

MAINE STATE LEGISLATURE

The following document is provided by the
LAW AND LEGISLATIVE DIGITAL LIBRARY
at the Maine State Law and Legislative Reference Library
<http://legislature.maine.gov/lawlib>



Reproduced from scanned originals with text recognition applied
(searchable text may contain some errors and/or omissions)

STATE LAW LIBRARY
AUGUSTA, MAINE

036

STATE OF MAINE
RADIOLOGICAL INCIDENT PLAN

POINT LEPREAU
NUCLEAR GENERATING FACILITY
NEW BRUNSWICK, CANADA

ANNEX "E"
STATE OF MAINE
EMERGENCY OPERATIONS PLAN

MARCH 1983

RICHARD D. DUTREMBLE
DIRECTOR
MECEP

ROBERT E. MALANEY
OPERATIONS OFFICER
MECEP

MAR 27 1984

SECTION I

PREFACE

1.1 PURPOSE

The purpose of this contingency plan is to provide concerned Maine citizens with contingency planning concepts, procedures and Emergency Public Information (EPI) in the event an incident occurs at the Point Lepreau Nuclear Generating Facility, located at Point Lepreau, New Brunswick, Canada.

1.2 PROCEDURES

It should be realized that our emergency planning concepts for a Canadian nuclear generating facility will generally adhere to U.S. Nuclear Regulatory Commission (NRC) and Federal Emergency Management Agency (FEMA) guidance. The primary guidance that will be utilized is:

- . NUREG-0654/FEMA-REP-1 "Criteria for Preparation and Evaluation of Radiological Emergency Response Plans and Preparedness in Support of Nuclear Power Plants."
- . NUREG-0396 (EPA 5201 - 78-016) "Planning Basis for the Development of State and Local Government Radiological Emergency Response Plans in Support of Light Water Nuclear Power Plants."

1.3 EMERGENCY PLANNING ZONE (EPZ)

The Emergency Planning Zone (EPZ) within Washington County will be limited to the ingestion exposure pathway. This longer pathway is considered a reasonable approach in view of the fact that Point Lepreau is geographically located about 27 miles northeast of the eastern most tip of Washington County.

1.4 SUMMARY

It will be the responsibility of the Maine Bureau of Civil Emergency Preparedness (MECEP) to review and test this plan on a periodic basis. The purpose of these exercises will be to make concerned citizens and local officials aware of the emergency response procedures established between Emergency Management Organization (EMO), Fredericton, New Brunswick, Canada and State of Maine agencies.

County and local governmental organizations are encouraged to develop their own unique internal standard operation procedures which will (when completed) provide a basis for both county and local community response.

TABLE OF CONTENTS

SECTION II

| | | |
|---------------|--|-------------|
| Section I | Preface | Pages 1-2 |
| Section II | Table of Contents | Page 3 |
| Section III | Distribution Plan | Pages 4-5 |
| Section IV | Situations and Assumptions | Pages 6-7 |
| Section V | Concepts of Operations | Pages 8-14 |
| Section VI | Responsibilities | Pages 15-19 |
| Section VII | Emergency Public Information | Pages 20-21 |
| | | |
| Addendum No I | Demographic Data | Pages 22-23 |
| Addendum No 2 | Letters of Agreement | Page 24 |
| Addendum No 3 | Resource data | Pages 25-31 |
| Addendum No 4 | Departmental Standard Operating Procedures (SOP) | Pages 32-48 |
| | . Maine State Police | |
| | . Maine Department of Agriculture | |
| | . Maine Department of Transportation | |
| | . Division of Health Engineering | |
| | . Marine Resources | |

SECTION III
DISTRIBUTION LIST

| ORGANIZATION | <u>COPY NO.</u> |
|---|-----------------|
| Defense and Veterans Services | 1 |
| Department of Transportation | 2 |
| Department of Agriculture | 3 |
| Department of Marine Resources | 4 |
| Division of Health Engineering | 5 |
| Maine State Police, Augusta | 6 |
| Maine State Police, Houlton | 7 |
| Maine State Police, Machias | 8 |
| Director, Maine Bureau of Civil Emergency Preparedness | 9 |
| Operations Officer, MECEP | 10 |
| Warning Officer, MECEP | 11 |
| Plans & Research (P&T), MECEP | 12 |
| Business Manager, MECEP | 13 |
| Chief, Radiological Defense, MECEP | 14 |
| Communications Officer, MECEP | 15 |
| Federal Emergency Management Agency, Washington, D.C. | 16 |
| Federal Emergency Management Agency, Region One | 17 |
| Emergency Measures Organization, Fredericton, New Brunswick | 18 |
| Washington County Commissioners | 19 |
| Washington County Sheriff | 20 |
| Washington County CEP | 21 |

ORGANIZATION

COPY NO.

Local Officials of:

| | |
|--|----|
| Alexander | 22 |
| Baileyville | 23 |
| Baring Plantation | 24 |
| Calais | 25 |
| Charlotte | 26 |
| Copper | 27 |
| Cutler | 28 |
| Dennysville | 29 |
| Eastport | 30 |
| Edmunds Township | 31 |
| Lubec | 32 |
| Marion Township | 33 |
| Meddybemps | 34 |
| No. 14 Plantation | 35 |
| Pembroke | 36 |
| Perry | 37 |
| Pleasant Point | 38 |
| Robbinston | 39 |
| Trescott Township | 40 |
| Whiting | 41 |
| U.S. Border Patrol, Houlton | 42 |
| U.S. Customs and Immigration, Portland | 43 |
| CO, U.S. Naval Communication Facility, Cutler, Maine | 44 |
| CO, USCG, West Jonesport | 45 |
| CO, USCG, East Quoddy Head | 46 |

SECTION IV

SITUATION AND ASSUMPTIONS

4.1 BACKGROUND

Today the generation of electricity by means of nuclear materials has become a common occurrence, but history and prudence dictate that due to the unique hazards associated with nuclear power generation, contingency plans to protect human life and property should be developed and distributed to concerned Maine citizens and specific elements of government at the state, county and local level. The specific facility addressed in this plan is the Point Lepreau Nuclear Generating Station, New Brunswick, Canada. This station lies 27 miles, northeast of Eastport, Maine, thus placing a portion of Maine (Washington County) within a 50 mile radius of Point Lepreau, New Brunswick, Canada.

4.2 SITUATION

Point Lepreau Nuclear Generating Station is located in a lightly populated area on the shore of the Bay of Fundy about 24 miles west of Saint John, New Brunswick. The reactor is of the CANDU type using non-enriched uranium fuel moderated by deuterium enriched water. It has a potential generating capacity of 660 megawatts, and is the only Canadian reactor using sea water for cooling. While some residents work outside the general area, most are engaged in fishing, tourism and service industries. A demographic survey indicates a total population of about 3,500 residents within a 20 km radius of the plant site.

Maps illustrating the geographic relationship between Point Lepreau, the Canadian/United States border, and the immediate geographic area of the nuclear generating station are contained in Addendum No. 1.

4.3 ASSUMPTIONS

The following assumptions are applicable to this contingency plan:

- . Point Lepreau Nuclear Generating Facility personnel will operate the plant and all ancillary equipment in accordance with existing Canadian rules and regulations.
- . Point Lepreau plant officials will report all required radiation incidents to Canadian authorities in accordance with established procedures.
- . Maine State Police will receive initial notification and warning information, as set forth in the Concepts of Operations from Emergency Measures Organization (EMO), New Brunswick, Canada. Maine Bureau of Civil Emergency Preparedness (MECEP) will complete all notifications required within Maine State Government and Washington County.
- . All affected Maine State Agency personnel will maintain a high state of training and will respond to all reported and verified nuclear "incidents" at Point Lepreau within existing personnel and financial resources.
- . Federal agencies will provide personnel and equipment to the State of Maine, if requested.
- . On an annual basis each organization shall review its portion of this plan and forward all recommended changes to Maine Bureau of Civil Emergency Preparedness (MECEP).
- . Radiological training requirements will be forwarded to Maine Bureau of Civil Emergency Preparedness (MECEP) annually by state, county and local organizations that have personnel requiring initial or refresher radiological training.

SECTION V

CONCEPTS OF OPERATIONS

5.1 BACKGROUND

In the event an incident at the Point Lepreau Nuclear Generating Facility occurs, contingency procedures must be developed, promulgated and tested which will provide certain elements of Maine state government timely notification on the status and anticipated status of the Pt. Lepreau Nuclear Power Plant. This information may result in some type of recommended protective action(s) within Washington County.

5.2 PROCEDURES

Notification procedures originate with the nuclear power plant officials at Point Lepreau and are subsequently relayed to Canadian officials at Emergency Measures Organization (EMO), located in Fredericton, New Brunswick and subsequently forwarded by telephone to the Maine State Police , Augusta, Maine. It should be realized that due to governmental complexity, and the difference in some technical terminology it should be apparent that notification procedures must be thoroughly understood by affected agencies on both sides of the border.

5.3 INITIAL NOTIFICATION

Emergency Measures Organization (EMO), New Brunswick, Canada will notify Maine Bureau of Civil Emergency Preparedness by contacting the Maine State Police at Augusta. Maine State Police (MSP) A/C 207-289-2155 will be notified whenever any release of radioactive materials occurs in excess of Canadian emission

limits. These limits are designated by Canadian Atomic Energy Control Board (AECB). The Maine State Police will notify:

- . Troop "J" Maine State Police, Machias
- . MECEP, Maine Bureau of Civil Emergency Preparedness which in turn will notify:
 - . Executive Department
 - . Division Health Engineering
 - *. Maine Department of Transportation
 - *. Maine Department of Agriculture
 - *. Marine Resources
 - . Washington County Sheriff
 - . Washington County Civil Emergency Preparedness

*Only on the recommendation of Health Engineering personnel.

Because of the international aspects of any "incident" at Point Lepreau there may be a distinct need to ensure that both Federal and Maine state government agencies are aware that an incident or situation is/has occurred at the plant. Accordingly, certain Maine state agencies (MECEP and DHE) will be provided this data from:

U.S. Nuclear Regulatory Commission

and

Federal Emergency Management Agency

NOTE NO. 1 This is a cross check to ensure that initial notification is received from the above agencies. This report will originate with the Atomic Energy Control Board (AECB) and Emergency Planning, Canada

NOTE NO. 2 Alerting and notification procedures i.e., events are illustrated in Figure 5-5A.

5.4 OPERATIONS

A. EMERGENCY HEADQUARTERS

- . Maine State Government will operate and function from the Civil Emergency Preparedness Emergency Operations Center (EOC), located in the basement of the State Office Building, Augusta, Maine.
- . Emergency Personnel will consist of selected personnel from the Disaster Liaison Team (DLT). This augmentation of MECEP personnel will enable the State Operating Center to function on a twenty-four (24) hour a day basis for a protracted time frame.
- . Canadian officials will operate from the New Brunswick Emergency Measures Organization Emergency Operations Center (EOC), located at 15 Carleton Street, Fredericton, New Brunswick, Canada.
- . Maine State Police (MSP) will establish a command post at the Washington County Building in Machias and provide a communications link between the emergency area and Maine state government in Augusta via mobile radio and police cruiser.

B. COMMUNICATIONS

- . The primary means of communication between the Maine Emergency Operations Center (EOC) and the New Brunswick Emergency Operations Center (EOC) will be via telephone. A secondary communications link between emergency centers may be established via radio if the emergency is of severe or prolonged duration.
- . Operational communications in the Washington County - New Brunswick border area will be provided by the Maine State Police and the Canadian Royal Canadian Mounted Police (RCMP).

Communications dispatch points will be at the Washington County Radio Communications Center (RCC) in Machias and at the RCMP Headquarters in St. Stephen, New Brunswick.

The RCC at the County Building in Machias, with its multiple radio circuits utilizing police and civil emergency preparedness frequencies, provides an excellent interface point between field forces and the State Emergency Center.

A table of communications circuits and radio frequencies available at the Washington County RCC is set forth in Figure 5B.

- . Communications to the general public during an incident period will be via the Emergency Broadcast System (EBS) radio/TV, Cable TV and newspapers.

C. PERSONNEL AND ORGANIZATIONS that may be affected by this type of situation are listed below (telephone numbers are listed in Addendum No. 3):

(1) FEDERAL GOVERNMENT

- . Federal Emergency Management Agency (National and Regional)
- . National Weather Service
- . U.S. Coast Guard
- . U.S. Customs and Immigration
- . U.S. Nuclear Regulatory Commission
- . Department of Energy
- . U.S. Border Patrol

(2) MAINE STATE GOVERNMENT

- . Governor and Executive Department
- . Bureau of Civil Emergency Preparedness
- . Division of Health Engineering
- . Maine State Police
- . Maine Department of Agriculture
- . Marine Resources
- . Department of Transportation
- . Department of Environmental Protection

WASHINGTON COUNTY GOVERNMENT

- . County Commissioners
- . Civil Emergency Preparedness
- . Sheriff's Department

(3) LOCAL GOVERNMENT (20 COMMUNITIES)

- . Selectmen/Mayors/Town Managers, as appropriate
- . Police Departments/Constables
- . Fire Departments
- . Civil Emergency Preparedness Directors

5.5 EXTRACTS FROM MAINE STATE LAW

The following extracts are reprinted below which provide the basis for the development of this document and similar documents which may be helpful at the county and local levels of government.

TITLE 25

CHAPTER 5

RADIATION

§ 50. Radiation Hazards

Whenever there are actual or potential hazards or dangers to property or to the public from radiation, radioactive materials, nuclear materials or the occurrence of a radiological incident as a result of the presence of, release of or emissions from radioactive materials, radioactivity or nuclear materials in this State, which hazards or dangers arise from the peaceful use of nuclear or atomic materials, the Governor, after consultation with and advice of the Department of Health and Welfare, shall by proclamation declare the fact and that an emergency exists in any or all areas of the State. A copy of such proclamation shall be filed with the Secretary of State and published in such newspapers of the State as the Governor deems appropriate. In such event, the Governor shall have general direction and control of the Department of State Police, the Department of Health and Welfare, the National Guard, and of any other state department or agency.

The Governor is authorized and empowered to do all things necessary to protect the public and prevent damage to property. The Governor may order the State Police or National Guard to evacuate any area designated by him and to carry out any other orders he deems necessary, and they shall in such event have full authority to carry out his orders. The Governor may delegate any authority vested in him under this provision.

Whenever the Governor is temporarily absent from the State or is otherwise unavailable, the next person who would act as Governor if the office of Governor

were vacant shall have all the authority, powers, duties and responsibilities of the Governor under this chapter.

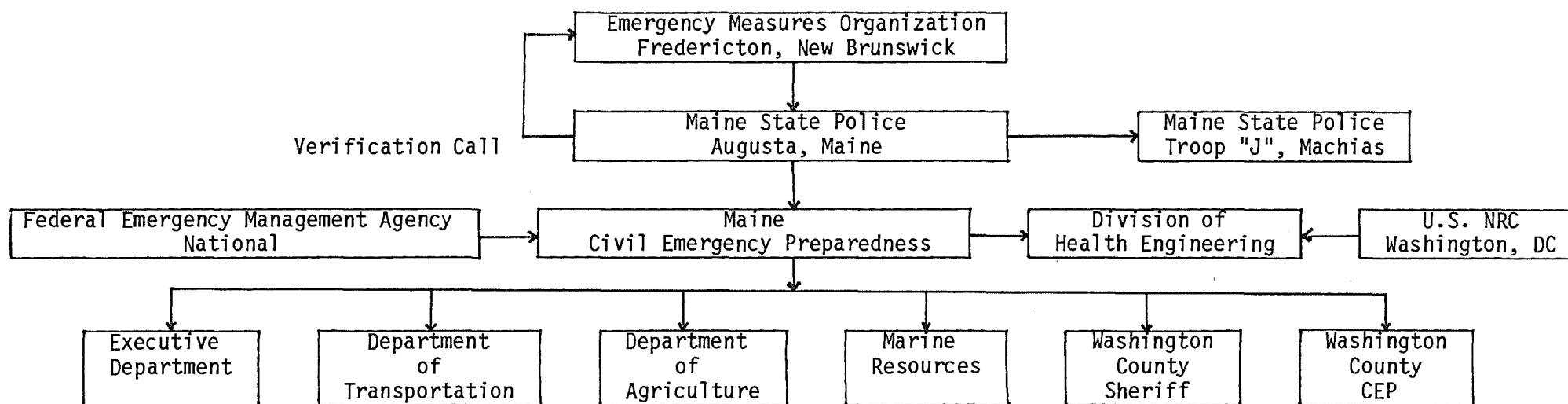
Any person who shall violate any lawful order of the Governor or the person acting in that capacity or any person to whom authority has been delegated or any lawful order of the Maine State Police or National Guard, shall be guilty of a misdemeanor and shall be punished by a fine of not less than \$100 nor more than \$500.

§ Agreements

The Governor, the Department of Health and Welfare and the Department of State Police, or any person, department or agency designated by the Governor shall have authority to enter into agreements, understandings or arrangements with any other department or agency of this State, any federal agency, state, political subdivision or person to provide for mutual aid plans, emergency plans, evacuation plans and their implementation and any other agreements deemed necessary to protect public and private property in this State from hazards or dangers from radiation, radioactive materials, radioactivity or nuclear materials in this State. The hazards or dangers referred to in this section shall be only those arising from the peaceful use of nuclear or atomic materials.

Within the provisions 37-A MRSA Section 59 subsection 3, local chief executives will be expected to develop, publish and update contingency operations plans which will utilize city/town resources. Appropriate local ordinances and regulations will be developed to allow Government to function during an emergency and evaluate the need for outside assistance. Any two or more cities or towns may, with the approval of the State Director, Maine Bureau of Civil Emergency Preparedness, establish a joint organization for Civil Defense.

INITIAL ALERTING
AND
NOTIFICATION PROCEDURES



NOTE: MECEP to notify Department of Transportation, Department of Agriculture and Marine Resources upon recommendation of Health Engineering.

Figure 5-A

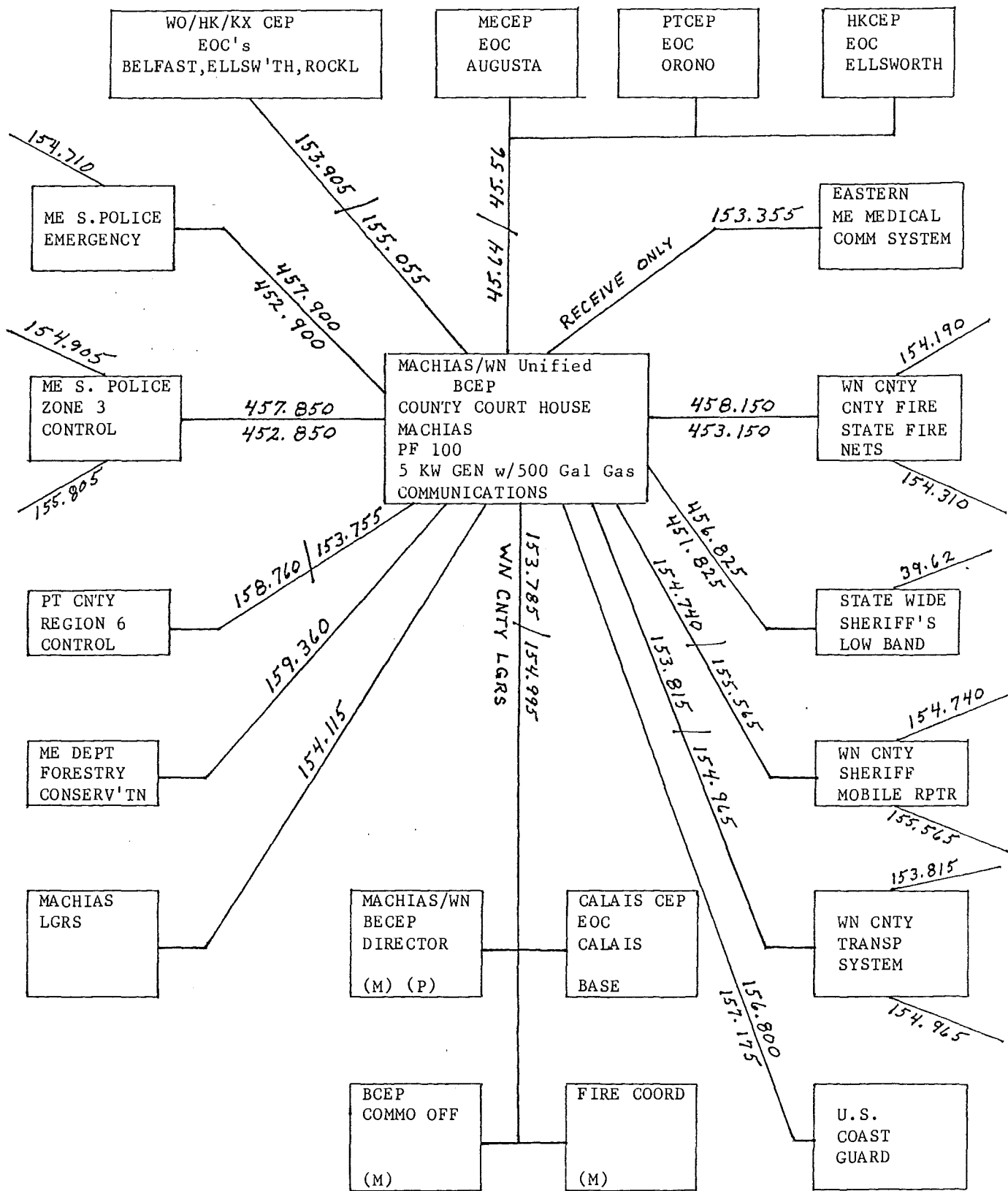


FIGURE 5-B

SECTION VI
RESPONSIBILITIES

6.1 BACKGROUND

The purpose of this section is to simply yet clearly indicate the specific responsibilities of each affected agency - both Canadian and the State of Maine. Agencies have been identified as either: (1) Primary or (2) Secondary. Maine state government primary agencies will develop and promulgate a Standard Operating Procedure (SOP) which will indicate specific actions initiated by that agency. Agency SOP's are included as Addendum No. 4 to this contingency plan.

A. PRIMARY AGENCIES RESPONSIBILITIES

1. Emergency Measures Organization (EMO), New Brunswick, Canada will:
 - a. Notify Maine State Police whenever radioactive material is released which exceeds Canadian emission levels.
 - b. Provide Maine State Police (MSP) and Maine Bureau of Civil Emergency Preparedness (MECEP) with periodic updates on the status of the nuclear power plant and especially any off-site radiation and its projected track.

2. Executive Department - State of Maine will:
 - a. Monitor overall situation.
 - b. Receive updated reports from appropriate Maine state agencies.
 - c. Initiate appropriate action(s) to protect the citizens within Washington County.
 - d. Partially activate the State EOC if appropriate.

3. Maine State Police (MSP) will:

a. Act as twenty-four (24) hour contact point for receipt of initial notification from Emergency Measures Organization (EMO), New Brunswick. Whenever a telephone notification of this type is received, the Maine State Police will initiate a "return call" to Emergency Measures Organization (EMO), Canada A/C 506/453-2133 to verify the situation.

b. Notify Maine Bureau of Civil Emergency Preparedness (MECEP) staff personnel subsequent to incident notification.

Maine Bureau of Civil Emergency Preparedness (MECEP) staff personnel and their telephone numbers will be provided to Maine State Police.

c. Establish and maintain vehicle traffic control within Washington County.

d. Dispatch Maine State Police cruiser to the Royal Canadian Mounted Police (RCMP) headquarters in St. Stephen, New Brunswick which will provide radio communications and mobile liaison between governments.

e. Dispatch a police officer to the State Emergency Operations Center (EOC) to act as liaison officer.

4. Maine Bureau of Civil Emergency Preparedness will:

a. Notify following Maine State Agencies:

. Executive Department

. Division of Health Engineering

*. Maine Department of Transportation

*. Maine Department of Agriculture

- *. Marine Resources
 - . Washington County Sheriff
 - . Washington County CEP

*Based upon a recommendation of Division of Health Engineering.

- b. Activate State EOC.
- c. Activate the Disaster Liaison Team (DLT), if required.
- d. Receive, post and analyze all data pertaining to radiological situation.
- e. Provide periodic updates to the Executive Department, DLT Washington County Government, and Federal Emergency Management Agency (FEMA), Region One.
- f. Monitor situation until the incident period is terminated.
- g. Establish a liaison representative at EMO Fredericton EOC, if required.

4. Division of Health Engineering will:

- a. Establish contact with Department of Health, New Brunswick and obtain and plot radiation data.
- b. Coordinate and conduct as required off-site radiation monitoring and sampling with:
 - . Department of Health New Brunswick
 - . Maine Division of Marine Resources
 - . Maine Department of Agriculture
 - . Maine Department of Environmental Protection

- c. Provide updated situation reports to Executive Department, Washington County Government, and to concerned Maine citizens via appropriate news media and in accordance with Executive Department policy.
5. Maine Department of Agriculture will:
- a. Assist Maine Division of Health Engineering in obtaining off-site radiation data in developing technical recommendations for state and local officials.
 - b. Monitor the status of livestock and stored field crops and farm resources in an effort to minimize contamination through food consumption.
 - c. Provide liaison to Maine Bureau of Civil Emergency Preparedness (MECEP) at the State Emergency Operating Center (EOC).
6. Maine Department of Transportation will:
- a. Establish radio communications as required.
 - b. Provide road reports and vehicle traffic reports as required to Maine State Police (MSP).
 - c. Assist Maine State Police (MSP) in traffic control.
 - d. Provide liaison representatives to State Emergency Operating Center (EOC).
 - e. Activate Division Operating Center (DOC) at the Ellsworth Office if required.
7. Washington County CEP will:
- a. Establish County Emergency Operating Center until incident period is terminated.

- b. Maintain liaison with all elements of Washington County government and local governments within Washington County that may be affected.
- c. Provide periodic update reports to State Emergency Operating Center (EOC) as required.
- d. Periodically brief or cause to have briefed all local officials within Washington County that are geographically located within fifty (50) miles of Point Lepreau.

SECTION VII

EMERGENCY PUBLIC INFORMATION

7.1 BACKGROUND

It must be realized that public information concerning nuclear power generation is extremely sensitive data and must be processed in an accurate, timely and impartial manner. News releases with regard to any situation at Point Lepreau Nuclear Generating Facility will be reviewed and released by a representative of the Executive Department. This process may require input from Maine Bureau of Civil Emergency Preparedness (MECEP), Maine Department of Transportation (MDOT), Maine State Police (MSP), Division of Health Engineering (DHE), Marine Resources and other state agencies that may have direct or supportive responsibility during a situation of this type.

7.2 PROCEDURES

The Departmental Public Information officers who may be temporarily assigned to this project and who will provide professional assistance to the Executive Department during an off-site emergency situation will adhere to the following policy:

- A. News announcements which address warning the public, immediate protective actions if required, may be issued by the Division of Health Engineering or Maine Bureau of Civil Emergency Preparedness if the situation warrants.
- B. All news releases addressing state policy decisions as well as releases not of an immediate nature will emanate from the Executive Department, or should be approved by a representative of the Executive Department.
- C. All Maine State agencies or individuals who desire to release any official public information will submit prospective release(s) to the Executive Department for clearance by the Governor's Director of Communications.

7.3 News Releases. Initial news releases which may be released by both Canadian news media organizations and certain news media within the State of Maine are set forth in Figures 7A and 7B respectively.

7.4 Emergency Public Information. Figure 7C has been developed as a handout for county/local officials and residents of Washington County who may be affected by an off-site incident at Point Lepreau.

SAMPLE NEWS RELEASE WHICH WILL BE
UTILIZED BY CANADIAN AUTHORITIES

ALERTING ANNOUNCEMENT - STAY TUNED

Filed at:

Saint John -- CBD/CBC, CFBC, CHSJ (Radio and TV), CRSJ, ATV; Calais, Maine -- WQDY;
Fredericton -- CBC-TV, CBZ/CBC, CFNB, CIHI, ATV; Presque Isle, Maine -- WAGM;
Bangor, Maine -- WLBZ-TV.

This is an urgent bulletin from the New Brunswick Emergency Measures Organization regarding the release of airborne radioactive matter from the Point Lepreau Nuclear Generating Station.

Residents in the immediate area of the Point Lepreau site including, the communities of Maces Bay, Little Lepreau, Dipper Harbour & Chance Harbour are instructed to stay in their homes. You are advised to close all windows and doors and turn off air conditioners and furnace fans.

Residents of nearby communities are also advised to stay indoors, unless it is absolutely necessary to go out, until further information is issued by EMO concerning the extent of the release of radioactive matter from the Point Lepreau Plant.

Anyone driving is advised to avoid these areas.

All residents are urged to remain calm and to follow the steps laid down in the Emergency Response Guide.

WE REPEAT

Residents in the immediate area of the Point Lepreau site including the communities of Maces Bay, Little Lepreau, Dipper Harbour and Chance Harbour are instructed to stay indoors and keep their doors and windows closed and fans turned off while authorities determine the extent of the release of radioactive matter from the Point Lepreau Nuclear Generating Station.

Further bulletins will be carried by this station as information becomes available.

Stay tuned.

SAMPLE NEWS RELEASE ANNOUNCING AN INITIAL "INCIDENT"
AT POINT LEPREA, NEW BRUNSWICK, CANADA

The Maine Bureau of Civil Emergency Preparedness has received a verified report that an incident has occurred at the Point Lepreau Nuclear Generating Facility at Point Lepreau, New Brunswick, Canada. This report was received from Emergency Measures Organization (EMO), Fredericton, New Brunswick, Canada.

Maine State officials are responding in accordance with pre-established plans to monitor this situation. Stay tuned to this station, additional information will be broadcast as soon as it is made available by State of Maine authorities.

EMERGENCY INSTRUCTIONS
to be used in the event of an accident at
POINT LEPREAU NUCLEAR GENERATING FACILITY

(if you live or work within the area shown on the map below)

Primary Action

Turn on your radio or television to WAGM-TV, Ch. 8; WLBZ-TV, Ch. 2; WDEA-AM; WQDY-AM/FM; and, WABI-TV, Ch. 5. State government officials will broadcast situation reports and any special protective actions the public should take.

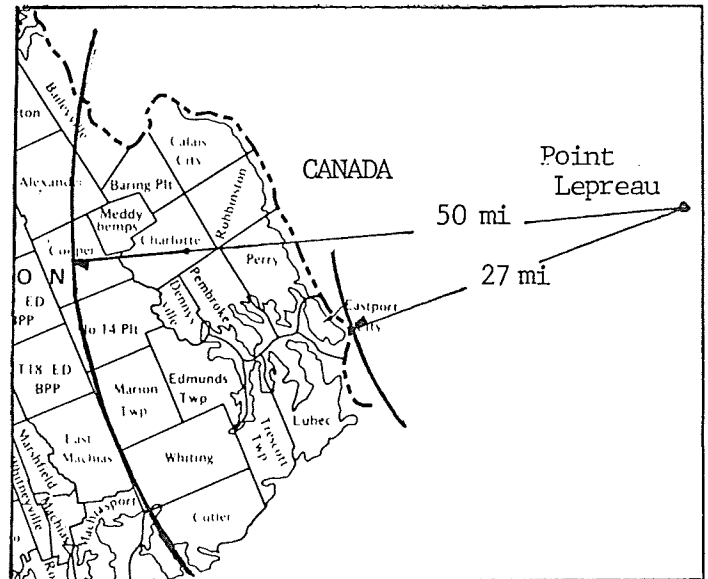
GENERAL INFORMATION

The Point Lepreau NGF is located in New Brunswick Canada approximately 27 1/2 miles northeast of Eastport, Maine.

The State of Maine is following U.S. Nuclear Regulatory Commission and Federal Emergency Management Agency guidelines (NUREG 0654/REP 1) consisting of two emergency planning zones. One called the Inhalation Zone which covers a 10 mile radius around a nuclear facility and an Ingestion Zone which covers a 50 mile radius around a nuclear facility.

The map clearly shows part of Washington County lies in the 50 mile ingestion zone. This means special actions may be necessary to protect milk and other foodstuffs from contamination.

Actions such as, in house shelter or evacuation are not primary factors because of the distance from the nuclear facility. If such actions ever becomes necessary the Governor would issue instructions via radio and television.



COMMUNITIES INVOLVED

INFORMATION SOURCES

Your local officials
Washington County Sheriff 255-4422
Washington County CEP 255-3931
State Civil Emergency Preparedness 1-800-452-8735

| | |
|-------------|----------------|
| Alexander | Lubec |
| Baileyville | Marion TWP |
| Baring Plt | Meddybemps |
| Calais | No. 14 Plt. |
| Charlotte | Pembroke |
| Cooper | Perry |
| Cutler | Robbinston |
| Dennysville | Trescott TWP |
| Eastport | Whiting |
| Edmunds TWP | Pleasant Point |

(Do Not tie up telephone circuits with unnecessary calls)

Figure 7-C

ADDENDUM NO. 1

Demographic Data and Maps of the Area

1.1 This addendum contains population data, land use data, special facilities data and maps to graphically display the planning radii of 50 miles from the Pt. Lepreau nuclear plant.

A.

COMMUNITIES LOCATED WITHIN 50 MILES

| <u>Town(s)</u> | <u>Population</u> |
|----------------|-------------------|
| Alexander | 383 |
| Baileyville | 2,450 |
| Baring Plt. | 308 |
| Calais | 4,254 |
| Charlotte | 295 |
| Cooper | 105 |
| Cutler | 728 |
| Dennysville | 296 |
| Eastport | 1,999 |
| Edmunds TWP | 165 |
| Lubec | 2,040 |
| Marion TWP | 32 |
| Meddybemps | 110 |
| No. 14 Plt. | 52 |
| Pembroke | 922 |
| Perry | 733 |
| Robbinston | 492 |

| | |
|----------------|--------|
| Trescott TWP | 300 |
| Whiting | 331 |
| Pleasant Point | 547 |
| | <hr/> |
| TOTAL | 16,542 |

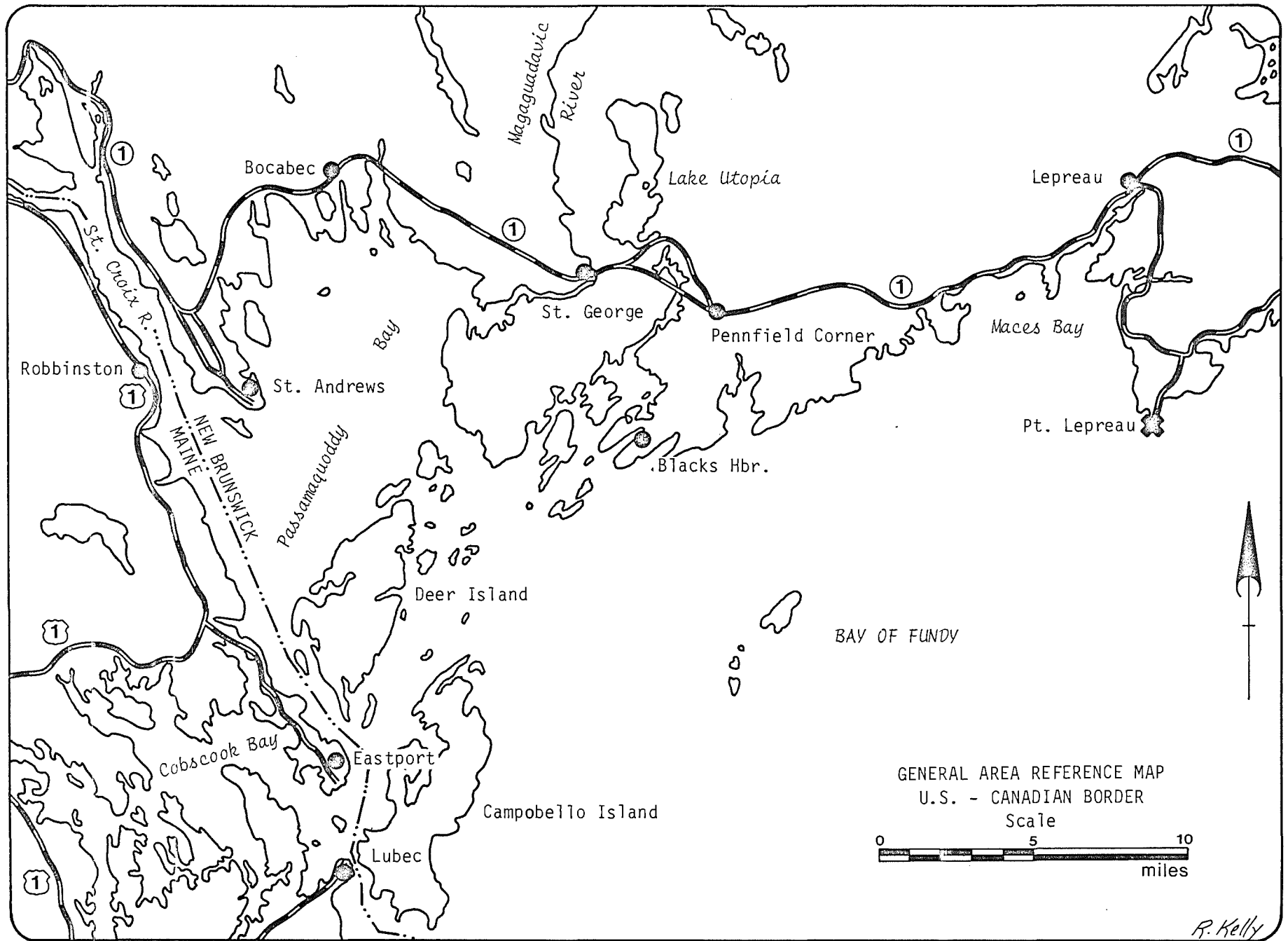
B. Land Use

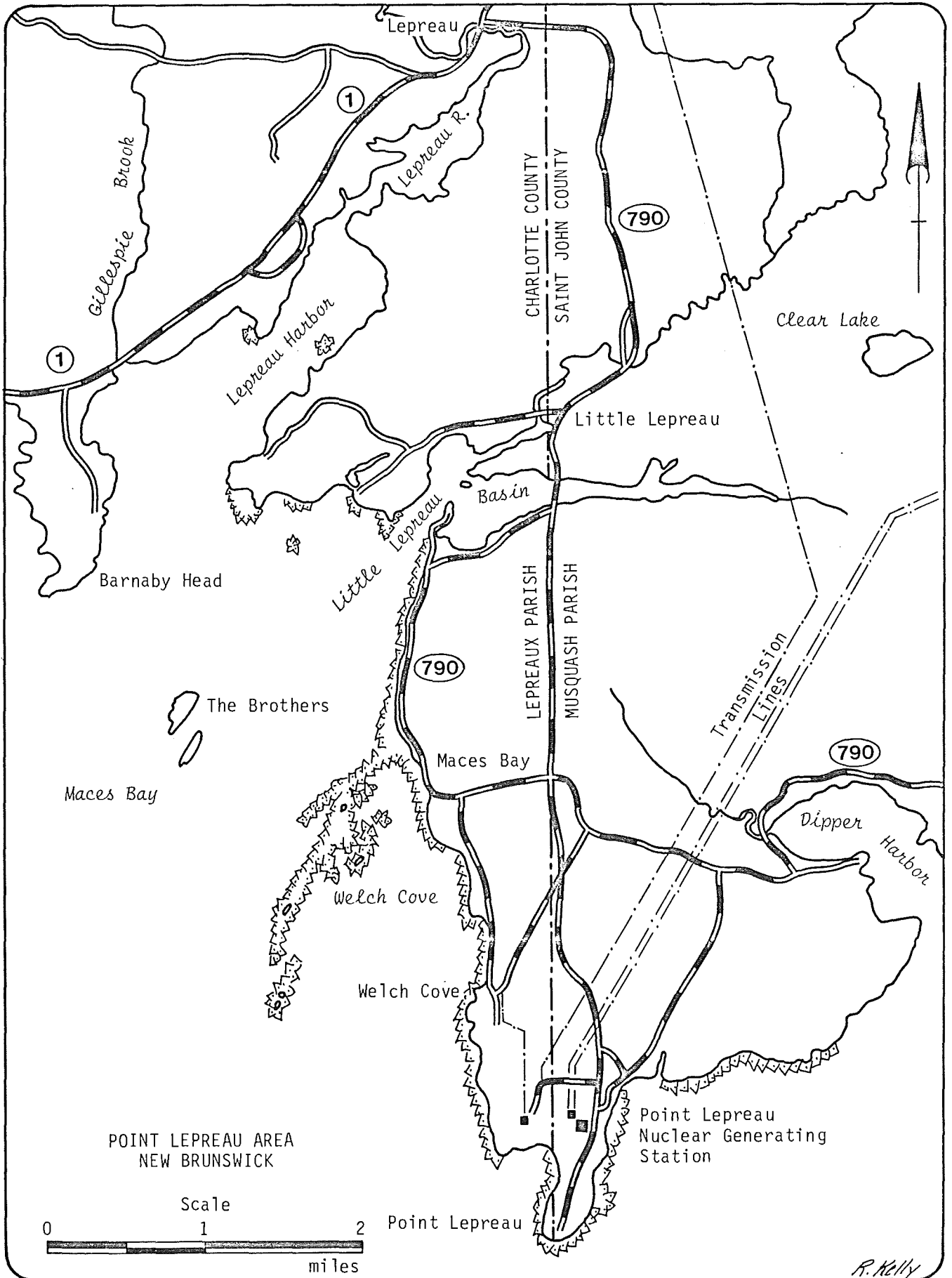
1. The land use within the area of concern is mainly farmland and recreational activities.
2. Because of its unique coastal terrain and numerous bays, the area is a summer recreational center for marine activities. This summer recreation and the paper industry with the attendant businesses, motels, restaurants, shops, etc. provide most of the economic base for this area. Industrial activity is somewhat limited with fishing, fish processing and the paper industry as the two largest employers within the county.

C. Wind Data for Eastern Washington County

The following data was obtained from the U.S. National Weather Service:

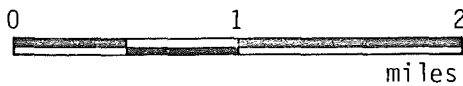
- . Average annual wind speed is 10.7 miles per hour.
- . Prevailing winds are from the south and southwest April through October.
- . Prevailing winds during the colder months October–November through March are from the northwest.
- . During the summer the southerly daytime winds tend to shift to southwest at night.
- . During the late fall months the prevailing winds are from the northwest during the daylight hours and shift to a westerly direction during hours of darkness.





POINT LEPREAU AREA
NEW BRUNSWICK

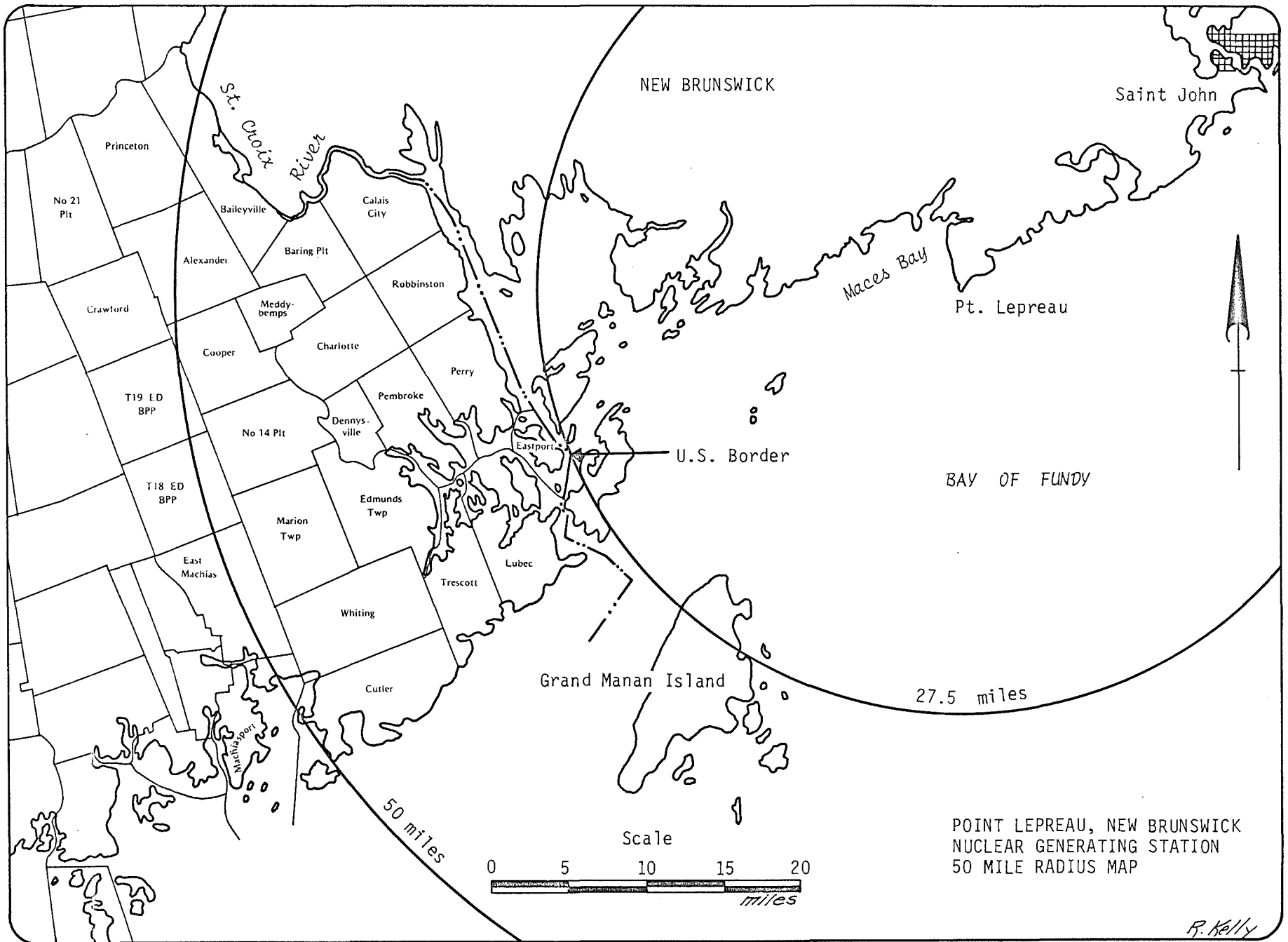
Scale



Point Lepreau

Point Lepreau
Nuclear Generating
Station

R. Kelly



ADDENDUM NO. 2

Letters of Agreement

The following organizations and/or agencies have indicated their willingness to provide assistance within the constraints of their personnel and financial resources. These letters are attached.

COMMUNITY BROADCASTING SERVICE

35 HILDRETH STREET • BANGOR, MAINE 04401

31 • WABI-TV • WBGW

TEL. (207) 947-8321

May 14, 1982

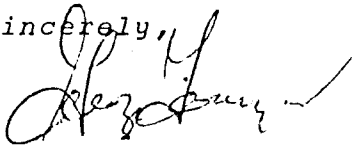
Richard D. Dutremble
State Director
Bureau of Civil Emergency Preparedness
State House
Augusta, Maine 04333

Dear Mr. Dutremble:

I have forwarded your letter of May 6th to our News Director, Gordon Manuel. He will be in touch with you for details regarding your contingency plan for Washington County residents in the event of a nuclear accident at Point Lapreau.

We wish to cooperate in any way possible.

Sincerely,



George Gonyar
Vice President and Manager
Community Broadcasting Service

GG/cs

CC: Gordon Manuel

Area Code 207
454-7545



WQDY
INCORPORATED

AM & FM STEREO
92.7 FM Stereo

SAV
Daniel F. Hollingdale, President
General Manager
"1230 on your AM Dial"

INTERNATIONAL BROADCAST HOUSE • CALAIS, MAINE • ST. STEPHEN, N. B.

May 13, 1982

Bureau of Civil Emergency Preparedness
Richard D. Dutremble
State Director
State House
Augusta, Maine 04333

Dear Mr. Dutremble:

In regards to your letter dated May 6, 1982 #103-82-1, I am writing to inform you that WQDY AM-FM Radio would be more than willing to cooperate with you in the event of a serious accident at Point Lepreau in New Brunswick. We recognize our strategic location and if you will keep us informed as to what steps should be taken, we will do the very best we can to comply.

If you have need of more information, please feel free to contact me.

Sincerely,

Daniel F. Hollingdale
President

DFH/saw

Most Easterly Station In The U.S.A.

PT. 1P.
SIRUK

WIDEA
96 FM/1370 AM
CBS RADIO NETWORK AFFILIATES

RICHARD DUDMAN, CHAIRMAN OF THE BOARD

12 May 1982

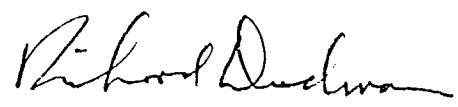
Mr. Richard D. Dutremble, State Director
Bureau of Civil Emergency Preparedness
State House
Augusta, Maine 04333

Dear Mr. Dutremble:

Please do keep us informed of any reports that should be made to the people of eastern Washington County in connection with the Point Lepreau Nuclear Power Plant.

We share your interest in supplying factual information to dispel rumor and counteract innuendo.

Sincerely yours,



Richard Dudman

UNITED STATES DEPARTMENT OF JUSTICE

IMMIGRATION AND NATURALIZATION SERVICE

319 FEDERAL COURTHOUSE
PORTLAND, MAINE 04112

PLEASE REFER TO THIS FILE NUMBER

POM 105.17

June 29, 1982

Mr. Richard Dutremble
State Director
Bureau of Civil Emergency Preparedness
Augusta, Maine, 04333

Dear Mr. ^{Dick}Dutremble:—

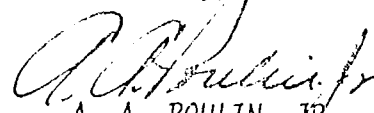
Thank you for your letter of June 23, 1982, in which you request a statement of Service policy if it should become necessary to evacuate large numbers of Canadian residents to the State of Maine in the event of a nuclear emergency at the Pt. Lepreau Nuclear Power Plant in New Brunswick.

In the absence of any current statement of Service-wide policy on such international relocations, in the event of nuclear emergency, this district would authorize the temporary admission of the affected Canadian residents with a minimum of inspection requirements. The entry of their possessions, i.e. household goods, vehicles, equipment, etc. would be a matter of U.S. Customs Service jurisdiction and I recommend you consult with Mr. Emery Ingalls, District Director, U.S. Customs on that matter.

In the meantime, I am referring your request to higher authority for consideration of issuance of a region-wide, or Service wide, statement of policy on the matter of relocations of Canadian residents to the United States due to nuclear emergency in that country. In this connection, a statement of what the Canadian policy would be in admitting relocated United States citizens to Canada, in the event of nuclear emergency in the United States, would be most helpful. I will notify you if any regional or Service wide policy statement is issued on this subject.

Kindest regards.

Cordially,


A. A. POULIN, JR.
DISTRICT DIRECTOR



STATE OF MAINE
DEPARTMENT OF PUBLIC SAFETY
36 HOSPITAL STREET
AUGUSTA MAINE 04110

December 15, 1980

John Langton, Planning Officer
Department of Municipal Affairs
Emergency Measures Organization
P.O. Box 6000
Fredericton, N.B. E3B 5H1

Dear Mr. Langton:

It is my understanding after talking with Captain Dean F. Clukey, that as a result of the workshop held in Fredericton on November 21, 1980, certain tentative agreements were reached between the Royal Canadian Mounted Police and our agency concerning Point Lepreau.

As a follow-up to those preliminary discussions, the following paragraphs outline the steps to be followed by the Maine State Police in the event of an incident at Point Lepreau, N.B.

Upon notification through channels of an incident at Point Lepreau, the State Police will, as soon as practical, establish a command post at the County Building in Machias, Maine. A State Police officer will be dispatched to the RCMP detachment at St. Stephen, N.B. for the purpose of utilizing his mobile radio as a communications liaison between the RCMP and the State Police command post.

Since the County Building in Machias houses the Regional Communications Center for Washington County, this liaison effectively links the RCMP with not only the State Police, but all other major law enforcement and emergency vehicles in Washington County.

There are no plans for an evacuation of any Maine residents so our agency would only stand ready to react to any emergency situations brought on by such an incident and to be of any assistance possible to the RCMP in carrying out their duties.

Sincerely,

A handwritten signature in black ink, appearing to read 'Allan H. Weeks', written over a circular stamp or mark.

COLONEL ALLAN H. WEEKS
Chief, Maine State Police

AHW/slw

cc: ✓ Leslie Higgins, Deputy Dir., CEP
Insp. A. Michalow, RCMP, J Div. Hdqs.

ADDENDUM NO. 3

Resource Data

Telephone Numbers

Federal Agencies

| | | |
|-------------------------------------|----------------------|--------------|
| U.S. Coast Guard | East Quoddy Head | 244-5121 |
| U.S. Coast Guard | West Jonesport | 497-5700 |
| U.S. Coast Guard | Portland, Maine | 799-5531 |
| U.S. Coast Guard | Boston, Ma. | 617-223-3639 |
| Federal Emergency Management Agency | Boston, Ma. | 617-223-4271 |
| Federal Emergency Management Agency | Washington, D.C. | 202-545-6700 |
| U.S. Nuclear Regulatory Commission | Washington, D.C. | 301-492-7210 |
| U.S. Nuclear Regulatory Commission | King of Prussia, Pa. | 215-337-5000 |
| National Weather Service | Portland | 207-773-0352 |
| U.S.D.A. Maine | | 207-886-4976 |

State of Maine

| | | |
|--|---------|----------------------|
| Governor's Officers | Augusta | 289-3531 |
| State Civil Emergency Preparedness | Augusta | 289-3211 622-6201 |
| Maine State Police | Augusta | 289-2155 |
| Division of Health Engineering | Augusta | 289-3826 |
| Maine National Guard | Augusta | 622-9331 |
| Maine Department of Human Services | Augusta | 289-2226 |
| Maine Department of Agriculture | Augusta | 289-3871 |
| Maine Department of Marine Resources | Augusta | 289-2291 |
| Maine Department of Environmental Protection | Augusta | 289-2811 |

| | | |
|---|--------------------------------------|--------------------------|
| Maine Department of Transportation | Augusta | 289-2551 |
| Maine Department of Conservation | Augusta | 289-2211 |
| Maine Department of Inland, Fisheries and Wildlife | Augusta | 289-2766 |
| <u>Washington County</u> | | |
| Washington County CEP | | 255-3931 |
| Dispatch Center | | 1-800-432-7303 |
| Washington County Sheriff | | 255-4422 |
| Emergency Measures Organization | Fredericton, New Brunswick Canada | 506-453-2133 453-3749 |
| After Hours (Answering Service) | | 1-506-453-2133 |
| New Brunswick Information Service | | 1-506-453-2240 |

COMMUNITIES WITHIN WASHINGTON COUNTY THAT ARE
WITHIN 50 MILES OF POINT LEPREAU

Alexander

| <u>Officials</u> | <u>Telephone</u> | <u>Population</u> |
|------------------|------------------|-------------------|
| C. Davis (S) | 454-7467 | 383 |
| F. Wallace (S) | 454-7766 | |
| K. Smith (S) | 454-3420 | |

BAILEYVILLE

| | | |
|------------------------|----------|-------|
| Town Office | 427-3442 | 2,450 |
| J. Barnes (TM) | 427-6071 | |
| F. Jones (C) | 427-3262 | |
| G. Arthur Fleming (FC) | 427-6667 | |
| J. Wallace (S) | 427-3401 | |
| M. Bagley (S) | 427-3835 | |

BARING PLANTATION

| | | |
|----------------|----------|-----|
| B. Johnson (A) | 454-2011 | 308 |
| D. Doten | 454-3382 | |
| N. Doten | 454-7793 | |

CALAIS

| | | |
|------------------|----------|-------|
| Town Office | 454-2521 | 4,254 |
| R. Steadman (M) | 454-3427 | |
| W. Bridgeo (TM) | 454-7057 | |
| W. DelMonaco (S) | 454-3771 | |
| H. Clark (S) | 454-3314 | |
| J. Kelley (S) | 454-2230 | |

CHARLOTTE

| | | |
|---------------|----------|-----|
| Town Office | 454-3636 | 295 |
| E. James (S) | 454-3636 | |
| C. Sawyer (S) | 454-7436 | |
| R. Hatton (S) | 454-7447 | |

COOPER

| | | |
|----------------|----------|-----|
| Town Office | 454-7833 | 105 |
| J. Day (S) | 454-3947 | |
| P. Day (S) | 454-3947 | |
| R. Cousins (S) | 454-2364 | |

CUTLER

| | | |
|-----------------|----------|-----|
| Town Office | 259-3693 | 728 |
| N. Sheridan (S) | 259-3611 | |
| V. McGuire (S) | 259-3608 | |
| W. Ramsdell (S) | 259-7762 | |

DENNYSVILLE

| | | |
|-----------------|----------|-----|
| Town Office | 726-4663 | 296 |
| J. Sullivan (S) | 726-4718 | |
| R. Wilder (S) | 726-4707 | |
| A. Curtis (S) | 726-4637 | |

EASTPORT

| | | |
|-------------------|----------|-------|
| Town Office | 853-2951 | 1,999 |
| C. Worcester (TM) | 853-4057 | |
| J. Lynch (S) | 853-2777 | |
| D. Turner (S) | 853-2543 | |
| J. Mitchell | 853-2768 | |

LUBEC

| | | |
|-----------------|----------|-------|
| Town Office | 733-5532 | 2,040 |
| D. Bradley (TM) | 733-8890 | |
| C. Leighton (S) | 733-4368 | |
| E. Hallett (S) | 733-2262 | |
| A. Theeman (S) | 733-2813 | |
| W. Corey (S) | 733-8828 | |
| J. Lawrence (S) | 733-8869 | |

MEDDYBEMPS

| | | |
|--------------|----------|-----|
| Town Office | 454-8462 | 110 |
| H. Smith | 454-8851 | |
| C. Ward (S) | 454-7643 | |
| A. Corey (S) | 454-3752 | |

NO. 14 PLANTATION

| | | |
|-----------------|----------|----|
| D. Robinson (S) | 454-2679 | 52 |
| A. Lyford (S) | 454-2478 | |
| F. Mallar (S) | 454-7762 | |

PEMBROOK

| | | |
|-----------------|----------|-----|
| Town Office | 726-5592 | 922 |
| E. Davis (S) | 726-5547 | |
| M. Jamieson (S) | 726-4242 | |
| V. Cushing (S) | 726-4477 | |

PERRY

| | | |
|----------------|----------|-----|
| Town Office | 853-4161 | 733 |
| S. Lincoln (S) | 853-4843 | |
| L. Newcomb (S) | 853-4776 | |
| F. Martin (S) | 853-2866 | |

PLEASANT POINT

| | | |
|-----------|----------|--|
| C. Barnes | 853-2310 | |
| | 853-4890 | |

ROBBINSTON

| | | |
|-----------------|----------|-----|
| G. Perkins (S) | 454-2082 | 492 |
| D. Warren (S) | 454-3317 | |
| H. Morrison (S) | 454-3890 | |

WHITING

| | | |
|----------------|----------|-----|
| A. Look (S) | 259-3681 | 331 |
| A. Hall (S) | 259-7766 | |
| G. Lingley (S) | 259-3320 | |
| H. Crosby (S) | 733-4791 | |
| J. Look | 733-8801 | |

FACILITIES

Airports

| | |
|---|-------------------------|
| Princeton Airport Airport Road Princeton, Maine 04668 | 796-8376 |
| Machias Airport 3000' asphalt runway (no lights) | 255-6621 |
| Eastport Airport 2850' asphalt runway (no lights) | 853-4353 or 853-2300 |
| Lubec Airport 2000' gravel runway (lighted) | 733-5556 or 733-4641 |

Medical Facilities

| | |
|---|----------|
| Calais Regional Hospital (77 capacity) Franklin Street Calais, Maine 04619 | 454-7521 |
| Down East Community Hospital (38 capacity) Machias, Maine 04654 | 255-3356 |
| Eastport Memorial Hospital (8 capacity) 22 Boynton Street Eastport, Maine 04631 | 853-2531 |

Food Processors

| | |
|--|----------|
| Neil Corbott Lobster Co., Cutler | 259-7761 |
| Shoppe Dairy, Machias | 255-3681 |
| Bucks Harbor Seafood, Machiasport | 255-3223 |
| Machiasport Packing & Canning Co., Machiasport | 255-3311 |
| A.M. Look Canning Co., Whiting | 259-3341 |

ADDENDUM NO.4

DEPARTMENTAL OPERATING PROCEDURES

The following Maine State Government Departmental Standard Operating Procedures are included in this addendum:

- . Maine State Police
- . Maine Department of Agriculture
- . Maine Department of Transportation
- . Division of Health Engineering
- . Maine Department of Marine Resources

MAINE STATE POLICE STANDARD OPERATING PROCEDURES

1. The Maine State Police will:

A. The Maine State Police will act as a twenty-four hour contact point for the receipt of initial notification from Emergency Measures Organization (EMO) in Fredericton, New Brunswick, Canada in the event of a radiological incident at Point Lepreau Nuclear Generating Facility

B. Emergency Measures Organization (EMO) will contact the Augusta RCC via conventional telephone, advising of an incident. The Police Communication Operator (PCO) receiving the message from Emergency Measures Organization (EMO) shall record the time _____ and immediately inform the shift supervisor _____ who shall proceed as follows:

Date: _____

C. Police Communication Operator (PCO) enter the contents of the message from Emergency Measures Organization (EMO) here:

1. The shift supervisor shall contact Emergency Measures Organization (EMO) New Brunswick by conventional phone within two (2) minutes and attempt to verify the emergency message.

Person contacted at EMO (506-453-2133) _____

2. If unable to contact Emergency Measures Organization (EMO), the shift supervisor shall attempt to verify the message by contacting the RCMP in Fredericton, New Brunswick

Person contacted at RCMP (506-452-3466) _____

3. After verification of the emergency message from Emergency Measures Organization (EMO) and at the direction of the shift supervisor, the R.C.C. shall,

a. Notify the Chief, Maine State Police. Time: _____

4. Notify the State Police Operations Officer or his officer of the day.

Time: _____ Whom contacted: _____

It will be the responsibility of the Operations Officer to contact those management people he deems necessary.

5. Telephone the Maine State Office of Civil Emergency Preparedness and repeat the message from Emergency Measures Organization (EMO), New Brunswick. (622-6201)

Time: _____ Person contacted: _____

a. The Office of Civil Emergency Preparedness will make all of the other necessary notifications of state, county, federal and local agencies.

D. Notify the commanding officer or officer of the day for Troop J in East Machias.

Time: _____ Person contacted: _____

1. The troop commander will be responsible for the following:

a. Establish a command post at the Washington County R.C.C.

b. Dispatch a police cruiser and mobile radio to the RCMP headquarters in St. Stevens, New Brunswick to provide communications liaison

between governments.

Officer assigned: _____ Time: _____

- c. Establish and maintain traffic control in Washington County.
 - 1. No evacuation is planned, however, officers should stand ready to respond to any situation, traffic or other, that might arise in connection with an incident at Point Lepreau.

MAINE DEPARTMENT OF TRANSPORTATION

STANDARD OPERATING PROCEDURES

1. The Maine Department of Transportation will:

A. Procedure

This area outlines the classifications of radiological incidents and the involvement of D.O.T. personnel.

- a. Unusual Events - D.O.T. is not involved.
- b. General Emergency Event - D.O.T./D.T. will be called and will report to E.O.C., State Office Building, Division 2 coordinating team (C.T.) will be called, Division 2 field personnel (F.P.) will be called, other Division offices notified.

B. Notification

1. Purpose

To provide guide line for notification of D.O.T. personnel in the event of a radiological incident at Point Lepreau.

2. Procedure

There will be detailed by incident classification.

- a. Unusual Event - The D.O.T. will not be notified.
- b. General Emergency Event - The D.O.T./D.T. will be called by the office of C.E.P. and report to E.O.C., State Office Building, Augusta.

Members of Department's Disaster Team: (D.T.)

Alden G. Small, Highland Avenue, Winthrop

Bus. Telephone: 289-2661

Home Telephone: 377-8260

Philip N. Henry, Highland Avenue, Winthrop

Bus. Telephone: 289-2645

Home Telephone: 377-8538

The D.O.T./D.T. will then evaluate the situation and contact Division 2's C.T.

Members of Division 2 Coordinating Team: (C.T.)

Roger Sargent, Ellsworth

Bus. Telephone: 667-5556

Home Telephone: 667-2276

Leon Johnson, Union Street, Ellsworth

Bus. Telephone: 667-5556

Home Telephone: 667-8940

These members will set up a D.O.C. at the Ellsworth Division office, Telephone 667-5556 or may be reached by using State Radio. Other personnel from Division 2 will be called by the C.T. to report to the D.O.C. to staff this office. Members of Division 2's F.P. will be notified by the D.O.T.'s D.T. or C.T. to advise them of the situation and may/will place them on stand-by at their respective area of operations.

The following are the locations of the areas of operation with phone at camp sites or home phones of coordinating members of the Field Personnel for Division 2.

| | | |
|------------------------|------------|----------|
| Baileyville Camp | Tel.: | 427-6588 |
| Clayton Brown, Foreman | Home Tel.: | 726-4296 |
| | | |
| Pembroke Camp | Tel.: | 726-5585 |
| Robert Wilder, Foreman | Home Tel.: | 726-4707 |
| | | |
| Perry Camp | Tel.: | 733-2138 |
| Richard Gove, Foreman | Home Tel.: | 853-2793 |

The D.O.T./C.T. or F.P. member will notify other D.O.T. Division personnel that will be involved in the event of an evacuation.

Other D.O.T. Division offices will be contacted by D.O.T./D.T. to advise them of the situation.

If a response from Division 2's D.T. and/or F.P. is needed immediately, then C.E.P. will/may contact those peoples listed above. The other Division offices will be notified by D.O.T./D.T.

In the event of a general emergency, all other D.O.T. personnel in Division 2 may/will be on alert status.

C. Responsibilities

1. Purpose

To establish a chain of command to enable the D.O.T. to react quickly in the event of a radiological incident at Point Lepreau.

2. Procedure

This will be a generalized overview of each area of activity such that D.O.T./D.T., C.T. and F.P. teams will have an understanding of what will be expected in the event of an incident. Each of the team's duties will be outlined, but it should be noted that the fine tuning of these activities will depend on weather conditions, direction of plume path, availability of personnel in the area, and request for aid from other agencies.

Maine Department of Transportation Disaster Team (M.D.O.T. - D.T.)

- a. Set up a command post at Emergency Operations Center (E.O.C.), Civil Emergency Headquarters, State Office Building to coordinate all activities.
 - b. Alert Division 2 (Ellsworth)
 - c. Responsible for responding to requests from other agencies and fulfilling these requests. Will delegate which D.O.T. Division personnel should respond.
3. Division Command Team (C.T.)
- a. Set up command post at Division office:
Division 2 (Ellsworth, High Street)
 - b. Will have available at command post the Division Engineer (who will be in charge of all activities in his Division), the Assistant Division Engineer, Division Superintendent, Traffic Engineer, and other personnel the Division needs to aid in coordinating this activity. Chain of command will pass down people listed above in the event one or more are not available.

- c. The C.T. will coordinate all activities in their Division and report to the D.T. in Augusta, who is doing what and where as the situation changes.

Need for assistance from other Divisions will be requested directly to D.T. who will delegate to available personnel.

4. Division Field Personnel (F.P.)

- a. Establish a base of operation at each camp.
- b. The foreman and/or Crew leaders assigned to each camp will be in charge of all field personnel assignments. These assignments will be coordinated with the Division office command post. The following are a few of the assignments that each camp may have:

1. Baileyville Camp

- a. Maintain S.H. in their area.
- b. Put up barricades on side roads leading off Route 1 so that cars cannot enter them (one side only) as requested.
- c. Assist other agencies, as requested.

2. Pembroke Camp

- a. Maintain S.H. in their area.
- b. Put up barricades on Route 1 as requested.
- c. Assist other camps or agencies, as requested.

3. Perry Camp

- a. Maintain S.H. in their area.
- b. May need to assist Pembroke in placing barricades on side roads.
- c. Assist other camps or agencies, as requested.

The primary responsibility of the Maine Department of Transportation is to be sure that the State Highways are safe for the travelling public to use. Secondly, that other agencies are provided adequate help to perform their assignments, such as State Police , Health Engineering and Civil Emergency Preparedness.

MAINE DEPARTMENT OF AGRICULTURE
STANDARD OPERATING PROCEDURES

1. The Maine Department of Agriculture will:

A. Functions

1. Coordinate and assist Division of Health Engineering in obtaining off-site and radiation data.
2. Monitor the status of livestock and stored field crops and farm resources.
3. Provide liaison personnel to the State Emergency Operating Center.

B. Notification and Communications

1. Agriculture Monitoring Team Members will receive initial telephone notification from Radiation Health Coordinator and will subsequently notify two additional members from a call list to proceed to area(s) designated.
2. The first individual contacted will contact two additional people to proceed to the designated area to work with Department of Environmental Protection (DEP).
3. Agricultural Monitoring Teams:

| <u>Name</u> | <u>Business Phone</u> | <u>Home Phone</u> |
|----------------------|-----------------------|-------------------|
| 1. A. R. Greenier | 289-3841 | 487-5905 |
| 2. Robert Vogelsberg | Dennysville | 726-3956 |
| 3. Gregory Giggie | Lubec | 733-2416 |
| 4. Dana W. Small | 289-3841 | 666-3013 |
| 5. Audrey Peckham | 289-3841 | 786-4690 |
| 6. James W. Bartlett | 289-3841 | 487-6934 |

| | | | |
|-----|--------------------|----------|----------|
| 7. | Robert E. Clark | 289-3841 | 549-7933 |
| 8. | Russell D. Hilton | 289-3841 | 832-5334 |
| 9. | Gerald J. Chestnut | 289-3841 | 883-4244 |
| 10. | Mary Bryant | 289-3841 | 597-2941 |

NOTE: Agriculture Monitoring Team Members will assemble at the Human Services Public Health Laboratory for a briefing and issuance of equipment and supplies for sampling.

C. Deployment of Teams

1. Each monitoring team will consist of two people, one from agriculture and one from Department of Environmental Protection (DEP).
2. Location amounts and types of samples will be determined by the Radiological Health Coordinator.
3. All teams will follow designated routes and samples will be taken and returned to designated collection points.

D. Farms/Food Processing Plants with 50 miles of Point Lepreau

1. Dairy Farms:

Dana Cox, Dennysville
Gordon Hawkes, Pembroke

NOTE: Milk produced on these farms is normally shipped to Grant's Dairy, Bangor and then processed for distribution.

2. Sardine Processing Plants:

R. J. Peacock Canning Company, Lubec
Port Clyde Foods, Eastport
Booth Fisheries, Lubec

3. Poultry Farms/Egg Plants:

Lawrence Ramon, Pembroke

James M. Prout, Lubec

Ganong Poultry Farm, Pembroke

4. Blueberry Receiving Stations:

Medomak Canning Company, Machias

(Operational: July through 1 September)

MAINE DEPARTMENT OF MARINE RESOURCES
STANDARD OPERATING PROCEDURES

1. The Maine Department of Marine Resources will support the Division of Health Engineering (DHE) in the following ways:
 - A. Assist in the collection of sea water and seaweed samples at predetermined sample sites coinciding with DMR's PSP Control Program.
 1. The RHC will contact the DMR monitoring team coordinator in accordance with procedures established for emergencies at the Maine Yankee plant in Wiscasset.
 2. DMR will assemble a monitoring team.
 3. The monitoring team coordinator will stand by at telephone and radio communications and will complete check off lists for the emergency kit maintained at the Boothbay Harbor laboratory. The DMR telephone number is 633-5572.
 4. The RHC will request that samples be collected at predetermined sites.
 5. The monitoring team coordinator will call the DHE confidential telephone number each hour to maintain close contact with the state EOC.
 - B. DMR will close contaminated areas to the harvesting of potential food products and will reopen harvesting areas when testing indicates safe levels for radioactivity.
 1. Immediate closure of the area from _____ to _____ in the event of an accident at Point Lepreau. This will be completed by DMR with the consent of the Commissioner or his designate.
 2. DMR will collect fish and shellfish samples for analysis at a radiation laboratory following an accident and will transfer these samples to a laboratory designated by RHC.
 3. DMR will reopen selectively those food producing areas determined to be safe for harvesting.

C. DMR will arrange for offshore transportation for the evaluation of airborne contamination in the event of unsuitable weather for helicopters.

1. Upon request by the RHC, the DMR monitoring team coordinator will call the Coast Guard station or the DMR pilot and crew to transport a DHE team to an offshore area for environmental monitoring.

2. The DMR coordinator will arrange for the offshore support of environmental sampling.

3. The DMR coordinator will call the Commissioner, Deputy Commissioner or Laboratory Director to secure approval for authorized use of DMR facilities and vessels.

4. Use of Coast Guard vessels is authorized through activation of the FRRP (Federal Emergency Plan) by the RHC via the USDOE 24 hr. contact at Brookhaven National Laboratory.

DIVISION OF HEALTH ENGINEERING
STANDARD OPERATING PROCEDURES

1. The Maine Division of Health Engineering will:

A. Emergency Team Activation

1. Upon the declaration of a "station alert" or "station emergency" by Point Lepreau officials and when relayed to Health Engineering officials by the Maine State Police, the Radiological Health Coordinator (RHC) will perform the following:
 - a. Call the primary call list (see MYA emergency plan)
 - b. Call a radiation chemist to prepare TLD's within 3 hours
 - c. Assemble radiation specialists at the State EOC within 1 hour
 - d. Assess status of Point Lepreau radiological incident
 - e. If a Station Emergency is declared, perform environmental surveillance procedures in the Point Lepreau Field Operation Guide
 - f. If a Station Alert is declared, no emergency environmental surveillance is required, since emergency action levels are much more conservative than required for U.S. reactors.

*RHC is the Radiation Specialist contacted by the Maine State Police.

B. Station Emergency

1. In the event of a Station Emergency the New Brunswick Department of Health will provide the following information to the RHC.
 - a. Current Status of incident and prognosis
 - b. Source term within containment

- c. Population dose projection at 20 KM and 40 Km, 12.5 mi and 25 mi respectively
- d. Weather conditions and forecast
- e. Other public health information/advisory

C. Public Notification

- 1. The RHC will recommend actions to be included in statements to the news media that will serve to protect the public health, such as:
 - a. Remove dairy animals from pasture
 - b. Limitation on fish processing
 - c. Limitation on fruit and vegetable harvesting/consumption
 - d. Limitation on water consumption from surface supplies