

MAINE STATE LEGISLATURE

The following document is provided by the
LAW AND LEGISLATIVE DIGITAL LIBRARY
at the Maine State Law and Legislative Reference Library
<http://legislature.maine.gov/lawlib>



Reproduced from electronic originals
(may include minor formatting differences from printed original)

2012

***Municipal Landfill Closure & Remediation Program:
History and Future Program Requirements
For Protecting our Investment in Maine's Future***



Department of Environmental Protection
Bureau of Remediation and Waste
Management
Landfill Closure and Remediation Program
January 23, 2012

Table of Contents

Summary	3
Statutory History of the Program	4
Landfill Closure Activity:	7
History of Program Expenditures:	8
Need for additional State Funds:	9
Conclusion:	12

Figures

Figure 1: A Typical 1960's Maine Landfill that Sparked Establishment of the Program	4
Figure 2: Capping the North Haven Landfill in the Summer of 1999	5
Figure 3: Closed Municipal Landfill in Belfast, Maine, 2000	6
Figure 4: Annual Municipal Landfill Closures 1976-2010	7
Figure 5: State Funding for the Municipal Landfill Closure and Remediation Program	8
Figure 6: Landfill Closure & Remediation Expenditures – 1989 to 2010	8
Figure 7: Leachate Breakout Near the Portland Trails Pathway, Ocean Ave Landfill, 2009	11
Figure 8: Development Pressure has Increased Near Closed Landfills	12

Tables

Table 1: Unfunded State Obligations to Municipalities in the Landfill Closure & Remediation Program	3
Table 2: Range of DEP Match Obligations for Future Closure Activities	9
Table 3: Current and Anticipated Remediation Match Obligations of the State	10
Table 4: Landfills with Recent or Potential Nearby Development	10

Appendices

Appendix 1: State Appropriations by Date for Maine's Municipal Landfill Closure & Remediation Program	13
Appendix 2: Sites in the Municipal Landfill Closure & Remediation Program	14

Municipal Landfill Closure & Remediation Program

History and Future Program Requirements

For Protecting our Investment in Maine's Future

Revision of January 23, 2012

By
 Department of Environmental Protection
 Bureau of Remediation and Waste Management
 Landfill Closure and Remediation Program

Summary

Prior to 1988, most municipalities in Maine disposed of their solid waste in their own unlined Landfill. These open dumps were often located in environmentally sensitive areas. They posed public health threats by contaminating air, land and groundwater, and through disease vectors and odors. Realizing the risk that these dumps posed to drinking water and public health, the legislature established the Solid Waste Landfill Closure and Remediation Program within the Maine Department of Environmental Protection (DEP). This program provided technical assistance and 75% reimbursement to municipalities to close these unlined landfills. Meanwhile, the DEP's Solid Waste Program established regulations for the construction of modern-day solid waste handling facilities. Between 1989 and 2000, the Closure and Remediation program provided \$79,000,000 to municipalities to assist with the closure of 397 unlined landfills.

In addition to landfill closure, the program provides a 50% to 90% state match to municipalities for remedial actions that are necessary to address potential threats posed by the closed landfills. To date, the Program has expended an additional \$2,568,654 in match for remedial actions. In addition to financial assistance, a skeletal crew at DEP provides technical assistance to ensure that the caps are being properly maintained, and, as development encroaches on the closed landfills, helps investigate public health risks stemming from contaminated groundwater and landfill gases.

However, the program has run out of money to accomplish its mission as summarized in Table 1. During the 125th legislative session the match program for closure costs at select landfills was reopened, which will result in an estimated \$3,390,000 in State match obligations between now and 2015. Additionally, the State currently owes \$2,574,034 in reimbursements to municipalities for landfill remediation, and we anticipate that the state will incur up to \$935,000 in match obligations for additional remediation within one to five years. This leaves an anticipated structural deficit of \$6,899,034 through CY 2015, in addition to DEP staff costs.

Table 1: Unfunded State Obligations to Municipalities in the Landfill Closure & Remediation Program

Item	DEP Match
Outstanding Obligations to Municipalities For Closure	\$0
Estimated Future Obligations to Municipalities For Closure through 2015	\$3,390,000
Outstanding Obligation to Municipalities For Remediation	\$2,574,034
Estimated Future Obligations to Municipalities For Remediation through 2015	\$935,000
Total obligations	\$6,899,034.00
Available Funds	\$0
Unfunded Balance	\$6,899,034

Figure 1: A Typical 1960's Maine Landfill that Sparked Establishment of the Program



Statutory History of the Program

The Solid Waste Landfill Closure and Remediation Program was established within the Maine DEP by the Legislature in 1988. P.L. 1987, Chapter 517, established the program to:

1. promptly close those solid waste landfills that posed a potential or actual hazard to the environment and public health; and
2. remediate existing hazards posed by closed municipal solid waste landfills.¹

To accomplish these objectives the law² directed DEP to rank and evaluate all municipal solid waste landfills on the basis of hazards posed to public health and the environment. Each evaluation resulted in a DEP recommended closure plan (including schedule) and, when necessary, a remediation plan. The municipalities were to implement the plan. As incentive, DEP reimbursed participating municipalities for 75% of their closure costs and 90% of their remediation costs that were incurred back to January 1, 1983. All municipalities which owned, leased or operated a landfill were eligible for the cost-sharing program. Most municipalities opted to close their landfill under the program, while a few others sought licenses under the new DEP landfill regulations in order to continue operations.

After establishment of the program in 1988, the legislature made several significant statutory changes to enhance the effectiveness and fairness of the program:

¹ 38 MRSA §1310-C

² 38 MRSA §1310-D

- P.L. 1989, c. 273 expanded the DEP cost sharing program to include the interest municipalities paid on bonds that funded landfill closure and remediation expenses;
- P.L. 1989, c. 869 expanded eligibility for the state's cost sharing program to sanitary districts and refuse disposal districts that owned a solid waste landfill;
- P.L. 1991, c. 215 extended reimbursement to closure costs incurred after February 1, 1976;
- P.L. 1991, c. 374 added a third objective for the program: to provide markets for compost and reclaimed materials. In addition, it mandated that closure plans specify the use of compost/reclaimed materials for landfill covers when practicable;
- P.L. 1991, c. 519 authorized the DEP to issue closure and remediation orders when warranted. In addition, planning costs were made reimbursable (75% for closure and 90% for remediation);
- P.L. 1993, c. 355 prohibited the use of the cost-sharing funds to settle civil or criminal judgments for injuries caused by a municipally-owned landfill;
- P.L. 1993, c. 732 required:
 - DEP to rank landfills as “high risk” to the public health and/or the environment or “not high risk”;
 - Municipalities to provide reasonably available and relevant materials requested by DEP as it conducted its evaluation;
 - DEP to allow an expedited, reduced closure procedure under most circumstances;
 - DEP cost-share for closure changed to:
 - 75% for costs incurred prior to July 1, 1994 with signed closure agreement by July 1, 1994;
 - 50% for costs incurred after July 1, 1994 but before January 1, 1996, and
 - 30% for costs incurred after January 1, 1996;

Figure 2: Capping the North Haven Landfill in the Summer of 1999



- P.L. 1995, c. 665 changed the closure cost-share fraction again by further limiting the state's share to 30% of cover costs incurred after January 1, 1996 but before January 1, 1997. In addition, except for certain pre-approved closure schedules, the state's share of closure costs incurred after January 1, 1997 would be 0%;
- P.L. 1997, c. 479 revised the closure cost fractions as follows:
 - 75% of closure costs incurred before July 1, 1994;
 - 50% of landfill cover costs and 75% of other closure costs incurred on or after July 1, 1994 and before January 1, 1996;
 - 30% of landfill cover costs and 75% of other closure costs incurred on or after January 1, 1996 and before January 1, 2000;
 - In certain cases approved by DEP, 75% of all closure costs incurred on or after July 1, 1994 and before January 1, 2000; and
 - 0% of landfill costs incurred after January 1, 2000 except for 30% of certain landfill cover costs approved by DEP prior to January 1, 2000;
- P.L. 1999, c. 334:
 - allowed up to 50% reimbursement for remediation costs at landfills posing a threat to wells or other structures that were constructed after December 31, 1999, provided the municipality took reasonable steps to anticipate and abate the risk.
 - required notice of the presence of the landfill in any deed transferring ownership or an easement on the parcel.
- P.L. 2001, c. 315 allowed for DEP investigation of old abandoned landfills and specified a remediation process.
- P.L. 2011, c. 435 established a state match of 75% for landfill closure costs incurred between July 1, 1994 and December 30, 2015 (inclusive) for landfills that DEP finds must be closed because the landfill is contaminating groundwater and corrective actions were unsuccessful.

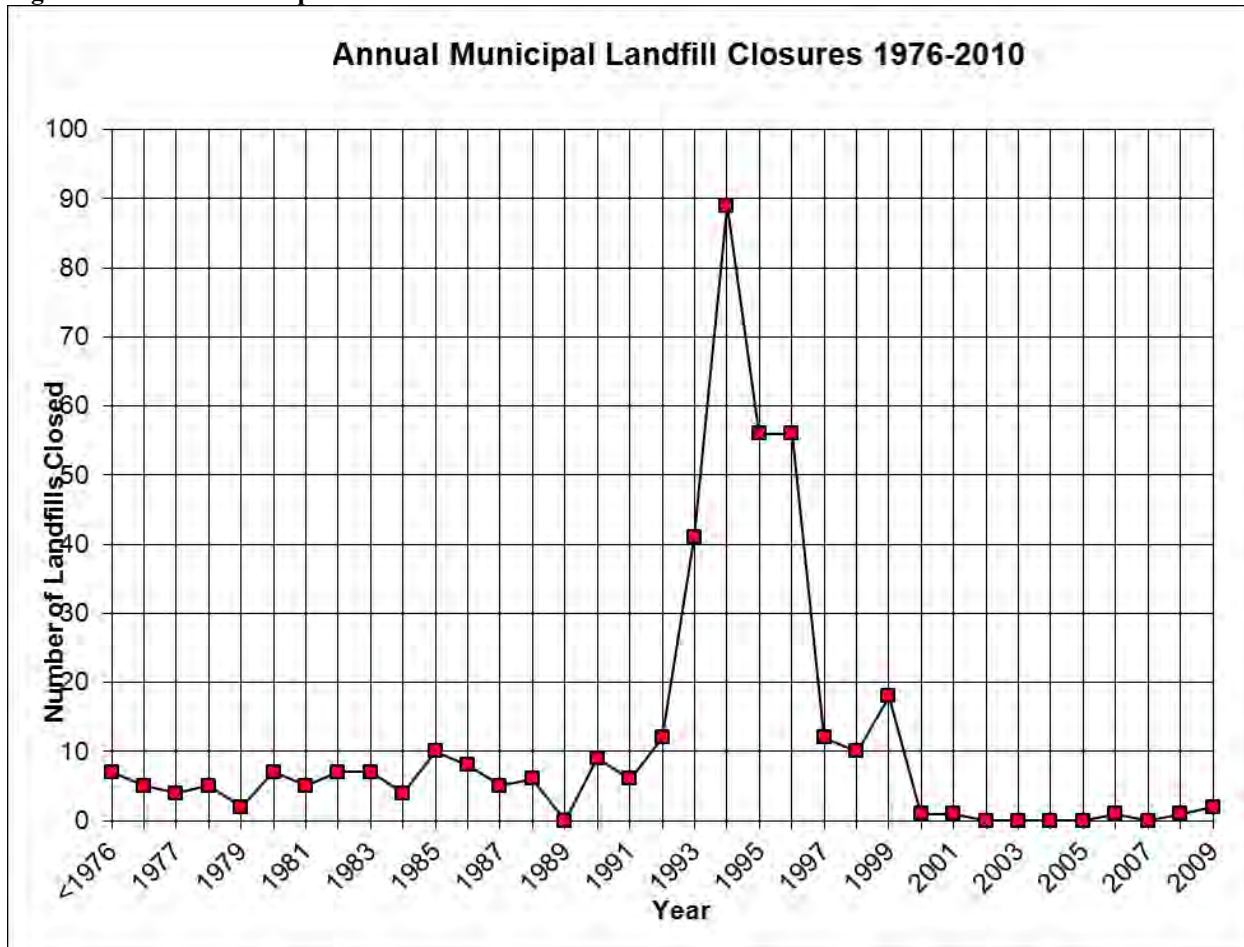
Figure 3: Closed Municipal Landfill in Belfast, Maine, 2000



Landfill Closure Activity:

From 1976 to June of 2011, a total of 397 unlined municipal landfills across Maine, totaling 1,769 acres, have been successfully capped under this program, significantly reducing threats to public health and the environment. As shown in Figure 4, a significant majority of these closures took place from 1993 through 1996, sparked by legislative changes that eased the closure specifications and set a deadline for conducting reimbursable activities. The success of this program can be attributed to legislative leadership, public support, technical support from the DEP, and public funding to municipalities. A list of Landfills in the program is included in Appendix 1 on page 13.

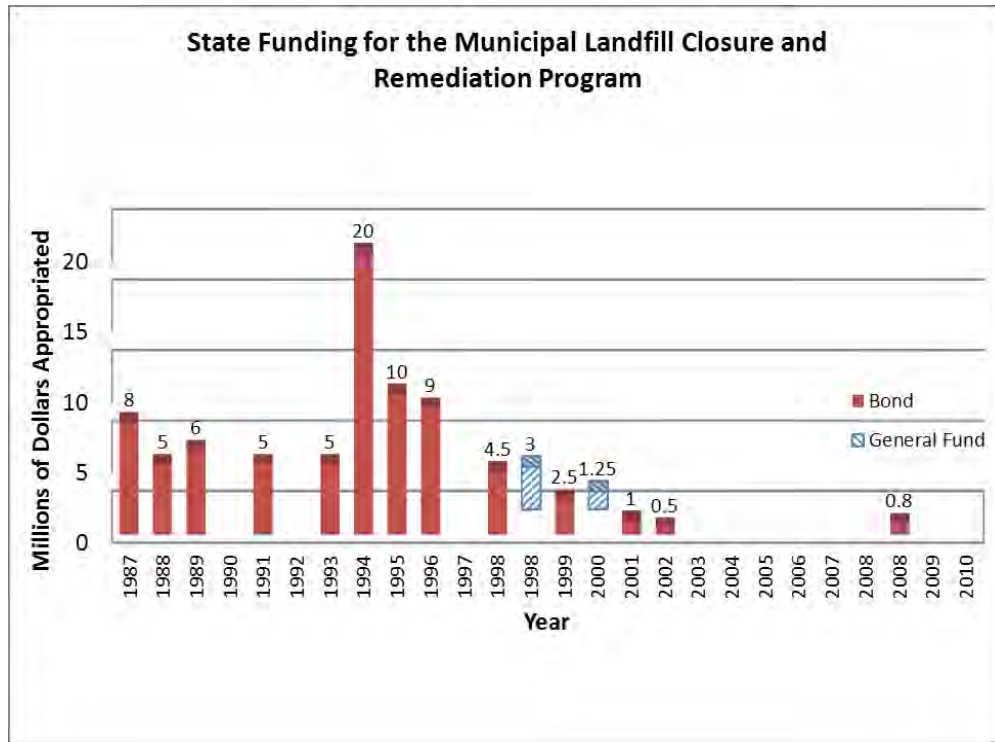
Figure 4: Annual Municipal Landfill Closures 1976-2010



History of Program Funding:

The Municipal Landfill Closure and Remediation Program received strong financial support from the legislature and Maine citizens during the late 1980’s through the 1990’s. The State of Maine has used general obligation bond issues and General Fund appropriations to provide a total of \$81,550,000 to cover the state’s match for closing municipal landfills and remedial activities. The majority, \$77,300,000, was from voter approved bonds, while \$4,250,000 was from general fund appropriations. Appropriations for the program are shown in Figure 5 by date and source, while more details on each appropriation are available in on page 12.

Figure 5: State Funding for the Municipal Landfill Closure and Remediation Program



History of Program Expenditures:

Closure: The State expended approximately \$79,000,000 to match some \$26,000,000 in municipal funds to close municipal landfills. The distribution of State expenditures on an annual basis is depicted in Figure 6; most of the spending corresponds to the peak years of closures (1993-1997, see Figure 4 on page 7). The state match for closure only applied to closure activities that municipalities incurred prior to December 31, 1999. At this time, all the State match obligations to municipalities for closure activities have been paid. However, P.L. 2011, c. 435 recently extended state match obligations for closure to select landfills, as discussed below.

Figure 6: Landfill Closure & Remediation Expenditures – 1989 to 2010



Remediation: In addition to closure costs, the State is obligated to match qualifying municipal expenses for remedial activities. To date, the State has expended \$2,574,034 on remedial match, mostly incurred since the December 31, 1999 cut-off date for closure expenses. State match for remediation activities at closed municipal landfills is still being incurred and, for the reasons described below, likely will be for the foreseeable future.

Need for additional State Funds:

New Closure Match: DEP had completed all match that it owed for qualifying closure expenses. However, P.L. 2011, c. 435 reopens the state match program for closure costs of certain landfills: The state must provide a 75% match for closure costs incurred between July 1, 1994 and December 30, 2015 (inclusive) in case where DEP determines the landfill must be closed because it is contaminating groundwater and corrective actions were unsuccessful. The legislation targeted approximately five unlined landfills that secured a permit under the new regulations, but have not been able to operate in such a manner as to prevent groundwater contamination. These landfills must close before reaching full capacity, and therefore will not have had ongoing tipping fees to raise the full amount necessary for closure. Anticipated costs from this change depend on many circumstances, the range is shown in Table 2.

Table 2: Range of DEP Match Obligations for Future Closure Activities

Item	DEP Match
High estimate (all landfills meet funding criteria & close by 2014)	\$5,246,250
Best estimate (Greenville, Caratunk, Jacob's Quarry, Presque Isle, and Hartland meet funding criteria & close by 2014)	\$3,390,000
Low estimate (Greenville, & Caratunk meet funding criteria & close by 2014)	\$1,140,000

Remediation Match: In addition to the unfunded closure match obligations described above, we anticipate incurring match obligations under existing law for remedial activities at previously closed facilities. Prior to closure, development of land near landfills was kept at bay by noxious smoke, vectors such as rats and seagulls, and nuisance odors (see Figure 1 on page 4). Now that the landfills appear to be well kept fields, the open spaces around the landfills have become desirable development locations (see on page 6). The state and most local governments only have the authority to restrict development within 100 feet of the solid waste boundary. However, all of the landfills closed under the program were unlined, and most were closed with a minimal cap. Therefore, many landfills may have contamination plumes that extend well beyond 100 feet of the waste boundary, which can be drawn into residential wells, necessitating water filters, replacement wells, or public water systems. Few of the closed landfills have had a full hydrogeologic investigation to determine where development may safely be undertaken. Further, in some cases the closed landfills can pose an explosion hazard from methane, or generate dangerous levels of hydrogen sulfide or other gases necessitating construction of a gas mitigation system. These types of remedial activities qualify for a state match under the existing law.

The Town of Wells is a prime example, where homes were allowed to be built on and near an old pre-1976 dumpsite. Ultimately, Wells spent nearly \$4 million to relocate about a dozen families; Some of these expenses had to be matched by the DEP.

Table 3: Current and Anticipated Remediation Match Obligations of the State

Actual or Potential Obligation	Landfill	Project	Total
Actual Cost-Share Commitments	Arundel	home assessment/filters	\$6,510
	Bath	gas control	\$798,391
	Newfield	sampling	\$306
	Tri-Community	Phase I gas control	\$722,709
		Phase II gas control	\$1,046,118
Actual Commitments Total			\$2,574,034
Anticipated Future Cost-Share Projects	Belgrade	remove metal for physical safety concerns	\$20,000
	Brewer	home connections to future waterline	\$30,000
	Corinna	land acquisition; IC development; delineation	\$100,000
	Dexter	sampling/assessment	\$35,000
	Eastport	Solid Waste debris removal from intertidal area	\$30,000
	Oakland	treatment systems for 1 home and trailer park community well; testing	\$50,000
	Pembroke	erosion and cover replacement	\$320,000
	Statewide	Miscellaneous Investigations & minor remediation (\$20,000/yr * 5 yrs)	\$100,000
	Wilton	cover replacement	\$250,000
Anticipated Future Projects Total			\$935,000
Grand Total			\$3,509,034

The Program has developed a “watch-list” of 37 sites that have either allowed small scale development near their landfills since 2000 or to have the potential for such development (Table 4). Each of these landfills has chemical contamination, leachate seeps, landfill gas migration, or erosional issues that increase the potential for impacts to new neighbors. As necessary remediation is undertaken, we anticipate that towns will seek reimbursement of up to 90% of remedial costs, subject to the funding criteria in 38 MRSA §1310.

Table 4: Landfills with Recent or Potential Nearby Development

Alna	Bucksport	Greenfield	Newfield	Sorrento	Woolwich
Appleton	Chebeague Is.	Hampden	Nobleboro	St. Albans	York
Belfast	Corinna	Hollis	North Haven	Tremont	
Belgrade	Deblois	Isleboro	Owl’s Head	Union	
Biddeford	Ellsworth	Long Is.	Poland	Vassalboro	
Blue Hill	Freeport	Machiasport	Scarborough	Warren	
Boothbay	Garland	Mount Vernon	Somerville	Wayne	

Inspection Staff: Pursuant to existing law³, DEP Landfill Closure and Remediation staff continue oversight of closed landfills through periodic inspections, review of post closure monitoring reports, and

³ 38 MRSA 1310-C (1) (B)

Figure 7: Leachate Breakout Near the Portland Trails Pathway, Ocean Ave Landfill, 2009



implementation of limited field investigations. This activity is to determine that the caps, gas mitigation systems, and other elements of the closure system are being maintained and are functioning as intended. DEP's technical assistance to municipalities is crucial to determining when remedial actions are necessary to protect human health, and when unnecessary actions would only create needless cost. Our experience has been that local historical memory of these sites lasts for about 25 years after landfill closure due to changes in the local population. In the long term, the DEP will become the repository of site knowledge for developers inquiring as to the nature of the site and its potential impact to the surrounding area.

Funding for DEP staff in the inspection program comes from the Solid Waste Fund, and has been cut to the point where it only covers an Environmental Specialist III, and part of the salaries of a Geologist and Engineer, totaling about 1.25 Full Time Equivalents (FTEs). However, at least 2 FTEs are needed to adequately undertake the following O&M activities as required by existing statutes; Additional staff resources will be required for a short time if additional landfills close or require significant remediation under the program.:

- conduct inspections of closed landfill sites; prioritize site inspections; develop inspection reports; and communicate/follow-up with municipalities to assure that maintenance and /or repairs are completed;
- provide limited technical assistance to municipalities; review post closure use proposals on or near landfill sites and aid technical information searches;
- track new development near sites;
- advise towns and assist with IC development as necessary;
- evaluate the 60 post closure monitoring reports that are submitted by municipalities
- reassess post closure monitoring requirements based on historic results and changing land use.

- track reports of old abandoned dump sites (note: Wells 9B is classic example of what can go wrong with these old sites), assess potential risks, collect samples, and require municipal action if necessary;
- communicate with municipal officials, members of the public, and realtors;
- process grant and reimbursement requests;
- support funding requests; track bond accounts; address legislative and policy issues as necessary;
- manage databases and the [Google Earth applications](#), which are increasingly important as staff leave the program;
- sample residential and/or leachate locations; and
- sample landfill monitoring wells occasionally

Conclusion:

Between 1988 and 2000 DEP's Municipal Landfill Closure and Remediation Program oversaw the expenditure of \$79,000,000 in State match funds on the successful closure of 397 unlined municipal landfills. The DEP anticipates expending another \$3,390,000 for the closure of 5 more landfills. These actions complemented the development of modern day landfills under the DEP's Solid Waste Rules. Since 2000, the Municipal Landfill Closure & Remediation Program has incurred an additional \$2,574,034 in match obligations for remedial actions near these closed municipal landfills, and anticipates incurring another \$935,000 in match obligations through CY 2015 for additional remedial actions. The total unmet State match obligation to Municipalities through CY 2015 is estimated to be \$6,899,034, plus DEP staff costs to provide technical support and other oversight activities.

Figure 8: Development Pressure has Increased Near Closed Landfills



Appendix 1: State Appropriations by Date for Maine's Municipal Landfill Closure & Remediation Program

<u>Description</u>	<u>Law</u>	<u>Amount</u>	<u>Date Voters Approved</u>
\$8 Million for Cleaning Up & Closing Solid Waste Landfills that Pose a Hazard to Public Health & to Ground Water Quality	P&S1987, c. 70	\$8,000,000	11/4/87
\$13 Million for the, Cleaning Up and Closing Solid Waste,	P&S 1987, c. 126	\$5,000,000	11/8/88
\$6 Million for Clean-up & Closure of Solid Waste Landfills	P&S 1989, c. 81	\$6,000,000	11/7/89
\$10 Million for And for Closure and Remediation of Municipal Solid Waste Landfills	P&S 1991, c. 118	\$5,000,000	11/3/93
\$5 Million for Landfill Closure & Remediation	P&S 1993, c. 50	\$5,000,000	11/2/93
\$20 Million for Municipal Solid Waste Landfills	P&S 1993, c.99	\$20,000,000	11/8/94
\$14 Million for Landfill Closure	P&S 1995, c. 45	\$10,000,000	11/7/95
\$16.5 Million to ...Clean-up Municipal Solid Waste Landfills	P&S 1995, c. 84	\$9,000,000	11/5/96
\$13 Million to ...Close and Clean-up Municipal Solid Waste Landfills	P&S 1997, c. 561	\$4,500,000	6/5/98
\$12.5 Million to ...Make Other Environmental Improvements	P&S 1999, c. 60	\$2,500,000	11/2/99
\$17.2 Million to ...Make Other Environmental Improvements	P&S 2001, c.33	\$1,000,000	11/6/01
\$24.1 Million to ...Make Other Environmental Improvements	P&S 2001, c. 71	\$500,000	11/5/02
\$16.4 Million to ...Make Other Environmental Improvements	P&S 2007, c. 39	\$800,000	11/ /08
<i>Subtotal of Voter Approved Bonds</i>		<i>\$77,300,000</i>	
\$ 3 Million GF appropriation in FY 98-99 for completion of landfill costs not provided by bond authorizations	PL 1997, c. 643, sec S-6	\$3,000,000	1997
\$1.25 Million GF appropriation PL 1999, in FY 00-01 to close and clean-up solid waste landfills	PL 1999, c. 731, part A	\$1,250,000	1999
<i>Subtotal of General Fund Appropriations</i>		<i>\$4,250,000</i>	
<i>Total of State Funds</i>		<i>\$81,550,000</i>	

Appendix 2: Sites in the Municipal Landfill Closure & Remediation Program

ICDB ID No	Landfill Name	Street Address	MCD Town	Status	Secondary DEP Program
REM00001	ABBOT MUNICIPAL LANDFILL	RT 6/15	ABBOT	Operation and Maintenance	
REM00002	ACTON MUNICIPAL LANDFILL	H ROAD	ACTON	Operation and Maintenance	
REM00003	ADDISON MUNICIPAL LANDFILL	229 WESCOGUS ROAD	ADDISON	Operation and Maintenance	
REM00004	ALBION MUNICIPAL LANDFILL	SOUTH FREEDOM RD.	ALBION	Operation and Maintenance	
REM00005	ALEXANDER MUNICIPAL LANDFILL	SPEARIN RD.	ALEXANDER	Operation and Maintenance	
REM00006	ALFRED MUNICIPAL LANDFILL	SWETT'S BRIDGE ROAD	ALFRED	Operation and Maintenance	
REM00007	ALFRED STUMP DUMP	SWETTS BRIDGE RD.	ALFRED	Operation and Maintenance	
REM00008	ALLAGASH PLT. MUNICIPAL LANDFILL	INN ROAD (MICHAUD FARM RD)	ALLAGASH	Operation and Maintenance	
REM00009	ALNA MUNICIPAL LANDFILL	RT 218/WEST ALNA RD.	ALNA	Operation and Maintenance	
REM00010	AMITY MUNICIPAL LANDFILL	MONUMENT RD	AMITY	Operation and Maintenance	
REM00011	ANDOVER MUNICIPAL LANDFILL	ROUTE 5	ANDOVER	Operation and Maintenance	
REM00012	ANSON MUNICIPAL LANDFILL	PATTERSON BRIDGE ROAD	ANSON	Operation and Maintenance	
REM00013	ANSON MAD. SAN. DIST. SLUDGE LANDFILL	ARNOLD ST	ANSON	Remediation Needed	
REM00014	APPLETON MUNICIPAL LANDFILL	SENNEBEC ROAD	APPLETON	Operation and Maintenance	
REM00015	ARUNDEL MUNICIPAL LANDFILL	MOUNTAIN ROAD	ARUNDEL	Operation and Maintenance	
REM00016	ASHLAND MUNICIPAL LANDFILL	SHERIDAN RD	ASHLAND	Operation and Maintenance	
REM00017	ATHENS MUNICIPAL LANDFILL	DORE HILL RD	ATHENS	Operation and Maintenance	

ICDB ID No	Landfill Name	Street Address	MCD Town	Status	Secondary DEP Program
REM00018	AUBURN ASH LANDFILL	POLAND SPRING ROAD	AUBURN	Operation and Maintenance	UNCONTROLLED SITES
REM00019	AUBURN GRACELAWN LANDFILL	GRACELAWN ROAD	AUBURN	Operation and Maintenance	UNCONTROLLED SITES
REM00021	HATCH HILL LANDFILL EXPANSION I	HATCH HILL RD	AUGUSTA	Operation and Maintenance	
REM00022	HATCH HILL LANDFILL EXPANSION II	HATCH HILL RD	AUGUSTA	Investigation Needed	
REM00023	AUGUSTA SANITARY DISTRICT LANDFILL	HATCH HILL ROAD	AUGUSTA	Operation and Maintenance	
REM00024	AURORA MUNICIPAL LANDFILL	RT 9	AURORA	Operation and Maintenance	
REM00025	BAILEYVILLE MUNICIPAL LANDFILL	OFF RT 1	BAILEYVILLE	Operation and Maintenance	
REM00026	BANGOR MUNICIPAL LANDFILL	HOGAN RD	BANGOR	Operation and Maintenance	
REM00027	BANGOR DEMO DEBRIS LANDFILL	HOGAN RD	BANGOR	Operation and Maintenance	
REM00028	BATH MUNICIPAL LANDFILL -OLD	DETRITUS DRIVE	BATH	Operation and Maintenance	
REM00029	BATH MUNICIPAL LANDFILL - NEW	DETRITUS DRIVE	BATH	Remediation Needed	
REM00031	BELFAST MUNICIPAL LANDFILL	PITCHER ROAD	BELFAST	Operation and Maintenance	
REM00032	BELGRADE MUNICIPAL LANDFILL	DUNN ROAD	BELGRADE	Operation and Maintenance	
REM00033	BELMONT MUNICIPAL LANDFILL	OLD CRIE RD	BELMONT	Operation and Maintenance	
REM00034	BERWICK SEWER DISTRICT SLUDGE LANDFILL	POWERHOUSE ROAD	BERWICK	Operation and Maintenance	
REM00035	BETHEL MUNICIPAL LANDFILL	ROUTE 2	BETHEL	Operation and Maintenance	
REM00036	BIDDEFORD MUNICIPAL LANDFILL	ANDREWS ROAD	BIDDEFORD	Operation and Maintenance	UNCONTROLLED SITES
REM00037	BINGHAM MUNICIPAL LANDFILL	RTE 16 (RIDGE ROAD)	CONCORD TWP	Operation and Maintenance	

ICDB ID No	Landfill Name	Street Address	MCD Town	Status	Secondary DEP Program
REM00038	BLUE HILL MUNICIPAL LANDFILL	TURKEY FARM RD.	BLUE HILL	Operation and Maintenance	
REM00039	BOOTHBAY MUNICIPAL LANDFILL	COUNTRY CLUB RD	BOOTHBAY	Operation and Maintenance	
REM00040	BOWDOINHAM MUNICIPAL LANDFILL	CARDING MACH RD	BOWDOINHAM	Operation and Maintenance	
REM00041	BOWERBANK MUNICIPAL LANDFILL	BOWERBANK RD/BACK NEIGHBORHOOD RD.	BOWERBANK	Operation and Maintenance	
REM00042	BRADFORD MUNICIPAL LANDFILL	MIDDLE ROAD	BRADFORD	Operation and Maintenance	
REM00043	BREWER MUNICIPAL LANDFILL	WISWELL ROAD	BREWER	Operation and Maintenance	
REM00044	BRIDGEWATER MUNICIPAL LANDFILL	CORNER ROAD	BRIDGEWATER	Operation and Maintenance	
REM00045	BRIDGTON MUNICIPAL LANDFILL	RT 117	BRIDGTON	Operation and Maintenance	
REM00046	BRIGHTON PLT. MUNICIPAL LANDFILL	RT 154	BRIGHTON PLT	Operation and Maintenance	
REM00047	BRISTOL MUNICIPAL LANDFILL	FOSTER ROAD	BRISTOL	Operation and Maintenance	
REM00048	BROOKLIN MUNICIPAL LANDFILL	OLD COUNTRY ROAD	BROOKLIN	Operation and Maintenance	
REM00049	BROOKS MUNICIPAL LANDFILL	MONROE CENTER ROAD	BROOKS	Operation and Maintenance	
REM00050	BROWNFIELD MUNICIPAL LANDFILL	1076 PEQUAWKWT TRAIL	BROWNFIELD	Operation and Maintenance	
REM00051	GRAHAM HILL RD. LANDFILL	GRAHAM HILL RD	BRUNSWICK	Investigation Needed	
REM00052	RIVER RD. LANDFILL	RIVER RD	BRUNSWICK	Remediation Needed	
REM00053	BRUNSWICK SAN. DIST. SLUDGE LANDFILL	PLEASANT HILL RD	BRUNSWICK	Operation and Maintenance	
REM00054	PLEASANT HILL ROAD LANDFILL	PLEASANT HILL ROAD	BRUNSWICK	Operation and Maintenance	
REM00055	BUCKFIELD MUNICIPAL LANDFILL	ROUTE 140	BUCKFIELD	Operation and Maintenance	

ICDB ID No	Landfill Name	Street Address	MCD Town	Status	Secondary DEP Program
REM00056	BUCKFIELD STUMP DUMP	RT 140	BUCKFIELD	Operation and Maintenance	
REM00057	BUCKSPORT MUNICIPAL LANDFILL	CENTRAL STREET	BUCKSPORT	Operation and Maintenance	
REM00058	BURLINGTON/LOWELL MUNICIPAL LANDFILL	RT 188	BURLINGTON	Operation and Maintenance	
REM00060	GROVEVILLE LANDFILL	CHURCH HILL RD	BUXTON	Operation and Maintenance	
REM00061	TOWN FARM RD. LANDFILL	TOWN FARM RD	BUXTON	Operation and Maintenance	
REM00062	CALAIS MUNICIPAL LANDFILL	SOUTH STREET	CALAIS	Operation and Maintenance	
REM00064	CAMBRIDGE MUNICIPAL LANDFILL	ROUTE 150	CAMBRIDGE	Operation and Maintenance	
REM00065	JACOBS QUARRY LANDFILL	UNION STREET	ROCKPORT	Investigation Needed	
REM00066	CANAAN MUNICIPAL LANDFILL	BROWNS CORNER ROAD	CANAAN	Operation and Maintenance	
REM00067	CANTON MUNICIPAL LANDFILL	JONES RD	CANTON	Operation and Maintenance	
REM00068	CAPE ELIZABETH MUNICIPAL LANDFILL	DENNISON DRIVE	CAPE ELIZABETH	Operation and Maintenance	
REM00069	CARATUNK (THE FORKS, WEST FORKS)	LOWER ENCHANTED RD OFF RT 201	WEST FORKS		
REM00070	CARIBOU MUNICIPAL LANDFILL	OGREN ROAD/OLD DUMP ROAD	CARIBOU	Operation and Maintenance	
REM00071	CARTHAGE MUNICIPAL LANDFILL	RT 142	CARTHAGE	Remediation Needed	
REM00072	CASCO MUNICIPAL LANDFILL	LEECH HILL RD	CASCO	Operation and Maintenance	
REM00073	CASTINE MUNICIPAL LANDFILL	RT 166A	CASTINE	Operation and Maintenance	
REM00074	CHARLESTON MUNICIPAL LANDFILL	ROUTE 15	CHARLESTON	Operation and Maintenance	
REM00075	CHARLOTTE MUNICIPAL LANDFILL	SMITH RIDGE ROAD	CHARLOTTE	Operation and Maintenance	

ICDB ID No	Landfill Name	Street Address	MCD Town	Status	Secondary DEP Program
REM00076	CHELSEA MUNICIPAL LANDFILL	SEARLS MILL ROAD	CHELSEA	Operation and Maintenance	
REM00077	CHERRYFIELD MUNICIPAL LANDFILL	ROUTE 193/BEDDINGTON ROAD	CHERRYFIELD	Operation and Maintenance	
REM00078	CHESTER MUNICIPAL LANDFILL	KEENE ROAD	CHESTER	Operation and Maintenance	
REM00079	CHESTERVILLE MUNICIPAL LANDFILL	RIDGE ROAD	CHESTERVILLE	Operation and Maintenance	
REM00080	CHESUNCOOK MUNICIPAL LANDFILL	TRAIL 3/4 MILE WEST OF VILLAGE	CHESUNCOOK	Operation and Maintenance	
REM00081	CHINA MUNICIPAL LANDFILL	ALDER PARK RD	CHINA	Operation and Maintenance	
REM00082	CLINTON MUNICIPAL LANDFILL	ROUTE 100/11	CLINTON	Operation and Maintenance	
REM00083	COBURN GORE MUNICIPAL LANDFILL	ROUTE 27	COBURN GORE	Operation and Maintenance	
REM00084	CODYVILLE MUNICIPAL LANDFILL	RT 6	CODYVILLE	Operation and Maintenance	
REM00085	COLUMBIA FALLS MUNICIPAL LANDFILL	ROUTE 187	COLUMBIA FALLS	Operation and Maintenance	
REM00086	CONNOR TWP. MUNICIPAL LANDFILL	BEAULIEU RD	CONNOR TWP	Operation and Maintenance	
REM00087	COOPER MUNICIPAL LANDFILL	RT 191	COOPER	Operation and Maintenance	
REM00088	CORINNA MUNICIPAL LANDFILL	PHINNEY ROAD	CORINNA	Operation and Maintenance	
REM00089	CORINTH MUNICIPAL LANDFILL	NOTCH RD	CORINTH	Operation and Maintenance	
REM00090	CORNISH MUNICIPAL LANDFILL	RTE 25/OSSIPEE RIVER	CORNISH	Operation and Maintenance	
REM00091	CORNVILLE MUNICIPAL LANDFILL	HUFF RD	CORNVILLE	Operation and Maintenance	
REM00092	CHEBEAGUE ISLAND LANDFILL	CHEBEAGUE ISLAND NORTH RD	CUMBERLAND	Operation and Maintenance	
REM00093	DROWNE RD. LANDFILL	DROWNE RD	CUMBERLAND	Operation and Maintenance	

ICDB ID No	Landfill Name	Street Address	MCD Town	Status	Secondary DEP Program
REM00094	CUTLER MUNICIPAL LANDFILL	ROUTE 191	CUTLER	Operation and Maintenance	
REM00095	DAMARISCOTTA MUNICIPAL LANDFILL	STANDPIPE RD	DAMARISCOTTA	Operation and Maintenance	
REM00096	DANFORTH MUNICIPAL LANDFILL (NEW)	MAPLE ST	DANFORTH	Operation and Maintenance	
REM00097	DANFORTH MUNICIPAL LANDFILL (OLD)	MAPLE ST	DANFORTH	Operation and Maintenance	
REM00098	DAYTON MUNICIPAL LANDFILL	RT 5/RUMMERY RD.	DAYTON	Operation and Maintenance	
REM00099	DEBLOIS MUNICIPAL LANDFILL	LANE ROAD OFF ROUTE 193	DEBLOIS	Operation and Maintenance	
REM00100	DEER ISLE MUNICIPAL LANDFILL	REACH WOODS ROAD	DEER ISLE	Operation and Maintenance	
REM00101	DENMARK MUNICIPAL LANDFILL	HANCOCK POND ROAD	DENMARK	Operation and Maintenance	
REM00102	DEXTER MUNICIPAL LANDFILL	UPPER GARLAND ROAD	DEXTER	Operation and Maintenance	
REM00103	DIXFIELD MUNICIPAL LANDFILL	RT 2 (MAIN STREET)	DIXFIELD	Operation and Maintenance	
REM00104	DIXMONT MUNICIPAL LANDFILL	MITCHELL ROAD	DIXMONT	Operation and Maintenance	
REM00105	DOVER-FOXCROFT MUNICIPAL LANDFILL	FOXCROFT CENTER ROAD	DOVER-FOXCROFT	Operation and Maintenance	
REM00106	EAGLE LAKE MUNICIPAL LANDFILL	CONVENT RD	EAGLE LAKE	Operation and Maintenance	
REM00107	EAST MACHIAS MUNICIPAL LANDFILL	DUMP ROAD	EAST MACHIAS	Operation and Maintenance	
REM00108	EAST MILLINOCKET MUNICIPAL LANDFILL	CHURCH ST.	EAST MILLINOCKET	Operation and Maintenance	
REM00109	EASTBROOK MUNICIPAL LANDFILL	RT 200/EASTBROOK RD.	EASTBROOK	Operation and Maintenance	
REM00110	EASTON MUNICIPAL LANDFILL	HOULTON RD (RT 1A & 165)	EASTON	Operation and Maintenance	
REM00111	EASTPORT MUNICIPAL LANDFILL	14 DEEP COVE ROAD	EASTPORT	Investigation Needed	

ICDB ID No	Landfill Name	Street Address	MCD Town	Status	Secondary DEP Program
REM00112	ELIOT MUNICIPAL LANDFILL	ROUTE 236	ELIOT	Operation and Maintenance	
REM00113	ELLSWORTH MUNICIPAL LANDFILL	STABAWL RD/UNION ST.	ELLSWORTH	Operation and Maintenance	
REM00114	ENFIELD MUNICIPAL LANDFILL	ROUTE 155	ENFIELD	Operation and Maintenance	
REM00115	EUSTIS MUNICIPAL LANDFILL	SCHOOL ST/OLD DEAD RIVER RD	BIGELOW TWP	Operation and Maintenance	
REM00116	EXETER MUNICIPAL LANDFILL	EATON ROAD	EXETER	Operation and Maintenance	
REM00117	MAPLE ST. LANDFILL	MAPLE ST	FAIRFIELD	Operation and Maintenance	
REM00118	GREEN ST. STUMP DUMP	GREEN ST	FAIRFIELD	Operation and Maintenance	
REM00119	FALMOUTH MUNICIPAL LANDFILL	WOODS ROAD	FALMOUTH	Operation and Maintenance	
REM00120	FARMINGTON MUNICIPAL LANDFILL (OLD)	ROUTE 43 INDUSTRY ROAD	FARMINGTON	Operation and Maintenance	
REM00121	FARMINGTON MUNICIPAL LANDFILL (NEW)	ROUTE 2 & 27	FARMINGTON	Operation and Maintenance	
REM00122	FORT FAIRFIELD MUNICIPAL LANDFILL	NORTH CARIBOU ROAD	FORT FAIRFIELD	Operation and Maintenance	
REM00123	FORT KENT MUNICIPAL LANDFILL	NORTH PERLEY BROOK ROAD	FORT KENT	Operation and Maintenance	UNCONTROLLED SITES
REM00124	FRANKLIN MUNICIPAL LANDFILL	RT 200	FRANKLIN	Operation and Maintenance	
REM00125	FREEDOM MUNICIPAL LANDFILL	BEAVER HILL RD/DUMP RD.	FREEDOM	Operation and Maintenance	
REM00126	FREEPORT MUNICIPAL LANDFILL	POWNA ROAD	FREEPORT	Operation and Maintenance	
REM00127	FREEPORT MUNICIPAL LANDFILL -OLD	POWNA RD	FREEPORT	Operation and Maintenance	
REM00128	FREEPORT DEMO DEBRIS LANDFILL	POWNA RD	FREEPORT	Investigation Needed	

ICDB ID No	Landfill Name	Street Address	MCD Town	Status	Secondary DEP Program
REM00129	FRENCHBORO MUNICIPAL LANDFILL	NEAR LUNT HARBOR	FRENCHBORO	Operation and Maintenance	
REM00130	FRENCHTOWN MUNICIPAL LANDFILL	FRENCHTOWN RD	FRENCHTOWN TWP	Operation and Maintenance	
REM00131	FRENCHVILLE MUNICIPAL LANDFILL	CLEVELAND AVE	FRENCHVILLE	Operation and Maintenance	
REM00132	FRIENDSHIP MUNICIPAL LANDFILL	FINNTOWN RD	FRIENDSHIP	Operation and Maintenance	
REM00133	FRYEBURG MUNICIPAL LANDFILL	OLD PORTER ROAD	FRYEBURG	Operation and Maintenance	
REM00134	GARLAND MUNICIPAL LANDFILL	OLIVER HILL ROAD	GARLAND	Operation and Maintenance	
REM00135	GEORGETOWN MUNICIPAL LANDFILL	BAY POINT ROAD	GEORGETOWN	Operation and Maintenance	
REM00136	GILEAD MUNICIPAL LANDFILL	RT 2	GILEAD	Operation and Maintenance	
REM00137	GLENBURN MUNICIPAL LANDFILL	HUDSON ROAD/ROUTE 221	GLENBURN	Operation and Maintenance	
REM00138	GORHAM MUNICIPAL LANDFILL	HUSTON RD	GORHAM	Operation and Maintenance	
REM00139	GORHAM DEMO DEBRIS LANDFILL	HUSTON RD	GORHAM	Operation and Maintenance	
REM00140	GRAND ISLE MUNICIPAL LANDFILL	DOUCHETTE RD.	GRAND ISLE	Operation and Maintenance	
REM00141	GRAND LAKE STREAM PLANTATION MUNICIPAL LANDFILL	MILFORD STREET	GRAND LAKE STREAM PLT	Operation and Maintenance	
REM00142	GRAY MUNICIPAL LANDFILL	SEAGULL DR/RT 26	GRAY	Operation and Maintenance	UNCONTROLLED SITES
REM00143	GREENBUSH MUNICIPAL LANDFILL	CARDVILLE ROAD	GREENBUSH	Operation and Maintenance	
REM00144	GREENE MUNICIPAL LANDFILL	QUAKER RIDGE ROAD	GREENE	Operation and Maintenance	
REM00145	GREENFIELD MUNICIPAL LANDFILL	CROCKER TURN ROAD	GREENFIELD	Operation and Maintenance	
REM00146	GREENVILLE MUNICIPAL LANDFILL	SCAMMON ROAD	GREENVILLE	Operation and Maintenance	

ICDB ID No	Landfill Name	Street Address	MCD Town	Status	Secondary DEP Program
REM00147	GREENVILLE MUNICIPAL LANDFILL -NEW	DYER RD	MOOSEHEAD JUNCT. TWP	Investigation Needed	
REM00148	GREENWOOD MUNICIPAL LANDFILL	RT 219	GREENWOOD	Operation and Maintenance	
REM00149	GREENWOOD STUMP DUMP	RT 219 - WEST PARIS ROAD	GREENWOOD	Operation and Maintenance	
REM00150	GUILFORD MUNICIPAL LANDFILL	MCPHETRES RD/RT 150	PARKMAN	Operation and Maintenance	
REM00151	HALLOWELL MUNICIPAL LANDFILL	TOWN FARM RD	HALLOWELL	Operation and Maintenance	
REM00152	HAMPDEN MUNICIPAL LANDFILL	BAKER ROAD	HAMPDEN	Operation and Maintenance	
REM00153	HANCOCK MUNICIPAL LANDFILL	ROUTE 182	HANCOCK	Operation and Maintenance	
REM00154	HARMONY MUNICIPAL LANDFILL	RT154/WELLINGTON RD.	HARMONY	Operation and Maintenance	
REM00155	HARPSWELL ROUTE 24 DUMP SITE	ROUTE 24	HARPSWELL	Investigation Needed	
REM00156	HARPSWELL MUNICIPAL LANDFILL	MOUNTAIN ROAD	HARPSWELL	Operation and Maintenance	
REM00157	HARPSWELL MUNICIPAL DUMP	ROUTE 123	HARPSWELL	Operation and Maintenance	
REM00158	HARRISON MUNICIPAL LANDFILL	UPTON ROAD	HARRISON	Operation and Maintenance	
REM00159	HARRISON DEMO DEBRIS LANDFILL	UPTON RD	HARRISON	Operation and Maintenance	
REM00160	HARTFORD/SUMNER MUNICIPAL LANDFILL	BUTTERFIELD RD/RT 140	SUMNER	Operation and Maintenance	
REM00161	HARTLAND MUNICIPAL LANDFILL	RTE 43 & 151	HARTLAND	Operation and Maintenance	
REM00162	HARTLAND SLUDGE LANDFILL (PHASE I)	RTE 43	HARTLAND	Operation and Maintenance	
REM00163	HARTLAND SLUDGE LANDFILL (PHASE II)	RTE 43	HARTLAND	Investigation Needed	
REM00164	HAYNESVILLE MUNICIPAL LANDFILL	NUMBER 9 ROAD	HAYNESVILLE	Operation and Maintenance	

ICDB ID No	Landfill Name	Street Address	MCD Town	Status	Secondary DEP Program
REM00165	HEBRON MUNICIPAL LANDFILL	GOODRICH RD	HEBRON	Operation and Maintenance	
REM00166	HERMON MUNICIPAL LANDFILL	NEWBOSTON ROAD	HERMON	Operation and Maintenance	
REM00167	HIGHLAND PLT. MUNICIPAL LANDFILL	LONG FALLS DAM RD	HIGHLAND PLT	Operation and Maintenance	
REM00168	HOLLIS MUNICIPAL LANDFILL (NEW)	DECKER ROAD	HOLLIS	Operation and Maintenance	
REM00169	HOULTON MUNICIPAL LANDFILL	STEELSTONE STREET	HOULTON	Operation and Maintenance	
REM00170	HOWLAND MUNICIPAL LANDFILL	ROUTE 6/155	HOWLAND	Operation and Maintenance	
REM00171	HUDSON MUNICIPAL LANDFILL	HUDSON HILL RD/TAMBURO LN	HUDSON	Operation and Maintenance	
REM00172	INDIAN TOWNSHIP MUNICIPAL LANDFILL	GRAND LAKE STREAM RD	INDIAN TWP PASSAMAQUODDY RESRV	Operation and Maintenance	
REM00173	ISLAND FALLS MUNICIPAL LANDFILL	SEWALL STREET	ISLAND FALLS	Operation and Maintenance	
REM00174	ISLESBORO MUNICIPAL LANDFILL	MAIN ROAD	ISLESBORO	Operation and Maintenance	
REM00175	JACKMAN MUNICIPAL LANDFILL	HASTINGS ROAD	JACKMAN	Operation and Maintenance	
REM00176	JAY MUNICIPAL LANDFILL	ROUTE 4	JAY	Operation and Maintenance	
REM00177	JEFFERSON MUNICIPAL LANDFILL	HINCKS ROAD	JEFFERSON	Operation and Maintenance	
REM00178	JONESBORO MUNICIPAL LANDFILL	STATION ROAD	JONESBORO	Investigation Needed	
REM00179	JONESPORT MUNICIPAL LANDFILL	ROUTE 187	JONESPORT	Operation and Maintenance	
REM00180	KENDUSKEAG MUNICIPAL LANDFILL	TOWN HOUSE ROAD	KENDUSKEAG	Investigation Needed	
REM00181	KENNEBEC SANITARY TREATMENT DISTRICT LANDFILL	401 WATER STREET	WATERVILLE	Operation and Maintenance	

ICDB ID No	Landfill Name	Street Address	MCD Town	Status	Secondary DEP Program
REM00182	KENNEBUNK MUNICIPAL LANDFILL (PHASE I)	SEA ST	KENNEBUNK	Operation and Maintenance	UNCONTROLLED SITES
REM00183	KENNEBUNK MUNICIPAL LANDFILL (PHASE II)	SEA ST	KENNEBUNK	Operation and Maintenance	UNCONTROLLED SITES
REM00184	KENNEBUNKPORT MUNICIPAL LANDFILL	BEACHWOOD ROAD	KENNEBUNKPORT	Operation and Maintenance	
REM00185	KINGFIELD MUNICIPAL LANDFILL	ROUTE 16	KINGFIELD	Operation and Maintenance	
REM00186	KITTERY MUNICIPAL LANDFILL	PICOTT ROAD	KITTERY	Operation and Maintenance	UNCONTROLLED SITES
REM00187	LAGRANGE MUNICIPAL LANDFILL	ROUTE 16	LAGRANGE	Operation and Maintenance	
REM00188	LAKE VIEW PLANTATION MUNICIPAL LANDFILL	LAKEVIEW ROAD	LAKE VIEW PLT	Operation and Maintenance	
REM00189	LAMBERT LAKE MUNICIPAL LANDFILL	RTE 6	LAMBERT LAKE	Operation and Maintenance	
REM00190	LAMOINE MUNICIPAL LANDFILL	ROUTE 184	LAMOINE	Operation and Maintenance	
REM00191	LAWPCA SLUDGE LANDFILL	RIVER RD	LEWISTON	Operation and Maintenance	
REM00192	LEBANON MUNICIPAL LANDFILL	UPPER GUINEA ROAD	LEBANON	Operation and Maintenance	
REM00193	LEE MUNICIPAL LANDFILL	DAM ROAD	LEE	Operation and Maintenance	
REM00194	LEEDS MUNICIPAL LANDFILL	RIDGE ROAD	LEEDS	Operation and Maintenance	
REM00195	LEWISTON MUNICIPAL LANDFILL	424 RIVER ROAD	LEWISTON	Operation and Maintenance	
REM00196	LIBERTY MUNICIPAL LANDFILL	UPPER HOSTILE VALLEY RD.	LIBERTY	Operation and Maintenance	
REM00197	LILY BAY MUNICIPAL LANDFILL	LILY BAY RD	LILY BAY	Operation and Maintenance	
REM00198	LIMERICK MUNICIPAL LANDFILL	PICKEREL POND RD	LIMERICK	Operation and Maintenance	UNCONTROLLED SITES

ICDB ID No	Landfill Name	Street Address	MCD Town	Status	Secondary DEP Program
REM00199	LIMINGTON MUNICIPAL LANDFILL	PINE HILL ROAD	LIMINGTON	Operation and Maintenance	
REM00200	LINCOLN MUNICIPAL LANDFILL	FOLSOM POND ROAD	LINCOLN	Operation and Maintenance	
REM00201	LINCOLN PLANTATION MUNICIPAL LANDFILL	RTE 16	LINCOLN PLT	Operation and Maintenance	
REM00202	LISBON MUNICIPAL LANDFILL (NEW)	PINEWOODS ROAD	LISBON	Operation and Maintenance	UNCONTROLLED SITES
REM00203	LISBON MUNICIPAL LANDFILL (OLD)	EDGECOMB ROAD	LISBON	Operation and Maintenance	
REM00204	LITCHFIELD MUNICIPAL LANDFILL	HALLOWELL ROAD	LITCHFIELD	Operation and Maintenance	
REM00205	LITTLETON MUNICIPAL LANDFILL	WEST RIDGE ROAD	LITTLETON	Operation and Maintenance	UNCONTROLLED SITES
REM00206	LIVERMORE MUNICIPAL LANDFILL	RTE 4	LIVERMORE	Operation and Maintenance	
REM00207	LIVERMORE FALLS MUNICIPAL LANDFILL	OFF RTE 133/DIAMOND RD.	LIVERMORE FALLS	Operation and Maintenance	
REM00208	LUBEC MUNICIPAL LANDFILL	SOUTH LUBEC RD	LUBEC	Operation and Maintenance	
REM00209	MACHIAS MUNICIPAL LANDFILL	ROUTE 192/OUTER BROADWAY	MACHIAS	Operation and Maintenance	
REM00210	MACHIASPORT MUNICIPAL LANDFILL	MACHIAS RD	MACHIASPORT	Operation and Maintenance	
REM00211	MACWAHOC PLANTATION MUNICIPAL LANDFILL	ROUTE 170	MACWAHOC PLT	Operation and Maintenance	
REM00212	MARIAVILLE MUNICIPAL LANDFILL	ROUTE 181/MARIAVILLE ROAD	MARIAVILLE	Operation and Maintenance	
REM00213	MARS HILL MUNICIPAL LANDFILL	MILL STREET	MARS HILL	Operation and Maintenance	
REM00214	MASARDIS MUNICIPAL LANDFILL	BLACKWATER ROAD	MASARDIS	Operation and Maintenance	
REM00215	MATTAWAMKEAG MUNICIPAL LANDFILL	DEPOT ROAD	MATTAWAMKEAG	Operation and Maintenance	UNCONTROLLED SITES
REM00216	MECHANIC FALLS MUNICIPAL LANDFILL	WALKER ROAD	MECHANIC FALLS	Operation and Maintenance	

ICDB ID No	Landfill Name	Street Address	MCD Town	Status	Secondary DEP Program
REM00217	MEDDYBEMPS MUNICIPAL LANDFILL	RTE 191	MEDDYBEMPS	Operation and Maintenance	
REM00218	MEDWAY MUNICIPAL LANDFILL	RTE 11	MEDWAY	Operation and Maintenance	
REM00219	MERCER MUNICIPAL LANDFILL	SANDY RIVER ROAD	MERCER	Operation and Maintenance	
REM00220	MEXICO MUNICIPAL LANDFILL	POPLAR HILL ROAD	MEXICO	Operation and Maintenance	
REM00221	MILBRIDGE MUNICIPAL LANDFILL	RTE 1A	MILBRIDGE	Operation and Maintenance	
REM00222	MILFORD MUNICIPAL LANDFILL	COUNTY RD	MILFORD	Operation and Maintenance	
REM00223	MILLINOCKET MUNICIPAL LANDFILL	LAKE RD	T3 INDIAN PURCHASE	Operation and Maintenance	
REM00224	MILO MUNICIPAL LANDFILL	DUSTY LANE	MILO	Operation and Maintenance	
REM00225	MONMOUTH MUNICIPAL LANDFILL	RTE 135/REEVEY RD.	MONMOUTH	Operation and Maintenance	
REM00226	MONROE MUNICIPAL LANDFILL	MONROE ROAD/PINES RD	MONROE	Operation and Maintenance	
REM00227	MONSON MUNICIPAL LANDFILL	CHAPIN STREET	MONSON	Operation and Maintenance	
REM00228	MONTICELLO MUNICIPAL LANDFILL - NEW	DUMP RD	MONTICELLO	Operation and Maintenance	
REM00229	MONTICELLO MUNICIPAL LANDFILL - OLD	DUMP RD	MONTICELLO	Operation and Maintenance	
REM00230	MONTVILLE MUNICIPAL LANDFILL	TWITCHELL HILL RD	MONTVILLE	Operation and Maintenance	
REM00231	MOUNT CHASE MUNICIPAL LANDFILL	RTE 159	MOUNT CHASE	Operation and Maintenance	
REM00232	MT. VERNON MUNICIPAL LANDFILL	MOOAR HILL RD	MOUNT VERNON	Remediation Needed	
REM00233	MT. VERNON STUMP DUMP	MOOAR HILL RD.	MOUNT VERNON	Remediation Needed	

ICDB ID No	Landfill Name	Street Address	MCD Town	Status	Secondary DEP Program
REM00234	NAPLES MUNICIPAL LANDFILL	PERLEY ROAD	NAPLES	Operation and Maintenance	
REM00235	NARIF ASH LANDFILL	AIRPORT RD	FRENCHVILLE	Operation and Maintenance	
REM00236	NEW GLOUCESTER MUNICIPAL LANDFILL	BALD HEAD ROAD	NEW GLOUCESTER	Operation and Maintenance	UNCONTROLLED SITES
REM00237	NEW GLOUCESTER STUMP DUMP	BALD HILL RD	NEW GLOUCESTER	Operation and Maintenance	
REM00238	NEW PORTLAND STUMP DUMP	MIDDLE RD	NEW PORTLAND	Operation and Maintenance	
REM00239	NEW SHARON MUNICIPAL LANDFILL	ROUTE 134/STARKS ROAD	NEW SHARON	Operation and Maintenance	
REM00240	NEW SWEDEN MUNICIPAL LANDFILL	BONDESON ROAD	NEW SWEDEN	Operation and Maintenance	
REM00241	NEW VINEYARD MUNICIPAL LANDFILL	ROUTE 127	NEW VINEYARD	Operation and Maintenance	
REM00242	NEWBURGH MUNICIPAL LANDFILL	RIVER ROAD	NEWBURGH	Operation and Maintenance	
REM00243	NEWCASTLE MUNICIPAL LANDFILL	RT 215	NEWCASTLE	Operation and Maintenance	
REM00244	NEWFIELD MUNICIPAL LANDFILL	ROUTE 11	NEWFIELD	Operation and Maintenance	
REM00245	NEWPORT STUMP DUMP	CEMETARY ROAD	NEWPORT	Operation and Maintenance	
REM00246	NEWPORT MUNICIPAL LANDFILL	CEMETARY ROAD	NEWPORT	Operation and Maintenance	
REM00247	NOBLEBORO MUNICIPAL LANDFILL	LOWER CROSS RD	NOBLEBORO	Operation and Maintenance	
REM00248	NORRIDGEWOCK MUNICIPAL LANDFILL	WINDING HILL ROAD	NORRIDGEWOCK	Operation and Maintenance	UNCONTROLLED SITES
REM00249	NORTH BERWICK MUNICIPAL LANDFILL	LEBANON RD	NORTH BERWICK	Operation and Maintenance	
REM00250	NORTH HAVEN ISLAND MUNICIPAL LANDFILL	NORTH SHORE ROAD	NORTH HAVEN ISLAND	Operation and Maintenance	
REM00251	NORTH YARMOUTH MUNICIPAL LANDFILL	WEST POWNAL RD.	NORTH YARMOUTH	Operation and Maintenance	

ICDB ID No	Landfill Name	Street Address	MCD Town	Status	Secondary DEP Program
REM00252	NORTHFIELD MUNICIPAL LANDFILL	EAST RIDGE ROAD	NORTHFIELD	Investigation Needed	
REM00253	NORTHPORT MUNICIPAL LANDFILL	BEECH HILL ROAD	NORTHPORT	Operation and Maintenance	
REM00254	NORWAY MUNICIPAL LANDFILL	DUMP RD/OFF RTE 26	NORWAY	Operation and Maintenance	UNCONTROLLED SITES
REM00255	NORWAY DEMO DEBRIS LANDFILL	DUMP RD/OFF RTE 26	NORWAY	Operation and Maintenance	
REM00256	OAKFIELD MUNICIPAL LANDFILL	THOMPSON SETTLEMENT RD	OAKFIELD	Operation and Maintenance	
REM00257	OAKLAND MUNICIPAL LANDFILL	TOWN FARM ROAD	OAKLAND	Operation and Maintenance	
REM00258	OGUNQUIT MUNICIPAL LANDFILL	368 BERWICK ROAD	OGUNQUIT	Operation and Maintenance	
REM00259	OLD ORCH. B. MUNICIPAL LANDFILL - OLD	103 SMITHWHEEL ROAD	OLD ORCHARD BEACH	Operation and Maintenance	
REM00260	OLD ORCH. B. MUNICIPAL LANDFILL - NEW	108 SMITHWHEEL ROADDIRIGO DR.	OLD ORCHARD BEACH	Operation and Maintenance	
REM00261	OLD ORCH. B. DEMO/WOOD WASTE DUMP	40 E.E. CUMMINGS BLVD.	OLD ORCHARD BEACH	Operation and Maintenance	
REM00262	OLD TOWN MUNICIPAL LANDFILL	RTE 16/BENNOCH RD.	OLD TOWN	Operation and Maintenance	
REM00263	ORIENT MUNICIPAL LANDFILL	RTE 1/POWERLINE RD	ORIENT	Operation and Maintenance	
REM00264	ORNEVILLE MUNICIPAL LANDFILL	BOYD LAKE ROAD	ORNEVILLE	Operation and Maintenance	
REM00265	ORONO MUNICIPAL LANDFILL	TAYLOR ROAD	ORONO	Operation and Maintenance	
REM00266	OTIS MUNICIPAL LANDFILL	ROUTE 180	OTIS	Operation and Maintenance	
REM00267	OWLS HEAD MUNICIPAL LANDFILL	ASH POINT DR	OWLS HEAD	Operation and Maintenance	
REM00268	OXFORD MUNICIPAL LANDFILL	SKEETFIELD RD	OXFORD	Operation and Maintenance	

ICDB ID No	Landfill Name	Street Address	MCD Town	Status	Secondary DEP Program
REM00269	OXFORD ASH LANDFILL	89 SMITH ROAD	OXFORD	Operation and Maintenance	
REM00270	PARIS MUNICIPAL LANDFILL	HATHAWAY ROAD	PARIS	Operation and Maintenance	
REM00271	PARIS UTILITY DISTRICT SLUDGE LANDFILL	OXFORD ST	PARIS	Operation and Maintenance	
REM00272	PARKMAN MUNICIPAL LANDFILL	CROW HILL ROAD	PARKMAN	Operation and Maintenance	
REM00273	PASSADUMKEAG MUNICIPAL LANDFILL	CARIBOU RD	PASSADUMKEAG	Operation and Maintenance	
REM00274	PATTEN MUNICIPAL LANDFILL	LOVEJOY ROAD	PATTEN	Operation and Maintenance	
REM00275	PENOBSCOT MUNICIPAL LANDFILL	PIERCE POND	PENOBSCOT	Operation and Maintenance	
REM00276	PERU MUNICIPAL LANDFILL - WEST	PLEASANT STREET	PERU	Operation and Maintenance	
REM00277	PERU MUNICIPAL LANDFILL - EAST	GREENWOODS ROAD	PERU	Operation and Maintenance	
REM00278	PHILLIPS MUNICIPAL LANDFILL	PARK ST EXTENSION	PHILLIPS	Operation and Maintenance	
REM00279	PHIPPSBURG MUNICIPAL LANDFILL	58 SAM DAY HILL ROAD	PHIPPSBURG	Operation and Maintenance	
REM00280	PITTSFIELD MUNICIPAL LANDFILL	PELTOMA AVE/HORSEBACK RD	PITTSFIELD	Operation and Maintenance	
REM00281	PITTSFIELD DEMO DEBRIS LANDFILL	PELTOMA AVE/HORSEBACK RD	PITTSFIELD	Operation and Maintenance	
REM00282	PLANTATION #14 MUNICIPAL LANDFILL	RTE 191	NO 14 TWP	Operation and Maintenance	
REM00283	PLANTATION #21 MUNICIPAL LANDFILL	OFF YATES PT RD	NO 21 TWP	Operation and Maintenance	
REM00284	PLEASANT RIDGE PLT. MUNICIPAL LANDFILL	HOUSTON BROOK FALLS	PLEASANT RIDGE PLT	Operation and Maintenance	
REM00285	PLYMOUTH MUNICIPAL LANDFILL	ROUTE 7/LOUD ROAD	PLYMOUTH	Operation and Maintenance	
REM00286	POLAND STUMP DUMP	TRIPP LAKE RD	POLAND	Operation and Maintenance	

ICDB ID No	Landfill Name	Street Address	MCD Town	Status	Secondary DEP Program
REM00287	POLAND MUNICIPAL LANDFILL	TRIPP LAKE RD	POLAND	Operation and Maintenance	
REM00288	PORTAGE LAKE MUNICIPAL LANDFILL	ROUTE 11	PORTAGE LAKE	Operation and Maintenance	
REM00289	LONG ISLAND MUNICIPAL LANDFILL	ISLAND AVE	LONG ISLAND	Operation and Maintenance	
REM00290	PORTLAND MUNICIPAL LANDFILL - OCEAN AVE	OCEAN AVE	PORTLAND	Operation and Maintenance	UNCONTROLLED SITES
REM00291	PORTLAND MUNICIPAL LANDFILL - PEAKS ISLAND	BEACH AVE	PORTLAND	Operation and Maintenance	
REM00292	PORTLAND MUNICIPAL LANDFILL - RIVERSIDE	RIVERSIDE DRIVE	PORTLAND	Operation and Maintenance	
REM00293	PRESQUE ISLE MUNICIPAL LANDFILL	EAST CHAPMAN RD	PRESQUE ISLE	Remediation Needed	
REM00294	PRINCETON MUNICIPAL LANDFILL - NEW	EASTERN CUTOFF ROAD	PRINCETON	Operation and Maintenance	
REM00295	PROSPECT MUNICIPAL LANDFILL	HAWES BRIDGE RD	PROSPECT	Operation and Maintenance	
REM00296	RANGELEY MUNICIPAL LANDFILL	RTE 4	RANGELEY	Operation and Maintenance	
REM00297	RANGELEY PLANTATION MUNICIPAL LANDFILL	BIRDSEYE ROAD	RANGELEY PLT	Operation and Maintenance	
REM00298	EGYPT ROAD LANDFILL	EGYPT RD	RAYMOND	Operation and Maintenance	
REM00299	RAYMOND DEMO DEBRIS LANDFILL	BROWN RD	RAYMOND	Operation and Maintenance	
REM00300	READFIELD MUNICIPAL LANDFILL	NORTH ROAD	READFIELD	Operation and Maintenance	
REM00301	REED PLANTATION MUNICIPAL LANDFILL	ROUTE 171	REED PLT	Operation and Maintenance	
REM00302	REGIONAL WASTE SYSTEMS LANDFILL	RUNNING HILL ROAD	SCARBOROUGH	Operation and Maintenance	
REM00304	RICHMOND MUNICIPAL LANDFILL	LINCOLN RD	RICHMOND	Operation and Maintenance	
REM00305	ROCKLAND MUNICIPAL LANDFILL	LIMEROCK STREET	ROCKLAND	Operation and Maintenance	UNCONTROLLED SITES

ICDB ID No	Landfill Name	Street Address	MCD Town	Status	Secondary DEP Program
REM00306	ROCKWOOD MUNICIPAL LANDFILL	MILLIGAN FARM ROAD	ROCKWOOD STRIP T01 R01 NBKP	Operation and Maintenance	
REM00307	SABATTUS MUNICIPAL LANDFILL	PLEASANT HILL RD	SABATTUS	Operation and Maintenance	
REM00310	SANFORD MUNICIPAL LANDFILL	RUSHTON STREET	SANFORD	Operation and Maintenance	UNCONTROLLED SITES
REM00311	SANFORD MUNICIPAL LANDFILL - OLD	RUSTON ST	SANFORD	Operation and Maintenance	UNCONTROLLED SITES
REM00312	SANGERVILLE MUNICIPAL LANDFILL	ROUTE 23	SANGERVILLE	Operation and Maintenance	
REM00313	PLEASANT HILL RD. DUMP	PLEASANT HILL RD	SCARBOROUGH	Operation and Maintenance	
REM00314	HOLMES RD. LANDFILL	HOLMES RD	SCARBOROUGH	Investigation Needed	
REM00315	SEARSMONT MUNICIPAL LANDFILL	CRIE ROAD	SEARSMONT	Operation and Maintenance	
REM00316	SEARSPORT MUNICIPAL LANDFILL	DUMP ROAD	SEARSPORT	Operation and Maintenance	
REM00317	SEBAGO MUNICIPAL LANDFILL	LONG HILL ROAD	SEBAGO	Operation and Maintenance	
REM00318	SEBEC MUNICIPAL LANDFILL	OLD BROWNVILLE RD	SEBEC	Operation and Maintenance	
REM00319	SEDGWICK MUNICIPAL LANDFILL	OLD COUNTY RD	SEDGWICK	Operation and Maintenance	
REM00320	SHAPLEIGH MUNICIPAL LANDFILL	ROUTE 11	SHAPLEIGH	Operation and Maintenance	
REM00321	SHERMAN MUNICIPAL LANDFILL	EXTRACT ROAD	SHERMAN	Operation and Maintenance	
REM00322	SHIRLEY MUNICIPAL LANDFILL	UPPER SHIRLEY CORNER RD	SHIRLEY	Operation and Maintenance	
REM00323	SIDNEY MUNICIPAL LANDFILL	RT 23/TIFFANY ROAD	SIDNEY	Operation and Maintenance	
REM00324	SINCLAIR MUNICIPAL LANDFILL	HEBERT RD OFF RT 162	SINCLAIR	Operation and Maintenance	
REM00326	SMITHFIELD MUNICIPAL LANDFILL	SAND HILL ROAD	SMITHFIELD	Operation and Maintenance	

ICDB ID No	Landfill Name	Street Address	MCD Town	Status	Secondary DEP Program
REM00327	SMYRNA MUNICIPAL LANDFILL	MISSION ST. OFF RTE 2	SMYRNA	Remediation Needed	
REM00328	SOLON MUNICIPAL LANDFILL	RIVER ROAD	SOLON	Operation and Maintenance	
REM00329	SOMERVILLE MUNICIPAL LANDFILL	RTE 206	SOMERVILLE	Operation and Maintenance	
REM00330	SOMERVILLE MUNICIPAL LANDFILL - OLD	RTE 206	SOMERVILLE	Operation and Maintenance	
REM00331	SORRENTO MUNICIPAL LANDFILL	WAUKEAG RD	SORRENTO	Operation and Maintenance	
REM00332	SOUTH BERWICK MUNICIPAL LANDFILL	111 AGAMENTICUS RD	SOUTH BERWICK	Operation and Maintenance	UNCONTROLLED SITES
REM00333	SOUTH PORTLAND MUNICIPAL LANDFILL	HIGHLAND AVE	SOUTH PORTLAND	Operation and Maintenance	UNCONTROLLED SITES
REM00334	SOUTH PORTLAND DEMO DEBRIS LANDFILL	HIGHLAND AVE	SOUTH PORTLAND	Operation and Maintenance	
REM00335	SOUTH THOMASTON DEMO DEBRIS LANDFILL	STUMP DUMP RD/OFF RT 73	SOUTH THOMASTON	Operation and Maintenance	
REM00336	SPRINGFIELD MUNICIPAL LANDFILL	RTE 169 & 170	SPRINGFIELD	Operation and Maintenance	
REM00337	SQUIRREL ISLAND MUNICIPAL LANDFILL		SQUIRREL ISLAND	Operation and Maintenance	
REM00338	SAINT AGATHA MUNICIPAL LANDFILL	MARQUIS ROAD	ST AGATHA	Operation and Maintenance	
REM00339	SAINT ALBANS MUNICIPAL LANDFILL	RTE 23/ 43/152	ST ALBANS	Operation and Maintenance	
REM00340	SAINT FRANCIS MUNICIPAL LANDFILL	BACK SETTLEMENT RD	ST FRANCIS	Operation and Maintenance	
REM00341	SAINT GEORGE MUNICIPAL LANDFILL	WALLSTON ROAD	ST GEORGE	Operation and Maintenance	
REM00342	SAINT JOHN PLANTATION MUNICIPAL LANDFILL	ROUTE 161	ST JOHN PLT	Operation and Maintenance	
REM00343	STANDISH MUNICIPAL LANDFILL	MOODY RD	STANDISH	Operation and Maintenance	

ICDB ID No	Landfill Name	Street Address	MCD Town	Status	Secondary DEP Program
REM00344	STARKS MUNICIPAL LANDFILL	OFF RTE 43	STARKS	Remediation Needed	
REM00345	STETSON MUNICIPAL LANDFILL	ROUTE 222	LEVANT	Operation and Maintenance	
REM00346	STOCKHOLM MUNICIPAL LANDFILL	MAIN STREET	STOCKHOLM	Operation and Maintenance	
REM00347	STONINGTON MUNICIPAL LANDFILL	AIRPORT RD	STONINGTON	Operation and Maintenance	
REM00348	STRONG MUNICIPAL LANDFILL	BURBANK HILL ROAD	STRONG	Operation and Maintenance	
REM00349	SULLIVAN MUNICIPAL LANDFILL - EAST	TRUNK LAKE ROAD	SULLIVAN	Operation and Maintenance	
REM00350	SULLIVAN MUNICIPAL LANDFILL - NORTH	QUARRY DUMP ROAD	SULLIVAN	Operation and Maintenance	
REM00351	SWANS ISLAND MUNICIPAL LANDFILL	DUMP RD/NEAR BACK COVE	SWANS ISLAND	Operation and Maintenance	
REM00352	SWANVILLE MUNICIPAL LANDFILL	SWAN LAKE AVE (RT 141)	SWANVILLE	Operation and Maintenance	
REM00353	TALMADGE/WAITE MUNICIPAL LANDFILL	NEAR DEMOCRATE RIDGE	TALMADGE	Operation and Maintenance	
REM00354	TEMPLE MUNICIPAL LANDFILL	MAPLE STREET	TEMPLE	Operation and Maintenance	
REM00355	THE FORKS PLT. MUNICIPAL LANDFILL	LAKE MOXIE RD	THE FORKS PLT	Operation and Maintenance	
REM00356	THOMASTON MUNICIPAL LANDFILL	68 ANNA BELLE LANE	THOMASTON	Operation and Maintenance	
REM00357	TOPSFIELD MUNICIPAL LANDFILL	ROUTE 6	TOPSFIELD	Operation and Maintenance	
REM00358	TOPSHAM MUNICIPAL LANDFILL	FORESIDE ROAD	TOPSHAM	Operation and Maintenance	
REM00359	TREMONT MUNICIPAL LANDFILL	ROUTE 102A	TREMONT	Operation and Maintenance	
REM00360	TRI-COMMUNITY - PHASE I	MURPHY RD	FORT FAIRFIELD		
REM00361	TRI-COMMUNITY - PHASE II	MURPHY RD	FORT FAIRFIELD		

ICDB ID No	Landfill Name	Street Address	MCD Town	Status	Secondary DEP Program
REM00362	TURNER MUNICIPAL LANDFILL	SNELL HILL ROAD	TURNER	Operation and Maintenance	UNCONTROLLED SITES
REM00363	UNION MUNICIPAL LANDFILL	BUMP HILL ROAD	UNION	Operation and Maintenance	
REM00364	UNITY MUNICIPAL LANDFILL	CROSBY BROOK RD (DUMP RD)	UNITY	No Further Action	
REM00365	UPTON MUNICIPAL LANDFILL	EAST "B" HILL ROAD	UPTON	Remediation Needed	
REM00366	VAN BUREN MUNICIPAL LANDFILL	ALEXANDER RD	VAN BUREN	Operation and Maintenance	
REM00367	VANCEBORO MUNICIPAL LANDFILL	RT 6	VANCEBORO	Operation and Maintenance	
REM00368	VASSALBORO MUNICIPAL LANDFILL	LOMBARD DAM ROAD	VASSALBORO	Operation and Maintenance	
REM00369	VEAZIE MUNICIPAL LANDFILL	OLD COUNTY RD	VEAZIE	Operation and Maintenance	
REM00370	VIENNA MUNICIPAL LANDFILL	TOWER ROAD	VIENNA	Operation and Maintenance	
REM00371	VINALHAVEN MUNICIPAL LANDFILL	ROUND ISLAND ROAD	VINALHAVEN	Operation and Maintenance	
REM00372	WALDO MUNICIPAL LANDFILL	SAVAGE ROAD	WALDO	Operation and Maintenance	
REM00373	WALDOBORO MUNICIPAL LANDFILL	NORTH NOBLEBORO ROAD	WALDOBORO	Operation and Maintenance	
REM00374	WALDOBORO - BACK BROOK DUMP SITE	OLD RT 1 (COLES HILL RD)	WALDOBORO		
REM00375	WALLAGRASS MUNICIPAL LANDFILL	SOLDIER POND ROAD	WALLAGRASS	Operation and Maintenance	
REM00376	WALTHAM MUNICIPAL LANDFILL	RTE 179	WALTHAM	Operation and Maintenance	
REM00377	WARREN MUNICIPAL LANDFILL	OLD AUGUSTA ROAD	WARREN	Operation and Maintenance	
REM00378	WASHBURN MUNICIPAL LANDFILL	EVERETT RD.	WASHBURN	Operation and Maintenance	
REM00379	WASHINGTON MUNICIPAL LANDFILL	VANNER ROAD	WASHINGTON	Operation and Maintenance	

ICDB ID No	Landfill Name	Street Address	MCD Town	Status	Secondary DEP Program
REM00380	WATERBORO MUNICIPAL LANDFILL	BENNET HILL RD	WATERBORO	Operation and Maintenance	UNCONTROLLED SITES
REM00381	WATERFORD MUNICIPAL LANDFILL	RT 5/35	WATERFORD	Operation and Maintenance	
REM00382	WATERVILLE MUNICIPAL LANDFILL	WEBB ROAD	WATERVILLE	Operation and Maintenance	
REM00383	WAYNE MUNICIPAL LANDFILL	MORRISON HEIGHTS RD	WAYNE	Operation and Maintenance	
REM00384	WELD MUNICIPAL LANDFILL	ROUTE 142	WELD	Operation and Maintenance	
REM00385	WELLS MUNICIPAL LANDFILL	ROUTE 9	WELLS	Operation and Maintenance	
REM00386	WESLEY MUNICIPAL LANDFILL	ROUTE 9	CRAWFORD	Operation and Maintenance	
REM00387	WEST PARIS MUNICIPAL LANDFILL	PIONEER ST	WEST PARIS	Operation and Maintenance	
REM00388	SANDY HILL LANDFILL	SACO ST	WESTBROOK	Operation and Maintenance	UNCONTROLLED SITES
REM00389	ROCKY HILL DEMO DEBRIS LANDFILL	METHODIST HILL RD	WESTBROOK	Operation and Maintenance	
REM00390	WESTFIELD MUNICIPAL LANDFILL	EYGPT RD	WESTFIELD	Operation and Maintenance	
REM00391	WHITEFIELD MUNICIPAL LANDFILL	HOWE RD	WHITEFIELD	Operation and Maintenance	
REM00392	WHITNEYVILLE MUNICIPAL LANDFILL	CANAL RD	WHITNEYVILLE	Remediation Needed	
REM00393	WILLIMANTIC MUNICIPAL LANDFILL	RTE 150	WILLIMANTIC	Operation and Maintenance	
REM00394	WILTON MUNICIPAL LANDFILL - NEW	MUNSON RD	WILTON	Operation and Maintenance	UNCONTROLLED SITES
REM00395	WILTON ASH SITE	MUNSON RD	WILTON	Operation and Maintenance	
REM00396	WINDHAM MUNICIPAL LANDFILL	RTE 302	WINDHAM	Operation and Maintenance	
REM00397	WINDSOR MUNICIPAL LANDFILL	RTE 32	WINDSOR	Operation and Maintenance	

ICDB ID No	Landfill Name	Street Address	MCD Town	Status	Secondary DEP Program
REM00398	WINN MUNICIPAL LANDFILL	RTE 168	WINN	Operation and Maintenance	
REM00399	WINTER HARBOR MUNICIPAL LANDFILL	RTE 186	WINTER HARBOR	Operation and Maintenance	UNCONTROLLED SITES
REM00400	WINTERPORT MUNICIPAL LANDFILL	STREAM RD.	WINTERPORT	Operation and Maintenance	
REM00401	WINTERVILLE PLT. MUNICIPAL LANDFILL	NORTH QUIMBY RD	WINTERVILLE PLT	Operation and Maintenance	
REM00403	WISCASSET MUNICIPAL LANDFILL	HUNTOON HILL RD	WISCASSET	Operation and Maintenance	
REM00404	WOODSTOCK MUNICIPAL LANDFILL	ROUTE 232	WOODSTOCK	Operation and Maintenance	
REM00405	WOOLWICH MUNICIPAL LANDFILL	RTE 127	WOOLWICH	Operation and Maintenance	
REM00406	YARMOUTH MUNICIPAL LANDFILL	OLD COUNTY RD (E MAIN ST)	YARMOUTH	Operation and Maintenance	
REM00407	YARMOUTH STUMP DUMP	OLD COUNTY RD (E MAIN ST)	YARMOUTH	Remediation Needed	
REM00408	YORK MUNICIPAL LANDFILL	65 WITCHTROT ROAD	YORK	Operation and Maintenance	
REM01502	SKOWHEGAN MUNICIPAL LANDFILL	STEWARD HILL ROAD	SKOWHEGAN	Operation and Maintenance	
REM01504	AUBURN BRUSH/PIONITE DUST LANDFILL	GRACELAWN ROAD	AUBURN	Operation and Maintenance	
REM01505	AUBURN INTERIM LANDFILL	GRACELAWN ROAD	AUBURN	Operation and Maintenance	
REM01506	BURNHAM MUNICIPAL LANDFILL	HORSEBACK ROAD	BURNHAM	Operation and Maintenance	
REM01507	HOLLIS MUNICIPAL LANDFILL (OLD)	123 NEW COUNTY RD (RT 5)	HOLLIS	Operation and Maintenance	
REM01628	YORK MUNICIPAL LANDFILL-OLD	20 & 24 SEWALL'S PASTURE RD	YORK	Operation and Maintenance	

C:\Documents and Settings\ david.w.wright\Desktop\Mun Landfill Prog\LANDFILL History v7.doc