

MAINE STATE LEGISLATURE

The following document is provided by the
LAW AND LEGISLATIVE DIGITAL LIBRARY
at the Maine State Law and Legislative Reference Library
<http://legislature.maine.gov/lawlib>



Reproduced from electronic originals
(may include minor formatting differences from printed original)

Fiscal Year 2015
~Annual Report~
Cultural Affairs Council

Maine Arts Commission

Submission for Cultural Affairs Council Annual Report FY15

Mission:

The Maine Arts Commission shall encourage and stimulate public interest and participation in the cultural heritage and cultural programs of our state; it shall expand the state's cultural resources; and it shall encourage and assist freedom of artistic expression for the well being of the arts to meet the needs and aspirations of persons in all parts of the state.

Vision:

Increase the impact of arts & culture on Maine's livability, vitality and prosperity.

Summary of FY15 Budget:

FY	DEP		FUND	AMOUNT
		Personnel Services		
2015	94W	General Fund	010	573,038
2015	94W	Federal Expenditures Fund	013	310,078
		Total Personnel Services		883,117
		Administrative		
2015	94W	General Fund	010	175,059
2015	94W	Federal Expenditures Fund	013	78,935
2015	94W	Federal Expenditures Fund	013	55,297
2015	94W	Other Special Revenue	014	8,420
		Total Administrative		317,710
		Grants		
2015	94W	General Fund	010	114,715
2015	94W	Federal Expenditures Fund	013	204,822
2015	94W	Federal Expenditures Fund	013	130,337
2015	94W	Other Special Revenue	014	30,396
		Total Grants		480,270
		TOTAL ARTS COMMISSION		1,681,097

The expenditure information for this unit was generated from the Budget and Financial Management System. (BFMS)

Acquisitions:

There were no acquisitions in FY2015.

Program Needs:

- The Maine Arts Commission seeks funds that would allow the agency to provide support for various needs that are not met under the current structure. The agency has recently completed a Cultural Plan – Fortifying Maine's Creativity & Culture: A Five-Year Cultural Plan. The agency will be looking for additional support to implement the priorities and outcomes outlined in that Plan.
- The agency's Ticket to Ride program, a fund that supports the transportation of school students to cultural events and venues, requires additional funding in the long-term. The agency has operated the program with support from two sources but, due to the popularity of the program, additional funding will be required in the coming years in order to maintain its success.

- The agency needs additional funding overall to better serve the needs of the field (artists, arts organizations and arts education) throughout the State of Maine. The agency revamped its granting program and structure, allowing easier and broader access to grants and the agency hopes to be able to increase badly needed general operating support across the sector.
- The agency needs funding for its Maine Arts Leadership Initiative (MALI) a program that was begun in the Department of Education and was taken over by the Arts Commission in 2013. This model program provides professional development and support to arts educators across the state.

Improvements:

- The Commission completed its first comprehensive cultural plan in many years – Fortifying Maine's Creativity & Culture. This Plan will guide the Commission's work over the next five years, significantly expanding the Commission's work in five key areas: Investment in the creative capital in our state; Capacity building to artists and organizations; an expanded Arts Education and Cultural Tourism focus and greater Awareness building of the arts and culture field across the State.
- As a component of the Cultural Plan, the Commission is creating a 501c3 support organization – ArtsEngageME. Legislation is in process as of the writing of this report.
- The Maine Arts Commission completely revamped its grant programming to be more responsive to arts organizations and artists needs. One significant addition are the Partnership grants designed to provide the agency with more information about the fiscal health of these organizations to better respond to them while providing them with general operating support to allow them to increase their operating capacity.
- The agency continues to improve its grants process. The agency launched a new grants website that allows for better data gathering and ease of use for staff and grantees and reviewers.
- The Commission is participating for the first time in the national Arts & Economic Prosperity V study conducted by Americans for the Arts. When completed, this study will provide comprehensive arts and culture economic impact data from across the state.
- The Commission is implementing the Cultural Data Project this year. All grantees will be required to fill out a comprehensive data form, giving the Commission ongoing access to the most current financial, attendance and staffing information going forward.

MAINE HISTORIC PRESERVATION COMMISSION

55 Capitol Street, 65 State House Station

Augusta, Maine 04333-0065

Phone 207-287-2132

<http://www.maine.gov/mhpc>

Mission

Established through a legislative act in 1971, the Maine Historic Preservation Commission is an independent agency within the Executive branch of state government that functions as the State Historic Preservation Office. Its Director is the State Historic Preservation Officer (SHPO). The Commission is responsible for the identification, evaluation, and protection of Maine's significant cultural resources as directed by the National Historic Preservation Act of 1966.

Public Composition

The Commission consists of eleven appointed members made up as follows: The Commissioner of Transportation or a representative of the Department, and the Commissioner of the Department of Agriculture, Conservation and Forestry or a representative of the Department, who serve in an ex officio capacity; and 9 representatives from among the citizens of the State who are known for their competence, experience and interest in historic preservation, including at least one prehistoric archaeologist, one historic archaeologist, one historian, one architectural historian and one architect, to be appointed by the Governor. The Commission meets on a quarterly basis to review and approve nominations of historic properties to the National Register of Historic Places, the agency's annual operating budget, and to make grant awards for historic preservation projects.

FY 2015 MAINE HISTORIC PRESERVATION COMMISSION

EXPENDITURES	TOTAL FOR ALL FUNDS	GENERAL FUND	SPECIAL REVENUE FUNDS	FEDERAL FUNDS
SALARIES & WAGES	595,456	192,051	136,117	267,288
HEALTH BENEFITS	214,888	56,770	52,604	105,514
RETIREMENTS	117,621	39,890	24,655	53,076
OTHER FRINGE BENEFITS	10,349	2,100	2,429	5,820
COMPUTER SERVICES	20,935	5,917	7,465	7,553
CONTRACTUAL SERVICES	81,897	3,924	22,916	55,147
RENTS	1,393			1,393
COMMODITIES	20,780		1,346	19,434
GRANTS, SUBSIDIES, PENSIONS	179,742			179,742
TRANSFER TO OTHER FUNDS	56,230		18,248	37,982

TOTAL EXPENDITURES	1,299,291	300,652	265,780	732,949
--------------------	-----------	---------	---------	---------

Acquisitions

The Commission continues to add to its collection of Maine images, maps and prints which are used for research purposes by the staff, and that are made available to the public for educational purposes.

Program Needs

One of the Commission's principal responsibilities is the identification of historic properties, including historic and prehistoric archaeological sites. Although survey data is being collected during the project review process, the Commission would like to focus survey efforts in particular geographic areas of the state or on certain types of properties that may be threatened. Such an effort will require resources to both generate an interest for such surveys in targeted communities, and to conduct them using qualified consultants.

Improvements

Among the accomplishments or improvements in the area of historic preservation during 2015 were the following:

National Register Property Mapping

When location information for National Register listed properties was initially moved into the geographic information system several years ago, the maps in many of the early nominations were found to contain errors. In order to rectify this problem for all properties that were listed in the Register before 1987, Commission staff employed current aerial and ground level imagery to precisely locate and create new maps and obtain corrected UTM coordinates. Copies of the revised maps have been submitted to the National Register office in Washington along with GIS data for its point layer. This process also revealed the unfortunate fact that a number of listed properties no longer exist.

Certified Local Governments (CLG) – Portland

Portland is the only CLG community in the state that has a full time historic preservation program manager, a position that has been supported for a number of years with HPF pass-through funds from the Maine Historic Preservation Commission. In FY15, the City's preservation staff completed the survey and evaluation of the India Street neighborhood, an area that was the site of the first European settlement on the Portland peninsula. Although no buildings remain from the 17th or 18th centuries, the 19th century historic, cultural and architectural significance of the neighborhood is reflected in the existing residential, commercial and religious properties. Following several public meetings and presentations to the Planning Board and City Council, the India Street Historic District was designated under municipal ordinance.

Campbell Barn Rehabilitation – Augusta

Constructed in 1903-04 as a replacement barn for the Maine Insane Hospital's Farm Department, the Campbell Barn was built to house approximately 200 head of horned stock, pigs and draft horses, as well as related agricultural equipment. Designed by the

Lewiston, Maine architectural firm of Coombs and Gibbs and measuring 50 by 150 feet, it was the last of a series of agricultural buildings built to support the large hospital farm that had been developed in the 1800s. Unused since the 1950s, the Campbell Barn had fallen into disrepair. Without a clear vision for its future, no funding was available to maintain or restore the barn. However, as a result of renewed interest in State-owned office and storage space the buildings of the former hospital facility, now known as the East Campus of State Government and listed in the National Register of Historic Places, have been gradually rehabilitated. The need for additional storage space to house field equipment and supplies for state agencies led the Maine Bureau of General Services to rehabilitate the historic Campbell Barn rather than construct a new facility. State agencies moved equipment into Campbell Barn at the end of August 2015. The Bureau worked closely with the Maine Historic Preservation Commission to ensure that the project met the *Secretary of the Interior's Standards for the Treatment of Historic Properties*. The project received a 2015 Honor Award from Maine Preservation.

Statewide Historic Preservation Plan

With input from its preservation partners and the public, the Commission updated the Statewide Historic Preservation Plan. The plan lays out a series of goals and strategies for historic preservation in Maine over the next five years. In addition to providing guidance for the Commission, it is hoped that the plan will be used by individuals, organizations and agencies at all levels of government to focus their respective preservation activities.

MEMBERS OF THE MAINE HISTORIC PRESERVATION COMMISSION

Thomas B. Johnson, Portland, Chairman and Historian Member

Jason Libby, New Gloucester, Vice-Chairman and Public Member

Michael Pullen, Hampden, Architect Member

James F. O'Gorman, Ph.D., Windham, Architectural Historian Member

Dr. Richard Will, Ph.D., Ellsworth, Prehistoric Archaeologist Member

Dr. Emerson Baker, Ph.D., York, Historic Archaeologist Member

Joseph R. Hanslip, Sanford, Public Member

Michael Pearson, Enfield, Public Member

Thomas T. Elliman, Portland, Public Member

Megan Hopkin, MDOT, Ex-Officio Member

Nicholas Livesay, Department of Agriculture, Conservation and Forestry, Ex-Officio Member

Kirk F. Mohnney, Director

MAINE HISTORICAL SOCIETY
489 Congress Street, Portland, ME 04101
phone (207) 774-1822
info@mainehistory.org

1. PURPOSE:

Incorporated by the State of Maine in 1822, the Maine Historical Society is a private, charitable, educational, non-profit corporation: the third oldest state historical society in the United States. It preserves the heritage and history of Maine: the stories of Maine people, the traditions of Maine communities, and the record of Maine's place in a changing world. Because an understanding of the past is vital to a healthy society, MHS collects, cares for, and exhibits historical treasures; facilitates research into family, local, state, and national history; provides education programs that make history meaningful, accessible and enjoyable; and empowers others to preserve and interpret the history of their communities and our state.

2. ORGANIZATION:

The Society is organized into five major areas: 1) the Brown Research Library; 2) the MHS Museum, including the Wadsworth-Longfellow House, a National Historic Landmark; 3) Digital projects, including the Maine Memory Network (www.mainememory.net), a statewide collaborative online archive and museum; 4) Educational and community outreach services; and 5) Scholarship and publishing in cooperation with the University of Maine. A Board of Trustees, ten standing committees, and several ad hoc committees advise and support the Society staff of 11 full-time and 15 part-time in its work. (Please See Appendix A for a list of Trustees.)

3. ACQUISITIONS:

In 2015, Maine Historical Society added approximately 162 gifts or purchases to its collections. (The size of each gift or purchase varies from a single item to large collections comprised of hundreds, sometimes thousands, of items.) This is a smaller number than in previous years due to an eight-month institution-wide moratorium on new acquisitions, while the collections staff was engaged in the Collections Move Project, which relocated a major portion of the MHS collection to the new Riverside storage facility.

Significant library purchases included a bound manuscript book titled, "Road Book for the Town of Portland," which includes information on Portland streets from 1724 – 1829. We also bought a World War II scrapbook and album kept by Charles Eliot Winslow (1918-1995), commanding officer on the US Coast Guard Cutter Argo, which details naval operations involving German U-boats and German prisoners of war.

Noteworthy library gifts included audio disks of the radio program "Do You Think You Know Maine," circa 1947, and a collection of material regarding World War I veteran Joseph L. Murray's American Legion Auxiliary trip to France in 1927.

The museum purchased a watercolor painting of the view of the back garden at the Wadsworth-Longfellow House by Mary King Longfellow, circa 1900, and an engraved and colored memorial to Ruth Stinchfield of New Gloucester, dated 1835. Significant gifts to the museum included The Mark and Terry Silber Collection of artwork by George “Shavey” Noyes of Norway, Maine, circa 1920.

4. PROGRAM ACCOMPLISHMENTS:

The Maine Memory Network continues to provide incredible opportunities for MHS to support and engage diverse audiences across Maine in the exploration and practice of Maine history. Launched in 2001, Maine Memory is a statewide digital museum that empowers historical organization across Maine to share their collections online. MHS provides training, support, and the technological infrastructure. Local organizations (“Contributing Partners”) select items in their collections; scan or take digital photographs of those items; and then, through their own free account, use a web browser to upload, catalog, manage, and interpret the material online. The process of contributing encourages local organizations—historical societies, archives, libraries, and schools in particular—to collaborate, share resources, and develop skills, all while exploring, celebrating, and vastly expanding access to their community’s history. By 2015, Maine Memory featured nearly 50,000 historic items—including photographs, letters, documents, artifacts, and more—contributed by more than 270 organizations from every corner of Maine; hundreds of online exhibits that explore individual stories and topics from Maine history; *Maine History Online*, a rich and extensive new chronological and thematic introduction to Maine history; lesson plans; and much more. Maine Memory serves a broad and quickly growing audience in Maine and far beyond, including teachers, students, researchers, planners, professionals, tourists, and the general public. Maine Memory received 1,328,531 page views on its website in the past year.

In 2011, Maine Historical Society, in partnership with the Maine State Library, received a National Leadership Grant from the Institute for Museum & Library Services to continue to expand our nationally-recognized program that guides communities as they mobilize around their local history and uses participation in Maine Memory to foster collaboration between local schools, libraries, and historical organizations. Through this program, MHS has provided a digital platform, extensive training and support, and stipends to community teams from forty-five communities as they digitized and shared local historical collections, created online exhibits, and built websites, all through Maine Memory. Organizations that have participated include:

Digitization Projects (14): Berwick Historical Society, Boothbay Historical Society, Bridgton Historical Society, Camden Public Library, Hartford-Sumner Elementary School (Buckfield), Hartland Public Library (with Hartland Historical Society, Palmyra Historical Society, St. Albans Historical Society), Maine Irish Heritage Center, Monson Historical Society, Robert A. Frost Memorial Library (Limestone), South Bristol Historical Society, Walker Memorial Library (Westbrook), Waterford Historical Society, Westport Island History Committee, Winslow Historical Preservation Committee

Online Exhibit Projects (26): Baldwin Historical Society, Bowdoin International Music Festival, Cary Library (Houlton; in conjunction with Aroostook County Historical and Art

Museum), Franco-American Collection (USM), Friendship Museum (in conjunction with Friendship School), Great Cranberry Isle Historical Society (in conjunction with Great Cranberry Library), Kennebec Valley Community College (Fairfield), L.C. Bates Museum (Fairfield), Leeds Historical Society (in conjunction with Leeds Central School), Maine Folklife Center (UMO), Maine's First Ship (Phippsburg; in conjunction with Maine State Museum), Maine Island Trail Association (Little Chebeague Island; in conjunction with National Archives Boston), Maine's Paper and Heritage Museum (Jay/Livermore; in conjunction with Spruce Mountain Middle School and Livermore/Livermore Falls Historical Society), Mantor Library (UMF), Moosehead Historical Society (Greenville), New England Electric Railway Historical Society (Kennebunkport; in conjunction with York Community College), Norway Historical Society, Penobscot Marine Museum (Searsport), Princeton Public Library, Rockland Historical Society (in conjunction with Rockland Public Library), Sebago Historical Society (in conjunction with Sebago Public Library), Ski Museum of Maine (statewide), Stetson Historical Society, Topsham Historical Society (in conjunction with Town of Topsham and Topsham Public Library), Vaughan Homestead Foundation (Hallowell), Waterville Public Library, Waldoboro Public Library (in conjunction with Waldoboro Fire Department and Waldoboro Historical Society), Wayne Library Association (Cary Memorial Library; in conjunction with Wayne Historical Society)

My Maine History grant (2013-2016)

In 2013, Maine Historical Society, again in partnership with the Maine State Library, received another National Leadership Grant from the Institute for Museum & Library Services to encourage individuals to become active participants in the history of their places. The three-year project builds on and continues development of the Maine Memory Network. MHS staff will develop and pilot tools, resources, and an outreach program that give individuals the ability to participate in and contribute to Maine Memory. Until now, only institutional partners have been able to contribute to the network. Planning for this program and these tools has begun.

MHS continues outreach to libraries and organizations, including training and serving Contributing Partners that have not received grants. In the past year the following organizations have joined Maine Memory or been trained to digitize or create online exhibits. Norcross Family Trust, Millinocket, Dennys River Historical Society, Chewonki Foundation, Scarborough Historical Society (not for a grant), Minot Historical Society, Pejepscot Historical Society, Boothbay Harbor Historical Society, Museums of Old York, Orono Historical Society, Phil Von Stade/Prout's Neck History Group, Vaughan Homestead, Belfast Historical Society, Westport Island Historical Society (not for grant), Walker Memorial Library, Norway Historical Society, Norridgewock Historical Society, and Tate House Museum.

Local & Legendary: Maine in the Civil War grant (2013-2015)

Maine Historical Society (MHS) and Maine Humanities Council (MHC) partnered to create *Local & Legendary: Maine in the Civil War*, a grant program to engage Maine communities in their Civil War history. Funded by the National Endowment for the Humanities, *Local & Legendary* brings together collaborative project teams comprised of libraries, historical organizations, and educational institutions to explore local Civil War history in

multidisciplinary ways and investigate questions of that era's motivations, loyalty, identity, and politics at the community level. Digital exhibits created by the teams have been added to Maine Memory Network's Civil War site at <http://civilwar.mainememory.net>. The organizations receiving grants to date are: Windham Historical Society, Gorham Historical Society, Belfast Historical Society, Belfast Free Library, Presque Isle Historical Society, Friends of Evergreen Cemetery, Walker Memorial Library (Westbrook), Westbrook Historical Society, Jay Historical Society, Bethel Historical Society, Pittsfield Historical Society, Rumford Historical Society, and Scarborough Historical Society.

1924 Portland Tax Records project

For the past 4 years, MHS partnered with the City of Portland and Portland Public Library to digitize and catalog over 20,000 original records and photographs from the 1924 city assessor records. With the help of a team of volunteers, paid workers, and MHS staff, the project was completed in early 2014 and the records are now completely searchable on Maine Memory Network. Visitors to the website have increased substantially and sales on VintageMaineImages.com (the ecommerce site of MMN which provides income to Contributing Partner from sales of reproductions) has seen an increase directly related to the availability of these records on the web.

5. FINANCES, FISCAL YEAR 2015: The following financial display was generated from this unit's accounts as recorded in the files of the Bureau of the Budget's MFASIS System. Not included in this display is the Maine Historical Society FY 14-15 consolidated operations of \$2,373,774 consisting of \$2,024,428 in operating, and \$349,346 in restricted expenses (federal grants & special project activities).

	TOTAL FC ALL FUNDS	GENERAL FUND	SPECIAL REVENUE	HIGHWAY	FEDERAL FUNDS	MISC. FUNDS
EXPENDITURES						
GRANTS, SUBSIDIE PENSIONS	44,864	44,864				
TOTAL EXPENDITURES	44,864	44,864				

6. PROGRAM NEEDS: The most significant need is increased funding for the Maine Memory Network. State support, compared to expenses, is minimal despite the fact that Maine Memory provides vast, proven, and deeply valued support, resources, and infrastructure to cultural organizations, schools, and citizens that empower and build capacity in communities in every corner of the state. To sustain this resource, MHS must combine increased state support with a more secure private base. Toward this end, MHS continues to work through the Cultural Affairs Council to pursue this critical goal.

7. IMPROVEMENTS: In 2013 Maine Historical Society formed an innovative partnership with the Portland Public Library to mutually solve a problem common to most museums and libraries, we had run out of space for our growing collections. We decided to work

together to find a solution that would be both cost-effective and environmentally sustainable and jointly purchased a 35,500 sq. foot industrial warehouse located on the outskirts of Portland. MHS and PPL renovated the structure into a state-of-the-art Collections Management Center for managing and housing our collections. Repairs and fit-up have just been completed. Each organization now owns a condominium unit within an up-to-date, energy-efficient, structurally-sound building that is not only a model for deep nonprofit collaboration, but for green building practices including high efficiency HVAC systems and superior insulation.

Even in an energy efficient building, the demands of 24/7 climate control needed for responsible collections care are high. We plan to offset that need by installing solar panels on the roof of the Center. Converting our power to solar will reduce Maine Historical Society's carbon footprint, and save up to \$15,000/year in operating costs.

Appendix A: Board of the Maine Historical Society

Preston R. Miller, Jr., Chair	Biddeford Pool, Maine.
Joseph E. Gray, 1 st Vice President	Portland, Maine
Jean Gulliver, 2nd Vice President	Falmouth, Maine.
Carl Chatto, Treasurer	South Portland, Maine.
Tyler Judkins, Secretary	Portland, Maine.
Eleanor G. Ames	Portland, Maine.
Richard Barnes	Kennebunkport, Maine
Eric Baxter	Gray, Maine.
Meredith Strang Burgess	Portland, Maine.
Penny Carson	Falmouth, Maine
Tom Cattell	Portland, Maine.
Nancy Cline	Chebeague Island, Maine
John Doughty	Falmouth, Maine.
Jan Eakins	Portland, Maine.
Bob Greene	South Portland, Maine.
Horace Horton	Portland, Maine.
Patrick Jackson	Yarmouth, Maine
Jon Jennings	South Portland, Maine.
David Lakari	South Portland, Maine.
Peter Merrill	Portland, Maine.
Thomas P. Noyes	Falmouth, Maine.
Theodore Oldham	Portland, Maine.
Betsy Pelikan	Portland, Maine.
Tobey Scott	Freeport, Maine.
Eileen Skinner	Falmouth, Maine.
Kathryn Schneider Smith	Freeport, Maine.
Lendall L. Smith,	Falmouth, Maine.
Charles V. Stanhope	Southwest Harbor, Maine.
Alan B. Stearns	Hallowell, Maine.
Andy Verzosa	Portland, Maine.
Lee Webb	Union, Maine.
Charles D. Whittier II	Falmouth, Maine.

Appendix B: Maine Memory Network Contributing Partners:

Abbe Museum Abbot Historical Society Abel J. Morneault Memorial Library Abplanalp Library, UNE Acadia National Park Acadian Archives Acton-Shapleigh Historical Society Alexander-Crawford Historical Society Alfred Historical Society Allagash Historical Society Ambajeus Boom House Museum Androscoggin Historical Society Aroostook County Historical and Art Museum Baldwin Historical Society Bangor Daily News / Bangor Public Library Bangor Historical Society Bangor Police Museum Bangor Public Library Bar Harbor Fire Department Bar Harbor Historical Society Base Camp Outfitters Baxter State Park Belfast Free Library Belfast Historical Society Berwick Historical Society Bethel Historical Society Biddeford Historical Society Biddeford Mills Museum Blake Library Special Collections Blue Hill Historical Society Blue Hill Public Library Boothbay Region Historical Society Boston Public Library Bowdoin College Library Bowdoin College Museum of Art Brewer Public Library Brick Store Museum Bridgewater Historical Society Bridgton Historical Society Buck Memorial Library Buckfield Historical Society Bucksport Historical Society Byron Historical Society Camden Public Library Camden-Rockport Historical Society Camp Runoia Camp Winnebago Caribou Public Library Cary Library Cary Memorial Library in Wayne	Kennebec Valley Community College Archive Kennebunk Free Library Kennebunkport Historical Society Kings Landing Historical Settlement L.C. Bates Museum / Good Will-Hinckley Homes L.L.Bean Corporate Archives L'Heritage Vivant Living Heritage Lamoine Historical Society Laudholm Trust Leeds Historical Society Lewiston Public Library Life Story Center Lincoln Historical Society Lisbon Historical Society Lithgow Public Library Long Creek Youth Development Center Longfellow Garden Club Longfellow National Historic Site Lovell Historical Society Lubec Historical Society Lubec Landmarks Lubec Memorial Library Lyman Moore Middle School Maine Aviation Historical Society & Maine Air Museum Maine Bureau of Parks and Lands Maine Central Institute Maine Conservation Corps Maine Department of Transportation Maine Folklife Center, Univ. of Maine Maine Forest Service Maine Granite Industry Historical Society Maine Historic Preservation Commission Maine Historical Society Maine Historical Society/MaineToday Media Maine Irish Heritage Center Maine Maritime Museum Maine Medical Center Archives Maine State Archives Maine State Library Maine State Museum Maine's Paper & Heritage Museum Mantor Library at UMF Margaret Chase Smith Library Mark & Emily Turner Memorial	Presque Isle Historical Society Prince Memorial Library Princeton Public Library Raymond H. Fogler Library Robert A. Frost Memorial Library Rockland Historical Society Salmon Brook Historical Society Sanford-Springvale Historical Society Scarborough Historical Society & Museum Seal Cove Auto Museum Seashore Trolley Museum Sebago Historical Society Sedgwick-Brooklin Historical Society Ski Museum of Maine Skowhegan History House Skowhegan Public Library Skyline Farm South Bristol Historical Society South Portland Historical Society South Portland Public Library Southern Aroostook Agricultural Museum Southwest Harbor Historical Society Southwest Harbor Public Library St. Albans Historical Society St. Croix Historical Society St. Joseph Healthcare Stanley Museum Ste. Agathe Historical Society Steep Falls Library Stetson Historical Society Steuben Historical Society Stockholm Historical Society Strong Historical Society Sullivan and Sorrento Historical Society Surry Historical Society Swan's Island Educational Society Tate House Museum Telephone Museum The Cedars Thomaston Historical Society Town of Cumberland Town of Topsham Trenton Cemetery & Keeping Society Turner Museum and Historical Society United Society of Shakers University of Maine at Presque Isle Library Vaughan Homestead Foundation Waldoboro Fire Department Walker Memorial Library Washburn Norlands Living History Center Waterford Historical Society
------------------------------------------------------------------------------------------------------------------------------------------------------------------------------------------------------------------------------------------------------------------------------------------------------------------------------------------------------------------------------------------------------------------------------------------------------------------------------------------------------------------------------------------------------------------------------------------------------------------------------------------------------------------------------------------------------------------------------------------------------------------------------------------------------------------------------------------------------------------------------------------------------------------------------------------------------------------------------------------------------------------------------------------------------------------------------------------------------------------------------------------------------------------------------------------------------------------------------------------------------------------------------------------------------------------------------------------------------------------------------------------------------------------------------------------------------------------------------------------------------------	-------------------------------------------------------------------------------------------------------------------------------------------------------------------------------------------------------------------------------------------------------------------------------------------------------------------------------------------------------------------------------------------------------------------------------------------------------------------------------------------------------------------------------------------------------------------------------------------------------------------------------------------------------------------------------------------------------------------------------------------------------------------------------------------------------------------------------------------------------------------------------------------------------------------------------------------------------------------------------------------------------------------------------------------------------------------------------------------------------------------------------------------------------------------------------------------------------------------------------------------------------------------------------------------------------------------------------------------------------------------------------------------------------------------------------------------------	--------------------------------------------------------------------------------------------------------------------------------------------------------------------------------------------------------------------------------------------------------------------------------------------------------------------------------------------------------------------------------------------------------------------------------------------------------------------------------------------------------------------------------------------------------------------------------------------------------------------------------------------------------------------------------------------------------------------------------------------------------------------------------------------------------------------------------------------------------------------------------------------------------------------------------------------------------------------------------------------------------------------------------------------------------------------------------------------------------------------------------------------------------------------------------------------------------------------------------------------------------------------------------------------------------------------------------------------------------------------------------------------------------------------------------------------------------------------------------------------------------------------------------------------------------------------------------------------------------------------------------------------

Charlotte Hobbs Memorial Library Chewonki Foundation City of Brewer City of Portland - Planning & Development City of Portland Dept. of Public Works Clifton Historical Society Colby College Special Collections Congregation Shaarey Tphiloh Cornish Historical Society Cumberland Historical Society Davistown Museum Denmark Historical Society Dennys River Historical Society Dixfield Historical Society Dover-Foxcroft Historical Society Durham Historical Society Dyer Library Archives / Saco Museum East Grand School Eastern Maine Medical Center Easton Historical Society Edmund S. Muskie Archives and Special Collections Library Eliot Baha'i Archives Ellsworth Public Library Farmington Historical Society Farmington Public Library Fifth Maine Regiment Museum First Parish in Portland Fort Kent Historical Society Fort Kent Public Library Franco Center Franco-American Collection Freeport Historical Society Friends of Evergreen Cemetery Friends of the Kotzschmar Organ Friends of Wood Island Lighthouse Friendship Museum Fryeburg Academy Archives Fryeburg Historical Society Fryeburg Public Library Garland Historical Society Gorham Historical Society Great Cranberry Island Historical Society Great Harbor Maritime Museum Greater Portland Landmarks Greater Rumford Area Historical Society Greene Plantation Historical Society Guilford Historical Society Hamlin Memorial Library and Museum Hampden Historical Society Hartland Historical Society Hartland Public Library	Library McArthur Public Library McLaughlin Foundation Mexico Historical Society Milbridge Historical Society Millinocket Fire Department Minot Historical Society Monhegan Museum Monmouth Museum Monson Historical Society Montpelier, The General Henry Knox Museum Moosehead Historical Society Moosehead Messenger Mount Desert Island Historical Society Mt. Desert Island Hospital Museum at Portland Head Museums of Old York Naples Historical Society National Archives at Boston New Gloucester Historical Society New Hampshire Historical Society New Portland Historical Society New Sharon Historical Society New Sweden Historical Society Norcross Heritage Trust Nordica Memorial Association Norridgewock Historical Society North Yarmouth Historical Society Northeast Harbor Library Northeast Historic Film Northern Maine Museum of Science Norway Historical Society Norway Memorial Library Nylander Museum Oakfield Grange #414 Oakfield Historical Society Old Berwick Historical Society Old Bristol Historical Society Old Canada Road Historical Society Old Orchard Beach Historical Society Orono Historical Society Otisfield Historical Society Owls Head Transportation Museum Palmyra Historical Society Paris Cape Historical Society Paris Hill Historical Society Parsons Memorial Library Parsonsfield-Porter Historical Society Patten Free Library Patten Historical Society Patten Lumbermen's Museum Peary-MacMillan Arctic Museum and	Waterville Public Library West Quoddy Head Light Keepers Association Westbrook Historical Society Western Maine Cultural Alliance Westport Island History Committee Whitefield Historical Society William Fogg Library Wilson Museum Windham Historical Society Winslow Historical Preservation Committee Winter Harbor Historical Society Yarmouth Historical Society
-----------------------------------------------------------------------------------------------------------------------------------------------------------------------------------------------------------------------------------------------------------------------------------------------------------------------------------------------------------------------------------------------------------------------------------------------------------------------------------------------------------------------------------------------------------------------------------------------------------------------------------------------------------------------------------------------------------------------------------------------------------------------------------------------------------------------------------------------------------------------------------------------------------------------------------------------------------------------------------------------------------------------------------------------------------------------------------------------------------------------------------------------------------------------------------------------------------------------------------------------------------------------------------------------------------------------------------------------------------------------------------------------------------------------------------------------------------------------------------------------------------------------------------------------------------------------------------------------------------------------------------------------------------------------------------	---------------------------------------------------------------------------------------------------------------------------------------------------------------------------------------------------------------------------------------------------------------------------------------------------------------------------------------------------------------------------------------------------------------------------------------------------------------------------------------------------------------------------------------------------------------------------------------------------------------------------------------------------------------------------------------------------------------------------------------------------------------------------------------------------------------------------------------------------------------------------------------------------------------------------------------------------------------------------------------------------------------------------------------------------------------------------------------------------------------------------------------------------------------------------------------------------------------------------------------------------------------------------------------------------------------------------------------------------------------------------------------------------------------------------------------------------------------------------------------------------------------------------------------------------------------------------------------------------------------------------------------------	---------------------------------------------------------------------------------------------------------------------------------------------------------------------------------------------------------------------------------------------------------------------------------------------------------------------------------------------------------------------------------------------------------

Haystack Historical Society Hermon Historical Society Hiram Historical Society Hollingsworth Fine Arts Hose 5 Fire Museum Houlton Grange Hubbard Free Library Hudson Museum, Univ. of Maine Island Falls Historical Society Islesboro Historical Society Jesup Memorial Library John Bapst Memorial High School Jonathan Fisher Memorial, Inc. Kennebec Historical Society	Arctic Studies Center Pejepscot Historical Society Penobscot Marine Museum Peru Historical Society Phillips Historical Society Pittsfield Historical Society Poland Spring Preservation Society Porter Memorial Library Portland Public Library Portland Water District Pownal Scenic and Historical Society Presque Isle Air Museum Presque Isle Fire Department	
-------------------------------------------------------------------------------------------------------------------------------------------------------------------------------------------------------------------------------------------------------------------------------------------------------------------------------------------------------------------------------------------------------------------	-------------------------------------------------------------------------------------------------------------------------------------------------------------------------------------------------------------------------------------------------------------------------------------------------------------------------------------------------------------------------------------------------------	--

MAINE HUMANITIES COUNCIL
674 Brighton Avenue, Portland, Maine 04103
207-773-5051
mainehumanities.org

Hayden Anderson, Executive Director

1. MISSION:

Maine Humanities Council is an independent statewide educational nonprofit committed to helping Maine people of all ages and educational levels deepen their understanding of themselves, their communities, and the world. Through programs that convene conversations around books, films, or lectures and grants supporting local projects in community history and other educational programs, the Council works to build communities and make Maine a more literate, thoughtful, and humane place to live. An independent nonprofit organization, the Council is Maine's affiliate of the National Endowment for the Humanities and the Library of Congress Center for the Book.

The State of Maine appropriation to the Council is returned 100% to Maine communities as grants, with no money being retained by the Council for administration, personnel, or overhead. The Council also distributes grants for humanities infrastructure projects, such as permanent exhibits, museum improvements, equipment, and permanent signage. A complete list of grants made in FY 2014 is appended.

2. BUDGET RECEIPTS AND EXPENDITURES

Finances Fiscal year 2014: Expenditure information for this unit was developed from the Budget and Financial Management System

MAINE HUMANITIES COUNCIL

	TOTAL FOR ALL FUNDS	GENERAL FUND	SPECIAL REVENUE FUNDS	HIGHWAY FUND	FEDERAL FUND	MISC FUNDS
GRANTS, SUBSIDIES PENSIONS	53,357	53,357				
TOTAL EXPENDITURES	53,357	53,357				

3. ACQUISITIONS:

This section of the report does not apply to the Maine Humanities Council, which is not a collecting organization.

4. PROGRAM NEEDS:

The Council serves its public in two ways: through direct programs delivered through networks of libraries, adult education providers, schools, health care facilities and nonprofit organizations, and through its grants program, which is supported by its funding from the State of Maine.

In all Council programs, both direct services and grants, demand from constituents significantly outstrips the organization's budgetary ability to meet that demand. As the current economic circumstances cause cutbacks in other areas, demand for Council services is increasing even more.

The Council has a broad base of funding that includes, in addition to its state appropriation, base support from the Federal government (matching requirements for which are provided by State funds); resources from individual contributions, investment income, earned revenue from program fees (although the MHC makes a practice of offering the majority of its programs free to the public, fees are charged where appropriate) and a variety of grants from foundations.

A sampling of the Council's programming would include activities aimed at a range of audiences, including:

Children, Youth and Families:

Teachers:

Teacher Enrichment Programs provide a variety of programs on content and new scholarship, offering K-12 teachers a way to refresh and enrich their professional lives. We recently launched ***Literature & Education***, which offers a free yearlong series of facilitated reading and discussion sessions for teachers, administrators, and other employees in Maine's school districts to illuminate issues central to educating our students..

Youth:

Letters About Literature, a national reading and writing promotion program organized by the Center for the Book in the Library of Congress, invites students in grades 4-10 to write a letter to the author (living or dead) of their favorite book, poem, or short story and describe how that book moved or changed them.

Student Humanities Ambassadors seeks high school students interested in community engagement through the humanities. The selected student(s) work with MHC to identify a topic and create, plan, run, and evaluate a humanities-based program or event in their community.

The MHC began collaborating with Maine's **Civil Rights Teams**, partnering with them to offer fall training workshops for students all over the state taking part in the program.

General Audience:

Let's Talk About It, a free, facilitated book discussion program for adults, has been hosted by local libraries in more than 130 Maine communities. This program is undertaken in partnership with the Maine State Library, one of the Cultural Affairs Council agencies.

World in Your Library offers libraries a chance to host a free foreign policy or civics speaker series. It is offered in partnership with the Margaret Chase Smith Library and the Mid-Coast Forum on Foreign Relations.

Winter Weekends explore great works of literature from a number of perspectives over the course of a weekend. Selections have included Mary Shelley's *Frankenstein*, Seamus Heaney's translation of *Beowulf*, *Moby Dick*, Tolstoy's *Anna Karenina*, and, in 2012, *The Iliad* by Homer.

The ***Dorothy Schwartz Forum on Art, Science & the Humanities*** is an annual public forum focused on a multidisciplinary theme. In 2014, we explored *Why Darwin Matters*, and in 2015, the Forum covered *Communicating Climate Change*.

Local & Legendary: Maine in the Civil War was a three-year program offered in partnership with the Maine Historical Society. It provided grants to five communities in 2013-14 and five in 2014-15. Three public symposia exploring Maine and the Civil War were also offered.

Think & Drink is a happy-hour series that sparks provocative conversations about big ideas. The series invites the audience to participate in a facilitated public conversation with two panelists who have expertise in the subject at hand.

Specialized Adult Audiences:

New Books, New Readers is a free, facilitated book discussion program for adults who are learning to read or who are infrequent readers. Participants are given copies of the books, the first many of them have ever owned. *New Books, New Readers* serves approximately 500 Mainers each year in towns and prisons throughout the state and is offered in conjunction with Local Adult Education organizations.

Literature & Medicine™ brings doctors, nurses, hospital trustees, and support staff together monthly for facilitated discussions of literature that illuminates issues central to caring for people. This program has taken place in 25 hospitals in Maine since 1997, and an extensive evaluation by the Muskie school has shown it to aid in caregiver empathy, job satisfaction, and cross cultural understanding. The Council has expanded this program to hospitals in 25 other states, including 14 Veterans Administration Medical Centers. In 2011, the Council was invited to the White House to share its work with the VA medical system. Two additional components of

the program focus on special audiences: the Domestic Violence Prevention Initiative serves those who support Mainers affected by domestic violence, and the Hospice Initiative serves those working in a hospice setting.

The ***Veterans Book Group*** offers facilitated small-group reading and discussion programs directly to veterans and public programs focused on the military experience.

Humanities Grants:

As noted above, in addition to its various direct programs, the Council offers Humanities grants (from \$500 to \$7,500) to support community organizations in developing and presenting local public humanities programs. In total over the years Maine Humanities Council has awarded more than \$4.7 million in grants for public projects that have deepened public understanding of history and culture in communities across Maine.

All of these grants are matched at least 1:1 by a combination of cash and documented in-kind support by the recipients. .

In addition, many of these grants are the product of collaboration between the Maine cultural agencies of the Cultural Affairs Council. Its Arts and Humanities grant program, for example, is jointly funded by the Maine Humanities Council and the Maine Arts Commission

5. IMPROVEMENTS: SUGGESTIONS FOR IMPROVEMENTS OF INDIVIDUAL PROGRAMS WITHIN YOUR AGENCY

The Council operates within a tight budget, and its staff members are constantly seeking ways to increase efficiencies. Most recently, the Council has been exploring how to leverage relationships with partners, relying on their established programming and expertise and offering our unique abilities to improve or expand on their existing work.

6. APPENDICES

A. BOARD LIST

B. LISTS OF GRANTS MADE FY 2014

Maine State Library

FY15 Report to the Cultural Affairs Council

The Maine State Library (Unit 75), and as such, the Maine State Library Commission (Unit 82) represent the operations of the Maine State Library (Department 94Q).

- Maine State Library Commission – (Umbrella 94Q // Unit 82)
- Maine State Library – (Umbrella 94Q // Unit 75) – with four distinct programs:
 - Administration
 - Collection Development, Digital Initiatives, and Promotion
 - Library Development
 - Public and Outreach Services, Research and Innovation

Maine State Library Commission

The Maine State Library Commission is established under MRSA Title 27 §111. The Commission is represented by 15 volunteer members of the public who represent various library constituents served by the Maine State Library. All Commission members are nominated by the Governor – no subsequent legislative confirmations are required by Commission members nominated by the Governor.

Maine State Library – Administration

This program is defined by the role of the State Librarian. As such, the State Librarian has administrative oversight of operations and programs offered by the Maine State Library. These programs include: Collection Development, Digital Initiatives and Promotion; Library Development; and Public and Outreach Services, Research and Innovation.

Maine State Library – Collection Development, Digital Initiatives, and Promotion

This program oversees traditional collection development and processing as well as the building of a digital collection, which includes state agency publications, as well as historical and rare collections which have been converted to a digital format so they may be made more accessible

Maine State Library – Library Development

Provides for support and infrastructure to assist in developing all types of libraries in the state. Harnesses state– and national– partnerships to continuously define and develop new resource sharing opportunities. Many services provided by Library Development use federal Library School and Technology Act (LSTA) funds to deliver services, such as but not limited to: consulting services, Maine InfoNet services, and electronic content licensing.

Maine State Library – Public and Outreach Services, Research & Innovation

Oversees the development of all direct one to one services. These services include but are not limited to: direct library lending and reference services, Books by Mail, and

Talking Books. This program will use the Maine State Library's public operation to test innovative library services in an effort to continuously offer efficient and world class service to constituents, and also provide the Library Development program with tested solutions for all libraries in Maine.

Program Descriptions

Pursuant to MRSA Title 3 §956, Section 2, Part B this section includes descriptions for each program administered by the agency or independent agency, including the following for each program:

- *Established priorities, including the goals and objectives in meeting each priority;*
- *Performance measures or other benchmarks used by the agency to measure its progress in achieving the goals and objectives; and*
- *An assessment by the agency indicating the extent to which it has met the goals and objectives, using the performance measures. When an agency has not met its goals and objectives, the agency shall identify the reasons for not meeting them and the corrective measures the agency has taken to meet the goals and objectives.*

In offering this report, it's important to put the discussion around the following program descriptions in the proper context. The past ten years has brought significant transition, and with that, significant opportunity to the Maine State Library. Maine's longest- serving State Librarian, Gary Nichols, retired in 2008 after 30-years of service.

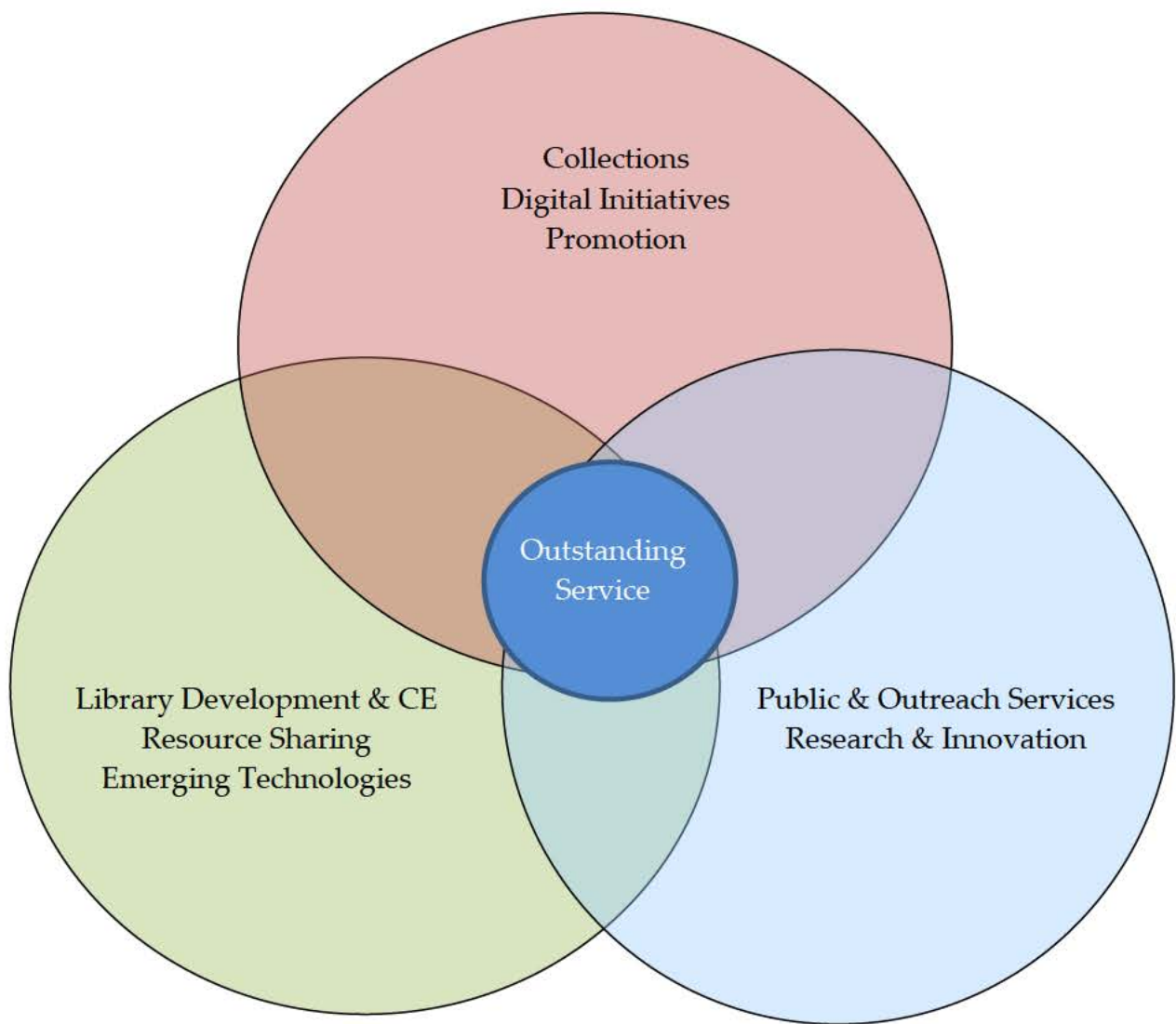
The most recent former State Librarian, Linda Lord, served from 2009-2014. Ms. Lord's tenure as State Librarian ushered in a new MSL 2011-2013 Strategic Plan; advocated for, and received, more funding and greater participation for the Van Delivery and Interlibrary Loan service; expanded statewide virtual resources; focused on early childhood literacy services and consulting; enhanced access to state agency publications through a digital repository; and increased funding for public libraries through the Maine Public Library Fund, which is funded by contributions Maine citizens make when filing their Maine Income Tax Returns.

The initiatives begun under the leadership of Ms. Lord, and supported by the Maine Library Commission, reflect the accomplishments of the Maine State Library since 2009, and establish the foundation for essential services that will continue. In January 2015, the Maine State Library Commission hired James Ritter as the new State Librarian.

Beginning with Mr. Ritter's assuming the role of State Librarian, key staff and organizational changes have been made to align the organization with needs of constituents and leading library trends. Among the most significant change is an emphasis that all public services are provided through one division/department. Additionally, a renewed and dedicated focus on collection development – with

specific emphasis on digital collections and collection processing was further articulated in recent organizational changes.

To meet this structure, the Maine State Library has three formal divisions/departments: Library Development, led by Ms. Janet McKenney, Public and Outreach Services, Research & Innovation, led by Ms. Alison Maxell, and Collections and Digital Initiatives led by Mr. Adam Fisher. Combined, these three departments will grow the Maine State Library's operation by delivering outstanding services that leverage each division's key strengths. The Venn Diagram (following page), represents the current thinking as to how the Maine State Library's programs can be aligned to meet 21st century library needs – all through a focus on outstanding service.



Additionally, the Maine State Library is undergoing steps to ensure that program evaluation and assessment are key attributes that lead to data-driven decisions. In this regard, a new monthly report is generated at the Maine State Library, (called the MSL Data Dashboard), which is reviewed by the Maine Library Commission, and all levels of staff at the Maine State Library, so that important measures of the library's business are kept in focus and attended to.

The Maine State Library firmly believes that "what gets measured gets attended to, and what gets attended to gets done." We are committed to becoming more purposeful in gathering, analyzing and using data for decision-making, strategic planning and demonstrating library impact.

A new library data dashboard was created earlier this year and is distributed at each meeting of the Maine Library Commission to keep members informed of key metrics. The dashboard document reflecting statistics through 2015 is shown on the following page.



MSL
MAINE STATE LIBRARY

Data Dashboard

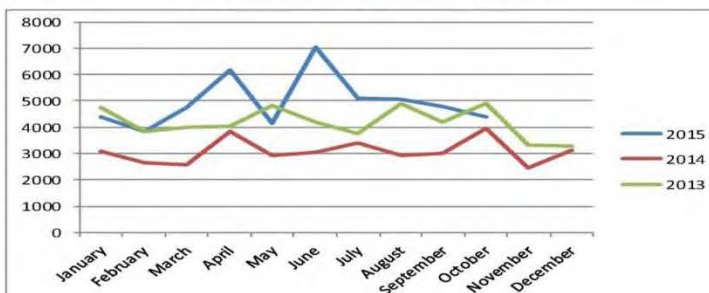
Nov. 2015

Patron Visits YTD

53,641
Year to Date

Up 59% from same period in 2014

Patron Visits by Month/Year



Circulation

132,111*
Year to Date

Down 1% from same period in 2014

Does not include books by mail

Computer Use

14,387
User Logins*

12,576 Total Hours Used *
52 Minutes – Average Time per User *

* From 3/1/2015 to 8/31/2015
Prior Year Data Unavailable

Conference Room Use

187
Meetings YTD

116 uses of Studio Conference Room (70
of which included Video Conference)

71 uses of other conference rooms
2,212 Participants
Prior Year Data Unavailable

Digital Repository Items

15,379
Items in Collection

Up 222% from beginning of year

Repository Circulation

46,823
Last 12 Months

83,547 since repository launch in Jan '13

New ILL Libraries

14
Year to Date

Libraries Added

Caribou Public Library
Cherryfield Public Library
Dorcas Library
Ivan O. Davis-Liberty Library
Julia Adams Morse Memorial Library
Katahdin Public Library
Kezar Falls Circulating Library
Mechanic Falls Public Library
Rangeley Public Library
Spaulding Memorial Library
Stonington Public Library
Strong Public Library
Weld Public Library
Wiscasset Public Library

New Collection Items

3,711
Titles Added YTD

Up 42% from same period in 2014

Librarian Certification

160 Students

**1,901 Completed
Courses**

107 Certificates Issued

MAINE STATE MUSEUM

Purpose

The Maine State Museum seeks to share what is meaningful about Maine and its place in the world, in order to inspire people to discover Maine's past, understand its present, and imagine its future. The Maine State Museum pursues this mission through the selection, preservation, research, and educational use of objects and information representing the compelling significance of Maine's natural and cultural heritage.

The Maine State Museum is located in Augusta and maintains collections comprising some 800,000 items representing the full range of Maine's natural science and human history. Portions of these collections are publicly exhibited in the Cultural Building, State House, and Blaine House.

The museum staff conducts scientific and historical research in support of exhibits, publications, and educational programs intended to reach a wide and varied audience.

Organization

The Maine State Museum was initially established by the Maine legislature in 1836. In that year it opened its first exhibit, comprising geological collections, in the State House. It was several times subsequently disestablished and re-established, becoming an independent, professionally staffed agency with the creation of the Maine State Museum Commission in 1965. It has occupied its present building since 1971. Though on a national scale it is a museum of medium size, it has the responsibilities of a major institution and continues to be New England's most substantial state museum. It has always sought to embody the highest professional standards of museum operations and enterprise and for 40 years has achieved continuous accreditation by the national museum organization, the American Alliance of Museums. The Maine State Museum and six other cultural agencies are members of the Maine State Cultural Affairs Council, which considers cultural issues of significance to Maine and coordinates various state-wide projects.

Program

EDUCATION: In FY 2015 the museum hosted 45,595 visitors, 20,177 of whom came within organized educational groups: 232 different Maine towns were represented. Special events, drawing almost 9,000 attendees, included Maine Earth Science Day and Bug Maine-ia. The Friends of the Maine State Museum organized public programs on natural science and photography. Volunteers for the Museum contributed almost 2,100 hours of work in Education and close to 1,000 hours in other operational areas.

The Education Division inaugurated its most substantial staff reorganization in years, to enhance visitor services and new program development. A high number of staff retirements meant that the Education staff at 5 FTEs was at its lowest number in decades, but with its volunteers was able to sustain museum visitation and conduct many special activities.

COLLECTIONS: The museum completed the move of over 50,000 objects in the History collections to renovated, state-owned storage space. To house its natural science collections it continued to develop new space made available by the Maine State Library. The museum prepared 120,000 data records for transfer into Proficio, its new collections database. The museum accepted 51 new collection accession

groups, comprising hundreds of objects. Donation highlights include an unrivalled collection of early Maine-made firearms and accessories from Dwight Demeritt, and a rare Civil war uniform and diaries; the purchase of an extraordinary Civil War quilt, made by Neal Dow's daughter and friends, was made possible through a generous private donor.

By mid-2015 the museum had processed 8,000 historic photographs under its three-year grant from the Council on Library and Information Resources to catalogue historic images kept at the Maine Historic Preservation Commission. Through a grant the museum completed digitization of the *John Martin Journals*, Maine's most important historical diaries, posting them with transcriptions on the internet in cooperation with the Maine Historical Society.

The museum loaned 120 objects to Maine colleges and high schools and one to the Smithsonian Institution. The museum's adjunct curator program secured 130 hours of volunteer professional help from advanced specialists to assist with collection documentation and research.

FACILITIES: Through a private donation the museum was able to design and construct a new exhibit gallery of 1,000 sq. ft., intended for rotating or temporary exhibits.

EXHIBITS: A new exhibition, *The Passionate Photographer: Kosti Ruohomaa's Maine and Magazine Photojournalism*, opened in 2015, and many smaller, temporary in-house exhibits were also presented.

OUTREACH: Artifacts and specimens were lent to many institutions and agencies, including the Maine Forest Service, the Department of Inland Fisheries and Wildlife, Unity College, Bates College, and Bowdoin College. Museum staff assisted in installing three exhibits, at Cony High School, the Fisheries and Wildlife Department, and for Pine Tree Quilts. Museum staff served on professional committees, taught at Bates College, responded to thousands of requests for information, spoke at state and regional conferences, and gave public presentations in Maine and Massachusetts. A staff member served on the board of the New England Museum Association and another as the associate editor of the *Journal of Paleontology*.

Licenses

Any person, agency or institution desiring to excavate an archaeological site on state-controlled land (including submerged lands beneath the ocean up to three miles off shore, beneath navigable rivers, lakes, and great ponds) shall submit a written application for a permit to the Maine State Museum (approval must also be given by the Maine Historic Preservation Commission and the agency controlling the property).

Any person, agency or institution desiring to use the image, design, or dimensions of any object in the museum's collection for any purpose shall submit a written application to the museum director.

Publications

Website address: www.mainestatemuseum.org

The museum's curator of history, Laureen LaBar, published a paper on quilts in the Dublin Seminar's *Dressing New England*. The museum's director, Bernard Fishman, published an article in the *Maine Policy Review*.

The museum is preparing its first popular book of collection highlights, to be published by Tilbury House in 2016. With the Working title *The Story of Maine in 101 Objects*, it is being edited by Bernard Fishman.

Recent book-length publications by museum staff or published by the museum include:

Maine Voices from the Civil War (Maine State Museum) by Laureen A. LaBar, 2013

Malaga Island, Fragmented Lives (Friends of the Maine State Museum) by Katherine A. McBrien, 2013

The Swordfish Hunters (Bunker Hill Publishing) by Bruce J. Bourque, 2013

Everyday Lives: An Interim Report on Archaeological and Environmental Investigations of Malaga Island, Phippsburg, Maine (University of Southern Maine and Maine State Museum) by Nathan D. Hamilton and Robert M. Sanford, 2012