

MAINE STATE LEGISLATURE

The following document is provided by the
LAW AND LEGISLATIVE DIGITAL LIBRARY
at the Maine State Law and Legislative Reference Library
<http://legislature.maine.gov/lawlib>



Reproduced from electronic originals
(may include minor formatting differences from printed original)



MISSION: To administer justice by providing a safe, accessible, efficient and impartial system of dispute resolution that serves the public interest, protects individual rights, and instills respect for the law.

MAINE STATE COURTS: AT A GLANCE

POPULATION OF MAINE..... 1,328,361
 GEOGRAPHIC AREA..... 30,843 sq. mi.
 COURT LOCATIONS..... 39

FY'13 EXPENDITURES:

Judicial Branch Operations\$45,983,335
 Personal Services\$33,237,711
 All Other Operation Expenses\$12,745,624
 Guardians ad Litem, Psychological Exams.....\$2,993,439
 Debt Service\$7,632,055

TOTAL: \$56,608,829

% of State General Fund..... 1.9%

FY'13 REVENUE:

Deposited to Maine's General Fund..... \$30,897,517
 Deposited to Dedicated Revenue Accounts..... \$8,161,411

TOTAL: \$39,058,928

JUDGES (Total) 60
 Supreme Judicial Court Justices7
 Superior Court Justices 17
 District Court Judges 36

FAMILY LAW MAGISTRATES 8

STAFF (clerks, security, and administration)423.5
 Clerks' Offices258.5
 Marshals..... 63
 Administration (Tech, HR, Finance, Facilities, etc.) .. 102

TOTAL: 491.5

TOTAL 2013 CASES FILED 238,286

Supreme Judicial Court..... 690
 Superior Court14,659
 Unified Criminal Dockets.....18,415
 District Court.....98,964
 Violations Bureau 105,558

INCREASED COURTHOUSE SAFETY

With the support of Governor LePage and the 126th Legislature, entry screening is now provided on approximately 60% of all court days. This is a significant increase over prior years and, as a result, Maine's courts are safer. All of Maine's courts still need to be secure every day that they are open for business.

ELECTRONIC PROTECTION FROM ABUSE ORDERS

In 2013, through technology improvements, the courts now send civil Protection From Abuse orders electronically to the Department of Public Safety. Law enforcement throughout the state can make service immediately wherever the defendant might be located, improving safety for victims of abuse.

KATAHDIN COUNSEL

2013 saw another year in which Maine lawyers contributed the equivalent of well over \$2,000,000 worth of civil legal services to elderly and low-income people who could not otherwise afford legal assistance. The Supreme Court recognized 145 honorees in October who had each donated at least 50 hours of free legal services. Katahdin Counsel assisted citizens in many cases; for example, matters involving children, domestic violence, and housing.

ACCESS TO JUSTICE: Interpreters

The Maine Judicial Branch continued its efforts in 2013 to improve access to justice through court interpreters. Two spoken language interpreters received national court interpreter certification. Maine courts now have a statewide roster of 52 spoken language interpreters, who collectively interpret 24 different languages, and 10 legally-certified sign language interpreters. Interpretation services are provided free of charge for all case types; however, 82% of the usage is in primarily four areas: criminal, juvenile, family matters, and protection from abuse cases. Somali is the most frequently requested language, followed by Spanish and Arabic. Protection from abuse and harassment forms have been translated into 6 languages and are now available on the Judicial Branch web page at http://www.courts.state.me.us/fees_forms/forms/trans_docs/index.html.

PROTECTION FROM VIOLENCE

If You Are In Immediate Danger, Call 9-1-1.

For information about Protection Orders visit

www.courts.state.me.us/main_courts/district/protection_orders.html



Seven nationalities and eight languages are represented at this interpreter training sponsored by the Judicial Branch.

THE COURTS OF MAINE

SUPREME JUDICIAL COURT



Front Row: Justice Donald G. Alexander, Chief Justice Leigh I. Saufley, Justice Jon D. Levy; Back Row: Justice Ellen A. Gorman, Justice Warren M. Silver, Justice Andrew M. Mead, Justice Joseph M. Jabar

CHIEFS



From Left to Right: THOMAS E. HUMPHREY, Chief Justice, Superior Court; LEIGH I. SAUFLEY, Chief Justice, Supreme Judicial Court; CHARLES C. LAVERDIERE, Chief Judge, District Court; ROBERT E. MULLEN, Deputy Chief Judge, District Court

STATE COURT ADMINISTRATOR



TED GLESSNER, State Court Administrator

TRIAL COURT CASE FILINGS FY'13 TOTAL: 237,596

CRIMINAL FILINGS: 57,331

District Court Criminal	30,293
District Ct. Probation Revocations	390
Superior Court Criminal	8,830
Super. Ct. Probation Revocations	2,211
Unified Criminal Dockets	14,894
UCD Probation Revocations	713

DISTRICT COURT FAMILY DIVISION: 24,924

Juvenile	2,840
Divorce	6,225
Other Family Matters	2,646
Family Post-Judgment	6,409
Child Protective	938
Protection from Abuse	5,866

CIVIL FILINGS: 33,897

	SUPERIOR	DISTRICT
Contract	411	5,290
Foreclosure	1,114	3,333
Tort	856	122
Other Civil	1,237	946
Small Claims		10,605
Money Judgments		4,281
FEDs (Eviction)		5,702
TOTAL(S):	3,618	30,279

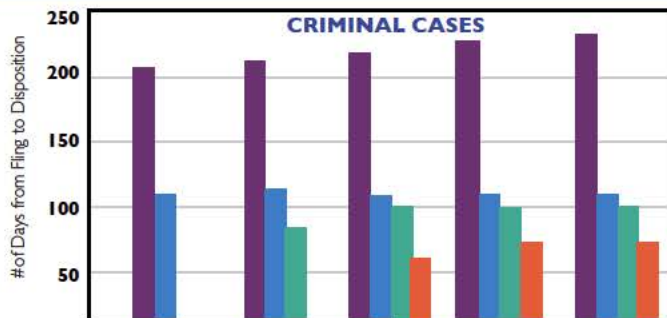
OTHER ACTIONS: 15,886

Mental Health (District Court)	921
Protection from Harassment (District Court)	2,931
Civil Violations (District Court & UCDs)	12,034

VIOLATIONS BUREAU

Traffic Infractions	105,558
---------------------	---------

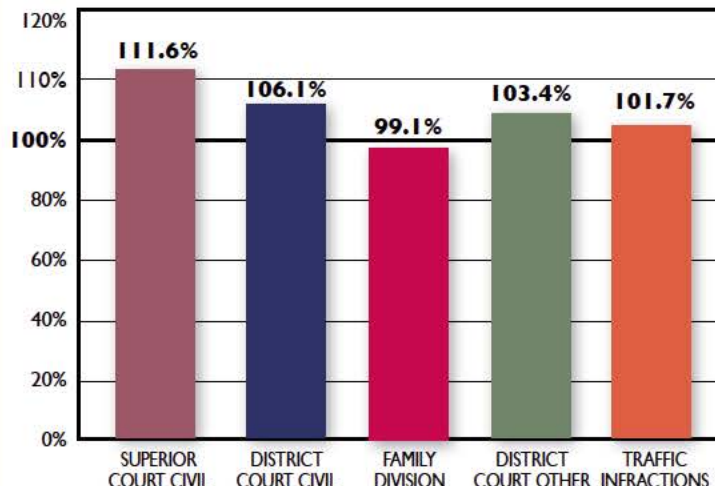
COURTS PROVIDE IMPROVED CASE MANAGEMENT



	FY '09	FY '10	FY '11	FY '12	FY '13
Superior Court Criminal	205	219	229	239	242
District Court Criminal	109	110	113	115	115
Portland UCD		84	101	102	102
Bangor UCD			68	75	81

The trial courts in Portland and Bangor have adopted a unified process for criminal cases and have eliminated the need for transferring cases from District to Superior Court. This model has simplified procedures for litigants and stakeholders, has eliminated duplication of work by clerks, and has substantially reduced the time for felony resolution.

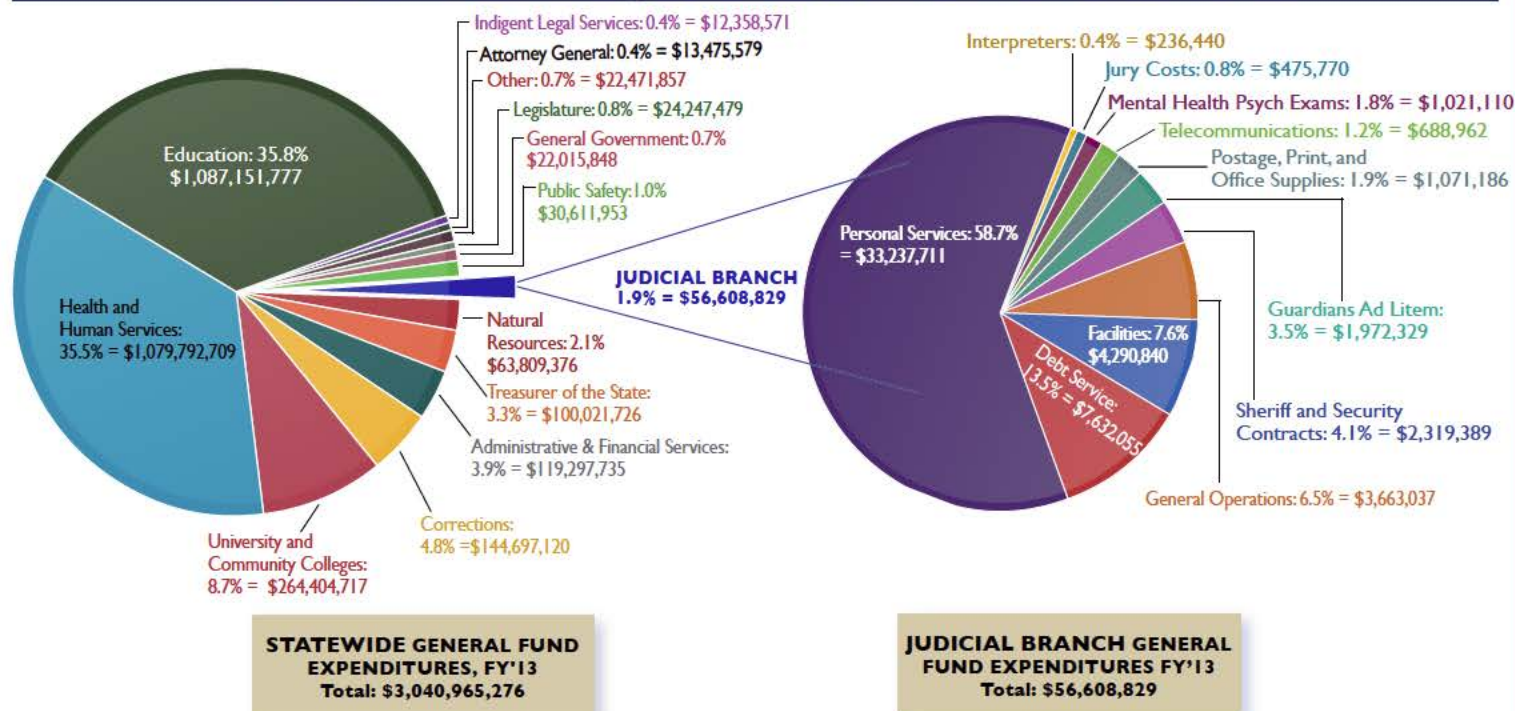
CLEARANCE RATES IN TRIAL COURTS



Clearance Rate measures whether the courts are keeping up with caseload. When the Clearance Rate exceeds 100%, it means that more cases were disposed than were filed during FY '13.

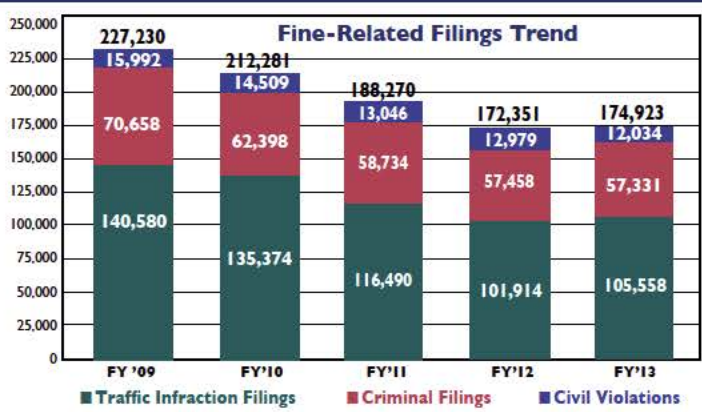
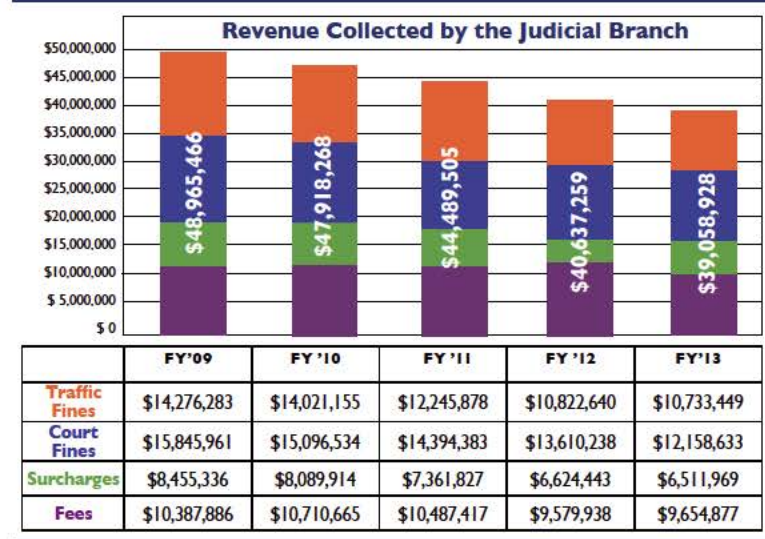
FISCAL INFORMATION

GENERAL FUND AND JUDICIAL BRANCH EXPENDITURES



In FY'13, General Funds received by the Judicial Branch were less than 2% of the State total. Personal Services accounted for more than half (58.7%) of Judicial Branch expenditures.

FY'13 REVENUE

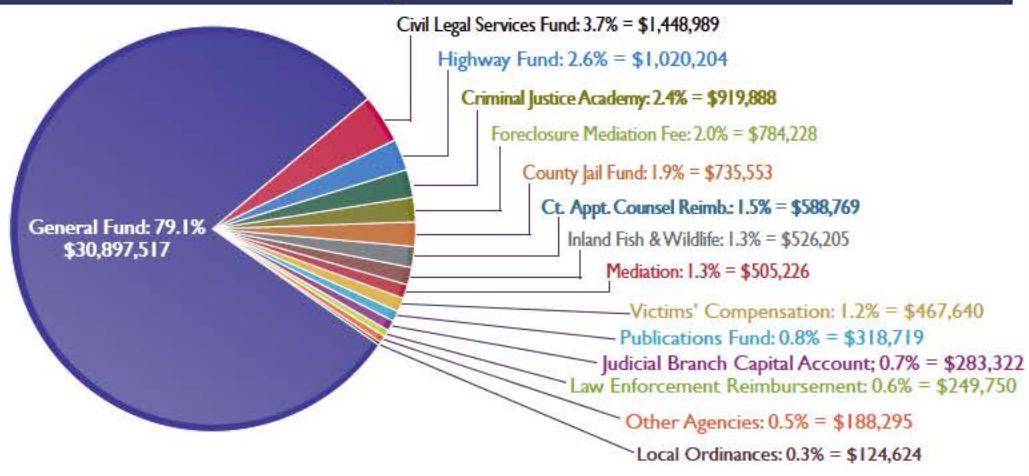


Fine and related surcharge revenue has decreased in recent years. A primary cause for the reduction is the decline in the number of criminal cases, civil violations, and traffic infractions filed in the courts, as illustrated by the chart above.

REVENUE DISTRIBUTED BY THE JUDICIAL BRANCH

FY'13 Revenue Distribution
Total: \$39,058,928

All revenue collected by the Judicial Branch is deposited into the State's General Fund and to other dedicated accounts as required by Maine Statutes. Sources of revenue include fees, fines, and surcharges.



COURT REGIONS AND CASES FILED

REGION 5

CASE TOTAL 17,300
REGIONAL POPULATION.....171,205
COURT FACILITIES 5

PENOBSCOT 3,397 square miles
 Bangor Superior.....429
 Penobscot UCD.....6,022
 Bangor District.....5,016
 Newport District.....2,217
 Lincoln/Millinocket District...2,087

PISCATAQUIS 3,961 square miles
 Dover-Foxcroft Superior.....100
 Piscataquis UCD.....214
 Dover-Foxcroft District.....1,215

REGION 4

CASE TOTAL 18,808
REGIONAL POPULATION.....173,963
COURT FACILITIES 6

SOMERSET 3,924 square miles
 Skowhegan Superior.....637
 Somerset UCD.....717
 Skowhegan District.....4,065

KENNEBEC 868 square miles
 Augusta Superior.....1,789
 Augusta District.....6,508
 Waterville District.....5,092

REGION 3

CASE TOTAL 21,564
REGIONAL POPULATION.....195,839
COURT FACILITIES 7

FRANKLIN 1,697 square miles
 Farmington Superior.....264
 Franklin UCD.....483
 Farmington District.....2,385

OXFORD 2,077 square miles
 South Paris Superior.....777
 South Paris District.....2,293
 Rumford District.....1,831

ANDROSCOGGIN 468 square miles
 Auburn Superior.....2,065
 Lewiston District.....11,466

REGION 2

CASE TOTAL 23,320
REGIONAL POPULATION.....282,401
COURT FACILITIES 2

CUMBERLAND 835 square miles
 Portland Superior.....848
 Cumberland UCD.....10,979
 Portland District.....8,335
 Bridgton District.....3,158

REGION 1

CASE TOTAL 20,911
REGIONAL POPULATION.....198,199
COURT FACILITIES 4

YORK 991 square miles
 Alfred Superior.....4,023
 Biddeford District.....7,925
 Springvale District.....5,432
 York District.....3,531

REGION 8

CASE TOTAL 7,629
REGIONAL POPULATION.....71,482
COURT FACILITIES 5

AROOSTOOK 6,671 square miles
 Car bou/Houlton Superior.....1,066
 Car bou District.....1,510
 Houlton District.....1,495
 Presque Isle District.....2,405
 Fort Kent/Madawaska District...1,153

REGION 7

CASE TOTAL 7,647
REGIONAL POPULATION.....87,215
COURT FACILITIES 3

HANCOCK 1,587 square miles
 Ellsworth Superior.....424
 Ellsworth District.....4,090

WASHINGTON 2,563 square miles
 Machias Superior.....329
 Machias District.....1,400
 Calais District.....1,404

REGION 6

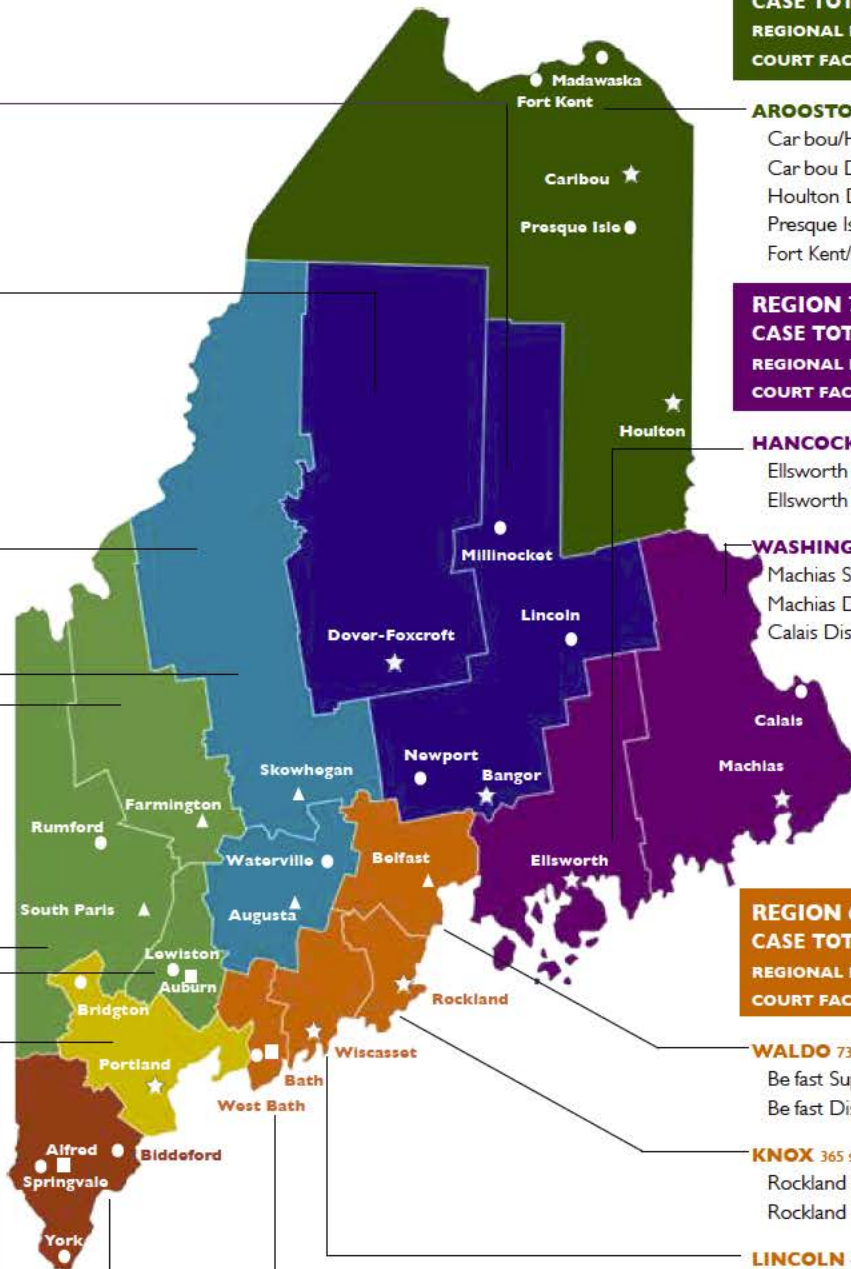
CASE TOTAL 14,859
REGIONAL POPULATION.....147,884
COURT FACILITIES 6

WALDO 730 square miles
 Belfast Superior.....425
 Belfast District.....2,770

KNOX 365 square miles
 Rockland Superior.....567
 Rockland District.....3,156

LINCOLN 456 square miles
 Wiscasset Superior.....522
 Wiscasset District.....2,339

SAGadahoc 254 square miles
 Bath Superior.....394
 West Bath District.....4,686



KEY

- District Court
- Superior Court
- ▲ District and Superior in the same city/town.
- ★ District and Superior Court occupy the same building.

Counties grouped together by color are part of a single court **REGION**, where resources and scheduling are coordinated.

FOR MORE INFORMATION:

For more information about the Courts
ADMINISTRATIVE OFFICE OF THE COURTS
 PO Box 4820
 Portland, ME 04112-4820
 (207) 822-0792 . (207) 822-0701 (TTY)

Visit the Court's web page at www.courts.state.me.us or scan the QR code below.

TRAFFIC INFRACTIONS:
 Total: 105,558

* Population statistics and square mileage data source: US Census Bureau