

MAINE STATE LEGISLATURE

The following document is provided by the
LAW AND LEGISLATIVE DIGITAL LIBRARY
at the Maine State Law and Legislative Reference Library
<http://legislature.maine.gov/lawlib>



Reproduced from electronic originals
(may include minor formatting differences from printed original)

\$5.00

STATE OF MAINE
COMMISSION ON GOVERNMENTAL ETHICS
AND ELECTION PRACTICES



BIENNIAL REPORT

1999 - 2000

COMMISSION ON GOVERNMENTAL ETHICS AND
ELECTION PRACTICES

COMMISSION MEMBERS -- JANUARY 1999 TO DECEMBER 2000

NAME/ADDRESS

EXPIRATION OF TERM

Chairman

Peter B. Webster, Esq.
Yarmouth

2003 (Reappointed in 1999)

Members

Honorable Michael E. Carpenter
Houlton

2004 (Appointed in 1999 to fill the
unexpired term of Commissioner
Mackenzie; Reappointed 2000)

Honorable Virginia Constantine
Bar Harbor

2002 (Appointed in 1999 to fill the
unexpired term of Commissioner Nelson)

Dr. Linda W. Cronkhite
Brunswick

2002 (Reappointed in 1998)

Honorable Harriet P. Henry
Standish

2003 (Reappointed in 1999)

G. Calvin Mackenzie
Bowdoinham

1999 (Resigned)

Honorable Merle R. Nelson
Falmouth

1999 (Resigned)

COMMISSION STAFF

Administrative

Executive Director

William C. Hain, III, Esq.
135 State House Station
Augusta, Maine 04333
287-6219

Staff Auditor

Andrew Seaman
287-7651

Staff Accountant

Sally Costello
287-7652

Lobbyist Registrar

Annette Jones
287-6221

Candidate Registrar

Dottie Perry
287-3024

Commission Assistant

Diana True
287-4179

Counsel

(1 M.R.S.A. § 1006)
(As required)

Phyllis Gardiner, Esq.
Assistant Attorney General
6 State House Station
Augusta, Maine 04333
626-8800

CONTENTS

Overview of the Commission 1

Campaign Reports and Finances Activity 3

Commission Filings Chart 8

Spending Summaries -- 1999 - 2000 9

State Senate:

- Spending Statistics Table 11
- Cost of Senate Seat Graph 12
- Ten Most Expensive Campaigns Table 13
- Expenditures of Winning Candidates Table 14
- Cumulative Balance Report 15

State House of Representatives:

- Spending Statistics Table 18
- Cost of House Seat Graph 19
- Fifteen Most Expensive Campaigns Table 20
- Expenditures of Winning Candidates Table 21
- Cumulative Balance Report 25

County Candidates:

- Spending Summary Table 34
- Ten Most Expensive Campaigns Table 34
- Cumulative Balance Report 35

Federal Candidates:

- Senate General Election Candidates 38
- Congressional General Election Candidates 38

Political Action Committees (PACs):

- Expenditures 1990 - 2000 39
- Expenditures of Registered Candidate PACs Table (1990 - 2000) 40
- Ballot Question (Issue) PACs Receipts & Expenditures (2000) 41
- Receipts and Expenditures - 1999 42
- Receipts and Expenditures - 2000 48

Biennial Report 1999 - 2000

Lobbyist Disclosure Procedures: 54
 Statistics Table 1991 - 2000 56
 Statistics - 1999 57
 Statistics - 2000 58
 Compensation for Two or More Clients Table - 1999 59
 Compensation for Two or More Clients Table - 2000 60
 Employers Spending \$20,000 or More Table - 1999 61
 Employers Spending \$20,000 or More Table - 2000 66

Laws on Legislative Ethics and Financial Disclosure 70

Informal Advisory Opinions 71

Commission Policies:
 Acceptance of Gifts 81
 Definition of "Lobbying" 85
 Membership Organizations and Corporation Communications 87
 Reporting Requirements for Independent Expenditures 88

Legislation 89

Assistance to the Commission 92

Publications 93

OVERVIEW OF THE COMMISSION

PURPOSE: The Commission on Governmental Ethics and Election Practices is an independent commission established to guard against corruption or undue influencing of the election process and against acts or the appearance of misconduct by Legislators.

DUTIES AND RESPONSIBILITIES: The general duties of the Commission are to administer and investigate any violations of the requirements for campaign reports and campaign financing, including the provisions of the Maine Clean Election Act and Fund; to conduct biennially, in conjunction with the Attorney General and the Chair of the Legislative Council, an ethics seminar for Legislators; to administer the lobbyist disclosure laws; to administer and ensure effective implementation of the Maine Clean Election Act and Fund according to Title 21-A, chapter 14; to provide for enhanced monitoring and enforcement of election practices; and to institute electronic submission of reports and computerized tracking of campaign, election and lobbying information under the Commission's jurisdiction.

Additional responsibilities of the Commission are to investigate and make advisory recommendations to the appropriate body of the Legislature of any apparent violations of the ethical standards set by the Legislature; to issue advisory opinions and guidelines on problems or questions involving possible conflict of interest in matters under consideration by, or pertaining to, the Legislature; and to administer the sources of income disclosure law.

ORGANIZATION: The Commission on Governmental Ethics and Election Practices consists of 5 members appointed by the Governor. Members of the public, groups, and organizations may nominate qualified individuals to the Governor for appointment to the Commission during a nomination period jointly established by the Governor, the President of the Senate, the Senate Minority Leader, the Speaker of the House of Representatives, and the House Minority Leader. Appointments are subject to review by the joint standing committee of the Legislature having jurisdiction over legal affairs and confirmation by the Legislature.

No more than two members of the Commission may be enrolled in the same political party. Each member serves a four-year term. A person may not be appointed to the Commission who is a member of the Legislature or who was a member of the previous legislature, or who was a declared candidate for an elective county, state or federal office within two years prior to the appointment, or who holds an elective county, state or federal office, or who is an officer of a political committee, party committee or political action committee.

Pursuant to 1 M.R.S.A. Section 1006, the Commission may call for the aid or assistance in the performance of its duties on the Attorney General, Secretary of State, Department of Audit, or any law enforcement agency in Maine.

Biennial Report 1999 - 2000

THE STAFF: The staff of the Commission conducts the daily business of the Commission. The staff director serves as spokesperson and liaison between the Legislature and the Commission, conducts Commission correspondence, makes findings and recommendations, tracks legislation, prepares fiscal notes, conducts preliminary investigations, drafts legislation, and prepares and edits Commission publications. The staff director supervises the daily activities of the staff auditor, accountant, lobbyist registrar, candidate registrar, and Commission assistant, and supervises the administration of the Maine Clean Election Act and the multi-million dollar Maine Clean Election Fund.

The staff auditor oversees the random and selective audit of the numerous reports filed with the Commission for compliance with State law, assists the staff director with implementation of the Maine Clean Election Act, and reviews the transfer of Maine Clean Election Funds to private accounts by the staff accountant.

The staff accountant processes the electronic transfer or issuance of checks of revenues from the Maine Clean Election Fund to the private accounts of certified Maine Clean Election Act candidates, manages the Commission's biennial budget process, and administers the daily financial obligations and personnel matters of the Commission staff.

The lobbyist registrar processes the registrations of lobbyists, lobbyist associates, and political action committees (PACs); prepares lobbyist and PAC registers; compiles and prepares statistics; and advises lobbyists and others with regard to the provisions of the lobbyist and PAC laws.

The candidate registrar processes registrations and reports, assists candidates and others in completing reports, advises candidates as to their legal obligations, prepares agenda materials, monitors filings, audits reports, and prepares statistics.

The commission assistant provides administrative, electronic data processing, and clerical support to the Commission and its staff members.

Although the Commission is empowered to investigate violations of the laws on campaign financing and legislative ethics, it has no investigative staff. Thus, it relies largely on the Attorney General's Office for assistance in this area.

RECORDS: The staff devotes considerable time to receiving, organizing, and maintaining records for public inspection. The following records are made available for public review: campaign finance reports of county, state, and gubernatorial candidates and candidates for Federal office (via the Federal Election Commission's Internet website, www.fec.gov, available on a public terminal in the Commission's offices); party committee reports; and political action committee reports. Also on file are financial disclosure statements of federal officials and members of the Legislature,

minutes of Commission meetings, and advisory opinions. The Commission also maintains detailed lobbyist disclosure and reporting documents. Reports filed with the Commission may be copied for a modest fee.

OFFICE LOCATION: The Commission's offices are located at 242 State Street, Augusta (locally referred to as the Public Utilities Commission building). In addition to the availability of all reports, forms, and other public documents filed with the Commission, the office will provide public computer terminals when the Commission offers report filers the opportunity to file their reports electronically, hopefully in time for the 2002 elections.

CAMPAIGN REPORTS AND FINANCES LAW

The campaign finance laws require candidates for state, county, gubernatorial, and federal office and political action committees organized within the State to register and report their campaign contributions and expenditures to the Commission. Out-of-state political action committees making contributions to Maine candidates are subject to the reporting laws as well.

ACTIVITY DURING 1999-2000

Registrations: During the biennium ending December 31, 2000, the Commission Staff processed a total of 519 registrations for candidates seeking election to state and county offices. A total of 86 candidates competed for election to fill 35 State Senate vacancies, while 347 candidates registered for election to fill 151 State House of Representatives seats. Two (2) candidates competed for election to the United States Senate; two (2) candidates sought election in the First District United States Congressional race; and two (2) candidates competed for the Second District United States Congressional position.

Educational and Informational Activities: The election year, predictably, saw increased activity for the Commission and its staff. Throughout the year, the staff communicated regularly with state and county candidates advising them of their statutory obligations to register with the Commission and to file periodic reports of their campaign finances. In April, general reporting instructions were mailed, together with standardized forms, filing schedules, and other helpful information.

A substantial part of the Commission Staff's daily workload involved advising candidates and treasurers about how to complete reports and providing informal advice regarding the requirements of the law. Assistance was provided in person, by telephone, and by regular and electronic mail. The Staff also routinely advised other individuals, including legislative staff personnel, members of the general public, students, scholars, and reporters, regarding the myriad of campaign finance reporting issues. To ensure the accuracy of the advice provided, as necessary, Staff members conferred with the Commission or with the Commission Counsel from the Office of Attorney

Biennial Report 1999 - 2000

General on questions of law that were subject to interpretation and where no prior ruling existed. The Staff also actively assisted persons to inspect various reports filed with the Commission.

The Commission Staff again collaborated with the Office of Secretary of State to produce "A Candidate Guide to Running for Office in Maine " to help candidates understand the reporting laws. The informational pamphlet detailed the requirements of Maine's election laws and "guided" the candidate through the entire reporting process. During the election year, over 700 copies of the pamphlet were distributed to candidates, treasurers, and others.

Another aspect of the Commission's information program involved the distribution of lists of political action committees, lobbyists, candidates, and treasurers.

Enforcement Activity: The monitoring and auditing of reports is a key element of the Commission's election year program. The staff carefully reviews each registration and report for timeliness and accuracy, and audits reports to the extent available resources permit. Following that review, each person who files a late report is notified of the violation and advised of his or her right to a hearing before the full Commission to determine whether any penalty should be assessed in accordance with Maine's statutes.

Report filers were notified of the preliminary determinations of potential penalties based upon the application of the statutory formula for computing penalties in the absence of "mitigating circumstances" for reducing or waiving those penalties. In many cases, report filers elected to remit payment for those "preliminary determinations" rather than contest the penalty to the full Commission. Report filers were notified of their right to request a Commission determination of the amount of any penalty that may be assessed for the possible violation of the reporting requirements in each case. In total, during the biennial period of 1999-2000, 69 candidates remitted a total of \$15,135.42 in penalties; 41 political action committees (PACs) remitted a total of \$14,430.00 in penalties, and 195 lobbyists remitted a total of \$16,750.00 in penalties.

During the 1999-2000 biennial election cycle, the Commission considered the late filings of reports by 12 candidates, 14 political action committees, 3 party committees, and 34 lobbyists. The disposition of those cases was as follows (these figures are included in the amounts above):

<u>Filing Entity</u>	<u>Number of Penalties Assessed</u>	<u>Total \$ Amount of Penalties Assessed</u>	<u>Full Penalty Waived</u>
Candidates	11	\$16,575.12 (1 @ \$15,000)	1
PACs	11	\$ 7,908.26	3
Lobbyists	30	\$ 3,000.00	4
Party Committees	2	\$ 990.79	1

During the 1999-2000 biennium, the Commission directed the referral of 4 candidate cases and 3 political action committee cases to the Attorney General's Office for appropriate disposition either for failure to file campaign finance reports within 30 days of the report due date or failure to pay a duly assessed penalty.

Complaints: A person may apply in writing to the Commission requesting an investigation concerning any activity subject to the Commission's jurisdiction. Such complaints could involve the conduct of candidates, political action committees, party committees, lobbyists, or Legislators. Each such request is acknowledged and subsequently pursued if the nature of the claim is subject to the Commission's jurisdiction, and the reasons stated for the request show sufficient grounds for believing a violation may have occurred. A preliminary investigation may be conducted and findings made. The findings, together with a recommendation, are presented by the staff to the full Commission which then decides the merits of each case. In the conduct of investigations, the Commission may subpoena witnesses and records and take evidence under oath.

During the 1999-2000 Biennium, the Commission received 33 complaints concerning alleged violations of the various laws subject to the Commission's jurisdiction. The disposition of those cases was as follows:

Five (5) complaints alleging violations of the Maine Code of Fair Campaign Practices were deemed to be outside the Commission's jurisdiction because of the protection of the First Amendment of the United States Constitution. Four (4) concerned "attribution" violations. The Commission assessed penalties in each of those cases, but rescinded the assessment in one. In the three (3) cases where a violation was found to have occurred and no correction was made, the Commission assessed a penalty ranging from \$25 to \$50, depending upon the facts of each individual case. One (1) case involving an alleged violation of political action committee registration and reporting requirements resulted in the assessment of a \$250 penalty for failure to register and a \$1,875.12 penalty for the late submission of reports. Nine (9) complaints involved alleged violations of the limitations on the acceptance of campaign contributions. The Commission acknowledged a violation in each case, but dismissed each of the cases with a warning in recognition of the new contribution limitations that became effective only January 1, 1999. Additional complaints alleged violations of the rules governing the use and disposition of surplus funds, failure to register, reporting irregularities, incomplete lobbyist disclosure reports, endorsement of candidate by public officials, Federal "Hatch Act" violation, and violations of the provisions governing the implementation of the Maine Clean Election Act.

Maine Clean Election Act: The administration, implementation and enforcement of the Maine Clean Election Act is the subject of a separate Report of the Commission to the Joint Standing Committee on Legal and Veterans' Affairs. Please refer to that report for detailed information on those aspects of the Commission's activities during 1999-2000.

Post-Election Year Filings: The post-election filings of primary and general election candidates revealed that 169 candidates ended the election year with active campaign accounts. Under the law, the disposition of any surplus or deficit of more than \$50 remaining in a candidate's account must be disclosed in semiannual reports. To ensure compliance, the Commission staff notifies each candidate subject to post-election year requirements of the semiannual filing requirements. As with election year reports, filings are monitored for timeliness.

Following the election cycle, the staff carefully examines each election report to detect any technical errors that may have been missed earlier. When a report is found to be deficient, the candidate's treasurer is notified and asked to make corrections in the form of an amended report.

The final audit is an important step in ensuring that the figures published in the Commission's official election report are accurate. The audit of campaign finance reports during the 2000 election cycle resulted in the identification of errors in approximately 25% of the filed reports that required amendment. Correction notices were mailed or telephone contact made, depending upon the complexity of the error that required amendment.

Election Year Planning: Once work on the last election year season (including preparation of the annual report) has been completed, planning begins for the next election year cycle. Preparations involve updating written guidelines, instructions, and reporting forms; and compiling new filing schedules. In addition to that activity, the 2002 election cycle presents a new challenge to Commission staff with the application of the new Maine Clean Election Act to gubernatorial candidates for the first time. Additionally, that law requires the Commission to provide candidates running for State Senator or State Representative with the voluntary option of being certified as eligible to receive public funding of their campaigns from the Maine Clean Election Fund, a multi-million dollar source of revenue derived from Legislative appropriations, voluntary taxpayer check-offs in their income tax returns, deposit of all qualifying contributions received by participating Clean Election Act candidates, and several other sources of revenue specified in the Maine Clean Election Act. The Commission will determine the amounts of the initial distributions for certified candidates for the gubernatorial election and for the State Senate and House of Representatives and publish a Candidate's Guide to the Maine Clean Election Act during the Summer of 2001.

Municipal Candidates/Party Committees: Prior to the start of each election year, the staff distributes revised reporting forms and instructions to state party committees and clerks in those municipalities with populations greater than 15,000 where candidates for public office are governed by the State campaign finance law.

COMMISSION FILINGS

The following summarizes the type and number of filings processed by the staff during 1999-2000:

Filing Entity	Number of Filings Processed in 1999-2000
Campaign Finance	
Registrations:	
State/County Candidates	519
Political Action Committees	67
Reports:	
State and County Candidates	2,376
Federal Candidates	105
State/County PACs	2,336
Federal PACs	422
Party Committees:	
State/County Accounts	78
Federal Accounts	3
Independent Expenditures	34
Membership Organizations/Corps. Comms.	7
Code of Fair Campaign Practices	285
Maine Clean Election Act Candidates:	
Declarations of Intent	148
Certification of Candidates	134
Qualifying Contribution & Seed Money	268
Lobbyist Disclosure	
Registrations	814
Monthly/Annual Disclosure Reports	5,278
Requests for Nonsession Waiver	482
Termination Reports	51
Legislative Ethics	
Sources of Income Statements	538
Total	13,945

SPENDING SUMMARIES - 2000

Spending summaries for the 2000 election year are shown on the following pages. Figures for each year reflect the amounts reported by candidates on their pre- and post- election campaign finance reports. The chart entitled "Cost of Senate Seat" shows that the average, winning Senate candidate spent \$20,129.90 in 2000, a 15% reduction from the 1998 election average. The average figures reflect a retreat from the generally upward trend in the cost of election campaign financing. The median figure reflects a continued drop in comparison to the 1994 high median expenditures by winning Senate candidates.

The campaign finance reports of winning candidates running for State Representative in 2000 reflect a 29% reduction in average spending per candidate from \$6,463.81 in 1998 to \$4,586.52 in 2000, reversing the generally upward trend in expenditures before 1998. The median expenditures declined by 34% from \$5,658.08 to \$3,748.01, reflecting a reversal in the upward trend in median expenditures reported through 1998.

The logical explanation for the reduction in average and median expenditures for candidates for State Senate and House of Representatives is two-fold. First, on January 1, 1999, contribution limitations to privately-funded candidates were significantly reduced from \$5,000 to \$250 per election per candidate from any source other than an individual, and from \$1,000 to \$250 per election per candidate from any individual. The consequence of those reductions was a significant decline in direct contributions given to candidates and a concomitant decrease in expenditures made by them as a result.

Instead, however, prospective contributors used the funds they likely would have given directly to candidates before the reduction in contribution limitations to make so-called "independent expenditures" in support of the candidates to whom they may have given those funds. If the "independent expenditure" expressly advocated the election or defeat of a clearly identified candidate, the contributor was required to submit a report of the expenditure to the Commission along with an affidavit that it had not been made in cooperation, consultation or concert with, or at the request or suggestion of, any candidate or any authorized committee or agent of a candidate. By avoiding the use of so-called "magic word" (e.g., "vote for," "vote against," "elect," etc.) in the political communication, the maker of the expenditure could avoid the reporting requirement because the expenditure would not qualify as an "express advocacy" communication.

The total expenditures of all political action committees (PACs) (both candidate and ballot question PACs) increased significantly in 2000 (\$12,226,627.84) compared to 1998 (\$8,275,242.70), a 48% increase in total spending. The total expenditures of candidate PACs increased by 33% from \$1,512,036.12 in 1998 to \$2,006,175.92 in 2000, representing a significant continuation in the financial influence of candidate PACs that is particularly important in light of the reductions in

Biennial Report 1999 - 2000

contribution limitations to candidates, the advent of the Maine Clean Election system of publicly funding qualified candidates, and the proliferation of independent expenditures made in support of all candidates, both privately and publicly funded.

COMMISSION ON GOVERNMENTAL ETHICS AND ELECTION PRACTICES

SPENDING STATISTICS
SENATE CANDIDATES

1990 - 2000

Election Year	Number of Candidates	Total Expenditures
1990	76	\$988,783.00
1992	92	\$1,559,824.00
1994	86	\$1,571,123.00
1996	83	\$1,333,164.00
1998	75	\$1,383,375.90
2000	83	\$1,331,620.70

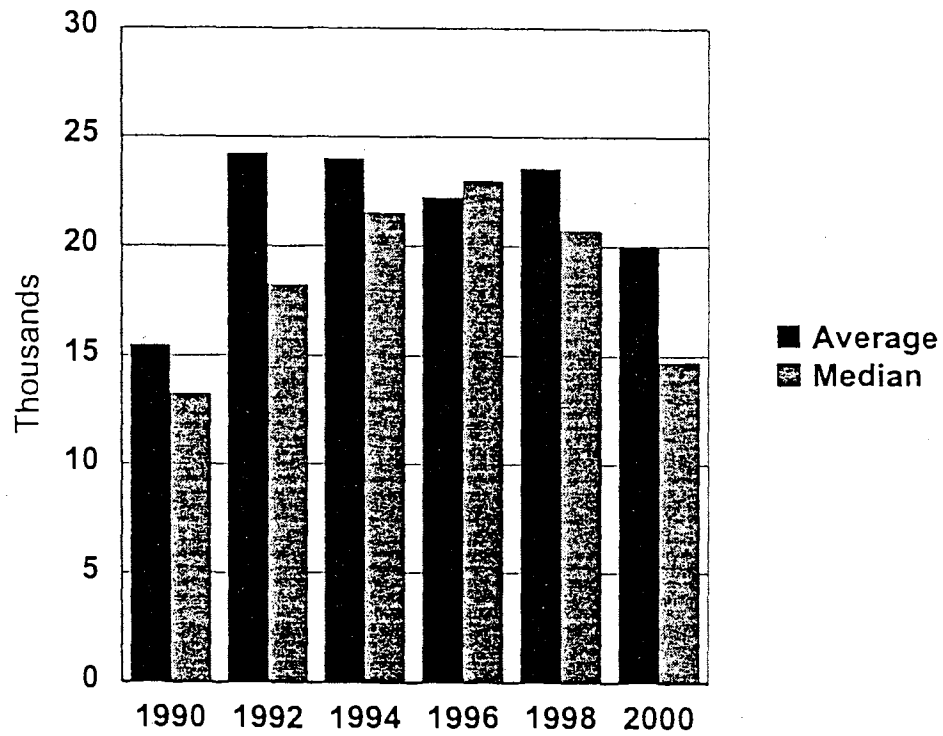
A small percentage of the expenditure totals shown above represent the transfer of funds between candidates. Since the totals include both the receipt and expenditure of these funds, the figures are slightly inflated. The inflation rate due to transfers is estimated to be approximately 2 percent each election year.

Maine State Legislature

Winning Candidates - Senate

<u>YEAR</u>	<u>AVERAGE</u>	<u>MEDIAN</u>
1990	\$15,515.67	\$13,246.05
1992	\$24,246.81	\$18,253.23
1994	\$24,014.78	\$21,515.71
1996	\$22,252.00	\$23,001.00
1998	\$23,581.57	\$20,731.06
2000	\$20,056.94	\$14,733.18

COST OF SENATE SEAT



COMMISSION ON GOVERNMENTAL ETHICS AND ELECTION
PRACTICES

2000 ELECTION

AVERAGE COST FOR SENATE SEAT - \$16,043.62

MEDIAN COST FOR SENATE SEAT - \$14,675.89

TEN MOST EXPENSIVE SENATE CAMPAIGNS

	District	Candidate	Expenditures
1	9	W. Tom Sawyer	\$153,064.79
2	29	Adam Mack *	\$61,541.42
3	12	Judith A. Powers *	\$54,968.32
4	12	Christine R. Savage	\$33,210.38
5	27	I. Joel Abromson	\$33,090.63
6	9	Jane W. Saxl *	\$31,758.75
7	6	Edward M. Youngblood	\$29,736.38
8	26	Karl W. Turner	\$27,146.81
9	26	Carol A. Kontos *	\$27,104.62
10	29	William B. O'Gara	\$27,089.39

* Unsuccessful candidates

**2000 ELECTION
EXPENDITURES OF WINNING SENATE CANDIDATES**

	DISTRICT	NAME	EXPENDITURES
1	9	W. Tom Sawyer Jr.	\$153,064.79
2	12	Christine R. Savage	\$33,210.38
3	27	I. Joel Abromson	\$33,090.63
4	6	Edward M. Youngblood	\$29,736.38
5	26	Karl W. Turner	\$27,146.81
6	29	William B. O'Gara	\$27,089.39
7	22	Neria R. Douglass	\$24,444.20
8	16	Marjorie L. Kilkelly	\$23,084.58
9	34	Michael J. McAlevey	\$20,044.10
10	10	Betty Lou Mitchell	\$19,670.84
11	35	Kenneth F. Lemont	\$18,907.04
12	11	Susan W. Longley	\$17,918.49
13	30	Lynn Bromley	\$17,359.49
14	21	Margaret R. Rotundo	\$17,094.53
15	23	Betheda Edmonds	\$16,441.53
16	8	Paul T. Davis	\$16,371.97
17	2	Richard Kneeland	\$15,809.86
18	14	Kenneth T. Gagnon	\$14,733.18
19	24	Norman K. Ferguson, Jr.	\$14,694.93
20	18	Sharon Treat	\$14,691.07
21	13	S. Peter Mills	\$14,652.58
22	31	Peggy A. Pendleton	\$14,578.45
23	20	John M. Nutting	\$13,460.69
24	15	Beverly C. Daggett	\$12,676.32
25	4	Kevin L. Shorey	\$11,946.48
26	7	Mary R. Cathcart	\$11,730.37
27	1	John L. Martin	\$11,689.96
28	17	Chandler E. Woodcock	\$11,535.71
29	19	Mary E. Small	\$11,269.49
30	33	David L. Carpenter	\$11,002.50
31	28	Anne M. Rand	\$10,523.77
32	3	Michael H. Michaud	\$5,233.96
33	32	Lloyd P. LaFountain III	\$3,312.89
34	5	Jill M. Goldthwait	\$2,084.30
35	25	Richard A. Bennett	\$1,791.22
TOTAL EXPENDITURES			\$701,992.88

Average cost - \$20,056.94
Median cost - \$14,733.18

Cumulative Balance Report to Date
Date Printed 06/01/01
CANDIDATES FOR STATE SENATE

DISTRICT	NAME	TOTAL CONTRIBUTIONS	TOTAL EXPENDITURES	OUTSTANDING LOAN	CASH BALANCE
1	Joel J. Hebert	\$434.40	\$435.34	\$0.00	(\$0.94)
1	John L. Martin	\$10,425.00	\$11,689.96	\$1,400.00	\$135.04
1	Duane J. Belanger	\$700.00	\$284.41	\$0.00	\$415.59
2	Richard Kneeland	\$15,822.00	\$15,809.86	\$0.00	\$12.14
2	Eugene J. McLaughlin, Jr.	\$16,321.00	\$16,982.58	\$0.00	(\$661.58)
3	Michael H. Michaud	\$9,657.84	\$5,233.96	\$0.00	\$4,423.88
3	Roger W. Ek	\$14,631.81	\$14,631.81	\$0.00	\$0.00
4	Kevin L. Shorey	\$13,606.66	\$11,846.48	\$0.00	\$1,760.18
4	Arthur P. Dolan	\$2,083.40	\$2,083.40	\$0.00	\$0.00
4	George A. Finch	\$12,910.00	\$10,852.37	\$0.00	\$2,057.63
5	Sumner A. Lymburner	\$2,355.00	\$3,565.62	\$1,814.71	\$604.09
5	Jill M. Goldthwait	\$10,041.77	\$2,084.30	\$0.00	\$7,957.47
5	Richard D. Hart	\$1,226.00	\$747.00	\$0.00	\$479.00
6	Richard P. Ruhlin	\$23,181.18	\$23,141.26	\$0.00	\$39.92
6	Edward M. Youngblood	\$30,110.00	\$29,736.38	\$0.00	\$373.62
7	Mary R. Cathcart	\$18,892.91	\$11,730.37	\$0.00	\$7,162.54
7	Steven C.D. Veit	\$0.00	\$0.00	\$0.00	\$0.00
7	David C. Ireland	\$17,658.00	\$17,243.77	\$0.00	\$414.23
8	Paul T. Davis	\$16,999.00	\$16,371.97	\$0.00	\$627.03
8	Linda Clark Howard	\$15,045.00	\$14,675.89	\$0.00	\$369.11
9	Jane W. Saxl	\$27,234.00	\$30,858.75	\$4,100.00	\$475.25
9	W. Tom Sawyer Jr.	\$11,430.95	\$153,064.79	\$143,946.35	\$2,312.51
10	Betty Lou Mitchell	\$22,657.21	\$19,670.84	\$0.00	\$2,986.37
10	Jean Hay	\$16,263.35	\$16,259.22	\$0.00	\$4.13
11	Susan W. Longley	\$17,419.92	\$17,918.49	\$0.00	(\$498.57)
11	John A. Ford Sr.	\$19,908.54	\$16,167.62	\$0.00	\$3,740.92
12	Judith A. Powers	\$54,879.04	\$54,720.02	\$555.70	\$714.72
12	Christine R. Savage	\$33,210.38	\$33,210.38	\$0.00	\$0.00
13	Pamela H. Hatch	\$8,986.00	\$6,831.29	\$0.00	\$2,154.71
13	S. Peter Mills	\$14,695.00	\$14,652.58	\$0.00	\$42.42
14	Kenneth T. Gagnon	\$14,988.17	\$14,733.18	\$0.00	\$254.99
14	Charles R. Gaunce	\$25,496.00	\$26,615.87	\$0.00	(\$1,119.87)
15	JoAnn Clark Austin	\$14,762.27	\$14,762.27	\$0.00	\$0.00
15	Beverly C. Daggett	\$14,694.87	\$12,676.32	\$0.00	\$2,018.55
16	Marjorie L. Kilkelly	\$23,131.60	\$23,084.58	\$0.00	\$47.02

Cumulative Balance Report to Date
Date Printed 06/01/01
CANDIDATES FOR STATE SENATE

DISTRICT	NAME	TOTAL CONTRIBUTIONS	TOTAL EXPENDITURES	OUTSTANDING LOAN	CASH BALANCE
16	Dirk D. Poole	\$16,558.95	\$16,558.95	\$0.00	\$0.00
17	Chandler E. Woodcock	\$14,722.43	\$11,535.71	\$0.00	\$3,186.72
17	Russell B. Christensen	\$14,707.95	\$14,676.73	\$0.00	\$31.22
18	Sharon Treat	\$14,695.00	\$14,691.07	\$0.00	\$3.93
18	John M. Kaiser	\$14,695.00	\$14,631.17	\$0.00	\$63.83
19	Mathew J. Scease	\$14,699.45	\$755.25	\$0.00	\$13,944.20
19	Mary E. Small	\$14,695.00	\$11,269.49	\$0.00	\$3,425.51
19	Roger A. Baffer	\$0.00	\$0.00	\$0.00	\$0.00
19	Carol A. Grose	\$12,910.00	\$12,882.07	\$0.00	\$27.93
20	Robert L. Coates Jr.	\$1,879.09	\$1,852.18	\$0.00	\$26.91
20	John M. Nutting	\$14,695.00	\$13,460.69	\$0.00	\$1,234.31
21	Margaret R. Rotundo	\$17,475.00	\$17,094.53	\$0.00	\$380.47
21	Larry Poulin	\$2,150.00	\$2,443.31	\$293.36	\$0.05
21	Paul B. Madore	\$5,289.00	\$5,289.00	\$0.00	\$0.00
22	Neria R. Douglass	\$22,862.36	\$24,444.20	\$1,600.00	\$18.16
22	Donald J. Bernard	\$7,847.00	\$6,715.98	\$0.00	\$1,131.02
22	Michael A. Vaughan	\$4,579.58	\$5,970.14	\$250.00	(\$1,140.56)
23	Betheda Edmonds	\$16,624.80	\$16,441.53	\$0.00	\$183.27
23	David P. Snow	\$24,234.00	\$22,969.42	\$0.00	\$1,264.58
23	Robert V. Toothaker III	\$1,125.02	\$558.83	\$0.00	\$566.19
24	Norman K. Ferguson, Jr.	\$14,694.85	\$14,694.93	\$0.00	(\$0.08)
24	Joseph Derouche	\$14,695.00	\$14,687.73	\$0.00	\$7.27
25	Richard A. Bennett	\$1,791.42	\$1,791.22	\$0.00	\$0.20
26	Carol A. Kontos	\$28,801.21	\$27,104.62	\$6,500.00	\$6,696.59
26	Barry A. Watson	\$4,334.00	\$4,319.55	\$0.00	\$14.45
26	Karl W. Turner	\$27,154.20	\$27,146.81	\$0.00	\$7.39
26	James B. Moulton	\$3,000.00	\$2,999.40	\$0.00	\$0.60
27	I. Joel Abromson	\$35,040.15	\$33,090.63	\$0.00	\$1,949.52
27	Loren J. Bailey	\$27,948.00	\$23,488.65	\$0.00	\$4,459.35
28	Anne M. Rand	\$14,695.00	\$10,523.77	\$0.00	\$4,171.23
28	Michael J. Leavitt	\$0.00	\$0.00	\$0.00	\$0.00
28	Frank G. Akers, Jr.	\$3,560.00	\$3,635.39	\$0.00	(\$75.39)
29	Adam Mack	\$24,996.46	\$61,541.42	\$37,000.00	(\$3,544.96)
29	William B. O'Gara	\$30,015.44	\$27,089.39	\$0.00	\$2,926.05
30	Lynn Bromley	\$17,396.00	\$17,359.49	\$0.00	\$36.51

Cumulative Balance Report to Date
Date Printed 06/01/01
CANDIDATES FOR STATE SENATE

DISTRICT	NAME	TOTAL CONTRIBUTIONS	TOTAL EXPENDITURES	OUTSTANDING LOAN	CASH BALANCE
30	Ruth McCleery Watson	\$24,824.00	\$24,470.17	\$0.00	\$353.83
31	Peggy A. Pendleton	\$14,695.00	\$14,578.45	\$0.00	\$116.55
31	Mark H. Sangster	\$14,695.00	\$14,695.00	\$0.00	\$0.00
32	Lloyd P. LaFountain III	\$11,871.91	\$3,312.89	\$0.00	\$8,559.02
32	Thomas M. Macisso Jr.	\$0.00	\$0.00	\$0.00	\$0.00
32	Jeffery E. McCulloh	\$12,913.85	\$12,308.38	\$0.00	\$605.47
33	Janet Ellen Tockman	\$18,885.89	\$18,968.54	\$0.00	(\$82.65)
33	David L. Carpenter	\$13,325.00	\$11,002.50	\$0.00	\$2,322.50
34	Michael J. McAlevey	\$22,300.68	\$20,044.10	\$100.00	\$2,356.58
34	James J. Campbell, Sr.	\$4,332.54	\$4,161.53	\$0.00	\$171.01
34	Donald H. Gean	\$14,945.00	\$14,690.15	\$0.00	\$254.85
35	Kenneth F. Lemont	\$26,185.93	\$18,907.04	\$0.00	\$7,278.89
35	Catherine A. Woodard	\$16,631.00	\$15,860.53	\$0.00	\$770.47

COMMISSION ON GOVERNMENTAL ETHICS AND ELECTION PRACTICES

**SPENDING STATISTICS
HOUSE CANDIDATES**

1990 - 2000

Election Year	Number of Candidates	Total Expenditures
1990	325	\$946,986.00
1992	367	\$1,139,844.00
1994	360	\$1,105,064.00
1996	379	\$1,487,346.00
1998	323	\$1,526,085.43
2000	313	\$1,192,702.43

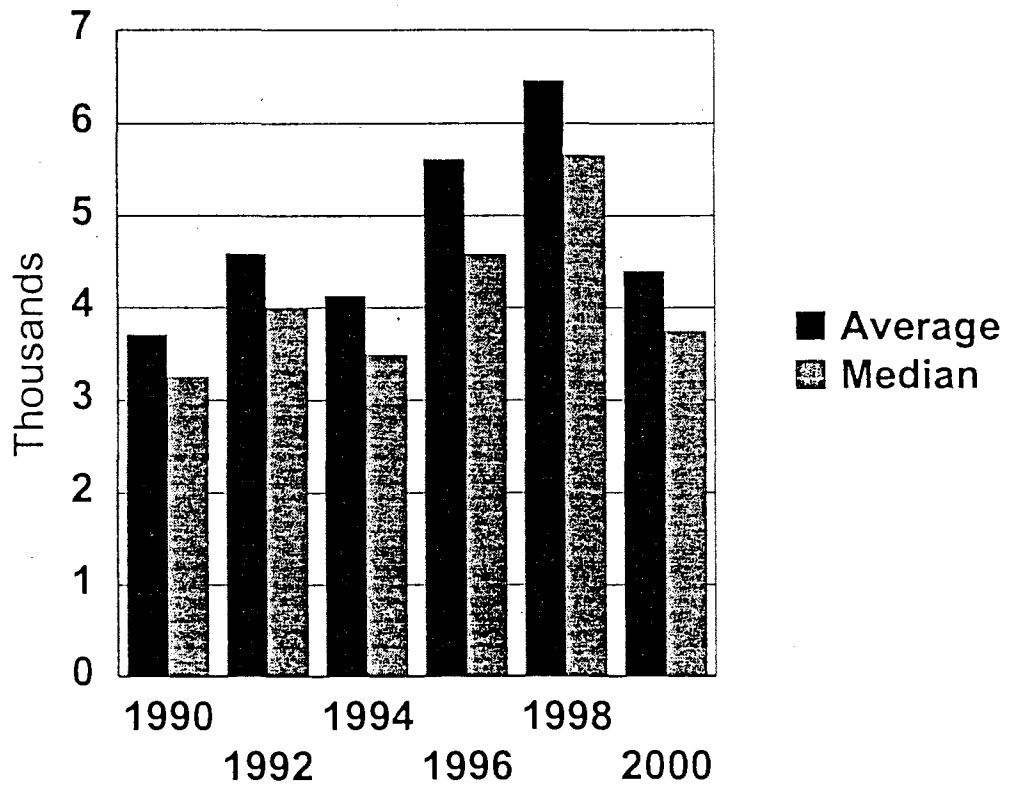
A small percentage of the expenditure totals shown above represent the transfer of funds between candidates. Since the totals include both the receipt and expenditure of these funds, the figures are slightly inflated. The inflation rate due to transfers is estimated to be approximately 2 percent each election year.

Maine State Legislature

Winning Candidates - House

<u>YEAR</u>	<u>AVERAGE</u>	<u>MEDIAN</u>
1990	\$3,710.98	\$3,250.33
1992	\$4,588.85	\$3,993.66
1994	\$4,134.67	\$3,487.83
1996	\$5,617.00	\$4,578.00
1998	\$6,463.81	\$5,658.08
2000	\$4,401.94	\$3,745.22

COST OF HOUSE SEAT



COMMISSION ON GOVERNMENTAL ETHICS AND ELECTION
PRACTICES

2000 ELECTION

AVERAGE COST FOR HOUSE SEAT - \$3,810.55
MEDIAN COST FOR HOUSE SEAT - \$3,296.00

FIFTEEN MOST EXPENSIVE HOUSE CAMPAIGNS

	District	Candidate	Expenditures
1	59	Elizabeth P. Wooster*	\$16,794.37
2	27	Kevin J. Glynn	\$15,880.53
3	61	Audrey V. Buffington*	\$15,376.29
4	38	Joseph Bruno	\$14,816.90
5	88	Stavros Mendros	\$14,289.24
6	91	Patrick E. Colwell	\$13,148.60
7	130	Theodore Koffman	\$12,209.25
8	62	Deborah K. McNeil	\$11,718.27
9	40	Gerald M. Davis	\$11,578.58
10	122	Daniel Williams*	\$10,689.56
11	8	Thomas W. Murphy	\$10,553.19
12	47	Philip A. Cressey Jr.	\$10,025.86
13	114	Brian Duprey	\$10,001.16
14	42	Daniel N. Crewe*	\$9,952.90
15	56	John C. Harris*	\$9,863.97

*unsuccessful candidates

2000 ELECTION
EXPENDITURES OF WINNING HOUSE CANDIDATES

DISTRICT	NAME	EXPENDITURES	
1	27	Kevin J. Glynn	\$15,880.53
2	38	Joseph Bruno	\$14,816.90
3	88	Stavros Mendros	\$14,289.24
4	91	Patrick E. Colwell	\$13,148.60
5	130	Theodore Koffman	\$12,209.25
6	62	Deborah K. McNeil	\$11,718.27
7	40	Gerald M. Davis	\$11,578.58
8	8	Thomas W. Murphy Jr.	\$10,553.19
9	47	Philip A. Cressey, Jr	\$10,025.86
10	114	Brian Duprey	\$10,001.16
11	116	Mary Ellen Ledwin	\$9,313.87
12	112	James D. Annis	\$9,300.86
13	7	Ronald F. Collins	\$9,222.09
14	56	Christopher G. Hall	\$8,918.25
15	131	Edward R. Dugay	\$8,913.49
16	138	Roderick W. Carr	\$8,887.43
17	113	Richard W. Rosen	\$8,117.49
18	9	David E. Bowles	\$8,087.20
19	144	Jacqueline A. Lundeen	\$7,884.27
20	54	Arthur F. Mayo III	\$7,816.45
21	21	Glenys P. Lovett	\$7,720.47
22	41	Clifton E. Foster	\$7,619.38
23	104	Bernard E. McGowan	\$7,565.20
24	50	Stanley J. Gerzofsky	\$7,481.98
25	35	Joseph C. Brannigan	\$7,314.74
26	101	Paul L. Tessier	\$7,167.48
27	17	Nancy B. Sullivan	\$7,045.95
28	85	William J. Schneider	\$6,992.61
29	42	Terrence P. McKenney	\$6,885.95
30	13	Robert A. Daigle	\$6,870.74
31	127	Edward J. Povich	\$6,685.58
32	11	Richard A. Nass	\$6,366.03
33	118	Joseph Perry	\$6,200.87
34	61	James G. Skoglund	\$6,148.97
35	96	Julie O'Brien	\$6,126.79
36	109	Donald P. Berry Sr.	\$6,113.95
37	15	Christopher P. O'Neil	\$5,985.18
38	2	Mary Black Andrews	\$5,921.87

2000 ELECTION
EXPENDITURES OF WINNING HOUSE CANDIDATES

DISTRICT	NAME	EXPENDITURES	
39	107	Joseph E. Brooks	\$5,838.16
40	117	Christina L. Baker	\$5,792.10
41	124	Russell P. Treadwell	\$5,309.13
42	59	A. David Trahan	\$5,302.21
43	120	Jacqueline R. Norton	\$5,278.48
44	12	Frank J. Tarazewich	\$5,163.78
45	106	Randall L. Bumps	\$5,088.83
46	66	Monica McGlocklin	\$4,978.56
47	140	Joseph E. Clark	\$4,881.11
48	121	Matthew Dunlap	\$4,875.83
49	77	Charles C. LaVerdiere	\$4,774.70
50	72	Thomas F. Shields	\$4,572.44
51	52	Paul J. Lessard	\$4,486.00
52	26	Christopher T. Muse	\$4,451.46
53	110	Carol Weston	\$4,398.34
54	36	Boyd Marley	\$4,387.73
55	95	David R. Madore	\$4,382.66
56	67	Bruce Bryant	\$4,367.24
57	108	Vaughn A. Stedman	\$4,292.37
58	90	Gerald N. Bouffard	\$4,285.36
59	79	Linda R. McKee	\$4,278.15
60	148	Florence T. Young	\$4,263.00
61	73	Deborah Simpson	\$4,139.62
62	16	Thomas J. Kane	\$4,052.10
63	151	Marc Michaud	\$4,026.66
64	103	Robert W. Nutting	\$3,949.91
65	20	David G. Lemoine	\$3,864.48
66	86	Richard H. Mailhot	\$3,784.28
67	82	Elizabeth Watson	\$3,775.66
68	22	Harold A. Clough	\$3,774.69
69	111	Sharon Libby Jones	\$3,763.49
70	70	John L. Patrick	\$3,763.03
71	31	Michael V. Saxl	\$3,763.00
72	55	Judith B. Peavey	\$3,763.00
73	29	Robert Duplessie	\$3,763.00
74	1	Stephen C. Estes	\$3,750.93
75	83	Bonnie Green	\$3,748.01
76	76	Raymond G. Pineau	\$3,745.22

2000 ELECTION
EXPENDITURES OF WINNING HOUSE CANDIDATES

DISTRICT	NAME	EXPENDITURES	
77	14	William R. Savage	\$3,739.12
78	25	Janet L. McLaughlin	\$3,723.18
79	136	George H. Bunker Jr.	\$3,716.30
80	132	William D. Pinkham	\$3,716.13
81	58	Kenneth A. Honey	\$3,608.24
82	49	John G. Richardson	\$3,593.76
83	28	Ronald E. Usher	\$3,571.21
84	32	John F. McDonough	\$3,561.63
85	57	Peter L. Rines	\$3,442.52
86	43	Susan M. Hawes	\$3,353.63
87	68	Tom J. Winsor	\$3,350.50
88	115	Charles D. Fisher	\$3,287.00
89	99	Marilyn E. Canavan	\$3,274.06
90	37	Glenn Cummings	\$3,266.23
91	10	John L. Tuttle Jr.	\$3,257.88
92	53	Deborah J. Hutton	\$3,252.00
93	24	Lawrence Bliss	\$3,238.56
94	89	Lillian LaFontaine O'Brien	\$3,214.76
95	139	Stephen S. Stanley	\$3,088.83
96	69	Rosita Gagne	\$3,083.42
97	129	Paul Volenik	\$3,061.73
98	4	Jay MacDougall	\$3,051.63
99	74	John M. Michael	\$3,032.00
100	63	Susan Dorr	\$3,026.13
101	125	Susan L. Kasprzak	\$2,937.73
102	48	Thomas D. Bull	\$2,817.80
103	141	Sally Landry	\$2,815.65
104	128	Royce W. Perkins	\$2,754.41
105	143	Edgar Wheeler	\$2,754.24
106	98	Paul R. Hatch	\$2,723.98
107	5	Eleanor M. Murphy	\$2,666.12
108	119	Patricia A. Blanchette	\$2,628.47
109	147	Irvin Belanger	\$2,626.51
110	78	Walter R. Gooley	\$2,469.72
111	75	Patricia Jacobs	\$2,463.37
112	23	Janice E. Labrecque	\$2,375.00
113	46	G. Paul Waterhouse	\$2,322.18
114	135	John R. Morrison	\$2,296.53

2000 ELECTION
EXPENDITURES OF WINNING HOUSE CANDIDATES

DISTRICT		NAME	EXPENDITURES
115	150	Rosaire Paradis Jr.	\$2,225.00
116	6	Howard A. Chick	\$2,219.01
117	126	James Howard Tobin Jr.	\$2,219.00
118	123	Jonathan Richard Thomas	\$2,200.72
119	71	Lois A. Snowe-Mello	\$2,181.42
120	34	William S. Norbert	\$2,180.17
121	80	Elaine E. Fuller	\$2,131.88
122	137	Anita Peavey Haskell	\$2,004.76
123	60	Richard A. Crabtree	\$1,831.00
124	39	David L. Tobin	\$1,804.40
125	18	Marie Laverriere-Boucher	\$1,785.25
126	87	William R. Cote	\$1,775.00
127	142	Roger L. Sherman	\$1,757.85
128	45	Kevin M. Muse	\$1,655.22
129	102	Zachary E. Matthews	\$1,650.00
130	93	Randall L. Berry	\$1,608.64
131	51	David Etnier	\$1,447.87
132	145	Richard H. Duncan	\$1,403.55
133	133	Martha Bagley	\$1,331.15
134	97	Shirley K. Richard	\$1,248.70
135	33	Michael W. Quint	\$1,200.16
136	100	Lisa Tessier Marrache' MD	\$1,122.50
137	84	Nancy L. Chizmar	\$1,113.80
138	65	Arlan R. Jodrey	\$1,113.19
139	64	Theodore H. Heidrich	\$1,074.15
140	149	William J. Smith	\$1,074.03
141	3	Gary J. Wheeler	\$885.93
142	44	John T. Buck	\$699.00
143	146	Mabel J. Desmond	\$520.72
144	92	Scott W. Cowger	\$513.68
145	30	Benjamin F. Dudley	\$511.00
146	94	Charles Mitchell	\$416.07
147	105	Walter E. Ash Jr.	\$363.05
148	19	Joanne T. Twomey	\$351.20
149	134	Albion D. Goodwin	\$139.94
150	81	Richard H.C. Tracy	\$0.00
151	122	Peter D. Chase	\$0.00
TOTAL EXPENDITURES			\$664,692.61

Cumulative Balance Report to Date
Date Printed 06/01/01
CANDIDATES FOR STATE REPRESENTATIVE

DISTRICT	NAME	TOTAL CONTRIBUTIONS	TOTAL EXPENDITURES	OUTSTANDING LOAN	CASH BALANCE
1	Mark J. Sousa	\$3,120.00	\$3,120.00	\$0.00	\$0.00
1	Stephen C. Estes	\$3,763.00	\$3,750.93	\$0.00	\$12.07
2	Mary Black Andrews	\$7,183.40	\$5,921.87	\$0.00	\$1,261.53
2	Michael L. Zimmer	\$3,763.00	\$0.00	\$0.00	\$3,763.00
2	Charles T. Lawton	\$7,975.00	\$7,707.43	\$0.00	\$267.57
3	Gary J. Wheeler	\$1,630.98	\$885.93	\$0.00	\$745.05
4	Jay MacDougall	\$4,002.55	\$3,051.63	\$0.00	\$950.92
4	Barry Abbott	\$2,345.00	\$1,818.01	\$0.00	\$526.99
5	Eleanor M. Murphy	\$4,654.72	\$2,666.12	\$0.00	\$1,988.60
5	Thomas J. Wright	\$2,147.85	\$2,000.00	\$0.00	\$147.85
6	Howard A. Chick	\$2,540.00	\$2,219.01	\$0.00	\$320.99
6	Linda J. Strohecker	\$1,611.00	\$1,442.35	\$0.00	\$168.65
7	Ronald F. Collins	\$9,254.58	\$9,222.09	\$337.47	\$32.49
7	Harold Joseph Tomah	\$9,023.00	\$3,763.33	\$0.00	\$5,259.67
8	Thomas W. Murphy Jr.	\$12,654.44	\$10,553.19	\$0.00	\$2,101.25
8	Lynda Wilson-Dinino	\$500.00	\$499.50	\$0.00	\$0.50
9	David E. Bowles	\$9,475.00	\$8,087.20	\$0.00	\$1,387.80
9	Abel R. Saucier	\$4,904.16	\$4,354.46	(\$549.70)	\$0.00
10	John L. Tuttle Jr.	\$4,944.90	\$3,257.88	\$0.00	\$1,687.02
10	Michael A. Lewis	\$1,000.00	\$916.01	\$0.00	\$83.99
11	Richard A. Nass	\$7,481.05	\$6,366.03	\$0.00	\$1,115.02
11	David McKechnie	\$5,371.66	\$5,366.45	\$0.00	\$5.21
12	Brenda D. Charland	\$140.00	\$996.41	\$1,000.00	\$143.59
12	Willis A. Lord	\$5,799.90	\$5,482.02	\$0.00	\$317.88
12	Dennis R. Doughty	\$125.50	\$125.50	\$0.00	\$0.00
12	Frank J. Tarazewich	\$5,114.32	\$5,163.78	\$0.00	(\$49.46)
13	Robert A. Daigle	\$7,207.12	\$6,870.74	\$0.00	\$336.38
13	Adair Kathleen O'Reilly	\$0.00	\$0.00	\$0.00	\$0.00
13	Randa L. Thomas	\$3,788.00	\$2,768.47	\$0.00	\$1,019.53
14	Robert W. Brandenstein	\$4,439.93	\$4,439.93	\$0.00	\$0.00
14	William R. Savage	\$3,763.00	\$3,739.12	\$0.00	\$23.88
15	Christopher P. O'Neil	\$6,735.00	\$5,985.18	\$0.00	\$749.82
16	Thomas J. Kane	\$6,043.71	\$4,052.10	\$0.00	\$1,991.61
16	Peter T. Sipes	\$175.00	\$155.54	\$0.00	\$19.46
17	Nancy B. Sullivan	\$10,646.41	\$7,045.95	\$0.00	\$3,600.46

Cumulative Balance Report to Date
Date Printed 06/01/01
CANDIDATES FOR STATE REPRESENTATIVE

DISTRICT	NAME	TOTAL CONTRIBUTIONS	TOTAL EXPENDITURES	OUTSTANDING LOAN	CASH BALANCE
17	H. Stedman Seavey	\$5,322.37	\$5,297.37	\$0.00	\$25.00
18	Marie Laverriere-Boucher	\$1,825.00	\$1,785.25	\$0.00	\$39.75
18	W. Sturgis Whalen	\$55.00	\$55.00	\$0.00	\$0.00
19	Joanne T. Twomey	\$511.00	\$351.20	\$0.00	\$159.80
20	David G. Lemoine	\$8,028.34	\$3,864.48	\$0.00	\$4,163.86
21	Glenys P. Lovett	\$7,749.45	\$7,720.47	\$0.00	\$28.98
21	John E. Leighton Jr.	\$1,270.00	\$877.67	\$0.00	\$392.33
22	Harold A. Clough	\$5,936.06	\$3,774.69	\$49.00	\$710.37
22	Robert E. Pendleton Jr.	\$4,725.00	\$2,988.72	\$0.00	\$1,736.28
23	Janice E. Labrecque	\$2,375.00	\$2,375.00	\$0.00	\$0.00
24	Nancy L. Larsen	\$3,763.00	\$2,553.96	\$0.00	\$1,209.04
24	Lawrence Bliss	\$3,252.00	\$3,238.56	\$0.00	\$13.44
25	Janet L. McLaughlin	\$4,430.92	\$3,723.18	\$0.00	\$707.74
25	John W. McGinty	\$2,115.92	\$3,632.17	\$1,500.00	(\$16.25)
26	Rita L. Caron	\$3,382.23	\$3,382.23	\$0.00	\$0.00
26	Christopher T. Muse	\$5,150.00	\$4,451.46	\$0.00	\$698.54
26	Herbert H. Haase	\$0.00	\$0.00	\$0.00	\$0.00
27	Kevin J. Glynn	\$10,131.23	\$15,880.53	\$8,564.58	\$2,815.28
27	Alton E. Morgan	\$4,672.93	\$4,672.93	\$0.00	\$0.00
28	Ronald E. Usher	\$4,946.16	\$3,571.21	\$0.00	\$1,374.95
28	Richard W. Eaton	\$60.00	\$57.20	\$0.00	\$2.80
29	Robert Duplessie	\$3,763.00	\$3,763.00	\$0.00	\$0.00
29	Lyle B. Cramer	\$5,434.00	\$3,181.67	\$0.00	\$2,252.33
30	Benjamin F. Dudley	\$511.00	\$511.00	\$0.00	\$0.00
31	Derrick Grant	\$3,763.00	\$3,534.27	\$200.00	\$428.73
31	Michael V. Saxl	\$3,763.00	\$3,763.00	\$0.00	\$0.00
32	John F. McDonough	\$3,763.00	\$3,561.63	\$168.31	\$369.68
32	Steven Punsy	\$700.00	\$677.84	\$0.00	\$22.16
33	Michael W. Quint	\$1,224.85	\$1,200.16	\$1,500.00	\$24.69
34	William S. Norbert	\$3,763.00	\$2,180.17	\$0.00	\$1,582.83
35	Joseph C. Brannigan	\$8,150.00	\$7,314.74	\$0.00	\$835.26
35	Moses A. Sebunya	\$0.00	\$0.00	\$0.00	\$0.00
36	James A. Banks, Sr	\$1,141.00	\$1,113.29	\$0.00	\$27.71
36	Boyd Marley	\$4,393.00	\$4,387.73	\$0.00	\$5.27
36	Mark Cenci	\$1,721.93	\$1,676.93	\$0.00	\$45.00

Cumulative Balance Report to Date
Date Printed 06/01/01
CANDIDATES FOR STATE REPRESENTATIVE

DISTRICT	NAME	TOTAL CONTRIBUTIONS	TOTAL EXPENDITURES	OUTSTANDING LOAN	CASH BALANCE
37	Glenn Cummings	\$3,763.00	\$3,266.23	\$0.00	\$496.77
37	David C. Palmer	\$3,763.00	\$1,022.24	\$0.00	\$2,740.76
37	David A. Brewer	\$1,035.00	\$1,035.00	\$0.00	\$0.00
38	Joseph Bruno	\$14,839.19	\$14,816.90	\$0.00	\$22.29
39	David L. Tobin	\$1,810.72	\$1,804.40	\$0.00	\$6.32
40	Gerald M. Davis	\$12,292.44	\$11,578.58	\$0.00	\$713.86
40	David C. Clark	\$7,456.00	\$4,898.84	\$0.00	\$2,557.16
41	Clifton E. Foster	\$8,420.27	\$7,619.38	\$0.00	\$800.89
41	Mark A. Sanborn	\$2,191.97	\$1,459.47	\$0.00	\$732.50
42	Terrence P. McKenney	\$8,285.00	\$6,885.95	\$500.00	\$1,899.05
42	Nathan W. Hagelin	\$270.00	\$266.51	\$0.00	\$3.49
42	Daniel N. Crewe	\$9,950.00	\$9,952.90	\$0.00	(\$2.90)
43	Susan M. Hawes	\$3,763.00	\$3,353.63	\$0.00	\$409.37
43	Ernest C. Greenlaw	\$3,345.00	\$3,677.10	\$331.94	(\$0.16)
44	John T. Buck	\$5,521.41	\$699.00	\$0.00	\$4,822.41
45	Chester H. Chapman	\$1,850.00	\$827.85	\$0.00	\$1,022.15
45	Kevin M. Muse	\$1,300.00	\$1,655.22	\$1,000.00	\$644.78
46	G. Paul Waterhouse	\$2,322.18	\$2,322.18	\$0.00	\$0.00
46	Carol J. Farnsworth	\$0.00	\$0.00	\$0.00	\$0.00
47	Philip A. Cressey, Jr	\$6,701.89	\$10,025.86	\$2,625.81	(\$698.16)
47	Gregory B. Brown	\$4,955.00	\$3,953.28	\$0.00	\$1,001.72
48	Thomas D. Bull	\$5,611.00	\$2,817.80	\$0.00	\$2,793.20
48	Millard W. Pray	\$5,100.00	\$4,541.93	\$0.00	\$558.07
49	William J. Donovan	\$6,047.09	\$4,019.16	\$0.00	\$2,027.93
49	John G. Richardson	\$3,763.00	\$3,593.76	\$0.00	\$169.24
50	Ervin D. Snyder	\$1,141.00	\$1,119.93	\$0.00	\$21.07
50	Stanley J. Gerzofsky	\$7,568.00	\$7,481.98	\$0.00	\$86.02
50	Austin S. Treworgy	\$6,517.80	\$5,960.55	\$0.00	\$557.25
51	David Etnier	\$2,574.52	\$1,447.87	\$0.00	\$1,126.65
52	Jane Scease	\$4,486.00	\$4,453.38	\$0.00	\$32.62
52	Paul J. Lessard	\$4,486.00	\$4,486.00	\$0.00	\$0.00
52	Charles Ayer	\$3,975.00	\$3,153.71	\$0.00	\$821.29
53	David C. Shiah	\$1,000.00	\$1,000.00	\$0.00	\$0.00
53	Patricia L. Dutille	\$3,763.00	\$3,754.13	\$0.00	\$8.87
53	Deborah J. Hutton	\$3,252.00	\$3,252.00	\$0.00	\$0.00

Cumulative Balance Report to Date
Date Printed 06/01/01
CANDIDATES FOR STATE REPRESENTATIVE

DISTRICT	NAME	TOTAL CONTRIBUTIONS	TOTAL EXPENDITURES	OUTSTANDING LOAN	CASH BALANCE
54	Arthur F. Mayo III	\$7,838.17	\$7,816.45	\$0.00	\$21.72
54	Kelly Ann Staples	\$3,763.00	\$3,418.53	\$0.00	\$344.47
55	Judith B. Peavey	\$3,763.00	\$3,763.00	\$0.00	\$0.00
55	David W. Hall	\$3,763.00	\$3,580.26	\$0.00	\$182.74
56	Wendy Pieh	\$0.00	\$0.00	\$0.00	\$0.00
56	John C. Harris	\$9,864.17	\$9,863.97	\$0.00	\$0.20
56	Christopher G. Hall	\$8,918.25	\$8,918.25	\$0.00	\$0.00
57	Benjamin M. Barth	\$2,514.59	\$2,514.59	\$0.00	\$0.00
57	Benjamin Rines, Jr	\$536.82	\$536.82	\$0.00	\$0.00
57	Jennifer L.M. Carleton	\$1,750.00	\$1,566.23	\$720.08	\$903.85
57	Peter L. Rines	\$3,467.00	\$3,442.52	\$0.00	\$24.48
58	Kenneth A. Honey	\$6,747.78	\$3,608.24	\$0.00	\$3,139.54
58	Dawn S. Gilbert	\$2,629.56	\$2,629.56	\$0.00	\$0.00
58	Morrison (Bump) Bonpass	\$780.00	\$1,112.23	\$332.23	\$0.00
59	A. David Trahan	\$6,697.34	\$5,302.21	\$0.00	\$1,395.13
59	Elizabeth P. Wooster	\$16,894.37	\$16,794.37	\$0.00	\$100.00
60	Richard A. Crabtree	\$3,778.50	\$1,831.00	\$0.00	\$1,947.50
60	Shlomit Auciello	\$3,763.00	\$3,000.97	\$0.00	\$762.03
61	James G. Skoglund	\$6,695.70	\$6,148.97	\$0.00	\$546.73
61	Audrey V. Buffington	\$15,376.29	\$15,376.29	\$0.00	\$0.00
62	Deborah K. McNeil	\$13,050.00	\$11,718.27	\$0.00	\$276.51
62	Jean B. Chalmers	\$8,958.33	\$8,694.68	\$0.00	\$263.65
62	Shawn S. Levasseur	\$808.00	\$602.21	\$0.00	\$205.79
63	Susan Dorr	\$5,431.00	\$3,026.13	\$0.00	\$2,404.87
63	Priscilla G. Taylor	\$5,555.00	\$5,555.00	\$0.00	\$0.00
64	Theodore H. Heidrich	\$5,399.24	\$1,074.15	\$0.00	\$4,325.09
64	Annie F. Switser	\$863.25	\$863.25	\$0.00	\$0.00
65	Arlan R. Jodrey	\$1,150.00	\$1,113.19	\$0.00	\$36.81
66	Edward L. Dexter	\$7,647.40	\$7,896.87	\$0.00	(\$249.47)
66	Monica McGlocklin	\$9,208.40	\$4,978.56	\$0.00	\$4,229.84
67	Bruce Bryant	\$4,874.37	\$4,367.24	\$0.00	\$507.13
67	James M. Arsenault	\$1,070.00	\$593.72	\$0.00	\$476.28
68	Tom J. Winsor	\$4,501.73	\$3,350.50	\$0.00	\$1,151.23
68	Brian W. Sessions	\$3,763.00	\$2,982.45	\$0.00	\$780.55
68	Marjorie M. Medd	\$1,141.00	\$1,129.52	\$0.00	\$11.48

Cumulative Balance Report to Date
Date Printed 06/01/01
CANDIDATES FOR STATE REPRESENTATIVE

DISTRICT	NAME	TOTAL CONTRIBUTIONS	TOTAL EXPENDITURES	OUTSTANDING LOAN	CASH BALANCE
68	Ronald S. Snow	\$399.65	\$399.65	\$0.00	\$0.00
69	Rosita Gagne	\$3,763.00	\$3,083.42	\$0.00	\$679.58
69	Barbara E. Robinson	\$450.00	\$336.58	\$0.00	\$113.42
70	Jolene S. Lovejoy	\$3,767.22	\$3,755.78	\$0.00	\$11.44
70	John L. Patrick	\$3,763.00	\$3,763.03	\$0.00	(\$0.03)
71	Lois A. Snowe-Mello	\$5,575.43	\$2,181.42	\$0.00	\$3,394.01
72	Thomas F. Shields	\$4,574.00	\$4,572.44	\$0.00	\$1.56
72	Stanley L. Tetenman	\$4,393.00	\$4,393.00	\$0.00	\$0.00
72	E. Chris L'Hommedieu	\$1,141.00	\$0.00	\$0.00	\$1,141.00
73	Arnold L. Woolf	\$1,141.00	\$1,137.17	\$0.00	\$3.83
73	Deborah Simpson	\$4,393.00	\$4,139.62	\$0.00	\$253.38
73	Bruce J. Gerry	\$3,252.00	\$3,238.91	\$0.00	\$13.09
74	Brian Bolduc	\$2,061.95	\$1,965.00	\$0.00	\$96.95
74	John M. Michael	\$3,252.00	\$3,032.00	\$0.00	\$220.00
75	Patricia Jacobs	\$3,763.00	\$2,463.37	\$0.00	\$1,299.63
75	William P. Clarke Jr.	\$71.40	\$86.40	\$0.00	(\$15.00)
76	Raymond G. Pineau	\$3,724.00	\$3,745.22	\$550.00	\$528.78
76	William L. Reid III	\$2,755.67	\$2,755.67	\$0.00	\$0.00
77	Charles C. LaVerdiere	\$5,231.73	\$4,774.70	\$0.00	\$457.03
77	Clinton Larry Stinchcomb	\$5,000.00	\$4,958.07	\$0.00	\$41.93
78	Walter R. Gooley	\$3,329.97	\$2,469.72	\$0.00	\$860.25
78	Brian Camire	\$3,763.00	\$3,732.78	\$0.00	\$30.22
79	Linda R. McKee	\$4,861.00	\$4,278.15	\$0.00	\$582.85
79	Joan A. Stiehler	\$4,350.00	\$4,170.09	\$0.00	\$179.91
80	Elaine E. Fuller	\$2,279.83	\$2,131.88	\$0.00	\$147.95
81	Richard H.C. Tracy	\$0.00	\$0.00	\$0.00	\$0.00
82	Gabrielle Carbonneau	\$4,662.00	\$4,661.60	\$0.00	\$0.40
82	Elizabeth Watson	\$3,763.00	\$3,775.66	\$0.00	(\$12.66)
83	Bonnie Green	\$3,762.90	\$3,748.01	\$0.00	\$14.89
83	Randall A. Greenwood	\$3,763.00	\$3,760.05	\$0.00	\$2.95
84	Nancy L. Chizmar	\$2,028.67	\$1,113.80	\$0.00	\$914.87
85	William J. Schneider	\$10,537.63	\$6,992.61	\$0.00	\$3,545.02
85	Patrick J. Beck	\$1,451.38	\$1,435.12	\$0.00	\$16.26
86	Richard H. Mailhot	\$7,681.15	\$3,784.28	\$0.00	\$3,896.87
86	Jo Anne Frank	\$624.96	\$513.00	\$0.00	\$111.96

Cumulative Balance Report to Date
Date Printed 06/01/01
CANDIDATES FOR STATE REPRESENTATIVE

DISTRICT	NAME	TOTAL CONTRIBUTIONS	TOTAL EXPENDITURES	OUTSTANDING LOAN	CASH BALANCE
87	William R. Cote	\$1,775.00	\$1,775.00	\$313.86	\$0.00
87	Maurice F. Drouin Jr.	\$1,767.17	\$1,736.47	\$0.00	\$30.70
88	Stavros Mendros	\$13,111.06	\$14,289.24	\$1,736.89	\$358.71
88	Robert F. Poulin	\$4,913.77	\$5,039.27	\$726.19	\$600.69
89	Lillian LaFontaine O'Brien	\$3,763.00	\$3,214.76	\$0.00	\$548.24
89	Alan Jenkins	\$270.00	\$270.00	\$0.00	\$0.00
89	Marc D. Breton	\$463.27	\$463.27	\$0.00	\$0.00
90	Robert E. MacDonald	\$4,628.28	\$4,656.10	\$0.00	(\$27.82)
90	Gerald N. Bouffard	\$4,700.14	\$4,285.36	\$0.00	\$414.78
91	Patrick E. Colwell	\$14,771.62	\$13,148.60	\$0.00	\$1,623.02
91	Jean T. Dellert	\$1,659.25	\$1,819.57	\$165.00	\$4.68
92	Scott W. Cowger	\$512.05	\$513.68	\$1.63	\$0.00
93	Randall L. Berry	\$2,226.59	\$1,608.64	\$0.00	\$617.95
93	Gregory Young Jr.	\$345.00	\$345.00	\$0.00	\$0.00
94	Charles Mitchell	\$511.00	\$416.07	\$0.00	\$94.93
95	David R. Madore	\$4,783.10	\$4,382.66	\$59.85	\$400.44
95	Douglas Watts	\$6,860.00	\$5,391.91	\$0.00	\$1,468.09
96	Julie O'Brien	\$8,020.84	\$6,126.79	\$0.00	\$1,894.05
96	Clyde F. LeClair	\$6,837.00	\$5,467.79	\$0.00	\$1,369.21
97	Shirley K. Richard	\$1,248.70	\$1,248.70	\$0.00	\$0.00
97	Richard Linkletter	\$607.11	\$607.11	\$0.00	\$0.00
98	David G. Summers	\$3,763.00	\$3,233.74	\$0.00	\$529.26
98	Joanne M. Woodard	\$2,369.83	\$2,369.83	\$0.00	\$0.00
98	Paul R. Hatch	\$3,255.00	\$2,723.98	\$0.00	\$531.02
99	Frederic P. Johnson	\$4,335.00	\$4,334.96	\$0.00	\$0.04
99	Gilman R. Pelletier	\$2,072.94	\$2,072.94	\$0.00	\$0.00
99	Marilyn E. Canavan	\$3,597.00	\$3,274.06	\$0.00	\$322.94
100	Lisa Tessier Marrache' M	\$2,780.00	\$1,122.50	\$0.00	\$1,657.50
101	Paul L. Tessier	\$8,650.00	\$7,167.48	\$0.00	\$1,482.52
102	Zachary E. Matthews	\$2,000.00	\$1,650.00	\$0.00	\$350.00
102	Wayne R. Leach	\$287.00	\$249.97	\$0.00	\$37.03
103	Dennis McLellan	\$350.00	\$655.37	\$1,000.00	\$694.63
103	Robert W. Nutting	\$6,353.57	\$3,949.91	\$0.00	\$2,403.66
104	Sumner A. Jones, Jr	\$7,460.00	\$7,415.73	\$0.00	\$44.27
104	Bernard E. McGowan	\$7,370.00	\$7,565.20	\$0.00	(\$195.20)

Cumulative Balance Report to Date
Date Printed 06/01/01
CANDIDATES FOR STATE REPRESENTATIVE

DISTRICT	NAME	TOTAL CONTRIBUTIONS	TOTAL EXPENDITURES	OUTSTANDING LOAN	CASH BALANCE
105	Walter E. Ash Jr.	\$363.05	\$363.05	\$0.00	\$0.00
105	Orene Clarke Nesin	\$3,763.00	\$2,334.90	\$0.00	\$1,428.10
106	Randall L. Bumps	\$5,221.72	\$5,088.83	\$0.00	\$132.89
106	Carmaleta Farrington	\$4,110.00	\$4,096.97	\$0.00	\$13.03
107	Joseph E. Brooks	\$6,926.00	\$5,838.16	\$0.00	\$1,087.84
107	Jeffrey H. Kaelin	\$5,856.66	\$6,058.16	\$900.00	\$698.50
108	Vaughn A. Stedman	\$5,280.01	\$4,292.37	\$0.00	\$987.64
108	Gary A. French	\$3,097.74	\$3,116.27	\$18.53	\$0.00
109	Donald P. Berry Sr.	\$5,990.00	\$6,113.95	\$0.00	(\$123.95)
109	Betty I. Johnson	\$4,586.00	\$4,093.73	\$0.00	\$492.27
110	Claton R. Corriveau	\$1,987.46	\$1,952.39	\$158.56	\$193.63
110	Carol Weston	\$4,942.58	\$4,398.34	\$0.00	\$544.24
111	Sharon Libby Jones	\$3,763.00	\$3,763.49	\$0.00	(\$0.49)
111	Earl E. Richardson	\$5,986.00	\$5,785.66	\$0.00	\$200.34
111	Debbie S. Pettigrew	\$1,141.00	\$1,141.13	\$0.00	(\$0.13)
112	James D. Annis	\$10,267.00	\$9,300.86	\$0.00	\$966.14
112	Kenneth W. White	\$3,763.00	\$0.00	\$0.00	\$3,763.00
112	Judith C. Merck	\$3,252.00	\$3,116.24	\$0.00	\$135.76
113	Richard W. Rosen	\$6,287.58	\$8,117.49	\$5,000.00	\$2,170.09
113	Linda Bennett-Catlow	\$850.00	\$854.95	\$0.00	(\$4.95)
114	Carl E. Pease	\$4,393.00	\$3,911.74	\$0.00	\$481.26
114	Dana L. Skinner	\$1,875.00	\$1,886.07	\$0.00	(\$11.07)
114	Rosanna Libby	\$3,252.00	\$3,193.05	\$0.00	\$58.95
114	Brian Duprey	\$4,320.24	\$10,001.16	\$5,676.09	(\$4.83)
114	Brian J. Kilroy	\$392.16	\$392.16	\$0.00	\$0.00
115	Charles D. Fisher	\$9,463.41	\$3,287.00	\$0.00	\$6,176.41
116	Louis Horvath	\$1,141.00	\$719.42	\$0.00	\$421.58
116	John E. Burke II	\$7,466.00	\$7,466.00	\$0.00	\$0.00
116	Mary Ellen Ledwin	\$9,914.00	\$9,313.87	\$0.00	\$600.13
117	Christina L. Baker	\$9,960.85	\$5,792.10	\$0.00	\$4,168.75
117	Frank J. Farrington	\$9,881.00	\$6,867.69	\$0.00	\$3,013.31
118	Joseph Perry	\$7,385.11	\$6,200.87	\$0.00	\$1,121.54
118	Roy C. Daigle	\$10,921.77	\$9,190.23	\$0.00	\$1,731.54
118	John M. Vogell	\$3,069.33	\$3,069.33	\$0.00	\$0.00
119	Tarren R. Bragdon	\$3,683.57	\$3,643.58	\$0.00	\$39.99

Cumulative Balance Report to Date
Date Printed 06/01/01
CANDIDATES FOR STATE REPRESENTATIVE

DISTRICT	NAME	TOTAL CONTRIBUTIONS	TOTAL EXPENDITURES	OUTSTANDING LOAN	CASH BALANCE
119	Patricia A. Blanchette	\$2,766.00	\$2,628.47	\$0.00	\$137.53
119	Donald C. Lewis III	\$3,252.00	\$3,248.99	\$0.00	\$3.01
120	Joseph R. Hunt	\$1,189.00	\$1,184.87	\$0.00	\$4.13
120	Jacqueline R. Norton	\$5,460.54	\$5,278.48	\$0.00	\$182.06
121	Matthew Dunlap	\$8,132.57	\$4,875.83	\$0.00	\$3,256.74
121	Albert J. Duplessis	\$0.00	\$0.00	\$0.00	\$0.00
122	Daniel Williams	\$13,720.00	\$10,689.56	\$0.00	\$3,030.44
122	Gary Treworgy	\$0.00	\$0.00	\$0.00	\$0.00
122	Peter D. Chase	\$0.00	\$0.00	\$0.00	\$0.00
123	Jonathan Richard Thomas	\$3,050.00	\$2,200.72	\$0.00	\$849.28
124	Russell P. Treadwell	\$8,198.25	\$5,309.13	\$250.00	\$2,839.12
124	Donald E. Shepley	\$2,845.00	\$2,829.70	\$0.00	\$15.30
125	John T. Burgess	\$3,862.49	\$3,862.49	\$0.00	\$0.00
125	Susan L. Kasprzak	\$3,279.82	\$2,937.73	\$0.00	\$342.09
126	James Howard Tobin Jr.	\$2,219.00	\$2,219.00	\$0.00	\$0.00
126	David L. Rudolph	\$3,763.00	\$3,282.27	\$0.00	\$480.73
127	Edward J. Povich	\$6,726.00	\$6,685.58	\$0.00	\$40.42
127	Steven E. Joy	\$3,763.00	\$3,764.59	\$0.00	(\$1.59)
128	Royce W. Perkins	\$3,763.00	\$2,754.41	\$0.00	\$1,008.59
128	James M. Schatz	\$1,553.72	\$1,553.38	\$0.00	\$0.34
129	Paul Volenik	\$4,327.00	\$3,061.73	\$0.00	\$1,265.27
129	Clare F. Grindal	\$4,615.68	\$4,211.15	\$0.00	\$404.53
130	Theodore Koffman	\$12,697.46	\$12,209.25	\$0.00	\$488.21
130	Robert E. Stanwood	\$8,763.76	\$8,763.76	\$0.00	\$0.00
130	Robert B. Coolidge	\$778.38	\$1,048.38	\$0.00	(\$270.00)
131	Edward R. Dugay	\$9,029.63	\$8,913.49	\$0.00	\$116.14
131	Willard M. Kelley Jr.	\$1,749.29	\$1,744.23	\$0.00	\$5.06
132	William D. Pinkham	\$3,763.00	\$3,716.13	\$0.00	\$46.87
132	William F. Stone	\$0.00	\$0.00	\$0.00	\$0.00
132	Patricia J. Wallace	\$3,252.00	\$3,063.66	\$0.00	\$188.34
133	Martha Bagley	\$2,759.59	\$1,331.15	\$0.00	\$1,428.44
134	Albion D. Goodwin	\$175.00	\$139.94	\$0.00	\$35.06
135	John R. Morrison	\$2,296.53	\$2,296.53	\$0.00	\$0.00
135	Dale E. Earle	\$1,141.00	\$1,141.00	\$0.00	\$0.00
135	David McAlpine	\$0.00	\$0.00	\$0.00	\$0.00

Cumulative Balance Report to Date
Date Printed 06/01/01
CANDIDATES FOR STATE REPRESENTATIVE

DISTRICT	NAME	TOTAL CONTRIBUTIONS	TOTAL EXPENDITURES	OUTSTANDING LOAN	CASH BALANCE
135	Charles Casey	\$1,160.00	\$1,098.95	\$0.00	\$61.05
136	Barry G. Gillis	\$5,555.50	\$5,105.40	\$3,737.87	\$450.10
136	George H. Bunker Jr.	\$4,850.00	\$3,716.30	\$0.00	\$1,133.70
137	Anita Peavey Haskell	\$1,414.31	\$2,004.76	\$590.43	(\$0.02)
137	Laura J. Sanborn	\$4,600.00	\$4,617.73	\$0.00	(\$17.73)
138	Roderick W. Carr	\$12,191.92	\$8,887.43	\$0.00	\$3,304.49
138	David Kirkpatrick	\$1,500.00	\$1,499.96	\$0.00	\$0.04
139	Stephen S. Stanley	\$3,949.44	\$3,088.83	\$0.00	\$860.61
139	Charles H. Buzzell	\$7,068.74	\$7,082.48	\$0.00	(\$13.74)
140	Joseph E. Clark	\$4,928.75	\$4,881.11	\$0.00	\$47.64
140	Stuart F. Kallgren	\$1,845.00	\$1,651.41	\$0.00	\$193.59
141	Sally Landry	\$3,763.00	\$2,815.65	\$0.00	\$947.35
141	Stephen J. Martin	\$3,023.30	\$3,338.58	\$0.00	(\$315.28)
142	Roger L. Sherman	\$2,050.00	\$1,757.85	\$0.00	\$292.15
142	Paul J. Cleary	\$0.00	\$0.00	\$0.00	\$0.00
143	Edgar Wheeler	\$2,754.24	\$2,754.24	\$0.00	\$0.00
144	Margaret L. Niblett	\$2,780.00	\$9,770.91	\$6,912.13	(\$78.78)
144	Jacqueline A. Lundeen	\$8,483.00	\$7,884.27	\$0.00	\$598.73
144	Ralph Jeff Hotham	\$1,141.00	\$1,141.00	\$0.00	\$0.00
144	Christopher J. Cronkhite	\$0.00	\$0.00	\$0.00	\$0.00
145	Richard H. Duncan	\$2,447.97	\$1,403.55	\$0.00	\$1,044.42
146	Mabel J. Desmond	\$525.00	\$520.72	\$0.00	\$4.28
147	Irvin Belanger	\$2,925.15	\$2,626.51	\$0.00	\$298.64
147	Matthew J. Sanfacon	\$3,260.85	\$3,255.04	\$0.00	\$5.81
148	Florence T. Young	\$4,263.00	\$4,263.00	\$0.00	\$0.00
148	Homer R. Ward Jr.	\$684.35	\$684.35	\$0.00	\$0.00
148	Wade E. McLaughlin	\$0.00	\$0.00	\$0.00	\$0.00
149	Rosaire J. Sirois	\$500.00	\$500.00	\$0.00	\$0.00
149	William J. Smith	\$1,074.03	\$1,074.03	\$0.00	\$0.00
150	Daniel P. Ahearne	\$852.87	\$852.87	\$0.00	\$0.00
150	Rosaire Paradis Jr.	\$2,225.00	\$2,225.00	\$0.00	\$0.00
151	Marc Michaud	\$5,181.24	\$4,026.66	\$0.00	\$1,154.58
151	Troy D. Jackson	\$3,659.00	\$4,116.45	\$0.00	(\$457.45)

COMMISSION ON GOVERNMENTAL ETHICS AND ELECTIONS PRACTICES

2000

SPENDING SUMMARY - COUNTY CANDIDATES

Candidates	Office Sought	Total Expenditures	Average per Candidate
52	County Commissioner	\$49,896.06	\$959.54
2	County Treasurer	\$4,470.65	\$2,235.32
0	District Attorney	\$0.00	\$0.00
0	Finance Commissioner	\$0.00	\$0.00
8	Judge of Probate	\$0.00	\$0.00
1	Register of Deeds	\$0.00	\$0.00
16	Register of Probate	\$10,120.88	\$632.56
4	Sheriff	\$6,448.96	\$1,612.24
2	A-1	\$0.00	\$0.00
TOTAL		\$70,936.55	\$834.55

TEN MOST EXPENSIVE COUNTY CAMPAIGNS

	Candidate	Office Sought	Expenditures
1	Tracey Rotondi	County Commissioner	\$5,352.42
2	Douglas Thomas	County Treasurer	\$4,470.65
3	Crispin Connery	County Commissioner	\$4,129.59
4	Edward Sleeper	County Commissioner	\$3,948.89
5	Richard Feeney	County Commissioner	\$3,698.54
6	Donald Richards	Sheriff	\$3,566.67
7	Sheridan Bond	County Commissioner	\$3,354.40
8	Peter Kelley	County Commissioner	\$3,344.54
9	A. Mason Johnson	County Commissioner	\$2,966.04
10	Charles Crosby	County Commissioner	\$2,625.26

Cumulative Balance Report to Date
Date Printed 06/01/01
CANDIDATES FOR COUNTY OFFICE

OFFICE	NAME	TOTAL CONTRIBUTIONS	TOTAL EXPENDITURES	OUTSTANDING LOAN	CASH BALANCE
A-1	Ralph A. Ivey	\$0.00	\$0.00	\$0.00	\$0.00
A-1	Gary J. Voisine	\$0.00	\$0.00	\$0.00	\$0.00
County Commissioner	Gordon M. Andrews	\$0.00	\$0.00	\$0.00	\$0.00
County Commissioner	Peter K. Baldacci	\$0.00	\$0.00	\$0.00	\$0.00
County Commissioner	Duncan E. Beaton	\$0.00	\$0.00	\$0.00	\$0.00
County Commissioner	Elmer Berry	\$455.52	\$455.52	\$0.00	\$0.00
County Commissioner	Sheridan T. Bond	\$2,223.00	\$2,223.00	\$0.00	\$0.00
County Commissioner	William B. Boone	\$0.00	\$0.00	\$0.00	\$0.00
County Commissioner	Winola M. Burke	\$0.00	\$0.00	\$0.00	\$0.00
County Commissioner	Esther B. Clenott	\$314.33	\$265.58	\$0.00	\$48.75
County Commissioner	Crispin H. Connery	\$4,188.93	\$4,129.59	\$0.00	\$59.34
County Commissioner	Constance D. Cote	\$1,771.66	\$1,771.66	\$0.00	\$0.00
County Commissioner	Charles E. Crosby III	\$2,625.26	\$2,625.26	\$0.00	\$0.00
County Commissioner	Dennis S. Damon	\$0.00	\$0.00	\$0.00	\$0.00
County Commissioner	Thomas J. Davis	\$0.00	\$0.00	\$0.00	\$0.00
County Commissioner	Eben G. DeWitt	\$0.00	\$0.00	\$0.00	\$0.00
County Commissioner	Mansour Elalwi	\$220.00	\$326.55	\$126.55	\$20.00
County Commissioner	Richard J. Feeny	\$3,805.00	\$3,498.54	\$0.00	\$306.46
County Commissioner	Richard A. Fortier	\$0.00	\$0.00	\$0.00	\$0.00
County Commissioner	Norman Fournier	\$0.00	\$0.00	\$0.00	\$0.00
County Commissioner	Robert J. Garland	\$70.00	\$70.00	\$0.00	\$0.00
County Commissioner	Christopher M. Gendro	\$455.52	\$455.52	\$0.00	\$0.00
County Commissioner	Keith E. Gorman	\$1,037.90	\$1,037.90	\$0.00	\$0.00
County Commissioner	Gary L. Griffeth	\$666.20	\$661.81	\$0.00	\$4.39
County Commissioner	C. Richard Hall	\$1,282.86	\$1,282.86	\$0.00	\$0.00
County Commissioner	Joseph R. Hanslip	\$0.00	\$0.00	\$0.00	\$0.00
County Commissioner	Frederick W. Hardy	\$0.00	\$0.00	\$0.00	\$0.00
County Commissioner	Richard A. Higgins	\$450.00	\$379.60	\$0.00	\$70.40
County Commissioner	John M. Hyk Jr.	\$0.00	\$0.00	\$0.00	\$0.00
County Commissioner	Paul F. Jacques	\$0.00	\$0.00	\$0.00	\$0.00
County Commissioner	A. Mason Johnson	\$1,600.00	\$1,566.04	\$0.00	\$33.96
County Commissioner	Peter S. Kelley	\$3,344.54	\$3,344.54	\$0.00	\$0.00
County Commissioner	Fredric L. Kennard	\$0.00	\$0.00	\$0.00	\$0.00
County Commissioner	Wesley G. Kieltyka	\$0.00	\$0.00	\$0.00	\$0.00
County Commissioner	William H. Layman	\$0.00	\$0.00	\$0.00	\$0.00

Cumulative Balance Report to Date
Date Printed 06/01/01
CANDIDATES FOR COUNTY OFFICE

OFFICE	NAME	TOTAL CONTRIBUTIONS	TOTAL EXPENDITURES	OUTSTANDING LOAN	CASH BALANCE
County Commissioner	Sarah O. Lewin	\$1,350.00	\$1,400.64	\$350.00	\$299.36
County Commissioner	Zane G. Libby	\$551.66	\$551.66	\$0.00	\$0.00
County Commissioner	Edward T. Madden	\$798.86	\$798.86	\$0.00	\$0.00
County Commissioner	Gary T. McGrane	\$450.00	\$254.63	\$0.00	\$195.37
County Commissioner	Steven Michael Merrill	\$0.00	\$0.00	\$0.00	\$0.00
County Commissioner	Lawrence F. Nash	\$0.00	\$0.00	\$0.00	\$0.00
County Commissioner	John W. O'Connell	\$40.00	\$40.00	\$0.00	\$0.00
County Commissioner	Kathleen V. Ouilette	\$997.36	\$1,010.21	\$0.00	(\$12.85)
County Commissioner	David A. Parkman	\$691.98	\$691.98	\$0.00	\$0.00
County Commissioner	Jethro D. Pease	\$955.13	\$955.13	\$0.00	\$0.00
County Commissioner	John F. Ridge	\$2,244.45	\$1,930.53	\$1,480.53	\$1,794.45
County Commissioner	Tracey H. Rotondi	\$2,838.71	\$2,838.71	\$0.00	\$0.00
County Commissioner	Kenneth R. Shea	\$1,500.00	\$1,126.00	\$0.00	\$374.00
County Commissioner	Edward B. Sleeper	\$3,948.89	\$3,948.89	\$0.00	\$0.00
County Commissioner	Paul J. Underwood	\$593.64	\$553.64	\$0.00	\$40.00
County Commissioner	James B. Wagner	\$250.00	\$358.53	\$115.00	\$6.47
County Commissioner	Ben C. Worcester III	\$1,046.38	\$1,046.38	\$0.00	\$0.00
County Commissioner	Phillip E. Wright	\$665.00	\$1,476.18	\$822.01	\$10.83
County Commissioner	David C. Young	\$500.00	\$1,035.88	\$535.88	\$0.00
County Treasurer	Jill C. Holmes	\$0.00	\$0.00	\$0.00	\$0.00
County Treasurer	Douglas A. Thomas	\$4,935.00	\$3,637.25	\$34.00	\$1,331.75
Judge of Probate	John D. Alsop	\$0.00	\$0.00	\$0.00	\$0.00
Judge of Probate	Thomas A. Berry	\$0.00	\$0.00	\$0.00	\$0.00
Judge of Probate	James P. Dunleavy	\$0.00	\$0.00	\$0.00	\$0.00
Judge of Probate	Dana C. Hanley	\$0.00	\$0.00	\$0.00	\$0.00
Judge of Probate	Randolph A. Mailloux	\$0.00	\$0.00	\$0.00	\$0.00
Judge of Probate	Robert M.A. Nadeau	\$0.00	\$0.00	\$0.00	\$0.00
Judge of Probate	Douglas M. Smith	\$0.00	\$0.00	\$0.00	\$0.00
Judge of Probate	John W. Voorhees	\$0.00	\$0.00	\$0.00	\$0.00
Register of Deeds	Betty S. Mason	\$0.00	\$0.00	\$0.00	\$0.00
Register of Probate	Herbert C. Adams	\$850.00	\$850.00	\$0.00	\$0.00
Register of Probate	Susan M. Almy	\$0.00	\$0.00	\$0.00	\$0.00
Register of Probate	Joan M. Atwood	\$790.00	\$792.59	\$0.00	(\$2.59)
Register of Probate	John J. Cleveland	\$325.00	\$312.08	\$0.00	\$12.92
Register of Probate	Joanne M. Crowley	\$128.25	\$128.25	\$0.00	\$0.00

Cumulative Balance Report to Date
Date Printed 06/01/01
CANDIDATES FOR COUNTY OFFICE

OFFICE	NAME	TOTAL CONTRIBUTIONS	TOTAL EXPENDITURES	OUTSTANDING LOAN	CASH BALANCE
Register of Probate	Diana L. Dennett	\$66.45	\$477.11	\$416.78	\$6.12
Register of Probate	Brent L. Gordon	\$1,360.00	\$1,360.00	\$0.00	\$0.00
Register of Probate	Jaye R. Goulet	\$152.12	\$152.12	\$0.00	\$0.00
Register of Probate	Elaine D. Hallett	\$16.00	\$16.00	\$0.00	\$0.00
Register of Probate	Victoria M. Hatch	\$1,143.85	\$1,143.85	\$0.00	\$0.00
Register of Probate	Alison M. Hawes	\$1,455.00	\$1,455.00	\$0.00	\$0.00
Register of Probate	Margaret C. Lunt	\$134.43	\$134.43	\$0.00	\$0.00
Register of Probate	Joyce S. Morton	\$0.00	\$0.00	\$0.00	\$0.00
Register of Probate	Keith R. Patterson	\$2,170.00	\$2,155.60	\$0.00	\$14.40
Register of Probate	Oleg Svetlichny	\$0.00	\$0.00	\$0.00	\$0.00
Register of Probate	Theodore R. Tracy	\$0.00	\$0.00	\$0.00	\$0.00
Sheriff	Dennis C. Pike	\$3,048.15	\$2,073.15	\$0.00	\$975.00
Sheriff	Donald P. Richards	\$3,566.67	\$3,566.67	\$0.00	\$0.00
Sheriff	Scott L. Story	\$286.43	\$286.06	\$0.00	\$0.37
Sheriff	Mark A. Westrum	\$485.10	\$485.10	\$0.00	\$0.00

FEDERAL ELECTION CANDIDATES - ELECTION YEAR 2000

(All information disclosed has been taken from the FEC Financial Activity Report dated May 15, 2001- For additional information, please refer to the FEC website at www.fec.gov)

SENATE CANDIDATES

CANDIDATE	PARTY	% OF VOTE	RECEIPTS	DEIBURSEMENTS	ENDING CASH ON HAND	CLOSING DEBT
Olympia Snow	Republican	69%	\$2,236,146	\$1,981,504	\$447,789	\$0
Mark Lawrence	Democrat	31%	\$739,637	\$727,655	\$6,553	\$12,045

CONGRESSIONAL CANDIDATES

CANDIDATE	DISTRICT	PARTY	% OF VOTE	RECEIPTS	DISBURSEMENTS	CASH ON HAND
Thomas Allen	1	Democrat	59%	\$667,259	\$639,119	\$31,066
Jane Amero	1	Republican	36%	\$478,724	\$478,817	(\$92)
John Elias Baldacci	2	Democrat	73%	\$505,992	\$508,966	\$43,822
Richard Campbell	2	Republican	26%	\$70,867	\$69,343	\$1,522

STATE OF MAINE

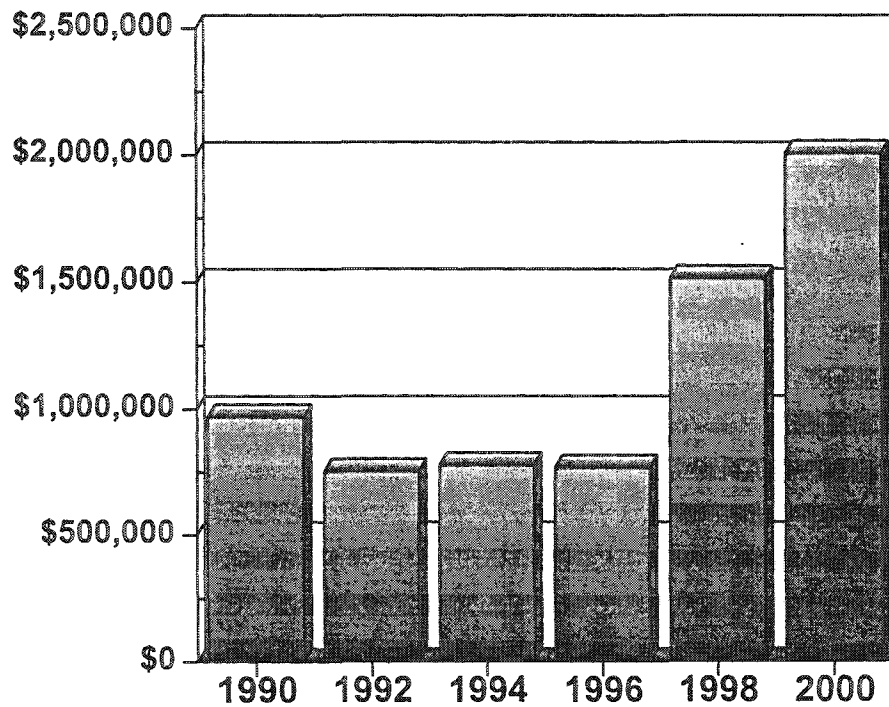
COMMISSION ON GOVERNMENTAL ETHICS AND ELECTION PRACTICES

**EXPENDITURES OF POLITICAL ACTION COMMITTEES
REGISTERED IN MAINE**

1990	1992	1994	1996	1998	2000
\$1,685,120.80	\$1,651,541.61	\$1,090,549.07	\$8,748,797.60	\$8,275,242.70	\$12,226,627.84

EXPENDITURES OF REGISTERED
POLITICAL ACTION COMMITTEES
(Candidate PACS Only)

Year	Expenditures
1990	\$968,845.00
1992	\$752,002.00
1994	\$776,614.00
1996	\$765,776.00
1998	\$1,512,036.12
2000	\$2,006,175.92



2000 Issue PACs - Receipts & Expenditures

PA ne	Issue # 2000	Total Receipts	Total Expenditures	Total Debt
Mainers for Death with Dignity	2001G-S	\$1,631,407.71	\$1,328,435.47	\$22,443.26
Coalition for the Compassionate Care of the Dying	2001G-O	\$1,049,692.72	\$1,072,125.62	\$50,000.00
No on 1	2001G-O	\$957,474.44	\$866,125.95	\$29,423.57
Respect Life Educational Foundation	2001G-O	\$1,113,958.36	\$1,002,515.50	\$0.00
Forests for the Future	2002G-S	\$57,037.82	\$66,852.02	\$0.00
Sierra Club Maine Action PAC	2002G-S	\$200,514.04	\$200,514.04	\$200.00
Coalition to Save Small Woodlands	2002G-O	\$33,540.00	\$31,446.85	\$6,321.94
Common Sense for Maine Forests	2002G-O	\$13.79	\$3.80	\$0.00
Maine's Forest Heritage Coalition	2002G-O	\$2,306,916.25	\$2,201,870.87	\$0.00
Sportsman's Alliance of ME PAC	2002G-O	\$15,915.40	\$8,224.36	\$0.00
Unorganized Territories United	2002G-O	\$266.41	\$150.00	\$0.00
Committee for Property Tax Relief for ME	2003G-S	\$42,544.50	\$42,533.90	\$378.00
No Dice: Mainers Against a Dishonest Deal	2003G-O	\$30,920.00	\$15,088.13	\$29,720.01
Citizens to Preserve Maine's Fishing Heritage	2004G-S	\$5,411.00	\$5,411.00	\$0.00
Committee to End Voting Discrimination Against Persons with Mental	2005G-S	\$4,262.82	\$3,886.13	\$0.00
Maine Won't Discriminate	2006G-S	\$40,977.20	\$20,613.04	\$0.00
Midast for Human Rights	2006G-S	\$7,809.83	\$6,798.94	\$2,000.00
Washington County for Equal Rights	2006G-S	\$4,852.75	\$3,086.23	\$0.00
Yes on 6	2006G-S	\$379,726.00	\$412,713.00	\$55,000.00

\$7,893,291.04 \$7,288,394.85 \$195,486.78

2000 Ballot Questions

1. Should a terminally ill adult who is of sound mind be allowed to ask for and receive a doctor's help to die?
2. Do you favor requiring landowners to obtain a permit for all clear-cuts and defining cutting levels for lands subject to the tree growth tax law?
3. Do you want to allow video lottery machines at certain horse racing tracks if 40% of the profits are used for property tax relief?
4. Do you favor amending the Constitution of Maine to allow the Legislature to provide for the assessment of land used for commercial fishing activities based on the current use of that property?
5. Do you favor amending the Constitution of Maine to end discrimination against persons under guardianship for mental illness for the purpose of voting?
6. Do you favor ratifying the action of the 119th Legislature whereby it passed an act extending to all citizens regardless of their sexual orientation the same basic rights to protection against discrimination now guaranteed to citizens on the basis of race, color, religion, sex or national origin in the areas of employment, housing, public accommodation and credit and where the act expressly states that nothing in the act confers legislative approval of, or special rights to, any person or group of persons?

CL "Issue #":

- 20 = year 2000
- 01 = question #
- G = general election
- O = opposes question

Receipts and Expenditures of Political Action Committees - 1999

PAC Name	Type	Date of Registration	Date of Termination	Balance Carried Forward *	Total Receipts **	Total Contributions to Candidates/ Committees	Total Operating Expenses	Total Expenditures
ABC PAC	Candidate	07/30/86		\$135.64	\$170.64	\$0.00	\$20.00	\$20.00
Ad Hoc Committee for Common Sense	Issue	06/23/97		\$1,833.03	\$93,256.16	\$0.00	\$0.00	\$91,423.07
American Insurance Association MAINE PAC	Candidate	08/25/82		\$2,665.97	\$2,665.97	\$810.00	\$0.00	\$810.00
Ax the Snacks Tax	Issue	11/04/99		\$0.00	\$43,500.00	\$0.00	\$28,336.80	\$28,336.80
Bell Atlantic Maine Employee PAC	Candidate	01/17/96		\$677.01	\$3,165.06	\$2,400.00	\$0.00	\$2,400.00
BLUEPAC of Maine	Candidate	07/22/86		\$1,678.65	\$7,618.46	\$4,700.00	\$2,010.60	\$6,710.60
Build Maine PAC	Candidate	08/05/98		\$1,049.66	\$1,049.66	\$0.00	\$888.55	\$888.55
Cheaper, Safer Power	Issue	01/21/97		(\$2,119.59)	\$2,932.00	\$0.00	\$0.00	\$5,021.59
Christian Action League, The	Issue	07/27/99		\$0.00	\$30,850.57	\$10,720.00	\$19,351.29	\$30,071.29
Christian Civic League of Maine, The	Issue	04/26/99	4/10/99	\$1,155.00	\$1,195.00	\$0.00	\$0.00	\$0.00
Citizens Concerned About Reformulated Gas	Issue	09/11/95		(\$94.07)	\$812.00	\$0.00	\$0.00	\$906.07
Citizens for a Livable Environment in Alliance with Nature in Maine	Issue	09/16/96		(\$15,162.72)	\$15,885.72	\$0.00	\$0.00	\$31,310.94
Citizens for Jobs and a Sound Economy	Candidate	10/27/98		\$387.65	\$399.10	\$0.00	\$0.00	\$0.00
Citizens for Justice in Maine, Inc.	Candidate	06/16/88		\$5,989.71	\$18,037.18	\$4,600.00	\$459.36	\$5,059.36
Citizens for Reading the Details and Fine Print	Issue	10/30/96		\$445.45	\$445.45	\$0.00	\$0.00	\$0.00
Citizens for Sensible Emission Law	Issue	04/13/95	1/11/99	\$0.00	\$0.00	\$0.00	\$0.00	\$0.00
Citizens to Restore the North Woods	Issue	10/30/96		\$34.00	\$36.00	\$0.00	\$1.00	\$1.00
Citizens to Save Maine's Heritage	Issue	07/13/99		\$0.00	\$651,481.79	\$10,000.00	\$705,027.89	\$715,027.89
Club 1996	Candidate	01/11/96		\$0.00	\$0.00	\$0.00	\$0.00	\$0.00
CMP Group Employee-Political Action Committee	Candidate	09/10/98		\$6,600.00	\$27,851.52	\$3,080.00	\$21,251.52	\$24,331.52
Coalition for Responsible Forestry and Forest Jobs	Issue	09/24/99		\$0.00	\$3,367.50	\$0.00	\$3,367.50	\$3,367.50
Coalition for the Compassionate Care of the Dying	Issue	02/16/99		\$0.00	\$20,564.79	\$13,835.00	\$47,407.27	\$61,242.27
Coalition to Protect Maine's Family Farms	Issue	09/20/96		\$0.00	\$41,635.00	\$0.00	\$30,000.00	\$41,635.00
Committee for a Responsible Senate	Candidate	01/02/86		\$8,544.31	\$17,535.74	\$0.00	\$9,026.19	\$9,026.19
Committee for Conservative Government	Candidate	03/12/98		\$1,690.00	\$1,690.00	\$0.00	\$0.00	\$0.00
Committee to Stop Corporate Welfare	Issue	09/05/97		\$864.34	\$12,122.00	\$0.00	\$47.64	\$9,767.20

Receipts and Expenditures of Political Action Committees - 1999

PAC Name	Type	Date of Registration	Date of Termination	Balance Carried Forward *	Total Receipts **	Total Contributions to Candidates/ Committees	Total Operating Expenses	Total Expenditures
Common Sense for Maine Forests	Issue	11/26/96		\$43.75	\$111,603.23	\$0.00	\$30.72	\$111,590.20
Congressional Term Limits Coalition	Issue	09/03/93		(\$5.00)	\$171,396.00	\$0.00	\$0.00	\$171,401.00
Democratic Legislative Majority	Candidate	03/15/96		\$613.37	\$613.37	\$600.00	\$0.00	\$600.00
Democrats for a New Agenda	Candidate	08/17/98		\$58.42	\$308.42	\$50.00	\$36.00	\$86.00
Dirigo 2000	Candidate	10/18/99		\$0.00	\$5,195.00	\$100.00	\$701.89	\$801.89
Dirigo Alliance PAC	Candidate	07/28/88		\$261.29	\$3,026.50	\$0.00	\$2,003.64	\$2,003.64
Don't Tax Food Coalition of Maine	Issue	11/09/99		\$0.00	\$36,000.00	\$33,500.00	\$2,000.00	\$35,500.00
Energy PAC for Maine	Candidate	03/07/86		\$1,869.39	\$2,320.42	\$750.00	\$89.57	\$839.57
Environmental Voters of Maine	Candidate	06/08/98	10/13/99	\$0.00	\$0.00	\$0.00	\$0.00	\$0.00
Fleet Bank of Maine Political Action Committee	Candidate	07/17/89		\$4,693.05	\$4,693.05	\$1,700.00	\$0.00	\$1,700.00
Forests for the Future	Issue	09/24/99		\$0.00	\$1,468.73	\$0.00	\$1,468.73	\$1,468.73
Friends for a State Aquarium	Issue	02/19/91		\$0.00	\$0.00	\$0.00	\$0.00	\$0.00
Friends of Maine Hospitals	Candidate	01/28/87		\$6,709.10	\$45,503.10	\$8,352.50	\$9,795.36	\$18,147.86
Friends of the Technical Colleges	Issue	07/14/99	1/5/00	\$0.00	\$132,062.42	\$0.00	\$64,918.54	\$64,918.54
Friends of the University of Maine	Issue	10/27/94		\$286.88	\$287.55	\$0.00	\$0.00	\$0.00
Fund for Maine's Future	Candidate	04/23/98		\$106.04	\$42,706.04	\$8,700.00	\$33,931.37	\$42,631.37
GOP House Majority 2000	Candidate	06/21/99		\$0.00	\$100.00	\$0.00	\$128.15	\$128.15
GOPAC 98	Candidate	10/26/98	4/14/99	\$0.00	\$0.00	\$0.00	\$0.00	\$0.00
GUARDPAC	Candidate	11/09/95	1/26/00	\$603.56	\$603.56	\$0.00	\$0.00	\$0.00
House Democratic Campaign Committee	Candidate	07/11/83		\$22,114.21	\$84,355.47	\$1,567.91	\$51,251.26	\$52,819.17
House Republican Fund	Candidate	01/14/97		\$1,570.67	\$15,819.18	\$1,500.00	\$5,083.09	\$6,583.09
Independent Party for Maine	Candidate	05/15/98		\$0.00	\$0.00	\$0.00	\$0.00	\$0.00
International Brotherhood of Painters and Allied Trades	Candidate	10/03/94		\$0.00	\$0.00	\$0.00	\$0.00	\$0.00
Keep Maine Free	Issue	07/16/99	12/15/99	\$0.00	\$2,532.03	\$0.00	\$2,532.03	\$2,532.03
Keep Maine Moving	Issue	04/21/98		\$6,556.22	\$215,993.00	\$350.00	\$107,475.63	\$218,199.13
Keep Public Broadcasting in Maine/Vote Yes on 5	Issue	08/25/99	1/17/00	\$0.00	\$315,389.48	\$0.00	\$315,379.31	\$315,379.31

Receipts and Expenditures of Political Action Committees - 1999

PAC Name	Type	Date of Registration	Date of Termination	Balance Carried Forward *	Total Receipts **	Total Contributions to Candidates/ Committees	Total Operating Expenses	Total Expenditures
Kennebec County Women's Republican Club	Candidate	07/18/94		\$337.65	\$1,266.68	\$0.00	\$777.44	\$777.44
Leadership 2000	Candidate	08/05/98	1/5/00	\$1,673.58	\$1,673.89	\$1,623.89	\$50.00	\$1,673.89
Libertarian Party of Maine, Inc.	Candidate	10/19/98		\$2,499.01	\$8,372.51	\$0.00	\$5,473.34	\$5,473.34
Local 1253 PAC	Candidate	07/12/89		\$10,619.49	\$13,491.51	\$0.00	\$0.00	\$0.00
Loggers for Maine's Future	Issue	03/15/96		\$0.00	\$0.00	\$0.00	\$0.00	\$0.00
Lottery Players for Tax Relief	Issue	08/03/99	2/16/00	\$0.00	\$31.00	\$0.00	\$29.25	\$29.25
Maine AFL-CIO Committee on Political Education PAC	Candidate	07/18/88		\$672.27	\$19,759.72	\$300.00	\$72.79	\$372.79
Maine Association of Community Banks	Candidate	03/30/84		\$6,993.90	\$18,522.58	\$2,910.00	\$0.00	\$2,910.00
Maine Association of Realtors PAC	Candidate	09/28/78		\$7,869.06	\$33,122.13	\$10,717.80	\$1,915.55	\$12,633.35
MAINE BANKPAC-STATE	Candidate	12/31/85		\$957.33	\$33,712.20	\$9,340.00	\$10,295.56	\$19,635.56
Maine Citizens for Access, Safety & Independence	Issue	09/29/97	1/5/99	\$0.00	\$0.00	\$0.00	\$0.00	\$0.00
Maine Citizens for Responsible Government	Issue	07/21/95	6/16/99	\$0.96	\$107,178.58	\$0.00	\$17.50	\$107,145.12
Maine Citizens for Safe Waste Disposal	Issue	09/10/85		\$15,034.56	\$15,034.56	\$0.00	\$0.00	\$0.00
Maine College Republicans	Candidate	10/23/95		\$0.00	\$0.00	\$0.00	\$0.00	\$0.00
Maine Credit Union League - Legislative Action Committee	Candidate	11/14/86		\$5,667.34	\$7,223.34	(\$10.00)	\$147.21	\$137.21
Maine Dental PAC	Candidate	01/27/86		\$9,339.36	\$17,514.36	\$1,160.00	\$8,035.82	\$9,195.82
Maine Education Association PAC	Candidate	01/30/84		\$4,030.09	\$10,369.08	\$600.00	\$3,025.66	\$3,625.66
Maine Eye PAC	Candidate	10/22/93		\$2,169.46	\$5,326.86	\$1,250.00	\$0.20	\$1,250.20
Maine Freedom Fighters	Issue	10/05/90		\$0.00	\$0.00	\$0.00	\$0.00	\$0.00
Maine Funeral Directors PAC	Candidate	12/15/95		\$1,438.96	\$1,495.89	\$0.00	\$0.00	\$0.00
Maine Grassroots Coalition	Candidate	12/10/97		\$27.98	\$17,832.74	\$0.00	\$17,822.74	\$17,822.74
Maine Health Care Association	Candidate	10/16/86		\$8,499.72	\$19,108.72	\$3,610.85	\$3,398.03	\$7,008.88
Maine House Republican Women's PAC	Candidate	10/27/99		\$0.00	\$1,190.00	\$0.00	\$1,103.51	\$1,103.51
Maine Innkeepers PAC	Candidate	10/07/98		\$429.25	\$1,408.00	\$0.00	\$0.00	\$0.00
Maine Insurance Agents	Candidate	06/12/92		\$1,211.14	\$1,243.24	\$0.00	\$0.00	\$0.00
Maine League of Conservation Voters	Issue	10/14/86		\$5,309.91	\$61,859.91	\$0.00	\$22,436.61	\$22,436.61

Receipts and Expenditures of Political Action Committees - 1999

PAC Name	Type	Date of Registration	Date of Termination	Balance Carried Forward *	Total Receipts **	Total Contributions to Candidates/ Committees	Total Operating Expenses	Total Expenditures
Maine Life Underwriters PAC	Candidate	07/20/84		\$721.77	\$3,053.96	(\$50.00)	\$125.00	\$75.00
Maine Majority 2000	Candidate	11/30/99		\$0.00	\$6,075.00	\$0.00	\$582.95	\$582.95
Maine Motorcyclist PAC	Candidate	07/28/98		(\$1,033.02)	\$284.00	\$0.00	\$284.00	\$284.00
Maine National Organization for Women-PAC	Issue	06/30/78		\$2,406.89	\$21,330.67	\$0.00	\$6,658.18	\$15,728.94
Maine Optometrists PAC	Candidate	10/01/86		\$1,280.22	\$1,282.99	\$250.00	\$0.00	\$250.00
Maine Osteopathic PAC	Candidate	08/12/92		\$873.75	\$3,848.75	\$0.00	\$1,633.31	\$1,633.31
Maine Physicians Action Fund	Candidate	04/07/88		\$1,293.87	\$22,054.45	\$7,548.00	\$8,483.92	\$16,031.92
Maine Psychological Association PAC	Candidate	09/15/94		\$1,233.24	\$2,080.38	\$0.00	\$30.23	\$30.23
Maine Right to Life Committee PAC State Candidate Fund	Candidate	09/22/82		\$156.44	\$156.44	\$0.00	\$0.00	\$0.00
Maine Right to Life Committee PAC to Ban Partial Birth Abortion	Issue	07/14/99		\$0.00	\$3,734.46	\$0.00	\$3,094.31	\$3,094.31
Maine State Employees Association-PAGE	Candidate	07/29/92		\$8,479.06	\$11,364.00	\$250.00	\$6,222.00	\$6,472.00
Maine Taxpayer Action Network	Issue	01/18/95		(\$24,776.00)	\$63,349.00	\$14,463.00	\$3,773.00	\$88,068.00
Maine Taxpayers Party	Candidate	10/05/94	3/6/00	\$2,361.75	\$3,810.47	\$1,000.00	\$2,305.87	\$3,305.87
Maine Truck PAC	Candidate	04/28/86		\$1,830.01	\$2,830.01	\$1,240.00	\$211.69	\$1,451.69
Maine United Auto Workers PAC Council	Candidate	05/29/90		\$510.56	\$688.07	\$0.00	\$0.00	\$0.00
Maine Unlimited	Candidate	08/31/99		\$0.00	\$2,300.00	\$0.00	\$0.00	\$0.00
Maine Won't Discriminate	Issue	08/24/93		\$21,431.72	\$23,827.72	\$0.00	\$3,450.49	\$3,450.49
Mainers for Death with Dignity	Issue	07/27/98		(\$1,990.27)	\$383,113.60	\$0.00	\$386,963.93	\$406,583.22
Mainers for Medical Rights	Issue	10/28/97		\$541.01	\$699,672.42	\$0.00	\$319,533.24	\$693,150.57
Majority for the Millenium	Candidate	12/20/99		\$0.00	\$0.00	\$0.00	\$0.00	\$0.00
Management Research & Development Association	Issue	01/25/99	2/5/99	\$0.00	\$1,127.49	\$0.00	\$0.00	\$1,127.49
Merchants Alliance for Better Government	Candidate	04/13/84		\$154.67	\$1,154.67	\$70.00	\$114.59	\$184.59
Michaud 2000	Candidate	12/07/99		\$0.00	\$2,353.00	\$0.00	\$85.80	\$85.80
Mid-Coast for Human Rights	Issue	12/31/97		\$1,600.93	\$1,901.23	\$0.00	\$80.00	\$80.00
MPA Campaign Vote!	Candidate	10/20/86		\$175.32	\$200.04	\$0.00	\$125.39	\$125.39
National Association of Social Workers	Candidate	02/13/92		\$919.85	\$3,507.35	\$300.00	\$25.02	\$325.02

Receipts and Expenditures of Political Action Committees - 1999

PAC Name	Type	Date of Registration	Date of Termination	Balance Carried Forward *	Total Receipts **	Total Contributions to Candidates/ Committees	Total Operating Expenses	Total Expenditures
National Federation of Independent Business-Maine SAFE Trust	Candidate	08/17/92		\$1,822.70	\$4,678.96	\$0.00	\$326.95	\$326.95
Natural Resources Council of Maine PAC	Issue	06/22/99	12/7/99	\$0.00	\$4,228.10	\$0.00	\$4,228.10	\$4,228.10
New Leadership for Maine	Candidate	08/25/98		\$2,360.00	\$2,360.00	\$1,000.00	\$120.00	\$1,120.00
NO on 1 Coalition	Issue	01/27/99		\$0.00	1,312,586.99	\$0.00	1,285,276.04	\$1,285,276.04
November Impact Coalition	Issue	11/01/99		\$0.00	\$665.34	\$0.00	\$15.34	\$15.34
NRA Political Victory Fund	Candidate	04/01/88		\$0.00	\$2,700.00	\$2,700.00	\$0.00	\$2,700.00
On Our Terms 97	Issue	08/25/97	2/16/00	\$0.00	\$3,000.00	\$0.00	\$1,838.83	\$1,838.83
Pharmacists of Maine PAC	Candidate	01/04/90		\$2,051.48	\$2,051.48	\$0.00	\$0.00	\$0.00
Pine Tree Political Action Committee	Issue	02/21/86		\$137.55	\$137.55	\$0.00	\$12.00	\$12.00
Pingree Leadership Fund	Candidate	09/02/98		\$6,916.05	\$7,666.05	\$3,645.00	\$3,982.79	\$7,627.79
Primerica Financial Services Maine PAC	Candidate	03/14/88		\$18,210.64	\$18,721.36	\$0.00	\$3,452.42	\$3,452.42
Promote Jobs for Maine PAC	Candidate	10/11/96		\$2,302.57	\$2,802.57	\$0.00	\$4,092.97	\$4,092.97
Republican Majority 2000	Candidate	03/02/99		\$0.00	\$25,923.00	\$1,725.00	\$10,319.98	\$12,044.98
Republican Pro Choice Campaign Committee	Issue	07/09/99		\$0.00	\$2,822.40	\$1,070.00	\$1,090.53	\$2,160.53
Research and Development Bond Campaign	Issue	06/11/98		\$14,523.35	\$216,833.59	\$0.00	\$185.62	\$202,333.80
Respect Life Educational Foundation	Issue	08/04/99		\$0.00	\$478,064.64	\$300,000.00	\$3,890.63	\$303,890.63
Richard H. Campbell Leadership PAC	Candidate	06/21/99		\$0.00	\$11,290.00	\$25.00	\$10,715.11	\$10,740.11
Safe Jobs for Maine	Candidate	07/15/98		\$1,375.00	\$8,525.00	\$300.00	\$273.13	\$573.13
Save Our Homes, Inc.	Issue	11/27/95		\$40.00	\$2,840.00	\$0.00	\$0.00	\$2,800.00
Saxl for House Democrats 2000	Candidate	08/19/99		\$0.00	\$30,426.56	\$0.00	\$1,166.56	\$1,166.56
Senate 21-Leadership for a New Century	Candidate	02/19/93		\$300.13	\$67,401.93	\$3,495.85	\$44,241.17	\$47,737.02
Senate Republican Leadership for the 21st Century	Candidate	07/30/99		\$0.00	\$36,861.02	\$0.00	\$8,130.17	\$8,130.17
Sierra Club Maine Chapter PAC	Issue	10/28/97	3/9/99	\$42.48	\$42.48	\$0.00	\$14.48	\$14.48
Smokeless Tobacco Council, Inc. STCPAC	Candidate	06/20/88		\$0.00	\$0.00	\$0.00	\$0.00	\$0.00
Sportsman's Alliance of ME PAC	Issue	10/07/86		\$1,891.10	\$6,991.10	\$60.00	\$1,336.38	\$1,396.38
Taxpayers for Sensible Government	Candidate	04/28/97	3/31/99	\$0.00	\$0.00	\$0.00	\$0.00	\$0.00

Receipts and Expenditures of Political Action Committees - 1999

PAC Name	Type	Date of Registration	Date of Termination	Balance Carried Forward *	Total Receipts **	Total Contributions to Candidates/ Committees	Total Operating Expenses	Total Expenditures
The Benjamins	Candidate	12/23/99		\$0.00	\$9,230.00	\$0.00	\$0.00	\$0.00
U.A. Local 321 Political Action Committee	Candidate	09/27/91	3/19/99	\$205.24	\$231.68	\$226.68	\$5.00	\$231.68
United for Life Coalition	Issue	02/16/99		\$0.00	\$684,822.59	\$371,278.60	\$313,543.99	\$684,822.59
Unorganized Territories United	Candidate	10/19/98		\$438.36	\$1,518.36	\$0.00	\$1,276.95	\$1,276.95
Victory 98	Candidate	06/02/98	11/9/99	\$3,806.92	\$3,806.92	\$2,140.00	\$1,282.06	\$3,422.06
We The People Maine	Issue	04/03/98		\$224.00	\$3,289.35	\$0.00	\$0.00	\$0.00
Women Against Partial Birth Abortion	Issue	08/12/99		\$0.00	\$71,703.12	\$0.00	\$71,703.12	\$71,703.12
Women Vote	Candidate	09/21/98		(\$447.16)	\$5,542.84	\$0.00	\$1,435.25	\$1,435.25
Yes for Equal Rights	Issue	10/24/97		(\$11,855.34)	\$109,562.47	\$0.00	\$0.00	\$121,417.81
Yes for Life	Issue	07/22/99		\$0.00	\$65,810.40	\$0.00	\$53,456.42	\$66,264.82

Receipts and Expenditures of Political Action Committees - 2000

PAC Name	Type	Date of Registration	Date of Termination	Balance Carried Forward	Total Receipts	Total Contributions to Candidates/ Committees	Total Operating Expenses	Total Expenditures
ABC PAC	Candidate	07/30/86		\$150.64	\$150.64	\$0.00	\$0.00	\$0.00
Ad Hoc Committee for Common Sense	Issue	06/23/97		\$1,833.09	\$93,256.16	\$0.00	\$0.00	\$91,423.07
American Insurance Association MAINE PAC	Candidate	08/25/82		\$1,855.97	\$5,855.97	\$5,180.00	\$0.00	\$5,180.00
Ax the Snacks Tax	Issue	11/04/99	7/18/00	\$15,163.20	\$64,800.00	\$0.00	\$36,463.20	\$64,800.00
BLUEPAC of Maine	Candidate	07/22/86		\$907.86	\$8,124.15	\$5,700.00	\$12.31	\$5,712.31
Build Maine PAC	Candidate	08/05/98		\$161.11	\$10,861.11	\$10,200.00	\$25.64	\$10,225.64
Cathcart Leadership 2000	Candidate	01/06/00		\$495.00	\$7,865.57	\$3,575.00	\$592.28	\$4,167.28
Cheaper, Safer Power	Issue	01/21/97		(\$2,089.59)	\$3,022.00	\$0.00	\$131.64	\$5,182.92
Christian Action League, The	Candidate/I	07/27/99		\$779.28	\$60,494.14	\$1,200.00	\$28,695.57	\$59,966.86
Citizens Concerned About Reformulated Gas	Issue	09/11/95	6/5/00	(\$94.07)	\$0.00	\$0.00	\$0.00	\$0.00
Citizens for a Livable Environment in Alliance with Nature in Maine	Issue	09/16/96		(\$15,425.22)	\$15,990.72	\$0.00	\$150.00	\$31,460.94
Citizens for Jobs and a Sound Economy	Candidate	10/27/98	1/16/01	\$399.10	\$415.72	\$415.72	\$0.00	\$415.72
Citizens for Justice in Maine, Inc.	Candidate	06/16/88		\$12,977.82	\$24,393.15	\$18,400.00	\$2,329.88	\$20,729.88
Citizens for Reading the Details and Fine Print	Issue	10/30/96		\$445.45	\$445.45	\$0.00	\$0.00	\$0.00
Citizens to Preserve Maine's Fishing Heritage	Issue	09/29/00	4/10/01	\$0.00	\$6,374.00	\$0.00	\$6,374.00	\$6,374.00
Citizens to Restore the North Woods	Issue	10/30/96		\$35.00	\$137.73	\$0.00	\$101.73	\$101.73
Citizens to Save Maine's Heritage	Issue	07/13/99	4/10/00	(\$63,546.10)	\$718,133.81	\$0.00	\$3,105.92	\$718,133.81
Club 1996	Candidate	01/11/96	4/11/00	\$0.00	\$0.00	\$0.00	\$0.00	\$0.00
CMP Group Employee-Political Action Committee	Candidate	09/10/98		\$3,520.00	\$25,296.24	\$10,295.00	\$10,489.04	\$20,784.04
Coalition for the Compassionate Care of the Dying	Issue	02/16/99		(\$40,677.48)	\$1,165,532.7	\$924,000.00	\$225,263.33	\$1,210,505.60
Coalition to Protect Maine's Family Farms	Issue	09/20/96		\$0.00	\$41,635.00	\$0.00	\$0.00	\$41,635.00
Coalition to Save Small Woodlands	Issue	06/15/00	12/14/00	\$0.00	\$39,505.00	\$0.00	\$39,505.00	\$39,505.00
Committee for a Responsible Senate	Candidate	01/02/86		\$8,509.55	\$103,035.61	\$19,900.00	\$81,337.22	\$101,237.22
Committee for Conservative Government	Candidate	03/12/98	10/30/00	\$1,690.00	\$1,690.00	\$1,690.00	\$0.00	\$1,690.00
Committee for Property Tax Relief for ME	Issue	07/24/00		\$0.00	\$83,790.39	\$0.00	\$83,699.13	\$83,699.13
Committee to End Voting Discrimination Against Persons with Mental Illness	Issue	08/29/00		\$0.00	\$4,262.82	\$0.00	\$4,216.13	\$4,216.13
Committee to Stop Corporate Welfare	Issue	09/05/97	10/11/00	\$2,354.80	\$2,354.80	\$1,263.86	\$1,090.94	\$2,354.80
Common Sense for Maine Forests	Issue	11/26/96		\$13.03	\$13.79	\$0.00	\$4.57	\$4.57
Concerned Business for Midcoast Maine	Candidate	0000		\$0.00	\$1,500.00	\$400.00	\$820.00	\$1,226.00
Congressional Term Limits Coalition	Issue	09/03/93		(\$5.00)	\$171,396.00	\$0.00	\$0.00	\$171,401.00

Receipts and Expenditures of Political Action Committees - 2000

PAC Name	Type	Date of Registration	Date of Termination	Balance Carried Forward	Total Receipts	Total Contributions to Candidates/ Committees	Total Operating Expenses	Total Expenditures
Constitution Party of Maine	Candidate	03/07/00		\$0.00	\$3,563.00	\$25.00	\$2,157.02	\$2,182.02
Democratic Legislative Majority	Candidate	03/15/96	4/11/00	\$13.37	\$13.37	\$0.00	\$13.37	\$13.37
Democrats for a New Agenda	Candidate	08/17/98	10/6/00	\$222.42	\$272.42	\$262.82	\$9.60	\$272.42
Dirigo 2000	Candidate	10/18/99	12/15/00	\$4,393.11	\$15,253.11	\$11,378.42	\$1,823.23	\$13,201.65
Dirigo Alliance PAC	Candidate	07/28/88		\$1,022.86	\$6,546.22	\$0.00	\$5,299.18	\$5,299.18
Don't Tax Food Coalition of Maine	Issue	11/09/99	5/31/00	\$500.00	\$72,000.00	\$21,300.00	\$15,200.00	\$72,000.00
Energy PAC for Maine	Candidate	03/07/86		\$1,480.85	\$10,933.48	\$10,815.00	\$8.67	\$10,823.67
Family Planning Action Fund of Maine	Candidate	10/12/00		\$0.00	\$1,306.82	\$0.00	\$872.97	\$872.97
Fleet National Bank Political Action Committee	Candidate	07/17/89		\$2,743.05	\$7,595.90	\$4,250.00	\$743.09	\$4,993.09
Forests for the Future	Issue	09/24/99	12/11/00	\$0.00	\$87,337.82	\$0.00	\$85,874.09	\$87,342.82
Friends for a State Aquarium	Issue	02/19/91		\$0.00	\$0.00	\$0.00	\$0.00	\$0.00
Friends of Maine Hospitals	Candidate	01/28/87		\$27,355.24	\$55,564.24	\$26,745.00	\$12,226.00	\$38,971.00
Friends of the University of Maine	Issue	10/27/94		\$287.55	\$288.22	\$0.00	\$0.00	\$0.00
Fund for Maine's Future	Candidate	04/23/98		\$74.67	\$85,834.53	\$48,555.00	\$32,022.24	\$80,577.24
Goodwin for Speaker	Candidate	06/16/00		\$0.00	\$1,449.60	\$300.00	\$1,008.80	\$1,308.80
GOP House Majority 2000	Candidate	06/21/99		(\$28.15)	(\$28.15)	\$0.00	\$0.00	\$0.00
House Democratic Campaign Committee	Candidate	07/11/83		\$31,536.30	\$220,556.91	\$18,610.00	\$199,688.51	\$218,298.51
House Republican Fund	Candidate	01/14/97		\$9,236.09	\$63,937.48	\$24,446.93	\$30,673.48	\$55,120.41
Independent Party for Maine	Candidate	05/15/98		\$0.00	\$0.00	\$0.00	\$0.00	\$0.00
International Brotherhood of Painters and Allied Trades	Candidate	10/03/94	5/8/00	\$0.00	\$0.00	\$0.00	\$0.00	\$0.00
JOBSPAC	Candidate	03/16/00		\$0.00	\$17,219.55	\$0.00	\$16,649.52	\$16,649.52
Keep Maine Moving	Issue	04/21/98	11/2/00	(\$2,206.13)	\$232,481.90	\$1,650.00	\$12,558.15	\$232,407.28
Kennebec County Women's Republican Club	Candidate	07/18/94		\$489.24	\$489.24	\$0.00	\$0.00	\$0.00
Lead Maine	Candidate	10/26/00		\$0.00	\$4,150.00	\$1,000.00	\$0.00	\$1,000.00
Leader/120	Candidate	10/12/00		\$0.00	\$4,540.00	\$2,630.00	\$1,781.48	\$4,411.48
Leadership 2000	Candidate	08/30/00		\$0.00	\$5,000.00	\$4,000.00	\$171.28	\$4,171.28
Leadership for Maine's Future PAC	Candidate	06/27/00		\$0.00	\$21,022.51	\$16,975.00	\$2,599.00	\$19,574.00
Libertarian Party of Maine, Inc.	Candidate	10/19/98		\$2,899.17	\$15,338.93	\$600.00	\$12,528.38	\$13,128.38
Local 1253 PAC	Candidate	07/12/89		\$13,491.51	\$15,156.32	\$9,218.23	\$674.51	\$9,892.74
Loggers for Maine's Future	Issue	03/15/96		\$0.00	\$0.00	\$0.00	\$0.00	\$0.00

Receipts and Expenditures of Political Action Committees - 2000

PAC Name	Type	Date of Registration	Date of Termination	Balance Carried Forward	Total Receipts	Total Contributions to Candidates/ Committees	Total Operating Expenses	Total Expenditures
Lottery Players for Tax Relief	Issue	08/03/99	2/16/00	\$1.75	\$44.44	\$15.19	\$0.00	\$44.44
Maine AFL-CIO Committee on Political Education PAC	Candidate	07/18/88		\$19,386.93	\$66,018.49	\$58,800.00	\$1,298.25	\$60,098.25
Maine Association of Community Banks	Candidate	03/30/84		\$15,612.58	\$31,379.01	\$18,050.00	\$360.29	\$18,410.29
Maine Association of Realtors PAC	Candidate	09/28/78		\$20,488.78	\$45,448.88	\$27,984.25	\$4,744.19	\$32,728.44
MAINE BANKPAC-STATE	Candidate	12/31/85		\$14,076.64	\$49,947.28	\$37,850.00	\$10,082.75	\$47,932.75
Maine Citizens for Safe Waste Disposal	Issue	09/10/85	10/31/00	\$15,034.56	\$15,034.56	\$0.00	\$0.00	\$0.00
Maine Conservation Voters Action Fund	Candidate	07/25/00		\$0.00	\$16,006.00	\$0.00	\$14,685.25	\$14,685.25
Maine Council of Senior Citizens PAC	Issue	06/07/00		\$0.00	\$4,705.15	\$0.00	\$4,677.32	\$4,677.32
Maine Credit Union League - Legislative Action Committee	Candidate	11/14/86		\$7,086.13	\$9,536.63	\$8,675.00	\$0.00	\$8,675.00
Maine Dental PAC	Candidate	01/27/86		\$8,318.54	\$44,338.54	\$28,655.00	\$4,910.61	\$33,565.61
Maine Education Association PAC	Candidate	01/30/84		\$6,748.45	\$21,371.33	\$14,500.00	\$0.00	\$14,500.00
Maine Eye PAC	Candidate	10/22/93		\$4,076.66	\$10,448.76	\$7,500.00	\$3.30	\$7,503.30
Maine Food Issues Coalition, The	Issue	09/27/00		\$0.00	\$101,300.00	\$32,831.19	\$6,300.00	\$39,131.19
Maine Freedom Fighters	Issue	10/05/90	11/6/00	\$0.00	\$0.00	\$0.00	\$0.00	\$0.00
Maine Funeral Directors PAC	Candidate	12/15/95		\$1,495.89	\$1,497.98	\$500.00	\$0.00	\$500.00
Maine Grassroots Coalition	Issue	12/10/97		\$10.00	\$2,399.61	\$1,034.61	\$1,364.88	\$2,399.49
Maine Health Care Association	Candidate	10/16/86		\$12,099.84	\$27,324.47	\$16,478.10	\$3,633.77	\$20,111.87
Maine House Republican Women's PAC	Candidate	10/27/99	11/13/00	\$86.49	\$86.49	\$0.00	\$0.00	\$0.00
Maine Innkeepers PAC	Candidate	10/07/98		\$1,408.00	\$4,915.80	\$2,875.00	\$0.00	\$2,875.00
Maine Insurance Agents	Candidate	06/12/92		\$1,243.24	\$17,439.82	\$11,500.00	\$20.99	\$11,520.99
Maine League of Conservation Voters	Issue	10/14/86	7/25/00	\$39,423.30	\$50,453.30	\$0.00	\$7,333.86	\$7,333.86
Maine Majority 2000	Candidate	11/30/99	6/6/00	\$5,492.05	\$5,592.05	\$4,481.00	\$1,111.05	\$5,592.05
Maine Mortgage Bankers Alliance PAC	Candidate	10/31/00		\$0.00	\$2,750.00	\$1,500.00	\$21.90	\$1,521.90
Maine Motorcyclist PAC	Candidate	07/28/98		\$0.00	\$558.00	\$0.00	\$450.61	\$450.61
Maine National Organization for Women-PAC	Candidate	06/30/78		\$5,601.73	\$7,938.56	\$5,010.00	\$904.42	\$5,914.42
Maine Optometrists PAC	Candidate	10/01/86		\$1,032.99	\$9,570.87	\$7,475.00	\$0.00	\$7,475.00
Maine Osteopathic PAC	Candidate	08/12/92		\$2,215.44	\$3,540.44	\$3,300.00	\$53.34	\$3,353.34
Maine Physician Action Fund	Candidate	04/07/88		\$6,022.53	\$20,529.09	\$13,410.00	\$5,962.34	\$19,372.34
Maine Psychological Association PAC	Candidate	5/94		\$2,050.15	\$3,238.13	\$2,250.00	\$88.00	\$2,338.13
Maine Right to Know	Issue	08/18/00		\$0.00	\$3,103.18	\$0.00	\$2,446.44	\$2,446.44

Receipts and Expenditures of Political Action Committees - 2000

PAC Name	Type	Date of Registration	Date of Termination	Balance Carried Forward	Total Receipts	Total Contributions to Candidates/ Committees	Total Operating Expenses	Total Expenditures
Maine Right to Life Committee PAC State Candidate Fund	Candidate	09/22/82		\$156.44	\$322.96	\$40.00	\$210.77	\$250.77
Maine State Employees Association-PAGE	Candidate	07/29/92		\$4,892.00	\$99,020.57	\$38,084.28	\$34,037.47	\$72,121.75
Maine Taxpayer Action Network	Issue	01/18/95		(\$24,719.00)	\$96,515.00	\$0.00	\$33,073.00	\$121,141.00
Maine Taxpayers Party	Candidate	10/05/94	3/6/00	\$504.60	\$5,612.47	\$0.00	\$2,119.59	\$5,425.46
Maine Truck PAC	Candidate	04/28/86		\$1,378.32	\$13,873.32	\$11,230.00	\$553.21	\$11,783.21
Maine United Auto Workers PAC Council	Candidate	05/29/90		\$688.07	\$2,779.82	\$530.00	\$250.00	\$780.00
Maine Unlimited	Candidate	08/31/99		\$2,300.00	\$229,427.27	\$5,500.00	\$211,304.47	\$216,804.47
Maine Voices for Reproductive Choices	Candidate	01/27/99		\$27,310.95	\$30,050.40	\$5,500.00	\$16,968.15	\$22,468.15
Maine Won't Discriminate	Issue	08/24/93		\$20,377.23	\$40,977.20	\$2,716.54	\$18,146.50	\$20,863.04
Mainers for Death with Dignity	Issue	07/27/98		(\$23,469.62)	\$1,432,387.6	\$0.00	\$1,035,241.38	\$1,441,824.60
Mainers for Medical Rights	Issue	10/28/97	1/17/01	\$6,521.85	\$68,837.59	\$0.00	\$68,837.59	\$68,837.59
Maine's Forest Heritage Coalition	Issue	09/24/99		\$0.00	\$2,392,804.4	\$0.00	\$2,379,366.55	\$2,382,734.05
Majority for the Millenium	Candidate	12/20/99		\$0.00	\$9,403.34	\$6,550.00	\$2,653.58	\$9,203.58
Mendros Leadership Campaign	Candidate	10/27/00	7/9/01	\$0.00	\$2,400.00	\$2,400.00	\$0.00	\$2,400.00
Merchants Alliance for Better Government	Candidate	04/13/84		\$970.08	\$8,007.89	\$5,850.00	\$1,375.85	\$7,225.85
Michaud 2000	Candidate	12/07/99		\$2,267.20	\$59,202.87	\$42,185.00	\$11,866.06	\$54,051.06
Mid-Coast for Human Rights	Issue	12/31/97		\$1,821.23	\$12,926.40	\$400.00	\$12,729.33	\$13,129.33
Midcoast Leadership PAC	Candidate	06/08/00		\$0.00	\$11,191.00	\$5,906.05	\$404.14	\$6,310.19
MPA Campaign Vote!	Candidate	10/20/86		\$74.65	\$2,828.98	\$0.00	\$2,146.45	\$2,146.45
NAIFAPAC - Maine	Candidate	07/20/84		\$2,978.96	\$6,847.27	\$4,550.00	\$1,156.71	\$5,706.71
National Association of Social Workers	Candidate	02/13/92		\$3,182.33	\$5,331.53	\$3,679.16	\$804.63	\$4,483.79
National Federation of Independent Business-Maine SAFE Trust	Candidate	08/17/92		\$4,352.01	\$7,983.76	\$3,750.00	\$1,514.14	\$5,264.14
New Leadership for Maine	Candidate	08/25/98	7/18/00	\$1,240.00	\$1,260.00	\$1,200.00	\$60.00	\$1,260.00
New Majority PAC	Candidate	09/20/00		\$0.00	\$1,300.00	\$900.00	\$0.00	\$900.00
No Dice: Mainers Against a Dishonest Deal	Issue	09/22/00		\$0.00	\$31,290.00	\$15,569.74	\$15,088.13	\$30,657.87
No on 1	Issue	02/03/00	12/19/00	\$0.00	\$1,142,422.4	\$0.00	\$1,142,035.01	\$1,142,035.01
November Impact Coalition	Issue	11/01/99		\$650.00	\$3,555.00	\$0.00	\$2,093.54	\$2,093.54
NRA Political Victory Fund	Candidate	04/01/88		\$0.00	\$9,200.00	\$9,200.00	\$0.00	\$9,200.00
On Our Terms 97	Issue	08/25/97	2/16/00	\$1,161.17	\$3,000.00	\$1,161.17	\$0.00	\$3,000.00
Pharmacists of Maine PAC	Candidate	01/04/90	6/20/00	\$2,051.48	\$1,722.73	\$0.00	\$0.00	\$0.00

Receipts and Expenditures of Political Action Committees - 2000

PAC Name	Type	Date of Registration	Date of Termination	Balance Carried Forward	Total Receipts	Total Contributions to Candidates/ Committees	Total Operating Expenses	Total Expenditures
Pine Tree Political Action Committee	Candidate	02/21/86		\$125.55	\$125.55	\$0.00	\$12.00	\$12.00
Pingree Leadership Fund	Candidate	09/02/98		\$38.26	\$99,218.26	\$3,649.50	\$71,941.10	\$75,590.60
Planned Parenthood of Northern New England Action Fund	Candidate	09/11/00		\$0.00	\$3,273.72	\$0.00	\$2,354.85	\$2,354.85
Primerica Financial Services Maine PAC	Candidate	03/14/88	1/11/01	\$15,268.94	\$15,993.51	\$12,509.81	\$3,518.05	\$16,027.86
Promote Jobs for Maine PAC	Candidate	10/11/96		(\$1,290.40)	\$209.60	\$0.00	\$44.00	\$44.00
Republican Majority 2000	Candidate	03/02/99	1/16/01	\$13,878.02	\$38,709.51	\$25,720.53	\$13,013.98	\$38,734.51
Republican Pro Choice Campaign Committee	Issue	07/09/99	4/1/00	\$661.87	\$663.41	\$0.00	\$0.00	\$0.00
Research and Development Bond Campaign	Issue	06/11/98		\$14,499.79	\$14,622.04	\$0.00	\$0.00	\$0.00
Respect Life Educational Foundation	Issue	08/04/99		\$174,174.01	\$1,189,140.00	\$1,094,000.00	\$21,613.93	\$1,115,613.93
Richard H. Campbell Leadership PAC	Candidate	06/21/99		\$1,010.37	\$9,545.37	\$565.00	\$8,977.25	\$9,542.25
Rosita's Leadership Committee	Candidate	08/24/00	12/13/00	\$0.00	\$1,000.00	\$780.00	\$220.00	\$1,000.00
Safe Jobs for Maine	Candidate	07/15/98		\$8,891.24	\$16,041.24	\$12,750.00	\$1,027.42	\$13,777.42
Save Our Homes, Inc.	Issue	11/27/95		\$40.00	\$2,840.00	\$0.00	\$0.00	\$2,800.00
Saxl for House Democrats 2000	Candidate	08/19/99		\$29,260.00	\$55,427.16	\$30,614.50	\$14,989.53	\$45,604.03
SCICOM PAC	Candidate	10/23/95		\$0.00	\$7,400.00	\$1,450.00	\$4,147.98	\$5,597.98
Senate Democratic Campaign Committee	Candidate	02/19/93		\$19,664.91	\$259,835.94	\$124,956.67	\$130,093.32	\$255,049.99
Senate Republican Leadership for the 21st Century	Candidate	07/30/99		\$28,730.85	\$49,111.17	\$23,850.00	\$17,853.01	\$41,703.01
Sierra Club Maine Action PAC	Issue	10/16/00	12/13/00	\$0.00	\$200,714.04	\$200,514.04	\$156.57	\$200,670.61
Smokeless Tobacco Council, Inc. STCPAC	Candidate	06/20/88		\$0.00	\$0.00	\$0.00	\$0.00	\$0.00
Sportsman's Alliance of ME PAC	Issue	10/07/86		\$4,394.72	\$15,925.40	\$5,314.50	\$2,954.42	\$8,268.92
Stop Handgun Violence Action Fund	Issue	08/01/00		\$0.00	\$3,556.00	\$3,000.00	\$140.00	\$3,140.00
The Benjamins	Candidate	12/23/99		\$9,230.00	\$28,940.00	\$25,100.00	\$3,073.16	\$28,173.16
The Human Fund	Candidate	04/20/00		\$0.00	\$6,570.00	\$4,825.00	\$1,523.58	\$6,348.58
Tom Murphy for House Republicans 2000 PAC	Candidate	07/24/00	11/28/00	\$0.00	\$3,600.00	\$3,570.00	\$30.00	\$3,600.00
United for Life Coalition	Issue	02/16/99	1/16/01	\$0.00	\$0.00	\$0.00	\$0.00	\$0.00
Unorganized Territories United	Issue	10/19/98		\$241.41	\$266.41	\$0.00	\$150.00	\$150.00
Verizon Communications Corporation Maine Employees' Good Government	Candidate	01/17/96		\$765.06	\$10,917.36	\$9,700.00	\$6.00	\$9,706.00
Waldo County for Equal Rights	Issue	03/14/00	1/5/01	\$0.00	\$4,951.85	\$1,373.18	\$3,578.67	\$4,951.85
We The People	Issue	1/98	4/5/00	\$3,289.35	\$3,389.35	\$0.00	\$1,000.00	\$1,067.88
Women Against Partial Birth Abortion	Issue	08/12/99	1/16/01	\$0.00	\$0.00	\$0.00	\$0.00	\$0.00

Receipts and Expenditures of Political Action Committees - 2000

PAC Name	Type	Date of Registration	Date of Termination	Balance Carried Forward	Total Receipts	Total Contributions to Candidates/ Committees	Total Operating Expenses	Total Expenditures
Women Vote	Candidate	09/21/98		\$4,107.59	\$9,257.00	\$7,000.00	\$2,200.00	\$9,200.00
Yes for Equal Rights	Issue	10/24/97		(\$11,855.34)	\$109,562.47	\$0.00	\$0.00	\$121,417.81
Yes for Life	Issue	07/22/99		(\$454.42)	\$65,810.40	\$0.00	\$0.00	\$66,264.82
Yes on 6	Issue	01/13/00		\$0.00	\$459,194.00	\$0.00	\$506,311.00	\$506,311.00

LOBBYIST DISCLOSURE PROCEDURES

The lobbyist disclosure laws require registered lobbyists to register as paid lobbyists and to file monthly reports with the Commission. The reports must show the compensation received and expenditures made by the lobbyists in pursuit of their lobbying activities. Lobbyists must file annual reports as well.

Each fall, the staff reviews reporting forms and instructions and revises them as necessary to conform them to legal requirements. Packets containing registration forms and instructions for reporting are mailed to the previous year's registrants. The staff produces and publishes a register containing the names and addresses of all registered lobbyists and their employers, updating that listing as necessary throughout the year. Each year, the staff compiles and publishes a lobbyist compensation report summarizing the activity of lobbyists for the previous lobbyist registration year that ends November 30. Both the register and the annual compensation report are available for public inspection and may be purchased for a small fee.

As with campaign finance reports, each monthly disclosure report is monitored for timeliness and completeness. Lobbyists filing late reports are referred to the Commission for determination of the appropriate sanction as provided by statute. While most lobbyists remit payment upon notification of any penalty amount, those who do not may be referred to the Attorney General's Office for appropriate disposition and may have their lobbying privileges revoked during the pendency of that process.

Lobbyist Activity 1999:

Both the number of individual lobbyists and the number of lobbyist employers in 1999 increased by 18% compared to 1998, while reported compensation paid to lobbyists between 1998 and 1999 increased by 58% from \$2,366,516.98 to \$3,742,244.97, not quite eclipsing the single year record compensation of \$3,852,653.80 paid in 1997. The total number of lobbyist registrations (i.e., lobbyist/employer, employer/lobbyist, recognizing that an individual lobbyist may work for more than one employer and an individual employer may employ more than one lobbyist) also increased significantly in 1999, from 338 registrations to 416, a 23% increase. Between 1998 and 1999, the reported amount spent on officials by lobbyists increased by nearly 23%, while the reported amount in excess of \$25 spent on officials increased by over 41%. In comparison to the figures for 1997, the First Regular Session of the 119th Legislature, the reflect a slight reduction in lobbying activity, except for the number of lobbyist employers, total number of lobbyist registrations, and amount in excess of \$25 spent on officials.

Lobbyist Activity 2000:

The number of individual lobbyists and lobbyist employers in 2000 remained approximately the same compared to 1999, while reported expenses also decreased by over 26%. The total number of lobbyist registrations (i.e., lobbyist/employer, employer/lobbyist, recognizing that an individual lobbyist may work for more than one employer and an individual employer may employ more than one lobbyist) also decreased by slightly more than 4% in 2000, from 416 to 398 registrations. The amount of compensation paid to lobbyists decreased by more than 9% from 1999 to 2000. Between 1999 and 2000, the reported amount spent on officials by lobbyists decreased over 20%, while the reported amount in excess of \$25 spent on officials decreased by over 30%.

The above analysis appears to continue the general trend in lobbying activity representing a greater level of activity and commensurate expense in the first year of a legislative biennium than in the second year.

Decade Summary:

The Commission staff summarizes the disclosures of lobbyists and lobbyist employers conducting business in Maine during the preceding decade. With respect to Part A of that summary, it may be noted that the level of activity conducted each year is directly related to the duration of the legislative session; i.e., the first session of the Legislature, which falls in odd-numbered years and includes consideration of the biennial budget, produces more activity than does the shorter, second session. Hence, while the figures accurately reflect yearly activity, they are less useful in measuring progression. A better gauge would be to compare totals for each Legislative Biennium which combine activity for both the first and second sessions. That comparison is provided in Part B.

The study shows that between the 115th Legislature (1991-1992) and the 119th Legislature (1999-2000), lobbyist registrations increased over 23%, compensation paid to lobbyists increased more than 64%, and expenses more than quintupled during that period.

LOBBYIST STATISTICS
1991 - 2000

PART A

YEAR	NUMBER OF INDIVIDUAL LOBBYISTS	NUMBER OF EMPLOYERS	NUMBER OF REGISTRATIONS	COMPENSATION	EXPENSES	SPENT ON OFFICIALS	\$25+ SPENT ON OFFICIALS	TOTAL REVENUE
1991	298	287	351 (\$100 ea)	2,747,343.39	2,393.98	4,863.53	312.00	40,167
1992	269	254	306 (\$100 ea)	1,596,026.44	54,444.43	3,542.74	882.41	33,322
1993	303	285	349 (\$100 ea)	2,619,813.12	1,686.57	4,295.65	2,633.92	37,366
1994	250	275	342 (\$200 ea)	2,326,765.03	2,178.38	7,690.61	3,262.06	114,704
1995	283	312	390 (\$200 ea)	3,473,451.13	9,699.68	16,217.99	6,878.94	129,271
1996	226	246	292 (\$200 ea)	2,116,278.51	172,686.14	17,246.20	3,514.01	89,004
1997	307	319	410 (250 @ \$200 ea) (160 @ \$400 ea)	3,852,653.80	251,130.08*	16,247.30	4,103.49	176,372
1998	239	280	338 (\$400 ea)	2,366,516.98	171,952.95	12,873.43	3,409.87	191,796
1999	281	330	416 (\$200 ea)	3,742,244.97	174,435.75	15,793.12	4,813.77	121,143
2000	287	329	398 (\$200 ea)	3,391,951.45	128,237.94	12,598.48	3,368.04	117,845

56

PART B

	NUMBER OF REGISTRATIONS	COMPENSATION	EXPENSES	SPENT ON OFFICIALS	\$25+ SPENT ON OFFICIALS
1991-1992 115th Legislature	657	\$4,343,369.83	\$56,838.41	\$8,406.27	\$1,194.41
1993-1994 116th Legislature	691	\$4,946,578.15	\$3,864.95	\$11,985.26	\$5,895.98
1995-1996 117th Legislature	682	\$5,589,729.64	\$182,385.82	\$33,464.19	\$10,392.95
1997-1998 118th Legislature	748	\$6,219,170.78	\$423,083.03	\$29,120.73	\$7,513.36
1999-2000 119th Legislature	814	\$7,134,196.42	\$302,673.69	\$28,391.60	\$8,181.81

* Prior to 1997, it is unclear whether lobbyists were including expenses in compensation total; in 1997 reporting forms were revised, requiring lobbyists to report expenses separately from compensation.

LOBBY STATISTICS
December 1, 1998 - November 30, 1999

Individual Lobbyists/Lobbyist Associates * 281

Number of Employers 330

Number of Registrations 416

Fees:	416 lobbyist/employer Registrations	@ \$200 each =	\$83,200	
	287 lobbyist associate registrations **	@ \$100 each =	\$28,700	
	Total revenue - registrations		\$111,900	
	Penalties		\$8,700	
	Publications sold (including disks, labels, lobby copying fees)		\$543 #	
	Total revenue - other		\$9,243	
	TOTAL REVENUE - LOBBYIST FUNCTION			\$121,143

Average amount remitted by lobbyist/employer each joint registration = \$291.21

- * Includes individuals only.
- ** Lobbyist associates do not register separately. They are listed on joint lobbyist/employer registration.
- # Includes sales tax of approximately \$27.00.

LOBBY STATISTICS
December 1, 1999 - November 30, 2000

Individual Lobbyists/Lobbyist Associates * 287

Number of Employers 329

Number of Registrations 398

Fees:	398 lobbyist/employer registrations	@ \$200 each = \$79,600	
	296 lobbyist associate registrations **	@ \$100 each = \$29,600	
	Total revenue - registrations		\$109,200
	Penalties	\$8,050	
	Publications sold (including disks, labels, lobby copying fees)	\$595	
	Total revenue - other		\$8,645
	 TOTAL REVENUE - LOBBYIST FUNCTION		 \$117,845

* Includes individuals only.

** Lobbyist associates do not register separately. They are listed on joint lobbyist/employer registration.

**COMPENSATION - LOBBYISTS & LOBBYING/CONSULTING FIRMS
CONTRACTING FOR TWO OR MORE CLIENTS**

1999

	Lobbyist/Firm	Compensation
1	Preti, Flaherty, Beliveau & Pachios, LLC	\$333,790.19
2	Doyle & Nelson	\$311,757.37
3	Public Affairs Group	\$301,065.64
4	Howe & Company	\$170,502.89
5	Hawkes & Mayhew	\$152,314.31
6	Pierce Atwood	\$129,265.00
7	Verrill & Dana, LLP	\$119,349.50
8	Drummond, Woodsum & MacMahon	\$117,655.50
9	Maine Tomorrow	\$94,970.43
10	Pineau Policy Associates	\$89,003.00
11	Eaton, Peabody, Bradford & Veague PA	\$88,199.10
12	Resource Policy Group	\$81,531.25
13	Moose Ridge Associates	\$73,100.00
14	Capital Consultants of Maine	\$63,712.52
15	Bernstein, Shur, Sawyer & Nelson, PA	\$61,500.04
16	Public Policy Associates	\$54,352.50
17	Capitol Insights	\$52,866.65
18	Andrew B. MacLean	\$49,175.80
19	Dyer & Goodall	\$40,965.00
20	Perkins, Thompson, Hinckley & Keddy	\$40,425.21
21	Michele A. Fossett	\$37,500.00
22	Marden, Dubord, Bernier & Stevens	\$36,500.00
23	Farnsworth & Associates	\$31,500.00
24	John W. Royce	\$30,500.00
25	Linda B. Gifford	\$28,000.00
26	Hart Public Policy	\$24,850.00
27	Vivian St. Onge	\$20,392.00
28	Curtis, Thaxter, Stevens, Broder & Micoleau	\$18,125.00
29	Enterprise Policy Group	\$15,412.00
30	Maine Policy Group, LLC	\$15,319.35
31	Jimmy A. McGregor	\$12,260.00
32	Norman, Hanson & DeTroy, LLC	\$8,649.50
33	Competitive Edge Consulting	\$5,620.05
34	Erler, Powers & Nicholson	\$5,210.50
35	Ralph Buchanan Pears	\$3,762.00
36	Bill Diamond	\$2,730.00

**COMPENSATION - LOBBYISTS & LOBBYING/CONSULTING FIRMS
CONTRACTING FOR TWO OR MORE CLIENTS**

2000

	Lobbyist/Firm	Compensation
1	Doyle & Nelson	\$498,943.04
2	Preti, Flaherty, Beliveau & Pachios, LLC	\$246,614.79
3	Public Affairs Group	\$223,672.24
4	Maine Tomorrow	\$151,760.04
5	Pierce Atwood	\$147,200.00
6	Howe & Company	\$128,521.28
7	Eaton, Peabody, Bradford & Veague PA	\$113,666.90
8	Drummond, Woodsum & MacMahon	\$110,066.50
9	Verrill & Dana, LLP	\$91,296.70
10	Bernstein, Shur, Sawyer & Nelson, PA	\$89,402.50
11	Moose Ridge Associates	\$80,100.00
12	Pineau Policy Associates	\$77,718.00
13	Hawkes Associates	\$62,200.00
14	Capitol Insights	\$58,906.25
15	Resource Policy Group	\$52,500.00
16	Barbara Merrill	\$43,600.00
17	Public Policy Associates	\$42,923.32
18	Michele A. MacLean	\$36,400.00
19	Phillips & Bernier, LLC	\$33,500.00
20	Linda B. Gifford	\$28,000.00
21	Andrew B. MacLean	\$25,678.25
22	Perkins, Thompson, Hinckley & Keddy	\$24,950.00
23	Hart Public Policy	\$24,400.00
24	Patrick Paradis	\$22,000.00
25	Capitol Strategies	\$20,000.00
26	Susan Farnsworth	\$19,500.00
27	John Royce	\$15,500.00
28	Enterprise Policy Group	\$15,204.00
29	Curtis, Thaxter, Stevens, Broder & Micoleau	\$14,173.00
30	Karen Brown-Mohr	\$13,000.00
31	John Cleveland	\$11,575.00
32	Norman Trask	\$11,000.00
33	Jimmy A. McGregor	\$7,320.00
34	Bill Diamond	\$3,970.00

**1999 LOBBYIST EMPLOYERS SPENDING \$20,000 OR MORE
ALL REGISTRANTS - ALL TYPES OF EXPENSES**

EM	YER	EMPLOYER BUSINESS	TOTAL AMOUNT
CMP Group, Inc.			
	Doyle, Jon R.	Utilities	
	Dyer, Linda Smith	Utilities	
	Fairfield, James D.	Utilities	
	Public Affairs Group	Utilities	
			\$132,154.65
Blue Cross & Blue Shield of Maine			
	Doyle, Jon R.	Health care	
	Dutremble, Dennis L.	Insurance	
	O'Brien, Jadine R.	Insurance	
	Softan, Charles C.	Health care	
			\$85,133.03
R. J. Reynolds Tobacco Company			
	Doyle, Jon R.	Tobacco/food	
	Riley, Daniel P. Jr.	Tobacco/food	
			\$83,893.40
Sustainable Forestry Coalition			
	Doyle, Jon R.	Environment (not-for-profit advocacy coalition)	
	Lowry, Cindy	Environment/forest products	
	Mattson, Kevin J.	Environment/forest products/natural resources	
	Pineau, Edward	Environment	
			\$79,493.62
Philip Morris Management Corp.			
	Lambert, John F. Jr.	Tobacco/food	
	Martel-Riess, Carol	Tobacco/food/alcoholic beverages	
	Mayhew, Mary	Food processing/sales	
			\$64,480.04
Maine Yankee			
	Public Affairs Group	Utilities	
			\$63,615.62
Industrial Energy Consumer Group			
	Bickmore, Ellen C.	Utilities	
	Buxton, Anthony W.	Energy	
	Johnston, Edward I.	Energy	
	Martel-Riess, Carol	Energy	
			\$60,461.02
Maine Municipal Association			
	Herman, Geoff	Government	
			\$59,964.78
Maine Pulp & Paper Association			
	Johnston, Edward I.	Forest products	
	Pierce Atwood	Industry/manufacturing	
	Timberlake, Cheryl C.	Business	
	Orish, Jeff	Forest products	
			\$58,211.71
American Resort Development Association			
	Carr, Douglas S.	Trade association	
	Doyle, Jon R.	Trade association	
			\$55,511.90

**1999 LOBBYIST EMPLOYERS SPENDING \$20,000 OR MORE
ALL REGISTRANTS - ALL TYPES OF EXPENSES**

EMPLOYER	EMPLOYER BUSINESS	TOTAL AMOUNT
Maine Automobile Dealers Association, Inc. Brown, Thomas T. Jr. Gerrity, Bruce C.	Motor vehicle Motor vehicle	\$48,706.15
State Farm Insurance Companies Plouffe, William L.	Insurance	\$45,000.00
Maine Bankers Association Pietroski, Joseph J. Jr.	Banking/finance	\$44,307.40
Maine Public Service Company Cohen, James I. Hart, Debra A. Johnson, Stephen A.	Utilities Utilities Utilities	\$34,279.20
Tufts Health Plan Doyle, John P. Jr.	Insurance	\$31,747.68
Maine State Chamber of Commerce Hall, Christopher J.	Business	\$31,443.50
Bangor School Department Davies, Richard S.	Education	\$30,000.00
Plum Creek Timber Company, L.P. Denico, Douglas P. Eaton, Peabody, Bradford & Veague, PA	Forest products Forest products	\$29,731.17
Maritimes & Northeast Management Company Prenda, Brian J. Public Affairs Group	Utilities Utilities	\$29,432.39
FPL Energy, Inc. Riley, Daniel P. Jr.	Energy	\$29,406.50
Health Insurance Association of America Public Affairs Group	Health care	\$29,400.50
Maine Medical Association MacLean, Andrew B.	Health care	\$29,175.80
Maine Employers' Mutual Insurance Company Pierce Atwood	Workers' compensation	\$28,790.00
Maine Association of Realtors Gifford, Linda B.	Real estate	\$28,637.50

**1999 LOBBYIST EMPLOYERS SPENDING \$20,000 OR MORE
ALL REGISTRANTS - ALL TYPES OF EXPENSES**

EM	YER	EMPLOYER BUSINESS	TOTAL AMOUNT
	Irving Oil Corporation		
	Doyle, Jon R.	Energy	\$28,262.86
	Maine Health Care Association		
	Dyer, Mary Lou	Health care	
	Robinson, Ann R.	Health care	\$28,091.25
	Maine Assn. of Mental Health Services		
	Doyle, Jon R.	Mental health	
	Sweet, Elizabeth	Mental health	\$27,808.62
	Maine Trial Lawyers Association		
	Dyer, Linda Smith	Legal	
	Stinson, Lucy E.	Legal	\$27,758.28
	Medical Mutual Insurance Company of Maine		
	Hanson, Robert F.	Health care	
	Soltan, Charles C.	Insurance	
	Trahan, Ronald J.	Insurance	\$27,113.14
M	Community Drug Store Coalition		
	Ke, Christine F.	Health care	\$27,106.16
	Scarborough Downs		
	MacColl, Edward S.	Wagering/gaming	
	Pineau, Edward	Wagering/gaming	
	Tardy, Robert J.	Wagering/gaming	\$27,028.20
	Champion International Corporation		
	Fossett, Michele A.	Forest products	
	Maker, Andrea C.	Forest products	\$26,670.00
	Maine Lesbian/Gay Political Alliance		
	Farnsworth, Susan	Public interest	\$26,500.00
	Healthsource Maine, Inc.		
	Public Affairs Group	Insurance	\$25,900.06
	Maine Council of Self-Insurers		
	Johnston, Edward I.	Insurance	
	McLaughlin, D. Vincent	Workers' compensation	\$25,711.31
F	Quebec		
	ashem, Julie	Energy	
	Pierce Atwood	Energy	\$25,515.00

**1999 LOBBYIST EMPLOYERS SPENDING \$20,000 OR MORE
ALL REGISTRANTS - ALL TYPES OF EXPENSES**

EMPLOYER	EMPLOYER BUSINESS	TOTAL AMO
Alliance of American Insurers Hirshon, Robert E.	Insurance	\$25,300.00
Maine Better Transportation Association Fuentes, Maria R. Timberlake, Cheryl C.	Transportation Transportation	\$25,205.40
Bangor Hydro-Electric Company Hawkes, Susan Williams, LuAnn C.	Utilities Utilities	\$25,121.56
Maine AFL-CIO Gorham, Edward F.	Labor union	\$25,100.00
Commercial Union York Insurance Company Stevens, Everard B.	Insurance	\$24,980.00
Eastern Maine Healthcare Eaton, Peabody, Bradford & Veague, PA Harvey-McPherson, Lisa	Health care Health care	\$24,926.27
Maine School Management Association Barker, Ronald T. Spencer, Richard A.	Education Education	\$24,764.16
Maine Assn. of Substance Abuse Providers Doyle, Jon R.	Substance abuse providers	\$24,575.91
Maine Equal Justice Project, Inc. Henderson, Mary T.	Public interest	\$24,409.31
Methanex Methanol Company Public Affairs Group	Environment	\$24,388.47
Great Northern Paper, Inc. Gould, Richard A. Stetson, Brian R.	Industry/manufacturing Forest products	\$24,100.00
Maine Hospital Association Michaud, Steven R. St. Onge, Vivian	Health care Health care	\$24,067.83
Maine Daily Newspaper Publishers Association Eaton, Peabody, Bradford & Veague, PA	Media	\$24,000.00

**1999 LOBBYIST EMPLOYERS SPENDING \$20,000 OR MORE
ALL REGISTRANTS - ALL TYPES OF EXPENSES**

EM	YER	EMPLOYER BUSINESS	TOTAL AMOUNT
Bell Atlantic			
Breton, Daniel B.		Telecommunications	\$23,952.28
Manufactured Housing Association of Maine			
Howe, Robert S.		Business	\$23,256.71
Vanguard Cellular Systems			
Hobbins, Barry J.		Telecommunications	\$22,639.45
Maine Association of Community Banks			
Cohen, James I.		Banking/finance	
Pinkham, Christopher W.		Banking/finance	\$22,517.50
Maine Beer & Wine Wholesalers Assn., The			
Mayhew, Mary		Alcoholic beverages	\$22,000.00
Natural Resources Council of Maine			
Cartwright, Steve		Environment	\$21,408.61
Maine Association of Insurance Companies, The			
Mayhew, Mary		Insurance	\$21,000.00
International Anticounterfeiting Coalition			
Doyle, Jon R.		Industry	\$20,709.62
Rite Aid Corporation/Eagle Managed Care			
Carr, Douglas S.		Retail sales	\$20,403.71
Alliance of Automobile Manufacturers, Inc.			
Public Affairs Group		Transportation	\$20,195.19
Maine Association of Area Agencies on Aging			
Sweet, Elizabeth		Elderly	\$20,000.00

**2000 LOBBYIST EMPLOYERS SPENDING \$20,000 OR MORE
ALL REGISTRANTS - ALL TYPES OF EXPENSES**

EMPLOYER	EMPLOYER BUSINESS	TOTAL AMOUNT
Intelligent Learning Corporation		
Hart, Debra A.	Education	
Public Affairs Group	Education	
Burke, Christine F.	Education	
Lenardson, Roy	Education	
Doyle, Jon R.	Education	
		\$143,782.84
CMP Group, Inc.		
Doyle, Jon R.	Utilities	
Allen, David F.	Utilities	
Public Affairs Group	Utilities	
		\$96,204.62
Maine Education Loan Marketing Corp.		
Doyle, Jon R.	Banking/finance	
		\$90,263.45
Brunswick Technologies, Inc.		
Eaton, Peabody, Bradford & Veague, PA	Industry/manufacturing	
Grimnes, Martin S.	Industry/manufacturing	
Public Affairs Group	Industry/manufacturing	
		\$77,561.63
Maine Yankee		
Public Affairs Group	Utilities	
Lynch, Mary Ann	Energy	
Burke, Christine F.	Energy	
Pineau, Edward	Energy	
Howes, Eric T.	Utilities	
		\$74,896.28
CertainTeed Corporation		
Cohen, James I.	Industry/manufacturing	
Merrill, Barbara E.	Industry/manufacturing	
Pineau, Edward	Industry/manufacturing	
		\$53,078.33
Blue Cross & Blue Shield of Maine		
O'Brien, Jadine R.	Insurance	
Shorr, Elizabeth O.	Insurance	
Doyle, Jon R.	Insurance	
Soltan, Charles C.	Health care	
Dutremble, Dennis L.	Insurance	
		\$52,928.47
Maine Pulp & Paper Association		
Toorish, Jeffrey	Forest products	
Delahanty, John D.	Industry/manufacturing	
		\$46,003.55
State Farm Insurance Companies		
Plouffe, William L. Esq.	Insurance	
		\$45,000.00
Financial Independent Services Corporation (FISC)		
Beliveau, Severin M. Esq.	Education	
		\$39,870.50
Irving Oil Corporation		
Doyle, Jon R.	Business	
Riley, Daniel P. Jr.	Energy	
		\$37,590.95

**2000 LOBBYIST EMPLOYERS SPENDING \$20,000 OR MORE
ALL REGISTRANTS - ALL TYPES OF EXPENSES**

EMPLOYER	EMPLOYER BUSINESS	TOTAL AMOUNT
Ila Waste Systems, Inc./SERF/KTI Delahanty, John D.	Waste management	\$37,387.50
Maine Association of Substance Abuse Providers Doyle, Jon R.	Health care	\$35,659.25
Maine Bankers Association Pietroski, Joseph J. Jr.	Banking/finance	\$34,450.02
Maine State Troopers Association Doyle, Jon R.	Labor union	\$34,271.84
Sustainable Forestry Coalition Mattson, Kevin J. Pineau, Edward	Forest products Agriculture; environment	\$33,000.00
Maine State Chamber of Commerce Hall, Christopher J.	Business	\$32,601.50
R. J. Reynolds Tobacco Company Riley, Daniel P. Jr.	Tobacco/food	\$31,731.00
Maine Automobile Dealers Association, Inc. Brown, Thomas T. Jr. Gerrity, Bruce C. Esq.	Motor vehicle Motor vehicle	\$31,528.71
Maine Community Drug Store Coalition Burke, Christine F.	Retail sales	\$30,800.41
Maine Municipal Association Herman, Geoff	Government	\$30,647.22
Maine Education Loan Authority Doyle, Jon R.	Banking/finance	\$30,629.59
North Berwick, Town of Burke, Christine F.	Government	\$30,192.50
Maine School Management Association Barker, Ronald T. Spencer, Richard A.	Education Education	\$27,811.40
Maine Association of Realtors Gifford, Linda B. Esq.	Real estate	\$27,434.29
FPL Energy, Inc. Riley, Daniel P. Jr.	Energy	\$26,996.88
Maine Association of Mental Health Services Doyle, Jon R. Sweet, Elizabeth	Mental health Mental health	\$26,809.03
Maine AFL-CIO Gorham, Edward F.	Labor union	\$26,400.00

**2000 LOBBYIST EMPLOYERS SPENDING \$20,000 OR MORE
ALL REGISTRANTS - ALL TYPES OF EXPENSES**

EMPLOYER	EMPLOYER BUSINESS	TOTAL AMOUNT
Philips Lighting Company Delahanty, John D.	Industry/manufacturing	\$25,540.00
Alliance of American Insurers Hirshon, Robert E. Esq.	Insurance	\$25,300.00
Bangor Hydro Electric Company Hawkes, Susan	Utilities	\$25,000.00
International Anticounterfeiting Coalition Doyle, Jon R.	Industry/manufacturing	\$24,770.76
Wiscasset, Town of Beliveau, Severin M. Esq.	Government	\$24,664.58
Jackson Laboratory, The Beliveau, Severin M. Esq.	Biotechnology	\$24,552.21
Manufactured Housing Association of Maine Howe, Robert S.	Business	\$24,341.67
Bell Atlantic Breton, Daniel B.	Telecommunications	\$24,306.25
Maine Equal Justice Project, Inc. Henderson, Mary T.	Public interest	\$24,198.41
Guilford Rail System Danton, Peter Paradis, Patrick E.	Transportation Transportation	\$24,000.00
Maine Daily Newspaper Publishers Association Eaton, Peabody, Bradford & Veague, PA	Media	\$24,000.00
Natural Resources Council of Maine Didisheim, Pete Sweet, Elizabeth	Environment Environment	\$23,215.87
Maine Smoking OR Health Coalition Burke, Christine F.	Health care	\$23,168.27
BC International, Inc. Gahagan, Hayes Morgan, Erika	Industry/manufacturing Energy	\$22,230.00
Maine Medical Association MacLean, Andrew B. Esq.	Health care	\$21,678.25
Champion International Corporation Maker, Andrea C. MacLean, Michele A.	Forest products Forest products	\$21,252.00
Methanex Methanol Company Public Affairs Group	Environment	\$20,806.75

**2000 LOBBYIST EMPLOYERS SPENDING \$20,000 OR MORE
ALL REGISTRANTS - ALL TYPES OF EXPENSES**

EMPLOYER	EMPLOYER BUSINESS	TOTAL AMOUNT
J. Morris Management Corporation Public Affairs Group Tardy, Robert J.	Tobacco/food Tobacco/food; food processing/sales; also	\$20,400.00
Maine Association for Community Service Providers Merrill, Barbara E.	Health care	\$20,000.00
Maine Association of Area Agencies on Aging Sweet, Elizabeth	Human services	\$20,000.00
Maine Grocers Association Burke, Christine F.	Retail sales	\$20,000.00

LAWS ON LEGISLATIVE ETHICS AND FINANCIAL DISCLOSURE

Unlike many state codes, Maine's legislative ethics laws do not impose sanctions as a means of resolving questionable ethical issues. Rather, those laws define the standards by which Legislators are expected to conduct themselves and they admonish Legislators to avoid even the appearance of misconduct or a conflict of interest. The law empowers the Commission to conduct investigations; and it further authorizes the Commission to issue opinions and recommendations. But the opinions rendered by the Commission, whether at the request of a Legislator, or on the Commission's own motion, are strictly advisory; and the ultimate responsibility for resolving ethical issues rests with the Legislature itself.

A key aspect of the legislative ethics law is personal financial disclosure. Under that law, Legislators as well as Legislative candidates are required to disclose the sources of their personal income, including any unsecured indebtedness. The purpose of such disclosure is threefold: 1) to reveal to citizens any potential conflicts of interest; 2) to remind Legislators of potential sources of conflicts of interest; and 3) to discourage Legislators from using their office for personal gain or benefit. Disclosure statements are available for public inspection.

Ethics Seminar: To promote awareness of the standards established by the Legislature, the Commission conducts a seminar for Legislators prior to the commencement of the first regular session of each Legislature. The seminar is conducted in conjunction with the Attorney General's office and the Executive Director of the Legislative Council. Participants usually include the Speaker of the House, the President of the Senate, the Attorney General, and the Chairman of the Ethics Commission.

1999-2000 Activity: The Commission considered numerous matters during the biennium. Among the most contentious issues considered were complaints filed against several political action committees (PACs) for alleged violations of the PAC registration and reporting laws, a willful violation of the reporting requirements for Legislators to file statements of sources of income, several requests for Commission guidance on the implementation and administration of the Maine Clean Election Act (see separate report on the MCEA), alleged violations of the newly reduced contribution limitations for candidates, reporting irregularities and late filings of required reports, complaints alleging failure of lobbyists to fully disclose the focus of their lobbying activities, a complaint alleging the endorsement of a candidate by public officials, several complaints regarding the application of the matching funds provision of the Maine Clean Election Act, and numerous penalty actions to enforce the statutory filing and reporting requirements for candidates, political party committees, political action committees, and lobbyists.

INFORMAL ADVISORY OPINIONS

During 1999-2000, the Commission issued the following informal advisory opinions in response to the inquiries of Legislators, lobbyists, political action committees, and others. A word of caution about the general use of these opinions: While the Commission's objective in printing summaries of these opinions is to increase Legislator and public understanding of and sensitivity to the laws administered by the Commission, only persons who receive an advisory opinion from the Commission may rely upon that opinion as protection against an adverse Commission finding if a complaint is filed against another individual. Each case is decided based on its own unique facts.

Issues Concerning Ethics, Conflict of Interest, or Sources of Income

ISSUE: Potential conflict of interest in voting on a bill

OPINION: A conflict of interest would be created by a Legislator's participation in the consideration of legislation that would include the significant potential for the Legislator's wife and her family to receive a financial gain or a direct benefit as a result of the enactment of that proposed legislation, and that such financial gain or direct benefit would be distinct from that of the general public.

ISSUE: Appropriateness of accepting a gift of a pullover golf shirt in recognition of a Legislator's service as a member of an advisory council prior to election to the Legislature.

OPINION: It would not be a conflict of interest under existing law for a Legislator to accept the gift in question provided that it is clearly understood that the presentation was solely in appreciation for past services rendered as a member of the advisory council, that the practice has been to make similar presentations to departing council members, and that the purpose in making the presentation was not to influence the Legislator in the performance of official duties or vote, or to reward any action as a Legislator. However, that conclusion is based solely on the application of the legislative ethics laws over which the Commission has jurisdiction. It does not apply to the bribery and corrupt practices laws over which the Attorney General has enforcement jurisdiction.

ISSUE: Whether the Maine Constitution or statutes would prohibit a State Legislator from being employed as the manager of a U. S. Senator's local field office.

OPINION: None of the laws which the Commission administers and over which it has enforcement jurisdiction (1 M.R.S.A. sections 1001-1023; 3 M.R.S.A. sections 311-326; and 21A M.R.S.A. sections 1001-1128) would prohibit the type of employment described. However, the legislative ethics provisions found at 1 M.R.S.A. sections 1011-1015 may apply to specific factual situations that could create a conflict of interest between the new employment position and

legislative service. In the event of a possible conflict of interest situation that may present itself, 1 M.R.S.A. section 1013 provides the mechanism by which the Legislator may request an advisory opinion and guidelines on problems or questions involving possible conflicts of interest in matters under consideration by, or pertaining to, the Legislature.

Because the Commission lacks jurisdiction to interpret constitutional provisions, Commission Members declined to issue an opinion with respect to whether the Maine Constitution, Art. IV, Part Third, Sec. 11 (Persons disqualified to be members) would bar prospective employment. The Commission suggested that the Office of the Attorney General would be the more appropriate source for an opinion regarding the applicability of that provision.

Issues Involving Lobbying Activities

ISSUE: Adequacy of existing lobbyist disclosure procedures.

OPINION: The Commission considered the rulemaking process for clarifying the existing statutory requirements that are predicated upon reporting the amounts of compensation paid for lobbying services, rather than the hours spent performing particular “lobbying” activities. Commission Members agreed that the present disclosure forms fully comply with the statutory mandates for lobbyist disclosure, and that such disclosure provides the information the existing statutory scheme requires. The disclosure of any additional information would have to be mandated by the Legislature. Consequently, the Commission unanimously agreed that further consideration of the lobbyist disclosure requirements was unnecessary pending a change to those requirements by the Legislature.

The Commission published guidance in response to requests for an interpretation of the definition of “lobbying.” Copies of that guidance is available to be downloaded and printed from the Commission’s Internet web site at www.state.me.us/ethics and will be provided with the lobbyist registration and disclosure information that is distributed to prospective lobbyists before the start of each new Legislature.

Issues Involving Candidate Campaign Finance Reporting

ISSUE: May signs left over from a previous election be used in the current election? May printer paper and other consumables from past elections be purchased at original cost? Would an in-kind contribution of polling data be valued at the cost to conduct the poll or some other cost formula?

OPINION: Signs left over from a previous election may be used for the current election provided their value is disclosed on the campaign finance report.

Supplies such as printer paper and other consumables that were purchased in the past and are to be used for this campaign should be purchased by the campaign and reported accordingly. Such supplies should be valued at their fair market value, which is the original cost of the supplies less any depreciation.

A Maine Clean Election Act (MCEA) candidate may not accept contributions from any source other than the Maine Clean Election Fund. Free polling data (presumably obtained at some expense and having some value) that shows information for the candidate's race would be a prohibited "in-kind contribution." Therefore, a MCEA candidate may not accept free polling data, but it would be permissible for the campaign to purchase the polling data provided the campaign pays fair market value for that data.

ISSUE: Applicability of the election laws to a newspaper advertisement.

OPINION: Maine law (21A M.R.S.A. Section 1014) requires any person who makes an expenditure to finance a communication that is authorized by a candidate and **expressly advocates** the election or defeat of a clearly identified candidate through newspapers to clearly and conspicuously state that the communication has been so authorized and to clearly state the name and address of the person who made or financed the expenditure for the communication.

The term "expressly advocate" means any communication that uses phrases such as "vote for," "reelect," "support," "cast your ballot for," "Smith for," "Jones in," "vote," etc., accompanied by the identification of a clearly identified candidate by name, picture, or any other description which, in context, can have no other reasonable meaning than to urge the election or defeat of that clearly identified candidate. In other words, the expression must contain so-called "magic words" that advocate the reader to vote in a particular way, either for or against a named candidate. In the absence of such "express advocacy," courts have upheld the right of citizens under the First Amendment of the Constitution to express their views without attributing the source of those views.

The advertisement in question did not include a communication that expressly advocates the election or defeat of a clearly identified candidate. The advertisement appeared to be an informational piece promoting National Hunting and Fishing Day with the name of a State Senator appearing at the top of the advertisement for no apparent reason. While it may be inferred that the Senator may have paid for the advertisement, the communication failed to meet the test of express advocacy in any way. Therefore, the provisions of 21A M.R.S.A. Section 1014 did not apply and an attribution statement was not required.

ISSUE: Commission's response to Resolve directing the Commission to "adopt rules regulating push polling, including sanctions for candidates whose campaigns violate such rules."

OPINION: The Commission identified several major concerns. First, was not clear that the Commission had sufficient legal authority, as the statutes are currently written, to promulgate rules governing push polling. The Commission has authority, pursuant to 1 M.R.S.A. Section 1003, to adopt “such procedures, rules and regulations as may appear necessary, for the orderly, prompt, fair and efficient carrying out of its duties, consistent with this chapter,” but the duties with which the Commission is charged do not include regulating any type of polling or telemarketing activity. Second, the Legislature, in enacting the Resolve, had not provided any guidance regarding the manner in which push polling is to be regulated. There was no policy statement or standards articulated which the Commission could follow in developing rules, even if the Commission had clear statutory authority to do so. Finally, questions were raised about the constitutional implications of regulating certain types of activities, particularly if those activities involve the protected exercise of free speech.

For those reasons, the Commission concluded that it needed further guidance from the Legislature to develop any rules. The Commission had conducted research relating to the issue of push polling and offered to share that information with the Legislature.

ISSUE: Whether the League of Women Voters of Maine Education Fund may provide all legally qualified candidates for the Maine Legislature with an equal opportunity to participate in the League’s Democracy Network (DNet) Maine Election 2000 project without the League being required to report the costs of doing so as a “contribution” or “expenditure” “for the purpose of influencing the . . . election of any person to state . . . office,” as those terms are defined in 21-A M.R.S.A. § 1012.

OPINION: The League’s DNet project is a worthwhile nonpartisan, voter educational endeavor to provide information regarding candidates to the voting public. That conclusion is predicated on the explanatory materials provided regarding the DNet project, noting particularly the League’s intent to maintain its reputation as a “trusted source of objective and nonpartisan information about candidates and issues.” The League’s nonpartisan nature advances its objective to provide DNet services to all candidates without incurring unintended reporting requirements. This conclusion is consistent with the Federal Election Commission’s Advisory Opinion 1999-25 (October 29, 1999), although that opinion was based on exceptions to the definitions of “contribution” and “expenditure” under federal law that differ from the definitions in Maine’s campaign finance reporting statute.

ISSUE: Whether a candidate who uploads onto the DNet site textual information that may be construed as “expressly advocating” the election or defeat of a clearly identified candidate has received a reportable in-kind “contribution” in the form of the value of an Internet service for which payment otherwise would have to be made. If so, must that be reported by the candidate?

OPINION: The League's "Guidelines for State Candidate Participation in DNet" apply "established principles governing voter education activities to 'online' projects," and include provisions that attempt to retain the nonpartisan nature of the educational information included in DNet. The League was encouraged to consider adding an additional guideline admonishing candidates to refrain from including in their uploaded textual statements any comment that may be construed as expressly advocating the election or defeat of a clearly identified candidate. Such admonition would bolster the League's stated intent that DNet be truly nonpartisan and most likely would encourage candidates to respect that intent. The Commission would address any complaint that may be received based on the unique facts of each case.

ISSUE: The legality of certain communications supporting a State Representative that appear to have been authorized and paid for by the Maine State Employees Association-PAGE (MSEA), and how the MSEA can give that State Representative over \$1500 of in-kind contributions if the contribution limits are \$250.00.

OPINION: An independent expenditure is any contribution or expenditure by a person, party committee, political committee or political action committee aggregating in excess of \$50 in an election that expressly advocates the election or defeat of a clearly identified candidate, other than by contribution to a candidate or a candidate's authorized political committee. Independent expenditures must be reported to the Commission according to a reporting schedule that the Commission establishes for each election. The report must state whether the contribution or expenditure is in support of or in opposition to the candidate and must include, under penalty of perjury, a statement under oath or affirmation whether the expenditure is made in cooperation, consultation or concert with, or at the request or suggestion of, any candidate or any authorized committee or agent of a candidate. As the constitutionally protected exercise of free speech, based on court decisions, there is no limitation on the amount that may be spent for independent expenditures.

Maine Clean Election Act (MCEA) candidates receive matching funds when any campaign, finance or election report shows that the sum of an opposing candidate's expenditures and obligations, or funds raised and borrowed, whichever is greater, alone or in conjunction with independent expenditures, exceeds the distribution amount received by the MCEA candidate. The Commission authorized the MCEA candidate's MCEA opponent to spend an additional \$1,540 in matching funds based on the report of independent expenditures received from the MSEA.

Issues Involving Political Action Committee Campaign Finance Reporting

ISSUE: What are the rules or regulations regarding the formation of a political action committee and how do those provisions apply to a group of women who want to unite to speak out concerning a specific political issue?

OPINION: Essentially, if any “person” (i.e., an individual, committee, firm, partnership, corporation, association, group or organization) makes an expenditure (other than by contribution to a political action committee) to initiate, promote, or defeat any “question” (i.e., any proposition submitted to the voters), that person becomes a political action committee and must register and file the required campaign finance disclosure reports with the Commission. Making expenditures in the aggregate in excess of \$50 in any single calendar year to expressly advocate a position on a political question would require the registration of a political action committee.

ISSUE: How does the Commission intend to interpret applicable provisions of 21-A M.R.S.A. Chapter 13, Subchapter IV, regarding political action committees?

OPINION: The Commission expressed its confidence in the ability of experienced attorneys representing law-abiding clients to read, interpret, and apply the relevant legal requirements to the unique facts of the situations with which they may be confronted and to advise their clients accordingly.

The solicitation and spending of funds creates the potential for the application of the political action committee reporting requirements. Therefore, special care should be given to the drafting of communications to ensure that the party making the solicitation is clearly identified and that party adheres to the registration and reporting requirements for political action committees, as appropriate. Since the treasurer of a political action committee must keep a record of all contributions to the committee which exceed \$50 each for a referendum campaign, by name and mailing address of each donor and the amount and date of the contribution [21-A M.R.S.A. § 1057(3)], the acceptance of anonymous contributions of more than \$50 is not permitted. The Commission does not intend to direct the manner of disposition of anonymous contributions that may be received, except to note that a committee receiving an anonymous cash contribution in excess of \$50 shall promptly dispose of the amount over \$50 by any lawful purpose unrelated to any State election, campaign, or candidate.

Issues Involving the Maine Clean Election Act

ISSUE: How the Commission intends to interpret applicable provisions of the Maine Clean Election Act and its implementing regulations to effectuate the Commission’s intent to support participation in the Act by prospective candidates.

OPINION: Under normal circumstances the Commission would liberally exercise the exception authority of its regulations regarding a candidate who **unintentionally** accepted contributions in 1999 in violation of the “seed money” restrictions, provided the candidate is able to establish that

he/she **immediately** had returned such contributions and had not made expenditures from such contributions in excess of seed money total amount restrictions. A contribution will be deemed to have been “unintentionally” accepted if the candidate establishes that he/she “had not been aware of the statutory requirements at the time the contribution was accepted,” and a contribution will be deemed to have been “immediately” returned if the candidate establishes that he/she had returned the contribution “within a reasonable period of time after the candidate became aware of its erroneous acceptance.”

A person would not lose eligibility to participate in the public funding provisions of the Maine Clean Election Act by soliciting and accepting contributions to retire 1998 election cycle debt up to the point at which the person files a Declaration of Intent to participate in the Act. A person becomes a “candidate,” by definition (21-A M.R.S.A. § 1(5)), by accepting contributions after retiring debt from a previous campaign, and must register as a “candidate” within 10 days. *See also* 21-A M.R.S.A. §§ 1013-A(1)(A) and 1017(9)(D). Therefore, a person who collects funds subsequent to the 1998 election cycle for the purpose of retiring campaign debt would not, by that activity, be a “candidate” as defined by 21-A M.R.S.A. § 1(5) because the purpose in collecting those funds would not be to run as a candidate for the next election, but rather to retire debt from the previous campaign. However, if that person accepts contributions other than “seed money” contributions after fully retiring previous campaign debt, the acceptance of those contributions would affect the eligibility of that person to participate in the Maine Clean Election Act. Filing a Declaration of Intent would qualify that person as a “participating candidate” and would include an affirmation that the person had “not accepted any contributions, except for seed money contributions, since becoming a candidate.”

Regarding the proper disposition of funds “erroneously” received, subparagraph 3.3.E(4) of the Commission’s Regulations requires that any such contribution be “returned” to its original source. Since 21-A M.R.S.A. § 1016(3) requires the treasurer to keep a detailed account of the name and address of every person making a contribution in excess of \$10, it should not be difficult for a candidate to return a contribution over \$10 to the original source. A candidate may use any contribution of \$10 or less for any lawful purpose unrelated to any State election, campaign, or candidate if no record of the source of such contribution is available.

ISSUE: Interpretation of the Maine Clean Election Act to permit successful primary election write-in candidates to become eligible for certification and receipt of funding under the Act in the November general election.

OPINION: The Act and its implementing regulations do not address the circumstances of the eligibility of a successful primary election write-in candidate for public funding. However, the Act and regulations do contemplate the circumstances of replacement candidates and provide a process for their certification. Section 1126 of the Act directs the Commission to adopt rules to ensure

effective administration of the Act, including circumstances involving withdrawals or replacements. The Commission has adopted rules, and section 8 of chapter 3 of the Commission's rules addresses the subject of the qualifying period for establishment of eligibility involving replacement candidates.

Since the matter of the eligibility of write-in candidates is not otherwise addressed, the Commission interpreted the statute and its implementing regulations in order to apply the same standards to successful primary election write-in candidates as apply to replacements for withdrawn candidates. Therefore, the provisions of paragraph B of subsection 2 of section 8 will apply to successful primary election write-in candidates who intend to seek certification as a Clean Election Act candidate, and such candidates will have a qualifying period of 30 days from the 4th Monday in July as a participating candidate to collect qualifying contributions and request certification. The provisions of paragraph D of subsection 2 also will apply with respect to compliance by a successful write-in candidate with all other requirements of the Act and regulations prior to certification, i.e., seed money, qualifying contributions, etc. rules.

ISSUE: Clarification of the Commission's intent regarding certain aspects of the Campaign Finance Report form and the application of information provided by that form to certified Maine Clean Election Act (MCEA) candidates and their nonparticipating opponents.

OPINION: Some of the confusion in the reporting forms may be attributed to the statutory definition of "expenditure" that differs somewhat from the average person's everyday use of that term. While the dictionary definition of expenditure is "the act or process of expending; something expended, especially money" (i.e., to spend), the statutory definition is more exhaustive and includes "a contract, promise or agreement, expressed or implied, whether or not legally enforceable, to make any expenditure" (i.e., an obligation).

The intent of Schedule B is to reflect those "expenditures" that actually have been paid, whereas that of Schedule E is to report unpaid "expenditures" (i.e., obligations). Schedule G summarizes the candidate's actual receipts and expenditures, treating loans, sale of campaign equipment/property, other receipts, and loan repayments separately. Schedule G attempts to summarize information the Commission uses for various purposes.

Since the campaign finance report form is not intended to serve as an accounting ledger in a technical sense, but rather as a disclosure document with statutory constraints, it would not seem appropriate to apply principals of "accrual" and "cash" accounting to the information reflected therein. The objective is to provide a vehicle for the public to view how much and from what sources candidates received their financial support and to whom and for what purposes they spent those funds, including the reporting of so-called "in-kind" contributions/expenditures usually provided in the form of prepaid goods or services that benefit the candidate's campaign.

The accelerated reports that nonparticipating candidates are required to file (i.e. "101%," 21-day, 12-day, and 48-hour) are not the same report forms and schedules used for the pre-election and post-election reports. The accelerated report forms require the reporting only of "total contributions and receipts" and "total expenditures and obligations" to date. The more detailed itemization of those two broad categories must be included in the nonparticipating candidates' pre-election or post-election reports, as appropriate. Therefore, if the nonparticipating opposing candidate fully reports the campaign's total contributions, obligations and expenditures to date, as required, the certified MCEA candidate should receive the matching funds to which that candidate is entitled by law. All nonparticipating opposing candidates of MCEA candidates have received explicit instructions from the Commission regarding their reporting obligations.

With respect to the payment of matching funds to MCEA candidates, nonparticipating opponents of MCEA candidates are required to report their total contributions, obligations and expenditures within 48 hours of exceeding by 1% the MCEA candidate's initial distribution amount and not again until 21 days and 12 days before the election. Within 12 days of the election, candidates must report single expenditures of \$750 (Senate candidates) or \$500 (House candidates) within 48 hours of those expenditures. Therefore, the timing of expenditures (whether by actual payment or mere obligation) by nonparticipating candidates may create problems for the Commission's release of matching funds to opposing MCEA candidates.

The Commission staff is committed to doing its very best to expedite the release of funds as soon as required reports are received and eligibility is established. The Commission has the authority to advance the total amount of matching funds to eligible MCEA candidates and intends to do so, but to limit the authority to spend only as much of that total amount as determined by the reports of the nonparticipating opposing candidate. Letters explaining these provisions will inform both nonparticipating and certified MCEA candidates as the campaign progresses.

ISSUE: Whether expenditures by membership organizations for communications to their members expressly advocating the election or defeat of a clearly identified candidate must be reported to the Commission as independent expenditures and, if so, whether such expenditures should be included in the computation of matching funds for eligible Maine Clean Election Act candidates.

OPINION: The Commission published its interpretation on the subject of membership communications. The interpretation resulted in the development of a revised form for membership communications that provides for reporting in a manner that is essentially identical to previously reported independent expenditures without labeling membership communications as such.

ISSUE: If a nonparticipating candidate (i.e. privately funded) accepts polling information for his/her race, must the candidate declare that as an in-kind contribution, and would that in-kind

contribution be added to that candidate's totals in determining matching funds that would be allowed a certified MCEA opponent?

OPINION: Campaign finance reports for candidates must contain the itemized accounts of contributions received during that report filing period for contributions aggregating in excess of \$50. The term "contribution" includes anything of value made for the purpose of influencing the election of any person to state office, but does not include certain exclusions provided by statute. The values of goods and services provided to candidates in place of cash are reported as "in-kind" contributions. Therefore, if a candidate receives something of value that is given to the candidate for the purpose of influencing the election of that person, including polling information of some value, the fair market value of that information should be reported. "Fair market value" is defined as the value a willing buyer and seller would place on an object in the normal course of business.

A certified Maine Clean Election Act candidate may not accept contributions except for distributions from the Maine Clean Election Fund. Matching funds for distribution to MCEA candidates are computed based on the sum of a nonparticipating opponent's expenditures and obligations, or funds raised and borrowed, whichever is greater, alone or in conjunction with independent expenditures. The amount "raised" by a nonparticipating candidate and considered in determining whether an accelerated report should be filed includes "in-kind" contributions received by that candidate. "In-kind" contributions would be added to the total of the amount "raised" by a nonparticipating opponent of a MCEA candidate for the purpose of computing eligibility for and the amount of distribution of matching funds to be paid to a MCEA candidate.



STATE OF MAINE
COMMISSION ON GOVERNMENTAL ETHICS
AND ELECTION PRACTICES
135 STATE HOUSE STATION
AUGUSTA, MAINE
04333-0135

GUIDELINES ON ACCEPTANCE OF GIFTS
October 21, 1999

The State Legislature in 1975 created an independent commission on governmental ethics and election practices to guard against corruption or undue influencing of the election process and against acts or the appearance of misconduct by Legislators. That Commission is charged with the responsibility to investigate and make advisory recommendations to the appropriate body of any apparent violations of the ethical standards set by the Legislature and to conduct an ethics seminar for Legislators. Along with those duties, the Commission is authorized to issue advisory opinions and guidelines on problems or questions involving possible conflicts of interest in matters under consideration by, or pertaining to, the Legislature.

A frequently troublesome area is that of "gifts." The question periodically is asked whether a "gift" to a Legislator violates the legislative ethics law or any other provision of Maine law. Two statutes raise possible barriers to the acceptance by Legislators of gift offers. The first limitation is found in the legislative ethics law [1 M.R.S.A. § 1014(1)(B)] which provides that a **conflict of interest** occurs when a Legislator or a member of the Legislator's immediate family accepts a **gift**, other than a campaign contribution, from any person affected by legislation or who has an interest in a business affected by proposed legislation, **where it is known or reasonably should be known that the purpose of the gift is to influence the performance of the Legislator's official duties or vote, or is intended as a reward for action on the Legislator's part.**

As used in that provision, "**gift**" means **anything of value**, including the forgiveness of an obligation or debt, given to a person **without** that person providing **equal or greater consideration** to the giver. However, "**gift**" **does not include** things of value received from a **single source** during the reporting period with an **aggregate value of \$300 or less**; a bequest or other form of inheritance; a gift received from a relative; or a subscription to a newspaper, news magazine or other news publication.

The key questions that must be answered are: (1) Is the offer of anything of value to a Legislator intended to influence the performance of the Legislator's duty or vote or as a reward for any action on the Legislator's part; and (2) Does the offer constitute a "gift" under the legislative ethics law's definition of that term? Thus, the applicability of the legislative ethics law with respect to the acceptance of a gift would depend on the **purpose** of the offer and the **nature and value** of the thing offered. If the purpose is to influence or reward a Legislator in the performance of official duties, and/or if the value of the thing offered exceeds \$300, the item would be a prohibited "gift" for purposes of the applicability of the legislative ethics law.

However, a second limiting statutory provision, the stricter (narrower standard) Maine Criminal Code (17-A M.R.S.A. § 605), provides that it is improper for a public servant to solicit, accept or agree to accept any pecuniary benefit from a person "if the public servant knows or reasonably should know that the purpose of the donor in making the gift is to influence the public



PRINTED ON RECYCLED PAPER

OFFICE LOCATED AT: 242 STATE STREET, AUGUSTA, MAINE

PHONE: (207) 287-4179

FAX: (207) 287-6775

Guidelines on Acceptance of Gifts -- October 21, 1999

servant in the performance of the public servant's official duties or vote, or is intended as a reward for action on the part of the public servant."

As used in the Criminal Code provision, the term "**pecuniary benefit**" means **any advantage** in the form of money, property, commercial interest or anything else, the **primary significance** of which is **economic gain**. It does not include economic advantage applicable to the public generally, such as tax reduction or increased prosperity generally. "Pecuniary benefit" **does not include a meal**, if the meal is provided by industry or special interest organizations as **part of an informational program** presented to a **group of public servants**; a **meal**, if the meal is a **prayer breakfast** or meal served during a meeting to establish a prayer breakfast; or a **subscription** to a newspaper, news magazine or other news publication.

What must be answered, then, is: (1) Does the giver of the gift have an interest in a matter before the Legislature or a matter that is expected to come before the Legislature; and (2) Would the gift result in any economic advantage to the recipient that is not applicable to the general public or otherwise permitted by the law? Under the criminal law standard, the value of the gift is not a factor. Any economic gain or advantage is enough to invoke the proscription of the statute.

The comment that accompanied the Legislature's 1975 enactment of the criminal law provision stated:

It seems to be a warranted assumption that gifts from persons who have an interest in an official matter before the public servant would be so often **made with the hope and intent of influencing** [that public servant] that it is **appropriate to prohibit all such gifts generally**. This prohibition also serves to contribute significantly to the appearance, as well as the substance, of public integrity.

The Legislature has assigned to the Ethics Commission the responsibility to investigate and make advisory recommendations to the Legislature of any apparent violations of the ethical standards set by the Legislature. However, the Attorney General enforces the provisions of the Maine Criminal Code. Therefore, the Ethics Commission is the arbiter regarding the applicability of the legislative ethics law, while the Attorney General's Office is the final authority concerning the applicability of the criminal law provisions.

Individual Legislators are encouraged to consult with the Commission's staff, which includes the availability of legal counsel from the Attorney General's Office, about the particular facts of a potential gift situation before embarking on a course of action with respect to the acceptance of that particular gift. That is especially true with respect to the acceptance of offers of expense-paid trips, including reimbursement for travel, meals, and accommodations. The Commission and its staff will make every reasonable attempt to review the facts and offer advice

Guidelines on Acceptance of Gifts -- October 21, 1999

in a timely manner within the limits of the Commission's authority. In that regard, some examples of gift situations that the Commission has addressed in the recent past are illustrative:

1. In 1996 a Legislator requested the Commission's guidance concerning the propriety of a member of the Legislature accepting an expense-paid trip to a conference sponsored by a national trade association. After reviewing the specific facts presented, the Commission concluded that acceptance of the trip would not constitute a violation of Maine's legislative ethics law because the conference would be an educational opportunity that would serve to benefit the Legislator in the discharge of the Legislator's duties. However, the Commission questioned the propriety of attending a conference at which such diversions as golf and deep-sea fishing are offered as part of the program and referred the requesting Legislator to the State law regarding the purpose of the donor in making the gift and the relation of that purpose to possibly influencing that Legislator in the performance of official duties or as a reward for past actions. Additionally, the Attorney General was asked to render a formal opinion regarding the questions raised.

2. Also in 1996, the Commission concluded that a Legislator's acceptance of an expense-paid trip of unknown value to another state to participate in a conference sponsored by a Maine political action committee, including hotel accommodations and travel expenses associated with the trip, was not a conflict of interest. However, the Commission encouraged the Legislator in the future to seek advice before accepting anything of value from anyone with a potential interest in proposed legislation. The Commission also reminded the Legislator of the responsibility to ascertain the value of those goods or services that may bear upon the question of the propriety of accepting such "gifts." Finally, the Commission reminded the Legislator of Maine's financial disclosure law that requires Legislators to report annually the source of any gifts received with an aggregate value of more than \$300.

3. In 1997 the permissibility was questioned of a paper company inviting certain members of the Legislature to tour Maine's northern woodlands, including payment for overnight accommodations, one restaurant meal, and bus transportation to view the woodlands. The invitation was valued at less than \$100 per Legislator, not including transportation to and from the point of departure. The program included various presentations, but no lobbying was planned. Legislation involving woodland issues was pending before the Legislature. The Commission concluded that Legislators who participated in the tour would not be in violation of the Legislative ethics law because the value to each Legislator was considerably less than the \$300 threshold by which a "gift" is defined. However, the Commission recommended that the Attorney General be consulted regarding the applicability of the criminal law provisions involving improper gifts to public servants.

4. Finally, in 1997 the Commission considered whether the offer of the services of a free community-service web page on the Internet and 20 hours of free Internet access per month, including installation of the appropriate software on the Legislator's at-home personal computer,

Guidelines on Acceptance of Gifts -- October 21, 1999

offered to certain Legislators by a communications company would constitute a violation of State law. Issues were expected to arise on the legislative agenda that would affect the future health of the Internet and telecommunications industries in Maine. The company acknowledged its belief that "hands-on experience will help [the benefited Legislators] make informed decisions about legislation as these issues come before you." The Commission concluded that the applicability of the Legislative Ethics Act with respect to the question of whether the offer constituted a "gift" would depend upon whether the value of the services to be rendered was less than \$300 per year in the aggregate so as not to trigger the "gift" prohibition. However, the Commission decided that acceptance of the offer was prohibited because of the appearance that the offer may have been intended to influence Legislators in the performance of their official duties or vote at some time in the future. Moreover, the Commission concluded that the acceptance of the offer would violate the State's criminal law prohibition against public servants accepting any "pecuniary benefit" in the form of a "commercial interest" or advantage that is not generally available to other members of the general public.

Consequently, Legislators and prospective sponsors of so-called "fact-finding," "educational," or "informational" programs that may include sponsor-paid offers of meals, travel, and transportation routinely question the propriety of accepting proposed offers of such "gifts."



STATE OF MAINE
COMMISSION ON GOVERNMENTAL ETHICS
AND ELECTION PRACTICES
135 STATE HOUSE STATION
AUGUSTA, MAINE
04333-0135

**COMMISSION STAFF GUIDANCE TO REQUESTS FOR
INTERPRETATION OF DEFINITION OF "LOBBYING"**

The Commission addressed the definition of "lobbying" during several regular meetings and a special subcommittee meeting in 1995. Proposed legislation was submitted for consideration, but the Legislature took no action on the proposal.

The current Lobbyist Disclosure Procedures in 3 M.R.S.A. Chapter 15 predicate the status of "lobbyist" and the function of "lobbying" upon the employment relationship between lobbyist and employer and the receipt of compensation in some form (including reimbursement for expenses) for lobbying. The provisions of Section 317 require the reporting of specific amounts of compensation, expenditures, etc., as applicable. Consequently, the forms prescribed by the Commission conform to the statutory requirements and provide for the reporting of amounts of compensation, expenditures, etc. and not for the amounts of time spent engaged in "lobbying" activities.

Based upon those criteria, the Commission staff's response to inquiries on this subject has been that lobbyists and lobbyist associates should report the amounts of compensation they receive based upon either the hours billed to their employer or, in the case of a salaried or hourly employee, the amount computed by multiplying the hours engaged in lobbying activities times the employee's regular rate of pay based on a 40-hour week. In the former case, if the lobbyist or lobbyist associate billed the lobbyist employer for the time spent "lobbying" (i.e., time spent communicating directly with any official in the Legislature for the purpose of influencing any legislative action, including time spent preparing and submitting oral or written proposals, testimony, or analyses concerning any legislative action), that amount should be reported. In the latter case, if the lobbyist's employer paid the lobbyist or lobbyist associate for the time spent engaged in "lobbying," the amount of that compensation likewise should be reported.

In response to questions regarding what constitutes lobbying in 1) determining whether the 8-hour threshold per calendar month has been reached, thus triggering the registration requirement, or 2) what should be included in a monthly report, the Commission staff provides the following guidance:

- Travel time should be included if the individual travels to Augusta only for the purpose of speaking to a Legislator or attending a committee meeting or hearing and is doing so on the lobbyist employer's time; that is, the employer is being billed for the time spent to travel to Augusta. The same would be true for the time spent in a meeting, whether waiting to be heard or simply listening. In most instances, someone is being billed for the time spent just sitting. If other business is conducted in Augusta, then travel time would not be considered lobbying.
- The above would apply as well in the case of an "in-house" lobbyist, i.e., one who is employed within an entity and a portion of salary, for instance, is designated as


PRINTED ON RECYCLED PAPER

OFFICE LOCATED AT: 242 STATE STREET, AUGUSTA, MAINE

PHONE: (207) 287-4179

FAX: (207) 287-6775

Commission "Lobbying" Guidance -- May 10, 2000

compensation for lobbying. While an employee is in Augusta attending session, he/she is away from the employee's regular business, but is still being paid by the lobbyist's employer. Therefore, a portion of that employee's salary proportionate to the time engaged in "lobbying" should be reported.

In response to Representative Daigle's scenarios, the determination whether an individual is engaged in reportable "lobbying" depends upon whether the lobbyist is being compensated in some manner by an employer, as opposed to being on the lobbyist's own time. If the employer is being billed for the full time the lobbyist spends in Augusta, then the amount of compensation received for that time constitutes reportable lobbying. In order in answer Mr. Daigle's questions more specifically, clarification would be required to determine whether the individual is being compensated or reimbursed for that person's activities and the amount of that compensation.



STATE OF MAINE
COMMISSION ON GOVERNMENTAL ETHICS
AND ELECTION PRACTICES
135 STATE HOUSE STATION
AUGUSTA, MAINE
04333-0135

**INTERPRETATION OF MEMBERSHIP ORGANIZATION AND
CORPORATION COMMUNICATIONS**

On August 9, 2000, the Commission on Governmental Ethics and Election Practices interpreted the provisions of 21-A M.R.S.A. §1019(2) to require that any membership organization or corporation that makes a communication to its members or stockholders expressly advocating the election or defeat of a clearly identified candidate must report any expenditures aggregating in excess of \$50 for such a communication in any election. The Commission interpreted that provision to require the reporting of expenditures for such communications on an aggregate basis for all candidates in an election (i.e., primary, general, special), and not on a "per candidate per election" basis.

The Commission further interpreted the definition of "independent expenditure" in 21-A M.R.S.A. §1019 to exclude communications by any membership organization or corporation to its members and stockholders expressly advocating the election or defeat of a clearly identified candidate. Therefore, the amounts of expenditures for such communications, while reportable to the Commission, will not be included in computing the eligibility for matching funds for candidates under the Maine Clean Election Act [21-A M.R.S.A. §1125(9)].

Forms for reporting expenditures in excess of \$50 by any membership organization or corporation to its members or stockholders expressly advocating the election or defeat of a clearly identified candidate are available in the Commission office at 242 State Street, Augusta, Maine, or by calling (207) 287-4179. Forms also may be downloaded and printed from the Commission's web site at www.state.me.us/ethics. The reporting schedule is the same as for candidates and political action committees (i.e., 6 days before and 42 days after an election).

Questions about the Commission's interpretation of these statutory provisions should be referred to William Hain at 287-6219 or Annette Jones at 287-6221, or by correspondence to the Commission office.



PRINTED ON RECYCLED PAPER

OFFICE LOCATED AT: 242 STATE STREET, AUGUSTA, MAINE

PHONE: (207) 287-4179

FAX: (207) 287-6775



STATE OF MAINE
COMMISSION ON GOVERNMENTAL ETHICS
AND ELECTION PRACTICES
135 STATE HOUSE STATION
AUGUSTA, MAINE
04333-0135

REPORTING REQUIREMENTS FOR INDEPENDENT EXPENDITURES

State law requires any person, party committee, political committee or political action committee that makes an “**independent expenditure**” to file a report with the Commission on Governmental Ethics and Election Practices. An **independent expenditure** is any contribution or expenditure aggregating in excess of \$50 in an election for the purpose of expressly advocating the election or defeat of a clearly identified candidate, other than by contribution to that candidate or that candidate’s authorized political committee. Any expenditure made in cooperation, consultation or concert with, or at the request or suggestion of, a candidate, a candidate’s political committee or their agents is considered to be a contribution to that candidate and, therefore, is **not** an independent expenditure.

Independent expenditures aggregating in excess of \$50, but not in excess of \$250, must be reported to the Commission in accordance with the reporting schedule for candidates, party committees or political action committees. However, because of their greater impact, independent expenditures aggregating **in excess of \$250** must be reported to the Commission **within 48 hours** of making those expenditures. Additional reports are required for subsequent increments of independent expenditures aggregating in excess of \$250 within 48 hours of those expenditures.

Reports must contain an itemized account of each contribution or expenditure aggregating in excess of \$50 in any election, the date and purpose of each expenditure, and the name of each payee or creditor. Total contributions or expenditures of less than \$500 in any election need not be individually itemized.

The report must state whether the contribution or expenditure is in support of or in opposition to the candidate and must include, under penalty of perjury, a statement under oath or affirmation whether the expenditure is made in cooperation, consultation or concert with, or at the request or suggestion of, any candidate or any authorized committee or agent of a candidate.

Any membership organization or corporation that makes a communication to its members or stockholders expressly advocating the election or defeat of a clearly identified candidate must report any expenditures aggregating in excess of \$50 for such a communication in any election, whether or not the communication is defined as an expenditure. Please refer to the attached Commission interpretation regarding membership organization and corporation communications.

Reporting forms may be obtained by contacting the Commission office or downloaded and printed from the Commission’s Web site at www.state.me.us/ethics. Please call the Commission staff at 287-4179 if you have any questions.



PRINTED ON RECYCLED PAPER

OFFICE LOCATED AT: 242 STATE STREET, AUGUSTA, MAINE

PHONE: (207) 287-4179

FAX: (207) 287-6775

LEGISLATION

“The Maine Clean Election Act,” Initiated Bill 5 (Legislative Document No. 1823), An Act to Reform Campaign Finance, was approved by the voters of the State of Maine at the election held on November 5, 1996, and took effect on January 2, 1997, pursuant to M. R. S. A. Const., Art. 4, Pt. 3, § 19.

The Initiated Bill amended existing law and added new provisions, including new Chapter 14 of Title 21-A, The Maine Clean Election Act, that established an alternative campaign financing option available to candidates running for Governor, State Senator and State Representative. The alternative campaign financing option is available to candidates for elections to be held beginning in the year 2000. The Commission is responsible for administering the Act and the Maine Clean Election Fund established by the Act. Candidates participating in the Maine Clean Election Act must also comply with all other applicable election and campaign laws and regulations. The Commission adopted rules to implement the Maine Clean Election Act that became effective on November 1, 1998, after an extensive public rulemaking process pursuant to the requirements of the Maine Administrative Procedures Act.

The following actions were taken by the 119th Legislature that affected the Commission:

Public Law 149, An Act to Amend the Maine Criminal Code Regarding Improper Gifts:

Public Law 1999, Chapter 149, amends the laws governing the crime of improper gifts to public servants to more closely align those laws with the laws governing legislative ethics. PL1999, Ch. 149 adds another element of proof that requires the showing of a “quid pro quo” benefit, instead of the potential for such a benefit. Specifically, a public servant may not accept a pecuniary benefit if the public servant knows or should know that the purpose of the benefit is to influence that public servant’s actions or reward that public servant for past actions.

Public Law 157, An Act to Require Legislative Review of Rules Regarding Campaign Report Filing Forms:

Public Law 1999, Chapter 157, amends the Maine Clean Election Act to require legislative review of Commission on Governmental Ethics and Election Practices rules establishing the forms to be used by candidates to file campaign reports.

Public Law 273, An Act to Clarify the Laws Regarding Fund Raising During the Legislative Session:

Public Law 1999, Chapter 273, provides that the prohibitions against solicitation of campaign contributions do not prohibit elected officials or their agents from attending a fundraising event held by a political party.

Public Law 432, An Act to Clarify the Definitions of “Contribution” and “Expenditure” Under the Campaign Finance Laws:

Public Law 1999, Chapter 432, clarifies the definition of “contribution” and “expenditure” by defining what those terms do not include for the purposes of the law regarding campaign reports and finances. “Contributions” and “expenditures” do not include documents created or maintained by a political party for the general purpose of party building, certain compensation paid by a political party to an employee, campaign training sessions provided to three or more candidates, or the use of office equipment that involves no additional cost to the provider.

Public Law 648, An Act to Modify the Campaign Finance Laws with Regard to Running for Federal Office:

Public Law 1999, Chapter 648, clarifies a provision of current law by stating that a legislator running for federal office is not prohibited from soliciting or accepting contributions for that office while the Legislature is in session.

Public Law 729, An Act Relating to Reporting Requirements for Political Action Committees on the Flexibility of the Commission on Governmental Ethics and Election Practices to Assess Penalties:

Public Law 1999, Chapter 729, makes changes to the laws governing the filing of campaign finance forms by providing the Commission on Governmental Ethics and Election Practices with more flexibility to accept campaign finance reports late without penalty if the reason is a valid emergency. It also requires that any changes to the campaign finance reporting form be adopted by rule. These rules are considered major substantive rules.

In response to *Volle v. Webster*, this law changes the threshold at which persons or organizations that are considered political action committees (PACs) must file an itemized report. Under this law, that amount is changed from \$50 to \$1,500. Public Law 1999, Chapter 729 also requires persons or organizations that are not considered PACs and solicit and receive contributions or make expenditures, other than by contribution to a political action committee, for the purpose of initiating, promoting, defeating or in any way influencing the outcome of a ballot question aggregating in excess of \$1,500 to file a report with the Commission on Governmental Ethics and Election Practices. This report is less detailed than those required of PACs.

This law also provides that candidates who have filed a declaration of intent to become certified under the Maine Clean Election Act are not required to file whether or not they accept the voluntary limits on political expenditures. Candidates who do not intend to be certified under the Maine Clean Election Act are required to file this form stating whether or not they agree to limits on political expenditures.

Public Law 745, An Act to Amend the Lobbyist Registration Fee Provisions:

Public Law 1999, Chapter 745, reduces the registration fee paid annually by lobbyists and lobbyist associates from \$400 and \$200 to \$200 and \$100, respectively.

Resolve 133, Resolve, Directing the Commission on Governmental Ethics and Election Practices to Adopt Rules Regulating Push Polling:

Resolve 1999, Chapter 133, requires the Commission on Governmental Ethics and Election Practices to adopt rules regulating push polling including sanctions for candidates whose campaigns violate those rules. Rules adopted under this provision are considered major substantive rules.

ASSISTANCE TO THE COMMISSION

The Attorney General's Office designates an Assistant Attorney General to function as Commission Counsel and to provide advice at Commission meetings. The Secretary of State's Office maintained the Commission's budget, financial, and payroll records until the Commission employed its own accountant for those purposes in mid-1999. The State Auditor assists the staff in preparing statistics and in conducting report audits. The support provided by each of those agencies enables the Commission staff to perform its primary duties more efficiently. The Commission would like to express its gratitude to the Attorney General, the Secretary of State, and the State Auditor for the important support they provide to the Commission, and publicly thank the staff personnel of those agencies for their very helpful assistance to the Commission and its staff.

PUBLICATIONS

The Commission publishes the following documents:

Campaign Finance

Registration forms for:

- State and county candidates
- Political action committees

Reporting forms for:

- State and county candidates
 - Full reporting
 - 48-hour reporting
 - Termination form
- State political action committees
 - Full reporting
 - 48-hour reporting
 - Termination form
- Municipal candidates
- Party committees
- Entities making independent expenditures

Filing schedules for:

- State and county candidates
- Political action committees
- Party committees

Instructional:

- A Candidate's Guide to the Maine Clean Election Act
- A Candidate's Guide to Running for Office in Maine (Co-produced with the Department of the Secretary of State)
- A guide to party committee reporting

Other:

- Campaign Reports and Finances (21-A M.R.S.A. Sections 1001-1105)
 - Maine Code of Fair Campaign Practices (Sections 1101-1105)
- The Maine Clean Election Act (21-A M.R.S.A. Sections 1121-1128)
- Declaration of Intent - Voluntary Spending Limits
- Penalty matrix for candidates, political action committees, and party committees

Lobbyist Disclosure

Registration form for:
Joint lobbyist/employer

Reporting forms for:
Monthly disclosure - long form
Monthly disclosure - short form
Annual report
Termination report

Instructional:
A Guide to Maine's Lobbyist Disclosure Law

Other:
Lobbyist Disclosure Procedures (3 M.R.S.A. Chapter 15)
Request for Non-session waiver
Lobbyist Compensation Report

Legislative Ethics

Sources of Income Reporting Forms and Instructions for:
Legislators
Legislative candidates

Other:
Governmental Ethics Law (1 M.R.S.A. Sections 1001-1023)

Rosters

Registered Lobbyists and Employers (cross-indexed)
Registered political action committees
Candidates subscribing to the voluntary spending limits
State and County Candidates/Treasurers (cross-indexed)