

MAINE STATE LEGISLATURE

The following document is provided by the
LAW AND LEGISLATIVE DIGITAL LIBRARY
at the Maine State Law and Legislative Reference Library
<http://legislature.maine.gov/lawlib>



Reproduced from electronic originals
(may include minor formatting differences from printed original)

2014 ANNUAL REPORT



Featured Courthouse – Penobscot Judicial Center– Bangor, Maine

BOARD OF OVERSEERS OF THE BAR

CREATED BY THE MAINE SUPREME JUDICIAL COURT
IN 1978 TO GOVERN THE CONDUCT OF LAWYERS
AS OFFICERS OF THE COURT

2014 ANNUAL REPORT OF THE BOARD OF OVERSEERS OF THE BAR

Table of Contents

Introduction	1
Mission Statement	1
Board Leadership and Staff.....	1
Commissions	2
Overview of the Attorney Disciplinary Process.....	2
Grievance Complaints	3
Fee Arbitration Commission	4
Professional Ethics Commission.....	4
Education and Outreach Programs	6
Professional Update for Lawyers and Judges	6
Study of Maine Bar Rules with Respect to the Bar and the Public	7
Registration.....	7
Funding	7
Recognizing Volunteers.....	8
Statistics	
Bar Counsel Files	10
Grievance Commission Files.....	11
Fee Arbitration Petitions.....	19
Registration Statistics.....	22

COVER PHOTO CREDIT

Title: Penobscot Judicial Center – Augusta
Credit: WBRC Architects Engineers – Bangor
Leers Weinzapfel Associates – Boston



Board of Overseers of the Bar

2014 Annual Report

INTRODUCTION

The Board of Overseers of the Bar was created by the Maine Supreme Judicial Court in 1978 as an independent administrative body to govern the conduct of lawyers as officers of the Court. The Board regulates attorney conduct by enforcing the Maine Bar Rules and the Maine Rules of Professional Conduct adopted by the Court. The purpose of the Maine Rules of Professional Conduct is to provide appropriate standards for attorneys with respect to their practice of the profession of law, including, but not limited to, their relationship with their clients, the general public, other members of the legal profession, the courts, and other agencies of this state.

MISSION STATEMENT

The Board's mission is to encourage and promote competent and ethical practice by members of the Maine Bar, and to make these standards known to members of the public so that they have confidence in the legal profession in Maine.

The Board accomplishes its mission by:

- registering and regulating attorneys licensed to practice in Maine;
- approving and providing continuing legal education programs;
- requiring that all attorneys licensed to practice in Maine have met the Maine Supreme Judicial Court's continuing legal education standards;
- providing guidance to attorneys on ethical issues through written advisory opinions issued by the Professional Ethics Commission, as well as an ethics helpline;
- informing members of the public of their rights concerning proper attorney behavior and the availability of fee arbitration;
- enforcing Maine's code of ethics for attorneys; and
- endeavoring to achieve the best possible legal representation of clients through all of these measures.

BOARD LEADERSHIP AND STAFF

The Maine Supreme Judicial Court appoints Board members to oversee the operations of the organization. The Board is composed of six lawyers and three members of the public. Public members are appointed by the Court on the recommendation of the Governor. Board members may serve two consecutive three-year terms.

Board Members

Gregory T. Caswell (Chair) – Falmouth

Richard P. Dana, CPA

Cathy A. DeMerchant – Augusta

Barbara H. Furey, Esq. – Portland

Charles E. Gilbert III, Esq. (Vice Chair Jan.-Oct.) – Bangor

Daniel A. Pileggi, Esq. – Ellsworth

Dawn M. Pelletier, Esq. – Bangor

Victoria Powers, Esq. (Vice Chair Oct. – Dec.) – Portland

Stephen J. Schwartz, Esq. – Portland

Court Liaison

The Honorable Warren M. Silver – Bangor (Court Liaison)

Board Staff

Susan E. Adams, CLE/Registration Coordinator

Jody A. Breton, Registration Clerk

J. Scott Davis, Bar Counsel

Marilyn L. DeMichele, Assistant to Bar
Counsel/Financial Manager

Aria Eee, Deputy Bar Counsel

Alan P. Kelley, Assistant Bar Counsel

Angela M. Morse, Board Clerk

Jennifer M. Pare, Administrative Assistant

Jacqueline M. Rogers, Executive Director

Donna L. Spillman, Senior Assistant to Bar Counsel

COMMISSIONS

The Board appoints volunteer members to three Commissions established by the Maine Bar Rules: the Grievance Commission, the Fee Arbitration Commission and the Professional Ethics Commission. Three-member panels of the Fee Arbitration Commission and the Grievance Commission conduct their duties and responsibilities as defined in the Maine Bar Rules. Each panel is comprised of two attorneys and one public member. The Professional Ethics Commission, consisting of eight attorneys, issues formal written advisory opinions to the Court, Board, Grievance Commission, Bar Counsel and members of the Maine bar. Those opinions involve the interpretation and application of the Maine Rules of Professional Conduct related to specific questions of lawyer conduct.

Information concerning the responsibilities and functions of the Board and each of its Commissions may be found on the Board's website.

OVERVIEW OF THE ATTORNEY DISCIPLINARY PROCESS

The purpose of the disciplinary system is to protect the public, the courts, and the legal profession from attorneys who do not meet their ethical responsibilities under the Maine Bar Rules and the Maine Rules of Professional Conduct.

The Maine Supreme Judicial Court has inherent jurisdiction over members of the legal profession in Maine, including matters of attorney discipline. The Court has the power to promulgate and, in its discretion, amend the rules regarding attorney discipline, including the Maine Bar Rules and the Maine Rules of Professional Conduct. The Court established the Board of Overseers of the Bar as its disciplinary arm, appoints Board members, and designates those who shall serve as Board Chair and Vice Chair. The Court has the exclusive authority to impose the most severe disciplinary sanctions—disbarment, suspension and public censure.

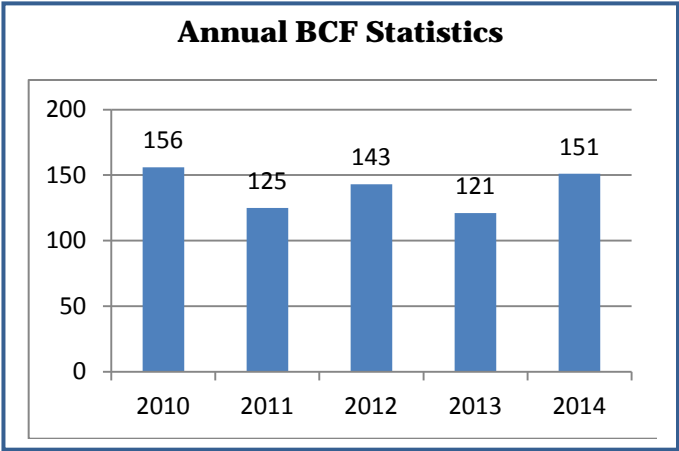
All complaints filed with the Board are carefully reviewed by the office of Bar Counsel and investigated. If the alleged misconduct, if proven true, would violate the Maine Bar Rules or the Maine Rules of Professional Conduct, the disciplinary process is initiated. Complaints that do not allege conduct in violation of the rules are dismissed.

The Board does not provide complainants with legal assistance or advice. The complaint process is not a substitute for a civil action between the complainant and the lawyer. The disciplinary system is not designed to compensate a complaining party for monetary loss or emotional distress incurred as a result of attorney misconduct.

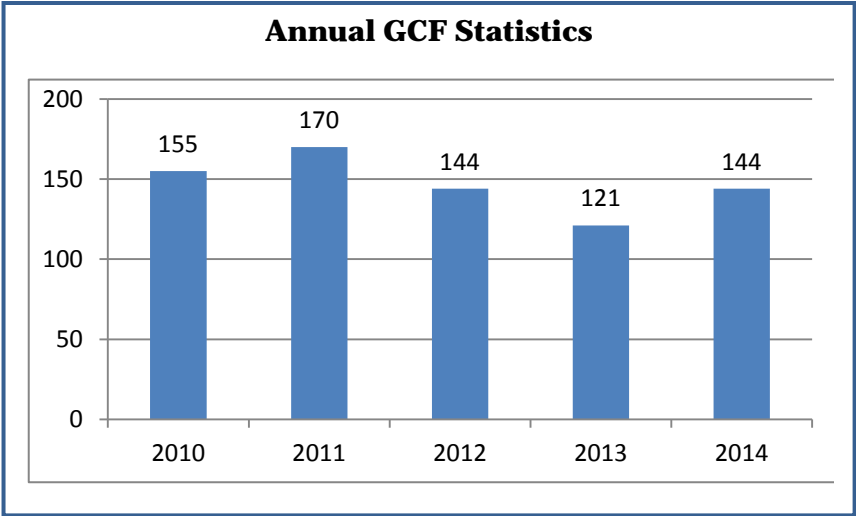
The forms of sanction or discipline that may be imposed upon a lawyer for unethical conduct are: dismissal with a warning, public reprimand, suspension and disbarment. All orders and reports issued after disciplinary hearings are published on the Board's website.

GRIEVANCE COMPLAINTS

If Bar Counsel determines that the grievance, on its face, does not allege professional misconduct, Bar Counsel will docket the matter as a Bar Counsel File (BCF). Bar Counsel will then dismiss the complaint, with or without investigation, pursuant to Maine Bar Rule 7.1(c). If Bar Counsel determines that the conduct alleged professional misconduct would violate the Maine Rules of Professional Conduct, it will be docketed as a Grievance Commission File (GCF). The complaint will then be sent to the lawyer with instructions to submit a written response to Bar Counsel.



In 2014, Bar Counsel received, screened and docketed 151 BCF complaints. Upon written notice of a dismissal, the complainant is provided with Bar Counsel's explanation of the reason for the dismissal. The complainant is informed of the right to file a written request within fourteen days for the dismissal to be reviewed. If a review is sought, a public member of the Board or the Grievance Commission may approve, disapprove or modify the terms of the dismissal. In all dismissed BCF matters, the involved attorney is provided with copies of the complaint filing, the dismissal letter and notice of any resulting request for review. The parties are subsequently notified of the reviewer's decision. In 2014, Bar Counsel dismissed 151 BCF matters involving 134 attorneys. Upon receipt of the complainant's request for review, 46 of those dismissals were reviewed by public members who affirmed all 46 dismissals. At the close of 2014, there were 11 pending BCF matters, one of which was under public member review.



In 2014, Bar Counsel received, screened and docketed 144 new grievance complaints as GCF complaints. After investigation, three-member panels of the Grievance Commission met to conduct preliminary case reviews pursuant to Maine Bar Rule 7.1(d) involving 116 GCF complaints against 101 attorneys. These reviews are not hearings, and neither the respective complainant nor the respondent attorney are present or participates in the review. Although there is no confidentiality requirement imposed upon the complainant or the respondent attorney, Bar Counsel's investigation and the Grievance Commission Panels' preliminary review process is confidential under Maine Bar Rule 7.1(d)(2) and 7.3(k)(1).

In 2014 the Grievance Commission issued 13 hearing decisions pursuant to Maine Bar Rule 7.1(e). At the close of 2014, there were 73 pending GCF matters.

Bar Counsel also investigated 42 matters that were considered by a Single Justice of the Maine Supreme Judicial Court. At the close of 2014, there were 32 pending Court matters.

Preliminary Case Review Dispositions

Dismissal.....	74	Probable Cause for Hearing.....	17
Dismissal with Warning.....	17		

Hearing Dispositions

Dismissal.....	2	Public Reprimand	5
Dismissal with Warning.....	5	Reinstatement Recommended	1
Information Authorized.....	0		

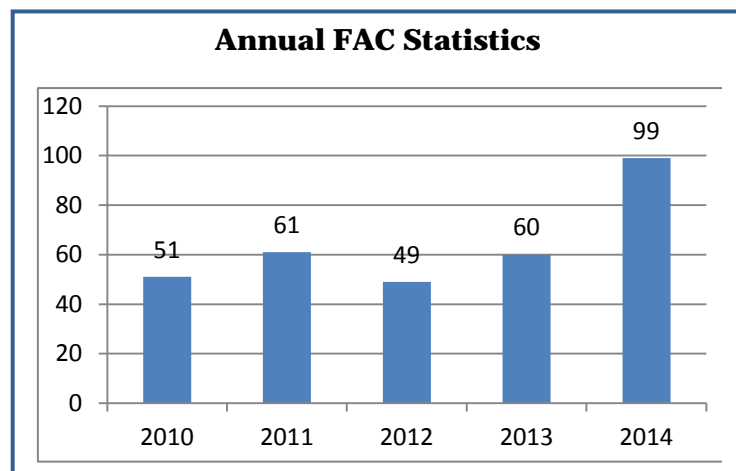
Single Justice Dispositions

Disbarment	0	Reinstatement - Administrative	3
Dismissal.....	1	Resignation.....	2
Disability Suspension.....	10	Temporary Suspension	9
Receiver Appointment	7	Suspension.....	11
Reciprocal Reprimand	1	Suspended Suspension	5
Reciprocal Suspension.....	1		

FEE ARBITRATION COMMISSION

The Board docketed 99 fee arbitration petitions in 2014. Over the course of the year, 40 fee dispute matters were dismissed, settled or withdrawn prior to hearing. Fee Arbitration Commission Panels heard and rendered Awards in 41 matters. Of those, the Commission decided in favor of the petitioner in 21 cases and in favor of the respondent attorney in 20 cases. At year-end, 34 fee arbitration matters remained pending.

The Fee Arbitration Commission provides clients (petitioners) and licensed Maine attorneys (respondents) with an efficient out-of-court service to resolve disputes involving legal fees.



Fee Arbitration Hearing Dispositions

Award to Petitioner	21	Dismissed/Settled/Withdrawn	40
Award to Respondent.....	20		

PROFESSIONAL ETHICS COMMISSION

The Professional Ethics Commission issues advisory opinions to the Court, Board, Bar Counsel, and to the Grievance Commission on matters involving the interpretation and application of the Maine Rules of Professional Conduct. The Commission also issues advisory opinions on ethical questions posed by members of the bar. The Commission issued four formal advisory opinions in 2014, Opinions 208-211.

On March 6, 2014, the Professional Ethics Commission issued Opinion #208 – Practice of Collaborative Law in Family Law Matters. In its Opinion, the Commission advised that Maine attorneys may participate or become parties to a collaborative participation agreement to resolve legal disputes involving family relationships, however, the ethical obligations under the Maine Rules of Professional Conduct remain applicable. A lawyer should consider the following

caveats when entering into a collaborative participation agreement: First, a lawyer should clearly specify the scope of the representation and the goals to be achieved, as well as whether the lawyer may continue to represent one of the clients after termination of the agreement. Second, the agreement should state whether the client waives the attorney/client privilege and the extent to which information may be revealed. Third, the lawyer must furnish competent representation and should be knowledgeable of the Uniform Collaborative Law Act. Fourth, the agreement should specify the client's responsibility for payment of legal fees. Fifth, a lawyer may not represent multiple parties under a collaborative participation agreement. Sixth, the agreement should contain a provision permitting the client to terminate the representation. Lastly, a lawyer must fully explain the collaborative participation process to the client, along with its benefits, risks, rights and obligations, and obtain the client's informed consent before the process is initiated. This is not an exhaustive list.

On May 20, 2014, the Professional Ethics Commission issued Opinion #209 – Disclosure Issues in Deferred Disposition Settings. In its Opinion, the Commission advised that Maine attorneys have no affirmative obligation to disclose to the Court or to the prosecutor information regarding the client's criminal history in other jurisdictions or the client's criminal conduct during a period of deferred disposition, so long as the attorney does not allow the client to make false statements to the Court. Even with the obligation to disavow known false statements, however, the attorney must be careful to limit and tailor any disclosures to the Court to refrain from divulging confidences and secrets protected from disclosure by Maine Rules of Professional Conduct 1.6.

On July 14, 2014, the Professional Ethics Commission issued Opinion #210 – Restrictions on the Sale of an Attorney's Law Practice. In Part I of its Opinion, the Commission advised that under Maine Rules of Professional Conduct 1.17, when selling their law practice, solo practitioners must sell the entire practice and completely cease to engage in private practice. Thus, for such attorneys to remain in practice they may sell their practice and then return and continue to practice law in some limited capacity, only if they retain an ownership interest in the practice. A lawyer who sells a private practice without retaining an ownership interest is barred from engaging in the private practice of law within the state of Maine. In Part II of its Opinion, the Commission advised that Maine attorneys may begin "farming out cases" under a "fee sharing" arrangement so long as the lawyer's client, after receiving full disclosure confirmed in writing, consents to the employment of the other lawyer and to the terms of the division of fees. The total fee must be reasonable. The referring lawyer, however, may not receive fees after the lawyer has left the practice of law. See Maine Rules of Professional Conduct 1.5(e) and 5.4. The only exception permitting fees generated from "farming out" clients, and received after leaving the practice of law, would be the sale of the practice in its entirety, including the sale of "good will" associated with the practice.

On December 3, 2014, the Professional Ethics Commission issued Opinion #211 – Allowance of Nonrefundable Fee Agreements. In its Opinion, the Commission advised that Maine attorneys may not accept a nonrefundable reasonable fee unless the attorneys comply with very specific client-focused conditions set forth in new Maine Rules of Professional Conduct 1.5(h) (effective September 1, 2014), which includes the attorney's need to confirm to the client in writing that the funds will not be refundable and the scope of availability and/or services the client is entitled to receive. In addition, the attorney shall not make any agreement with the client that prospectively waives the client's right to challenge the fee. A nonrefundable fee that complies with the requirements of Maine Rules of Professional Conduct 1.5(h)(1)(2)(3) constitutes property of the lawyer that should not be commingled with client funds in the lawyer's trust account. As a result, Opinion #211 specifically withdrew and vacated Opinion #206. The Commission also assisted Bar Counsel in processing informal confidential opinions in letter format in response to several inquiries from Maine attorneys. The complete list of the Commission's formal opinions is published on the Board's website.

EDUCATION AND OUTREACH PROGRAMS

MCLE Seminars Approved by the Board - In conjunction with the annual registration period, the Board administers attorney compliance with Maine Bar Rule 12 - Continuing Legal Education. Active attorneys are required to annually complete eleven hours of approved continuing legal education programming, including one hour of ethics or professionalism. In 2014, the Board approved 3,210 courses that were submitted by 475 providers.

CLE Presentations - The Board is committed to educating lawyers about the ethical considerations surrounding their law practice and ways to avoid common disciplinary problems. As part of this ongoing initiative, the Board co-sponsored a free seminar with the Maine State Bar Association on December 11th entitled "Succession Planning: Plan for the Future Today!" Attended by more than 200 attorneys, the seminar offered a practical overview of the various factors and risks that must be considered when contemplating retirement. Subjects covered included an overview of Maine attorney demographics, succession-planning strategies, valuation approaches, identifying and recruiting a successor, structuring an agreement and exit strategies.

Speaking Engagements - Also on the education front, Bar Counsel spoke at 31 state and national continuing legal education seminars. Through those educational opportunities, Bar Counsel offered guidance on practice management, how to avoid ethical problems, updates on disciplinary decisions and trends in the realm of ethics and professionalism. Bar Counsel welcomes the opportunity to provide CLE presentations to Maine lawyers and members of their staff on issues concerning ethics and professional responsibility.

Ethics Helpline - Bar Counsel, through the Ethics Helpline, provides informal ethics and professional responsibility advice to Maine attorneys. Members of the bar are encouraged to speak with Bar Counsel to discuss ethical dilemmas. Bar Counsel will only provide such advice concerning the conduct of the inquiring attorney or another member of that attorney's law firm. Board Regulation No. 28 prohibits Bar Counsel from advising an inquiring attorney about another attorney's actual or hypothetical conduct. *See also* Advisory Opinions #67 and #171. In 2014, Bar Counsel fielded 831 helpline calls; by comparison, 729 calls were received in 2013. The top ten subjects of inquiry for 2014 were:

THE ETHICS HELPLINE NUMBER IS
207-623-1122

- | | |
|---|--|
| 1. Conflicts of Interest | 6. Fees |
| 2. Practice Management | 7. Reporting Professional Misconduct |
| 3. Client Confidentiality | 8. Questions about Grievance Complaints and the Disciplinary Process |
| 4. Contact with Opposing Counsel | 9. Trust Accounts |
| 5. Termination/Withdrawal from Representation | 10. Commencement of Representation |

Publications – The Board publishes a *Handbook for a Receiver of the Law Practice of a Disabled or Missing or Deceased ("DMD") Maine Attorney* and a *Practice Closing Guide*. Both publications are available in PDF format on the Board's website. The Board also publishes and distributes brochures to the public regarding how to file a grievance complaint and/or a fee arbitration petition.

PROFESSIONAL UPDATE FOR MAINE LAWYERS AND JUDGES

As part of the Board's ongoing educational outreach to members of the bar, the Board publishes a bi-monthly electronic newsletter entitled *Professional Update for Maine Lawyers and Judges*. In addition to administrative updates, statistical data, notice of rule amendments and Court news, Bar Counsel publishes a regular feature entitled *Bar Counsel Informal Advisory Ethics Notes* wherein Bar Counsel provides ethical guidance to members of the bar. The newsletter also highlights an "Enduring Ethics Opinion" concerning earlier advisory opinions issued by the Professional Ethics

Commission that remain relevant and in effect under the Maine Rules of Professional Conduct which became effect on August 1, 2009.

STUDY OF MAINE BAR RULES WITH RESPECT TO THE BAR AND THE PUBLIC

The Board is charged with the continuous study of the bar and its relation to the public and the courts for the purpose of making recommendations to the Court with respect to changes, additions or deletions to the Maine Bar Rules. In response to that charge, the Board's Committee to Review Maine Bar Disciplinary Enforcement Rules, comprised of Board members and staff, attorneys and public members of the Grievance Commission, disciplinary defense counsel and respondent attorneys, completed and submitted to the Supreme Judicial Court a comprehensive revision of the Maine Bar Rules. The proposed rules meld the best practices from the ABA Model Rules for Lawyer Disciplinary Enforcement and the current Maine Bar Rules. As part of its review, the Committee held two public hearings and received and responded to feedback generated from members of the bar.

In June 2014, the Board's Task Force to Study Maine's Bar Demographics issued its Report and Recommendations to the Supreme Judicial Court. The Task Force examined the challenges facing the Maine bar with respect to the dearth of new lawyers working and residing in rural counties and the abundance of retiring lawyers predicted within the next decade. Recognizing that the challenges are not unique to Maine, the Task Force explored how other jurisdictions were responding to these concerns. The Task Force acknowledged that there is no "one-size fits all" solution to address all of the issues and concerns addressed in its report. However, the Task Force identified several challenges and opportunities that will require action by legal organizations, the Court and the Legislature.

REGISTRATION

The Board maintains a Register of attorneys who are active members of the bar in the State of Maine, as well as records of inactive, resigned, suspended, and disbarred attorneys. At the end of 2014, the active registration roll total was 5,308, representing an increase of 22 attorneys over the prior year.

Administrative Suspensions

Maine Bar Rule 6 requires attorneys to annually renew their license with the Board. In 2014, 48 attorneys were administratively suspended for failing to complete the registration process.

Demographics

Registration demographic statistics show that 71% of Maine's resident attorney population is concentrated in three counties: Cumberland, Kennebec, and Penobscot. Statistics show that women make up 35% of the bar and men represent 65% of the bar. Age demographics at year's end show that 22% of the bar is younger than 40, 48% are between the ages of 40 and 59, and that 31% are 60 years or older.

FUNDING

Although the Board is subject to the oversight of the Maine Supreme Judicial Court, the Board receives no public taxpayer monies to subsidize its operations. The Board's fiscal year is July 1 through June 30. Each year the Board prepares a budget for the Court's review and approval. At the end of the fiscal year, the Board's audited financial statements for the

Registration Statistics

<i>Resident</i>	
Active	3,828
Emeritus	5
Federal Judiciary	12
Maine Judicial	69
Law Clerk	30
Sub-Total:	3,944
<i>Non-Resident</i>	
Active	1,361
Law Clerk	3
Sub-Total:	1,364
Total:	5,308

2013-2014 fiscal year show revenues over expenditures in the amount of \$3,719. As a result, the Fund Balance stands at \$736,641.

In addition to the collection of licensing fees, the Board also collects the Court's annual assessment fee on behalf of the Lawyers' Fund for Client Protection (LFCP) and the Maine Assistance Program for Lawyers and Judges (MAP).

The purpose of the LFCP is to promote public confidence in the administration of justice and the integrity of the legal profession by reimbursing clients who suffer losses caused by an attorney's dishonest conduct. Generally, such conduct involves the misuse of funds in the care of the attorney or the misappropriation of funds for the attorney's personal benefit.

MAP has three purposes: to protect the interests of clients and the general public from harm caused by impaired lawyers or judges; to confidentially assist impaired members of the profession to begin and continue recovery; and to educate the bench, the bar, and the public as to the causes of and remedies for impairments affecting members of the legal profession.

RECOGNIZING VOLUNTEERS

The Board fulfills its mission with the assistance of volunteer attorneys and members of the public. Collectively, they devote hundreds of hours each year to protect the public. The work of the Board could not be accomplished without the donation of their time, talent, and expertise. Each member of the Board's Commissions is a volunteer, receiving no compensation. Collectively they donate thousands of hours. Thank you.

GRIEVANCE COMMISSION

Maurice A. Libner, Esq., Chair – Brunswick
Peter C. Fessenden, Esq., Vice Chair – Orono
David S. Abramson, Esq. – Portland
John Alfano – Biddeford
Frank H. Bishop, Esq. – Presque Isle
M. Ray Bradford, Jr., Esq. – Bangor
L. Dennis Carrillo, Esq. – Waterville
Peter Clifford, Esq. – Kennebunk
Sallie M. Crittendon – Harpswell
Richard P. Dana, C.P.A. – Cape Elizabeth
Mary A. Denison, Esq. – Winthrop
Steven E. Diaz, MD, FACEP – Waterville
Martica S. Douglas, Esq. – Portland
Emilie Van Eeghen – Canaan
David J. Fletcher, Esq. – Calais
Robert S. Frank, Esq. – Portland
John P. Gause, Esq. – Bangor
Franklin D. Gooding – Saco
Clarke C. Hambley, Jr., Esq. – Portland
Robert S. Hark, Esq. – Portland
Catherine L. Haynes, Esq. – Ellsworth

A.J. Hungerford, Esq. – Portland
John C. Hunt, Esq. – Kennebunk
Jonathan Huntington, Esq. – Wayne
John R. Hutchins – Brunswick
Thomas H. Kelley, Esq. – Portland
Michael K. Knowles – Kennebunk
Jud Knox – York
Bernard Kubetz, Esq. – Bangor
Justin D. LeBlanc, Esq. – Portland
James A. McKenna III, Esq. – Hallowell
Sarah McPartland-Good, Esq. – Orono
Marjorie M. Medd – Norway
Cynthia M. Mehnert, Esq. – Bangor
Margaret J. Palmer, Ph.D. – New Gloucester
Kenneth L. Roberts – Scarborough
Norman A. Ross – Hampden
Harold Stewart, Esq. – Presque Isle
William R. Stokes, Esq. – Augusta
Nolan Thompson – Portland
Vendean V. Vafiades, Esq. – Portland
Milton R. Wright – Readfield

FEE ARBITRATION COMMISSION

Christopher L. Mann, Esq., Chair – Augusta
Michael H. Ayotte, Esq. – Saco
Brett D. Baber, Esq. – Bangor
Tara K. Bates, Esq. – Lewiston
Edmond J. Bearor, Esq. – Bangor
Paul F. Bolin – Bangor
Rufus E. Brown, Esq. – Portland
Rebecca A. Cayford, Esq. – Skowhegan
Steven E. Cope, Esq. – Portland
Rick Dacri – Kennebunk
Darren Defoe, Esq. – Biddeford
Cathy A. DeMerchant – Augusta
Susan E. Driscoll, Esq. – Kennebunk
Arthur H. Dumas, Esq. – Sanford
Thomas P. Elias, Esq. – York
Jeffrey William Fitch – Bangor
David M. Glasser, Esq. – Camden

Peter G. Hastings, Esq. – Fryeburg
Sandra Hodge – Alna
Naomi H. Honeth, Esq. – Portland
Dennis L. Jones, Esq. – Farmingdale
Heidi J. Kinney – Orrington
F. Todd Lowell, Esq. – Bangor
Michael J. Levey, Esq. – Winthrop
Peter T. Marchesi, Esq. – Waterville
Daniel J. Mitchell, Esq. – Portland
Jon S. Oxman, Esq. – Auburn
Lori M. Pelletier – Kennebunk
Michael R. Poulin, Esq. – Auburn
Michael B. Reynolds – Raymond
Timothy Smith, CPA – Ellsworth
Edward M. Snook – Auburn
Stephen W. Veazey – Norway
Timothy C. Woodcock, Esq. – Bangor

PROFESSIONAL ETHICS COMMISSION

Robert J. Stolt, Esq., Chair – Augusta
Ellen S. Best, Esq. – Blue Hill
James M. Bowie, Esq. – Portland
C. Donald Briggs III, Esq. – Rockport

Rebecca A. Cayford, Esq. – Skowhegan
Rita M. Farry, Esq. – Yarmouth
David L. Herzer, Jr., Esq. – Portland
Anne-Marie L. Storey, Esq. – Bangor

SPECIAL RECOGNITION

The following commission members' service ended in 2014:

Professional Ethics Commission

Rebecca A. Cayford, Esq. – Skowhegan

C. Donald Briggs, Esq. – Rockport (Posthumously)

Grievance Commission

Maurice Libner, Esq. – Brunswick
Clarke Hambley, Esq. – Portland
John Hutchins – Brunswick

Michael Knowles – Kennebunk
Norman Ross – Hampden
Nolan Thompson – Portland

RECEIVER RECOGNITION

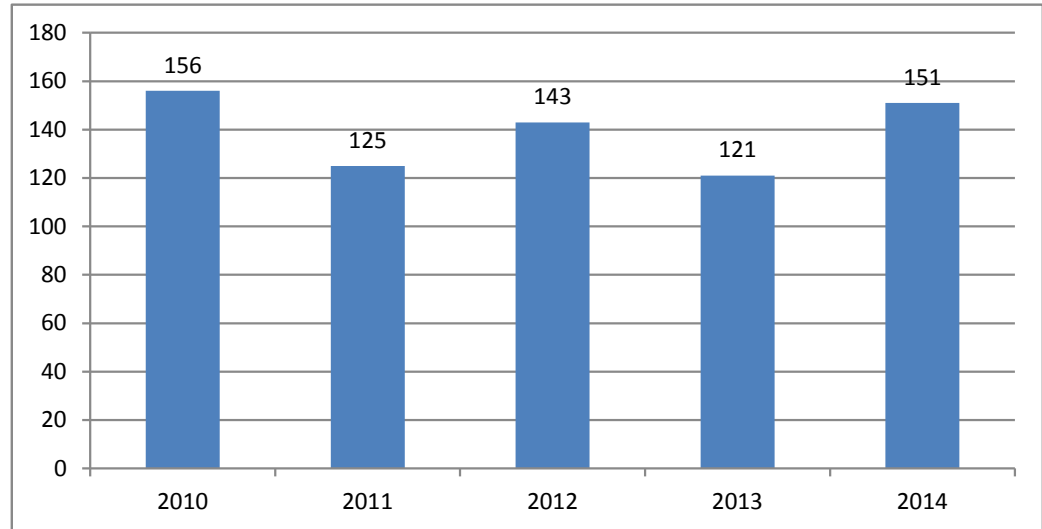
Lawyers are specially appointed by the Court pursuant to Maine Bar Rule 7.3(f) to wind down the practices of attorneys that were determined to be disabled, missing, deceased or unable to practice as a result of a disciplinary matter. As a service to the public and the bar, receivers donate countless hours to ensure that clients are protected. The following law firm is recognized for the completion of their receiver work in 2014:

Andrucki and Associates – Auburn

Bar Counsel Files

Annual Statistics

Year	Total	Variance
2010	156	
2011	125	-19.87%
2012	143	14.40%
2013	121	-15.38%
2014	151	24.79%



Respondents by County

County	2010		2011		2012		2013		2014	
Androscoggin	15	9.62%	9	7.20%	7	4.90%	14	11.57%	17	11.26%
Aroostook	5	3.21%	10	8.00%	6	4.20%	4	3.31%	6	3.97%
Cumberland	45	28.85%	29	23.20%	41	28.67%	35	28.93%	59	39.07%
Franklin	15	9.62%	1	0.80%	2	1.40%	0	0.00%	0	0.00%
Hancock	4	2.56%	3	2.40%	7	4.90%	3	2.48%	4	2.65%
Kennebec	15	9.62%	23	18.40%	18	12.59%	17	14.05%	23	15.23%
Knox	7	4.49%	2	1.60%	4	2.80%	2	1.65%	4	2.65%
Lincoln	3	1.92%	2	1.60%	4	2.80%	3	2.48%	1	0.66%
Oxford	11	7.05%	3	2.40%	6	4.20%	2	1.65%	2	1.32%
Penobscot	15	9.62%	17	13.60%	13	9.09%	16	13.22%	8	5.30%
Piscataquis	0	0.00%	1	0.80%	0	0.00%	0	0.00%	0	0.00%
Sagadahoc	3	1.92%	0	0.00%	1	0.70%	1	0.83%	3	1.99%
Somerset	0	0.00%	1	0.80%	7	4.90%	2	1.65%	3	1.99%
Waldo	2	1.28%	2	1.60%	6	4.20%	5	4.13%	4	2.65%
Washington	3	1.92%	8	6.40%	5	3.50%	5	4.13%	1	0.66%
York	10	6.41%	10	8.00%	12	8.39%	9	7.44%	11	7.28%
Out of State	3	1.92%	4	3.20%	4	2.80%	3	2.48%	5	3.31%
Total:	156		125		143		121		151	

Bar Counsel Files

Area of Law

	2010		2011		2012		2013		2014	
Administrative/Municipal Law	3	1.92%	0	0.00%	7	4.90%	7	5.79%	7	4.64%
ADR/Mediation/Arbitration	3	1.92%	1	0.80%	1	0.70%	0	0.00%	0	0.00%
Bankruptcy Law	3	1.92%	3	2.40%	1	0.70%	2	1.65%	0	0.00%
Child Protection Law	2	1.28%	2	1.60%	1	0.70%	0	0.00%	1	0.66%
Civil Rights/Discrimination Law	0	0.00%	0	0.00%	1	0.70%	1	0.83%	3	1.99%
Collections Law	2	1.28%	3	2.40%	3	2.10%	9	7.44%	8	5.30%
Commercial/Business Law	6	3.85%	1	0.80%	7	4.90%	2	1.65%	4	2.65%
Contracts/Consumer Law	0	0.00%	1	0.80%	2	1.40%	0	0.00%	2	1.32%
Corporate Law	1	0.64%	0	0.00%	0	0.00%	0	0.00%	0	0.00%
Criminal Conviction	0	0.00%	1	0.80%	0	0.00%	0	0.00%	43	28.48%
Criminal Law	36	23.08%	24	19.20%	30	20.98%	18	14.88%	0	0.00%
Education Law	0	0.00%	0	0.00%	0	0.00%	0	0.00%	0	0.00%
Elder Law	2	1.28%	1	0.80%	1	0.70%	1	0.83%	0	0.00%
Employment Law	3	1.92%	0	0.00%	0	0.00%	4	3.31%	2	1.32%
Environmental Law	0	0.00%	0	0.00%	0	0.00%	1	0.83%	0	0.00%
Family Law	32	20.51%	33	26.40%	29	20.28%	25	20.66%	30	19.87%
Foreclosure Law	1	0.64%	2	1.60%	3	2.10%	0	0.00%	0	0.00%
General Practice	0	0.00%	1	0.80%	0	0.00%	1	0.83%	2	1.32%
Health Law	0	0.00%	3	2.40%	0	0.00%	1	0.83%	0	0.00%
Immigration & Naturalization Law	0	0.00%	0	0.00%	0	0.00%	1	0.83%	0	0.00%
Insurance Law	0	0.00%	1	0.80%	0	0.00%	0	0.00%	0	0.00%
Juvenile Law	0	0.00%	0	0.00%	0	0.00%	0	0.00%	0	0.00%
Landlord/Tenant Law	3	1.92%	1	0.80%	3	2.10%	6	4.96%	3	1.99%
Law-Related Services	1	0.64%	0	0.00%	1	0.70%	0	0.00%	0	0.00%
Other/Unknown	5	3.21%	6	4.80%	3	2.10%	1	0.83%	1	0.66%
PFA/Harassment	0	0.00%	2	1.60%	4	2.80%	2	1.65%	1	0.66%
Real Estate Law	25	16.03%	14	11.20%	25	17.48%	18	14.88%	17	11.26%
Social Security Law	3	1.92%	0	0.00%	1	0.70%	0	0.00%	1	0.66%
Torts	4	2.56%	11	8.80%	3	2.10%	8	6.61%	6	3.97%
Wills/Estates/Probate	19	12.18%	11	8.80%	17	11.89%	11	9.09%	19	12.58%
Workers' Compensation	2	1.28%	3	2.40%	0	0.00%	2	1.65%	1	0.66%
Total:	156		125		143		121		151	

Complaint Source

	2010		2011		2012		2013		2014	
Attorney	4	2.56%	4	3.20%	10	6.99%	2	1.65%	5	3.31%
Beneficiary	0	0.00%	2	1.60%	0	0.00%	0	0.00%	2	1.32%
Client	39	25.00%	44	35.20%	26	18.18%	30	24.79%	43	28.48%
Law Enforcement	0	0.00%	1	0.80%	0	0.00%	0	0.00%	0	0.00%
Opposing Counsel	2	1.28%	1	0.80%	0	0.00%	1	0.83%	1	0.66%
Opposing Party	54	34.62%	49	39.20%	57	39.86%	50	41.32%	56	37.09%
Other	57	36.54%	23	18.40%	50	34.97%	38	31.40%	44	29.14%
Vendor	0	0.00%	1	0.80%	0	0.00%	0	0.00%	0	0.00%
Total:	156		125		143		121		151	

Bar Counsel Files

Final Disposition

Individual Cases by Open Year

Open Year	2010	2011	2012	2013	2014
BCF Bump up to Grievance	0	0	0	2	0
BCF Dismissal	98	0	0	0	0
BCF Dismissal with Investigation	36	105	104	83	96
BCF Dismissal without Investigation	21	20	39	36	44
Total:	155	125	143	121	140
Lay Review Disposition					
BCF Lay Review Dismissal Approved	29	32	46	49	35
BCF Lay Review Dismissal Disapproved	0	0	2	1	0
Total:	29	32	48	50	35

Distinct Respondents by Open Year

2010	2011	2012	2013	2014
0	0	0	2	0
79	0	0	0	0
36	99	97	80	87
21	18	34	35	41
136	117	131	117	128
29	32	46	47	35
0	0	2	1	0
29	32	48	48	35

Individual Cases by Close Year

Close Year	2010	2011	2012	2013	2014
BCF Bump up to Grievance	0	0	0	1	0
BCF Dismissal	109	0	0	0	0
BCF Dismissal with Investigation	26	108	100	84	105
BCF Dismissal without Investigation	21	18	38	36	46
Total:	156	126	138	121	151
Lay Review Disposition					
BCF Lay Review Dismissal Approved	28	33	43	44	46
BCF Lay Review Dismissal Disapproved	0	0	2	1	0
Total:	28	33	45	45	46

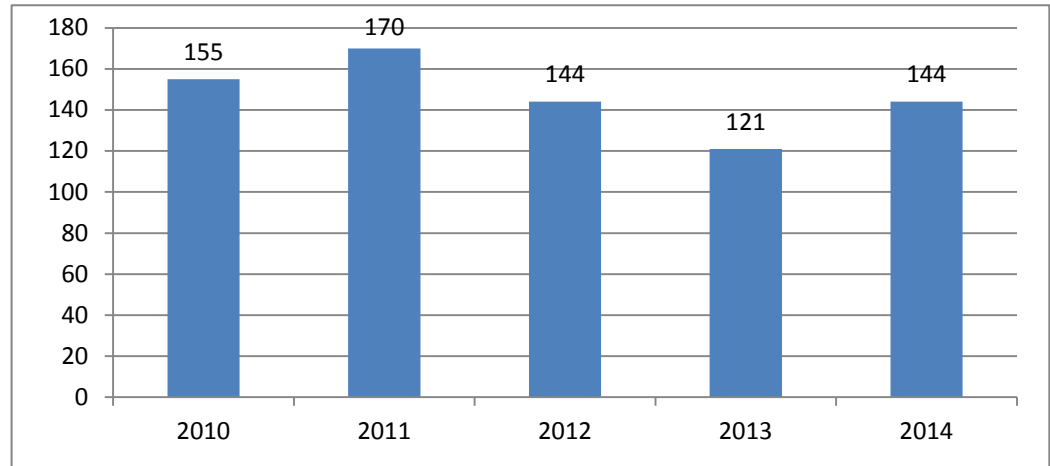
Distinct Respondents by Close Year

2010	2011	2012	2013	2014
0	0	0	1	0
88	0	0	0	0
26	103	91	81	96
21	16	35	34	43
135	119	126	116	139
28	33	43	41	46
0	0	2	1	0
28	33	45	42	46

Grievance Commission Files

Annual Statistics

Year	Total	Variance
2010	155	
2011	170	9.68%
2012	144	-7.10%
2013	121	-28.82%
2014	144	19.01%



Respondent County

County	2010		2011		2012		2013		2014	
Androscoggin	12	7.74%	6	3.53%	9	6.25%	7	5.79%	13	9.03%
Aroostook	7	4.52%	14	8.24%	4	2.78%	10	8.26%	5	3.47%
Cumberland	42	27.10%	54	31.76%	64	44.44%	27	22.31%	33	22.92%
Franklin	1	0.65%	0	0.00%	2	1.39%	4	3.31%	2	1.39%
Hancock	8	5.16%	14	8.24%	3	2.08%	4	3.31%	8	5.56%
Kennebec	10	6.45%	7	4.12%	7	4.86%	6	4.96%	19	13.19%
Knox	10	6.45%	4	2.35%	3	2.08%	6	4.96%	5	3.47%
Lincoln	6	3.87%	2	1.18%	3	2.08%	4	3.31%	2	1.39%
Oxford	3	1.94%	2	1.18%	2	1.39%	0	0.00%	2	1.39%
Penobscot	19	12.26%	12	7.06%	20	13.89%	18	14.88%	18	12.50%
Piscataquis	0	0.00%	1	0.59%	0	0.00%	2	1.65%	0	0.00%
Sagadahoc	3	1.94%	7	4.12%	1	0.69%	3	2.48%	5	3.47%
Somerset	1	0.65%	2	1.18%	2	1.39%	1	0.83%	0	0.00%
Waldo	7	4.52%	2	1.18%	2	1.39%	0	0.00%	1	0.69%
Washington	3	1.94%	6	3.53%	0	0.00%	2	1.65%	1	0.69%
York	15	9.68%	16	9.41%	11	7.64%	15	12.40%	17	11.81%
Out-of-State	8	5.16%	21	12.35%	11	7.64%	12	9.92%	13	9.03%
Total:	155		170		144		121		144	

Grievance Commission Files

Area of Law

	2010		2011		2012		2013		2014	
Administrative/Municipal Law	3	1.94%	4	2.35%	1	0.69%	3	2.48%	2	1.39%
ADR/Mediation/Arbitration	0	0.00%	2	1.18%	0	0.00%	0	0.00%	0	0.00%
Antitrust Law	0	0.00%	1	0.59%	0	0.00%	0	0.00%	0	0.00%
Appellate	0	0.00%	0	0.00%	1	0.69%	0	0.00%	0	0.00%
Bankruptcy Law	6	3.87%	5	2.94%	5	3.47%	4	3.31%	3	2.08%
Child Protection	0	0.00%	1	0.59%	1	0.69%	2	1.65%	2	1.39%
Civil Rights/Discrimination Law	1	0.65%	0	0.00%	0	0.00%	1	0.83%	0	0.00%
Collections Law	2	1.29%	7	4.12%	4	2.78%	3	2.48%	0	0.00%
Commercial/Business	9	5.81%	10	5.88%	11	7.64%	2	1.65%	2	1.39%
Contracts/Consumer	2	1.29%	3	1.76%	1	0.69%	1	0.83%	2	1.39%
Corporate Law	0	0.00%	0	0.00%	1	0.69%	1	0.83%	0	0.00%
Criminal Conviction	0	0.00%	0	0.00%	0	0.00%	1	0.83%	1	0.69%
Criminal Law	23	14.84%	24	14.12%	19	13.19%	13	10.74%	24	16.67%
Elder Law	0	0.00%	0	0.00%	0	0.00%	0	0.00%	0	0.00%
Election Law	0	0.00%	0	0.00%	0	0.00%	1	0.83%	0	0.00%
Employment Law	2	1.29%	0	0.00%	3	2.08%	0	0.00%	1	0.69%
Environmental Law	0	0.00%	0	0.00%	0	0.00%	0	0.00%	0	0.00%
Family Law	39	25.16%	44	25.88%	38	26.39%	29	23.97%	34	23.61%
Foreclosure Law	1	0.65%	5	2.94%	3	2.08%	1	0.83%	1	0.69%
General Practice	1	0.65%	2	1.18%	5	3.47%	6	4.96%	20	13.89%
Health Law	1	0.65%	0	0.00%	0	0.00%	1	0.83%	0	0.00%
Immigration and Naturalization Law	0	0.00%	0	0.00%	0	0.00%	1	0.83%	4	2.78%
Indian Law	0	0.00%	0	0.00%	0	0.00%	0	0.00%	0	0.00%
Insurance Law	1	0.65%	4	2.35%	0	0.00%	2	1.65%	0	0.00%
Intellectual Property	0	0.00%	0	0.00%	0	0.00%	0	0.00%	0	0.00%
Labor Law	1	0.65%	0	0.00%	0	0.00%	0	0.00%	0	0.00%
Landlord/Tenant	2	1.29%	1	0.59%	1	0.69%	16	13.22%	1	0.69%
Law Practice Management	19	12.26%	17	10.00%	13	9.03%	0	0.00%	2	1.39%
Law-Related Services	0	0.00%	0	0.00%	0	0.00%	0	0.00%	0	0.00%
Municipal	0	0.00%	0	0.00%	0	0.00%	0	0.00%	2	1.39%
PFA/Harassment	1	0.65%	3	1.76%	3	2.08%	0	0.00%	2	1.39%
Real Estate	12	7.74%	8	4.71%	15	10.42%	14	11.57%	15	10.42%
Reinstatement	2	1.29%	0	0.00%	0	0.00%	0	0.00%	0	0.00%
Social Security Law	1	0.65%	1	0.59%	1	0.69%	0	0.00%	2	1.39%
Taxation	2	1.29%	0	0.00%	0	0.00%	0	0.00%	1	0.69%
Torts	5	3.23%	8	4.71%	6	4.17%	6	4.96%	7	4.86%
Wills/Estates/Probate	16	10.32%	12	7.06%	6	4.17%	11	9.09%	14	9.72%
Workers' Compensation	0	0.00%	2	1.18%	3	2.08%	1	0.83%	2	1.39%
Other/Unknown	3	1.94%	6	3.53%	3	2.08%	1	0.83%	0	0.00%
Total:	155		170		144		121		144	

Grievance Commission Files

Respondent Firm Size

Firm Size	2010		2011		2012		2013		2014	
1	70	45.16%	93	54.71%	64	44.44%	63	52.07%	65	45.14%
2 - 5	50	32.26%	48	28.24%	42	29.17%	42	34.71%	51	35.42%
6 - 9	9	5.81%	9	5.29%	10	6.94%	9	7.44%	7	4.86%
10 - 19	1	0.65%	7	4.12%	7	4.86%	1	0.83%	7	4.86%
20 - 49	9	5.81%	3	1.76%	7	4.86%	3	2.48%	5	3.47%
50 - 99	1	0.65%	1	0.59%	0	0.00%	0	0.00%	2	1.39%
100+	0	0.00%	3	1.76%	6	4.17%	0	0.00%	0	0.00%
Unknown	15	9.68%	6	3.53%	8	5.56%	3	2.48%	7	4.86%
Total:	155		170		144		121		144	

Respondent Age

Age	2010		2011		2012		2013		2014	
29 or less	0	0.00%	3	1.76%	1	0.69%	0	0.00%	0	0.00%
30 - 34	9	5.81%	8	4.71%	2	1.39%	8	6.61%	7	4.86%
35 - 39	12	7.74%	16	9.41%	14	9.72%	7	5.79%	10	6.94%
40 - 44	18	11.61%	25	14.71%	19	13.19%	19	15.70%	19	13.19%
45 - 49	23	14.84%	18	10.59%	19	13.19%	11	9.09%	28	19.44%
50 - 54	29	18.71%	23	13.53%	25	17.36%	17	14.05%	21	14.58%
55 - 59	24	15.48%	35	20.59%	17	11.81%	18	14.88%	16	11.11%
60 - 64	28	18.06%	26	15.29%	15	10.42%	19	15.70%	23	15.97%
65 - 69	9	5.81%	11	6.47%	22	15.28%	16	13.22%	13	9.03%
70+	3	1.94%	5	2.94%	8	5.56%	6	4.96%	7	4.86%
Unknown	0	0.00%	0	0.00%	2	1.39%	0	0.00%	0	0.00%
Total:	155		170		144		121		144	

Complaint Source

	2010		2011		2012		2013		2014	
Attorney	3	1.94%	16	9.41%	11	7.64%	15	12.40%	29	20.14%
Beneficiary	2	1.29%	2	1.18%	0	0.00%	0	0.00%	0	0.00%
Client	83	53.55%	85	50.00%	73	50.69%	61	50.41%	74	51.39%
Court Order	0	0.00%	1	0.59%	0	0.00%	0	0.00%	0	0.00%
Judge	1	0.65%	2	1.18%	0	0.00%	3	2.48%	0	0.00%
Law Enforcement	0	0.00%	1	0.59%	0	0.00%	0	0.00%	0	0.00%
Opposing Counsel	3	1.94%	1	0.59%	0	0.00%	2	1.65%	5	3.47%
Opposing Party	21	13.55%	30	17.65%	29	20.14%	16	13.22%	9	6.25%
Sua Sponte	22	14.19%	21	12.35%	13	9.03%	20	16.53%	11	7.64%
Vendor	0	0.00%	1	0.59%	1	0.69%	0	0.00%	0	0.00%
Other	20	12.90%	10	5.88%	17	11.81%	4	3.31%	16	11.11%
Total:	155		170		144		121		144	

Grievance Commission and Court Matters

Sanction Cases by Area of Law - Open Year

	2010		2011		2012		2013		2014	
Administrative/Municipal Law	1	1.85%	0	0.00%	0	0.00%	0	0.00%	1	4.55%
Appellate Law	0	0.00%	0	0.00%	1	2.22%	0	0.00%	0	0.00%
Bankruptcy Law	1	1.85%	3	4.76%	2	4.44%	1	2.27%	1	4.55%
Child Protection Law	0	0.00%	0	0.00%	0	0.00%	2	4.55%	0	0.00%
Collections Law	0	0.00%	5	7.94%	0	0.00%	0	0.00%	0	0.00%
Commercial/Business Law	5	9.26%	2	3.17%	1	2.22%	1	2.27%	0	0.00%
Contracts/Consumer Law	2	3.70%	0	0.00%	0	0.00%	1	2.27%	1	4.55%
Corporate Law	0	0.00%	0	0.00%	1	2.22%	0	0.00%	0	0.00%
Criminal Law	5	9.26%	5	7.94%	5	11.11%	1	2.27%	2	9.09%
Employment Law	2	3.70%	0	0.00%	0	0.00%	0	0.00%	0	0.00%
Family Law	8	14.81%	9	14.29%	16	35.56%	5	11.36%	6	27.27%
Foreclosure Law	0	0.00%	2	3.17%	0	0.00%	1	2.27%	0	0.00%
General Practice	1	1.85%	0	0.00%	3	6.67%	3	6.82%	4	18.18%
Health Law	1	1.85%	0	0.00%	0	0.00%	0	0.00%	0	0.00%
Insurance Law	1	1.85%	2	3.17%	0	0.00%	0	0.00%	0	0.00%
Landlord/Tenant Law	0	0.00%	1	1.59%	0	0.00%	0	0.00%	1	4.55%
Law Practice Management	13	24.07%	17	26.98%	7	15.56%	15	34.09%	1	4.55%
Real Estate Law	3	5.56%	4	6.35%	4	8.89%	4	9.09%	3	13.64%
Taxation Law	0	0.00%	1	1.59%	0	0.00%	0	0.00%	0	0.00%
Torts	2	3.70%	3	4.76%	1	2.22%	2	4.55%	1	4.55%
Wills/Estates/Probate	8	14.81%	5	7.94%	2	4.44%	8	18.18%	1	4.55%
Workers' Compensation Law	0	0.00%	0	0.00%	2	4.44%	0	0.00%	0	0.00%
Other	1	1.85%	4	6.35%	0	0.00%	0	0.00%	0	0.00%
Total:	54		63		45		44		22	

Sanction Cases by Area of Law - Closed Year

	2010		2011		2012		2013		2014	
Administrative/Municipal Law	1	1.89%	0	0.00%	0	0.00%	0	0.00%	1	2.56%
Appellate	0	0.00%	0	0.00%	0	0.00%	1	1.30%	0	#DIV/0!
Bankruptcy Law	2	3.77%	3	7.14%	1	1.82%	4	5.19%	1	2.56%
Child Protection Law	1	1.89%	0	0.00%	0	0.00%	1	1.30%	1	2.56%
Collections Law	1	1.89%	0	0.00%	3	5.45%	2	2.60%	0	0.00%
Commercial/Business Law	3	5.66%	3	7.14%	4	7.27%	2	2.60%	0	0.00%
Contracts/Consumer Law	2	3.77%	1	2.38%	0	0.00%	1	1.30%	1	2.56%
Corporate Law	0	0.00%	0	0.00%	0	0.00%	1	1.30%	0	0.00%
Criminal Law	7	13.21%	5	11.90%	4	7.27%	4	5.19%	3	7.69%
Elder Law	0	0.00%	1	2.38%	0	0.00%	0	0.00%	0	0.00%
Employment Law	0	0.00%	2	4.76%	1	1.82%	0	0.00%	0	0.00%
Family Law	8	15.09%	4	9.52%	11	20.00%	17	22.08%	10	25.64%
Foreclosure Law	0	0.00%	0	0.00%	0	0.00%	1	1.30%	1	2.56%
General Practice	3	5.66%	0	0.00%	0	0.00%	6	7.79%	4	10.26%
Health Law	1	1.89%	0	0.00%	0	0.00%	0	0.00%	0	0.00%
Insurance Law	0	0.00%	0	0.00%	3	5.45%	0	0.00%	0	0.00%
Landlord/Tenant Law	0	0.00%	0	0.00%	1	1.82%	0	0.00%	1	2.56%
Law Practice Management	13	24.53%	8	19.05%	14	25.45%	18	23.38%	5	12.82%
PFA/Harassment	2	3.77%	0	0.00%	0	0.00%	0	0.00%	0	0.00%
Real Estate Law	3	5.66%	3	7.14%	5	9.09%	3	3.90%	7	17.95%
Taxation Law	0	0.00%	0	0.00%	1	1.82%	0	0.00%	0	0.00%
Torts	2	3.77%	2	4.76%	3	5.45%	2	2.60%	1	2.56%
Wills/Estates/Probate	4	7.55%	9	21.43%	2	3.64%	10	12.99%	3	7.69%
Workers' Compensation	0	0.00%	0	0.00%	0	0.00%	2	2.60%	0	0.00%
Other	0	0.00%	1	2.38%	2	3.64%	2	2.60%	0	0.00%
Total:	53		42		55		77		39	

Sanction Types: Hearing Dismissal with Warning; Hearing Reprimand; Court Reprimand; Court Suspension; Court Disbarment

Grievance Commission and Court Matters

Discipline Cases by Area of Law - Open Year

	2010		2011		2012		2013		2014	
Administrative/Municipal Law	0	0.00%	0	0.00%	0	0.00%	0	0.00%	1	7.69%
Bankruptcy Law	1	3.23%	2	5.26%	2	9.09%	1	4.35%	0	0.00%
Child Protection Law	0	0.00%	0	0.00%	0	0.00%	1	4.35%	0	0.00%
Collections Law	0	0.00%	1	2.63%	0	0.00%	0	0.00%	0	0.00%
Commercial/Business Law	3	9.68%	1	2.63%	0	0.00%	0	0.00%	0	0.00%
Contracts/Consumer Law	1	3.23%	0	0.00%	0	0.00%	0	0.00%	1	7.69%
Criminal Law	1	3.23%	2	5.26%	1	4.55%	0	0.00%	1	7.69%
Employment Law	2	6.45%	0	0.00%	0	0.00%	0	0.00%	0	0.00%
Family Law	4	12.90%	5	13.16%	11	50.00%	2	8.70%	4	30.77%
Foreclosure Law	0	0.00%	1	2.63%	0	0.00%	0	0.00%	0	0.00%
General Practice	1	3.23%	0	0.00%	3	13.64%	2	8.70%	3	23.08%
Insurance Law	1	3.23%	1	2.63%	0	0.00%	0	0.00%	0	0.00%
Landlord/Tenant Law	0	0.00%	1	2.63%	0	0.00%	0	0.00%	1	7.69%
Law Practice Management	5	16.13%	13	34.21%	1	4.55%	12	52.17%	1	7.69%
Real Estate Law	1	3.23%	4	10.53%	1	4.55%	0	0.00%	0	0.00%
Taxation Law	0	0.00%	1	2.63%	0	0.00%	0	0.00%	0	0.00%
Torts	2	6.45%	2	5.26%	0	0.00%	0	0.00%	1	7.69%
Wills/Estates/Probate	8	25.81%	2	5.26%	1	4.55%	5	21.74%	0	0.00%
Workers' Compensation Law	0	0.00%	0	0.00%	2	9.09%	0	0.00%	0	0.00%
Other	1	3.23%	2	5.26%	0	0.00%	0	0.00%	0	0.00%
Total:	31		38		22		23		13	

Discipline Cases by Area of Law - Closed Year

	2010		2011		2012		2013		2014	
Administrative/Municipal Law	0	0.00%	0	0.00%	0	0.00%	0	0.00%	1	5.88%
Bankruptcy Law	1	4.76%	2	7.69%	1	3.23%	4	7.69%	0	0.00%
Child Protection Law	0	0.00%	0	0.00%	0	0.00%	1	1.92%	0	0.00%
Commercial/Business Law	3	14.29%	1	3.85%	3	9.68%	0	0.00%	0	0.00%
Contracts/Consumer Law	1	4.76%	1	3.85%	0	0.00%	0	0.00%	1	5.88%
Criminal Law	1	4.76%	2	7.69%	1	3.23%	2	3.85%	1	5.88%
Elder Law	0	0.00%	0	0.00%	0	0.00%	0	0.00%	0	0.00%
Employment Law	0	0.00%	2	7.69%	1	3.23%	0	0.00%	0	0.00%
Family Law	3	14.29%	2	7.69%	4	12.90%	15	28.85%	5	29.41%
General Practice	2	9.52%	0	0.00%	0	0.00%	5	9.62%	3	17.65%
Insurance Law	0	0.00%	0	0.00%	2	6.45%	0	0.00%	0	0.00%
Landlord/Tenant Law	0	0.00%	0	0.00%	1	3.23%	0	0.00%	1	5.88%
Law Practice Management	3	14.29%	5	19.23%	9	29.03%	13	25.00%	4	23.53%
PFA/Harassment	1	4.76%	0	0.00%	0	0.00%	0	0.00%	0	0.00%
Real Estate Law	0	0.00%	1	3.85%	4	12.90%	1	1.92%	0	0.00%
Taxation Law	0	0.00%	0	0.00%	1	3.23%	1	1.92%	0	0.00%
Torts	2	9.52%	1	3.85%	2	6.45%	0	0.00%	1	5.88%
Wills/Estates/Probate	4	19.05%	8	30.77%	1	3.23%	7	13.46%	0	0.00%
Workers' Compensation Law	0	0.00%	0	0.00%	0	0.00%	2	3.85%	0	0.00%
Other	0	0.00%	1	3.85%	1	3.23%	1	1.92%	0	0.00%
Total:	21		26		31		52		17	

Sanction Types: Hearing Reprimand; Court Reprimand; Court Suspension; Court Disbarment

Grievance Commission and Court Matters

Final Disposition

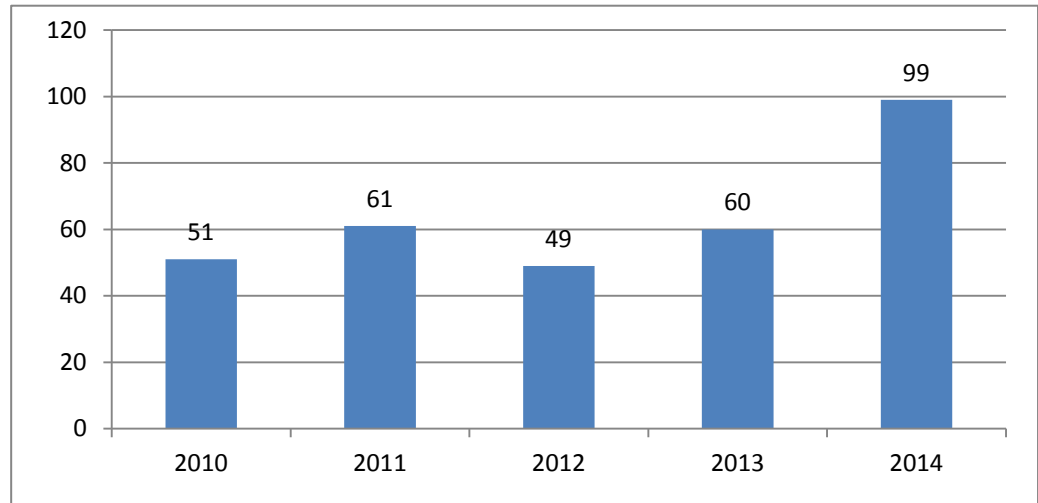
	Distinct Cases by Case Opened Year					Distinct Respondents by Case Opened Year				
	2010	2011	2012	2013	2014	2010	2011	2012	2013	2014
Board Dismissal	0	1	0	1	0	0	1	0	1	0
Case Review Dismissal	99	103	102	66	55	87	86	60	61	51
Case Review Dismissal With Warning	20	17	20	15	9	20	16	19	15	9
Hearing Dismissal	1	5	0	1	0	1	5	0	1	0
Hearing Dismissal With Warning	3	9	3	6	0	3	9	3	6	0
Hearing Reprimand	17	19	6	10	1	14	18	6	10	1
Court Disbarment	1	0	0	0	0	1	0	0	0	0
Court Dismissal	3	5	1	0	1	1	2	1	0	1
Court Dismissal with Warning	0	0	0	0	0	0	0	0	0	0
Court Reciprocal Disbarment	0	2	1	0	0	0	2	1	0	0
Court Reciprocal Reprimand	0	0	0	1	0	0	0	0	1	0
Court Reciprocal Suspension	1	0	1	1	1	1	0	1	1	1
Court Reinstatement Approved										
Administrative	0	1	6	2	2	0	1	6	2	2
Discipline	0	2	0	0	0	0	2	0	0	0
Court Reinstatement Denied	2	0	0	0	0	2	1	0	0	0
Court Reprimand	1	4	3	2	0	1	3	2	1	0
Court Resignation	2	1	5	3	1	2	1	3	3	1
Court Suspended Suspension	1	0	1	4	1	1	0	1	2	1
Court Suspension	10	14	8	8	11	4	7	3	2	1
Court Temporary Suspension	3	1	3	13	0	1	1	2	5	0
Total:	164	184	160	133	82	139	155	108	111	68

	Distinct Cases by Case Closed Year					Distinct Respondents by Case Closed Year				
	2010	2011	2012	2013	2014	2010	2011	2012	2013	2014
Board Dismissal	0	1	0	0	1	0	1	0	0	1
Case Review Dismissal	111	95	108	84	74	96	88	91	70	68
Case Review Dismissal with Warning	29	13	19	16	17	26	13	19	16	16
Hearing Dismissal	6	2	3	1	2	6	2	3	1	2
Hearing Dismissal with Warning	4	4	5	9	5	4	4	5	9	5
Hearing Reprimand	11	16	15	18	5	10	11	14	17	5
Court Disbarment	1	0	0	0	0	1	0	0	0	0
Court Dismissal	3	1	4	4	1	1	1	1	1	1
Court Dismissal with Warning	0	0	6	0	0	0	0	6	0	0
Court Reciprocal Disbarment	0	2	1	0	0	0	2	1	0	0
Court Reciprocal Reprimand	0	0	0	0	1	0	0	0	0	1
Court Reciprocal Suspension	0	1	1	1	1	0	1	1	1	1
Court Reinstatement Approved										
Administrative	0	0	6	2	3	0	0	6	2	3
Discipline	1	2	0	0	0	1	2	0	0	0
Court Reinstatement Denied	2	1	0	0	0	2	1	0	0	0
Court Reprimand	0	1	4	5	0	0	1	3	2	0
Court Resignation	0	2	1	7	2	0	2	1	3	2
Court Suspended Suspension	10	0	0	1	5	1	0	0	1	3
Court Suspension	9	7	11	22	11	6	1	3	7	1
Court Temporary Suspension	5	5	1	7	9	4	1	1	2	4
Total:	192	153	185	177	137	158	131	155	132	113

Fee Arbitration Petitions

Annual Statistics

Year	Total	Variance
2010	51	
2011	61	19.61%
2012	49	-19.67%
2013	60	22.45%
2014	99	65.00%



Respondent County

	2010		2011		2012		2013		2014	
County										
Androscoggin	4	7.84%	8	13.11%	4	8.16%	8	13.33%	23	23.23%
Aroostook	4	7.84%	2	3.28%	3	6.12%	2	3.33%	2	2.02%
Cumberland	18	35.29%	24	39.34%	14	28.57%	16	26.67%	13	13.13%
Franklin	0	0.00%	0	0.00%	3	6.12%	1	1.67%	2	2.02%
Hancock	0	0.00%	1	1.64%	1	2.04%	1	1.67%	1	1.01%
Kennebec	3	5.88%	1	1.64%	6	12.24%	4	6.67%	13	13.13%
Knox	4	7.84%	1	1.64%	0	0.00%	3	5.00%	0	0.00%
Lincoln	2	3.92%	1	1.64%	1	2.04%	2	3.33%	1	1.01%
Oxford	1	1.96%	3	4.92%	0	0.00%	1	1.67%	2	2.02%
Penobscot	5	9.80%	10	16.39%	7	14.29%	10	16.67%	18	18.18%
Piscataquis	0	0.00%	2	3.28%	0	0.00%	0	0.00%	0	0.00%
Sagadahoc	0	0.00%	3	4.92%	3	6.12%	2	3.33%	1	1.01%
Somerset	2	3.92%	1	1.64%	1	2.04%	1	1.67%	1	1.01%
Waldo	2	3.92%	0	0.00%	0	0.00%	0	0.00%	1	1.01%
Washington	0	0.00%	0	0.00%	1	2.04%	0	0.00%	0	0.00%
York	4	7.84%	3	4.92%	2	4.08%	8	13.33%	13	13.13%
Out-of-State	2	3.92%	1	1.64%	3	6.12%	1	1.67%	8	8.08%
Total:	51		61		49		60		99	

Fee Arbitration Petitions

Respondent Firm Size

Firm Size	2010		2011		2012		2013		2014	
1	22	43.14%	29	47.54%	24	48.98%	24	40.00%	63	63.64%
2 - 5	22	43.14%	26	42.62%	15	30.61%	21	35.00%	30	30.30%
6 - 9	1	1.96%	3	4.92%	0	0.00%	4	6.67%	5	5.05%
10 - 19	2	3.92%	3	4.92%	7	14.29%	7	11.67%	0	0.00%
20 - 49	3	5.88%	0	0.00%	0	0.00%	3	5.00%	0	0.00%
50 - 99	0	0.00%	0	0.00%	1	2.04%	0	0.00%	0	0.00%
100+	0	0.00%	0	0.00%	1	2.04%	0	0.00%	0	0.00%
Not Applicable	1	1.96%	0	0.00%	1	2.04%	1	1.67%	1	1.01%
Total:	51		61		49		60		99	

Respondent Age

Age	2010		2011		2012		2013		2014	
29 or less	1	1.96%	1	1.64%	0	0.00%	2	3.33%	0	0.00%
30 - 34	2	3.92%	2	3.28%	1	2.04%	5	8.33%	4	4.04%
35 - 39	2	3.92%	4	6.56%	3	6.12%	4	6.67%	9	9.09%
40 - 44	3	5.88%	7	11.48%	8	16.33%	12	20.00%	7	7.07%
45 - 49	9	17.65%	1	1.64%	3	6.12%	7	11.67%	13	13.13%
50 - 54	9	17.65%	7	11.48%	4	8.16%	4	6.67%	6	6.06%
55 - 59	9	17.65%	10	16.39%	9	18.37%	6	10.00%	21	21.21%
60 - 64	9	17.65%	14	22.95%	4	8.16%	8	13.33%	12	12.12%
65-69	3	5.88%	8	13.11%	12	24.49%	5	8.33%	20	20.20%
70+	4	7.84%	7	11.48%	4	8.16%	6	10.00%	7	7.07%
Unknown	0	0.00%	0	0.00%	1	2.04%	1	1.67%	0	0.00%
Total:	51		61		49		60		99	

Complaint Source

	2010		2011		2012		2013		2014	
Attorney	3	5.88%	2	3.28%	2	4.08%	1	1.67%	3	3.03%
Beneficiary	0	0.00%	0	0.00%	0	0.00%	0	0.00%	1	1.01%
Client	44	86.27%	57	93.44%	41	83.67%	53	88.33%	90	90.91%
Opposing Party	0	0.00%	0	0.00%	1	2.04%	1	1.67%	0	0.00%
Vendor	0	0.00%	2	3.28%	0	0.00%	0	0.00%	0	0.00%
Other	4	7.84%	0	0.00%	5	10.20%	5	8.33%	5	5.05%
Total:	51		61		49		60		99	

Fee Arbitration Petitions

Area of Law by Open Year

	2010		2011		2012		2013		2014	
Administrative/Municipal Law	0	0.00%	1	1.64%	1	2.04%	1	1.67%	2	2.02%
ADR/Mediation/Arbitration	0	0.00%	0	0.00%	0	0.00%	0	0.00%	0	0.00%
Banking Law	1	1.96%	0	0.00%	0	0.00%	0	0.00%	0	0.00%
Bankruptcy Law	2	3.92%	3	4.92%	3	6.12%	0	0.00%	3	3.03%
Civil Rights/Discrimination Law	0	0.00%	0	0.00%	0	0.00%	1	1.67%	0	0.00%
Collections Law	0	0.00%	3	4.92%	0	0.00%	0	0.00%	0	0.00%
Commercial/Business	5	9.80%	2	3.28%	3	6.12%	2	3.33%	1	1.01%
Contracts/Consumer	0	0.00%	1	1.64%	2	4.08%	0	0.00%	1	1.01%
Corporate Law	0	0.00%	0	0.00%	1	2.04%	1	1.67%	0	0.00%
Criminal Law	3	5.88%	8	13.11%	7	14.29%	5	8.33%	17	17.17%
Education Law	0	0.00%	0	0.00%	0	0.00%	1	1.67%	0	0.00%
Employment Law	0	0.00%	2	3.28%	0	0.00%	4	6.67%	1	1.01%
Environmental Law	0	0.00%	0	0.00%	0	0.00%	0	0.00%	0	0.00%
Family Law	23	45.10%	21	34.43%	14	28.57%	24	40.00%	38	38.38%
Insurance Law	0	0.00%	1	1.64%	1	2.04%	2	3.33%	0	0.00%
Intellectual Property	0	0.00%	0	0.00%	0	0.00%	0	0.00%	0	0.00%
Labor Law	0	0.00%	0	0.00%	0	0.00%	0	0.00%	0	0.00%
Landlord/Tenant	3	5.88%	0	0.00%	1	2.04%	0	0.00%	2	2.02%
Law Practice Management	0	0.00%	0	0.00%	0	0.00%	0	0.00%	0	0.00%
Law-Related Services	0	0.00%	0	0.00%	0	0.00%	0	0.00%	0	0.00%
PFA/Harassment	0	0.00%	1	1.64%	1	2.04%	0	0.00%	2	2.02%
Real Estate	6	11.76%	1	1.64%	10	20.41%	8	13.33%	8	8.08%
Social Security Law	0	0.00%	0	0.00%	1	2.04%	1	1.67%	3	3.03%
Taxation	0	0.00%	0	0.00%	1	2.04%	1	1.67%	0	0.00%
Torts	1	1.96%	1	1.64%	0	0.00%	2	3.33%	4	4.04%
Wills/Estates/Probate	6	11.76%	4	6.56%	0	0.00%	5	8.33%	12	12.12%
Workers' Compensation	0	0.00%	1	1.64%	1	2.04%	1	1.67%	1	1.01%
Other/Unknown	1	1.96%	11	18.03%	2	4.08%	1	1.67%	4	4.04%
Total:	51		61		49		60		99	

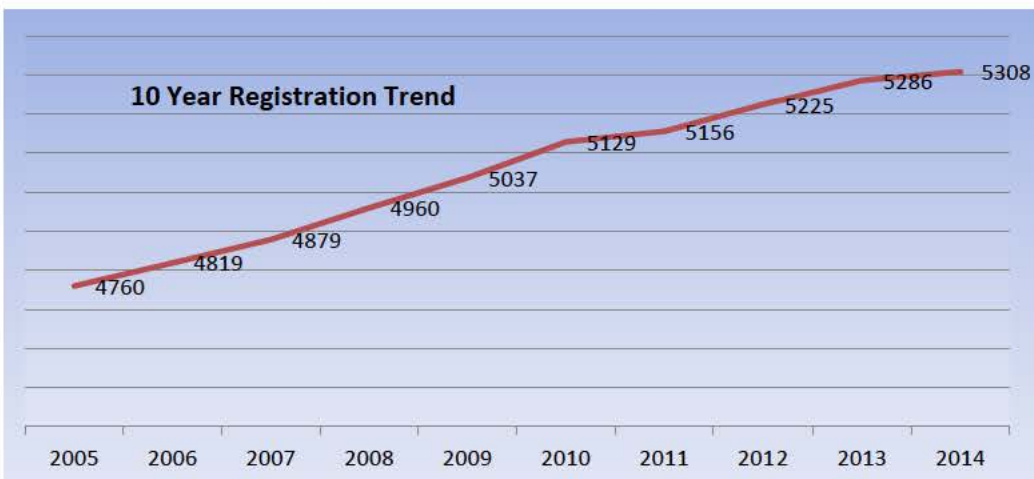
Registration Statistics

	2010	2011	2012	2013	2014
Resident Attorneys					
Active	3721 72.55%	3742 72.58%	3754 71.85%	3807 72.02%	3828 72.12%
Emeritus	5 0.10%	4 0.08%	2 0.04%	3 0.06%	5 0.09%
Federal Judiciary				10	12
Judicial	78 1.52%	82 1.59%	82 1.57%	68 1.29%	69 1.30%
Law Clerk	26 0.51%	25 0.48%	26 0.50%	25 0.47%	30 0.57%
Sub-Total:	74.67%	74.73%	73.95%	73.84%	74.08%
Non-Resident Attorneys					
Active	1297 25.29%	1298 25.17%	1360 26.03%	1366 25.84%	1361 25.64%
Law Clerk	2 0.04%	5 0.10%	1 0.02%	7 0.13%	3 0.06%
Sub-Total:	25.33%	25.27%	26.05%	25.97%	25.70%
Total:	5129	5156	5225	5286	5308
		27 0.53% *	69 1.34% *	61 1.17% *	22 0.42%

*Increase over prior year.

Age Breakdown

Years Admitted to Practice							
5 or Less Years	779	14.68%	41 to 45 Years	284	5.35%	≤ 29	207 3.90%
6 to 10 Years	677	12.75%	46 to 50 Years	89	1.68%	30 - 34	470 8.85%
11 to 15 Years	562	10.59%	51 to 55 Years	27	0.51%	35 - 39	469 8.84%
16 to 20 Years	609	11.47%	56 to 60 Years	13	0.24%	40 - 44	497 9.36%
21 to 25 Years	614	11.57%	61 to 65 Years	14	0.26%	45 - 49	576 10.85%
26 to 30 Years	716	13.49%	66 to 70 Years	0	0.00%	50 - 54	672 12.66%
31 to 35 Years	492	9.27%	71 to 75 Years	0	0.00%	55 - 59	792 14.92%
36 to 40 Years	430	8.10%	76 to 80 Years	2	0.04%	60 - 64	716 13.49%
						65 - 69	561 10.57%
						70+	348 6.56%



Increase Over Prior Year
2006 - 1.24%
2007 - 1.25%
2008 - 1.66%
2009 - 1.55%
2010 - 1.83%
2011 - 0.53%
2012 - 1.34%
2013 - 1.17%
2014 - 0.42%

County Demographics

County	2010		2011		2012		2013		2014	
Androscoggin	220	4.29%	219	4.25%	202	3.87%	208	3.93%	208	3.92%
Aroostook	79	1.54%	78	1.51%	75	1.44%	74	1.40%	72	1.36%
Cumberland	1873	36.52%	1898	36.81%	1916	36.67%	1948	36.85%	1976	37.23%
Franklin	30	0.58%	33	0.64%	36	0.69%	33	0.62%	31	0.58%
Hancock	102	1.99%	100	1.94%	101	1.93%	109	2.06%	106	2.00%
Kennebec	475	9.26%	471	9.13%	472	9.03%	489	9.25%	499	9.40%
Knox	95	1.85%	101	1.96%	105	2.01%	107	2.02%	105	1.98%
Lincoln	81	1.58%	79	1.53%	79	1.51%	75	1.42%	73	1.38%
Oxford	45	0.88%	42	0.81%	41	0.78%	41	0.78%	43	0.81%
Penobscot	342	6.67%	340	6.59%	347	6.64%	344	6.51%	347	6.54%
Piscataquis	8	0.16%	9	0.17%	9	0.17%	9	0.17%	10	0.19%
Sagadahoc	83	1.62%	86	1.67%	92	1.76%	89	1.68%	85	1.60%
Somerset	40	0.78%	41	0.80%	41	0.78%	41	0.78%	38	0.72%
Waldo	37	0.72%	37	0.72%	38	0.73%	38	0.72%	39	0.73%
Washington	30	0.58%	33	0.64%	30	0.57%	34	0.64%	35	0.66%
York	286	5.58%	290	5.62%	298	5.70%	306	5.79%	310	5.84%
Out-of-State	1303	25.40%	1299	25.19%	1343	25.70%	1341	25.37%	1331	25.08%
Total:	5129		5156		5225		5286		5308	

Variance over Prior Year

County	2010		2011		2012		2012		2014	
Androscoggin	220	2.45%	219	-0.45%	202	-7.76%	208	2.97%	208	0.00%
Aroostook	79	2.63%	78	-1.27%	75	-3.85%	74	-1.33%	72	-2.70%
Cumberland	1873	1.87%	1898	1.33%	1916	0.95%	1948	1.67%	1976	1.44%
Franklin	30	6.67%	33	10.00%	36	9.09%	33	-8.33%	31	-6.06%
Hancock	102	-2.97%	100	-1.96%	101	1.00%	109	7.92%	106	-2.75%
Kennebec	475	-1.68%	471	-0.84%	472	0.21%	489	3.60%	499	2.04%
Knox	95	1.03%	101	6.32%	105	3.96%	107	1.90%	105	-1.87%
Lincoln	81	0.00%	79	-2.47%	79	0.00%	75	-5.06%	73	-2.67%
Oxford	45	0.00%	42	-6.67%	41	-2.38%	41	0.00%	43	4.88%
Penobscot	342	0.59%	340	-0.58%	347	2.06%	344	-0.86%	347	0.87%
Piscataquis	8	16.67%	9	12.50%	9	0.00%	9	0.00%	10	11.11%
Sagadahoc	83	2.70%	86	3.61%	92	6.98%	89	-3.26%	85	-4.49%
Somerset	40	2.50%	41	2.50%	41	0.00%	41	0.00%	38	-7.32%
Waldo	37	0.00%	37	0.00%	38	2.70%	38	0.00%	39	2.63%
Washington	30	0.00%	33	10.00%	30	-9.09%	34	13.33%	35	2.94%
York	286	0.00%	290	1.40%	298	2.76%	306	2.68%	310	1.31%
Out-of-State	1303	3.10%	1299	-0.31%	1343	3.39%	1341	-0.15%	1331	-0.75%
Total:	5129		5156		5225		5286		5308	

Firm Size

	2010		2011		2012		2013		2014	
Solo	1415	27.59%	1429	27.72%	1382	26.45%	1419	26.84%	1466	27.62%
2 - 5	1197	23.34%	1194	23.16%	1167	22.33%	1226	23.19%	1262	23.78%
6 - 9	421	8.21%	403	7.82%	416	7.96%	419	7.93%	425	8.01%
10 - 19	420	8.19%	418	8.11%	413	7.90%	446	8.44%	468	8.82%
20 - 49	406	7.92%	426	8.26%	397	7.60%	404	7.64%	400	7.54%
50 - 99	301	5.87%	201	3.90%	239	4.57%	247	4.67%	201	3.79%
100+	376	7.33%	454	8.81%	467	8.94%	479	9.06%	531	10.00%
N/A	593	11.56%	631	12.24%	744	14.24%	646	12.22%	555	10.46%
Total:	5129		5156		5225		5286		5308	

2014 County/Age Demographics

County*	≤ 29	30 - 34	35-39	40-44	45-49	50-54	55-59	60-64	65-69	70+	Total
Androscoggin	10	28	12	27	24	12	29	29	25	12	208
Aroostook	3	1	9	5	5	7	9	8	10	15	72
Cumberland	77	196	217	181	202	251	278	254	202	118	1976
Franklin	0	2	1	4	1	5	5	5	5	3	31
Hancock	3	2	6	5	12	12	16	19	18	13	106
Kennebec	22	35	27	42	59	59	81	95	46	33	499
Knox	3	9	9	8	11	8	11	14	22	10	105
Lincoln	0	3	2	7	5	5	7	13	19	12	73
Oxford	1	2	6	2	3	7	8	1	8	5	43
Penobscot	18	30	23	23	33	53	58	51	33	25	347
Piscataquis	0	1	0	1	2	0	1	1	3	1	10
Sagadahoc	3	7	7	8	10	10	11	7	12	10	85
Somerset	2	3	1	2	2	5	5	8	6	4	38
Waldo	2	3	7	0	3	3	5	7	6	3	39
Washington	2	3	1	3	2	4	3	2	10	5	35
York	14	20	24	22	29	44	42	52	33	30	310
Out-of-State	47	125	117	157	173	187	223	150	103	49	1331
Total:	207	470	469	497	576	672	792	716	561	348	5308

*County is based on the attorney's preferred mailing address.

Practice Type

	2010		2011		2012		2013		2014	
Government	532	10.37%	523	10.14%	522	9.99%	547	10.35%	569	10.72%
In-House/Corporate Counsel	317	6.18%	328	6.36%	334	6.39%	334	6.32%	347	6.54%
Judiciary	90	1.75%	95	1.84%	73	1.40%	70	1.32%	92	1.73%
Law Clerk	21	0.41%	17	0.33%	25	0.48%	33	0.62%	28	0.53%
Law School	32	0.62%	32	0.62%	32	0.61%	33	0.62%	31	0.58%
Legal Service	101	1.97%	95	1.84%	92	1.76%	100	1.89%	102	1.92%
Military	22	0.43%	14	0.27%	13	0.25%	9	0.17%	9	0.17%
Private Practice	3381	65.92%	3383	65.61%	3333	63.79%	3452	65.30%	3531	66.52%
Retired	49	0.96%	65	1.26%	69	1.32%	84	1.59%	88	1.66%
Other	584	11.39%	604	11.71%	732	14.01%	624	11.80%	511	9.63%
Total:	5129		5156		5225		5286		5308	

Age Demographics

	2010		2011		2012		2013		2014	
≤ 29	142	2.77%	147	2.85%	215	4.11%	209	3.95%	207	3.90%
30 - 34	378	7.37%	393	7.62%	435	8.33%	445	8.42%	470	8.85%
35 - 39	449	8.75%	440	8.53%	447	8.56%	463	8.76%	469	8.84%
40 - 44	604	11.78%	573	11.11%	574	10.99%	534	10.10%	497	9.36%
45 - 49	599	11.68%	572	11.09%	573	10.97%	584	11.05%	576	10.85%
50 - 54	784	15.29%	760	14.74%	758	14.51%	714	13.51%	672	12.66%
55 - 59	803	15.66%	787	15.26%	786	15.04%	789	14.93%	792	14.92%
60 - 64	721	14.06%	727	14.10%	708	13.55%	710	13.43%	716	13.49%
65+	649	12.65%	757	14.68%						
65-69					469	8.98%	533	10.08%	561	10.57%
70+					260	4.98%	305	5.77%	348	6.56%
Total:	5129		5156		5225		5286		5308	

Gender Demographics

	2010		2011		2012		2013		2014	
Female	1726	33.65%	1769	34.31%	1810	34.64%	1844	34.88%	1875	35.32%
Male	3403	66.35%	3387	65.69%	3415	65.36%	3442	65.12%	3433	64.68%
Total:	5129		5156		5225		5286		5308	

Age/Gender Demographics

Female	2010		2011		2012		2013		2014	
≤ 29	78	1.52%	87	1.69%	124	2.37%	117	2.21%	115	2.17%
30 - 34	213	4.15%	214	4.15%	230	4.40%	229	4.33%	241	4.54%
35 - 39	196	3.82%	209	4.05%	210	4.02%	229	4.33%	233	4.39%
40 - 44	230	4.48%	216	4.19%	214	4.10%	207	3.92%	199	3.75%
45 - 49	229	4.46%	226	4.38%	228	4.36%	220	4.16%	214	4.03%
50 - 54	278	5.42%	267	5.18%	268	5.13%	266	5.03%	257	4.84%
55 - 59	260	5.07%	271	5.26%	271	5.19%	279	5.28%	280	5.28%
60 - 64	167	3.26%	182	3.53%	177	3.39%	170	3.22%	195	3.67%
65+	75	1.46%	97	1.88%						
65-69					73	1.40%	106	2.01%	111	2.09%
70+					15	0.29%	21	0.40%	30	0.57%
Total:	5129		5156		5225		5286		5308	

Male	2010		2011		2012		2013		2014	
≤ 29	64	1.25%	60	1.16%	91	1.74%	92	1.74%	92	1.73%
30 - 34	165	3.22%	179	3.47%	205	3.92%	216	4.09%	229	4.31%
35 - 39	253	4.93%	231	4.48%	237	4.54%	234	4.43%	236	4.45%
40 - 44	374	7.29%	357	6.92%	360	6.89%	327	6.19%	298	5.61%
45 - 49	370	7.21%	346	6.71%	345	6.60%	364	6.89%	362	6.82%
50 - 54	506	9.87%	493	9.56%	490	9.38%	448	8.48%	415	7.82%
55 - 59	543	10.59%	516	10.01%	515	9.86%	510	9.65%	512	9.65%
60 - 64	554	10.80%	545	10.57%	531	10.16%	540	10.22%	521	9.82%
65+	574	11.19%	660	12.80%						
65-69					396	7.58%	427	8.08%	450	8.48%
70+					245	4.69%	284	5.37%	318	5.99%
Total:	5129		5156		5225		5286		5308	

County/Practice Demographics

Board of Overseers of the Bar

County

Age: ≤ 29

Page 26

www.mebareoverseers.org

Age: 40 - 44

	Androscoggin	Aroostook	Cumberland	Franklin	Hancock	Kennebec	Knox	Lincoln	Oxford	Penobscot	Piscataquis	Sagadahoc	Somerset	Waldo	Washington	York	Out-of-State	Total:
Government	2	1	4	0	1	6	0	0	0	2	0	2	0	1	1	0	5	25
In-House/Corporate	0	0	3	0	0	0	0	0	0	2	0	0	0	0	0	0	1	6
Law Clerk	0	0	6	0	0	2	0	0	0	3	0	0	0	0	0	1	1	13
Law School	0	0	0	0	0	0	0	0	0	0	0	1	0	0	0	0	0	1
Legal Service	0	0	2	0	0	3	0	0	0	1	0	0	0	0	0	0	2	8
Private Practice	7	2	46	0	1	8	1	0	0	8	0	1	1	1	1	8	28	113
Other	1	0	15	0	1	3	2	0	1	2	0	0	1	0	0	5	10	41
Sub-Total:	10	3	76	0	3	22	3	0	1	18	0	4	2	2	2	14	47	207

Age: 30 - 34

Government	3	0	11	0	0	11	1	0	0	1	0	1	2	0	1	1	19	51
In-House/Corporate	0	0	10	1	0	1	0	0	0	1	0	2	0	1	0	1	13	30
Law School	0	0	0	0	0	0	0	0	0	0	0	0	0	0	0	0	1	1
Law Clerk	0	0	5	0	0	0	0	0	0	1	0	0	0	0	0	0	1	7
Legal Service	2	0	8	0	0	1	0	0	0	3	0	1	0	0	0	0	3	18
Military	0	0	0	0	0	0	0	0	0	0	0	0	0	0	0	0	1	1
Private Practice	21	1	139	1	2	14	7	2	2	23	1	3	1	2	2	16	69	306
Other	2	0	23	0	0	8	1	1	0	1	0	0	0	0	0	2	18	56
Sub-Total:	28	1	196	2	2	35	9	3	2	30	1	7	3	3	3	20	125	470

Age: 35 - 39

Government	0	2	17	0	1	8	1	0	0	5	0	2	0	0	0	1	13	50
In-House/Corporate	0	0	17	0	0	0	1	0	2	1	0	1	0	0	0	1	16	39
Law Clerk	0	0	2	0	0	0	0	0	0	0	0	0	0	0	0	0	0	2
Law School	0	0	2	0	0	0	0	0	0	0	0	0	0	0	0	0	1	3
Legal Service	0	0	6	0	0	2	0	0	0	0	0	0	0	0	0	0	3	11
Military	0	0	0	0	0	1	0	0	0	0	0	0	0	0	0	0	0	1
Private Practice	11	7	136	1	5	14	7	1	3	14	0	3	1	7	1	21	66	298
Other	1	0	37	0	0	2	0	1	1	3	0	1	0	0	0	1	18	65
Sub-Total:	12	9	217	1	6	27	9	2	6	23	0	7	1	7	1	24	117	469

County	Androscoggin	Arroostook	Cumberland	Franklin	Hancock	Kennebec	Knox	Lincoln	Oxford	Penobscot	Piscataquis	Sagadahoc	Somerset	Waldo	Washington	York	Out-of-State	Total:
Age: 45 - 49																		
Government	1	0	8	0	0	30	1	0	0	4	0	0	0	1	0	4	20	69
In-House/Corporate	1	0	29	0	0	1	0	0	0	3	0	2	0	0	0	3	32	71
Judiciary	0	0	0	0	0	1	1	0	0	0	0	0	0	0	1	0	0	3
Law Clerk	0	0	0	0	0	0	0	0	0	1	0	0	0	0	0	0	0	1
Law School	0	0	1	0	0	0	0	0	0	0	0	0	0	0	0	0	0	1
Legal Service	1	1	2	0	0	3	0	0	0	1	0	0	0	0	0	1	3	12
Military	0	0	1	0	0	0	0	0	0	0	0	0	0	0	0	0	3	4
Private Practice	18	4	120	0	12	23	7	5	3	18	2	7	2	2	1	21	101	346
Other	3	0	41	1	0	1	2	0	0	6	0	1	0	0	0	0	14	69
Sub-Total:	24	5	202	1	12	59	11	5	3	33	2	10	2	3	2	29	173	576
Age: 50 - 54																		
Government	1	1	25	2	0	33	0	1	1	8	0	1	2	0	1	5	18	99
In-House/Corporate	0	0	23	0	0	5	0	0	0	0	0	0	0	0	0	3	30	61
Judiciary	0	1	2	0	0	2	0	0	0	3	0	0	0	0	0	1	3	12
Law Clerk	1	0	0	0	0	0	0	0	0	1	0	0	0	0	0	0	0	2
Law School	0	0	2	0	0	0	0	0	0	0	0	0	0	0	0	0	4	6
Legal Service	0	0	3	0	0	2	1	0	0	0	0	0	0	0	1	1	3	11
Private Practice	10	5	170	2	10	12	3	4	6	36	0	8	3	2	2	29	115	417
Other	0	0	26	1	2	5	4	0	0	5	0	1	0	1	0	5	14	64
Sub-Total:	12	7	251	5	12	59	8	5	7	53	0	10	5	3	4	44	187	672
Age: 55 - 59																		
Government	3	1	25	0	1	39	0	1	1	4	0	1	0	0	0	0	21	97
In-House/Corporate	0	1	18	0	0	0	0	0	1	1	0	1	0	0	0	3	20	45
Judiciary	3	1	5	0	1	5	1	0	0	5	0	1	0	1	0	1	1	25
Law Clerk	0	0	0	0	0	0	0	0	0	1	0	0	0	0	0	0	0	1
Law School	0	0	2	0	0	0	0	0	0	0	0	0	0	0	0	0	4	6
Legal Service	0	0	3	0	1	2	0	0	0	0	0	0	0	0	0	0	2	8
Military	0	0	0	0	0	0	0	0	0	0	0	0	0	0	0	0	2	2
Retired	0	0	0	1	0	1	0	0	0	0	0	0	0	0	0	1	0	3
Private Practice	23	5	206	3	10	31	8	5	6	42	1	6	5	2	3	33	160	549
Other	0	1	19	1	3	3	2	1	0	5	0	2	0	2	0	4	13	56
Sub-Total:	29	9	278	5	16	81	11	7	8	58	1	11	5	5	3	42	223	792

County	Androscoggin	Aroostook	Cumberland	Franklin	Hancock	Kennebec	Knox	Lincoln	Oxford	Penobscot	Piscataquis	Sagadahoc	Somerset	Waldo	Washington	York	Out-of-State	Total:
Age: 60 - 64																		
Government	3	1	12	0	1	38	1	0	0	5	0	0	0	0	0	3	16	80
In-House/Corporate	1	0	12	0	1	4	0	1	0	2	0	0	0	0	0	2	11	34
Judiciary	1	1	8	0	0	4	0	2	0	2	1	0	0	1	0	3	0	23
Legal Service	0	0	2	0	0	6	0	0	0	2	0	0	0	1	0	0	8	19
Retired	0	0	7	0	0	1	1	0	0	0	0	0	1	0	0	1	4	15
Private Practice	22	6	188	5	14	37	12	8	1	37	0	7	7	5	2	41	93	485
Other	2	0	25	0	3	5	0	2	0	3	0	0	0	0	0	2	18	60
Sub-Total:	29	8	254	5	19	95	14	13	1	51	1	7	8	7	2	52	150	716
Age: 65 - 69																		
Government	2	0	5	0	1	11	3	1	1	3	0	1	0	0	0	0	5	33
In-House/Corporate	0	0	8	0	0	1	0	0	0	1	0	0	0	0	0	1	6	17
Judiciary	0	1	9	0	0	1	0	0	0	3	1	1	0	0	1	0	1	18
Law School	1	0	3	0	0	0	0	0	0	0	0	0	0	0	0	0	3	7
Legal Service	0	0	3	0	0	3	0	0	0	1	0	0	0	1	0	0	0	8
Retired	0	1	10	1	1	3	1	1	1	1	1	1	0	0	1	3	13	39
Private Practice	21	8	144	4	16	25	18	17	6	21	1	9	6	5	8	27	67	403
Other	1	0	20	0	0	2	0	0	0	3	0	0	0	0	0	2	8	36
Sub-Total:	25	10	202	5	18	46	22	19	8	33	3	12	6	6	10	33	103	561
Age: 70+																		
Government	0	0	1	0	0	2	0	2	0	0	0	1	0	0	0	0	2	8
In-House/Corporate	0	0	2	0	0	0	0	0	0	0	0	0	0	0	0	0	0	2
Judiciary	1	0	4	0	0	0	0	0	0	0	0	0	0	0	0	0	1	6
Law School	0	0	1	0	0	0	0	0	0	0	0	0	0	0	0	0	0	1
Legal Service	0	0	0	0	0	0	0	0	0	0	0	1	0	0	0	0	0	1
Retired	0	0	13	1	2	2	2	0	1	3	0	2	0	0	0	3	2	31
Private Practice	10	14	89	2	9	27	8	10	4	21	1	6	4	3	5	27	41	281
Other	1	1	8	0	2	2	0	0	0	1	0	0	0	0	0	0	3	18
Sub-Total:	12	15	118	3	13	33	10	12	5	25	1	10	4	3	5	30	49	348
Grand-Total:	208	72	1975	31	106	499	105	73	43	347	10	86	38	39	35	310	1331	5308