

MAINE STATE LEGISLATURE

The following document is provided by the
LAW AND LEGISLATIVE DIGITAL LIBRARY
at the Maine State Law and Legislative Reference Library
<http://legislature.maine.gov/lawlib>



Reproduced from electronic originals
(may include minor formatting differences from printed original)

2012 Annual Report



Board of Overseers of the Bar
P O Box 527
Augusta, ME 04332-0527
P. 207-623-1121
F. 207-623-4175
E. board@mebaroverseers.org



Board of Overseers of the Bar

2012 Annual Report

INTRODUCTION

The Board of Overseers of the Bar was created by the Maine Supreme Judicial Court in 1978 as an independent administrative body to govern the conduct of lawyers as officers of the Court. The Board regulates attorney conduct by enforcing the Maine Bar Rules and the Maine Rules of Professional Conduct (Rules) adopted by the Court. The purpose of those Rules is to provide appropriate standards for attorneys with respect to their practice of the profession of law, including, but not limited to, their relationship with their clients, the general public, other members of the legal profession, the courts, and other agencies of this state.

MISSION STATEMENT

The Board's mission is to encourage and promote competent and ethical practice by members of the Maine Bar, and to make these standards known to members of the public, so that they have confidence in the legal profession in Maine.

The Board accomplishes its mission by:

- registering and regulating attorneys licensed to practice in Maine;
- approving and providing continuing legal education programs;
- requiring that all attorneys licensed to practice in Maine have met the Maine Supreme Judicial Court's continuing legal education standards;
- providing guidance to attorneys on ethical issues through written advisory opinions issued by the Professional Ethics Commission, as well as an ethics helpline;
- informing members of the public of their rights concerning proper attorney behavior and the availability of fee arbitration;
- enforcing Maine's code of ethics for attorneys; and
- endeavoring to achieve the best possible legal representation of clients through all of these measures.

BOARD LEADERSHIP AND STAFF

The Maine Supreme Judicial Court appoints Board members to oversee the operations of the organization. The Board is composed of six lawyers and three members of the public. Public members are appointed by the Court on recommendation of the Governor. Board members may serve two consecutive three-year terms.

Board Members - 2012

Gregory T. Caswell – Falmouth

Barbara H. Furey, Esq. – Portland

Jud Knox – York*

Dawn M. Pelletier, Esq. – Bangor

David M. Sanders, Esq. – Livermore Falls*

The Honorable Warren M. Silver – Bangor (Court Liaison)

Cathy A. DeMerchant – Augusta

Charles E. Gilbert III – Bangor

Daniel A. Pileggi, Esq. – Ellsworth

Victoria Powers, Esq. – Portland

Stephen J. Schwartz, Esq. – Portland

* Term concluded on 10/31/12.

Board Staff - 2012

Jacqueline M. Rogers, Executive Director

J. Scott Davis, Bar Counsel

Aria Eee, Assistant Bar Counsel

Susan E. Adams, CLE/Registration Coordinator

Jody A. Breton, Registration Clerk

Heather S. Hinton, Assistant to the Executive Director

Patti Howe, Assistant to Bar Counsel

Angela Morse, Board Clerk

Donna L. Spillman, Assistant to Bar Counsel

COMMISSIONS

The Board appoints volunteer members to three commissions established by the Maine Bar Rules: the Grievance Commission, the Fee Arbitration Commission, and the Professional Ethics Commission. Three-member panels of the Fee Arbitration Commission and the Grievance Commission conduct their duties and responsibilities as defined in the Maine Bar Rules. Each panel is comprised of two attorneys and one public member. The Professional Ethics Commission, consisting of eight attorneys, renders formal written advisory opinions to the Court, Board, Grievance Commission, Bar Counsel and members of the Maine bar involving interpretation and application of the Maine Rules of Professional Conduct concerning specific questions of lawyer conduct.

Information concerning the responsibilities and functions of the Board and each of its commissions may be found on the Board's website.

OVERVIEW OF THE ATTORNEY DISCIPLINARY PROCESS

The purpose of the disciplinary system is to monitor the legal profession's compliance with the Court's promulgated rules of ethics and to discipline or otherwise sanction lawyers whose conduct violates those standards.

Complaints filed with the Board are taken very seriously. Each written complaint is reviewed by the office of Bar Counsel and investigated if it involves alleged misconduct that if proven true, would be a violation of the Rules. Complaints that do not actually allege conduct in violation of the Rules are not subject to the disciplinary system.

The Board does not provide complainants with legal assistance or advice and the complaint process is not a substitute for a civil action. The disciplinary system is not designed to compensate a complaining party for monetary loss or emotional distress incurred as a result of attorney misconduct.

The forms of sanction or discipline that may be imposed upon a lawyer for unethical conduct are: dismissal with a warning, public reprimand, suspension, and disbarment. All orders and reports issued after disciplinary hearings are published on the Board's website.

GRIEVANCE COMPLAINTS

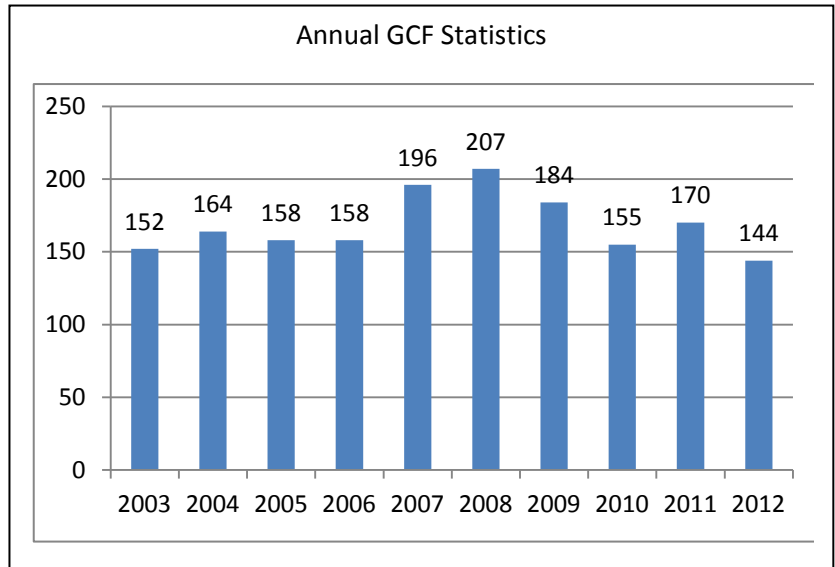
Upon receipt of a grievance complaint, Bar Counsel determines whether the grievance, on its face, alleges professional misconduct. If the complaint does not allege professional misconduct, Bar Counsel will docket the matter as a Bar Counsel File (BCF) complaint. Bar Counsel will then dismiss the complaint, with or without investigation, pursuant to Maine Bar Rule 7.1(c). If the complaint does allege professional misconduct, the complaint will be docketed as a Grievance Commission File (GCF) and will be sent to the lawyer who is alleged to have committed the professional misconduct for a response.

In 2012, Bar Counsel received, screened and docketed 143 BCF complaints. Upon written notice of a dismissal, the complainant is provided with an explanation as to the reason for the dismissal. The complainant is also notified of the right to file a written request within fourteen days for the dismissal to be reviewed. If a review is sought, a public member

of the Board or the Grievance Commission may approve, disapprove or modify the terms of the dismissal. In all dismissed BCF matters, the involved attorney is provided with copies of the complaint filing, the dismissal letter, and any resulting notice of request for review. The parties are subsequently notified of the reviewer’s decision. Bar Counsel dismissed 131 BCF matters involving 125 attorneys in 2012. Upon receipt of the complainant’s request for review, forty-two of those dismissals were reviewed by public members who affirmed forty dismissals and disapproved two. At the close of 2012, there were twelve pending BCF matters.

In 2012, Bar Counsel received, screened and docketed 144 new grievance complaints as GCF complaints. After investigation, three-member panels of the Grievance Commission met to conduct preliminary case reviews of 161 GCF complaints under Maine Bar Rule 7.1(d). Such reviews are not hearings, and neither the respective complainant nor the respondent attorney is present or involved at the review. Although there is no confidentiality restriction requirement applicable to complainant and respondent attorney, Bar Counsel’s investigation and the Grievance Commission panels’ preliminary review process are required to be kept confidential by the Board, the Commission and the Board’s staff under Maine Bar Rule 7.1(d)(2) and 7.3(k)(1).

The Grievance Commission conducted seventeen hearings involving nineteen complaints pursuant to Maine Bar Rule 7.1(e). All disciplinary hearings are open to the public and the resulting decisions are published on the Board’s website. At the close of 2012, there were ninety pending GCF matters.



Case Review Dispositions

Deferral	5	Probable Cause for Hearing.....	28
Dismissal.....	107	Consent to Proceed to Court.....	2
Dismissal with Warning.....	19		

Hearing Dispositions

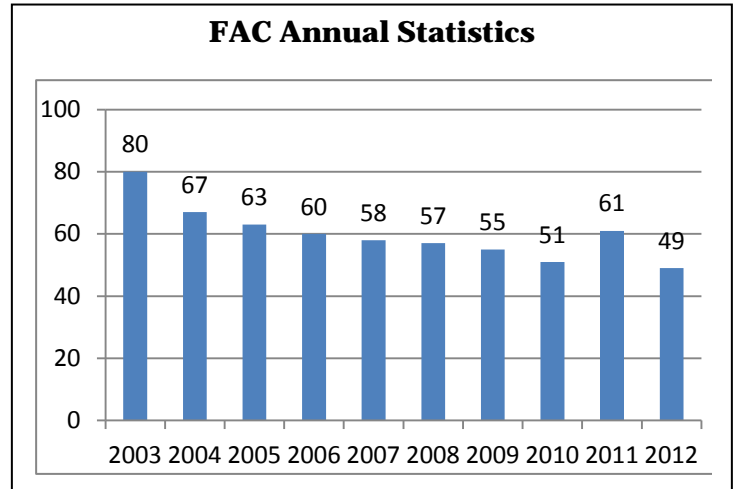
Dismissal.....	3	Public Reprimand	13
Dismissal with Warning.....	2	Information Authorized.....	1

Single Justice and Law Court Dispositions

Dismissal.....	8	Reinstatement (Administrative) Approved	6
Dismissal with Warning.....	6	Reprimand.....	4
Reciprocal Disbarment	1	Resignation	1
Reciprocal Suspension.....	1	Suspension.....	6

FEE ARBITRATION COMMISSION

The Board docketed forty-nine fee arbitration petitions in 2012. Over the course of the year, twenty-seven dispute matters were dismissed, settled or withdrawn prior to a hearing. Twenty-seven were heard by panels of the Fee Arbitration Commission. Of those, the Commission decided in favor of the petitioner in nine cases and in the favor of the respondent attorney in eighteen cases. At year-end, six fee arbitration matters remained pending.



Fee Arbitration Hearing Dispositions

Award to Petitioner	9	Dismissal	27
Award to Respondent.....	18		

PROFESSIONAL ETHICS COMMISSION

The Professional Ethics Commission issues advisory opinions to the Court, Board, Bar Counsel, and to the Grievance Commission on matters involving the interpretation and application of the Maine Rules of Professional Conduct. The Commission also issues advisory opinions on ethical questions posed by members of the bar.

On December 12, 2012, the Professional Ethics Commission issued Opinion #206 – *Non-Refundable Flat Fee Agreements*. The commission opined that a “flat fee arrangement” that specifically states the lawyer's fee is “a non-refundable minimum fee earned by the lawyer upon the execution of the agreement” is impermissible under the Maine Rules of Professional Conduct. The Commission also assisted Bar Counsel in processing informal confidential opinions in letter format in response to several inquiries from Maine attorneys. The complete list of the Commission’s formal opinions is published on the Board’s website.

CONTINUING LEGAL EDUCATION

The Board is committed to educating lawyers about the ethical considerations surrounding their law practice and ways to avoid common disciplinary problems. As part of this ongoing initiative, the Board co-sponsored a seminar with the Maine Assistance Program for Lawyers and Judges and the Maine State Bar Association on December 7th entitled “Essentials for Solo and Small Firm Practitioners”. Subjects discussed included the nuts and bolts of starting a law practice, choosing the right corporate structure, emerging trends in technology, marketing, practice management, and ways to avoid grievance complaints and malpractice claims. Additionally, over the course of the year, Bar Counsel spoke at twenty-five state and national continuing legal education seminars. Through these educational opportunities, Bar Counsel offered guidance on how to avoid ethical problems, discussed recent decisions and trends, and also explained how the grievance complaint process works. Bar Counsel welcomes the opportunity to provide CLE presentations to Maine lawyers and members of their staff on issues concerning ethics and professional responsibility.

BOARD ONLINE PUBLICATIONS

- Bar Counsel Informal Advisory Ethics Notes
- Handbook for a Receiver of the Law Practice of a Disabled or Missing or Deceased (“DMD”) Maine Attorney (PDF)
- Practice Closing Guide

To download these publications, visit mebaroverseers.org, go to Attorney Services and select Legal Resources.

ETHICS HELPLINE

The office of Bar Counsel, through the Ethics Helpline, provides informal ethics and professional responsibility advice to Maine attorneys. Members of the bar are encouraged to call and speak with Bar Counsel to discuss ethical dilemmas. Bar Counsel will only discuss the conduct of the inquiring attorney or another member of that attorney's law firm. Board Regulation No. 28 prohibits Bar Counsel from advising an inquiring attorney about another attorney's actual or hypothetical conduct. *See also* Advisory Opinions #67 and #171. In 2012, Bar Counsel fielded 666 helpline calls; comparatively, 780 calls were received in 2011. The three most frequent conduct inquiries involved questions relating to conflicts of interest, practice management, and contact with opposing counsel.

THE ETHICS HELPLINE NUMBER IS 207-623-1122

PROFESSIONAL UPDATE FOR MAINE LAWYERS AND JUDGES

As part of the Board's ongoing educational outreach to members of the bar, the Board publishes a bi-monthly electronic newsletter entitled *Professional Update for Maine Lawyers and Judges*. In addition to administrative updates, statistical data, notice of rule amendments and Court news, Bar Counsel publishes a regular feature entitled *Bar Counsel Informal Advisory Ethics Notes* wherein Bar Counsel provides ethical guidance to members of the bar. The newsletter also highlights an "Enduring Ethics Opinion" that was issued in the past by the Professional Ethics Commission.

REGISTRATION

The Board maintains a Register of attorneys who are active members of the bar in the State of Maine, as well as records of inactive, resigned, suspended, and disbarred attorneys. The registration roll increased by sixty-nine attorneys over the course of the year. At year's end, the Board's Register contained the names of 5,225 attorneys. Comparatively, at the close of 2011, the Register contained 5,156 names. In 2012, fifty-nine attorneys were administratively suspended for their failure to properly register with the Board.

In conjunction with the annual registration period, the Board administers attorney compliance with Maine Bar Rule 12 - Continuing Legal Education. Active attorneys are required to annually complete eleven hours of approved continuing legal education programming, including one hour of ethics or professionalism. In 2012, The Board approved 3,068 courses that were submitted by 450 providers.

Registration demographic statistics show that 52% of Maine's resident attorney population is concentrated in three counties: Cumberland, Kennebec, and Penobscot. Gender statistics show that women make up 35% of the bar and men represent 65% of the bar. Age demographics at year's end show that 21% of the bar is younger than 40, 52% are between the ages of 40 and 59, and that 27% are 60 years or older.

RULE AMENDMENTS AND BOARD REGULATIONS

The Board is charged with the continuous study of the Bar in its relation to the public and the courts for the purpose of making recommendations to the Court with respect to changes, additions or deletions to the Maine Bar Rules or for such other action by the Court as it may deem advisable in its supervision of the Bar. The Board's *Committee to Review Maine Bar Disciplinary Enforcement Rules* continued its review of the Maine Bar Rules in 2012. The committee will be submitting a final report next year to the Board and the Court to amend the administrative and disciplinary procedural rules contained in the Maine Bar Rules.

WEBSITE

The Board continues to enhance its website to better serve the public and members of the bar. The Board's website contains extensive information regarding the discipline and fee arbitration systems. To ensure that the public is informed

about the work of the Board, notices of public hearings and the resulting decisions are posted to the website. Members of the bar benefit from increased knowledge of and compliance with the Maine Bar Rules and the Maine Rules of Professional Conduct through the dissemination of Bar Counsel's Informal Advisory Ethics Notes, Board Regulations, Ethics Opinions, and the posting of hearing decisions.

RECOGNIZING VOLUNTEERS

The Board fulfills its mission with the assistance of volunteer attorneys and members of the public. Collectively, they devote hundreds of hours each year to protect the public. The following commission members' service ended in 2012:

Board Members

Jud Knox – York

David S. Sanders, Esq. – Livermore Falls

Fee Arbitration Commission Members

John C. Alfano – Biddeford

John J. Aromando, Esq. – Portland

John B. Cole, Esq. – Auburn

John W. Geismar, Esq. – Lewiston

Stephen W. Hanscom, Esq. – Rockland

Sandra Hodge – Alna

Michael A. Nelson, Esq. – Portland

Dana E. Prescott, Esq. – Saco

Melinda Y. Small – Harpswell

Grievance Commission Members

Ann M. Courtney, Esq. – Portland

Lynne C. McKeone – Cumberland

Tobi L. Schneider, Esq. – Waterville

Kathleen A. Schulz – Topsham

Susannah White – Yarmouth

Professional Ethics Commission Members

William D. Robitzek, Esq. – Auburn

FUNDING

Although the Board is subject to the supervision of the Maine Supreme Judicial Court, the Board receives no public taxpayer monies to subsidize its operations. The Board's fiscal year is July 1 through June 30. Each year the Board prepares a budget for the Court's review and approval. The Board's audited financial statements for the 2011-2012 fiscal year show revenue of \$1,049,909 and expenses of \$900,393. The fund balance stands at \$660,923.

In addition to the collection of licensing fees, the Board also collects the Court's annual assessment fee on behalf of the Lawyers' Fund for Client Protection (LFCP) and the Maine Assistance Program for Lawyers and Judges (MAP).

The purpose of the LFCP is to promote public confidence in the administration of justice and the integrity of the legal profession by reimbursing clients who suffer losses caused by an attorney's dishonest conduct. Generally, such conduct involves the misuse of funds in the care of the attorney or the misappropriation of funds for the attorney's personal benefit.

MAP has three purposes: to protect the interests of clients and the general public from harm caused by impaired lawyers or judges; to confidentially assist impaired members of the profession to begin and continue recovery; and to educate the bench, the bar, and the public as to the causes of and remedies for impairments affecting members of the legal profession.

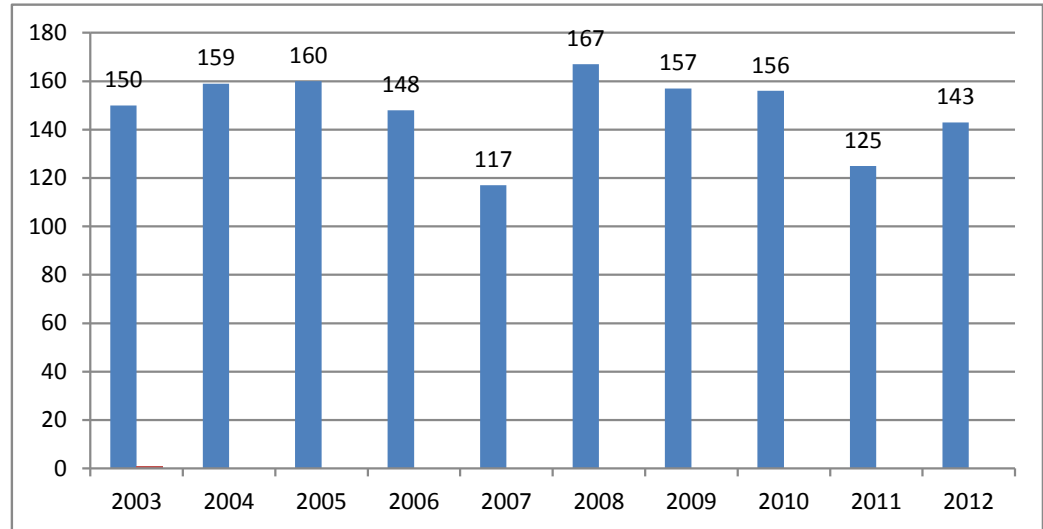
CONCLUSION

The information that follows provides more details about the demographics of the bar and the case statistics.

Bar Counsel Files

Annual Statistics

Year	Total	Variance
2003	150	
2004	159	6.00%
2005	160	0.63%
2006	148	-7.50%
2007	117	-20.95%
2008	167	42.74%
2009	157	-5.99%
2010	156	-0.64%
2011	125	-19.87%
2012	143	14.40%



Respondents by County

County	2008		2009		2010		2011		2012	
Androscoggin	10	5.99%	9	5.73%	15	9.62%	9	7.20%	7	4.90%
Aroostook	10	5.99%	6	3.82%	5	3.21%	10	8.00%	6	4.20%
Cumberland	45	26.95%	40	25.48%	45	28.85%	29	23.20%	41	28.67%
Franklin	5	2.99%	2	1.27%	15	9.62%	1	0.80%	2	1.40%
Hancock	6	3.59%	3	1.91%	4	2.56%	3	2.40%	7	4.90%
Kennebec	23	13.77%	31	19.75%	15	9.62%	23	18.40%	18	12.59%
Knox	6	3.59%	4	2.55%	7	4.49%	2	1.60%	4	2.80%
Lincoln	2	1.20%	9	5.73%	3	1.92%	2	1.60%	4	2.80%
Oxford	3	1.80%	3	1.91%	11	7.05%	3	2.40%	6	4.20%
Penobscot	20	11.98%	21	13.38%	15	9.62%	17	13.60%	13	9.09%
Piscataquis	0	0.00%	0	0.00%	0	0.00%	1	0.80%	0	0.00%
Sagadahoc	2	1.20%	2	1.27%	3	1.92%	0	0.00%	1	0.70%
Somerset	1	0.60%	3	1.91%	0	0.00%	1	0.80%	7	4.90%
Waldo	5	2.99%	1	0.64%	2	1.28%	2	1.60%	6	4.20%
Washington	12	7.19%	1	0.64%	3	1.92%	8	6.40%	5	3.50%
York	15	8.98%	10	6.37%	10	6.41%	10	8.00%	12	8.39%
Out of State	2	1.20%	12	7.64%	3	1.92%	4	3.20%	4	2.80%
Total:	167		157		156		125		143	

Statistics are based on year in which case was opened.

Bar Counsel Files

Area of Law

	2008		2009		2010		2011		2012	
Administrative/Municipal Law	4	2.40%	11	7.01%	3	1.92%	0	0.00%	7	4.90%
ADR/Mediation/Arbitration	1	0.60%	0	0.00%	3	1.92%	1	0.80%	1	0.70%
Bankruptcy Law	2	1.20%	4	2.55%	3	1.92%	3	2.40%	1	0.70%
Child Protection Law	2	1.20%	2	1.27%	2	1.28%	2	1.60%	1	0.70%
Civil Rights/Discrimination Law	0	0.00%	2	1.27%	0	0.00%	0	0.00%	1	0.70%
Collections Law	3	1.80%	4	2.55%	2	1.28%	3	2.40%	3	2.10%
Commercial/Business Law	8	4.79%	2	1.27%	6	3.85%	1	0.80%	7	4.90%
Contracts/Consumer Law	2	1.20%	1	0.64%	0	0.00%	1	0.80%	2	1.40%
Corporate Law	0	0.00%	1	0.64%	1	0.64%	0	0.00%	0	0.00%
Criminal Conviction	0	0.00%	0	0.00%	0	0.00%	1	0.80%	0	0.00%
Criminal Law	53	31.74%	37	23.57%	36	23.08%	24	19.20%	30	20.98%
Education Law	0	0.00%	2	1.27%	0	0.00%	0	0.00%	0	0.00%
Elder Law	2	1.20%	2	1.27%	2	1.28%	1	0.80%	1	0.70%
Employment Law	0	0.00%	4	2.55%	3	1.92%	0	0.00%	0	0.00%
Environmental Law	0	0.00%	0	0.00%	0	0.00%	0	0.00%	0	0.00%
Family Law	39	23.35%	42	26.75%	32	20.51%	33	26.40%	29	20.28%
Foreclosure Law	1	0.60%	2	1.27%	1	0.64%	2	1.60%	3	2.10%
General Practice	0	0.00%	0	0.00%	0	0.00%	1	0.80%	0	0.00%
Health Law	0	0.00%	0	0.00%	0	0.00%	3	2.40%	0	0.00%
Insurance Law	0	0.00%	0	0.00%	0	0.00%	1	0.80%	0	0.00%
Juvenile Law	0	0.00%	1	0.64%	0	0.00%	0	0.00%	0	0.00%
Labor Law	1	0.60%	0	0.00%	0	0.00%	0	0.00%	0	0.00%
Landlord/Tenant Law	2	1.20%	3	1.91%	3	1.92%	1	0.80%	3	2.10%
Law-Related Services	5	2.99%	1	0.64%	1	0.64%	0	0.00%	1	0.70%
Other/Unknown	7	4.19%	10	6.37%	5	3.21%	6	4.80%	3	2.10%
PFA/Harassment	2	1.20%	1	0.64%	0	0.00%	2	1.60%	4	2.80%
Real Estate Law	14	8.38%	10	6.37%	25	16.03%	14	11.20%	25	17.48%
Social Security Law	0	0.00%	0	0.00%	3	1.92%	0	0.00%	1	0.70%
Taxation Law	1	0.60%	0	0.00%	0	0.00%	0	0.00%	0	0.00%
Torts	5	2.99%	5	3.18%	4	2.56%	11	8.80%	3	2.10%
Wills/Estates/Probate	11	6.59%	9	5.73%	19	12.18%	11	8.80%	17	11.89%
Workers' Compensation	2	1.20%	1	0.64%	2	1.28%	3	2.40%	0	0.00%
Total:	167		157		156		125		143	

Complaint Source

	2008		2009		2010		2011		2012	
Attorney	1	0.60%	1	0.64%	4	2.56%	4	3.20%	10	6.99%
Beneficiary	0	0.00%	0	0.00%	0	0.00%	2	1.60%	0	0.00%
Client	70	41.92%	39	24.84%	39	25.00%	44	35.20%	26	18.18%
Judge	1	0.60%	1	0.64%	0	0.00%	0	0.00%	0	0.00%
Law Enforcement	0	0.00%	0	0.00%	0	0.00%	1	0.80%	0	0.00%
Opposing Counsel	1	0.60%	0	0.00%	2	1.28%	1	0.80%	0	0.00%
Opposing Party	55	32.93%	37	23.57%	54	34.62%	49	39.20%	57	39.86%
Other	39	23.35%	79	50.32%	57	36.54%	23	18.40%	50	34.97%
Vendor	0	0.00%	0	0.00%	0	0.00%	1	0.80%	0	0.00%
Total:	167		157		156		125		143	

Statistics are based on year in which case was opened.

Bar Counsel Files

Final Disposition

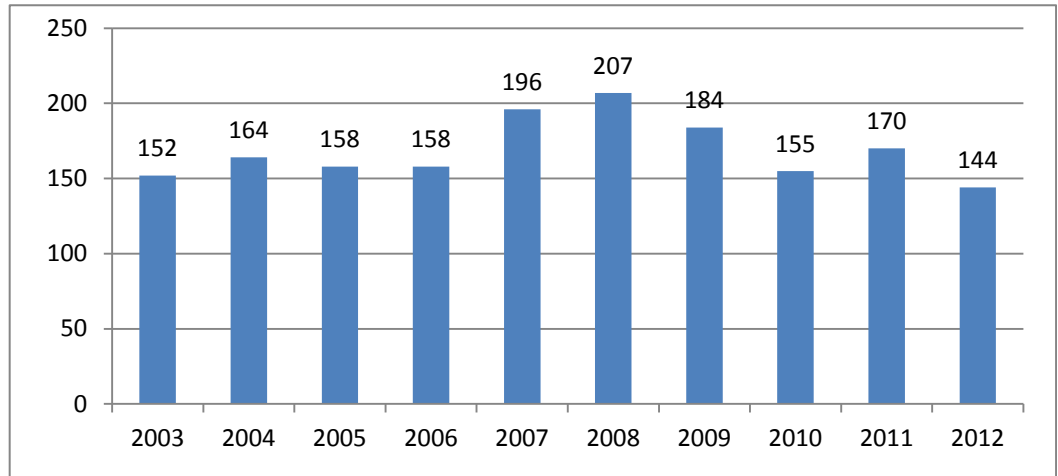
Open Year	Individual Cases by Open Year					Distinct Respondents by Open Year				
	2008	2009	2010	2011	2012	2008	2009	2010	2011	2012
BCF Dismissal	119	132	85	0	0	109	114	67	0	0
BCF Dismissal with Investigation	0	0	25	78	62	0	0	25	73	58
BCF Dismissal without Investigation	0	0	17	15	27	0	0	17	15	25
BCF Lay Review Dismissal Approved	48	25	29	32	40	43	25	29	32	40
BCF Lay Review Dismissal Disapproved	0	0	0	0	2	0	0	0	0	2
Total:	167	157	156	125	131	152	139	138	120	125

Close Year	Individual Cases by Close Year					Distinct Respondents by Close Year				
	2008	2009	2010	2011	2012	2008	2009	2010	2011	2012
BCF Dismissal	125	139	93	0	0	115	121	74	0	0
BCF Dismissal with Investigation	0	0	19	79	65	0	0	19	75	59
BCF Dismissal without Investigation	0	0	17	14	27	0	0	17	14	26
BCF Lay Review Dismissal Approved	42	31	28	33	43	39	30	28	33	43
BCF Lay Review Dismissal Disapproved	0	0	0	0	2	0	0	0	0	2
Total:	167	170	157	126	137	154	151	138	122	130

Grievance Commission Files

Annual Statistics

Year	Total	Variance
2003	152	
2004	164	7.89%
2005	158	-3.66%
2006	158	0.00%
2007	196	24.05%
2008	207	5.61%
2009	184	-11.11%
2010	155	-15.76%
2011	170	9.68%
2012	144	-15.29%



Respondent County

County	2008		2009		2010		2011		2012	
Androscoggin	12	5.80%	10	5.43%	12	7.74%	6	3.53%	9	6.25%
Aroostook	3	1.45%	10	5.43%	7	4.52%	14	8.24%	4	2.78%
Cumberland	74	35.75%	55	29.89%	42	27.10%	54	31.76%	64	44.44%
Franklin	1	0.48%	0	0.00%	1	0.65%	0	0.00%	2	1.39%
Hancock	4	1.93%	8	4.35%	8	5.16%	14	8.24%	3	2.08%
Kennebec	26	12.56%	23	12.50%	10	6.45%	7	4.12%	7	4.86%
Knox	5	2.42%	4	2.17%	10	6.45%	4	2.35%	3	2.08%
Lincoln	3	1.45%	5	2.72%	6	3.87%	2	1.18%	3	2.08%
Oxford	9	4.35%	6	3.26%	3	1.94%	2	1.18%	2	1.39%
Penobscot	27	13.04%	26	14.13%	19	12.26%	12	7.06%	20	13.89%
Piscataquis	2	0.97%	0	0.00%	0	0.00%	1	0.59%	0	0.00%
Sagadahoc	7	3.38%	7	3.80%	3	1.94%	7	4.12%	1	0.69%
Somerset	3	1.45%	1	0.54%	1	0.65%	2	1.18%	2	1.39%
Waldo	4	1.93%	1	0.54%	7	4.52%	2	1.18%	2	1.39%
Washington	4	1.93%	2	1.09%	3	1.94%	6	3.53%	0	0.00%
York	17	8.21%	16	8.70%	15	9.68%	16	9.41%	11	7.64%
Out-of-State	6	2.90%	10	5.43%	8	5.16%	21	12.35%	11	7.64%
Total:	207		184		155		170		144	

Statistics are based on year in which case was opened.

Grievance Commission Files

Area of Law

	2008		2009		2010		2011		2012	
Administrative/Municipal Law	11	5.31%	1	0.54%	3	1.94%	4	2.35%	1	0.69%
ADR/Mediation/Arbitration	0	0.00%	0	0.00%	0	0.00%	2	1.18%	0	0.00%
Antitrust Law	0	0.00%	0	0.00%	0	0.00%	1	0.59%	0	0.00%
Appellate	0	0.00%	0	0.00%	0	0.00%	0	0.00%	1	0.69%
Bankruptcy Law	1	0.48%	7	3.80%	6	3.87%	5	2.94%	5	3.47%
Child Protection	1	0.48%	1	0.54%	0	0.00%	1	0.59%	1	0.69%
Civil Rights/Discrimination Law	0	0.00%	0	0.00%	1	0.65%	0	0.00%	0	0.00%
Collections Law	4	1.93%	5	2.72%	2	1.29%	7	4.12%	4	2.78%
Commercial/Business	12	5.80%	12	6.52%	9	5.81%	10	5.88%	11	7.64%
Contracts/Consumer	3	1.45%	3	1.63%	2	1.29%	3	1.76%	1	0.69%
Corporate Law	5	2.42%	0	0.00%	0	0.00%	0	0.00%	1	0.69%
Criminal Law	43	20.77%	28	15.22%	23	14.84%	24	14.12%	19	13.19%
Elder Law	1	0.48%	4	2.17%	0	0.00%	0	0.00%	0	0.00%
Election Law	0	0.00%	1	0.54%	0	0.00%	0	0.00%	0	0.00%
Employment Law	0	0.00%	9	4.89%	2	1.29%	0	0.00%	3	2.08%
Environmental Law	1	0.48%	0	0.00%	0	0.00%	0	0.00%	0	0.00%
Family Law	49	23.67%	49	26.63%	39	25.16%	44	25.88%	38	26.39%
Foreclosure Law	1	0.48%	0	0.00%	1	0.65%	5	2.94%	3	2.08%
General Practice	0	0.00%	2	1.09%	1	0.65%	2	1.18%	5	3.47%
Health Law	0	0.00%	0	0.00%	1	0.65%	0	0.00%	0	0.00%
Immigration and Naturalization Law	1	0.48%	0	0.00%	0	0.00%	0	0.00%	0	0.00%
Indian Law	0	0.00%	1	0.54%	0	0.00%	0	0.00%	0	0.00%
Insurance Law	0	0.00%	0	0.00%	1	0.65%	4	2.35%	0	0.00%
Intellectual Property	1	0.48%	0	0.00%	0	0.00%	0	0.00%	0	0.00%
Labor Law	1	0.48%	1	0.54%	1	0.65%	0	0.00%	0	0.00%
Landlord/Tenant	0	0.00%	1	0.54%	2	1.29%	1	0.59%	1	0.69%
Law Practice Management	0	0.00%	17	9.24%	19	12.26%	17	10.00%	13	9.03%
Law-Related Services	3	1.45%	0	0.00%	0	0.00%	0	0.00%	0	0.00%
PFA/Harassment	4	1.93%	3	1.63%	1	0.65%	3	1.76%	3	2.08%
Real Estate	16	7.73%	7	3.80%	12	7.74%	8	4.71%	15	10.42%
Reinstatement	0	0.00%	2	1.09%	2	1.29%	0	0.00%	0	0.00%
Social Security Law	0	0.00%	2	1.09%	1	0.65%	1	0.59%	1	0.69%
Taxation	0	0.00%	0	0.00%	2	1.29%	0	0.00%	0	0.00%
Torts	16	7.73%	14	7.61%	5	3.23%	8	4.71%	6	4.17%
Wills/Estates/Probate	25	12.08%	13	7.07%	16	10.32%	12	7.06%	6	4.17%
Workers' Compensation	2	0.97%	1	0.54%	0	0.00%	2	1.18%	3	2.08%
Other/Unknown	6	2.90%	0	0.00%	3	1.94%	6	3.53%	3	2.08%
Total:	207		184		155		170		144	

Statistics are based on year in which case was opened.

Grievance Commission Files

Respondent Firm Size

Firm Size	2008		2009		2010		2011		2012	
1	98	47.34%	86	46.74%	70	45.16%	93	54.71%	64	44.44%
2 - 5	59	28.50%	51	27.72%	50	32.26%	48	28.24%	42	29.17%
6 - 9	11	5.31%	15	8.15%	9	5.81%	9	5.29%	10	6.94%
10 - 19	11	5.31%	7	3.80%	1	0.65%	7	4.12%	7	4.86%
20 - 49	2	0.97%	8	4.35%	9	5.81%	3	1.76%	7	4.86%
50 - 99	7	3.38%	2	1.09%	1	0.65%	1	0.59%	0	0.00%
100+	8	3.86%	0	0.00%	0	0.00%	3	1.76%	6	4.17%
Unknown	11	5.31%	15	8.15%	15	9.68%	6	3.53%	8	5.56%
Total:	207		184		155		170		144	

Respondent Age

Age	2008		2009		2010		2011		2012	
29 or less	1	0.48%	3	1.63%	0	0.00%	3	1.76%	1	0.69%
30 - 34	12	5.80%	17	9.24%	9	5.81%	8	4.71%	2	1.39%
35 - 39	15	7.25%	20	10.87%	12	7.74%	16	9.41%	14	9.72%
40 - 44	13	6.28%	15	8.15%	18	11.61%	25	14.71%	19	13.19%
45 - 49	40	19.32%	34	18.48%	23	14.84%	18	10.59%	19	13.19%
50 - 54	35	16.91%	35	19.02%	29	18.71%	23	13.53%	25	17.36%
55 - 59	39	18.84%	23	12.50%	24	15.48%	35	20.59%	17	11.81%
60 - 64	34	16.43%	19	10.33%	28	18.06%	26	15.29%	15	10.42%
65 - 69	10	4.83%	11	5.98%	9	5.81%	11	6.47%	22	15.28%
70+	8	3.86%	7	3.80%	3	1.94%	5	2.94%	8	5.56%
Unknown	0	0.00%	0	0.00%	0	0.00%	0	0.00%	2	1.39%
Total:	207		184		155		170		144	

Complaint Source

	2008		2009		2010		2011		2012	
Attorney	14	6.76%	17	9.24%	3	1.94%	16	9.41%	11	7.64%
Beneficiary	0	0.00%	0	0.00%	2	1.29%	2	1.18%	0	0.00%
Client	117	56.52%	86	46.74%	83	53.55%	85	50.00%	73	50.69%
Court Order	0	0.00%	0	0.00%	0	0.00%	1	0.59%	0	0.00%
Judge	6	2.90%	0	0.00%	1	0.65%	2	1.18%	0	0.00%
Law Enforcement	0	0.00%	0	0.00%	0	0.00%	1	0.59%	0	0.00%
Opposing Counsel	8	3.86%	1	0.54%	3	1.94%	1	0.59%	0	0.00%
Opposing Party	27	13.04%	16	8.70%	21	13.55%	30	17.65%	29	20.14%
Sua Sponte	8	3.86%	25	13.59%	22	14.19%	21	12.35%	13	9.03%
Vendor	0	0.00%	0	0.00%	0	0.00%	1	0.59%	1	0.69%
Other	27	13.04%	39	21.20%	20	12.90%	10	5.88%	17	11.81%
Total:	207		184		155		170		144	

Statistics are based on year in which case was opened.

Grievance Commission Files

Sanctioned Cases by Area of Law - Open Year

	2008		2009		2010		2011		2012	
Administrative/Municipal Law	2	3.85%	0	0.00%	1	2.00%	0	0.00%	0	0.00%
Bankruptcy Law	1	1.92%	2	4.17%	1	2.00%	2	4.88%	0	0.00%
Child Protection Law	1	1.92%	1	2.08%	0	0.00%	0	0.00%	0	0.00%
Collections Law	0	0.00%	1	2.08%	0	0.00%	3	7.32%	0	0.00%
Commercial/Business Law	1	1.92%	3	6.25%	4	8.00%	2	4.88%	0	0.00%
Contracts/Consumer Law	1	1.92%	2	4.17%	2	4.00%	0	0.00%	0	0.00%
Corporate Law	2	3.85%	0	0.00%	0	0.00%	0	0.00%	0	0.00%
Criminal Law	4	7.69%	6	12.50%	5	10.00%	4	9.76%	2	16.67%
Elder Law	0	0.00%	1	2.08%	0	0.00%	0	0.00%	0	0.00%
Employment Law	0	0.00%	2	4.17%	1	2.00%	0	0.00%	0	0.00%
Family Law	18	34.62%	6	12.50%	7	14.00%	6	14.63%	4	33.33%
General Practice	0	0.00%	2	4.17%	1	2.00%	0	0.00%	0	0.00%
Health Law	0	0.00%	0	0.00%	1	2.00%	0	0.00%	0	0.00%
Insurance Law	0	0.00%	0	0.00%	1	2.00%	2	4.88%	0	0.00%
Law Practice Management	0	0.00%	12	25.00%	13	26.00%	12	29.27%	3	25.00%
PFA/Harassment	0	0.00%	2	4.17%	0	0.00%	0	0.00%	0	0.00%
Real Estate Law	4	7.69%	3	6.25%	3	6.00%	4	9.76%	1	8.33%
Torts	6	11.54%	1	2.08%	1	2.00%	2	4.88%	1	8.33%
Wills/Estates/Probate	9	17.31%	4	8.33%	8	16.00%	2	4.88%	1	8.33%
Other	3	5.77%	0	0.00%	1	2.00%	2	66.67%	0	0.00%
Total:	52		48		50		41		12	

Sanctioned Cases by Area of Law - Closed Year

	2008		2009		2010		2011		2012	
Administrative/Municipal Law	2	5.88%	1	1.45%	1	2.00%	0	0.00%	0	0.00%
Bankruptcy Law	1	2.94%	0	0.00%	2	4.00%	3	7.50%	1	1.96%
Child Protection Law	0	0.00%	2	2.90%	1	2.00%	0	0.00%	0	0.00%
Collections Law	0	0.00%	0	0.00%	1	2.00%	0	0.00%	3	5.88%
Commercial/Business Law	1	2.94%	2	2.90%	2	4.00%	3	7.50%	4	7.84%
Contracts/Consumer Law	2	5.88%	2	2.90%	2	4.00%	1	2.50%	0	0.00%
Corporate Law	0	0.00%	2	2.90%	0	0.00%	0	0.00%	0	0.00%
Criminal Law	3	8.82%	6	8.70%	7	14.00%	5	12.50%	4	7.84%
Elder Law	1	2.94%	0	0.00%	0	0.00%	1	2.50%	0	0.00%
Employment Law	0	0.00%	1	1.45%	0	0.00%	1	2.50%	1	1.96%
Family Law	8	23.53%	18	26.09%	8	16.00%	4	10.00%	11	21.57%
General Practice	0	0.00%	1	1.45%	2	4.00%	0	0.00%	0	0.00%
Health Law	0	0.00%	0	0.00%	1	2.00%	0	0.00%	0	0.00%
Insurance Law	0	0.00%	0	0.00%	0	0.00%	0	0.00%	3	5.88%
Law Practice Management	0	0.00%	7	10.14%	13	26.00%	7	17.50%	13	25.49%
PFA/Harassment	0	0.00%	0	0.00%	2	4.00%	0	0.00%	0	0.00%
Real Estate Law	3	8.82%	9	13.04%	3	6.00%	3	7.50%	5	9.80%
Torts	6	17.65%	5	7.25%	1	2.00%	2	5.00%	2	3.92%
Wills/Estates/Probate	7	20.59%	10	14.49%	4	8.00%	9	22.50%	2	3.92%
Other	0	0.00%	3	4.35%	0	0.00%	1	2.50%	2	3.92%
Total:	34		69		50		40		51	

Sanction Types: Hearing Dismissal with Warning; Hearing Reprimand; Court Reprimand; Court Suspension; Court Disbarment

Grievance Commission Files

Discipline Cases by Area of Law - Open Year

	2008		2009		2010		2011		2012	
Administrative/Municipal Law	2	8.00%	0	0.00%	0	0.00%	0	0.00%	0	0.00%
Bankruptcy Law	1	4.00%	1	6.25%	1	3.70%	1	4.76%	0	0.00%
Child Protection Law	1	4.00%	0	0.00%	0	0.00%	0	0.00%	0	0.00%
Collections Law	0	0.00%	0	0.00%	0	0.00%	0	0.00%	0	0.00%
Commercial/Business Law	1	4.00%	3	18.75%	2	7.41%	1	4.76%	0	0.00%
Contracts/Consumer Law	0	0.00%	1	6.25%	1	3.70%	0	0.00%	0	0.00%
Corporate Law	1	4.00%	0	0.00%	0	0.00%	0	0.00%	0	0.00%
Criminal Law	2	8.00%	1	6.25%	1	3.70%	1	4.76%	0	0.00%
Elder Law	0	0.00%	0	0.00%	0	0.00%	0	0.00%	0	0.00%
Employment Law	0	0.00%	1	6.25%	1	3.70%	0	0.00%	0	0.00%
Family Law	6	24.00%	1	6.25%	3	11.11%	2	9.52%	1	100.00%
General Practice	0	0.00%	0	0.00%	1	3.70%	0	0.00%	0	0.00%
Insurance Law	0	0.00%	0	0.00%	1	3.70%	1	4.76%	0	0.00%
Law Practice Management	0	0.00%	2	12.50%	5	18.52%	8	38.10%	0	0.00%
PFA/Harassment	0	0.00%	1	6.25%	0	0.00%	0	0.00%	0	0.00%
Real Estate Law	3	12.00%	1	6.25%	1	3.70%	4	19.05%	0	0.00%
Taxation Law	0	0.00%	0	0.00%	0	0.00%	0	0.00%	0	0.00%
Torts	1	4.00%	1	6.25%	1	3.70%	1	4.76%	0	0.00%
Wills/Estates/Probate	4	16.00%	3	18.75%	8	29.63%	1	4.76%	0	0.00%
Other	3	12.00%	0	0.00%	1	3.70%	1	4.76%	0	0.00%
Total:	25		16		27		21		1	

Discipline Cases by Area of Law - Close Year

	2008		2009		2010		2011		2012	
Administrative/Municipal Law	2	9.09%	1	3.13%	0	0.00%	0	0.00%	0	0.00%
Bankruptcy Law	1	4.55%	0	0.00%	1	5.56%	2	8.33%	1	3.70%
Child Protection Law	0	0.00%	2	6.25%	0	0.00%	0	0.00%	0	0.00%
Commercial/Business Law	1	4.55%	2	6.25%	2	11.11%	1	4.17%	3	11.11%
Contracts/Consumer Law	2	9.09%	0	0.00%	1	5.56%	1	4.17%	0	0.00%
Corporate Law	0	0.00%	1	3.13%	0	0.00%	0	0.00%	0	0.00%
Criminal Law	1	4.55%	2	6.25%	1	5.56%	2	8.33%	1	3.70%
Elder Law	1	4.55%	0	0.00%	0	0.00%	0	0.00%	0	0.00%
Employment Law	0	0.00%	0	0.00%	0	0.00%	1	4.17%	1	3.70%
Family Law	3	13.64%	8	25.00%	3	16.67%	2	8.33%	4	14.81%
General Practice	0	0.00%	0	0.00%	1	5.56%	0	0.00%	0	0.00%
Insurance Law	0	0.00%	0	0.00%	0	0.00%	0	0.00%	2	7.41%
Law Practice Management	0	0.00%	0	0.00%	3	16.67%	4	16.67%	8	29.63%
PFA/Harassment	0	0.00%	0	0.00%	1	5.56%	0	0.00%	0	0.00%
Real Estate Law	3	13.64%	6	18.75%	0	0.00%	1	4.17%	4	14.81%
Torts	3	13.64%	2	6.25%	1	5.56%	1	4.17%	1	3.70%
Wills/Estates/Probate	5	22.73%	5	15.63%	4	22.22%	8	33.33%	1	3.70%
Other	0	0.00%	3	9.38%	0	0.00%	1	4.17%	1	3.70%
Total:	22		32		18		24		27	

Grievance Commission Files and Court Matters

Final Disposition

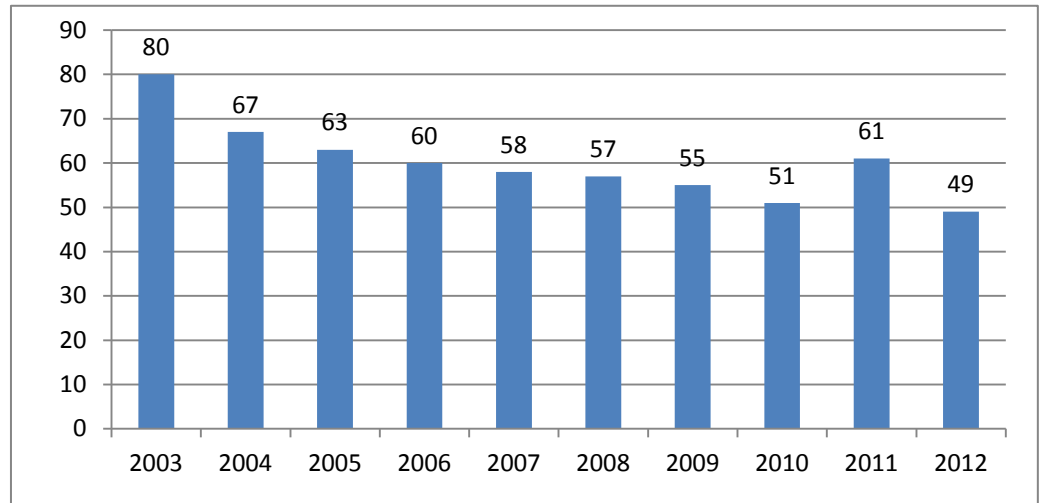
	Individual Cases by Case Opened Year					Distinct Respondents by Case Opened Year				
	2008	2009	2010	2011	2012	2008	2009	2010	2011	2012
Board Dismissal	0	0	0	1	0	0	0	0	1	0
Case Review Dismissal	135	124	99	102	90	119	113	87	85	81
Case Review Dismissal With Warning	25	27	20	16	18	24	26	20	15	17
Hearing Dismissal	5	1	1	3	1	5	1	1	3	1
Hearing Dismissal With Warning	2	5	3	5	3	2	5	3	5	3
Hearing Reprimand	17	10	17	14	1	14	9	14	13	1
Court Disbarment	2	0	1	0	0	2	0	1	0	0
Court Dismissal	0	3	3	5	1	0	1	1	2	1
Court Dismissal with Warning	6	0	0	0	0	6	0	0	0	0
Court Reciprocal Disbarment	0	0	0	2	1	0	0	0	2	1
Court Reciprocal Suspension	0	0	1	0	1	0	0	1	0	1
Court Reinstatement Approved	1	2	0	3	6	1	2	0	3	6
Court Reinstatement Denied	0	1	2	0	0	0	1	2	0	0
Court Reprimand	0	0	1	4	0	0	0	1	3	0
Court Resignation	2	0	2	1	0	2	0	2	1	0
Court Suspended Suspension	4	5	1	0	0	1	1	1	0	0
Court Suspension	4	7	10	10	5	4	5	4	4	1
Court Temporary Suspension	1	0	0	0	2	1	0	0	0	1
Total:	204	185	161	166	129	181	164	138	137	114

	Individual Cases by Case Closed Year					Distinct Respondents by Case Closed Year				
	2008	2009	2010	2011	2012	2008	2009	2010	2011	2012
Board Dismissal	0	0	0	1	0	0	0	0	1	0
Case Review Dismissal	103	161	111	95	107	91	138	96	88	90
Case Review Dismissal with Warning	12	34	28	12	19	12	34	25	12	19
Hearing Dismissal	3	3	6	2	3	2	3	6	2	3
Hearing Dismissal with Warning	0	3	4	4	5	0	3	4	4	5
Hearing Reprimand	14	20	11	16	15	9	15	10	11	14
Court Disbarment	2	3	1	0	0	1	1	1	0	0
Court Dismissal	0	0	3	1	4	0	0	1	1	1
Court Dismissal with Warning	0	0	0	0	6	0	0	0	0	6
Court Reciprocal Disbarment	0	0	0	2	1	0	0	0	2	1
Court Reciprocal Suspension	0	0	0	1	1	0	0	0	1	1
Court Reinstatement Approved	0	2	1	2	6	0	2	1	2	6
Court Reinstatement Denied	0	0	2	1	0	0	0	2	1	0
Court Reprimand	3	1	0	1	4	3	1	0	1	3
Court Resignation	0	2	0	2	1	0	2	0	2	1
Court Suspended Suspension	0	0	10	0	0	0	0	1	0	0
Court Suspension	3	6	9	7	10	3	3	6	1	3
Court Temporary Suspension	0	0	2	0	0	0	0	2	0	0
Total:	140	235	188	147	182	121	202	155	129	153

Fee Arbitration Petitions

Annual Statistics

Year	Total	Variance
2003	80	
2004	67	-16.25%
2005	63	-5.97%
2006	60	-4.76%
2007	58	-3.33%
2008	57	-1.72%
2009	55	-3.51%
2010	51	-7.27%
2011	61	19.61%
2012	49	-19.67%



Respondent County

County	2008		2009		2010		2011		2012	
Androscoggin	4	7.02%	5	9.09%	4	7.84%	8	13.11%	4	8.16%
Aroostook	1	1.75%	1	1.82%	4	7.84%	2	3.28%	3	6.12%
Cumberland	17	29.82%	21	38.18%	18	35.29%	24	39.34%	14	28.57%
Franklin	2	3.51%	0	0.00%	0	0.00%	0	0.00%	3	6.12%
Hancock	1	1.75%	0	0.00%	0	0.00%	1	1.64%	1	2.04%
Kennebec	10	17.54%	8	14.55%	3	5.88%	1	1.64%	6	12.24%
Knox	1	1.75%	2	3.64%	4	7.84%	1	1.64%	0	0.00%
Lincoln	1	1.75%	1	1.82%	2	3.92%	1	1.64%	1	2.04%
Oxford	2	3.51%	4	7.27%	1	1.96%	3	4.92%	0	0.00%
Penobscot	7	12.28%	7	12.73%	5	9.80%	10	16.39%	7	14.29%
Piscataquis	0	0.00%	0	0.00%	0	0.00%	2	3.28%	0	0.00%
Sagadahoc	2	3.51%	1	1.82%	0	0.00%	3	4.92%	3	6.12%
Somerset	0	0.00%	0	0.00%	2	3.92%	1	1.64%	1	2.04%
Waldo	0	0.00%	1	1.82%	2	3.92%	0	0.00%	0	0.00%
Washington	0	0.00%	0	0.00%	0	0.00%	0	0.00%	1	2.04%
York	8	14.04%	3	5.45%	4	7.84%	3	4.92%	2	4.08%
Out-of-State	1	1.75%	1	1.82%	2	3.92%	1	1.64%	3	6.12%
Total:	57		55		51		61		49	

Statistics are based on year in which case was opened.

Fee Arbitration Petitions

Respondent Firm Size

Firm Size	2008		2009		2010		2011		2012	
1	23	40.35%	19	34.55%	22	43.14%	29	47.54%	24	48.98%
2 - 5	24	42.11%	24	43.64%	22	43.14%	26	42.62%	15	30.61%
6 - 9	3	5.26%	2	3.64%	1	1.96%	3	4.92%	0	0.00%
10 - 19	3	5.26%	3	5.45%	2	3.92%	3	4.92%	7	14.29%
20 - 49	2	3.51%	4	7.27%	3	5.88%	0	0.00%	0	0.00%
50 - 99	0	0.00%	0	0.00%	0	0.00%	0	0.00%	1	2.04%
100+	1	1.75%	1	1.82%	0	0.00%	0	0.00%	1	2.04%
Unknown	1	1.75%	2	3.64%	1	1.96%	0	0.00%	1	2.04%
Total:	57		55		51		61		49	

Respondent Age

Age	2008		2009		2010		2011		2012	
29 or less	1	1.75%	1	1.82%	1	1.96%	1	1.64%	0	0.00%
30 - 34	0	1.75%	5	9.09%	2	3.92%	2	3.28%	1	2.04%
35 - 39	2	0.00%	5	9.09%	2	3.92%	4	6.56%	3	6.12%
40 - 44	4	3.51%	4	7.27%	3	5.88%	7	11.48%	8	16.33%
45 - 49	13	7.02%	10	18.18%	9	17.65%	1	1.64%	3	6.12%
50 - 54	11	22.81%	4	7.27%	9	17.65%	7	11.48%	4	8.16%
55 - 59	16	19.30%	10	18.18%	9	17.65%	10	16.39%	9	18.37%
60 - 64	8	28.07%	9	16.36%	9	17.65%	14	22.95%	4	8.16%
65-69	2	14.04%	2	3.64%	3	5.88%	8	13.11%	12	24.49%
70+	0	3.51%	5	9.09%	4	7.84%	7	11.48%	4	8.16%
Unknown	0	0.00%	0	0.00%	0	0.00%	0	0.00%	1	2.04%
Total:	57		55		51		61		49	

Complaint Source

	2008		2009		2010		2011		2012	
Attorney	1	1.75%	0	0.00%	3	5.88%	2	3.28%	2	4.08%
Client	50	87.72%	47	85.45%	44	86.27%	57	93.44%	41	83.67%
Opposing Party	1	1.75%	1	1.82%	0	0.00%	0	0.00%	1	2.04%
Other	5	8.77%	7	12.73%	4	7.84%	0	0.00%	5	10.20%
Vendor	0	0.00%	0	0.00%	0	0.00%	2	3.28%	0	0.00%
Total:	57		55		51		61		49	

Statistics are based on year in which case was opened.

Fee Arbitration Petitions

Area of Law by Open Year

	2008		2009		2010		2011		2012	
Administrative/Municipal Law	0	0.00%	0	0.00%	0	0.00%	1	1.64%	1	2.04%
ADR/Mediation/Arbitration	0	0.00%	2	3.64%	0	0.00%	0	0.00%	0	0.00%
Banking Law	0	0.00%	0	0.00%	1	1.96%	0	0.00%	0	0.00%
Bankruptcy Law	0	0.00%	0	0.00%	2	3.92%	3	4.92%	3	6.12%
Collections Law	1	1.75%	0	0.00%	0	0.00%	3	4.92%	0	0.00%
Commercial/Business	3	5.26%	3	5.45%	5	9.80%	2	3.28%	3	6.12%
Contracts/Consumer	0	0.00%	3	5.45%	0	0.00%	1	1.64%	2	4.08%
Corporate Law	0	0.00%	0	0.00%	0	0.00%	0	0.00%	1	2.04%
Criminal Law	12	21.05%	6	10.91%	3	5.88%	8	13.11%	7	14.29%
Elder Law	1	1.75%	0	0.00%	0	0.00%	0	0.00%	0	0.00%
Employment Law	0	0.00%	2	3.64%	0	0.00%	2	3.28%	0	0.00%
Environmental Law	0	0.00%	0	0.00%	0	0.00%	0	0.00%	0	0.00%
Family Law	19	33.33%	22	40.00%	23	45.10%	21	34.43%	14	28.57%
Insurance Law	0	0.00%	0	0.00%	0	0.00%	1	1.64%	1	2.04%
Intellectual Property	0	0.00%	0	0.00%	0	0.00%	0	0.00%	0	0.00%
Labor Law	1	1.75%	4	7.27%	0	0.00%	0	0.00%	0	0.00%
Landlord/Tenant	0	0.00%	0	0.00%	3	5.88%	0	0.00%	1	2.04%
Law Practice Management	0	0.00%	0	0.00%	0	0.00%	0	0.00%	0	0.00%
Law-Related Services	1	1.75%	0	0.00%	0	0.00%	0	0.00%	0	0.00%
PFA/Harassment	1	1.75%	1	1.82%	0	0.00%	1	1.64%	1	2.04%
Real Estate	2	3.51%	3	5.45%	6	11.76%	1	1.64%	10	20.41%
Social Security Law	0	0.00%	0	0.00%	0	0.00%	0	0.00%	1	2.04%
Taxation	1	1.75%	0	0.00%	0	0.00%	0	0.00%	1	2.04%
Torts	2	3.51%	3	5.45%	1	1.96%	1	1.64%	0	0.00%
Wills/Estates/Probate	6	10.53%	5	9.09%	6	11.76%	4	6.56%	0	0.00%
Workers' Compensation	0	0.00%	1	1.82%	0	0.00%	1	1.64%	1	2.04%
Other/Unknown	7	12.28%	0	0.00%	1	1.96%	11	18.03%	2	4.08%
Total:	57		55		51		61		49	

Disposition by Open Year

	2008	2009	2010	2011	2012
Award to Petitioner	5	7	6	10	4
Award to Respondent	21	15	18	21	10
Dismissal	31	33	27	28	17
Total:	57	55	51	59	31

Disposition by Close Year

	2008	2009	2010	2011	2012
Award to Petitioner	4	4	8	8	9
Award to Respondent	20	24	14	21	18
Dismissal	30	35	30	30	21
Total:	54	63	52	59	48

Registration Statistics

	2007		2008		2009		2010		2011		2012	
Resident												
Active	3599	73.77%	3638	73.35%	3665	72.76%	3721	72.55%	3742	72.58%	3754	71.85%
Emeritus	3	0.06%	3	0.06%	5	0.10%	5	0.10%	4	0.08%	2	0.04%
Judicial	79	1.62%	78	1.57%	75	1.49%	78	1.52%	82	1.59%	82	1.57%
Law Clerk	0		0		27	0.54%	26	0.51%	25	0.48%	26	0.50%
		75.45%		74.98%		74.89%		74.67%		74.73%		73.95%
Non-Resident												
Active	1198	24.55%	1241	25.02%	1264	25.09%	1297	25.29%	1298	25.17%	1360	26.03%
Judicial	0	0.00%	0	0.00%	0	0.00%	0	0.00%	0	0.00%	0	0.00%
Law Clerk	0		0		1	0.02%	2	0.04%	5	0.10%	1	0.02%
		24.55%		25.02%		25.11%		25.33%		25.27%		26.05%
Total:	4879		4960		5037		5129		5156		5225	
Increase over prior year.			81	1.66%	77	1.55%	92	1.83%	27	0.53%	69	1.34%

Admission by Year

	2007		2008		2009		2010		2011		2012	
1/1/1935 - 12/31/1939	2	0.08%	2	0.04%	2	0.04%	2	0.04%	2	0.04%	2	0.04%
1/1/1940 - 12/31/1944	0	0.80%	0	0.00%	0	0.00%	0	0.00%	0	0.00%	0	0.00%
1/1/1945 - 12/31/1949	4	0.43%	3	0.06%	2	0.04%	0	0.00%	1	0.02%	1	0.02%
1/1/1950 - 12/31/1954	39	1.33%	27	0.54%	25	0.50%	21	0.41%	20	0.39%	19	0.36%
1/1/1955 - 12/31/1959	21	2.09%	25	0.50%	21	0.42%	20	0.39%	18	0.35%	17	0.33%
1/1/1960 - 12/31/1964	65	8.67%	47	0.95%	43	0.85%	42	0.82%	37	0.72%	32	0.61%
1/1/1965 - 12/31/1969	102	8.73%	115	2.32%	110	2.18%	106	2.07%	102	1.98%	98	1.88%
1/1/1970 - 12/31/1974	423	14.59%	333	6.71%	326	6.47%	321	6.26%	311	6.03%	308	5.89%
1/1/1975 - 12/31/1979	426	12.89%	501	10.10%	495	9.83%	489	9.53%	473	9.17%	463	8.86%
1/1/1980 - 12/31/1984	712	16.91%	562	11.33%	555	11.02%	544	10.61%	531	10.30%	518	9.91%
1/1/1985 - 12/31/1989	629	11.09%	773	15.58%	758	15.05%	749	14.60%	735	14.26%	730	13.97%
1/1/1990 - 12/31/1994	825	15.90%	694	13.99%	682	13.54%	672	13.10%	659	12.78%	646	12.36%
1/1/1995 - 12/31/1999	541	6.44%	660	13.31%	655	13.00%	653	12.73%	635	12.32%	627	12.00%
1/1/2000 - 12/31/2004	776	15.90%	619	12.48%	606	12.03%	601	11.72%	584	11.33%	574	10.99%
1/1/2005 - 12/31/2009	314	6.44%	599	12.08%	757	15.03%	747	14.56%	740	14.35%	720	13.78%
1/1/2010 - 12/31/2012	0	0.00%	0	0.00%	0	0.00%	162	3.16%	308	5.97%	470	9.00%
Total:	4879		4960		5037		5129		5156		5225	

County Demographics

County	2007		2008		2009		2010		2011		2012	
Androscoggin	201	4.12%	204	4.11%	209	4.15%	220	4.29%	219	4.25%	202	3.87%
Aroostook	77	1.58%	76	1.53%	78	1.55%	79	1.54%	78	1.51%	75	1.44%
Cumberland	1789	36.67%	1817	36.63%	1851	36.75%	1873	36.52%	1898	36.81%	1916	36.67%
Franklin	32	0.66%	30	0.60%	32	0.64%	30	0.58%	33	0.64%	36	0.69%
Hancock	100	2.05%	101	2.04%	98	1.95%	102	1.99%	100	1.94%	101	1.93%
Kennebec	469	9.61%	477	9.62%	469	9.31%	475	9.26%	471	9.13%	472	9.03%
Knox	93	1.91%	97	1.96%	98	1.95%	95	1.85%	101	1.96%	105	2.01%
Lincoln	72	1.48%	72	1.45%	72	1.43%	81	1.58%	79	1.53%	79	1.51%
Oxford	44	0.90%	44	0.89%	44	0.87%	45	0.88%	42	0.81%	41	0.78%
Penobscot	334	6.85%	340	6.85%	342	6.79%	342	6.67%	340	6.59%	347	6.64%
Piscataquis	9	0.18%	6	0.12%	7	0.14%	8	0.16%	9	0.17%	9	0.17%
Sagadahoc	72	1.48%	74	1.49%	76	1.51%	83	1.62%	86	1.67%	92	1.76%
Somerset	41	0.84%	40	0.81%	41	0.81%	40	0.78%	41	0.80%	41	0.78%
Waldo	38	0.78%	37	0.75%	37	0.73%	37	0.72%	37	0.72%	38	0.73%
Washington	31	0.64%	29	0.58%	29	0.58%	30	0.58%	33	0.64%	30	0.57%
York	291	5.96%	289	5.83%	289	5.74%	286	5.58%	290	5.62%	298	5.70%
Out-of-State	1186	24.31%	1227	24.74%	1265	25.11%	1303	25.40%	1299	25.19%	1343	25.70%
Total:	4879		4960		5037		5129		5156		5225	

Variance over Prior Year

County	2007		2008		2009		2010		2011		2012	
Androscoggin	201	1.52%	204	1.49%	209	2.45%	220	5.26%	219	-0.45%	202	-7.76%
Aroostook	77	2.67%	76	-1.30%	78	2.63%	79	1.28%	78	-1.27%	75	-3.85%
Cumberland	1789	1.19%	1817	1.57%	1851	1.87%	1873	1.19%	1898	1.33%	1916	0.95%
Franklin	32	-3.03%	30	-6.25%	32	6.67%	30	-6.25%	33	10.00%	36	9.09%
Hancock	100	1.01%	101	1.00%	98	-2.97%	102	4.08%	100	-1.96%	101	1.00%
Kennebec	469	6.40%	477	1.71%	469	-1.68%	475	1.28%	471	-0.84%	472	0.21%
Knox	93	1.09%	97	4.30%	98	1.03%	95	-3.06%	101	6.32%	105	3.96%
Lincoln	72	0.00%	72	0.00%	72	0.00%	81	12.50%	79	-2.47%	79	0.00%
Oxford	44	-4.35%	44	0.00%	44	0.00%	45	2.27%	42	-6.67%	41	-2.38%
Penobscot	334	-89.00%	340	1.80%	342	0.59%	342	0.00%	340	-0.58%	347	2.06%
Piscataquis	9	12.50%	6	-33.33%	7	16.67%	8	14.29%	9	12.50%	9	0.00%
Sagadahoc	72	14.29%	74	2.78%	76	2.70%	83	9.21%	86	3.61%	92	6.98%
Somerset	41	-8.89%	40	-2.44%	41	2.50%	40	-2.44%	41	2.50%	41	0.00%
Waldo	38	8.57%	37	-2.63%	37	0.00%	37	0.00%	37	0.00%	38	2.70%
Washington	31	-3.13%	29	-6.45%	29	0.00%	30	3.45%	33	10.00%	30	-9.09%
York	291	0.00%	289	-0.69%	289	0.00%	286	-1.04%	290	1.40%	298	2.76%
Out-of-State	1186	2.33%	1227	3.46%	1265	3.10%	1303	3.00%	1299	-0.31%	1343	3.39%
Total:	4879		4960		5037		5129		5156		5225	

Firm Size

	2007		2008		2009		2010		2011		2012	
Solo	1369	28.06%	1387	27.96%	1413	28.05%	1415	27.59%	1429	27.72%	1382	26.45%
2 - 5	1248	25.58%	1211	24.42%	1200	23.82%	1197	23.34%	1194	23.16%	1167	22.33%
6 - 9	420	8.61%	435	8.77%	407	8.08%	421	8.21%	403	7.82%	416	7.96%
10 - 19	429	8.79%	439	8.85%	428	8.50%	420	8.19%	418	8.11%	413	7.90%
20 - 49	362	7.42%	400	8.06%	408	8.10%	406	7.92%	426	8.26%	397	7.60%
50 - 99	313	6.42%	308	6.21%	310	6.15%	301	5.87%	201	3.90%	239	4.57%
100+	362	7.42%	378	7.62%	387	7.68%	376	7.33%	454	8.81%	467	8.94%
N/A	376	7.71%	402	8.10%	484	9.61%	593	11.56%	631	12.24%	744	14.24%
Total:	4879		4960		5037		5129		5156		5225	

Practice Type

	2007		2008		2009		2010		2011		2012	
Government	528	10.82%	530	10.69%	528	10.48%	532	10.37%	523	10.14%	522	9.99%
In-House/Corporate Counsel	294	6.03%	311	6.27%	325	6.45%	317	6.18%	328	6.36%	334	6.39%
Judiciary	78	1.60%	86	1.73%	88	1.75%	90	1.75%	95	1.84%	73	1.40%
Law Clerk	8	0.16%	17	0.34%	28	0.56%	21	0.41%	17	0.33%	25	0.48%
Law School	8	0.16%	27	0.54%	31	0.62%	32	0.62%	32	0.62%	32	0.61%
Legal Service	109	2.23%	101	2.04%	105	2.08%	101	1.97%	95	1.84%	92	1.76%
Military	23	0.47%	11	0.22%	21	0.42%	22	0.43%	14	0.27%	13	0.25%
Private Practice	3312	67.88%	3408	68.71%	3421	67.92%	3381	65.92%	3383	65.61%	3333	63.79%
Retired/Inactive	35	0.72%	45	0.91%	46	0.91%	49	0.96%	65	1.26%	69	1.32%
Other	484	9.92%	424	8.55%	444	8.81%	584	11.39%	604	11.71%	732	14.01%
Total:	4879		4960		5037		5129		5156		5225	

County/Age Demographics

County	29 or Less	30-34	35-39	40-44	45-49	50-54	55-59	60-64	65-69	70+	Total:
Androscoggin	9	18	16	32	11	21	29	34	15	17	202
Aroostook	2	4	12	5	6	4	10	11	7	14	75
Cumberland	87	182	180	209	218	266	280	255	151	88	1916
Franklin	1	3	1	5	1	6	5	6	5	3	36
Hancock	1	3	5	10	10	14	13	21	15	9	101
Kennebec	11	29	24	48	47	73	96	78	43	23	472
Knox	4	10	6	13	7	12	14	19	13	7	105
Lincoln	0	2	6	5	4	8	9	14	20	11	79
Oxford	0	5	3	1	2	13	3	7	4	3	41
Penobscot	19	26	22	32	35	61	49	61	26	16	347
Piscataquis	0	0	0	3	0	0	1	1	2	2	9
Sagadahoc	4	10	7	10	11	10	8	9	15	8	92
Somerset	3	2	1	3	3	5	7	11	4	2	41
Waldo	1	7	1	0	6	3	7	6	4	3	38
Washington	1	0	2	3	2	1	3	7	9	2	30
York	9	19	26	21	33	41	49	48	30	22	298
Out-of-State	63	115	135	174	177	220	203	120	106	30	1343
Total:	215	435	447	574	573	758	786	708	469	260	5225

County designation is based on preferred mailing address of attorney.

Age Demographics

	2007		2008		2009		2010		2011		2012	
29 or Less	117	2.40%	172	3.47%	128	2.54%	142	2.77%	147	2.85%	215	4.11%
30 - 34	342	7.01%	377	7.60%	364	7.23%	378	7.37%	393	7.62%	435	8.33%
35 - 39	506	10.37%	522	10.52%	466	9.25%	449	8.75%	440	8.53%	447	8.56%
40 - 44	572	11.72%	582	11.73%	592	11.75%	604	11.78%	573	11.11%	574	10.99%
45 - 49	711	14.57%	712	14.35%	641	12.73%	599	11.68%	572	11.09%	573	10.97%
50 - 54	822	16.85%	821	16.55%	790	15.68%	784	15.29%	760	14.74%	758	14.51%
55 - 59	771	15.80%	767	15.46%	809	16.06%	803	15.66%	787	15.26%	786	15.04%
60 - 64	614	12.58%	606	12.22%	697	13.84%	721	14.06%	727	14.10%	708	13.55%
65+	424	8.69%	401	8.08%	550	10.92%	649	12.65%	757	14.68%		
65-69											469	8.98%
70+											260	4.98%
Total:	4879		4960		5037		5129		5156		5225	

Gender Demographics

	2007		2008		2009		2010		2011		2012	
Female	1551	31.79%	1601	32.28%	1639	32.54%	1726	33.65%	1769	34.31%	1810	34.64%
Male	3328	68.21%	3359	67.72%	3398	67.46%	3403	66.35%	3387	65.69%	3415	65.36%
Total:	4879		4960		5037		5129		5156		5225	

Female	2007		2008		2009		2010		2011		2012	
29 or Less	82	1.68%	108	2.18%	70	1.39%	78	1.52%	87	1.69%	124	2.37%
30 - 34	176	3.61%	190	3.83%	202	4.01%	213	4.15%	214	4.15%	230	4.40%
35 - 39	188	3.85%	197	3.97%	192	3.81%	196	3.82%	209	4.05%	210	4.02%
40 - 44	213	4.37%	219	4.42%	216	4.29%	230	4.48%	216	4.19%	214	4.10%
45 - 49	255	5.23%	257	5.18%	241	4.78%	229	4.46%	226	4.38%	228	4.36%
50 - 54	287	5.88%	286	5.77%	274	5.44%	278	5.42%	267	5.18%	268	5.13%
55 - 59	188	3.85%	186	3.75%	236	4.69%	260	5.07%	271	5.26%	271	5.19%
60 - 64	131	2.68%	128	2.58%	150	2.98%	167	3.26%	182	3.53%	177	3.39%
65+	31	0.64%	30	0.60%	58	1.15%	75	1.46%	97	1.88%		
65-69											73	1.40%
70+											15	0.29%

Male	2007		2008		2009		2010		2011		2012	
29 or Less	35	0.72%	64	1.29%	58	1.15%	64	1.25%	60	1.16%	91	1.74%
30 - 34	166	3.40%	187	3.77%	162	3.22%	165	3.22%	179	3.47%	205	3.92%
35 - 39	318	6.52%	325	6.55%	274	5.44%	253	4.93%	231	4.48%	237	4.54%
40 - 44	359	7.36%	363	7.32%	376	7.46%	374	7.29%	357	6.92%	360	6.89%
45 - 49	456	9.35%	455	9.17%	400	7.94%	370	7.21%	346	6.71%	345	6.60%
50 - 54	535	10.97%	535	10.79%	516	10.24%	506	9.87%	493	9.56%	490	9.38%
55 - 59	583	11.95%	581	11.71%	573	11.38%	543	10.59%	516	10.01%	515	9.86%
60 - 64	483	9.90%	478	9.64%	547	10.86%	554	10.80%	545	10.57%	531	10.16%
65+	393	8.05%	371	7.48%	492	9.77%	574	11.19%	660	12.80%		0.00%
65-69											396	7.58%
70+											245	4.69%
Total:	4879		4960		5037		5129		5156		5225	