

MAINE STATE LEGISLATURE

The following document is provided by the
LAW AND LEGISLATIVE DIGITAL LIBRARY
at the Maine State Law and Legislative Reference Library
<http://legislature.maine.gov/lawlib>



Reproduced from electronic originals
(may include minor formatting differences from printed original)

2011 Annual Report



Board of Overseers of the Bar
P O Box 527
Augusta, ME 04332-0527
P. 207-623-1121
F. 207-623-4175
E. board@mebaroverseers.org



Board of Overseers of the Bar

2011 Annual Report

Introduction

The Board of Overseers of the Bar was created by the Maine Supreme Judicial Court in 1978 to govern the conduct of lawyers as officers of the Court. The Board regulates attorney conduct by enforcing the Maine Bar Rules and the Maine Rules of Professional Conduct adopted by the Court. The purpose of those Rules is to provide appropriate standards for attorneys with respect to their practice of the profession of law, including, but not limited to, their relationship with their clients, the general public, other members of the legal profession, the courts, and other agencies of this state.

Board Leadership and Staff

The Maine Supreme Judicial Court appoints Board members to oversee the operations of the organization. The Board is composed of six lawyers and three members of the public. Public members are appointed by the Court on recommendation of the Governor. Board members may serve two consecutive three-year terms.

Board Members

Terms on the Board of Overseers of the Bar are for three years beginning in November and ending in October.

Gregory T. Caswell - Falmouth

Charles E. Gilbert III – Bangor

Victoria Powers, Esq. – Portland

David M. Sanders, Esq. – Livermore Falls

The Honorable Warren M. Silver – Bangor (Court Liaison)

Daniel A. Pileggi, Esq. – Ellsworth

Jud Knox – York

Dawn M. Pelletier, Esq. – Bangor

Stephen J. Schwartz, Esq. – Portland

Board Staff

Jacqueline M. Rogers, Executive Director

J. Scott Davis, Bar Counsel

Aria Eee, Assistant Bar Counsel

Jacqueline L.L. Gomes, Assistant Bar Counsel

Susan E. Adams, CLE/Registration Coordinator

Jody A. Breton, Receptionist

Heather S. Hinton, Assistant to the Executive Director

Patti Howe, Assistant to Bar Counsel

Brian P. Murphy, Board Clerk

Donna L. Spillman, Assistant to Bar Counsel

Dawn L. Stickney, Assistant to Bar Counsel

Commissions

The Board appoints volunteer members to three commissions established by the Maine Bar Rules: the Grievance Commission, the Fee Arbitration Commission, and the Professional Ethics Commission. Three-member panels of the Fee Arbitration Commission and the Grievance Commission conduct their functions under the Maine Bar Rules. Each panel is comprised of two attorneys and one lay member. The Professional Ethics Commission, consisting of eight attorneys, renders formal written advisory opinions to the Court, Board, Grievance Commission, Bar Counsel and members of the Maine bar involving interpretation and application of the Maine Rules of Professional Conduct concerning specific questions of lawyer conduct.

Information concerning the responsibilities and functions of the Board and each of its commissions is accessible on the Board's website at www.mebaroverseers.org.

Attorney Complaints

The purpose of the disciplinary system is to monitor the legal profession's compliance with the Court's promulgated rules of ethics and to discipline or otherwise sanction lawyers whose conduct violates those standards.

Complaints filed with the Board are taken very seriously. Each written complaint is reviewed by the office of Bar Counsel and investigated if it involves alleged misconduct by a Maine attorney. Complaints that do not actually allege misconduct in violation of the Maine Rules of Professional Conduct are not subject to the grievance procedure, although, if the allegations appear to involve fee disputes, the complainant may be referred to the Board's Fee Arbitration Commission.

The Board does not provide legal services or advice to anyone making a complaint. The complaint process should not be viewed as a substitute for a civil action for damages against a lawyer. The disciplinary system is not designed to compensate a complaining party for monetary loss or emotional distress incurred as a result of any unethical conduct.

The forms of sanction or discipline which may be imposed upon a lawyer for unethical conduct are: dismissal with a warning, public reprimand, suspension, and disbarment. All orders and reports issued after disciplinary hearings are published on the Board's website.

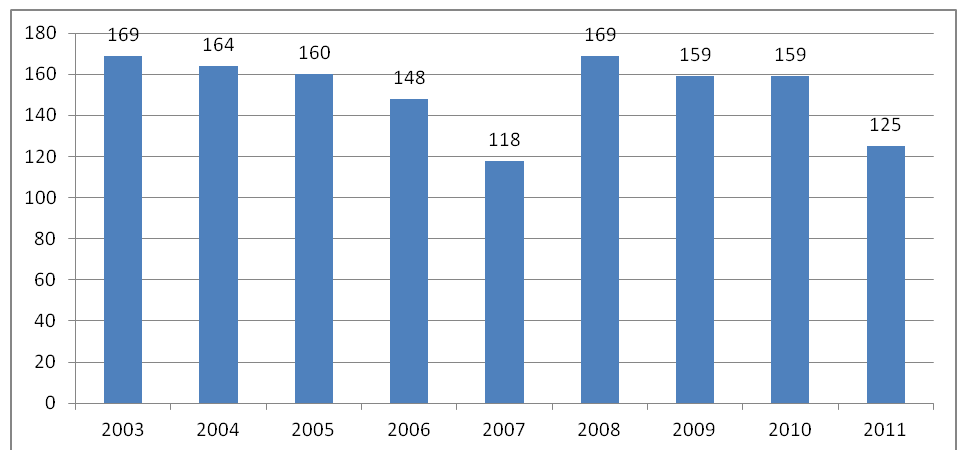
Bar Counsel Files

Bar Counsel Files (BCF) comprise those submitted written grievance complaints that upon initial review, or after brief informal investigation by Bar Counsel, are deemed not to allege any professional misconduct by an attorney subject to sanction under the Maine Bar Rules. Maine Bar Rule 7.1(c) requires Bar Counsel's unilateral dismissal of such matters, either with or without any investigation. In 2011, Bar Counsel received, screened and docketed 125 BCF complaints.

When a BCF matter is dismissed, the complainant is notified in writing and provided an explanation of the dismissal. The complainant is also notified of the right to file a written request within fourteen days for the dismissal to be reviewed. Such reviews are then conducted by lay members of the Board or the Grievance Commission who have the authority to approve, disapprove or modify the terms of the dismissal. In

all dismissed BCF matters, the involved attorney is provided with copies of the complaint filing, the dismissal letter, and any resulting notice of request for review. The parties are subsequently notified of the lay reviewer's decision. Bar Counsel dismissed 126 BCF matters involving 122 attorneys in 2011. Thirty-three complainants requested a lay member review. Lay members decided and affirmed all thirty-three of those dismissals. At the close of 2011, there were 12 pending BCF matters.

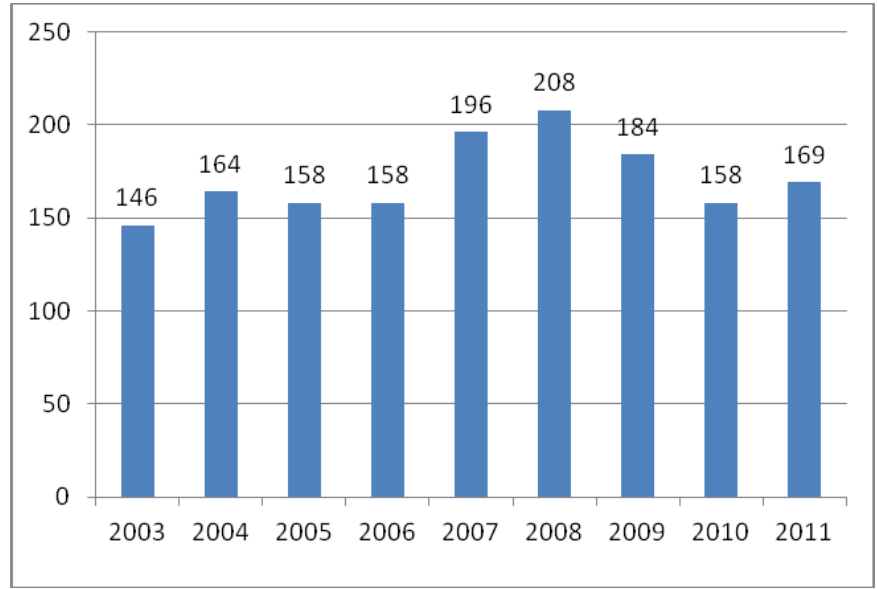
Annual BCF Statistics



Grievance Commission

In 2011, Bar Counsel received, screened and docketed 169 grievance complaints as Grievance Commission Files (GCF), representing a 6.96% increase over the prior year. Upon initial screening, these files were deemed to allege at least some form of a prima facie claim of professional misconduct by Maine attorneys in violation of the former Code of Professional Responsibility and/or the current Maine Rules of Professional Conduct.

Annual GCF Statistics



Case Reviews and Hearings

Panels of the Grievance Commission met to conduct preliminary case reviews of 158

GCF complaints under Maine Bar Rule 7.1(d). Those meetings consist of a three-member panel that reviews the contents of GCF investigative files as presented by Bar Counsel. Such reviews are not hearings, and neither the respective complainants nor the respondent attorneys are present or involved at the reviews. Although there is no confidentiality restriction requirement applicable to complainants and respondent attorneys, Bar Counsel’s investigation and the Grievance Commission panels’ preliminary review process are required to be kept confidential by the Board, the Commission and the Board’s staff under Maine Bar Rule 7.1(d)(2) and 7.3(k)(1).

All disciplinary hearings are open to the public and the resulting decision concerning such complaints is available to the public upon request. All decisions issued after hearing are published on the Board’s website. At the close of 2011, there were 86 pending GCF matters.

Grievance Commission Case Review Decisions

Deferral	9	Probable Cause for Hearing.....	35
Dismissal.....	95	Consent to Proceed to Court.....	6
Dismissal with Warning*	13		

**One dismissal with warning disposition was subsequently dismissed by the Board.*

The Grievance Commission conducted 23 hearings involving 28 complaints pursuant to Maine Bar Rule 7.1(e). The following are 2011 hearing statistics:

Grievance Commission Decisions and Orders

Dismissal.....	2	Public Reprimand	17
Dismissal with Warning.....	7	Decisions Pending.....	2

Single Justice and Law Court Decisions and Orders

Law Court Remands Decision	1	Reprimand.....	1
Reciprocal Disbarment	2	Resignation.....	2
Reciprocal Suspension	1	Temporary Suspension	1
Reinstatement Approved	2	Suspension.....	2
Reinstatement Denied	1		

Fee Arbitration Commission

The Board docketed sixty-one fee arbitration petitions in 2011. Over the course of the year, thirty-one dispute matters were dismissed, settled or withdrawn prior to a hearing before a panel of the Fee Arbitration Commission. Twenty-nine matters were heard by panels of the Fee Arbitration Commission. Of those, the Commission decided in favor of the petitioner in eight cases and in the favor of the respondent attorney in twenty-one cases. At year-end, seventeen fee arbitration matters remained pending.

Professional Ethics Commission

The Professional Ethics Commission issued the following four advisory opinions in 2011.

January 9, 2011 - Opinion #202

Inclusion in Engagement Letter of Client's Agreement to Waive a Jury Regarding Disputes between Attorney and Client

April 13, 2011 - Opinion #203

Specialization (Earlier Opinion #21 now confirmed to be obsolete.)

April 22, 2011 - Opinion #204

Prohibition of Attorney Entering Into a Hold Harmless or Indemnification Agreement in Favor of an Adverse Party Making Payment to the Attorney's Client in Settlement of a Personal Injury Claim

November 3, 2011 - Opinion #205

Attorney's Representation of Opposing Counsel in an Unrelated Matter

The Commission also assisted Bar Counsel in processing informal confidential opinions in letter format in response to several inquiries from Maine attorneys. The complete list of the Commission's formal opinions is published on the Board's website at www.mebaroverseers.org.

Registration

The Board maintains a Register of attorneys who are active members of the bar in the State of Maine, as well as records of inactive, resigned, suspended, and disbarred attorneys. The registration roll increased by twenty-seven attorneys over the course of the year. At year's end, the Board's Register contained the names of 5,156 attorneys. Comparatively, at the close of 2010, the Register contained 5,129 names.

In conjunction with the annual registration period, the Board administers attorney compliance with Maine Bar Rule 12 - Continuing Legal Education. Active attorneys are required to annually complete eleven hours of approved continuing legal education programming, including one hour of ethics or professionalism. The Board approved 3,398 courses that were submitted by 480 providers.

In 2011, eight attorneys were administratively suspended for failing to properly register with the Board. An additional thirteen attorneys were administratively suspended for failing to comply with Maine Bar Rule 12. Lastly, forty two attorneys were suspended for failing to register and for failing to comply with Maine Bar Rule 12.

Registration demographic statistics show that 53% of Maine's resident attorney population is concentrated in three counties: Cumberland, Kennebec, and Penobscot. Gender statistics show that women make up 34% of the bar and men represent 66% of the bar. Age demographics at year's end show that 19% of the bar is 39 years or less, 52% are between the ages of 40 and 59, and that 29% are 60 years or older.

Ethics Helpline

The office of Bar Counsel, through the Ethics Helpline, provides informal ethics and professional responsibility advice to Maine attorneys. Members of the bar are encouraged to call and speak with Bar Counsel to discuss ethical dilemmas. Bar Counsel will only discuss the conduct of the inquiring attorney or another member of that attorney's law firm. Board Regulation No. 28 prohibits Bar Counsel from advising an inquiring attorney about another attorney's actual or hypothetical conduct. See also Advisory Opinions #67 and #171. In 2011, Bar Counsel fielded 780 helpline calls; comparatively, 826 calls were received in 2010. The three most frequent conduct inquiries involved questions relating to conflicts of interest, practice management, and client confidentiality issues.

Professional Update for Maine Lawyers and Judges

As part of the Board's ongoing educational outreach to members of the bar, the Board publishes a bi-monthly electronic newsletter entitled *Professional Update for Maine Lawyers and Judges*. In addition to administrative updates, statistical data, notice of rule amendments and Court news, Bar Counsel publishes a regular feature entitled *Bar Counsel Informal Advisory Ethics Notes* wherein Bar Counsel provides ethical guidance to members of the bar.

Bar Counsel CLE Presentations

In calendar year 2011, Bar Counsel spoke at thirty-two state and national continuing legal education seminars. Through these educational opportunities, Bar Counsel offered guidance on how to avoid ethical problems, discussed recent decisions and trends, and also explained how the grievance complaint process works under the Maine Bar Rules. Bar Counsel welcome the opportunity to provide CLE presentations to Maine lawyers and members of their staff on issues concerning ethics and professional responsibility.

Rule Amendments and Board Regulations

The Board is charged with the continuous study of the Bar in its relation to the public and the courts for the purpose of making recommendations to the Court with respect to changes, additions or deletions to the Maine Bar Rules or for such other action by the Court as it may deem advisable in its supervision of the Bar. In 2011 the Board submitted three proposed amendments to the Maine Bar Rules. Ultimately, the Court adopted amendments to M. Bar R. 10(b) and 12(a). The Board also proposed and the Court approved a change to the annual fee charged to non-resident attorneys to match

those fees charged to resident attorneys. The Board also adopted amendments to Regulations 31, 35 and 56. Board Regulations may be viewed on the Board's website at <http://www.mebaroverseers.org/board/regulations.shtml>.

Mission Statement

The Board's mission is to encourage and promote competent and ethical practice by members of the Maine Bar, and to make these standards known to members of the public, so that they have confidence in the legal profession in Maine.

The Board accomplishes its mission by:

- registering and regulating attorneys licensed to practice in Maine;
- approving and providing continuing legal education programs;
- requiring that all attorneys licensed to practice in Maine have met the Maine Supreme Judicial Court's continuing legal education standards;
- providing guidance to attorneys on ethical issues through written advisory opinions issued by the Professional Ethics Commission, as well as an ethics helpline;
- informing members of the public of their rights concerning proper attorney behavior and the availability of fee arbitration;
- enforcing Maine's code of ethics for attorneys; and
- endeavoring to achieve the best possible legal representation of clients through all of these measures.

Website Development

The Board continues to enhance its website to better serve the public and members of the bar. Members of the public will find a wealth of information regarding Maine's grievance system and fee arbitration system. To ensure that the public is informed about the work of the Board, notices of public hearings and the resulting decisions are posted to the website. Members of the bar benefit from increased knowledge of and compliance with the Maine Bar Rules and the Maine Rules of Professional Conduct through the dissemination of Bar Counsel Informal Advisory Ethics Notes, Board Regulations, Ethics Opinions, and the posting of hearing decisions.

Funding

The Board's fiscal year is July 1 through June 30. Each year the Board prepares a budget for the Court's review and approval. No licensing fee increase was recommended to the Court in 2010. In fact, through careful budget planning, the Board proposed and the Court approved a \$10 decrease in the annual registration in 2011.

Maine lawyers, through their licensing fees, directly fund the cost of attorney registration, continuing legal education compliance, grievance complaint investigation and disciplinary hearings, the resolution of fee arbitration disputes and for such other purposes as the Board, with the approval of the Court, may determine are appropriate or required. The Board receives no public monies to subsidize its operations. The Board's audited financial statements for the 2010-2011 fiscal year (ending June 30, 2011) show revenue of \$998,999 and expenses of \$945,926. The Fund Balance stands at \$532,489.

In addition to the collection of licensing fees, the Board also collects the Court's annual assessment fee on behalf of the Lawyers' Fund for Client Protection (LFCP) and the Maine Assistance Program for Lawyers and Judges (MAP).

The purpose of the LFCP is to promote public confidence in the administration of justice and the integrity of the legal profession, by reimbursing clients who suffer losses caused by an attorney's dishonest conduct. Generally, such conduct

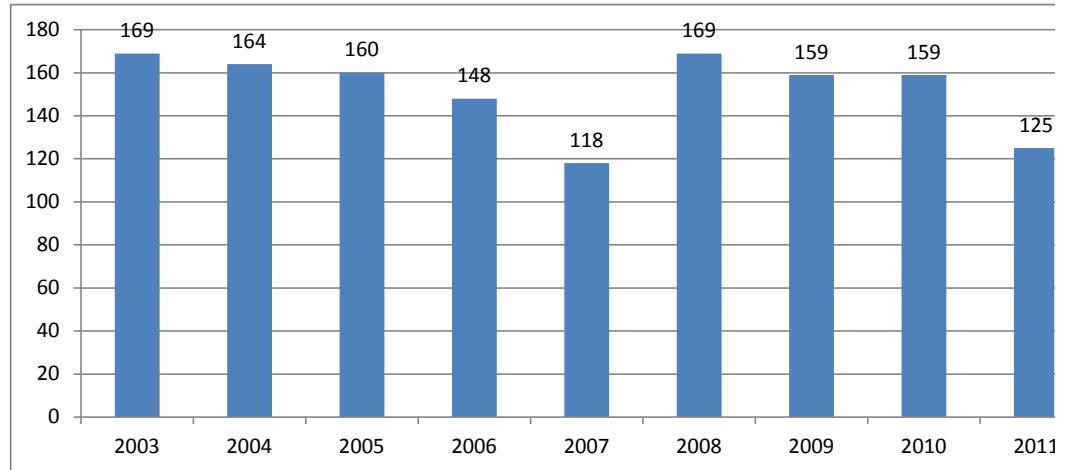
involves the misuse of funds in the care of the attorney or the misappropriation of funds for the attorney's personal benefit.

MAP has three purposes: to protect the interests of clients and the general public from harm caused by impaired lawyers or judges; to confidentially assist impaired members of the profession to begin and continue recovery; and to educate the bench, the bar, and the public as to the causes of and remedies for impairments affecting members of the legal profession.

Bar Counsel File Statistics

Yearly Totals

2003	169	
2004	164	-2.96%
2005	160	-2.44%
2006	148	-7.50%
2007	118	-20.27%
2008	169	43.22%
2009	159	-5.92%
2010	159	0.00%
2011	125	-21.38%



Respondents by County

County	2007		2008		2009		2010		2011	
Androscoggin	7	5.93%	10	5.92%	9	5.66%	15	9.43%	9	7.20%
Aroostook	6	5.08%	10	5.92%	6	3.77%	5	3.14%	10	8.00%
Cumberland	36	30.51%	45	26.63%	42	26.42%	46	28.93%	29	23.20%
Franklin	0	0.00%	5	2.96%	2	1.26%	15	9.43%	1	0.80%
Hancock	6	5.08%	6	3.55%	3	1.89%	4	2.52%	3	2.40%
Kennebec	12	10.17%	24	14.20%	31	19.50%	15	9.43%	23	18.40%
Knox	3	2.54%	6	3.55%	4	2.52%	7	4.40%	2	1.60%
Lincoln	3	2.54%	2	1.18%	9	5.66%	3	1.89%	2	1.60%
Oxford	5	4.24%	3	1.78%	3	1.89%	11	6.92%	3	2.40%
Penobscot	17	14.41%	20	11.83%	21	13.21%	17	10.69%	17	13.60%
Piscataquis	0	0.00%	0	0.00%	0	0.00%	0	0.00%	1	0.80%
Sagadahoc	1	0.85%	2	1.18%	2	1.26%	3	1.89%	0	0.00%
Somerset	2	1.69%	1	0.59%	3	1.89%	0	0.00%	1	0.80%
Waldo	2	1.69%	5	2.96%	1	0.63%	2	1.26%	2	1.60%
Washington	0	0.00%	10	5.92%	1	0.63%	3	1.89%	8	6.40%
York	13	11.02%	15	8.88%	10	6.29%	10	6.29%	10	8.00%
Out of State	5	4.24%	5	2.96%	12	7.55%	3	1.89%	4	3.20%
Total:	118		169		159		159		125	

Statistics are based on calendar year in which case was opened.

BCF - Area of Law

	2007		2008		2009		2010		2011	
Administrative/Municipal Law	2	1.69%	4	2.37%	10	6.29%	3	1.89%	0	0.00%
ADR/Mediation/Arbitration	0	0.00%	1	0.59%	0	0.00%	3	1.89%	1	0.80%
Banking Law	0	0.00%	0	0.00%	0	0.00%	0	0.00%	0	0.00%
Bankruptcy Law	0	0.00%	2	1.18%	4	2.52%	3	1.89%	3	2.40%
Child Protection Law	1	0.85%	2	1.18%	2	1.26%	2	1.26%	2	1.60%
Civil Rights/Discrimination Law	0	0.00%	0	0.00%	2	1.26%	0	0.00%	0	0.00%
Collections Law	5	4.24%	3	1.78%	4	2.52%	2	1.26%	3	2.40%
Commercial/Business Law	4	3.39%	8	4.73%	2	1.26%	6	3.77%	1	0.80%
Contracts/Consumer Law	0	0.00%	2	1.18%	1	0.63%	0	0.00%	1	0.80%
Corporate Law	0	0.00%	0	0.00%	1	0.63%	1	0.63%	0	0.00%
Criminal Law	31	26.27%	53	31.36%	37	23.27%	36	22.64%	25	20.00%
Education Law	0	0.00%	0	0.00%	2	1.26%	0	0.00%	0	0.00%
Elder Law	1	0.85%	2	1.18%	2	1.26%	2	1.26%	1	0.80%
Employment Law	0	0.00%	0	0.00%	4	2.52%	3	1.89%	0	0.00%
Environmental Law	0	0.00%	0	0.00%	0	0.00%	0	0.00%	0	0.00%
Family Law	32	27.12%	39	23.08%	43	27.04%	34	21.38%	33	26.40%
Foreclosure Law	1	0.85%	1	0.59%	1	0.63%	1	0.63%	2	1.60%
General Practice	0	0.00%	0	0.00%	0	0.00%	0	0.00%	1	0.80%
Health Law	0	0.00%	0	0.00%	0	0.00%	0	0.00%	3	2.40%
Insurance Law	0	0.00%	0	0.00%	0	0.00%	0	0.00%	1	0.80%
Juvenile Law	0	0.00%	0	0.00%	1	0.63%	0	0.00%	0	0.00%
Labor Law	1	0.85%	1	0.59%	0	0.00%	0	0.00%	0	0.00%
Landlord/Tenant Law	4	3.39%	2	1.18%	3	1.89%	3	1.89%	1	0.80%
Law-Related Services	0	0.00%	5	2.96%	1	0.63%	1	0.63%	0	0.00%
Other/Unknown	3	2.54%	7	4.14%	12	7.55%	6	3.77%	6	4.80%
PFA/Harassment	2	1.69%	2	1.18%	1	0.63%	0	0.00%	2	1.60%
Real Estate Law	10	8.47%	14	8.28%	10	6.29%	25	15.72%	14	11.20%
Social Security Law	0	0.00%	0	0.00%	0	0.00%	3	1.89%	0	0.00%
Taxation Law	1	0.85%	1	0.59%	0	0.00%	0	0.00%	0	0.00%
Torts	8	6.78%	6	3.55%	6	3.77%	4	2.52%	11	8.80%
Wills/Estates/Probate	11	9.32%	12	7.10%	9	5.66%	19	11.95%	11	8.80%
Workers' Compensation	1	0.85%	2	1.18%	1	0.63%	2	1.26%	3	2.40%
Total:	118		169		159		159		125	

BCF - Complaint Source

	2007		2008		2009		2010		2011	
Attorney	2	1.69%	1	0.59%	1	0.63%	4	2.52%	4	3.20%
Beneficiary	0	0.00%	0	0.00%	0	0.00%	0	0.00%	2	1.60%
Client	38	32.20%	71	42.01%	41	25.79%	39	24.53%	44	35.20%
Judge	0	0.00%	1	0.59%	1	0.63%	0	0.00%	0	0.00%
Law Enforcement	0	0.00%	0	0.00%	0	0.00%	0	0.00%	1	0.80%
Opposing Counsel	0	0.00%	1	0.59%	0	0.00%	2	1.26%	1	0.80%
Opposing Party	47	39.83%	55	32.54%	37	23.27%	55	34.59%	49	39.20%
Other	31	26.27%	40	23.67%	79	49.69%	59	37.11%	23	18.40%
Vendor	0	0.00%	0	0.00%	0	0.00%	0	0.00%	1	0.80%
Total:	118		169		159		159		125	

Statistics are based on calendar year in which case was opened.

BCF Complaints by Disposition

Open Year	Individual Cases by Open Year					Distinct Respondents by Open Year				
	2007	2008	2009	2010	2011	2007	2008	2009	2010	2011
BCF Dismissal	88	119	132	85	0	77	109	114	67	0
BCF Dismissal with Investigation*	0	0	0	25	77	0	0	0	25	73
BCF Dismissal without Investigation*	0	0	0	17	16	0	0	0	17	16
BCF Lay Review Dismissal Approved	29	48	25	29	29	26	43	25	29	29
BCF Lay Review Dismissal Disapproved	0	0	0	0	0	0	0	0	0	0
Elevated to GCF	1	2	2	3	0	1	2	2	3	0
Total:	118	169	159	159	122	104	154	141	141	118

Statistics are based on calendar year in which case was opened.

Close Year	Individual Cases by Close Year					Distinct Respondents by Close Year				
	2007	2008	2009	2010	2011	2007	2008	2009	2010	2011
BCF Dismissal	82	125	139	93	0	75	115	121	74	0
BCF Dismissal with Investigation*	0	0	0	19	79	0	0	0	19	75
BCF Dismissal without Investigation*	0	0	0	17	14	0	0	0	17	14
BCF Lay Review Dismissal Approved	29	42	31	28	33	27	39	30	28	33
BCF Lay Review Dismissal Disapproved	0	0	0	0	0	0	0	0	0	0
Elevated to GCF	1	0	3	4	0	1	0	3	4	0
Total:	112	167	173	161	126	103	154	154	142	122

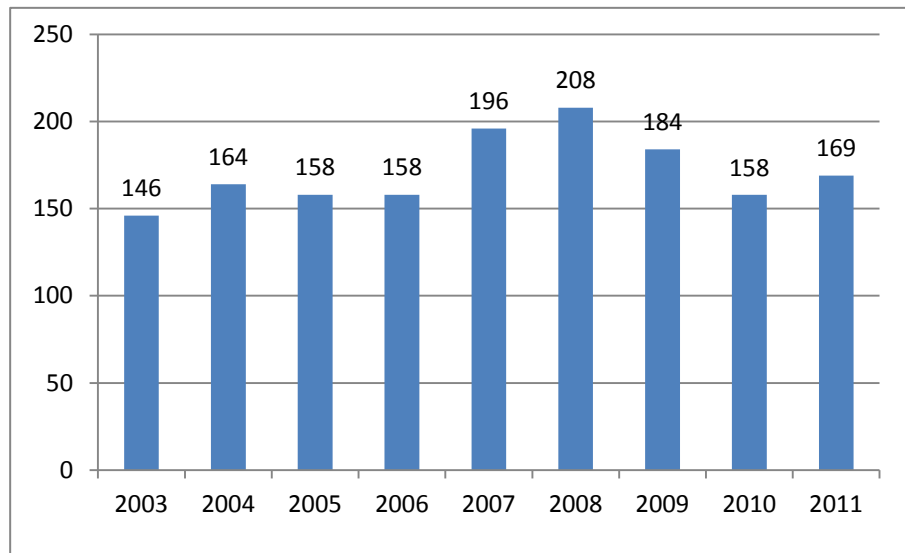
Statistics are based on calendar year in which case was closed.

*Midway through 2010, a system change was implemented to clarify that BCF files were dismissed with or without an investigation.

Grievance Commission Statistics

Yearly Totals

Year	Total	Variance
2003	146	
2004	164	12.33%
2005	158	-3.66%
2006	158	0.00%
2007	196	24.05%
2008	208	6.12%
2009	184	-11.54%
2010	158	-14.13%
2011	169	6.96%



Respondent County

County	2007		2008		2009		2010		2011	
Androscoggin	20	10.20%	12	5.77%	10	5.43%	12	7.59%	6	3.55%
Aroostook	9	4.59%	3	1.44%	10	5.43%	7	4.43%	13	7.69%
Cumberland	63	32.14%	74	35.58%	55	29.89%	42	26.58%	54	31.95%
Franklin	1	0.51%	1	0.48%	0	0.00%	1	0.63%	0	0.00%
Hancock	7	3.57%	4	1.92%	8	4.35%	11	6.96%	14	8.28%
Kennebec	17	8.67%	27	12.98%	23	12.50%	10	6.33%	7	4.14%
Knox	6	3.06%	5	2.40%	4	2.17%	10	6.33%	4	2.37%
Lincoln	4	2.04%	3	1.44%	5	2.72%	6	3.80%	2	1.18%
Oxford	11	5.61%	9	4.33%	6	3.26%	3	1.90%	2	1.18%
Penobscot	20	10.20%	27	12.98%	26	14.13%	19	12.03%	12	7.10%
Piscataquis	0	0.00%	2	0.96%	0	0.00%	0	0.00%	1	0.59%
Sagadahoc	4	2.04%	7	3.37%	7	3.80%	3	1.90%	7	4.14%
Somerset	1	0.51%	3	1.44%	1	0.54%	1	0.63%	2	1.18%
Waldo	3	1.53%	4	1.92%	1	0.54%	7	4.43%	2	1.18%
Washington	3	1.53%	4	1.92%	2	1.09%	3	1.90%	6	3.55%
York	18	9.18%	17	8.17%	16	8.70%	15	9.49%	16	9.47%
Out-of-State	9	4.59%	6	2.88%	10	5.43%	8	5.06%	21	12.43%
Total:	196		208		184		158		169	

GFC Complaints by Area of Law

By Open Year

	2007		2008		2009		2010		2011	
Administrative/Municipal Law	11	5.61%	11	5.29%	1	0.54%	3	1.90%	4	2.37%
ADR/Mediation/Arbitration	0	0.00%	0	0.00%	0	0.00%	0	0.00%	2	1.18%
Antitrust Law	0	0.00%	0	0.00%	0	0.00%	0	0.00%	1	0.59%
Banking Law	1	0.51%	0	0.00%	0	0.00%	0	0.00%	0	0.00%
Bankruptcy Law	2	1.02%	1	0.48%	7	3.80%	6	3.80%	5	2.96%
Child Protection	1	0.51%	1	0.48%	1	0.54%	0	0.00%	1	0.59%
Civil Rights/Discrimination Law	0	0.00%	0	0.00%	0	0.00%	1	0.63%	0	0.00%
Collections Law	4	2.04%	4	1.92%	5	2.72%	2	1.27%	7	4.14%
Commercial/Business	3	1.53%	12	5.77%	12	6.52%	9	5.70%	10	5.92%
Contracts/Consumer	3	1.53%	3	1.44%	3	1.63%	2	1.27%	3	1.78%
Corporate Law	1	0.51%	5	2.40%	0	0.00%	0	0.00%	0	0.00%
Criminal Law	41	20.92%	44	21.15%	28	15.22%	23	14.56%	24	14.20%
Elder Law	3	1.53%	1	0.48%	4	2.17%	0	0.00%	0	0.00%
Election Law	0	0.00%	0	0.00%	1	0.54%	0	0.00%	0	0.00%
Employment Law	0	0.00%	0	0.00%	9	4.89%	2	1.27%	0	0.00%
Environmental Law	0	0.00%	1	0.48%	0	0.00%	0	0.00%	0	0.00%
Family Law	43	21.94%	49	23.56%	49	26.63%	39	24.68%	43	25.44%
Foreclosure Law	1	0.51%	1	0.48%	0	0.00%	1	0.63%	5	2.96%
General Practice	0	0.00%	0	0.00%	2	1.09%	1	0.63%	2	1.18%
Health Law	0	0.00%	0	0.00%	0	0.00%	1	0.63%	0	0.00%
Immigration and Naturalization Law	0	0.00%	1	0.48%	0	0.00%	0	0.00%	0	0.00%
Indian Law	0	0.00%	0	0.00%	1	0.54%	0	0.00%	0	0.00%
Insurance Law	0	0.00%	0	0.00%	0	0.00%	1	0.63%	4	2.37%
Intellectual Property	1	0.51%	1	0.48%	0	0.00%	0	0.00%	0	0.00%
Labor Law	0	0.00%	1	0.48%	1	0.54%	1	0.63%	0	0.00%
Landlord/Tenant	2	1.02%	0	0.00%	1	0.54%	2	1.27%	1	0.59%
Law Practice Management	0	0.00%	0	0.00%	17	9.24%	19	12.03%	17	10.06%
Law-Related Services	2	1.02%	3	1.44%	0	0.00%	0	0.00%	0	0.00%
PFA/Harassment	0	0.00%	4	1.92%	3	1.63%	1	0.63%	3	1.78%
Real Estate	18	9.18%	16	7.69%	7	3.80%	12	7.59%	8	4.73%
Reinstatement	0	0.00%	0	0.00%	2	1.09%	2	1.27%	0	0.00%
Social Security Law	0	0.00%	0	0.00%	2	1.09%	1	0.63%	1	0.59%
Taxation	0	0.00%	0	0.00%	0	0.00%	2	1.27%	0	0.00%
Torts	27	13.78%	16	7.69%	14	7.61%	5	3.16%	8	4.73%
Wills/Estates/Probate	25	12.76%	25	12.02%	13	7.07%	19	12.03%	12	7.10%
Workers' Compensation	3	1.53%	2	0.96%	1	0.54%	0	0.00%	2	1.18%
Other/Unknown	4	2.04%	6	2.88%	0	0.00%	3	1.90%	6	3.55%
Total:	196		208		184		158		169	

GCF Complaints Area of Law - Sanctioned Cases - By Open Year

	2007		2008		2009		2010		2011	
Administrative/Municipal Law	1	2.63%	3	5.36%	0	0.00%	1	2.17%	0	0.00%
Bankruptcy Law	1	2.63%	1	1.79%	2	3.92%	1	2.17%	2	11.11%
Child Protection Law	1	2.63%	1	1.79%	1	1.96%	0	0.00%	0	0.00%
Collections Law	0	0.00%	0	0.00%	2	3.92%	0	0.00%	0	0.00%
Commercial/Business Law	0	0.00%	1	1.79%	3	5.88%	3	6.52%	0	0.00%
Contracts/Consumer Law	1	2.63%	1	1.79%	2	3.92%	2	4.35%	0	0.00%
Corporate Law	0	0.00%	2	3.57%	0	0.00%	0	0.00%	0	0.00%
Criminal Law	7	18.42%	6	10.71%	6	11.76%	4	8.70%	2	11.11%
Elder Law	1	2.63%	0	0.00%	1	1.96%	0	0.00%	0	0.00%
Employment Law	0	0.00%	0	0.00%	2	3.92%	1	2.17%	0	0.00%
Family Law	6	15.79%	19	33.93%	7	13.73%	7	15.22%	1	5.56%
General Practice	0	0.00%	0	0.00%	2	3.92%	1	2.17%	0	0.00%
Health Law	0	0.00%	0	0.00%	0	0.00%	1	2.17%	0	0.00%
Landlord/Tenant Law	0	0.00%	0	0.00%	0	0.00%	1	2.17%	0	0.00%
Landlord/Tenant Law	0	0.00%	0	0.00%	0	0.00%	0	0.00%	0	0.00%
Law Practice Management	0	0.00%	0	0.00%	12	23.53%	11	23.91%	8	44.44%
Other	0	0.00%	3	5.36%	0	0.00%	1	2.17%	1	5.56%
PFA/Harassment	0	0.00%	0	0.00%	2	3.92%	0	0.00%	0	0.00%
Real Estate Law	6	15.79%	4	7.14%	3	5.88%	3	6.52%	0	0.00%
Taxation Law	0	0.00%	0	0.00%	0	0.00%	0	0.00%	0	0.00%
Torts	8	21.05%	6	10.71%	2	3.92%	1	2.17%	2	11.11%
Wills/Estates/Probate	6	15.79%	9	16.07%	4	7.84%	8	17.39%	2	11.11%
Total:	38		56		51		46		18	

GCF Complaints Area of Law - Sanctioned Cases - By Close Year

	2007		2008		2009		2010		2011	
Administrative/Municipal Law	1	2.86%	2	5.88%	1	1.45%	2	3.39%	0	0.00%
Bankruptcy Law	0	0.00%	1	2.94%	0	0.00%	2	3.39%	3	7.89%
Child Protection Law	0	0.00%	0	0.00%	2	2.90%	1	1.69%	0	0.00%
Collections Law	0	0.00%	0	0.00%	0	0.00%	2	3.39%	0	0.00%
Commercial/Business Law	1	2.86%	1	2.94%	2	2.90%	3	5.08%	3	7.89%
Contracts/Consumer Law	1	2.86%	2	5.88%	2	2.90%	2	3.39%	1	2.63%
Corporate Law	1	2.86%	0	0.00%	2	2.90%	0	0.00%	0	0.00%
Criminal Law	8	22.86%	3	8.82%	6	8.70%	9	15.25%	4	10.53%
Elder Law	0	0.00%	1	2.94%	0	0.00%	0	0.00%	1	2.63%
Employment Law	0	0.00%	0	0.00%	1	1.45%	0	0.00%	1	2.63%
Family Law	6	17.14%	8	23.53%	18	26.09%	11	18.64%	4	10.53%
General Practice	0	0.00%	0	0.00%	1	1.45%	2	3.39%	0	0.00%
Health Law	0	0.00%	0	0.00%	0	0.00%	1	1.69%	0	0.00%
Law Practice Management	0	0.00%	0	0.00%	7	10.14%	13	22.03%	6	15.79%
Other	0	0.00%	0	0.00%	3	4.35%	0	0.00%	1	2.63%
PFA/Harassment	0	0.00%	0	0.00%	0	0.00%	2	3.39%	0	0.00%
Real Estate Law	7	20.00%	3	8.82%	9	13.04%	3	5.08%	3	7.89%
Torts	8	22.86%	6	17.65%	5	7.25%	2	3.39%	2	5.26%
Wills/Estates/Probate	2	5.71%	7	20.59%	10	14.49%	4	6.78%	9	23.68%
Total:	35		34		69		59		38	

Sanction Types: Hearing Dismissal with Warning; Hearing Reprimand; Court Reprimand; Court Suspension; Court Disbarment

GCF Complaints Area of Law - Disciplined Cases - By Open Year

	2007		2008		2009		2010		2011	
Administrative/Municipal Law	0	0.00%	3	10.34%	0	0.00%	0	0.00%	0	0.00%
Bankruptcy Law	1	3.85%	1	3.45%	1	5.26%	1	4.35%	1	14.29%
Child Protection Law	1	3.85%	1	3.45%	0	0.00%	0	0.00%	0	0.00%
Collections Law	0	0.00%	0	0.00%	1	5.26%	0	0.00%	0	0.00%
Commercial/Business Law	0	0.00%	1	3.45%	3	15.79%	1	4.35%	0	0.00%
Contracts/Consumer Law	1	3.85%	0	0.00%	1	5.26%	1	4.35%	0	0.00%
Corporate Law	0	0.00%	1	3.45%	0	0.00%	0	0.00%	0	0.00%
Criminal Law	2	7.69%	4	13.79%	1	5.26%	0	0.00%	0	0.00%
Elder Law	1	3.85%	0	0.00%	0	0.00%	0	0.00%	0	0.00%
Employment Law	0	0.00%	0	0.00%	1	5.26%	1	4.35%	0	0.00%
Family Law	4	15.38%	7	24.14%	2	10.53%	3	13.04%	0	0.00%
General Practice	0	0.00%	0	0.00%	0	0.00%	1	4.35%	0	0.00%
Insurance Law	0	0.00%	0	0.00%	0	0.00%	1	4.35%	0	0.00%
Law Practice Management	0	0.00%	0	0.00%	2	10.53%	3	13.04%	4	57.14%
Other	0	0.00%	3	10.34%	0	0.00%	1	4.35%	0	0.00%
PFA/Harassment	0	0.00%	0	0.00%	1	5.26%	0	0.00%	0	0.00%
Real Estate Law	4	15.38%	3	10.34%	1	5.26%	1	4.35%	0	0.00%
Torts	7	26.92%	1	3.45%	2	10.53%	1	4.35%	1	14.29%
Wills/Estates/Probate	5	19.23%	4	13.79%	3	15.79%	8	34.78%	1	14.29%
Total:	26		29		19		23		7	

GCF Complaints Area of Law - Disciplined Cases - By Close Year

	2007		2008		2009		2010		2011	
Administrative/Municipal Law	0	0.00%	2	9.09%	1	3.13%	1	3.70%	0	0.00%
Bankruptcy Law	0	0.00%	1	4.55%	0	0.00%	1	3.70%	2	9.09%
Child Protection Law	0	0.00%	0	0.00%	2	6.25%	0	0.00%	0	0.00%
Collections Law	0	0.00%	0	0.00%	0	0.00%	1	3.70%	0	0.00%
Commercial/Business Law	1	7.14%	1	4.55%	2	6.25%	3	11.11%	1	4.55%
Contracts/Consumer Law	1	7.14%	2	9.09%	0	0.00%	1	3.70%	1	4.55%
Corporate Law	1	7.14%	0	0.00%	1	3.13%	0	0.00%	0	0.00%
Criminal Law	3	21.43%	1	4.55%	2	6.25%	3	11.11%	1	4.55%
Elder Law	0	0.00%	1	4.55%	0	0.00%	0	0.00%	0	0.00%
Employment Law	0	0.00%	0	0.00%	0	0.00%	0	0.00%	1	4.55%
Family Law	1	7.14%	3	13.64%	8	25.00%	6	22.22%	2	9.09%
Foreclosure Law	0	0.00%	0	0.00%	0	0.00%	0	0.00%	0	0.00%
General Practice	0	0.00%	0	0.00%	0	0.00%	1	3.70%	0	0.00%
Juvenile Law	0	0.00%	0	0.00%	0	0.00%	0	0.00%	0	0.00%
Law Practice Management	0	0.00%	0	0.00%	0	0.00%	3	11.11%	3	13.64%
Other	0	0.00%	0	0.00%	3	9.38%	0	0.00%	1	4.55%
PFA/Harassment	0	0.00%	0	0.00%	0	0.00%	1	3.70%	0	0.00%
Real Estate Law	3	21.43%	3	13.64%	6	18.75%	0	0.00%	1	4.55%
Taxation Law	0	0.00%	0	0.00%	0	0.00%	0	0.00%	0	0.00%
Torts	4	28.57%	3	13.64%	2	6.25%	2	7.41%	1	4.55%
Wills/Estates/Probate	0	0.00%	5	22.73%	5	15.63%	4	14.81%	8	36.36%
Total:	14		22		32		27		22	

Sanction Types: Hearing Reprimand; Court Reprimand; Court Suspension; Court Disbarment

Final Disposition - Grievance Commission and Court Matters

	Individual Cases by Case Opened Year					Distinct Respondents by Case Opened Year				
	2007	2008	2009	2010	2011	2007	2008	2009	2010	2011
Board Dismissal	0	0	0	0	1	0	0	0	0	1
Case Review Dismissal	150	135	124	99	91	131	119	113	87	78
Case Review Dismissal With Warning	11	25	28	20	12	10	24	27	20	12
Hearing Dismissal	5	5	1	1	0	4	5	1	1	0
Hearing Dismissal With Warning	1	2	5	3	2	1	2	5	3	2
Hearing Reprimand	15	17	9	15	4	13	14	8	12	4
Court Disbarment	1	2	0	1	0	1	2	0	1	0
Court Dismissal	0	0	3	0	0	0	0	1	0	0
Court Reciprocal Disbarment	0	0	0	0	2	0	0	0	0	2
Court Reciprocal Suspension	0	0	0	1	0	0	0	0	1	0
Court Reinstatement Approved	0	1	2	0	3	0	1	2	0	3
Court Reinstatement Denied	0	0	1	2	0	0	0	1	2	0
Court Reprimand	6	0	0	0	1	6	0	0	0	1
Court Resignation	1	2	0	2	1	1	2	0	2	1
Court Suspension	4	9	12	11	6	2	5	6	5	2
Court Temporary Suspension	1	2	4	3	1	1	2	3	1	1
Total:	195	200	189	158	124	170	176	167	135	107

	Individual Cases by Case Closed Year					Distinct Respondents by Case Closed Year				
	2007	2008	2009	2010	2011	2007	2008	2009	2010	2011
Board Dismissal	0	0	0	0	1	0	0	0	0	1
Case Review Dismissal	124	103	161	111	96	107	91	138	96	89
Case Review Dismissal With Warning	15	12	34	29	13	15	12	34	26	13
Hearing Dismissal	3	3	3	6	2	3	2	3	6	2
Hearing Dismissal With Warning	6	0	3	4	4	5	0	3	4	4
Hearing Reprimand	5	14	21	11	16	5	9	16	10	11
Court Disbarment	1	2	3	1	0	1	1	1	1	0
Court Dismissal	0	0	0	3	0	0	0	0	1	0
Court Reciprocal Disbarment	0	0	0	0	2	0	0	0	0	2
Court Reciprocal Suspension	0	0	0	0	1	0	0	0	0	1
Court Reinstatement Approved	0	0	2	1	2	0	0	2	1	2
Court Reinstatement Denied	1	0	0	2	1	1	0	0	2	1
Court Reprimand	4	3	1	0	1	4	3	1	0	1
Court Resignation	2	0	2	0	2	1	0	2	0	2
Court Suspension	2	3	7	19	7	2	3	3	7	1
Court Temporary Suspension	0	0	0	5	5	0	0	0	4	1
Total:	163	140	237	192	153	144	121	203	158	131

GCF Complaint by Firm Size - By Open Year

Firm Size	2007		2008		2009		2010		2011	
1	58	29.59%	85	40.87%	86	46.74%	77	48.73%	93	55.03%
2 - 5	93	47.45%	72	34.62%	59	32.07%	52	32.91%	48	28.40%
6 - 9	21	10.71%	14	6.73%	13	7.07%	6	3.80%	9	5.33%
10 - 19	12	6.12%	11	5.29%	8	4.35%	3	1.90%	6	3.55%
20 - 49	1	0.51%	4	1.92%	9	4.89%	9	5.70%	3	1.78%
50 - 99	4	2.04%	9	4.33%	0	0.00%	1	0.63%	1	0.59%
100+	2	1.02%	6	2.88%	0	0.00%	1	0.63%	3	1.78%
Unknown	5	2.55%	7	3.37%	9	4.89%	9	5.70%	6	3.55%
Total:	196		208		184		158		169	

GCF Complaint by Age - By Open Year

Age	2007		2008		2009		2010		2011	
29 or less	1	0.51%	1	0.48%	2	1.09%	0	0.00%	3	1.78%
30 - 34	7	3.57%	12	5.77%	15	8.15%	8	5.06%	8	4.73%
35 - 39	12	6.12%	13	6.25%	18	9.78%	10	6.33%	16	9.47%
40 - 44	11	5.61%	15	7.21%	17	9.24%	21	13.29%	25	14.79%
45 - 49	37	18.88%	38	18.27%	32	17.39%	23	14.56%	18	10.65%
50 - 54	37	18.88%	34	16.35%	31	16.85%	25	15.82%	23	13.61%
55 - 59	42	21.43%	40	19.23%	30	16.30%	28	17.72%	34	20.12%
60 - 64	30	15.31%	34	16.35%	21	11.41%	26	16.46%	26	15.38%
65+	17	8.67%	21	10.10%	18	9.78%	17	10.76%	16	9.47%
Unknown	2	1.02%	0	0.00%	0	0.00%	0	0.00%	0	0.00%
Total:	196		208		184		158		169	

GFC Complaints by Source - By Open Year

	2007		2008		2009		2010		2011	
Attorney	4	2.04%	14	6.73%	17	9.24%	6	3.80%	16	9.47%
Beneficiary	0	0.00%	0	0.00%	0	0.00%	2	1.27%	2	1.18%
Client	94	47.96%	117	56.25%	86	46.74%	83	52.53%	84	49.70%
Court Order	0	0.00%	0	0.00%	0	0.00%	0	0.00%	1	0.59%
Judge	4	2.04%	6	2.88%	0	0.00%	1	0.63%	2	1.18%
Law Enforcement	0	0.00%	0	0.00%	0	0.00%	0	0.00%	1	0.59%
Opposing Counsel	9	4.59%	8	3.85%	1	0.54%	3	1.90%	1	0.59%
Opposing Party	43	21.94%	27	12.98%	16	8.70%	20	12.66%	30	17.75%
Sua Sponte	8	4.08%	9	4.33%	25	13.59%	21	13.29%	21	12.43%
Vendor	0	0.00%	0	0.00%	0	0.00%	0	0.00%	1	0.59%
Other	34	17.35%	27	12.98%	39	21.20%	22	13.92%	10	5.92%
Total:	196		208		184		158		169	

Registration Demographics

	2007		2008		2009		2010		2011	
Resident										
Active	3599	73.77%	3638	73.35%	3665	72.76%	3721	72.55%	3742	72.58%
Emeritus	3	0.06%	3	0.06%	5	0.10%	5	0.10%	4	0.08%
Judicial	79	1.62%	78	1.57%	75	1.49%	78	1.52%	82	1.59%
Law Clerk	0		0		27	0.54%	26	0.51%	25	0.48%
Non-Resident										
Active	1198	24.55%	1241	25.02%	1264	25.09%	1297	25.29%	1298	25.17%
Judicial	0	0.00%	0	0.00%	0	0.00%	0	0.00%	0	0.00%
Law Clerk	0		0		1	0.02%	2	0.04%	5	0.10%
Total:	4879		4960		5037		5129		5156	
Increase over prior year.			81	1.66%	77	1.55%	92	1.83%	27	0.53%

Admission by Year

	2007		2008		2009		2010		2011	
1/1/1935 - 12/31/1939	2	0.08%	2	0.04%	2	0.04%	2	0.04%	2	0.04%
1/1/1940 - 12/31/1944	0	0.80%	0	0.00%	0	0.00%	0	0.00%	0	0.00%
1/1/1945 - 12/31/1949	4	0.43%	3	0.06%	2	0.04%	0	0.00%	1	0.02%
1/1/1950 - 12/31/1954	39	1.33%	27	0.54%	25	0.50%	21	0.41%	20	0.39%
1/1/1955 - 12/31/1959	21	2.09%	25	0.50%	21	0.42%	20	0.39%	18	0.35%
1/1/1960 - 12/31/1964	65	8.67%	47	0.95%	43	0.85%	42	0.82%	37	0.72%
1/1/1965 - 12/31/1969	102	8.73%	115	2.32%	110	2.18%	106	2.07%	102	1.98%
1/1/1970 - 12/31/1974	423	14.59%	333	6.71%	326	6.47%	321	6.26%	311	6.03%
1/1/1975 - 12/31/1979	426	12.89%	501	10.10%	495	9.83%	489	9.53%	473	9.17%
1/1/1980 - 12/31/1984	712	16.91%	562	11.33%	555	11.02%	544	10.61%	531	10.30%
1/1/1985 - 12/31/1989	629	11.09%	773	15.58%	758	15.05%	749	14.60%	735	14.26%
1/1/1990 - 12/31/1994	825	15.90%	694	13.99%	682	13.54%	672	13.10%	659	12.78%
1/1/1995 - 12/31/1999	541	6.44%	660	13.31%	655	13.00%	653	12.73%	635	12.32%
1/1/2000 - 12/31/2004	776	15.90%	619	12.48%	606	12.03%	601	11.72%	584	11.33%
1/1/2005 - 12/31/2009	314	6.44%	599	12.08%	757	15.03%	747	14.56%	740	14.35%
1/1/2010 - 12/31/2014	0	0.00%	0	0.00%	0	0.00%	162	3.16%	308	5.97%
Total:	4879		4960		5037		5129		5156	

County Demographics

County	2007		2008		2009		2010		2011	
Androscoggin	201	4.12%	204	4.11%	209	4.15%	220	4.29%	219	4.25%
Aroostook	77	1.58%	76	1.53%	78	1.55%	79	1.54%	78	1.51%
Cumberland	1789	36.67%	1817	36.63%	1851	36.75%	1873	36.52%	1898	36.81%
Franklin	32	0.66%	30	0.60%	32	0.64%	30	0.58%	33	0.64%
Hancock	100	2.05%	101	2.04%	98	1.95%	102	1.99%	100	1.94%
Kennebec	469	9.61%	477	9.62%	469	9.31%	475	9.26%	471	9.13%
Knox	93	1.91%	97	1.96%	98	1.95%	95	1.85%	101	1.96%
Lincoln	72	1.48%	72	1.45%	72	1.43%	81	1.58%	79	1.53%
Oxford	44	0.90%	44	0.89%	44	0.87%	45	0.88%	42	0.81%
Penobscot	334	6.85%	340	6.85%	342	6.79%	342	6.67%	340	6.59%
Piscataquis	9	0.18%	6	0.12%	7	0.14%	8	0.16%	9	0.17%
Sagadahoc	72	1.48%	74	1.49%	76	1.51%	83	1.62%	86	1.67%
Somerset	41	0.84%	40	0.81%	41	0.81%	40	0.78%	41	0.80%
Waldo	38	0.78%	37	0.75%	37	0.73%	37	0.72%	37	0.72%
Washington	31	0.64%	29	0.58%	29	0.58%	30	0.58%	33	0.64%
York	291	5.96%	289	5.83%	289	5.74%	286	5.58%	290	5.62%
Out-of-State	1186	24.31%	1227	24.74%	1265	25.11%	1303	25.40%	1299	25.19%
Total:	4879		4960		5037		5129		5156	

Variance over Prior Year

County	2007		2008		2009		2010		2011	
Androscoggin	201	1.52%	204	1.49%	209	2.45%	220	5.26%	219	-0.45%
Aroostook	77	2.67%	76	-1.30%	78	2.63%	79	1.28%	78	-1.27%
Cumberland	1789	1.19%	1817	1.57%	1851	1.87%	1873	1.19%	1898	1.33%
Franklin	32	-3.03%	30	-6.25%	32	6.67%	30	-6.25%	33	10.00%
Hancock	100	1.01%	101	1.00%	98	-2.97%	102	4.08%	100	-1.96%
Kennebec	469	6.40%	477	1.71%	469	-1.68%	475	1.28%	471	-0.84%
Knox	93	1.09%	97	4.30%	98	1.03%	95	-3.06%	101	6.32%
Lincoln	72	0.00%	72	0.00%	72	0.00%	81	12.50%	79	-2.47%
Oxford	44	-4.35%	44	0.00%	44	0.00%	45	2.27%	42	-6.67%
Penobscot	334	-89.00%	340	1.80%	342	0.59%	342	0.00%	340	-0.58%
Piscataquis	9	12.50%	6	-33.33%	7	16.67%	8	14.29%	9	12.50%
Sagadahoc	72	14.29%	74	2.78%	76	2.70%	83	9.21%	86	3.61%
Somerset	41	-8.89%	40	-2.44%	41	2.50%	40	-2.44%	41	2.50%
Waldo	38	8.57%	37	-2.63%	37	0.00%	37	0.00%	37	0.00%
Washington	31	-3.13%	29	-6.45%	29	0.00%	30	3.45%	33	10.00%
York	291	0.00%	289	-0.69%	289	0.00%	286	-1.04%	290	1.40%
Out-of-State	1186	2.33%	1227	3.46%	1265	3.10%	1303	3.00%	1299	-0.31%
Total:	4879		4960		5037		5129		5156	

Age Demographics

	2007		2008		2009		2010		2011	
29 or Less	117	2.40%	172	3.47%	128	2.54%	142	2.77%	147	2.85%
30 - 34	342	7.01%	377	7.60%	364	7.23%	378	7.37%	393	7.62%
35 - 39	506	10.37%	522	10.52%	466	9.25%	449	8.75%	440	8.53%
40 - 44	572	11.72%	582	11.73%	592	11.75%	604	11.78%	573	11.11%
45 - 49	711	14.57%	712	14.35%	641	12.73%	599	11.68%	572	11.09%
50 - 54	822	16.85%	821	16.55%	790	15.68%	784	15.29%	760	14.74%
55 - 59	771	15.80%	767	15.46%	809	16.06%	803	15.66%	787	15.26%
60 - 64	614	12.58%	606	12.22%	697	13.84%	721	14.06%	727	14.10%
65+	424	8.69%	401	8.08%	550	10.92%	649	12.65%	757	14.68%
Total:	4879		4960		5037		5129		5156	

Gender Demographics

	2007		2008		2009		2010		2011	
Female	1551	31.79%	1601	32.28%	1639	32.54%	1726	33.65%	1769	34.31%
Male	3328	68.21%	3359	67.72%	3398	67.46%	3403	66.35%	3387	65.69%
Total:	4879		4960		5037		5129		5156	

Female	2007		2008		2009		2010		2011	
29 or Less	82	1.68%	108	2.18%	70	1.39%	78	1.52%	87	1.69%
30 - 34	176	3.61%	190	3.83%	202	4.01%	213	4.15%	214	4.15%
35 - 39	188	3.85%	197	3.97%	192	3.81%	196	3.82%	209	4.05%
40 - 44	213	4.37%	219	4.42%	216	4.29%	230	4.48%	216	4.19%
45 - 49	255	5.23%	257	5.18%	241	4.78%	229	4.46%	226	4.38%
50 - 54	287	5.88%	286	5.77%	274	5.44%	278	5.42%	267	5.18%
55 - 59	188	3.85%	186	3.75%	236	4.69%	260	5.07%	271	5.26%
60 - 64	131	2.68%	128	2.58%	150	2.98%	167	3.26%	182	3.53%
65+	31	0.64%	30	0.60%	58	1.15%	75	1.46%	97	1.88%

Male	2007		2008		2009		2010		2011	
29 or Less	35	0.72%	64	1.29%	58	1.15%	64	1.25%	60	1.16%
30 - 34	166	3.40%	187	3.77%	162	3.22%	165	3.22%	179	3.47%
35 - 39	318	6.52%	325	6.55%	274	5.44%	253	4.93%	231	4.48%
40 - 44	359	7.36%	363	7.32%	376	7.46%	374	7.29%	357	6.92%
45 - 49	456	9.35%	455	9.17%	400	7.94%	370	7.21%	346	6.71%
50 - 54	535	10.97%	535	10.79%	516	10.24%	506	9.87%	493	9.56%
55 - 59	583	11.95%	581	11.71%	573	11.38%	543	10.59%	516	10.01%
60 - 64	483	9.90%	478	9.64%	547	10.86%	554	10.80%	545	10.57%
65+	393	8.05%	371	7.48%	492	9.77%	574	11.19%	660	12.80%
Total:	4879		4960		5037		5129		5156	

Firm Size

	2007		2008		2009		2010		2011	
Solo	1369	28.06%	1387	27.96%	1413	28.05%	1415	27.59%	1429	27.72%
2 - 5	1248	25.58%	1211	24.42%	1200	23.82%	1197	23.34%	1194	23.16%
6 - 9	420	8.61%	435	8.77%	407	8.08%	421	8.21%	403	7.82%
10 - 19	429	8.79%	439	8.85%	428	8.50%	420	8.19%	418	8.11%
20 - 49	362	7.42%	400	8.06%	408	8.10%	406	7.92%	426	8.26%
50 - 99	313	6.42%	308	6.21%	310	6.15%	301	5.87%	201	3.90%
100+	362	7.42%	378	7.62%	387	7.68%	376	7.33%	454	8.81%
N/A	376	7.71%	402	8.10%	484	9.61%	593	11.56%	631	12.24%
Total:	4879		4960		5037		5129		5156	
Variance over prior year.			1.66%		1.55%		1.83%		0.53%	

Practice Type

	2007		2008		2009		2010		2011	
Government	528	10.82%	530	10.69%	528	10.48%	532	10.37%	523	10.14%
In-House/Corporate Counsel	294	6.03%	311	6.27%	325	6.45%	317	6.18%	328	6.36%
Judiciary	78	1.60%	86	1.73%	88	1.75%	90	1.75%	95	1.84%
Law Clerk	8	0.16%	17	0.34%	28	0.56%	21	0.41%	17	0.33%
Law School	8	0.16%	27	0.54%	31	0.62%	32	0.62%	32	0.62%
Legal Service	109	2.23%	101	2.04%	105	2.08%	101	1.97%	95	1.84%
Military	23	0.47%	11	0.22%	21	0.42%	22	0.43%	14	0.27%
Private Practice	3312	67.88%	3408	68.71%	3421	67.92%	3381	65.92%	3383	65.61%
Retired/Inactive	35	0.72%	45	0.91%	46	0.91%	49	0.96%	65	1.26%
Unknown/Other	484	9.92%	424	8.55%	444	8.81%	584	11.39%	604	11.71%
Total:	4879		4960		5037		5129		5156	
Variance over prior year.			1.66%		1.55%		1.83%		0.53%	