

# MAINE STATE LEGISLATURE

The following document is provided by the  
**LAW AND LEGISLATIVE DIGITAL LIBRARY**  
at the Maine State Law and Legislative Reference Library  
<http://legislature.maine.gov/lawlib>



Reproduced from electronic originals  
(may include minor formatting differences from printed original)

# 2010 Annual Report



**Board of Overseers of the Bar**  
**P O Box 527**  
**Augusta, ME 04332-0527**  
**P. 207-623-1121**  
**F. 207-623-4175**  
**E. [board@mebaroverseers.org](mailto:board@mebaroverseers.org)**



# Board of Overseers of the Bar

## 2010 Annual Report

### Introduction

The Board of Overseers of the Bar was created by the Maine Supreme Judicial Court in 1978 to govern the conduct of lawyers as officers of the Court. The Board regulates attorney conduct by enforcing the Maine Bar Rules and the Maine Rules of Professional Conduct adopted by the Court. The purpose of those Rules is to provide appropriate standards for attorneys with respect to their practice of the profession of law, including, but not limited to, their relationship with their clients, the general public, other members of the legal profession, the courts, and other agencies of this state.

### Board Leadership

The Board has nine members, of which six are members of the bar appointed by the Maine Supreme Judicial Court and three are non-lawyers appointed by the Court on recommendation of the Governor. The Board generally meets ten times annually to conduct business.

### Board Members

The following list includes members who served during 2010. Terms on the Board of Overseers of the Bar are for three years beginning in November and ending in October.

Chair Jud Knox – York  
*Lay Member [Term: 2009 – 2012]*

Gregory T. Caswell – Falmouth  
*Lay Member [Term: 2010 – 2013]*

Christine Holden, Ph.D.  
*Lay Member [Term: 2007 – 2010]*

Vice Chair David M. Sanders – Livermore Falls  
*Lawyer Member [Term: 2009 – 2012]*

Patricia M. Ender – Augusta  
*Lawyer Member [Term: 2007 – 2010]*

Dawn M. Pelletier – Bangor  
*Lawyer Member [Term: 2008 – 2011]*

The Hon. Warren M. Silver – Bangor  
*Court Liaison*

Charles E. Gilbert III – Bangor  
*Lawyer Member [Term: 2010 – 2013]*

Daniel A. Pileggi – Ellsworth  
*Lawyer Member [Term: 2009 – 2012]*

Stephen J. Schwartz – Portland  
*Lawyer Member [Term: 2008 – 2011]*

On January 26, 2011, Board Chair Jud Knox presented certificates of appreciation to out-going board members Patricia Ender and Christine Holden thanking them for their dedication and service to the Board of Overseers of the Bar.

### Board Staff

The Board of Overseers of the Bar is managed by the Executive Director and Bar Counsel and consists of three lawyers and seven non-lawyers:

#### *Lawyer Staff*

J. Scott Davis, Bar Counsel

Aria Eee, Assistant Bar Counsel

Jacqueline L.L. Gomes, Assistant Bar Counsel

#### *Non-Lawyer staff*

Jacqueline M. Rogers, Executive Director

Susan E. Adams, Registration Coordinator

Jody A. Breton, Assistant to the Executive Director

Linda J. Hapworth, Registration Secretary

Brian P. Murphy, Board Clerk

Donna L. Spillman, Assistant to Bar Counsel

Dawn M. Stickney, Assistant to Bar Counsel

## Commissions

The Board appoints volunteer members to three commissions established by the Maine Bar Rules: the Grievance Commission, the Fee Arbitration Commission, and the Professional Ethics Commission. Three-member panels of the Fee Arbitration Commission and the Grievance Commission conduct their functions under the Maine Bar Rules. Each panel comprises two attorneys and one lay member. The Professional Ethics Commission, consisting of eight attorneys, renders formal written advisory opinions to the Court, Board, Grievance Commission, Bar Counsel, and members of the Maine bar involving interpretation and application of the Maine Rules of Professional Conduct concerning specific questions of lawyer conduct.

Information concerning the responsibilities and functions of the Board and each of its commissions is accessible on the Board's website at [www.mebaroverseers.org](http://www.mebaroverseers.org).

## Attorney Complaints

The purpose of the disciplinary system is to monitor the legal profession's compliance with the Court's promulgated rules of ethics and to discipline or otherwise sanction lawyers whose conduct violates those standards.

Complaints filed with the Board are taken very seriously. Each written complaint is reviewed by the office of Bar Counsel and investigated if it involves alleged misconduct by a Maine attorney. Complaints that do not actually allege misconduct in violation of the Maine Rules of Professional Conduct are not subject to the grievance procedure, although, if they appears to involve fee disputes, may be referred for filing with the Board's Fee Arbitration Commission.

The Board does not provide legal services or advice to anyone making a complaint. The complaint process should not be viewed as a substitute for a civil action for damages against a lawyer. The disciplinary system is not designed to compensate a complaining party for monetary loss or emotional distress incurred as a result of any unethical conduct.

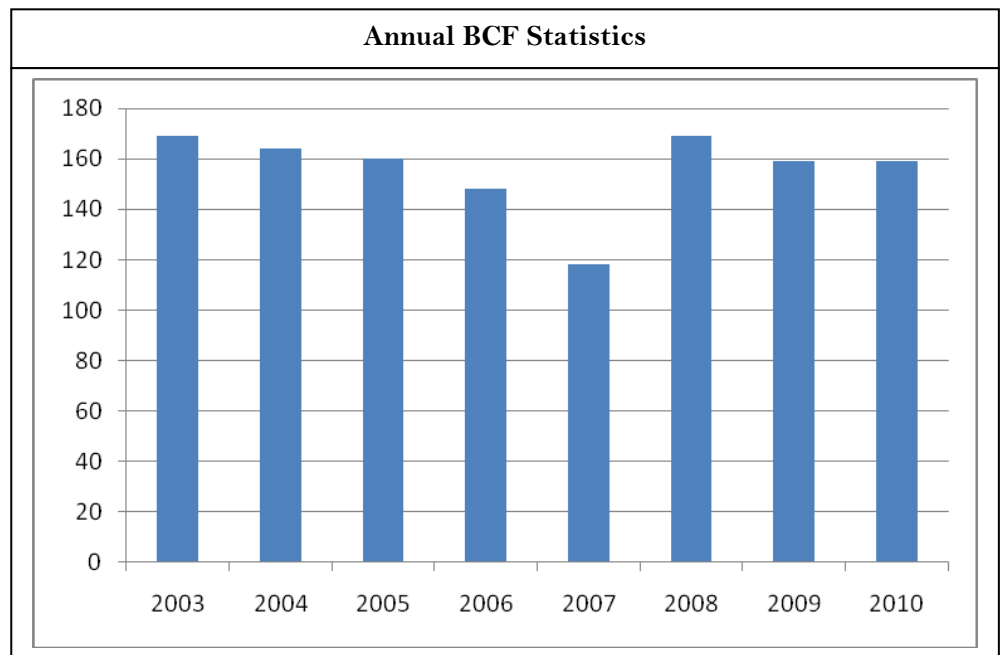
The forms of sanction or discipline which may be imposed upon a lawyer for unethical conduct are: dismissal with a warning, public reprimand, suspension for a specified period of time, and disbarment. All disciplinary orders and reports issued after hearing are published on the Board's website.

## Bar Counsel Files

Bar Counsel Files (BCF) comprise those submitted written grievance complaints that upon initial review, or after brief informal investigation by Bar Counsel, are deemed not to allege any professional misconduct by an attorney subject to sanction under the Maine Bar Rules. Maine Bar Rule 7.1(c) requires Bar Counsel's unilateral dismissal of such matters, either with or without any investigation. In 2010, Bar Counsel received, screened and docketed 159 BCF complaints.

When a BCF matter is dismissed by

Bar Counsel, the complainant is notified in writing and provided an explanation of the dismissal. The complainant is also



notified of the right to file a written request within fourteen days for the dismissal to be reviewed. Such reviews are then conducted by lay members of the Board or the Grievance Commission who have the authority to approve, disapprove or modify the terms of Bar Counsel's dismissal. In all dismissed BCF matters, Bar Counsel provides the involved attorney with copies of the complaint filing, the dismissal letter, any resulting notice of request for review, and the lay reviewer's decision. Bar Counsel dismissed 181 BCF matters in 2010. Four BCF matters were elevated to Grievance Commission File status after investigation by Bar Counsel. Twenty-five complainants requested a lay member review. Lay members decided and affirmed all twenty-five of those dismissals.

At the close of 2010, there were twelve pending BCF matters.

### **Grievance Commission**

In 2010, Bar Counsel received, screened and docketed 159 grievance complaints as Grievance Commission Files (GCF), representing a 13.5% decrease over the prior year. Upon initial screening, these files were deemed to allege at least some form of a prima facie claim of professional misconduct by Maine attorneys in violation of the former Code of Professional Responsibility and the current Maine Rules of Professional Conduct.

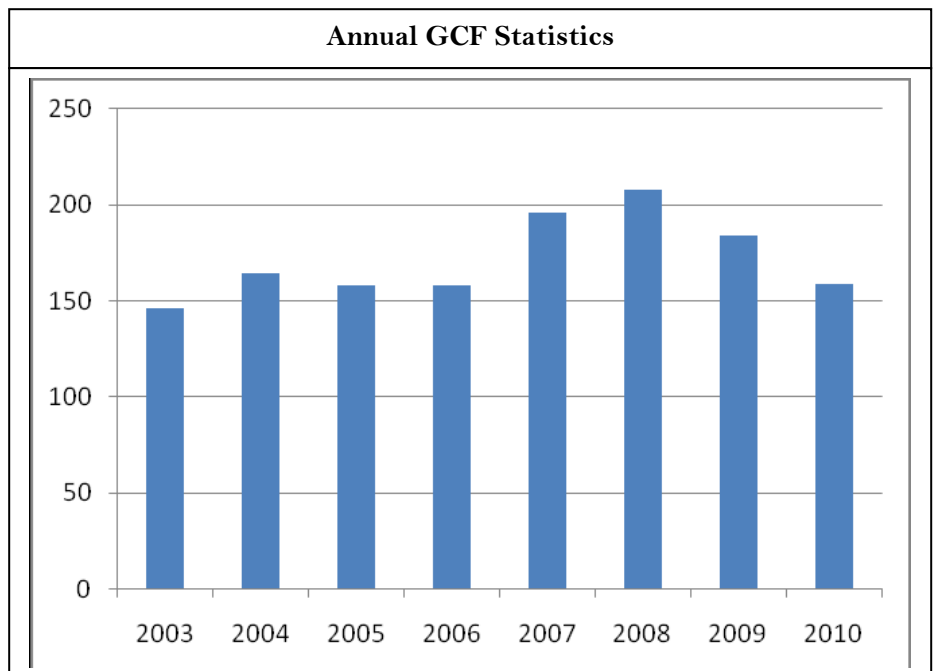
### **Case Reviews and Hearings**

Panels of the Grievance Commission met to conduct preliminary case reviews of 182 GCF complaints under Maine Bar Rule 7.1(d). Those meetings consist of a three-member panel that reviews the contents of GCF investigative files as presented by Bar Counsel. Such reviews are not hearings, and neither the respective complainants nor the respondent attorneys are present or involved at the reviews. Although there is no confidentiality restriction requirement applicable to complainants and respondent attorneys, Bar Counsel's investigation and the Grievance Commission panels' preliminary review process are required to be kept confidential by the Board, the Commission and the Board's staff under Maine Bar Rule 7.3(k)(1). Upon completion of Bar Counsel investigations and after review, 139 GCF complaints were closed by issuance of either a dismissal (130) or a dismissal with a warning (30) in 2010. Panels found probable cause that professional misconduct appeared to have occurred in 41 matters reviewed, warranting a hearing by another panel (or the Court) to determine if any sanction should be imposed upon the respective attorneys.

The Grievance Commission conducted nineteen hearings involving pursuant to Maine Bar Rule 7.1(e). The Grievance Commission disposed of four cases by the issuance of a dismissal, four dismissals with warning and eleven public reprimands. Ultimately, the Grievance Commission authorized Bar Counsel to file three informations with the Executive Clerk of the Maine Supreme Judicial Court for hearing before a Single Justice.

All disciplinary hearings are open to the public and the resulting decision concerning such complaints is available to the public upon request. All disciplinary orders and reports issued after hearing are published on the Board's website.

At the close of 2010, there were 85 pending GCF matters.



## **Public Disciplinary Sanctions**

### **Grievance Commission**

Reprimands – The Grievance Commission issued eleven public reprimands in 2010.

### **Single Justice Matters**

Suspension Orders – The Court issued seven suspension orders and one temporary suspension order in 2010.

Disbarment Order - The Court issued one reciprocal disbarment order in 2010.

Dismissal Orders – After hearing, the Court issued two dismissal orders.

Petition for Reinstatement - Two new petitions for reinstatement petitions were docketed in 2010. The Court approved one petition for reinstatement and denied two petitions for reinstatement.

### **Law Court Matters**

Petition for Reinstatement – In 2010, the Court affirmed a judgment issued by a Single Justice denying a petition for reinstatement.

## **Fee Arbitration Commission**

The Board docketed fifty-one fee arbitration petitions in 2010. Over the course of the year, thirty fee dispute matters were dismissed, settled or withdrawn prior to a hearing before a panel of the Fee Arbitration Commission. Twenty-two matters were heard by panels of the Fee Arbitration Commission. Of those, the Commission decided in favor of the petitioner in eight cases and in the favor of the respondent attorney in fourteen cases. At year-end, seventeen fee arbitration matters remained pending.

## **Professional Ethics Commission**

The Professional Ethics Commission issued three formal written advisory opinions in 2010. On July 7, 2010, the Commission issued Opinion #199 - *Advising clients concerning Maine's Medical Marijuana Act*. On August 11, 2010, the Commission issued opinion #200 - *Attorney Serving only as Guardian ad litem: Use of IOLTA Accounts/Working with Non-Lawyer GALs and Parent Coordinators*. Lastly, on November 1, 2010, the Commission issued opinion #201 - *Client File Retention Responsibilities Where an Associate Attorney Leaves a Law Firm*.

The Commission also assisted Bar Counsel in processing informal confidential opinions in letter format in response to several inquiries from Maine attorneys. The complete list of the Commission's formal opinions is published on the Board's website at [www.mebaroverseers.org](http://www.mebaroverseers.org).

## **Registration**

The Board maintains a Register of attorneys who are active members of the bar in the State of Maine, as well as records of inactive, resigned, suspended, and disbarred attorneys. The registration roll increased by ninety-two attorneys over the course of the year. At year's end, the Board's Register contained the names of 5,129 attorneys. Comparatively, at the close of 2009, the Register contained 5,037 names.

In conjunction with the annual registration period, the Board administers attorney compliance with Maine Bar Rule 12 - Continuing Legal Education. Active attorneys are required to annually complete eleven hours of approved continuing legal education programming, including one hour of ethics or professionalism. The Board approved 3,343 courses that were submitted by 436 providers.

In 2010, seven attorneys were administratively suspended for failing to properly register with the Board. An additional sixteen attorneys were administratively suspended for failing to comply with Maine Bar Rule 12. Lastly, thirty-seven attorneys were suspended for failing to register and for failing to comply with Maine Bar Rule 12.

Registration demographic statistics show that 52% of Maine's attorney population is concentrated in three counties: Cumberland, Kennebec, and Penobscot. Gender statistics show that women make up 34% of the bar and men represent 66% of the bar. Age demographics at year's end show that 19% of the bar is 39 years or less, 54% are between the ages of 40 and 59, and that 27% are 60 years or older.

### **Ethics Helpline**

The office of Bar Counsel, through the Ethics Helpline, provides informal ethics and professional responsibility advice to Maine attorneys. Members of the bar are encouraged to call and speak with Bar Counsel to discuss ethical dilemmas. Bar Counsel will only discuss the conduct of the inquiring attorney or another member of that attorney's law firm. Board Regulation No. 28 prohibits Bar Counsel from advising an inquiring attorney about another attorney's actual or hypothetical conduct. See also Advisory Opinions #67 and #171. In 2010, Bar Counsel fielded 828 helpline calls; comparatively, 798 calls were received in 2009. The three most frequent inquiries involved questions relating to conflicts of interest, confidentiality, and practice management.

### **Professional Update for Maine Lawyers and Judges**

As part of the Board's ongoing educational outreach to members of the bar, the Board publishes a by-monthly electronic newsletter entitled *Professional Update for Maine Lawyers and Judges*. In addition to administrative updates, statistical data, notice of rule amendments and Court news, Bar Counsel publishes a regular feature entitled *Notes from Bar Counsel* wherein Bar Counsel provides ethical guidance to members of the bar.

### **Bar Counsel CLE Presentations**

In calendar year 2010, Bar Counsel spoke at nineteen state and national continuing legal education seminars. Through these educational opportunities, Bar Counsel offered guidance on how to avoid ethical problems, discussed recent decisions and trends, and also explained how the grievance complaint process works under the Maine Bar Rules. Bar Counsel welcome the opportunity to provide CLE presentations to Maine lawyers and members of their staff on issues concerning ethics and professional responsibility.

### **Rule Amendments and Board Regulations**

The Board is charged with the continuous study of the Bar in its relation to the public and the courts for the purpose of making recommendations to the Court with respect to changes, additions or deletions to the Maine Bar Rules or for such other action by the Court as it may deem advisable in its supervision of the Bar. In 2010 the Board submitted several amendments to the Maine Bar Rules primarily to replace references to the abrogated Code of Professional Responsibility with the Maine Rules of Professional Conduct. The Board also proposed to the Court that non-resident attorneys should be assessed the same fee as resident attorneys. Amendments to Board Regulations 28, 48, and 58 and the abrogation of Regulation 25 were approved by the Board. Lastly, the Board approved an amendment to CLE Policy #12.

### **Mission Statement**

The Board's mission is to encourage and promote competent and ethical practice by members of the Maine Bar, and to make these standards known to members of the public, so that they have confidence in the legal profession in Maine.

The Board accomplishes its mission by:

- registering and regulating attorneys licensed to practice in Maine;
- approving and providing continuing legal education programs;
- requiring that all attorneys licensed to practice in Maine have met the Maine Supreme Judicial Court's continuing legal education standards;
- providing guidance to attorneys on ethical issues through written advisory opinions issued by the Professional Ethics Commission, as well as an ethics helpline;
- informing members of the public of their rights concerning proper attorney behavior and the availability of fee arbitration;
- enforcing Maine's code of ethics for attorneys; and
- endeavoring to achieve the best possible legal representation of clients through all of these measures.

### **Website Development**

The Board continues to enhance its website to better serve the public and members of the bar. Members of the public will find a wealth of information regarding Maine's grievance system and fee arbitration system. To ensure that the public is informed about the work of the Board, notices of public hearings and the resulting decisions are posted to the website. Members of the bar benefit from increased knowledge of and compliance with the Maine Bar Rules and the Maine Rules of Professional Conduct through the dissemination of Bar Counsel Notes, Board Regulations, Ethics Opinions, and the posting of hearing decisions.

### **Funding**

The Board's fiscal year is July 1 through June 30. Each year the Board prepares a budget for the Court's review and approval. No licensing fee increase was recommended to the Court in 2010. In fact, through careful budget planning, the Board has not proposed a fee increase for eight years.

Maine lawyers, through their licensing fees, directly fund the cost of attorney registration, continuing legal education compliance, grievance complaint investigation and disciplinary hearings, the resolution of fee arbitration disputes and for such other purposes as the Board, with the approval of the Court, may determine are appropriate or required. The Board receives no public monies to subsidize its operations. The Board's audited financial statements for the 2009-2010 fiscal year (ended June 30, 2010) show revenue of \$1,000,709 and expenses of \$947,453. The Fund Balance stands at \$498,350.

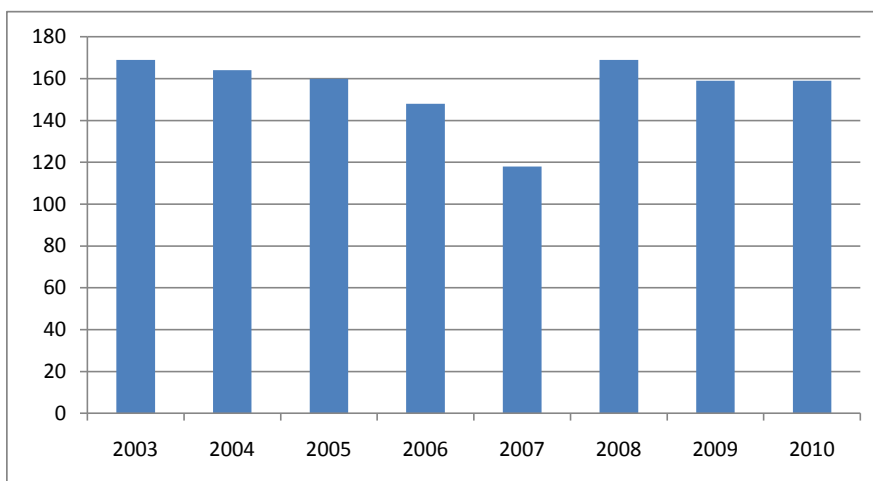
In addition to the collection of licensing fees, the Board also collects the Court's annual assessment fee on behalf of the Lawyers' Fund for Client Protection (Fund) and the Maine Assistance Program for Lawyers and Judges (MAP). The purpose of the Fund is to promote public confidence in the administration of justice and the integrity of the legal profession, by reimbursing clients who suffer losses caused by an attorney's dishonest conduct. Generally, such conduct involves the misuse of funds in the care of the attorney or the misappropriation of funds for the attorney's personal benefit. MAP has three purposes: to protect the interests of clients and the general public from harm caused by impaired lawyers or judges; to confidentially assist impaired members of the profession to begin and continue recovery; and to educate the bench, the bar, and the public as to the causes of and remedies for impairments affecting members of the legal profession.



## Bar Counsel File Statistics

### Yearly Totals

2003	169	
2004	164	-2.96%
2005	160	-2.44%
2006	148	-7.50%
2007	118	-20.27%
2008	169	43.22%
2009	159	-5.92%
2010	159	0.00%



## Respondents by County

County	2006		2007		2008		2009		2010	
Androscoggin	12	8.11%	7	5.93%	10	5.92%	9	5.66%	15	9.43%
Aroostook	9	6.08%	6	5.08%	10	5.92%	6	3.77%	5	3.14%
Cumberland	33	22.30%	36	30.51%	45	26.63%	42	26.42%	46	28.93%
Franklin	1	0.68%	0	0.00%	5	2.96%	2	1.26%	15	9.43%
Hancock	6	4.05%	6	5.08%	6	3.55%	3	1.89%	4	2.52%
Kennebec	16	10.81%	12	10.17%	24	14.20%	31	19.50%	15	9.43%
Knox	4	2.70%	3	2.54%	6	3.55%	4	2.52%	7	4.40%
Lincoln	2	1.35%	3	2.54%	2	1.18%	9	5.66%	3	1.89%
Oxford	5	3.38%	5	4.24%	3	1.78%	3	1.89%	11	6.92%
Penobscot	18	12.16%	17	14.41%	20	11.83%	21	13.21%	17	10.69%
Piscataquis	0	0.00%	0	0.00%	0	0.00%	0	0.00%	0	0.00%
Sagadahoc	1	0.68%	1	0.85%	2	1.18%	2	1.26%	3	1.89%
Somerset	4	2.70%	2	1.69%	1	0.59%	3	1.89%	0	0.00%
Waldo	3	2.03%	2	1.69%	5	2.96%	1	0.63%	2	1.26%
Washington	19	12.84%	0	0.00%	10	5.92%	1	0.63%	3	1.89%
York	5	3.38%	13	11.02%	15	8.88%	10	6.29%	10	6.29%
Out of State	10	6.76%	5	4.24%	5	2.96%	12	7.55%	3	1.89%
<b>Total:</b>	<b>148</b>		<b>118</b>		<b>169</b>		<b>159</b>		<b>159</b>	

Statistics are based on calendar year in which case was opened.

## BCF - Area of Law

	2006		2007		2008		2009		2010	
Administrative/Municipal Law	3	2.03%	2	1.69%	4	2.37%	10	6.29%	3	1.89%
ADR/Mediation/Arbitration	0	0.00%	0	0.00%	1	0.59%	0	0.00%	3	1.89%
Banking Law	2	1.35%	0	0.00%	0	0.00%	0	0.00%	0	0.00%
Bankruptcy Law	1	0.68%	0	0.00%	2	1.18%	4	2.52%	3	1.89%
Child Protection Law	0	0.00%	1	0.85%	2	1.18%	2	1.26%	2	1.26%
Civil Rights/Discrimination Law	0	0.00%	0	0.00%	0	0.00%	2	1.26%	0	0.00%
Collections Law	6	4.05%	5	4.24%	3	1.78%	4	2.52%	2	1.26%
Commercial/Business Law	6	4.05%	4	3.39%	8	4.73%	2	1.26%	6	3.77%
Contracts/Consumer Law	2	1.35%	0	0.00%	2	1.18%	1	0.63%	0	0.00%
Corporate Law	0	0.00%	0	0.00%	0	0.00%	1	0.63%	1	0.63%
Criminal Law	44	29.73%	31	26.27%	53	31.36%	37	23.27%	36	22.64%
Education Law	0	0.00%	0	0.00%	0	0.00%	2	1.26%	0	0.00%
Elder Law	1	0.68%	1	0.85%	2	1.18%	2	1.26%	2	1.26%
Employment Law	0	0.00%	0	0.00%	0	0.00%	4	2.52%	3	1.89%
Environmental Law	1	0.68%	0	0.00%	0	0.00%	0	0.00%	0	0.00%
Family Law	35	23.65%	32	27.12%	39	23.08%	43	27.04%	34	21.38%
Foreclosure Law	0	0.00%	1	0.85%	1	0.59%	1	0.63%	1	0.63%
Juvenile Law	2	1.35%	0	0.00%	0	0.00%	1	0.63%	0	0.00%
Labor Law	0	0.00%	1	0.85%	1	0.59%	0	0.00%	0	0.00%
Landlord/Tenant Law	0	0.00%	4	3.39%	2	1.18%	3	1.89%	3	1.89%
Law-Related Services	0	0.00%	0	0.00%	5	2.96%	1	0.63%	1	0.63%
Other/Unknown	16	10.81%	3	2.54%	7	4.14%	12	7.55%	6	3.77%
PFA/Harassment	0	0.00%	2	1.69%	2	1.18%	1	0.63%	0	0.00%
Real Estate Law	13	8.78%	10	8.47%	14	8.28%	10	6.29%	25	15.72%
Social Security Law	0	0.00%	0	0.00%	0	0.00%	0	0.00%	3	1.89%
Taxation Law	0	0.00%	1	0.85%	1	0.59%	0	0.00%	0	0.00%
Torts	2	1.35%	8	6.78%	6	3.55%	6	3.77%	4	2.52%
Wills/Estates/Probate	11	7.43%	11	9.32%	12	7.10%	9	5.66%	19	11.95%
Workers' Compensation	3	2.03%	1	0.85%	2	1.18%	1	0.63%	2	1.26%
<b>Total:</b>	<b>148</b>		<b>118</b>		<b>169</b>		<b>159</b>		<b>159</b>	

## BCF - Complaint Source

	2006		2007		2008		2009		2010	
Attorney	1	0.68%	2	1.69%	1	0.59%	1	0.63%	4	2.52%
Client	55	37.16%	38	32.20%	71	42.01%	41	25.79%	39	24.53%
Judge	1	0.68%	0	0.00%	1	0.59%	1	0.63%	0	0.00%
Opposing Counsel	3	2.03%	0	0.00%	1	0.59%	0	0.00%	2	1.26%
Opposing Party	51	34.46%	47	39.83%	55	32.54%	37	23.27%	55	34.59%
Other	37	25.00%	31	26.27%	40	23.67%	79	49.69%	59	37.11%
<b>Total:</b>	<b>148</b>		<b>118</b>		<b>169</b>		<b>159</b>		<b>159</b>	

Statistics are based on calendar year in which case was opened.

# BCF Complaints by Disposition

Open Year	Individual Cases by Open Year					Distinct Respondents by Open Year				
	2006	2007	2008	2009	2010	2006	2007	2008	2009	2010
BCF Dismissal	120	88	119	136	99	104	77	109	117	80
BCF Dismissal with Investigation*	0	0	0	0	24	0	0	0	0	24
BCF Dismissal without Investigation*	0	0	0	0	19	0	0	0	0	19
BCF Lay Review Dismissal Approved	28	29	48	25	22	28	26	43	25	22
BCF Lay Review Dismissal Disapproved	0	0	0	0	0	0	0	0	0	0
Elevated to GCF	0	1	2	2	3	0	1	2	2	3
<b>Total:</b>	<b>148</b>	<b>118</b>	<b>169</b>	<b>163</b>	<b>167</b>	<b>132</b>	<b>104</b>	<b>154</b>	<b>144</b>	<b>148</b>

Statistics are based on calendar year in which case was opened.

Close Year	Individual Cases by Close Year					Distinct Respondents by Close Year				
	2006	2007	2008	2009	2010	2006	2007	2008	2009	2010
BCF Dismissal	122	82	125	140	110	106	75	115	121	89
BCF Dismissal with Investigation*	0	0	0	0	23	0	0	0	0	23
BCF Dismissal without Investigation*	0	0	0	0	19	0	0	0	0	19
BCF Lay Review Dismissal Approved	25	29	42	31	25	25	27	39	30	25
BCF Lay Review Dismissal Disapproved	0	0	0	0	0	0	0	0	0	0
Elevated to GCF	0	1	0	3	4	0	1	0	3	4
<b>Total:</b>	<b>147</b>	<b>112</b>	<b>167</b>	<b>174</b>	<b>181</b>	<b>131</b>	<b>103</b>	<b>154</b>	<b>154</b>	<b>160</b>

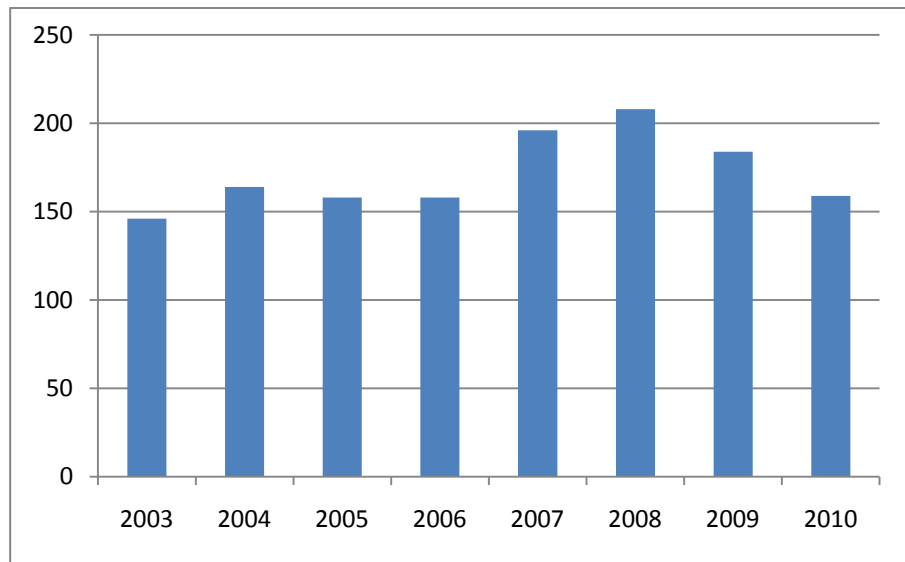
Statistics are based on calendar year in which case was closed.

\*Midway through 2010, a system change was implemented to clarify that BCF files were dismissed with or without an investigation.

## Grievance Commission Statistics

### Yearly Totals

Year	Total	Variance
2003	146	
2004	164	12.33%
2005	158	-3.66%
2006	158	0.00%
2007	196	24.05%
2008	208	6.12%
2009	184	-11.54%
2010	159	-13.59%



## Respondent County

County	2006		2007		2008		2009		2010	
Androscoggin	9	5.70%	20	10.20%	12	5.77%	10	5.43%	12	7.55%
Aroostook	9	5.70%	9	4.59%	3	1.44%	10	5.43%	7	4.40%
Cumberland	48	30.38%	63	32.14%	74	35.58%	55	29.89%	42	26.42%
Franklin	0	0.00%	1	0.51%	1	0.48%	0	0.00%	1	0.63%
Hancock	9	5.70%	7	3.57%	4	1.92%	8	4.35%	11	6.92%
Kennebec	14	8.86%	17	8.67%	27	12.98%	23	12.50%	10	6.29%
Knox	3	1.90%	6	3.06%	5	2.40%	4	2.17%	10	6.29%
Lincoln	8	5.06%	4	2.04%	3	1.44%	5	2.72%	6	3.77%
Oxford	4	2.53%	11	5.61%	9	4.33%	6	3.26%	3	1.89%
Penobscot	16	10.13%	20	10.20%	27	12.98%	26	14.13%	19	11.95%
Piscataquis	1	0.63%	0	0.00%	2	0.96%	0	0.00%	0	0.00%
Sagadahoc	6	3.80%	4	2.04%	7	3.37%	7	3.80%	3	1.89%
Somerset	1	0.63%	1	0.51%	3	1.44%	1	0.54%	1	0.63%
Waldo	1	0.63%	3	1.53%	4	1.92%	1	0.54%	7	4.40%
Washington	2	1.27%	3	1.53%	4	1.92%	2	1.09%	3	1.89%
York	24	15.19%	18	9.18%	17	8.17%	16	8.70%	15	9.43%
Out-of-State	3	1.90%	9	4.59%	6	2.88%	10	5.43%	9	5.66%
<b>Total:</b>	<b>158</b>		<b>196</b>		<b>208</b>		<b>184</b>		<b>159</b>	

# GFC Complaints by Area of Law

By Open Year

	2006		2007		2008		2009		2010	
Administrative/Municipal Law	6	3.80%	11	5.61%	11	5.29%	1	0.54%	3	1.89%
Antitrust Law	0	0.00%	0	0.00%	0	0.00%	0	0.00%	0	0.00%
Banking Law	0	0.00%	1	0.51%	0	0.00%	0	0.00%	0	0.00%
Bankruptcy Law	0	0.00%	2	1.02%	1	0.48%	7	3.80%	5	3.14%
Child Protection	0	0.00%	1	0.51%	1	0.48%	1	0.54%	0	0.00%
Civil Rights/Discrimination Law	0	0.00%	0	0.00%	0	0.00%	0	0.00%	1	0.63%
Collections Law	4	2.53%	4	2.04%	4	1.92%	5	2.72%	2	1.26%
Commercial/Business	6	3.80%	3	1.53%	12	5.77%	12	6.52%	10	6.29%
Contracts/Consumer	8	5.06%	3	1.53%	3	1.44%	3	1.63%	2	1.26%
Corporate Law	0	0.00%	1	0.51%	5	2.40%	0	0.00%	0	0.00%
Criminal Law	27	17.09%	41	20.92%	44	21.15%	28	15.22%	23	14.47%
Elder Law	2	1.27%	3	1.53%	1	0.48%	4	2.17%	0	0.00%
Election Law	0	0.00%	0	0.00%	0	0.00%	1	0.54%	0	0.00%
Employment Law	0	0.00%	0	0.00%	0	0.00%	9	4.89%	2	1.26%
Environmental Law	0	0.00%	0	0.00%	1	0.48%	0	0.00%	0	0.00%
Family Law	35	22.15%	43	21.94%	49	23.56%	49	26.63%	38	23.90%
Foreclosure Law	0	0.00%	1	0.51%	1	0.48%	0	0.00%	1	0.63%
General Practice	0	0.00%	0	0.00%	0	0.00%	2	1.09%	1	0.63%
Health Law	0	0.00%	0	0.00%	0	0.00%	0	0.00%	1	0.63%
Immigration and Naturalization Law	1	0.63%	0	0.00%	1	0.48%	0	0.00%	0	0.00%
Indian Law	0	0.00%	0	0.00%	0	0.00%	1	0.54%	0	0.00%
Insurance Law	0	0.00%	0	0.00%	0	0.00%	0	0.00%	1	0.63%
Intellectual Property	0	0.00%	1	0.51%	1	0.48%	0	0.00%	0	0.00%
Labor Law	1	0.63%	0	0.00%	1	0.48%	1	0.54%	1	0.63%
Landlord/Tenant	3	1.90%	2	1.02%	0	0.00%	1	0.54%	2	1.26%
Law Practice Management	0	0.00%	0	0.00%	0	0.00%	17	9.24%	18	11.32%
Law-Related Services	0	0.00%	2	1.02%	3	1.44%	0	0.00%	0	0.00%
PFA/Harassment	0	0.00%	0	0.00%	4	1.92%	3	1.63%	1	0.63%
Real Estate	21	13.29%	18	9.18%	16	7.69%	7	3.80%	11	6.92%
Reinstatement	0	0.00%	0	0.00%	0	0.00%	2	1.09%	2	1.26%
Social Security Law	0	0.00%	0	0.00%	0	0.00%	2	1.09%	1	0.63%
Taxation	2	1.27%	0	0.00%	0	0.00%	0	0.00%	2	1.26%
Torts	9	5.70%	27	13.78%	16	7.69%	14	7.61%	5	3.14%
Wills/Estates/Probate	18	11.39%	25	12.76%	25	12.02%	13	7.07%	19	11.95%
Workers' Compensation	1	0.63%	3	1.53%	2	0.96%	1	0.54%	0	0.00%
Other	14	8.86%	4	2.04%	6	2.88%	0	0.00%	7	4.40%
<b>Total:</b>	<b>158</b>		<b>196</b>		<b>208</b>		<b>184</b>		<b>159</b>	

### GCF Complaints Area of Law - Sanctioned Cases - By Open Year

	2006		2007		2008		2009		2010	
Administrative/Municipal Law	0	0.00%	1	2.70%	3	5.36%	0	0.00%	1	4.76%
Bankruptcy Law	0	0.00%	1	2.70%	1	1.79%	1	2.22%	0	0.00%
Child Protection Law	0	0.00%	1	2.70%	1	1.79%	1	2.22%	0	0.00%
Collections Law	0	0.00%	0	0.00%	0	0.00%	2	4.44%	0	0.00%
Commercial/Business Law	4	8.51%	0	0.00%	1	1.79%	3	6.67%	0	0.00%
Contracts/Consumer Law	2	4.26%	1	2.70%	1	1.79%	2	4.44%	1	4.76%
Corporate Law	0	0.00%	0	0.00%	2	3.57%	0	0.00%	0	0.00%
Criminal Law	6	12.77%	7	18.92%	6	10.71%	4	8.89%	4	19.05%
Elder Law	0	0.00%	1	2.70%	0	0.00%	0	0.00%	0	0.00%
Employment Law	0	0.00%	0	0.00%	0	0.00%	1	2.22%	0	0.00%
Family Law	11	23.40%	6	16.22%	19	33.93%	7	15.56%	2	9.52%
General Practice	0	0.00%	0	0.00%	0	0.00%	2	4.44%	1	4.76%
Health Law	0	0.00%	0	0.00%	0	0.00%	0	0.00%	1	4.76%
Landlord/Tenant Law	1	2.13%	0	0.00%	0	0.00%	0	0.00%	0	0.00%
Law Practice Management	0	0.00%	0	0.00%	0	0.00%	12	26.67%	8	38.10%
Other	4	8.51%	0	0.00%	3	5.36%	0	0.00%	0	0.00%
PFA/Harassment	0	0.00%	0	0.00%	0	0.00%	2	4.44%	0	0.00%
Real Estate Law	9	19.15%	5	13.51%	4	7.14%	3	6.67%	1	4.76%
Taxation Law	2	4.26%	0	0.00%	0	0.00%	0	0.00%	0	0.00%
Torts	4	8.51%	8	21.62%	6	10.71%	2	4.44%	0	0.00%
Wills/Estates/Probate	4	8.51%	6	16.22%	9	16.07%	3	6.67%	2	9.52%
<b>Total:</b>	<b>47</b>		<b>37</b>		<b>56</b>		<b>45</b>		<b>21</b>	

### GCF Complaints Area of Law - Sanctioned Cases - By Close Year

	2006		2007		2008		2009		2010	
Administrative/Municipal Law	2	3.39%	1	2.86%	2	5.88%	1	1.45%	2	3.39%
Banking Law	2	3.39%	0	0.00%	0	0.00%	0	0.00%	0	0.00%
Bankruptcy Law	0	0.00%	0	0.00%	1	2.94%	0	0.00%	2	3.39%
Child Protection Law	1	1.69%	0	0.00%	0	0.00%	2	2.90%	1	1.69%
Collections Law	2	3.39%	0	0.00%	0	0.00%	0	0.00%	2	3.39%
Commercial/Business Law	5	8.47%	1	2.86%	1	2.94%	2	2.90%	3	5.08%
Contracts/Consumer Law	3	5.08%	1	2.86%	2	5.88%	2	2.90%	2	3.39%
Corporate Law	0	0.00%	1	2.86%	0	0.00%	2	2.90%	0	0.00%
Criminal Law	7	11.86%	8	22.86%	3	8.82%	6	8.70%	9	15.25%
Elder Law	0	0.00%	0	0.00%	1	2.94%	0	0.00%	0	0.00%
Employment Law	0	0.00%	0	0.00%	0	0.00%	1	1.45%	0	0.00%
Family Law	7	11.86%	6	17.14%	8	23.53%	18	26.09%	10	16.95%
Foreclosure Law	1	1.69%	0	0.00%	0	0.00%	0	0.00%	0	0.00%
General Practice	0	0.00%	0	0.00%	0	0.00%	1	1.45%	2	3.39%
Health Law	0	0.00%	0	0.00%	0	0.00%	0	0.00%	1	1.69%
Juvenile Law	1	1.69%	0	0.00%	0	0.00%	0	0.00%	0	0.00%
Landlord/Tenant Law	1	1.69%	0	0.00%	0	0.00%	0	0.00%	0	0.00%
Law Practice Management	0	0.00%	0	0.00%	0	0.00%	7	10.14%	13	22.03%
Other	6	10.17%	0	0.00%	0	0.00%	3	4.35%	0	0.00%
PFA/Harassment	0	0.00%	0	0.00%	0	0.00%	0	0.00%	2	3.39%
Real Estate Law	11	18.64%	7	20.00%	3	8.82%	9	13.04%	3	5.08%
Taxation Law	3	5.08%	0	0.00%	0	0.00%	0	0.00%	0	0.00%
Torts	1	1.69%	8	22.86%	6	17.65%	5	7.25%	2	3.39%
Wills/Estates/Probate	6	10.17%	2	5.71%	7	20.59%	10	14.49%	5	8.47%
<b>Total:</b>	<b>59</b>		<b>35</b>		<b>34</b>		<b>69</b>		<b>59</b>	

### GCF Complaints Area of Law - Disciplined Cases - By Open Year

	2006		2007		2008		2009		2010	
Administrative/Municipal Law	0	0.00%	0	0.00%	3	10.34%	0	0.00%	0	0.00%
Bankruptcy Law	0	0.00%	1	3.85%	1	3.45%	0	0.00%	0	0.00%
Child Protection Law	0	0.00%	1	3.85%	1	3.45%	0	0.00%	0	0.00%
Collections Law	0	0.00%	0	0.00%	0	0.00%	1	6.67%	0	0.00%
Commercial/Business Law	4	18.18%	0	0.00%	1	3.45%	3	20.00%	0	0.00%
Contracts/Consumer Law	2	9.09%	1	3.85%	0	0.00%	1	6.67%	0	0.00%
Corporate Law	0	0.00%	0	0.00%	1	3.45%	0	0.00%	0	0.00%
Criminal Law	4	18.18%	2	7.69%	4	13.79%	0	0.00%	0	0.00%
Elder Law	0	0.00%	1	3.85%	0	0.00%	0	0.00%	0	0.00%
Environmental Law	0	0.00%	0	0.00%	0	0.00%	0	0.00%	0	0.00%
Family Law	3	13.64%	4	15.38%	7	24.14%	2	13.33%	0	0.00%
General Practice	0	0.00%	0	0.00%	0	0.00%	0	0.00%	1	33.33%
Labor Law	0	0.00%	0	0.00%	0	0.00%	0	0.00%	0	0.00%
Law Practice Management	0	0.00%	0	0.00%	0	0.00%	2	13.33%	1	33.33%
Other	2	9.09%	0	0.00%	3	10.34%	0	0.00%	0	0.00%
PFA/Harassment	0	0.00%	0	0.00%	0	0.00%	1	6.67%	0	0.00%
Real Estate Law	4	18.18%	4	15.38%	3	10.34%	1	6.67%	0	0.00%
Taxation Law	2	9.09%	0	0.00%	0	0.00%	0	0.00%	0	0.00%
Torts	0	0.00%	7	26.92%	1	3.45%	2	13.33%	0	0.00%
Wills/Estates/Probate	1	4.55%	5	19.23%	4	13.79%	2	13.33%	1	33.33%
<b>Total:</b>	<b>22</b>		<b>26</b>		<b>29</b>		<b>15</b>		<b>3</b>	

### GCF Complaints Area of Law - Disciplined Cases - By Close Year

	2006		2007		2008		2009		2010	
Administrative/Municipal Law	1	2.78%	0	0.00%	2	9.09%	1	3.13%	1	3.85%
Banking Law	2	5.56%	0	0.00%	0	0.00%	0	0.00%	0	0.00%
Bankruptcy Law	0	0.00%	0	0.00%	1	4.55%	0	0.00%	1	3.85%
Child Protection Law	0	0.00%	0	0.00%	0	0.00%	2	6.25%	0	0.00%
Collections Law	2	5.56%	0	0.00%	0	0.00%	0	0.00%	1	3.85%
Commercial/Business Law	4	11.11%	1	7.14%	1	4.55%	2	6.25%	3	11.54%
Contracts/Consumer Law	3	8.33%	1	7.14%	2	9.09%	0	0.00%	1	3.85%
Corporate Law	0	0.00%	1	7.14%	0	0.00%	1	3.13%	0	0.00%
Criminal Law	6	16.67%	3	21.43%	1	4.55%	2	6.25%	3	11.54%
Elder Law	0	0.00%	0	0.00%	1	4.55%	0	0.00%	0	0.00%
Family Law	0	0.00%	1	7.14%	3	13.64%	8	25.00%	5	19.23%
Foreclosure Law	1	2.78%	0	0.00%	0	0.00%	0	0.00%	0	0.00%
General Practice	0	0.00%	0	0.00%	0	0.00%	0	0.00%	1	3.85%
Juvenile Law	1	2.78%	0	0.00%	0	0.00%	0	0.00%	0	0.00%
Law Practice Management	0	0.00%	0	0.00%	0	0.00%	0	0.00%	3	11.54%
Other	4	11.11%	0	0.00%	0	0.00%	3	9.38%	0	0.00%
PFA/Harassment	0	0.00%	0	0.00%	0	0.00%	0	0.00%	1	3.85%
Real Estate Law	4	11.11%	3	21.43%	3	13.64%	6	18.75%	0	0.00%
Taxation Law	3	8.33%	0	0.00%	0	0.00%	0	0.00%	0	0.00%
Torts	1	2.78%	4	28.57%	3	13.64%	2	6.25%	2	7.69%
Wills/Estates/Probate	4	11.11%	0	0.00%	5	22.73%	5	15.63%	4	15.38%
<b>Total:</b>	<b>36</b>		<b>14</b>		<b>22</b>		<b>32</b>		<b>26</b>	

## GCF Complaints by Disposition

Open Year	Individual Cases by Case Opened Year					Distinct Respondents by Case Opened Year				
	2006	2007	2008	2009	2010	2006	2007	2008	2009	2010
Case Review Dismissal	107	150	135	122	67	96	131	119	111	60
Case Review Dismissal With Warning	19	11	25	27	18	18	10	24	26	18
Hearing Dismissal	3	4	5	1	0	3	3	5	1	0
Hearing Dismissal With Warning	6	0	2	4	0	5	0	2	4	0
Hearing Reprimand	8	15	17	7	2	7	13	14	6	2
Court Reprimand	1	6	0	0	0	1	6	0	0	0
Court Suspension	6	4	9	8	2	2	2	5	4	2
Court Resignation	0	1	2	0	0	0	1	2	0	0
Court Disbarment	7	1	2	0	0	2	1	2	0	0
Court Reinstatement Denied	1	0	0	1	2	1	0	0	1	2
<b>Total:</b>	<b>158</b>	<b>192</b>	<b>197</b>	<b>170</b>	<b>91</b>	<b>135</b>	<b>167</b>	<b>173</b>	<b>153</b>	<b>84</b>

Close Year	Individual Cases by Case Closed Year					Distinct Respondents by Case Closed Year				
	2006	2007	2008	2009	2010	2006	2007	2008	2009	2010
Case Review Dismissal	129	124	103	161	109	107	107	91	138	94
Case Review Dismissal With Warning	17	15	12	34	30	16	15	12	34	27
Hearing Dismissal	0	3	3	3	6	0	3	2	3	6
Hearing Dismissal With Warning	6	6	0	3	4	6	5	0	3	4
Hearing Reprimand	15	5	14	21	11	10	5	9	16	10
Court Reprimand	1	4	3	1	0	1	4	3	1	0
Court Suspension	8	2	3	7	16	3	2	3	3	6
Court Resignation	2	2	0	2	0	2	1	0	2	0
Court Disbarment	10	1	2	3	0	2	1	1	1	0
Court Reinstatement Denied	0	1	0	0	2	0	1	0	0	2
<b>Total:</b>	<b>188</b>	<b>163</b>	<b>140</b>	<b>235</b>	<b>178</b>	<b>147</b>	<b>144</b>	<b>121</b>	<b>201</b>	<b>149</b>



### GCF Complaint by Firm Size - By Open Year

Firm Size	2006		2007		2008		2009		2010	
1	65	41.14%	58	29.59%	85	40.87%	86	46.74%	77	48.43%
2 - 5	58	36.71%	93	47.45%	72	34.62%	59	32.07%	53	33.33%
6 - 9	13	8.23%	21	10.71%	14	6.73%	13	7.07%	6	3.77%
10 - 19	6	3.80%	12	6.12%	11	5.29%	8	4.35%	3	1.89%
20 - 49	5	3.16%	1	0.51%	4	1.92%	9	4.89%	9	5.66%
50 - 99	1	0.63%	4	2.04%	9	4.33%	0	0.00%	1	0.63%
100+	2	1.27%	2	1.02%	6	2.88%	0	0.00%	1	0.63%
Unknown	8	5.06%	5	2.55%	7	3.37%	9	4.89%	9	5.66%
<b>Total:</b>	<b>158</b>		<b>196</b>		<b>208</b>		<b>184</b>		<b>159</b>	

### GCF Complaint by Age - By Open Year

Age	2006		2007		2008		2009		2010	
29 or less	0	0.00%	1	0.51%	1	0.48%	2	1.09%	0	0.00%
30 - 34	3	1.90%	7	3.57%	12	5.77%	15	8.15%	8	5.03%
35 - 39	11	6.96%	12	6.12%	13	6.25%	18	9.78%	10	6.29%
40 - 44	14	8.86%	11	5.61%	15	7.21%	17	9.24%	21	13.21%
45 - 49	35	22.15%	37	18.88%	38	18.27%	32	17.39%	23	14.47%
50 - 54	39	24.68%	37	18.88%	34	16.35%	31	16.85%	25	15.72%
55 - 59	25	15.82%	42	21.43%	40	19.23%	30	16.30%	29	18.24%
60 - 64	18	11.39%	30	15.31%	34	16.35%	21	11.41%	26	16.35%
65+	12	7.59%	17	8.67%	21	10.10%	18	9.78%	17	10.69%
Unknown	1	0.63%	2	1.02%	0	0.00%	0	0.00%	0	0.00%
<b>Total:</b>	<b>158</b>		<b>196</b>		<b>208</b>		<b>184</b>		<b>159</b>	

### GFC Complaints by Source - By Open Year

	2006		2007		2008		2009		2010	
Attorney	1	0.63%	4	2.04%	14	6.73%	17	9.24%	6	3.77%
Beneficiary	0	0.00%	0	0.00%	0	0.00%	0	0.00%	2	1.26%
Client	84	53.16%	94	47.96%	117	56.25%	86	46.74%	83	52.20%
Judge	5	3.16%	4	2.04%	6	2.88%	0	0.00%	1	0.63%
Opposing Counsel	4	2.53%	9	4.59%	8	3.85%	1	0.54%	3	1.89%
Opposing Party	37	23.42%	43	21.94%	27	12.98%	16	8.70%	21	13.21%
Sua Sponte	3	1.90%	8	4.08%	9	4.33%	25	13.59%	21	13.21%
Other	24	15.19%	34	17.35%	27	12.98%	39	21.20%	22	13.84%
<b>Total:</b>	<b>158</b>		<b>196</b>		<b>208</b>		<b>184</b>		<b>159</b>	

## Registration Demographics

	2006		2007		2008		2009		2010	
<b>Resident</b>										
Active	3576	74.21%	3599	73.77%	3638	73.35%	3665	72.76%	3721	72.55%
Emeritus	3	0.06%	3	0.06%	3	0.06%	5	0.10%	5	0.10%
Judicial	76	1.58%	79	1.62%	78	1.57%	75	1.49%	78	1.52%
Law Clerk	0		0		0		27	0.54%	26	0.51%
<b>Non-Resident</b>										
Active	1164	24.15%	1198	24.55%	1241	25.02%	1264	25.09%	1297	25.29%
Judicial	0	0.00%	0	0.00%	0	0.00%	0	0.00%	0	0.00%
Law Clerk	0		0		0		1	0.02%	2	0.04%
<b>Total:</b>	<b>4819</b>		<b>4879</b>		<b>4960</b>		<b>5037</b>		<b>5129</b>	
Increase over prior year.			60	1.25%	81	1.66%	77	1.55%	92	1.83%

## Admission by Year

	2006		2007		2008		2009		2010	
1/1/1935 - 12/31/1939	2	0.10%	2	0.08%	2	0.04%	2	0.04%	2	0.04%
1/1/1940 - 12/31/1944	1	0.87%	0	0.80%	0	0.00%	0	0.00%	0	0.00%
1/1/1945 - 12/31/1949	5	0.46%	4	0.43%	3	0.06%	2	0.04%	0	0.00%
1/1/1950 - 12/31/1954	42	1.39%	39	1.33%	27	0.54%	25	0.50%	21	0.41%
1/1/1955 - 12/31/1959	22	2.14%	21	2.09%	25	0.50%	21	0.42%	20	0.39%
1/1/1960 - 12/31/1964	67	8.99%	65	8.67%	47	0.95%	43	0.85%	42	0.82%
1/1/1965 - 12/31/1969	103	8.94%	102	8.73%	115	2.32%	110	2.18%	106	2.07%
1/1/1970 - 12/31/1974	433	15.02%	423	14.59%	333	6.71%	326	6.47%	321	6.26%
1/1/1975 - 12/31/1979	431	13.22%	426	12.89%	501	10.10%	495	9.83%	489	9.53%
1/1/1980 - 12/31/1984	724	17.41%	712	16.91%	562	11.33%	555	11.02%	544	10.61%
1/1/1985 - 12/31/1989	637	11.54%	629	11.09%	773	15.58%	758	15.05%	749	14.60%
1/1/1990 - 12/31/1994	839	16.68%	825	15.90%	694	13.99%	682	13.54%	672	13.10%
1/1/1995 - 12/31/1999	556	3.17%	541	6.44%	660	13.31%	655	13.00%	653	12.73%
1/1/2000 - 12/31/2004	804	16.68%	776	15.90%	619	12.48%	606	12.03%	601	11.72%
1/1/2005 - 12/31/2009	153	3.17%	314	6.44%	599	12.08%	757	15.03%	747	14.56%
1/1/2010 - 12/31/2014	0	0.00%	0	0.00%	0	0.00%	0	0.00%	162	3.16%
<b>Total:</b>	<b>4819</b>		<b>4879</b>		<b>4960</b>		<b>5037</b>		<b>5129</b>	

## County Demographics

County	2006		2007		2008		2009		2010	
Androscoggin	198	4.11%	201	4.12%	204	4.11%	209	4.15%	220	4.29%
Aroostook	75	1.56%	77	1.58%	76	1.53%	78	1.55%	79	1.54%
Cumberland	1768	36.69%	1789	36.67%	1817	36.63%	1851	36.75%	1873	36.52%
Franklin	33	0.68%	32	0.66%	30	0.60%	32	0.64%	30	0.58%
Hancock	99	2.05%	100	2.05%	101	2.04%	98	1.95%	102	1.99%
Kennebec	466	9.67%	469	9.61%	477	9.62%	469	9.31%	475	9.26%
Knox	92	1.91%	93	1.91%	97	1.96%	98	1.95%	95	1.85%
Lincoln	72	1.49%	72	1.48%	72	1.45%	72	1.43%	81	1.58%
Oxford	46	0.95%	44	0.90%	44	0.89%	44	0.87%	45	0.88%
Penobscot	337	6.99%	334	6.85%	340	6.85%	342	6.79%	342	6.67%
Piscataquis	8	0.17%	9	0.18%	6	0.12%	7	0.14%	8	0.16%
Sagadahoc	63	1.31%	72	1.48%	74	1.49%	76	1.51%	83	1.62%
Somerset	45	0.93%	41	0.84%	40	0.81%	41	0.81%	40	0.78%
Waldo	35	0.73%	38	0.78%	37	0.75%	37	0.73%	37	0.72%
Washington	32	0.66%	31	0.64%	29	0.58%	29	0.58%	30	0.58%
York	291	6.04%	291	5.96%	289	5.83%	289	5.74%	286	5.58%
Out-of-State	1159	24.05%	1186	24.31%	1227	24.74%	1265	25.11%	1303	25.40%
<b>Total:</b>	<b>4819</b>		<b>4879</b>		<b>4960</b>		<b>5037</b>		<b>5129</b>	

## Variance over Prior Year

County	2006		2007		2008		2009		2010	
Androscoggin	198	0.51%	201	1.52%	204	1.49%	209	2.45%	220	5.26%
Aroostook	75	-2.60%	77	2.67%	76	-1.30%	78	2.63%	79	1.28%
Cumberland	1768	2.37%	1789	1.19%	1817	1.57%	1851	1.87%	1873	1.19%
Franklin	33	-5.71%	32	-3.03%	30	-6.25%	32	6.67%	30	-6.25%
Hancock	99	5.32%	100	1.01%	101	1.00%	98	-2.97%	102	4.08%
Kennebec	466	0.43%	469	0.64%	477	1.71%	469	-1.68%	475	1.28%
Knox	92	4.55%	93	1.09%	97	4.30%	98	1.03%	95	-3.06%
Lincoln	72	1.41%	72	0.00%	72	0.00%	72	0.00%	81	12.50%
Oxford	46	4.55%	44	-4.35%	44	0.00%	44	0.00%	45	2.27%
Penobscot	337	3.06%	334	-0.89%	340	1.80%	342	0.59%	342	0.00%
Piscataquis	8	0.00%	9	12.50%	6	-33.33%	7	16.67%	8	14.29%
Sagadahoc	63	-3.08%	72	14.29%	74	2.78%	76	2.70%	83	9.21%
Somerset	45	4.65%	41	-8.89%	40	-2.44%	41	2.50%	40	-2.44%
Waldo	35	-2.78%	38	8.57%	37	-2.63%	37	0.00%	37	0.00%
Washington	32	3.23%	31	-3.13%	29	-6.45%	29	0.00%	30	3.45%
York	291	1.39%	291	0.00%	289	-0.69%	289	0.00%	286	-1.04%
Out-of-State	1159	-0.60%	1186	2.33%	1227	3.46%	1265	3.10%	1303	3.00%
<b>Total:</b>	<b>4819</b>		<b>4879</b>	1.25%	<b>4960</b>	1.66%	<b>5037</b>	1.55%	<b>5129</b>	1.83%

## Age Demographics

	2006		2007		2008		2009		2010	
29 or Less	113	2.34%	117	2.40%	172	3.47%	128	2.54%	142	2.77%
30 - 34	333	6.91%	342	7.01%	377	7.60%	364	7.23%	378	7.37%
35 - 39	543	11.27%	506	10.37%	522	10.52%	466	9.25%	449	8.75%
40 - 44	558	11.58%	572	11.72%	582	11.73%	592	11.75%	604	11.78%
45 - 49	769	15.96%	711	14.57%	712	14.35%	641	12.73%	599	11.68%
50 - 54	810	16.81%	822	16.85%	821	16.55%	790	15.68%	784	15.29%
55 - 59	774	16.06%	771	15.80%	767	15.46%	809	16.06%	803	15.66%
60 - 64	547	11.35%	614	12.58%	606	12.22%	697	13.84%	721	14.06%
65+	372	7.72%	424	8.69%	401	8.08%	550	10.92%	649	12.65%
<b>Total:</b>	<b>4819</b>		<b>4879</b>		<b>4960</b>		<b>5037</b>		<b>5129</b>	

## Gender Demographics

	2006		2007		2008		2009		2010	
Female	1503	31.19%	1551	31.79%	1601	32.28%	1639	32.54%	1726	33.65%
Male	3316	68.81%	3328	68.21%	3359	67.72%	3398	67.46%	3403	66.35%
<b>Total:</b>	<b>4819</b>		<b>4879</b>		<b>4960</b>		<b>5037</b>		<b>5129</b>	

Female	2006		2007		2008		2009		2010	
29 or Less	73	1.51%	82	1.68%	108	2.18%	70	1.39%	78	1.52%
30 - 34	156	3.24%	176	3.61%	190	3.83%	202	4.01%	213	4.15%
35 - 39	206	4.27%	188	3.85%	197	3.97%	192	3.81%	196	3.82%
40 - 44	213	4.42%	213	4.37%	219	4.42%	216	4.29%	230	4.48%
45 - 49	259	5.37%	255	5.23%	257	5.18%	241	4.78%	229	4.46%
50 - 54	273	5.67%	287	5.88%	286	5.77%	274	5.44%	278	5.42%
55 - 59	195	4.05%	188	3.85%	186	3.75%	236	4.69%	260	5.07%
60 - 64	105	2.18%	131	2.68%	128	2.58%	150	2.98%	167	3.26%
65+	23	0.48%	31	0.64%	30	0.60%	58	1.15%	75	1.46%

Male	2006		2007		2008		2009		2010	
29 or Less	40	0.83%	35	0.72%	64	1.29%	58	1.15%	64	1.25%
30 - 34	177	3.67%	166	3.40%	187	3.77%	162	3.22%	165	3.22%
35 - 39	337	6.99%	318	6.52%	325	6.55%	274	5.44%	253	4.93%
40 - 44	345	7.16%	359	7.36%	363	7.32%	376	7.46%	374	7.29%
45 - 49	510	10.58%	456	9.35%	455	9.17%	400	7.94%	370	7.21%
50 - 54	537	11.14%	535	10.97%	535	10.79%	516	10.24%	506	9.87%
55 - 59	579	12.01%	583	11.95%	581	11.71%	573	11.38%	543	10.59%
60 - 64	442	9.17%	483	9.90%	478	9.64%	547	10.86%	554	10.80%
65+	349	7.24%	393	8.05%	371	7.48%	492	9.77%	574	11.19%
<b>Total:</b>	<b>4819</b>		<b>4879</b>		<b>4960</b>		<b>5037</b>		<b>5129</b>	

## Firm Size

Firm Size	2006		2007		2008		2009		2010	
Solo	1337	27.74%	1369	28.06%	1387	27.96%	1413	28.05%	1415	27.59%
2 - 5	1194	24.78%	1248	25.58%	1211	24.42%	1200	23.82%	1197	23.34%
6 - 9	374	7.76%	420	8.61%	435	8.77%	407	8.08%	421	8.21%
10 - 19	441	9.15%	429	8.79%	439	8.85%	428	8.50%	420	8.19%
20 - 49	382	7.93%	362	7.42%	400	8.06%	408	8.10%	406	7.92%
50 - 99	223	4.63%	313	6.42%	308	6.21%	310	6.15%	301	5.87%
100+	460	9.55%	362	7.42%	378	7.62%	387	7.68%	376	7.33%
N/A	408	8.47%	376	7.71%	402	8.10%	484	9.61%	593	11.56%
<b>Total:</b>	<b>4819</b>		<b>4879</b>		<b>4960</b>		<b>5037</b>		<b>5129</b>	
Variance over prior year.			1.25%		1.66%		1.55%		1.83%	

## Practice Type

Firm Size	2006		2007		2008		2009		2010	
Government	514	10.67%	528	10.82%	530	10.69%	528	10.48%	532	10.37%
In-House/Corporate Counsel	279	5.79%	294	6.03%	311	6.27%	325	6.45%	317	6.18%
Judiciary	71	1.47%	78	1.60%	86	1.73%	88	1.75%	90	1.75%
Law Clerk	0	0.00%	8	0.16%	17	0.34%	28	0.56%	21	0.41%
Law School	32	0.66%	8	0.16%	27	0.54%	31	0.62%	32	0.62%
Legal Service	78	1.62%	109	2.23%	101	2.04%	105	2.08%	101	1.97%
Military	21	0.44%	23	0.47%	11	0.22%	21	0.42%	22	0.43%
Private Practice	3234	67.11%	3312	67.88%	3408	68.71%	3421	67.92%	3381	65.92%
Retired/Inactive	52	1.08%	35	0.72%	45	0.91%	46	0.91%	49	0.96%
Unknown/Other	538	11.16%	484	9.92%	424	8.55%	444	8.81%	584	11.39%
<b>Total:</b>	<b>4819</b>		<b>4879</b>		<b>4960</b>		<b>5037</b>		<b>5129</b>	
Variance over prior year.			1.25%		1.66%		1.55%		1.83%	