

MAINE STATE LEGISLATURE

The following document is provided by the
LAW AND LEGISLATIVE DIGITAL LIBRARY
at the Maine State Law and Legislative Reference Library
<http://legislature.maine.gov/lawlib>



Reproduced from electronic originals
(may include minor formatting differences from printed original)

2009 Annual Report



Board of Overseers of the Bar
P O Box 527
Augusta, ME 04332-0527
P. 207-623-1121
F. 207-623-4175
E. board@mebaroverseers.org



Board of Overseers of the Bar

2009 Annual Report

Introduction

The Board of Overseers of the Bar was created by the Maine Supreme Judicial Court in 1978 to govern the conduct of lawyers as officers of the Court. The Board regulates attorney conduct by enforcing the Maine Bar Rules and the Maine Rules of Professional Conduct adopted by the Court. The purpose of those Rules is to provide appropriate standards for attorneys with respect to their practice of the profession of law, including, but not limited to, their relationship with their clients, the general public, other members of the legal profession, the courts, and other agencies of this state.

Board Leadership

The Board is composed of nine members, three of whom are lay members, and six members of the bar. The lawyers are appointed by the Court and the lay members are appointed by the Court on recommendation of the Governor. The Board generally meets ten times annually to conduct business.

Board Staff

The Board staff comprises ten key members. The office of Bar Counsel has three staff attorneys and two administrative assistants. The Board also employs an Executive Director, Board Clerk, Registration Secretary, CLE Coordinator and assistant to the Executive Director.

Commissions

The Board appoints volunteer members to three commissions established by the Maine Bar Rules: the Grievance Commission, the Fee Arbitration Commission, and the Professional Ethics Commission. Three-member panels of the Fee Arbitration Commission and the Grievance Commission conduct their functions under the Maine Bar Rules. Each panel comprises two attorneys and one lay member. The Professional Ethics Commission, consisting of eight attorneys, renders formal written advisory opinions to the Court, Board, Grievance Commission, Bar Counsel, and members of the Maine bar involving interpretation and application of the Maine Rules of Professional Conduct to lawyer conduct.

Information concerning the responsibilities and functions of the Board and each of its commissions is accessible on the Board's website at www.mebaroverseers.org.

Attorney Complaints

The purpose of the disciplinary system is to monitor the legal profession's compliance with the Court's promulgated rules of ethics and to discipline or otherwise sanction lawyers whose conduct violates those standards.

Complaints filed with the Board are taken very seriously. Each written complaint is reviewed by the office of Bar Counsel and investigated if it involves alleged misconduct by a Maine attorney. Complaints that do not actually allege misconduct in violation of the Maine Rules of Professional Conduct are not subject to the grievance procedure, although, if they involve fees, may be referred to the Board's Fee Arbitration Commission.

The Board does not provide legal services or advice to anyone making a complaint. The complaint process should not be viewed as a substitute for a civil action for damages against the lawyer. The disciplinary system is not designed to compensate a complaining party for monetary loss or emotional distress incurred as a result of any unethical conduct.

The forms of sanction or discipline which may be imposed upon a lawyer for unethical conduct are: dismissal with a warning, public reprimand, suspension for a specified period of time, and disbarment. All public discipline decisions are posted on the Board's website at www.mebaroverseers.org.

Bar Counsel Files

Bar Counsel Files (BCF) comprise those submitted written grievance complaints that upon initial review, or after brief informal investigation by Bar Counsel, are deemed not to allege any professional misconduct by an attorney subject to sanction under the Maine Bar Rules. Maine Bar Rule 7.1(c) requires Bar Counsel's unilateral dismissal of such matters, either with or without any investigation. In 2009, Bar Counsel received, screened and docketed 159 BCF complaints, representing a 6% decrease over the prior year.

When a BCF matter is dismissed by Bar Counsel, the complainant is notified in writing and provided an explanation of the dismissal. The complainant is also notified of the right to file a written request within 14 days for the dismissal to be reviewed. Reviews are conducted by lay members of the Board or the Grievance Commission who have the authority to approve, disapprove or modify the terms of Bar Counsel's dismissal. In all dismissed BCF matters, Bar Counsel provides the involved attorney with copies of the complaint filing, the dismissal letter, any resulting request for review, and the lay reviewer's decision. Bar Counsel dismissed 140 BCF matters in 2009. Three BCF matters were elevated to Grievance Commission File status. Thirty complainants requested a lay member review. Lay members decided and affirmed all 30 of those dismissals.

At the close of 2009, there were approximately 10 pending BCF matters.

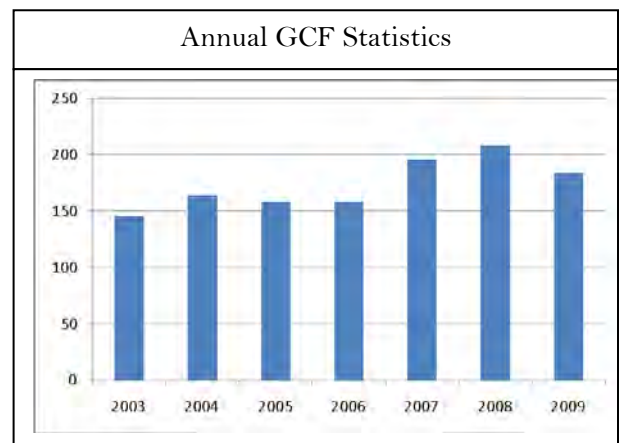
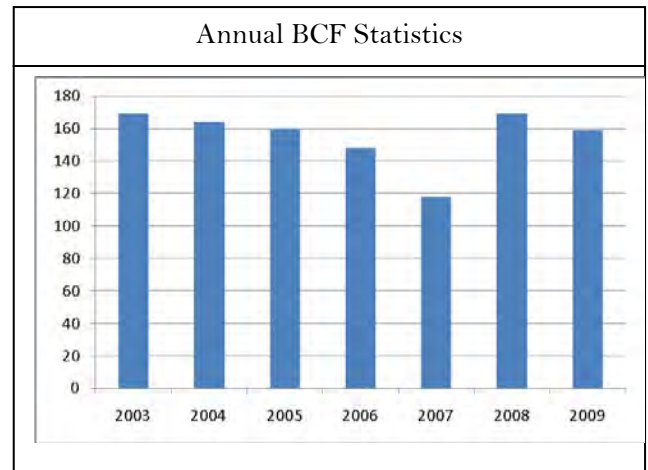
Grievance Commission

In 2009, Bar Counsel received, screened and docketed 184 grievance complaints as Grievance Commission Files (GCF), representing a 12% decrease over the prior year. Upon initial screening, these files were deemed to allege at least some form of a prima facie claim of professional misconduct by Maine attorneys in violation of the Code of Professional Responsibility and/or the newly promulgated Maine Rules of Professional Conduct that became effective August 1, 2009.

Case Reviews and Hearings

Panels of the Grievance Commission met to conduct preliminary reviews of 234 GCF complaints under Maine Bar Rule 7.1(d). Those meetings consist of a panel that reviews the contents of GCF investigative files as presented by Bar Counsel. Such reviews are not hearings, and neither the respective complainants nor the respondent attorneys are present or involved at the reviews. Although there is no confidentiality restriction requirement applicable to complainants and respondent attorneys, Bar Counsel's investigation and the Grievance Commission panels' preliminary review process are required to be kept confidential by the Board, the Commission and the Board's staff under Maine Bar Rule 7.3(k)(1). However, any Grievance Commission panel disciplinary hearing is always open to the public and the panel's resulting decision concerning such complaints--regardless of the result--is also always made available to the public upon request. All public disciplinary orders and reports are published on the Board's website.

Upon completion of Bar Counsel investigations and after Grievance Commission panel review, 195 GCF complaints were closed by issuance of either a dismissal or a dismissal with a warning in 2009. Panels found probable cause that



professional misconduct appeared to have occurred in 39 matters reviewed, warranting a hearing by another panel (or the Court) to determine if any sanction should be imposed upon the respective attorneys.

Pursuant to Maine Bar Rule 7.1(e), Grievance Commission Panels conducted 21 hearings involving 28 grievance complaints. Ultimately, four informations were authorized by the Grievance Commission. Bar Counsel filed seven informations with the Executive Clerk of the Maine Supreme Judicial Court for hearing before a Single Justice.

At the close of 2009, there were 116 pending GCF matters.

Public Disciplinary Sanctions

In 2009, 23 public disciplinary sanctions, involving 22 attorneys, were imposed by the Grievance Commission or a single justice of the Maine Supreme Judicial Court. All such attorney disciplinary decisions are public and may be viewed on the Board's website at www.mebaroverseers.org.

Disciplinary Reinstatements

Three reinstatement petitions were received and processed in 2009. Those petitions remained pending at year-end.

Fee Arbitration Commission

The Board docketed 55 fee arbitration petitions in 2009. Over the course of the year, 34 fee dispute matters were dismissed, settled or withdrawn prior to a hearing before a panel of the Fee Arbitration Commission. Twenty-eight matters were heard by panels of the Fee Arbitration Commission. Of those, the Commission decided in favor of the petitioner in four cases and in the favor of the respondent attorney in 24 cases. At year-end, 15 fee arbitration matters remained pending.

Professional Ethics Commission

The Professional Ethics Commission met six times in 2009 and issued two formal written advisory opinions, numbered 197 and 198. The Commission also assisted Bar Counsel in processing informal confidential opinions in letter format in response to several inquiries from Maine attorneys. The complete list of opinions is published on the Board's website at www.mebaroverseers.org.

Register of Attorneys

The Board maintains a Register of attorneys who are active members of the bar in the State of Maine, as well as records of inactive, resigned, suspended, and disbarred attorneys. At year's end, the Board's Register contained the names of 5,037 attorneys. Comparatively, at the close of 2008, the Register contained 4,960 names. In 2009, 48 attorneys were administratively suspended for failing to properly register with the Board.

Demographic statistics show that 53% of Maine's attorney population is concentrated in 3 counties: Cumberland, Kennebec, and Penobscot. Gender statistics show that women make up 33% of the bar and men represent 67% of the bar. Age demographics at year's end show that 19% of the bar is 39 years or less, 56% are between the ages of 40 and 59, and that 25% are 60 years or older.

Rule 12 - Continuing Legal Education

The Board of Overseers of the Bar administers attorney compliance with Maine Bar Rule 12 - Continuing Legal Education. Active attorneys are required to complete 11 hours of approved continuing legal education programming, including one hour of ethics or professionalism, each calendar year. The Board approved 3,191 courses that were submitted by 463 providers. Ninety-six attorneys were administratively suspended for failing to comply with Maine Bar Rule 12 for calendar year 2009.

Ethics Helpline

The office of Bar Counsel, through the Ethics Helpline, provides informal ethics and professional responsibility advice to Maine attorneys. Members of the bar are encouraged to call and speak with Bar Counsel to discuss ethical dilemmas. Bar Counsel will only discuss the conduct of the inquiring attorney or another member of that attorney's law firm. Board Regulation No. 28, prohibits Bar Counsel from advising an inquiring attorney about another attorney's actual or hypothetical conduct. See also Advisory Opinions #67 and #171. In 2009, Bar Counsel fielded 798 calls; comparatively, 749 calls were received in 2008.

Professional Update for Maine Lawyers and Judges

As part of the Board's ongoing educational outreach to members of the bar, the Board publishes an electronic communication entitled *Professional Update for Maine Lawyers and Judges*. In addition to administrative updates, statistical data, notice of rule amendments and Court news, Bar Counsel publishes a regular feature entitled *Notes from Bar Counsel* wherein Bar Counsel provides ethical guidance to members of the bar.

Bar Counsel CLE Presentations

In calendar year 2009, Bar Counsel staff spoke at 31 state and national continuing legal education seminars. Through these educational opportunities, Bar Counsel offers guidance on how to avoid ethical problems, discusses recent decisions and trends, and also explains how the grievance complaint process works under the Maine Bar Rules. Bar Counsel welcome the opportunity to provide CLE presentations to Maine lawyers and members of their staff on issues concerning ethics and professional responsibility.

Rule Amendments and Board Regulations

The Board is charged with the continuous study of the Bar in its relation to the public and the courts for the purpose of making recommendations to the Court with respect to changes, additions or deletions to the Maine Bar Rules or for such other action by the Court as it may deem advisable in its supervision of the Bar. In that regard, Bar Counsel participated in the creation of the Maine Rules of Professional Conduct that became effective on August 1, 2009. Adopted by the Maine Supreme Judicial Court, the rules are based upon recommendations submitted to the Court by the Maine Task Force on Ethics 2000 after its extensive study and review of the ABA Model Rules of Professional Conduct. The new Rules, Comments and Reporters' Notes may be accessed on the Board of Overseers' website at www.mebaroverseers.org.

Mission Statement

Adopted by the Board on October 21, 2009, the mission of the Board of Overseers of the Bar is to encourage and promote competent and ethical practice by members of the Maine Bar, and to make these standards known to members of the public, so that they have confidence in the legal profession in Maine.

The Board accomplishes its mission by:

- registering and regulating attorneys licensed to practice in Maine;
- approving and providing continuing legal education programs;
- requiring that all attorneys licensed to practice in Maine have met the Maine Supreme Judicial Court's continuing legal education standards;
- providing guidance to attorneys on ethical issues through written advisory opinions issued by the Professional Ethics Commission, as well as an ethics hotline;
- informing members of the public of their rights concerning proper attorney behavior and the availability of fee arbitration;
- enforcing Maine's code of ethics for attorneys; and
- endeavoring to achieve the best possible legal representation of clients through all of these measures.

Website Development

Work continued in 2009 on the redesign of the Board's website. When complete, the new website will have enhanced content and improved search capabilities. The new website will also promote transparency and openness of Board proceedings by posting a schedule of upcoming public hearings on the website's home page and through the creation of a searchable archive of public disciplinary decisions and reports. Plans call for the new website to be launched in early 2010.

Funding

The Board's fiscal year is July 1 through June 30. Each year the Board prepares a budget for the Court's review and approval. No licensing fee increase was recommended to the Court in 2009. In fact, through careful budget planning, the Board has not proposed a fee increase for seven years.

Maine lawyers, through their licensing fees, directly fund the cost of attorney registration, continuing legal education compliance, grievance complaint investigation and disciplinary hearings, the resolution of fee arbitration disputes and for such other purposes as the Board, with the approval of the Court, may determine appropriate or required. The Board receives no public monies to subsidize its operations.

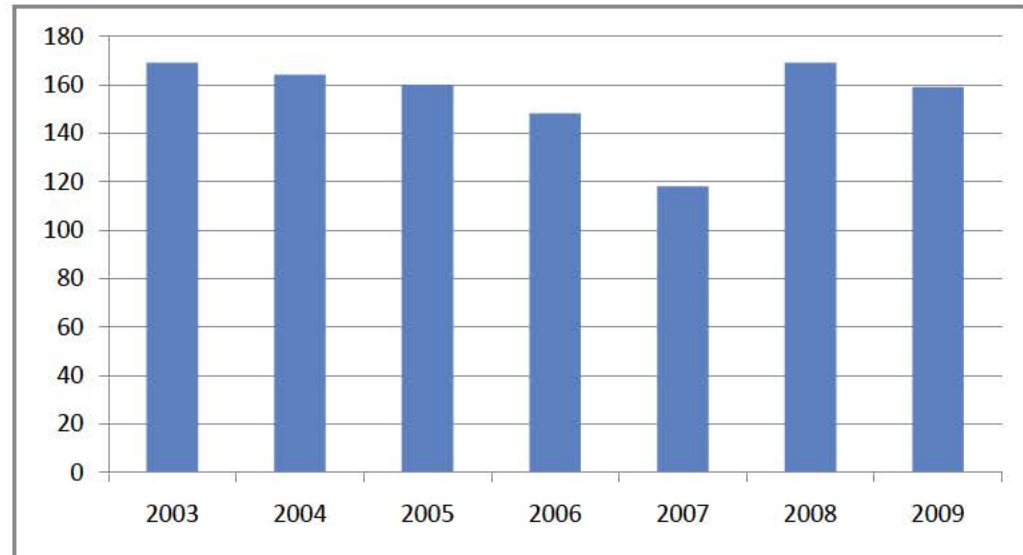
In addition to the collection of licensing fees, the Board also collects the Court's annual assessment fee on behalf of the Lawyers' Fund for Client Protection (Fund) and the Maine Assistance Program for Lawyers and Judges (MAP). The purpose of the Fund is to promote public confidence in the administration of justice and the integrity of the legal profession, by reimbursing clients who suffer losses caused by an attorney's dishonest conduct. Generally, such conduct involves the misuse of funds in the care of the attorney or the misappropriation of amounts for the attorney's personal benefit. MAP has three purposes: to protect the interests of clients and the general public from harm caused by impaired lawyers or judges; to confidentially assist impaired members of the profession to begin and continue recovery; and to educate the bench, the bar, and the public as to the causes of and remedies for impairments affecting members of the legal profession.

The Board's audited financial statements for the 2008-2009 fiscal year (ended June 30, 2009) show revenue of \$1,006,568 and expenses of \$887,530.

Bar Counsel File Statistics

Yearly Totals

2003	169	
2004	164	-2.96%
2005	160	-2.44%
2006	148	-7.50%
2007	118	-20.27%
2008	169	43.22%
2009	159	-5.92%



Respondents by County

By Open Year

County	2005		2006		2007		2008		2009	
	Count	%	Count	%	Count	%	Count	%	Count	%
Androscoggin	9	5.63%	12	8.11%	7	5.93%	10	5.92%	9	5.66%
Aroostook	6	3.75%	9	6.08%	6	5.08%	10	5.92%	6	3.77%
Cumberland	47	29.38%	33	22.30%	36	30.51%	45	26.63%	42	26.42%
Franklin	3	1.88%	1	0.68%	0	0.00%	5	2.96%	2	1.26%
Hancock	7	4.38%	6	4.05%	6	5.08%	6	3.55%	3	1.89%
Kennebec	16	10.00%	16	10.81%	12	10.17%	24	14.20%	31	19.50%
Knox	5	3.13%	4	2.70%	3	2.54%	6	3.55%	4	2.52%
Lincoln	2	1.25%	2	1.35%	3	2.54%	2	1.18%	9	5.66%
Oxford	2	1.25%	5	3.38%	5	4.24%	3	1.78%	3	1.89%
Penobscot	21	13.13%	18	12.16%	17	14.41%	20	11.83%	21	13.21%
Piscataquis	0	0.00%	0	0.00%	0	0.00%	0	0.00%	0	0.00%
Sagadahoc	6	3.75%	1	0.68%	1	0.85%	2	1.18%	2	1.26%
Somerset	5	3.13%	4	2.70%	2	1.69%	1	0.59%	3	1.89%
Waldo	0	0.00%	3	2.03%	2	1.69%	5	2.96%	1	0.63%
Washington	0	0.00%	19	12.84%	0	0.00%	10	5.92%	1	0.63%
York	19	11.88%	5	3.38%	13	11.02%	15	8.88%	10	6.29%
Out of State	12	7.50%	10	6.76%	5	4.24%	5	2.96%	12	7.55%
Total	160		148		118		169		159	
Variance over prior year:			-12		-30		51		-10	

BCF - Area of Law

By Open Year

	2005		2006		2007		2008		2009	
Administrative/Municipal Law	2	1.25%	3	2.03%	2	1.69%	4	2.37%	10	6.29%
ADR/Mediation/Arbitration	0	0.00%	0	0.00%	0	0.00%	1	0.59%	0	0.00%
Banking Law	0	0.00%	2	1.35%	0	0.00%	0	0.00%	0	0.00%
Bankruptcy Law	2	1.25%	1	0.68%	0	0.00%	2	1.18%	4	2.52%
Child Protection	5	3.13%	0	0.00%	1	0.85%	2	1.18%	2	1.26%
Civil Rights/Discrimination Law	0	0.00%	0	0.00%	0	0.00%	0	0.00%	2	1.26%
Collections Law	1	0.63%	6	4.05%	5	4.24%	3	1.78%	4	2.52%
Commercial/Business	7	4.38%	6	4.05%	4	3.39%	8	4.73%	2	1.26%
Contracts/Consumer	5	3.13%	2	1.35%	0	0.00%	2	1.18%	1	0.63%
Corporate Law	1	0.63%	0	0.00%	0	0.00%	0	0.00%	1	0.63%
Criminal Law	40	25.00%	44	29.73%	31	26.27%	53	31.36%	37	23.27%
Education Law	0	0.00%	0	0.00%	0	0.00%	0	0.00%	2	1.26%
Elder Law	2	1.25%	1	0.68%	1	0.85%	2	1.18%	2	1.26%
Employment Law	0	0.00%	0	0.00%	0	0.00%	0	0.00%	4	2.52%
Environmental Law	1	0.63%	1	0.68%	0	0.00%	0	0.00%	0	0.00%
Family Law	42	26.25%	35	23.65%	32	27.12%	39	23.08%	43	27.04%
Foreclosure Law	1	0.63%	0	0.00%	1	0.85%	1	0.59%	1	0.63%
Juvenile Law	1	0.63%	2	1.35%	0	0.00%	0	0.00%	1	0.63%
Labor Law	0	0.00%	0	0.00%	1	0.85%	1	0.59%	0	0.00%
Landlord/Tenant	3	1.88%	0	0.00%	4	3.39%	2	1.18%	3	1.89%
Law-Related Services	0	0.00%	0	0.00%	0	0.00%	5	2.96%	1	0.63%
Other/Unknown	11	6.88%	16	10.81%	3	2.54%	7	4.14%	12	7.55%
PFA/Harassment	1	0.63%		0.00%	2	1.69%	2	1.18%	1	0.63%
Real Estate	15	9.38%	13	8.78%	10	8.47%	14	8.28%	10	6.29%
Taxation	0	0.00%		0.00%	1	0.85%	1	0.59%	0	0.00%
Torts	9	5.63%	2	1.35%	8	6.78%	6	3.55%	6	3.77%
Wills/Estates/Probate	8	5.00%	11	7.43%	11	9.32%	12	7.10%	9	5.66%
Workers' Compensation	3	1.88%	3	2.03%	1	0.85%	2	1.18%	1	0.63%
	160		148		118		169		159	
Variance over prior year.			-7.50%		-20.27%		43.22%		-5.92%	

BCF - Complaint Source

	2005		2006		2007		2008		2009	
Attorney	3	1.88%	1	0.68%	2	1.69%	1	0.59%	1	0.63%
Client	58	36.25%	55	37.16%	38	32.20%	71	42.01%	41	25.79%
Judge	0	0.00%	1	0.68%	0	0.00%	1	0.59%	1	0.63%
Opposing Counsel	0	0.00%	3	2.03%	0	0.00%	1	0.59%	0	0.00%
Opposing Party	57	35.63%	51	34.46%	47	39.83%	55	32.54%	37	23.27%
Other	42	26.25%	37	25.00%	31	26.27%	40	23.67%	79	49.69%
	160		148		118		169		159	

BCF Complaints by Disposition

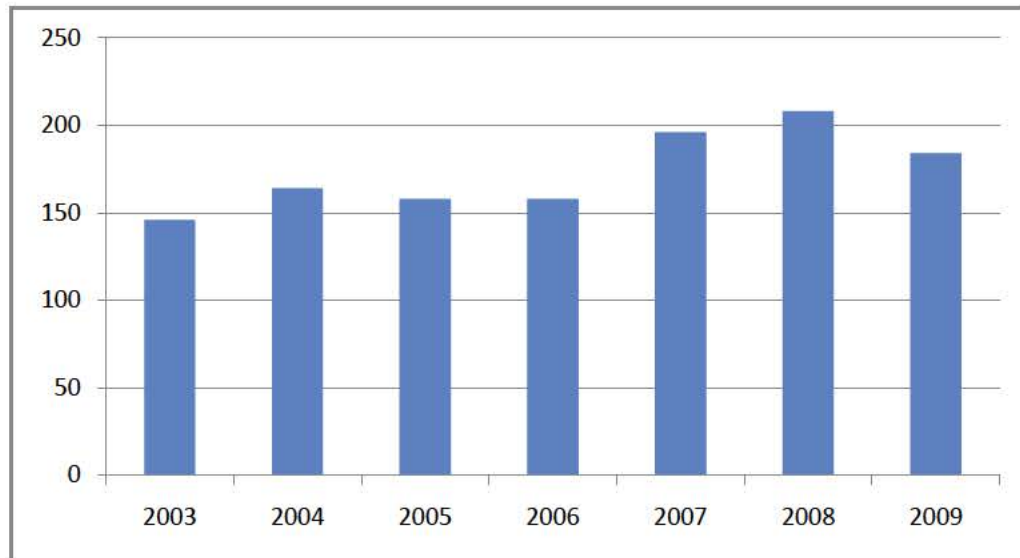
Open Year	Individual Cases by Case Opened Year					Distinct Respondents by Case Opened Year				
	2005	2006	2007	2008	2009	2005	2006	2007	2008	2009
BCF Dismissal	117	120	88	121	123	105	104	77	110	107
BCF Lay Review Dismissal Approved	43	28	29	45	21	38	28	26	40	21
BCF Lay Review Dismissal Disapproved	0	0	0	0	0	0	0	0	0	0
Elevated to GCF	0	0	1	2	1	0	0	1	2	1
Total:	160	148	118	168	145	143	132	104	152	129

Close Year	Individual Cases by Case Closed Year					Distinct Respondents by Case Closed Year				
	2005	2006	2007	2008	2009	2005	2006	2007	2008	2009
BCF Dismissal	103	122	82	125	140	93	106	75	115	121
BCF Lay Review Dismissal Approved	47	25	29	42	30	42	25	27	39	29
BCF Lay Review Dismissal Disapproved	0	0	0	0	0	0	0	0	0	0
Elevated to GCF	0	0	1	0	3	0	0	1	0	3
Total:	150	147	112	167	173	135	131	103	154	153

Grievance Commission Statistics

Yearly Totals

Year	Total	Variance
2003	146	
2004	164	12.33%
2005	158	-3.66%
2006	158	0.00%
2007	196	24.05%
2008	208	6.12%
2009	184	-11.54%



Respondent County

County	2005		2006		2007		2008		2009	
Androscoggin	11	6.96%	9	5.70%	20	10.20%	12	5.77%	10	5.43%
Aroostook	5	3.16%	9	5.70%	9	4.59%	3	1.44%	10	5.43%
Cumberland	37	23.42%	48	30.38%	63	32.14%	74	35.58%	55	29.89%
Franklin	0	0.00%	0	0.00%	1	0.51%	1	0.48%	0	0.00%
Hancock	6	3.80%	9	5.70%	7	3.57%	4	1.92%	8	4.35%
Kennebec	14	8.86%	14	8.86%	17	8.67%	27	12.98%	23	12.50%
Knox	3	1.90%	3	1.90%	6	3.06%	5	2.40%	4	2.17%
Lincoln	3	1.90%	8	5.06%	4	2.04%	3	1.44%	5	2.72%
Oxford	0	0.00%	4	2.53%	11	5.61%	9	4.33%	6	3.26%
Penobscot	16	10.13%	16	10.13%	20	10.20%	27	12.98%	26	14.13%
Piscataquis	1	0.63%	1	0.63%	0	0.00%	2	0.96%	0	0.00%
Sagadahoc	5	3.16%	6	3.80%	4	2.04%	7	3.37%	7	3.80%
Somerset	5	3.16%	1	0.63%	1	0.51%	3	1.44%	1	0.54%
Waldo	2	1.27%	1	0.63%	3	1.53%	4	1.92%	1	0.54%
Washington	3	1.90%	2	1.27%	3	1.53%	4	1.92%	2	1.09%
York	42	26.58%	24	15.19%	18	9.18%	17	8.17%	16	8.70%
Out-of-State	5	3.16%	3	1.90%	9	4.59%	6	2.88%	10	5.43%
Total:	158		158		196		208		184	
Variance over prior year:			0		38		12		-24	

GFC Complaints by Area of Law

By Open Year

	2005		2006		2007		2008		2009	
Administrative/Municipal Law	5	3.16%	6	3.80%	11	5.61%	11	5.29%	1	0.54%
Antitrust Law	0	0.00%	0	0.00%	0	0.00%	0	0.00%	0	0.00%
Banking Law	2	1.27%	0	0.00%	1	0.51%	0	0.00%	0	0.00%
Bankruptcy Law	0	0.00%	0	0.00%	2	1.02%	1	0.48%	7	3.80%
Child Protection	1	0.63%	0	0.00%	1	0.51%	1	0.48%	1	0.54%
Collections Law	10	6.33%	4	2.53%	4	2.04%	4	1.92%	5	2.72%
Commercial/Business	12	7.59%	6	3.80%	3	1.53%	12	5.77%	12	6.52%
Contracts/Consumer	6	3.80%	8	5.06%	3	1.53%	3	1.44%	3	1.63%
Corporate Law	2	1.27%	0	0.00%	1	0.51%	5	2.40%	0	0.00%
Criminal Law	17	10.76%	27	17.09%	41	20.92%	44	21.15%	28	15.22%
Elder Law	1	0.63%	2	1.27%	3	1.53%	1	0.48%	4	2.17%
Election Law	0	0.00%	0	0.00%	0	0.00%	0	0.00%	1	0.54%
Employment Law	0	0.00%	0	0.00%	0	0.00%	0	0.00%	9	4.89%
Environmental Law	0	0.00%	0	0.00%	0	0.00%	1	0.48%	0	0.00%
Family Law	30	18.99%	35	22.15%	43	21.94%	49	23.56%	49	26.63%
Foreclosure Law	1	0.63%	0	0.00%	1	0.51%	1	0.48%	0	0.00%
General Practice	0	0.00%	0	0.00%	0	0.00%	0	0.00%	2	1.09%
Immigration and Naturalization Law	0	0.00%	1	0.63%	0	0.00%	1	0.48%	0	0.00%
Indian Law	0	0.00%	0	0.00%	0	0.00%	0	0.00%	1	0.54%
Intellectual Property	0	0.00%	0	0.00%	1	0.51%	1	0.48%	0	0.00%
Juvenile Law	1	0.63%	0	0.00%	0	0.00%	0	0.00%	0	0.00%
Labor Law	0	0.00%	1	0.63%	0	0.00%	1	0.48%	1	0.54%
Landlord/Tenant	0	0.00%	3	1.90%	2	1.02%	0	0.00%	1	0.54%
Law Practice Management	0	0.00%	0	0.00%	0	0.00%	0	0.00%	17	9.24%
Law-Related Services	0	0.00%	0	0.00%	2	1.02%	3	1.44%	0	0.00%
PFA/Harassment	0	0.00%	0	0.00%	0	0.00%	4	1.92%	3	1.63%
Real Estate	24	15.19%	21	13.29%	18	9.18%	16	7.69%	7	3.80%
Reinstatement	0	0.00%	0	0.00%	0	0.00%	0	0.00%	2	1.09%
Social Security Law	0	0.00%	0	0.00%	0	0.00%	0	0.00%	2	1.09%
Taxation	2	1.27%	2	1.27%	0	0.00%	0	0.00%	0	0.00%
Torts	11	6.96%	9	5.70%	27	13.78%	16	7.69%	14	7.61%
Wills/Estates/Probate	16	10.13%	18	11.39%	25	12.76%	25	12.02%	13	7.07%
Workers' Compensation	6	3.80%	1	0.63%	3	1.53%	2	0.96%	1	0.54%
Other	11	6.96%	14	8.86%	4	2.04%	6	2.88%	0	0.00%
Total:	158		158		196		208		184	

GFC Complaints by Source

By Open Year

	2005		2006		2007		2008		2009	
Attorney	14	8.86%	1	0.63%	4	2.04%	14	6.73%	17	9.24%
Client	64	40.51%	84	53.16%	94	47.96%	117	56.25%	86	46.74%
Judge	5	3.16%	5	3.16%	4	2.04%	6	2.88%	0	0.00%
Opposing Counsel	7	4.43%	4	2.53%	9	4.59%	8	3.85%	1	0.54%
Opposing Party	34	21.52%	37	23.42%	43	21.94%	27	12.98%	16	8.70%
Sua Sponte	3	1.90%	3	1.90%	8	4.08%	9	4.33%	25	13.59%
Other	31	19.62%	24	15.19%	34	17.35%	27	12.98%	39	21.20%
Total:	158		158		196		208		184	

GCF Complaints Area of Law - Sanctioned Cases

By Open Year

	2005		2006		2007		2008		2009	
Administrative/Municipal Law	0	0.00%	0	0.00%	1	3.03%	2	7.41%	0	0.00%
Banking Law	1	2.00%	0	0.00%	0	0.00%	0	0.00%	0	0.00%
Bankruptcy Law	0	0.00%	0	0.00%	1	3.03%	0	0.00%	0	0.00%
Child Protection	1	2.00%	0	0.00%	0	0.00%	0	0.00%	0	0.00%
Collections Law	3	6.00%	0	0.00%	0	0.00%	0	0.00%	0	0.00%
Commercial/Business	5	10.00%	4	8.89%	0	0.00%	0	0.00%	0	0.00%
Contracts/Consumer	1	2.00%	2	4.44%	1	3.03%	1	3.70%	1	5.26%
Corporate Law	1	2.00%	0	0.00%	0	0.00%	2	7.41%	0	0.00%
Criminal Law	6	12.00%	6	13.33%	6	18.18%	4	14.81%	2	10.53%
Elder Law	0	0.00%	0	0.00%	1	3.03%	0	0.00%	0	0.00%
Employment Law	0	0.00%	0	0.00%	0	0.00%	0	0.00%	1	5.26%
Family Law	5	10.00%	10	22.22%	7	21.21%	11	40.74%	3	15.79%
General Practice	0	0.00%	0	0.00%	0	0.00%	0	0.00%	1	5.26%
Juvenile Law	1	2.00%	0	0.00%	0	0.00%	0	0.00%	0	0.00%
Landlord/Tenant	0	0.00%	1	2.22%	0	0.00%	0	0.00%	0	0.00%
Law Practice Management	0	0.00%	0	0.00%	0	0.00%	0	0.00%	8	42.11%
Real Estate	11	22.00%	8	17.78%	4	12.12%	0	0.00%	2	10.53%
Taxation	2	4.00%	2	4.44%	0	0.00%	0	0.00%	0	0.00%
Torts	2	4.00%	4	8.89%	8	24.24%	3	11.11%	0	0.00%
Wills/Estates/Probate	7	14.00%	4	8.89%	4	12.12%	3	11.11%	1	5.26%
Workers' Compensation	2	4.00%	0	0.00%	0	0.00%	0	0.00%	0	0.00%
Other	2	4.00%	4	8.89%	0	0.00%	1	3.70%	0	0.00%
Total:	50		45		33		27		19	

Sanction Types	
1	Hearing Dismissal with Warning
2	Hearing Reprimand
3	Court Reprimand
4	Court Suspension
5	Court Disbarment

GCF Complaints Area of Law - Sanctioned Cases

By Closed Year

	2005		2006		2007		2008		2009	
Administrative/Municipal Law	8	16.67%	2	3.39%	1	2.86%	2	6.06%	1	1.43%
Banking Law	1	2.08%	2	3.39%	0	0.00%	0	0.00%	0	0.00%
Bankruptcy Law	0	0.00%	0	0.00%	0	0.00%	1	3.03%	0	0.00%
Child Protection	0	0.00%	1	1.69%	0	0.00%	0	0.00%	2	2.86%
Collections Law	10	20.83%	2	3.39%	0	0.00%	0	0.00%	0	0.00%
Commercial/Business	1	2.08%	5	8.47%	1	2.86%	1	3.03%	2	2.86%
Contracts/Consumer	2	4.17%	3	5.08%	1	2.86%	2	6.06%	2	2.86%
Corporate Law	1	2.08%	0	0.00%	1	2.86%	0	0.00%	2	2.86%
Criminal Law	0	0.00%	7	11.86%	8	22.86%	3	9.09%	7	10.00%
Elder Law	6	12.50%	0	0.00%	0	0.00%	1	3.03%	0	0.00%
Employment Law	0	0.00%	0	0.00%	0	0.00%	0	0.00%	1	1.43%
Environmental Law	1	2.08%	0	0.00%	0	0.00%	0	0.00%	0	0.00%
Family Law	2	4.17%	7	11.86%	6	17.14%	8	24.24%	18	25.71%
Foreclosure Law	4	8.33%	1	1.69%	0	0.00%	0	0.00%	0	0.00%
General Practice	0	0.00%	0	0.00%	0	0.00%	0	0.00%	1	1.43%
Juvenile Law	0	0.00%	1	1.69%	0	0.00%	0	0.00%	0	0.00%
Labor Law	1	2.08%	0	0.00%	0	0.00%	0	0.00%	0	0.00%
Landlord/Tenant	0	0.00%	1	1.69%	0	0.00%	0	0.00%	0	0.00%
Law Practice Management	0	0.00%	0	0.00%	0	0.00%	0	0.00%	7	10.00%
Real Estate	6	12.50%	11	18.64%	7	20.00%	3	9.09%	9	12.86%
Taxation	2	4.17%	3	5.08%	0	0.00%	0	0.00%	0	0.00%
Torts	0	0.00%	1	1.69%	8	22.86%	6	18.18%	5	7.14%
Wills/Estates/Probate	1	2.08%	6	10.17%	2	5.71%	6	18.18%	10	14.29%
Workers' Compensation	2	4.17%	0	0.00%	0	0.00%	0	0.00%	0	0.00%
Other	0	0.00%	6	10.17%	0	0.00%	0	0.00%	3	4.29%
Total:	48		59		35		33		70	

GCF Complaints Area of Law - Disciplined Cases

By Open Year

	2005		2006		2007		2008		2009	
Administrative/Municipal Law	0	0.00%	0	0.00%	0	0.00%	2	18.18%	0	0.00%
Banking Law	1	3.45%	0	0.00%	0	0.00%	0	0.00%	0	0.00%
Bankruptcy Law	0	0.00%	0	0.00%	1	4.55%	0	0.00%	0	0.00%
Collections Law	1	3.45%	0	0.00%	0	0.00%	0	0.00%	0	0.00%
Commercial/Business	3	10.34%	4	19.05%	0	0.00%	0	0.00%	0	0.00%
Contracts/Consumer	1	3.45%	2	9.52%	1	4.55%	0	0.00%	0	0.00%
Corporate Law	1	3.45%	0	0.00%	0	0.00%	1	9.09%	0	0.00%
Criminal Law	5	17.24%	4	19.05%	1	4.55%	2	18.18%	0	0.00%
Elder Law	0	0.00%	0	0.00%	1	4.55%	0	0.00%	0	0.00%
Family Law	2	6.90%	2	9.52%	5	22.73%	2	18.18%	0	0.00%
Juvenile Law	1	3.45%	0	0.00%	0	0.00%	0	0.00%	0	0.00%
Real Estate	3	10.34%	4	19.05%	3	13.64%	0	0.00%	1	100.00%
Taxation	1	3.45%	2	9.52%	0	0.00%	0	0.00%	0	0.00%
Torts	2	6.90%	0	0.00%	7	31.82%	1	9.09%	0	0.00%
Wills/Estates/Probate	6	20.69%	1	4.76%	3	13.64%	2	18.18%	0	0.00%
Workers' Compensation	0	0.00%	0	0.00%	0	0.00%	0	0.00%	0	0.00%
Other	2	6.90%	2	9.52%	0	0.00%	1	9.09%	0	0.00%
Total:	29		21		22		11		1	

GCF Complaints Area of Law - Disciplined Cases

By Closed Year

	2005		2006		2007		2008		2009	
Administrative/Municipal Law	6	22.22%	1	2.78%	0	0.00%	2	9.09%	1	3.03%
Banking Law	1	3.70%	2	5.56%	0	0.00%	0	0.00%	0	0.00%
Bankruptcy Law	0	0.00%	0	0.00%	0	0.00%	1	4.55%	0	0.00%
Child Protection Law	0	0.00%	0	0.00%	0	0.00%	0	0.00%	2	6.06%
Collections Law	4	14.81%	2	5.56%	0	0.00%	0	0.00%	0	0.00%
Commercial/Business	0	0.00%	4	11.11%	1	7.14%	1	4.55%	2	6.06%
Contracts/Consumer	2	7.41%	3	8.33%	1	7.14%	2	9.09%	0	0.00%
Corporate Law	1	3.70%	0	0.00%	1	7.14%	0	0.00%	1	3.03%
Criminal Law	0	0.00%	6	16.67%	3	21.43%	1	4.55%	3	9.09%
Elder Law	2	7.41%	0	0.00%	0	0.00%	1	4.55%	0	0.00%
Environmental Law	1	3.70%	0	0.00%	0	0.00%	0	0.00%	0	0.00%
Family Law	2	7.41%	0	0.00%	1	7.14%	3	13.64%	8	24.24%
Foreclosure Law	2	7.41%	1	2.78%	0	0.00%	0	0.00%	0	0.00%
Juvenile Law	0	0.00%	1	2.78%	0	0.00%	0	0.00%	0	0.00%
Labor Law	1	3.70%	0	0.00%	0	0.00%	0	0.00%	0	0.00%
Real Estate	3	11.11%	4	11.11%	3	21.43%	3	13.64%	6	18.18%
Taxation	1	3.70%	3	8.33%	0	0.00%	0	0.00%	0	0.00%
Torts	0	0.00%	1	2.78%	4	28.57%	3	13.64%	2	6.06%
Wills/Estates/Probate	1	3.70%	4	11.11%	0	0.00%	5	22.73%	5	15.15%
Other	0	0.00%	4	11.11%	0	0.00%	0	0.00%	3	9.09%
Total:	27		36		14		22		33	

GCF Complaints by Disposition

Open Year	Individual Cases by Case Opened Year					Distinct Respondents by Case Opened Year				
	2005	2006	2007	2008	2009	2005	2006	2007	2008	2009
Case Review Dismissal	106	107	150	135	103	89	96	131	119	93
Case Review Dismissal With Warning	14	19	11	24	25	14	18	10	23	25
Hearing Dismissal	2	3	3	2	0	2	3	2	2	0
Hearing Dismissal With Warning	7	6	0	2	0	7	5	0	2	0
Hearing Reprimand	14	8	15	15	3	12	7	13	12	3
Court Reprimand	1	1	6	0	0	1	1	6	0	0
Court Suspension	6	6	4	9	4	6	2	2	5	1
Court Resignation	4	0	1	2	0	4	0	1	2	0
Court Disbarment	4	7	1	2	0	2	2	1	2	0
Total:	158	157	191	191	135	137	134	166	167	122

Close Year	Individual Cases by Case Closed Year					Distinct Respondents by Case Closed Year				
	2005	2006	2007	2008	2009	2005	2006	2007	2008	2009
Case Review Dismissal	114	129	124	103	161	101	107	107	91	138
Case Review Dismissal With Warning	17	17	15	11	34	16	16	15	11	34
Hearing Dismissal	2	0	3	3	3	2	0	3	2	3
Hearing Dismissal With Warning	4	6	6	0	3	4	6	5	0	3
Hearing Reprimand	6	15	5	14	21	6	10	5	9	16
Court Reprimand	1	1	4	3	1	1	1	4	3	1
Court Suspension	1	8	2	3	7	1	3	2	3	3
Court Resignation	6	2	2	0	2	3	2	1	0	2
Court Disbarment	13	10	1	2	3	1	2	1	1	1
Total:	164	188	162	139	235	135	147	143	120	201

GCF Misconduct - Sanctioned Cases

By Open Year

GCF Misconduct - Disciplined Cases

By Open Year

Misconduct*	2005	2006	2007	2008	2009
M. R. Prof. Conduct 1.7(a)(2)	0	0	0	0	1
M. R. Prof. Conduct 3.4(e)	0	0	0	0	1
M. R. Prof. Conduct 3.7	0	0	0	0	1
M. Bar Rule 2(c)	0	0	0	0	4
M. Bar Rule 3.1(a)	2	2	21	32	13
M. Bar Rule 3.12(b)	0	0	1	0	0
M. Bar Rule 13(a)	0	0	0	1	0
M. Bar Rule 3.13(a)(1)	0	0	0	1	0
M. Bar Rule 3.13(c)	0	0	1	1	0
M. Bar Rule 3.2(a)(1)	0	0	0	0	1
M. Bar Rule 3.2(c)(1)	0	0	1	0	0
M. Bar Rule 3.2(f)	0	0	0	0	1
M. Bar Rule 3.2(f)(1)	0	0	0	4	9
M. Bar Rule 3.2(f)(2)	4	9	7	14	0
M. Bar Rule 3.2(f)(3)	9	7	16	17	0
M. Bar Rule 3.2(f)(4)	4	4	17	23	1
M. Bar Rule 3.3(a)	0	2	4	4	1
M. Bar Rule 3.4(a)(1)	0	0	2	1	0
M. Bar Rule 3.4(a)(2)	0	0	0	0	1
M. Bar Rule 3.4(a)(3)(i)	0	0	1	0	0
M. Bar Rule 3.4(b)	0	0	0	1	0
M. Bar Rule 3.4(b)(1)	4	6	2	1	0
M. Bar Rule 3.4(b)(2)	0	0	2	0	0
M. Bar Rule 3.4(c)	0	0	2	2	0
M. Bar Rule 3.4(c)(2)	0	0	0	1	1
M. Bar Rule 3.4(c)(2)(i)	0	0	1	0	0
M. Bar Rule 3.4(c)(2)(ii)	0	0	1	0	0
M. Bar Rule 3.4(c)(2)(iii)	0	0	1	0	0
M. Bar Rule 3.4(d)	0	0	0	2	0
M. Bar Rule 3.4(d)(1)	0	0	0	0	1
M. Bar Rule 3.4(d)(1)(i)	0	0	0	4	0
M. Bar Rule 3.4(f)	0	0	4	1	0
M. Bar Rule 3.4(f)(1)	0	0	1	1	0
M. Bar Rule 3.4(f)(1)(2)(v)	0	0	0	3	0
M. Bar Rule 3.4(g)(1)	0	0	1	1	0
M. Bar Rule 3.5(a)	0	0	0	2	0
M. Bar Rule 3.5(b)	0	0	0	1	0
M. Bar Rule 3.5(b)(2)(iv)	0	0	1	0	0
M. Bar Rule 3.5(c)	0	0	0	1	0
M. Bar Rule 3.6(a)	3	1	2	10	0
M. Bar Rule 3.6(a)(1)	1	2	7	7	1
M. Bar Rule 3.6(a)(2)	0	0	9	16	5
M. Bar Rule 3.6(a)(3)	13	10	13	20	5
M. Bar Rule 3.6(c)	0	1	2	0	1
M. Bar Rule 3.6(d)	1	0	7	0	0
M. Bar Rule 3.6(e)(1)	0	0	1	1	0
M. Bar Rule 3.6(e)(2)	0	0	1	0	0
M. Bar Rule 3.6(e)(2)(iii)	0	0	1	2	0
M. Bar Rule 3.6(e)(2)(iv)	5	3	1	4	1
M. Bar Rule 3.6(f)	0	0	4	2	0
M. Bar Rule 3.6(g)	0	0	1	0	0
M. Bar Rule 3.6(h)	0	0	0	4	0
M. Bar Rule 3.6(h)(1)	0	0	0	1	0
M. Bar Rule 3.6(h)(1)(i)	0	0	0	2	0
M. Bar Rule 3.6(j)	0	0	2	0	0
M. Bar Rule 3.7(a)	0	0	0	3	0
M. Bar Rule 3.7(b)	0	0	2	1	0
M. Bar Rule 3.7(e)(1)	0	0	1	0	0
M. Bar Rule 3.7(e)(1)(i)	4	0	1	1	0
M. Bar Rule 3.7(e)(1)(ii)	0	0	1	0	0
M. Bar Rule 3.7(e)(2)(v)	0	0	1	0	1
M. Bar Rule 3.7(e)(2)(vi)	0	0	1	0	0
M. Bar Rule 3.7(g)(1)	0	0	1	0	0
M. Bar Rule 3.9(a)	0	0	0	0	1
M. Bar Rule 3.9(b)(1)	0	0	0	0	1
M. Bar Rule 3.9(b)(3)	0	0	0	0	1
M. Bar Rule 7.3(b)	0	0	0	4	1
M. Bar Rule 7.3(i)(1)(F)	0	0	0	0	7
M. Bar Rule 7.3(i)(2)	0	0	0	0	8
Total:	50	47	146	197	69

Misconduct	2005	2006	2007	2008	2009
M. Bar Rule 3.1(a)	2	1	14	16	1
M. Bar Rule 3.12(b)	0	0	1	0	0
M. Bar Rule 3.13(a)(1)	0	0	0	1	0
M. Bar Rule 3.13(c)	0	0	1	1	0
M. Bar Rule 3.2(a)(1)	0	0	1	0	0
M. Bar Rule 3.2(f)(2)	4	7	5	9	0
M. Bar Rule 3.2(f)(3)	3	2	14	13	0
M. Bar Rule 3.2(f)(4)	1	3	11	12	0
M. Bar Rule 3.3(a)	0	0	2	2	0
M. Bar Rule 3.4(a)(1)	0	0	2	0	0
M. Bar Rule 3.4(b)(1)	2	3	2	0	0
M. Bar Rule 3.4(b)(2)	0	0	2	0	0
M. Bar Rule 3.4(c)	0	0	2	0	0
M. Bar Rule 3.4(c)(2)	0	0	0	1	0
M. Bar Rule 3.4(c)(2)(i)	0	0	1	0	0
M. Bar Rule 3.4(c)(2)(ii)	0	0	1	0	0
M. Bar Rule 3.4(c)(2)(iii)	0	0	1	0	0
M. Bar Rule 3.4(d)(1)(i)	0	0	0	1	0
M. Bar Rule 3.4(f)	0	0	3	1	0
M. Bar Rule 3.4(f)(1)	0	0	1	0	0
M. Bar Rule 3.4(g)(1)	0	0	1	1	0
M. Bar Rule 3.5(a)	0	0	0	1	0
M. Bar Rule 3.5(b)	0	0	0	1	0
M. Bar Rule 3.5(c)	0	0	0	1	0
M. Bar Rule 3.6(a)	0	0	1	3	0
M. Bar Rule 3.6(a)(1)	0	1	5	5	0
M. Bar Rule 3.6(a)(2)	0	0	7	8	1
M. Bar Rule 3.6(a)(3)	8	4	11	10	1
M. Bar Rule 3.6(c)	0	0	2	0	0
M. Bar Rule 3.6(d)	1	0	7	0	0
M. Bar Rule 3.6(e)(1)	0	0	1	1	0
M. Bar Rule 3.6(e)(2)	0	0	1	0	0
M. Bar Rule 3.6(e)(2)(iii)	0	0	1	1	0
M. Bar Rule 3.6(e)(2)(iv)	4	1	1	4	0
M. Bar Rule 3.6(f)	0	0	3	0	0
M. Bar Rule 3.6(g)	0	0	1	0	0
M. Bar Rule 3.6(h)	0	0	0	1	0
M. Bar Rule 3.6(h)(1)	0	0	0	1	0
M. Bar Rule 3.6(h)(1)(i)	0	0	0	2	0
M. Bar Rule 3.6(j)	0	0	2	0	0
M. Bar Rule 3.7(b)	0	0	2	1	0
M. Bar Rule 3.7(e)(1)	0	0	1	0	0
M. Bar Rule 3.7(e)(1)(i)	4	0	1	1	0
M. Bar Rule 3.7(e)(1)(ii)	0	0	1	0	0
M. Bar Rule 3.7(e)(2)(v)	0	0	1	0	0
M. Bar Rule 3.7(e)(2)(vi)	0	0	1	0	0
M. Bar Rule 3.7(g)(1)	0	0	1	0	0
Total:	29	22	116	99	3

GCF Complaint by Firm Size

By Open Year

Firm Size	2005		2006		2007		2008		2009	
1	67	42.41%	65	41.14%	58	29.59%	85	40.87%	86	46.74%
2 - 5	61	38.61%	58	36.71%	93	47.45%	72	34.62%	59	32.07%
6 - 9	6	3.80%	13	8.23%	21	10.71%	14	6.73%	13	7.07%
10 - 19	7	4.43%	6	3.80%	12	6.12%	11	5.29%	8	4.35%
20 - 49	2	1.27%	5	3.16%	1	0.51%	4	1.92%	9	4.89%
50 - 99	2	1.27%	1	0.63%	4	2.04%	9	4.33%	0	0.00%
100+	0	0.00%	2	1.27%	2	1.02%	6	2.88%	0	0.00%
Unknown	13	8.23%	8	5.06%	5	2.55%	7	3.37%	9	4.89%
	158		158		196		208		184	

GCF Complaint by Age

By Open Year

Age	2005		2006		2007		2008		2009	
29 or less	0	0.00%	0	0.00%	1	0.51%	1	0.48%	2	1.09%
30 - 34	3	1.90%	3	1.90%	7	3.57%	12	5.77%	15	8.15%
35 - 39	28	17.72%	11	6.96%	12	6.12%	13	6.25%	18	9.78%
40 - 44	10	6.33%	14	8.86%	11	5.61%	15	7.21%	17	9.24%
45 - 49	24	15.19%	35	22.15%	37	18.88%	38	18.27%	32	17.39%
50 - 54	27	17.09%	39	24.68%	37	18.88%	34	16.35%	31	16.85%
55 - 59	26	16.46%	25	15.82%	42	21.43%	40	19.23%	30	16.30%
60 - 64	20	12.66%	18	11.39%	30	15.31%	34	16.35%	21	11.41%
65+	20	12.66%	12	7.59%	17	8.67%	21	10.10%	18	9.78%
Unknown	0	0.00%	1	0.63%	2	1.02%	0	0.00%	0	0.00%
	158		158		196		208		184	

Registration Demographics

	2005		2006		2007		2008		2009	
Resident										
Active	3507	73.68%	3576	74.21%	3599	73.77%	3638	73.35%	3665	72.76%
Emeritus	5	0.11%	3	0.06%	3	0.06%	3	0.06%	5	0.10%
Judicial	74	1.55%	76	1.58%	79	1.62%	78	1.57%	75	1.49%
Law Clerk	0		0		0		0		27	0.54%
Non-Resident										
Active	1161	24.39%	1164	24.15%	1198	24.55%	1241	25.02%	1264	25.09%
Judicial	13	0.27%	0	0.00%	0	0.00%	0	0.00%	0	0.00%
Law Clerk	0		0		0		0		1	0.02%
	4760		4819		4879		4960		5037	100.00%
Increase over prior year.			59	1.24%	60	1.25%	81	1.66%	77	1.55%

Admission by Year

	2005		2006		2007		2008		2009	
1/1/1930 - 12/31/1934	2	0.04%	0	0.00%	0	0.00%	0	0.00%	0	0.00%
1/1/1935 - 12/31/1939			2	0.10%	2	0.08%	2	0.04%	2	0.04%
1/1/1940 - 12/31/1944	11	1.41%	1	0.87%	0	0.80%	0	0.00%	0	0.00%
1/1/1945 - 12/31/1949			5	0.46%	4	0.43%	3	0.06%	2	0.04%
1/1/1950 - 12/31/1954	67	3.84%	42	1.39%	39	1.33%	27	0.54%	25	0.50%
1/1/1955 - 12/31/1959			22	2.14%	21	2.09%	25	0.50%	21	0.42%
1/1/1960 - 12/31/1964	183	18.42%	67	8.99%	65	8.67%	47	0.95%	43	0.85%
1/1/1965 - 12/31/1969			103	8.94%	102	8.73%	115	2.32%	110	2.18%
1/1/1970 - 12/31/1974	877	29.16%	433	15.02%	423	14.59%	333	6.71%	326	6.47%
1/1/1975 - 12/31/1979			431	13.22%	426	12.89%	501	10.10%	495	9.83%
1/1/1980 - 12/31/1984	1388	29.89%	724	17.41%	712	16.91%	562	11.33%	555	11.02%
1/1/1985 - 12/31/1989			637	11.54%	629	11.09%	773	15.58%	758	15.05%
1/1/1990 - 12/31/1994	1423	17.00%	839	16.68%	825	15.90%	694	13.99%	682	13.54%
1/1/1995 - 12/31/1999			556	3.17%	541	6.44%	660	13.31%	655	13.00%
1/1/2000 - 12/31/2004	809	17.00%	804	16.68%	776	15.90%	619	12.48%	606	12.03%
1/1/2005 - 12/31/2009			153	3.17%	314	6.44%	599	12.08%	757	15.03%
	4760		4819		4879		4960		5037	

Note: In 2005, admission dates were broken down in 10 increments.

County Demographics

County	2005		2006		2007		2008		2009	
Androscoggin	197	4.14%	198	4.11%	201	4.12%	204	4.11%	209	4.15%
Aroostook	77	1.62%	75	1.56%	77	1.58%	76	1.53%	78	1.55%
Cumberland	1727	36.28%	1768	36.69%	1789	36.67%	1817	36.63%	1851	36.75%
Franklin	35	0.74%	33	0.68%	32	0.66%	30	0.60%	32	0.64%
Hancock	94	1.97%	99	2.05%	100	2.05%	101	2.04%	98	1.95%
Kennebec	464	9.75%	466	9.67%	469	9.61%	477	9.62%	469	9.31%
Knox	88	1.85%	92	1.91%	93	1.91%	97	1.96%	98	1.95%
Lincoln	71	1.49%	72	1.49%	72	1.48%	72	1.45%	72	1.43%
Oxford	44	0.92%	46	0.95%	44	0.90%	44	0.89%	44	0.87%
Penobscot	327	6.87%	337	6.99%	334	6.85%	340	6.85%	342	6.79%
Piscataquis	8	0.17%	8	0.17%	9	0.18%	6	0.12%	7	0.14%
Sagadahoc	65	1.37%	63	1.31%	72	1.48%	74	1.49%	76	1.51%
Somerset	43	0.90%	45	0.93%	41	0.84%	40	0.81%	41	0.81%
Waldo	36	0.76%	35	0.73%	38	0.78%	37	0.75%	37	0.73%
Washington	31	0.65%	32	0.66%	31	0.64%	29	0.58%	29	0.58%
York	287	6.03%	291	6.04%	291	5.96%	289	5.83%	289	5.74%
Out-of-State	1166	24.50%	1159	24.05%	1186	24.31%	1227	24.74%	1265	25.11%
Total:	4760		4819		4879		4960		5037	

Variance over Prior Year

County	2005		2006		2007		2008		2009	
Androscoggin	197		198	0.51%	201	1.52%	204	1.49%	209	2.45%
Aroostook	77		75	-2.60%	77	2.67%	76	-1.30%	78	2.63%
Cumberland	1727		1768	2.37%	1789	1.19%	1817	1.57%	1851	1.87%
Franklin	35		33	-5.71%	32	-3.03%	30	-6.25%	32	6.67%
Hancock	94		99	5.32%	100	1.01%	101	1.00%	98	-2.97%
Kennebec	464		466	0.43%	469	0.64%	477	1.71%	469	-1.68%
Knox	88		92	4.55%	93	1.09%	97	4.30%	98	1.03%
Lincoln	71		72	1.41%	72	0.00%	72	0.00%	72	0.00%
Oxford	44		46	4.55%	44	-4.35%	44	0.00%	44	0.00%
Penobscot	327		337	3.06%	334	-0.89%	340	1.80%	342	0.59%
Piscataquis	8		8	0.00%	9	12.50%	6	-33.33%	7	16.67%
Sagadahoc	65		63	-3.08%	72	14.29%	74	2.78%	76	2.70%
Somerset	43		45	4.65%	41	-8.89%	40	-2.44%	41	2.50%
Waldo	36		35	-2.78%	38	8.57%	37	-2.63%	37	0.00%
Washington	31		32	3.23%	31	-3.13%	29	-6.45%	29	0.00%
York	287		291	1.39%	291	0.00%	289	-0.69%	289	0.00%
Out-of-State	1166		1159	-0.60%	1186	2.33%	1227	3.46%	1265	3.10%
Total:	4760		4819		4879		4960		5037	

Age Demographics

	2005		2006		2007		2008		2009	
29 or Less	100	2.10%	113	2.34%	117	0.00%	172	3.47%	128	2.54%
30 - 34	342	12.23%	333	11.58%	342	11.72%	377	7.60%	364	7.23%
35 - 39	561	16.30%	543	15.96%	506	14.57%	522	10.52%	466	9.25%
40 - 44	582	17.54%	558	16.81%	572	16.85%	582	11.73%	592	11.75%
45 - 49	776	16.22%	769	16.06%	711	15.80%	712	14.35%	641	12.73%
50 - 54	835	9.68%	810	11.35%	822	12.58%	821	16.55%	790	15.68%
55 - 59	772	6.95%	774	7.72%	771	8.69%	767	15.46%	809	16.06%
60 - 64	461	9.68%	547	11.35%	614	12.58%	606	12.22%	697	13.84%
65+	331	6.95%	372	7.72%	424	8.69%	401	8.08%	550	10.92%
	4760		4819		4879		4960		5037	

Gender Demographics

	2005		2006		2007		2008		2009	
Female	1455	30.57%	1503	31.19%	1551	31.79%	1601	32.28%	1639	32.54%
Male	3305	69.43%	3316	68.81%	3328	68.21%	3359	67.72%	3398	67.46%
	4760		4819		4879		4960		5037	

	2005		2006		2007		2008		2009	
Female										
29 or Less	60	1.26%	73	1.51%	82	1.68%	108	2.18%	70	1.39%
30 - 34	150	3.15%	156	3.24%	176	3.61%	190	3.83%	202	4.01%
35 - 39	220	4.62%	206	4.27%	188	3.85%	197	3.97%	192	3.81%
40 - 44	215	4.52%	213	4.42%	213	4.37%	219	4.42%	216	4.29%
45 - 49	535	11.24%	259	5.37%	255	5.23%	257	5.18%	241	4.78%
50 - 54	0	0.00%	273	5.67%	287	5.88%	286	5.77%	274	5.44%
55 - 59	256	5.38%	195	4.05%	188	3.85%	186	3.75%	236	4.69%
60 - 64	0	0.00%	105	2.18%	131	2.68%	128	2.58%	150	2.98%
65+	19	0.40%	23	0.48%	31	0.64%	30	0.60%	58	1.15%
Male										
29 or Less	40	0.84%	40	0.83%	35	0.72%	64	1.29%	58	1.15%
30 - 34	192	4.03%	177	3.67%	166	3.40%	187	3.77%	162	3.22%
35 - 39	341	7.16%	337	6.99%	318	6.52%	325	6.55%	274	5.44%
40 - 44	367	7.71%	345	7.16%	359	7.36%	363	7.32%	376	7.46%
45 - 49	1076	22.61%	510	10.58%	456	9.35%	455	9.17%	400	7.94%
50 - 54	0	0.00%	537	11.14%	535	10.97%	535	10.79%	516	10.24%
55 - 59	977	20.53%	579	12.01%	583	11.95%	581	11.71%	573	11.38%
60 - 64	0	0.00%	442	9.17%	483	9.90%	478	9.64%	547	10.86%
65+	312	6.55%	349	7.24%	393	8.05%	371	7.48%	492	9.77%
	4760		4819		4879		4960		5037	

Note: In 2005, two age brackets (45-54 and 55-64) were calculated in ten year increments.

Firm Size

Firm Size	2006		2007		2008		2009	
Solo	1337	27.74%	1369	28.06%	1387	27.96%	1413	28.05%
2 - 5	1194	24.78%	1248	25.58%	1211	24.42%	1200	23.82%
6 - 9	374	7.76%	420	8.61%	435	8.77%	407	8.08%
10 - 19	441	9.15%	429	8.79%	439	8.85%	428	8.50%
20 - 49	382	7.93%	362	7.42%	400	8.06%	408	8.10%
50 - 99	223	4.63%	313	6.42%	308	6.21%	310	6.15%
100+	460	9.55%	362	7.42%	378	7.62%	387	7.68%
N/A	408	8.47%	376	7.71%	402	8.10%	484	9.61%
	4819		4879		4960		5037	
Variance over prior year.			1.25%		1.66%		1.55%	

Practice Type

Firm Size	2006		2007		2008		2009	
Government	514	10.67%	528	10.82%	530	10.69%	528	10.48%
Inactive	26	0.54%	1	0.02%	0	0.00%	0	0.00%
In-House/Corporate Counsel	279	5.79%	294	6.03%	311	6.27%	325	6.45%
Judiciary	71	1.47%	78	1.60%	86	1.73%	88	1.75%
Law Clerk	0	0.00%	8	0.16%	17	0.34%	28	0.56%
Law School	32	0.66%	8	0.16%	27	0.54%	31	0.62%
Legal Service	78	1.62%	109	2.23%	101	2.04%	105	2.08%
Military	21	0.44%	23	0.47%	11	0.22%	21	0.42%
Other	389	8.07%	411	8.42%	377	7.60%	444	8.81%
Private Practice	3234	67.11%	3312	67.88%	3408	68.71%	3421	67.92%
Retired	26	0.54%	34	0.70%	45	0.91%	46	0.91%
Unknown	149	3.09%	73	1.50%	47	0.95%	0	0.00%
	4819		4879		4960		5037	
Variance over prior year.			1.25%		1.66%		1.55%	

Note: Firm size and practice type data was not recorded in 2005.