

# MAINE STATE LEGISLATURE

The following document is provided by the  
**LAW AND LEGISLATIVE DIGITAL LIBRARY**  
at the Maine State Law and Legislative Reference Library  
<http://legislature.maine.gov/lawlib>



Reproduced from electronic originals  
(may include minor formatting differences from printed original)

**MAINE DEPARTMENT OF HEALTH AND HUMAN SERVICES**

**Office of Child and Family Services**

**Child Protective  
Services Annual Report**

**2015**



*Paul R. LePage, Governor*

*Mary C. Mayhew, Commissioner*



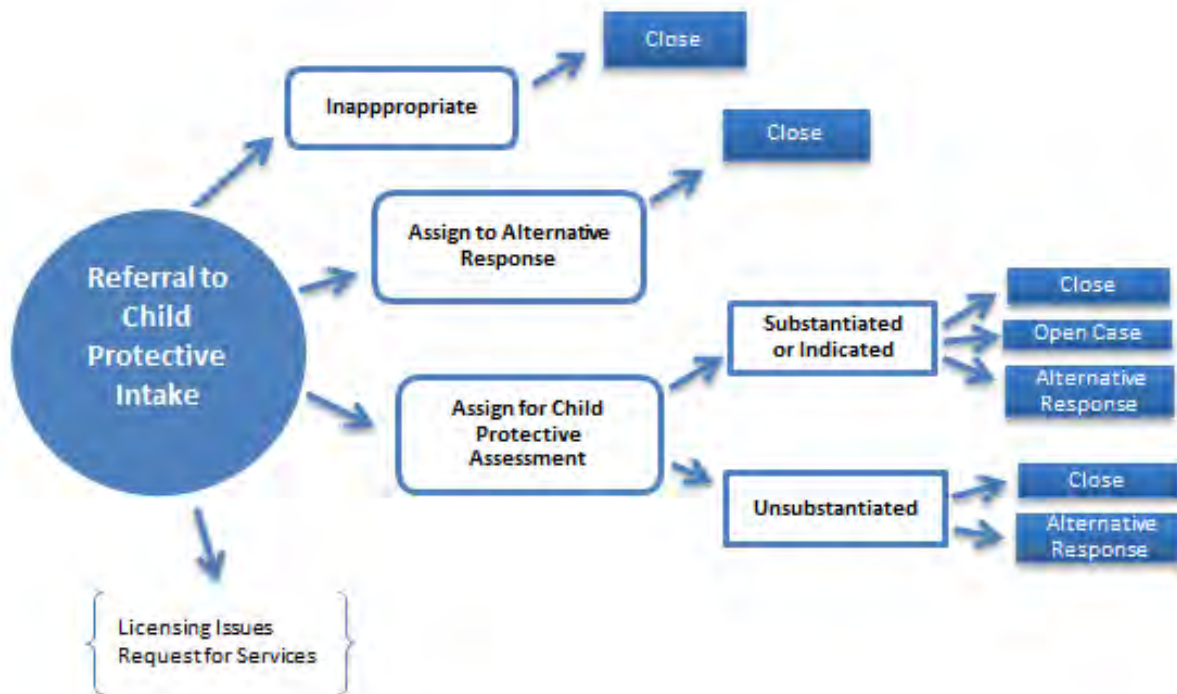
# Child Protective Services Annual Report

The following report provides a summary of the number of referrals to Child Protective Services, the number of unassigned referrals, and a series of detailed reports on the characteristics of the referrals that were assigned to caseworkers for assessment.

A referral is any written or verbal request for Child Protective Services intervention, in a family situation on behalf of a child, in order to assess or resolve problems being presented.

All county level data represents the county where the primary caregiver was residing at the time of the Intake referral.

• • •  
Title 22 MRSA, Chapter 1071, Subsection 4002 defines abuse or neglect as "a threat to a child's health or welfare by physical, mental, or emotional injury or impairment, sexual abuse or exploitation, deprivation of essential needs or lack of protection from these by a person responsible for the child."



## ***REFERRALS FOR CHILD PROTECTIVE SERVICES***

During calendar year 2015, the Department of Health and Human Services received **18,615** referrals for Child Protective Services intervention in a family situation. Most referrals are received through Child Protective Intake, though a small amount of reports are received within one of the eight District Offices. When reports are received, a decision is made regarding whether or not the report contains allegations of abuse or neglect per Title 22. If the report does not contain allegations of abuse or neglect per Maine state law, the report is not assigned (“inappropriate”) for intervention. When reports contain allegations of abuse or neglect and are “appropriate” for intervention, the report may be assigned for a child protective assessment, or assigned to an Alternative Response Program (ARP).

The following chart shows the number of reports received by county over the past three years. This includes inappropriate reports, reports assigned for alternative response, and those assigned for a child protective assessment.

<b>NUMBER OF REFERRALS BY COUNTY AND CALENDAR YEAR</b>			
<b>COUNTY</b>	<b>2013</b>	<b>2014</b>	<b>2015</b>
Androscoggin	2145	2158	2147
Aroostook	1175	1220	1198
Cumberland	2606	2650	2532
Franklin	469	471	462
Hancock	648	658	578
Kennebec	2297	2252	2079
Knox	549	573	544
Lincoln	439	441	418
Oxford	872	946	950
Penobscot	2625	2529	2486
Piscataquis	295	275	240
Sagadahoc	403	392	366
Somerset	1011	959	972
Waldo	647	627	579
Washington	454	480	424
York	2527	2584	2514
Unknown	21	11	38
Out of State	53	13	88
<b>TOTAL REPORTS</b>	<b>19236</b>	<b>19239</b>	<b>18615</b>

*\*Excludes reports referred to Licensing, Out of Home Investigation Unit, Service Requests, and reports received where a case was already open and the information was not a new incident.*

*\*County represents the county where the primary caregiver was residing at the time of the Intake referral.*

## ***INAPPROPRIATE REFERRALS***

During calendar year 2015, **7534** reports were deemed “inappropriate” (screened out) as they did not contain allegations of child abuse or neglect. Some examples of reports that would be deemed inappropriate include:

- **Parent/child conflict:** Children and parents in conflict over family, school, friends, or behaviors, with no allegations of abuse or neglect. Includes adolescents who are runaways or who are exhibiting acting out behaviors that parents have been unable to control.
- **Non-specific allegations** or allegations of marginal physical or emotional care, which may be poor parenting practice, but is not considered abuse or neglect under Maine Law.
- **Conflicts over custody** and or visitation of children which may include allegations of marginal/poor care.
- **Families in crisis** due to financial, physical, mental health, or interpersonal problems, but there are no allegations of abuse or neglect.

The following is the breakdown of inappropriate reports received by county over the past three years.

<b>NUMBER OF INAPPROPRIATE REPORTS BY COUNTY</b>			
<b>County</b>	<b>2013</b>	<b>2014</b>	<b>2015</b>
Androscoggin	964	908	858
Aroostook	574	499	524
Cumberland	1221	1184	1109
Franklin	232	194	156
Hancock	276	252	246
Kennebec	1001	889	716
Knox	247	241	227
Lincoln	221	181	175
Oxford	437	371	396
Penobscot	1210	1060	988
Piscataquis	143	118	103
Sagadahoc	181	166	143
Somerset	441	375	357
Waldo	310	291	244
Washington	172	152	154
York	1185	1092	1014
Unknown	21	11	38
Out of State	53	13	87
<b>State</b>	<b>8889</b>	<b>7997</b>	<b>7534</b>

## ***ALTERNATIVE RESPONSE***

---

The Department of Health and Human Services has contracts with private agencies to provide an alternative response to reports of child abuse and neglect when the allegations are considered to be of low to moderate severity.

In 2015, there were **2177** reports which were assigned to a Contract Agency for alternative response at the time of initial report. Referrals are also made to Alternative Response Programs at the conclusion of a child protective assessment or case with a family, when ongoing services and support are deemed necessary. The following chart shows the number of reports assigned for alternative response at the time of the Intake report.

<b>REPORTS ASSIGNED FOR ALTERNATIVE RESPONSE BY COUNTY</b>			
<b>COUNTY</b>	<b>2013</b>	<b>2014</b>	<b>2015</b>
Androscoggin	86	262	329
Aroostook	1	176	151
Cumberland	85	160	183
Franklin	22	60	86
Hancock	67	76	60
Kennebec	216	228	338
Knox	24	56	60
Lincoln	46	59	50
Oxford	31	132	151
Penobscot	284	221	246
Piscataquis	36	33	25
Sagadahoc	33	57	66
Somerset	25	43	66
Waldo	64	100	91
Washington	31	60	28
York	108	185	247
<b>State</b>	<b>1159</b>	<b>1908</b>	<b>2177</b>

*\*County represents the county where the primary caregiver was residing at the time of the Intake referral.*

## ***REFERRALS FOR CHILD PROTECTIVE SERVICES***

There were **8446** reports involving **13,933** children assigned to a caseworker for a child protective assessment during calendar year 2015.

The following is the breakdown by county of reports assigned for a child protective assessment over the past 3 years.

<b>REPORTS ASSIGNED FOR CHILD PROTECTIVE ASSESSMENT BY COUNTY</b>			
<b>COUNTY</b>	<b>2013</b>	<b>2014</b>	<b>2015</b>
Androscoggin	1027	940	884
Aroostook	549	509	477
Cumberland	1253	1251	1199
Franklin	208	215	216
Hancock	286	313	256
Kennebec	1058	1114	1000
Knox	260	268	241
Lincoln	165	186	180
Oxford	392	424	383
Penobscot	1048	1160	1164
Piscataquis	108	118	107
Sagadahoc	177	165	148
Somerset	537	535	529
Waldo	257	219	223
Washington	216	241	205
York	1216	1287	1234
<b>State</b>	<b>8757</b>	<b>8945</b>	<b>8446</b>

*\* County represents the county where the primary caregiver was residing at the time of the Intake referral.*



**REFERRALS FOR CHILD PROTECTIVE SERVICES**

The following is the breakdown by county and age group of the alleged victims associated with the reports assigned for a child protective assessment over the past three years.

NUMBER OF ALLEGED VICTIMS ASSOCIATED WITH REPORTS ASSIGNED FOR CHILD PROTECTIVE ASSESSMENTS												
County	2013				2014				2015			
	Age Group				Age Group				Age Group			
	0-4	5-9	10-14	15-17	0-4	5-9	10-14	15-17	0-4	5-9	10-14	15-17
Androscoggin	767	557	322	97	679	552	329	90	660	517	290	86
Aroostook	413	293	171	60	369	287	161	70	347	235	166	46
Cumberland	782	645	472	161	802	679	461	184	756	667	380	161
Franklin	131	131	69	22	132	124	98	32	156	126	63	28
Hancock	196	124	98	31	219	147	109	29	176	135	76	21
Kennebec	758	513	340	119	758	570	346	134	637	555	338	113
Knox	208	125	91	20	201	141	86	22	169	128	59	21
Lincoln	101	93	68	17	117	104	71	25	124	74	78	13
Oxford	295	214	148	52	296	271	164	44	282	215	139	50
Penobscot	776	553	302	83	823	579	378	122	829	551	351	98
Piscataquis	71	53	45	14	79	58	41	14	79	43	47	14
Sagadahoc	102	101	72	23	106	95	55	24	80	78	49	18
Somerset	380	302	169	69	379	284	233	77	348	285	213	60
Waldo	195	156	99	25	176	143	73	16	140	127	67	31
Washington	161	126	59	28	174	138	75	25	146	111	84	22
York	784	627	473	186	781	699	484	181	710	639	450	176
<b>State</b>	<b>6120</b>	<b>4613</b>	<b>2998</b>	<b>1007</b>	<b>6091</b>	<b>4871</b>	<b>3164</b>	<b>1089</b>	<b>5639</b>	<b>4486</b>	<b>2850</b>	<b>958</b>

\*County represents the county where the primary caregiver was residing at the time of the Intake referral.

\*Children may be counted multiple times if more than one report was received in the year. There were 11,709 unique children in calendar year 2015.

**REFERRAL SOURCE OF ALL REPORTS RECEIVED**

The following is a breakdown of the report source, (i.e. “Referent”) for reports received in calendar year 2015. Mandated reporters are required by law to provide their name and information about their professional relationship with the family, though can ask that their name be kept confidential from the family. Non-mandated reporters can ask that their name be kept “anonymous,” and not disclose their name/identity for the report.

REFERRAL SOURCE – ALL REPORTS			
REFERRAL SOURCE	2013	2014	2015
Anonymous	11%	9%	10%
Child Care Personnel	1%	1%	1%
Law Enforcement Personnel	12%	13%	14%
Medical Personnel	13%	14%	15%
Mental Health Personnel	12%	12%	13%
Neighbor/Friend	4%	5%	5%
Other	1%	1%	1%
Relative	6%	6%	5%
School Personnel	19%	20%	19%
Self/Family	13%	11%	11%
Social Services Personnel	9%	9%	8%

**REFERRAL SOURCE OF REPORTS ASSIGNED FOR CHILD PROTECTIVE ASSESSMENT**

REFERRAL SOURCE – REPORTS ASSIGNED FOR CHILD PROTECTIVE ASSESSMENT			
REFERRAL SOURCE	2013	2014	2015
Anonymous	11%	9%	8%
Child Care Personnel	0%	0%	1%
Law Enforcement Personnel	17%	18%	19%
Medical Personnel	15%	15%	16%
Mental Health Personnel	10%	10%	11%
Neighbor/Friend	4%	5%	4%
Other	1%	1%	1%
Relative	6%	6%	6%
School Personnel	17%	18%	18%
Self/Family	8%	8%	7%
Social Services Personnel	10%	9%	9%

*\*Excludes reports referred to Licensing, Out of Home Investigations, Service Requests, and reports received where a case was already open and the information was not a new incident.*

**HOUSEHOLD TYPE/LIVING ARRANGEMENT OF FAMILIES  
ASSIGNED FOR CHILD PROTECTIVE ASSESSMENT**

---

When receiving reports of suspected abuse/neglect, Maine OCFS documents information regarding the living arrangement of each family/household. For example, a two parent, unmarried family may include a biological parent and his/her live-in partner who is also a caretaker to the child (ren). A one parent female/male family would be a household with a single parent caring for the children. A “relative” household type would be chosen when grandparents, aunt/uncle, etc. are the caregivers of children. A non-relative household type would be selected when children are being cared for by a person not related to them.

The following chart shows the living arrangement at the time of the receipt of the Intake report for those reports that were assigned for a child protective assessment.

<b>LIVING ARRANGEMENT OF FAMILIES FOR REPORTS ASSIGNED FOR CHILD PROTECTIVE ASSESSMENT</b>			
<b>Household Type/Living Arrangement</b>	<b>2013</b>	<b>2014</b>	<b>2015</b>
Two Parent Married	20%	19%	19%
Two Parent Unmarried	30%	32%	35%
One Parent Female	38%	36%	35%
One Parent Male	7%	7%	7%
Adoptive Home	1%	1%	1%
Relative	3%	3%	3%
Non Relative	0%	0%	0%
Other	1%	1%	1%

## ***Family Risk Factors Identified During Assessment***

The following shows the percentage of assessments where one of the following risk factors were found during the assessment. Each assessment may have several risk factors.

<b>RISK FACTOR</b>	<b>2013</b>	<b>2014</b>	<b>2015</b>
Prior History with CPS	72%	75%	74%
Mental Health Problems	44%	45%	44%
Involved with Court	21%	23%	22%
Spouse Abuse/Family Violence	21%	20%	21%
Drug Misuse by Parent	19%	19%	18%
Pregnancy/New Child	19%	18%	18%
Heavy Child Care Responsibility	14%	13%	13%
Unstable Living Conditions	14%	13%	11%
School Related Problems	12%	12%	11%
Parent / Child Conflict	12%	12%	11%
ADD/ADHD	12%	11%	11%
Alcohol Misuse by Parent	11%	10%	11%
Physical Health Problems	11%	10%	9%
Severe Acting Out Behavior by Child	10%	10%	8%
Emotionally Disturbed Child	9%	9%	7%
Divorce Conflict	8%	9%	8%
Former Foster Child	8%	9%	10%
Learning Disability	8%	8%	8%
Inadequate Housing	5%	5%	5%
Social Isolation	4%	3%	3%
Physical Disability	3%	2%	2%
Drug Misuse by Child	2%	2%	2%
Premature Birth	1%	1%	1%
Runaway	1%	1%	1%
Alcohol Misuse by Child	1%	1%	1%
Abuse to Animals	1%	<1%	<1%
Visual/Hearing Impairment	1%	1%	<1%
Previous Child Death	1%	<1%	<1%
Failure to Thrive Child	<1%	<1%	<1%
Fire Setting	<1%	<1%	<1%
Fetal Alcohol Syndrome	<1%	<1%	<1%

\*Totals will exceed 100% due to each assessment having multiple risk factors identified during the assessment.

## COMPLETED ASSESSMENTS

Below are outcomes for assessments completed in calendar year 2015, showing the number of completed assessments by county which resulted in a finding of abuse or neglect (substantiated or indicated), or no findings of abuse/neglect (unsubstantiated). Substantiated findings are high severity, whereas indicated findings are of low/moderate severity.

CHILD PROTECTIVE ASSESSMENT FINDINGS						
COUNTY	2014			2015		
	# Assigned	# Substantiated/ Indicated	#Unsubstantiated	# Assigned	# Substantiated/ Indicated	#Unsubstantiated
Androscoggin	940	237	703	884	200	678
Aroostook	509	127	382	477	85	391
Cumberland	1251	319	932	1199	257	942
Franklin	215	52	163	216	40	176
Hancock	313	124	189	256	93	164
Kennebec	1114	261	853	1000	269	730
Knox	268	55	213	241	50	190
Lincoln	186	38	148	180	53	126
Oxford	424	100	324	383	70	313
Penobscot	1160	291	869	1164	286	878
Piscataquis	118	38	80	107	21	87
Sagadahoc	165	30	135	148	28	119
Somerset	535	174	361	529	186	343
Waldo	219	57	162	223	52	171
Washington	241	69	172	205	59	146
York	1287	420	867	1234	399	834
<b>State</b>	<b>8945</b>	<b>2392</b>	<b>6553</b>	<b>8446</b>	<b>2148</b>	<b>6288</b>

\*County represents the county where the primary caregiver was residing at the time of the Intake referral.

## ASSESSMENT FINDINGS RATE

---

The following shows the percentage of assessments completed where findings of abuse or neglect were substantiated or indicated by county.

ASSESSMENT FINDINGS RATE			
COUNTY	2013	2014	2015
Androscoggin	26%	25%	23%
Aroostook	25%	25%	18%
Cumberland	27%	25%	21%
Franklin	24%	24%	19%
Hancock	42%	40%	36%
Kennebec	22%	23%	27%
Knox	23%	21%	21%
Lincoln	29%	20%	30%
Oxford	25%	24%	18%
Penobscot	32%	25%	25%
Piscataquis	32%	32%	19%
Sagadahoc	20%	18%	19%
Somerset	32%	33%	35%
Waldo	24%	26%	23%
Washington	34%	29%	29%
York	34%	33%	32%
<b>State</b>	<b>28%</b>	<b>27%</b>	<b>25%</b>

*\*County represents the county where the primary caregiver was residing at the time of the Intake referral.*

## ***CHILD ABUSE AND NEGLECT VICTIMS BY ABUSE TYPE***

---

The following report shows the victims by age group and type(s) of abuse found during the child protective assessment for the past three years. Children may be counted multiple times if they were the victim of more than one abuse type in a given assessment, or the victim of subsequent abuse in calendar year 2015.

<b>2013</b>				
<b>AGE</b>	<b>Sexual Abuse</b>	<b>Physical Abuse</b>	<b>Neglect</b>	<b>Emotional Abuse</b>
<b>0-4</b>	57	424	1436	323
<b>5-9</b>	78	241	750	509
<b>10-14</b>	75	171	459	438
<b>15-17</b>	29	55	151	147
<b>Total</b>	<b>239</b>	<b>891</b>	<b>2796</b>	<b>1417</b>

<b>2014</b>				
<b>AGE</b>	<b>Sexual Abuse</b>	<b>Physical Abuse</b>	<b>Neglect</b>	<b>Emotional Abuse</b>
<b>0-4</b>	69	436	1237	235
<b>5-9</b>	86	305	729	506
<b>10-14</b>	82	159	427	387
<b>15-17</b>	28	49	126	128
<b>Total</b>	<b>265</b>	<b>949</b>	<b>2519</b>	<b>1256</b>

<b>2015</b>				
<b>AGE</b>	<b>Sexual Abuse</b>	<b>Physical Abuse</b>	<b>Neglect</b>	<b>Emotional Abuse</b>
<b>0-4</b>	64	491	1044	228
<b>5-9</b>	73	282	654	407
<b>10-14</b>	73	180	388	338
<b>15-17</b>	25	60	110	114
<b>Total</b>	<b>235</b>	<b>1013</b>	<b>2196</b>	<b>1087</b>

*\*Children may be counted multiple times if they were the victim of more than one abuse type in a given assessment, or the victim of subsequent abuse in calendar year 2015.*