

# MAINE STATE LEGISLATURE

The following document is provided by the  
**LAW AND LEGISLATIVE DIGITAL LIBRARY**  
at the Maine State Law and Legislative Reference Library  
<http://legislature.maine.gov/lawlib>



Reproduced from electronic originals  
(may include minor formatting differences from printed original)

**MAINE DEPARTMENT OF HEALTH AND HUMAN SERVICES**

**Office of Child and Family Services**

**Child Protective  
Services Annual Report**

**2013**



*Paul R. LePage, Governor*

*Mary C. Mayhew, Commissioner*



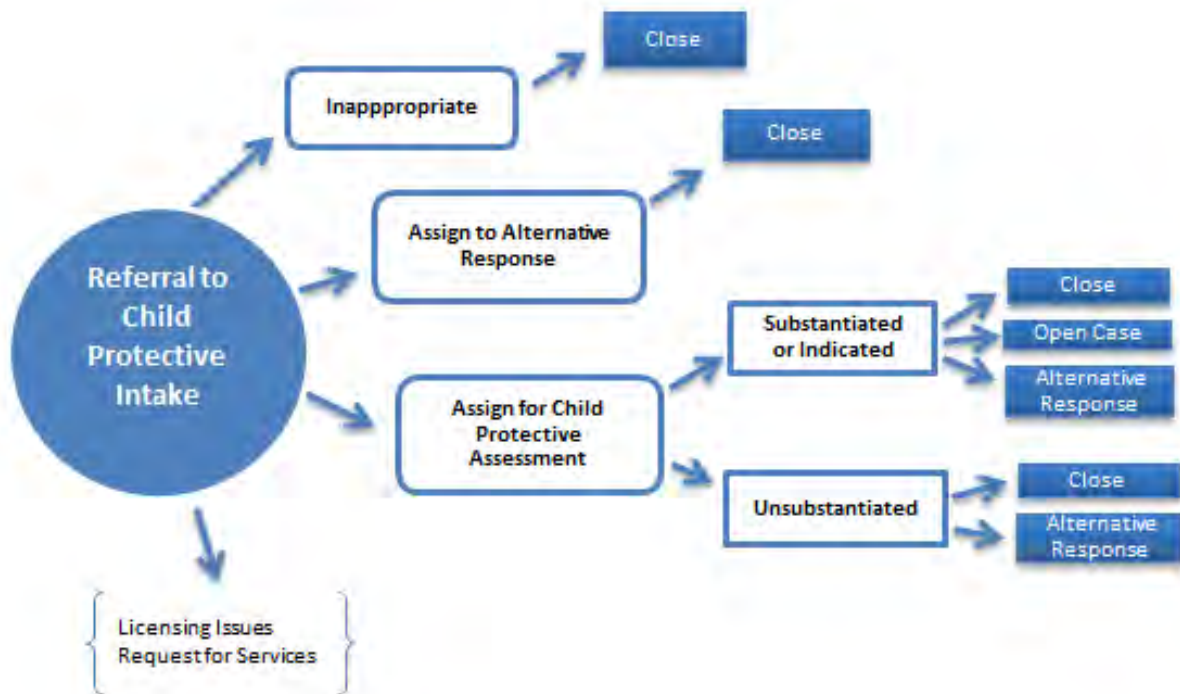
# Child Protective Services Annual Report

The following report provides a summary of the number of referrals to Child Protective Services, the number of unassigned referrals, and a series of detailed reports on the characteristics of the referrals that were assigned to caseworkers for assessment.

A referral is any written or verbal request for Child Protective Services intervention, in a family situation on behalf of a child, in order to assess or resolve problems being presented.

All county level data represents the county where the primary caregiver was residing at the time of the Intake referral.

• • •  
Title 22 MRSA, Chapter 1071, Subsection 4002 defines abuse or neglect as "a threat to a child's health or welfare by physical, mental, or emotional injury or impairment, sexual abuse or exploitation, deprivation of essential needs or lack of protection from these by a person responsible for the child."



## ***REFERRALS FOR CHILD PROTECTIVE SERVICES***

During calendar year 2013, the Department of Health and Human Services received **19236** referrals for Child Protective Services intervention in a family situation. Most referrals are received through Child Protective Intake, though a small amount of reports are received within one of the eight District Offices. When reports are received, a decision is made regarding whether or not the report contains allegations of abuse or neglect per Title 22. If the report does not contain allegations of abuse or neglect per Maine state law, the report is not assigned (“inappropriate”) for intervention. When reports contain allegations of abuse or neglect and are “appropriate” for intervention, the report may be assigned for a child protective assessment, or assigned to an Alternative Response Program (ARP).

The following chart shows the number of reports received by county over the past three years. This includes inappropriate reports, reports assigned for alternative response, and those assigned for a child protective assessment.

<b>NUMBER OF REFERRALS BY COUNTY AND CALENDAR YEAR</b>			
<b>COUNTY</b>	<b>2011</b>	<b>2012</b>	<b>2013</b>
Androscoggin	1999	2027	2145
Aroostook	1015	1189	1175
Cumberland	2555	2558	2606
Franklin	445	472	469
Hancock	640	658	648
Kennebec	2067	2236	2297
Knox	551	554	549
Lincoln	381	416	439
Oxford	875	890	872
Penobscot	2413	2640	2625
Piscataquis	248	267	295
Sagadahoc	369	414	403
Somerset	981	970	1011
Waldo	570	626	647
Washington	476	442	454
York	2341	2412	2527
Unknown	54	40	21
Out of State	57	56	53
<b>TOTAL REPORTS</b>	<b>18037</b>	<b>18867</b>	<b>19236</b>

*\*Excludes reports referred to Licensing, Out of Home Investigation Unit, Service Requests, and reports received where a case was already open and the information was not a new incident.*

*\*County represents the county where the primary caregiver was residing at the time of the Intake referral.*

## ***INAPPROPRIATE REFERRALS***

During calendar year 2013, **8889** reports were deemed “inappropriate” (screened out) as they did not contain allegations of child abuse or neglect. Some examples of reports that would be deemed inappropriate include:

- **Parent/child conflict:** Children and parents in conflict over family, school, friends, or behaviors, with no allegations of abuse or neglect. Includes adolescents who are runaways or who are exhibiting acting out behaviors that parents have been unable to control.
- **Non-specific allegations** or allegations of marginal physical or emotional care, which may be poor parenting practice, but is not considered abuse or neglect under Maine Law.
- **Conflicts over custody** and or visitation of children which may include allegations of marginal/poor care.
- **Families in crisis** due to financial, physical, mental health, or interpersonal problems, but there are no allegations of abuse or neglect.

The following is the breakdown of inappropriate reports received by county over the past three years.

<b>NUMBER OF INAPPROPRIATE REPORTS BY COUNTY</b>			
<b>County</b>	<b>2011</b>	<b>2012</b>	<b>2013</b>
Androscoggin	1025	964	964
Aroostook	559	566	574
Cumberland	1347	1323	1221
Franklin	239	238	232
Hancock	300	297	276
Kennebec	1035	1068	1001
Knox	278	262	247
Lincoln	234	221	221
Oxford	503	467	437
Penobscot	1223	1267	1210
Piscataquis	133	148	143
Sagadahoc	214	231	181
Somerset	495	461	441
Waldo	285	317	310
Washington	227	215	172
York	1217	1175	1185
Unknown	54	40	21
Out of State	57	55	53
<b>State</b>	<b>9425</b>	<b>9315</b>	<b>8889</b>

## ***ALTERNATIVE RESPONSE***

---

The Department of Health and Human Services has contracts with private agencies to provide an alternative response to reports of child abuse and neglect when the allegations are considered to be of low to moderate severity.

In 2013, there were **1159** reports which were assigned to a Contract Agency for alternative response at the time of initial report. Referrals are also made to Alternative Response Programs at the conclusion of a child protective assessment or case with a family, when ongoing services and support are deemed necessary. The following chart shows the number of reports assigned for alternative response at the time of the Intake report.

<b>REPORTS ASSIGNED FOR ALTERNATIVE RESPONSE BY COUNTY</b>			
<b>COUNTY</b>	<b>2011</b>	<b>2012</b>	<b>2013</b>
Androscoggin	152	30	86
Aroostook	18	21	1
Cumberland	122	109	85
Franklin	32	5	22
Hancock	110	46	67
Kennebec	215	117	216
Knox	60	20	24
Lincoln	32	25	46
Oxford	55	20	31
Penobscot	250	199	284
Piscataquis	35	23	36
Sagadahoc	34	14	33
Somerset	77	29	25
Waldo	41	41	64
Washington	74	43	31
York	151	123	108
<b>State</b>	<b>1458</b>	<b>865</b>	<b>1159</b>

*\*County represents the county where the primary caregiver was residing at the time of the Intake referral.*

## ***REFERRALS FOR CHILD PROTECTIVE SERVICES***

There were **8757** reports involving **12366** children assigned to a caseworker for a child protective assessment during calendar year 2013.

The following is the breakdown by county of reports assigned for a child protective assessment over the past three years.

<b>REPORTS ASSIGNED FOR CHILD PROTECTIVE ASSESSMENT BY COUNTY</b>			
<b>COUNTY</b>	<b>2011</b>	<b>2012</b>	<b>2013</b>
Androscoggin	800	1001	1027
Aroostook	422	566	549
Cumberland	1063	1099	1253
Franklin	169	227	208
Hancock	220	298	286
Kennebec	797	1019	1058
Knox	202	257	260
Lincoln	105	162	165
Oxford	311	398	392
Penobscot	853	1097	1048
Piscataquis	80	85	108
Sagadahoc	117	165	177
Somerset	406	474	537
Waldo	225	258	257
Washington	161	160	216
York	959	1103	1216
<b>State</b>	<b>6890</b>	<b>8369</b>	<b>8757</b>

*\*County represents the county where the primary caregiver was residing at the time of the Intake referral.*



**REFERRALS FOR CHILD PROTECTIVE SERVICES**

The following is the breakdown by county and age group of the alleged victims associated with the reports assigned for a child protective assessment over the past three years.

NUMBER OF ALLEGED VICTIMS ASSOCIATED WITH REPORTS ASSIGNED FOR CHILD PROTECTIVE ASSESSMENTS												
County	2011				2012				2013			
	Age Group				Age Group				Age Group			
	0-4	5-9	10-14	15-17	0-4	5-9	10-14	15-17	0-4	5-9	10-14	15-17
Androscoggin	611	366	235	90	728	554	339	111	767	557	322	97
Aroostook	295	203	144	44	446	299	208	42	413	293	171	60
Cumberland	716	568	368	142	716	555	338	135	782	645	472	161
Franklin	123	75	54	17	145	115	71	27	131	131	69	22
Hancock	141	95	60	26	194	145	111	32	196	124	98	31
Kennebec	608	399	249	99	725	468	356	131	758	513	340	119
Knox	142	98	69	17	186	137	73	20	208	125	91	20
Lincoln	65	65	43	11	100	96	43	16	101	93	68	17
Oxford	218	163	125	41	246	212	162	54	295	214	148	52
Penobscot	636	403	226	80	786	546	292	104	776	553	302	83
Piscataquis	53	38	45	15	53	41	32	16	71	53	45	14
Sagadahoc	82	54	48	15	106	96	52	24	102	101	72	23
Somerset	283	201	154	65	324	244	169	71	380	302	169	69
Waldo	178	108	101	13	216	131	78	32	195	156	99	25
Washington	118	65	50	20	136	79	49	19	161	126	59	28
York	630	434	337	147	707	554	464	137	784	627	473	186
<b>State</b>	<b>4899</b>	<b>3335</b>	<b>2308</b>	<b>842</b>	<b>5814</b>	<b>4272</b>	<b>2837</b>	<b>971</b>	<b>6120</b>	<b>4613</b>	<b>2998</b>	<b>1007</b>

\*County represents the county where the primary caregiver was residing at the time of the Intake referral.

\*Children may be counted multiple times if more than one report was received in the year. There were 12366 unique children in calendar year 2013.

**REFERRAL SOURCE OF ALL REPORTS RECEIVED**

The following is a breakdown of the report source, (i.e. “Referent”) for reports received in calendar year 2013. Mandated reporters are required by law to provide their name and information about their professional relationship with the family, though can ask that their name be kept confidential from the family. Non-mandated reporters can ask that their name be kept “anonymous,” and not disclose their name/identity for the report.

<b>REFERRAL SOURCE – ALL REPORTS</b>			
<b>REFERRAL SOURCE</b>	<b>2011</b>	<b>2012</b>	<b>2013</b>
Anonymous	11%	11%	11%
Child Care Personnel	1%	1%	1%
Law Enforcement Personnel	11%	11%	12%
Medical Personnel	12%	12%	13%
Mental Health Personnel	11%	12%	12%
Neighbor/Friend	6%	5%	4%
Other	2%	1%	1%
Relative	7%	7%	6%
School Personnel	19%	18%	19%
Self/Family	13%	13%	13%
Social Services Personnel	8%	8%	9%

**REFERRAL SOURCE OF REPORTS ASSIGNED FOR CHILD PROTECTIVE ASSESSMENT**

<b>REFERRAL SOURCE – REPORTS ASSIGNED FOR CHILD PROTECTIVE ASSESSMENT</b>			
<b>REFERRAL SOURCE</b>	<b>2011</b>	<b>2012</b>	<b>2013</b>
Anonymous	10%	11%	11%
Child Care Personnel	1%	1%	0%
Law Enforcement Personnel	16%	16%	17%
Medical Personnel	13%	15%	15%
Mental Health Personnel	9%	10%	10%
Neighbor/Friend	6%	5%	4%
Other	2%	1%	1%
Relative	8%	8%	6%
School Personnel	18%	17%	17%
Self/Family	8%	8%	8%
Social Services Personnel	10%	9%	10%

*\*Excludes reports referred to Licensing, Out of Home Investigations, Service Requests, and reports received where a case was already open and the information was not a new incident.*

**HOUSEHOLD TYPE/LIVING ARRANGEMENT OF FAMILIES  
ASSIGNED FOR CHILD PROTECTIVE ASSESSMENT**

---

When receiving reports of suspected abuse/neglect, Maine OCFS documents information regarding the living arrangement of each family/household. For example, a two parent, unmarried family may include a biological parent and his/her live-in partner who is also a caretaker to the child (ren). A one parent female/male family would be a household with a single parent caring for the children. A “relative” household type would be chosen when grandparents, aunt/uncle, etc. are the caregivers of children. A non-relative household type would be selected when children are being cared for by a person not related to them.

The following chart shows the living arrangement at the time of the receipt of the Intake report for those reports that were assigned for a child protective assessment.

<b>LIVING ARRANGEMENT OF FAMILIES FOR REPORTS ASSIGNED FOR CHILD PROTECTIVE ASSESSMENT</b>			
<b>Household Type/Living Arrangement</b>	<b>2011</b>	<b>2012</b>	<b>2013</b>
Two Parent Married	20%	21%	20%
Two Parent Unmarried	30%	30%	30%
One Parent Female	39%	38%	38%
One Parent Male	6%	6%	7%
Adoptive Home	1%	1%	1%
Relative	3%	3%	3%
Non Relative	0%	0%	0%
Other	1%	1%	1%

## ***Family Risk Factors Identified During Assessment***

The following shows the percentage of assessments where one of the following risk factors were found during the assessment. Each assessment may have several risk factors.

<b>RISK FACTOR</b>	<b>2011</b>	<b>2012</b>	<b>2013</b>
Prior History with CPS	71%	71%	72%
Mental Health Problems	47%	46%	44%
Involved with Court	22%	22%	21%
Spouse Abuse/Family Violence	21%	21%	21%
Drug Misuse by Parent	20%	20%	19%
Pregnancy/New Child	19%	19%	19%
Heavy Child Care Responsibility	18%	18%	14%
Unstable Living Conditions	13%	14%	14%
ADD/ADHD	13%	13%	12%
School Related Problems	15%	13%	12%
Parent / Child Conflict	12%	11%	12%
Alcohol Misuse by Parent	11%	12%	11%
Physical Health Problems	12%	11%	11%
Severe Acting Out Behavior by Child	11%	10%	10%
Emotionally Disturbed Child	11%	10%	9%
Divorce Conflict	9%	10%	8%
Former Foster Child	10%	9%	8%
Learning Disability	8%	8%	8%
Inadequate Housing	5%	5%	5%
Social Isolation	4%	3%	4%
Physical Disability	3%	3%	3%
Drug Misuse by Child	2%	2%	2%
Premature Birth	1%	1%	1%
Runaway	1%	1%	1%
Alcohol Misuse by Child	1%	1%	1%
Abuse to Animals	1%	1%	1%
Visual/Hearing Impairment	1%	1%	1%
Previous Child Death	<1%	1%	1%
Failure to Thrive Child	<1%	<1%	<1%
Fire Setting	<1%	<1%	<1%
Fetal Alcohol Syndrome	<1%	<1%	<1%

\*Totals will exceed 100% due to each assessment having multiple risk factors identified during the assessment.

## COMPLETED ASSESSMENTS

Below are outcomes for assessments completed in calendar year 2013, showing the number of completed assessments by county which resulted in a finding of abuse or neglect (substantiated or indicated), or no findings of abuse/neglect (unsubstantiated). Substantiated findings are high severity, whereas indicated findings are of low/moderate severity.

CHILD PROTECTIVE ASSESSMENT FINDINGS						
COUNTY	2012			2013		
	# Assigned	# Substantiated/ Indicated	#Unsubstantiated	# Assigned	# Substantiated/ Indicated	#Unsubstantiated
Androscoggin	1001	297	704	1027	266	761
Aroostook	566	139	427	549	136	413
Cumberland	1099	306	793	1253	334	919
Franklin	227	73	154	208	50	158
Hancock	298	117	181	286	120	166
Kennebec	1019	284	735	1058	237	821
Knox	257	65	192	260	59	201
Lincoln	162	43	119	165	48	117
Oxford	398	114	284	392	99	293
Penobscot	1097	351	746	1048	339	709
Piscataquis	85	27	58	108	35	73
Sagadahoc	165	31	134	177	35	142
Somerset	474	155	319	537	173	364
Waldo	258	86	172	257	62	195
Washington	160	60	100	216	73	143
York	1103	454	649	1216	417	799
<b>State</b>	<b>8369</b>	<b>2602</b>	<b>5767</b>	<b>8757</b>	<b>2483</b>	<b>6274</b>

\*County represents the county where the primary caregiver was residing at the time of the Intake referral.

## ***ASSESSMENT FINDINGS RATE***

---

The following shows the percentage of assessments completed where findings of abuse or neglect were substantiated or indicated by county.

<b>ASSESSMENT FINDINGS RATE</b>		
<b>COUNTY</b>	<b>2012</b>	<b>2013</b>
Androscoggin	30%	26%
Aroostook	25%	25%
Cumberland	28%	27%
Franklin	32%	24%
Hancock	39%	42%
Kennebec	28%	22%
Knox	25%	23%
Lincoln	27%	29%
Oxford	29%	25%
Penobscot	32%	32%
Piscataquis	32%	32%
Sagadahoc	19%	20%
Somerset	33%	32%
Waldo	33%	24%
Washington	38%	34%
York	41%	34%
<b>State</b>	<b>31%</b>	<b>28%</b>

*\*County represents the county where the primary caregiver was residing at the time of the Intake referral.*

## ***CHILD ABUSE AND NEGLECT VICTIMS BY ABUSE TYPE***

---

The following report shows the victims by age group and type(s) of abuse found during the child protective assessment for the past three years. Children may be counted multiple times if they were the victim of more than one abuse type in a given assessment, or the victim of subsequent abuse in calendar year 2013.

<b>2011</b>				
<b>AGE</b>	<b>Sexual Abuse</b>	<b>Physical Abuse</b>	<b>Neglect</b>	<b>Emotional Abuse</b>
<b>0-4</b>	45	241	1252	270
<b>5-9</b>	47	152	639	456
<b>10-14</b>	75	119	443	402
<b>15-17</b>	41	51	151	155
<b>Total</b>	<b>208</b>	<b>563</b>	<b>2485</b>	<b>1283</b>

<b>2012</b>				
<b>AGE</b>	<b>Sexual Abuse</b>	<b>Physical Abuse</b>	<b>Neglect</b>	<b>Emotional Abuse</b>
<b>0-4</b>	73	359	1469	332
<b>5-9</b>	95	221	883	544
<b>10-14</b>	83	171	581	503
<b>15-17</b>	20	56	180	134
<b>Total</b>	<b>271</b>	<b>807</b>	<b>3113</b>	<b>1513</b>

<b>2013</b>				
<b>AGE</b>	<b>Sexual Abuse</b>	<b>Physical Abuse</b>	<b>Neglect</b>	<b>Emotional Abuse</b>
<b>0-4</b>	57	424	1436	323
<b>5-9</b>	78	241	750	509
<b>10-14</b>	75	171	459	438
<b>15-17</b>	29	55	151	147
<b>Total</b>	<b>239</b>	<b>891</b>	<b>2796</b>	<b>1417</b>

*\*Children may be counted multiple times if they were the victim of more than one abuse type in a given assessment, or the victim of subsequent abuse in calendar year 2013.*