

# MAINE STATE LEGISLATURE

The following document is provided by the  
**LAW AND LEGISLATIVE DIGITAL LIBRARY**  
at the Maine State Law and Legislative Reference Library  
<http://legislature.maine.gov/lawlib>



Reproduced from electronic originals  
(may include minor formatting differences from printed original)



# Maine Tax Incidence Study

A Distributional Analysis of Maine's State & Local Tax System

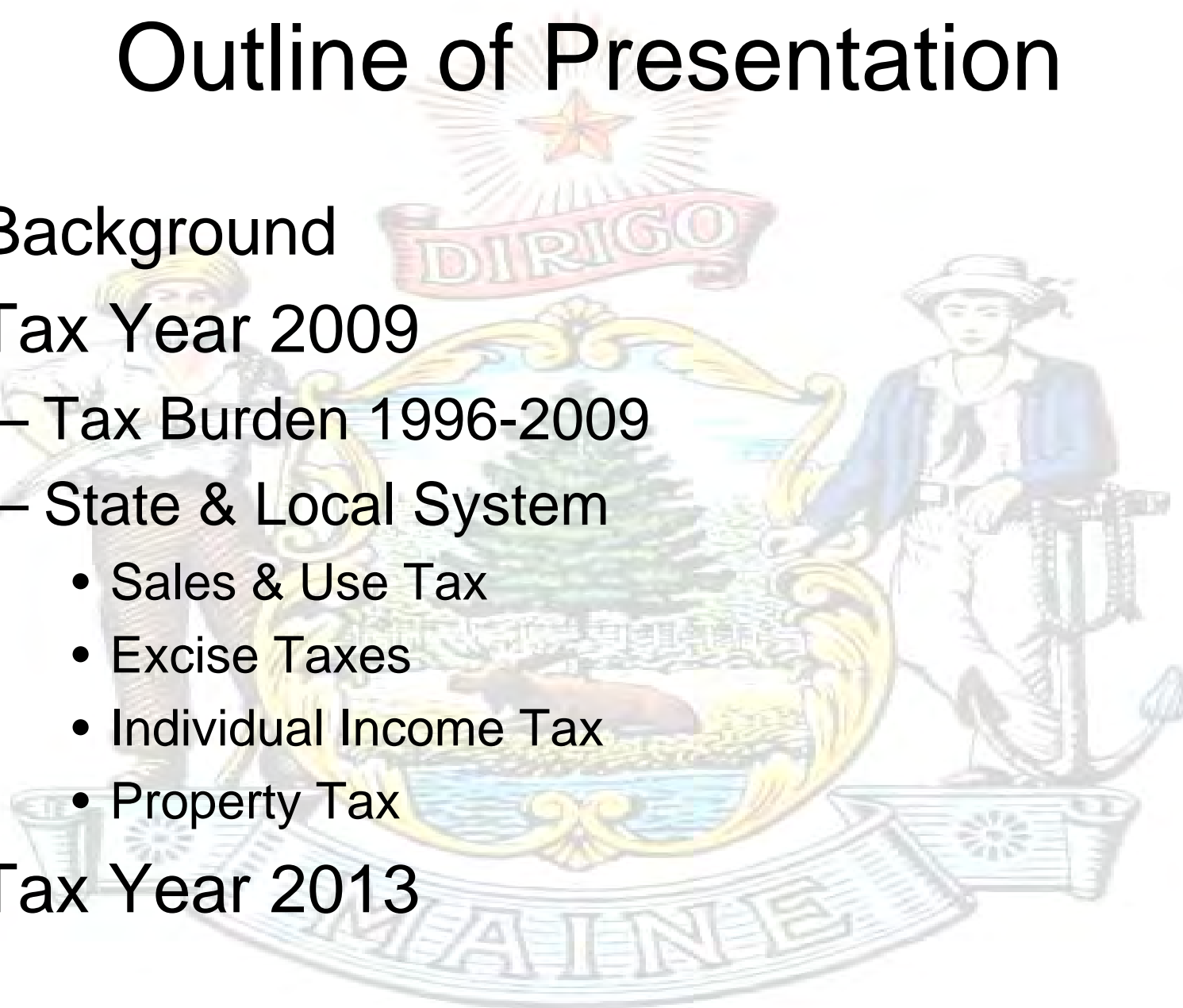
**Michael J. Allen, Ph.D.  
Economic Research Division  
Maine Revenue Services**

**Presentation to Joint Standing Committee on  
Taxation**

**August 15, 2011**

# Outline of Presentation

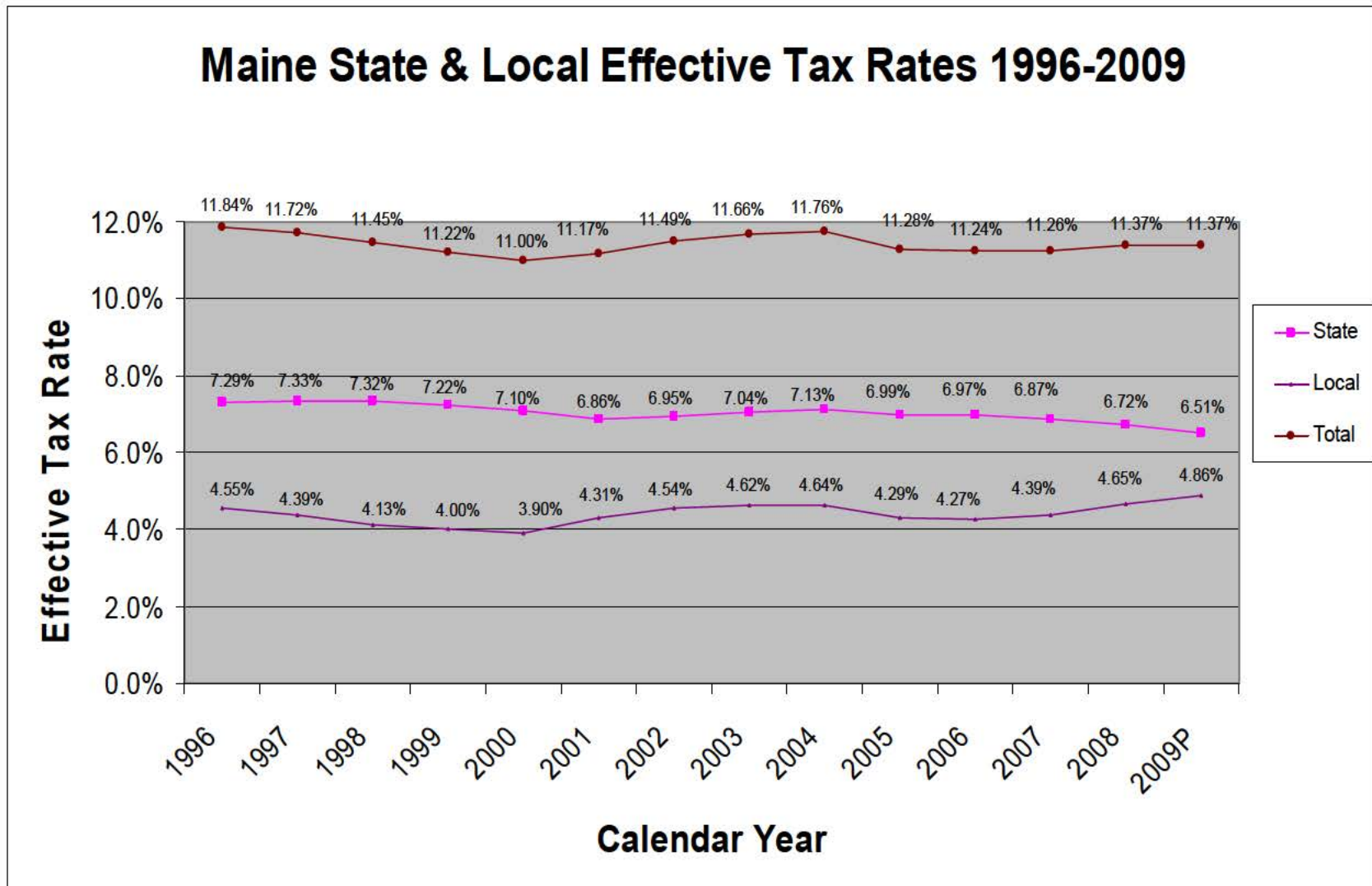
- Background
- Tax Year 2009
  - Tax Burden 1996-2009
  - State & Local System
    - Sales & Use Tax
    - Excise Taxes
    - Individual Income Tax
    - Property Tax
- Tax Year 2013



# 36 MRSA, Section 200

- Estimate of state and local tax burden on Maine residents
- Distribution of tax burden
- Analysis of progressivity of tax system
- Analysis of trends

# Estimated State & Local Tax Burden



# Maine's State Level Tax Base is Volatile

- Volatility of Maine's tax system is often discussed, but not quantified or compared to other states.
- Dye & McGuire (National Tax Journal, 1998) – Estimate a measure of the sensitivity of each state's revenue system to the business cycle. Assume constant tax law

Findings: Maine had the 11th most volatile tax base (individual income and sales) between 1976 and 1995 cyclical elasticity of estimated individual income tax = 1.18 (tied for 19th); cyclical elasticity of estimated sales tax = 1.23 (tied for 9th); combined elasticity of 1.2

**Table 2**  
**Maine State and Local Tax Collections for Calendar Year 2009 Liability**  
**(Millions of Dollars)**

State		Local		Total
<b>Included</b>		<b>Included</b>		<b>Included</b>
Sales & Use Tax	\$945	Gross Property Taxes	\$2,071	
Individual Income Tax	\$1,266	Motor Vehicle Excise Tax	\$191	
Corporate Income Tax	\$149	Watercraft Excise Tax	\$2	
Cigarette, Tobacco & Alcohol Taxes	\$161	Homestead Exemption	(\$57)	
Public Utilities Tax	\$19	Circuit Breaker Refunds	(\$43)	
Insurance Companies Tax	\$82	BETR/BETE Refunds	<u>(\$71)</u>	
Estate Tax	\$30			
State Property Taxes /1	\$ 26.34			
Motor Fuels Excise Taxes	<u>\$234</u>			
Total	\$2,914	Total	\$2,093	\$5,007
<b>Omitted</b>		<b>Omitted</b>		<b>Omitted</b>
Railroad Company Tax	\$1			
Sardine Tax	\$0			
Mahogany Quahog Tax	\$0			
Milk Handling & Stabilization Tax	\$0			
Blueberry Tax	\$1			
Potato Tax	\$1			
Recycling Assistance Fee	\$1			
Pari-mutuel Revenue	<u>\$5</u>			
Total	\$9	Total	\$0	\$9
Total Tax Collections	\$2,923	Total Tax Collections	\$2,093	\$5,016

1/ Includes Unorganized Territory Taxes, Real Estate Transfer Taxes, and Commercial Forestry Excise Tax.

**Table 3**  
**State and Local Tax Collections for CY09 Liability by Type of Tax and Taxpayer Category**  
**(Millions of Dollars)**

Tax Category	Collections		Percentage by Taxpayer Category			
	Total	Percentage Distribution	Individuals		Businesses	Total
			Resident	Nonresident		
<b>Taxes on Income</b>						
Individual Income Tax	\$1,266.4	25.3%	94.4%	5.6%	0.0%	100.0%
Corporate Income Tax /1	<u>\$149.3</u>	<u>3.0%</u>	0.0%	0.0%	100.0%	100.0%
Total Income Taxes	\$1,415.7	28.3%	84.5%	5.0%	10.5%	100.0%
<b>Taxes on Consumption</b>						
Sales & Use Tax	\$944.6	18.9%	61.4%	11.3%	27.3%	100.0%
Cig., Tob. & Alcohol Excise	\$161.0	3.2%	91.3%	8.2%	0.5%	100.0%
Insurance Companies Tax /2	\$82.3	1.6%	0.0%	0.0%	100.0%	100.0%
Motor Fuels Excise Taxes	<u>\$234.4</u>	<u>4.7%</u>	51.7%	8.6%	39.7%	100.0%
Total Consumption Taxes	\$1,422.3	28.4%	59.6%	9.8%	30.5%	100.0%
<b>Taxes on Wealth</b>						
Estate Tax	\$30.4	0.6%	79.6%	20.4%	0.0%	100.0%
<b>Taxes on Property</b>						
<i>Local</i>						
Homeowners (gross)	\$1,532.2	30.6%	84.6%	15.4%	0.0%	100.0%
Businesses (gross)	\$538.5	10.8%	0.0%	0.0%	100.0%	100.0%
Motor Vehicle Excise Tax	\$190.7	3.8%	70.0%	0.0%	30.0%	100.0%
Watercraft Excise Tax	\$2.4	0.0%	80.0%	20.0%	0.0%	100.0%
Homestead Exemption	(\$56.9)	-1.1%	100.0%	0.0%	0.0%	100.0%
Circuit Breaker Refunds	(\$42.5)	-0.8%	100.0%	0.0%	0.0%	100.0%
BETR/BETE Refunds	<u>(\$71.4)</u>	<u>-1.4%</u>	0.0%	0.0%	100.0%	100.0%
<i>State</i>						
State Property Taxes (gross) /3	\$26.3	0.5%	36.4%	7.7%	55.9%	100.0%
Public Utilities Tax	<u>\$19.3</u>	<u>0.4%</u>	0.0%	0.0%	100.0%	100.0%
Total Property Taxes	\$2,138.7	42.7%	62.7%	11.2%	26.1%	100.0%
<b>Total Taxes</b>	\$5,007.1	100.0%	68.1%	9.1%	22.8%	100.0%

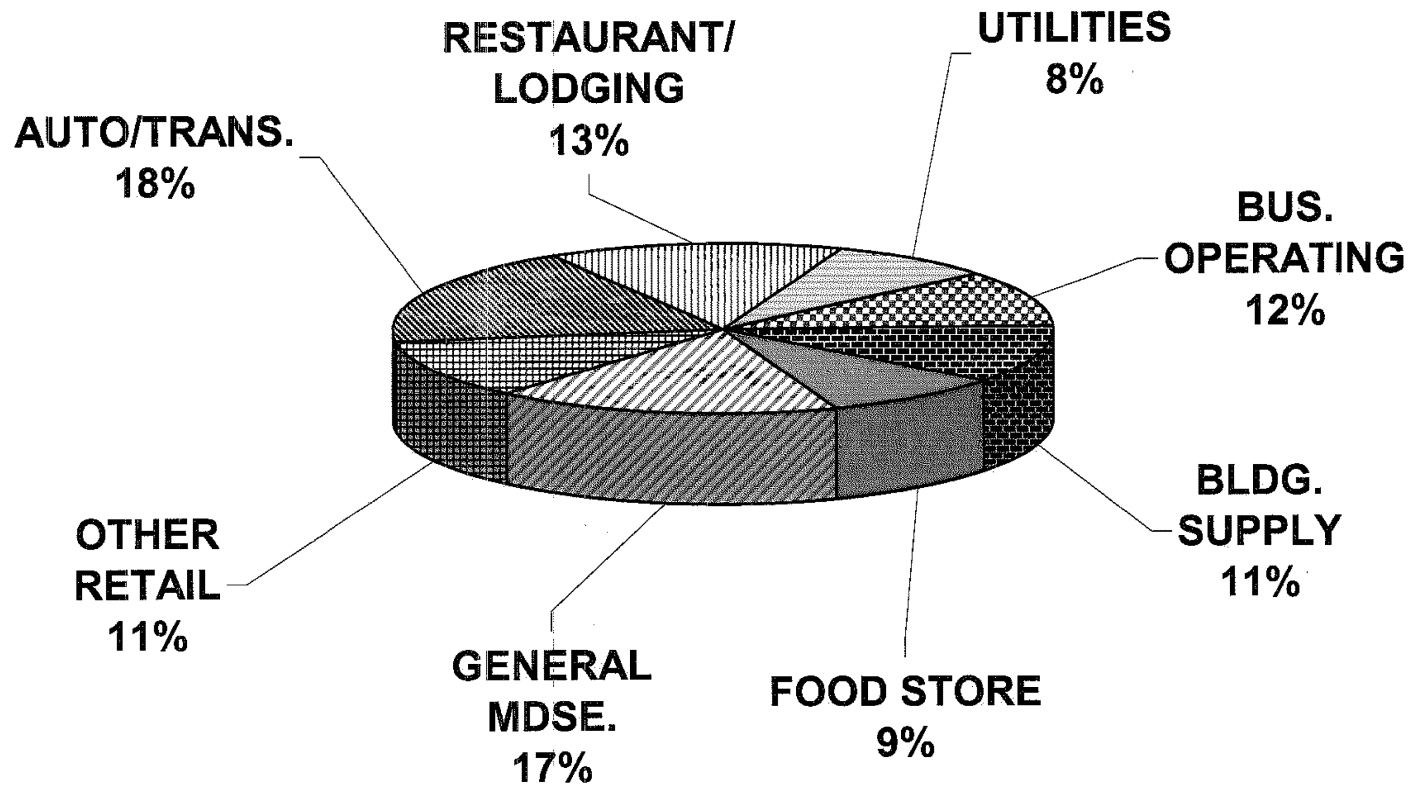
1/ Includes Franchise Tax on Financial Institutions.

2/ Includes Fire Investigation and Prevention Tax.

3/ Includes Unorganized Territory Taxes, Real Estate Transfer Taxes, and Commercial Forestry Excise Tax.

# Sales & Use Tax

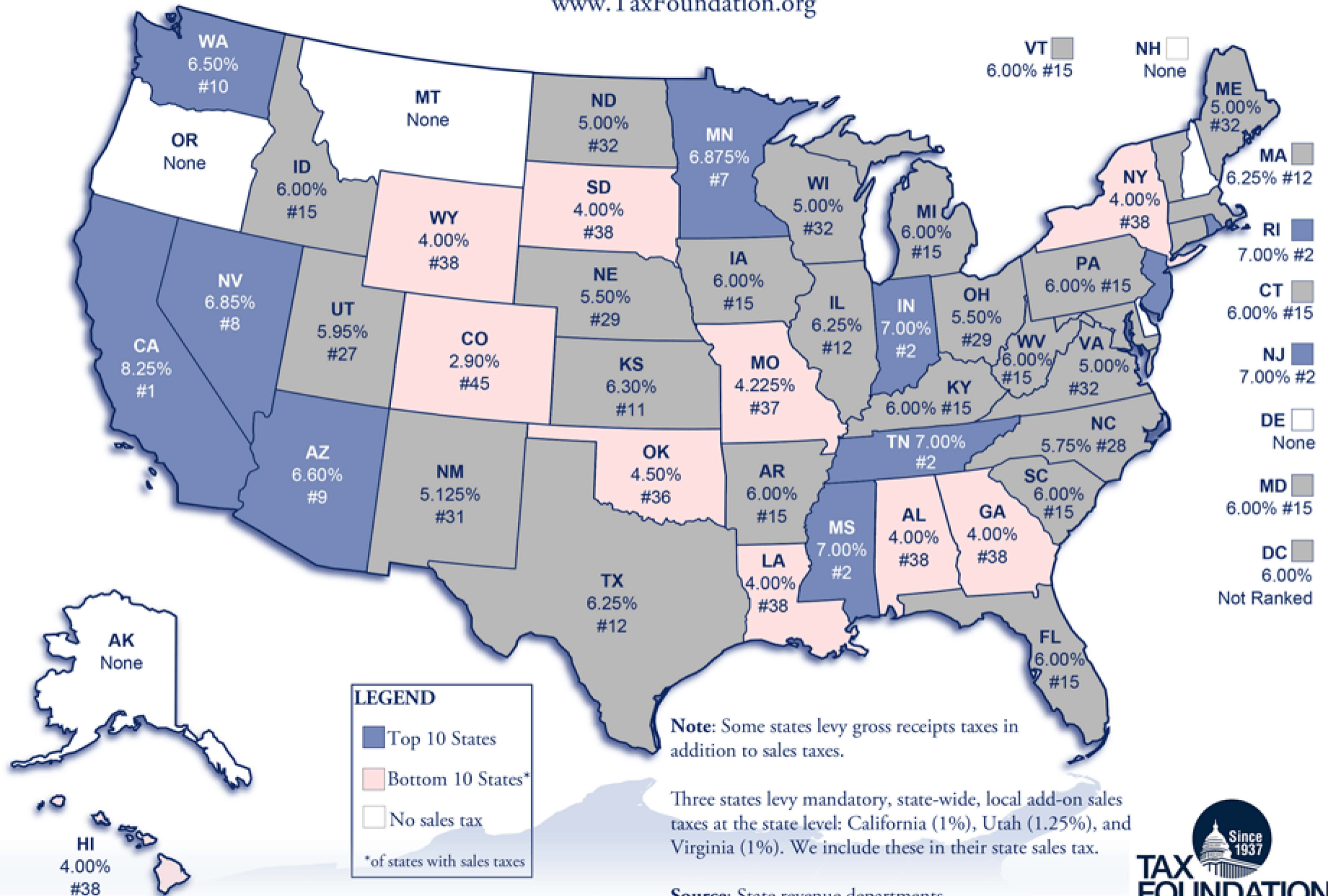
## ***2009 Maine Taxable Sales by Sector***



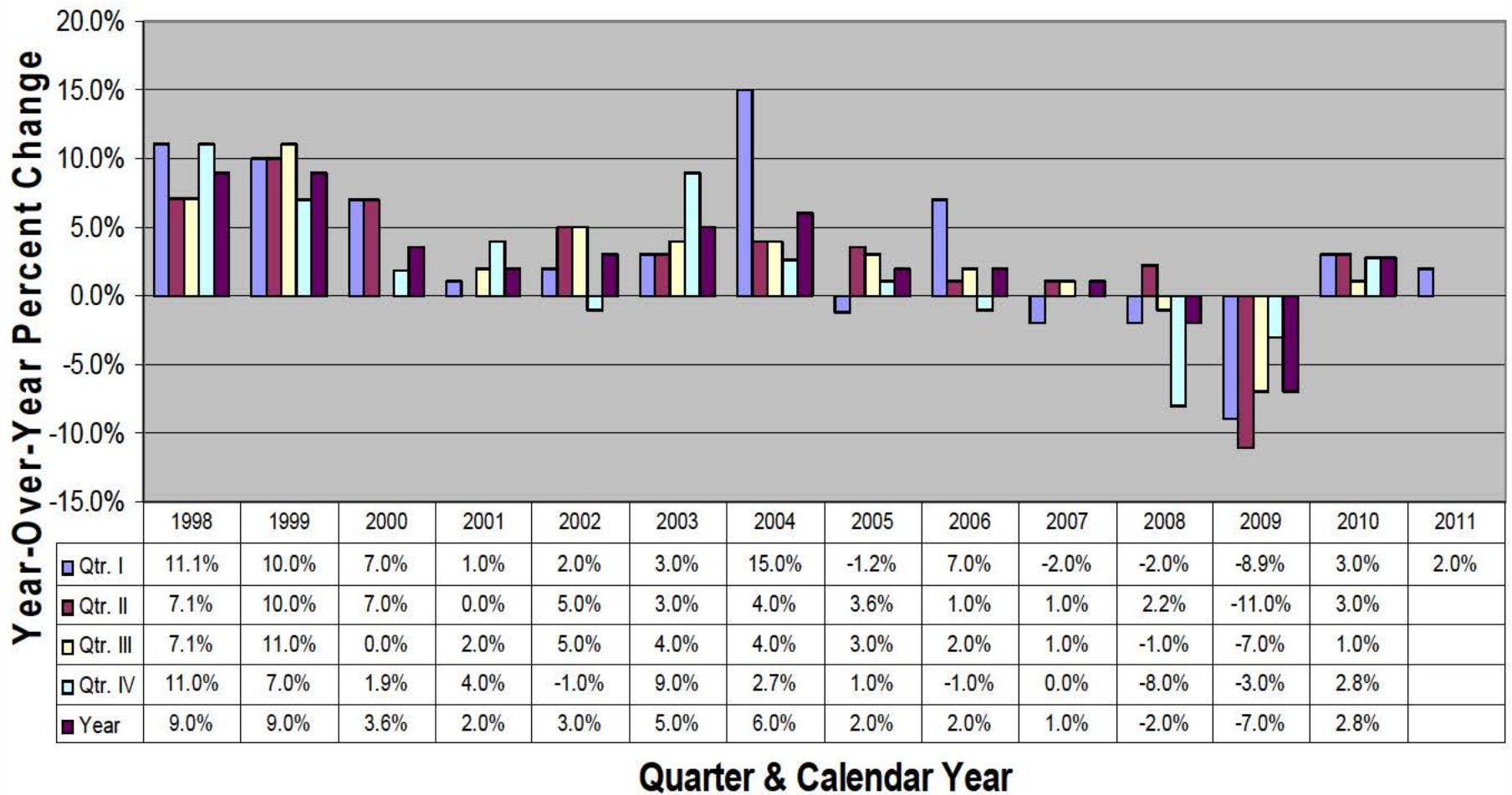
# State Sales Tax Rates

As of January 1, 2011

www.TaxFoundation.org



# Total Taxable Sales



**Maine Sales and Use Tax Paid Directly by Consumers - Tax Year 2009**  
**(Maine Residents Only)**

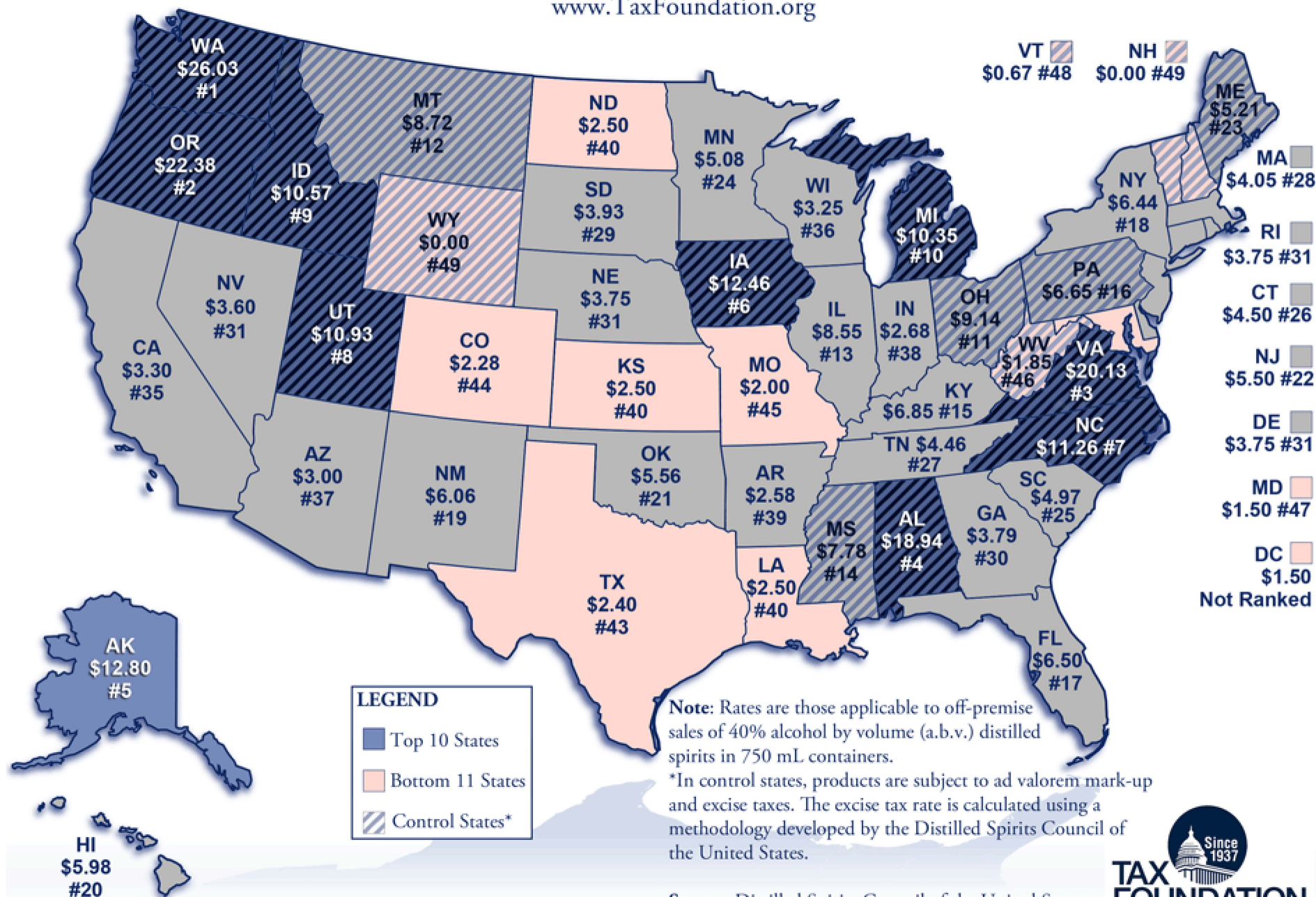
Decile	Expanded Income Range	Families	Income	Tax Liability		Average Tax	Effective Tax Rate
			\$ Millions	\$ Millions	Percent		
First & Second	-\$ Infinity <= \$12,167	134,767	\$859	\$31.5	5.4%	\$234	3.7%
Third	\$12,168 <= \$17,711	67,387	\$1,012	\$21.1	3.6%	\$313	2.1%
Fourth	\$17,712 <= \$23,373	68,104	\$1,392	\$28.5	4.9%	\$419	2.0%
Fifth	\$23,374 <= \$30,810	66,659	\$1,829	\$42.2	7.3%	\$633	2.3%
Sixth	\$30,811 <= \$41,668	67,382	\$2,377	\$49.1	8.5%	\$729	2.1%
Seventh	\$41,669 <= \$55,471	67,385	\$3,248	\$62.0	10.7%	\$920	1.9%
Eighth	\$55,472 <= \$74,757	67,381	\$4,350	\$72.2	12.5%	\$1,072	1.7%
Ninth	\$74,758 <= \$108,724	67,383	\$6,054	\$81.4	14.0%	\$1,208	1.3%
Tenth	\$108,724 <= \$ Infinity	67,383	\$14,440	\$192.1	33.1%	\$2,850	1.3%
Total	Total	673,831	\$35,561	\$580.1	100.0%	\$861	1.6%
Top Decile Decomposition							
90th to 95th	\$108,725 <= \$145,201	33,693	\$4,181	\$56.6	9.8%	\$1,681	1.4%
95th-99th	\$145,202 <= \$323,241	26,952	\$5,315	\$71.6	12.4%	\$2,658	1.3%
Top 1%	\$323,242 <= \$ Infinity	6,738	\$4,943	\$63.8	11.0%	\$9,465	1.3%

# Excise Taxes

# State Spirits Excise Tax Rates

As of September 1, 2010 (Dollars Per Gallon)

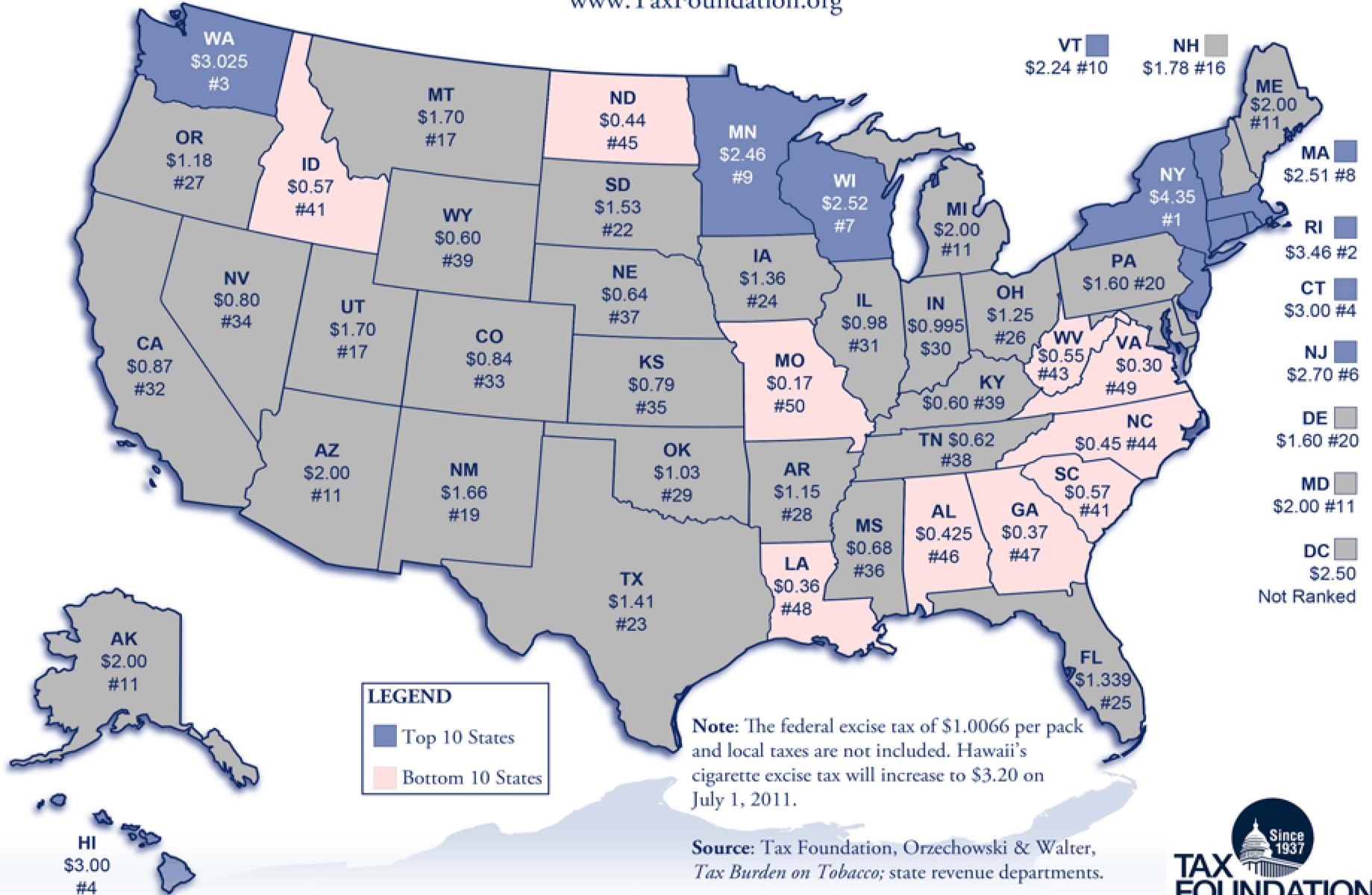
[www.TaxFoundation.org](http://www.TaxFoundation.org)



# State Cigarette Excise Tax Rates

As of January 1, 2011 (Dollars Per 20-Pack)

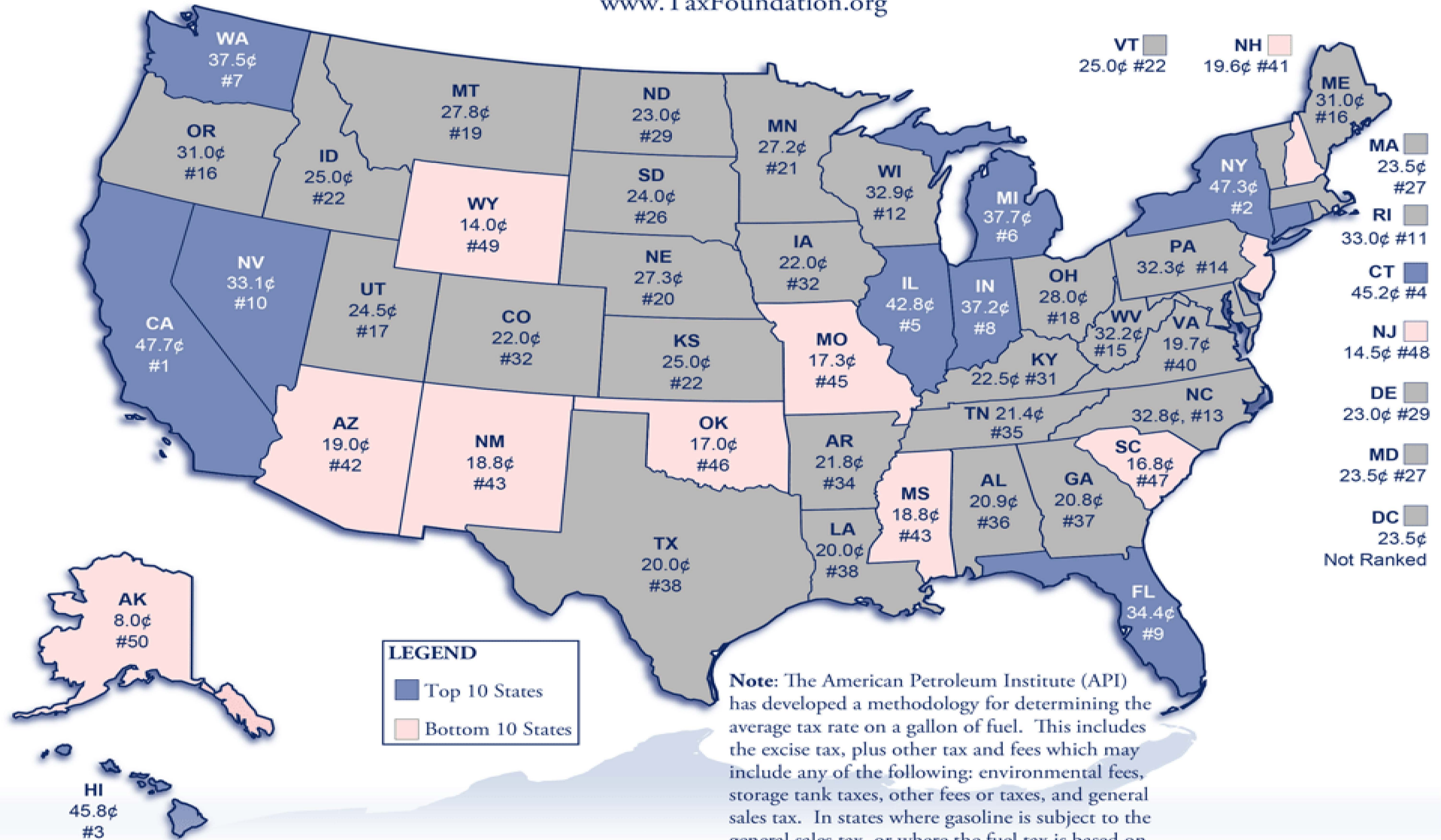
www.TaxFoundation.org



# Total State Gasoline Tax Rates

As of January 1st, 2011

www.TaxFoundation.org



**Maine Excise Taxes Paid Directly by Consumers - Tax Year 2009**  
**(Maine Residents Only)**

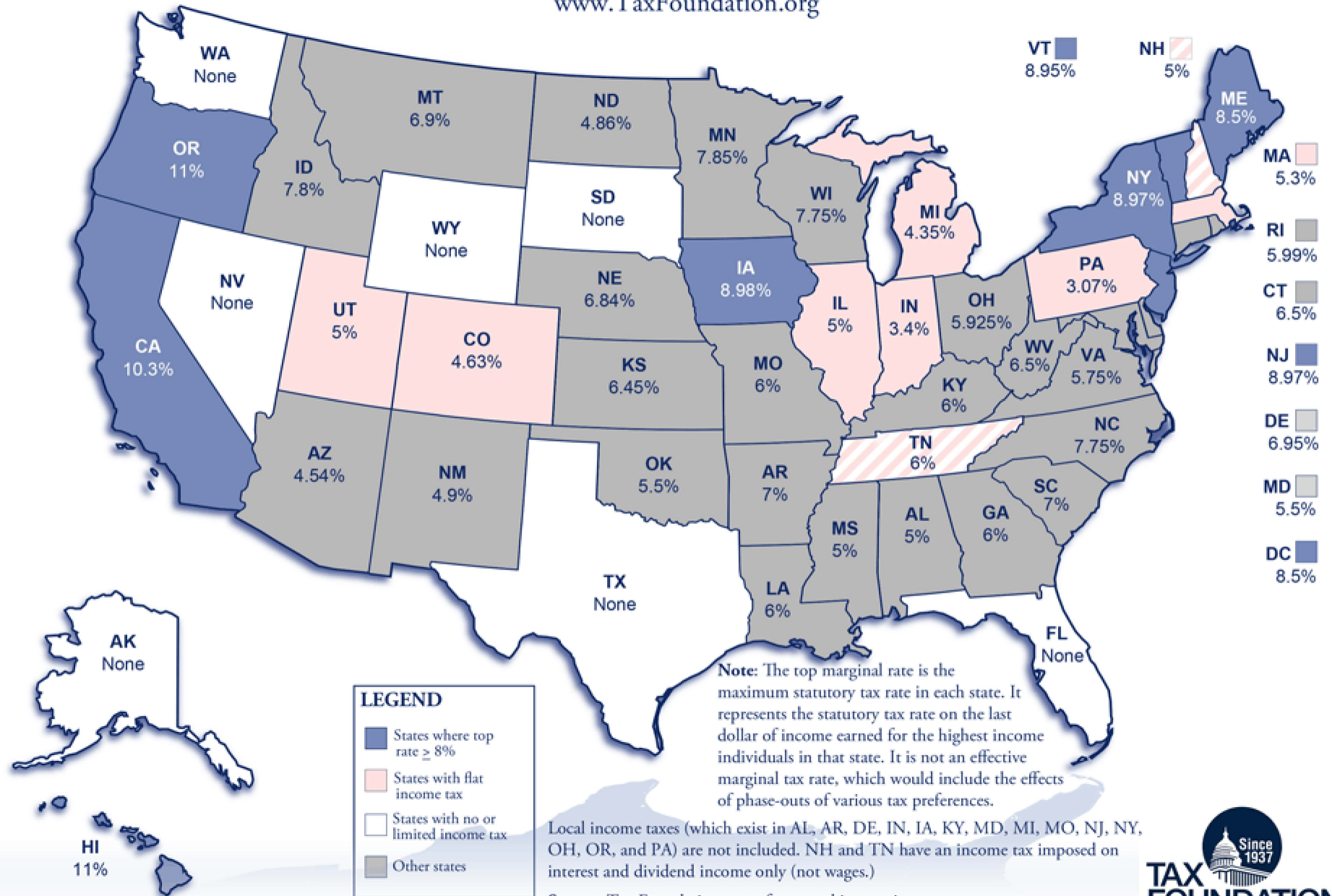
Decile	Income Range	Families	Income	Tax Liability /2		Average Tax	Effective Tax Rate
			\$ Millions	\$ Millions	Percent		
First & Second	-\$ Infinity <= \$12,167	134,767	\$859.3	\$30.3	11.3%	\$225	3.5%
Third	\$12,168 <= \$17,711	67,387	\$1,012.3	\$19.3	7.2%	\$287	1.9%
Fourth	\$17,712 <= \$23,373	68,104	\$1,392.0	\$24.0	8.9%	\$352	1.7%
Fifth	\$23,374 <= \$30,810	66,659	\$1,829.3	\$32.6	12.1%	\$489	1.8%
Sixth	\$30,811 <= \$41,668	67,382	\$2,376.6	\$32.8	12.2%	\$487	1.4%
Seventh	\$41,669 <= \$55,471	67,385	\$3,248.1	\$34.2	12.7%	\$507	1.1%
Eighth	\$55,472 <= \$74,757	67,381	\$4,349.6	\$28.2	10.5%	\$419	0.6%
Ninth	\$74,758 <= \$108,724	67,383	\$6,054.5	\$20.0	7.5%	\$297	0.3%
Tenth	\$108,724 <= \$ Infinity	67,383	\$14,439.7	\$46.8	17.4%	\$694	0.3%
Total	Total	673,831	\$35,561.3	\$268.2	100.0%	\$398	0.8%
Top Decile Decomposition							
90th to 95th	\$108,725 <= \$145,201	33,693	\$4,181	\$14.0	5.2%	\$415	0.3%
95th-99th	\$145,202 <= \$323,241	26,952	\$5,315	\$17.4	6.5%	\$644	0.3%
Top 1%	\$323,242 <= \$ Infinity	6,738	\$4,943	\$15.4	5.7%	\$2,288	0.3%

# Individual Income Tax

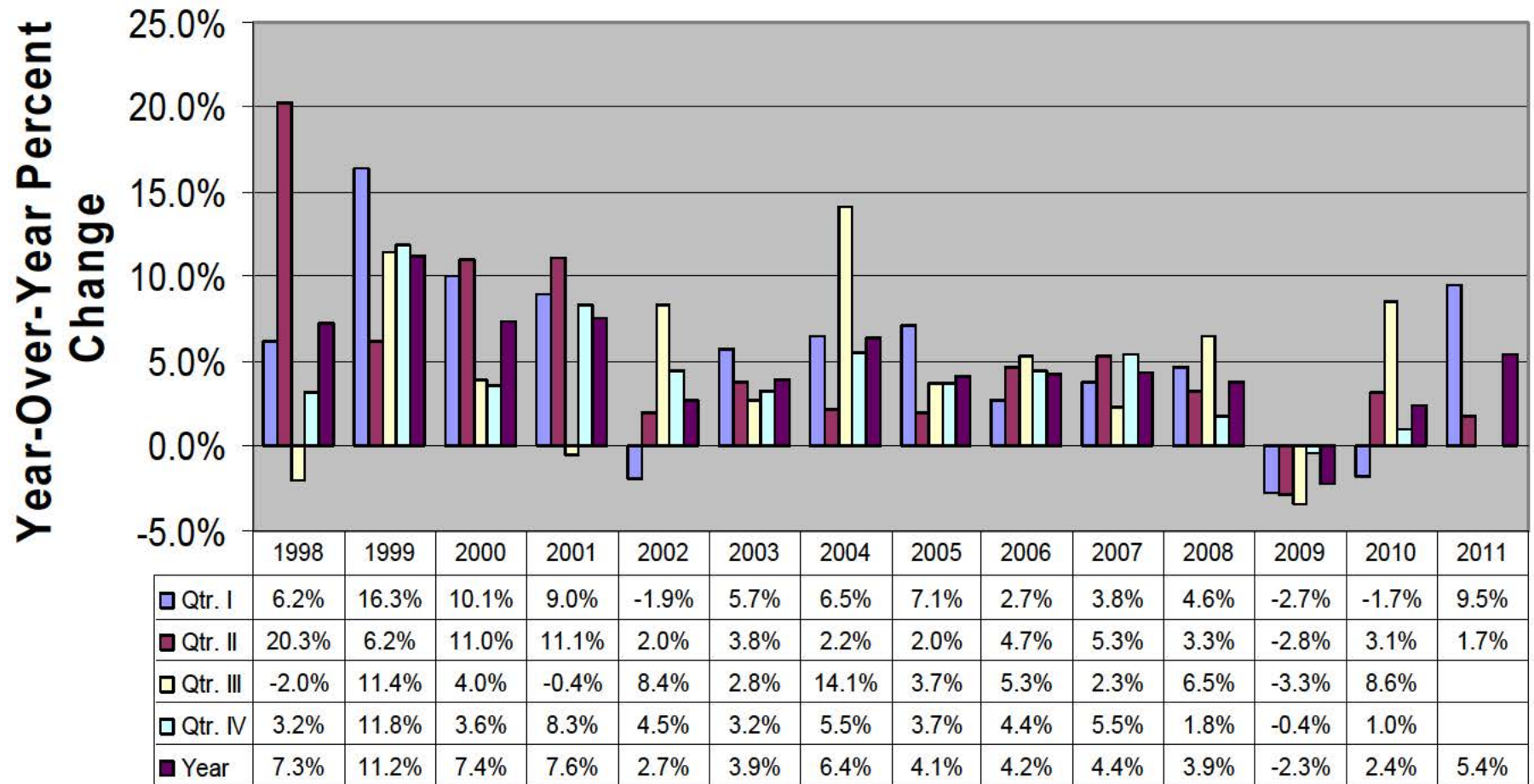
# Top State Income Tax Rates

Highest Statutory Marginal Income Rate By State, Tax Year 2011

www.TaxFoundation.org



# Individual Income Tax Withholding



**Quarter & Calendar Year**

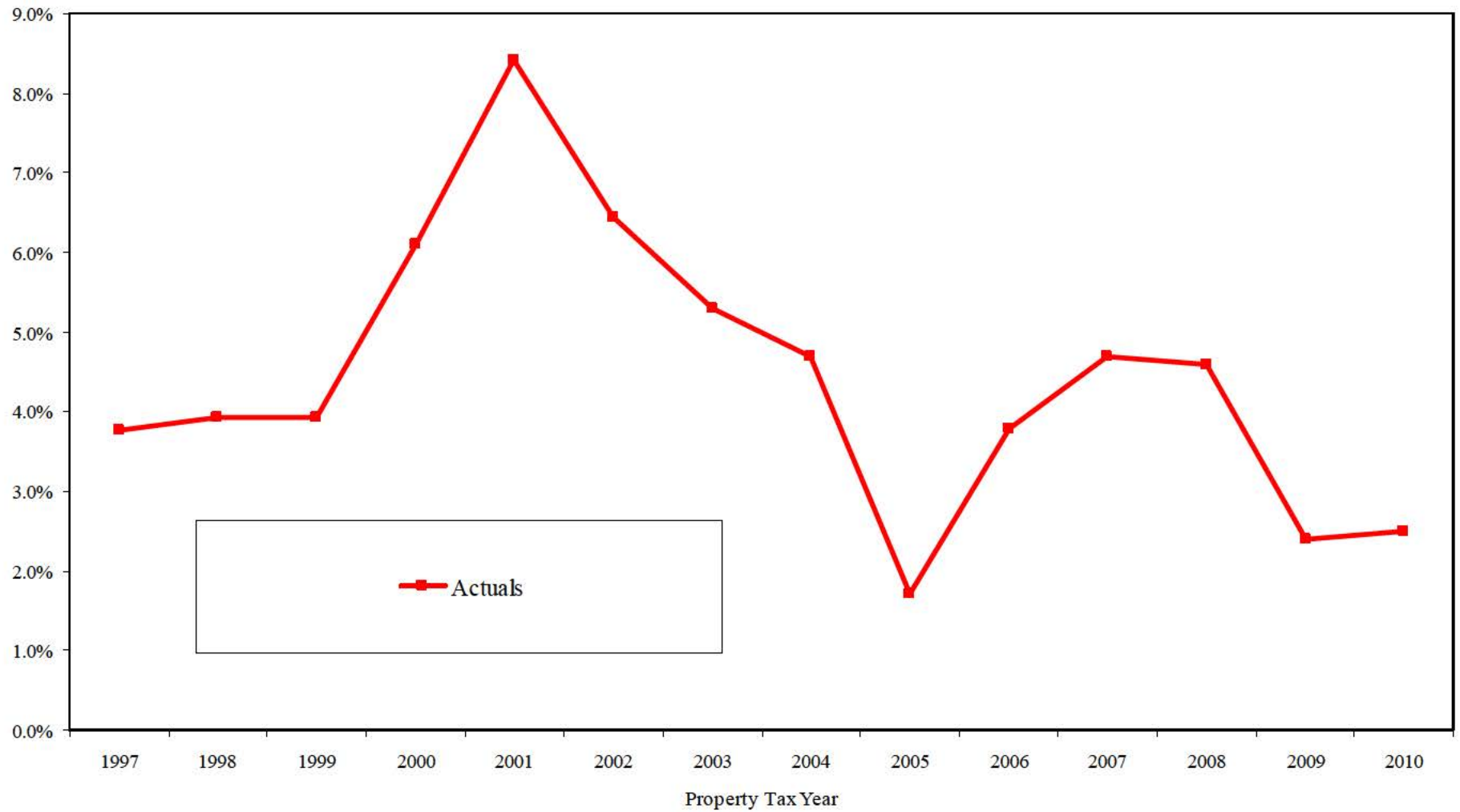
**Maine Individual Income Tax by Population Deciles - Tax Year 2009**  
**(Maine Residents Only)**

Decile	Expanded Income Range	Families	Income	Tax Liability		Average Tax	Effective Tax Rate
			\$ Millions	\$ Millions	Percent		
First & Second	-\$ Infinity <= \$12,167	134,767	\$859	\$0.7	0.1%	\$5	0.1%
Third	\$12,168 <= \$17,711	67,387	\$1,012	\$3.4	0.3%	\$50	0.3%
Fourth	\$17,712 <= \$23,373	68,104	\$1,392	\$9.1	0.8%	\$134	0.7%
Fifth	\$23,374 <= \$30,810	66,659	\$1,829	\$25.5	2.1%	\$383	1.4%
Sixth	\$30,811 <= \$41,668	67,382	\$2,377	\$41.8	3.5%	\$620	1.8%
Seventh	\$41,669 <= \$55,471	67,385	\$3,248	\$77.2	6.5%	\$1,146	2.4%
Eighth	\$55,472 <= \$74,757	67,381	\$4,350	\$120.8	10.1%	\$1,792	2.8%
Ninth	\$74,758 <= \$108,724	67,383	\$6,054	\$222.6	18.6%	\$3,303	3.7%
Tenth	\$108,724 <= \$ Infinity	67,383	\$14,440	\$694.9	58.1%	\$10,312	4.8%
Total	Total	673,831	\$35,561	\$1,195.9	100.0%	\$1,775	3.4%
Top Decile Decomposition							
90th to 95th	\$108,725 <= \$145,201	33,693	\$4,181	\$178.3	14.9%	\$5,291	4.3%
95th-99th	\$145,202 <= \$323,241	26,952	\$5,315	\$254.8	21.3%	\$9,455	4.8%
Top 1%	\$323,242 <= \$ Infinity	6,738	\$4,943	\$261.8	21.9%	\$38,848	5.3%

# Local Property Tax

Residential Property  
And Auto Excise Tax

## Historical Growth of Property Tax Commitments



**Maine Property Taxes Paid Directly by Homeowners - Tax Year 2009**  
**(Maine Residents Only)**

Decile	Income Range	Families	Income	Tax Liability /1		Average Tax	Effective Tax Rate
			\$ Millions	\$ Millions	Percent		
First & Second	-\$ Infinity <= \$12,167	134,767	\$859.3	\$71.6	4.9%	\$532	8.3%
Third	\$12,168 <= \$17,711	67,387	\$1,012.3	\$55.7	3.8%	\$826	5.5%
Fourth	\$17,712 <= \$23,373	68,104	\$1,392.0	\$74.2	5.1%	\$1,089	5.3%
Fifth	\$23,374 <= \$30,810	66,659	\$1,829.3	\$93.5	6.5%	\$1,403	5.1%
Sixth	\$30,811 <= \$41,668	67,382	\$2,376.6	\$118.3	8.2%	\$1,755	5.0%
Seventh	\$41,669 <= \$55,471	67,385	\$3,248.1	\$158.3	10.9%	\$2,349	4.9%
Eighth	\$55,472 <= \$74,757	67,381	\$4,349.6	\$191.4	13.2%	\$2,841	4.4%
Ninth	\$74,758 <= \$108,724	67,383	\$6,054.5	\$246.6	17.0%	\$3,659	4.1%
Tenth	\$108,724 <= \$ Infinity	67,383	\$14,439.7	\$439.9	30.4%	\$6,529	3.0%
Total	Total	673,831	\$35,561.3	\$1,449.5	100.0%	\$2,151	4.1%
Top Decile Decomposition							
90th to 95th	\$108,725 <= \$145,201	33,693	\$4,181	\$184.4	12.7%	\$5,472	4.4%
95th-99th	\$145,202 <= \$323,241	26,952	\$5,315	\$187.7	12.9%	\$6,963	3.5%
Top 1%	\$323,242 <= \$ Infinity	6,738	\$4,943	\$67.9	4.7%	\$10,073	1.4%

**Property Taxes Paid by Maine Residents on Their Primary Residence - Property Tax Year 2009**

<b>Decile</b>	<b>Expanded Income</b>	<b>Homeowners</b>	<b>Average Expanded Income</b>	<b>Total Property Taxes Paid /1 (Millions)</b>	<b>Average Property Tax</b>	<b>Ratio of Average Tax to Average Income</b>
First & Second	-\$ Infinity <= \$12,167	28,136	\$6,559	\$56.4	\$2,006	30.6%
Third	\$12,168 <= \$17,711	22,600	\$15,156	\$43.7	\$1,934	12.8%
Fourth	\$17,712 <= \$23,373	27,795	\$20,648	\$58.3	\$2,096	10.2%
Fifth	\$23,374 <= \$30,810	32,412	\$27,354	\$71.1	\$2,195	8.0%
Sixth	\$30,811 <= \$41,668	38,976	\$35,610	\$92.1	\$2,363	6.6%
Seventh	\$41,669 <= \$55,471	47,372	\$48,462	\$122.8	\$2,592	5.3%
Eighth	\$55,472 <= \$74,757	55,353	\$64,673	\$155.3	\$2,806	4.3%
Ninth	\$74,758 <= \$108,724	59,871	\$90,014	\$201.0	\$3,357	3.7%
Tenth	\$108,724 <= \$ Infinity	61,384	\$214,497	\$322.8	\$5,258	2.5%
<b>Total</b>		<b>373,898</b>	<b>\$74,370</b>	<b>\$1,123.5</b>	<b>\$3,005</b>	<b>4.0%</b>
<b>Top Decile Decomposition</b>						
90th to 95th	\$108,725 <= \$145,201	30,616	\$124,250	\$131.7	\$4,303	3.5%
95th-99th	\$145,202 <= \$323,241	24,826	\$197,425	\$141.4	\$5,697	2.9%
Top 1%	\$323,242 <= \$ Infinity	5,942	\$750,786	\$49.6	\$8,347	1.1%

Source: State of Maine Property Tax and Individual Income Tax Models

1/ Property tax paid is net of Homestead Exemption.

**Maine Effective Tax Rates by Expanded Income Level  
All Resident Taxpayers (2009)**

Decile	Expanded Income Range	Tax Families	Income Tax		Consumer		Total State Taxes		
			Individual	Corporate	Sales Tax	Excise Tax	Individual	Business	Total
First & Second	-\$ Infinity <= \$12,167	134,767	0.09%	1.70%	3.67%	3.53%	7.28%	1.70%	8.98%
Third	\$12,168 <= \$17,711	67,387	0.33%	1.15%	2.08%	1.91%	4.32%	1.15%	5.48%
Fourth	\$17,712 <= \$23,373	68,104	0.66%	1.08%	2.05%	1.72%	4.43%	1.08%	5.50%
Fifth	\$23,374 <= \$30,810	66,659	1.39%	1.11%	2.31%	1.78%	5.48%	1.11%	6.59%
Sixth	\$30,811 <= \$41,668	67,382	1.76%	1.06%	2.07%	1.38%	5.20%	1.06%	6.27%
Seventh	\$41,669 <= \$55,471	67,385	2.38%	1.05%	1.91%	1.05%	5.34%	1.05%	6.39%
Eighth	\$55,472 <= \$74,757	67,381	2.78%	1.00%	1.66%	0.65%	5.09%	1.00%	6.09%
Ninth	\$74,758 <= \$108,724	67,383	3.68%	0.93%	1.34%	0.33%	5.36%	0.93%	6.29%
Tenth	\$108,724 <= \$ Infinity	67,383	4.81%	0.88%	1.33%	0.32%	6.63%	0.88%	7.51%
Total		673,831	3.36%	0.98%	1.63%	0.75%	5.82%	0.98%	6.79%
90-95	\$108,725 <= \$145,201	33,693	4.26%	0.93%	1.35%	0.33%	5.98%	0.93%	6.91%
95-99	\$145,202 <= \$323,241	26,952	4.79%	0.89%	1.35%	0.33%	6.59%	0.89%	7.48%
Top 1%	\$323,242 <= \$ Infinity	6,738	5.30%	0.82%	1.29%	0.31%	7.21%	0.82%	8.03%

Decile	Local Property Taxes			Property Tax Relief Programs			Total State and Local Taxes			Federal Tax Offset
	Individual	Business	Total	Homestead	Circ. Break	BETR	Individual	Business	Total	
First & Second	8.34%	1.34%	9.68%	-0.48%	-0.95%	-0.16%	14.18%	2.88%	17.06%	-0.01%
Third	5.50%	0.93%	6.43%	-0.34%	-0.60%	-0.11%	8.88%	1.98%	10.86%	-0.03%
Fourth	5.33%	0.86%	6.18%	-0.31%	-0.46%	-0.10%	8.98%	1.83%	10.82%	-0.06%
Fifth	5.11%	0.87%	5.99%	-0.27%	-0.34%	-0.10%	9.99%	1.88%	11.87%	-0.11%
Sixth	4.98%	0.83%	5.81%	-0.25%	-0.25%	-0.10%	9.69%	1.80%	11.48%	-0.19%
Seventh	4.87%	0.85%	5.72%	-0.22%	-0.15%	-0.10%	9.84%	1.80%	11.64%	-0.37%
Eighth	4.40%	0.82%	5.22%	-0.19%	-0.08%	-0.10%	9.22%	1.72%	10.94%	-0.56%
Ninth	4.07%	0.78%	4.85%	-0.15%	-0.03%	-0.09%	9.26%	1.61%	10.87%	-0.89%
Tenth	3.05%	0.90%	3.94%	-0.06%	0.00%	-0.09%	9.61%	1.68%	11.29%	-1.56%
Total	4.08%	0.87%	4.94%	-0.16%	-0.12%	-0.09%	9.61%	1.76%	11.37%	-0.91%
90-95	4.41%	0.79%	5.19%	-0.11%	0.00%	-0.09%	10.28%	1.62%	11.90%	-1.57%
95-99	3.53%	1.19%	4.72%	-0.07%	0.00%	-0.09%	10.05%	1.99%	12.04%	-1.51%
Top 1%	1.37%	0.68%	2.05%	-0.02%	0.00%	-0.08%	8.57%	1.42%	9.99%	-1.61%

# Suits Index

Tax Category	2009
Individual Income Tax	0.240
Consumer Sales Tax	-0.126
Consumer Excise Tax	-0.412
Estate Tax	0.570
Total State Taxes	0.040
Residential Property Taxes	
Gross of State Programs	-0.113
Net of State Programs	-0.090
Total State and Local Taxes	-0.013

**Tax Foundation State & Local Tax Burden for Maine**

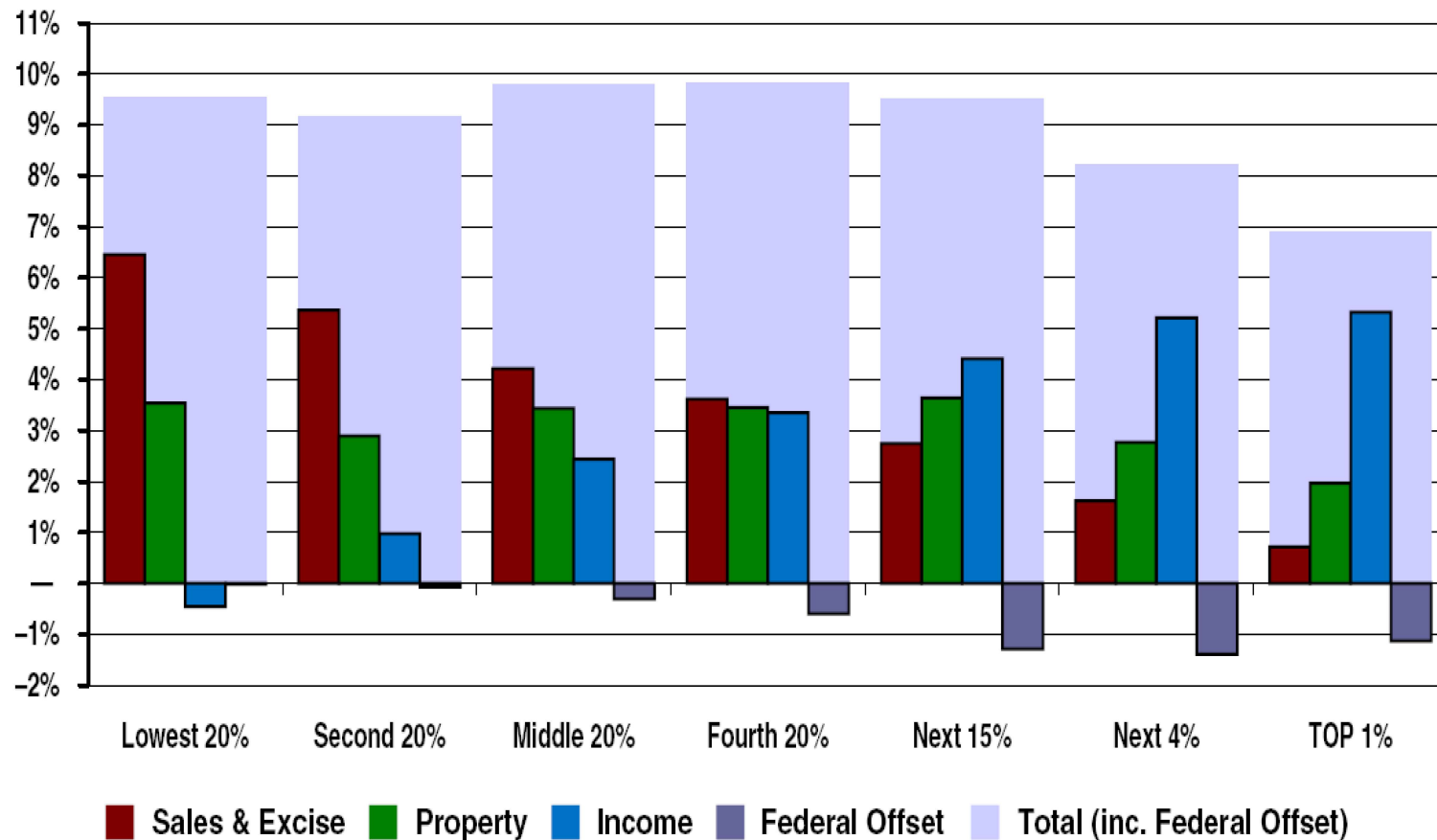
<b><u>Fiscal Year</u></b>	<b><u>Total Tax</u></b>		<b><u>Home Tax</u></b>		<b><u>MRS*</u></b>
	<b><u>Burden</u></b>	<b><u>Rank</u></b>	<b><u>Burden</u></b>	<b><u>Rank</u></b>	
1977	10.1%	23	7.0%	21	
1978	10.5%	12	7.4%	12	
1979	9.9%	14	7.0%	15	
1980	9.8%	13	7.0%	14	
1981	9.7%	9	6.9%	10	
1982	9.9%	9	7.1%	11	
1983	10.0%	11	7.1%	12	
1984	10.3%	11	7.4%	10	
1985	10.2%	12	7.3%	11	
1986	10.3%	7	7.3%	9	
1987	10.6%	7	7.7%	7	
1988	10.9%	3	8.0%	5	
1989	10.6%	5	7.8%	5	
1990	10.5%	6	7.7%	7	
1991	10.5%	8	7.7%	9	
1992	11.0%	8	8.2%	5	
1993	11.1%	7	8.3%	5	
1994	10.9%	9	8.1%	5	
1995	10.8%	7	8.1%	7	
1996	10.7%	6	8.1%	7	11.8%
1997	10.8%	6	8.2%	4	11.7%
1998	11.2%	4	8.7%	3	11.5%
1999	10.7%	6	8.3%	3	11.2%
2000	10.6%	6	8.1%	5	11.0%
2001	10.7%	4	8.2%	3	11.2%
2002	10.8%	3	8.4%	2	11.5%
2003	10.9%	5	8.4%	3	11.7%
2004	10.7%	6	8.2%	3	11.8%
2005	10.1%	11	7.4%	12	11.3%
2006	10.7%	6	7.9%	5	11.2%
2007	10.3%	9	7.5%	7	11.3%
2008	10.6%	8	7.8%	7	11.4%
2009	10.1%	9	7.6%	7	11.4%

\* MRS estimates are on a calendar year basis.

# Maine

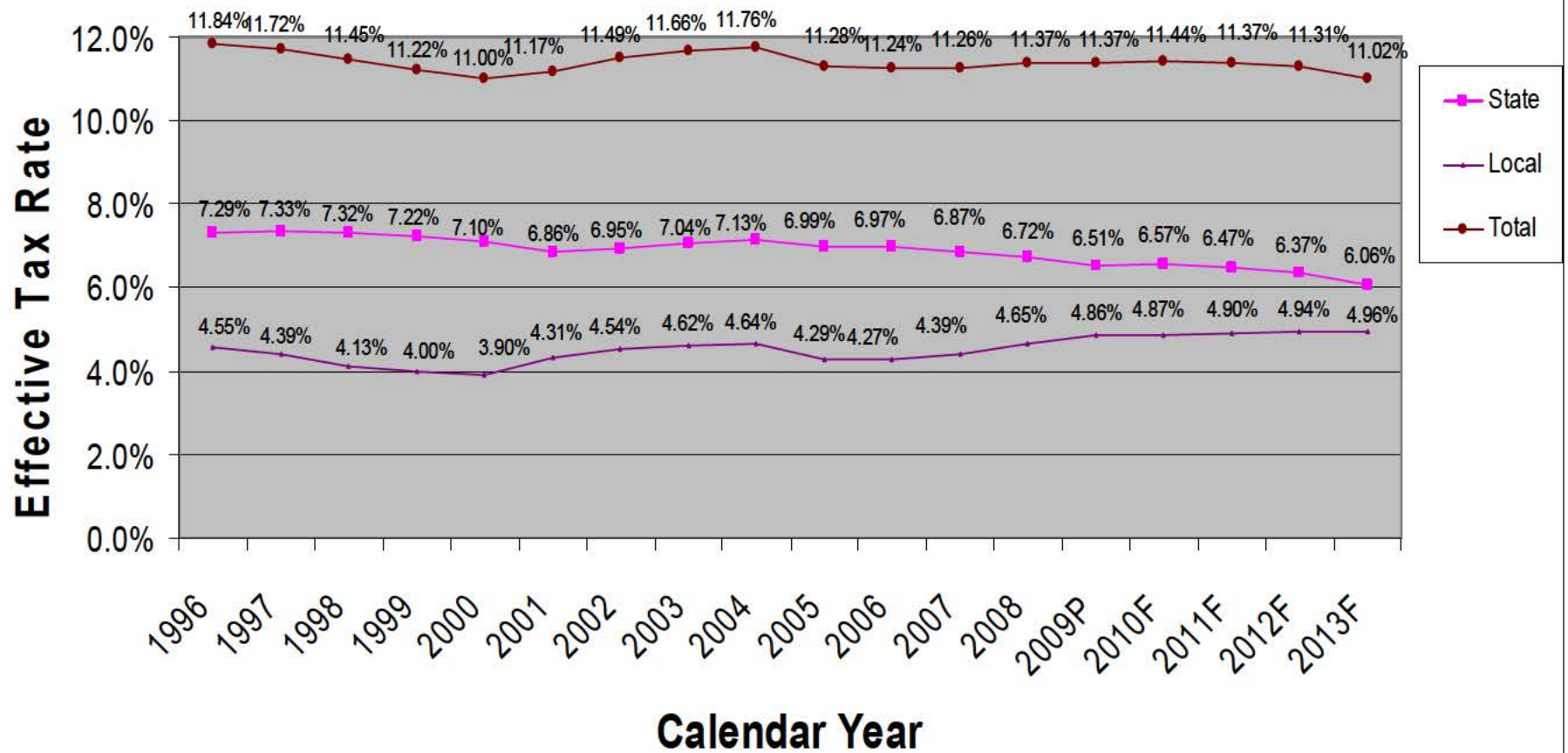
## State & Local Taxes in 2007

Shares of family income for non-elderly taxpayers



Income	Lowest	Second	Middle	Fourth	Top 20%
--------	--------	--------	--------	--------	---------

# Maine State & Local Effective Tax Rates 1996-2013



**Table 3**  
**State and Local Tax Collections for CY13 Liability by Type of Tax and Taxpayer Category**  
**(Millions of Dollars)**

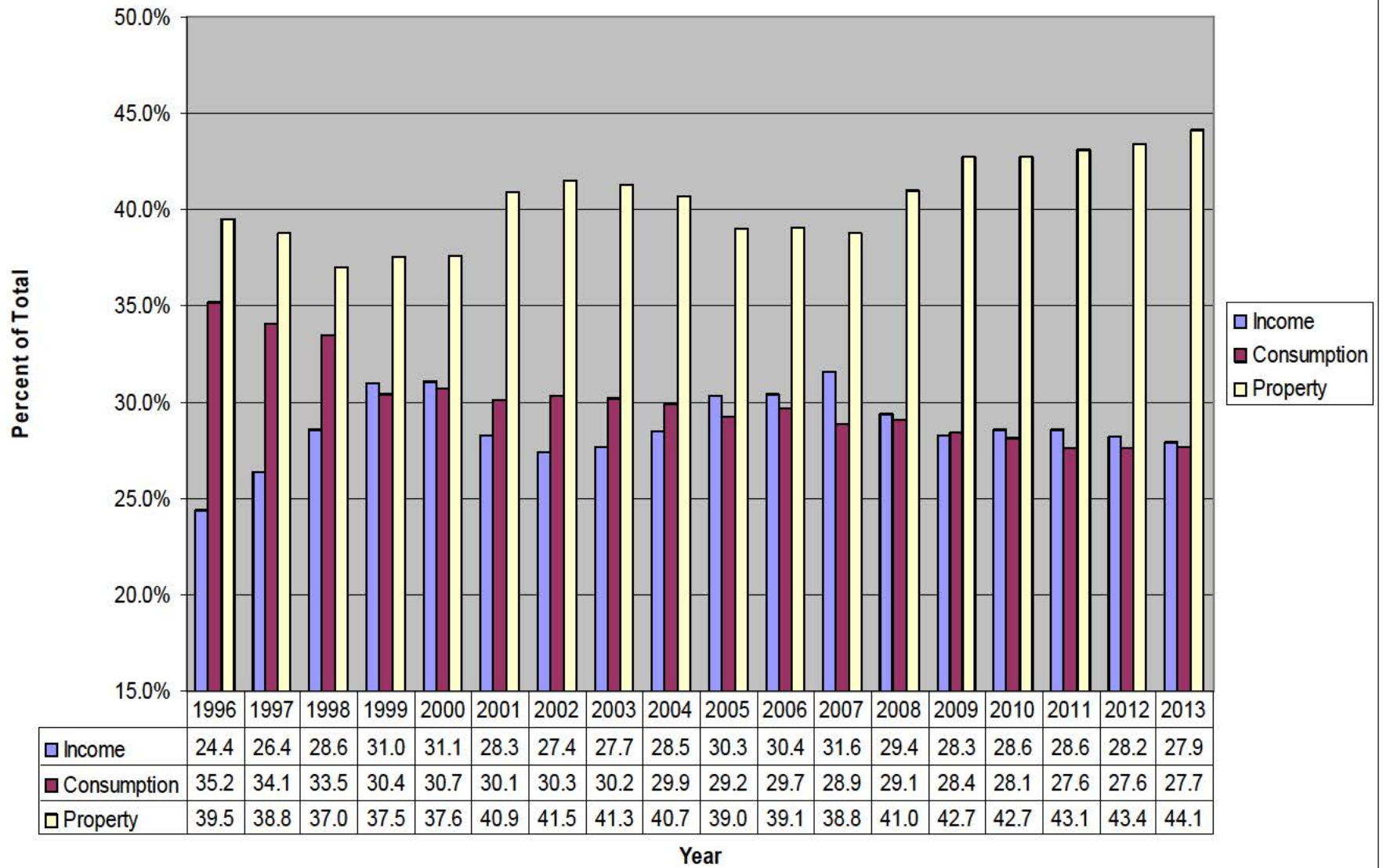
Tax Category	Collections		Percentage by Taxpayer Category			
	Total	Percentage Distribution	Individuals		Businesses	Total
			Resident	Nonresident		
<b>Taxes on Income</b>						
Individual Income Tax	\$1,366.9	24.1%	93.8%	6.2%	0.0%	100.0%
Corporate Income Tax /1	<u>\$213.5</u>	<u>3.8%</u>	0.0%	0.0%	100.0%	100.0%
Total Income Taxes	\$1,580.4	27.9%	81.1%	5.3%	13.5%	100.0%
<b>Taxes on Consumption</b>						
Sales & Use Tax	\$1,083.2	19.1%	59.7%	12.9%	27.4%	100.0%
Cig., Tob. & Alcohol Excise	\$157.6	2.8%	91.5%	7.9%	0.6%	100.0%
Insurance Companies Tax /2	\$82.5	1.5%	0.0%	0.0%	100.0%	100.0%
Motor Fuels Excise Taxes	<u>\$246.5</u>	<u>4.3%</u>	51.8%	8.6%	39.6%	100.0%
Total Consumption Taxes	\$1,569.9	27.7%	58.5%	11.0%	30.5%	100.0%
<b>Taxes on Wealth</b>						
Estate Tax	\$21.3	0.4%	80.0%	20.0%	0.0%	100.0%
<b>Taxes on Property</b>						
<i>Local</i>						
Homeowners (gross)	\$1,772.0	31.2%	86.1%	13.9%	0.0%	100.0%
Businesses (gross)	\$637.3	11.2%	0.0%	0.0%	100.0%	100.0%
Motor Vehicle Excise Tax	\$230.3	4.1%	70.0%	0.0%	30.0%	100.0%
Watercraft Excise Tax	\$2.5	0.0%	80.0%	20.0%	0.0%	100.0%
Homestead Exemption	(\$47.7)	-0.8%	100.0%	0.0%	0.0%	100.0%
Circuit Breaker Refunds	(\$58.3)	-1.0%	100.0%	0.0%	0.0%	100.0%
BETR/BETE Refunds	<u>(\$77.7)</u>	<u>-1.4%</u>	0.0%	0.0%	100.0%	100.0%
<i>State</i>						
State Property Taxes (gross) /3	\$28.8	0.5%	38.4%	8.0%	53.5%	100.0%
Public Utilities Tax	<u>\$13.5</u>	<u>0.2%</u>	0.0%	0.0%	100.0%	100.0%
Total Property Taxes	\$2,500.8	44.1%	63.8%	9.9%	26.3%	100.0%
<b>Total Taxes</b>	\$5,672.5	100.0%	67.2%	9.0%	23.8%	100.0%

1/ Includes Franchise Tax on Financial Institutions.

2/ Includes Fire Investigation and Prevention Tax.

3/ Includes Unorganized Territory Taxes, Real Estate Transfer Taxes, and Commercial Forestry Excise Tax.

### Percentage Distribution of Major Tax Categories 1996-2013



Tax Category	2013
Individual Income Tax	0.240
Consumer Sales Tax	-0.107
Consumer Excise Tax	-0.387
Estate Tax	0.575
Total State Taxes	0.047
Residential Property Taxes	
Gross of State Programs	-0.115
Net of State Programs	-0.093
Total State and Local Taxes	-0.013