

MAINE STATE LEGISLATURE

The following document is provided by the
LAW AND LEGISLATIVE DIGITAL LIBRARY
at the Maine State Law and Legislative Reference Library
<http://legislature.maine.gov/lawlib>



Reproduced from electronic originals
(may include minor formatting differences from printed original)

State of Maine Pedestrian & Bicycle Crash History

2017-2021



MaineDOT

Prepared by:

Maine Department of Transportation
Office of Safety & Mobility Crash Records Section
16 State House Station
Augusta, Maine 04333-0016

STATE OF MAINE
HIGHWAY PEDESTRIAN CRASHES
2017 - 2021

I. PREFACE i

II. PEDESTRIAN CRASH TABLES AND CHARTS 2017-2021

Crashes Summarized by:

County 1-4

Severity 5-6

Fatal Crashes Location Map 7

Rural/Urban Designation 8

Month

Day of Week 10

Time of Day 11

Age Groups 12

Age Groups by Gender 13

Apparent Physical Condition 14

Contributing Factors 15

Vehicle Type 16

Light Conditions 17

Weather Conditions 18

Road Surface Conditions 19

STATE OF MAINE

HIGHWAY PEDESTRIAN CRASHES

2017 - 2021

Preface

This publication is a statistical review of reported motor vehicle highway crashes that involved pedestrians in Maine during the five-year study period 2017- 2021. The statistics are compiled from crash reports submitted to the Department of Transportation by the Traffic Division, Department of Public Safety. The Traffic Division receives all police uniform crash reports Form 13:20 A, from state, county and local police agencies.

The enclosed charts, graphs, listings and summaries were produced using the Department of Transportation's Computerized Crash Records System. Fatalities data was provided by the Department of Public Safety. Except for adjustments to locations and crash-type information for accuracy, no attempt has been made to modify the raw data received from the reporting agencies. However, because crash scenes are often dangerous and chaotic, some inaccuracies in data collection are possible.

A comparison of this report with other summaries of crashes and fatalities may also reveal inconsistencies due to changes in crash classification, late submittals, and differing reporting criteria. Fatalities data is provided by the Department of Public Safety and does not include deaths that were later determined to be of natural causes.

The Department of Transportation and the Department of Public Safety wish to express our sincere thank you to all law enforcement agencies and officers for the work they do on crash investigations. Without their dedication, this report would not be possible.

A link to this publication can be found on the maine.gov website at:

maine.gov/mdot/safety/crash-data/

We welcome your comments and suggestions on this report at:

Maine Department of Transportation
Office of Safety & Mobility
Crash Records Section
16 State House Station
Augusta, ME 04333-0016
Tel: 207-624-3616

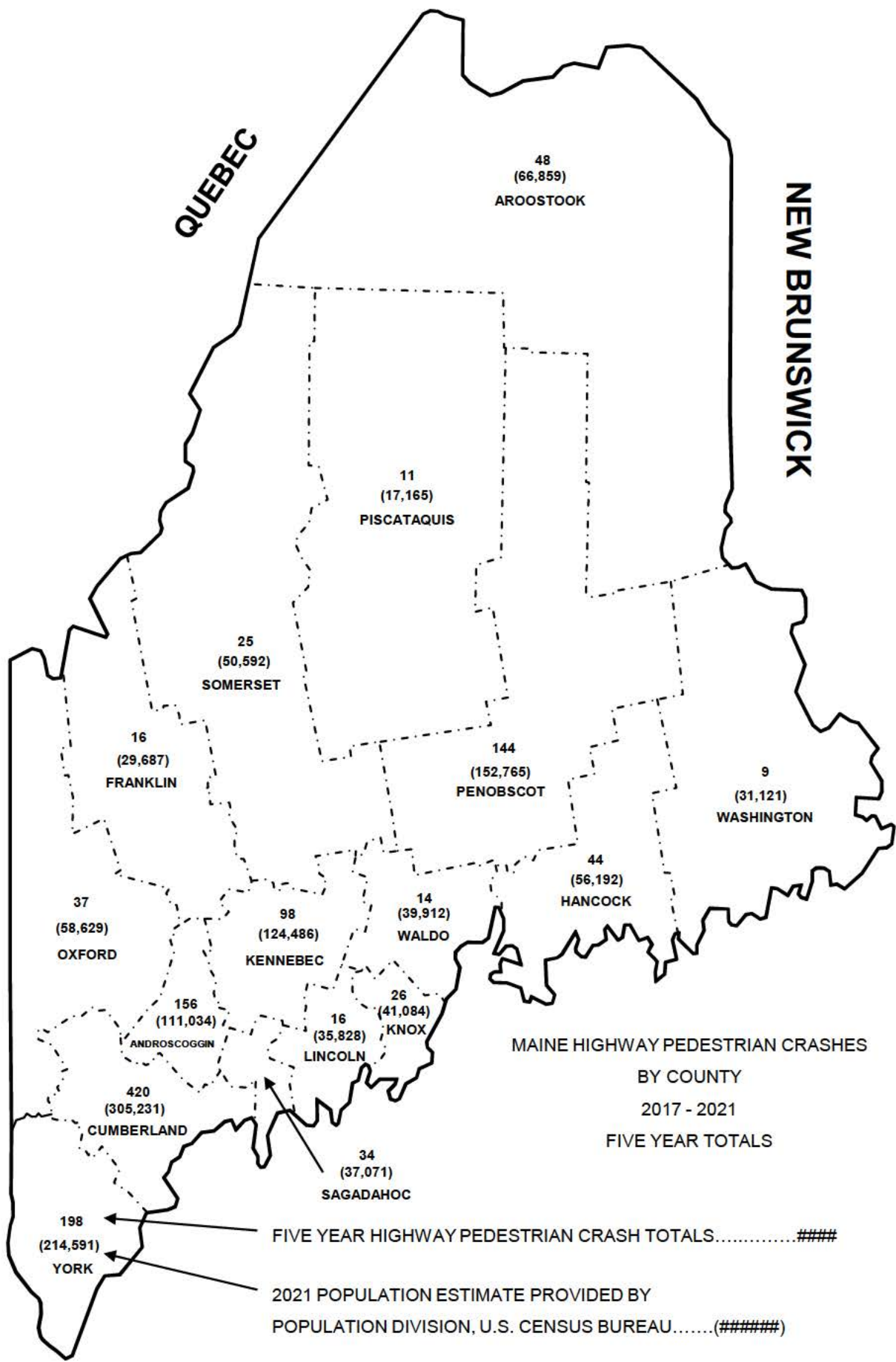




NEW HAMPSHIRE

QUEBEC

NEW BRUNSWICK



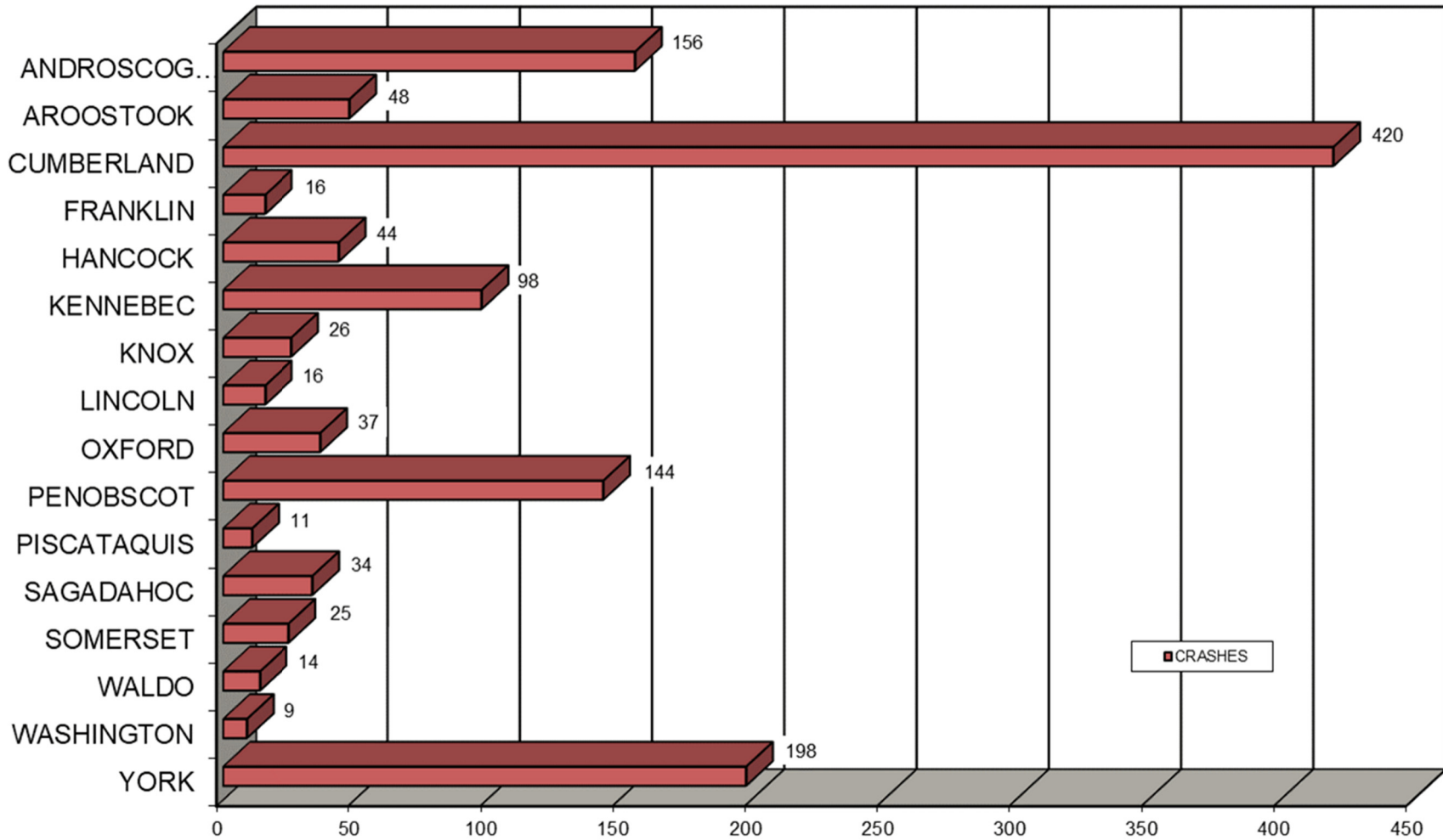
MAINE HIGHWAY PEDESTRIAN CRASHES
BY COUNTY
2017 - 2021
FIVE YEAR TOTALS

FIVE YEAR HIGHWAY PEDESTRIAN CRASH TOTALS.....####
2021 POPULATION ESTIMATE PROVIDED BY
POPULATION DIVISION, U.S. CENSUS BUREAU.....(#####)



Produced by the Maine Department of Transportation

MAINE HIGHWAY PEDESTRIAN CRASHES BY COUNTY 2017 - 2021



MAINE HIGHWAY PEDESTRIAN CRASH SEVERITY BY COUNTY

2017 - 2021

COUNTY	INJURY TYPE	2017	2018	2019	2020	2021	TOTAL CRASHES	PERCENT OF TOTAL
ANDROSCOGGIN Percent Personal Injury 94.87%	FATAL (K)	3	0	2	0	2	7	0.54%
	SUSPECTED SERIOUS INJURY (A)	6	4	5	3	7	25	1.93%
	SUSPECTED MINOR INJURY (B)	12	8	3	4	5	32	2.47%
	POSSIBLE INJURY (C)	19	16	19	19	11	84	6.48%
	PROPERTY DAMAGE ONLY (PDO)	3	2	1	1	1	8	0.62%
	COUNTY SUBTOTAL		43	30	30	27	26	156
AROSTOOK Percent Personal Injury 100.00%	FATAL (K)	0	1	0	1	0	2	0.15%
	SUSPECTED SERIOUS INJURY (A)	4	2	5	3	1	15	1.16%
	SUSPECTED MINOR INJURY (B)	3	3	4	1	4	15	1.16%
	POSSIBLE INJURY (C)	2	3	3	2	6	16	1.23%
	PROPERTY DAMAGE ONLY (PDO)	0	0	0	0	0	0	0.00%
	COUNTY SUBTOTAL		9	9	12	7	11	48
CUMBERLAND Percent Personal Injury 95.95%	FATAL (K)	6	1	5	1	3	16	1.23%
	SUSPECTED SERIOUS INJURY (A)	19	18	12	9	15	73	5.63%
	SUSPECTED MINOR INJURY (B)	19	27	39	21	35	141	10.88%
	POSSIBLE INJURY (C)	37	40	38	25	33	173	13.35%
	PROPERTY DAMAGE ONLY (PDO)	5	3	4	4	1	17	1.31%
	COUNTY SUBTOTAL		86	89	98	60	87	420
FRANKLIN Percent Personal Injury 100.00%	FATAL (K)	0	0	0	0	0	0	0.00%
	SUSPECTED SERIOUS INJURY (A)	0	1	1	0	1	3	0.23%
	SUSPECTED MINOR INJURY (B)	2	0	2	0	1	5	0.39%
	POSSIBLE INJURY (C)	2	1	2	1	2	8	0.62%
	PROPERTY DAMAGE ONLY (PDO)	0	0	0	0	0	0	0.00%
	COUNTY SUBTOTAL		4	2	5	1	4	16
HANCOCK Percent Personal Injury 97.73%	FATAL (K)	1	0	2	2	1	6	0.46%
	SUSPECTED SERIOUS INJURY (A)	1	3	1	2	0	7	0.54%
	SUSPECTED MINOR INJURY (B)	3	3	6	4	2	18	1.39%
	POSSIBLE INJURY (C)	1	3	3	5	0	12	0.93%
	PROPERTY DAMAGE ONLY (PDO)	0	0	0	0	1	1	0.08%
	COUNTY SUBTOTAL		6	9	12	13	4	44
KENNEBEC Percent Personal Injury 93.88%	FATAL (K)	1	1	1	0	3	6	0.46%
	SUSPECTED SERIOUS INJURY (A)	3	2	1	2	1	9	0.69%
	SUSPECTED MINOR INJURY (B)	5	8	3	7	5	28	2.16%
	POSSIBLE INJURY (C)	9	13	9	10	8	49	3.78%
	PROPERTY DAMAGE ONLY (PDO)	1	0	1	3	1	6	0.46%
	COUNTY SUBTOTAL		19	24	15	22	18	98
KNOX Percent Personal Injury 84.62%	FATAL (K)	1	0	1	0	0	2	0.15%
	SUSPECTED SERIOUS INJURY (A)	2	2	2	1	0	7	0.54%
	SUSPECTED MINOR INJURY (B)	1	0	2	3	1	7	0.54%
	POSSIBLE INJURY (C)	0	1	3	1	1	6	0.46%
	PROPERTY DAMAGE ONLY (PDO)	3	0	0	0	1	4	0.31%
	COUNTY SUBTOTAL		7	3	8	5	3	26
LINCOLN Percent Personal Injury 87.50%	FATAL (K)	0	0	1	0	1	2	0.15%
	SUSPECTED SERIOUS INJURY (A)	0	1	1	0	0	2	0.15%
	SUSPECTED MINOR INJURY (B)	2	3	1	0	1	7	0.54%
	POSSIBLE INJURY (C)	1	0	2	0	0	3	0.23%
	PROPERTY DAMAGE ONLY (PDO)	1	1	0	0	0	2	0.15%
	COUNTY SUBTOTAL		4	5	5	0	2	16

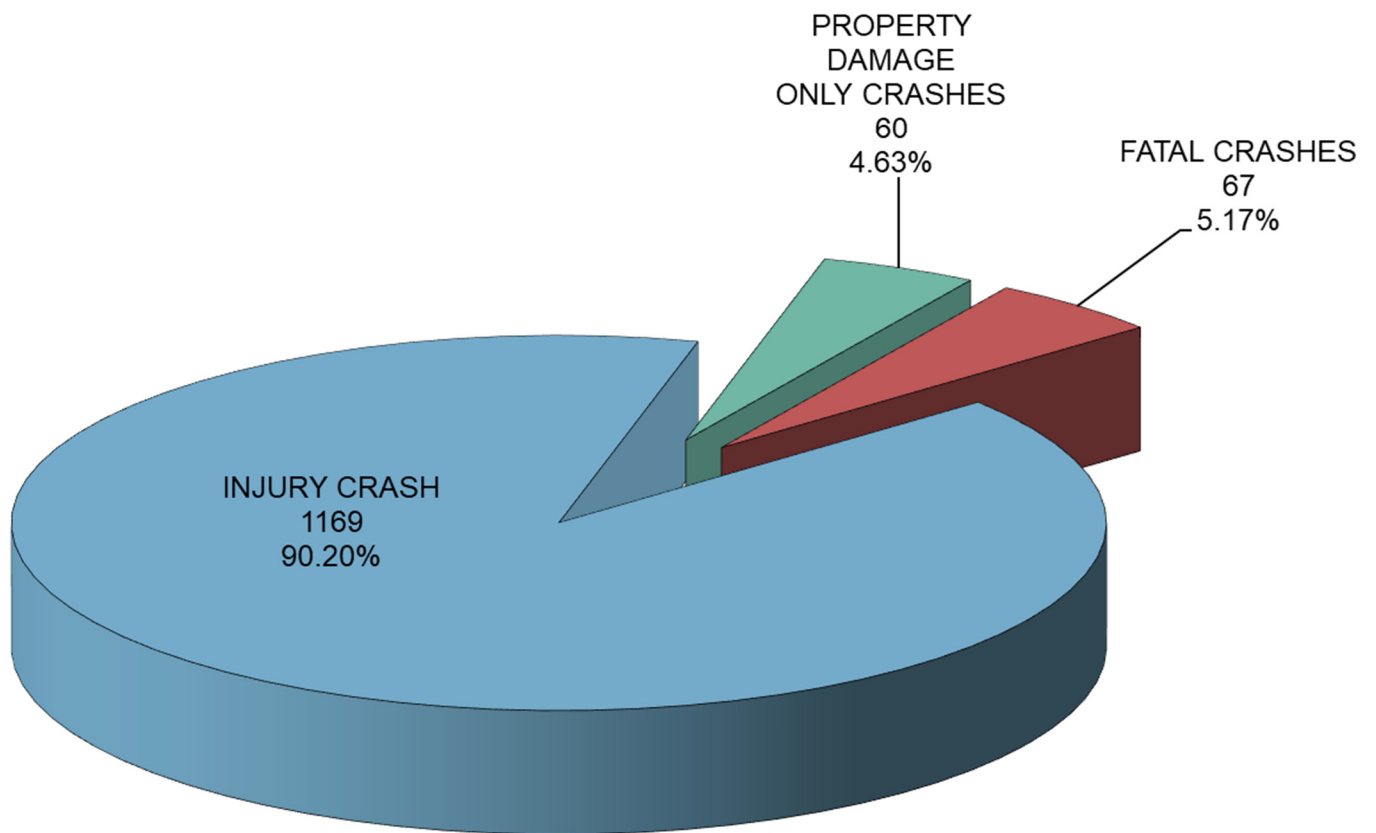


COUNTY	INJURY TYPE	2017	2018	2019	2020	2021	TOTAL CRASHES	PERCENT OF TOTAL
OXFORD Percent Personal Injury 94.59%	FATAL (K)	1	0	0	1	0	2	0.15%
	SUSPECTED SERIOUS INJURY (A)	1	2	2	1	0	6	0.46%
	SUSPECTED MINOR INJURY (B)	5	2	3	2	3	15	1.16%
	POSSIBLE INJURY (C)	2	4	3	2	1	12	0.93%
	PROPERTY DAMAGE ONLY (PDO)	0	0	1	1	0	2	0.15%
	COUNTY SUBTOTAL	9	8	9	7	4	37	2.85%
PENOBSCOT Percent Personal Injury 97.22%	FATAL (K)	2	1	2	2	1	8	0.62%
	SUSPECTED SERIOUS INJURY (A)	8	4	10	4	2	28	2.16%
	SUSPECTED MINOR INJURY (B)	6	8	22	10	14	60	4.63%
	POSSIBLE INJURY (C)	15	11	8	8	2	44	3.40%
	PROPERTY DAMAGE ONLY (PDO)	0	1	0	0	3	4	0.31%
	COUNTY SUBTOTAL	31	25	42	24	22	144	11.11%
PISCATAQUIS Percent Personal Injury 100.00%	FATAL (K)	0	0	0	0	2	2	0.15%
	SUSPECTED SERIOUS INJURY (A)	1	2	1	0	1	5	0.39%
	SUSPECTED MINOR INJURY (B)	0	0	1	0	1	2	0.15%
	POSSIBLE INJURY (C)	0	0	1	1	0	2	0.15%
	PROPERTY DAMAGE ONLY (PDO)	0	0	0	0	0	0	0.00%
	COUNTY SUBTOTAL	1	2	3	1	4	11	0.85%
SAGadahoc Percent Personal Injury 97.06%	FATAL (K)	0	0	0	1	1	2	0.15%
	SUSPECTED SERIOUS INJURY (A)	1	2	2	1	0	6	0.46%
	SUSPECTED MINOR INJURY (B)	4	4	3	3	4	18	1.39%
	POSSIBLE INJURY (C)	2	0	2	2	1	7	0.54%
	PROPERTY DAMAGE ONLY (PDO)	1	0	0	0	0	1	0.08%
	COUNTY SUBTOTAL	8	6	7	7	6	34	2.62%
SOMERSET Percent Personal Injury 84.00%	FATAL (K)	2	0	0	0	0	2	0.15%
	SUSPECTED SERIOUS INJURY (A)	0	2	1	0	0	3	0.23%
	SUSPECTED MINOR INJURY (B)	1	1	0	1	1	4	0.31%
	POSSIBLE INJURY (C)	3	1	3	4	1	12	0.93%
	PROPERTY DAMAGE ONLY (PDO)	1	1	0	1	1	4	0.31%
	COUNTY SUBTOTAL	7	5	4	6	3	25	1.93%
WALDO Percent Personal Injury 100.00%	FATAL (K)	0	0	0	1	1	2	0.15%
	SUSPECTED SERIOUS INJURY (A)	1	0	0	0	1	2	0.15%
	SUSPECTED MINOR INJURY (B)	1	2	1	1	1	6	0.46%
	POSSIBLE INJURY (C)	0	1	2	0	1	4	0.31%
	PROPERTY DAMAGE ONLY (PDO)	0	0	0	0	0	0	0.00%
	COUNTY SUBTOTAL	2	3	3	2	4	14	1.08%
WASHINGTON Percent Personal Injury 100.00%	FATAL (K)	1	1	0	0	0	2	0.15%
	SUSPECTED SERIOUS INJURY (A)	0	0	0	0	1	1	0.08%
	SUSPECTED MINOR INJURY (B)	1	0	0	1	2	4	0.31%
	POSSIBLE INJURY (C)	0	0	1	0	1	2	0.15%
	PROPERTY DAMAGE ONLY (PDO)	0	0	0	0	0	0	0.00%
	COUNTY SUBTOTAL	2	1	1	1	4	9	0.69%
YORK Percent Personal Injury 94.44%	FATAL (K)	1	1	2	0	2	6	0.46%
	SUSPECTED SERIOUS INJURY (A)	6	9	6	9	9	39	3.01%
	SUSPECTED MINOR INJURY (B)	12	12	9	9	14	56	4.32%
	POSSIBLE INJURY (C)	21	17	24	13	11	86	6.64%
	PROPERTY DAMAGE ONLY (PDO)	5	1	1	1	3	11	0.85%
	COUNTY SUBTOTAL	45	40	42	32	39	198	15.28%
COUNTY GRAND TOTAL Percent Personal Injury 95.37%	FATAL (K)	19	6	16	9	17	67	5.17%
	SUSPECTED SERIOUS INJURY (A)	53	54	50	35	39	231	17.82%
	SUSPECTED MINOR INJURY (B)	77	81	99	67	94	418	32.25%
	POSSIBLE INJURY (C)	114	111	123	93	79	520	40.12%
	PROPERTY DAMAGE ONLY (PDO)	20	9	8	11	12	60	4.63%
	GRAND TOTAL	283	261	296	215	241	1,296	100.00%

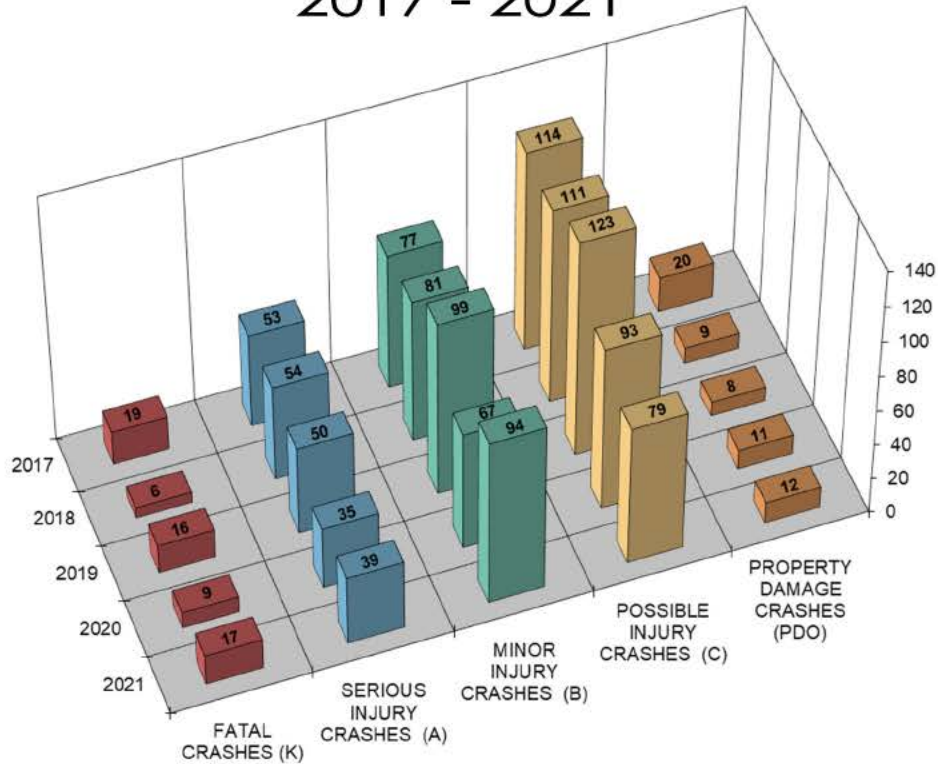


MAINE HIGHWAY PEDESTRIAN CRASHES 2017 - 2021

1,296 Total Pedestrian Crashes



MAINE HIGHWAY PEDESTRIAN CRASH SEVERITY BY YEAR 2017 - 2021



YEAR	FATAL CRASHES (K)	SERIOUS INJURY CRASHES (A)	MINOR INJURY CRASHES (B)	POSSIBLE INJURY CRASHES (C)	PROPERTY DAMAGE CRASHES (PDO)	TOTAL CRASHES
2017	19	53	77	114	20	283
2018	6	54	81	111	9	261
2019	16	50	99	123	8	296
2020	9	35	67	93	11	215
2021	17	39	94	79	12	241
TOTAL	67	231	418	520	60	1,296
PERCENT	5.17%	PERCENT INJURY =		90.20%	4.63%	100.00%

(K) = Fatal Injury Crash. A crash where the highest level of injury to any person involved in the crash is a fatal injury, which results in death within 30 days of the crash.

(A) = Serious Injury Crash. A crash where the highest level of injury to any person involved in the crash is a serious injury, which prevents the injured person from walking, driving or normally continuing the activities the person was capable of performing before the injury occurred.

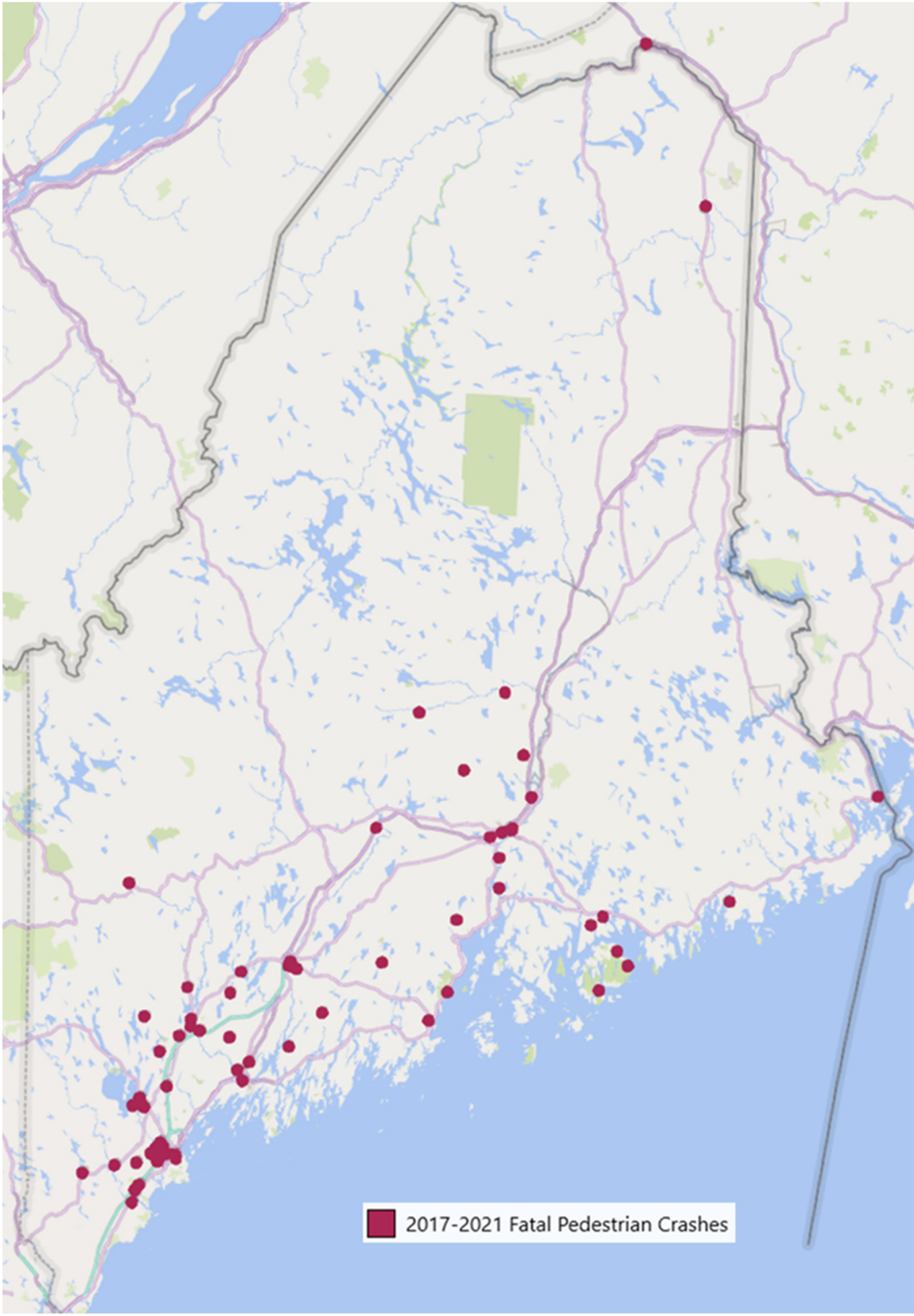
(B) = Minor Injury Crash. A crash where the highest level of injury to any person involved in the crash is a minor injury, which is evident to observers at the scene of the crash in which the injury occurred.

(C) = Possible Injury Crash. A crash where the highest level of injury to any person involved in the crash is a possible injury, which is any injury reported or claimed which is not a fatal injury, serious injury or minor injury.

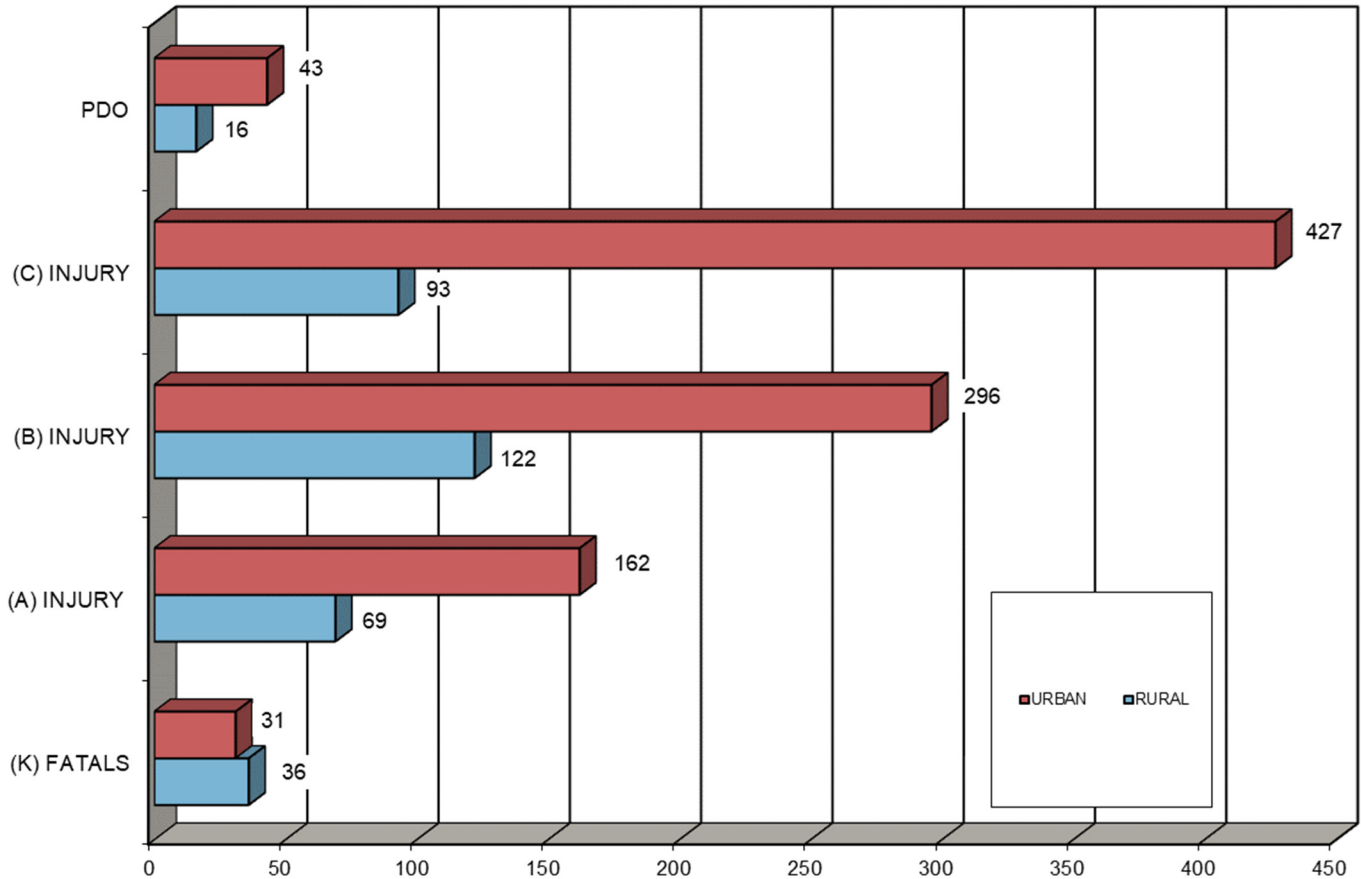
(PDO) = Property Damage Crash. A crash where no injury occurred and only damage occurred to property that reduces the monetary value of that property. No injuries.



MAINE HIGHWAY PEDESTRIAN FATAL CRASH LOCATIONS 2017 - 2021



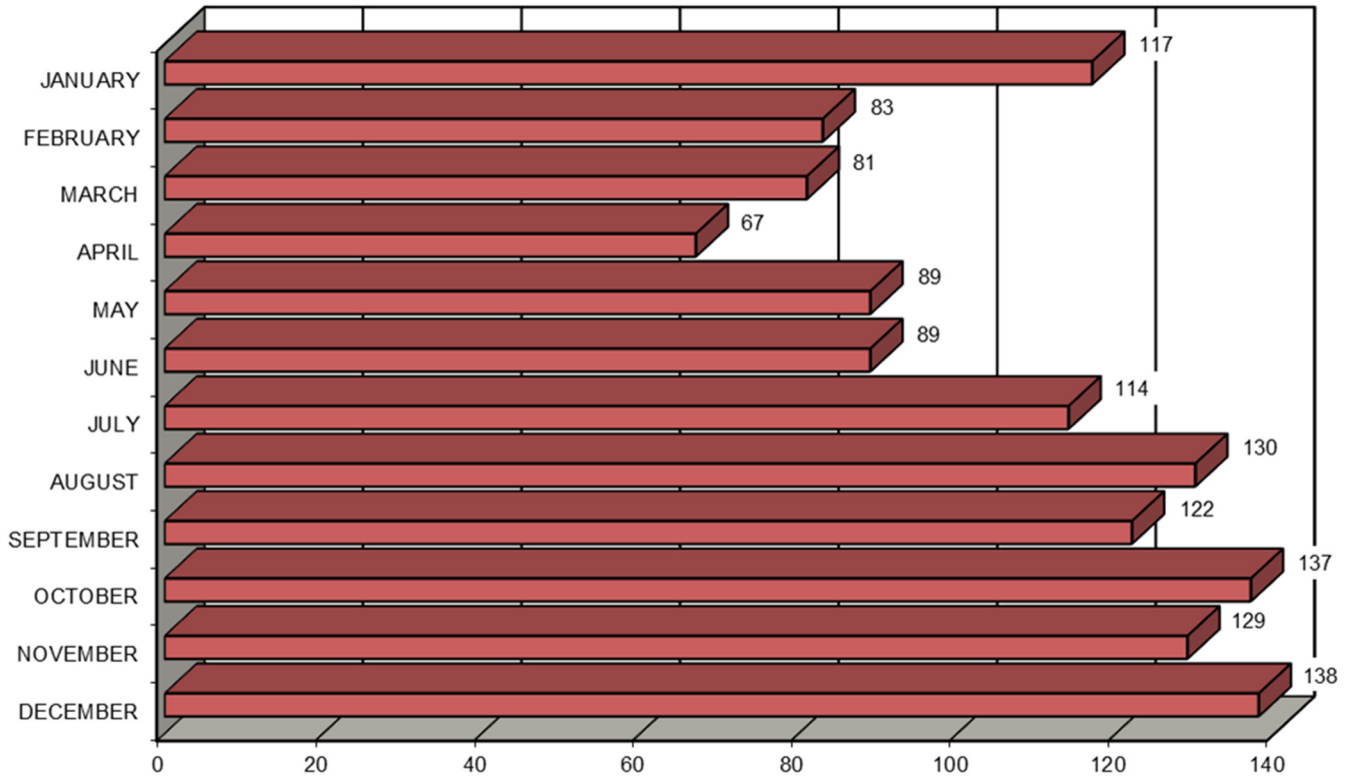
MAINE HIGHWAY PEDESTRIAN CRASH SEVERITY BY RURAL URBAN DESIGNATION 2017 - 2021



RURAL URBAN DESIGNATION	FATAL CRASHES (K)	SERIOUS INJURY CRASHES (A)	MINOR INJURY CRASHES (B)	POSSIBLE INJURY CRASHES (C)	PROPERTY DAMAGE CRASHES (PDO)	FIVE YEAR TOTAL
RURAL	36	69	122	93	16	336
URBAN	31	162	296	427	43	959
UNKNOWN	0	0	0	0	1	1
TOTAL	67	231	418	520	60	1,296



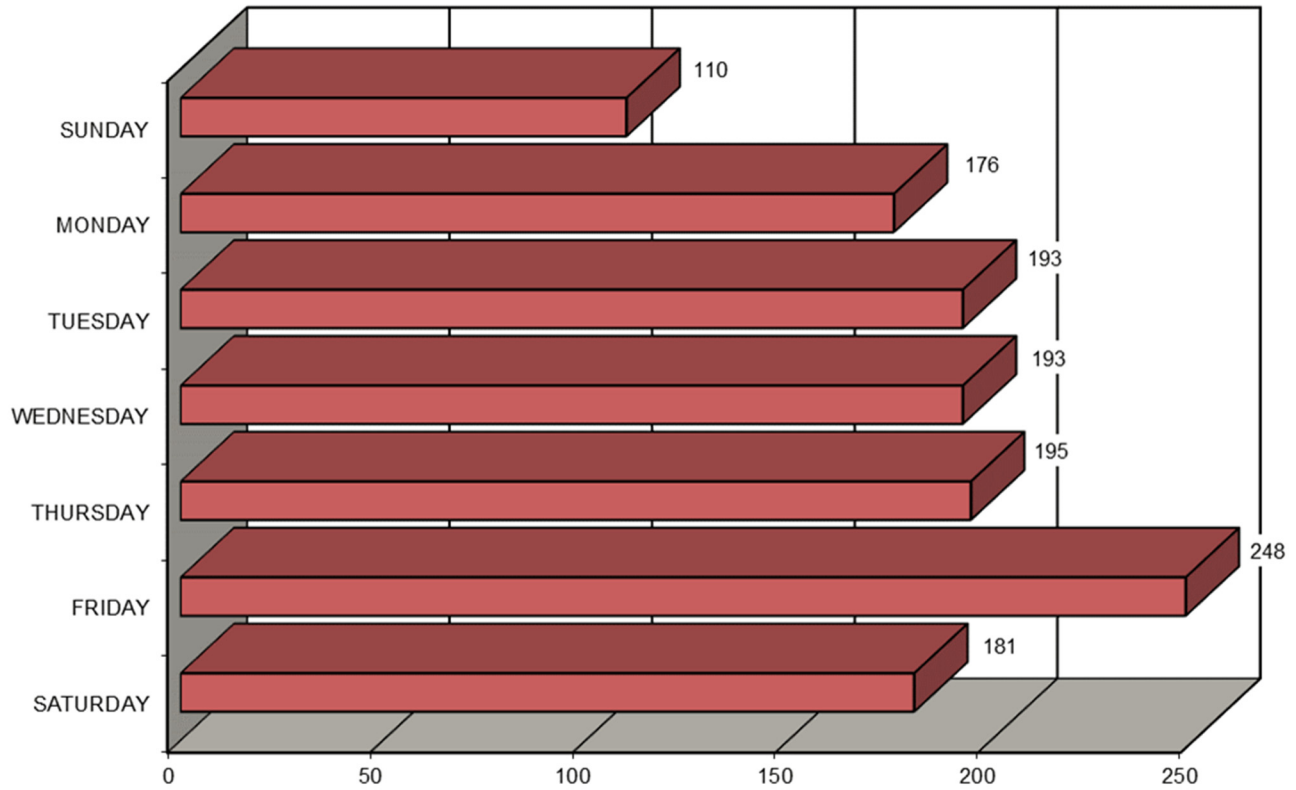
MAINE HIGHWAY PEDESTRIAN CRASHES BY MONTH 2017 - 2021



MONTH	2017	2018	2019	2020	2021	FIVE YEAR TOTAL	PERCENT OF TOTAL
JANUARY	27	20	22	33	15	117	9.03%
FEBRUARY	21	12	16	20	14	83	6.40%
MARCH	11	13	17	16	24	81	6.25%
APRIL	13	15	20	4	15	67	5.17%
MAY	28	13	22	13	13	89	6.87%
JUNE	12	19	24	17	17	89	6.87%
JULY	34	24	23	17	16	114	8.80%
AUGUST	22	34	34	18	22	130	10.03%
SEPTEMBER	29	25	28	12	28	122	9.41%
OCTOBER	32	31	27	21	26	137	10.57%
NOVEMBER	27	27	31	16	28	129	9.95%
DECEMBER	27	28	32	28	23	138	10.65%
TOTAL	283	261	296	215	241	1,296	100.00%



MAINE HIGHWAY PEDESTRIAN CRASHES BY DAY OF THE WEEK 2017 - 2021



DAY OF THE WEEK	2017	2018	2019	2020	2021	FIVE YEAR TOTAL	PERCENT OF TOTAL
SUNDAY	29	18	27	13	23	110	8.49%
MONDAY	31	39	34	34	38	176	13.58%
TUESDAY	49	41	42	33	28	193	14.89%
WEDNESDAY	32	45	42	40	34	193	14.89%
THURSDAY	47	31	45	39	33	195	15.05%
FRIDAY	60	47	56	39	46	248	19.14%
SATURDAY	35	40	50	17	39	181	13.97%
TOTAL	283	261	296	215	241	1,296	100.00%

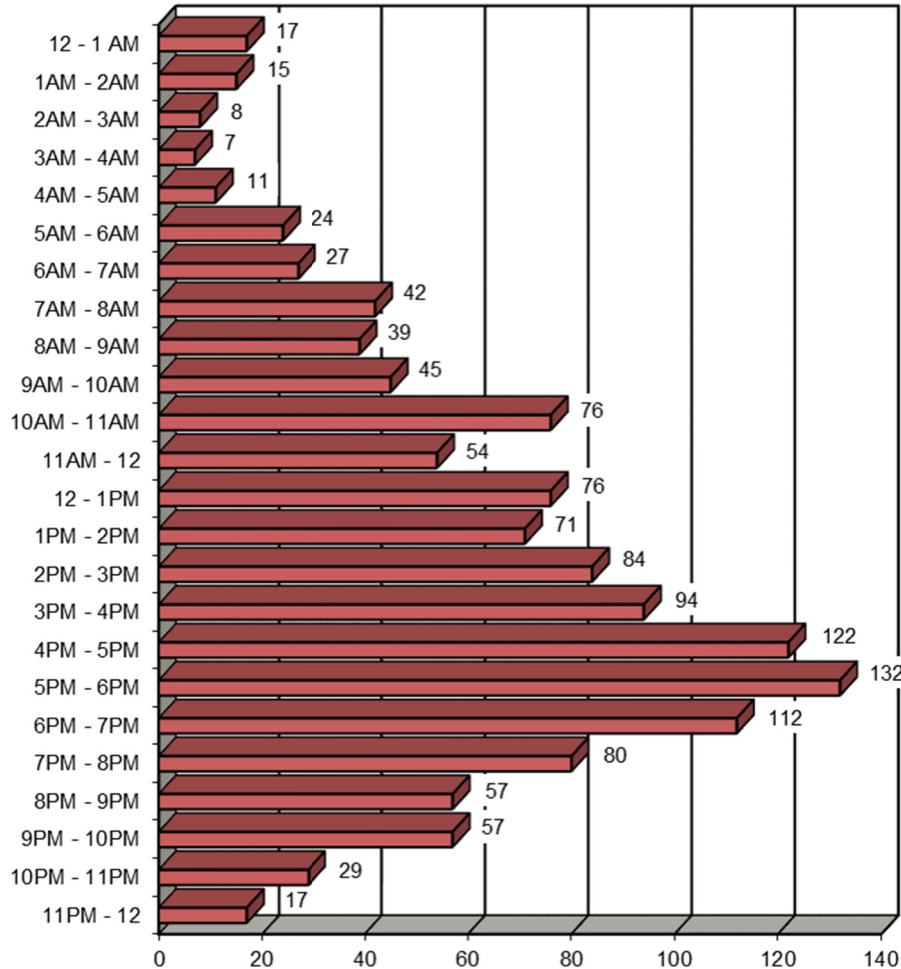


MAINE HIGHWAY PEDESTRIAN CRASHES

BY TIME OF DAY

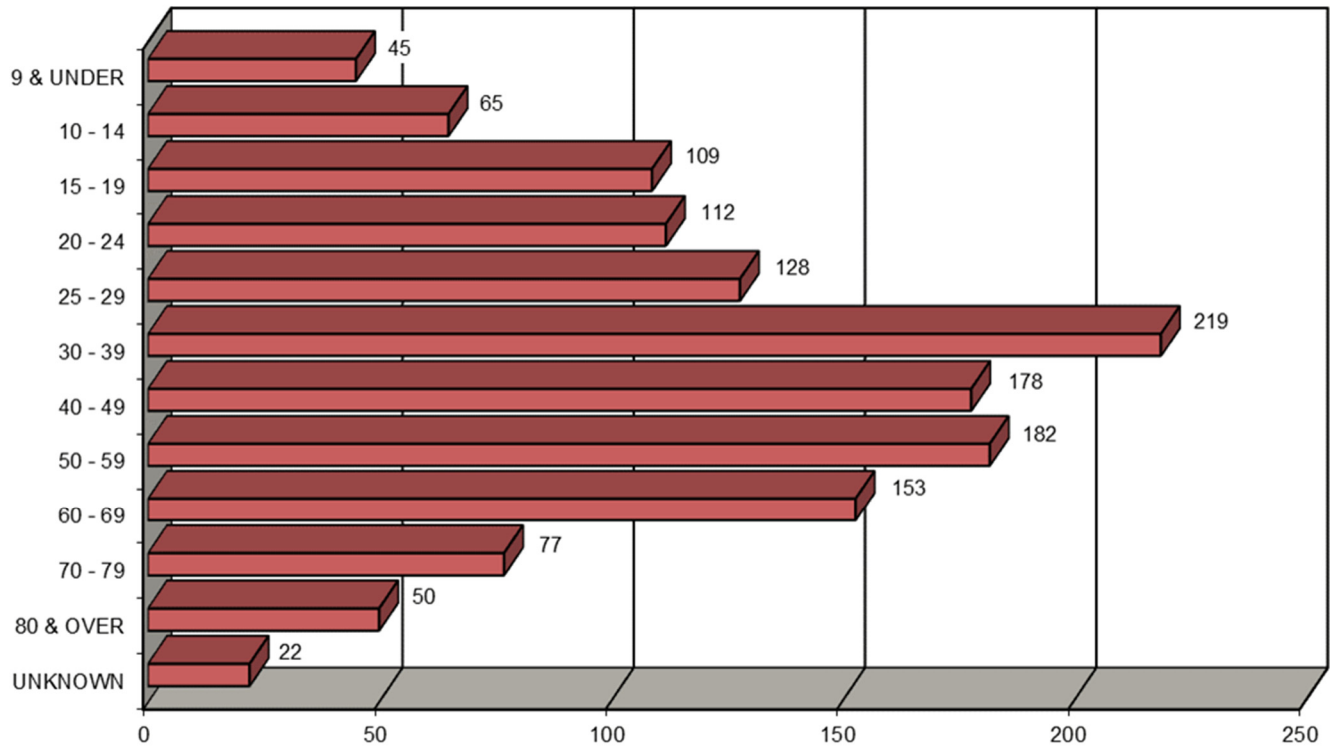
2017 - 2021

11



TIME OF DAY	2017	2018	2019	2020	2021	FIVE YEAR TOTAL
12 - 1 AM	5	3	4	0	5	17
1AM - 2AM	3	3	3	1	5	15
2AM - 3AM	3	1	1	1	2	8
3AM - 4AM	1	2	3	1	0	7
4AM - 5AM	2	4	0	2	3	11
5AM - 6AM	3	4	3	6	8	24
6AM - 7AM	6	3	5	9	4	27
7AM - 8AM	7	10	14	6	5	42
8AM - 9AM	4	7	9	7	12	39
9AM - 10AM	8	11	11	7	8	45
10AM - 11AM	13	18	18	17	10	76
11AM - 12	14	13	13	9	5	54
12 - 1PM	15	17	17	13	14	76
1PM - 2PM	13	12	23	10	13	71
2PM - 3PM	26	14	16	17	11	84
3PM - 4PM	14	22	18	15	25	94
4PM - 5PM	30	20	32	19	21	122
5PM - 6PM	30	25	28	25	24	132
6PM - 7PM	30	21	22	14	25	112
7PM - 8PM	10	18	22	14	16	80
8PM - 9PM	18	14	7	9	9	57
9PM - 10PM	19	10	12	9	7	57
10PM - 11PM	7	7	9	3	3	29
11PM - 12	2	2	6	1	6	17
TOTAL	283	261	296	215	241	1,296

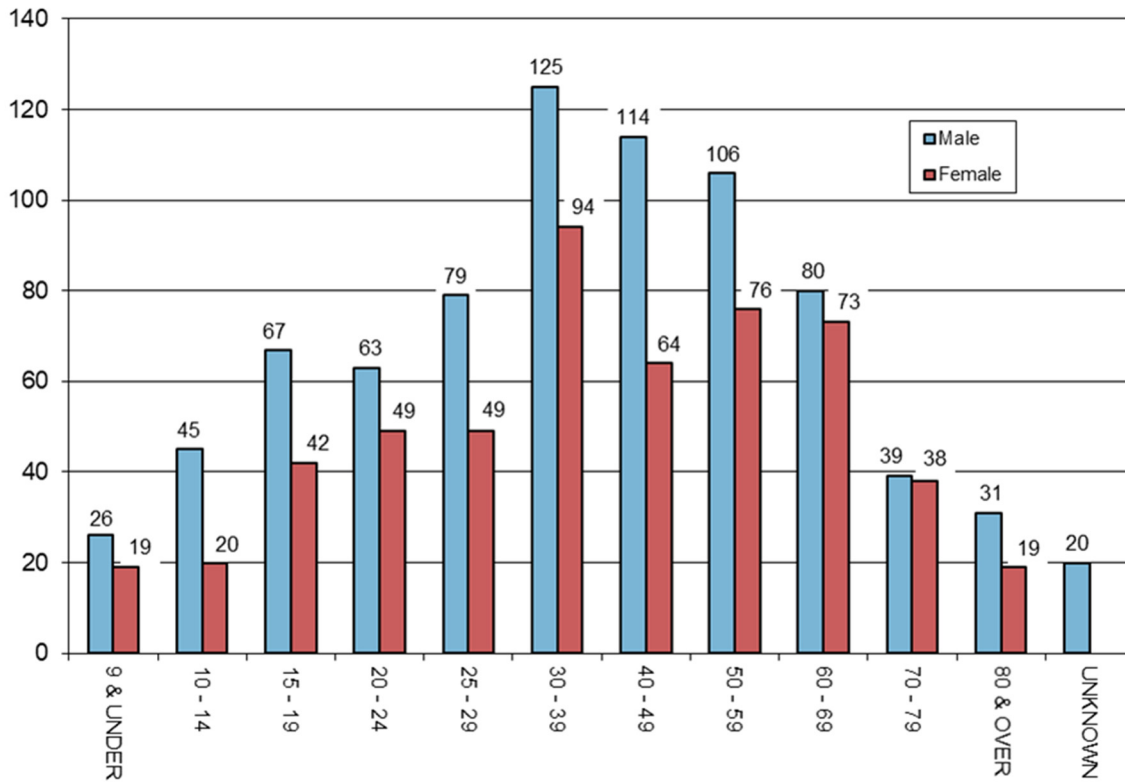
PEDESTRIANS INVOLVED IN MAINE HIGHWAY CRASHES BY AGE GROUP 2017 - 2021



AGE GROUP OF PEDESTRIAN	2017	2018	2019	2020	2021	FIVE YEAR TOTAL	PERCENT OF TOTAL
9 & UNDER	6	8	10	9	12	45	3.36%
10 - 14	18	16	17	6	8	65	4.85%
15 - 19	34	21	22	17	15	109	8.13%
20 - 24	32	21	27	18	14	112	8.36%
25 - 29	28	23	28	27	22	128	9.55%
30 - 39	34	44	59	41	41	219	16.34%
40 - 49	37	31	42	26	42	178	13.28%
50 - 59	51	40	34	30	27	182	13.58%
60 - 69	28	36	32	27	30	153	11.42%
70 - 79	14	18	21	9	15	77	5.75%
80 & OVER	11	11	11	4	13	50	3.73%
UNKNOWN	9	5	2	2	4	22	1.64%
TOTAL	302	274	305	216	243	1,340	100.00%



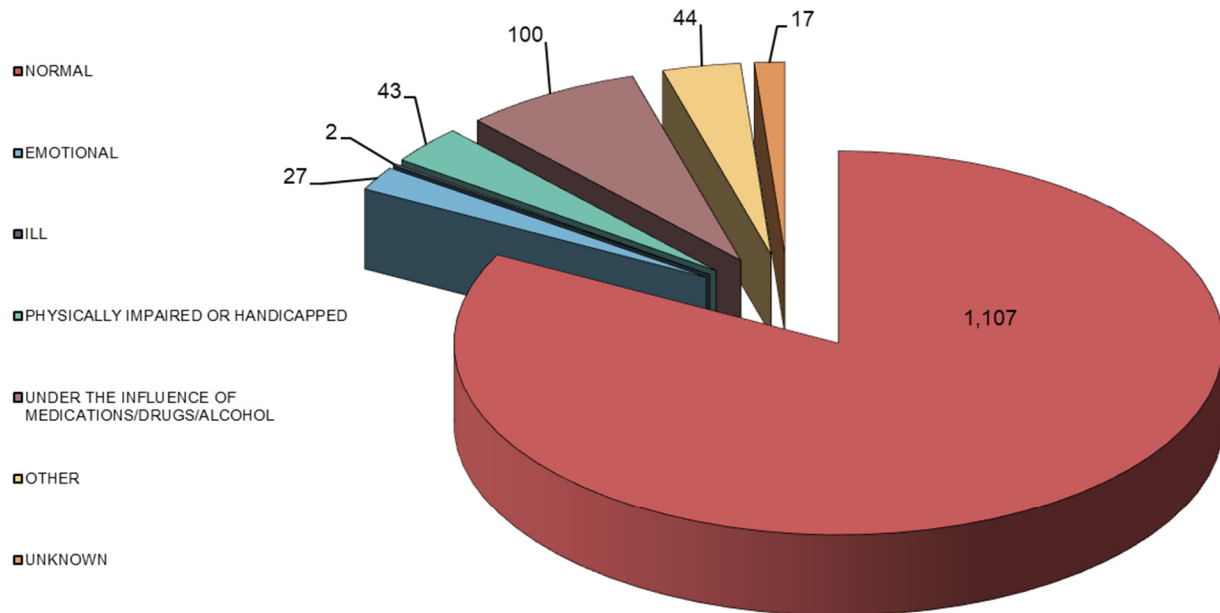
PEDESTRIANS INVOLVED IN MAINE HIGHWAY CRASHES BY AGE GROUP AND GENDER 2017 - 2021



AGE GROUP OF PEDESTRIAN BY GENDER	2017		2018		2019		2020		2021		TOTALS		FIVE YEAR TOTAL	PERCENT OF TOTAL
	M	F	M	F	M	F	M	F	M	F	M	F		
9 & UNDER	3	3	6	2	8	2	3	6	6	6	26	19	45	3.36%
10 - 14	8	10	12	4	15	2	4	2	6	2	45	20	65	4.86%
15 - 19	24	10	11	10	13	9	10	7	9	6	67	42	109	8.15%
20 - 24	26	6	14	7	8	19	8	10	7	7	63	49	112	8.37%
25 - 29	19	9	14	9	17	11	17	10	12	10	79	49	128	9.57%
30 - 39	20	14	25	19	28	31	26	15	26	15	125	94	219	16.37%
40 - 49	24	13	22	9	21	21	18	8	29	13	114	64	178	13.30%
50 - 59	28	23	21	19	22	12	21	9	14	13	106	76	182	13.60%
60 - 69	14	14	19	17	20	12	13	14	14	16	80	73	153	11.43%
70 - 79	8	6	8	10	7	14	8	1	8	7	39	38	77	5.75%
80 & OVER	9	2	5	6	7	4	2	2	8	5	31	19	50	3.74%
UNKNOWN	9		5		2		2		2		20		20	1.49%
TOTAL BY GENDER	183	110	157	112	166	137	130	84	139	100	775	543		
TOTAL	302		274		305		216		241		1,338		1,338	100.00%



PEDESTRIANS APPARENT PHYSICAL CONDITIONS INVOLVED IN MAINE HIGHWAY CRASHES 2017 - 2021



PEDESTRIAN PHYSICAL CONDITION	2017	2018	2019	2020	2021	FIVE YEAR TOTAL	PERCENT OF TOTAL
APPARENTLY NORMAL	241	217	256	182	211	1,107	82.61%
ASLEEP OR FATIGUED	0	0	0	0	0	0	0.00%
EMOTIONAL (depressed, angry, disturbed, etc.)	4	3	10	8	2	27	2.01%
ILL (sick)	0	0	1	1	0	2	0.15%
PHYSICALLY IMPAIRED OR HANDICAPPED	11	15	9	3	5	43	3.21%
UNDER THE INFLUENCE OF MEDICATIONS/DRUGS/ALCOHOL	28	20	22	14	16	100	7.46%
OTHER	9	11	7	8	9	44	3.28%
UNKNOWN	9	8	0	0	0	17	1.27%
TOTAL	302	274	305	216	243	1,340	100.00%



CONTRIBUTING FACTORS TO MAINE HIGHWAY PEDESTRIAN CRASHES, 2017 - 2021

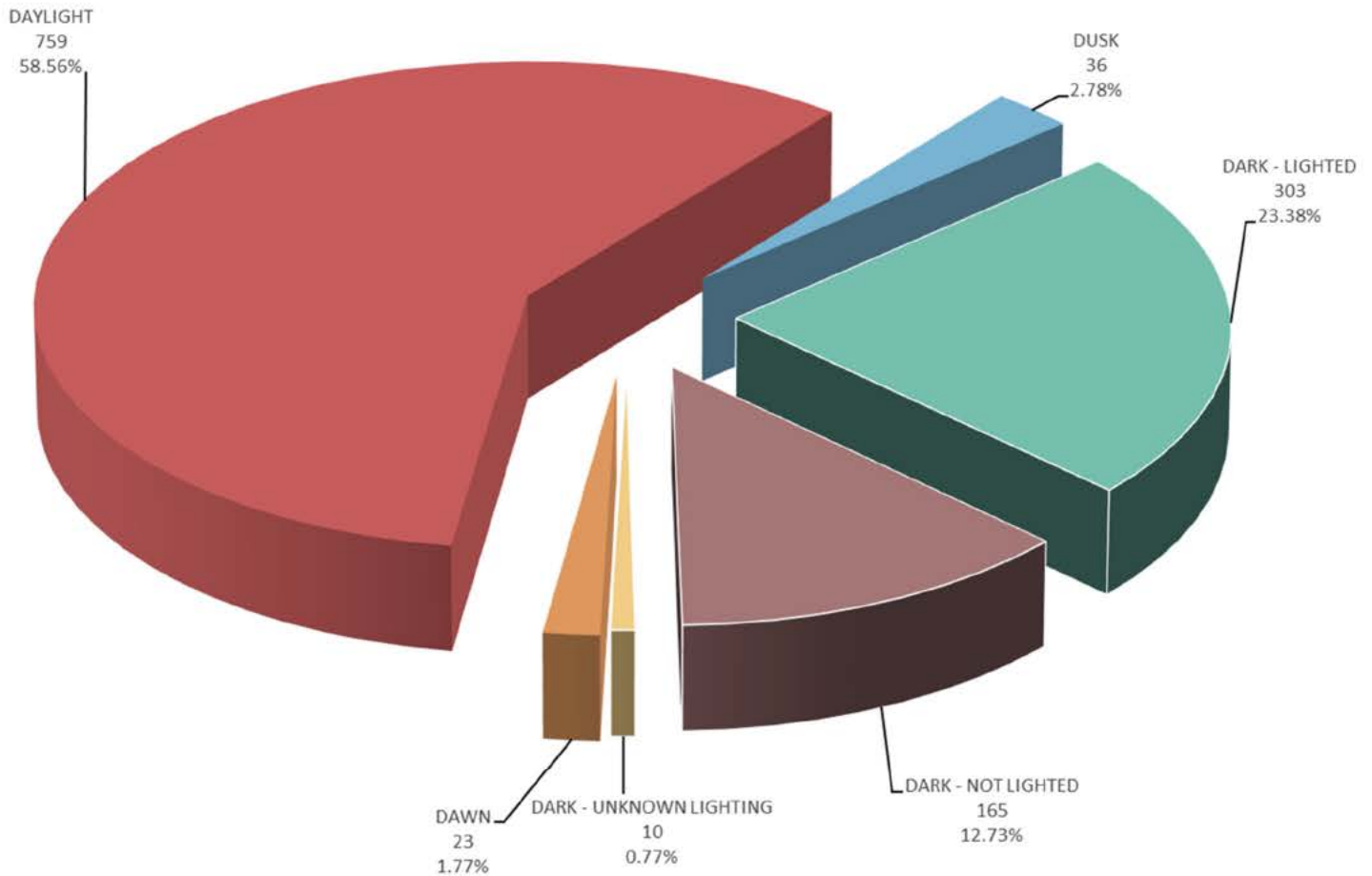
DRIVER ACTIONS (actions 1 & 2 combined)	2017	2018	2019	2020	2021	Totals
NO CONTRIBUTING ACTION	142	121	130	97	20	510
RAN OFF ROADWAY	6	5	11	3	9	34
FAILED TO YIELD RIGHT-OF-WAY	65	53	89	59	50	316
RAN RED LIGHT	1	1	0	0	0	2
RAN STOP SIGN	1	2	1	0	0	4
DISREGARDED OTHER TRAFFIC SIGN	2	6	1	2	1	12
DISREGARDED OTHER ROAD MARKINGS	4	3	1	1	2	11
EXCEEDED POSTED SPEED LIMIT	1	1	0	2	8	12
DROVE TOO FAST FOR CONDITIONS	6	7	3	2	4	22
IMPROPER TURN	4	4	9	2	102	121
IMPROPER BACKING	6	11	7	4	4	32
IMPROPER PASSING	1	1	1	1	2	6
WRONG WAY	0	0	0	0	0	0
FOLLOWED TOO CLOSELY	4	10	6	7	8	35
FAILED TO KEEP IN PROPER LANE	7	9	5	5	10	36
OPERATED MOTOR VEHICLE IN ERRATIC, RECKLESS, CARELESS, NEGLIGENT OR AGGRESSIVE MANNER	10	14	13	15	35	87
SWERVED OR AVOIDED DUE TO WIND, SLIPPERY SURFACE, MOTOR VEHICLE, OBJECT, NON-MOTORIST IN ROADWAY	5	3	3	5	4	20
OVER-CORRECTING/OVER-STEERING	0	0	1	0	0	1
OTHER CONTRIBUTING ACTION	23	29	24	17	8	101
UNKNOWN	11	13	11	14	15	64
TOTAL	299	293	316	236	282	1426
PEDESTRIAN ACTIONS						
CROSSING WITH SIGNAL	25	20	35	27	18	125
CROSSING AGAINST SIGNAL	13	11	22	9	13	68
CROSSING MARKED CROSSWALK (no signal)	62	60	72	44	43	281
CROSSING NO SIGNAL OR CROSSWALK	70	65	70	48	47	300
WALKING IN ROAD WITH TRAFFIC	19	22	17	12	14	84
WALKING IN ROAD AGAINST TRAFFIC	11	9	8	9	13	50
STANDING IN ROAD	13	6	6	10	16	51
EMERGING FROM BEHIND PARKED CAR	5	3	3	3	4	18
CHILD GETTING ON/OFF SCHOOL BUS	0	1	0	0	0	1
GETTING ON/OFF VEHICLE	5	3	0	2	4	14
PUSHING OR WORKING ON VEHICLE	2	5	1	0	0	8
WORKING IN ROAD	5	7	8	5	8	33
PLAYING IN ROAD	6	3	2	2	2	15
NOT IN ROAD	10	11	8	12	11	52
FOLLOWING TRAIL	0	0	0	1	0	1
WALKING ON SIDEWALK	6	8	9	4	5	32
WALKING ADJACENT TO ROADWAY	10	5	12	7	11	45
WALKING TO/FROM SCHOOL	1	0	0	1	0	2
OTHER PEDESTRIAN ACTION	34	35	32	20	33	154
TOTAL	297	274	305	216	242	1334
VEHICULAR FACTORS						
NONE	289	270	281	217	231	1288
BRAKES	2	1	4	2	3	12
EXHAUST SYSTEM	0	0	0	0	0	0
BODY, DOORS	1	0	1	0	0	2
STEERING	1	0	0	0	0	1
POWER TRAIN	1	1	0	0	0	2
SUSPENSION	0	0	0	0	0	0
TIRES	0	0	0	0	0	0
WHEELS	0	0	1	0	0	1
LIGHTS (head, signal, tail, brake)	1	1	1	1	0	4
WINDOWS/WINDSHIELD	1	1	1	0	0	3
MIRRORS	0	0	2	0	1	3
WIPERS	0	0	0	0	0	0
TRUCK COUPLING/TRAILER HITCH/SAFETY CHAINS	0	0	0	0	0	0
OTHER	2	4	4	0	7	17
TOTAL	298	278	295	220	242	1333

VEHICLES INVOLVED IN
MAINE HIGHWAY PEDESTRIAN CRASHES
2017 - 2021

VEHICLE TYPE INVOLVED IN PEDESTRIAN CRASHES	2017	2018	2019	2020	2021	FIVE YEAR TOTAL
PASSENGER CAR	168	148	167	104	128	715
(SPORT) UTILITY VEHICLE	61	65	55	54	57	292
PASSENGER VAN	16	4	6	5	12	43
CARGO VAN (10k lbs or less)	1	2	5	1	1	10
PICKUP TRUCK	51	55	57	49	46	258
MOTOR HOME	0	0	0	0	0	0
SCHOOL BUS	0	0	2	0	1	3
TRANSIT BUS	2	0	2	2	0	6
MOTOR COACH	0	0	0	1	0	1
OTHER BUS	1	1	0	0	0	2
MOTORCYCLE	3	2	2	2	1	10
MOPED	0	1	1	0	0	2
LOW SPEED VEHICLE	0	0	0	0	0	0
AUTOCYCLE	0	0	0	0	0	0
EXPERIMENTAL	0	0	0	0	5	5
OTHER LIGHT TRUCK (10,000 lbs or less)	0	2	0	0	1	3
MEDIUM /HEAVY TRUCKS (more than 10,000 lbs)	7	17	5	5	0	34
ATV (2,3,4-WHEEL)	2	0	1	0	0	3
SNOWMOBILE	0	0	0	0	0	0
PEDESTRIAN	302	274	305	214	236	1,331
BICYCLE	0	0	1	0	0	1
OTHER	17	9	12	10	11	59
TOTAL VEHICLES INVOLVED	631	580	621	447	499	2,778



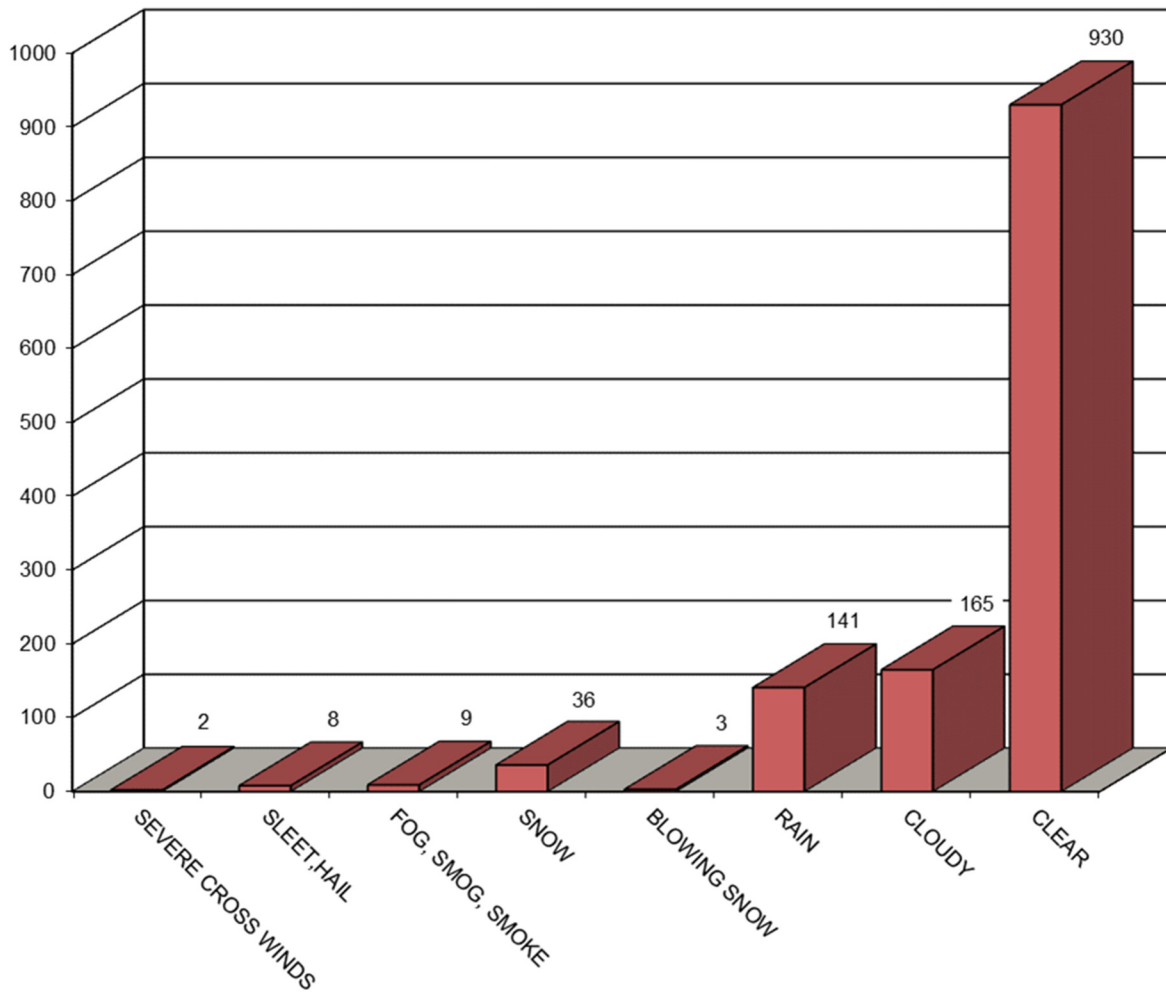
MAINE HIGHWAY PEDESTRIAN CRASHES BY LIGHT CONDITION 2017 - 2021



LIGHT CONDITION	2017	2018	2019	2020	2021	FIVE YEAR TOTAL	PERCENT OF TOTAL
Dark - Lighted	72	56	72	50	53	303	23.38%
Dark - Not Lighted	36	39	35	21	34	165	12.73%
Dark - Unknown Lighting	4	1	1	3	1	10	0.77%
Dawn	4	2	3	7	7	23	1.77%
Daylight	157	156	178	127	141	759	58.56%
Dusk	10	7	7	7	5	36	2.78%
Total	283	261	296	215	241	1296	100.00%



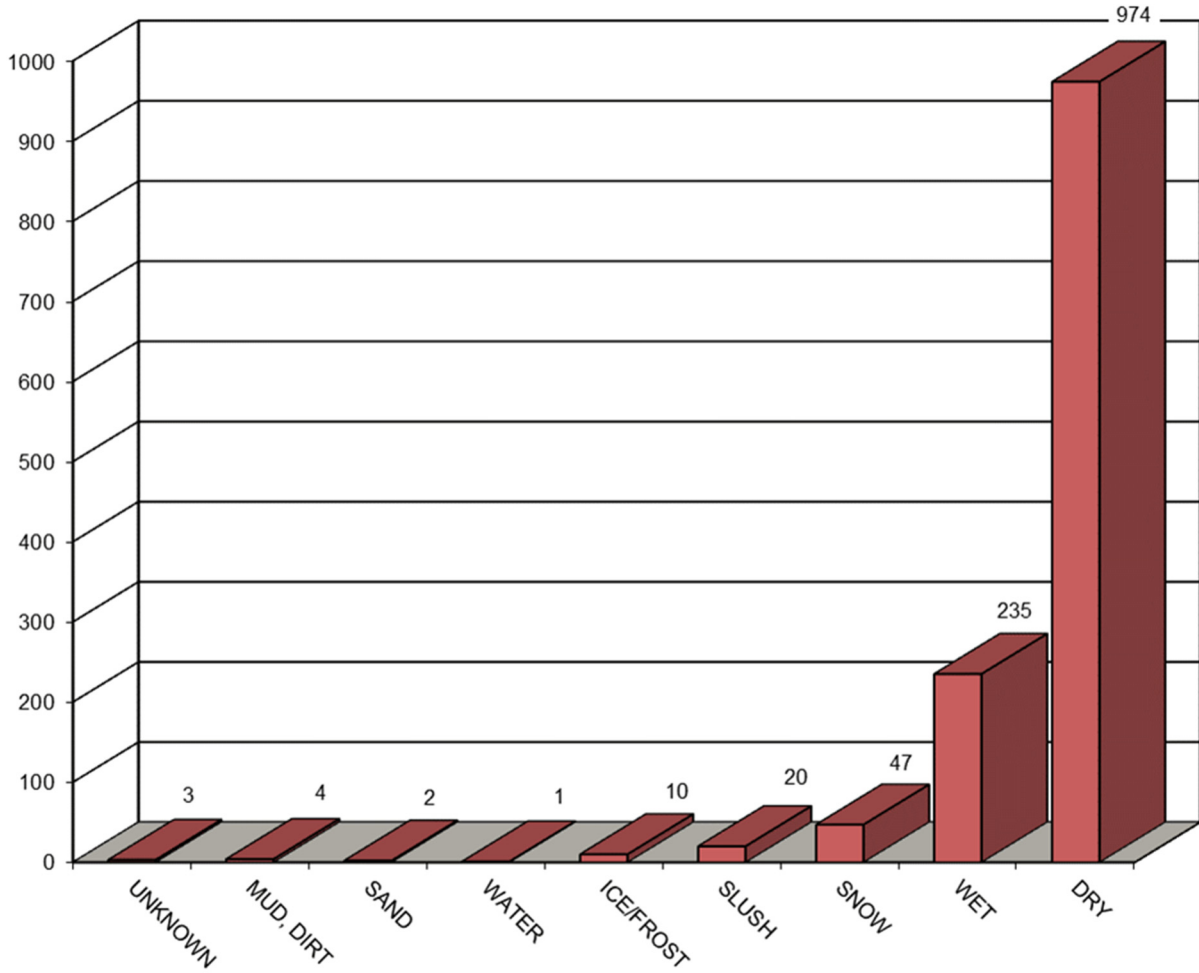
MAINE HIGHWAY PEDESTRIAN CRASHES BY WEATHER CONDITIONS 2017 - 2021



WEATHER CONDITIONS	2017	2018	2019	2020	2021	FIVE YEAR TOTAL
BLOWING SAND, SOIL, DIRT	0	0	0	0	0	0
SEVERE CROSS WINDS	1	0	1	0	0	2
SLEET, HAIL (freezing rain or drizzle)	2	2	4	0	0	8
OTHER	0	0	0	2	0	2
FOG, SMOG, SMOKE	2	2	2	2	1	9
SNOW	7	7	7	11	4	36
BLOWING SNOW	2	0	0	1	0	3
RAIN	35	36	40	14	16	141
CLOUDY	25	43	40	31	26	165
CLEAR	209	171	202	154	194	930
TOTAL	283	261	296	215	241	1,296



MAINE HIGHWAY PEDESTRIAN CRASHES BY ROAD SURFACE CONDITIONS 2017 - 2021



ROAD SURFACE CONDITIONS	2017	2018	2019	2020	2021	FIVE YEAR TOTAL
UNKNOWN	1	1	0	1	0	3
OTHER	0	0	0	0	0	0
OIL	0	0	0	0	0	0
MUD, DIRT	0	1	1	2	0	4
SAND	2	0	0	0	0	2
WATER (standing, moving)	0	0	0	0	1	1
ICE/FROST	4	1	4	1	0	10
SLUSH	5	6	4	1	4	20
SNOW	13	11	7	13	3	47
WET	49	60	69	33	24	235
DRY	209	181	211	164	209	974
TOTAL	283	261	296	215	241	1,296



STATE OF MAINE
HIGHWAY BICYCLE CRASHES
2017 - 2021

I. PREFACEi

II. BICYCLE CRASH TABLES AND CHARTS 2017-2021

Crashes Summarized by:

County 1-4

Severity 5-6

Fatal & Suspected Serious Injury Crash Map..... 7

Rural/Urban Designation 8

Month 9

Day of Week 10

Time of Day 11

Age Groups 12

Age Groups by Gender 13

Apparent Physical Condition 14

Contributing Factors 15

Vehicle Type 16

Light Conditions 17

Weather Conditions 18

Road Surface Conditions 19

STATE OF MAINE

HIGHWAY BICYCLE CRASHES

2017 - 2021

Preface

This publication is a statistical review of reported motor vehicle highway crashes that involved bicycles in Maine during the five-year study period 2017- 2021. The statistics are compiled from crash reports submitted to the Department of Transportation by the Traffic Division, Department of Public Safety. The Traffic Division receives all police uniform crash reports Form 13:20 A, from state, county and local police agencies.

The enclosed charts, graphs, listings and summaries were produced using the Department of Transportation's Computerized Crash Records System. Fatalities data was provided by the Department of Public Safety. Except for adjustments to locations and crash-type information for accuracy, no attempt has been made to modify the raw data received from the reporting agencies. However, because crash scenes are often dangerous and chaotic, some inaccuracies in data collection are possible.

A comparison of this report with other summaries of crashes and fatalities may also reveal inconsistencies due to changes in crash classification, late submittals, and differing reporting criteria. Fatalities data is provided by the Department of Public Safety and does not include deaths that were later determined to be of natural causes.

The Department of Transportation and the Department of Public Safety wish to express our sincere thank you to all law enforcement agencies and officers for the work they do on crash investigations. Without their dedication, this report would not be possible.

A link to this publication can be found on the maine.gov website at:

maine.gov/mdot/safety/crash-data/

We welcome your comments and suggestions on this report at:

Maine Department of Transportation
Office of Safety & Mobility
Crash Records Section
16 State House Station
Augusta, ME 04333-0016
Tel: 207-624-3616

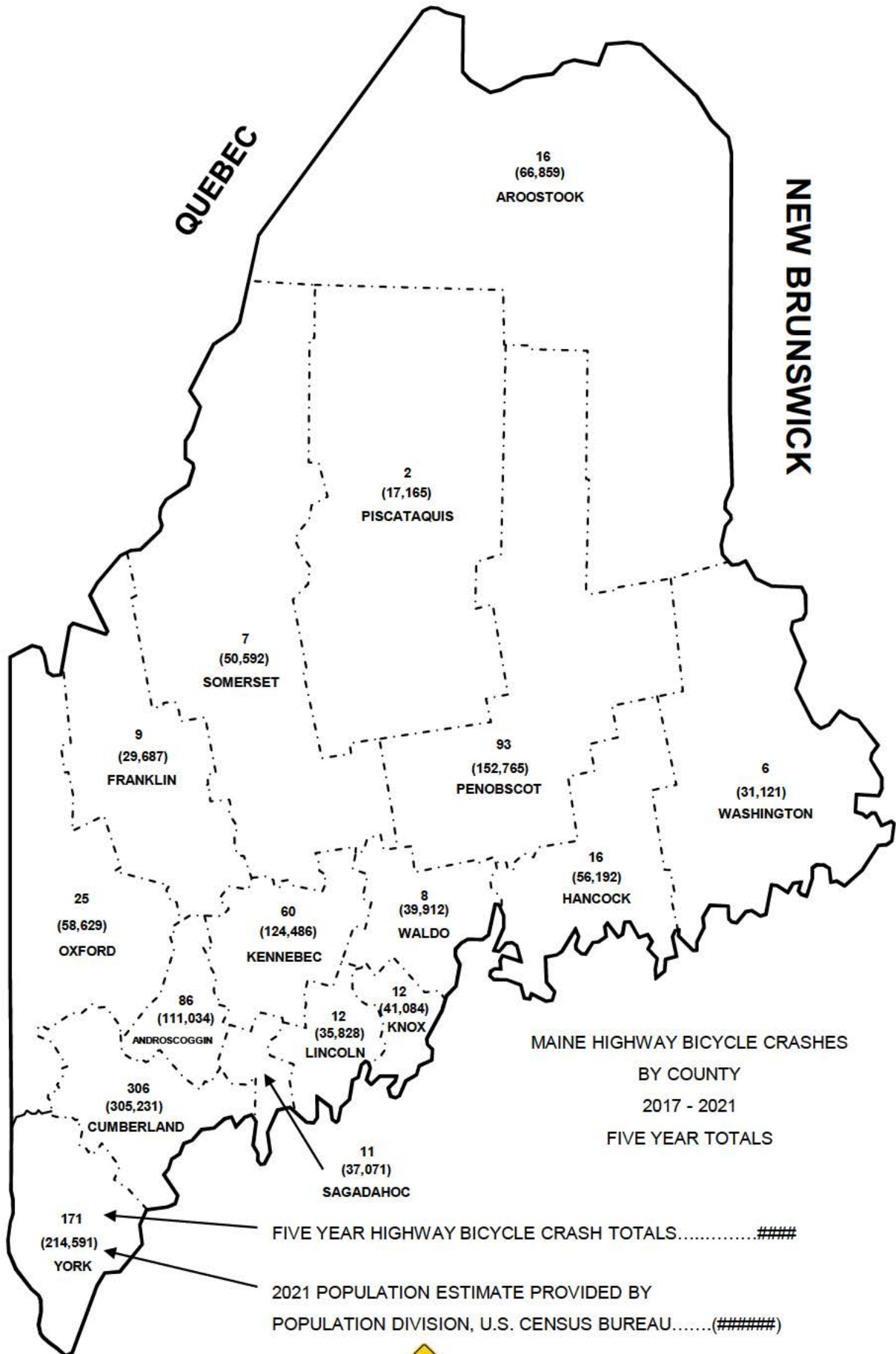




NEW HAMPSHIRE

QUEBEC

NEW BRUNSWICK



MAINE HIGHWAY BICYCLE CRASHES
BY COUNTY
2017 - 2021
FIVE YEAR TOTALS

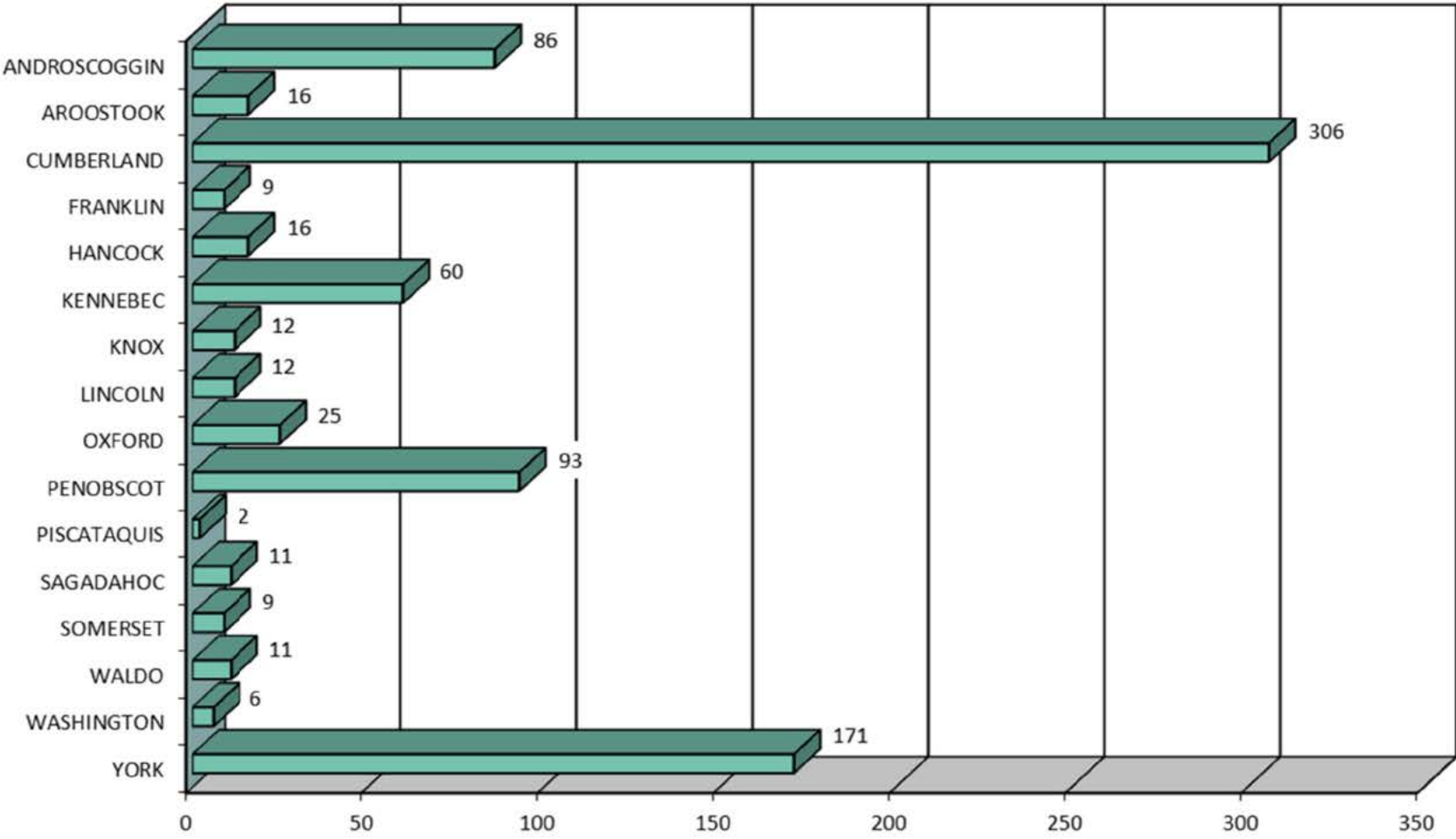
FIVE YEAR HIGHWAY BICYCLE CRASH TOTALS.....####

2021 POPULATION ESTIMATE PROVIDED BY
POPULATION DIVISION, U.S. CENSUS BUREAU.....(#####)



Produced by the Maine Department of Transportation

MAINE HIGHWAY BICYCLE CRASHES BY COUNTY 2017 - 2021



MAINE HIGHWAY BICYCLE CRASH SEVERITY BY COUNTY 2017- 2021

COUNTY	CRASH INJURY TYPE	2017	2018	2019	2020	2021	TOTAL CRASHES	PERCENT OF TOTAL
ANDROSCOGGIN Percent Personal Injury 96.51%	FATAL (K)	0	0	0	0	0	0	0.00%
	SUSPECTED SERIOUS (A)	2	5	0	0	2	9	1.07%
	SUSPECTED MINOR (B)	7	2	12	6	7	34	4.02%
	POSSIBLE INJURY (C)	11	4	9	9	7	40	4.73%
	PROPERTY DAMAGE ONLY (O)	0	1	2	0	0	3	0.36%
	COUNTY SUBTOTAL		20	12	23	15	16	86
AROOSTOOK Percent Personal Injury 93.75%	FATAL (K)	0	0	0	0	0	0	0.00%
	SUSPECTED SERIOUS (A)	0	0	1	1	0	2	0.24%
	SUSPECTED MINOR (B)	1	0	3	0	1	5	0.59%
	POSSIBLE INJURY (C)	1	4	0	1	2	8	0.95%
	PROPERTY DAMAGE ONLY (O)	1	0	0	0	0	1	0.12%
	COUNTY SUBTOTAL		3	4	4	2	3	16
CUMBERLAND Percent Personal Injury 92.48%	FATAL (K)	0	0	1	0	1	2	0.24%
	SUSPECTED SERIOUS (A)	7	6	5	3	12	33	3.91%
	SUSPECTED MINOR (B)	18	19	27	22	28	114	13.49%
	POSSIBLE INJURY (C)	35	24	35	21	19	134	15.86%
	PROPERTY DAMAGE ONLY (O)	4	8	4	4	3	23	2.72%
	COUNTY SUBTOTAL		64	57	72	50	63	306
FRANKLIN Percent Personal Injury 100.00%	FATAL (K)	0	0	0	0	1	1	0.12%
	SUSPECTED SERIOUS (A)	1	0	0	0	0	1	0.12%
	SUSPECTED MINOR (B)	0	1	1	1	1	4	0.47%
	POSSIBLE INJURY (C)	1	0	0	2	0	3	0.36%
	PROPERTY DAMAGE ONLY (O)	0	0	0	0	0	0	0.00%
	COUNTY SUBTOTAL		2	1	1	3	2	9
HANCOCK Percent Personal Injury 100.00%	FATAL (K)	0	0	0	0	0	0	0.00%
	SUSPECTED SERIOUS (A)	1	0	0	1	0	2	0.24%
	SUSPECTED MINOR (B)	2	4	2	1	2	11	1.30%
	POSSIBLE INJURY (C)	0	2	0	1	0	3	0.36%
	PROPERTY DAMAGE ONLY (O)	0	0	0	0	0	0	0.00%
	COUNTY SUBTOTAL		3	6	2	3	2	16
KENNEBEC Percent Personal Injury 88.33%	FATAL (K)	0	0	0	0	0	0	0.00%
	SUSPECTED SERIOUS (A)	0	2	1	0	1	4	0.47%
	SUSPECTED MINOR (B)	7	3	2	3	4	19	2.25%
	POSSIBLE INJURY (C)	9	7	2	3	9	30	3.55%
	PROPERTY DAMAGE ONLY (O)	0	3	0	2	2	7	0.83%
	COUNTY SUBTOTAL		16	15	5	8	16	60
KNOX Percent Personal Injury 100.00%	FATAL (K)	0	0	0	0	0	0	0.00%
	SUSPECTED SERIOUS (A)	2	0	1	1	0	4	0.47%
	SUSPECTED MINOR (B)	0	0	2	0	0	2	0.24%
	POSSIBLE INJURY (C)	0	2	2	2	0	6	0.71%
	PROPERTY DAMAGE ONLY (O)	0	0	0	0	0	0	0.00%
	COUNTY SUBTOTAL		2	2	5	3	0	12
LINCOLN Percent Personal Injury 100.00%	FATAL (K)	0	1	0	0	0	1	0.12%
	SUSPECTED SERIOUS (A)	1	1	0	0	0	2	0.24%
	SUSPECTED MINOR (B)	1	1	2	1	1	6	0.71%
	POSSIBLE INJURY (C)	0	2	1	0	0	3	0.36%
	PROPERTY DAMAGE ONLY (O)	0	0	0	0	0	0	0.00%
	COUNTY SUBTOTAL		2	5	3	1	1	12

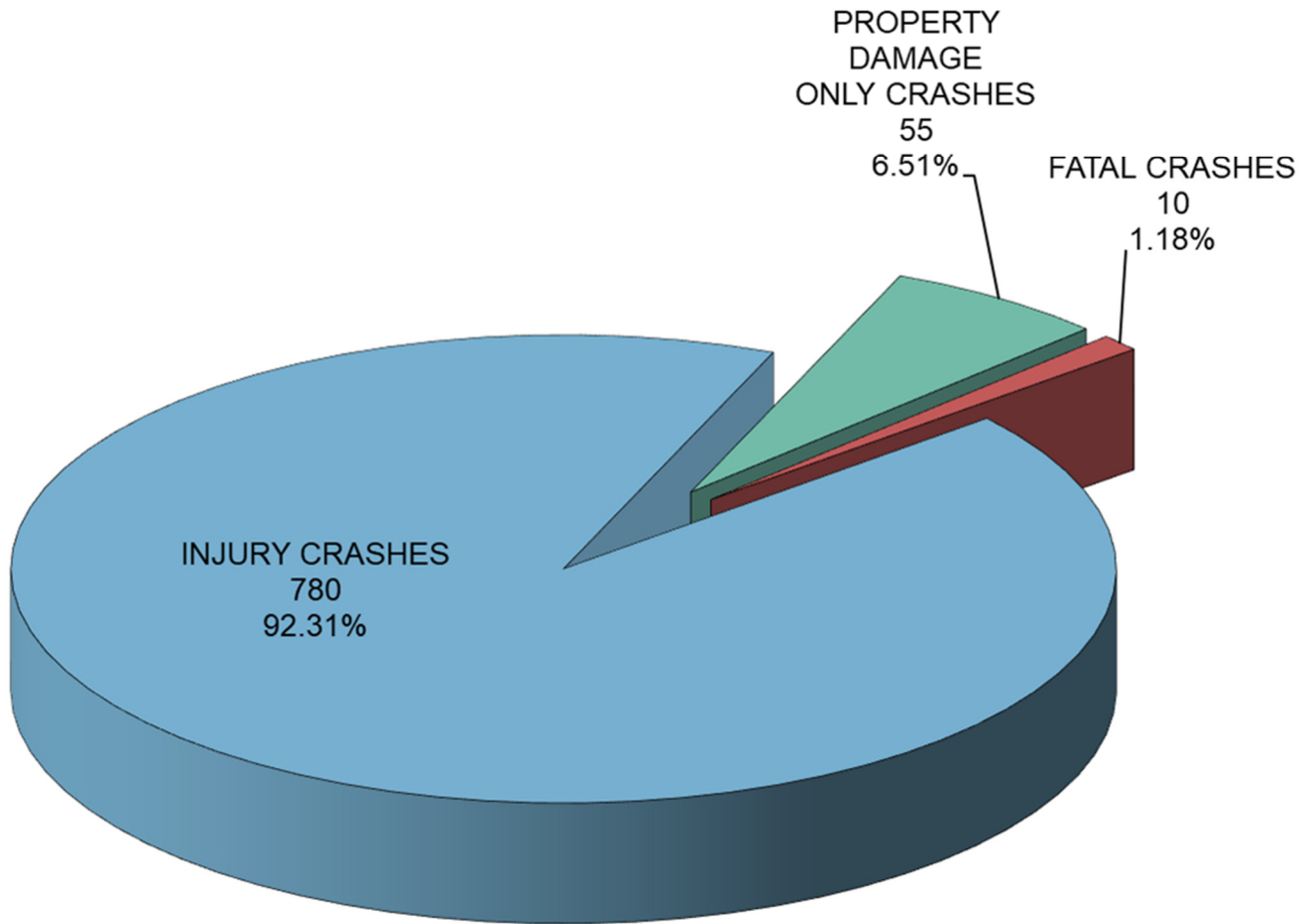


COUNTY	CRASH INJURY TYPE	2017	2018	2019	2020	2021	TOTAL CRASHES	PERCENT OF TOTAL
OXFORD Percent Personal Injury 96.00%	FATAL (K)	0	0	1	1	0	2	0.24%
	SUSPECTED SERIOUS (A)	1	0	0	0	0	1	0.12%
	SUSPECTED MINOR (B)	2	1	3	3	4	13	1.54%
	POSSIBLE INJURY (C)	1	3	0	1	3	8	0.95%
	PROPERTY DAMAGE ONLY (O)	0	0	0	1	0	1	0.12%
	COUNTY SUBTOTAL	4	4	4	6	7	25	2.96%
PENOBSCOT Percent Personal Injury 92.47%	FATAL (K)	0	0	0	0	0	0	0.00%
	SUSPECTED SERIOUS (A)	4	0	1	2	2	9	1.07%
	SUSPECTED MINOR (B)	12	8	8	4	9	41	4.85%
	POSSIBLE INJURY (C)	12	4	9	9	2	36	4.26%
	PROPERTY DAMAGE ONLY (O)	1	2	1	0	3	7	0.83%
	COUNTY SUBTOTAL	29	14	19	15	16	93	11.01%
PISCATAQUIS Percent Personal Injury 100.00%	FATAL (K)	0	0	0	0	0	0	0.00%
	SUSPECTED SERIOUS (A)	0	1	0	0	0	1	0.12%
	SUSPECTED MINOR (B)	0	0	0	0	0	0	0.00%
	POSSIBLE INJURY (C)	0	0	0	0	1	1	0.12%
	PROPERTY DAMAGE ONLY (O)	0	0	0	0	0	0	0.00%
	COUNTY SUBTOTAL	0	1	0	0	1	2	0.24%
SAGadahoc Percent Personal Injury 100.00%	FATAL (K)	0	0	0	0	0	0	0.00%
	SUSPECTED SERIOUS (A)	1	0	1	1	0	3	0.36%
	SUSPECTED MINOR (B)	1	1	0	2	1	5	0.59%
	POSSIBLE INJURY (C)	1	1	1	0	0	3	0.36%
	PROPERTY DAMAGE ONLY (O)	0	0	0	0	0	0	0.00%
	COUNTY SUBTOTAL	3	2	2	3	1	11	1.30%
SOMERSET Percent Personal Injury 77.78%	FATAL (K)	0	0	0	0	0	0	0.00%
	SUSPECTED SERIOUS (A)	0	0	1	0	0	1	0.12%
	SUSPECTED MINOR (B)	1	0	0	0	1	2	0.24%
	POSSIBLE INJURY (C)	2	1	1	0	0	4	0.47%
	PROPERTY DAMAGE ONLY (O)	0	1	0	0	1	2	0.24%
	COUNTY SUBTOTAL	3	2	2	0	2	9	1.07%
WALDO Percent Personal Injury 90.91%	FATAL (K)	0	1	0	0	0	1	0.12%
	SUSPECTED SERIOUS (A)	0	0	0	2	1	3	0.36%
	SUSPECTED MINOR (B)	0	0	0	0	2	2	0.24%
	POSSIBLE INJURY (C)	1	1	1	1	0	4	0.47%
	PROPERTY DAMAGE ONLY (O)	0	1	0	0	0	1	0.12%
	COUNTY SUBTOTAL	1	3	1	3	3	11	1.30%
WASHINGTON Percent Personal Injury 83.33%	FATAL (K)	0	0	0	1	0	1	0.12%
	SUSPECTED SERIOUS (A)	0	1	1	0	0	2	0.24%
	SUSPECTED MINOR (B)	0	0	0	0	0	0	0.00%
	POSSIBLE INJURY (C)	1	0	1	0	0	2	0.24%
	PROPERTY DAMAGE ONLY (O)	1	0	0	0	0	1	0.12%
	COUNTY SUBTOTAL	2	1	2	1	0	6	0.71%
YORK Percent Personal Injury 94.74%	FATAL (K)	2	0	0	0	0	2	0.24%
	SUSPECTED SERIOUS (A)	1	3	0	2	7	13	1.54%
	SUSPECTED MINOR (B)	12	15	15	13	20	75	8.88%
	POSSIBLE INJURY (C)	16	18	16	11	11	72	8.52%
	PROPERTY DAMAGE ONLY (O)	2	3	1	0	3	9	1.07%
	COUNTY SUBTOTAL	33	39	32	26	41	171	20.24%
COUNTY GRAND TOTAL Percent Personal Injury 93.49%	FATAL (K)	2	2	2	2	2	10	1.18%
	SUSPECTED SERIOUS (A)	21	19	12	13	25	90	10.65%
	SUSPECTED MINOR (B)	64	55	77	56	81	333	39.41%
	POSSIBLE INJURY (C)	91	73	78	61	54	357	42.25%
	PROPERTY DAMAGE ONLY (O)	9	19	8	7	12	55	6.51%
	GRAND TOTAL	187	168	177	139	174	845	100.00%

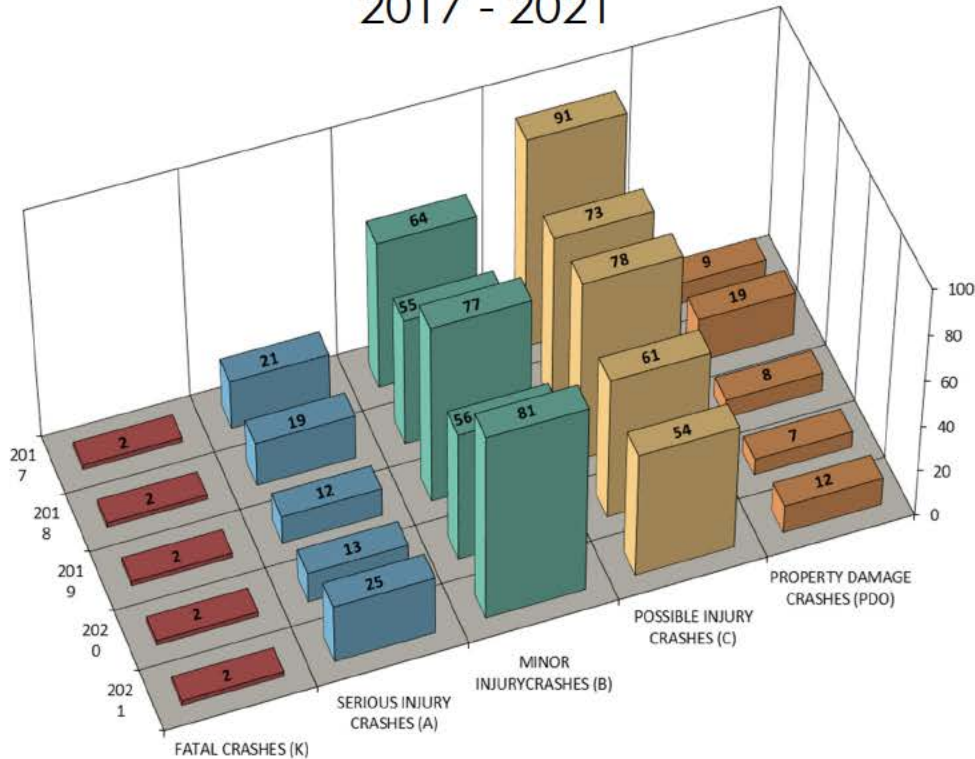


MAINE HIGHWAY BICYCLE CRASHES 2017 - 2021

845 Total Bicycle Crashes



MAINE HIGHWAY BICYCLE CRASH SEVERITY BY YEAR 2017 - 2021



YEAR	FATAL CRASHES (K)	SERIOUS INJURY CRASHES (A)	MINOR INJURY CRASHES (B)	POSSIBLE INJURY CRASHES (C)	PROPERTY DAMAGE CRASHES (PDO)	TOTAL CRASHES
2017	2	21	64	91	9	187
2018	2	19	55	73	19	168
2019	2	12	77	78	8	177
2020	2	13	56	61	7	139
2021	2	25	81	54	12	174
TOTAL	10	90	333	357	55	845
PERCENT	1.18%	PERCENT INJURY =		92.31%	6.51%	100.00%

(K) = Fatal Injury Crash. A crash where the highest level of injury to any person involved in the crash is a fatal injury, which results in death within 30 days of the crash.

(A) = Serious Injury Crash. A crash where the highest level of injury to any person involved in the crash is a serious injury, which prevents the injured person from walking, driving or normally continuing the activities the person was capable of performing before the injury occurred.

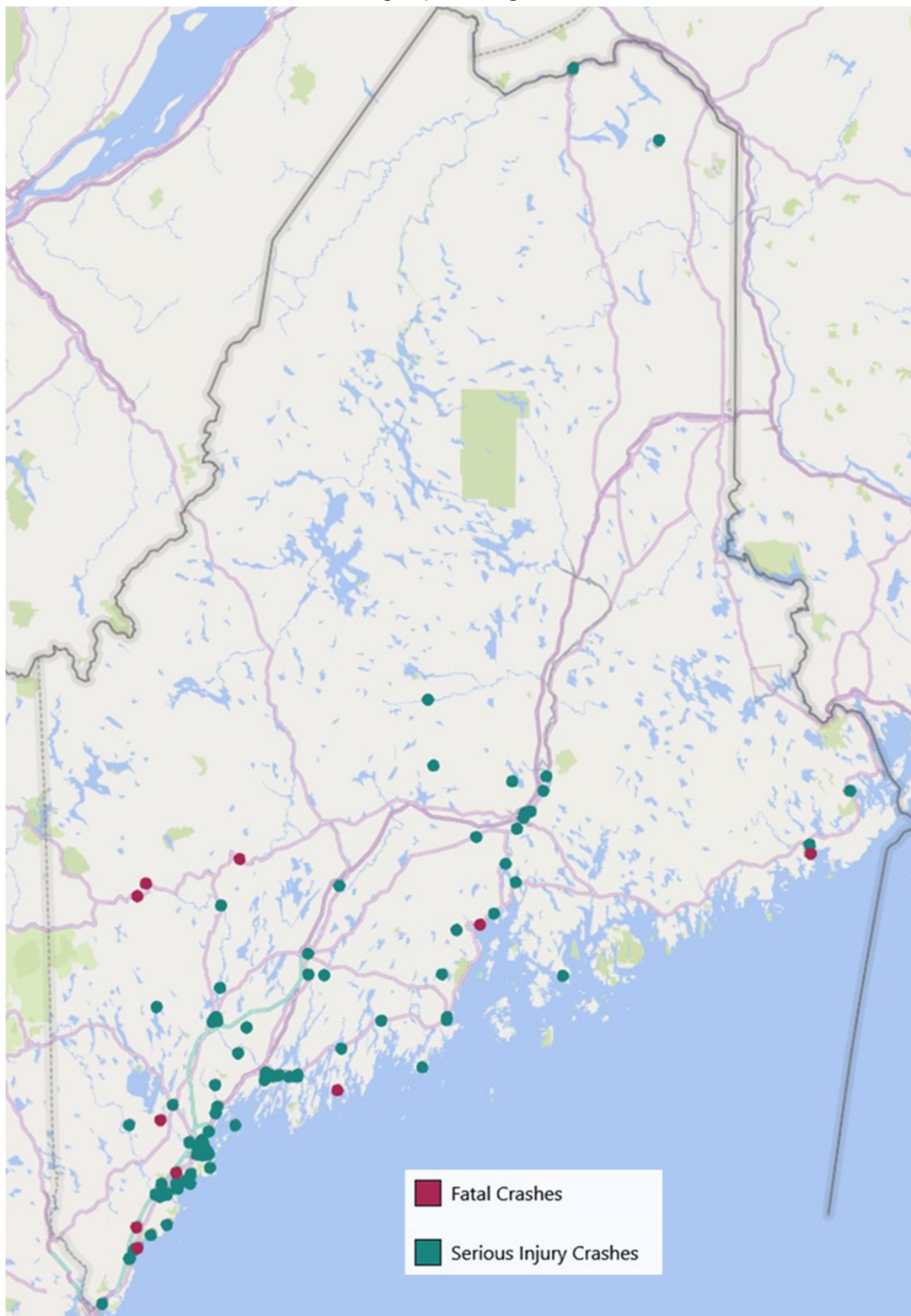
(B) = Minor Injury Crash. A crash where the highest level of injury to any person involved in the crash is a minor injury, which is evident to observers at the scene of the crash in which the injury occurred.

(C) = Possible Injury Crash. A crash where the highest level of injury to any person involved in the crash is a possible injury, which is any injury reported or claimed which is not a fatal injury, serious injury or minor injury.

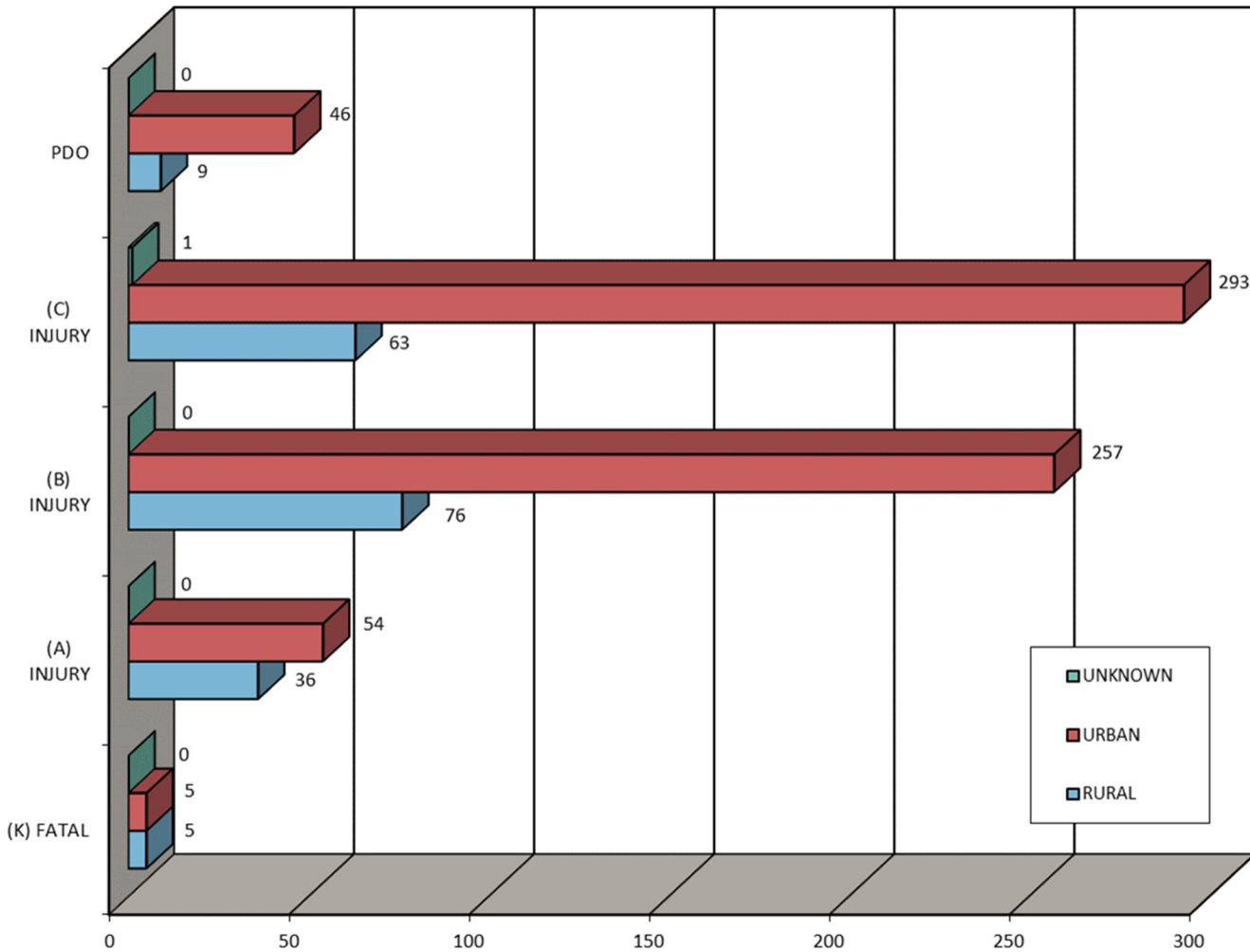
(PDO) = Property Damage Crash. A crash where no injury occurred and only damage occurred to property that reduces the monetary value of that property. No injuries.



MAINE HIGHWAY BICYCLE FATAL & SUSPECTED SERIOUS INJURY CRASH MAP 2017 - 2021



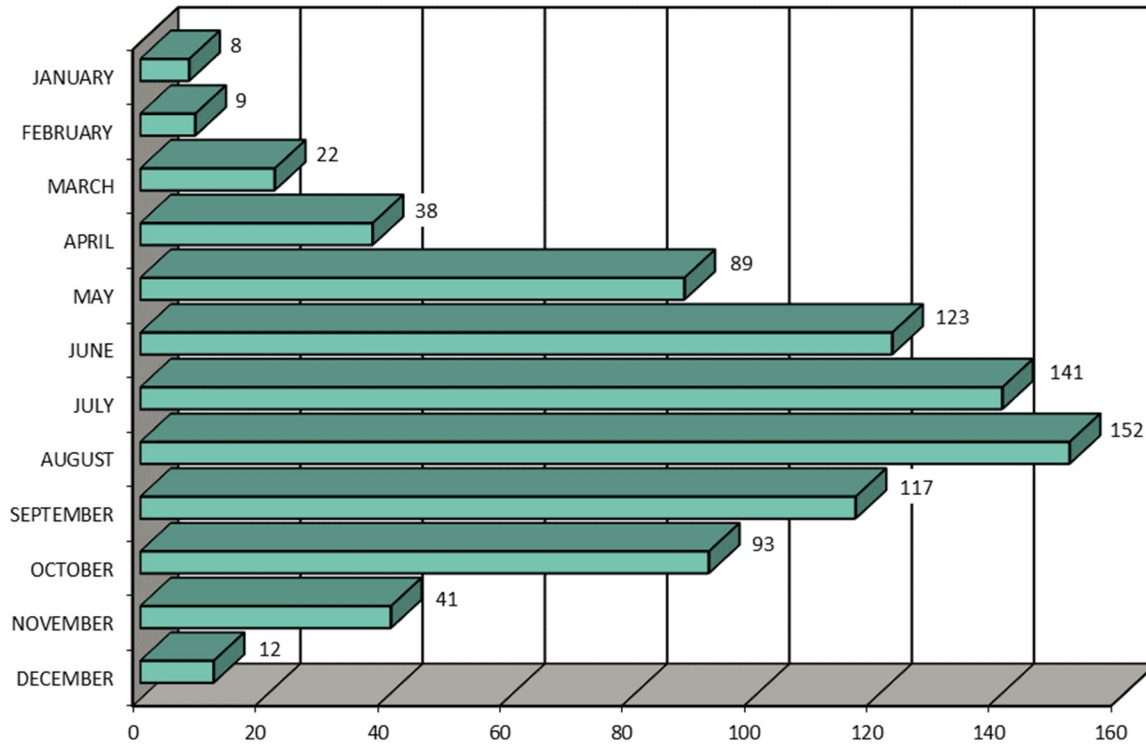
MAINE HIGHWAY BICYCLE CRASH SEVERITY BY RURAL URBAN DESIGNATION 2017 - 2021



RURAL URBAN DESIGNATION	FATAL CRASHES (K)	SERIOUS INJURY CRASHES (A)	MINOR INJURY CRASHES (B)	POSSIBLE INJURY CRASHES (C)	PROPERTY DAMAGE CRASHES (PDO)	FIVE YEAR TOTAL
RURAL	5	36	76	63	9	189
URBAN	5	54	257	293	46	655
UNKNOWN	0	0	0	1	0	1
TOTAL	10	90	333	357	55	845



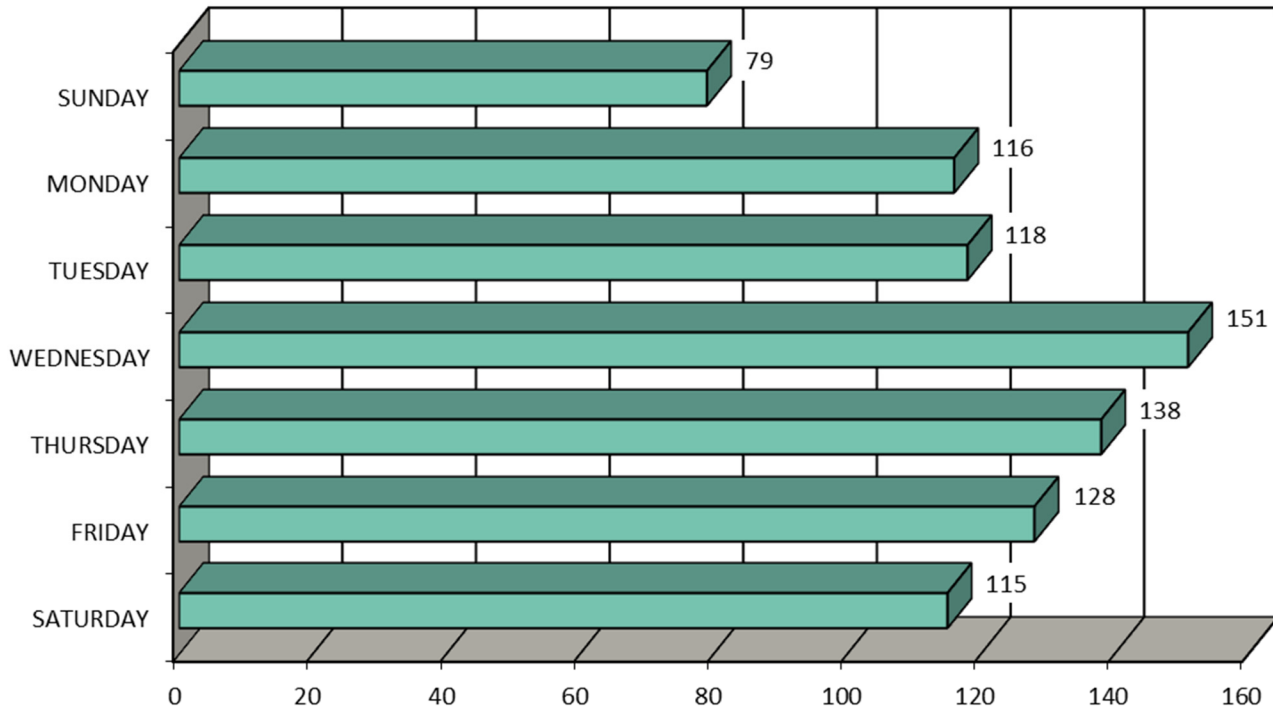
MAINE HIGHWAY BICYCLE CRASHES BY MONTH 2017- 2021



MONTH	2017	2018	2019	2020	2021	FIVE YEAR TOTAL	PERCENT OF TOTAL
JANUARY	2	1	0	3	2	8	0.95%
FEBRUARY	4	0	2	3	0	9	1.07%
MARCH	2	4	4	5	7	22	2.60%
APRIL	9	8	8	6	7	38	4.50%
MAY	22	20	15	17	15	89	10.53%
JUNE	26	27	33	15	22	123	14.56%
JULY	33	22	35	23	28	141	16.69%
AUGUST	31	37	28	22	34	152	17.99%
SEPTEMBER	25	21	21	24	26	117	13.85%
OCTOBER	25	19	15	12	22	93	11.01%
NOVEMBER	6	6	13	7	9	41	4.85%
DECEMBER	2	3	3	2	2	12	1.42%
TOTAL	187	168	177	139	174	845	100.00%



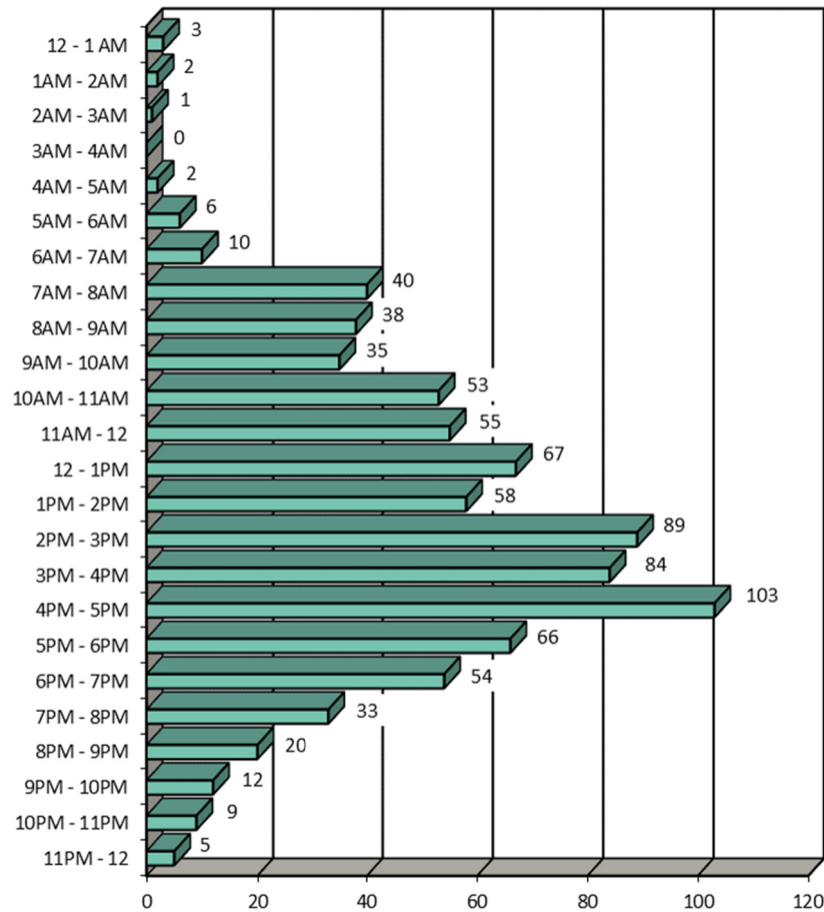
MAINE HIGHWAY BICYCLE CRASHES BY DAY OF THE WEEK 2017 - 2021



DAY OF THE WEEK	2017	2018	2019	2020	2021	FIVE YEAR TOTAL	PERCENT OF TOTAL
SUNDAY	20	24	7	15	13	79	9.35%
MONDAY	20	23	24	16	33	116	13.73%
TUESDAY	36	15	24	23	20	118	13.96%
WEDNESDAY	29	30	32	29	31	151	17.87%
THURSDAY	35	25	30	22	26	138	16.33%
FRIDAY	21	31	29	18	29	128	15.15%
SATURDAY	26	20	31	16	22	115	13.61%
TOTAL	187	168	177	139	174	845	100.00%



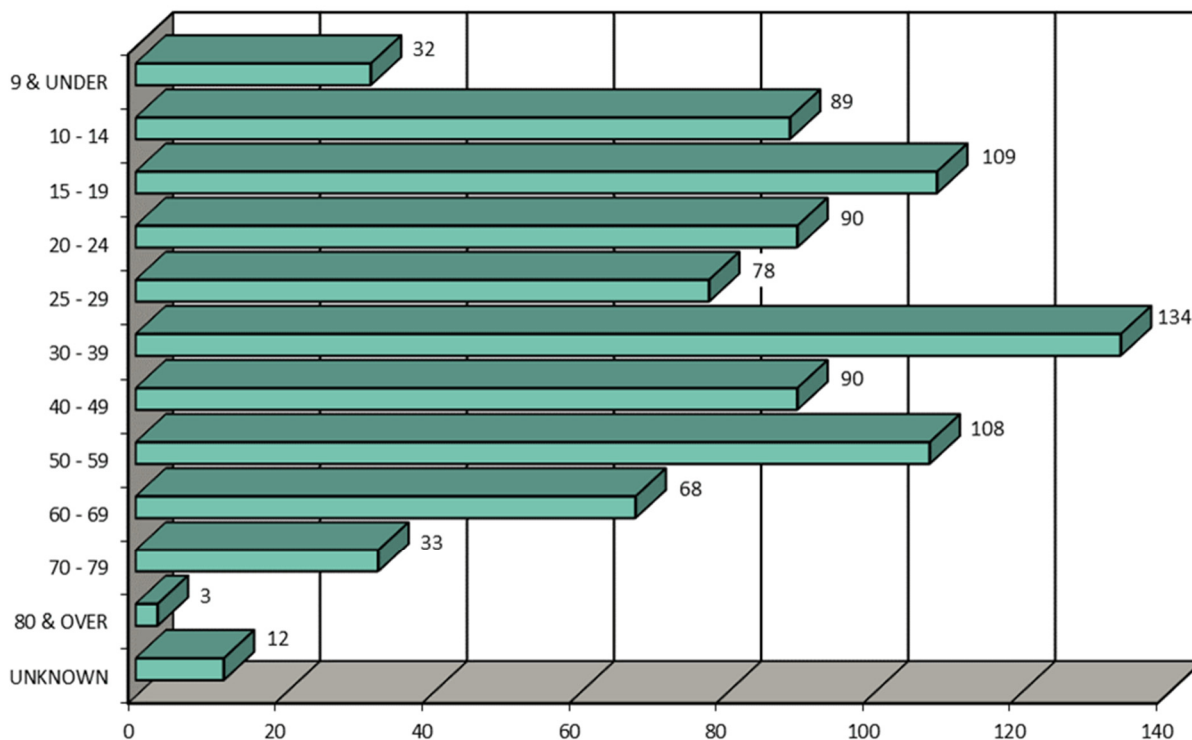
MAINE HIGHWAY BICYCLE CRASHES BY TIME OF DAY 2017 - 2021



TIME OF DAY	2017	2018	2019	2020	2021	FIVE YEAR TOTAL
12 - 1 AM	1	1	1	0	0	3
1AM - 2AM	0	1	0	0	1	2
2AM - 3AM	0	1	0	0	0	1
3AM - 4AM	0	0	0	0	0	0
4AM - 5AM	0	0	1	1	0	2
5AM - 6AM	1	0	1	2	2	6
6AM - 7AM	3	2	2	1	2	10
7AM - 8AM	10	13	8	3	6	40
8AM - 9AM	13	9	7	3	6	38
9AM - 10AM	8	2	11	4	10	35
10AM - 11AM	9	16	9	8	11	53
11AM - 12	8	12	17	8	10	55
12 - 1PM	14	9	12	15	17	67
1PM - 2PM	9	14	9	10	16	58
2PM - 3PM	22	18	18	15	16	89
3PM - 4PM	18	15	17	16	18	84
4PM - 5PM	21	23	29	15	15	103
5PM - 6PM	17	9	13	17	10	66
6PM - 7PM	14	8	9	8	15	54
7PM - 8PM	7	7	0	5	14	33
8PM - 9PM	4	5	6	3	2	20
9PM - 10PM	3	2	4	1	2	12
10PM - 11PM	3	0	2	3	1	9
11PM - 12	2	1	1	1	0	5
TOTAL	187	168	177	139	174	845



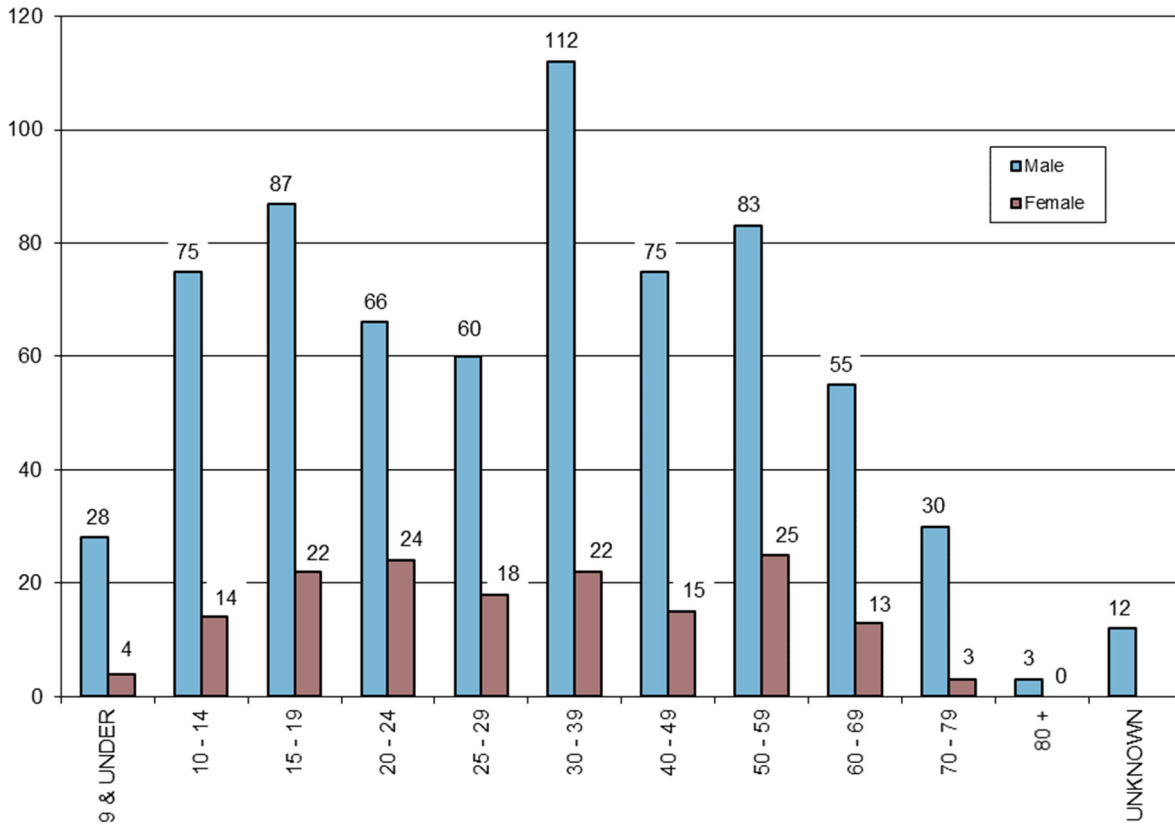
BICYCLISTS INVOLVED IN MAINE HIGHWAY CRASHES BY AGE GROUP 2017 - 2021



AGE OF BICYCLIST	2017	2018	2019	2020	2021	FIVE YEAR TOTAL	PERCENT OF TOTAL
9 & UNDER	7	8	7	5	5	32	3.78%
10 - 14	30	15	17	10	17	89	10.52%
15 - 19	21	25	26	13	24	109	12.88%
20 - 24	25	21	15	14	15	90	10.64%
25 - 29	20	18	18	9	13	78	9.22%
30 - 39	18	34	30	26	26	134	15.84%
40 - 49	20	15	19	15	21	90	10.64%
50 - 59	27	20	20	13	28	108	12.77%
60 - 69	16	8	14	13	17	68	8.04%
70 - 79	3	5	7	12	6	33	3.90%
80 & OVER	1	0	1	0	1	3	0.35%
UNKNOWN	2	1	2	6	1	12	1.42%
TOTAL	190	170	176	136	174	846	100.00%



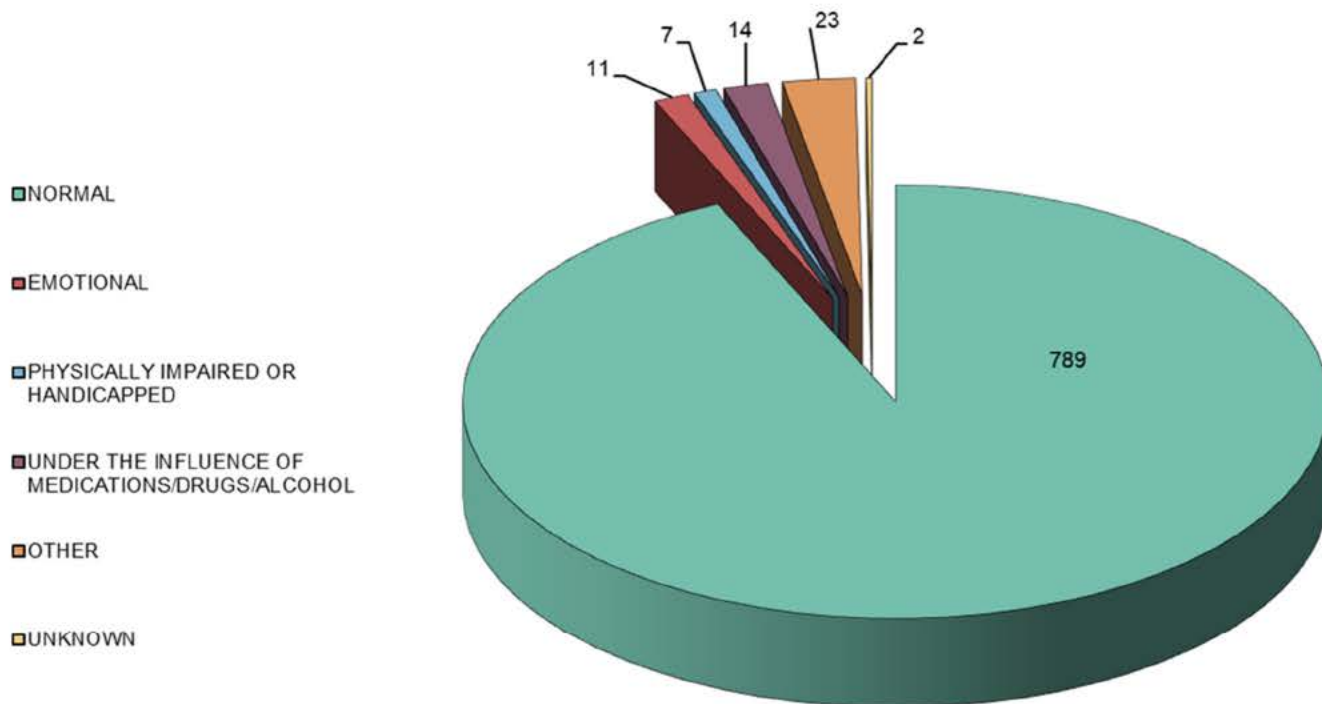
BICYCLISTS INVOLVED IN MAINE HIGHWAY CRASHES BY AGE GROUP AND GENDER 2017 - 2021



AGE GROUP OF BICYCLIST BY GENDER	2017		2018		2019		2020		2021		TOTALS		FIVE YEAR TOTAL	PERCENT OF TOTAL
	M	F	M	F	M	F	M	F	M	F	M	F		
9 & UNDER	6	1	6	2	7	0	4	1	5	0	28	4	32	3.78%
10 - 14	26	4	14	1	15	2	8	2	12	5	75	14	89	10.52%
15 - 19	18	3	18	7	21	5	10	3	20	4	87	22	109	12.88%
20 - 24	16	9	17	4	10	5	12	2	11	4	66	24	90	10.64%
25 - 29	14	6	14	4	14	4	6	3	12	1	60	18	78	9.22%
30 - 39	15	3	25	9	27	3	22	4	23	3	112	22	134	15.84%
40 - 49	17	3	12	3	15	4	13	2	18	3	75	15	90	10.64%
50 - 59	22	5	17	3	18	2	7	6	19	9	83	25	108	12.77%
60 - 69	12	4	7	1	12	2	11	2	13	4	55	13	68	8.04%
70 - 79	3	0	5	0	7	0	11	1	4	2	30	3	33	3.90%
80 & OVER	1	0	0	0	1	0	0	0	1	0	3	0	3	0.35%
UNKNOWN	2		1		2		6		1		12		12	1.42%
TOTAL BY GENDER	150	38	135	34	147	27	104	26	138	35	674	160		
TOTAL	190		170		176		136		174		846		846	100.00%



BICYCLIST APPARENT PHYSICAL CONDITIONS INVOLVED IN MAINE HIGHWAY CRASHES 2017 - 2021



BICYCLIST PHYSICAL CONDITION	2017	2018	2019	2020	2021	FIVE YEAR TOTAL	PERCENT OF TOTAL
APPARENTLY NORMAL	179	157	168	122	163	789	93.26%
ASLEEP OR FATIGUED	0	0	0	0	0	0	0.00%
EMOTIONAL (depressed, angry, disturbed, etc.)	1	4	2	3	1	11	1.30%
ILL (sick)	0	0	0	0	0	0	0.00%
PHYSICALLY IMPAIRED OR HANDICAPPED	0	2	0	4	1	7	0.83%
UNDER THE INFLUENCE OF MEDICATIONS/DRUGS/ALCOHOL	4	0	3	3	4	14	1.65%
OTHER	6	5	3	4	5	23	2.72%
UNKNOWN	0	2	0	0	0	2	0.24%
TOTAL	190	170	176	136	174	846	100.00%



CONTRIBUTING FACTORS TO MAINE HIGHWAY BICYCLE CRASHES 2017 - 2021

DRIVER ACTIONS (actions 1 & 2 combined)	2017	2018	2019	2020	2021	Totals
NO CONTRIBUTING ACTION	86	85	80	71	103	425
RAN OFF ROADWAY	2	1	0	1	0	4
FAILED TO YIELD RIGHT-OF-WAY	54	44	63	40	38	239
RAN RED LIGHT	1	0	0	1	0	2
RAN STOP SIGN	0	0	0	1	1	2
DISREGARDED OTHER TRAFFIC SIGN	0	0	0	2	0	2
DISREGARDED OTHER ROAD MARKINGS	0	0	0	0	0	0
EXCEEDED POSTED SPEED LIMIT	0	0	0	0	1	1
DROVE TOO FAST FOR CONDITIONS	1	0	1	0	0	2
IMPROPER TURN	7	7	8	3	1	26
IMPROPER BACKING	2	1	0	1	0	4
IMPROPER PASSING	2	0	4	3	1	10
WRONG WAY	0	1	0	0	0	1
FOLLOWED TOO CLOSELY	1	2	1	2	3	9
FAILED TO KEEP IN PROPER LANE	3	2	2	5	3	15
OPERATED MOTOR VEHICLE IN ERRATIC, RECKLESS, CARELESS, NEGLIGENCE OR AGGRESSIVE MANNER	5	5	4	6	3	23
SWERVED OR AVOIDED DUE TO WIND, SLIPPERY SURFACE, MOTOR VEHICLE, OBJECT, NON-MOTORIST IN ROADWAY	0	1	1	1	2	5
OVER-CORRECTING/OVER-STEERING	0	0	0	0	0	0
OTHER CONTRIBUTING ACTION	9	11	11	6	13	50
UNKNOWN	8	19	3	8	5	43
TOTALS	181	179	178	151	174	863
BICYCLIST ACTIONS						
RIDING WITH TRAFFIC	67	72	79	69	66	353
RIDING AGAINST TRAFFIC	38	29	28	20	33	148
MAKING RIGHT TURN	4	1	1	2	2	10
MAKING LEFT TURN	8	8	6	5	10	37
MAKING U TURN	0	1	0	0	0	1
RIDING ACROSS ROAD	50	32	42	22	37	183
SLOWING, STOPPING, STARTING IN ROAD	6	4	0	3	2	15
OTHER BYCLIST ACTION	15	16	14	9	16	70
UNKNOWN	2	7	7	3	1	20
TOTALS	190	170	177	133	167	837
VEHICULAR FACTORS						
NONE	170	158	165	132	166	791
BRAKES	0	1	1	1	0	3
EXHAUST SYSTEM	0	0	0	0	0	0
BODY, DOORS	1	1	0	0	0	2
STEERING	0	0	1	1	0	2
POWER TRAIN	0	0	0	0	0	0
SUSPENSION	0	0	0	0	0	0
TIRES	0	0	0	0	0	0
WHEELS	0	0	0	0	0	0
LIGHTS (head, signal, tail, brake)	0	0	0	0	0	0
WINDOWS/WINDSHIELD	0	0	0	0	0	0
MIRRORS	0	0	0	0	0	0
WIPERS	0	0	0	0	0	0
TRUCK COUPLING/TRAILER HITCH/SAFETY CHAINS	0	0	0	0	0	0
OTHER	0	0	2	1	0	3
TOTALS	171	160	169	135	166	801

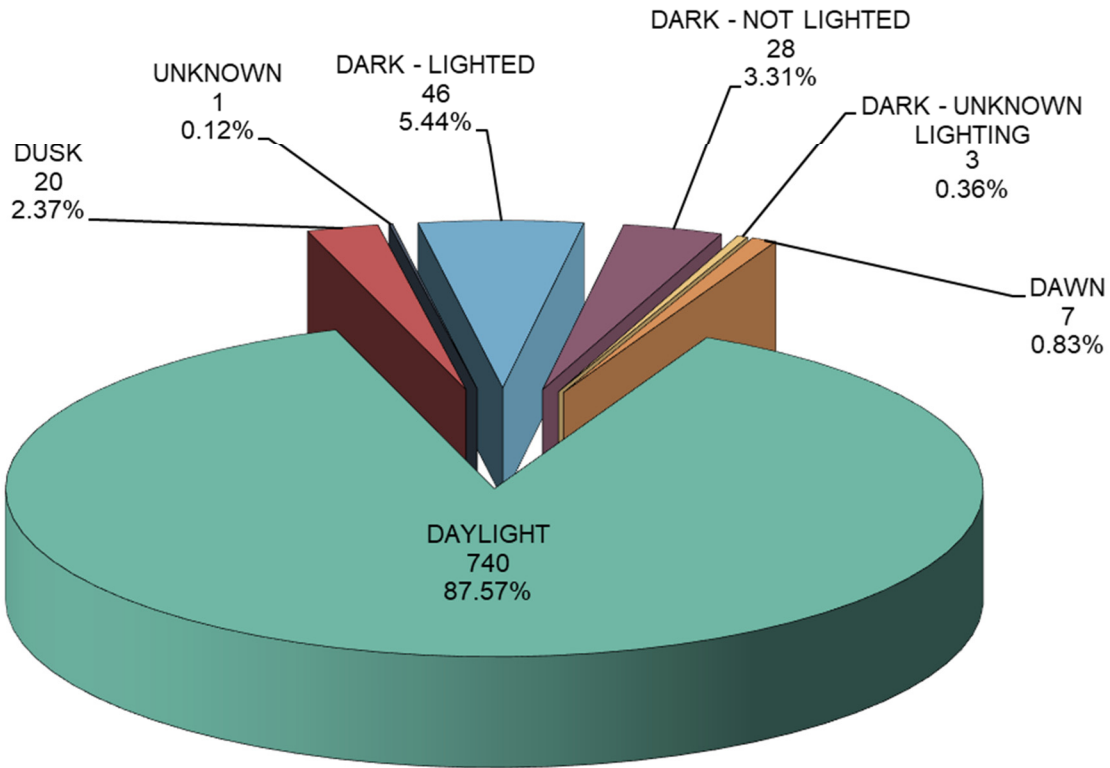


VEHICLES INVOLVED IN MAINE HIGHWAY BICYCLE CRASHES 2017 - 2021

VEHICLE TYPE INVOLVED IN BICYCLE CRASHES	2017	2018	2019	2020	2021	FIVE YEAR TOTAL
PASSENGER CAR	117	100	92	68	92	469
(SPORT) UTILITY VEHICLE	31	27	40	31	46	175
PASSENGER VAN	4	3	1	5	0	13
CARGO VAN (10k or less)	3	2	4	0	3	12
PICKUP TRUCK	20	26	33	23	24	126
MOTOR HOME	0	0	0	0	0	0
SCHOOL BUS	0	0	1	0	1	2
TRANSIT BUS	0	0	1	0	0	1
MOTOR COACH	0	0	0	0	0	0
OTHER BUS	0	0	1	0	0	1
MOTORCYCLE	1	2	1	0	4	8
MOPED	0	0	0	1	1	2
LOW SPEED VEHICLE	0	0	0	0	0	0
AUTOCYCLE	0	0	0	0	0	0
EXPERIMENTAL	0	0	0	0	0	0
OTHER LIGHT TRUCK (10,000 lbs or less)	0	2	0	1	0	3
MEDIUM /HEAVY TRUCKS (more than 10,000 lbs)	4	1	1	1	0	7
ATV (2,3,4-WHEEL)	0	0	0	0	0	0
SNOWMOBILE	0	0	0	0	0	0
PEDESTRIAN	1	0	1	4	0	6
BICYCLE	190	170	177	132	170	839
OTHER	1	2	4	6	1	14
TOTAL VEHICLES INVOLVED	372	335	357	272	342	1,678



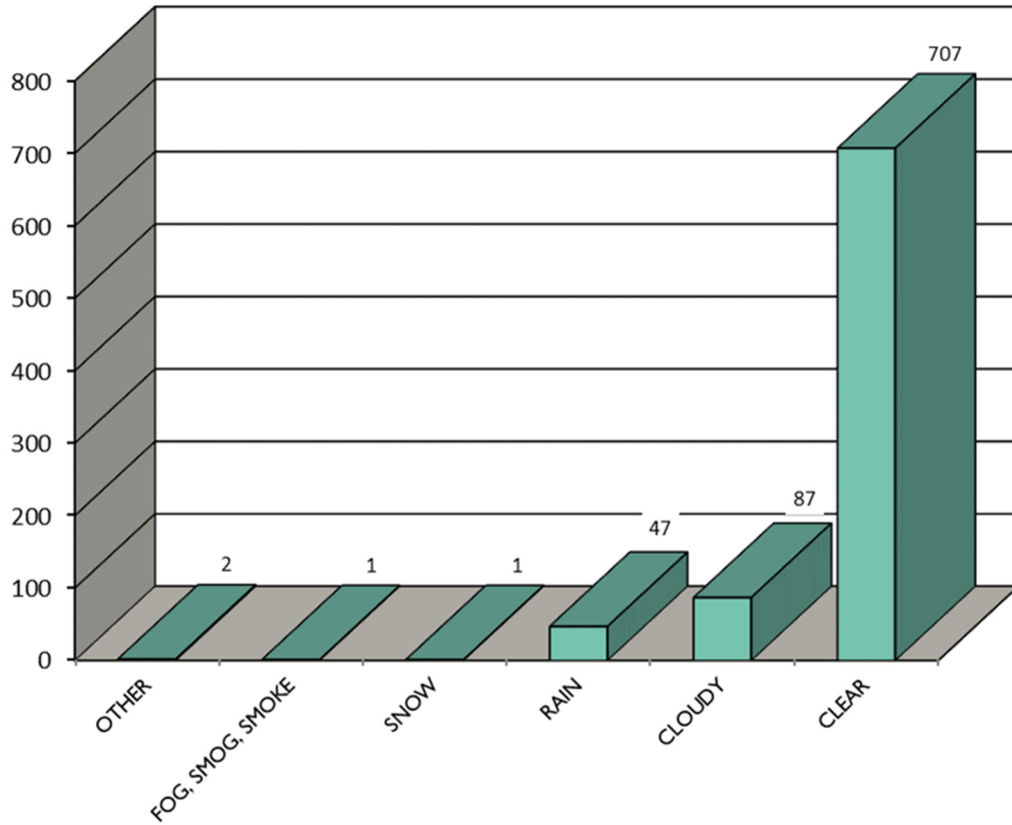
MAINE HIGHWAY BICYCLE CRASHES BY LIGHT CONDITION 2017 - 2021



LIGHT CONDITION	2017	2018	2019	2020	2021	FIVE YEAR TOTAL	PERCENT OF TOTAL
Dark - Lighted	5	6	17	8	10	46	5.44%
Dark - Not Lighted	11	5	2	4	6	28	3.31%
Dark - Unknown Lighting	1	0	0	0	2	3	0.36%
Dawn	1	0	3	1	2	7	0.83%
Daylight	164	153	149	125	149	740	87.57%
Dusk	5	3	6	1	5	20	2.37%
Unknown	0	1	0	0	0	1	0.12%
Grand Total	187	168	177	139	174	845	100.00%



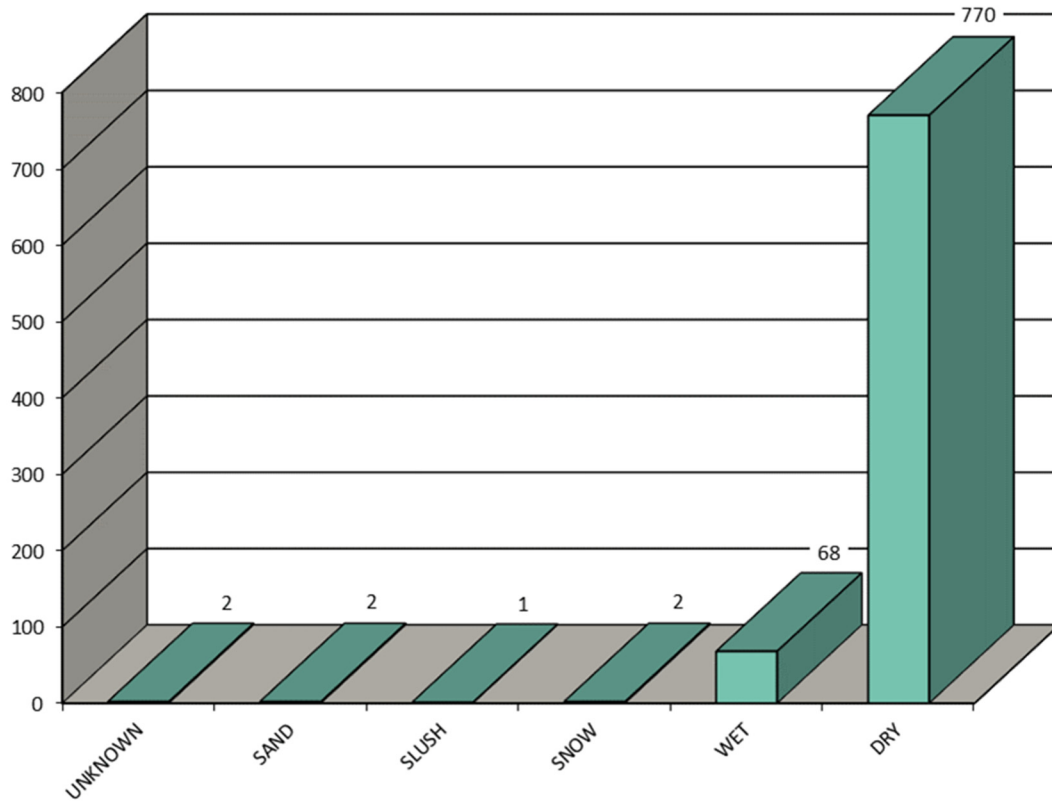
MAINE HIGHWAY BICYCLE CRASHES BY WEATHER CONDITIONS 2017 - 2021



WEATHER CONDITIONS	2017	2018	2019	2020	2021	FIVE YEAR TOTAL
BLOWING SAND, SOIL, DIRT	0	0	0	0	0	0
SEVERE CROSS WINDS	0	0	0	0	0	0
SLEET, HAIL (freezing rain or drizzle)	0	0	0	0	0	0
OTHER	0	1	1	0	0	2
FOG, SMOG, SMOKE	0	0	0	1	0	1
SNOW	1	0	0	0	0	1
BLOWING SNOW	0	0	0	0	0	0
RAIN	11	11	14	5	6	47
CLOUDY	27	14	17	14	15	87
CLEAR	148	142	145	119	153	707
TOTAL	187	168	177	139	174	845



MAINE HIGHWAY BICYCLE CRASHES BY ROAD SURFACE CONDITIONS 2017 - 2021



ROAD SURFACE CONDITIONS	2017	2018	2019	2020	2021	FIVE YEAR TOTAL
UNKNOWN	0	1	1	0	0	2
OTHER	0	0	0	0	0	0
OIL	0	0	0	0	0	0
MUD,DIRT	0	0	0	0	0	0
SAND	1	0	1	0	0	2
WATER (standing, moving)	0	0	0	0	0	0
ICE/FROST	0	0	0	0	0	0
SLUSH	1	0	0	0	0	1
SNOW	1	1	0	0	0	2
WET	15	16	20	8	9	68
DRY	169	150	155	131	165	770
TOTAL	187	168	177	139	174	845

