

MAINE STATE LEGISLATURE

The following document is provided by the
LAW AND LEGISLATIVE DIGITAL LIBRARY
at the Maine State Law and Legislative Reference Library
<http://legislature.maine.gov/lawlib>



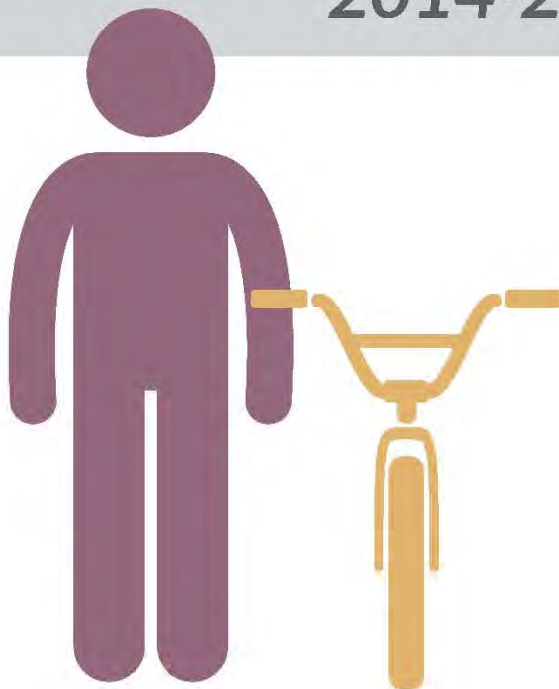
Reproduced from electronic originals
(may include minor formatting differences from printed original)



MaineDOT

State of Maine **Pedestrian & Bicycle Crash History**

2014-2018



Prepared by:

Maine Department of Transportation
Office of Safety Crash Records Section
16 State House Station
Augusta, Maine 04333-0016

STATE OF MAINE

HIGHWAY PEDESTRIAN CRASHES

2014 - 2018

I. PREFACE i

II. PEDESTRIAN CRASH TABLES AND CHARTS 2014-2018

Crashes Summarized by:

County	1-4
Severity	5-6
Rural/Urban Designation	7
Month	8
Day of Week	9
Time of Day	10
Age Groups	11
Age Groups by Gender	12
Apparent Physical Condition	13
Contributing Factors	14
Vehicle Type	15
Light Conditions	16
Weather Conditions	17

STATE OF MAINE

HIGHWAY PEDESTRIAN CRASHES

2014 - 2018

Preface

This publication is a statistical review of reported motor vehicle highway crashes that involved pedestrians in Maine during the five-year study period 2014- 2018. The statistics are compiled from crash reports submitted to the Department of Transportation by the Traffic Division, Department of Public Safety. The Traffic Division receives all police uniform crash reports Form 13:20 A, from state, county and local police agencies.

The enclosed charts, graphs, listings and summaries were produced using the Department of Transportation's Computerized Crash Records System. Fatalities data was provided by the Department of Public Safety. Except for adjustments to locations and crash-type information for accuracy, no attempt has been made to modify the raw data received from the reporting agencies. However, because crash scenes are often dangerous and chaotic, some inaccuracies in data collection are possible.

A comparison of this report with other summaries of crashes and fatalities may also reveal inconsistencies due to changes in crash classification, late submittals, and differing reporting criteria. Fatalities data is provided by the Department of Public Safety and does not include deaths that were later determined to be of natural causes.

The Department of Transportation and the Department of Public Safety wish to express our sincere thank you to all law enforcement agencies and officers for the work they do on crash investigations. Without their dedication, this report would not be possible.

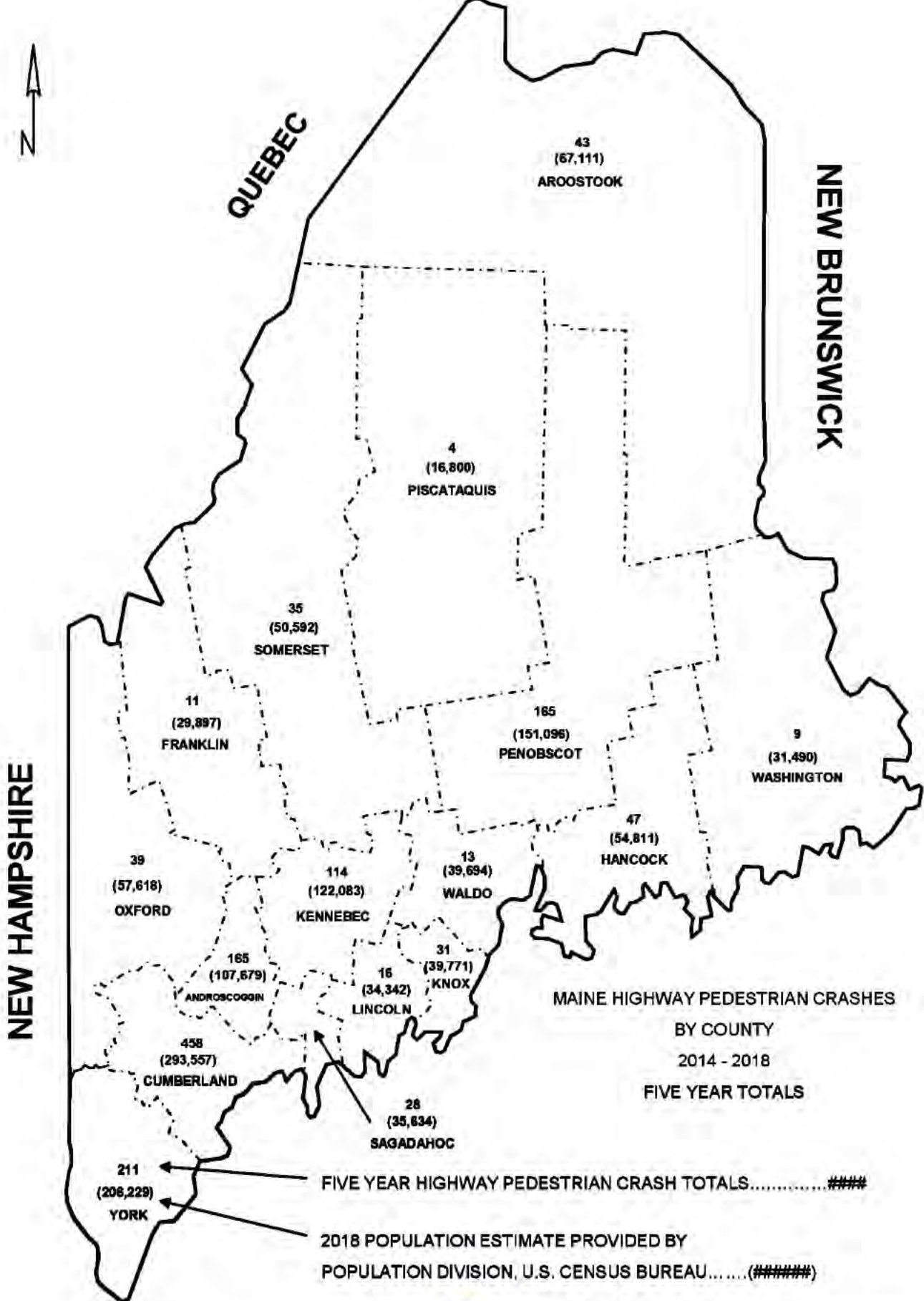
A link to this publication can be found on the maine.gov website at:

mainedot.gov/safety/crash-data/

We welcome your comments and suggestions on this report at:

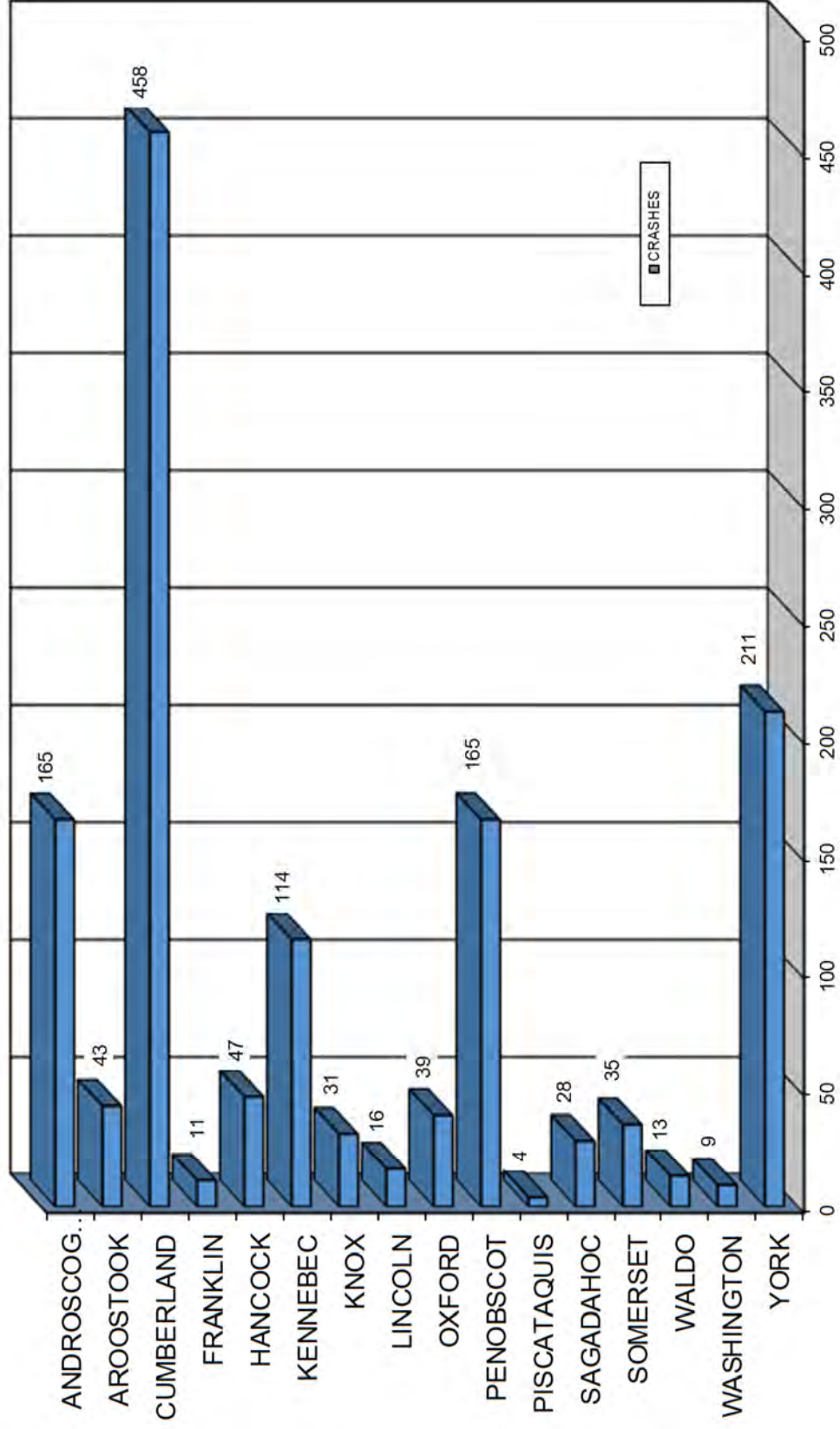
Maine Department of Transportation
Office of Safety
Crash Records Section
16 State House Station
Augusta, ME 04333-0016
Tel: 207-624-3616





Produced by the Maine Department of Transportation

MAINE HIGHWAY PEDESTRIAN CRASHES BY COUNTY 2014 - 2018



MAINE HIGHWAY PEDESTRIAN CRASH SEVERITY BY COUNTY

2014 - 2018

COUNTY	INJURY TYPE	2014	2015	2016	2017	2018	TOTAL CRASHES	PERCENT OF TOTAL
ANDROSCOGGIN Percent Personal Injury 95.15%	FATAL (K)	1	3	2	3	0	9	0.65%
	SUSPECTED SERIOUS INJURY (A)	3	6	8	6	4	27	1.94%
	SUSPECTED MINOR INJURY (B)	10	9	4	12	8	43	3.10%
	POSSIBLE INJURY (C)	17	12	14	19	16	78	5.62%
	PROPERTY DAMAGE ONLY (PDO)	1	2	0	3	2	8	0.58%
	COUNTY SUBTOTAL	32	32	28	43	30	165	11.88%
AROOSTOOK Percent Personal Injury 90.70%	FATAL (K)	0	0	1	0	2	3	0.22%
	SUSPECTED SERIOUS INJURY (A)	2	1	1	4	2	10	0.72%
	SUSPECTED MINOR INJURY (B)	3	3	0	3	3	12	0.86%
	POSSIBLE INJURY (C)	2	3	4	2	3	14	1.01%
	PROPERTY DAMAGE ONLY (PDO)	2	2	0	0	0	4	0.29%
	COUNTY SUBTOTAL	9	9	6	9	10	43	3.10%
CUMBERLAND Percent Personal Injury 96.29%	FATAL (K)	1	2	5	6	1	15	1.08%
	SUSPECTED SERIOUS INJURY (A)	19	14	17	19	18	87	6.26%
	SUSPECTED MINOR INJURY (B)	27	25	28	19	27	126	9.07%
	POSSIBLE INJURY (C)	44	50	42	37	40	213	15.33%
	PROPERTY DAMAGE ONLY (PDO)	2	5	2	5	3	17	1.22%
	COUNTY SUBTOTAL	93	96	94	86	89	458	32.97%
FRANKLIN Percent Personal Injury 100.00%	FATAL (K)	0	0	1	0	0	1	0.07%
	SUSPECTED SERIOUS INJURY (A)	2	0	0	0	1	3	0.22%
	SUSPECTED MINOR INJURY (B)	0	1	0	2	0	3	0.22%
	POSSIBLE INJURY (C)	0	1	0	2	1	4	0.29%
	PROPERTY DAMAGE ONLY (PDO)	0	0	0	0	0	0	0.00%
	COUNTY SUBTOTAL	2	2	1	4	2	11	0.79%
HANCOCK Percent Personal Injury 95.74%	FATAL (K)	1	3	0	1	0	5	0.36%
	SUSPECTED SERIOUS INJURY (A)	1	2	3	1	3	10	0.72%
	SUSPECTED MINOR INJURY (B)	5	4	1	3	3	16	1.15%
	POSSIBLE INJURY (C)	3	3	4	1	3	14	1.01%
	PROPERTY DAMAGE ONLY (PDO)	0	1	1	0	0	2	0.14%
	COUNTY SUBTOTAL	10	13	9	6	9	47	3.38%
KENNEBEC Percent Personal Injury 91.23%	FATAL (K)	0	1	1	1	1	4	0.29%
	SUSPECTED SERIOUS INJURY (A)	3	2	1	3	2	11	0.79%
	SUSPECTED MINOR INJURY (B)	6	5	2	5	8	26	1.87%
	POSSIBLE INJURY (C)	15	17	10	8	13	63	4.54%
	PROPERTY DAMAGE ONLY (PDO)	2	4	3	1	0	10	0.72%
	COUNTY SUBTOTAL	26	29	17	18	24	114	8.21%
KNOX Percent Personal Injury 90.32%	FATAL (K)	0	1	0	1	0	2	0.14%
	SUSPECTED SERIOUS INJURY (A)	3	2	1	2	2	10	0.72%
	SUSPECTED MINOR INJURY (B)	3	1	0	1	0	5	0.36%
	POSSIBLE INJURY (C)	4	4	2	0	1	11	0.79%
	PROPERTY DAMAGE ONLY (PDO)	0	0	0	3	0	3	0.22%
	COUNTY SUBTOTAL	10	8	3	7	3	31	2.23%
LINCOLN Percent Personal Injury 87.50%	FATAL (K)	0	0	0	0	0	0	0.00%
	SUSPECTED SERIOUS INJURY (A)	1	0	2	0	1	4	0.29%
	SUSPECTED MINOR INJURY (B)	1	0	1	2	3	7	0.50%
	POSSIBLE INJURY (C)	1	1	0	1	0	3	0.22%
	PROPERTY DAMAGE ONLY (PDO)	0	0	0	1	1	2	0.14%
	COUNTY SUBTOTAL	3	1	3	4	5	16	1.15%



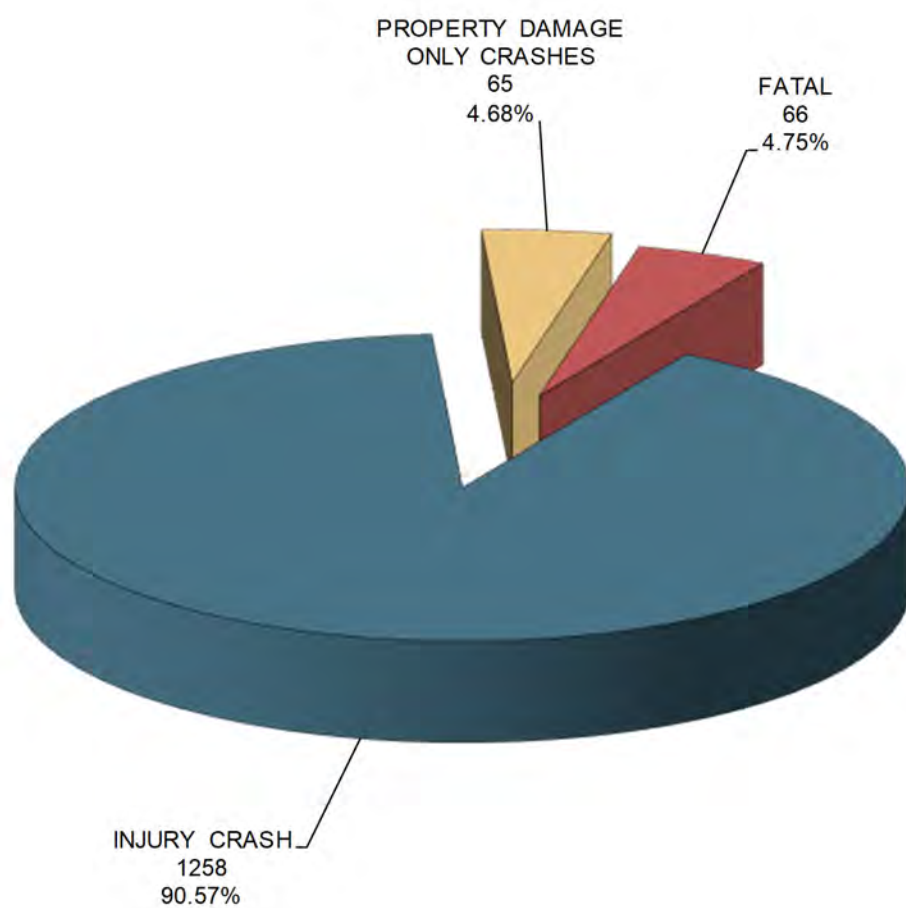
COUNTY	INJURY TYPE	2014	2015	2016	2017	2018	TOTAL CRASHES	PERCENT OF TOTAL
OXFORD Percent Personal Injury 100.00%	FATAL (K)	1	0	1	1	0	3	0.22%
	SUSPECTED SERIOUS INJURY (A)	2	2	1	1	2	8	0.58%
	SUSPECTED MINOR INJURY (B)	1	3	0	5	2	11	0.79%
	POSSIBLE INJURY (C)	5	2	4	2	4	17	1.22%
	PROPERTY DAMAGE ONLY (PDO)	0	0	0	0	0	0	0.00%
	COUNTY SUBTOTAL	9	7	6	9	8	39	2.81%
PENOBSCOT Percent Personal Injury 98.18%	FATAL (K)	3	3	1	1	1	9	0.65%
	SUSPECTED SERIOUS INJURY (A)	8	6	7	8	4	33	2.38%
	SUSPECTED MINOR INJURY (B)	4	6	10	6	8	34	2.45%
	POSSIBLE INJURY (C)	16	15	29	15	11	86	6.19%
	PROPERTY DAMAGE ONLY (PDO)	0	1	1	0	1	3	0.22%
	COUNTY SUBTOTAL	31	31	48	30	25	165	11.88%
PISCATAQUIS Percent Personal Injury 100.00%	FATAL (K)	0	0	0	0	0	0	0.00%
	SUSPECTED SERIOUS INJURY (A)	0	0	0	1	2	3	0.22%
	SUSPECTED MINOR INJURY (B)	1	0	0	0	0	1	0.07%
	POSSIBLE INJURY (C)	0	0	0	0	0	0	0.00%
	PROPERTY DAMAGE ONLY (PDO)	0	0	0	0	0	0	0.00%
	COUNTY SUBTOTAL	1	0	0	1	2	4	0.29%
SAGadahoc Percent Personal Injury 96.43%	FATAL (K)	0	0	1	0	0	1	0.07%
	SUSPECTED SERIOUS INJURY (A)	2	1	0	1	2	6	0.43%
	SUSPECTED MINOR INJURY (B)	2	5	0	4	4	15	1.08%
	POSSIBLE INJURY (C)	0	1	2	2	0	5	0.36%
	PROPERTY DAMAGE ONLY (PDO)	0	0	0	1	0	1	0.07%
	COUNTY SUBTOTAL	4	7	3	8	6	28	2.02%
SOMERSET Percent Personal Injury 85.71%	FATAL (K)	0	2	0	1	0	3	0.22%
	SUSPECTED SERIOUS INJURY (A)	2	2	1	0	2	7	0.50%
	SUSPECTED MINOR INJURY (B)	3	0	2	1	1	7	0.50%
	POSSIBLE INJURY (C)	3	4	2	3	1	13	0.94%
	PROPERTY DAMAGE ONLY (PDO)	0	1	2	1	1	5	0.36%
	COUNTY SUBTOTAL	8	9	7	6	5	35	2.52%
WALDO Percent Personal Injury 100.00%	FATAL (K)	0	0	0	0	0	0	0.00%
	SUSPECTED SERIOUS INJURY (A)	0	0	1	1	0	2	0.14%
	SUSPECTED MINOR INJURY (B)	1	0	0	1	2	4	0.29%
	POSSIBLE INJURY (C)	2	3	1	0	1	7	0.50%
	PROPERTY DAMAGE ONLY (PDO)	0	0	0	0	0	0	0.00%
	COUNTY SUBTOTAL	3	3	2	2	3	13	0.94%
WASHINGTON Percent Personal Injury 100.00%	FATAL (K)	0	1	1	1	1	4	0.29%
	SUSPECTED SERIOUS INJURY (A)	0	0	1	0	0	1	0.07%
	SUSPECTED MINOR INJURY (B)	1	1	0	1	0	3	0.22%
	POSSIBLE INJURY (C)	0	0	0	1	0	1	0.07%
	PROPERTY DAMAGE ONLY (PDO)	0	0	0	0	0	0	0.00%
	COUNTY SUBTOTAL	1	2	2	3	1	9	0.65%
YORK Percent Personal Injury 95.26%	FATAL (K)	1	2	2	1	1	7	0.50%
	SUSPECTED SERIOUS INJURY (A)	11	6	3	6	9	35	2.52%
	SUSPECTED MINOR INJURY (B)	16	13	13	12	12	66	4.75%
	POSSIBLE INJURY (C)	17	19	18	22	17	93	6.70%
	PROPERTY DAMAGE ONLY (PDO)	0	3	1	5	1	10	0.72%
	COUNTY SUBTOTAL	45	43	37	46	40	211	15.19%
COUNTY GRAND TOTAL Percent Personal Injury 95.32%	FATAL (K)	8	18	16	17	7	66	4.75%
	SUSPECTED SERIOUS INJURY (A)	59	44	47	53	54	257	18.50%
	SUSPECTED MINOR INJURY (B)	84	76	61	77	81	379	27.29%
	POSSIBLE INJURY (C)	129	135	132	115	111	622	44.78%
	PROPERTY DAMAGE ONLY (PDO)	7	19	10	20	9	65	4.68%
	GRAND TOTAL	287	292	266	282	262	1,389	100.00%



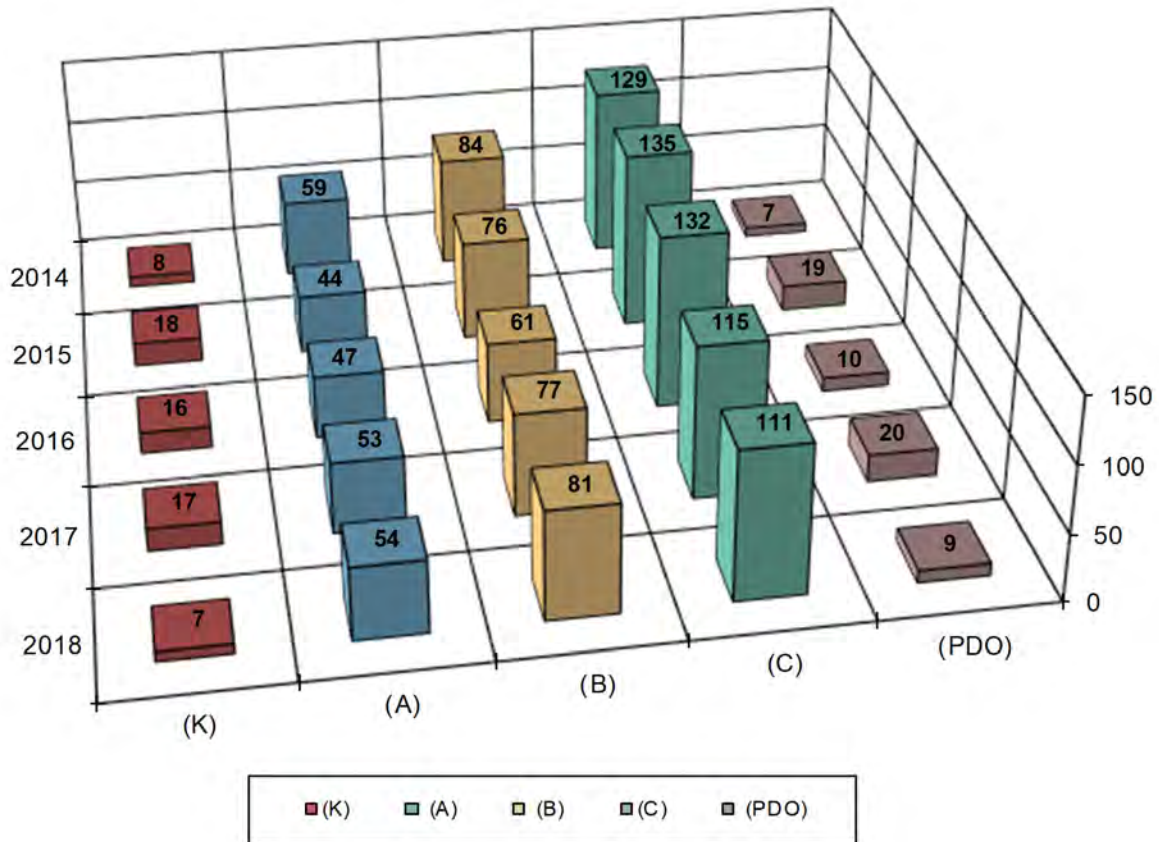
MAINE HIGHWAY PEDESTRIAN CRASHES

2014 - 2018

1,389 Total Pedestrian Crashes



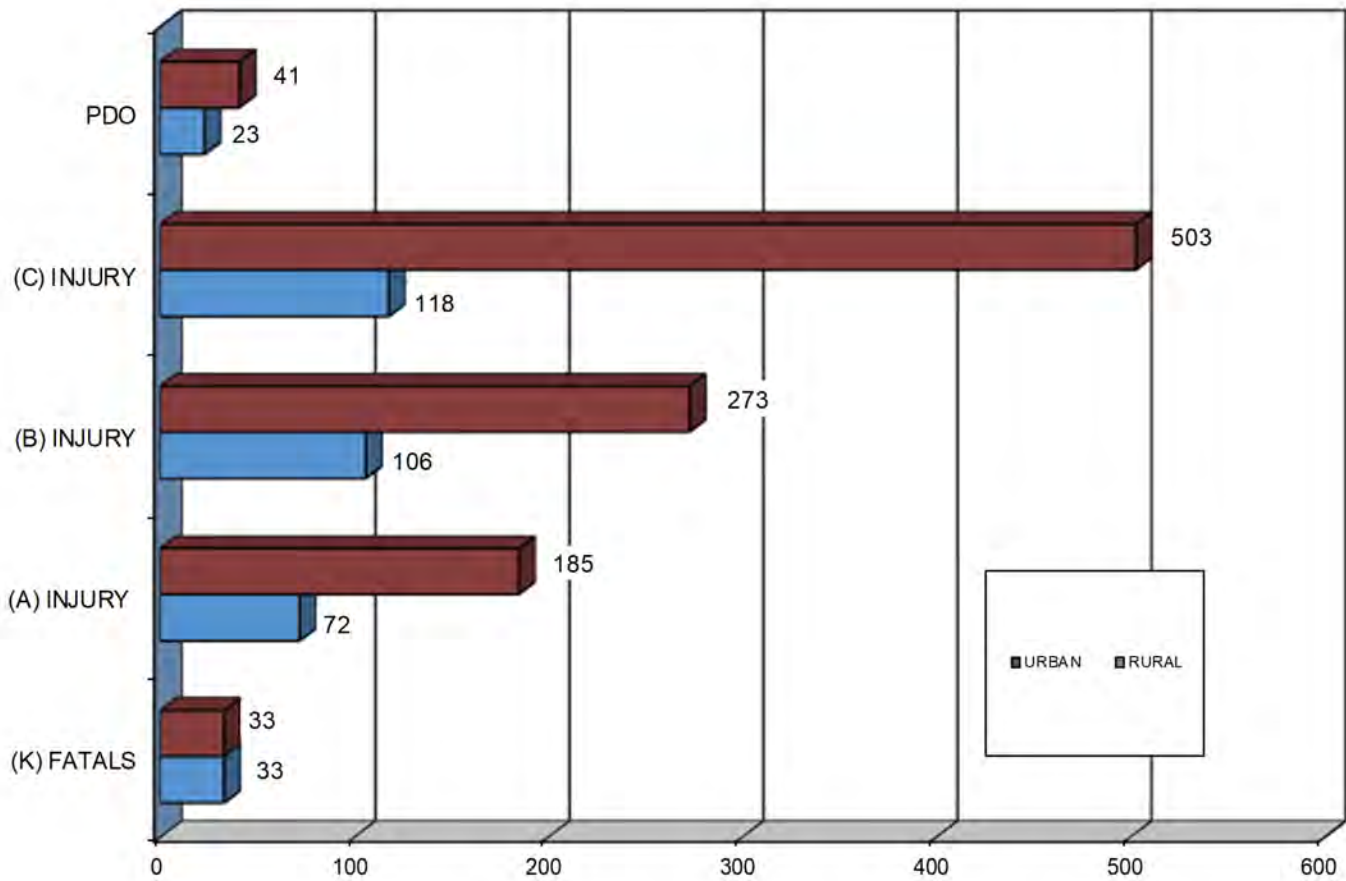
MAINE HIGHWAY PEDESTRIAN CRASH SEVERITY BY YEAR 2014 - 2018



YEAR	FATAL CRASH (K)	SUSPECTED SERIOUS INJURY (A)	SUSPECTED MINOR INJURY (B)	POSSIBLE INJURY (C)	PROPERTY DAMAGE ONLY (PDO)	TOTAL CRASHES
2014	8	59	84	129	7	287
2015	18	44	76	135	19	292
2016	16	47	61	132	10	266
2017	17	53	77	115	20	282
2018	7	54	81	111	9	262
TOTAL	66	257	379	622	65	1,389
PERCENT	4.75%	PERCENT INJURY CRASHES =			90.57%	4.68%
						100.00%



MAINE HIGHWAY PEDESTRIAN CRASH SEVERITY BY RURAL URBAN DESIGNATION 2014 - 2018



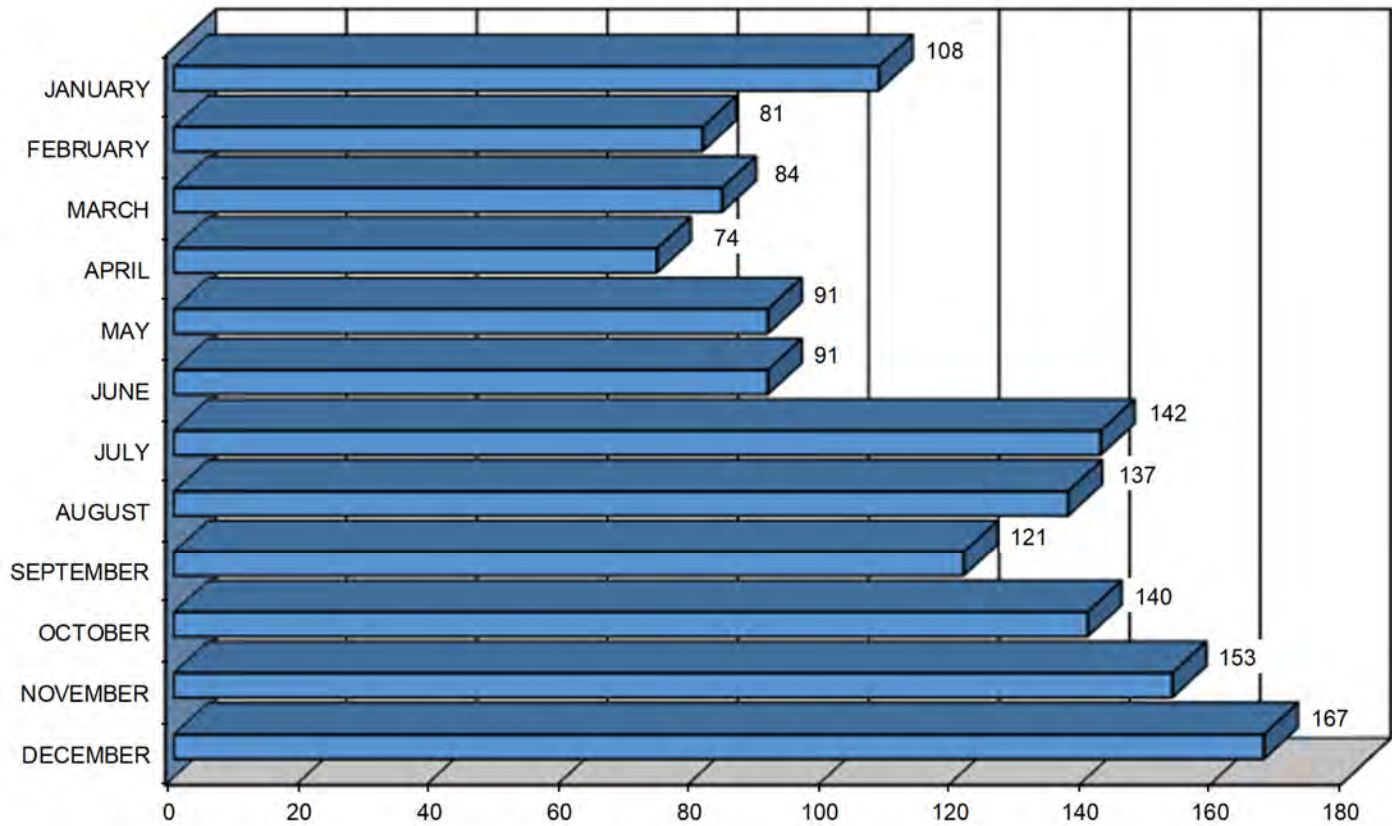
RURAL / URBAN DESIGNATION	FATAL CRASHES (K)	SUSPECTED SERIOUS INJURY (A)	SUSPECTED MINOR INJURY (B)	POSSIBLE INJURY (C)	PROPERTY DAMAGE ONLY (PDO)	FIVE YEAR TOTAL
RURAL	33	72	106	118	23	352
URBAN	33	185	273	503	41	1035
UNKNOWN	0	0	0	1	1	2
TOTAL	66	257	379	622	65	1,389



MAINE HIGHWAY PEDESTRIAN CRASHES

BY MONTH

2014 - 2018



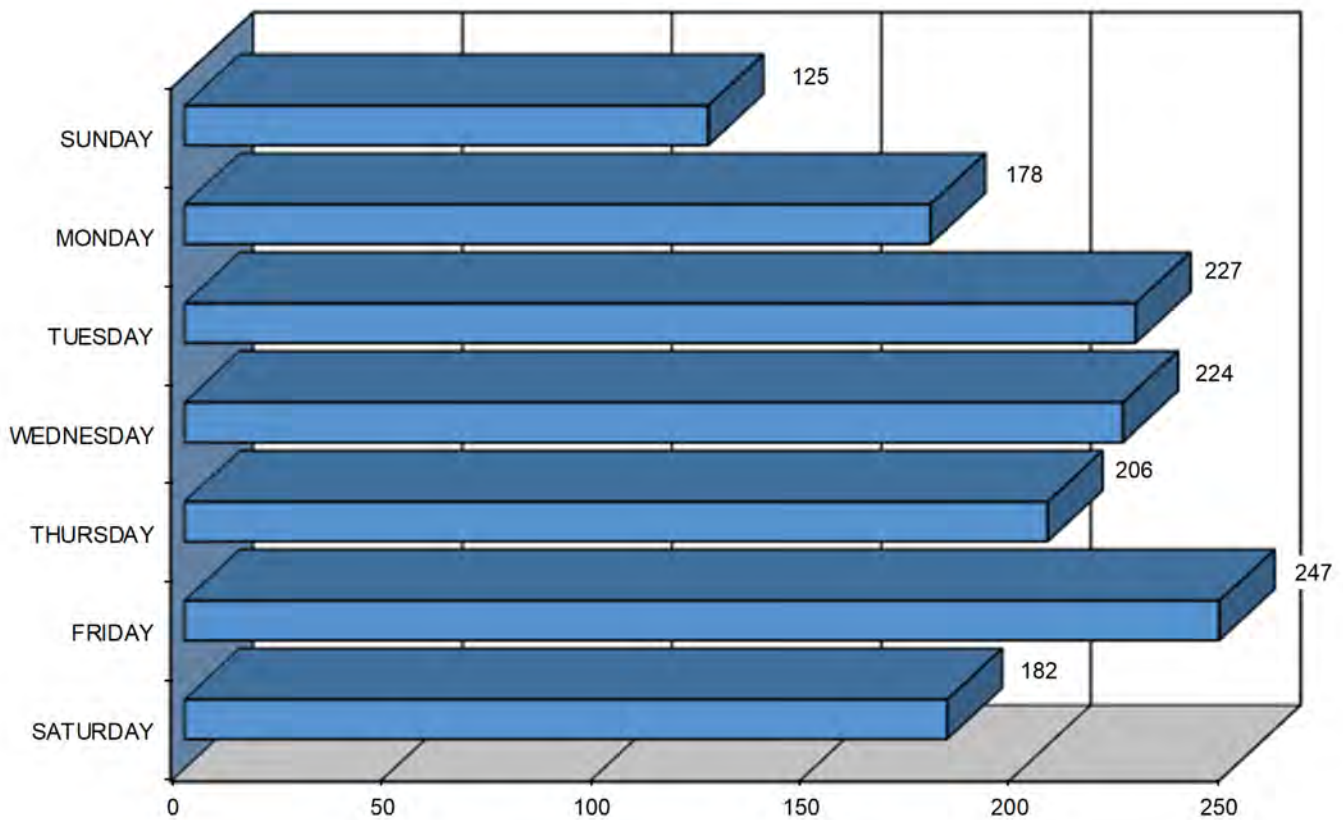
MONTH	2014	2015	2016	2017	2018	FIVE YEAR TOTAL	PERCENT OF TOTAL
JANUARY	19	21	21	27	20	108	7.78%
FEBRUARY	17	16	15	21	12	81	5.83%
MARCH	25	21	14	11	13	84	6.05%
APRIL	8	22	16	13	15	74	5.33%
MAY	17	16	17	27	14	91	6.55%
JUNE	19	16	25	12	19	91	6.55%
JULY	29	30	25	34	24	142	10.22%
AUGUST	30	20	30	23	34	137	9.86%
SEPTEMBER	21	25	22	28	25	121	8.71%
OCTOBER	28	26	23	32	31	140	10.08%
NOVEMBER	30	35	34	27	27	153	11.02%
DECEMBER	44	44	24	27	28	167	12.02%
TOTAL	287	292	266	282	262	1,389	100.00%



MAINE HIGHWAY PEDESTRIAN CRASHES

BY DAY OF THE WEEK

2014 - 2018



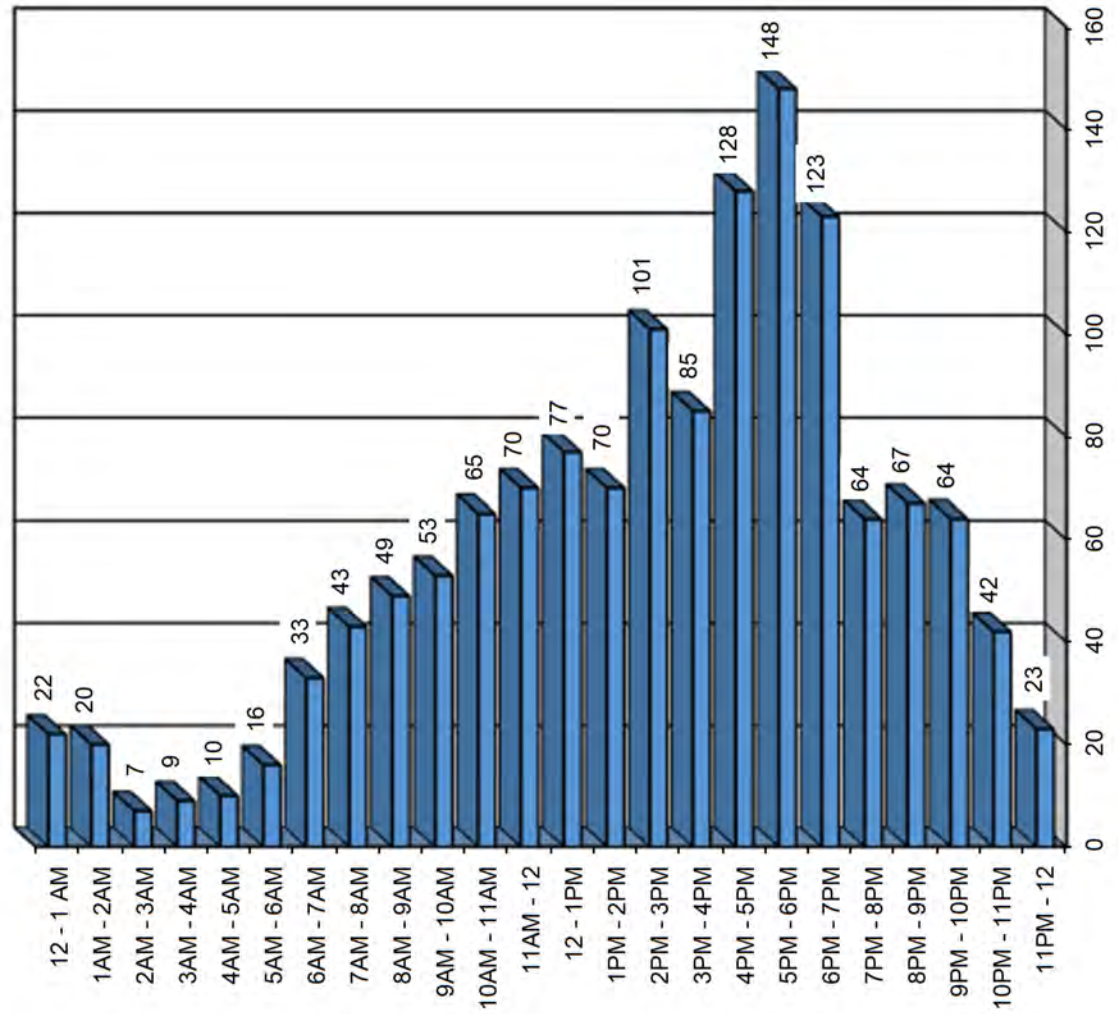
DAY OF THE WEEK	2014	2015	2016	2017	2018	FIVE YEAR TOTAL	PERCENT OF TOTAL
SUNDAY	29	26	23	29	18	125	9.00%
MONDAY	33	43	32	31	39	178	12.81%
TUESDAY	44	47	47	48	41	227	16.34%
WEDNESDAY	44	45	58	32	45	224	16.13%
THURSDAY	43	49	36	47	31	206	14.83%
FRIDAY	46	51	42	60	48	247	17.78%
SATURDAY	48	31	28	35	40	182	13.10%
TOTAL	287	292	266	282	262	1,389	100.00%



MAINE HIGHWAY PEDESTRIAN CRASHES

BY TIME OF DAY

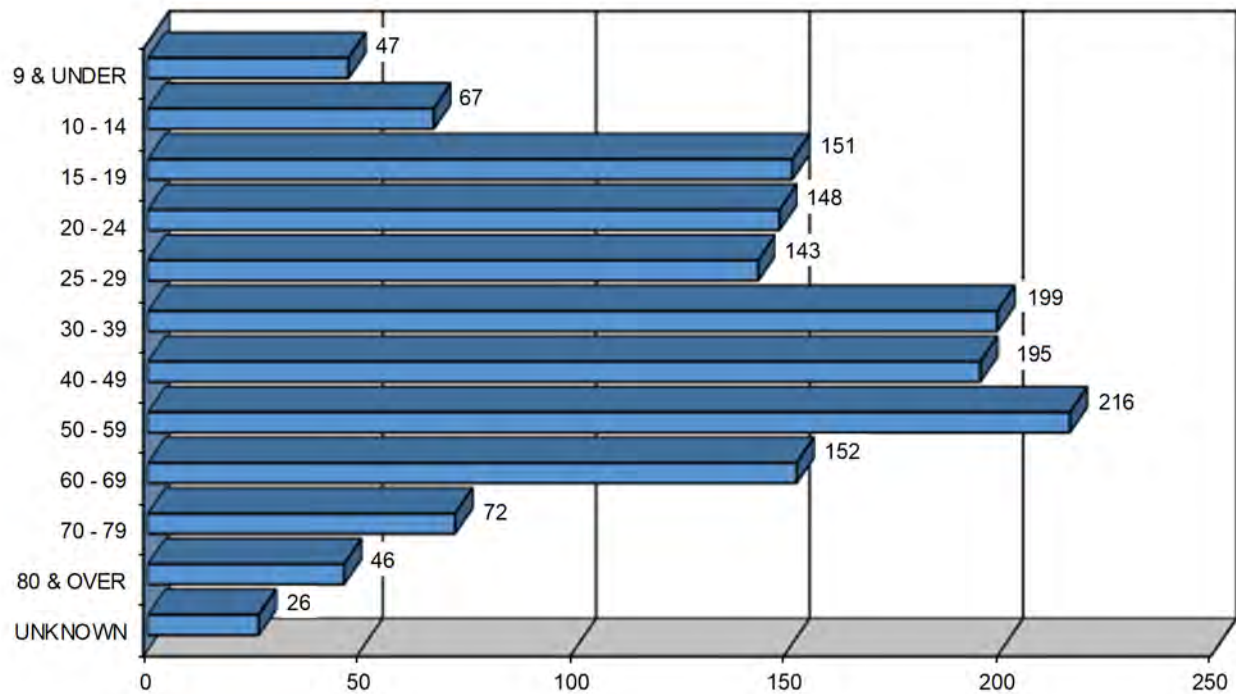
2014 - 2018



PEDESTRIANS INVOLVED IN MAINE HIGHWAY CRASHES

BY AGE GROUP

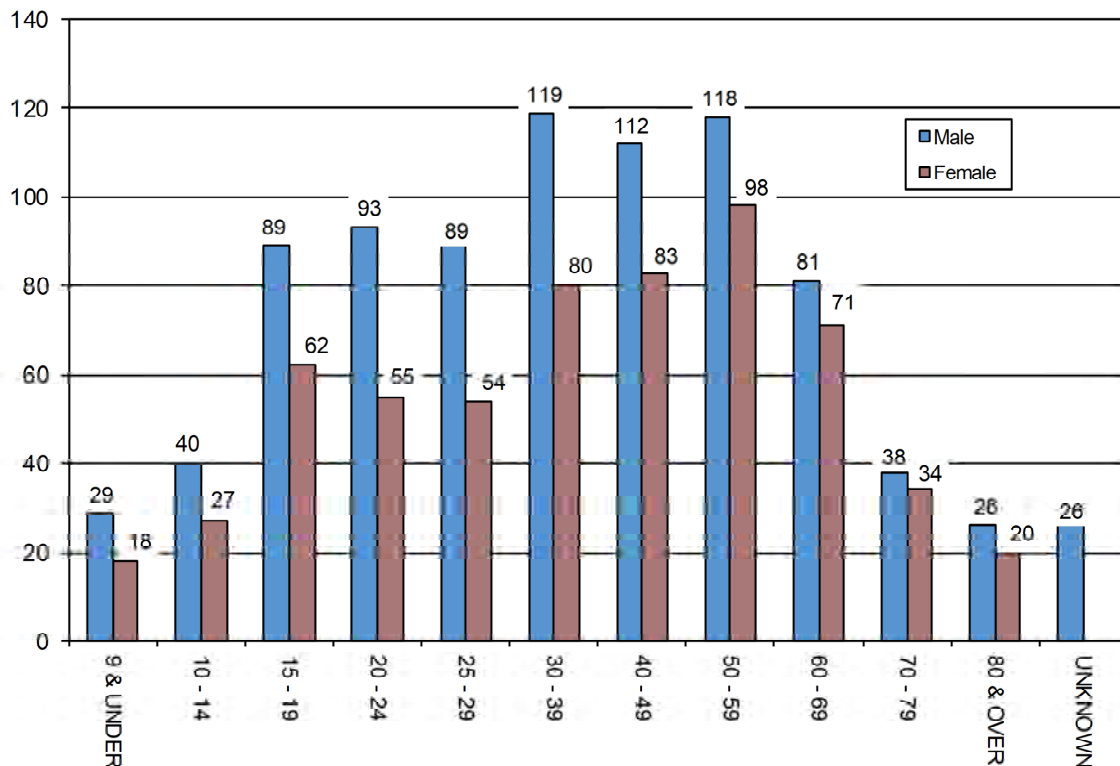
2014 - 2018



AGE GROUP OF PEDESTRIAN	2014	2015	2016	2017	2018	FIVE YEAR TOTAL	PERCENT OF TOTAL
9 & UNDER	13	11	9	6	8	47	3.21%
10 - 14	14	9	10	18	16	67	4.58%
15 - 19	36	34	26	34	21	151	10.33%
20 - 24	34	27	34	32	21	148	10.12%
25 - 29	30	31	31	28	23	143	9.78%
30 - 39	41	44	36	34	44	199	13.61%
40 - 49	34	40	53	37	31	195	13.34%
50 - 59	38	48	39	51	40	216	14.77%
60 - 69	31	39	18	28	36	152	10.40%
70 - 79	17	9	14	14	18	72	4.92%
80 & OVER	8	6	10	11	11	46	3.15%
UNKNOWN	2	7	3	9	5	26	1.78%
TOTAL	298	305	283	302	274	1,462	100.00%



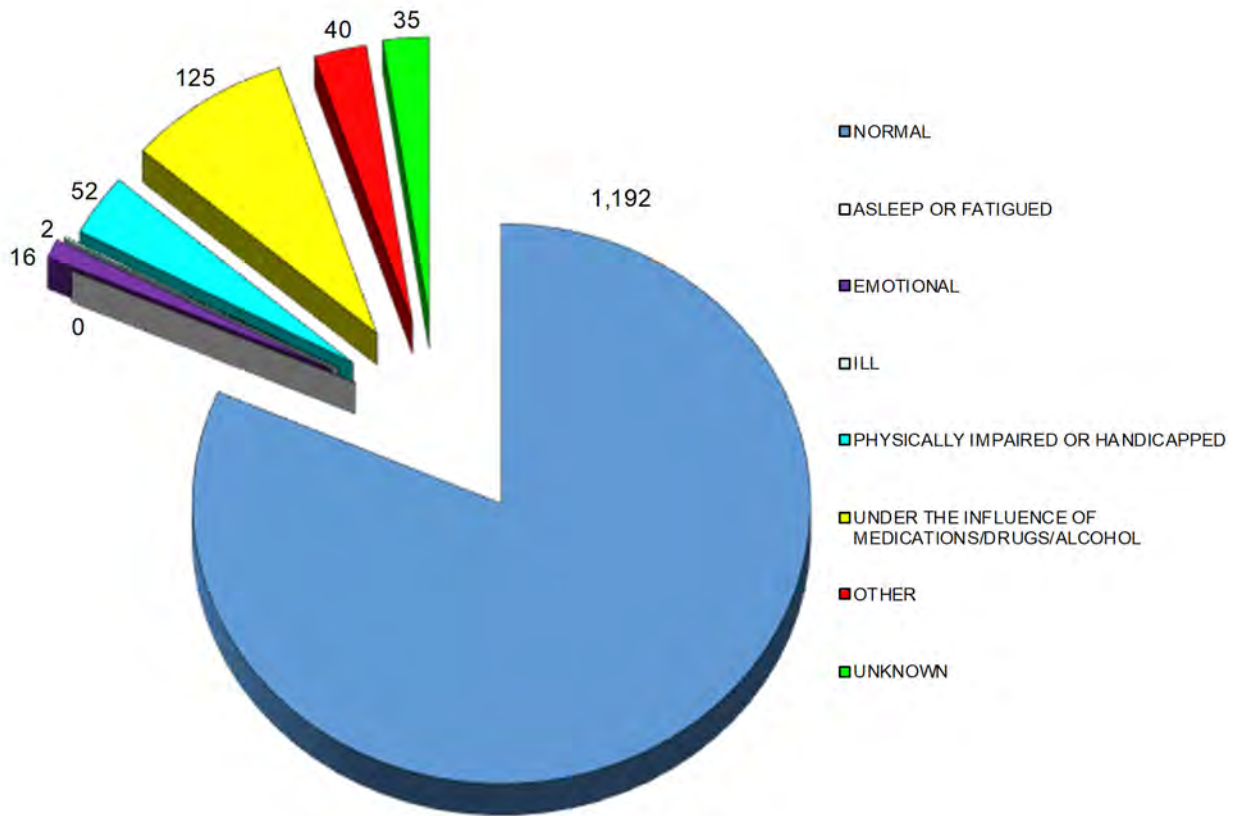
PEDESTRIANS INVOLVED IN MAINE HIGHWAY CRASHES BY AGE GROUP AND GENDER



AGE GROUP OF PEDESTRIAN BY GENDER	2014		2015		2016		2017		2018		TOTALS		FIVE YEAR TOTAL	PERCENT OF TOTAL
	M	F	M	F	M	F	M	F	M	F	M	F		
9 & UNDER	8	5	7	4	5	4	3	3	6	2	29	18	47	3.21%
10 - 14	8	6	6	3	6	4	8	10	12	4	40	27	67	4.58%
15 - 19	14	22	23	11	17	9	24	10	11	10	89	62	151	10.33%
20 - 24	20	14	15	12	18	16	26	6	14	7	93	55	148	10.12%
25 - 29	20	10	19	12	17	14	19	9	14	9	89	54	143	9.78%
30 - 39	22	19	29	15	23	13	20	14	25	19	119	80	199	13.61%
40 - 49	18	16	22	18	26	27	24	13	22	9	112	83	195	13.34%
50 - 59	22	16	32	16	15	24	28	23	21	19	118	98	216	14.77%
60 - 69	16	15	20	19	12	6	14	14	19	17	81	71	152	10.40%
70 - 79	11	6	6	3	5	9	8	6	8	10	38	34	72	4.92%
80 & OVER	4	4	4	2	4	6	9	2	5	6	26	20	46	3.15%
UNKNOWN	2		7		3		9		5		26		26	1.78%
TOTAL BY GENDER	163	133	183	115	148	132	183	110	157	112	834	602		
TOTAL	298		305		283		302		274		1,462		1,462	100.00%



MAINE HIGHWAY PEDESTRIAN CRASHES BY APPARENT PHYSICAL CONDITIONS 2014 - 2018



PEDESTRIAN PHYSICAL CONDITION	2014	2015	2016	2017	2018	FIVE YEAR TOTAL	PERCENT OF TOTAL
APPARENTLY NORMAL	256	257	221	241	217	1,192	81.53%
ASLEEP OR FATIGUED	0	0	0	0	0	0	0.00%
EMOTIONAL (depressed, angry, disturbed, etc.)	3	3	3	4	3	16	1.09%
ILL (sick)	0	1	1	0	0	2	0.14%
PHYSICALLY IMPAIRED OR HANDICAPPED	10	5	11	11	15	52	3.56%
UNDER THE INFLUENCE OF MEDICATIONS/DRUGS/ALCOHOL	24	22	31	28	20	125	8.55%
OTHER	3	10	7	9	11	40	2.74%
UNKNOWN	2	7	9	9	8	35	2.39%
TOTAL	298	305	283	302	274	1,462	100.00%



CONTRIBUTING FACTORS TO MAINE HIGHWAY PEDESTRIAN CRASHES, 2014-2018

DRIVER ACTIONS (actions 1 & 2 combined)	2014	2015	2016	2017	2018	Totals
NO CONTRIBUTING ACTION	123	114	99	117	116	569
RAN OFF ROADWAY	2	5	7	3	5	22
FAILED TO YIELD RIGHT-OF-WAY	65	60	72	63	53	313
RAN RED LIGHT	0	1	0	1	1	3
RAN STOP SIGN	1	1	4	1	2	9
DISREGARDED OTHER TRAFFIC SIGN	2	3	0	2	6	13
DISREGARDED OTHER ROAD MARKINGS	2	6	2	3	3	16
EXCEEDED POSTED SPEED LIMIT	1	0	0	1	1	3
DROVE TOO FAST FOR CONDITIONS	7	2	2	3	6	20
IMPROPER TURN	3	0	2	4	4	13
IMPROPER BACKING	8	10	6	5	11	40
IMPROPER PASSING	0	1	4	0	1	6
WRONG WAY	0	1	0	0	0	1
FOLLOWED TOO CLOSELY	0	0	1	0	2	3
FAILED TO KEEP IN PROPER LANE	4	1	4	7	9	25
OPERATED MOTOR VEHICLE IN ERRATIC, RECKLESS, CARELESS, NEGLIGENT OR AGGRESSIVE MANNER	17	21	9	9	13	69
SWERVED OR AVOIDED DUE TO WIND, SLIPPERY SURFACE, MOTOR VEHICLE, OBJECT, NON-MOTORIST IN ROADWAY	1	3	1	3	3	11
OVER-CORRECTING/OVER-STEERING	1	4	1	0	0	6
OTHER CONTRIBUTING ACTION	24	21	21	20	26	112
UNKNOWN	18	16	17	11	15	77
TOTAL	279	270	252	253	277	1331
PEDESTRIAN ACTIONS						
CROSSING WITH SIGNAL	13	12	27	25	20	97
CROSSING AGAINST SIGNAL	16	13	25	13	11	78
CROSSING MARKED CROSSWALK (no signal)	69	53	57	62	60	301
CROSSING NO SIGNAL OR CROSSWALK	78	74	64	70	65	351
WALKING IN ROAD WITH TRAFFIC	21	20	13	19	22	95
WALKING IN ROAD AGAINST TRAFFIC	9	8	6	11	9	43
STANDING IN ROAD	10	21	12	13	6	62
EMERGING FROM BEHIND PARKED CAR	3	3	2	5	3	16
CHILD GETTING ON/OFF SCHOOL BUS	1	1	0	0	1	3
GETTING ON/OFF VEHICLE	0	5	4	5	3	17
PUSHING OR WORKING ON VEHICLE	1	0	1	2	5	9
WORKING IN ROAD	6	9	5	5	7	32
PLAYING IN ROAD	3	1	2	6	3	15
NOT IN ROAD	10	17	10	10	11	58
FOLLOWING TRAIL	0	0	0	0	0	0
WALKING ON SIDEWALK	11	7	9	6	8	41
WALKING ADJACENT TO ROADWAY	15	17	8	10	5	55
WALKING TO/FROM SCHOOL	1	0	0	1	0	2
OTHER PEDESTRIAN ACTION	29	37	33	34	35	168
TOTAL	296	298	278	297	274	1443
VEHICULAR FACTORS						
NONE	241	252	230	241	244	1208
BRAKES	1	1	1	1	1	5
EXHAUST SYSTEM	0	0	0	0	0	0
BODY, DOORS	1	1	1	1	0	4
STEERING	0	0	0	0	0	0
POWER TRAIN	1	0	1	0	1	3
SUSPENSION	0	0	0	0	0	0
TIRES	1	2	0	0	0	3
WHEELS	0	0	0	0	0	0
LIGHTS (head, signal, tail, brake)	2	0	0	1	1	4
WINDOWS/WINDSHIELD	1	1	1	1	0	4
MIRRORS	0	0	1	0	0	1
WIPERS	0	0	0	0	0	0
TRUCK COUPLING/TRAILER HITCH/SAFETY CHAINS	0	0	0	0	0	0
OTHER	4	6	3	2	6	21
TOTAL	252	263	238	247	253	1253

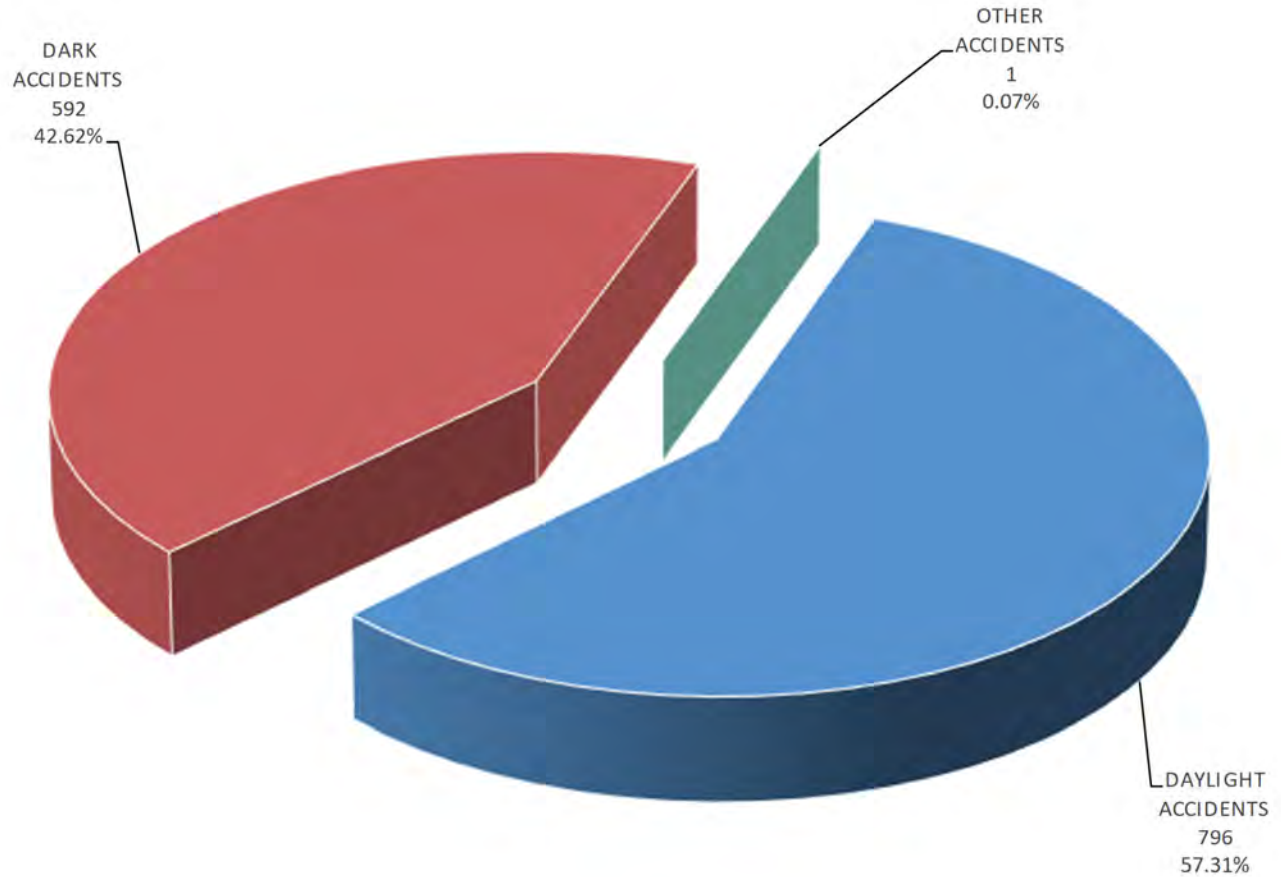


VEHICLES INVOLVED IN MAINE HIGHWAY PEDESTRIAN CRASHES 2014 - 2018

VEHICLE TYPE INVOLVED IN PEDESTRIAN CRASHES	2014	2015	2016	2017	2018	FIVE YEAR TOTAL
PASSENGER CAR	168	154	128	140	123	713
(SPORT) UTILITY VEHICLE	38	53	48	49	55	243
PASSENGER VAN	8	9	11	12	5	45
CARGO VAN (10k lbs or less)	3	2	4	1	1	11
PICKUP TRUCK	39	51	48	48	46	232
MOTOR HOME	1	0	0	0	0	1
SCHOOL BUS	0	1	1	0	0	2
TRANSIT BUS	0	2	0	2	0	4
MOTOR COACH	1	0	0	0	0	1
OTHER BUS	0	0	0	1	1	2
MOTORCYCLE	3	1	4	3	2	13
MOPED	0	0	1	0	1	2
LOW SPEED VEHICLE	0	0	0	0	0	0
AUTOCYCLE	0	0	0	0	0	0
EXPERIMENTAL	0	0	0	0	0	0
OTHER LIGHT TRUCK (10,000 lbs or less)	2	0	0	0	2	4
MEDIUM /HEAVY TRUCKS (more than 10,000 lbs)	3	8	6	2	16	35
ATV (2,3,4-WHEEL)	1	0	0	2	0	3
SNOWMOBILE	0	0	0	0	0	0
PEDESTRIAN	298	305	283	302	274	1,462
BICYCLE	0	1	0	0	0	1
OTHER	10	6	3	16	1	36
TOTAL VEHICLES INVOLVED	575	593	537	578	527	2,810



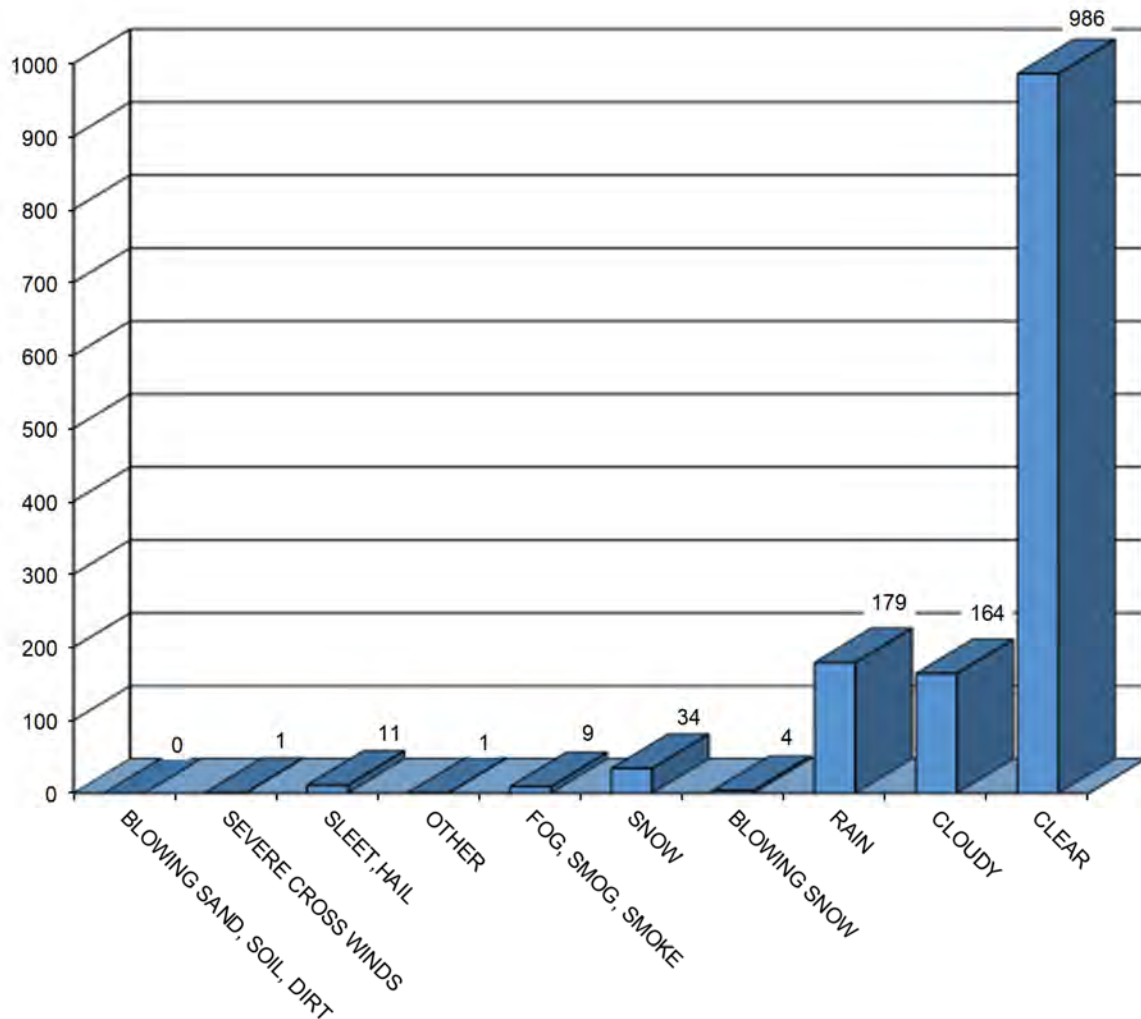
MAINE HIGHWAY PEDESTRIAN CRASHES BY LIGHT CONDITION 2014 - 2018



LIGHT CONDITION	2014	2015	2016	2017	2018	FIVE YEAR TOTAL	PERCENT OF TOTAL
DAYLIGHT	155	165	156	161	159	796	57.31%
DARK	131	127	110	121	103	592	42.62%
OTHER	1	0	0	0	0	1	0.07%
TOTAL	287	292	266	282	262	1,389	100.00%



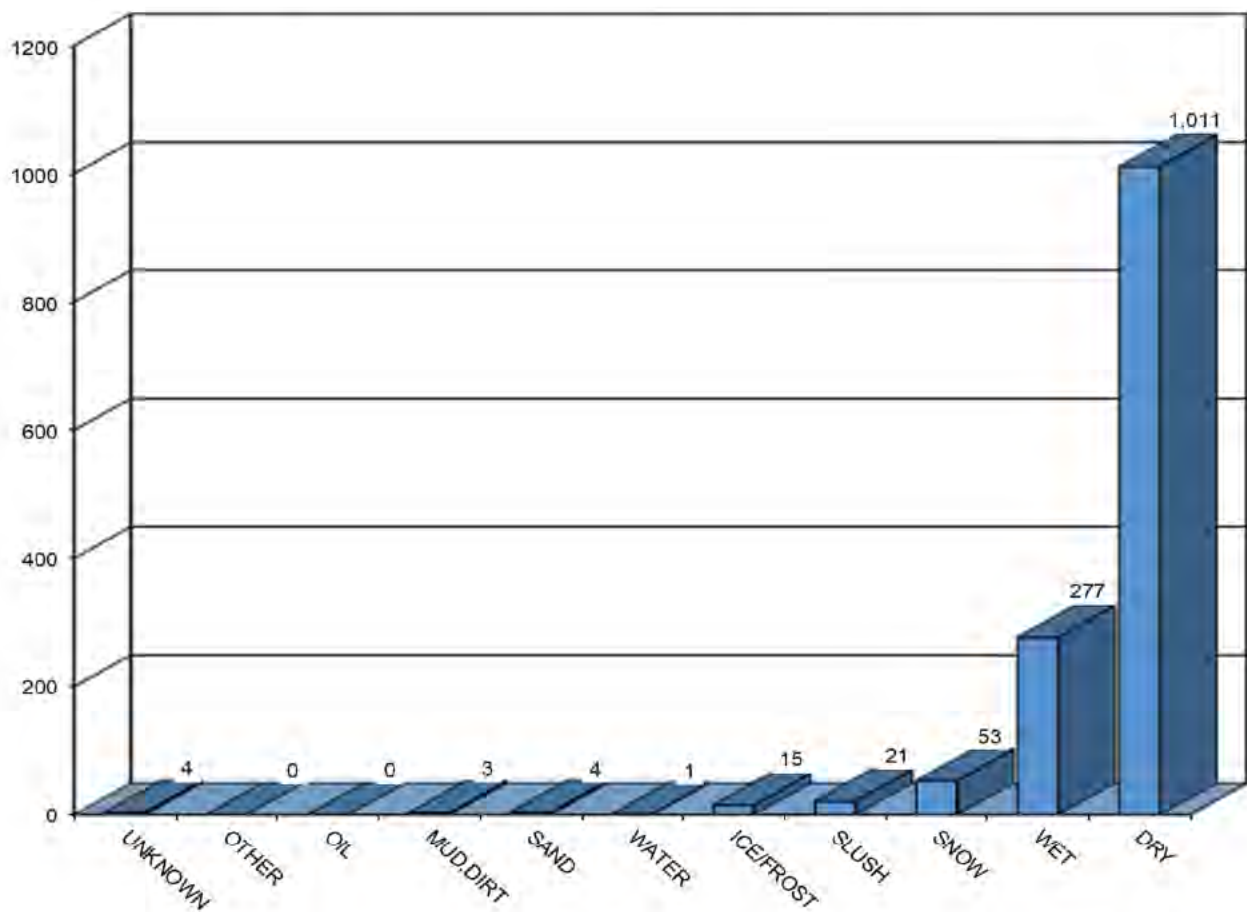
MAINE HIGHWAY PEDESTRIAN CRASHES BY WEATHER CONDITIONS 2014 - 2018



WEATHER CONDITIONS	2014	2015	2016	2017	2018	FIVE YEAR TOTAL
BLOWING SAND, SOIL, DIRT	0	0	0	0	0	0
SEVERE CROSS WINDS	0	0	0	1	0	1
SLEET, HAIL (freezing rain or drizzle)	4	1	2	2	2	11
OTHER	1	0	0	0	0	1
FOG, SMOG, SMOKE	0	4	1	2	2	9
SNOW	9	7	4	7	7	34
BLOWING SNOW	1	1	0	2	0	4
RAIN	42	29	38	34	36	179
CLOUDY	33	34	28	26	43	164
CLEAR	197	216	193	208	172	986
TOTAL	287	292	266	282	262	1,389



MAINE HIGHWAY PEDESTRIAN CRASHES BY ROAD SURFACE CONDITIONS



ROAD SURFACE CONDITIONS	2014	2015	2016	2017	2018	FIVE YEAR TOTAL
UNKNOWN	2	0	0	1	1	4
OTHER	0	0	0	0	0	0
OIL	0	0	0	0	0	0
MUD, DIRT	2	0	0	0	1	3
SAND	2	0	0	2	0	4
WATER (standing, moving)	0	0	1	0	0	1
ICE/FROST	4	4	2	4	1	15
SLUSH	4	4	2	5	6	21
SNOW	11	12	6	13	11	53
WET	61	53	54	49	60	277
DRY	201	219	201	208	182	1,011
TOTAL	287	292	266	282	262	1,389





STATE OF MAINE HIGHWAY BICYCLE CRASHES 2014 - 2018

I.	PREFACE	i
----	---------------	---

II. BICYCLE CRASH TABLES AND CHARTS 2014-2018

Crashes Summarized by:

County	1-4
Severity	5-6
Rural/Urban Designation	7
Month	8
Day of Week	9
Time of Day	10
Age Groups	11
Age Groups by Gender	12
Apparent Physical Condition	13
Contributing Factors	14
Vehicle Type	15
Light Conditions	16

STATE OF MAINE

HIGHWAY BICYCLE CRASHES

2014 - 2018

Preface

This publication is a statistical review of reported motor vehicle highway crashes that involved bicycles in Maine during the five-year study period 2014- 2018. The statistics are compiled from crash reports submitted to the Department of Transportation by the Traffic Division, Department of Public Safety. The Traffic Division receives all police uniform crash reports Form 13:20 A, from state, county and local police agencies.

The enclosed charts, graphs, listings and summaries were produced using the Department of Transportation's Computerized Crash Records System. Fatalities data was provided by the Department of Public Safety. Except for adjustments to locations and crash-type information for accuracy, no attempt has been made to modify the raw data received from the reporting agencies. However, because crash scenes are often dangerous and chaotic, some inaccuracies in data collection are possible.

A comparison of this report with other summaries of crashes and fatalities may also reveal inconsistencies due to changes in crash classification, late submittals, and differing reporting criteria. Fatalities data is provided by the Department of Public Safety and does not include deaths that were later determined to be of natural causes.

The Department of Transportation and the Department of Public Safety wish to express our sincere thank you to all law enforcement agencies and officers for the work they do on crash investigations. Without their dedication, this report would not be possible.

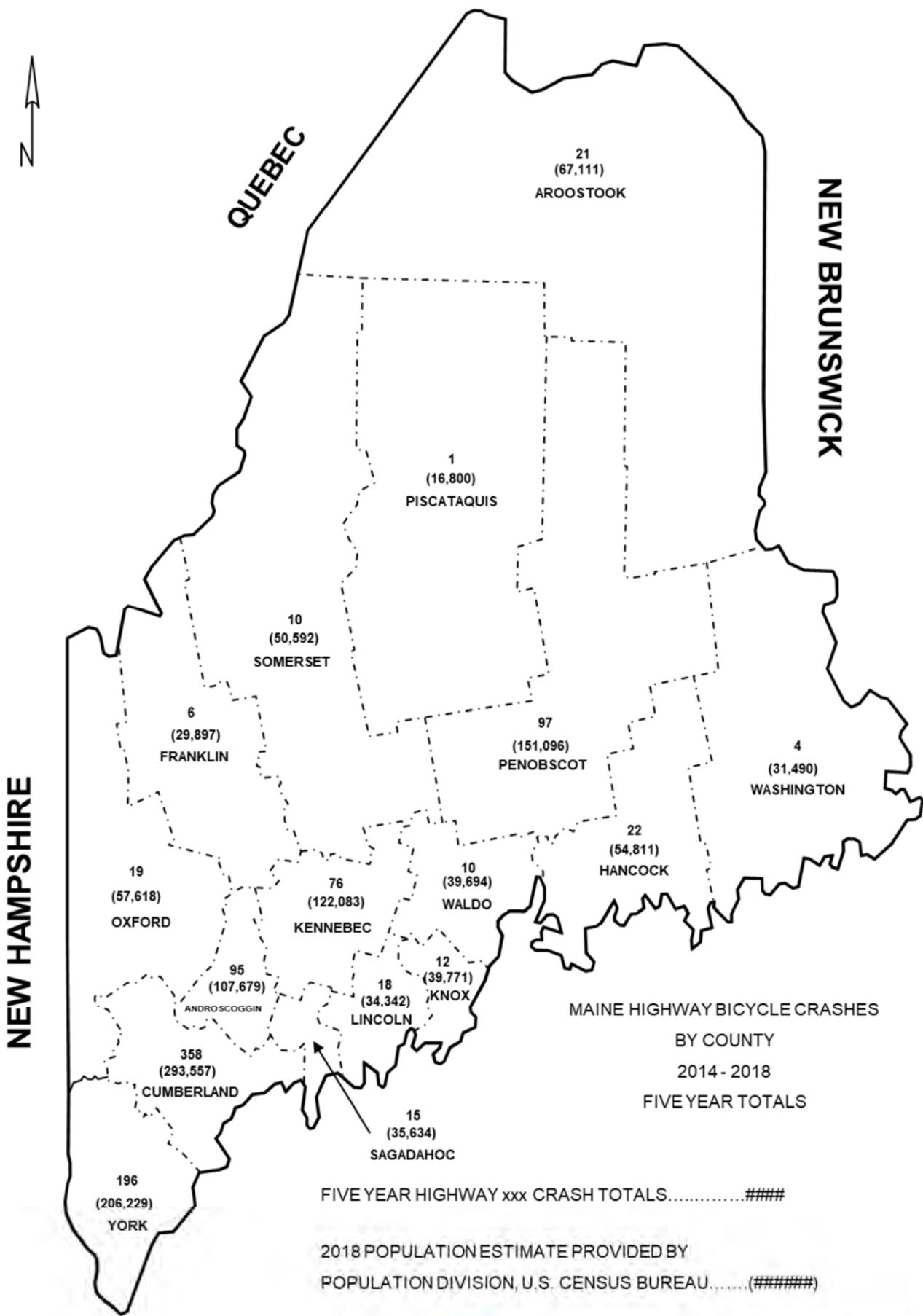
A link to this publication can be found on the maine.gov website at:

mainedot.gov/safety/crash-data/

We welcome your comments and suggestions on this report at:

Maine Department of Transportation
Office of Safety
Crash Records Section
16 State House Station
Augusta, ME 04333-0016
Tel: 207-624-3616



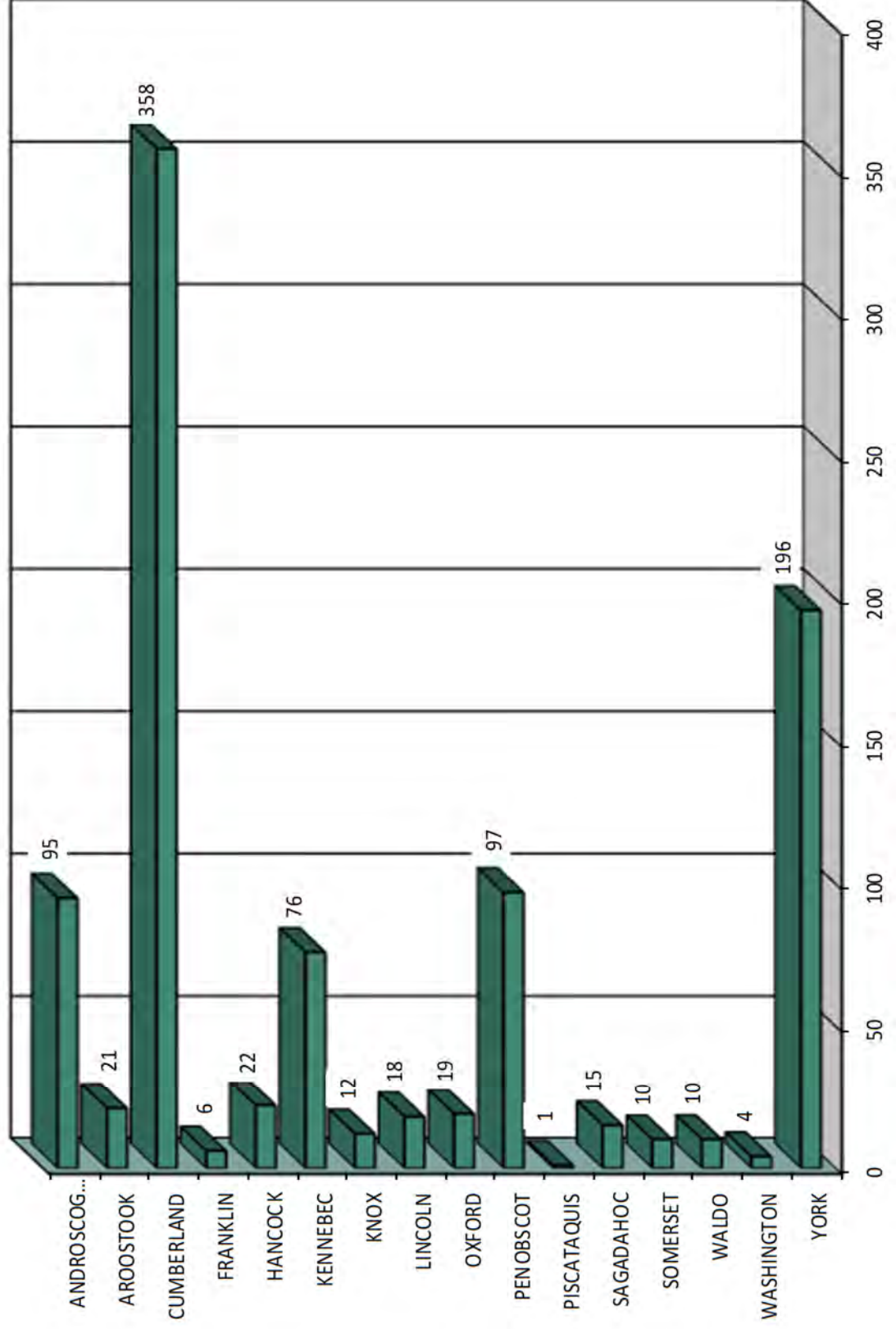


Produced by the Maine Department of Transportation

MAINE HIGHWAY BICYCLE CRASHES

BY COUNTY

2014 - 2018



MAINE HIGHWAY BICYCLE CRASH SEVERITY BY COUNTY

2014- 2018

COUNTY	INJURY TYPE	2014	2015	2016	2017	2018	TOTAL CRASHES	PERCENT OF TOTAL
ANDROSCOGGIN Percent Personal Injury 91.58%	FATAL (K)	0	0	1	0	0	1	0.10%
	SUSPECTED SERIOUS (A)	1	2	4	2	5	14	1.46%
	SUSPECTED MINOR (B)	8	5	8	7	2	30	3.13%
	POSSIBLE INJURY (C)	10	7	10	11	4	42	4.38%
	PROPERTY DAMAGE ONLY (O)	4	2	1	0	1	8	0.83%
	COUNTY SUBTOTAL	23	16	24	20	12	95	9.90%
AROOSTOOK Percent Personal Injury 90.48%	FATAL (K)	0	0	0	0	0	0	0.00%
	SUSPECTED SERIOUS (A)	0	1	0	0	0	1	0.10%
	SUSPECTED MINOR (B)	1	3	4	1	0	9	0.94%
	POSSIBLE INJURY (C)	2	1	1	1	4	9	0.94%
	PROPERTY DAMAGE ONLY (O)	0	1	0	1	0	2	0.21%
	COUNTY SUBTOTAL	3	6	5	3	4	21	2.19%
CUMBERLAND Percent Personal Injury 91.62%	FATAL (K)	0	0	1	0	0	1	0.10%
	SUSPECTED SERIOUS (A)	9	6	5	7	6	33	3.44%
	SUSPECTED MINOR (B)	27	27	30	18	19	121	12.60%
	POSSIBLE INJURY (C)	39	39	36	35	24	173	18.02%
	PROPERTY DAMAGE ONLY (O)	5	5	8	4	8	30	3.13%
	COUNTY SUBTOTAL	80	77	80	64	57	358	37.29%
FRANKLIN Percent Personal Injury 83.33%	FATAL (K)	0	0	0	0	0	0	0.00%
	SUSPECTED SERIOUS (A)	0	0	0	1	0	1	0.10%
	SUSPECTED MINOR (B)	1	0	1	0	1	3	0.31%
	POSSIBLE INJURY (C)	0	0	0	1	0	1	0.10%
	PROPERTY DAMAGE ONLY (O)	0	1	0	0	0	1	0.10%
	COUNTY SUBTOTAL	1	1	1	2	1	6	0.63%
HANCOCK Percent Personal Injury 100.00%	FATAL (K)	0	0	0	0	0	0	0.00%
	SUSPECTED SERIOUS (A)	0	1	1	1	0	3	0.31%
	SUSPECTED MINOR (B)	1	1	2	2	4	10	1.04%
	POSSIBLE INJURY (C)	1	3	3	0	2	9	0.94%
	PROPERTY DAMAGE ONLY (O)	0	0	0	0	0	0	0.00%
	COUNTY SUBTOTAL	2	5	6	3	6	22	2.29%
KENNEBEC Percent Personal Injury 92.116%	FATAL (K)	0	0	1	0	0	1	0.10%
	SUSPECTED SERIOUS (A)	3	0	3	0	2	8	0.83%
	SUSPECTED MINOR (B)	5	4	6	7	3	25	2.60%
	POSSIBLE INJURY (C)	7	6	7	9	7	36	3.75%
	PROPERTY DAMAGE ONLY (O)	0	1	2	0	3	6	0.63%
	COUNTY SUBTOTAL	15	11	19	16	15	76	7.92%
KNOX Percent Personal Injury 100.00%	FATAL (K)	0	0	0	0	0	0	0.00%
	SUSPECTED SERIOUS (A)	1	0	0	2	0	3	0.31%
	SUSPECTED MINOR (B)	1	3	0	0	0	4	0.42%
	POSSIBLE INJURY (C)	2	0	1	0	2	5	0.52%
	PROPERTY DAMAGE ONLY (O)	0	0	0	0	0	0	0.00%
	COUNTY SUBTOTAL	4	3	1	2	2	12	1.25%
LINCOLN Percent Personal Injury 94.44%	FATAL (K)	2	0	0	0	1	3	0.31%
	SUSPECTED SERIOUS (A)	0	0	0	1	1	2	0.21%
	SUSPECTED MINOR (B)	1	2	1	1	1	6	0.63%
	POSSIBLE INJURY (C)	3	0	1	0	2	6	0.63%
	PROPERTY DAMAGE ONLY (O)	1	0	0	0	0	1	0.10%
	COUNTY SUBTOTAL	7	2	2	2	5	18	1.88%

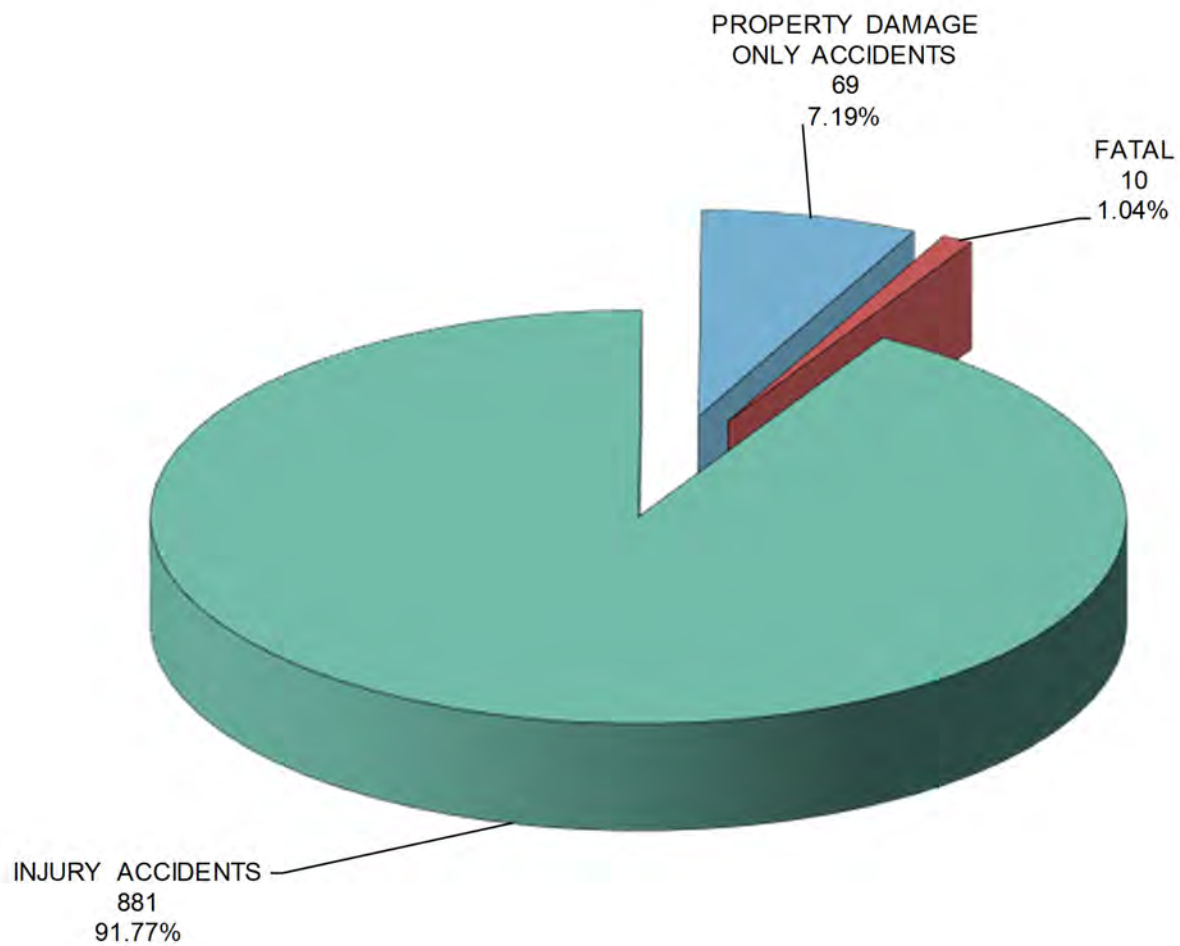


COUNTY	INJURY TYPE	2014	2015	2016	2017	2018	TOTAL CRASHES	PERCENT OF TOTAL
OXFORD Percent Personal Injury 100.00%	FATAL (K)	0	0	1	0	0	1	0.10%
	SUSPECTED SERIOUS (A)	2	1	0	1	0	4	0.42%
	SUSPECTED MINOR (B)	1	1	2	2	1	7	0.73%
	POSSIBLE INJURY (C)	1	1	1	1	3	7	0.73%
	PROPERTY DAMAGE ONLY (O)	0	0	0	0	0	0	0.00%
	COUNTY SUBTOTAL	4	3	4	4	4	19	1.98%
PENOBSCOT Percent Personal Injury 89.69%	FATAL (K)	0	0	0	0	0	0	0.00%
	SUSPECTED SERIOUS (A)	2	1	1	4	0	8	0.83%
	SUSPECTED MINOR (B)	4	4	3	12	8	31	3.23%
	POSSIBLE INJURY (C)	10	12	10	12	4	48	5.00%
	PROPERTY DAMAGE ONLY (O)	1	3	3	1	2	10	1.04%
	COUNTY SUBTOTAL	17	20	17	29	14	97	10.10%
PISCATAQUIS Percent Personal Injury 100.00%	FATAL (K)	0	0	0	0	0	0	0.00%
	SUSPECTED SERIOUS (A)	0	0	0	0	1	1	0.10%
	SUSPECTED MINOR (B)	0	0	0	0	0	0	0.00%
	POSSIBLE INJURY (C)	0	0	0	0	0	0	0.00%
	PROPERTY DAMAGE ONLY (O)	0	0	0	0	0	0	0.00%
	COUNTY SUBTOTAL	0	0	0	0	1	1	0.10%
SAGadahoc Percent Personal Injury 100.00%	FATAL (K)	0	0	0	0	0	0	0.00%
	SUSPECTED SERIOUS (A)	0	0	0	1	0	1	0.10%
	SUSPECTED MINOR (B)	4	2	1	1	1	9	0.94%
	POSSIBLE INJURY (C)	0	2	1	1	1	5	0.52%
	PROPERTY DAMAGE ONLY (O)	0	0	0	0	0	0	0.00%
	COUNTY SUBTOTAL	4	4	2	3	2	15	1.56%
SOMERSET Percent Personal Injury 90.00%	FATAL (K)	0	0	0	0	0	0	0.00%
	SUSPECTED SERIOUS (A)	1	0	0	0	0	1	0.10%
	SUSPECTED MINOR (B)	1	0	0	1	0	2	0.21%
	POSSIBLE INJURY (C)	1	2	0	2	1	6	0.63%
	PROPERTY DAMAGE ONLY (O)	0	0	0	0	1	1	0.10%
	COUNTY SUBTOTAL	3	2	0	3	2	10	1.04%
WALDO Percent Personal Injury 90.00%	FATAL (K)	0	0	0	0	1	1	0.10%
	SUSPECTED SERIOUS (A)	2	1	0	0	0	3	0.31%
	SUSPECTED MINOR (B)	1	0	0	0	0	1	0.10%
	POSSIBLE INJURY (C)	2	0	0	1	1	4	0.42%
	PROPERTY DAMAGE ONLY (O)	0	0	0	0	1	1	0.10%
	COUNTY SUBTOTAL	5	1	0	1	3	10	1.04%
WASHINGTON Percent Personal Injury 75.00%	FATAL (K)	0	0	0	0	0	0	0.00%
	SUSPECTED SERIOUS (A)	0	0	0	0	1	1	0.10%
	SUSPECTED MINOR (B)	0	1	0	0	0	1	0.10%
	POSSIBLE INJURY (C)	0	0	0	1	0	1	0.10%
	PROPERTY DAMAGE ONLY (O)	0	0	0	1	0	1	0.10%
	COUNTY SUBTOTAL	0	1	0	2	1	4	0.42%
YORK Percent Personal Injury 95.92%	FATAL (K)	0	0	0	2	0	2	0.21%
	SUSPECTED SERIOUS (A)	8	6	9	1	3	27	2.81%
	SUSPECTED MINOR (B)	15	15	20	12	15	77	8.02%
	POSSIBLE INJURY (C)	15	14	19	16	18	82	8.54%
	PROPERTY DAMAGE ONLY (O)	1	2	0	2	3	8	0.83%
	COUNTY SUBTOTAL	39	37	48	33	39	196	20.42%
COUNTY GRAND TOTAL Percent Personal Injury 92.81%	FATAL (K)	2	0	4	2	2	10	1.04%
	SUSPECTED SERIOUS (A)	29	19	23	21	19	111	11.56%
	SUSPECTED MINOR (B)	71	68	78	64	55	336	35.00%
	POSSIBLE INJURY (C)	93	87	90	91	73	434	45.21%
	PROPERTY DAMAGE ONLY (O)	12	15	14	9	19	69	7.19%
	GRAND TOTAL	207	189	209	187	168	960	100.00%

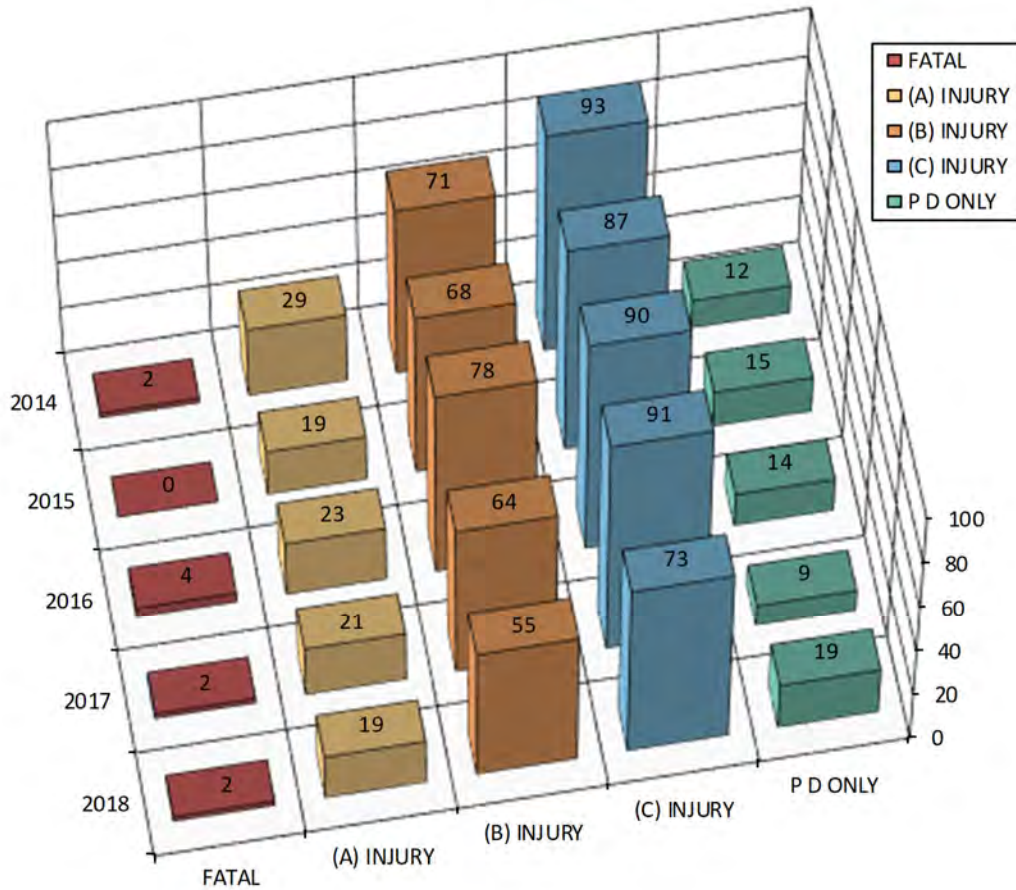


MAINE HIGHWAY BICYCLE CRASHES 2014 - 2018

960 Total Bicycle Crashes



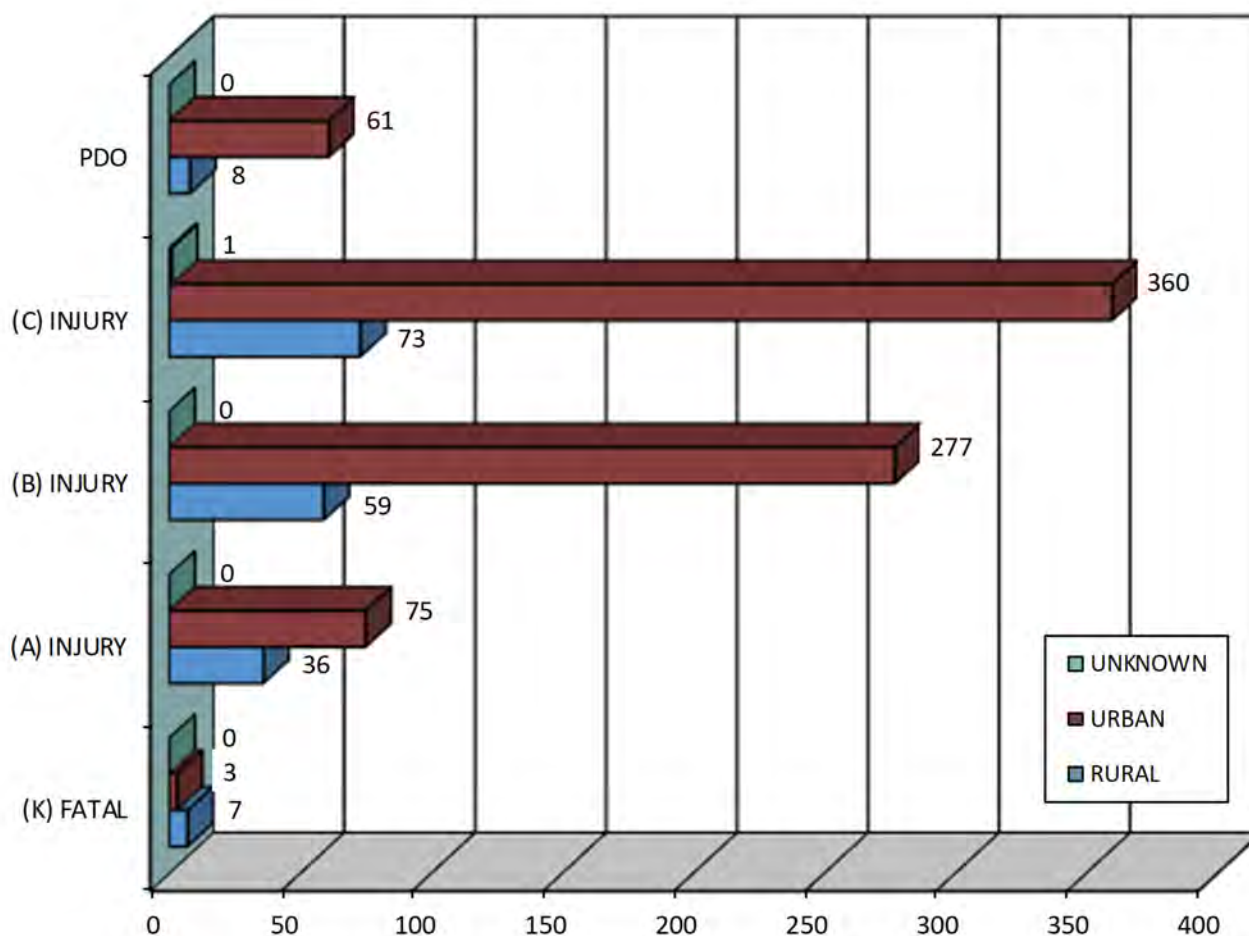
MAINE HIGHWAY BICYCLE CRASH SEVERITY BY YEAR 2014 - 2018



YEAR	FATAL CRASH (K)	SUSPECTED SERIOUS INJURY (A)	SUSPECTED MINOR INJURY (B)	POSSIBLE INJURY (C)	PROPERTY DAMAGE ONLY (O)	TOTAL CRASHES
2014	2	29	71	93	12	207
2015	0	19	68	87	15	189
2016	4	23	78	90	14	209
2017	2	21	64	91	9	187
2018	2	19	55	73	19	168
TOTAL	10	111	336	434	69	960
PERCENT	1.04%	PERCENT INJURY CRASHES =			91.77%	7.19%
						100.00%



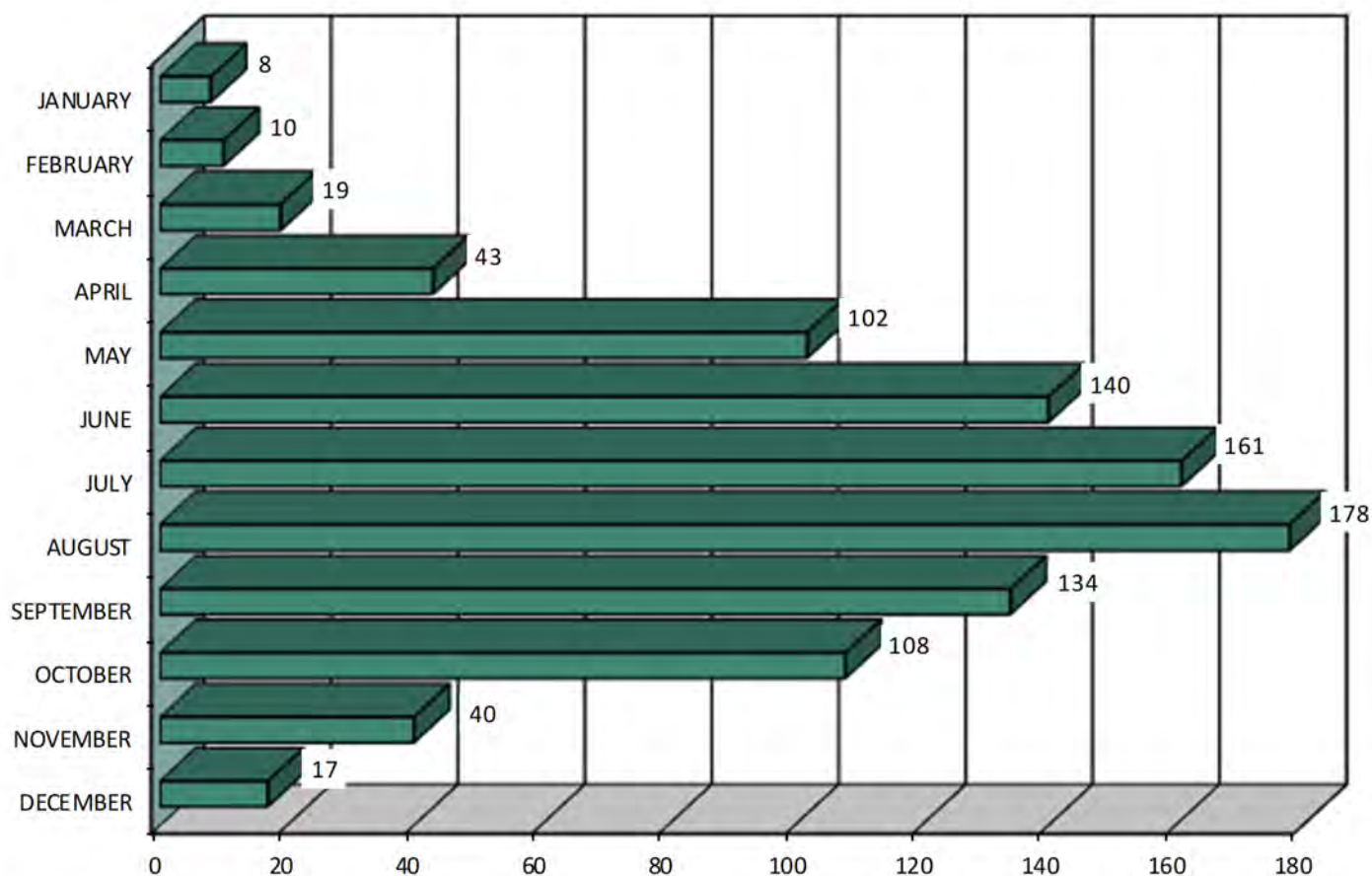
MAINE HIGHWAY BICYCLE CRASH SEVERITY BY RURAL URBAN DESIGNATION 2014 - 2018



RURAL URBAN DESIGNATION	FATAL CRASH (K)	SUSPECTED SERIOUS INJURY (A)	SUSPECTED MINOR INJURY (B)	POSSIBLE INJURY (C)	PROPERTY DAMAGE ONLY (PDO)	FIVE YEAR TOTAL
RURAL	7	36	59	73	8	183
URBAN	3	75	277	360	61	776
UNKNOWN	0	0	0	1	0	1
TOTAL	10	111	336	434	69	960



MAINE HIGHWAY BICYCLE CRASHES BY MONTH



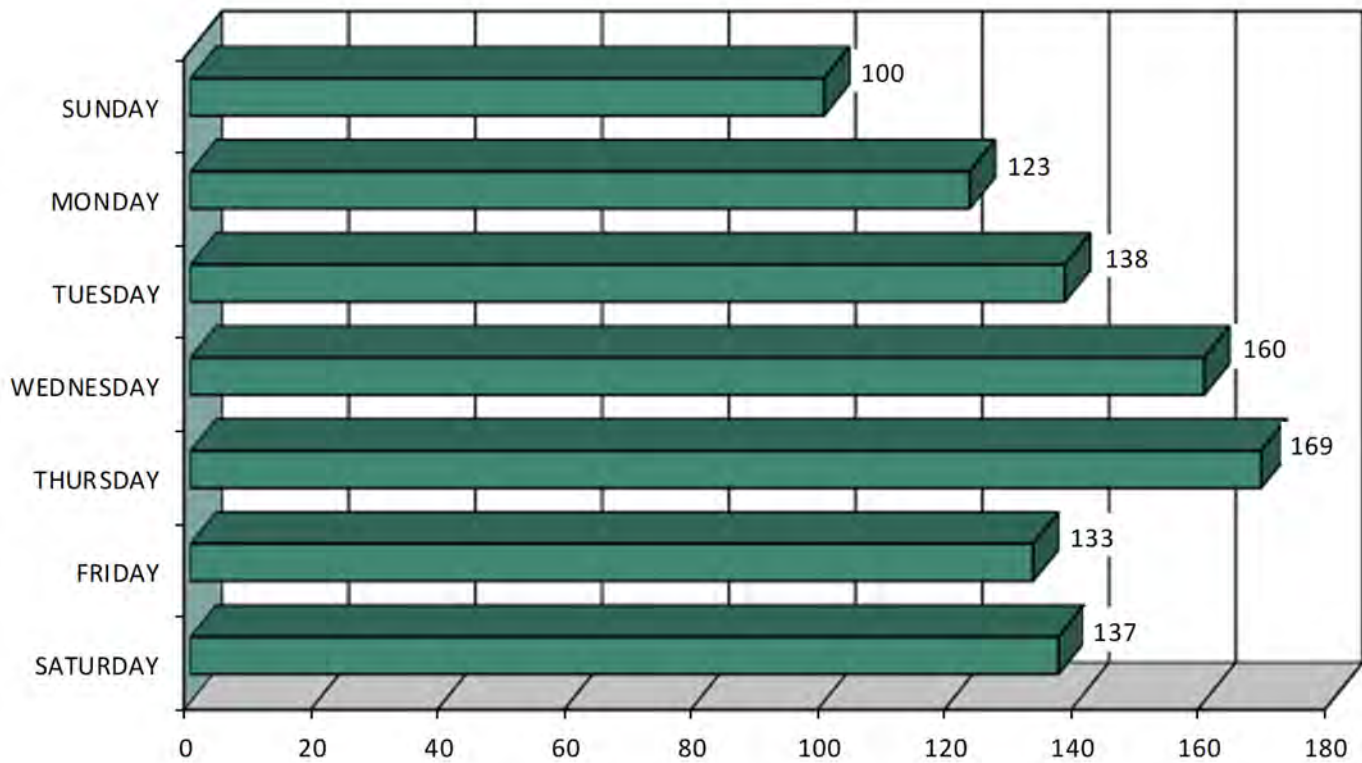
MONTH	2014	2015	2016	2017	2018	FIVE YEAR TOTAL	PERCENT OF TOTAL
JANUARY	1	3	1	2	1	8	0.83%
FEBRUARY	1	0	5	4	0	10	1.04%
MARCH	0	5	8	2	4	19	1.98%
APRIL	8	9	9	9	8	43	4.48%
MAY	17	20	23	22	20	102	10.63%
JUNE	29	30	28	26	27	140	14.58%
JULY	34	36	36	33	22	161	16.77%
AUGUST	47	31	32	31	37	178	18.54%
SEPTEMBER	33	22	33	25	21	134	13.96%
OCTOBER	27	19	18	25	19	108	11.25%
NOVEMBER	5	10	13	6	6	40	4.17%
DECEMBER	5	4	3	2	3	17	1.77%
TOTAL	207	189	209	187	168	960	100.00%



MAINE HIGHWAY BICYCLE CRASHES

BY DAY OF THE WEEK

2014 - 2018



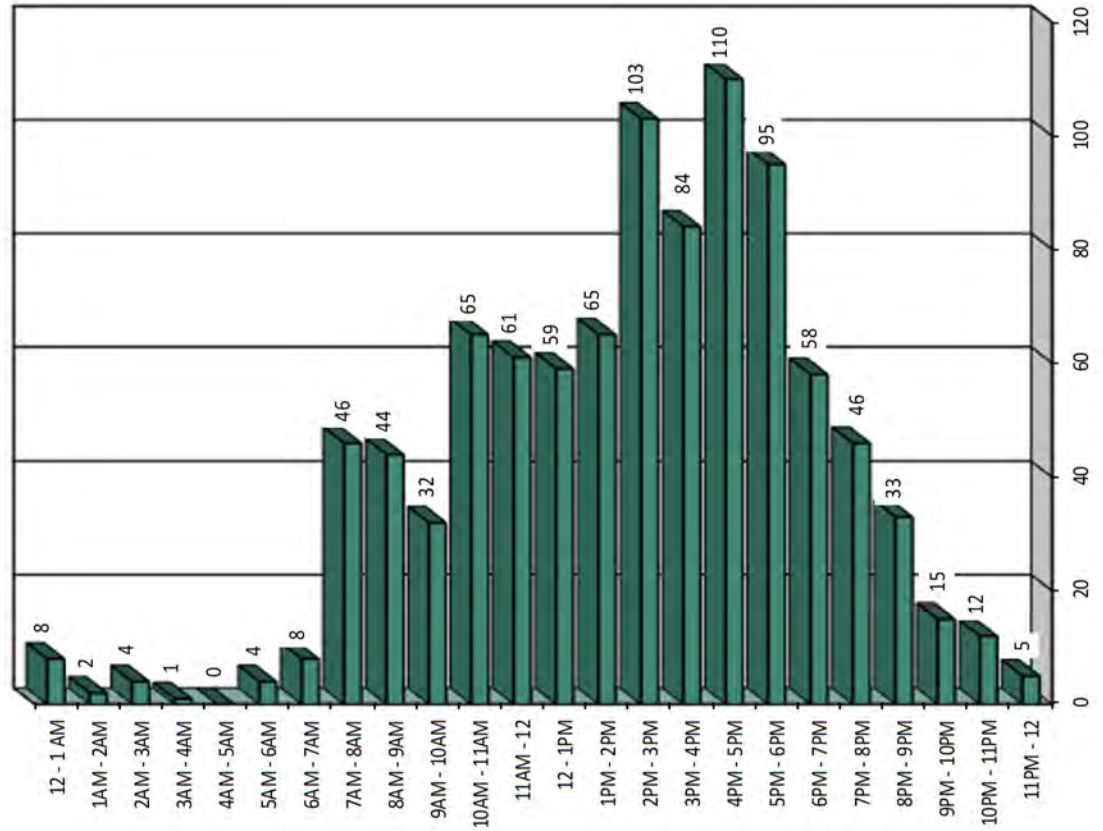
DAY OF THE WEEK	2014	2015	2016	2017	2018	FIVE YEAR TOTAL	PERCENT OF TOTAL
SUNDAY	19	14	23	20	24	100	10.42%
MONDAY	25	26	29	20	23	123	12.81%
TUESDAY	28	25	34	36	15	138	14.38%
WEDNESDAY	43	28	30	29	30	160	16.67%
THURSDAY	35	33	41	35	25	169	17.60%
FRIDAY	26	30	25	21	31	133	13.85%
SATURDAY	31	33	27	26	20	137	14.27%
TOTAL	207	189	209	187	168	960	100.00%



MAINE HIGHWAY BICYCLE CRASHES

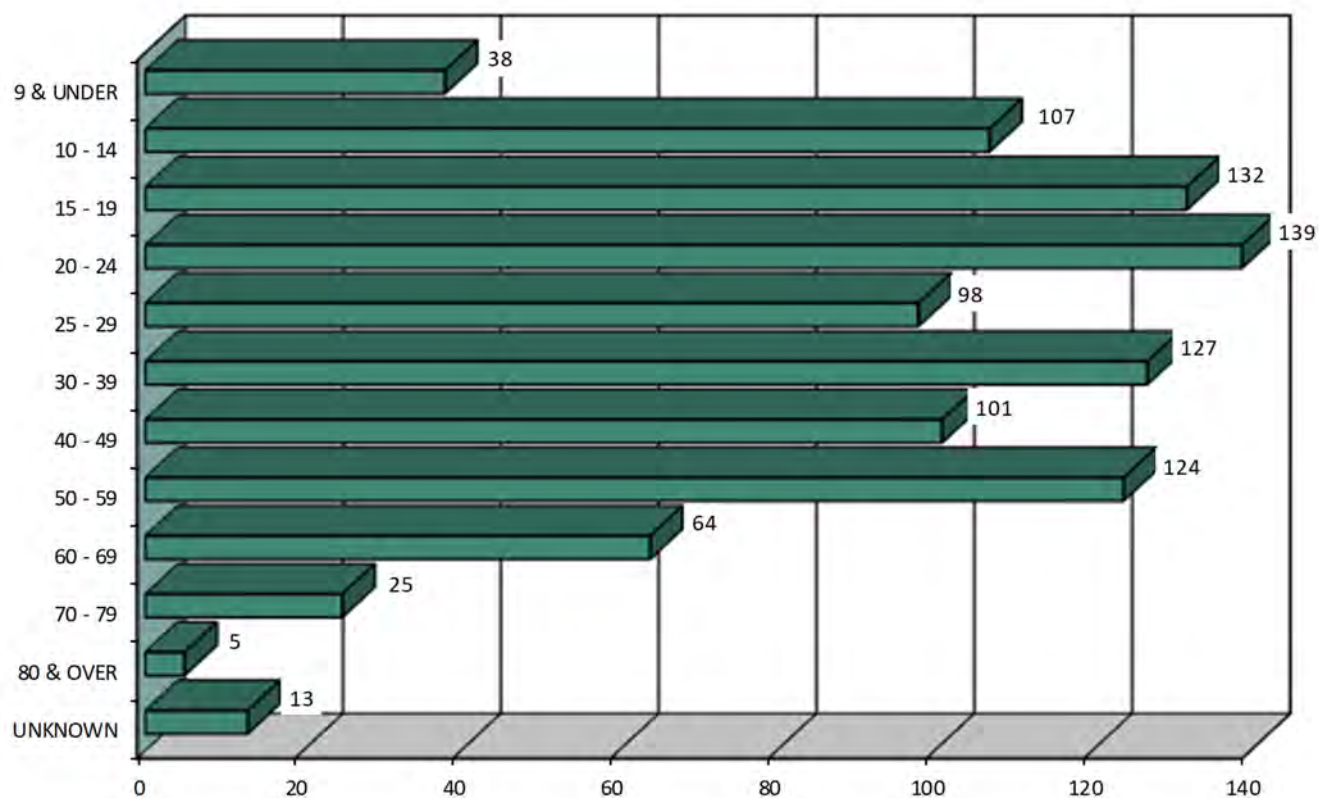
BY TIME OF DAY

2014 - 2018



TIME OF DAY	2014	2015	2016	2017	2018	FIVE YEAR TOTAL
12 - 1 AM	2	1	3	1	1	8
1AM - 2AM	1	0	0	0	1	2
2AM - 3AM	1	1	1	0	1	4
3AM - 4AM	0	1	0	0	0	1
4AM - 5AM	0	0	0	0	0	0
5AM - 6AM	2	0	1	1	0	4
6AM - 7AM	0	2	1	3	2	8
7AM - 8AM	10	4	9	10	13	46
8AM - 9AM	5	10	7	13	9	44
9AM - 10AM	8	11	3	8	2	32
10AM - 11AM	15	13	12	9	16	65
11AM - 12	13	16	12	8	12	61
12 - 1PM	12	9	15	14	9	59
1PM - 2PM	9	13	20	9	14	65
2PM - 3PM	20	24	19	22	18	103
3PM - 4PM	20	13	18	18	15	84
4PM - 5PM	24	22	20	21	23	110
5PM - 6PM	25	20	24	17	9	95
6PM - 7PM	13	8	15	14	8	58
7PM - 8PM	15	7	10	7	7	46
8PM - 9PM	6	8	10	4	5	33
9PM - 10PM	3	3	4	3	2	15
10PM - 11PM	2	2	5	3	0	12
11PM - 12	1	1	0	2	1	5
TOTAL	207	189	209	187	168	960

BICYCLISTS INVOLVED IN MAINE HIGHWAY CRASHES BY AGE GROUP



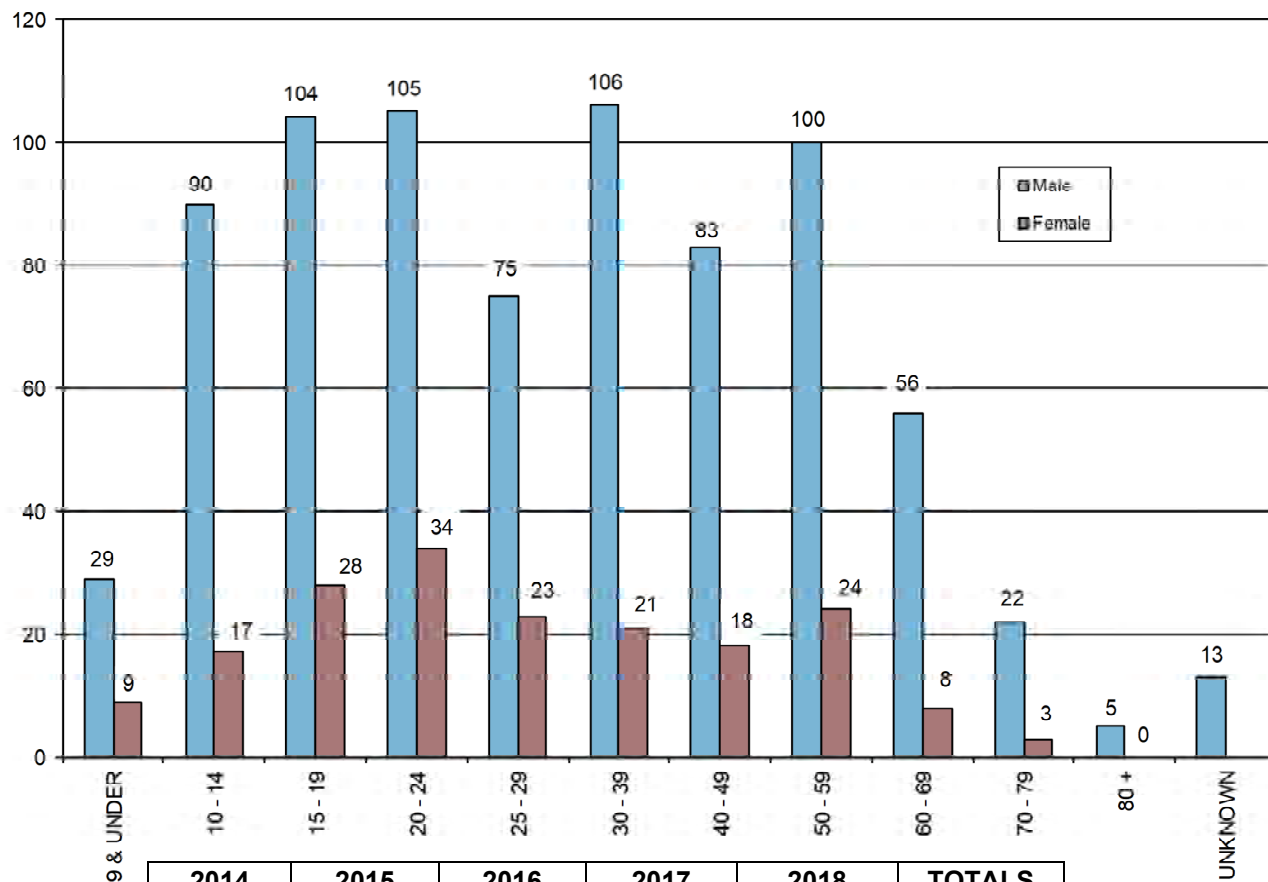
AGE OF BICYCLIST	2014	2015	2016	2017	2018	FIVE YEAR TOTAL	PERCENT OF TOTAL
9 & UNDER	6	10	7	7	8	38	3.91%
10 - 14	16	25	21	30	15	107	11.00%
15 - 19	28	26	32	21	25	132	13.57%
20 - 24	42	17	34	25	21	139	14.29%
25 - 29	22	19	19	20	18	98	10.07%
30 - 39	24	26	25	18	34	127	13.05%
40 - 49	29	19	18	20	15	101	10.38%
50 - 59	27	26	24	27	20	124	12.74%
60 - 69	9	12	19	16	8	64	6.58%
70 - 79	4	8	5	3	5	25	2.57%
80 & OVER	1	0	3	1	0	5	0.51%
UNKNOWN	2	3	5	2	1	13	1.34%
TOTAL	210	191	212	190	170	973	100.00%



BICYCLISTS INVOLVED IN MAINE HIGHWAY CRASHES

BY AGE GROUP AND GENDER

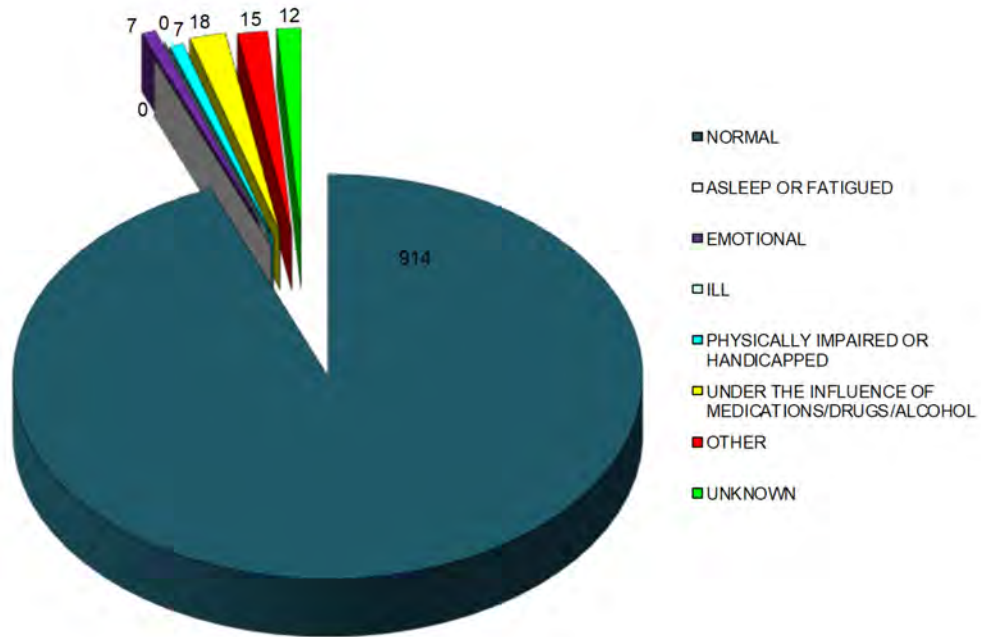
2014 - 2018



	2014		2015		2016		2017		2018		TOTALS			
AGE GROUP OF BICYCLIST BY GENDER	M	F	M	F	M	F	M	F	M	F	M	F	FIVE YEAR TOTAL	PERCENT OF TOTAL
9 & UNDER	5	1	6	4	6	1	6	1	6	2	29	9	38	3.91%
10 - 14	9	7	21	4	20	1	26	4	14	1	90	17	107	11.00%
15 - 19	23	5	18	8	27	5	18	3	18	7	104	28	132	13.57%
20 - 24	34	8	15	2	23	11	16	9	17	4	105	34	139	14.29%
25 - 29	20	2	15	4	12	7	14	6	14	4	75	23	98	10.07%
30 - 39	19	5	24	2	23	2	15	3	25	9	106	21	127	13.05%
40 - 49	25	4	15	4	14	4	17	3	12	3	83	18	101	10.38%
50 - 59	20	7	19	7	22	2	22	5	17	3	100	24	124	12.74%
60 - 69	9	0	11	1	17	2	12	4	7	1	56	8	64	6.58%
70 - 79	4	0	7	1	3	2	3	0	5	0	22	3	25	2.57%
80 & OVER	1	0	0	0	3	0	1	0	0	0	5	0	5	0.51%
UNKNOWN	2		3		5		2		1		13		13	1.34%
TOTAL BY GENDER	169	39	151	37	170	37	150	38	135	34	775	185		
TOTAL	210		191		212		190		170		973		973	100.00%



MAINE HIGHWAY BICYCLE CRASHES BY APPARENT PHYSICAL CONDITIONS 2014 - 2018



BICYCLIST PHYSICAL CONDITION	2014	2015	2016	2017	2018	FIVE YEAR TOTAL	PERCENT OF TOTAL
APPARENTLY NORMAL	197	181	200	179	157	914	93.94%
ASLEEP OR FATIGUED	0	0	0	0	0	0	0.00%
EMOTIONAL (depressed, angry, disturbed, etc.)	0	1	1	1	4	7	0.72%
ILL (sick)	0	0	0	0	0	0	0.00%
PHYSICALLY IMPAIRED OR HANDICAPPED	3	1	1	0	2	7	0.72%
UNDER THE INFLUENCE OF MEDICATIONS/DRUGS/ALCOHOL	7	2	5	4	0	18	1.85%
OTHER	1	1	2	6	5	15	1.54%
UNKNOWN	2	5	3	0	2	12	1.23%
TOTAL	210	191	212	190	170	973	100.00%



CONTRIBUTING FACTORS TO MAINE HIGHWAY BICYCLE CRASHES 2014 - 2018

DRIVER ACTIONS (actions 1 & 2 combined)	2014	2015	2016	2017	2018	Totals
NO CONTRIBUTING ACTION	109	87	107	85	85	473
RAN OFF ROADWAY	1	2	1	3	0	7
FAILED TO YIELD RIGHT-OF-WAY	53	50	60	52	47	262
RAN RED LIGHT	2	0	0	1	0	3
RAN STOP SIGN	4	1	3	0	0	8
DISREGARDED OTHER TRAFFIC SIGN	0	1	1	0	0	2
DISREGARDED OTHER ROAD MARKINGS	0	1	0	0	0	1
EXCEEDED POSTED SPEED LIMIT	0	1	2	0	0	3
DROVE TOO FAST FOR CONDITIONS	0	1	0	1	0	2
IMPROPER TURN	5	11	9	6	6	37
IMPROPER BACKING	2	0	2	2	1	7
IMPROPER PASSING	1	2	3	2	0	8
WRONG WAY	0	0	0	0	1	1
FOLLOWED TOO CLOSELY	1	2	0	1	2	6
FAILED TO KEEP IN PROPER LANE	0	3	2	3	2	10
OPERATED MOTOR VEHICLE IN ERRATIC, RECKLESS, CARELESS, NEGLIGENT OR AGGRESSIVE MANNER	1	2	5	7	4	19
SWERVED OR AVOIDED DUE TO WIND, SLIPPERY SURFACE, MOTOR VEHICLE, OBJECT, NON-MOTORIST IN ROADWAY	4	1	1	0	1	7
OVER-CORRECTING/OVER-STEERING	0	0	0	0	0	0
OTHER CONTRIBUTING ACTION	7	13	8	7	10	45
UNKNOWN	11	14	7	7	19	58
TOTALS	201	192	211	177	178	959
BICYCLIST ACTIONS						
RIDING WITH TRAFFIC	90	77	77	67	72	383
RIDING AGAINST TRAFFIC	30	21	39	38	29	157
MAKING RIGHT TURN	2	3	3	4	1	13
MAKING LEFT TURN	9	8	12	8	8	45
MAKING U TURN	0	0	2	0	1	3
RIDING ACROSS ROAD	49	46	47	50	32	224
SLOWING, STOPPING, STARTING IN ROAD	3	4	2	6	4	19
OTHER BYCLIST ACTION	15	19	16	15	16	81
UNKNOWN	2	3	4	2	7	18
TOTALS	200	181	202	190	170	943
VEHICULAR FACTORS						
NONE	191	172	193	170	158	884
BRAKES	0	0	1	0	1	2
EXHAUST SYSTEM	0	0	1	0	0	1
BODY, DOORS	0	1	0	1	1	3
STEERING	0	0	0	0	0	0
POWER TRAIN	0	0	0	0	0	0
SUSPENSION	0	0	0	0	0	0
TIRES	0	0	0	0	0	0
WHEELS	0	0	0	0	0	0
LIGHTS (head, signal, tail, brake)	0	0	0	0	0	0
WINDOWS/WINDSHIELD	0	0	0	0	0	0
MIRRORS	0	0	0	0	0	0
WIPERS	0	0	0	0	0	0
TRUCK COUPLING/TRAILER HITCH/SAFETY CHAINS	0	0	0	0	0	0
OTHER	2	1	2	0	0	5
TOTALS	193	174	197	171	160	895

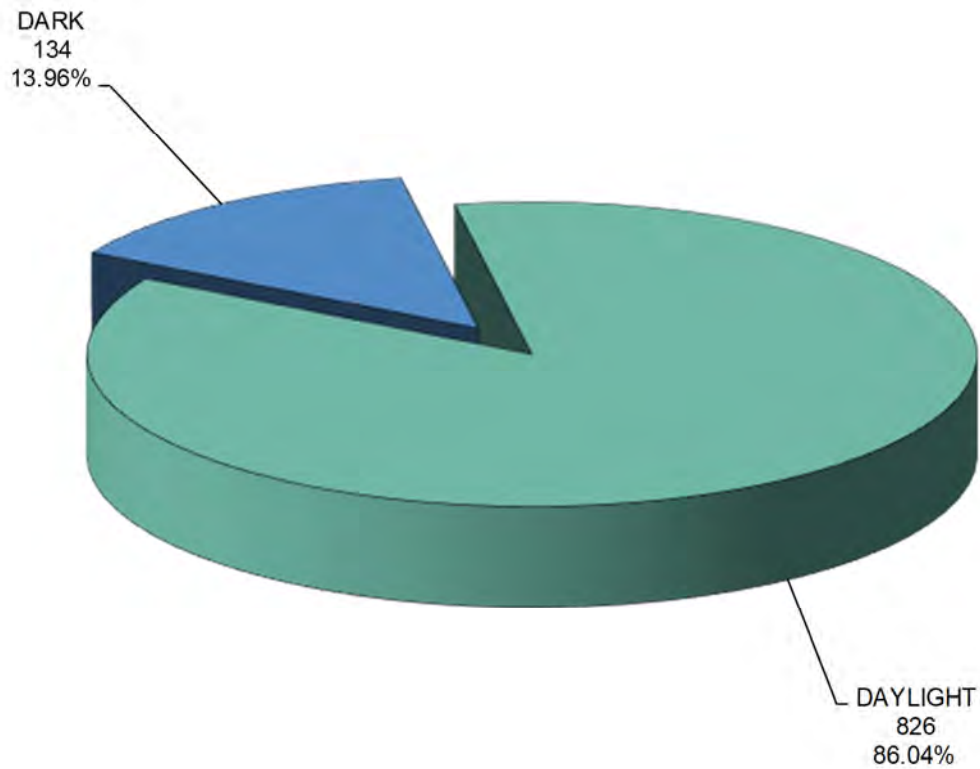


VEHICLES INVOLVED IN MAINE HIGHWAY BICYCLE CRASHES 2014- 2018

VEHICLE TYPE INVOLVED IN BICYCLE CRASHES	2014	2015	2016	2017	2018	FIVE YEAR TOTAL
PASSENGER CAR	132	105	123	117	100	577
(SPORT) UTILITY VEHICLE	26	38	31	31	27	153
PASSENGER VAN	8	7	10	4	3	32
CARGO VAN (10k or less)	2	1	3	3	2	11
PICKUP TRUCK	28	22	31	20	26	127
MOTOR HOME	0	0	1	0	0	1
SCHOOL BUS	0	1	0	0	0	1
TRANSIT BUS	1	0	0	0	0	1
MOTOR COACH	0	0	0	0	0	0
OTHER BUS	0	0	0	0	0	0
MOTORCYCLE	2	4	3	1	2	12
MOPED	0	0	0	0	0	0
LOW SPEED VEHICLE	0	0	0	0	0	0
AUTOCYCLE	0	0	0	0	0	0
EXPERIMENTAL	0	0	0	0	0	0
OTHER LIGHT TRUCK (10,000 lbs or less)	0	1	0	0	2	3
MEDIUM /HEAVY TRUCKS (more than 10,000 lbs)	2	2	2	4	1	11
ATV (2,3,4-WHEEL)	0	0	0	0	0	0
SNOWMOBILE	0	0	0	0	0	0
PEDESTRIAN	1	1	1	1	0	4
BICYCLE	210	191	212	190	170	973
OTHER	7	5	5	1	2	20
TOTAL VEHICLES INVOLVED	419	378	422	372	335	1,926



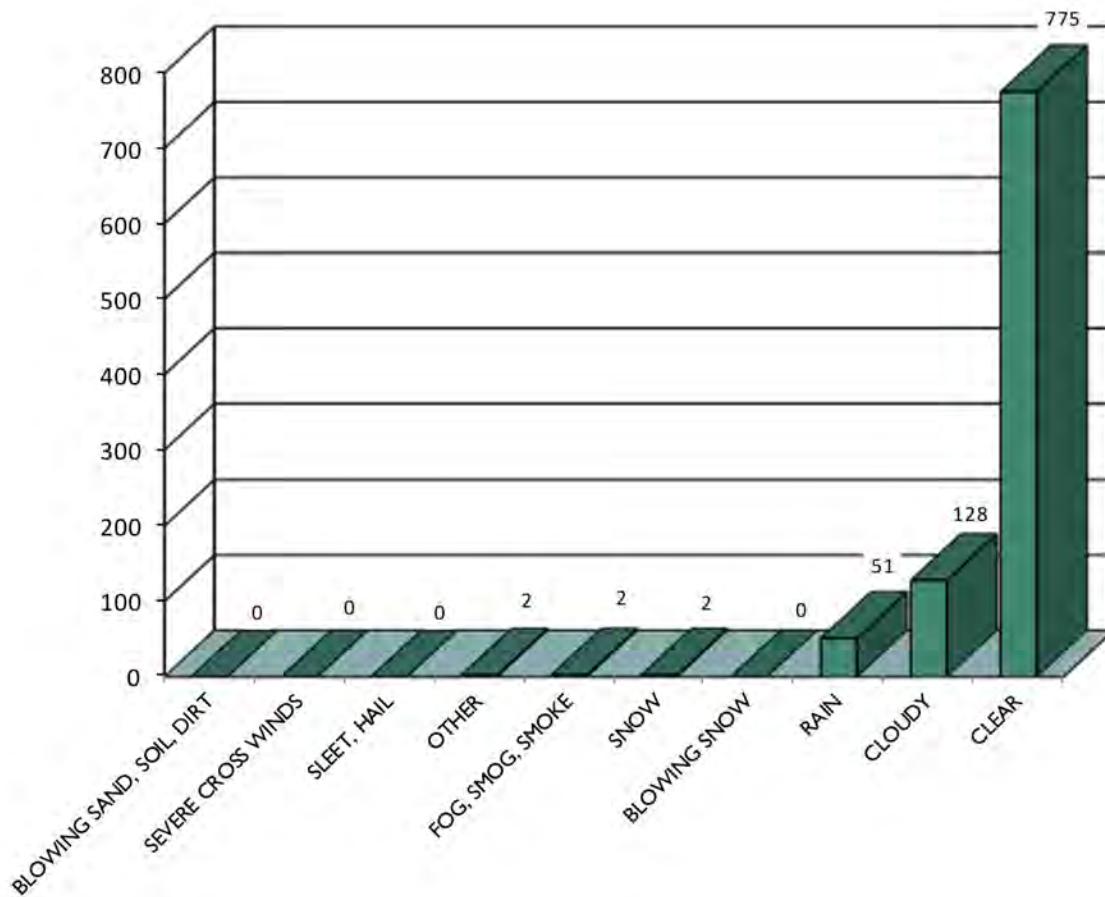
MAINE HIGHWAY BICYCLE CRASHES BY LIGHT CONDITION 2014 - 2018



LIGHT CONDITION	2014	2015	2016	2017	2018	FIVE YEAR TOTAL	PERCENT OF TOTAL
DAYLIGHT	174	164	171	164	153	826	86.04%
DARK	33	25	38	23	15	134	13.96%
TOTAL	207	189	209	187	168	960	100.00%



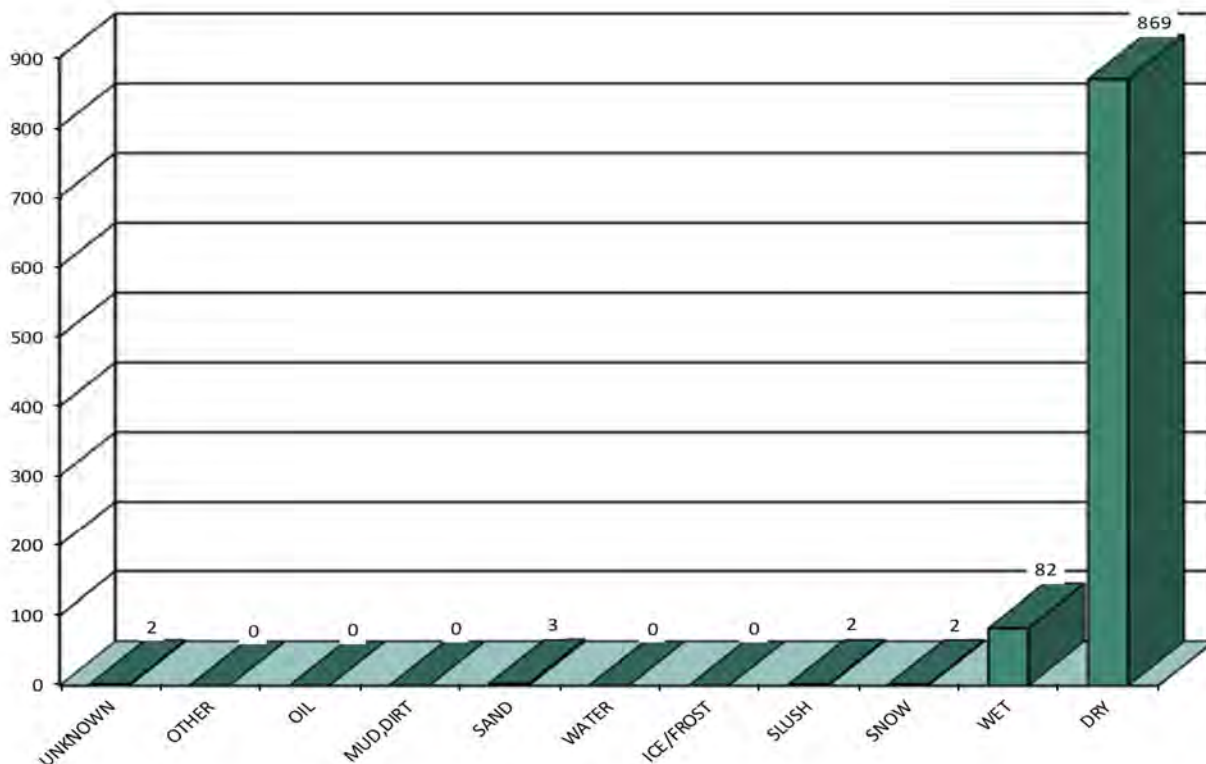
MAINE HIGHWAY BICYCLE CRASHES BY WEATHER CONDITIONS 2014 - 2018



WEATHER CONDITIONS	2014	2015	2016	2017	2018	FIVE YEAR TOTAL
BLOWING SAND, SOIL, DIRT	0	0	0	0	0	0
SEVERE CROSS WINDS	0	0	0	0	0	0
SLEET, HAIL (freezing rain or drizzle)	0	0	0	0	0	0
OTHER	0	1	0	0	1	2
FOG, SMOG, SMOKE	0	1	1	0	0	2
SNOW	0	1	0	1	0	2
BLOWING SNOW	0	0	0	0	0	0
RAIN	15	7	7	11	11	51
CLOUDY	26	29	32	27	14	128
CLEAR	166	150	169	148	142	775
TOTAL	207	189	209	187	168	960



MAINE HIGHWAY BICYCLE CRASHES BY ROAD SURFACE CONDITIONS 2014 - 2018



ROAD SURFACE CONDITIONS	2014	2015	2016	2017	2018	FIVE YEAR TOTAL
UNKNOWN	0	1	0	0	1	2
OTHER	0	0	0	0	0	0
OIL	0	0	0	0	0	0
MUD, DIRT	0	0	0	0	0	0
SAND	1	1	0	1	0	3
WATER (standing, moving)	0	0	0	0	0	0
ICE/FROST	0	0	0	0	0	0
SLUSH	0	1	0	1	0	2
SNOW	0	0	0	1	1	2
WET	20	15	16	15	16	82
DRY	186	171	193	169	150	869
TOTAL	207	189	209	187	168	960

