

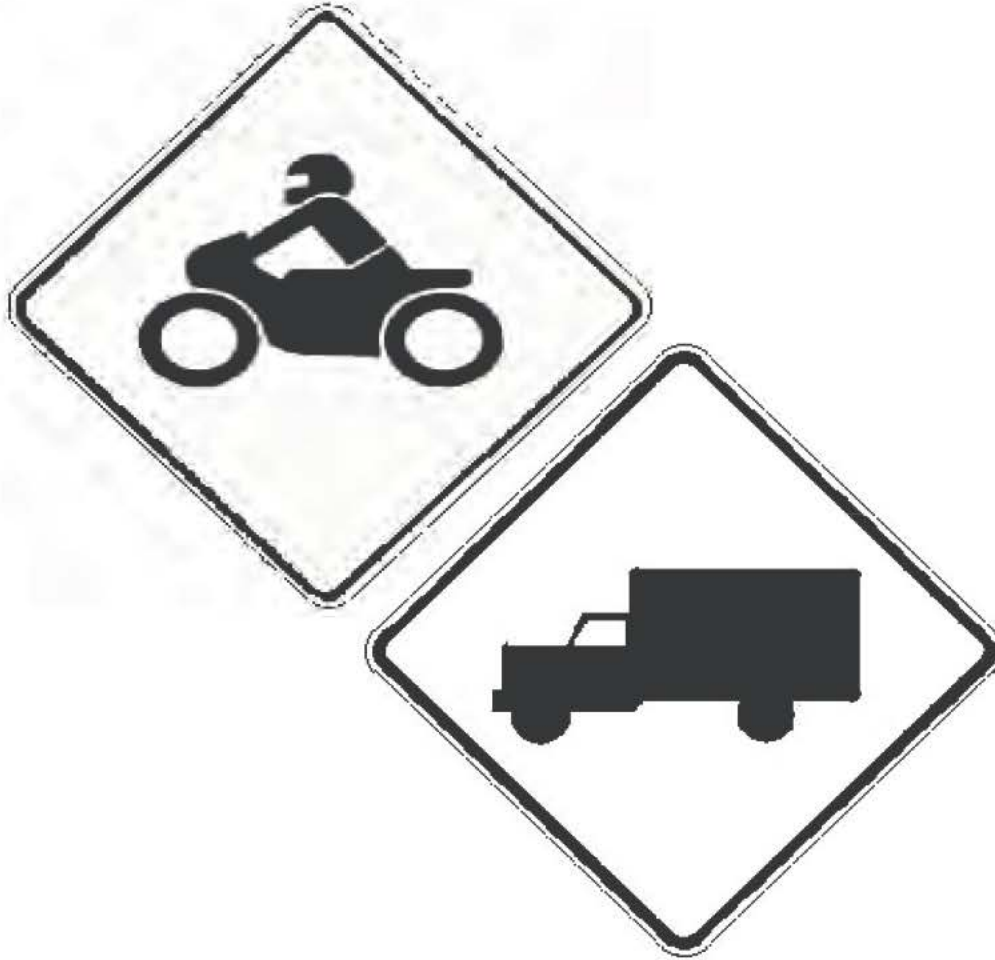
MAINE STATE LEGISLATURE

The following document is provided by the
LAW AND LEGISLATIVE DIGITAL LIBRARY
at the Maine State Law and Legislative Reference Library
<http://legislature.maine.gov/lawlib>



Reproduced from electronic originals
(may include minor formatting differences from printed original)

**STATE OF MAINE
MOTORCYCLE CRASH HISTORY
2010 - 2014**



**STATE OF MAINE
TRUCK CRASH HISTORY
2010 - 2014**

Prepared by:
Maine Department of Transportation
Bureau of Maintenance and Operations
Traffic Engineering Division
Crash Records Section
16 State House Station
Augusta, Maine 04333-0016

STATE OF MAINE

HIGHWAY MOTORCYCLE CRASHES

2010 - 2014

I. PREFACE 1

II. MOTORCYCLE CRASH TABLES AND CHARTS 2010-2014

Crashes Summarized by:

County	2-5
Severity	6-7
Rural/Urban Designations	8
Month	9
Day of Week	10
Time of Day	11
Age Groups	12
Age Groups by Gender	13
Contributing Factors	14-15
Apparent Physical Condition	16
Vehicle Type	17
Injury by Helmet Use	18
Light Conditions	19
Weather Conditions	20
Road Surface Conditions	21

STATEWIDE MOTORCYCLE CRASHES

2010 - 2014

Preface

This publication is a statistical review of reported motor vehicle crashes that involved motorcycles in Maine during the five-year study period 2010 - 2014. The statistics are compiled from crash reports submitted to the Department of Transportation by the Traffic Division, Department of Public Safety. The Traffic Division receives all police uniform crash reports Form 13:20 A, from state, county and local police agencies.

The enclosed charts, graphs, listings and summaries were produced using the Department of Transportation's Computerized Crash Records System. Except for adjustments to locations and crash-type information for accuracy, no attempt has been made to modify the raw data received from the reporting agencies. However, because crash scenes are often dangerous and chaotic, some inaccuracies in data collection are possible.

A comparison of this report with other summaries of crashes and fatalities may also reveal inconsistencies due to changes in crash classification, late submittals, and differing reporting criteria.



M1

The Department of Transportation and the Department of Public Safety wish to express our sincere thank you to all law enforcement agencies and officers for the work they do on crash investigations. Without their dedication, this report would not be possible.

We welcome your comments and suggestions on this report at:

Maine Department of Transportation
Bureau of Maintenance and Operations
Traffic Engineering Division
Crash Records Section
16 State House Station
Augusta, ME 04333-0016

Tel: 207-624-3618

Fax: 207-624-3101

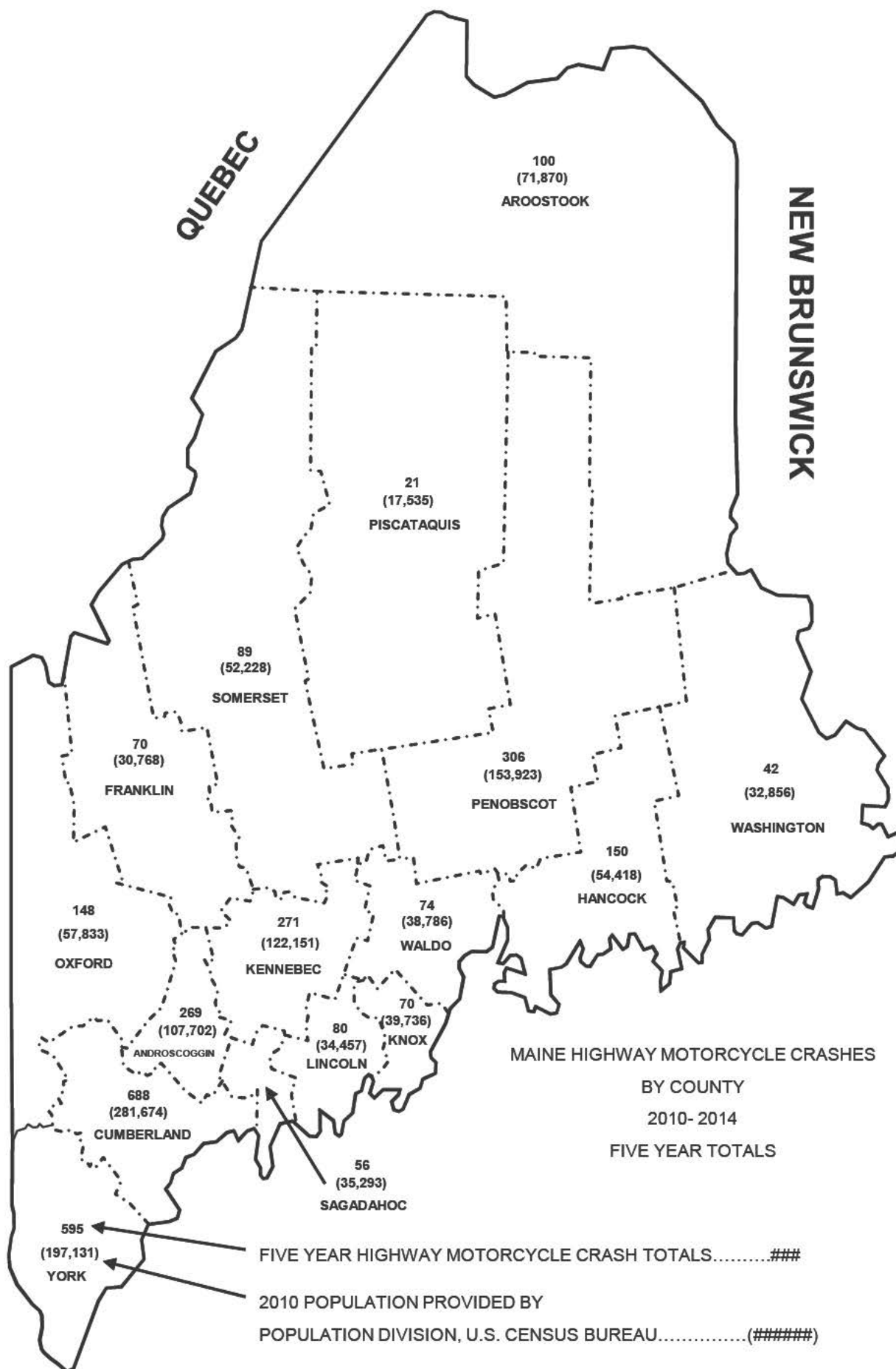


M2

NEW HAMPSHIRE

QUEBEC

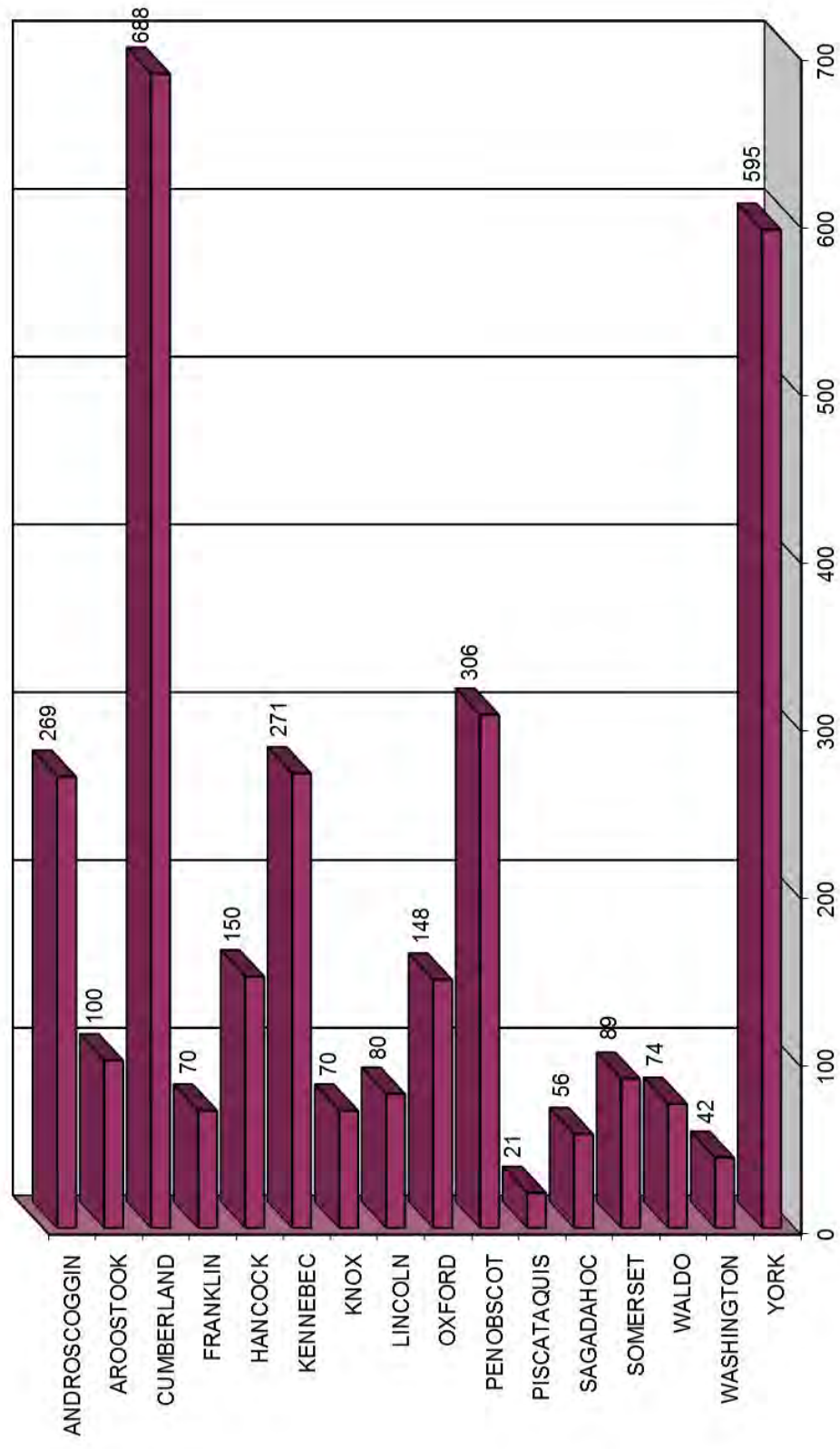
NEW BRUNSWICK



MAINE HIGHWAY MOTORCYCLE CRASHES

By County

2010 - 2014



MAINE HIGHWAY MOTORCYCLE CRASH SEVERITY BY COUNTY

2010 - 2014



M4

COUNTY	INJURY TYPE	2010	2011	2012	2013	2014	TOTAL CRASHES	PERCENT OF TOTAL
ANDROSCOGGIN Percent personal injury 86.99%	FATAL (K)	2	3	2	0	1	8	0.26%
	INCAPACITATING (A)	10	8	10	8	8	44	1.45%
	NON-INCAPACITATING (B)	23	22	17	25	21	108	3.57%
	POSSIBLE INJURY (C)	13	18	16	15	12	74	2.44%
	PROPERTY DAMAGE ONLY (PDO)	8	3	11	7	6	35	1.16%
	COUNTY SUBTOTAL	56	54	56	55	48	269	8.88%
AROOSTOOK Percent personal injury 91.00%	FATAL (K)	0	0	3	0	1	4	0.13%
	INCAPACITATING (A)	4	2	6	5	5	22	0.73%
	NON-INCAPACITATING (B)	4	10	9	4	4	31	1.02%
	POSSIBLE INJURY (C)	5	8	4	8	9	34	1.12%
	PROPERTY DAMAGE ONLY (PDO)	1	2	2	1	3	9	0.30%
	COUNTY SUBTOTAL	14	22	24	18	22	100	3.30%
CUMBERLAND Percent personal injury 83.14%	FATAL (K)	3	3	1	2	1	10	0.33%
	INCAPACITATING (A)	18	28	28	23	26	123	4.06%
	NON-INCAPACITATING (B)	41	54	65	36	38	234	7.73%
	POSSIBLE INJURY (C)	35	38	28	54	50	205	6.77%
	PROPERTY DAMAGE ONLY (PDO)	16	26	23	25	26	116	3.83%
	COUNTY SUBTOTAL	113	149	145	140	141	688	22.71%
FRANKLIN Percent personal injury 85.71%	FATAL (K)	1	0	0	1	0	2	0.07%
	INCAPACITATING (A)	2	5	5	1	4	17	0.56%
	NON-INCAPACITATING (B)	5	4	7	4	5	25	0.83%
	POSSIBLE INJURY (C)	3	4	0	4	5	16	0.53%
	PROPERTY DAMAGE ONLY (PDO)	2	2	3	3	0	10	0.33%
	COUNTY SUBTOTAL	13	15	15	13	14	70	2.31%
HANCOCK Percent personal injury 85.33%	FATAL (K)	0	0	1	0	0	1	0.03%
	INCAPACITATING (A)	7	7	5	7	8	34	1.12%
	NON-INCAPACITATING (B)	19	17	14	5	5	60	1.98%
	POSSIBLE INJURY (C)	4	9	6	7	7	33	1.09%
	PROPERTY DAMAGE ONLY (PDO)	4	5	7	2	4	22	0.73%
	COUNTY SUBTOTAL	34	38	33	21	24	150	4.95%
KENNEBEC Percent personal injury 84.13%	FATAL (K)	1	3	1	2	2	9	0.30%
	INCAPACITATING (A)	9	15	7	11	13	55	1.82%
	NON-INCAPACITATING (B)	14	24	20	22	16	96	3.17%
	POSSIBLE INJURY (C)	14	12	14	10	18	68	2.24%
	PROPERTY DAMAGE ONLY (PDO)	11	5	5	10	12	43	1.42%
	COUNTY SUBTOTAL	49	59	47	55	61	271	8.95%
KNOX Percent personal injury 87.14%	FATAL (K)	0	0	0	0	0	0	0.00%
	INCAPACITATING (A)	2	4	4	3	3	16	0.53%
	NON-INCAPACITATING (B)	6	7	5	6	5	29	0.96%
	POSSIBLE INJURY (C)	3	5	1	2	5	16	0.53%
	PROPERTY DAMAGE ONLY (PDO)	1	0	0	4	4	9	0.30%
	COUNTY SUBTOTAL	12	16	10	15	17	70	2.31%
LINCOLN Percent personal injury 92.50%	FATAL (K)	2	0	1	0	1	4	0.13%
	INCAPACITATING (A)	3	6	5	6	3	23	0.76%
	NON-INCAPACITATING (B)	5	9	3	8	5	30	0.99%
	POSSIBLE INJURY (C)	3	5	4	1	4	17	0.56%
	PROPERTY DAMAGE ONLY (PDO)	1	1	1	1	2	6	0.20%
	COUNTY SUBTOTAL	14	21	14	16	15	80	2.64%

MAINE HIGHWAY MOTORCYCLE CRASH SEVERITY BY COUNTY

2010 - 2014

COUNTY	INJURY TYPE	2010	2011	2012	2013	2014	TOTAL CRASHES	PERCENT OF TOTAL
OXFORD Percent personal injury 85.14%	FATAL (K)	3	0	3	0	1	7	0.23%
	INCAPACITATING (A)	9	8	7	7	5	36	1.19%
	NON-INCAPACITATING (B)	8	13	12	10	10	53	1.75%
	POSS BLE INJURY (C)	3	4	8	9	6	30	0.99%
	PROPERTY DAMAGE ONLY (PDO)	1	4	7	4	6	22	0.73%
	COUNTY SUBTOTAL	24	29	37	30	28	148	4.89%
PENOBSCOT Percent personal injury 84.64%	FATAL (K)	0	1	2	1	0	4	0.13%
	INCAPACITATING (A)	2	10	19	15	7	53	1.75%
	NON-INCAPACITATING (B)	24	29	20	19	21	113	3.73%
	POSS BLE INJURY (C)	14	13	27	15	20	89	2.94%
	PROPERTY DAMAGE ONLY (PDO)	9	7	11	12	8	47	1.55%
	COUNTY SUBTOTAL	49	60	79	62	56	306	10.10%
PISCATAQUIS Percent personal injury 90.48%	FATAL (K)	1	0	0	0	0	1	0.03%
	INCAPACITATING (A)	1	0	0	1	1	3	0.10%
	NON-INCAPACITATING (B)	1	2	4	0	3	10	0.33%
	POSS BLE INJURY (C)	1	0	1	2	1	5	0.17%
	PROPERTY DAMAGE ONLY (PDO)	0	1	0	1	0	2	0.07%
	COUNTY SUBTOTAL	4	3	5	4	5	21	0.69%
SAGadahoc Percent personal injury 94.64%	FATAL (K)	0	0	0	0	1	1	0.03%
	INCAPACITATING (A)	4	3	2	1	1	11	0.36%
	NON-INCAPACITATING (B)	3	8	4	5	5	25	0.83%
	POSS BLE INJURY (C)	3	1	2	5	5	16	0.53%
	PROPERTY DAMAGE ONLY (PDO)	1	1	0	1	0	3	0.10%
	COUNTY SUBTOTAL	11	13	8	12	12	56	1.85%
SOMERSET Percent personal injury 84.27%	FATAL (K)	1	2	2	0	1	6	0.20%
	INCAPACITATING (A)	9	2	7	3	3	24	0.79%
	NON-INCAPACITATING (B)	4	8	7	0	7	26	0.86%
	POSS BLE INJURY (C)	3	5	4	4	3	19	0.63%
	PROPERTY DAMAGE ONLY (PDO)	1	1	4	3	5	14	0.46%
	COUNTY SUBTOTAL	18	18	24	10	19	89	2.94%
WALDO Percent personal injury 91.89%	FATAL (K)	0	1	2	0	0	3	0.10%
	INCAPACITATING (A)	1	1	4	2	7	15	0.50%
	NON-INCAPACITATING (B)	8	4	6	1	6	25	0.83%
	POSS BLE INJURY (C)	6	3	5	8	3	25	0.83%
	PROPERTY DAMAGE ONLY (PDO)	2	1	0	0	3	6	0.20%
	COUNTY SUBTOTAL	17	10	17	11	19	74	2.44%
WASHINGTON Percent personal injury 83.33%	FATAL (K)	1	0	0	1	0	2	0.07%
	INCAPACITATING (A)	1	2	2	1	3	9	0.30%
	NON-INCAPACITATING (B)	2	3	4	3	2	14	0.46%
	POSS BLE INJURY (C)	2	0	3	2	3	10	0.33%
	PROPERTY DAMAGE ONLY (PDO)	4	0	1	1	1	7	0.23%
	COUNTY SUBTOTAL	10	5	10	8	9	42	1.39%
YORK Percent personal injury 86.05%	FATAL (K)	2	1	4	5	1	13	0.43%
	INCAPACITATING (A)	22	18	24	30	26	120	3.96%
	NON-INCAPACITATING (B)	38	44	60	41	46	229	7.56%
	POSS BLE INJURY (C)	42	24	24	30	30	150	4.95%
	PROPERTY DAMAGE ONLY (PDO)	19	12	11	23	18	83	2.74%
	COUNTY SUBTOTAL	123	99	123	129	121	595	19.64%
COUNTY GRAND TOTAL Percent personal injury 85.67%	FATAL (K)	17	14	22	12	10	75	2.48%
	INCAPACITATING (A)	104	119	135	124	123	605	19.97%
	NON-INCAPACITATING (B)	205	258	257	189	199	1,108	36.58%
	POSS BLE INJURY (C)	154	149	147	176	181	807	26.64%
	PROPERTY DAMAGE ONLY (PDO)	81	71	86	98	98	434	14.33%
GRAND TOTAL		561	611	647	599	611	3,029	100.00%

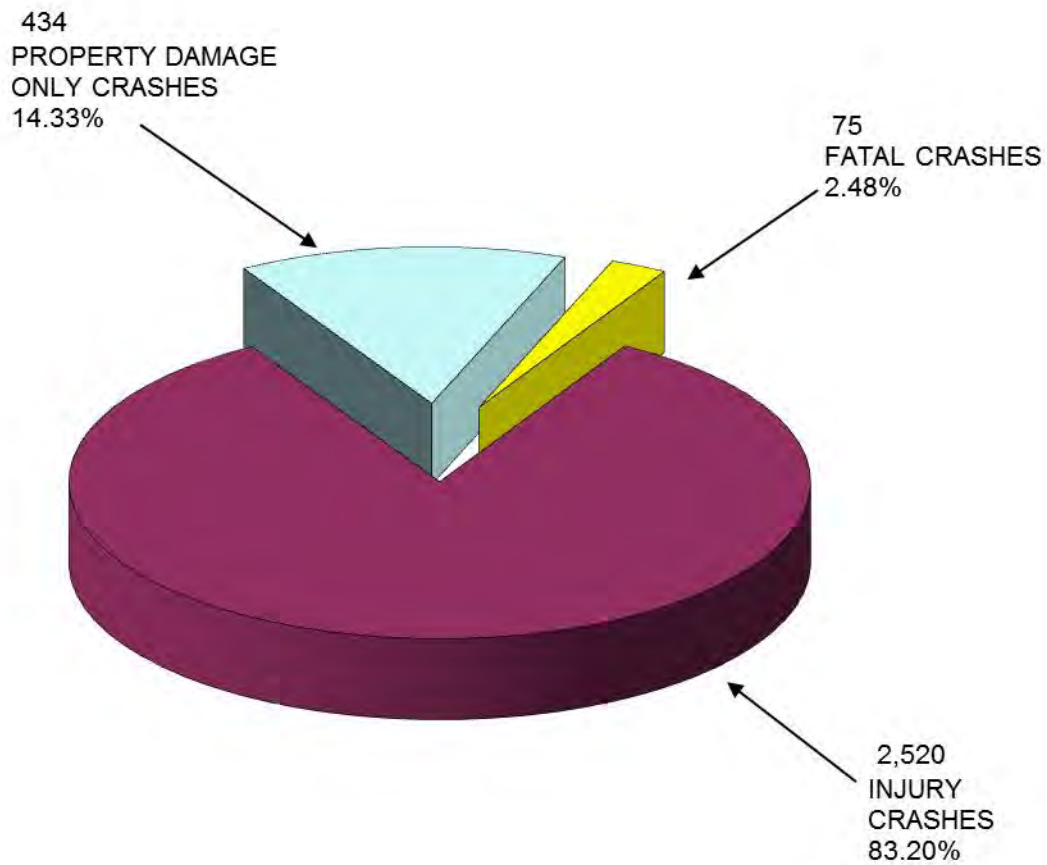


M5

MAINE HIGHWAY MOTORCYCLE CRASHES

2010 - 2014

3,029 TOTAL MOTORCYCLE CRASHES

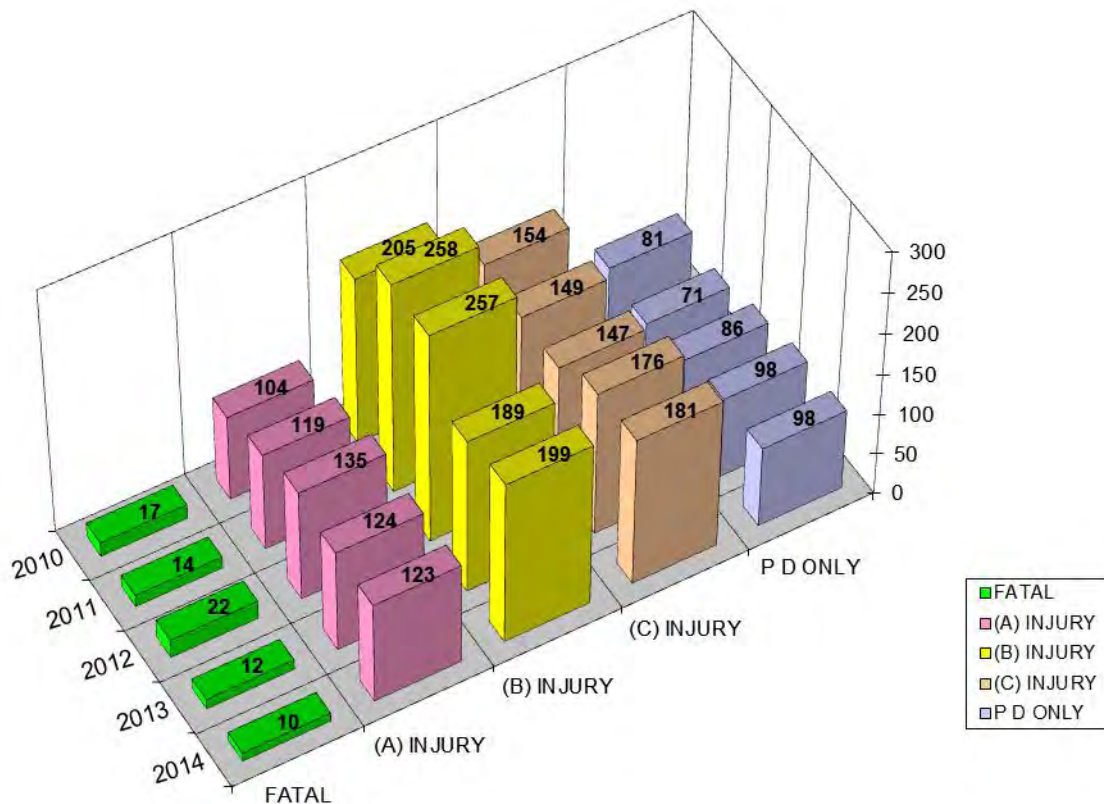


M6

MAINE HIGHWAY MOTORCYCLE CRASH SEVERITY

BY YEAR

2010 - 2014



M7

YEAR	FATAL CRASH (K)	INCAPACITATING INJURY (A)	NON INCAPACITATING INJURY (B)	POSSIBLE INJURY (C)	PROPERTY DAMAGE ONLY (PDO)	TOTAL CRASHES
2010	17	104	205	154	81	561
2011	14	119	258	149	71	611
2012	22	135	257	147	86	647
2013	12	124	189	176	98	599
2014	10	123	199	181	98	611
TOTAL	75	605	1,108	807	434	3,029
PERCENT	2.48%	PERCENT INJURY CRASHES =		83.20%	14.33%	100.00%

(K) = Fatal injury. A fatal injury is any injury that results in death.

(A) = Incapacitating injury. An Incapacitating injury is any injury, other than a fatal injury, which prevents the injured person from walking, driving or normally continuing the activities the person was capable of performing before the injury occurred.

(B) = Nonincapacitating injury. A Nonincapacitating injury is any injury, other than fatal injury or an incapacitating injury, which is evident to observers at the scene of the accident in which the injury occurred.

(C) = Possible injury. A possible injury is any injury reported or claimed which is not a fatal injury, incapacitating injury or nonincapacitating injury.

(PDO) = Property Damage only. Damage is harm to property that reduces the monetary value of that property.

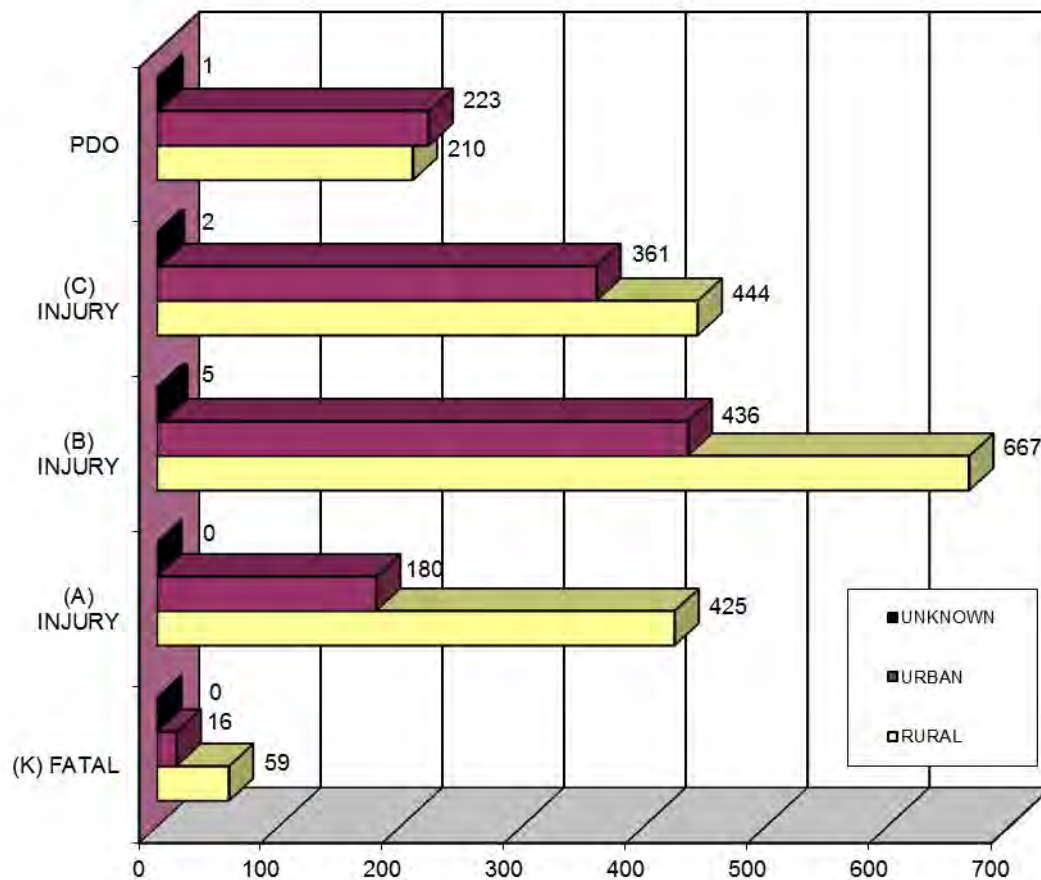
MAINE HIGHWAY MOTORCYCLE CRASH SEVERITY

BY RURAL URBAN DESIGNATION

2010 - 2014



M8

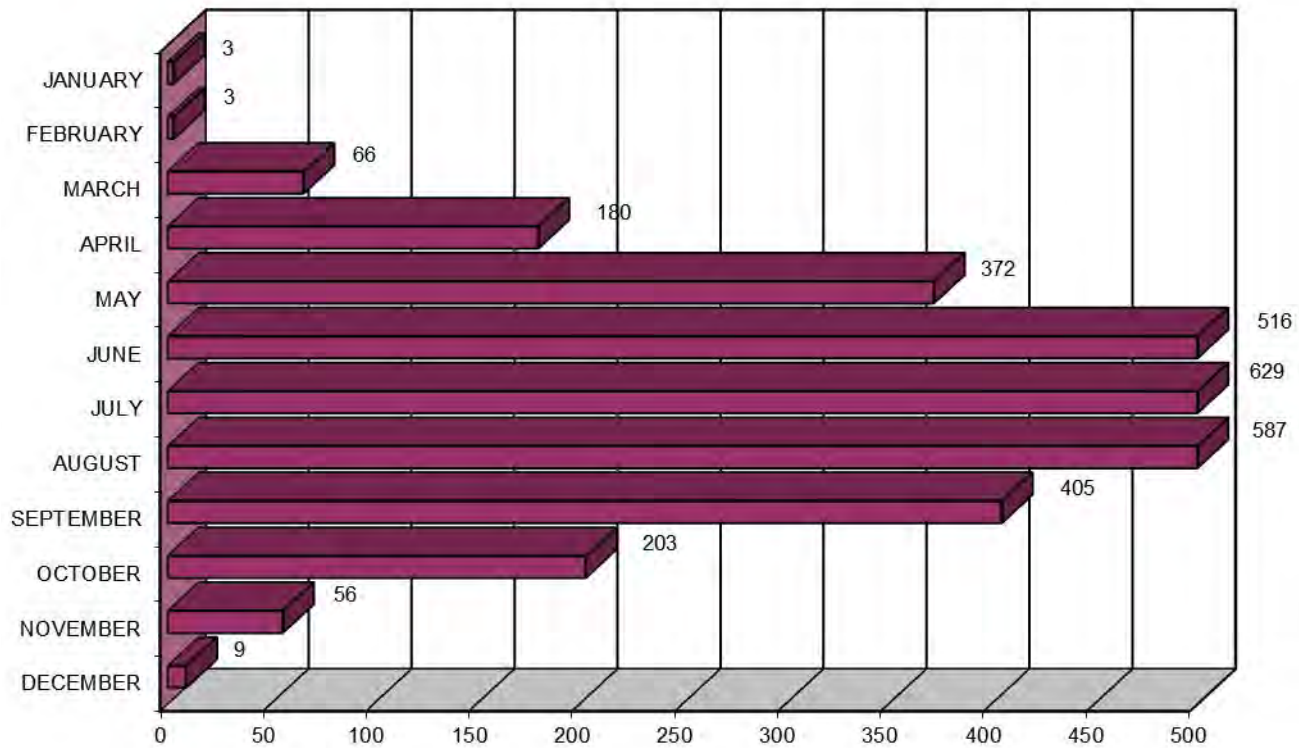


RURAL URBAN DESIGNATION		FATAL CRASH (K)	INCAPACITATING INJURY (A)	NON INCAPACITATING INJURY (B)	POSSIBLE INJURY (C)	PROPERTY DAMAGE ONLY (PDO)	FIVE YEAR TOTAL
RURAL	(1)	59	425	667	444	210	1,805
URBAN	(2)	16	180	436	361	223	1,216
UNKNOWN		0	0	5	2	1	8
TOTAL		75	605	1,108	807	434	3,029

MAINE HIGHWAY MOTORCYCLE CRASHES

By Month

2010 - 2014

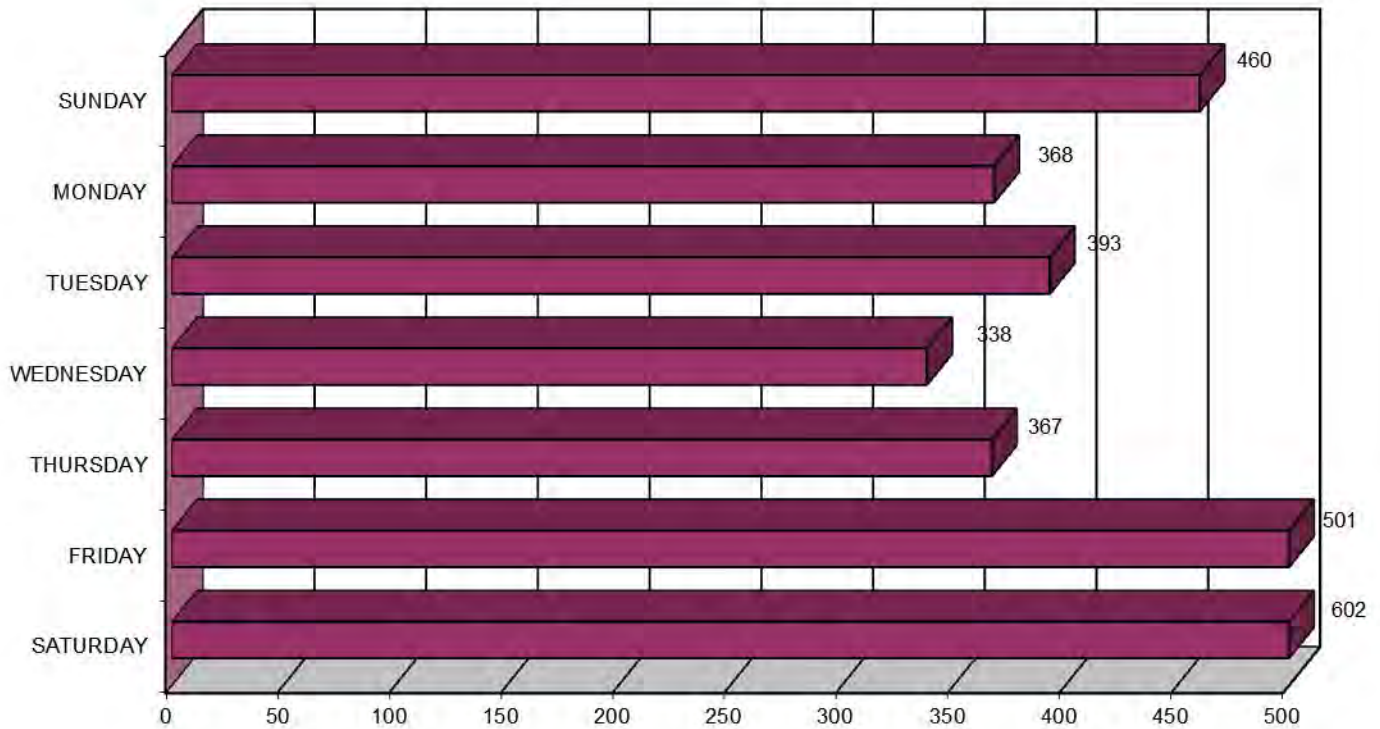


MONTH	2010	2011	2012	2013	2014	FIVE YEAR TOTAL	PERCENT OF TOTAL
JANUARY	1	0	1	1	0	3	0.10%
FEBRUARY	0	1	2	0	0	3	0.10%
MARCH	23	5	27	9	2	66	2.18%
APRIL	54	35	34	29	28	180	5.94%
MAY	71	58	83	98	62	372	12.28%
JUNE	89	108	110	89	120	516	17.04%
JULY	96	149	134	105	145	629	20.77%
AUGUST	107	102	135	122	121	587	19.38%
SEPTEMBER	72	78	72	89	94	405	13.37%
OCTOBER	35	51	39	48	30	203	6.70%
NOVEMBER	13	19	8	9	7	56	1.85%
DECEMBER	0	5	2	0	2	9	0.30%
TOTAL	561	611	647	599	611	3,029	100.00%

MAINE HIGHWAY MOTORCYCLE CRASHES

BY DAY OF THE WEEK

2010 - 2014

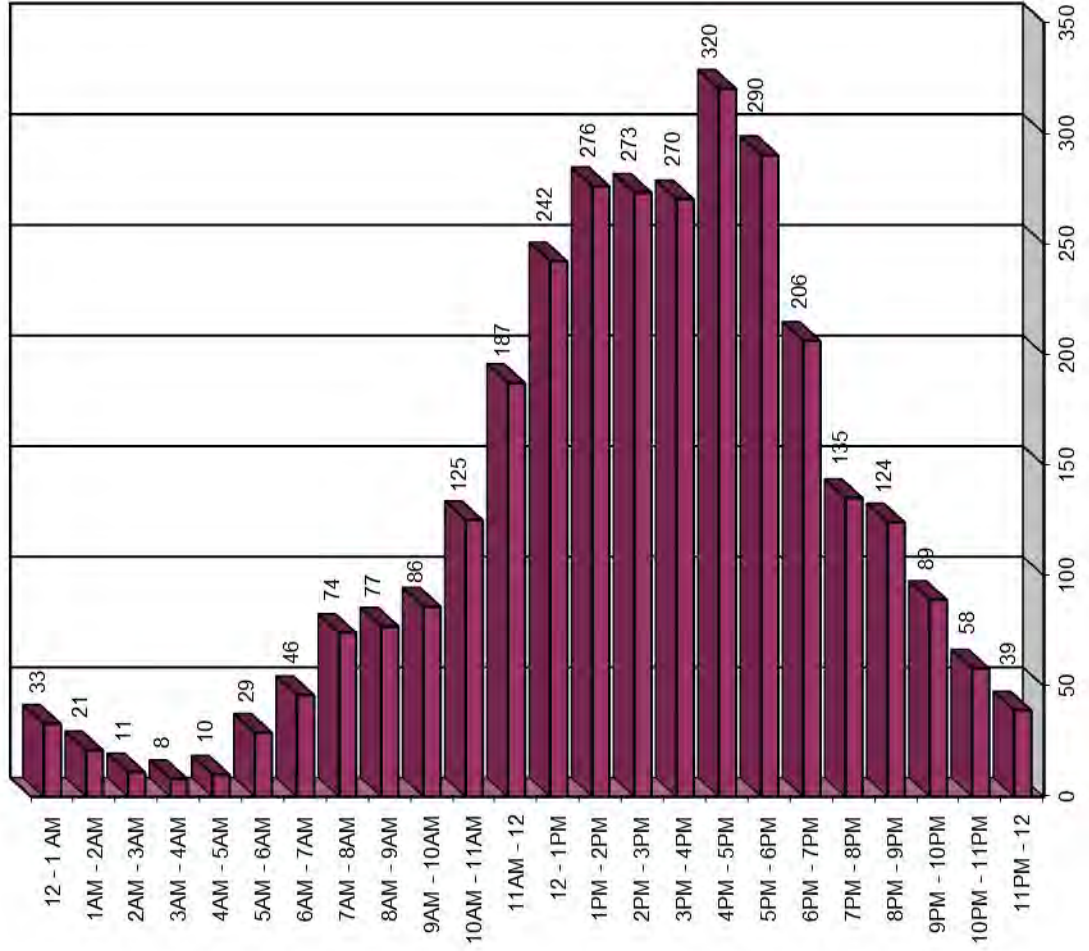


DAY OF THE WEEK	2010	2011	2012	2013	2014	FIVE YEAR TOTAL	PERCENT OF TOTAL
SUNDAY	88	93	102	80	97	460	15.19%
MONDAY	70	76	82	59	81	368	12.15%
TUESDAY	75	89	76	67	86	393	12.97%
WEDNESDAY	57	74	69	79	59	338	11.16%
THURSDAY	69	65	72	88	73	367	12.12%
FRIDAY	90	107	108	97	99	501	16.54%
SATURDAY	112	107	138	129	116	602	19.87%
TOTAL	561	611	647	599	611	3,029	100.00%

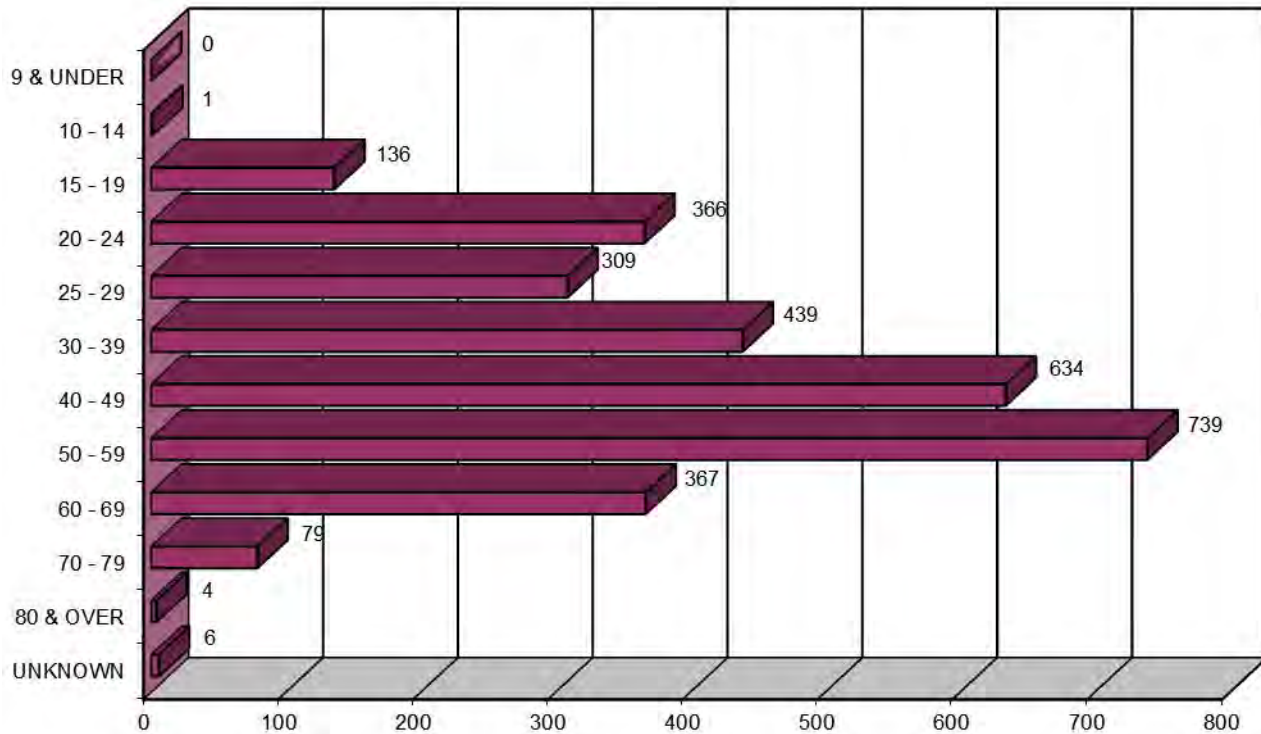
MAINE HIGHWAY MOTORCYCLE CRASHES

BY TIME OF DAY

2010 - 2014

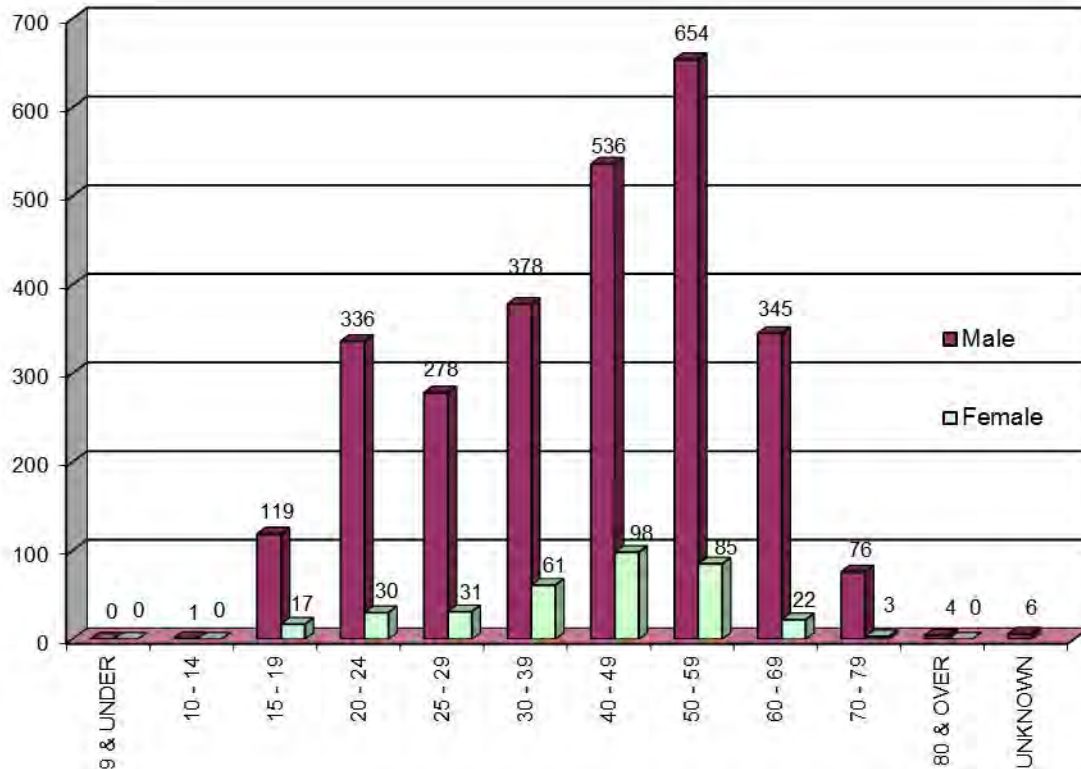


MOTORCYCLISTS INVOLVED IN MAINE HIGHWAY CRASHES By AGE GROUP 2010 - 2014



AGE OF MOTORCYCLIST	2010	2011	2012	2013	2014	FIVE YEAR TOTAL	PERCENT OF TOTAL
9 & UNDER	0	0	0	0	0	0	0.00%
10 - 14	0	0	1	0	0	1	0.03%
15 - 19	24	34	25	22	31	136	4.42%
20 - 24	73	72	86	74	61	366	11.88%
25 - 29	46	58	62	68	75	309	10.03%
30 - 39	110	88	91	77	73	439	14.25%
40 - 49	133	130	141	124	106	634	20.58%
50 - 59	128	148	157	132	174	739	23.99%
60 - 69	59	75	77	87	69	367	11.92%
70 - 79	14	12	17	19	17	79	2.56%
80 & OVER	1	2	0	0	1	4	0.13%
UNKNOWN	0	1	1	0	4	6	0.19%
TOTAL	588	620	658	603	611	3,080	100.00%

MOTORCYCLISTS INVOLVED IN MAINE HIGHWAY CRASHES By AGE GROUP/GENDER 2010 - 2014



M13

	2010		2011		2012		2013		2014		TOTALS			
AGE GROUP OF MOTORCYCLIST BY GENDER	M	F	M	F	M	F	M	F	M	F	M	F	FIVE YEAR TOTAL	PERCENT OF TOTAL
9 & UNDER	0	0	0	0	0	0	0	0	0	0	0	0	0	0.00%
10 - 14	0	0	0	0	1	0	0	0	0	0	1	0	1	0.03%
15 - 19	23	1	29	5	23	2	17	5	27	4	119	17	136	4.42%
20 - 24	67	6	66	6	80	6	65	9	58	3	336	30	366	11.88%
25 - 29	44	2	50	8	58	4	61	7	65	10	278	31	309	10.03%
30 - 39	94	16	74	14	74	17	68	9	68	5	378	61	439	14.25%
40 - 49	109	24	114	16	121	20	104	20	88	18	536	98	634	20.58%
50 - 59	112	16	133	15	139	18	118	14	152	22	654	85	739	23.99%
60 - 69	55	4	72	3	67	10	83	4	68	1	345	22	367	11.92%
70 - 79	12	2	12	0	17	0	19	0	16	1	76	3	79	2.56%
80 & OVER	1	0	2	0	0	0	0	0	1	0	4	0	4	0.13%
UNKNOWN	0		1		1		0		4		6		6	0.19%
TOTAL BY GENDER	517	71	552	67	580	77	535	68	543	64	2,727	347		
TOTAL	588		620		658		603		611		3,080		3,080	100.00%

CONTRIBUTING FACTORS OF MOTORCYCLES INVOLVED IN MAINE HIGHWAY MOTORCYCLE CRASHES 2011 - 2014

M14

DRIVER ACTIONS (actions 1 & 2 combined)	2011	2012	2013	2014	2015
NO CONTRIBUTING ACTION	248	290	270	286	
RAN OFF ROADWAY	92	102	89	83	
FAILED TO YIELD RIGHT-OF-WAY	18	17	10	16	
RAN RED LIGHT	3	1	2	2	
RAN STOP SIGN	3	6	2	1	
DISREGARDED OTHER TRAFFIC SIGN	1	1	1	3	
DISREGARDED OTHER ROAD MARKINGS	2	3	2	0	
EXCEEDED POSTED SPEED LIMIT	49	42	35	32	
DROVE TOO FAST FOR CONDITIONS	33	37	32	40	
IMPROPER TURN	11	16	11	6	
IMPROPER BACKING	0	1	0	0	
IMPROPER PASSING	15	19	21	13	
WRONG WAY	0	0	0	0	
FOLLOWED TOO CLOSELY	47	57	61	46	
FAILED TO KEEP IN PROPER LANE	17	12	18	26	
OPERATED MOTOR VEHICLE IN ERRATIC, RECKLESS, CARELESS, NEGLIGENT OR AGGRESSIVE MANNER	21	36	32	35	
SWERVED OR AVOIDED DUE TO WIND, SLIPPERY SURFACE, MOTOR VEHICLE, OBJECT, NON-MOTORIST IN ROADWAY	21	52	21	28	
OVER-CORRECTING/OVER-STEERING	20	27	23	15	
OTHER CONTRIBUTING ACTION	30	46	35	37	
UNKNOWN	27	29	18	25	
VEHICULAR FACTORS	658	794	683	684	
NONE	578	627	576	587	
BRAKES	4	8	4	6	
EXHAUST SYSTEM	1	0	2	0	
BODY, DOORS	3	8	3	0	
STEERING	7	3	7	2	
POWER TRAIN	2	3	0	4	
SUSPENSION	1	2	0	0	
TIRES	3	5	6	7	
WHEELS	3	1	3	0	
LIGHTS (head, signal, tail, brake)	0	1	2	0	
WINDOWS/WINDSHIELD	0	0	0	0	
MIRRORS	0	0	0	0	
WIPERS	0	0	0	0	
TRUCK COUPLING/TRAILER HITCH/SAFETY CHAINS	0	0	0	0	
OTHER	23	10	7	15	
	625	668	610	621	

*Due to changes in the new crash report, making contributing factors drastically different, we needed to use only new categories here.

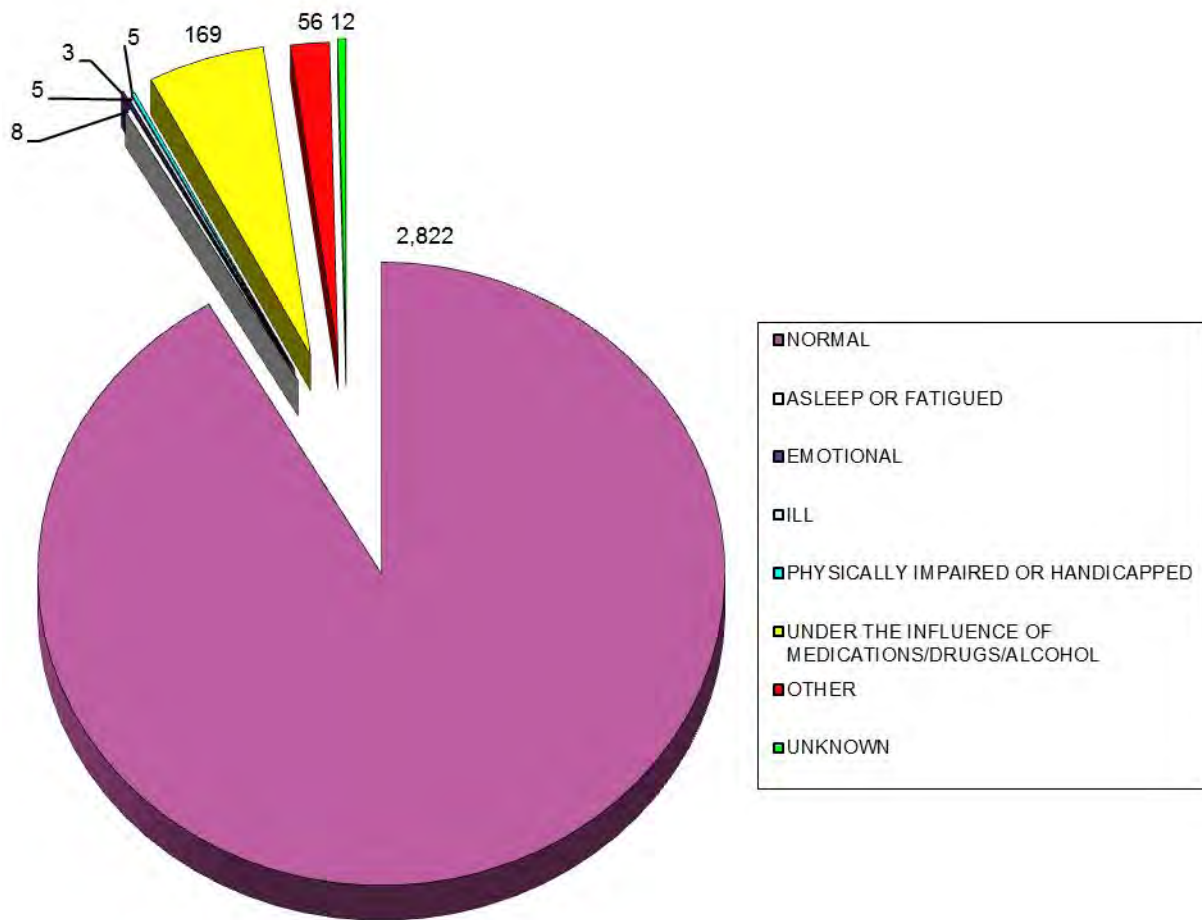
CONTRIBUTING FACTORS OF ALL VEHICLES INVOLVED IN MAINE HIGHWAY MOTORCYCLE CRASHES 2011 - 2014

DRIVER ACTIONS (actions 1 & 2 combined)	2011	2012	2013	2014	2015
NO CONTRIBUTING ACTION	355	420	407	420	
RAN OFF ROADWAY	95	102	91	84	
FAILED TO YIELD RIGHT-OF-WAY	122	140	111	131	
RAN RED LIGHT	5	5	3	4	
RAN STOP SIGN	6	6	5	1	
DISREGARDED OTHER TRAFFIC SIGN	2	1	1	5	
DISREGARDED OTHER ROAD MARKINGS	4	5	2	2	
EXCEEDED POSTED SPEED LIMIT	50	42	35	32	
DROVE TOO FAST FOR CONDITIONS	33	37	32	41	
IMPROPER TURN	34	31	25	27	
IMPROPER BACKING	2	7	5	9	
IMPROPER PASSING	18	26	22	18	
WRONG WAY	0	2	0	1	
FOLLOWED TOO CLOSELY	76	73	80	70	
FAILED TO KEEP IN PROPER LANE	25	20	26	36	
OPERATED MOTOR VEHICLE IN ERRATIC, RECKLESS, CARELESS, NEGLIGENT OR AGGRESSIVE MANNER	36	45	35	39	
SWERVED OR AVOIDED DUE TO WIND, SLIPPERY SURFACE, MOTOR VEHICLE, OBJECT, NON-MOTORIST IN ROADWAY	21	52	23	30	
OVER-CORRECTING/OVER-STEERING	20	27	23	15	
OTHER CONTRIBUTING ACTION	48	61	45	53	
UNKNOWN	32	38	25	30	
VEHICULAR FACTORS	984	1140	996	1048	
NONE	921	941	864	897	
BRAKES	4	10	8	7	
EXHAUST SYSTEM	1	0	2	0	
BODY, DOORS	10	13	4	1	
STEERING	8	3	7	2	
POWER TRAIN	2	3	0	5	
SUSPENSION	1	2	0	0	
TIRES	3	5	6	8	
WHEELS	3	1	3	0	
LIGHTS (head, signal, tail, brake)	0	2	2	2	
WINDOWS/WINDSHIELD	0	0	0	0	
MIRRORS	0	0	0	0	
WIPERS	0	0	0	0	
TRUCK COUPLING/TRAILER HITCH/SAFETY CHAINS	0	0	0	0	
OTHER	30	10	11	18	
	983	990	907	940	



*Due to changes in the new crash report, making contributing factors drastically different, we needed to use only new categories here.

APPARENT PHYSICAL CONDITION OF MOTORCYCLISTS INVOLVED IN MAINE HIGHWAY MOTORCYCLE CRASHES 2010 - 2014



M16

MOTORCYCLIST PHYSICAL CONDITION	2010	2011	2012	2013	2014	FIVE YEAR TOTAL	PERCENT OF TOTAL
APPARENTLY NORMAL	545	570	596	550	561	2,822	91.62%
ASLEEP OR FATIGUED	1	0	4	0	3	8	0.26%
EMOTIONAL (depressed, angry, disturbed, etc.)	0	0	1	1	1	3	0.10%
ILL (sick)	1	0	2	2	0	5	0.16%
PHYSICALLY IMPAIRED OR HANDICAPPED	0	2	1	0	2	5	0.16%
UNDER THE INFLUENCE OF MEDICATIONS/DRUGS/ALCOHOL	33	34	36	35	31	169	5.49%
OTHER	4	13	15	15	9	56	1.82%
UNKNOWN	4	1	3	0	4	12	0.39%
TOTAL	588	620	658	603	611	3,080	100.00%

VEHICLES INVOLVED IN MAINE HIGHWAY MOTORCYCLE CRASHES 2010 - 2014

VEHICLE TYPE INVOLVED IN MOTORCYCLE CRASHES	2010	2011	2012	2013	2014	FIVE YEAR TOTAL
PASSENGER CAR	164	192	186	179	198	919
(SPORT) UTILITY VEHICLE	61	62	44	52	53	272
PASSENGER VAN	4	4	11	14	10	43
CARGO VAN (10k or less)	14	2	5	1	2	24
PICKUP TRUCK	53	51	61	47	45	257
MOTOR HOME	0	0	0	0	3	3
SCHOOL BUS	0	1	0	0	0	1
TRANSIT BUS	0	0	0	0	1	1
MOTOR COACH	0	0	1	0	0	1
OTHER BUS	0	0	0	0	0	0
MOTORCYCLE	588	599	624	571	589	2,971
MOPED	0	29	45	41	35	150
LOW SPEED VEHICLE	0	0	1	0	0	1
AUTOCYCLE	0	0	0	0	0	0
EXPERIMENTAL	0	0	0	0	0	0
OTHER LIGHT TRUCK (10,000 lbs or less)	0	0	0	0	1	1
MEDIUM /HEAVY TRUCKS (more than 10,000 lbs)	4	6	6	2	5	23
ATV (2,3,4-WHEEL)	0	0	0	0	0	0
SNOWMOBILE	0	0	0	0	0	0
PEDESTRIAN	4	2	0	1	8	15
BICYCLE	3	1	4	1	2	11
OTHER	1	7	8	7	7	30
TOTAL VEHICLES INVOLVED	896	956	996	916	959	4,723



M17



MAINE HIGHWAY MOTORCYCLE CRASHES

BY HELMET USE/INJURY

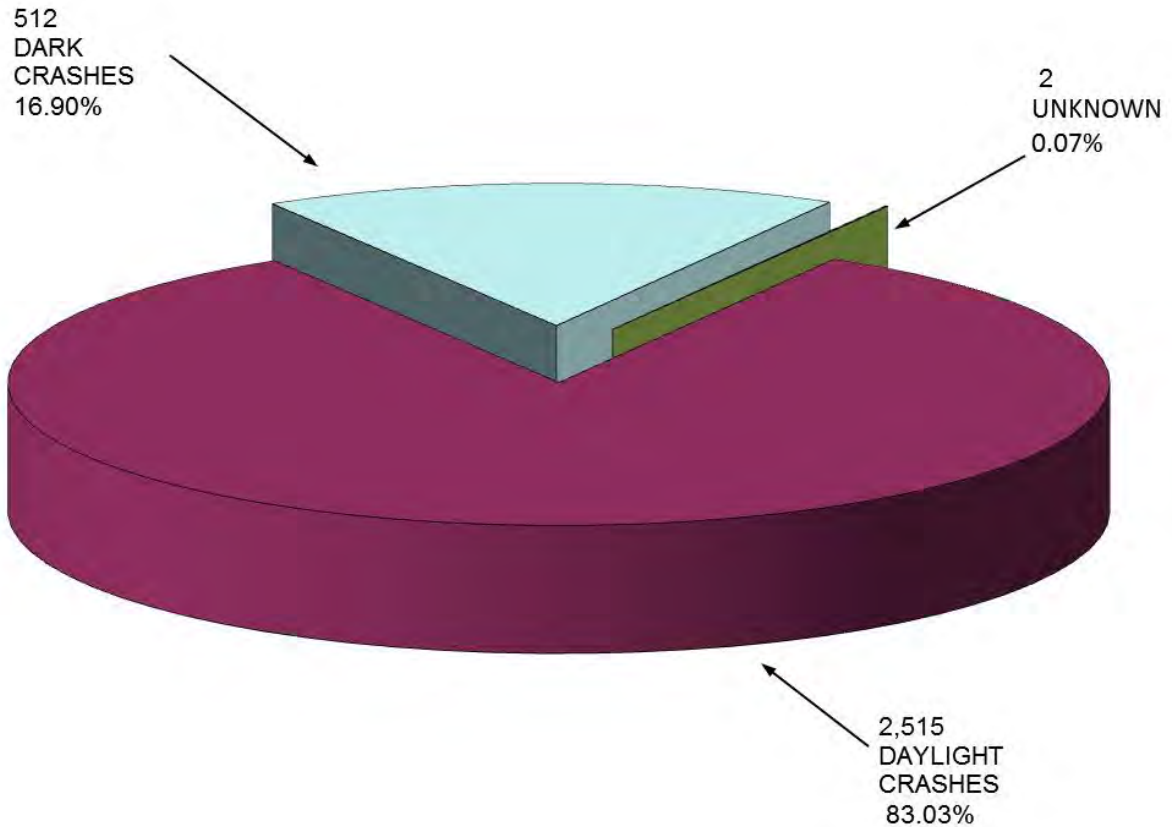
2010 - 2014

	FATAL (K)						INCAPACITATING (A)						NON-INCAPACITATING (B)						POSSIBLE INJURY (C)						PROPERTY DAMAGE ONLY (PDO)						UNKNOWN					GRAND TOTAL
SAFETY EQUIPMENT USED	2010	2011	2012	2013	2014	5 YEAR	2010	2011	2012	2013	2014	5 YEAR	2010	2011	2012	2013	2014	5 YEAR	2010	2011	2012	2013	2014	5 YEAR	2010	2011	2012	2013	2014	5 YEAR	2010	2011	2012	2013	2014	
DOT Compliant Motorcycle Helmet	8	3	8	1	6	26	48	55	36	56	44	239	107	147	147	101	109	611	80	96	95	110	104	485	53	53	63	64	63	296	0	0	0	0	0	1,657
No Helmet	9	10	13	12	4	48	59	68	103	73	84	387	106	123	134	109	103	575	85	63	66	81	107	402	45	48	63	64	49	269	0	1	0	0	0	1,682
Other Helmet	0	1	2	0	0	3	0	1	1	0	3	5	0	5	6	3	6	20	0	4	3	1	1	9	0	0	2	6	2	10	0	0	0	0	0	47
Unknown	0	0	0	0	0	0	2	0	0	0	0	2	9	4	0	0	0	13	5	1	0	0	0	6	15	3	0	0	0	18	65	1	1	1	2	109
TOTAL	17	14	23	13	10	77	109	124	140	129	131	633	222	279	287	213	218	1,219	170	164	164	192	212	902	113	104	128	134	114	593	65	2	1	1	2	3,495

MAINE HIGHWAY MOTORCYCLE CRASHES

BY LIGHT CONDITION

2010 - 2014

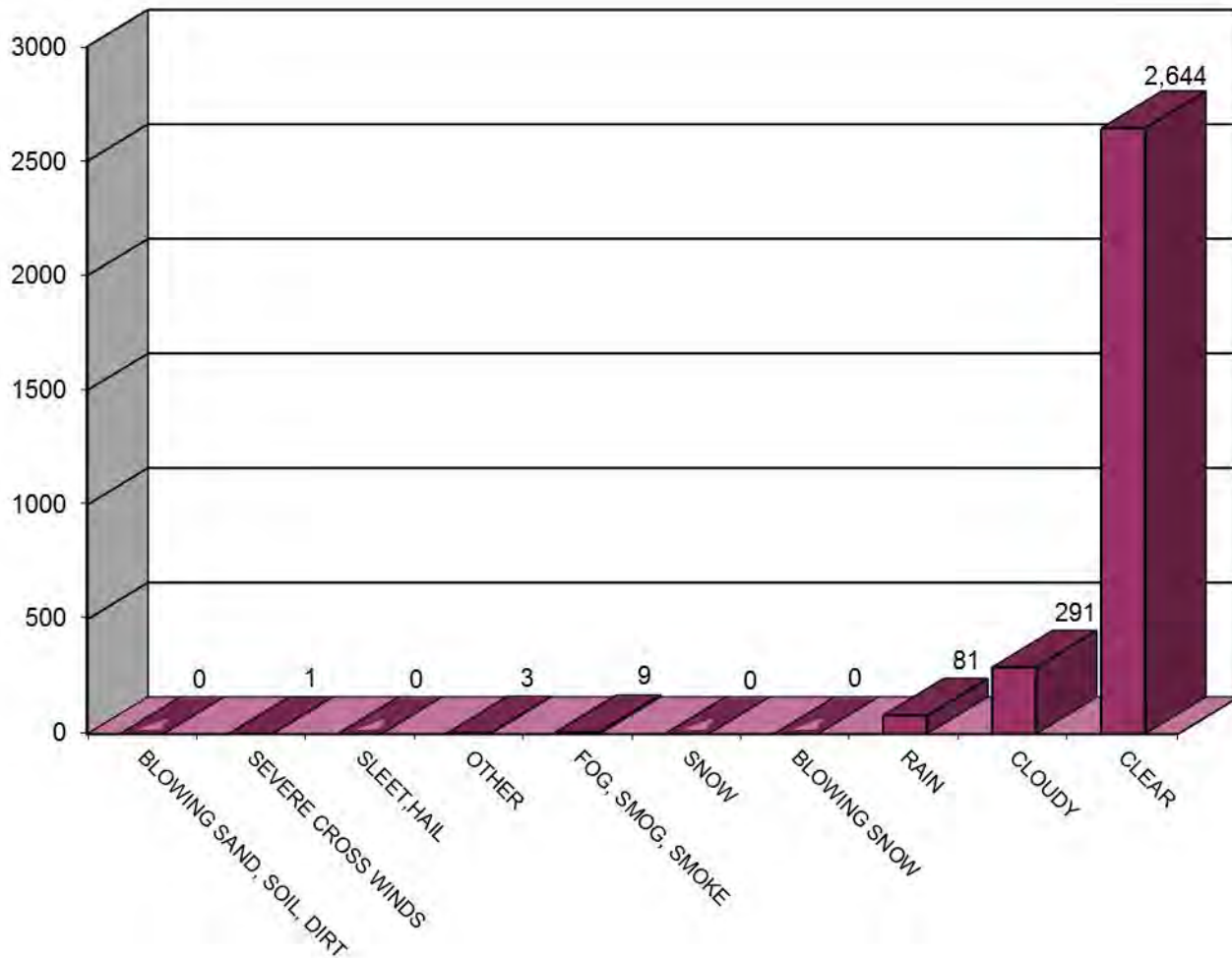


LIGHT CONDITION	2010	2011	2012	2013	2014	FIVE YEAR TOTAL	PERCENT OF TOTAL
DAYLIGHT	474	505	536	495	505	2,515	83.03%
DARK	87	106	111	104	104	512	16.90%
UNKNOWN	0	0	0	0	2	2	0.07%
TOTAL	561	611	647	599	611	3,029	100.00%

MAINE HIGHWAY MOTORCYCLE CRASHES

BY WEATHER CONDITIONS

2010 - 2014

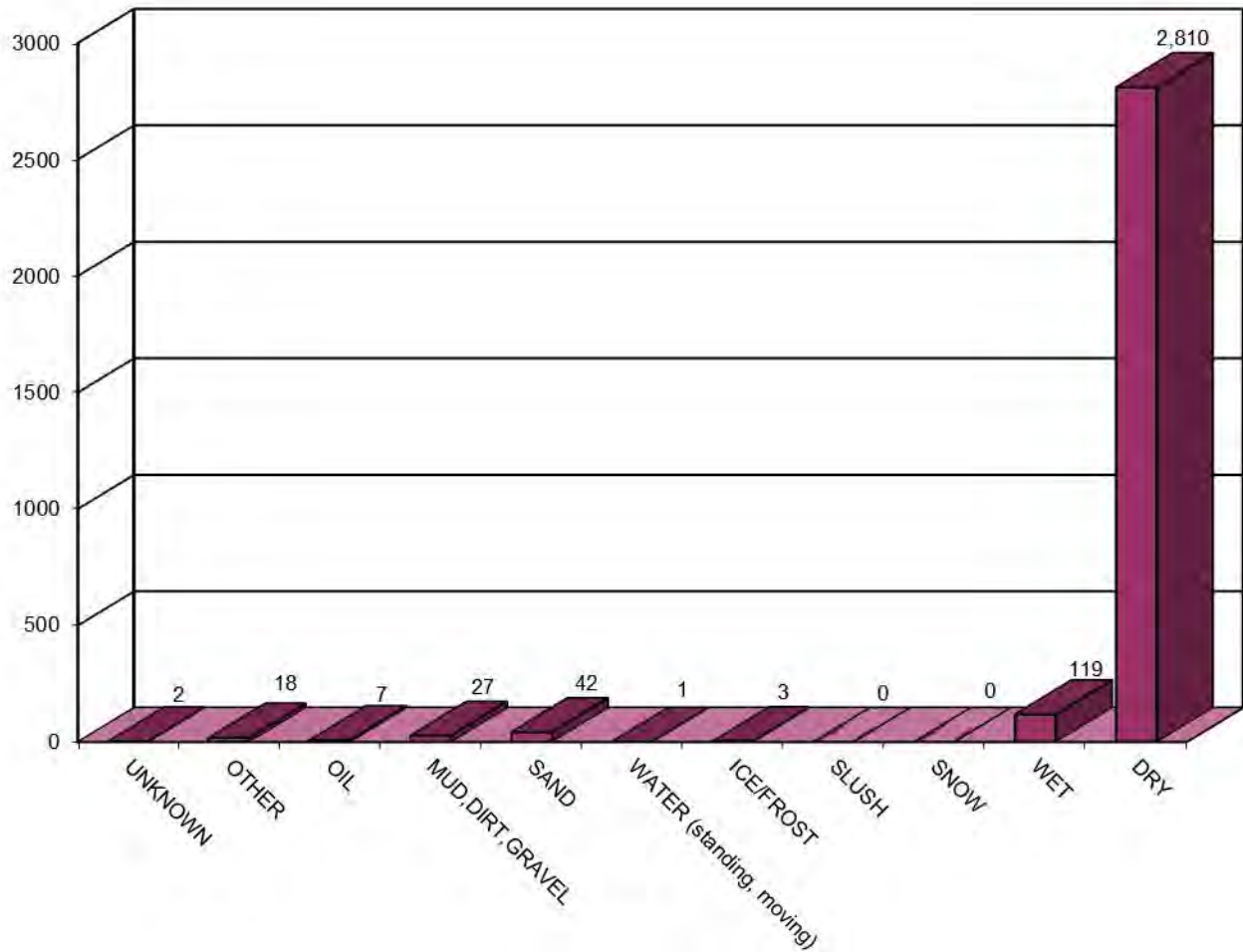


WEATHER CONDITIONS	2010	2011	2012	2013	2014	FIVE YEAR TOTAL
BLOWING SAND, SOIL, DIRT	0	0	0	0	0	0
SEVERE CROSS WINDS	0	0	0	0	1	1
SLEET, HAIL (freezing rain or drizzle)	0	0	0	0	0	0
OTHER	2	0	0	1	0	3
FOG, SMOG, SMOKE	1	3	1	3	1	9
SNOW	0	0	0	0	0	0
BLOWING SNOW	0	0	0	0	0	0
RAIN	14	16	21	18	12	81
CLOUDY	53	62	68	51	57	291
CLEAR	491	530	557	526	540	2,644
TOTAL	561	611	647	599	611	3,029

MAINE HIGHWAY MOTORCYCLE CRASHES

BY ROAD SURFACE CONDITIONS

2010 - 2014



M21

ROAD SURFACE CONDITIONS	2010	2011	2012	2013	2014	FIVE YEAR TOTAL
UNKNOWN	0	0	0	2	0	2
OTHER	6	3	2	3	4	18
OIL	2	1	2	1	1	7
MUD,DIRT,GRAVEL	0	9	4	5	9	27
SAND	0	9	17	11	5	42
WATER (standing, moving)	0	0	0	0	1	1
ICE/FROST	0	1	0	1	1	3
SLUSH	0	0	0	0	0	0
SNOW	0	0	0	0	0	0
WET	20	27	29	29	14	119
DRY	533	561	593	547	576	2,810
TOTAL	561	611	647	599	611	3,029

STATE OF MAINE

HIGHWAY TRUCK CRASHES

2010 - 2014

I. PREFACE 1

II. TRUCK CRASH TABLES AND CHARTS 2010-2014

Crashes Summarized by:

County	2-5
Severity	6-7
Rural/Urban Designations	8
Month	9
Day of Week	10
Time of Day	11
Age Groups	12
Age Groups by Gender	13
Apparent Physical Condition	14
Light Conditions	15
Contributing Factors	16-17
Weather Conditions	18
Road Surface Conditions	19
Vehicle Type	20

STATEWIDE TRUCK CRASHES

2010 - 2014

Preface

This publication is a statistical review of reported motor vehicle crashes that involved trucks in Maine during the five-year study period 2010 - 2014. The statistics are compiled from crash reports submitted to the Department of Transportation by the Traffic Division, Department of Public Safety. The Traffic Division receives all police uniform crash reports Form 13:20 A, from state, county and local police agencies.

The enclosed charts, graphs, listings and summaries were produced using the Department of Transportation's Computerized Crash Records System. Except for adjustments to locations and crash-type information for accuracy, no attempt has been made to modify the raw data received from the reporting agencies. However, because crash scenes are often dangerous and chaotic, some inaccuracies in data collection are possible.



A comparison of this report with other summaries of crashes and fatalities may also reveal inconsistencies due to changes in crash classification, late submittals, and differing reporting criteria. T1

The Department of Transportation and the Department of Public Safety wish to express our sincere thank you to all law enforcement agencies and officers for the work they do on crash investigations. Without their dedication, this report would not be possible.

We welcome your comments and suggestions on this report at:

Maine Department of Transportation
Bureau of Maintenance and Operations
Traffic Engineering Division
Crash Records Section
16 State House Station
Augusta, ME 04333-0016

Tel: 207-624-3618
Fax: 207-624-3101

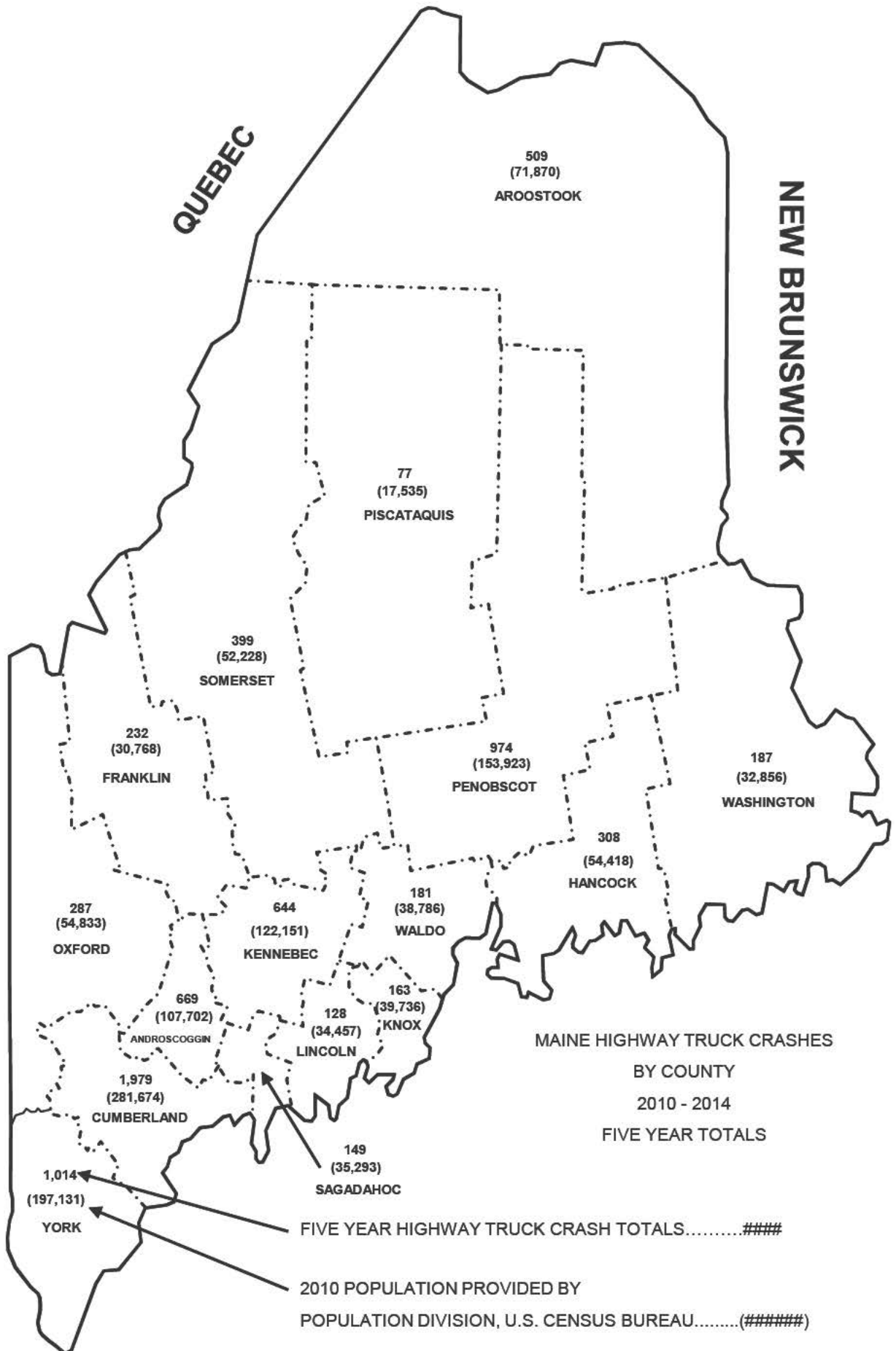


T2

NEW HAMPSHIRE

QUEBEC

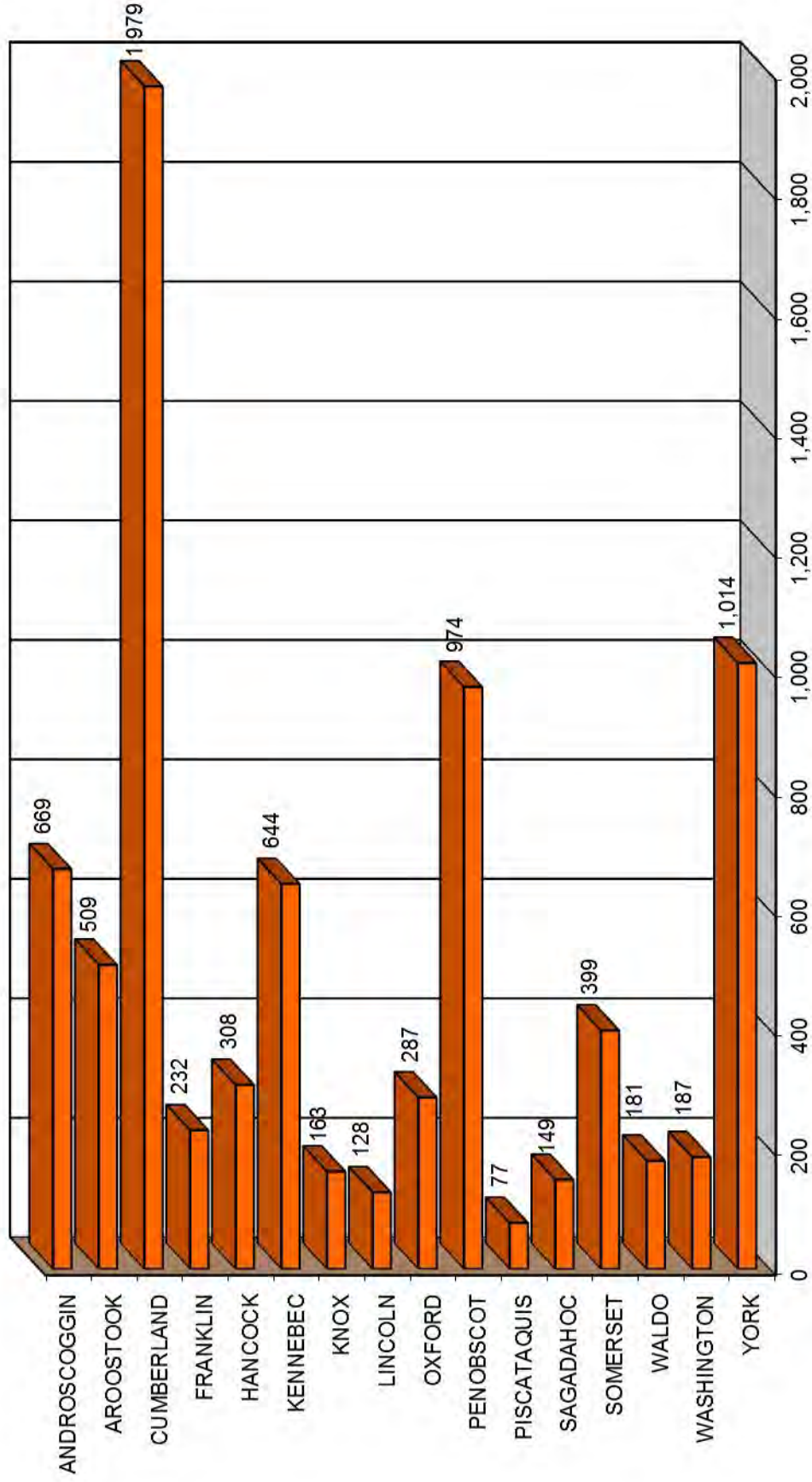
NEW BRUNSWICK



MAINE HIGHWAY TRUCK CRASHES

By County

2010 - 2014



T3

MAINE HIGHWAY TRUCK CRASH SEVERITY BY COUNTY

2010 - 2014



T4

COUNTY	INJURY TYPE	2010	2011	2012	2013	2014	TOTAL CRASHES	PERCENT OF TOTAL
ANDROSCOGGIN Percent personal injury 24.22%	FATAL (K)	1	1	1	0	0	3	0.04%
	INCAPACITATING (A)	7	4	1	2	2	16	0.20%
	NON- INCAPACITATING (B)	10	9	10	12	10	51	0.65%
	POSSIBLE INJURY (C)	20	15	22	18	17	92	1.16%
	PROPERTY DAMAGE ONLY (PDO)	94	85	129	98	101	507	6.42%
	COUNTY SUBTOTAL	132	114	163	130	130	669	8.47%
AROOSTOOK Percent personal injury 19.65%	FATAL (K)	2	1	0	2	0	5	0.06%
	INCAPACITATING (A)	1	1	1	3	0	6	0.08%
	NON- INCAPACITATING (B)	12	9	7	9	6	43	0.54%
	POSSIBLE INJURY (C)	7	7	9	12	11	46	0.58%
	PROPERTY DAMAGE ONLY (PDO)	56	89	80	84	100	409	5.18%
	COUNTY SUBTOTAL	78	107	97	110	117	509	6.44%
CUMBERLAND Percent personal injury 17.69%	FATAL (K)	3	2	1	1	0	7	0.09%
	INCAPACITATING (A)	8	6	7	6	6	33	0.42%
	NON- INCAPACITATING (B)	15	27	22	14	23	101	1.28%
	POSSIBLE INJURY (C)	34	42	37	48	48	209	2.65%
	PROPERTY DAMAGE ONLY (PDO)	269	328	292	347	393	1,629	20.62%
	COUNTY SUBTOTAL	329	405	359	416	470	1,979	25.05%
FRANKLIN Percent personal injury 28.02%	FATAL (K)	1	2	0	4	1	8	0.10%
	INCAPACITATING (A)	0	1	1	0	1	3	0.04%
	NON- INCAPACITATING (B)	5	8	8	2	2	25	0.32%
	POSSIBLE INJURY (C)	7	8	8	1	5	29	0.37%
	PROPERTY DAMAGE ONLY (PDO)	34	43	28	26	36	167	2.11%
	COUNTY SUBTOTAL	47	62	45	33	45	232	2.94%
HANCOCK Percent personal injury 21.43%	FATAL (K)	0	1	0	0	0	1	0.01%
	INCAPACITATING (A)	0	2	2	0	0	4	0.05%
	NON- INCAPACITATING (B)	7	6	9	3	4	29	0.37%
	POSSIBLE INJURY (C)	5	7	7	8	5	32	0.41%
	PROPERTY DAMAGE ONLY (PDO)	47	55	28	55	57	242	3.06%
	COUNTY SUBTOTAL	59	71	46	66	66	308	3.90%
KENNEBEC Percent personal injury 20.34%	FATAL (K)	2	1	1	2	0	6	0.08%
	INCAPACITATING (A)	4	2	5	4	5	20	0.25%
	NON- INCAPACITATING (B)	10	11	6	9	4	40	0.51%
	POSSIBLE INJURY (C)	10	16	9	12	18	65	0.82%
	PROPERTY DAMAGE ONLY (PDO)	103	89	103	109	109	513	6.49%
	COUNTY SUBTOTAL	129	119	124	136	136	644	8.15%
KNOX Percent personal injury 22.09%	FATAL (K)	0	0	0	0	0	0	0.00%
	INCAPACITATING (A)	4	1	2	0	0	7	0.09%
	NON- INCAPACITATING (B)	4	2	4	2	0	12	0.15%
	POSSIBLE INJURY (C)	4	2	2	6	3	17	0.22%
	PROPERTY DAMAGE ONLY (PDO)	16	28	30	31	22	127	1.61%
	COUNTY SUBTOTAL	28	33	38	39	25	163	2.06%
LINCOLN Percent personal injury 28.91%	FATAL (K)	0	0	1	0	2	3	0.04%
	INCAPACITATING (A)	0	0	0	3	0	3	0.04%
	NON- INCAPACITATING (B)	3	2	0	2	0	7	0.09%
	POSSIBLE INJURY (C)	4	4	2	6	8	24	0.30%
	PROPERTY DAMAGE ONLY (PDO)	18	20	9	22	22	91	1.15%
	COUNTY SUBTOTAL	25	26	12	33	32	128	1.62%

MAINE HIGHWAY TRUCK CRASH SEVERITY BY COUNTY

2010 - 2014

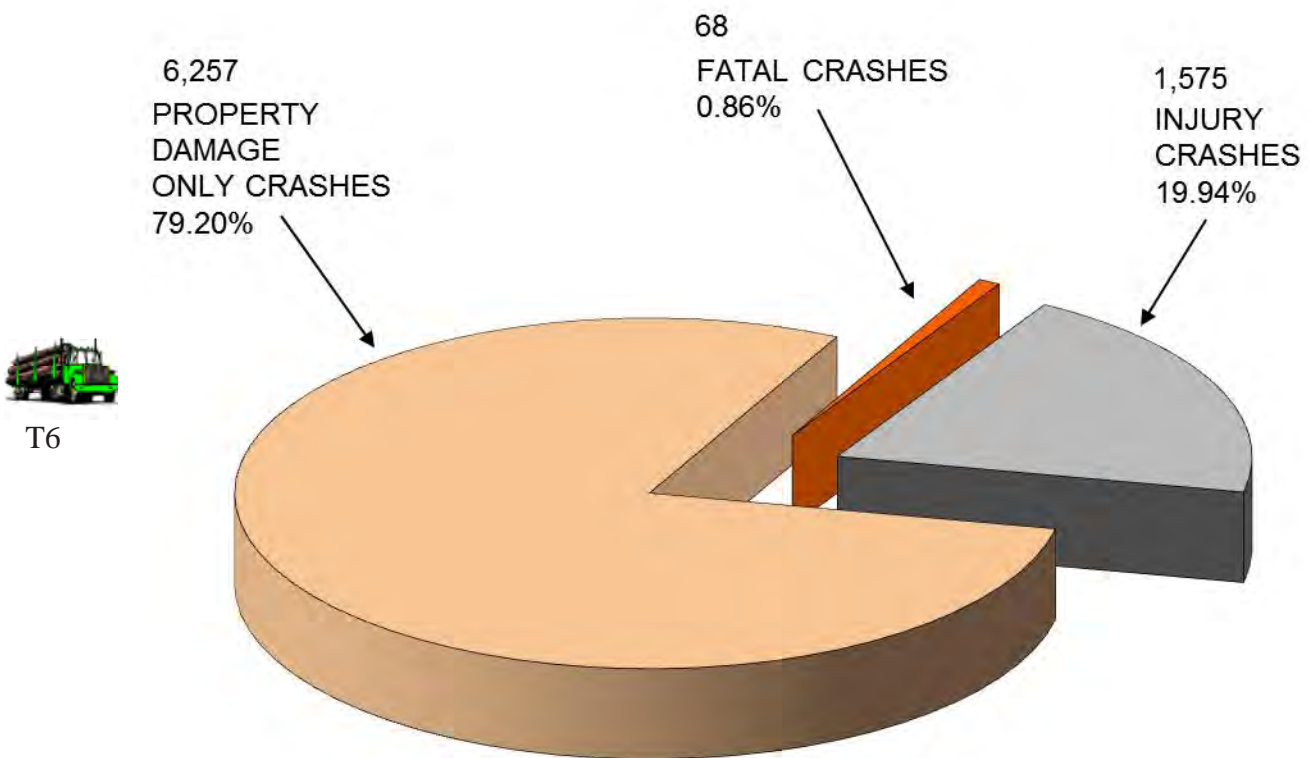
COUNTY	INJURY TYPE	2010	2011	2012	2013	2014	TOTAL CRASHES	PERCENT OF TOTAL
OXFORD Percent personal injury 24.04%	FATAL (K)	0	1	0	3	2	6	0.08%
	INCAPACITATING (A)	6	0	1	3	2	12	0.15%
	NON-INCAPACITATING (B)	3	5	3	6	6	23	0.29%
	POSS BLE INJURY (C)	3	5	5	4	11	28	0.35%
	PROPERTY DAMAGE ONLY (PDO)	36	36	41	46	59	218	2.76%
	COUNTY SUBTOTAL	48	47	50	62	80	287	3.63%
PENOBSCOT Percent personal injury 20.43%	FATAL (K)	2	2	3	1	1	9	0.11%
	INCAPACITATING (A)	4	0	7	7	6	24	0.30%
	NON-INCAPACITATING (B)	15	19	15	10	11	70	0.89%
	POSS BLE INJURY (C)	15	18	21	24	18	96	1.22%
	PROPERTY DAMAGE ONLY (PDO)	139	152	144	142	198	775	9.81%
	COUNTY SUBTOTAL	175	191	190	184	234	974	12.33%
PISCATAQUIS Percent personal injury 20.78%	FATAL (K)	0	1	0	0	0	1	0.01%
	INCAPACITATING (A)	0	0	0	1	0	1	0.01%
	NON-INCAPACITATING (B)	0	2	0	0	4	6	0.08%
	POSS BLE INJURY (C)	4	1	0	1	2	8	0.10%
	PROPERTY DAMAGE ONLY (PDO)	11	11	12	11	16	61	0.77%
	COUNTY SUBTOTAL	15	15	12	13	22	77	0.97%
SAGadahoc Percent personal injury 15.44%	FATAL (K)	0	0	0	0	0	0	0.00%
	INCAPACITATING (A)	0	1	0	1	0	2	0.03%
	NON-INCAPACITATING (B)	2	3	0	3	1	9	0.11%
	POSS BLE INJURY (C)	2	1	1	3	5	12	0.15%
	PROPERTY DAMAGE ONLY (PDO)	26	25	23	26	26	126	1.59%
	COUNTY SUBTOTAL	30	30	24	33	32	149	1.89%
SOMERSET Percent personal injury 23.06%	FATAL (K)	0	2	1	0	0	3	0.04%
	INCAPACITATING (A)	3	2	3	3	2	13	0.16%
	NON-INCAPACITATING (B)	9	7	9	9	6	40	0.51%
	POSS BLE INJURY (C)	3	8	12	7	6	36	0.46%
	PROPERTY DAMAGE ONLY (PDO)	56	62	60	65	64	307	3.89%
	COUNTY SUBTOTAL	71	81	85	84	78	399	5.05%
WALDO Percent personal injury 24.31%	FATAL (K)	1	3	1	2	0	7	0.09%
	INCAPACITATING (A)	0	2	0	1	1	4	0.05%
	NON-INCAPACITATING (B)	5	2	2	1	4	14	0.18%
	POSS BLE INJURY (C)	3	2	4	4	6	19	0.24%
	PROPERTY DAMAGE ONLY (PDO)	31	30	23	26	27	137	1.73%
	COUNTY SUBTOTAL	40	39	30	34	38	181	2.29%
WASHINGTON Percent personal injury 28.88%	FATAL (K)	0	1	0	1	2	4	0.05%
	INCAPACITATING (A)	0	2	2	0	2	6	0.08%
	NON-INCAPACITATING (B)	1	5	6	4	1	17	0.22%
	POSS BLE INJURY (C)	6	3	2	8	8	27	0.34%
	PROPERTY DAMAGE ONLY (PDO)	34	27	17	24	31	133	1.68%
	COUNTY SUBTOTAL	41	38	27	37	44	187	2.37%
YORK Percent personal injury 19.63%	FATAL (K)	1	1	1	0	2	5	0.06%
	INCAPACITATING (A)	4	13	2	3	4	26	0.33%
	NON-INCAPACITATING (B)	11	18	11	12	12	64	0.81%
	POSS BLE INJURY (C)	17	22	22	14	29	104	1.32%
	PROPERTY DAMAGE ONLY (PDO)	140	170	131	177	197	815	10.32%
	COUNTY SUBTOTAL	173	224	167	206	244	1,014	12.84%
COUNTY GRAND TOTAL Percent personal injury 20.80%	FATAL (K)	13	19	10	16	10	68	0.86%
	INCAPACITATING (A)	41	37	34	37	31	180	2.28%
	NON-INCAPACITATING (B)	112	135	112	98	94	551	6.97%
	POSS BLE INJURY (C)	144	161	163	176	200	844	10.68%
	PROPERTY DAMAGE ONLY (PDO)	1,110	1,250	1,150	1,289	1,458	6,257	79.20%
GRAND TOTAL		1,420	1,602	1,469	1,616	1,793	7,900	100.00%



T5

MAINE HIGHWAY TRUCK CRASHES 2010 - 2014

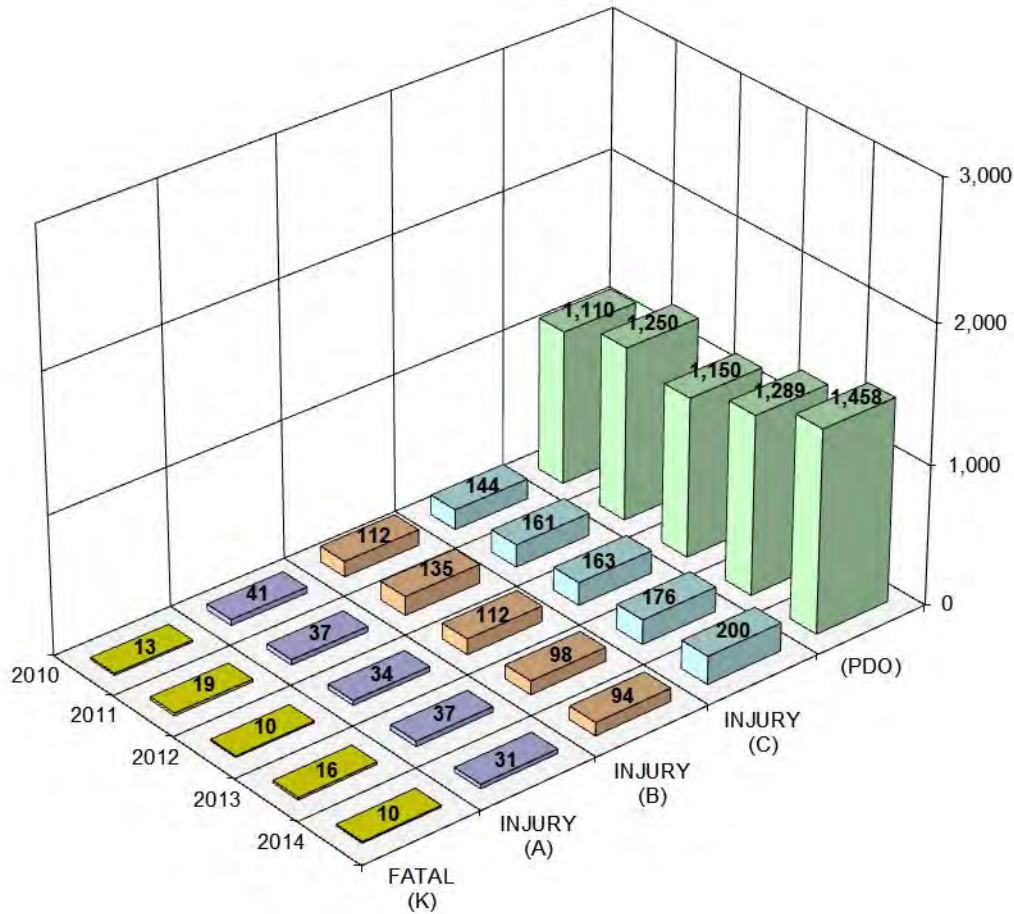
7,900 TOTAL TRUCK CRASHES



MAINE HIGHWAY TRUCK CRASH SEVERITY

BY YEAR

2010 - 2014



T7

YEAR	FATAL CRASH (K)	INCAPACITATING INJURY (A)	NON INCAPACITATING INJURY (B)	POSSIBLE INJURY (C)	PROPERTY DAMAGE ONLY (PDO)	TOTAL CRASHES
2010	13	41	112	144	1,110	1,420
2011	19	37	135	161	1,250	1,602
2012	10	34	112	163	1,150	1,469
2013	16	37	98	176	1,289	1,616
2014	10	31	94	200	1,458	1,793
TOTAL	68	180	551	844	6,257	7,900
PERCENT	0.86%	PERCENT INJURY CRASHES		= 19.94%	79.20%	100.00%

(K) = Fatal injury. A fatal injury is any injury that results in death.

(A) = Incapacitating injury. An Incapacitating injury is any injury, other than a fatal injury, which prevents the injured person from walking, driving or normally continuing the activities the person was capable of performing before the injury occurred.

(B) = Nonincapacitating injury. A Nonincapacitating injury is any injury, other than fatal injury or an incapacitating injury, which is evident to observers at the scene of the accident in which the injury occurred.

(C) = Possible injury. A possible injury is any injury reported or claimed which is not a fatal injury, incapacitating injury or nonincapacitating injury.

(PDO) = Property Damage only. Damage is harm to property that reduces the monetary value of that property.

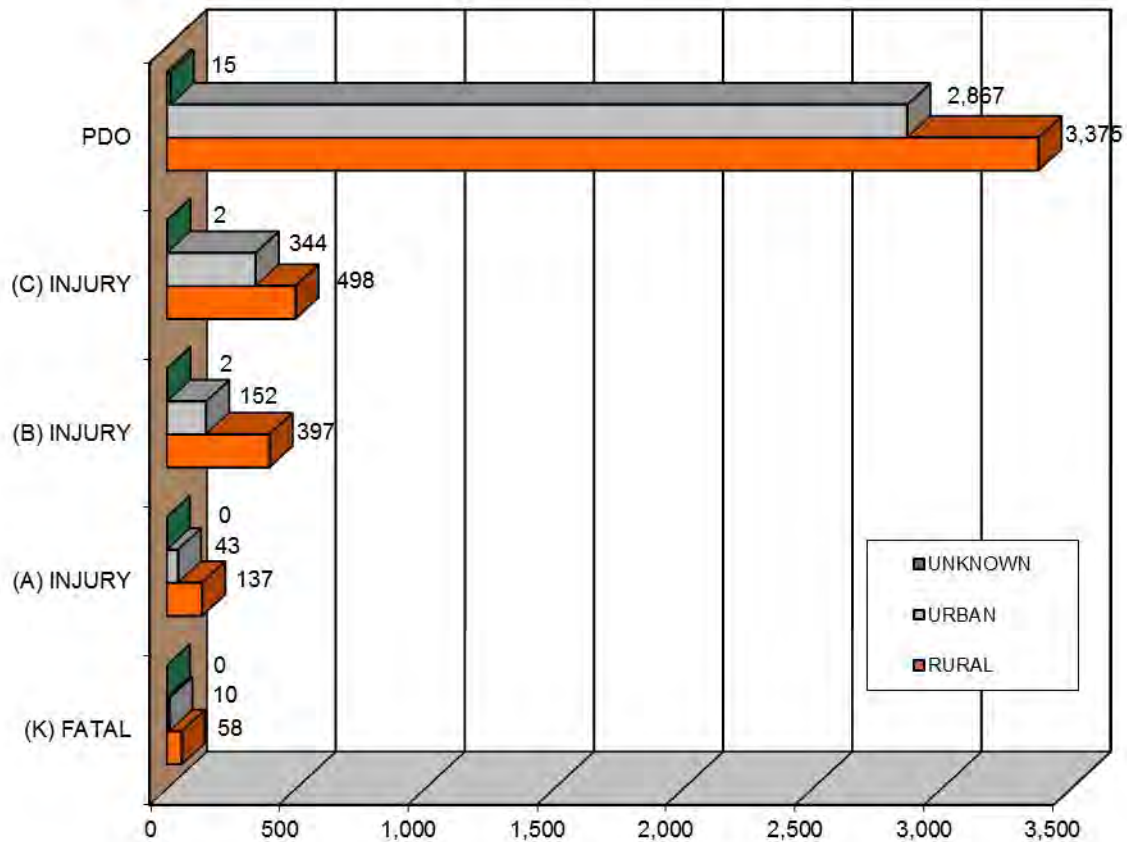
MAINE HIGHWAY TRUCK CRASH SEVERITY

BY RURAL URBAN DESIGNATION

2010 - 2014



T8

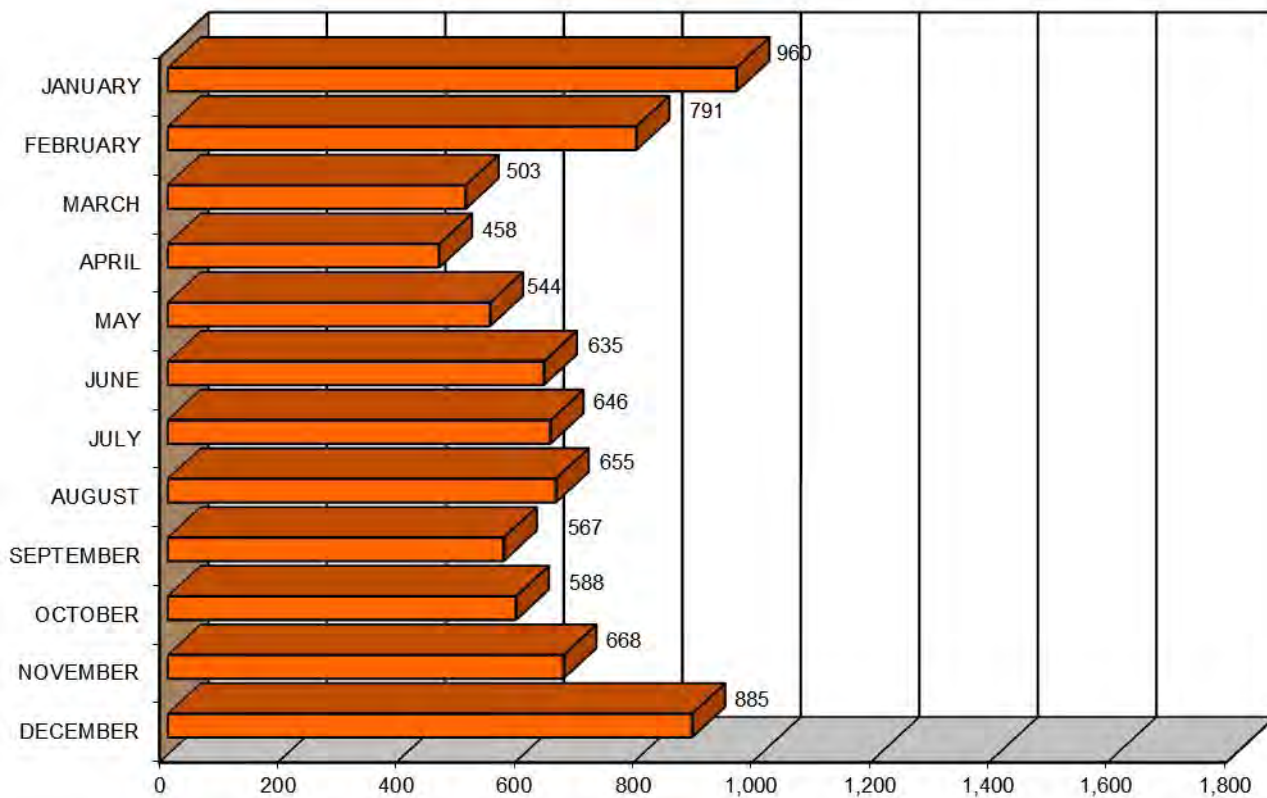


RURAL URBAN DESIGNATION		FATAL CRASH (K)	INCAPACITATING INJURY (A)	NON INCAPACITATING INJURY (B)	POSSIBLE INJURY (C)	PROPERTY DAMAGE ONLY (PDO)	FIVE YEAR TOTAL
RURAL	(1)	58	137	397	498	3,375	4,465
URBAN	(2)	10	43	152	344	2,867	3,416
UNKNOWN		0	0	2	2	15	19
TOTAL		68	180	551	844	6,257	7,900

MAINE HIGHWAY TRUCK CRASHES

BY MONTH

2010 - 2014



T9

MONTH	2010	2011	2012	2013	2014	FIVE YEAR TOTAL	PERCENT OF TOTAL
JANUARY	179	223	149	157	252	960	12.15%
FEBRUARY	100	216	90	180	205	791	10.01%
MARCH	62	91	116	103	131	503	6.37%
APRIL	102	104	68	95	89	458	5.80%
MAY	121	104	107	116	96	544	6.89%
JUNE	115	118	124	127	151	635	8.04%
JULY	111	121	138	141	135	646	8.18%
AUGUST	110	137	144	126	138	655	8.29%
SEPTEMBER	110	96	125	113	123	567	7.18%
OCTOBER	120	110	125	95	138	588	7.44%
NOVEMBER	115	144	109	138	162	668	8.46%
DECEMBER	175	138	174	225	173	885	11.20%
TOTAL	1,420	1,602	1,469	1,616	1,793	7,900	100.00%

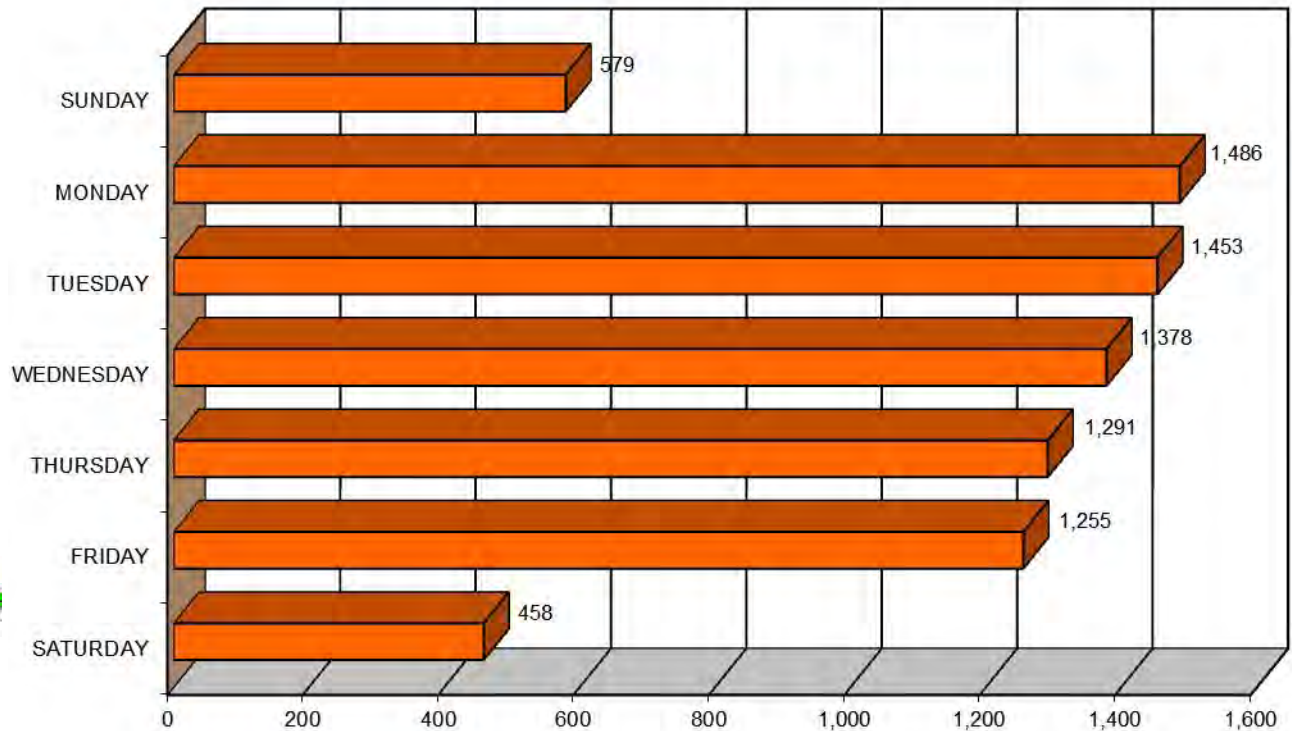
MAINE HIGHWAY TRUCK CRASHES

BY DAY OF THE WEEK

2010 - 2014



T10

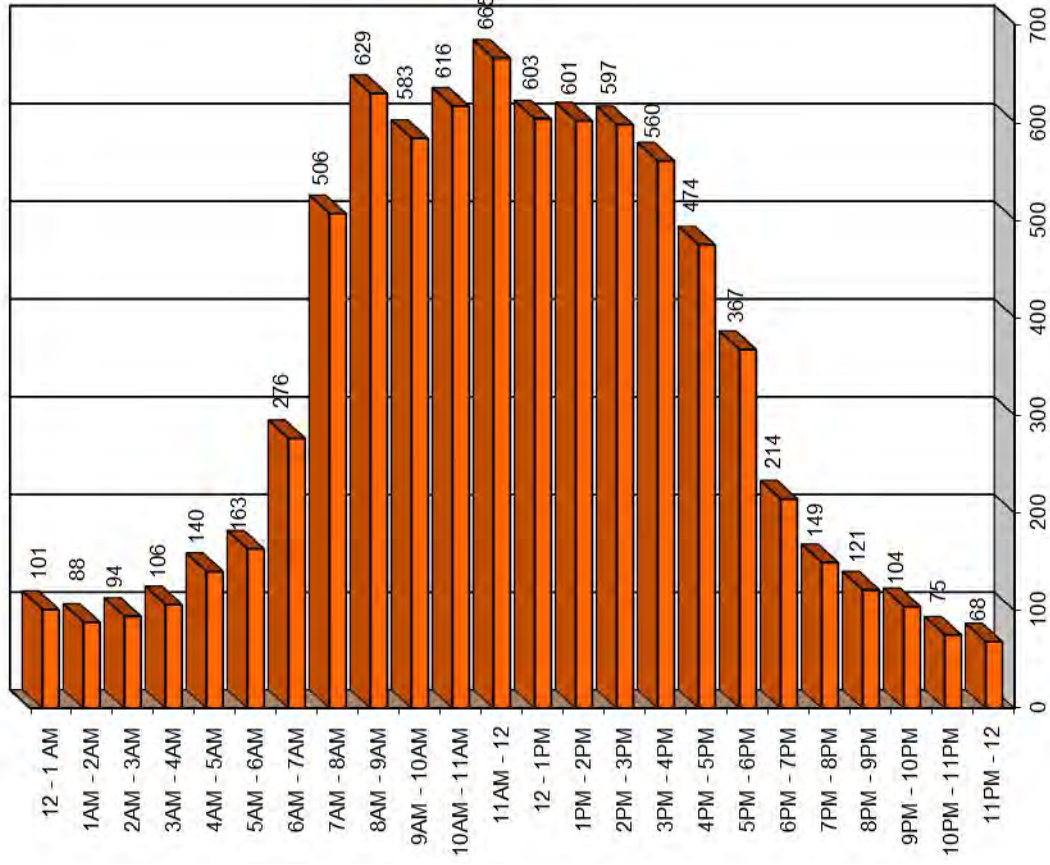


DAY OF THE WEEK	2010	2011	2012	2013	2014	FIVE YEAR TOTAL	PERCENT OF TOTAL
SUNDAY	53	73	62	89	302	579	7.33%
MONDAY	316	248	273	338	311	1,486	18.81%
TUESDAY	272	296	264	295	326	1,453	18.39%
WEDNESDAY	248	324	241	253	312	1,378	17.44%
THURSDAY	227	257	253	279	275	1,291	16.34%
FRIDAY	237	315	278	249	176	1,255	15.89%
SATURDAY	67	89	98	113	91	458	5.80%
TOTAL	1,420	1,602	1,469	1,616	1,793	7,900	100.00%

MAINE HIGHWAY TRUCK CRASHES

By Time of Day

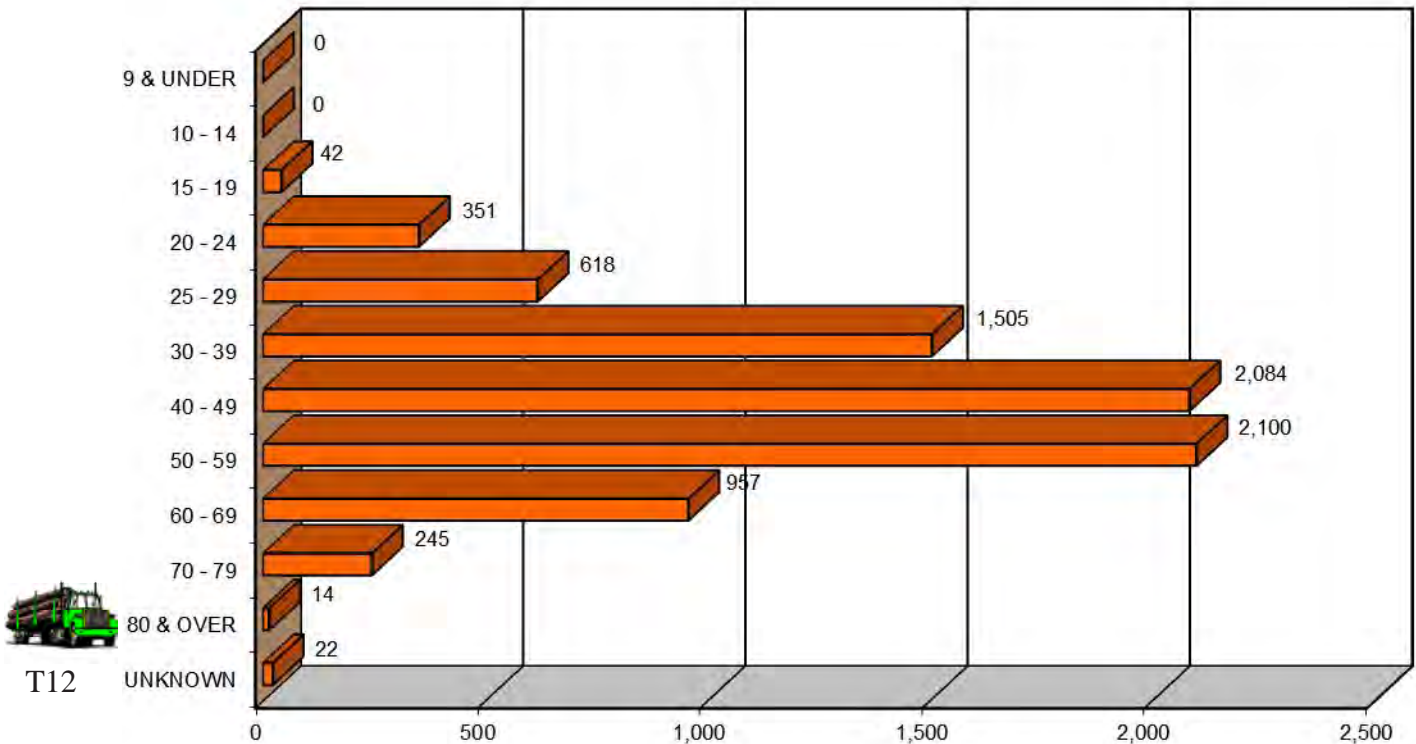
2010 - 2014



T11

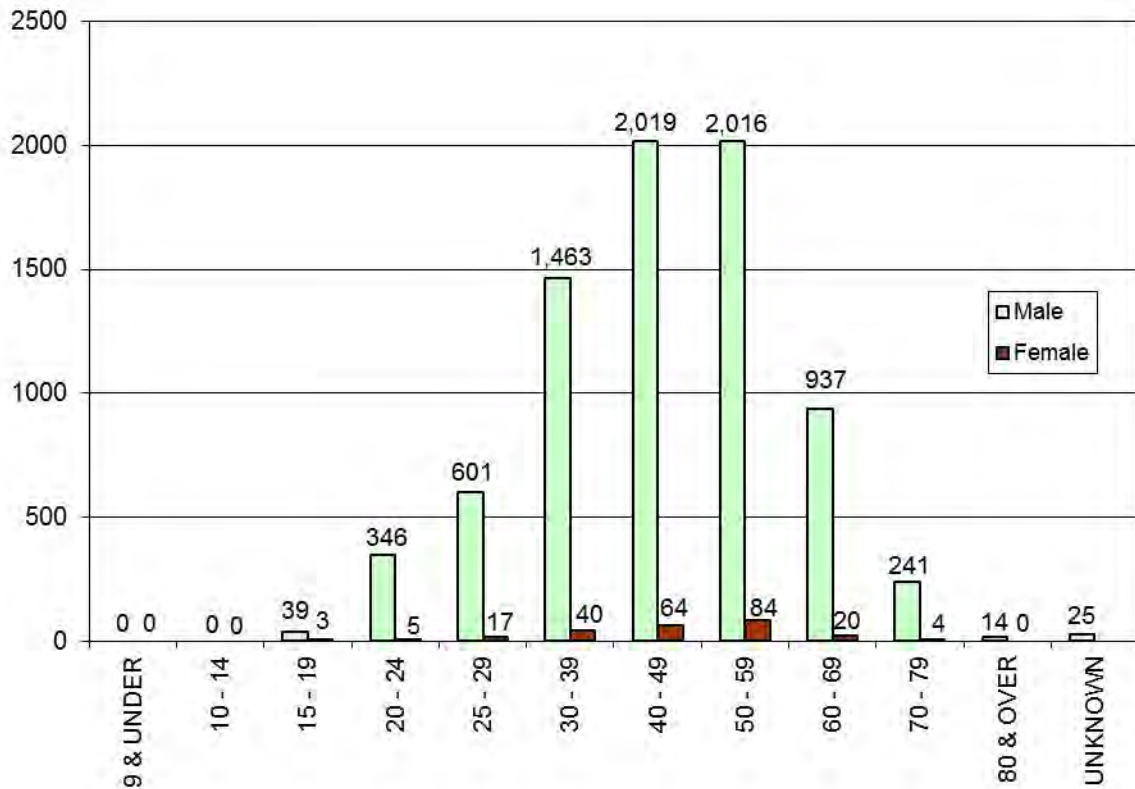
TIME OF DAY	2010	2011	2012	2013	2014	FIVE YEAR TOTAL
12 - 1 AM	17	15	20	21	28	101
1AM - 2AM	17	18	20	15	18	88
2AM - 3AM	17	16	23	18	20	94
3AM - 4AM	20	18	14	30	24	106
4AM - 5AM	27	26	27	22	38	140
5AM - 6AM	42	31	26	28	36	163
6AM - 7AM	48	59	47	63	59	276
7AM - 8AM	100	105	88	99	114	506
8AM - 9AM	109	136	109	127	148	629
9AM - 10AM	104	116	94	128	141	583
10AM - 11AM	121	126	116	134	119	616
11AM - 12	114	128	142	124	157	665
12 - 1PM	115	117	119	125	127	603
1PM - 2PM	106	128	101	129	137	601
2PM - 3PM	99	117	121	134	126	597
3PM - 4PM	109	125	106	103	117	560
4PM - 5PM	88	107	81	101	97	474
5PM - 6PM	62	68	69	73	95	367
6PM - 7PM	24	52	43	43	52	214
7PM - 8PM	20	29	34	28	38	149
8PM - 9PM	19	18	18	29	37	121
9PM - 10PM	17	14	28	21	24	104
10PM - 11PM	14	14	14	14	19	75
11PM - 12	11	19	9	7	22	68
TOTAL	1,420	1,602	1,469	1,616	1,793	7,900

INDIVIDUALS INVOLVED IN MAINE HIGHWAY TRUCK CRASHES BY AGE GROUP 2010 - 2014



AGE OF TRUCK DRIVER	2010	2011	2012	2013	2014	FIVE YEAR TOTAL	PERCENT OF TOTAL
9 & UNDER	0	0	0	0	0	0	0.00%
10 - 14	0	0	0	0	0	0	0.00%
15 - 19	13	8	4	8	9	42	0.53%
20 - 24	77	60	62	70	82	351	4.42%
25 - 29	117	103	110	141	147	618	7.79%
30 - 39	297	316	291	277	324	1,505	18.96%
40 - 49	384	459	400	397	444	2,084	26.25%
50 - 59	357	421	392	464	466	2,100	26.46%
60 - 69	174	188	159	198	238	957	12.06%
70 - 79	39	40	56	53	57	245	3.09%
80 & OVER	3	3	2	5	1	14	0.18%
UNKNOWN	4	6	2	4	6	22	0.28%
TOTAL	1,465	1,604	1,478	1,617	1,774	7,938	100.00%

TRUCK DRIVERS INVOLVED IN MAINE HIGHWAY CRASHES BY AGE GROUP AND GENDER 2010 - 2014



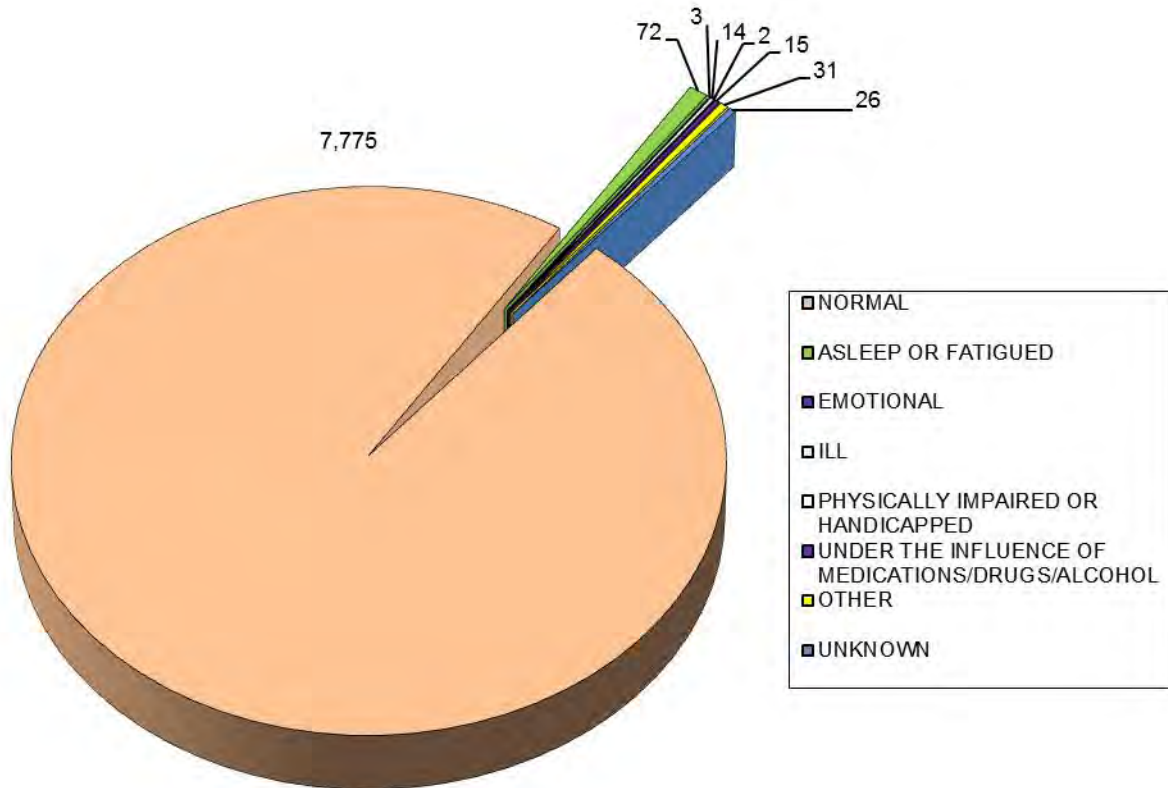
T13

AGE GROUP OF TRUCK DRIVER BY GENDER	2010		2011		2012		2013		2014		TOTALS		FIVE YEAR TOTAL	PERCENT OF TOTAL
	M	F	M	F	M	F	M	F	M	F	M	F		
9 & UNDER	0	0	0	0	0	0	0	0	0	0	0	0	0	0.00%
10 - 14	0	0	0	0	0	0	0	0	0	0	0	0	0	0.00%
15 - 19	13	0	8	0	4	0	7	1	7	2	39	3	42	0.53%
20 - 24	75	2	60	0	62	0	69	1	80	2	346	5	351	4.42%
25 - 29	113	4	100	3	108	2	136	5	144	3	601	17	618	7.79%
30 - 39	282	15	313	3	289	2	262	13	317	7	1,463	40	1,503	18.93%
40 - 49	370	14	447	12	382	17	389	8	431	13	2,019	64	2,083	26.24%
50 - 59	342	15	409	12	373	19	447	17	445	21	2,016	84	2,100	26.46%
60 - 69	169	5	185	3	158	1	191	7	234	4	937	20	957	12.06%
70 - 79	38	1	38	2	56	0	53	0	56	1	241	4	245	3.09%
80 & OVER	3	0	3	0	2	0	5	0	1	0	14	0	14	0.18%
UNKNOWN	4		6		3		6		6		25		25	0.31%
TOTAL BY GENDER	1,405	56	1,563	35	1,434	41	1,559	52	1,715	53	7,676	237		
TOTAL	1,465		1,604		1,478		1,617		1,774		7,938		7,938	100.00%

MAINE HIGHWAY TRUCK CRASHES BY APPARENT PHYSICAL CONDITIONS 2010 - 2014



T14

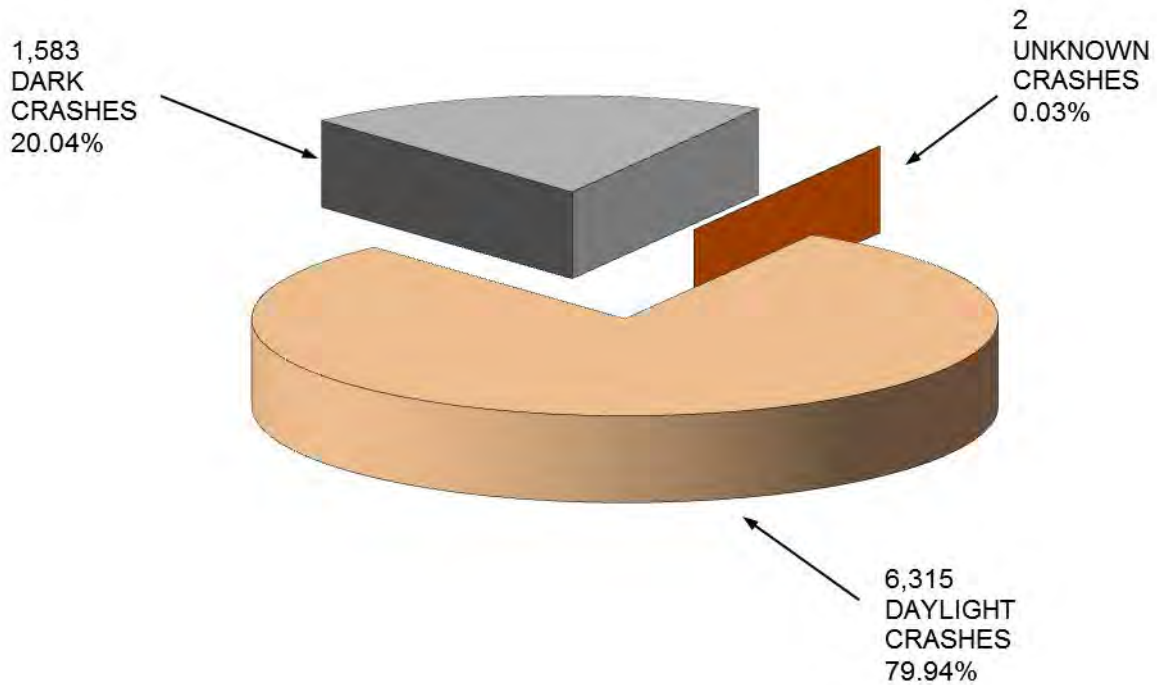


TRUCK DRIVER PHYSICAL CONDITION	2010	2011	2012	2013	2014	FIVE YEAR TOTAL	PERCENT OF TOTAL
APPARENTLY NORMAL	1,429	1,576	1,440	1,587	1,743	7,775	97.95%
ASLEEP OR FATIGUED	21	11	14	16	10	72	0.91%
EMOTIONAL (depressed, angry, disturbed, etc.)	0	0	1	0	2	3	0.04%
ILL (sick)	2	4	4	3	1	14	0.18%
PHYSICALLY IMPAIRED OR HANDICAPPED	0	0	2	0	0	2	0.03%
UNDER THE INFLUENCE OF MEDICATIONS/DRUGS/ALCOHOL	2	5	4	2	2	15	0.19%
OTHER	1	3	9	7	11	31	0.39%
UNKNOWN	10	5	4	2	5	26	0.33%
TOTAL	1,465	1,604	1,478	1,617	1,774	7,938	100.00%

MAINE HIGHWAY TRUCK CRASHES

BY LIGHT CONDITION

2010 - 2014



LIGHT CONDITION	2010	2011	2012	2013	2014	FIVE YEAR TOTAL	PERCENT OF TOTAL
DAYLIGHT	1,156	1,291	1,166	1,308	1,394	6,315	79.94%
DARK	264	311	303	308	397	1,583	20.04%
UNKNOWN	0	0	0	0	2	2	0.03%
TOTAL	1,420	1,602	1,469	1,616	1,793	7,900	100.00%

CONTRIBUTING FACTORS OF TRUCKS INVOLVED IN MAINE HIGHWAY TRUCK CRASHES 2011 - 2014



T16

TRUCK DRIVER ACTIONS (actions 1 & 2 combined)	2011	2012	2013	2014	2015
NO CONTRIBUTING ACTION	595	779	912	941	
RAN OFF ROADWAY	55	89	79	95	
FAILED TO YIELD RIGHT-OF-WAY	105	112	86	95	
RAN RED LIGHT	5	4	8	2	
RAN STOP SIGN	2	4	1	5	
DISREGARDED OTHER TRAFFIC SIGN	10	10	9	11	
DISREGARDED OTHER ROAD MARKINGS	4	7	3	8	
EXCEEDED POSTED SPEED LIMIT	56	14	5	2	
DROVE TOO FAST FOR CONDITIONS	36	62	58	93	
IMPROPER TURN	62	67	66	80	
IMPROPER BACKING	89	94	80	124	
IMPROPER PASSING	16	20	19	29	
WRONG WAY	3	2	1	0	
FOLLOWED TOO CLOSELY	87	76	95	84	
FAILED TO KEEP IN PROPER LANE	47	80	82	96	
OPERATED MOTOR VEHICLE IN ERRATIC, RECKLESS, CARELESS, NEGLIGENT OR AGGRESSIVE MANNER	13	28	21	21	
SWERVED OR AVOIDED DUE TO WIND, SLIPPERY SURFACE, MOTOR VEHICLE, OBJECT, NON-MOTORIST IN ROADWAY	23	29	43	34	
OVER-CORRECTING/OVER-STEERING	10	18	9	22	
OTHER CONTRIBUTING ACTION	73	113	152	136	
UNKNOWN	38	57	51	66	
VEHICULAR FACTORS	1,329	1,665	1,780	1,944	
NONE	1,515	1,375	1,518	1,693	
BRAKES	21	17	16	14	
EXHAUST SYSTEM	1	0	0	0	
BODY, DOORS	16	11	12	5	
STEERING	3	6	5	2	
POWER TRAIN	3	4	4	5	
SUSPENSION	4	3	2	2	
TIRES	17	25	24	22	
WHEELS	7	11	11	17	
LIGHTS (head, signal, tail, brake)	3	5	0	1	
WINDOWS/WINDSHIELD	0	1	0	0	
MIRRORS	0	2	2	2	
WIPERS	0	0	0	0	
TRUCK COUPLING/TRAILER HITCH/SAFETY CHAINS	6	7	9	14	
OTHER	59	46	53	59	
	1,655	1,513	1,656	1,836	

Speed related went from one category to two, which accounts for the difference in figures between 2011 and 2012-2014.

*Due to changes in the new crash report, making contributing factors drastically different, we needed to use only new categories here.

CONTRIBUTING FACTORS OF ALL VEHICLES INVOLVED IN MAINE HIGHWAY TRUCK CRASHES 2011 - 2014

ALL DRIVER ACTIONS (actions 1 & 2 combined)	2011	2012	2013	2014	2015
NO CONTRIBUTING ACTION	979	1,281	1,507	1,558	
RAN OFF ROADWAY	65	101	86	108	
FAILED TO YIELD RIGHT-OF-WAY	263	246	239	241	
RAN RED LIGHT	13	15	21	12	
RAN STOP SIGN	13	15	18	14	
DISREGARDED OTHER TRAFFIC SIGN	12	12	11	12	
DISREGARDED OTHER ROAD MARKINGS	9	15	10	10	
EXCEEDED POSTED SPEED LIMIT	236	23	15	9	
DROVE TOO FAST FOR CONDITIONS	89	117	182	214	
IMPROPER TURN	81	96	86	107	
IMPROPER BACKING	106	109	92	152	
IMPROPER PASSING	69	68	64	76	
WRONG WAY	6	5	2	2	
FOLLOWED TOO CLOSELY	160	160	178	168	
FAILED TO KEEP IN PROPER LANE	111	145	172	179	
OPERATED MOTOR VEHICLE IN ERRATIC, RECKLESS, CARELESS, NEGLIGENT OR AGGRESSIVE MANNER	27	56	52	53	
SWERVED OR AVOIDED DUE TO WIND, SLIPPERY SURFACE, MOTOR VEHICLE, OBJECT, NON-MOTORIST IN ROADWAY	41	44	67	55	
OVER-CORRECTING/OVER-STEERING	17	24	14	29	
OTHER CONTRIBUTING ACTION	115	160	212	200	
UNKNOWN	64	104	83	118	
VEHICULAR FACTORS	2,476	2,796	3,111	3,317	
NONE	2,789	2,374	2,720	2,983	
BRAKES	27	24	26	20	
EXHAUST SYSTEM	1	0	0	0	
BODY, DOORS	35	21	24	10	
STEERING	5	7	6	3	
POWER TRAIN	6	5	7	7	
SUSPENSION	4	3	2	2	
TIRES	21	33	29	26	
WHEELS	8	14	11	18	
LIGHTS (head, signal, tail, brake)	4	6	0	3	
WINDOWS/WINDSHIELD	1	3	2	2	
MIRRORS	0	4	3	3	
WIPERS	0	1	0	0	
TRUCK COUPLING/TRAILER HITCH/SAFETY CHAINS	6	7	10	16	
OTHER	84	63	68	73	
	2,991	2,565	2,908	3,166	



T17

*Due to changes in the new crash report, making contributing factors drastically different, we needed to use only new categories here.

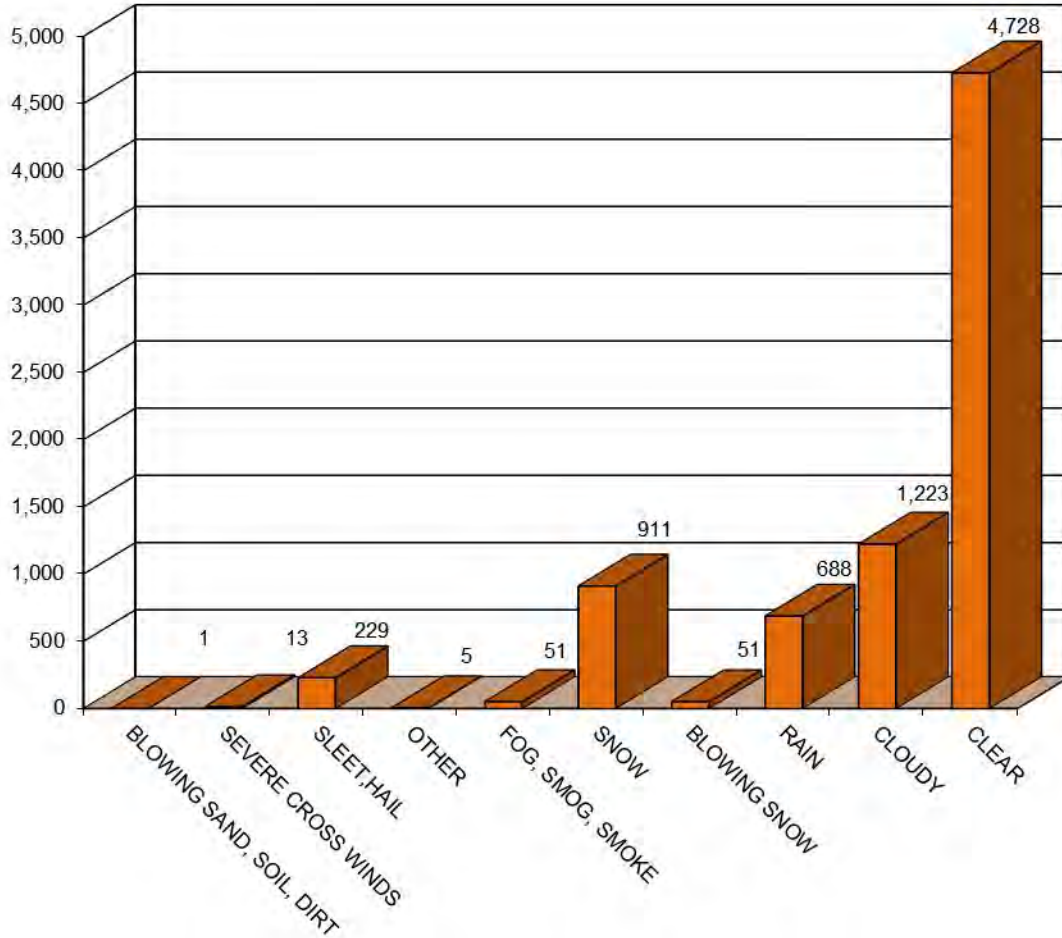
MAINE HIGHWAY TRUCK CRASHES

BY WEATHER CONDITIONS

2010 - 2014

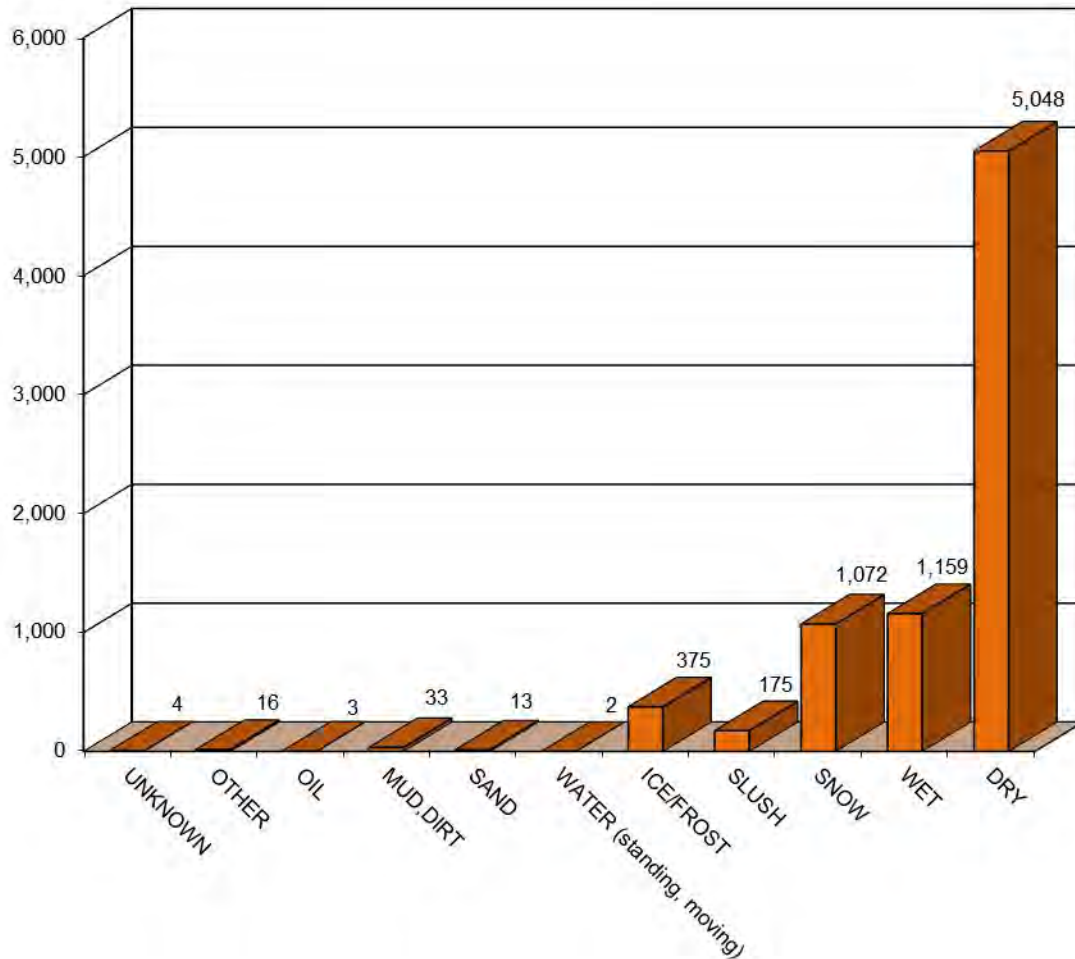


T18



WEATHER CONDITIONS	2010	2011	2012	2013	2014	FIVE YEAR TOTAL
BLOWING SAND, SOIL, DIRT	1	0	0	0	0	1
SEVERE CROSS WINDS	3	1	2	4	3	13
SLEET,HAIL (freezing rain or drizzle)	23	43	34	37	92	229
OTHER	2	1	1	1	0	5
FOG,SMOG,SMOKE	10	3	6	11	21	51
SNOW	159	248	119	198	187	911
BLOWING SNOW	0	6	2	21	22	51
RAIN	131	139	123	120	175	688
CLOUDY	206	230	253	271	263	1,223
CLEAR	885	931	929	953	1,030	4,728
TOTAL	1,420	1,602	1,469	1,616	1,793	7,900

MAINE HIGHWAY TRUCK CRASHES By ROAD SURFACE CONDITIONS 2010 - 2014



T19

ROAD SURFACE CONDITIONS	2010	2011	2012	2013	2014	FIVE YEAR TOTAL
UNKNOWN	0	0	0	2	2	4
OTHER	7	6	0	1	2	16
OIL	2	1	0	0	0	3
MUD,DIRT,GRAVEL	1	9	4	6	13	33
SAND	0	1	4	2	6	13
WATER (standing, moving)	0	1	1	0	0	2
ICE/FROST	0	132	35	61	147	375
SLUSH	0	29	35	53	58	175
SNOW	234	243	131	241	223	1,072
WET	210	236	216	236	261	1,159
DRY	966	944	1,043	1,014	1,081	5,048
TOTAL	1,420	1,602	1,469	1,616	1,793	7,900

*2010 figures that were previously WINTRY (old categories) were moved to SNOW (new categories)

VEHICLES INVOLVED IN MAINE HIGHWAY TRUCK CRASHES 2010 - 2014



T20

Medium/Heavy trucks broken out

VEHICLE TYPE INVOLVED IN TRUCK CRASHES	2010	2011	2012	2013	2014	FIVE YEAR TOTAL
PASSENGER CAR	627	783	650	766	801	3,627
(SPORT) UTILITY VEHICLE	155	207	162	168	210	902
PASSENGER VAN	21	16	43	54	65	199
CARGO VAN (10k or less)	62	20	14	17	13	126
PICKUP TRUCK	179	199	158	227	208	971
MOTOR HOME	2	0	2	1	1	6
SCHOOL BUS	0	4	3	0	3	10
TRANSIT BUS	29	43	29	41	38	180
MOTOR COACH	11	5	7	9	11	43
OTHER BUS	0	2	0	0	0	2
MOTORCYCLE	4	4	6	2	7	23
MOPED	0	2	1	0	0	3
LOW SPEED VEHICLE	0	0	1	0	0	1
AUTOCYCLE	0	0	0	0	0	0
EXPERIMENTAL	0	0	0	0	0	0
OTHER LIGHT TRUCK (10,000 lbs or less)	0	84	120	143	163	510
TOTAL MEDIUM/HEAVY TRUCKS (more than 10,000 lbs)	1443	1528	1367	1473	1641	7,452
Single Unit Truck (2 axles, 6 tires)	535	420	341	399	486	2,181
Single Unit Truck (3 axles)	177	222	183	223	251	1,056
Single Unit Truck (4 axles with rear tri-axle)	57	47	42	59	55	260
Single Unit Truck (5 or more axles)	0	8	20	22	31	81
Truck/Trailer(s) [Single Unit Truck with Trailer(s)]	0	75	105	106	95	381
Truck Tractor (without trailer, bobtail or saddle mount)	23	13	10	14	11	71
Tractor/Semi-Trailer (one trailer - 5 axles)	246	341	329	304	377	1,597
Tractor/Semi-Trailer (one trailer - 6 axles)	138	144	165	152	157	756
Tractor/Semi-Trailer (one trailer - all other axle configurations)	125	76	33	41	38	313
Tractor/Doubles (two trailers)	84	32	0	2	1	119
Tractor/Triples (three trailers)	0	0	0	0	0	0
Other Trucks Greater Than 10,000 lbs. (not listed above)	7	37	47	55	57	203
Unknown Configuration	51	113	92	96	82	434
ATV (2,3,4-WHEEL)	0	0	0	0	0	0
SNOWMOBILE	0	0	1	0	0	1
PEDESTRIAN	6	7	8	9	8	38
BICYCLE	3	3	2	4	4	16
OTHER	41	18	15	25	31	130
TOTAL VEHICLES INVOLVED	2,583	2,925	2,589	2,939	3,204	21,692

*2010 figures may not match previous truck numbers due to a changes in the way data is captured and classified