

# MAINE STATE LEGISLATURE

The following document is provided by the  
**LAW AND LEGISLATIVE DIGITAL LIBRARY**  
at the Maine State Law and Legislative Reference Library  
<http://legislature.maine.gov/lawlib>



Reproduced from electronic originals  
(may include minor formatting differences from printed original)

MAINE DEPARTMENT OF  
**LABOR**

BUREAU OF LABOR STANDARDS

Research and Statistics Division



**CHARACTERISTICS OF WORK-RELATED  
INJURIES AND ILLNESSES IN MAINE**

**1983**



JOSEPH E. BRENNAN  
GOVERNOR



STATE OF MAINE  
DEPARTMENT OF LABOR  
BUREAU OF LABOR STANDARDS

STATE HOUSE STATION 45  
AUGUSTA, MAINE 04333

TEL. 289-3331

PATRICIA M. MCDONOUGH  
*Commissioner*

MARVIN EWING  
*Bureau Director*

CHARACTERISTICS OF WORK-RELATED  
INJURIES AND ILLNESSES IN MAINE  
1983

Prepared By:  
Research and Statistics Division

January 1985

In cooperation with the  
Maine Workers' Compensation Commission  
and the  
U.S. Department of Labor  
Bureau of Labor Statistics

Material in this publication is in the public domain and may,  
with appropriate credit, be reproduced without permission.



THE UNIVERSITY OF CHICAGO

1960

DEPARTMENT OF CHEMISTRY

PHYSICAL CHEMISTRY

1960

DEPARTMENT OF CHEMISTRY

PHYSICAL CHEMISTRY

1960

DEPARTMENT OF CHEMISTRY

PHYSICAL CHEMISTRY

1960

DEPARTMENT OF CHEMISTRY

PHYSICAL CHEMISTRY

1960

DEPARTMENT OF CHEMISTRY

PHYSICAL CHEMISTRY

1960

DEPARTMENT OF CHEMISTRY

PHYSICAL CHEMISTRY

1960

DEPARTMENT OF CHEMISTRY

PHYSICAL CHEMISTRY

1960

DEPARTMENT OF CHEMISTRY

PHYSICAL CHEMISTRY

1960

DEPARTMENT OF CHEMISTRY

PHYSICAL CHEMISTRY

1960

CHARACTERISTICS OF WORK-RELATED  
INJURIES AND ILLNESSES IN MAINE  
1983

T A B L E   O F   C O N T E N T S

	<u>Page</u>
Preface	iii
1984 Highlights	iv
Five Year Comparison	1
Text:	
Part I   - Characteristics of the Injured or Ill Worker	2
Part II   - Characteristics of the Firm	6
Part III  - Characteristics of the Incident	11
Part IV   - Characteristics of Fatalities	22
Detail Tables:	
Table 1   - Nature of Injury or Illness, Number and Percent Distribution of Cases, by Severity, All Workers, State of Maine, 1983	29
Table 2   - Part of Body Affected, Number and Percent Distribu- tion of Cases, All Workers, State of Maine, 1983	31
Table 3   - Source of Injury or Illness, Number and Percent Distribution of Cases, All Workers, State of Maine, 1983	33
Table 4   - Type of Accident or Exposure, Number and Percent Distribution of Cases, By Severity, All Workers, State of Maine, 1983	36
Table 5   - Associated Object or Substance, Number and Percent Distribution of Cases, All Workers, State of Maine, 1983	37
Table 6   - Number of Occupational Injuries and Illnesses, Industry by Sex, State of Maine, 1983	39
Table 7   - Occupation and Age of Injured or Ill Worker, Number of Cases, All Workers, State of Maine, 1983	42
Table 8   - Occupation of Injured or Ill Worker, Number of Cases, by Industry Division, State of Maine, 1983	45
Table 9   - Occupation by Injured or Ill Worker, Number of Cases, by Selected Manufacturing Industries, State of Maine, 1983	46
Table 10  - Duration of Employment of Injured or Ill Workers, Num- ber and Cumulative Percent of All, Disabling, and Fatal Reports, State of Maine, 1983	47

# T A B L E   O F   C O N T E N T S

(continued)

	<u>Page</u>
 Detail Tables (continued)	
Table 11 - Occupational Illness: Industry by Nature of Illness, State of Maine, 1983	48
Table 12 - Nature of Injury or Illness by Part of Body Affected, All Workers, State of Maine, 1983	49
Table 13 - Nature of Injury or Illness by Type of Accident or Exposure, All Workers, State of Maine, 1983	50
Table 14 - Source of Injury or Illness by Nature of Injury or Illness, All Workers, State of Maine, 1983	51
Table 15 - Source of Injury or Illness by Type of Accident or Exposure, All Workers, State of Maine, 1983	52
Table 16 - Associated Object or Substance by Type of Accident or Exposure, All Workers, State of Maine, 1983	53
 Appendices:	
Appendix A - Technical Notes	54
Appendix B - Additional Information Available from the Supplementary Data System	56
Appendix C - Listing of Individual Fatality Reports for 1983	59
Appendix D - Maine's On-Site Job Safety and Health Consultation Program	62
Appendix E - Comments Form	63
Appendix F - Order Form	64

## PREFACE

The statistics in this publication are the results of the Supplementary Data System (SDS), a cooperative program involving the Maine Department of Labor, Bureau of Labor Standards, Division of Research and Statistics, the Maine Workers' Compensation Commission, and the U.S. Department of Labor, Bureau of Labor Statistics, Office of Safety and Health Statistics.

Maine's participation in the SDS program began in 1977. Published data on work-related injuries and illnesses extends back through that year. More detailed tables and special studies are also available. See Appendix B for ordering information.

Wherever possible, the tables and charts show two series of numbers, those for All cases and those for Disabling cases. When First Reports are coded, they are assigned one of three severity codes: 1) Fatal; 2) Disabling (one or more lost workdays beyond the date of injury or onset of illness); and 3) Nondisabling. Of course, in a small number of cases, the severity is unknown.

The information shown, except for Fatalities, is for reports received by the Maine Workers' Compensation Commission through June 1, 1984 for injuries and illnesses occurring in 1983. Fatalities are updated through December 1, 1984.

Each year the Bureau will attempt to expand on a specific area of interest. The 1981 publication developed a comparison of the safety records of men and women. In 1982, we looked at a new measure of job risk by occupation and how Maine data compared with the national data. Last year's publication examined injuries and illnesses by age group. Due to staffing problems, the narrative in the 1983 booklet has been shortened to facilitate publication. If you have comments on the material in the publication or suggestions for future areas of study, please contact the Bureau of Labor Standards, Department of Labor, State House Station #45, Augusta, ME 04333.

The number of First Reports submitted to the Workers' Compensation Commission increased 4.3% from 47,188 in 1982 to 49,214 in 1983. This is largely because of a stronger economic climate in 1983, with a subsequent rise in employment. Fatalities dropped dramatically from 53 in 1982 to 36 in 1983. As with previous years, the majority of work-related fatalities were attributed to heart attacks. (See Part IV, Characteristics of Fatalities.)

While the overall number of work-related injuries and illnesses has fluctuated some since 1977, the percentage of disabling injuries and illnesses has risen steadily from around 35% to nearly 40% of the total. (A disabling occurrence is defined as one where one or more workdays are lost.)



## 1983 HIGHLIGHTS

	<u>All</u>	<u>Disabling</u>	<u>Fatal</u>
<u>TOTAL REPORTED CASES</u>	49,214	19,140	36
CHARACTERISTICS OF THE INJURED PERSON			
<u>Sex:</u> Male	36,221 (73.6%)	14,183 (74.1%)	34 (94.4%)
Female	12,993 (26.4%)	4,957 (25.9%)	2 (5.6%)
<u>Age:</u> Median	30 Years	29 Years	48 Years
<u>Occupation:</u> Largest Group	Operatives 12,525 (25.5%)	Operatives 4,792 (25.0%)	Operatives 8 (22.2%)
<u>Length of Service:</u> (Median)	2 Years	2 Years	9 Years
CHARACTERISTICS OF THE FIRM			
<u>Ownership:</u> State Government	1,973 (4.0%)	751 (4.1%)	3 (8.3%)
Local Government	3,561 (7.2%)	1,299 (6.8%)	2 (5.6%)
Private Sector	43,680 (88.8%)	17,090 (89.3%)	31 (86.1%)
<u>Standard Industrial Classification</u>			
Largest Industry Division	Manufacturing 21,668 (44.0%)	Manufacturing 7,631 (41.9%)	Manufacturing 12 (33.3%)
Largest Manufacturing Major Industry:	Lumber & Wood 4,007 (8.1%)	Lumber & Wood 1,893 (9.9%)	Trans. Eqpt. 3 (8.3%)
<u>Insurance Type:</u> Private	37,098 (75.4%)	14,773 (77.2%)	26 (72.2%)
Self	11,214 (22.8%)	3,946 (35.2%)	8 (22.2%)
Uninsured	902 (1.8%)	421 (2.2%)	2 (5.6%)
<u>County:</u>			
Largest No.:	Cumberland 11,049 (22.5%)	Cumberland 4,327 (22.6%)	Androscoggin 7 (19.4%)
Smallest No.:	Lincoln 563 (1.1%)	Lincoln 212 (1.1%)	Cumberland 7 (19.4%)
			Franklin 0
			Oxford 0
			Somerset 0
			Waldo 0
CHARACTERISTICS OF THE INCIDENT			
<u>Month:</u>			
Largest No.	August 4,990 (10.1%)	August 2,071 (10.8%)	June 7 (19.4%)
Smallest No.	February 3,535 (7.2%)	February 1,362 (7.1%)	July 0
			October 0

#### Nature of Injury or Illness

Sprain, Strain	(31.5%)	Sprain, Strain	(43.7%)	Heart Attack	(33.3%)
Cut, Laceration, Puncture	(19.9%)	Cut, Laceration	(12.8%)	Multiple Injuries	(11.1%)
Bruise, Contusion	(16.3%)	Bruise, Contusion	(11.2%)	Fracture	(8.4%)
	(67.7%)		(67.7%)		(54.3%)

#### Part of Body

Fingers	(18.1%)	Back	(26.5%)	Circulatory System	(33.3%)
Back	(17.0%)	Fingers	(11.9%)	Multiple Parts	(13.9%)
Head	(14.1%)	Knee	(5.4%)	Respiratory System	(11.1%)
Leg	(7.6%)	Arm	(5.3%)	Trunk	(8.4%)
Arm	(6.3%)	Multiple Parts	(5.1%)	Head	(5.5%)
Hand	(5.8%)	Hand	(4.5%)	Nervous System	(5.5%)
	(68.9%)	Ankle	(4.5%)		(77.7%)
			(63.2%)		

#### Source of Injury or Illness

Metal Items	(10.9%)	Working Surfaces	(12.4%)	Person Injured	(36.1%)
Working Surfaces	(10.1%)	Containers	(11.9%)	Highway Vehicle	(27.8%)
Containers	(9.8%)	Metal Items	(8.5%)	Plants, Trees	(11.1%)
Unpowered Hand Tools	(7.5%)	Vehicles	(7.1%)	Mineral Items	(5.5%)
Vehicles	(6.2%)	Machines	(5.5%)		(80.5%)
Machines	(5.7%)	Wood Items	(5.0%)		
Wood Items	(4.9%)	Unpowered Hand Tools	(5.0%)		
	(55.1%)	Bodily Motion	(4.1%)		
			(59.5%)		

#### Type of Injury or Illness

Overexertion	(23.7%)	Overexertion	(33.2%)	Accident Type, Other	(36.8%)
Struck By	(20.8%)	Struck By	(17.1%)	Motor Vehicle Accident	(16.6%)
Struck Against	(13.3%)	Struck Against	(9.9%)	Struck By	(13.9%)
Fall	(12.0%)	Fall, Same Level	(7.8%)	Contact w/Noxious	
Rubbed or Abraded	(8.7%)	Fall, Height	(6.4%)	Substance by Inhalation	(8.4%)
Caught In, Under, Between	(5.8%)	Caught In, Under, Between	(5.3%)		(75.7%)
Contact w/Caustics, etc.	(4.7%)	Bodily Reaction	(4.1%)		
	(89.0%)		(83.8%)		

#### Associated Object or Substance (AOS)

Containers	(10.3%)	Containers	(12.1%)	Person Injured	(38.9%)
Hand Tools	(8.8%)	Working Surfaces	(9.5%)	Highway Vehicle	(26.7%)
Working Surfaces	(8.1%)	Vehicles	(8.3%)		(65.6%)
Metal Items	(7.1%)	Machines	(6.6%)		
Vehicles	(7.1%)	Metal Items	(6.2%)		
Machine	(6.9%)	Persons	(5.7%)		
	(48.3%)	Unpowered Hand Tools	(5.6%)		
			(54.0%)		

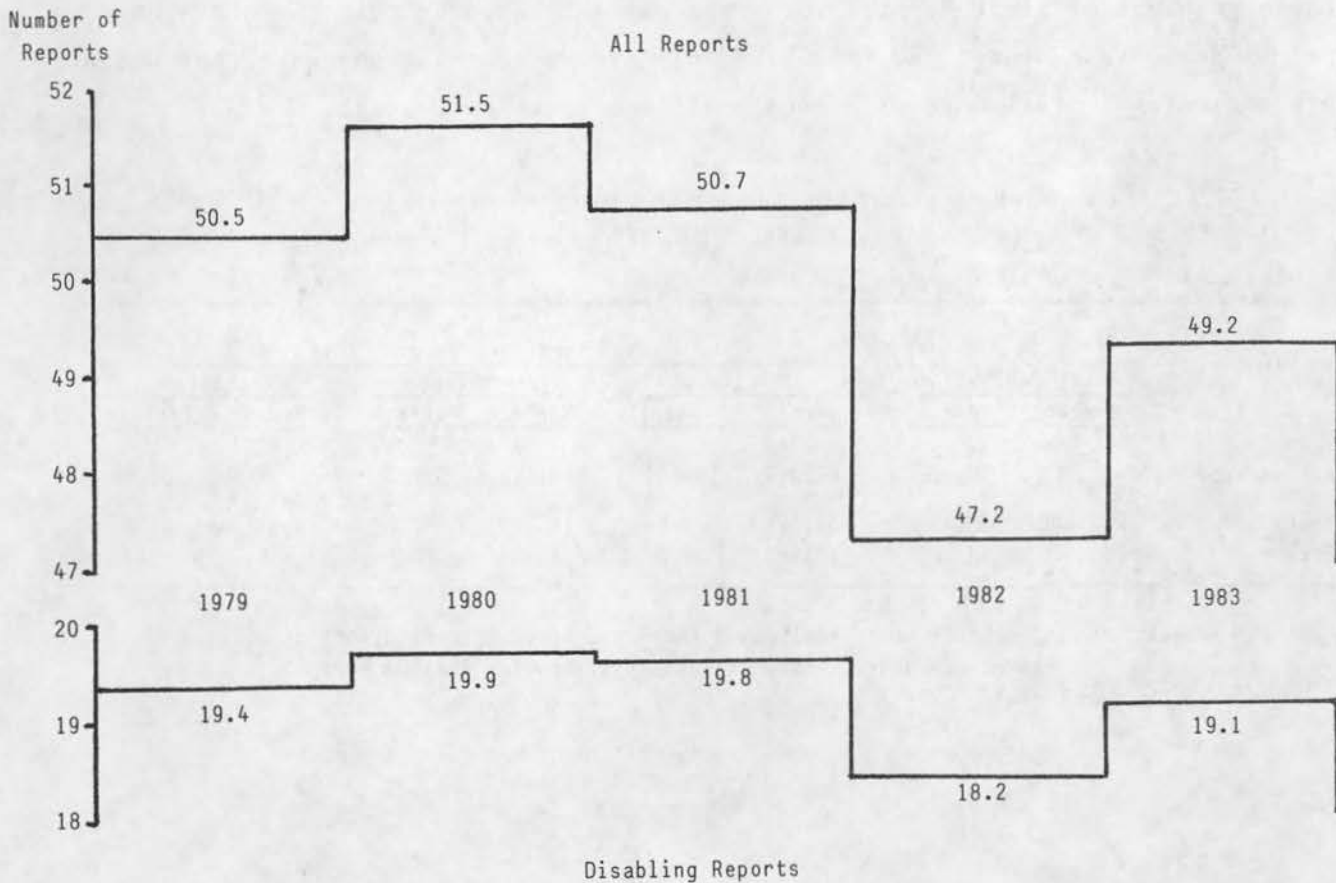


Characteristics of Work-Related  
Injuries and Illnesses in Maine  
1983

Five Year Comparison

Every year since 1979, approximately one worker in eight in Maine filed a First Report. Figure 1 gives a breakdown by year of the number of All and Disabling Reports for that period. There has been little fluctuation in the number of First Reports submitted to the Workers' Compensation Commission in the past five years, with a low of 47,188 in 1982 and a high of 51,551 in 1980. But, projections for 1984 show an increase in First Reports to an estimated 61,000.

Figure 1. -- Number of First Reports  
1979-1983  
(all numbers in thousands)





PART I

CHARACTERISTICS OF THE INJURED OR ILL WORKER

Sex

As shown in the table below, males account for 73.6% and females, 26.4% of all work-related injuries and illnesses reported to the Workers' Compensation Commission. This disparity has been attributed to differences in jobs the sexes generally fill; that is, men tend to occupy the higher risk occupations. Upon examination of areas where men and women do the same activities, the injury and illness statistics are very similar.

Although the percentage of women in the labor force has remained stable, the percentage of First Reports for women has increased by over two and a half points percentage since 1980 (23.6%). This steady increase suggests that women are beginning to fill more dangerous positions than in the past.

TABLE 1. -- AVERAGE EMPLOYMENT & NUMBER OF REPORTS  
BY SEX, MAINE, 1983

Sex	Total Employment <sup>1/</sup>		Reports of Injury or Illness					
			All		Disabling		Fatal	
	Number	Percent	Number	Percent	Number	Percent	Number	Percent
All Workers	411,600	100.0%	49,214	100.0%	19,140	100.0%	36	100.0%
Male	210,100	51.0	36,221	73.6	14,183	74.1	34	94.3
Female	201,500	49.0	12,993	26.3	4,957	25.9	2	5.7

1. SOURCE: Division of Economic Analysis & Research, Bureau of Employment Security, Department of Labor. These employment statistics include Federal workers.

### Occupation

A workers' occupation is one of the best indicators of whether or not he or she will have a work-related injury or illness. Injuries and illnesses are concentrated in a small number of occupational groups: Operatives, except Transport; Craft and Kindred Workers; Laborers, except Farm and Service Workers. These four out of the eleven major groups represent 80% of All reports and Disabling reports. Other occupations filing over 1,000 reports in 1983 were Clericals (6.9%); Transport Operatives (4.7%); Professional/Technical Workers (4.5%); and Managers and Administrators (3.1%).

TABLE 2. -- OCCUPATIONAL GROUPS, NUMBER & PERCENT OF REPORTS  
ALL & DISABLING, MAINE, 1983

OCCUPATIONAL GROUP	Reports			
	All		Disabling	
	Number	Percent	Number	Percent
ALL OCCUPATIONS	49,214	100.0%	19,140	100.0%
Operatives, except Transport	12,525	25.5	4,792	25.0
Craft & Kindred Workers	10,337	21.0	3,754	19.6
Laborers, except Farm	8,769	17.8	3,993	20.9
Service Workers	7,275	14.8	2,829	14.8
Clerical Workers	3,379	6.9	1,159	6.1
Transport Operatives	2,304	4.7	1,160	6.1
Professional/Technical	2,206	4.5	580	3.0
Managers & Administrators	1,520	3.1	460	2.4
Sales Workers	330	.7	142	.7
Farm Workers	162	.3	96	.5
Private Household Workers	3	.0	2	.0
Unknown Occupations	404	.8	173	.9

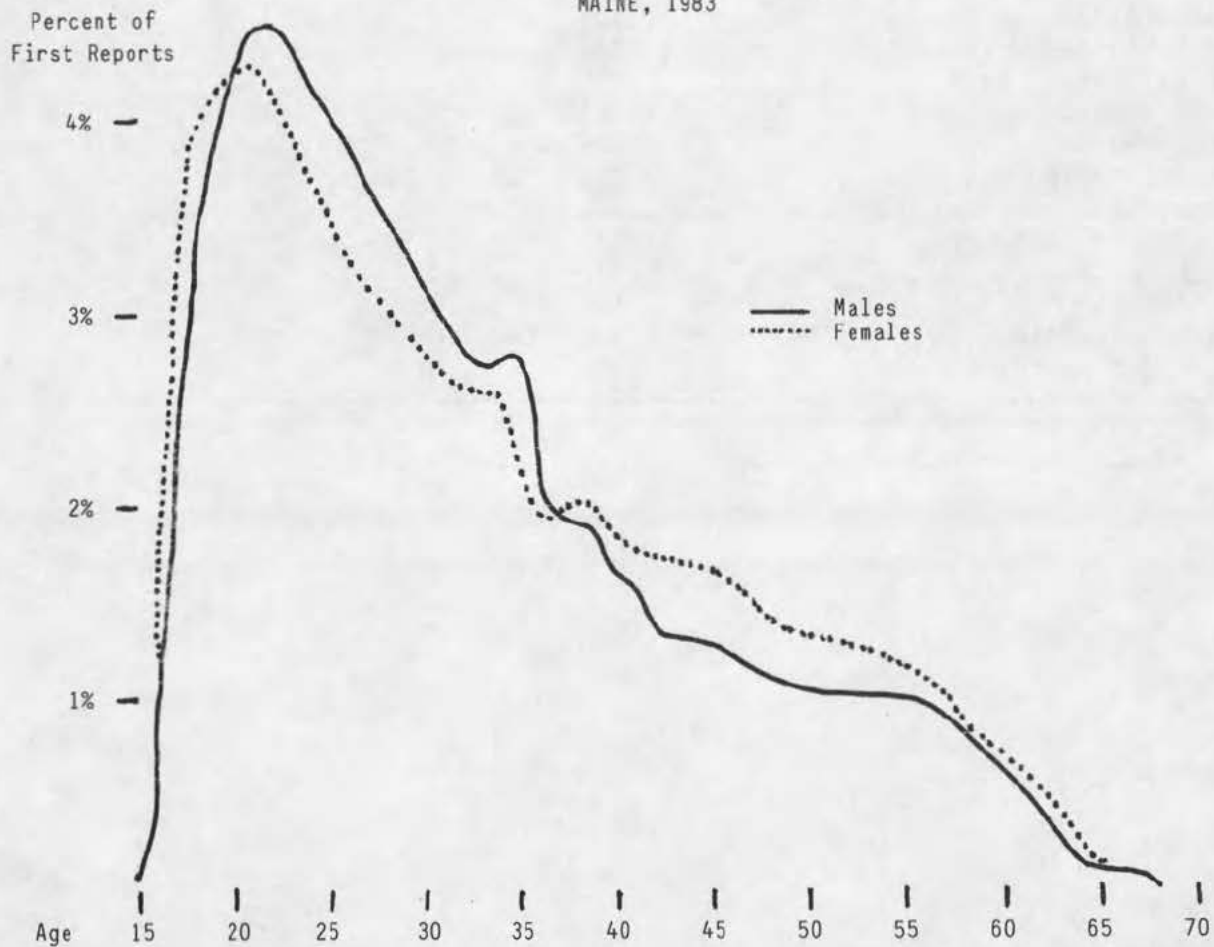
## Age

Younger workers apparently get injured at a higher rate than older workers. This was discussed in detail in the 1982 publication. But, as the chart below shows, there are some differences between the sexes. Women tend to have a higher percentage prior to 20 and after 37. These variations could well be the result of age patterns in the work force. This was true for the less than 20 segment; a higher percentage of the female labor force was in the 16-19 category (8.6%) than the same ages for men (7.6%). But, it is not true for the older groups; the male labor force is more concentrated in the 35 or older category (50.4%) than the same ages for women (48.8%). As the table below shows, the three large age groups show less variation for women than for men.

TABLE 3. -- LABOR FORCE AND FIRST REPORTS, PERCENT DISTRIBUTION AND RATIO, MAINE, 1983

Age	Men			Women		
	% Labor Force	% Reports	Ratio	% Labor Force	% Reports	Ratio
16-19	7.6	7.1	.93	8.6	8.7	1.01
20-34	42.0	55.0	1.31	42.6	49.0	1.15
35 & Older	50.4	37.9	.75	48.8	42.2	.86

FIGURE 2. -- FIRST REPORTS BY AGE AND SEX, PERCENT DISTRIBUTION MAINE, 1983



### Length of Service

More injuries and illnesses occur in the first month on a job than any year beyond the fourth year. Thirty-four percent occur within the first year. As Table 4 shows, occupational categories that include a large number of first jobs have a below average length of service.

TABLE 4. -- AVERAGE LENGTH OF SERVICE, ALL CASES, MAINE, 1983

<u>OCCUPATIONAL CATEGORY</u>	<u>Average Length of Service (Years/Months)</u>
Managers/Administrators	7/7
Professional/Technical	6/6
Craft & Kindred Workers	6/5
Transport Operatives	5/8
Sales Workers	5/2
Operatives, except Transport	4/11
<u>ALL OCCUPATIONS</u>	<u>4/11</u>
Clerical Workers	4/2
Service Workers	4/2
Laborers, except Farm	3/5
Farm Workers	3/0



## PART II

### CHARACTERISTICS OF THE FIRM

#### Ownership

In 1983, private employers filed nearly 90% of all First Reports. The remainder were from Local Government (7.2%) and the State (4.0%). The importance of a breakdown of cases by ownership is that there are different jurisdictions for the enforcement of Occupational Safety and Health rules. The U.S. Department of Labor, Occupational Safety and Health Administration (OSHA) covers private employers, while those in the public domain (state and local governments) are under the jurisdiction of the Safety Division of the Maine Bureau of Labor Standards.

The activities usually found in each sector are widely divergent. For instance, the private sector has a great deal of manufacturing while the public sector has virtually none. For this reason, a comparison of employment to report percentages may lead to false judgments as to the performance of the enforcing agencies. The figures do, however, show the relative workloads of the respective health and safety authorities.

TABLE 5. -- PERCENT AVERAGE EMPLOYMENT & PERCENT REPORTS  
BY OWNERSHIP, MAINE, 1983

	Average Nonfarm Employment*		Reports of Injuries and Illnesses			
	Number	Percent	All		Disabling	
			Number	Percent	Number	Percent
ALL EMPLOYERS	393,500	100.0%	49,214	100.0%	19,140	100.0%
Private Employers	329,200	83.7	43,680	88.8	17,090	89.3
Public Employers	64,300	16.3	5,534	11.2	2,050	11.7
Local Government	(43,300)	(11.0)	(3,561)	(7.2)	(1,299)	(6.8)
State Government	(21,000)	(5.30)	(1,973)	(4.0)	(751)	(3.9)

\*SOURCE: Division of Economic Analysis & Research, Bureau of Employment Security,  
Department of Labor. (Excludes Federal employment).

## Industry

Table 6 compares the percent of average employment and of First Reports for Major Industry Divisions. It is interesting to note that while average employment increased 2% from 1982 to 1983, the number of First Reports increased nearly 5%. Manufacturing was the leader, with a rise from just over 20,000 in 1982 to nearly 22,000 in 1983. As can be seen from the comparison rate between employment and number of reports, Construction has a very high ratio of reports to employment (2.14), indicating a relatively hazardous work environment and the physical nature of the occupations involved. It seems intuitive, therefore, that Finance, Insurance, and Real Estate would have the smallest ratio (.20), being an Industry Division involving relatively sedentary occupations.

TABLE 6. -- AVERAGE EMPLOYMENT & REPORTS, NUMBER & PERCENT  
BY MAJOR INDUSTRIAL DIVISIONS, MAINE, 1983

Industry Division	Average Employment <sup>1/</sup>		Reports of Injuries & Illnesses					
	Number	Percent	All			Disabling		
			Number	Percent	Ratio <sup>2/</sup>	Number	Percent	Ratio <sup>2/</sup>
ALL DIVISIONS	393,500	100.0%	49,214	100.0%	1.0	19,140	100.0%	1.0
Manufacturing	106,200	27.0	21,668	44.1	1.63	8,201	42.8	1.59
Services	77,300	19.6	6,461	13.1	.67	2,409	12.6	.64
Retail Trade	73,100	18.6	6,363	12.9	.69	2,349	12.3	.66
Construction	16,400	4.2	4,437	9.0	2.14	1,882	9.8	2.33
Wholesale Trade	18,600	4.7	2,221	4.5	.96	986	5.2	1.1
Trans. & Pub. Utilities	15,900	4.0	1,590	3.2	.80	824	4.3	1.08
Fin., Ins., & Real Estate	17,500	4.4	417	.9	.20	167	.9	.20
Other, Private Sector <sup>3/</sup>	4,300	1.1	501	1.0	NA	262	1.4	NA
State & Local Government	64,300	16.3	5,534	11.3	.69	2,050	10.7	.66

1. SOURCE: Division of Economic Analysis & Research, Bureau of Employment Security, Department of Labor (excludes Federal employment).

2. Percent of Reports divided by percent of employment.

3. Due to variations in coverage, figures are not comparable.

Table 7 offers a further breakdown by Major Industry Group for Manufacturing. Lumber and Wood Products leads the group with the largest ratio of injuries and illnesses to employment (1.53), while Electric and Electronic Equipment had the smallest ratio (.43). Looking at Disabling cases, Lumber and Wood again leads with 1.91, or nearly twice the number of reports as could be expected looking at employment. Food Products also shows a dramatic increase in ratio from 1.05 for All cases to 1.23 for Disabling reports.

TABLE 7. -- AVERAGE EMPLOYMENT & REPORTS, NUMBER & PERCENT  
BY SELECTED MANUFACTURING GROUPS, MAINE, 1983

Manufacturer	Average Employment <sup>1/</sup>		Reports of Injuries and Illnesses					
	Number	Percent	All			Disabling		
			Number	Percent	Ratio <sup>2/</sup>	Number	Percent	Ratio <sup>2/</sup>
ALL MANUFACTURING	106,200	100.0%	21,668	100.0%	1.00	8,201	100.0%	1.00
Lumber & Wood	12,900	12.1	4,007	18.5	1.53	1,891	23.1	1.91
Paper	17,900	16.9	3,743	17.3	1.02	974	11.9	.70
Leather	20,800	19.6	3,523	16.3	.83	1,353	16.5	.84
Transportation Equipment	NP	NP	3,107	14.3	NA	1,169	14.3	NA
Food	8,300	7.8	1,779	8.2	1.05	786	9.6	1.23
Textiles	6,800	6.4	1,070	4.9	.77	484	5.9	.92
Fabricated Metals	3,200	3.0	714	3.3	1.10	200	2.4	.80
Electric & Electronic Eqpt.	7,800	7.3	703	3.2	.43	251	3.1	.42
Rubber & Plastics	4,000	3.8	656	3.0	.79	234	2.9	.76
Machinery	3,700	3.5	643	3.0	.86	203	2.4	.69
Apparel	4,800	4.5	541	2.5	.56	229	2.8	.62
Printing	4,200	4.0	497	2.3	.58	152	1.9	.48
ALL OTHER MANUFACTURING	NP	NP	685	3.2	NA	275	3.3	NA

1. Division of Economic Analysis and Research, Bureau of Employment Security, Department of Labor.
2. Percent of Reports divided by percent of employment.

NP: Not Publishable

## Insurance

Insurance coverage in over three-quarters of cases in 1983 was provided by a private insurance company. Nearly 23% of the cases involved a self-insured firm. A small number were uninsured; most often, this occurs because the employer was late in renewing insurance or failed to file proof of coverage.

TABLE 8. -- REPORTS, NUMBER & PERCENT  
BY INSURANCE TYPE, MAINE, 1983

<u>Insurance Method</u>	<u>All Reports</u>		<u>Disabling Reports</u>	
	<u>Number</u>	<u>Percent</u>	<u>Number</u>	<u>Percent</u>
ALL	49,214	100.0%	19,140	100.0%
Private	37,098	75.4	14,773	77.2
Self-Insured	11,214	22.8	3,946	20.6
Not Insured	902	1.8	421	2.2



## County of Occurrence

The three counties with the greatest number of reports were Cumberland (22.5%), Penobscot (13.1), and York (9.7); but in each case, the number of reports could be anticipated by their share of employment. There were five counties that are "over represented" as determined by the ratio of percent employment to percent of cases. These were Sagadahoc (1.88 ratio), Piscataquis (1.42), Oxford (1.34), Somerset (1.28), and Franklin (1.22). All, except Sagadahoc, are areas with a great deal of Logging. Data for Disabling cases shows a similar pattern, but includes Aroostook County in addition to the other five counties.

TABLE 9. -- PERCENT EMPLOYMENT & REPORTS & RATIOS, BY COUNTY  
ALL & DISABLING, MAINE, 1983

COUNTY	Average Employment* (Percent)	Reports**			
		All		Disabling	
		Percent	Ratio	Percent	Ratio
ALL COUNTIES	100.0%	100.0%	1.0	100.0%	1.0
Androscoggin	10.6	9.5	.90	8.7	.82
Aroostook	6.0	6.4	1.07	7.8	1.30
Cumberland	25.9	22.5	.86	22.6	.87
Franklin	2.7	3.3	1.22	2.9	1.07
Hancock	3.0	2.3	.77	2.1	.70
Kennebec	10.4	8.2	.79	8.3	.80
Knox	2.7	2.5	.93	2.2	.81
Lincoln	1.2	1.1	.92	1.1	.92
Oxford	3.8	5.1	1.34	5.3	1.39
Penobscot	13.2	13.1	.99	13.8	1.05
Piscataquis	1.2	1.7	1.42	1.8	1.50
Sagadahoc	3.3	6.2	1.88	6.1	1.85
Somerset	3.2	4.1	1.28	3.9	1.22
Waldo	1.4	1.3	.93	1.6	1.14
Washington	1.8	1.9	1.06	1.8	1.0
York	9.6	9.7	1.01	8.5	.89
Other States		1.1		1.3	
Out of Country		.1		.1	

\*Figures are calculated from County Business Patterns, 1980, Maine (Bureau of Census, 1981). Excludes government, railroads, self-employed, & family members and is classified by job location, not residence of worker.

\*\*Location where incident occurred.

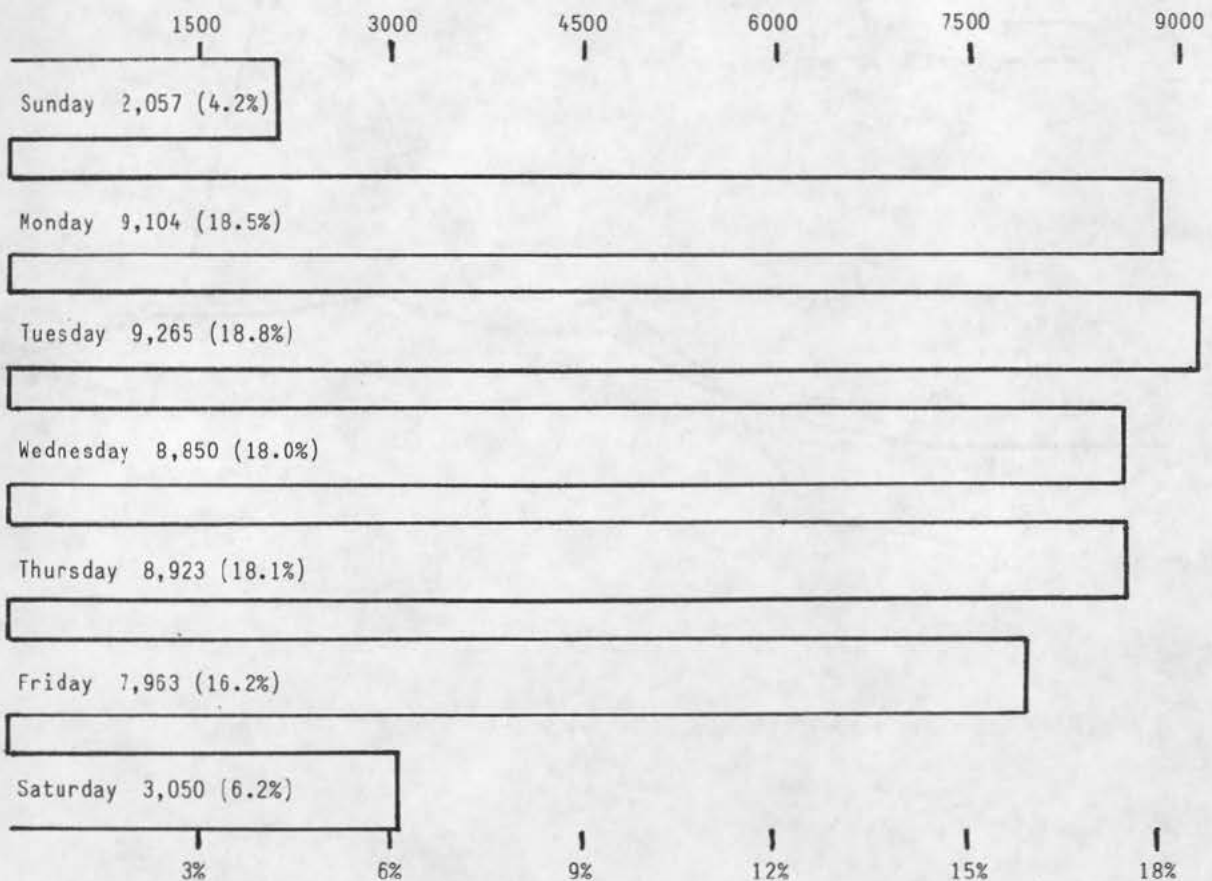
### PART III

#### CHARACTERISTICS OF THE INCIDENT

##### Day of the Week

As expected, almost 90% of injuries and illnesses occur on Monday through Friday. Saturdays account for 6.2%; Sundays for 4.2%. Looking at the "regular" work week, there is a slight, decrease in the number of reports from 18.8% on Tuesday to 16.2% on Friday. Monday had 18.5%, somewhat less than in previous years.

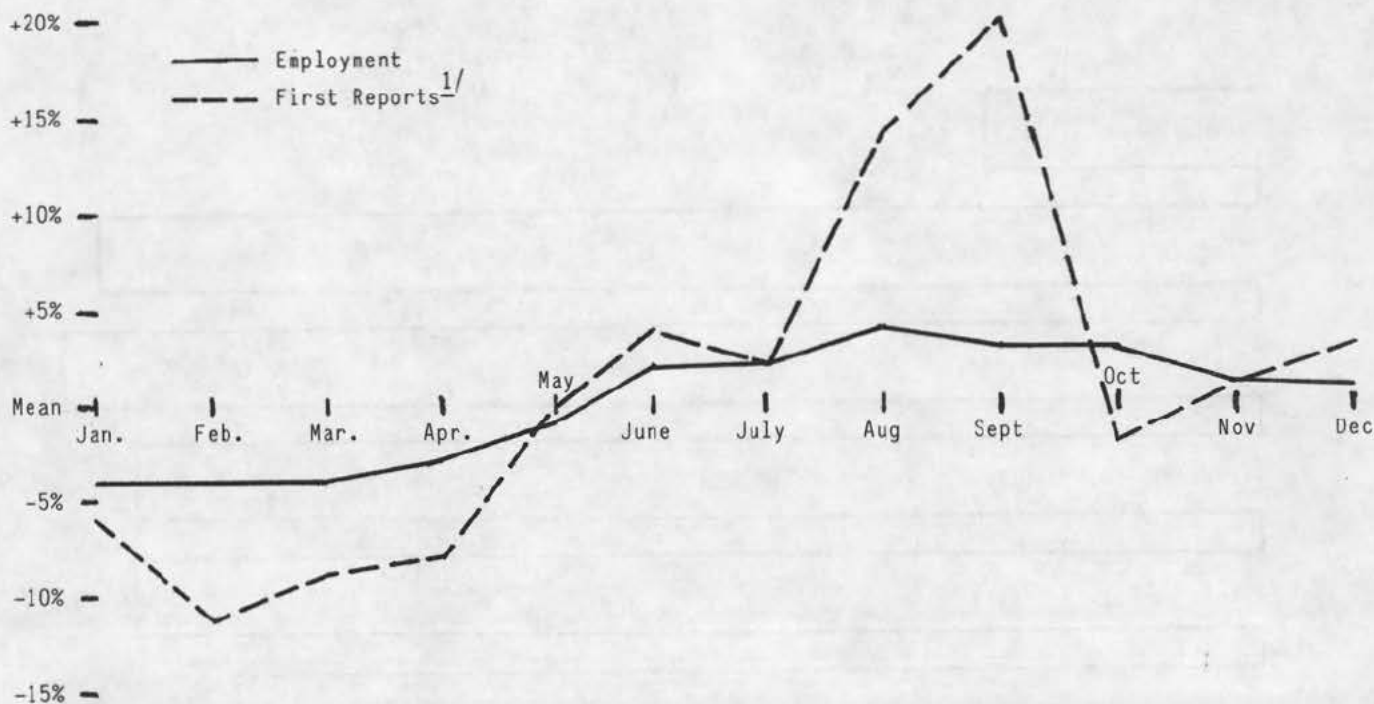
FIGURE 3. -- DAY OF THE WEEK, NUMBER & PERCENT,  
ALL CASES, MAINE, 1983



## Month

Activity by month shows only minor variations. In 1983, the percentage of First Reports by month ranged from a low 7.2% in February to a high of 10.1% in August. As Figure 4 shows, the number of First Reports by month follows a pattern similar to employment, but is more volatile. It should be noted that September is the month with the highest employment in Construction and one of the highest in Lumber and Wood Products.

FIGURE 4. -- PERCENT DEVIATION FROM MEAN, FIRST REPORTS AND EMPLOYMENT BY MONTH, MAINE, 1983

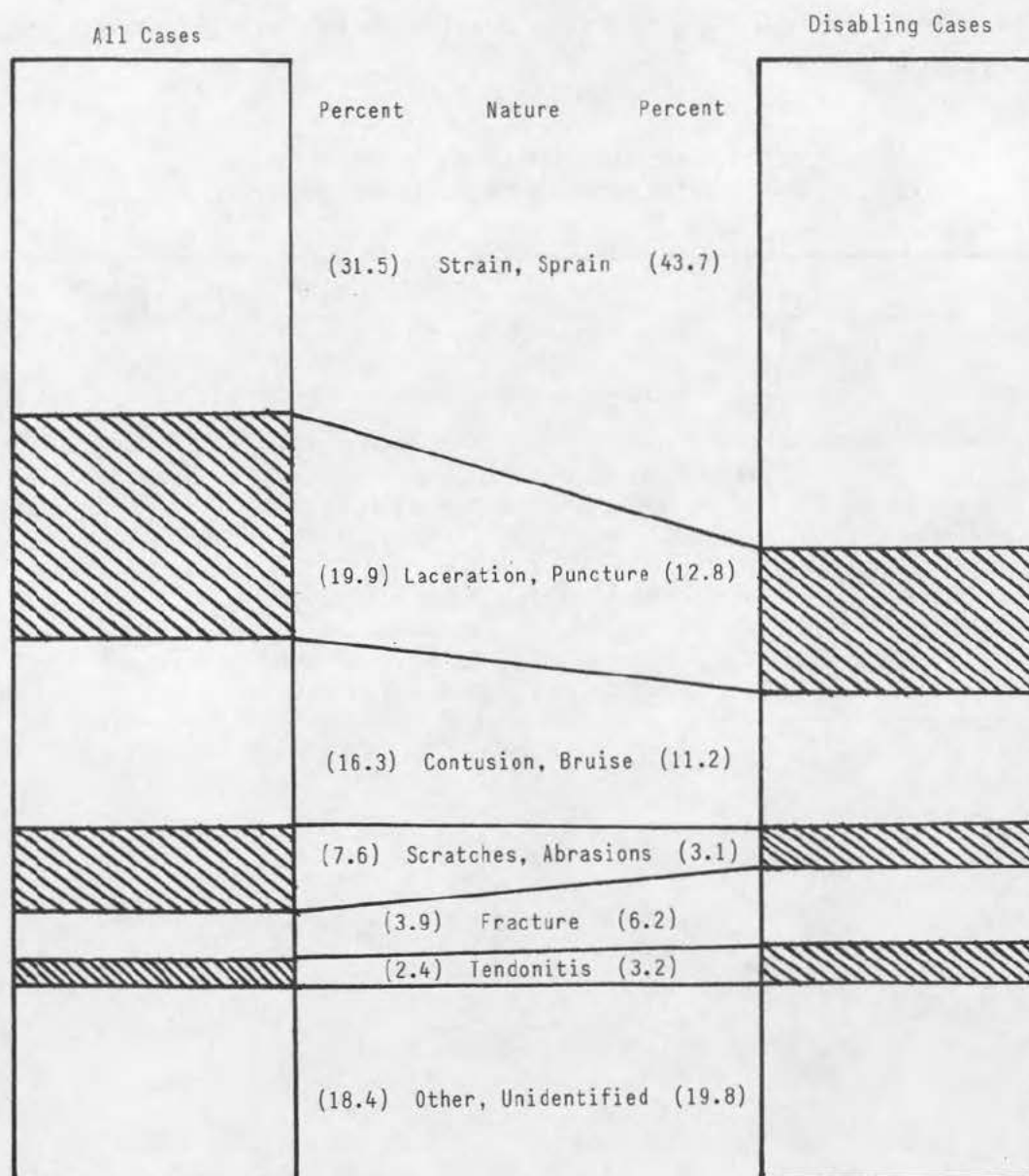


1. Adjusted for number of workdays in the month.

## Nature of Illness or Injury

The figure below shows the breakdown by Nature of Illness or Injury for First Reports filed in 1983. Over half of the reported cases were for Sprains and Strains (31.5%) or Lacerations (19.9%). Bruises followed in size with over 16%. On the other hand, Strains and Sprains comprise over 40% of the Disabling cases while Bruises (11.2%) and Lacerations (12.8%) show much smaller proportions. As might be expected, Fractures and Tendonitis comprised larger portions of the Disabling than of the All Cases category.

FIGURE 5. -- NATURE OF INJURY OR ILLNESS  
ALL & DIABLING CASES, MAINE, 1983



### Occupational Illnesses

Occupational illnesses are relatively uncommon, comprising only about 7% of the total cases. Inflammation of Joints, Tendons, etc. (Tendonitis, bursitis, etc.) comprise the majority of occupational illnesses in both the All and Disabling categories. This diagnosis is usually the result of prolonged exertion of a specific area of the body (most often, upper extremities). Dermatitis, which includes rash, skin or tissue inflammation, is the second most frequent occupational illness. Unlike the former, however, dermatitis cases are less often disabling. Systemic Effects of Toxic Materials account for nearly 11% of both All and Disabling cases. Other significant occupational illnesses included Radiation Effects, Heart Attacks, and Infectious and Parasitic Disease.

TABLE 10. -- NUMBER OF ILLNESSES, NUMBER & PERCENT OF  
ALL & DISABLING CASES, MAINE, 1983

ALL			DISABLING		
ILLNESS	Number	Percent	ILLNESS	Number	Percent
TOTAL	3,326	100.0%	TOTAL	1,482	100.0%
Inflammation of Joints, Tendons, etc.	1,159	34.8	Inflammation of Joints, Tendons, etc.	606	40.9
Dermatitis	846	25.4	Dermatitis	261	17.6
Systemic Effects of Toxic Materials	355	10.7	Systemic Effects of Toxic Materials	157	10.6
Radiation Effects	208	6.3	Heart Attacks	75	5.1
Heart Attacks	90	2.7	Radiation Effects	48	3.2
Infection & Parasitic Disease	73	2.2	Infection & Parasitic Disease	21	1.4
Other Illnesses	595	17.9	Other Illnesses	314	21.2

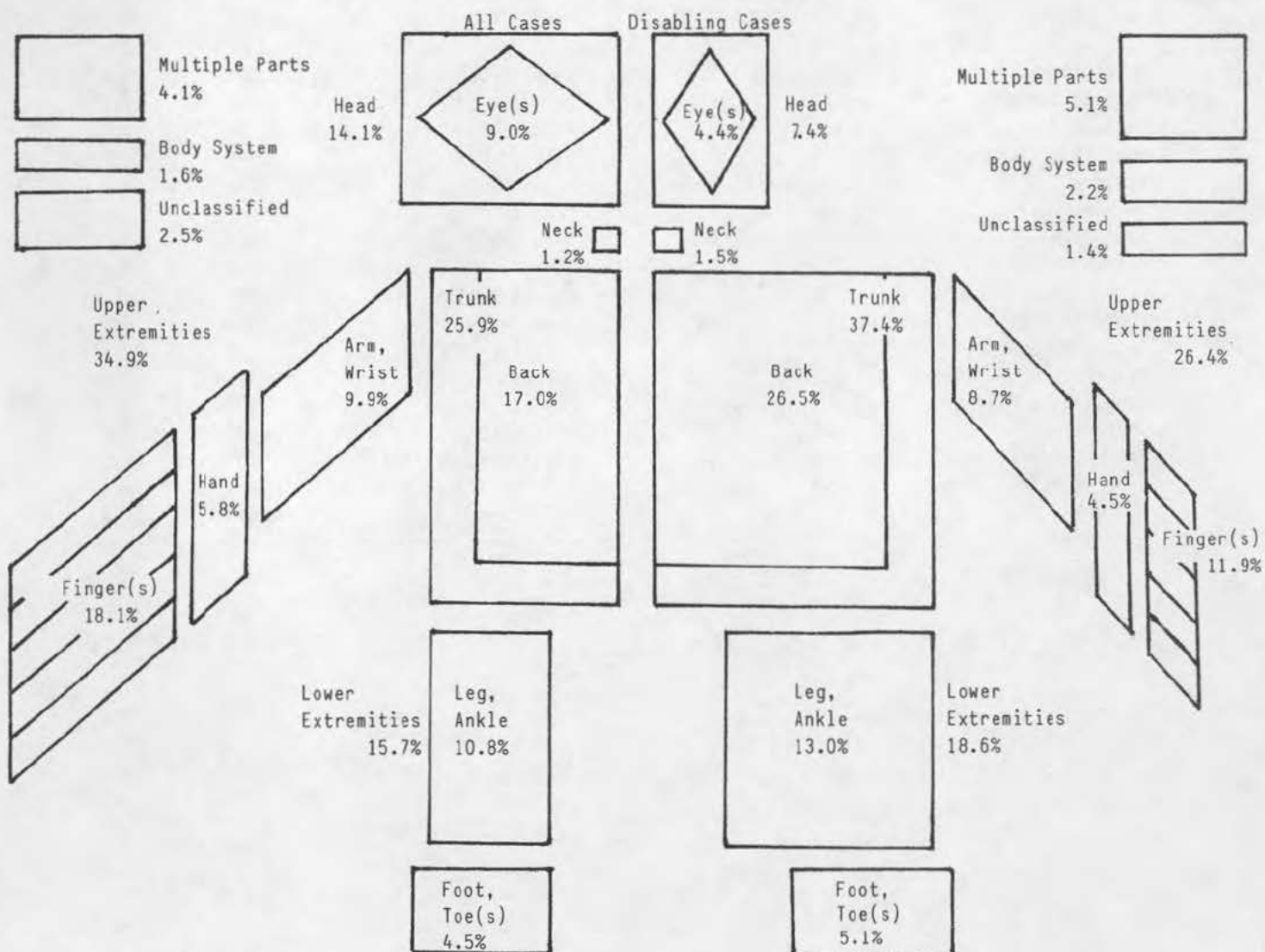


## Part of Body Affected

The figure below displays the Part of Body Affected by the work-related injury or illness. Over 60% of All Cases involved the Trunk (25.9%) and Upper Extremities (34.9%). The numbers are reversed for Disabling Cases with the Trunk having 37.4% and Upper Extremities showing 26.4%.

Larger differences appear when considering more detailed parts of the body. Over 26% of the Disabling cases involved the back, while only 17% of the total cases were back injuries. In addition, the percentage of eye injuries for All cases was nearly double the percentage of Disabling cases (9.0% vs. 4.4%), indicating the presence of a substantial number of minor corneal abrasions.

FIGURE 6. -- PART OF BODY AFFECTED  
PERCENT DISTRIBUTION OF CASES  
MAINE, 1983



### Source of Injury or Illness

Metal Items (10.9%) and Working Surfaces (12.4%) were the most often cited Sources of Injury or Illness for All and Disabling cases respectively in 1983. Containers, the third most common Source over all comprised a larger percentage of Disabling cases (11.9%) than All cases (9.8%). Conversely, Metal Items made up a smaller percentage of the Disabling cases (8.5%) than All cases.

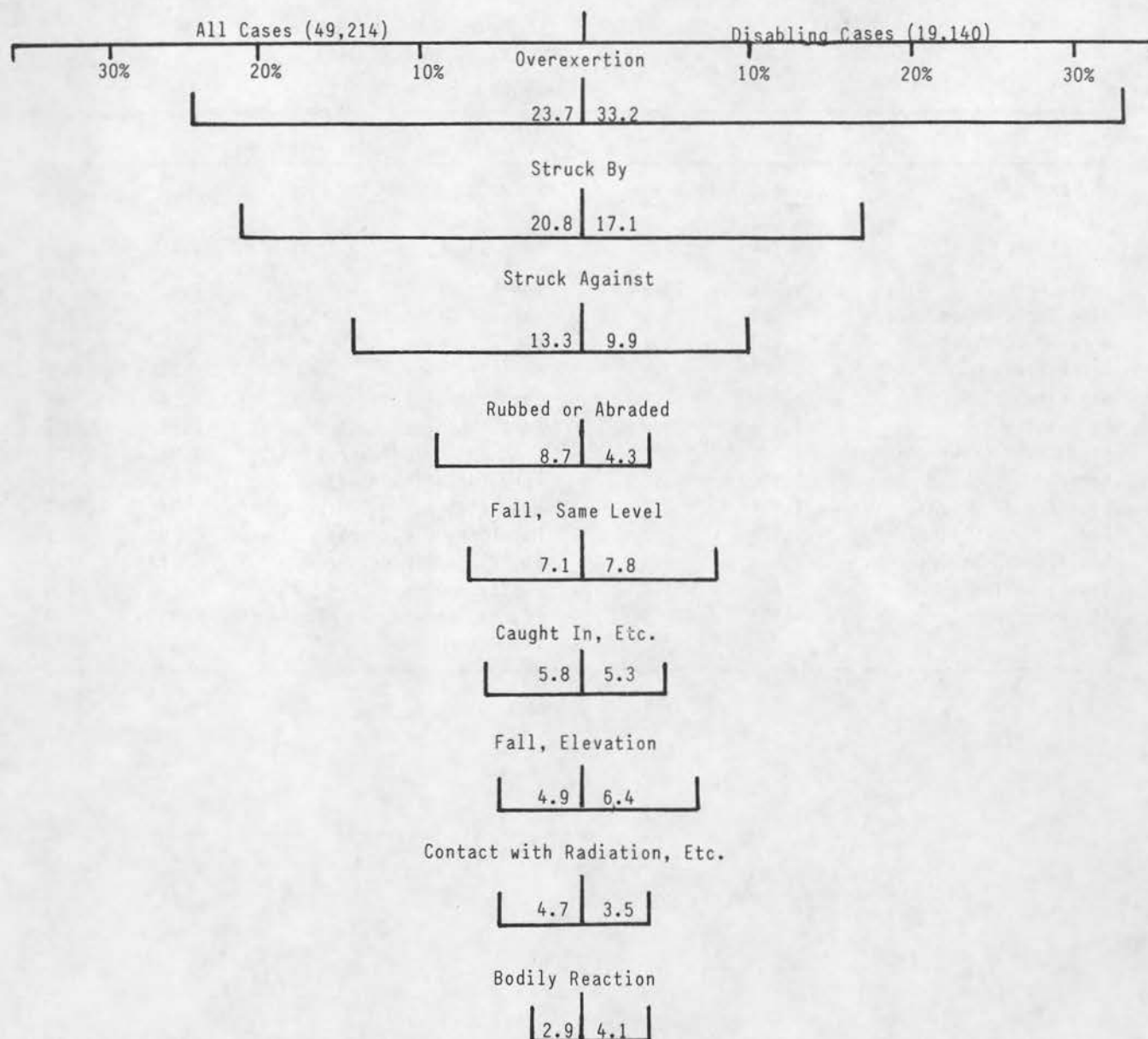
FIGURE 7. -- SOURCE OF INJURIES OR ILLNESSES, NUMBER & PERCENT  
OF ALL & DISABLING CASES, MAINE, 1983

ALL			DISABLING		
SOURCE	Number	Percent	SOURCE	Number	Percent
TOTAL	49,214	100.0%	TOTAL	19,140	100.0%
Metal Items	5,378	10.9	Working Surfaces	2,376	12.4
Working Surfaces	4,955	10.1	Containers	2,283	11.9
Containers	4,814	9.8	Metal Items	1,626	8.5
Hand Tools, Unpowered	3,691	7.5	Vehicles	1,361	7.1
Vehicles	3,034	6.2	Machines	1,046	5.5
Machines	2,808	5.7	Person	1,008	5.2
Wood Items	2,429	4.9	Wood Items	953	5.0
Person	2,259	4.6	Hand Tools, Unpowered	948	5.0
Furniture & Fixtures	1,758	3.5	Bodily Motion	777	4.1
Particles, Unidentified	1,592	3.2	Hand Tools, Powered	593	3.1
Bodily Motion	1,417	2.9	Furniture & Fixtures	540	2.8
Buildings & Structures	1,366	2.8	Buildings & Structures	448	2.4
Hand Tools, Powered	1,225	2.5	Plants, Trees, Etc.	407	2.1
Chemicals	1,026	2.1	Chemicals	278	1.4
Plants, Trees, Etc.	814	1.7	Particles, Unidentified	204	1.1
Mineral Items, Nonmetallic	497	1.0	Mineral Items, Nonmetallic	199	1.0
All Other	10,151	20.6	All Other	4,093	21.4

### Type of Accident or Exposure

Type of Accident or Exposure indicates what action led to the injury or illness. Overexertion, as in other years, tops the list for Type of Accident, comprising nearly 24% of All cases and over one-third of Disabling cases. Figure 8 reveals a more complete picture of Type data. Struck By (20.8%) and Struck Against (13.3%) follow Overexertion as the next two most common types of accidents. Both were less significant among Disabling cases. On the other hand, Falls and Bodily Reaction (along with Overexertion) were the only categories where the percent of Disabling cases exceeds the percent of All cases, indicating more traumatic types of accident or exposure resulted.

FIGURE 8. -- TYPE OF ACCIDENT OR EXPOSURE  
PERCENT DISTRIBUTION, MAINE, 1983



### Associated Object or Substance

The Associated Object or Substance (AOS) identifies the object, substance, or person with respect to which measures could have been introduced to prevent the accident or mitigate the injury or illness. The relationship between the AOS and Source may be directly or indirectly causal. In the instance of a worker who cut a finger against a table saw, the Source and the AOS would be the same object -- the saw, because no other object related to the injurious event. However, if a forklift ran into the worker, causing a fall into the table saw, thus cutting the finger, the Source would still be the saw, while the AOS would be the forklift. Boxes, Barrels, and Containers were the most frequently cited AOS in both All cases (10.3%) and Disabling cases (12.1%).

TABLE 11. -- ASSOCIATED OBJECTS OR SUBSTANCES, NUMBER &  
PERCENT FOR ALL & DISABLING CASES, MAINE, 1983

ALL			DISABLING		
AOS	Number	Percent	AOS	Number	Percent
TOTAL	49,214	100.0%	TOTAL	19,140	100.0%
Containers	5,051	10.3	Containers	2,325	12.1
Hand Tools (Unpowered)	4,309	8.8	Working Surfaces	1,819	9.5
Working Surfaces	3,998	8.1	Vehicles	1,597	8.3
Metal Items	3,515	7.1	Machines	1,268	6.6
Vehicles	3,500	7.1	Metal Items	1,189	6.2
Machines	3,409	6.9	Person	1,095	5.7
Hand Tools (Powered)	2,518	5.1	Hand Tools (Unpowered)	1,081	5.6
Person	2,510	5.1	Hand Tools (Powered)	874	4.6
Wood Items	1,904	3.9	Wood Items	771	4.0
Furniture & Fixtures	1,824	3.7	Furniture & Fixtures	596	3.1
Buildings & Structures	1,423	2.9	Buildings & Structures	517	2.7
Bodily Motion	928	1.9	Bodily Motion	495	2.6
All Other	14,325	29.1	Plants, Vegetables, Etc.	384	2.0
			All Other	5,132	27.0

## CROSS TABULATIONS

Nature-Part Combinations

Table 12 clearly indicates that the most common First Report Nature/Part combination was Sprain or Strain to the Back (15.6%). This combination was followed by Laceration to Finger (11.0%), Abrasion of the Eye (6.5%), and Strain to Lower Extremities (5.3%). The ten largest groups totaled nearly 62% of the total.

TABLE 12. -- NATURE OF INJURY OR ILLNESS, BY PART OF BODY AFFECTED, PERCENT DISTRIBUTION, MAINE, 1983

NATURE	Total	PART						
		Fingers	Back	Upper Extremities <sup>1/</sup>	Lower Extremities	Eyes	Trunk <sup>2/</sup>	Other
Total	100.0%	18.1%	17.0%	16.8%	15.7%	9.0%	8.9%	14.5%
Strains, Sprains	31.5	0.9	15.6(1)	3.3(10)	5.3(4)	-	4.7 (6)	1.7
Cuts, Lacerations	19.9	11.0 (2)	-	3.4(8)	1.8	0.5	0.1	3.1
Contusions, Bruises	16.3	3.4 (9)	0.5	3.6(7)	4.9 (5)	0.1	1.8	2.0
Scratches, Abrasions	7.6	0.2	-	0.4	0.2	6.5(3)	-	0.3
Other	24.7	2.6	0.9	6.1	3.5	1.9	2.3	7.4

Note: Ranking of the ten largest combinations are shown in parentheses.

1. Except Fingers.

2. Except Back.

Nature-Type Combinations

The most frequently cited combinations were Sprains and Strains as a consequence of Overexertion (19.7%), Struck By or Against, resulting in a Cut or Laceration (15.0%), and a Bruise, Contusion, or Crushing as the result of Striking Against (9.6%). The top ten combinations had a 67.9% share of the total.

TABLE 13. -- NATURE OF INJURY OR ILLNESS BY TYPE OF ACCIDENT OR EXPOSURE, PERCENT DISTRIBUTION, MAINE, 1983

NATURE	Total	TYPE					
		Struck By or Against	Over- exertion	Fall	Rubbed or Abraded	Caught In, Under or Between	Other
Total	100.0%	34.0%	23.7%	12.0%	8.7%	5.8%	15.8%
Strains, Sprains	31.5	3.3(7)	19.7(1)	3.9(5)	0.3	0.5	3.8
Cuts, Lacerations	19.9	15.0(2)	0.1	0.6	2.0	1.6	0.6
Contusions, Bruises	16.3	9.6(3)	0.2	3.3(6)	0.1	2.5(10)	0.6
Scratches, Abrasions	7.6	1.1	0.2	0.2	6.0(4)	0.1	-
Other	24.7	5.0	3.5	4.0	0.3	1.1	10.8

Note: Ranking of the ten largest combinations are shown in parentheses. Numbers 8, Strain or Sprain by Bodily Reaction, 2.6% and 10, Burn by Contact with Temperature Extreme, 2.0% are not shown separately.



### Nature-Source Combinations

Sprain or Strain from Boxes, Barrels, or Containers (6.3%) tops the list here. Other common combinations for Source/Nature were Lacerations, resulting from the use of Unpowered Hand Tools (5.0%) and Strains and Sprains from a Fall to a Working Surface (4.3%). The Source codes are so numerous that the top ten Source/Nature combinations total only 34%.

TABLE 14. -- NATURE OF INJURY OR ILLNESS BY SOURCE OF INJURY OR ILLNESS  
PERCENT DISTRIBUTION, MAINE, 1983

NATURE	Total	SOURCE						
		Metal Items	Working Surfaces	Boxes, Etc.	Hand Tools (Not Pwd.)	Vehicle	Machines	Other
TOTAL	100.0%	10.9	10.1	9.8	7.5	6.2	5.7	49.8
Strains, Sprains	31.5	1.9	4.3(3)	6.3(1)	1.0	2.0(9)	0.8	15.2
Cuts, Lacerations	19.9	4.2(4)	0.2	0.8	5.0(2)	0.8	2.4(7)	6.5
Contusions, Bruises	16.3	1.6	2.3(8)	1.4	0.8	1.8	1.5	6.9
Scratches, Abrasions	7.6	1.9(10)	0.9	0.8	0.1	0.1	0.1	3.7
Other	24.7	1.3	2.4	0.5	0.6	1.5	0.9	17.5

Note: Rankings of top ten combinations are in parentheses. Numbers 5, Scratch or Abrasion by an Unidentified Particle (3.1%) and 6, Strain or Sprain by Bodily Motion (2.6%) are not shown separately.

### Source-Type Combinations

Falls to the Working Surfaces was the number one combination of Source/Type, occurring in over 8.4% of All cases. Number two was Overexertion involving Boxes and Containers at 6.5%. Struck By or Against Unpowered Hand Tools followed with a frequency of 6.0%. The top ten combinations totaled less than 42%.

TABLE 15. -- SOURCE OF INJURY OR ILLNESS BY TYPE OF ACCIDENT OR EXPOSURE  
PERCENT DISTRIBUTION, MAINE, 1983

SOURCE	Total	TYPE OF ACCIDENT OR EXPOSURE					
		Struck By, Against	Over- Exertion	Fall	Rubbed or Abraded	Caught In Under, Between	Other
Total	100.0%	34.0	23.7	12.0	8.7	5.8	15.8
Metal Items	10.9	5.6(4)	1.7	0.3	2.4(7)	0.4	0.5
Working Surfaces	10.1	1.4	-	8.4(1)	0.2	-	0.1
Boxes, Etc.	9.8	2.2	6.5(2)	0.3	0.2	0.4	0.2
Hand Tools (Not Pwd.)	7.5	6.0(3)	1.2	-	0.1	0.1	0.1
Vehicles	6.2	2.3(9)	1.3	0.5	0.2	0.8	1.1
Machines	5.7	2.3(6)	0.7	0.2	0.1	1.9	0.5
Wood Items	4.9	2.4(8)	1.2	0.2	0.7	0.3	0.1
Person	4.6	0.9	2.3(10)	-	-	0.1	1.3
Other	40.3	10.9	8.8	2.1	4.8	1.8	11.9

Note: Rankings of top ten combinations shown in parentheses. Number 5, Rubbed or Abraded by an Unidentified Particle (3.1%) is not shown separately.

TABLE 16. -- ASSOCIATED OBJECT OR SUBSTANCE BY TYPE OF ACCIDENT OR EXPOSURE  
PERCENT DISTRIBUTION, MAINE, 1983

AOS	Total	TYPE OF ACCIDENT OR EXPOSURE					
		Struck By, Against	Over- Exertion	Fall	Rubbed or Abraded	Caught In Under, Between	Other
TOTAL	100.0%	34.0	23.7	12.0	8.7	5.8	15.8
Boxes	10.3	2.2(8)	6.4(2)	0.4	0.3	0.4	0.6
Hand Tools (Not Pwd.)	8.8	6.6(1)	1.1	0.1	0.6	0.1	0.3
Working Surfaces	8.1	1.3	0.3	5.4(3)	0.1	0.1	0.9
Metal Items	7.1	3.9(4)	1.7	0.2	0.8	0.3	0.2
Vehicles	7.1	2.5(6)	1.3	1.1	0.4	0.7	1.1
Machines	6.9	3.0(5)	0.9	0.2	0.5	1.9(10)	0.4
Hand Tools (Pwd.)	5.1	2.2(9)	0.5	-	1.5	-	0.9
Person	5.1	0.1	2.3(7)	0.3	-	-	2.4
Other	41.5	12.2	9.2	4.3	4.5	2.3	9.0

PART IV

CHARACTERISTICS OF FATALITIES

The Seven Years

TABLE 17. -- SELECTED CHARACTERISTICS OF FATALITIES  
MAINE, 1977-1983

DESCRIPTION	YEAR						
	1977	1978	1979	1980	1981	1982	1983
Total Fatalities	38	52	66	54	50	53	36
Fatalities Due to Injuries	23	35	41	36	26	23	21
Fatalities Due to Heart Attacks	13	14	22	13	22	28	12
Fatalities Due to Illnesses (except Heart Attacks)	2	3	3	5	2	2	3
Occurring to Females	0	0	1	0	0	5	2
Multiple Death Incidents (Number of Fatalities)	0	2(6)	2(4)	0	3(6)	1(2)	1(2)
Auto Occupant	5	5	8	11	8	13	7
Trees Falling	1	4	5	3	0	0	1

Over the past seven years, there was an average of just under 50 cases per year, with a high of 66 in 1979 and a low of 36 in 1983. The peak can be attributed to the large number of injury fatalities that year, while 1983's lower number of fatalities is clearly attributable to a relatively small number of heart attacks.

The number of fatal heart attacks reported increased dramatically over the first six years, with 1982 recording an all-time high of 28 reports. Fatalities due to heart attacks are likely to be contested; it is the task of the Commission to determine the work-relatedness of the incident. These data are based solely on First Reports.

In 1982, the fact that there were a number of fatalities among women was significant. In the previous five years combined, there had been only one female fatality. In 1982, however, 5 out of the 53 deaths were women. All of the women suffered heart attacks; all were relatively young when they died (41, 53, 53, and 54); and all held non-managerial positions. In 1983, one of the two women died of a heart attack; the other died in an automobile accident.

Tabulations for occupational fatalities by industry over the seven-year span shows that Manufacturing leads the next highest industry (Consturction) in total fatalities over 2:1. Finance, Insurance and Real Estate occupies the other end of he scale with no fatalities in the last two years.

TABLE 18. -- NUMBER OF FATALITIES, BY INDUSTRY  
MAINE, 1977-1983

INDUSTRY	Total	YEAR						
		1977	1978	1979	1980	1981	1982	1983
ALL INDUSTRIES	349	38	52	66	54	50	53	36
Private Sector	283	30	42	53	45	38	42	31
Agriculture, Forestry, & Fishing (01-09)	9	4	2	1	1	0	1	0
Mining (10-14)	1	0	0	0	0	1	0	0
Construction	45	9	6	8	3	7	8	4
General Building (15)	(17)	(2)	(3)	(4)	(0)	(2)	(5)	(1)
Non Building (16)	(10)	(4)	(1)	(0)	(0)	(0)	(3)	(2)
Special Trade (17)	(18)	(3)	(2)	(4)	(3)	(5)	(0)	(1)
Manufacturing (20-39)	105	7	19	20	21	7	19	12
Food (20)	(3)	(0)	(2)	(0)	(0)	(0)	(0)	(1)
Textiles (22)	(7)	(1)	(1)	(0)	(2)	(1)	(2)	(0)
Lumber & Wood (24)	(44)	(3)	(10)	(11)	(12)	(0)	(6)	(2)
Paper (26)	(17)	(3)	(2)	(4)	(2)	(1)	(3)	(2)
Transportation Equipment (37)	(4)	(0)	(0)	(0)	(0)	(0)	(0)	(4)
Transportation & Utilities (40-49)	39	3	6	7	8	7	5	3
Trucking & Warehousing (42)	(17)	(2)	(1)	(3)	(5)	(2)	(3)	(1)
Air Transport (45)	(7)	(0)	(4)	(3)	(0)	(0)	(0)	(0)
Utilities & Sanitary Services (49)	(9)	(1)	(0)	(1)	(1)	(3)	(1)	(2)
Wholesale Trade (50-51)	25	2	4	4	5	5	3	2
Retail Trade (52-59)	24	2	4	4	5	5	3	1
Automotive Dealers & Gas Service Stations (55)	(10)	(1)	(1)	(1)	(3)	(3)	(1)	(0)
Eating & Drinking Places (58)	(4)	(0)	(0)	(2)	(0)	(2)	(0)	(0)
Finance, Insurance, & Real Estate (60-64)	7	0	2	2	1	2	0	0
Services (80-89)	30	0	2	5	5	6	3	9
Public Sector	66	8	10	13	9	12	11	5
State	25	2	4	5	2	5	4	3
Highways (16)	(4)	(1)	(1)	(1)	(0)	(1)	(0)	(0)
Social Services (83)	(4)	(0)	(0)	(0)	(0)	(2)	(0)	(2)
Public Safety (92)	(5)	(0)	(1)	(1)	(0)	(1)	(2)	(0)
Administration (91, 93-98)	(8)	(1)	(2)	(1)	(1)	(0)	(2)	(1)
Local	41	6	6	8	7	7	7	2
Highways (16)	(4)	(0)	(1)	(1)	(1)	(0)	(0)	(1)
Water, Sewer, Dumps (49)	(5)	(0)	(1)	(1)	(1)	(1)	(0)	(1)
Schools (82)	(9)	(0)	(1)	(1)	(1)	(2)	(4)	(0)
Public Safety (92)	(18)	(5)	(2)	(2)	(3)	(3)	(3)	(0)



### Nature and Part

The largest single injury or illness category among the 349 fatalities was heart attacks, comprising over one-third of all fatalities for the seven-year span. Even more compelling is the statistics that heart attacks (n=124) accounted for over 86% of all illness fatalities for the same time period. Cerebrovascular conditions, malignant tumors, and exposure to toxic substances comprise the other 14%.

Injury fatalities included 43 fractured skulls and/or concussions, 30 multiple injuries, 18 asphyxiations or drownings, 13 electrocutions, 13 crushed chests, 10 broken necks, 9 heat burns, and 7 crushed multiple parts. The above categories encompass nearly 70% of all injury fatalities.

### Source and Type

Seventy of the 349 fatalities taking place between 1977-1983 were vehicular accidents -- 57 where the fatality was an occupant in the car and 13 where the injured was struck by a vehicle. Falling trees and falls to a working surface both claimed 14 lives. Collapsing excavations were the cause of an additional 8 fatalities. Six deaths were the result of airplane disasters.

## Occupation

Table 19 demonstrates that 44% of work-related fatalities fall into two occupational groups -- Craft Workers and Laborers (except Farm). However, when broken down into injuries and illnesses, dramatic distinctions are evident. Craft and Kindred Workers comprise just over one-fourth of both injuries and illnesses while Laborers make up 24% of injuries, but only around 10% of illnesses. In other words, craft work is dangerous, both for injuries and illnesses, while laborers seem to be far more likely to meet an on-the-job injury than develop a job-related illness. With the exception of Service and Clerical Workers, who have nearly twice as many illnesses as injuries, all occupations are roughly equivalent in percent of injuries and illnesses.

Individual occupations with large numbers of fatalities are truck drivers (27), woodworkers (23), supervisors (23), general laborers (23), and construction laborers (11).

TABLE 19. -- NUMBER & PERCENT OF INJURY & ILLNESS FATALITIES  
BY OCCUPATION, MAINE, 1977-1983

CATEGORY	INJURIES		ILLNESSES		TOTAL	
	Number	Percent	Number	Percent	Number	Percent
ALL WORKERS	205	100.0%	144	100.0%	349	100.0%
Professional/Technical	14	6.8	7	4.9	21	6.0
Managers/Administrators	17	8.3	14	9.7	31	8.9
Sales Workers	6	2.9	4	2.8	10	2.9
Clerical	4	2.0	5	3.5	9	2.6
Craft & Kindred Workers	51	24.9	38	26.4	89	25.5
Operatives, Ex. Transport	17	8.3	13	9.0	30	8.6
Transport Operatives	21	10.2	13	9.0	34	9.7
Laborers, Ex. Farm	50	24.4	14	9.7	64	18.3
Farm Workers	4	2.0	2	1.4	6	1.7
Service Workers	17	8.3	21	14.6	38	10.9
Unknown	4	2.0	13	9.0	17	4.9

### Age

Nearly one-quarter of all fatal injuries happen to a worker who is between the ages of 16 and 25. Inexperience on the job site coupled with the fact that workers in this age group are more likely to have the dangerous jobs contribute to this statistic. The next decade (26-35) has even more injury fatalities (28%), but this is due largely to greater numbers in the labor force. In terms of illness fatalities, there is very little activity until the age 46 when a dramatic rise occurs. A subsequent decrease takes place in the 61-65 age group. It is interesting to note a "hump" of activity in the age range of 51-55 for both injuries and illnesses. This may be because workers of that age group are doing the same work as the younger worker but may be having a harder time with the job. On the other hand, the over 60 worker is likely to be taken off the heaviest duty; thus, the steady decline in number from this point on.

TABLE 20. -- FATAL INJURIES & ILLNESSES BY AGE GROUP  
MAINE, 1977-1983

AGE SPAN	INJURIES		ILLNESSES		ALL	
	Number	Percent	Number	Percent	Number	Percent
TOTAL	189	100.0%	106	100.0%	295	100.0%
16-20	16	8.5	0	-	16	5.4
21-25	29	15.3	0	-	29	9.8
26-30	27	14.3	2	1.9	29	9.8
31-35	26	13.8	3	2.8	29	9.8
36-40	19	10.1	10	9.4	29	9.8
41-45	11	5.8	7	6.6	18	6.1
46-50	13	6.9	14	13.2	27	9.2
51-55	17	9.0	29	27.4	46	15.6
56-60	12	6.3	25	23.6	37	12.5
61-65	9	4.8	11	10.4	20	6.8
66-70	4	2.1	3	2.8	7	2.4
71-75	3	1.6	1	0.9	4	1.4
Over 75	3	1.6	1	0.9	4	1.4

NOTE: Age unknown not shown.

### Length of Service

The contrast between injuries and illnesses is visible to an even greater extent when considering Length of Service with the present employer. Table 21 illustrates this using the number of reports and an annualized average. As can be seen from the chart, nearly 60% of all fatal injuries occur to a worker who has been on the job less than two years. Contrast this statistics with the same time frame for illnesses, where only 24% of fatalities occur and it becomes clear that lack of experience plays a major role in determining on-the-job accidents. Injuries occur less frequently the longer one spends at a job; illnesses, on the other hand, occur more frequently the more years of service on has accrued. Injury is tied to inexperience while illness is linked to exposure and advancing age.

TABLE 21. -- NUMBER & ANNUALIZED AVERAGE\* OF FATAL  
INJURIES & ILLNESSES, MAINE, 1977-1983

<u>LENGTH OF SERVICE</u>	<u>INJURIES</u>		<u>ILLNESSES</u>		<u>TOTAL</u>	
	<u>Number</u>	<u>Annualized Average</u>	<u>Number</u>	<u>Annualized Average</u>	<u>Number</u>	<u>Annualized Average</u>
TOTAL	177	-	91	-	268	-
Under 1 Month	37	63.4	7	12.0	44	75.4
1 Month to 6 Months	26	8.9	5	1.7	31	10.6
6 Months to 12 Months	12	3.4	5	1.4	17	4.9
1 Year to Under 2 Years	27	3.9	5	0.7	32	4.6
2 Years to Under 3 Years	8	1.1	5	0.7	13	1.9
3 Years to Under 4 Years	9	1.3	4	0.6	13	1.9
4 Years to Under 5 Years	4	0.6	5	0.7	9	1.3
5 Years up to 10 Years	29	0.8	12	0.3	41	1.2
10 Years up to 15 Years	14	0.4	13	0.4	27	0.8
15 Years up to 35 Years	11	0.1	30	0.2	41	0.3

\*Number of reports multiplied or divided by the appropriate number, to account for varying time spans, and divided by years in the table to create an average year.

NOTE: Length of Services unknown not shown.

TABLE 1. -- NATURE OF INJURY OR ILLNESS  
NUMBER & PERCENT DISTRIBUTION OF CASES, BY SEVERITY,  
ALL WORKERS, STATE OF MAINE, 1983

CODES <sup>1/</sup>	NATURE OF INJURY OR ILLNESS	ALL REPORTS <sup>2/</sup>		DISABLING REPORTS <sup>3/</sup>		FATAL REPORTS	
		Number	Percent	Number	Percent	Number	Percent
	TOTAL	49,214	100.0%	19,140	100.0%	36	100.0%
100	AMPUTATION OR ENUCLEATION	43	.1	41	.2	-	-
110	ASPHYXIA, STRANGULATION, DROWNING, SUFFOCATION	2	.0	-	-	2	5.6
120	HEAT BURN	1,035	2.1	349	1.8	-	-
130	CHEMICAL BURN	748	1.5	176	.9	-	-
140	CONCUSSION	80	.2	57	.3	-	-
15-	INFECTIVE OR PARASITIC DISEASE	73	.2	21	.1	-	-
160	CONTUSION, CRUSHING, BRUISE	8,046	16.3	2,153	11.2	3	8.3
170	CUT, LACERATION, PUNCTURE	9,813	19.9	2,444	12.8	-	-
18-	DERMATITIS	846	1.7	261	1.4	-	-
181	Contact Dermatitis	(650)	(1.3)	(201)	(1.1)	-	-
190	DISLOCATION	455	.9	302	1.6	-	-
200	ELECTRIC, ELECTROCUTION	55	.1	26	.1	1	2.8
210	FRACTURE	1,929	3.9	1,185	6.2	3	8.3
220	EFFECTS OF EXPOSURE TO LOW TEMPERATURE	29	.1	7	.0	-	-
230	HEARING LOSS OR IMPAIRMENT	129	.3	14	.1	-	-
240	EFFECTS OF ENVIRONMENTAL HEAT	22	.0	8	.0	-	-
250	HERNIA, RUPTURE	288	.6	218	1.1	-	-
260	INFLAMMATION OR IRRITATION OF JOINTS, TENDONS, OR MUSCLES	1,159	2.4	606	3.2	-	-
27-	SYSTEMIC POISONING	355	.7	157	.8	-	-
28-	PNEUMOCONIOSIS	16	.0	5	.0	1	2.8
29-	RADIATION EFFECTS	208	.4	48	.3	-	-
295	Welders Flash	(199)	(.4)	(44)	(.2)	-	-
300	SCRATCHES, ABRASIONS	3,734	7.6	593	3.1	-	-
310	SPRAINS, STRAINS	15,491	31.5	8,371	43.7	1	2.8
320	HEMORRHOIDS	52	.1	34	.2	-	-
330	HEPATITIS, SERUM & INFECTIVE	2	.0	2	.0	-	-
400	MULTIPLE INJURIES	747	1.5	369	1.9	4	11.1
500	EFFECTS OF CHANGES IN ATMOSPHERIC PRESSURE	6	.0	3	.0	-	-
510	CEREBROVASCULAR & OTHER CONDITIONS OF THE CIRCULATORY SYSTEM	24	.0	20	.1	-	-
520	COMPLICATIONS PECULIAR TO MEDICAL CARE	38	.1	15	.1	-	-
530	OTHER DISEASES OF THE EYE	19	.0	7	.0	-	-



TABLE 1  
(continued)

CODES <sup>1/</sup>	NATURE OF INJURY OR ILLNESS	ALL REPORTS		DISABLING REPORTS <sup>3/</sup>		FATAL REPORTS	
		Number	Percent	Number	Percent	Number	Percent
540	MENTAL DISORDERS	71	.1	60	.3	1	2.8
55-	MALIGNANT NEOPLASM, TUMOR	42	.1	13	.1	1	2.8
56-	CONDITIONS OF THE NERVOUS SYSTEM	143	.3	81	.4	-	-
57-	CONDITIONS OF THE RESPIRATORY SYSTEM	3	.0	1	.0	-	-
580	SYMPTOMS & ILL-DEFINED CONDITIONS	125	.3	55	.3	-	-
900	NO INJURY OR ILLNESS	100	.2	8	.0	-	-
950	DAMAGE TO PROSTHETIC DEVICES	452	.9	8	.0	-	-
990	OTHER OCCUPATIONAL DISEASE	3	.0	3	.0	-	-
991	HEART CONDITIONS (INCLUDES HEART ATTACKS)	90	.2	75	.4	12	33.3
995	OTHER INJURIES	178	.4	16	.1	-	-
999	NONCLASSIFIABLE	2,563	5.2	1,328	6.9	7	19.4

1. American National Standards Institute Z16.2; see Appendix C.

2. The total of Disabling and Fatal cases (shown) plus Non-disabling and Severity Unknown cases (not shown separately).

3. Only those cases where one or more days of work were lost beyond the date of injury or diagnosis of illness.

TABLE 2. -- PART OF BODY AFFECTED  
NUMBER & PERCENT DISTRIBUTION OF CASES  
ALL WORKERS, STATE OF MAINE, 1983

CODES <sup>1/</sup>	PART OF BODY AFFECTED	ALL REPORTS		DISABLING REPORTS <sup>2/</sup>		FATAL REPORTS	
		Number	Percent	Number	Percent	Number	Percent
	TOTAL	49,214	100.0%	19,140	100.0%	36	100.0%
1--	HEAD	6,931	14.1	1,419	7.4	5	13.9
100	Head, Unspecified	(433)	(.9)	(126)	(.7)	-	-
110	Brain	(87)	(.2)	(63)	(.3)	(2)	(5.6)
12-	Ear(s)	(259)	(.5)	(32)	(.2)	-	-
120	Ear(s), Unspecified	(12)	(.0)	(4)	(.0)	-	-
121	Ear(s), External	(36)	(.1)	(4)	(.0)	-	-
124	Ear(s), Internal	(211)	(.4)	(24)	(.1)	-	-
130	Eye(s)	(4,406)	(9.0)	(847)	(4.4)	-	-
14-	Face	(1,396)	(2.8)	(42)	(.2)	-	-
140	Face, Unspecified	(57)	(.1)	(13)	(.1)	-	-
141	Jaw	(68)	(.1)	(6)	(.0)	-	-
144	Mouth	(387)	(.8)	(59)	(.3)	-	-
146	Nose	(163)	(.3)	(41)	(.2)	-	-
148	Face, Multiple Parts	(162)	(.3)	(51)	(.3)	-	-
149	Face, Other	(559)	(1.1)	(105)	(.5)	-	-
150	Scalp	(228)	(.5)	(42)	(.2)	-	-
160	Skull	(29)	(.1)	(4)	(.0)	(3)	(2.8)
198	Head, Multiple Parts	(71)	(.1)	(24)	(.1)	-	-
199	Head, Other	(22)	(.0)	(6)	(.0)	-	-
200	NECK	585	1.2	292	1.5	1	2.8
3--	UPPER EXTREMITIES	17,178	34.9	5,056	26.4	-	-
300	Upper Extremities, Unspecified	(32)	(.1)	(7)	(.0)	-	-
31-	Arm(s)	(3,099)	(6.3)	(1,006)	(5.3)	-	-
310	Arm(s), Unspecified	(1,258)	(2.6)	(475)	(2.5)	-	-
311	Upper Arm	(172)	(.3)	(46)	(.2)	-	-
313	Elbow	(838)	(1.7)	(246)	(1.3)	-	-
315	Forearm	(691)	(1.4)	(174)	(.9)	-	-
318	Arm, Multiple	(140)	(.3)	(65)	(.3)	-	-
320	Wrist	(1,764)	(3.6)	(660)	(3.4)	-	-
330	Hand	(2,860)	(5.8)	(855)	(4.5)	-	-
340	Finger	(8,885)	(18.1)	(2,281)	(11.9)	-	-
398	Upper Extremities, Multiple	(535)	(1.1)	(245)	(1.3)	-	-
4--	TRUNK	12,756	25.9	7,155	37.4	5	13.9
400	Trunk, Unspecified	(19)	(.0)	(9)	(.0)	-	-
410	Abdomen	(1,017)	(2.1)	(541)	(2.8)	-	-
420	Back	(8,383)	(17.0)	(5,067)	(26.5)	-	-
430	Chest	(1,031)	(2.1)	(435)	(2.3)	(4)	(11.1)
440	Hips	(519)	(1.1)	(228)	(1.2)	-	-
450	Shoulder(s)	(1,584)	(3.2)	(768)	(4.0)	-	-
498	Trunk, Multiple	(193)	(.4)	(103)	(.5)	(1)	(2.8)
5--	LOWER EXTREMITIES	7,725	15.7	3,567	18.6	1	2.8
51-	Leg(s)	(3,763)	(7.6)	(1,630)	(8.5)	-	-
510	Leg(s), Unspecified	(594)	(1.2)	(281)	(1.5)	-	-
511	Thigh	(296)	(.6)	(102)	(.5)	-	-

TABLE 2  
(continued)

CODES <sup>1/</sup>	PART OF BODY AFFECTED	ALL REPORTS		DISABLING REPORTS <sup>2/</sup>		FATAL REPORTS	
		Number	Percent	Number	Percent	Number	Percent
513	Knee	(2,357)	(4.8)	(1,029)	(5.4)	(1)	(2.8)
515	Lower Leg	(461)	(.9)	(194)	(1.0)	-	-
518	Leg, Multiple	(55)	(.1)	(24)	(.1)	-	-
520	Ankle	(1,581)	(3.2)	(862)	(4.5)	-	-
530	Foot	(1,561)	(3.2)	(698)	(3.6)	-	-
540	Toe(s)	(629)	(1.3)	(287)	(1.5)	-	-
598	Lower Extremities, Multiple	(190)	(.4)	(89)	(.5)	-	-
700	MULTIPLE PARTS	2,018	4.1	970	5.1	3	8.3
8--	BODY SYSTEM	791	1.6	419	2.2	17	47.2
800	Body System, Unspecified	(368)	(.7)	(171)	(.9)	-	-
801	Circulatory System	(106)	(.2)	(87)	(.5)	(12)	(33.3)
810	Digestive System	(17)	(.0)	(14)	(.1)	-	-
820	Excretory System	(4)	(.0)	(2)	(.0)	-	-
840	Nervous System	(35)	(.1)	(22)	(.1)	(1)	(2.8)
850	Respiratory System	(259)	(.5)	(122)	(.6)	(4)	(11.1)
880	Other Body Systems	(2)	(.0)	(1)	(.0)	-	-
999	NONCLASSIFIABLE	1,229	2.5	261	1.4	4	11.1

1. American National Standards Institute Z16.2; see Appendix C.

2. Only those cases where one or more days of work were lost beyond the date of injury or diagnosis of illness.

TABLE 3. -- SOURCE OF INJURY OR ILLNESS  
NUMBER & PERCENT DISTRIBUTION OF CASES  
ALL WORKERS, STATE OF MAINE, 1983

CODES <sup>1/</sup>	SOURCE OF INJURY OR ILLNESS	ALL REPORTS		DISABLING REPORTS <sup>2/</sup>		FATAL REPORTS	
		Number	Percent	Number	Percent	Number	Percent
	TOTAL	49,214	100.0%	19,140	100.0%	36	100.0%
01--	AIR PRESSURE	7	.0	2	.0	-	-
02--	ANIMALS, INSECTS, ETC.	299	.6	61	.3	-	-
03--	ANIMAL PRODUCTS	204	.4	67	.3	-	-
0330	Hides, Leather	(122)	(.2)	(34)	(.2)	-	-
0400	BODILY MOTION	1,417	2.9	777	4.1	-	-
05--	BOILERS, PRESSURE VESSELS	363	.7	163	.8	-	-
0530	Pressure Lines	(243)	(.5)	(95)	(.5)	-	-
06--	BOXES, BARRELS, CONTAINERS	4,814	9.8	2,283	11.9	-	-
0601	Barrels, Kegs, Drums	(325)	(.7)	(166)	(.9)	-	-
0630	Boxes, Crates, Cartons	(2,043)	(4.2)	(1,028)	(5.4)	-	-
0660	Bundles, Barrels	(565)	(1.1)	(289)	(1.5)	-	-
0665	Reels, Rolls	(536)	(1.1)	(239)	(1.2)	-	-
0670	Tanks, Bins, Etc.	(219)	(.4)	(94)	(.5)	-	-
07--	BUILDINGS & STRUCTURES	1,366	2.8	448	2.4	-	-
0705	Doors, Gates	(643)	(1.3)	(200)	(1.0)	-	-
0755	Walls, Fences	(319)	(.6)	(95)	(.5)	-	-
08--	CERAMIC ITEMS	40	.1	19	.1	-	-
09--	CHEMICALS, CHEMICAL COMPOUNDS	1,026	2.1	278	1.4	-	-
10--	CLOTHING	220	.4	86	.5	-	-
11--	COAL & PETROLEUM PRODUCTS	131	.3	38	.2	-	-
1200	COLD, ATMOSPHERIC, ENVIRONMENTAL	25	.1	7	.0	-	-
13--	CONVEYORS	187	.4	63	.3	-	-
14--	DRUGS & MEDICINES	14	.0	4	.0	-	-
15--	ELECTRIC APPARATUS	297	.6	108	.6	-	-
1700	FLAME, FIRE, SMOKE	211	.4	73	.4	-	-
18--	FOOD PRODUCTS	341	.7	131	.7	-	-
19--	FURNITURE, FIXTURES, ETC.	1,718	3.5	540	2.8	-	-
1970	Tables	(278)	(.6)	(94)	(.5)	-	-
2000	GLASS ITEMS, OTHER	609	1.2	141	.7	-	-
22--	HAND TOOLS, NOT POWERED	3,691	7.5	948	5.0	-	-
2230	Hammer	(324)	(.7)	(89)	(.5)	-	-
2245	Knife	(1,366)	(2.8)	(320)	(1.7)	-	-
23--	HAND TOOLS, POWERED	1,225	2.5	593	3.1	-	-
2355	Saws	(567)	(1.1)	(343)	(1.8)	-	-
	(Chainsaws)	(351)	(.7)	(233)	(1.2)	-	-
2400	HEAT, ATMOSPHERIC, ENVIRONMENTAL	25	.1	11	.1	-	-
2500	HEATING EQUIPMENT, OTHER	216	.4	67	.4	-	-
26--	HOISTING APPARATUS	283	.6	112	.6	-	-

TABLE 3  
(continued)

CODES <sup>1/</sup>	SOURCE OF INJURY OR ILLNESS	ALL REPORTS		DISABLING REPORTS <sup>2/</sup>		FATAL REPORTS	
		Number	Percent	Number	Percent	Number	Percent
2700	INFECTIOUS, PARASITIC AGENTS, OTHER	63	.1%	21	.1%	-	-
28--	LADDERS	212	.4	100	.5	-	-
29--	LIQUIDS, OTHER	185	.4	79	.4	1	2.8
3---	MACHINES	2,808	5.7	1,046	5.5	-	-
3001	Agitators, Mixers, Tumblers	(119)	(.2)	(46)	(.2)	-	-
3250	Drilling, Boring	(133)	(.3)	(58)	(.3)	-	-
3300	Highway Construction	(47)	(.2)	(58)	(.3)	-	-
3750	Saws	(142)	(.30)	(54)	(.3)	-	-
3850	Shears, Slitters, Slicers	(377)	(.8)	(120)	(.6)	-	-
3900	Stitching & Sewing Machines	(151)	(.3)	(41)	(.2)	-	-
40--	MECHANICAL POWER TRANSMISSION APPARATUS	216	.4	91	.5	-	-
41--	METAL ITEMS	5,378	10.9	1,627	8.5	1	2.8
4110	Automobile Parts	(232)	(.50)	(105)	(.5)	-	-
4115	Beams, Bars	(893)	(1.8)	(334)	(1.7)	-	-
4140	Pipe	(583)	(1.2)	(187)	(1.0)	-	-
4150	Castings Forgings, Etc.	(617)	(1.3)	(240)	(1.3)	-	-
4155	Nails, Spikes, Etc.	(670)	(1.4)	(152)	(.8)	-	-
4165	Chips, Splinters, Particles	(1,259)	(2.5)	(263)	(1.4)	-	-
4300	MINERAL ITEMS, NONMETALLIC, NEC	497	1.0	199	1.0	3	8.3
4400	NOISE	128	.3	17	.1	-	-
4500	PAPER & PULP	170	.3	48	.3	-	-
4600	UNIDENTIFIED PARTICLES	1,592	3.2	204	1.1	-	-
4700	PLANTS, TREES, VEGETATION	814	1.7	407	2.1	1	2.8
4800	PLASTIC ITEMS, OTHER	94	.2	18	.1	-	-
49--	PUMPS & PRIME MOVERS	108	.2	50	.3	-	-
50--	RADIATING SUBSTANCES & EQUIPMENT	205	.4	50	.3	-	-
5070	Welding Equipment	(194)	(.4)	(46)	(.2)	-	-
5100	SOAPS, DETERGENT, ETC., OTHER	172	.3	51	.3	-	-
5400	STEAM	53	.1	18	.1	-	-
5500	TEXTILE ITEMS, OTHER	118	.2	57	.3	-	-
56--	VEHICLES	3,034	6.2	1,361	7.1	13	36.1
5620	Highway Vehicles, Powered	(1,476)	(3.0)	(695)	(3.6)	(13)	(36.1)
563-	Plant or Industrial Vehicles	(1,362)	(2.7)	(584)	(3.0)	-	-
5631	Nonpowered Vehicles	(1,006)	(2.0)	(417)	(2.2)	-	-
5635	Powered Carriers	(266)	(.5)	(118)	(.6)	-	-
5700	WOOD ITEMS	2,429	4.9	953	5.0	-	-
5710	Logs	(338)	(.70)	(165)	(.9)	-	-
5720	Lumber	(569)	(1.2)	(275)	(1.4)	-	-
5730	Skids, Pallets	(296)	(.6)	(135)	(.7)	-	-



TABLE 3  
(continued)

CODES <sup>1/</sup>	SOURCE OF INJURY OR ILLNESS	ALL REPORTS		DISABLING REPORTS <sup>2/</sup>		FATAL REPORTS	
		Number	Percent	Number	Percent	Number	Percent
58--	WORKING SURFACES	4,955	10.1%	2,376	12.4%	-	-
5801	Floor	(2,128)	(4.3)	(936)	(4.9)	-	-
5810	Ground	(1,656)	(3.4)	(893)	(4.7)	-	-
5840	Stairs, Steps	(721)	(1.5)	(331)	(1.7)	-	-
60--	PERSON	2,259	4.6	1,008	5.2	12	33.3
6010	Person, Injured (Heart Failure or No Cause Indicated)	(308)	(.6)	(220)	(1.1)	(12)	(33.3)
6020	Person, Other Than Injured	(1,951)	(4.0)	(788)	(4.1)	-	-
6100	RECREATION & ATHLETIC EQUIPMENT	116	.2	30	.2	-	-
62--	RUBBER PRODUCTS	178	.4	97	.5	-	-
6210	Tires	(159)	(.3)	(88)	(.5)	-	-
6500	ICE, SNOW	23	.0	9	.0	-	-
8800	SOURCE NOT ELSEWHERE CLASSIFIED	432	.9	165	.9	-	-
9800	NONCLASSIFIABLE	4,189	8.5	2,021	10.6	5	13.9

1. American National Standards Institute Z16.2; see Appendix C.

2. Only those cases where one or more days of work were lost beyond the date of injury or diagnosis of illness.

TABLE 4. -- TYPE OF ACCIDENT OR EXPOSURE  
NUMBER & PERCENT DISTRIBUTION OF CASES BY SEVERITY  
ALL WORKERS, STATE OF MAINE, 1983

CODES <sup>1/</sup>	TYPE OF ACCIDENT OR EXPOSURE	ALL REPORTS <sup>2/</sup>		DISABLING REPORTS <sup>3/</sup>		FATAL REPORTS	
		Number	Percent	Number	Percent	Number	Percent
	TOTAL	49,214	100.0%	19,140	100.0%	36	100.0%
01-	STRUCK AGAINST	6,528	13.3	1,902	9.9	-	-
011	Stationary Object	(5,850)	(11.9)	(1,703)	(8.9)	-	-
012	Moving Object	(226)	(.5)	(87)	(.5)	-	-
02-	STRUCK BY	10,217	20.8	3,276	17.1	5	13.9
021	Falling Object	(2,892)	(5.9)	(1,182)	(6.2)	(1)	(2.8)
022	Flying Object	(764)	(1.6)	(220)	(1.1)	(1)	(2.8)
03-	FALL FROM ELEVATION	2,426	4.9	1,222	6.4	-	-
032	From Ladders	(292)	(.6)	(180)	(.9)	-	-
034	From Vehicle	(397)	(.8)	(230)	(1.2)	-	-
035	On Stairs	(634)	(1.3)	(291)	(1.5)	-	-
036	Into Shafts, Etc.	(158)	(.3)	(86)	(.4)	-	-
05-	FALL ON SAME LEVEL	3,500	7.1	1,490	7.8	-	-
051	Fall to the Working Surface	(2,237)	(4.5)	(950)	(5.0)	-	-
052	Fall Onto or Against Objects	(991)	(2.0)	(407)	(2.1)	-	-
06-	CAUGHT IN, UNDER, OR BETWEEN	2,864	5.8	1,007	5.3	3	(8.3)
061	In Running or Meshing Objects	(363)	(.7)	(159)	(.8)	-	-
062	Moving & Stationary Object	(807)	(1.6)	(257)	(1.3)	(2)	(5.6)
08-	RUBBED OR ABRADED	4,273	8.7	820	4.3	-	-
082	Objects Handled	(781)	(1.6)	(185)	(1.0)	-	-
084	Foreign Matter in Eyes	(2,997)	(6.1)	(484)	(2.5)	-	-
100	BODILY REACTION	1,416	2.9	779	4.1	-	-
12-	OVEREXERTION	11,672	23.7	6,348	33.2	-	-
121	Lifting Objects	(5,614)	(11.4)	(3,195)	(16.7)	-	-
122	Pulling or Pushing Objects	(1,674)	(3.4)	(844)	(4.4)	-	-
123	Wielding, Throwing, Holding, or Carrying Objects	(840)	(1.7)	(432)	(2.3)	-	-
130	CONTACT WITH ELECTRIC CURRENT	68	.1	31	.2	1	2.8
15-	CONTACT WITH TEMPERATURE EXTREMES	1,067	2.2	348	1.8	-	-
153	Hot Objects	(1,010)	(2.1)	(332)	(1.7)	-	-
18-	CONTACT WITH RADIATIONS, CAUSTICS, ETC.	2,301	4.7	667	3.5	3	8.3
181	By Inhalation	(388)	(.8)	(153)	(.8)	(3)	(8.3)
183	By Absorption	(1,632)	(3.3)	(431)	(2.3)	-	-
2--	TRANSPORTATION ACCIDENTS, OTHER THAN MOTOR VEHICLE	8	.0	2	.0	-	-
3--	MOTOR VEHICLE ACCIDENTS	466	.9	289	1.5	7	19.4
31-	Both Vehicles in Motion	(55)	(.1)	(37)	(.2)	(4)	(11.1)
32-	Standing Vehicle or Stationary Object	(69)	(.1)	(37)	(.2)	-	-
33-	Noncollision Accidents	(202)	(.4)	(127)	(.7)	(1)	(2.8)
40-	EXPOSURE TO NOISE	123	.2	13	.1	-	-
500	EXPLOSIONS	85	.2	36	.2	-	-
899	ACCIDENT TYPE, OTHER	708	1.4	266	1.4	12	33.3
999	NONCLASSIFIABLE	1,492	3.0	644	3.4	5	13.9

1. American National Standards Institute Z16.2; see Appendix C.

2. The total of Disabling and Fatal cases (shown) plus Non-disabling and Severity Unknown cases (not shown separately).

3. Only those cases where one or more days of work were lost beyond the date of injury or diagnosis of illness.

TABLE 5. -- ASSOCIATED OBJECT OR SUBSTANCE  
NUMBER & PERCENT DISTRIBUTION OF CASES  
ALL WORKERS, STATE OF MAINE, 1983

CODES <sup>1/</sup>	ASSOCIATED OBJECT OR SUBSTANCE	ALL REPORTS		DISABLING REPORTS <sup>2/</sup>		FATAL REPORTS	
		Number	Percent	Number	Percent	Number	Percent
	TOTAL	49,214	100.0%	19,140	100.0%	36	100.0%
01--	AIR PRESSURE	6	.0	2	.0	-	-
02--	ANIMALS, INSECTS, ETC.	315	.6	69	.4	-	-
03--	ANIMAL PRODUCTS	181	.4	59	.3	-	-
0400	BODILY MOTION	928	1.9	495	2.6	-	-
05--	BOILER, PRESSURE VESSELS	685	1.4	261	1.4	-	-
06--	BOXES, BARRELS, CONTAINERS	5,051	10.3	2,325	12.1	1	2.8
07--	BUILDINGS & STRUCTURES	1,423	2.9	517	2.7	-	-
08--	CERAMIC ITEMS	30	.1	13	.1	-	-
09--	CHEMICALS, CHEMICAL COMPOUNDS	582	1.2	166	.9	-	-
10--	CLOTHING	287	.6	114	.6	-	-
11--	COAL & PETROLEUM PRODUCTS	64	.1	21	.1	-	-
1200	COLD, ATMOSPHERIC, ENVIRONMENTAL	25	.1	8	.0	-	-
13--	CONVEYORS	213	.4	74	.4	-	-
14--	DRUGS & MEDICINES	7	.0	2	.0	-	-
15--	ELECTRIC APPARATUS	386	.8	139	.7	1	2.8
16--	EXCAVATIONS, TRENCHES, TUNNELS, ETC.	30	.1	20	.1	-	-
1700	FLAME, FIRE, SMOKE	141	.3	40	.2	-	-
1800	FOOD PRODUCTS	243	.5	87	.5	-	-
19--	FURNITURE, FIXTURES, ETC.	1,824	3.7	596	3.1	-	-
2000	GLASS ITEMS	431	.9	102	.5	-	-
22--	HAND TOOLS, NOT POWERED	4,309	8.8	1,081	5.6	-	-
23--	HAND TOOLS, POWERED	2,518	5.1	874	4.6	1	2.8
2400	HEAT, ATMOSPHERIC, ENVIRONMENTAL	23	.0	9	.0	-	-
2500	HEATING EQUIPMENT, OTHER	309	.6	110	.6	-	-
26--	HOISTING APPARATUS	382	.8	160	.8	-	-
2700	INFECTIOUS, PARASITIC AGENTS	24	.0	11	.1	-	-
28--	LADDERS	542	1.1	287	1.5	-	-
29--	LIQUIDS, OTHER	77	.2	30	.2	-	-
3---	MACHINES	3,409	6.9	1,268	6.6	-	-
40--	MECHANICAL POWER TRANSMISSION APPARATUS	266	.5	105	.5	-	-
41--	METAL ITEMS	3,515	7.1	1,189	6.2	-	-
4200	MINERAL ITEMS, METALLIC, OTHER	19	.0	10	.1	-	-

TABLE 5  
(continued)

CODES <sup>1/</sup>	ASSOCIATED OBJECT OR SUBSTANCE	ALL REPORTS		DISABLING REPORTS <sup>2/</sup>		FATAL REPORTS	
		Number	Percent	Number	Percent	Number	Percent
4300	MINERAL ITEMS, NONMETALLIC, OTHER	343	.7%	144	.8%	2	5.6
4400	NOISE	48	.1	11	.1	-	-
4500	PAPER & PULP	146	.3	46	.2	-	-
4600	UNIDENTIFIED PARTICLES	265	.5	40	.2	-	-
4700	PLANTS, TREES, VEGETATION	754	1.5	384	2.0	1	2.8
4800	PLASTIC ITEMS, OTHER	76	.2	19	.1	-	-
49--	PUMPS & PRIME MOVERS	107	.2	51	.3	-	-
50--	RADIATING SUBSTANCES & EQUIPMENT	27	.1	9	.0	-	-
5100	SOAPS, DETERGENTS, ETC., OTHER	109	.2	34	.2	-	-
5200	SILICA	1	.0	-	-	-	-
5300	SCRAPS, DEBRIS, WASTE MATERIALS, OTHER	29	.1	3	.0	-	-
5400	STEAM	17	.0	2	.0	-	-
5500	TEXTILE ITEMS, OTHER	116	.2	55	.3	-	-
56--	VEHICLES	3,500	7.1	1,597	8.3	13	36.1
57--	WOOD ITEMS	1,904	3.9	771	4.0	-	-
60--	PERSON	2,510	5.1	1,095	5.7	12	33.3
6100	RECREATION & ATHLETIC EQUIPMENT	138	.3	40	.2	-	-
62--	RUBBER PRODUCTS	175	.4	96	.5	-	-
6300	PILES, STACKS	218	.4	110	.6	-	-
64--	WORKING SURFACES	3,998	8.1	1,819	9.5	-	-
6500	ICE, SNOW, NOT WORKING SURFACE	20	.0	10	.1	-	-
8800	MISCELLANEOUS, OTHER	421	.9	168	.9	-	-
9800	NONCLASSIFIABLE	6,052	12.3	2,392	12.5	5	13.9

1. Bureau of Labor Statistics, Supplementary Data System.

2. Only those cases where one or more days of work were lost beyond the date of injury or diagnosis of illness.

TABLE 6. -- NUMBER OF OCCUPATIONAL INJURIES & ILLNESSES  
INDUSTRY BY SEX  
STATE OF MAINE, 1983

SIC <sup>1/</sup>	INDUSTRY	NUMBER OF CASES		
		TOTAL	MALE	FEMALE
	TOTAL, ALL INDUSTRIES	49,214	36,221	12,993
	TOTAL, PRIVATE SECTOR	43,680	32,115	11,565
	AGRICULTURE, FORESTRY, & FISHING	466	406	57
01	AGRICULTURAL PRODUCTION, CROP	141	118	23
02	AGRICULTURAL PRODUCTION, LIVESTOCK	60	48	12
07	AGRICULTURAL SERVICES	230	210	20
08	FORESTRY	28	26	2
	MINING	35	32	3
	CONSTRUCTION	4,437	4,362	75
15	GENERAL BUILDING CONTRACTORS	1,336	1,321	15
152	Residential Building Construction	568	560	8
154	Nonresidential Building Construction	764	757	7
16	HEAVY CONSTRUCTION CONTRACTORS	1,074	1,057	17
161	Highway & Street Construction	486	479	7
162	Heavy Construction, Except Highway	588	578	10
17	SPECIAL TRADE CONTRACTORS	2,027	1,984	43
171	Plumbing, Heating, Air Conditioning	347	343	4
173	Electrical Work	214	208	6
174	Masonry, Stonework, & Plastering	314	310	4
176	Roofing & Sheet Metal Work	202	201	1
179	Miscellaneous Special Trade Contractors	587	567	20
	MANUFACTURING	21,668	16,878	4,790
20	FOOD & KINDRED PRODUCTS	1,779	1,328	451
201	Meat Products	313	225	88
2016	Poultry Dressing Plants	146	72	74
203	Preserved Fruits & Vegetables	428	310	118
2037	Frozen Fruits & Vegetables	365	256	109
205	Bakery Products	417	353	64
2051	Bread, Cake, & Related Products	417	353	64
209	Miscellaneous Foods & Kindred Products	358	188	170
2091	Canned & Cured Seafoods	204	89	115
2092	Fresh or Frozen Packaged Fish	136	81	55
22	TEXTILE MILL PRODUCTS	1,070	761	309
222	Weaving Mills, Synthetics	209	157	52
223	Weaving & Finishing Mills, Wool	556	414	142
23	APPAREL & OTHER TEXTILE PRODUCTS	541	173	368
24	LUMBER & WOOD PRODUCTS	4,007	3,568	439
241	Logging Camps & Logging Contractors	1,488	1,476	12
242	Sawmills & Planing Mills	1,026	975	51
2421	Sawmills & Planing Mills, General	866	824	42
2426	Hardwood Dimension & Flooring	160	151	9
243	Millwork, Plywood, & Structural Members	173	152	21
245	Wood Buildings & Mobile Homes	193	190	3
249	Miscellaneous Wood products	1,067	720	347
25	FURNITURE & FIXTURES	133	108	25
251	Household Furniture	102	79	23



TABLE 6  
(continued)

SIC <sup>1/</sup>	INDUSTRY	NUMBER OF CASES		
		TOTAL	MALE	FEMALE
26	PAPER & ALLIED PRODUCTS	3,743	3,372	371
261	Pulp Mills	140	129	11
262	Paper Mills, Except Building Paper	3,176	2,895	281
264	Miscellaneous Converted Paper Products	286	217	69
27	PRINTING & PUBLISHING	497	3,701	127
28	CHEMICALS & ALLIED PRODUCTS	78	61	17
29	PETROLEUM & COAL PRODUCTS	20	20	-
30	RUBBER & MISCELLANEOUS PLASTICS PRODUCTS	656	449	207
302	Rubber & Plastics Footwear	112	58	58
307	Miscellaneous Plastics Products	466	327	139
31	LEATHER & LEATHER PRODUCTS	3,523	1,831	1,692
311	Leather Tanning & Finishing	438	417	21
313	Boot & Shoe Cut Stock & Findings	206	139	67
314	Footwear, Except Rubber	2,872	1,273	1,599
3143	Men's Footwear, Except Athletic	1,339	621	718
3144	Women's Footwear, Except Athletic	415	175	240
3149	Footwear, Except Rubber, Other	972	427	545
32	STONE, CLAY, & GLASS PRODUCTS	154	153	1
327	Concrete, Gypsum, & Plaster Products	126	126	-
33	PRIMARY METAL INDUSTRIES	87	84	3
34	FABRICATED METAL PRODUCTS	714	674	40
344	Fabricated Structural Metal Products	280	272	8
346	Metal Forgings & Stampings	151	148	3
35	MACHINERY, EXCEPT ELECTRICAL	643	591	52
353	Construction Machinery	149	145	4
354	Metalworking Machinery	106	100	6
36	ELECTRIC & ELECTRONIC EQUIPMENT	703	320	383
361	Electric Distributing Equipment	128	31	97
366	Communication Equipment	127	80	47
37	TRANSPORTATION EQUIPMENT	3,107	2,870	237
372	Aircraft & Parts	217	176	41
373	Ship & Boat Building & Repairing	2,809	2,646	163
3731	Ship Building & Repairing	2,676	2,522	154
3732	Boat Building & Repairing	133	124	9
38	INSTRUMENTS & RELATED PRODUCTS	39	20	19
39	MISCELLANEOUS MANUFACTURING INDUSTRIES	174	125	49
	TRANSPORTATION & PUBLIC UTILITIES	1,590	1,491	99
41	LOCAL PASSENGER TRANSIT	60	49	11
42	TRUCKING & WAREHOUSING	735	704	31
44	WATER TRANSPORTATION	88	81	7
45	TRANSPORTATION BY AIR	69	68	1
48	COMMUNICATION	198	166	32
49	ELECTRIC, GAS, & SANITARY SERVICES	421	405	16
491	Electric Services	296	282	14
	WHOLESALE TRADE	2,221	2,040	181
50	WHOLESALE TRADE, DURABLE GOODS	966	897	69
508	Machinery, Equipment, & Supplies	289	277	12
51	WHOLESALE TRADE, NONDURABLE GOODS	1,255	1,143	112
514	Groceries & Related Products	712	642	70

(continued)

SIC <sup>1/</sup>	INDUSTRY	NUMBER OF CASES		
		TOTAL	MALE	FEMALE
	RETAIL TRADE	6,363	4,114	2,249
52	BUILDING MATERIALS & SUPPLIES	463	440	23
521	Lumber & Other Building Materials	287	281	6
53	GENERAL MERCHANDISE STORES	763	296	467
531	Department Stores	640	244	396
54	FOOD STORES	1,456	872	584
541	Grocery Stores	1,361	818	543
55	AUTOMOTIVE DEALERS & SERVICE STATIONS	982	935	47
551	New & Used Car Dealers	469	456	13
553	Auto & Home Supply Stores	245	243	2
56	APPAREL STORES	81	42	39
57	FURNITURE & HOME FURNISHINGS STORES	130	121	9
58	EATING & DRINKING PLACES	1,569	830	739
59	MISCELLANEOUS RETAIL	919	578	341
598	Fuel & Ice Dealers	278	264	14
	FINANCE, INSURANCE, & REAL ESTATE	417	197	220
60	BANKING	127	30	97
63	INSURANCE CARRIERS	97	43	54
65	REAL ESTATE	94	87	7
	SERVICES	6,461	2,575	3,886
70	HOTELS & OTHER LODGING	487	275	212
701	Hotels, Motels, & Tourist Courts	358	188	170
72	PERSONAL SERVICES	172	82	90
73	BUSINESS SERVICES	428	338	90
75	AUTO REPAIR, SERVICES, & GARAGES	328	322	6
753	Automotive Repair Shops	268	265	3
76	MISCELLANEOUS REPAIR SERVICES	119	110	9
79	AMUSEMENT & RECREATION SERVICES	215	164	51
80	HEALTH SERVICES	3,509	632	2,877
805	Nursing & Personal Care Facilities	1,454	140	1,314
806	Hospitals	1,925	463	1,462
82	EDUCATIONAL SERVICES	385	240	145
822	Colleges & Universities	236	150	86
83	SOCIAL SERVICES	553	237	316
	<u>TOTAL, PUBLIC SECTOR</u>	5,534	4,106	1,428
	STATE GOVERNMENT	1,973	1,355	618
	Highway & Street Construction	275	267	8
	Hospitals	208	107	101
	Colleges & Universities	320	221	99
	Social Services	374	165	209
	Public Administration	527	395	132
	Police Protection	65	58	7
	Correctional Institutions	86	82	4
	LOCAL GOVERNMENT	3,561	2,751	810
	Highway & Street Construction	472	469	3
	Sanitary Services	169	162	7
	Amusement & Recreation Services	101	81	20
	Educational Services	1,064	529	535
	Public Administration	1,348	1,201	147
	Police Protection	541	494	47
	Fire Protection	603	569	34

1. Standard Industrial Classification Manual, 1972.

TABLE 7. -- OCCUPATION & AGE OF INJURED OR ILL WORKER,  
NUMBER OF CASES, ALL WORKERS, STATE OF MAINE, 1983

OCCUPATION <sup>1/</sup>	AGE OF WORKER IN YEARS									
	TOTAL ALL AGES	15 YEARS OR LESS	16 - 19 YEARS	20 - 24 YEARS	25 - 34 YEARS	35 - 44 YEARS	45 - 54 YEARS	55 - 64 YEARS	65 YEARS OR MORE	AGE UNKNOWN
TOTAL, ALL OCCUPATIONS	49,214	82	3,461	9,455	15,183	8,810	5,503	3,269	284	3,167
PROFESSIONAL, TECHNICAL, & KINDRED WORKERS	2,206	1	31	278	914	478	265	145	5	89
Health Technologists	(303)	-	(7)	(70)	(146)	(36)	(21)	(12)	-	(11)
Registered Nurses	(583)	-	(1)	(79)	(258)	(111)	(59)	(50)	-	(25)
Teachers, except College & University	(453)	-	-	(19)	(163)	(138)	(76)	(30)	(1)	(26)
MANAGERS & ADMINISTRATORS, EXCEPT FARM	1,520	-	20	163	511	334	251	144	24	73
Restaurant, Bar Mangers	(139)	-	(4)	(32)	(53)	(14)	(17)	(10)	(4)	(5)
Sales Managers & Department Heads, Retail Trade	(428)	-	(4)	(76)	(165)	(99)	(46)	(22)	(4)	(12)
SALESWORKERS	330	-	28	49	103	72	34	26	1	17
CLERICAL & KINDRED WORKERS	3,379	7	456	739	889	504	369	222	23	170
Cashiers	(197)	-	(44)	(48)	(45)	(19)	(21)	(7)	(1)	(12)
Secretaries	(196)	-	(4)	(26)	(50)	(39)	(40)	(24)	(3)	(10)
Shipping, Receiving Clerks	(261)	-	(19)	(63)	(92)	(36)	(20)	(14)	(1)	(16)
Stock Clerks, Storekeepers	(1,578)	(3)	(346)	(419)	(360)	(185)	(98)	(75)	(10)	(82)
CRAFTSMEN & KINDRED WORKERS	10,337	4	243	1,503	3,589	2,192	1,349	804	35	618
Carpenters	(1,160)	-	(31)	(217)	(453)	(178)	(110)	(72)	(5)	(94)
Crane, Derrick, Hoist Operators	(174)	-	(7)	(38)	(47)	(41)	(23)	(9)	-	(9)
Electricians	(478)	-	(4)	(65)	(190)	(101)	(71)	(25)	-	(22)
Electric Power Linemen & Cablemen	(151)	-	-	(5)	(58)	(48)	(34)	(2)	(1)	(3)
Excavating, Grading, & Machine Operators, except Bulldozers	(208)	-	-	(27)	(58)	(49)	(32)	(29)	-	(13)
Foremen, Other	(1,284)	-	(9)	(79)	(398)	(333)	(238)	(153)	(9)	(65)
Machinists	(449)	-	(5)	(62)	(144)	(99)	(58)	(50)	(3)	(28)
Air Conditioning, Heating, & Refrigeration Mechanics	(173)	-	(1)	(23)	(43)	(52)	(32)	(14)	-	(8)
Automobile Body Repairers	(152)	-	(13)	(28)	(51)	(23)	(14)	(9)	(1)	(13)
Automobile Mechanics	(741)	-	(37)	(149)	(282)	(145)	(62)	(36)	(2)	(28)
Heavy Equipment Mechanics	(657)	-	(5)	(83)	(231)	(159)	(83)	(59)	(1)	(36)
Other Mechanics & Repairers	(1,167)	(3)	(34)	(146)	(379)	(243)	(179)	(117)	(5)	(61)
Millwrights	(476)	-	(3)	(23)	(146)	(142)	(93)	(38)	(1)	(30)
Painters, Construction, Maintenance	(357)	(1)	(7)	(65)	(128)	(60)	(35)	(21)	-	(40)
Plumbers, Pipefitters	(653)	-	(4)	(94)	(249)	(136)	(92)	(49)	(1)	(28)

TABLE 7  
(continued)

OCCUPATION <sup>1/</sup>	AGE OF WORKER IN YEARS									
	TOTAL ALL AGES	15 YEARS OR LESS	16 - 19 YEARS	20 - 24 YEARS	25 - 34 YEARS	35 - 44 YEARS	45 - 54 YEARS	55 - 64 YEARS	65 YEARS OR MORE	AGE UNKNOWN
CRAFTSMEN & KINDRED WORKERS (continued)										
Press & Plate Printers	(111)	-	(9)	(26)	(30)	(17)	(15)	(6)	-	(8)
Sheetmetal Workers, Tinsmiths	(311)	-	(11)	(54)	(116)	(63)	(27)	(20)	(2)	(18)
Shipfitters	(198)	-	-	(28)	(90)	(38)	(16)	(19)	(1)	(6)
Structural Metal Workers	(170)	-	(4)	(29)	(52)	(23)	(21)	(13)	-	(28)
OPERATIVES, EXCEPT TRANSPORT	12,525	2	762	2,833	3,838	2,161	1,270	810	57	792
Asbestos & Insulation Workers	(144)	-	(4)	(54)	(38)	(29)	(6)	(5)	-	(8)
Assemblers	(465)	-	(29)	(120)	(135)	(67)	(41)	(23)	(3)	(47)
Checkers, Examiners, Inspectors; Mfg.	(316)	-	(17)	(54)	(70)	(69)	(48)	(38)	-	(20)
Cutting Operatives, Other	(282)	(1)	(19)	(65)	(85)	(45)	(27)	(23)	(4)	(13)
Filers, Polishers, Sanders, Buffers	(400)	-	(20)	(121)	(153)	(46)	(24)	(10)	(1)	(25)
Garage Workers, Gas Station Attendants	(201)	(1)	(36)	(77)	(44)	(25)	(6)	(2)	-	(10)
Meat Cutters, Butchers, ex. Mfg.	(142)	-	(6)	(33)	(40)	(30)	(14)	(8)	(1)	(10)
Meat Cutters, Butchers, Mfg.	(251)	-	(11)	(62)	(71)	(34)	(28)	(20)	(1)	(24)
Packers, Wrappers, Ex. Retail	(683)	-	(65)	(137)	(177)	(103)	(71)	(65)	(2)	(63)
Grinding Machine Operatives	(143)	-	(3)	(35)	(54)	(21)	(12)	(7)	-	(11)
Lathe, Milling Machine Operatives	(269)	-	(17)	(68)	(94)	(33)	(31)	(9)	(2)	(15)
Sawyers	(491)	-	(41)	(127)	(139)	(63)	(36)	(26)	(3)	(56)
Sewers & Stitchers	(701)	-	(40)	(151)	(206)	(159)	(70)	(53)	(4)	(18)
Shoemaking Machine Operatives	(1,520)	-	(145)	(409)	(412)	(274)	(152)	(74)	(3)	(51)
Textile Operatives	(418)	-	(26)	(74)	(125)	(85)	(54)	(41)	(2)	(11)
Welders & Flame Cutters	(826)	-	(6)	(156)	(327)	(165)	(72)	(37)	(4)	(59)
TRANSPORT EQUIPMENT OPERATIVES	2,304	1	46	307	741	546	338	148	11	166
Deliverymen & Routemen	(747)	(1)	(22)	(132)	(258)	(166)	(84)	(32)	(4)	(48)
Forklift, Tow Motor Operatives	(175)	-	(3)	(28)	(75)	(30)	(19)	(13)	-	(7)
Truck Drivers	(1,262)	-	(21)	(136)	(380)	(309)	(226)	(86)	(4)	(100)
LABORERS, EXCEPT FARM	8,769	40	904	2,138	2,551	1,204	742	422	54	714
Construction Laborers, ex. Carpenters Helpers	(1,062)	(2)	(123)	(319)	(338)	(91)	(49)	(23)	(4)	(113)
Freight, Material Handlers	(848)	-	(79)	(215)	(265)	(128)	(61)	(32)	(4)	(64)
Gardeners, Groundskeepers, ex. Farm	(191)	(5)	(20)	(54)	(49)	(24)	(12)	(17)	(3)	(7)
Lumbermen, Raftsmen, Woodchoppers	(1,194)	(1)	(65)	(195)	(368)	(234)	(144)	(65)	(4)	(118)
Stock Handlers	(227)	-	(39)	(56)	(58)	(34)	(9)	(10)	(1)	(20)
Vehicle & Equipment Cleaners	(150)	-	(6)	(37)	(45)	(18)	(12)	(12)	-	(20)
Warehousemen, Other	(544)	-	(56)	(149)	(163)	(84)	(46)	(17)	(1)	(28)



TABLE 7  
(continued)

OCCUPATION <sup>1/</sup>	AGE OF WORKER IN YEARS									
	TOTAL ALL AGES	15 YEARS OR LESS	16 - 19 YEARS	20 - 24 YEARS	25 - 34 YEARS	35 - 44 YEARS	45 - 54 YEARS	55 - 64 YEARS	65 YEARS OR MORE	AGE UNKNOWN
FARM MANAGERS, FOREMEN, LABORERS	162	5	15	33	47	18	10	6	-	28
Farm Laborers, Wage Workers	(154)	(5)	(15)	(32)	(43)	(18)	(9)	(5)	-	(27)
SERVICE WORKERS, EXCEPT PRIVATE HOUSEHOLD	7,275	22	924	1,346	1,887	1,247	840	520	71	418
Cleaners	(590)	(2)	(74)	(100)	(103)	(83)	(107)	(71)	(10)	(40)
Janitors	(626)	(5)	(33)	(66)	(105)	(104)	(141)	(126)	(21)	(25)
Cooks	(780)	(1)	(123)	(227)	(170)	(73)	(86)	(43)	(6)	(51)
Dishwashers	(192)	(3)	(87)	(44)	(21)	(11)	(5)	(5)	(1)	(15)
Waiters	(312)	(1)	(63)	(88)	(76)	(31)	(18)	(12)	(1)	(22)
Food Service Workers, Other	(1,024)	(7)	(322)	(204)	(165)	(89)	(94)	(58)	(10)	(75)
Health Aides, except Nursing	(558)	-	(33)	(105)	(192)	(113)	(66)	(37)	-	(12)
Nursing Aides, Orderlies, & Attendants	(1,255)	-	(103)	(269)	(330)	(219)	(137)	(84)	(5)	(108)
Practical Nurses	(247)	-	(2)	(31)	(92)	(62)	(31)	(12)	-	(17)
Attendants, Recreation	(159)	(1)	(42)	(53)	(28)	(12)	(6)	(7)	(3)	(7)
Firemen, Fire Protection	(519)	-	(23)	(39)	(220)	(160)	(52)	(10)	(3)	(12)
Guards & Watchmen	(271)	(1)	(5)	(26)	(77)	(67)	(45)	(29)	(5)	(16)
Policemen & Detectives	(549)	-	(2)	(58)	(262)	(188)	(24)	(3)	(1)	(11)
PRIVATE HOUSEHOLD WORKERS	3	-	-	1	1	-	-	1	-	-
NONCLASSIFIABLE	404	-	32	65	112	54	35	21	3	82

1. Classified according to the Occupational Classification System, U.S. Bureau of the Census, 1970 Census of Population.



TABLE 8. -- OCCUPATION OF INJURED OR ILL WORKER,  
NUMBER OF CASES, BY INDUSTRY DIVISION,  
STATE OF MAINE, 1983

OCCUPATION	TOTAL ALL IND. <sup>1/</sup>	AG., FOR. & FISH.	MINING	CONST.	MFG.	TRANS. & PUB. UTIL.	WHOLESALE TRADE	RETAIL TRADE	FIN., INS. & REAL ESTATE	SERVICES	PUBLIC SECTOR
TOTAL	49,214	466	35	4,437	21,668	1,590	2,221	6,363	417	6,461	5,534
PROFESSIONAL, TECH., & KINDRED WORKERS	2,206	11	5	19	179	42	5	23	10	1,201	711
MANAGERS & ADMINISTRATORS, EXCEPT FARM	1,520	8	1	76	225	56	119	576	44	232	180
SALESWORKERS	330	-	-	4	35	3	78	181	18	10	-
CLERICAL & KINDRED WORKERS	3,379	2	-	35	472	88	167	1,735	199	289	391
Stock Clerks, Storekeepers	(1,578)	-	-	(11)	(87)	(8)	(76)	(1,343)	(4)	(17)	(32)
CRAFTSMEN & KINDRED WORKERS	10,337	68	8	2,370	4,665	507	436	968	50	604	656
Carpenters	(1,160)	(2)	(1)	(804)	(210)	(11)	(7)	(29)	(6)	(50)	(38)
Foremen, Other	(1,284)	(45)	(1)	(266)	(597)	(34)	(48)	(61)	(6)	(73)	(153)
Mechanics & Repairers	(2,892)	(13)	(1)	(199)	(797)	(151)	(317)	(740)	(22)	(378)	(272)
OPERATIVES, EXCEPT TRANSPORT	12,525	27	12	308	10,955	72	277	524	15	259	73
Packers, Wrappers, Except Retail	(683)	(12)	-	(2)	(572)	(11)	(35)	(48)	(2)	(1)	-
Sewers & Stitchers	(701)	-	-	-	(674)	(1)	(1)	(7)	-	(17)	1
Shoemaking Machine Operatives	(1,520)	-	-	-	(1,512)	-	(1)	(2)	-	(4)	1
Welders & Flame Cutters	(826)	-	(3)	(95)	(677)	(12)	(8)	(2)	-	(22)	(6)
Machine Operatives, Miscellaneous	(2,568)	(4)	(3)	(32)	(2,415)	(10)	(36)	(24)	(4)	(25)	(15)
TRANSPORT EQUIPMENT OPERATIVES	2,304	17	1	151	671	460	458	276	3	101	166
Deliverymen & Routemen	(747)	(4)	-	(7)	(157)	(122)	(269)	(150)	(1)	(32)	(5)
Truck Drivers	(1,262)	(10)	(1)	(140)	(369)	(314)	(173)	(118)	(2)	(53)	(82)
LABORERS, EXCEPT FARM	8,769	208	8	1,415	3,995	313	630	601	55	553	984
Construction Laborers, Ex. Carpenters											
Helpers	(1,062)	(6)	(2)	(957)	(34)	(8)	(5)	(13)	(1)	(26)	(9)
Freight Material Handlers	(848)	(5)	-	(4)	(521)	(60)	(95)	(128)	(1)	(26)	(8)
Lumbermen, Raftsmen, Woodchoppers	(1,194)	(10)	-	(15)	(1,044)	(17)	(11)	(16)	(2)	(15)	(64)
FARM MANAGERS, FOREMEN, & LABORERS	163	120	-	1	13	1	7	4	1	7	8
SERVICE WORKERS, EXCEPT PRIVATE HOUSEHOLD	7,275	3	-	22	253	37	27	1,432	16	3,160	2,325
Cleaners & Janitors	(1,216)	(1)	-	(14)	(148)	(12)	(11)	(37)	(10)	(553)	(430)
Food Service Workers	(2,308)	(2)	-	(2)	(28)	-	(12)	(1,359)	(2)	(672)	(231)
Nursing Aides, Orderlies, & Attendants	(1,255)	-	-	(1)	-	-	(1)	-	(1)	(1,202)	(50)
Protective Service Workers, Inc. Fire & Police Personnel	(1,388)	-	-	(2)	(73)	(16)	(2)	(17)	(3)	(94)	(1,181)
PRIVATE HOUSEHOLD WORKERS	3	-	-	-	-	-	-	-	-	3	-
NONCLASSIFIABLE	404	2	-	36	205	11	17	43	6	42	40

1. Columns may not add up to total column due to unclassifiable establishments.

TABLE 9. -- OCCUPATION OF INJURED OR ILL WORKER,  
NUMBER OF CASES, BY SELECTED MANUFACTURING INDUSTRIES,  
STATE OF MAINE, 1983

OCCUPATION	TOTAL ALL MFG.	FOOD	TEXTILES	LUMBER & WOOD	PAPER	RUBBER & PLASTIC	LEATHER	FABRICATED METAL	MACHINERY EXCEPT ELECTRICAL	ELECTRIC & ELECTRONIC EQUIPMENT	TRANSPORTATION EQUIPMENT	OTHER MFG.
TOTAL, ALL OCCUPATIONS	21,668	1,779	1,070	4,007	3,743	656	3,523	714	643	703	3,107	1,723
PROFESSIONAL & TECHNICAL	179	8	2	13	64	5	8	8	7	22	26	16
MANAGERS & ADMINISTRATORS	225	36	9	32	32	7	27	16	4	6	24	32
SALESWORKERS	35	21	-	4	-	-	2	-	-	-	-	8
CLERICAL & KINDRED WORKERS	472	56	21	21	70	10	73	16	15	30	53	107
CRAFTSMEN & KINDRED WORKERS	4,665	158	112	589	1,040	92	186	243	214	134	1,637	260
Foremen	(597)	(39)	(16)	(127)	(105)	(31)	(76)	(35)	(10)	(24)	(87)	(550)
Machinists	(402)	(4)	(5)	(11)	(57)	(8)	(34)	(27)	(87)	(22)	(131)	(16)
Mechanics & Repairers, ex. Heavy Equipment Mechanics	(449)	(59)	(54)	(77)	(133)	(37)	(40)	(15)	(30)	(32)	(49)	(77)
Heavy Equipment Mechanics	(239)	(14)	(5)	(37)	(89)	(5)	(7)	(5)	(16)	(17)	(35)	(9)
Millwrights	(405)	(9)	(4)	(60)	(322)	-	(2)	(2)	(1)	(2)	(1)	(2)
Plumbers & Pipefitters	(405)	-	(6)	(2)	(134)	-	-	(6)	(3)	(1)	(253)	-
OPERATIVES, EXCEPT TRANSPORT	10,955	775	768	1,403	1,693	436	2,909	338	314	458	1,038	823
Assemblers	(406)	(15)	(4)	(83)	(3)	(24)	(16)	(13)	(37)	(144)	(28)	(39)
Cutting Operatives	(260)	(28)	(4)	(57)	(19)	(11)	(117)	(2)	(1)	-	(1)	(20)
Filers, Sanders, etc.	(384)	-	(3)	(13)	(21)	(6)	(52)	(16)	(8)	(5)	(227)	(33)
Packers, Wrappers, except Retail	(572)	(221)	(13)	(95)	(57)	(30)	(104)	(2)	(7)	(7)	(1)	(35)
Lathe, Milling Machine Operatives	(257)	(1)	(3)	(178)	(5)	(9)	(20)	(18)	(7)	(3)	(5)	(8)
Sawyers	(460)	(4)	-	(390)	(12)	(5)	(20)	(3)	-	(2)	(1)	(23)
Sewers & Stitchers	(674)	(2)	(14)	(2)	(6)	(18)	(430)	-	(3)	-	(1)	(198)
Shoemaking Machine Operatives	(1,512)	-	(1)	(5)	-	(82)	(1,410)	-	-	-	-	(14)
Welders & Flame Cutters	(677)	(2)	(3)	(7)	(37)	(1)	(1)	(74)	(86)	(42)	(409)	(662)
TRANSPORT EQUIPMENT OPERATIVES	671	245	14	155	124	12	26	21	3	5	3	63
Truck Drivers	(369)	(91)	(10)	(114)	(65)	(12)	(12)	(10)	(2)	(3)	(2)	(48)
LABORERS, EXCEPT FARM	3,995	387	136	1,693	611	91	252	65	61	32	291	376
Freight, Material Handlers	(521)	(57)	(21)	(127)	(148)	(28)	(44)	(9)	(6)	(10)	(37)	(34)
Lumbermen, Raftsmen, Woodchoppers	(1,044)	-	-	(1,032)	(6)	-	(2)	-	(1)	-	(2)	(1)
FARM WORKERS & MANAGERS	13	12	-	1	-	-	-	-	-	-	-	-
SERVICE WORKERS, EX. PRIVATE HOUSEHOLD	253	56	5	34	58	1	30	3	12	6	27	21
NONCLASSIFIABLE	205	25	3	62	51	2	10	4	13	10	8	17

TABLE 10. -- DURATION OF EMPLOYMENT OF INJURED OR ILL WORKERS  
NUMBER & CUMULATIVE PERCENT ALL, DISABLING, & FATAL REPORTS  
STATE OF MAINE, 1983

	ALL REPORTS		DISABLING REPORTS <sup>1/</sup>		FATAL REPORTS	
	Number		Number		Number	
Total Reports	49,214		19,140		36	
Missing Length of Service	12,636		3,512		18	
Total with Length of Service	36,578	100.0%	15,628	100.0%	18	100.0%

Length of Service	ALL REPORTS		DISABLING REPORTS		FATAL REPORTS	
	Number	Cumulative Percent	Number	Cumulative Percent	Number	Cumulative Percent
Up to 1st Month	2,327	6.4	1,142	7.3	0	
1st Month up to 2nd Month	1,854	11.4	847	12.7	0	
2nd Month up to 3rd Month	1,487	15.5	721	17.3	0	
3rd Month up to 4th Month	1,355	19.2	651	21.5	1	5.6
4th Month up to 5th Month	1,009	22.0	475	24.5	1	11.1
5th Month up to 6th Month	775	24.1	367	26.9	0	
6th Month up to 7th Month	916	26.6	423	29.6	0	
7th Month up to 8th Month	604	28.2	254	31.2	0	
8th Month up to 9th Month	601	29.9	258	32.9	0	
9th Month up to 10th Month	596	31.5	255	34.5	0	
10th Month up to 11th Month	432	32.7	199	35.8	0	
11th Month up to 1 Year	403	33.8	185	37.0	0	
1 Year up to 2nd Year	4,363	45.7	1,935	49.3	2	22.2
2nd Year up to 3rd Year	3,333	54.8	1,461	58.7	0	
3rd Year up to 4th Year	2,708	62.2	1,140	66.0	0	
4th Year up to 5th Year	2,094	68.0	867	71.5	0	
5th Year up to 6th Year	1,874	73.1	703	76.0	2	33.3
6th Year up to 7th Year	1,383	76.9	548	79.5	1	38.9
7th Year up to 8th Year	924	79.4	358	81.8	2	50.0
8th Year up to 9th Year	822	81.6	320	83.9	0	
9th Year up to 10th Year	774	83.7	292	85.7	0	.0
10th Year up to 15th Year	2,978	91.9	1,161	93.2	4	72.2
15th Year up to 20th year	1,476	95.9	508	96.4	1	77.8
20th Year up to 25th Year	636	97.7	246	98.0	1	83.3
25th Year up to 30th Year	418	98.8	171	98.1	1	88.9
30th Year up to 35th Year	270	99.5	97	99.7	2	100.0
35th Year up to 40th Year	140	99.9	37	100.0	0	
40th Year up to 60th Year	26	100.0	7	100.0	0	

1. Only those cases where one or more days of work were lost beyond the date of injury or diagnosis of illness.

TABLE 11. -- OCCUPATIONAL ILLNESS: INDUSTRY BY NATURE OF ILLNESS, STATE OF MAINE, 1983

INDUSTRY	TOTAL	INFECTIVE OR PARASITIC DISEASES	DERMATITIS	INFLAMMATION OF JOINTS, ETC.	POISONING, SYSTEMIC	RADIATION EFFECTS	CONDITIONS OF THE CIRCULATORY SYSTEM, OTHER	CONDITIONS OF THE RESPIRATORY SYSTEM, PNEUMOCONIOSIS	HEART CONDITIONS	ALL OTHER DISEASES
<u>TOTAL, ALL INDUSTRIES</u>	3,326	73	845	1,159	355	208	24	20	90	552
<u>TOTAL, PRIVATE SECTOR</u>	2,939	60	734	1,118	278	196	20	20	62	45
<u>AGRICULTURE, FORESTRY, &amp; FISHING</u>	29	-	18	3	3	3	-	-	-	2
<u>CONSTRUCTION</u>	209	2	48	33	31	48	4	5	7	31
<u>MANUFACTURING</u>	1,957	17	466	896	169	114	8	13	26	248
<u>DURABLE GOODS</u>	676	8	163	222	94	84	2	12	10	81
Lumber & Wood Products	181	2	60	82	9	4	-	-	5	19
Fabricated Metal Products	32	-	7	12	5	5	1	-	-	2
Machinery, except Electrical	38	1	8	14	1	8	-	-	-	6
Electric & Electronic Equipment	116	1	36	47	13	3	-	-	1	15
Transportation Equipment	263	3	42	56	55	61	1	12	3	30
<u>NONDURABLE GOODS</u>	1,281	9	303	674	75	30	6	1	16	167
Food & Kindred Products	190	1	49	87	13	2	4	-	1	33
Textile Mill Products	70	-	46	17	1	1	-	-	-	5
Apparel & Other Textile Products	78	-	11	58	-	-	1	-	-	8
Paper & Allied Products	220	4	45	64	37	24	1	1	12	32
Rubber & Misc. Plastics Products	58	-	19	23	5	-	-	-	1	10
Leather & Leather Products	636	4	126	413	17	1	-	-	2	73
<u>TRANSPORTATION &amp; PUBLIC UTILITIES</u>	72	-	29	8	5	10	2	-	3	15
<u>WHOLESALE TRADE</u>	113	1	41	30	15	10	-	-	3	13
<u>RETAIL TRADE</u>	197	8	43	62	20	3	1	-	9	51
<u>FINANCE, INSURANCE, &amp; REAL ESTATE</u>	41	-	1	17	4	2	1	1	2	13
<u>SERVICES</u>	316	32	87	69	29	5	4	-	12	78
Health Services	142	23	37	23	14	2	1	-	2	40
<u>TOTAL, PUBLIC SECTOR</u>	387	13	111	41	77	12	4	-	28	101
<u>STATE GOVERNMENT</u>	135	9	41	17	15	3	3	-	10	37
<u>LOCAL GOVERNMENT</u>	252	4	70	24	62	9	1	-	18	64
Fire Protection	91	-	3	3	40	2	-	-	7	36



TABLE 12. -- NATURE OF INJURY OR ILLNESS BY PART OF BODY AFFECTED  
ALL WORKERS, STATE OF MAINE, 1983

NATURE OF INJURY OR ILLNESS	TOTAL	PART OF BODY AFFECTED									
		EYES	HEAD, NECK <sup>1/</sup>	FINGERS	UPPER EXTREMITIES <sup>2/</sup>	BACK	TRUNK <sup>3/</sup>	LOWER EXTREMITIES	MULTIPLE BODY PARTS	SYSTEM	NONCLASS.
TOTAL	49,214	4,405	3,111	8,885	8,291	8,383	4,373	7,724	2,019	793	1,230
AMPUTATION OR ENUCLEATION	43	-	1	29	9	-	-	4	-	-	-
HEAT BURN	1,032	76	89	150	436	10	35	128	102	-	6
CHEMICAL BURN	750	470	59	15	84	1	10	55	51	1	4
INFECTIVE OR PARASITIC DISEASES	73	10	9	1	1	-	3	-	9	20	20
CONTUSION, CRUSHING, BRUISE	8,046	65	569	1,652	1,766	248	886	2,436	401	-	23
CUT, LACERATION, PUNCTURE	9,813	269	876	5,399	2,055	17	62	1,039	52	-	44
DERMATITIS	845	18	60	103	331	5	10	39	206	-	73
DISLOCATION	455	-	15	48	25	193	134	40	-	-	-
FRACTURE	1,929	-	242	546	340	13	210	554	22	-	2
HERNIA, RUPTURE	288	-	-	-	2	2	283	-	1	-	-
INFLAMMATION OF JOINTS, ETC.	1,159	-	10	75	763	48	143	72	26	-	22
RADIATION EFFECTS	208	198	1	-	1	1	-	2	3	1	1
SCRATCHES, ABRASIONS	3,735	3,197	81	99	192	12	21	102	29	-	2
SPRAINS, STRAINS	15,491	-	487	423	1,632	7,654	2,314	2,606	308	-	67
MULTIPLE INJURIES	747	4	72	67	65	6	14	78	438	-	3
SYMPTOMS & ILL-DEFINED CONDITIONS	125	2	21	5	-	2	6	4	6	75	4
OTHER & NONCLASSIFIABLE	4,475	96	525	393	463	176	237	565	365	696	959

1. Excluding Eyes.

2. Excluding Fingers.

3. Excluding Back.



TABLE 13. -- NATURE OF INJURY OR ILLNESS BY TYPE OF ACCIDENT AND EXPOSURE  
ALL WORKERS, STATE OF MAINE, 1983

NATURE OF INJURY OR ILLNESS	TYPE OF ACCIDENT OR EXPOSURE										
	TOTAL	STRUCK BY OR AGAINST	FALL	CAUGHT IN OR BETWEEN	RUBBED OR ABRADED	BODILY REACTION	OVER- EXERTION	CONTACT W/ TEMP. EXT.	CONTACT W/ RAD., ETC.	MOTOR VEH. ACCIDENTS	OTHER & NONCLASS.
TOTAL	49,214	16,746	5,926	2,863	4,272	1,416	11,672	1,064	2,307	466	2,482
AMPUTATION OR ENCULEATION	43	17	1	23	-	-	-	-	-	-	2
HEAT BURN	1,032	-	-	-	-	-	-	992	-	-	40
CHEMICAL BURN	750	-	-	-	-	-	-	-	734	-	16
CONCUSSION	80	50	23	1	-	-	-	-	-	3	3
INFECTIVE OR PARASITIC DISEASES	73	-	-	-	-	-	-	2	64	-	7
CONTUSION, CRUSHING, BRUISE	8,046	4,743	1,648	1,250	65	-	93	-	-	67	180
CUT, LACERATION, PUNCTURE	9,813	7,377	275	770	979	-	25	-	-	28	359
DERMATITIS	845	-	-	-	-	-	-	3	813	-	29
DISLOCATION	455	49	92	14	4	34	239	-	-	7	16
FRACTURE	1,929	946	556	303	5	17	30	-	-	27	45
HERNIA, RUPTURE	288	5	5	-	-	1	262	-	-	-	15
INFLAMMATION OF JOINTS, ETC.	1,159	6	4	1	33	25	1,062	-	-	-	28
SYSTEMIC POISONING	355	-	-	-	-	-	-	-	338	-	17
SCRATCHES, ABRASIONS	3,735	541	74	26	2,974	-	5	-	-	4	111
SPRAINS, STRAINS	15,491	1,601	1,943	229	163	1,300	9,681	-	-	145	429
MULTIPLE INJURIES	747	207	292	73	3	-	10	-	2	82	78
SYMPTOMS & ILL-DEFINED CONDITIONS	125	8	2	-	4	-	4	2	15	1	89
DAMAGE TO PROSTHETIC DEVICES	452	208	169	9	2	-	1	10	6	-	47
OTHER & NONCLASSIFIABLE	3,796	988	842	164	40	39	260	55	335	102	971

TABLE 14. -- SOURCE OF INJURY OR ILLNESS BY NATURE OF INJURY OR ILLNESS  
ALL WORKERS, STATE OF MAINE, 1983

SOURCE OF INJURY OR ILLNESS	TOTAL	NATURE OF INJURY OR ILLNESS									
		AMPUTATIONS	HEAT BURNS	CHEM. BURNS	CONTUSIONS, BRUISES	CUTS, LACERATIONS	FRACTURES	SCRATCHES, ABRASIONS	SPRAINS, STRAINS	ALL OCC. DISEASES	OTHER & NONCLASS.
TOTAL	49,214	43	1,032	750	8,046	9,813	1,929	3,735	15,491	3,326	5,049
BODILY MOTION	1,417	-	-	-	-	-	16	-	1,300	42	59
BOILERS, PRESSURE VESSELS	363	-	3	-	70	30	17	7	194	6	36
BOXES, BARRELS, CONTAINERS	4,814	2	38	-	710	375	118	35	3,107	83	346
BUILDINGS & STRUCTURES	1,366	1	3	-	543	198	94	23	328	8	168
CHEMICALS, CHEMICAL COMPOUNDS	1,026	-	59	540	13	13	2	29	5	341	24
CLOTHING	220	1	3	-	17	19	3	21	85	54	17
ELECTRIC APPARATUS	297	-	9	2	44	51	9	3	120	3	56
FOOD PRODUCTS	340	-	184	4	10	14	6	4	50	62	6
FURNITURE, FIXTURES, ETC.	1,718	1	9	3	610	286	74	27	518	13	177
GLASS ITEMS, OTHER	609	-	1	1	2	497	1	88	9	7	3
HAND TOOLS, NOT POWERED	3,691	2	6	-	375	2,460	105	41	489	89	124
HAND TOOLS, POWERED	1,224	5	28	-	105	715	35	26	233	33	44
HOISTING APPARATUS	283	1	1	-	105	50	23	-	69	2	32
MACHINES	2,808	23	27	-	748	1,159	144	52	370	66	219
METAL ITEMS	5,379	-	163	1	791	2,048	180	944	921	23	308
MINERAL ITEMS, NONMETALLIC, OTHER	497	-	-	8	88	33	29	126	135	27	51
UNIDENTIFIED PARTICLES	1,592	-	2	-	1	26	-	1,520	1	36	6
PLANTS, TREES, VEGETATION	814	-	-	-	170	77	80	73	141	102	171
VEHICLES	3,034	3	11	-	901	390	167	33	1,004	26	499
WOOD ITEMS	2,429	1	-	-	550	471	147	284	720	67	189
WORKING SURFACES	4,955	1	-	-	1,155	90	460	52	2,130	43	1,024
PERSON	2,259	-	-	-	261	105	37	118	1,203	263	272
OTHER & NONCLASSIFIABLE	8,079	2	485	191	777	707	229	2,359	1,930	1,218	181

TABLE 15. -- SOURCE OF INJURY OR ILLNESS BY TYPE OF ACCIDENT OR EXPOSURE,  
ALL WORKERS, STATE OF MAINE, 1983

SOURCE OF INJURY OR ILLNESS	TOTAL	TYPE OF ACCIDENT OR EXPOSURE									
		STRUCK BY OR AGAINST	FALL	CAUGHT IN OR BETWEEN	RUBBED OR ABRADED	BODILY REACTION	OVER- EXERTION	CONTACT W/ TEMP. EXT.	CONTACT W/ RAD., ETC.	MOTOR VEH. ACCIDENTS	OTHER & NONCLASS.
TOTAL	49,214	16,746	5,926	2,863	4,272	1,416	11,672	1,064	2,307	466	2,482
BODILY MOTION	1,417	1	2	-	-	1,410	3	-	-	-	1
BOILERS, PRESSURE VESSELS	363	151	12	9	7	1	176	3	-	-	4
BOXES, BARRELS, CONTAINERS	4,814	1,088	135	193	118	-	3,215	38	3	-	24
BUILDINGS & STRUCTURES	1,366	705	154	246	18	-	229	3	-	-	11
CHEMICALS, CHEMICAL COMPOUNDS	1,026	21	2	4	29	-	6	57	885	-	22
CLOTHING	220	36	-	17	35	-	118	3	7	-	4
ELECTRIC APPARATUS	297	98	11	20	11	-	111	2	1	-	43
FOOD PRODUCTS	340	21	-	4	12	-	65	184	52	-	2
FURNITURE, FIXTURES, ETC.	1,718	900	158	132	61	-	430	10	6	-	21
GLASS ITEMS, OTHER	609	332	9	-	226	-	12	1	8	1	20
HAND TOOLS, NOT POWERED	3,691	2,972	12	45	69	-	566	6	3	-	18
HAND TOOLS, POWERED	1,224	817	25	60	25	-	246	27	1	-	23
HOISTING APPARATUS	283	139	14	72	1	-	56	1	-	-	-
MACHINES	2,808	1,298	92	915	45	1	340	26	2	14	75
METAL ITEMS	5,379	2,780	134	187	1,196	-	841	166	6	-	69
MINERAL ITEMS, NONMETALLIC, OTHER	497	184	58	23	124	-	71	-	35	-	2
UNIDENTIFIED PARTICLES	1,592	20	-	-	1,525	-	1	2	37	-	7
PLANTS, TREES, VEGETATION	814	566	46	14	12	-	71	-	99	1	5
VEHICLES	3,034	1,153	241	386	92	1	649	11	-	448	53
WOOD ITEMS	2,429	1,178	78	168	340	-	603	-	38	-	24
WORKING SURFACES	4,955	675	4,157	16	81	1	11	-	-	1	13
PERSON	2,259	423	2	45	6	-	1,135	-	17	-	631
OTHER & NONCLASSIFIABLE	8,079	1,188	584	307	239	2	2,717	524	1,107	1	1,410

TABLE 16. -- ASSOCIATED OBJECT OR SUBSTANCE BY TYPE OF ACCIDENT OR EXPOSURE,  
ALL WORKERS, STATE OF MAINE, 1983

ASSOCIATED OBJECT OR SUBSTANCE	TOTAL	TYPE OF ACCIDENT OR EXPOSURE									
		STRUCK BY OR AGAINST	FALL	CAUGHT IN OR BETWEEN	RUBBED OR ABRADED	BODILY REACTION	OVER- EXERTION	CONTACT W/ TEMP. EXT.	CONTACT W/ RAD., ETC.	MOTOR VEH. ACCIDENTS	OTHER & NONCLASS.
TOTAL	49,214	16,746	5,926	2,863	4,272	1,416	11,672	1,064	2,307	466	2,482
ANIMALS, INSECTS, ETC.	315	19	9	66	6	1	14	-	146	4	50
BODILY MOTION	928	25	99	1	5	790	7	-	-	-	1
BOILERS, PRESSURE VESSELS	685	189	55	7	67	5	169	66	111	-	16
BOXES, BARRELS, CONTAINERS	5,050	1,103	204	177	158	19	3,158	113	76	-	42
BUILDINGS & STRUCTURES	1,423	647	190	290	43	7	226	4	-	1	15
CHEMICALS, CHEMICAL COMPOUNDS	582	16	3	3	7	-	5	28	517	-	3
ELECTRIC APPARATUS	386	90	42	16	15	3	110	14	32	-	64
FURNITURE, FIXTURES, ETC.	1,824	882	218	134	89	25	431	9	11	-	25
GLASS ITEMS, OTHER	431	241	2	-	161	-	12	1	8	-	6
HAND TOOLS, NOT POWERED	4,309	3,271	53	51	308	4	550	17	33	-	22
HAND TOOLS, POWERED	2,519	1,060	18	49	738	1	239	169	207	-	38
HEATING EQUIPMENT, OTHER	309	52	2	9	16	1	51	152	6	-	20
HOISTING APPARATUS	382	176	42	93	4	2	57	3	1	-	4
LADDERS	542	102	290	21	7	22	85	3	-	-	12
MACHINES	3,409	1,500	123	929	232	19	432	59	22	10	83
MECHANICAL POWER TRANSMISSION APPARATUS	266	95	30	35	28	1	72	2	-	-	3
METAL ITEMS	3,514	1,897	123	139	386	21	825	53	16	1	53
MINERAL ITEMS, NONMETALLIC	343	131	34	18	51	-	72	-	32	3	2
UNIDENTIFIED PARTICLES	265	3	-	-	240	-	-	1	20	-	1
PLANTS, TREES, VEGETATION	754	499	56	14	8	1	68	-	100	1	7
VEHICLES	3,500	1,249	543	361	193	34	626	34	11	396	53
WOOD ITEMS	1,904	861	133	129	139	12	585	1	34	-	10
PERSON	2,510	482	132	51	7	3	1,134	2	47	5	647
WORKING SURFACES	3,998	654	2,659	29	73	385	126	16	5	34	17
OTHER & NONCLASSIFIABLE	9,066	1,502	866	241	1,291	60	2,618	317	872	11	1,288



APPENDIX A -  
TECHNICAL NOTES

Under the Maine Workers' Compensation Act<sup>1/</sup> and the Occupational Disease Law<sup>2/</sup>, employers<sup>3/</sup> must file a First report of Occupational Injury or Occupational Illness (ME Form 21) or its equivalent within seven days of notice or knowledge of each incident which resulted in the loss of at least one day's work or which required the services of a physician<sup>4/</sup>. Also, a significant number of voluntary reports are filed that do not meet these conditions, but are submitted to protect the rights of both parties in case of later complications. As the reports are received, they are assigned a number which serves as a unique identifier of that particular case. The First Reports are then coded by the staff of the Research and Statistics Division, Bureau of Labor Standards for the seventeen data elements shown in the table below:

<u>DATA ELEMENT</u>	<u>SOURCE</u>	<u>DEFINITION</u>
Case Number	Maine Workers' Compensation Commission	Unique number assigned sequentially by the W.C.C.
Employer Number	Bureau of Employment Security	Unemployment Insurance account number as assigned by the B.E.S.
Industry/ownership	U.S. Office of Management & Budget, Standard Industrial Classification Manual	In most cases, the SIC assigned by B.E.S. is used. In cases where the employer is not covered by Unemployment Insurance, an SIC is assigned by the R & S Division based on information on the First Report. An ownership code is also assigned to show whether the employer is in private industry, state government, or local government.
County	State Planning Office, Geographic Coding System	Code is assigned based on the county in which the incident occurred.
Insurance Carrier	Maine Bureau of Insurance	The Bureau of Insurance identification number of the employer's insurance carrier is assigned. Special codes are used for self-insured and uninsured employers.
Sex	--	From First Report.
Age	--	Age from First Report information. (Optional)
Date	--	The date of occurrence is used if applicable. For illnesses, the date of diagnosis is used.
Time of Accident	--	Time listed is converted to the 4-digit, 24-hour system. (Optional).
Length of Service	--	Months coded if less than one year's service. Years used otherwise. All fractions rounded downward. (Optional).

1. Title 39 MRSA §1-180.
2. Title 39 MRSA §181-195.
3. Exempted are employers hiring four or less farm laborers provided they have liability insurance. Also, employees engaged in domestic service or as casual or seasonal labor in agriculture are exempted (§§4, 21).
4. §106.



## APPENDIX A (continued)

<u>DATE ELEMENT</u>	<u>SOURCE</u>	<u>DEFINITION</u>
Occupation	U.S. Bureau of Census Occupational Classification system	Codes assigned based on occupation listed or determined from the First Report, coded to the 3-digit level.
Nature of Injury or Illness	American National Standards Institute A16.2	ANSI Z16.2 as modified is used. All coding done to the 3-digit level. Identifies the most serious injury or illness in terms of its principal physical characteristics.
Part of Body Affected	As above	As above, coding done to the 3-digit level. Indicates part of body or the body system associated with the nature of injury or illness.
Source of Injury or Illness	As above	As above, coding done to the 3-digit level. Identifies the object, substance, or bodily motion which directly produced or inflicted the previously identified injury or illness.
Type of Accident or Exposure	As above	As above, coding done to the 3-digit level. Identifies the event which directly led to the injury or illness.
Associated Object or Substance (AOS)	Developed by the Bureau of Labor Statistics, U.S. Department of Labor	Using a code listing similar to that for Source, AOS identifies the object, substance, person, or bodily motion with respect to which measures could have been taken to prevent the accident or exposure or mitigate the injury or illness.
Severity Code	--	Three levels of severity are coded: <ol style="list-style-type: none"> <li>1. Fatal.</li> <li>2. Disabling (time lost beyond day of injury).</li> <li>3. Nondisabling (no time lost beyond day of injury).</li> </ol>

APPENDIX B -  
ADDITIONAL INFORMATION AVAILABLE FROM THE SUPPLEMENTARY DATA SYSTEM

DETAIL TABLES

The data in this publication was compiled from a series of detail tables produced for the Research and Statistics Division, Bureau of Labor Standards, Department of Labor, by the U. S. Bureau of Labor Statistics. A complete list of these tables follows. For each title listed a table is available for all workers and for women workers only. Please specify if the tables you want are for women only. Copies of these tables are available upon written request to Marvin W. Ewing, Bureau Director, Bureau of Labor Standards, State House Station #45, Augusta, Maine 04333. Please specify table number and title.

SPECIAL STUDIES

The Research and Statistics Division of the Bureau of Labor Standards has the ability to produce special tabulations and studies of the data elements listed in Appendix A. Requests for special studies should be made in writing to the Bureau Director at the above address. The ability to fill such requests is limited by the availability of computer and staff resources. In addition, there may be charges for reimbursement of costs.

WORK INJURY REPORT (WIR) SURVEYS

The Office of Occupational Safety and Health Statistics of the Bureau of Labor Statistics has conducted twelve surveys focusing on specific characteristics of accidents. Each survey was conducted in a number of SDS-participating states. The latest seven surveys include respondents from the State of Maine. The survey respondents were the injured workers who were chosen from First Reports according to survey criteria. No names (firm or injured party) were disclosed and responses were voluntary.

The responses to these surveys are tabulated and summarized in WIR publications, the second list that follows. The title describes the survey-selection criteria.

Requests may be made to the above address specifying "Work Injury Report Survey" and the title. Supplies of these are somewhat limited.

## LIST OF DETAIL TABLES

<u>Table Number</u>	<u>Primary Classification</u>	<u>Secondary Classification</u>
101 101W	Nature of Injury or Illness	
102 102W	Part of Body Affected	
103 103W	Source of Injury or Illness	
104 104W	Type of Accident or Exposure	
105 105W	Associated Object or Substance (AOS)	
161 161W	Nature	Insurance Type
201 201W	Industry	Nature
202 202W	Industry	Part
203 203W	Industry	Source
204 204W	Industry	Type
205 205W	Industry	AOS
220 220W	Industry (Division)	Month of Occurrence
221 221W	Industry (Division)	Day of Week
223 223W	Industry (Major Group)	Duration of Employment
230 230W	Industry (Major Group)	Occupational Disease
240 240W	Industry (Major Group)	Age of Worker
260 260W	Industry (Major Group)	Insurance

LIST OF DETAIL TABLES  
(continued)

<u>Table Number</u>	<u>Primary Classification</u>	<u>Secondary Classification</u>
301 301W	Occupation of Worker	Nature
302 302W	Occupation	Part
303 303W	Occupation	Source
304 304W	Occupation	Type
305 305W	Occupation	AOS
310 310W	Occupation	Industry (Division)
311 311W	Occupation	Industry (Durable Manufacturing)
312 312W	Occupation	Industry (Nondurable Manufacturing)
330 330W	Occupation	Disease
340 340W	Occupation	Age
511 511W	Nature	Part
512 512W	Source	Nature
513 513W	Nature	Type
514 514W	Source	Type
515 515W	AOS	Type

# APPENDIX C

## LISTING OF INDIVIDUAL FATALITY REPORTS FOR 1983

The following is a listing of the 36 fatalities received by the Workers' Compensation Commission by December 1983. They are arranged by ownership and industry group.

<u>Industry</u>	<u>Date</u>	<u>Occupation</u>	<u>Age</u>	<u>Sex</u>	<u>Event</u>
<u>Construction</u>					
General Building	1-28	Details Unknown			
Heavy Construction	8-12	Foreman	58	M	Fell under wheels of truck
	12-1	Pipefitter	Unk.	M	Lung Cancer
Special Trades Contractors	2-14	Plumber	58	M	Heart Attack
<u>Manufacturing</u>					
Food Products	6-1	Sales Manager	44	M	Heart Attack
Lumber & Wood Products	2-16	Logger	48	M	Single car accident
	4-19	Logger	35	M	Struck by falling tree
Paper Products	5-26	Millwright	38	M	Struck by truck
	8-24	Details Unknown			
Chemicals & Allied Products	4-13	Seaweed Harvester	Unk.	M	Electrocuted
Leather & Allied Products	2-18	Tacker	29	M	Single car accident
Stone, Clay, Glass Products	6-8	Crusher Operator	59	M	Suffocated under sand
Transportation Equipment	1-25	Pipecoverer	60	M	Heart Attack
	6-11	Machinist	44	M	Two car accident (head-on)
	11-15	Pipecoverer	60	M	Lung Cancer
	11-23	Tinsmith	39	M	Heart Attack
<u>Transportation &amp; Public Utilities</u>					
Motor Freight Transport	12-11	Truck Driver	46	M	Single vehicle accident
Electric, Gas, & Sanitary Service	5-30	Utility Worker	48	M	Fell from boat, drowned
	12-12	Line Superintendent	63	M	Heart Attack



## APPENDIX C (continued)

 INDIVIDUAL FATALITIES  
 1983  
 (continued)

<u>Industry</u>	<u>Date</u>	<u>Occupation</u>	<u>Age</u>	<u>Sex</u>	<u>Event</u>
<u>Wholesale Trade</u>					
Durable Goods	1-15	Commissioned Sales	29	M	Automobile accident
	11-8	Commissioned Sales	Unk.	M	Heart Attack
<u>Retail Trade</u>					
Drug Stores	1-16	Pharmacist	Unk.	M	Heart Attack
<u>Services</u>					
Personal Services	2-8	Funeral Director	77	M	Heart Attack
	2-18	Funeral Director	33	M	Self-inflicted Gunshot
Business Services	8-5	Pipefitter	31	M	Unknown
	9-23	Instrument Technician	26	M	Struck by truck
	9-23	Rod Holder	23	M	Struck by truck
Automotive Repair, Garages	6-14	Laborer	20	M	Two-car accident
	12-20	Tire Changer	Unk.	M	Heart Attack
Health Services	5-23	Home Health Aide	60	F	Two-car accident
	10-11	Outside Maintenance	Unk.	M	Lung Cancer
<u>Government</u>					
State Government	1-29	Nursing Assistant	55	F	Heart Attack
	1-29	Command Sergeant	52	M	Unknown
	6-27	Mental Health Worker	54	M	Heart Attack
Local Government	5-31	Laborer	40	M	Heart Attack
	12-30	Solid Waste Attendant	88	M	Struck by truck

APPENDIX D -  
MAINE'S ON-SITE JOB SAFETY & HEALTH CONSULTATION PROGRAM

- . . . provides you with a cost-free safety and health inspection without penalty provisions and a confidential written report.
- . . . provides a pre-construction review of plans or specifications for potential safety and health problems.
- . . . provides you with equipment and laboratory assistance to measure potential safety and health problems.
- . . . provides safety and health alternative correction action to assist in complying with OSHA citations.
- . . . provides safety and health inspections of only those areas in your establishment specified by you.

The Maine job safety and health consultation program began in 1978 to help employers, primarily small employers, maintain a safe workplace by understanding and complying with OSHA regulations. This is a cost-free and penalty-free program conducted under a contract between the Maine and the U.S. Departments of Labor.

The consultant will first meet with you to explain the procedures and to update you on OSHA activities. Then, the consultant will inspect your workplace and will note any violations of rules and potential hazards. You are encouraged, but not required, to have worker representatives participate.

When the inspection is completed, the consultant will review the findings with you, including how the standards apply to the workplace, which OSHA rules you may be violating, and ways to correct the deficiencies. The consultant also can help you interpret the standards and inform you of other available resources, or to aid you in correcting safety and health problems.

Later, you will receive a written technical report covering the information given you during the visit, including the specific rules which apply and ways to correct violations.

If you would like more information on this program or would like to request a consultation, call the Bureau of Labor Standard's Safety Division at 289-2591 or write to them at Station 45, Augusta, ME 04333.

APPENDIX E -  
COMMENTS FORM

Your comments about this material will help us to improve our publications. We are interested in any feedback concerning its usefulness, accuracy, organization, and completeness. Requests for additional copies will be filled subject to availability. (See Appendix F). Requests for further details on this subject should be sent to the Bureau Director at the address below. These requests may be denied due to confidentiality restrictions.

Please indicate your position or title: \_\_\_\_\_

How suitable is this material for your own requirements?

\_\_\_\_\_ Very Suitable      \_\_\_\_\_ Suitable      \_\_\_\_\_ Not Suitable

What information not presently covered should be included? \_\_\_\_\_

\_\_\_\_\_

\_\_\_\_\_

What information presently covered should be excluded? \_\_\_\_\_

\_\_\_\_\_

\_\_\_\_\_

Additional comments: \_\_\_\_\_

\_\_\_\_\_

\_\_\_\_\_

\_\_\_\_\_

Please return this page to:

Maine Department of Labor  
Bureau of Labor Standards  
Research & Statistics Division  
State House Station #45  
Augusta, ME 04333

If you wish a reply, please include your name and mailing address.

APPENDIX F -  
ORDER FORM

The following items are available without charge from:

Maine Department of Labor  
Bureau of Labor Standards  
Research & Statistics Division  
State House Station #45  
Augusta, ME 04333

PUBLICATIONS (some years may be out of print)

- ☐ Occupational Injuries and Illnesses in Maine (publication began with the 1975 calendar year)
- ☐ Characteristics of Work-Related Injuries & Illnesses in Maine (beginning 1977)
- ☐ Census of Maine Manufactures (beginning 1945)
- ☐ Directory of Maine Labor Organizations (latest year only is made available)
- ☐ Maine Construction Wage Rates (beginning 1983)
- ☐ Labor Relations in Maine (beginning 1983)

Booklet: Evaluating Your Firm's Injury & Illness Record

- ☐ Construction Industries
- ☐ Manufacturing Industries
- ☐ Wholesale & Retail Trade Industries
- ☐ Transportation & Public Utilities Industries
- ☐ Services Industries

OSHA RECORDKEEPING MATERIALS

- ☐ Supplementary Record of Occupational Injuries & Illnesses, OSHA No. 101
- ☐ Log & Summary of Occupational Injuries & Illnesses, OSHA No. 200
- ☐ Poster: Safety and Health Protection on the Job
- ☐ Recordkeeping Requirements Guidelines

CONSULTATION PROGRAM

- ☐ Booklet: Maine's On-Site Safety & Health Consultation program
- ☐ Please contact me concerning an on-site safety & health consultation.
- ☐ My phone number is \_\_\_\_\_

MAILING LABEL:

---

---

---

---