

# MAINE STATE LEGISLATURE

The following document is provided by the  
**LAW AND LEGISLATIVE DIGITAL LIBRARY**  
at the Maine State Law and Legislative Reference Library  
<http://legislature.maine.gov/lawlib>



Reproduced from electronic originals  
(may include minor formatting differences from printed original)

Land for Maine's Future Program

# Biennial Report

January 2016 – December 2018

Pursuant to Title 5, Section 6206



January 2019

Maine Department of Agriculture, Conservation and Forestry

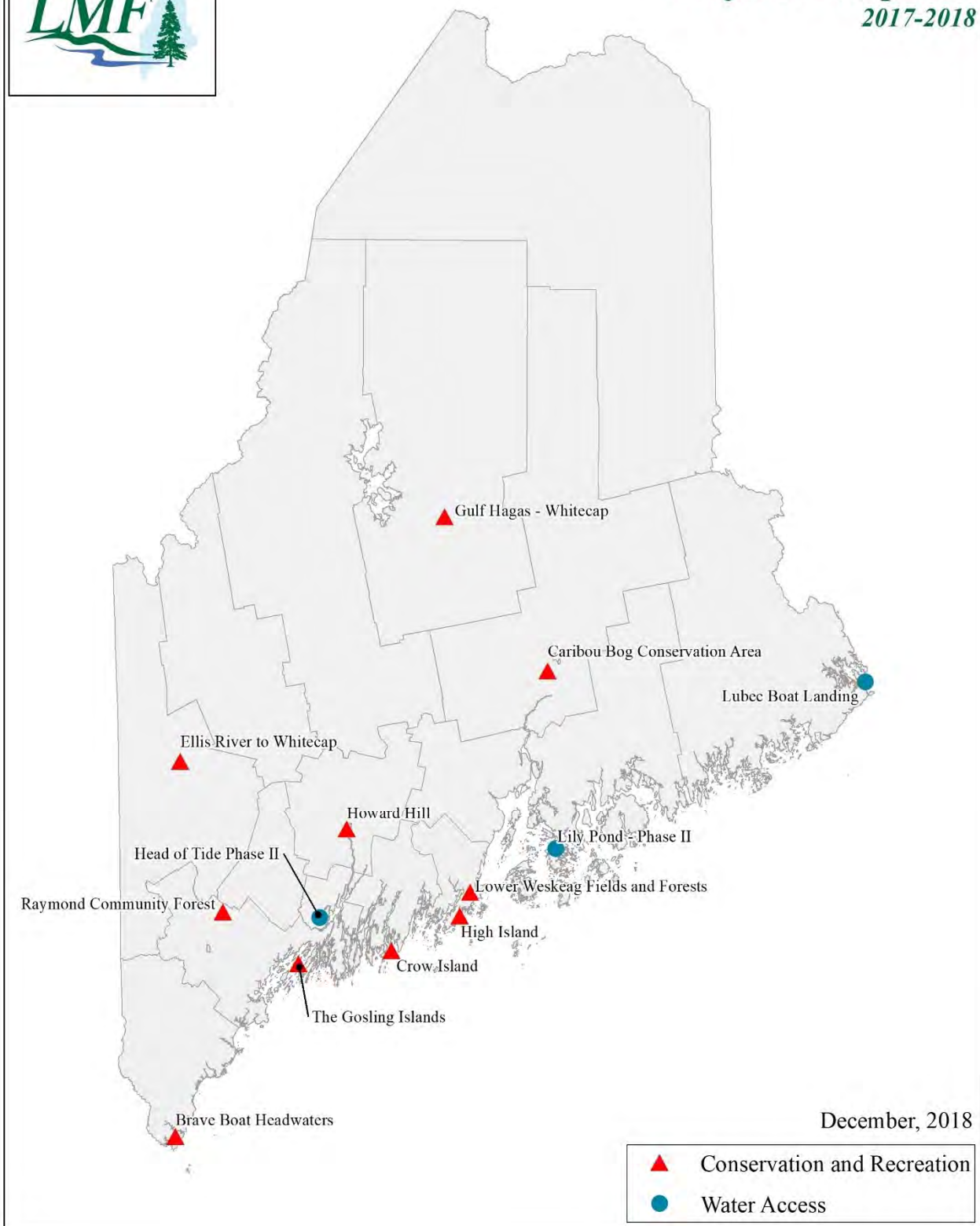
[www.maine.gov/dacf/](http://www.maine.gov/dacf/)

207-287-3200





## Projects Completed 2017-2018



## Table of Contents

Map: Land for Maine’s Future Projects Completed 2017-2018	page 1
I. Executive Summary	page 3
II. LMF Project Details 2017-2018	page 5
III. Program Management	page 6
Board Mission and Membership	page 6
Board Composition	page 6
Board Responsibilities	page 6
Board Committees and Working Groups	page 7
Board and Program Initiatives	page 7
Program Administration and Staffing	page 10
Agency and Non-profit Support	page 10
IV. Program Funding	page 11
Bond Authority	page 11
Current Funding Status	page 11
Other Programs Supported by LMF	page 11
V. Project Summaries	
Individual Projects:	
Conservation and Recreation	page 14
Public Access to Maine Waters	page 24
Appendices	
Appendix 1 – Projects Closed by County	page 29
Appendix 2 - Bond Authority and Funds Available	page 30
Appendix 3 - Program Partners During Biennium	page 32
Appendix 4 – Map: Maine Conservation Lands – Federal, State, Other	page 33
Appendix 5 – Map: Maine Conservation Lands – Fee and Easement Lands	page 34
Appendix 6 - Cumulative Summary of Projects 1987 – 2014	page 35

## I. EXECUTIVE SUMMARY

### Program Overview:

The Land for Maine's Future (LMF) Program was established in 1987 when Maine voters first approved a \$35 million bond to purchase lands of state significance for the continued availability of public access to diverse outdoor recreation opportunities and the protection of the scenic and natural environment for preserving the State's high quality of life. The goal of the program is defined in the enabling statute:

*"The Legislature declares that the future social and economic well-being of the citizens of this state depends upon maintaining the quality and availability of natural areas for recreation, hunting and fishing, conservation, wildlife habitat, vital ecologic functions and scenic beauty and that the state, as the public's trustee, has a responsibility and a duty to pursue an aggressive and coordinated policy to assure that this Maine heritage is passed on to future generations." (5 M.R.S.A. sec. 6200)*

The LMF Program has evolved in a number of ways over the last thirty years. Despite the changes, the LMF Program continues to fund properties that provide high value wildlife and fisheries habitat, key access points to Maine waters and ensures that land is available for traditional recreational activities. In addition to traditional conservation, recreation and water access projects, the LMF Program supports an array of working landscapes which contribute to Maine's rural economy. Farmland preservation projects support farmer and community efforts to keep land in production. Working forest conservation easements are one tool to ensure the stability of Maine's wood supply for the forest products industries. The working waterfront access protection program makes key points of access along Maine's coast available to our commercial fisheries industry.

The LMF Program serves the state and Maine citizens in numerous ways, including:

- Improves public access to land and water for traditional recreation activities
- Assists communities with investments in town owned forests, parks and water access sites
- Supports tourism opportunities with pedestrian and motorized trail networks and access to some of Maine's most scenic locations
- Provides working lands to support marine fisheries, forestry and agricultural industries

The LMF Program consistently delivers the people of Maine a high quality resource for an exceptional value. With a rigorous application and review process, and strict due diligence and closing procedures, the Program ensures public access is guaranteed, traditional uses such as hunting, fishing and trapping are allowed and that the future use and management of the property is consistent with each properties' resource values.

The LMF Program is administratively located in the Department of Agriculture, Conservation, Forestry's Bureau of Resource Information and Land Management. The staff is located in the Elkins Building, 19 Elkins Lane, Augusta.

Information about the LMF programs can be found on the DACF website at [www.maine.gov/dacf/lmf](http://www.maine.gov/dacf/lmf). Correspondence may be directed to:

Sarah Demers, Director,  
Land for Maine's Future Program  
22 State House Station  
19 Elkins Lane  
Augusta, ME 04333  
[Sarah.demers@maine.gov](mailto:Sarah.demers@maine.gov)  
207-287-7576

## OVERVIEW OF PROJECTS ACCOMPLISHED THIS BIENNIUM

In the biennium, January 1, 2017 through December 31, 2018, 13 projects completed the rigorous LMF review process with a successful closing. A summary is attached for each project completed during the biennium. See pgs. 14 – 28.

The LMF program investment in these 13 projects was \$2,195,800, which generated \$6,499,218 in matching funds, representing \$2.96 in matching funds for every LMF dollar spent. The matching contributions were provided by generous bargain sale donations from private landowners and the fundraising efforts of cooperating agencies, conservation partners and municipalities.

The projects completed are diverse and include:

- Additions to the Maine Department of Inland Fisheries and Wildlife's Ralph Waldo Tyler and Caribou Bog Wildlife Management Areas,
- 3 island properties,
- 3 water access sites and
- Several locally and regionally important community recreation sites.

These 13 projects are spread across 11 counties; and consists of 12 fee acquisition projects and 1 working forest conservation easement project.

In all, the projects protect and provide access to an additional 3± miles of shorefront and riparian habitats along the coast as well as 26± miles of frontage on rivers and lakes throughout the state. Encompassing 9,871.8± acres of forest, recreation, wildlife habitat and other special areas, these projects are managed by state agencies, municipalities and private conservation organizations, in cooperation with the LMF program.

\*\*\*\*\*

## II. LMF PROJECT DETAILS 2017-2018

A summary is attached for each project completed during the biennium. See pgs. 14 – 28.

Projects are defined in the following categories specified in statute, bond language, and LMF Board initiatives.

<u>Project Type</u>	<u>Number of Projects</u>	<u>Acres</u>
• Conservation and Recreation	10	9,852.7
• Public Access to Maine Waters	3	19.1

Additional information can be found in the following locations

- |  |                  |
|--|------------------|
| 1. <u>Biennial Project Summary Descriptions</u>  | See pgs. 14 - 28 |
| 2. <u>Projects Closed by County</u>              | See Appendix 1   |
| 3. <u>Cumulative Summary of all LMF Projects</u> | See Appendix 6   |



### III. PROGRAM MANAGEMENT

#### BOARD MISSION AND MEMBERSHIP

The Land for Maine's Future Program is comprised of the Land for Maine's Future's Fund and the Public Access to Maine Waters Fund, and administers the Working Waterfront Access Protection Program jointly with the Department of Marine Resources. The LMF Board's primary responsibility is to administer these funds in accordance with statutory and bond requirements. Occasionally, the Board is directed by the legislature to oversee other funds such as the Sears Island Consent Decree Funds and Katahdin Lake Funds. The LMF board meets regularly to provide policy direction, oversee the funds, and approves the land acquisition strategy under legislative authority (5 MRSA Section 6202). The board works with individuals, land trusts, municipalities, nonprofit conservation organizations, and federal and state agencies to identify lands of statewide, regional and local significance to accomplish the LMF's statutory requirements.

#### BOARD COMPOSITION

The nine member board consists of six public citizens, and the Commissioners from the Departments of Agriculture, Conservation and Forestry, Inland Fisheries and Wildlife, and Marine Resources.

As specified in the authorizing legislation,

*"The 6 public members must be selected for their knowledge of the State's natural resources and landscape, and their demonstrated commitment to land conservation. Appointments must provide broad geographic representation." (5 M.R.S.A. sec. 6204)*

These members are appointed by the Governor, and confirmed by the Legislature's Joint Standing Committee on Agriculture, Conservation and Forestry and to confirmation by the Legislature. By statute, appointed board members are limited to serving two consecutive terms.

The following individuals served during the reporting period:

Member	Term
Fred Bucklin, Appleton	03/12/2016 - 11/13/2018
Harry Ricker, Turner	03/03/2016 - 1/31/2019
Robert Meyers, Bath	04/04/2016 - 11/13/2019
Lisa Turner, Freeport	04/21/2016 - 01/31/2020
Bradley Moll, Yarmouth	04/27/2016 - 01/31/2020
Don Kleiner, Union	02/11/2018 – 1/31/2022

Patrick Keliher, Commissioner, Department of Marine Resources; appointed Chair by the Governor in 2016  
Walt Whitcomb, Commissioner, Department of Agriculture, Conservation & Forestry  
Chandler Woodcock, Commissioner, Department of Inland Fisheries and Wildlife

#### BOARD RESPONSIBILITIES

Board responsibilities as specified in the authorizing legislation, 5 MRSA, Section 6206 include:

1. Complete an assessment of the State's public land acquisition needs and develop a strategy and guidelines, based on that assessment, for use in allocating the proceeds of the Land for Maine's Future Fund and the Public Access to Maine Waters Fund.

2. Receive and review funding requests from state agencies and cooperating entities for acquisition projects meeting state guidelines.
3. In accordance with the strategy and guidelines developed, authorize distribution of proceeds from the Land for Maine's Future Fund and the Public Access to Maine Waters Fund for acquisitions of property or interests in property; and
4. On January 1st of every odd-numbered year, report to the joint standing committee of the Legislature having jurisdiction over matters pertaining to state parks and public lands on expenditures from the Land for Maine's Future Fund and the Public Access to Maine Waters Fund and revisions to the strategies and guidelines.

## BOARD COMMITTEES AND WORKING GROUPS

All LMF sub-committees, work groups and board meetings are posted on the LMF website at [www.maine.gov/dacf/lmf](http://www.maine.gov/dacf/lmf). The Board and staff utilize several approaches to receive input from interested parties and the public. The Board places public notice of pending land acquisitions and invites public comment at all board meetings. Opportunities for public input were provided for all of the work groups. Information about the program is also available on the website and staff are available to meet with, or make presentations to, any interested groups and community organizations. The following committees were in place during the reporting period:

### Appraisal Oversight Committee

The role of the AOC is to evaluate appraisals submitted by applicants seeking LMF funding, and to make a recommendation to the LMF Board for their vote to allocate LMF funds. The objective of the AOC is to ensure that the appraiser has clearly identified the appraisal problem, that the methodology used to address the appraisal problem is well supported by data provided in the report and that the appraisal meets the appraisal standards outlined in the LMF Workbook.

### Amendments and Change of Use Committee

In recent years LMF staff have seen an increase in the number of inquiries and requests from Cooperating Entities, easement holders, landowners and State agencies for “after-the-fact” changes to properties acquired with LMF funds. This biennium we received 8 requests from State agencies and Cooperating Entities for after-the fact changes.

Recognizing the need to address these requests in a consistent and timely manner, the Board established a sub-committee that could provide recommendations to the Board on how to proceed with these requests. The sub-committee has spent time understanding the state and federal implications for allowing a change of use or an amendment to an easement, as well as LMF policy considerations. The Board has recently reviewed and approved several of these changes. The sub-committee’s next steps are to formulate recommendations that can be reviewed and approved by the Board.

## BOARD AND PROGRAM INITIATIVES

In addition to working with agencies, partners and landowners on land conservation projects, the program undertook the following activities:

### LMF Database Updates and Maintenance

LMF staff and interns spent considerable time during the biennium recovering and updating our project tracking database which had become inactive following the Program's move from the State Planning Office in 2012. The database tracks LMF funded projects, financial allocations and other data supplied in the biennial report. The database is also used to supply data to our newest initiative, the LMF Online Property Finder, described below.

### LMF Online Property Finder

During the reporting period LMF staff and interns, with technical assistance from the DACF, Bureau of Resource Information and Land Use Planning, developed an online map feature which will be located on the LMF webpage. The map is searchable and includes built in queries that allow users to view information and pictures of LMF funded properties. Featured properties include a sub-set of LMF funded Conservation and Recreation, Water Access and Working Waterfront projects. Efforts will be made in early 2019 to publicize and promote the site with the intention of creating more awareness of the variety of properties that have been funded by the Land for Maine's Future Program.

### LMF Workbook Updated

In accordance with the LMF Board responsibilities enumerated above, the LMF Board and staff undertook an extensive review of the LMF Proposal Workbook in anticipation of issuing a call for proposals. In February, 2017 the board began the process of reviewing the LMF workbook with the goal of streamlining it to make it easier for applicants and revising the allocation of points in each scoring category to reflect Board priorities. After several public meetings where proposed changes were reviewed and discussed, the Board adopted the LMF Workbook in late May. The Board then issued a call for proposals on June 1<sup>st</sup> 2017, with a deadline for proposals of September 15, 2017. A copy of the LMF Workbook can be found on the LMF website:

[https://www.maine.gov/dacf/lmf/docs/2017workbook/2017\\_Workbook.pdf](https://www.maine.gov/dacf/lmf/docs/2017workbook/2017_Workbook.pdf)

### Round 9 Call for Proposals: New Projects authorized in 2017

At their November 7 and November 9, 2017 Board meetings, the LMF Board reviewed, scored and selected 15 project finalists located in 22 different communities, totaling \$3,192,000 in preliminary allocations.

The Board selected the following finalists:

#### **CONSERVATION & RECREATION preliminary allocations: \$2,815,000**

Bethel Community Forest	Bethel
Caterpillar Hill	Sedgwick
Easter Hill Beaches	Owls Head
Hope Woods	Kennebunk
Kennebec Highlands Additions	Vienna, New Sharon
Madison Branch Multi-Use Trail	Oakland, Fairfield, Norridgewock, Madison, Anson, Embden
Mirror Lake Conservation Easement	Camden, Hope, Rockport
Robinson Pond South	Cape Elizabeth
Schooner Cove	Pembroke
Woodward Point	Brunswick
Yarmouth Riverfront Woods Preserve	Yarmouth

**FARMLAND preliminary allocations: \$163,000**

Brigee Farms	Turner
Old Talbot Farm	Arundel

**WATER ACCESS preliminary allocations: \$214,000**

Pettegrow Point	Machiasport
Lubec Boat Landing	Lubec

Working Waterfront Call for Proposals

In November 2018, the Board issued a call for proposals that solicits applications to its Working Waterfront Access Protection Program (WWAPP). The WWAPP utilizes LMF funding to secure working waterfront covenants on strategically significant properties that are essential to the long-term future of this economic sector. These properties often include lands that offer access to the sea, docks, wharfs, and the associated services and parking. The covenants are held by the Department of Marine Resources and ensure that the strategic properties are not converted to non-fishery uses. The current allocation available for this WWAPP round is \$2M. Proposals are due March 22, 2019.

Access Improvement Grants

As authorized in statute (MRS Title 5 Ch. 353 Sec. 6203 3.), LMF Bond funds may be used to make access improvement grants to enhance the public accessibility to land that has been acquired with proceeds from the Land for Maine's Future Fund and the Public Access to Maine Waters Fund. Funds have been used for the upgrade of access roads, the addition of parking, trails, and boat launches, or the installation of signage, information kiosks, and picnic tables.

Historically, access improvement grants have ranged between 2% and 5% of a project's LMF allocation, and the Board has adopted incentives for projects that are designed to facilitate use by people who may have physical limitations or impairments, sometimes referred to as "differently-abled persons or "adaptive access". For adaptive access improvements, the board has made access improvement grants up to 5% of the appraised value when sufficient funding is available.

In 2016 the LMF Board adopted the practice of annually soliciting access improvement grant applications from applicants that closed on an LMF property in the previous year. This scheduled approach allows for a more concentrated administration of the application, award, contracting and reporting process. Due to reduced LMF staffing during the reporting period, administration of the access improvement grant component of LMF has been facilitated by an outside contractor.

The LMF Board made the following awards for access improvement grants during the reporting period

**2017 Access Improvement Grant Awards**

ME Bureau of Parks and Lands	Cold Stream Forest	\$30,000
ME Department of Inland Fisheries & Wildlife	Central Maine Sportsman's Access	\$10,000
Brunswick-Topsham Land Trust	Woodward Cove – Water Access	\$1,140
Pleasant River Wildlife Foundation	Merritt Cove - Water Access	\$3,890
Town of Cumberland	Knight's Pond Preserve	\$4,500
Western Foot Hills Land Trust	Crooked River	<u>\$4,400</u>
		<b>\$53,930</b>

### **2018 Access Improvement Grant Awards**

ME Bureau of Parks and Lands	Gulf Hagas	\$6,500
ME Department of Inland Fisheries & Wildlife	Pleasant Bay WMA	\$15,850
ME Department of Inland Fisheries & Wildlife	Caribou Bog WMA	\$1,590.74
Damariscotta River Association	Crow Island	\$1,500
Island Heritage Trust	Lily Pond – Water Access	\$2,400
Kittery Land Trust	Braveboat Headwaters	\$3,000
Loon Echo Land Trust	Crooked River	\$6,870
Mahoosuc Land Trust	Ellis River to Whitecap Mtn.	\$3,875
Maine Coast Heritage Trust	High Island	<u>\$1,900</u>
		<b>\$43,485.74</b>

### **PROGRAM ADMINISTRATION AND STAFFING**

The LMF program is supported by staff located within the DACF's Bureau of Resource Information and Land Use Planning. Staff oversee the call for proposals and project selection process and project management including all aspects of project development and negotiations as well as the review of all required due diligence documents, easement drafting and baseline evaluation, and other activities related to real estate transactions. Staff also oversees various post-closing activities, including access improvement grants and the receipt of annual monitoring reports from cooperating entities. In addition, staff provides support to the board and its working committees, and generates legislatively required reports on the Board's behalf.

As part of the merger between the Department of Conservation and the Department of Agriculture the LMF Director position was re-established as a civil service, competitive position. Ms. Sarah Demers assumed this role on February 16, 2015. LMF staff members are Mr. Tom Miragliuolo and Ms. R. Collin Therrien. In May 2016 an LMF position became vacant when a staff member retired from State Government service. This position was held vacant through 2016 and the position was then eliminated in the following biennial budget. A 25% reduction in staffing has challenged the Program to do more with less. A return to 3 full-time project positions in addition to the Director would assist with increasing the pace of completing projects, provide opportunity to undertake additional special projects as determined by the Board and provide capacity for collaborating with partners on state-wide and national conservation initiatives.

### **AGENCY AND NON-PROFIT SUPPORT**

The Program relies extensively on various staff from the Maine Department of Agriculture, Conservation and Forestry, Inland Fisheries and Wildlife, Marine Resources, State Historic Preservation Office, and numerous federal partner agencies for assistance in many aspects of its work. Legal counsel for conservation projects is provided through a cooperative agreement with the Maine Department of Transportation (MDOT). The MDOT Legal Division provides legal research services. The Attorney General's Office is the counsel for the Board's functions, interpreting legal questions relating to LMF statutes, policies and process.

Non-profit land trusts, municipalities, and other cooperating entities (as defined in statute), as applicants, assist the program in the development of projects, working with landowners, completing important due diligence such as boundary surveys, title work and providing matching funds. These arrangements provide substantial leverage to the LMF funds and efforts of program staff.

#### IV. PROGRAM FUNDING

##### EXISTING BOND AUTHORITY

Funding for the program is drawn from the sale of bonds approved by Maine voters. Bonds are administered by the State Treasurer. DACF and NRSC financial staff monitors fund balances and coordinate with the State Treasurer.

Legislation authorizing the use of proceeds from LMF bonds specifies certain program objectives or requirements for use of the funds, such as for working water front protection projects, farmland preservation, or protection of winter habitat areas for white-tailed deer (“deer yards”).

##### CURRENT FUNDING STATUS

###### Funds Available 12/31/2016

<u>Public Law</u>	<u>Year Authorized</u>	<u>Funds Available</u>	<u>Bonds to be Sold</u>
2007, Ch. 39	2008	\$7,568	\$0
2009, Ch. 645	2010	\$4,470,238	\$1,250,000
2011, Ch. 696	2012	<u>\$500,000</u>	<u>\$3,000,000</u>
	Total:	\$4,977,806	\$4,250,000

###### Funds Available 12/31/2018

<u>Public Law</u>	<u>Year Authorized</u>	<u>Funds Available</u>	<u>Bonds to be Sold</u>
2009, Ch. 645	2010	\$3,685,130	\$0
2011, Ch. 696	2012	<u>\$3,175,000</u>	<u>\$0</u>
	Total:	\$6,860,130*	\$0

\* Of this total, the Board has allocated \$3,893,405 for projects selected in 2017 and has set aside \$2,000,000 for Working Waterfront Access Protection proposals due in 2019.

*Note:* See Appendix 2 for list of bonds and the purposes for which they can be used.

##### OTHER PROGRAMS SUPPORTED OR ASSISTED BY LMF

Due to its expertise in matters related to land conservation and real estate, the Land for Maine’s Future Board has been called on to oversee funds and procedures for a small number of other public purposes.

###### Sears Island Consent Decree Fund

In 1996, the Maine Dept. of Transportation (MDOT) was sued by the U.S. EPA and others for filling wetlands on Sears Island in Searsport. The parties negotiated a consent decree to settle the lawsuit. The consent decree included a Supplemental Environmental Project under which funds were transferred from MDOT to the Land for Maine’s Future’s oversight and administration.

These funds must be used for the sole purpose of acquiring properties identified within the Ducktrap River watershed, in order to protect in perpetuity the valuable freshwater wetlands and uplands that support Atlantic salmon habitat. The consent decree identified specific parcels in the Ducktrap watershed for acquisition and

conservation. In 2014, 121 acres were acquired in the town of Lincolnville. These are the final parcels identified in the Consent Decree.

To date, Sears Island Consent Decree funds have been used to acquire nine parcels encompassing over 394 acres and 17,622 feet of shore front on the Ducktrap River. As of December 31, 2018, the cash balance in the account was **\$151,721.08**. There are no outstanding expenditures. LMF is working in cooperation with MDOT, the Office of the Attorney General and EPA to come to a resolution on the disbursement of the remaining funds.

#### Katahdin Lake Fund

The Legislature created the Katahdin Lake Fund by PL 2005, Resolves 197 in 2006 from proceeds from the sale of public lots in Aroostook, Washington, and Franklin counties. The legislative Resolve authorizing the sale requires the Department of Conservation (now DACF) to use the proceeds to acquire conservation land in the counties where parcels were sold and with similar conservation, habitat, and wildlife values. All of the funds dedicated for Franklin and Aroostook Counties have been expended and as of December 31, 2018 **\$75,747.86** remains in the Washington County account.

#### Publications

All LMF publications may be found on the LMF website: <http://www.maine.gov/dacf/lmf/>

LMF undertook three substantive publications in this biennium:

- (1) the LMF Proposal Workbook
- (2) the Working Waterfront Access Protection Proposal Workbook and
- (3) the biennial report.

When funding is available, LMF publishes an LMF Proposal Workbook, which provides guidance to applicants for preparing and submitting proposals. The Workbook also details the due diligence requirements to be completed by applicants and agencies for all projects.

#### Conservation Lands Registry

In 2007, the Legislature passed L.D. 1737, which amended the laws governing conservation easements and established a mandatory statewide registry for all conservation easements held in Maine. Legislation adopted in 2016 has expanded this to require that lands owned in fee for conservation purposes (recreation, agriculture, forestry, habitat, etc.) must also be registered (Title 33 MRS §476 et seq). The Conservation Lands Registry is a requirement of the Department of Agriculture, Conservation and Forestry and has been assigned to LMF for administrative purposes. The Registry requirements established by the legislature are entirely separate from LMF's annual reporting requirements for LMF funded acquisitions.

Under the law, the holder of a conservation easement or owner of lands held for conservation purposes must report: the book and page number at the registry of deeds for each conservation easement that it holds or each parcel owned in fee for conservation purposes, the municipality, the approximate number of acres protected under each easement or parcel owned, the approximate number of acres that are exempt from taxation pursuant to Title 36, section 652 for which the municipality or county does not receive payments in lieu of taxes and such other information as the Department of Agriculture, Conservation and Forestry determines necessary. Holders are also required to monitor their conservation easements at least once within a three-year period. Each annual filing by account holders must be accompanied by \$80.00 which helps cover the annual \$6,920.00 hosting and maintenance fee to InforME.

The Conservation Lands Registry is implemented as an on-line resource available for each account holder to maintain and to update their registry account and records directly and is configured to provide each registry account-holder with 24/7 access.

LMF staff annually issues advance notification through the DACF registry's website, municipal, and land trust networks; issues direct reminders to all registry account-holders regarding annual registration renewal process, provides technical assistance and monitors the account-holder registrations, responds to Registry related data requests from accountholders, municipal officials, agencies, legal professionals, real estate professionals and the public.

Moving forward, guidance and direction is needed to determine how the state can best use data collected in the Registry. The current database lacks functionality for producing accurate and usable reports. Recent changes to the Registry did not include tools to assist with data management, analysis, and reporting. Account holders are also interested in streamlining the data entry process. Along with a clear vision on the purpose and function of the Registry, there is a need to review the resources required to put that vision into place. At the request of the prior administration, LMF and other staff from within the Bureau of Resource Information developed recommendations for a Maine Conserved Lands Data Management Resource. Revisiting these recommendations would be a good start to helping to define the State's objective of maintaining a Conservation Lands Registry and how that could be done efficiently.



# Project Summaries

January 2017 - December 2018

## **Conservation & Recreation Projects:**

Brave Boat Headwaters	pg. 15
Caribou Bog Conservation Area	pg. 16
Crow Island Thread of Life	pg. 17
Ellis River to Whitecap Mountain	pg. 18
Gulf Hugas-Whitecap	pg. 19
High Island	pg. 20
Howard Hill	pg. 21
Lower Weskeag Fields and Forest	pg. 22
Raymond Community Forest	pg. 23
The Gosling Islands	pg. 24

## PROJECT SUMMARY: Brave Boat Headwaters

**CONSERVATION PARTNERS:** Kittery Land Trust

**LAND TYPE AND SIGNIFICANCE:** Recreational, Regional Significance

**LOCATION:** Kittery, York County

**PROJECT ACREAGE:** 55.8± acres

**PROJECT DESIGN:** Fee simple acquisition by the Kittery Land Trust held under an LMF Project Agreement with Department of Agriculture, Conservation and Forestry

**PUBLIC ACCESS:** Access off State Route 103 (Brave Boat Harbor Road) in Kittery

**SPONSORING AGENCY:** ME Department of Agriculture, Conservation and Forestry

**PURCHASE PRICE:** \$1,362,128

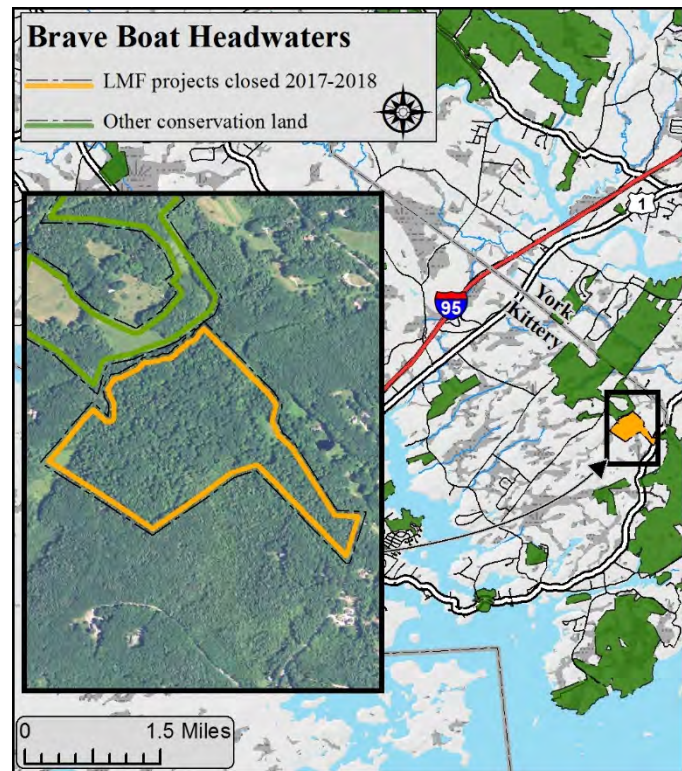
**CLOSING DATE:** 3/8/2017

**LMF BOND FUNDS:** \$150,000

**MATCHING CONTRIBUTIONS:** \$1,212,128

### PROJECT DESCRIPTION:

Nestled in the heart of Brave Boat Harbor between Route 103, Bartlett and Payne Roads, Brave Boat Headwaters is part of the largest block of natural land remaining in Kittery. The Kittery Land Trust's 150-acre BBH preserve has a 1.5 mile trail network through wildlife-rich forest habitats. Adjacent to the Rachel Carson National Wildlife Refuge and other protected lands, BBH is located within the Mount A to Sea Conservation Area. The Land for Maine's Future Board supported the acquisition of 55 acres of the preserve in 2017. It is a biologically rich and diverse area. Eagles circle overhead, butterflies flutter in the open fields, salamanders hide themselves in the wet mosses near vernal pools and otters travel between the fresh water of the forested uplands to salt marsh and the sea.



## PROJECT SUMMARY: Caribou Bog Conservation Area

**CONSERVATION PARTNERS:** University of Maine System, Orono Land Trust

**LAND TYPE AND SIGNIFICANCE:** Rare, Threatened, or Endangered Species; Regional Significance

**LOCATION:** Old Town, Penobscot County

**PROJECT ACREAGE:** 264.4 ± acres

**PROJECT DESIGN:** Lucien parcels 1 & 2: Fee simple acquisition of (89.9±) acres by the University of Maine System held under an LMF Project Agreement with the ME Department of Inland Fisheries & Wildlife; IFW- Beyenberg Lot: Fee simple acquisition of (27.7±) acres by the ME Department of Inland Fisheries & Wildlife. Match Land: fee simple title of (146.8±) acres to ME Department of Inland Fisheries & Wildlife and included as part of ME DIFW's Caribou Bog Wildlife Management Area ('WMA').

**PUBLIC ACCESS:** All three tracts have deeded access over abutting MDIFW WMA lands and accessed from Kirkland Road, a public road and are in proximity to lands conserved for purposes of habitat connectivity and recreational trail corridor network.

**SPONSORING AGENCY:** ME Department of Inland Fisheries & Wildlife ('MDIFW')

**PURCHASE PRICE:** \$113,500

**CLOSING DATE:** 12/15/2017

**LMF BOND FUNDS:** \$79,537

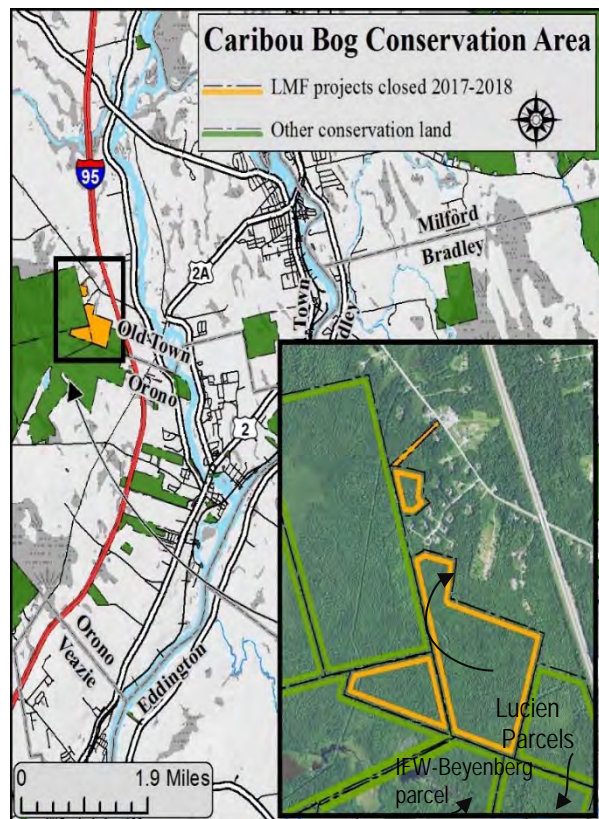
**MATCHING CONTRIBUTIONS:** \$80,545

### PROJECT DESCRIPTION:

Caribou Bog Conservation Area parcels are located in proximity to: 1) DIFW Caribou Bog Wildlife Management Area, and 2) University of Maine Forest, and are part of one of largest wetland systems in Maine.

As part of DIFW's Caribou Bog WMA, DIFW-Beyenberg lands support vernal pool critical terrestrial habitat. Abutting Lucien parcels 1 & 2 lands are part of abutting University of Maine Forest, characterized as upland buffer, are managed for wildlife habitat and forestry.

These lands provide access and connectivity: 1) to Pushaw Lake with hiking trails over WMA lands, and 2) to University of Maine lands east along a former railroad corridor and 3) to the southwest from Orono Land Trust lands connecting to an extensive network of hiking and groomed ski trails that extends along a former rail bed corridor located between Old Town and Bangor.





## PROJECT SUMMARY: Crow Island Thread of Life

**CONSERVATION PARTNERS:** Damariscotta River Association

**LAND TYPE AND SIGNIFICANCE:** Supporting Vital Ecological or Conservation Functions, Regional Significance

**LOCATION:** South Bristol, Lincoln County

**PROJECT ACREAGE:** 2.9± acres

**PROJECT DESIGN:** Fee simple acquisition by the Damariscotta River Association held under an LMF Project Agreement with Department of Agriculture, Conservation and Forestry

**PUBLIC ACCESS:** Access is by water to the island and there is adequate water depth to land or moor recreational boats. A small cove at the north end and another on the southwestern edge of the island provide the best access for small boats.

**SPONSORING AGENCY:** ME Department of Inland Fisheries & Wildlife

**PURCHASE PRICE:** \$239,550

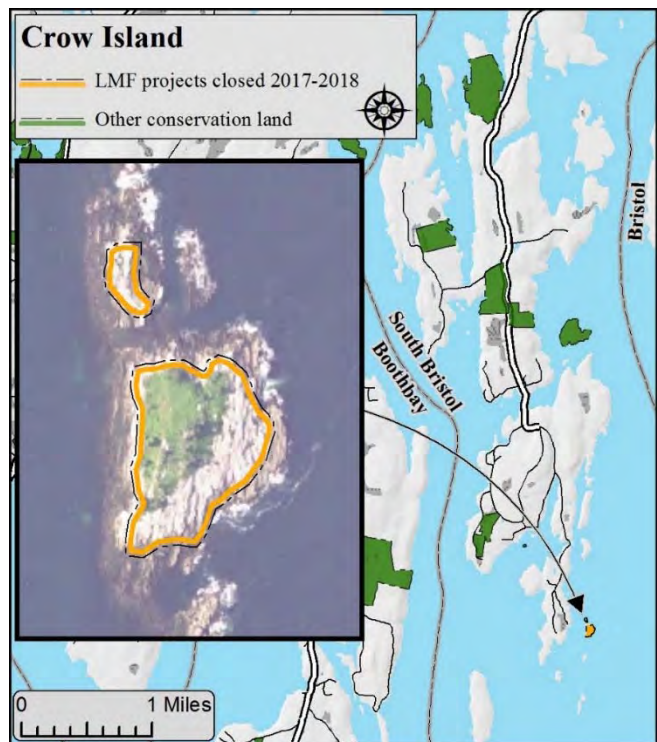
**CLOSING DATE:** 12/11/2017

**LMF BOND FUNDS:** \$75,000

**MATCHING CONTRIBUTIONS:** \$164,550

### PROJECT DESCRIPTION:

Crow Island is a gem of an island in John's Bay on the coast of Mid-Coast Maine. Crow Island is a wild island open for camping and is part of the Maine Island Trail. The small 3-acre wooded island is surrounded by bold granite and prominent outcrops on the east side of the island provide exceptional views over John's Bay and the Pemaquid Peninsula. The southwestern part of the island is a great place to set up camp and enjoy the peace and quiet while overlooking John's Bay. Be on the lookout for osprey and migrating birds.



## PROJECT SUMMARY: Ellis River to Whitecap Mountain

**CONSERVATION PARTNERS:** Mahoosuc Land Trust

**LAND TYPE AND SIGNIFICANCE:** Supporting Vital Ecological or Conservation Functions, Regional Significance

**LOCATION:** Rumford, Oxford County

**PROJECT ACREAGE:** 368± acres

**PROJECT DESIGN:** Ellis River Conservation Area parcel: Fee simple acquisition by the Mahoosuc Land Trust of (227.7±) acres, with (4,063') feet of river frontage, held under an LMF Project Agreement with Department of Agriculture, Conservation and Forestry. Match Land: (140.3±) acres fee simple title held by Mahoosuc Land Trust and acknowledged in the project agreement.

**PUBLIC ACCESS:** Trailhead to Whitecap Mountain- From US-2 in Rumford Point, take ME-5/Ellis River Road north for 3.1 miles. Turn right onto Andover Road and cross the bridge over the Ellis River. After 0.4 miles, turn left onto East Andover Road, and go another 0.2 miles to the parking lot on the left. The trailhead is directly across from the parking lot.

**SPONSORING AGENCY:** ME Department of Agriculture, Conservation and Forestry

**PURCHASE PRICE:** \$307,526

**CLOSING DATE:** 12/19/2017

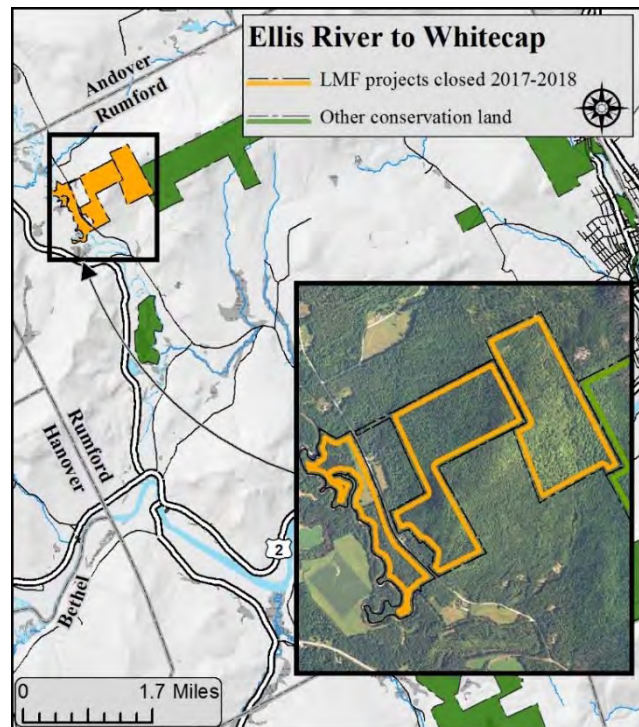
**LMF BOND FUNDS:** \$153,763

**MATCHING CONTRIBUTIONS:** \$153,763

### PROJECT DESCRIPTION:

The Ellis River to Whitecap Mountain project provides connectivity between two very different ecological systems. The Ellis River Conservation Area lands provide over a mile of frontage along the Ellis River, characterized by multiple sandy bars, old oxbows and pools, that provide good riparian habitat. This area includes an Oak-Ash Woodland that is considered a rare and exemplary natural community.

The Whitecap Mountain area is part of a well-defined ridge formation that reaches a maximum elevation of 2,200'. Spectacular 360-degree views of the surrounding mountains and valleys are available near. The red pine woodland near the summit is the largest known community of this type in Maine. Adjoining the pine woodland is a 55± acre mid-elevation bald that is one of ten occurrences known in the State of Maine.



c. Mahoosuc Land Trust

## PROJECT SUMMARY: Gulf Hagas to Whitecap Mountain

**CONSERVATION PARTNERS:** Forest Society of Maine

**LAND TYPE AND SIGNIFICANCE:** Recreational, Statewide Significance

**LOCATION:** Bowdoin College Grant East Twp, Piscataquis

**PROJECT ACREAGE:** 8,402± acres

**PROJECT DESIGN:** Fee simple acquisition of (1,264 ±) acres, and, a working forest conservation easement encumbering (7,138±) acres by the ME Department of Agriculture, Conservation and Forestry.

**PUBLIC ACCESS:** Primary vehicular access is along the Katahdin Ironworks Jo-Mary Road from either Greenville or Brownville.

**SPONSORING AGENCY:** ME Department of Agriculture, Conservation and Forestry

**PURCHASE PRICE:** \$ \$2,000,000

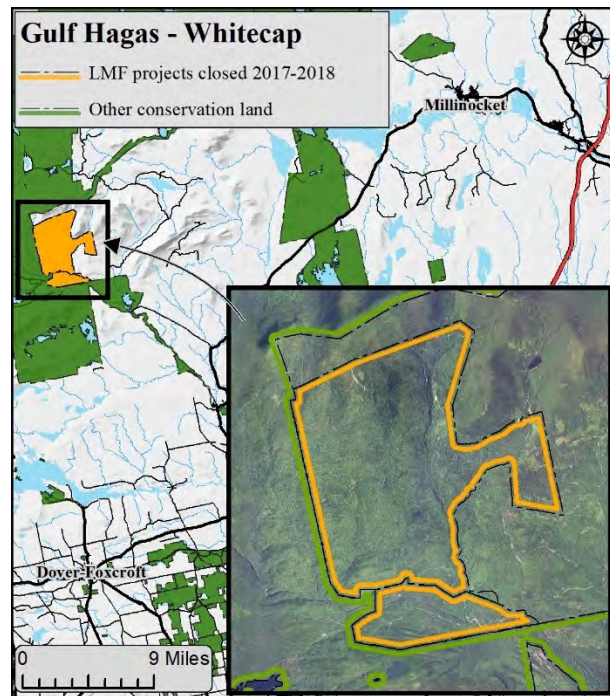
**CLOSING DATE:** 12/28/2016/5/18/2017

**LMF BOND FUNDS:** \$325,000

**MATCHING CONTRIBUTIONS:** \$1,600,000

### PROJECT DESCRIPTION:

The Gulf-Hagas project lands are located in a region that is of state-wide significance for forest-products, recreation and conservation. The project builds on nearby conserved lands that are popular recreation destinations. 7,138 acres remain in private ownership with a conservation easement that promotes forest management while also accommodating existing snowmobile and hiking trails and camping facilities. 1,264 acres were acquired by the State's Bureau of Parks and Lands and include five miles of frontage on the West Branch of the Pleasant river. This parcel includes campsites, the parking area and the trail head for Gulf Hagas, The Hermitage and the Appalachian Trail.





## PROJECT SUMMARY: High Island

**CONSERVATION PARTNERS:** Maine Coast Heritage Trust

**LAND TYPE AND SIGNIFICANCE:** Recreational, Regional Significance

**LOCATION:** Saint George, Knox County

**PROJECT ACREAGE:** 19.7± acres

**PROJECT DESIGN:** Fee simple acquisition by the Maine Coast Heritage Trust held under an LMF Project Agreement with Department of Agriculture, Conservation and Forestry.

**PUBLIC ACCESS:** From public wharf at Tenant's Harbor, in Town of Saint George, using paddle watercraft or motorized boat, travel approx. 1.3 mile northerly in Long Cove to the island. Drop anchor in proximity to the beach located on the westerly side of the island. Use dingy or wade at low tide to reach the island. Day-Use. Check with Maine Coast Heritage Trust about overnight camping reservations.

**SPONSORING AGENCY:** ME Department of Agriculture, Conservation and Forestry

**PURCHASE PRICE:** \$1,015,676

**CLOSING DATE:** 6/30/2017

**LMF BOND FUNDS:** \$262,500

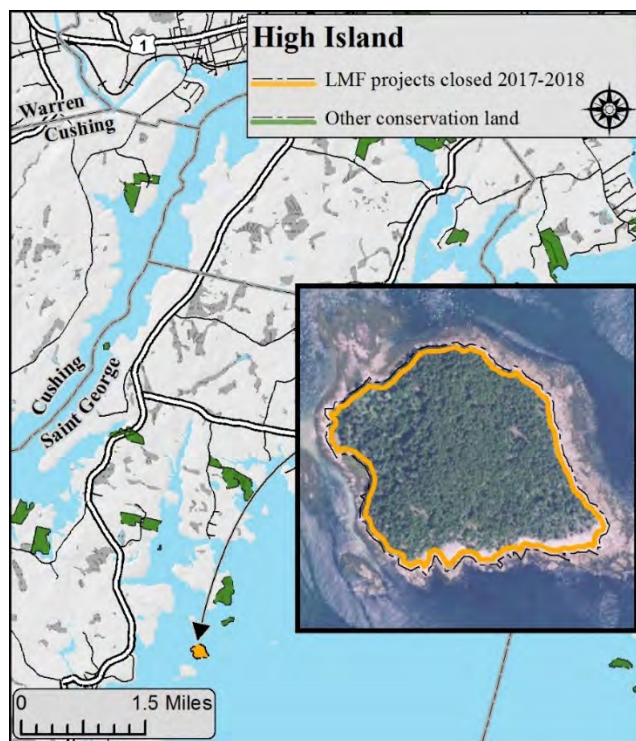
**MATCHING CONTRIBUTIONS:** \$753,176

### PROJECT DESCRIPTION:

High Island is a 19+/- acre island located in Saint George. The island's western shoreline is varied, such as smooth rock ledges allowing for sunbathing to a salt marsh, and a few areas of fine gravel beaches for swimming in the cold Atlantic waters. Trailhead of hiking trail starts at the beach located on the southwesterly side of this island.



Sunrise at High Island  
c. Maine Coast Heritage Trust



## PROJECT SUMMARY: Howard Hill

**CONSERVATION PARTNERS:** Augusta Conservation Commission, Augusta Trails, Hallowell Conservation Commission, Kennebec Valley Chamber of Commerce, Kennebec Valley YMCA, Maine Historic Preservation Commission, Maine State Archives, Maine TREE Foundation, Old Fort Western

**LAND TYPE AND SIGNIFICANCE:** Areas of Scenic Interest and Prime Features, Regional Significance

**LOCATION:** Augusta, Kennebec County

**PROJECT ACREAGE:** 164± acres

**PROJECT DESIGN:** Fee simple acquisition by the City of Augusta held under an LMF Project Agreement with Department of Inland Fisheries and Wildlife, and a conservation easement between the City of Augusta and the Kennebec Land Trust

**PUBLIC ACCESS:** At this time the public can access the property by foot, however, trails have not yet been established. There are three locations where the Howard Hill property abuts other public land with frontage on a public road as follows:

- Stevens School Campus (Winthrop Street in Hallowell)
- MDIF&W property (state land with frontage on Federal Street)
- City of Augusta property (municipal land with frontage on Murdock Street)

**SPONSORING AGENCY:** ME Department of Inland Fisheries & Wildlife ('MDIFW')

**PURCHASE PRICE:** \$925,000

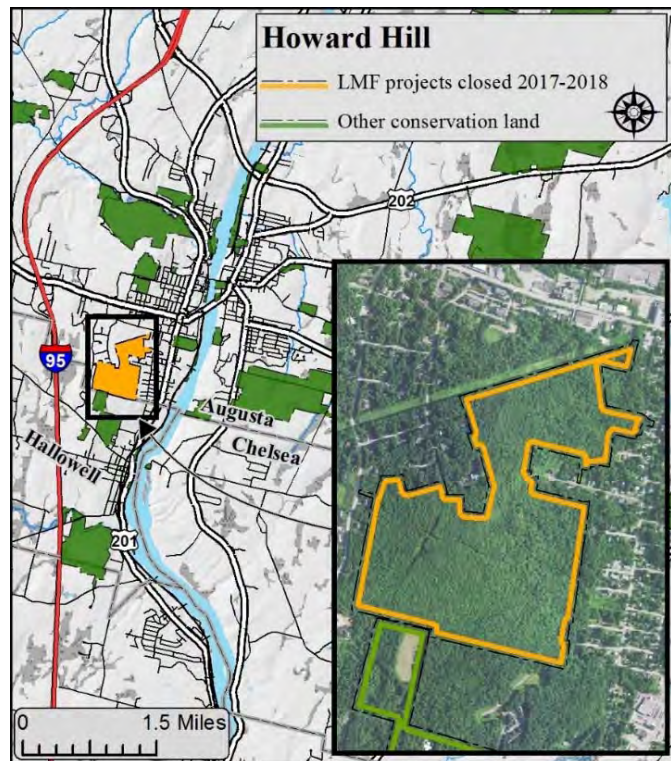
**CLOSING DATE:** 3/23/2017

**LMF BOND FUNDS:** \$163,500

**MATCHING CONTRIBUTIONS:** \$761,500

### PROJECT DESCRIPTION:

Howard Hill is a 164-acre property in Augusta that provides the backdrop to the state capitol and green space for local residents. The project property includes a cascading stream, steep ravines, large boulders, an expansive ridgeline with cliffs, and a diverse wildlife habitat. The property is divided by an informal network of old carriage roads and wood roads that provide scenic views over the State House of Maine and the Kennebec River Valley.





## PROJECT SUMMARY: Lower Weskeag Fields and Forest

**CONSERVATION PARTNERS:** Department of Inland Fisheries & Wildlife, Maine Coast Heritage Trust

**LAND TYPE AND SIGNIFICANCE:** Supporting Vital Ecological or Conservation Functions, State-wide Significance

**LOCATION:** South Thomaston, Knox County

**PROJECT ACREAGE:** 205.98± acres

**PROJECT DESIGN:** Firth parcel: (46.48±) acres and Philbrook Woods (26.7±) acres owned in fee by the Department of Inland Fisheries & Wildlife. Bartlett parcel (91.7±) acres and Philbrook Fields parcel (41.1±) acres: Fee simple acquisition by the Maine Coast Heritage Trust held under an LMF Project Agreement with Department of Inland Fisheries & Wildlife.

**PUBLIC ACCESS:** A small off-street parking area is located on Buttermilk Lane in South Thomaston, ME, just northwest of Iron Tree Street.

**SPONSORING AGENCY:** ME Department of Inland Fisheries & Wildlife

**PURCHASE PRICE:** \$785,485

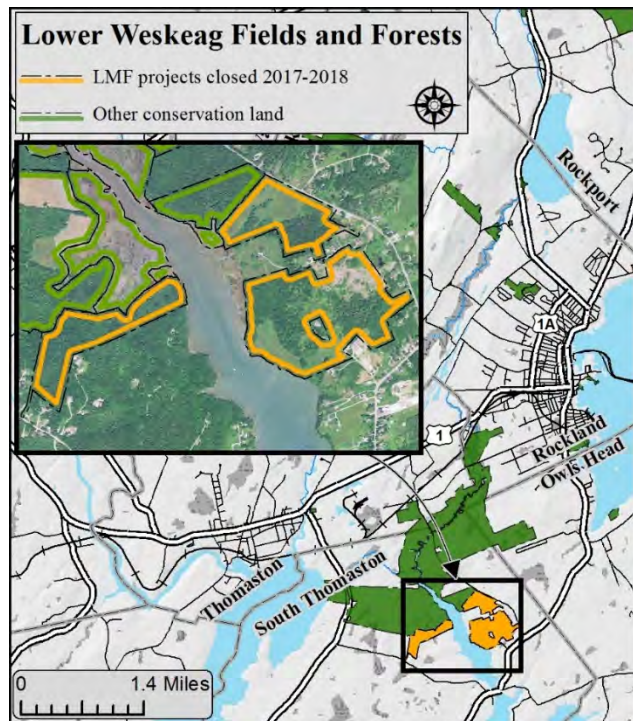
**CLOSING DATE:** 3/16/2018

**LMF BOND FUNDS:** \$350,000

**MATCHING CONTRIBUTIONS:** \$435,485

### PROJECT DESCRIPTION:

The Weskeag River is an exceptional estuarine ecosystem and the marsh is home to more bird species than any marsh in the Mid-Coast or Penobscot Bay regions of Maine. This property is a priority focus area for bird conservation; the land is undeveloped and portions are mowed to increase local habitat diversity. Walking trails are also maintained on the property.



## PROJECT SUMMARY: Raymond Community Forest

**CONSERVATION PARTNERS:** Raymond Conservation Commission

**LAND TYPE AND SIGNIFICANCE:** Recreational, Local Significance

**LOCATION:** Raymond, Cumberland County

**PROJECT ACREAGE:** 356.1± acres

**PROJECT DESIGN:** Two (2) non-congruous undeveloped land parcels: Fee simple acquisition by the Loon Echo Land Trust held under an LMF Project Agreement with Department of Agriculture, Conservation and Forestry.

**PUBLIC ACCESS:** Parking area and hiking trailhead located just off of Conesca Road in Raymond, Maine.

**SPONSORING AGENCY:** ME Department of Agriculture, Conservation and Forestry

**PURCHASE PRICE:** \$631,966

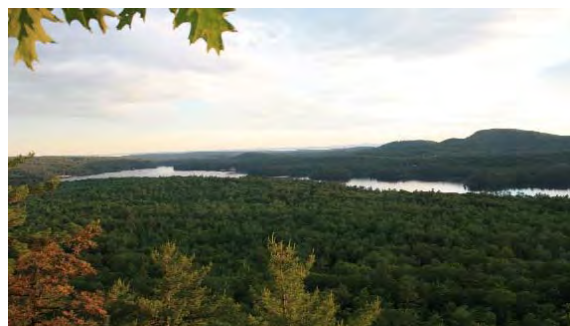
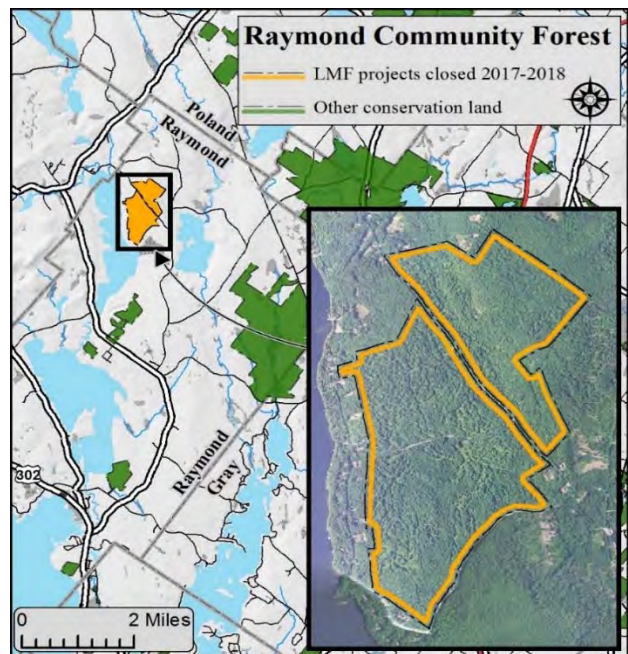
**CLOSING DATE:** 3/6/2017

**LMF BOND FUNDS:** \$150,000

**MATCHING CONTRIBUTIONS:** \$481,966

### PROJECT DESCRIPTION:

Raymond Community Forest totals ~350-acres of natural beauty. The property's southern area is comprised of (230.9±) acres and consists of some wetlands, forested terrain that slopes gently down to within 400 feet of Crescent Lake. The forest is dominated by species of white pine, hemlock, beech, and red oak, with lesser amounts of birch, maple, ash and fir trees. The property's northerly land tract is comprised of (125.2±) acres consists of forestland, steep cliffs and the south summit of Pismire Mountain. The land around Pismire Mountain is rocky, rugged and undisturbed. Open forest at the top of the cliffs and mountain top offer excellent views of Crescent Lake and Rattlesnake Mountain with Sebago Lake and the foothills of Saddleback Mountain seen in the distance.



View from Pismire Mountain  
c. Loon Echo Land Trust



## PROJECT SUMMARY: The Gosling Islands

**CONSERVATION PARTNERS:** Maine Coast Heritage Trust

**LAND TYPE AND SIGNIFICANCE:** Recreational, Regional Significance

**LOCATION:** Harpswell, Cumberland County

**PROJECT ACREAGE:** 13.8± acres

**PROJECT DESIGN:** Two undeveloped coastal islands East Gosling Island (8.6± acres), West Gosling Island (4.1± acres): fee simple acquisition by the Maine Coast Heritage Trust held under an LMF Project Agreement with Department of Agriculture, Conservation and Forestry; Match Land- Irony Island: (1.1±) acres fee simple title held by Maine Coast Heritage Trust and acknowledged in the project agreement.

**PUBLIC ACCESS:** From the Mere Point Public Boat Launch, located at the southern end of Mere Point Road off Main Street in Brunswick. The best places to land are the northwestern shores of East Gosling Island; landing on Irony is not advised. Please contact the Brunswick Department of Marine Resources if you plan to park overnight at the boat launch.

**SPONSORING AGENCY:** ME Department of Agriculture, Conservation and Forestry

**PURCHASE PRICE:** \$866,565

**CLOSING DATE:** 3/12/2018

**LMF BOND FUNDS:** \$262,500

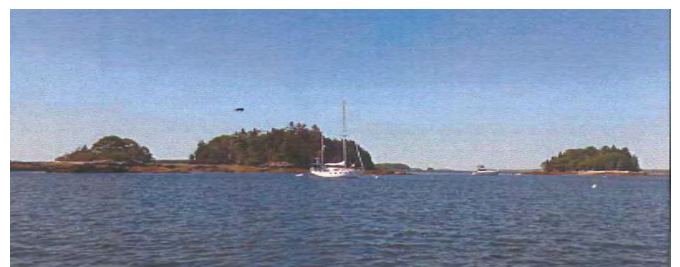
**MATCHING CONTRIBUTIONS:** \$604,065

### PROJECT DESCRIPTION:

These three islands, long been popular and available for public use are located within 1.5 miles from the West Harpswell peninsula and about 3½ miles southerly of Brunswick's Mere Point peninsula, and 5± miles northeast of Freeport. The two larger islands are linked by a sandbar at low tide. Irony Island is little more than a narrow strip of ledge crowned with some wind-beaten spruce and fir trees.

Part of the Maine Island Trail since 2010, The Goslings are a regionally treasured resource in Casco Bay. The acquisition of The Goslings ensures availability of public access and the opportunity for a variety of traditional outdoor recreational uses, i.e. hiking, nature study, traditional camping, picnicking, paddling remain available.

Use dingy or wade at low tide to reach both East and West Gosling islands. Day-Use. Check with Maine Coast Heritage Trust for overnight camping reservation. There are three established campsites at The Goslings: two are first come, first serve, and one is by reservation only.



c. Jane-Furbish Owens

Project Summaries  
January 2017 - December 2018

**Water Access Projects:**

Head of Tide - Cathance R - Phase II	pg. 26
Lily Pond - Phase II	pg. 27
Lubec Boat Landing	pg. 28

## PROJECT SUMMARY: Head of Tide - Cathance River - Phase II

**CONSERVATION PARTNERS:** Town of Topsham, Brunswick-Topsham Land Trust

**LAND TYPE AND SIGNIFICANCE:** Water Access Lands

**LOCATION:** Topsham, Sagadahoc County

**PROJECT ACREAGE:** 7.0± acres

**PROJECT DESIGN:** Fee simple acquisition by the Town of Topsham held under an LMF Project Agreement with Department of Agriculture, Conservation and Forestry

**PUBLIC ACCESS:** The Head of Tide Park is located on Cathance Road in Topsham. Coming from the south, the parking area is located on the left just past the bridge (across from the picnic table shelter).

**SPONSORING AGENCY:** ME Department of Agriculture, Conservation and Forestry

**PURCHASE PRICE:** \$105,491

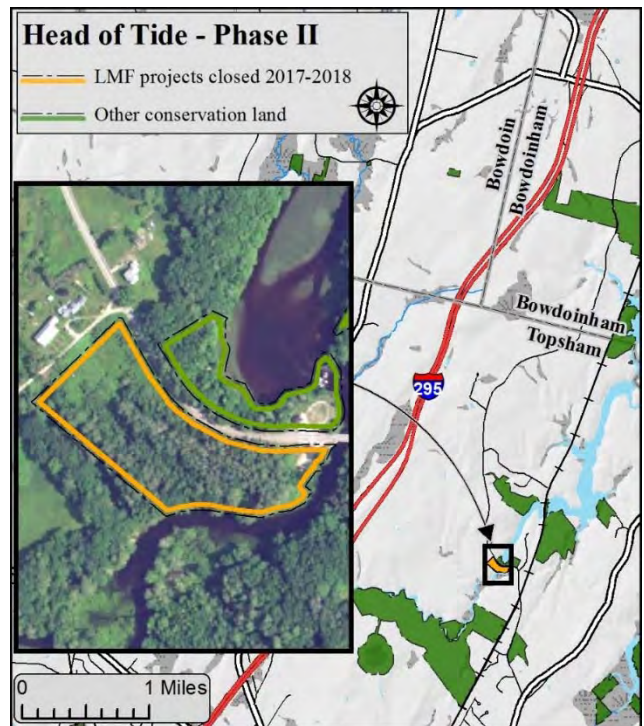
**CLOSING DATE:** 2/8/2018

**LMF BOND FUNDS:** \$50,00

**MATCHING CONTRIBUTIONS:** \$55,491

### PROJECT DESCRIPTION:

The Head of Tide Phase II water access project is across the street from the popular Phase I Head of Tide Park. Phase II is located immediately upstream of the Cathance River's 15-foot waterfall allowing hand carry access above the waterfall and makes portages possible. The property also contains a trail head and a parking area that services both phases of the project.





## PROJECT SUMMARY: Lily Pond - Phase II

**CONSERVATION PARTNERS:** Island Heritage Trust

**LAND TYPE AND SIGNIFICANCE:** Water Access Lands

**LOCATION:** Deer Isle, Hancock County

**PROJECT ACREAGE:** 10.3± acres

**PROJECT DESIGN:** Fee simple acquisition by the Island Heritage Trust held under an LMF Project Agreement with Department of Agriculture, Conservation and Forestry

**PUBLIC ACCESS:** The property is located on Lily Pond in Deer Isle, Maine, on the eastern side of Quaco Road. The parking area is located off Deer Run Apartments Road.

**SPONSORING AGENCY:** ME Department of Agriculture, Conservation and Forestry

**PURCHASE PRICE:** \$255,350

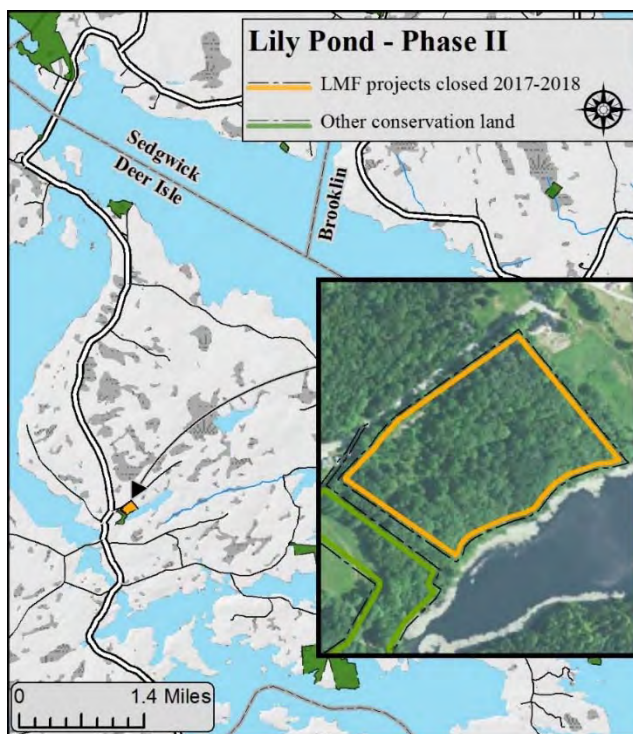
**CLOSING DATE:** 4/19/2017

**LMF BOND FUNDS:** \$120,000

**MATCHING CONTRIBUTIONS:** \$135,350

### PROJECT DESCRIPTION:

Lily Pond supports numerous low-impact recreational activities, wildlife habitats, and high-value fishery habitat. Phase 1 has proved to be a popular freshwater swimming location. Phase 2 provides additional outdoor activities and will provide improved public access and parking.



## PROJECT SUMMARY: Lubec Boat Landing

**CONSERVATION PARTNERS:** Town of Lubec, Maine Coast Heritage Trust

**LAND TYPE AND SIGNIFICANCE:** Water Access Lands

**LOCATION:** Lubec, Washington County

**PROJECT ACREAGE:** 1.8± acres

**PROJECT DESIGN:** Fee simple acquisition by the Town of Lubec held under an LMF Project Agreement with Department of Agriculture, Conservation and Forestry.

**PUBLIC ACCESS:** The property is located at 125 Main Street (Route 189) in Lubec, ME.

**SPONSORING AGENCY:** ME Department of Agriculture, Conservation and Forestry

**PURCHASE PRICE:** \$115,200

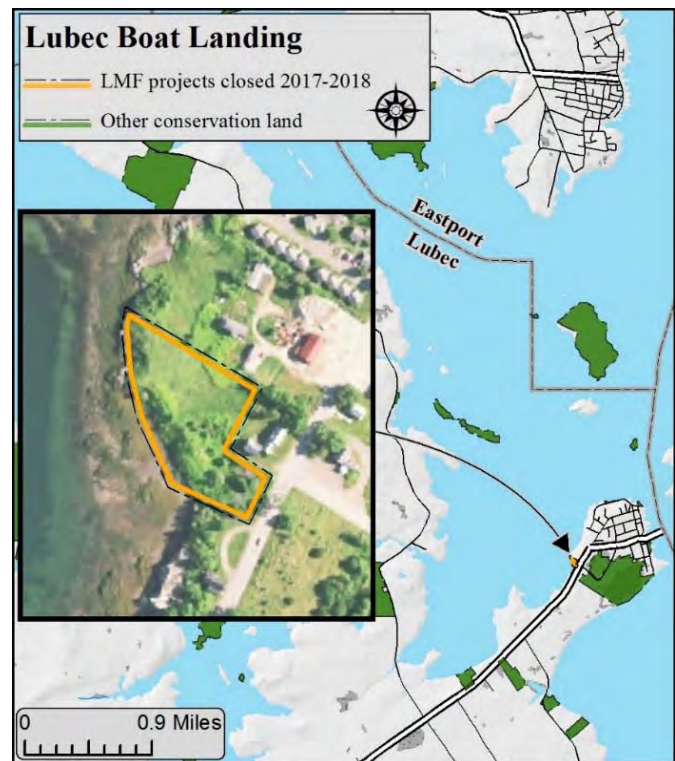
**CLOSING DATE:** 6/29/2018

**LMF BOND FUNDS:** \$54,000

**MATCHING CONTRIBUTIONS:** \$61,200

### PROJECT DESCRIPTION:

The primary long-term goal of this project is improved boater safety. While only 1.8 acres in size, this property is a great addition to the public's access to the sea. The Town of Lubec will be constructing a boat ramp and parking. There are plans for floats, moorings, and possibly a breakwater.



## Appendices

Appendix 1 – Projects Closed by County	pg. 30
Appendix 2 - Bond Authority and Funds Available	pg. 31-32
Appendix 3 - Program Partners During Biennium	pg. 33
Appendix 4 – Map: Maine Conservation Lands – Federal, State, Other	pg. 34
Appendix 5 – Map: Maine Conservation Lands – Fee and Easement Lands	pg. 35
Appendix 6 - Cumulative Summary of Projects 1987 – 2014	pg. 36



## Appendix 1

### Project Summaries By County - January 2017 - December 2018

Projects Closed by County	Funding Type	Acres (Fee)	Acres (CE)	LMF Funding	Match	LMF Bond
<b>Cumberland</b>						
Raymond Community Forest	Conservation & Recreation	356.1		\$150,000	\$481,966	LMF 2009 PL C 645 J
The Gosling Islands	Conservation & Recreation	13.8		\$262,500	\$604,065	LMF 2009 PL C 645 J
		<b>369.9</b>		<b>\$412,500</b>	<b>\$1,086,031</b>	
<b>Hancock</b>						
Lily Pond - Phase II	Water Access	10.3		\$120,000	\$135,350	LMF 2009 PL C 645 J
		<b>10.3</b>		<b>\$120,000</b>	<b>\$135,350</b>	
<b>Kennebec</b>						
Howard Hill	Conservation & Recreation	164.0		\$163,500	\$761,500	LMF 2009 PL C 645 J
		<b>164.0</b>		<b>\$163,500</b>	<b>\$761,500</b>	
<b>Knox</b>						
Lower Weskeag Fields and Forest	Conservation & Recreation	205.98		\$350,000	\$435,485	LMF 2009 PL C 645 J
High Island	Conservation & Recreation	19.7		\$262,500	\$753,176	LMF 2009 PL C 645 J
		<b>225.68</b>		<b>\$612,500</b>	<b>\$1,188,661</b>	
<b>Lincoln</b>						
Crow Island Thread of Life	Conservation & Recreation	2.9		\$75,000	\$164,550	LMF 2009 PL C 645 J
		<b>2.9</b>		<b>\$75,000</b>	<b>\$164,550</b>	
<b>Oxford</b>						
Ellis River to Whitecap Mountain	Conservation & Recreation	368.0		\$153,763	\$153,763	LMF 2009 PL C 645 J
		<b>368.0</b>		<b>\$153,763</b>	<b>\$153,763</b>	
<b>Penobscot</b>						
Caribou Bog Conservation Area	Conservation & Recreation	264.4		\$79,537	\$80,545	LMF 2009 PL C 645 J
		<b>264.4</b>		<b>\$79,537</b>	<b>\$80,545</b>	
<b>Piscataquis County</b>						
Gulf Hags to Whitecap Mountain	Conservation & Recreation	1,264	7,138	\$325,000	\$1,600,000	LMF 2009 PL C 645 J
		<b>1,264</b>	<b>7,138</b>	<b>\$325,000</b>	<b>\$1,600,000</b>	
<b>Sagadahoc</b>						
Head of Tide - Cathance R - Phase II	Water Access	7.0		\$50,000	\$55,491	LMF 2009 PL C 645 J
		<b>7.0</b>		<b>\$50,000</b>	<b>\$55,491</b>	
<b>Washington</b>						
Lubec Boat Landing	Water Access	1.8		\$54,000	\$61,200	LMF 2009 PL C 645 J
		<b>1.8</b>		<b>\$54,000</b>	<b>\$61,200</b>	
<b>York</b>						
Brave Boat Headwaters	Conservation & Recreation	55.8		\$150,000	\$1,212,128	LMF 2009 PL C 645 J
		<b>55.8</b>		<b>\$150,000</b>	<b>\$1,212,128</b>	
<b>Total</b>		<b>2,733.78</b>	<b>7,138 ac.</b>	<b>\$2,195,800</b>	<b>\$6,499,218</b>	

## Appendix 2

### Bond Funds Available During the Biennium

<i>BOND</i>	<i>AMOUNT</i>	<i>PURPOSE</i>	<i>Available Balance 12/31/2018</i>
PL 2009 Chapter 414 Part E as Amended by Chapter 645, Part J Voter approved 11/2/2010	<b>\$9,250,000</b>	The proceeds must be expended for the acquisition of land and interest in land for conservation, water access, outdoor recreation, wildlife and fish habitat, farmland preservation in accordance with Title 5, Chapter 353 and working waterfront preservation, including all costs associated with such acquisitions, except that use of the proceeds of these bonds is subject to conditions and requirements. The bond funds expended for conservation, recreation, farmland and water access must be matched with at least \$6,500,000 in public and private contributions	
Minimum amounts specified in the statute.		<ul style="list-style-type: none"> <li>• The proceeds of \$6,500,000 are available for acquisition of land and interest in land for conservation, water access, outdoor recreation, wildlife and fish habitat, including hunting and fishing.</li> <li>• Of the proceeds available, <b>\$1,000,000 must be made available to protect farmland</b> in accordance with Title 5, Section 6207</li> <li>• Of the proceeds available, <b>\$1,750,000 must be made available to protect working waterfront properties</b> in accordance with PL 2005, Chapter 462, Part B, Section 6</li> </ul>	\$3,024,714  \$383,559  \$276,857
<i>BOND</i>	<i>AMOUNT</i>	<i>PURPOSE</i>	<i>Available Balance 12/31/2018<sup>1</sup></i>
PL 2011 Chapter 696 Voter approved 11/6/2012	<b>\$5,000,000</b>	The proceeds must be expended for the acquisition of land and interest in land for conservation, water access, outdoor recreation, wildlife and fish habitat, farmland preservation in accordance with Title 5, Chapter 353 and working waterfront preservation in accordance with the terms of PL 2005, chapter 462, Part B, Sec. 6, including all costs associated with such acquisitions, <b>except that use of the proceeds is subject to following conditions</b> and requirements. The funds are to be expended for conservation, water access, wildlife habitat (including deer wintering areas) or fish habitat, outdoor recreation (including hunting and fishing), and preservation of farmland and working waterfronts, subject to a number of conditions and requirements and must be matched with at least \$5,000,000 in public and private contributions.	\$3,175,000

<sup>1</sup> Amounts as of December 31, 2018



## **Appendix 3**

### **Program Partners During Biennium**

There are many individuals and organizations that assist the Land for Maine's Future Program in completing our charge. The work of these partners and the matching funds they bring make this Program among the best at providing the greatest return on investment. The list below is comprised of those partners who had projects completed (closed purchases) during 2017-2018 and those behind the scenes that provide funding and technical and administrative assistance.

#### **Federal agencies and programs**

US Fish and Wildlife Service, North American Wetlands Conservation Act  
US Fish and Wildlife Service, National Coastal Wetlands Conservation Grant Program  
US Department of Agriculture - Forest Service, Forest Legacy Program

#### **State agencies and programs**

Department of Administration and Financial Services, Natural Resources Service Center  
Department of Administration and Financial Services, Division of Procurement  
Department of Administration and Financial Services, Office of the State Controller  
Department of Agriculture, Conservation and Forestry  
Department of Inland Fisheries and Wildlife  
Department of Marine Resources  
Department of Transportation  
Maine Historic Preservation Commission  
Office of Attorney General  
Office of State Treasurer

#### **Municipalities**

City of Augusta  
Town of Topsham

#### **Conservation organizations**

Damariscotta River Association	Island Heritage Trust
Kennebec Land Trust	Kittery Land Trust
Loon Echo Land Trust	Mahoosuc Land Trust
Maine Coast Heritage Trust	Orono Land Trust

*\*Note: Some projects include matching funds from USDA. USDA requires the following statement in all publications related to its program:*

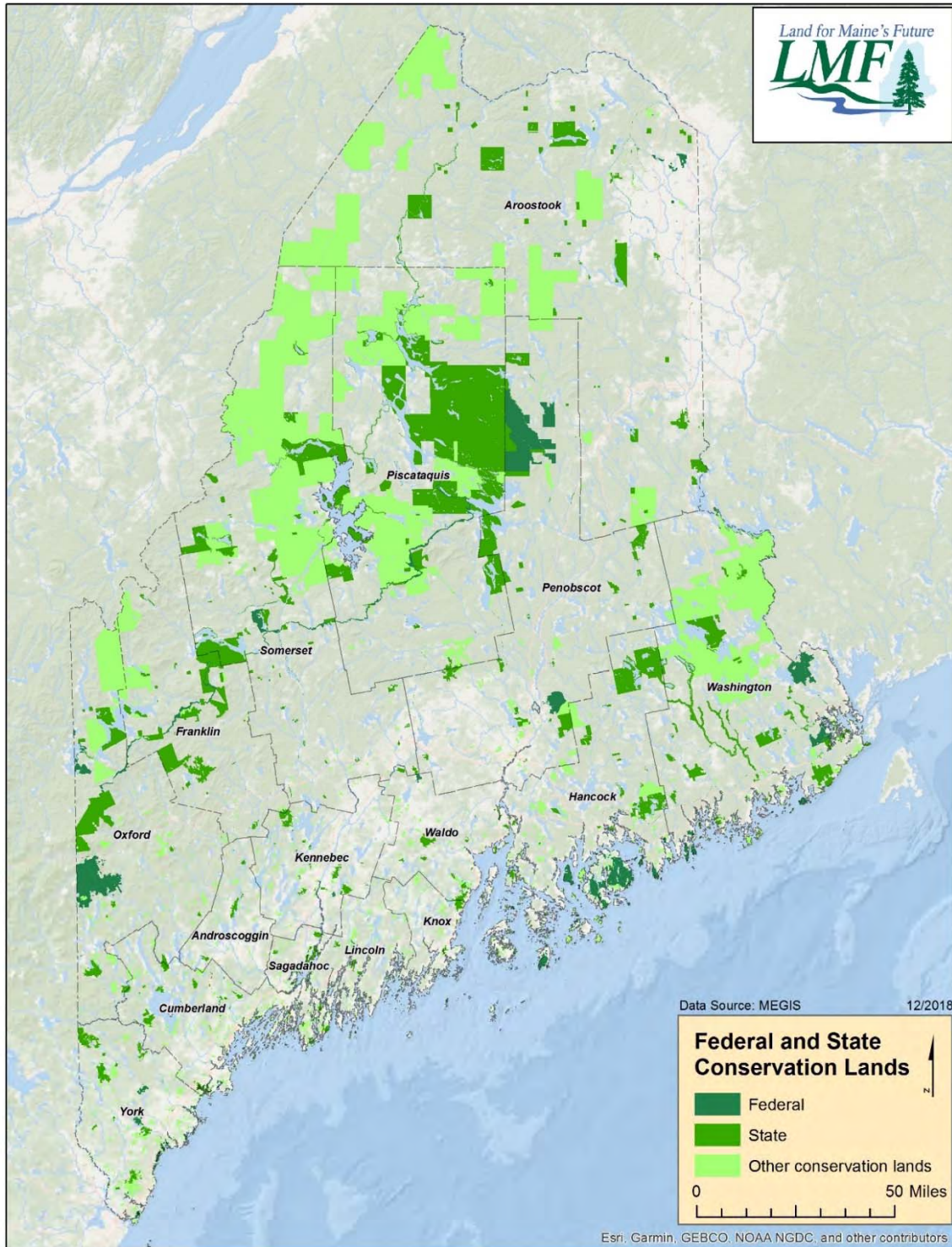
The U.S. Department of Agriculture (USDA) prohibits discrimination against its customers, employees, and applicants for employment on the bases of race, color, national origin, age, disability, sex, gender identity, religion, reprisal, and where applicable, political beliefs, marital status, familial or parental status, sexual orientation, or all or part of an individual's income is derived from any public assistance program, or protected genetic information in employment or in any program or activity conducted or funded by the Department. (Not all prohibited bases will apply to all programs and/or employment activities.)

[http://www.usda.gov/wps/portal/usda/usdahome?navid=NON DISCRIMINATION](http://www.usda.gov/wps/portal/usda/usdahome?navid=NON_DISCRIMINATION)

## Appendix 4

### Maine Conservation Lands

#### Federal, State, Other ownership

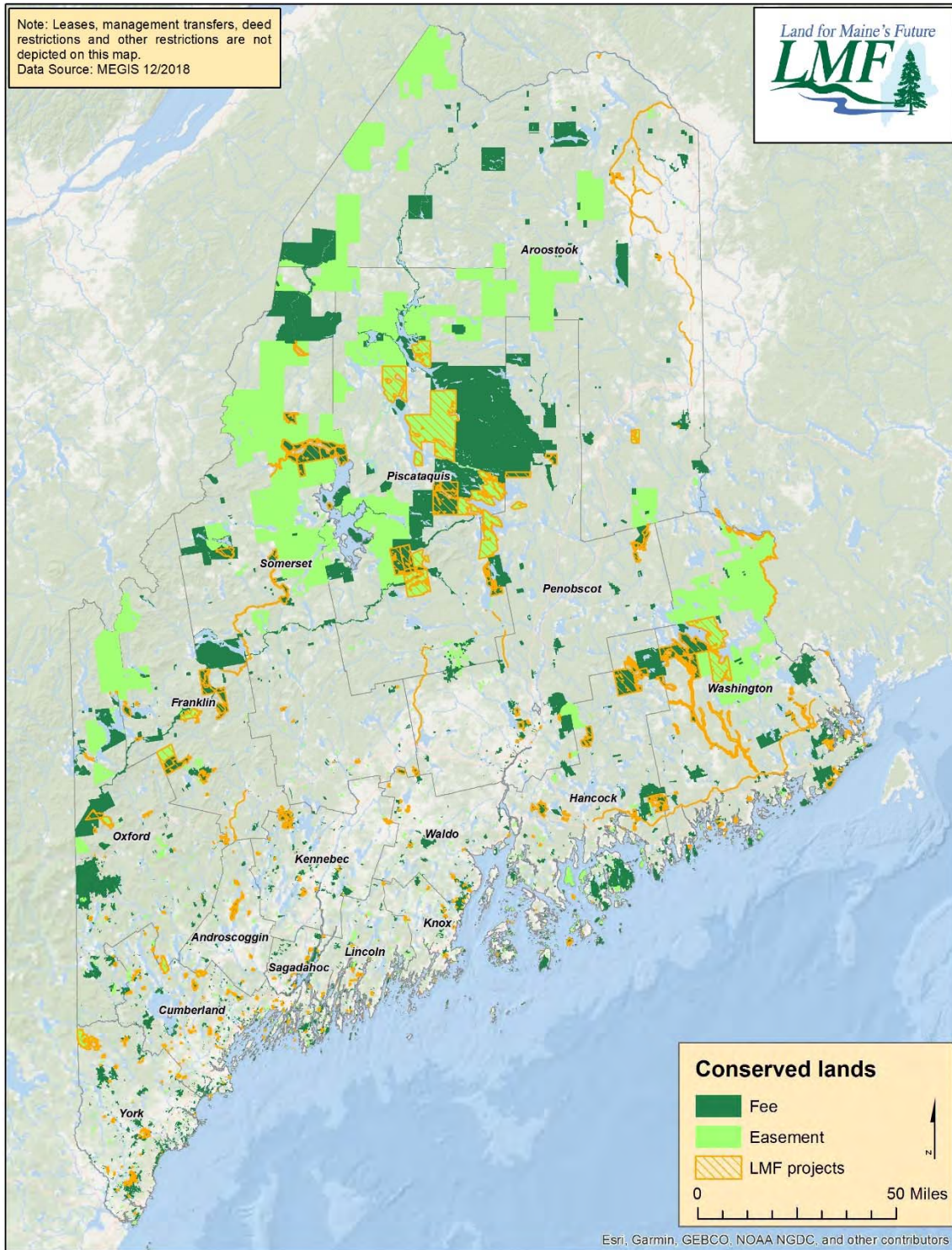




## Appendix 5

### Maine Conservation Lands

### Fee and Easement Lands



## Appendix 6

### Cumulative Summary of Completed LMF Projects by County

	Conservation and Recreation		Water Access		Farmland		Working Waterfront		TOTAL	
	Project #	Acres	Project #	Acres	Project #	Acres	Project #	Acres	Project #	Acres
Androscoggin	7	2,927	3	32	5	679	0	0	15	3,638
Aroostook	8	6,668	2	12	0	0	0	0	10	6,680
Cumberland	34	8,255.7	7	334	11	3,550	3	3	55	12,142.7
Franklin	11	40,323	1	1	0	0	0	0	12	40,324
Hancock	14	47,175	8	46.3	3	409	1	1	26	47,631.3
Kennebec	6	7,414.5	4	40	5	1,184	0	0	15	8,638.5
Knox	10	846.1	0	0	2	242	9	6	21	1064.1
Lincoln	13	1,306.5	2	7	1	92	5	27	21	1,432.5
Oxford	16	11,628	7	236	0	0	0	0	23	11,864
Penobscot	13	17,328	4	8	0	0	0	0	17	17,336
Piscataquis	9	279,692	3	57	0	0	0	0	12	279,749
Sagadahoc	8	2,728	2	11	4	560	0	0	14	3,299
Somerset	7	73,743.9	4	168	0	0	0	0	11	73,911.9
Waldo	8	2,368	2	2	5	818	0	0	15	3,188
Washington	32	84,142	10	59.7	1	1,523	5	4	48	85,728.8
York	25	14,373	0	0	4	699	1	1	30	15,073
<b>TOTALS</b>	<b>221</b>	<b>600,919</b>	<b>59</b>	<b>1,014</b>	<b>41</b>	<b>9,755</b>	<b>24</b>	<b>42</b>	<b>345</b>	<b>611,730</b>

\* There are instances where project acreages extend across county lines. In such cases, the summary table above counts the project as being in the county that contains the majority of the project's acreage.

\* Total acreages (rounded).

\*Table does not include active projects with proposed closing dates after December 31, 2018.