

# MAINE STATE LEGISLATURE

The following document is provided by the  
**LAW AND LEGISLATIVE DIGITAL LIBRARY**  
at the Maine State Law and Legislative Reference Library  
<http://legislature.maine.gov/lawlib>



Reproduced from electronic originals  
(may include minor formatting differences from printed original)

# THE A<sup>||</sup>agash WILDERNESS WATERWAY

## 2014 Annual Report



Maine Department of Agriculture, Conservation & Forestry  
Bureau of Parks and Lands

## Inside this report

Policy, Mission, and Goals.....	2	Education, Interpretation & Historic Preservation.....	7
AWW Advisory Council Report.....	3	Staff Training.....	8
Forest Operations Notifications.....	3	2014 Project Update.....	9
AWW Budget.....	4	Dam Inspection Report.....	10
Endowment Fund.....	4	Volunteers.....	11
FY14 Expenditure Report.....	5	Incidents.....	11
Recreation.....	6	Superintendent's Report.....	12
Oversize Group Permits.....	6		

### 12 MRSA § 1891-B. Reporting

Public Law, Chapter 146 of the 123rd Legislature established reporting requirements for the Allagash Wilderness Waterway as follows:

The commissioner shall report on or before March 1st of each year to the joint standing committee of the Legislature having jurisdiction over conservation matters regarding the state of the waterway, including its mission and goals, administration, education and interpretive programs, historic preservation efforts, visitor use and evaluation, ecological conditions and any natural character enhancements, general finances, income, expenditures and balance of the Allagash Wilderness Waterway Permanent Endowment Fund, the department's annual budget request for the waterway operation in the coming fiscal year and current challenges and prospects for the waterway.

This document contains our report for 2014. We invite you to read about our progress and accomplishments.

### Policy

The AWW Act of 1966 contains the following statutory policy language:

#### §1871. Declaration of policy

Whereas the preservation, protection and development of the natural scenic beauty and the unique character of our waterways, wild-life habitats and wilderness recreation resources for this generation and all succeeding generations; the prevention of erosion, droughts, freshets and the filling up of waters; and the promotion of peace, health, morals and general welfare of the public are the concern of the people of this State, the Legislature declares it to be in the public interest, for the public benefit and for the good order of the people of this State to establish an area known as the Allagash Wilderness Waterway.





*Moose near a campsite in the Umsaskis District  
Photo by Steve Day*

## Report from the AWW Advisory Council

The Allagash Wilderness Waterway (AWW) advisory council met publicly four times in Augusta during 2014 using the ACF committee room in the Cross building. The following topics were discussed with Matt LaRoche, the Superintendent of the Waterway and with the Acting Director of the Bureau of Parks and Lands (BPL), Tom Morrison.

We determined a way to keep and approve aircraft landings in the AWW on Webster Lake using a procedure eliminating illegal aircraft landings in the Waterway. The AWW Statutes were reviewed in part by Lauren Parker from the AG's office to help insure our recommendations continue to agree with the AWW statutes. There is a great deal of interest by the public to travel by foot to the trains and discussion is on going to see if we can do something constructive for the public on this subject. We also had discussions concerning snowmobile access points to the Watercourse. We had Jay Clement from the Army Corps in to review their rules to insure another Churchill Dam type problem does not reoccur. Don Hudson came to speak about his group's efforts to evaluate camp sites and funding for young people to explore the Waterway. We discussed the dam inspection trip this summer by State Dam Inspector Tony Fletcher and he gave an excellent update on some further minor work to insure the three dams remain functional. If these dams became unusable, the Waterway could become a very different and difficult experience for the public's use. The large old Churchill historic boarding house is to be looked at for possible restoration. Jamie Fosburg and Don Cyr are evaluating this idea with Matt.

Matt has given us reports at each of our meetings which are also distributed weekly. Things are running smoothly in the Waterway with no major problems and our observations indicate all the varied interests continue to be enjoyed without conflicts.

*- Submitted per Maine Statutes - February 19, 2015  
Frederick L. Denico, Chair AWW Advisory Committee*

## Forest Operations Notifications

In 2014 there were a total of 32 active Forest Operation Notifications (FONs) within the mile zone of the Allagash Wilderness Waterway (AWW).

Five notifications were for harvests within a mapped visual area of the AWW. One of the visual area applications proposed to exceed the standards because of dead or dying conditions in the harvest area. All visual area harvest applications were inspected prior to harvest activity by the AWW Superintendent, and Jacob Guimond, Forester with the Bureau of Parks & Lands, and appropriate landowner representative. All visual area harvest applications were approved with conditions to minimize the visual impact of the harvest area, associated skid trails and log landings.

Five of the 32 harvest notifications were for pre-commercial thinning of young spruce and fir stands adjacent to the waterway.

Seven notifications were received for road construction within the mile zone. Five of the roads were in areas not viable from the watercourse. Two roads were constructed within mapped visual areas; they were approved with conditions to minimize visual impact. All seven roads were associated with timber harvests adjacent to the AWW.

There were two applications for road construction within the 1/4 mile new construction zone. These were approved with the conditions that they be seeded and blocked at the mile zone after harvest.

The waterway received two notifications for the application of herbicide within the mile zone, both for road side brush control. Both applications were approved for brush control outside the restricted zone.

## FY 2014 Allagash Wilderness Waterway Budget

<i>Allotment Source</i>	FY-14 Q1	FY-14 Q2	FY-14 Q3	FY-14 Q4	Total
<b>General Fund (all other)</b>	\$55,000.00	\$24,000.00	\$18,000.00	\$25,039.00	\$122,039.00
<b>AWW Account (capital improvements)</b>	\$43,105.00	\$25,200.00	\$15,200.00	\$45,200.00	\$128,705.00
<b>Total</b>	<b>\$98,105.00</b>	<b>\$49,200.00</b>	<b>\$33,200.00</b>	<b>\$70,239.00</b>	<b>\$250,744.00</b>

### Revenue from Fees

The Bureau of Parks and Lands collects fees for AWW camping use, relying mostly on a contract with North Maine Woods, Inc. for fee collection services. Fiscal year reporting is July 1-June 30.

Fiscal Year	Revenues from Fees
<b>2010</b>	\$104,875.81
<b>2011</b>	\$97,562.91
<b>2012*</b>	\$130,222.95
<b>2013</b>	\$102,268.08
<b>2014</b>	<b>\$115,173.84</b>

\* The figure includes two commercial sporting camps, and occasional state grant reimbursement.

### Revenue to AWW Account

From revenues received from camping fees, Maine law requires that a portion of that amount be set aside in a non-lapsing account to be used for capital improvements in the AWW. The table below shows the calculated revenue to this special account.

Fiscal Year	Revenue to AWW Account
<b>2010*</b>	\$103,103.50
<b>2011</b>	\$55,007.80
<b>2012</b>	\$61,612.12
<b>2013</b>	\$50,894.10
<b>2014</b>	<b>\$49,778.99</b>

\* The 2010 amount includes funds to correct for transfers that should have been made as a result of increased user fees for non-residents.

**AWW Endowment Fund:** \$693 is in the Allagash Wilderness Waterway endowment fund. This is an interest bearing trust account at the Department of Treasury.

**AWW Donations Account:** \$22,083.56 was in the Allagash Wilderness Waterway donations account as of June 30, 2014.

# Allagash Wilderness Waterway Fiscal Year 14 Expenditure Report (July 1, 2013—June 30, 2014)

	AWW Account (dedicated revenue)	General Fund (general operations)	Loon Account (dedicated revenue)	Poland Spring Account (dedicated revenue)	Donations Account (dedicated revenue)	TOTAL
<b>Expenses - FY14</b>						
Salary and Benefits		456,122.35				456,122.35
Professional Services	75.00	1,112.70			61.23	1,248.93
Medical Supplies						0.00
Water tests	575.00	140.00				715.00
Gas (for equipment)		18,560.07			32.68	18,592.75
Lodging, Meals, Mileage		479.72				479.72
Telephone						0.00
Electric		224.77				224.77
Other utilities		89.84				89.84
Misc. Rents		50.00				50.00
Rent of Land		750.00				750.00
Rental of State Vehicle		38,459.48				38,459.48
Repair - Equipment	1,048.50	9,561.74				10,610.24
Repair - Boats		4,708.50				4,708.50
Repair - Roads and Grounds	2,539.69	933.38			50.75	3,523.82
Repair - Buildings	593.00	9,629.43			102.87	10,325.30
Repair - Misc.		800.00				800.00
Trash Removal		150.60				150.60
Snow plowing		481.25				481.25
General Operations		2,749.42			425.00	3,174.42
Non-Employee Settlement						0.00
Occupational Health/Rehab						0.00
Employee Training		32.29				32.29
Food		732.82				732.82
L.P. Gas		8,942.26				8,942.26
Natural Gas		620.20				620.20
Fuel Oil		40.99				40.99
Firewood		192.33				192.33
Misc. Supplies & Minor Office Equip	75.00	5,672.90			178.99	5,926.89
Clothing		1,698.72				1,698.72
Pinter						0.00
Equipment (garage shop equip)		12,422.61			48.80	12,471.41
Grants to Public/Private Organiz.		1,000.00				1,000.00
Administrative Charges*	725.10	3.00			143.90	872.00
Material Purchases for Resale						0.00
CAP Equipment				11,163.00		11,163.00
CAP Buildings & Improvements	12,900.20					12,900.20
CAP Structures & Improvements						0.00
CAP Infrastructures & Improvements	4,551.95					4,551.95
<b>TOTAL EXPENSES</b>	<b>23,083.44</b>	<b>576,361.37</b>	<b>0.00</b>	<b>11,163.00</b>	<b>1,044.22</b>	<b>611,652.03</b>

**CASH BALANCE IN AWW ACCT AS OF 7/01/14** **157,490.63**

\* Includes total of STA-CAP and DI-CAP on all expenditures and late fees.

## Expenditures from the AWW Capital account included:

- Jacked, leveled, new structure under Chamberlain Bridge ranger station
- Finished clean-up of Telos Dam site
- Construction of a 50' X 90' parking lot with handicap privy at Michaud Farm



Photo by Steve Day

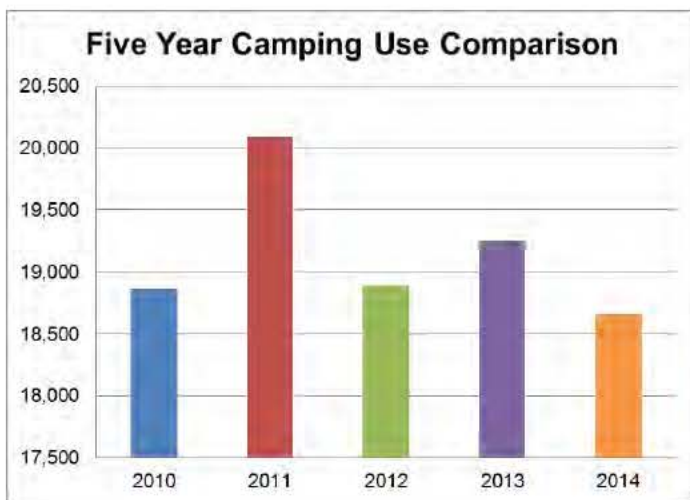
## Recreation

Total public use decreased by 2.8% in 2014. Day use increased by 3.6%, camping use decreased by 3%, and sporting camp visitation decreased by 14% after several years of steady growth. There is a significant amount of undocumented day use by visitors staying at North Maine Woods campsites and by camp owners staying at camps adjacent to the waterway. Nonresidents comprise approximately 60% of the camping use in the waterway. Camp groups with nonresident young people are the primary visitors during July and early August.

The waterway had excellent water flows throughout the entire canoe season and the fishing was very good during the spring and fall. The May 10th ice out date on the waterway headwater lakes was later than normal, this accounted for some loss in visitation in early May.

Year	Parties	Persons	Camping Nights	Sporting Camp Days	Day Use	Total Visitor Days
2010	1,145	4,267	18,860	3,507	6,297	28,664
2011	1,087	4,159	20,091	3,702	9,768	33,561
2012	1,105	4,286	18,892	4,031	8,750	31,673
2013	1,167	4,273	19,247	4,213	8,117	31,577
2014	1,033	4,037	18,656	3,612	8,414	30,682

Day use destinations were reported by visitors to North Maine Woods checkpoint attendants.



Number of Camping Nights per Year

## Oversize Group Permits

Group camping on the AWW is limited to 12 people. In the past, several organizations were allowed an exemption to this limit. These groups have been grandfathered in and are given a permit to allow groups in excess of 12 people. In 2014 there were 6 permits issued to 3 exempt organizations.

Year	Exempt Organizations	Permits Issued
2012	4	8
2013	3	5
2014	3	6



## Education, Interpretation, and Historic Preservation

The AWW received a Maine Outdoor Heritage Fund grant of \$6,865.00 for the production of an Allagash Information and Education video. The video is linked to the Allagash Wilderness Waterway homepage at: [www.maine.gov/allagash](http://www.maine.gov/allagash).

The focus of the video series is to inform, educate, and prepare potential visitors to the waterway. The video series is also designed to inspire a higher level of visitation to this National Scenic and Wild River. The 71 minute video may be viewed in whole or by section; it is divided into the nine different segments listed below:

1. Introduction
2. Preparing for a trip to the North Maine Woods
3. Preparing for a visit to the AWW
4. Fishing
5. Allagash Heritage & History
6. Geography
7. Safety
8. Leave No Trace
9. Winter Use



*New partition wall at Taylor Camp*

The restored Henry Taylor Camp is now closed in and weather tight. Ranger, Trevor O'Leary has built a partition wall inside the camp from hand hewn logs previously salvaged from the adjacent Moir Farm. Trevor, a seventh generation descended of the original settlers from the Moir Farm, wrote an article about the farm and its former inhabitants. A copy of that article will be placed at the Taylor Camp for visitors to read.

Matt and Ruth LaRoche staffed a booth at the Cabin Fever Reliever show in Brewer during the last weekend in February. Matt also made a special presentation on how to prepare for an Allagash canoe trip at the show and gave the first-ever showing of the new AWW video series at the Thoreau-Wabanaki Trail Festival in Greenville during July.

The AWW helped sponsor a booth at the Presque Isle Sportsman's Show and provided information to Public Lands staff to be handed out at the show.

### Tramway Restoration

Roger Morneault led his third group of volunteers to the tramway for the continued restoration of this unique log moving device. The volunteer group, along with help from AWW staff, refurbished the rock foundations that support the drive mechanism, jacked, leveled, and placed new bed timbers under the drive machinery. The effort to restore the tramway, as a static display, has been undertaken primarily by volunteers and funded solely by donations of money and materials. AWW staff attached an interpretive panel to the log that sits on the reconstructed section tramway railbed.



**Before**



**After**



## Staff Training



### 2014 AWW Crew

Front left to right: Josh Whalen, Ed Palys, Dave Ramsey, Trevor O'Leary, Steve Day, Jay Young, Matt LaRoche, Ruth LaRoche. Back left to right: Shane DuFour, Josh Plourde, Kevin Brown, Chris Silsbee, Kale O'Leary

The major training provided in 2014 was a two day chainsaw exercise provided by Forest Ranger, Sam Heffner. Sam provided an excellent seminar that covered everything from how to sharpen and maintain a chainsaw to using wedges and directional felling. All staff not currently certified attended the training.

All field staff took and passed a Red Cross certified, Wilderness First Aid Course. This included Red Cross certified CPR, our part-time intermittent Customer Service Representative took CPR only. The training was provided by Jeremy Hargraves from Northeast Whitewater.

All field staff received in-house GPS training.

New employees received boat training provided by, Chief Ranger Kevin Brown.

The rangers assigned to the AWW headwater lakes received Maine Department of Environmental Protection water quality training and were certified to take water quality readings.

Chris Silsbee has assumed the role as the geographic information system contact person for the AWW and attended monthly GIS training in classes Augusta with the Bureau GIS Coordinator, Gena Denis.

Regular training was completed on the job and at staff meetings during the year. That training included:

- Bureau of Labor Standards mandated training
- Standard operating procedures
- Cash handling review
- Law Enforcement policy review
- Emergency operations plan

## Projects Accomplished by Staff, Volunteers, and Contactors in 2014

- ◆ Produced an eight part information and education video for the waterway, linked video to the AWW website.
- ◆ Performed an assessment of environmental conditions at every campsite in the AWW.
- ◆ Continued with tramway restoration:
  - ◇ Installed interpretive panel on the log
  - ◇ Refurbished rock footings that support the drive mechanism.
  - ◇ Jacked, leveled, and placed new bed timbers under drive mechanism.
- ◆ Chamberlain Ranger Station:
  - ◇ Jacked, leveled, installed concrete pads and posts.
  - ◇ Installed new skirting around building.
  - ◇ Had the underside of building spray foam insulated.
  - ◇ Built new steps.
  - ◇ Rip-rapped erosion problem near dock.
  - ◇ Applied a 6-12 inch coating of ripped ledge to driveway, access to the dock, and around shop area.
  - ◇ Installed a frost-free hydrant at the public drinking water supply location.
  - ◇ Built two walk-in campsites at the rear of the Chamberlain Bridge parking lot for late arrival groups.
- ◆ Telos Dam (finished outstanding items):
  - ◇ Reshaped ditches along a section of old access road and installed a new culvert.
  - ◇ Diverted runoff from debris burial site across old road that runs along Webster Stream.
  - ◇ Graded new access road.
- ◆ Round Pond Camp (T6 R11):
  - ◇ Jacked and leveled camp.
  - ◇ Installed new metal roof on camp.
- ◆ Umsaskis Ranger Station:
  - ◇ Jacked and leveled shed at Ranger Station.
  - ◇ Installed new floors in the two bedrooms at Ranger Station.
- ◆ Finished outstanding items on handicap accessible vault privy at the Umsaskis and Michaud Farm parking lots.
- ◆ Camp Drake (Umsaskis Lake):
  - ◇ Jacked and leveled woodshed
  - ◇ Re-shingled woodshed
- ◆ Covered spring at Lost Popple Campsite.
- ◆ Continued with Henry Taylor camp restoration:
  - ◇ Laid out a new access trail from the river to the camp.
  - ◇ Built “piece en piece” partition inside the camp with material salvaged from the Moir Farm.
  - ◇ Installed oakum chinking around purlins.
- ◆ Touched up sheet rock and repainted bathroom and hallway going upstairs at AWW headquarters.
- ◆ Constructed guard posts to protect propane tank storage areas Churchill Dam and Chamberlain Bridge.
- ◆ Constructed 13 picnic tables and installed with tarp poles at campsites.
- ◆ Cleared, re-blazed, and painted six miles of AWW boundary line.



## Dam Inspection Report

AWW Advisory Committee Chairman, Rick Denico arranged for the Maine State Dam Inspector to visit the three State of Maine owned dams in the AWW: Telos, Lock, and Churchill Dams on August 5, 2014. A brief synopsis of the findings, is below:

### Telos Dam

Telos Dam is 240' long x 20' high rock filled, timber-crib mass gravity barrage. It is an aging timber crib structure. There is some documented movement of the rock filled piers and mis-alignment of both the upstream and downstream surfaces of the dam. There is significant leakage under the emergency spillway. The wooden timbers are weathered and show some signs of rot.

Recommendations: Continue to monitor for movement in the dam, four times per year during each season of the year. Reestablish benchmarks using larger marks. The flow (leaks) should be estimate and recorded so that change can be detected after dry weather with the gates closed and with no overflow. Investigate the significant emergency spillway leakage, Try to determine the location, flow rates, and source of the leak. Dewater the downstream pool to accurately determine toe leakage. Scouting for upstream whirlpools should be added to the SOP monthly dam inspection. Examine all wood surfaces in the dam, record defects using a working drawing, replace damaged or rotten material with new seasoned treated wood.

**Telos Dam is classified as a low hazard potential dam.**



*Aerial View of Telos Dam by AWW Chair, Rick Denico*

### Lock Dam

Lock Dam is 139 year old 15 foot high x 280 foot long earthen dam. The principle spillway outlet gate and pipework should be inspected internally during 2015, and replaced if internally corroded. Vegetation should be removed from the dam, including 10-20' beyond its footprint and then re-inspect the dam for leakage. Engineering data should be gathered, beginning with a survey and the dams overtopping potential should be determined.

**Lock Dam is classified as a low hazard potential dam.**

### Churchill Dam

Churchill Dam is 24' high x 460' long earthen dam with a concrete and galvanized steel spillway. There are significant cracks in the right, upstream retaining wall and a discernable deflection in that same wall. Continue to monitor this retaining wall for movement. Dam may have inadequate spillway capacity or standard operating procedure to prevent overtopping. Have the dam's designer re-examine the design and report back to the waterway about these defects.



## Volunteers

During 2014 we had 79 individuals donate 644 hours to the Allagash Wilderness Waterway. This is way up from last year's total of 293 hours but down from the 1075 hours donated in 2012.

Volunteers helped waterway staff accomplish the following tasks during 2014:

- Campsite maintenance
- General maintenance
- Built picnic tables
- Built and installed bog bridging Round Pond tower trail
- Cleared brush from trails
- Built a canoe slip at the Eagle Lake Ranger Station
- Moved timbers from the Moir Farm to the Taylor Camp
- Tramway restoration
- Leveled gravel at handicap accessible privy at Umsaskis
- Hauled gravel for wet holes on Allagash Falls portage trail

## Special Activity Permits Issued

- Can Am sled dog race, for crossing the AWW at Round-Pond in, T13 R12.
- Optomen Productions -filming the entering AWW sign near Chamberlain Bridge in, T6 R11.
- The U.S. Department of Environmental Protection – fish sampling in the Allagash River in T13 R12.

## Incidents

There were 10 recorded incidents in 2014. The most serious incidents involved two groups that capsized canoes in the Chamberlain Lake District. One group capsized on Chamberlain Lake in rough waters due to high winds. The other group capsized several canoes in Webster Stream in water that was too difficult for their group to navigate.

Ranger, Chris Silsbee and Intern, Amber Gabriel provided outstanding assistance to the group that capsized on Chamberlain Lake. One member of that group was taken to the hospital for a serious illness related to spending too much time in the cold water.

The group that swamped their canoes in Webster Stream was evacuated with assistance of Assistant Ranger, David Ramsey.

Three warnings were issued for violations of AWW rules.

Waterway staff responded to the following incidents during the year:

- 2 – Capsized watercraft/evacuation
- 1 – Medical emergency
- 1 – Theft
- 1 – Automobile accident
- 2 – Missing persons
- 1 - Rule infraction

The following warnings were issued:

- 2 – Camping in a prohibited area
- 1 – Illegal campfire

**The Allagash Wilderness Waterway provides the following materials to the public. All are free unless otherwise noted.**

- **NORTHRUNNER** documentary film (\$15.00)
- Allagash Wilderness Waterway brochure (informational brochure)
- Rules and Regulations for Recreational Use of the Allagash Wilderness Waterway
- Allagash Wilderness Waterway Special Fees, Tips for Visitors, and more (informational brochure)
- Allagash Wilderness Waterway Decal (\$2.00)
- Visitors can register their canoe and receive a tag for temporary storage on the Allagash Wilderness Waterway

**These materials are available through the Bureau of Parks and Lands Bangor Office:**

106 Hogan Road Bangor, ME 04401 - (207) 941-4014

## Superintendent's Report

2014 was my sixth year as superintendent of the Allagash Wilderness Waterway (AWW). I feel very fortunate to be entrusted by the State of Maine with the management of this National Wild and Scenic River and to lead the dedicated staff and volunteers of the waterway that work to keep the waterway clean, safe, and well maintained for our visitors.

The winter season began with nearly full winter campgrounds at Chamberlain Bridge and Kellogg Brook. We sold 42 of the 48 available sites, most were booked for the entire winter season on the first day of availability.

The ice fishing was reported as good by most fishermen with some very nice native brook trout and togue being caught through the ice. Allagash Lake, which is only open for the month of February, was especially productive.

The ice was out on all the waterway headwater lakes by May 10<sup>th</sup>.

We had a normal spring, with most of the runoff occurring in late April. Reservoirs were filled behind Churchill and Telos Dams by the end of May; we went into July with plenty of water stored for the summer canoe season. We had above average rainfall during the summer and excellent water flows for the entire canoeing season.

The cool rainy summer extended the spring fishing season into July. It was an excellent season by all accounts with nice fat healthy brook trout in the 12– 16 inch range being commonly caught.

The spring, summer, and fall season saw a 3% decrease in camping use. This decrease is despite my efforts to raise awareness of the wonderful recreational opportunities available in the waterway through my monthly column in the Northwoods Sporting Journal and press releases to the general media. The Bangor Daily News has run almost every story that I have sent them. I have gotten a great deal of positive feedback from these articles, so I'll keep on writing.

The tramway restoration effort took a major step forward this year. Roger Morneau led his third group of volunteers to the tramway for the continuing restoration of that unique log moving devise. The volunteer group, along with help from AWW staff, refurbished the rock foundations that support the drive mechanism, jacked, leveled, and placed new bed timbers under the all the drive machinery.

Another significant accomplishment was the completion of the new AWW video series. The focus of the video is to inform, educate, and prepare potential visitors to the waterway. The video series is also designed to inspire a higher level of visitation to this National Scenic and Wild River. The 71 minute video is divided into nine different segments that may be viewed by section or the whole video may be watched. To date the video has been watched 5832 times.

The waterway completed National Park Service approved substitution measures at Telos Dam and Michaud Farm, this allows for continued vehicle access at Bissonnette Bridge. We received documentation from the NPS that finally closed the book on the mitigation measures of the 2002 Memorandum of Agreement (MOA), for the after the fact permit for the construction of Churchill Dam.

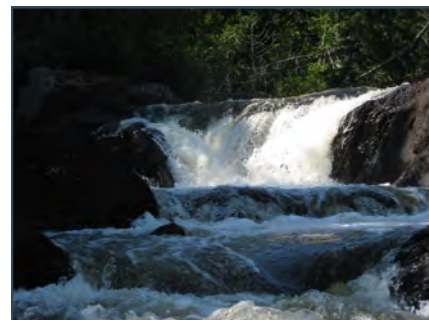
The waterway submitted changes to the rules and regulations for the AWW to conform to the newly completed management plan. These changes were approved by the Attorney Generals office on July 19, 2014.

A huge thank you to the staff of the waterway, they all take pride in their work and strive to keep this special area well maintained, clean, and safe; all while striving to enhance the wilderness character of this wild river. It truly is a delicate balancing act. I also thank the support staffs in Bangor and Augusta who help with funding, administrative and political support for the waterway.



Respectfully submitted,  
**Matthew LaRoche**  
Superintendent  
Allagash Wilderness Waterway

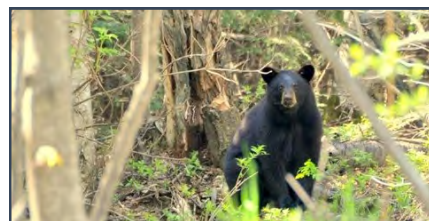




# THE Allagash

WILDERNESS WATERWAY

To plan a trip or find out more about the Allagash Wilderness Waterway, please contact the following organizations:



## Bureau of Parks and Lands Northern Region Office

106 Hogan Road  
Bangor, ME 04401  
(207) 941-4014

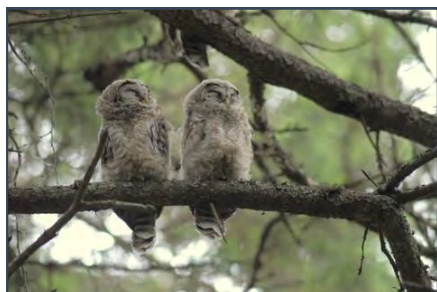
## North Maine Woods, Inc.

P.O. Box 421  
Ashland, ME 04732  
(207) 435-6213



## Maine Department of Inland Fisheries & Wildlife

State House Station 41  
Augusta, ME 04333  
(207) 287-2871



**Left side top to bottom:** Moose with calf by Julia Bayly, Volunteer group cleaning out beaver dam on North Twin Brook by Kevin Brown, Chewonki group poling up the Allagash by Chewonki, Two Owls by Steve Day. **Top middle:** Ranger Trevor O'Leary monitoring upstream by Steve Day. **Right side top to bottom:** Little Allagash Falls by Matt LaRoche, Bear & Lynx by Steve Day, Matt LaRoche with two brook trout by Mark LaRoche, Trains by Steve Day, Umsaskis Ranger Station by Kevin Brown. **Bottom middle:** Group paddling in Umsaskis by Steve Day. **Front Cover:** Umsaskis Sunset by Steve Day. **Back Cover:** Moose by Steve Day. **Report Design:** Katie Nemmer





**Allagash Wilderness Waterway Administration 2014**

*Maine Department of Agriculture, Conservation, and Forestry: Walter Whitcomb, Commissioner*

*Maine Bureau of Parks and Lands: Thomas Morrison, Acting Director*

*Ron Hunt, Acting Director of Operations*

*Matthew LaRoche, AWW Superintendent*

**THE**  
**Allagash**  
WILDERNESS WATERWAY

Administrative offices:

106 Hogan Road, Bangor, Maine, USA 04401-5640

Telephone: 207-941-4014 Fax: 207-941-4222

<http://www.maine.gov/allagashwildernesswaterway>