

MAINE STATE LEGISLATURE

The following document is provided by the
LAW AND LEGISLATIVE DIGITAL LIBRARY
at the Maine State Law and Legislative Reference Library
<http://legislature.maine.gov/lawlib>



Reproduced from electronic originals
(may include minor formatting differences from printed original)



**Baxter State Park
Annual Operating
Report
For the Year 2016**

**To the
Baxter State Park
Authority**

August 2017

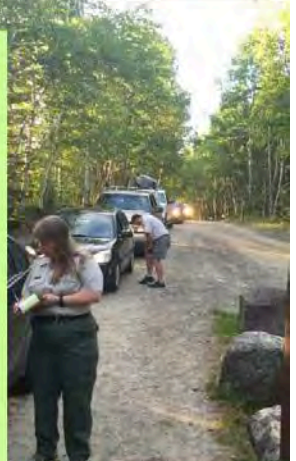


Table of Contents

DIRECTOR'S SUMMARY	9
ADMINISTRATION	9
BAXTER STATE PARK AUTHORITY	9
ADVISORY COMMITTEES	9
BAXTER STATE PARK ADVISORY COMMITTEE	9
BSP INVESTMENT COMMITTEE	10
BSP RESEARCH COMMITTEE	10
SCIENTIFIC FOREST MANAGEMENT ADVISORY COMMITTEE	10
TRAIL GUIDE REVISION	10
TRAIL RELOCATION WORK	11
ABOL RELOCATION	11
DUDLEY TRAIL CLOSURE	11
HUNT TRAIL RELOCATION	12
CULVERT, BRIDGE AND STRUCTURE IMPROVEMENTS	12
ROARING BROOK CULVERT REPLACEMENT	12
KIDNEY POND RANGER CAMPS	13
NESOWADNEHUNK BUNKHOUSE	13
TROUT BROOK FARM HIKING BRIDGE	14
KATAHDIN STREAM CAMPGROUND BRIDGE	14
OTHER PROJECTS	15
HQ PARK ORIENTATION SLIDE PROGRAM	15
WATER FLOW MONITORING - NESOWADNEHUNK STREAM	15
BAXTER PARK LONG TERM FOREST MONITORING	16
NORTH BRANCH CAMPS	16
INFORMATION TECHNOLOGY	16
APPALACHIAN TRAIL POLICY	18
PERSONNEL	20
TALKS	21
ATTORNEY GENERAL JANET T. MILLS	22
2016 OPERATIONAL HIGHLIGHTS & OVERVIEW	25
CHIEF RANGER OVERVIEW	25
2016 MAINTENANCE REPORT	26
HEADQUARTERS RENOVATIONS	26
STOREHOUSE IMPROVEMENTS	26
TOGUE GATE SOLAR PROJECT	27

KATAHDIN STREAM FOOTBRIDGE REPLACEMENT	27
ROARING BROOK CULVERT REPLACEMENT	27
KIDNEY POND RANGER CAMPS	28
NESOWADNEHUNK BUNKHOUSE	28
TBF RANGER CAMP ROOFING REPLACEMENT	28
SOLAR BATTERY REPLACEMENTS	28
SFMA HEMLOCK CAMPS	29
SFMA NORTH CAMP	29
TOGUE POLE BARN REORGANIZATION	29
ABOL SERVICE AREA REORGANIZED	29
SCREENED GRAVEL	29
ROAD GRAVELING	29
TRAIL MAINTENANCE OVERVIEW 2016	30
TRAIL SPECIALISTS	30
MAINE CONSERVATION CORPS	30
MAINE TRAIL CREW	32
APPALACHIAN MOUNTAIN CLUB	32
MAINE APPALACHIAN TRAIL CLUB	32
RELOCATION EFFORTS	32
ABOL TRAIL	32
DUDLEY TRAIL	32
HUNT TRAIL	34
SEARCH AND RESCUE	35
SEARCH AND RESCUE SUMMARY 2016	36
LAW ENFORCEMENT	39
BSP 2016 USAC SUMMARY	39
INFORMATION & EDUCATION DIVISION	41
I&E 2016 SUMMARY	42
SUMMER EVENING PROGRAMS - DATES AND DESCRIPTIONS	43
July 6th at South Branch Pond: Stewardship of Baxter State Park	43
July 13th at Kidney Pond: Search and Rescue at Baxter State Park	43
July 20th at South Branch Pond: Canoeing Workshop	43
August 3rd at Katahdin Stream: Campfire Cooking Demonstration	44
August 10th at Katahdin Stream: Packing Essentials for Baxter State Park	44
August 24th at Daicey Pond: Life of a Logger	44
August 31st at Katahdin Stream: Wilderness On Its Own Terms	44
CHILDREN'S PROGRAMS - DATES AND DESCRIPTIONS	44
July 2nd at Daicey Pond: Wild Moms and Respect	44

July 9th at Daicey Pond: Wild Canines	45
July 23rd at Kidney Pond: Pollinators and Fruits	45
July 30th at Daicey Pond: Tricky Tracks!	45
August 6th at Kidney Pond: Wild Canines	46
August 20th at Kidney Pond: Who Comes Out at Night?	46
August 13th at Daicey Pond: Hiking Safety, Take a Hike!	46
August 27th at Kidney Pond: Hiking Safety, Take a Hike!	46
September 3rd at South Branch Pond: Pollinators and Fruits	46
September 10th at South Branch Pond: Wild Moms and Respect	46
September 21st at the Millinocket Library: What's for Dinner?	47
September 28th at the Millinocket Library: Wild Canines	47
October 5th at the Millinocket Library: What's for Dinner?	47
October 12th at the Millinocket Library: Only on Katahdin! The Katahdin Arctic Butterfly	47
PARK OUTREACH AND MEETINGS	48
May 10th - School presentation Center Drive School in Orrington, Maine	48
May 29th - The Summit Project at Katahdin Stream Campground	48
July 13th - Group presentation at Katahdin Health Care Nursing Home in Millinocket	48
August 17th - Group presentation with KidsPeace from East Millinocket at Park Headquarters	48
August 20th - Event booth at the Penobscot River Festival in Medway	48
September 17th - Event booth at the Trails End Festival in Millinocket	48
October 1st - Meeting with Geri Vistein, conservation biologist of Maine	48
October 18th - Appalachian Trail season overview with ATC in Milo, Maine	48
TRAININGS OFFERED AND RECEIVED	49
May 17th - Welcome and BSP Orientation with Wilderness Educators	49
May 18th - Workplace harassment training with Business Manager Christine Theriault	49
June 7th - Field Training at Katahdin Stream with Campground Ranger Julianna Hansen	49
June 15-16th - Wilderness First Aid Training	49
June 21-22nd - Leave No Trace Training in Acadia National Park	49
June 23-25th - Alpine Stewardship and Mountain Patrol Training at Chimney Pond	49
June 26th - Overview of Search & Rescue and Wildfire Suppression with Ranger Rob Tice	49
July 6th - Authority of the Resource with Gabe and Marcia Williamson at South Branch Pond	49
July 19th - BSP Staff Visit to the Appalachian Trail Visitor Center in Monson, Maine	49
July 1, 8, 20, and 27th - BSP Visitor Center Orientation for Wilderness Educators	49
October 19th - SFMA Tour with Forester Deidre George	49
FIELD PATROLS	49

June 3rd - Trout Brook Mountain	50
June 9-11th - Chimney Pond and Saddle Trail of Katahdin	50
June 23-25th - Chimney Pond and Saddle Trail of Katahdin	50
June 21st - Doubletop Mountain	50
July 15th - South Turner Mountain	50
August 3-4th - Chimney Pond	50
August 29th - Foss and Knowlton Trail and Appalachian Trail	50
September 2nd - Five Ponds Trail	50
October 6th - Katahdin Lake Trail	50
October 19th - Wadleigh Mountain	50
WILDNOTES	50
VOLUNTEERS	50
ALPINE STEWARDSHIP ON KATAHDIN	51
KATAHDIN ARCTIC BUTTERFLY SURVEY	53
MAINE AUDUBON LOON COUNT	54
MOOSE PATROL	54
PURPLE LOOSESTRIFE	55
VISITOR CENTER	56
RESEARCH	56
KATAHDIN VEGETATION COMMUNITIES	57
WOOD TURTLE POPULATION DYNAMICS	57
SURVEYING TALUS SLOPES FOR BATS	57
SPRUCE GROUSE STUDY	57
INVENTORY OF INSECT SPECIES IN 2013 TORNADO AREA	57
SEASONAL STAFF	57
Elise Panzner: Six Month Wilderness Educator Intern	58
Justine Rumaker: Six Month Wilderness Educator Intern	58
Jonathan Schmidt: Appalachian Trail Steward	59
Brian Johnston, Bob Gonya, & Kathy Winslow:	59
Visitor Center Customer Service Representatives	59
I&E SEASON HIGHLIGHTS	60
THE PLANTS OF BAXTER STATE PARK BOOK RELEASE	60
STRING FENCING PHOTOGRAPHY AT THOREAU SPRINGS	60
LOON COUNT DATA 2016	63
LOON COUNT VOLUNTEERS AND LAKES/PONDS SURVEYED	63
BUSINESS DEPARTMENT	67
PERSONAL	67
ADMINISTRATIVE SERVICE STAFF	67

POSITION CHANGES AND POSITION CHANGED BY FJAS-1	67
NEW EMPLOYEES: SEASONAL	68
RESIGNATIONS	68
TRANSFER/PROMOTIONS/DEMOTIONS/ACTING CAPACITY/TEMP COMP	68
RETIRED	69
YEAR-ROUND POSITIONS	69
SEASONAL POSITIONS – 2016	70
ORGANIZATION CHART (NEXT PAGE)	72
CONTRACTED SERVICES	74
RESERVATIONS OFFICE	74
OPENING DAY 2016	74
IN THE PARK	75
RESERVATION OFFICE STATISTICS AND PROCEDURES	76
FINANCIALS	81
STATEMENT OF REVENUE AND EXPENDITURES	81
FISCAL YEAR ENDING JUNE 30, 2016	81
Revenue – 014 Account	81
Expenditures	81
EXECUTIVE SUMMARY: FY17 ANNUAL WORK PROGRAM	82
REVENUE NOTES	82
EXPENDITURE NOTES	82
REVENUE BUDGET SUMMARY	83
PERSONAL SERVICES	84
ALL OTHER	86
DONATIONS	90
ALLOTMENTS FOR THE TRUST FOR FY16	92
SCIENTIFIC FOREST MANAGEMENT	93
STAFF, CONTRACTED LABOR, VOLUNTEERS	93
STAFF	93
CONTRACTED LABOR	93
VOLUNTEERS	93
HARVEST PRODUCTION AND MARKETS	93
SILVICULTURE	95
LiDAR	97
UNMANNED AERIAL VEHICLE	98
ADVISORY COMMITTEE	99
TOURS AND OUTREACH	100
ECO-MONITORING	100

INFRASTRUCTURE	100
BSP STATISTICS- 2016	103

DIRECTOR'S SUMMARY

ADMINISTRATION

BAXTER STATE PARK AUTHORITY

Chandler Woodcock (Commissioner of Inland Fisheries and Wildlife) and **Doug Denico** (Director of the Maine Forest Service) have served as Authority members since 2010.

Janet Mills (Maine Attorney General) has served on the Authority since 2012 after serving from 2008 to 2010. These three Maine natives continue to provide thoughtful and dedicated leadership to the administration and protection of Baxter State Park.



ADVISORY COMMITTEES

BAXTER STATE PARK ADVISORY COMMITTEE

This committee met several times during the months January to April. Due to personal events, no meetings were held in November or December of 2016. The meetings utilized the UMO polycom system with nodes at UMPI, UMFK, UMO and USM. Plans for 2017 include moving the meetings to a Google Hangouts platform with more local control on locations and the option for members to meet individually from remote locations. Advisory Committee members also participated in the BSP Spring Clean-Up Day before holding an Advisory meeting at Park Headquarters on April 30, 2016. At the May 20, 2016 Authority meeting held at Kidney Pond Campground, the Authority approved the appointments of **Steve West** and **Mike Perry** to the Committee and the appointment of **Laurie Nale** as Chair of the Committee. The Authority also thanked **Rick Bray** for his long service to the Park as a volunteer and as Chair of the BSP Advisory. The Authority also thanked **Eric Baxter** who stepped off the committee due to difficulty in making meetings. Eric communicated that although he will not hold a seat

on the committee, he stands ready to help the Authority, the Committee or the Park in any difficult issue that may arise.

BSP INVESTMENT COMMITTEE

Brian Noyes continued his capable leadership of this important committee. The committee met several times during the year and Brian paired with BNYMellon Investment Manager Mike Daley to provide Trust Fund updates to the Authority at the spring and fall Authority meetings held at Kidney Pond Campground.

BSP RESEARCH COMMITTEE

Due to an unexpected absence of the Park Naturalist, this committee did not meet in 2016.

SCIENTIFIC FOREST MANAGEMENT ADVISORY COMMITTEE

This committee continued to provide important feedback to the Resource Manager and Director. The Director attended the spring and fall meetings of this committee. For more detail on the activities of this committee, see the SFMA section of this report.

TRAIL GUIDE REVISION

In 2010, the Park bought the rights to “Katahdin, A Guide to Baxter State Park” from Steve Clark. Steve published the first edition of the guide in 1978, and then followed that with 5 more. The Park published a 7th edition in 2012. We began the editing work for the 8th edition early in 2016, but the work fell into hiatus with the unexpected absence of the Park Naturalist. Work has resumed on this and the revision is expected to be published in the first half of 2017.

TRAIL RELOCATION WORK

ABOL RELOCATION



Work continued on the Abol relocation in 2016 with a single MCC crew spiked at the bottom of the relocation just east of the old trail location near a water source. Dry weather eliminated the water source and we improvised by flying in 5 gallon plastic water jugs by helicopter. Work will continue on the relocation in the coming years, but as a scheduled effort for limited weeks each summer. Public reaction to the relocation has been very good.

DUDLEY TRAIL CLOSURE

During early spring patrol hikes, Rangers discovered that a land and rock slide had obliterated a section of the popular Dudley Trail at the junction with the spur trail to Pamola Caves. After careful examination and consideration, the decision was made to close this trail due to the instability of large rocks above the trail. Options to repair the trail in place were not available, so plans proceeded to find a relocation line that would provide long-term safe access to the Dudley Ridge and Pamola Peak. By early summer a line had been flagged running east through the boulder field along the base of the ridge then turning south and ascending to the open ridge and the existing Dudley Trail.

MCC crews were then assigned to begin the clearing work and crews managed to complete the first rough clearing and grubbing of the relocation. This work will continue in earnest during the 2017 summer season with a planned reopening of this trail in 2018. No work was accomplished regarding re-establishing a route to Pamola Caves.

HUNT TRAIL RELOCATION

After a couple of years of planning and layout work by former Trail Supervisors Lester Kenway and Paul Sannicandro, relocation lines were established for two segments of the Hunt Trail above Katahdin Stream Falls. These segments will retire deeply eroded fall-line trail with more gradual graded trail that will be more able to withstand the high hiker traffic of this historic and popular Katahdin ascent trail. MCC crews began clearing work on the lower segment in 2016. Trail construction is slated to begin in 2017 by MATC crews as well as MCC crews. Clearing work on the upper segment will also likely begin in 2017. The lower segment will likely open to hikers in 2018 and the upper segment in 2019.

CULVERT, BRIDGE AND STRUCTURE IMPROVEMENTS

ROARING BROOK CULVERT REPLACEMENT



The Park completed a large culvert replacement project on the “other Roaring Brook” located a little south of Slide Dam. The project was awarded to DiCenzo Construction of Calais, ME. for a bid price of \$163,000. This project required the removal and replacement of two large culverts with “cannon” outlets that prevented fish movement upstream. The new arch pipe culverts were set slightly below grade so that rocks and gravel will form a natural stream bed on the culvert bottom. The replaced culverts were also larger than the original pipes to allow for the possibility of larger peak flows in the future.

KIDNEY POND RANGER CAMPS

Rangers completed the clearing and site preparation early in the season and materials were brought in for two small camps to serve as staff housing for the Campground Rangers at Kidney Pond. The camps were contracted for the construction and completion of the exterior shell. This work was completed early in the season without issues. Interior work will begin in the fall and commence through the winter and spring of 2017 for the planned occupation by Kidney Pond staff in May of 2017.

NESOWADNEHUNK BUNKHOUSE

For the last several years, visitors have utilized the former and aptly named “Camp Cozy” that was moved up to Nesowadnehunk (one of its many moves over the years) after the completion of the Daicey Pond Ranger Camp. This bunkhouse is really too small for winter parties and limits party size to four. In the latter part of the 2016 season, the construction of a new bunkhouse, similar in size and design to bunkhouses at South Branch Pond and Russell Pond was completed in time to accommodate winter visitors.



TROUT BROOK FARM HIKING BRIDGE

After several years of concern regarding the failing east abutment on the Trout Brook Stream hiking bridge in Trout Brook Farm Campground, engineering work was completed in 2015 to extend the steel girders supporting the bridge so they would rest on ledge and eliminate the need for support from an abutment. This work was originally scheduled to be added to the Roaring Brook Culvert Project, but the project was not able to be included with this work. It was re-bid in late 2016 and the bid was awarded to DiCenzo Construction for \$20,000. The work is scheduled for June of 2017. Completion of this work will ensure the use of this bridge to access the Freezeout Trail and the group sites and lean-to sites located west of the stream.

KATAHDIN STREAM CAMPGROUND BRIDGE

After startlingly discovering that the spruce log stringers supporting the pedestrian bridge over Katahdin Stream in Katahdin Stream Campground were rotted to the point of failure, Park Rangers closed the bridge to use in late 2015 and removed the bridge in early 2016. A temporary low crossing was established and early in the season in 2016, the bridge was replaced upstream in the location of the former dam. The new bridge used steel stringers using steel supports from a train car that had been in Slaughter Pit for some years. The crew then decked the stringers with hemlock and applied cedar rails. The construction and installation of the bridge was a significant



team effort involving Maintenance, Ranger and Volunteer personnel. The new bridge should last many, many years and serves as a tribute to the ingenuity and skill of the Park staff.

OTHER PROJECTS

HQ PARK ORIENTATION SLIDE PROGRAM

Early in 2016, long time Park volunteer Ken Wadness completed work on substantial revisions to the Park's automated orientation slide show available to visitors in the HQ auditorium. The revised show was shown to Park staff during the winter and received rave reviews. Ken provided a rough audio using the existing text to go with the slide show. The plan is to revise the accompanying audio. The Park Naturalist is the lead in this work, and it has been delayed by Jean's absence.

WATER FLOW MONITORING - NESOWADNEHUNK STREAM

For some years, the Director has been working with Regional Fisheries Biologist Nels Kramer to ensure the health and viability of the native eastern brook trout populations in Nesowadnehunk Stream and Lake. The concerns are particularly focused on the ability of fish to leave habitat in Nesowadnehunk Lake, travel over the dam at the outlet to spawn in the stream and then to successfully return to the lake. Concerns include the efficacy of the fish ladder, which in turn relate in part to the effective management of water levels at certain times of the year. Management of water levels in the stream and lake are also of concern, particularly regarding the need for a scientifically based plan for water (dam) level management.



Early in the summer of 2016, the Director met with Nels Kramer and staff from the USGS to consider work to gather the necessary data to complete the water management plan. We settled on the installment of a stream gauge near the former double culverts on the former BSP Tote Road. After the gauge was installed, monitoring of the gauge levels over the summer was carried out by BSP Ranger Dave Looe. USGS staff also plan to visit the Park several times over the winter of 2016-17 to gather

data for winter water levels in the stream. The cost of the work by USGS was shared by IF&W and BSP.

BAXTER PARK LONG TERM FOREST MONITORING

During the field seasons of 2015 and 2016, the Maine Natural Areas Program began collecting data within permanent forest monitoring plots at Baxter State Park. In these two years, field staff visited 30 of 150 forested monitoring plots identified for inventory over a 10 year period. Located along 6 randomly selected transects, forest measurements including tree DBH, height, species, tree condition, estimated stand age, seedling/sapling regeneration, coarse woody debris and understory vegetation composition were sampled within these fixed radius plots. Additional details regarding monitoring protocols are available at http://www.maine.gov/dacf/mnap/reservesys/monitoring_plan_2003.pdf, Plans are to continue visiting 15 plots each year on a ten year cycle.

NORTH BRANCH CAMPS

The North Branch Camps are a set of two camps located next to the North Branch of Trout Brook where it crosses under the the Park Tote Road about one mile east of the Burnt Mtn picnic area. The camps were originally used as lodging for DOT crews when the DOT carried the responsibility for maintaining the Park Tote Road. The Park took this responsibility over around 1990. The Park then substantially renovated the camps with the intention of using them for lodging for the Park Trail Crew. In practice, the camps were used only occasionally and in some years, not at all. After careful consideration by Park staff and the BSP Advisory, the decision was made to place the camps in rental status as a low-cost group camping options for groups that might want the remote setting combination with the comfort of two large cabins for sleeping and eating. The fall 2016 BSP Advisory outing included work on staining the camps and re-painting the concrete floors in both camps.

INFORMATION TECHNOLOGY

The Park continued its very productive contractual relationship with Shaun Campbell and Brad Lee



in

Nichols of Starfruit Solutions in 2016. We continued to move away from the Maine Office of Information Technology and more toward various Google platforms and cloud-based applications. The collaborative use of Google docs and drives has significantly changed the way we work on documents and store data. While our progress has been good toward ensuring the safety and security of our data and work, we have more work to do.

Our data storage stream continues to be a concern as we remain with standard server systems. Shaun has organized a plan to address these concerns (referred to as the “data monster”) and we will be continuing to move forward on this in 2017.

Early in the season in 2016, we completed a significant contracted project with Moosehead Solar to install a solar system to power the gatehouse at Togue Pond. This system now allows the gatehouse to be fully connected to the internet, and the Park reservation system, during the operational hours of the gatehouse. We will continue to work on training the gate staff to make reservations during the hours that HQ is closed.



Internet connectivity also allowed the implementation of a swipe system for credit cards at the gatehouse. We initiated this system near the end of the season and will continue to refine the system in 2017 to make it faster and easier for gatehouse staff.

APPALACHIAN TRAIL POLICY

Discussions continued in 2016 with the ATC regarding increasing numbers of AT hikers entering BSP as well as behavior and logistics issues. The Park initiated a Hiker Permit Card system in 2016 as an initial step in regulating the numbers of hikers entering the Park on the AT. In November, a post-season review of the AT use and issues, including all the relevant AT stakeholders associated with the Park, was productive.

After careful consideration of the increasing numbers of AT hikers and the progress of discussions with the ATC regional and national representatives, BSP announced a plan to limit the number of AT Permit Cards issued in 2017. The initiative was presented in a document included below:

Baxter State Park Announces A.T. Hiker Permit Process



Myron Avery established the northern terminus of the Appalachian Trail (A.T.) on Baxter Peak in 1933, two years after Percival Baxter donated more than 6,000 acres on Katahdin to the State of Maine as the first parcel of Baxter State Park. Since the A.T.'s establishment, the Baxter State Park Authority has hosted the northern terminus of the Appalachian Trail. The Trust Guidance and informal communications left by Percival Baxter to direct the governance and management of Baxter Park are silent regarding the A.T. They are not silent, however, as to the need to balance human use and resource protection.

For the past decade the increasing numbers of A.T. long-distance hikers entering the Park has been drawing the attention of Park management as the Park has applied increased resources to

administer this group's unique needs.

Use of the Park by A.T. long-distance hikers has increased an average of 9% annually over the past 25 years. In 1991, the total number of recorded A.T. long-distance hikers in Baxter State Park was 359. In 2016, 2,733 A.T. long-distance hikers registered in the Park, an increase of more than 700% from 1991. Even in the last year (2016), 23% more A.T. hikers registered in the Park than in 2015.

In order to protect the natural resources of Katahdin and the visitor experience at Baxter Park, The Baxter State Park Authority has managed hiker access to Katahdin and Baxter Peak for several decades under a limited use model - with the exception of A.T. long-distance hikers. All Park visitors, both resident and non-resident, with the exception of AT hikers, work within a system that limits daily hiker access to Baxter Peak on Katahdin.

Based on the significant growth rates of the A.T., the Baxter Park Authority has determined that the time has come to include AT hikers in the same model respected by all other Katahdin hikers. This plan includes commercial, camp, school, guided and other organized groups entering the Park on the A.T. and planning to hike Katahdin via the A.T.

In 2016, Baxter Park initiated an A.T. Hiker Permit Card process that required A.T. hikers in Baxter Park to acquire a permit card. This process will continue, but to improve our management of A.T. long-distance hikers in the years ahead and to be consistent in our management of all of BSP visitors wishing to climb Katahdin, the number of permit cards available to A.T. long-distance Hikers in 2017 will be capped at 3,150.

All Northbound and Southbound Thru Hikers, Section Hikers and Flip-Flop A.T. Hikers entering Baxter Park in 2017, including commercial, camp, school, guided and other organized groups, will be required to secure an A.T. long-distance Hiker Permit Card for the Hunt Trail section of the A.T. This permit system applies to every hiker, so each member of the group will be required to secure an A.T. Hiker Permit Card prior to hiking the A.T./Hunt Trail out of Katahdin Stream.

The number of cards available in 2017 is 417 cards more than were issued in 2016. A.T. Hikers will be required to have a stamped permit card prior to hiking the Hunt (A.T.) Trail from Katahdin Stream Campground to Baxter Peak.

Here are the specifics that A.T. Hikers will need to know:

1. A.T. Hiker Permit Cards will be available when the Hunt Trail opens to hiking in the spring (usually in early June).

2. A.T. Hiker Permit Cards must be secured **in person** at Park Headquarters or Katahdin Stream Campground. Hikers must provide their actual name, trail name and an emergency contact phone number to receive a card.
3. There is no fee for a card.
4. The cards will be issued to four categories of long distance A.T. hikers: ***Northbound, Southbound, Section and Flip-Flop***. Each hiker will be required to self-determine and declare their category prior to being issued an A.T.-Hiker Permit card.
5. The available number of A.T.-Hiker Permit Cards for 2017 will be **3,150**.
6. Hikers must stop at the Katahdin Stream Ranger Station to have their permit card stamped. Hikers can obtain a yellow hiker registration sheet at this time.
7. **Permit cards will be date-stamped at the time of issue. Permit cards are valid for a period of seven days from the date stamp on the card. For example, a permit card date stamped 9/23/17 will be valid through 9/30/17.**
8. If all available 2017 permit cards have been issued, registration of A.T. hikers will end for the season, the Long Distance Hiking campsite will be closed and normal access protocols will apply to A.T. Shuttle traffic arriving at Togue Pond Gatehouse.
9. If all available cards have been issued, A.T. hikers may still complete their hike by entering the Park through the Togue Pond Gate following the same process as other day use or camping visitors.



We will monitor the effectiveness of this policy in 2017 and we will review the outcomes carefully at the end of the season and make adjustments as necessary.

PERSONNEL

Park Naturalist Jean Hoekwater remained out of service for 2016 in recovery from an injury suffered at Headquarters in January of 2015.

Chief Ranger Ben Woodard resigned in December of 2015 to take a position at Bradbury Mountain State Park. Deputy Chief Ranger Stewart Guay was appointed to the position of Chief Ranger early in 2016.

After a competitive interview process, **Georgia Manzo** was selected as Park Secretary. Georgia has brought great energy, ability and enthusiasm to the position and together with Ranger Supervisor Bruce White, they have made great improvements in the Park's volunteer program.

Acadia Tripp returned to the Park as the selection for Interpretive Specialist.

Trails Supervisor **Paul Sannicandro** resigned early in 2016. The trails management program was then reviewed and redesigned. The Trail Supervisor position was eliminated and two 42 week Trail Specialist positions were created and filled by **Alex Bradley** and former BSP Wilderness Educator **Theresa Therriault**. Working as a team, these two have made improvements in the planning and efficiency of the trails program.

In 2016, the Park added Tim Pieh to assist **Dr. Matt Scholl** as Medical Director for BSP. These Doctors generously volunteer their time to consult with Baxter State Park on medical protocols for our various levels of wilderness medical training including, in 2016, a protocol of the administration of Narcan by BSP staff.

TALKS

During the 2016 season the Director provided talks to the following:

- FBSP Annual State of the Park Address
- Claremont Hotel
- FBSP Speaker series
- Maine Outdoors Radio

ATTORNEY GENERAL JANET T. MILLS

At the October 2016 14, 2016 Baxter State Park Authority meeting, Authority member and Maine Attorney General Janet Trafton Mills read a prepared expression. Janet's eloquent and heartfelt thoughts touched everyone at the meeting and have since been shared widely. Her text:

Whatever our personal views, our responsibility is to reflect and channel the wishes of Governor Percival Baxter who entrusted us with the care of this unique Park. Many are now celebrating the establishment of a National Monument to the east. Others – both day hikers and Appalachian Trail through-hikers – are celebrating their visits to the Park in a way that disturbs others' enjoyment of the Park.. These challenges I hope we will face with a goal of harmony rather than conflict. But it is a good time to reflect on the mission and the values of Baxter State Park.

I have been thinking about the early Native Americans and their reverence for Pamola and the mountain which they named "Ktaadn." I've been thinking too about Henry David Thoreau's visits to Katahdin and Governor Baxter's enormous love for this pristine area. What did they find here? Why did they love it? What did they command us to preserve about it?

I think it was here that they found peace. And it is peace they expected us to preserve – peace for ourselves, peace for the wildlife who make this their home. They expected people who come here to do so with that same reverence, with a longing for peace.

This is why we don't have fishing derbies, or 5k races, or marathon runs along the Tote Road, or big bonfires with high pitched songs, or fireworks on the Fourth of July. The Park is its own quiet celebration. Its meaning lies in its quietude, in its broad spaces, in its deep peace.

That is a tough concept for the culture of today, when people of all ages are bombarded with bits and gigabits of information every second of our lives; when music, news and the clutter of conversation confuse our minds, making us feel as dizzy as fireflies on a dark starry night. Some days peace is almost impossible to find.

This Park is an escape from all of that, a place of respite and repair. We love it in its human silence – only the wind to cheer you on or to challenge you at the summit, only the rush of water to comfort you in the stream, only the stare of a curious moose to give you all the conversation you need.

Here isolation is a virtue, almost a prerequisite at times. The founders and heroes of this Park envisioned contemplative walks, hikes and climbs by individuals, fishing alone on small lakes and big streams, not among clingy crowds of tourists and onlookers. The Park is uniquely non commercial.

The Mountain doesn't need a play date with you. It wants you to explore on your own, without appointment or celebration; the goal is not the summit but the getting there. You do not conquer it; it accepts you.

That is why we continue to say, the Park represents a different culture, a different psyche than the national

park phenomenon, different from other places of cultural refuge. It is a place with a different mission, different values. It is not for everyone. We do not invite groups and crowds, posses of civilization through the open gate and along the rough marked trails.

The Park is a place in my mind where I can go on a deep winter's night, a picture in my soul, a thing I know will always be there, no matter how strange the storm, how wild the wind, how far the ride, how tough the seasons of a life.

It is our duty to honor it, to preserve it. - Attorney General Janet Mills, BSPA Member, October 2016



2016 OPERATIONAL HIGHLIGHTS & OVERVIEW

CHIEF RANGER OVERVIEW

Baxter State Park Operations is comprised of the Maintenance group, Trail Crew group and Rangers at all levels. We are 47 strong in the summer's busy season and shrink to 10 in the dead of winter. These different groups come together as a competent team to tackle emergencies, special projects, general park maintenance, public relations and whatever else is necessary to ensure that they preserve and protect Baxter State Park.

The winter of 2015-2016 was remarkable in the sense that was the first winter in over two decades that rangers were not able to create a winter hauling trail from South Branch Pond to Russell Pond. We did get snow, but with periodic thaws, boggy and typically wet areas did not get a chance to properly "set up". Fortunately, it is a matter of procedure that BSP backcountry campgrounds are a year ahead with supplies. Adherence to this procedure helped ensure that we were not at a deficit in items such as propane gas and toilet paper.

Spring, summer and fall brought an exceedingly busy schedule for Operations staff. Rangers, Maintenance Crews and Trail Crews alike rose to the challenge and accomplished more than the Park has seen in over 25 years. Their efforts are commendable. Descriptions in the Director's summary above and the Maintenance and Trails summary below illuminate the bulk of these projects; some were quite extensive.

With a shallow snowpack leading up to our warm busy season, the physical Park was not equipped to weather an extended period of minimal rainfall. Water levels on streams and lakes were low and much of Maine was in drought. With extended fair weather comes increased day use activities in BSP. Park usage was up about 7% in 2016. Surprisingly, search and rescue activities in Baxter did not follow the same trend. Park staff affected numerous rescues. When viewing a 10 year average, we endured a 30% rise in rescue activity. It is worth noting that the fair weather, while it surely contributed to higher rescue and general activity, also contributed to the heightened accomplishments in maintenance.

2016 finished out with a reassuring resurgence in "old fashioned" Maine Winter. Thanks to all Operations staff for their contributions, dedication and hard work.

2016 MAINTENANCE REPORT

Listed below are the combined efforts of BSP personnel to safely maintain the park's physical and natural resources . These accomplishments were completed with varied skill sets, specific talents and local contractors.. The diversity of maintenance throughout the park will continue to be a challenge as structures age, communications become the "norm" and energy is captured with minimal environmental impact. As the maintenance team strives to meet these needs we will remain flexible to upcoming requirements.

HEADQUARTERS RENOVATIONS

- Men's and Women's bathroom floors, installed vinyl floor tiles and installed handicap accessible sinks
- The primary staircase leading to the administration offices was upgraded to a commercial grade stair tread.
- The 2nd floor hallway received new vinyl floor tile combined with improved lighting and furniture re-location.
- The Reservation office was reorganized with an additional office.
- The 1st floor Administration Conference room was moved to the 2nd floor.
 - Walls and ceiling were repainted combined with new doors and lighting.
- An upgrade to the Fire Alarm system was installed.
 - This new system has single pull stations to alarm the building with horns and strobes.
- The Chief Ranger's office had a new countertop installed.
- The west side Fujitsu heat pump was replaced due to compressor failure.

STOREHOUSE IMPROVEMENTS

- The garage area was divided to gain additional storage for clothing.
 - This area was insulated, walls/ceiling sheathed, painted, new electrical wiring and LED lights completed this upgrade.

TOGUE GATE SOLAR PROJECT

This new solar system is capable of producing 12k watts per day based upon 4.2hrs of sunshine. Pole mounted, 12pc, 250 watt solar panels on this array produce 3K watts per hour. A Sturdi-Bilt building houses the battery system, solar controller and electrical components for the Ecogen 6K Generac generator.

There were two steel culverts on the roadway which needed to be replaced prior to installing 600' of cable to the Togue Gate House. Installed were two 36" plastic culverts.

KATAHDIN STREAM FOOTBRIDGE REPLACEMENT

The decision was made to relocate the footbridge upstream. 2 concrete waste blocks were installed, per side, approximately 41 feet apart. A center beam from a rail car was fabricated to accept 6ft cedar decking. A bi-pod, winches, rollers, combined with anchoring devices allowed the beam to be placed onto the waste blocks successfully. After the two entrance ramps were constructed the entire surface was decked over with 4" cedar. Railings were installed at 42" to complete this project.

ROARING BROOK CULVERT REPLACEMENT

The previous culvert spillway on the northern culvert created a scour hole which needed to be addressed. The two new culverts are 11ft wide, 42ft long. Both installations were placed at grade specs which allows natural flow of the brook. The roadway had scheduled closures to allow for uninterrupted progress.

The multiple wide loads combined with heavy equipment required an abnormal amount of escorted trips through the north end and south end.

KIDNEY POND RANGER CAMPS

We purchased two 14" x 32" buildings from Hill View Mini Barns. The basic building components were prefabbed in Etna and delivered via trailers to the work site. The narrow roads within the park prevented the entire buildings from being delivered assembled. A field crew from Hill View assembled both building within 3-4 days. These two camps will be ready for occupancy May 2017.

Previous discussions led to the removal of the Kitchen Camp and the concrete Shower facility at Kidney Pond Campground. After the interior material was removed, roofing material disposed of, the buildings were torn down.

NESOWADNEHUNK BUNKHOUSE

A new 8 person bunkhouse was purchased from Katahdin Cedar Log Homes. This building reflects the similar structure located at South Branch Campground. The occupied space is 18' x 24' with a 6' porch.

The site prep work was easily accomplished with BSP staff because the gravel pit is only minutes away.

TBF RANGER CAMP ROOFING REPLACEMENT

Asphalt roofing removed, radio tower re-located and metal roofing installed.

SOLAR BATTERY REPLACEMENTS

Replaced batteries at Abol Ranger Camp, Katahdin Stream Ranger Camp and Matagamon Gate

SFMA HEMLOCK CAMPS

The two small camps require continual leveling due to freeze/thaw action. Ongoing we will replace sill posts with knee walls resting on concrete cookies. This approach will distribute the heaving to the entire building versus specific areas.

SFMA NORTH CAMP

Replaced PVC supply piping with Pex. The PVC had several breaks and over time became unreliable.

TOGUE POLE BARN REORGANIZATION

This area was organized and crusher dust material distributed throughout the floor area.

ABOL SERVICE AREA REORGANIZED

Inventory of the custom sawn cedar resulted from this effort and placement of future material will be easily identified. Excess culvert material is also within this location.

SCREENED GRAVEL

The East Branch pit had 1000 cubic yards screened and Nesowadnehunk pit had 1500 cubic yards screened (completed by local contractor).

ROAD GRAVELING

Roaring Brook Campground parking lot and lean-to entrances had multiple loads of gravel spread. Abol Hill received multiple loads due to erosion. Areas between Abol Campground and Katahdin Stream where culverts were noticeably visible were recovered.

Purchased Two Pick-up Trucks and One Snowmobile
Propane Stove Replacement at RB Ranger Camp
Propane Hot Water Tank Replacement Abol Field Camp

TRAIL MAINTENANCE OVERVIEW 2016

TRAIL SPECIALISTS

Two Trail Specialists were hired in the Spring of 2016. Working as a team, these two positions are managing the Park's trail work contracts with the Maine Conservation Corps, as well as conducting trail inventory work, scoping out relocation and other trail project work, and organizing volunteer projects on Park trails.

Theresa Therriault graduated from the University of Maine in 2015 with a B.S. in Parks, Recreation, and Tourism. She has experience working on a Field Team with the Maine Conservation Corps, and is a former Wilderness Educator at Baxter State Park.

Alex Bradley has an A.A.S. in Adventure Recreation from Washington County Community College, and a B.S. in Environmental Recreation from the University of Maine at Machias. He has an extensive trail work background, and has worked for the Maine Conservation Corps, Nevada Conservation Corps, and the Rocky Mountain Youth Corps.



MAINE CONSERVATION CORPS

Baxter State Park contracted team leaders and six crews from the Maine Conservation Corps, for a total of 20 weeks of trail work. The Summer season was focused mainly on continued hardening of the Abol Relocation, blowdown patrols, and some bog



bridging replacement in the North End. With the slide of the Dudley Trail in early Spring, much of the Fall work was devoted to cutting a new section relocation, planned by Park staff. Hunt Trail Relocation sections were also cut in the Fall.

The chart below breaks down the work completed by the Maine Conservation Corps in 2016:

<u>Task</u>	<u>Summer</u>	<u>Fall</u>	<u>Total</u>
Blowdown (miles)	123.3	10.5	133.8 miles
Corridor Definition (miles)	44.3	1.8	46.1 miles
Stone Steps	146	54	200
Crib Steps	13	3	16
Stepping Stones	112	1	113
Check Steps	3	0	3
Waterbars Cleaned	0	75	75
New Waterbars Installed	2	1	3
Bog Bridging Installed (feet)	96	95	191 feet
Blazing (miles)	16.9	6.4	23.3 miles
Cairns Constructed	16	0	16
Sidehilling (feet)	806	0	806 feet
Naturalization (sq. feet)	335	0	335 sq. feet
Drainage Ditch Installed	2	0	2
Drainage Ditch Cleaned	1	0	1
Retaining Wall Constructed	5	1	6
Riprap/Armoring Structure	2	2	4
Turnpike	1	0	1
New Trail Cleared (miles)	0	2.5	2.5 miles

MAINE TRAIL CREW

The **Maine Trail Crew (MTC)** spent 700 hours working on the annual upkeep of water delineation structures on the Hunt Trail (AT). This season's crew installed 55 stepping stones and 8 stone waterbars on the section of trail just above Katahdin Stream Falls. 2016 Trail Volunteer Groups

APPALACHIAN MOUNTAIN CLUB

The **Appalachian Mountain Club** sent an enthusiastic group of volunteers to the Park to volunteer on the Wassataquoik Lake Trail. They spent a week replacing bog bridging, painting blazes, and clearing corridor.



MAINE APPALACHIAN TRAIL CLUB

The **Maine Appalachian Trail Club** maintainers cleared corridor and cleaned out waterbars on the A.T. in the Park. Their annual trail work and monitoring of the condition of the Appalachian Trail within the Park boundary is a great help to operations.



RELOCATION EFFORTS

ABOL TRAIL

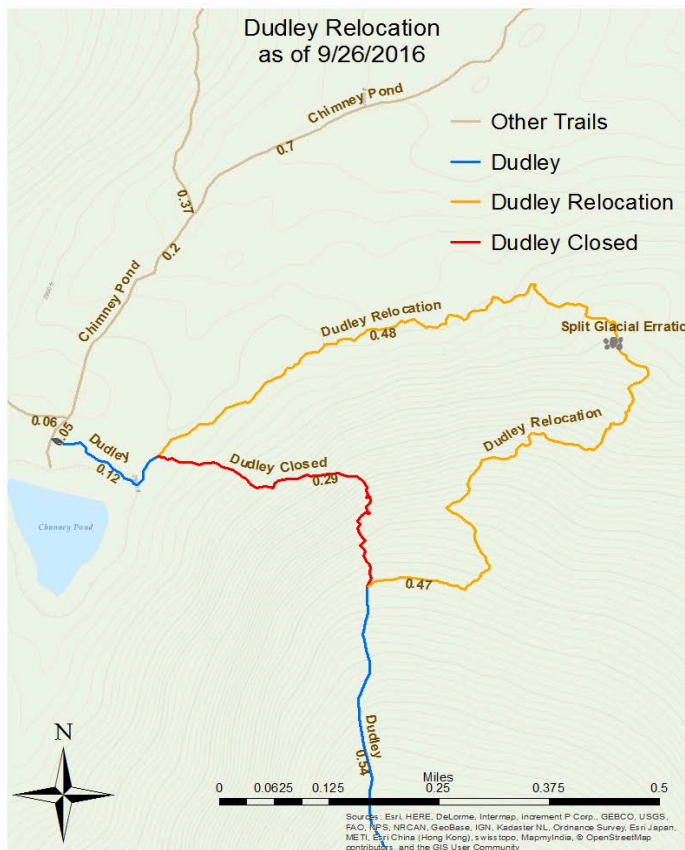
After the significant movement of rocks, materials and debris down slope from the upper reaches of the Abol slide to the lower slopes, this iconic and popular

Katahdin-access trail was closed in 2013 to hiking. The slide movement had resulted in many unstable rocks in and along the trail corridor. Trail stabilization efforts continued into 2016, with the relocation route opening to

the public on July 1, 2016. Remaining necessary stone structures will be constructed in 2017.

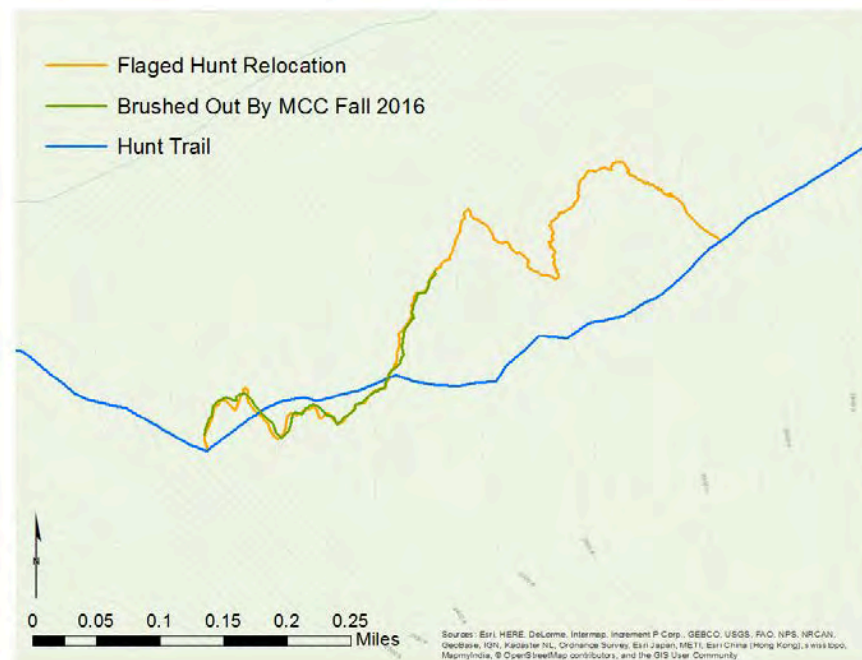
DUDLEY TRAIL

In early Spring 2016, a rock and debris slide caused a section of the Dudley Trail (above Pamola Caves) to be obliterated. The Dudley Trail was closed indefinitely, and Park staff collaborated to assess the damage and plan for a section relocation to bypass the damaged area of trail. In the Fall, the Maine Conservation Corps brushed out the new section of trail. Construction of stabilizing rock structures will commence in 2017.



HUNT TRAIL

Approximately eight tenths of a mile of the Hunt Trail is currently being relocated, due to major erosion and trenching issues in the current trail location. As the map to the right displays, some of the brushing out commenced in the Fall. The trail corridor will finish being brushed out in 2017, and rock work will commence on the relocated sections.



SEARCH AND RESCUE



SEARCH AND RESCUE SUMMARY 2016

Date	Age	Gender	Location	Problem
3/3/2016		M	Rum Mountain Road	Lack of experience, cold
3/13/2016	26	M	Pamola Cliffs	Shoulder injury
5/29/2016		M	Trout Brook Farm	Dizzy, nauseous
6/1/2016		F	Kidney Pond	Hand sprain
6/10/2016	45	M	Cathedral Trail	Knee injury
6/10/2016	23	M	South Branch Pond	Thumb injury
6/11/2016	29	F	Pamola Peak	Guillain Barre Syndrome symptoms
6/11/2016		F	Hunt Trail	Ankle injury
6/17/2016	23	M	BSP Tote Rd	Head injury
6/23/2016	7 hikers		Katahdin Stream Campground	Fatigue
6/24/2016		M	Katahdin Stream Hunt Trail	Ankle injury
6/27/2016		M	Katahdin Stream Campground	Burn
6/29/2016	20	F	Hunt Trail	Laceration
6/30/2016	28	M	Chimney Pond	Exhaustion
7/1/2016	63	F	Lower Saddle Trail	Knee & head contusions
7/1/2016	25	F	Saddle Trail	asthma attack
7/2/2016	63	M	Katahdin Stream Campground	Unresponsive, unconscious
7/3/2016	61	M	Knife Edge	Pain in wrist, small cuts
7/6/2016	48	F	(Upper) Saddle Trail	Ankle injury
7/6/2016	59	M	Katahdin Stream Falls	Fainted
7/8/2016	?	M	Blueberry Ledge Trail	Overdue hiker
7/18/2016	72	F	Hunt Trail	Overdue Hiker
7/20/2016	80	M	Chimney Pond	Exhaustion
7/25/2016	53	F	Hunt Trail	Exhaustion/Dehydration
7/30/2016	49	F	Chimney Pond	Ankle injury
8/4/2016	32	M	Chimney Pond	Irritation of eye and itching

Date	Age	Gender	Location	Problem
8/5/2016	25	F	Daicey Pond (AT)	Ankle injury
8/4/2016	7	F	South Branch Pond	Snake bite
8/4/2016	19	F	Wassataquoik Lake	Cut on foot
8/7/2016	53	F	Doubletop Mountain	Ankle injury
8/8/2016	?	M	Hunt Trail	Hypothermia
8/10/2016	16	F	Center Ridge Trail	Ankle injury
8/11/2016	14	M	Katahdin Stream Falls	Knee Injury
8/11/2016	60	F	Chimney Pond Campground	Overextended hike, bruises, scrapes
8/13/2016	31	M	Abol Trail	Shoulder injury
8/15/2016	58	M	Saddle Trail	Chest/arm injury
8/18/2016		F	Sentinel Trail	Ankle/knee injury
8/18/2016	72	F	Hunt Trail	Wrist injury
8/19/2016	21	M	Cathedral Trail	Arms/Legs injury
8/19/2016	45	F	Cathedral Trail	Back injury
8/20/2016	14	F	Hunt Trail	Ankle injury
8/20/2016		M	Ledge Falls	Head injury
8/21/2016		M	AT - south of Nlagara Falls	Cramping/dehydration
8/24/2016	61	M	Chimney Pond	Exhaustion
8/26/2016	69	F	Katahdin Stream	Broken ribs
8/27/2016	28	F	Abol Trail	Cramping, dehydration
8/28/2016	39	F	CP Trail - N. Basin Cut-off	Knee lacerations
9/3/2016	19	F	Hunt Trail	Chest pain, POTS flare-up
9/3 & 9/4/2016	40 & 41	F	Chimney Pond	Fatigue, dehydration
9/6/2016	31	F	Helon Taylor Trail	Foot injury
9/7/2016	65 or 69	M	Abol Trail	Dehydration/weak
9/9/2016	52	F	Katahdin Stream	Shoulder injury
9/11/2016	24	M	Hunt Trail	Dislocated finger
9/13/2016	70	M	Hunt Trail	Gastrointestinal problems

Date	Age	Gender	Location	Problem
9/16-17	?	F-2	Abol Trail	Exhaustion, cramps
9/16	57	F	Hunt Trail	Exhaustion, atrophy
9/17	81	M	Hunt Trail	Knee injury
9/23	70	F	Doubletop Mountain	Head injury
9/23	65	M	Chimney Pond Campground	Cold, weak, nauseous
9/22-23	38	M	Chimney Pond Campground	Exhaustion
9/26	33	M	Pamola/Helon Taylor Trail	Finger pain
9/29	14	F	Saddle Trail	Ankle injury
10/3	25	M	Chimney Pond	Ankle Injury
10/4	58	M	Chimney Pond	Fatigue
10/5	12,11	M & F	Abol Trail	Arm/Ankle injury
10/7	31	M	Chimney Pond	Gastrointestinal problems
10/10	19	F	Hunt Trail	Asthma attack
10/20	16	M-4	Poc Rock	Multiple injuries

LAW ENFORCEMENT

BSP 2016 USAC SUMMARY

DATE	CASE#	NAME	VIOLATION	DESCRIPTION	FINE	DISPOSITION
2/22	2016-58-01	Stephen Bailey	BSP Rule #1.2	Camping in unauthorized area	\$200	Guilty
3/7	2016-58-02	Nathan Beroff	BSP Rule #1.2	Camping without a reservation	\$200	Guilty
3/7	2016-58-03	Adam Otterbach	BSP Rule #1.2	Camping without a reservation	\$200	Guilty
4/16	2016-59-01	Peter Capaldi	BSP Rule #1.2	Camping in unauthorized area	\$200	Guilty
4/16	2016-59-01	Sierra Costa-Pierce	BSP Rule #1.2	Camping in unauthorized area	\$200	Guilty
4/16	2016-59-01	Scott Geissler	BSP Rule #1.2	Camping in unauthorized area	\$200	Guilty
5/26	2016-53-03	Yi Shang	BSP Rule #2.2	Child under 6 above timberline	\$200	Guilty
5/26	2016-53-03	Yi Shang	BSP Rule #2.2	Hiking on closed trail	\$200	Guilty
5/29	2016-59-02	David Coutts	BSP Rule #4.5	Littering	\$200	Guilty
7/13	2016-53-04	Marsha Hartz	BSP Rule 1.2	Camping without a reservation	\$200	Guilty
7/13	2016-59-04	Todd Grizzi	BSP Rule #1.2	Camp non-designated area	\$200	Guilty
7/13	2016-58-007	Christopher Fuller	BSP Rule 1.3	Failure to register	\$200	Guilty
7/20	2016-56-6	Kyle Bouchard	BSP Rule #5.5	Bicycling on a hiking trail	\$300	Guilty
7/20	2016-56-6	Kyle Bouchard	BSP Rule #3.1	No firearm in BSP Game Sanctuary		Dismissed
7/20	2016-56-6	Frank Bishop	BSP Rule #5.5	Bicycling on a hiking trail	\$200	Guilty
7/24	2016-58-008	Miren Yanci	BSP Rule #4.1	No dogs allowed in the Park	\$200	Guilty

DATE	CASE#	NAME	VIOLATION	DESCRIPTION	FINE	DISPOSITION
7/26	2016-58-009	Shannon McLaughlin	BSP Rule #1.2	Illegal Camping	\$200	Guilty
7/26	2016-58-010	Derek Tiepstra	BSP Rule #1.2	Illegal Camping	\$200	Guilty
9/3	2016-58-012	Linda Ryan	BSP Rule 2.2	Hiking a closed trail	\$200	Guilty
9/14	2016-58-016	Emerson Sykes	BSP Rule 1.2	Illegal Camping	\$200	Guilty
10/15	2016-58-021	Peter West Soren	BSP Rule 4.1	No pets in BSP	\$200	Guilty
11/19	2016-59-11	Simon Frescador	BSP Rule 2.2	Accessing closed area	\$200	Guilty
11/19	2016-59-11	Zachary Huxley	BSP Rule 2.2	Accessing closed area	\$200	Guilty
11/19	2016-59-11	Pierre Caron	BSP Rule 2.2	Accessing closed area	\$200	Guilty

INFORMATION & EDUCATION DIVISION

BSP Naturalist - Jean Hoekwater

BSP Interpretive Specialist - Acadia Tripp

BSP Visitor Center Representatives -

Brian Johnston, Bob Gonya, and Kathy Winslow

2016 Wilderness Educators - Elise Panzner and Justine Rumaker

2016 A.T. Steward - Jonathan Schmidt



“Never stop learning, because life never stops teaching.” - Unknown

I&E 2016 SUMMARY



The Information and Education division underwent staff changes after Morgan Taylor, former Interpretive Specialist, stepped down from her position in the beginning of the year. Morgan had held this position since 2013 and was always a positive contributor to the educational team. She made great efforts to provide a variety of evening programs to park visitors and supervised the seasonal Wilderness Educators with careful thought and decisiveness. Thank-you Morgan for all your hard work and commitment to the mission of Baxter State Park!

After a competitive hiring process, Acadia Tripp was hired as the new Interpretive Specialist. She assumed her duties on April 4, 2016, shortly before the new Wilderness Educators Interns arrived for the season. Acadia was a six month Wilderness Educator in 2012, after which she traveled west and worked at Dead Horse Point State Park in Moab, Utah as the Park Naturalist. She holds a Bachelor's Degree in Environmental Recreation and Tourism Management from the University of Maine at Machias.



All three Wilderness Educator Interns arrived on May 15th for the full six month season at Baxter State Park. Unfortunately, one intern was unable to fulfill the season's contract, so the I&E Division was narrowed down to a small but determined and highly capable team. Even as a small group, I&E provided a continual presence on the trails of Katahdin, as well as other areas of high visitor concentration including campgrounds,



the Appalachian Trail, on field patrols, and in popular wildlife areas. There was also a variety of evening and children's

programs provided throughout the season and several outreach events that were facilitated. The Park's Visitor Center had more visitors recorded than any year prior, with over 23,000 people of all ages stopping to ask questions and receive helpful information. It was a busy but highly rewarding season for the Information and Education Division!

SUMMER EVENING PROGRAMS - DATES AND DESCRIPTIONS

July 6th at South Branch Pond: Stewardship of Baxter State Park

Have you ever thought about protecting and preserving Baxter State Park? Join Campground Ranger Gabe Williamson to learn what you can do to be a steward of Governor Baxter's precious gift to us all! Stewardship is the careful and responsible management of land that is entrusted to one's care, such as the stewardship of Baxter State Park.

July 13th at Kidney Pond: Search and Rescue at Baxter State Park

Spend some time with Baxter State Park's Chief Ranger, Stewart Guay. Listen to Stewart share his experiences of search and rescue incidents in the Park. Visitors will gain a better understanding of the rescue process while discussing stories from the past during an open exchange of information.

July 20th at South Branch Pond: Canoeing Workshop

Join Ranger Mike Winslow for a fun afternoon of canoeing! Learn about different strokes and how to use them in certain situations. Come prepared for all weather. Life jackets and paddles will be provided. Insect repellent and sunscreen are recommended.



August 3rd at Katahdin Stream: Campfire Cooking Demonstration

Come join Rick Bray, frequent Baxter State Park visitor and volunteer as he demonstrates camp cooking over an open wood fire. He brings more than 10 years experience as the cook for his Civil War re-enacting unit, where he often feeds in excess of 45 soldiers over the open flame. Sample some of Rick's camp fare and take some tips from his 55 years of experience as a Baxter Park camper and campfire cook.

August 10th at Katahdin Stream: Packing Essentials for Baxter State Park

Why do the ten packing essentials deserve a spot in your day pack? Join Ranger Edward Pontbriand as he discusses the packing essentials and learn why each item will ensure a safe and enjoyable hike in Baxter State Park.

August 24th at Daicey Pond: Life of a Logger

Join Interpretive Specialist, Acadia Tripp, for a late afternoon hike to Toll Dam to learn about the history of logging in Baxter State Park, as well as the dangers of river driving in Maine and the background of the logging industry in the Northwoods of Maine. View some historical photos during this engaging hike along Nesowadnehunk Stream!

August 31st at Katahdin Stream: Wilderness On Its Own Terms

Wilderness offers challenge and beauty and also risks. Ever wonder about deaths in the Park and how they happened? The Park Director, Jensen Bissell, will recount the history of fatalities in Baxter State Park and their causes, dating back to the late 1800's.

CHILDREN'S PROGRAMS - DATES AND DESCRIPTIONS

July 2nd at Daicey Pond: Wild Moms and Respect

Baxter State Park is full of Wildlife! Learn about proper wildlife viewing safety. Come for some fun and make binoculars. Maybe we will even spot some wildlife!

July 9th at Daicey Pond: Wild Canines

Baxter State Park is home to two species of wild canines – the Eastern Coyote and the Red Fox. Come learn the basics about these dog-like animals, how to identify their tracks, and create a mask of your favorite! We will also discuss the ancestor to our Eastern Coyotes, the Gray Wolf, and see if you can howl like a wolf! If you are a dog lover, you do not want to miss this event!

July 23rd at Kidney Pond: Pollinators and Fruits

Come learn the basics about pollinators, from bumblebees to butterflies, and why we need these critters to grow the fruits we love to eat. We will decorate our own flowerpots and plant a native seed for you to take home with you to grow into a flower in your garden! We will also sample the common fruits grown here in Maine that depend on our native pollinators!



July 30th at Daicey Pond: Tricky Tracks!

Learn to walk like a wild animal and how to identify the tracks that you see on your next adventure in the Park! Join us to create your own animal tracks bandana!

August 6th at Kidney Pond: Wild Canines

Baxter State Park is home to two species of wild canines – the Eastern Coyote and the Red Fox. Come learn the basics about these dog-like animals, how to identify their tracks, and create a mask of your favorite! We will also discuss the ancestor to our Eastern Coyotes, the Gray Wolf, and see if you can howl like a wolf! If you are a dog lover, you do not want to miss this event.

August 20th at Kidney Pond: Who Comes Out at Night?

What do owls eat in the wild? Come discover the owl meal plan by dissecting an owl pellet!

August 13th at Daicey Pond: Hiking Safety, Take a Hike!

Planning to go hiking this summer? Come learn what you will need to stay prepared and safe. Make a checklist book with us and never forget your essential items again!

August 27th at Kidney Pond: Hiking Safety, Take a Hike!

Planning to go hiking this summer? Come learn what you will need to stay prepared and safe. Make a checklist book with us and never forget your essential items again!

September 3rd at South Branch Pond: Pollinators and Fruits

Come learn the basics about pollinators, from bumblebees to butterflies, and why we need these critters to grow the fruits we love to eat. We will decorate our own flowerpots and plant a native seed for you to take home with you to grow into a flower in your garden! We will also sample the common fruits grown here in Maine that depend on our native pollinators!

September 10th at South Branch Pond: Wild Moms and Respect

Baxter State Park is full of Wildlife! Learn about proper wildlife viewing safety. Come for some fun and make binoculars. Maybe we will even spot some wildlife!

September 21st at the Millinocket Library: What's for Dinner?

Did you ever wonder what animals eat? Come join us to find out! Match the animals to the food and find some in the wild yourself!

September 28th at the Millinocket Library: Wild Canines

Baxter State Park is home to two species of wild canines – the Eastern Coyote and the Red Fox. Come learn the basics about these dog-like animals, how to identify their tracks, and create a mask of your favorite! We will also discuss the ancestor to our Eastern Coyotes, the Gray Wolf, and see if you can howl like a wolf! If you are a dog lover, you do not want to miss this event!

October 5th at the Millinocket Library: What's for Dinner?

Did you ever wonder what animals eat? Come join us to find out! Match the animals to the food and find some in the wild yourself!

October 12th at the Millinocket Library: Only on Katahdin! The Katahdin Arctic Butterfly

Do you have a soft spot for butterflies? If so, this program is for you! The Katahdin Arctic Butterfly is an endangered species that is found only on the summit of Mt. Katahdin and nowhere else in the world. Come learn about the park's efforts to protect this rare and beautiful species, and what YOU can do to help if you are on the summit. We will also create our own butterfly wings, decorated in any way you choose!



PARK OUTREACH AND MEETINGS

May 10th - School presentation Center Drive School in Orrington, Maine

May 29th - The Summit Project at Katahdin Stream Campground

July 13th - Group presentation at Katahdin Health Care Nursing Home in Millinocket

August 17th - Group presentation with KidsPeace from East Millinocket at Park Headquarters

August 20th - Event booth at the Penobscot River Festival in Medway

September 17th - Event booth at the Trails End Festival in Millinocket

October 1st - Meeting with Geri Vistein, conservation biologist of Maine

October 18th - Appalachian Trail season overview with ATC in Milo, Maine

TRAININGS OFFERED AND RECEIVED

May 17th - Welcome and BSP Orientation with Wilderness Educators

May 18th - Workplace harassment training with Business Manager Christine Theriault

June 7th - Field Training at Katahdin Stream with Campground Ranger Julianna Hansen

June 15-16th - Wilderness First Aid Training

June 21-22nd - Leave No Trace Training in Acadia National Park

June 23-25th - Alpine Stewardship and Mountain Patrol Training at Chimney Pond

June 26th - Overview of Search & Rescue and Wildfire Suppression with Ranger Rob Tice

July 6th - Authority of the Resource with Gabe and Marcia Williamson at South Branch Pond

July 19th - BSP Staff Visit to the Appalachian Trail Visitor Center in Monson, Maine

July 1, 8, 20, and 27th - BSP Visitor Center Orientation for Wilderness Educators

October 19th - SFMA Tour with Forester Deidre George

FIELD PATROLS

(Not included are the weekly patrols of Katahdin by Wilderness Educators and the daily patrols of the Appalachian Trail by the AT Steward)

June 3rd - Trout Brook Mountain

June 9-11th - Chimney Pond and Saddle Trail of Katahdin

June 23-25th - Chimney Pond and Saddle Trail of Katahdin

June 21st - Doubletop Mountain

July 15th - South Turner Mountain

August 3-4th - Chimney Pond

August 29th - Foss and Knowlton Trail and Appalachian Trail

September 2nd - Five Ponds Trail

October 6th - Katahdin Lake Trail

October 19th - Wadleigh Mountain



Other trails patrolled throughout the season by the Wilderness Educators include: Burnt Mountain, Sentinel Mountain, The Owl, Mount OJI, Blueberry Ledges Trail, Russell Pond Trail, and Wassataquoik Stream Trail.

WILDNOTES

The Park ordered 26,000 copies of Wildnotes to be printed for the 2016 season. Wildnotes serves as an educational resource and is distributed to all Park visitors entering the Park through the Gatehouses and copies are also available at nearby local stores. The articles featured important information regarding Leave No Trace, updated

rules and regulations, safety precautions, preventing the spread of invasive species, Appalachian Trail updates, trail and campground overviews, and other helpful details. Park Director Jensen Bissell highlighted the management and independent funding of the Park, while also including updates on the Abol Trail and seasonal maintenance projects in his front page story. A featured article discussed the Fire of 1977, which burned approximately 3,500 acres in the Park and left one ranger severely injured in an unfortunate accident. This article also features vintage photographs and newspaper clippings, providing an interesting read for Park visitors!

VOLUNTEERS

The Junior Ranger Booklets were created by a dedicated team of individuals, who again helped to copy, staple, and fold hundreds of booklets in preparation of the season. Thank-you to Laurie Rich, Robin Stevens, Diane Freelove, Katrina Kinkead, and Marcia Williamson for ensuring that we would never run out of copies of these much favored and appreciated children's activity books!

Julianna Hansen, Katahdin Stream Campground Ranger, volunteered to provide two children's programs in the Park. In 2012, Julianna created and facilitated several programs as a Wilderness Educator Intern, which proved to be useful again this season! Her past experience working with children makes her programs especially engaging and enjoyable for all those involved.

Betsy Dawkins, Nesowadnehunk Campground Ranger, assisted Acadia Tripp with the removal of Purple loosestrife, near Nesowadnehunk Lake Dam in August. Her efforts to dig the root systems from the aquatic habitats on a humid summer day were much appreciated! For more details about this invasive plant, please read the section regarding Purple loosestrife also included in this report.

ALPINE STEWARDSHIP ON KATAHDIN

The 2016 season was filled with many bright and sunny days, making it an ideal summer for hikers attempting to summit Katahdin. This meant that it was also a very busy season for Wilderness Educators Elise and Justine, who alternated weeks at Chimney Pond from July through mid-October. In prior seasons, there has been a

rotation of three interns, allowing each a two week rest period between the physically demanding job duties of mountain patrol. Due to the loss of one intern in June, Elise and Justine hiked up every other week for the entire season! Their dedication and willingness to devote so much time to alpine stewardship was very much appreciated by the Park. Their role on Katahdin not only assisted hikers in need of aid and/or information, it also ensured that the fragile resources of the mountain were protected.



Similar to prior seasons, each Wilderness Educator would assist the Chimney Pond ranger to provide morning safety and educational talks at the trail register before beginning their hike. This allows the Chimney Pond ranger to focus on incoming radio messages and reservation issues while hikers continue to be greeted and have their questions

answered. By mid-morning, the Wilderness Educator will gear up with a park-issued radio and first aid kit, as well as their food and supplies to begin mountain patrol for the day. Due to the physical demands of alternating weeks this season, it was not expected that they would reach Baxter Peak every day while on mountain patrol. Instead they were to focus on hiking within their personal limits while continuing to provide valuable education to visitors along the way.

In addition to answering visitor questions, Wilderness Educators recorded notes at five plant stations and their observations from the numbers of hikers visible from various points during their patrol. In 2016, Wilderness Educators recorded the number of hikers visible at Baxter Peak twelve times during their patrols. The highest visitor count at Baxter Peak was 130 people on August 27, 2016. Mountain patrol figures for the last 10 years can be found in the Appendix to this section of the Operational Report. Records from years previous to 2003 are available from the I & E division at Park Headquarters.

KATAHDIN ARCTIC BUTTERFLY SURVEY

On June 24, 2016, Acadia provided the annual training of alpine stewardship to Wilderness Educators, Elise and Justine. Their route began at Chimney Pond and followed the Saddle Trail to the Baxter Peak Cut-Off Trail and ended at Thoreau Springs. The objective was to complete a Katahdin Arctic Butterfly Survey on the way to Thoreau Springs, followed by a plant station report on the route back to Chimney Pond.

The weather was ideal for a butterfly count, with warm and clear days prior to and on the day of the survey. The winds were light and from the west, approximately 5-10 mph. Acadia, Elise, and Justine spread out along the trail in the hopes of rousing the butterflies along the way. Their plan succeeded, for as soon as the three turned onto the Baxter Cut-Off Trail, butterflies began to emerge from nearby krummholz areas to flutter around before landing nearby. One butterfly even landed right in front of Elise, stopping to rest on a sun-warmed rock. Several pairs were noted, their wings flickering in the air and creating small circles around each other.

We reached Thoreau Springs at approximately 2:00 pm, by which time we counted 22 Katahdin Arctics at separate locations along the trail. After stopping to rest at the trail junction, two more butterflies emerged for a total count of 24 butterflies! Although our survey was complete, we continued to enjoy the peaceful flutter of wings on our hike back to Chimney Pond. Before descending the Saddle Slide at 4:00 pm, two butterflies circled us before settling in nearby alpine flora. It was an unforgettable day for us all on the Tablelands of Katahdin!

Two more Katahdin Arctic Butterfly Surveys were completed this season, both by Wilderness Educator Elise Panzner. On June 30th, Elise counted one butterfly near Thoreau Springs and a second along the Baxter Peak Cut-Off Trail. On July 13th, she counted two more in similar locations. Both days were partly sunny, slightly windy, and with warm temperatures.

MAINE AUDUBON LOON COUNT



It was a bright and sunny day on the morning of July 16th, the day of our annual Loon Count for the Maine Audubon Society! Twenty individuals, ranging from volunteers to BSP staff, joined us this year to take part in the count and eighteen bodies of water were surveyed. Wilderness Educator Justine Rumaker coordinated the effort this year and compiled the results. Twenty-three adults and five chicks were counted altogether, which indicates a stable and healthy loon population for the Park. Most volunteers paddled the waters or searched from the shoreline with binoculars for the half hour duration of the count. It is always a treat to behold the contrasting colors of a loon, hear its echoing song, or even be fortunate enough to see a chick following in the wake of its mother. A table listing of the volunteers and more detailed results is included in the Appendix of this report.

MOOSE PATROL

There are many locations in Baxter State Park where visitors have access to observing wildlife in their natural setting. A prime example is found at Sandy Stream Pond and Stump Pond, where moose are known to frequent the area. The discussion to provide



education, and therefore wildlife protection, began in 2002 after visitors were consistently having negative impacts upon the environment and wildlife.

Sandy Stream Pond is unique because it is a prime feeding location and water source for moose, but it is also in close proximity to a popular campground and several highly-used trails, including a Katahdin trailhead. This creates a unique situation that requires moose patrols do be done routinely throughout the season by staff members. One of the main responsibilities of Wilderness Educators is to patrol the areas surrounding these two ponds and the known stopping locations for visitors and photographers. Our main goals during patrols are to be unobtrusive to the visitors' experience and to be available to answer questions, but to also serve as a primary source of protection for wildlife.

Sandy Stream and Stump Ponds were patrolled from June through October in 2016. Wilderness Educators did moose patrols for a total of eighteen days. There was little conflict to report this season between wildlife and visitors because only one moose was recorded during the entire season and visitors were all observing with respect and courtesy. However, the Wilderness Educators continued to provide a positive and informative presence in these wildlife areas. Approximately 142 visitors were encountered during patrols and 24 parties were provided with additional information and education. More information about Moose Pond Patrols can be found in the I&E Appendix of the Operational Report.

PURPLE LOOSESTRIFE

Purple loosestrife (*Lythrum salicaria*) is an invasive species found in many states, including Maine. In recent years, this plant has been found near the boundary of Baxter State Park at Nesowadnehunk Lake Dam and Caribou Pit. Based upon locations it has already invaded, this plant has the potential to be found in other high-use areas of the Park, including Matagamon Lake Landing. Purple loosestrife is found in wetland ecosystems and is a threat to native species, including cattails and sedges.



Although there are different methods for controlling the invasion of Purple loosestrife, we are currently pulling the plant and its roots when it is found within or near Park boundaries. There are a few

lookalikes, including Fireweed (*Epilobium angustifolium*), Blue vervain (*Verbena hastata*), and other native species of loosestrife. Learning how to distinguish between Purple Loosestrife and other plants always presents the opportunity for seasonal employees to learn more about plant identification in the Park.

In July, Acadia provided field training to the Wilderness Educators to properly identify, remove, and dispose of Purple loosestrife. From mid-July through September, the I&E team did regular field patrols at Matagamon Lake Landing at the north entrance, Caribou Pit just before the Togue Pond Gatehouse, and at Nesowadnehunk Lake Dam.

During one of these patrols, Acadia and Justine found four plants in bloom near Nesowadnehunk Lake Dam. On August 16th, Campground Ranger Betsy Dawkins volunteered to help Acadia to remove these invasive plants and their root systems. The roots were very well established and intertwined with other aquatic root systems, but Acadia and Betsy persevered and removed as much of the bulbous roots as possible. The I&E Division will continue to do routine patrols next season in the hopes of preventing the invasion of Purple loosestrife in Baxter State Park.



VISITOR CENTER

As noted earlier, the Park's Visitor Center served over 23,000 visitors this season—a higher number recorded than any other year! The efforts of Visitor Center Staff provided assistance to visitors and protection of Park resources. Visitors consistently remain grateful for the availability of a visitor center and the opportunity to purchase maps and trail guides before beginning their adventure. Thank-you Brian Johnston, Bob Gonya, and Kathy Winslow for your excellent customer service and sharing your knowledge with so many visitors this season!

RESEARCH

Research and inventory in the Park by outside parties in 2016 included the following:

KATAHDIN VEGETATION COMMUNITIES

Principals: Don Hudson, Ph.D ,and Charlie Cogbill,Ph.D based out of Chimney Pond Crew Camp. Expected party size 5 P. Dates: 3-4 nights at CPCC sometime between June 6-June 25 OR early July, TBD.

WOOD TURTLE POPULATION DYNAMICS

Principals: Derek Yorks and Derek Moore, Maine I.F. & W., possibly needing housing at Trout Brook Farm apartment. Expected survey party size 2-4 P. Dates: May surveys as weather/field schedules allow, September/October surveys as weather/field schedules allow, TBD.

SURVEYING TALUS SLOPES FOR BATS

Principal Corey Mosby, ME I.F. & W., based out of Trout Brook Farm apt and Chimney Pond Crew Camp. Dates: TB.

SPRUCE GROUSE STUDY

Principal Joel Tebbencamp U ME Orono, study based primarily in the SFMA. Dates:May-September ongoing.

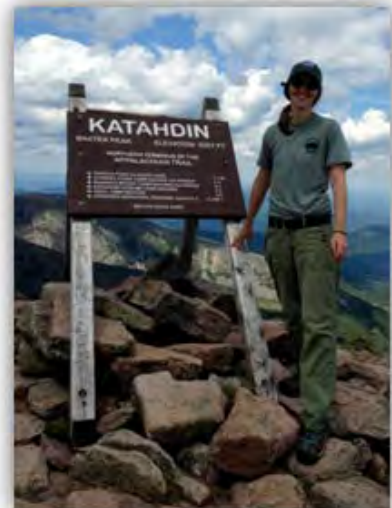
INVENTORY OF INSECT SPECIES IN 2013 TORNADO AREA

Principal: Shawn Fraver, based in SFMA, Dates: ongoing.

SEASONAL STAFF

Elise Panzner: Six Month Wilderness Educator Intern

Elise Panzner graduated from Salem State University in Massachusetts with a degree in Biology and a concentration on environmental conservation. Her commitment to environmental biology is evident in her work experience for organizations that include the Audubon Society, Cat Cove Marine Laboratory, and Wolf Hollow, and non-profit educational facility. In many of her positions, she has taught children of all ages about wildlife and ecology. During her internship at Baxter State Park, Elise educated and inspired visitors about the importance of wilderness and the protection of Park resources. With a keen eye for detail, Elise photographed the string fencing on the Tablelands, which documented the revegetated areas near Thoreau Springs. Elise also provided six engaging children's programs this season with themes that centered on wild canines and pollinators found within the northern woods.



Justine Rumaker: Six Month Wilderness Educator Intern

Justine Rumaker recently graduated from the University of Delaware with a degree in Wildlife Ecology and Conservation. She also has an Associate's Degree in Veterinary Technology from Camden County College in New Jersey. Justine has extensive knowledge of both customer service and animal care from working at a Veterinary Hospital and a local zoo in Maryland. As a child, she spent many summers camping with her family at Abol Bridge Campground, and her memories of exploring the Park instilled a desire to return to Maine. Her "strong passion and calling to wilderness" led her back to Baxter



State Park where she continued to fulfill her dream of working in the great outdoors. Justine coordinated the Loon Count survey this year, used her artistic skills to create interpretive displays, and facilitated six children's programs throughout the season. Her program themes focused on wildlife biology with consideration to the principles of Leave No Trace.

Jonathan Schmidt: Appalachian Trail Steward

Jon Schmidt returned to Baxter State Park for his second season as the Appalachian Trail Steward. Prior to educating visitors along the Appalachian Trail, Jon worked for the Park for two seasons with the trail crew, first in 2010 as a Trail Crew Intern, and again in 2012 as a Trail Crew Leader. Jon has also occasionally served as a park volunteer. He has hiked and performed maintenance along many of the trails in the Park. Originally from North Dakota, he now lives in Bowdoin, Maine, where he resides with his wife and daughters.



Brian Johnston, Bob Gonya, & Kathy Winslow:

Visitor Center Customer Service Representatives



Brian Johnston returned for his seventh season at the Visitor Center, and he continued to provide exceptional advice and customer service to visitors of the Park. Brian's knowledge and experience from working in the Park for many years makes him a valuable member of the Information and Education Team. Bob Gonya also worked at the Visitor Center for his fifth season, providing much needed assistance to people of all ages. After Bob left in August to retire from the Park, Kathy Winslow generously offered to fill the

vacant position for the remainder of the season. As a resident of Millinocket, Kathy is very familiar with the Park and all of its opportunities and proved to be an excellent addition to the Visitor Center.

I&E SEASON HIGHLIGHTS

THE PLANTS OF BAXTER STATE PARK BOOK RELEASE

The Plants of Baxter State Park, by Glen H. Mittelhauser, Jensen Bissell, Don Cameron, Alison C. Dibble, Arthur Haines, Jean Hoekwater, Marilee Lovit and Aaron Megquier, was released on August 23, 2016 by the University of Maine Press in Orono. The much anticipated release of this book was celebrated in three locations:

1. The University of Maine Fogler Library on August 23rd
2. Gulf of Maine Books in Brunswick, Maine on August 24th
3. The Millinocket Memorial Library on August 30th

The five year effort to publish this book was led by botanist Glen Mittelhauser and assisted by Baxter State Park staff, as well as many scientists and independent researchers. Together, they documented 857 plant species within Baxter State Park. The book includes over 2,000 color photographs, illustrated keys, a comprehensive glossary, index, and many other user-friendly features. This will be an invaluable educational tool for both Park visitors and staff members and will certainly be put to good use in the years to come!

STRING FENCING PHOTOGRAPHY AT THOREAU SPRINGS

Over a decade ago in 2002, Park staff began to discuss the significant and negative hiker impacts along the trails near Thoreau Springs of Katahdin. The intersection of the Hunt Trail and Abol Trail in the rare Sedge Meadow Community was increasing in width and severely impacting the alpine species. Baxter State Park staff, BSP Authority members, and the advisory committee discussed several options to improve the trail conditions, and therefore provide protection of this very rare community found on the Tablelands. After much consideration and input from Park staff, advisory members, and ecologists, it was decided that the trails would remain the same and “string fencing” would be established along a portion of these trails.

Photos were taken in 2002 in nine locations along the Hunt Trail on Katahdin before the string fencing was established to document the improvement along the trail and anticipated revegetation in the years to come. Park staff constructed the string fencing in 2006, and extended it in 2009, creating approximately 0.75 miles of protected trail in the sedge meadow. Photos were taken in 2011 in the same original nine locations, and again in 2016 by Wilderness Educator Elise Panzner. The three series of photographs document the significant improvement and revegetation in this area of concern.

According to Elise, it was a highlight of her season to be asked "...to photograph the string fencing for the continued monitoring the Hunt Trail." Not only did she capture excellent photographs, she also provided education and answered questions from visitors who inquired about the string fencing while she was photographing the area.

It is anticipated that with the continued maintenance of the string fencing, combined with the educational efforts of Park staff, the sedge meadow will continue to revegetate. Photographs will be taken every five years to document the Park's efforts. The following set of photographs provides a sample of the evidence of trail revegetation and improvement in one of the rarest community types in the New England alpine region:





LOON COUNT DATA 2016

REGION	LAKE/POND	TOWN	ADULTS	CHICKS	ISOLATED	PAIRS	GROUP	WEEK PRIOR?
16	Abol Pond	T2R9	2	1	1	1	0	N/A
16	Big Rocky Pond	T3R10	2	1	Not Indicated	Not Indicated	Not Indicated	N/A
16	Billfish Pond	T6R9	N/A	N/A	N/A	N/A	N/A	N/A
16	Celia Pond	T3R10	N/A	N/A	N/A	N/A	N/A	N/A
16	Daicey Pond	T3R10	1	0	1	Not Indicated	Not Indicated	YES
16	Draper Pond	T3R10	0	0	0	0	0	N/A
16	Dwellely Pond	T5R10	0	0	0	0	0	NO
16	Elbow Pond	T3R10	0	0	0	0	0	N/A
16	Foss & Knowlton Pond	T3R10	N/A	N/A	N/A	N/A	N/A	N/A
16	Frost Pond	T6R9	N/A	N/A	N/A	N/A	N/A	N/A
16	Grassy Pond	T3R10	0	0	0	0	0	N/A
16	Hay Lake	T6R8 T6R9	0	0	0	0	0	N/A
16	Jackson Pond	T3R10	N/A	N/A	N/A	N/A	N/A	N/A
16	Katahdin Lake	T3R8	N/A	N/A	N/A	N/A	N/A	N/A
16	Kidney Pond	T3R10	0	0	0	0	0	YES
16	Lily Pad Pond	T3R10	N/A	N/A	N/A	N/A	N/A	N/A
16	Little Rocky Pond	T3R10	0	0	0	0	0	N/A
16	Lost Pond	T3R10	N/A	N/A	N/A	N/A	N/A	N/A
16	Lower Fowler Pond	T6R9	1	0	1	Not Indicated	Not Indicated	N/A
16	Lower South Branch Pond	T5R9	1	0	1	0	0	YES
16	Lower Togue Pond	T2R9	0	0	0	0	0	N/A
16	Matagamon Lake	T6R8	14	2	8	3	0	N/A
16	Middle Fowler Pond	T5R9	0	0	0	0	0	N/A
16	Nesowadnehunk Lake	T4R10	N/A	N/A	N/A	N/A	N/A	N/A
16	Tracy Pond	T3R10	0	0	0	0	0	N/A
16	Upper South Branch Pond	T5R9	0	0	0	0	0	NO
16	Upper Togue Pond	T2R9	N/A	N/A	N/A	N/A	N/A	N/A
16	Wassataquoik Lake	T4R9	2	1	Not Indicated	Not Indicated	Not Indicated	YES
16	Webster Lake	T6R10	N/A	N/A	N/A	N/A	N/A	YES

LOON COUNT VOLUNTEERS AND LAKES/PONDS SURVEYED

<i>Last Name:</i>	<i>First Name:</i>	<i>Lake/Pond:</i>
Dawkins,	Betsy	Dwellely Pond
Freelove,	Diane	Kidney Pond
Hamer,	Gregory F.	Wassataquoik Lake
Hanson,	Julianna	Elbow Pond and Tracy Pond
Kennedy,	Craig	Middle Fowler Pond
Levasseur,	Charity	Little Rocky Pond
Levasseur,	Dean	Big Rocky Pond
Locke,	Gerry	Lower Fowler Pond
Loome,	David	Grassy Pond
Martin,	Mike and Jan	Matagamon Lake
Porter,	Russ	Hay Lake
Rich,	Laurie	Abol Pond
Rumaker,	Justine E.	Lower Togue Pond
Tripp,	Acadia	Lower Togue Pond
Vietze,	Andrew	Daicey Pond
White,	Bruce	Draper Pond
Williamson,	Gabriel	Lower South Branch Pond
Williamson,	Marcia H.	Upper South Branch Pond

Moose Patrol 2016

Date	Weather	Location	Time	People Visible	Moose Visible	Closest Distance	Noted Behavior Issues	Total Number of Moose	Total Number of People Met	Trash	HW	Info
4-Jun	Foggy & Cloudy	Sandy Stream	8:40-9:20 AM	0	0	n/a	n/a	0	0	0	0	0
9-Jun	Rainy	Stump Pond	2:45-3:02 PM	3	0	n/a	n/a	0	3	0	0	0
5-Jul	Mostly Sunny	Stump Pond	1:30-2:00 PM	0	0	n/a	n/a	0	0	0	0	0
13-Jul	Clear & Sunny	Stump Pond	11:40-11:45 AM	0	0	n/a	n/a	0	0	0	0	0
13-Jul	Clear & Sunny	Sandy Stream	12:55-1:43 PM	0	0	n/a	n/a	0	16	0	0	0
24-Jul	Clear & Sunny	Sandy Stream	12:17-1:00 PM	0	0	n/a	n/a	0	4	0	0	1
28-Jul	Partly Cloudy & Thunder	Sandy Stream	2:35-3:15 PM	4	0	n/a	n/a	0	10	0	0	1
10-Aug	Partly Cloudy	Sandy Stream	1:25-2:58 PM	4	0	n/a	n/a	0	9	2	1	3
14-Aug	Rainy	Sandy Stream	10:20-11:00 AM	0	1	n/a - across pond	n/a	1	0	1	0	0
26-Aug	Mostly Sunny	Sandy Stream	1:45-2:35 PM	8	0	n/a	n/a	0	15	2	0	3
28-Aug	Cloudy	Stump Pond	12:44-12:47 PM	0	0	n/a	n/a	0	0	0	0	0
3-Sep	Clear & Sunny	Stump Pond	8:58-9:15 AM	0	0	n/a	n/a	0	0	0	0	0
3-Sep	Clear & Sunny	Sandy Stream	10:14-11:26 AM	0	0	n/a	Five visitors swimming	0	8	0	0	0
3-Sep	Mostly Sunny	Sandy Stream	4:30-4:30 PM	10	0	n/a	n/a	0	14	1	0	2
4-Sep	Clear & Sunny	Sandy Stream	12:05-1:20 PM	0	0	n/a	n/a	0	13	0	0	2
4-Sep	Clear & Sunny	Stump Pond	10:35-10:45 AM	1	0	n/a	n/a	0	1	1	0	1
7-Sep	Mostly Cloudy	Sandy Stream	2:25-3:15 PM	2	0	n/a	n/a	0	7	1	0	1
9-Sep	Mostly Sunny	Sandy Stream	11:00-11:55 AM	0	0	n/a	n/a	0	3	0	0	0
9-Sep	Mostly Cloudy	Stump Pond	10:05-10:15 AM	0	0	n/a	n/a	0	0	1	0	0
13-Sep	Mostly Cloudy	Sandy Stream	9:25-10:06 AM	6	0	n/a	n/a	0	11	0	0	2
15-Sep	Mostly Sunny	Stump Pond	9:33-9:47 AM	0	0	n/a	n/a	0	0	0	0	0
15-Sep	Mostly Sunny	Sandy Stream	10:45-11:24 AM	6	0	n/a	n/a	0	12	1	0	1
16-Sep	Clear & Sunny	Stump Pond	9:27-9:34 AM	0	0	n/a	n/a	0	0	0	0	0
16-Sep	Clear & Sunny	Sandy Stream	10:35-11:20 AM	0	0	n/a	n/a	0	3	0	0	1
18-Sep	Cloudy & Light Rain	Stump Pond	9:15-9:24 AM	2	0	n/a	n/a	0	2	0	1	1
18-Sep	Cloudy & Light Rain	Sandy Stream	10:35-12:00 PM	0	0	n/a	n/a	0	1	0	1	0
9-Oct	Cloudy	Stump Pond	9:25-9:32 AM	0	0	n/a	n/a	0	0	1	0	0
9-Oct	Cloudy & Light Rain	Sandy Stream	10:19-11:13 AM	0	0	n/a	n/a	0	13	0	0	1
10-Oct	Partly Sunny	Sandy Stream	2:00-3:00 PM	0	0	n/a	n/a	0	8	0	0	5
Total:				46	1			1	153	11	3	25

MOUNTAIN PATROL DATA

JUNE								
Date	Total Stopping Points	Total Visible	Min at any Pt.	Max at any Pt.	Bax Pk Count	# People Met	Parties Contacted	Trash Human Waste (incl. TP)
24-Jun	3	18	1	10		30	5	0
29-Jun	5	1	0	1		5	3	0
30-Jun	5	13	0	7		48	7	6
Total	13	32.00				83	15	10
JULY								
Date	Total Stopping Points	Total Visible	Min at any Pt.	Max at any Pt.	Bax Pk Count	# People Met	Parties Contacted	Trash Human Waste (incl. TP)
1-Jul	4	60	4	18	18	50	6	5
2-Jul	4	13	2	5		32	5	1
8-Jul	3	6	0	4		50	12	3
9-Jul	4	5	0	3		21	5	3
11-Jul	3	119	17	57	57	90	13	2
13-Jul	5	19	2	7		39	9	5
14-Jul	4	9	1	4		27	11	4
15-Jul	3	6	0	4		8	3	0
16-Jul	5	28	0	13		55	10	4
20-Jul	5	33	2	10		105	17	3
21-Jul	5	52	1	30	30	59	9	6
22-Jul	2	3	0	3		18	4	0
23-Jul	5	17	0	9		22	6	1
27-Jul	5	37	2	12		75	10	4
28-Jul	5	10	0	4		70	5	2
29-Jul	5	23	0	14		50	8	6
30-Jul	5	154	2	75	75	150	30	5
Total	72	594.00				921	163	95
AUGUST								
Date	Total Stopping Points	Total Visible	Min at any Pt.	Max at any Pt.	Bax Pk Count	# People Met	Parties Contacted	Trash Human Waste (incl. TP)
3-Aug	5	47	0	21		135	20	2
4-Aug	5	28	0	12		51	14	1
5-Aug	5	28	2	11		104	25	0
6-Aug	2	8	2	6		16	4	1
10-Aug	5	28	1	14		65	5	6
11-Aug	4	14	0	8		60	10	4
12-Aug	2	8	4	4		40	4	1
13-Aug	5	63	3	24	20	150	18	3
18-Aug	5	27	3	10		45	12	5
19-Aug	2	18	0	18		80	20	0
20-Aug	2	7	0	7		60	14	2
24-Aug	5	10	0	3		50	5	3
25-Aug	5	83	0	40	40	160	10	3
26-Aug	4	12	0	6		40	5	4
27-Aug	5	164	0	130	130	250	3	3
31-Aug	4	0	0	0		12	2	6
Total	65	545.00				1318	171	44
SEPTEMBER								
Date	Total Stopping Points	Total Visible	Min at any Pt.	Max at any Pt.	Bax Pk Count	# People Met	Parties Contacted	Trash Human Waste (incl. TP)
7-Sep	2	4	2	2		15	4	2
8-Sep	5	14	0	6		40	6	6
9-Sep	5	9	0	4		35	4	3
10-Sep	5	121	0	100	100	200	17	2
14-Sep	5	2	0	2		2	1	2
15-Sep	5	15	1	5		40	13	1
16-Sep	3	4	0	2		31	10	0
17-Sep	5	39	0	30	30	118	24	1
23-Sep	4	7	0	5		7	1	2
24-Sep	4	29	2	12		90	8	1
28-Sep	5	21	0	12		40	8	1
29-Sep	5	13	0	8		31	10	0
9/30/2016	5	11	0	7		26	11	11
Total	58	289				675	117	32
OCTOBER								
Date	Total Stopping Points	Total Visible	Min at any Pt.	Max at any Pt.	Bax Pk Count	# People Met	Parties Contacted	Trash Human Waste (incl. TP)
1-Oct	5	64	0	34	34	111	21	4
5-Oct	5	14	0	11		60	6	3
6-Oct	5	7	0	3		10	5	0
7-Oct	5	41	2	25	25	60	12	1
8-Oct	5	83	0	70	70	120	22	3
Total	25	209				361	66	11

BUSINESS DEPARTMENT

PERSONAL

ADMINISTRATIVE SERVICE STAFF

Human Resource Assistant, Joni Lowell
Accounting Associate I, Judy Nicholson
Inventory and Property Associate I, Constance Theriault
Office Associate II Supervisory, Nancy Guay
Office Assistant II, Mary Beth Varney – 40 weeks
Office Assistant II, Lulu Legassey – 31 weeks
Office Assistant II, Ruth Levesque – 26 weeks
Office Assistant II, Monica Raulf – 15 weeks

POSITION CHANGES AND POSITION CHANGED BY FJAS-1

With the resignation of Ben Woodard as Chief Ranger Stewart Guay was promoted from Deputy Chief to Chief Ranger in January 2016. With the vacancy of Stewart Guay's position as Deputy Chief a decision was made to do an FJA-1 to reclassify this to a new position, Senior Field Supervisor, and was also requested that it be increased from range 23 to 24. The FJA and range increase was approved in March 2016. The Senior Field Supervisor position was also determined to be an internal transfer from Baxter Park Enforcement Ranger only. The Senior Field Supervisor was filled by Michael Martin in April 2016. Michael Martin's vacant Enforcement Ranger position was reorganized to a Baxter Park Supervisor Ranger in April of 2016. The Baxter Park Supervisor Ranger was filled in May 2016 by Russ Porter a long time seasonal employee of Baxter.

With the resignation of Paul Sannicandro as Trail Crew leader and the two vacancies of Trail Crew Leaders it was decided to combine the three positions and create two new 42 week seasonal positions. A FJA-1 was done and in February 2016 it was approved to create two 42 week seasonal positions titled Trail Specialist. In May 2016 Alexander Bradley started, and Theresa Therriault started in June 2016, both as Trail Specialists.

The retirement of Ada Angotti (2015) as Secretary was filled with Georgia Manzo in

February 2016.

The resignation of Morgan Taylor as Interpretive Specialist was filled with Acadia Tripp in April 2016.

In the 2016 season Togue Pond Gate had an upgraded solar system installed to provide more power to the Gate to allow WiFi ability so that the Gatehouse Attendants could use a computer and login to the Reservation system used at Headquarters. With this upgrade and the introduction of a credit card cube that would allow visitor to use their credit cards at the gate it was decided to submit an FJA-1 to reclassify the 6 Togue Pond Gatehouse Attendant positions and the 4 Office Assistant II positions at Headquarter and combine them into one position title - Baxter State Park Customer Representative. This change was approved in August 2016 but the funding for the position change will not be available until 2017.

Two other FJAs that were submitted and approved in 2016 were the Carpenter position to BSP Supervisory Carpenter in October 2016 and Inventory and Property Associate I to Inventory and Property Associate II in November 2016. The funding for these two changes will not be available until 2017.

NEW EMPLOYEES: SEASONAL

Gatehouse Attendant: Beverly Guay, Stacy Labby and Renee Burby.

Campground Ranger: Audrey Laffey- NES/TBF, Nick MacPherson- Roaring Brook, Ed Pontbriand-Katahdin Stream

Backcountry Ranger: Danielle Woodworth- Roving Ranger, Ian Lookabaugh - Chimney Pond Nathan Ventura- Russell Pond

RESIGNATIONS

Robert Gagnon - Visitor Center

TRANSFER/PROMOTIONS/DEMOTIONS/ACTING CAPACITY/TEMP COMP

James Barden - voluntarily demoted from Campground Ranger to Matagamon Gate

Yves Baribeau -transferred from Katahdin Stream to South Branch Pond

Robin Stevens- transferred from Togue Pond Gate to Abol Campground

David Chase - transferred from 18 wk Abol Campground to 22 week Abol

RETIRED

Dana Miller - Matagamon Gate

Brenden Curren - Russell Pond

Gunter Bernardini - South Branch Pond

YEAR-ROUND POSITIONS

BSP Director - D. Jensen Bissell	Headquarters, Mkt.
----------------------------------	--------------------

BSP Chief Ranger - Stewart Guay	Headquarters, Mkt.
---------------------------------	--------------------

Park Naturalist - Jean Hoekwater	Headquarters, Mkt.
----------------------------------	--------------------

Business Manager -Christine Theriault	Headquarters, Mkt.
---------------------------------------	--------------------

BSP Senior Field Supervisor - Michael Martin	Headquarters, Mkt.
----------------------------------------------	--------------------

Secretary - Georgia Manzo	Headquarters, Mkt.
---------------------------	--------------------

Accounting Associate I - Judy Nicholson	Headquarters, Mkt.
-----------------------------------------	--------------------

Human Resource Assistant - Joni Lowell	Headquarters, Mkt.
----------------------------------------	--------------------

Inventory & Property Asso. I - Constance Theriault	Headquarters, Mkt.
----------------------------------------------------	--------------------

Office Associate II, Supervisor -Nancy Guay	Headquarters, Mkt.
---------------------------------------------	--------------------

Maintenance Supervisor - Stephen Bouchard	Headquarters, Mkt.
-------------------------------------------	--------------------

Auto Mechanic II - Frank George	Headquarters, Mkt.
---------------------------------	--------------------

Carpenter - Craig Kennedy	Headquarters, Mkt.
---------------------------	--------------------

Interpretive Specialist - Acadia Tripp	Headquarters, Mkt.
Resource Manager - Eben Sypitkowski	SFMA
Forester I - Deidra George	SFMA
BSP Enforcement Ranger - Michael Winslow	Field
BSP Enforcement Ranger - Robert Tice	Field
BSP Supervisor - Bruce White	Field
BSP Supervisor- Ranger - David Loome	Field
BSP Supervisor-Ranger - Russell Porter	Field

SEASONAL POSITIONS – 2016

<u>Title/Position Number</u>	<u>Name/Location</u>	<u>Wks</u>	<u>Start</u>	<u>End</u>
CAMPGROUND RANGERS				
9425-0631 Betsy Dawkins	-Nesowadnehunk	21	5-22	10-15
9425-1013 Audrey Laffley	-Nesowadnehunk/TBF	12	6-19	9-10
9425-0221 Gabe Williamson	-So. Branch Pond	24	5-8	10-22
9425-0922 Yves Baribeau	-So. Branch Pond	20	5-15	10-1
9425-0351 Robert Mackenzie, Jr.	-Roaring Brook	24	5-8	10-22
9425-0741 Nicholas MacPherson	-Roaring Brook	22	5-15	10-15
9425-0391 Julianna Hansen	-Katahdin Stream	26	5-8	11-05
9425-0421 Edward Pontbriand	-Katahdin Stream	22	5-15	10-15
9425-0978 Dave Chase	-Abol	22	5-15	10-15
9425-0461 Robin Stevens	-Abol	18	5-22	9-24
9425-0611 Gerard Locke	-Trout Brook Farm	20	5-15	10-1
9425-0982 Dean Levasseur	-Kidney Pond	25	5-8	10-29
9425-0983 Diane Freeloove	-Kidney Pond	25	5-8	10-29
9425-0980 Charity Levasseur	-Daicey Pond	25	5-8	10-29
9425-0981 Andy Vietze	-Daicey Pond	25	5-8	10-29

BACKCOUNTRY RANGERS - SUMMER

9423-0021 Greg Hamer	-Russell Pond	24	5-8	10-22
9423-0831 Nathan Ventura	-Russell Pond	22	5-15	10-15
9423-0601 Jennifer Sinsabaugh	-Chimney Pond	24	5-8	10-22
9423-0841 Ian Lookabaugh	-Chimney Pond	22	5-15	10-15

BACKCOUNTRY RANGERS - ROVING RANGERS

9423-0991	Bill Martell	-Parkwide	26	5-8	11-05
9423-0993	Danielle Woodworth	-Parkwide	26	5-29	11-26

BACKCOUNTRY RANGERS – WINTER

9423-1008	Greg Hamer	-Chimney Pond	12	1-3	3-26
9423-0998	vacant	-Chimney Pond	12	1-10	4-02

GATEHOUSE ATTENDANT

9422-0171	Katrina Kinhead	-Togue Pond	26**	5-29	11-26
9422-0511	David White	-Togue Pond	23	5-08	10-15
9422-0361	Tracy Young	-Matagamon	29**	5-08	11-26
9422-0441	Marcia Anderson	-Matagamon	29**	5-08	11-26
9422-0201	James Barden	-Matagamon	23	5-08	10-15
9422-0501	Tom Power	-Togue Pond	29**	5-08	11-26
9422-0531	Stacy Labbe	-Togue Pond	23	5-08	10-15
9422-0541	Beverley Guay	-Togue Pond	12	6-19	9-10
9422-1011	Renee Burby	-Togue Pond	12	6-12	9-3

OFFICE ASSISTANT II

6538-0941	Lulu Legassey	-Millinocket Hdqtrs.	31	3-13	10-15
6538-0967	Ruth Levesque	-Millinocket Hdqtrs.	26	4-17	10-15
6538-0731	Marybeth Varney	-Millinocket Hdqtrs.	40	2-7	11-12
6538-0997	Monica Raulf	-Millinocket Hdqtrs.	12	6-19	9-10

CUSTOMER REP ASSOC I COMM

6510-0977	Bob Gonya	-Visitor Center	21	5-22	10-15
6510-0992	Brian Johnston	-Visitor Center	21	5-15	10-8

MAINTENANCE MECHANIC

8281-0965	Matt Martin	- Mill. Maint. Facilities	26	5-08	11-5
-----------	-------------	---------------------------	----	------	------

FOREST TECHNICIAN

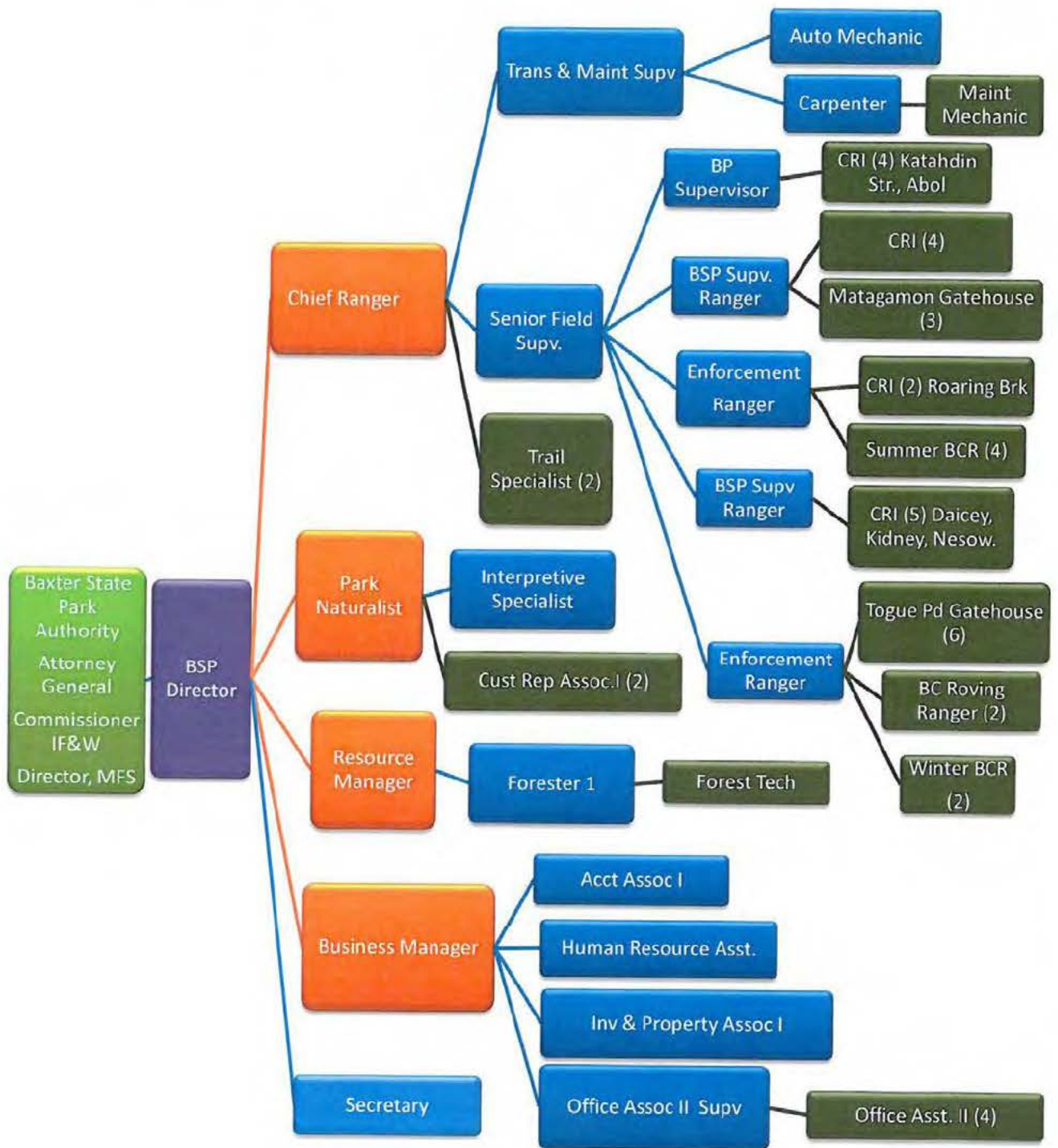
9456-0988	Kevin Osborne	-SFMA	31	4-17	11-19
-----------	---------------	-------	----	------	-------

TRAIL SPECIALIST

9419-0141	Theresa Therriault		42	06	12-10
9419-0940	Alex Bradley		42	05-23	12-10

ORGANIZATION CHART (NEXT PAGE)

2016 BSP
Organization Chart



CONTRACTED SERVICES

- Rubbish Removal – Plourde Trucking, Millinocket; Pine Tree, Houlton
- Janitorial Services – Denise Bragdon, Millinocket
- Firewood and Firewood Bundling – Justin Allen, Scott Hannington
- SFMA Forest Operations/Road Construction – Pelletier Brothers, Millinocket, Ben Jordan, Brent Chadborne
- SFMA – BSP Interns-Jacob Cerminar and Emily Higgins
- Trail Work – Maine Conservation Corp.
- Information/Education – BSP Interns- Justine Rumaker, Elise Panzner and Jonathan Schmidt
- Septic Tank Pumping – Lincoln Rental, Lincoln
- Fuel – Dead River, Preble Oil, Agri-Cal, Houlton
- Lawn Maintenance – Mainely Landscaping and Lawns, Millinocket
- Computers and Programing – Starfruit Solutions
- Cellular Service – US Cellular, Verizon
- Copier Service – Budget Documents Technology
- Satellite Internet Dish Access – Hughesnet.com
- Website Maintenance- Cadillac Web Development

RESERVATIONS OFFICE

OPENING DAY 2016

Opening day was held on January 14, 2016. We had ninety-three people come to make a reservation. Eighty-nine reservations were made.

Opening day was the first time the new reservation system was used. Shaun and Brad-Lee, the creators of the new system, were on hand to make sure the day went smoothly and to fix any issue that came up. There were some changes that were done on opening day to make the system better and some suggestions of changes that could enhance the system that would be updated later. The day went well and the new system was great to use. Over the course of the year Nancy Guay, Reservation Supervisor, worked with Shaun and Brad-Lee to make the changes to the reservation

system so that it works efficiently.

Some infrastructure changes were made to the reservation office in 2016. The adjacent room to the reservation office that was being used as a conference room was added to the space for the reservation staff. A window was put into the wall between the two rooms so that there was a clear line of sight to the counter from the second room. Nancy Guay, Reservation Supervisor, moved into the second room and the remaining three workstations were separated and sound barriers were put up to help with the noise level in the office. The postage machine was also moved to the second room.

IN THE PARK

With the summer season having very little rain the visitor number increased by 10% over last season.

The solar power system at the Togue Pond Gatehouse was upgrade so that the gatehouse would have enough power to run the computer and printer. This upgrade made it possible to have the new reservation system accessible to the gate staff so they could view availability in the campgrounds. The next step at the gatehouse for the 2017 camping season is to have the gate staff able after the reservation office closes to make reservation from the gatehouse on the computer in the new reservation system. This will also remove the need to keep manual statistic of reservation at the gatehouse because all reservations will be done in the system. Another addition that was tested in 2016 was a credit card cube that would allow the gate staff to accept credit cards at the gatehouse. In the 2017 camping season this credit card cube will be used for reservation at the gate as well as entrance passes.

The 2016 summer camping season was the third of a three year trial for extended camping season. The sites were:

Katahdin Stream #9, #10, #11, #12, #16, #17

Daicey Pond #4, #5, #7, #10

Kidney Pond #5, #6, #7, #8, #10

The extended season trial was received positively by visitors and staff but because of staffing issues Abol campground was excluded from the campgrounds with extended

season. Starting summer camping season 2017 the entire campgrounds of Katahdin Stream, Daicey Pond and Kidney Pond will be open until October 22, 2017. It was also determined that the closing date of the extended season will be October 22 every year.

The following chart are the statistics of the reservation office for 2016:

RESERVATION OFFICE STATISTICS AND PROCEDURES

	RESERVATION OFFICE STATS 2016 SEASON																	
	Site nights	Total Campers	Adults	Junior	Child	Counter Res	Mail Res	Radio Res	Phone Res	Winter Res	Internet Res	Phone Calls	Office Visitors	Mail Received	Info packets	Video Shown	DUPR Res	Refunds
January	537	752	748	0	4	97			?	66	?	424	104	61	6	1	0	0
February	846	1253	1249	0	4				?	46	?	578	52	43	2	0	0	0
March	974	1387	1387	0	0			0	?	28	?	989	99	76	3	0	0	0
April	0	0	0	0	0			0	?	0	?	1899	103	145	7	0	8	19
May	?	?	?	?	?	?	?	?	?	0	?	1887	199	69	1	5	18	0
June	?	?	?	?	?	?	?	?	?	0	?	2206	691	9	1	6	220	80
July	?	?	?	?	?	?	?	?	?	0	?	2782	903	16	0	16	323	57
August	?	?	?	?	?	?	?	?	?	0	?	3128	1314	6	0	25	320	60
September	?	?	?	?	?	?	?	?	?	0	?	2192	773	5	1	21	160	40
October	?	?	?	?	?	?	?	?	?	0	?	1178	381	4	3	11	20	11
November	?	?	?	?	?	?	?	?	?	122	?	317	83	71	2	0	0	1
December	?	?	?	?	?	?	?	?	?	47	?	241	46	69	1	0	0	3
Totals	2357	3392	3384	0	8	97				309		17821	4748	574	27	85	1069	271
Used old reservation system for December 2015 to March 2016 winter camping season.																		
Online Orders filled: 123 customer orders filled May-Dec																		
Total amount of money refunded \$24,051																		
Total amount held for service fees \$2,235.00																		
Didn't have a proper reporting system until June 9th 2016																		
Togue Pond made \$84.00 in Gate fees via computer system (Oct)																		
DUPR ONLINE- June 964, July 1718, Aug 1599, Sept 966, Oct 204 Total: 5451																		
Opening Day Thursday January 14th 2016: 89 Reservations made Total amount of money: 29,156.00 , 93 people																		
Breakdown of Opening Day money, cash: 1471.00 checks: 7925.00 credit card: 19760.00																		

2016 BAXTER STATE PARK RESERVATION PROCEDURES

How do I make Reservations?

1. Read completely:

- ♦ This information sheet
- ♦ BSP Rules & Regulations
- ♦ The BSP Road Map handout or general information from Park website.

2. Completely fill out reservation forms available from the Reservation Office or our website (baxterstateparkauthority.com). Include as many options as possible.

3. Enclose appropriate payment.

4. Enclose self-addressed, stamped, #10 business sized envelope (if reserving by mail).

5. The appropriate time: Mail, bring in person, book online, or phone to Baxter State Park Headquarters.

When can I make a reservation at Baxter State Park?

1. **Coming in person to BSP HQ on Weds. January 14, 2016.** Reservations will be limited to 20% of sites per campground, per day. Only two (2) reservations per person will be allowed. If large numbers of campers intend to make reservations on this day the campground limits are expected to be quickly reached; forcing campers to try again for reservations during the rest of the season. Campers are encouraged to be flexible in their dates and site choices and plan on using the rolling reservation system for the majority of their camping trips.

2. **Using the Rolling Reservation System, mailing, walking in, phone and reservations can be made at BSP HQ four (4) months or less prior to the start of your desired camping trip. Online reservations can be made (4) months from your camping end date. (sites excluded from online reservations include: Chimney Pond, Russell Pond, Davis Pond, bunk spaces, group sites and accessible sites).** All sites (at least 80% of all camping nights, plus any sites not reserved on January 14th) will now be available for rental, four months prior to camping. Mail in reservations will be given a seven (7) day "buffer". Mail and walk-in customers will be processed at the same time. Mail will be randomly processed (not in the order it was received) except that all Maine resident reservation requests made by mail will be processed before non-resident mail requests on a daily basis. There is a limit of two (2) reservations per day for each person making walk-in or mail-in reservations. **NOTE:** People who arrive earlier than four months ahead of their camping date will not be processed and will be asked to return or mail-in when the dates finally do "roll" open. Mail that is received more than four months and seven days ahead of camping dates will not be processed and will be returned to sender.

What else do I need to know?

Summer Campground Opening & Closing Dates (Inclusive):

Roaring Brook: May 15th - Oct. 15th
Chimney Pond: June 1st - Oct. 15th
Katahdin Stream: May 15th - Oct. 22nd (extended season)
Abol: May 15th - Oct. 15th
Daicey Pond: May 15th - Oct. 22nd (extended season)
South Branch Pond: May 15th - Oct. 15th
Russell Pond: May 15 - Oct. 15th
Kidney Pond: May 15th - Oct. 22nd (extended season)
Trout Brook Farm Opens the Friday before Memorial Day - Oct. 15th
Nesowadnehunk Opens Friday before Memorial Day – Oct 15th.

The Director or such other person designated by the Authority may adjust campground seasons before July 4th and after Labor Day should use, weather or other conditions warrant. Under these circumstances, reservations will be made on a daily basis only.

Arrival and Departure Check-In Time after 1:00 p.m.

Check-Out Time by 11:00 a.m.

All campers must be through the gate by 8:30 p.m. on the first night of camping. If you miss the first day of your reservation please call, as reservations are released on the second day at 4:00 p.m. for no show reservations.

Fees:

Summer fees (children age 6 or under are free, but count towards site capacity):

Cabins: 2-person cabin = \$55.00; 3-person cabin = \$75.00; 4 person cabin = \$100.00; 6 person cabin = \$130.00. Gas lights and firewood are included in cabin fee.

Tent sites: \$30.00 per site per night

Lean-tos: \$30.00 per site per night.

Bunkhouse**:\$11.00 per person per night

Group Areas (Bear Brook, Foster Field, Nesowadnehunk Field and Trout Brook Farm Field): 6 person minimum charge (\$42.00), otherwise \$7.00 per person per night.

Winter Fees (Special policies are in effect for winter, please request winter information from Park Headquarters or visit the Park's website before making winter reservations):

Bunkhouse**:\$19.00 per person per night, except at Chimney Pond bunkhouse (\$38.00 per person per night).

Lean-to or Tent site: \$15.00 per night.

Cabins: . 2-person cabin = \$55.00; 3-person cabin = \$75.00; 4 person cabin = \$100.00; 6 person cabin = \$130.00. Gas lights and firewood are included in cabin fee.

**Reservations for individual bunk only. Facility is shared with other individuals or groups up to the capacity of the bunkhouse.

Non-Resident Motor Vehicle Fee A day pass or season pass is required for all vehicles entering Baxter State Park. Non-resident motor vehicles shall pay a motor vehicle fee of \$14.00 per motor vehicle for each day in the Park. If a motor vehicle enters the park in connection with overnight reservations covering one or more consecutive nights in the park, then re-entry to the park shall be permitted upon payment of a single motor vehicle fee during the period covered by the overnight reservations, and no longer. Motor vehicles shall not be permitted to enter the Park under any other circumstances, including day use, through traffic or reservations for non-successive nights in the park, without payment of the motor vehicle fee for each day. This regulation does not apply to motor vehicles bearing a Maine registration and license plate. A season pass under this regulation shall be available at a charge of \$39.00 per non-resident vehicle.

The proper fee must accompany all reservation requests. All fees include sales tax where applicable and must be paid in U.S. funds. For summer reservations, Park Headquarters accepts Visa, MasterCard, money order or check made payable to Baxter State Park. **Campgrounds and gates inside the Park do not accept credit cards (no electricity), please be prepared to pay with cash or check when arriving at the Park.** Fees are payable by all persons year round, except government employees on official business within the Park.

Summer Season Cancellation Policy: Cancellations and partial cancellations requests must be received a minimum of 14 days prior to the scheduled camping date. A \$15.00 service fee will be applied. Cancellations can only be made in person or by phone. No refunds within the 14 day window, transfers only, a \$15.00 will also apply.

Transfers: Transfers must be made and used within the same camping season the original reservation was made. Changes to all reservations can only be made in person or by phone 207-724-5140. A \$15.00 fee.

Office Hours: The Reservations Office is open from 8 a.m. to 4 p.m., Monday through Friday, but closed on weekends and holidays. During our peak season from Memorial Day through the Saturday of Columbus Day weekend, the Reservation Office is open from 8 a.m. to 4 p.m. seven days a week, including Holidays. No mail reservations will be made when our office is closed, but shall be accepted on the next business day.

Reservation Limits and Other Policies:

A reservation is accommodations are secured for one or more consecutive nights of lodging in Baxter State Park. Reservations shall be accepted for up to seven (7) total nights for any one (1) site and any one (1) campground, and up to two weeks (14 nights) total duration. **Exceptions: Davis Pond lean-to one (1) night only and Wassataquoik Lake Island lean-to two (2) nights only.**

Capacity: When considering capacity of all facilities, each child is counted as one individual regardless of age. **Site capacity is strictly enforced.** Before adding people to your party, consult with Park Reservation Clerks to be sure your site will hold additional people.

No Shows: Reservations for two or more nights will be held only until 4:00 PM of the day following the first evening for which reservations were made.

Groups of thirteen (13) or more in a family or non-family situation shall be assigned to one of the group areas.

Each organized camp group of five (5) or more individuals will be limited to one (1) visit to Chimney Pond Campground during the period from July through August. Park Campground maps showing campsites and information on outlying sites are available by contacting the Park directly or visiting our website: www.baxterstateparkauthority.com

If you have questions, please call our Reservations Office at (207) 723-5140.

The reservation office is closed (no reservations made) on weekends & holidays from Columbus Day to Memorial Day.

For the summer season, the office is open every day from Memorial Day to Columbus Day. Office hours: 8am to 4pm

Camping Start Date	Earliest Reservation Date	Camping Start Date	Earliest Reservation Date	Camping Start Date	Earliest Reservation Date	Camping Start Date	Earliest Reservation Date	Camping Start Date	Earliest Reservation Date	Camping Start Date	Earliest Reservation Date
15-May	15-Jan	1-Jun	1-Feb	1-Jul	1-Mar	1-Aug	1-Apr	1-Sep	1-May	1-Oct	1-Jun
16-May	16-Jan	2-Jun	2-Feb	2-Jul	2-Mar	2-Aug	2-Apr	2-Sep	2-May	2-Oct	2-Jun
17-May	17-Jan	3-Jun	3-Feb	3-Jul	3-Mar	3-Aug	3-Apr	3-Sep	3-May	3-Oct	3-Jun
18-May	18-Jan	4-Jun	4-Feb	4-Jul	4-Mar	4-Aug	4-Apr	4-Sep	4-May	4-Oct	4-Jun
19-May	19-Jan	5-Jun	5-Feb	5-Jul	5-Mar	5-Aug	5-Apr	5-Sep	5-May	5-Oct	5-Jun
20-May	20-Jan	6-Jun	6-Feb	6-Jul	6-Mar	6-Aug	6-Apr	6-Sep	6-May	6-Oct	6-Jun
21-May	21-Jan	7-Jun	7-Feb	7-Jul	7-Mar	7-Aug	7-Apr	7-Sep	7-May	7-Oct	7-Jun
22-May	22-Jan	8-Jun	8-Feb	8-Jul	8-Mar	8-Aug	8-Apr	8-Sep	8-May	8-Oct	8-Jun
23-May	23-Jan	9-Jun	9-Feb	9-Jul	9-Mar	9-Aug	9-Apr	9-Sep	9-May	9-Oct	9-Jun
24-May	24-Jan	10-Jun	10-Feb	10-Jul	10-Mar	10-Aug	10-Apr	10-Sep	10-May	10-Oct	10-Jun
25-May	25-Jan	11-Jun	11-Feb	11-Jul	11-Mar	11-Aug	11-Apr	11-Sep	11-May	11-Oct	11-Jun
26-May	26-Jan	12-Jun	12-Feb	12-Jul	12-Mar	12-Aug	12-Apr	12-Sep	12-May	12-Oct	12-Jun
27-May	27-Jan	13-Jun	13-Feb	13-Jul	13-Mar	13-Aug	13-Apr	13-Sep	13-May	13-Oct	13-Jun
28-May	28-Jan	14-Jun	14-Feb	14-Jul	14-Mar	14-Aug	14-Apr	14-Sep	14-May	14-Oct	14-Jun
29-May	29-Jan	15-Jun	15-Feb	15-Jul	15-Mar	15-Aug	15-Apr	15-Sep	15-May	15-Oct	15-Jun
30-May	30-Jan	16-Jun	16-Feb	16-Jul	16-Mar	16-Aug	16-Apr	16-Sep	16-May		
31-May	31-Jan	17-Jun	17-Feb	17-Jul	17-Mar	17-Aug	17-Apr	17-Sep	17-May		
		18-Jun	18-Feb	18-Jul	18-Mar	18-Aug	18-Apr	18-Sep	18-May		
		19-Jun	19-Feb	19-Jul	19-Mar	19-Aug	19-Apr	19-Sep	19-May		
		20-Jun	20-Feb	20-Jul	20-Mar	20-Aug	20-Apr	20-Sep	20-May		
		21-Jun	21-Feb	21-Jul	21-Mar	21-Aug	21-Apr	21-Sep	21-May		
		22-Jun	22-Feb	22-Jul	22-Mar	22-Aug	22-Apr	22-Sep	22-May		
		23-Jun	23-Feb	23-Jul	23-Mar	23-Aug	23-Apr	23-Sep	23-May		
		24-Jun	24-Feb	24-Jul	24-Mar	24-Aug	24-Apr	24-Sep	24-May		
		25-Jun	25-Feb	25-Jul	25-Mar	25-Aug	25-Apr	25-Sep	25-May		
		26-Jun	26-Feb	26-Jul	26-Mar	26-Aug	26-Apr	26-Sep	26-May		
		27-Jun	27-Feb	27-Jul	27-Mar	27-Aug	27-Apr	27-Sep	27-May		
		28-Jun	28-Feb	28-Jul	28-Mar	28-Aug	28-Apr	28-Sep	28-May		
		29-Jun	29-Feb / 1-Mar	29-Jul	29-Mar	29-Aug	29-Apr	29-Sep	29-May		
		30-Jun	1-Mar	30-Jul	30-Mar	30-Aug	30-Apr	30-Sep	30-May		
				31-Jul	31-Mar	31-Aug	1-May				

FINANCIALS

STATEMENT OF REVENUE AND EXPENDITURES

FISCAL YEAR ENDING JUNE 30, 2016

Revenue – 014 Account

Park Operations	
Recreations Fees	<u>\$944,767</u>
Transfer Fees	<u>\$6,811</u>
Entrance Fees	<u>\$212,773</u>
Miscellaneous Services	<u>\$64,576</u>
Sales of Maps, Books, etc.	<u>\$41,817</u>
Sale of Forest Products	<u>\$ 121,646</u>
Foreign Exchange Differential	<u>\$109</u>
Duplicate/Overpayment Fees	<u>(\$9,858)</u>
NET REVENUE FROM OPERATIONS	<u>\$1,382,641</u>

TRUST FUNDS

Boston Trust	<u>\$ 2,050,000</u>
State Held Trust	<u>\$92,571</u>
Cash Pool Distribution (interest)	<u>\$5,169</u>
Independent Trust	<u>\$260,000</u>
NET REVENUE FROM TRUSTS	<u>\$2,407,740</u>

MISCELLANEOUS REVENUE

Special Licenses and Leases	<u>\$ (2)</u>
Sale of Equipment	<u>\$ 1,070</u>
Rent of Lands	<u>\$2,500</u>
Miscellaneous Income	<u>\$ 13,683</u>
TOTAL MISCELLANEOUS REVENUE	<u>\$17,251</u>

BALANCE FORWARD USED AS REVENUE

\$446,000

TOTAL REVENUE AVAILABLE

\$4,253,632

Expenditures

PERSONNEL SERVICES

Salaries, permanent	<u>\$912,613</u>
Salaries, seasonal	<u>\$546,023</u>
Overtime/Differential/Retro	<u>\$102,970</u>
Retirement Contributions	<u>\$560,402</u>
Other Benefits	<u>\$444,335</u>

TOTAL PERSONNEL SERVICES	<u>\$2,556,343</u>	
ALL OTHER		
Contractual Services	<u>\$399,143</u>	
Park Operations – All Groups	<u>\$566,594</u>	
Sta-Cap Charges	<u>\$50,545</u>	
TOTAL ALL OTHER	<u>\$1,016,282</u>	
CAPITAL		
Buildings	<u>\$311,805</u>	
Equipment	<u>\$39,743</u>	
TOTAL CAPITAL	<u>\$351,548</u>	
TOTAL EXPENDITURES		<u>\$3,934,173</u>

EXECUTIVE SUMMARY: FY17 ANNUAL WORK PROGRAM

REVENUE NOTES

- Revenue from Recreation Use, Entrance Fees, Books and Maps remains consistent.
- Online reservations continue to help maximize camping sites in the Park.
- The Park continues to use Balance Forward amount to fund large Capital projects.
- Significant donations from the Baxter Park Wilderness Trust continue to support increased trail maintenance and relocation projects in the Park.
- Depressed or vanishing wood products markets continues to challenge the management of the SFMA.

EXPENDITURE NOTES

- Baxter Park efforts to reorganize both year round and seasonal positions to better operational effectiveness results in an increase in Personal Services.
- Efforts continue in replacing large culverts on the Park tote road.
- Completion of the major relocation project on the Abol Trail.
- Baxter Park will be providing funding to allow MCC crews to help the efforts of trail maintenance and relocations projects.
- Scheduled for FY17 includes a major revision of the Park website to improve the interface and connect it to the Park's social media.

- FY17 plans include continued progress on improving the visitor registration process at the Park Gatehouses.
- Project work to replace the Kidney Pond staff housing is proceeding. This will be followed by additional building demolition and re-purposing.

REVENUE BUDGET SUMMARY

BAXTER STATE PARK - REVENUE BUDGET SUMMARY – FY 2016								
	CODE	ACTUAL FY2013	ACTUAL FY2014	ANNUAL FY2015	% OF FY15	ANNUAL FY2016	% OF FY16	
EARNED REVENUE								
SPECIAL LICENSE & LEASES	1448	(194)	(64)	200	0%	100	0%	
EARNINGS ON INVESTMENT/Cash pool	2105	3,560	3,380	2,500	0%	3,000	0%	
RENT OF LANDS	2601	2,500	2,501	2,500	0%	2,500	0%	
RECREATIONAL USE OF PARK	2610	731,858	984,391	848,388	25%	860,000	25%	
TRANSFERS	2616	5,935	5,930	6,000	0%	5,500	0%	
ENTRANCE FEES	2618	165,428	188,173	162,000	5%	190,000	5%	
REFUNDS & DUPLICATE FEES	2620	(2,559)	(5,185)	(3,500)	0%	(3,000)	0%	
MISC SERVICES & FEES	2637	45,074	48,703	44,000	1%	47,000	1%	
SALE OF MAPS & BOOKS	2657	35,658	37,120	35,000	1%	35,000	1%	
CASH OVER/SHORT FOREIGN EXCHANGE	2689	(275)	(102)	(100)	0%	(100)	0%	
CONTINGENCY FROM ENTERPRISE FUND(SFM	2722	171,696	174,551	170,000	5%	170,000	5%	
CONTINGENCY FROM BAXTER TRUSTS	2724	1,870,000	1,845,000	1,961,700	59%	2,052,000	59%	
CONTINGENCY FROM STATE HELD TRUSTS	2724A	119,087	122,565	100,000	3%	125,000	4%	
SALE OF EQUIPMENT	2806	3,225	2,500	2,500	0%	0	0%	
SALE OF AUTOS	2821		2,000		0%	0	0%	
TOTAL EARNED REVENUE		3,150,993	3,411,463	3,331,188	100%	3,487,000	100%	
BALANCE BROUGHT FORWARD		202,049	254,715	338,754		360,178		
UNEARNED (Donated) REVENUE								
SMALL DONATIONS (<\$1000)	2686A	2,779	4,091	5,000		2,500		
LARGE DONATIONS (>\$1000)	2686B	120,000	133,000	136,000		260,000		
TOTAL UNEARNED REVENUE		122,779	137,091	141,000		262,500		
TOTAL REVENUE		3,475,821	3,803,269	3,810,942		4,109,678		
EXPENDITURES BY GROUP								
PERSONAL SERVICES		2,217,943	2,349,926	2,480,812	65%	2,635,636	64%	
ALL OTHER		882,736	961,010	1,024,130	27%	1,110,042	27%	
CAPITAL		202,049	254,715	306,000	8%	364,000	9%	
TOTAL EXPENDITURES		3,302,728	3,565,651	3,810,942	100%	4,109,678	100%	

PERSONAL SERVICES

	ACTUAL BUDGET FY13	ACTUAL BUDGET FY14	ANNUAL BUDGET FY15	ANNUAL BUDGET FY16
3000 PERSONAL SERVICES				
3110 Perm Regular	701,986	724,181	890,850	943,965
3120 Perm PT B			17,670	18,716
3180 Perm Vac	59,274	63,028		
3181 Perm Hol	45,010	45,355		
3182 Perm Sick	45,152	24,398		
3185 Perm Vac Pay Retire				
3195 Attrition			-91,177	-25,969
3210 Limited Period Regular		3,083		
3280 Limited Period Vacation				
3281 Limited Period Holiday		116		
3282 Limited Period Sick				
3310 SSNL REG	416,722	400,821	534,314	578,446
3380 SSNL VAC	29,803	28,834		
3381 SSNL HOL	24,208	23,791		
3382 SSNL SICK	16,912	18,703		
3410 PROJ REG				
3450 REG ACTG	5,652	12,225		
3480 PROJ VAC		193		
3481 PROJ HOL	138	391		
3482 PROJ SICK				
3611 STAND O/T	4,871	6,699		
3612 PREM O/T	6,914	11,358		
3616 RETRO LUMP		17,338		
3618 RETRO 84				
3620 Retire Incentive				
3621 STP RC/RT	4,636	4,329	4,752	5,162
3623 I.T.TRAINING STIPEND				

3631 LNGVTY PY	5,942	5,942	8,710	9,778
3634 CALL OUT	138			
3636 Court Pay		279		
3638 SHFT DIFF	644	730	4,338	4,554
3641 NSTND DIF	53,370	54,074	59,033	62,522
3648 Comp U/P No Retiremnt	7,204	7,017		
3810 UNEMP CMP	43,164	45,811	46,000	46,000
3899 ACCURED PAYROLLS				
3901 HLTH INSR	348,691	323,952	405,535	373,023
3905 DENTAL IN	12,787	12,054	14,094	13,209
3906 EMPLOYEE HLTH SVS/WC		76		

3908 ST RET HL	116,076	182,913	249,416	159,558
3909 ST RET AD				
3910 EMPR RTMT	77,734	78,846	78,768	122,508
3911 EMPR GROUP LIFE	6,650	7,697	7,661	9,628
3912 EMPR MED	19,361	19,631	19,937	22,288
3959 RUL-BPR	47,782	67,648	69,213	86,993
3960 RUL-REG	115,038	156,540	160,098	203,355
3971 UNIFORM	2,084	1,817	1,600	1,900
3973 CHILD CARE				
3978 INTEREST DUE EMPLOYEES		56		
	2,217,943	2,349,926	2,480,812	2,635,636

ALL OTHER

	ACTUAL BUDGET FY13	ACTUAL BUDGET FY14	ANNUAL BUDGET FY15	ANNUAL BUDGET FY16
All Other				
PROFESSIONAL SERVICES				
4003 Act/Audit Service	2,250			
4015 Casual Labor	99,312	142,952	126,025	176,925
4016 Art /Graphics	0	50	200	200
4041 Laundry Services	0	39	100	100
4042 Legal Services	0	3,230	100	100
4046 Medical Services	2,443	1,319	3,000	3,000
4099 Professional Services	232,813	193,749	243,400	250,140
PROFESSIONAL SERVICES STATE				
4106 Lab Services	757	512	1000	1000
TRAVEL IN STATE				
4270 In-State Mileage	863	1,408	2,000	2,000
4271 Other Transportation	0		200	200
4273 Lodging	993	1,439	2,000	2,000
4274 Meals/Gratuities	4,756	3,216	5,000	5,000
TRAVEL OUT OF STATE				
4380 Out of State Mileage	0			
4381 Other Transportation (out of state)	2,063	29	3,000	3,000
4383Lodging (out of state)	620	962	1,000	1,000
4384 Meals/Gratuities	300	40	500	224

VEHICLE OPERATIONS				
4402 Gas/Oil	65,563	65,133	65,000	65,000
4403 Diesel Oil	2,630	9,575	4,000	10,000
4423 Repairs Parts/Supply	25,074	39,323	25,000	25,000
4424 Repairs Snowmobile	6,602	6,784	6,000	7,000
UTILITIES SERVICES				
4521 Electric	11,689	12,324	12,000	13,500
4532 Bottled Water	429	332	500	500
4536 Other Utility	4,076	3,993	4,000	4,000
4551 Freight	3,117	1,958	4,000	4,000
RENTS				
4601 Rent Land	0	1,000	500	500
4602 Rent Plane	424	1,645	1,400	1,400
4616 Rent Misc. Office Equipment	0		200	200
4661 Rent Equipment	1,668		500	500
REPAIRS				
4711 Repair Building	29,547	26,091	30,000	30,000
4721 Repair Small Engine	3,128	2,615	3,200	3,200
4726 Repair Radios	3,989	2,755	4,000	3,000
4735 Maintenance Agreements	2,229	5,299	6,000	6,000
4751 Misc. Repairs	2,668	2,771	3,000	3,000
INSURANCES				
4801 Insurance Building	2,230	2,528	2,300	2,500
4811 Insurance Equipment	290	290	300	300
4825 Insurance General Liability	13,073	4,342	14,000	4,300
4827 Snowmobile Ins	1,051	1,078	1,400	1,400
4841 Employees Bond	204	120	200	200
4845 Workers Comp Ins.	12,078	32,391	36,000	36,000
4851 Mis Insurance	800	800	800	600
4852 Auto Insurance	6,312	4,054	6,400	5,000
4880 Eye Exam	150	150	250	250
4881 Lens Stat	0	150	250	250

GENERAL OPERATIONS				
4901 Stamps/Parcel Post	0	13	0	0
4909 Courier Service	283	0	300	300
4911 Metered Postage	3,040	4,163	4,000	5,000
4913 Inter Government postage	51	35	150	150
4929 Printing/Binding	12,643	22,795	18,000	18,000
4941 Print Report (State of Maine)	53	0	60	60
4946 Advertisement Notices	1,406	2,544	3,000	2,000
4955 Credit Card Charges	9,468	11,369	14,000	14,000
4975 Sales Tax	71,464	72,250	75,000	74,000
4982 Subscriptions	435	29	500	550
4995 General Expenses	4,821	6,080	29,300	30,000
CAREER DEVELOPMENT				
5013 Employee Training	9,814	11,062	15,000	15,000
Training budget for I&E			800	800
Training budget for SFMA			600	600
Training budget for Bus Dept			600	600
FUEL				
5201 Fuel oil/pellets	15,069	12,350	16,000	17,000
5202 LP Gas	5,115	8,158	10,000	10,000
INFORMATION TECHNOLOGY				
5300 Technology				
5301 OIT Prof services			1454	1082
5302 Telephone/Data	26,398	25,899	28,000	13,000
5304 Cellular Phones	8,715	13,402	10,000	14,000
5310 Other Services				8,957
5315 GIS Services				2,006
5331 Network Access				5,655
5380 Subscription- PC/Laptop				450
5381 Support - PC/Laptop				524
5382 File Services				137
5383 Email				2,491
5386 Mobile Data Device/Connection				2,548
CLOTHING				
5401 Clothing	12,509	20,569	15,000	15,000

CLOTHING				
5401 Clothing	12,509	20,569	15,000	15,000
OPERATING SUPPLIES				
5602 Office Supply	9,043	6,366	8,000	8,000
5611 Interpretation/Education	428	210	2,000	3,000
5629 Books & Maps for Resale	16,153	21,568	20,000	20,000
5636 Miscellaneous Supply	45,097	47,167	46,000	45,000
5650 Misc. Minor Equipment	42,292	31,431	44,000	44,000
HIGHWAY MATERIALS				
5812 Culverts	0	7,086	6,000	6,000
5861 Signs	1,504	528	2,276	2,276
STA-CAP	40,744	55,937	35,365	40,367
Total All Other	841,992	901,520	988,765	1,054,675
Total All Other & Sta-cap	882,736	961,010	1,024,130	1,095,042
Capital				
7001 Land				
7101 Bldg./Improvements	193,733	171,857	241000	299000
7200 Equipment				
7203 Data Processing Equipment				
7211 Motor Vehicle Transportation	8,316	82,858	65000	54000
New				
Used				
Snowmobiles				11000
Total Capital	202,049	254,715	306,000	364,000
All Totals	3,302,728	3,565,651	3,810,942	4,094,678

DONATIONS

Donations to Baxter State Park Summary			Yearly Report
			01/01/16-12/31/16
Donations under \$1000			
Anonymous - Field Locations	Date		Amount
April donations	04/30/16		\$ -
May donations	05/31/16		\$ 67.00
June donations	06/30/16		\$ 573.49
July donations	07/31/16		\$ 245.70
August donations	08/31/16		\$ 292.50
September donations	09/30/16		\$ 701.65
October donations	10/31/16		\$ 512.61
November donations	11/30/16		\$ 358.00
December donations	12/31/16		
Total			\$ 2,750.95
Anonymous - Reservation Office	Date		Amount
March donations	03/31/16		\$ 20.00
May donations	05/31/16		\$ 7.00
June donations	06/30/16		\$ -
July donations	07/30/16		\$ 10.00
August donations	08/30/16		\$ 3.94
September donations	09/30/16		\$ 334.25
October donations	10/30/16		\$ 104.00
November donations	11/30/16		\$ 20.00
December donations	12/30/16		
Total			\$ 499.19
Individual Donations	Date	Ck #	Amount
Leighton Houck-donation to the Park	01/04/16	4697	\$ 250.00
James Lowe-donation to the Park	01/19/16	1490	\$ 500.00
The Waterman Fund-from uncashed check 6/13/2012	02/10/16	39043	\$ 75.00
James Garland-contribution to the Park	03/03/16	5734	\$ 500.00
Wanda Rice-in memory of Michael D'Orio	05/15/16	4564	\$ 200.00
Julia & John Gray-in memory of Richard Bray	05/14/16	2581	\$ 100.00
Karen & David Gorgonzola-in appreciation	07/06/16	9332	\$ 250.00
Wesley Neal-thanks for returning lost items	07/01/16	233	\$ 50.00
Joanne Bliss	07/22/16	5233	\$ 100.00
Howard Bliss-rescue Courtney Bliss	07/28/16	4280	\$ 30.00
Jeff Doody	12/29/16	8062	\$ 100.00
Total			\$ 2,155.00

Donation Over \$1000	Date		Amount
Wilderness Fund	01/19/16	1044	\$ 65,000.00
Wilderness Fund	04/25/16	1047	\$ 65,000.00
Edward & Elva Hawkins-annual donation	06/09/16	205	\$ 5,000.00
Wilderness Fund	07/18/16	1049	\$ 66,000.00
Wilderness Fund	10/05/16	1050	\$ 66,000.00
Total			\$ 267,000.00

Donation Purchases	Date	#	Amount
Baxter State Park-Wilderness Fund	01/19/16	273	\$ 65,000.00
Key Bank-Nexus tablets for Rangers	02/19/16	274	\$ 1,105.86
NH Braggs-Ranger tool kits	03/05/16	275	\$ 3,720.16
Levasseurs-tools	03/04/16	280	\$ 40.47
Key Bank-Ranger tool kits	03/15/16	281	\$ 370.69
Key Bank-Ranger tool kits	03/15/16	282	\$ 292.61
Key Bank-Ranger tool kits	04/25/16	283	\$ 233.02
Baxter State Park-Wilderness Fund	05/09/16	284	\$ 65,000.00
BSP-Canoes for SBP & Frost Pond	06/06/16	285	\$ 1,344.29
Key Bank-Rescue Litter	07/15/16	286	\$ 2,110.40
Key Bank-6 Beartooth communication units	07/15/16	287	\$ 399.00
Baxter State Park-Wilderness Fund	07/30/16	288	\$ 66,000.00
Key Bank-2 new canoes	08/16/16	289	\$ 1,497.87
Key Bank-canoe skid plate kits	08/16/16	290	\$ 357.16
Sam's Club-canoe seat and skid plate	08/26/16	291	\$ 300.45
Baxter State Park-Wilderness Fund	10/18/16	292	\$ 66,000.00
Totals			\$ 273,771.98

Total Donations			\$ 272,405.14
Total Purchases			\$ 273,771.98

ALLOTMENTS FOR THE TRUST FOR FY16

<u>MONTH</u>	<u>AMOUNT</u>
July 2015	\$297,000
August 2015	\$296,000
September 2015	\$296,000
October 2015	\$245,000
November 2015	\$185,000
December 2015	\$160,000
January 2016	\$ 90,000
February 2016	\$ 90,000
March 2016	\$ 90,000
April 2016	\$103,000
May 2016	\$100,000
<u>June 2016</u>	<u>\$100,000</u>
Total	\$2,052,000

SCIENTIFIC FOREST MANAGEMENT

STAFF, CONTRACTED LABOR, VOLUNTEERS

STAFF

Eben Sypitkowski, Resource Manager.

Dee George, Forester.

Kevin Osborne, Forest Tech.

Interns (photo to right):

Emily Higgins, Unity College WL Bio

Jacob Cerminar, U-Wisconsin Stevens Pt, now with Missouri State Lands.

CONTRACTED LABOR

Processor (JD tracked waratah dangle): Clint Morrow

Forwarder: Corey Morrow, then Keith Dionne

Hand Crews:

Brent Chadbourne, Caratunk, JD 540B

Ben Jordan, Millinocket, JD 540E (about a foot wider than Brent's)

VOLUNTEERS

Jim Hamlin

Jeff Furlong

Ethan Furlong

Helen Aylward

Nancy Clark



HARVEST PRODUCTION AND MARKETS

After a mild winter, the warming continued into summer and brought along dry conditions (much of the southern portion of the state in severe drought) which were great for logging. All would have been well were it not for increasingly difficult market conditions. Hardwood and popple markets were simply unavailable until late July and early August, and prices made these products fall below break-even for the first time in years. We harvested 300+ cords of aspen we could not move for months--but after

several iterations of trying to chop it 9 foot and go to LP in Houlton, trying to sneak loads into Gardiner's Chester chip plant (Dolby never opened, and has yet to as of this writing), and one disastrous attempt to pawn the odd ends and bits off on the ranger staff to make firewood, we finally put all of this down to Chester. To clean up the random length ends from the slashing debacle, we thought it wise to bring this to Togue Pond service area to be used as firewood, but the same slasher operator decided to clean this up with a loader, not a crane, and thus brought us not only the muddied up popple and pile of bark, but about half the Pelletier Yard's large rocks and random chunks of dirt. So Bruce White spent a day removing the estimated 60 tons of material they dumped in front of the useful Togue Pond firewood, and I spent a week apologizing. Lessons: don't go gang-busters too early in the season (we started in June) when you don't have a handle on markets yet.



Hardwood and aspen stabilized at a slightly less than break-even price (for *us*, the reader is gently reminded of our location 60+ miles from any market) over the course of the summer, but we had strict, two and 3 loads a week quotas --when we could move wood at all--throughout the summer. This was a particular problem for the two hand crews we employed to tackle re-entry of Jensen's small gap harvests and some oversized hardwood. Because they were paid based on mill-delivered weights for pulp and a profit-sharing basis for logs (we started out trying to log all hardwood on the landing, then moved to selling this material tree length to Maine Woods Company in Portage), when loads couldn't go they didn't get paid, and I arranged for several forwarded payments. Both operators, however, were thankful for the opportunity and fair wages--as the pulp markets fell apart opportunities elsewhere dried up and staying with us became the only option. We were planning to have only one hand crew, but ended up with another because I thought we might get more done and folks with chainsaws were finding their rates slashed drastically.

Clint on the processor (4500 hours to start) produced an average of **168 cds/wk** through the **22 week** summer. Brent and Ben both produced about **30 cord/week**. This

gave a us a total for summer around **4950 cords**. Thus far this winter, given a late start (Jan 9, Pelletiers were slow to open the winter portion of Murphy Brook and Roundabout due to the lack of owning a decently size dozer any more), and a significant thaw in late February, it is looking like Clint will get about 1500 cord harvested by break-up, putting us squarely within our annual allowable cut (AAC) for the year (5k-7k cord). Mostly because we have shifted away from aspen and hardwood and towards still-profitable spruce, our finances will likely be quite good for this fiscal year.

Pleasant River asked for **spruce** in summer, so we have been selling about 15-20% of ours to them, but the balance goes to D&G in Canada. Just got word that Ward Clapboard, a family owned business based in Vermont that employed Cecil Gallagher to quartersaw nicer spruce up to Patten, will be no more. Cecil plans to restart his own gig this summer. We sold 3 logs to Randy Lucas for tonewood. Given the lack of the clapboard market and the fact that the majority of the spruce now heads directly to Canada and does not have a stop in the yard at Millinocket, trying to sell tonewood and separate the nicer stuff has become less of priority.

Hardwood logs went mainly to Maine Woods Company because we could also sell them **HW pulp** when we did so--later we figured this was best in the same tree, and just sold them hygrade. Pulp went back again to Gardiner at Chester. **Pine** has been easiest to D&G as well, though their scale has not been as favorable as loads we've sent to PRL Ellsworth, but the long haul distance there makes little sense. Fir is separated and goes to D&G as well. Clint has bought some of the **cedar** that comes downtown and the rest has gone to Scott Hanington, who now has the contract to provide our bundlewood (I made it mandatory to buy cedar from us to do so). No biomass or SF pulp options exist.

SILVICULTURE

Table 1. Volume and acreage by silvicultural treatment for FY17 (final).

treatment	volume removed (cords)		acres treated	
Group selection (hc gap cuts)	489	7%	123	15%
irregular shelterwood (ctl gaps)	397	6%	98	12%
Overstory Removal	4985	73%	443	53%
Selection	227	3%	69	8%
Extended Shelterwood	728	11%	97	12%
Total	6825		830	

Much of our forest is spruce, and much of it has this ubiquitous layer of SF regeneration climbing into an established state. Though this is not unique to areas that have been treated with a shelterwood establishment, much of our ground has in fact been treated this way between 5 and 20 years ago. Thus, we're seeing the need for **lots of overstory**



removals to release the well-established regeneration. This was predicted by Rick's modelling activities, and is quite helpful on to our finances given the continued value of spruce. After the popple debacle, we put the processor into these types of stands almost exclusively and will likely do so for a few more seasons. In comparison with other years, the finances of the SFMA were quite favorable as prices we had last year remained where they were and given only slight inflation, we paid only slightly more than last year for wood harvesting services. This combined with the fact that 73% of our harvest volume was spruce overstory removals proved remunerative.

below). We also did away with the logged-wood pre-bunching to forwarder trails, as both Ben and Brent pushed back hard on this, citing that it takes In order to keep up with the prescription in place for a few our better sites where Jensen had installed **small gaps** to establish 14 age classes within each stand, we hired two hand crews this summer. This was the second entry into these stands, and while we stuck with the initial prescription of 0.1 acre gaps harvesting about 7% of the stand each entry (140

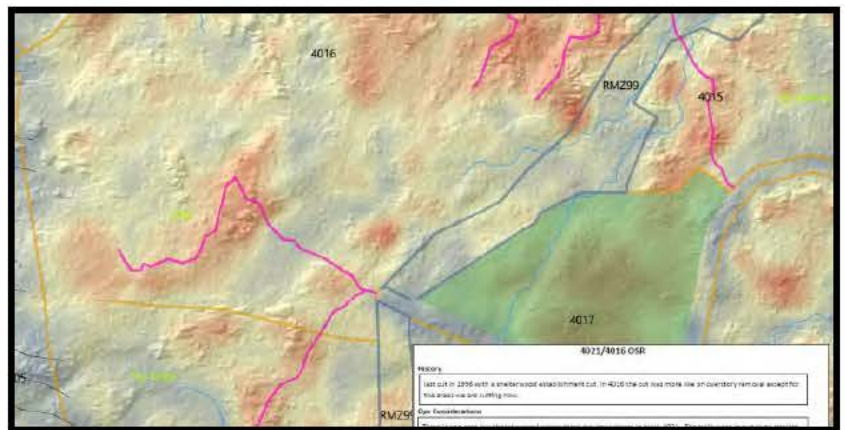


year rotation / 10 year interval), we modified where these gaps were located. Jensen had laid them out via random GPS points, in order to more closely mimic more stochastic natural windthrow gaps, but we tried to lay these out around existing red spruce regeneration, since this did not appear to me to be as ubiquitous as it needed to be to ensure the RS component remained prominent in the stand (our more even-aged treatments in these richer sites favor hardwood regeneration, which overtops the RS and then sets it back that much further, or potentially kills it by the low shade of the hardwoods). This worked well in instances where a v-shaped geometry served to protect the regen in the middle of the V, and the hand crews could fell wood on either side of it (see picture far more time and mucks up their saws to log trees in the woods as opposed to bring them out tree length, and pre-bunching would create numerous tiny yards throughout the woods that would be difficult to operate around. The old forwarder trails were rough and somewhat rutted, and where they used them again with their skidders they turned to soupy mess. We learned much from the first hand crews to harvest in the SFMA in 10 years.

We began to identify and lay out potential pre-commercial thinning blocks in areas where we've removed overstories (and started thinking about this *before* we removed overstories in some places), and we plan to do about 10 acres a year of this kind of treatment starting 2017.

LiDAR

We entered into a project with the University to acquire single photon LiDAR (SPL) on our forest plus 3 of theirs to the south. Trying to do this while everyone was leaf-off snow-off proved challenging/impossible. So, when the leaves began popping in the Holt forest in Arrowsic, we agreed to let the SPL be flown before the snow melted in the SFMA if the University paid for a USGS QL2 acquisition on us after the snow melted to ensure we got a good DEM (snow does unknown bad things to LiDAR). The SPL products were disappointing to all involved--missing tree tops and not registering boles as well as the QL2 stuff Quantum Spatial flew--so we kicked that back to



SigmaSpace (now Hexagon) and Woolpert to figure out what was wrong. Still waiting on a reply. Meantime the QL2 stuff has been great.

The data arrived this spring and we've been using it to the best of our abilities. The **1m digital elevation model** was an incredible improvement over our 30m resolution one--this, combined with the **enhanced forest inventory (EFI)** that seems off in terms of numbers (underestimates stand volumes compared to our inventories), but right on for an image of where the volume is and is not. This has allowed us to focus our recon, layout, and harvesting in those areas of higher volume within any stand. We are still in the very early stages of using these data (thus far only a free version from PhD student Elias Ayrey at UMO--Sewall is [still] working up a version that we paid for), and I am concerned that if we always know where the volume is, we won't bother looking at lower volumes areas. Next year the rest of the Park will also get flown at USGS quality level 2 (2 ppsm) as was the SFMA this April.

UNMANNED AERIAL VEHICLE

Another thing that has the unfortunate possibility of reducing fieldwork is the **Phantom 3 Advanced** drone we purchased this past summer. As Jensen says, this thing has brought up more questions than it has answered. The goal is to develop a protocol wherein we might use such a device in

search and rescue activities, but for now I've been using it to acquire high resolution imagery of stands we're about to cut (see photo) or those we just finished. The high temporal and spatial resolutions this makes available are helpful and interesting--and once the EFI gets better, missions flown with high overlap can produce 3d point clouds that can be used to develop EFI from these stands on the same spatial and temporal resolution as the imagery (one mission produces both). This "PhoDAR", given a drone that could fly a broad enough area, or imagery acquired by a small plane, will likely be all the point cloud we'll need. I passed the test for my Remote Pilot Certificate, but we could potentially go for a Certificate of Authority as a government organization and then



we would train ourselves on these things and no one else would have to get a remote pilot certificate. More in the 2017 episode.

ADVISORY COMMITTEE

Fname	Lname	TermUp
Allison	Kanoti	2019
Shawn	Fraver	2019
Andy	Cutko	2019
Emily	Meacham	2019
John	Bryant	2019
Jim	O'Malley	2019
Ken	Laustsen	2017
Gordon	Mott	2017
Robert	Seymour	2017
Craig	Troeger	2017
Aaron	Weiskittel	2017
Barrie	Brusila	2018
Rob	Bryan	2018
Philip	Ahrens	2018
Alison	Dibble	2018
Joe	Wiley	2018



April's meeting in Bangor ([minutes](#)) was quite eventful, especially in terms of two decisions; to drop FSC certification for the time being and to eliminate the confusing and restrictive clause in the [exported wood policy](#) that prevented much of our volume from flowing over the border. Shawn Fraver came on board in Jeremy Wilson's place. We felt that FSC was a substantial financial burden without substantial benefit, and that should we find there to be a benefit in the future, it would be quite easy to sign up again. The tightening of markets led to the need to sell a larger percentage of our wood to D&G, where we

have the highest net revenue for our spruce, while responding to requests for wood from our long-time partners Pleasant River Lumber.

We moved our fall meeting to summer ([tour handouts](#)) in order to overlap with our two interns and give them a chance to present what they learned from examining, cruising, prescribing, laying out, and overseeing the harvest of one stand. This was the one day of rain all summer, I believe.

TOURS AND OUTREACH

Requests for tours were sparse this year. Bob Seymour came up with his Acadian Forest Ecology class. Eben demonstrated



the drone for a few different groups, and gave a (lengthy) lunchtime seminar to the University of Fort Kent, as a well as a brief talk to the Maine Tree Foundation teachers' tour. Dee lead a tour for a few BSP staff as well. We revised the brochure for the Forestry interpretive Trail and will make paper copies available at the kiosk so that visitors wishing to take them home can do so. We re-worked much of that document to bring the reading comprehension requires down to a 6th-8th grade level.

ECO-MONITORING

We continue to maintain long-term datasets monitoring 12 air and water temperature stations, 6 cover object array transects, and the annual lynx track survey of roads. We reached out to Jack Witham of the Holt research forest in Arrowsic, ME, to offer our cover object array dataset up for compilation with the dataset he has developed down there in the same time period. No major deviations from normal were found in these data and we will continue to monitor these items into the future as barometers for long-term forest health and to evaluate the effectiveness of our forest health protection measures.

INFRASTRUCTURE

Webster Lake received shipment of two new outhouses for the two tent-sites. They will be installed in the spring. Much of road work budget was gobbled up by the installation of the Hinckley Brook Bridge (our last section of the 9/17 bridge, though the Park plans to buy 4 more this year) and repairs to the Telos Brook Bridge, which we split with KFM after the decking broke. We also graded most of the south end (with the exceptions of Frost Pond and Wadleigh Mt from Frost Pond to the Lynx Gate) and replaced 6 culverts (@ \$700 per). We also spent quite a bit on opening up Murphy Brook and Roundabout for winter with a rented D5 dozer (PBI let their D6 go and couldn't get the D4 on the site). We will be in the same road system next winter given the issues we've had recently, we will need a few days with an excavator to make the road passable. Dee and Kevin completed 1.7 miles of boundary refreshment, and we are 10 years current everywhere now. We hired Clint to brush a few miles of the Wadleigh Mountain Road and were quite pleased with the results. Plan to continue this.



Shawn Fraver (UMO Assoc. Prof and newest advisory committee member) continues to lead a study of beetle dynamics following the tornado blowdown on the north end. Several species of beetles formerly unknown in Maine have been found. This was the last year the USFS came up to sample their various insect traps. Shawn also successfully published his paper, *Forest structure following tornado damage and salvage logging in northern Maine, USA* in CJFR.

Joel Tebbencamp (UMO, PhD Candidate) [continued to track his spruce grouse hens](#)---lost a few, and radio collared a few more on the north end.

APPENDIX

BSP STATISTICS- 2016

BAXTER STATE PARK Camper Night Summary 2016																
TOTAL CAMPER NIGHTS (Summer)				54,615					% OF	Total Camper Nights (Winter)			2,513		% OF	Camper Nights Total
TOTAL CAMPERS (Summer)				22,109					SUMMER	Total Campers (Winter)			1,980		WINTER	
NIGHTS PER CAMPER (Summer)				2.47					CAMPER	Nights per Camper (Winter)			1.27		WINTER CAMPER	
MAY	JUNE	JULY	AUG.	SEPT.	OCT.	TOTAL	NIGHT	DEC.	JAN.	FEB.	MAR.	TOTAL	NIGHT	TOTAL		
CAMPGROUNDS																
Roaring Brook	225	1180	1660	1779	1373	638	6855	15%	40	93	182	162	477	19%	16%	7332
Abol	150	644	1494	1531	995	406	5220	12%	8	21	47	65	141	6%	11%	5361
Katahdin Stream	361	1234	1686	1643	1237	692	6853	15%	1	14	4	10	29	1%	15%	6882
Daicey Pond	234	704	891	865	760	409	3863	9%	34	72	177	152	435	17%	9%	4298
Kidney Pond	247	623	863	1007	883	422	4045	9%	14	68	91	24	197	8%	9%	4242
Nesowadnehunk	15	436	1204	1228	598	308	3789	9%	8	12	12	10	42	2%	8%	3831
Trout Brook Farm	15	162	299	581	300	41	1398	3%	4	17	9	48	78	3%	3%	1476
South Branch Pond	246	747	1868	2488	1406	610	7365	17%	20	11	118	136	285	11%	16%	7650
Russell Pond	79	269	356	494	197	115	1510	3%	0	28	21	12	61	2%	3%	1571
Chimney Pond	0	605	899	885	749	333	3471	8%	34	132	270	301	737	29%	9%	4208
Togue Pond	0	0	0	0	0	0	0	0%	2	8	14	7	31	1%		31
Campground Total	1572	6604	11220	12501	8498	3974	44369	81%	165	476	945	927	2513	100%	82%	46882
GROUP AREAS																
Bear Brook	0	280	560	651	413	120	2024	32%							32%	2024
Foster Field	0	331	618	783	270	253	2255	36%							36%	2255
Nesowadnehunk	88	145	284	501	179	74	1271	20%	C L O S E D						20%	1271
Trout Brook	6	87	74	430	92	10	699	11%							11%	699
Group Area Total	94	843	1536	2365	954	457	6249	11%							11%	6249
OUTLYING SITES																
South Branch Pond	33	32	79	93	93	28	358	9%							9%	358
Fowler	35	112	174	169	90	6	586	15%							15%	586
Webster/Matagamon	111	136	310	252	116	21	946	24%							24%	946
AT Shelter/Thr Birches	2	38	165	267	192	107	771	19%	C L O S E D						19%	771
Davis	0	21	49	52	52	24	198	5%							5%	198
Wassataquoik Area	20	104	161	222	167	81	755	19%							19%	755
Katahdin Lake	23	26	99	107	95	33	383	10%							10%	383
Outlying Total	224	469	938	1162	805	300	3997	7%							7%	3997
TOT. CAMP NIGHTS - SUMMER	1890	7916	13694	16028	10257	4731	54615	100%	165	476	945	927	2513	100%	100%	57128
% OF PARK TOTAL	3%	14%	24%	28%	18%	8%	96%	100%	0%	1%	2%	2%	4%			

BAXTER STATE PARK

COMPARATIVE STATISTICS - VISITOR DAYS

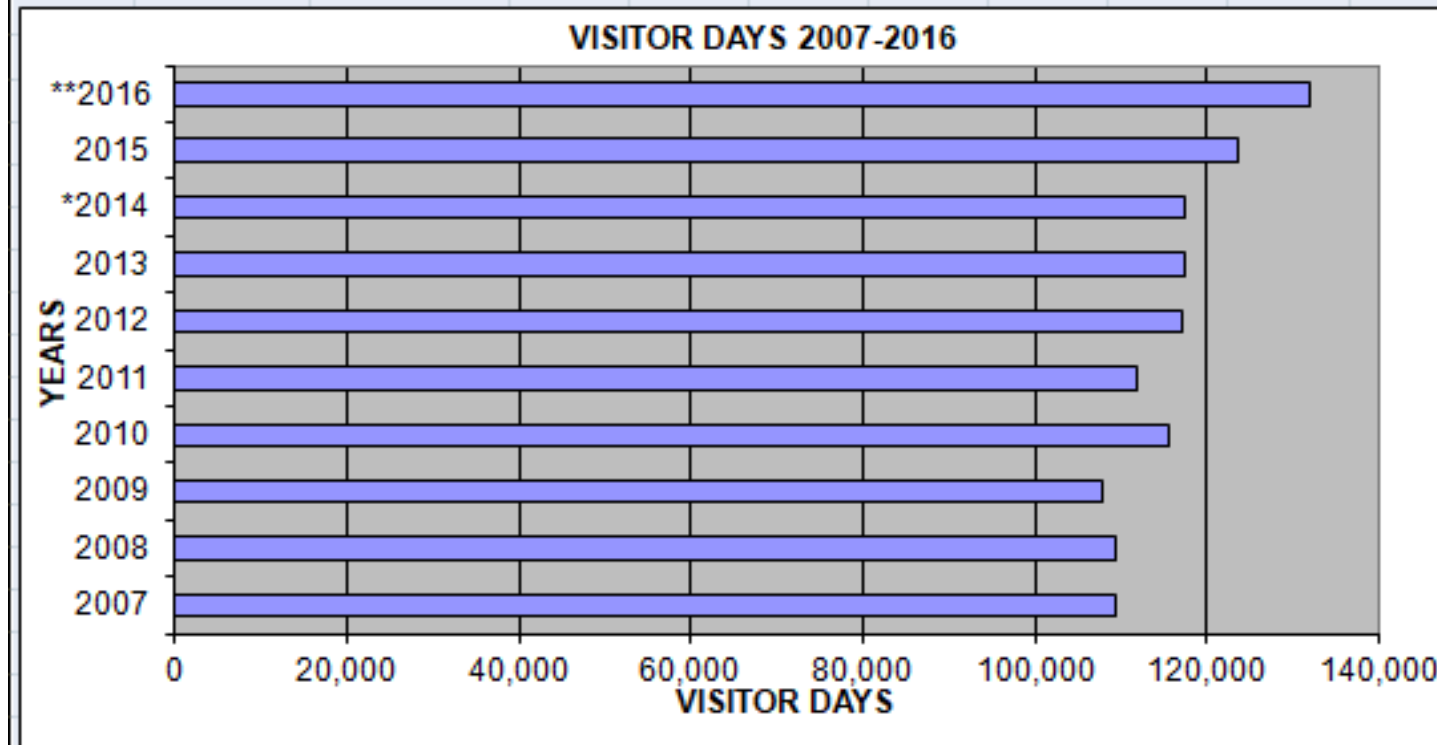
2007-2016

VISITOR DAY STATISTICS:	2007	2008	2009	2010	2011	2012	2013	*2014	2015	**2016
TOTAL SUMMER VISITOR DAYS	107,551	106,544	106,592	114,523	109,265	115,828	114,101	113,444	119,761	127,459
TOTAL WINTER VISITOR DAYS	1,873	2,741	1,396	1,240	2,597	1,420	3,380	4,090	4,033	4,493
TOTAL PARK VISITOR DAYS	109,424	109,285	107,988	115,763	111,862	117,248	117,481	117,534	123,794	131,952

Visitor day = camper nights + gatehouse headcount

(A visitor staying in the park two nights would spend three days in the Park. Camper nights counts the nights in the Park, gatehouse headcount adds the extra camper day plus includes day users.)

*2014-15 Abol Trail closed due to avalanche damage. **Dudley Trail closed in 2016



BAXTER STATE PARK Site Occupancy Summary 2016

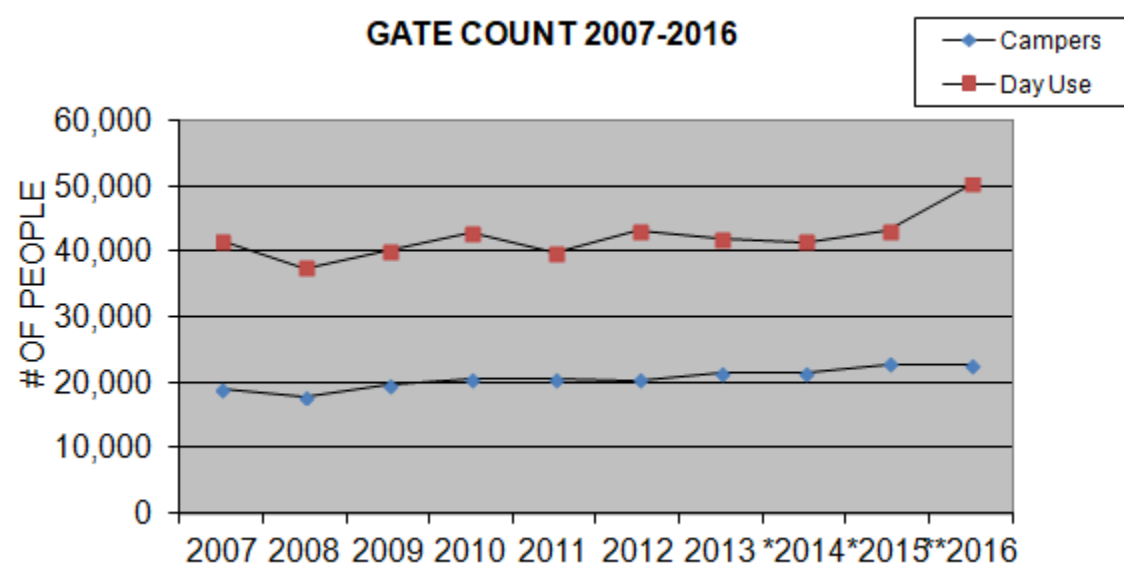
	OCCUPIED SITE-NIGHTS						SUMMER	TOTAL	TOTAL	TOTAL		%
	MAY	JUNE	JULY	AUG.	SEPT.	OCT.	TOTAL	AVAIL	AVAIL	AVAIL	%	OCCUPANCY
								SITES	NITES	SITE-NITES		
Bear Brook	0	35	62	80	45	20	242	3	154	✓ 462	✓	52.4%
Foster Field	0	47	65	83	37	22	254	3	161	✓ 483	✓	52.6%
Nesowadnehunk	7	16	39	68	28	10	168	3	142	✓ 426	✓	39.4%
Trout Brook Farm	2	17	11	50	12	2	94	4	142	✓ 568	✓	16.5%
Group Area Total	9	115	177	281	122	54	758	4	599	1939	✓	39.1%
CABINS												
Daicey Pond	99	231	274	285	279	153	1321	10	161	✓ 1610	✓	82.0%
Kidney Pond	84	226	292	338	327	165	1432	12	161	✓ 1932	✓	74.1%
TOTAL	183	457	566	623	606	318	2753	22	322	3542	✓	77.7%
NO-SHOW SITES												
Roaring Brook	14	67	81	76	78	17	333	✓ 23	154	✓ 3542	✓	9.4%
Abol	4	21	59	56	44	33	217	✓ 21	154	✓ 3234	✓	6.7%
Katahdin Stream	13	67	74	81	68	33	336	✓ 24	161	✓ 3864	✓	8.7%
Daicey Pond	1	6	6	10	2	5	30	✓ 10	161	✓ 1610	✓	1.9%
Kidney Pond	1	6	11	12	6	2	38	✓ 12	161	✓ 1932	✓	2.0%
Nesowadnehunk	1	18	45	70	40	12	186	✓ 25	142	✓ 3550	✓	5.2%
Trout Brook Farm	0	0	0	0	0	0	0	✓ 19	142	✓ 2698	✓	0.0%
South Branch Pond	11	23	69	72	40	14	229	✓ 34	154	✓ 5236	✓	4.4%
Russell Pond	0	7	7	11	14	2	41	✓ 9	154	✓ 1386	✓	3.0%
Chimney Pond	0	24	23	21	28	15	111	✓ 10	137	✓ 1370	✓	8.1%
NO-SHOW TOTAL	45	239	375	409	320	133	1521	187	1520	28422		49.3%

Note: Last week Oct 16-22, Only 4 cabins avail. - Kidney/Daicey (2016 only)

BAXTER STATE PARK
2016 GATE COUNT - PEOPLE PER MONTH

	DAY USE				CAMPERS				BY MONTH	% OF TOTAL
	RES	NON-RES	Walk/ Bike	TOTAL	RES	NON-RES	Walk/ Bike	TOTAL		
MAY										
Togue Pond	1046	685	3	1734	358	349	4	711	2445	
Matagamon	400	59	0	459	117	72	0	189	648	
Total MAY	1446	744	3	2193	475	421	4	900	3093	4%
JUNE										
Togue Pond	2881	2825	1	5707	1381	1900	2	3283	8990	
Matagamon	639	207	6	852	297	177	0	474	1326	
Total JUNE	3520	3032	7	6559	1678	2077	2	3757	10316	14%
JULY										
Togue Pond	5232	5418	3	10653	1904	2609	1	4514	15167	
Matagamon	1115	360	0	1475	608	373	11	992	2467	
Total JULY	6347	5778	3	12128	2512	2982	12	5506	17634	24%
AUGUST										
Togue Pond	6075	6309	11	12395	2136	2726	5	4867	17262	
Matagamon	1059	506	0	1565	816	501	1	1318	2883	
Total AUGUST	7134	6815	11	13960	2952	3227	6	6185	20145	28%
SEPTEMBER										
Togue Pond	3997	4059	17	8073	1730	1935	0	3665	11738	
Matagamon	628	249	3	880	506	270	0	776	1656	
Total SEPTEMBER	4625	4308	20	8953	2236	2205	0	4441	13394	18%
OCTOBER										
Togue Pond	2620	2917	6	5543	799	929	3	1731	7274	
Matagamon	461	234	4	699	165	111	13	289	988	
Total OCTOBER	3081	3151	10	6242	964	1040	16	2020	8262	11%
TOTALS BY USE CATEGORY	26153	23828	54	50035	10817	11952	40	22809		
				50035				22809	72844	100%
% OF TOTAL USE				69%				31%		
% BY CATAGORY	DAY USE				CAMPING				RES/NON-RES	
RES/NON-RES*	52%	48%			47%	52%			51%	49%

BAXTER STATE PARK										
2016 GATE COUNTS - PEOPLE PER GATE										
		DAY USE			CAMPERS			WALK/BIKE	TOTAL	%
		RES	NON-RES	TOTAL	RES	NON-RES	TOTAL		COUNT	BY GATE
TOGUE POND GATE										
May		1046	685	1731	358	349	707	7	2445	4.7%
June		2881	2825	5706	1381	1900	3281	3	8990	17.4%
July		5232	5418	10650	1904	2609	4513	4	15167	29.4%
August		6075	6309	12384	2136	2726	4862	16	17262	33.4%
September		3997	4059	8056	1730	1935	3665	17	11738	22.7%
October		2620	2917	5537	799	929	1728	9	7274	14.1%
TOGUE POND TOTAL		21851	22213	44064	8308	10448	18756	56	62876	86%
MATAGAMON GATE										
May		400	59	459	117	72	189	0	648	7.5%
June		639	207	846	297	177	474	6	1326	15.3%
July		1115	360	1475	608	373	981	11	2467	28.5%
August		1059	506	1565	816	501	1317	1	2883	33.2%
September		628	249	877	506	270	776	3	1656	19.1%
October		461	234	695	165	111	276	17	988	11.4%
MATAGAMON TOTAL		4302	1615	5917	2509	1504	4013	38	9968	14%
TOTAL GATES		26153	23828	49981	10817	11952	22769	94	72844	



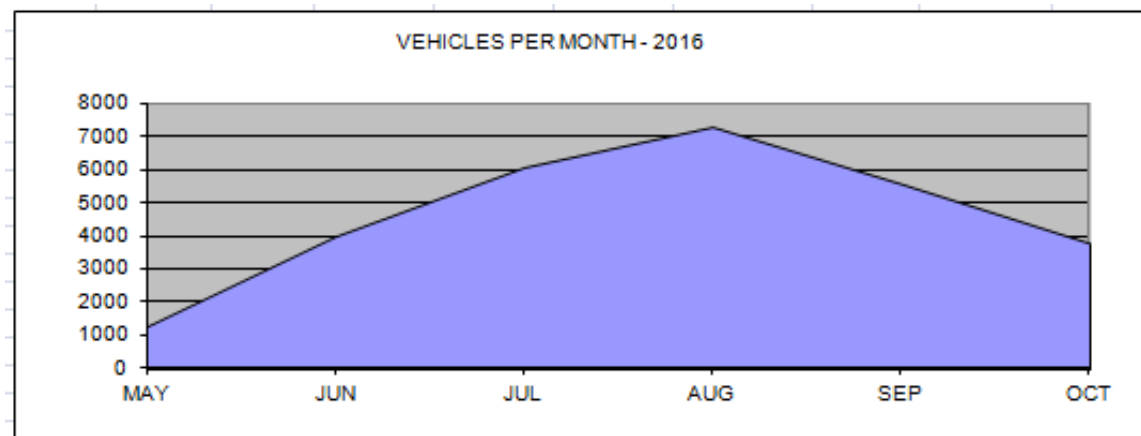
BAXTER STATE PARK		Dudley closed 2016. Abol Trail opened July 1.								
2016 TRAIL USE SUMMARY -										
REGISTERED HIKES PER PERSON PER TRAIL										
	MONTH						TRAIL TOTAL	AREA TOTAL	% OF TOTAL	
	MAY	JUN	JUL	AUG	SEPT	OCT				
KATAHDIN STREAM:										
Hunt	285	2222	3267	3643	2482	1601	13500			
Owl	35	68	93	120	84	67	467			
Grassy Pond	6	72	34	103	33	21	269			
O.J.I.	56	47	67	88	116	65	439			
A.T. South	35	236	164	99	29	16	579			
Blueberry Ledges	8	19	77	68	55	27	254			
KAT STR TOTALS	425	2,664	3,702	4,121	2,799	1,797	15,508	15,508	18%	
ABOL:										
Abol Trail	0	0	1,476	1,690	1,078	666	4,910			
Abol Falls	30	112	144	183	83	40	592			
Abol Pond/Stream	17	24	74	73	23	19	230			
Blueberry Ledges	81	65	386	485	145	108	1,270			
AT North	48	297	539	843	648	244	2,619			
Foss & Knowlton	0	0	3	25	12	13	53			
Kettle Ponds	22	59	67	72	53	26	299			
Cranberry Pond	42	140	188	211	163	90	834			
ABOL TOTALS	240	697	2,877	3,582	2,205	1,206	10,807	10,807	12%	
ROARING BROOK:										
Chimney	0	2,120	3,893	4,015	2,834	1,408	14,270			
Helon Taylor	163	915	1,242	1,319	875	454	4,968			
Sandy Stream	435	1,363	1,843	1,385	1,225	839	7,090			
South Turner	138	81	186	162	120	78	765			
Russell Pond	44	128	240	198	159	62	831			
Nature Trail	4	29	8	12	21	0	74			
Katahdin Lake	0	16	0	0	0	0	16			
Martin Ponds	0	0	1	0	0	0	1			
North Katahdin Lake	0	0	0	0	0	0	0			
Rum Pond	0	0	0	0	0	0	0			
RRG BK TOTALS	784	4,652	7,413	7,091	5,234	2,841	28,015	28,015	32%	

BAXTER STATE PARK		Dudley closed 2016. Abol Trail opened July 1.								
2016 TRAIL USE SUMMARY -										
REGISTERED HIKES PER PERSON PER TRAIL										
		MONTH						TRAIL	AREA	% OF
		MAY	JUN	JUL	AUG	SEPT	OCT	TOTAL	TOTAL	TOTAL
SOUTH BRANCH POND:										
South Branch Falls	46	170	293	445	236	112	1,302			
Ledges	29	77	148	213	124	111	702			
Howe Brook	15	114	237	227	120	68	781			
North Traveler	16	74	187	300	205	91	873			
Center Ridge	2	25	30	24	33	7	121			
Traveler Loop	0	55	93	145	131	65	489			
South Branch Mountain	8	32	72	86	109	54	361			
Pogy Notch	31	43	81	176	77	40	448			
Middle Fowler	2	20	31	46	49	12	160			
Burnt Mountain	0	23	40	53	27	18	161			
SO BRANCH TOTAL	149	633	1,212	1,715	1,111	578	5,398	5,398	6%	
NESOWADNEHUNK:										
Double Top	39	100	269	218	132	102	860			
Marston	64	125	282	318	317	157	1,263			
Wassataquoik Lake Trail	9	25	52	91	48	15	240			
Dwelley Trail	0	29	44	84	60	58	275			
NESO TOTALS	112	279	647	711	557	332	2,638	2,638	3%	
Registered hikes per person per trail, continued							TRAIL	AREA	% OF	
TRAIL NAME	MAY	JUN	JUL	AUG	SEPT	OCT	TOTAL	TOTAL	TOTAL	
CHIMNEY POND:										
Dudley	0	0	0	0	0	0	0			
Cathedral	0	753	1,540	1,466	1,154	623	5,536			
Saddle	0	511	1,209	1,244	877	341	4,182			
Hamlin	0	31	28	51	59	48	217			
North Basin	0	8	25	35	42	27	137			
NorthWest Basin	0	7	12	44	15	7	85			
North Peaks	0	5	6	14	7	0	32			
CHIMNEY TOTALS	0	1,315	2,820	2,854	2,154	1,046	10,189	10,189	12%	

BAXTER STATE PARK		Dudley closed 2016. Abol Trail opened July 1.								
2016 TRAIL USE SUMMARY -										
REGISTERED HIKES PER PERSON PER TRAIL										
	MONTH						TRAIL	AREA	% OF	
	MAY	JUN	JUL	AUG	SEPT	OCT	TOTAL	TOTAL	TOTAL	
DAICEY POND:										
Niagara Falls	284	865	1,566	1,792	1,016	422	5,945			
Daicy Pond Nature Trail	16	56	98	98	57	50	375			
Lost Pond Trail	22	10	21	10	11	6	80			
Sentinel Mt. Trail	0	0	2	5	2	0	9			
A.T. to Katahdin	12	19	175	330	235	100	871			
Daicey to Grassy	16	30	44	22	32	6	150			
Daicey to Elbow	0	18	21	9	20	18	86			
Daicey to Kidney	0	0	0	0	0	0	0			
Kidney/Lily Pad	0	0	0	0	4	2	6			
DAICEY TOTALS	350	998	1,927	2,266	1,377	604	7,522	7,522	9%	
KIDNEY POND:										
Double Top	37	52	97	143	105	72	506			
Sentinel Mountain	74	86	251	374	200	158	1,143			
Rocky Pond	59	94	106	104	95	30	488			
Draper Pond	30	41	46	49	29	25	220			
Kidney Pond Circuit	0	0	3	21	7	5	36			
Celia & Jackson	18	31	45	36	37	40	207			
Windy Pitch/Niagara/ Lily	5	15	39	65	26	32	182			
Slaughter Pond	20	30	58	56	23	15	202			
KIDNEY TOTALS	243	349	645	848	522	377	2,984	2,984	3%	
RUSSELL POND:										
Russell Pond Trail	7	40	63	134	57	40	341			
Wassataquoik Stream	22	107	133	142	73	42	519			
Pogy Notch Trail	19	23	16	45	48	23	174			
Wassataquoik Lake	28	59	112	134	81	44	458			
North West Basin Trail	4	26	58	92	52	31	263			
Grand Falls Trail	6	20	50	47	23	17	163			
Lookout Trail	6	20	12	25	11	8	82			
North Peaks	0		17	12	18	8	55			
RUSSELL TOTALS	92	295	461	631	363	213	2,055	2,055	2%	

BAXTER STATE PARK		Dudley closed 2016. Abol Trail opened July 1.							
2016 TRAIL USE SUMMARY -									
REGISTERED HIKES PER PERSON PER TRAIL									
	MONTH						TRAIL	AREA	% OF
	MAY	JUN	JUL	AUG	SEPT	OCT	TOTAL	TOTAL	TOTAL
TROUT BR FARM:									
Horse Mountain	6	56	75	55	38	32	262		
Five Ponds	33	38	84	152	81	41	429		
Fowler Pond	36	78	71	86	72	26	369		
Freezeout	6	36	39	48	39	28	196		
Frost Pond	5	8	7	18	18	0	56		
Trout Brook Mountain	22	69	84	170	60	30	435		
Wadleigh Brook	0	13	18	31	29	2	93		
TROUT BR. TOTAL	108	298	378	560	337	159	1,840	1,840	2%
MONTHLY TOTALS	2,503	12,180	22,082	24,379	16,659	9,153	86,956	86,956	100%
% OF TOTAL	3%	14%	25%	28%	19%	11%	100%	100%	

BAXTER STATE PARK 2016 GATE COUNT - VEHICLES PER MONTH								
	VEHICLES		COMMERCIAL USE		TOTAL	% OF	TOTAL	AVE.
	RES	NON-RES	RES	NON-RES	VEHICLE	TOTAL	PEOPLE/	PEOPLE/
					MONTH	VEH	MONTH	VEHICLE
MAY								
Togue Pond	555	441	15	1	1012		2445	
Matagamon	218	55	0	0	273		648	
Total MAY	773	496	15	1	1285	5%	3093	2.4
JUNE								
Togue Pond	1590	1793	85	7	3475		8990	
Matagamon	375	156	0	0	531		1326	
Total JUNE	1965	1949	85	7	4006	14%	10316	2.6
JULY								
Togue Pond	2321	2814	60	8	5203		15167	
Matagamon	605	276	0	0	881		2467	
Total JULY	2926	3090	60	8	6084	22%	17634	2.9
AUGUST								
Togue Pond	2834	3323	71	2	6230		17262	
Matagamon	687	383	1	1	1072		2883	
Total AUGUST	3521	3706	72	3	7302	26%	20145	2.8
SEPTEMBER								
Togue Pond	2251	2537	66	0	4854		11738	
Matagamon	485	248	0	0	733		1656	
Total SEPT	2736	2785	66	0	5587	20%	13394	2.4
OCTOBER								
Togue Pond	1372	1658	33	2	3065		7274	
Matagamon	485	248	0	0	733		988	
Total OCTOBER	1857	1906	33	2	3798	14%	8262	2.2
TOTAL BY								
USE CATEGORY	13778	13932	331	21	28062	100%	72844	2.6
%BY CATEGORY	49%	50%						



**BAXTER STATE PARK
2016 GATE COUNT - VEHICLES PER GATE**

		VEHICLES		COMMERCIAL			% OF
		RES	NON-RES	RES	NON-RES	TOTAL	TOTAL
TOGUE POND GATE							
May		555	441	15	1	1012	
June		1590	1793	85	7	3475	
July		2321	2814	60	8	5203	
August		2834	3323	71	2	6230	
September		2251	2537	66	0	4854	
October		1372	1658	33	2	3065	
TOGUE TOTAL		10923	12566	330	20	23839	86%
MATAGAMON GATE							
May		218	55	0	0	273	
June		375	156	0	0	531	
July		605	276	0	0	881	
August		687	383	1	1	1072	
September		485	248	0	0	733	
October		287	167	0	2	456	
MATAGAMON TOTAL		2657	1285	1	3	3946	14%
TOTAL GATES		13580	13851	331	23	27785	

VEHICLE COUNT BY GATE 2016

