

# MAINE STATE LEGISLATURE

The following document is provided by the  
**LAW AND LEGISLATIVE DIGITAL LIBRARY**  
at the Maine State Law and Legislative Reference Library  
<http://legislature.maine.gov/lawlib>



Reproduced from electronic originals  
(may include minor formatting differences from printed original)



**Baxter State Park  
Annual Operating  
Report  
For the Year 2011**

**To the  
Baxter State Park  
Authority**

**July 24, 2012**



This Operational Report is Dedicated to

Retired Baxter State Park Ranger

**Barry MacArthur**

With his quiet intelligence and patient manner Ranger Barry MacArthur built many of the Park's finest buildings, bridges and structures and inspired and trained many of the Rangers who protect and preserve the Park today.





## Table of Contents

<b>Director's 2011 Summary .....</b>	<b>8</b>
Baxter State Park Authority .....	9
BSP Advisory: .....	9
BSP Investment Committee: .....	10
Operations - BSP Projects: .....	10
Administration .....	12
LD55 .....	14
Day Use Parking Reservations .....	17
SFMA .....	17
DOL Inspection .....	17
The Friends of Baxter State Park .....	18
<b>B. Operational Highlights And Overview for 2011 .....</b>	<b>19</b>
I. OVERVIEW – 2011 .....	20
II. PROJECTION OF MAJOR PROJECTS FOR 2012 .....	21
Maintenance 2011 .....	21
SFMA .....	22
Road Projects .....	22
Bundle Wood .....	22
Maintenance Shop Projects .....	22
III. SAFETY .....	23
IV. PUBLIC RELATIONS .....	24
V. SIGNIFICANT PROJECTS / NEW CONSTRUCTION .....	25
VI. SEARCH AND RESCUE .....	25
VII. SPECIAL ACTIVITIES .....	25
VIII. LAW ENFORCEMENT .....	27
IX. FACILITY AND RESOURCE MAINTENANCE .....	27
A. PARK RANGERS .....	27
B. CAMPGROUNDS .....	28
C. GATEHOUSES .....	30
Trail Maintenance Report .....	31

BSP Trail Staff: .....	31
Trail Statistics.....	31
Statistical Summary of Trail Maintenance.....	32
<b>Administrative Services Summary .....</b>	<b>45</b>
Reservations: .....	45
Website.....	46
Contracted Services.....	47
Positions Changes.....	47
Year-Round Position Roster.....	48
Seasonal Position Roster .....	49
BSP Organizational Structure .....	50
Reservations and Office Operations.....	51
Fiscal Statement .....	55
FY12 Budget.....	56
Donations to Baxter State Park 2011 .....	63
<b>Information/Education Division .....</b>	<b>65</b>
2011 Programs-Introduction .....	66
2011 Program Series: .....	66
Children’s programs in the Park .....	68
Park Outreach Programs (partial listing) .....	69
Information/Education Projects .....	70
Park Newspaper .....	70
Project Learning Tree .....	70
Volunteers .....	71
Baxter State Park Interpretive Plan/ Management Plan Revision.....	71
2011 Education issues .....	72
Group Day Hike Numbers.....	72
The “Elephant in the Room” .....	72
Catching Up With the “New Visitor” .....	73
Seasonal Staff/Volunteers .....	73
2011 Wilderness Educators .....	73

2011 Togue Pond Visitor Center.....	75
2011 MATC Abol Ridge Runner .....	75
Training Received/Conferences Attended .....	76
Research & Special Permits .....	76
Monitoring/Inventory.....	77
American Pipit Surveys .....	77
High Elevation Bird Surveys .....	78
2011 Katahdin Arctic Butterfly Survey .....	78
Maine Audubon Loon Count .....	79
Mountain Plant Watch .....	79
Miscellaneous Surveys and Patrol Programs .....	79
Mt Coe, South and North Brother Plants .....	79
Aquatic Plant Surveys on Matagamon Lake .....	80
Purple Loosestrife Surveys .....	80
Soils.....	80
DEP Survey of Wassataquoik Drainage .....	81
Moose Pond Patrols .....	81
Mountain Patrol .....	82
Training Received/Conferences/Meetings Attended/ Assorted Field Patrols .....	83
Conferences/Training .....	83
Meetings.....	83
Assorted Field Patrols.....	83
<b>SFMA 2011 Annual Report .....</b>	<b>84</b>
Silvicultural Operations .....	84
Harvest Volumes, Revenues, and Costs. ....	85
Monitoring.....	86
Maintenance Operations.....	86
Forest Management Planning .....	87
Demonstration and Education .....	87
Certification .....	88
SFMA 2011 Harvest Statistics .....	89

<b>Appendix .....</b>	<b>90</b>
Baxter State Park Use Statistics .....	91
Park Advisory Committee Rosters .....	104



# Director's 2011 Summary



0-1 Klondike Pond



## Baxter State Park Authority

For the first time in more than 50 years, a completely new Baxter State Park Authority was



0-2 BSPA members William Schneider, Chandler Woodcock and Doug Denico, March 2011

seated following the elections of November 2010. **William Schneider** was elected by the Maine Legislature to serve as Attorney General. **Chandler Woodcock** was appointed Commissioner of Inland Fisheries and Wildlife and **Doug Denico** was named as Director of the Maine Forest Service. All three Authority members have extensive experience in public service and administration as well as outdoor experience and each member has expressed a strong interest in the Park. After initial briefing sessions, the new Authority held their first scheduled meeting in the Cross Building in

Augusta on March 15 and established Doug Denico as Chairman. The Authority followed the March meeting with meetings at Millinocket Headquarters on May 12 and at the Library at Kidney Pond Campground on October 6. In between these meetings, the Authority spent a day in August in the Park as an orientation trip. In addition to regular meetings, the Authority meets informally with the Director once a month for a briefing on Park activities and administration. In the tradition of Authority members before them, the current Authority members are excellent trustees of the Park in the manner intended by Park donor Percival Baxter.

## BSP Advisory

The Baxter State Park Advisory Committee continued its long tradition of service to the Park in



1-0-3 BSP Advisors Carla Ritchie, Mike Perry (former Advisor), Spencer Meyer and Rick Bray at Abol Narrows before the Advisory hike in September.

2011. Carla Ritchie continued in her role as a very capable and dedicated Committee Chair and Rick Bray continued his service as Vice-Chair. The members of the Advisory present a broad array of experience and orientation to the various activities available to Park visitors and as a group they provide a very productive review and advisory source for emerging Park policy regarding resource protection and recreation management.

The BSP Advisory Committee members are limited to a maximum of three consecutive 2 year terms.

As a result of some early departures, many members were scheduled to be termed out at the same time. To remedy this concern, the Authority confirmed a proposal to adjust the term limits of Advisory members at the May 12<sup>th</sup> meeting. This adjustment spread the term limit dates out among the existing members in a regular fashion.

The Advisory met six times in 2011, including a September field hike in the Park to examine potential backcountry campsites on the West Branch Lands parcel between Daicey Pond Campground and Abol Bridge. The Advisory Committee provided critical review and comment on a variety of issues including the FY12 budget, commercial and photography use in the Park, several drafts of the Park management plan and revisions to the Park website.

In the fall of 2011 and with the scheduling assistance of Advisor Spencer Meyer, the committee began to utilize polycom meeting site portals at various University of Maine facilities. This resource substantially reduced travel time and expense for committee members and allowed more committee members to make the daytime weekday meeting schedule. We hope to be able to continue utilizing the polycom sites in the years ahead.

### **BSP Investment Committee**

The Baxter State Park Investment Committee, under the steady leadership of committee Chair Brian Noyes, continued to provide critical oversight, guidance and advice regarding the portfolio of the Baxter Park endowments managed by Bank of New York Mellon in Boston. Michael Janko has served as Mellon's designated fund manager for the Park accounts since the mid-1990's. The importance of this committee to Baxter State Park and the continued expertise of Michael Janko of BNYMellon cannot be over emphasized. After many months and meetings of detailed discussions, the Park Authority confirmed a revision to the Park's Investment Policy in 2011. The revision broadens the scope of available investment instruments included in the portfolio in order to ensure continued fund performance and risk protection in the coming years. Noyes also met with the Baxter State Park Authority early in the year to provide an orientation to the Authority about the management of the Park's endowment funds.

### **Operations - BSP Projects**

2011 was a busy year in operations as Chief Ranger Ben Woodard and crew worked hard to maintain facilities, protect the Park resources and manage recreation in the Park.

The Park conducted a successful search and eventual evacuation of Christopher Dubois on January 19-20. Mr. Dubois became separated from his three hiking companions during severe winter weather while descending Keep Ridge on the Helon Taylor Trail. After the initial notification from Mr. Dubois' companions, we mobilized S&R crews and implemented an air and ground search plan on the following morning. Mr. Dubois was located by a ground team around mid-day and successfully air-lifted to the Millinocket Regional Hospital for treatment of hypothermia and possible frostbite.

After a winter of heavy snows the Park had a "normal" opening. Road conditions necessitated that the May Authority meeting be held at Park Headquarters, and the Tote Road and west side trails opened on May 28. East side trails including Chimney Pond, Cathedral and Dudley opened on June 4. The Saddle and Hamlin Ridge Trails opened later in June.



Several projects were initiated in 2011. Work began in earnest on the **re-structuring of the Foster Field Group Area** with the construction of two new shelters (fall of 2010) and two new outhouses with the prototype design for outside the cab pump-outs. The new tenting areas were seeded twice in 2011 and should be ready for camping traffic in 2012. In the fall of 2011, Park crews completed the largest step in the project and realigned the road to the west to the edge of the group area. The new road section will be ready for vehicle traffic in the spring of 2012 and some final work in closing the discontinued road section and establishing parking areas the work should be completed. This project will eliminate the public safety and environmental concerns of Tote Road traffic passing through the center of a group area and provide shelters that should reduce the informal tarping that has long characterized this group campground.

Work continued on reviewing possible options for addressing long-term trail maintenance and resource protection concerns in the **sedge meadow habitat near Thoreau Spring** at the junction of the Abol and Hunt Trails. Questions and operational concerns remain on the table and the discussion of this issue will continue into 2012 and likely include another field hike to the site before a resolution and/or operational plan is developed.

After some time searching for the right design. Park carpenter Craig Kennedy, with help from



0-4 Chimney Pond Day Use Shelter and Crew Camp

Matt Martin and the Chimney Pond Rangers, completed the day use shelter at Chimney Pond. Craig provided not only the skill and expertise for this project, but the final design. This shelter should serve many mountain hikers in the decades to come in one of the busiest day use areas in the Park.

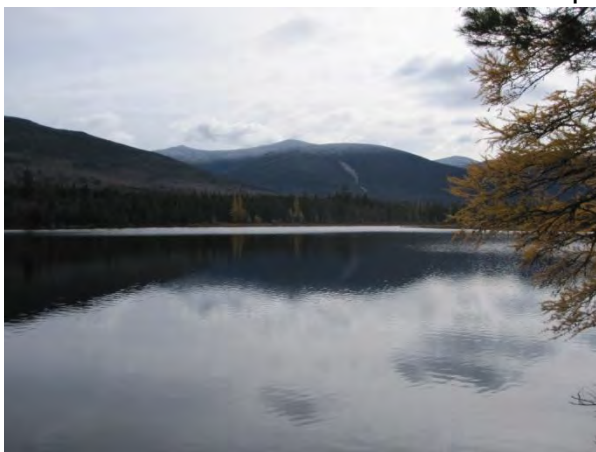
The aging drainage infrastructure on the Park Tote Road has been an issue of concern for some years now. With the help of Galen Hale of the DEP and Keith Kanoti of the Maine Forest Service, we made significant process in planning and will be starting what will likely be a long series of annual culvert

replacements in the Park. After some field review, **we will be replacing the large culvert at Black Brook on the Part Tote Road** in 2012. This culvert, currently a section of 5' and a section of 6' corrugated metal pipe married together, will be replaced with a single bottomless arch culvert. We hope to build our internal expertise and planning skill with each culvert replacement as we move through the Park in the coming years.

At the end of August, after closely watching weather predictions and news reports, we successfully **evacuated the Park for two days as an emergency preparedness measure for Hurricane Irene**. Ultimately, this strong hurricane tracked more westward than predicted

resulting in devastating flood damage in Vermont. In the Park, we had some wind and a substantial summer rainfall resulting in scattered and minor road damage. This is the first time since the Baxter Fire in 1977 that the Park was evacuated. The Park staff from top to bottom did an excellent job in communication the protocol and timing of the evacuation to Park visitors and in providing assistance to Park visitors in effecting a timely exit from the Park. Camping fees for visitors impacted by the Park's evacuation order were refunded. Costs to the Park for this action were more than \$7,000. In addition to evacuating visitors, the Park positioned both Park and contracted equipment to prepare for the rapid repair of damaged roads and to open roads clogged with downed trees. This equipment was not necessary, but the planning was well thought out and executed and will serve the Park well in future events.

In the fall of 2011, I accompanied Rangers Mike Martin, Isaac Needell and Greg Hamer on a hike to Center Pond. Before we left that day we had settled **on a location on the north shore of Center Pond for a new lean-to** to replace the existing Center Mountain lean-to. The



0-5 View from the new lean-to site at Center Pond

Center Pond lean-to will be strategically located at a nexus point for possible future trail construction on the Center Pond – Northwest Basin Trail link. This trail link is listed in the Park Management Plan as part of a long-term effort to provide more opportunities for multi-day backcountry hiking loops in the Park. If plans for the Guard to fly in the lean-to materials in early 2012 hold up, then we plan to construct the lean-to in May or June of 2012.

## Administration

Many hours in 2011 were spent on the revision of the Park's **Management Plan**. After a



0-6 BSP Administrative Team Jensen Bissell, Christine Theriault, Jean Hoekwater, Ben Woodard, Rick Morrill

series of public listening sessions in 2010, the latter two months of 2010 and the first three months of 2011 included many days of work to produce the first draft of the Management Plan. After the administrative team had finished edits, this draft was then reviewed first by the Baxter State Park Authority and then by the Baxter Park Advisory Committee and posted for public review on the Park website. After administrative team consideration of all gathered comments and suggestions, a second draft was provided to the Authority and then the Advisory Committee and posted for review. By the end of 2011, the final edits had been posted on the proposed final draft Management Plan. This plan will be presented to

the Authority for adoption by March of 2012.

The management plan process, although deliberate and lengthy, proved to be an excellent and timely process for the Park. The plan presents a broad but thorough overview of the Park and describes the specific functions of the Park based on the six primary components of the Park mission:

- Protection of the Park Resources
- Provision for Recreation Opportunities
- Conduct of Exemplary Forest Management in the SFMA
- Maintenance of Park Resources
- Provision for Public and Staff Safety
- Management of the Fiscal Resources

Within the discussion of the Park's mission elements, necessary strategic needs were identified as **"Action Items"**. The more than 60 identified action items identified in the plan were consolidated and prioritized as a separate table in the appendix of the plan. These actions items will form the core of the Park's efforts in the coming years.

As a part of the management plan, the Park worked closely with regional Maine Forest Service personnel to complete a revision of the Park's **Fire Plan**. Regional Forest Ranger Bill Greaves and District Ranger Joe Mints contributed most of the heavy lifting of this effort, culminating in a significant improvement over the previous plan. The revised Fire Plan was approved by the Baxter State Park Authority at their December 2012 scheduled meeting.

After a productive process with the Department of Human Resources, the Park secured the new positions of **Baxter Park Backcountry Rangers – Winter**. Chimney Pond is the most popular winter destination in the Park. It is also one of the most dangerous, combining the winter activities of ascents of Baxter and other peaks, ice climbing, winter rock climbing, basin skiing with the unpredictable and often very harsh winter weather of Katahdin. Past practice was to staff Chimney Pond with a BSP1 and rotate coverage on the BSPI's days off with other staff. The specific skill level required to ranger in winter at Chimney suggested that we should revise this practice. In the winter of 2009/10 and again in 2010/11 we tested project positions serving as winter rangers at Chimney Pond. After evaluating the outcome of the test period, we submitted requests to include the winter backcountry ranger position in the Park's roster. After interviews of qualified candidates, summer seasonal rangers Greg Hamer and Mark Sairio were selected to fill the positions. We are confident that this organizational change will provide better resource protection, recreation management, facilities maintenance and public safety at this important Park winter destination for many years to come.

Long time **Baxter Park Supervisory Ranger Barry MacArthur retired after more than 30 years of service** to Baxter State Park on ?



0-7 Barry at work.

Barry for his unique and very much appreciated contributions to the Park at a retirement party in Island Falls in November. I won't try and replicate here what was said and felt at the retirement party, but Barry is a unique individual admired, respected and greatly liked by all who know him. To me, he is what the State of Maine is really about. We wish Barry the best of luck in his retirement and we expect to see him often in and around the Park.

## LD55

The submission of LD55 in the early months of 2011, required several trips to Augusta to testify before the Agriculture, Forestry and Conservation Committee. LD 55, if enacted into law, would have required the Baxter State Park Authority to allow hunting on the Katahdin Lake Parcel. The LD stated in part:

**Be it enacted by the People of the State of Maine as follows:**

**Sec. 1. Baxter State Park Authority to allow hunting on certain lands.** The Baxter State Park Authority shall allow hunting on an approximately 4,040-acre parcel of land located in the northwestern quadrant of Township 3, Range 8, W.E.L.S. and commonly referred to as "the Katahdin Lake parcel." On December 13, 2006, Gardner Land Company, Inc. of the Town of Lincoln transferred the Katahdin Lake parcel by a quitclaim deed with covenant to the Baxter State Park Authority for inclusion in Baxter State Park. The boundaries of the Katahdin Lake parcel are found in Exhibit A of the deed recorded on December 13, 2006 with the Penobscot County Registry of Deeds in Book 10761, Page 286.

The proposed legislation was submitted by Representative Paul Davis of Sangerville. The Park Director provided testimony on behalf of the Baxter State Park Authority (included below). After limited discussion, Representative Davis requested that the legislation be retracted. Representative Davis made reference to the many letters and calls he had received in opposition to this legislation. Committee leadership pointed out that the process was too far along to allow retraction and that a vote was necessary. The committee voted the LD "Ought Not To Pass". The following is the testimony provided by the Park Director on behalf of the Baxter State Park Authority:





February 3, 2011

Senator Sherman, Representative Edgecomb, and Members of the Agriculture, Conservation and Forestry Committee:

---

I am Jensen Bissell and I serve as the Director of the Baxter State Park.

I am speaking to you today on behalf of the Baxter State Park Authority in opposition to **LD 55, An Act to Restore Hunting Rights in the Katahdin Lake Region.**

The Baxter Park Authority, as you most likely are aware, consists of the Attorney General, the Commissioner of Inland Fisheries and Wildlife, and the Director of the Bureau of Forestry. The following comments have been approved by each member of the Authority. Former Maine Governor Percival P. Baxter gifted Baxter State Park to the People of Maine as a 200,000 acre Public Trust. Twenty eight separate parcels were gifted to and accepted by Maine legislatures between 1931 and 1962.

Within the Deeds of Gift and the associated Formal Communications submitted to Legislatures and Governors with each gift of land, Percival Baxter described his intentions and provided direction for the administration and management of the Park. Realizing that the management of the Park would be controversial at times, in 1939 Baxter sponsored the creation of the Baxter State Park Authority as an independent body with "full power in the control and management" of the Park to interpret and administer the provisions of the Trust.

For more than 60 years the Baxter State Park Authority has been administering the Trust provisions for Baxter State Park – a recognized gem of Maine's natural resources. Over the decades, some decisions of the Authority have been questioned. In each case, the Authority has responded with a thorough and fair reconsideration of the issue followed by appropriate action if necessary. At times, the decisions of the Authority have been formally challenged by

legal action. The Courts have consistently validated the Baxter State Park Authority as the exclusive body to decide management directives for the Park.

The issue which is the subject of this proposed legislation was thoroughly explored and decided before the Katahdin Lake parcel was accepted, with comments from the public, hunters, hikers, legislators, donors, and others. All were seriously considered. That decision was not contested in court. As far as we are aware, no one has come to the Baxter Park Authority and asked for reconsideration of it.

LD 55 would set a counterproductive precedent, in clear contravention to Governor Baxter's intent and over 60 years of history. Governor Baxter wished that the Authority decide these issues, and 30 Maine Legislatures and 17 Maine Governors have honored his wishes. This is not the first time that an effort has been made to have the Legislature become involved directly in the management of the Park. Each time, after the history of the Park and particularly Governor Baxter's intent have been explained, the Legislature rejected the effort.

The Baxter State Park Authority opposes this proposed legislation because such an action is contrary to the intent of the Baxter State Park Trust and sets a dangerous precedent that would undermine the Authority as envisioned by the Trustor, Percival Baxter.

*" In conveying these lands to the State of Maine a definite Trust is created and I have the utmost confidence that the word of this Sovereign State as given by the Chief Executive and by the representatives of the people never will be broken and that this State never will violate the Trust provisions in the Deeds it accepts from me."*

*Formal Communications from Percival Baxter to Governor Lewis Barrows and the Eighty-Ninth Maine Legislature, January 1939.*

Respectfully,

Director

Baxter State Park

---

## Day Use Parking Reservations

The summer of 2011 marked the second year of the **Day Use Parking Reservation Program**. What a difference a year can make. The DUPR program operated smoothly for the summer season with a few compliments and no complaints received from Park visitors and minimal difficulties experienced by staff. Approximately 4,500 DUPRs were made by Park visitors in 2011. We hope to continue to streamline the gatehouse process for DUPR's and camping reservations in the years ahead.

## SFMA

- FSC Certification
- SAF Field Tour

Operations in the Scientific Forest Management Area continued to evolve under the **capable leadership of Resource Manager Rick Morrill**. The harvest crew morale and productivity excelled while Rick established new harvest techniques in a variety of SFMA stands.

Forest certification is a process whereby a forest management entity can undergo an independent audit of forest management measured against accepted standards for sustainable forest management. The SFMA was first FSC-certified in 2001 and then again in 2006. FSC certification lasts 5 years, after which a forest must undergo the full certification procedure. After the FSC certification for the SFMA lapsed early in 2011, **Rick successfully led an FSC certification** audit through Scientific Certification Systems (SCS) conducted by **Mike Dann and David Capen**. This was a rigorous audit involving all of the SFMA crew. The SFMA was subsequently recertified under FSC standards.

Later in the summer of 2011, Rick led a tour of the SFMA by a group from the Maine Chapter of the Society of American Foresters. The SAF is a national organization of foresters promoting sound forest management and professional conduct among foresters. The SFMA tour was one of a number of tours in Maine recognizing landowners with a long record of exemplary and imaginative forest management – in this case highlighting the past management work of the previous Resource Manager (current Park Director) and the continuing work of Rick Morrill as SFMA Resource Manager.

## DOL Inspection

In August of 2011, the Department of Labor, Workplace Safety and Health Division, conducted a safety inspection of work facilities at Baxter State Park. The audit was prompted by a complaint about workplace conditions at Headquarters (temperature). The complaint was found to be baseless, but the audit team then visited all work facilities including the Headquarters campus in Millinocket as well as facilities in the Park. Chief Ranger Ben Woodard escorted the auditors on all segments of their inspection. The audit findings included a number of conditions that were in violation of Occupational and Safety Health Rules. These violations included cleaning materials without labeling, fire extinguishers without documented inspection tags, lock-out/tag-out procedures, missing equipment guards, safety rails on bunks etc. The DOL provided an abatement period prior to final assessment of approximately four months. Ben and Transportation Supervisor Rod Angotti immediately got to work on addressing all listed issues. Prior to the final abatement date early in 2012, the Chief Ranger

and Park Director met with Steve Greeley, Deputy Director of the Workplace Safety and Health Division to review the Park's work on violation abatement. The DOL's response was to waive all violation penalties.

The Park had been applying a steady effort to improving safety in the workplace before the DOL audit occurred and the audit provided further impetus to continue our work on this issue. The encouragement of a culture of safety and awareness on the part of all Park employees will continue to be a focus in the years ahead. The leadership of Chief Ranger Ben Woodard and his operational staff has been an important component in the progress we have made to date.

## The Friends of Baxter State Park

The FBSP continued to have a very positive effect on the Park in 2011 through their support



10-8 FBSP Board members with BSP staff at their annual FBSP Board retreat on Clark Island. Margaret Mills, Chaitanya York, Anne Huntington, Milt Wright, Jean Hoekwater, Henry Beeuwkes, Jensen Bissell, Barbara Bentley, Charlie Jacobi.

and philanthropic efforts. As in past years, the FBSP provided support to Maine Conservation Corp trail crews to accomplish work on trail maintenance that would otherwise not have been done. The Park also utilized donated funds from the FBSP to purchase of field data collectors and the funding of intern positions to accomplish a **Park-wide Trail Inventory**. The Trail Inventory gathered objective spatially oriented information on trail structures and trail conditions on the Park's 200+ mile trail system. The trail inventory interns, **Patrick Aldritch and**

**Andy Pelletier** were the subjects of a Bill Green's Maine segment during the summer of 2011 that described the project and its importance to the Park and the management of Park trails. The information gathered on drainage and erosion control structures

bridges and other trail attributes, will play a vital role in more informed decisions in the maintenance of Park hiking trails in the coming years.

## **B. Operational Highlights And Overview for 2011**



The cliffs of Wassataquoik Mountain as seen from the Wassataquoik Lake Trail



## **I. OVERVIEW – 2011**

The 2011 visitor numbers, work projects, patrols, opening of roads and campgrounds are all connected to the weather that was experienced. A snowy 2010-11 winter transition allowed Park Rangers, Backcountry Rangers (project position), and other BSP Staff to patrol and complete hauling projects. A steady melt created minimal road damage although Campground Rangers could not drive to their campgrounds until almost a week later than usual. A core of volunteers helped to open the campgrounds on time.

The Volunteer Program again proved to be invaluable in helping with campground & trail maintenance, SFMA, I&E, and other projects. Each volunteer is appreciated for their contribution. Some volunteer to help for a specific event, such as the annual Clean-Up day, while others may help throughout the summer. All efforts are much appreciated.

Training and safety were the focus in 2011. The annual spring meeting became 2 days rather than 1. The first day was park updates, topics of interest, and some training. A second safety day was added to fulfill training and safety requirements. Baxter State Park's partner in safety, MEMIC organized the safety day training led by Peter Koch, along with key personnel. Lectures and demonstrations were held on ladder, fall protection, job hazards analysis, MSDS sheets, and other topics. The medical response of the park has advanced to now having a medical director. Former Maine EMS Medical Director Steve Diaz became the Medical Director for Baxter State Park. Dr. Diaz worked with the Chief Ranger, to authorize all wilderness medicine trained staff with current certifications to respond to emergencies using written medical protocols with specific guidelines of treatment. Along with the protocols, a standardized first aid kit was created, along with an accident/ incident report form. All accidents & incidents in the park are reviewed to assess response levels, and support that was or may be needed. As part of his medical duties, Dr. Diaz reviews all accident/ incident forms. Park Rangers, headed by Rob Tice, began training Katahdin trailhead based Campground Rangers on how to assist in setting up low slope angle belay systems for rescue litter evacuations. Maintenance & Building Supervisor Rod Angotti developed and trained park staff in fall protection and ladder training. Lester Kenway was contracted to run a chain saw safety course for park personnel, in addition to park's chain saw training and certification program. In August 2011, Baxter State Park was inspected by the Maine Department of Labor, Bureau of Labor Standards (BLS). During the inspection, violations were found ranging from unlabeled spray bottles, no hand rails on work stairways, guards missing on machinery, fire extinguishers, not checked monthly, etc. These violations were distributed by location to all supervisors to correct. Most violations could be corrected immediately, while others needed construction or development. The hard work of the entire park staff helped to correct the violations with no fines.

Park Ranger Barry MacArthur decided that 2011 was a good year to retire. Barry worked the summer camping season trying to finish as projects as possible. Barry's hard work and many years of dedication will not soon be forgotten. Barry returned to volunteer during the 2011-12 winter season to help with projects and put a smile on everyone's face who worked with him.

The project position Backcountry Rangers at Chimney Pond became full seasonal positions. Backcountry Rangers Greg Hamer and Mark Sairio started the 2011- 12 winter season by hiking into Chimney Pond due to the lack of early season snow. Greg and Mark did an excellent job providing public education, maintenance work, and patrol of Chimney Pond and the Park.

In conclusion, 2011 was a successful & productive year in park operations.

## **II. PROJECTION OF MAJOR PROJECTS FOR 2012**

### **Maintenance 2011**

#### **Purchases**

2 new GMC 4x4 trucks for the Law Enforcement staff.  
1 new GMC Canyon 4x4 crew cab truck for the SFMA Resource Manager  
1 used Dodge Van to replace the Head Quarters pool van  
1 used Ford Escape for the Park Naturalist  
1 new weed whacker for Russell Pond  
1 new chain saw for Russell Pond  
2 gas refrigerators for Abol and Katahdin Stream campgrounds  
1 woodstove for cabin #6 at Daicey Pond  
3 self contained solar lights two for Togue Pond gate and one for Roaring Brook  
1 300 gallon gasoline double wall skid tank for Roaring Brook  
Several fall projection systems for use throughout the Park

#### **Building Projects**

##### **South end of the Park**

- Cabin #8 at Kidney Pond had the front porch replaced.
- A new woodshed was constructed at the Visitor Center
- New odorless outhouse replaced an old double unit at Roaring Brook
- Kidney Pond woodshed was expanded
- Installed railings on the Togue Pond pole barn loft
- Roaring Brook bunkhouse countertop was replaced with ceramic tile
- Four lean-tos at the Abol Narrows had the roofing replaced by volunteers

##### **North end of the Park**

- Davis Pond outhouse was replaced
- Davis Pond lean-to roofing and flooring were replaced
- Replaced 8 back country outhouses 4 at Fowler Pond, 2 at Long Pond, 1 at Togue Ledge and 1 at Boody Brook
- Constructed a new picnic shelter at Chimney Pond
- Russell Pond bunkhouse roofing was replaced with metal
- Russell Pond shop windows were replaced
- Replaced one lean-to at SBP
- Converted one outhouse at SBP to the new odor free design.
- Trout Brook Farm garage had the roofing and chimney replaced
- An outhouse was prefabricated for the lean-to relocation project at Center Pond



## SFMA

- Steps and railings were replaced on the small cabins on the Hemlock road
- Several light fixtures were replaced to comply with the Dept. of Labor requirements
- Temporary skirting was installed on the large camp at the Hemlock road location

## Road Projects

- Six new culverts were installed in the Wadleigh Mountain road in the SFMA
- Four miles of Park road had the brush cut back to a height of 12 feet by a contractor. The area covered was from the top of Abol Hill to Tracey pit. Cost for the brushing averaged approximately \$1200/mile.
- A new gate was installed on the Wadleigh Mountain road in the SFMA
- Spring road damage was minimal this year. Abol Hill, the culvert which Abol stream flows through below Abol campground and a few areas on the hardwood ridge by Dwelley Pond trail required surface material replacement.
- Hurricane Irene cause additional road damage on the North end of the Park in the areas of Little Field and Dry brooks. The Roaring Brook road had minor damage in a few spots during this storm.
- The road at Foster Field was relocated to the West so it now is on the outskirts of the camping area instead of running through the center of it.
- Effort was concentrated in the ditching of Abol hill in the fall to see if improved drainage will minimize the damage that traditionally occurs in the spring.
- Several large culverts had the brush cut back off the road edges. Cutting this brush removes material that compromises the fill integrity around the culverts, removes the potential of this brush falling into the culvert and allows monitoring of potential plugs from brush and debris.

## Bundle Wood

7303 bundles of camp ground fire wood were processed at Abol Service area and sold in the area camp grounds. This is an increase of 1000 bundles over the previous year. The ratio of bundles sold is running twice as much softwood to hardwood. All the softwood bundle wood processed this year on the south end of the Park was saw mill slab wood and trimmings accumulated from the milling of bog bridging and bridge decking for Park projects.

## Maintenance Shop Projects

The staff mechanic spent 1706 hours in the shop and 197 hours assisting on field projects. Below is a summary of vehicle maintenance projects completed:

- Batteries replaced 11
- Body repairs 5
- Brake jobs 2
- Electrical repairs 4
- Exhaust System repairs 2
- Front end repairs 6
- New tires installed 27
- Outboard motor repairs 1

- Snow sled repairs 24
- Vehicle Inspections 39
- Tires repaired 4
- Vehicle services 73
- Chain saw repair or rebuild 1
- Generator repair 4
- Road calls for Park Equipment 3
- Water pump repairs 1

The following are additional projects completed by the staff mechanic:

- Fabricated two steel gates one for the SFMA and one to replace the wooden gates at the Park's south entrance
- Set up a new truck for the SFMA
- Installed 5 new radios and boosters
- Replaced brakes on the equipment trailer
- Assisted with culvert replacement in the SFMA
- Assisted with road repair and Foster Field road relocation

Parts used = approximately \$22,363 on motor vehicles  
   \$1320 on snow sleds  
   \$12,019 on building projects and repairs

### **III. SAFETY**

Noteworthy safety oriented activities in 2011 include:

1. Snow was removed at the Millinocket facilities and sanding of all entrances and walkways was performed.
2. All chimneys and woodstoves were cleaned of soot and ash.
3. All fire extinguishers were inspected and re-certified for the year and checked on a monthly basis.
4. Park visitors were informed daily of weather and hiking conditions. Mountain Patrol personnel hiked Katahdin during heavy use periods to assist, aid, and inform hikers of Katahdin trail conditions and environmental concerns.
5. Wind thrown trees were removed from the Park Tote Road and trails on a routine basis.
6. All boats, flotation devices and canoes were checked for serviceability and repaired or replaced as needed.
7. Maine Search and Rescue teams (Mount Desert Island, Franklin, Wilderness, Mahoosuc and Lincoln) covered busy weekends in May, June, July, August, September and October.
8. All cabins, tent sites, lean-tos, outhouses and all other Baxter State Park facilities were inspected for safety and serviceability.
9. All campfire rings were inspected to meet Baxter State Park fire safety standards.
10. Wildfire suppression equipment was tested and inspected Park wide.
11. All search and rescue equipment was inspected to assure rescue readiness.
12. Baxter State Park personnel were involved in 30 search and rescue incidents.

13. Smoke and carbon monoxide alarms were inspected and replaced as needed.
14. Six miles of trail were re-blazed for better hiker visibility.
15. Corridor definition was completed on seventeen miles of trail to enhance visibility and safety.
16. Annual chainsaw, search and rescue, first aid and wildfire suppression training was provided for Baxter State Park personnel.
17. Law enforcement rangers received firearms usage and safety training.
18. Bridges on winter administrative snowmobile trails were shoveled regularly to reduce over load and tipping hazards.
19. The 2-way radio communications equipment was repaired and replaced to enhance search and rescue operations. Additionally, new narrow band compliant radios were purchased and installed in order to comply with upcoming FCC mandates.
20. The Maine Forest Service located a wildfire suppression fire engine in the Togue Pond Area and trained Park Rangers in its use.
21. Avalanche level I training was hosted at Chimney Pond on January 25 and 26 and was attended by BSP Staff.
22. On October 29, an experienced sawyer was accompanied by a member of the BSP Safety Committee. The hazards from numerous danger trees were eliminated Park wide at buildings, facilities and campsites.
23. Following a Maine Department of Labor Park-wide safety inspection, numerous modifications and improvements were made such as installation of railings, improved product labeling and enhanced fire extinguisher accountability. This process has also enabled the Park to formalize a safety committee as well as institute improved safety training.
24. Under first time medical direction, Baxter State Park medical response capacity was improved and clearly guided by specific medical protocols.
25. In anticipation of the arrival hurricane Irene, Park Rangers and staff worked together to safely effect the first Park wide evacuation in over 20 years.

#### **IV. PUBLIC RELATIONS**

1. Baxter State Park personnel within the Park made multiple contacts with people from May to October in 2011. This does not include numerous day use contacts at Togue Pond Beach, Matagamon Picnic Area, snowmobile riders, ice fishermen, winter campers and hunters in the Scientific Forest Management Area.
2. Baxter State Park employees assisted the public by rendering numerous services that included: transporting hikers, delivering messages, minor vehicle repairs and vehicle jump starts. Information on scenic views, trail conditions, wildlife settings, good fishing locations and similar topics was daily passed on to the public.
3. The Alpine Stewards greeted and assisted hundreds of hikers on Katahdin.
4. Baxter State Park staff participated in occasional speaking engagements throughout Maine and in the Park to assist the Interpretive Division.

## V. SIGNIFICANT PROJECTS / NEW CONSTRUCTION

1. A new replacement lean-to was built at South Branch Pond.
2. The workshop at Trout Brook Farm had shingles stripped and a new metal roof installed.
3. Replacement outhouses were built in the back country at: Middle Fowler North and South tent sites, Lower Fowler and Lower Fowler outlet tent sites, Long Pond Pines and Outlet tent sites, as well as Boody Brook and Togue Ledge tent sites on Matagamom Lake.
4. After much needed assistance from the 126 Maine Army Guard, a replacement outhouse was built at Davis Pond. In addition, a new metal roof was installed as was the floor replaced.
5. A replacement vault privy was installed at Roaring Brook Campground.
6. A new day use shelter was built at Chimney Pond.
7. The final phases of the Foster Field relocation project were initiated and nearly completed.



Davis Pond:

Lean-to renovated with a new roof and floor,

Plus a new outhouse as well!



## VI. SEARCH AND RESCUE

There were 30 search and rescue incidents that required the assistance of Baxter State Park personnel in 2011. Four of the search and rescue operations involved the use of aircraft. Refer to **Appendix I** for additional information.

## VII. SPECIAL ACTIVITIES

1. On January 6, 2011 the annual winter inspection of Park Ranger ranks was performed.



2. Baxter State Park Rangers, both current and retired, attended a memorial service on June 18 for Ranger Ralph Heath, who gave his life in the attempt to save the life of another. On that day, a new tradition began in which relatives of Ralph Heath were invited to attend the memorial. Attendance was excellent.
3. Assistance was rendered to Wilderness Rescue Team, Mahoosuc Mountain Rescue Team, Mount Desert Island Rescue Team and Lincoln Rescue Team by transporting search and rescue personnel and equipment from Abol Bridge on the Golden Road to Chimney Pond for winter training exercises.
4. On Saturday May 14, Park Rangers assisted volunteers and other park staff at the Baxter State Park 2011 Earth Day road side clean-up.
5. On Saturday June 18, the annual formal summer inspection of Park Ranger ranks was performed.
6. A variety of staff, particularly Togue Pond Gate and Katahdin Stream Campground Rangers, assisted the Penobscot Indian Nation while in the Park during their annual run of the Katahdin 100 on Labor Day Weekend.
7. Mutual aid was rendered between Baxter State Park, Maine Warden Service, Maine Forest Service and other local and state law enforcement departments.
8. The Maine Forest Service assisted with new employee Wildfire Suppression Training and coordinated wildfire suppression efforts at the September Windy Pitch Pond fire in Baxter State Park.
9. Rangers worked with maintenance staff on the Foster Field group area relocation project.
10. In an effort to increase the amount of in-house trainings, Park Rangers led or assisted with: Introduction to Search and Rescue, Basic Rope Rescue, GPS Training, Chainsaw Training and numerous safety trainings.
11. Park Rangers spoke at area schools contributing scheduled career day functions.
12. Park Rangers serve on BSP interview panels as needed.



Davis Pond in the Northwest Basin of Katahdin as seen from a Blackhawk Helicopter  
Photo courtesy of Jon Campbell

## **VIII. LAW ENFORCEMENT**

Baxter State Park continues to maintain a low profile law enforcement program with emphasis on education and information. Law enforcement officers are required to attend 20 hours of training each year. The 2011 mandatory training consisted of: MCJA firearms qualification, new law and case updates, dealing with emotionally disturbed persons (adults and children), pursuits and response to calls, and stress in law enforcement. The violations in 2011 were varied with a greater percentage of them being speeding and motor vehicle related charges. Regular hunting patrols were scheduled in T6R9 and T6R10 townships. Baxter Park Rangers investigated eight motor vehicle accidents in the Park this year. To review the summary of court cases and law enforcement courtesy warnings, please refer to **Appendix I**.

## **IX. FACILITY AND RESOURCE MAINTENANCE**

Maintenance plays a very important role and continual upkeep of Baxter State Park and its facilities assures a safe and positive experience for Park visitors. Listed below are the pertinent projects completed by staff in the year 2011.

### **A. PARK RANGERS**

1. Communications & Solar Power. Park Rangers assisted the maintenance group in servicing solar charged batteries and improving wiring in key locations.
2. Culverts were installed or replaced as needed.
3. Rock work at culverts as well as diversion ditches were reinforced and maintained as needed.
4. Park wide, gravel and screenings were hauled for minor road and spot surfacing projects. Park roads were also rock raked by staff.
5. Winter hauling trails were maintained to Russell Pond and Chimney Pond Campgrounds.
6. Winter re-supply operations were completed for Russell Pond and Chimney Pond Campgrounds included bringing propane tanks, firewood, bridge repair and construction materials, requisitions and supplies into the backcountry.
7. Several bins of outhouse compost were removed from Chimney Pond Campground to the Rum Mountain Service Area.
8. Maintenance and upkeep of infra-red counters occurred on various tote road and trail locations to monitor snowmobile and other activity.
9. In April, snow was removed from the Park Tote Road from Matagamon Gate to Trout Brook Farm.
10. Welding jobs were completed, both in fabrication and repair of heavy equipment, tote sleds, portable gates and other assorted tasks.
11. A new service bridge was built across Boody Brook on the Freeze Out Trail.
12. Two new replacement outhouses were built at Boody Brook and Togue Ledge.
13. Much time was spent working on the Foster Field Road re-route.
14. The gates were removed and replaced with boulders at the north and south ends of the Dwelley pond road.
15. A new four-backpack Search and Rescue litter carrying system was constructed, tested, and implemented.
16. Brush and wood demolition and debris was burned and cleaned up at the East Branch pit and Tracy Pond pit.

17. The perimeters of all park campgrounds and major structures were recorded by GPS for use in the Baxter State Park fire plan.
18. Inventories of private canoes at all Baxter State Park outlying ponds were made.
19. Park Rangers assisted in the annual roadside clean up event in May.
20. Several miles of the BSP boundary line were cleared, re-blazed and painted.
21. Numerous campground and road signs were routed at Trout Brook Farm.
22. Outhouses and facilities on the Long Pond and Fowler areas saw winter inspection and improvements.
23. Park Rangers worked with staff in removing beaver blockage and debris from several Baxter State Park culverts.

## B. CAMPGROUNDS

Campground Rangers routinely clean campsites, lean-tos, cabins and outhouses. These rangers remove wind thrown trees from the roads, campgrounds and trails that are near duty stations. While on roads and trails, Rangers assist motorists and hikers that are struggling with motor vehicle problems or injuries, respectively. They also patrol for litter in Baxter State Park campgrounds, parking lots, roads and trails. Picnic tables, signs, gates and sign posts are stained, repaired or replaced on an as needed basis. Buildings, lean-tos and outhouses are painted and stained by campground rangers as well as minor building maintenance such as replacing stovepipes and mending screens and screen doors. Winter campground staff also keeps solar panels clear of snow, keep key doors and outhouses free of snow and daily meet the environmental challenges that Baxter State Park presents in the wintertime. Listed below are each duty stations' maintenance projects that were beyond the routine.

### *ABOL: Paul Corrigan CRI, William Martel CRI*

1. Pipes were repaired and new fixtures were installed in the small cabin.
2. A new bookshelf was built, painted, and installed.
3. Multiple improvements were made to the woodshed including the replacement of a rotted sill log and repairs to the stairs.

### *KATAHDIN STREAM: Bruce White CRI, Betsy Dawkins CRI*

1. Almost a dozen picnic tables were repaired or replaced.
2. Considerable time was spent in public contacts with Appalachian Trail hikers.
3. Six information kiosks were built, stained, and installed at Katahdin Stream, Bear Brook, the Visitor Center, Foster Field, and Nesowadnehunk Campground.
4. The roof on the outhouse at site 17 was replaced.
5. Many hours were spent working on the new road section at Foster Field group area.

### *DAICEY POND: Andrew Vietze CRI, Charity Levasseur, CRI*

1. A new rack for saleable items was built, stained, and installed.
2. A new bulletin board was built for the Day Use area.
3. The porch on cabin #3 was leveled and replaced.
4. Multiple staining projects were completed at outhouses, cabins, and the library..
5. The kayak rack was rebuilt.



***KIDNEY POND: Diane Freelove CRI, Dean Levasseur CRI***

1. Kidney Pond staff spends part of one day per week covering Nesowadnehunk Campground.
2. Kidney Pond Campground staff must spend considerable time mowing their area.
3. A sill log, the deck, and the stairs were replaced on cabin #8.
4. A new water heater was installed in the cook camp.
5. Campground Rangers helped level and replace the porch on Daicey Pond cabin #3.
6. The Baxter State Park Authority, Donn Fendler, and other special guests were hosted at the Kidney Pond library.

***NESOWADNEHUNK: Mark Varney CRI, Kidney and Daicey Pond Staff***

1. Nesowadnehunk staff spends one day per week covering Trout Brook Farm campground.
2. The Nesowadnehunk Campground Ranger must spend considerable time mowing assigned areas.
3. Roof boards were removed from and repairs made to the Marston Trailhead outhouse.
4. The bunkhouse floor was given a fresh coat of paint.
5. Multiple outhouses were scraped and painted as and re-varnished on the interior walls.

***SOUTH BRANCH POND: Gabe Williamson CRI, Gunter Bernardini CRI***

1. South Branch Pond Campground staff must cover Trout Brook Farm Campground one day per week.
2. Lean-to 4 was replaced with the help of rangers from other duty stations including: Mark Sairio, Tom Bell, Greg Hamer, Barry MacArthur and Mike Martin.
3. Five spruce trees were planted in front of lean-to's 4 & 5.
4. A platform to hold propane cylinders was installed at the ranger station.
5. A new screen door was installed at the ranger station.
6. A new rock-way was installed at tent-site 36.

***TROUT BROOK FARM: Gerald Locke CRI***

1. The Trout Brook Farm Campground Ranger must cover Nesowadnehunk Campground one day per week.
2. A considerable amount of time is spent mowing the Trout Brook Farm area, North Branch Camps, and Burnt Mountain.
3. The ranger assisted with the controlled burn of Black Brook service area.
4. Trimming of overhanging limbs and brush was performed along the Park Tote Road when travelling to and from coverage at Nesowadnehunk Campground.
5. The Trout Brook Farm Campground Ranger patrols the Five Ponds Trail weekly, maintaining campsites, outhouses and fire rings.

***ROARING BROOK: Bill MacDonald CRI, Russell Porter CRI***

1. Firewood was prepared and staged for hauling to Chimney Pond Campground during the upcoming winter.
2. The rangers assisted in the construction of a new outhouse.
3. The ranger station porch railing was repaired.
4. Roaring Brook staff was very much absorbed in contributing to the success of the Day Use Parking Reservation pilot program.

***CHIMNEY POND: Gregory Hamer CRI (Winter Project Position), Brendan Curran CRI (Winter Project Position), Tom Bell BRI (Summer), Rich Elliott BRI (Summer)***

1. Winter staff at Chimney Pond work on: establishing and maintaining the snowmobile hauling trail trails, removing accumulated compost to an approved storage site, remove demolition and material from the previous summer, swap empty for full propane tanks, haul 3-4 cord of firewood up from Roaring Brook and haul numerous other requisitions and supplies.
2. Bog bridging, cribbing, stringer logs and service bridge deck materials were transported to job sites on area trails including Blacksmith Brook on the Chimney Pond Trail, Katahdin Lake, and Sandy Stream Pond.
3. A new set of compost bins were built, painted, and installed.
4. A new Day Use shelter was constructed with the help of the Park Carpenters Craig Kennedy and Matt Martin.

***RUSSELL POND: Gregory Hamer BRI, Brendan Curran BRI***

1. A cedar log crib was built in front of lean-to 4.
2. The rangers assisted the Park Carpenter with privy construction and roof replacement on the lean-to at Davis Pond.
3. The bog bridging at the beginning of the Grand Falls Trail was replaced.
4. The Six Ponds canoe landing was relocated.
5. New stairway railings were installed at the main camp and in the shop.
6. The rangers assisted the trail crew with the North Peaks Trail project.
7. A new canoe rack was built next to the shop.
8. A new flagpole was cut, peeled and erected.
9. The rangers assisted the Park Carpenter with the installation of a new metal roof on the bunkhouse.

***ROVING RANGERS: Cathy Lusk BRI, Mark Sairio BRI***

1. Filling in for time off requests and staff vacancies at gatehouses and campgrounds comprised the bulk of Roving Ranger time this year.
2. The Togue Pond picnic area walkway borders were repaired and/or replaced.
3. Assistance was given to the Foster Field road relocation project.
4. Multiple patrols were made to the Katahdin Lake sites for maintenance and cleaning.

## **C. GATEHOUSES**

All gatehouse attendants assist with firewood, mowing grass, the cleaning of out-houses, staining and lettering of Park signage and other projects as time allows.

***TOGUE POND: Ruth Levesque, Geri Fraser, Zac Montgomery, Tom Power, Rick Leavitt***

1. Routine cleaning of Togue Pond Beach and area facilities.
2. Considerable time was spent painting trail signs, sign posts, and the ceiling of the gatehouse.
3. Togue staff continued the successful transition in to Day Use Parking Reservation System.

***MATAGAMON: Dana Miller, Marcia Anderson, Tracy Young***

1. Assistance with campground coverage and maintenance at Trout Brook Farm campground.
2. The wood shed and four tote sleds were scraped and stained.
3. Wood for the gatehouse was cut, split, and stacked.

## **Trail Maintenance Report**

### **BSP Trail Staff**

Paul Sannicandro – Trail Supervisor

Krista Rogers, Anthony Savino – Trail Crew Leaders

Baxter State Park Trail Crew Interns

Summer Crew

Marshall Davis – Patten, ME

Sean Cooley – Meridan, CT

Renzo Moyano – New York, NY

Leewood Oakley-Atlantic Beach, FL

Donald Sanner-Meyersdale, PA

Stephen Day – Baring Plt, ME

Shane Dufour- Van Buren, ME

Benjamin Murphy- Fillmore, NY

Ronald Pickens- Clayton, NC

Cody Whiteside-Val Verde, CA

Fall Crew

Dylan Cookson-Corinna, ME

Joshua Gallagher- W. Harrison, NY

Ronald Pickens- Clayton, NC

Donald Sanner-Meyersdale, PA

Marshall Davis- Patten, ME

Emily Hayes-Duluth, MN

Cameron Richardson-Cincinnati, OH

Cody Whiteside-Val Verde, CA

Trail Inventory Interns

Patrick Aldrich, Springfield, ME

Andrew Pelletier, Fort Kent, ME

## **Trail Statistics**

### **Trail Staff Work Hour Summary**

Trail Supervisor	1040
Trail Crew Leaders	2020
BSP Trail Crew Interns	6716
Trail Inventory Interns	838
Maine Conservation Corps	3865
Maine Trail Crew (MATC Cost Share)	881
<b>Total Trail Staff Hours</b>	<b>15,360</b>

### **Trail Volunteer Work Hour Summary**

AMC Service Trips	192
American Hiking Society	192
BSP Trail Stewards	88
Friends of Baxter State Park	141
Individuals – Trail Friends	907
Maine Appalachian Trail Club	69
Tanglewood 4-H Camp	36
Volunteers for Peace	400
<b>Total Trail Volunteer Hours</b>	<b>2,025</b>

**TOTAL TRAIL WORK HOURS = 17,385 HOURS**

### **Statistical Summary of Trail Maintenance**

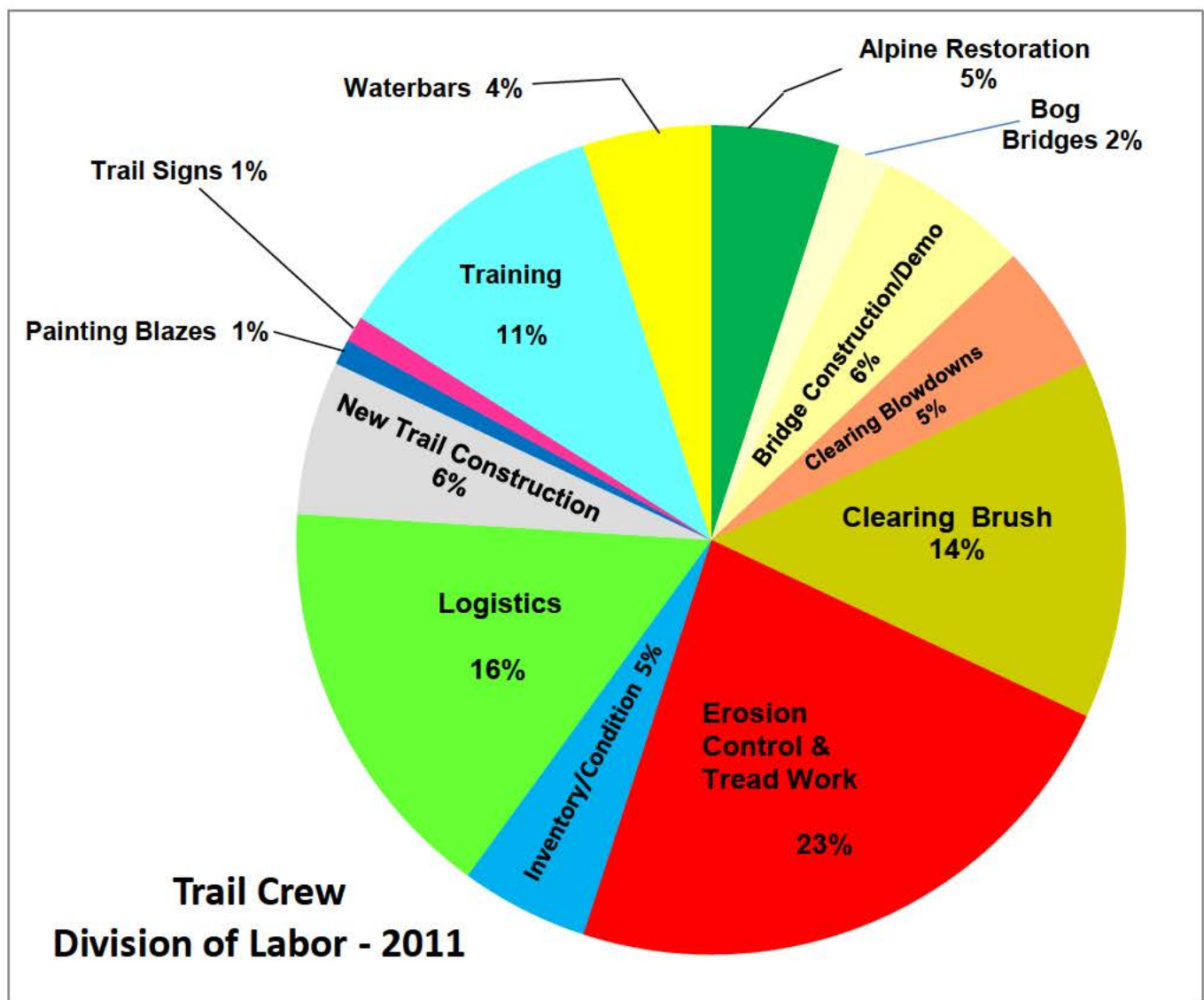
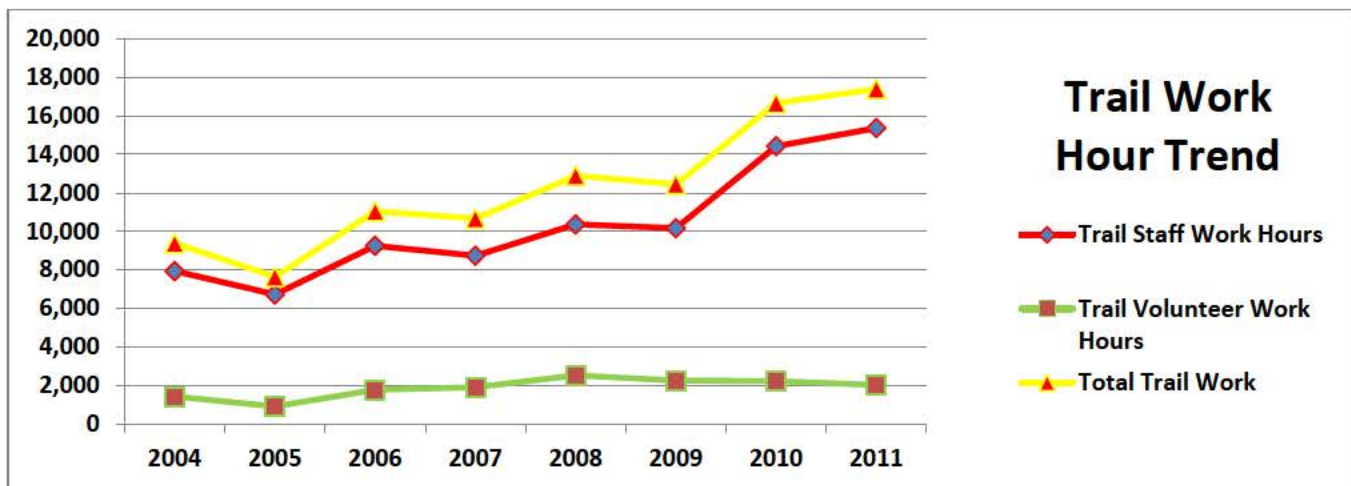
Trail staff work hours for 2011 were comprised of our three classified trail maintenance positions, our BSP Trail Crew Interns, Maine Conservation Corps (MCC contract crews well as the MATC's Maine Trail Crew). The 2011 season also introduced two Trail Inventory GIS Interns to our Trail Staff. These work hours are counted separately to distinguish the efforts between paid or contract trail maintenance staff and our volunteer trail maintainers.

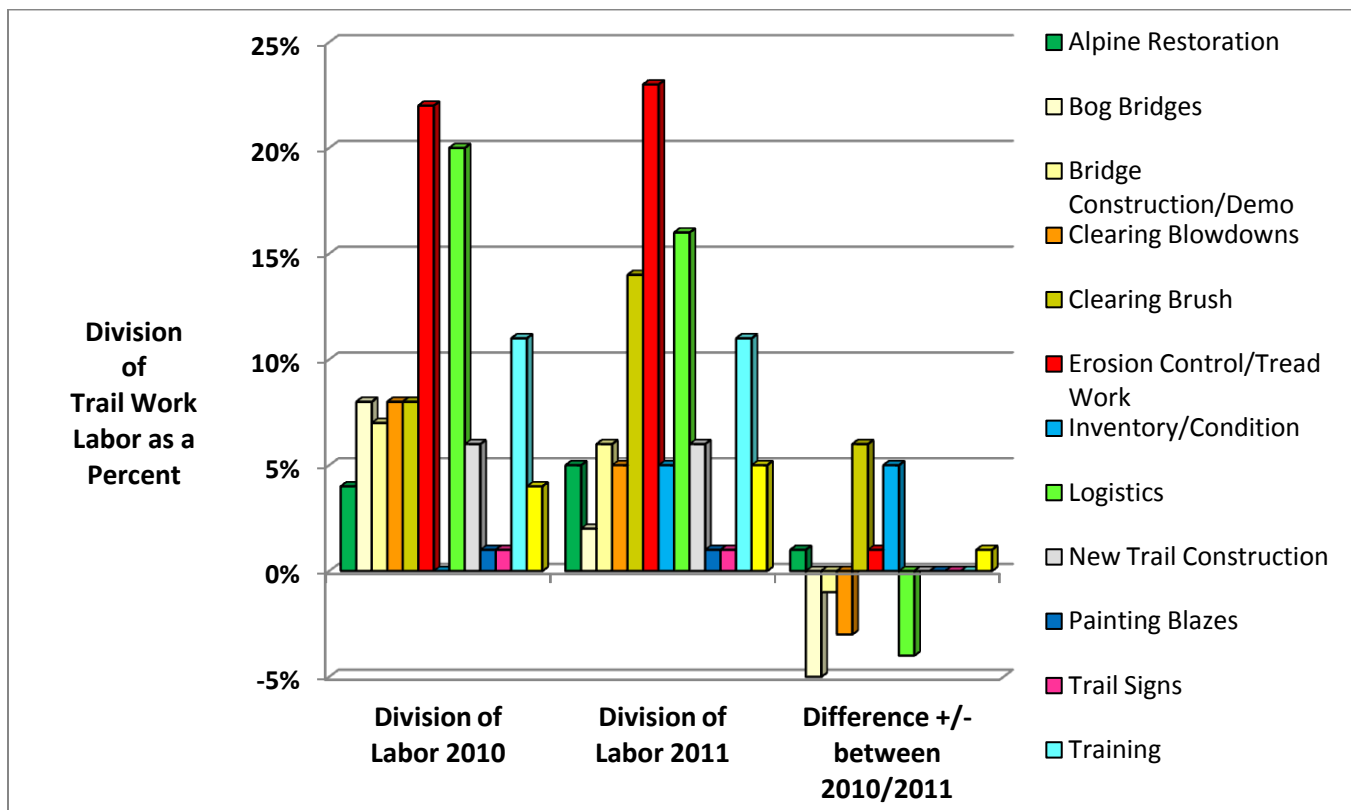
Our BSP Trail Crew Interns collectively contributed 6,716 work hours towards trail maintenance for the 2011 season. This total is just slightly less from the 6,844 hours recorded in 2010, which was a 27% gain compared to the 2009 crew total of 4,963 hours. The total hours contributed to the Trail Staff category for this past year was 15,360 hours. Those hours, show an increase of 6%, compared to last year's total of 14,420 hours. This increase is due in part from the contributions of the GIS Interns with their Trail Inventory project.

The Trail Maintenance Volunteer Program had a slight decrease in participation for 2011. For this year, our total Trail Volunteer Work Hours amounted to 2,025 hours. This is a decrease of 9% compared to the 2010 total of 2,231 hours. The greatest decrease was in the Trail Stewards volunteer program, which had dropped between 2010 and 2011, by 71%. However, our Trail Friends program grew by 36% over the 2010 season. With that said, our Trail Volunteer program continues to be fairly stable with a variety of opportunities for numerous interested individuals and organized groups.

Activity within our overall trail maintenance program had leveled off between the last two seasons. Having the support of multiple MCC Crews and a full roster of our own crews, has helped us realize our optimum level of accomplishment for the second year in a row. This achievement is a benchmark of our program's model, as we continue to develop ways to optimize our trail maintenance operations into the future.



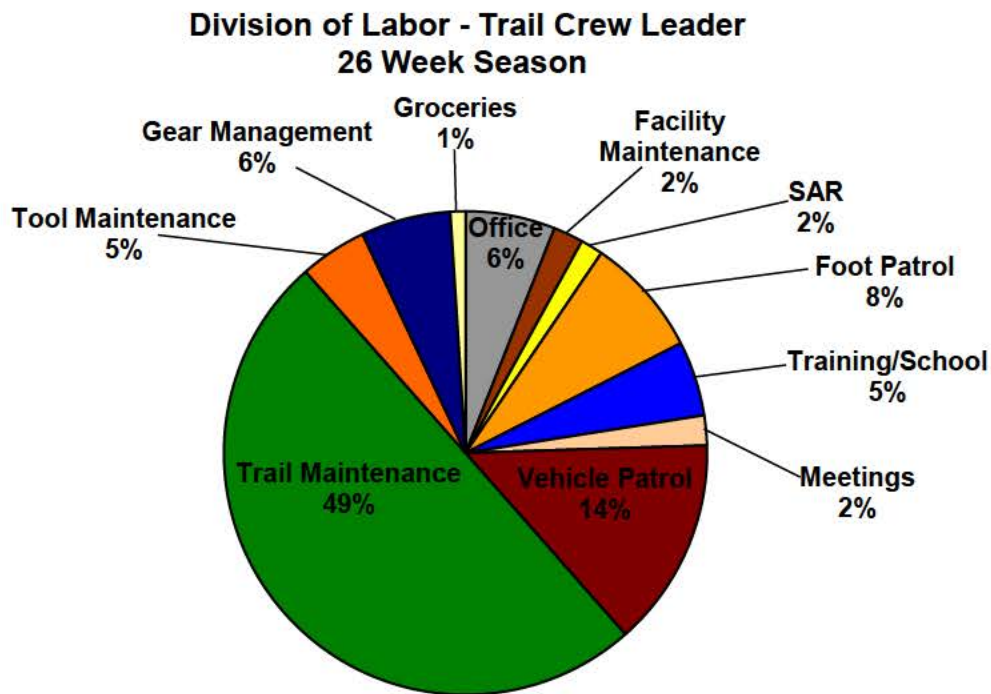




Accurate documentation of work projects is a most important task for trail crews. The reports that are generated from weekly work projects are indispensable tools for reviewing work done in the past, recording current conditions and planning for the future. In an effort to more accurately gauge and estimate projects for the future, actual time spent working on the various categories of tasks have been separated from the total weekly work hours.

The non-project specific hours that can vary greatly from project to project such as travel time, hiking, planning and tool maintenance and others, have been grouped together in one category labeled “logistics”. The separation of these metrics will aid us in the future by enabling us to better estimate project time lines and expected outcomes. This in turn can assist us with project scheduling.

“Training”, has also been added to the list of hours that can be tracked for crews’ Division of Labor. Training is a major component of our Trail Crew Internship Program. With full crews and additional crews, training hours stack up. By including this metric in the overall picture, we are not only able to realize more accurately what the impact of our crews are, but also the significance of our training regimen and how it prepares our interns for their experience. This method of recording hours was first implemented for the 2010 Annual Report, and being a change from our previous process, it gave the appearance of a deficit in many of the categories, and conversely, a surge in the “Training” and “Logistics” categories. Now that we’ve had two years to compare the addition of the “Training” and “Logistics” categories, the other categories have leveled out on the whole in comparison to the appearance of the gains and losses of the 2010 report.



The preceding pie chart gives an accurate depiction of our crew leader's operational division of labor and how it can represent a crew's time spent on logistics compared to time dedicated to "on the ground" work.

#### **Alpine Restoration – 865 hours**

The Alpine Trail Rehabilitation Action Plan for Katahdin continued into its sixth year in the 2011 season. The BSP Trail Crew, as well as an MCC crew, was based at Chimney Pond Campground, where they were able to focus on alpine maintenance work encompassing a variety of projects in an effort to stabilize soils and protect rare alpine plants in that environment. Again, the first three phases of the Alpine Action Plan for Katahdin were carried out with a focus of synergizing the knowledge and experience of both the I & E and Trail Divisions. This cooperation ensures that our interns have a full understanding of what we are protecting and how we go about protecting it.

Cathedral Trail: 733 hrs. We focused the majority of our efforts on working to finish a series of steps and rip-rap that will complete a project that was last worked on in 1999. The stone step materials were on site, and a high line system with tripod towers was utilized to gather rip-rap materials approximately 150 feet off of the work site. Due to the exposed conditions of the work site, our efforts were at times stymied by bad weather and we were not allowed to work many days back to back. Crews were able to move 30 loads of rip-rap along the highline tramway in a rock basket to the trailside. Fifteen boulders were also moved into position from the stockpile, which will later be installed for staircase steps. One keystone was set, to begin the bottom of the staircase, as were four edge rocks put into place. Progress is likely to come easier in 2012 with much of the preparation executed by the 2011 crews.

Hunt Trail: 12 hrs. The nylon masonry twine that comprises our string fence on the Thoreau Spring area of the Hunt and Abol Trails was replaced. The one-thousand foot section of trail, lined on both sides with hardwood stakes, required 2,000 feet of string to cover both sides of the trail.

We continue to see improvements with re-vegetation of the Thoreau Spring area. With six years of applying the string fence as a treadway delineation marker, it is obvious that it is working. Sedges and other species of alpine vegetation are reclaiming the once disturbed areas outside of the treadway.

The success of the string fence is a short term solution to a long term challenge. Garnering additional suggestions from the AMC, the BSP Advisory Council and additional field trips by the Trail Supervisor and Park Director, we will continue to have more discussions and field trips as we further develop a plan for managing this unique area. Further follow up is expected throughout the 2012 season.

Saddle Trail: 120 hrs. In the higher elevation region of the Saddle Trail, above the scree field of the “felsenmeer” (sea of rock) zone, efforts continued to reconstruct and delineate an area that had been identified in 2010 as needing substantial reconstruction. Placement of a new cairn, reconstruction of 15 feet of scree wall and 140 square feet of rip-rap was placed to discourage hikers from getting off of the route in this area.

#### **Bog Bridges - 282 hours**

Appalachian Trail: 74 hrs. The MATC Maine Trail Crew assisted with resetting and improving 150 feet of pre-existing bog bridging in the vicinity of the outlet of Grassy Pond. They used rocks to weigh down base logs as well as secured base logs to the base of trees and roots to prevent the bridges from floating in high water events.

North Katahdin Lake Trail: 56 hrs. Forty feet of new pre-milled bog bridges were constructed on a new segment of the North Katahdin Lake Trail to Twin Ponds. This particular area will be finished in 2012.

Sandy Stream Pond Trail: 152 hrs. Seventy-four feet of bog bridging was replaced at the east outlet viewing platform of Sandy Stream Pond.

**Total Bog Bridge Construction= 264 ft.**

#### **Bridge Construction – 1,061 hours**

Appalachian Trail: 120 hrs. The MATC Crew replaced the two approaches on the steel I-beam stringer bridge over Abol Stream in June of 2011. The approaches had floated off during flood stage waters earlier in the spring. The crew secured some wire cable through the new approaches to prevent them from floating away in the future.

Chimney Pond Trail: Blacksmith Brook Bridge – 387 hrs. 65 feet  
The stringer bridge over Blacksmith Brook was last replaced during the summer of 1996. Nearly all of our interns and a couple of volunteers from our Volunteers For Peace ranks



assisted with the demolition and reconstruction of this bridge. It was the last project for our Summer Crew and was completed in four days, from start to finish.

Chimney Pond Trail: Lower Saddle Brook Bridge – 40 hrs. 16 feet

New decking was added to the last sixteen foot span from a project that was completed during the fall of 2010.

Sandy Stream Pond Trail: West Outlet Boardwalk – 514 hrs. 134 feet

The boardwalk that spans over the west outlet on the initial approach to Sandy Stream Pond, allows access to thousands of BSP visitors every year. It is this structure, which is the gateway for many to see their first moose. Our crews replaced nearly the entire bridge system, which was last replaced in 1996. Their efforts have allowed for continued safe passage for our visitors to seek out our iconic four legged friend, the moose.

### **Clearing Blowdowns – 727 Hours**

This essential, general maintenance task is the first job that the our crews initiate annually after completion of their training regimen. On an average season, it can take the trail crew and field staff three weeks to patrol all of the trails for blowdowns in the park. The focus is to first clear trails that are in closest proximity to the campgrounds, for they will be the first trails to get used. Priority is also given to the trails known for the greatest hiker traffic so that hikers will not create braided trails around the blowdowns that become obstacles. Finally, our attention turns to the littler used trails that do not see a great volume of hikers and are not as prone to getting braided by foot traffic.

Our Spring seasons seem to be trending toward a much earlier arrival than usual. Being that BSP Crews normally do not have the opportunity to begin cutting blowdowns until the first week of June, our MCC Crews are as important as ever in being able to get an earlier start to open up the trails. This continues to be a great help in being able to open many of our trails before the Memorial Day Weekend.

### **Erosion Control and Tread Hardening – 3,886 Hours**

Chimney Pond Trail: 467 hrs. Maine Conservation Corps contributed two weeks to hardening the treadway just below the “Halfway Rock” area of the CP Trail. During that time their crew constructed a twenty-one (21) rock step staircase that was topped off with a new rock waterbar. A continuing effort to harden this trail’s treadway and reinforce its water diversion structures will help to stabilize the park’s most popular trail well into the future.

Helon Taylor Trail: 213 hrs. Maine Conservation Corps Crews spent one week on this trail working on tread hardening during this past season. The result was sixteen (16) rock steps on a new staircase.

Hunt Trail (BSP): 1,276 hrs. The BSP Trail Crew continued its efforts on the section of Hunt Trail known locally as the “Stairway to Heaven”. This project above Katahdin Stream Falls continues to be our most technical project requiring the coordination of at least 24 volunteers divided up at several locations to make it work. This year’s effort welcomed back many of the volunteers that assist with this project year after year.

There were fifty-eight (58) payloads of rock material transported from the bottom of the ravine to the ridge line. Of that, fifteen (15) loads were rock boxes loaded with rip-rap and edge rock materials and forty-three (43) loads were boulder payloads.

Just a few weeks later, one of our crews spent a week installing the material that was transported to the site with the high line system. That effort bared eighteen (18) rock steps, integrated with forty-six (46) edge stones and gathered thirty-six (36) bags of crush fill for the next effort.

We had predicted earlier in the 2011 season that we would finish this project, however, mother nature had other ideas for us, for the weather did not cooperate during the extraction project. It's probable that we will finish this long term project in the 2012 season.

Hunt Trail (MATC): 560 hrs. The MATC's Maine Trail Crew assisted the park for three weeks during late May and early June, with a portion of that time dedicated to tread hardening work on the stairway above Katahdin Stream Falls. The crew of volunteers, led by MATC's Chris Binder had great success moving and installing fifty (50) rock steps, and one (1) rock waterbar. The MATC Crew also dedicated time to some areas on the lower first mile of the Hunt Trail that needed some attention. That effort reared nine (9) rock steps with edge stones, three (3) check steps and one (1) stepping stone.

This effort was supported by a cost share agreement between BSP and the MATC. This agreement has been helpful in fielding nine weeks of crews over the last three years. We look forward to continuing to work with the MATC, with a similar arrangement for 2011.

Marston Trail: 339 hrs. The Maine Conservation Corps continued with an effort of rehabilitating sections of the Marston Trail, based out of a spike campsite approximately one and three quarter miles up on the trail.

This year's effort was centralized on hardening a steep, sandy soiled area just a short distance from first junction of the Marston and Mt. Coe Trails, nearly one and a half miles from the trailhead on the Tote Rd. The crew was able to accomplish a well built, twenty-eight (28) step, rock staircase, reinforced with an eight foot (8') long stone retaining wall.

Rum Pond Trail: 1,031 hrs. Our BSP Crews invested three weeks on an extremely wet and boggy stretch of the Rum Pond Trail in the fall of 2011. This area has been a disappointment in years past, to winter travelers, who assumed that they would take a "short cut" to ski with their gear to the Roaring Brook Rd. Unfortunately, in years past, many skiers would find wet conditions, which would thereby ice up their skis and allow for snow to ball up in the kick zone of their skis. This is no longer a problem in this particular location.

Our crews constructed a seventy-six foot (76') long raised tread causeway. This project required a healthy stockpile of granite material to supply our crew with the stone needed to anchor the parallel lines of coping stone that would later hold yards of crushed fill. This was the first time, also, our crews had the opportunity to work with geo-textile filter fabric. That material used in conjunction with crushed granite fill, allows for water to continue percolating through the structure, yet not surface through allowing for muddy or saturated conditions.

Three areas along the structure were identified as the wettest areas, where water continually ran freely. It was at these three locations that open bottomed wooden culverts were constructed to allow the water free movement.

In total there were seventy-three (73) coping stones set, two-hundred-sixty three (263) coal bags of granite processed and utilized, one-hundred-fifty-four (154) bags of mineral soil used to cap off the structure, eleven (11) culvert stones set at right angles to close off the ends of the causeway, three (3) open bottomed wooden culverts and a six foot by 8 foot (6'x 8') stone retaining wall set.

### **Inventory – GIS Interns – 838 Hours**

In 2012 we had the opportunity to field two GIS Interns that were trained to inventory the condition of our trails throughout the park. Carrying Archer field computers with GPS technology, Pat Aldrich and Andrew Pelletier, both students of U-Maine – Fort Kent, catalogued nearly our entire trail infrastructure. Their observations were recorded to include the condition of not only the pre-existing trail structures but also work that is needed throughout the trail system of the park.

The work of these two gentlemen has enabled us to now have baseline data from which to make queries that will assist us in taking a more methodical approach to prioritizing work into the future.

### **National Trails Day**

On June 4, 2011, Baxter State Park held its annual National Trails Day event. Our crews combined efforts with ten other volunteers for a day full of trail maintenance on the Helon Taylor Trail. This event serves as a spring board annually to train both our interns and other interested volunteers to the park's general maintenance standards for defining the trail corridor, cleaning waterbars, painting blazes and documenting trail conditions. Twenty-four people embarked from Roaring Brook Campground to hike up Helon Taylor to cut back heavily overgrown areas in addition to cleaning waterbars along the trail. This project introduced a couple of new people into our Trail Stewards program. Approximately 1.1 miles of trail was cut back to proper corridor standards before the end of the day. Volunteers were later treated to a barbeque supper that was prepared by retired BSP Rangers Loren Goode and Charlie Kenney. Thanks to their volunteering and preparation, the crew interns and volunteers' hearty appetites were satiated with the great spread provided for them at the Abol Narrows Volunteer Site.

### **New Trail Construction – 1,003 Hours**

North Katahdin Lake Trail: 1003 hrs. Four calendar weeks were dedicated to the development and extension of the North Katahdin Lake Trail to Twin Ponds, within the basin to the north of East Turner Mt. Crews from both the Summer and Fall seasons worked hard on this project with the help of volunteers from the Appalachian Mountain Club, Volunteers For Peace and American Hiking Society, amongst others.

These groups, directed by our interns and staff, had the opportunity to pioneer approximately two and one half miles (2.5 mi.) of new trail. Sawyers initially cut the corridor with chainsaws and brush saws, followed later by loppers to better define the corridor. Crews utilized grubbing tools such as mattocks and pulaskis to grub out stumps within the corridor's treadway to

reduce tripping hazards as well as blazing our standard blue trail markers on trees along the corridor.

Finishing touches for this trail for 2012 will be the construction of bog bridges, continuing to grub out stumps, cutting areas of sidehill bench towards the final ascent to Twin Ponds and posting signage. The trail conditions were left this past fall to a navigable standard that would allow winter explorers from Katahdin Lake to enjoy the prospects of a winter hike to Twin Ponds.

### **Trail Stewards**

There continues to be a core group of volunteers that assists with general trail maintenance efforts throughout the park, as participants of our Trail Stewards program. The level of participation in the Trail Stewards program was at a sharp decline in 2011 compared to that of 2010. This was due to the fact that for the second year in a row, we had the highest level of involvement and scheduling of our own crews, Maine Conservation Corps crews in addition to also tending to the organization and implementation of two Trail Inventory GIS Interns. This left little time for the management of this facet of our operations.

Promotion, by both the Park's website and the Friends of Baxter State Park's quarterly newsletter and by word of mouth through active Trail Stewards, helps to market the program to a sustainable level. New participants often are recruited by veteran Trail Stewards to assist with their trail assignments. We are very thankful for the volunteers who do continue to participate in the program and for their dedication and time that they consistently contribute from year to year. With our trail inventory nearly complete and trails identified for the 2012 Trail Stewards Program, we look forward to the opportunity of again ramping up efforts to fully engage volunteers for the Trail Stewards Program.

The following is an overview of the general maintenance that was performed by our trail crews and Trail Steward volunteers.

### **Corridor Definition – 2,360 Hours**

#### **Blazing - 70 Hrs.**

Helon Taylor Trail	1.5 miles
North Katahdin Lake Tr.	3.5
South Turner Mt.	0.3
Traveler Mt. Trail	0.7
<b>Total</b>	<b>6 miles</b>

Burnt Mt. Trail	2.0 miles
Chimney Pond Tr.	0.5
Dwelley Pond Tr.	3.0
Five Ponds Tr.	0.5
Helon Taylor Tr.	1.1
Marston Trail	1.0
Martin Ponds Tr.	0.9
North Basin Trail	0.4
North Katahdin Lake Tr.	2.7
North Peaks Tr.	1.4
North Traveler Mt. Tr.	0.3
Rocky Pond Trail	0.5
Russell Pond Tr.	1.0
Traveler Mt. Trail	1.6
Wassataquoik Lake Tr.	0.4
<b>Total</b>	<b>17.3 miles</b>

### **Trail Signs – 16 Hours**

**Traveler Mt. Trail:** The three temporary plastic signs on the Traveler Mt. Trail were replaced with our standard routed wooden signs. Catalog numbers are 116.00, 116.01 and 116.02.

### **Training – 1,896 Hours**

Training is a major component of our Trail Maintenance Internship Program. The training regimen that we provide to our interns not only serves as a foundation to cultivating a safety minded crew, but it also initially serves as an enticement to get potential applicants interested in our program.

During the first two weeks of our program, our interns benefit from training sessions such as Wilderness First Aid, Introduction to Search and Rescue, Chainsaw Safety Training, Introduction to Wildfire Suppression and learn Leave No Trace outdoor ethics. In addition to this, the summer crews participate in the spring meeting, with fall crews participating in the fall meeting. This past season we also offered our incoming fall crew the opportunity of a 3 day wilderness orientation trip.

Such opportunities as the ones mentioned above, truly do assist crews with developing situational awareness for all aspects of the work that they do on the crew. These training opportunities ultimately play a large role with our consistent record for safety.

### **Waterbars and Water Diversion – 937 Hours**

General Maintenance Patrols: 282 hrs. These hours encompass the early and late season patrols to clean waterbars on all of the steep trails that hold these trail features.

Abol Trail: 455 hrs. The Maine Conservation Corps added an additional fifteen (15) waterbars to the area affected most by erosion and braiding approximately a half mile away from the trailhead. This was a continuation of the effort from the MCC's work in 2010.

South Branch Falls: 200 hrs. Materials were stockpiled and prepared, with construction of one rock waterbar to deal with a trenched out area on this popular trail in the South Branch Pond Campground area.

### **Trail Volunteers**

Appalachian Mt. Club  
Megan Johnson  
Todd Flagg  
Shiaw-Tarn Shu  
David Mills  
Bill Foster

Melanie Kosach  
Danielle Piscatelli  
Kevin Silva  
Daniel Bartell  
Vicki Lyn Butrym

Nelson Daigle  
Barbara Bentley  
Jane Brann  
BSP Trail Stewards  
Cont'd  
Steve Plumb  
Tristan Plumb  
Pierre Rougny  
Suzanne Lussier  
Nancy Jane Clark

### **American Hiking Society**

**BSP Trail Stewards**  
Brant Miller  
Charles Jacobi  
Dave Edwards



Janice Clain  
Vivian Phillips

**Friends of Baxter State  
Park**

Barbara Bentley  
Bill Bentley  
Doug Rich  
Mike Stillman  
Dr. Stephen Ellis  
Jay Bertagni  
Charlie Jacobi  
Josh Sepe  
John Mirick  
Chris Mirick  
Catherine Mirick  
Beth & Dennis Ruksznis  
Individuals – Trail  
Friends  
Peggy Smith  
Chelsea Benoit  
Bill James  
Mike & Sue Zlogar  
David Wilcox  
Doug Dolan  
Joe Saetta  
Paul Delaney  
Travis Jimenez  
Raynold Jackson  
Ken Beach  
Bob Cressey  
Steve Tatko  
Andrew Swafford  
Mike Bowyer  
Andrew MacDougall

Vivian Phillips  
Loren Goode Sr.  
Charlie Kenney

**MATC**

John Neff  
Rick Ste. Croix  
Priscilla Seimer  
Cliff Ives  
Sean Marden  
Ray Anderson  
Zachery Anderson  
David Little

**MATC – Maine Trail**

Crew  
Chris Binder  
Matt Coughlin  
Abby Seymour  
Matt Baker-White  
Pat Rose  
Leslie Bean  
Jacklyn Doering

**Maine Conservation**

Corps  
Aaron Mathias – TL  
Ken Parrotte  
Thomas Lechner  
  
Matthew Spinner – TL  
Allegra Torres

Larsen Wilkinson  
Roy Kresge  
Sibyl Weise  
Nikolai Logan

Lindsey May – TL  
Andrew Cooper  
Andrew Thompson  
Matthew Stone  
Miri Gubler  
Ijeoma Ozoma

**Tanglewood 4-H**

Steven Clarrage  
Leah Finnemore  
Eric Armbrust  
Mackenzie Hayman  
Lorelei Hipkins  
John Mooney

**Volunteers For Peace**

Inaki Vega Bayo  
Giulia Capelli  
Eva Heinemann  
Jongyaeb Park  
Kim Julie Levasseur-  
Baulay  
Margarita Lipatova  
Lorenzo Bucciarelli  
Timothee Morvant  
Nazuki Ogawa  
Paulina Segalat

**Trail Notes:**

A great many thanks need to go out to Barbara Bentley and the Board of Directors of the Friends of Baxter State Park, for their diligence in submitting and managing the grant application process for the Recreational Trails Program and The Davis Conservation Fund. The benefits of those efforts are many. The Park received a generous donation of nine weeks of Maine Conservation Corps crews to assist with projects on and around Katahdin. Also, donations of Garmin GPS Units, an Archer Field Computer and funding for our GIS Trail Inventory Interns were direct results of the One of the greatest benefits of that effort was the opportunity to expose nearly a dozen new people to the trail maintenance craft here in BSP with Katahdin as their backdrop.

It was a pleasure to work with the MCC crews throughout the season. Their contributions made a great impact on our overall operations and performance in 2011. Thanks again to the Friends of Baxter State Park for their support! Here are the results of that support:

Trail	MCC – RTP Grant - Work Accomplished	Hours
Abol Trail	15 waterbars constructed 1 stepping stone 5 waterbars repaired	455
Chimney Pond Trail	23 step – rock staircase 1 – rock waterbar	467
Helon Taylor	12 step – rock staircase 4 steps – added to existing staircase	243
Marston Trail	28 step – rock staircase 8 ft. rock retaining wall	447
Alpine Work  Cathedral & other trails based from Chimney Pond	Moved Tool Cache to Cathedral work site Placed one rock step, 4 edge rocks on Cathedral Repaired 2 waterbars on Chimney Pond Tr., repaired staircase on Saddle Trail  Winterized Tool Cache	420
<b>Total</b>		<b>2,032</b>

Our Trail Crew Interns are still the foundation of our trail maintenance activities here at BSP. We nearly had full crews for both of the Summer and Fall seasons. For a model that has been tailored to recruit mostly from Maine colleges and universities, we still have a great cross section of people joining the crew from across the nation. We can attribute that success to our fine website that promotes the Trail Crew Internship Program 24/7, 365 days a year.

This year was an exceptional year where we were able to retain four of our interns for the entire season. Thanks go to Donnie Sanner, Cody Whiteside, Marshall Davis and Ronald Pickens for their dedication throughout the season. Thanks to all of our interns and trail volunteers throughout the season. We hope to see you again on the trail soon! The GIS Trail Inventory work completed by Patrick Aldrich and Andrew Pelletier this season is a great accomplishment as we continue to strive to find the ideal model for our Trail Maintenance Program.

The best of wishes go out to Krista Rogers and Tony Savino, our Trail Crew Leaders for 2011. They were both very capable leaders who brought their own styles to facilitating their crews with a very busy and growing schedule. Tony's plan from the start of the 2011 season, was to hike the Pacific Crest Trail beginning in the spring of 2012. Best of luck to Tony with a safe adventure. Krista has accepted a Senior Team Leader position with the Maine Conservation Corps for the 2012 season. There's a good chance that she'll be back to visit and assist with coaching MCC Crews that will be working in BSP during the 2012 season. Both did a fine job for Baxter State Park Trails in 2011.

## **Administrative Services Summary**

- Personnel/Payroll Technician, S. Jean Howes
- Accounting Associate II, Mary Ellen Bell,
- Inventory and Supply Associate, Constance Theriault
- Office Associate II Supervisory, Joni Lowell
- Office Associate, Nancy Guay
- Office Associate, Jeannie Tibbitts
- Office Associate, Mary Beth Varney
- Office Associate, Monica Rauf
- Project position for Day Use Parking Reservation(DUPR), Kelley King

## **Reservations**

On opening Day 2011 we had a total of 105 visitors, 98 Reservations, 17 Guests made 2 reservations, 81 Guests made reservations, 85 Reservations made for Maine residents and 13 Reservations made for Non-residents.

We completed the second season of the Day Use Parking Reservations (DUPRs) and with the changes that were made from the suggestions of the Gatehouse staff and the trailhead Campground Rangers the season went well. Changes that were made were reducing Roaring Brook parking lot from 40 parking spots to 35, allowing the gate staff to fill 3 spots at Abol and Katahdin Stream and 5 spots at Roaring Brook with visitors that showed up at the gate first thing in the morning and did not have a DUPR. The time the “no show” DUPRs were released went from 7:30am to 7:05. A dedicated lane was built for visitors to park who didn’t have a DUPR and wanted to wait until 7:05 to see if they could get a “no show” spot. Some reports that the gate would receive were updated as well.

Some of the changes made with the online part of the DUPR were allowing the visitor to pay their \$14 entrance fee with their \$5 DUPR fee and allowing the non-resident visitors to make a reservation within two weeks of the date they were coming instead of three weeks.

In the 2011 summer season online reservations for camping were introduced to our visitors. A visitor could go online through our website and with their credit card make a reservation within two weeks of the date their reservation began. The visitor was allowed to make a reservation for one site in one campground staying from one to seven nights. The visitor was also able to pay for their \$14 entrance fee with their camping reservation. This opened up the possibility for vacant spots to be booked and filled without the visitor having to call the reservation office. As shown on the table below, over 1000 reservation were made online.

The online reservations for camping is going to be a continuous process that started out as simple as possible to avoid any major problems and will eventually be a system where people can make more than one reservation at a time and at different campgrounds.

RESERVATION OFFICE STATS - 2011 SEASON																
	Site Nights	Adults	Junior	Child	Counter Reservations	Mail Reservations	Radio Reservations	Telephone Reservations	Winter Reservations	Internet Reservations	Telephone Calls	Office Visitors	Mail Received	Information Packets Sent	Videos Shown	Dupr Res
Jan	611	611	0	0	105	70	0	0	25	3	280	135	80	10	0	0
February	1436	1436	0	0	20	157	0	0	50	0	420	100	170	10	0	0
March	1365	1365	0	0	21	590	0	0	8	0	500	85	650	10	0	0
April	0	0	0	0	32	858	0	0	0	0	775	90	1000	15	0	0
May	2440	2101	294	45	33	840	9	36	0	66	1005	147	1000	24	20	0
June	9116	7961	1039	116	67	609	55	187	0	258	1616	321	700	12	17	39
July	19827	15676	3716	435	58	414	82	329	0	254	1800	380	500	8	15	225
August	22066	18420	3196	450	67	405	96	334	0	231	1700	300	480	10	25	272
September	12082	11521	411	150	53	183	96	285	0	206	1300	200	200	5	40	71
October	4729	4433	231	65	16	22	41	78	0	65	350	50	30	3	2	20
November	0	0	0	0	25	69	0	0	94	0	280	92	85	8	0	0
December	160	0	0	0	2	47	0	0	49	0	220	52	62	7	0	0
<b>TOTALS</b>	73832	63524	8887	1261	499	4264	379	1249	226	1083	10246	1952	4957	122	119	627

## Website

The website has become a valuable tool for Baxter Park. We are using it for online Day Use Parking reservations and camping reservations. Visitors are able to view availability of campsites as well as gain information of trail and weather conditions in the Park. It has become more user friendly and is being continuously updated. We are able to receive reports on how and who are using our website to have more insight to the visitors that come to the Park.



## **Contracted Services**

Rubbish Removal – Plourde Trucking, Millinocket; Pine Tree, Houlton  
Janitorial Services – Denise Bragdon, Millinocket  
Firewood and Firewood Bundling – Mike Sabine, Clint Morrow  
SFMA Forest Operations/Road Construction – Pelletier Brothers, Millinocket  
Trail Crew, I&E – Student Conservation Association & Maine Conservation Corp.  
Septic Tank Pumping – Lincoln Rental, Lincoln  
Fuel – Dead River, Preble Oil,  
Lawn Maintenance – Mainely Landscaping and Lawns, Millinocket  
Computers – CMTI/Bruce Grant, Dover-Foxcroft,  
Cellular Service – UniceL and US Cellular  
Copier Service – Ikon Office Solutions  
Programming Services – Dirigo Spatial Systems, Inc., Hampden  
Satellite Internet Dish Access – Hughesnet.com  
Website Maintenance- Cadillac Web Development

## **Positions Changes**

### **NEW EMPLOYEES:**

Krista Rogers – Trail Crew Leader  
Anthony Savino – Trail Crew Leader  
Christopher Morris – CRAI – Visitor Center  
Rick Leavitt – Gatehouse Attendant – Togue Pond  
Gerry Locke – Campground Ranger – Trout Brook Farm

### **RESIGNATIONS:**

Anthony Savino – Trail Crew Leader  
Katie Vargas – CRAI – Visitor Center  
Rich Elliott – Backcountry Ranger – Chimney Pond  
Tom Bell – Backcountry Ranger – Chimney Pond  
Tonya Bubar – Campground Ranger – Trout Brook Farm

### **TRANSFERS:**

Geri Fraser - transferred to longer season at Togue Pond Gate  
Zac Montgomery – transferred to longer season at Togue Pond Gate  
Cathy Lusk – Backcountry Roving Ranger to Backcountry Ranger Chimney Pond  
Mark Sairio – Backcountry Roving Ranger to Backcountry Ranger Chimney Pond

### **RETIRED:**

Barry MacArthur – Baxter Park Ranger II

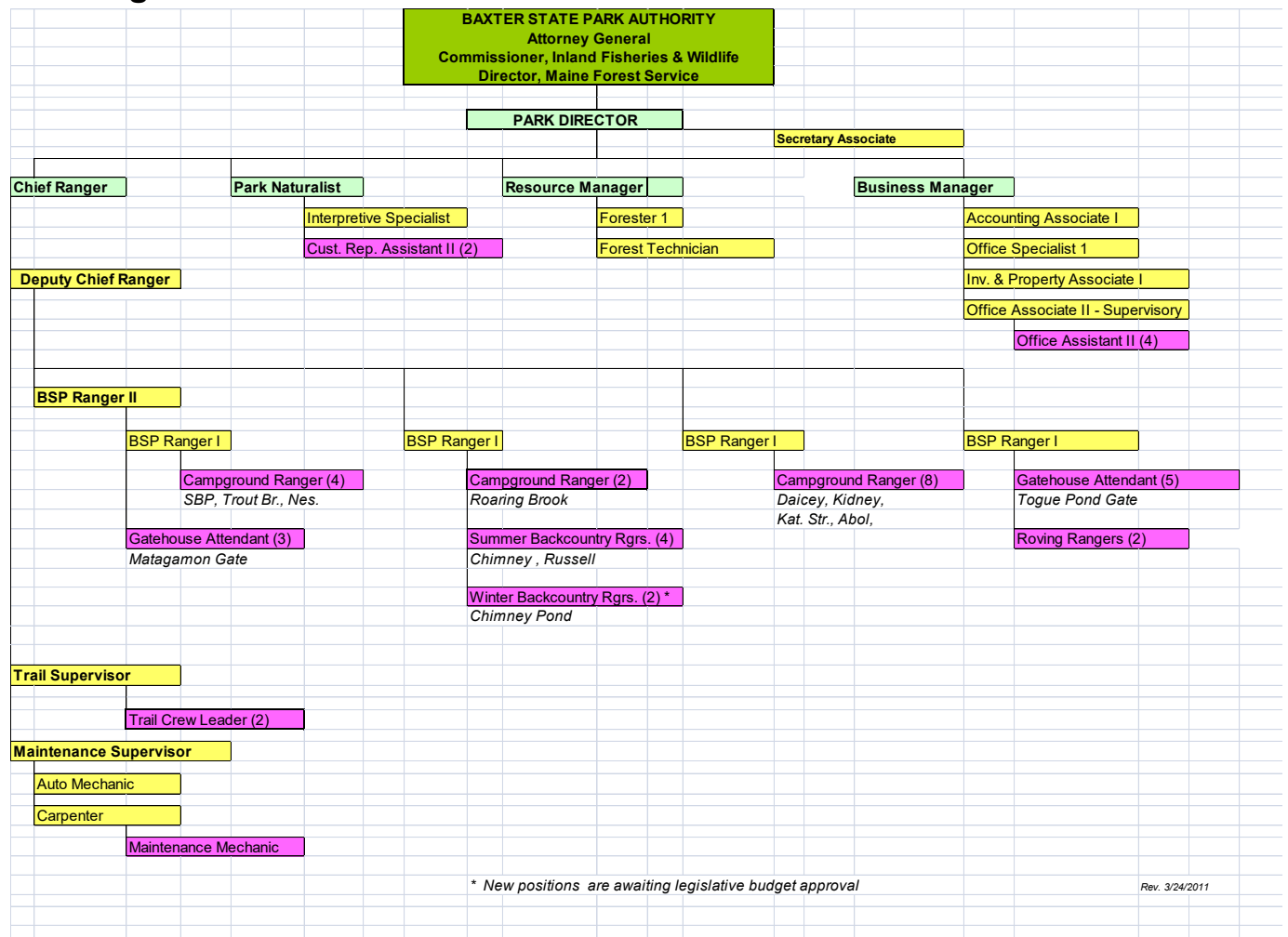
## Year-Round Position Roster

<b>Position</b>	<b>Name</b>	<b>Location</b>
BSP Director	D. Jensen Bissell	Headquarters, Mkt.
BSP Chief Ranger	Ben Woodard	Headquarters, Mkt.
Resource Manager	Richard Morrill	SFMA
Forester I	Deidra Brace	SFMA
Park Naturalist	Jean Hoekwater	Headquarters, Mkt.
Business Manager	Christine Theriault	Headquarters, Mkt.
Deputy Chief Ranger	Stewart Guay	Headquarters, Mkt.
BSP Ranger II	Barry MacArthur	Field
BSP Ranger I	Mike Winslow	Field
BSP Ranger I	Isaac Needell	Field
BSP Ranger I	Michael Martin	Field
BSP Ranger I	Rob Tice	Field
Secretary Associate	Ada Angotti	Headquarters, Mkt.
Accounting Associate	MaryEllen Bell	Headquarters, Mkt.
Personnel/Payroll Technician	S. Jean Howes	Headquarters, Mkt.
Inventory & Property Associate	Constance Theriault	Headquarters, Mkt.
Office Associate II, Supervisor	Joni Lowell	Headquarters, Mkt.
Maintenance Supervisor	Rodney Angotti	Headquarters, Mkt.
Auto Mechanic II	Frank George	Headquarters, Mkt.
Carpenter	Craig Kennedy	Headquarters, Mkt.
Trail Crew Supervisor	Paul Sannicandro	Headquarters, Mkt.
Interpretive Specialist	Marcia Williamson	Headquarters, Mkt.

## Seasonal Position Roster

<u>Title/Position Number</u>	<u>Name/Location</u>	<u>Wks</u>	<u>Start</u>	<u>End</u>
<b>CAMPGROUND RANGERS</b>				
9425-0631	Mark Varney -Nesowadnehunk	21	5-23	10-16
9425-0021	Greg Hamer -Russell Pond	24	5-9	10-23
9425-0831	Brendan Curran -Russell Pond	22	5-16	10-16
9425-0221	Gabe Williamson -So. Branch Pond	24	5-9	10-23
9425-0922	Gunter Bernardini -So. Branch Pond	20	5-16	10-2
9425-0351	Bill MacDonald -Roaring Brook	24	5-9	10-23
9425-0741	Russell Porter -Roaring Brook	22	5-16	10-16
9425-0601	Tom Bell -Chimney Pond	24	5-9	10-23
9425-0841	Rich Elliott -Chimney Pond	22	5-16	10-16
9425-0391	Bruce White -Katahdin Stream	29**	5-9	11-27
9425-0421	Betsy Dawkins -Katahdin Stream	22	5-16	10-16
9425-0978	Paul Corrigan -Abol	22	5-16	10-16
9425-0461	Alice Wilbur/Bill Martel-Abol	18	5-30	10-2
9425-0611	Gerald Locke A/C -Trout Brook Farm	20	5-16	10-2
9425-0982	Dean Levasseur -Kidney Pond	25	5-9	10-30
9425-0983	Diane Freelove -Kidney Pond	25	5-9	10-30
9425-0980	Charity Levasseur -Daicey Pond	25	5-9	10-30
9425-0981	Andy Vietze -Daicey Pond	25	5-9	10-30
<b>ROVING RANGERS</b>				
9425-0991	Cathy Lusk -Parkwide	26	5-30	11-27
9425-0993	Mark Sairo -Parkwide	26	5-9	11-6
<b>GATEHOUSE ATTENDANT</b>				
9422-0171	Ryan Bolduc/Rick Leavitt-Togue Pond	29**	5-9	11-27
9422-0511	Tom Power -Togue Pond	23	5-9	10-16
9422-0361	Tracy Young -Matagamon	29**	5-9	11-27
9422-0441	Marcia Anderson -Matagamon	29**	5-9	11-27
9422-0201	Dana Miller -Matagamon	23	5-9	10-16
9422-0501	Ruth Levesque -Togue Pond	29**	5-9	11-27
9422-0531	Geri Fraser -Togue Pond	23	5-9	10-16
9422-0541	Zac Montgomery -Togue Pond	12	6-13	9-4
<b>TRAIL CREW LEADER</b>				
9436-0940	Neal Padrta -Parkwide	26	5-9	11-6
9436-0984	Steve Loughry -Parkwide	26	5-9	11-6
<b>OFFICE ASSISTANT II</b>				
6538-0941	Jean Tibbitts -Millinocket Hdqtrs.	40	1-10	10-16
6538-0967	Nancy Guay -Millinocket Hdqtrs.	40	1-10	10-16
6538-0731	Marybeth Varney -Millinocket Hdqtrs.	40	3-14	12-18
6538-0997	Monica Raulf -Millinocket Hdqtrs.	12	6-13	9-4
<b>CUSTOMER REP ASSISTANT II</b>				
6510-0977	Katherine Vargas -Visitor Center	20	5-30	10-16
6510-0992	Brian Johnston -Visitor Center	20	5-16	10-2
<b>MAINTENANCE MECHANIC</b>				
8281-0965	Matt Martin - Mill. Maint. Facilities	26	5-9	11-6
<b>FOREST TECHNICIAN</b>				
9456-0988	Kevin Osborne -SFMA	31	4-25	11-27

# BSP Organizational Structure



## Reservations and Office Operations

### How do I make Reservations?

#### 1. Read completely:

- ◆ This information sheet
- ◆ BSP Rules & Regulations
- ◆ The BSP Road Map handout or general information from Park website.

#### 2. Completely fill out reservation forms (available from the Park or its website). Include as many options as possible.

#### 3. Enclose appropriate payment.

#### 4. Enclose self-addressed, stamped, #10 business sized envelope (if reserving by mail).

#### 5. At the appropriate time: Mail, bring in person, or phone to Baxter State Park Headquarters.

#### When can I make a reservation at Baxter State Park?

**1. Coming in person to BSP HQ on January 18, 2011.** Reservations will be limited to 20% of sites per campground, per day. Only two (2) reservations per person will be allowed. If large numbers of campers intend to make reservations on this day, the campground limits are expected to be reached quickly, thereby forcing campers to try again for reservations during the rest of the season. Campers are encouraged to be flexible in their dates and site choices and plan on using the rolling reservation system for the majority of their camping trips.

**2. Using the Rolling Reservation System, mailing or walking in to BSP HQ four (4) months or less prior to the start of your desired camping trip.** All sites (at least 80% of all camping nights, plus any sites not reserved on January 18th) will now be available for rental, four months prior to camping. Mail in reservations will be given a seven (7) day “buffer”. Mail and walk-in customers will be processed at the same time. Mail will be randomly processed (not in the order it was received) except that all Maine resident reservation requests made by mail will be processed before non-resident mail requests on a daily basis. There is a limit of two (2) reservations per day for each person making walk-in or mail-in reservations. **NOTE:** People who arrive earlier than four months ahead of their camping date will not be processed and will be asked to return or mail-in when the dates finally do “roll” open. Mail that is received more than four months and seven days ahead of camping dates will not be processed and will be returned to sender.

**3. Last minute reservations during the camping season (14-days or less before your arrival).** If you would like to camp in the Park in the next 14 days or less, we will accept your reservation by phone or you can go online through our website. Phone-in reservations are limited to one reservation per call and one call per person per day. Phone reservations must be paid by Visa or Master Card at the time of the call. Online reservations are limited to one campsite in one campground for up to seven nights. It is against Park regulations to use a cell phone inside the Park for a non-life threatening emergency. Please do not call for reservations from inside the Park. As we expect many reservations to be taken during the rolling reservation system, less choices will be available for the 14 days prior to your trip. During July, August and fall weekends, much of the Park may be full when you call, but you can always hope for a cancellation.

#### Baxter State Park Headquarters:

Baxter State Park  
Reservations  
64 Balsam Drive  
Millinocket, ME 04462

Telephone 207-723-5140  
TDDY 207-723-9905  
[www.baxterstateparkauthority.com](http://www.baxterstateparkauthority.com)



### **What else do I need to know?**

#### **Summer Campground Opening & Closing Dates (Inclusive):**

Roaring Brook: May 15 – October 15      Daicey Pond: May 15 – October 15  
Chimney Pond: June 1 – October 15      South Branch Pond: May 15 – October 15  
Katahdin Stream: May 15 – October 15      Russell Pond: May 15 – October 15  
Abol: May 15 – October 15  
Kidney Pond: May 15 – October 15  
Trout Brook Farm \*Opens the Friday before Memorial Day - October 15  
Nesowadnehunk \*Variable: Opens no later than June 15 – Closes as early as September 15.

\*Please call Park Headquarters for current opening/closing dates for these campgrounds. The Director or such other person designated by the Authority may adjust campground seasons before July 4th and after Labor Day should use, weather or other conditions warrant. Under these circumstances, reservations will be made on a daily basis only.

#### **Fees:**

**Summer fees** (children age 6 or under are free, but count towards site capacity):

Cabins: 2 person \$55/night, 3 person \$75/night, 4 person \$100/night, 6 person \$130/night. Gas lights and firewood are included in cabin fee.

Tentsites \$30/night.

Lean-tos: \$30/night

Bunkhouse\*\*: \$11.00 per person per night.

Group Areas (Bear Brook, Foster Field, Nesowadnehunk Field and Trout Brook Farm Field): Six (6) person minimum charge (\$42.00), otherwise \$7.00 per person per night.

**Winter Fees** (Special policies are in effect for winter, please request winter information from Park Headquarters or visit the Park's website before making winter reservations):

Bunkhouse\*\*: \$19.00 per person per night, except at Chimney Pond bunkhouse (\$38.00 per person per night).

Lean-to or Tentsite: \$15.00 per night.

Chimney Pond Lean-to: \$40.00 per night

Cabins: 2 person \$55/night, 3 person \$75/night, 4 person \$100/night, 6 person \$130/night. Gas lights and firewood are included in cabin fee.

\*\*Reservations for individual bunk only. Facility is shared with other individuals or groups up to the capacity of the bunkhouse.

**Non-Resident Motor Vehicle Fee** (Payable only at gate.) A day pass or season pass is required for all vehicles entering Baxter State Park. Non-resident motor vehicles shall pay a motor vehicle fee of \$14.00 per motor vehicle for each day in the Park. If a motor vehicle enters the park in connection with overnight reservations covering one or more consecutive nights in the park, then re-entry to the park shall be permitted upon payment of a single motor vehicle fee during the period covered by the overnight reservations, and no longer. Motor vehicles shall not be permitted to enter the Park under any other circumstances, including day use, through traffic or reservations for non-successive nights in the park, without payment of the motor vehicle fee for each day. This regulation does not apply to motor vehicles bearing a Maine registration and

license-plate. A season pass under this regulation shall be available at a charge of \$39.00 per non-resident vehicle.

The proper fee must accompany all reservation requests. All fees include sales tax where applicable and must be paid in U.S. funds. For summer reservations, Park Headquarters accepts Visa, MasterCard, money order or check made payable to Baxter State Park. **Campgrounds and gates inside the Park do not accept credit cards (no electricity), please be prepared to pay with cash or check when arriving at the Park.** The Park does not accept personal checks for winter reservations. Fees are payable by all persons year round, except government employees on official business within the Park. **Refunds will not be available ordinarily.** The Director may (at his sole discretion), permit refunds or may impose a special requirement before granting refunds. Portion of paid fee retained in the event of a refund will be \$37.00. **A fee of \$15.00 will be collected for site transfers.**

**Office Hours:** The Reservations Office is open from 8 a.m. to 4 p.m., Monday through Friday, and closed on weekends and holidays. During our peak season from Memorial Day through the Saturday of Columbus Day week-end, the Reservation Office is open from 8 a.m. to 4 p.m. seven days a week, including holidays. No reservations will be made when our office is closed, but shall be accepted on the next business day.

**Reservation Limits and Other Policies:** A reservation is an arrangement by which accommodations are secured for one or more consecutive nights of lodging in Baxter State Park. Reservations shall be accepted for up to seven (7) total nights for any one (1) site and any one (1) campground, and up to two weeks (14 nights) total duration.

When considering capacity of all facilities, each child is counted as one individual regardless of age. Site capacity is restricted. Before adding people to your party, consult with Park Reservation Clerks to be sure your site will hold additional people.

Reservations for two or more nights will be held only until 4:00 PM of the day following the first evening for which reservations were made.

An average of 30% of campground lean-to and tent site facilities shall be set aside for Maine resident advance reservations until seven (7) days prior to the actual use date. After which time, unreserved sites will be released to either residents or non-residents.

**Groups** of thirteen (13) or more in a family or non-family situation shall be assigned to one of the group areas.

**Each organized camp group** of five (5) or more individuals will be limited to one (1) visit to Chimney Pond Campground during the period from July through August.

Park Campground maps showing campsites and information on outlying sites are available by contacting the Park directly or visiting our website: **[www.baxterstateparkauthority.com](http://www.baxterstateparkauthority.com)**

If you have questions, please call our Reservations Office at (207) 723-5140.

## BAXTER STATE PARK ROLLING RESERVATION SYSTEM

**The reservation office is closed (no reservations made) on weekends & holidays from Columbus Day to Memorial Day.**

For the summer season, the office is open every day from Memorial Day to Columbus Day. Office hours: 8am to 4pm

Camping Start Date	Earliest Reservation Date	Camping Start Date	Earliest Reservation Date	Camping Start Date	Earliest Reservation Date	Camping Start Date	Earliest Reservation Date	Camping Start Date	Earliest Reservation Date	Camping Start Date	Earliest Reservation Date
15-May	15-Jan	1-Jun	1-Feb	1-Jul	1-Mar	1-Aug	1-Apr	1-Sep	1-May	1-Oct	1-Jun
16-May	16-Jan	2-Jun	2-Feb	2-Jul	2-Mar	2-Aug	2-Apr	2-Sep	2-May	2-Oct	2-Jun
17-May	17-Jan	3-Jun	3-Feb	3-Jul	3-Mar	3-Aug	3-Apr	3-Sep	3-May	3-Oct	3-Jun
18-May	18-Jan	4-Jun	4-Feb	4-Jul	4-Mar	4-Aug	4-Apr	4-Sep	4-May	4-Oct	4-Jun
19-May	19-Jan	5-Jun	5-Feb	5-Jul	5-Mar	5-Aug	5-Apr	5-Sep	5-May	5-Oct	5-Jun
20-May	20-Jan	6-Jun	6-Feb	6-Jul	6-Mar	6-Aug	6-Apr	6-Sep	6-May	6-Oct	6-Jun
21-May	21-Jan	7-Jun	7-Feb	7-Jul	7-Mar	7-Aug	7-Apr	7-Sep	7-May	7-Oct	7-Jun
22-May	22-Jan	8-Jun	8-Feb	8-Jul	8-Mar	8-Aug	8-Apr	8-Sep	8-May	8-Oct	8-Jun
23-May	23-Jan	9-Jun	9-Feb	9-Jul	9-Mar	9-Aug	9-Apr	9-Sep	9-May	9-Oct	9-Jun
24-May	24-Jan	10-Jun	10-Feb	10-Jul	10-Mar	10-Aug	10-Apr	10-Sep	10-May	10-Oct	10-Jun
25-May	25-Jan	11-Jun	11-Feb	11-Jul	11-Mar	11-Aug	11-Apr	11-Sep	11-May	11-Oct	11-Jun
26-May	26-Jan	12-Jun	12-Feb	12-Jul	12-Mar	12-Aug	12-Apr	12-Sep	12-May	12-Oct	12-Jun
27-May	27-Jan	13-Jun	13-Feb	13-Jul	13-Mar	13-Aug	13-Apr	13-Sep	13-May	13-Oct	13-Jun
28-May	28-Jan	14-Jun	14-Feb	14-Jul	14-Mar	14-Aug	14-Apr	14-Sep	14-May	14-Oct	14-Jun
29-May	29-Jan	15-Jun	15-Feb	15-Jul	15-Mar	15-Aug	15-Apr	15-Sep	15-May	15-Oct	15-Jun
30-May	30-Jan	16-Jun	16-Feb	16-Jul	16-Mar	16-Aug	16-Apr	16-Sep	16-May		
31-May	31-Jan	17-Jun	17-Feb	17-Jul	17-Mar	17-Aug	17-Apr	17-Sep	17-May		
		18-Jun	18-Feb	18-Jul	18-Mar	18-Aug	18-Apr	18-Sep	18-May		
		19-Jun	19-Feb	19-Jul	19-Mar	19-Aug	19-Apr	19-Sep	19-May		
		20-Jun	20-Feb	20-Jul	20-Mar	20-Aug	20-Apr	20-Sep	20-May		
		21-Jun	21-Feb	21-Jul	21-Mar	21-Aug	21-Apr	21-Sep	21-May		
		22-Jun	22-Feb	22-Jul	22-Mar	22-Aug	22-Apr	22-Sep	22-May		
		23-Jun	23-Feb	23-Jul	23-Mar	23-Aug	23-Apr	23-Sep	23-May		
		24-Jun	24-Feb	24-Jul	24-Mar	24-Aug	24-Apr	24-Sep	24-May		
		25-Jun	25-Feb	25-Jul	25-Mar	25-Aug	25-Apr	25-Sep	25-May		
		26-Jun	26-Feb	26-Jul	26-Mar	26-Aug	26-Apr	26-Sep	26-May		
		27-Jun	27-Feb	27-Jul	27-Mar	27-Aug	27-Apr	27-Sep	27-May		
		28-Jun	28-Feb	28-Jul	28-Mar	28-Aug	28-Apr	28-Sep	28-May		
		29-Jun	29-Feb / 1-Mar	29-Jul	29-Mar	29-Aug	29-Apr	29-Sep	29-May		
		30-Jun	1-Mar	30-Jul	30-Mar	30-Aug	30-Apr	30-Sep	30-May		
				31-Jul	31-Mar	31-Aug	1-May				

## Fiscal Statement

### BAXTER STATE PARK STATEMENT OF REVENUE AND EXPENDITURES FISCAL YEAR ENDING JUNE 30, 2011

BALANCE FORWARD		<u>\$211,327</u>	
<b>REVENUE – 014 Account</b>			
Park Operations			
Recreations Fees	<u>\$787,593</u>		
Transfer Fees	<u>\$8,312</u>		
Entrance Fees	<u>\$152,646</u>		
Miscellaneous Services	<u>\$41,569</u>		
Sales of Maps, Books, etc.	<u>\$38,866</u>		
Sale of Forest Products	<u>\$ 304,934</u>		
Foreign Exchange Differential	<u>\$(166)</u>		
Duplicate/Overpayment Fees	<u>(\$4,975)</u>		
NET REVENUE FROM OPERATIONS		<u>\$1,328,779</u>	
<b>TRUST FUNDS</b>			
Boston Trust	<u>\$ 1,955,000</u>		
State Held Trust	<u>\$ 87,488</u>		
Cash Pool Distribution (interest)	<u>\$1072</u>		
Independent Trust	<u>\$88,750</u>		
NET REVENUE FROM TRUSTS		<u>\$2,132,310</u>	
<b>MISCELLANEOUS REVENUE</b>			
Special Licenses and Leases	<u>\$ 201</u>		
Sale of Equipment	<u>\$ 0</u>		
Rent of Lands	<u>\$2,500</u>		
Miscellaneous Income	<u>\$14,441</u>		
TOTAL MISCELLANEOUS REVENUE		<u>\$17,142</u>	
TOTAL REVENUE AVAILABLE			<u>\$3,689,558</u>
<b>EXPENDITURES</b>			
<b>PERSONNEL SERVICES</b>			
Salaries, permanent	<u>\$863,016</u>		
Salaries, seasonal	<u>\$498,151</u>		
Overtime/Differential/Retro	<u>\$62,016</u>		
Retirement Contributions	<u>\$407,056</u>		
Other Benefits	<u>\$429,725</u>		
TOTAL PERSONNEL SERVICES		<u>\$2,259,964</u>	
<b>ALL OTHER</b>			
Contractual Services	<u>\$299,778</u>		
Park Operations – All Groups	<u>\$542,473</u>		
Sta-Cap Charges	<u>\$31,461</u>		
TOTAL ALL OTHER		<u>\$873,712</u>	
<b>CAPITAL</b>			
Buildings	<u>\$ 3105</u>		
Equipment	<u>\$35,870</u>		
TOTAL CAPITAL		<u>\$38,975</u>	
TOTAL EXPENDITURES			<u>\$3,172,651</u>

## FY12 Budget



### Executive Summary: FY11 Annual Work Program

---

As predicted in the FY10 Executive Summary, the construction of the FY11 budget has been a difficult task. The gradual recovery of the market value of the endowment funds over the past year, while by no means complete, has been a welcome trend. In general, the Park has held ground on identified priorities and set most discretionary spending at minimum levels.

Budget construction will likely continue to be a difficult exercise for several more years.

#### Revenue Notes:

- After discussion with the Investment Manager and the Investment Committee, spending from the Baxter Trusts was set at 3.57% of the 20 quarter market value average. This is within the acceptable range of spending from the trusts, but roughly half a percentage point higher than recent years.
- As expected, the estimated balance forward from FY10 is significantly less than was available from FY09. The smaller balance forward suggests that funding for additional contributions to the Capital Reserve Account will continue to be hard to find.
- Recent visitor use levels have remained constant or have slightly increased. Recent changes in the fee structure are not anticipated to affect the fee revenue significantly.
- Demand for wood products from the SFMA is reasonably strong, but market pricing remains weak. Revenues for FY11 are projected to be lower until market prices rebound. Recent data may affect overall harvest rates in the next 10 year cycle.
- For the third year, the Park's budget continues to be assisted by a significant donation from the Baxter Wilderness Trust.

#### Expenditure Notes:

- While staffing levels remain unchanged from FY10, Personal Services increased by roughly \$78,000. Significant contributions to the increases include increases in wages, required commitments to retirement funding and health care.
- Discretionary spending in each line of All Other has been carefully reviewed. Most pool accounts have been set at or below FY10 levels and staff have been urged to consider carefully each spending request. Administrative staff continues to consider reductions in non-essential equipment, supplies and contracting.
- Recent claims will result in a significant increase in worker's comp costs for FY11.

- The Park has identified priorities in staff training and development, the trail maintenance program, SFMA road maintenance, renewed FSC Certification in the SFMA, and the conversion of our radio system to narrow band frequency. Spending levels have been maintained in these areas.
  - Capital expenditures have been limited to the maintenance of basic transportation and infrastructure needs.
-



REVENUE	CODE	ACTUAL FY2008	ACTUAL FY2009	ACTUAL FY2010	BIENNIAL FY2010	% OF TOTAL	ANNUAL FY2011	% OF TOTAL
BALANCE BROUGHT FORWARD		350,333	311,322	211,327	0	0%	150,000	0%
SPECIAL LICENSE & LEASES	1448	(65)	(109)	327	120	0%	100	0%
INTEREST ON BANK BALANCES	2101	5,457	1,766	5,000	5,000	0%	2,000	0%
EARNINGS ON INVESTMENT	2105	10,003	9,127	1,532	5,000	0%	9,000	0%
RENT OF LANDS	2601	255	2,501	2,500	2,500	0%	2,500	0%
RECREATIONAL USE OF PARK	2610	676,912	698,243	817,459	690,000	19%	700,000	19%
TRANSFERS	2616	7,551	6,330	6,849	5,700	0%	7,000	0%
ENTRANCE FEES	2618	114,415	112,559	122,092	120,000	3%	120,000	3%
REFUNDS & DUPLICATE FEES	2620	(3,836)	(1,262)	(2,786)	0	0%	(3,000)	0%
MSC SERVICES & FEES	2637	30,718	31,957	37,839	25,000	1%	30,000	1%
SALE OF MAPS & BOOKS	2657	23,870	22,591	29,166	25,000	1%	23,000	1%
MSC - INCOME (Donations)	2666	525	3,266	2,377	0	0%	2,000	0%
CASH OVERSHORT FOREIGN EXCHANGE	2689	185	95	150	0	0%	150	0%
CONTINGENCY FROM ENTERPRISE FUND(SFMA)	2722	290,000	210,085	71,404	250,000	7%	125,000	9%
CONTINGENCY FROM BAXTER TRUSTS	2724	1,750,000	2,015,000	1,890,000	2,252,426	63%	2,230,000	66%
CONTINGENCY FROM STATE HELD TRUSTS	2724A	124,915	58,551	143,304	130,000	4%	95,000	0%
CONTINGENCY FROM INDEPENDENT TRUSTS	2724B		75,000	85,000	75,000	2%	75,000	0%
SALE OF EQUIPMENT	2806	10,677	2,749	6,751	10,000	0%	3,000	0%
SALE OF AUTOS	2821	6,000	0	0	4,000	0%	2,000	0%
TOTAL REVENUE		3,397,915	3,559,771	3,430,291	3,599,746	100%	3,572,750	100%
EXPENDITURES BY GROUP								
PERSONAL SERVICES		2,200,764	2,321,839	2,364,548	2,244,311	67.4%	2,514,744	66.9%
ALL OTHER		844,293	854,623	817,193	906,283	27.2%	912,130	28.0%
CAPITAL		51,411	147,033	121,175	176,880	5.3%	145,876	5.1%
TOTAL EXPENDITURES		3,096,468	3,323,495	3,302,916	3,327,474	100.0%	3,572,750	100.0%
PERCENTAGE OF TRUST MARKET VALUE								
TRUSTS MARKET VALUE AVERAGE OVER 20 QTRS		2.80%	3.23%	3.17%	3.57%		3.80%	
		62,394,356	62,394,326	64,180,695	63,138,039		58,609,590	
Capital Reserve		108,000	108,000	102,515	108,000		108,000	

	ACTUAL BUDGET FY08	ACTUAL BUDGET FY09	ACTUAL BUDGET FY10	ANNUAL BUDGET FY11	ACTUAL BUDGET FY11
<b>3000 PERSONAL SERVICES</b>					
3110 Perm Regular	704,338	713,290	759,919	966,556	740,669
3120 Perm PT B					
3180 Perm Vac	59,523	72,780	54,206		44,671
3181 Perm Hol	43,193	43,895	45,639		46,375
3182 Perm Sick	31,703	30,317	25,273		31,301
3195 Attrition				-24,831	0
3210 Limited Period Regular	0				
3280 Limited Period Vacation	0				
3281 Limited Period Holiday	0				
3282 Limited Period Sick	0				
3310 SSNL REG	376,649	398,664	422,074	511,896	404,182
3380 SSNL VAC	15,586	23,958	26,452		27,372
3381 SSNL HOL	25,274	26,653	28,099		23,660
3382 SSNL SICK	13,029	9,689	12,925		8,520
3410 PROJ REG		13,141			16,146
3450 REG ACTG	4,830	21,729	8,722		16,601
3480 PROJ VAC		777			163
3481 PROJ HOL	424	989	246		1,507
3482 PROJ SICK		215			
3611 STAND O/T	4,614	9,202	9,308		4,846
3612 PREM O/T	5,493	9,251	12,406		4,950
3616 RETRO LUMP	2,433	6,629	837		2,429
3618 RETRO 84	25,549	2,080	10,000		
3621 STP RC/RT	2,719	4,901	6,281	3,464	6,393
3623 I.T.TRAINING STIPEND		750	1,500		250
3631 LNGVTY PY	9,400	8,210	519	10,596	5,739
3634 CALL OUT		52			58
3636 Court Pay					69
3638 SHFT DIFF	1,049	806	649	3,694	745
3641 NSTND DIF	45,242	44,368	43,106	50,476	36,537
3810 UNEMP CMP	28,627	24,639	37,590	30,000	2,656
3899 ACCURED PAYROLLS		-2,504	0		29,058
3901 HLTH INSR	326,152	337,186	339,234	390,642	
3905 DENTAL IN	11,666	11,533	12,039	12,264	358,846
3908 ST RET HL	170,992	192,906	205,385	229,190	12,131
3909 ST RET AD	0	0			130,698

3910 EMPR RTMT	109,079	116,842	116,681	124,847	
3911 EMPR GROUP LIFE	7,043	6,664	6,281	7,893	112,989
3912 EMPR MED	16,405	17,909	19,258	18,842	6,611
3959 RUL-BPR	53,364	56,575	47,525	58,046	18,623
3960 RUL-REG	103,757	115,843	110,910	118,369	48,422
3971 UNIFORM	2,651	1,900	1,484	2,800	114,947
3973 CHILD CARE	0				1,800
	2,200,784	2,321,839	2,364,548	2,514,744	2,259,964
	ACTUAL BUDGET FY08	ACTUAL BUDGET FY09	ACTUAL BUDGET FY10	ANNUAL BUDGET FY11	ACTUAL BUDGET FY11
<b>All Other</b>					
<b>PROFESSIONAL SERVICES</b>					
4003 Act/Audit Service		1	61	1,000	-1,528
4015 Labor	78,839	67,294	92,375	100,975	100,975
4016 Art /Graphics	0	174	0	200	21
4041 Laundry Services	0	0	0	100	0
4042 Legal Services	60	0	0	500	0
4046 Medical Services	106	0	1,150	500	556
4099 Professional Services	183,760	218,557	166,786	244,300	199,754
<b>PROFESSIONAL SERVICES STATE</b>		0			
4106 Lab Services	535	1,188	372	500	122
<b>TRAVEL IN STATE</b>					
4270 In-State Mileage	2,070	3,116	2,228	2,000	1,151
4271 Other Transportation	0	0	0	100	0
4273 Lodging	1,976	2,019	836	2,000	636
4274 Meals/Gratuities	11,443	12,955	6,204	5,800	5,502
<b>TRAVEL OUT OF STATE</b>					
4380 Out of State Mileage	0	0	0	0	0
4381 Other Transportation (out of state)	0	0	0	0	505
4383Lodging (out of state)	784	480	0	500	483
4384 Meals/Gratuities	0	170	7	200	0
<b>VEHICLE OPERATIONS</b>					
4402 Gas/Oil	46,473	46,121	41,267	48,000	48,162
4403 Diesel Oil	15,204	4,732	9,144	7,000	8,373
4423 Repairs Parts/Supply	24,690	37,165	29,204	26,000	22,070
4424 Repairs Snowmobile	4,109	3,569	4,252	4,000	2,292
<b>UTILITIES SERVICES</b>					
4521 Electric	10,683	9,853	11,192	11,000	10,352
4532 Bottled Water	853	918	689	300	306

4536 Other Utility	2,657	2,008	1,886	2,500	2,197
4551 Freight	3,503	4,363	4,017	5,000	3,818
<b>RENTS</b>					
4601 Rent Land	0	0	500	200	500
4602 Rent Plane	1,242	3,350	0	1,000	640
4616 Rent Misc. Office Equipment	125	0	0	150	150
4661 Rent Equipment	4,269	809	0	1,000	185
	<b>ACTUAL BUDGET FY08</b>	<b>ACTUAL BUDGET FY09</b>	<b>ACTUAL BUDGET FY10</b>	<b>ANNUAL BUDGET FY11</b>	<b>ACTUAL BUDGET FY11</b>
<b>REPAIRS</b>					
4701 Repair grounds& road			2,142		145
4711 Repair Building	19,057	24,121	14,064	25,000	16,614
4721 Repair Small Engine	4,629	9,205	4,351	9,000	2,539
4726 Repair Radios	6,046	6,368	1,492	2,000	930
4735 Maintenance Agreements	21,241	24,160	19,962	20,000	16,393
4751 Misc. Repairs	1,404	3,825	2,030	2,000	2,084
<b>INSURANCES</b>					
4801 Insurance Building	4,257	2,139	2,138	2,300	2,154
4811 Insurance Equipment	580	290	290	500	290
4825 Insurance General Liability	7,137	2,622	2,475	3,000	2,303
4841 Employees Bond	244	126	118	200	118
4827 Snowmobile Ins					489
4845 Workers Comp Ins.	39,354	45,386	61,261	61,000	82,428
4851 Mis Insurance		126	550		570
4852 Auto Insurance	4,462	4,394	4,312	5,000	4,167
4880 Eye Exam	0	200	165	300	150
4881 Lens Stat	0	0	0	250	0
<b>GENERAL OPERATIONS</b>					
4901 Stamps/Parcel Post	137	273	8	200	0
4909 Courier Service	679	499	256	500	237
4911 Metered Postage	4,412	4,574	5,556	5,000	4,605
4913 Inter Government postage	109	84	41	100	38
4929 Printing/Binding	20,405	16,752	18,032	18,000	20,371
4941 Print Report (State of Maine)	79	0	118	80	69
4946 Advertisement Notices	705	6,346	2,727	1,500	2,156
4955 Credit Card Charges	8,295	9,332	8,780	9,500	13,225
4975 Sales Tax	51,254	52,691	62,348	54,000	67,300
4982 Subscriptions	508	298	561	300	379
4995 General Expenses	14,957	23,703	3,529	20,000	3,309
<b>CAREER DEVELOPMENT</b>					
5013 Employee Training	8,583	9,753	19,492	15,000	14,076
<b>FUEL</b>					

5201 Fuel oil	2,522	9,046	10,634	7,000	11,182
5202 LP Gas	29,773	7,733	7,520	9,000	7,013
5211 Firewood	5,780	0	2,450	2,400	2,160
<b>INFORMATION TECHNOLOGY</b>					
5301 OIT Prof Services					4,758
5302 Telephone/Data	11,657	20,958	31,632	21,000	26,944
5304 Cellular Phones	3,745	3,965	6,878	4,500	8,090
5346 PC & Networking Software	2,862	9,548	2,685	4,200	2,188
5350 Repair Computers	0	198	0	300	0
	<b>ACTUAL BUDGET FY08</b>	<b>ACTUAL BUDGET FY09</b>	<b>ACTUAL BUDGET FY10</b>	<b>ANNUAL BUDGET FY11</b>	<b>ACTUAL BUDGET FY11</b>
<b>CLOTHING</b>					
5401 Clothing	17,241	11,707	15,334	13,600	11,920
<b>OPERATING SUPPLIES</b>					
5602 Office Supply	20,545	5,756	6,371	7,000	7,558
5611 Interpretation/Education	230	2,286	394	2,500	155
5629 Books & Maps for Resale	9,572	9,753	9,673	10,000	16,197
5636 Miscellaneous Supply	56,085	56,458	37,228	57,000	42,071
5650 Misc. Minor Equipment	47,884	29,208	40,905	28,200	36,025
<b>HIGHWAY MATERIALS</b>					
5830 Lumber			3,478		
5812 Culverts	851	0	0	3,000	0
5861 Signs	2,662	597	447	1,000	1,629
<b>STA-CAP</b>	20,968	21,301	32,596	22,882	31,461
Total All Other	823,324	833,322	784,536	890,255	842,251
<b>Total All Other &amp; Sta-cap</b>	<b>844,293</b>	<b>854,623</b>	<b>817,132</b>	<b>913,137</b>	<b>873,712</b>
<b>Capital</b>					
7001 Land					
7101 Bldg./Improvements	459	14,762	12,220	100,876	3,105
	0				
	0				
	0				
7200 Equipment				25,000	21,016
7203 Data Processing Equipment					
7211 Motor Vehicle Transportation	50,952				
		98,428	52,038	19,000	14,854
		15,035	28,699		
		18,808	28,218		
<b>Total Capital</b>	<b>51,411</b>	<b>147,033</b>	<b>121,175</b>	<b>144,876</b>	<b>38,975</b>
<b>All Totals</b>	<b>3,096,488</b>	<b>3,323,495</b>	<b>3,302,855</b>	<b>3,572,757</b>	<b>3,172,651</b>

## Donations to Baxter State Park 2011

Donations FY 2011 under \$1000	DATE		AMOUNT
<b>1/1/2011-12/31/2011</b>			
<b>Anonymous - Field Locations</b>			
	Feb-11		\$ 3.61
	Mar-11		\$ 40.00
	May-11		\$ 32.06
	Jun-11		\$ 438.07
	Jul-11		\$ 181.58
	Aug-11		\$ 343.75
	Sep-11		\$ 145.94
	Oct-11		\$ 210.78
	Nov-11		\$ 20.00
	<b>Total</b>		<b>\$ 1,415.79</b>
<b>Anonymous - Reservation Office</b>			
	May-11		\$ 3.00
	Jun-11		\$ 10.88
	Jul-11		\$ 16.00
	Aug-11		\$ 2.45
	<b>Total</b>		<b>\$ 32.33</b>
<b>Individual Donations</b>			
Freightliner of Maine	Feb-11		\$ 50.00
Warren Carriere	Feb-11		\$ 25.00
Benjamin Jones	Mar-11		\$ 50.00
Nancy Koch	Mar-11		\$ 20.00
James Garland & Carol Andreae	Mar-11		\$ 500.00
John Mitchell	Mar-11		\$ 90.00
Jane & Ben Jones	Jun-11		\$ 50.00
Kevin & Konrad Martin	Jun-11		\$ 300.00
Antonio Planchart	Jul-11		\$ 15.00



Robert Morrison	Sep-11		\$ 50.00
Charles Richards	Sep-11		\$ 100.00
Susan Atwood	Dec-11		\$ 25.00
	<b>Total</b>		<b>\$ 1,275.00</b>
<b>Donations FY 2011 over \$1000</b>			
Baxter Park Wilderness Fund	Jan-11		\$ 21,250.00
Baxter Park Wilderness Fund	Apr-11		\$ 25,000.00
Baxter Park Wilderness Fund	Jul-11		\$ 25,000.00
Baxter Park Wilderness Fund	Oct-11		\$ 30,000.00
Friends of Baxter	Apr-11		\$ 6,000.00
Friends of Baxter	Jun-11		\$ 3,500.00
Friends of Baxter	Jul-11		\$ 1,200.00
Ed Hawkins	Oct-11		\$ 3,000.00
<b>Total</b>			<b>\$ 114,950.00</b>
<b>Donation Purchases</b>			
Garmin GPS Units	Jan-11		\$ 612.31
Spring Medical Supplies	Apr-11		\$ 650.43
Caddy for D Cylinder	Apr-11		\$ 87.50
Spring Medical Supplies	May-11		\$ 130.18
Canoes	Jun-11		\$ 2,910.00
Trail Inventory Interns	June-Aug 11		\$ 7,200.00
Logistical systems equip/Paul	Jul-11		\$ 1,940.33
Old Town Canoe/skid plates	Jul-11		\$ 279.80
S & R Equipment	Aug-11		\$ 3,049.11
Projector & access for con room	Dec-11		\$ 886.86
<b>Total</b>			<b>\$ 17,746.52</b>

# Information/Education Division

BSP Naturalist Jean Hoekwater  
BSP Interpretive Specialist, Marcia Williamson  
BSP Visit Center Receptionists Brian Johnson/Chris Morris  
2011 Wilderness Educators- 6 month: Morgan Taylor, 12 week: Emilie Schur, Emily McCloud,  
Andrew Swafford  
2011 MATC Abol Ridgerunner CJ Manza



5 yr old Jack Brooks hikes out of Katahdin Lake

**To be whole. To be complete. Wilderness reminds us what it means to be human,  
what we are connected to rather than what we are separate from.**

*Terry Tempest Williams, testimony before the Senate Subcommittee on Forest & Public Lands Management  
regarding the Utah Public Lands Management Act of 1995. Washington, D.C. July 13, 1995.*

## 2011 Programs-Introduction

In 2011, the summer Evening Program series included visitor favorites as well as new additions such as geologist Robert Johnston's program on the geology of the South Branch Pond region and a Baxter Player's production based on a Native American legend. The 2011 Visiting Artist, Michael Vermette, delighted park visitors with his Open Studio and evening talk in August while gaining new perspectives on the Park for his future paintings. Our summer Children's Programs in the Park provided wonderful experiences for many Park families, ranging from building kites with an insect theme to searching for and identifying animal scat to learning to love leeches! An increasingly important part of our program efforts is our interface with the Millinocket Public Library. We try to offer some programs during the summer and more recently, with the revised scheduling of our late summer Wilderness Educator positions, we offer a number of after school programs that engage children and encourage outdoor exploration. We continue our tradition of offering outreach programs on a statewide basis October-April, including schools, outing clubs, civic groups and more, with an emphasis on explaining Percival Baxter's gift and the Park mission at each event.

## 2011 Program Series

### Evening Programs in the Park:

- 7/6 **South Branch Pond** – Stewardship of Baxter State Park – What does it mean to become a steward of Governor Baxter's gift? – Gabe Williamson – led an interactive, experiential learning program that fostered discussion about what Governor Baxter meant when he said he wanted the Park used in the "right unspoiled way" and how we can all help protect and preserve Governor Baxter's gift.
  
- 7/13 **Daicey Pond** – The Pack Talk – Does your pack feel like it weighs 100 lbs? – Ben Woodard, Chief Ranger – provided tips on how to keep your pack weight down and still have the essentials for a safe and enjoyable hike!
  
- 7/20 **Daicey Pond** – Baxter State Park from the Director's Chair – Jensen Bissell pulled up a seat and spent an evening talking with visitors about what we are doing to make their visit to the Park more enjoyable!
  
- 7/20 **South Branch Pond** – A Volcano in Baxter State Park? – Robert Johnston, Geologist with the Maine Geological Survey – This new program offering enlightened visitors about the geological history as told by the rocks and landscape on the mountains surrounding South Branch Ponds and included a short hike up the Ledges Trail.
  
- 7/27 **Kidney Pond** – "Lost on a Mountain in Maine" – Donn Fendler – Children and adults sat wide-eyed listening to Donn relive his experience of 72 years ago - being lost on Katahdin and in the Maine Woods for nine days.

8/3 **Kidney Pond** – Who Comes Out at Night – Jean Hoekwater, Park Naturalist –led visitors on a night hike learning who makes those noises in the dark and how animals find their food at night.

8/3 **South Branch Pond** – Bears, Outhouses and Things that Go Bump in the Night – Chris Drew, Retired Chief Ranger – Laughter filled the night air, as Chris relayed bear, mouse, outhouse and other tales of Park happenings.

8/10 **Daicey Pond** – Theatrical Rangers – Members of the Baxter State Park Staff engaged in an interactive and fun play from a Native American legend about how Bat became part of the mammal family instead



Michael Vermette, 2011 Visiting Artist

8/16 **Daicey Pond** – Visiting Artist Open Studio – Michael Vermette guided all ages as they tried their hands at capturing the landscape and gaining an appreciation of the nature with the assistance of the Park's Visiting Artist.

8/17 **Daicey Pond** – A View of the Park Through an Artist's Eyes – Michael Vermette demonstrated unique painting and drawing techniques used in his preliminary drawings of nature. He focused on painting visitors interfacing with nature in the Park, the essence of Governor Baxter's gift – a place where people can be close to nature.

8/31 **Kidney Pond** – Memories of Happy Trails! – Buzz Caverly, retired Park Director, took visitors on a journey of 50+ years working for the Park, from his early days as a young, eager ranger to Park Director to working for the Baxter State Park Wilderness Fund.

9/6 **South Branch Pond** – Governor Baxter's Vision – Piecing Together 28 Parcels of Land 1931-1963 – Howard Whitcomb traced the footsteps of Governor Baxter during 32 years of creating his legendary Park.

9/7 **South Branch Pond** – A Volcano in Baxter State Park? – Robert Johnston, Geologist with the Maine Geological Survey once again enlightened visitors about the violent volcanic eruptions that helped shape this beautiful landscape.

### **Children's programs in the Park**

7/2 **Daicey Pond** – Bird! Is the Word – How many birds can you see and

hear? Sitting still listening and looking, children learned how to identify and sing like a bird and created their favorite bird to take home.



**Looking for birds!**

7/9 **Kidney Pond** – Explore the Miracle of Flight! Build Your Own Insect Kite! –The miraculous world of insects came alive as children learned what insect flies like a helicopter and what Monarch butterflies eat.

7/16 **Daicey Pond** – Bark, Leaves, and All Things TREES! – Making bark rubbings provided a fun hands-on way to identify trees while keeping a record in a hand-made beginner's Trees of Baxter State Park ID book!

7/23 **Kidney Pond** – Detective Decay and the Hunt for the FBI (Fungus, Bacteria, and Intertebrates) – The case of what is eating dead trees was cracked with the help of Dr. Decay and a stealthy crew of young scientists.

7/30 **Kidney Pond** – Ready, Set, LET'S GO HIKING! – A backpack relay provided learning about what is important to take on a hike that will make it fun and safe while protecting and preserving the natural world.

8/6 **Daicey Pond** – Oh, What's in a Pond? – Discovering what is under the water through a leave what you find scavenger hunt led to squeals of excitement and learning.



**Lurking Leeches participants with masks**

8/13 **South Branch Pond** – POND CRITTERS – Even if They Give You the JITTERS! – Exploring the outlet of Lower South Branch Pond children got an up-close look at fabulous plants and brilliant bugs!

8/24 **Kidney Pond** – Lurking Leeches! – Are leeches all that bad? Wearing personally crafted leech masks, excited children searched for

leeches to discover the hidden world behind these notorious worms!



- 8/27 **Daicey Pond** – Fabulous Frogs – Finding frogs in different stages of their life cycle created learning opportunities and fodder for making a frog puppet.  
Children's Programs-Millinocket Memorial Library

### **Park Outreach Programs (partial listing)**

- 1/6 Patten Men's Club
- 2/9 Unity College Career Fair
- 2/10 Bowdoin College Career Fair
- 2/15 Forest Resources Job Fair – University of Maine Orono
- 3/24 Interpretation Class, Rick Scribner Instructor – University of Maine Machias
- 4/29 Winthrop Elementary School Social Studies & Geography Day
- 5/17 Orrington Center Drive School, Camping and Hiking in Baxter
- 5/20 Lee Middle School Career Day, Careers in Parks
- 6/5 Bigelow Lodge MATC Ridge Runner, Orientation to BSP for Ridge Runners
- 6/7 Isleboro School, Baxter Natural History and Management Issues
- 6/29 Camp Wavus program at Chimney Pond about Baxter State Park & Leave No Trace
- 7/21 Camp Walden presentation about Baxter State Park & Leave No Trace
- 8/6 FBSP Wilderness Youth Leadership Camp, Overview of Park features
- 8/7 Leave No Trace in Baxter State Park – FBSP – Maine Youth Wilderness Leadership
- 8/27 Colby College Outing Club Leaders Leave No Trace – 2 3-hr sessions at Colby College
- 8/28 Colby College Outing Club Leaders Leave No Trace – 2 3-hr sessions at Colby College
- 9/12 Grindstone Byway Bus Tour Talk
- 9/17 Trails End Festival – BSP/nature related children's activities
- 10/14 Wilderness Educator Internship presentation by Morgan Taylor, Wilderness Educator at University of Maine, Orono
- 11/10 Hibbard Nursing Home, The Park Through the Years
- 12/2 Leave No Trace Backyard Workshop at LL Bean Freeport



Walking like animals, Trails End Festival, Millinocket

### **In-House Trainings Offered or Hosted**

- 5/19 Leave No Trace training for the spring/summer Trail Crew at Abol Field Camp
- 6/17 Park Van Tour for new staff in conjunction with Jensen Bissell, Park Director
- 8/9 Leave No Trace training for late summer/fall Trail Crew at South Branch Pond
- 8/23 Leave No Trace training for Wilderness Educator Assistant Interns at Headquarters



9/30 Signs of the Seasons- Pheonology Network Training in partnership with Millinocket  
Middle and High School  
10/18 Project Learning Tree

## **Information/Education Projects**

### **Park Newspaper**

The 2011 *Wildnotes*, the annual Park newspaper for visitors was once again handed out to each vehicle entering the Park. The 2011 edition included a colorful, updated map created by BSP Resource Manager Rick Morrill. In response to staff suggestions, we moved the map from the center of the paper to the back cover so it was easy for Gate and Visitor Center staff to use when talking to visitors. Other updates included information on the Naturalist Adventure Packs, invasive forest pests, and a one-time piece on the recreational opportunities on Matagamon Lake. Info/Ed staff makes an effort to supply local businesses with copies throughout the season and the Friends of Baxter State Park have paid the required fees to allow them to distribute several thousand copies through the I-95 Visitor Centers. We continue to solicit feedback and suggestions for upcoming issues and appreciate the many helpful tips we received in 2011, several of which will be used to improve the 2012 issue.

### **Project Learning Tree**

Each year we aim to host either a Project Learning Tree or Project WILD curriculum workshop. On October 18, 2011, a group of 12 attended a Project Learning Tree workshop hosted by Baxter State Park, including teachers from Granite Street and Stearns in Millinocket and Medway, along with Park staff, attended a full day of instruction, meant to bring the environment into the classroom and the classroom into the environment. Project Learning Tree (PLT) provides hands on, experiential lessons for educators, natural resource professionals, college students, environmental educators and community leaders. PLT and Project WILD workshops not only allow BSP I/E staff to update their outdoor education programming skills and knowledge but provide a networking opportunity. Morgan Taylor, 6 month Wilderness Educator, was tasked with scheduling, recruiting, promoting and participant sign up of the course. Pat Maloney, Maine PLT coordinator led the workshop, assisted by a Maine Forest Service forester, Morgan Taylor and Marcia Williamson presenting activities and demonstrating use of the curriculum guide activities for participants. Teachers qualify for continuing education credits by taking part in this field oriented curriculum training. They left enthused with new curriculum ideas and excitement for taking their classes outside into the environment.

An interesting by product of the day was a discussion during which Pat Maloney mentioned that a school in New Zealand was looking for a partner school in Maine with which to correspond. Later in the school year, Millinocket Middle School and High School school teacher Dave Wilkins applied for his students to take part in this fascinating exercise. We continue to look for ways we can interact in meaningful, efficient ways with local schools and are pleased to learn of such far reaching outcomes from a curriculum workshop.

**Signs of the Season** – In late July 2011, the Park Naturalist learned of the Signs of the Seasons program, a citizen science initiative offering Mainers of all ages the opportunity to contribute to science by observing and documenting the life stages of common species. This program is offered through the University of Maine Cooperative Extension common plants and animals in their own backyards, school yards or communities. The data collected is entered into a national data base assisting scientists with the



FBSP Wilderness Youth Leadership LNT Training with Marcia and Gabe Williamson

understanding of local effects of climate change. After learning of the program and querying the local school regarding their possible interest, we contacted the program coordinators to offer to host a training session at Park Headquarters. On September 30, five students from the Millinocket Middle and High Schools, along with science teacher Dave Wilkins, two Wilderness Educator Interns, and two Park staff participated

in this half-day workshop, led by Signs of Spring representatives Medea Steinman and

Esperanza Stancioff. Teachers are hopeful the newly built walking path in Millinocket that passes nearby the schools will provide easy access for students and teachers to track some nearby shrubs, wildflowers or bird species.

Andrew Swafford, one of the 2011 Wilderness Educator Interns, continued to work with teacher Dave Wilkins and his students after the workshop to help them establish their observation plots outside their schools and/or homes, record their findings, and enter the data. We appreciate the collaboration with the local schools and teachers and the opportunity to provide an educational experience outside the classroom. With climate change promising wide ranging consequences, we hope to be successful in continuing to encourage visitors and local residents to play a part in submitting their observations so scientists can obtain a vast amount of data, contributing to a more complete picture than any one project with limited personnel can ever hope to compile.

### **Volunteers**

Diane Freelove and Laurie Rich provided 6 hours each of volunteer time collating and stapling over 500 Jr. Ranger booklets for the 2011 season.

Laurie Rich also devoted many hours to archiving photos for the Park.

Anne Huntington devoted three days to Matagamon Lake aquatic plant surveys.

Rick Speer volunteered a total of about 30 hours to check plant alpine plant species on Mt Coe and elsewhere + 5 hours to prepare field forms and reports.

### **Baxter State Park Interpretive Plan/ Management Plan Revision**

The Park Naturalist continued to work on assigned sections of the Park Management Plan in 2011 as requested. Certain items mentioned in the I/E section have already informed division activities, including creation of the Park newspaper, Wildnotes, and a recent Friends of Baxter initiative to support the publishing of a Field Guide to the Plants of Baxter, dependent upon the development of a comprehensive Flora of Baxter State

Park. Initial botanical surveys to build the plant list are slated to take place during summer 2012. The need for an update of the BSP Media Policy became evident in the occasional challenges routine proposals continued to present for administrative staff during summer/fall 2011 so that work was also in progress at year's end.

## **2011 Education issues**

### **Group Day Hike Numbers**

The Park has been a popular place for large group day hikes for a very long time. While Group Camping Areas in the Park are one source of large hiking groups, many more groups arrive for day use only. In the 1990's the Park instituted a large group registration process as a first step in getting a handle on group use in the Park. The process encouraged advance notice from groups and gave Park employees a chance to discuss itineraries and group hiking etiquette. Over the years, fewer and fewer groups provided advance notice choosing to fill out the group form when they arrived at the gate instead. During this same time period, more agencies and organizations adopted guidelines espoused by Leave No Trace, Inc. and other hiking ethic programs. These guidelines include recommendations for group sizes no larger than 12 individuals and as small as 6, for premium wilderness experiences and minimum impact to the resource and other individuals. In the winter of 2011-2012, following extensive discussions with the Advisory and BSP Authority, Park managers began informing groups that use the Park on a regular basis about a limit on group size for day hikers, beginning with the summer of 2013. The I/E division has already contacted outing clubs and many of the youth camps through contacts we have been building over the years. Support and understanding in group leaders thus far has been earnest and widespread. We are confident that the natural resources and wilderness experience of other visitors as well as the experience of group members, will benefit from this new policy. In addition, Park regulations will now be more in line with other institutions and hiking destinations in New England.

### **The "Elephant in the Room"**

The summer of 2011 proved to be a trying one for interns and employees patrolling the trails of Katahdin. For whatever reason, incidents of human waste being left directly on hiking trails, especially above treeline, were more numerous than past seasons, although they have been generally increasing in recent years. We upped our efforts to educate visitors in this regard and will be approaching the problem on several fronts in coming seasons. Observations from Alpine Stewards indicated at least some of the problem was originating from large groups and poor leadership. However, it is also likely that society in general is less aware of trail etiquette when "nature calls" in the woods. We may also be seeing a larger percentage of visitors who are well outside their comfort zones, thus putting park resources at risk while they gain some of their first experiences in a setting that sometimes tests even the most experienced. Finally, the physical characteristics of Katahdin itself, being an extremely rigorous day hike removed from facilities for most of the distance, provides greater likelihood of incidents. For whatever reasons, it became abundantly clear in 2011 that information on properly



disposing of all waste requires greater emphasis in our programs, despite being an uncomfortable subject for some visitors. In addition to incorporating a blunter approach during early morning orientations at Chimney Pond, our Wilderness Educators responded in a very timely manner by scheduling campground visits with as many visiting groups in late summer as possible, to discuss these matters. 2012 and upcoming seasons will include continued campground visits to groups and increased efforts to address this resource threat in as many constructive and creative ways as possible.

### **Catching Up With the “New Visitor”**

Over the last few years, the Park has instituted many user friendly changes, in an effort to make the Park available and to make information on using the Park more accessible. Changes include a website, being re-designed in early 2012 to provide even more user friendly features, Day Use Parking Reservations, a hiking information number, and computerized reservations for some sites. As a result, we are most likely reaching new audiences that might not have previously been aware of, or considered visiting, the Park. The I/E division has been giving some thought to how we need to change some of our approach, to meet the orientation needs of these new visitors. Simply put, the more technologically advanced our interface with the visitor is prior to their arrival, the greater the possibility they may arrive expecting a different level of services and facilities than our mission and operations provide for. The challenge for our division is to bridge the gap between the technological introduction many people have to the Park and the realities of the primitive setting and camping experience we still offer when you enter the Park gates. Addressing this issue ensures resource protection and high quality visitor experiences while preventing resource damage due to unprepared visitors coping with conditions they didn't expect.

## **Seasonal Staff/Volunteers**

### **2011 Wilderness Educators**

We were fortunate to have four interns join us for the 2011 season.

**Morgan Taylor** was the six-month Wilderness Educator Intern, starting her internship on May 15, 2011, after graduating from the University of Maine in Orono with a B.S. in Wildlife Ecology with a Conservation Biology Concentration. Morgan's varied work and educational experiences served her well during her six months. Her past experience included three summers as a camp counselor with children in grades 2-8, coached 5th and 6th grade boys' basketball, volunteering for the Center for Wildlife in Cape Neddick, Maine, where she cared for birds and young mammals and assisted with visitor contact. She also worked with the U.S. Fish and Wildlife Service on the Razorbill Restoration Project on East Brothers Island off the coast of Jonesport. As a volunteer with the Center for Disease Control, she sampled deer blood to determine the prevalence of Eastern Equine Encephalitis in the deer population in Maine. Morgan felt right at home on a busy August Saturday on Katahdin as a result of waitressing in a tourist town in southern Maine where she encountered people of all ages and from many different

cultures. Her hiking has taken her on almost every trail in Acadia and many trails in the Maine's State Parks, as well as on Katahdin.



Morgan Taylor, Marcia Williamson and Emilie Schur

**Emilie Schur** was the first of two 3-month Wilderness Educator Assistant Interns. She flew from California, arriving May 29 to begin her season with us. Emilie grew up in the San Juan Mountains of southwestern Colorado where she spent her childhood hiking, camping and exploring the wilderness. During her junior year, she studied geology in Santiago at the University of Chili, while learning to speak Spanish. The children's programs benefitted from Emilie's course work in the visual arts, acting and creative writing, including nature poetry. She has extensive hiking experience from Colorado, Montana, Wyoming, California, Kentucky, Peru and Chili. She earned a BA in Geology from Macalester College in St. Paul, Minnesota in 2010. Prior to working at Baxter, she was a naturalist at the San Joaquin Outdoor School in California teaching fifth and sixth grade students about the earth's natural resources in an outdoor school setting. As a self-described budding naturalist, Emilie is enthusiastic about

learning the natural features of a new part of the country. In her words, the "values of Baxter State Park mirror my own".

**Emily MacLeod** graduated from Michigan State University with a B.S. in Environmental Biology/Zoology. Emily discovered her enthusiasm for educating children in the natural environment, when teaching 5<sup>th</sup> graders at a science and space camp one summer. She also spent a summer kayaking in the San Juan Islands of Washington State working for a non-profit KWIAT (a native term meaning "the sea"). Part of her work included trapping insects and comparing them to what the local salmon were eating. She also enjoyed the community involvement, which included working with and educating the volunteers. The dream of any young athlete is to win a significant athletic event. As a runner for her college track and field team, Emily's dream was fulfilled. She and her teammates won the Big 10 Track and Field Championships in 2010. To quote Emily, she had to "dig deep" to help her team in a winning effort and she brought that same enthusiasm to bear when working with the I&E team. Along with our second late



season Wilderness Educator, Andrew Swafford (see below), Emily will work with Andrew to provide a full component of Alpine Steward patrols on Katahdin during the busy month of August and the popular autumn weekends.



**Andrew Swafford and Emily McCloud**

**Andrew Swafford** graduated from Bowdoin College with a degree in biology and a keen interest in pursuing environmental work. Though he calls California home, Andrew is no stranger to Maine, having spent quite a bit of time on Chebeague Island off the southern coast of the state. As part of his studies, he spent four months the 2010 fall semester conducting wildlife and environmental surveys in twelve

different countries around the world through a program offered by Hiram College in Ohio called Biomes of the World. Along with 12 other students, he studied the effects of climate change on habitats, populations and cultural attitudes. Part of this experience included hiking across rugged terrain in hostile environments, preparing him well for fall and winter conditions on Katahdin he experienced! He also brought with him a background of working with children at a summer camp and program skills gained through leading tours of the intertidal zone along Maine's coast for groups of children and adults.

### **2011 Togue Pond Visitor Center**

The Visitor Center was staffed by Brian Johnston and Chris Morris during the summer of 2011. Brian was returning for his second season at this duty station while Chris was a newcomer to the Park. With Brian's assistance, the helpful guidance of many other Park employees and a voracious amount of background reading, Chris learned a great deal about the Park as quickly as possible. His background working as SCA in Visitor Contact in the National Park Service helped him approach his work with visitors professionally and thoroughly. Additional coverage for the VC was provided by Marcia Williamson, Morgan Taylor, Emilie McCloud and Emily Schur and BSP Roving Rangers. Approximately 16,421 visitors stopped at the Visitor Center in 2011. Of this total, 1,668 were children or a little over 1 in every 10 visitors, although the statistics show they often arrive in groups, for instance youth camp and scout groups. The seasons of the two VC employees are staggered, with one starting early and finishing early. During the main season, the VC is open an extra three hours, from 3-6, on Friday, Saturday and Sundays, for a total of 49 days in 2011. During this time period, a total of 2,225 visitors or an average of about 15 people per hour were served.

### **2011 MATC Abol Ridge Runner**

CJ Manza returned for a second season along the AT corridor in Baxter State Park. Summer 2011 marked the first operating season for the new owners of the Abol Bridge



Campground and Store. The Surprenant family took over the business after the departure of Linda Belmont. CJ worked hard to initiate contact with all incoming AT hikers while also acting as an informal ambassador from the thru hiking community, introducing the new operators of the campground to the world of AT thru-hikers. As in years past, he made one patrol in Jo-Mary country, south of the Park, to check on the condition of sites in the northern third of the 100 Mile Wilderness and additional short trips into Hurd Brook to pick up litter and trash left by parties passing through the area. CJ's ease of contact with AT hikers belies the challenges in educating this group of experienced hikers on the limited accommodations available as they enter the Park and policies they may not have expected, including the no pet regulation. CJ did a great job of relaying approaching numbers of hikers in late summer, based on what he was able to learn from incoming hikers he talked to. CJ also hosted an exchange with other MATC caretakers and ridgerunners in the late summer. This is always an excellent way to ensure consistent information on Baxter policies and regulations up and down the trail. This is the third year we wrapped up the season as the Park closed to camping (Oct 15) with most hikers having completed their hike by that time. When the Abol Ridge Runner position was first created, we still had a lot of very late hikers getting disappointed by the early winter conditions which prevented them from being able to complete their through hike. The Abol Ridge Runner position originally ran into late October to work with late hikers. Over the years however, guide books and general information have successfully gotten the word out: "hike Katahdin early in the fall or you may encounter winter conditions!" Much depends on the weather of the particular autumn but we have realized in recent years that the vast bulk of hikers have heeded the warnings and the season has been reduced to coincide with the closing of the camping season in Baxter, while we continue to experiment on the front end, looking for ways to address a growing component of Southbounders in the thru-hiker mix.

### **Training Received/Conferences Attended**

4/1-4/3: Alpine Research Conference, AMC Highland Center  
4/27-5/5: Wilderness First Aid+ Wilderness Advanced First Aid  
5/13: International Appalachian Trail Annual Meeting, Shin Pond  
6/2: Tour of 1977 Burn Study Areas with forester Erin Small  
7/18-22: Josselyn Botanical Society Annual Meeting and Field Trips  
7/23-24: Maine Entomological Society Bug Bioblitz @ Acadia National Park  
10/13: Risk Communication, U Maine Orono  
11/11-13 7<sup>th</sup> Northeastern Alpine Stewardship Gathering, Waterbury Center, VT

### **Research & Special Permits**

Members of the BSP Director's Research Committee met on March 28, 2011 in Augusta. They reviewed the activities and progress reports of 2010 research, including an update on 2010 Soils Mapping, principal investigator Tony Jenkins, NRCS, second summer of work characterizing the Wassataquoik Drainage Study, principal investigator Roy Bouchard, DEP, and North Turner geology study, principal investigator Kyle Marvinney.

The committee reviewed upcoming activities slated for summer 2011 including a continuation of the Wassataquoik drainage, Maine I. F. & W. surveys of Russell, Deep #3 and #4 Six Ponds and (new survey) Draper Pond, New England Wildflower Society botanist Bill Brumback, Maine state botanist Don Cameron and botanists Alison Dibble and Glen Mittelhauser-Katahdin Plant survey.

The Park is entering an era when baseline inventory of existing natural resources, coupled with strategic monitoring is vital to the fulfillment of our Park mission. Because of our mandate and mission, the generally unaltered nature of the Park setting affords researchers a valuable control to compare to other sites where they conduct research. It was acknowledged during the meeting that fewer and fewer applied research proposals are coming our way at the same time we are receiving greater assistance from sister agencies, such as Maine DEP, I. F. & W., Maine Natural Heritage Program and others,



Katahdin Plant Survey team: D Cameron, B Brumback, J Hoekwater, G Mittelhauser, A Dibble, August 2011

in the inventory work necessary for an area the size of the Park. With that discussion in mind, the committee shared thoughts regarding development of a Preferred Research List specific to the Park and reviewed a draft of that list (see Appendix). Additional work on the list is needed before it will be a useful document to post at universities and elsewhere but the DRC remains important as a guiding force and source of expertise as we enter this new era.

## **Monitoring/Inventory**

### **American Pipit Surveys**

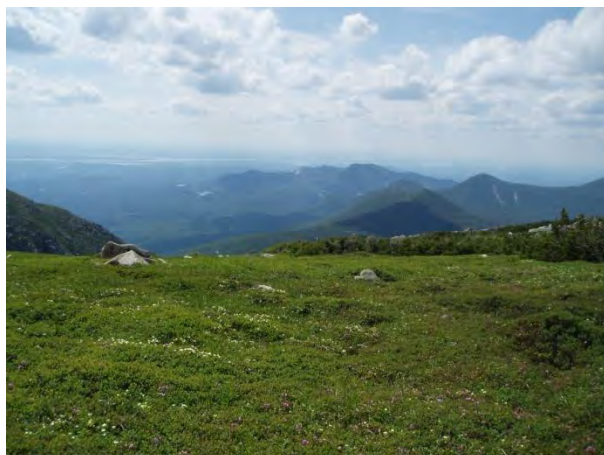
In 2011, the Park devoted time usually allocated to High Elevation Bird surveys to gain more information on locations of American Pipit territories on Katahdin. On June 23, we left Chimney Pond in the early AM after being treated to a Bicknell Thrush singing repeatedly in the campground, a good omen for the day ahead! Six distinct territories were noted during the course of the day, with males exhibiting their distinctive flights with great regularity. As a bonus on this day, we also observed 5 freshly emerged Katahdin Arctic butterflies! In subsequent seasons, other areas will be visited, to gain an understanding of which areas on the Tableland are being utilized by the pipits. Ideally, once we know the general “hot spots” for this species, we hope to have several volunteers go out on the same day during the breeding season to get an estimate on numbers of breeding pairs using Katahdin. This state listed species has been intensively studied on Mount Washington but less is known regarding its population status on Katahdin.

## High Elevation Bird Surveys

This year, surveys of High Elevation Birds, with revised protocols and a focus on the Bicknell's Thrush, were undertaken throughout the state of Maine by a network of volunteers organized by Dr. Judith Scarl of Vermont Ecostudies. Several routes were proposed in Baxter but in the end, due to difficulty of access and safety concerns with some of the routes, only three of the VT Ecostudies routes were selected for volunteers to cover, with the understanding that more might be approved if efforts to cover these went well over the next three years. Two capable and able volunteers tackled these routes. One route, covered by Tom Bjorkman of Blue Hill, ME, traversed the floor of Great Basin and ascended Dudley Trail, ending at Index Rock. Mike Zimmermann, of Porter, ME did two routes. One was on North Brother. The other route, on Abol Slide, is considered by scientists establishing these routes to be the highest priority route in the study, for purposes of gaining information on the Bicknell Thrush. The seasonal timing for these surveys is more forgiving than we previously worked with when doing High Elevation Bird Surveys. Tom Bjorkman covered his route June 11, 2011 and Mike Zimmermann covered his routes July 1 and July 12, 2011.

The new protocol involves collecting detailed information on the number of spruce and fir cones and presence of red squirrels in addition to focusing on several avian species. On June 11, on his survey route on Katahdin, Tom Bjorkman detected a Bicknell Thrush at one stop, Fox Sparrows at all 6 stops, White-Throated Sparrows, Yellow-Bellied Flycatchers and Winter Wrens at 4 stations, Blackpoll Warblers at 5 stops and Swainsons Thrush at all 6 stops.

On July 1, 2011 on Abol Trail survey route Mike and Barb Zimmermann detected Hermit Thrushes at 1 out of 5 stops, Yellow-Bellied Flycatchers and Bicknell's Thrushes at 3 out of 6 stations, Swainsons Thrushes at 4 out of 6 stops, Fox Sparrows, White-Throated Sparrows and Blackpoll Warblers at 5 stations, Winter Wrens at all 6 stops.



Classic Katahdin Arctic Butterfly habitat July 2011

On July 12, 2011, on the Brothers East survey route, Mike and Barb Zimmermann detected Bicknell Thrushes, Blackpolls and Yellow-Bellied Flycatchers at 6 out of 6 stops, Winter Wrens and Swainsons Thrushes at 5 out of 6 stops, Hermit Thrushes at 4 out of 6 stops, Black Cap Chickadees at 3 out of 6 stops and Boreal Chickadees and White-Throated Sparrows at 1 out of 6 stops.

## 2011 Katahdin Arctic Butterfly Survey

On July 8, Morgan Taylor accompanied Jean Hoekwater for the Katahdin Arctic butterfly trailside survey. A secondary mission was to look over possible trail re-routes near Thoreau Spring and the Sedge Meadow habitat, as follow up to the 2010 report by Doug Weihrauch, Alpine Ecologist, Appalachian Mt Club. The temperature at the top of

Saddle Slide at 10:30 was 76 degrees and with winds out of the SW at less than 5 mph. We spotted a total of 7 individuals but only 2 were on our standard trailside survey route, the remaining 5 were flushed while we were off trail looking over possible trail re-routes.



Loon photo by Laurie Rich

### **Maine Audubon Loon Count**

Morgan Taylor, our 6 month Wilderness Educator Intern coordinated the recruitment and data collection for the Loon Count on Baxter State Park ponds this year. On Saturday, July 16, ten volunteers and 14 employees counted adult loons, newly hatched chicks and nest sightings on 19 ponds and lakes throughout the Park. They went by foot, canoe, kayak and motor boat to ensure an accurate count. We appreciate their willingness to spend a very early Saturday in July assisting the Park in this cooperative effort with Maine Audubon. A table listing the ponds and lakes observed and the volunteers who participated is included in the Appendix to this report.

### **Mountain Plant Watch**

There are five designated plant stations on Katahdin that are checked on a weekly basis by the interns to contribute to a baseline of alpine plant phenology over the New England region. This year, the interns collected data on the plants 12 times during the season. Due to unfavorable weather conditions on Katahdin, there was no data collected on the plant stations for the final three weeks of the season. The data is submitted to the New England database developed and maintained by the Appalachian Mountain Club at Pinkham Notch, NH. For more information on Mountain Plant Watch, please check the following website:

<http://outdoors.org/conservation/mountainwatch/mtplant.cfm>

## **Miscellaneous Surveys and Patrol Programs**

### **Mt Coe, South and North Brother Plants**

Rick Speer is a long time Park visitor and volunteer plant monitor with the New England Wildflower Society as well as a member of the Josselyn Botanical Society. In July, he volunteered to check some plant species found on Coe Slide and the Brothers, which amounted to a very long day of hiking multiple peaks. He



Emilie Schur at a Mt Plant Watch station



successfully located the species he hoped to find and submitted his field forms to our files.

### **Aquatic Plant Surveys on Matagamon Lake**

In mid-July Anne Huntington volunteered two days to continue baseline surveys of the shoreline plants beds in Matagamon Lake. No invasive species have been detected during the three summers Anne has provided these surveys. BSP Ranger Mike Martin assisted us with the BSP launch for part of one day, providing access and additional expertise. The extreme difference in water levels from the August 2010 surveys to July 2011 surveys meant that many beds were deeply submerged in summer 2011. Access up Hay Brook was enhanced however, allowing a more careful look in this region.

### **Purple Loosestrife Surveys**

We continue to monitor Matagamon Lake Landing with vigilance from the end of June through mid September, performing 12 checks this season over the three month period. Again, no purple loosestrife plants were identified at the landing, demonstrating continued response to our educational efforts. Since the discovery of purple loosestrife in Caribou Pit outside the southern boundary of the Park, that site is also checked weekly during the season as well. Midsummer, BSP Ranger Mike Martin reported the presence of purple loosestrife plants at the dam site in Nesowadnehunk Lake. Upon inspection, plants were found just above the dam and just below the dam on the Nesowadnehunk Stream, just outside the western Park boundary. The plants were clipped before they could disperse their seeds and this site will be added to the weekly loosestrife checks next season.



Purple Loosestrife at Nesowadnehunk Lake Dam

### **Soils**

A detailed report prepared by Chris Dorion, describing the findings of a 2010 survey of the soils around Sandy Stream Pond will be included in the Appendix for this section of the 2011 Operational Report. The Park requested this survey to gain a fuller understanding of this popular moose pond. In 2010, DEP also conducted water chemistry analysis of ponds in the same area, to determine if there were any detectable differences between Sandy Stream Pond and others. The analysis of the DEP samples was included in the 2010 report.

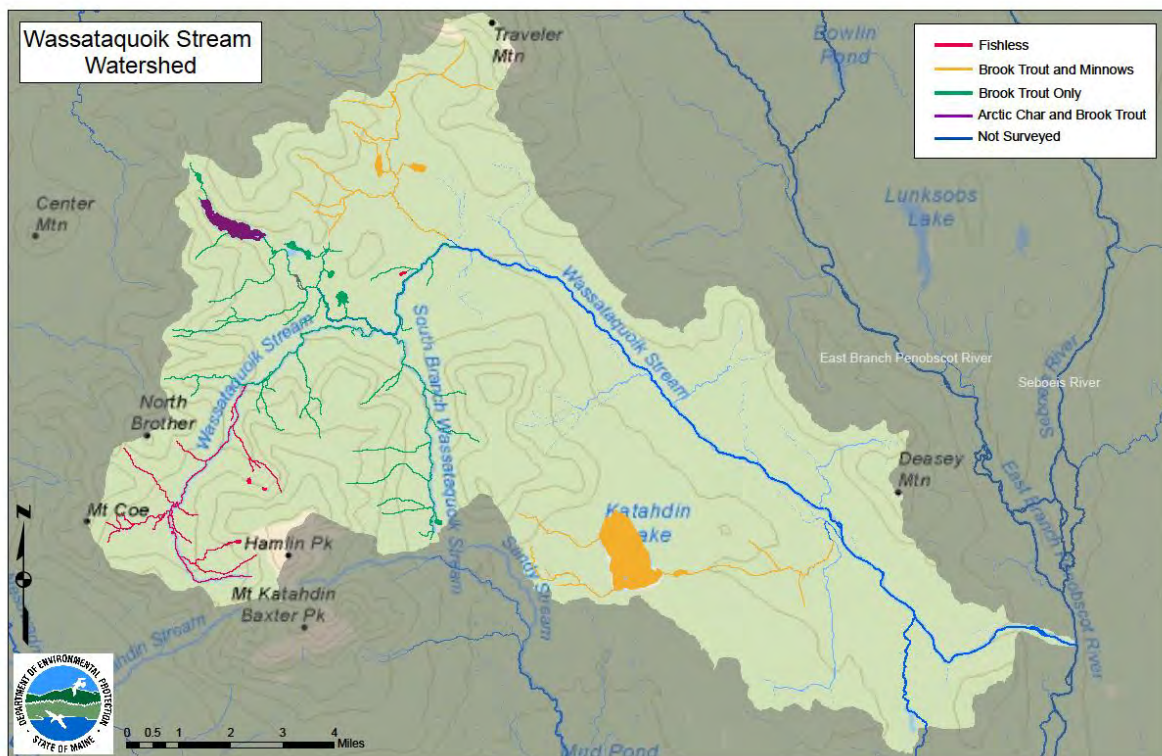
In August/September 2011, Nick Butler, Chris Dorion and Tony Jenkins of the Natural Resources Conservation Service, Bangor office returned to the Park for follow-up work



on the soils of the Park. Locations included the SW slope of OJI, Cross Range, Katahdin Lake and eastern slopes of East/North Turner Mountains, Trout Brook Valley and the Tableland of Katahdin. A file pertaining to their findings at all locations except Katahdin is available at Park Headquarters. Samples from soils on the Tableland, obtained from hand dug exposures have been sent for laboratory analysis. A report on these samples will be forthcoming in 2012.

### DEP Survey of Wassataquoik Drainage

A team of DEP specialists, led by Roy Bouchard, returned to Russell Pond July 24-28, 2011 for the final portion of their study of ponds/streams in the Wassataquoik Drainage.



Preliminary representation of DEP surveys

### Moose Pond Patrols

In 2011 the educational aspect of Moose Pond Patrols became an increasingly important tool in dealing with the intense photographic interest at specific locations for a brief but critical portion of the year. Our intention is to make sure the welfare of the moose population takes precedent at all times at important calving, feeding and breeding areas in the Park and to ensure cooperation of all visitors in working with that priority. 2010-2011 BSP Advisory and staff discussion centered strongly on a permit system for tripods as a mechanism of ensuring compliance with ethical wildlife viewing standards and accountability for individual and workshop participant behavior. However, in the end, we delayed that step in hopes education, increased signage and law enforcement presence would eliminate the need for additional regulations.



In 2011, the signage at Stump Pond in particular, was noticeable to the point of being offensive for some visitors, even triggering written comment forms. I/E staff received feedback prior to the season that sign wording had to be adjusted to be as direct as possible and signage had to be visible at every point of possible non-compliance with the intention of Wildlife Only zones. We posted many signs roadside and trailside at Stump Pond alone. Additional signs were posted at Sandy Stream Pond, adding to an already significant signage effort at that location. While both photographers and general visiting public complained about the non-conforming amount and style of signage, the general feeling of staff at season's end in 2011 was that we had done our job and succeeded in eliciting the increased cooperation we are seeking from visitors on this issue. When the peak photography season passed, we took down the temporary signs at each location, leaving only the core signage. Law Enforcement rangers held up their end of the commitment, patrolling popular locations on a daily basis during peak photography season. Their presence was a helpful supplement the role of the Wilderness Educators at the most popular moose watching ponds. I/E staff recognize the necessity of utilizing a less-than- subtle approach at this time but remain hopeful we can enjoy a gradual return to conventional interpretive etiquette, as awareness and compliance improve at these target locations .

Wilderness Educator Interns performed 36 moose patrols between Sandy Stream Pond and Stump Pond. Calving in May/June brings greater numbers to these ponds to view the cows and newborn calves, as does the mating season in September/October when splendid antlers of bulls in their prime combine with foliage to create a stunning opportunity for photographers. The primary focus of our education during visits to these ponds has been to encourage ethical wildlife watching behavior, the reduction of impacts to surrounding habitat and consideration of other visitors. During patrols this year, particular attention was focused on noting the effect of additional signage around Stump Pond. Results varied, from mysteriously missing signs to compliance and lessened impacts in some areas. As part of their patrol duties, interns collect visitor use data, estimated distances between humans and moose and record observed off-trail impacts as the photography season progresses. This data assists the administrative staff with decisions relevant to this issue. A summary of the moose patrols can be found in the appendix of this report.

### **Mountain Patrol**

In 2011, the Wilderness Educators conducted 59 foot patrols on Katahdin. The month with the highest number of patrols continues to be July, due to training and scheduling difficulties. Because we were able to hire a second 12 week late summer position, hiking Katahdin was divided between three people instead of two, giving the person who has been climbing all season a bit more time to rest between hiking weeks. Please refer to the Appendix of this section for more information on 2011 patrols.



Satellite trail signed to prevent resource damage

## **Training Received/Conferences/Meetings Attended/ Assorted Field Patrols**

### **Conferences/Training**

4/1 - 4/3: Alpine Research Conference, AMC Highland Center  
4/27 - 5/5: Wilderness First Aid+ Wilderness Advanced First Aid  
5/13: International Appalachian Trail Annual Meeting, Shin Pond  
6/2: Tour of 1977 Burn Study Areas with forester Erin Small  
7/18 - 22: Josselyn Botanical Society Annual Meeting and Field Trips  
7/23 - 24: Maine Entomological Society Bug Bioblitz @ Acadia National Park  
10/13: Risk Communication, U Maine Orono

### **Meetings**

BSP Advisory Meetings: 1/13, 5/25, 11/10, 12/8  
BSP Authority Meetings: 3/15, 5/12, 10/6  
1/11 Management Plan meeting  
3/9 Fisheries Meeting, Enfield I.F. & W. office  
10/25 BSP Flora and Field Guide, initial meeting, Orono

### **Assorted Field Patrols**

1/19 Winter Field patrol, Admin Staff  
2/23 Russell Pond with 87 + 53  
5/22 Helon Taylor trail conditions assessment  
5/27 Chimney Pond trail conditions assessment  
8/18-20 Klondike  
8/25-26- Katahdin, South Basin, Caribou Spring



Morgan Taylor, Don Hudson, Klondike Pond Hike



Chimney Pond conditions 5/28/2011



# SFMA 2011 Annual Report

## Silvicultural Operations

2011 was a successful and busy year for implementing silvicultural work in SFMA harvest operations. The January–April harvest season was an excellent one with very deep **snow** packs and steady winter operating conditions. The only downside to the deep snow was the constant stream of expensive plowing bills, but the extended operating season made up for those costs. The winter season was spent along the Wadleigh Mt and Fishhawk roads with a variety mostly first entry shelterwood establishment treatments. The introduction of the fixed head processor in the middle of the season was an exciting new chapter in the use of cut-to-length equipment in the SFMA. The winter season ended in mid April.

The summer harvest season began in early June with good summer operating conditions due to dry spring weather. These operations focused on the Hinckley Brook and Junco Rds. Again, a mix of shelterwood establishment treatments and some overstory removal treatments were employed. Staff experimented

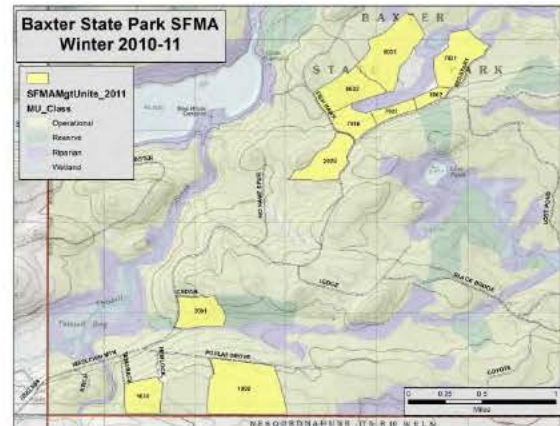


Figure 1. SFMA 2011 Winter operations.



Figure 2. Fixed head processor at work.

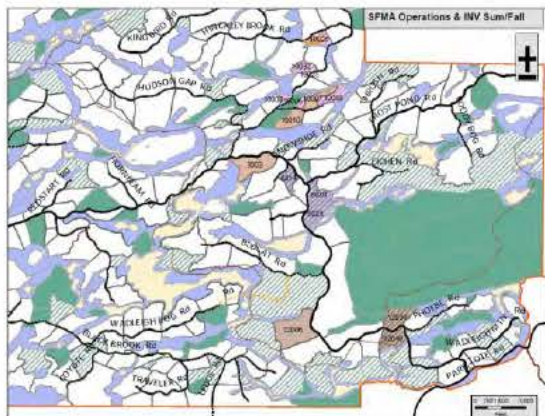


Figure 3. SFMA 2011 Summer operations.

Bobcat and Phoebe Roads, the weather turned wet, extremely wet. Operations were able to continue uninterrupted for the most part due to the well drained nature of the higher ground along Wadleigh Mt Rd. These treatments were classified as a “patch cut” and involved ½ acre to 3+ acre canopy removals adjacent to existing or new established 300ft+ spaced harvest trails. These patches were intended to either release existing

with what was termed an “irregular shelterwood” treatment where the operator was instructed to remove overstories where regeneration was already well established, but only remove 1/3 of the overstory where regeneration was not well established. This approach had mixed results due to the generally well regenerated nature of the stand and the difficult terrain faced by the operator. Staff are continuing to work out the most efficient and successful application of this system. As fall operations moved to aspen dominated stands in the area between the



regeneration if present or foster the regeneration of aspen and paper birch. In some cases these patches were adjacent to smaller rectangular openings created in the early 2000's. These openings were successful as regenerating softwood species, especially along the patch edge where more of a shelterwood effect was present. However in the patches the aspen and other hardwood that regenerated was often light deprived and heavily browsed by moose. Thus the intention was to create larger canopy openings to reduce the negative impacts on regeneration from these 2 sources. Future monitoring over the next several years will give a good sense about the success or failure of these treatments.

### Harvest Volumes, Revenues, and Costs

The 2011 harvest was about average in terms of volumes removed and revenues generated. Table 1 shows the volumes, revenues, and costs associated by species and product. The harvest of about 6,200 cords is almost identical to the 2010 harvest. Revenues are down from the previous year due to slightly lower mill prices and a different product mix. Negative revenue values indicated in the table for certain products are the due to the fact these are used internally by BSP and are not sold on the outside market. Volumes are evenly split between pulpwood and sawlog products.

Table 1 2011 SFMA Harvest Volumes, Revenues, and Associated Costs.

2011 Harvest Statistics		Draft Version		2011Apr23					
Product Name	Species Name	Net Wt (LBS)	Net Vol (BF)	Cords	Gross Revenue	Service Payment	Road Tolls	Bridge Tolls	Net Revenue
Veneer	Aspen	164,162	20,090	38.2	\$ 5,775.88	\$3,115.79	\$207.66	\$16.42	\$2,436.01
Sawlog	Hardwood	1,372,704	0	249.6	\$ 28,932.78	\$25,134.04	\$1,587.23	\$137.27	\$2,074.24
Sawlog	Hemlock	64,800		13.5	\$ -	\$1,198.15	\$81.97	\$6.48	(\$1,286.60)
Sawlog	Paper Birch	12,800		2.3	\$ -	\$236.67	\$14.78	\$1.28	(\$252.74)
Sawlog	Spruce/Fir	11,409,378	1,339,070	2,684.6	\$ 432,386.55	\$217,154.34	\$14,432.86	\$1,140.94	\$199,658.41
Sawlog	Tamarack	84,000		17.5	\$ -	\$1,553.16	\$106.26	\$8.40	(\$1,667.82)
Sawlog	White Cedar	210,000		60.0	\$ -	\$3,882.90	\$265.65	\$21.00	(\$4,169.55)
Sawlog	White Pine	238,506	24,765	55.5	\$ 5,778.50	\$4,526.84	\$301.71	\$23.85	\$926.10
<b>Total Sawlog Values</b>		<b>13,556,349</b>		<b>3,121.1</b>	<b>\$ 472,873.70</b>	<b>\$ 256,801.89</b>	<b>\$ 16,998.13</b>	<b>\$ 1,355.63</b>	<b>\$197,718.04</b>
Pulp	Aspen	4,173,870	0	970.7	\$ 98,085.95	\$77,174.86	\$4,820.82	\$417.39	\$15,672.88
Pulp	Hardwood	6,956,750	0	1,264.9	\$ 144,421.64	\$127,975.81	\$6,227.28	\$442.84	\$9,775.71
Pulp	Hemlock	18,040		3.8		\$356.29	\$22.82	\$1.80	(\$380.91)
Pulp	Spruce/Fir	3,619,090	0	851.6	\$ 79,111.86	\$66,474.08	\$4,449.20	\$361.91	\$7,826.67
Pulp	White Pine	16,360		3.8	\$ 253.58	\$323.11	\$20.70	\$1.64	(\$91.86)
<b>Total Pulp Values</b>		<b>14,784,110</b>		<b>3,094.6</b>	<b>\$ 321,873.02</b>	<b>\$ 272,304.14</b>	<b>\$ 15,540.81</b>	<b>\$ 1,225.58</b>	<b>\$32,802.48</b>
Firewood	Hardwood	117,600		21.4		\$2,174.42	\$148.76	\$11.76	(\$2,334.95)
Firewood	Paper Birch	78,400		14.3		\$1,449.62	\$99.18	\$7.84	(\$1,556.63)
Firewood	White Cedar	38,500		11.0		\$711.87	\$48.70	\$3.85	(\$764.42)
<b>Total Misc Product Values</b>		<b>234,500</b>		<b>46.6</b>	<b>\$ -</b>	<b>\$ 4,335.91</b>	<b>\$ 296.64</b>	<b>\$ 23.45</b>	<b>(\$4,656.00)</b>
<b>Total All Product Values</b>		<b>28,574,959</b>		<b>6,262.4</b>	<b>\$ 794,746.72</b>	<b>\$ 533,441.94</b>	<b>\$ 32,835.59</b>	<b>\$ 2,604.66</b>	<b>\$225,864.53</b>

## Monitoring



Figure 4. Collecting post-harvest temporary inventory data.

we attempt to model forest development over the length of an entire rotation. The dead wood transects will help give better estimates on the presence of this important habitat component and will also give insight into the occurrence of blow downs post-harvest. A revision to the CFI data collection system is planned for 2012 when a rotating inventory of around 10-13 samples will be completed every year. This will prevent the bottleneck of an overwhelming number of samples to collect every 10 years. Data from the CFI network was incorporated into a single relational database designed to house all BSP forest inventory data. This will enable more streamlined input of field data and reduce data errors. The database structure will also enable the production of simple and efficient field data forms that will improve the ease of data collection.

Temperature loggers were installed as usual this season and were collected before freeze up in late October. The COA transects were routinely sampled every two weeks. The locations of each paired COA station were collected using GPS this summer.

## Maintenance Operations

A variety of road maintenance activities were completed in 2011. The entire length of the Wadleigh Mt road was graded during September significantly improving the crowning and drainage. This also removed the worst of the grass patches in the center and on the extreme edges of the travel way. A total of 8 culverts were replaced along Wadleigh Mt Rd from the Fishhawk Road to the western Park

It was a busy 2011 field season. The dry weather at in the early part of the season was helpful as SFMA staff Dee Brace, Kevin Osborn, and summer interns Steve Allen and Eli Shank collected forest inventory data in a variety of management units. A new inventory protocol for temporary sampling was tested and will be fully implemented in 2012. This new approach builds on the existing system of variable radius samples taken post-harvest and every decade there after. The new approach increases the return interval of inventory from 10-15 years and adds fixed radius regenerations samples and limited down dead wood transects. These additions are important as current datasets lack robust estimates of regeneration in the sapling classes. This data is critical as

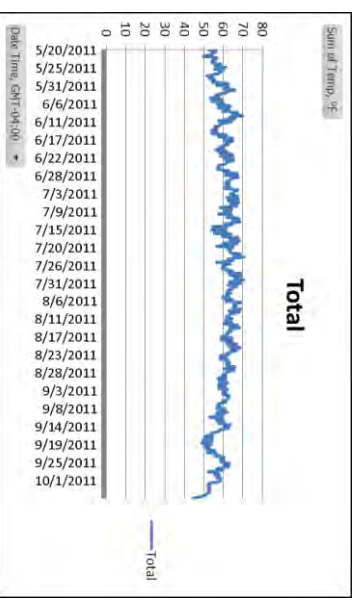


Figure 5. 2011 temperature logger data from Murphy Brook

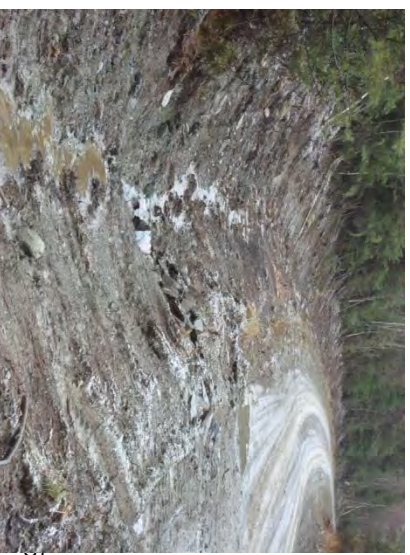


Figure 6 Road ditching and culvert replacement along the Wadleigh Mt Rd fall 2011.



entrance. These were sites where the culverts had been damaged and were not functioning properly. This data has been recorded in the spatial data layers for road maintenance events.

### Forest Management Planning

Forestry involves many things, but planning is perhaps the most important element as the intention expressed in plans and related documentation is what separates forest management from “*just logging*.” Management Plans are revised on a periodic basis, generally every 10 years. Management plans cannot be considered as static documents, rather they must remain fluid and dynamic to reflect the realities of forest, market, and societal conditions. Park staff worked during the fall and winter of 2011 to compile data in preparation for Forest Modeling work intended to inform questions about the long term sustainability of harvest levels and forest conditions. The current update of the comprehensive SFMA forest management plan is scheduled for completion in 2012. This planning process involves development and review of management policies and practices as well as the analysis of current forest conditions and computer model simulations of future forest conditions under potential management scenarios.

### Demonstration and Education

2011 was a busy season for tours and education events in the SFMA. In August 2011 Park Director and Resource Manager led a tour of the SFMA by a group from the Maine



Figure 7. Maine SAF summer 2011 field tour.

Chapter of the Society of American Foresters. The SAF is a national organization of foresters promoting sound forest management and professional conduct among foresters. The SFMA tour was one of a number of tours in Maine recognizing landowners with a long record of exemplary and imaginative forest management – in this case highlighting the past management work of the previous Resource Manager (current Park Director) and the continuing work of Rick Morrill as SFMA Resource Manager.

Summer field tours included:

- UMaine Student SAF chapter, March 2011.
- Si Balch and German forester Dr. Hermann Rodenkirchen, June 2011
- Maine Tree Foundation Teachers Tour, July 2011.
- Maine SAF Summer Field Tour, August 2011



Figure 0-1. Summer intern Eli Shank explains dead-wood transect sampling to FBSP tour participants.



- Friends of Baxter State Park Tour, August 2011
- UMaine Fort Kent Summer Field Camp Tour, September 2011.
- SFMA Advisory Committee Fall Field Tour, September 2011.
- BSP Fall Trail Crew Tour, October 2011.

### **Certification**

The SFMA was first FSC-certified in 2001 and then again in 2006. FSC certification lasts 5 years, after which the SFMA must undergo the full certification procedure. The FSC certification for the SFMA lapsed early in 2011 due to staff turnover. In summer 2011 an **FSC certification** audit through Scientific Certification Systems (SCS) conducted by **Mike Dann and David Capen**. This was a rigorous audit involving all of the SFMA staff. The SFMA was successfully recertified under FSC standards at the end of the process. Annual audits by SCS will be conducted until 2017 when a new re-certification will be conducted.

## SFMA 2011 Harvest Statistics

2011 Harvest Statistics		Draft Version		2011Apr23						
Product Name	Species Name	Net Wt (LBS)	Net Vol (BF)	Cords	Gross Revenue	Service Payment	Road Tolls	Bridge Tolls	Net Revenue	Profit Margin Vol Weighted
Veneer	Aspen	164,162	20,090	38.2	\$ 5,775.88	\$3,115.79	\$207.66	\$16.42	\$2,436.01	42%
Sawlog	Hardwood	1,372,704	0	249.6	\$ 28,932.78	\$25,134.04	\$1,587.23	\$137.27	\$2,074.24	7%
Sawlog	Hemlock	64,800		13.5	\$ -	\$1,198.15	\$81.97	\$6.48	(\$1,286.60)	0%
Sawlog	Paper Birch	12,800		2.3	\$ -	\$236.67	\$14.78	\$1.28	(\$252.74)	0%
Sawlog	Spruce/Fir	11,409,378	1,339,070	2,684.6	\$ 432,386.55	\$217,154.34	\$14,432.86	\$1,140.94	\$199,658.41	46%
Sawlog	Tamarack	84,000		17.5	\$ -	\$1,553.16	\$106.26	\$8.40	(\$1,667.82)	0%
Sawlog	White Cedar	210,000		60.0	\$ -	\$3,882.90	\$265.65	\$21.00	(\$4,169.55)	0%
Sawlog	White Pine	238,506	24,765	55.5	\$ 5,778.50	\$4,526.84	\$301.71	\$23.85	\$926.10	16%
Total Sawlog Values		13,556,349		3,121.1	\$ 472,873.70	\$ 256,801.89	\$ 16,998.13	\$ 1,355.63	\$197,718.04	13.52%
Pulp	Aspen	4,173,870	0	970.7	\$ 98,085.95	\$77,174.86	\$4,820.82	\$417.39	\$15,672.88	16%
Pulp	Hardwood	6,956,750	0	1,264.9	\$ 144,421.64	\$127,975.81	\$6,227.28	\$442.84	\$9,775.71	7%
Pulp	Hemlock	18,040		3.8		\$356.29	\$22.82	\$1.80	(\$380.91)	0%
Pulp	Spruce/Fir	3,619,090	0	851.6	\$ 79,111.86	\$66,474.08	\$4,449.20	\$361.91	\$7,826.67	10%
Pulp	White Pine	16,360		3.8	\$ 253.58	\$323.11	\$20.70	\$1.64	(\$91.86)	-36%
Total Pulp Values		14,784,110		3,094.6	\$ 321,873.02	\$ 272,304.14	\$ 15,540.81	\$ 1,225.58	\$32,802.48	2.01%
Firewood	Hardwood	117,600		21.4		\$2,174.42	\$148.76	\$11.76	(\$2,334.95)	0%
Firewood	Paper Birch	78,400		14.3		\$1,449.62	\$99.18	\$7.84	(\$1,556.63)	0%
Firewood	White Cedar	38,500		11.0		\$711.87	\$48.70	\$3.85	(\$764.42)	0%
Total Misc Product Values		234,500		46.6	\$ -	\$ 4,335.91	\$ 296.64	\$ 23.45	(\$4,656.00)	0%
Total All Product Values		28,574,959		6,262.4	\$ 794,746.72	\$ 533,441.94	\$ 32,835.59	\$ 2,604.66	\$225,864.53	8%

# Appendices

**Baxter  
State  
Park  
Use  
Statistics**

# **BAXTER STATE PARK**

## **COMPARATIVE STATISTICS - VISITOR DAYS**

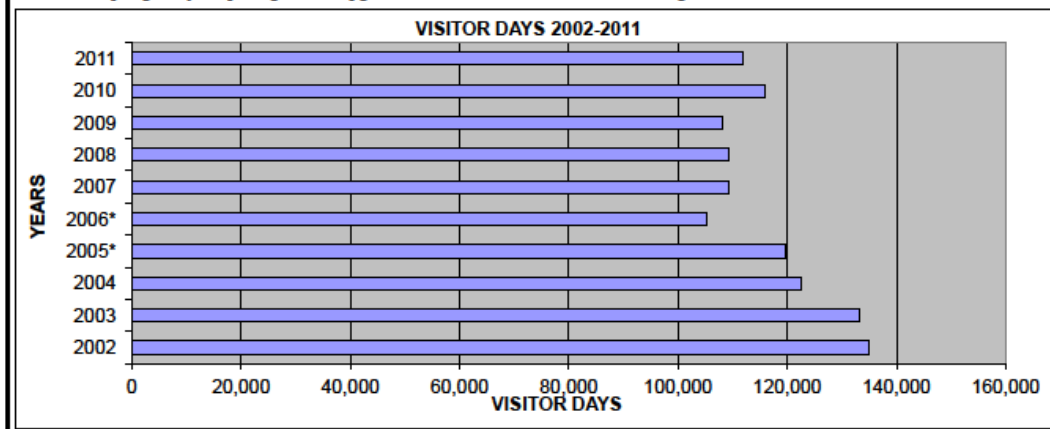
2002 - 2011

<b>VISITOR DAY STATISTICS:</b>	<b>2002</b>	<b>2003</b>	<b>2004</b>	<b>2005*</b>	<b>2006*</b>	<b>2007</b>	<b>2008</b>	<b>2009</b>	<b>2010</b>	<b>2011</b>
<b>TOTAL SUMMER VISITOR DAYS</b>	131,007	120,297	117,274	103,196	106,449	107,551	106,544	106,592	114,523	109,265
<b>TOTAL WINTER VISITOR DAYS</b>	2,083	2,333	2,323	2,054	2,410	1,873	2,741	1,396	1,240	2,597
<b>TOTAL PARK VISITOR DAYS</b>	<b>134,838</b>	<b>133,090</b>	<b>122,630</b>	<b>119,597</b>	<b>105,250</b>	<b>109,424</b>	<b>109,285</b>	<b>107,988</b>	<b>115,763</b>	<b>111,862</b>

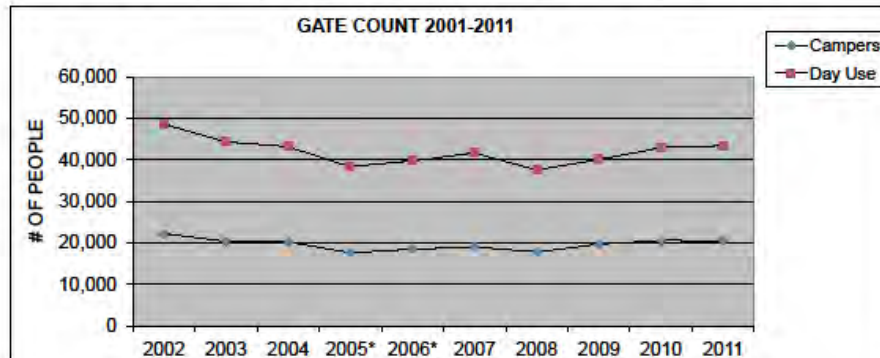
Visitor day = camper nights + gatehouse headcount

(A visitor staying in the park two nights would spend three days in the Park. Camper nights counts the nights in the Park, gatehouse headcount adds the extra camper day plus includes day users.)

\* 2005, late spring delayed opening trails/cmpgrds for 2 weeks. 2006, Neso closed during June. Aval Fld moved to Bear Brook.



BAXTER STATE PARK COMPARATIVE STATISTICS 2002 - 2011 GATEHOUSE STATISTICS: 2002-2011										
PERSONS	2002	2003	2004	2005*	2006*	2007	2008	2009	2010	2011
Resident	38,428	36,027	35,483	31,972	33,402	34,874	31,577	34,992	36,717	34,021
Non-resident	33,226	28,688	28,057	24,095	25,014	25,850	23,862	24,869	26,904	26,240
<b>TOTAL</b>	<b>71,654</b>	<b>64,715</b>	<b>63,540</b>	<b>56,067</b>	<b>58,416</b>	<b>60,724</b>	<b>55,439</b>	<b>59,861</b>	<b>63,621</b>	<b>60,261</b>
Campers	22,217	20,282	20,195	17,552	18,455	18,941	17,808	19,599	20,577	20,415
Day Use	48,613	44,273	43,113	38,338	39,720	41,612	37,506	40,096	42,913	43,352
Transient	731	*	*	*	*	*	*	*	*	*
Walk/Bike	93	160	232	177	241	171	125	166	131	87
<b>TOTAL</b>	<b>71,654</b>	<b>64,715</b>	<b>63,540</b>	<b>56,067</b>	<b>58,416</b>	<b>60,724</b>	<b>55,439</b>	<b>59,861</b>	<b>63,621</b>	<b>63,854</b>
* Transient visitors who use the Park are now counted as day use.										
VEHICLES	2002	2003	2004	2005	2006	2007	2008	2009	2010	2011
Togue Pond	21,936	20,265	19,893	17,163	18,260	20,822	17,485	18,991	18,677	18,322
Matagamon	4,668	4,687	4,388	3,992	4,322	6,834	3,239	3,543	3,485	3,357
<b>TOTAL</b>	<b>26,604</b>	<b>24,952</b>	<b>24,281</b>	<b>21,155</b>	<b>22,582</b>	<b>27,656</b>	<b>20,724</b>	<b>22,534</b>	<b>22,162</b>	<b>21,679</b>
*Walk/Bike tallied under residents										
* 2005, delayed opening trails/cgs for 2 wks. 2006, Nes closed during June. Aval Fld moved to Bear Brook.										





BAXTER STATE PARK Camper Night Summary - 2011																
TOTAL CAMPER NIGHTS (Summer)		48,915						% OF SUMMER					% OF WINTER			
TOTAL CAMPERS (Summer)		20,415						SUMMER CAMPER					WINTER CAMPER			
NIGHTS PER CAMPER (Summer)		2.40						SUMMER CAMPER					WINTER CAMPER			
	MAY	JUNE	JULY	AUG.	SEPT.	OCT.	TOTAL	NIGHT	DEC.	JAN.	FEB.	MAR.	TOTAL	NIGHT	TOTAL	%
CAMPGROUNDS																
Roaring Brook	89	997	1536	1710	1239	538	6109	16%	32	41	196	123	392	15%	6501	16%
Abol	98	519	1536	1534	805	292	4784	12%	9	2	76	49	136	5%	4920	12%
Katahdin Stream	205	1026	1699	1729	1029	385	6073	16%	1	6	11	2	20	1%	6093	15%
Daicey Pond	193	501	833	854	765	372	3518	9%	26	45	187	94	352	14%	3870	9%
Kidney Pond	146	547	851	963	737	364	3608	9%	0	10	118	131	259	10%	3867	9%
Nesowadnehunk	CLOSED	310	1025	1188	499	156	3178	8%	13	12	51	5	81	3%	3259	8%
Trout Brook Farm	6	96	337	567	149	38	1193	3%	0	15	14	10	39	2%	1232	3%
S. Branch Pond	182	444	1971	1358	1018	415	5388	14%	0	67	166	65	298	11%	5686	14%
Russell Pond	101	279	395	448	250	125	1598	4%	7	55	73	0	135	5%	1733	4%
Chimney Pond	CLOSED	512	855	864	827	291	3349	9%	20	99	334	397	850	33%	4199	10%
Togue Pond	0	0	0	0	0	0	0	0%	4	16	15	0	35	1%	35	
Campground Total	1020	5231	11038	11215	7318	2976	38798	79%	112	368	1241	876	2597	100%	41395	80%
GROUP AREAS																
Avalch Field/Bear Brook	0	291	1759	81	275	100	2506	34%							2506	34%
Foster Field	132	234	828	520	195	61	1970	27%							1970	27%
Nesowadnehunk	CLOSED	169	1027	491	18	14	1719	23%			C	L	O	S	E	D
Trout Brook Farm	15	115	604	361	75	38	1208	16%							1208	16%
Group Area Total	147	809	4218	1453	563	213	7403	15%							7403	14%
OUTLYING SITES																
S. Branch Pond	36	42	110	67	49	16	320	12%							320	12%
Fowler	43	47	86	72	75	4	327	12%							327	12%
Webster	108	94	178	275	133	36	824	30%							824	30%
AT Shelter/Thr Birches	0	22	96	198	173	52	541	20%			C	L	O	S	E	D
Davis	CLOSED	23	50	36	46	18	173	6%							173	6%
Wassataquoik Area	10	55	130	132	154	48	529	19%							529	19%
Outlying Total	197	283	650	780	630	174	2714	6%							2714	5%
TOT. CAMP NIGHTS	1364	6323	15906	13448	8511	3363	48915	100%	112	368	1241	876	2597	100%	51512	100%
% OF PARK TOTAL	3%	12%	31%	26%	17%	7%	95%		0%	1%	2%	2%	5%		100%	

BAXTER STATE PARK							
2011 GATE COUNT/VEHICLE PER MONTH							
	VEHICLES				% OF	TOTAL	AVE.
	RES	NON-RES	PASS	TOTAL	TOTAL	PEOPLE/	PEOPLE/
					VEH	MONTH**	VEHICLE
<b>MAY</b>							
Togue Pond	370	190		560			
Matagamon	221	34		255			
<b>Total MAY</b>	<b>591</b>	<b>224</b>	<b>0</b>	<b>815</b>	<b>4%</b>	<b>0</b>	<b>0.0</b>
<b>JUNE</b>							
Togue Pond	1381	1047		2428			
Matagamon	311	94		405			
<b>Total JUNE</b>	<b>1692</b>	<b>1141</b>	<b>0</b>	<b>2833</b>	<b>13%</b>	<b>0</b>	<b>0.0</b>
<b>JULY</b>							
Togue Pond	2568	2086		4654			
Matagamon	730	256	0	986			
<b>Total JULY</b>	<b>3298</b>	<b>2342</b>	<b>0</b>	<b>5640</b>	<b>26%</b>	<b>0</b>	<b>0.0</b>
<b>AUGUST</b>							
Togue Pond	2202	2519	14	4721			
Matagamon	590	257	0	847			
<b>Total AUGUST</b>	<b>2792</b>	<b>2776</b>	<b>14</b>	<b>5582</b>	<b>26%</b>	<b>0</b>	<b>0.0</b>
<b>SEPTEMBER</b>							
Togue Pond	1923	1762	27	3685			
Matagamon	373	155	0	528			
<b>Total SEPT</b>	<b>2296</b>	<b>1917</b>	<b>27</b>	<b>4240</b>	<b>20%</b>	<b>0</b>	<b>0.0</b>
<b>OCTOBER</b>							
Togue Pond	198	104	0				
Togue Pond	1172	1043	18	2215			
Matagamon				0			
<b>Total OCTOBER</b>	<b>1172</b>	<b>1043</b>	<b>18</b>	<b>2233</b>	<b>10%</b>	<b>0</b>	<b>0.0</b>
<b>TOTAL BY</b>	<b>11841</b>	<b>9443</b>	<b>59</b>				
<b>USE CATEGORY</b>				<b>21343</b>	<b>100%</b>	<b>0</b>	<b>0.0</b>
<b>%BY CATEGORY</b>	<b>55%</b>	<b>44%</b>	<b>0%</b>				

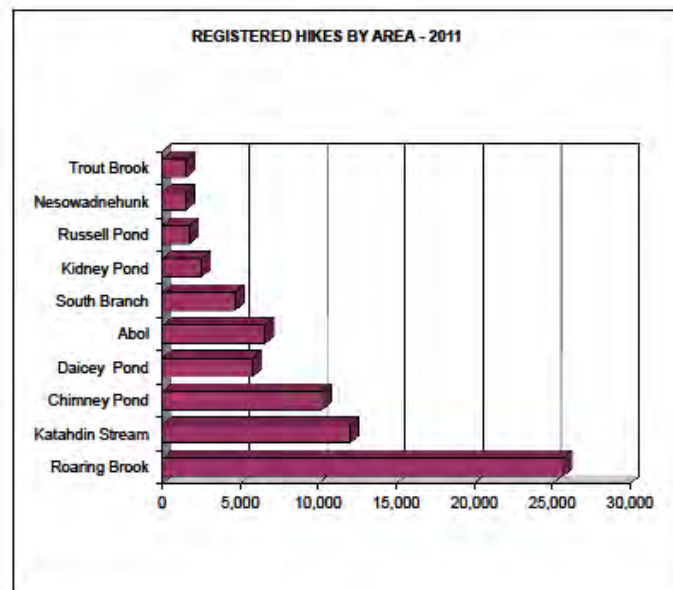
BAXTER STATE PARK 2011 GATE COUNTS - PEOPLE PER GATE									
	CAMPERS			DAY USE			WALK/ BIKE	TOTAL COUNT	% BY GATE
	RES	NON-RES	TOTAL	RES	NON-RES	TOTAL			
<b>TOGUE POND GATE</b>									
May	357	139	496	561	293	854	13	1363	2.6%
June	1306	1124	2430	2386	1723	4109	18	6557	12.7%
July	2501	2522	5023	5422	4043	9465	10	14498	28.1%
August	2150	2349	4499	4995	5137	10132	10	14641	28.4%
September	1761	1490	3251	3233	2607	5840	12	9103	17.6%
October	666	596	1262	2370	1863	4233	4	5499	10.7%
<b>TOGUE POND TOTAL</b>	8741	8220	16961	18967	15666	34659	26	51646	86%
<b>MATAGAMON GATE</b>									
May	136	41	177	368	44	412	2	591	6.8%
June	232	51	283	469	148	617	0	900	10.4%
July	857	293	1150	1299	435	1734	3	2887	33.3%
August	805	329	1134	766	462	1228	6	2368	27.3%
September	433	105	538	421	207	628	2	1168	13.5%
October	122	50	172	405	193	598	0	770	8.9%
<b>MATAGAMON TOTAL</b>	2585	869	3454	3728	1489	5217	13	8671	14%
<b>TOTAL GATES</b>	11326	9089	20415	22695	17155	39889	39	60343	

BAXTER STATE PARK 2011 GATE COUNT/VEHICLE PER MONTH							
	VEHICLES				% OF TOTAL VEH	TOTAL PEOPLE/ MONTH**	AVE. PEOPLE/ VEHICLE
	RES	NON-RES	PASS	TOTAL			
<b>MAY</b>							
Togue Pond	370	190		560			
Matagamon	221	34		255			
<b>Total MAY</b>	<b>591</b>	<b>224</b>	<b>0</b>	<b>815</b>	<b>4%</b>	<b>0</b>	<b>0.0</b>
<b>JUNE</b>							
Togue Pond	1381	1047		2428			
Matagamon	311	94		405			
<b>Total JUNE</b>	<b>1692</b>	<b>1141</b>	<b>0</b>	<b>2833</b>	<b>13%</b>	<b>0</b>	<b>0.0</b>
<b>JULY</b>							
Togue Pond	2568	2086		4654			
Matagamon	730	256	0	986			
<b>Total JULY</b>	<b>3298</b>	<b>2342</b>	<b>0</b>	<b>5640</b>	<b>26%</b>	<b>0</b>	<b>0.0</b>
<b>AUGUST</b>							
Togue Pond	2202	2519	14	4721			
Matagamon	590	257	0	847			
<b>Total AUGUST</b>	<b>2792</b>	<b>2776</b>	<b>14</b>	<b>5582</b>	<b>26%</b>	<b>0</b>	<b>0.0</b>
<b>SEPTEMBER</b>							
Togue Pond	1923	1762	27	3685			
Matagamon	373	155	0	528			
<b>Total SEPT</b>	<b>2296</b>	<b>1917</b>	<b>27</b>	<b>4240</b>	<b>20%</b>	<b>0</b>	<b>0.0</b>
<b>OCTOBER</b>							
Togue Pond	1172	1043	18	2215			
Matagamon				0			
<b>Total OCTOBER</b>	<b>1172</b>	<b>1043</b>	<b>18</b>	<b>2233</b>	<b>10%</b>	<b>0</b>	<b>0.0</b>
<b>TOTAL BY</b>	<b>11841</b>	<b>9443</b>	<b>59</b>	<b>21343</b>	<b>100%</b>	<b>0</b>	<b>0.0</b>
<b>USE CATEGORY</b>							
<b>%BY CATEGORY</b>	<b>55%</b>	<b>44%</b>	<b>0%</b>				

BAXTER STATE PARK 2011 GATE COUNTS/VEHICLE PER GATE					
	VEHICLES				% OF
	RES	NON-RES	PASS	TOTAL	TOTAL
<b>TOGUE POND GATE</b>					
May	370	190	0	560	
June	1381	1047	0	2428	
July	2568	2086	0	4654	
August	2202	2519	14	4735	
September	1923	1762	27	3712	
October	1172	1043	18	2233	
<b>TOGUE TOTAL</b>	<b>9616</b>	<b>8647</b>	<b>59</b>	<b>18322</b>	<b>85%</b>
<b>MATAGAMON GATE</b>					
May	255	34	0	289	
June	311	94	0	405	
July	730	256	0	986	
August	590	257	0	847	
September	373	155	0	528	
October	198	104	0	302	
<b>MATAGAMON TOTAL</b>	<b>2457</b>	<b>900</b>	<b>0</b>	<b>3357</b>	<b>15%</b>
<b>TOTAL GATES</b>	<b>12073</b>	<b>9547</b>		<b>21679</b>	



Roaring Brook	25,684
Katahdin Stream	12,025
Chimney Pond	10,233
Daisy Pond	5,788
Abol	6,585
South Branch	4,673
Kidney Pond	2,521
Russell Pond	1,750
Nesowadinehunk	1,478
Trout Brook	1,508



**BAXTER STATE PARK  
TRAIL USE SUMMARY  
- 2011**

**REGISTERED HIKES PER PERSON PER TRAIL**

	MONTH						TRAIL	AREA	% OF
TRAIL NAME	MAY	JUN	JUL	AUG	SEPT	OCT	TOTAL	TOTAL	TOTAL
KATAHDIN STREAM:									
Hunt	193	1,261	2,769	2,969	1,830	975	9,997		
Owl	14	73	134	167	85	66	539		
Grassy Pond	37	40	82	142	65	41	407		
O.J.I.	8	18	82	63	70	48	289		
A.T. South	23	227	164	90	49	24	577		
Blueberry Ledges	13	20	33	74	56	20	216		
KAT STR TOTALS	288	1,639	3,264	3,505	2,155	1,174	12,025	12,025	17%
ABOL:									
Abol Trail	94	429	1,326	1,438	817	273	4,377		
Abol Falls	0	46	55	69	24	31	225		
Abol Pond/Stream	0	7	12	26	30	0	75		
Blueberry Ledges	0	9	314	298	53	0	674		
AT North	0	31	225	354	306	0	916		
Foss & Knowlton	0	0	15	12	9	0	36		
Kettle Ponds	0	34	21	20	25	0	100		
Cranberry Pond	0	14	64	71	43	0	192		
ABOL TOTALS	94	570	2,032	2,288	1,307	304	6,595	6,595	9%
ROARING BROOK:									
Chimney	0	1,870	4,021	3,699	2,691	1,133	13,414		
Helon Taylor	27	240	630	679	490	38	2,104		
Sandy Stream	313	1,219	2,190	1,779	1,335	811	7,647		
South Turner	70	143	160	190	101	72	736		
Russell Pond	8	137	229	215	165	97	851		
Nature Trail	0	11	10	11	20	16	68		
Katahdin Lake	34	89	196	230	156	82	787		
Martin Ponds	0	0	0	7	10	15	32		
North Katahdin Lake	4	0	0	30	6	5	45		
RRG BK TOTALS	456	3,709	7,436	6,840	4,974	2,269	25,684	25,684	36%
SOUTH BRANCH POND:									
South Branch Falls	23	55	318	409	114	85	1,004		
Ledges	26	24	150	189	158	23	570		
Howe Brook	47	62	234	233	117	44	737		
North Traveler	5	35	307	408	156	40	951		

Center Ridge	0	31	31	76	5	8	151		
Traveler Loop	1	22	95	105	106	40	369		
South Branch Mountain	4	11	116	114	41	9	295		
Pogy Notch	56	47	183	145	92	10	533		
Middle Fowler	12	10	10	8	12	11	63		
Burnt Mountain	0	0	0	0	0	0	0		
<b>SO BRANCH TOTALS</b>	<b>174</b>	<b>297</b>	<b>1,444</b>	<b>1,687</b>	<b>801</b>	<b>270</b>	<b>4,673</b>	<b>4,673</b>	<b>6%</b>
<b>NESOWADNEHUNK:</b>									
Double Top	CL	33	175	200	120	41	569		
Marston	CL	71	137	166	191	46	611		
Wassataquoik Lake Trail	CL	7	25	52	48	20	152		
Dwelley Trail	CL	5	17	58	60	6	146		
<b>NESO TOTALS</b>	<b>0</b>	<b>116</b>	<b>354</b>	<b>476</b>	<b>419</b>	<b>113</b>	<b>1,478</b>	<b>1,478</b>	<b>2%</b>
continued...									
Registered hikes per person									
per trail, continued									
<b>TRAIL NAME</b>	<b>MAY</b>	<b>JUN</b>	<b>JUL</b>	<b>AUG</b>	<b>SEPT</b>	<b>OCT</b>	<b>TRAIL TOTAL</b>	<b>AREA TOTAL</b>	<b>% OF TOTAL</b>
<b>CHIMNEY POND:*</b>									
Dudley	CL	313	481	390	257	69	1,510		
Cathedral	CL	558	1,363	1,315	776	277	4,289		
Saddle	CL	531	1,237	1,040	880	381	4,069		
Hamlin	CL	22	42	48	48	7	167		
North Basin	CL	20	30	34	51	28	163		
NorthWest Basin	CL	6	5	7	15	2	35		
<b>CHIMNEY TOTALS</b>	<b>0</b>	<b>1,450</b>	<b>3,158</b>	<b>2,834</b>	<b>2,027</b>	<b>764</b>	<b>10,233</b>	<b>10,233</b>	<b>14%</b>
<b>DAICEY POND:</b>									
Niagara Falls	120	535	1,221	1,338	753	448	4,415		
Daicy Pond Nature Trail	4	14	100	131	50	49	348		
Lost Pond Trail	0	7	23	15	32	21	98		
Sentinel Mt. Trail	0	0	0	0	0	0	0		
A.T. to Katahdin	0	1	23	75	66	34	199		
Daicey to Grassy	3	16	17	28	26	25	115		
Daicey to Elbow	4	1	0	4	25	0	34		
Daicey to Kidney	0	0	0	0	2	0	2		
<b>DAICEY TOTALS</b>	<b>131</b>	<b>574</b>	<b>1,384</b>	<b>1,591</b>	<b>954</b>	<b>577</b>		<b>5,788</b>	<b>8%</b>
<b>KIDNEY POND:</b>									
Double Top	58	3	64	143	113	36	417		
Sentinel Mountain	29	73	251	358	278	100	1,089		
Rocky Pond	13	75	48	53	32	37	258		
Draper Pond	10	35	22	57	48	40	212		
Kidney Pond Circuit	3	17	43	63	33	23	182		
Celia & Jackson	18	42	7	8	45	14	134		
Windy Pitch/Niagara/ Lily	5	11	19	41	25	0	101		

Slaughter Pond	5	28	57	16	8	14	128		
<b>KIDNEY TOTALS</b>	<b>141</b>	<b>284</b>	<b>511</b>	<b>739</b>	<b>582</b>	<b>264</b>	<b>2,521</b>	<b>2,521</b>	<b>3%</b>
<b>RUSSELL POND:</b>									
Russell Pond Trail	0	29	76	80	52	5	242		
Wassataquoik Stream	2	71	115	93	70	39	390		
Pogy Notch Trail	30	21	3	15	26	16	111		
Wassataquoik Lake	29	81	97	123	95	48	473		
North West Basin Trail	3	37	81	66	53	23	263		
Grand Falls Trail	10	24	52	50	32	24	192		
Lookout Trail	8	15	16	25	6	9	79		
<b>RUSSELL TOTALS</b>	<b>82</b>	<b>278</b>	<b>440</b>	<b>452</b>	<b>334</b>	<b>164</b>	<b>1,750</b>	<b>1,750</b>	<b>2%</b>
<b>TROUT BROOK FARM:</b>									
Horse Mountain	15	12	71	68	62	17	245		
Five Ponds	26	30	56	83	41	21	257		
Fowler Pond	31	44	114	95	48	19	351		
Freezeout	5	19	25	54	50	9	162		
Frost Pond	0	2	7	9	12	0	30		
Trout Brook Mountain	36	22	119	123	69	44	413		
Wadleigh Brook	0	8	8	14	20	0	50		
<b>TROUT BR. TOTAL</b>	<b>113</b>	<b>137</b>	<b>400</b>	<b>446</b>	<b>302</b>	<b>110</b>	<b>1,508</b>	<b>1,508</b>	<b>2%</b>
<b>MONTHLY TOTALS</b>								<b>72,255</b>	<b>100%</b>
<b>% OF TOTAL</b>								<b>100%</b>	
<p>*Early spring arrival allowed opening of Dudley, Cathedral, and Saddle Trails to open in May.</p>									

**Baxter State Park**  
**Final Snowmobile Activity Report**  
**Winter 2010 - 2011**

	10-11	09-10
<b><u>Togue and Matagamon areas (Interior / Tote Rd.)</u></b>		
Total snowmobile counts from Matagamon and Togue gates:	3142	4059
Number of pedestrians counted (going in <u>and</u> out both gates)*:	870	951
Total snowmobile counts less pedestrians:	2272	3108
One half the snowmobile count will represent the number of actual snowmobiles that visited Baxter State Park through the Matagamon and Togue areas:	1136	1554

**BSP Tote Road through traffic.**

Total snowmobile counts, represents amount of through traffic.		
These numbers already captured at Togue and Matagamon:	438	776

**Roaring Brook Road & Katahdin Lake Trail**

Roaring Brook Road snowmobile count (less BSP visitors, including BSP staff, Katahdin Lake staff & visitors):	1176**	1233**
Katahdin Lake Tr. (includes K.L. staff, BSP staff & K.L. visitors):	1043**	742**

\*The visitor numbers listed here do not include winter campers headed toward Abol, Katahdin Stream, Daicey Pond, Kidney Pond and Nesowadnehunk.

\*\*The counts for the Roaring Brook Road and Katahdin Lake Tr. are totals. The actual number (capturing BSP & KL staff) would be half, less KL visitors

July 2011



# **Park Advisory Committee Rosters**

**BAXTER STATE PARK  
AUTHORITY/ADVISORY LISTING**  
Effective 5/12/2011

AUTHORITY MEMBERS	ADDRESS	TELEPHONE NUMBERS
DOUG DENICO DIRECTOR MAINE FOREST SERVICE <a href="mailto:Doug.Denico@maine.gov">Doug.Denico@maine.gov</a>	22 State House Station Augusta, ME 04333-0022	287-2791
CHANDLER WOODCOCK COMMISSIONER IF&W <a href="mailto:Joel.Wilkerson@Maine.gov">Joel.Wilkerson@Maine.gov</a>	284 State Street 41 State House Station Augusta, ME 04333-0041	287-5202
WILLIAM SCHNEIDER ATTORNEY GENERAL <a href="mailto:William.J.Schneider@maine.gov">William.J.Schneider@maine.gov</a>	Six State House Station State Office Building Augusta, ME 04333-0006	626-8800

**BSP ADVISORY COMMITTEE MEMBER LISTINGS**

Revised 05/23/2011

ADVISORY MEMBERS	TERM / APPOINTMENT DATE	ADDRESS	TELEPHONE NUMBERS
1. CARLA RITCHIE CHAIR <a href="mailto:critchie@lbean.com">critchie@lbean.com</a>	2007/2013	1477 Dixmont Road Etna, ME 04434	H570-6933 W941-1840
2. RICHARD BRAY VICE CHAIR <a href="mailto:rbraybuilder@gmail.com">rbraybuilder@gmail.com</a>	2008/2016	921 River Road Brunswick, ME 04011	H725-8318 C319-5353
3. ERIC BAXTER <a href="mailto:ebaxter@hewinstravel.com">ebaxter@hewinstravel.com</a>	C	Hewins Travel 100 Commercial St. Portland, ME 04101	772-7252 800-370-0888
4. R. MICHAEL WHITE <a href="mailto:mwhite@tds.com">mwhite@tds.com</a>	C	1030 Carmel Road N Hampden, ME 04444	H 862-4719 W745-3906
5. DAVE BUCCELLO <a href="mailto:davidbuccello@mac.com">davidbuccello@mac.com</a>	2010/2015	87 Mill Brook Road Bar Harbor, ME 04609	288-0968
6. DOUG CALLNAN <a href="mailto:anne@agricalinc.com">anne@agricalinc.com</a>	2010/2018	PO Box 6 Houlton, ME 04730	H532-4180 W 532-6130
7. SHERRY DUBIS	2010/2017	15 Third Avenue 1	C 316-5226

	<a href="mailto:sherdubis@msad33.net">sherdubis@msad33.net</a> <a href="mailto:shdubis@gmail.com">shdubis@gmail.com</a>		Fort Kent, ME 04743	W543-7302
8.	DAVID EDWARDS <a href="mailto:dedwards1@maine.rr.com">dedwards1@maine.rr.com</a>	2008/2015	171 Lawrence Road Pownal, ME 04069	H688-4180 C807-0323
9.	TOM GOETZ <a href="mailto:tgoetz@maine.rr.com">tgoetz@maine.rr.com</a>	2008/2016	1754 New Sweden Road Woodland, ME 04736	H896-5675
10.	BRUCE HANCOCK <a href="mailto:brucehancock@me.com">brucehancock@me.com</a> <a href="mailto:katahdinbound@gmail.com">katahdinbound@gmail.com</a>	2007/2014	51 Park Street #3 Portland, ME 04102	C595-0305
11.	SPENCER MEYER <a href="mailto:spencer@beyondkatahdin.org">spencer@beyondkatahdin.org</a>	2007/2017	84 Summer Street Hampden, ME 04444	862-5675
12.	DARRELL MORROW <a href="mailto:dmorrowoiano@yahoo.com">dmorrowoiano@yahoo.com</a>	2011/2017	86 Shaws Mill Road Gorham, ME 04038	839-3016
13.	LAURIE NALE <a href="mailto:momatlrq@gmail.com">momatlrq@gmail.com</a>	2008/2018	Four Country Way Waterville, ME 04901	649-4901
14.	LAURIE RICH <a href="mailto:douglaurie@att.net">douglaurie@att.net</a>	2008/2014	62 Wessnette Drive Hampden, ME 04444	862-6580
15.	CHARLIE WOODWORTH <a href="mailto:chas.woodworth@gmail.com">chas.woodworth@gmail.com</a>	2007/2013	70 Fawn Run Yarmouth, ME 04096	H846-4458 W775-3191

BSP INVESTMENT COMMITTEE MEMBER LISTING		
Revised 5/23/2011		
NAME	ADDRESS	TELEPHONE NUMBERS
1. BRIAN NOYES, Chair* <a href="mailto:bynoyes@mrdavis.com">bynoyes@mrdavis.com</a>	PO Box 491	H865-3291 W774-0022 C329-0991
2. STEVE HUTNAK* <a href="mailto:shutnak@sahutnakcpa.com">shutnak@sahutnakcpa.com</a>	22 Coveside Drive Cumberland Foreside ME, 04110	H899-2257 W772-1600 C632-6294
3. RUPERT WHITE* <a href="mailto:Rupert.white@comcast.net">Rupert.white@comcast.net</a>	24 McKeen Street Brunswick, ME 04011	H725-6845
4. CHRIS NELSON* <a href="mailto:Cin04473@msn.com">Cin04473@msn.com</a>	Ten Page Place Orono, ME 04473	H866-0530
5. CARL GERCKE* <a href="mailto:cgercke@headinvest.com">cgercke@headinvest.com</a>	Four Laurel Lane Falmouth, ME 04105	H773-5333
6. CARLA RITCHIE <a href="mailto:critchie@llbean.com">critchie@llbean.com</a>	1477 Dixmont Road Etna, ME 04434	H725-8318 C941-1840
7. RICK BRAY <a href="mailto:rbravbuilder@gmail.com">rbravbuilder@gmail.com</a>	921 River Road Brunswick, ME 04011	H725-8318 C319-5353
8. JOHN LOYD* <a href="mailto:jloyd@eatonpeabody.com">jloyd@eatonpeabody.com</a>	1768 Harpswell Neck Road Harpswell, ME 04079	H751-2373 W729-0448 F729-1104

Baxter State Park Advisory Chair and Vice Chair share responsibility to serve as members on all committees.

- \*Subcommittee members only, not BSP Advisory Committee member.

**DIRECTOR'S RESEARCH COMMITTEE**

Revised 05/12/2011

Jean Hoekwater, Staff Coordinator  
Dave Field, U of M - Retired  
Steven Oliveri, Vines Arboretum  
Woodrow Thompson, M.G.S.  
Roy Farnsworth, Bates College - Retired  
Hank Tyler, State Planning - Retired  
Dykstra Eusden, Bates College  
George Matula, IF&W  
Richard Dearborn, MFS - Retired  
Don Hudson, Chewonki Foundation  
Dave Courtemanch, Dept. of Environmental Protection  
Steve Selva, University of Maine Fort Kent  
Kathleen Murray, Department of Agriculture



**BAXTER STATE PARK  
SCIENTIFIC FOREST MANAGEMENT AREA  
ADVISORY COMMITTEE** *(Updated 5/12/2011)*

MEMBERS	TERM	ADDRESS	TELEPHONE
ALISON DIBBLE, CHAIR <a href="mailto:adibble@earthlink.net">adibble@earthlink.net</a>	2012	HC 64, Box 5312 Brooklin, ME 04616	H359-4859 W866-7258 F866-4602
LINDA ALVERSON <a href="mailto:Lmcandalv@ainon.com">Lmcandalv@ainon.com</a>	2011	812 Oxbow Road Oxbow, ME 04764	435-3410
PHILIP AHRENS <a href="mailto:pahrens@piercetwood.com">pahrens@piercetwood.com</a>	2016	97 Cousins Street Yarmouth, ME 04096	W791-1298 H846-9572
BARRIE BRUSILA <a href="mailto:mid-maine_forestry@juno.com">mid-maine_forestry@juno.com</a>	2012	1320 Western Road Warren, ME 04864	WHF 273-4046
ROB BRYAN <a href="mailto:rbryan@forestsynthesis.com">rbryan@forestsynthesis.com</a>	2012	271 Harpswell Neck Road Harpswell, ME 04079	725-8942
DAVE CLEMENT <a href="mailto:magram@gwi.net">magram@gwi.net</a>	2012	536 West Ridge Road Cornville, ME 04976	H474-3964
ROY FARNSWORTH <a href="mailto:rfarnsw2@bates.edu">rfarnsw2@bates.edu</a>	2016	14 Hersey Hill Road Auburn, ME 04210	783-9936
ALLISON KANOTI <a href="mailto:kanoti@gwi.net">kanoti@gwi.net</a>	2016	33 Crummett Mountain Rd H Somerville, ME 04348	549-4868 W287-3147
LAUSTSEN, KEN <a href="mailto:Ken.Laustsen@maine.gov">Ken.Laustsen@maine.gov</a>	2017	MFS – 22 SHS Augusta, ME 04333-0022	W287-3135
GORDON MOTT <a href="mailto:forester@almanacmtn.us">forester@almanacmtn.us</a>	2017	42 Damon Pasture Lane Lakeville, ME 04487	H738-2108 C794-5729
BOB SEYMOUR <a href="mailto:RSeymour@maine.edu">RSeymour@maine.edu</a>	2017	University of ME 211 Nutting Hall Orono, ME 04469-5755	581-2860 944-9534
CRAIG TROEGER <a href="mailto:ctroeger@gmail.com">ctroeger@gmail.com</a>	2017	PO Box 307 Van Buren, ME 04785	768-1575
CARL VAN HUSEN	2017	27 Vaughn Street Madison, ME 04950	H696-3665 C491-9044 F696-5211
JOE WILEY <a href="mailto:joe.wiley@maine.gov">joe.wiley@maine.gov</a>	2012	92 Route 127 Dresden, ME 04342	W287-4921 H737-8149
JEREMY WILSON <a href="mailto:jeremy.wilson@umit.maine.edu">jeremy.wilson@umit.maine.edu</a>	2016	University of ME 5755 Nutting Hall Orono, ME 04469	W581-9213 H866-0328
AARON WEISKITTEL <a href="mailto:Aaron.weiskittel@maine.edu">Aaron.weiskittel@maine.edu</a>	2017	University of ME 211 Nutting Hall Orono, ME 04469-5793	581-2857 F581-2875