

MAINE STATE LEGISLATURE

The following document is provided by the
LAW AND LEGISLATIVE DIGITAL LIBRARY
at the Maine State Law and Legislative Reference Library
<http://legislature.maine.gov/lawlib>



Reproduced from scanned originals with text recognition applied
(searchable text may contain some errors and/or omissions)

BAXTER STATE PARK

STATE LAW LIBRARY
AUGUSTA, MAINE

1989

ANNUAL REPORT

MAR 26 1990



F
27
.P5
P323
1989

BAXTER PARK AUTHORITY:

JAMES E. TIERNEY, Chairman
Attorney General

WILLIAM E. VAIL
Commissioner, Inland Fisheries and Wildlife

JOHN H. CASHWELL
Director, Maine Forest Service

Compiled by: IRVIN C. CAVERLY, JR.
Director, Baxter State Park

TABLE OF CONTENTS

- A. DIRECTOR'S PROLOGUE
- B. OPERATIONAL REPORT BY CATEGORY
 - I. OVERVIEW
 - II. PUBLIC RELATIONS
 - III. SAFETY
 - IV. NEW CONSTRUCTION
 - V. MAINTENANCE
 - VI. 1988 BSP VOLUNTEER PROGRAM
 - VII. TRAINING
 - VIII. SEARCH & RESCUE
 - IX. LAW ENFORCEMENT
 - X. SPECIAL ACTIVITIES
 - XI. PROJECTION OF FUTURE PROJECTS 1990-91
- C. SCIENTIFIC FOREST MANAGEMENT AREA
 - I. OVERVIEW
 - II. ADMINISTRATION
 - III. OPERATIONS
- D. INFORMATION/EDUCATION
 - I. OVERVIEW
 - II. RESEARCH AND FIELD STUDIES
- E. ADMINISTRATIVE SERVICES
 - I. INTRODUCTION
 - a. PERSONNEL
 - b. TRAINING
 - c. CONTRACT SERVICES
 - d. SUPPLY
 - e. STATEMENT OF REVENUES AND EXPENDITURES FOR FISCAL YEAR ENDING JUNE 30, 1989
 - f. FINANCIAL ANALYSIS - BUDGET VS. ACTUAL FOR YEAR ENDING JUNE 30, 1989
 - g. COMPARATIVE STATEMENT OF REVENUES AND EXPENDITURES FISCAL YEAR 1988 AND 1989
- F. TRUST FUND INFORMATION
 - I. FINANCIAL POLICY
 - II. SUMMARY OF ACCOUNTS AS OF JUNE 30, 1989
 - III. SUMMARY OF ACCOUNTS AS OF SEPTEMBER 31, 1989
 - IV. MARKET VALUE OF TRUST ASSETS

Sent to Printer 2/9/90

G. STATISTICAL REPORT

- I. GATE STATISTICS - BY GATE
- II. GATE STATISTICS - BY MONTH
- III. BSP COMPARATIVE STATISTICS - 1988-89
- IV. WEST GATE STATISTICS
- V. CAMPER DAY USE - WINTER SEASON - 1988-89
- VI. BSP COMPARATIVE STATISTICS - 1989
- VII. TRAIL USE SUMMARY - 1989
- VIII. CLASS DAYS SUMMARY
- IX. CAMPER DAYS SUMMARY - 1989

H. PERSONNEL LISTING

- I. ORGANIZATION CHART
- II. YEAR-ROUND POSITIONS
- III. SEASONAL POSITIONS

I. DIRECTOR'S CONCLUDING REMARKS

J. APPENDIXES

- I. AUDITOR'S REPORT
 - a. LETTER TO AUDIT
 - b. JAMES TIERNEY LETTER
 - c. CORRECTIVE ACTION STATEMENT
 - d. LD 93 AMENDMENT RE: CHECKING ACCOUNT
- II. BSP AUTHORITY/ADVISORY AND SUB-COMMITTEE MEETINGS

A. DIRECTOR'S PROLOGUE

PROLOGUE

Greetings:

This is a very important time of year for all of us, especially for the management and operation of Baxter State Park. It's an opportunity to reflect on the past year's experience and accomplishments, the visitor use, to evaluate the effectiveness of our policies and rules/regulations. But most importantly, it's time for us to be accountable to the people of Maine and for the record, the results of our labor during the past twelve months. Our mission has and continues to be to protect the resources of Baxter State Park, to assure their existence for all time and to provide public recreational opportunity for those who seek a wilderness experience.

I am pleased to report that we have been successful in meeting those mandates in 1989 and our Park is in good shape physically and financially as demonstrated in the following pages. The Baxter Park Authority, Advisory Committees and staff have given their utmost support to operational objectives and have been most effective in operating as a team.

Public use during the year has exceeded both in overnight camping and day use by approximately 7,000 people. Although we have established capacities with overnight accommodations, we are finding more people coming to the Park earlier in the season and staying later in the season, hence the reason for increased overnight opportunities. Day use demands continue to be on the increase and staff and Advisory Committee members are reviewing control methods and techniques which can be recommended for Baxter State Park Authority consideration.

Although public use has been higher this year, we have had a very safe visitor use period. Accidents on the mountain have been minor in nature and those with injuries or fatigue were successfully evacuated without incident. A great deal of credit goes to Park staff who work hard to prepare people for the hikes and to assist and account for all hikers at the end of each day, particularly the Campground Rangers and our Mountain Patrols.

In addition to people management efforts, Park staff have been successful in accomplishing many maintenance/construction chores; consequently our facilities are in the best shape they have been in for years. Capital equipment has been in a rotating program long enough now so that our equipment is safe and dependable.

The Baxter State Park Advisory Committees have worked consistently with staff to review areas that needed reviewing. Some have consistently volunteered to work within operations performing a number of different jobs and have proven to be pretty skilled Rangers.

Special recognition is deserved for the Baxter State Park Scien-

tific Forestry Management Area Committee, their commitment to assist Resource Manager Jensen Bissell and the contractor working the area has been strong and consistent. We are extremely grateful to them for their part in bringing the SFMA to its current status.


Throughout the year we have worked on budgeting issues in anticipation of the State Employee's Contract Settlement. Also with the total support of the Authority, Advisory and Appropriations Committee of the 114th Legislature, we accomplished implementation of an amendment to L.D. 93, Part I Budget, which recognizes the BSP Authority having total control over Park finances. Consequently, we have been able to establish our own checking account in Millinocket and meet our financial objectives to our vendors in a timely fashion. See Appendix #I. This major step in the interest of BSP could not have been achieved if it had not been for the complete support and cooperation of BSP Authority Chair James Tierney, Appropriations Committee Chair Senator Michael Pearson, President of the Senate Charles Pray, Representative Patrick McGowan and all Appropriations Committee members who unanimously supported a motion to approve. Our thanks to Paul Stern, Assistant AG and also to the staff members at Authority's office in Augusta, specifically Kris Kristine in the AG's office and Cecile Sibley with IF&W.

When requested to testify by the Chair of LURC, I informed LURC on our concern about impacts to BSP if the private campground at Pockwockamus were to be opened to the general public. We have continued discussion on the issues of day use capacities and policies needed at the Togue Pond Gate.

The support we have received from the public, volunteers and contract services has been excellent.

As you read the pages of this report, you will find that each topic represented is complete as to the best of our knowledge. I commend all who took part in its formulation, and trust that if you have any questions or suggestions, you will give us a call following your review. I think you will agree it's been a good year, the end results of a combined effort of many many people. I am indebted to all, but most especially my Administrative Staff who have exercised skill, dedication and commitment in making our Park operations as successful as is humanly possible. To Roxie McLean my Secretary, Chris Drew Chief Ranger, Beth Austin Business Manager, Jensen Bissell Forest Manager and Jean Hoekwater Manager of Information/interpretation, thanks for a job well done. To my bosses the Baxter Park Authority (James Tierney Chairman, William Vail Commissioner IF&W, and John Cashwell Director MFS), thanks for your counsel, your confidence and your support, for it is this that brings it all together.

Regards,



B. OPERATIONAL REPORT BY CATEGORY

I 1989 OPERATIONAL HIGHLIGHTS AND OVERVIEW (12/88-11/89)

SOUTH DISTRICT NORTH DISTRICT MAINTENANCE DIVISION VOLUNTEER PROGRAM CHIEF RANGER

Personal contacts	- 205,664 persons
Total personnel hours	- 50,443 hours
Total volunteer hours	- 11,244 hours
Search & rescue incidents	- 20 incidents of record
Complaints answered	- 401 complaints
Meetings attended	- 222 meetings of record

The winter of 1988-89 was a record winter for lack of snow. There was only two inches of snow in the center of the Park (Russell Pond) in February. This created cross country skiing difficulty. Notwithstanding the lack of snow, our winter camping statistics were nearly doubled from the 1987-88 winter. The increase was noticeable at the Chimney Pond Campground.

Park Rangers repainted 19 miles of the Baxter State Park boundary during the winter months of 1989.

Three major snowmobile accidents involving multiple fractures occurred in the winter of 1988-89. Excessive speed was a major factor.

The renovations of the Kidney Pond Camps was a major Park project in 1989. During the winter of 1988-89, 6 cabins were moved off the shoreline of Kidney Pond on the ice and relocated to different areas of Baxter State Park. The location of these cabins are:

- 1 - to the SFMA for crew housing
- 1 - to the West Gate for staff housing
- 2 - consolidated to make housing for Park Ranger Loren Goode
- 2 - Relocated to other locations of Kidney Pond well away from the shoreline.

The summer months at Kidney Pond brought about the removal of 4 additional cabins that had been auctioned off in 1988. Five cabins were rented on a daily basis at Kidney Pond while an additional five cabins were being renovated for operation in 1991.

The spring of 1989 was very wet. High water created damages on some foot trail bridges. Wassataquoik Stream had the highest water level in 19 years when 1 lean-to was moved from the campsite on Wassataquoik Stream. The unusually wet spring brought hordes of blackflies which were the worst in the memory of many users and staff.

The fire towers on Horse Mt. and Burnt Mt. were staffed by Baxter Park volunteers who donated 1,460 hours toward fire protection. This project was a cooperative program between the Maine Forest Service and Baxter State Park. This program was considered successful by the Maine Forest Service, Baxter State Park and all the volunteers involved.

Baxter State Park volunteers (152) donated in excess of 11,244 hours in 1989. Eleven (11) persons donated more than one month of volunteer time. Six (6) persons actually donated their entire summer for Baxter State Park. The Baxter State Park Volunteer Program does much to complement and supplement Park staff and operations.

The introducing of Caribou in Baxter State Park created much publicity and hopeful expectations. The small herd dispersed widely and slowly succumbed to parasite infestation and predation. Many were hopeful the restocking of Caribou would be successful.

There were peregrine falcon sightings in 1989 in Baxter State Park with one confirmed pair of nesting falcons sighted in the Wassataquoik Lake region of BSP.

Baxter State Park personnel found and suppressed a forest fire ignited by a lightning storm in T6,R8 - just east of Baxter State Park on July 27, 1989.

Camper use in outlying hike-in campsites increased in popularity in 1989. The Matagamon Lake area received more demand and use than in previous years and will probably become more popular in future seasons.

Hurricane Hugo basically was a rain storm in Baxter State Park. The most damage incurred was the windfall of mostly aspen and birch in the South Branch Pond area and perimeter road.

The majority of complaints in 1989 centered on poor road conditions. The Day Use Survey conducted in the South District of Baxter State Park was positive and complimentary toward Park staff and facilities.

The Maine Army National Guard (112th Medivac) and the Maine Forest Service were of great assistance to Baxter State Park in search & rescue evacuation, hazardous waste removal, training and re-supply missions. Without their professional assistance, the efficient operation of Baxter State Park would noticeably be affected.

Animal problems in 1989 were minimal. The first problem bear in four seasons was live-trapped at South Branch Pond and relocated outside Baxter State Park. Several beaver were live-trapped at flooded road crossings and relocated to other watersheds.

Trail Supervisor Lester Kenway did an outstanding job in planning

and implementing all trail maintenance projects. Lester supervised a large staff of SCA personnel and volunteers. Trail crew volunteers donated 865 hours toward trail maintenance in 1989.

The SFMA (Scientific Forest Management Area) provided nearly 100 cords of firewood for Daicey Pond, Kidney Pond, Millinocket Headquarters, Nesowadnehunk Field and Trout Brook Farm. In addition several truck loads of cedar logs for landscape cribbing materials were hauled to Togue Pond Camp.

The Dept. of Inland Fisheries and Wildlife is conducting fishery surveys on various ponds/lakes in Baxter State Park where some fishery quality concerns have been raised. Proper management practices which fit the water and fishery quality will be initiated after the data collected is analyzed.

The Baxter State Park Fire Plan was reviewed and modified after consultation with Maine Forest Service management personnel. The BSP Search & Rescue SOP and Duty Officer Manual were reviewed and updated in 1989.

The SCA (Student Conservation Association) and MCC (Maine Conservation Corps) provided additional assistance in trail maintenance, campground maintenance and the mountain patrol.

Baxter State Park personnel assisted in 20 search and rescue incidents. The most serious injury in 1989 was a multiple leg fracture in a snowmobile accident on the Park perimeter road in late November. There were no fatalities in 1989.

Park personnel were active in moving major maintenance projects in 1989 which include:

- a. The re-roofing of the Support Services garage in Mlkt.
- b. The addition of a Carpenter Shop to the Support Services building in Millinocket.
- c. The construction of a new bunkhouse at the Russell Pond Campground.
- d. The removal of the former bunkhouse with asbestos lining at Russell Pond.
- e. The installation of 2 fuel storage tanks near the Abol Field location.

II PUBLIC RELATIONS

In 1989 Baxter State Park personnel made 205,664 contacts with public users inside Baxter State Park. Many users have multiple contacts with Park staff. Most contacts are with campers, hikers, wildlife enthusiasts, fishermen, snowmobilers, skiers, hunters and sightseers. Park personnel cordially related information on the trails, campgrounds, wildlife and other natural features of the Park.

Camping groups in Baxter State Park had the opportunity to participate in campfire-type programs by Park staff and volunteers at Daicey Pond, Kidney Pond and Chimney Pond Campgrounds.

Public complaints centered on the rough unimproved road conditions inside of Baxter State Park. The wet spring of 1989 produced a regional increase in the growing insect population. The fishing quality of several Park ponds was a concern of some fishermen.

Compliments were many and some quite lavish. Many internationally experienced outdoor users were very positive in putting the quality of the wilderness experience in Baxter State Park over all the national and international parks they had visited.

III SAFETY

The Baxter State Park personnel continued to be safety conscious in 1989. There were no major lost-time accidents or injuries involving Park employees. Safety orientated activities by Park staff included:

1. All fire suppression equipment was checked or readied for use.
2. First aid supplies were inventoried and replaced.
3. The BSP Search and Rescue Manual and Duty Officer Manuals were reviewed and revised to expedite emergency situations.
4. Installation of a new fire extinguisher in the new Russell Pond bunkhouse. Other fire extinguishers in the Park were inspected and refilled as needed.
5. Installed 2 slate platforms under 2 new woodstoves in the Trout Brook Farm crew camp.
6. Park personnel worked with Dead River propane repair personnel in the repair of Park propane appliances and lights.
7. The hazardous rear discharge grass chute was replaced on the Kidney Pond lawnmower.
8. The purchase of 2 new gas refrigerators and 2 new gas stoves to replace aging and potentially dangerous propane appliances.
9. Six metal-bestos chimneys were purchased to replace worn chimneys at Daicey Pond Camps and Kidney Pond Camps. Two chimneys were installed in 1989.

10. The following bridge repairs, replacements or removals:
 - a. The Katahdin Falls bridge was re-decked.
 - b. The Saddle Brook bridge on the Chimney Pond Trail was replaced.
 - c. The Grassy Pond Outlet bridge was basically rebuilt. This project will be completed in 1990.
 - d. The rotted "Half Way Brook" bridge was removed on the Russell Pond Trail.
11. The purchase and installation of 1 wood stove to replace on old deteriorating wood stove.
12. The counseling of Park employees on the proper use, care and maintenance of new chainsaws and lawnmowers.
13. The potential for serious injury is ever present. Two acts of nature in Baxter State Park could have seriously injured staff or public users:
 - a. A wind storm blew a large pine onto the top of the Pogey Pond lean-to during the late night hours. Two campers remained inside the lean-to and two got out. The limbs of this large pine penetrated the top of the lean-to. Fortunately, no one was injured.
 - b. A small tornado threw canoes and a boat out of the water a considerable distance at the beach area of South Branch Pond. No one was injured, but the potential is always present.

IV NEW CONSTRUCTION

1. New Carpenter Shop facility constructed at the Park Headquarters facility in Millinocket.
2. The construction of a Park Ranger's quarters on the Kidney Pond road. This facility has been built by joining two former Kidney Pond cabins together.
3. Constructed 3 double vault toilets at Abol Campground.
4. Construction of a new 8 person bunkhouse at the Russell Pond Campground.
5. Remodeled the Tamarack residence of the Park Director to a supply facility and an efficiency apartment.
6. Built and installed steel gates at the Murphy Brook Road and the Rum Mt. Road for administrative purposes.
7. Prepared a fuel tank site at the Abol Pit.
8. Constructed a new tool room at the trail crew facility at Roaring Brook.

9. Built a canoe launching dock at Kidney Pond.
10. Replaced 4 porches on cabins at Kidney Pond and Daicey Pond.
11. Built 1 pit toilet at the Kidney facility for the Outlet cabin.
12. Built and installed 10 log fireplace cribs at Abol Campground.
13. Added 4 rear door porch type roofs on Kidney Pond cabins.
14. Constructed a new flat bed totesled.
15. Constructed a skid sled to move and relocate cabins.
16. The Trout Brook Farm crew camp had 1 apartment completely furnished for personnel use.
17. A cold storage facility was added to the propane shed at Trout Brook Farm.
18. A new boathouse and toilet was constructed at Webster Lake.
19. A "canoe-in" tent site was developed for public use at Lower South Branch Pond.
20. Several new toilets were constructed at the South Branch Pond.
21. A new porch was installed on the Trout Brook Farm District Ranger's cabin.

V MAINTENANCE

Baxter State Park continues to put high emphasis on the maintenance of Park facilities and equipment maintenance and repair projects by division and location.

MILLINOCKET MAINTENANCE DIVISION REPORT - 1989

Maintenance Supervisor - Philip McGlaufflin
Park Mechanic - Timothy Sides

A. Major Maintenance Projects

1. Extensive wiring at 55 Tamarack St. facility which includes the supply facility and Park Director's residence.
2. Surveyed Park Ranger lot prior to grounds and construction preparation of the new Ranger's cabin on the Kidney Pond road.

3. Worked on the new Carpenter Shop construction project. This included installation of the concrete foundation, framing of the 50' x 20' building, installation of the metal roofing and siding, installation of the overhead door and insulating of 50% of the building.
4. Assisted in the loading and hauling of 20 truckloads of mulch from Millinocket to the Togue Pond Campground.
5. Plowed and sanded the Millinocket grounds during the winter months.
6. Maintained heating and lighting facilities at the Millinocket Headquarters facilities.
7. Assisted in the cutting, splitting and stacking of 15 cords of firewood for the maintenance facility in Millinocket.
8. Coordinated the maintenance of the grounds (moving, raking, clean-up) of the Millinocket facilities during the summer months.
9. Installed new signage at the entrance/exit locations at the Millinocket Headquarters facility.
10. Installed panel boards and wired the A.C. receptacle for the new telephone system.
11. Worked extensively on the plumbing and wiring of the SFMA housing facilities in T6,R11. This work included:
 - a. Complete internal plumbing of the shower/bathroom facility.
 - b. Plumbing of the entire sewerage system.
 - c. Plumbed the water pump/pressure tank system.
 - d. Completed the electrical system changeover to the living facilities (3 buildings).

B. Garage Projects: Vehicles & Heavy Equipment Repair

1. Completed extensive hydraulic repair to the 550 backhoe. Also completed rewiring, radiator repair, water-pump repair.
2. Completed extensive hydraulic pump repair to the 966 Catapillar front end loader. Also major repair to the power steering and final drive components.
3. Reorganized the stock shelving in the Mechanic Shop Storeroom.
4. Installation of a radio loop to the garage to tie in with the Park-wide radio communication system.

5. Completed repairs on 1290 Case Tractor.
6. Completed a major repair to the Farmi-Winch Unit.
7. The breakdown of vehicle and equipment repairs are as follows:

Battery Replacement/Recharge.No. 6
Body Repair/Painting.No. 10
Brake Repair.No. 19
Canoe/Boat RepairNo. -
Chin Saw RepairNo. 2
Clutch RepairNo. -
Electrical RepairNo. 41
Exhaust System RepairNo. 13
Front End Repair.No. 24
Generator Repair.No. -
Motor Repair.No. 1
New Tires installedNo. 27
Outboard RepairNo. 1
Rear End RepairNo. 10
Road calls for Park EquipmentNo. 9
Snowsled RepairNo. -
State Vehicle InspectionsNo. 26
Tires Repaired.No. 25
Tune ups.No. 15
Universal Joint Repair.No. 5
Vehicles Serviced (grease, oil)No. 100
Waterpump Repair.No. 2
Window Replacement.No. -
Pressure WashedNo. 21
	Vehicles

C. Park Mechanic Timothy Sides assisted in several field projects which include:

1. Assisted in moving of two camps off the ice at Kidney Pond during the winter of '88-'89.
2. Became a Class II motor vehicle licensed driver on May 24, 1989.
3. Hauled gravel for the SFM road construction project on July 18, 19, 20, 1989.
4. Hauled 10 bundles of slab firewood to the North District in October and November, 1989.
5. Assisted in the shuttle of North District motor vehicles for maintenance repairs and service on a regular basis throughout the year.

SOUTH DISTRICT - Robert Howes - South District Ranger
 Bernard Crabtree - Park Ranger
 Loren Goode

Baxter State Park Trail Maintenance Report - 1989

Trail Supervisor - Lester Kenway
 Trail Crew Leader - Gary Stillman
 Trail Crew Members: Brett Battaglia, Canandaigua, NY
 Shawn Faith, State College, PA
 David Grant, Oberlin, OH
 Deborah Luckin, Spencerport, NY
 Kristen Messenger, Pittsburgh, KS
 John Meyer, Mt. Pleasant, MI
 Rick Meyer, Rolla, MO
 Stuart Murray, New York, NY
 Jeni Snyder, Pittsburgh, PA
 Brie Weisman, Frederick, MD

INFORMATIONAL DATA

Field work.	Hrs.	844	71%
Office & planning	Hrs.	317	26%
Support services.	Hrs.	36	3%
TOTAL.	Hrs.	1,197	100%
Foot patrol (miles)	No.	145	
Vehicle travel (miles).	No.	4,081	miles
Miles of trail inspected.	No.	39	miles
Miles of trail cleared.	No.	125	miles
Treadway projects	No.	4	
Bridge projects	No.	4	

TOTAL CREW HOURS SPENT ON TRAIL WORK:

Leader	240
Ass't. Leader.	397
SCA.	2,318
Other volunteers	625
TOTAL	3,575

SCA HOURS TOTALED BY CATEGORY

<u>Tails</u>	<u>Albert's</u> <u>Helper</u>	<u>Abol</u>	<u>Mtn.</u> <u>Patrol</u>	<u>Training</u>	<u>Travel</u>	<u>Misc.</u>	<u>Total</u>
2318	135	472	412	304	179	10411	4861
48%	3%	10%	8%	6%	4%	21%	100%

TRAILS INSPECTED:

Baxter Peak Cut-off
Chimney Pond Trail
Cathedral Trail
Russell Pond Trail
Saddle Trail
Sandy Stream Pond Trail
Appalachian Trail (in part)
Hunt Trail (in part)
Pogy Notch Trail (in part)
Wassataquoik Stream Trail
Freezeout Trail (in part)
Fowler Brook Trail
Lower Fowler Pond Trail
Webster Lake Trail (in part)

Extensive renovation projects at the Roaring Brook Crew Camp and Kidney Pond Crew Camp, combined with major projects on the Hunt Trail and at the Grassy Pond Bridge prevented me from seeing more of the trails this season.

TRAILS CLEARED OF BLOWDOWNS:

North Basin Cut-off
North Basin Trail
Russell Pond Trail (Curran, Trail Crew)
Sandy Stream Pond Trail
Abol Trail
Appalachian Trail (Trautmann & Volunteers)
Ceclia & Jackson Ponds Trail
Doubletop Mtn. Trail
Grassy Pond Trail (Ives)
Hunt Trail (Neff)
Lily Pad Pond Trail
Little Abol Falls Trail
Marston Trail
Mt. Coe Trail
OJI Trail, South
OJI Trail, North
OJI Link
Owl Trail
Rocky Pond Trail
Polly Pond Trail
Draper Pond Trail
Sentinel Mtn. Trail
Kidney Pond Outlet Trail
Slaughter Pond Trail
Lost Pond Trail
Grand Falls Trail (Curran)
Look Out Trail (Curran)
North Peaks Trail
Northwest Basin Trail (Curran)
Pogy Notch Trail
Tracy Horse Trail (Curran)
Wassataquoik Lake Trail (Curran)
Freezeout Trail

High & Long Ponds Trail
Littlefield Pond Trail
Lower Fowler Pond Trail
Fowler Brook Trail
Middle Fowler Pond Trail
South Branch Mtn. Trail
Webster Lake Trail

TRAILS CLEARED OF BRUSH:

Russell Pond Trail (in part)
Grand Falls Trail
Chimney Pond Trail (in part)
Helon Taylor Trail (in part)

TRAILS BLAZED:

Trout Brook Mtn. Trail

TREADWAY PROJECTS:

- Chimney Pond Trail - Follow-up rock work was done on the trail 1/2 mile above Pamola Brook. 7 rock steps and 1 waterbar were built.
- Chimney Pond Trail - Washouts were repaired near Dry Pond. 3 rock steps, 1 rock waterbar, and 50 feet of gravel causeway were built.
- Saddle Trail - Waterbars were cleaned, steps were repaired, rock walls were maintained, and "Stay on Trail" signs were added on previously rebuilt sections. Timely maintenance of these recovery areas is critical to their successful regrowth.
- Hunt Trail - Repairs were confined to a 300' pitch that was badly eroded. 53 rock steps, 3 rock water bars, and 300' of 2 side rip-rap were built. A "Tramway" using two steel tripods was very helpful in moving rock to where it was needed. 200' of rock wall was built near the summit.

BRIDGE PROJECTS:

- Turner Brook, Russell Pond Trail - This bridge was rebuilt with a new deck and a wire rope truss. Abutments were repaired also.
- Katahdin Falls, Hunt Trail - Further repairs were made to this bridge, an additional foot rail was installed, and all decking not replaced in 1988 was renewed.
- Grassy Pond Outlet - 1 abutment and two 6' piers were constructed and 4 stringers 2=45' long, and 2=30' long were put in place. Decking was installed for entire length of bridge. East end requires a staircase before bridge can be opened in 1990. The approach trail will require over 500' of bog bridges also.
- Saddle Brook, Chimney Pond Trail - A new upper span was replaced at the crossing closest to the campground.

1989 was a challenging summer. The crew did a fine job cleaning up

the blowdown in the Kidney Pond area. This was our first year maintaining these trails. Gary Stillman once again proved to be a very efficient crew leader.

MAJOR ACCOMPLISHMENTS INCLUDE:

Near completion of the Grassy Pond bridge, construction of a 300' stairway on the Hunt Trail, conversion of the Kidney Pond laundry to a crew camp, construction of a tool room at Roaring Brook.

NEXT YEAR'S PROJECTS WILL INCLUDE:

- Routine blowdown removal on 125 miles of trail.
- Brushing out overgrown areas.
- Continued work on Hunt Trail.
- Upgrading trails in the Kidney Pond area.

Respectfully submitted,

Lester C. Kenway

CHIMNEY POND (CR-Esther Hendrickson, ACR-Christine Trefethen)

1. Remodeling of bunkhouse - see new construction.
2. Uprighted lean-to #2 (winter winds blew over) and leveled.
3. Cleared blowdowns off campground trails.
4. Repaired broken floor joist in lean-to #1.
5. Painted bunks and floors in bunkhouse.
6. Polyurethaned walls/ceilings in bunkhouse.
7. Repaired/rehung broken outhouse door.
8. Cleared blowdowns off Northwest Basin Trail to Davis Pond.
9. Cleaned Davis Pond lean-to site.
10. Cut, split (as needed) and stacked stove length wood.
11. Graveled trail by lean-to #3 as it was very eroded.
12. Dug dirt out from around lean-tos so it doesn't build up around the sills and rot them.
13. Cleared blowdowns off Cathedral and Saddle Trails.
14. Scraped and stained men's double outhouse.
15. Hooked up waterline from Cathedral Pond.
16. Repaired and rehung men's outhouse door.
17. Scraped and painted flagpole.
18. Replaced bottoms on sides of bunkhouse door to close gaps.
19. Replaced torn screen on office porch.
20. Put board and battens on main camp porch.
21. Stained office porch floor and steps.
22. Caulked crew camp windows.
23. Painted crew camp floor.
24. Replaced floor in right side of men's outhouse.
25. Painted inside of men's double outhouse.
26. Stained men's outhouse.
27. Painted inside of women's double outhouse and men's single.
28. Caulked bunkhouse windows.

29. Put flashing around porch windows.
30. Assembled picnic table for bunkhouse.
31. Coated shop floor with wood preservative.
32. Patched holes in waterline that were taking in air.
33. Campground trail maintenance - replaced rotten logs that retain gravel.
34. Put gravel around outhouses as needed.
35. Cut up scrapwood for kindling.
36. Replaced torn screens on outhouses.
37. Graveled front of lean-tos as needed.
38. Brushed in paths that were developing where they shouldn't.
39. Stained office porch floor and steps.
40. Shoveled outhouses as needed.
41. Stained porch and east side of main camp.
42. Replaced leaking connections of lines to water heater.
43. Put roofing tar under shingles on bunkhouse that weren't lying flat.
44. Cut some high stumps in back of bunkhouse.
45. Stain window covers for crew camp.
46. Boxed up old shingles from bunkhouse to be taken out during winter.
47. Stacked winter firewood on main camp porch.
48. Disconnected and drained waterline.
49. Blackened bunkhouse and crew camp stoves.
50. Put window covers on main camp windows.
51. Replaced one pane of a bunkhouse window.

KATAHDIN STREAM (CRI-Russell Rytleski, ACR-John Horton)

1. Routine seasonal starting and drainage of water systems.
2. Replaced support logs on day-use picnic shelter.
3. Cleaned out and organized garage.
4. Repaired damage outhouse roofs.
5. Resurfaced sites.
6. Regular campground maintenance.
7. Mowed grass at Katahdin Stream and Foster Field.
8. Removed brush - blowdowns from stream.
9. Stripped shingles, replaced boards, re-shingled day use shelters.
10. Painted picnic table parts.
11. Repaired outhouse.
12. Removed rotten bumper logs.
13. Stained lean-to's and picnic tables.
14. Re-decked Katahdin Stream dam treadway.
15. Replaced stairs at tentsite #19.
16. Removed old materials from around shop.
17. Remove old woodshed/hailed to dump.
18. Installed window in shop.
19. Made level platform for new woodshed.
20. Helped install new woodshed - filled with wood.
21. Put in door on woodshed and braced flooring.
22. Removed walk-in sites bridge.

TOGUE POND CAMPGROUND (CRI-Mac Browning)

1. Moved changing room to beach area.
2. Stained changing room.
3. Re-designed roof on changing room.
4. Replaced and stained doors on beach outhouse.
5. Painted foundation on District Ranger camp.
6. Worked on cribbing on Upper Togue Pond Point shoreline.
7. Completed 2 of 3 new picnic areas on Togue Pond beach - landscaping.
8. Re-organized and cleaned material storage area near Togue Pond.
9. Re-organized a room in blockhouse for tools and maintenance shop.
10. Repaired erosion damage on beach.
11. Cribbed in picnic site #4, grassed and hayed area.
12. Cut alders in new parking lot area.
13. Mowed lawns and maintained grounds on a regular basis.

NESOWADNEHUNK (CRI-Joe Cushman, ACR-Bruce White)

1. Cut blowdowns on perimeter road.
2. Cut firewood, split, hauled, stacked.
3. Cut cedar posts.
4. Cut brush on camp road.
5. Cut cedar for West Gate.
6. Canoeed Nesowadnehunk Stream and removed blowdowns across the stream.
7. Checked out gunshots near Park line.
8. Checked out illegal campers.
9. Painted signs, designed sign.
10. Painted cabin - garage - workshop buildings.
11. Repaired picnic tables - screen door - outhouse doors.
12. Mowed lawns.
13. Replaced cement fireplace with truck rims, graveled.
14. Placed sign at Double Top Trail near top.
15. Built ramp on garage for lawnmowers.
16. Shoveled out outhouses.
17. Seasonal startup and shutdown of campground water system.

ROARING BROOK (CRI-Greg Hammer, ACR-Scott Fisher)

1. Painted inside of bunkhouse.
2. Replaced hinges and latches on outhouses as needed.
3. Painted signs, sign posts, picnic tables.
4. Seasonal startup and shutdown of campground water system, etc.
5. Reconstructed and graveled some camp sites.
6. Cleaned ditches in campground and along Roaring Brook Road.
7. Routinely cleaned and checked over workshop and chemical buildings.
8. Made new signs for public awareness program.
9. Cleaned vent and burner system of crew camp refrigerator.
10. Cut blowdowns in campground and along Roaring Brook road.

11. Roped area where trees were planted between camp sites.
12. Mouse proofed the crew camp.
13. Cleaned chimneys in main camp.
14. Restacked firewood in shed.
15. Hauled gravel and drums, set gate, ran cement for Rum Mt. road.
16. Repaired screen doors.
17. Took out one site, fireplace at Avalanche Field.
18. Daily cleaning of Togue Pond beach facilities.
19. Cut, hauled split stacked firewood.
20. Graveled several sites.
21. Planted grass between some sites.
22. Clear brush around speed limit signs.
23. Daily maintenance in campground.
24. Some erosion control in wash area.
25. Painted gate on Rum Mountain road.
26. Cut, stacked wood for Chimney Pond.
27. Repaired waterline.
28. Replaced screens in outhouses.
29. Cleared blowdowns on Nature Trail.
30. Replaced tiles in bathroom.
31. Replaced toilet seats at Togue Pond beach facility.
32. Serviced lawnmower at a regular basis.
33. Blacken stoves in crew camp and bunkhouse.
34. Cleaned up and straightened out fire equipment room.
35. Inventoried equipment in campground.
36. Put wood on back porch of Ranger camp.
37. Made new wood box for livingroom of main camp.
38. Enclosed back porch with plastic on main camp for winter protection.
39. Cut out turn around for honey wagon site near Avalanche Field.

ABOL (CRI-Brian Johnston, ACR-SCA Students) on a Rotating Basis

1. Seasonal startup and shutdown of campgrounds water systems, etc.
2. Assisted Park Ranger Loren Goode getting logs off perimeter and Daicey Pond roads.
3. Cut and installed new top to Abol Campground sign.
4. Graded Abol Beach.
5. Assisted with hooking up of appliances at West Gate.
6. Assisted with beaver problems near West Gate.
7. Routine campground maintenance covering Abol, Katahdin Stream, Foster Field and Abol Beach.
8. Scraped and painted 8 lean-to's.
9. Installed new skirt on #4 lean-to.
10. Mowed grass at Abol, Foster Field, Abol Beach.
11. Spread gravel at Katahdin Stream for driveway and sites.
12. Painted interior of porch of Ranger's cabin.
13. Assisted in moving cabin from Kidney Pond to West Gate.
14. Stained picnic tables.
15. Leveled area around new outhouses.
16. Filled in around newly installed rocks on culvert sites

- along perimeter road.
17. Assisted Park Ranger Loren Goode with camp construction on Kidney Pond road.
 18. Jacked camp under office door.
 19. Assisted at Katahdin Stream with picnic shelter reconstruction.
 20. Graded overflow parking lots below Abol Campground.
 21. Graded driveway and parking lot.
 22. Installed new signpost for game preserve sign, stained, lettered.
 23. Cleared Abol Falls Trail.
 24. Stained new outhouses and varnished inside - installed hardware.
 25. Stained sign posts along perimeter road.
 26. Made shield for batteries in shop.
 27. Cut trees and brush on blind turns on perimeter road.
 28. Installed new screens and hardware cloth on back porch of Campground Ranger's camp.
 29. Trimmed large branches around solar panels.
 30. Spread several loads of bark around 3 new toilets.
 31. Hauled several empty propane cylinders to Millinocket.
 32. Shingled two picnic shelters.
 33. Cut and peeled cedar logs for fireplace cribs and posts.
 34. Spread load of loam and seeded.
 35. Hauled wood for Abol and Katahdin Stream with Russ Rytlewski.
 36. Assisted in new woodshed installation at Katahdin Stream.
 37. Put in rocks to better define sites #16 and #19.
 38. Tore off rotten siding on lean-to #8 - installed new siding.
 39. Picked up radios and batteries for Daicey and Kidney Ponds.

KIDNEY POND (Caretaker-Lou LeBlanc, CRI-Mac Browning)

1. Repaired screen doors on all cabins.
2. Mowed lawns - a full time job!
3. Re-screened cabins and windows on cabins.
4. Routine campground maintenance.
5. Major renovations in office quarters (Loon's Nest).
6. Relocated doors from kitchen to library area.
7. Repaired metal chimneys.
8. Painted and installed signs for cabins.
9. Cleaned woodshed interior.
10. Cleared brush from campground area.
11. Repaired water pitcher pump over the well.
12. Relocated L.P. gas tanks from rear of laundry to kitchen area.
13. Painted several steps and porches of cabins.
14. Installed rubbish barrels area for day use and near cabins #1 and #2.
15. Re-adjusted cabin doors.
16. Cut, split, hauled, stacked 20 cords of firewood.
17. Several trips to Millinocket for supplies.
18. Removed barrels from under canoe launching dock and installed flotation foam on dock.

19. Demolished and hauled away three old buildings.
20. Relocated via ice five cabins to new locations on Kidney Pond or to other locations in Park.
21. Sawed blowdowns in campground.
22. Installed gas lights in four (4) cabins.
23. Color coded all new tools and equipment for Kidney Pond.
24. Repaired porches on several camps.
25. Built screen doors.
26. Repaired hand railing to library.
27. Stained and painted trim on several buildings.
28. Cleared out furniture from two camps and stored over workshop.
29. Installed fireplaces for cabins #1 and #2.
30. Removed electrical wiring from kitchen and diningroom.
31. Removed some plumbing from kitchen and diningroom.
32. Built shutters for winter use on diningroom windows.
33. Constructed bypass trail around cabins.
34. Painted and installed several picnic tables.
35. Jacked polished and replaced rear sills.
36. Made canoe rack for winter storage.
37. Cut trail for OJI cabin.
38. Replaced 1/4 of office floor.
39. Placed BSP decals on all outlying canoes.
40. Built new bunks in trail crew cabin.
41. Built and placed register box for Double Top Trail survey.
42. Built and placed crib dock for OJI cabin.
43. Started digging out old sill on office camp.
44. Built new rack for life jacket on library porch.
45. Painted flag pole.
46. Placed cribbing in front of #18 to control erosion.
47. Shingled two camps.
48. Replaced wooden gate at campground entrance.
49. Repaired canoes at Lily Pad Pond.
50. Replaced two sills on cabin #19.
51. Jacked and leveled floor to cabin #19.
52. Cut out and replaced culvert in road to cabins 17, 18, 19, and 20.

DAICEY POND (Caretakers-Linda Ives, Latona Torrey)

1. Routine opening and closing of campground cabins, canoes, water system, etc.
2. Blowdown cleanup in campground - piled brush.
3. Repaired screens.
4. Trail clearing in surrounding area.
5. Cutting, splitting, stacking 20 cords of firewood.
6. Painted AT lean-to's.
7. Repaired, replaced 2 porches on cabins.
8. Sprayed camps for ants.
9. Replaced picnic tables.
10. Put up all fishing signs on Daicey Pond.
11. Repaired canoe at Lily Pad Pond.
12. Replaced and repaired bumper logs on entry road.
13. Put BSP decals on all area canoes.

14. Replaced fireplaces.
15. Spread gravel on cabin paths and cabin sites.
16. Stained porches and two camps.
17. Shoveled out outhouses.
18. Repaired windows.
19. Trimmed windows and door of volunteer camp.
20. Cleaned out spring near Niagara Falls.
21. Repaired batting strips on shower house.
22. Stained several steps.
23. Covered brush to be burned during winter.
24. Insulated volunteer camp.
25. Installed vent in day use outhouse.
26. Repaired swimming dock - replaced rotten boards.
27. Replaced maul and lawn rake handles.
28. Campground inventory.
29. Routine campground - cabin maintenance.
30. Prepared cabins 4 and 5 for winter use.

WEST GATE (Gatekeepers- Scott Thies, Lori Freeman)

1. Seasonal opening and closing of facility.
2. Filled potholes in road in front of gatekeeper.
3. Replaced stove.
4. Mowed grass - raked grounds.
5. Split and stacked wood.
6. Repaired gas leak in refrigerator.
7. Plugged holes in camp.
8. Glazed windows of gatehouse.
9. Painted porch floor and interior trim.
10. Painted outhouse.
11. Built West Gate sign.
12. Painted signs and box for Park permits.
13. Painted and erected flagpole.
14. Cleaned and built shelves in shed.
15. Replaced broken screen.
16. Place wire screen around base of cabin.
17. Built shelves and counter top for camp.

TOGUE POND GATE (Debra Guerette, Amy Gumprecht, Ulric Turmel,
Coleen Moore, Leslie Gordon)

1. Normal opening and closing for season.
2. Sign painting.
3. Lawn mowing.
4. Firewood detail.
5. Replaced toilet seats.
6. Painting and staining of some facilities.
7. Replaced damaged screening on gate booth.

MISCELLANEOUS MAINTENANCE PROJECTS

1. Routine washing and waxing of trucks.

2. Color coding of tools at various locations.
3. Changeover of new vehicles involved radios, blue lights, siren, racks, toolboxes.
4. Cutting of 60 cords of firewood, hauling, splitting and piling.
5. Routine litter patrol.
6. Cleaning and storing of sleds.
7. Routine service and maintenance, repairs to vehicles, lawnmowers, chainsaws, firepumps, generators, snowsleds, etc.
8. Putting up and taking down of seasonal signs.
9. Plowing of road to Togue Pond in spring breakup.
10. Daicey cleaning of facilities.
11. Shoveling of outhouses.
12. Assisted honey wagon on pumpout of septic and toilet facilities.
13. Routing service - maintenance of twelve solar - battery communication system.
14. Tore down, hauled off, burned old store building at Togue Pond.
15. Routine covering of winter parties and transportation of volunteer to and from Chimney Pond.
16. Hauling of wood, requisitions from Roaring Brook to Chimney Pond and boxes of old shingles and propane cylinders to Roaring Brook.
17. Routine winter trail work shoveling, packing, grooming of trails to outlying campground for the hauling of supplies.
18. Considerable time spent marking and painting boundary lines southern and western lines.
19. Shoveling snow off buildings as needed.
20. Routine patrolling of District and checking of skiers, sledders, campers, etc.
21. Hauled building materials throughout District to construction sites.
22. Rebuilt two old dumpsters and built two new ones.
23. Built two box sleds.
24. Built two sets of racks for trucks.
25. Hauled rocks to three culvert sites and placed along side road - hauled and placed rocks for parking lot site at Togue Pond beach.
26. Completely buried Foster Field dump twice - debris from Kidney Pond Campgrounds.
27. Prepared materials, wood, lumber, requisitions to be flown from Caribou Pit to Chimney and Russell Ponds.
28. Assisted Maintenance Division with plowing of Headquarters and garage complex.
29. Prepared two sites at Kidney Pond for buildings relocation.
30. Repaired and welded scraper blade for 1290 farm tractor.
31. Took apart and stored skid sled in Kidney Pond garage.
32. Relocated snowsled trail from Pamola Brook to foot of Gas Bottle Hill.
33. Hauled dead moose of Katahdin Lake Trail - sent head and droppings to UMO for analysis.
34. Assisted in burning and demolishing old hovel at Russell Pond.
35. Assisted in hauling building materials to new site at Rus-

- sell Pond.
36. Made up poster size maps for Togue Gate and house relocation.
 37. Routine screening and interviewing for seasonal jobs.
 38. Assisted in Caribou Transplant McCarthy Field.
 39. Assisted Maintenance Division with repairs to equipment - backhoe bucket, cat. 966 bucket.
 40. Cut out cabin site on Center Mt. Rd. and hauled gravel.
 41. Haul 1290 farm tractor to H. D. Smith for winch problems.
 42. Hauled sand and gravel throughout District as needed.
 43. Made 30 fireplaces from wheel rims.
 44. Relocated Camp Laura to site on Center Mt. Road (for West Gatekeepers).
 45. Rebuilt and reattached pintle hitch on GMC truck.
 46. Moved two buildings - one from Togue Pond, one from Kidney Pond to SFMA.
 47. Hauled rocks and blocked off road entrance near Abol Pond Outlet.
 48. Moved woodshed from Kidney Pond to new Park Ranger quarters site near Kidney Pond bridge.
 49. Cleaned manhole and trench culvert and trench at Togue beach.
 50. Built new lean-to at Togue to be moved to Katahdin Stream.
 51. Cleaned up waste wood, sawdust, bark behind Daicey Pond woodshed.
 52. Cut three trees, hauled three loads gravel for Abol Pond Scout area.
 53. Built registration boxes for SFMA.

Maintenance Ranger - Albert Rickards

Maintenance Ranger Albert Rickards was primarily involved in new construction. A list of accomplishments include:

1. Built new chimney for bunkhouse at Chimney Pond.
2. Remodeled, tore out bunkbeds and paneling at bunkhouse at Chimney Pond - 120 hrs.
Insulated, installed new waferboard paneling on walls, new molding around ceiling and floor. Replaced rotted out studs and bottom plate. Cut and installed new trim work around doors. Installed strapping on joints in waferboard. Installed strapping on joints in waferboard. Rebuilt bunkbed and installed.
3. Shingled roof on bunkhouse at Chimney Pond.
4. Installed new door in Ranger station at Chimney Pond.
5. Completed new skylight on Abol crew camp.
6. Construction of three new outhouses at Abol - 284 hrs.
Throughout the construction of Abol outhouses Maintenance Ranger Albert Rickards was involved in several other activities. They included making reservations for campers, jump-starting vehicles, assisting people with locked vehicle doors and helping out on other Ranger projects as needed.
7. Construction of new Carpentry Shop - 526 hrs.
8. Built new chimney at Park Ranger Loren Goode's new living quarters (near Kidney Pond bridge).
9. Built five new A-frame stagings.

10. Remodeled Tamarack house over to new Baxter Park Warehouse - 138 hrs.

NORTH DISTRICT - Barry MacArthur, North District Ranger
Charlie Kenney, Park Ranger
Thomas Chase, Park Ranger

RUSSELL POND (CR-Brendan Curran, ACR-Jack Sheltmire)

1. Regular spring maintenance of buildings and campground.
2. Organized materials for new building, stored requisitions.
3. Painted fire code on new requisition tools.
4. Checked conditions of bridges and trails in area and cleared blowdowns where needed.
5. Opened Wass. lake site and readied canoes.
6. Made and replaced canoe seats where needed.
7. Checked and organized all first aid gear, set out spine board and litter.
8. Cleared and burned debris from old building and began new bunkhouse construction.
9. Made and posted signs for campground.
10. Removed several large blowdowns near and on top of stream lean-to's.
11. Repositioned one of the stream lean-tos after high water had moved it.
12. Pulled up well casing in campground, cleaned and reset casing; installed pump and pump stand.
13. Maintained helipad area.
14. Hauled gravel to dock area, did repairs to dock.
15. Hauled gravel and maintained campground trails.
16. Did repairs to area bridges.
17. Repaired office stairs and restrained.
18. Built workbench, shelves and tool racks in workshop area of old bunkhouse.
19. Organized tools and supplies.
20. Applied roof tar around chimney of bunkhouse and crew camp.
21. Put up flagpole.
22. Transferred tools and materials for flight out.
23. Routine maintenance of outlying sites, also canoe repair.
24. Stained, lettered and posted new signs.
25. Cleaned and organized woodshed.
26. Cut and peeled logs to use as repair material.
27. Repaired/replaced log rollers at canoe dock.
28. Cleaned up old steel scraps around new bunkhouse.
29. Replaced cracked and brittle hoses on Indian pumps.
30. Checked and maintained fire equipment.
31. Painted privies and replaced seats as needed.
32. Supervised various volunteers in projects.
33. Built canoe rock at main camp.
34. Cut brush around main camp and on trails.
35. Split and stored firewood for 1990 season.
36. Repaired pack weigh-in station.
37. Dug and hauled gravel to lean-to #3.
38. Improved helipad clearing with direction from 112th National

- Guard.
39. Assisted in pouring concrete slab for Carpenter Shop in Millinocket.
 40. Installed damper in crew camp stovepipe.
 41. Cleared debris and trails after Hurricane Hugo.
 42. Removed trees from roof of Pogy Pond lean-to and repaired roof.
 43. Maintenance to campground chainsaws.
 44. Painted blazes, clipped brush around confusing areas of NW Basin Trail.
 45. Replaced one sill log and deacon seat and leveled lean-to 1.
 46. Seeded site of old workshop with grass seed.
 47. Cleaned privies for winter.
 48. Routine campground closure and canoe storage.

SOUTH BRANCH POND (CRI-Keith Smith, ACR-Jonathan Milne)

1. Routine opening of camps and campground.
2. Geared both boats, motors, etc.
3. Built shelving for tool shop.
4. Stained float and docks and put in water.
5. Cut blowdowns in campground and on road sides.
6. Cut and split firewood.
7. Readied picnic and day use areas for summer use.
8. Replaced old sign posts and stained.
9. Raked yard and hauled leaves away.
10. Repaired office fence and painted.
11. Mowed lawns as needed.
12. Replaced tent site #20 with new canoe site location.
13. Repaired pitcher pump at the South Branch Pond spring.
14. Replaced rockway at outlet of South Branch Pond.
15. Serviced and maintained chainsaw.
16. Made short trail to new campsite from shore of Pond.
17. Put gravel around fire rings as necessary.
18. Dug pit for new outhouse.
19. Removed three old outhouses.
20. Filled in pit at South Branch Pond parking lot area (old outhouse site).
21. Cut, peeled and utilized spruce poles for railings, etc.
22. Stained various projects: fence, outhouse, sign posts.
23. Dug out reservoir area at Ellsworth Spring (N. Traveler).
24. Relocated and re-anchored swim dock.
25. Put new screening on screen door of Ranger camp.
26. Scraped and repainted display case.
27. Repaired leaky roof of lean-to #12.
28. Stained exterior of new outhouse.
29. Repaired swim dock
30. Hauled gravel to fill outhouse pits and for other projects.
31. Prepared bear trap for problem bear.
32. Repaired canoe rack - replaced supports.
33. Worked on waterline and dug out reservoir area.
34. Graveled tent pad area and fire ring at new canoe site.
35. Repaired bunkhouse screens.
36. Repaired picnic tables.

37. Stripped off old shingles on four lean-tos, replaced rotted boards and shingled.
38. Replaced sills lean-tos #6, #4, #3 and #7 and jacked/blocked up.
39. Removed old outhouse from Telos area and hauled off.
40. Removed old outhouse from McCarthy Field hauled off.
41. Cut cedar logs for sign posts and kindling.
42. Established rock step and erosion bars at canoe site #1.
43. Put rock barriers at tentsite #22 and #31.
44. Polyurethaned and painted new walls in bedroom and kitchen of Ranger station.
45. Hauled gravel to fill potholes on South Branch Pond road.
46. Cut Hurricane Hugo blowdowns.
47. Baited and trapped problem bear from campground.
48. Lean-to #1 and #5 sill replacement, new porch, new flooring and blocked up.
49. Repaired ceiling of crew camp and painted.
50. Closed up and winterized campground and camp.

TROUT BROOK (CRI-Fred Ward)

1. Routine opening of camps and campground.
2. Cleaned fireplaces, moved some to better locations.
3. Did maintenance on lawn mower.
4. Put canoes down by Trout Brook for rental use.
5. Assisted with propane shed addition.
6. Cut brush and cleaned area around camp sites.
7. Moved office and supplies to new office in crew camp.
8. Checked fire equipment for fire suppression readiness.
9. Mowed lawns as needed - a full time job!
10. Did repairs to picnic tables.
11. Made new signs for walk-in tentsite across Trout Brook.

MATAGAMON GATE (GA-Dana Miller, Sylvia Getchell, Ted Hanson, Tabitha Dudley)

1. Opened camp, cleaned yard and woodshed.
2. Built new interior door for gatehouse cabin.
3. Organized tools in woodshed.
4. Put new foot valve on water pump and maintained.
5. Maintained lawnmower.
6. Mowed lawns as needed at gatehouse and boat landing.
7. Built new shelf for office.
8. Painted bedroom ceiling.
9. Replaced faucet O rings.
10. Removed clump of dead maple trees from back of camp.
11. Cut and split firewood.
12. Painted picnic table.
13. Painted signs and woodshed, back side of camp.
14. Put up new flagpole.
15. Painted green trim on woodshed/shop.
16. Scraped and restained fence, painted flagpole.
17. Painted livingroom and kitchen ceilings.

18. Spread calcium on road for dust control.
19. Painted trash cans, signs and window trim.
20. Closed up camp for winter season.

MAINTENANCE RANGER - Hadley Coolong

1. Worked on plumbing in new crew camp at Trout Brook Farm.
2. Did refrigerator repair at Telos Gate.
3. Replaced work bench at Trout Brook garage.
4. Repaired spring near McCarthy Field.
5. Worked on waterline at Trout Brook Farm-spring hookup and fall take down.
6. Helped on trail work on Freeze Out Trail with signs installation and sign removal.
7. Set up radio at Trout Brook office.
8. Installed new ceiling and vent in South Branch Pond Ranger camp.
9. Made a culvert repair at Dry Brook.
10. Chainsaw repair and maintenance of North District saws.
11. Repaired hot water heater at Nesowadnehunk Field CR cabin.
12. Worked on porch construction of Ranger camp Trout Brook Farm.
13. Painted screens on crew camp at Trout Brook Farm.
14. Assisted moving supplies to Russell Pond.
15. Repaired desk and livingroom furniture at Matagamon Gate.
16. Hooked up hot water heater in crew camp Trout Brook Farm.
17. Installed lights at Trout Brook garage.
18. Numerous lawnmower repairs.
19. Assisted DOT with gasline installation.
20. Installed slate under woodstove in crew camp Trout Brook Farm.
21. Assisted with work at Kidney Pond.
22. Worked on propane gas repair at McCarty Field.
23. Repaired table saw at Trout Brook Farm.
24. Made roof brackets for shingling projects.
25. Maintained outboard motors, canoes and generator.
26. Worked on lean-tos at South Branch Pond.
27. Worked on cupboards at Trout Brook Farm.
28. Made screen doors for Trout Brook Farm.
29. Repaired refrigerator at Telos.
30. Put antenna on roof of Trout Brook Farm Campground office.
31. Made shelves in garage Trout Brook.
32. Shingled roof of boathouse at Webster Lake.
33. Built slip for boat at Webster Lake.
34. Built woodshed steps at Webster Lake cabin.
35. Made and repaired picnic tables.
36. Maintenance of case backhoe and 1290 tractor.
37. Built outhouse at Webster Lake.

MISCELLANEOUS MAINTENANCE

1. Built tote sled to move buildings at Kidney Pond.
2. Routine snowsled and vehicle repair.
3. Hauled lumber and firewood into Webster Lake.

4. Destroyed old boathouse at Webster.
5. Supplies were flown into Russell Pond with assistance of 112th and Maine Forest Service.
6. Removed and destroyed old shed from Black Brook.
7. Helped build dumpsters at Millinocket.
8. Had lumber planed and hauled to various locations.
9. Put siding on one wall and two new windows and a door at Trout Brook Farm Ranger camp.
10. Shingled lean-to at Little East Site.
11. Shingled Ranger camp at Trout Brook Farm.
12. Re-topped chimney at Trout Brook Farm Ranger camp.
13. Cut and split firewood for garage in Millinocket (15 cord).
14. Rebuilt pathway to toilet at Matagamon.
15. Mowed roadside from Park line to Black Brook.
16. Hauled wood heater to Webster and installed.
17. Worked on boat mooring at Matagamon.
18. Flagged landing zone on Horse Mt.
19. Worked on skylight at Martin Camp.

VI - 1989 BAXTER STATE PARK VOLUNTEER PROGRAM

Baxter State Park Volunteer Co-ordinator John Howard has compiled the following 1989 volunteer statistics:

- A. 152 volunteers donated a total of 11,244 hours of useful service to Baxter State Park.

- B. A breakdown of volunteer services by location:

Fire Towers - Burnt Mt.	985 Hours	
Horse Mt.	475 Hours	1,460 TOTAL

Campgrounds - Abol	360 Hours	
Chimney Pond	404 Hours	
Daicey Pond	922 Hours	
Kidney Pond	1,955 Hours	
Roaring Brook	60 Hours	
Russell Pond	548 Hours	
South Branch Pond	60 Hours	
Trout Brook Farm	472 Hours	
Webster Lake	1,736 Hours	
West Gate/Nes. Field	390 Hours	
Survey of Park Boundary	56 Hours	
Trail Crew Assistance	865 Hours	
Togue Pond Area	934 Hours	
Park Ranger Cabin Proj.	214 Hours	
Misc.	115 Hours	
Administrative	733 Hours	11,244

- C. Special recognition is in order to the following volunteers who donated more than one month's volunteer service to Baxter State Park.

1. Ben & Verna Boyington covered Webster Lake Ranger Sta.
2. Ruth Buttler worked at the Daicey Pond Campground.
3. Alice Crabtree assisted Park Rangers in the Togue Pond area on a 4-season basis.
4. Ron and Lee Davis performed both maintenance and public relations projects at Daicey Pond.
5. John Howard administered the Volunteer Program as the Volunteer Coordinator.
6. Julie Johnston performed maintenance and public relations at the Abol Campground.
7. Lucien LeBlanc assisted in winter projects at Chimney Pond, Roaring Brook and the boundary repainting project.
8. Abbott and Nancy Meader assisted at Kidney Pond and the Horse Mt. Firetower Project.
9. Edward "Ted" Norrish worked at Park Headquarters, Daicey Pond and the Burnt Mt. Firetower.

- D. Organizations who volunteered their services to Baxter State Park include:

1. Country Way Carpenters: The Construction of the Russell Pond bunkhouse.

2. Sierra Club for major assistance in trail maintenance.
 3. U. of M. Presque Isle for trail maintenance and camp-ground Maintenance at Russell Pond.
 4. Weelabrator - Sherman Energy Co. for restoration work on the Horse Mt. Firetower.
- E. 1989 BSP Volunteers:
- Patricia Albano, Hauppauge, NY
Marc. S. Alberi, South Paris, ME
Linda G. Allen, Brewster, NY
Faith Ames, South China, ME
Leslie D. Ames, South China, ME
Robert F. Ames, Bucksport, ME
Sherri L. Ames, Bucksport, ME
Eric Apgar, New Haven, CT
Lucille T. Atwell, Hancock, ME
Deborah A. Berman, Bath, ME
Anita Bidinosti, London, Ontario, Canada
Janice Bilodeau, Auburn, ME
Kathy Blikken, Brunswick, ME
Deborah Bobotas, Oakland, ME
Steve Bobotas, Oakland, ME
Bennie Boyington, Millinocket, ME
Verna Boyington, Millinocket, ME
Richard W. Bray, Orland, ME
Richard A. Bresnahan, Hope, ME
Thomas M. Bresnahan, Hope, ME
Laurie J. Buck, Ithaca, NY
Jean Burnham, Hebron, ME
Robert Burnham, Hebron, ME
Ruth Buttler, Brewerton, NY
Joseph Caputo, Gardiner, ME
Cloe Caputo, Gardiner, ME
Country Way Carpentry, Hope, ME
Isabel M. Carson, Woodsville, NH
Martin J. Castle, Unity, ME
Robert J. Ceglarski, Clifton Park, NY
Brenda C. Clarkson, Moretown, VT
Courtney Collins, Lake Hill, NY
Charles A. Coolidge III, New York, NY
Alice Crabtree, Monson, ME
Bernard Crabtree, Monson, ME
Mike Cranmer, Dover-Foxcroft, ME
Nancy Cranmer, Dover-Foxcroft, ME
Brendan Curran, Hope, ME
Lee Davis, Orono, ME
Ron Davis, Orono, ME
Claude Deschaine, Millinocket, ME
Milton E. Doebener, East Port, ME
Everett W. Dorr, Appleton, ME
Joel Drew,
Dorothy M. Dubois, Dexter, ME
Emile A. Dubois, Dexter, ME
Shaun P. Faith, State College, PA
Elden Gag, Millinocket, ME

Christine Gilbert, Dover-Foxcroft, ME
 Marlies Glacies, Amsterdam, Holland
 Kristen F. Goodard, Dover-Foxcroft, ME
 John Gondek, Tyringham, MA
 Loren C. Goode, Jr., Patten, ME
 Regina Goode, Patten, ME
 George Grafton, Thomaston, ME
 Clyde D. Grant, Old Town, ME
 Judy A. Hale, Penobscot, ME
 Laura Hamer, Bangor, ME
 Margaret Hanscom, Orrington, ME
 Roland Hanscom, Orrington, ME
 J. Michael Haskell, Bowdoinham, ME
 Jack Hassler, Swatara, PA
 Velmer Hassler, Swatara, PA
 G. Adair Heath, Portland, ME
 Joan D. Hildreth, Hancock, ME
 Nancy Hill, Harrisburg, PA
 James F. Holt, Livermore Falls, ME
 Janys Holt, Livermore Falls, ME
 Alan Howard, Newtown, PA
 Betty Howard, Orrington, ME
 John Howard, Orrington, ME
 Joshua Howard, Newton, PA
 Matthew Howard, Newtown, PA
 Jean Howes, Patten, ME
 Linda Ives, Bangor, ME
 Brian Iwatake, New London, CT
 Steve Jackson, Dover-Foxcroft, ME
 Charles James, Millinocket, ME
 Julian J. James, Millinocket, ME
 Andre Jenny, Exton, PA
 Ingrid A. Johnson, Winchester, MA
 Julie Johnston, Millinocket, MA
 Denna Kastner, Flemmington, NJ
 Liz Keach, New Sharon, ME
 Stan Keach, New Sharon, ME
 Fr. Edward J. Kelley, Woonsocket, RI
 Homer King, Millinocket, ME
 Barbara Leavitt, St. Albans, ME
 Dana Leavitt, St. Albans, ME
 Lucien LeBlanc, Woonsocket, RI
 Marcia H. Libby, Scarborough, ME
 Jean Lobdell, Bath, ME
 Ronald Lobdell, Bath, ME
 Charlotte, Lowell, Island Falls, ME
 Ava M. MacArthur, Island Falls, ME
 Alisa MacArthur, Island Falls, ME
 Jason MacArthur, Island Falls, ME
 James McLean, Millinocket, ME
 Harold McNelly, Island Falls, ME
 Abbott Meader, Oakland, ME
 Nancy Meader, Oakland, ME
 Roger Merchant, Dover-Foxcroft, ME
 Terri-Ann Miller, Houlton, ME

John Mingus, Germantown, MD
 Judy Mingus, Germantown, MD
 Pat Moran, Arlington Heights, IL
 Michael Mulcahy, Austin, TX
 Glen Naftchi, Teaneck, NJ
 Deborah Nelson, Winchester, MA
 Charlie Noddin, Millinocket, ME
 Edward Norrish, Wigtownshire, Scotland
 Earl J. Noury, Gardiner, ME
 Sandra Noury, Gardiner, ME
 Skip Oliver, Hillsboro, NH
 Donna Day, Hillsoboro, NH
 Daphne Payne, Hamilton, Ontario, Canada
 Carol A. Peabody, Princeton Junction, NJ
 Jennifer L. Redding, Wiscaset, ME
 Peter H. Richardson, South Deerfield, MA
 Beatriz Gallego Rojo, Palecia, Spain
 Lowell Satre, Youngstown, OH
 Ellen Satre, Youngstown, OH
 Godpic C. Shoesmith, New York, NY
 Thomas Shoesmith, New York, NY
 Joan Shute, Path, ME
 Kevin Shute, Bath, ME
 William Silliker, Hampden, ME
 Maryellen Silliker, Hampden, ME
 Edward Smith, 'Pasabna, MD
 Keith Swartley, Stanfordville, NY
 John K. Taylor, Oakfield, ME
 Jane I Thomas, Surrey, ME
 Latona Torrey, Bangor, ME
 Frank Trautman, Islesboron, ME
 Christine Trefethen, Milford, ME
 Jodi Tucker, Caribou, ME
 University of Maine-Presque Isle, ME
 Harold W. Underhill, Upper Frenchville, ME
 Maureen Watson, Scranton, PA
 Scott J. Whitcomb, Lynn, MA
 Brian Williams, Silver Springs, MD
 Lloyd L. Witham, Norway, ME
 Deborah Wohlfort, Wallingford, CT
 Dennis I. Wright, Hope, ME
 Chaitanya E. York, West Leeds, ME

- F. The special memory of two Volunteers who passed away in 1989 and who will be missed by Baxter State Park.
1. Richard Bray, Sr. - A regular Volunteer at the Kidney Pond Camps.
 2. Julian James - Assisted in the Supply Warehouse in Millinocket.

BAXTER STATE PARK VOLUNTEER PROGRAM BUDGET AND BENEFITS (1989)

A. Cost per Volunteer

- | | |
|-----------------------------------|----------|
| 1. Postage - 5 letters x .25 | = \$1.25 |
| 2. Telephone - 2 calls at \$1.10 | = 2.20 |
| 3. Awards - a) patch and numerals | = 2.00 |
| b) certificates | = 1.50 |
| 4. Stationery/misc. supplies | = 1.00 |

Total cost per Volunteer = \$7.95

Total number of Volunteers x cost per Volunteer

150 Volunteers x \$7.95 (cost per Volunteer) = \$1,192.50

B. Additional costs of Volunteer Program

- | | |
|--|------------|
| 1. Administrative costs | = \$300.00 |
| 2. Propane tanks (18 per year x 24.28) | = \$437.04 |
| 3. Campsite space - less than \$100.00 | = \$100.00 |

C. Total cost of BSP Volunteer Program = \$2,029.54

D. Total benefit of Volunteer Program measured in value of services = \$66,783.74

- | | |
|---|------------------------------|
| 1. Number of Volunteer hours per year | = 11,244 |
| 2. Value of hourly rate of \$6.12 per hour (Ass't Campground Ranger wage - pay range 7) | |
| 3. \$11,244 x \$6.12 | = \$68,813.28 in labor value |
| 4. Labor value - (\$68,813.28) less Park cost \$2,029.54 | = \$66,783.74 |

E. Additional Comments

The figures given in the cost of the Volunteer Program as recorded in columns A and B is a liberal cost estimate. In most cases there are less than 5 letters written per Volunteer and less than 2 phone calls. Volunteers often call Baxter State Park at their expense.

Also, the value of \$6.12 per hour is a very conservative cost. Many volunteers offer professional services that are very much higher than the lowest Park wage of \$6.12 per hour.

The Volunteer Program in Baxter State Park is very beneficial to the overall operation of Baxter State Park. The labor of 11,000 hours is a solid supplement to Park staff and Park operations.

VII TRAINING

Training opportunities for Park employees in 1989 included:

1. A two-day "Solo" first aid training course was conducted at Roaring Brook for trail crew personnel and new campground personnel.
2. A fire suppression training session was conducted by the Maine Forest Service at Park Headquarters and Nesowadnehunk Field.
3. Lester Kenway, the Trail Supervisor, taught trail maintenance and saw safety to SCA personnel and MCC crew leaders.
4. A helicopter safety training session was conducted by the 112th Medivac Army National Guard unit at the Millinocket Municipal Airport. The National Guard also trained their staff by several flights in the Mt. Katahdin/Russell Pond area to familiarize staff with unique Baxter State Park topographical features.
5. The annual spring orientation of Park employees was held at Kidney Pond on May 31, 1989.
6. A law enforcement training school (100 hours) was attended in 1989 by Rangers Robert Howes, Barry MacArthur, Thomas Chase, Loren Goode, Charlie Kenney and Park Director I. C. Caverly, Jr.
7. A firearm training session was conducted on August 16, 1989 for all Commissioned Rangers.
8. Chief Ranger Chris Drew attended the State Employee Relation conference in Carrabassett Valley on September 13-15, 1989.
9. Park Mechanic Timothy Sides attended a training session sponsored by the General Motor Training Center in Dedham, Mass., on March 13-14, 1989. Tim received training on the new fuel injection systems installed on all current GM motor vehicles.
10. All new Park employees received training and orientation by State trained personnel.

VIII SEARCH AND RESCUE

There were no fatalities in Baxter State Park in 1989. Search and Rescue involved fractures, sprains, strains, and other minor injuries. A list of Search and Rescue operations due to injury or dangerous conditions include:

- A. South District

1. 12/29/88 - A snowsledder from New York shattered his left elbow on the State Road (Rt 157) in a sledding accident. Park Rangers responded to this accident.
2. 12/30/88 - Evacuation of Mark Hoxie of East Millinocket who fractured his right arm in two places in a snowmobile accident between Abol and Katahdin Stream.
3. 12/30/88 - Park personnel evacuated Mrs. Grotefield from Baxter State Park to the Millinocket hospital with a frostbite injury to the right foot.
4. 1/4/89 - Evacuating Natalie Mamoureaux due to a frostbite injury to the left foot.
5. 3/11/89 - Evacuation of a young woman from Portland, Maine who suffered chest injuries from a snowmobile accident at Logan Ponds in T2,R9.
6. 5/28/89 - Watercraft rescue of a lawyer stranded on Daicey Pond after losing his paddle...
7. 6/18/89 - Assistance to young lady on the Chimney Pond Trail.
8. 6/24/89 - Assistance rendered to Cheryl Lavential on the Hunt Trail.
9. 7/27/89 - Assistance to late hikers with no flashlights off the Abol Trail.
10. 8/11/89 - Late hiker assistance on Marston Trail.
11. 8/16/89 - Evacuation of Paul Minnulli (emotional distress).
12. 8/23/89 - Assistance to Kevin Charleson on the Hunt Trail.
13. 9/3/89 - Assistance to a late hiker on the Abol Trail (no light and sore knee).
14. 9/4/89 - Evacuating Harriet Hazeltine of Passadumkeag, ME off the Abol Trail (exhaustion).
15. 11/4/89 - Assistance in search of Jeff Austin of Brattleboro, VT, a lost hunter staying at the Katahdin Lake Camp in T4,R9.

B. North District

1. 5/28/89 - Assistance to a late day use party at lower South Branch Pond Campground.

2. 6/18/89 - Assistance to persons in a capsized canoe on South Branch Pond. Campground personnel believe this to be an alcohol related accident.
3. 8/16/89 - Karl Lane was flow out of Russell Pond after a lower leg fracture. The Maine Forest Service evacuated Karl to the nearest hospital.
4. Park personnel assisted in the body recovery of a drowning accident on the East Branch of the Penobscot River outside of Baxter State Park.

IX LAW ENFORCEMENT

Considerable time and energy was spent protecting the resources of Baxter State Park in 1989. Baxter State Park maintained a low profile law enforcement program. Warnings are far more common than Court summons as the staff strives to educate the user in the proper use of the unique wilderness resources of Baxter State Park.

A breakdown of law enforcement activities are:

- Prosecutions - 20
- Evictions - 4
- Written warnings - 2
- Verbal warnings - 220 plus - too numerous to accurately count. Many such warnings center on speeding.
- Automobile accidents - 8

Most violations were centered on illegal camping and fires.

The 1989 record of law enforcement actions are as follows:

SUMMARY OF
CRIMINAL CASES



COURT OFFICER
Robert E. Howes

DATE 1989

*P-Physical
S-Summons
B-Bond

OFFICER	BDG NO.	RESPONDENT	DOB	ARREST*	OFFENSE	PLACE OF ARREST	COLL.	DISPOSITION	TIME
T. Chase	56	Douglas Crouse	07-07-72		F&W-Did fish with- in 150' of fishway	T6R8	\$55	Guilty	
R. Howes	53	Ralph Sando	06-29-71		Imprudent Speed	T2R9	38.50	Guilty	
L. Goode	57	Thomas Harpe	11-11-59		Illegal Camping	T3R10	38.50	Guilty	
R. Howes	53	Howard Meader	02-22-62		Illegal Camping	T3R9	38.50	Guilty	
R. Howes	53	Scott Perry	01-16-63		Illegal Camping	T3R9	38.50	Guilty	
R. Howes	53	John Okerman	12-17-62		Illegal Camping	T3R9	38.50	Guilty	
C. Kenny	59	James Whittington	04-28-61		Failure to Register	T6R8		Dismissed	
R. Howes	53	Theodore Maffeo	03-16-68		Illegal Camping	T3R10		FTA	
R. Howes	53	Lee King	01-20-71		Illegal Camping	T3R10	38.50	Guilty	
R. Howes	53	Pamela Andrews	09-12-70		Illegal Camping	T3R10	38.50	Guilty	
R. Howes	53	Lawrence Arone	12-13-68		Illegal Camping	T3R10	38.50	Guilty	
R. Howes	53	Gregory Jacenko	07-21-66		Illegal Camping	T3R9		FTA	
R. Howes	53	Brady Landis	06-25-70		Illegal Camping	T3R9		FTA	
C. Kenny	59	Jeffrey Donahue	08-04-70		Illegal Camping	T3R10	38.50	Guilty	
R. Howes	53	Robert Brooks	07-23-71		Illegal Camping	T3R10	38.50	Guilty	
R. Howes	53	Nicholas Collins	06-28-68		Illegal Camping	T3R10	38.50	Guilty	



*P-Physical
S-Summons
B-Bond

[illegible]

X SPECIAL ACTIVITIES

1. Park personnel repainted 19 miles of the Baxter State Park boundary.
2. The Maine Forest Service and the Maine National Guard (112th) provided a great deal of assistance to Baxter by assisting in search and rescue activities and the air lifting of supplies necessary for asbestos removal and the construction projects at Russell Pond and Chimney Pond.
3. Personnel of the Environmental Protection Agency and the Bureau of Public Improvement were housed and flown in and out of Russell Pond during the asbestos removal project of August 8-10, 1989.
4. Park personnel assisted the Maine Forest Service by locating and suppressing a fire caused by a lightening strike in T6,R8 (outside of Baxter State Park).
5. Park personnel assisted the Dept. of Inland Fisheries and Wildlife by:
 - a. Assisting in a drowning on the East Branch of Penobscot River.
 - b. Assisting in 2 serious snowsled accidents outside of BSP.
 - c. Assisting in a search of a lost hunter outside of BSP.
6. Park personnel assisted the Caribou Project personnel at McCarthy Field and Camp Phoenix from April through October.
7. Park personnel and volunteers operated the West Gate to specially accommodate the construction equipment entering and exiting the West Gate for the Camp Phoenix Corporation.
8. West Gatekeepers assisted local fishermen by providing access to the public landing at Nesowadnehunk Lake.
9. The day use control booth at the junction of the Roaring Brook road was manned during heavy use traffic periods.
10. Baxter State Park provided housing and materials for the volunteers for Peace, Maine Conservation Corps and the Sierra Club as these organizations assisted in the maintenance of Park resources.
11. Wheelabrator - Sherman Energy Company of Sherman Mills, Maine volunteered to remodel and upgrade the Horse Mt. Tower for use in 1989.
12. Park personnel provided housing and assistance to Dr. Hudson and Charlie Cogbill as they performed a critical area study on the Tableland of Katahdin.
13. Park personnel assisted the Pine Marten Study personnel in

- providing maintenance assistance at the Double Top Camp and providing access through the West Gate.
14. Park personnel assisted the Park Naturalist in gathering information on the day use survey.
 15. On April 5, 1989 Park staff orientated a delegation of three officials of the China Dept. of Forestry personnel in the operation of Baxter State Park.
 16. Park personnel attended the funerals of three friends of Baxter State Park:
 1. Walter Birt - Former Chairman of the BSP Advisory Comm.
 2. Richard Bray, Sr. - A regular BSP volunteer
 3. Julian James - a local regular BSP volunteer.
 17. Special services for the public include:
 - a. Hauling stuck vehicles out of the ditches, calling for wrecker assistance.
 - b. Boosting of batteries; assisting persons getting into their locked vehicle.
 - c. Transporting fatigued hikers and packs.
 - d. Repair of camping equipment, vehicles, fishing equipment, etc.
 - e. Temporary loaning of axes, hand tools, etc.
 - f. Furnishing small amounts of gasoline to help get vehicles "out of the woods."
 18. Park personnel found time to teach Junior Rangers how to fly fish as part of the Junior Ranger Program at Daicey Pond.
 19. Assisting the Dept. of Inland Fisheries & Wildlife fisheries biologists with housing and watercraft for fishing surveys done at Abol Pond, Draper Pond and Celia Pond.
 20. Lee Davis closely monitored the nesting activities of a family of loons on the south shore of Kidney Pond, near Colt's Point.
 21. Park Personnel provided information and assistance to Peregrine Falcon Study personnel as they located a nesting area in Baxter State Park.
 22. Park staff live-trapped and relocated one bear and several beavers in 1989.
 23. Cabins removed from Kidney Pond were utilized by:
 - a. Joining two cabins to make Park Ranger cabin on the old Kidney Pond road.
 - b. Providing a cabin for housing for West Gate personnel.
 - c. Providing a cabin for housing/shower facilities for SFMA activities.
 25. The Volunteers for Peace crew did substantial landscaping on

the former Togue Pond Campground tentsite and surrounding shoreline.

26. Assisted Environmental Protection Agency personnel in the on-going acid rain studies on bodies of water in BSP.
27. "Country Way Carpentry" volunteered their able staff or carpenters to build the new Russell Pond bunkhouse...a fine piece of carpentry showmanship!
28. The first year full operation of the West Gate - the statistics are included below:

1989
WEST GATE STATISTICS
TOTAL ENTRANTS - 3480

	<u>No.</u>	<u>%</u>
Transient traffic exiting other gates	571	16.41
Togue Pond Gate	387	11.12
Matagamon Gate	184	5.29
Transient traffic to Nesowadnehunk Lake	333	9.57
Public Landing	267	7.67
Camp Phoenix	57	1.64
Daisey's Camp	9	.26
Day Use traffice thru West Gate	539	15.49
Sightseeing	247	7.10
Fishing	152	4.37
Hiking	140	4.02
Camping in Baxter State Park	140	4.02
Total of Entrance Statistics		
Transient Vehicles	904	25.98
Day Use Vehicles	539	15.49
Camping Vehicles	140	4.02
Pass & Official Vehicles	1079	31.00
Vehicles to Store at NWCG	<u>818</u>	<u>23.51</u>
Total	3480	100.00

XI PROJECTION OF FUTURE PROJECTS FOR 1990-91

Baxter State Park has goals that may be completed in future years. Providing that funding and resources are available, the following projects are scheduled for future completion:

1. Old underground fuel tank removals at Millinocket Headquarters, Togue Pond, Nesowadnehunk Field, Tracey Pit, and Trout Brook Farm.
2. New above ground fuel tanks to be installed at Abol Pit, Nesowadnehunk Field and the North District.
3. The completion of the Carpenter Shop for winter useage.
4. The removal of the asbestos covered (roof and flooring) of the former bunkhouse at Russell Pond. This building is presently used for storage.
5. The completion of a new workshop/storage building at Russell Pond to take the place of the present asbestos covered facility.
7. The renovation of 5 cabins at Kidney Pond for public useage.
8. The continuation of grounds renovation and stabilization at Togue Pond (cabin and tenting areas)..
9. The roadside moving of the Park perimeter road.
10. The removal of the old Katahdin Stream bridge.
11. The raising and extension of the Kidney Pond bridge.
12. Modification of the Headquarters auditorium to provide office and storage space for upstairs access.
13. The possible construction of a Park Ranger's cabin in the South District.

C. SCIENTIFIC

FOREST

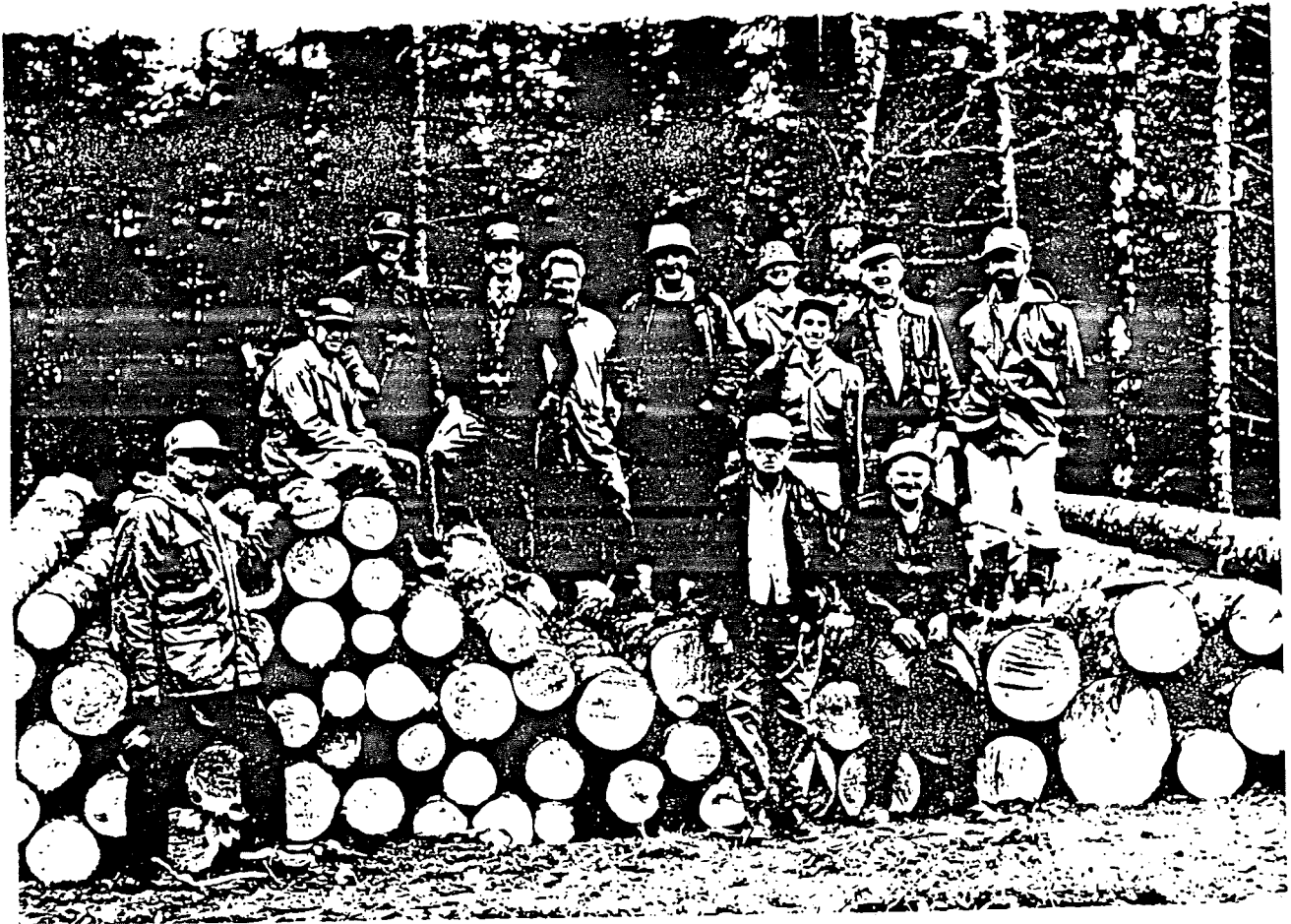
MANAGEMENT

AREA

OVERVIEW

1989 was a watershed year for the SFMA. Following management plan review and planning for forest administration and operations, forest harvest operations resumed after a 3 year hiatus. Response to this summers operations has been positive with general agreement that the SFMA is moving firmly toward the goals and vision expressed by Governor Baxter in the Deeds of Trust. Getting the SFMA moving was a difficult task and was possible only with the combined effort and commitment of many people - keeping the SFMA moving and on track will require continued effort, vigilance and patience on the part of all who support the idea of the sound long-term forest stewardship.

The forest resources of the State of Maine have come under increasing public attention over the past year, and it is unlikely that this attention will fade for some time. Wilderness reserves, hostile take-overs, softwood supply shortfalls and a number of other issues have all spent front-and-center time in our media this year. Clearly, there is increasing pressure from many sides on the resources the forest has to offer. When the relative values that our society places on the various forest resources begins to shift, our vision of what the forest should be like also shifts. The Deeds of Gift provide the mandate for the SFMA to provide a balanced forest resource appropriate not only for the needs of today but for the future as well. In small areas we can begin immediately to reflect the vision Percival Baxter held for the SFMA, but it will take many years of patient and persistent effort through good times and bad to achieve the overall forest care and management that forms the heart of what Governor Baxter's hopes were for the SFMA.



SFMA Advisory Committee and Contract Foresters - 1989 Field Tour

FOREST ADMINISTRATION

This marks the third year of support and commitment provided by the SFMA Advisory Committee. It would be hard to imagine a better group of people to work with on this endeavor. It is my hope that for many of the Committee members, that the successful operations of this summer provided some measure of satisfaction after a long period of patient and dogged efforts. 1989 saw committee meetings in January, June, September and December, and included the seating of Bob Frank of the U.S. Forest Service as committee chair. In my opinion, the highlight of the year was our September 14th field tour of the SFMA. This now-annual event includes an overnight on the Park (this year at Kidney Pond Camps), followed by an early morning start for the SFMA to view the most recent field operations. The tour was very well attended this year including 10 of 11 committee members plus the two foresters providing management assistance on the SFMA. The field visit included stops new crew camps, new road construction, stands marked for harvest, and harvested stands. The last stop included viewing harvest in progress with the opportunity for

committee members to question the crew on techniques and problems.

The vital contribution and balance provided by the SFMA Advisory Committee cannot be overlooked and will continue to provide an essential element in successful progress in the management of the area.

1989 marks the first full year of an in-place access policy regarding vehicle access to the SFMA. This policy, arrived at after review and input from Park staff, SFMA advisory committee, and interested public groups, basically provides resource protection by restricting vehicle access during times of:

- high fire danger (MFS Build-Up Index of 40 or greater)
- heavy rains (soft roads)
- dangerous conditions (log truck traffic, heavy blowdowns)

This policy resulted in the existing gate on the Murphy Brook Road being closed from March 30 to May 20th of 1989 to protect roads during spring break-up. This gate was also closed on one weekend in July in response to high fire danger. Currently, the Murphy Brook gate controls access on the SFMA north of Webster Stream. The main access route to the SFMA south of Webster Stream, the Wadleigh Mountain Road, will hopefully have a gate installed in 1990 to allow implementation of the access policy.



All roads on the SFMA have been signed with a road name. Major brooks, where crossed by a road, are also signed. The signs have weathered well and provide people in the area with a common denominator in describing their travels as well as a reminder that they are within the boundaries of Baxter Park. Some short and basic interpretive signing has also been placed on areas harvested in 1989 in an attempt to inform the public of the purpose and design of the management activities taking place.

A major project involving plenty of both administration and hands-on operation was the construction of lodging facilities for logging personnel working on the SFMA. Personnel from the Dept. of Conservation, Bureau of Public Lands were very helpful in providing space at the Coffeelos Camps in T7R11 just off mile 52 of the Great Northern Paper Co. Telos Road. This camp yard was previously the site of a large GNP woods camp that was dismantled and moved in the late 1970's. In the early 80's a private woods contractor moved some smaller camps into the facility, but these camps have not been fully occupied for some time. Public Lands offered BSP space at the site for additional camps for crews working on the SFMA. Public Lands also implemented action toward establishing their own camp at the site for use by BPL marking crews and foresters. It is likely the camps moved in earlier by the private contractor will be moved out in the coming year..

Baxter Park opted to construct new camps on the site to provide quality housing for the operational crews. The camps consist of two 16' x 20' (interior dimensions) log camps for primary housing. With help from Togue Pond Ranger Bernard Crabtree, one of the surplus camps from Kidney Pond was jacked up and moved up to the Coffeelos site to serve as additional housing and a shower house. Major phases of the project were:

1. construction of log camps
2. excavation and installation of water and sewer lines (the site had an existing 200' drilled well and large in place septic system from the GNP camps)
3. Installation of propane tanks and lines to supply refrigerators, stoves and heaters for all living units and pumphouse.
4. Move and set generator shed and install 10KW generator.
5. Move and rehab surplus Kidney camp.
6. Install water heater and plumb shower house and camps
7. Move and rehab pumphouse shed, plumb and install pumping system
8. Wire camps, shower house and pumphouse and tie to generator
9. Move and set equipment and storage shed

Simply stated, the 8 items listed above represent a large amount of work. The buildings moved up from other locations required extensive reworking in sheathing, insulation and roofing. The contractor for the SFMA, Randy Cyr, carried a large portion of the camp establishment effort in supplying labor and materials throughout the summer. Randy's attitude and approach

have played a pivotal role in the success of this years' activities and the establishment of the Coffeelos crew camps is an important component in the overall operations of the SFMA. Finally, a note of thanks is due to Phil McGlauglin of BSP staff for his hardy assistance in plumbing and sewer work that was crucial to the effective operation of the camps.

A motion to dismiss was filed by BSP legal counsel regarding the complaint against the Park filed in 1986 by Fitzgerald and Butler. The motion was heard on May 3, 1989 and ruled dismissed.

The start-up of operations, particularly the sale of forest products prompted some development of accounting systems to check and track transport, scale, costs and revenues from harvested products. This effort generated a Utilization Summary which follows revenue and volume of products sold on a weekly basis. A sample is included in the appendix.

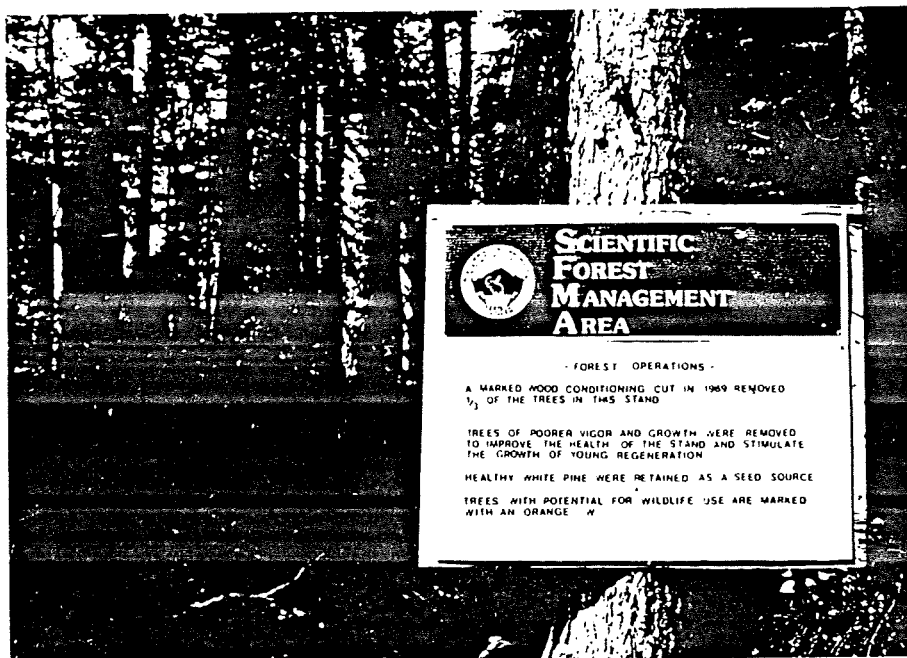
The sale of softwood logs also prompted some tracking of log loads and defect. The resulting Log Tally sheet is also included in the appendix.

FOREST OPERATIONS

Stand Operations:

Forest stand evaluation, prescription and marking activities continued in 1989 in preparation for treatment operations. Excellent assistance in field work was provided by two registered professional foresters, John Mills and George Ritz. These individuals are employed on a contract basis and worked on the average 1-2 days per week from May into November. It is likely that the work arrangement will continue on a more occasional basis through the winter operating period. Both John and George deserve a great deal of credit for the high level of expertise, experience and quality evident in their work on the SFMA.

Following the development of stand prescriptions, about 204 acres were marked for a first stage conditioning cut. Wood marked for removal concentrated on trees of estimated poorer growth and vigor and those trees of relatively high risk for insect or disease attack. Important considerations while marking included residual stand spacing, estimates of windthrow potential, and potential for establishing or enhancing regeneration. Healthy white pine were favored for retention as a seed source and in consideration of future value growth. When encountered, trees with potential value for wildlife use were marked with an orange "W" for protection.



About 30 acres of small diameter softwood on poor sites were designated for a first-stage shelterwood cut. These treatments were layed out so that wood was removed in narrow (20) strips spaced 80' apart. All trees within the strip were cut with the exception of young, 6"-10" diameter white pine.

Another 30 acres of established mixed regeneration overtopped by merchantable white pine, scattered spruce, fir and aspen, were designated for a seed tree cut. In this stand, merchantable trees in the deteriorating overstory were designated for removal, again with the exception of vigorous white pine. The white pine were retained in recognition of the potential for value increase and to enhance the existing mix of established regeneration.

All stands were cruised to help develop initial prescriptions. Marked wood stands were cruised after marking to verify that removal rates in species, diameters, stocking and spacing meet prescription targets.

Harvest operations began in mid-June in marked wood stands and has continued though years' end. Treatments were accomplished with two conventional skidder crews of two persons each. As needed, skid road locations were designated in advance. Harvested trees were limbed in the woods, with no mechanized delimbing at roadside. This resulted in better protection of harvested sites, better potential for suitable regeneration development, and much improved aesthetics along the road system.



The consideration of aesthetics and the emphasis placed on minimizing site and stand damage and maximizing regeneration potential were considered in the determination of harvest cost and payment rates to the crews. Chainsaw limbing of spruce and fir and yarding of wood in a tightly marked cut are challenging and difficult tasks. The crews working on the SFMA in 1989 deserve high commendation for the skill and expertise they demonstrated and the excellent job they accomplished in the harvest operations.

Products resulting from the harvest operations include spruce and fir pulpwood and logs, pine logs and pulpwood, aspen pulpwood, birch boltwood, and hardwood pulpwood. A yearly summary for 1989 specifying the harvest amounts of these materials from the SFMA may be found in the Utilization Summary in the Appendix. The remote location of the SFMA, the toll required for shipment of products not sold to Great Northern Paper, and the current market prices offered for the various wood products, combine to make sound silvicultural and economical forest operations a challenge on the SFMA. The marketing efforts of many people and particularly the operations contractor for the SFMA, Randy Cyr, have made significant headway in 1989 in improving the forest management possible on the SFMA.

Road Construction:

Road construction activities continued on the SFMA in 1989. Operations in the construction of all-weather road continued to utilize a hydraulic excavator in combination with a bulldozer. The technique of back-hoe built road offers a sound road surface with minimal surfacing requirements and effective removal of debris resulting in a final road that is pleasing to the eye.



This year's construction resulted in approximately 12,000' of all-weather road and 7,500' of winter road on the SFMA. A potential source of road surfacing in the form of ripped ledge was located and cleared for excavation in 1990. Because of the lack of overall surfacing, roads on the SFMA are sensitive to heavy rains and through the summer and fall, wood hauling activities were dictated by rainfall and road condition.

Site stabilization:

Approximately 8,000' of new road construction was seeded in 1989 using a combination of perennial coated seed mix and oats for stabilization and cover. In certain areas, lime and fertilizer were applied to assist in assuring cover development. A supply of mulch was kept on the site throughout the year for use in minimizing erosion, stabilizing localized sites and mulching seeded areas.

Maintenance operations (grading and raking) were performed on seven miles of Bureau of Public Lands road accessing the SFMA.

Firewood Supply:

The SFMA assisted Parkwide operations by supplying firewood to campground and administrative facilities. The following is a breakdown of firewood supply activities:

Millinocket Maintenance Garage:	16 cords
Daicey Pond	16 cords
Kidney Pond	16 cords
Trout Brook Farm	8 cords
Nesowadnehunk pit	8 cords
Togue Pond	16 cords + truckload
	tree-length cedar

BAXTER STATE PARK FOREST MANAGER'S REFLECTIONS

Miscellaneous Activities

From January 11 to 13, 1989, I attended a Forestry Financial Analysis Course offered at the University of Maine. Material and information gained from this course will be applied in formulation of the 1991 budget and the completion of a five year financial estimate for SFMA operations planned for spring of 1990.

On April 4, 1989, Park staff hosted a meeting with a delegation from the People's Republic of China. The meeting was to exchange information on park and land management. The Chinese have a markedly different concept of land use and preservation and with their large and developing population were extremely interested in the operational details of forest management on the SFMA. I did my best to answer all their questions and found the exchange to be interesting and thought provoking.

In part for my own interest and in part to develop at least some visual idea of what constitutes old-growth forest in Maine. I attended a Nature Conservancy tour of Big Reed Pond. The tour was interesting and informative but, at least for me, raised more questions than it answered. Nevertheless, the "old-growth" forest around Big Reed Pond was definitely worth the trip.

Finally, I was privileged to be invited to accompany members of the Baxter family on a trip down Webster Stream. As the least capable canoeist in the party, I can surprisingly report that I never got wet in the water. I did get wet dragging the canoe through the brush in order to avoid places where I undoubtedly would have gotten wet in the water. It's a wild and wonderful trip and I highly recommend it to those so inclined.

Jensen Bissell
January, 1990

D. INFORMATION/EDUCATION



"All the wild world is beautiful and it matters but little where we go...the spot where we chance to be always seems the best."
John Muir journal entry June 1890.

INFORMATION/EDUCATION

I. OVERVIEW

The activities of the past year have served to define and illustrate the role of the Naturalist position in fulfilling the overall goals and objectives of Baxter Park.

In the past several months opportunities to communicate with the public and jointly protect Park resources have been many and diverse. Thanks to the help of a Student Conservation Association Resource Assistant, who was on specific assignment to work with the Naturalist all summer, we have a new Day Use Hiking Map, ready to be printed and distributed for the 1990 season. We also have the results of a hiker survey, summarizing the experience and opinions of nearly 500 Park visitors. The survey results will certainly provide a relevant basis for future Park management discussions and decisions. Last, but definitely not least, it was a summer filled with numerous special (natural!) events, from the hatching of a peregrine chick to the spectacular lunar eclipse on August 16.

COMMITTEES

Park Regulations and Visitor Use Committee

As the staff representative to this Sub-Committee, the Park Naturalist has a firsthand opportunity to work with some very dedicated members of the BSP Advisory Committee. This year the Sub-Committee met 3 times - February, March and November. Agendas reflected concern for the growing numbers of day users and the environmental/social implications of this trend. In our January PRVU meeting, Sub-Committee members met Burnham Martin, a researcher from the Appalachian Mt. Club at Pinkham Notch, New Hampshire. Burnham listened to the discussion of day use problems and proposed the development and distribution of a user survey as a step in defining our problems. The group recommended to the BSP Authority approval for Burnham's proposal to apply to the AMC Murphy Fund for money to do the work. Later in the spring, PRVU Committee members individually read documents such as "Limits to Acceptable Change" and "Managing Wilderness Recreation Use: Common Problems and Potential Solutions" (Both U.S.F.S. publications), in an attempt to follow other agencies' progress through the maze of day use recreation scenarios and solutions. At the spring (Daicey Pond) Advisory meeting, Sub-Committee members reviewed a draft visitor use questionnaire written by Burnham Martin and offered their comments. Burnham and Jean Hoekwater then worked together on the questionnaire, making adjustments before the July Authority meeting. Ultimately the questionnaire had unavoidable shortcomings. Some Sub-Committee members disliked the emphasis on hiking and the minimal attention given to other recreational uses of the Park, such as fishing or scenic drives. However, if we were to gather any useful data, Burnham warned us it would be necessary to focus our

questions. His sense, after attending our January meeting, was that day use hikers were a crucial aspect of our problem. The Authority approved the idea of the survey; results can be reviewed under "Research" in this report.

The PRVU Sub-Committee didn't meet again until November 15, 1989. On November 15 the Sub-Committee began work on specific regulation proposals for the Authority to consider. The time lapse between spring and fall also helped sort out ideas regarding traffic control proposals at Togue Gate - an intrinsic part of every discussion on day use control in BSP.

The Sub-Committee is currently devising regulations to cope with group day use (requiring large groups to reserve ahead for day use in BSP and limiting the number of large groups on any trail at one time). PRVU Sub-Committee members are also proposing changes to existing regulations to:

- 1) Change winter fees at Chimney Pond bunkhouse from \$10-\$20 per night, Chimney Pond lean-tos \$7-\$10/night.
- 2) Change check-in, check-out time at cabin and campsites from noon to 11:00 and 1:00 respectively.
- 3) Entirely prohibit ATV/motorcycles from entering the Park, whether they are simply being transported through or used for transportation.

The next step, after approval of a specific new regulation or regulation change is to devote a year to informing the public via public meetings, radio and T.V. and newspaper announcements.

The members of the Sub-Committee on Park Regulations and Visitor Use have persevered through some difficult sessions and their hard work is sure to contribute to the protection of the Park in years to come.

Scientific Study Review Committee

This Committee meets to advise on proposals submitted by individuals and agencies desiring to conduct research within Park boundaries. We held one meeting in the spring of 1989. This was to inform Sub-Committee members of some research proposals and to introduce 2 researchers and their projects (for summer 1989).

Public Programs

Throughout the year, numerous community organizations, schools and other groups contact us for programs on the Park and related topics. Often they ask for a slide show, occasionally they request a guided field trip or demonstration. Some of the groups the Naturalist worked with over the year (in chronological order):

Millinocket Scout Pack 66 (Winter Outdoor Safety)
Island Falls Women's Club Caribou Sportsmen Show
Oakfield Seniors
Katahdin High School

Millinocket Plus & Minus Club
Katahdin Training Center (BSP orientation for Maine Guides-in-training)
The Forum Exhibition Hall - Presque Isle
Aroostook County Extension Service Homemakers (150th Anniversary Celebration)
Millinocket Middle School (Terry Givens' class)
Millinocket Middle School (6th grade Tea Pond ecology week)
Howland High Adventure (Boy Scouts of America Base)
Wytopotlock 5th grade
Unity College
Millinocket Cub Scouts (Burnt Mt. hike)
Hodgdon Elementary School
Millinocket Middle School (8th grade S. Turner geology hikes)
Sedamocha 6th grade
Patten Men's Club

Projects

This fall, the orientation slide show was finally operating at Headquarters. Buzz Caverly, Brenden Curran, Dave Getchell, Lester Kenway, Dorcus Miller, Jack Stirling, Rich Vaglie, Scott Vincent, Stephen Vincent all lent slides to supplement Jean Hoekwater's slides for the show. We are also very grateful to Bud Leavitt for his fine narration of the show, John Howard for his reading of Percival Baxter quotations, and Les Myers and the MPBN, for their patience during taping. Rich Vaglie created and donated the title and credit slides and Bill Sleamaker, Steve Oliveri and Roy O'Hara lent their expertise on equipment and technical questions.

The slide files are constantly growing. In addition to scenic and natural history shots, we are filing shots of staff, special events and work-in-progress. Places like Togue Pond and Kidney Pond are being photographed to document changes as they occur.

This past June, Jennifer Longville a Student Conservation Association Resource Assistant, arrived for a 10-week stint in the Park. By the end of her first week she had toured the Park from one end to the other and had hiked Katahdin. Her main project was to update and revise the BSP .50 Hiking Guide. Her "surprise" project was collecting addresses for the visitor survey we mailed out. She persevered through long rainy days and together we accomplished many tasks both large and small, indoors and outdoors. The map will be printed and ready for sale during the 1990 season.

In light of increasing costs involved in transporting and disposing of solid waste, BSP is trying to educate users to exercise a carry-in, carry-out ethic, no matter where they camp in the Park. In cooperation with Sue McIntyre of the Office of Waste Reduction and Recycling, we composed a prototype pamphlet on the subject of Camping and Waste Reduction. This is now used internally and has also been adapted for use throughout the State Park System of Maine. As time goes on, we will take further steps to educate

Park users regarding this problem.

Examples of other ongoing projects: The map in the winter information packet has been updated. It now reflects the true number and range of facilities available for winter use, as well as the West Gate, etc. Winter theme displays also are being made for each of several locations. A display-sized mileage map is in the works for road use in the Reservation Office, ensuring that answers to trail and road mileages are standardized in-house.

Research and Field Studies

Research reports are covered in the section titled Research and Field Studies. However, we would like to point out two projects which evolved directly out of need within the Park and were designed to aid our efforts in managing the Park wisely.

The study of alpine vegetation is an attempt to collect baseline data and establish permanent plots to detect changes in mountain-top vegetation. Final report is not complete but we have included a preliminary summary. The second study included here is the results of the hiker survey. An analysis of the data and a large number of unsolicited but highly readable essays taken from people's return survey forms can be obtained from BSP Headquarters if you desire; limited space prohibits their inclusion in this document.

Also included in the "Research and Field Studies" section of this Annual Report is a summary of observations of loon behavior compiled by BSP volunteer Lee Davis. Lee and Ron Davis volunteered to lead natural history walks and talks throughout the summer of 1989. They led weekly activities for campers at Daicey and Kidney Pond and led various day hikes while imparting their knowledge and love of the environment to everyone. Their commitment was much appreciated, not only by Park staff but by the numerous participants in their programs.

Training Opportunities/Exchanges

Park Naturalist, Jean Hoekwater, took part in several conferences or meetings to expand her base of knowledge and professional contacts. Among these:

Interpretive Training Institute (June) and Interpreting Critical Resource Issues (November)

These conferences offered training in interpretive techniques and present findings in current environmental research. They strengthened our rapport with: National Forest Service, National Park Service and both private and public regional organizations throughout New England.

Assorted Field Trips

Early in the '89 summer season, the Naturalist made a few trips into the SFMA with Resource Manager Jensen Bissell. They checked blocks (scheduled for harvest) for the presence of threatened and endangered species, especially the Calypso Orchid (Calypso bulbosa). Also, Naturalist Ray Welch spent time botanizing in

the Park and confirmed identification on several species.

In July, Roger Applegate of Maine IF&W kindly led Jean and her SCA assistant within viewing range of BSP's first successful peregrine nesting site (since the beginning peregrine re-introduction efforts). It was a fine feeling to see these powerful birds once again nesting and raising their young in the Park. Roger was a wealth of information on birds of prey and they learned a great deal.

Chinese Delegation

In early April, the Park participated in hosting a delegation of Chinese foresters and national park officials on their tour of New England. The group also visited Acadia National Park and the White Mountains National Forest. Our one-day exchange took place at Headquarters and consisted of an overview of Park operations. The SFMA was of particular interest to the Chinese; they seemed to find the general concept of "Forever Wild" difficult to understand. They explained that outdoor recreation was much more of a social experience in the Chinese parks than it is designed to be in BSP. They exchanged gifts and name cards before departing Millinocket.

Naturescene

In late August, Naturalists Jim Welch and Rudy Mancke, along with film maker Allen Sharpe, filmed a 1/2 hour segment for "Naturescene" a nationally-syndicated T.V. nature show. The film is entitled "Maine Woods" and will probably be aired on Public Television within the next 2 years.

Big Reed Pond

In September the Resource Manager, Jensen Bissell and Park Naturalist, Jean Hoekwater, attended a Nature Conservancy field trip. They traveled to Big Reed Pond, a 3,800 acre reserve containing the largest old growth forest in all of New England. Trip leaders John Albright (Maine Natural Heritage Program) and Tat Smith (U.N.H.) communicated a great deal of information as they reconciled participants' stereotypical expectations of an old growth forest (typically a western image of redwoods, etc.) with the actual phenomena, as it applies in Maine.

Managing State Government

Required training for new supervisors in the State government, this workshop concentrated on supervisors in the State the employee review process and standard State supervisory procedures.

OFFICE OPERATIONS

This year the Baxter Park newsletter was distributed 6 times. All the office staff contributes ideas and facts which the Naturalist adds to, organizes and compiles. Roxie McLean types, Xeroxes and mails the newsletter.

Reservation staff conscientiously processed reservation requests throughout the season with very few problems. On October 15, the Naturalist assumed the new responsibility of managing the reservation office. At season's end, we began planning on new ways to deal effectively with the anticipated January 1990 rush. Staff will also be involved in developing new ways to educate groups and individuals regarding our goals and objectives.

II.

R E S E A R C H

AND

F I E L D S T U D I E S

CARIBOU

The Caribou Corporation's proposal to re-introduce Caribou in Baxter State Park was approved unanimously by the Authority on November 16, 1988; as follows:

"MOVED, THAT the Baxter State Park Advisory Committee recommend to the Baxter State Park Authority that the latter grant permission to the Maine Caribou Transplant Corporation to re-introduce woodland caribou to Baxter State Park as proposed;

provided that:

1. specific times and locations of release, and location of telemetry receiving systems, shall be mutually agreed upon by the Maine Caribou Transplant Corporation or its designated representative, and the Director of Baxter State Park;
2. the entire program shall be reviewed not less than annually as to the propriety of continuing the project in view of any ecological, environmental, social, or economic impacts on the Park; and
3. the Maine Caribou Transplant Corporation and the Department of Inland Fisheries and Wildlife shall agree to a protocol requiring the Park Director's review and approval over any and all dissemination of information regarding the release of caribou in Baxter State Park."

On April 4-5, 1989, transfer of 13 caribou to a holding pen in McCarty Field was accomplished. The following week, one more animal was transported. Two yearling females died due to complications related to the transfer. The remaining animals were held (minus 2 frisky escapees!) in a 3-acre enclosure until the May 3rd release date. During these 4 weeks, they acclimated to the natural environment and foods available.

Following the May 3rd release, animals varied greatly in their activities and travels. Some traveled widely (as far as the Quebec border) most stayed closer to their new "home." Project Director Mark McCollough and Project Biologist Bruce Connery used radio telemetry equipment, aerial surveys and reported sightings to keep track of the animals.

By the end of 1989, 10 of the animals had died. Four were killed by bears, 2 by coyotes, 1 fell off a rock slide, 1 was killed by disease (stomach ulcer) and 2 of the animals were killed by brainworm.* While the survival rates of the initial year were discouraging, Project officials have dedicated themselves to using what they have thus far observed and learned to insure success in future release attempts, both here in Maine and in sister projects in Minnesota and Idaho.

*The 2 killed by coyotes and the 1 killed on the rock slide each had 1 brainworm present at the time of autopsy. - Mark McCollough - Baxter State Park Authority meeting 1/9/90.

RESULTS OF 1989 HIKER SURVEY

The following is a copy of the hiker survey. The numbers next to each choice represents the percentage of people responding. Unless otherwise stated, the sample size is 497 (n = 497).

BAXTER STATE PARK HIKER QUESTIONNAIRE

Recently you visited Baxter State Park and went hiking. During your visit, you were asked whether you were willing to take part in a survey of Park visitors. We hope that completing the questionnaire will be an interesting experience for you. Please feel free to make comments in the margins.

The first questions are about your experience as a user of Baxter State Park.

1a. On your recent visit to Baxter, did you stay overnight in the Park?

- [49%] Yes
- [50%] No
- [1%] No response

1b. If yes, where did you stay?

n = 243

- [63%] Car campground (please specify) _____
- [9%] Backcountry camping (please specify) _____
- [26%] Both of the above (please specify) _____
- [2%] no response

1c. If you did not stay in the Park, where did you stay?

n = 247

- [21%] Day trip from home
- [33%] Area private campground
- [16%] Area motel
- [13%] With friends/family
- [16%] Other (please specify) _____
- [1%] no response

2. In what year did you first visit Baxter State Park? ____

<u>Year</u>	<u>Number</u>	<u>Percent</u>
1989	228	46
1988	26	5
1987	22	4
1986	14	3
1985	14	3
<1985	185	37
no response	8	2

3. In what year did you first hike in Baxter State Park? ____

<u>Year</u>	<u>Number</u>	<u>Percent</u>
1989	248	50
1988	25	5
1987	21	4
1986	16	3
1985	13	3
<1985	166	33
no response	8	2

4. Approximately how many times have you visited Baxter State Park since your first visit? ____

<u>Number of visits</u>	<u>Number</u>	<u>Percent</u>
0	228	46
1	57	11
2	37	7
3	29	6
4	21	4
5	19	4
6-10	39	8
11-15	23	5
16-25	19	4
>25	16	3
no response	9	.2

5a. On the day you were contacted to participate in this questionnaire, what trail(s) or area did you use?

<u>Area</u>	<u>Number</u>	<u>Percent</u>
Katahdin - from Roaring Brook	208	42
Katahdin Stream - Hunt Trail	98	20
Abol Trail	37	7
Daicey Pond/Kidney Pond area	34	7
Sandy Pond	27	5
Russell Pond Trail	25	5
S. Turner Mountain	15	3
Doubletop Mountain	4	1
Marston Trail - Brother Mtn.	2	<1
No response	47	10

5b. Why did you decide to visit that area? (Please check as many as apply.)

Note: For each category, n=497. . Percentage not indicated for each category is "no response"; for example, 29% did not choose "to climb Katahdin".

- [71%] To climb Katahdin
- [7%] Climbing New England's hundred highest
- [52%] To enjoy alpine environment
- [2%] Because first choice parking lots were filled
- [23%] To see a new part of Baxter
- [21%] To avoid crowds
- [4%] To meet new people
- [11%] For a less strenuous hike
- [10%] Convenient to camping area
- [27%] Because others recommended it
- [8%] With an organized group
- [9%] Family tradition
- [4%] Fishing access
- [8%] Sightseeing along road
- [2%] Article in periodical (please specify) _____
- [23%] Other (please specify) _____

The following questions focus on your perceptions of the natural and social conditions you found during your hiking trip.

6. How do you rate the condition of the following features along the trail(s) you followed on the day you were contacted to participate in this questionnaire? (Please circle a number from 1 to 5.)

	Very Good				Very Poor	No Response
	1	2	3	4	5	
Trail surface	[38%]	[36%]	[17%]	[5%]	[2%]	[2%]
Trail width	[46%]	[34%]	[14%]	[3%]	[1%]	[2%]
Damage to plants beside trails						
below treeline ...	[34%]	[36%]	[18%]	[4%]	[1%]	[7%]
Damage to plants beside trails						
above treeline ...	[29%]	[32%]	[14%]	[3%]	[1%]	[21%]
Other (please specify) _____	[7%]	[1%]	[2%]	[3%]	[2%]	[85%]

7a. If you have been hiking in the Park for more than 5 years, do you notice any changes in the conditions of the trails and the environment near them?

[13%] Yes
[13%] No
[19%] No opinion
[55%] No response

7b. If yes, please describe.

8. How do you feel about the number of people you encountered in the following locations during your hike on the day you were contacted to participate in this questionnaire? (Please circle a number from 1 to 5.) In the right-hand column, please mark approximately the number of people you saw.

	Too Many		About Right		Too No Few Response	
	1	2	3	4	5	
On the trail in general	[3%]	[13%]	[76%]	[4%]	[1%]	[3%]
Hiking above treeline	[4%]	[12%]	[54%]	[4%]	[1%]	[25%]
On summit	[11%]	[16%]	[40%]	[3%]	[1%]	[29%]
At lunch stop	[4%]	[10%]	[59%]	[3%]	[1%]	[23%]
At viewing points ..	[3%]	[11%]	[65%]	[3%]	[1%]	[17%]
Other (please specify)	[2%]	[2%]	[3%]	[<1%]	[1%]	[92%]

9. How would you feel if you had encountered the following numbers of people in small groups (5 or fewer members) on the trail you hiked the day you were contacted to participate in the survey? (Please circle a number from 1 to 5.)

	Very Pleasant 1	2	Neutral 3	4	Very Unpleasant 5	No Response
None	[55%]	[9%]	[15%]	[9%]	[10%]	[2%]
1	[54%]	[13%]	[16%]	[7%]	[7%]	[3%]
2	[52%]	[18%]	[16%]	[6%]	[5%]	[3%]
3-5	[36%]	[29%]	[22%]	[7%]	[1%]	[5%]
6-10	[19%]	[24%]	[33%]	[16%]	[5%]	[3%]
11-25	[9%]	[10%]	[29%]	[24%]	[25%]	[3%]
26-100	[2%]	[2%]	[9%]	[21%]	[63%]	[3%]
Over 100	[2%]	[1%]	[2%]	[7%]	[85%]	[3%]

10. How would you feel if you had encountered the following numbers of large groups (12 or more members) on the trail you hiked the day you were contacted to participate in the survey? (Please circle a number from 1 to 5.)

	Very Pleasant		Neutral		Very Unpleasant	No response
None	[66%]	[7%]	[15%]	[2%]	[6%]	[4%]
1	[24%]	[28%]	[29%]	[8%]	[8%]	[3%]
2	[11%]	[19%]	[33%]	[17%]	[16%]	[4%]
3-5	[3%]	[8%]	[19%]	[30%]	[36%]	[4%]
6-10	[2%]	[1%]	[8%]	[18%]	[67%]	[4%]
Over 10	[2%]	[<1%]	[4%]	[7%]	[84%]	[3%]

11. How would you feel if you had encountered the following numbers of people on one of Katahdin's summits? (Please circle a number from 1 to 5.)

	Very Pleasant		Neutral		Very Unpleasant	No response
None	[60%]	[7%]	[14%]	[5%]	[8%]	[6%]
1	[61%]	[12%]	[11%]	[5%]	[5%]	[6%]
2	[58%]	[16%]	[13%]	[3%]	[3%]	[7%]
3-5	[45%]	[25%]	[20%]	[3%]	[1%]	[6%]
5-10	[22%]	[28%]	[31%]	[9%]	[3%]	[7%]
10-25	[6%]	[13%]	[34%]	[25%]	[16%]	[6%]
25-100	[2%]	[1%]	[8%]	[27%]	[56%]	[6%]
101-250	[1%]	[0%]	[2%]	[7%]	[84%]	[6%]
Over 250	[1%]	[0%]	[2%]	[2%]	[89%]	[6%]

12. How important to you are the following attributes of the hiking experience in Baxter State Park? (Please circle a number from 1 to 5.)

	Very Important		Neutral		Very Un- important	No response
	1	2	3	4	5	
Wilderness feeling .	[85%]	[11%]	[2%]	[<1%]	[<1%]	[1%]
Solitude	[55%]	[30%]	[11%]	[2%]	[<1%]	[1%]
Quiet	[71%]	[23%]	[4%]	[<1%]	[<1%]	[1%]
Views	[79%]	[17%]	[2%]	[<1%]	[<1%]	[1%]
Nature study	[34%]	[28%]	[29%]	[6%]	[1%]	[2%]
Fishing	[7%]	[9%]	[26%]	[15%]	[39%]	[4%]
Family experience ..	[28%]	[20%]	[28%]	[8%]	[13%]	[3%]
Social experience ..	[10%]	[15%]	[35%]	[18%]	[20%]	[2%]
Meeting new people .	[6%]	[12%]	[34%]	[19%]	[28%]	[1%]
Challenging hikes ..	[37%]	[37%]	[17%]	[5%]	[2%]	[2%]
Gentle terrain hikes	[17%]	[28%]	[35%]	[10%]	[8%]	[2%]
Other (please specify)	[11%]	[1%]	[0%]	[0%]	[0%]	[88%]

13. How satisfied were you with the following attributes as they were provided by Baxter State Park during your recent visit? (Please circle a number from 1 to 5.)

	Very Satisfied		Neutral		Very Dis- satisfied	No response
	1	2	3	4	5	
Wilderness feeling .	[69%]	[21%]	[6%]	[2%]	[<1%]	[2%]
Solitude	[46%]	[31%]	[14%]	[6%]	[1%]	[2%]
Quiet	[53%]	[30%]	[12%]	[3%]	[<1%]	[2%]
Views	[77%]	[14%]	[5%]	[2%]	[<1%]	[2%]
Nature study	[38%]	[25%]	[30%]	[2%]	[0%]	[5%]
Fishing	[9%]	[4%]	[62%]	[4%]	[2%]	[19%]
Family experience ..	[31%]	[16%]	[38%]	[1%]	[2%]	[12%]
Social experience ..	[22%]	[23%]	[45%]	[2%]	[1%]	[7%]
Meeting new people .	[20%]	[19%]	[50%]	[2%]	[1%]	[8%]
Challenging hikes ..	[65%]	[19%]	[9%]	[<1%]	[<1%]	[6%]
Gentle terrain hikes	[39%]	[21%]	[26%]	[5%]	[2%]	[7%]
Other (please specify)	[5%]	[1%]	[<1%]	[1%]	[1%]	[91%]

The next series of questions asks about management of hiking in Baxter State Park.

14a. Do you think that the number of hikers on Katahdin should be limited to protect the environment?

[75%] Yes
[15%] No
[7%] No opinion
[3%] No response

14b. Do you think that the number of hikers on Katahdin should be limited to protect the visitor experience?

- [65%] Yes
- [22%] No
- [11%] No opinion
- [2%] No response

15. If day use of Katahdin and perhaps other areas in the Park were to be limited, which of the following do you think would be the best way to limit use?

- [9%] First come-first served
- [17%] Reservations
- [67%] A combination of the two above
- [4%] Other (please specify) _____
- [3%] No response

16. Do you think the size of groups should be limited?

- [75%] Yes
- [15%] No
- [8%] No opinion
- [2%] No response

17. Do you think large groups visiting the Park for the day should reserve in advance?

- [84%] Yes
- [8%] No
- [6%] No opinion
- [2%] No response

18. Would you be willing to volunteer for a weekend to help maintain or reconstruct trails in Baxter State Park?

- [47%] Yes
- [33%] No
- [14%] No opinion
- [6%] No response

19. Would you reduce your use of the Park to support some control measures (for example, limiting yourself to one climb of Katahdin per year)?

- [76%] Yes
- [12%] No
- [8%] No opinion
- [4%] No response

The final questions are about you. These questions are completely anonymous and will be used for statistical comparisons only.

20. Please list your home zip code. _____

State or region Percent

Maine	31
New Hampshire	3
Vermont	2
Massachusetts	16
Rhode Island	1
Connecticut	7
New York	9
New Jersey	5
Pennsylvania	7
Delaware	<1
District of Columbia	<1
Maryland	1
Virginia	2
West Virginia	1
Southeast	3
Midwest	5
South	1
West	2
No response	2

21. How many people were there in the group you were hiking or visiting with? _____

Number in Group Number of Groups Percent

1	26	5
2	167	34
3	75	15
4	81	16
5	34	7
6-10	73	15
11-20	30	6
>20	3	<1
no response	8	2

22. How would you describe your group?

[43%]	Family
[42%]	Friends
[7%]	Organized group
[3%]	Other (please specify) _____
[5%]	No response

Please list any additional comments you would like to make about hiking in Baxter State Park below.

Thank you for taking the time to fill out this questionnaire. Your responses will be used by the Park staff in making future management decisions.

Loon Behavior at Kidney Pond Camp, Baxter State Park
June - August 1989

A pair of loons constructed a nest at Colt's point of Kidney Pond, a few inches from the water's edge and adjacent to an old wooden bench, the first week in June. The parents began incubating their two eggs around June 8-10. I was told by people who had stayed here in previous years that loons nested on the island in the pond. Perhaps they changed their nesting site because the pond level had been raised by a beaver dam in the outlet stream.

During the nesting period I noticed that the parent loons took turns in incubating the eggs. A change of incubation shift was initiated by the loon that was on the nest when that parent entered the water and gave the wail call. The bird that had been "off-duty" responded by paddling toward the nest. Often the parents would meet on the lake and "sing a duet" before the "off-duty" bird began its shift of egg-sitting. On one occasion I observed the reverse: a change of shift was begun by the bird off-duty.

The eggs were rarely left uncovered for more than 10 minutes unless the birds were disturbed by moose or humans. Under such circumstances the loon on duty remained in the water near the nest from 20 to 30 minutes before resuming incubation. Neither canoes passing by nor fishermen casting their lines from canoes off the point seemed to be threatening enough for the sitting loon to leave the nest.

My best estimate is that the baby loon hatched on July 8. It may have spent a day in the nest. The baby was seen riding on

a parent's back on July 10th. It spent most of its time sheltered under the wings on the back of a parent on July 11th, which was a cold and windy day. When in the water it made soft cooing noises. It was fed small fishes in the one-to-two inch range by both parents.

The second egg was abandoned, perhaps because of the cold, windy weather. Tom Klein states in "Loon Magic" (1985): "Any disturbance after the hatching of the first egg, including natural events such as a heavy rainstorm, could force the adults to abandon the nest and leave the second egg unhatched..."

During the first week, post hatching, the parents swam around on the surface with their heads under water much of the time. I surmised that they were either keeping an eye out for predators, such as snapping turtles, or looking for fish. Ordinarily they do not spend as much time looking under water before diving for fish, so perhaps this was a predator defense strategy used during a period when the week-old baby would make a tender morsel for a big turtle or large trout. During the first week in August three otters swam across the lake in the direction of the loons and their chick. The parents first stayed close to the youngster, and then as the mammals approached closely they "charged" the otters with wings slapping the water.

On July 22nd, three visiting loons called from above, circled the pond, and landed in the middle of the lake. These loons from surrounding ponds were frequently seen joining the breeding pair at Kidney Pond. I speculate that they are related, perhaps offspring from previous years. On this morning, the loon that was with the two-week-old youngster swam out to meet the

visitors, leaving the chick by itself along the shore between the library and cabin 18. The baby kept a low profile, by which I mean it kept its head down rather than erect. When a red-winged blackbird swooped low over it, it dived under the surface.

After about 20 minutes, one of the parents had moved to the western cove where they could usually be found with the youngster. The parent began giving the wail call. The chick, now a light brown color and twice as large as the previous week, responded by moving in that direction, and calling back with a husky "hoot". The calls of parent and chick alternated as the youngster moved toward the parent. I was surprised that the chick went to the parent, instead of the parent returning to fetch its youngster.

On one of the occasions when 5 adults gathered together in the western cove, I watched two of them "wrestling" for about 5 minutes. They locked their beaks together and beat their wings vigorously at each other.

After two weeks (post hatching), the parents both flew around together, leaving their offspring for periods of time. The chick's call, when with the parents, was longer and more rasping than formerly.

On August 7, two adult loons made a great commotion "wing flapping" all around the lake together, mostly in parallel fashion. When one turned left, the other turned left, etc. Sometimes it looked like one was chasing the other. This went on for at least 10 minutes in what may have been an "endurance contest". It is my guess that this was a territorial display. A

third adult loon did not participate. In the book "Loon Magic" (pg. 69, Klein 1985), it states that "the running and flight displays signal aggression, which could not strengthen the pair bond, and are probably territorial." However, William Southern (1961) "observed two loons skimming over the water at varying speeds, striking the surface with their wings, one bird pursuing the other." He described this as courtship behavior. It seems unlikely that any courtship would be taking place in August, so I favor the territorial/aggression hypothesis.

By the time the chick was a month old the parents led it out to the center of the lake. They still brought minnows from shallow areas for it to eat. The adults frequently gave a "hoot" call under these circumstances, a soft vocalization which appeared to bring the chick close for feeding. At 5 weeks, the chick was heard giving a hoarse wail, only audible to humans at close range. Sometimes the youngster seemed to take the lead, and the parents followed it.

I noticed that when people in canoes got too close to a parent accompanying the youngster, the parents gave what sounded to me like an agitated, urgent tremolo call. The tremolo has been described as an all purpose call, with the high frequency use of it signaling extreme alarm or "annoyance". A lower frequency tremolo is used as a greeting between loons, according to Klein.

On August 13, one parent with a small fish carried it a long distance from the center of the lake to the chick. The adult dropped and retrieved the minnow several times. However, the chick did not take the offering and so the parent carried it back

out toward the middle of the lake again. Perhaps the chick was becoming self-sufficient and was not hungry enough to take the food from its parent. On subsequent occasions it did take food when it was offered.

One call which I haven't described, the yodel, is apparently given only by males, is an individual identifier, and is used to establish and maintain territories (Klein 1985).

It is my hope that future observers will continue the study of loons at Kidney Pond. Knowledge of Kidney Pond's loons, if conveyed to visitors to the pond will enrich their experience. Such knowledge may also help to protect loons from disturbance during their reproductive period.

Klein, T. 1985. Loon Magic. Paper Birch Press Inc.; Ashland, WI.

by Shirley L. Davis

Volunteer 1989

Assistant Professor, UM

Progress report on "The baseline characterization of the alpine area of Katahdin" to the AMC Murphy Fund committee.

September 1989

We (Charles Cogbill and Don Hudson) have completed the field portion of our work characterizing the alpine area of Katahdin.

Our initial field reconnaissance showed the existing vegetation map of the mountain to be uninformative. Thus our original intention to use previously identified locations and plant communities was replaced by our subjective choice of locations, including examples of krummholz, snowbank, exposed cushion, sedge meadows, heath, and fellfield.

During two trips this summer we spent 11 days (18-23 June and 9-13 July) establishing transects and sampling the vegetation covering all areas above treeline on the mountain. We set up 16 permanent transects (located at the squares on accompanying map) totalling 680 meters in length. The center lines of the transect were marked with inconspicuous yellow paint on rocks and locations were documented by photographs and detailed descriptions in relation to known trails, peaks or other landmarks. On each transect, typically 50 meters long in one homogenous plant community, we recorded the cover of all vascular and cryptogam plant species in m^2 quadrats centered on each meter of the transect line (data is available for 680 m^2). In addition, we ran 41 relevés (quick semi-quantitative samples of small sites located at the dots on accompanying map) to document the flora and derive a rough description of variability in the vegetation over the mountain. On both transects and relevés we measured the

elevation, slope, aspect, substrate character, and general geological setting of the (57) sites. Soil samples were also collected for chemical analyses at each of the transects.

This fall we intend to collate, summarize, and analyze the data collected. The primary objective is to make the actual data available in archival form so comparisons can be made in the future. In addition, we will analyze the data using ordination (mathematical organization of the sites to display groupings) to produce a simple classification of the alpine vegetation. The influence of various environmental factors (e.g. soil, climate, topography) will also be evaluated from our results.

BAXTER

Northwest Basin

Lake Cowles

Davis Pond

Harvey Ridge

ENTRANCE

BOUNDARY

Little North Basin

NW Plateau

Howe Peaks

PARK

North Basin

Klondike Pond

Carbon Spring

Hamlin Peak

Hamlin Ridge

Depot Pond

Basin Ronds

Dry Pond

Great Basin

Saddle Spring

Campground

South Basin

Chimney Pond

MT KATAHDIN

(T3 R9 WELS)

MOUNT KATAHDIN

Baxter Peak

South Peak

Chimney Peak

Kepp Ridge

Thoreau Spring

Avalanche

E. ADMINISTRATIVE SERVICES

I. INTRODUCTION

RESERVATIONS:

Calendar year 1989 in the reservation office started out with close to 80 over-the-counter requests. Revenue received that day topped \$65,000. Daicey Pond cabins were in high demand as always and many visitors had to chose alternate campgrounds or withdraw their requests as the campground filled very quickly for the entire season.

Kidney Pond Campground was in operation for the 1989 season with 5 cabins available. These cabins also were in high demand. Overall, camper days increased 2,822 or 4.5%. Of that amount, 2,179 was due to the added capacity at Kidney Pond. Day use increased slightly by 449 visitors (less than 1%) and the number of transient visitors increased by 606 (over 10%). There appears to be a trend toward more use of the Park in the spring and fall months, perhaps because of availability of sites or an interest in avoiding the summer crowds.

PERSONNEL:

Changes in personnel this year are as follows:

Promotions, demotions and transfers:

Russ Rytlewski promoted to Campground Ranger at Katahdin Stream from Campground Attendant.

Mac Browning promoted to Campground Ranger at Togue Pond from Campground Attendant at Katahdin Stream.

Christine Trefethen demoted to Campground Attendant at Chimney Pond from Gatehouse Attendant at Togue Pond.

Scott Fisher transferred to Campground Attendant at Roaring Brook from Campground Attendant at Russell Pond.

New Employees:

Mac Browning - Campground Ranger at Togue Pond
Bruce White - Campground Attendant at Nesowadnehunk.
Jack Sheltmire - Campground Attendant at Russell Pond.
John Horton - Campground Attendant at Katahdin Stream.
Debbie Guerette - Gatehouse Attendant at Togue Pond.
Amy Gumprecht - Gatehouse Attendant at Togue Pond.
Sylvia Getchell - Gatehouse Attendant at Matagamom.
Lori Freeman - Gatehouse Attendant at Togue Pond.
Colleen Moore - Gatehouse Attendant at Togue Pond.
Scott Theis - Gatehouse Attendant at West Gate.
Sue MacArthur - Clerk II at Park Headquarters.

Acting Capacity Appointments:

Tabitha Dudley - Gatehouse Attendant at Matagamon.
Karen Mott - Park Receptionist at Park Headquarters.

Employee Terminations:

Joel Drew - Campground Ranger at Katahdin Stream.
Steve Tetreault - Campground Ranger at Togue Pond.
Bob Hawkins - Campground Attendant at Roaring Brook.
Rodney Thompson - Campground Attendant at Chimney Pond.
Michael Smith - Campground Attendant at Nesowadnehunk.
David Tardiff - Gatehouse Attendant at Togue Pond.
Sandra Tardiff - Gatehouse Attendant at Togue Pond.
Jesse Jacques - Gatehouse Attendant at Matagamon.
Julie Smart - Clerk II at Park Headquarters.
Dick Shean - Gatehouse Attendant at West Gate.

Student Conservation Association members who worked in BSP in 1989 include:

Jennifer Longville, Long Beach, CA.
Brett Battaglia, Canandaigua, NY.
Shawn Faith, State College, PA.
David Grant, Oberlin, OH.
Deborah Luckin, Spencerport, NY.
Kristen Messenger, Pittsburgh, KS
John Meyer, Mt. Pleasant, MI
Rick Meyer, Rolla, MO
Stuart Murray, New York, NY.
Jeni Snyder, Pittsburgh, PA.
Brie Weisman, Frederick, MD

Student Intern selected for work in Baxter State Park was:

Mac Browning, University of Maine, Presque Isle, ME.

Maine Conservation Corp personnel in Baxter State Park in 1989 were:

Thomas Bradbury, Mars Hill, ME, Team Leader.
Cole Thompson, Portland, ME, Job Counselor.
Mindy Hicks, Millinocket, ME, Job Training Counselor.
Brian Richardson, Portland, ME.
Mark Bell, Scarborough, ME.
Philip Bumby, Windham, ME.
Jean-Paul Bisson, Sr., Freeport, ME.
Scott Walsh, Millinocket, ME.

TRAINING:

April 12, 13 and 14 - Worker's Compensation Seminar at the Samoset Hotel in Rockland was attended by Elizabeth Austin, Business Manager.

April 20 - The annual Secretarial Symposium was attended by Roxie McLean, Secretary to the Director.

April 26 - Year-round staff were addressed by Tim Smith, Director of Risk Management on workplace safety and Sgt. Ben Conant on the Employee Assistance Program.

May 31 - The annual spring orientation was held at Kidney Pond Campground. Guest speakers were Mel Fitzherbert, VALIC; Sgt. Ben Conant and George Newhall, Employee Assistance Program; Bruce Conary, Caribou Project and Ron Ahlquist, MSEA.

October 31 - Employee Health Conference was attended by Judy Hafford, Payroll Clerk and Elizabeth Austin, Business Manager.

October through December - MFASIS (Maine Financial and Administrative Statewide Information System) trainings and informational meetings were held on a regular basis in preparation for the new payroll and accounting systems going live in 1990. Judy Hafford, Payroll Clerk and Elizabeth Austin, Business Manager attended several sessions.

CONTRACT SERVICES:

Daicey Pond Campground was operated again by Linda Ives and Latona Torrey.

Kidney Pond Campground was operated by Lucien LeBlanc.

Rubbish removal services were provided by Dave Condon d/b/a The White Knight.

Septic tank pumping was done by Cal's Septic Service.

Janitorial services at Park Headquarters were provided by Wayne Lyle of Millinocket.

Grounds maintenance at Park Headquarters was done by Rodrique Pelletier of East Millinocket.

Road construction in the SFMA was completed by Randy Cyr.

Forest management services were provided by John Mills and George Ritz.

SUPPLY:

The new warehouse has seen its first full year of operations. The system is running smoothly with continuous improvements. We are now using our own BSP Field Requisitions and Purchase Orders. During the summer most of our capital equipment was marked with unique Baxter State Park ID tags.

In September a surplus property auction was held in the support services yard at Baxter Park Headquarters. Two snowmobiles and several canoes were bid off along with many appliances and smaller items.

STATEMENT OF REVENUES AND EXPENDITURES
FISCAL YEAR ENDING JUNE 30, 1989

Balance Forward, July 1, 1987

\$ 115,237.26

REVENUE:

PARK OPERATIONS:

Use Fees	\$ 356,436.07
Entrance Fees	89,173.00
Sale of Maps and Guides	12,418.68
Canoe Rental	7,038.90
Transfer Fees	2,782.00
Cash Over/Short F. Exch.	49.12

SUB-TOTAL		\$ 467,897.77
-----------	--	---------------

LESS: Overpayments	(4,892.50)	
Refunds	(8,866.50)	

SUB-TOTAL		(13,759.00)
Net Revenue from Operations		\$ 454,138.77

TRUST FUNDS:

Boston Safe Deposit & Trust Co.	500,000.00	
Casco Bank & Trust Co.	360,000.00	
Net Revenue from Trusts		860,000.00

MISCELLANEOUS REVENUE:

License Fees	139.00	
Interest Earned	10,295.83	
Sale of Equipment	6,242.05	
Net Miscellaneous Revenue		16,676.88

SFMA

Sale of forest products	14,797.46	
Net Revenue - All Sources		\$1,345,613.11
Adjustment to Balance Forward		30.00

TOTAL REVENUE AVAILABLE

\$1,345,613.11
\$1,460,850.37

EXPENDITURES:

Operations

S.F.M.A.

Total

PERSONAL SERVICES:

Salaries, Permanent	\$ 387,104.54	\$31,855.72	\$ 418,960.26
Salaries, Seasonal	200,787.79	-	200,787.79
Retro Pay	520.00	-	520.00
Overtime	14,533.94	-	14,533.94
Retirement Cont.	114,449.96	6,017.02	120,466.98
Other Benefits	74,557.58	3,446.09	78,003.67
TOT. PER. SERV.	\$ 791,953.81	\$41,318.83	\$ 833,272.64

ALL OTHER:

Contractual Serv.	\$ 291,047.82	\$59,884.60	\$ 350,932.42
Commodities	88,409.26	3,503.73	91,912.99
STA-CAP Charges	18,995.81	1,699.33	20,695.14
TOTAL ALL OTHER	\$ 398,452.89	\$65,087.66	\$ 463,540.55

CAPITAL:

Building	\$ 8,735.58	\$ -	\$ 8,735.58
Equipment	112,991.74	-	112,991.74
Structures	8,809.88	-	8,809.88
TOTAL CAPITAL	\$ 130,537.20	\$ -	\$ 130,537.20
TOT. EXPENDIT.	\$1,320,943.90	\$106,406.49	\$1,427,350.39

Bal. Forward, 6/30/89

\$1,427,350.39
\$ 33,499.98

COMPARATIVE STATEMENT OF REVENUES AND EXPENDITURES
FISCAL YEAR 1988 AND 1989

<u>REVENUE</u>	<u>FY-1989</u>	<u>FY-1988</u>	<u>Inc./Dec.</u>	<u>%</u>
Use Fees	\$ 359,218	\$ 277,792	\$ 81,426	29.3
Entrance Fees	89,173	61,869	27,304	44.1
Sale of Maps and Guides	12,419	9,428	2,991	31.7
Cash Over/Short	-	38	(38)	-
Refunds/Overpayments	(13,759)	(10,263)	3,496	34.1
Misc. Revenue	23,795	24,950	(1,155)	(4.6)
Forestry Operations	14,797	2,854	11,943	418.5
Trust Fund Contributions	860,000	860,000	-	-
NET REVENUE	\$1,345,643	\$1,226,668	\$118,975	9.7
<u>EXPENDITURES</u>				
Personal Services				
Salaries Permanent	\$ 418,960	\$ 355,938	\$ 63,022	17.7
Salaries Seasonal	200,788	191,188	9,600	5.0
Retro Pay	520	-	520	-
Overtime	15,184	17,974	(2,790)	(15.5)
Retirement Contribution	120,467	104,111	16,356	15.7
Other Benefits	77,354	62,276	15,078	24.2
TOTAL PERSONAL SERVICES	\$ 833,273	\$ 733,487	\$ 99,786	13.6
<u>All Other</u>				
Contractual Services	\$ 418,178	\$ 267,596	\$150,582	56.3
Commodities	93,979	79,401	14,578	18.4
STA-CAP Charges	20,695	24,419	(3,724)	(15.3)
TOTAL ALL OTHER	\$ 532,852	\$ 371,416	\$161,436	43.5
<u>Capital</u>				
Building	\$ 15,518	\$ 20,389	\$ (4,871)	(23.9)
Equipment	114,615	94,205	20,410	21.7
Structures	8,810	1,866	6,944	372.1
TOTAL CAPITAL	\$ 138,943	\$ 116,460	\$ 22,483	19.3
TOTAL EXPENDITURES	\$1,505,068	\$1,221,363	\$283,705	23.2

BAXTER STATE PARK
BUDGET VS ACTUAL
FY ENDED JUNE 30, 1989

	1989 BUDGET PLUS PRIOR YEAR <u>ENCUMBRANCE</u>	1989 ACTUAL REVENUE AND EXPENDITURES PLUS CURRENT <u>ENCUMBRANCES</u>	<u>DIFFERENCE</u>
<u>Revenue</u>			
License Fees	100	139	39
User Fees	260,000	356,436	96,436
Transfer Fees	-	2,782	2,782
Entrance Fees	96,000	89,173	(6,827)
Canoe & Stove Rental	11,500	7,039	(4,461)
Sale of Maps & Guides	14,000	12,419	(1,581)
Refunds/Overpayments	(16,000)	(13,759)	2,241
Sale of Forest Products	30,000	14,797	(15,203)
Sale of Timber	10,000	-	(10,000)
Interest & Misc.	5,200	10,375	5,175
Sale of Equipment	4,000	6,242	2,242
Trust Fund-Boston	798,755	500,000	(298,755)
Trust Fund-Casco	200,000	360,000	160,000
Encumbrances Prior Yr.	64,577	64,577	-
Total Revenue	1,478,132	1,410,220	(67,912)
<u>Expenditures</u>			
<u>Personal Services</u>			
Permanent Wages	405,833	418,960	(13,127)
Seasonal Wages	216,932	200,788	16,144
Overtime	20,000	14,534	5,466
Retro Pay	-	520	(520)
Unemployment Comp.	17,456	15,184	2,272
Health Insurance	51,249	48,882	2,367
Dental Insurance	2,260	4,073	(1,813)
Bur. of Employee Health	-	2,390	(2,390)
Retirement	129,677	120,467	9,218
Group Life Insurance	1,875	1,677	198
Medicare	2,720	2,821	(101)
Uniform Allowance	2,431	2,977	(546)
Tot. Personal Serv.	850,433	833,273	17,160
<u>All Other</u>			
Prof. Serv.-Not State	190,886	186,990	3,896
Prof. Serv.-State	600	11	589
Travel-In State	7,600	4,198	3,402
Travel-Out-of-State	2,400	2,396	4
Operation of St. Veh.	57,400	41,597	15,803
Utilities	26,800	24,458	2,342
Rentals	4,100	1,240	2,860

All Other Cont'd.

Repairs	81,799	68,923	12,876
Insurance	25,900	34,944	(9,044)
General Operating	47,000	53,012	(6,012)
Food	1,000	5,055	(4,055)
Fuel	5,500	5,839	(339)
Office Supplies	4,000	8,528	(4,528)
Clothing	7,000	12,612	(5,612)
Misc. Supplies	49,161	59,281	(10,120)
Highway Materials	8,000	2,664	5,336
Total All Other	519,146	511,748	7,398
<u>Interest</u>	-	409	(409)
<u>Sta Cap</u>	27,522	20,695	6,827
<u>Capital</u>			
Bldgs. & Improvements	10,800	15,518	(4,718)
Equipment	125,965	114,615	11,350
Structures & Improve.	7,266	8,810	(1,544)
Total Capital	144,031	138,943	5,088
<u>Total Expenditures</u>	1,541,132	1,505,068	36,064

F. TRUST FUND INFORMATION

I. BAXTER STATE PARK AUTHORITY'S
FINANCIAL POLICY - TRUST FUND INFORMATION

The Baxter State Park Authority's Financial Policy requires the following information to be reported to the Authority at the end of each calendar year:

- I. The Market Value of all trusts generating revenue for the support of Park operations.

Market Value = \$24,549,052.79 (12-31-89)

- II. A. The amount of Trust Fund monies used to support Park operations during calendar year 1988.

Boston Trust. \$700,000
Casco Trust 260,000

Total Funds Used. \$960,000

- B. The percent that total Trust Fund monies used represents in relation to the market value of trusts. 3.9

- III. The rate of inflation for 1989 as measured by the Consumer Price Index. (12 months ending 12-31-89) 4.4

- IV. A. Yearly growth rate of all Trusts 11.6

- B. Percent change of market value (year ending):

- | | |
|----------------------------------|--------|
| 1. Boston principle | 13.3 |
| 2. Boston Investment Income | 9.4 |
| 3. Casco Trust | 13.9 |
| 4. State Treasurer's (Cash Pool) | (90.8) |

- V. The change in Trust Fund purchasing power during calendar year 1988.

Yearly growth rate of trust	less	Inflation rate	less	% of Funds Used	=	% Change in purchasing power
11.6	-	4.4	-	3.9	=	3.3

- VI. The total amount of monies from trusts allowed to support fiscal year 1990 (re: BSPA Financial Policy - 5% of market value as of 12-31-89) \$24,549,052.79 = \$1,227,452.64

BAXTER STATE PARK AUTHORITY'S
FINANCIAL POLICY - TRUST FUND INFORMATION

Significant changes since the Financial Policy Report of 12-31-88 include:

An increase of \$2,552,623.42 in the market value of the Trusts.

An increase of the inflation rate of .2 (from 4.2% to 4.4%).

An increase in Trust Fund purchasing power of 3.3% during 1989 is substantially more than the 1.7% decrease during 1988.

Of the \$1,576,041.00 estimated annual income as of 12-31-88, 60.9% was used to support Park operations during 1989 with the remainder reinvested for growth.

II. BAXTER STATE PARK
SUMMARY OF ACCOUNTS
as of June 30, 1989

TRUSTS GENERATING OPERATING REVENUE REVENUE	BOOK VALUE	MARKET VALUE	ESTIMATED VALUE	CURRENT YIELD	% OF ASSETS
I. PRINCIPAL ACCOUNT Boston Trust					
(14-0068-00-8)	\$13,087,030.51	\$14,573,574.39	\$ 908,469	6.2	62.9
II. INVESTED INCOME Boston Trust					
(14-0068-81-8)	5,328,403.95	5,430,991.69	444,724	8.2	23.4
III. STATE TRUST Casco Bank					
(A-48381)	2,895,851.31	2,704,581.03	176,320	6.5	11.7
IV. STATE (Invested Income) Treasurer's (Cash Pool)					
(82460)	<u>12,971.42</u>	<u>12,971.42</u>	<u>882</u>	<u>6.8</u>	<u>.1</u>
SUB TOTALS	\$21,324,257.19	\$22,722,118.53	\$1,530,395	6.7	98.1
 <u>SPECIAL TRUSTS</u>					
Baxter MacWorth Trust (83071) Land Acquisition)	<u>\$ 443,910.98</u>	<u>\$ 448,082.33</u>	<u>\$ 36,404</u>	<u>8.1</u>	<u>1.9</u>
TOTAL ALL TRUSTS	\$21,768,168.17	\$23,170,200.86	\$1,566.799	6.8	100

III. BAXTER STATE PARK
SUMMARY OF ACCOUNTS
as of December 31, 1989

<u>TRUSTS GENERATING OPERATING REVENUE REVENUE</u>	<u>BOOK VALUE</u>	<u>MARKET VALUE</u>	<u>ESTIMATED VALUE</u>	<u>CURRENT YIELD</u>	<u>% OF ASSETS</u>
I. PRINCIPAL ACCOUNT Boston Trust					
(14-0068-00-8)	\$14,463,832.41	\$15,616,924.58	\$ 882,701	5.7	63.6
II. INVESTED INCOME Boston Trust					
(14-0068-81-8)	5,297,063.33	5,429,571.57	442,655	8.2	22.1
III. STATE TRUST Casco Bank					
(A-48381)	2,892,006.07	3,027,683.60	182,414	7.0	12.3
IV. STATE (Invested Income) Treasurer's (Cash Pool)					
(82460)	<u>15,896.86</u>	<u>15,896.86</u>	<u>1,415</u>	<u>8.9</u>	<u>.1</u>
SUB TOTALS	\$22,668,798.67	\$24,090,076.61	\$1,509,185	6.3	98.1
 <u>SPECIAL TRUSTS</u>					
Baxter MacWorth Trust (83071) Land Acquisition)	<u>\$ 465,201.88</u>	<u>\$ 458,976.18</u>	<u>\$ 37,989</u>	<u>8.3</u>	<u>1.9</u>
TOTAL ALL TRUSTS	\$23,134,000.55	\$24,549,052.79	\$1,547,174	6.3	100.

BAXTER STATE PARK TRUST FUNDS
Market Value Comparison as of June 30th
1970 - 1989

	<u>Boston Principal</u>	<u>Invested Income</u>	<u>State Held Trust</u>	<u>Total</u>	<u>Increase (Decrease)</u>
	\$	\$	\$	\$	\$
1970					
1971					
1972	8,346,013		2,182,044	10,528,057	
1973	8,078,632		2,063,520	10,142,153	(385,904)
1974	6,686,866	471,778	1,667,743	8,826,387	1,315,766
1975	7,075,199	542,015	1,825,442	9,442,656	616,269
1976	7,184,532	386,399	2,003,508	9,574,439	131,783
1977	7,163,909	442,868	1,951,584	9,558,361	(16,078)
1978	6,787,252	512,952	1,763,062	9,063,266	(459,095)
1979	6,709,749	707,511	1,769,369	9,186,629	123,363
1980	7,003,738	947,302	1,791,821	9,742,861	556,232
1981	7,320,493	1,169,962	1,645,692	10,136,147	393,286
1982	6,819,945	1,166,239	1,698,045	9,684,229	(451,918)
1983	9,064,737	1,497,313	2,229,054	12,791,104	3,106,875
1984	8,678,249	2,081,655	2,084,622	12,844,526	53,422
1985	10,777,407	2,718,503	2,405,893	15,901,803	3,057,277
1986	13,736,002	3,774,155	2,779,121	20,289,278	4,387,475
1987	14,025,261	4,406,487	2,810,862	21,242,610	953,332
1988	13,484,915	4,761,652	2,710,436	20,957,003	(285,607)
1989	14,573,574	5,430,992	2,704,581	22,709,147	1,752,144

IV. BAXTER STATE PARK TRUST FUNDS
Book Value Comparison as of June 30th
1970 - 1989

	<u>Boston Principal</u>	<u>State Held Trust</u>	<u>Invested Income</u>	<u>Total</u>	<u>Increase (Decrease)</u>
1970	\$ 6,774,704	\$1,623,756	\$ 230,000	\$ 8,628,460	\$
1971	6,135,318	1,624,785	569,021	8,329,124	(299,336)
1972	6,261,897	1,654,120	869,044	8,785,061	455,937
1973	6,580,541	1,756,870	342,992	8,680,403	(104,658)
1974	6,558,645	1,771,728	475,068	8,805,441	125,038
1975	6,169,858	1,771,511	538,515	8,479,884	(325,557)
1976	6,080,346	1,843,038	388,848	8,312,232	(167,652)
1977	6,260,071	1,878,552	433,537	8,572,160	259,928
1978	6,396,063	1,909,241	529,113	8,834,417	262,257
1979	6,406,141	1,894,754	718,551	9,019,446	185,029
1980	6,644,606	1,980,674	958,532	9,583,812	564,366
1981	6,662,632	2,061,305	1,193,915	9,917,852	334,040
1982	6,763,071	2,090,217	1,185,356	10,038,644	120,792
1983	7,267,328	2,265,327	1,518,354	11,051,009	1,012,365
1984	7,268,680	2,327,886	2,151,354	11,747,920	696,911
1985	8,511,869	2,423,232	2,676,794	13,611,895	1,863,975
1986	9,060,430	2,589,480	3,498,568	15,148,478	1,536,583
1987	10,844,238	4,262,656	2,734,658	17,841,552	2,693,074
1988	11,766,725	4,661,919	2,822,203	19,250,847	1,409,295
1989	13,087,031	5,328,404	2,895,851	21,311,286	2,060,439

PERCIVAL BAXTER TRUST
ESTIMATED INCOME 1979 - 1990

<u>Year</u>	<u>14-0068-81-88</u>	<u>14-0068-00-8</u>	<u>Combined Income Total</u>	<u>Dollar Change</u>	<u>Percent Change</u>
1979	55,740	469,596	525,336	--	--
1980	111,912	532,728	644,640	119,304	22.7
1981	155,292	522,356	666,648	22,008	3.4
1982	134,988	585,684	720,672	54,024	8.1
1983	102,324	568,092	670,416	(50,256)	(7.0)
1984	171,888	621,636	793,524	123,108	18.3
1985	234,924	670,440	905,364	111,840	14.1
1986	263,856	717,912	981,768	76,404	8.4
1987	330,000	767,196	1,097,196	115,428	11.7
1988	342,352	815,834	1,158,186	60,990	5.6
1989	425,154	921,613	1,346,767	188,581	16.3
1990	410,689	883,097	1,293,786	(52,981)	(3.9)

11/21/89
S. Salas

NET INCOME ANALYSIS
Percival P. Baxter Trust
(Combined Invested Income and Main Accounts)

	<u>1980</u>	<u>1981</u>	<u>1982</u>	<u>1983</u>	<u>1984</u>	<u>1985</u>	<u>1986</u>	<u>1987</u>	<u>1988</u>	(Esc.) <u>1989</u>	(Est.) <u>1990</u>
Net Income	\$606,554	\$675,880	\$660,659	\$679,981	\$ 775,802	\$ 878,833	\$1,056,945	\$1,145,366	\$1,196,435	\$1,323,125	\$1,293,786
Income Distributed to BSP Authority	<u>423,565</u>	<u>617,457</u>	<u>612,633</u>	<u>-</u>	<u>190,000</u>	<u>245,029</u>	<u>100,000</u>	<u>500,000</u>	<u>700,000</u>	<u>500,000</u>	<u>800,000</u>
Reinvested Income	<u>\$182,989</u>	<u>\$ 58,423</u>	<u>\$ 48,026</u>	<u>\$679,981</u>	<u>\$ 585,802</u>	<u>\$ 633,804</u>	<u>\$ 956,945</u>	<u>\$ 645,366</u>	<u>\$ 496,435</u>	<u>\$ 823,125</u>	<u>\$ 493,786</u>
Cumulative Reinvested Income Since 1-1-80	\$182,989	\$241,412	\$289,438	\$969,419	\$1,555,221	\$2,189,025	\$3,145,970	\$3,791,336	\$4,287,771	\$5,110,896	\$5,604,682

G. STATISTICAL REPORT

BAXTER STATE PARK
GATE STATISTICS - 1989
ENTRANCE PERMITS ISSUED - BY GATE

	NUMBER OF VEHICLES			NUMBER OF CAMPERS			NUMBER OF DAY USERS			NUMBER OF TRANSIENTS		
	RES.	NON-RES.	TOTAL	RES.	NON-RES.	TOTAL	RES.	NON-RES.	TOTAL	RES.	NON-RES.	TOTAL
Togue Pond Gate												
May	1122	523	1645	751	597	1354	2263	729	2992	106	57	163
June	2113	1064	3177	1925	1261	3186	4043	1283	5326	252	80	332
July	3211	2353	5564	2171	2335	4506	7900	3953	11853	449	186	635
August	2581	2798	5379	2174	2403	4577	5547	4920	10467	395	353	748
September	2375	1942	4317	1800	1784	3584	4511	2527	7038	373	237	610
October	<u>1186</u>	<u>826</u>	<u>2012</u>	<u>525</u>	<u>712</u>	<u>1237</u>	<u>2471</u>	<u>1106</u>	<u>3577</u>	<u>230</u>	<u>119</u>	<u>349</u>
Subtotal Tog. Pd.	12588	9506	22094	9352	9092	18444	26735	14518	41253	1805	1032	2837
West Gate												
May	146	17	163	202	21	223	21	-	21	109	8	117
June	247	25	272	408	22	430	25	6	31	184	24	208
July	317	107	424	615	108	723	49	65	114	338	87	425
August	221	127	348	63	76	139	307	125	432	293	143	436
September	258	60	318	18	14	32	249	68	317	305	58	363
October	<u>41</u>	<u>19</u>	<u>60</u>	<u>5</u>	<u>5</u>	<u>10</u>	<u>37</u>	<u>12</u>	<u>49</u>	<u>68</u>	<u>30</u>	<u>98</u>
Subtotal West Gate	1230	355	1585	1311	246	1557	688	276	964	1297	350	1647
Matagamom Gate												
May	414	103	517	311	90	401	831	155	986	40	26	66
June	454	194	648	339	187	526	889	240	1129	173	96	269
July	889	472	1361	1472	549	2021	942	542	1484	382	252	634
August	615	503	1118	599	604	1203	976	585	1561	286	285	571
September	465	321	786	309	247	556	846	358	1204	163	160	323
October	<u>244</u>	<u>123</u>	<u>367</u>	<u>102</u>	<u>59</u>	<u>161</u>	<u>460</u>	<u>154</u>	<u>614</u>	<u>132</u>	<u>91</u>	<u>223</u>
Subtotal Matagamom	3081	1716	4797	3132	1736	4868	4944	2034	6978	1176	910	2086
TOTAL	16899	11577	28476	13795	11074	24869	32367	16828	49195	4278	2292	6570

BAXTER STATE PARK
GATE STATISTICS - 1989
ENTRANCE PERMITS ISSUED - BY MONTH

	NUMBER OF VEHICLES			NUMBER OF CAMPERS			NUMBER OF DAY USERS			NUMBER OF TRANSIENTS		
	RES.	NON-RES.	TOTAL	RES.	NON-RES.	TOTAL	RES.	NON-RES.	TOTAL	RES.	NON-RES.	TOTAL
May												
Togue Pond	1122	523	1645	757	597	1354	2263	729	2992	106	57	163
West Gate	146	17	163	202	21	223	21	-	21	109	8	117
Matagamon	414	103	517	311	90	401	831	155	986	40	26	66
Subtotal May	1682	643	2325	1270	708	1978	3115	884	3999	255	91	346
June												
Togue Pond	2113	1064	3177	1925	1261	3186	4043	1283	5326	252	80	332
West Gate	247	25	272	408	22	430	25	6	31	184	24	208
Matagamon	454	194	648	339	187	526	889	240	1129	173	96	269
Subtotal June	2814	1283	4097	2672	1470	4142	4957	1529	6486	609	200	809
Year to Date	4496	1926	6422	3942	2178	6120	8072	2413	10485	864	291	1155
July												
Togue Pond	3211	2353	5564	2171	2335	4506	7900	3953	11853	449	186	635
West Gate	317	107	424	615	108	723	49	65	114	338	87	425
Matagamon	889	472	1361	1472	549	2021	942	542	1484	382	252	634
Subtotal July	4417	2932	7349	4258	2992	7250	8891	4560	13451	1169	525	1694
Year to Date	8913	4858	13771	8200	5170	13370	16963	6973	23936	2033	816	2849
August												
Togue Pond	2581	2798	5379	2174	2403	4577	5547	4920	10467	395	353	748
West Gate	221	127	348	63	76	139	307	125	432	293	143	436
Matagamon	615	503	1118	599	604	1203	976	585	1561	286	285	571
Subtotal August	3417	3428	6845	2836	3083	5919	6830	5630	12460	974	781	1755
Year to Date	12330	8286	20616	11036	8253	19289	23793	12603	36396	3007	1597	4604
September												
Togue Pond	2375	1942	4317	1800	1784	3584	4511	2527	7038	373	237	610
West Gate	258	60	318	18	14	32	249	68	317	305	58	363
Matagamon	465	321	786	309	247	556	846	358	1204	163	160	323
Subtotal Sept.	3098	2323	5421	2127	2045	4172	5606	2953	8559	841	455	1296
Year to Date	15428	10609	26037	13163	10298	23461	29399	15556	44955	3848	2052	5900
October												
Togue Pond	1186	826	2012	525	712	1237	2471	1106	3577	230	119	349
West Gate	41	19	60	5	5	10	37	12	49	68	30	98
Matagamon	244	123	367	102	59	161	460	154	614	132	91	223
Subtotal Oct.	1471	968	2439	632	776	1408	2968	1272	4240	430	240	670
Total	16899	11577	28476	13795	11074	24869	32367	16828	49195	4278	2292	6570

BAXTER STATE PARK
COMPARATIVE STATISTICS 1988-89
VISITORS

	<u>1988</u>	<u>1989</u>	<u>Increased (Decrease)</u>
May			
Togue Pond	4901	4509	(392)
Nesowadnehunk	334	361	27
Matagamon	<u>1365</u>	<u>1453</u>	<u>88</u>
Subtotal May	6600	6323	(277)
June			
Togue Pond	8552	8844	292
Nesowadnehunk	453	669	216
Matagamon	<u>1857</u>	<u>1924</u>	<u>67</u>
Subtotal June	10862	11437	575
July			
Togue Pond	16200	16994	794
Nesowadnehunk/West	830	1262	432
Matagamon	<u>3794</u>	<u>4139</u>	<u>345</u>
Subtotal July	20824	22395	1571
August			
Togue Pond	16058	15792	(266)
Nesowadnehunk/West	985	1007	22
Matagamon	<u>3570</u>	<u>3335</u>	<u>(235)</u>
Subtotal July	20613	20134	(479)
September			
Togue Pond	10970	11232	262
Nesowadnehunk/West	681	712	31
Matagamon	<u>2011</u>	<u>2083</u>	<u>72</u>
Subtotal September	13662	14027	365
October			
Togue Pond	4055	5163	1108
Nesowadnehunk/West	191	157	(34)
Matagamon	<u>780</u>	<u>998</u>	<u>218</u>
Subtotal October	5026	6318	1292
Total Year to Date	77587	80634	3047

1989
WEST GATE STATISTICS
TOTAL ENTRANTS - 3480

	<u>No.</u>	<u>%</u>
Transient traffic exiting other gates	571	16.41
Togue Pond Gate	387	11.12
Matagamon Gate	184	5.29
Transient traffic to Nesowadnehunk Lake	333	9.57
Public Landing	267	7.67
Camp Phoenix	57	1.64
Daisey's Camp	9	.26
Day Use traffic thru West Gate	539	15.49
Sightseeing	247	7.10
Fishing	152	4.37
Hiking	140	4.02
Camping in Baxter State Park	140	4.02
Total of Entrance Statistics		
Transient Vehicles	904	25.98
Day Use Vehicles	539	15.49
Camping Vehicles	140	4.02
Pass & Official Vehicles	1079	31.00
Vehicles to Store at NWCG	<u>818</u>	<u>23.51</u>
Total	3480	100.00

1989
WEST GATE STATISTICS

	May		June		July		Aug.		Sept.	
	No.	%	No.	%	No.	%	No.	%	No.	%
Trans. traffic exit. other gates	52	14.17	83	12.05	183	15.84	139	18.63	114	21.80
Togue Pond Gate	30	8.17	58	8.42	125	10.82	98	13.14	76	14.53
Matagamon Gate	22	6.00	25	3.63	58	5.02	41	5.49	38	7.27
Trans. traffic to Nesowadnehunk	27	7.36	105	15.24	60	5.19	36	4.83	105	20.08
Public Landing	24	6.54	85	12.34	47	4.07	30	4.02	81	15.50
Camp Phoenix	3	.82	18	2.61	8	.69	4	.54	24	4.58
Daisey's Camp	0	0	2	.29	5	.43	2	.27	0	0
Day Use Traffic thru West Gate	72	19.62	78	11.32	166	14.37	143	19.17	80	15.30
Sightseeing	27	7.36	40	5.81	87	7.53	52	6.97	41	7.81
Fishing	30	8.17	31	4.50	49	4.24	36	4.83	6	1.18
Hiking	15	4.09	7	1.01	30	2.60	55	7.73	33	6.31
Camping in BSP	11	3.00	21	3.05	52	4.50	42	5.63	14	2.68
76 Total of Entrance Statistics										
Transient Vehicles	79	21.53	188	27.29	243	21.04	175	23.43	219	41.87
Day Use Vehicles	72	19.62	78	11.32	166	14.37	143	19.17	80	15.30
Camping Vehicles	11	3.00	21	3.05	52	4.50	42	5.63	14	2.68
Pass & Official Vehicles	160	43.60	27	39.19	380	32.92	120	16.11	149	28.49
Vehicles to Store at NWCG	45	12.25	132	19.15	314	27.17	266	35.66	61	11.66
Total	367	100.00	689	100.00	1155	100.00	746	100.00	523	100.00

BAXTER STATE PARK
Camper Days Use by Location and Activity
WINTER SEASON 1988-1989

O V E R N I G H T C A M P I N G											
MONTH	ROARING BROOK	DAICEY POND	CHIMNEY POND	KATAHDIN STREAM	RUSSELL POND	ABOL		SO. BRANCH POND	NESOWA- DNEHUNK	TOTAL NUMBER OF PEOPLE	TOTAL CAMPER NIGHTS
December	38	14	57	32	-	-		4	-	71	145
January	58	64	110	18	-	10	18	4	-	120	282
February	259	65	236	146	57	22	33	47	60	509	925
March	68	48	228	36	15	23	-	22	18	217	458
April	-	-	-	-	-	-	-	-	-	-	-
TOTALS	423	191	631	232	72	55	51	77	78	917	1810

C A M P I N G A C T I V I T I E S					
CAMPER NIGHTS			DAY-USE		
MONTH	GENERAL CAMPING	TECHNICAL CLIMBING	SKIING/ SNOW- SHOEING	SNOW MOBILING	TOTAL
December	88	57	32	277	454
January	144	138	41	289	612
February	304	621	116	285	1326
March	242	216	54	177	689
April	-	-	-	-	-
TOTALS	778	1032	243	1056	3109

BAXTER STATE PARK COMPARATIVE STATISTICS - 1989

GATEHOUSE STATISTICS:

					SUMMER USE	DETAIL 1989
					Day use	
Persons:	1986	1987	1988	1989	Trans.	Campers
Resident	49,459	50,612	46,908	50,440	36,645	13,795
Non-Resident	25,579	31,415	30,679	30,194	19,120	11,074
TOTAL	75,038	82,027	77,587	80,634	55,765	24,869
Day Use	41,589	45,980	48,746	49,195	49,195	-
Transient	12,267	13,013	5,964	6,570	6,570	-
Campers	20,415	22,290	22,877	24,869	-	24,869
Lodge Guests	767	744	-	-	-	-
TOTAL	75,038	82,027	77,587	80,634	55,765	24,869

VEHICLES:

Togue Pond	20,106	22,387	21,430	22,094
Matagamon	4,331	4,740	4,584	4,797
Nesowadnehunk, West	2,237	2,221	1,484	1,585
TOTAL	26,674	29,348	27,498	28,476

CAMPGROUND STATISTICS:

					DETAIL USE	CAMPER 1989
					Cmpgrds.	Grp.Ar.
CAMPER DAYS:	1986	1987	1988	1989		
Campgrounds:						
Roaring Brook	9,622	10,473	10,543	10,621	7,653	2,968
Abol	4,988	5,415	5,621	5,691	5,691	-
Katahdin Stream	9,476	9,992	10,705	10,370	7,743	2,627
Daicey Pond	4,635	4,863	4,871	4,636	4,636	-
Kidney Pond	-	-	-	2,179	2,179	-
Nesowadnehunk	4,703	5,787	5,890	6,182	4,223	1,959
Trout Brook Farm	2,500	3,266	4,193	4,791	3,077	1,714
South Branch Pond	8,472	9,375	9,331	9,380	9,380	-
Russell Pond	2,719	2,890	3,028	2,881	2,881	-
Chimney Pond	3,623	3,688	3,756	3,888	3,888	-
SUB-TOT. CAMPGROUNDS	50,738	55,749	57,938	60,619	51,351	9,268

Outlying Sites:

South Branch Area	381	466	501	565
Fowler Area	680	785	1,005	1,003
Webster Area	909	1,101	1,491	1,373
AT Shelter	111	324	171	393
Davis Pond Area	240	243	241	251
Wassataquoik Area	717	773	864	829
SUB-TOT. OUTLY. SITES	3,038	3,692	4,273	4,414
TOT. SUMMER OUTLY. DAYS	53,776	59,441	62,211	65,033

VISITOR DAYS:

	86	87	88	89
Camper Days-Summer	53,776	59,441	62,211	65,033
Day Use/Transient	53,856	58,993	54,710	55,765
TOT. SUM. VISIT. DAYS	107,632	118,429	116,921	120,798

	86-87	87-88	88-89
Camper Days-Winter	919	1,622	1,810
Day Use-Winter	1,200	1,448	1,299
TOT. WINTER VISIT. DAYS	2,119	3,070	3,109
TOT. PARK VISIT. DAYS	109,751	121,499	

TRAIL USE SUMMARY

<u>TRAIL:</u>	<u>May</u>	<u>June</u>	<u>July</u>	<u>August</u>	<u>Sept.</u>	<u>Oct.</u>	<u>Total Hikers</u>
<u>ROARING BROOK:</u>							
Chimney	422	2,267	3,900	4,359	3,239	1,211	15,398
Helon Taylor	153	468	1,209	1,124	945	186	4,085
Sandy Stream	646	1,203	2,398	2,147	953	666	8,013
So. Turner	219	211	302	382	340	173	1,627
Russell Pond	67	408	557	542	400	65	2,039
Nature Trail	69	98	162	152	132	153	766
Sub-Total	1,076	4,655	8,528	8,706	6,009	2,454	31,928
<u>ABOL:</u>							
Abol Beach	220	389	1,074	598	312	103	2,696
Abol Trail	404	607	1,313	1,257	1,114	295	4,990
Abol Falls	40	76	107	119	94	55	491
Sub-Total	664	1,072	2,494	1,974	1,520	453	8,177
<u>KATAHDIN STREAM:</u>							
Hunt	385	715	1,890	2,180	1,656	661	7,487
Owl	65	76	380	576	338	136	1,571
Marston	5	2	26	15	9	0	57
Mt. Coe	0	0	0	0	0	0	0
Grassy Pond	100	47	616	810	551	168	2,292
Double Top So.	2	0	8	11	21	14	56
O.J.I.	4	4	45	52	46	22	173
A.T. South	13	132	522	861	602	254	2,373
Sub-Total	574	976	3,476	4,505	3,223	1,255	14,009
<u>DAICEY POND:</u>							
Niagara Falls	234	701	1,157	869	670	370	4,001
D.P. Nature Tr.	72	218	377	309	206	147	1,329
Lost Pond Trail	11	35	33	77	53	26	235
Sentinel Mt. Tr.	0	48	40	67	64	60	279
A.T. to Katahdin	0	15	78	90	115	43	341
Daicey to Grassy	45	188	283	182	195	114	1,007
Daicey to Elbow	35	162	205	203	172	93	870
Daicey to Kidney	3	96	101	67	61	58	386
Doubletop	8	0	0	0	0	0	8
Sub-Total	408	1,463	2,274	1,864	1,536	911	8,456
<u>KIDNEY POND:</u>							
Celia & Jackson	0	0	0	7	9	2	18
Draper Pond	0	0	0	1	0	0	1
Kidney Pd. Outlet	0	0	0	0	0	0	0
Lily Pad Pond	0	6	0	20	13	0	39
Little Beaver Pd.	0	0	0	0	0	0	0
Little Rocky Pd.	-	13	0	0	0	0	13
Rocky Pond	2	0	0	22	7	2	33
Sentinel Link	0	0	0	0	0	0	0
Sentinel Mtn.	3	31	0	62	44	26	166
Windy Pitch	0	0	0	2	0	0	2
Sub-Total	5	50	0	114	73	30	272
<u>NESOWADNEHUNK:</u>							
Day Use	0	0	205	210	139	50	604
Ledge Falls	0	0	317	187	93	32	629
Slide Dam	0	0	38	91	86	28	243
Sub-Total	0	0	560	488	318	110	1,476
<u>SOUTH BRANCH POND:</u>							
So. Branch Falls	5	50	91	75	31	27	279
Ledges	24	28	108	76	39	12	287
Howe Brook	4	49	169	225	85	31	563
N. Traveler	43	136	362	357	245	52	1,195
Center Ridge	8	23	37	78	44	10	200
So. Br. Mtn.	43	40	83	173	63	24	426
Pogy Notch	40	110	225	216	168	90	849
Burnt Mtn.	0	0	0	0	0	0	0
Middle Fowler	5	11	39	47	41	2	145
Sub-Total	172	447	1,114	1,247	716	248	3,944
<u>CHIMNEY POND:</u>							
Dudley	113	561	903	934	800	150	3,461
Cathedral	183	719	970	1,147	895	285	4,199
Saddle	Closed	766	1,693	2,029	1,259	645	6,392
Hamlin	19	77	104	131	147	55	533
N. Basin	35	123	168	189	114	31	660
N. Peaks	0	4	18	8	8	0	38
N.W. Basin	0	50	89	79	78	22	318
Sub-Total	350	2,300	3,945	4,517	3,301	1,188	15,601
<u>RUSSELL POND:</u>							
Russell Pd. Tr.	43	418	247	622	296	151	1,777
Wass. Str. Tr.	34	119	250	308	89	55	855
Pogy Notch Tr.	62	75	117	183	98	46	581
Wass. Lake Tr.	91	311	283	338	210	81	1,314
N.W. Basin Tr.	0	148	109	150	145	69	621
N. Peaks Tr.	0	9	57	31	7	13	117
Grand Falls Tr.	25	35	130	165	55	10	420
Lookout Trail	16	38	64	77	48	16	259
Sub-Total	271	1,153	1,257	1,874	948	441	5,944
GRAND TOTAL	4,020	1,2116	23,648	25,289	17,644	7,090	89,807

CLASS DAYS SUMMARY - 1989

CONDITIONS CONCERNING WHEN KATAHDIN IS CLOSED OR OPEN ABOVE TREELINE

Class 1 - Open - A good day.

Class 2 - Open but not recommended for climbing.

Class 3 - Open but not recommended; one or more trails closed - trails closed to be named by Ranger when setting Class Day.

Class 4 - Mandatory closure of all trails above treeline.

The Ranger at Chimney Pond is responsible for determining the Class Day of Katahdin. Closing applied only to portions of trails above treeline. Portions of trails below treeline will remain open.

NUMBER OF CLASS DAYS

<u>YEAR</u>	<u>CLASS 1</u>	<u>CLASS 2</u>	<u>CLASS 3</u>	<u>CLASS 4</u>
1982	51	80	7	0
1983	50	93	2	0
1984	47	70	22	6
1985	53	84	9	2
1986	36	102	13	0
1987	47	97	12	0
1988	32	89	23	11
1989	53	70	32	7

BAXTER STATE PARK
Camper Days Summary
1989

<u>Campgrounds</u>	<u>May</u>	<u>June</u>	<u>July</u>	<u>Aug.</u>	<u>Sept.</u>	<u>Oct.</u>	<u>Total</u>	<u>% of Total Camper Day</u>
Roaring Brook	547	1,298	1,807	1,969	1,484	548	7,653	11.8
Abol	408	665	1,633	1,663	1,040	282	5,691	8.8
Katahdin Stream	575	1,261	1,956	1,985	1,486	480	7,743	11.9
Daicey Pond	436	906	1,012	1,004	860	418	4,636	7.1
Kidney Pond	74	534	495	507	387	182	2,179	3.4
Nesowadnehunk	141	417	1,289	1,578	658	140	4,223	6.5
Trout Brook Farm	175	262	1,017	1,117	365	141	3,077	4.7
So. Branch Pond	539	1,071	2,952	3,071	1,422	325	9,380	14.4
Russell Pond	145	560	637	822	551	166	2,881	4.4
Chimney Pond	39	751	925	996	845	332	3,888	6.0
Sub-Total	3,079	7,725	13,723	14,712	9,098	3,014	51,351	79.0

Group Areas

Avalanche Field	272	388	865	855	403	185	2,968	4.6
Foster Field	238	388	812	652	426	111	2,627	4.0
Nesowadnehunk	110	205	593	638	327	86	1,959	3.0
Trout Brook Farm	146	83	729	657	89	10	1,714	2.6
Sub-Total	766	1,064	2,999	2,802	1,245	392	9,268	14.2

Outlying Sites

So. Branch Pond	65	71	122	145	133	29	565	.9
Fowler	189	124	239	342	105	4	1,003	1.5
Webster	150	219	304	503	152	45	1,373	2.1
AT Shelter	5	44	91	93	117	43	393	.6
Davis	0	48	61	56	62	24	251	.4
Wassataquoik Area	5	138	198	280	153	55	829	1.3
Sub-Total	414	644	1,015	1,419	722	200	4,414	6.8

TOT. CAMP. DAYS	4,259	9,433	17,737	18,933	11,065	3,606	65,033	100.0
-----------------	-------	-------	--------	--------	--------	-------	--------	-------

% Camper Days Per Month

CAMPER AND VISITOR DAYS (1989)

	<u>1986</u>	<u>1989</u>	<u>%</u>
*Total Summer Visitor Days	107,632	120,798	11%

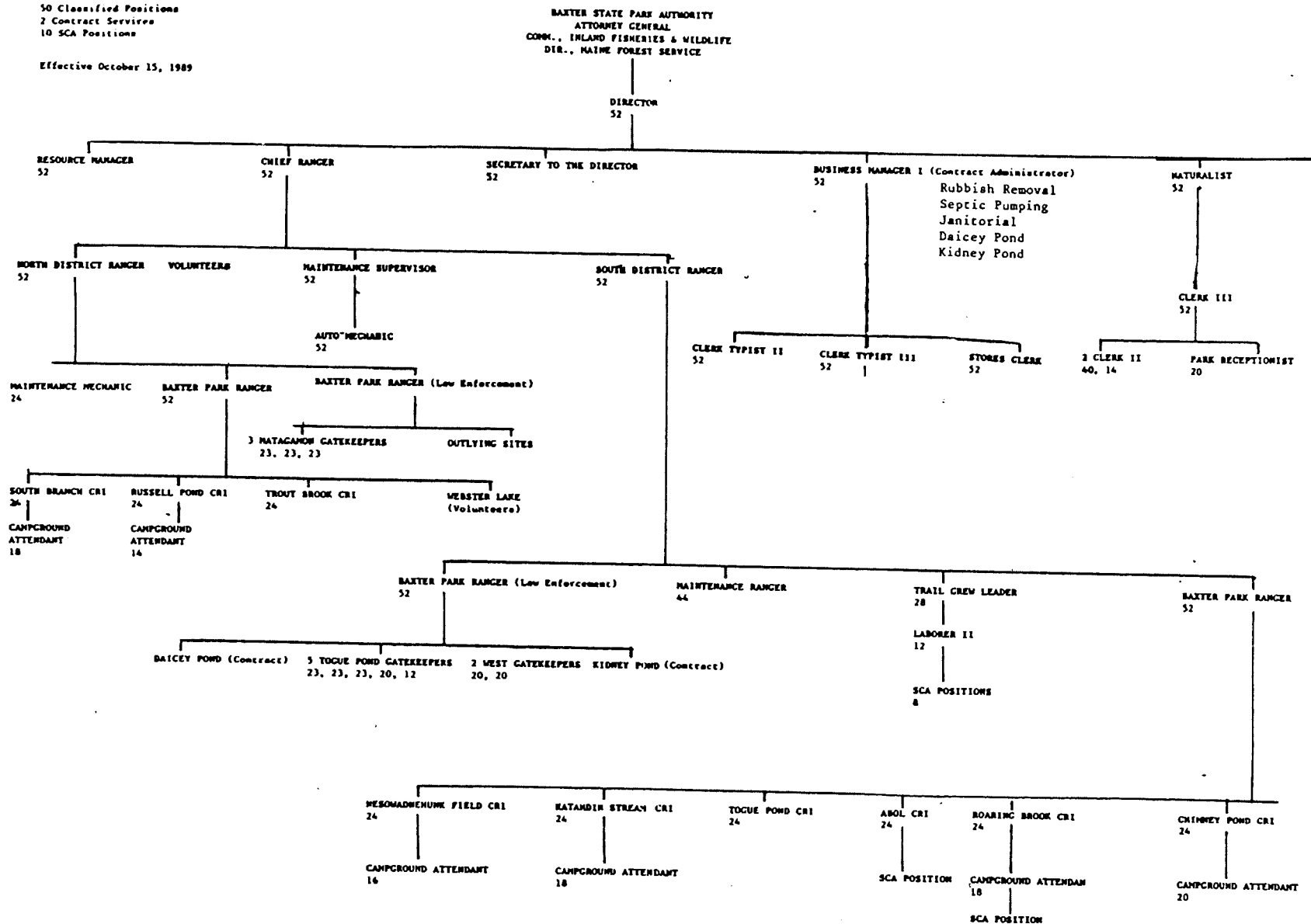
- increasing because people are extending seasons - hiking and camping in spring and fall.
- People are also taking extended hikes utilizing loop trails.
- Trout Brook Campground was fixed up and canoes are now rented there.
- (Weather fluctuations).

	<u>1986</u>	<u>1989</u>	<u>%</u>
*Total Camper Days	53,776	65,033	+21%
Roaring Brook	9,600	10,600	+10%
Nesowadnehunk	4,703	6,182	+31%
Trout Brook	2,500	4,791	+92%

H. PERSONNEL LISTING

50 Classified Positions
2 Contract Services
10 SCA Positions

Effective October 15, 1989



BAXTER STATE PARK
YEAR-ROUND POSITIONS - 1989

<u>Title/ Position Number:</u>	<u>Name:</u>	<u>Location:</u>
BSP Director 9429-0811	Irvin C. Caverly, Jr.	Headquarters, Mlkt.
BSP Chief Ranger 9428-0966	Chris M. Drew	Headquarters, Mlkt.
Business Manager 0041-0481	Elizabeth Austin	Headquarters, Mlkt.
Forester II 9452-0968	D. Jensen Bissell	Headquarters, Mlkt.
Secretary 005-0969	Roxanna F. McLean	Headquarters, Mlkt.
Interpretive Spec 0479A-0947	Jean Hoekwater	Headquarters, Mlkt.
BSP Maintenance Supv. 9427-0121	Philip M. McGlaufflin	Headquarters, Mlkt.
BSP District Rangers 9404-0946 9404-0945	Barry MacArthur Robert E. Howes	North District South District
BSP Rangers 9434-0946 9434-0944 9434-0943 9434-0942	Thomas P. Chase Loren Goode Bernard Crabtree Charlie Kenney	North District South District South District North District
Auto Mechanic II 8303-0926	Tim Sides	Headquarters, Mlkt.
Clerk III 0003-0091	Janice T. Caverly	Headquarters, Mlkt.
Clerk Typist III 0013-1081	Judith A. Hafford	Headquarters, Mlkt.
Clerk Typist II 0012-0871	S. Jean Howes	Headquarters, Mlkt.
Stores Clerk 0221-0927	Rosemary K. James	Headquarters, Mlkt.

SEASONAL POSITIONS - 1989

<u>Title/ Position Number</u>	<u>Name/Location</u>	<u>Weeks</u>	<u>Start</u>	<u>End</u>
MAINTENANCE RANGERS				
8281-0965 - 2	Coolong - North	24	5-1	10-13
8281-0041 - 1	Rickards - South	44	5-1	3-3
CAMPGROUND RANGERS				
9425-0631 - 7	Cushman - Nesowadnehunk	24	5-7	10-21
9425-0021 - 1	Curran - Russell Pond	24	5-7	10-21
9425-0221 - 3	Smith - South Branch Pond	24	5-7	10-21
9425-0611 - 9	Ward - Trout Brook Farm	24	5-7	10-21
9425-0351 - 4	Hendrickson - Chimney Pond	24	5-7	10-21
9425-0641 - 8	Hamer - Roaring Brook	24	5-7	10-21
9425-0601 - 6	Johnston - Abol	24	5-7	10-21
9425-0391 - 5	Rytlewski - Katahdin Stream	24	5-7	10-21
9425-0151 - 2	Browning - Togue Pond	24	5-7	10-21
CAMPGROUND ATTENDANTS				
9424-0841 - 5	Trefethen - Chimney Pond	20	5-21	10-7
9424-0741 - 3	Fisher - Roaring Brook	18	5-21	9-23
9424-0922 - 6	Milne - South Branch Pond	18	5-21	9-23
9424-0461 - 2	White - Nesowadnehunk	16	5-21	9-9
9424-0831 - 4	Sheltmire - Russell Pond	14	5-28	9-3
9424-0421 - 1	Horton - Katahdin Stream	18	5-21	9-23
	SCA Student - South			
GATEHOUSE ATTENDANTS				
9422-0171 - 3	Guerette - Togue Pond	23	5-14	10-21
9422-0511 - 5	Gumprecht - Togue Pond	23	5-14	10-21
9422-0361 - 7	Miller - Matagamon	23	5-14	10-21
9422-0441 - 8	*Getchell - Matagamon	23	5-14	10-21
	Dudley - AC			
9422-0201 - 9	*Hanson - Matagamon	23	5-14	10-21
9422-0501 - 4	Turmel - Togue Pond	23	5-14	10-21
9422-0521 - 6	Freeman - West Gate	22	5-17	10-14
9422-0531 - 1	Moore - Togue Pond	20	5-19	10-30
9422-0541 - 2	Gordon - Togue Pond	12	6-18	9-19
9422-0971 - 10	Thies - West Gate	22	6-15	10-14
TRAIL CREW				
9435-0141 - 1	Kenway - Trail Crew Super.	28	3-20	9-30
8002-0940 - 1	Stillman - Laborer II	14	5-15	8-19
	8 SCA Students			
HEADQUARTERS				
0002-0731 - 1	King - Clerk II	40	1-9	10-13
0002-0941 - 2	MacArthur - Clerk II	14	5-8	8-26
9210-0967 - 1	Mott - Park Receptionist	20	5-1	9-15

*Vacated position during season. Position filled by AC.

I. DIRECTOR'S CONCLUDING REMARKS

DIRECTOR'S CONCLUDING REMARKS

In the conclusion of the 1988 report I identified an agenda of projects we hope to accomplish in 1989, namely by title: new bunkhouse at Russell Pond, road work in the SFMA, housing at the SFMA and a road use policy at the SFMA, a caribou transplant to BSP, a new carpentry shop at Millinocket, work at Togue Pond Camps, housing at West Gate, work at Kidney Pond and improved I&E program. We have accomplished much in these areas. In 1990 our focus will be towards less new construction and continued repair and maintenance of our existing facilities and equipment. We have some bridge work to accomplish which is presently being looked at by the Maine Army National Guard, namely: the raising of Kidney Pond bridge and the removal of the bridge at Katahdin Stream Campground. A foot bridge will be maintained across the dam for public access to the campground office. Drive-in traffic to the campground will be routed via the north approach, the south approach being maintained as a service road to staff facilities.

We will implement in-house procedure which will give us better control of the Roaring Brook road. We are confident this can be accomplished without a major reconstruction of the area.

Some proposed regulation changes are in order effective 12/1/90 and we will work to get these through the process and implemented. The Kidney Pond Plan has progressed ahead of schedule and our objectives for 1990 will be to:

1. Open KPC for public use Friday proceeding Memorial weekend.
2. Open cabins #6 and #7 for public rental (4 units) start of season.
3. Renovate Colt Point Camp and have available for rent by July 15, 1990 for summer use (winter use Dec. 1, 1990).
4. Complete renovations of cabins #17, #18, #19, #20. Relocate #20 to site of old #15.
5. Continued efforts towards improved trail system and signing to outlying areas.

We will also work with DOT to add the Kidney Pond and Daicey Pond roads to the same maintenance schedule as the rest of BSP road system. This will require some legislative action.

For nearly two decades now the Maine Army National Guard 112th Medivac Unit from the Bangor Base has been of tremendous assistance to BSP in the area of search and rescue training, medical response and emergency evacuation. Our sincerest thanks to the Adj. General of the State of Maine Ernest Park and the commanding officers at the Bangor Base (past and present) Col. Albert White and Maj. James Tinkham and the entire staff.

This Department has worked consistently and cooperatively with our Department in identifying heliports providing training

BAXTER STATE PARK AUTHORITY
 COMBINED STATEMENT OF REVENUES, EXPENDITURES AND
 CHANGES IN FUND BALANCES - ALL GOVERNMENTAL FUND TYPES
 AND EXPENDABLE TRUST FUNDS (PRESCRIBED BASIS)

For the Fiscal Year Ended June 30, 1989

	Governmental Fund Type Special Revenue	Fiduciary Fund Type Trust	Total (Memorandum Only) 1989
Revenues:			
Other taxes or special licenses	\$ 139	\$	\$ 139
From use of money and property	10,296	200,197	210,493
Service charges for current services	468,936		468,936
Sale and compensation for loss of property	6,242		6,242
Total Revenues	<u>485,613</u>	<u>200,197</u>	<u>685,810</u>
Expenditures:			
Personal services -			
Salaries and wages	634,802		634,802
Fringe benefits	198,471		198,471
Capital expenditures	130,537		130,537
All other -			
Contractual services	351,086		351,086
Commodities	91,913		91,913
Debt retirement, interest	409		409
Transfers to General Fund	20,701		20,701
Total Expenditures	<u>1,427,919</u>		<u>1,427,919</u>
Excess of Revenues Over (Under) Expenditures	(<u>942,306</u>)	<u>200,197</u>	(<u>742,109</u>)
Other Financing Sources (Uses):			
Nonrevenue receipts and credits		43,956	43,956
Operating transfers in	900,000	500,000	1,400,000
Operating transfers out		(<u>860,000</u>)	(<u>860,000</u>)
Total Other Financing Sources (Uses)	<u>900,000</u>	(<u>316,044</u>)	<u>583,956</u>
Excess of Revenues and Other Sources Over (Under) Expendi- tures and Other Uses	(<u>42,306</u>)	(<u>115,847</u>)	(<u>158,153</u>)
Fund balance at beginning of year (adjusted)	<u>134,618</u>	<u>569,857</u>	<u>704,475</u>
Fund balance at end of year	<u>\$ 92,312</u>	<u>\$454,010</u>	<u>\$546,322</u>


See accompanying notes to financial statements.

BAXTER STATE PARK AUTHORITY
 COMBINED STATEMENT OF ASSETS, LIABILITIES
 AND FUND EQUITY (PRESCRIBED BASIS)
 June 30, 1989

	Governmental Fund Type <u>Special Revenue</u>	Fiduciary Fund Type <u>Trust</u>	Account Group General <u>Fixed Assets</u>	Total (Memorandum Only)
<u>ASSETS</u>				
Cash:				
Equity in treasurer's demand and/or investments (Note 1E)	\$50,180	\$	\$	\$ 50,180
Fiscal agent or fiduciary cash (Note 1E)		381,007		381,007
Other cash (Note 1E)	42,117			42,117
Investments (Note 2)		2,970,252		2,970,252
Accounts receivable	15			15
Land, buildings, and equipment (Note 3)			658,584	658,584
Total Assets	<u>\$92,312</u>	<u>\$3,351,259</u>	<u>\$658,584</u>	<u>\$4,102,155</u>
<u>FUND EQUITY</u>				
Fund Equity:				
Investments in general fixed assets (Note 3)	\$	\$	\$658,584	\$ 658,584
Fund balance -				
Reserved for encumbrances (Note 1D)				77,714
Unreserved	14,598	3,351,259		3,365,857
Total Fund Equity	<u>\$92,312</u>	<u>\$3,351,259</u>	<u>\$658,584</u>	<u>\$4,102,155</u>

See accompanying notes to financial statements.

In our opinion, except for the effects on the financial statements of not recording an adjustment, as would have been required for the cost of park-owned buildings described in the third preceding paragraph, and except for the effects on the financial statements of not recording certain adjustment, for the estimated fair value of donated trust fund land and buildings as described in the second preceding paragraph, the component unit financial statements referred to above present fairly the financial position of the Baxter State Park Authority, at June 30, 1989 and the results of its operations and fiduciary fund types for the year then ended, on the basis of accounting described in Note 1C.

 CPA
Rodney L. Scribner, CPA
State Auditor

October 27, 1989



STATE OF MAINE
DEPARTMENT OF AUDIT
STATE HOUSE STATION 66
AUGUSTA, MAINE 04333
Area Code 207
Tel. 289-2201

RODNEY L. SCRIBNER, CPA
STATE AUDITOR

Independent Auditor's Report on Financial Statements
Prepared in Accordance With a Comprehensive Basis of Accounting
Other Than Generally Accepted Accounting Principles

To the President of the Senate and the
Speaker of the House of Representatives

We have audited the financial statements of the Baxter State Park Authority, as of and for the year ended June 30, 1989, as listed in the table of contents. These financial statements are the responsibility of the Authority's management. Our responsibility is to express an opinion on these financial statements based on our audit.

We conducted our audit in accordance with generally accepted auditing standards. Those standards require that we plan and perform the audit to obtain reasonable assurance about whether the financial statements are free of material misstatement. An audit includes examining, on a test basis, evidence supporting the amounts and disclosures in the financial statements. An audit also includes assessing the accounting principles used and significant estimates made by management, as well as evaluating the overall financial statement presentation. We believe that our audit provides a reasonable basis for our opinion.

As described in Note 1C, these financial statements were prepared on the basis of accounting prescribed by the State Controller, which is a comprehensive basis of accounting other than generally accepted accounting principles.

As more fully described in Note 3 to the financial statements, Baxter State Park Authority does not record certain park-owned buildings in the General Fixed Assets Account Group. The cost of such buildings could not readily be determined and accordingly, no adjustment has been made to record such cost.

As more fully described in Note 3, the Authority does not record land and buildings donated to the state, in trust, in the Nonexpendable Trust Fund of the Baxter State Park Authority. The estimated fair value of such land and buildings at the date of donation could not readily be determined and accordingly, no adjustment has been made to record such value.

TABLE OF CONTENTS

Independent Auditor's Report on Financial Statements
Prepared in Accordance with a Comprehensive Basis
of Accounting Other Than Generally Accepted
Accounting Principles

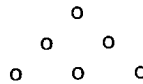
Exhibit

Financial Statements:

Combined Statement of Assets, Liabilities and Fund Equity (Prescribed Basis)	1
Combined Statement of Revenues, Expenditures and Changes in Fund Balances - All Governmental Fund Types and Expendable Trust Funds (Prescribed Basis)	2
Combined Statement of Revenues, Expenditures and Changes in Fund Balance - Budget and Actual - Special Revenue Fund Type (Prescribed Basis)	3
Statement of Revenues, Expenses and Changes in Fund Balance - Nonexpendable Trust Fund (Prescribed Basis)	4
Statement of Changes in Financial Position - Nonexpendable Trust Fund (Prescribed Basis)	5

Notes to Financial Statements

Management Letter

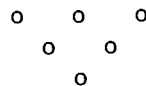


INDEPENDENT AUDITOR'S REPORT

BAXTER STATE PARK AUTHORITY

FOR THE FISCAL YEAR ENDED

JUNE 30, 1989



INDEPENDENT AUDITOR'S REPORT
BAXTER STATE PARK AUTHORITY
FOR THE FISCAL YEAR ENDED
JUNE 30, 1989



STATE DEPARTMENT OF AUDIT
Augusta, Maine 04333

J. APPENDIXES

missions, maintaining effective communications and responding in adverse conditions with sometimes very short notice. I hope that each individual who is involved in the program will receive and understand our appreciation for their contributions and dedicated services. Over the years a countless number of people have been successfully evacuated to our local medical center. For a Ranger who remembers the days of evacuating injured persons from the top of our mountain via stretcher set up in relays of 2 6-person crews (when you could get that many) and spending anywhere from 8-48 hours in getting them off the mountain under all kinds of weather combinations, the services of the 112th are truly appreciated. Thanks.

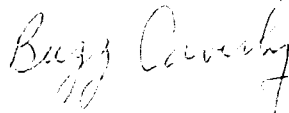
Much work will need to be done during the year in review and preparation of our work program budget. We are anticipating some major cost increases in Personal Services (approximately \$100,000 per year for the next three years) and must prepare well in advance to meet these projections.

At the writing of this report, the Maine Caribou Corporation has requested permission from the Baxter State Park Authority to release the remainder of the herd at Orono into Baxter State Park. We are still considering the details of that agenda.

From all indications 1990 promises to be an interesting and active year. We are watching with interest the proposed land exchange between GNP and GP and the activities on adjoining lands to BSP. Our goal is to work with all interested parties to assure the best use of our natural resources and to minimize the the encroachments to BSP that Governor Baxter referred to.

To all who have made this year successful, a sincere thanks.

Respectfully submitted,



IRVIN C. CAVERLY, JR.
DIRECTOR, BAXTER STATE PARK
64 BALSAM DRIVE
MILLINOCKET, ME 04462

BAXTER STATE PARK AUTHORITY
 COMBINED STATEMENT OF REVENUES, EXPENDITURES AND
 CHANGES IN FUND BALANCE - BUDGET AND ACTUAL
 SPECIAL REVENUE FUND TYPE (PRESCRIBED BASIS)
 For the Fiscal Year Ended June 30, 1989

	<u>Special Revenue Fund</u>		<u>Variance Favorable (Unfavorable)</u>
	<u>Budget</u>	<u>Actual</u>	
Revenues:			
Other taxes or special licenses	\$ 110	\$ 139	\$ 29
From use of money and property	16,700	10,296	(6,404)
Service charges for current services	429,000	468,936	39,936
Sale and compensation for loss of property	<u>4,000</u>	<u>6,242</u>	<u>2,242</u>
Total Revenues	<u>449,810</u>	<u>485,613</u>	<u>35,803</u>
Expenditures:			
Personal services -			
Salaries and wages	642,765	634,802	7,963
Fringe benefits	207,668	198,471	9,197
Capital expenditures	139,821	130,537	9,284
All other -			
Contractual services	446,023	351,086	94,937
Commodities	75,061	91,913	(16,852)
Debt retirement, interest		409	(409)
Transfer to General Fund	<u>27,722</u>	<u>20,701</u>	<u>7,021</u>
Total Expenditures	<u>1,539,060</u>	<u>1,427,919</u>	<u>111,141</u>
Excess of Revenues Over (Under) Expenditures	(<u>1,089,250</u>)	(<u>942,306</u>)	<u>146,944</u>
Other Financing Sources:			
Operating transfers in	<u>1,044,155</u>	<u>900,000</u>	(<u>144,155</u>)
Excess of Revenues and Other Sources Over(Under) Expendi- tures and Other Uses	(45,095)	(42,306)	2,789
Fund balance at beginning of year (adjusted)	<u>134,618</u>	<u>134,618</u>	<u>-</u>
Fund balance at end of year	<u>\$ 89,523</u>	<u>\$ 92,312</u>	<u>\$ 2,789</u>

See accompanying notes to financial statements.

BAXTER STATE PARK AUTHORITY
STATEMENT OF REVENUES, EXPENSES AND CHANGES IN FUND BALANCE
NONEXPENDABLE TRUST FUND (PRESCRIBED BASIS)
For the Fiscal Year Ended June 30, 1989

Nonoperating Revenues (Expenses):	<u>1 9 8 9</u>
Receipts from securities	\$ 422,634
Purchase of securities	(<u>368,672</u>)
Total Nonoperating Revenues (Expenses)	53,962
Fund balance at beginning of year	<u>2,843,320</u>
Fund balance at end of year	<u><u>\$2,897,282</u></u>

See accompanying notes to financial statements.

BAXTER STATE PARK AUTHORITY
STATEMENT OF CHANGES IN FINANCIAL POSITION
NONEXPENDABLE TRUST FUND (PRESCRIBED BASIS)
For the Fiscal Year Ended June 30, 1989

Sources of Working Capital:

Nonoperating revenue	\$53,962
----------------------	----------

Total Sources of Working Capital	<u>53,962</u>
----------------------------------	---------------

Net Increase in Working Capital	<u>\$53,962</u>
---------------------------------	-----------------

Elements of Net Increase in Working Capital:

Investments	<u>\$53,962</u>
-------------	-----------------

See accompanying notes to financial statements.

BAXTER STATE PARK AUTHORITY
NOTES TO FINANCIAL STATEMENTS

June 30, 1989

(1) Summary of Organizational Structure and Significant Accounting Policies

A. Scope of Reporting Entity

The Baxter State Park Authority was established to operate and maintain Baxter State Park for the use and enjoyment of the people of Maine in accordance with the wishes of the donor, former Governor Percival P. Baxter, that this park "...shall forever be retained and used for state forest, public park and public recreational purposes...shall forever be kept and remain as a sanctuary for beasts and birds."

The Baxter State Park Authority, consisting of three members, the State's Attorney General, the Director of the Bureau of Forestry and the Commissioner of Inland Fisheries and Wildlife, has full power in the control and management of the park pursuant to Title 12, Sections 900 - 907, Maine Revised Statutes Annotated of 1964, as amended. The primary responsibilities of the authority are to operate and maintain various campgrounds and campsites within the 200,000 acre wilderness park; to protect the wildlife, fauna, and flora within the park for the enjoyment of present and future generations; to receive and expend monies from trusts and other income for maintenance and operation; to acquire additional land for the park as authorized by law, to establish rules and regulations as necessary for the protection and preservation of the park, monuments and structures thereon and for the protection and safety of the public, and to exercise police supervision over the park.

B. Basis of Presentation - Fund Accounting

The accounts of the Baxter State Park Authority are organized on the basis of funds, each of which is considered a separate accounting entity. The operations of each fund are accounted for with a separate set of self-balancing accounts that comprise its assets, liabilities, and fund equity or balance, revenues, and expenditures or expenses, as appropriate. Government resources are allocated to, and accounted for, in individual funds based upon the purposes for which they are to be spent and the means by which spending activities are controlled. The following fund categories, fund types, and account group are utilized by the Authority:

Governmental Funds

Special Revenue Fund - The Special Revenue Fund is used to account for the proceeds of specific revenue sources that are legally restricted to expenditures for specified purposes.

Fiduciary Funds

Trust Funds - Trust Funds are used to account for assets held by the state in a trustee capacity or as an agent for the Baxter State Park Authority. These include Nonexpendable and Expendable Trusts. Nonexpendable Trust Funds are accounted for in essentially the same manner as proprietary funds since capital maintenance is critical. Expendable Trust Funds are accounted for in essentially the same manner as governmental funds.

Account Group

General Fixed Assets Account Group - Accounts for all general fixed assets acquired or constructed for use by the state in the conduct of its activities, except those accounted for in the trust funds.

Total Columns on Combined Statements

Total columns on combined statements are captioned Memorandum Only to indicate that they are presented only to facilitate financial analysis. Data in these columns do not present financial position in conformity with generally accepted accounting principles.

C. Basis of Accounting

Governmental Fund and Expendable Trust Funds revenues and expenditures are recognized on the modified accrual basis. Under the modified accrual basis applied in accordance with generally accepted accounting principles, revenues are recognized in the accounting period in which they become measurable and available. Expenditures are recognized in the accounting period in which the fund liability is incurred, if measurable, except for unmatured interest on general long-term debt, which is recognized when due.

In certain respects, the authority's accounting practices as prescribed by the State Controller of the State of Maine differ from generally accepted accounting principles. At June 30, 1989, material differences were as follows: it is the authority's policy not to record accounts payable in the Governmental Fund types; payroll expenditures are recorded as paid rather than at the time services are rendered; certain non-payroll obligations are recorded as encumbrances and reservations of fund balances (appropriations carried forward) rather than as accounts payable; funds expended for items of inventory are recorded under the purchase option method, but no entry is made at year end to record on the balance sheet the amount of inventory on hand; in addition, the authority does not accrue a liability for accumulated compensated absences payable in subsequent years from Governmental Funds and Fiduciary Funds.

D. Encumbrances

Encumbrance accounting, under which purchase orders, contracts, and other commitments for the expenditure of money are recorded in order to reserve that portion of the applicable appropriation, is employed as an extension of formal budgetary integration in the Special Revenue Fund. Encumbrances outstanding at year end are reported as reservations of fund balances since they do not constitute expenditures or liabilities.

E. Assets, Liabilities and Fund Equities

Equity in Treasurer's Demand Cash and/or Investments

The Treasurer's cash pool, comprised primarily of short-term certificates of deposit, repurchase agreements, U.S. Treasury Bills and U.S. Treasury Notes, is stated at cost which approximates market value.

Fiscal Agent or Fiduciary Cash

Fiscal agent or fiduciary cash consists of cash equivalents held in the trust fund that is managed by Casco Northern Bank.

Other Cash

Other cash consists of a demand deposit account and petty cash.

Investments

Trust fund investments of the Baxter State Park Authority are managed by Casco Northern Bank under the direction of the advisors of the various trusts of the State of Maine (through the Office of the Treasurer of State). Investments are stated at cost.

F. Other Accounting Policies

Vacation and Sick Leave

The authority accounts for vacation leave payments to employees on a cash basis, rather than accruing a liability when the obligation is incurred as required by generally accepted accounting principles. Employees do not vest in sick time, therefore, expense for sick time is recorded when paid.

(2) Detail Notes

Deposits and Investments

The following information is provided as required by the Governmental Accounting Standards Board's Statement No. 3, "Deposits with Financial Institutions, Investments (including Repurchase Agreements), and Reverse Repurchase Agreements."

Authority for the Baxter State Park Authority investments: The deposit and investment policies of the authority are governed by Title 5 s 135 et. seq. of the Maine Revised Statutes Annotated. Authority deposits must be held in depositories organized under the laws of this state or depositories located in this state not to exceed an amount equal to 25% of the capital, surplus and undivided profits of such depository unless fully secured by the pledge of certain securities as collateral or fully covered by insurance. Money in excess of that necessary to meet current obligations may be invested in: bonds, notes, certificates of indebtedness or other obligations of the United States which mature not more than 24 months from the date of investment, or in repurchase agreements secured by obligations of the United States which mature within the succeeding 24 months, prime commercial paper, tax-exempt obligations or bankers' acceptances.

The investments of the Baxter State Park Authority are categorized, according to the level of credit risk assumed by the authority. Category 1 includes investments that are insured, registered or held by the authority's agent in the authority's name. Category 2 includes uninsured and unregistered investments held by the counterparty's trust department or agent in the authority's name. Category 3 includes uninsured and unregistered investments held by the counterparty, its trust department or its agent, but not in the authority's name. All investments of the Baxter State Park Authority are in Category 2. The market value of investments as of June 30, 1989 was \$3,252,943.

(3) Fixed Assets

General Fixed Assets Account Group

Asset records of the authority are incomplete as they do not include some trust fund assets and may not include some general fixed assets. The following is a description of those assets that are not recorded by the authority:

The Baxter State Park Authority owns various buildings (rangers' headquarters, gatehouses, bunkhouses, camps, lean-tos, etc.) within the park, acquired or constructed through use of Governmental Funds, that are not recorded in the General Fixed Assets Account Group. The cost of such buildings could not readily be determined and, accordingly, no adjustment has been made to record such cost.

Nonexpendable Trust Fund

In addition, the authority owns land aggregating 201,018 acres and buildings in the park, which were donated to the state, in trust, by former Governor Percival P. Baxter. Whereas this land was purchased by Mr. Baxter in 28 separate parcels at various times between 1930 and 1962, the cost of this land could not readily be determined. Further, because the land is to be maintained in a Nonexpendable Trust Fund, the value of such land should be recorded at the estimated fair value at the date of donation. Because this value could not readily be determined, no adjustment has been made to record such value.

(4) Boston Safe Deposit and Trust Company

Boston Safe Deposit and Trust Company is the trustee appointed by the late Governor Baxter to hold the main body of the trust property and to manage, invest, reinvest, and administer the same. Funds reported by the trustee as of June 30, 1989 are \$14,573,574 in the principal account and \$5,430,992 in invested income. By the terms of the trust agreement, the net income of the trust is available for the care, protection and operation of the forest land known as Baxter State Park and for other forest lands hereinafter acquired by the State of Maine, under the provisions of the trust, for recreational or reforestation purposes. Funds may be withdrawn from the principal account for the purchase or other acquisition of additional lands for Baxter State Park or other lands for recreational or reforestation purposes.

Funds held by the trustee are not reflected on the records of the State Controller and, accordingly, are not presented on the accompanying financial statements. These funds have not been audited by us and, accordingly, we offer no opinion as to the fairness of presentation of the financial position of the funds as reported by the trustee.

(5) Contributory Defined Benefit Pension Plan

All employees of the Baxter State Park Authority participate in the Maine State Retirement System, a multiple-employer public employee retirement system. The total current-year covered payroll, for the authority, for the year ended June 30, 1989 was \$634,802.

All employees of the Authority shall become members of the retirement system as a condition of their employment. The system provides retirement, death and disability benefits. Employees who retire at age 60 are entitled to an unreduced annual retirement benefit.

The general annual benefit is 2% of the member's average final compensation multiplied by years of membership service, reduced for retirement before age 60.

Covered employees are required by state statute to contribute to the system at a rate of 6.5% of earnable compensation. The authority is required by the same statute to contribute the remaining amounts necessary to pay benefits when due. Employer contributions are based upon an actuarially determined percentage of gross pay that is necessary to provide the system with assets sufficient to meet the benefits to be paid to system members.

The aggregate entry age normal method is used to determine costs. Under this funding method, a total contribution rate is determined which consists of two elements, the normal cost rate and the unfunded actuarial reserve (UAR) rate. Significant actuarial assumptions used include (a) a rate of return on investments of 8%, (b) projected salary increases ranging from 6% per year at age 65 to 10% per year at age 20, (c) projected cost-of-living increases of 4% per year, and (d) a retirement age of 60.

Investments of the retirement system are not segregated by contributing employer, rather, they are recorded as assets of the system in a separate Pension Trust Fund of the State of Maine.

The following contributions were made by the authority in accordance with actuarially determined requirements:

<u>For the Year Ended</u>	<u>Amount of Contribution</u>	<u>% of Covered Payroll</u>
June 30, 1986	\$ 83,748	17
June 30, 1987	90,192	17
June 30, 1988	104,111	18
June 30, 1989	120,467	19

Additional pension information, as required by Governmental Accounting Standards Board Statement No. 5, was not available for note disclosure.

(6) Other Employee Benefits

Postretirement Health Care Benefits: In addition to providing pension benefits, the State of Maine provides certain health care benefits for retired employees of the Baxter State Park Authority. Basic benefits covered hospital and physicians' services as well as major medical expenses. Additional benefit provisions include care of mental health conditions, alcoholism and substance abuse. These benefits are provided through insurance companies whose premiums are based on an experience rating determined by past claims activity. Premium payments are made by the Maine State Retirement System using funds generated from current contributions and return on investments. The Retirement System recognizes the cost of providing these benefits as incurred.

Postretirement Life Insurance Benefits: In addition to providing pension and health care benefits, the State of Maine provides certain life insurance benefits for retired employees of the Baxter State Park Authority, who participated in the group life insurance program as active employees. Benefits are paid by the state on a scaled distribution based on the number of years of employee's participation. Payments of claims are made by the Maine State Retirement System using funds generated from premiums paid by employers and employees while in active status and by the employer after retirement for employees who participated for 10 continuous years prior to retirement. The retirement system recognizes the cost of providing these benefits as claims are paid to beneficiaries.

Deferred Compensation Plan: The authority, through the State of Maine offers its employees a deferred compensation plan created in accordance with Internal Revenue Code Section 457. The plan, available to all authority employees, permits them to defer a portion of their salary until future years. The deferred compensation is not available to employees until termination, retirement, death or unforeseeable emergency.

All amounts of compensation deferred under the plan, all property and rights purchased with those amounts, and all income attributable to those amounts, property, or rights are (until paid or made available to the employee or other beneficiary) solely the property and rights of the state (without being restricted to the provisions of benefits under the plan), subject only to the claims of the state's general creditors. Participants' rights under the plan are equal to those of general creditors of the state in an amount equal to the fair market value of the deferred account for each participant.

In the past, the plan assets have been used for no purpose other than to pay benefits. The State of Maine believes that it is unlikely that it will use the assets to satisfy the claims of general creditors in the future.



STATE OF MAINE
DEPARTMENT OF AUDIT
STATE HOUSE STATION 86
AUGUSTA, MAINE 04333
Area Code 207
Tel. 289-2201

RODNEY L. SCRIBNER, CPA
STATE AUDITOR

Management Letter

To the President of the Senate and the
Speaker of the House of Representatives

We have audited the component unit financial statements of the Baxter State Park Authority as of and for the year ended June 30, 1989, and have issued our qualified report thereon dated October 27, 1989. As a part of our audit, we made a study and evaluation of the Authority's system of internal accounting control to the extent we consider necessary to evaluate the system as required by generally accepted auditing standards. Under these standards, the purpose of such evaluation is to establish a basis for reliance on the system of internal accounting control in determining the nature, timing, and extent of other auditing procedures that are necessary for expressing an opinion on the financial statements and to assist us in planning and performing our examination of the financial statements.

Our examination of the component unit financial statements of the Baxter State Park Authority made in accordance with generally accepted auditing standards, including the study and evaluation of the authority's system of internal accounting control as of and for the year ended June 30, 1989, would not necessarily disclose all weaknesses in the system because it was based on selective tests of accounting records and related data. Accordingly, we do not express an opinion on the Authority's system of internal accounting control taken as a whole. However, such study and evaluation disclosed certain weaknesses, upon which we are presenting our comments and recommendations for your consideration.

MATERIAL WEAKNESSES

Park-owned buildings not
recorded in the General
Fixed Assets Account
Group (GFAAG)

Assets of the Baxter State Park
Authority, as recorded in the General
Fixed Assets Account Group, are
understated.

Prior year finding

Governmental Accounting Standards (GASB
Cod. Sec. 1400.110,111) require that the
cost of fixed assets be recorded in the
GFAAG to provide a management control
and accountability listing of a
government's general fixed assets. The
Authority does not include the cost of
buildings owned by the Park in the
GFAAG.

We again recommend that the Authority
record the cost of Park-owned buildings
in the GFAAG.

Land not recorded in the
Nonexpendable Trust Fund

Prior year finding

Assets of the Baxter State Park Authority, as recorded in the Nonexpendable Trust Fund, are understated.

Governmental Accounting Standards (GASB Cod. Sec. 1400.105) require that fixed assets associated with trust funds be accounted for through those funds. Whereas the principal of the Baxter State Park Authority Nonexpendable Trust Fund includes land (in excess of 200,000 acres), the estimated fair value of the land at the date of donation should be recorded in that fund.

We again recommend that the Authority record the estimated fair value of the land, at the date of donation, in the Nonexpendable Trust Fund. This assists in assuring compliance with terms of the trust instrument and provides a deterrent to mismanagement of trust assets.

OTHER WEAKNESSES

Locally handled demand deposit account - not recorded on the State Controller's records

As of the balance sheet date, the Authority maintained a locally-handled demand deposit account with an account balance of \$39,766.80. The account was initially established with funds transferred directly from the trust account with the Boston Safe Deposit and Trust Company to the demand deposit account. An entry was not made to record the balance on the State Controller's records.

We recommend a journal entry be prepared to properly establish the authorized fund balance in the demand deposit account on the State Controller's records.

Lack of segregation of duties - purchasing - disbursements cycle

A review of the purchasing-disbursements cycle revealed a lack of segregation of duties exists for the following responsibilities:

1. The open market purchase order file is maintained by the warehouse supply clerk, rather than by personnel from the business office.
2. The warehouse supply clerk is responsible for matching vendor's invoices to the receiving reports.

We recommend, in order to provide for proper segregation of duties within the purchasing/disbursements cycle, that the business office maintain the open purchase order file. In addition, we recommend that the warehouse supply clerk be responsible for receiving equipment and supplies and preparing a receiving report. The receiving report should be submitted to the business office, where it should be matched to the vendor's invoice.

Agency records not properly reconciled to Controller's records

Prior year finding

An analysis of the accounting records maintained by administrative personnel revealed that discrepancies between the agency's records and the State Controller's records were not properly reconciled.

To provide accurate accounting records for decision-making, control, forecasting, and trend analysis, we again recommend that agency records be reconciled to the State Controller's records. We also recommend that the reconciliation be documented.

Auditees Response to Recommendations

All recommendations were discussed with administrative personnel of the Baxter State Park Authority. They indicated that further study would be required in regards to the implications of recording the fair value of the Authority's lands in the Nonexpendable Trust Fund. Administrative personnel were in general agreement with the other recommendations.

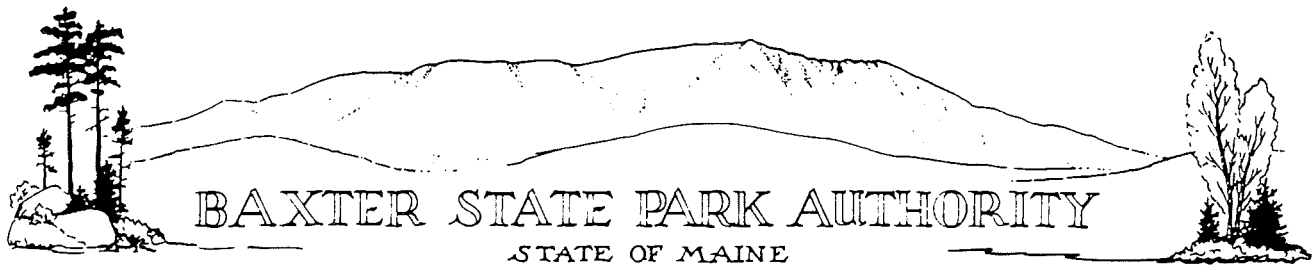
The objective of internal accounting control is to provide reasonable, but not absolute, assurance as to the safeguarding of assets against loss from unauthorized use or disposition and the reliability of financial records for preparing financial statements and maintaining accountability for assets. The concept of reasonable assurance recognizes that the cost of a system of internal accounting control should not exceed the benefits derived and also recognizes that the valuation of these factors necessarily requires estimates and judgements by management.

There are inherent limitations that should be recognized in considering the potential effectiveness of any system of internal accounting control. In the performance of most control procedures, errors can result from misunderstanding of instructions, mistakes of judgement, carelessness or other personal factors. Control procedures whose effectiveness depends upon segregation of duties can be circumvented intentionally by management with respect to the execution and recording of transactions or with respect to the estimates and judgements required in the preparation of financial statements. Further, projections of any evaluation of internal accounting control to future periods is subject to the risk that the procedures may become inadequate because of changes in conditions, and the degree of compliance with the procedures may deteriorate.

The foregoing conditions were considered in determining the nature, timing, and extent of audit tests applied in our examination of the component unit financial statements of the Baxter State Park Authority as of and for the year ended June 30, 1989. This letter does not affect our report dated October 27, 1989 on the component unit financial statements of the Baxter State Park Authority.

Rodney L. Scribner, CPA
State Auditor

October 27, 1989



AUTHORITY MEMBERS

JAMES E. TIERNEY, CHAIRMAN
ATTORNEY GENERAL

WILLIAM J. VAIL, COMMISSIONER
INLAND FISHERIES AND WILDLIFE

JOHN H. CASHWELL, DIRECTOR
MAINE FOREST SERVICE

INFORMATION

(207) 723-5140

BUSINESS OFFICE
(207) 723-9616

PARK HEADQUARTERS

IRVIN C. CAVERLY, JR., DIRECTOR

64 BALSAM DRIVE
MILLINOCKET, MAINE 04462
(207) 723-9500

October 25, 1989

State Department of Audit
State House Station #66
Augusta, ME 04333

In connection with your examination of the general purpose financial statements of Baxter State Park as of June 30, 1989, and for the year then ended for the purpose of expressing an opinion as to whether the financial statements present fairly the financial position of Baxter State Park and the results of its operations and the changes in financial position in conformity with the State of Maine Financial Procedures, we confirm, to the best of our knowledge and belief, the following representations made to you during your examination.

1. We are responsible for the fair presentation in the financial statements of financial position and results of operations of Baxter State Park and changes in financial position in conformity with the State of Maine Financial Procedures. The financial statements include all properly classified funds and account groups of the oversight unit and all component units required by generally accepted accounting principles to be included in the financial reporting entity.
2. We have made available to you all --
 - a. Financial records and related data.
 - b. Minutes of meetings of Baxter State Park Authority or summaries of actions of recent meetings for which minutes have not yet been prepared.
3. There have been no --
 - a. Irregularities involving management or employees who have significant roles in the system of internal

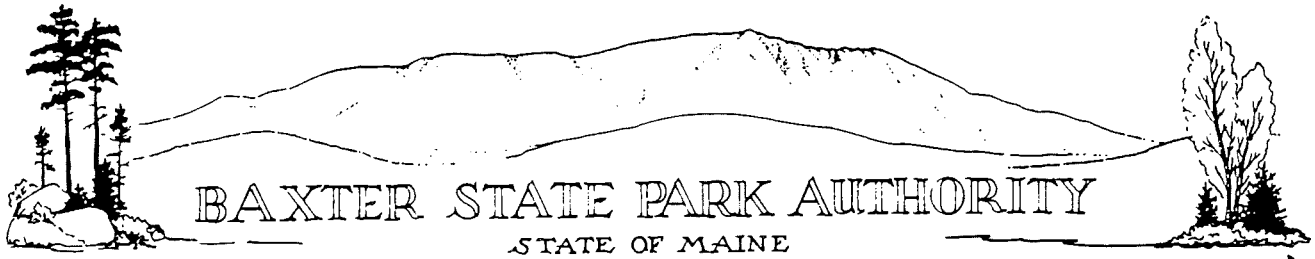
accounting control.

- b. Irregularities involving other employees that could have a material effect on the financial statements.
 - c. Communications from regulatory agencies concerning noncompliance with, or deficiencies in financial reporting practices that could have a material effect on the financial statements.
4. We have no plans or intentions that may materially affect the carrying value or classification of assets, liabilities or fund balances.
5. The following have been properly recorded or disclosed in the financial statements:
- a. Joint ventures and related party transactions and related accounts receivable or payable, including revenues, expenditures, loans, transfers, leasing arrangements, and guarantees.
 - b. Arrangements with financial institutions involving repurchase or reverse repurchase agreements, compensating balances, or other arrangements involving restrictions on cash balances and line-of-credit or similar arrangements.
 - c. Arrangements to repurchase assets previously sold.
6. There are no--
- a. Violations or possible violations of budget ordinances, or laws or regulations (including those pertaining to adopting and amending budgets) whose effects should be considered for disclosure in the financial statements or as a basis for recording a loss contingency.
 - b. Other material liabilities or gain or loss contingencies that are required to be accrued or disclosed by Statement of Financial Accounting Standards No. 5.
 - c. Reservations or designations of fund equity that were not properly authorized and approved.
7. There are no unasserted claims or assessments that our lawyer has advised us are probably of assertion and must be disclosed in accordance with Statement of Financial Accounting Standards No. 5.
8. There are no material transactions that have not been properly recorded in the accounting records underlying the financial statements.

9. Provision, when material, has been made to reduce excess or obsolete inventories to their estimated net realized value.
10. Baxter State Park has satisfactory title to all owned assets, and there are no liens or encumbrances on such assets nor has any asset been pledged.
11. We have complied with all aspects of contractual agreements that would have a material effect on the financial statements in the event of noncompliance.
12. No events have occurred subsequent to the balance-sheet date that would require adjustments to, or disclosure in, the financial statements.
13. We have identified all accounting estimates that could be material to the financial statements, including the key factors and significant assumptions underlying those estimates, and we believe the estimates are reasonable in the circumstances.
14. We have disclosed to you all Civil Rights complaints filed against us or investigations completed or in progress, of which we are aware.

Signed: Jim O. Carver, Jr.
Title: Director, Baxter State Park
Date: October 25, 1989

Signed: Elizabeth M. Austin
Title: Business Manager
Date: October 25, 1989



AUTHORITY MEMBERS

JAMES E. TIERNEY, CHAIRMAN
ATTORNEY GENERAL

WILLIAM J. VAIL, COMMISSIONER
INLAND FISHERIES AND WILDLIFE

JOHN H. CASHWELL, DIRECTOR
MAINE FOREST SERVICE

INFORMATION

(207) 723-5140

BUSINESS OFFICE
(207) 723-9616

PARK HEADQUARTERS

IRVIN C. CAVERLY, JR., DIRECTOR

64 BALSAM DRIVE
MILLINOCKET, MAINE 04462
(207) 723-9500

October 25, 1989

James E. Tierney, Attorney General
Department of Attorney General
State House Station #6
Augusta, ME 04333

Dear Mr. Tierney:

The State Auditor, Rodney L. Scribner, CPA, is making an annual audit of our financial statements. Please furnish to him the information requested below involving matters as to which you have been engaged and to which you have devoted substantive attention on behalf of the Baxter State Park Authority in the form of legal consultation or representation.

Pending or Threatened Litigation (excluding unasserted claims and assessments) -

Please prepare a description of all material litigation, claims, and assessments (excluding unasserted claims and assessments). Materiality for purposes of this letter includes substantial items, which individually or in the aggregate, involve amounts exceeding \$5,000.00. The description of each claim should include:

- a. The nature of the litigation;
- b. The progress of the case to date;
- c. How management of the Baxter State Park Authority is responding or intends to respond to the litigation, e.g., to contest the case vigorously or to seek out-of-court settlement; and
- d. An evaluation of the likelihood of an unfavorable outcome and an estimate, if one can be made, of the amount or range of potential loss.

To: James E. Tierney, Attorney General
Department of Attorney General

October 25, 1989
Page 2

Unasserted Claims and Assessments -

We have represented to the auditors that there are no unasserted possible claims or assessments that you have advised us are probably of assertion and must be disclosed in accordance with Statement of Financial Accounting Standards No. 5 (excerpts which can be found in the ABA's Auditor's Letter Handbook).

We understand that whenever, in the course of performing legal services for us with respect to a matter recognized to involve an unasserted possible claim or assessment that may call for financial statement disclosure, you have formed a professional conclusion that we should disclose or consider disclosure concerning such possible claim or assessment, as a matter of professional responsibility to us, you will so advise us and will consult with us concerning the question of such disclosure and the applicable requirements of Statement of Financial Accounting Standards No. 5. Please specifically confirm to the auditors that our understanding is correct.

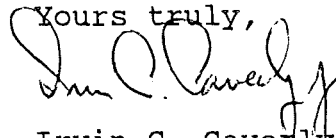
Response

Your response should include matters that existed as of June 30, 1989, and during that period from that date to the effective date of your response.

Please specifically identify the nature of, and reasons for, any limitations on your response.

The auditors expect to have the audit completed on November 17, 1989, and would appreciate receiving your reply by that date with a specified effective date no earlier than October 31, 1989.

Yours truly,



Irvin C. Caverly, Jr.
Director

ICC:rm

INTERDEPARTMENT MEMORANDUM

DATE: 1/18/90

TO: ELIZABETH AUSTIN, BUSINESS MANAGER, BSP

FROM: *Buy* IRVIN C. CAVERLY, JR., DIRECTOR, BSP

SUBJECT: AUDIT REPORT

=====

I received the 1989 Audit Report and have now had the opportunity to review it in detail. Overall, it is a good report and I appreciate the extent and thorough review of our records accomplished by the State of Maine Department of Audit. There are areas of material weakness brought to our attention which have been reported to us in the past and which have not been responded to by us to the extent expected by the Dept. of Audit. In the next paragraph I will identify each and ask that you put into place prior to identified dates, the recommendations as recorded by the Dept. of Audit on the following subjects:

1. Record the list of Park owned buildings in the GFAAG according to Audit standards May 1, 1990.
2. Audit refers to a locally handled demand deposit account with a balance of \$39,766.80 which was initially established with funds from Boston to set up our checking account. Evidently we did not record the balance on the State Controller's records. Prior to March 1, 1990 please prepare a journal entry for this discrepancy to the State Controller for his records.
3. Another weakness identified was that there is a lack of segregation of duties - purchasing - disbursements cycle. Please review the extent of their concern as recorded in the Audit for the fiscal year ending June 30, 1989 and take corrective action to comply with their recommendations prior to March 1, 1990. It appears this will necessitate a change in the procedure of filing open market purchase orders to the Business Office rather than the warehouse, putting the Warehouse Clerk clearly in the position of being responsible for receiving equipment and supplies and preparing and receiving the report; the receiving report be submitted to the Business Office to be matched to the vendor's invoice.
4. For several years now Audit has been concerned that our records are not properly reconciliated to the Controller's records. Would you please meet with staff of the Controller's Office and develop a system prior to July 1, 1990 which will respond to Audit concern. I realize that the distance between Millinocket and Augusta and the time required for mail deliveries both ways has had an impact and

To: Elizabeth Austin
January 18, 1990
Page 2

contributed to this discrepancy, but it would appear to me now that we have a computer system in place these discrepancies can be corrected and we need to accomplish that as soon as possible.

5. And finally, I note that the Audit Dept. continues to be concerned that we have not identified or recorded an estimated fair value of the land at the date of donation. I personally will work closely with you and members of the Finance Committee of BSP Advisory to respond to this request prior to July 1, 1990 and to meet the needs of State Audit without jeopardizing the desires and intent of the donor on this issue.

In closing, I would say that one of our prime considerations and goals in 1990 would be to correct all of these weaknesses identified by State Audit to the extent that they are in total compliance with Audit's procedures and these issues need not be brought to our attention again or identified as material weaknesses within our system.

Thank you for your attention to these matters and the follow-up work that will be required and a timely response to me of the status of these assignments according to the designated dates of achievement.

ICC:rm

cc: BSP Authority
Jane Thomas
Roy Farnsworth
Finance Committee

Director
Bert Schlosser
Deputy Director
John D. Wakefield
Principal Analysts
James A. Clair
Cheryl E. Ring



Analysts
Rosemarie Fredette
Lock Kiermaier
J. Timothy Leet
Kevin M. Madigan
Grant T. Pennoyer
Kathryn Van Note

MAINE STATE LEGISLATURE
OFFICE OF FISCAL AND PROGRAM REVIEW

STATE HOUSE, STATION 5
AUGUSTA, MAINE 04333
Telephone: (207) 289-1635

May 10, 1989

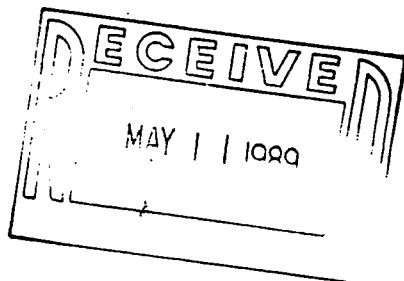
Mr. Buzz Caverly
Baxter State Park Authority
64 Balsalm Drive
Millinocket, Maine 04462

Dear Mr. Caverly:

Rep. Pat McGowan suggested that I sent you a copy of Committee Amendment "A" to L.D. 93, the "Part I" Budget (see enclosure). He mentioned that you need to review the approval exemptions from certain administrative processes that were included in this bill. Section 2 of Part C (see page 199) includes the Baxter State Park Authority's exemption from the Bureau of Accounts and Control, Bureau of Purchases, and Bureau of Public Improvements approval processes.

L.D. 93, as amended, was enacted by the Legislature and signed by the Governor on April 28, 1989. It is now referred to as P.L. 1989, c.68. Due to the emergency preamble, the provisions included in Part C, section 2 were effective on April 28, 1989.

Please call if I can answer any questions concerning the above.



Sincerely,

A handwritten signature in cursive script, reading "James A. Clair".

James A. Clair
Principal Analyst

JAC/efb
enclosure

cc: Rep. Patrick McGowan

Sec. 2. 12 MRSE Sec908 is enacted to read:

Sec. 908. Park operations

1. Certain approval unnecessary; payments. Notwithstanding any other provisions of law, the Baxter State Park Authority shall not need the approval of the Department of Finance through the Bureau of Accounts and Control for the payment of any bills, invoices, accounts, payrolls or any other evidences of claims, demands or charges.

2. Certain approval unnecessary; purchases. Notwithstanding any other provision of law, purchases of materials or services by the Baxter State Park Authority shall not need the approval of the Department of Administration through the Bureau of Purchases.

3. Certain approval unnecessary; contraction or improvement. Notwithstanding any other provision of law, the construction or reconstruction of roads and buildings or any other improvements by the Baxter State Park Authority shall not need the approval of the Department of Administration through the Bureau of Public Improvements.

II. RECORD OF BAXTER STATE PARK
AUTHORITY/ADVISORY AND SUB-COMMITTEE MEETINGS
FOR 1989

Authority/Advisory

March 31, 1989 - Bolton Hill, Augusta
May 12, 1989 - Daicey Pond, Baxter Park
July 7, 1989 - Bolton Hill, Augusta
October 13, 1989 - Kidney Pond, Baxter Park

Finance

May 5, 1989 - Civic Center, Augusta
October 30, 1989 - Civic Center, Augusta
November 29, 1989 - Fleet Bank, Augusta

Park Regulations and Visitor Use

January 13, 1989 - State Office Building, Augusta
February 8, 1989 - Park Headquarters, Millinocket
March 14, 1989 - University of Maine, Orono
November 15, 1989 - State House, Augusta

Scientific Forest Management Area

January 24, 1989 - University of Maine, Orono
June 6, 1989 - University of Maine, Orono
December 5, 1989 - University of Maine, Orono

Director's Communications

January 18, 1989 - Park Headquarters, Millinocket
June 9, 1989 - Park Headquarters, Millinocket & Augusta
December 5, 1989 - Park Headquarters, Millinocket

NOTE: Minutes of these meetings are available for public review
at Park Headquarters.