

MAINE STATE LEGISLATURE

The following document is provided by the
LAW AND LEGISLATIVE DIGITAL LIBRARY
at the Maine State Law and Legislative Reference Library
<http://legislature.maine.gov/lawlib>



Reproduced from scanned originals with text recognition applied
(searchable text may contain some errors and/or omissions)

BAXTER STATE PARK

1986

ANNUAL REPORT



F
27
.P5
B323
1986

By: Irvin C. Caverly, Jr.
Director
Baxter State Park
December 31, 1986

MAR 1 1987

TABLE OF CONTENTS

- A. DIRECTOR'S REPORT
- B. OPERATIONAL REPORT BY CATEGORY
 - I. PUBLIC RELATIONS
 - II. SAFETY
 - III. TRAINING
 - IV. MAINTENANCE
 - South District
 - North District
 - Maintenance
 - Trail Crew
 - V. NEW CONSTRUCTION BY DIVISION
 - VII. PERSONNEL
 - VII. SEARCH AND RESCUE
 - VIII. LAW ENFORCEMENT
 - IX. SPECIAL ACTIVITIES
 - X. OVERVIEW
- C. SCIENTIFIC FOREST MANAGEMENT AREA
 - I. PRESENT STATUS
 - II. S.F.M.A. ADVISORY COMMITTEE PROPOSAL
 - III. DIRECTOR'S RECOMMENDATION
- D. ADMINISTRATIVE SERVICES
 - I. SUMMARY
 - II. STATEMENT OF REVENUES AND EXPENDITURES FOR FISCAL YEAR
ENDING June 30, 1986
 - III. FINANCIAL ANALYSIS BUDGET vs. EXPENDITURES FOR FISCAL YEAR
ENDED JUNE 30, 1986
 - IV. STATEMENT OF REVENUES AND EXPENDITURES FOR CALENDAR YEAR
1986 (PENDING YEAR END INFORMATION)
 - V. COMPARATIVE STATEMENT OF REVENUES AND EXPENDITURES FISCAL
YEAR 1985-1986
 - VI. REVENUE/EXPENDITURES CHART
- E. TRUST FUND INFORMATION
 - I. FINANCIAL POLICY (PENDING YEAR END INFORMATION)
 - II. CASH FLOW CHART
 - III. SUMMARY OF ACCOUNTS AS OF June 30, 1986
 - IV. SUMMARY OF ACCOUNTS AS OF December 31, 1986 (PENDING YEAR
END INFORMATION)
 - V. NET INCOME ANALYSIS (PENDING YEAR END INFORMATION)

F. STATISTICAL REPORT

- I. GATE STATISTICS
- II. GATE STATISTICS BY MONTH
- III. CAMPER DAYS USE - WINTER SEASON - 1985/1986
- IV. BSP COMPARATIVE STATISTICS
- V. TRAIL USE SUMMARY
- VI. CLASS DAY SUMMARY
- VII. CAMPER DAYS SUMMARY

G. PERSONNEL LISTING

- I. ORGANIZATION CHART
- II. YEAR ROUND POSITIONS
- III. SEASONAL POSITIONS

H. DIRECTOR'S CONCLUDING COMMENTS

I. APPENDIXES

- I. AUDITOR'S REPORT
- II. VOLUNTEER PROGRAM 1986
- III. RESEARCH PROJECTS (SPIDERS)
- IV. SPECIAL ACTIVITIY REPORTS
- V. PROCEDURE FOR REVIEWING PROPOSALS FOR
SCIENTIFIC STUDY

A. DIRECTOR'S REPORT

A. DIRECTOR'S REPORT

We are submitting this report early this year as we see a potential change in the individuals serving on the Baxter State Park Authority come January 1987; consequently, we want the present Authority as well as the new member or members to benefit from this operational overview. By completing this report prior to the end of December, there will be some statistical and financial information omitted as our books have not closed. However, all pertinent information and activities will be added as an appendix and will be available upon request by February 1, 1987. Meanwhile, I hope each of you find the following overview informative and reflective. I hope you can take satisfaction in the results of all efforts and if questions arise, you will contact me. I reiterate what makes our Park successful is the interest of operation and management participants and their supporters.

As I reflect on this past operational year, I can think of no season in my total years of service to Baxter State Park that we have so consistently experienced inclement weather yet the spirits of the overnight campers have not been dampened to reflect a noticeable impact on facility fees and statistics. We opened our Control Booth at the junction of the Roaring Brook Road; however, it was operational only a few days this season. The rain caused extensive work for employees of the Department of Transportation who worked long hours to keep our road system open. Because of D.O.T. employees dedicated service, we did not have to close any section of road because of washouts. Although roads were washboarded and rough, we received very few complaints from the public.

The Reservation Office was extremely busy up to and including the first part of October. The staff is to be commended for the long hours of pressure that they consistently contend with. The phone rings steady; someone seems to be always calling on the radio; and the people at the counter are looking for immediate service. Transfer requests are unbelievable and extremely time consuming; we have 138 pages in the transfer book of individuals who needed attention on this matter. The support offered to the reservation personnel by the secretarial office when times were tough is sincerely appreciated. Shirley, Judy, Tib and Carol were always willing to back up Jan, Joan, Vesta and Jean when they were working alone or on occasions when there was too much traffic for them to handle. Beth Gray's efforts in coordinating these two offices are effective and appreciated. Chris Drew and all are to be commended for excellent performances in all aspects of job responsibilities. It is because of employees effort all over and Park Authority and Advisory's support that I, as your Director, can, with pleasure, report a very successful 1986 operational year.

The S.F.M.A. was a very controversial issue during the last year and much time was spent in attending sub-committee meetings; talking with individuals; and meeting with Authority and Advisory on that subject.

Some real progress was made at the Abol Scout Area, we are trying to stabilize some of the grounds. We appreciate the cooperation and coordination that we receive from the local scout officials. Everyone worked toward the best interest of fixing the area up.

Search and Rescue Teams have been very supportive this year as usual and we appreciate their enthusiasm towards Baxter State Park. Fortunately, they didn't

have to respond too many times; however, nearly as important as response itself is the need to remain alert, train and be familiar with the Park, so when the real thing does happen, they are totally prepared. All of our support teams do an excellent job in staying prepared.

I attended a Superior Court hearing on the snowmobile issue and we were notified shortly after that, the Court had upheld the Authority's decision on snowmobiles in Baxter State Park.

I continue to serve as a Trustee at Unity College and would like to think that I am contributing in small way towards helping to manage this college which provides education toward resource management fields.

The Authority and Communication Committee meetings were held in a timely fashion this year and as previous agendas reflect, there were no shortages of items for discussion or decisions that needed to made.

I was asked to speak to a class at Katahdin High School and spent one afternoon talking to several classes on the wilderness management and management of Baxter State Park.

Employee Relations issues this year were minimal. We had one in-house grievance which we were able to resolve working closely with the Union. We also had the arbitration hearing on the Rumney case and I am pleased to report the Arbitrator ruled in support of Baxter State Park's position.

I traveled to Poland, Maine early in the winter to meet with Harold Gray and some citizens from that area who are interested in hearing about Baxter State Park. We met at the Poland Library and had a good attendance.

Bucky Owens brought a class in from the University of Maine and we talked about Baxter Park management and some controversial issues. I enjoyed this session and sensed that the students were sincerely interested in the Park. A field trip followed the class room presentation.

During the year, I have been actively involved with the Caribou Transport Corporation. As a member of the corporation, I had an opportunity to travel to Newfoundland and work on bringing the animals back to Maine. We all see it as a worthwhile and challenging venture and are optimistic that we will see caribou in Maine from this point on. It has been a real pleasure working with this committee and I thank Commissioner Manuel for allowing me this privilege.

Other meetings during the year included sessions with the Department of Personnel on the Fair Labor Standard Act as it applied to Baxter State Park and we certainly have been trying to adjust our procedures to assure that we are in total compliance with that Act. It has been difficult to say the least as we just do not have the coverage or ability to provide the public services that we have been accustomed to providing in the past. Simply because the finances aren't there to support the personnel hours.

There have been a number of seminars that the Park Staff and I have attended. We continued to take part in training opportunities as frequently as possible in order to keep up on the latest techniques.

Steve Oliveri was good enough to take care of our slide show this season prior to the summer starting. We had a contract with Steve and he completely revised the show and set it up for our summer season.

I met with Great Northern Paper Company and gave them an overview of what was happening at Baxter State Park. They in turned have met with me and dicussed their projected plan for recreational management for their lands for 1987. I appreciate the intercommunications as I think it makes it much easier for the both of us to operate and appreciate each other's problem when we do communicate on a frequent basis.

The Camp Phoenix boundary dispute is still with us. We are in hopes of getting that resolved. Legal counsel is at this time in discussions with representatives of the Daisey family.

In June I received a request from Bill Green of Channel 6 (a Portland channel) to do an interview on Katahdin. Bill and I went up the first part of June and did the interview and came down the mountain to Chimney Pond then on out to Roaring Brook. I was also interviewed during the summer by Phyllis Austin of the Maine Times. Phyllis maintains an interest in the Park and asked some very interesting questions.

A considerable amount of time was spent on the Pockwockamus Pond development representing the Authority's position and concerns about additional developments near the access point to Baxter State Park.

I attended a meeting on the Governor's Conference on Outdoor Recreation in Greenville and although I did not make the other meetings, I got a good feel for the reaction of the general public's interest in outdoor recreation and all the problems that go with it.

Field trips this year other than those mentioned include a trip to Webster Lake with Chris Drew; several trips through the Park; and a 3-day stay at Russell Pond. During this period of time, my wife and I had an opportunity to tread some old trails and look over some areas of the Park that we hadn't seen together since the early 60's and we thoroughly enjoyed it. Those trips are necessary from time to time to get us in the field and remind us of what we represent.

As is mentioned in more detail later on in the report, D.O.T. is relocating their camps and will be taking down the old camps. The new camps will be in use in the summer of 1987.

I am pleased to report that after a long process, we have been able to select a Resource Manager. Donald Bissell of Salem, Oregon will be starting work on February 2, 1987. We are confident that he will find the job challenging and will be able to move us ahead towards some very positive goals that have been pending for a long time in the S.F.M.A.

The Kidney Pond Camp Committee has met on several occasions and hopefully will be submitting their report to the Baxter Park Authority regarding future use of the facilities after the 1987 season. Eighty-seven is the last year the present lease is in effect.

The Baxter Park Advisory Committes have been very involved and supportive throughout the year. I particularly thank the S.F.M.A. Advisory Committee for

their efforts during the controversy on the S.F.M.A. and the selection of the Resource Manager. I especially thank the Baxter Park Advisory Committee for each member's participation in assisting on major issues throughout the year. Walter Birt, in particular, has been extremely helpful to me. He lives just 10 miles down the road, we talk on the phone frequently and generally meet on a personal basis once a week. Walter is always willing to assist and take on projects and assist in the coordination of assignments to committees then report back to the Baxter Park Authority. We are fortunate to have him as Chairman of the Advisory and my personal thanks to him and the other Advisory Committee members for their input for 1986.

Now with that overview of my personal activities, it is with a great deal of pleasure that I now proceed to report to you in a more detailed fashion on aspects of Park operations. You will note within the contents of this report, there is no shortage of activities within our operation. We cover broad ranges of responsibilities and take our job of protecting the resources, maintaining our facilities and trails and providing services to our visiting guests seriously. The State of Maine can be as proud of Baxter State Park as we employees are grateful and proud of what we represent.

B. OPERATIONAL REPORT

1986

B. OPERATIONAL REPORT BY CATEGORY
YEARLY REPORT - 1986

INFORMATIONAL DATA

Contacts by Personnel	117,585	
Search and Rescue Incidents	49	
Complaints Answered--Field	336	Headquarters 6
Total Work Hours for all Personnel	36,042	
Auto Accidents Investigated	10	
Number of Special Services Rendered	551	
Special Projects Worked on--No.	122	
Speaking Engagements--No.	21	
Headquarters Visitor Stats	13,121	
Phone Calls Received	16,834	
Letters Mailed	8,759	
Meetings Attended--Number of	186	

I. PUBLIC RELATIONS

Every contact a staff makes is a public contact. In 1986, Park staff made 117,585 contacts in the field. Most contacts are with campers, hikers, fishermen, wildlife enthusiasts, snowmobilers, hunters, skiers and sightseers. Park personnel generally relate information centered on history, wildlife, camping and hiking areas and other details that relate to Baxter State Park.

We within the Department participated in numerous speaking engagements in 1986. Various organizations and clubs were informed on Park matters. Such organizations include: Presque Isle Kiwanis; Houlton Fish and Game Club; Southern Aroostook Community School; Katahdin High School; Stearns Middle School; Maine Mobile Retirees; Sherman Elementary School; Mattawamkeag Elementary School and Schenck High School. Other church and senior citizen groups were also addressed by Park staff.

Public complaints centered primarily on the problem of the unusually wet summer. The constant rain also created rough driving conditions on the Park's unpaved roads. Few complaints were serious in nature. Many compliments, both written and oral were received at Park Headquarters concerning the Park's neatness, cleanliness and helpful staff.

II. SAFETY

Park District Rangers examined fire extinguishers in field, vehicles and Park buildings. All fire equipment was inspected and tested for serviceability.

Two Park employees sustained minor injuries in the Chimney Pond area. No time was lost due to employee accidents.

Park staff assisted numerous hikers who had difficulty on Park trails lessening further potential injury to public users.

One log cabin on Matagamon Lake was dismantled due to deterioration which enhanced an unsafe condition.

Motor vehicle safety practices in Baxter State Park by Park employees were good. Only one vehicle accident occurred with Park staff; this accident occurred after dark when a young deer panicked and jumped into the headlights of a Park vehicle.

The strategic placement of State highway speed limit signs near campgrounds and other areas of high risk should eliminate safety hazards.

A chimney was replaced at the South Branch Pond Ranger's quarters to insure greater fire safety.

III. TRAINING

Numerous training opportunities were made in 1986 which include:

1. Avalanche Training - A joint training session with University of Maine personnel was held on March 1st and 2nd. Classroom training was held on March 1st at Park Headquarters; field training was held on Mt. Katahdin on March 2nd.
2. Fire suppression training was held at three (3) Park locations in 1986. The North District personnel jointly trained with North Regional Maine Forest Service personnel at Trout Brook Farm. South District personnel jointly trained with Eastern Region Maine Forest Service personnel at the Rum Brook area. The Park trail crew had a separate two day training session on basic fire fighting procedures.
3. The spring meetings with Park personnel on May 22nd assisted in training of Park staff in areas of maintenance and public relations.
4. On the job training by experienced personnel with new employees is the most practical form of training in the field.
5. The Solo First Aid training session was held for two (2) days at the Roaring Brook Campground. Trail Crew members and other new Park employees attended this training session.
6. Fire arm training was conducted on May 9th and July 30th for Commissioned Rangers.

IV. MAINTENANCE

Sound maintenance practices are a high priority in Baxter State Park. Major maintenance projects by Division include:

NORTH DISTRICT:

A. RUSSELL POND

1. cleared trails of blowdowns in Russell Pond area.
2. Painted/stained all toilets, leantos, and bunkhouse
3. Cut, split and piled firewood for winter use
4. Constructed bear proof food storage area
5. Painted BSP firecode on all tools and equipment
6. Caulked and installed 1/4 sawn strips on bunkhouse
7. Cleared brush from heliport
8. Constructed a split log bridge at Six Ponds
9. Replaced rotten sills, flooring, and posts on bunkhouse porch
10. Made repairs to all canoe racks
11. Routine maintenance of campground facilities, bridges, and trails

B. TROUT BROOK FARM

1. Replaced office steps with cedar steps
2. Field and campsite mowing of grounds is a major maintenance function
3. Built 3 picnic tables for outlying sites on Matagamom Lake
4. Relocated tent site #25 to a better location
5. Three p.t. toilets removed
6. Painted Martin garage
7. Routine maintenance of campground facilities
8. Planted 500 red pine at Old Pit location

C. SOUTH BRANCH POND

1. Repaired and repainted picnic tables
2. Repaired boat dock, swimming float and canoe racks
3. Built loft for storage purposes in woodshop
4. Reblocked and replaced posts under CRI quarters
5. Cut, split, piled firewood for winter use
6. Major bunkhouse renovations included new floor, and new bunks. The interior was renovated and painted.
7. Beach renovation included gravel stabilization
8. Jacked, blocked and leveled leantos #4 and #10
9. Jacked and blocked base of garage
10. Painted exterior of bunkhouse
11. Strapped ceilings at CRI quarters
12. Replaced log fencing at CRI quarters
13. Cut blowdowns in the campground
14. Routine maintenance of campground facilities

D. TELOS GATE

1. Painted exterior of gatehouse
2. Painted floors in interior of gatehouse
3. Built double bunkbed
4. Made numerous interior renovations
5. Cut, split and piled firewood
6. Cut blowdowns on Dwelley Pond Road
7. Routine maintenance of campground facilities

E. MISCELLANEOUS MAINTENANCE PROJECTS OF THE NORTH DISTRICT

1. Winter trail maintenance to Russell Pond
2. Hauling of supplies and propane to Russell Pond
3. Cut 14,000 feet of logs for lumber
4. Reset Webster Lake gate
5. Repaired Telos Gate
6. Dismantled old cabin at Martin's Camp area
7. Hauled firewood to Webster Lake and Chimney Pond
8. Enlarged Fowler Brook parking lot
9. Jacked and leveled floor at Telos gatehouse
10. Cut and hauled firewood in winter for Russell Pond
11. Cleaned culverts along Perimeter Road

F. MAINTENANCE RANGER - Hadley Coolong

1. Case tractor repair
2. Fence repair at Millinocket garage complex
3. Propane sled construction at Millinocket
4. Built chimney at Nes. Field
5. Assisted in replacing new sills on 11 Roaring Brook leantos
6. Assisted in renovation of Nes. Field crew camp
7. Assisted maintenance staff at Millinocket Headquarters
8. Telos Gate repair
9. Replacement of sills/posts of South Branch Pond CRI quarters and workshop
10. Renovation of South Branch Pond bunkhouse
11. Mowing of roadside until tractor breakdown
12. Repaired small engine equipment: lawn mowers, chain saws, and outboard motors
13. Worked on new construction projects listed further in the annual report

SOUTH DISTRICT:

A. CHIMNEY POND

1. Reinsulated and sheetrocked attic of CRI quarters
2. Covered exterior of bunkhouse with board and batten
3. Covered exterior of Crew Camp with board and batten
4. Installed solar system for communication purposes
5. Installed bear proof food storage structure

B. ROARING BROOK

1. Jacked, leveled, and replaced sills on 11 leantos
2. Major repainting of cabins and structures in campground
3. Assisted in Togue Pond renovation projects

C. TOGUE POND

1. Jacked, blocked and leveled workshop
2. Poured cement for floor and walls of workshop
3. Installed new workbench in workshop
4. Installed new overhead door in workshop
5. Built new chimney in workshop
6. Thorosealed entire block building at Togue Campground
7. Placed 200' cribbing along Togue Beach area
8. Installed french culvert at Togue Beach
9. Placed 200' of cedar fence along Togue Beach

10. Loamed, seeded and replanted the shrubbery along the Togue Pond public beach
 11. Resurfaced Togue Pond beach with sand lost through erosion
 12. Hauled 70 yards of loam for Togue Pond project
 13. Hauled several hundred cedar logs for Togue project.
 14. Hauled control booth from Togue Campground to junction of Roaring Brook road with the Perimeter Road
 15. Covered exterior of control booth with board and batten
- D. ABOL**
1. Jacked, leveled and replaced sills on 2 leantos
 2. Assisted in Togue Pond/Katahdin Stream projects
- F. KATAHDIN STREAM**
1. Installed new floor in crew camp
 2. Reshingled half of roof on D.O.T. camp
 3. Built new chimney in D.O.T. camp
 4. Remodeled and reorganized workshop
 5. Jacked, leveled, and replaced sills on 4 leantos
- G. DAICEY POND**
1. Removed old generator-shower shed
 2. Replaced with new 12' x 10' building
- H. NESOWADNEHUNK FIELD**
1. Constructed wire cage for fire equipment
 2. Shingled crew camp
 3. Remodel crew camp for 2 separate living quarters
 4. Built new chimney for the crewcamp
 5. Painted major buildings in the campground
 6. Rebuilt Nes. gate
- I. MAINTENANCE RANGER: Albert Rickards**
1. Remodeled Nes. Crew Camp
 2. Replaced sills on leantos at Roaring Brook, Abol, Katahdin Stream
 3. Remodeled control booth at Roaring Brook Road
 4. Remodeled, renovated Togue Pond workshop complex
 5. Assisted in new construction projects
 6. Assisted in carpentry repairs at Millinocket Headquarters
- J. MISCELLANEOUS MAINTENANCE**
- Cleaning all campsites which includes putting picnic tables in and out; cleaning fireplaces and stoves
 Painting or staining of porches, picnic tables, steps, building signs, sign posts, touch-up jobs, etc.
 Hooking up and disconnecting of waterlines and repairing of some
 Cutting, hauling, splitting and piling of 35 cords of firewood
 Repairing of screens
 Clearing of roads and trailheads of blowdowns and debris
 Hauling of gravel to fill washouts, campgrounds and Perimeter Road
 Routine litter patrol
 Mowing of grass
 Replacing of glass in windows
 Hauling and delivery of propane gas
 Cleaning and storing of sleds

Routine service, maintenance and repairs to vehicles, lawnmowers,
 chainsaws, firepumps, generators, snowsleds, etc.
 Putting up and taking down of seasonal signs
 Picnic table repairs
 Cleaning of woodstoves and chimneys
 Repairs of leady roof
 Hauling, sorting and delivery of spring requisitions, including:
 lumber; picnic tables; shingles, etc.
 Replacing of sign posts
 Assisted Maintenance Division with repairs at Support Services
 Building and Headquarters; assembled and disassembled air-lock
 entries
 Daily cleaning of facilities
 Repairs to toilets, roofs, doors, lean-tos, cabins, etc.
 Shoveling of outhouses
 Graded Abol Beach, Abol And Katahdin Stream Campgrounds Roads
 Installed antennas on Chris Drew's resident
 Installed radios in new trucks #58 and #64
 Assisted honeywagon on pumpout of septic and toilet facilities
 Cut roots growing into septic system
 Repaired and renewed 3 dumpsters
 Built new bear trap
 Hauled 6 dumpsters to Support Services for major repair
 Peeled cedar for erosion control purposes at Togue Pond Camp
 Hauled 300 bales of hay to Togue Pond

MAINTENANCE DIVISION - MILLINOCKET

A. MAJOR MAINTENANCE PROJECTS INCLUDE:

Overhaul of wood furnace blower at garage
 Replaced clutch of Case 580 Backhoe with other minor repairs
 Grease hoist repair completed
 Reorganized mechanic stock room
 Sawed, split, piled 14 cords of firewood
 Replaced clutch and brakes on Case 1290 tractor
 Installed new hydraulic controls on Case 1290 tractor
 Repair farm winch
 Repaired garage air compressor
 Shoveled snow off buildings as needed
 Reorganized steel storage area
 Repaired, straightened security fence
 Maintained heating systems
 Maintained parking lot and driveway
 Replaced old propane shed with new fenced propane storage area
 Installed french culvert at Togue Pond
 Assisted in Togue Pond Campground renovation
 Finished installation of trim boards on Pole Barn
 Installation of 2 overhead doors at garage
 Installation of new gasoline pump
 Stained 75% of Pole Barn
 Installed new flag pole at Adm. Building
 Wrote specifications for asphalt application at Millinocket Adm.
 complex and Director's quarters

Remodeled Business Manager closet for storage purposes
Assisted in bear trap construction
Assisted in renovating of 3 dumpsters
Raised shop work benches

B. GARAGE MAINTENANCE REPORT ON VEHICLES/EQUIPMENT

Completed 83 services on Park fleet
Inspected 12 vehicles on Park fleet
Installed 41 tires
Repaired 2 lawnmowers; 2 chainsaws, 2 snowsleds
Specific repairs to vehicles can be found in Annual Report on file

TRAIL CREW:

The Trail Crew worked all over the Park doing various tasks. Lester made 153 signs for the Park before his crew started. The following is a breakdown of the miles and projects that were undertaken:

Miles of trails inspected - 56.4
Miles of trails brushed and blazed (blowdowns removed) - 55.7
Treadway Projects - 17
Bridge Projects - 7

Trails that were inspected are as follows:

1. Russell Pond
2. Northwest Basin (in part)
3. North Peaks (in part)
4. Wassataquoik Stream
5. Webster Lake (in part)
6. Freezeout
7. Chimney Pond
8. Saddle
9. Cathedral
10. South Turner
11. Middle Fowler Pond
12. Fowler Brook
13. High and Long Ponds
14. Round Pond
15. Littlefield Pond
16. Lower Fowler Pond
17. Baxter Peak Cut-Off
18. Windex Pitch Pond
19. Appalachian Trail (in part)
20. Marston (in part)
21. Wassataquoik Lake

Blowdowns were cleared from the following trails:

1. Russell Pond
2. North Peaks
3. Wassataquoik Stream
4. Webster Lake
5. Freezeout
6. Pogy Notch (in part)
7. Fowler Brook
8. Middle and Lower Fowler Pond

9. High and Long Pond
10. Round Pond
11. Littlefield Pond
12. The Owl
13. Doubletop North Side
14. Marston (in part)
15. Wassataquoik Stream (in part)
16. Grand Falls
17. Marston
18. Freezeout (in part)
19. Slaughter Pond
20. North Basin
21. North Basin Cut-Off

Treadway Projects are as follows:

1. Northwest Basin Trail. Cut and peeled logs for bog bridges at 3 locations near the upper Wassataquoik Stream crossing.
2. Fowler Brook Trail. Built 100' of bog bridge just north of the brook crossing.
3. Saddle Trail. Finish scree wall work from the Saddle to Baxter Peak.
4. Chimney Pond Trail. Built 6 waterbars and 11 steps near Basin Pond.
5. Chimney Pond Trail. Built 3 waterbars; dug 2-50' drainage ditches and resloped 100' of Side Hill Trail.
6. South Turner. Built 29 rock steps and 1 waterbar on trail above spring.
7. Hunt Trail. Began scree walls in Thoreau Spring area; about 700' of trail was defined.
8. Abol Trail. Step rocks were placed in mud near Thoreau Spring.
9. Northwest Basin. Built 200' of bog bridge at 3 locations near upper stream crossing.
10. Began reconstruction of Northwest Basin Trail. Dug 320' of drainage ditch and built 3 rock waterbars.

The following are bridges built, repaired or replaced:

1. Footbridge over Fowler Brook
2. Chimney Pond Trail. Replaced 20' bridge near Basin Pond
3. Doubletop North Trail. Replaced 1/2 of deck on Doubletop Brook Bridge.
4. 270' of bog bridges at 4 locations on Freezeout Trail.

Marston Trail Relocation Effort

Considerable effort was spent into clearing this new trail section but was hampered by bad weather, chainsaw difficulties, loss of SCA crew and lost time due to the Derek Quiet body recovery. The trail was cleared except for 0.4 miles on the upper end.

Considerable time was spent by Trailcrew Leader Lester Kenway coordinating with the various volunteer groups such as SCA and Sierra Club. Their efforts are greatly appreciated in assisting in the Park Trail Program.

V. NEW CONSTRUCTION

A. NORTH DISTRICT

1. One new toilet (double vault) at Trout Brook Crossing
2. One new toilet (double vault) at Trout Brook Farm
3. One 10' x 16' propane storage shed at Trout Brook Farm
4. One winter storage structure at Trout Brook Farm
5. One new swimming float at South Branch Pond
6. One new trail from South Branch Pond to Middle Fowler Pond (Middle Fowler Trail)

B. SOUTH DISTRICT

1. Built one new gate at Nesowadnehunk Field (replacement)
2. Built one new bear trap
3. Built one solar system at Chimney Pond
4. Built one bear proof structure at Chimney Pond
5. Renovated Togue Pond Beach
6. Built 12' x 10' storage shed at Daicey (replacement)

VI. PERSONNEL

Time spent on various phases of personnel matters included:

1. Interviews for various positions, both seasonal and permanent
2. Setting up of work schedules, including Chimney Pond coverage agreement.
3. Evaluation of performance appraisal reports.
4. Supervised and assisted Park volunteers.
5. Monitored employee grievances/complaints; worked at resolving disputes. Prominent case was the Paul Rumney case.
6. Acquainted new personnel with Park procedures, policies and operations.

VII. SEARCH AND RESCUE

Two fatalities occurred in Baxter State Park in 1986:

1. John Brow of Braintree, Mass. died of an apparent heart attack near Nesowadnehunk Stream on June 23, 1986.
2. Derek Quiet, 16, of Dover-Foxcroft died as a result of a climbing accident on Katahdin on August 10, 1986.

Other search and rescue activities included:

1. A major search and rescue operation was conducted from January 26th through January 29, 1986 for a winter party at Russell Pond. This was the Tapley/Lund party.
2. On November 11, 1986, Mike Lewis of Massachusetts spent a long night in the woods just south of Wadleigh Mtn. He was found by Park Staff the next day.
3. An early season snowstorm left many hunters trapped in or near the Park. From November 21st to November 24th, Park Staff was involved in assisting stranded parties out of Baxter State Par. Ricky Bates and his wife spent three (3) days at the Black Brook highway camps. Hunters were also temporarily stranded at Katahdin Lake and Camp Phoenix.
4. Numerous injuries of a more minor nature occurred in Baxter State Park. Several litter evacuations occurred in the heavier used South District. These evacuations occurred at:

Appalachian Trail - 1
Hunt Trail - 2
Chimney Pond - 2
Abol Trail - 1
Abol Slide - 1

Numerous personnel assisted people coming off trails late due to minor physical injury or lack of proper equipment.

Baxter State Park has record of nineteen (19) injured persons taken to local hospital with injuries and/or illnesses occurring in Baxter State Park.

VIII. LAW ENFORCEMENT

Considerable time was spent protecting the resources of Baxter State Park. A personnel restructuring of assigning two (2) Park Rangers with law enforcement duties was helpful in protecting Park resources. Many fishermen, hunters, and campers were checked. Slowing down public traffic on weekends helps keep accidents down on the Park roads.

Court Officer Robert E. Howes spent many hours at Court. Chief Ranger Chris M. Drew assisted Ranger Howes.

A breakdown of total law enforcement activities is as follows:

Prosecutions - 42
Warnings - 131
Evictions - 17
Auto Accidents - 10

North District Statistics:

Fish & Wildlife - 8 prosecutions
Motor Vehicle - 2 prosecutions speeding
Park Rules - 1 prosecution

SOUTH DISTRICT STATISTICS:

Fish & Wildlife - 11 prosecutions
Motor Vehicle - 5 prosecutions
Park Rules - 15 prosecutions

Most warnings center around Park rule violations and speeding. Most evictions center on persons creating disturbances.

IX. SPECIAL ACTIVITIES

The volunteer programs at Baxter State Park was a positive success. Nearly 120 volunteers gave 7,004 hours of volunteer work. This is equivalent to 175 - 40 hour work weeks donated to Baxter State Park.

Telos Gate was covered from May through September without any volunteer cancellations. "Toar" and Alice Gross of Bucksport gave 1,137 hours of gate house duty. That is equivalent to 28 weeks of volunteer service.

Bennie and Verna Boyington completed 109 days of volunteer service at Webster Lake. Their presence has given Baxter State Park better control of this previously unmonitored access point. The Boyingtons gave 1308 hours of service for 32 weeks (40 hours per) of volunteer labor. The Webster Lake campsites were neatly maintained by the Boyingtons.

Latona Torrey and Linda Ives gave 1,008 hours of volunteer services at Telos Gate, Trout Brook Farm, Chimney Pond, South Branch Pond and Russell Pond. They volunteered 25 work weeks of service.

The Sierra Club volunteered for 1,280 hours of volunteer service of trail maintenance on the Freezeout Trail, Ledge Falls Trail, N. West Basin Trail, and the Middle Fowler Trail.

The Maine Snowmobile Association gave 1,093 hours of volunteer service for the operation of Telos Gate. They have been the major contributors for gate volunteers.

Other volunteers gave service at Matagamon Gate and Trout Brook Farm during the hunting season, winter coverage at Chimney Pond, and assistance in renovating the Togue Pond Campground.

The Togue Pond beach area was renovated by installing a drainage system and revegetating the area.

The Department of Transportation constructed a new bridge over Little Nesowadnehunk Stream. A unique system on wiring stone in cages to avoid flood erosion was installed at each bank of the stream.

The Department of Transportation started site preparation for a new complex of living quarters at the N. Branch of Trout Brook. This will replace the presently deteriorating quarters at Black Brook.

A spider research program was initiated in Baxter Park in 1986. Daniel Jennings and associates at the University of Maine recorded 41 species and 130 specimens.

South Branch Pond and Frost Pond were stocked with Eastern Brook Trout.

Although S.F.M.A. operations were ceased in February of 1986, Park Staff assisted in the burning of some slash.

The Environmental Protection Agency conducted water tests at Six Pond for acid rain data.

500 Red Pine were planted at the Trout Brook Farm P.T.

Materials for the construction of a new leanto at Davis Pond were flown in by the 112th Army National Guard.

A five acre fire was cleaned up by Maine Forest Service at Sable Mt. on June 26-27, 1986.

Baxter State Park Staff had an Allagash Waterway orientation during the winter of '86.

Park Staff spent much time assisting hunters out of Baxter State Park after a large snowfall the third week of November.

The Abol Scout area had four (4) truck loads of sand spread by scouts and leaders.

Removal of the D.O.T. fuel tank at Black Brook camps.

Camp Phoenix/Daisey Boundary dispute seems to be at the agreement stage. Meetings between Baxter State Park Staff and Daiseys seem to be positive.

Pockwockamus hearings

Park Bulletin Boards at Medway D.O.T. Information Centers. Assistance to other agencies in bulletin board construction.

New trail construction from Middle Fowler Pond to South Branch Pond - 4.0 miles.

Relocation of Marston Trail around Marston Slide - 2.4 miles nearly completed.

Starting of remarking of Baxter State Park boundary.

Many special activities of Park personnel are public service orientated. A partial listing would include towing vehicles, boosting batteries, hauling of equipment, repairing equipment, loaning of tools, and just about anything imaginable when dealing with public in a wilderness area.

X. OVERVIEW

1986 was an interesting year at Baxter State Park. Mid-winter rains stranded skiers at Russell Pond. An unusually wet summer hampered hikers and campers. Heavy rains also hampered the recovery of Derek Quiet on Katahdin. Early snows stranded hunters.

The bear population kept a paw's distance from public users. We had no bear problems in 1986 which was a readical change from 1985.

Two (2) fatalities occurred in Baxter State Park: one an apparent heart attack and the other a mountaineering accident.

The South and North Districts performed many maintenance projects: leantos and bunkhouses were renovated.

The S.F.M.A. had no logging operations, although much planning was accomplished for future operation by various committee personnel.

Blowdowns are still a major problem following major storms. They present a constant fire hazard. Major blowdown damage has also created a need to remark the Baxter Park boundary.

The only conflict with people and wildlife occurred ofter at Trout Brook Farm. Canadian geese have multiplied to the point of being a nuisance. Attached is a report by North District Ranger Barry MacArthur.

The trail system has been expanded by 4 miles. This connects the trails from Roaring Brook to the Webster Lake region. Hikers can now hike on the Park trail system from the end of Baxter Park to the other end of the Park.

Lester Kenway did a superb job of planning and implementing all trail maintenance projects. Lester also supervised a large volunteer program that gave 1,280 hours of trail maintenance.

The volunteer program in Baxter Park has been very successful - 7,004 hours of donated hours was volunteered to Baxter State Park in 1986.

The Togue Pond Campground is improving in natural appearance. The public beach area was revegetated and renovated. Surrounding structures were painted and repaired.

1986 was a productive year in terms of Park maintenance, protection, administration and public relations.

C. SCIENTIFIC FOREST MANAGEMENT AREA

I. PRESENT STATUS OF THE S.F.M.A.



A

FOREST MANAGEMENT PLAN FOR THE INITIAL 10-YEAR OPERATIONAL PERIOD

In February of 1986 after considerable controversy and subsequent review of operational activity, the Authority voted to close down operations within the S.F.M.A. and cancel the contract with the Maine Forest Service. Since that time, the S.F.N.A. Advisory Committee has worked long hours on frequent occasions with Park personnel, the Department of Personnel and others to develop a job description for the position of Resource Manager which was approved by the Baxter State Park Authority at a June 18, 1986 Authority Meeting. Job Announcements were sent all over the country. The Department of Personnel received thirty-nine (39) applications for the job and a screening committee consisting of Bob Seymour, Kim Kolman, Fred Hurley, Chris Drew and Jerry Bley reviewed applications narrowing the list to six (6) candidates. On December 1 and 2, 1986, five (5) of the six (6) candidates were interviewed; one declined. The Interview Board consisted of Charles Gadzik, Chairman; Charles Fitzgerald; Walter Birt; Chris Drew; Bob Frank; and Buzz Caverly. On December 11, 1986, the Authority considered the name of Donald Bizzell as the new Resource Manager and hired him as recommended by the Interview Board and Park Director. Mr. Bissell is from Salem, Oregon and will start work on February 2, 1987.

With this background, I conclude this section of the report with a copy of the recommendation submitted by the S.F.M.A. Advisory Committee on May 28, 1986.

After a long and time consuming review, I am confident we are headed in the right direction for the year to come.

II. S.F.M.A. ADVISORY COMMITTEE PROPOSAL

BAXTER STATE PARK

Scientific Forest Management Area

Revised Staffing and Budget Proposal

Submitted by the Members

of the

SFMA Standing Advisory Committee

Charles Gadzik, Chairman

On January 29th of this year, the Ad Hoc Advisory Committee, chaired by Greg Brown, submitted several long-term recommendations for the management of the SFMA. With the support of all interested parties, the Authority endorsed these recommendations.

The first of these recommendations, to appoint a standing committee, has been fulfilled, and this committee is now proceeding with addressing the remaining issues.

The next recommendation in sequence was to change the staffing arrangement of the SFMA, and in particular, to recruit management expertise. The ad hoc committee recommended hiring a full-time manager. At the first meeting of our standing committee, Commissioner Manuel and Director Stratton requested a specific proposal for staffing and emphasized the need to address the budgetary requirements of such a proposal.

The committee submitted a staffing and budget proposal to the Authority on April 29. However, at the Authority's May 8 meeting it became apparent that there had been some misconceptions regarding the financial workings of the SFMA. The committee has therefore revised its proposal as detailed below.

I. Financial Overview

The Committee believes that in managing an area such as the SFMA, with its ambitious goals and standards, that it is necessary to outline the financial dimensions within which it must operate. The guidelines we have received and acknowledge are that the activities within the SFMA cannot be a drain on the Park's finances; that in effect, the SFMA must provide all of its own operating funds over a reasonable period of time, although it must not necessarily end every fiscal year with a surplus.

In particular, it should be recognized that it will require some input of start-up funds to bring the resource manager on board, revise the management plan and prepare for harvesting again in the SFMA. Income projected from SFMA harvests in the Park's FY 86/87 Work Plan will be deferred.

Finally, it is the committee's understanding that the costs for clean-up activities in the SFMA and setting up a demonstration area are included in the Park's Work Plan. Therefore, we have not incorporated these costs into our budgeting.

II. SFMA Staffing Requirements

A. The Role of the Resource Manager

The standing committee believes that the best staffing arrangement to achieve the goals and expectations of the SFMA is to have in place a manager responsible for all of its planning and activities. There are

a great many issues requiring the day to day guidance of a skilled manager capable of linking all decisions with the broad policies and goals as outlined by the existing and future management plans. The advisory committee, representing many diverse views and expertise, can only recommend real directions with the constant input of such a manager.

The SFMA is in a position to host forestry research and demonstration projects by many groups. Soliciting and coordinating these activities in concert with the overall management of the SFMA would also be duties of the manager. Along with the management issues, we feel there is a need for a great deal of communication with all interested parties explaining what the SFMA is doing and why.

The manager would also be responsible for supervising all employees working in the SFMA. The manager should report directly to the Baxter State Park Director.

B. Other SFMA Staff

Once the management plan has been revised and harvesting operations are ready to resume (FY 87/88), the SFMA will require technical expertise and manpower to oversee the harvesting and other activities of the area. Ultimately the manager will help to determine the necessary staffing level of the SFMA, but at this time we feel that it is reasonable to propose a full-time technician and summer staff to collect data, and prepare and supervise operations.

Several options exist for obtaining these technical services. These include: 1) contracting with the Maine Forest Service; 2) hiring additional park employees; or 3) contracting with private individuals or companies. These options should be discussed by the resource manager, the SFMA advisory committee, and the Authority.

While an applicant for the manager's position will not be required to be a registered professional forester, we feel the selected manager will most likely have such a qualification. In the event this is not the case, it would be necessary to upgrade the technician's position to that of a forester.

III. SFMA Operations/Budget for FY 86/87

The committee strongly believes that timber harvesting operations in the SFMA should not resume until a resource manager is hired and the management plan is revised. We anticipate

that it will take 6-8 months for the manager to familiarize him/herself with the SFMA and coordinate the review of the management plan. That review will require extensive communication with the advisory committee, park staff, and the Authority, as well as input from the general public.

Assuming that the manager will not be hired until the fall, we believe it is unrealistic to expect any harvesting to occur in the SFMA during the winter/spring season. It is usually mid-June before the SFMA dries up enough to operate in. This being the case, the committee has not projected any income from the SFMA in FY 86/87.

Based on a recommendation from Director Caverly and Finance Committee Chairman Rob Gardiner, we propose that the vacant Park Naturalist position be used to fund the Resource Manager's position in FY 86/87. This would only be a one year arrangement, during which a small portion of the manager's time (Buzz suggested 15%) would be devoted to interpretive responsibilities. In following years when the SFMA will pay its own way, the Authority can again choose to hire a full-time naturalist.

To address budget concerns for FY 86/87 the committee recommends that other SFMA expenses be kept to a minimum. Our recommendations include:

- not hiring any other SFMA staff until FY 87/88
- delaying the purchase of a new vehicle (not needed until additional staff is hired), the construction of SFMA housing, critical areas survey work, and various other expenses until FY 87/88

The only SFMA expenses beyond the manager's salary that we have included for FY 86/87 are those items which are needed for the manager to carry out his/her planning efforts (travel, uniform, vehicle costs, etc.). Our expense projections are based on a resource manager beginning work on November 1, 1986.

By using the vacant naturalist position and cutting expenses we have been able to propose a FY 86/87 budget for the SFMA that will have virtually no negative impact on the Park's operating budget.

IV SFMA Operation/Budget for FY 87/88 and Beyond

The committee expects harvesting to resume in the SFMA during FY 87/88. The committee projects that revenues from the SFMA, beginning in FY 87/88, will cover all expenses including the resource manager's salary. The budget we have proposed does not include some capital start-up costs which may occur in FY 87/88 (eg. housing), however the committee believes that if such expenditures are necessary, they can be accommodated within a balanced SFMA budget by making some modifications in proposed expenditures and revenues. Our budget projections

for technical services should be adequate regardless of whether these services are obtained through the Maine Forest Service or other means.

FY 87/88 and future year's revenues have been projected on the basis of a harvest volume of 8,000 cord equivalents at a rate of \$11.00 per cord. The 8,000 cords reflect a sustained removal on the basis of about 1/3 cord/acre/year. The growth and yield potential for most of the 28,000 acre SFMA is at least 1/2 cord/acre/year net growth, and with exemplary management, there is the potential for twice that or 1 cord/acre/year.

These calculations alone shouldn't determine the annual harvest, but illustrate the conservative nature of our estimate. Wood values for the SFMA are also conservative. While the SFMA has had problems attracting interested wood harvesting contractors, and thus has received low wood values, the longer-term outlook should be considerably brighter. The future value of the species and quality of trees that compose most of the SFMA are likely to increase at substantial rates.

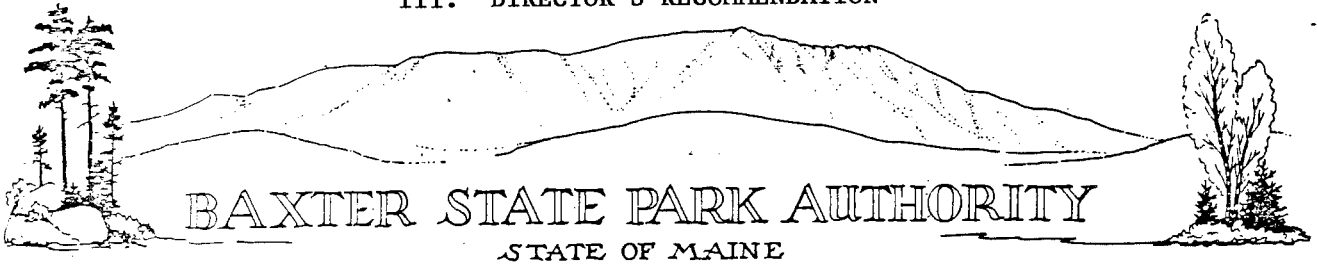
Managing the SFMA with its ambitious mandate at this time is not an easy task to undertake. Many of the actions the SFMA would like to implement are made incredibly difficult by very hard times and resulting low revenues in the land management business. Our committee considered the option of doing nothing at all and waiting for better times. But the risk of not proceeding with management activities, risks to the overall health and productivity of the forest, risks of not having a management staff in place to recognize opportunities, and the risk of not building a knowledge of the forest are too great. Management decisions made at these times on the SFMA are critical to its future. The ad hoc committee recognized the need for someone's full attention to these management needs. Our advisory committee believes the proposed staffing arrangement is the best means to accomplish this.

Proposed SFMA Budget

EXPENSES:	FY 86/87	FY 87/88 (a normal operating year)
<u>ITEM</u>		
Resource Manager	23,100	35,000
Forest Technician	0	20,000
Seasonal Employees	0	6,000
Secretarial Services	2,700	8,200
Critical Areas Survey	0	1,500
Travel and Lodging	600	600
Vehicle Costs	600	900
Rentals	800	1,000
General Expenses	200	200
Supplies	600	600
Highway Materials	0	3,000
Sta Cap	500	500
Clothing	<u>900</u>	<u>0</u>
Total Expenses	\$30,000	\$77,000
 REVENUE		
Transfer of funds from Park Naturalist position	26,000	0
Value of harvested volumes at \$11.00/Cord	<u>0</u>	<u>88,000</u>
Total Revenue	\$26,000	\$88,000
Net Balance	(\$4,000)	\$11,000*

* Start up costs in FY 87/88 may influence this balance. However the committee is committed to proposing a balanced budget for FY 87/88.

III. DIRECTOR'S RECOMMENDATION



AUTHORITY MEMBERS

GLENN H. MANUEL, CHAIRMAN
COMMISSIONER,
INLAND FISHERIES AND WILDLIFE

KENNETH G. STRATTON
DIRECTOR,
MAINE FOREST SERVICE

JAMES E. TIFRNEY
ATTORNEY GENERAL

INFORMATION

(207) 723-5140

PARK HEADQUARTERS

IRVIN C. CAVERLY, JR.,
DIRECTOR

64 BALSAM DRIVE
MILLINOCKET, MAINE 04462
(207) 723-9616

TO: BAXTER STATE PARK AUTHORITY

FROM: *By* IRVIN C. CAVERLY, JR., DIRECTOR, BAXTER STATE PARK

SUBJECT: PROPOSAL FROM S.F.M.A. ADVISORY

I recently received the latest proposal from the S.F.M.A. Advisory Committee. I attended the workshop the Committee held and the discussions on various subjects lasted for nearly four hours. Everybody was very helpful in providing information and input. Bob Ohler and Win Robbins from our Advisory Committee were also there. I think Bob and Win felt as I did that the final recommendations were ones we could support. As I read through it, I find that it is consistent with the discussions and, therefore, I am writing this memo to advise the Authority that I support the recommendations and recommend the Authority proceed as they are outlined.

I think we are at the point now where we can economically move ahead to the planning stages of the S.F.M.A. As you will note, the budget is less than the biannual, we got about \$36,000 approved in the biannual and by using the Park Naturalist's position, the hiring of a Resource Manager will have a minimum financial impact for the near future. I would point out, however, long-term it is important that we reactivate the Park Naturalist's position to meet the objectives of our interpretive program; but, I do feel comfortable in putting that on hold for another year.

If you have any questions for me on any of this, I would be happy to respond.

ICC:jah

cc: Paul Stern

D. ADMINISTRATIVE SERVICES

I. SUMMARY

The reservation office has been very busy this year. Although camper use was down by 2,851 camper days, income from use fees was up by \$3,450.00. This was due mostly to the inclement weather we were blessed with this summer. There were many no-shows and last minute cancellations. Our biggest headache again was transfers. Transfers are time consuming on the telephone, radio, over-the-counter, at the gates and in the campgrounds. They have caused irate campers, confused gatekeepers, rangers and reservation clerks. Transfers sometime result in duplicate reservations or unfilled sites. A suggestion was made that we charge a fee for transfers in order to discourage them. Fee charges require a change in Rules & Regulations.

A request changing the administrative procedures governing the use of Davis Pond leanto and the Wassataquoik Island campsite was approved this fall. Starting with the 1987 season, we will be accepting advance reservations for these two sites; however, the limits will be one (1) night only at Davis Pond and up to two (2) nights at the Island. The same previous night requirements will apply as they did last year. We feel this change will ease the transfer problem greatly since these are two (2) of the most popular outlying sites in the Park.

The reservation office was also busy with book sales thanks to the new display in the lobby. the slide show was redone for us by Steve Oliveri of the Department of Conservation on contract. We had an average of 92 phone calls and 96 visitors per day through July and August.

The personnel office saw changes this year. On September 1st, the entire state payroll system was converted to a new computer program which will eventually provide the much needed historical data for all employees. We realize that any conversion can be difficult; however, since we are located 150 miles from Augusta, our agency experienced several frustrating delays in paperwork because of this new system.

This season there were four promotions in the Park. Bernard Crabtree was selected to replace Barry MacArthur as a year-round ranger in the South District. Brendan Curran promoted from Assistant Campground Ranger at Chimney Pond to Campground Ranger at Russell Pond. Greg Hamer promoted from Assistant Campground Ranger at Roaring Brook to Campground Ranger as Kathy Redmond resigned. Jean Howes moved up to a Gatekeeper position at Togue Pond from her former position as Clerk II at Headquarters in Millinocket. In addition, we hired two new year-round employees: Tim Sides replaced Ed Jandreau as our Maintenance Mechanic in May and Carol Emery replaced Mary Greateon as Inventory Clerk in July. Seasonal positions filled this year were South District Maintenance Ranger Albert Rickards; Togue Pond Campground Ranger Steve Tetreault; Chimney Pond ACR Rod Thompson; Roaring Brook ACR Jeff Snedgen; Russell Pond ACR Joel Drew; Nesowadnehunk Gatekeeper Dana Miller; Togue Pond Gatekeeper Dave Tardiff; Assistant Trail Crew Leader John Holden; and Headquarters Park Receptionist Vesta Osgood.

An organizational chart and detail lists of both year-round and seasonal positions are located in the personnel section of this report.

All other services provided this year were by lease or contract. The Kidney Pond Lease, a five year lease expiring at the end of the 1987 season, is being reviewed by a subcommittee of the Baxter State Park Advisory. The Daicey Pond contract was re-issued to Gene and Margaret Herrin. Their son, John, assisted them with the maintenance of cabins, stocking firewood and other projects in the campground. The cabins were in high demand this season due to the rain and cool weather.

Our septic tank pumping and rubbish removal contracts were put out for bid last

spring. David Thorpe of Greenville was awarded the contract for septic tank services. Dave Condon d/b/a The White Knight was again issued the contract for rubbish removal. Both contractors have provided excellent service for us and we appreciate them being available when we need them. We have had to call on both for extra services with quite short notice.

Other contracts issued or continued this year were for janitorial services here at Park Headquarters, grounds maintenance around the Headquarters complex and a painting contract to do the Director's residence. Architectural services were provided partly on contract and the rest on volunteer basis for the short term program of regeneration and rehabilitation at Togue Pond Campground.

The following financial statements show a summary of income and costs for both fiscal year ending June 30, 1986 and calendar year ending December 31, 1986. Also attached is a comparative statement for fiscal years 1985-1986. It is of interest to note that income from operations last fiscal year amounted to approximately 30% of operating expenditures. We received net revenue from S.F.M.A. operations last year of \$145,772.99. If we deduct S.F.M.A. expenditures of \$29,552.92 from that revenue, we saw a net profit of \$127,220.07.

We drew from Boston Safe Deposit and Trust Company \$135,028.00 for the purchase of Togue Pond Camps and \$100,000.00 for operations. We used \$400,000.00 of the income from Casco Bank & Trust Co. for operations. Miscellaneous Revenue increased substantially this year since we started receiving interest on our operating funds in Augusta.

Personal Services costs increased overall 4.1% from 1985. Overtime costs were up \$5,568.33 or 62.7% due to restrictions imposed by the Fair Labor Standard Act. For most of Fy 1986 compensating time in lieu of overtime pay was disallowed; therefore, we paid all overtime hours worked in cash. As of April 1986, comp time has been reinstated.

II. STATEMENT OF REVENUES AND EXPENDITURES
FISCAL YEAR ENDING June 30, 1986

Balance Forward, July 1, 1985

\$ 16,120.05

REVENUE:

PARK OPERATIONS:

Use Fees	\$235,874.92	
Entrance Fees	44,915.00	
Sale of Maps and Guides	9,088.69	
Cash Over/Short F. Exchange	(23.85)	
SUB-TOTAL		\$ 289,854.76
LESS: Overpayments	(5,022.30)	
Refunds	(7,389.00)	
SUB-TOTAL		(12,411.30)
Net Revenue from Operations		\$ 277,443.46

FORESTRY OPERATIONS:

Sale of pulp	\$147,060.89	
Sale of Timber	38,307.96	
*Reg. Transfer-Me. Forest Service	(28,595.86)	
Net Revenue from S.F.M.A.		\$ 156,772.99

TRUST FUNDS:

Boston Safe Deposit & Trust Co.	\$235,028.00	
Casco Bank & Trust Co.	400,000.00	
Net Revenue from Trusts		635,028.00

MISCELLANEOUS REVENUE:

License Fees	79.75	
Interest on Bonds	4,509.69	
Rent of Offices	1,300.00	
Misc. Services & Fees	6,836.64	
Misc. Income	2,655.00	
Sale of Equipment	3,490.22	
Net Revenue from Miscellaneous		18,871.30
Net Revenue - All Sources		\$1,088,115.75
Adjustment to Balance Forward		147.00

\$1,088,262.75
\$1,104,382.80

TOTAL REVENUE AVAILABLE

	<u>OPERATIONS</u>	<u>S.F.M.A.</u>	<u>TOTAL</u>	
<u>EXPENDITURES:</u>				
<u>PERSONAL SERVICES:</u>				
Salaries, Permanent	\$ 298,925.12		\$ 298,925.12	
Salaries, Seasonal	165,587.30	\$ 4,508.00	170,095.30	
Overtime	14,337.22	102.90	14,440.12	
Retirement Contributions	82,963.19	785.26	83,748.45	
Other Benefits	50,085.38	439.67	50,525.05	
TOTAL PERSONAL SERVICES	\$ 611,898.21	\$ 5,835.83	\$ 617,734.04	
<u>ALL OTHER:</u>				
Contractual Services	\$ 181,273.08	\$ 8,936.94	\$ 190,210.02	
Commodities	57,954.37	3,503.61	61,457.98	
STA-CAP charges	14,275.82	355.54	14,631.36	
TOTAL ALL OTHER	\$ 253,503.27	\$12,796.09	\$ 266,299.36	
<u>CAPITAL:</u>				
Building	\$ 145,266.81		\$ 145,266.81	
Equipment	57,895.87	\$10,921.00	68,816.87	
Structures	-	-	-	
TOTAL CAPITAL	\$ 203,162.68	\$10,921.00	\$ 214,083.68	
TOTAL EXPENDITURES	\$1,068,564.16	\$29,552.92	\$1,098,117.08	\$1,098,117.08

Balance Forward, June 30, 1986

\$ 6,265.72

BAXTER STATE PARK
 III. Financial Analysis - Budget vs. Expenditures
 For FY Ending June 30, 1986

	BUDGET PLUS OLD YEAR ENCUMBRANCES	EXPENDITURES PLUS CURRENT ENCUMBRANCES	BALANCE
PERSONAL SERVICES			
3100 Permanent Regular	339,170	298,925	40,245
3300 Seasonal	181,694	170,095	11,599
3600 Overtime		14,440	(14,440)
3800 Unemployment Compensation	19,220	15,828	3,392
3901 Health Insurance	36,507	29,294	7,213
3905 Dental Insurance	2,000	1,982	18
3910 Retirement	77,402	83,748	(6,346)
3911 Group Life Insurance	2,100	1,276	824
3912 Employee Medicare Cost		13	(13)
3971 Uniform Allowance	2,800	2,132	668
3979 Other Benefits	1,000		1,000
TOTAL PERSONAL SERVICES	661,893	617,733	44,160
ALL OTHER			
4000 Professional Services - Not State	63,950	72,882	(8,932)
4100 Professional Services - State	1,200	631	569
4200 Travel Expense - In State	2,040	5,564	(3,524)
4300 Travel Expense - Out of State	400	883	(483)
4400 Operation of State Vehicles	37,200	45,735	(8,535)
4500 Utilities	17,600	21,336	(3,736)
4600 Rentals	6,350	5,075	1,275
4700 Repairs	39,400	13,074	26,326
4800 Insurance	18,900	6,481	12,419
4900 General Operating	26,150	33,074	(6,924)
5100 Food	2,400	1,102	1,298
5200 Fuel	6,000	4,433	1,567
5300 Office Supplies	1,200	2,684	(1,484)
5400 Clothing	2,050	5,646	(3,596)
5600 Miscellaneous Supplies	35,974	47,724	(11,750)
5800 Highway Materials	11,300	5,148	6,152
TOTAL ALL OTHER	272,114	271,472	642
CAPITAL			
7100 Buildings & Improvements	165,950	145,267	20,683
7200 Equipment	51,600	70,568	(18,968)
7300 Structures & Improvements			
TOTAL CAPITAL	217,550	215,835	1,715
8008 Interest		24	(24)
8511 Sta Cap	15,717	14,607	1,110
TOTAL EXPENDITURES	1,167,274	1,119,671	47,603

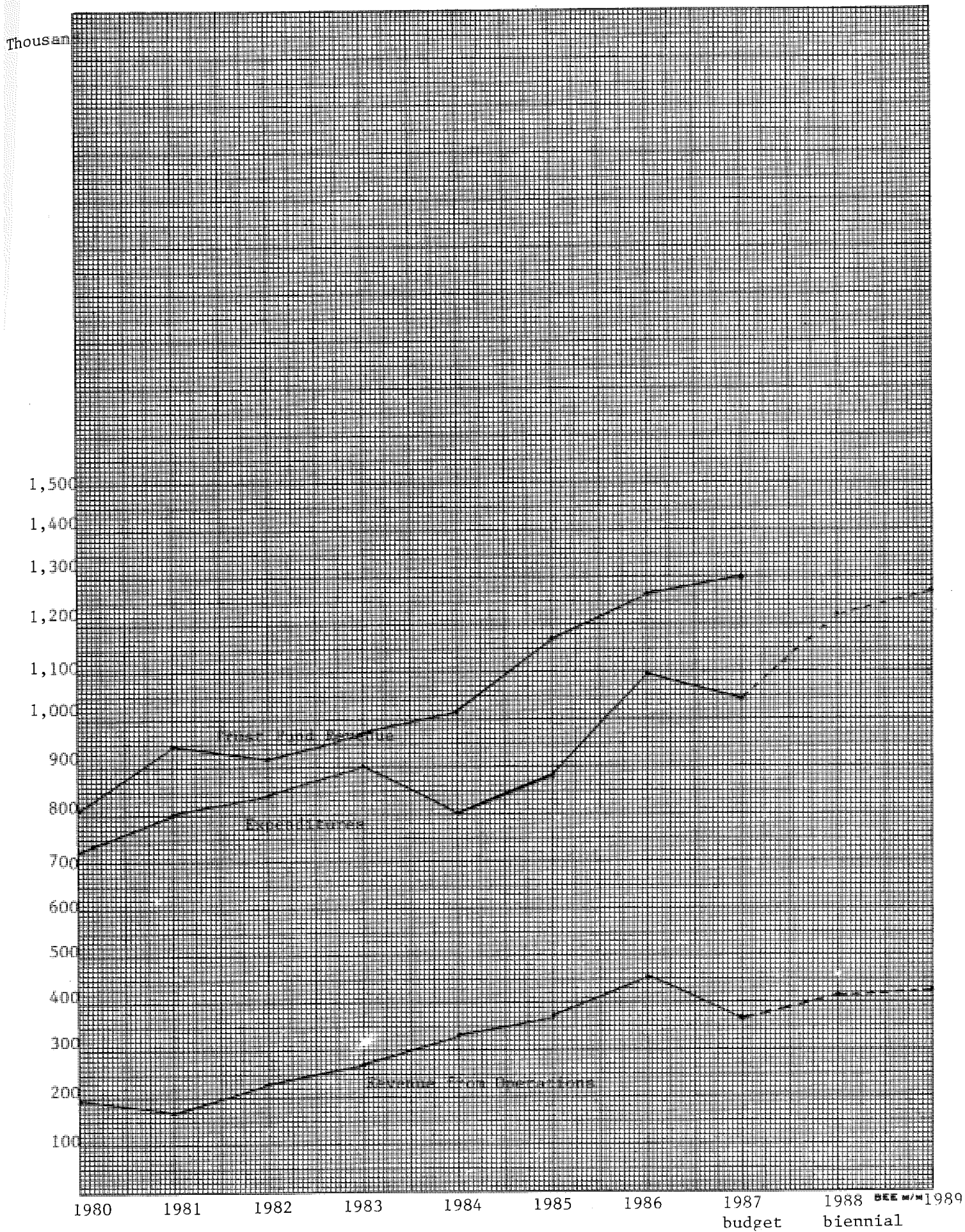
IV. STATEMENT OF REVENUES AND EXPENDITURES
FOR CALENDAR YEAR 1986

(PENDING YEAR END INFORMATION)

V. COMPARATIVE STATEMENT OF REVENUES AND EXPENDITURES
FISCAL YEAR 1985 and 1986

REVENUE	FY-1986	FY-1985	Inc./Dec.	%
Use Fees	\$ 235,874.92	\$232,424.50	\$ 3,450.42	1.5
Entrance Fees	44,915.00	45,499.50	(584.50)	(1.3)
Sale of Maps and Guides	9,088.69	8,647.68	441.01	5.1
Cash over/short	(23.85)	(25.79)	1.94	7.5
Refunds	(7,389.00)	(7,538.00)	149.00	(2.0)
Overpayments	(5,022.30)	(4,089.75)	(932.55)	22.8
Misc. Revenue	19,018.30	9,457.05	9,561.25	101.1
Forestry Operations	156,772.99	75,647.76	81,125.23	107.2
Trust Fund Contributions	<u>635,028.00</u>	<u>520,000.00</u>	<u>115,028.00</u>	22.1
NET REVENUE	\$1,088,262.75	\$880,022.95	\$208,239.80	23.7
<u>EXPENDITURES</u>				
Personal Services				
Salaries Permanent	\$ 298,925.12	\$274,883.12	\$ 24,042.00	8.7
Salaries Seasonal	170,095.30	159,672.46	10,422.84	6.5
Retro Pay		25,816.13	(25,816.13)	(100.
Overtime	14,440.12	8,871.79	5,568.33	62.7
Retirement Contributions	83,748.45	74,800.58	8,947.87	11.9
Other benefits	<u>50,525.05</u>	<u>49,155.32</u>	<u>1,369.73</u>	2.8
TOTAL PERSONAL SERVICES	\$ 617,734.04	\$593,199.40	\$ 24,534.64	4.1
All Other				
Contractual Services	\$ 190,210.02	\$171,711.41	\$ 18,498.61	10.8
Commodities	61,457.98	52,686.54	8,771.44	16.7
STA-CAP Charges	<u>14,631.36</u>	<u>16,480.82</u>	<u>(1,849.46)</u>	(11.2
TOTAL ALL OTHER	\$ 266,299.36	\$240,878.77	\$ 25,420.59	10.6
Capital				
Building	\$ 145,266.81	\$ 256.00	\$145,010.81	-
Equipment	68,816.87	43,095.27	25,721.60	59.7
Structures	<u></u>	<u>3,687.00</u>	<u>(3,687.00)</u>	(100.
TOTAL CAPITAL	\$ 214,083.68	\$ 47,038.27	\$167,045.41	-
TOTAL EXPENDITURES	\$1,098,117.08	\$881,116.44	\$217,000.64	24.6
Togue Pond Purchase	<u>- 135,028.00</u>		<u>-135,028.00</u>	
	\$ 963,089.08	\$881,116.44	\$ 81,972.64	9.3

VI. REVENUE/EXPENDITURE CHART



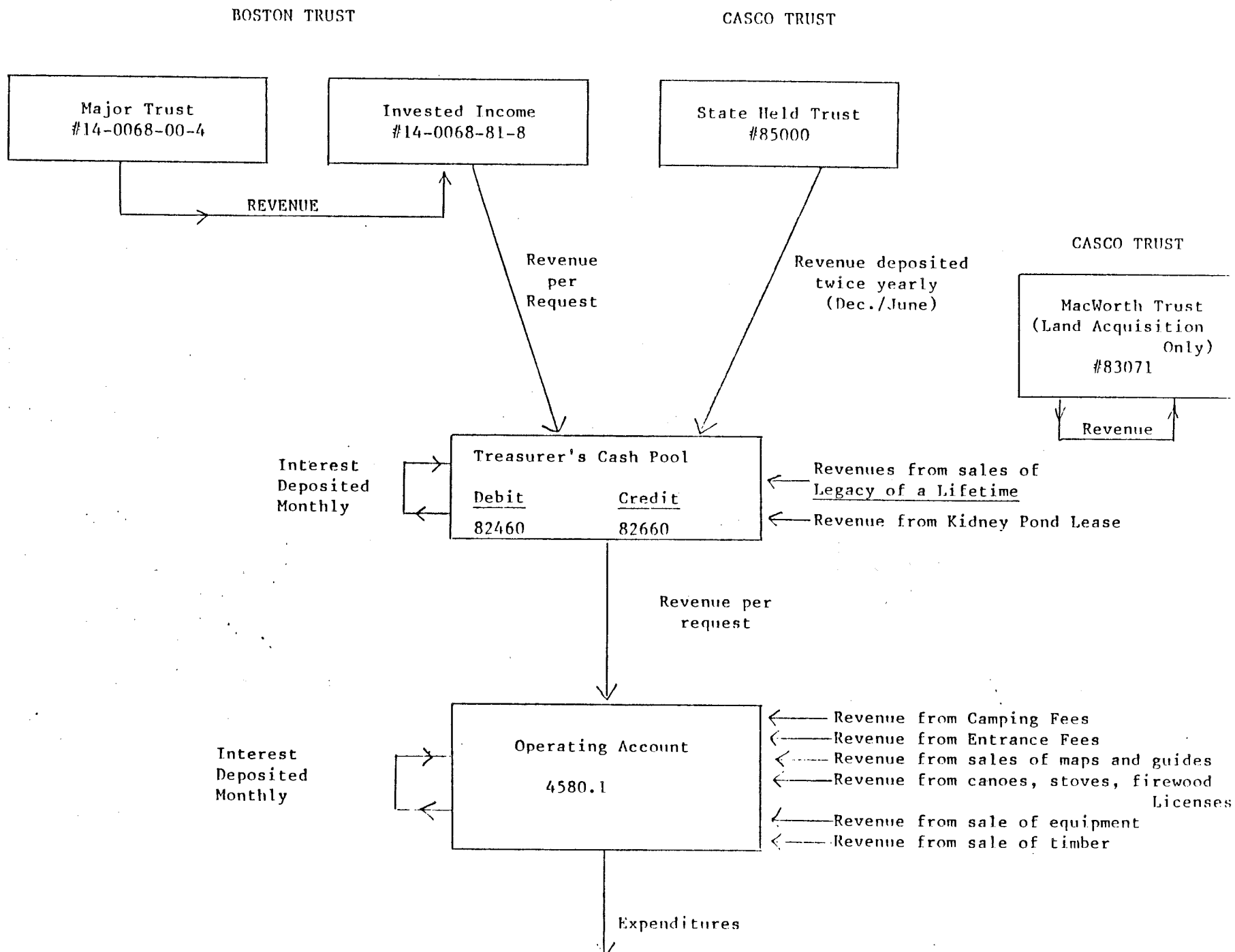
E. TRUST FUND INFORMATION

I. FINANCIAL POLICY

(PENDING YEAR END INFORMATION)

II. BAXTER STATE PARK
CASH FLOW CHART

Revised January 1986



BAXTER STATE PARK
III. SUMMARY OF ACCOUNTS
June 30, 1986

<u>TRUSTS GENERATING OPERATING REVENUE</u>	<u>BOOK VALUE</u>	<u>MARKET VALUE</u>	<u>ESTIMATED INCOME</u>	<u>CURRENT YIELD</u>	<u>% OF ASSETS</u>
I. PRINCIPAL ACCOUNT Boston Trust (14-0068-00-8)	\$ 9,060,429.76	\$13,736,002.39	\$ 692,021.57	5.04	65.15
II. INVESTED INCOME Boston Trust (14-0068-81-8)	3,498,567.73	3,774,155.23	299,780.36	7.94	17.90
III. STATE TRUST Casco Bank (A-48381)	2,589,479.87	2,779,121.36	211,587.00	7.6	13.18
IV. STATE (Invested Income) TREASURER'S (Cash Pool) (82460)	<u>429,811.18</u>	<u>429,811.18</u>	<u>34,384.89</u>	8.0	2.04
SUB TOTALS	15,578,288.54	20,719,090.16	1,237,773.82	6.0	98.27
SPECIAL TRUST					
Baxter MacWorth Trust (83071 Land Acquisition)	\$ 356,739.27	\$ 364,194.88	\$ 34,962.00	9.6	1.73
TOTAL ALL TRUSTS	<u>\$15,935,027.81</u>	<u>\$21,083,285.04</u>	<u>\$ 1,272,735.82</u>	6.04	100

IV. SUMMARY OF ACCOUNTS
as of December 31, 1986

(PENDING YEAR END INFORMATION)

V. NET INCOME ANALYSIS

(PENDING YEAR END INFORMATION)

F. STATISTICAL REPORT
ON THE USE OF BAXTER STATE PARK
BY THE PUBLIC - 1986

BAXTER STATE PARK
I. GATE STATISTICS - 1986

PERMITS ISSUED - BY GATE

	<u>TOTAL # OF VEHICLES</u>	<u>RESIDENT</u>	<u>NON-RESIDENT</u>
<u>TOGUE POND GATE</u>			
May	1,585	1,171	414
June	3,134	2,195	939
July	4,719	2,841	1,878
August	5,733	2,808	2,925
September	3,644	2,285	1,359
October	<u>1,291</u>	<u>742</u>	<u>549</u>
Total	20,106	12,042	8,064
 <u>NESOWADNEHUNK GATE</u>			
May	256	220	36
June	469	396	73
July	507	385	122
August	548	386	162
September	457	383	74
October	<u>-</u>	<u>-</u>	<u>-</u>
Total	2,237	1,770	467
 <u>MATAGAMON GATE</u>			
May	507	403	104
June	686	561	125
July	1,025	711	314
August	1,047	649	398
September	741	553	188
October	<u>325</u>	<u>217</u>	<u>108</u>
Total	4,331	3,094	1,237
TOTAL ALL GATES	26,674	16,906	9,768

BAXTER STATE PARK
II. STATISTICS - 1986

PERMITS ISSUED - BY MONTH

	<u>TOTAL # OF VEHICLES</u>	<u>RESIDENT</u>	<u>NON-RESID</u>
<u>May</u>			
Togue Pond Gate	1,585	1,171	414
Nesowadnehunk Gate	256	220	36
Matagamon Gate	507	403	104
Total May	2,348	1,794	554
<u>June</u>			
Togue Pond Gate	3,134	2,195	939
Nesowadnehunk Gate	469	396	73
Matagamon Gate	686	561	125
Total June	4,289	3,152	1,137
Total Year-to-date	6,637	4,946	1,691
<u>July</u>			
Togue Pond Gate	4,719	2,841	1,878
Nesowadnehunk Gate	507	385	122
Matagamon Gate	1,025	711	314
Total July	6,251	3,937	2,314
Total Year-to-date	12,888	8,883	4,005
<u>August</u>			
Togue Pond Gate	5,733	2,808	2,925
Nesowadnehunk Gate	548	386	162
Matagamon Gate	1,047	649	398
Total August	7,328	3,843	3,485
Total Year-to-date	20,216	12,726	7,490
<u>Sept.</u>			
Togue Pond Gate	3,644	2,285	1,359
Nesowadnehunk Gate	457	383	74
Matagamon Gate	741	553	188
Total Sept.	4,842	3,221	1,621
Total Year-to-date	25,058	15,947	9,111
<u>Oct.</u>			
Togue Pond Gate	1,291	742	549
Nesowadnehunk	-	-	-
Matagamon Gate	325	217	108
Total Oct.	1,616	959	657
Total Year-to-date	26,674	16,906	9,768

BAXTER STATE PARK

III. Camper Days Use by Location and Activity

WINTER SEASON - 1985-86

O V E R N I G H T C A M P I N G

MONTH	ROARING BROOK	DAICEY POND	CHIMNEY POND	KATAHDIN STREAM	RUSSELL POND	ABOL	SO. BRANCH POND	NESOWAD- NEHUNK	TOTAL # OF PEOPLE	TOTAL CAMPE NIGHT
Dec.	33	4	19	10	40	6	-	12	94	124
Jan.	130	12	251	12	11	-	49	7	243	472
Feb.	114	53	225	50	69	12	50	17	354	590
March	24	34	78	63	3	-	15	-	119	217
TOTALS	301	103	573	135	123	18	114	36	810	1,403

C A M P I N G A C T I V I T I E S

MONTH	CAMPER NIGHTS		DAY-USE		TOTAL
	GENERAL CAMPING	TECHNICAL CLIMBING	SKIING/ SNOW- SHOEING	SNOW MOBILING	
Dec.	99	25	15	177	316
Jan.	209	263	1	169	642
Feb.	371	219	4	467	1,061
March	139	78	6	287	510
TOTALS	818	585	26	1,100	2,529

IV. BAXTER STATE PARK COMPARATIVE STATISTICS - 1986

					SUMMER DETAIL USE 1986	
GATEHOUSE STATISTICS:					Day Use	Campers
Persons:	1983	1984	1985	1986	Transients	Lodge Guests
Resident	43,825	47,564	46,321	49,459	41,589	20,415
Non-Resident	25,680	22,611	26,492	25,579	12,267	767
TOTAL	69,505	70,175	72,813	75,038	53,856	21,182
Day Use	37,991	41,727	40,613	41,589	41,589	
Transient	9,944	8,903	10,501	12,267	12,267	
Campers	20,975	18,819	21,033	20,415		20,415
Lodge Guests	595	726	666	767		767
TOTAL	69,505	70,175	72,813	75,038	53,856	21,182
Vehicles:						
Togue Pond	18,124	18,883	19,813	20,106		
Matagamon	3,776	3,830	4,234	4,331		
Nesowadnehunk	1,218	737	919	2,237		NOT AVAILABLE
Telos	-	192	-	-		
TOTAL	23,118	23,642	24,966	26,674		
CAMPGROUND STATISTICS:					DETAIL CAMPER USE 1986	
CAMPER DAYS:	1983	1984	1985	1986	Campgrounds	Group Areas
Campgrounds:						
Roaring Brook	11,381	10,516	10,470	9,622	7,060	2,562
Abol	5,548	5,387	5,380	4,988	4,988	-
Katahdin Stream	9,446	8,861	9,241	9,476	7,020	2,456
Daicey Pond	4,081	4,173	4,500	4,635	4,635	-
Nesowadnehunk	4,779	4,888	4,975	4,703	3,916	787
Trout Brook Farm	2,852	2,755	3,102	2,500	1,970	530
South Branch Pond	8,890	8,453	9,174	8,472	8,472	-
Russell Pond	3,241	2,929	2,811	2,719	2,719	-
Chimney Pond	4,326	3,756	3,786	3,623	3,623	-
SUB-TOTAL CAMPGROUNDS	54,511	51,718	53,439	50,738	44,403	6,335
Outlying Sites:						
South Branch Area	-	394	342	381		
Fowler Area	-	712	685	680		
Webster Area	-	923	1,004	909		
At Shelter	-	128	97	111		
Davis Pond area	-	203	225	240		
Wassataquoik Area	-	623	835	717		
SUB-TOTAL OUTLYING SITES	-	2,983	3,188	3,038		
TOTAL SUMMER CAMPER DAYS	54,511	54,701	56,627	53,776		
VISITOR DAYS:	82-83	83-84	84-85	85-86		
Camper Days-Summer	54,511	54,701	56,627	53,776		
Day Use/Transient	47,935	50,630	51,114	53,856		
TOTAL SUMMER VISITOR DAYS	102,446	105,331	107,741	107,632		
Camper Days-Winter	1,070	1,549	1,403			
Day Use-Winter	594	977	1,126			
TOTAL WINTER VISITOR DAYS	1,664	2,526	2,529			
TOTAL PARK VISITOR DAYS	104,110	107,857	110,270			
					DETAIL WINTER USE	
					General Camping	G
					Snowmobiling	SB
					Technical Climbing	TC
					Skiing/Snowshoeing	SS

V. TRAIL USE SUMMARY - 1986

TRAIL:	May	June	July	August	Sept.	Oct.	Total Hikers
<u>KATAHDIN STREAM:</u>							
Hunt	326	716	1,362	1,857	927	311	5,499
Owl	21	105	171	259	198	63	817
Marston	-	2	11	2	5	5	25
Mt. Coe	2	2	5	1	-	1	11
Grassy Pond	16	31	26	122	47	-	242
Double Top.	5	-	4	19	-	-	28
O.J.I.	-	5	4	10	2	7	28
Togue Pond Beach	-	-	-	-	-	-	-
<u>ABOL:</u>							
Abol Beach	151	897	865	914	295	99	3,221
Abol Trail	300	566	891	1,336	789	262	4,144
Abol Falls	47	51	97	161	126	19	501
<u>ROARING BROOK:</u>							
Chimney	523	389	3,032	3,848	2,332	592	10,716
Helon Taylor	91	36	553	961	833	121	2,595
Sandy Stream	321	1,028	1,843	1,717	950	455	6,314
So. Turner	98	187	295	440	299	160	1,479
Russell Pond	34	2,079	504	415	319	91	3,442
Nature Trail	-	335	21	13	79	4	452
<u>SOUTH BRANCH POND:</u>							
So. Branch Falls	12	79	140	90	36	6	363
Ledges	18	36	100	69	47	13	283
Howe Brook	20	46	178	142	74	27	487
N. Traveler	52	103	244	351	129	49	928
Center Ridge	14	19	20	61	34	9	157
So. Branch Mtn.	20	17	81	68	107	25	318
Pogy Notch	66	106	291	176	116	36	791
Other	7	11	23	42	22	20	125
<u>NESOWADNEHUNK:</u>							
Double Top	2	12	32	94	30	10	180
Marston	-	-	-	9	3	2	14
Burnt Mtn.	-	-	6	10	1	-	17
Sentinel	-	1	-	-	2	-	2
Center Mtn.	-	-	4	2	-	2	8
N. Brother	-	3	-	-	-	1	4
S. Brother	-	-	-	-	1	-	1
Wass. Lake Trail	-	-	2	-	-	2	4
<u>CHIMNEY POND:</u>							
Dudley	126	589	1,125	1,013	542	161	3,556
Cathedral	168	578	1,007	878	782	147	3,560
Saddle	221	937	1,600	1,792	974	371	5,895
Hamlin	37	59	47	97	94	49	383
N. Basin	19	46	46	121	94	64	390
N. Peaks	-	3	2	35	19	8	67
N.W. Basin	-	50	32	56	63	13	214
<u>RUSSELL POND:</u>							
Russell Pond	34	506	545	494	313	76	1,968
Tracy Horse Mtn.	26	155	257	320	128	31	917
Lookout Trail	2	80	96	90	88	16	372
N.W. Basin Trail	4	109	129	225	145	44	656
N. Peaks Trail	2	16	17	35	29	11	110
Pogy Notch Trail	72	100	164	132	97	16	581
Grand Falls Trail	11	98	104	143	72	6	434
Wass. Lake Trail	55	220	280	277	256	38	1,126
TOTAL PERSONS	2,923	10,407	16,256	18,897	11,499	3,443	63,425

VI. CLASS DAYS SUMMARY - 1986

CONDITIONS CONCERNING WHEN KATAHDIN IS CLOSED OR OPEN ABOVE TREELINE

Class 1 - Open - A good day.

Class 2 - Open but not recommended for climbing.

Class 3 - Open but not recommended; one or more trails closed - trails closed to be named by Ranger when setting Class Day.

Class 4 - Mandatory closure of all trails above treeline.

The Ranger at Chimney Pond is responsible for determining the Class Day of Katahdin. Closing applies only to portions of trails above treeline. Portions of trails below treeline will remain open.

NUMBER OF CLASS DAYS

<u>YEAR</u>	<u>CLASS 1</u>	<u>CLASS 2</u>	<u>CLASS 3</u>	<u>CLASS 4</u>
1982	51	80	7	0
1983	50	93	2	0
1984	47	70	22	6
1985	53	84	9	2
1986	36	102	13	0

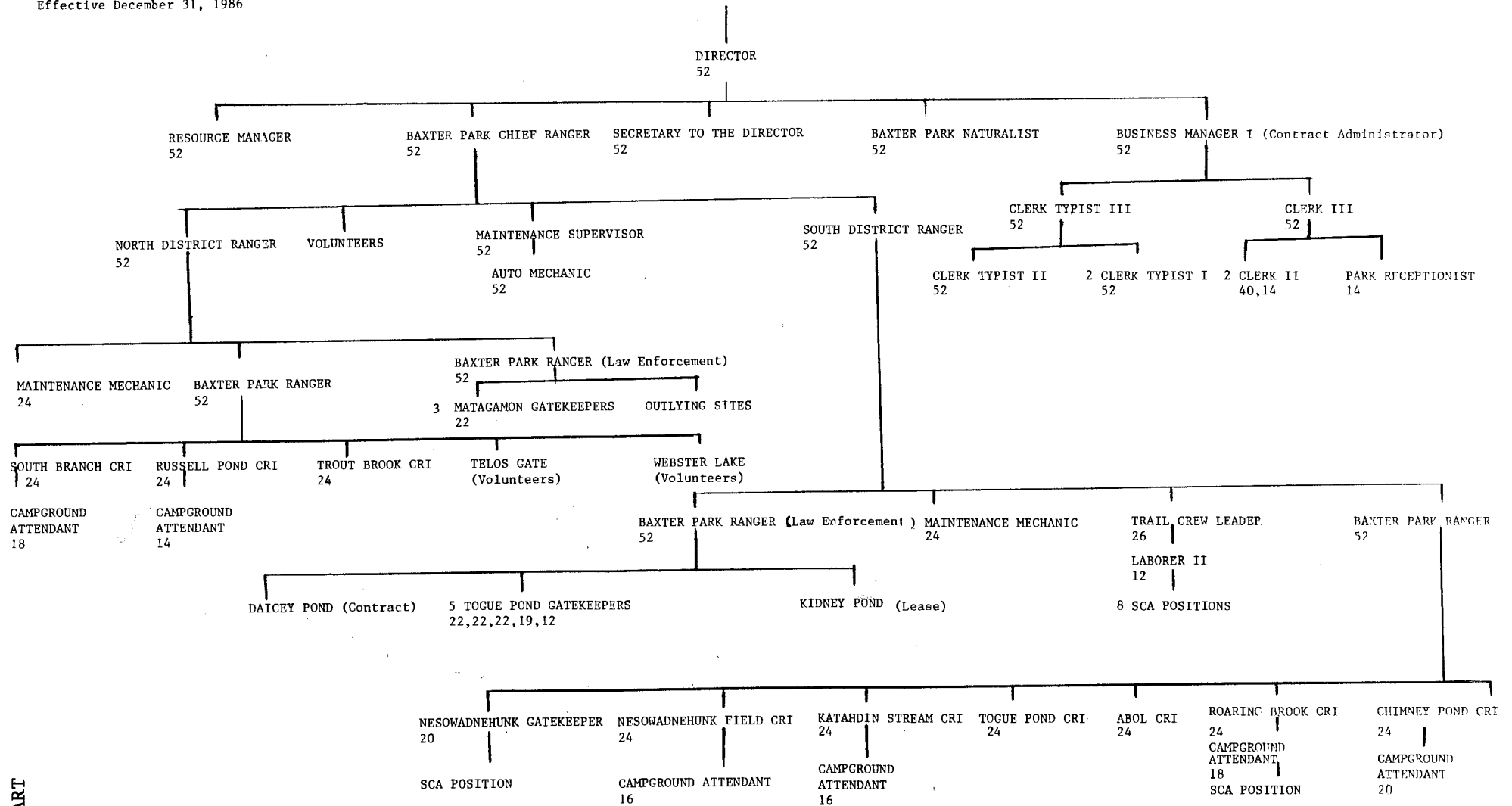
VII. CAMPER DAYS SUMMARY

(PENDING YEAR END INFORMATION)

G. PERSONNEL LISTING
1986

50 Classified Positions
 2 Contract Services
 10 SCA Positions
 Effective December 31, 1986

BAXTER STATE PARK AUTHORITY
 Comm. Inland Fisheries & Wildlife
 Attorney General
 Dir., Maine Forest Service



III. SEASONAL POSITIONS - 1986

<u>Title/ Position Number</u>	<u>Name/Location</u>			
MAINTENANCE RANGERS				
8281-0965	Coolong - North	24	5-5	10-17
8281-0041	Rickards - South	24	5-5	10-17
CAMPGROUND RANGERS				
9425-0631	Cushman - Nesowadnehunk	24	5-8	10-22
9425-0021	Curran - Russell Pond	24	5-8	10-22
9425-0221	Smith - South Branch Pond	24	5-8	10-22
9425-0611	Ward - Trout Brook Farm	24	5-8	10-22
9425-0351	Hendrickson - Chimney Pond	24	5-8	10-22
9425-0641	Hamer - Roaring Brook	24	5-8	10-22
9425-0601	Johnston - Abol	24	5-8	10-22
9425-0391	Merry - Katahdin Stream	24	5-8	10-22
9425-0151	Tetrault - Togue Pond	24	5-12	10-22
CAMPGROUND ATTENDANTS				
9424-0841	Thompson - Chimney Pond	20	5-26	10-11
9424-0741	Snedgen - Roaring Brook	18	5-25	9-27
9424-0922	Jacques - South Branch Pond	18	5-25	9-27
9424-0461	Leiter - Nesowadnehunk	16	5-26	9-13
9424-0421	Drew - Russell Pond	14	6-2	9-27
9424-0831	Gordon - Katahdin Stream	14	6-2	9-27
	SCA Student - South			
GATEHOUSE ATTENDANTS				
9422-0171	King - Togue Pond	23	5-15	10-15
9422-0511	Morrisette - Togue Pond	23	5-15	10-15
9422-0361	Pratt - Matagamon	23	5-15	10-15
9422-0441	Pratt - Matagamon	23	5-15	10-15
9422-0201	Matthews - Matagamon	23	5-15	10-15
9422-0501	Johnston - Togue Pond	23	5-15	10-15
9422-0521	Miller - Nesowadnehunk	20	5-19	10-3
9422-0531	Tardiff - Togue Pond	18	6-2	10-3
9422-0541	Howes - Togue Pond	12	6-16	9-6
	SCA Student - South			
TRAIL CREW				
9435-0141	Kenway - Trail Crew Leader	28	3-31	10-11
8002-0940	Holden - Laborer II	14	6-15	8-30
	8 SCA Students			
HEADQUARTERS				
0002-0731	King - Clerk II	40	1-6	10-11
0002-0941	Cummings - Clerk II (Acting Capacity)	14	5-27	8-29
9210-0967	Osgood - Park Receptionist	14	5-27	8-29
	Greaney - Laborer I (Acting Capacity)	12		8-29

BAXTER STATE PARK

II. YEAR-ROUND POSITIONS - 1986

<u>Title/ Position Number:</u>	<u>Name:</u>	<u>Location:</u>
BSP Director 9429-0811	Irvin C. Caverly, jr.	Headquarters, Millinocket
BSP Chief Ranger 9428-0966	Chris M. Drew	Headquarters, Millinocket
Business Manager I 0041-0481	Elizabeth M. Gray	Headquarters, Millinocket
BSP Maintenance Supv. 9427-0121	Philip M. McGlauflin	Headquarters, Millinocket
BSP District Rangers 9404-0946 9404-0945	Barry MacArthur Robert E. Howes	North District South District
BSP Rangers 9434-0946 9434-0944 9434-0943 9434-0942	Thomas P. Chase Loren Goode Bernard Crabtree Charlie Kenney	North District South District South District North District
Interpretive Spec 0479A-0947		Headquarters, Millinocket
Auto Mechanic II 8303-0926	Tim Sides	Headquarters, Millinocket
Clerk III 0003-0091	Janice T. Caverly	Headquarters, Millinocket
Clerk Typist III 0013-1081	Shirley F. Brewster	Headquarters, Millinocket
Clerk Typist II 0012-0871	Judith A. Hafford	Headquarters, Millinocket
Clerk Typist I's 0011-0925 0011-0927	Carol Emery Loretta G. Manzo	Headquarters, Millinocket Headquarters, Millinocket

H.

Conclusion:

In each year of operation at Baxter State Park, we find ourselves involved with a wide variety of activities and issues. Governor Baxter once said after I am gone the Park will become controversial because of its nature. We find this to be true today; however, controversies are not all bad and sometimes result in constructive conclusion. A positive aspect that I like to think about is that when controversy develops, people have a tendency to get involved in the management of this Park by expressing their ideas, suggestions and concerns. This is important as it demonstrates interest and as long as Maine people maintain interest in their Park, we the administrators have an excellent support team who will assist us in being successful in managing the Park.

Special recognition and thanks to the following for their contribution towards the compiling of this report:

Baxter State Park Authority:

Glenn H. Manuel, Chairman

Commissioner, Dept. of Inland Fisheries & Wildlife

James Tierney, Attorney General

Kenneth Stratton, Director, Maine Forest Service

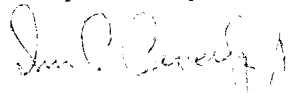
Chief Ranger Chris Drew and Staff

Business Manager Elizabeth Gray and Staff

Judy Hafford, Clerk Typist, who spent many hours finalizing this report.

For all of the input and support during the 1986, my sincerest thanks.

Respectfully submitted,



Irvin C. Caverly, Jr.

Director

Baxter State Park

ICC:jah

BAXTER STATE PARK AUTHORITY
NOTES TO FINANCIAL STATEMENTS

June 30, 1986

(1) Summary of Organizational Structure and Significant Accounting Policies

The Baxter State Park Authority was established to operate and maintain Baxter State Park for the use and enjoyment of the people of Maine in accordance with the wishes of the donor, former Governor Percival P. Baxter, that this park "...shall forever be retained and used for state forest, public park and public recreational purposes...shall forever be kept and remain in the natural wild state...shall forever be kept and remain as a sanctuary for beasts and birds."

The Baxter State Park Authority, a three-man authority consisting of the State's Attorney General, the Director of the Bureau of Forestry and the Commissioner of Inland Fisheries and Wildlife, has full power in the control and management of the park pursuant to Title 12, Sections 900-907, Maine Revised Statutes Annotated of 1964, as amended. The primary responsibilities of the authority are to operate and maintain various campgrounds and campsites within the 200,000 acre wilderness park; to protect the wildlife, fauna, and flora within the park for the enjoyment of present and future generations; to receive and expend moneys from trusts and other income for maintenance and operation; to acquire additional land for the park as authorized by law, to establish rules and regulations as necessary for the protection and preservation of the park, monuments and structures thereon and for the protection and safety of the public; and to exercise police supervision over the park.

The accounting policies of the Baxter State Park Authority conform to generally accepted accounting principles as applicable to governments. The following is a summary of the more significant policies:

A. Fund Accounting

The accounts of the Baxter State Park Authority are organized on the basis of funds each of which is considered a separate accounting entity. The operations of each fund are accounted for with a separate set of self-balancing accounts that comprise its assets, liabilities, fund equity or balance, revenues, and expenditures or expenses, as appropriate. Government resources are allocated to and accounted for in individual funds based upon the purposes for which they are to be spent and the means by which spending activities are controlled. The various funds are grouped, in the financial statements in this report, into two generic fund types and two broad fund categories as follows:

GOVERNMENTAL FUNDS

Other Special Revenue Fund - The Other Special Revenue Fund is used to account for the proceeds of specific revenue sources that are legally restricted to expenditures for specified purposes.

Fiduciary Funds

Trust Funds - Trust Funds are used to account for assets held by the state in a trustee capacity or as an agent for the Baxter State Park Authority. These include Nonexpendable and Expendable Trusts. Nonexpendable Trust Funds are accounted for in essentially the same manner as proprietary funds since capital maintenance is critical. Expendable Trust Funds are accounted for in essentially the same manner as governmental funds.

B. Basis of Accounting

The accounts of all Governmental Funds and Expendable Trust Funds are maintained and reported on the modified accrual basis of accounting. Under the modified accrual basis of accounting, revenues and assets are recognized when measurable and available to finance operations during the year; expenditures and liabilities are recognized when obligations are incurred as a result of receipt of goods and services.

All Nonexpendable Trust Funds are accounted for using the accrual basis of accounting. Their revenues are recognized when they are earned and their expenses are recognized when they are incurred.

C. Budgets and Budgetary Accounting

Allocations are made in quarterly installments and are reduced when goods and services are received or by encumbering outstanding commitments such as contracts or purchase orders.

D. Encumbrances

Encumbrance accounting, under which purchase orders, contracts, and other commitments for the expenditure of money are recorded in order to reserve that portion of the applicable appropriation, is employed as an extension of formal budgetary integration in the Other Special Revenue Fund. Encumbrances outstanding at year end are reported as reservations of fund balances since they do not constitute expenditures or liabilities.

E. Investments

Investments are stated at cost.

F. Total Columns on Combined Statements - Overview

Total Columns on Combined Statements - Overview are captioned Memorandum Only to indicate that they are presented only to

facilitate financial analysis. Data in these columns do not present financial position, results of operations, or changes in financial position in conformity with generally accepted accounting principles.

(2) Dedicated Revenue

Dedicated revenue credited to the Authority during the fiscal year amounted to \$1,465,284.40, an increase of \$122,055.64 as compared with the previous fiscal year. The increase occurred, for the most part, in the revenue from the use of the park and related services.

(3) Expenditures

Total expenditures for the Authority's operations amounted to \$1,598,382.30, an increase of \$197,265.86 as compared with the previous fiscal year. The increase occurred, for the most part, in personal services expenditures, and capital expenditures.

(4) Transactions Between Funds

We noted that the Fiduciary Fund records as expenditures moneys transferred to the Governmental Fund. The Governmental Fund records these same moneys as dedicated revenue. During the fiscal year, these interfund transactions totaled \$500,000.00. The elimination of these transactions from revenue and expenditures on the Combined Statement of Revenues, Expenditures, and Changes in Fund Balance (Exhibit 2) would result in dedicated revenue of \$965,284.40 and expenditures of \$1,098,382.30, which we feel would more clearly reflect the results of operations.

(5) Boston Safe Deposit and Trust Company

Boston Safe Deposit and Trust Company is the trustee appointed by the late Governor Baxter to hold the main body of the trust property and manage, invest, reinvest, and administer the same. Funds reported by the trustee as of June 30, 1986 are \$9,060,429.76 in the principal account and \$3,498,567.73 in invested income. By the terms of the trust agreement, the net income of the trust is available for the care, protection and operation of the forest land known as Baxter State Park and for other forest lands hereinafter acquired by the State of Maine under the provisions of the trust for recreational or reforestation purposes. Funds may be withdrawn from the principal account for the purchase or other acquisition of additional lands for Baxter State Park or other lands for recreational or reforestation purposes.

Funds held by the trustee are not reflected on the records of the State Controller and accordingly are not presented on the accompanying financial statements. These funds have not been audited by us and accordingly we offer no opinion as to the fairness of presentation of the financial position of the funds as reported by the trustee.



STATE OF MAINE
DEPARTMENT OF AUDIT
STATE HOUSE STATION 66
AUGUSTA, MAINE 04333

Area Code 207
Tel. 288-2201

ROBERT W. NORTON
STATE AUDITOR

Glenn H. Manuel, Chr. Comm. of Inland Fisheries and Wildlife
Baxter State Park Authority
64 Balsam Drive
Millinocket, Maine 04462

I. Introduction

It is the purpose of this report to appraise and discuss the adequacy of the accounting systems and financial and administrative controls as we have observed them during the course of our audit of the operations of the Baxter State Park Authority for the 1986 fiscal year.

Examination of the Authority operations was conducted using several audit tests and techniques applicable to the particular agency. Based on the results of these tests, inferences were drawn as to the characteristics of the operations as a whole.

Field work was performed at the Baxter State Park Authority, Millinocket office and park facilities, with contact being made with the appropriate personnel. During the course of our audit, we were in contact with the following personnel:

Irvin Caverly - Director
Janice Caverly - Clerk III
Elizabeth Gray - Bus. Mgr. I
Shirley Brewster - Clerk III
Judy Hafford - Clerk Typist II
Carol Emery - Clerk Typist I
Joan King - Clerk II

II. Scope of Audit

We have examined the records of the Baxter State Park Authority for the fiscal year ended June 30, 1986. Our examination was conducted in accordance with generally accepted auditing standards and the Standards for Audit of Governmental Organizations, Programs, Activities, and Functions, promulgated by the U. S. Comptroller General. As part of our examination, we have made a review of those internal accounting and administrative control procedures of the agency that we considered relevant to the criteria established by the U. S. Comptroller General, including such tests of the accounting records and other auditing procedures as we considered necessary in the circumstances.

III. Summary of Auditors' Findings and Recommendations

The objective of internal control accounting is to provide reasonable, but not absolute assurance as to the safeguarding of assets against loss from unauthorized use or disposition, and the reliability of the financial records for preparing financial statements and maintaining accountability of assets. We understand that the objective of those administrative control procedures comprehended in U. S. Comptroller General criteria is to provide assurance as to compliance with its requirements. The concept of reasonable assurance recognizes that the cost of a system of internal control should not exceed the benefits derived and also recognizes that the evaluation of these factors necessarily required estimates and judgments by management.

There are inherent limitations that should be considered in evaluating the potential effectiveness of any system of internal control. In the performance of most control procedures, errors can result from misunderstanding or lack of instructions, mistakes of judgment, carelessness or other personal factors. Control procedures, whose effectiveness depends on segregation of duties, can be circumvented intentionally with respect to the execution of duties, recording of transactions or to the estimates and judgments required in the preparation of financial statements. Further projection of any evaluation of internal control to future periods is subject to the risk that procedures may change or become inadequate because of changes in conditions, and that the degree of compliance may also change as a result of the aforementioned.

Title 5, Chapter II, Section 243, Maine Revised Statutes Annotated of 1964, as amended, requires the State Auditor "to perform a postaudit of all accounts and other financial records of the State Government or any department or agency thereof, including the judiciary and the Executive Department of the Governor; except the Governor's Expense Account, and to report annually on this audit, and at such other times as the Legislature may require." Based on our audit, we believe the procedures used by the Baxter State Park Authority were adequate; however, there are existing conditions that are jeopardizing the adequacy of these controls which are described in Section IV and which we believe are material weaknesses or other conditions that are not in conformity with the criteria referred to above in relation to the agency operations.

This report is intended for use by the Baxter State Park Authority to which it refers.

IV. Auditors' Findings and Recommendations

PREFACE

The following findings and recommendations are rendered with regard to the Baxter State Park Authority internal control over operations. We feel these recommendations will improve internal controls over the operation of the agency.

Supply Inventory Control

A review of the supply inventory records revealed that the perpetual inventory system the Park has been using in the past is not maintained on a current basis. Personnel changes have made it difficult to maintain the records on a current basis. This lack of a current perpetual inventory system leads to poor control over supplies on hand. The supply inventory records should reflect an accurate balance of supplies on hand at all times.

We recommend that a perpetual inventory system be maintained on a current basis for supply items on hand.

II. VOLUNTEER PROGRAM

II. VOLUNTEER CERTIFICATE LIST (1986)

1. Archie, Wayne A., 22 Washington Street, Millinocket, ME 04462
2. Boyington, Bennie and Verna, Crestview Circle, Crestview Apt. #3, Millinocket, ME 04462
3. Buttler, Ruth E., Box 448, Brewerton, NY 13029
4. Chase, Alma C., P.O. Box 233, Patten, ME 04765
5. Chase, Linda A., P.O. Box 233, Patten, ME 04765
6. Chase, Todd A., P.O. Box 233, Patten, ME 04765
7. Colt, Harold, 219 Reservoir Road, New Hartford, CT 06057
8. Crabtree, Alice, General Delivery, Monson, ME 04464
9. Gray, Christopher K., 16 Spring Street, East Millinocket, ME 04430
10. Greaney, Carla A., R.F.D. #1, Brownville, ME 04414
11. Hendrickson, Esther, P.O. Box 215, Friendship, ME 04547
12. Jacques, Kelly J., P.O. Box 71, Oakland, ME 04963
13. King, Homer, Box 525, Millinocket, ME 04462
14. Lizotte, Jean, Medway Road, Millinocket, ME 04462
15. Lobdell, Dean J., HCR 31, Box 390, Bath, ME 04530
16. Lobdell, Ronald Jr., HCR 31, Box 390, Bath, ME 04530
17. Lobdell, Ronald and Elva, HCR 31, Box 390, Bath, ME 04530
18. Lyman, James, 369 Congress Street, Millinocket, ME 04462
19. MacArthur, Ava M., Rte. 1, Box 347, Island Falls, ME 04747
20. Merry, Lynn L., Box 48, Stacyville, ME 04782
21. Michaud, Daniel H. and Marcia E., 5 Church Street, East Millinocket, ME 04430
22. Miklovich, Winona, R.F.D., Swanville, ME 04915
23. Pollard, Albert A., MD, 25A June Street, Sanford, ME 04073
24. Rolfe, Barbara A., Front Street, Box 106, Brownville Junction, ME 04415
25. Slater, Kevin, R.D. #2, Box 2940, Old Town, ME 04468
26. Smith, Marie L., c/o Hadley Coolong, Rte. 1, Box 230, Patten, ME 04765
27. Torrey, Latona K., Winter Harbor, ME 04693

VOLUNTEER CERTIFICATE LIST (1986)

Page 2

28. Trautman, Frank, The Narrows, Islesboro, ME 04848
29. Vrabel, Timothy J., R.F.D. 2, Box 2780, Mechanic Falls, ME 04256
30. Waite, Marie M., 5 Church Street, East Millinocket, ME 04430
31. Warburg, Sharon D., Freud Street, Haifa, Israel 34753
32. Wormwood, Vance, 52 Fellows Street, South Portland, ME 04106
33. Yarnell, James W., 580 Upton Star Route, Newry, ME 04261

TELOS GATE VOLUNTEERS (1986)

1. Arsenault, Teresa, Box 1770, Brooks, ME 04921
2. Baker, Merchant M., Old Rte. 108, Peru, ME 04272
3. Beckwith, Phil and Pat, R.F.D. #1, Box 3260, Athens Road, Skowhegan, ME 0497
4. Burhoe, Earnest and Isabelle, Farmington, ME 04938
5. Burhoe, Richard J., Farmington, ME 04938
6. Burnham, Robert L. and Jean A., P.O. Box 125, Hebron, ME 04238
7. Cheney, Bernard, Rte. 1, Box 293, Machias, ME 04654
8. Durrell, Charlotte, Farmington, ME 04938
9. Ellicott, Anita, Phillips, ME 04966
10. Gilbert, Norman A. and Lucille D., Box 231, Hartland, ME 04943
11. Gross, Clifford and Alice, Bucksport, ME 04416
12. Hanscom, Roland and Margaret, Orrington, ME 04474
13. Hebert, Rene and Loretta, Limestone, ME 04750
14. Herrin, Norman and Margaret, East Holden, ME 04429
15. Hinckley, Homer T. and Barbara C., Box 742, Turner, ME 04282
16. Hodgkins, Earl, Harbor Road, Winter Harbor, ME 04693
17. Howard, John and Betty, Rte. 2, Box 58, Orrington, ME 04474
18. Howard, Tony, Rte. 2, Box 58, Orrington, ME 04474
19. Howe, Willis E. and Bernice, R.F.D. #1, Box 2640, Detroit, ME 04929

VOLUNTEER CERTIFICATE LIST (1986)
Page 3

20. Huff, Gordon and Marguerite, Newport, ME 04953
21. Ives, Linda J., Box 716, Gouldsboro, ME 04607
22. Kenniston, Monty and Alice, Phillips, ME 04966
23. Laney, Stacy, R.F.D. 1, Box 6475, Skowhegan, ME 04976
24. Laney, Steve and Linda, R.F.D. 1, Box 6475, Skowhegan, ME 04976
25. Littlefield, Earl and Jean, 249 Bowdoin Street, Auburn, ME 04210
26. Lowell, Charlotte, Dyer Brook, ME
27. Lynds, William I. and Jan H., North Anson, ME 04958
28. McBreairsty, Vincent and Loretta, P.O. Box 160, Island Falls, ME 04747
29. McNelly, Harold E., Dyer Brook, ME
30. Newell, Lewis E. and Lucille, R.F.D. #1, Box 1802, Hampden, ME 04444
31. Philpott, Lawrence A. and Charlotte C., R.F.D. #1, Box 251, Readfield, ME 04355
32. Thurston, George, Elm Street, Machias, ME 04654
33. Toothaker, Monty, Phillips, ME 04966
34. Varney, Paul B. and Mavis L., Star Route 2, Box 110, North Turner, ME 04266
35. Webber, Patricia, New Market, NH 03857
36. Yoder, Charles and Florence, P.O. Box 158, East Holden, ME 04429

Y.M.C.A. GROUP

1. Chris Hewes, Bangor Young Men's Christian Association, 127 Hammond Street,
Bangor, ME 04401
2. Josh Johnson, Bangor Young Men's Christian Association, 127 Hammond Street,
Bangor, ME 04401
3. Eddie Coda, Bangor Young Men's Christian Association, 127 Hammond Street,
Bangor, ME 04401
4. Neil Thompson, Bangor Young Men's Christian Association, 127 Hammond Street,
Bangor, ME 04401
5. Casey Moore, Bangor Young Men's Christian Association, 127 Hammond Street,
Bangor, ME 04401

VOLUNTEER CERTIFICATE LIST (1986)
Page 4

SIERRA CLUB BAXTER PARK TRAIL MAINTENANCE

1. Anderson, David and Bernadette, 259 W. Johnson Street, #D4, Philadelphia,
Pa 19144
2. Beirne, John, 108 Little Neck Road, Ipswich, MA 01938
3. Blaschke, Michael, P.O. Box 188, Longview, WA 98632
4. Capone, Mike, 1600 Middle Street, Pittsburg, PA 15215
5. Cohen, Linda, 5 Rambler Road, Jamaica Plain, MA 02130
6. Eckstein, Samuel, c/o Phoenix Software Assoc., 320 Norwood Park, South Norwood
MA 02062
7. Epstein, Lainie, 2486 S.W. Hideaway Lane, Stuart, FL 33497
8. Erf, Hillary, 319 Highland Road #5-2b, Ithaca, NY 14850
9. Gervasini, Kevin, 19 Edwards Street, Springfield, MA 01015
10. Gortlein, Delight, North Street, Middleton Springs, VT 05757
11. Hawk, David, R.D. 1, Box 1-B, Landenberg, PA 19350
12. Hunt, John, P.O. Box 176, Lattimore NC 28089
13. Jones, Kenneth, R.D. 1, Box 215, Glen Gardner, NJ 08826
14. Kaiser, Margaret, P.O. Box 202, Mt. Lake Park, MD 21550
15. Karl, Kevin, 15 Robin Street, Stamford, CT 06902
16. Kounitz, Lance, 300 W. 107 Street - 3B, New York City, NY 10025
17. Limmer, Ken, 3817 Logan's Ferry, Pittsburg, PA 15239-2944
18. Maxey, Ben, 3124 Thayer Avenue, Kalamazoo, MI 49004
19. Maxey, Bill, 3124 Thayer Avenue, Kalamazoo, MI 49004
20. Neffinger, George, 207 Lexow Avenue, Nyack, NY 10960
21. Robinson, Gary, Rte 3, Box 618, St. Anne, IL 60964
22. Rodgers, John, 310 Monroe Street, Ithaca, NY 14850
23. Rogers, Wally, LAB-RRMC, Rutland, VT 05701
24. Stahl, Louise, 312 N. Village Avenue, Rockville Centre, NY 11570
25. Stewart, Chandler, P.O. Box 195, Sanford, NC 27330

VOLUNTEER CERTIFICATE LIST (1986)

Page 5

26. Taylor, Joseph, 207 Cobble Creek Cur, Newark, DE 19702
27. Trost, Carl, 43 Crossman Avenue, Buffalo, NY 14211
28. Whitcomb, Scott, 21 Shirley Road, Lynn, MA 01904
29. Winkelman, Scott, 43 West Lake Street, Skaneateles, NY 13152
30. Yonkoski, Lynda and David, 735 Powhatan Beach Road, Pasadena, MD 21122

TRAIL CREW

1. Frith, Bernard, Embden Pond Road, No. Anson, ME 04958
2. Fulford, Susan J., Box 129, William Reynolds Road, Exeter, RI 02822
3. White, Connie, 5775 Mosholu Avenue, Riverdale, NY 10471
4. Whitehead, Mary K., 43 Arnold Lane, Rowayton, CT 06853

SEARCH AND RESCUE TEAMS

1. Camden Mountain Rescue Team
2. Dirigo Search and Rescue Team
3. Lincoln Search and Rescue Team
4. Wilderness Rescue Team
5. 112th Med-Evac - Maine Army National Guard

1986 VOLUNTEER PROGRAM
BAXTER STATE PARK

1.	Telos Gate	2,345	hours
2.	Trail Crew	1,528	"
3.	Webster Lake	1,308	"
4.	Matagamon Gate	608	"
5.	Chimney Pond	392	"
6.	Togue Pond Camps	341	"
7.	Trout Brook Farm	274	"
8.	Russell Pond	208	"
9.	South Branch Pond	<u>144</u>	"
TOTAL HOURS		7,148	hours Equivalent to 178 - 40 hr. work v

Individual Hours (Family or Group)

1.	Bennie and Verna Boyington	1,308	hrs. - Webster Lake
2.	Clifford and Alice Gross	1,137	hrs. - Telos and Matagamon Gate
3.	Latona Torrey and Linda Ives	1,008	hrs. - Various BSP locations

Organization Volunteer Contributions

1.	Maine Snowmobile Association	2,230	hrs. - Gatehouse Attendant
2.	Sierra Club	1,280	hrs. - Trail work

Headquarter's Volunteer Assistance

Computer: 100 hours
Statistical: 92.5 hours
Maintenance: 92 hours

Total 284.5 hours

Combined total of all volunteers hours: 7,432.5 which is equivalent to 185.8 40 hour work weeks.

III.

PROGRESS REPORT

SPIDERS OF MOUNT KATAHDIN, BAXTER STATE PARK,
PISCATAQUIS COUNTY, MAINE

Daniel T. Jennings
Northeastern Forest Experiment Station
USDA Building, University of Maine
Orono, Maine 04469

Charles D. Dondale and James H. Redner
Biosystematics Research Institute
Research Branch, Agriculture Canada
Ottawa, Ontario K1A 0C6

This report summarizes progress to date on the exploratory study, "Spiders of Mount Katahdin, Baxter State Park, Piscataquis County, Maine." This research was initiated in June, 1986. It is a cooperative effort involving the Baxter State Park Authority; the USDA, Forest Service, Northeastern Forest Experiment Station; and the Biosystematics Research Institute, Research Branch, Agriculture Canada.

Objectives of this study are to: 1) determine the species of spiders associated with spruce-fir and alpine communities of Mount Katahdin; 2) compare the fauna on Mount Katahdin with that of nearby spruce-fir forests (Jennings et al. 1986); and 3) determine habitat associations and altitudinal ranges for selected individual species.

METHODS

We used a variety of collecting methods to collect spiders including sweep nets, beating cloths, aspirators, and pan traps. Travel itineraries and pan-trap placements were as follows:

3 June 1986. (DTJ, CDD, JHR) Travel to Baxter State Park. Procured collecting permits, BSP Hdqts., Millinocket. Set up camp, Abol Field. Sweep net, beating foliage, hand collecting, Abol Field and Abol Beach.

4 June 1986. Climbed Mount Katahdin from Roaring Brook Campground via Chimney Pond and Saddle Trails. Set out pan traps enroute:

Basin Pond - 5 pans (spruce-fir)
Chimney Pond - 3 pans (riparian)
Saddle (summit) - 5 pans (alpine)

Inclement weather on top; winds > 60 mph. Returned to Roaring Brook Campground via Saddle and Chimney Pond Trails. Camped at Abol Field.

5 June 1986. Continued collecting at Abol Field. Set out pan traps:

Grassy Pond - 4 pans (spruce-cedar)

Abol Pond - 5 pans (bog)

Collected along Katahdin Stream near Katahdin Stream Campground. Broke camp, Abol Field. Leave Baxter State Park for Alton Bog and Orono.

24 June 1986. (DTJ, CDD, JHR) Procured collecting permit, BSP

Hdqts., Millinocket. Climbed to Chimney Pond via Roaring Brook Campground, Chimney Pond Trail. Retrieved pan traps at Basin Pond - 5 pans; Chimney Pond - 3 pans. Overnight Chimney Pond, Bunkhouse.

25 June 1986. Storm, held up all day at Chimney Pond. Upper trails closed due to high winds, snow, and ice.

26 June 1986. Continued climb of Mount Katahdin via Saddle Trail.

Retrieved 5 pans set earlier near summit of Saddle Trail.

Deployed 13 pans:

Saddle Trail (summit) - 4 pans

Caribou Springs - 3 pans

Baxter Cut-Off Trail (near Thoreau Springs) - 3 pans

Baxter Cut-Off Trail (near jct. Saddle Trail) - 3 pans

Collected spiders along trails, Tableland. Returned to Roaring Brook Campground via Saddle and Chimney Pond Trails. Camped at Abol Field.

27 June 1986. Retrieved 4 pans, Grassy Pond. Collected contents of 5 pans, Abol Pond, and replenished killing-preservative agent; 5 pans left in-place, Abol Pond. Broke camp. Leave Baxter State Park for Alton Bog and Orono.

22 July 1986. (DTJ) Procured collecting permit, BSP Hdqts., Millinocket. Climbed to Chimney Pond from Roaring Brook Campground via Chimney Pond Trail. Collected spiders (aspirator) near Chimney Pond. Overnight at Chimney Pond Bunkhouse.

23 July 1986. Resumed climb of Mount Katahdin via Saddle Trail.

Retrieved all remaining pan traps:

Saddle (summit) - 4 pans

Caribou Springs - 3 pans

Baxter Cut-Off (near Thoreau Spring)-3 pans

Baxter Cut-Off (near jct. Saddle Trail) - 3 pans

Jennings et al. 5

Collected along trails enroute and returning. Returned to Roaring Brook via Saddle and Chimney Pond Trails. Picked up 5 pans, Abol Pond. Leave Baxter State Park.

RESULTS

This Progress Report includes identifications of most hand-collected spiders, plus spiders collected by sweep net and beating cloth. Identifications of pan-trap spiders are proceeding and will be reported later.

Spiders of 12 families, 32 genera, and at least 41 species were collected from Baxter State Park. Numbers, sex, and habitat(s) are listed for each species by general collecting locality as follows:

Abol Beach

Family LINYPHIIDAE

Pityohyphantes costatus (Hentz)

3 June 1986, along beach, 1♂, 2♀

Porrhomma sp.

3 June 1986, beach debris, 1♀

Family LYCOSIDAE

Pardosa xerampelina (Keys.)

3 June 1986, among rocks, 1♂

Family SALTICIDAE

Metaphidippus protervus (Walck.)

3 June 1986, on beach debris, 1♂

Abol Field

Family AMAUROBIIDAE

Callobius bennetti (Blackwall)

3-5 June 1986, under bark, 1♂, 1♀

5 June 1986, inside outdoor privy, 1♂

Family DICTYNIDAE

Dictyna coloradensis Chamberlin

3 June 1986, sweeping grasses and forbs, 1♀

Family THERIDIIDAE

Steatoda borealis (Hentz)

3-5 June 1986, under boards, 2♀♀

Theridion frondeum (Hentz)

27 June 1986, sweeping grasses, forbs, and shrubs, 1♀

Family LINYPHIIDAE

Nerienne radiata (Walck.)

3-5 June 1986, low shrubs, 2♂♂, 3♀♀

Frontinella communis (Hentz)

3-5 June 1986, low shrubs, 1♀

3 June 1986, beating 10 white pines, 1♂

Microlinyphia mandibulata (Emerton)

3-5 June 1986, on ground debris, 1♀

Pityohyphantes costatus (Hentz)

5 June 1986, in web on outdoor privy, 1♀

Family ERIGONIDAE

Hypselistes florens (O.P.-Camb.)

3 June 1986, sweeping grasses and forbs, 1♀

Islandiana flaviola (Emerton)

3-5 June 1986, under stones, boards, 1♀

Tunagyna debilis (Banks)

3-5 June 1986, ground debris, 1♀

Family ARANEIDAE

Araniella displicata (Hentz)

3-5 June 1986, on shrub, 1♀

3 June 1986, sweeping grasses and forbs, 1♀

3 June 1986, beating 10 white pines, 1♂, 1♀

Tetragnatha laboriosa (Hentz)

27 June 1986, sweeping grasses, forbs, and shrubs, 3♀♀

Family LYCOSIDAE

Trochosa terricola Thorell.

3-5 June 1986, under boards, 1♀

Hogna frondicola (Emerton)

3-5 June 1986, under boards, 1♂

Pardosa xerampelina (Keys.)

3-5 June 1986, under boards, 3♀♀

3 June 1986, among rocks, 1♀

Pardosa distincta (Blackwall)

3-5 June 1986, under stones, 5♂♂, 5♀♀

3 June 1986, on ground, in grass-moss, 3♂♂, 3♀♀

27 June 1986, sweeping grasses, forbs, and shrubs, 1♂

Pardosa moesta Banks

3-5 June 1986, in grass, 3♀♀

3 June 1986, on ground in grass-moss, 1♀

Family GNAPHOSIDAE

Drassodes neglectus (Keys.)

3-5 June 1986, under boards, 1♂, 1♀

Gnaphosa muscorum (L. Koch)

3-5 June 1986, under stones, 1♂

Zelotes fratris Chamberlin

3-5 June 1986, under stones, 1♀

Drassyllus niger (Banks)

3-5 June 1986, under boards,

Family CLUBIONIDAE

Phrurotimpus borealis (Emerton)

3-5 June 1986, on ground debris, 1♀

Castianeira cingulata (C.L.Koch)

3-5 June 1986, on ground, 1♀

Family PHILODROMIDAE

Philodromus exilis Banks

3-5 June 1986, on spruce, 1♂

3 June 1986, beating 10 white pines, 1♀

Philodromus rufus vibrans Dondale

3 June 1986, sweeping grasses and forbs, 1♀

Tibellus oblongus (Walck.)

3 June 1986, beating 10 white pines, 1♀

Family THOMISIDAE

Misumena vatia (Clerck)

3 June 1986, sweeping grasses and forbs, 1♀

27 June 1986, sweeping grasses, forbs, and shrubs, 2♂♂

Family SALTICIDAE

Evarcha hoyi (Peckham)

3 June 1986, sweeping grasses and forbs, 1♂

Metaphidippus flavipedes (G. & E. Peckham)

3 June 1986, beating 10 white pines, 2♂♂, 4♀♀

Basin Pond

Family Linyphiidae

Neritene radiata (Walck.)

4 June 1986, shrub beside trail, 1♂, 1♀

Family Clubionidae

Clubiona bishopi Edwards

24 June 1986, on rock, 1♀

Chimney Pond

Family Lycosidae

Pardosa xerampelina (Keys.)

24 June 1986, among rocks, 1♂, 2♀♀

Family Clubionidae

Clubiona canadensis Emerton

24 June 1986, under rocks, 2♀♀

Chimney Pond Trail

Family Amaurobiidae

Callobius bennetti (Blackwall)

4 June 1986, under loose bark, dead balsam fir, 1♀

Family Lycosidae

Pardosa mackenziana (Keys.)

26 June 1986, on rock, 1♀

Grassy Pond - Katahdin Stream

Family AMAUROBIIDAE

Callobius bennetti (Blackwall)

5 June 1986, in metal culvert, 1♂

5 June 1986, river (stream) bank, 1♀

Family THERIDIIDAE

Steatoda borealis (Hentz)

5 June 1986, in metal culvert, 4♂♂

Crustulina sticta (O.P.-Camb.)

5 June 1986, in metal culvert, 1♂

Family ERIGONIDAE

Gonatium crassipalpus Bryant

5 June 1986, in metal culvert, 1♀

Family LYCOSIDAE

Trochosa terricola Thorell

5 June 1986, among rocks along Katahdin Stream, 1♂

Pardosa lapidicina Emerton

5 June 1986, beach along brook, 2♀♀

5 June 1986, among rocks along Katahdin Stream, 1♂, 1♀

Pardosa mackenziana (Keys.)

5 June 1986, beach along brook, 1♂

5 June 1986, among rocks along Katahdin Stream, 2♀♀

Pardosa moesta Banks

5 June 1986, among rocks along Katahdin Stream, 1♀

Pardosa xerampelina (Keys.)

5 June 1986, among rocks along Katahdin Stream, 1♂, 2♀♀

5 June 1986, river (stream) bank, 1♂, 5♀♀

Family CLUBIONIDAE

Clubiona canadensis Emerton

5 June 1986, in metal culvert, 1♀

Mt. Katahdin - Tableland

Family LINYPHIIDAE

Microlinyphia mandibulata (Em.)

26 June 1986, on ground, moss-lichens, 1♀

Family LYCOSIDAE

Arctosa sp. (prob. alpigena (Doleschall))

26 June 1986, on ground, moss-lichens, 1 imm. ♀

Pardosa hyperborea (Thorell)

26 June 1986, on ground near spruce-fir, 3♂♂, 5♀♀

Pardosa mackenziana (Keys.)

26 June 1986, on ground, moss-lichens, 1♂

Pardosa moesta Banks

26 June 1986, on ground, moss-lichens, 3♂♂, 1♀

Family GNAPHOSIDAE

Zelotes sp.

26 June 1986, under rock, 1 penult. ♂

Family CLUBIONIDAE

Clubiona praematura Emerton

26 June 1986, under rocks guarding egg sacs, 5♀♀

This preliminary list of 41 species substantially adds to the spider fauna described by Blake (1926) for Mount Katahdin. No doubt our pan-trap collections will boost the list of known species found on Mount Katahdin and in Baxter State Park.

Acknowledgments

We are grateful to the Baxter State Park personnel who generously assisted us and made our expeditions safe and successful. Special thanks are due Park Director Irvin Caverly, Jr. for expediting approval of our research proposal and Chief Ranger, Naturalist Chris M. Drew for issuance of collecting permits.

LITERATURE CITED

Blake, I. H. 1926. A comparison of the animal communities of
coniferous and deciduous forests. Illinois Biol. Monogr., 10 (4):
1-149.

Jennings, D. T., M. W. Houseweart, C. D. Dondale, and J. H. Redner.
1986. Spiders associated with strip-clearcut and dense spruce-fir
forests of Maine. Manuscript, review draft. 50 p.

IV. SPECIAL ACTIVITY REPORTS

- a. Tapley Party Incident
- b. Complaint & Investigation Report - John Brow
- c. Special Activity Report #2 - August 10, 1986
- d. Report on Activities Occurring 11-21-86 - 11-24-86

STATE OF MAINE

Inter-Departmental Memorandum Date January 29, 1986

To IRVIN C. CAVERLY, JR., DIRECTOR

Dept. BAXTER STATE PARK

From CHRIS M. DREW, CHIEF RANGER C.M.D.

Dept. BAXTER STATE PARK

Subject TAPLEY PARTY INCIDENT

The Tapley party of seven (7) winter campers skiing in Baxter State Park became isolated when a severe winter storm dropped a combination of heavy rain and snow throughout Baxter State Park during the weekend of January 25th to January 27th, 1986. Acting Park Ranger Bernard Crabtree reported to Chief Ranger Chris Drew on January 26th that the Tapley party did not show up at Nesowadnehunk Field according to their itinerary. Due to the heavy rains, Park staff assumed the Tapley party stayed over another night at Russell Pond.

On January 27th, Ranger Drew communicated with Ranger Crabtree to find that the Tapley party was still not at Nesowadnehunk Field. The winter rain/snow storm was still in progress with high winds. Ranger Drew informed Park Director Caverly of the situation. The decision was made to wait out the storm and try to make communication with the party on Tuesday, January 28th.

On January 28th, District Ranger Barry MacArthur and Park Ranger Charlie Kenney snowmobiled to South Branch Pond to see if the Tapley party skied out by going north. These rangers went through slush conditions to reach South Branch Pond. No evidence of the Tapley party was found.

On Tuesday, Ranger Crabtree attempted to travel to the Wassataquoik Lake Trail but was unable to travel beyond McManus Brook. The Perimeter Road was still in a flooded condition. Blowdowns from high winds were crisscrossed in the Park Perimeter Road.

Park Director Caverly and Ranger Drew snowmobiled into Roaring Brook Tuesday morning with food supplies for the Tapley party. The Roaring Brook Campground seemed to be the logical escape route for this party. Their personal vehicles were at Abol Bridge. The closest route from Russell Pond to their personal vehicles was through Roaring Brook. There was no evidence of the Tapley party at Roaring Brook; however, the Cote party from Chimney Pond was found at Roaring Brook Campground. The 112th Med-Evac unit of the Maine National Guard was notified for assistance to find and airlift the Tapley party out; however, due to heavy snow squalls and poor visibility, the 112th was unable to leave Bangor. Local pilot John Carey flew the area from Roaring Brook to Russell Pond to Nesowadnehunk Field. He saw no one on the trail. Park staff hoped the Tapley party was inside the cabin at Russell Pond. In reality, the Tapley party heard the aircraft and assumed that help was being initiated in their behalf. This helped encourage them to remain at Russell Pond.

Director Caverly and Ranger Drew left Roaring Brook in the late afternoon. They left food at the Ranger's cabin and left the Ranger's cabin unlocked with a message for the Tapley party if they arrived later. A warm fire was banked and the Park radio left on with instructions for the Tapley party to call out upon arrival. Rangers Barry MacArthur and Charlie Kenney were on call standby status at the Millinocket headquarters. The Dirigo and Wilderness Rescue Teams were placed on standby status.

Irvin C. Caverly, Jr., Director, BSP
Page 2
January 29, 1986

Subject: Tapley Party Incident

The 112th made plans to leave Millinocket at 0600 to 0630 hours on Wednesday, January 29th to fly into Russell Pond. A break in the weather made this rescue attempt successful. At approximately 0630 hours, the 112th helicopter picked up Park Director and flew to Russell Pond. The Tapley party was flown out in two trips. All party members were in good condition. Five (5) members of the group with all camping equipment were flown to the Millinocket Airport. Two (2) members were dropped off at Abol Bridge to their personal vehicles. All party members later met at Park Headquarters.

Great Northern Paper Company made it possible to refuel the 122th helicopter twice at their fueling depot at the Millinocket Airport. Their assistance is greatly appreciated.

Park staff gathered Wednesday morning, January 29th, at Roaring Brook, Nesowadnehunk Field, and South Branch Pond to assist the rescue efforts if the Tapley party was not found at Russell Pond. Rangers Robert Howes and Loren Goode went to Roaring Brook. Rangers Kenney and Crabtree stayed at Nesowadnehunk Field while Rangers Barry MacArthur and Thomas Chase covered the South Branch Campground access point.

Maintenance Supervisor Philip McGlauflin and Forester Dennis Brennan assisted Chief Ranger Drew in hauling the people and equipment of the Tapley party and the 112th Med-Evac personnel. Ranger Drew assisted in refueling the helicopter.

Basically, the rescue efforts went smoothly. No injuries were incurred. The assistance of the 112th Med-Evac, Great Northern Paper Company and John Carey made the rescue a success. Baxter State Park staff, both at the office and in the field, performed professionally and efficiently during the rescue operation.

CMD:jah
Attachments

STATE OF MAINE

Barter State Park

COMPLAINT NO.

CASE NO.

COMPLAINT AND INVESTIGATION REPORT

COMPLAINANT

COMPLAINT

Apparent heart attack

COMPLAINANT (Last name, first, middle initial)

Jim Mahoney

DATE OF BIRTH

TELEPHONE NO.

ADDRESS (Street or RFD, city or town, county, zip code)

Nesowadnehunk Lake Campground

PLACE OF OCCURRENCE (Specific area)

T4 R10 8/10th of mile south of Nesowadnehunk Lake

VICTIM'S NAME AND ADDRESS (If other than complainant)

John Brow

ACTION

DATE

TIME

177 Wildwood Avenue

Braintree, Mass. 02184

OCCURRENCE

6-22-86

prior to 7:00

CITY, TOWN OR VILLAGE AND COUNTY (Of incident)

T4 R10 - Piscataquis County

REPORTED

6-22-86

9:55 PM

8/10th of a mile south of Nesowadnehunk Lake

RESPONDED

6-22-86

10:00 PM

Campground beside Nesowadnehunk Stream

DATE OF BIRTH

1-3-25

TELEPHONE NO.

NAME OF INJURED PERSON (Last, first, middle initial)

John Brow

NATURE OF INJURIES

apparent heart attack

ADDRESS (Street or RFD, city or town, state, zip code)

177 Wildwood Ave., Braintree, Mass. 02184

HOSPITAL AND/OR PHYSICIAN

Dr. Gilman

DATE OF DEATH

6-22-86

MEDICAL EXAMINER

Dr. Gilman

NEXT OF KIN NOTIFIED IF YES, GIVE AND RELATION

☐ YES ☒ NO not at time

AUTOPSY

☐ YES ☐ NO

IF YES, GIVE NAME OF PATHOLOGIST

NAME (Last, first, middle initial)

ADDRESS

DATE OF BIRTH

TELEPHONE NO.

NAME (Last, first, middle initial)

ADDRESS

DATE OF BIRTH

TELEPHONE NO.

NAME OF RESPONDENT

ADDRESS

SEX

DATE OF BIRTH

HEIGHT

WEIGHT

HAIR

EYES

CRIME

TITLE

SECTION

ARREST ☐ YES ☐ NO

COURT

DATE ARRAIGNED

DISPOSITION -

PARENT OR GUARDIAN (If respondent is a juvenile)

ADDRESS

TELEPHONE NO.

PHOTOS TAKEN

☐ YES ☐ NO

BY WHOM

DEPARTMENT

EVIDENCE TAKEN

☒ YES ☐ NO

TURNED OVER TO

Dr. Gilman

LOCATION

Millinocket Regional Hospital

OTHER AGENCY NOTIFIED

State Police - Orono

RESPONDED (If yes, person in charge; if no, person notified)

☐ YES ☒ NO

TYPE OF VEHICLE

☒ MOTOR VEHICLE☐ SNOWMOBILE ☐ BOAT

VEHICLE INVOLVEMENT

☐ USED IN CRIME☒ IMPOUNDED (AUTH.) ☐ OTHER (Specify)

MAKE

Ford

MODEL/YEAR

Econoline Van -1976

COLOR

Green

REGISTRATION NO.

C12-327

STATE

Mass

VIN

E141BHA36962

OWNER

John Brow

DAMAGE

ESTIMATE

\$ ---

GAME

☐ DEER☐ MOOSE

SEX

☐ MALE☐ FEMALE

AGE

☐ ADULT☐ YEARLING☐ YNG OF YR. ☐ UNKNOWN

CAUSE OF DEATH

☐ VEHICLE☐ BOB CAT☐ DOG☐ ILL. HUNTING ☐ UNKNOWN☐ OTHER (Specify)

Resolution

NO. OF

EMBR

DISPOSITION OF CARCASS

MATERIAL

☐ DYNAMITE ☐ REPELLANT

Other

AMOUNT

VEHICLE (Miles)

BOAT (Hours)

PLANE (Hours)

HELICOPTER (Hours)

SNOWMOBILE (Hours)

Rangers (Hours)

4 hrs

TELEPHONE

MEALS

OTHER (Specify)

WEAPON

☐ REVOLVER ☐ PISTOL ☐ RIFLE☐ SHOTGUN ☐ OTHER (Specify)

CAL/GA

SERIAL NO.

MAKE

TYPE

MODEL

USED IN CRIME

☐ YES ☐ NO

EVIDENCE

☐ YES ☐ NO

OTHER

Nesowadnehunk Field called about 10:00 PM and said that Jim Mahoney, Nesowadnehunk Lake

Wilderness Campground had found a man, John Brow, of Braintree, Mass. dead in his vehicle

at the spring, 8/10th mile south of Nesowadnehunk Lake Campground. Joseph Cushman and

Sue Leiter went to the scene and I responded from Katahdin Stream. I left about 10:00

and arrived on the scene about 10:20 PM. The victim was in his vehicle and there were

SIGNATURE

J. C. Leiter

Title

Park Ranger

STATUS

☐ C/A☐ C/INV☐ C/UNF☐ OPEN☐ OTHER

ORIGINAL - RETAINED DUPLICATE TO FIELD SUPERVISOR TRIPLICATE TO OFFICE

ORIGINAL

STATE OF MAINE
Carter State Park

COMPLAINT AND INVESTIGATION REPORT - CONTINUATION

COMPLAINANT		SIGNATURE		COMPLAINT NO
CHARACTER OF CASE		PLACE OF OCCURRENCE (City, town or village and county)		CASE NO
VEHICLE (Miles)	BOAT (Hours)	PLANE (Hours)	HELICOPTER (Hours)	SNOWMOBILE (Hours)
Ranger (Hours)	TELEPHONE	MEALS	TOTAL VISITS	OTHER (Specify)
MATERIAL <input type="checkbox"/> DYNAMITE <input type="checkbox"/> REPELLANT <input type="checkbox"/> Other				AMOUNT
CASE STATUS <input type="checkbox"/> C/A <input type="checkbox"/> C/INV <input type="checkbox"/> C/UNF <input type="checkbox"/> OPEN <input type="checkbox"/> OTHER (Specify)				

NARRATIVE

signs of apparent injuries and I was told he had a history of heart problems so I assumed died of a heart attack. Chris Drew was notified and he called the State Police and the Medical Examiner. Chris Drew called and said the funeral home, Dowd's, would be leaving Millinocket about 11:40 PM E.T.A. about 1 hr. Chris Drew asked for info on victim and asked if I would make out reports and get to him. The transport vehicle arrived about 12 - June 23, 1986 - and we loaded the body onto litter and into the hearse. We then looked vehicle and Donis Rogers found an opened bottle of small white pills which were scattered van floor. About 1:30 AM, the van was locked and secured and we were released.

The victim had gone down to spring to get water sometime prior to 7:00 PM. His vehicle spotted at the spring about 7:00 PM by a Mr. Dudley. Mr. Dudley didn't think much of it cause fishermen are always parked there fishing stream. About 9:00 AM, a friend of Brown went down to the spring and found the body and went back and notified Jim Mahoney, who went down to check victim and notified Nesowadnehunk and me.



AUTHORITY MEMBERS

GLENN H. MANUEL, CHAIRMAN
COMMISSIONER,
INLAND FISHERIES AND WILDLIFE

KENNETH G. STRATTON
DIRECTOR,
MAINE FOREST SERVICE

JAMES E. TIERNEY
ATTORNEY GENERAL

INFORMATION

(207) 723-5140

PARK HEADQUARTERS

IRVIN C. CAVERLY, JR.,
DIRECTOR

64 BALSAM DRIVE
MILLINOCKET, MAINE 04462
(207) 723-9616

August 14, 1986

TO: BAXTER STATE PARK AUTHORITY

FROM: *ICC* IRVIN C. CAVERLY, JR., DIRECTOR, BAXTER STATE PARK

SUBJECT: SPECIAL ACTIVITY REPORT #2 - 1986

The following is an account and overview of the circumstances and events taking place on August 10, 1986. For the duration, this was a trying experience for all concerned; it did not end until August 12th. Supplementing this report are appendices, including logs and other pertinent information. I would say at the offset that the people involved in this operation performed above and beyond what we expected of them, whether they be Park personnel or members of volunteer rescue units. The elements were against them, the terrain and weather from the offset. About the only break they got was on the last day when the weather cleared and we were able to use helicopter evacuation from Chimney Pond thanks to the consideration and effort of Col. White and the 112th Med-Evac unit from the Maine National Guard at Bangor base.

At approximately 1:00 PM on August 10, 1986, Derek Quiet, age 16, of Dover-Foxcroft, Maine fell to his death on Mt. Katahdin. Derek was climbing Katahdin with a party of thirteen (13) climbers from the Dover-Foxcroft area. The climbing itinerary was to hike from Roaring Brook to Chimney Pond to Baxter Peak (via Cathedral Trail), cross the Knife Edge and come down the Dudley Trail to Chimney Pond and then back to Roaring Brook.

Derek and two companions, Lance Johnson, 18, of Sangerville and Wayne Grant, 17, of Dover-Foxcroft, got ahead of the main party group and traveled across the Knife Edge to South Peak. From South Peak they descended northerly toward Chimney Pond. They descended approximately one quarter of the headwall before the terrain caused them great difficulty. At the point of turning back to ascend to South Peak, Derek slipped and fell to his death. Wayne and Lance returned to the top of Katahdin where they made contact with the Park Mountain Patrol Ranger Jason Kay. This was approximately 2:00 PM. From that point, South District Ranger Robert Howes contacted the 112th Med-Evac, Brunswick Naval Station, Dirigo Search & Rescue, Wilderness Search & Rescue Team, the Camden Mountain Search & Rescue Team and the Lincoln Search & Rescue Team. Helicopter assistance hauled men and supplies to Chimney Pond.

At approximately 6:45 PM, it was verified that Derek was confirmed deceased by Park personnel. Rescue personnel reached Derek before dark and secured the body

Baxter State Park Authority
Page 2
August 14, 1986

Subject: Special Activity Report #2 - 1986

for a Monday morning (8-11-86) evacuation. The evacuation itinerary included lowering the body down two technical pitches and then to hand carry the body to Chimney Pond. Initially because of weather conditions, it was perceived that the victim would have to be carried all the way to Roaring Brook; however, due to a change in the weather pattern, a clearing trend, and the cooperation of the 112th, we were able to move the victim from Chimney to Millinocket. This saved many many hours of hand carrying the stretcher; it also saved the need of calling in another fresh crew as the people working on this operation had expended nearly all their energy during the previous several hours.

The accomplishments of this operation could not have been made if not for the extreme cooperation of all concerned. We depended largely on the rescue teams who have been training with us for a number of years; first as an advance team to the scene and then second as an evacuation team. They gave their utmost efforts; they were supplemented through support efforts by the Park staff and, in fact, on the final day, Park staff joined in the carry down from the base of the ledges. We involved just about all the resources we had available. If this operation had extended beyond the time period that it did, there is no doubt that we would had to recruited people from other agencies in other areas within the state. Everybody was fantastic, however, there are some very special recognition that should be made. First of all, I want to thank Col. White and the entire crew from the 112th Med-Evac. It is standard procedure for them not to respond for evacuation purposes of a deceased person; their role is to respond only to life saving missions. However, they were very understanding of the fact that if we had to carry the body an additional 3.3 miles, we would be working during nighttime hours; the terrain from Chimney Pond to Roaring Brook is rough and we would be working with a crew that was showing signs of fatigue. The potential for injury to one of those crew members under the wet conditions certainly would have been high; that was all avoid by a helicopter evacuation. Also our thanks to the Brunswick Naval Air Base for transporting technical team members from Waterville - Southern Maine.

Next, I would like to express our appreciation to Sheriff Frank Murch and the staff at the Piscataquis County Sheriff's Department. The victim and his party were from the Dover-Foxcroft area and Sheriff Murch personally knew the father of the victim; consequently, by updating Sheriff Murch frequently from this office, he in turn would go the victim's family residence and update the family on the operation. This proved to be an effective means of communication between the family of the victim, Sheriff's Department and Park Headquarters and we appreciate Sheriff Murch's efforts in accomplishing this. Also, I want to thank him for assisting in the transporting of the rescue team members back to Waterville following the operation. It saved us sending a vehicle down and we appreciate that. Sheriff Murch's people were ready throughout the operation to assist in any way possible and that makes the difference between the success and failure when you have support, backup and cooperative attitudes.

Our sincerest appreciation also to the rescue teams, namely: Wilderness Rescue Team out of Waterville, Camden Mountain Rescue Team out of Camden, Dirigo Search & Rescue Team out of Orono, and Lincoln Search & Rescue out of Lincoln as well as the many people at Chimney Pond who we do not have the names of who volunteered their services. Special thanks to Dave Getchell, Kevin Slater and another volunteer whose first name is Chris, we do not have his last name; they

August 14, 1986

Subject: Special Activity Report #2 - 1986

were the first to get to the scene and secure the victim. To the Park staff at Millinocket who spent their time and energies putting together meals for two major feeds as well as putting up and preparing lunches to be taken up on the mountain to feed the people on the trail. They worked many many hours to put on a roast turkey feed, beef stew, chop suey and all the fixings and did a fine job in taking care of that end of the operation. I might add they did this on their own without any request. We have been lucky over the years to have personnel in and associated with this Park so committed to serving the Department and assisting during these tragic situations that it is automatic for them just to move ahead and provide for these types of support services. I know the Authority shares my appreciation for their efforts. To other Park staff who were involved all over the Park, whether that be in an active role, support role, or an alert role, we appreciate your commitment to perform whatever function you might be called upon to do. Thanks.

I also would like to comment on the press. The reporters who came to this office to cover this story, both in Millinocket and in the field, were 100% cooperative. They picked up their own information, they recognized moments when people are busy, stress was high and they kept a low profile; they represented their profession well and we appreciate their understanding of our position and their cooperativeness in doing their job and at the same time assisting us in maintaining a smooth operation. We have had excellent cooperation from the media in the past and that tradition was also exemplified during this incident.

Finally, I would like to express my personal appreciation to Chief Ranger Chris Drew and District Ranger Robert Howes, who spent endless hours making sure the operation was conducted in an effective, efficient and above all, safe manner for the conditions in which our people were exposed to. Both of these men did a professional job; Chris on overall coordination; Bob primarily on the field end of it. I was extremely proud of the manner in which all conducted themselves. They can always be counted upon and as long as we have the services of the type of people we have working at Baxter Park now, I am confident that the challenges in the areas of Park management and search and rescue will be met effectively in the future.

As is frequently found, trouble sometimes comes in twos and threes. In this situation, there were a couple of other incidents that you should be aware of that happened either during or shortly after the mountain incident. First, during the mountain incident, a Boy Scout was reported lost out of Chimney Pond. He was last seen on the Saddle Slide then he disappeared. We started looking for him with ground crews, specifically Dirigo Search & Rescue sent two members out on the trail. While they were out, we had an offer of assistance from the 112th who said they would be glad to make an aerial overview. We soon learned that the boy had taken a right at the top of Saddle, started over Davis Pond, realized he was on the wrong trail, turned back and was met by two rescue team members and picked up. There was a potential here for a serious situation; however, with the boy's good judgment and the team members' efforts, it was averted. Shortly after that, we heard radio traffic that some people were considering a technical climb up the face of Horse Mt. which is on the shore of Matagamon Lake. (Several years ago we had a fatality there because of a similar situation.) There is a tendency when vehicles drive by the cliffs for some people to want to climb the headwall, generally with minimal gear. It was my understanding that this was the intent of these people; however, they were

Baxter State Park Authority
Page 4
August 14, 1986

Subject: Special Activity Report #2 - 1986

observed by Park personnel and that situation was taken care of before it got serious. Another incident was reported at approximately 6:00 PM on Tuesday (August 12th). A vehicle with four women went off the road near the Stump Pond area. The vehicle was totalled out and the driver and passenger were transported from the Park to the Millinocket Regional Hospital by ambulance where they were treated and released.

This wraps up the activities for the past few days. It has been a busy few days and we hope this trend does not continue for the rest of the summer. Our efforts now will be to compile all the necessary paperwork, put these incidents behind us and move on to the routine responsibilities of running the Park. We hope as you review this report if there are any gaps that need filling or any questions that need answering, you will contact me. We want to keep you informed and the only way we can do that to the fullest extent is to respond to any areas of questioning. Thank you.

ICC:jah

Attachments: Robert Howes Report
Radio Log (Togue Pond & Headquarters)
Newspaper Articles (Bangor Daily News & Katahdin Times)

cc: B.S.P. Advisory
Paul Stern
Philip Aherns
Wilderness Search & Rescue
Lincoln Search & Rescue
Camden Mountain Search & Rescue
Dirigo Search & Rescue
Sheriff Frank Murch, Piscataquis County
Col. John Marsh
Gary Anderson, Safety Officer
Gary Mather
Mike LaBlanc

STATE OF MAINE

Inter-Departmental Memorandum Date Dec. 2, 1986

To BARRY MacARTHUR, NO. DISTRICT RANGER Dept. BAXTER STATE PARK
From TOM CHASE, PARK RANGER Dept. BAXTER STATE PARK
Subject REPORT ON ACTIVITIES OCCURRING DURING AND AFTER SNOW STORM OF 11-21-86 - 11-24-86

11-21-86 0600 Hr.

Snowing hard; wet; an accumulation of approx. 6". Gate opened and hunters allowed in with caution of the weather. Roads passable with two-wheel drive.

11-21-86 1300 Hr.

Approx. 16" of snow. Four wheel drive only. Had to have help from 59 with 4 x 4 to get my vehicle out over hills. Informed from gate that a two-wheel drive was stuck at the crossing. Party was out getting help with 4 x 4.

11-21-86 1400 Hr.

Patrolled road with 4 x 4; tried to get to Telos Gate to lock gate and check on a party that had gone through in morning; could only get to legal mile - too much snow; going to haul stranded vehicle out but locked up.

11-21-86 1600 Hr.

We were informed by the party with stranded vehicle that they couldn't get out with the help of a 4 x 4. At this time, the wind was coming up and drifting at Matagamon Landing. We figured if they didn't get out, they wouldn't at all. Followed party back to Hill at Dry Brook and hooked up with two 4 - 4s and got approximately 1/2 mile east of Trout Brook and couldn't go. Still snowing hard.

11-21-86 2400 Hr.

Went to Matagamon store and got Don Dudley with his 4 x 4; with three 4 x 4s hauling, we got out at approximately 0130 hrs.

11-23-86 0800 hr.

At 59's residence getting 4 x 4 and double track to go to Trout Brook and haul volunteer out; overheard Allagash Waterway talking to Togue Pond. They were asking if a Ricky Bates party had gone through the Park Friday. They were concerned because the party never showed up. 59 and myself and Carroll Bates on snowsleds found the party at Highway Camp at Black Brook; all safe and sound. Party was discovered by Warden Pilot Gary Dumont of the Maine Warden Service. Road was plowed by private individuals and all parties out by dark.

11-24-86

57 and myself patrolled to Telos Gate to check if stranded vehicles were out of Camp Phoenix. All out by 1000 hrs.

I recommend that in the future, if there is any threat of a major storm coming that all gates be locked and no one allowed to enter by vehicle except authorized personnel.

TC:jah

V. PROCEDURE FOR REVIEWING PROPOSALS
FOR SCIENTIFIC STUDY

AS APPROVED BY THE BAXTER STATE PARK AUTHORITY
December 10, 1986

BAXTER STATE PARK

PROCEDURE FOR REVIEWING PROPOSALS FOR SCIENTIFIC STUDY

1. Baxter State Park will distribute and make available to the research committee the Park's scientific study procedure.
2. A scientific study review committee will be established by the Park to include:
 - Baxter State Park Advisory Committee
 - Forestry: UMO
 - Forestry: Maine Forest Service
 - Wildlife: UMO
 - Wildlife: IF&W
 - Geology: MGS
 - Geology: University
 - Critical Areas Program
 - The Nature Conservancy
 - Natural Resources Council
3. Standard application form will be available from the Park.
4. Baxter State Park will administer applications, review and the issuing of permits.
5. The Park will distribute scientific study proposals to the review committee. The committee will have 30 days to respond.
6. The Park staff will issue permits.

GUIDELINES FOR CONSIDERING SCIENTIFIC
STUDIES IN BAXTER STATE PARK

1. The Park will consider scientific research studies that conform to the general terms of Governor Baxter's Deeds of Trust. These studies will result in an improved understanding of biological and geological processes representative of northern Maine and Baxter State Park. In general, these studies will be non-consumptive and will have minimal impact on the wilderness environment of the Park.
2. Types of Studies. The Park encourages biological and geological studies that will lead to a greater understanding of the natural systems of northern Maine. Examples of these studies include:
 1. Population Dynamics
 2. Ecological Studies
 3. Behaviorial Studies
 4. Bedrock and surficial geological studies
3. Impact to the Park. Emphasis and priority will be given to research projects that have a minimal impact on the natural resources of the Park. In general, the Park will not allow research that involves removal of botanical, geological or zoological specimens. Alteration of terrain or the building of structures are prohibited.
4. Funding. In general, the Park will not fund scientific research from its annual budget. The Park will consider funding research that will provide data and management recommendations for specific management issues within the Park. If funding is requested, applications must be made two years prior to expected fundings.
5. Applications. Applications for permission to conduct research in the Park must be made six (6) months prior to expected issuance of a permit. The Park will circulate the proposal to a scientific studies review committee.

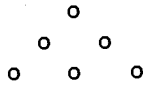
An application must contain the following:

1. Title
2. Name of Researcher

3. Researcher's credentials
 4. Benefits to be derived from the research
 5. Detailed description of research
 6. Area(s) of the Park for the research
 7. Impact on the Park
 8. Budget
 9. Time table for research and completion on application
6. Permit. Research will only be allowed in the Park upon the issuance of a permit by the Park's Director. The Director, upon the advice of the Scientific Studies Review Committee may attach conditions to the permit.
7. Staff Coordination. The Park Director shall assign a staff member to monitor the research site and program. The research shall coordinate implementation of the research project with the appropriate Park staff.
8. Rules, Regulation, and Fees. Researchers in the Park shall be subject to the existing Park rules, regulations, and fees.
9. Revoking of Permit. The Park Director, at his discretion, at any time, may revoke the research permit by informing the researcher of the revocation, orally or in writing, and if orally revoked such shall be confirmed in writing.
10. Liability. The Park will not be liable for the researcher's equipment or property installed or left in the Park during the course of the project.
11. Final report. Following the completion of a research project, all researchers are required to submit within sixty (60) days a complete report to the Baxter State Park Director identifying the results of that research project. All reports will be kept on file for reference material at Park Headquarters, the University of Maine and the Maine State Archives in Augusta.

I. APPENDIXES

I.



AUDIT REPORT

BAXTER STATE PARK AUTHORITY

FISCAL YEAR ENDED

JUNE 30, 1986

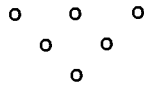


TABLE OF CONTENTS

Financial Section	Exhibit
Auditors' Opinion	
Combined Statements - Overview (General Purpose Financial Statements):	
Combined Balance Sheet - All Fund Types	1
Combined Statement of Revenues, Expenditures, and Changes in Fund Balances - All Governmental Fund Types and Expendable Trust Funds	2
	Statement/ Schedule
Financial Statements of Individual Funds:	
Fiduciary Funds:	
Combining Balance Sheet	A-1
Nonexpendable Trust Fund - Statement of Revenue, Expenditures, and Changes in Fund Balances	A-2
Expendable Trust Funds - Combining Statement of Revenues, Expenditures, and Changes in Fund Balances	A-3
Other Special Revenue Fund:	
Combining Balance Sheet	B-1
Combining Statement of Revenues, Expenditures, and Changes in Fund Balances	B-2
Statistical Section:	Table
Other Special Revenue Fund:	
Comparative Statement of Gross Receipts - Campground and Entrance Gate Fees	1
Notes to Financial Statements	
Management Letter	



STATE OF MAINE
DEPARTMENT OF AUDIT
STATE HOUSE STATION 66
AUGUSTA, MAINE 04333

Area Code 207
Tel. 288-2201

ROBERT W. NORTON
STATE AUDITOR

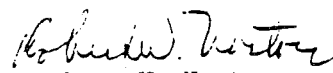
To the President of the Senate and the
Speaker of the House of Representatives

In accordance with Title 5, Section 243, Maine Revised Statutes Annotated of 1964, as amended, we have examined the financial records of the Baxter State Park Authority for the fiscal year ended June 30, 1986.

Our examination was made in accordance with generally accepted auditing standards and the Standards for Audit of Governmental Organizations, Programs, Activities, and Functions, promulgated by the U. S. Comptroller General and, accordingly included such tests of the accounting records and such other auditing procedures as we considered necessary in the circumstances.

Within the scope of the examination, the financial transactions were appropriately handled, with such exceptions as may be noted in the accompanying commentary.

In our opinion, the exhibits and schedules contained in this report present fairly the financial position of the various funds of the Baxter State Park Authority at June 30, 1986, the results of operations and the changes in fund balances of such funds for the fiscal year then ended, in conformity with generally accepted accounting principles applied on a basis consistent with that of the preceding year.


Robert W. Norton
State Auditor

October 3, 1986

BAXTER STATE PARK AUTHORITY
COMBINED BALANCE SHEET - ALL FUND TYPES
June 30, 1986

	Governmental Fund Type Other Special Revenue	Fiduciary Fund Type Trust and Agency	Totals (Memorandum Only)	
			1 9 8 6	1 9 8 5
<u>ASSETS</u>				
Cash:				
Equity in treasurer's demand cash and/or investments	\$25,616.86	\$ 429,811.18	\$ 455,428.04	\$ 663,317.05
Other fiscal agent or fiduciary		519,009.43	519,009.43	297,295.57
Investments - at amortized cost		2,336,097.17	2,336,097.17	2,437,627.99
Total assets	<u>\$25,616.86</u>	<u>\$3,284,917.78</u>	<u>\$3,310,534.64</u>	<u>\$3,398,240.61</u>
<u>FUND EQUITY</u>				
Fund balance:				
Reserved for encumbrances	\$ 6,265.72	\$	\$ 6,265.72	\$ 4,602.08
Unreserved	19,351.14	3,284,917.78	3,304,268.92	3,393,638.53
Total fund equity	<u>\$25,616.86</u>	<u>\$3,284,917.78</u>	<u>\$3,310,534.64</u>	<u>\$3,398,240.61</u>

See accompanying notes to financial statements

BAXTER STATE PARK AUTHORITY
COMBINED STATEMENT OF REVENUES, EXPENDITURES, AND
CHANGES IN FUND BALANCES - ALL GOVERNMENTAL FUND TYPES
AND EXPENDABLE TRUST FUNDS
Fiscal Year Ended June 30, 1986

EXHIBIT

	Governmental Fund Type Other Special Revenue	Fiduciary Fund Type Expendable Trust	Totals (Memorandum Only)	
			1 9 8 6	1 9 8 5
Revenues:				
Other taxes on specific businesses	\$ 79.75	\$	\$ 79.75	\$ 104.00
From use of money and property	4,509.69	237,241.02	241,750.71	273,090.81
Private sources				1,920.00
Service charges for current services	475,435.72	9,500.00	484,935.72	377,030.65
Contributions and transfers from other state agencies/funds	635,028.00	100,000.00	735,028.00	690,000.00
Sale and compensation for loss of property	3,490.22		3,490.22	1,083.30
Total revenues	1,118,543.38	346,741.02	1,465,284.40	1,343,228.76
EXPENDITURES:				
Personal services -				
Salaries and wages	499,288.18		499,288.18	485,422.13
Fringe benefits	118,445.86		118,445.86	107,777.27
Capital expenditures	214,083.68		214,083.68	47,038.27
All other -				
Contractual services	190,470.72		190,470.72	171,711.41
Commodities	61,457.98		61,457.98	52,686.54
Interest payment/late fee	24.32		24.32	.18
Transfers to General Fund	14,611.56		14,611.56	16,480.64
Charges to asset and liability accounts		500,000.00	500,000.00	520,000.00
Total expenditures	1,098,382.30	500,000.00	1,598,382.30	1,401,116.44
Excess (deficiency) of revenues over expenditures	20,161.08	(153,258.98)	(133,097.90)	(57,887.68)
Other financing sources (uses):				
Operating transfers out	(28,595.86)		(28,595.86)	(10,615.00)
Nonrevenue receipts and credits		29,242.69	29,242.69	17,096.36
Total other financing sources (uses)	(28,595.86)	29,242.69	646.83	6,481.36
Excess (deficiency) of revenues and other financing sources over expenditures and other (uses)	(8,434.78)	(124,016.29)	(132,451.07)	(51,406.32)
Fund balance at beginning of year (adjusted)	34,051.64	893,867.45	927,919.09	961,393.82
Fund balance at end of year	\$ 25,616.86	\$769,851.16	\$ 795,468.02	\$ 909,987.50

See accompanying notes to financial statements

BAXTER STATE PARK AUTHORITY
FIDUCIARY FUNDS
COMBINING BALANCE SHEET
June 30, 1986
With Comparative Totals for June 30, 1985

	Nonexpendable Trust Fund	Expendable Trust Funds		Totals	
	Major Trust	Operating Trust	Private Trust *	1986	1985
<u>ASSETS</u>					
Cash:					
Equity in treasurer's demand cash and/or investments	\$ 519,009.43	\$429,811.18	\$	\$ 429,811.18	\$ 647,197.00
Other fiscal agent or fiduciary	1,996,057.19		340,039.98	519,009.43	297,295.57
Investments at amortized cost				2,336,097.17	2,437,627.99
Total assets	<u>\$2,515,066.62</u>	<u>\$429,811.18</u>	<u>\$340,039.98</u>	<u>\$3,284,917.78</u>	<u>\$3,382,120.56</u>
<u>FUND BALANCES</u>					
Fund balances:					
Unreserved	<u>\$2,515,066.62</u>	<u>\$429,811.18</u>	<u>\$340,039.98</u>	<u>\$3,284,917.78</u>	<u>\$3,382,120.56</u>

*Funds to be used for land acquisition only

BAXTER STATE PARK AUTHORITY
NONEXPENDABLE TRUST FUND
STATEMENT OF REVENUE, EXPENDITURES, AND CHANGES IN FUND BALANCES
Fiscal Year Ended June 30, 1986
With Comparative Totals for Fiscal Year Ended June 30, 1985

	<u>1 9 8 6</u>	<u>1 9 8 5</u>
Other financing sources:		
Nonrevenue receipts and credits -		
Receipt of securities	\$ 26,813.51	\$ 93,547.86
Fund balance at beginning of year	<u>2,488,253.11</u>	<u>2,394,705.25</u>
Fund balance at end of year	<u>\$2,515,066.62</u>	<u>\$2,488,253.11</u>

BAXTER STATE PARK AUTHORITY
EXPENDABLE TRUST FUNDS
COMBINING STATEMENT OF REVENUES, EXPENDITURES, AND CHANGES IN FUND BALANCES
Fiscal Year Ended June 30, 1986
With Comparative Totals for Fiscal Year Ended June 30, 1985

	Operating Trust	Private Trust	Totals	
			1 9 8 6	1 9 8 5
Revenues:				
From use of money and property	\$237,241.02	\$	\$237,241.02	\$273,090.81
Service charges for current services	9,500.00		9,500.00	9,500.00
Contributions and transfers from other state agencies/funds	100,000.00		100,000.00	170,000.00
Total revenues	346,741.02		346,741.02	452,590.81
Expenditures:				
Charges to asset and liability accounts	500,000.00		500,000.00	520,000.00
Excess (deficiency) of revenues over expenditures	(153,258.98)		(153,258.98)	(67,409.19)
Other financing sources:				
Nonrevenue receipts and credits	2,052.96	27,189.73	29,242.69	17,096.36
Excess (deficiency) of revenues and other financing sources over expenditures	(151,206.02)	27,189.73	(124,016.29)	(50,312.83)
Fund balance at beginning of year	581,017.20	312,850.25	893,867.45	944,180.28
Fund balance at end of year	\$429,811.18	\$340,039.98	\$769,851.16	\$893,867.45

BAXTER STATE PARK AUTHORITY
OTHER SPECIAL REVENUE FUND
COMBINING BALANCE SHEET
June 30, 1986

	<u>Operations</u>	<u>Baxter Park - Other Lands</u>	<u>Total</u>
<u>ASSETS</u>			
Cash:			
Equity in treasurer's demand cash and/or investments	<u>\$6,265.72</u>	<u>\$19,351.14</u>	<u>\$25,616.86</u>
<u>FUND EQUITY</u>			
Fund balance:			
Reserved for encumbrances	\$6,265.72	\$	\$ 6,265.72
Unreserved	<u> </u>	<u>19,351.14</u>	<u>19,351.14</u>
Total fund equity	<u>\$6,265.72</u>	<u>\$19,351.14</u>	<u>\$25,616.86</u>

BAXTER STATE PARK AUTHORITY
OTHER SPECIAL REVENUE FUND
COMBINING STATEMENT OF REVENUES, EXPENDITURES, AND CHANGES IN FUND BALANCES
Fiscal Year Ended June 30, 1986
With Comparative Totals for Fiscal Year Ended June 30, 1985

	Departmental Operations	Baxter Park - Other Lands	Totals	
			1986	1985
Revenues:				
Other taxes on specific businesses	\$ 79.75	\$	\$ 79.75	\$ 104.00
From use of money and property	4,509.69		4,509.69	
Private sources				1,920.00
Service charge for current services	473,603.95	1,831.77	475,435.72	367,530.65
Contributions and transfers from other state agencies/funds	635,028.00		635,028.00	520,000.00
Sale and compensation for loss of property	3,490.22		3,490.22	1,083.30
Total revenues	<u>1,116,711.61</u>	<u>1,831.77</u>	<u>1,118,543.38</u>	<u>890,637.95</u>
Expenditures:				
Personal services -				
Salaries and wages	499,288.18		499,288.18	485,422.13
Fringe benefits	118,445.86		118,445.86	107,777.27
Capital expenditures	214,083.68		214,083.68	47,038.27
All other -				
Contractual services	190,210.02	260.70	190,470.72	171,711.41
Commodities	61,457.98		61,457.98	52,686.54
Interest payment/late fee	24.32		24.32	.18
Transfers to General Fund	14,607.04	4.52	14,611.56	16,480.64
Total expenditures	<u>1,098,117.08</u>	<u>265.22</u>	<u>1,098,382.30</u>	<u>881,116.44</u>
Excess (deficiency) of revenues over expenditures	18,594.53	1,566.55	20,161.08	9,521.51
Other financing sources (uses):				
Operating transfers out	(28,595.86)		(28,595.86)	(10,615.00)
Excess (deficiency) of revenues and other financing sources over expenditures and other (uses)	(10,001.33)	1,566.55	(8,434.78)	(1,093.49)
Fund balance at beginning of year (adjusted)	<u>16,267.05</u>	<u>17,784.59</u>	<u>34,051.64</u>	<u>17,213.54</u>
Fund balance at end of year	<u>\$ 6,265.72</u>	<u>\$19,351.14</u>	<u>\$ 25,616.86</u>	<u>\$ 16,120.05</u>

See accompanying notes to financial statements

TABLE 1

BAXTER STATE PARK AUTHORITY
OTHER SPECIAL REVENUE FUND
COMPARATIVE STATEMENT OF GROSS RECEIPTS -
CAMPGROUND AND ENTRANCE GATE FEES
Fiscal Year Ended June 30,

	<u>1 9 8 6</u>	<u>1 9 8 5</u>	<u>1 9 8 4</u>	<u>1 9 8 3</u>	<u>1 9 8 2</u>
Campground fees -					
Abol	\$ 19,902.00	\$ 18,917.00	\$ 18,293.50	\$ 19,455.60	\$ 17,921.50
Chimney Pond	22,286.00	21,852.00	21,856.00	22,117.00	19,429.50
Daicey Pond	45,336.00	45,219.00	41,470.00	42,797.28	37,628.07
Katahdin Stream	33,585.10	30,456.00	30,244.90	31,988.50	29,874.75
Nesowadnehunk	15,651.00	16,020.00	15,324.00	15,429.00	11,654.00
Roaring Brook	37,843.00	36,383.60	36,233.90	41,563.02	34,943.92
Russell Pond	15,553.00	16,272.00	17,238.00	19,636.00	15,689.40
South Branch	27,983.50	29,668.00	28,058.00	31,442.82	31,555.00
Trout Brook	12,800.00	13,389.00	15,473.00	13,621.00	9,793.00
Total gross receipts by campground	<u>230,939.60</u>	<u>228,176.60</u>	<u>224,191.30</u>	<u>238,050.22</u>	<u>208,489.14</u>
Entrance gate fees -					
Matagamon	5,445.00	5,470.00	5,165.00	5,135.00	5,601.50
Nesowadnehunk	1,075.00	860.00	690.00	1,193.00	120.00
Togue Pond	<u>41,050.00</u>	<u>39,169.50</u>	<u>38,155.00</u>	<u>38,540.00</u>	<u>37,793.00</u>
Total gross receipts by entrance gate	<u>47,570.00</u>	<u>45,499.50</u>	<u>44,010.00</u>	<u>44,868.00</u>	<u>43,514.50</u>
Total gross receipts - campgrounds and entrance gates	<u>\$278,509.60</u>	<u>\$273,676.10</u>	<u>\$268,201.30</u>	<u>\$282,918.22</u>	<u>\$252,003.64</u>

Note: The totals do not reflect refunds on reservations or other adjustments to reservation fees paid