

MAINE STATE LEGISLATURE

The following document is provided by the
LAW AND LEGISLATIVE DIGITAL LIBRARY
at the Maine State Law and Legislative Reference Library
<http://legislature.maine.gov/lawlib>



Reproduced from scanned originals with text recognition applied
(searchable text may contain some errors and/or omissions)

BAXTER STATE PARK

1985

ANNUAL REPORT

(CONDENSED)



F
27
.P5
B323
1985

By: Irvin C. Caverly, Jr.
Director
Baxter State Park
February 7, 1986

TABLE OF CONTENTS

1. DIRECTOR'S REPORT

A. OVERVIEW

B. OPERATIONAL REPORT BY CATEGORY

INFORMATIONAL DATA SUMMARY

- I. Public Relations
- II. Safety
- III. Training
- IV. Maintenance (South District)
(North District)
(Maintenance Division)
- V. New Construction by Division
- VI. Personnel
- VII. Search and Rescue
- VIII. Law Enforcement
- IX. Special Activities
- X. Reports, Research and Meetings
- XI. Overview
- XII. Trail Crew Annual Work Report

C. SCIENTIFIC FOREST MANAGEMENT AREA

D. FINANCIAL REPORT

- I. Annual Financial Report
- II. Statement of Revenues and Expenditures for
Fiscal Year ended June 30, 1985
- III. Financial Analysis Budget vs. Expenditures
for Fiscal Year ended June 30, 1985
- IV. Statement of Revenues and Expenditures
for Calendar year 1985
- V. Comparative Statement of Revenues and Expenditures
Fiscal Year 1984 and 1985
- VI. Revenue/Expenditure Chart

E. TRUST FUND INFORMATION

- I. Financial Policy
- II. Cash Flow Chart
- III. Summary of Accounts as of June 30, 1985
- IV. Summary of Accounts as of December 31, 1985
- V. Net Income Analysis

F. STATISTICAL REPORT

- I. Overview
- II. Day Use Policy
- III. Comparative Statistics - 1985
- IV. Camper Days Use Winter Season 1984/1985
- V. Camper Days Summary - 1985
- VI. Trail Use Summary - 1985
- VII. Class Days Summary - 1985

G. PERSONNEL LISTING

- I. Organization Chart
- II. Year Round Positions
- III. Seasonal Positions

2. APPENDIXES

* A. AUDITOR'S REPORT

B. VOLUNTEER PROGRAM 1985 CERTIFICATION LIST

* C. RESEARCH PROJECTS

- I. Critical Area - Old Growth Study by Don Hudson
- II. S.F.M.A. Critical Area - Compartments 7, 9, 12 and 25 acres of 13 by Sally Rooney
- III. Peregrine Falcon Project
- IV. Vole and Lemming Study by Garrett C. Clough, Ph.D.
- V. Equity and Efficiency in Public Provision of Forest-based Recreation Opportunities by Stephen D. Reiling and Mark W. Anderson
- VI. Landlocked Arctic Charr by Frederick W. Kircheis
- VII. Surficial Geology of the Telos Lake (15 Minute) Quadrangle by J. Steven Kite

* D. SPECIAL ACTIVITY REPORTS

- I. Sinclair Accident
- II. Lost Persons Report (Boyd/Lapierre)
- III. Dennis Crouse Accident
- IV. Various Accidents - August 4, 1985
- V. Jonathan Locke Incident

* E. MINUTES OF AUTHORITY MEETINGS

* F. ADVISORY COMMITTEE REPORTS AND RECOMMENDATIONS

- I. Togue Pond Camps - Special Committees
- II. Day Use Policy
- III. Finance Committee - Budget 1986 Workprogram
- Togue Pond Camps
- IV. Ad Hoc S.F.M.A. Committee
 - 1. Short-term recommendations
 - 2. Long-term recommendations

*Reports omitted - available upon request at Baxter State Park Headquarters

I. DIRECTOR'S REPORT

A. OVERVIEW



AUTHORITY MEMBERS

GLENN H. MANUEL, CHAIRMAN
COMMISSIONER,
INLAND FISHERIES AND WILDLIFE

KENNETH G. STRATTON
DIRECTOR,
MAINE FOREST SERVICE

JAMES E. TIERNEY
ATTORNEY GENERAL

INFORMATION

(207) 723-5140

PARK HEADQUARTERS

IRVIN C. CAVERLY, JR.,
DIRECTOR

64 BALSAM DRIVE
MILLINOCKET, MAINE 04462
(207) 723-9616

February 7, 1986

TO: BAXTER STATE PARK AUTHORITY

FROM: IRVIN C. CAVERLY, JR., DIRECTOR, BAXTER STATE PARK

SUBJECT: ANNUAL REPORT - 1985

It is with a great deal of pleasure and satisfaction that I submit to you this report on Baxter State Park activities for the calendar year ending 1985.

We were prepared and off to an excellent start with our operational season with attendance of winter parties using the Park at a record level. Activities included snowshoeing, snowmobiling, winter camping and cross country skiing. Users came from all over Maine and New England. With the exception of the Sinclair accident, we had a relatively problem free winter..

The Baxter State Park Authority held its first meeting on January 8th with subsequent meetings on March 12th, May 13th, June 6th, September 10th and November 21st. Several special meetings were also called to deal with issues such as the Togue Pond Camps and the Scientific Forest Management Area.

From the first snow in January to the last December storms, our season calendar was full of activities as illustrated in the following accounts reported by our Departmental Division Heads. As your Administrative Director, I met frequently with many interesting people and organizations to report, discuss and receive input regarding the management and operation of Baxter State Park.

Many hours of planning were spent on such issues as Day Use, Management Plan for the newly acquired Togue Pond Camps, personnel organization, management of the S.F.M.A., general review of the BSP Management Plan, Review of our Standard Operating Procedures Manual as well as updating of all other documents that serve as a working tool for Baxter Park staff. Meetings were held frequently during the year with members of Search & Rescue teams, Maine Warden Service, Maine Forest Service, Parks & Recreation, Personnel Department, Department of Transportation (Maintenance and Buildings Division), 112th Med-Evac Unit and many other organizations which work closely with our Department. I am pleased to report that we have maintained a steady working relationship with all people who wish to be involved with BSP administration and operation. From special interest to the Park employees, I am a great believer that the reason our operation works effectively is because of these people's interest and

February 7, 1986

Subject: Annual Report - 1985

support. The Baxter Park Advisory has demonstrated a deep commitment to the Authority and staff on any subject which has come up for review and their input; consequently, our operation has been more effective in meeting the Park's needs and public service considerations.

From January until late spring, Park Naturalist Gerald Merry upon request met with groups from all over Maine and talked about Baxter State Park and its natural features as well as its operational practices and policies. As has been experienced in past years, I received many compliments on Gerald's presentation and his ability to take a message to the people of Maine through lectures and slides about their Park. He is now and will continually be missed by all of us who shared our experience in the Park with him and also to others who came to know him through Park association; a good man who filled an important role within our operation.

At the first of the year, Gerald, Mike Boucher, and I had an opportunity to spend a couple of days at the University of Maine at Machias campus working with their facility in putting on a course of wilderness management and how it related to Baxter State Park's mandate. Students taking part were interested and enthusiastic and made our assignment a real pleasure; I am grateful for their interest.

During the legislature's session, I met with subcommittees on issues pertaining to the Park. I also represented the Authority at speaking engagements on Park matters and served on the Advisory Committee for the Maine High Adventure Boy Scouts of America.

I have continued my involvement in support of Unity College as a trustee and worked aggressively as a chairperson of the 20th year Special Gifts Committee. We believe in what Unity represents and see the future of the college to be extremely beneficial to the future changes of environmental protection and resource management.

As has been the practice in past years, we have contracted several services for our operations, specifically the contract with the Norrises to operate the Kidney Pond Campground continued in 1985 very effectively. The Norrises did an excellent job in fulfilling the contents of their contract as well as providing public services to the users of that facility.

Mr. and Mrs. Gene Herrin have been contracting the operation at Daicey Pond for Baxter State Park for the last couple of years and they also continue to do an excellent job. An advantage to having this contract at Daicey is that we basically have cut down our personal services cost. With the cooperation of Mr. and Mrs. Herrin, we have been able to run the campgrounds from 6:00 A.M. to 10:00 P.M., seven days a week and have a vehicle furnished by the Herrins. Consequently, we have had better coverage of the facilities and eliminated scheduling problems by having to pull employees from other grounds to cover during periods of time when campground employees would have been on scheduled leave.

Our rubbish removal contract which I must say is expensive; however, it is effective. The elimination of dumps was a good move on the Authority's behalf several years ago as all the waste material brought in by campers is now removed. Mr. Condon, who had a contract with us in 1985, is a conscientious individual who does an excellent job in meeting Park needs in this area.

Other contracts include: a cleaning contract for Park's janitorial services at Park Headquarters; contracts of the S.F.M.A. for cutting with Mr. Smart and Mr. York; other

February 7, 1986

Subject: Annual Report - 1985

operational contracts include the copying machine, typewriters, etc.

As you will note in the trail crew section of our report, Lester Kenway has done his usual good job in coordinating the activities of all the labor resources to make our trail program at Baxter the very best possible with these resources that are available. He has reported that under his sign replacement program that he is nearly complete and should be able to finish it up in 1986. Lester is to be congratulated on this task as he was the individual in 1978 who sat down and put together a sign standard program for Baxter State Park and since that time has been able to get all our Park signs standardized and in place. He is also recognized for his efforts on the restoration of the Saddle Trail which he reports is nearly 90 percent complete. Again, I congratulate him on his efforts, that was a big job and if any of you remember climbing the Saddle, you will recall the devastating erosion that had taken place there. Lester, as his 1985 report indicates, has done a lot of back breaking work with crews to accomplish his goal of restabilization.

Under the personnel aspect of our report, you will note that we have had many changeovers in 1985. I will just mention that all the positions that were vacant because of retirement or other reasons were filled through the Department of Personnel and Baxter State Park's standard procedures for such. All these procedures are according to the Affirmative Action Program, State laws as well as departmental procedures.

The vacant positions that had the biggest impact on the Park are, of course, the year-round positions and this is the first year in many many years that we have had a couple of openings in year-round jobs. The first, of course, was the Business Manager's position which was filled by Elizabeth M. Gray. Beth came to us from a job that she held at the Business Office at Thomaston State Prison. She had a background in accounting and has caught on to her new responsibilities at Baxter very well and is doing an excellent job coordinating the administrative functions of her office.

We created a new position this year that of Chief Ranger which basically is a follow-up to the old Park Supervisor's position. Chris M. Drew was appointed on an acting capacity basis and then, subsequently after due process, appointed to permanent status. Chris has done an excellent job in coordinating the day-to-day activities in the Park and I appreciate all his efforts.

Dennis Brennan has been working with us this year consistent with the contract we have with the Maine Forest Service. We welcome Dennis aboard and appreciate all the efforts that he has put into fulfilling the needs within the Scientific Forest Management Area.

Finally, I would comment that Barry MacArthur has been appointed District Ranger in the North District to fill the vacancy created by Chris' promotion and Barry has put a lot of effort into his new assignment. He has a lot of enthusiasm for his job and we are sure that this position will be one of challenge to him resulting in productivity to the Park and satisfaction to job accomplishment for Barry.

To all of these people, I offer my congratulations for picking up the reigns and moving ahead at a very productive course. I appreciate their support, thank them for their interest in the Park and look forward to working with them as we continue our challenge - preservation and management of this most unique area.

February 7, 1986

Subject: Annual Report - 1985

In mid-summer this year, I had the opportunity to meet with writer Mel Allen of Yankee Magazine. Mel had called up and asked for an interview, I had granted the interview and it was long towards the end of it that I mentioned that within a couple of weeks, Chief Ranger Chris Drew and I would be making a back country patrol from Roaring Brook to Chimney Pond, staying overnight there, then over the top of the mountain, down to Davis to look at a project there - a leanto that needed some work done on it, possibly a replacement, and then on out to Russell Pond. Mel asked if he could go along on this patrol and I said sure and gave him a date that we would be going. We did, in fact, go, had an excellent trip with an opportunity to spend a night at Chimney Pond with Campground Ranger Esther Hendrickson and Assistant Campground Ranger Brendan Curran.

The early evening hours offered us the opportunity to look over the facilities which we found to be in excellent shape. Long term management practices at the campgrounds have resulted in the restabilization of the grounds and the facilities had obviously been kept up throughout the season in the finest way. During the evening, we had an opportunity to talk with some of the guests and at great lengths with Esther and Brendan. I left the campground feeling the satisfaction, that things were going as should be, thanks to the efforts of these two employees. We are extremely lucky to have their dedication, skills, and ability.

The following morning at approximately 4:00 A.M., we left Chimney Pond, went up the Saddle to the Plateau, ran into a little bit of fog (nothing serious), went across the Plateau towards the Northwest Plateau, took a look at the Klondike area from the Plateau, and then proceeded on down the Davis Pond Trail to a Davis Pond leanto. There we were met by Campground Ranger Bernard Crabtree from Russell Pond and all had an opportunity to look at the leanto there that showed definite signs of deterioration and need for replacement. There had been a proposal that we should move a leanto from Davis up to Lake Cowles but we were all relatively satisfied after we looked at both locations that Davis continues to be the best location for the leanto; there is also historic value in keeping it there. Based upon these observations and discussions, we agreed that we would get the materials in at the first opportunity and rebuild the leanto at Davis Pond at its present location.

We continued from there on up to Russell where we spent the remainder of that day looking over the facilities there, talking with the campers, meeting with Bernard and, frankly, doing some recuperating from the trip. We found the same situation at Russell as we did at Chimney in the sense the facilities were kept up in the best way possible. Trails were clean; stabilization work had been done; appropriate signs had been posted; the bunkhouse and the overall area were immaculate. We appreciate Bernard and Alice's efforts as well as those of Ramon Torres, Assistant Campground Ranger. Both of these remote areas demand a lot of attention as the success of their operation depends on the individuals who are in the backcountry and who share an enthusiasm for the best operation possible. In both Chimney Pond and Russell Pond, the results are obvious.

The following morning we proceeded to Wassataquoik Lake to look over the facilities there and later on in the day we returned to Millinocket. The trip was very satisfying and rewarding. I want to take this opportunity to thank all of the employees for all the efforts that they are putting into their respective areas. The results of which we can all take pride in.

Subject: Annual Report - 1985

Although the subject of volunteer coverage has been well covered and reported on within the productivity report, I do want to take this opportunity to comment that the response of volunteer assistance has been overwhelming. There are many many projects and assignments accomplished in Baxter State Park that could not have been done at all if it had not been for the commitment of volunteers. I think Baxter State Park's volunteer program is an example of what can be accomplished in State government if people are given an opportunity and are called upon.

A couple prime examples would be the work of two long-term volunteers at Baxter. They were doing volunteer work long before the term "volunteerism" was ever used in this department. Harold Colt has been coming to Baxter State Park since he was a small child and for many many of those years has been working on our trail systems, free of charge, simply because he enjoyed doing it. He felt he was making a contribution by doing it and he took great satisfaction in the quality of the trails that he maintains. Harold works singlehanded, has maintained all the trails in and around the immediate area of Kidney Pond including the trails on O.J.I., Double Top, Sentinel as well as the connecting hiking trails at Kidney, plus many more. He comes back year after year after year, early in the spring to be sure that all his trails are cleared of blowdowns, he evaluates them, then he comes back in mid-summer to start the tasks of continually upgrading and building, whether that be stabilization or bridge construction, Harold is always enthusiastic to do his share. For all of his efforts for all of these years, we not only recognize him but we thank him sincerely and we hope that he has many many more years for happy trail work in Baxter State Park.

Another person who we are extremely fortunate to have associated with Baxter State Park over the years is Ruth Buttler from Syracuse, New York. For over 35 years, Ruth has come to Roaring Brook Campground to spend her vacation, usually about two weeks in the summer and another two weeks in the fall and on each of these visits, she has assisted Park staff in the maintenance and construction of Park facilities as well as trail crew work. I remember in my early years at the Park of Ruth spending many hours hiking, clearing and painting trails. She was here again in 1985 and although her health doesn't allow her to get out to do the extensive hiking she has back along, she still is a very capable individual on her feet. She does a lot of work for us at Roaring Brook in clean up, litter pickup, culvert cleaning, construction and maintenance as well as some trails from time to time.

It is a great pleasure for this officer to know both of these individuals, Ruth and Harold, and to report to the Authority these points of history and of their interest. We look forward to them both coming back for many years and we hope that their enthusiasm and interest in Baxter State Park continues to spread to many more people who have a desire to contribute to the preservation of this most unique area. Our hats off to all volunteers!

In the following overview of our administrative and operational reports, you will note that we have had a very full calendar of activities. I am proud of our results and am deeply appreciative of all Authority Members, Advisory Members, Staff, Support Teams and organizations, volunteers and special interest groups whom have made these results possible. To all of you, my wholehearted thanks.

B. OPERATIONAL REPORT BY CATEGORY

YEARLY REPORT

Date: January 21, 1986

DIVISIONS REPORTING: SOUTH DISTRICT, NORTH DISTRICT and MAINTENANCE DIVISION

NAME AND TITLE OF REPORTING OFFICER: CHRIS M. DREW, CHIEF RANGER

CMD

INFORMATIONAL DATA

CONTACTS BY PERSONNEL: 136,198 Total Park users 72,913 - Approx. 2 contacts per visitor

SEARCH AND RESCUE INCIDENTS: 59

COMPLAINTS ANSWERED - FIELD: 507 HEADQUARTERS _____

TOTAL WORK HOURS FOR ALL PERSONNEL: 38,523

AUTO ACCIDENTS INVESTIGATED: 20

NUMBER OF SPECIAL SERVICES RENDERED: 598

SPECIAL PROJECTS WORKED ON - No.: 217

SPEAKING ENGAGEMENTS - No.: 9

HEADQUARTER VISITOR STATS: _____

PHONE CALLS RECEIVED: _____

LETTERS MAILED: _____

MEETINGS ATTENDED - Number of: 63

Please use this sheet as cover for your report. Additional pages numbered and organized in the sequence of categories listed as follows: Public Relations, Safety, Training, Maintenance, New Construction, Personnel, Search and Rescue, Law Enforcement, Budgeting, Inventories, Special Activities.

BAXTER STATE PARK ANNUAL REPORT - 1985

I. PUBLIC RELATIONS

Park Employees made personal contact with 136,198 visitors.

A large percentage of time is spent in this category. Every contact an employee makes is a public contact. Contacts range from public assistance to information - education. Public relations is an on-going service and is an extremely important part of a ranger's job. Some of the contacts would include campers, hikers, technical climbers, fishermen, wildlife seekers, snowmobilers, hunters, skiers, snowshoers, fellow personnel, etc. Park personnel inform various parties of the Park's features, regulations, history, wildlife sightings, feeding grounds, hiking trails and many details that relate to and around the Park.

Park staff participated in numerous speaking engagements during 1985. The Millinocket Snowsled Club, East Millinocket Snowrovers, Katahdin High School, The Oakfield and Houlton Senior Citizens, The Houlton Fish and Game, The Presque Isle Rotary Club, and the University of Maine at Orono were organizations addressed by field staff.

Public complaints primarily centered on bear problems and rough roads. Both of these problems were alleviated by Baxter State Park - Department of Transportation staff. The black fly population was modest in 1985 due to a wet cold spring. Biting insects are always a subject of complaint.

II. SAFETY

Safety Officer Charlie Kenney examined all fire extinguishers in vehicles and campgrounds in 1985. The new seat belt directive from the Governor's Office should lessen employee injury in vehicle accidents. A no smoking policy was instituted late in 1985. Life preservers have been examined for serviceability.

Only one employee lost time due to a job related accident. Campground Ranger Fred Ward suffered a shoulder injury after falling off a step ladder at Matagamon Gate.

III. TRAINING

Numerous training opportunities were made available for Park staff in 1985. These include:

1. Black Bear training with Fish & Wildlife personnel - February 13, 1985.
2. Mountain Rescue Training with the 112th Med-Evac - March 9, 1985.
3. Employee Discipline Training was attended by District Rangers - March 13, 1985.
4. Park Rangers attended a PR24 training course.
5. Firearm Training at Dwelly Rd. Pit - June 26, 1985.
6. Fire Training and relay pumping was demonstrated and practiced from Abol Pond Picnic Area halfway up Abol Hill. A new Chrysler pumper was introduced & safety procedures on its proper use demonstrated. The Trail Crew had a separate two-day training session on basic fire fighting procedures.

7. Spring Orientation - general. May 23, 1985. (See attached Agenda)
8. Two-day Solo First-Aid Training at Roaring Brook. Esther Hendrickson attended high angle rescue training in Conway, New Hampshire.
9. Robert Howes and UMPI Intern Mike Boucher attended an avalanche seminar in Bangor.
10. Drive through the Park with new employees on familiarization with the Park.
11. Numerous new employees received on the job training in the Park campgrounds and gatehouses.

IV. MAINTENANCE

The area of maintenance is a high priority category. 1985 maintenance by Division is as follows:

SOUTH DISTRICT MAINTENANCE:

1. Cleaning and readying the campsites, such as raking leaves, putting picnic tables out and cleaning fireplaces and stoves.
2. Painting or staining of porches, picnic tables, steps, buildings, signs, sign posts, touch-up jobs, etc.
3. Hooking up and disconnecting of waterlines and repairing of some.
4. Cutting of 35 cords of firewood; hauling; splitting; and piling.
5. Repairing of screens.
6. Clearing of roads and trailheads of blowdowns and debris.
7. Hauling of gravel to fill washouts, campgrounds and Perimeter Road.
8. Routine litter patrol.
9. Mowing of grass.
10. Replacing of glass in windows.
11. Hauling and delivery of propane gas.
12. Cleaning and storing of sleds.
13. Routine service and maintenance and repairs to vehicles, lawnmowers, chainsaws, firepumps, generators, etc.
14. Putting up and taking down of seasonal signs.
15. Picnic table repairs.
16. Cleaning of wood stoves and chimneys.
17. Repairs of leaky roofs and shingling of two cabins at Daicey Pond and one at Katahdin Stream.
18. Hauling, sorting and delivery of spring requisitions, including lumber, picnic tables, shingles, etc.
19. Replacing of sign posts.
20. Assisted maintenance division with repairs at Support Services Building and Headquarters.
21. Daily cleaning of facilities.
22. Repairs to comfort station roofs and doors.
23. Replace sill logs on Daicey Pond cabin, jacked and leveled. Did other repairs and maintenance to cabins.
24. Shoveling of outhouses.
25. Graded Abol Beach and Roaring Brook roads. Leveled and graded Roaring Brook parking lots.
26. Put up radio antenna on Kidney Pond Camp.
27. Bundled and rebundled 3 times 4500' of lumber for Chimney Pond.
28. Worked on crew camp addition at Katahdin Stream.
29. Leveled and graded tent sites at Roaring Brook.

30. Rebuilt lawn at Roaring Brook.
31. Removed old outhouses at Avalanche Field.
32. Retailed siding on all lean-tos at Chimney.
33. Dug drainage ditch at Abol Field.
34. Removed floating island mass in front of Abol culvert.
35. Tore down and removed four buildings at Togue Pond Camps and debris around them.
36. Loaded, flew and unloaded lumber at Chimney Pond.
37. Repaired plumbing, garage doors and other items at Park's Tamarack Street house.
38. Put formica on Director Caverly's desk.
39. Jacked, leveled, repaired Abol Ranger camp - installed new toilet, shower and hot water heater; plumbing.
40. Tore down two houses and filled pits at Togue Camps.
41. Moved mail box upstairs in Park Headquarters.
42. Hauled rocks for Sentinel Mt. Trail Bridge.
43. Assisted D.O.T. with avalanche culvert improvements.
44. Screened gravel at Slaughter Pit.
45. Replanked Kidney Pond Bridge.
46. Installed two radios in new truck 58 and dump truck 64.
47. Moved safe from Togue Pond Camps to Gatehouse.
48. Handled and reinforced new antenna mast for Chimney Pond.
49. Assisted honeywagon on pumpout of septic and toilet facilities.
50. Cut and switched out 4500' pine logs for picnic tables.
51. Cut, hauled milled cedar logs for Davis Pond shelter.
52. Hauled and stacked lumber in polebarn.
53. Put up nine Game Preserve signs.
54. Moved two rusty dumpsters to Millinocket for repairs; returned one replaced one to Roaring Brook.
55. Burned materials from Togue Pond Camps at Caribou Pit.
56. Put up antenna at Nesowadnehunk.
57. Peeled and repiled cedar for Davis Shelter at Togue.
58. The Trail Crew inspected 51 miles of trails and brushed and blazed 84 miles. Six treadway projects and seven bridge projects were also started or completed. The Treadway projects included Upper Saddle, Lower Saddle, Chimney Pond, South Turner Mt., Wassataquoik Lake and Center Mtn. Trails. The bridge projects included Russell Pond, Freezeout, Wassataquoik Lake, Chimney Pond and Sentinel Mt. Trails.

A new 10' x 10' tool shed was built this past fall with the old shed scheduled to be torn down season '86.

NORTH DISTRICT MAINTENANCE:

TROUT BROOK FARM

1. District Ranger's quarters painted.
2. Trout Brook Farm bridge was stained.
3. A major landscaping project was completed at the old Trout Brook Farm gravel pit.
4. A new double toilet with vault was built and installed at Trout Brook.
5. Landscaping of various tent sites was instituted. The campsites included are #22, #23, #25 and #26.

SOUTH BRANCH POND

1. Bunkhouse shingled.

2. Garage and workshop shingled.
3. Constructed chimney in the Crew Camp.
4. Repaired the motor house on Upper South Branch Pond.
5. Repaired South Branch Pond Dumpster.
6. Repaired docks and swim float.
7. Repaired leaky canoes.
8. Resurfaced campground road.

NESOWADNEHUNK FIELD

1. Resurfaced campground road.
2. Painted Ranger's quarters.
3. Installed new window in south wall of the crew camp.
4. Replaced sills under leantos in the campground.

RUSSELL POND

1. Stained fireshed.
2. Stained leantos at Wassataquoik Stream.
3. Graveled foot trail around Russell Pond.
4. Stained bunkhouse.
5. Rebuilt dock at Main Camp.

MATAGAMON GATE

1. Painted gatehouse.
2. Maintained grounds.
3. Scraped and painted fencing.

TELOS GATEHOUSE

1. Gatehouse painted.
2. Firewood split and piled.
3. Numerous gatehouse improvements were made by volunteers.

Maintenance of the Perimeter Road is a continuous labor. Many blowdowns were cut up and removed from the road.

Outlying campsites were inspected and cleaned on a regular basis.

The Department of Transportation resurfaced the northern half of Baxter Park from Nesowadnehunk Field to Matagamon Gate.

MAINTENANCE DIVISION

1. Plowing of grounds in Millinocket.
2. Snow removal from roofs of structures in Millinocket.
3. Loamed, limed, and reseeded grounds in Millinocket.
4. Rebuilt gearbox on woods mower.
5. Repaired and serviced case tractor.
6. Took backhoe to Bangor for repair.
7. Summer maintenance of grounds (mowing, cleanup) in Millinocket.
8. Coated roof of garage with aluminum roof coating.
9. Installed stainless steel chimney at Millinocket garage.
10. Stained 50% of the headquarters building.
11. Mounted 18 new tires on Park fleet.

12. Repaired and mounted 11 tires on Park fleet.
13. Completed eight tuneups on Park vehicles.
14. Serviced (grease & oil) Park vehicles a total of 61 times.
15. Made 14 State inspections on Park vehicles.
16. Repaired 2 chainsaws.
17. Repaired 3 snowsleds.
18. Repaired 4 lawnmowers.
19. Completed 5 valve jobs on Park vehicles.
20. Completed 1 major motor repair (#59).
21. Made 15 brake repairs on Park vehicles.
22. Completed 11 exhaust system repairs.
23. Replaced 3 clutches in motor vehicles.
24. Replaced 4 rear ends on Park vehicles. (54 & 60 twice, campground trucks)
25. Replaced 2 windshields.
26. Repaired 3 dumpsters.
27. Major repairs on the heating unit at Millinocket Headquarters.

V. NEW CONSTRUCTION BY DIVISION

SOUTH DISTRICT:

1. Built walls and enclosed chimney at Park's Tamarack Street house.
2. Assisted in closing in new polebarn and graded around same.
3. Built six new outhouses for Park wide use and set up three.
4. Shingled Trapper Cabin.
5. Installed new solar electric systems at Trout Brook Farm, Nesowadnehunk, Katahdin Stream, and Abol.
6. Construction of new Smokey Bear sign, picnic tables, bulletin board, and shelves in Headquarters.
7. Cut out new snowsled trail near Abol Bridge.
8. Many new signs were built by Loren Goode at Support Services Building.

NORTH DISTRICT:

1. Built new toilet at Pogy Pond.
2. New water tank installed at Matagamon Gate.
3. A new campsite replacing the Pine Cove site was built.
4. Three new gates were installed on the Freezeout Trail.
5. A new canoe rack was built at South Branch Pond.

MAINTENANCE DIVISION:

1. Construction of 80' x 20' polebarn in Millinocket.
2. Wiring of the Togue Pond electrical system.
3. Created a parking area for the handicapped in Millinocket.

VI. PERSONNEL

Many personnel changes occurred in 1985. These included:

GATE PERSONNEL

1. Retirement of John Watson and Ginny McKenna.
2. Hiring of Addison Matthews and Anne MacDonald.

MAINTENANCE PERSONNEL

1. Hadley Coolong and Howard Turner replaced retiring Donald McKenna as Maintenance Rangers.

CAMPGROUND PERSONNEL

1. Hiring of Greg Hamer as the Roaring Brook Campground Attendant.
2. Hiring of Brendan Curran as the Chimney Pond Campground Attendant.
3. Hiring of Jeff Jacques as the South Branch Pond Campground Attendant.
4. Hiring of Craig Gordon as the Katahdin Stream Campground Attendant.
5. Resignation of Ramon Torres at Russell Pond.

PARK RANGERS

1. Charlie Kenney was acting District Ranger of the North District from June to October 15, 1985.
2. Bernard Crabtree is acting Park Ranger in the South District starting in October 1985.
3. Barry MacArthur is presently the North District Ranger.
4. Chris Drew is presently Chief Ranger.

Park personnel were saddened by the passing of former Supervisor Helon Taylor in January of 1985 and the passing of Park Naturalist Gerald Merry in November of 1985. Also, the loss of John Baxter and Ethel Dyer of our Baxter State Park Advisory Committee.

Time was spent on various phases of personnel matters which included:

1. Interviews for various positions, seasonal and permanent.
2. Setting up of work schedules.
3. Evaluation of performance appraisal reports.
4. Assisted volunteers with their and Park's goals and objectives.
5. Monitored various employee grievances and complaints; worked on resolving disputes.
6. Acquainted new personnel with Park procedures, policies and operations.

VII. SEARCH AND RESCUE

Two fatalities occurred in Baxter State Park. Stanley Sinclair of Shin Pond was fatally injured in a snowmobile accident in Baxter State Park just north of Camp Phoenix on January 13, 1985. Will Rand was fatally injured in a climbing accident on the Marston Trail on August 4, 1985.

A seriously injured Dennis Crouse was airlifted off Katahdin on May 25th by the 112th Med-Evac.

Reports are attached on both of the fatal accidents and the Crouse airlift.

Two lost hunters were found after searches during the November hunting season. Both hunters were hunting north of the legal mile section along the Wadleigh Mtn. area of Baxter State Park. The 112th Med-Evac and Warden Service assisted in the search of Dean Felitus. A copy of this report is also attached.

Several late parties were assisted due to no lights, exhaustion, etc. This occurs quite frequently between Roaring Brook and Chimney Pond and also on the Helon Taylor Trail. Abol and Hunt Trails also were the scenes of a few late parties having to be assisted.

One helicopter assisted rescue off the Knife Edge.

Several people visited the emergency room for various reasons: dislocations, broken bones, cuts and bruises and burns.

Two litter carries - one on the Hunt Trail - one on the Russell Pond Trail.

Boat rescues were made at Webster Lake, Webster Stream and South Branch Pond as canoes overturned and assistance was rendered retrieving persons and equipment.

Numerous searches were initiated around Katahdin as many parties are late coming down and require some assistance.

VIII. LAW ENFORCEMENT

Considerable time was spent patrolling Baxter State Park. Preventive enforcement was encouraged; however, numerous warnings and several summonses were issued. Some of the law enforcement activities consisted of checking fishermen, illegal campers, hunters, enforcing Park rules and routine checks to slow speeding traffic.

Court Officer Barry MacArthur spent many hours at Court and researching cases.

A breakdown of law enforcement activities are as follows:

Summonses.	44
Warnings	111
Evictions.	17
Auto Accidents Investigated. . . .	20

LAW ENFORCEMENT - STATISTICS BY DISTRICT:

NORTH DISTRICT PROSECUTIONS

Fish & Wildlife violations	8
Park Rules & Regulations	5
Motor vehicle violations (speeding).	7

67 warnings were issued - most warnings center around Park rule violations and speeding.

Rangers evicted 7 persons from the North District for camping violations. Most evictions center on individuals creating disturbances.

SOUTH DISTRICT PROSECUTIONS

Fish & Wildlife violations	14
Park Rules & Regulations violations.	8
Liquor violations.	2
Warnings issued.	44
Evictions.	10

IX . SPECIAL ACTIVITIES

Many activities in Baxter State Park during 1985 are noteworthy. These activities include:

1. The Volunteer Program at Baxter State Park was a great success. Over 85 volunteers gave nearly 4,000 hours of labor to assist Baxter State Park. The Telos Gatehouse was operated by volunteers for 6 consecutive months. Toar and Alice Gross volunteered 8 weeks of service at Telos Gate and were especially helpful during the hunting season. The Maine Snowmobile Association volunteered 29 individuals who assisted in the major coverage at Telos Gatehouse and with some campground maintenance.

Bennie and Verna Boyington covered the Webster Lake region of Baxter State Park for a total of 25 weeks. They were especially helpful in monitoring camping and day use activities of this remote area. Bennie and Verna assisted in the search and rescue activity of the Rooney party at Hudson Pond. Trail Crew volunteers gave 1,676 hours.

Linda Ives and Latona Torrey volunteered one week per month the spring, summer and fall. They assisted Baxter State Park staff at Trout Brook Farm, South Branch Pond, Nesowadnehunk Field, and at Togue Pond. Their cheerful dispositions added much to volunteer success.

Ruth Buttler has given many years of volunteer service in Baxter State Park. Her love of Baxter State Park and her labors performed for Baxter State Park is appreciated.
2. The purchase and maintenance of the Togue Pond Camps was a major highlight of 1985. Four cabins were physically removed and the grounds restored to a neat appearance. Togue Pond Gate staff, Bob Howes, Howard Turner, and other South District personnel and many volunteers did much to assist this major project. More restoration improvements are planned for 1986.
3. Baxter State Park personnel removed 14 bear from Baxter State Park. This approached the 1977 record of 16 bear removed from Baxter State Park. (See attached report). Many complaints were received in 1985 due to the bear problems encountered. Several nuisance beaver were also live trapped and relocated in Baxter State Park.

4. The Department of Transportation resurfaced nearly one half of the Park's Perimeter Road and is making preparation to construct a bridge over Little Nesowadnehunk Stream.
5. The raising and release of 10 Peregrine Falcons at the Horse Mtn. falcon rearing station.
6. National Geographic personnel spent time in Baxter State Park gathering information on Baxter State Park for future publications.
7. Stocking of South Branch Ponds, Abol Pond, Rocky Pond and Round Pond with eastern brook trout.
8. Hurricane Gloria visited Baxter State Park with great fanfare but left with little damage.
9. Park staff attended the funerals of Helon Taylor, January 4, 1985, and Gerald Merry, November 4, 1985. Both of these men were faithful and respected employees of Baxter State Park for many years.

Special activities were numerous. Most pertained to assisting campers or hikers in one way or another. Some of the activities consisted of the following:

1. Towing vehicles out of ditches.
2. Boosting vehicles.
3. Hauling packs and hikers.
4. Repairing camping gear, fishing gear, vehicles, etc.
5. Loaning of axes, gasoline and oil.
6. Assisting people who locked themselves out of vehicles.

Baxter Park volunteers assisted and accomplished many jobs which included:

1. Tearing down of buildings at Togue Pond.
2. Staining of thirty-four picnic tables.
3. Unloading of lumber from helicopters at Chimney Pond.
4. Picking up litter around Togue Pond Camps.
5. Assisting of survey of Togue Pond Camps.

X. REPORTS, RESEARCH AND MEETINGS

Baxter Park employees participated in many of activities, which include:

REPORTS:

1. Monthly and annual reports.
2. Standard Operating Procedures Revisions.
3. Major search and rescue reports (Sinclair and Rand reports attached)
4. Twenty (20) vehicle accident reports.
5. Weekly personnel work reports.
6. Monthly motor vehicle reports.
7. Annual requisition reports.

8. Complete inventory of the Togue Pond Camp complex.
9. Headquarters heating and fuel consumption report.

RESEARCH:

1. Planning and construction of the maintenance complex polebarn.
2. Researched material for the thoro sealing of cement block structures.
3. Researched restoration procedures for Togue Pond Campground and beach.
4. Researched costs of garage roof, garage door replacement and addition to the carpenter shop.
5. Researched fuel tank criteria and replacement.

MEETINGS INCLUDE:

1. Weekly administrative meetings.
2. Bimonthly division meetings.
3. Search and Rescue meetings with 112th Med-Evac and Rescue Teams - Jan. 9, 1985.
4. Solar Radio Planning meeting - January 31, 1985.
5. Phoenix - Daisey - Baxter State Park Boundary meeting - February 14, 1985.
6. MSEA - Baxter State Park meeting - February 14, 1985.
7. Baxter State Park personnel meeting - March 2, 1985.
8. Maine Forest Service - Baxter State Park meeting - March 5, 1985.
9. Non-standard workweek meeting - March 7, 1985.
10. Baxter State Park Budget meeting - April 11, 1985.
11. Fair Labor Standards meeting - May 2, 1985.
12. Baxter State Park spring meeting - May 23, 1985.
13. Hiring interviews - April 16, 17, 1985.
14. Baxter State Park Authority Meetings - June 6, 1985 and September 10, 1985.
15. Abol Scout Base meeting - June 29, 1985.
16. Baxter State Park Advisory Meeting - August 13, 1985.
17. LURC - Togue Pond meetings in Augusta - August 26 and October 28, 1985.
18. Soil Conservation meeting and review on Togue Pond - November 1, 1985.
19. Baxter State Park - 112th Med-Evac - Millinocket Fire Department meeting - December 19, 1985.

XI. 1985 OVERVIEW

1985 was a year of major transitions and activities in Baxter State Park. Many personnel changes occurred. At the administrative level, there were personnel changes in the Business Manager position, Park Naturalist and Chief Ranger positions. At the supervisory level, there were changes in the North District Ranger position and South District Park Ranger position. Many new seasonal employees began employment in 1985. Two maintenance rangers were hired for field duty.

There were two fatalities in Baxter State Park. One was a snowmobile accident and the other was a climbing accident.

The black bear created havoc with many campers in Baxter State Park. No personal injury was reported although personal equipment of many campers was damaged by over-zealous bear.

The Togue Pond Campground was an area of major restoration and renovation in 1985.

Timber management - S.F.M.A. area of Baxter State Park - received much attention in 1985. Logging operations increased over 1984.

The Freezeout Trail which transverses the S.F.M.A. was closed to vehicle traffic.

Volunteers in Baxter State Park were a valuable resource offering thousands of hours in gate coverage and campsite maintenance.

Many miles of the Park Perimeter Road was resurfaced with gravel.

The Trout Brook Farm Campground underwent some positive cosmetic changes with the landscaping of the old gravel pit and adjoining campsites.

Baxter State Park lost four faithful friends with the passing of John Baxter, Gerald Merry, Ethel Dyer and Helon Taylor.

1985 was a productive year in terms of positive public relations, Park maintenance and administration.

(Editor's Note:)

Because of Trail Crew's high priority and its many variances of activities and its impact on recreation uses, I feel it is beneficial and enlightening to include in its entire context as submitted by Trail Crew Leader Lester Kenway the Annual Work Report for 1985.

STATE OF MAINE

Inter-Departmental Memorandum Date January 2, 1986

To GEORGE MATULA, JR.

Dept. FISHERIES & WILDLIFE

From CHRIS M. DREW, CHIEF RANGER *Can*

Dept. BAXTER STATE PARK

Subject 1985 Wild Animal Activity Report - BEAR AND BEAVER REMOVAL

6-2-85 DAICEY POND, BAXTER STATE PARK, T3, R10

Live trapped, tagged and removed one (1) 195 pound male nuisance bear. Transported and released this bear at Nicatous Lake, Hancock County.

Present ear tag numbers of bear are 0043 and 0044 (purple).

This bear showed evidence of being tagged previously. Because of prominent chest markings, we believe this bear was previously tagged as 0037 and 0038 (purple) at Abol Campground on July 4, 1984.

6-13-85 DAICEY POND, BAXTER STATE PARK, T3, R10

Live trapped, tagged and released one (1) 75 pound female nuisance bear. This bear was released in T8, R5, Aroostook County.

Tag numbers are 0041 and 0042 (purple). A tooth sample was taken - B358.

6-14-85 TROUT BROOK FARM, BAXTER STATE PARK, T6, R9

Live trapped, tagged and released one (1) 50 pound female nuisance bear. This bear was released in T2, R4, Aroostook County.

Tag number is 005 (purple).

6-16-85 TROUT BROOK FARM, BAXTER STATE PARK, T5, R9

Live trapped, tagged and released one (1) 85 pound female nuisance bear. This bear was released in T2, R4, Aroostook County.

Tag number is 004 (purple). Tooth sample is 780690.

This bear vomited a quart of tapeworms while in the live trap.

6-19-85 ABOL CAMPGROUND, BAXTER STATE PARK, T3, R10

Live trapped and removed one (1) 195 pound male nuisance bear. This bear was released at T8, R5, Aroostook County

Tag numbers are 0043, 0044 (purple). This bear was previously caught 6-2-85 at Daicey Pond.

GEORGE MATULA, JR.

Page 2

January 2, 1986

Subject: 1985 Wild Animal Activity Report
BEAR AND BEAVER REMOVAL

6-29-85 TOGUE POND, BAXTER STATE PARK, T2, R9

Live trapped, tagged and removed one (1) 125 pound female nuisance bear. This bear was released at T9, R5, Aroostook County.

Tag numbers are 0039, 0040 (purple). Tooth sample is B354.

No cubs were present.

6-30-85 TOGUE POND, BAXTER STATE PARK, T2, R9

Live trapped, tagged and removed one (1) 60 pound male nuisance bear. This bear was released at T8, R5, Aroostook County.

Tag numbers are 0051, 0052 (purple). Tooth sample is B355.

7-4-85 DAICEY POND, BAXTER STATE PARK, T3, R10

Live trapped and destroyed one (1) 190 pound male nuisance bear. This was our fifth capture of this nuisance bear - July 4th, 1984 - August 13, 1984 - June 2, 1985 - June 19, 1985 - July 4, 1985. This bear had been previously released in Hancock and Aroostook Counties.

7-25-85 BARREN BROOK - BAXTER STATE PARK, T3, R10

Live trapped and removed one (1) beaver that was released in the West Branch of the Penobscot River.

7-27-85 FOSTER FIELD, BAXTER STATE PARK, T3, R10

Live trapped and removed four (4) nuisance bear. The 125 pound adult female was tagged with numbers 0053 and 0054 (purple). The three (3) cubs were not weighed nor tagged. These bear were released at T5, R8, Aroostook County.

Tooth sample of the adult female is B374.

8-5-85 RUSSELL POND, BAXTER STATE PARK, T4, R9

Destroyed one (1) 300 pound male nuisance bear with purple tag numbers 0045, 0046 (purple). This bear was previously lived trapped on October 14, 1984 at Roaring Brook when it weighed 235 pounds. This bear had been previously released in Hancock County. This bear routinely terrorized campers in numerous campgrounds. The areas most frequented - Roaring Brook, Chimney Pond, Russell Pond and South Branch Pond.

GEORGE MATULA, JR.

Page 3

January 2, 1986

Subject: 1985 Wild Animal Activity Report
BEAR AND BEAVER REMOVAL

9-1-85 DAICEY POND, BAXTER STATE PARK, T3, R10

Live trapped, tagged and removed one (1) 75 pound female nuisance bear. This bear was released at T8, R5, Aroostook County.

Tag numbers are 0099, 0100 (purple). Tooth sample is B356.

The bear problems of 1985 nearly matched the record year of 1977. Bear problems in 1985 were statewide in scope. Baxter State Park handled fourteen (14) bear and one beaver in 1985. One bear had been live trapped five (5) times in a one year period.

Early in July, a nuisance bear with purple tag #0047 was destroyed near the Frost Pond Camps at T3, R12, Piscataquis County. This bear had been previously live trapped on June 27, 1984 at Kidney Pond, Baxter State Park. This bear was 205 pound male in June of 1984. It was released in Hancock County following the initial capture.

CMD:jah

cc: Irvin C. Caverly, Jr.
Robert E. Howes
Charles Kenney

AGENDA

BAXTER STATE PARK SPRING MEETING

May 23, 1985

AM

8:00	-	Coffee and donuts	
8:30	-	Welcome and Introduction	Irvin C. Caverly, Jr
8:40	-	Personnel Orientation and Changes	Chris M. Drew
9:00	-	Baxter State Park Reorganization	
9:30	-	Review of New Rules and Regulations	Gerald Merry
10:00	-	Volunteer Programs -	
		SCA	Lester Kenway
		Telos Gate	Gerald Merry
		Webster Lake	Chris M. Drew
10:30	-	Communications - Radios	Robert Howes
10:45	-	S.F.M.A. Update - Income for 1984	Dennis Brennan
		Proj. Income for 1985	
		Operations/Expansion	
11:15	-	Administrative Update	
		Field Work Schedules - Flexibility	Chris M. Drew
		Overtime after 40 hours	
		weekly reports/time slips	
		Togue Gate Money Collection	Robert Howes
		New camping receipt forms	Jan Caverly
		Togue Pond Camps	
12:00	-	Lunch at Heritage	
1:00	-	Naturalist Update	Gerald Merry
		Maintenance Update	Phil McGlauflin
		North District Update	Chris Drew
2:00	-	South District Update	Robert Howes
2:30	-	Trail Maintenance Projections	Lester Kenway
2:45	-	Wilderness "Survival"	Robert Howes
3:15	-	General Discussion	Staff
4:00	-	Adjourn	

BAXTER STATE PARK
XII. WORK REPORT ANNUAL - 1985
From the Trail Crew Leader

Name of person reporting: Lester Kenway

 January April July October

REPORT FOR PERIOD 4-1-85 to 10-12-85

This report is due on the first of each of the above months for the previous three months.

Field work.	Hrs.	766
Office & planning	Hrs.	144
Support services.	Hrs.	<u>167</u>
TOTAL		Hrs. 1,077

Foot patrol (miles)	No.	164
Vehicle travel (miles).	No.	4,000
Meetings attended	No.	2
Public contact.	No.	-

Districts worked in (list) All Districts

Miles of trail inspected.	No.	51
Miles of trail brushed & blazed . .	No.	84
Treadway projects	No.	6
Bridge projects	No.	7

TOTAL CREW HOURS SPENT ON TRAIL WORK:	Leader.	422
	Ass't. Leader	429
	SCA	1,910
	Other Volunteers.	<u>1,676</u>

TOTAL. 4,437

THIS REPORT SUMMARIZES TRAIL WORK
ACCOMPLISHED DURING THE 1985 SEASON

TRAILS INSPECTED BY TRAIL CREW LEADER:

Freezeout Trail (in part)	Lower Fowler Pond Trail
Fowler Brook Trail	Middle Fowler Pond Trail
Round Pond Trail	Little Field Pond Trail
High and Long Pond Trail	Pogy Notch Trail (in part)
Wassataquoik Lake Trail (in part)	Wassataquoik Stream Trail
So. Turner Mtn. Trail	Russell Pond Trail (in part)
Chimney Pond Trail	Sandy Stream Pond Trail
Hamlin Ridge Trail	North Basin Trail
Cathedral Trail	Saddle Trail
Helon Taylor Trail (in part)	Dudley Trail
Grassy Pond Trail	Knife Edge (in part)
Marston Trail (in part)	Appalachian Trail
Mt. Coe Trail	

TRAILS CLEARED OF BLOWDOWNS AND BRUSH

Freezeout Trail	Trout Brook Mtn. Trail
Little Field Pond Trail	Round Pond Trail
High & Long Ponds Trail	Lower Fowler Pond Trail
Fowler Brook Trail	Middle Fowler Pond Trail
North Traveler Trail	South Branch Mtn. Trail
Pogy Notch Trail	Wassataquoik Lake Trail
Grand Falls Trail	Russell Pond Trail
Wassataquoik Stream Trail	Sandy Stream Pond Trail
Northwest Basin Trail	North Peaks Trail
Helon Taylor Trail	Abol Trail
Hunt Trail (Matc-Heff)	The Owl Trail
Appalachian Trail (Matc-Trautmann)	Marston Trail
Mt. Coe Trail	Doubletop Mtn. Trail
Kidney Pond Trails (Colt)	

NEW SIGNS PLACED:

Freezeout Trail

Horse Mtn. Trail

Littlefield Pond Trail

Middle Fowler Pond Trail

South Branch Mtn. Trail

Wassataquoik Lake Trail

Trout Brook Mtn. Trail

Round Pond Trail

High & Long Pond

Fowler Brook Trail

Mt. Coe Trail

I am pleased to report that we have standard trail signs on nearly all Park trails as of this time. This completes a project we began in 1978. We can now move into a replacement program. The above treeline signs, which are now six (6) years old, will be replaced in 1986.

TREADWAY PROJECTS:

1. UPPER SADDLE TRAIL: This project was continued in the same fashion as it has been in 1983 and 1984. We allocated nearly four (4) crew weeks to the project and we almost completed the reconstruction work as far as the junction with the Cathedral Trail near the summit of Katahdin. A huge amount of rip-rap work was done to control erosion and seventy-one (71) additional rock steps were placed to provide a good trail surface. I am pleased to report that this reconstruction job is 90% complete. I would propose that we finish it off in 1986 and begin badly needed work on Upper Cathedral Trail and the Thoreau Spring area. It will be essential to continue our educational efforts also, so as to assure that regrowth can occur in the stabilized areas.
2. LOWER SADDLE TRAIL: We improved drainage along the portion of the Saddle Trail leading from Chimney Pond to the upper crossing of Saddle Brook. Twenty-six (26) water bars were built (hard digging!) and twenty-one (21) rock steps were placed to control erosion. I do not foresee any additional work on this portion of trail.
3. CHIMNEY POND TRAIL: Seven (7) water bars were installed to improve drainage uphill from Half (½) Way Rock.
4. SOUTH TURNER MTN: A good amount of progress was made on the erosion occurring on this very steep trail. Eighty-eight (88) rock steps were placed above the Spring Side Trail and three (3) waterbars were built. I estimate three (3) crew weeks to stabilize the remaining portion of this trail.
5. WASSATAQUOIK LAKE TRAIL: With the help of the AHS Service Crew, we put in twelve (12) waterbars and three (3) rock steps to control erosion on the steep pitch west of Little Wassataquoik Lake. One thousand feet (1,000') of trail was relocated along a side hill grade to abandon another eroded section.

6. CENTER MTN. ROAD: AHS helped us divert water from the end of the Center Mtn. Road by digging about ten (10) shallow drainage ditches. These can be driven over with a full size pickup so should help maintain the road.

BRIDGE PROJECTS:

RUSSELL POND TRAIL:

One hundred ninety-five feet (195') of Bog Bridge was built in a seasonally wet area just north of Whidden Pond.

FREEZEOUT TRAIL:

With the help of a Sierra Club Service Trip, we built more Bog Bridge in extremely muddy areas of this low country trail.

Thirty feet (30') near Thistle Brook.

Three hundred sixty-five feet (365') near Hudson Brook.

Two hundred five feet (205') west of Webster Stream leanto.

WASSATAQUOIK LAKE TRAIL:

We either replaced or added Bog Bridges between Little Wassataquoik leanto and the Center Mtn. Road. AHS assisted us in building five hundred eighty feet (580') of bridge in several locations.

CHIMNEY POND TRAIL:

The decking was replaced on the "high" bridge over Dry Brook. This require thirty feet (30') of 5" - 6" deck material.

BRIDGE PROJECTS (Cont.)

SENTINEL MTN. TRAIL:

Spring floods damaged the south embankment of this bridge. Cribwork was constructed and filled with rock to shore up the bank. About thirty (30) 8" - 10" spruce logs and about twenty (20) yards of rock were used to build cribwork about twenty feet (20') wide on the stream bank.

SPECIAL PROJECT:

This fall David Powell re-enrolled as an SCA volunteer and helped me build a 10' x 10' tool shed using the logs that were left over from the crew camp addition. The project went smoothly and was completed in the last days of my season. It needs some caulking, stain, and a window. I should be able to finish the building and tear down the old shed in 1986.

MOUNTAIN PATROL:

One (1) person from the SCA Trail Crew rotated to the Mountain Patrol based out of Chimney Pond each week. Esther Hendrickson has prepared information on their activities. We were able to provide coverage for forty-three (43) days during June, July and August. I still am very supportive of this program, as one of their duties is to educate hikers to stay on the trails, which will help rehabilitate damaged areas. The rotation works well to give each crew member a change of pace and a wider range of experiences.

CONCLUSION:

Due to the very light winter damage, we had a "pick and shovel" summer. Most of our effort was towards erosion control, treadway repair and hardening. The SCA crew nicknamed themselves the "Rock Dogs" in a good humored assessment of their major work detail.

I continue to enjoy working with the SCA students and have applied for a program in 1986.

The Sierra Club and American Hiking Society provided us with a boost of four (4) additional crew weeks. I hope to arrange projects with both of these organizations in 1986.

Respectfully submitted,

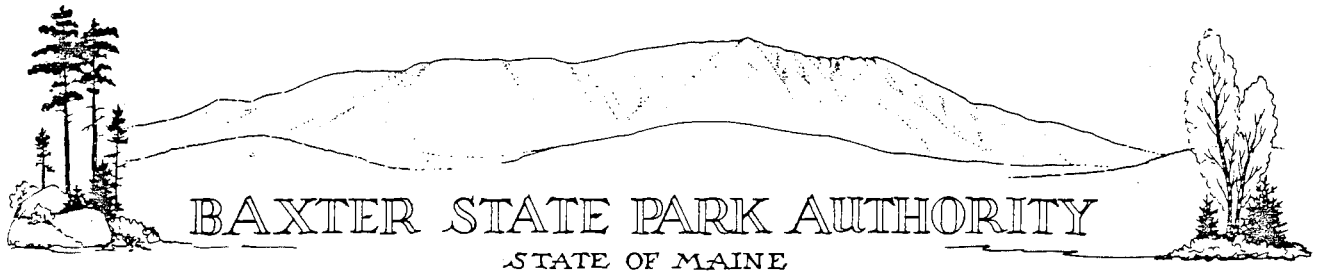
Lester C. Kenway

Lester C. Kenway
Trail Crew Leader

10-30-85

(Transcribed and signed for
Mr. Kenway during his absence)

C. SCIENTIFIC FOREST MANAGEMENT AREA - ANNUAL REPORT



AUTHORITY MEMBERS

GLENN H. MANUEL, CHAIRMAN
COMMISSIONER,
INLAND FISHERIES AND WILDLIFE

KENNETH G. STRATTON
DIRECTOR,
MAINE FOREST SERVICE

JAMES E. TIERNEY
ATTORNEY GENERAL

INFORMATION

(207) 723-5140

PARK HEADQUARTERS

IRVIN C. CAVERLY, JR.,
DIRECTOR

64 BALSAM DRIVE
MILLINOCKET, MAINE 04462
(207) 723-9616

February 14, 1986

Mr. Irvin C. Caverly, Jr., Director
Baxter State Park
64 Balsam Drive
Millinocket, Maine 04462

Re: S.F.M.A. - ANNUAL REPORT - 1985

Dear Buzz:

GOALS AND OBJECTIVES

*"The Scientific Forest Management Area (the "SFMA") consists of approximately 28,594 acres of land located in Township 6, Range 9 and Range 10 of Piscataquis County. It was created by two deeds from former Governor Percival P. Baxter in 1955, recorded in P.& S.L. 1955, ch 61 and P.& S.L. 1955, ch 177. In Chapter 61, the land was dedicated:"

"forever (to be) held by said State for State Forest, Public Park and Public Recreational Purposes and for the practice of Scientific Forestry, reforestation and for the production of forestry wood products. All harvesting of said products shall be done according to the most approved practices of Scientific Forestry and all revenue derived from the sale of said products shall be used by said State for the care, management and protection of Baxter State Park as now or hereinafter defined."

"In my travels in foreign lands I have seen beautiful great forests that for centuries have been producing a crop of wood without depletion. In Sweden, Norway, Finland, Germany, Chile, Russia and elsewhere what has been done by scientifically controlled forestry can be done in Maine. I now make it possible for the State to try a major experiment here at home, an experiment that can mean much for our future timber supply, which all admit is the chief natural resource of our State."

*Excerpt from "Policy Statement of B.S.P.A. with regard to management of S.F.M.A." January 10, 1984.

1985 was an active year for the S.F.M.A. Harvesting of wood products halted on February 7, 1985 for the remainder of the winter and spring. This was earlier than normal to allow emphasis to be shifted to hauling 2,000 cords of wood already piled on the landings.

Mr. Irvin C. Caverly, Jr., Director
Page 2
February 14, 1986

Re: S.F.M.A. - ANNUAL REPORT - 1985

The previous stumpage permit expired and new bids were solicited. The stumpage sale was increased and two separate permits were awarded. Merle York, Inc. was issued a stumpage permit to operate in T6 - R10, north of Webster Lake and Grant Forest Products, Inc. was issued a permit to operate south of Webster Lake.

During the spring months, road locations were laid out and marking of timber to be removed from sensitive areas such as deer wintering areas was carried out. As snow melted away, establishing cover on disturbed areas such as road ditches and log landings was started.

July 1st saw the addition of two laborers for the summer season. Some of their duties included soil stabilization in the form of applying lime, fertilizer, and grass seed followed by mulching or raking. The roadside debris burning program was started this summer in an attempt to make the primary roads more attractive for the next generation. Buffer zone lines were put in place around sensitive areas such as streams, hiking trails, rare orchid habitat and deer wintering areas.

A forestry advisory committee was gathered together to review and comment on activities in the management area. By December 1985, the majority of the year's wood was harvested and regular hauling of the products resulted in no great amount of wood on the landings at the end of the year.

The following is a run-down of accomplishments:

Roads constructed	5.25 miles
road side seeded	1 mile
road side debris burning	.75 mile
buffer lines marked	5.5 miles
wood products harvested	11,000 cord/equivalent

As of June 30, 1985

Total Income.	\$86,137.76
Total expenditures.	<u>(28,967.89)</u>

NET REVENUE \$57,169.87

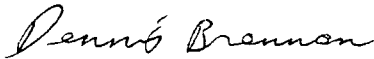
July 1st - December 31, 1985

Total Income.	\$66,643.47
Total expenditures.	<u>(29,662.20)</u>

NET REVENUE \$36,981.27

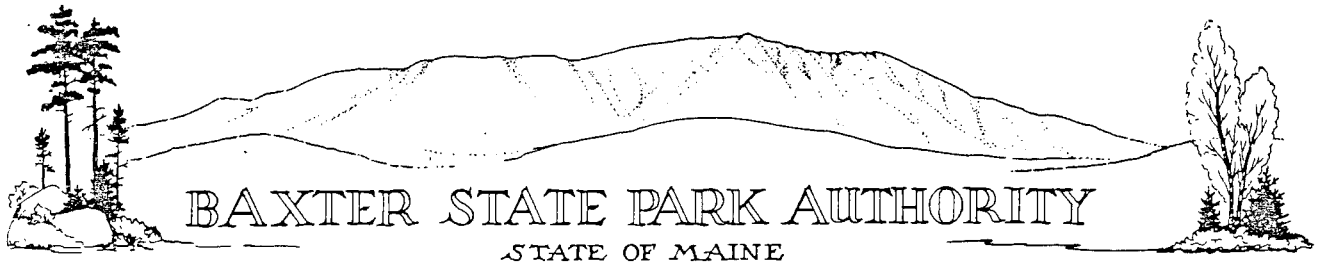
Wood hauled;
income not yet received \$88,206.37

Respectfully submitted,


Dennis Brennan
Maine Forest Service

DB:jah

FINANCIAL REPORT
1985



AUTHORITY MEMBERS

GLENN H. MANUEL, CHAIRMAN
COMMISSIONER,
INLAND FISHERIES AND WILDLIFE

KENNETH G. STRATTON
DIRECTOR,
MAINE FOREST SERVICE

JAMES E. TIERNEY
ATTORNEY GENERAL

INFORMATION

(207) 723-5140

PARK HEADQUARTERS

IRVIN C. CAVERLY, JR.,
DIRECTOR

64 BALSAM DRIVE
MILLINOCKET, MAINE 04462
(207) 723-9616

TO: IRVIN C. CAVERLY, JR., DIRECTOR, BAXTER STATE PARK
FROM: *Elizabeth M. Gray*
ELIZABETH M. GRAY, BUSINESS MANAGER, BAXTER STATE PARK
SUBJECT: ANNUAL FINANCIAL REPORT

The following financial statements represent operations at Baxter State Park for the Fiscal year ended June 30, 1985. A few changes were made during the year which should be noted.

On the Statement of Revenues and Expenditures under Forestry Operations, the salary and retirement contribution for our Forester I has been treated as a transfer of funds per our contract with Maine Forest Service. The \$10,615.00 reduction in revenue covers the period of January 21 through June 30, 1985.

Under Miscellaneous Revenue, we have a new item this year. The \$100.00, Rent of Offices, was received from U. S. Geological Service for one month's use of office space at our Headquarters Building in Millinocket. We expect the survey teams to be using the office until April or May 1986.

Under Expenditures - Personal Services, we have a category called Retro Pay - Contract Settlement in the amount of \$25,816.13. This represents a lump sum payment to each employee retroactive to July 1, 1984 to cover salary increases per the new MSEA contract.

The next statement, a comparative of fiscal year 1985 to fiscal year 1984, shows an increase in revenue of \$120,665.33 and an increase in expenditures of \$90,879.25. The most significant increases in Revenue were Trust Fund Contributions of \$85,000.00 and Forestry Operations of \$29,595.83. Modest increases were also seen in Use Fees, Entrance Fees and Sale of Maps and Guides.

Trust Fund contributions for 1985, a total of \$520,000.00, although considerably higher than 1984 were not excessive according to the guidelines established by the finance committee of the Baxter State Park Advisory. Those guidelines established a limit of 5% of Total Market Value of all Trusts as of December 31st of the previous year. For fiscal year 1985, the limit was \$688,650.00.

The increase in Forestry Operations Revenue has been the result of renegotiated prices for timber, upgrading of road construction and increasing forestry practices.

Irvin C. Caverly, Jr., Director, BSP

Page 2

Subject: Annual Financial Report

Other increases were mostly due to an overall busier season. Weather conditions started out terrible with rain for most of May but made up for any slack off by giving us exceptionally fine weather in October. Reservations went smooth this year, the office assisted by a new cash register and a new Park Receptionist position, Vesta Osgood, who handled most of the information requests by phone and gave the reservation clerks a chance to keep current with the mail and over-the-counter reservations as well as radio traffic.

Expenditures increased in all three major line categories. Personal Services were up \$45,773.78 of which \$25,816.13 was the lump sum contract settlement. The small increase in permanent salaries was mostly due to merit increases. Seasonal salaries increased due to merit increased and extensions of the Trail Crew Leader and one reservation clerk's work schedules.

Contractual services in the All Other category increased by almost \$26,000.00. Of that amount \$4,200.00 was spent for additional SCA workers, \$4,500.00 on a contract to the Chewonki Foundation for a critical areas study in the Park, and an additional \$5,000.00 was due to seasonal increases in other contracts - rubbish removal, cleaning services, etc. Our insurance costs were up by \$6,000.00 most of which was our workers' compensation policy. Printing costs were up about \$3,700.00. We ordered new rules and regulations for this year and purchased new gatehouse pass forms. Utilities and rentals showed small increases also.

Commodities costs were down by \$5,173.45. We have been keeping a very small stock in our warehouse and some of the orders for spring 1985 were late arriving, therefore putting payment for the items into Fiscal Year 1986.

Capital costs were more than 1984, but not over budget. Expenditures were for equipment which was scheduled to be replaced or had been planned for in advance.

A major capital project in FY-1985 was the installation of solar powered radio systems in five (5) locations. Of the equipment replaced were: three (3) snowsleds; three (3) canoes; one (1) pickup; and one (1) automobile. These items are typical of replacement needs. We should plan on a budget of approximately \$50,000.00 a year for equipment costs.

EMG:jah

II. STATEMENT OF REVENUES AND EXPENDITURES
FISCAL YEAR ENDING June 30, 1985

Balance Forward, July 1, 1984

\$ 16,931.19

REVENUE:

PARK OPERATIONS:

Use Fees	\$232,424.50	
Entrance Fees	45,499.50	
Sale of Maps and Guides	8,647.68	
Cash Over/Short F. Exchange	(25.79)	
Sub-Total		\$286,545.89
Less: Overpayments	(4,089.75)	
Refunds	(7,538.00)	
Sub-Total		(11,627.75)
Net Revenue from Operations		\$274,918.14

FORESTRY OPERATIONS:

Sale of Pulp	\$ 47,130.09	
Sale of Timber	39,132.67	
*Reg. Transfer - Me. Forest Service	(10,615.00)	
Net Revenue from S.F.M.A.		75,647.76

TRUST FUNDS:

Boston Safe Deposit & Trust Co.	\$170,000.00	
Casco Bank & Trust Co.	350,000.00	
Net Revenue from Trusts		520,000.00

MISCELLANEOUS REVENUE:

License Fees	\$ 104.00	
Private Contributions	1,920.00	
Rent of Offices	100.00	
Misc. Services & Fees	6,216.75	
Fees charged/Other Depts.	33.00	
Sale of Equipment	1,083.30	
Net Revenue from Miscellaneous		9,457.05

Net Revenue - All Sources	\$880,022.95
Adjustment to Balance Forward	282.35

TOTAL REVENUE AVAILABLE

880,305.30
\$897,236.49

EXPENDITURES:

PERSONAL SERVICES:

Salaries, Permanent	\$267,313.74	*\$ 7,569.38	\$274,883.12
Salaries, Seasonal	159,672.46		159,672.46
Retro Pay-Contract Settlement	24,946.17	869.96	25,816.13
Overtime	8,826.83	44.96	8,871.79
Retirement Contributions	73,505.50	1,295.08	74,800.58
Other Benefits	48,663.05	492.27	49,155.32
Total Personal Services	\$582,927.75	\$ 10,271.65	\$593,199.40

ALL OTHER:

Contractual Services	\$164,807.90	\$ 6,903.51	\$171,711.41
Commodities	51,884.69	801.85	52,686.54
STA-CAP charges	16,098.33	382.49	16,480.82
Total All Other	\$232,790.92	\$ 8,087.85	\$240,878.77

CAPITAL:

Building	\$ 256.00		\$ 256.00
Equipment	42,426.67	\$ 668.60	43,095.27
Structures	3,687.00		3,687.00
Total Capital	\$ 46,369.67	\$ 668.00	\$ 47,038.27

TOTAL EXPENDITURES:

\$862,088.34 \$ 19,028.10 \$881,116.44 \$881,116.44

Balance Forward, June 30, 1985

\$ 16,120.05

III. FINANCIAL ANALYSIS BUDGET vs. EXPENDITURES
FOR FISCAL YEAR ENDED - June 30, 1985

		Budget Plus Old Year Encumbrances	Expenditures Plus Current Encumbrances	Balance
PERSONAL SERVICES				
3100	Permanent Regular	273,178	274,883	(1,705)
3300	Seasonal	155,496	159,672	(4,176)
3612	Overtime	12,000	8,871	3,129
3616	Retro-Pay		25,816	(25,816)
	TOTAL WAGES	440,674	469,242	(28,568)
3810	Unemployment Compensation	16,000	16,179	(179)
3901	Health Insurance (BC/BS)	38,000	27,976	10,024
3905	Dental Ins.		1,079	(1,079)
3910	Retirement (17%)	74,913	74,801	112
3911	Group Life Insurance	3,500	1,633	1,867
3971	Uniform Allowance	2,000	2,288	(288)
3972	Telephone Allowance	500		500
3979	Other Benefits	1,000		1,000
	TOTAL BENEFITS	135,913	123,956	11,957
	TOTAL PERSONAL SERVICES	576,587	593,198	(16,611)
ALL OTHER				
4000	Professional Services - Not State	54,175	52,233	1,942
4100	Professional Services - State	3,400	838	2,562
4200	Travel Expense - In State	1,390	1,859	(469)
4300	Travel Expense - Out of State	400	72	328
4400	Operation of State Vehicles	34,700	40,641	(5,941)
4500	Utilities	16,320	17,547	(1,227)
4600	Rentals	5,740	4,904	836
4700	Repairs	44,265	8,401	35,864
4800	Insurance	17,450	19,262	(1,812)
4900	General Operating	22,950	30,854	(7,904)
5100	Food	2,300	2,830	(530)
5200	Fuel	6,200	4,363	1,837
5300	Office Supplies	1,000	1,488	(488)
5400	Clothing	2,000	2,969	(969)
5600	Misc. Supplies	28,200	39,357	(11,157)
5800	Highway Materials	1,500	3,381	(1,881)
	TOTAL ALL OTHERS	241,990	230,999	10,991
CAPITAL				
7100	Building Improvements	10,840	256	10,584
7200	Equipment	53,997	43,095	10,902
7300	Structures		3,687	(3,687)
	TOTAL CAPITAL	64,837	47,038	17,799
8511	Sta-Cap	14,000	16,481	(2,481)
	TOTAL	897,414	897,716	9,698

IV. STATEMENT OF REVENUES AND EXPENDITURES
Calendar Year 1985

Balance Forward - January 1, 1985

\$ 17,499.08

REVENUE:

PARK OPERATIONS:

Use Fees	\$230,007.49	
Entrance Fees	47,705.00	
Sale of Maps & Guides	8,759.04	
Cash Over - Short	4.44	
Sub-Total		\$286,475.97
Less: Refunds	(7,327.00)	
Overpayments	(4,738.75)	
Sub-Total		(12,065.75)
Net Revenue from Operations		\$274,410.22

FORESTRY OPERATIONS:

Sale of Pulp	\$ 94,065.25	
Sale of Timber	39,217.32	
Transfer to Me. Forest Service	(39,210.86)	
Sub-Total		\$ 94,071.71

TRUST FUNDS:

Boston Safe Dep. & Tr. Co.	\$245,028.00	
Casco Bank & Trust Co.	510,000.00	
Sub-Total		\$755,028.00

MISCELLANEOUS REVENUE:

License Fees	\$ 88.00	
Private Contributions	20.00	
Witness Fees	40.00	
Misc. Fees & Services	7,335.14	
Sale of Equipment	742.65	
Interest on Operating Account	1,944.90	
Sub-Total		\$ 10,170.69
Net Revenue - All Sources		\$1,133,680.62
Adjustment to Balance Forward		104.00
<u>TOTAL REVENUE AVAILABLE</u>		<u>\$1,133,784.62</u>

EXPENDITURES:

PERSONAL SERVICES:

Salaries, Permanent	\$278,218.42		\$278,218.42
Salaries, Seasonal	170,971.80	\$ 4,508.00	175,479.80
Overtime/Retro	15,181.10	469.96	15,651.06
Retirement	12,780.11	102.90	12,883.01
Unemployment	81,100.19	860.55	81,960.74
Other Benefits	51,771.29	439.67	52,210.96
Total Personal Services	\$610,022.91	\$ 6,381.08	\$616,403.99

ALL OTHER:

Contractual Services	\$179,744.57	\$ 9,877.12	\$189,621.69
Commodities	58,530.70	4,173.04	62,703.74
STA-CAP	13,340.06	326.59	13,666.65
Total All Other	\$251,615.33	\$ 14,376.75	\$265,992.08

CAPITAL:

Buildings	\$140,970.90		\$140,970.90
Equipment	69,477.16	\$ 668.60	70,145.76
Structures	1,785.00		1,785.00
Total Capital	\$212,233.06	\$ 668.60	\$212,901.66

TOTAL EXPENDITURES

\$1,095,297.73

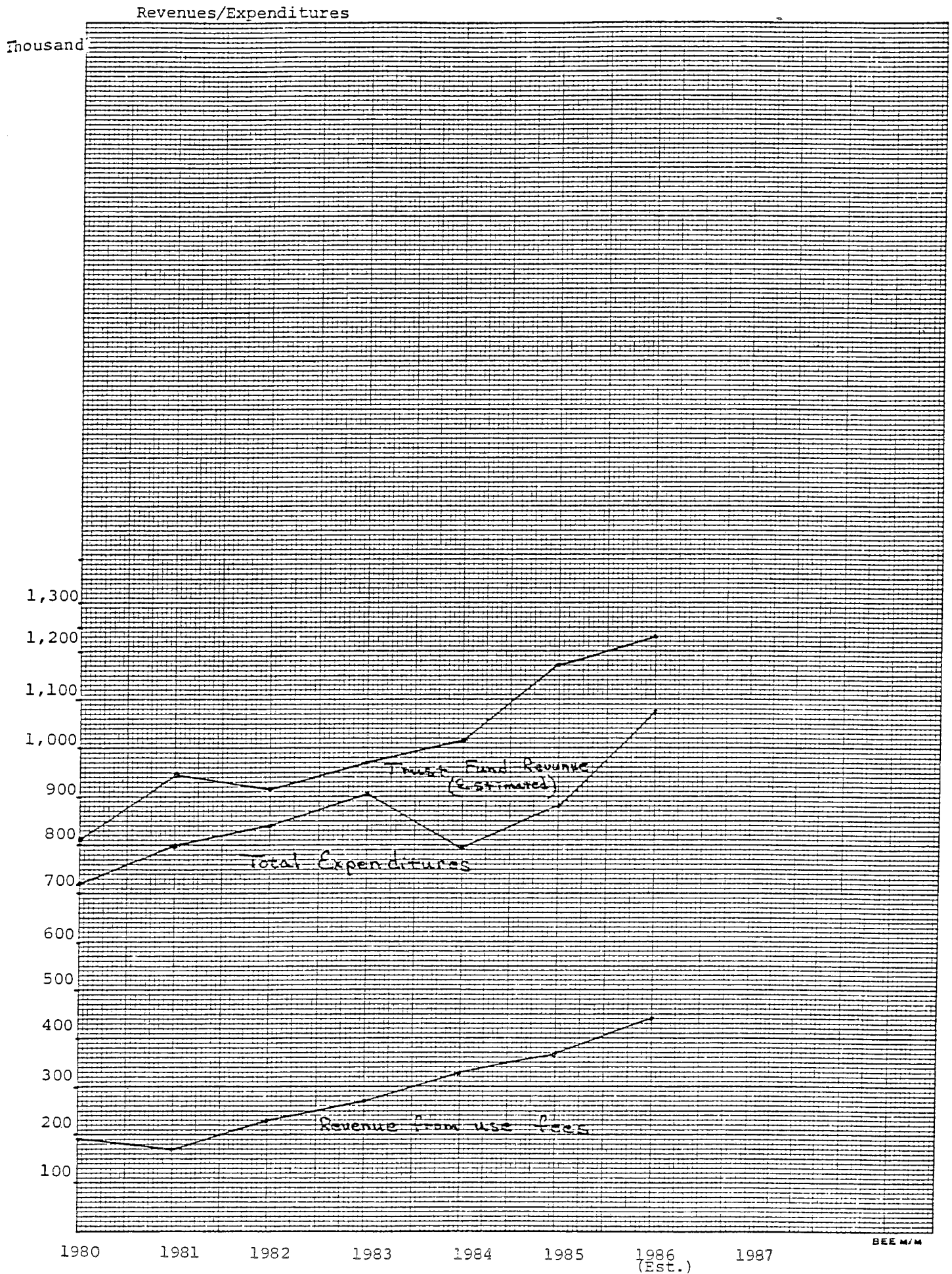
Balance Forward - December 31, 1985

\$ 55,985.97

V. COMPARATIVE STATEMENT OF REVENUES AND EXPENDITURES
FISCAL YEAR 1984 and 1985

	<u>FY-1985</u>	<u>FY-1984</u>	<u>Inc./Dec.</u>	<u>%</u>
<u>REVENUE</u>				
Use Fees	\$232,424.50	\$225,981.60	\$ 6,442.90	2.9
Entrance Fees	45,499.50	44,010.00	1,489.50	3.4
Sale of Maps and Guides	8,647.68	7,517.93	1,129.75	15.0
Cash over/short	(25.79)	39.45	(65.24)	(165.4)
Refunds	(7,538.00)	(4,340.40)	(3,197.60)	(73.7)
Overpayments	(4,089.75)	(11,663.15)	7,573.40	64.9
Misc. Revenue	9,457.05	16,760.26	(7,303.21)	43.6
Forestry Operations	75,647.76	46,051.93	29,595.83	64.3
Trust Fund Contributions	<u>520,000.00</u>	<u>435,000.00</u>	<u>85,000.00</u>	19.5
NET REVENUE	\$880,022.95	\$759,357.62	\$120,665.33	15.9
<u>EXPENDITURES</u>				
<u>Personal Services</u>				
Salaries Permanent	\$274,883.12	\$270,209.83	\$ 4,673.29	1.7
Salaries Seasonal	159,672.46	151,239.51	8,432.95	5.6
Retro Pay	25,816.13		25,816.13	
Overtime	8,871.79	12,753.44	(3,881.65)	(30.4)
Retirement Contributions	74,800.58	68,684.98	6,115.60	8.9
Other benefits	<u>49,155.32</u>	<u>44,537.86</u>	<u>4,617.46</u>	10.4
TOTAL PERSONAL SERVICES	\$593,199.40	\$547,425.62	\$ 45,773.78	8.4
<u>All Other</u>				
Contractual Services	\$171,711.41	\$145,725.79	\$ 25,985.62	17.8
Commodities	52,686.54	57,859.99	(5,173.45)	(8.9)
STA-CAP Charges	<u>16,480.82</u>	<u>15,727.20</u>	<u>753.62</u>	4.7
TOTAL ALL OTHER	\$240,878.77	\$219,312.98	\$ 21,565.79	9.8
<u>Capital</u>				
Building	\$ 256.00	\$	\$ 256.00	
Equipment	43,095.27	14,793.11	28,302.16	191.3
Structures	<u>3,687.00</u>	<u>8,705.48</u>	<u>(5,018.48)</u>	(57.6)
TOTAL CAPITAL	\$ 47,038.27	\$ 23,498.59	\$ 23,539.68	100.2
TOTAL EXPENDITURES	\$881,116.44	\$790,237.19	\$ 90,879.25	11.5

VI. REVENUE/EXPENDITURE CHART



E. TRUST FUND INFORMATION

I. BAXTER STATE PARK AUTHORITY'S FINANCIAL POLICY - TRUST FUND INFORMATION

The Baxter State Park Authority's Financial Policy requires the following information to be reported to the Authority at the end of each calendar year:

- I. The Market Value of all trusts generating revenue for the support of Park operations.

Market Value = \$18,171,940 (12-31-85)

- II. A. The amount of Trust Fund monies used to support Park operations during calendar year 1985.

Togue Pond Purchase. \$135,028
Boston Trust 110,000
Casco Trust. 510,000

Total Funds Used \$755,028

- B. The percent that total Trust Fund monies used represents in relation to the market value of trusts. 4.15%

- III. The rate of inflation for 1985 as measured by the Consumer Price Index. (12 months ending 12-30-85) 3.5 %

- IV. A. Yearly growth rate of all Trusts 19.3 %

- B. Percent change of market value (year ending)
 1. Boston principle 21.63%
 2. Boston Investment Income 31.43%
 3. Casco Trust 12.05%
 4. State Treasurer's (Cash Pool) (43.73%)

- V. The change in Trust Fund purchasing power during calendar year 1985.

<u>Yearly growth rate of trust</u>	less	<u>inflation rate</u>	less	<u>% of Funds Used</u>	=	% Change in Purchasing Power
19.3%	-	3.5%	-	4.15%	=	11.65%

- VI. The total amount of monies from trusts allowed to support fiscal year 1987 (Re: BSPA Financial Policy - 5% of market value as of 12-31-85 = \$908,597

Baxter State Park Authority's Financial Policy - Trust Fund Information

Significant changes since the Financial Policy Report of 12-31-84 include:

An increase of \$2,938,820 in the market value of the Trusts.

A decrease of the inflation rate of .7% (from 4.2% to 3.5%).

An increase in Trust Fund purchasing power of 11.65% during 1985 was substantially more than the .48% increase during 1984 and the 2.72% increase during 1983.

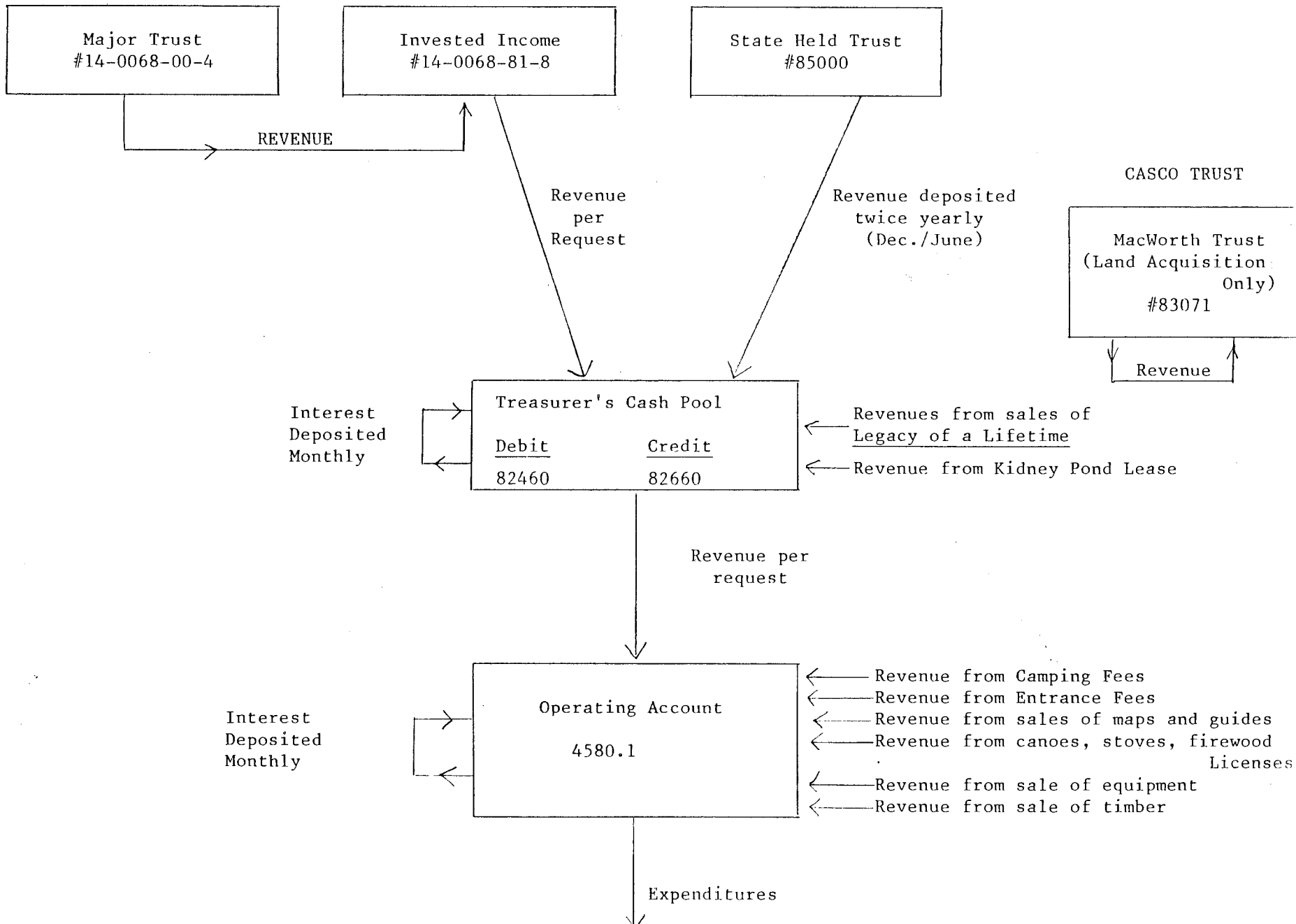
Of the \$1,237,160 estimated annual income as of 12-31-84, 61.0% was used to support Park operations during 1985 with the remainder reinvested for growth.

The following cash flow chart (revised January 1986) gives a visual track of revenue as it is generated and how it is moved to the operating account of the Park. This year through the efforts of the Baxter State Park Authority, interest earned on funds in the operating account #04580.1 is being credited to Baxter State Park. In previous years, interest on this fund was being credited to the General Fund in the amount of approximately \$4,000.00 per year.

II. BAXTER STATE PARK
CASH FLOW CHART

BOSTON TRUST

CASCO TRUST



III. BAXTER STATE PARK
SUMMARY OF ACCOUNTS
as of June 30, 1985

TRUSTS GENERATING OPERATING REVENUE	BOOK VALUE	MARKET VALUE	ESTIMATED VALUE	CURRENT YIELD	% OF ASSETS
I. PRINCIPAL ACCOUNT Boston Trust (14-0068-00-8)	\$ 8,511,868.50	\$10,777,406.97	\$ 660,229.65	6.13	63.85
II. INVESTED INCOME Boston Trust (14-0068-81-8)	2,676,794.00	2,718,503.44	241,847.04	8.9	16.11
III. STATE TRUST Casco Bank (A-48381)	2,423,232.49	2,405,892.85	208,179.00	8.7	14.25
IV. STATE (Invested Income) TREASURER'S (Cash Pool) (82460)	<u>581,017.20</u>	<u>581,017.20</u>	<u>60,180.00</u>	10.4	3.44
SUB TOTALS	\$14,192,912.19	\$16,482,820.46	\$1,170,435.69		
<u>SPECIAL TRUSTS</u>					
Baxter MacWorth Trust (83071 Land Acquisition)	\$ 324,315.94	\$ 331,591.87	\$ 32,479.00	9.8	1.96
Treasurer's Demand Cash (Kidney Pond - Acct. #85001)	<u>66,179.80</u>	<u>66,179.80</u>	<u>6,882.70</u>	10.4	.39
SUB TOTALS	<u>\$ 390,495.74</u>	<u>\$ 397,771.67</u>	<u>\$ 39,361.70</u>		
TOTAL ALL TRUSTS	\$14,583,407.93	\$16,880,592.13	\$1,209,797.30		100.0

IV. BAXTER STATE PARK
SUMMARY OF ACCOUNTS
as of December 31, 1985

<u>TRUSTS GENERATING OPERATING REVENUE</u>	<u>BOOK VALUE</u>	<u>MARKET VALUE</u>	<u>ESTIMATED VALUE</u>	<u>CURRENT YIELD</u>	<u>% OF ASSETS</u>
I. PRINCIPAL ACCOUNT Boston Trust (14-0068-00-8)	\$ 8,760,632.41	\$11,669,839.81	\$ 715,088.32	6.13	64.22
II. INVESTED INCOME Boston Trust (14-0068-81-8)	3,122,062.86	3,272,958.80	281,429.08	8.60	18.01
III. STATE TRUST Casco Bank (A-48381)	2,433,027.39	2,511,731.45	207,253.00	8.30	13.82
IV. STATE (Invested Income) TREASURER'S (Cash Pool) (82460)	<u>303,789.53</u>	<u>303,789.53</u>	<u>24,303.16</u>	<u>8.00</u>	<u>1.67</u>
SUB TOTALS	\$14,619,512.19	\$17,758,319.59	\$1,228,073.56	6.90	97.72
 <u>SPECIAL TRUSTS</u>					
Baxter MacWorth Trust (83071 Land Acquisition)	\$ 340,039.98	\$ 347,440.91	\$ 34,414.00	9.90	1.92
Treasurer's Demand Cash (Kidney Pond - Acct. #85001)	<u>66,179.80</u>	<u>66,179.80</u>	<u>5,294.38</u>	<u>8.00</u>	<u>.36</u>
SUB TOTALS	<u>\$ 406,219.78</u>	<u>\$ 413,620.71</u>	<u>\$ 39,708.38</u>	<u>9.60</u>	<u>2.28</u>
TOTAL ALL TRUSTS	<u><u>\$15,025,731.97</u></u>	<u><u>\$18,171,940.30</u></u>	<u><u>\$1,267,781.94</u></u>	<u><u>6.98</u></u>	<u><u>100.0</u></u>

V. NET INCOME ANALYSIS
Percival P. Baxter Trust
(Combined Invested Income and Main Accounts)

	<u>1980</u>	<u>1981</u>	<u>1982</u>	<u>1983</u>	<u>1984</u>	<u>1985</u>
Net Income	\$606,554	\$675,880	\$660,659	\$679,981	\$775,802	\$878,833
Income Distributed to Baxter State Park Authority	423,565	617,457	612,633	-0-	190,000	245,029
Reinvested Income	<u>\$182,989</u>	<u>\$ 58,423</u>	<u>\$ 48,026</u>	<u>\$679,981</u>	<u>\$585,802</u>	<u>\$633,804</u>
Cumulative Reinvested Income Since 1-1-80	\$182,989	\$241,412	\$289,438	\$969,419	\$1,555,221	\$2,189,025

MSS/dt
14-0068-00-8
14-0068-81-8

F. STATISTICAL REPORT
ON THE USE OF BAXTER STATE PARK
BY THE PUBLIC - 1985

STATE OF MAINE

Inter-Departmental Memorandum Date February 7, 1986To IRVIN C. CAVERLY, JR., DIRECTORDept. BAXTER STATE PARKFrom ELIZABETH M. GRAY, BUSINESS MANAGERDept. BAXTER STATE PARKSubject STATISTICAL REPORTS

The following reports:

Comparative Statistics 1985
Trail Use Summary for 1985
Camper Days by Month
and Class Day Report

show that the summer season this year was busier overall than the two previous years. The total number of persons 72,813 was up 2,638 or 3.8% from 1984. Total number of vehicles 24,966 was up 1,324 or 5.6%. Maine residents accounted for 63.5% of total visitors, a slight decrease from the previous year. That decrease was also reflected in the number of day users. Day use and transients accounted for 70.2% of total persons this year compared to 73.8% in 1984. Camper use increased 11.8% from the summer before most likely due to warm weather conditions for most of the camping season.

Overuse in the Roaring Brook area and on Katahdin is still a problem. This fall, in response to concern, the Baxter State Park Authority requested Director Caverly to issue a Day-Use Policy as follows:

II. DAY USE POLICY



AUTHORITY MEMBERS

GLENN H. MANUEL, CHAIRMAN
COMMISSIONER,
INLAND FISHERIES AND WILDLIFE

KENNETH G. STRATTON
DIRECTOR,
MAINE FOREST SERVICE

JAMES E. TIERNEY
ATTORNEY GENERAL

INFORMATION

(207) 723-5140

PARK HEADQUARTERS

IRVIN C. CAVERLY, JR.,
DIRECTOR

64 BALSAM DRIVE
MILLINOCKET, MAINE 04462
(207) 723-9616

November 14, 1985

TO: BAXTER STATE PARK AUTHORITY MEMBERS

FROM: IRVIN C. CAVERLY, JR., DIRECTOR, BAXTER STATE PARK

SUBJECT: BAXTER STATE PARK DAY-USE POLICY

I have reviewed with staff the draft policy submitted by Ron Wrye, Chairman of the Committee of Park Regulations and Visitor Use. You will recall that this policy was reviewed with the Baxter State Park Authority at the September meeting at Togue Pond and I was asked to make a staff recommendation on it at the November meeting. We concur with the objectives of the recommendations; however, in light of the memo received from Paul Stern regarding concerns about traffic control on leased land and a State aid road maintained by the Department of Transportation, we would revise the recommendations to adopt alternative #3 as follows:

Leave the Togue Pond entrance gate at the present location and install a small control booth at the junction of the Roaring Brook Road and the Nesowadnehunk tote road. This control station to be staffed as needed during heavy traffic periods. The staffing for this facility would come from a position with divided duties which entails covering this station during necessary periods. At all other times during the normal work week would cover duties and responsibilities at the Togue Pond Camps. (See Goals for 1986 - Togue Pond Camps).

Based on statistical information, we feel it would be necessary to operate this control station during the hours between 7:30 A.M. and 12:00 Noon each day during July and August with some coverage during June and September on an as needed basis, primarily weekends. Also, based on statistical records and experience by Park personnel, we should control the number of vehicles in the Roaring Brook parking lot to a breakdown of forty-five (45) camper vehicles (Chimney Pond, Russell Pond, Roaring Brook) and fifty (50) day-use vehicles. This control initially would only be necessary until 12:00 Noon as by that time our day-use climbing requests for Katahdin are minimal (lateness of day) and campers from Chimney Pond and Russell are turning over with the old leaving and the new coming in. For the day-users who want to make short trips from Roaring Brook to Sandy Stream Pond, So. Turner Mt., or Whidden Ponds, it would simply necessitate they go after 12:00 Noon rather than morning hours when capacities are reached. We think these options are desirable because we are not saying "No, you can't go" but we would be saying "you can go; however, you may have to reschedule to assist us in avoiding overcrowding and overuse of the area".

I recommend for the Authority's approval on November 21st that this proposal as submitted be adopted for the 1986 season.

BAXTER STATE PARK AUTHORITY MEMBERS

November 14, 1985

Page 2

(Subject: Baxter State Park Day-Use Policy)

I am sure it is not a fool proof plan; however, it is a step towards control of an over-use problem that has been in existence for years. I think if we try the proposal in 1986 and get our feet wet, we can adjust it as necessary and start the wheels towards long-term traffic control. I have not recommended a shuttle system at this time as has been suggested because we need to control the volume of people on the trails as well as cars in the parking lot and on the road system. I personally think a shuttle bus would only compound our trail problems at this time.

If you have any questions prior to the meeting, I would be happy to discuss them with you.

ICC:jah

Attachments:

Goals for 1986 - Togue Pond Camps

Ron Wrye's Report dated August 23, 1985

Paul Stern's letter

III. BAXTER STATE PARK COMPARATIVE STATISTICS - 1985

					SUMMER DETAIL USE 1985	
GATEHOUSE STATISTICS:					Day Use	Campers
Persons:	1982	1983	1984	1985	Transients	Lodge Guests
Resident	49,518	43,825	47,564	46,321	35,233	11,088
Non-Resident	26,613	25,680	22,611	26,492	15,881	10,611
TOTAL	76,131	69,505	70,175	72,813	51,114	21,699
Day Use	40,892	37,991	41,727	40,613	40,613	
Transient	11,860	9,944	8,903	10,501	10,501	
Campers	22,098	20,975	18,819	21,033	-	21,033
Lodge Guests	1,281	595	726	666		666
TOTAL	76,131	69,505	70,175	72,813	51,114	21,699
Vehicles:						
Togue Pond	19,836	18,124	18,883	19,813		
Matagamon	4,292	3,776	3,830	4,234		
Nesowadnehunk	934	1,218	737	919		
Telos	-	-	192	-		
TOTAL	25,062	23,118	23,642	24,966		
CAMPGROUND STATISTICS:					DETAIL CAMPER USE 1985	
Camper Days:	1982	1983	1984	1985	Campgrounds	Group Areas
Campgrounds:						
Roaring Brook	10,869	11,381	10,516	10,470	7,580	2,890
Abol	5,527	5,548	5,387	5,380	5,380	-
Katahdin Stream	9,844	9,446	8,861	9,241	6,930	2,311
Daicey Pond	3,993	4,081	4,173	4,500	4,500	-
Nesowadnehunk	4,435	4,779	4,888	4,975	4,179	796
Trout Brook Farm	3,064	2,852	2,755	3,102	2,344	758
South Branch Pond	9,048	8,890	8,453	9,174	9,174	-
Russell Pond	3,424	3,241	2,929	2,811	2,811	-
Chimney Pond	4,104	4,326	3,756	3,786	3,786	-
SUB-TOTAL CAMPGROUNDS	54,308	54,511	51,718	53,439	46,684	6,755
Outlying Sites:						
South Branch Area	-	-	394	342		
Fowler Area	-	-	712	685		
Webster Area	-	-	923	1,004		
At Shelter	-	-	128	97		
Davis Pond Area	-	-	203	225		
Wassataquoik Area	-	-	623	835		
SUB-TOTAL OUTLYING SITES	2,674	3,270	2,983	3,188		
TOTAL SUMMER CAMPER DAYS	56,982	54,511	54,701	56,627		
VISITOR DAYS:	1981/82	1982/83	1983/84	1984/85		
Camper Days-Summer	56,982	54,511	54,701	56,627		
Day Use/Transient	52,752	47,935	50,630	51,114		
TOTAL SUMMER VISITOR DAYS	109,734	102,446	105,331	107,741		
Camper Days-Winter	1,168	1,070	1,549			
Day Use-Winter	1,890	594	977			
TOTAL WINTER VISITOR DAYS	3,058	1,664	2,526			
TOTAL PARK VISITOR DAYS	112,792	104,110	107,857			

IV. BAXTER STATE PARK
 Camper Days Use by Location and Activity
 WINTER SEASON - 1984 - 1985

O V E R N I G H T C A M P I N G

MONTH	ROARING BROOK	DAICEY POND	CHIMNEY POND	KATAHDIN STREAM	RUSSELL POND	ABOL	SO. BRANCH POND	NESOWA- DNEHUNK	TOTAL NUMBER OF PEOPLE
December	14	48	69	5	-	-	-	-	38
January	60	39	160	39	4	-	-	4	86
February	176	52	370	24	30	-	54	5	197
March	88	21	171	70	27	18	26	-	118
April	--	--	--	--	--	--	--	--	--
TOTALS	338	160	770	138	61	18	80	9	439

C A M P I N G A C T I V I T I E S

CAMPER NIGHTS			DAY-USE		
MONTH	GENERAL CAMPING	TECHNICAL CLIMBING	SKIING/ SNOW- SHOEING	SNOW MOBILING	TOTAL
December	58	78	51	175	362
January	111	195	31	267	604
February	227	484	87	579	1,377
March	152	269	38	345	804
April	--	--	--	--	--
TOTALS	548	1,026	207	1,366	3,147

V. BAXTER STATE PARK
Camper Days Summary
1985

	<u>May</u>	<u>June</u>	<u>July</u>	<u>Aug.</u>	<u>Sept.</u>	<u>Oct.</u>	<u>Total</u>	<u>% of Tot Camper I</u>
<u>Campgrounds</u>								
Roaring Brook	589	1204	1900	2067	1291	529	7580	
Abol	370	609	1462	1678	941	320	5380	
Katahdin Stream	565	1023	1737	1883	1206	516	6930	
Daicey Pond	329	863	1048	1135	753	372	4500	
Nesowadnehunk	155	304	1314	1599	543	264	4179	
Trout Brook Farm	129	127	719	1225	98	46	2344	
South Branch Pond	593	996	2679	3242	1245	419	9174	
Russell Pond	210	467	636	854	446	198	2811	
Chimney Pond	119	626	961	977	741	362	3786	
Sub-Total	3059	6219	12456	14660	7264	3026	46684	
<u>Group Areas</u>								
Avalanche Field	129	266	1049	849	444	153	2890	
Foster Field	174	223	671	868	304	71	2311	
Nesowadnehunk	46	98	221	352	70	9	796	
Trout Brook Farm	143	50	183	320	32	30	758	
Sub-Total	492	637	2124	2389	850	263	6755	
<u>Outlying Sites</u>								
South Branch Pond	20	46	52	139	62	23	342	
Fowler	101	44	186	241	96	17	685	
Webster	132	125	193	353	152	49	1004	
A. T. Shelter	9	5	15	39	25	4	97	
Davis	0	28	47	67	62	21	225	
Wassataquoik Area	34	119	180	240	175	87	835	
Sub-Total	296	367	673	1079	572	201	3188	
TOTAL CAMPER DAYS	3847	7223	15253	18128	8686	3490	56627	

% Camper Days
Per Month

VI. TRAIL USE SUMMARY - 1985

<u>TRAIL:</u>	<u>May</u>	<u>June</u>	<u>July</u>	<u>August</u>	<u>Sept.</u>	<u>Oct.</u>	<u>Total Hikers</u>
<u>KATAHDIN STREAM:</u>							
Hunt	279	734	1,629	2,099	931	315	5,987
Owl	36	42	107	241	140	64	630
Marston	9	8	5	26	9	5	62
Mt. Coe	-	-	2	3	-	1	6
Grassy Pond	8	42	87	62	68	20	287
Double Top So.	7	2	-	11	8	5	33
O.J.I.	-	7	9	6	2	-	24
Togue Pond Beach	-	-	538	357	79	23	997
<u>ABOL:</u>							
Abol Beach	163	359	863	568	144	37	2,134
Abol Trail	333	462	1,032	1,366	936	182	4,311
Abol Falls	14	44	86	128	48	23	343
<u>ROARING BROOK:</u>							
Chimney	431	1,432	3,247	3,571	2,219	870	11,770
Helon Taylor	277	406	541	703	517	38	2,842
Sandy Stream	329	944	1,692	1,529	941	432	5,867
So. Turner	82	139	218	356	274	89	1,158
Russell Pond	67	258	382	377	269	152	1,505
Nature Trail	-	3	1	3	13	5	25
<u>SOUTH BRANCH POND:</u>							
So. Branch Falls	23	45	67	86	42	17	280
Ledges	38	38	53	60	50	13	252
Howe Brook	56	57	134	198	93	20	558
N. Traveler	155	79	238	385	190	51	1,098
Center Ridge	18	7	53	95	33	14	220
So. Br. Mtn.	65	24	122	111	90	20	432
Pogy Notch	54	155	121	197	147	46	720
Burnt Mtn.	3	2	28	43	25	2	103
<u>NESOWADNEHUNK:</u>							
Double Top	4	18	47	118	50	35	272
Marston	-	-	-	-	6	10	16
Burnt Mtn.	-	-	-	-	-	3	3
Sentinel	-	-	-	-	-	2	2
Center Mtn.	-	-	-	1	-	-	1
N. Brother	-	-	4	19	-	-	23
S. Brother	-	-	-	-	-	-	-
Wass. Lake Trail	3	-	12	4	8	-	27
<u>CHIMNEY POND:</u>							
Dudley	188	403	793	848	591	142	2,965
Cathedral	55	395	883	1,175	734	91	3,333
Saddle	10	503	1,638	1,833	1,058	414	5,456
Hamlin	55	67	97	108	172	49	548
N. Basin	6	43	52	89	134	28	352
N. Peaks	-	9	24	26	15	5	79
N.W. Basin	-	23	63	79	77	22	264
TOTAL PERSONS	2,768	6,750	14,868	16,881	10,113	3,245	54,625

VII. CLASS DAYS SUMMARY - 1985

CONDITIONS CONCERNING WHEN KATAHDIN IS CLOSED OR OPEN ABOVE TREELINE

Class 1 - Open - a good day.

Class 2 - Open but not recommended for climbing.

Class 3 - Open but not recommended; one or more trails closed - trails closed to be named by Ranger when setting Class Day.

Class 4 - Mandatory closure of all trails above treeline.

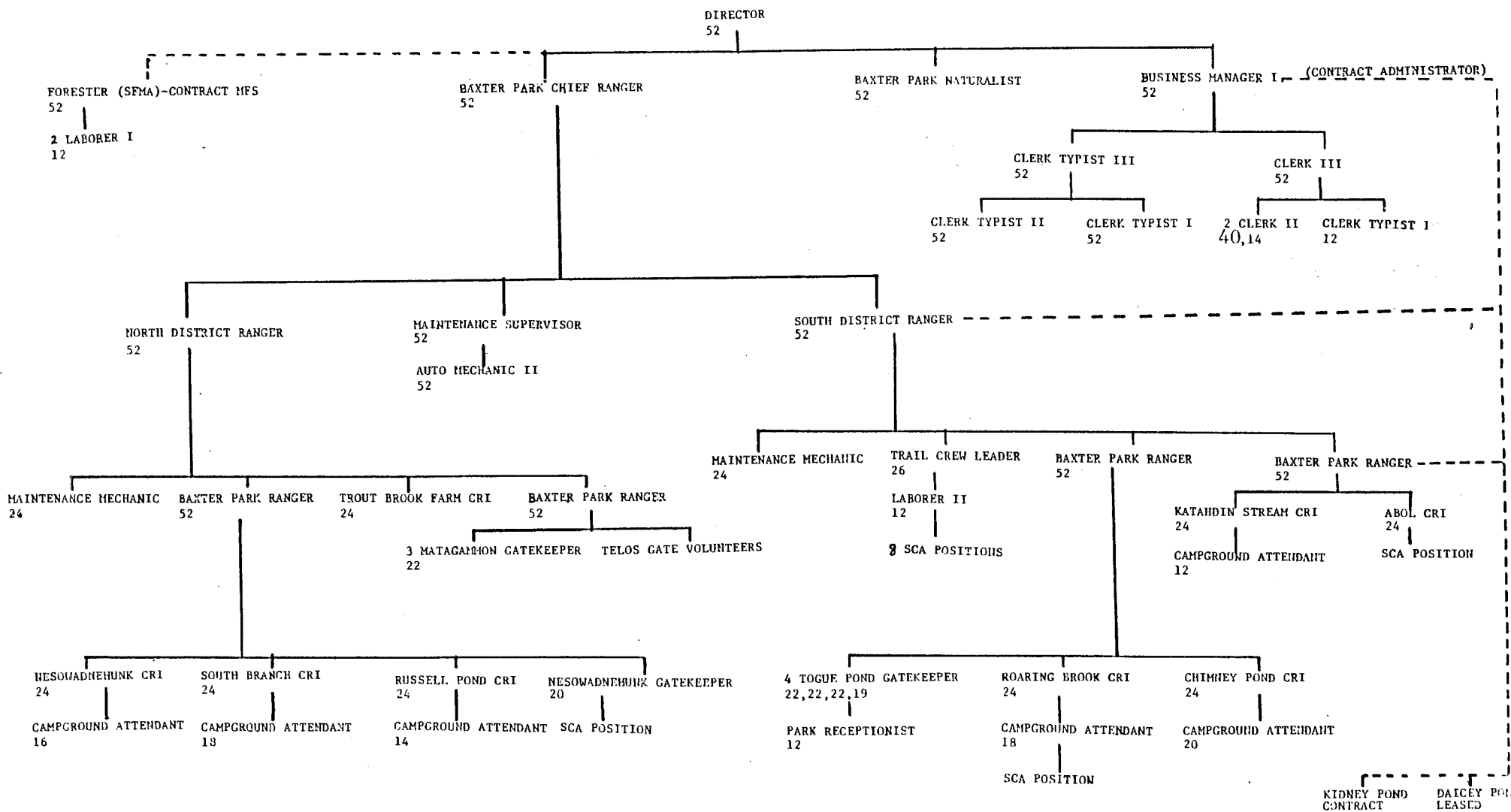
The Ranger at Chimney Pond is responsible for determining the Class Day of Katahdin. Closing applies only to portions of trails above treeline. Portions of trails below treeline will remain open.

<u>NUMBER OF CLASS DAYS</u>		<u>1</u>	<u>2</u>	<u>3</u>	<u>4</u>
Year:	1982	51	80	7	0
	1983	50	93	2	0
	1984	47	70	22	6
	1985	53	84	9	2

G. PERSONNEL LISTING
1985

43 Classified Positions
 3 Contract Services
 11 Student Conservation Association (SCA)
 Effective June 16, 1985 Per Reorganization

BAXTER STATE PARK AUTHORITY
 Comm., Inland Fisheries & Wildlife
 Attorney General
 Dir., Maine Forest Service



BAXTER STATE PARK

II. YEAR-ROUND POSITIONS - 1985

<u>Title/ Position Number:</u>	<u>Name:</u>	<u>Location:</u>
BSP Director 9429-0811	Irvin C. Caverly, Jr.	Headquarters, Millinocket
BSP Chief Ranger 9428-0966	Chris M. Drew	Headquarters, Millinocket
Business Manager I 0041-0481	Elizabeth M. Gray	Headquarters, Millinocket
BSP Maintenance Supv. 9427-0121	Philip M. McGlauflin	Headquarters, Millinocket
BSP District Rangers 9404-0946	Barry MacArthur	North District
9404-0945	Robert E. Howes	South District
BSP Rangers 9434-0946	Thomas P. Chase	North District
9434-0944	Loren C. Goode	South District
9434-0943	Bernard Crabtree (Act. Cap.)	South District
9434-0942	Charlie Kenney	North District
Interpretive Spec 0479A-0947	Gerald H. Merry	Headquarters, Millinocket
Auto Mechanic II 8303-0926	Edwin N. Jandreau	Headquarters, Millinocket
Clerk III 0003-0091	Janice T. Caverly	Headquarters, Millinocket
Clerk Typist III 0013-1081	Shirley F. Brewster	Headquarters, Millinocket
Clerk Typist II 0012-0871	Judith A. Hafford	Headquarters, Millinocket
Clerk Typist I's 0011-0925	Mary W. Greateon	Headquarters, Millinocket
0011-0927	Loretta G. Manzo	Headquarters, Millinocket
Maine Forest Service	Dennis Brennan	S.F.M.A.

III. SEASONAL POSITIONS - 1985

<u>Title/ Position Number</u>	<u>Name/Location</u>	<u>Weeks</u>	<u>Start</u>	<u>End</u>
MAINTENANCE RANGERS -				
	(Coolong - North)	24	6-3	11-16
	(Turner - South)	24	6-3	11-16
CAMPGROUND RANGERS -				
9425-0631	(Cushman - Nesowadnehunk)	24	5-6	10-19
9425-0021	(Crabtree - Russell Pond)	24	5-6	10-19
9425-0221	(Smith - South Branch Pond)	24	5-6	10-19
9425-0611	(Ward - Trout Brook Farm)	24	5-6	10-19
9425-0351	(Hendrickson - Chimney Pond)	24	5-6	10-19
9425-0641	(Redmond - Roaring Brook)	24	5-6	10-19
9425-0601	(Johnston - Abol)	24	5-6	10-19
9425-0391	(Merry - Katahdin Stream)	24	5-6	10-19
CAMPGROUND ATTENDANTS -				
9424-0841	(Curran - Chimney Pond)	20	5-27	10-12
9424-0741	(Hamer - Roaring Brook)	20	5-27	10-12
9424-0922	(Jacques - South Branch Pond)	18	5-27	9-28
9424-0461	(Leiter - Nesowadnehunk)	16	5-27	9-14
9424-0831	(Gordon - Katahdin Stream)	13	6-17	9-7
	(SCA Student - South)			
GATEHOUSE ATTENDANTS -				
9422-0171	(King - Togue Pond)	22	5-14	10-12
9422-0511	(Morrisette - Togue Pond)	22	5-14	10-12
9422-0361	(Pratt - Matagamon)	22	5-14	10-12
9422-0441	(Pratt - Matagamon)	22	5-14	10-12
9422-0201	(Watson - Matagamon)	16	5-14	9-1
	(A.C. Coolong - Matagamon)	6	8-29	10-10
9422-0501	(Johnston - Togue Pond)	22	5-14	10-12
9422-0521	(Matthews - Nesowadnehunk)	20	5-20	10-5
	(Vacant - Togue Pond)	12	6-23	9-7
9422-0531	(Dudley - Togue Pond)	4	5-27	6-27
	(A.C. MacDonald - Togue Pond)	2	7-1	7-15
	(MacDonald - Togue Pond)	10	7-16	9-28
	(SCA Student - Nesowadnehunk)	12	6-23	9-8
PARK RECEPTIONISTS -				
9210-0941	(King - Headquarters)	36	2-4	10-12
9210-0731	(Howes - Headquarters)	14	5-27	8-31
9210-0541	(Barr - Togue Pond Gate)	9	6-17	8-3
	(SCA Student - South District)	12	6-23	9-8
	(A.C. Osgood - Headquarters)	12	6-17	9-13
TRAIL CREW:				
Trail Crew Leader -				
9435-0141	(Kenway)	28	4-1	10-12
Laborer II -				
8002-0940	(Powell)	14	5-20	8-24
Laborer I -				
8001-0938	(Eight SCA Students)	12	6-2	8-24
8001-0939				

CONCLUSION:

Although we can take a great deal of satisfaction in the results of our efforts during 1985, we must now look ahead to the objectives of 1986. Of course, the prime objective is our continued efforts to contribute to the preservation of Baxter State Park while at the same time allowing public use and providing public services consistent with Governor Baxter's philosophy and intent. With the purchase of the Togue Pond Camps and restabilization efforts continuing, we should be able to do a better job at protecting the interest of the Park as well as at an appropriate time to provide some facilities in that area which are aesthetically pleasing and consistent with good management. So in 1986, we will continue to work towards repairs of the facilities, restabilization of the grounds and keeping the area secured so Nature can help us with our overall objectives. This addition to the Park's resources will in a long term be a tremendous asset to our overall operation and hopefully will help us with some of the problems we have encountered in recent years in the area of day use.

Day use control is an important part of our immediate future; we must get a handle on that as we did on overnight capacities in the early 70's. If the Park is to be a wilderness experience for its users, there is a need to implement policies to cut down on the overuse on our trails around Katahdin. I think the day-use policy that the Authority approved in 1985 and which will be implemented in 1986 is a small start but we are anxious to evaluate its results throughout the season and hopefully implement additional phases over the next five years which will assist us in curtailing overuse and provide a much better wilderness experience for the individuals using the Park. It is far better from both the management and the users' perspectives to be turned away on a first request to climb Katahdin than being forced to share Baxter Peak with 350 other people. This situation is hardly a wilderness experience.

Another goal we should strive for is to initiate steps in 1986 which will put the financial control of all Park resources directly and firmly in the hands of the Baxter State Park Authority. Legislation in 1985 has given State control to the Bureau of the Budget, Accounts and Control and Purchases directly over Authority funds. This, I believe, is neither the intent of Governor Baxter or in the best interest of Baxter State Park. Therefore, based upon a recent request by the Authority, I will be asking the Chairman of the Baxter Park Advisory Committee to review with that committee all of the options available to the Authority to turn this procedure around and submit recommendations as to which options are the best ones to proceed with. This is a most important issue and it could have a definite effect on the long-term management of the Park.

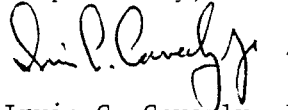
In 1986, we should continue to upgrade Park facilities; we have buildings that were built on mud sills in the early 1950's. As this report indicates along with previous reports, we have attempted to repair as many of these buildings as resources would allow in the last several years and we made good headway. However, there is a continued need to move forward in order to get all of our buildings in topnotch shape. I think we can do this with a good five year maintenance plan and I will be encouraging our Maintenance Division to complete that plan in 1986 along with stepped up efforts to bring all Park buildings up to the best maintenance standards as possible and then enter into an ambitious maintenance program that will keep them that way.

Finally, our most challenging goal is going to be the continued management of people, finances, and management of our natural features. This criteria will always be a challenge. But equally as challenging will be the orienting of people to the Park's philosophy and intent. Governor Baxter wanted the Park used "in the right unspoiled way". In order to do that, we, as managers of this vast area, must on a routine basis be willing to sit down with the Park users, explain our system, answer their ques-

tions, and solicit their support and cooperation in order to make this tremendous task work effectively. As your Director, I intend to do that and I intend to ask all staff members to assist me.

Our Park is about the only physical thing I can think of today that is mandated to last forever, to forever be available for the people of Maine. Hence, the reasons our jobs are so important and our responsibilities so far-reaching. Only with the efforts on the part of all will these goals be achieved as effectively in the future as Governor Baxter intended. Yet with the cooperation, enthusiasm, and commitment by all, it will be realized. For everybody's efforts toward this great goal, thanks!

Respectfully,

A handwritten signature in dark ink, appearing to read "Irvin C. Caverly, Jr.", followed by a period.

Irvin C. Caverly, Jr.
Director
Baxter State Park

ICC:jah

2. APPENDIXES

B. VOLUNTEER PROGRAM 1985 CERTIFICATION LIST

VOLUNTEER CERTIFICATE LIST (1985)

Linda J. Ives
Box 716
Gouldsboro, ME 04607

Ruth Buttler
Box 448
Brewerton, NY 13029

Latona K. Torrey
Winter Harbor, ME 04693

Tim J. Vrabel
514 A Main Street
Lewiston, ME 04240

James W. Yarnell
580 Upton Star Route
Newry, ME 04261

Bruce D. Gray
P.O. Box 441
Millinocket, Maine 04462

Kelley J. Jacques
P.O. Box 71
Oakland, ME 04963

Elgah R. Merry
Box 55
Stacyville, ME 04782

Frank H. Trautman
The Narrows
Islesboro, ME 04848

Jon A. Peterson
Kelley L. Peterson
Box 287
Kotzebue, AL 99752

David T. Ingerson
Logan W. Ingerson
6 Dundee Drive
P.O. Box 338
Plaistow, NH 03865

Kevin Slater
R.D. #2, Box 2940
Old Town, ME 04468

James A. Lyman
369 Congress Street
Millinocket, ME 04462

David R. Getchell, Sr.
Dory Getchell
RR #1, Box 888
Union, ME 04862

Ronald L. Lobdell, Sr.
Elva J. Lobdell
Ronald L. Lobdell, Jr.
Dean J. Lobdell
HCR 31, Box 390
Bath, ME 04530

Robert L. Burnham
Jean A. Burnham
P.O. Box 125
Hebron, ME 04238

Ava M. MacArthur
Rt. 1, Box 347
Island Falls, ME 04747

Norman A. Gilbert
Lucille D. Gilbert
P.O. Box 231
Hartland, ME 04943

Lynn L. Merry
P.O. Box 48
Stacyville, ME 04782

Doreen Renie Parent
Rt. 2, Box 1130
Norridgewock, ME 04957

Alice M. Crabtree
General Delivery
Monson, ME 04464

Richard C. Walker
Buckfield, ME 04220

VOLUNTEER CERTIFICATE LIST (1985)

Page 2

Lewis E. Newell
Lucille Newell
R.F.D. #1, Box 1802
Hampden, ME 04444

Paul B. Varney
Mavis L. Varney
Star Route 2
Box 110
North Turner, Me 04266

Teresa W. Arsenault
Box 1770
Brooks, ME 04921

Lawrence A. Philpott
Charlotte C. Philpott
R.F.D. #1, Box 251
Readfield, ME 04355

John Howard
Betty Howard
Rt. 2, Box 58
Orrington, ME 04474

Roland Hanscom
Margaret Hanscom
Rt. 2, Box 748
Orrington, ME 04474

Harold E. McNelly
Charlotte Lowell
Dyer Brook, ME

Homer T. Hinkley
Barbara C. Hinkley
Box 742
Turner, ME 04282

Stephen Wight
Marlene B. Wight
38 Leonard Lane
Old Town, ME 04468

Frazier Botting
Pearl Botting
Dyer Brook, ME

Phil W. Beckwith
Pat Beckwith (Separate address)
R.F.D #1, Box 3260
Athens Road
Skowhegan, ME 04976

Willis E. Howe
Bernice Howe
R.F.D. #1, Box 2640
Detroit, ME 04929

Richard J. Burhoe
Adams Road
Chesterville, ME

Earl Littlefield
Jean Littlefield
249 Bowdoin Street
Auburn, ME 04210

Barbara A. Rolfe
Front Street
Box 106
Brownville Junction, ME 04415

Carla A. Greaney
R.F.D. #1
Brownville, ME 04414

Christopher K. Cogan
P.O. Box 441
Millinocket, ME 04462

Melissa R. Gray
P.O. Box 441
Millinocket, ME 04462

Michael Capone
1414 N. Canal Street
Pittsburgh, PA 15215

James Bonnett
3433 Plumtree Dr., Apt. #C
Ellicott, MD 21823

VOLUNTEER CERTIFICATE LIST (1985)

Page 3

Robert Jenkinson
188 Redwood Avenue
Paterson, NJ 07522

Richard Kato
2519 Adrienne Drive
Ann Arbor, MI 48103

Judith Lynch
James Lynch
1 Cliff Street
Portland, ME 04102

Mark Sherwood
Lynn Lee Sherwood
603 Benner Street
Highland Park, NJ 08904

William Sussman
1804 Maple Avenue
Cherry Hill, NJ 08002

Mary Whitehead
43 Arnold Lane
Rowayton, CT 06853

Irwin Rosman
293 Greve Drive
New Milford, NJ 07640

George Neffinger
207 Lexow Avenue
Upper Nyack, NY 10960

Charles D. Peterman
741 Middlesex Drive
Macon, GA 31210

Christopher Carter
220 Tallwood Terrace
Roswell, GA 30076

Dave Carter
Nancy E. Phillips
22 Oakland Avenue
Shrewsbury, MA 01545

Leslie W. Kick
Norah Kick
7052 South Street
Box 49
Westmoreland, NY 13290

Reese Lukei
Melinda Lukei
1046 Azalea Ct.
Virginia Beach, VA 23452

Scott Owen Marx
Arbor Hill Drive
Pleasant Valley, NY 12569

Thomas M. Nolan
3137 Doreen Way
Louisville, KY 40220

Ken Stauffer
Carol Stauffer
35-15 84th Street, #4C
Jackson Heights, NY 11372

Jean Marie Wade
RR 5, Box 270 Seneca Trail
Oak Ridge, NJ 07438

Robert Osgood
Vesta Osgood
Cone Street Ext.
East Millinocket, ME 04430

Clifford Gross
Alice Gross
Bucksport, ME 04416

VOLUNTEER CERTIFICATE LIST (1985)

Page 4

Gordon E. Huff
Marguerite Huff
Newport, ME 04953

Ruth S. Scribner
Buckfield, ME 04220

Patricia Webber
P.O. Box 416
New Market, NH 03857

Winona Miklovich
R.F.D.
Swanville, ME 04915

Stephen Laney
Linda Laney
R.F.D. 1, Box 6475
Skowhegan, ME 04976