

MAINE STATE LEGISLATURE

The following document is provided by the
LAW AND LEGISLATIVE DIGITAL LIBRARY
at the Maine State Law and Legislative Reference Library
<http://legislature.maine.gov/lawlib>



Reproduced from scanned originals with text recognition applied
(searchable text may contain some errors and/or omissions)

PUBLIC DOCUMENTS OF MAINE

1913

BEING THE

ANNUAL REPORTS

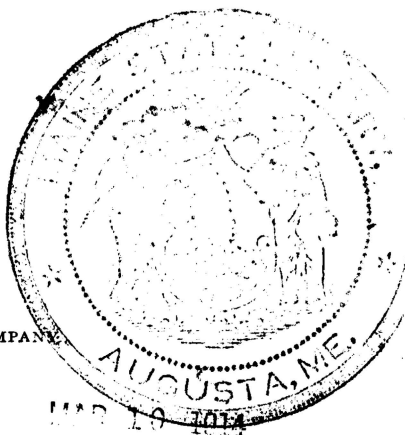
OF THE VARIOUS

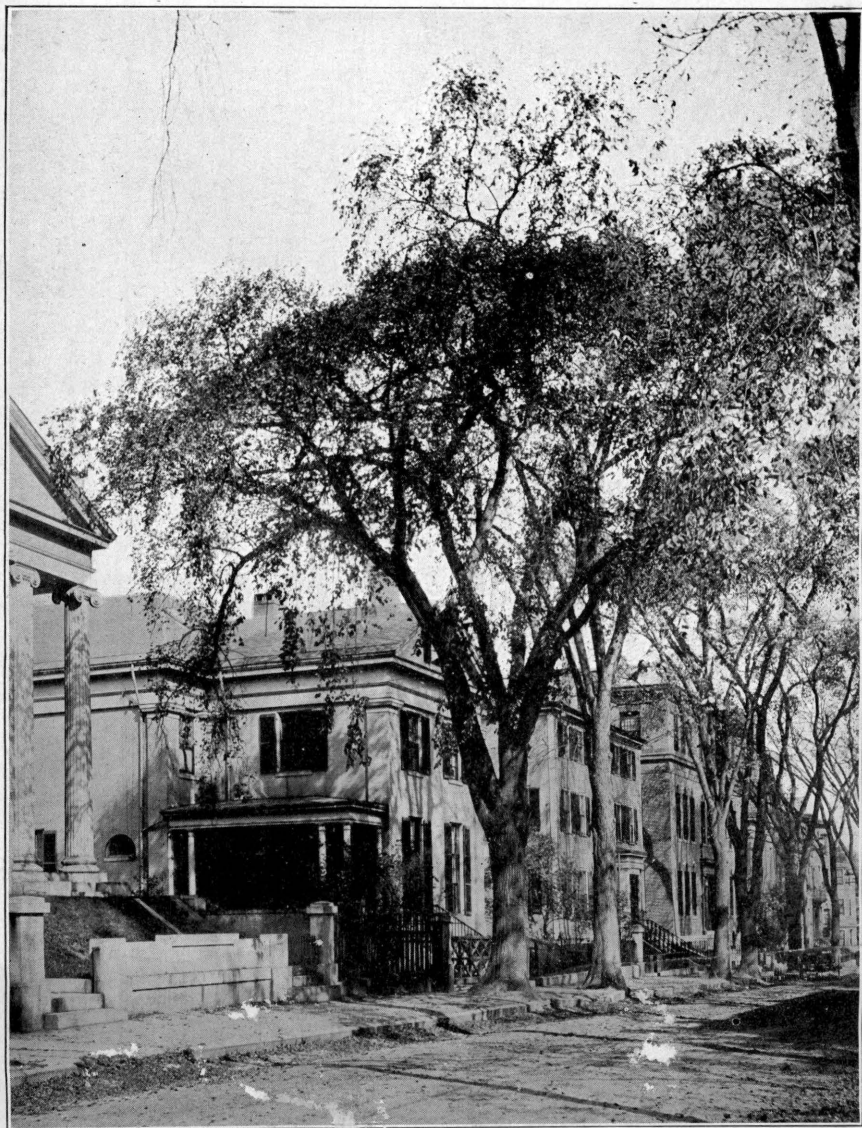
DEPARTMENTS AND INSTITUTIONS

For the Year 1912

VOLUME IV

WATERVILLE
SENTINEL PUBLISHING COMPANY
1914





Taylor Hall

Brownson Hall

School Building



School Building



REPORTS
OF THE
TRUSTEES AND PRINCIPAL
OF THE
MAINE SCHOOL FOR THE DEAF
IN PORTLAND

FROM

December 31, 1910 to December 31, 1912


WATERVILLE
SENTINEL PUBLISHING COMPANY
1913



BOARD OF TRUSTEES.

President.

THOMAS P. SHAW, Portland.

Treasurer.

ROSWELL C. BRADFORD, Portland.
HENRY W. SARGENT, Sedgwick,
HARRY E. PLUMMER, Lisbon Falls,
MELVIN P. FRANK, Portland.

Principal.

ELIZABETH R. TAYLOR.

Educational Department.

MARY L. DIVINE, 1st Assistant.
L. ISABEL HARRIS, Teacher.
ESTELLA M. DRAPER, Teacher.
ANNIE L. PATRICK, Teacher.
MABEL J. LIBBY, Teacher.
MARTHA M. TAYLOR, Teacher.
MARGARET J. WORCESTER, Teacher.
FANNIE P. KIMBALL, Teacher.
MARIA A. ROGERS, Teacher.
LENA E. ADAMS, Teacher.

Teachers of Gymnastics.

GRACE M. CLIFFORD,
JOHN HOGAN.

Teacher of Drawing.

LILIAN OWEN.

Physician.

RICHARD D. SMALL, M. D.

Industrial Department.

FRANK M. NELSON, Teacher of Printing.
GEORGE BESIG, Teacher of Carpentry.
LILIAN OWEN, Teacher of Sloyd and Basketry.
ANNIE S. MANDELL, Teacher of Cooking.
CARRIE W. GIRDLER, Teacher of Sewing.
MILDRED J. DAVIS, Teacher of Sewing.
MAY I. LAUBENSTEIN, Teacher of Dressmaking.

Household Department.

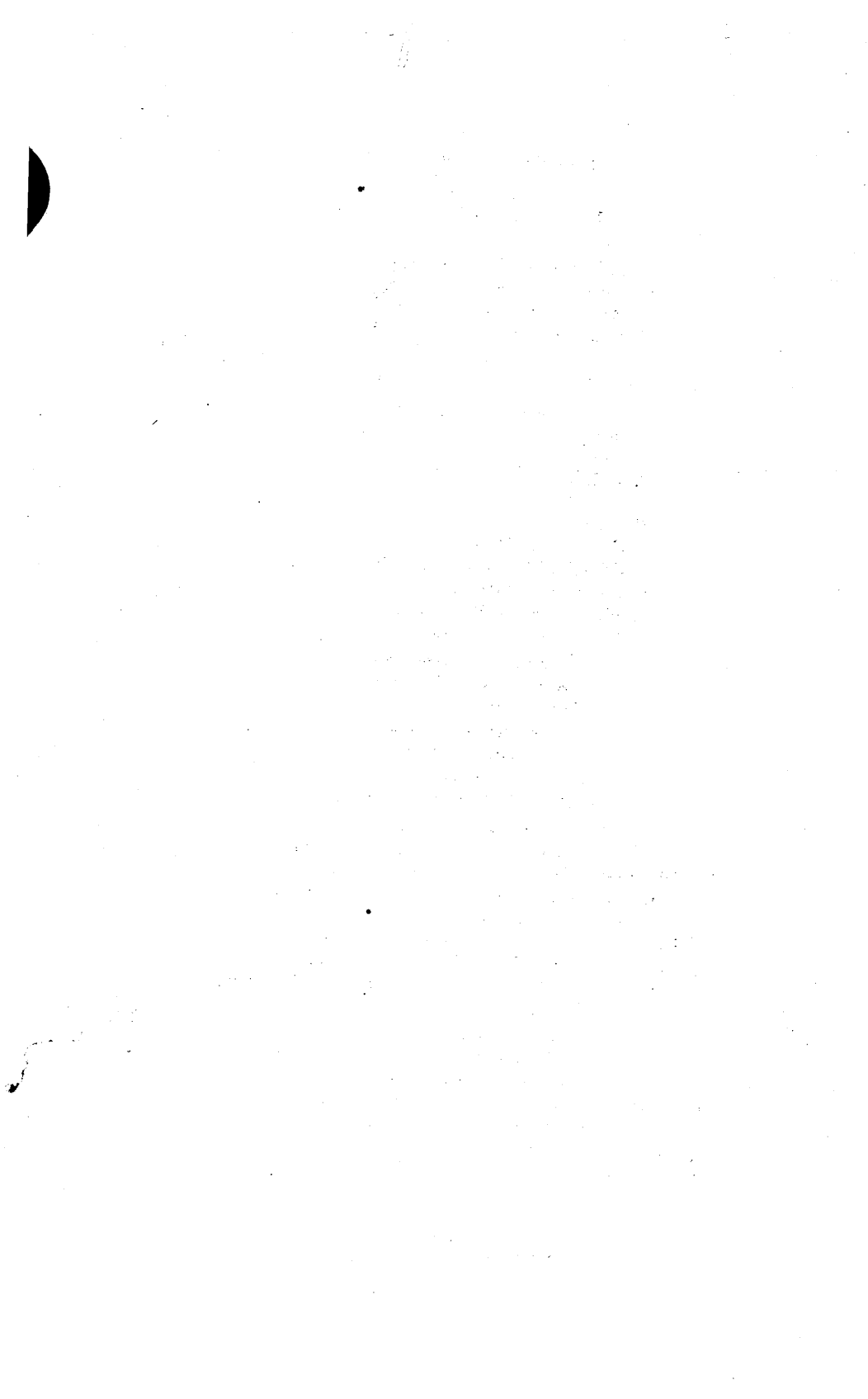
ANNIE S. MANDELL, Matron.
CARRIE W. GIRDLER, Supervisor of Small Girls.
MAY I. LAUBENSTEIN, Supervisor of Small Girls.
MILDRED J. DAVIS, Assistant Supervisor.
ALICIA M. STEVENS, Supervisor of Small Boys.
CAROLYN H. MORSE, Supervisor of Intermediate Boys.
GEORGE BESIG, Supervisor of Large Boys.

Engineer.

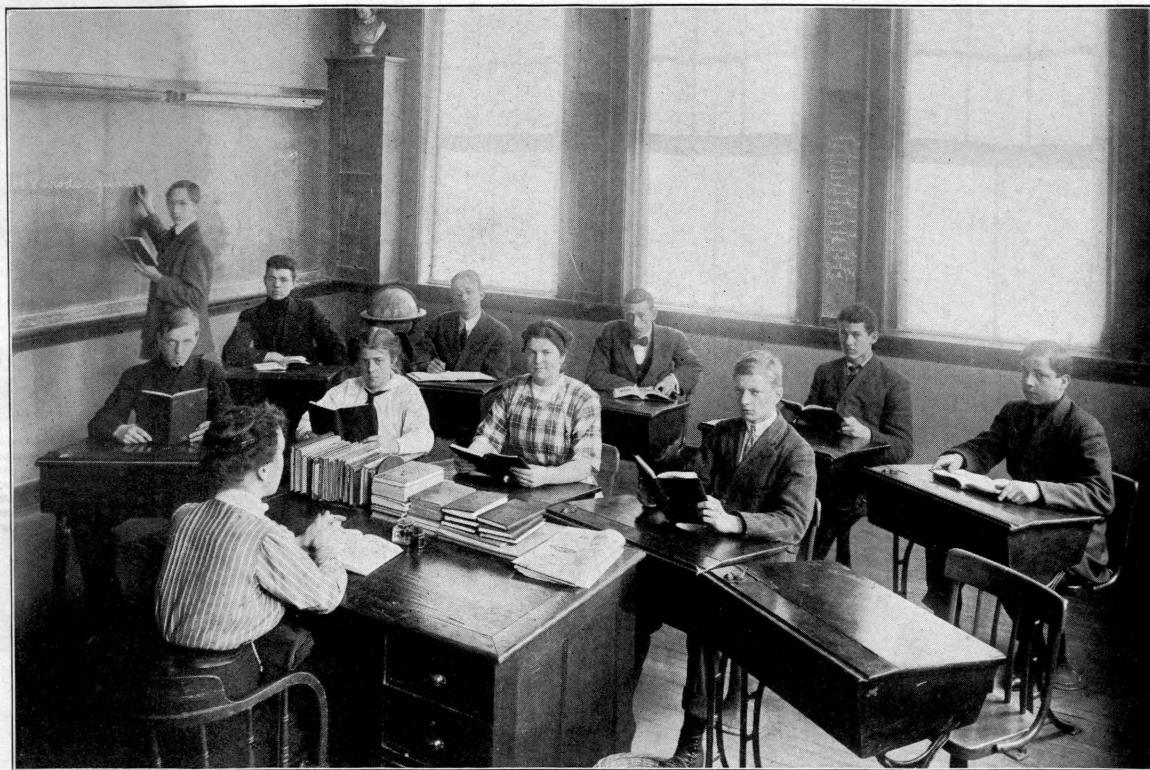
CARL H. LUFKIN.

Watchman.

PATRICK CRANAGE.







Advanced Class

TRUSTEES' REPORT.

To His Excellency, Frederick W. Plaisted, and the Honorable Executive Council:

The Trustees of the Maine School for the Deaf beg leave to submit their report for the years 1911-1912.

The success of the Institution, in the object sought for by its establishment, has been apparent by its continued advancement along its lines and the appreciation of its good work is manifest by the increased attendance of pupils availing themselves of its privileges.

The report of the principal, Miss Elizabeth R. Taylor, is herewith submitted showing enrollment of 133 for the year 1911 and 127 for the year 1912 and a present attendance of 113 pupils. The report also shows in detail the changes made in the faculty, improvement in the property and valuable suggestions along the lines of keeping the Institution up and meeting with advanced ideas.

We feel that the State of Maine is certainly fortunate in having the services of so able a principal as Miss Taylor has proven herself to be; fortunate in that her deep interest in her work, sound judgment in handling the many and perplexing details are given freely and without acclaim and to such great advantage that results can be easily seen and appreciated.

The faculty have given their best efforts and with a conscientiousness that entitles them to great praise and their success in making the Institution second to none, for its size, cannot be too strongly commended.

The trustees and faculty appreciate the honor of a visit by your Excellency and Council made during the year and trust that the inspection will increase the interest in the good work to still greater results and it is hoped the visit be repeated.

We believe and maintain that this is a State Institution for educational purposes, established along the lines of modern thought and progress and is not in any sense charitable beyond any other State Institution.

It is an Institution established for the advancement of those who would otherwise be deprived of opportunity to make the most of their capabilities and in line with what the generosity and sound judgment of the State gives to others.

The trustees approve of the recommendation of the principal for additional provision to cover the needs of hospital and physical requirements and trust that a favorable consideration will be given them. The needs and urgency heretofore expressed are certainly not lessened and should not longer continue.

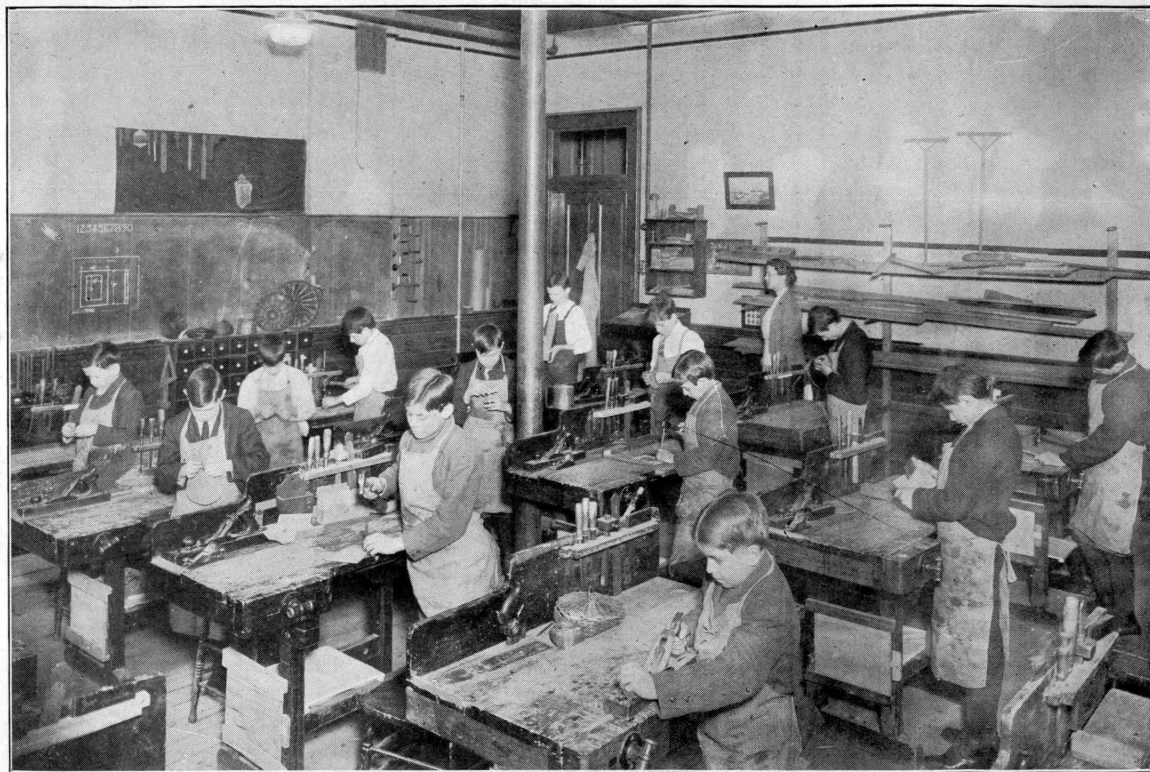
The retirement by provision of law of the Hon. E. B. Winslow, who was elected to the Executive Council, was a great loss to the school and the Board of Trustees. His great executive ability and deep interest in the welfare of the school was of material advantage; but we have the assurance of his readiness to give of his time and advice and that his interest will always remain in advancing the best interest of the Institution.

We are under obligation for his assistance as evidenced many times since his retirement.

The appointment of Hon. M. P. Frank to fill the vacancy was a happy one and will be of great value and importance toward advancing the best interests of the school and its object.

No line of effort in bettering the conditions both for the individual and the State can be productive of greater results or appeal more strongly to the human mind and heart than is being done at the Maine School for the Deaf, and a visit to see the conditions and provision made for the advancement of those needing the requirements will prove this and more. The painstaking efforts of the faculty, the patience shown, and successful efforts put forth cannot be too strongly commended; then the grand results as shown in the earnestness of the pupils, their glowing faces, bright gladsome smiles, as success meets these efforts, certainly appeals to all those who love children and would render their lives more happy, let alone the fact that they are being fitted to meet and take their share in the world's work.

Respectfully submitted for the
BOARD OF TRUSTEES,
THOS. P. SHAW, *President.*



Manual Training Room



MAINE SCHOOL FOR THE DEAF.

TREASURER'S REPORT FOR TWO YEARS, DECEMBER 26, 1910 TO
DECEMBER 26, 1912.

Debit:

Cash on hand Dec. 25, 1910.....		\$111 03
Received from State of Maine,		
Apr. 12, 1911.....	\$4,375 00	
Apr. 29, 1911.....	2,000 00	
May 24, 1911.....	2,000 00	
June 23, 1911.....	1,000 00	
July 18, 1911.....	2,000 00	
Sept. 15, 1911.....	1,000 00	
Oct. 14, 1911.....	2,000 00	
Nov. 24, 1911.....	1,000 00	
Dec. 15, 1911.....	2,000 00	
Jan. 15, 1912.....	3,023 67	
Feb. 14, 1912.....	2,026 83	
Mar. 12, 1912.....	2,067 50	
Apr. 12, 1912.....	2,261 58	
May 7, 1912.....	2,047 17	
July 15, 1912.....	966 74	
Aug. 16, 1912.....	247 72	
Oct. 16, 1912.....	2,555 18	
Nov. 14, 1912.....	2,692 73	
Dec. 13, 1912.....	2,759 53	
Dec. 30, 1912.....	2,726 09	\$40,749 74
Received from State of New Hampshire,		
Jan. 4, 1911.....	\$3,150 00	
Mar. 10, 1911.....	3,150 00	
May 20, 1912.....	6,300 00	\$12,600 00
Miscellaneous	87 25	87 25
		<hr/>
		\$53,548 02

Credit.

Expenses:	1911	1912	Total.
Services and expenses of trustees.....	\$337 90	\$310 70	\$648 60
Salaries teachers Literary Department.	9,235 00	8,340 00	1,755 00
Salaries teachers Literary Department.	9,235 00	8,340 00	1,757 00
Salaries teachers Industrial Department	1,910 00	1,797 50	3,707 50
Wages of employees	3,832 79	3,682 90	7,515 69
Fuel and light	1,956 31	2,563 78	4,520 09
Water and ice	326 53	282 95	609 48
Groceries and provisions	2,054 83	2,248 79	4,303 62
Butter, eggs and milk	1,332 79	1,345 54	2,678 33
Meats and fish.....	1,283 91	1,337 42	2,621 33
Laundry	411 70	327 30	739 00
Books, periodicals and school supplies	231 96	156 71	388 67
Medicine and attendance.....	244 33	254 08	498 41
Manual training and misc. supplies...	1,202 39	1,181 28	2,383 67
Household furnishings	437 88	1,063 75	1,501 63
Repairs to buildings and ground.....	1,377 79	1,583 58	2,961 37
Insurance	385 95		385 95
Tel., postage, stationery and printing..	175 36	125 74	301 10
Traveling expenses and sundries.....	112 87	74 46	187 33
	\$26,850 29	\$26,676 48	\$53,526 77
Balance			21 25
			\$53,548 02

Respectfully submitted,

ROSWELL C. BRADFORD,

Treasurer.



Class in Sewing



PRINCIPAL'S REPORT.

To the Board of Trustees of the Maine School for the Deaf:

GENTLEMEN:—The following report for the years 1911 and 1912 is respectfully submitted:

ATTENDANCE—1911.

	Boys.	Girls.	Total.
Enrollment January 1, 1911.....	60 +	52 =	112
Admitted during the year.....	13 +	8 =	21
Total enrollment for the year.....	73 +	60 =	133
Left during the year.....	12 +	10 =	22
Enrollment December 31, 1911.....	61 +	50 =	111

1912.

Enrollment January 1, 1912.....	61 +	50 =	111
Admitted during the year.....	8 +	8 =	16
Total enrollment for the year.....	69 +	58 =	127
Left during the year.....	7 +	7 =	14
Enrollment December 20, 1912.....	62 +	51 =	113

Of the 36 new pupils admitted the following causes of deafness were given:

Typhoid fever	1
Adenoids	2
Gathering in head.....	2
Spinal Meningitis	9
Scarlet fever	1
Measles	3
Delicate Health	1
Sickness	1
Spasms	1
Whooping Cough	1
Ear-ache	1

Fall	1
Catarrh	1
Born Deaf	10
No record	1

 36

The age at which deafness occurred was as follows:

Less than one year	16
From 1 to 2 years	6
“ 2 to 3 years	9
“ 4 to 5 years	1
“ 5 to 6 years	1
“ 7 to 8 years	1
“ 8 to 9 years	1
No record	1

 36

HEALTH.

The physical welfare of the children entrusted to our care is a grave responsibility and until there can be complete isolation of contagious diseases, epidemics may be looked for and expected.

A hospital is an imperative need. This fact has been reiterated again and again. Twenty-six cases of measles and twenty-five of mumps may give some conception of the progress of contagion which, with no hospital facilities, must be allowed to run its course.

One case of scarlet fever was removed to the Isolation Hospital and the spread of the disease was checked.

Four days after the opening of school in September of this year a case of diphtheria developed and this was followed by nine others. The school physician, Dr. Richard D. Small, and the nurses were unremitting in attendance and every care and comfort were provided and all made complete recovery.

In May, 1911, a case of pneumonia proved fatal notwithstanding the daily attendance of Dr. Friend, the father of the patient, and our own physician. In the spring of 1912 a broken leg was successfully treated. We are indebted to Dr. Walter D. Williamson and Dr. Philip W. Davis and the authorities of

the Maine General Hospital for the care and treatment of a case of appendicitis. Another pupil with appendicitis was able to reach home before an operation was necessary.

We are also indebted to Dr. Stanwood E. Fisher and those in authority at the Maine Eye and Ear Infirmary for an operation for the removal of adenoids.

EDUCATIONAL DEPARTMENT.

Our school building and equipment are modern and convenient and compare favorably with other schools of like character. The teachers endeavor to keep up with the latest ideas in methods by reading, discussions, etc. Four of the faculty attended the summer meeting of the American Association to Promote the Teaching of Speech to the Deaf, which was held in Providence, R. I., June 25 to July 2, 1912, and derived much profit therefrom.

A Teachers' Association has been formed, meeting monthly at the homes of the members and the subjects discussed tend to the improvement of class-room work.

In June, 1911, a class of eight pupils was graduated. Among the number was a promising young man of eighteen who had been with us since he was five years of age. Ralph Howard Friend was the only child of Dr. and Mrs. George E. Friend of Augusta. Life seemed to have greater promise for him than for many, but a few weeks before the graduating exercises he was stricken with pneumonia and died May 6, 1911, after five days illness. The other members of the class have gone out, we hope, prepared to take up life's duties. With our meagre understanding, we can only trust that Ralph was better equipped than his class-mates and for that reason was called to a higher life and more important duties.

At the close of school in June, 1911, Miss Kate E. Hay, teacher in the literary department; Miss Grace Gorsline, teacher of drawing and sloyd; and Miss Ruth Harding, teacher of domestic art, resigned to be married. Miss Grace Clifford, teacher of gymnastics, accepted a more lucrative position in the Westbrook schools and Miss Lucy J. Hadley, teacher of domestic science, accepted a position in Boston. These ladies did excellent work in their various branches and we regret losing them from our staff.

Miss Lena E. Adams was appointed to fill the vacancy caused by the resignation of Miss Hay. Miss Adams came to us from the school for the deaf at Providence, R. I.; she is a graduate of the Portland High School and received training in the special work of teaching the deaf at Mystic, Connecticut.

As has been stated in former reports the Maine School for the Deaf is a purely educational institution and as such should be classified with the educational institutions of the State.

It is the duty and safeguard of the State to educate all of her children and no better investment can be made than to include the deaf among the number. The stigma of charity should not accompany the gift and the educated deaf make a justifiable protest against the classification of their school with correctional, custodial and penal institutions. The deaf child's more fortunate brother is, perhaps, conveyed to and from school at public expense; the State Normal Schools and the University of Maine are maintained at great public cost, yet students at these schools would rightly make strenuous objections to being classed with criminals and idiots and being visited by Boards of Charities and Corrections.

The Maine School for the Deaf is a part—and a most important part—of the educational system of the State and it should be so classed.

INDUSTRIAL DEPARTMENT.

Since the organization of the Industrial Department in 1897, the boys' manual work has been under the capable supervision of Miss Estella M. Draper. As is well known pioneer work is the most difficult and Miss Draper is to be commended for bringing the manual work of the school to a standard that compared favorably and in individual cases excelled the work of other schools of like character.

In recognition of Miss Draper's services, in 1909, she was appointed "Teacher in Charge" of the Industrial Department and under her wise direction many innovations and improvements were made; but in June, 1911, Miss Draper, who is also a teacher in the Literary Department, decided that the onerous duties of the school-room were sufficient tax on her strength and asked to be relieved of the extra work which she had so acceptably performed for fifteen years. Her resignation was



Class in Cooking



received with regret and Mr. George Besig, a man of education and training, was appointed to take charge of the older boys in carpentry and advanced wood-working. Mr. Besig has done good work and the application and industry of the boys prove that in his appointment a wise selection has been made. During the past two years hard-wood floors have been laid, many substantial pieces of furniture made, screens renovated and renewed; in fact all the repair work of the plant in carpentry, glazing, lock-smithing and general repairs has been done as thoroughly and expeditiously as if by trained mechanics. In this connection it may be well to mention that two new bathrooms have been installed; the ventilating, draining and plumbing being done by the engineer with the assistance of the boys; and all plumbing and furnace repairs have been made—the cost of material being the only expense. Beside the advantage of practical training to those who assist in this work, the economic side is not to be over-looked in this age when a work-man demands \$5.00 for an eight-hour day.

Miss Lillian Owen, who has studied at the School of Applied Design for Women and is a graduate of the School of Fine and Applied Art of New York, was appointed in September, 1911, teacher of drawing and sloyd and is doing acceptable work.

In September of this year Miss May I. Laubenstein was appointed teacher of sewing and dress-making, having had one year's experience in the American School for the Deaf at Hartford, Connecticut; and Miss Mildred J. Davis, a graduate of our own school, was appointed in September, 1911, teacher of primary sewing.

HOUSEHOLD DEPARTMENT.

The domestic arrangements have been efficiently directed by the matron, Mrs. Mandell, for the past eight years.

The culinary department has been conducted with economy and skill. The ruddy, happy faces of the children, which are so frequently commented upon, are unanswerable arguments in favor of the plentiful and nutritious diet provided and the regular mode of living.

Many additions and improvements have been made to lessen labor and to expedite the preparation of food. A French range and a gas-range have been installed; a vegetable parer and a

dish-washing machine, with electrical attachments, perform the work necessary in less time and with much economy of labor.

October 17, 1911, James Doherty was appointed watchman. Mr. Doherty performed faithfully the duties assigned him until December 11th of the same year when we were notified of his sudden death from apoplexy. December 13, 1911, Patrick Cranage was appointed watchman to fill the vacancy.

REPAIRS AND IMPROVEMENTS.

The following is a summary of the principal repairs and improvements made during the past two years:—The exterior of Brownson Hall and Taylor Hall has been painted; also the walls and wood-work in both houses have been painted, ceilings whitened and the floors thoroughly cleaned off and re-finished; the office, reception-room and officers' dining-room re-papered.

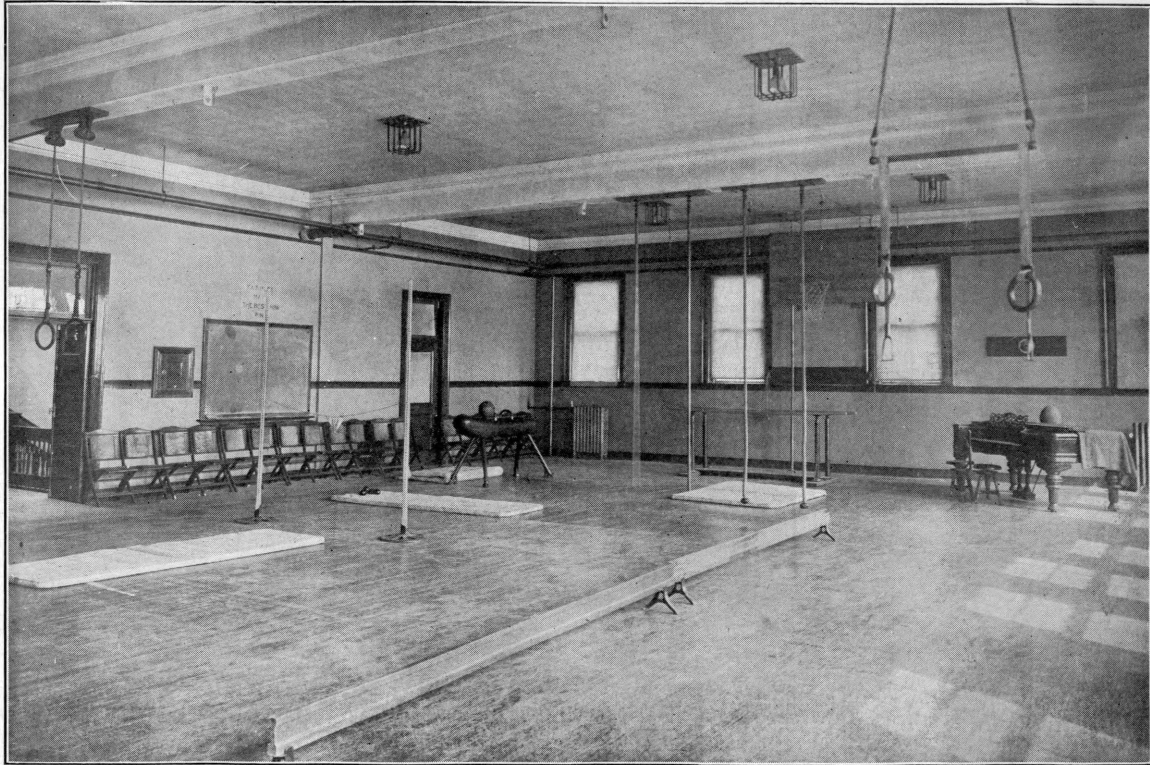
The boiler in Brownson Hall was re-tubed and new brick work put in; the roof of Brownson Hall repaired and the roof of the back building of Taylor Hall re-shingled; copper conductors repaired and renewed; two new bath-rooms fitted up; a new hot water heater and a copper boiler with a capacity of 200 gallons; an 8' French range and a gas range for the kitchen; a local telephone exchange connects the different buildings.

A much needed addition to the pupils' dining-room was made by enclosing a space 24' + 26' between the two houses. A cement floor was laid and the heating and electric lighting was done by the engineer. A window was cut in the library of the girls' house; new heating pipes were placed on two sides of the girls' play-room and additional radiation makes several rooms more comfortable.

A Blakeslee Dish-Washer was purchased; and as a precautionary measure tiling was laid around the range and under the Reid oven.

Sixty mattresses were made over; a dozen white enamelled beds bought and 20 old beds re-enamelled; new shades were put at all the windows in Brownson Hall; about 200 chairs were wired and re-stained and 6 dozen chairs and 4 dozen stools purchased.

A Baker Loom was bought which will add another handicraft to our industrial training.



Gymnasium



NEEDS.

Additional dormitory accommodations are a necessity. The capacity of the sleeping apartments have been taxed beyond their limit. Three boys are sleeping in a room which has been used as an infirmary.

Thirty-one girls and four adults are crowded into a house which when purchased was occupied by a family of five.

Hospital accommodations, where effective quarantine may be maintained, are a demand which it is criminal longer to ignore.

The Committee from the last Legislature was shown existing conditions during the epidemic of measles and the importance of proper hospital facilities was pointed out. We are at present undergoing a siege of diphtheria and the urgent need of a hospital cannot be too emphatically stated.

A laundry properly equipped and adequate to the needs of this large household should be immediately installed. Our laundry equipment consists of the usual family wash-tubs, a wash-board and a wringer. We are now dependent on a public laundry to which, for reasons apparent, clothing cannot be sent during an epidemic. The sources of our contagious diseases are often a query and the solution may possibly be found in the public laundry.

In January, 1911, Hon. Edward B. Winslow, having been appointed a member of the Governor's Council, resigned from the Presidency of the Board of Trustees. Mr. Winslow had been a member of the Board since the school was made a State institution in 1897 and always encouraged and promoted every plan for improvement, advancement and growth. His wise counsel and sympathetic appreciation have aided much in the furtherance of the work and since his retirement the school has been repeatedly and substantially assured of his continued interest in its welfare.

Col. Thomas P. Shaw was elected President of the Board and Hon. Melvin P. Frank was appointed Trustee to fill the vacancy.

To President Shaw, who has given of his time and counsel unsparingly, and to each member of the Board I give sincere thanks for the practical sympathy and the valuable and efficient services which have been accorded me in the discharge of my duties.

Respectfully submitted,

December 20, 1912.

ELIZABETH R. TAYLOR.

LIST OF PUPILS.

DECEMBER—1912.

Boys.

Name.	Residence.	County.
Argencourt, Napoleon	Augusta	Kennebec.
Bailey, C. Summer	Deering	Cumberland.
Ballard, William E.	Fryeburg	Oxford.
Bartol, Charles W.	Falmouth	Cumberland.
Bishop, Earl W.	Fort Fairfield	Aroostook.
Bradbury, Leon A.	Auburn	Androscoggin.
Bray, Phillips L.	Vinalhaven	Knox.
Call, Harry	Franklin	New Hampshire.
Chamberlain, Earl E.	Bangor	Penobscot.
Clark, Harold D.	Thorndike	Waldo.
Clark, Robert G.	Manchester	New Hampshire.
Crateau, Ernest	Sanbornville	New Hampshire.
Cyr, Fred J.	Grand Isle	Aroostook.
Devoux, Eugene H.	Brewer	Penobscot.
Dingley, Frank L.	Auburn	Androscoggin.
Dozois, Arsene E.	Manchester	New Hampshire.
Dubé, Aimée	Acadia	Aroostook.
Dubé, Thomas P.	Acadia	Aroostook.
Duggan, Lawrence J.	Berlin	New Hampshire.
Duncan, John L.	Rumford Falls	Oxford.
Fogg, Elmer D.	Lewiston	Androscoggin.
Frazier, Frederick C.	North East Harbor	Hancock.
Fritz, Charles H.	Portsmouth	New Hampshire.
Gleason, Earl	Franconia	New Hampshire.
Grant, Linwood C.	Orono	Penobscot.
Grindle, Ralph T.	Belfast	Waldo.
Hale, James R.	Castine	Hancock.
Hanson, Kenneth Mc K	Houlton	Aroostook.
Harris, Milton J.	Charlestown	New Hampshire.
Johnson, Charles E.	Dedham	Hancock.
Johnson, James M.	Dedham	Hancock.
Kimball, Wilfred W.	West Paris	Oxford.
Landry, William	Sanford	York.
Lane, Erlon G.	New Sharon	Franklin.
LaBell, Alfred J.	Great Works	Penobscot.
LaRiche, Armand	Auburn	Androscoggin.
Leighton, Carl M.	Deering	Cumberland.
Leighton, Keith M.	Westbrook	Cumberland.
Lovejoy, Franklin E.	Augusta	Kennebec.
Mattson, William	Marlborough	New Hampshire.
Morrell, G. Amos.	Limestone	Aroostook.
Mullen, H. Pierpont.	Franklin	New Hampshire.
McNally, Charles W.	Auburn	Androscoggin.
Page, Willis E.	Ashland	Aroostook.



Girls' Basket Ball Team



Name.	Residence.	County.
Pelletier, Leon	St. Agatha	Aroostook.
Pelkey, Edgar	Fairfield	Kennebec.
Plourde, Joseph	Caribou	Aroostook.
Plummer, Edward	Lisbon Falls	Androscoggin.
Robitaille, Reogene	Manchester	New Hampshire.
Rogers, Victor F.	Laconia	New Hampshire.
Rybansky, Adolphus	Great Works	Penobscot.
Sargent, Russell L.	West Gouldsboro	Hancock.
Spiller, Arthur G.	Portland	Cumberland.
Spruce, Edward	Eagle Lake	Aroostook.
Szopa, Ladislas	Manchester	New Hampshire.
St. Hilaire, Joseph	Manchester	New Hampshire.
Sturgis, Walter L.	Augusta	Kennebec.
Strout, Herbert C.	Charleston	Penobscot.
Tinkham, Norris E.	Westbrook	Cumberland.
Toulouse, Laurier	Waterville	Kennebec.
Wadlin, Ernest H.	Center Belmont	Waldo.
Ward, Robert H.	Portland	Cumberland.

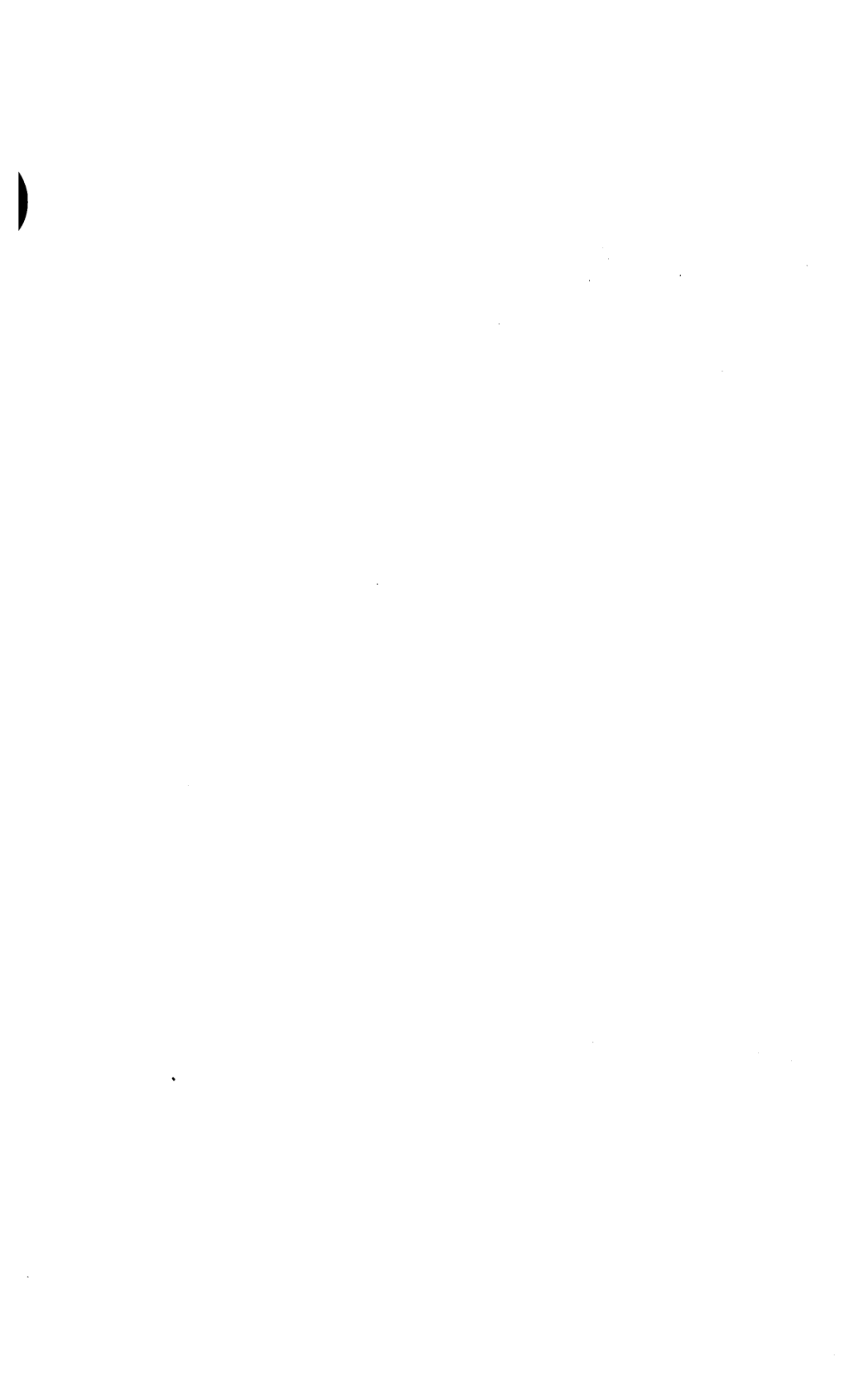
Girls.

Name.	Residence.	County.
Brown, Alma M.	Stockton Springs	Waldo.
Boisvert, Juliette Y.	Manchester	New Hampshire.
Burke, Catherine	Manchester	New Hampshire.
Burke, Ellen T.	Manchester	New Hampshire.
Champagne, Eva D.	Apthorpe	New Hampshire.
Charette, Amanda M.	Fort Kent	Aroostook.
Coyne, Delia	Portland	Cumberland.
Crocker, Ruth T.	Foxcroft	Piscataquis.
Davis, Kathleen M.	Rockland	Knox.
D'Amour, Yvonne G.	Lewiston	Androscoggin.
Dubé, Emily M.	Acadia	Aroostook.
Eustis, Augusta F.	Dixfield	Oxford.
Feehey, Mary A.	Portland	Cumberland.
Flagg, Inez B.	Auburn	Androscoggin.
Flaherty, Mary	Portland	Cumberland.
Flynn, Ethel M.	Bedford	New Hampshire.
Garneau, Dorilda M.	Lewiston	Androscoggin.
Healey, Nora E.	Manchester	New Hampshire.
Huot, Sylvia	Manchester	New Hampshire.
Jackson, Eugenia M.	Nashua	New Hampshire.
Jarvis, Hattie M.	Bangor	Penobscot.
Jarvis, Mabel M.	Bangor	Penobscot.
Johnson, Martha J.	Dedham	Penobscot.
Kidder, Ruby E.	Gouldsborough	Hancock.
Lawry, Eda J.	Lawry	Hancock.
Leavitt, Marion E.	Waldoborough	Lincoln.
Lesperance, Alice	Manchester	New Hampshire.
Madore, Emma M.	Lille	Aroostook.
Mattson, Sophia	Marlborough	New Hampshire.
McLaughlin, Helen M.	Trescott	Washington.
Martinson, Laura F.	Bangor	Penobscot.
Morrell, M. Irene	Limestone	Aroostook.
Morrell, Susie K. M.	Limestone	Aroostook.
Nichols, Gladys M.	Wolfeborough	New Hampshire.
O'Connor, Helen L.	Fairfield	Kennebec.
Patterson, Hazel M.	Presque Isle	Aroostook.

Name.	Residence.	County.
Philbrick, Audrey G....	Portland	Cumberland.
Pinette, Mary V.....	Claremont	New Hampshire.
Plourde, Eugenie	Stockholm	Aroostook.
Pratt, Alice M.....	Waterville	Kennebec.
Ramsdell, Evelyn P....	Bangor	Penobscot.
Robinson, Bertha M....	North Perry	Washington.
Savageau, Bertha	Manchester	New Hampshire.
Scott, Jessie M.....	Skowhegan	Somerset.
Scott, Margaret C.....	Skowhegan	Somerset.
Seader, Annie M.....	Portland	Cumberland.
Stevens, Beatrice A. P..	Wells Beach	York.
Spruce, Alice M.....	Eagle Lake	Aroostook.
Thibodeau, Sophie A....	Presque Isle	Aroostook.
Welcome, Mary A.....	Nashua	New Hampshire.
Woods, Laura G.....	Waterville	Kennebec.
Girls	62	
Boys	51	



Basket Ball Team



TO PARENTS OF DEAF CHILDREN.

The Maine School for the Deaf is a public school designed for the instruction of children whose hearing is so seriously impaired as to be incapable of receiving instruction in the common schools.

It is sustained by the State and is open to all deaf children in the State of Maine. The combined system of instruction, which includes all known methods of teaching the deaf, is used, especial attention being given to speech and lip-reading. The course of instruction includes all the English branches and every pupil is given industrial training while in attendance.

Applicants for admission must be between the ages of five and twenty-one years, and free from any constitutional malady that may render them incapable of receiving instruction.

The school term is from September 10 to June 15, with one week's intermission at Christmas.

Further information will be given on application to the principal of the school, at 85 Spring street, Portland, Maine.