

MAINE STATE LEGISLATURE

The following document is provided by the
LAW AND LEGISLATIVE DIGITAL LIBRARY
at the Maine State Law and Legislative Reference Library
<http://legislature.maine.gov/lawlib>



Reproduced from scanned originals with text recognition applied
(searchable text may contain some errors and/or omissions)

PUBLIC DOCUMENTS OF MAINE:

1907

BEING THE

ANNUAL REPORTS

OF THE VARIOUS

Departments and Institutions

FOR THE YEAR 1906.

VOLUME III.

AUGUSTA
KENNEBEC JOURNAL, PRINT
1907

REPORTS

OF THE

*Trustees, Resident Officers and
Visiting Committee*

OF THE

MAINE INSANE HOSPITAL

AND

Eastern Maine Insane Hospital

December 1, 1906.

AUGUSTA
Kennebec Journal Print
1907

OFFICERS FOR 1906-1907.

Trustees.

FREDERICK ROBIE, M. D., Gorham, President.
CHARLES E. FIELD, Bangor, Secretary.
Mrs. J. R. SMITH, Litchfield.
THOMAS WHITE, Bangor.
SIDNEY M. BIRD, Rockland.
GEORGE E. MACOMBER, Augusta.
EDWARD E. CHASE, Bluehill.

Resident Officers.

BIGELOW T. SANBORN, M. D., Superintendent.
HORACE B. HILL, M. D., Assistant Superintendent.
H. L. HORSMAN, M. D., Second Assistant.
J. B. MACDONALD, M. D., Third Assistant.
GERTRUDE E. HEATH, M. D., Fourth Assistant.
JOHN L. DAVIS, M. D., Interne.
MANNING S. CAMPBELL, Steward and Treasurer.
ALICE G. TWITCHELL, Matron.
G. R. CAMPBELL, M. D., Pathologist and Bacteriologist.

Chaplains for 1907.

REV. C. G. MOSHER, Augusta.
REV. E. E. NEWBERT, Augusta.
REV. D. H. EVANS, Augusta.
REV. C. W. DOHERTY, Augusta.

Subordinate Officers.

JOHN A. GETCHELL, Hospital Clerk.
A. M. PINGREE, Assistant Hospital Clerk.
T. W. EVERETT, Second Assistant Hospital Clerk.
GEO. M. FELLOWS, Superintendent's Clerk.
ROY H. CURTIS, Store Clerk.

Supervisors.

Men.	Women.
VERMONT R. LUCE.	Mrs. ANNIE D. McLEAN.
GEORGE E. KIMBALL, First Assistant.	MISS MARIA H. McFEE, Ass't
CHARLES H. DAVIS, Second Assistant.	

Women's Pavilion.

Miss ANNIE E. McLAUGHLIN.
Mrs. ELIZABETH E. HIGGINS, Assistant.

Men's Pavilion.

OLIN B. HUNNEWELL, Assistant.

E. C. Burleigh, Pavilion.

HENRY W. PLACE, Assistant.

Infirmaries.

Men.	Women.
CLYDE L. PRATT, Special Nurse.	ELIZABETH McBRIDE, Special Nurse.

Engineer.

W. L. SAMPSON.
W. H. ALLEN, Superintendent, Farm, Garden and Floral Department.

Standing Committees for 1906-1907.

- On Conference with Legislative Committee—Robie, Chase, White and Macomber.
 - On Finance—White, Bird and Macomber.
 - On Buildings and Improvements—Bird, Robie and Chase.
 - On Farm Stock and Outside Property—Field, Chase and Robie.
 - On Library—Chase, White and Dr. Sanborn.
 - On Recreation and Amusement of Patients—Dr. Sanborn and Field.
-

Visiting Committee for 1907.

- January—Robie, Bird, White and Mrs. Cony.
- February—Field, Macomber, White and Chase.
- March—Full Board.
- April—Robie, Field, Bird and Mrs. Cony.
- May—Bird, White, Field and Macomber.
- June—Full Board.
- July—Robie, Macomber, Chase and Field.
- August—Chase, Bird, Macomber and Mrs. Cony.
- September—Full Board.
- October—Macomber, Chase, White and Field.
- November—Robie, Bird, Chase and Mrs. Cony.
- December—Full Board.



Maine Insane Hospital. West View. Main Entrance

MAINE FARMER PRESS, AUGUSTA

REPORT OF THE TRUSTEES OF THE MAINE
INSANE AND EASTERN MAINE INSANE
HOSPITALS.

The board of trustees of the Maine Insane and the Eastern Maine Insane Hospitals of the State, having completed their official work for the year 1906, would respectfully present their annual reports to the governor and the executive council of the State. The reports from the heads of the several departments of these two insane hospitals have been received, and we inclose the same herewith. They each contain much information and many wise and useful suggestions, and we recommend the same to the careful consideration of both the executive and the legislative departments of the State.

The meetings of the board of trustees during the past year have been fully attended, except in one or two instances where sickness prevented. The work assigned to the different committees has been faithfully considered and carefully executed.

We are pleased to say that during the past year a kind Providence has safeguarded all the various interests of our two institutions, that but little has occurred to occasion any anxiety, and that no epidemic disease has prevailed. We feel grateful for such watchful care. The work during the year has been uniformly successful and satisfactory. The only material loss was the burning of the laundry on the morning of October 12th; the same fire also damaged the carpenter shop. The fire originated from causes for which no one is responsible; by the prompt action of the officers of the institution a large loss was prevented. The board of trustees was immediately called together, a careful examination of the laundry and other parts of the damaged building was made, and steps were at once taken to meet the exigencies of the case. There was naturally great need of haste in providing for the laundry work of nearly one thousand persons.

The cost to the State of replacing this property will probably be \$16,000, or more; but this does not represent the total loss, for the new laundry has been equipped with larger and more modern machines.

INCREASE OF PATIENTS IN THE TWO HOSPITALS.

We would call your attention to the increase in the number of patients in the two insane hospitals at Augusta and Bangor:

At the end of the fiscal year, November 30, 1905, there had been treated at the hospital		
at Augusta	914	patients
Been treated at the hospital at Bangor.....	370	"
	<hr/>	
Total	1,284	"
At the close of the present fiscal year, November 30, 1906, there has been treated at the hospital at Augusta.....	991	"
There has been treated at the hospital at Bangor	378	"
	<hr/>	
Total	1,369	"

This shows an annual increase of 85 patients; 44 of these had been treated in both hospitals.

At the close of the fiscal years, Nov. 30, 1905, there were remaining in the hospital at		
Augusta	713	patients
There were remaining in the hospital in Bangor	249	"
	<hr/>	
Total	962	
At the close of the present fiscal year, Nov. 30, 1906, we find that there are under treatment		
at the Maine Insane Hospital at Augusta ...	806	"
At the Eastern Maine Insane Hospital at Bangor	220	"
	<hr/>	
Total	1,026	"

This is an annual increase of 64 patients, and an increase of 60 over last year.

The number of recoveries and discharges from the Hospital at Augusta during the year is ..	47	patients
At Bangor during the year is	36	"
	<hr/>	
Total	83	"
The number of deaths at the Hospital at Augusta is	90	"
The number of deaths at the Hospital at Bangor is	31	"
	<hr/>	
Total	121	"

The number of recoveries and deaths vary each year, and are the result of conditions governed by forces beyond the control of medical science and treatment. This year there are fewer recoveries and more deaths from natural causes; but the care of the patients, under the direction of Superintendents Sanborn and Vaughan has met with the approval of the Board of Trustees who commend the efficiency and skill of these two physicians and their able corps of assistants.

The steady increase in the number of applicants, for treatment in the Insane Hospitals of our State, requires additional provisions to meet the demand for accommodations. The executive and legislative authorities of our commonwealth for the past sixty-six years, covering the period since the Maine Insane Hospital was organized and completed, have always freely and generously met all the requirements for the comfort and care of our unfortunate fellow-citizens; and, however large the appropriations have been, not a murmur of disapproval has ever been heard from the public. The aggregate of all these expenditures is very large, and the value represented in lands, buildings, furniture, sanitary equipments, and various works of ornament and use, all bringing so much comfort to our insane, give our hospitals a high reputation among those of the whole country; this magnificent public property represents an expenditure of over one million five hundred thousand dollars. It must, indeed, create a feeling of pride in the breast of every native of Maine that our insane have been so faithfully cared for in the past; and it should be an incentive for the continuance of the same good work in the future.

PUBLIC APPROPRIATIONS FOR THE INSANE BY THE LEGISLATURE
OF 1905.

The special public appropriations made by the last legislature for insane are as follows :

Furnishing buildings on Widow's island.....	\$6,000 00
For reconstruction of the second female wing of the Augusta hospital, for rebuilding piggery, for fire-proof stairways and copper aprons, for brick buildings, for renovation of arsenal buildings, for new sewers, and for other specified improvements on arsenal grounds.....	78,500 00
For the Eastern Maine Insane Hospital, for meeting current expenses, for making repairs and improvements and purchasing additional lands....	46,300 00
Total	\$130,800 00

The trustees would say that this sum was placed by the legislature in the hands of the board for the purpose above named, and we are pleased to report that it has all been judiciously expended, as indicated by the above statement; we are also able to say that in every instance the State has been greatly benefited by these appropriations.

THE CONVALESCENT HOME FOR THE INSANE ON CHASE'S
ISLAND.

The benefits attending the experimental residence of a selected number of inmates from the insane hospitals for two summer months of last year at the convalescent home so beautifully located on Chase's Island, incited the trustees to make an earlier transfer of patients to the island, in order to secure a longer residence and better results. Consequently, on the first of last June, thirty-six insane female patients were transferred from the Augusta Hospital, accompanied by twenty-two patients from the hospital at Bangor, all being placed under the charge of Doctor Macdonald. These patients remained on the island until 30th of July when they were returned to the institutions where they belonged, and their places immediately supplied by 35 male patients from the hospital at Augusta, and twenty-two patients from the hospital at Bangor. The board of trustees

made several visits during the four months' residence of the male and female inmates of these two insane hospitals, and took occasion at each visit to examine carefully the condition of the patients, and the evidences of improvement resulting from the change in their surroundings. We are pleased to say that we found in nearly every instance a general expression of satisfaction and contentment. In many cases there was a substantial increase in weight of body, and other evidences of physical betterment, which had exerted a favorable influence on the mental powers, resulting later in several discharges from the hospital.

/ The board of trustees are pleased to report that the experiences of the past year have strengthened their judgment regarding the desirableness of the Hospital and Convalescent Home at Chase Island as a summer residence for a selected number of our insane. This conclusion is verified by the past two years, which shows many instances of mental recovery and a generally better physical condition in nearly all the insane quartered on the island, apparently the direct result of a desirable change during the heat of the summer months.

The superintendent of the Maine Insane Hospital has recommended with our approval an appropriation for a wooden summer building with separate apartments, for the insane, at a cost of \$2,500. The superintendent also wisely advocates an appropriation for utilizing a natural depression, in a very advantageous place, near the ocean, for a safe bathing and swimming pool to be used by the patients on the island. We, therefore, recommend an appropriation for this purpose of \$1,000.

We would recommend that an appropriation of \$1,500 be made for a commodious gasoline launch for the transportation and use of the patients; and also would recommend \$2,500 per annum to provide for the salary of the person engaged to take care of all the property of the State on the island, also to pay for the transportation of the patients, officers, and employees from the two hospitals to the island, including additional furniture and bedding, repairs and cost of running launch.

EASTERN MAINE INSANE HOSPITAL.

This institution was established six years ago, largely by the influence of the people of eastern Maine, that its inhabitants might have a hospital readily accessible and nearer the center

of a large and increasing population: the crowded condition of the Augusta hospital furthered the project very materially. The institution has been wisely administered by competent physicians and assistants in all its departments. Favorable conditions have, unexpectedly, arisen which have given the hospital at Augusta far better opportunities to care for a larger number of insane patients than at that time existed. But there are still many obvious reasons why the present arrangements for the insane population of Eastern Maine should be continued and improved, and the State should promptly meet all the requirements of this excellent institution; we trust that the matter will be wisely considered, for there should be no lack of interest or want of effort to do justice to its wants.

The Board of Trustees have taken particular pains to canvass the whole question, and would respectfully ask the Executive and Legislative departments of the State to visit this institution and examine its needs for themselves; if this is done, we feel that the several appropriations cheerfully recommended by us will be adopted, provided that the condition of the treasury will admit of it.

The able Superintendent of the Eastern Maine Insane Hospital has, in his last two reports, called our attention to the immediate wants of this institution; we would recommend these reports to the careful reading of all. We desire also to commend his successful policy, so well exemplified during the past two years.

We have repeatedly asked the Legislature for an appropriation to meet the increasing requirements of Eastern Maine for more and better accommodations for its unfortunate insane. The transfer of forty-three patients during the year from the Bangor hospital to the one at Augusta has partially relieved the crowded condition of the wards; but, while this alleviates the situation, there comes from the eastern part of the State the complaint that they dislike to have their insane friends carried so far from their homes.

The female wards of the Eastern Maine Insane Hospital remain crowded, necessitating further transfers of insane patients from Eastern Maine to Augusta, thus in a measure defeating the original design in the location and erection of this beneficial institution.

The Board of Trustees would, therefore, join the Superintendent and the inhabitants of Eastern Maine and ask the Legislature, through its proper committee, to examine the plans and specifications, already prepared, for an additional wing to the female section of the hospital, and we would further ask the Legislature to appropriate for this purpose the sum of \$150,000.

There is no barn room within the limit of the hospital grounds sufficiently large to accommodate the increasing tonnage of hay, and other agricultural products of the real estate of the hospital; nor is there an adequate place for the proper care and housing of the various kinds of farm implements.

The Trustees would therefore recommend that the Legislature appropriate for a new barn, \$6,000.

Two years ago there was a deficiency of \$20,000 in the appropriation for meeting the expenses of the Eastern Maine State Hospital. There is a deficiency the present year of \$23,000. We therefore recommend that to meet this liability the Legislature appropriate this amount, \$23,000.

The condition of the hospital requires a larger appropriation for coal than last year. We therefore recommend for this purpose an appropriation of \$17,000.

AID FOR ENTERTAINMENTS.

The revenue which the Maine Insane Hospital receives from the Coburn, Williams and Gilman funds, amounting to \$2,100, is used solely for the comfort and entertainment of the patients of the Insane Hospital at Augusta, and cannot be diverted. The many advantages resulting from these gifts cannot be overestimated. The patients derive much pleasure from the music of the band, concerts, social and intellectual entertainments, excursions, etc., paid for from the interest of these funds; and they often express their appreciation in the strongest words. These diversions help to mitigate the discomfort and sadness that inevitably attend the seclusion and restraint of hospital life.

The Superintendent of the Eastern Maine Insane Hospital has no funds at hand to meet requirements of this character. We would, therefore, recommend that an appropriation of \$800 be made by the State for the recreation of the inmates of the Eastern Maine Insane Hospital.

THE CARE OF THE TUBERCULAR INSANE.

The Superintendent of the Insane Hospital at Bangor has given in his report a very careful and studied paper on tuberculosis, as it exists at the present time in his institution. This condition is not new to other hospitals in New England. A few have been obliged to provide against the inroads of this dreadful disease. The Board of Trustees are impressed by the warning given by Dr. Vaughan, and would respectfully call the attention of the Legislature to the statements and recommendations in his report.

No. A.

ITEMIZED APPROPRIATIONS FOR THE EASTERN MAINE INSANE
HOSPITAL MADE BY THE LEGISLATURE OF 1905—APPROVED
MARCH 24TH, 1905.

<i>Appropriations.</i>	
Repairs to buildings.....	\$5,000 00
Additional land	4,300 00
Coal	15,000 00
Deficiency	20,000 00
Amusements	600 00
Double windows	400 00
Hot water heater.....	1,000 00
	\$46,300 00

The statements from the reports, respectively, of the Steward and Treasurer for the fiscal years 1905-6, show that the above appropriations were duly and properly used for the purposes asked for, and that no balance remains in the hands of the Treasurer of the Eastern Maine Insane Hospital.

NO. B.

COSTS OF DEPARTMENTS FOR TWO YEARS.

(See Annual Financial Statements.)

	1905		1906	
Dispensary.....	\$1,550 13	plus	\$1,760 54	\$3,310 67
Farm.....	630 99	plus	673 71	1,304 70
Garden.....	14 17			14 17
Stable.....	2,424 11	plus	2,652 91	5,077 02
Expense.....	3,002 30	plus	3,306 71	6,309 01
Coal.....	8,563 55	plus	8,629 12	17,192 67
Repairs and Improvements.....	6,444 49	plus	7,968 40	14,412 89
Hospital Furnishings.....	4,177 64	plus	3,957 11	8,114 75
Engineer Department.....	4,324 40	plus	4,447 88	8,802 28
Ice.....	602 44	plus	1,276 47	1,878 91
Water.....	502 84	plus	714 34	1,217 18
Amusement.....	389 14	plus	506 75	895 89
Hot Water Heater.....	1,333 93			1,333 93
Land.....	4,523 52			4,523 52
Double Windows.....			475 19	475 19
	<u>\$38,433 65</u>	plus	<u>\$36,379 13</u>	<u>\$74,862 87</u>

The Board of Trustees would ask the members of the Legislature to carefully review the statement of No. A, which is a copy of the appropriations of the last Legislature covering the years 1905-6. No. B, which gives the itemized details of the cost for maintaining the hospital for the years 1905-6.

The Board of Trustees are satisfied with the good appearance which appears to follow the work of the Treasurer and Steward. The net resources over liabilities at the close of the fiscal year, Nov. 30th, 1906, appear to be \$4,230.75, which is about \$1,200 better than last year.

There are several important matters that need the attention of the Legislature. The large annual increase of the cost of ice from \$602.44 in 1905, to \$1,376.47 in 1906, demands a remedy if it can be obtained. The Trustees would advise the construction of an ice house which would hold 200 tons more than the usual consumption, at a cost of \$1,000, and fill the same by our own work.

The hospital has lost, during the year, 42 patients by transfer to the hospital at Augusta.

The price of board which was paid to the Eastern Maine Insane Hospital by these inmates was \$168 per week, which represents an annual payment of \$8,736. The hospital in July, 1905, domiciled 267 patients, and the pay-roll for physicians, attendants, and other employees, remains the same. It must

be readily seen that the deficiency of running the hospital must continually increase unless some means is used to retain and increase the number of patients that naturally should be cared for in this institution.

TOOLS AND SUPPLIES.

There has been a previous appropriation for the purpose of tools and supplies for the Eastern Maine Insane Hospital in the Engineer's department, but they are insufficient to do the necessary work of this institution. It, therefore, becomes necessary for us to recommend an appropriation to meet this necessity of \$800.

TREASURER'S REPORT OF EASTERN MAINE INSANE HOSPITAL, 1906.

The following is a condensed statement of the financial condition of the Eastern Maine Insane Hospital made by the Treasurer, Charles S. Pearl, which shows the good financial standing of the hospital:

<i>Dr.</i>	
Balance cash on hand Dec. 1st, 1905.....	\$9,799 47
Receipts for year—Hospital Account.....	66,695 36
Receipts from State Appropriation.....	23,150 00
	<hr/>
Total	\$99,644 83
<i>Cr.</i>	
Disbursements for year	\$95,445 27
Balance cash on hand, Nov. 30th, 1906.....	4,199 56
	<hr/>
Total	\$99,644 83

CASH STATEMENT, NOV. 30TH, 1906.

<i>Resources.</i>	
Cash on hand	\$4,199 56
Cash due from cities and towns.....	13,397 99
Cash due from sundry persons.....	152 58
Cash due from State, support of patients.....	5,078 55
	<hr/>
	\$22,828 68

Liabilities.

Owe sundry firms	\$16,287 18
Owe pay-roll for November	2,310 75
	<hr/>
	\$18,597 93
Net resources over liabilities.....	4,230 75
	<hr/>
	\$18,597 93

STEWARD AND TREASURER'S REPORT, MAINE INSANE HOSPITAL.

The annual financial statement of the Steward and Treasurer of Maine Insane Hospital shows a net decrease for the year of \$8,366.37, which is accounted for by an expenditure of \$10,007.08 for the steam line connection from the central steam plant of the Hospital with the new additions at the Arsenal, in excess of what was provided for by appropriation of the Legislature for renovation of Arsenal buildings, for the additional care of the insane, and the Hospital should be reimbursed for this outlay as the available working capital of the institution was impaired thereby, and this should be restored in order that the Hospital may be enabled to take advantage of cash discounts in its purchases.

The provision of this complete steam line from the central plant, which is sufficiently large to provide for all the buildings at the Arsenal, will make an annual saving of \$1,500.00 in labor alone, as the same engineer and firemen can provide steam without additional help and the extra coal consumed is not to be considered as compared with the consumption of coal at an isolated plant.

The profit-bearing departments, namely farm and garden, have experienced a hard year. Crops were very light as compared with former years and profits correspondingly small.

FINANCE.

An abstract from the Steward and Treasurer's report of the Insane Hospital at Augusta shows the receipts and disbursements for the year as follows:

STEWARD AND TREASURER'S REPORT.

To the Trustees of the Maine Insane Hospital:

I herewith present my report of the financial standing of the Maine Insane Hospital for the year ending November 30, 1906.

*Total Receipts and Disbursements of Cash for the Year Ending
November 30, 1906.*

Dr.

Balance of cash on hand December 1st, 1905	\$26,605 26
Receipts for year, Hospital Account	180,147 61
Received from State of Maine, account Coburn Fund, Williams and Gilman Legacies	2,090 00
Received from State of Maine, account appropri- ation for renovating Arsenal Building, to be used for male wards	15,000 00
Received from Chas. E. Field, Treasurer, Wid- ow's Island appropriation	2,859 66
	<hr/>
	\$226,702 53

Cr.

Disbursements, Hospital Account	\$173,513 90
Disbursements, Hospital Account, for renovation Arsenal Building and steam line, in excess of appropriation	10,007 08
Disbursements, Account Coburn Fund, Williams and Gilman Legacies	1,824 02
Disbursements, Account appropriation for copper aprons and fireproof stairways, Harlow and Sanborn Wings	7,194 72
Disbursements, Account appropriation for reno- vation Second Female Wing	502 64
Disbursements, Account appropriation for revo- lution Arsenal Building	19,629 76
Disbursements, Account appropriation for repair- ing Arsenal Buildings	1,000 00
Disbursements, Account appropriation for fur- nishing Arsenal Building	5,932 03
Disbursements, Account Widow's Island appropri- ation, Chas. E. Field, Treasurer	2,859 66
Balance of cash on hand December 1st, 1906	4,238 72
	<hr/>
	\$226,702 53

AUGUSTA, MAINE, Dec. 27, 1906.

To the Trustees of the Maine Insane Hospitals:

GENTLEMEN:—I hereby certify that I have examined the books and accounts of the Maine Insane Hospital at Augusta and the Eastern Maine Insane Hospital at Bangor, and I find them correct, as per detailed reports accompanying this statement.

Respectfully submitted,

EDWIN C. DUDLEY,

Auditor.

CHAPLAINS OF THE HOSPITAL.

The work of the Chaplains of the Hospital during the past year has been very acceptable to the patients and their services at the chapel and under other conditions, their visits have been sources of great comfort. The Chaplains appointed for the coming year are Rev. C. G. Mosher, Rev. E. E. Newbert, Rev. D. H. Evans.

The Catholic minister, Rev. Charles W. Doherty, has been very kind and obedient to the calls of the members of his religious flock, and as there are many representatives of this denomination in the Hospital, we have added his name to the number of attendant clergymen, and would ask for an additional appropriation of \$100.

MAINE INSANE HOSPITAL.

The Board of Trustees of the Maine Insane Hospital would congratulate the State on the many satisfactory improvements resulting from the efforts of the past fiscal year in behalf of the wards of the State, afflicted with curable and incurable mental difficulties, who are domiciled in this worthy and attractive institution.

We desire especially to commend the efficient work of Superintendent B. T. Sanborn, and the useful and painstaking service of Manning S. Campbell, the Treasurer of the institution.

The magnificent free gift of the Arsenal grounds by the United States vests in the State of Maine the ownership of a property, constantly increasing in value. Through the expendi-

ture of a comparatively small sum a large portion of this property can, as time progresses, be utilized for the care and benefit of the State's insane.

The new building on the Arsenal grounds, capable of accommodating 120 patients, attracts much commendation, and is an honor to the State.

The reconstruction of the second female wing of the stone building is completed; a personal examination shows the obvious advantages resulting therefrom.

Cleanliness, comfort, better and ampler accommodations, and increased healthfulness, are among the benefits of this expenditure.

The work of supplying copper aprons, ventilation and fire-proof stairways for the Harlow and Sanborn wings of the hospital is nearly completed, and an improved appearance, as well as greater safety and better health, has been thereby secured.

All the property of this institution has been carefully watched, and repairs and alterations have been made to remedy the inroads time is constantly making. More work has been done and more expense incurred than in any former year.

All the other appropriations of the State for the piggery, sewerage, Arsenal grounds and new road, have been duly expended by the Board of Trustees, and we are able to report they have been well and satisfactorily used for the purpose for which the sum was placed in our hands.

THE LAUNDRY.

The recent loss by fire of the laundry of the Maine Insane Hospital has been fully explained by the Superintendent in his report, and the action of the Trustees to meet the requirements of this great loss has also been stated. There is need of an appropriation by the State to meet the expenditure, which has become necessary in providing for a new laundry and its proper equipment. After a thorough consideration of the amount to finish this work, the Trustees would recommend an appropriation of \$16,000.

GREENHOUSE.

The Superintendent has also called our attention to the delapidated condition of the woodwork of the greenhouse. We have made an examination, which confirms his statement, and would therefore recommend for the purpose of rebuilding the hothouse an appropriation of \$1,500.

NEW ROAD ON THE ARSENAL GROUNDS.

The Superintendent has also advised that an appropriation be made for building and macadamizing a road from the main hospital down to and through the Arsenal grounds, and adding thereto a concrete sidewalk. It is estimated that the cost will be \$5,000. Such an improvement would be desirable on many accounts. We leave this matter to the judgment of the Legislature, and recommend an appropriation of \$5,000 to cover the full cost.

AN APPROPRIATION NECESSARY FOR THE STONE WINGS OF THE HOSPITAL.

There remains one wing of the female department of the stone building of the hospital which needs fireproof renovation. The reasons which have been successfully advanced by the Board of Trustees for securing an appropriation, and the great advantage accruing to the State from the renovation of the two wings already completed, substantiated by a personal examination of the remodeled wings, impel the Board of Trustees to recommend an appropriation to complete the fireproof renovation of the remaining female wing at a cost of \$65,000. The same reason exists for the completion of the fireproof renovation of the three wings of the stone building, occupied by the male patients, such as we have successfully used for the female department. In order, therefore, that this department may not be neglected at this time, we would urgently recommend that an appropriation be made for fireproof renovation of one of the male wings of the stone building at a cost of \$45,000.

CRIMINAL INSANE OF THE STATE OF MAINE.

Previous reports of the Board of Trustees have called the attention of the Legislature to the importance of adequate accommodations for a class of insane citizens, and wards of our State, serving out court sentences in the State Prison at Thomaston. The Superintendent of the Augusta Hospital has during the past year had medical charge of this class of patients, and, for reasons stated in his report, has wisely recommended that they be provided for by a suitable building and apartments at Augusta. The trustees, to meet this exigency, have engaged George M. Coombs, architect, to prepare a plan and specifications, using such materials and buildings on the Arsenal grounds, as would make a suitable hospital structure with apartments for the detention of the criminal insane. We would recommend that the committee of the Legislature examine these plans and specifications, and that, if it be thought advisable, a sufficient sum be appropriated for remodeling and finishing a hospital building for the purposes already mentioned, probably representing an expenditure of \$40,000.

TUBERCULOSIS.

The Board of Trustees regret to inform the executive and legislative departments of the State that for several years tuberculosis has been lurking among our large herd of cows, notwithstanding that every effort has been made to stamp out this threatening enemy by employing the most skillful and learned veterinary assistants, and using every other precaution and remedy, represented by proper ventilation, separation, neatness and other means, to ward off the disease, and thereby restore health and comfort to our herd. Despite all this care, the alarming symptoms have slowly increased, until we are facing a crisis which calls for surer and more heroic treatment, fully to meet the demands of the situation. It is our duty to secure milk from a healthy and sound herd for the wants of nearly 1,000 insane patients, the wards of the State, placed under our special care. The Cattle Commission of the State have made repeated examinations, and have laid out a plan which the chairman of the commission has advised us to follow. As the course suggested meets with universal approval, it will be fol-

lowed; and, if it be carefully observed, we are assured in a communication from the above commission that there "will not be much loss to the State."

We would recommend that this whole matter be referred to the Joint Committee on Agriculture of the Legislature.

BETTER FIRE PROTECTION FOR THE HOSPITAL BUILDINGS.

The destruction by fire of the laundry building last October, demonstrated what the Trustees have feared might be the result, because of the insufficiency of water supply. Owing to the high elevation of the land on which these buildings are located, the city pressure on which we have to depend, represents only about forty-seven pounds to the square inch. The entire supply of water for fire purposes is at present furnished through a six-inch pipe, and as this conveyance is used by other takes before it reaches the Hospital, it will be seen that when several lines of hose are attached to the hydrant in the vicinity of the buildings, that the pressure becomes very much reduced, and at the time of the fire above mentioned, it was found that with four or five lines of hose out, it was impossible to obtain sufficient pressure to stop the progress of the fire.

The Board of Trustees views with alarm the situation the Institution would be in, should fire occur in the older wards of the male side of the Institution, with so great a lack of water for extinguishing the same, and they, therefore, recommend that a new contract with the Augusta Water Company should be made, whereby a main representing at least eight inches in diameter shall be taken from the two mains running up Cony street, and thence directly to the Arsenal grounds and thereby connect with the system of mains about the Hospital grounds. A pipe of this capacity would furnish us a sufficient supply of water. And we would also advise that a steam pump of adequate capacity be installed in the engine house, and at all times be ready for emergency, so as to be able to increase a pressure at all the hydrants up to a sufficient fire-fighting force. The thought of so many helpless people at the mercy of the flames, without adequate fire protection, is the reason that we urge an early attention to this matter.

After the loss by fire of the laundry, the Board of Trustees was in much perplexity as to what they should do to restore this

absolutely essential industrial branch of the Institution. As must be apparent to all, the laundrying of the clothing and bedding of the patients must be attended to, and with no funds whatever to apply to the building of a laundry, our only resort was to apply to the Governor and Council, and having gained their advice and consent, the Trustees immediately made temporary repairs and other necessary arrangements to carry on the laundry work, although under somewhat difficult conditions, for we had no immediate funds to use until the Legislature could make an appropriation of a sufficient amount to complete the building. Had a fire occurred a year and a half ago with the necessary action of the Legislature so far distant, the difficulties would have been multiplied. And this suggests the idea, whether it would not be good policy on the part of the State, to carry a fair amount of insurance on the buildings of each Institution, so that in case of a large fire, the Trustees having an insurance fund under their control, would not be hampered for funds to begin the work of repairing or rebuilding as might seem necessary.

A fire in the Bangor Hospital is possible and it would throw out of a suitable home, some two or three hundred patients, and as both Institutions are practically full to their normal capacity, the care of so many patients, even for a short time and even if building operations could be started at once, would be full of difficulty. If it was necessary to wait for the convening of the Legislature, the difficulties would be multiplied many times. The same condition is before the Board with reference to Widows Island. This is a valuable property and could not be replaced today, probably for not less than one hundred thousand dollars, although it stands as a free gift from the Government of the United States to the State of Maine. It is accomplishing a great work and it is necessary at times to use on this island, more or less kerosene for lighting, although an electric light plant has been installed. The danger of fire is quite imminent, and if the building should burn up, the question arises, whether it would not be a burden for the State to replace it, and a failure to do so would certainly be a great loss to the patients. A reasonable amount of insurance on this property would seem to be advisable and we recommend it.

INSURANCE.

The fact that the laundry building and its valuable contents, recently destroyed by fire, were uninsured, has naturally given rise to the question of a better protection of the property of the Insane Hospitals. The Board of Trustees have no means in their hands to insure the property committed to their care. It is generally considered by the public a wise policy to protect property by a suitable insurance; this course is pursued everywhere throughout Maine, and in many instances the State itself has adopted the same wise precaution. The Board of Trustees would call the question of the Legislature to this important question, and would advise that sufficient funds be appropriated for the complete or partial insurance of all the valuable buildings and other hospital property belonging to the State.

THE DEATH OF MRS. BIGELOW T. SANBORN.

The present year has furnished many pleasant opportunities for thankfulness and congratulations, based on the events which have marked the progress of this honored institution. These form the silver lining of the dark cloud which has overshadowed the progress of the hospital. The Trustees have already expressed their genuine sorrow at the great loss experienced in the death of the late Mrs. Sanborn. We desire at this time officially to extend our warmest sympathy to the honored head of the hospital, Dr. B. T. Sanborn, for the irreparable loss which a wise Providence has allowed him to suffer. And we also desire to make a public acknowledgment of our appreciation of the virtues of our deceased friend. Mrs. Sanborn was a lady of rare attainments, a blessing to her family, with a true and loyal heart. During her long connection with this institution, she served its best interests with constant attention and unremitting care. The memory of her character remains with us and will be ever treasured as an incentive to higher living, exemplified by one of the noble women of the State of Maine. The Christian influence of her eventful life is summed up in a few words, for "she was always faithful."

CONCLUSION.

The State of Maine in the year of 1840 when it first began to take care of the insane of the State by giving them an opportunity to obtain medical treatment for the dreadful disease of insanity, and secure better safety from physical accidents, the population of the State was 501,793, and its valuation for taxation at that time was \$69,249,464. There was completed a new hospital which consisted of a stone main building and the annex of two wings. At the end of the first year there were domiciled in the hospital, total 54 patients. The report of the Treasurer shows that the total amount that he had for paying the expenses of the hospital

Was from the State.....	\$5,000 00
From towns and individuals for board...	4,558 78
	<hr/>
	\$9,558 78

This amount was sufficient to pay all the expenses of the institution. Sixty-six years have now passed away and the hospital work since 1840 has been faithfully and industriously executed by an earnest and distinguished class of representative citizens, who have served the State as superintendents, physicians and representatives of its several industrial departments, and instead of 54 patients in 1840 we now have under our care 1,024 insane patients.

What the State is now doing for its insane population, although its population has not increased much, displays a wonderful advance in a little over half a century. We present the following statement:

APPROPRIATIONS OF THE LEGISLATURE MADE FOR 1905-6.

Support of indigent insane.....	\$170,000
Maine Insane Hospital buildings.....	78,500
Eastern Maine Insane Hospital, for support and improvements	46,300
Salaries of officers of hospitals.....	26,600
Trustees per diem and expenses.....	5,000
Visiting Committee per diem and expenses,	1,600
Widow's Island Hospital	6,000
	<hr/>
	\$334,000

This would represent an annual expenditure of \$167,000.00. Besides this the State has the advantage of a beneficiary fund representing an amount of \$53,000 which furnishes an annual income for amusement for the insane of \$2,140.

The State and Trustees have this vast interest committed to our care and we pause, as we close our report, to ask the kind aid of Providence in the discharge of our responsible duty, and as an incentive for action we quote the closing sentence of the first report of the Trustees of the Maine Insane Hospital, "May the State never repudiate an institution so deservedly popular, but bestow upon it its most generous sympathy and always feel interested in it."

FREDERICK ROBIE, *President*,
 CHAS. E. FIELD, *Secretary*,
 THOMAS WHITE,
 S. M. BIRD,
 GEO. E. MACOMBER,
 EDWARD E. CHASE,

Trustees.

The report of the Board of Trustees for the fiscal year ending Nov. 30, 1906, was read by the President, and accepted at a meeting held Dec. 27th, 1906, and following the acceptance, a motion was made that Trustees George E. Macomber, E. E. Chase and B. T. Sanborn be a committee, with power to draft suitable resolutions representing our feelings on the death of our late respected and beloved associate Trustee, Mrs. Jennie R. Smith.

The Committee subsequently reported the following resolutions:

Whereas, the sad intelligence has reached us of the death of our late esteemed associate, Mrs. Jennie R. Smith,

Therefore resolved, That in this dispensation of Providence the institutions which she represented have lost a most valuable officer. Mrs. Smith possessed qualities which fitted her admirably for the position of a trustee of public institutions. She was a woman of strict integrity of character, wise judgment and possessed pre-eminent qualifications for the position which she occupied. She was endowed with a particularly sympa-

thetic nature and never failed to devote as much time as possible, while at the institutions, to the immediate requirements of the patients. Her associates in office will miss her council and Christian presence and the resident officers of the institutions will be bereft of a true friend and the influences which emanate and are imprinted by a person of high moral and intellectual qualities. Ever loyal to the responsibilities which she assumed, she will not only be missed by all with whom she came in contact during her frequent visitations, but her impress in the faithful duties performed for the best interests of the hospitals will become indelibly wrought as a lasting monument to her memory.

Resolved, That these resolutions be spread upon the records of the institutions and that a copy be forwarded to the bereaved husband and relatives.

A committee composed of Hon. Frederick Robie, Hon. Thomas White, Hon. George E. Macomber, Dr. Bigelow T. Sanborn and Mr. Manning S. Campbell were appointed to attend the funeral, which occurred Friday afternoon, the 28th day of December, 1906.



MAINE FARMER PRESS, AUGUSTA
Mrs. Jennie R. Smith

REPORT OF THE COMMITTEE ON RECREATION AND AMUSEMENT OF PATIENTS.

To the Trustees of the Maine Insane Hospital:

Your committee in presenting its report in reference to the specific work which has been entrusted to their care are unable to acquaint you of any special new methods devised, having prosecuted our labors along the lines already pursued. They have, however, endeavored to allow no retrogression and have sought to broaden the opportunities offered in the direction of furnishing proper facilities for diversion to a larger number of patients than heretofore. In order to accomplish this much individualization has been made necessary. In pursuing the psychiatry of mental disease it must be borne in mind that we are dealing with mind as well as matter and while the administration of drugs may affect favorably somatic changes in individual cases suffering from insanity in re-establishing faulty metabolism and eliminating from the body diseased products, the removal of which may re-establish proper functioning of the various organs and thereby aid the brain and nervous system in regaining its healthy equilibrium, yet it must be a novice who seeks no other method to re-establish the healthy functioning of the brain except by the pharmacopœia. He who attempts such a procedure is either a charlatan or has not acquired that experience which renders a person sufficiently capable to direct and offer that treatment which is so essential in dealing with the multitudinous changes which arise and are observed by the psychologist in the attempt to direct and carry through to a healthy termination perverted and disarranged mental states. It must be borne in mind that we are dealing with thought, feeling and will, the latter of which has become weakened and disordered and inhibition has become loosened.

We are having to do with the immaterial and so in order to offer intelligent treatment we must bring to bear upon the patient far more potent remedies which are found only in the category of moral forces and then guided by that experience in the observation of the insane as shall contribute to intelligent foresight and discrimination we are able to cope with formidable conditions. These moral measures we find in the proper arrangement of a hospital with due regard paid to proper classification so arranged that each individual patient is placed under the most congenial environments supervised by kind and sympathetic attendance and furnished with such appliances as shall interest and divert the mind from its subjective and frequently confused and morbid conditions. Faultless patience, unyielding will, gentleness, skill and innumerable gratuities that compel faith and hope are here the most powerful remedies that can be employed. These forces are potent certainties and are far reaching in awakening and re-establishing healthy thought, feeling and will. We do not wish to be regarded as discrediting drugs or somatic therapy but only desire to emphasize the importance and to direct attention to the almost forgotten fact that in insanity one of the most powerful instruments for good is in the personality, character and the sustained relations of the physician to his patients. Individualization should be made prominent. Firmness with gentleness should characterize the efforts of the physician and all concerned in dealing with the individual patient in the attempt to guide and direct a disease so obscure and requiring such far-reaching insight.

Our departure last year from former methods in introducing the experiment of treating our patients at the seashore was so successful that further efforts in sending more and covering a period of four months instead of two, as pertained last year, has been accompanied with commendable success in the evidence of increased bodily vigor and in quite a number of patients much mental improvement, although not so many cases recovered as occurred last year. This unquestionably arose from the fact that before the season arrived for their departure for the island we had discharged quite a considerable number of patients who had recovered, leaving us with a fewer number of hopeful cases.

The first of June we arranged for 36 women, with Dr. Macdonald as physician, accompanied by a suitable number of attendants, to go to our seashore resort, where they remained two months, when they were returned and their places were occupied by the transfer there of 35 men with suitable supervision, who remained eight weeks before returning. If any should doubt the propriety of the establishment of a home at the seashore for the sojourn of our patients through the summer months, who are in a sufficient condition to be appreciative, it would be only necessary to examine into the mental and physical condition of our people on their return to convince one that the greatly improved states of mind and body fully warrant the increased outlay. Several returned sufficiently improved to warrant their discharge from the institution and nearly all manifested marked signs of increased physical vigor marked by improvement in weight and more vigorous vitality.

In arranging for the departure we experienced some difficulty in obtaining the consent of quite a number of our patients to go, several refusing absolutely to make the change, assigning as a reason that they did not wish to leave a comfortable single sleeping room for large open dormitories which they would be obliged to occupy. No other objection was interposed and in fact those patients who had been residents of the island the year before spoke highly of the other environments of the resort. Our experience the past two years with this new feature for added opportunities for our patients leads us to the conclusion that it will become a permanent auxiliary to the two institutions but that in order to increase its efficiency to the maximum there should be a sufficient number of single rooms constructed to meet the wants of at least 30 patients of the most appreciative class such as naturally reside in our convalescent wards and are privileged with all of the environments of home and in many cases are living even under more favorable surroundings. The expense for the construction of such a building need not be large, as the main structure is supplied with parlors and day-rooms sufficiently large to accommodate the occupants of the single rooms. In the construction of the above adjunct we believe it will become a pleasure for our patients to reside there and with these added advantages afford increased favorable

results we have no doubt would be obtained. A sufficient number could go with the above class who are less appreciative and who do not require that retirement and would make no objection to occupying the dormitories of the main building.

We commend the above suggestions to the consideration of your board in the belief that there are latent potentialities in the development of our seashore resort which if judiciously carried into execution will become a source of much strength in the future treatment of our patients.

There has been quite a desire especially among the male patients to bathe and to some extent this has been allowed at the beach near the wharf and which offers much recreation. This brings with it considerable responsibility and the physician does not feel authorized to allow the patients to bathe to any great extent, as some accident might occur. There is a depression near the wharf which at half tide begins to fill with water and which at the flood contains between five and six feet of salt water. The temperature becomes considerably warmer in a short time under the influence of the sun's rays and at a small expense could be utilized for bathing purposes and would be absolutely safe for such recreation. We would call your attention to the desirability of arranging it for bathing purposes.

In concluding this subject we wish to mention in commendable terms the efficient service of Dr. Macdonald, who has had the medical charge of the party the entire season. He carried with him the experience of his similar service last year and brought to his duties that experience which rendered him so efficient as to meet our entire commendation. Mr. Campbell, the Steward and Treasurer, rendered valuable service in meeting the dietary requirements of the patients promptly and efficiently. The labors of the supervisor and attendants gave evidence of being well performed.

The efforts put forth for the diversion of our patients in other lines have been commensurate with that of former years. We have been liberal in affording trolley rides and taking our patients to the city for pleasure and shopping. Our usual steamboat excursion to the seashore was, as it always has been, a great pleasure to our patients and a large party enjoyed a most delightful sail. We must not forget to mention the advantages which our patients derive by our weekly and semi-weekly

entertainments, made pleasing and effective by a well-equipped orchestra. We could mention many other means that have been used which have contributed to the comfort and well-being of our patients but which this already lengthy report will not permit. Aside from our stated home entertainments which continue through the fall, winter and spring, our patients have been entertained by the annual High School entertainment of this city and which exercise our people always enjoy. Prof. Roberson, with his highly entertaining illustrated lectures, was welcomed as usual by our entire household.

We append a financial statement of the Coburn Fund, a portion of the interest of which from year to year furnishes the means for the amusement and diversion of our patients.

COBURN FUND DISBURSEMENTS.

FOR THE YEAR ENDING NOVEMBER 30, 1906, AS PER VOUCHERS IN TREASURER'S OFFICE.

GENERAL AMUSEMENTS.			
Paid	Choir and organist.....	\$346 81	
	Orchestra and band.....	607 58	
			\$954 39
SPECIAL ENTERTAINMENTS, REPAIRS, ETC.			
Paid	Cony High School Minstrels, for one entertainment....	\$25 00	
	Frank R. Roberson, for one stereopticon lecture, "Russia"	40 00	
	Frank E. Smith, for one entertainment, "The Japanese Girl"	25 00	
	Eastern Steamship Co., for use of steamer, Wiwurna, excursion to Isle of Springs, with patients.....	100 00	
	Augusta, Winthrop & Gardiner Railway Co., for use special car, trolley ride for patients.....	12 00	
	C. W. & R. M. Bowen Co., labor and material repairing electrical machine.....	20 50	
	J. B. Lippincott Co., for books.....	11 00	
	Goodman, Leavitt, Yatter Co. labor and material repairing billiard and pool table.....	52 80	
	Lea Brothers, for books.....	10 50	
	R. L. Polk & Co., for books.....	6 00	
	Music, musical supplies for band, orchestra and choir...	34 53	
	Patients to plays, circus, fair, car rides, shopping, etc....	45 50	
	Christmas cards.....	12 00	
	Tuning and repairing pianos and organs.....	59 50	
	Games and amusements for patients.....	14 00	
	Labor and material, repairs and repainting Coburn Hall, summer, 1906.....	401 30	\$869 63
			\$1,824 02

BIGELOW T. SANBORN,
CHARLES E. FIELD,
MRS. J. R. SMITH,

Committee on Recreation and Amusement of Patients.

REPORT OF THE COMMITTEE ON HOSPITAL
LIBRARY.

To the Trustees of the Maine Insane Hospital:

Your committee on the library for the year ending November 30, 1906, have attended to that duty now ask leave to report.

		To deposit in Augusta Savings Bank	\$1,221 00
December 1905.	1....	20 shares First National Bank Stock.....	2,000 00
December	1....	Cash on hand.....	1 05
December	1....		
1906.		Dividend on bank stock	60 00
January	1....	Dividend on bank stock.....	60 00
July	1..	Savings bank dividend.....	42 37
			3,384 42
		DISBURSEMENTS.	
		By paid for books, Charles E. Lauriat Co.....	1 14
January	7....	Charles E. Lauriat Co.....	1 15
February	21....	Lewis Mathews & Co.....	3 00
May	2....	Charles E. Lauriat Co.....	5 36
June	7....	Charles E. Lauriat Co.....	4 85
September	20....	The McMillan Co.....	4 00
October	11....	John Wesley & Sons.....	2 14
October	12....	Papers and magazines.....	139 35
November	30....	Picture cord and holders.....	91
		Express	70
		Balance on hand.....	3,221 82
December	1..	Balance in Augusta Savings Bank.....	\$1,221 00
		20 Shares First National Bank stock.....	2,000 00
		Cash on hand.....	82
			\$3,221 82

MRS. J. R. SMITH,
THOMAS WHITE,
BIGELOW T. SANBORN,
Committee on Library.



Maine Insane Hospital
North View—Female Pavilions and Stone Wings

MAINE FARMER PRESS, AUGUSTA

SUPERINTENDENT'S REPORT.

To the Trustees of the Maine Insane Hospital.

The labors which are attached to the resident management of the hospital having drawn to its close by the ending of its fiscal year, it becomes my duty, made by statutory enactment, to report what has occurred in the operations of the institution in the past twelve months, and I accordingly submit for your consideration the Superintendent's sixty-sixth annual report. Several conditions have transpired which have contributed towards a very busy and exacting year's labor for all concerned in carrying forward the multitudinous duties which pertain to the life of a resident officer. Notably among which may be mentioned the completion and occupation of the new wing upon the Arsenal grounds and the large influx of patients which have been admitted, largely exceeding that of any former year. We find that at the close of this report our patients are ninety-three in excess of twelve months ago and at times during the autumn a considerably larger number have been upon our daily records. Aside from the self-destruction of one patient occurring by strangulation, but which could not be averted, nothing has transpired out of the usual course which has caused pain or discomfort, and upon the whole our people have passed a very restful and healthful year. It is fitting that for these blessings vouchsafed we should acknowledge the hand of an overruling Providence.

At the commencement of the year there were remaining a total of seven hundred and thirteen patients, four hundred and four men and three hundred and nine women. There have been admitted since two hundred and seventy-eight, one hundred and sixty-two men and one hundred and sixteen women. The number under treatment has been nine hundred and ninety-one, five hundred and sixty-six men and four hundred and

twenty-five women. The discharges and deaths have been as follows: Total recoveries, forty-seven, twenty-eight men and nineteen women; much improved, thirteen, seven men and six women; improved, thirteen, nine men and four women; unimproved, twenty-two, fifteen men and seven women; died, ninety, sixty-one men and twenty-nine women; leaving at the close of the hospital year, November 30, 1906, a total of eight hundred and six patients, four hundred and forty-six men and three hundred and sixty women. The daily average number of patients for the entire year has been seven hundred and thirty-nine, the largest number in the institution under treatment were eight hundred and nine, and the least number seven hundred and twelve.

The mortuary record has not differed in its rate materially from that of the preceding year. There has been but one additional death, while our daily average number of patients has essentially increased. As is usually our experience the death rate has been kept up in consequence of extreme old age, fifteen having died from senile dementia and ten from apoplexy, all of whom were patients well advanced in life.

We are expecting much from the radical departure we have inaugurated during the past year in the care and treatment of our patients in the construction of the Arsenal building on a widely different plan from that which is in vogue in the main hospital and in the installment of a hydrotherapeutic plant. The administration of the building at the Arsenal is conducted on a plan quite identical to a general hospital in that it has but a few single rooms and the rest of the building thrown into large open congregate dormitories used only for sleeping and which are accommodated with a large parlor or day-room located on the first floor of the building and devoted entirely to the wants of the patients during the day. This is supplied by a commodious outside corridor with an extended view of the river and is so located that it contributes as a sunbath and which by being closed in with glass can be occupied by the patients during the day the greater part of the year. We have at present sixty patients occupying the building, which can be increased as fast as necessity demands to double this number and the congregate dining-room is sufficient for the accommodation of at least one hundred and thirty patients. We are treating there a class of

mild chronics whom thus far have been quiet and well disposed as a rule and the most of them have sufficient minds to appreciate and manifest by their restfulness that they are satisfied and pleased with their environments. This auxiliary offers additional classification and in the removal of this class affords much better opportunities for the treatment of acute cases. We are expecting excellent results from this opportunity to further strengthen our classification in the further separation of our chronic cases from our acute and which procedure will allow us more time to devote to that class which require more careful attention and treatment. While this method which we have adopted is somewhat experimental yet in some of the states it has been in operation for several years and the colonization of this class has not only become a permanent fixture but is regarded as a practical and valuable feature in the equipment of the hospitals.

Hydrotherapy as treatment in institutions for the insane has been in vogue for some little time in a few of the hospitals of the country, but only within a few years has there been a rapid introduction so that at the present day every well-equipped institution has its plant and such positive results have been obtained that it has become a fixed and daily treatment in nearly all hospitals where a considerable number of patients are being cared for. We have not offered sufficient treatment in hydrotherapy to warrant in speaking of results in this report. We are, however, keeping clinical records of the cases treated and are hoping that in the next report we may be able to print such results as will warrant the continuance of this method of treatment and that our observations may be of such a character as to regard it in the light of a highly useful and remedial measure.

SUPPORT OF PATIENTS.

The patients are being supported in the following manner, viz: fifty by their own means, eighty-four entirely by the State and six hundred and seventy-two receive State aid of one dollar and fifty cents per week, towns and individuals paying the balance.

APPROPRIATIONS.

The appropriations which were provided for the hospital for various specific purposes have been judiciously expended. In my last annual report will be found the amount of the various appropriations, for what purposes they were to be expended, the individuals and firms who received the contracts and the itemized contracts for each particular construction so that because of the fact that the report with the present one will be accessible to the members of the legislature I do not deem it necessary to go into all of the details again which were then enumerated.

CONSTRUCTIONS.

The most important appropriation was made for the purpose of reconstructing the large building upon the property deeded to the hospital by the United States Government and known as the Arsenal. While the contractors were slow in its completion occasioned by their inability to obtain the material necessary for construction yet it was finally made ready for occupation and the first party of patients were placed there on the 25th of September of the present year. I have already spoken of the number and condition of the patients occupying this pavilion and of the restfulness and contentment which evidently prevails occasioned by pleasant and healthful environments. The construction was most thorough in all of its details and all of its fixtures including electric lighting, bath-rooms, furniture, wardrobes, kitchen and dining-room are of the most modern appliances.

It is fitting that there has been inscribed upon the entrance to the building, in chiseling, "The Edwin C. Burleigh Pavilion," because of his arduous and gratuitous labors in procuring, from the general Government, a gift of such value to the State and which for coming years will subserve so important an interest in broadening the opportunities which are attached to the care of a dependent and unfortunate class.

The various other specific appropriations we believe have been prudently expended and carried to completion with the exception of a portion of the fire proof stairways of the Harlow and Sanborn Pavilion. The failure to complete has been

made necessary because of the inability thus far to obtain the entire material. The contractors feel assured now that the remainder of the slate will be received and the remnant of the work completed before the opening of the new year.

REPAIRS.

In consequence of causes which were not apparent at the commencement of the fiscal year the repairs that have been made necessary have been unusually large and required an extra force of mechanics. I think it will be shown by the forthcoming report of the steward and treasurer that the contingencies which have arisen have largely increased the necessary expenses of our mechanical departments. The outlays for painting particularly have been very large and required an additional force. The weakened masonry of the center building has required large expenditures. One of its large chimneys was found to be crumbling and in a dangerous condition necessitating its removal and rebuilding.

The fire which occurred in the early morning of October 12th originating in the dryroom of our laundry and resulting in the entire destruction of its interior has occasioned a large amount of extra labor and has been a source of much inconvenience to our entire household. Your committee, appointed at a full board meeting a few days subsequent to the fire, composed of two members of the trustees and the superintendent were empowered to so far construct the building as to make it available for partial use again and wait the action of the legislature expecting an appropriation sufficient to place it in the condition of its former usefulness. Your committee at once employed R. J. Noyes, of this city, with instructions to proceed as fast as possible to complete such repairs as was necessary. He has constructed a permanent and substantial roof under the architectural directions of Coombs & Gibbs, architects of Lewiston, and the roofing is now practically so far completed that the building below is protected from dampness and inclement weather. It was fortunate that the fire occurred before new machinery had taken the place of the old which purchase had been in contemplation and was much needed. Since the fire which destroyed the old mangle a new one of modern make

has been supplied, is performing efficient service and greatly facilitates in the rapidity of the work accomplished in our ironing room which temporarily occupies a portion of our heating plant which was, when constructed, intended for a dynamo room. We are performing fairly efficient work with our extemporized appliances but are hoping that the legislature may take early action in the premises in order that we may at once reconstruct the building in a permanent manner and be able to re-establish our laundry in the accustomed location in the early spring.

FARM AND GARDEN.

I will not attempt to go into the detail of the various products which have been harvested in these two departments as they will be given in detail in the steward and treasurer's report. I am of the opinion however it will be found that the yield from these auxiliaries will not be found quite up to the average of former years in consequence of a very backward spring and the land to be placed under cultivation being of such a character and so filled with moisture that planting was necessarily delayed, a portion of which was necessary to be left in the furrow.

A recent investigation into the condition of our herd of cows has found them in a reacting condition which will necessitate a gradual removal and the supply of another herd. While the individual animals are in good condition and to all outward physical signs are healthy yet the present acknowledged tests show disease. It is fortunate that we have a well equipped pasturizer which receives and sterilizes all of the product from the herd and which the most recent scientific investigations regard as a sure procedure in causing the destruction of all germs and which process renders it entirely safe for consumption.

Quite a force of patients from the various wards of the institution have been voluntarily employed upon the farm and garden which has resulted in many cases in physical and mental improvement and in a few instances full recovery has taken place.

NEEDS.

By far the most important requirements of the hospital are in my judgement to be found in a continuance of the renovation of the old wards of the hospital. Two of the wings of the male side of the house have been in continuous service since 1850, one other since 1866 and the remaining one was first occupied in 1868. There has scarcely occurred a period when these wards have not been occupied with patients to the full extent of their capacity. In two of these buildings, in addition to the occupation of the single rooms, the wards of each have been maintaining cots at night for sleeping purposes all these years so that because of the extra amount of labor that has been required in administration, necessitating so much wear and tear, they have become dilapidated and outgrown their usefulness in contributing to such demands as are consistent with that treatment that should be accorded the patients at the present time. The requirements of the hospital in this direction have been fully discussed with former hospital legislative committees for quite a number of years and the arguments offered have fully met the approval of these bodies. After full investigation an appropriation was made six years ago for a fire proof renovation of the first female wing and at the subsequent session of the legislature a bill was passed to fully equip the second one on that side of the hospital with the same material as the former, both wings of which have long since been fully occupied and because of the improvements made in the direction of increased light and ventilation greatly increased care and treatment are being extended to the occupants. At the time of the appropriations it was evidently the settled policy of the legislature to continue to complete the reconstruction of the remainder of the old wings of the hospital but at its last session it failed to provide means to pursue the intended prosecution. It is not necessary that I should further advocate these urgent necessities and will refer the matter to your consideration to take such steps as you deem wise in bringing about a condition such as shall result in the increased comfort of our patients and afford an opportunity to administer more scientific and rational care. I have already mentioned the necessity of an appropriation for our laundry and need not encumber this report further except to add that in its renovation, inasmuch as the fire orig-

inated in our dry room in the basement, the floor above should be replaced by fire proof material. It will be remembered that our carpenters shop now occupies a portion of the laundry building and inasmuch as we are obliged to house, in this department, a large amount of lumber which with other combustible material necessary to be kept there a fire is much more likely to occur. Inasmuch as it has not been thought wise to ask the legislature to appropriate a sum sufficiently large to reconstruct in fire proof material and because of the fact that our laundry department especially of late years does not afford sufficient room to conveniently care for the clothing I will call your attention to the advisability of asking for a small appropriation to construct a wooden building for the purposes of a carpenters shop in the rear of our heating apparatus sufficiently near to take its steam for this department including a dry-room for lumber. Such an addition would offer added advantages to our laundry and remove from the lawn on the north side of the hospital unsightly clutter which now obtains in carrying on the necessary repairs of the farm implements. It can hardly be expected that the institution, out of its own funds, can complete the building of our new road through the Arsenal grounds. It requires macadamizing and should not be allowed to go over another year especially as we are caring for patients at the Arsenal grounds which necessitates a large amount of travel in that direction.

The woodwork of our greenhouse has become decayed from long use and which has required additional supports for more than a year in order to prevent the falling of the roof and requires a small appropriation for its reconstruction. I have presented for your consideration what I regard as urgent necessities and will leave the matter in your hands to take such steps in the premises as you deem proper.

OFFICIAL CHANGES.

I am pleased to be able to report that no sickness has occurred in the official staff of the hospital which has required any change. Indeed all of my associates have been able to respond to duty uninterruptedly and because of added experience have rendered efficient and satisfactory service. My medical staff,

because of broader opportunities occasioned by long service, have been able to intelligently and scientifically cope with the intricacies which are manifested in various phases which afflict and pertain to mental diseases.

Dr. John L. Davis, a recent graduate from the medical department of Bowdoin College, entered upon his duties as interne in June last. The doctor is active and efficient and is proving himself as a valuable aid in the duties connected with the medical department of the hospital.

I am under many obligations to all who have conscientiously and willingly borne their part in our endeavors to bring comfort and relief to our patients and I am not unmindful of that support which has been rendered by the committee appointed from the governor and council. In addition to the duties devolving upon me as the chief executive of the institution a great sorrow has come to me personally in the demise of Mrs. Sanborn who was more to me than life itself and which burden would have been almost insuperable had it not been for that spontaneous sympathy extended not only by every member of your board but by the entire residents of the institution as well. For this gracious consideration and for the support you have extended to me in every direction and under all circumstances I am placed under profound obligations.

MEDICAL STATISTICS, 1906.

TABLE NO. 1.
MOVEMENT OF POPULATION.

	Men.	Women.	Total.
Remaining November 30, 1905	404	309	713
Admitted since	162	116	278
Number under treatment.....	566	425	991
DISCHARGES AND DEATHS.			
Recovered	28	19	47
Much improved	7	6	13
Improved	9	4	13
Unimproved	15	7	22
Died	61	29	90
Remaining November 30, 1906	446	360	806

TABLE NO. 2.
ASSIGNED CAUSE OF INSANITY OF THOSE ADMITTED DURING THE YEAR 1906.

	Men.	Women.	Total.
Alcoholism	20	1	21
Apoplexy	1	1	2
Bad Habits	1	0	1
Brights Disease	1	0	1
Congenital	7	2	9
Domestic affliction.....	4	8	12
Disappointment.....	0	1	1
Epilepsy	3	2	5
Exposure in army life	2	0	2
Hereditly	39	20	59
Ill health	2	0	2
La Grippe	1	3	4
Masturbation	7	2	9
Menopause	0	8	8
Morphine habit.....	3	0	3
Morphine and cocain habit.....	1	0	1
Nostalgia	0	1	1
Puerperal	0	3	3
Overwork	3	5	8
Overstudy	1	0	1
Religious excitement	1	1	2
Senility	8	1	9
Surgical operation	0	3	3
Sunstroke	2	0	2
Traumatism	9	1	9
Typhoid fever	1	1	2
Uterine disease	0	3	3
Unknown	40	45	85
Veneral disease	3	3	6
Worry	2	2	4
Total.....	162	116	278

TABLE No. 3.
AGES OF THOSE ADMITTED.

	Men.	Women.	Total.
From 10 to 20 years of age.....	6	7	13
" 20 " 30 "	27	9	36
" 30 " 40 "	24	26	50
" 40 " 50 "	36	39	75
" 50 " 60 "	24	19	43
" 60 " 70 "	27	11	38
" 70 " 80 "	13	4	17
" 80 " 90 "	5	1	6
Total.....	162	116	278

TABLE No. 4.
SOCIAL CONDITION OF THOSE ADMITTED.

	Men.	Women.	Total.
Married	66	43	109
Single.....	69	45	114
Widowed	23	26	49
Divorced	4	2	6
Total.....	162	116	278

TABLE No. 5.
DURATION OF INSANITY PRIOR TO ADMISSION.

	Men.	Women.	Total.
Not exceeding 1 week.....	15	9	24
" " 1 month	30	14	44
" " 3 months	25	14	39
" " 6 "	18	5	23
" " 9 "	4	2	6
" " 12 "	15	7	22
" " 2 years	13	13	26
" " 3 "	6	2	8
" " 4 "	2	2	4
" " 5 "	10	7	17
" " 10 "	6	13	19
" " 15 "	4	8	12
" " 30 "	4	8	12
Congenital	8	2	10
Unknown.....	2	10	12
Total.....	162	116	278

TABLE No. 6.
MONTHLY ADMISSION.

	Men.	Women.	Total.
December, 1905.....	5	8	13
January, 1906.....	14	9	23
February, ".....	12	3	15
March, ".....	8	7	15
April, ".....	10	1	11
May, ".....	16	8	24
June, ".....	12	5	17
July ".....	12	8	20
August ".....	22	12	34
September ".....	26	11	37
October ".....	15	35	50
November ".....	10	9	19
Total.....	162	116	278

TABLE No. 7.
TIME OF TREATMENT OF PATIENTS DISCHARGED RECOVERED.

	Men.	Women.	Total.
Not exceeding 3 months.....	5	1	6
" " 6 ".....	9	5	14
" " 9 ".....	2	0	2
" " 12 ".....	5	4	9
" " 2 years.....	2	6	8
" " 3 ".....	5	1	6
" " 4 ".....	0	1	1
" " 8 ".....	0	1	1
Total.....	28	19	47

TABLE No. 8.
CAUSES OF DEATH.

	Men.	Women.	Total.
Apoplexy.....	7	3	10
Acute delirium.....	2	0	2
Carcinoma of uterus.....	0	1	1
Cerebral syphilis.....	2	0	2
Epilepsy.....	2	2	4
Exhaustion following mania.....	4	3	7
Exhaustion following melancholia.....	6	4	10
Exhaustion following morphinomania.....	1	0	1
Exhaustion following melancholia and sepsis.....	1	0	1
Nephritis, chronic.....	6	3	9
Nephritis, acute.....	2	1	3
Organic brain disease.....	8	2	10
Organic valvular disease of the heart.....	2	1	3
Paresis.....	2	2	4
Phthisis pulmonalis.....	4	0	4
Pneumonia.....	0	1	1
Senile dementia.....	12	5	17
Strangulation.....	0	1	1
Total.....	61	29	90

TABLE No. 9.
MONTHLY MORTALITY.

	Men.	Women.	Total.
December, 1905.....	3	3	6
January, 1906.....	7	3	10
February, ".....	5	4	9
March, ".....	8	2	10
April, ".....	5	2	7
May, ".....	2	0	2
June, ".....	3	2	5
July, ".....	7	0	7
August, ".....	6	1	7
September, ".....	6	4	10
October, ".....	4	2	6
November, ".....	5	6	11
Total.....	61	29	90

TABLE No. 10.
AGE AT DEATH.

	Men.	Women.	Total.
From 10 to 20 years.....	0	1	1
" 20 " 30 ".....	6	0	6
" 30 " 40 ".....	8	3	11
" 40 " 50 ".....	17	6	23
" 50 " 60 ".....	10	7	17
" 60 " 70 ".....	10	3	13
" 70 " 80 ".....	5	8	13
" 80 " 90 ".....	5	1	6
Total.....	61	29	90

TABLE No. 11.
APPROXIMATE DURATION OF INSANITY PRIOR TO DEATH.

	Men.	Women.	Total.
3 weeks.....	2	1	3
1 month.....	4	1	5
3 months.....	9	3	12
9 ".....	4	0	4
1 year.....	6	2	8
2 years.....	12	4	16
5 ".....	7	8	15
10 ".....	7	5	12
15 ".....	3	3	6
20 ".....	3	0	3
25 ".....	4	2	6
Total.....	61	29	90

TABLE No. 12.
OCCUPATION OF THOSE ADMITTED.

	Men.	Women.	Total.
Actor	1	0	1
Bookkeeper	0	1	1
Butcher	1	0	1
Cab driver	1	0	1
Carpenter	5	0	5
Cattle dealer	1	0	1
Clerk	4	1	5
Cooper	2	0	2
Domestic	0	50	50
Dressmaker	0	1	1
Electrician	1	0	1
Evangelist	0	1	1
Farmer	46	0	46
Fisherman	1	0	1
Fur dealer	1	0	1
Hotel keeper	1	0	1
Housewife	0	43	43
Inventor	1	0	1
Jeweler	1	0	1
Laborer	41	0	41
Lecturer	1	0	1
Liveryman	1	0	1
Lumberman	6	0	6
Mail carrier	1	0	1
Machinist	2	0	2
Merchant	2	0	2
Mill operator	4	6	10
None	9	6	15
Painter	1	0	1
Peddler	1	0	1
Policeman	1	0	1
Physician	0	0	1
Railroad man	1	0	1
Restaurant keeper	1	0	1
Saddler	1	0	1
Sailor	3	0	3
School boy	2	0	2
School girl	0	3	3
Shoemaker	7	0	7
Stenographer	0	1	1
Student	1	0	1
Stonecutter	1	0	1
Teacher	1	3	4
Teamster	2	0	2
Upholsterer	2	0	2
Vagrant	2	0	2
Total	162	116	278

TABLE No. 13.
RESIDENCE OF THOSE ADMITTED.

	Men.	Women.	Total.
Athens	3	0	3
Andover.....	0	1	1
Alna	0	1	1
Abbot.....	0	1	1
Acton.....	0	1	1
Auburn.....	5	7	12
Alfred Jail	1	0	1
Albion.....	1	0	1
Anson.....	1	0	1
Augusta.....	3	3	6
Bristol.....	0	1	1
Blanchard... ..	1	2	3
Bridgton.....	2	0	2
Bridgewater	1	0	1
Bingham.....	1	0	1
Bethel.....	0	2	2
Bowdoinham	1	0	1
Bath.....	3	2	5
Belfast.....	1	1	2
Biddeford.....	4	2	6
Brunswick.....	1	1	2
Bangor.....	3	2	5
Benton.....	1	0	1
Cutler.....	1	0	1
Caribou.....	1	0	1
Clinton.....	1	0	1
Chapman Plantation.....	0	1	1
Calais.....	0	2	2
Canaan.....	1	0	1
Camden.....	1	0	1
Chesterville.....	2	0	2
Cornish.....	1	0	1
Danforth.....	0	1	1
Dresden.....	0	1	1
Durham.....	1	1	2
Dayton.....	0	1	1
Dixfield.....	1	0	1
Denmark.....	2	0	2
Damariscotta.....	1	2	3
Dover.....	2	0	2
Deer Isle.....	1	1	2
Eden.....	0	1	1
East Livermore.....	1	0	1
Eliot.....	0	1	1
Ellsworth.....	0	0	0
Eddington.....	1	0	1
Eastport.....	1	1	2
Fairfield.....	1	1	2
Friendship.....	0	1	1
Farmington.....	1	0	1
Farmingdale.....	1	0	1
Franklin.....	1	0	1
Fort Kent.....	1	0	1
Greene.....	1	0	1
Gardiner.....	4	0	4
Guilford.....	0	2	2
Gilead.....	0	1	1
Glenburn.....	0	1	1
Hallowell.....	2	1	3
Hollis.....	0	1	1
Hartford.....	1	0	1
Hampden.....	0	2	2
Jay.....	1	0	1
Kennebunkport.....	1	0	1
Knox County Jail.....	2	0	2
Kittery.....	0	2	2
Kennebunk.....	2	1	3
Lewiston.....	8	5	13
Lovell.....	0	0	0
Lisbon.....	3	0	3
Litchfield.....	0	2	2
Manchester.....	1	0	1
Moscow.....	1	0	1

TABLE No. 13—Concluded.

	Men.	Women.	Total.
Mexico	2	1	3
Milo	1	1	2
Monroe	1	0	1
Mt. Desert.....	0	1	1
Milford	0	1	1
Machias	0	1	1
Medway	0	1	1
Norway	1	1	2
Nobleboro.....	1	0	1
North Haven	1	0	1
New Vineyard	1	0	1
Newcastle	0	1	1
Newport.....	1	0	1
Oxford County Jail.....	1	1	2
Orland	0	1	1
Oldtown	1	2	3
Old Orchard	1	1	2
Presque Isle.....	2	0	2
Poland	1	0	1
Phippsburg	0	1	1
Pittston	0	1	1
Portland.....	11	11	22
Paris.....	1	1	2
Portland Jail.....	1	0	1
Pittsfield	3	3	6
Parsonfield	1	0	1
Rockland	2	3	5
Robbinston.....	1	0	1
Richmond	0	2	2
Rangeley	1	0	1
Rumford.....	2	0	2
Raymond	1	0	1
St. George	1	0	1
Sanford	1	3	4
Sangerville.....	4	0	4
So. Berwick	1	2	3
So. Thomaston	0	1	1
Somerville	1	0	1
Skowhegan.....	0	2	2
Stouington	1	0	1
Shapleigh.....	1	1	2
Stockton Springs	1	0	1
Standish	1	0	1
Searsport	1	0	1
Saco.....	1	0	1
Smithfield	0	1	1
So. Portland.....	0	1	1
Sullivan	0	1	1
Tremont	1	0	1
The Forks Plantation	1	0	1
Turner	2	0	2
Topsham	1	0	1
Thorndike.....	1	0	1
Temple	0	1	1
Trescott	0	1	1
Union	0	1	1
Vinalhaven	3	0	3
Van Buren	1	0	1
Waterville.....	1	1	2
Washington.....	2	0	2
West Bath.....	0	1	1
Westbrook.....	2	0	2
Winslow.....	1	0	1
Wayne.....	0	1	1
Waldo	2	0	2
Waldoboro.....	1	0	1
Weston	1	0	1
Waterford	1	0	1
Warren	0	1	1
Winthrop.....	1	0	1
Whiting	0	1	1
Yarmouth.....	0	1	1
Total.....	162	116	278

TABLE No. 14.
NUMBER OF ADMISSIONS OF THOSE ADMITTED.

	Men.	Women.	Total.
Admitted the first time.....	130	84	204
“ “ second time.....	23	26	49
“ “ third time.....	11	2	13
“ “ fourth time.....	0	1	1
“ “ fifth time.....	2	2	4
“ “ sixth time.....	0	1	1
“ “ seventh time.....	1	0	1
“ “ eighth time.....	2	0	2
“ “ eleventh time.....	1	0	1
“ “ thirteenth time.....	1	0	1
“ “ fourteenth time.....	1	0	1
Total.....	162	116	278

TABLE No. 15.
RELIGION OF THOSE ADMITTED.

	Men.	Women.	Total.
Catholic.....	25	24	49
Protestant.....	134	81	215
Jew.....	0	2	2
Unknown.....	3	9	12
Total.....	162	116	278

TABLE No. 16.
NATIVITY OF THOSE ADMITTED.

	Men.	Women.	Total.
Canada.....	5	6	11
Connecticut.....	1	0	1
District of Columbia.....	0	1	1
England.....	1	1	2
France.....	2	0	2
Finland.....	0	1	1
Germany.....	1	0	1
Illinois.....	1	0	1
Ireland.....	3	5	8
Italy.....	0	1	1
Massachusetts.....	0	2	2
Maine.....	130	78	208
Maryland.....	1	0	1
New Hampshire.....	1	2	3
New York.....	0	2	2
Nova Scotia.....	2	1	3
New Brunswick.....	4	4	8
Ohio.....	1	0	1
Prince Edwards Island.....	0	1	1
Quebec.....	2	0	2
Rhode Island.....	0	1	1
Russia.....	1	1	2
Scotland.....	0	1	1
Sweden.....	1	1	2
Unknown.....	3	6	9
Vermont.....	1	0	1
West Indies.....	1	0	1
West Virginia.....	0	1	1
Total.....	162	116	278

TABLE No. 17.
TYPE OF DISEASES OF THOSE ADMITTED.

	Men.	Women.	Total.
Exhaustion psychoses:			
Acquired neurasthenia	12	9	21
Acute delirium	5	0	5
Infection psychoses.	0	1	1
Intoxication psychoses:			
Acute alcoholism	2	0	2
Alcoholic delusional insanity	3	0	3
Chronic alcoholism	8	0	8
Morphinism	3	1	4
Morphinism and cocaineism	1	0	1
Involution psychoses:			
Affective melancholia	9	10	19
Senile dementia	15	5	20
Psychoses of autointoxication:			
Uraemic delirium	1	0	1
Manic-depressive insanity	30	36	66
Organic cerebral affections	21	3	24
Paranoia	3	2	5
General neuroses:			
Epileptic insanity	12	3	15
Hysterical insanity	0	2	2
Constitutional psychopathic states:			
Compulsive insanity	1	1	2
Mental instability	1	2	3
Sexual perversion	1	2	3
Paresis	3	2	5
Dementia praecox	22	32	54
Defective mental development:			
Moral insanity	0	2	2
Imbecility	6	2	8
Idiocy	1	1	2
Not insane	2	0	2
Total	162	116	278

SUPERINTENDENT'S REPORT.

TABLE No. 18.

SHOWING THE OPERATIONS OF THE HOSPITAL FROM ITS COMMENCEMENT TO THE PRESENT TIME.

Year.	Admitted.	Discharged.	Whole num-ber under treatment.	Recovered.	Improved.	Unimproved.	Died.	Greatest num-ber in hospital on any day.	Least number in hospital on any day.	Remaining at the end of year.	Daily average number for the year.
1840-1.....	105	79	133	33	20	20	6	70	29	54	48
1841-2.....	87	76	141	36	16	18	6	73	50	65	62
1842-3.....	82	79	147	31	27	17	4	72	52	68	65
1843-4.....	83	75	151	32	18	22	3	79	65	76	70
1844-5.....	99	90	175	38	22	23	7	89	72	85	80
1845-6.....	102	87	187	46	22	14	5	107	79	100	93
1846-7.....	124	100	224	53	17	20	10	125	92	124	108
1847-8.....	128	125	252	60	31	14	20	135	117	127	112
1848-9.....	123	123	250	60	28	17	18	135	112	127	126
1849-50.....	126	109	253	58	20	16	15	148	126	144	137
1850-1.....	90	102	234	51	40	52	39	155	52	52	75
1851-2.....	105	72	157	36	11	16	9	84	52	84	78
1852-3.....	124	89	208	45	14	15	15	119	84	119	109
1853-4.....	110	114	229	49	15	18	32	119	114	115	109
1854-5.....	128	88	243	41	14	14	19	155	114	155	134
1855-6.....	149	114	304	54	22	19	19	194	151	190	167
1856-7.....	144	126	334	69	24	19	14	215	190	208	204
1857-8.....	126	126	334	59	25	18	24	225	205	208	213
1858-9.....	149	120	357	58	22	23	17	240	205	337	222
1859-60.....	136	133	373	63	22	17	31	246	227	240	236
1860-1.....	135	123	375	55	25	16	27	255	239	252	248
1861-2.....	125	119	377	57	24	19	19	263	244	258	254
1862-3.....	118	111	376	52	21	14	24	266	242	265	254
1863-4.....	124	135	389	49	22	11	53	273	247	254	263
1864-5.....	142	119	396	47	25	23	24	282	254	277	272
1865-6.....	135	136	412	61	29	13	33	287	267	276	277
1866-7.....	150	123	426	54	27	11	31	303	276	303	391
1867-8.....	165	129	468	63	23	16	27	341	302	339	219
1868-9.....	150	152	489	68	28	14	42	351	332	337	342
1869-70.....	130	122	467	48	19	18	37	348	330	345	339
1870-1.....	174	151	519	58	28	21	44	376	345	368	363
1871-2.....	202	177	570	79	34	19	45	404	368	393	385
1872-3.....	200	182	593	83	36	20	43	416	388	411	400
1873-4.....	189	207	600	61	33	61	52	420	393	393	406
1874-5.....	188	178	581	68	31	27	52	408	389	403	398
1875-6.....	186	184	589	68	33	31	52	408	384	405	398
1876-7.....	194	183	599	74	35	28	46	423	397	416	411
1877-8.....	188	186	604	56	45	37	48	423	406	418	415
1878-9.....	196	195	614	53	52	60	30	432	399	419	415
1879-80.....	188	171	607	57	33	43	38	439	390	436	412
1880-1.....	215	201	651	56	57	42	46	453	426	450	442
1881-2.....	194	183	644	71	35	34	43	465	433	461	449
1882-3.....	208	205	669	53	42	22	88	467	430	464	450
1883-4.....	203	207	667	59	31	16	101	472	443	460	454
1884-5.....	249	223	709	80	54	12	77	488	459	486	474
1885-6.....	231	189	717	66	56	7	60	543	484	528	506
1886-7.....	226	202	754	82	52	14	54	556	527	552	543
1887-8.....	250	224	802	76	48	19	81	600	552	578	580
1888-9.....	225	223	803	65	60	22	76	599	561	580	579
1889-90.....	253	207	833	65	52	17	73	634	577	626	612
1890-1.....	245	198	871	63	47	18	70	677	626	673	649
1891-2.....	269	257	942	71	72	25	89	697	669	685	685
1892-3.....	287	301	972	75	83	55	88	714	671	671	693
1893-4.....	284	275	955	84	51	36	104	706	668	680	680
1894-5.....	274	248	954	95	54	34	65	712	680	706	698
1895-6.....	240	237	946	58	70	29	80	717	690	709	703
1896-7.....	255	251	964	52	95	33	81	737	710	713	722
1897-8.....	234	214	947	42	76	35	61	740	708	733	727
1898-9.....	249	235	982	48	37	21	103	771	732	747	747
1899-1900.....	273	249	1,020	61	49	32	107	782	748	771	764
1900-1901.....	206	377	977	66	92	117	102	776	600	600	702
1901-1902.....	203	172	803	46	28	16	82	631	536	631	607
1902-1903.....	209	176	840	57	31	17	77	668	629	664	646
1903-1904.....	200	160	864	49	23	11	77	710	663	704	689
1904-1905.....	210	201	914	63	38	11	89	728	701	713	710
1905-1906.....	278	185	991	47	13	22	90	809	712	806	739

Respectfully submitted,

BIGELOW T. SANBORN, Superintendent.

Maine Insane Hospital, Augusta, November 30, 1906.

FINANCIAL REPORT OF COMMITTEE ON WIDOWS
ISLAND HOSPITAL.

AUGUSTA, MAINE, November 30, 1906.

To the Trustees of the Maine Insane Hospital:

GENTLEMEN:—In accordance with the provision made by Governor Cobb, for the purpose of continuing and utilizing Widows Island for convalescent patients for the season of 1906, providing twenty-five hundred dollars (\$2,500.00) that it might be used as a summer home for such patients of the Maine Insane Hospital and Eastern Maine Insane Hospital as would be in the judgment of the Superintendents of the two Hospitals benefited thereby, we herewith submit report of cash received and expended for the year ending November 30, 1906.

1906. RECEIPTS.			
June 25.	To cash from State treasurer.....	\$1,000 00	
July 2.	cash from State treasurer.....	1,500 00	
July 2.	cash from Frost & Scribner, sale 1½ ton coal.....	7 50	
Nov. 30.	Balance from Convalescent Insane Hospital account, amount in excess of cost.....	172 17	\$2,679 67
DISBURSEMENTS.			
Due the treasurer of the Maine Insane Hospital for amount expended in excess of appropriation for operation and maintenance of the Convalescent Insane Hospital for the season of 1905.....		\$501 04	
Artesian well; transportation of boring machine, pumping engine, materials and labor....		812 00	
Tent, granite tablet, plans and specifications.....		239 62	
Salary of caretaker and use of launch.....		631 00	
Furniture, bedding and marine glass.....		76 75	
Material and labor repairing building, painting, piping, plumbing and fittings.....		229 28	
Freight and express, transportation of patients and officers, telephones, telegrams, etc. (not charged to the Widow's Island support account).....		601 44	
		\$3,091 13	
Due the treasurer of the Maine Insane Hospital for amount expended in excess of receipts, as per above report, for maintenance and operation of Convalescent Insane Hospital at Widows Island.....			411 46
		\$3,091 13	\$3,091 13

Respectfully submitted,

CHARLES E. FIELD,
BIGELOW T. SANBORN,
P. H. S. VAUGHAN,
MANNING S. CAMPBELL,

Committee on Widows Island Hospital.

REPORT OF BUILDING COMMITTEE.

AUGUSTA, MAINE, November 30, 1906.

To the Trustees of the Maine Insane Hospital:

GENTLEMEN:—In accordance with the resolve approved March 24, 1905, (see Chapter 168, Laws of 1905, Page 60) appropriating ten thousand dollars (\$10,000.00) for copper aprons and fireproof stairways for the Harlow and Sanborn wings, we herewith submit our report of cash received on account of the appropriation and disbursements for the year ending November 30, 1906.

1905.	RECEIPTS.		
	Received from State treasurer	\$10,000 00	
	DISBURSEMENTS.		
	Paid Jewett & Hanson, pointing		\$178 19
	Copper aprons and staging, labor, men, teams, material, etc.		294 20
	Dec. 1, 1905, Balance cash on hand, unexpended		9,527 61
		\$10,000 00	\$10,000 00
1905.	RECEIPTS.		
Dec. 1.	Balance cash on hand, unexpended	\$9,527 61	
	DISBURSEMENTS.		
	Fire Proof Stairways:		
Paid	Builders Iron & Steel Company, contractors, steel construction	\$2,419 00	
	Builders Iron & Steel Co., bill of extras in connection with contract	43 00	
	The H. H. Fernald Co. contractors, terra cotta fire-proofing	452 00	
	Augusta Lumber Co., lumber	22 38	
	Purington Bros. Co., brick, lime and cement	227 25	
	Brooks Hardware Co., hardware	54 00	
	Morse & Co., hand rails and moulding	44 00	
	Mathews Slate Co., extra slate material	19 12	
	Fire proof stairways, labor, men, teams, material, etc.	764 66	
			4,045 41

DISBURSEMENTS—Concluded.

Copper aprons and pointing:			
F. Korneffel & Son, contractors, copper aprons, ventila-		\$1,675 00	
tors, etc.....			
F. Korneffel & Son, bill of extras in connection with		447 00	
contract.....			
R. J. Reilly, contractor, slate work.....		175 00	
Brooks Hardware Co., mortar coloring.....		9 52	
Augusta Lumber Co., lumber.....		39 18	
Purinton Bros. Co., brick, lime and cement.....		11 25	
Excelsior Terra Cotta Co., terra cotta.....		20 00	
Copper aprons and pointing, labor, men, teams,		772 36	
material, etc.....			
			\$3,149 31
1906.			
Nov. 30. Balance unexpended.....			2,332 89
			\$9,527 61
Dec. 1, 1906. Balance cash on hand, unexpended		\$2,332 89	

Respectfully submitted,

GEO. E. MACOMBER,

BIGELOW T. SANBORN,

MANNING S. CAMPBELL,

Building Committee.

REPORT OF BUILDING COMMITTEE.

AUGUSTA, MAINE, November 30, 1906.

To the Trustees of the Maine Insane Hospital:

GENTLEMEN:—In accordance with the resolve approved March 24, 1905, (see Chapter 168, Laws of 1905, Page 60) appropriating fifty-six thousand dollars for additions and remodeling the Arsenal Building and other specified work in connection thereto, we herewith submit our report of cash balances and receipts on account of the appropriations and disbursements for the year ending November 30, 1906.

RECEIPTS.			
1905.	Appropriation renovation Arsenal building:		
Dec. 1.	Balance cash on hand unexpended, appropriation renovation Arsenal building.....	\$4,629 76	
	Balance cash on hand unexpended, appropriation furnishings Arsenal building.....	6,000 00	
	Balance cash on hand unexpended, appropriation repairs Arsenal building.....	1,000 00	
Dec. 27.	To cash from State treasurer.....	15,000 00	\$26,629 76.
DISBURSEMENTS.			
1906.	Paid R. J. Noyes, contractor, masonry and carpenter work.	\$15,068 00	
	Rice & Company, window guards.....	270 00	
	Jewett & Hanson, pointing, etc.....	469 13	
	Coombs & Gibbs, architects, plans, specifications, traveling expenses, etc.....	1,806 69	
	Renovation Arsenal building, labor, men, teams, materials, etc.....	474 12	
	Electric wiring and gas piping, labor, men, material, etc.	126 73	
	Interior finish, labor, men, teams, material, etc.....	1,096 84	
	Plumbing, labor, men and material fitting up dining room, kitchen, etc.....	738 76	
	Water and sewer lines, labor, men, teams, material, etc.	523 56	
	Furnishings Arsenal building, furnishings, material and labor.....	5,932 03	
	Appropriation, furnishings Arsenal building, balance on hand, unexpended.....	67 97	
		\$26,573 83	
	Steam heating lines and connections:		
Paid	W. W. Carman, pipe, fittings, labor, etc.....	5,979 20	
	Nightingale & Childs Co., contractors, pipe covering ..	2,050 35	
	J. H. Stetson & Company, galvanized heat and ventilating boxes.....	650 00	
	Arsenal steam line, steam heating, concreting steam line, labor, men, teams, material, etc.....	1,353 46	36,636 84
		\$10,063 01	

INSANE HOSPITAL.

DISBURSEMENTS—Concluded.

Due the treasurer of the hospital for amount expended in completing steam heating lines and connections in excess of appropriation as per treasurer's report		\$10,007 08
To be provided for:		
Due R. J. Noyes, contractor, masonry and carpenter work, for bill of extras in connection with renovation of Arsenal building for reslating, etc.	\$870 85	
Due R. J. Noyes, contractor, masonry and carpenter work, Jewett & Hanson's bill of extras, labor and material in connection with renovation of Arsenal building	491 37	1,362 22
Estimated cost of extra plumbing, grading and concreting	500 00	
Estimated cost of enclosing Arsenal piazza in glass	600 00	\$1,100 00
Total amount to be provided necessary to complete building, steam heating lines and connections		\$12,469 30

Respectfully submitted,

GEO. E. MACOMBER,
 BIGELOW T. SANBORN,
 MANNING S. CAMPBELL,
Building Committee.



Maine Insane Hospital—Cow Barn and Herd of Holstein Stock

MAINE FARMER PRESS, AUGUSTA

STEWARD AND TREASURER'S REPORT.

To the Trustees of the Maine Insane Hospital:

I herewith present my report of the financial standing of the Maine Insane Hospital for the year ending November 30, 1906.

TOTAL RECEIPTS AND DISBURSEMENTS OF CASH FOR THE YEAR ENDING NOVEMBER 30, 1906.

DR.		
Balance of cash on hand December 1, 1905.....	\$26,605 26	
Receipts for year, hospital account.....	180,147 61	
Received from State of Maine, account Coburn fund, Williams and Gilman legacies.....	2,090 00	
Received from State of Maine, account appropriation for renovating Arsenal building, to be used for male wards..	15,000 00	
Received from Chas. E. Field, treasurer, Widow's Island appropriation	2,859 66	\$226,702 53
CR.		
Disbursements, hospital account.....	\$173,513 90	
Disbursements, hospital account, for renovation Arsenal building and steam line, in excess of appropriation.....	10,007 08	
Disbursements, account Coburn fund, Williams and Gilman legacies.....	1,824 02	
Disbursements, account appropriation for copper aprons and fire-proof stairways Harlow and Sanborn wings.....	7,194 72	
Disbursements, account appropriation for renovation second female wing.....	502 64	
Disbursements, account appropriation for renovation Arsenal building.....	19,629 76	
Disbursements, account appropriation for repairing Arsenal buildings.....	1,000 00	
Disbursements, account appropriation for furnishing Arsenal building.....	5,932 03	
Disbursements, account Widow's Island appropriation, Chas. E. Field, treasurer.....	2,859 66	
Balance of cash on hand December 1, 1906.....	4,258 72	\$226,702 53

COMPARATIVE STATEMENT "A"
Of Resources and Liabilities November 30, 1905.

RESOURCES--SUPPLIES IN STOCK.		
Cash on hand	\$26,605 26	
Due from State of Maine for support of patients.....	16,465 65	
Due from towns and individuals for support of patients....	34,618 14	
Provisions, groceries, crockery and furniture on hand, per inventory	17,113 68	
Dry goods, clothing, etc., on hand, per inventory	7,765 96	
Coal on hand, per inventory	12,886 67	
Medical supplies on hand, per inventory.....	1,890 28	
Horses, cows, hogs and produce on hand, per inventory	29,273 69	
Repairs and improvements, pipe, fittings, lumber and materials on hand, per inventory	9,177 74	
Expense, stationery, books and office materials on hand per inventory	580 24	
Real estate, Norton house, purchased in 1886	900 00	
Real estate, Hoyt house, purchased in 1890	2,500 00	
Real estate, Severance farm, purchased in 1893	2,000 00	
Real estate, Thorne farm, purchased in 1893.....	4,500 00	
		\$166,217 81
LIABILITIES.		
Due firms and individuals, account supplies	\$39,067 75	
Due employes per pay roll.....	4,433 14	
Amusement fund, Orne bequest (1883).....	1,000 00	
Coburn fund, balance interest in treasury.....	3,305 00	
Appropriation for remodeling and renovating the second female wing, balance unexpended.....	502 64	
Appropriation repairs on barracks, arsenal buildings, balance unexpended	1,000 00	
Appropriation furnishings for arsenal building balance unexpended	6,000 00	
Appropriation renovation arsenal building, balance unexpended.....	4,629 76	
Appropriation Copper aprons and fire-proof stairways, balance unexpended.....	9,527 61	
		69,465 90
Net resources as per hospital account "A" in annual statement November 30, 1905.....		\$96,751 41

COMPARATIVE STATEMENT "B"
Of Resources--Supplies in Use November 30, 1905.

Dispensary department, medical instruments, furnishings, etc., on hand, per inventory	\$1,701 41	
Farm department, agricultural implements, carts, carriages, sleds, sleighs, tools, etc., on hand per inventory....	9,110 03	
Greenhouse department, plants, pots, implements, etc., on hand, per inventory	1,998 83	
Hospital furnishings department, furniture, bedding, fixtures, household materials, etc., on hand, per inventory..	58,703 80	
Repairs and improvements department, engineer's, blacksmith's, carpenter's, painter's, mason's and plumber's tools, implements, etc., on hand per inventory	3,736 63	
Amusement fund, principal of Orne bequest (1883).....	1,000 00	
Net resources as per hospital account "B" in annual statement, November 30 1905.....		\$76,250 60

COMPARATIVE STATEMENT "A"
Of Resources and Liabilities November 30, 1906.

RESOURCES—SUPPLIES IN STOCK.		
Cash on hand	\$4,238 72	
Due from State of Maine for support of patients	11,750 17	
Due from towns and individuals for support of patients....	33,327 08	
Provisions, groceries, crockery and furniture on hand, per inventory.....	16,542 62	
Dry goods, clothing, etc., on hand, per inventory	8,393 46	
Coal on hand per inventory	11,463 54	
Medical supplies on hand per inventory	2,062 88	
Horses, cows, hogs and produce on hand, per inventory....	28,884 47	
Repairs and improvements, pipe, fittings, lumber and materials on hand, per inventory.....	9,657 76	
Expense, stationery, books and office materials on hand, per inventory.....	446 07	
Real estate, Norton house, purchased in 1886.....	900 00	
Real estate, Hoyt house, purchased in 1890	2,500 00	
Real estate, Severance farm, purchased in 1893	2,000 00	
Real estate, Thorne farm, purchased in 1893.....	4,500 00	
		\$136,666 72
LIABILITIES.		
Due firms and individuals, account supplies.....	\$28,538 95	
Due employees, per pay roll.....	4,684 17	
Amusement Fund, Orne bequest, (1883).....	1,000 00	
Coburn fund, balance interest in treasury	3,570 98	
Appropriation, furnishings for arsenal building, balance unexpended	67 87	
Appropriation, copper aprons and fire-proof stairways, Harlow and Sanborn wings, balance unexpended.....	2,332 89	
		\$50,194 96
Net resources, as per hospital account "A" in annual statement, November 30, 1906		\$86,471 76

COMPARATIVE STATEMENT "B"
Of Resources—Supplies in Use November 30, 1906.

Dispensary department, medical instruments, furnishings, etc., on hand, per inventory	\$1,721 60	
Farm department, agricultural implements, carts, carriages, sleds, sleighs, tools, etc., on hand, per inventory	8,867 62	
Greenhouse department, plants, pots, implements, etc., on hand, per inventory	1,822 51	
Hospital furnishings department, furniture, bedding, fixtures, household materials, etc., on hand, per inventory..	61,064 08	
Repairs and improvements department, engineer's, blacksmith's, carpenter's, painter's, mason's, and plumber's tools, implements, etc., on hand, per inventory	3,697 07	
Amusement fund, principal of Orne bequest (1883)	1,060 00	
Net resources, as per hospital account "B" in annual statement, November 30, 1906		\$78,163 88

TWENTY-THIRD ANNUAL FINANCIAL STATE-

	Supplies in stock On hand per inventory avail- able November 30, 1906.	Supplies in use. On hand per in- ventory unavail- able November 30, 1906.	Trial Balance.		Net cost of different departments.
Hospital acc't "A," supplies in stock			\$96,751 41		
Hospital account "B," supplies in use			76,250 60		
Cash			\$4,238 72		
Dry goods department	\$8,393 46		6,971 23		
Dispensary department	2,062 83	\$1,712 60	6,535 10		\$2,759 67
Farm department	24,744 56	8,867 62	35,174 64		1,562 66
Garden department	333 51		619 15		
Greenhouse department		1,822 51	3,157 76		1,335 25
Grocery department	13,922 93		13,922 93		
Expense department	446 07		6,792 87		6,346 80
Heating and lighting department	11,463 54		29,965 14		18,501 60
Hog department	3,208 40		2,572 41		
Hospital furnishings department	903 67	61,064 08	67,499 59		5,531 84
Repairs and improvements	9,657 76	3,697 07	25,170 94		11,816 11
Real estate	9,909 00		9,828 00		
Subsistence	1,716 02			53,573 74	
Amusement fund, "Orne"			1,000 00		
Coburn fund				3,570 98	
Bills payable				1,000 00	
Interest and discount				655 99	
Salaries and wages due employes				4,684 17	
State of Maine owes hospital			11,750 17		
Sundry persons and towns owes hospital			33,327 08		
Sundry persons and towns hospital owes				38,538 95	
Extra repairs and improvements			8,893 89		8,893 89
Renovation arsenal building and new steam line, amount expended in excess of appropriation			10,007 08		10,007 08
Appropriation copper aprons and fireproof stairways, balance unex- pended				2,332 89	
Appropriation furnishing arsenal building, balance unexpended				67 97	
	\$87,350 75	\$77,163 88	277,426 70	277,426 70	
Decrease in Hospital Account A					
Increase in Hospital Account B					1,913 28
					68,667 98
Net decrease					\$8,366 37

We hereby certify that we have examined the accounts of the Treasurer for the year ending November 30, 1906, and find them correct.

THOMAS WHITE, } Finance Committee
SIDNEY M. BIRD, } of Trustees.
GEO. E. MACOMBER, }

Very respectfully submitted,

MANNING S. CAMPBELL, *Steward and Treasurer.*

I hereby certify that I have examined the books and accounts of the Steward and Treasurer and find them correct.

EDWIN C. DUDLEY, *Auditor.*

MENT, NOVEMBER 30, 1906.

Net production or gain of different departments.	Hospital Account A. Available assets.	Hospital Account B. Unavailable assets.	Resources B. Assets unavailable.	Resources A. Assets available.	Liabilities.
.....	\$96,751 41				
.....			\$76,250 60		
\$1,422 23				54,238 72	
.....				8,393 46	
.....			\$1,712 60	2,062 83	
.....			8,867 62	24,744 56	
314 36				933 51	
.....			1,822 51		
.....				13,922 93	
.....				446 07	
.....				11,463 54	
633 99				3,206 40	
.....			61,064 08	903 67	
.....			3,697 07	9,687 76	
72 00				9,900 00	
55,289 76				1,716 02	
.....			1,000 00		
.....					\$3,570 98
.....					1,000 00
655 99					4,684 17
.....					
.....				11,750 17	
.....				33,327 08	
.....					38,538 95
.....					
.....					2,332 89
.....					67 97
.....					
10,279 65	\$10,279 65		1,913 28		
\$68,667 98					
Balance Hospital account A.....	\$86,471 76				
Balance Hospital account B.....		\$78,163 88			
	\$96,751 41	\$96,751 41	\$78,163 88	\$78,163 88	
Total resources A				186,666 72	
Total resources B			\$78,163 88	78,163 88	
Total resources and liabilities..				214,830 60	\$50,194 96
Balance Hospital account A.....					86,471 76
Balance Hospital account B.....					78,163 88
Proof.....				214,830 60	214,830 60

GARDEN PRODUCTS FOR THE YEAR 1906.

337	Bushels apples	\$217 20
10	Bushels crab apples.....	5 00
28	Bushels pears	28 00
30	Bunches beets	1 50
8,074	Pounds beets	93 40
85	Bushels string beans.....	106 25
98	Bushels green peas.....	122 50
55	Bushels spinach	27 50
72	Pounds asparagus	9 00
2,959	Pounds cabbage	44 38
7,485	Pounds pumpkins	106 89
1,240	Pounds parsnips	15 50
3,148	Pounds rhubarb	39 06
20,834	Pounds squash	312 51
2,531	Pounds tomatoes	50 62
14,801	Pounds turnips	152 11
4,513	Pounds onions	90 26
30	Bunches onions	1 50
13,050	Cucumbers	127 50
15,200	Ears corn	138 00
550	Pounds popcorn	22 00
8,960	Heads celery	987 62
5,853	Heads lettuce	109 65
414	Boxes strawberries	51 75
82	Boxes blackberries	8 20
515	Quarts currants	51 50
37	Quarts raspberries	4 62
25	Bushels pickles	37 50
8	230-2000 Tons corn fodder.....	32 46
115	Gallons cider	11 55
15	Bunches radishes	65
		<hr/>
		\$3,007 08

FARM PRODUCTS FOR THE YEAR 1906.

2	Holstein cows (dry).....	\$70 00
2,833	Pounds veal	254 97
105	Pounds liver	5 25
25	Pounds tongue	3 00
433	Pounds hides	32 48
288	Pounds calf skins	28 54
42,201	Gallons milk	7,727 78
49,694	Pounds potatoes	472 60
218 1790-2000	Tons ensilage	1,532 26
40 111-2000	Tons green feed (grass).....	120 17
26 370-2000	Tons Hungarian (green).....	157 11
27 1430-2000	Tons oats and peas (green).....	166 29
431 600-2000	Tons hay	6,038 20
13 376-2000	Tons rye (green).....	79 12
		<hr/>
		\$16,687 77

ARTICLES MADE IN SEWING ROOM, YEAR ENDING
NOVEMBER 30, 1906.

288	Aprons.	122	Dresses.
30	Bureau covers.	531	Dresses repaired.
1	Book covered.	193	Pairs ladies' drawers.
24	Bed straps.	167	Nightdresses.
44	Camisoles.	1,060	Pillow slips.
1	Couch cover.	4,526	Sheets.
211	Camisole strings.	336	Skirts.
24	Provision and coffee bags.	337	Tablecloths.
157	Chemise.	2,957	Towels.
24	Bag strings.	24	Waists.
25	Cook's caps.	1,198	Bandages rolls.
13	Cook's coats.	328	Yards tennis tape.
433	Clothes bags.	318	Napkins hemmed.
23	Curtains.	328	Christmas bags.

ARTICLES REPAIRED IN SEWING ROOM, YEAR ENDING
NOVEMBER 30, 1906.

523	Aprons.	13	Spreads.
142	Cooks' coats.	46	Pairs white pants.
162	Camisoles.	1	Stable blanket.
3	Clothes bags.	70	Sheets.
1	Blanket.	151	Towels and napkins.
16	Frocks.	102	Rugs, bound and repaired.
16	Pillow slips.	8	Curtains.
47	Tablecloths.	1	Carriage robe.
26	Tablecloths from old material.		

CHAPLAIN'S REPORT.

AUGUSTA, ME., November 30, 1906.

To the Trustees of the Maine Insane Hospital:

The Board of Chaplains beg leave to submit their annual report.

Some things are of great importance in the work of ministering to a diseased mind. Among these are pleasant and healthful amusements, attractive, well-lighted rooms, expert treatment by specialists and skillful, kindly nursing.

In all these the Hospital in Augusta has won distinction. In addition to these it has been found highly desirable to have the assistance of those noble and exalted ideals that come only from contemplating religious subjects. The Gospel with its message of peace, joy and hope coming to these sick people has curative value beyond that generally conceded.

Your directions as to religious services have been carried out. Each Sunday throughout the year, except a few weeks in the summer, the Chaplains have conducted a service in the Chapel. This service is similar to that in our churches. The music is furnished by a quartette and an organist and is of high quality and great value.

The Superintendent and other officials, by their presence and influence, add to the interest and worth of the service.

During the past year the chapel has been redecorated. Good taste and skill are manifested in the design and work. The chapel thus decorated in delicate and quiet colors is an improvement our Board greatly appreciates.

It may be important to state, for those who have friends in the Hospital, that the patients appreciate and value the advice of the Chaplains and that they especially enjoy the religious service on the Lord's Day.

Respectfully submitted,

REV. HENRY E. DUNNACK, *Sec.*,

REV. CHARLES A. HAYDEN,

REV. B. P. HOPE,

REV. C. W. DOHERTY.

REPORT OF VISITING COMMITTEE.

To His Excellency the Governor, and Executive Council of the State of Maine:

The Visiting Committee to the Maine and Eastern Maine Insane Hospitals, in compliance with the requirements of law, herewith respectfully submit a report of their visits to the institutions for the year 1906.

The visits of the committee have been made at irregular intervals and without previous notice to the management. It is very gratifying to be able to state that we have always found the wards in excellent condition, the patients clean, and receiving the care and attention their condition required. The food and kitchen supplies which we have examined at different times were found to be of good quality and seemingly proper in kind. Although ample opportunity has been given each inmate to be heard and to make complaint if any cause therefor existed, we are pleased to say that we have none to report. The affairs of the hospitals, aside from their crowded condition, are in our judgment in excellent condition, and under the management of officials thoroughly qualified for their important duties.

In the Report of the Trustees and Superintendents upon whom devolves the management of the institutions you have been advised in detail of their financial affairs, their present condition, and future needs. We desire to add, however, that it is evident from the overcrowded condition of the wards of the Eastern Maine Insane Hospital that some further provision should be made for the accommodation of the patients from the great northern and eastern section of our State. The lighting, heating, and kitchen facilities are ample for the accommodation of several times the number of patients that are now here.

The Eastern Maine Insane Hospital was originally built to accommodate the patients from Penobscot, Piscataquis, Washington, Hancock, and Aroostook counties, and was started and practically equipped on a scale that contemplated the housing of about 800 patients. The great area of counties enumerated

above and the rapidly increasing population of this section furnish a basis for a logical and legitimate demand for additional buildings to accommodate at least twice the number of patients that the Eastern Maine Insane Hospital is capable at the present time to properly care for. The question of economy or sectionalism should not enter into the proper and humane provision for this class of our unfortunate citizens.

There is also existing a widespread sentiment throughout the State, opposed to the present method of caring for the criminal insane, and that the best interest of this class of insane require hospital treatment. It has been suggested that a segregate building should be erected upon the Arsenal grounds and that all of the criminal insane of the State, as well as such persons as are ordered from time to time by the courts for observation be treated there under the management of the Maine Insane Hospital.

Your committee have had deep interest in the improvements and changes in the old wings of the Augusta hospital, and one cannot fail to notice the great improvement which exists in consequence of the recent reconstruction of these two old wings. We would recommend that the policy already established be continued in the renovation upon the above plan of such wings of the hospital as have from the occupation of more than half a century become delapidated, and unable to afford the patients such care as is in keeping with the most modern methods.

The constant study of the management who have in charge the treatment of the insane of the State is to endeavor by proper construction and by the various appliances adopted to render the environment of the hospital as homelike as possible.

We can confidently assure the relatives of the patients and the public as well, that with the existing methods and opportunities for care, they can rest content that there are existing in these charitable institutions advantages for improvement far beyond those which can be obtained under home environments.

We wish to acknowledge the uniform courtesy that has always been shown us by the management of both hospitals during our official visits.

NATHL. M. JONES,
GEO. A. MURCHIE,
SARAH E. PETTENGILL.

APPENDIX

[FORM OF MITTIMUS.]

AND INSTRUCTIONS RELATING TO COMMITMENT OF PATIENTS TO EITHER HOSPITAL.

STATE OF MAINE.

To the Superintendent of the Maine Insane Hospital:

[FORM OF BOND FOR SUPPORT.]

KNOW ALL MEN BY THESE PRESENTS, That we, —, of —, in the county of —, as principal, and —, of —, in the county of —, as sureties, are jointly and severally held and bound unto —, Steward of the Insane Hospital at Augusta, or to his successor in said office, in the sum of three hundred dollars, to the payment of which sum, well and truly to be made to him, the said —, or to his successors in said office, we bind ourselves, our executors and administrators, firmly by these presents.

*Sealed with our seals, and dated at —, this — day
of —, A. D. 19*

The condition of the above obligation is such, That whereas — of —, in the county of —, is about to be admitted as a boarder and patient to the Institution aforesaid; now, if the said — shall pay to said —, or to his successor in said office, such sum per week for the board, washing, medicine and attendance, according to the trouble and expense incurred for said patient, as may be determined by the Trustees for the time being, not to exceed —, and pay for all such necessary articles of clothing as shall be furnished said — by the said —, or his successor, and remove the said — from said institution, whenever they shall be thereto in writing requested by the Superintendent for the time being,—and shall also pay a further sum, not exceeding fifty dollars, for all damages that may arise from injury to the furniture and other property of said Institution, by said —, and for reasonable charges that may be incurred in case of the elopement of said —, payments to be made quarterly and at the time of removal, with interest on the

amount after it becomes due as aforesaid, then this obligation to be null and void, otherwise to remain in full force and virtue. [L. S.]

Witness: [L. S.]

QUESTIONS

TO BE ANSWERED BY THE PATIENT'S FAMILY OR PHYSICIAN.

Name,.....; age,.....; sex,.....; married, single, widowed,.....; nativity,.....; education,.....; occupation,.....; religion,.....

What relatives, including grandparents and cousins, have suffered from either of the following diseases: Insanity, epilepsy, chorea, hysteria, neurasthenia, tuberculosis?

Were parents addicted to excessive use of alcohol, opium, chloral, or other narcotics? Habits of patient as to same.

Previous peculiarity of patient as to temper, conduct, etc.

At what age did signs of puberty appear?

At time of pubescence was there noticeable change of character or attack of mental or nervous disease?

Has patient had epilepsy, apoplexy, syphilis, tuberculosis, heat exhaustion, or other serious physical disease?

Evidence of sexual excess or abnormal sexual habits?

Previous attacks, if any; history?

When and how did the first symptoms of the disease become manifest?..... Preceded by what mental or physical strain?.....

Was there, previous to that date, any change in disposition, or evidence of physical or mental depression or disorder?

Describe as fully as possible the present symptoms of insanity.

What are the probable causes of the present attack, either predisposing or exciting?..... Do suicidal or homicidal tendencies exist, if so how manifested?..... In what institution, if any, and when, has patient received treatment?.....any restraint or confinement been applied?..... If any, what?..... What special medical treatment has patient received during this attack?

QUESTIONS FOR FEMALES.

Number of children,.....; age of youngest,.....; number of miscarriages,.....; date of last one,..... Has patient had any uterine or ovarian disease?..... Menstrual irregularities, if any?

Male patients admitted into the institution, should come provided with at least three good cotton shirts; coat, vest and pants, of strong woolen cloth; two pairs woolen stockings, one hat or cap, pocket handkerchiefs, brush and comb, and one pair of boots or shoes.

Females should have, at least, a change of underclothes, shoes and stockings, brush and comb, decent bonnet, and two substantial dresses; the woolens should be of dark color. It is quite desirable, also, that a Bible or Testament should not be forgotten in the outfit.

INSTRUCTIONS TO MUNICIPAL OFFICERS IN COMMIT-
MENTS TO EITHER INSANE HOSPITAL.

To the Municipal Officers of the Towns in the State of Maine:

GENTLEMEN:—The present Legislature has just made an important amendment of the law, R. S. chap. 143, sections 13 and 34, relating to the commitment of insane persons to the insane hospitals. The amendment has been approved by the Governor and is now the law. The law is now as follows:

“Sect. 13. Insane persons, not thus sent to any hospital, shall be subject to examination as hereinafter provided. The municipal officers of towns shall constitute a board of examiners, and on complaint in writing of any blood-relative, husband or wife of said alleged insane person, or of any justice of the peace, they shall immediately inquire into the condition of any person in said town alleged to be insane; shall appoint a time and place for a hearing by them of the allegations of said complaint, and shall cause to be given in hand to the person so alleged to be insane, at least twenty-four hours prior to the time of said hearing, a true copy of said complaint, together with a notice of the time and place of said hearing and that he has the right and will be given opportunity then and there to be heard in the matter; shall call before them all testimony necessary for a full understanding of the case; and if they think such person insane, and that his comfort and safety, or that of others interested, will thereby be promoted, they shall forthwith send him either to the Maine Insane Hospital or to the Eastern Maine Insane Hospital with a certificate stating the fact of his insanity, and the town in which he resided or was found at the time of examination, and directing the superintendent to receive and detain him until he is restored or discharged by law, or by the superintendent or trustees. They shall keep a record of their doings, and furnish a copy to any interested person requesting and paying for it.”

“Sect. 34. In all cases of preliminary proceedings for the commitment of any person to the hospital, to establish the fact of the insanity of the person to whom insanity is imputed there shall be required the evidence of at least two reputable physicians given by them under oath before the board of examiners, together with a certificate signed by such physicians and filed with said board, that in their opinion such person is insane, such evidence and certificate to be based upon due inquiry and personal examination of the person to whom insanity is imputed; and a certified copy of the physicians' certificate shall accompany the papers of commitment of the insane person to the hospital.”

By careful reading of the law as it now is you will observe that *it is necessary to give to the person alleged to be insane at least twenty-four hours prior notice of hearing* and that he has the right and will be given opportunity to be heard in the matter.

You will also perceive that the amended statute more distinctly sets out the necessity *that the physician shall testify under oath before the Municipal Officers* as to the alleged insanity of the person.

Proper blank forms have been prepared for use hereafter in proceedings for the commitment of insane persons to our hospitals; and a set of such forms is forwarded you herewith and others will be forwarded you on your request therefor.

THE FORMS ARE

1. The complaint to be signed by the person making the complaint; to which is attached the order for the hearing and notice, to be signed by the Municipal Officers. Form 1 is to remain on the town files.
2. Copy of such complaint and order, attested by the Town Clerk; to be delivered in hand to the person alleged to be insane, by the town constable.
3. The commitment paper to be signed by the Municipal Officers and sent forward to the hospital with the patient.
4. Record of the doings of the Municipal Officers to be signed by them and attested by the Town Clerk and filed with the town records.
5. (a) Physicians' certificate to be filed with the Municipal Officers.
(b) Attested copy of such certificate to be sent to the hospital with the commitment paper.

Dated this twenty-third day of January, A. D. 1903.

Trustees of the Maine Insane Hospital
and Eastern Maine Insane Hospital.

By CHAS. E. FIELD, Sec'y.

N. B. Blanks for committal of patients will be forwarded upon application by addressing either Dr. Bigelow T. Sanborn, Supt. Maine Insane Hospital, Augusta, Me., or Dr. P. H. S. Vaughan, Supt. Eastern Maine Insane Hospital, Bangor, Me.

FORM I.

INSANE PERSON. COMPLAINT AND ORDER FOR HEARING
AND NOTICE IN THE CASE OF.

TO BE RETAINED ON THE TOWN FILES.

To the Municipal Officers of the town of _____ in the County of _____ and State of Maine:

(a) _____ of the town of _____ in the County of _____ and State of Maine, who is a _____ relative, to wit: a _____ of _____ (b) _____ of the town of _____ in the County of _____ and State of Maine, hereby makes written complaint and says that said (b) _____ is insane, and that the comfort and safety of said (b) _____ and that of others interested, will be promoted by committing the said (b) _____ to the _____ Maine Insane Hospital.

WHEREFORE your complainant prays that you will immediately inquire into the condition of the said (b) _____ and that such other and further proceedings may be had in the premises as is by the Statutes of said State of Maine in such case made and provided.

Dated at said _____ this _____ day of _____ A. D. 190 .

STATE OF MAINE.

County of _____ ss. Town of _____

The above named complaint being presented to us this day we hereby appoint our office and (c) _____ the _____ day of _____ A. D. 190 , at _____ o'clock in the _____ noon, as the time and place for a hearing by us of the allegations of said complaint. And we hereby give notice to the said (b) _____ the person as above alleged to be insane, of said time and place of said hearing, and that he, the said (b) _____ has a right and will be given opportunity then and there to be heard in the matter.

Given under our hands at said _____ this _____ day of _____ A. D. 190 .

Selectmen of the town of _____

STATE OF MAINE.

(d) _____ County of _____ ss. Town of _____ A. D. 190 .

I hereby certify that I this day at _____ o'clock in the _____ noon delivered in hand to (b) _____ the within named alleged insane per-

son, a true copy of the within complaint and the order of the Municipal Officers thereon, of even tenor with the within.

Attest:

Constable of said town of

- (a) Name of complainant.
- (b) Name of insane person.
- (c) The time must be so as to give at least 24 hours prior notice of the hearing to the person alleged to be insane.
- (d) As soon as the constable has given in hand to (b) the attested copy—form 2—he will fill out and sign the above return of such service.

FORM 2.

INSANE PERSON, COPY OF COMPLAINT AND ORDER FOR HEARING AND NOTICE IN THE CASE OF _____ TO BE SERVED ON HIM.

TO BE GIVEN IN HAND TO THE ALLEGED INSANE PERSON BY THE CONSTABLE.

To the Municipal Officers of the town of _____ in the County of _____ and State of Maine:

(a) _____ of the town of _____ in the County of _____ and State of Maine, who is a _____ relative, to wit, a _____ of _____

(b) _____ of the town of _____ in the County of _____ and State of Maine, hereby makes written complaint and says that said (b) _____ is insane; and that the comfort and safety of said (b) _____ and that of others interested, will be promoted by committing the said (b) _____ to the _____ Maine Insane Hospital.

WHEREFORE your complainant prays that you will immediately inquire into the condition of the said (b) _____ and that such other and further proceedings may be had in the premises as is by the Statutes of said State of Maine in such case made and provided.

Dated at said _____ this _____ day of _____ A. D. 190 _____

STATE OF MAINE.

County of _____ ss. Town of _____

The above named complaint being presented to us this day we hereby appoint our office and (c) _____ the _____ day of _____ A. D. 190 _____, at _____ o'clock in the _____ noon, as the time and place for a hearing by us of the allegations of said complaint. And we hereby

give notice to the said (b) the person as above alleged to be insane, of said time and place of said hearing, and that he, the said (b) has a right and will be given opportunity then and there to be heard in the matter.

Given under our hands at said this day of A. D. 190 .

.....
.....
.....

Selectmen of the Town of

A true copy of the original complaint and the order of the Municipal Officers thereon.

Attest:

.....Clerk of said Town of

FORM 3.

COMMITMENT TO THE _____ MAINE INSANE HOSPITAL OF _____ AN INSANE PERSON.

COMMITMENT OF INSANE PERSON TO THE HOSPITAL.

STATE OF MAINE.

To the Superintendent of the Maine Insane Hospital:
WHEREAS, on the day of A. D. 190 ,
(a) of the town of in the County of
and State of Maine, and who bears the relationship of to
(b) of the town of in the County of
and State of Maine, made of us, the Municipal Officers of the town of
in the County of and State of Maine, a complaint
in writing stating that the said (b) is insane, and a proper
subject for commitment to and treatment in said hospital; and thereupon
we appointed our office in said town of and the
day of A. D. 190 , and the hour of o'clock in the
noon as the place and time for a hearing by us of the allegations
of said complaint, and caused to be given in hand to the said
(b) at o'clock in the noon of the
day of A. D. 190 , a true copy of said complaint, together
with a notice of the time and place of said hearing and that the said
(b) had the right and would be given opportunity then and
there to be heard in the matter; and at our office in said town of
at o'clock in the noon of the day

of A. D. 190 , being the place and time appointed therefor, as aforesaid, we made due inquiry into the condition of the said (b) called before us all testimony necessary for a full understanding of the case, and also heard the testimony under oath of, accompanied by a certificate of and two reputable physicians, whose evidence and certificate are based upon due inquiry and personal examination of the said (b) establishing the fact of the insanity of the said (b)

WHEREUPON it was proven to us and we are of the opinion that the said (b) is insane, and that the safety and comfort of the said (b) and that of others interested, will be promoted by the commitment to and detention in said hospital of the said (b) and that the said (b) be sent forthwith to said hospital.

THEREFORE we hereby certify that said (b) is insane and that was residing and found in the town of aforesaid at the time of said examination; and You, the said Superintendent, are hereby ordered and required to receive said (b) into said hospital and detain in your care until shall have become restored and of sound mind, or be discharged by law, or by the Superintendent, or Trustees.

Given under our hands at said this day of
A. D. one thousand nine hundred and

.....
.....
.....

Selectmen of the town of

- Mem. (a) Name of the complainant.
- (b) Name of the insane person.

FORM 4.

RECORD OF COMMITMENT OF _____ TO THE _____
MAINE INSANE HOSPITAL.

(a) Name of the complainant.

(b) Name of the insane person.

Record of doings of Municipal Officers in Commitment of Insane Person to the Hospital, to be signed by Municipal Officers and Town Clerk and filed with town records.

STATE OF MAINE.

To the Superintendent of the _____ Maine Insane Hospital:
WHEREAS, on the _____ day of _____ A. D. 190 _____,
(a) _____ of the town of _____ in the County of _____
and State of Maine, and who bears the relationship of _____ to
(b) _____ of the town of _____ in the County of _____
and State of Maine, made to us, the Municipal Officers of the town of _____
in the County of _____ and State of Maine, a complaint
in writing stating that the said (b) _____ is insane, and a proper
subject for commitment to and treatment in said hospital; and thereupon
we appointed our office in said town of _____ and the
day of _____ A. D. 190 _____, and the hour of _____ o'clock in the
_____ noon as the place and time for a hearing by us of the allegations
of said complaint, and caused to be given in hand to the said
(b) _____ at _____ o'clock in the _____ noon of the
day of _____ A. D. 190 _____, a true copy of said complaint, together
with a notice of the time and place of said hearing and that the said
(b) _____ had the right and would be given opportunity then and
there to be heard in the matter; and at our office in said town of _____
at _____ o'clock on the _____ noon of the _____ day
of _____ A. D. 190 _____, being the place and time appointed therefor,
as aforesaid, we made due inquiry into the condition of the said
(b) _____ called before us all testimony necessary for a full under-
standing of the case, and also heard the testimony under oath of, accom-
panied by a certificate of _____ and _____ two reputable phy-
sicians, whose evidence and certificate are based upon due inquiry and
personal examination of the said (b) _____ establishing the fact
of the insanity of the said (b) _____

WHEREUPON, it was proven to us and we are of the opinion that
the said (b) _____ is insane, and that the safety and comfort of the
said (b) _____ and that of others interested, will be promoted by
the commitment to and detention in said hospital of the said
(b) _____ and that the said (b) _____ be sent forthwith to
said hospital.

THEREFORE we hereby certify that said (b) is insane and that was residing and found in the town of aforesaid at the time of said examination; and you, the said Superintendent, are hereby ordered and required to receive said (b) into said hospital and detain in your care until shall have become restored and of sound mind, or be discharged by law, or by the Superintendent, or Trustees.

Given under our hands at said this day of A. D. one thousand nine hundred and

.....
.....
.....
Selectmen of the town of

A true record,

Attest:

Clerk of said town of

FORM 5.

PHYSICIANS' CERTIFICATE IN THE CASE OF _____
AN INSANE PERSON.

PHYSICIANS' CERTIFICATE OF INSANITY.

(a)

We, the undersigned, reputable and practicing physicians in the town of County of and State of Maine, hereby certify that, after due inquiry and personal examination of of the said town of in our opinion said is INSANE.

Dated at this day of 190 .
M. D.
M. D.

(b)

A true copy of the physicians' certificate to Municipal Officers.

Attest:

Clerk of said town of

(a) The original certificate is to be filed with and retained by the Municipal Officers.

(b) The certified copy of this certificate is to be forwarded with the commitment paper to the Superintendent of the Hospital.



Eastern Maine Insane Hospital

MAINE FARMER PRESS, AUGUSTA

REPORT

OF THE

Trustees, Resident Officers and Visiting Committee

OF THE

EASTERN MAINE INSANE HOSPITAL

December 1, 1906.

OFFICERS OF THE HOSPITAL.

TRUSTEES.

FREDERICK ROBIE, President, Gorham.
CHARLES E. FIELD, Secretary, Bangor.
MRS. J. R. SMITH, Litchfield.
SIDNEY M. BIRD, Rockland.
THOMAS WHITE, Bangor.
GEORGE E. MACOMBER, Augusta.
E. E. CHASE, Bluehill.

RESIDENT OFFICERS.

PHILIP H. S. VAUGHAN, M. D., Superintendent.
BURT F. HOWARD, M. D., Assistant Superintendent.
FORREST C. TYSON, M. D., Assistant Physician.
LEROY A. LUCE, M. D., Interne.
CHARLES F. PERRY, Steward.
CHARLES S. PEARL, Treasurer.
ADELAIDE C. BROWN, Matron.

CHAPLAINS.

REV. EDWARD McSWEENEY,
REV. EDWARD B. NEWBEGIN,
MR. ROBERT A. JORDAN.

SUPERVISORS.

MALE.

FRED R. CARTER.
EDWARD W. BRAILEY, Assistant Supervisor.
FRED E. WOODMAN, Night Supervisor.

FEMALE.

MARY E. HICKEY.
CLAIRE I. MYERS, Assistant Supervisor.
MINNIE L. CHANDLER, Night Supervisor.

WILBUR S. FISKE, Engineer.
LESLIE W. SOMERS, Clerk.
WILLIAM A. PALMER, Storekeeper.
GRACE E. ESTES, Superintendent's Clerk.
GEORGE WARE, Head Farmer.

EASTERN MAINE INSANE HOSPITAL REPORT.

To the Honorable Board of Trustees of the Eastern Maine Insane Hospital:—

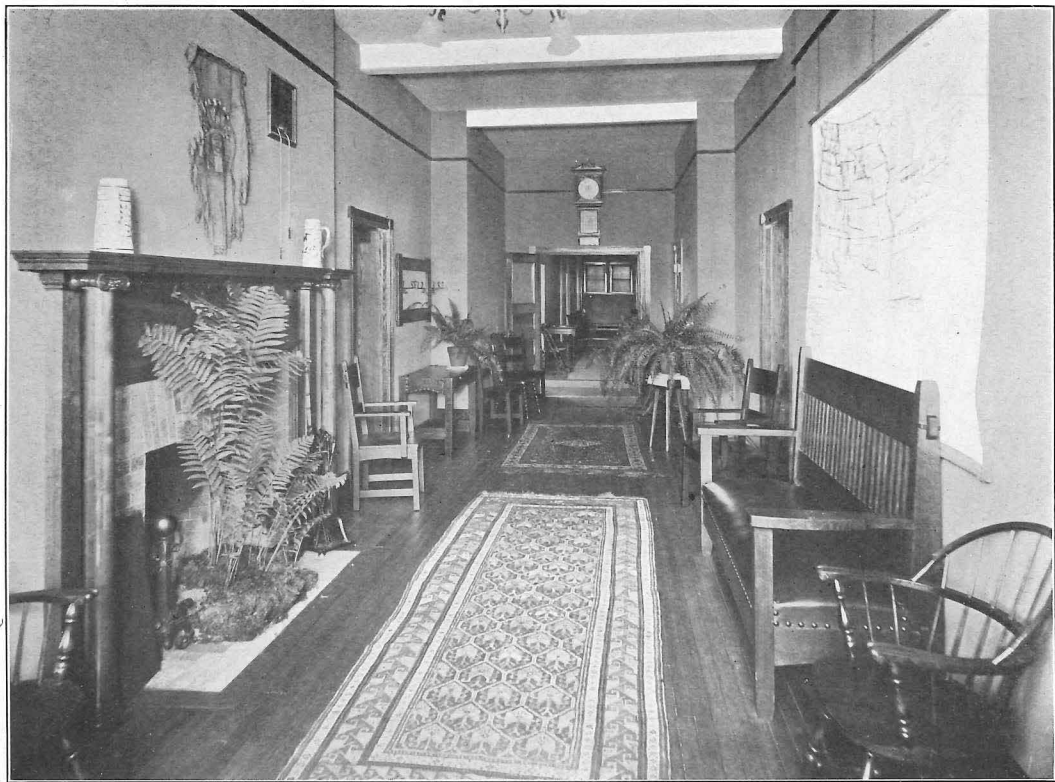
GENTLEMEN:—I have the honor to present for your consideration the Superintendent's sixth annual report, and in connection the report of the chaplain, the treasurer and the steward of the hospital for the fiscal year ending November 30, 1906.

It will be seen from the medical statistics that there has been admitted during the year 129 patients, this number being 13 in excess of that of the previous year, and a decrease in the daily average from 261.9 in 1905 to 254.1 in 1906. This decrease in the daily average is due to the transfers made to the Maine Insane Hospital at Augusta of forty-three patients during the year. The daily average of patients in the first year of the hospital's existence was 192 and we have without any increase of ward accommodations greatly overcrowded our capacity from year to year, so that at one time during the past year we were caring for 276 patients. As the normal capacity of the hospital is not more than 200, it will be seen that we have been for the past two years much congested and at times unable to receive patients from this section of the State who required institutional treatment.

Eighty-three patients have been discharged, 31 have died and one eloped while out at work on the farm. One suicide occurred during the year. Aside from this, no untoward accidents or incidents of any magnitude have occurred.

The number of recoveries based on the admissions for the year show over 33 per cent. We have had many acute cases admitted, but more chronic cases than in the previous year. Seventeen cases were admitted between 50 and 60 years of age, twelve between 60 and 70, five between 70 and 80 and one over 80 years of age.

•



Reception Hall, Administration Building
Eastern Maine Insane Hospital

MAINE FARMER PRESS, AUGUSTA

In regard to the matter of recoveries, a wide variance of opinion seems to pervade the profession, judging from the reports of superintendents from the institutions for the insane. A plethoric optimism apparently prevails in many cases, while in other instances a paucity seems to be the rule. It seems to me that between the two extremes there should be a conservative optimistic spirit, not only in regards to the conditions of a patient upon discharge, but more especially in regard to the prognosis of each case upon admission and throughout the course of treatment during their residence in the hospital. I believe that a wide and conservative optimism should prevail in the classification and prognosis of mental diseases and that we have no right to stamp any recent case as incurable to accord with any form of nomenclature.

The classification of mental diseases has for generations been a matter of much controversy among alienists but with our present knowledge of the etiology and the pathology of insanity, no satisfactory classification seems possible.

TRANSFERS.

Forty-three patients have been transferred from this institution to the Insane Hospital at Augusta during the year, such action being thought necessary by your Board on account of the overcrowded condition of our wards and from the increasing demand for admission of patients from the eastern and northern section of the state.

Very limited accommodations are afforded by the municipalities in the rural sections of the state for caring for even the mildest cases of those mentally afflicted, and when, as in some of the larger towns, almshouses are maintained to provide for indigent persons, those suffering from mental afflictions cannot as a general rule be properly cared for and receive little or no medical treatment.

It must be apparent to anyone that no insane person should be confined in an almshouse for the indigent poor, and this idea has become so prevalent that many states have a statute law making it obligatory on the municipalities to send all indigent persons suffering from insanity to institutions especially provided by the state for their care and treatment.

We have had many cases admitted who had been confined without proper care and treatment in the various almshouses of the state, some of whom were undoubtedly at the beginning of their disease acute and curable cases, but were allowed to lapse into a chronic mental state before proper treatment was instituted. I believe that all the indigent insane in the state should be treated in hospitals provided for that purpose, but this is evidently impossible in our state at the present time. I think, however, that it should be obligatory on any municipality to commit all recent cases of insanity to the state institutions especially provided for their treatment.

CHASE'S ISLAND.

Thirty-nine of our patients enjoyed an outing on Chase's Island during the months of June, July, August and September, seventeen of these being men and twenty-two women. This outing has apparently been very beneficial and I have no doubt that this radical change in their environment during the summer months will continue to prove of much benefit.

TUBERCULAR INSANE.

The Revised Statutes direct the Superintendent to report to your Honorable Board "such remarks and suggestions relative to the general subject of insanity as he thinks will promote the cause of science and humanity," and in accordance with this, I would call the attention of your Board to the necessity of some separate building or buildings especially devised and constructed for the care of the tubercular insane.

We have, after a careful physical examination verified so far as possible by a microscopic examination of sputum, found that quite a number of cases of tuberculosis exist in our most crowded wards. As this disease is so easily communicated especially to those predisposed, it is evidently of the utmost importance to protect others, both sane and insane, who are brought in daily contact with those so afflicted, from the possibility of contamination.

It is easy to see how nurses, attendants and visitors to the institution, as well as patients suffering from acute and recoverable forms of insanity, may be brought into close asso-

ciation with these cases and subject to the danger of contracting this disease. On account of the inability to control the acts of many of our patients, it is manifestly impossible to disinfect the sputum, and as tuberculosis is so widespread, so fatal, and the tendency to it is so commonly transmitted, some separate provision should be made for the tubercular insane whereby they may not only be segregated, but that their physical disease may be treated under modern scientific methods. During the past year the sputum of all patients showing any physical signs of this disease has been examined by the pathologist and we have found so large a number afflicted with pulmonary tuberculosis as to warrant the above suggestions.

EPILEPSY.

I would also take this opportunity to call your notice to the many cases of epilepsy admitted to the institution and the many cases outside of the hospital requiring treatment. This disease, although very grave so far as prognosis is concerned, may be much ameliorated and benefited by proper systematic treatment. I have found upon inquiry that it is almost impossible for patients suffering from this disease to gain admission to institutions especially maintained for this purpose in other states. Many persons afflicted with this dread malady apply for treatment here, but unless the mental symptoms are of an aggravated character, we are unable to receive them and I firmly believe that your Board should ask for some separate provision for this most unfortunate class of persons suffering from a neurosis grave in character, but amendable to treatment, which though it may not be curative is conducive to their welfare and results in many cases to much permanent benefit.

DRUG HABITUEES.

As in previous years, we have had many cases of alcoholism and drug habituees of various kinds committed as insane. Most of these have recovered after from three to six months' treatment and have been so classified in our tabulations. The question of the propriety or legality of committing such cases in our state institutions for the insane might be a matter of controversy, but as no reputable hospital exists in this state where

such cases can be restrained and receive proper treatment, it has been customary to receive them when legally committed. It must be conceded that this is a great advantage to patients thus admitted, but on the other hand, should this practice continue to grow, it might eventually, unless curtailed, deprive many suffering from the purer psychoses from gaining admission to our institution.

NEED FOR FURTHER ACCOMMODATIONS.

I feel it my official duty to again urge upon you the great necessity of providing for further institutional accommodations for the insane of eastern Maine. It seems to me if the conditions were fully understood by the people at large that the public sentiment among our citizens throughout the state would be overwhelmingly in favor of the construction of additional buildings adequate to meet the demands for proper hospital treatment of those afflicted with mental disease.

In our state's present financial condition, the political bugbear cry of economy should not clog the wheels of progress when such progress is in the interests of all our citizens and for the special benefit of an unfortunate class so peculiarly afflicted as to render them unable to realize their own needs or to plead their own cause.

INCREASE OF INSANITY.

It seems to be the general opinion among alienists that there is a gradual increase in the number of insane throughout this and other civilized countries. Whether or not this is true, there is certainly a greater demand for hospital treatment for all those afflicted with mental disease, which is constantly growing and will continue to grow. The more perfect and intelligent recording of census reports throughout the country would naturally show an increase in insanity and the increasing sentiment in favor of institutional treatment of all persons deranged no doubt has its effect in forming a basis for an opinion that insanity is on the increase.

TREATMENT.

In the treatment of our patients, I think less medicines have been used than in previous years. The various drugs used to allay symptoms are oft times unsatisfactory, not only so far as immediate action is concerned, but in the after effects. We have continued to use the various hydrotherapeutic methods, especially the douches at various temperatures and pressures with great advantage. Our douche room, which has been in use for hydropneumatic treatment for the past six years, has continued to prove its efficiency as a remedial measure. Some thirty patients are daily treated in the douche room and I believe that the results obtained from such treatment warrant its continuance on a larger scale.

Massage has been employed in a large number of acute cases and has as heretofore proven of much benefit, especially in patients of a neurasthenic type, where the malnutrition was a prominent feature. I know, however, from my experience that the treatment from the unskilled masseur or masseuse is not only useless but oftentimes detrimental and that one giving massage should have special training in this branch of nursing. Greater practical experience can be obtained in this special work, which must be a part of the equipment of every skilled nurse in institutions of this nature, as so many patients require treatment of this kind.

Many patients have been treated for various mental and physical symptoms by our static machine, which has been in daily use and has in many instances produced most satisfactory results. The galvanic current has also been employed to a limited extent.

PATHOLOGICAL WORK.

Our conveniences for pathological work are very limited, though we have done more in this line than in previous years. The following table will show the results of our work in this direction:

Chemical and microscopical examination of	
urine	223
Blood counts	26
Sputum	13

The importance of work in this direction can hardly be overestimated and I trust that some special provision may be made for it in the near future.

TENTS.

We have used three tents during the year to relieve the overcrowded state of the wards. During the summer two tents were provided for female patients during the day, in which we cared for some of the most disturbed cases without any special inconvenience and with apparent benefit, as in many instances it was noted that there was a distinct sedative effect as a result of being in the open air and away from the crowded wards during the day, and much improvement in the hygienic conditions of the wards, especially ventilation, was noticeable.

MEDICAL STAFF CHANGES.

Dr. Ezra B. Skoefield after two years of service as assistant physician severed his connection with the institution to engage in general practice. His intelligent and conscientious professional service is deserving of mention and commendation. Dr. Forrest C. Tyson, who was engaged to fill the vacancy caused by the resignation of Dr. Skoefield, has exhibited professional skill and enthusiasm in this special line of work which is worthy of your recognition.

Dr. LeRoy A. Luce was engaged as interne in June last and has performed the duties required of him in a highly satisfactory manner.

Frequent changes in the medical staff are always undesirable and detrimental to the general welfare and to the best results obtainable in the treatment of our patients and it should be apparent that the matter of financial compensation within reasonable limits should not outweigh the value of experience and faithful service. There can be no higher duty devolving upon man than to minister to the sick and certainly none higher or greater in our professional field than to properly and understandingly "minister to the mind diseased."



Laundry—Eastern Maine Insane Hospital

MAINE FARMER PRESS, AUGUSTA

TRAINING SCHOOL.

Under the supervision of Miss Mary E. Hickey the training school for nurses has continued to prove its efficiency in our special line of work. The results obtained from the employment of trained nurses and nurse pupils on the wards have been highly satisfactory. Lectures on subjects pertaining to the education and duties of the nurse have been given regularly throughout the year by the medical staff and by Dr. Carlotta Swett and Dr. Galen M. Woodcock of Bangor.

REPAIRS AND IMPROVEMENTS.

Some extensive repairs and improvements have been going on throughout the year in the engineer's department, in plumbing and to a limited extent in the general carpenter's work and painting about the institution. The Thornton house, so called, has been completely renovated and reconstructed inside and put into a habitable condition, so that we are now able to rent it to some profit to the state.

FINANCES.

Financially we can show little change from previous years, except that there is a larger income for the maintenance of patients. It must be obvious that an annual deficit will exist until further accommodations for patients are provided. Our plant aside from the wards is constructed on a large scale. Our modern heating and lighting plant and our laundry and kitchen are sufficiently extensive and were especially constructed to provide for more than twice the number of patients than we are now able to care for in our limited ward accommodations.

FARM AND GARDEN.

The farm and garden have been of much advantage to the hospital as in previous years and we have been able to produce sufficient vegetables to supply the entire institution during their season. The productions of the farm and garden will be found in the report of the Steward.

ACKNOWLEDGMENTS.

The institution is under obligations to the following and to some others whose names are not obtainable for their kind and charitable contributions of books, magazines, fruit and flowers, which have been fully appreciated by our patients.

Miss Engel, Mr. S. F. Coombs, Miss Emma Hincks, Miss Annie Casey, Mr. Geo. W. Baker, Mrs. Ira Watson, Mr. Frank Hight, Mr. John L. Crosby, Mrs. Geo. Godfrey, Mrs. R. K. Nickerson, Mrs J. A. Starrett, Mrs. Elizabeth Newbegin, Mr. R. A. Jordan, The S. A. Club, The Elks Club, The Tarratine Club.

In concluding my report to your honorable board, I wish to express my appreciation of your kindly advice and support in my executive direction of various affairs and departments of the institution.

Respectfully submitted,

PHILIP H. S. VAUGHAN.

TREASURER'S REPORT.

To the Trustees of the Eastern Maine Insane Hospital:

I herewith present my report of the financial standing of the Eastern Maine Insane Hospital for the year ending November 30, 1906.

Total Receipts and Disbursements of Cash for the Year Ending November 30, 1906.

DR.	
Balance, cash on hand December 1, 1905	\$9,799 47
Receipts for year, hospital account	66,695 36
Receipts from State appropriation.....	23,150 00
	\$99,644 83
CR.	
Disbursement for year	95,445 27
Balance cash on hand November 30, 1906.....	4,199 56
	\$99,644 83

Cash Statement, November 30, 1906.

Cash on hand		\$4,199 56
Cash due from cities and towns		13,397 99
Cash due from sundry persons.....		152 58
Cash due from State, for support of patients.....		5,078 55
		\$22,828 68
LIABILITIES.		
Owe sundry firms	\$16,287 18	
Owe pay roll, November	2,310 75	18,597 93
Net resources over liabilities		\$4,230 75
Balance of uncollected accounts, November 30, 1906		2,326 85

Respectfully submitted,
CHARLES S. PEARL,
Treasurer.

STEWARD'S REPORT.

To the Trustees of the Eastern Maine Insane Hospital:

I herewith present my report of the financial affairs of the Eastern Maine Insane Hospital, showing resources, liabilities, and department expenditures for the year ending November 30, 1906.

COMPARATIVE STATEMENT "A." Of Resources and Liabilities, November 30, 1905.

RESOURCES—SUPPLIES IN STOCK.		
Cash on hand	\$9,799 47	
Due from State of Maine for support of patients	5,053 82	
Due from cities, towns, and individuals, for support of patients	13,080 05	
Provisions and groceries, \$2,921.02; crockery as per inventory, \$235.99	3,157 01	
Dry goods, clothing, etc., as per inventory	2,180 48	
Coal as per inventory	2,655 96	
Medical supplies as per inventory	690 14	
Horses, swine, produce, etc.; stable, \$367.50; farm, \$2,652.84; garden, \$1,138.19, per inventory	4,658 53	
Repairs and improvements, lumber, hardware, paint stock, etc., per inventory	603 40	
Pipes and fittings and electrical supplies, per inventory	922 19	
		\$42,801 05
LIABILITIES.		
Due firms and individuals, account supplies	\$22,568 35	
Due employes for pay roll	2,300 29	
		\$24,868 64
Net resources as per Hospital account "A" in annual statement November 30, 1905		\$17,932 41

COMPARATIVE STATEMENT "B." Of Resources—Supplies in Use, November 30, 1905.

Dispensary, medical instruments, etc.....	\$1,028 21	
Farm—agricultural implements, carts, sleds, tools, etc.....	931 11	
Stable—carriages, sleighs, harnesses, tools, etc	1,149 44	
Engineer's department, tools, etc.....	711 93	
Expense—stationery, books and supplies in offices ..	374 04	
Hospital furnishings, furniture, bedding, etc	25,167 40	
Garden, tools, etc	59 35	
Repairs and improvements, carpenters and painters tools, etc	802 27	
Net resources as per hospital account "B" in annual statement, November 30, 1905		\$30,223 75

COMPARATIVE STATEMENT "A."
Of Resources and Liabilities, November 30, 1906.

Cash on hand.....	\$4,199 56	
Due from state of Maine for support of patients	5,078 55	
Due from cities and towns for support of patients	13,550 57	
Provisions and groceries, crockery, etc., per inventory	2,926 97	
Dry goods, clothing, etc., per inventory	2,480 00	
Coal, per inventory	976 48	
Medical supplies per inventory	559 09	
Repairs and improvements, lumber, hardware, paint stock, etc., per inventory	924 14	
Horses, swine, produce, etc.; stable, \$815; farm, \$874.40; garden, \$1,789.22, per inventory	2,578 62	
Pipes, fittings and electrical supplies, per inventory	1,362 15	\$34,936 13
LIABILITIES.		
Due firms account supplies	\$16,287 18	
Due employes account pay roll	2,310 75	18,597 93
Net resources as per Hospital account "A" in annual state- ment November 30, 1906.....		\$16,338 20

COMPARATIVE STATEMENT "B."
Of Resources—Supplies in use, November 30, 1906.

Stable—carriages, sleighs, harnesses, etc	\$1,120 45	
Dispensary, medical instruments, etc	1,078 73	
Farm implements, carts, sleds, tools, etc.....	2,397 15	
Engineer's department, tools, etc.....	822 97	
Expense—stationery, books and office supplies.....	425 34	
Hospital furnishings, furniture, bedding, etc.....	25,120 47	
Garden tools, etc	52 40	
Repairs and improvements, carpenters and painters tools, etc	657 73	
Total resources as per hospital account "B" in annual statement, November 30, 1906		\$31,875 24

SIXTH ANNUAL FINANCIAL STATE

	Supplies in stock per inventory available November 30, 1906.	Supplies in use per inventory available November 30, 1906.	Trial Balance.		Net cost of departments.
Hospital account A, (supplies in stock)				\$17,932 41	
Hospital account A, (appropriation from State)				23,150 00	
Hospital account B, (supplies in use)				30,223 75	
Cash			\$4,199 56		
Dry goods department	\$2,480 00		2,074 07		
Dispensary	559 09	\$1,078 73	3,398 36		\$1,760 54
Farm	874 40	2,397 15	3,945 26		673 71
Garden	1,189 22	52 40	79 62		
Grocery department	2,535 73		2,535 73		
Stable	815 00	1,120 45	4,588 36		2,652 91
Expense		425 34	3,732 05		3,306 71
Light, heat and power (coal)	976 48		9,605 60		8,629 12
Repairs and improvements	924 14	657 73	9,550 27		7,968 40
Hospital furnishings	391 24	25,120 47	29,448 82		3,937 11
Subsistence				11,232 84	
Interest and discount				285 64	
Engineers department	1,362 15	822 97	6,663 00		4,477 88
Ice			1,276 47		1,276 47
Water			714 34		714 34
Amusements			506 75		506 75
Double Windows			475 19		475 19
Salaries and wages				2,310 75	
State of Maine owes hospital			5,078 55		
Cities, towns and persons owe hospital			13,550 57		
Sundry persons hospital owes				16,287 18	
	\$12,107 45	\$31,675 24	101,422 57	101,422 57	
Resources unavailable transferred from A to B					
Net cost for the year					\$36,379 13

We hereby certify that we have examined the accounts of the Treasurer and the Steward for the year ending November 30, 1906, and find them correct.

THOMAS WHITE, }
 GEO. E. MACOMBER, } *Financial Committee*
 CHAS. E. FIELD, } *of Trustees.*

Respectfully submitted,

CHAS. F. PERRY, *Steward.*

MENT, NOVEMBER 30, 1906.

Net gain of departments.	Hospital Account A. Available assets.	Hospital Account B. Unavailable assets.	Resources B. Assets unavailable.	Resources A. Assets available.	Liabilities.
	\$17,932 41				
	23,150 00		\$30,223 75		
				\$4,189 56	
\$405 93				2,480 00	
			\$1,078 73	559 09	
			2,397 15	874 40	
1,162 00			52 40	1,139 22	
				2,535 73	
			1,120 45	815 00	
			425 34		
				976 48	
			657 73	924 14	
11,232 84			25,120 47	391 24	
285 64					
			822 97	1,362 15	
					\$2,310 75
				5,078 55	
				13,550 57	16,287 18
	\$1,451 49		1,451 49		
23,292 72	23,292 72				
\$36,379 13					
Balance Hospital Account A. . .	16,338 20				
Balance Hospital Account B.		31,675 24			
	\$41,082 41	\$41,082 41	\$31,675 24	\$31,675 24	
Total resources A				\$34,936 13	
Total resources B			\$31,675 24	31,675 24	
Total resources and liabilities .				\$66,611 37	\$18,597, 93
Balance Hospital Account A.					16,338 20
Balance Hospital Account B.					31,675 24
				\$66,611 37	\$66,611 37

GARDEN PRODUCTS.

24	bu. beans, string	\$26 50
103	qts. beans, shell	10 30
408	bunches beets	14 31
201	bu. beets	81 86
8½	bu. beet greens	4 65
14,505	lbs. cattle beets	72 52
40	bu. barley	16 00
6	boxes blackberries	90
114	bunches carrots	4 21
235	bu. carrots	94 12
22,012	lbs. cabbage	315 67
2,569	hds. celery	259 49
296	celeric roots	29 76
4,705	cucumbers	101 17
50	boxes currants	5 00
1,606	doz. ears corn, green	241 78
18,255	lbs. corn fodder	36 51
11	boxes gooseberries	1 10
780	hds. lettuce	29 94
91	bu. onions	89 36
103	bu. peas	89 91
3,112	lbs. pumpkins	28 32
5,556	lbs. parsnips	165 82
23,640	lbs. potatoes	229 18
213	bunches radish	9 85
51	boxes raspberries	7 74
6,440	lbs. squash	133 59
2	tons straw	16 00
505	bu. turnips	253 60
1,000	lbs. turnips, for swine	2 50
39	bu. tomatoes, green	20 55
2,360	lbs. tomatoes, ripe	118 03
		<hr/>
		\$2,510 24

FARM PRODUCTS.

Sales of rock.....	\$195 00
Pork products for year.....	996 79
Sale uncut hay.....	8 00
Cash received from cattle commission.....	20 00
31 Bushels barley	12 40
65 Tons hay	773 00
284 Bushels oats	142 00
11 Tons straw	88 00
	<hr/>

\$2,235 19

LIST OF ARTICLES MADE IN SEWING ROOM FROM
NOVEMBER 30, 1905, TO NOVEMBER 30, 1906.

113	Aprons, drilling.	6	Night shirts, short.
177	Aprons, nurses.	447	Pillow slips.
1	Bed sore pad.	8	Pillow slips, ruffled.
19	Belts.	19	Rugs.
18	Bureau covers.	81	Pairs sash draperies.
24	Camisoles.	2	Shirt waists.
247½	Yards camisole string.	2	Shirt waist suits.
10	Chemises.	172	Sheets, bleached.
5	Commode covers.	484	Sheets, unbleached.
4	Corset covers.	117	Skirts.
123	Pairs cuffs, nurses.	1	Splashers.
3	Curtains for screen.	4	Strong dresses.
4	Curtains, dark.	1	Surgical gown.
22	Doilies.	42	Tablecloths.
5	Doucheroom caps.	396	Towels, dish.
23	Pairs drawers.	337	Towels, hand.
3	Furniture covers.	108	Towels, roller.
5	Holdes.	24	Towels, sanitary.
42	Laundry bags.	26	Uniforms.
281	Napkins.	7	Uniform waists.
80	Night dresses, long.	13½	Pairs window draperies.
54	Night dresses, short.	39	Window shades.

LIST OF ARTICLES MENDED IN SEWING ROOM FROM
NOVEMBER 30, 1905, TO NOVEMBER 30, 1906.

105	Aprons.	271	Pairs pants.
2	Blankets.	7	Pillows.
37	Camisoles.	11	Pillowslips.
114	Coats.	32	Sheets.
188	Pairs drawers, men's.	696	Shirts.
5	Pairs drawers, women's.	35	Skirts.
41	Dresses.	52	Spreads.
417	Pairs hose.	1	Sweater.
3	Laundry bags.	2	Undervests.
4½	Pairs mittens.	68	Vests.
5	Nightdresses.	11	Window shades.

LIST OF ARTICLES TAGGED IN SEWING ROOM FROM
NOVEMBER 30, 1905, TO NOVEMBER 30, 1906.

2	Pairs arm elastics.	31	Pairs overalls.
2	Bathrobes.	14	Pairs overshoes.
59	Pairs blankets.	1	Pair pants.
24	Caps.	119	Shirts.
82	Coats.	1	Pair shoes.
6	Pairs gloves.	3	Pairs slippers.
1	Hat.	8	Sweaters.
633½	Pairs hose.	114	Ties.
27½	Pairs mittens.	1	Vest.
6	Neckscarfs.		