

MAINE STATE LEGISLATURE

The following document is provided by the
LAW AND LEGISLATIVE DIGITAL LIBRARY
at the Maine State Law and Legislative Reference Library
<http://legislature.maine.gov/lawlib>



Reproduced from scanned originals with text recognition applied
(searchable text may contain some errors and/or omissions)

PUBLIC DOCUMENTS OF MAINE:

1906

BEING THE

ANNUAL REPORTS

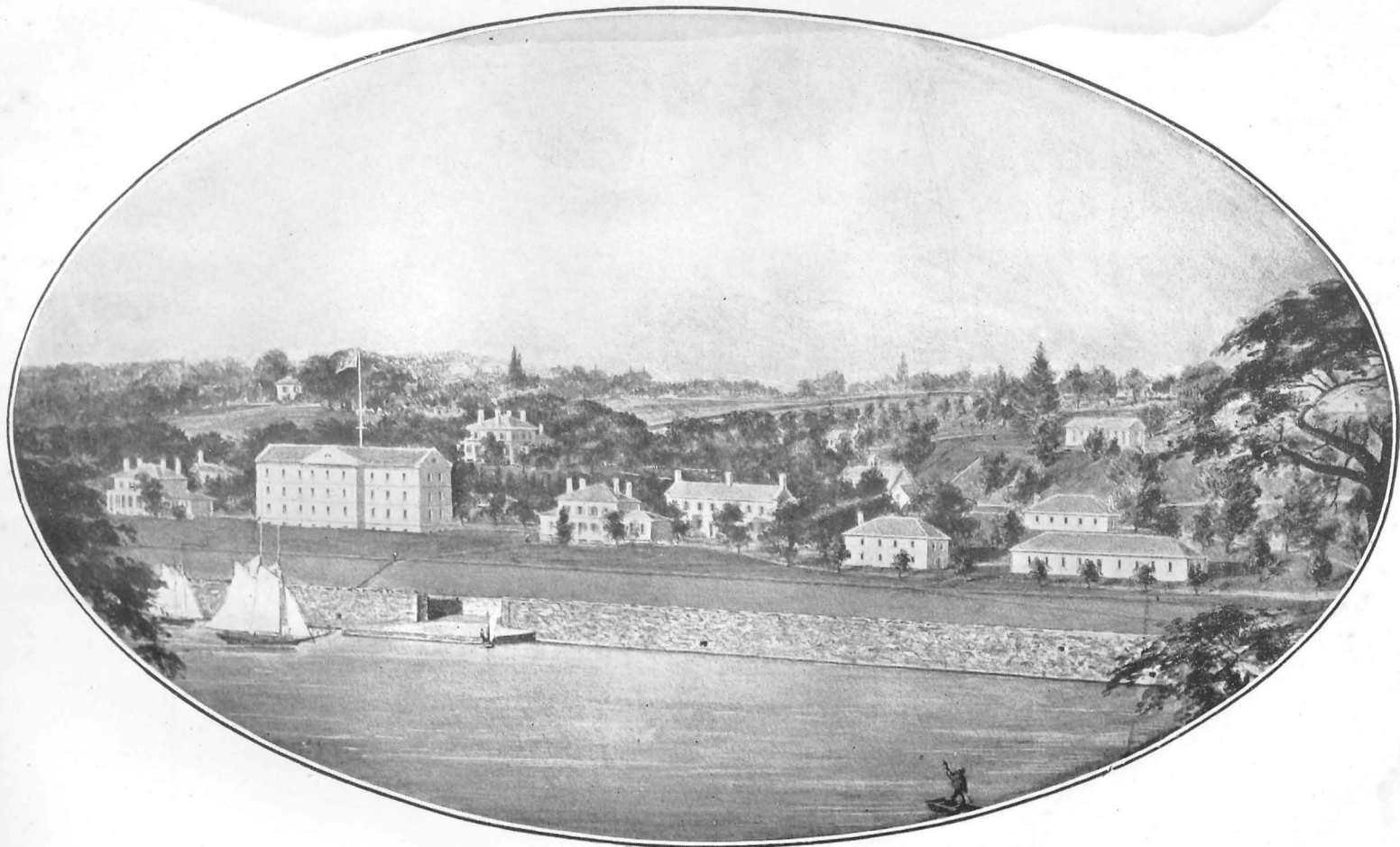
OF THE VARIOUS

Departments and Institutions

For the Year 1905.

VOLUME III.

AUGUSTA
KENNEBEC JOURNAL PRINT
1906



KENNEBEC ARSENAL, AUGUSTA, MAINE.

REPORTS

OF THE

*Trustees, Resident Officers and
Visiting Committee*

OF THE

MAINE INSANE HOSPITAL

AND

Eastern Maine Insane Hospital

December 1, 1905.

OFFICERS FOR 1905-1906.

Trustees.

FREDERICK ROBIE, M. D., Gorham, President.
CHARLES E. FIELD, Bangor, Secretary.
MRS. J. R. SMITH, Litchfield.
THOMAS WHITE, Bangor.
SIDNEY M. BIRD, Rockland.
GEORGE E. MACOMBER, Augusta.
EDWARD E. CHASE, Bluehill.

Resident Officers.

BIGELOW T. SANBORN, M. D., Superintendent.
HORACE B. HILL, M. D., Assistant Superintendent.
H. L. HORSMAN, M. D., Second Assistant.
J. B. MACDONALD, M. D., Third Assistant.
GERTRUDE E. HEATH, M. D., Fourth Assistant.
MANNING S. CAMPBELL, Steward and Treasurer.
ALICE G. TWITCHELL, Matron.
G. R. CAMPBELL, M. D., Pathologist and Bacteriologist.

Chaplains for 1906.

Rev. B. P. HOPE, Augusta.
Rev. C. A. HAYDEN, Augusta.
Rev. H. E. DUNNACK, Augusta.
Rev. C. W. DOHERTY, Augusta.

Subordinate Officers.

JOHN A. GETCHELL, Hospital Clerk.
A. M. PINGREE, Assistant Hospital Clerk.
T. W. EVERETT, Second Assistant Hospital Clerk.
GEO. M. FELLOWS, Superintendent's Clerk.
ROY H. CURTIS, Store Clerk.

Supervisors.

Men.	Women.
VERMONT R. LUCE.	MRS. ANNIE D. MCLEAN.
GEORGE E. KIMBALL, First Assistant	Miss MARIA H. MCFEE, Ass't.
CHARLES H. DAVIS, Second Assistant.	

Women's Pavilion.

Miss ANNIE R. McLAUGHLIN.
Miss JENNIE E. PENNIMAN, Assistant.

Men's Pavilion.

OLIN B. HUNNEWELL.
HENRY W. PLACE, Assistant.

Infirmaries

Men.	Women.
CLYDE L. PRATT, Special Nurse.	ELIZABETH McBRIDE, Special Nurse.

Engineer.

W. L. SAMPSON.
W. H. ALLEN, Superintendent, Farm, Garden and Floral Department.

Standing Committees for 1905-1906.

- On Conference with Legislative Committee—Robie, White and Macomber.
 - On Finance—White, Bird and Macomber.
 - On Buildings and Improvements—Bird, Robie and Chase.
 - On Farm Stock and Outside Property—Field, Chase and Robie.
 - On Library—Mrs. Smith, White and Dr. Sanborn.
 - On Recreation and Amusement of Patients—Dr. Sanborn, Field, Mrs. Smith.
-

Visiting Committee for 1906.

- January—Robie, Mrs. Smith, Bird and White.
- February—Field, Macomber, White and Mrs. Smith.
- March—Full Board.
- April—Robie, Field, Mrs. Smith and Bird.
- May—Bird, White, Field and Macomber.
- June—Full Board.
- July—Robie, Macomber, Chase and Field.
- August—Mrs. Smith, Bird, Chase and Macomber.
- September—Full Board.
- October—Macomber, Chase, White and Field.
- November—Robie, Bird, Mrs. Smith and Chase.
- December—Full Board.

TRUSTEES' REPORT.

To the Governor and Executive Council of the State of Maine:

The board of trustees of the Maine and Eastern Maine Insane Hospitals respectfully present to your honorable body the annual report of these two institutions for the year ending November 30, 1905.

Our return includes able reports from the superintendents of the two hospitals, and all other officers whose duty it is to prepare detailed accounts of the condition and work of their several departments the past fiscal year. These reports contain valuable information and statistics which we commend to your careful consideration, as establishing beyond question that harmony and efficiency have characterized the combined efforts put forth for the comfort and cure of the inmates of our State insane institutions, and also that the public expenditures in their behalf, prompted by Christian philanthropy, have produced an abundant and satisfactory harvest. These facts will be better appreciated after a consideration of the following statistics:

The whole number of patients under treatment during the year in the Maine Insane Hospital at Augusta has been	914
The whole number of patients under treatment during the year at the Eastern Maine Insane Hospital at Bangor has been	370
Total number	<hr/> 1,284
At the beginning of the year (December 1, 1904) the number of patients in the hospital at Augusta was....	704
At the beginning of the year (December 1, 1904) the number of patients in the hospital at Bangor was.....	254
Total number	<hr/> 958

At the close of the present year (November 30, 1905) the number of patients in the hospital at Augusta was	713
At the close of the present year (November 30, 1905) the number of patients in the hospital at Bangor was	249
	<hr/>
Total number	962
This shows an increase of four patients.	
The number of patients recovered and discharged from the hospital at Augusta during the year was	63
The number of patients recovered and discharged from the hospital at Bangor during the year was	50
	<hr/>
Total number	113
The total number of patients reported as improved (the larger portion being much improved) from the hospital at Augusta was	40
The total number of patients reported as improved (the larger portion being much improved) from the hospital at Bangor was	26
	<hr/>
Total number	66
The number of patients that died during the year at the Augusta hospital has been	89
The number of patients that died during the year at the Bangor hospital has been	32
	<hr/>
Total number	121

From this report we are able to say that the curative methods employed by the medical administration of the insane institutions of Maine, by which one hundred and thirteen patients have recovered and been restored to the normal condition of their mental powers, and thereby the means employed have produced the most satisfactory results, and we therefore feel that the work of the past year has added to the reputation and high standing of our two hospitals. In view of the fact that there has been no prevailing epidemic, the number of deaths appears large, but it is altogether the result of causes beyond the reach of professional treatment.

THE DUTIES OF THE BOARD OF TRUSTEES.

It is one of the duties of the board of trustees to visit the two hospitals every month; to examine each department, noting particularly the condition of the wards, the dormitories and the kitchen; to see and account for each patient; and to listen to all criticism, favorable or unfavorable, of the administration of affairs. We are also expected to examine the finances of the hospitals, and to satisfy ourselves that all expenditures are carefully made and that the cash balances of the treasurer have been reported correctly; also to look after the farm, its buildings and the premises in general, so that nothing may be lost or wasted; also to consult with the two superintendents on the general interests of the institutions. This responsibility has been duly discharged by the board of trustees, and the result of their observations carefully noted.

THE CONDITION OF THE SEVERAL DEPARTMENTS OF THE HOSPITALS.

We are most happy to report that every department has given evidence of careful and efficient oversight.

The superintendent of the Maine Insane Hospital, B. T. Sanborn, M. D., whose long and successful experience eminently qualifies him for the position, gives his undivided attention to its duties. He has won high distinction among the leading medical men of the country, and is deserving of great consideration from the people of our State.

The Eastern Maine Insane Hospital has made commendable progress under the direction of its superintendent, Dr. P. H. S. Vaughan. The want of enlarged quarters and other facilities which length of years has bountifully bequeathed to the older hospitals, has hampered the advance of the younger institution; but the ability and attainments of its popular superintendent promises a future of excellent work which may make the establishment not only an honor to the State of Maine, but also one of the leading institutions in the country.

The physicians associated with the hospital chiefs have discharge their complex responsibilities with a skill and fidelity that deserve our recognition and commendation.

The attendants in the two hospitals have been selected with the wisest care, and in a few instances during the year have been discharged for sufficient reason.

The general cleanliness of the patients, and the neatness of the several wards show that the greatest care has been exercised; we have always found the rooms well heated and properly ventilated, and, in many instances ornamented with an increasing number of pictures, and always with beautiful flowers.

MAINE STATE INSANE HOSPITAL.

The ready and continuous benevolence, practised by the State for over half a century, has created a hospital of generous capacity and ample equipment for sheltering and benefiting the insane citizens of Maine. This bountiful outlay in extensive territory and in suitable buildings, furnished with all the modern conveniences, has resulted, as is acknowledged by all visitors, in one of the most complete establishments in the United States.

During the past year many important improvements have been added. Ordinary repairs also have not been neglected. The several appropriations by the last legislature, representing in all \$78,500 for the Maine State Insane Hospital have been placed in our hands, to be used for reconstructing and completing the second female wing of the stone building, for placing fire-proof stairways and copper aprons in the brick buildings, also for constructing new sewers, and for renovating the stone building at the arsenal, while a portion of the sum is to be used for other detailed improvements on the same grounds. Such a notable gift is deserving of the cordial thanks of all the tax-payers in the State; and it has been carefully administered by the board of trustees.

The stone wings of the female wards of this hospital have been enlarged, thoroughly repaired and furnished, and the rooms are now fully occupied. This is a great improvement, as it gives more comfort and better sanitation to a much larger number of inmates than formerly occupied the same apartments. The expenditure meets with the ready approval of every person who visits the hospital and examines the completed work.

The enlargement and alterations of the stone buildings on the arsenal grounds for the accommodation of one hundred and twenty-five male insane patients, have received careful attention

from the board of trustees; and after the details were considered and defined, and contracts duly executed with the lowest bidders, the continuation of the work was placed under the supervision and direction of a competent committee. From the appropriation by the last Legislature there was set apart \$45,000.00 for the alteration and completion of the stone building on the Arsenal grounds. This amount will be quite sufficient for the purpose; part of the money has already been economically expended under the watchful care of the committee.

The skill of the architects, Messrs. Coombs and Gibbs of Lewiston, is worthy of special recognition; the several contractors also deserve credit for their fidelity and good workmanship; and we are indebted to the constant and painstaking oversight of George E. Macomber, Dr. B. T. Sanborn and Manning S. Campbell, under whose efficient management the work has steadily approached its completion. When finished, this structure will be one of the most comfortable and inviting homes connected with the institution.

The approach to the main building through the Arsenal grounds has already been opened; and when completed, the street will save at least twenty minutes in going to and returning from the post office, and in making other necessary visits to the opposite side of the river. Some other improvements have been completed, and still others begun; and hereafter many more will be suggested to meet the needs of the State's insane.

THE GIFT OF THE ARSENAL REAL ESTATE FROM THE UNITED STATES TO THE STATE OF MAINE.

The unexpected liberality of the United States Government in giving to the State of Maine the Arsenal grounds and other valuable property located on the same territory, for the use of the Maine Insane Hospital, is worthy of our deepest gratitude. We cannot adequately express the immense benefits thereby conferred upon our unfortunate fellow-creatures who, now and in the future, are to enjoy such additional advantages for their comfort and recovery. Let the people of our State join in suitably acknowledging this munificent gift, and let all further unite in making such benevolences redound to the restoration of the sanity of every unfortunate citizen within the borders of Maine.

EDWIN C. BURLEIGH PAVILION.

The State of Maine is under great obligations to the several members of the Maine delegation in Congress for their active and efficient support in securing the valuable donation of the Arsenal property from the United States to the State of Maine, and particularly we feel justified in recognizing the prompt and useful services of Hon. Edwin C. Burleigh, member of Congress from the Third District of Maine, and in consideration of these valuable services, and in consequence of the high esteem in which he is held, and because of his honorable discharge of many public duties, the Board of Trustees have unanimously voted that the new stone building on the Arsenal grounds, soon to be occupied by 125 inmates, be called and named Edwin C. Burleigh Pavilion.

The following bill was introduced by Mr. Burleigh in the House of Representatives on February 15, 1905, and on the same day referred by that body to the Committee on Military Affairs. It was reported back to the House by that committee "with the recommendation that it do pass" on March 2, 1905. An amendment presented by Mr. Burleigh was adopted and the bill passed unanimously by the House, as amended, on March 3, 1905. There was no division and no roll call. The bill went to the Senate the same day and was unanimously passed by that body, Senator Hale having the matter in charge. The act was signed by President Roosevelt on March 3, 1905.

An Act Authorizing the Secretary of War to convey the Kennebec Arsenal property, situated in Augusta, Maine, to the State of Maine for public purposes.

Be it enacted by the Senate and House of Representatives of the United States of America in Congress assembled, That the Secretary of War be, and he is hereby, authorized and directed to convey, by deed duly and properly executed, to the State of Maine, for the use of a State institution, organized under the laws of the State of Maine and maintained by said State, known as the Maine Insane Hospital, at Augusta, Maine, the property situated in the corporate limits of said Augusta, belonging to the Government of the United States, formerly used as an arsenal and known as the Kennebec Arsenal property, the same compris-



BURLEIGH PAVILION, ARSENAL GROUNDS.
Renovated, 1905.

ing about forty acres, and bounded on the north by private property, on the east by the road to Pittston, on the south by the Insane Hospital grounds, and on the west by the Kennebec river; said conveyance to provide, however, that the estate thereby created shall continue so long only as the said property shall be used by said State as a part of and in connection with the Maine Insane Hospital for the appropriate uses of an Insane Hospital in conformity with the terms of this Act; and that at any time the said property may be taken possession of by the United States whenever the President in his discretion, shall decide that the said property is needed for the uses of the United States, or that the requirements of this Act are not strictly observed by the said State of Maine; and that there shall be no liability on the part of the United States at any time for the use or destruction of any building that may be placed on the said property by the State of Maine.

Approved March 3, 1905.

[Public Bill No. 235, chapter 1502, 3d session, 58th Congress].

BEQUEST OF THE LATE MRS. ELLEN A. (WILLIAMS) GILMAN,
DECEASED.

The trustees of the Maine Insane Hospital at Augusta desire to express their appreciation and thanks for the munificent gift of one thousand dollars from this distinguished lady. This has been deposited in the treasury of the State of Maine. The interest of the same amount at 5% hereafter from the State to be applied and used annually, as an addition to the amount of an established fund donated for the benefit of the patients of this institution whose names may appear on the rolls of the above Hospital. The conditions of this gift was made with the expectancy of the passage of an official act of the legislature of Maine, fixing a yearly appropriation of an additional sum of fifty dollars, as an increased benefit from the use of a special fund already created, to be expended for the immediate wants of the patients of this Hospital for amusements, recreation and diversion. The legislature of Maine at the last session of that body unanimously approved of this gift, and passed the necessary law for a perpetual yearly appropriation from the State of an

additional fifty dollars for the above purposes. Mrs. Gilman was a daughter of Hon. Ruel Williams, who was one of the founders of this institution, and made a donation of ten thousand dollars for its establishment, and for many years was the early president of the board of trustees. She was the wife of John T. Gilman, M. D., who for many years was one of the most distinguished physicians in the city of Portland, and for nearly twenty years was one of the constant and efficient members of the board of trustees of this Hospital.

SUMMARY OF ALL BEQUESTS HERETOFORE MADE FOR THE BENEFIT
OF THE HOSPITAL LIBRARY AND AMUSEMENTS.

Con. Black Library Bequest, 1855	\$3,000 00	Deposited in the First National Bank, Portland.
Orne Bequest, 1883.....	1,000 00	Deposited in Hospital treasury.
Gov. Abner Coburn Bequest, 1886..	50,000 00	Deposited in the State treasury.
Joseph H. Williams Legacy, 1899..	1,000 00	Deposited in the State treasury.
Mrs. Helen A. Gilman Legacy, 1905	1,000 00	Deposited in the State treasury.
Total.....	\$56,000 00	

WIDOWS ISLAND.

The acceptance by the State of Maine, by the unanimous vote of the last Legislature, of the gift from the United States of Widows Island and the buildings thereon has been duly considered, and an appropriation of \$6,000.00 made from the State funds, and has been economically expended under the direction of the Board of Trustees.

During the months of July, August, and September the buildings and the grounds were occupied and used by a selected number of patients from both insane hospitals.

This new annex was visited several times by the Trustees, and from careful personal observation and the reports of the physicians and attendants, we are able to say that the sanitary influences and advantages of this department have exceeded our expectations. Information derived from every source leads to the most favorable conclusions regarding the benefit to the patients from this new means of treatment; and we feel that the need for a further appropriation, which our next report will place in detail before the next Legislature, will justify the favorable action of that body. We desire to commend the care and economy which have resulted in equipping this annex so thoroughly for the betterment of the convalescent insane of our State, and have already been the means of speedily restoring so many to health.



THE PATIENTS CONVALESCENT HOME.
West view, Chase Island.

The committee appointed by the Trustees to have charge of the \$6,000.00 appropriated by the last Legislature was Charles E. Field, B. T. Sanborn, M. D., Dr. P. H. S. Vaughan, and Manning S. Campbell. The work has required careful attention; and the Board of Trustees, who watched its progress, feel justified in saying that the result merits the fullest commendation both for economical expenditure and for the grand results obtained. The State is much indebted to the experience and constant labor of Manning S. Campbell, Treasurer of the Insane Hospital at Augusta. The Trustees have noticed with deep satisfaction the beneficial results which have attended the professional labors of Dr. Macdonald, who during the summer has had the immediate charge of the patients on the Island.

We consider this property to be of great value to the State, and its benefits to those afflicted with mental complaints cannot be overestimated. The poetic words of one of the female inmates of the home, in sight of the broad ocean, written just before she departed from the island, can be read with pleasure the second time:

“Any one who doubts the beauty
Sight into the mind instills,
Should but see this evening's sunset
Lighting up the Camden hills.

Like yon hills, our minds once clouded
By dark cares and shadows gray,
Now are flooded by the sunlight,
Driving grief and gloom away.”

The name, Widow's Island, by which this island has heretofore been known, does not have any particular significance. It is now and will forever be known as a summer resort for the convalescent insane of our State. The change to its present use was first called to the attention of the Executive Council of Gov. Hill, by Hon. Edward E. Chase then a member of that body, and thereby the transfer was made from the United States to the State of Maine with certain restrictions. He afterwards was an earnest worker and obtained an acceptance of this valuable gift by the Legislature of the State of Maine in 1905. He has since become a member of the Board of Trustees of the Insane Hospitals. He has taken a deep personal interest in the careful expenditure of the appropriation of \$6,000

and his associates on the Board of Trustees do therefore recommend that the Island be hereafter known as Chase Island.

EASTERN MAINE INSANE HOSPITAL.

The Eastern Maine Insane Hospital has made good progress during the year, and the examination of the several departments by the Board of Trustees on their repeated visits has proved very satisfactory. There has been a commendable improvement in the shade trees, shrubbery and floral decorations of the grounds around the hospital buildings.

The school established for nurses has graduated and promoted the efficiency of six young ladies.

The wards have been overcrowded, and there exist the same reasons as heretofore for enlarging the accommodations for the insane of the Eastern Maine, a condition which the Legislature of next winter will be invited to consider and provide for.

A suitable piggery has been constructed, with satisfactory results.

The farm has been well tilled and is highly productive; and the addition of real estate made by the appropriation of the \$4,300 by the Legislature of last winter has proved very remunerative.

There has been a uniform and mutual courtesy between the officials of each hospital, which has redounded to the benefit of the inmates of the two institutions. Thus the over-crowding of the Maine Insane Hospital has been remedied.

The Trustees have given a favorable account of the administration of our insane hospitals, and have spoken in complimentary terms of the heads of the several departments and others associated with them. This statement, based on our careful personal observation, is correct; but we are aware that there may be temporarily objectionable features, and that in the daily routine the Superintendents find many causes for complaint.

The occasions for adverse criticism, however, are merely temporary, and the corrections made for misconduct have been followed by satisfactory results.

INSANE DEPARTMENT AT THOMASTON.

The increasing number of the criminal insane, and the ineffectual means of treatment at the State Prison at Thomaston, call for an investigation and a remedy. It is perhaps fortunate that

we now have on the Arsenal grounds stone buildings of a suitable character, which can be so changed, at a moderate cost, as to provide safe curative isolation for this class of unfortunate men, whose misdeeds often spring from a diseased and disordered brain. The matter will be brought to the attention of the next Legislature.

THE FINANCIAL STATEMENTS OF THE TREASURY DEPARTMENTS OF
THE TWO INSANE HOSPITALS.

After the examination of the accounts of the Treasurer and Steward of the two Insane Hospitals of the State by the financial committee of the board of trustees, the board directed that the same be re-examined by an expert auditor and Mr. M. H. Merro of Augusta was employed for that purpose, and the Board of Trustees are pleased to report that the work has been carefully attended to in detail by the above party and that his report verifies the correctness of the books, receipts, accounts, payments and the cash balances of the two Hospitals, the same set forth by the official officers of the two Institutions and the finance committee of the Board of Trustees, and there is on file in the Steward's office a correct voucher for every payment.

STEWARD AND TREASURER'S REPORT—MAINE INSANE HOSPITAL.

The annual report of Manning S. Campbell, the Steward and Treasurer of the Maine Insane Hospital, which covers a large extent of laborious and careful work, has been received, and the following abstract furnishes the correct condition of the finances of the Hospital:

TOTAL RECEIPTS AND DISBURSEMENTS OF CASH FOR THE YEAR ENDING NOVEMBER 30, 1905.

DR.		
Balance cash on hand December 1, 1904.....	\$3,234 88	
Receipts for year, hospital account	178,094 51	
Received from State of Maine, account appropriation for copper aprons and fire-proof stairway	10,000 00	
Received from State of Maine, account appropriation for sewer	3,500 00	
Received from State of Maine, account appropriation for completing second female wing	6,000 00	
Received from State of Maine, account appropriation for balance due on piggery	3,000 00	
Received from State of Maine, account appropriation for proposed new road across Insane and Arsenal property	2,000 00	
Received from State of Maine, account appropriation for renovating Arsenal to be used for male wards	30,000 00	
Received from State of Maine, account appropriation for pump and tank connections with steam mains including duck and protection for same	2,000 00	
Received from State of Maine, account appropriation for furnishing for wards and day room, kitchen equipment and fittings for care of 125 patients	6,000 00	
Repairs on barracks and other buildings for protection and use in connection with said building	1,000 00	
Received of Charles E. Field, treasurer of Widows Island appropriation	4,000 00	\$248,829 39
CR.		
Disbursements, hospital account	\$172,243 36	
Disbursements, account appropriation for copper	472 39	
Disbursements, aprons and fire-proof stairway	3,500 00	
Disbursements, account appropriation for sewer	9,638 14	
Disbursements, account of appropriation for renovating second female wing	3,000 00	
Disbursements, account appropriation for balance due on piggery	2,000 00	
Disbursements, account appropriation for proposed new road (Arsenal)	25,370 24	
Disbursements, account appropriation for renovating Arsenal building	2,000 00	
Disbursements, account of appropriation for pump and tank connections	4,000 00	
Disbursements, account appropriation C. E. Field	26,605 26	\$248,829 39
Balance cash on hand November 30, 1905		

THE DEPARTMENT OF THE TREASURER AND THE STEWARD OF THE
EASTERN MAINE STATE HOSPITAL.

Hon. Charles Pearl of Bangor, who has been the Treasurer of the institution since its organization, has recently resigned his position. He has performed his duties with accuracy and fidelity, and has always manifested great interest in the Hospital's welfare; he will be greatly missed. The vacancy has not yet been filled. He reports that the finances of the institution are in good shape, and that the total receipts and disbursements of cash for the year ending Nov. 30, 1905, are as follows:

DR.	
Balance of cash on hand December 1, 1904.....	\$8,518 12
Receipts for year, Hospital account.....	67,034 03
Received from State account appropriation (balance due for 1904).....	425 00
Received from State, account appropriation 1905..	23,150 00
	\$99,127 15

CR.	
Disbursements for year.....	\$89,327 68
Balance cash on hand November 30, 1905.....	9,799 47
	\$99,127 15

The following summary will give the net cash resources of the Hospital at the close of the year 1905:

Resources:	
Cash on hand	\$9,799 47
Cash due from cities and towns.....	13,064 32
Cash due from individuals.....	15 73
Cash due from State for support of patients.....	5,053 82
	\$27,933 34
Liabilities:	
Owed firms	\$22,568 35
Owed pay roll.....	2,300 29
	\$24,868 64
Net cash resources....	\$3,064 70

At the close of the year a committee of the Board of Trustees carefully verified the books of the treasurers, and also examined the assets and property of the two hospitals; they have found the books well kept and properly vouched, and also all property of the other departments duly accounted for.

The varied official labors of Charles F. Perry, steward of the Eastern Maine Insane Hospital, in the subsistence and purchasing departments, are worthy of commendation; and the work on the farm gives evidence of his efficiency and painstaking industry.

CONCLUSIONS.

The Trustees have missed the attendance and valuable services of Hon. Sidney M. Bird of Rockland at our meetings during a portion of the past year. He has been for several years one of the most efficient and useful members of the Board, and his associates, on account of the best interests of the Institution, await with pleasure his return to active services as soon as his recovery is assured.

- It is with feelings of the greatest gratitude to the kind Providence that presides over the destiny and welfare of the human family, that we have recorded the many additions to the resources of Maine's two Insane Hospitals.

We rejoice that during the past year we have not been visited with any epidemic or unexpected misfortune. There is no nobler use for money than the founding and fostering of institutions for the relief of suffering, and especially for the care of those afflicted with a diseased and abnormal mental condition.

This is by far the brightest year in the history of the Insane Hospitals of the State. The magnificent gifts from the United States, representing several hundred thousand dollars for contemplated uses, cannot be overestimated.

This Christian benevolence strengthens our hope for further aids in removing some of the gloom which necessarily hangs over hospital life.

The Board of Trustees are grateful for the blessings which have attended their work during the past year, and feel stimu-

lated to renewed effort for future labors in which they hope to have the coöperation of the citizens of our State.

FREDERICK ROBIE,
MRS. J. R. SMITH,
THOMAS WHITE,
SIDNEY M. BIRD,
GEORGE E. MACOMBER,
CHARLES E. FIELD,
EDWARD E. CHASE,

Trustees.

REPORT OF THE COMMITTEE ON RECREATION AND AMUSEMENT OF PATIENTS.

To the Trustees of the Maine Insane Hospital:

The acquisition of the Arsenal property and Widow's Island from the United States Government during the past year, the former for the specific use of this Institution and the latter for the accommodation of the patients from both Hospitals for the insane, has materially broadened the scope of the duties incumbent upon your committee. As a result of these instrumentalities the methods pursued for the recreation of our patients have taken an entirely different aspect. More service has been required and better results have been obtained than in any previous year. The gift of the Government at Widow's Island consists of some 12 acres of land. A brick building formerly designed for a hospital 50x100 feet and two stories in height is admirably located upon the most prominent part of the Island. The property is furnished with a substantial wharf, suitable out buildings and an artesian well which furnishes suitable water for drinking purposes. Notwithstanding its quite thorough equipment when passed over to the two Hospitals, yet after all it was found that many changes were required to place it in complete readiness to render it absolutely convenient for our contemplated summer outing for the patients of both Hospitals. An appropriation from the Legislature of six thousand dollars for the purpose of repairs and furnishings was placed in the hands of a committee with one of your board as treasurer and the steward of the Institution as secretary. The necessary renovations were commenced at once by the active committee. So much was to be accomplished that it was not made ready for occupation until July 5th when a party of 30 male patients were forwarded in a private car to Bangor, where were met the



THE PATIENTS CONVALESCENT HOME.
South view, Chase Island.



patients from the hospital at Bangor and both parties were taken by boat to the Island where they remained until August 4th when a party of 28 female patients were sent to the Island by the former pursued method, meeting at Bangor a party of females from that institution and by the same boat the male patients were returned to their respective institutions. This party remained some five weeks when the summer residence was closed on September 9th.

This radical departure from former methods pursued in the endeavor to divert our patients and in the attempt to make effective, moral measures for the alleviation of morbid mental processes and to bring about added physical vigor was entirely experimental and the propriety of such a course was expressed in a quasi manner as somewhat doubtful and this feeling lingered for the time being in the mind of not a few. Particularly so was this pessimistic view entertained because of the fact there had been but a few precedents of like procedures established in this country. The timidity, however, of doubters has been assuaged and the mental horizon of the faint hearted has been entirely cleared because of the remarkably favorable results that have accrued. The fortunate location of the building situated upon the highest point of the Island afforded the physician in charge, with his force of supervision, an entire visual sweep of the Island at a glance which condition made available an opportunity for the patients to remain out of doors frolicking about the Island or sitting upon the ground the entire day when suitable weather prevailed.

A staunch naphtha launch, with an experienced person in charge, was at all times accessible for the use of the patients and added much to the pleasure of the occasion. Not a little comfort was afforded in the opportunity of digging clams and gathering shells on the borders of the Island. In consequence of the remarkably successful results which have followed this experiment we apprehend that it will not be longer regarded as such but in the future will become one of the fixed methods to be pursued looking towards better treatment, and it is reasonable to conjecture, an increased per cent of recoveries. The written reports from time to time from Dr. Macdonald, of the staff of this Institution who was placed in the medical charge of the patients the entire two months, were most assuring. There was evidence of a large measure of restfulness and constant changes

taking place manifesting increased physical and mental vigor. One of our interesting and intelligent lady patients expressed the entire sentiment of the party when she penned the following beautiful lines :

Any doubtful of the beauty
Sight into the mind instills,
Should but see this evening's sunset
Lighting up the Camden hills.

Like yon hills, our minds once clouded
By dark cares and shadows gray,
Now are flooded by the sunlight,
Driving grief and gloom away.

Of the 30 men who received the benefits of this temporary sojourn four recovered and were discharged and returned to their homes on their arrival at the Hospital. Several others were very much benefited and all gave evidence of recuperated physical powers. Of the 28 females eight made good recoveries and were discharged soon after their return to the Hospital and the entire party gave evidence of strengthened physical conditions. Notwithstanding this remarkable showing in the number of recoveries of both sexes it would be unfair and might be misleading without an explanation. Nearly all who were restored were regarded as recoverable cases before leaving the Institution for the Island and possibly everyone might have regained their mental equilibrium here, but it is fair to presume that the recoveries would have been more lingering and that they would not have returned to their various homes in such robust physical health and consequently there would not have been observed that absolutely complete recovery of mind. Such attendant success accompanying this new movement fully meeting the expectations of the most sanguine should be regarded as having passed beyond the experimental stage and we are of the opinion that in the future at least four months should be devoted to this method of recreation for our patients feeling assured that such treatment will be obtained as will result in our observance of increased recoveries from sickness both of body and mind.

Dr. Macdonald looked after the physical and mental wants of the patients in a very careful and intelligent manner and at all times maintained good discipline. He is to be congratulated for his efficient and painstaking labors in behalf of those intrusted to his care.



RECEPTION ROOM.
The Patients Convalescent Home.

Mr. Campbell, the steward and treasurer of this Institution, devoted much time to finishing and furnishing the building and supplying the dietary wants of the patients and rendered most valuable service.

The Arsenal property is already becoming a source of comfort and recreation to our female patients because of its ample growth of native oaks and elms for shelter from the sun and because of its pleasant walks and grounds. A section of this property accompanied with a more convenient approach from this part of the Institution will in the future supply a most valuable pleasure-ground for our patients. Our usual excursion to the Isle of Springs by a large number of our patients and accompanied by our band, was as enjoyable as in the past and becomes a source of mental recreation not only at the time but long before and subsequent to the excursion. Trolley rides are quite frequently afforded our people and many have the opportunity of enjoying the city theatres and entertainments of various kinds. The orchestra and vocal music of the Institution have entertained our household at stated weekly and semi-weekly gatherings as in former years adding much to the contentment of all. The usual religious services by our chaplains have been maintained throughout the entire year and the consolations of the gospel have resulted beneficially to all. We desire to acknowledge the receipt of an entertainment by Walter G. Richards, in the role of character delineator. A large audience were thoroughly entertained. Mrs. Ida Jenness Moulton acquitted herself as a reader with remarkable effect and our patients enjoyed the evening's entertainment. The Cony High School Minstrels which are always acceptable, entertained our patients in an interesting manner in their usual yearly visit.

We append to this report the amount which has been expended from the accrued interest of the Coburn fund for the purpose of the recreation and diversion of our patients.

COBURN FUND DISBURSEMENTS.

FOR THE YEAR ENDING NOVEMBER 30, 1905, AS PER VOUCHERS IN TREASURER'S OFFICE.

GENERAL AMUSEMENTS.		
Paid Choir and organist	\$325 40	
Orchestra and band	688 82	\$1,014 22
SPECIAL ENTERTAINMENTS, REPAIRS, ETC.		
Paid Walter G. Richards, for one entertainment, character delineator	\$15 00	
Ida Jenness Moulton, for one entertainment, reader	12 00	
Cony High School Minstrels, for one entertainment	25 00	
Eastern Steamship Co., for use of steamer Wiwurna, excursion to Isle of Springs with patients	100 00	
Augusta, Gardiner & Winthrop Railway Co., for use special car, trolley rides for patients	24 00	
Cressey & Allen, for one Cecilian piano player and music	250 00	
T. L. Merrill & Co., for one Edison Triumph phonograph and records	82 50	
C. W. & R. M. Bowen Co., for one 12 cycle vibrator and applicator	76 00	
J. M. Wyman, Jr., for one stereoscope and views	12 00	
Goodman-Leavitt-Yatter Co., for repairs on combination billiard and pool table	52 30	
Music, musical supplies for band, orchestra and choir ..	35 61	
Patients to plays, circus, fair and car rides, shopping, etc	49 50	
Christmas cards	10 00	
Tuning and repairing pianos and organ	44 00	
Games and amusements for patients	4 00	\$791 91
		\$1,806 13

BIGELOW T. SANBORN,

CHAS. E. FIELD,

MRS. J. R. SMITH,

Committee on Recreation and Amusement of Patients.

REPORT OF THE COMMITTEE ON HOSPITAL
LIBRARY.

To the Trustees of the Maine Insane Hospital:

Your committee on the library for the year ending Nov. 30, 1905, have attended to that duty now ask leave to report.

1904.			
December	1....	To deposit in Augusta Savings Bank	\$1,221 00
December	1....	20 shares First National Bank stock.....	2,000 00
December	1....	Cash on hand	9 87
1905.			
January	1....	Dividend on bank stock	60 00
July	1....	Dividend on bank stock	60 00
		Savings bank dividends	42 37
			\$3,393 24
		DISBURSEMENTS.	
1905.			
January	2....	By paid for books, A. T. Pattee.....	\$1 10
February	2....	Essex Publishing Co.....	3 00
February	8....	Lewis S. Matthews & Co.....	4 00
March	31....	Rebman Co.....	2 50
April	2....	F. A. Davis Co.....	1 25
August	9....	Lea Bros. & Co.....	6 00
August	22....	Lena Beane.....	1 50
September	5....	Wm. Wood & Co.....	2 50
November	30....	Charles E. Lauriat Co.....	21 45
November	30....	The Old Corner Book Store.....	17 06
November	30....	Papers and magazines.....	107 70
		Express	3 13
		Balance on hand	3,222 05
			\$3,393 24
December	1....	Balance in savings bank	\$1,221 00
		Twenty shares First National Bank stock.....	2,000 00
		Cash on hand	1 05
			\$3,222 05

MRS. J. R. SMITH,
THOMAS WHITE,
BIGELOW T. SANBORN,
Committee on Library.

SUPERINTENDENT'S REPORT.

To the Trustees of the Maine Insane Hospital:

I would respectfully submit for your consideration the Superintendent's sixty-fifth annual report.

My duties are very clearly set forth in the statutes when it directs that the Superintendent shall present to the Trustees a written report at the end of each fiscal year setting forth what has occurred in the condition of the Institution and its prospects. In entering upon this service, notwithstanding the prescribed obligation enjoined, it becomes to me at this time a pleasant duty notably from the fact that I am able at the onset of this review to report marked progress and development as a result of its recent accessions. The Institution has taken on a fresh impetus which has not been experienced heretofore during the progress of any single year in its history. Not only this, the interests of the insane throughout the State have been very materially strengthened and the opportunities for offering to its mentally diseased citizens enlarged and increased scientific treatment has in consequence of recent developments become essentially broadened. In many other ways there is reason to be profoundly thankful and for these manifold blessings we should devoutly acknowledge the interposition of an Overruling Providence. Save one serious accident occasioned by a feeble and confused patient's slipping upon the hard floor, and which afterwards resulted in his decease, the inmates of the Institution have been totally exempt from serious casualties and as a rule have passed a very restful season. At the commencement of the year there were remaining a total of seven hundred and four patients, four hundred and seven men and two hundred and ninety-seven women. There have been admitted since two hundred and ten, one hundred and fifteen men and ninety-five women. The number under treatment has been nine hundred and fourteen, five

hundred and twenty-two men and three hundred and ninety two women. The discharges and deaths have been as follows: Total recoveries, sixty-three, thirty-nine men and twenty-four women; much improved fifteen, ten men and five women; improved, twenty-three, thirteen men and ten women; unimproved, eleven, eight men and three women; died, eighty-nine, forty-eight men and forty-one women; leaving at the close of the hospital year, November 30, 1905, a total of seven hundred and thirteen patients, four hundred and four men and three hundred and nine women. The daily average number of patients for the entire year has been seven hundred and ten, the largest number in the Institution under treatment were seven hundred and twenty-eight and the least number, seven hundred and one. The per cent of recoveries during the past year based upon the admissions, has been thirty per cent against twenty-four and five tenths per cent the preceding year. The experience of our patients at Widow's Island and the attendant success has already been mentioned in your committees' report and need not be enlarged upon here. I will simply add, however, that the opportunities offered our patients, the entire change of environment and diet, air, exercise and other accessibilities favorably contributed to increase our recoveries. Aside from the above departure no especially new methods of treatment have been devised except that we have from time to time administered cold packs where we have had reason to believe that they were indicated and which have in some cases shown decided results.

It is hoped that the finances of the Institution will allow the introduction of a hydrotherapeutic plant as early as another spring. Your committee to whose care its construction was left have already arranged suitable apartments and are only waiting for the purchase of the desired apparatus. This auxiliary in treatment has for sometime been discussed and when the plant is installed we believe this method will become a reliable element among others which have already been introduced and will add to the material, physical and mental welfare of our patients.

APROPRIATIONS.

At once upon the receipt of the deed of the Arsenal property it was conceived that the larger granite building on its grounds could be conveniently re-arranged for the accommodation of

patients and after discussion it was determined that an appropriation should be asked for to reconstruct it for the accommodation of a mild class of patients and that they should be cared for on an entirely new plan from that which now obtains, not unlike that which is in vogue in the general hospitals of the State. By this method it was found that the hospital could easily care for 125 patients in this building. Consequently through the efforts of your board for this and other purposes the following liberal legislative appropriations were obtained, namely: For copper aprons, copper ventilators and fire-proof stairways for the Harlow and Sanborn Pavilions, \$10,000, for a sewer for the out buildings \$3,500.00, for the completion of second female wing \$6,000.00, for balance due on piggery \$3,000.00, for renovation of Arsenal building to be used for mild patients \$45,000.00, for pump and tank connections with steam mains including duck and protection for same \$2,000.00, for furnishing wards, day room, kitchen equipments and fittings for the care of 125 patients in Arsenal building \$6,000.00, for proposed new road across the grounds of the Hospital to unite with that of the Arsenal property and road \$2,000.00, for repairs on barracks and other buildings for protection and use in connection with said buildings \$1,000.00. There was in addition an appropriation of \$6,000.00 for repairing, furnishing and making ready the Widow's Island property for the reception of patients, but which has already been mentioned in your committees' report.

RECONSTRUCTIONS.

As a result of the above appropriations your board instructed me to procure the service of Coombs and Gibbs, architects, to make suitable plans for the renovation of the larger granite building upon the newly acquired property and as soon as arrangements were made and the contracts could be awarded work was commenced and at the date of this report the building is nearing completion. Its dimensions are 120 feet in length by 37 feet in width, three stories, ample in height and entirely fire proof in its construction. The architect very wisely attached to the west side of the building a commodious corridor running the entire length which will not only offer a sun bath but an extended and pleasant prospect for the patients. It is constructed on the same level with the day room and easily accessible. It can be

covered in by glass if desired through the winter months which would afford a pleasant promenade for the occupants nearly the entire year. This pavilion when completed will add much to the Hospital's resources in properly caring for its patients.

CONTRACTS.

R. J. Noyes received the contract for the renovation of the above pavilion, the contract price being \$35,268.00. It was found upon examining the roof that it would be necessary to expend more than the contract called for in order to make it sufficiently durable and we awarded a contract of \$652.00 to F. Korneffel & Son of Lewiston, for additional copper and labor. McKenney & Waterbury of Boston, Mass., received the contract for gas fittings at a cost of \$356.25. F. Korneffel & Son of Lewiston, secured the contract for the construction of the copper aprons and copper ventilators upon the Harlow and Sanborn buildings for \$1,675.00. The contract for iron stairways for the above buildings was awarded to the Iron and Steel Company, of Cambridge, Mass., for \$2,419.00. The terra cotta for the completion of the floors of the stairways was awarded to H. H. Fernald & Co., of Boston, for \$452.00. The plastering accompanying the above work and the slate for the stairways was secured by R. J. Noyes for \$1,980.00.

The repairs upon the roof and brick work of the Sanborn Pavilion have been completed. The reconstruction consists of copper aprons around the entire eaves of the building extending up to the roof four feet and it is now believed that the difficulty which we formerly experienced in the damp walls of the wards are obviated. New and larger copper ventilators upon the ridge-pole of the wing have taken the place of a smaller galvanized iron structures and it may be expected that this change will increase the ventilation of the wards below. The brick work throughout has been thoroughly repointed.

It was so late in the season when the renovations upon this wing were commenced that it is thought desirable to postpone the work upon the Harlow wing, including the fire proof stairways, until more favorable weather occurs so that these changes will not be completed until another spring or early summer. I am happy to be able to report that the second wing for females which was under reconstruction but had not been completed at

the closing of the last report was finally finished and occupied during the month of May. The wards and rooms are ample in proportion and thoroughly ventilated. The entire building is fire proof in construction and is unquestionably the finest finished wing of the institution. Our patients fully appreciate its advantages over the old wards and the plan of reconstruction is such that it adds very materially in the economical supervision of that side of the Hospital. The plumbing is of the best material and entirely modern and sanitary in its installation. The finishing of the wards in hard wood renders it quite impervious to any deleterious substances. The new barn and piggery were not completed at the closing of last year's summary but since which they have been made ready for occupation and meet the wants for which they were designed.

NEW CONSTRUCTIONS.

Subsequent to the arsenal estate becoming the property of the Hospital it was thought not only desirable but absolutely necessary that a road should be constructed from the institution's front entrance, skirting the field across and connecting with the highway of that property. As already mentioned \$2,000 was appropriated by the legislature for this purpose. The road has been quite thoroughly graded but the appropriation is not sufficient to complete it. Another spring it will be necessary to macadamize it the outlay of which must necessarily be quite large and incur additional expense far beyond the appropriation. The new highway will lessen the distance to town about one-third of a mile and will relieve us of the necessity of climbing the high hill in the rear of the institution. It is of much easier grade than that of the old highway and will become a great convenience not only in getting to the city but will become an indispensable necessity in the future supervision and development of the Arsenal property. During the summer a sewer for the construction of which the legislative appropriation has already been mentioned has been laid from the farm buildings to the river not only to accommodate these structures but the sewer of the farm house as well. The length of the sewer is 2,095 feet consisting of 840 feet of 24 inch, 1,225 feet of 12 inch tile pipe, also 30 feet of 12 inch cast iron pipe located where the sewer makes its exit into the river. The necessity of a sewer has existed for quite

a number of years especially since the development of the institution's property in that location. It will greatly improve the sanitation of all of our out buildings and the surrounding territory in that section. Your building committee in discussing the best method to be pursued in furnishing heat to the Arsenal buildings called to their aid the experienced services of W. W. Carmen, the steam heating engineer of Portland. After a thorough investigation of the matter with him as to whether we should supply the heat from the main heating plant of this institution through a suitable constructed line of pipe or erect a heating plant upon the premises we determined through his advice after a critical examination made by him to pursue the former method. We decided to place the matter of construction in Mr. Carmen's hands as it was a difficult task and construct the line without placing it under contract. I need not here go into the details of construction but will simply add that at the closing of this report more than half of the work has been performed and we have reason to believe when completed it will become a much more economical method of heating the premises in that section than would obtain through the other method.

REPAIRS.

We have had at our command as large a force in the various mechanical departments as heretofore and all have experienced a busy season. Nearly all of the exterior wood work of the institution has been repainted during the past season improving the appearance of the entire structure. The bathrooms in the granite wards on the men's side of the Hospital have been quite generally overhauled and modernized and floors repaired one of which was constructed of slate and is fire proof. Additional radiation has been installed in several of the dormitories of the help where heretofore the heat has been found insufficient. I have never observed a more active year or seen more accomplished by the various heads of our mechanical departments.

FARM AND GARDEN.

The institution's grounds since the addition of 42 acres included in the arsenal property nearly reaches the limit of one square mile. To be exact the deeds of the property represent 625 acres. Our grounds now offer plenty of scope for the exer-

cise of our patients and there is no especial call for increased acreage except it might be thought judicious in the future to enlarge our pasturage. The sanctioned estimate of "an acre to a patient" in a convention of experienced alienists may not attain that importance perhaps for the population of a Hospital of this character after passing beyond the limit of 400 but at all events a liberal acreage is of much consequence where it is so necessary for the physical good of patients to allow extended daily exercise. The farm and garden have yielded a supply of products considerably above the average of former years. I will not go into the details of its productions but will simply refer you to the itemized report of the steward and treasurer and will only add that the yield of 454 tons being that of the hay crop alone is significant, pointing towards yearly increased productiveness of the Hospital fields.

The herd of cows one hundred of which are full grown and supply milk have been very healthy throughout the year and indications of tuberculosis are quite entirely negative. There have been no indications whatever of any disease among our swine; in fact the entire stock including the horses of the institution have been remarkably free from sickness of any kind or character. The yield from the garden has been exceptionally large. Notably among its various productions there was a yield of 92 bushels of strawberries and more than 600 bushels of onions. Aside from the yield of fresh vegetables from these departments which are valuable and contribute to the health of the household yet perhaps a greater value may be attached to these auxiliaries in that they afford such ample opportunities for the healthful exercise of our patients.

NEEDS.

I apprehend that a period never will occur during any given year when it does not become necessary to present to your board some urgent requirement which necessitates a draft upon the institution's finances, otherwise one might suspect neglect and this would savor of degeneration and decay and such long pursued method would reflect upon good management. Upon investigation it is found that the wood work of the greenhouse is becoming decayed and the carpenters have already placed supports in the structure of the roof in order that it may support

the load of snow to which it will be subjected the coming winter. I would recommend that steps be taken for its thorough renovation another season. I would also recommend that a liberal concrete or macadam walk be constructed from the north side of the Hospital across the field to the Arsenal for the healthful exercise and recreation of our female patients. Beautiful and spacious grounds well covered by large native oaks, can be arranged there which will afford a most excellent park for diversion and comfort. In order to arrange the grounds a summer house should be constructed and containing a lavatory and other necessary accommodations. There is a wooden building in close proximity to these grounds which can be moved upon them and properly arranged. With these facilities it would greatly enhance the comfort and pleasure of all the occupants of the women's wards. I would recommend that the building mentioned be moved upon the grounds the coming winter and that this important consideration be carried into execution at as early a date as possible upon the approach of the spring months. Formerly we were in possession of a slaughter and rendering house but which was demolished at the time of rearranging our out buildings when the brick barn was constructed. We have felt the necessity of such a structure ever since. A building of this kind erected in the vicinity of our piggery sufficiently remote from the Hospital in order that no offensive odors might be communicated would conserve the economical interests of the institution. We are now under the necessity of sending all animals away for slaughter which puts us not only to great inconvenience but additional expense. I would recommend that another season such a building be arranged locating it upon the south side and adjacent to the piggery. Necessary outlays are required in our laundry. Some of the machinery has been in long use and has become worn and antiquated. For the purposes of economizing labor and accomplishing suitable laundrying the institution is in great need of a more modern mangle and of larger capacity. An additional extractor is also required. At the proper time estimates of the cost of the various needs of the institution which have been herewith submitted will be presented to your board for your consideration.

THE CRIMINAL INSANE.

At the legislative session of 1903 that body created a criminal department for the insane at the State prison and set aside a portion of one of the wings for their care the supervision of which was placed in the hands of a commission composed of the superintendent of the Maine Insane Hospital, the warden and the prison physician. The legislature also authorized that all of the insane criminals that had hitherto been cared for at this institution be returned to that department and that all becoming insane in the various jails of the State before final sentence was passed be ordered to that department by the governor and council for supervision. The statutes also provide that when a person becomes insane in the prison he shall be transferred to that department to remain so long as insanity continues. The above legislative action took place because of two important reasons which may be mentioned. At that time there were a minimum number of convicts and this department of the prison was vacant. There was also existing a widespread sentiment throughout the State opposed to the method of caring for the criminal and citizen insane in conjunction and in order to meet the requirements of the above conditions it was thought wise to take such legislative action. To-day there is a sentiment quite widespread not only among the families of the State who are afflicted with mental disease among its members, but by persons in official authority and who have intrusted to their care not only the economic interests of the State but the welfare of the insane as well, that the best interests of this defective class require hospital treatment. It has been suggested that a segregate building be erected upon the Arsenal grounds and that all of the criminal insane of the State be treated there under the management of this Hospital. It has also been advised that the building be constructed sufficiently capacious to accommodate such persons as are ordered here from time to time by the courts for observation. I have advocated such a procedure in a former as well as the present annual report of the committee who now have under their care the criminal insane at the prison. Various reasons might be given which induce such action but which perhaps is not necessary to mention here. I however wish to call the attention of your board to this matter who have the management

and best interests of the insane of the State in your keeping and would respectfully request that you give it the consideration which it deserves as it is not unlikely that the legislature at its coming session may be called upon to take action in this interest which so vitally concerns the families of the State.

OFFICIAL CHANGES.

At the commencement of the fiscal year Dr. Stinson, who had served faithfully and efficiently upon the medical staff of the institution, severed his connections in order to enter upon the general practice of medicine. Subsequently Dr. Macdonald was elected to fill the place made vacant. Dr. Macdonald came highly recommended by the various professors in the Medical School of Maine, and has entered upon the duties of the position with that determination of purpose and adaptability to the peculiar service which stamps him as an efficient adjunct to the medical staff of the institution.

Dr. B. F. Hayden was appointed as interne in July last at the conclusion of his course at Brunswick. He came well recommended and was performing his duties acceptably when he was called to a position at the Soldiers' Home at a much higher salary. While we regretted this course yet we could not deny him the privilege of securing a more lucrative position. Our best wishes go with him in his new field of labor. I am able to report that no sickness has occurred among any of the officers of the institution to prevent them from being constantly at their post of duty and all have performed efficient and valuable service. A large share of the success of the year's operation must be attributed to my associates. I desire to make commendable mention of many employes of the institution who have been loyal to their duty and have labored constantly to promote the interests of the institution and the best good of its patients.

To you, gentlemen, I am under continued obligations for your counsel and direction in the arduous duties which I am called upon to fulfill. Craving for this important charity with all of its interests the continued care from Him "who watches even the sparrow's fall," we enter upon the labors of a new year.

MEDICAL STATISTICS, 1905.

TABLE No. 1.
MOVEMENT OF POPULATION.

	Men.	Women.	Total.
Remaining November 30, 1904	407	297	704
Admitted since.....	115	95	210
Number under treatment.....	522	392	914
DISCHARGES AND DEATHS.			
Recovered.....	39	24	63
Much improved.....	10	5	15
Improved.....	13	10	23
Unimproved.....	8	3	11
Died.....	48	41	89
Remaining November 30, 1905.....	404	309	713

TABLE No. 2.
ASSIGNED CAUSE OF INSANITY OF THOSE ADMITTED DURING THE YEAR 1905.

	Men.	Women.	Total.
Apoplexy.....	2	0	2
Alcoholism.....	5	0	5
Congenital.....	1	2	3
Domestic affliction.....	0	5	5
Dissipation.....	6	0	6
Epilepsy.....	5	5	10
Exposure in army life.....	1	0	1
Erysipelas.....	0	1	1
Financial troubles.....	4	0	4
Family anxiety.....	1	0	1
Grief.....	0	2	2
Heredity.....	32	19	51
Ill health.....	1	8	9
Injury.....	1	1	2
La Grippe.....	2	1	3
Heredity and La Grippe.....	1	0	1
Jealousy.....	1	0	1
Menopause.....	0	3	3
Overwork.....	8	3	11
Overstudy.....	0	1	1
Puberty.....	0	1	1
Puerperal.....	0	5	5
Religious excitement.....	0	1	1
Surgical operation.....	0	1	1
Sunstroke.....	4	1	5
Senility.....	5	6	11
Self abuse.....	2	0	2
Uterine disease.....	0	1	1
Unknown.....	29	27	56
Veneral disease.....	3	1	4
Worry.....	1	0	1
Total.....	115	95	210

TABLE No. 3.
AGES OF THOSE ADMITTED.

	Men.	Women.	Total.
From 10 to 20 years of age.....	7	5	12
" 20 " 30 " " "	20	20	40
" 30 " 40 " " "	20	21	41
" 40 " 50 " " "	23	14	37
" 50 " 60 " " "	17	18	35
" 60 " 70 " " "	17	8	25
" 70 " 80 " " "	9	9	18
" 80 " 90 " " "	2	0	2
Total.....	115	95	210

TABLE No. 4.
SOCIAL CONDITION OF THOSE ADMITTED.

	Men.	Women.	Total.
Married	43	35	78
Single.....	59	41	100
Widowed.....	10	15	25
Divorced.....	3	4	7
Total.....	115	95	210

TABLE No. 5.
DURATION OF INSANITY PRIOR TO ADMISSION.

	Men.	Women.	Total.
Not exceeding 1 week.....	9	9	18
" " 1 month.....	40	11	51
" " 3 months.....	12	15	27
" " 6 ".....	8	12	20
" " 9 ".....	3	5	8
" " 12 ".....	10	8	18
" " 2 years.....	6	5	11
" " 3 ".....	4	4	8
" " 4 ".....	2	2	4
" " 5 ".....	1	2	3
" " 10 ".....	5	7	12
" " 15 ".....	2	5	7
" " 30 ".....	3	3	6
Congenital.....	1	2	3
Unknown.....	9	5	14
Total.....	115	95	210

TABLE No. 6.
MONTHLY ADMISSION.

	Men.	Women.	Total.
December, 1904.....	7	5	12
January, 1905.....	6	3	9
February,	10	7	17
March,	9	6	15
April,	8	13	21
May,	15	15	30
June,	9	6	15
July,	9	10	19
August,	10	6	16
September,	7	13	20
October,	19	6	25
November,	6	5	11
Total	115	95	210

TABLE No. 7.
TIME OF TREATMENT OF PATIENTS DISCHARGED RECOVERED.

	Men.	Women.	Total.
Not exceeding 3 months.....	18	3	21
" " 6 ".....	10	12	22
" " 9 ".....	4	2	6
" " 12 ".....	3	2	5
" " 3 years.....	2	5	7
" " 3 ".....	1	0	1
" " 8 ".....	1	0	1
Total	39	24	63

TABLE No. 8.
CAUSES OF DEATH.

	Men.	Women.	Total.
Apoplexy.....	3	0	3
Cirrhosis of the liver.....	1	0	1
Dementia paralytic.....	1	0	1
Dementia terminalis.....	8	10	18
Dementia senilis.....	2	8	10
Dementia primary.....	2	0	2
Diabetes.....	0	1	1
Epilepsy.....	4	3	7
Hyperpericardium.....	1	0	1
Mania acute.....	1	1	2
Mania chronic.....	1	3	4
Melancholia.....	3	9	12
Nephritis acute.....	1	1	2
Nephritis chronic.....	2	0	2
Parestis.....	11	0	11
Phthisis pulmonalis.....	2	1	3
Paralytic insanity.....	3	1	4
Shock.....	1	0	1
Typhoid fever.....	1	0	1
Toxic insanity.....	0	1	1
Typho-mania.....	0	2	2
Total	48	41	89

TABLE NO. 9.
MONTHLY MORTALITY.

	Men.	Women.	Total.
December, 1904	1	4	5
January, 1905	4	3	7
February, "	5	2	7
March, "	3	3	6
April, "	3	3	6
May, "	6	5	13
June, "	2	3	5
July, "	5	1	6
August, "	5	1	6
September, "	6	5	11
October, "	5	5	10
November, "	1	6	7
Total	48	41	89

TABLE NO. 10.
AGE AT DEATH.

	Men.	Women.	Total.
From 10 to 20 years	2	0	2
" 20 " 30 "	4	3	7
" 30 " 40 "	6	5	11
" 40 " 50 "	11	9	20
" 50 " 60 "	10	5	15
" 60 " 70 "	6	8	14
" 70 " 80 "	8	10	18
" 80 " 90 "	1	1	2
" 90 " 100 "	0	1	1
Total	48	41	89

TABLE NO. 11.
APPROXIMATE DURATION OF INSANITY PRIOR TO DEATH.

	Men.	Women.	Total.
1 month	2	4	6
3 months	2	4	6
6 "	4	1	5
12 "	4	4	8
2 years	10	2	12
3 "	7	2	9
5 "	4	5	9
10 "	6	9	15
15 "	2	7	9
20 "	5	1	6
25 "	1	0	1
35 "	0	1	1
45 "	1	1	2
Total	48	41	89

TABLE No. 12.
OCCUPATION OF THOSE ADMITTED.

	Men.	Women.	Total.
Blacksmith	1	0	1
Bookkeeper	1	0	1
Business	3	0	3
Baker	1	0	1
Boxmaker	1	0	1
Bootblack	1	0	1
Clerk	2	2	4
Carpenter	7	0	7
Contractor	1	0	1
Civil engineer	1	0	1
Domestic	0	7	7
Dressmaker	0	1	1
Expressman	1	0	1
Farmer	32	0	32
Guide	1	0	1
Housewife	0	36	36
Housekeeper	0	33	33
Horseman	1	0	1
Insurance agent	2	0	2
Jeweler	1	0	1
Laborer	20	0	20
Mason	1	0	1
Merchant	1	0	1
Mill operator	3	2	5
Milliner	0	1	1
Non-.....	5	6	11
Nurse	0	1	1
Physician	2	0	2
Painter	1	0	1
Papermaker	1	0	1
Railroad man	2	0	2
Restaurant	1	0	1
Shoemaker	3	0	3
Student	5	2	7
Salesman	1	0	1
School teacher	0	3	3
Seaman	3	0	3
Station agent	1	0	1
Stonecutter	1	0	1
Spinner	2	0	2
Shoecutter	1	0	1
Teamster	1	0	1
Tailoress	0	1	1
Tailor	1	0	1
Vagrant	2	0	2
Total	115	95	210

SUPERINTENDENT'S REPORT.

41

TABLE No. 13.
RESIDENCE OF THOSE ADMITTED.

	Men.	Women.	Total.
Auburn.....	4	0	4
Andover.....	0	1	1
Augusta.....	2	2	4
Albion.....	1	0	1
Aroostook County Jail.....	1	0	1
Athens.....	0	1	1
Brooksville.....	0	1	1
Bristol.....	1	0	1
Brunswick.....	1	2	3
Bowdoinham.....	1	0	1
Belfast.....	2	1	3
Biddeford.....	3	1	4
Bethel.....	0	1	1
Bath.....	1	1	2
Berwick.....	2	0	2
Cumberland.....	1	0	1
Chelsea.....	0	1	1
Clinton.....	2	0	2
Cape Elizabeth.....	1	0	1
Dover.....	0	1	1
Denmark.....	1	0	1
Deer Isle.....	0	1	1
Dixfield.....	2	0	2
Dresden.....	1	0	1
Durham.....	0	1	1
Damariscotta.....	0	2	2
Detroit.....	0	1	1
Elliot.....	1	0	1
Farmingdale.....	3	0	3
Frankfort.....	0	1	1
Fryeburg.....	0	2	2
Freeport.....	0	2	2
Friendship.....	0	1	1
Foxcroft.....	2	1	3
Farmington.....	2	0	2
Falmouth.....	0	2	2
Fairfield.....	2	0	2
Gardiner.....	4	0	4
Greenville.....	0	1	1
Georgetown.....	2	0	2
Gray.....	1	0	1
Greenwood.....	2	0	2
Gilead.....	0	1	1
Gorham.....	1	1	2
Hanover.....	0	1	1
Hope.....	0	1	1
Hallowell.....	2	1	3
Hebron.....	0	1	1
Hollis.....	0	1	1
Hartford.....	0	1	1
Jackman.....	0	1	1
Kiltery.....	0	1	1
Knox County Jail.....	3	0	3
Kennebec County Jail.....	1	0	1
Lincolnton.....	0	1	1
Litchfield.....	0	1	1
Lewiston.....	8	2	10
Leeds.....	1	0	1
Lyman.....	1	0	1
Monroe.....	1	0	1
Madison.....	0	2	2
Morrill.....	0	1	1
Mechanic Falls.....	0	2	2
Minot.....	0	1	1
Monmouth.....	0	1	1
North Berwick.....	1	1	2
New Portland.....	1	0	1
Norway.....	0	1	1
Newfield.....	1	0	1
Norridgewock.....	0	2	2
New Gloucester.....	1	0	1
Otisfield.....	1	0	1
Penobscot County Jail.....	2	0	2
Portland.....	10	12	22

TABLE NO. 13—*Concluded.*

	Men.	Women.	Total.
Pownal.....	0	1	1
Paris.....	1	1	2
Richmond.....	1	0	1
Readfield.....	1	1	2
Rome.....	1	0	1
Rumford Falls.....	0	1	1
Rumford.....	3	0	3
Rockland.....	2	1	3
Rangeley.....	1	1	2
Randolph.....	0	1	1
South Thomaston.....	1	0	1
Smithfield.....	0	1	1
St. George.....	1	2	3
Standish.....	0	2	2
St. Albans.....	1	0	1
Sanford.....	2	0	2
Scarboro.....	1	0	1
South Portland.....	0	3	3
South Berwick.....	1	0	1
Saco.....	1	0	1
Shapleigh.....	1	0	1
Stoneham.....	1	0	1
Skowhegan.....	0	1	1
Troy.....	1	0	1
Turner.....	1	0	1
Thomaston.....	1	0	1
Tremont.....	0	4	4
Topsam.....	0	1	1
Union.....	0	2	2
Vinalhaven.....	1	0	1
Vassalboro.....	0	1	1
Wayne.....	1	0	1
Westport.....	0	1	1
Wiscasset.....	0	1	1
Wilton.....	1	0	1
Waterville.....	3	0	3
Wells.....	1	1	2
Winslow.....	1	0	1
Windsor.....	1	1	2
West Bath.....	0	1	1
Yarmouth.....	1	1	2
York.....	1	0	1
Total.....	115	95	210

TABLE NO. 14.

NUMBER OF ADMISSIONS OF THOSE ADMITTED.

	Men.	Women.	Total.
Admitted the first time.....	85	75	160
“ “ second time.....	15	14	29
“ “ third time.....	8	3	11
“ “ fourth time.....	4	2	6
“ “ fifth time.....	1	0	1
“ “ sixth time.....	1	0	1
“ “ eleventh time.....	1	0	1
“ “ twentieth time.....	0	1	1
Total.....	115	95	210

TABLE No. 15.
NUMBER OF ADMISSIONS OF THOSE DISCHARGED RECOVERED.

	Men.	Women.	Total.
Admitted the first time.....	30	19	49
“ “ second time.....	3	1	4
“ “ third time.....	4	2	6
“ “ fourth time.....	1	0	1
“ “ fifth time.....	0	1	1
“ “ sixth time.....	1	1	1
“ “ eleventh time.....	0	0	1
Total.....	39	24	63

TABLE No. 16.
RELIGION OF THOSE ADMITTED.

	Men.	Women.	Total.
Catholic.....	18	15	33
Jew.....	2	0	2
Protestant.....	93	80	173
Unknown.....	2	0	2
Total.....	115	95	210

TABLE No. 17.
NATIVITY OF THOSE ADMITTED.

	Men.	Women.	Total.
Canada.....	0	1	1
England.....	1	1	2
Ireland.....	1	3	4
Maine.....	91	80	171
Massachusetts.....	3	0	3
North Carolina.....	1	0	1
New Hampshire.....	1	1	2
New Brunswick.....	1	1	2
Nova Scotia.....	4	2	6
New York.....	1	1	2
Ohio.....	1	0	1
Prince Edwards Island.....	0	1	1
Quebec.....	3	2	5
Russia.....	2	1	3
Sweden.....	0	1	1
Unknown.....	2	1	3
Vermont.....	2	0	2
Total.....	115	95	210

TABLE No. 18.
SHOWING THE OPERATIONS OF THE HOSPITAL FROM ITS COMMENCEMENT TO THE
PRESENT TIME.

Year.	Admitted.	Discharged.	Whole num- ber under treatment.	Recovered.	Improved.	Unimproved.	Died.	Greatest num- ber in hospital on any day.	Least number in hospital on any day.	Remaining at the end of year.	Daily average number for the year.
1840-1.....	105	79	133	33	20	20	6	70	28	54	48
1841-2.....	87	76	141	36	16	18	6	73	50	65	62
1842-3.....	82	79	147	31	27	17	4	72	58	68	65
1843-4.....	83	75	151	32	18	22	3	79	65	76	70
1844-5.....	99	90	175	38	22	23	7	89	72	85	80
1845-6.....	102	87	187	46	22	14	5	107	79	100	93
1846-7.....	124	100	224	53	17	20	10	125	98	124	108
1847-8.....	128	125	252	60	31	14	20	135	117	127	112
1848-9.....	123	123	250	60	28	17	18	135	118	127	126
1849-50.....	126	109	253	58	20	16	15	148	126	144	137
1850-1.....	90	102	234	51	40	52	39	155	52	52	75
1851-2.....	105	72	157	36	11	16	9	84	52	84	78
1852-3.....	124	89	208	45	14	15	15	119	84	119	109
1853-4.....	110	114	229	49	15	18	32	119	114	115	109
1854-5.....	128	88	243	41	14	14	19	155	114	155	134
1855-6.....	149	114	304	54	22	19	19	194	151	190	167
1856-7.....	144	126	334	69	24	19	14	215	190	208	204
1857-8.....	126	126	334	59	25	18	24	225	205	208	213
1858-9.....	149	120	357	58	22	23	17	240	205	337	222
1859-60.....	136	133	373	63	22	17	31	246	227	240	236
1860-1.....	135	123	375	55	25	16	27	255	239	252	248
1861-2.....	125	119	377	57	24	19	19	263	244	258	254
1862-3.....	118	111	376	52	21	14	24	266	242	265	254
1863-4.....	124	135	389	49	22	11	53	273	247	254	263
1864-5.....	142	119	396	47	25	23	24	282	254	277	272
1865-6.....	135	136	412	61	29	13	33	287	267	276	277
1866-7.....	150	123	426	54	27	11	31	303	276	303	391
1867-8.....	165	129	468	63	23	16	27	341	302	339	219
1868-9.....	150	152	489	68	28	14	42	351	332	337	342
1869-70.....	130	122	467	48	19	18	37	348	330	345	339
1870-1.....	174	151	519	58	28	21	44	376	345	368	363
1871-2.....	202	177	570	79	34	19	45	404	368	393	385
1872-3.....	200	182	593	83	36	20	43	416	388	411	400
1873-4.....	189	207	600	61	33	61	52	420	393	393	406
1874-5.....	188	178	581	68	31	27	52	408	389	403	398
1875-6.....	186	184	589	68	33	31	52	408	384	405	398
1876-7.....	194	183	599	74	35	28	46	423	397	416	411
1877-8.....	188	186	604	56	45	37	48	423	406	418	415
1878-9.....	196	195	614	53	52	60	30	432	399	419	415
1879-80.....	188	171	607	57	33	43	38	439	390	436	412
1880-1.....	215	201	651	56	57	42	46	453	426	450	442
1881-2.....	194	183	644	71	35	34	43	465	433	461	449
1882-3.....	208	205	669	53	42	22	88	467	430	464	450
1883-4.....	203	207	667	59	31	16	101	472	443	460	454
1884-5.....	249	223	709	80	54	12	77	488	459	486	474
1885-6.....	231	189	717	66	56	7	60	543	484	528	506
1886-7.....	226	202	754	82	52	14	54	536	527	552	543
1887-8.....	250	224	802	76	48	19	81	600	552	578	580
1888-9.....	225	223	803	65	60	22	76	599	561	580	579
1889-90.....	253	207	833	65	52	17	73	634	577	626	612
1890-1.....	245	198	871	63	47	18	70	677	626	673	649
1891-2.....	269	257	942	71	72	25	89	697	669	685	685
1892-3.....	287	301	972	75	83	55	88	714	671	671	693
1893-4.....	284	275	955	84	51	36	104	706	668	680	680
1894-5.....	274	248	954	95	54	34	65	712	680	706	698
1895-6.....	240	237	946	58	70	29	80	717	690	709	703
1896-7.....	255	251	964	52	95	33	81	737	710	713	722
1897-8.....	234	214	947	42	76	35	61	740	708	733	727
1898-9.....	249	235	982	48	37	21	103	771	732	747	747
1899-1900.....	273	249	1,020	61	49	32	107	782	748	771	764
1900-1901.....	206	377	977	66	92	117	102	776	600	600	702
1901-1902.....	203	172	803	46	28	16	82	631	596	631	607
1902-1903.....	209	176	840	57	31	17	77	668	629	664	646
1903-1904.....	200	160	864	49	23	11	77	710	663	704	689
1904-1905.....	210	201	914	63	38	11	89	728	701	713	710

Respectfully submitted,

BIGELOW T. SANBORN, *Superintendent.*

Maine Insane Hospital, Augusta, November 30, 1905.

FINANCIAL REPORT—COMMITTEE ON WIDOWS
ISLAND HOSPITAL.

AUGUSTA, MAINE, November 30, 1905.

To the Trustees of the Maine Insane Hospital:

GENTLEMEN: In accordance with the resolve approved March 24, 1905, (see chapter 161, resolves of 1905, page 56) appropriating six thousand dollars for furnishing and equipping the marine hospital property ceded to the State of Maine, known as Widows Island, that it might be utilized as a summer home for such patients of the Maine Insane Hospital and Eastern Maine Insane Hospital as would be in the judgment of the superintendents of the two hospitals benefited thereby. We herewith submit report of cash received on account of the appropriation and disbursements for the year ending November 30, 1905:

1905. RECEIPTS.			
July 1. To cash received from State treasurer.....		\$6,000 00	
cash received from M. I. H. (1 desk)		40 70	\$6,040 70
DISBURSEMENTS.			
Material and labor repairing chimneys, roofs, painting, etc ...		\$1,658 04	
Heating, electric lighting plant, labor, materials, etc.....		1,388 42	
Furniture, bedding, household supplies, etc		1,751 75	
Windmill, water supply, sewer, labor, pipe fittings and materials		359 26	
Freight and express, transportation of patients and officers, caretaker services, etc		1,174 28	
Support account in excess of receipts for maintenance of patients.....		211 99	
		\$6,541 74	
Due the treasury of the Maine Insane Hospital for amount expended in excess of appropriation, as per above report, for operation and maintenance of convalescent insane hospital at Widows Island.....			501 04
		\$6,541 74	\$6,541 74

Respectfully submitted,

CHAS. E. FIELD,

BIGELOW T. SANBORN,

P. H. S. VAUGHAN,

MANNING S. CAMPBELL,

Committee on Widows Island Hospital.

REPORT OF BUILDING COMMITTEE.

AUGUSTA, MAINE, November 30, 1905.

To the Trustees of the Maine Insane Hospital:

GENTLEMEN: In accordance with the resolve approved March 28, 1903, (see chapter 418, laws of 1903, page 729) appropriating forty-five thousand dollars, and resolve approved March 24, 1905, (see chapter 168, laws of 1905, page 60) appropriating six thousand dollars for additions and remodeling the second female wing, etc., we herewith submit report of cash received on account of the appropriation and disbursements for the year ending November 30, 1905:

DR.	RECEIPTS.		
1904.			
Dec. 1.	To balance cash on hand, unexpended.....	\$4,140 78	
1905.			
July 8.	To cash from State treasurer.....	6,000 00	\$10,140 78
	DISBURSEMENTS.		
CR.			
Paid	Ruel J. Noyes, contractor for mason and carpenter work	\$2,806 00	
	Ruel J. Noyes, contractor, extras	332 07	
	American Slate Company, contractors for slate base, floors, stairs, etc.....	400 00	
	Jewett & Hanson, contractors for setting slate base and floors	330 00	
	Kennebec Light & Heat Company for material, labor, etc.....	219 76	
	Electric repairs and express on fixtures	75	
	Coombs & Gibbs, architects for plans, specifications, inspections, etc	1,938 20	
	Plumbing work, material, labor, etc.....	1,675 75	
	Interior finish, material, labor, etc	485 64	
	Painting and varnishing work, material, labor, etc....	451 57	
	Slate work, material, labor, etc	66 54	
	Granite work, material, labor, teams, etc	25 70	
	Renovation second female wing, material, labor, teams, etc.....	71 18	
	Furnishings, material, labor, etc.....	834 98	9,638 14
	Balance of appropriation unexpended November 30, 1905.....		\$502 64

Respectfully submitted,

GEO. E. MACOMBER,
BIGELOW T. SANBORN,
MANNING S. CAMPBELL,

Building Committee.

REPORT OF BUILDING COMMITTEE.

AUGUSTA, MAINE, November 30, 1905.

To the Trustees of the Maine Insane Hospital:

GENTLEMEN: In accordance with the resolve approved March 24, 1905, (see chapter 168, laws of 1905, page 60) appropriating fifty-six thousand dollars for additions and remodeling the arsenal building and other specified work in connection thereto, we herewith submit report of cash received on account of the appropriations and disbursements for the year ending November 30, 1905:

DR.	RECEIPTS.		
1905.	Appropriation Renovation Arsenal Building:		
July 8.	To cash from State treasurer.....	\$14,000 00	
Nov. 11.	To cash from State treasurer.....	16,000 00	
	Appropriation Furnishing Arsenal Building:		
Nov. 11.	To cash from State treasurer.....	6,000 00	
	Appropriation arsenal steam line:		
Nov. 11.	To cash from State treasurer.....	2,000 00	
	Appropriation construction arsenal road:		
July 8.	To cash from State treasurer.....	2,000 00	
	Appropriation repairing arsenal buildings:		
Nov. 11.	To cash from State treasurer.....	1,000 00	\$41,000 00
CR.	DISBURSEMENTS.		
1905.			
Paid Ruel J. Noyes, contractor for mason and carpenter work.....	\$20,200 00		
F. Korneffel & Son, contractors for copper work.....	652 50		
Kennebec Light & Heat Company, labor and material, electric wiring, extras.....	34 88		
Renovation arsenal building, labor, men, teams, materials, etc.....	337 89		
Arsenal water and sewer lines, labor, men, teams, material, etc.....	595 18		
Electric wiring and gas piping arsenal building, labor, men, materials, etc.....	4 28		
Thomas Towle, gun carriages, mortar carriages, chassis	100 00		
		\$21,924 73	
Steam heating plant and connections:			
W. W. Carman, pipe, fittings, etc., for steam line.....	\$2,517 70		
Portland Stone Ware Co., channel pipe and cement.....	1,151 62		
Steam line to arsenal building, labor, men, teams, material, etc., building duct and covering in.....	1,725 19		
W. B. Getchell, civil engineer, services making surveys, plans, etc.....	51 00		
		\$5,445 51	
Construction arsenal road:			
Labor, men, teams, material, etc.....	\$2,000 00		\$29,370 24
Balance unexpended November 30, 1905.....			\$11,629 76
SUMMARY OF BALANCE.			
Balance appropriation renovations, etc.....	\$4,629 76		
Balance appropriation furnishings.....	6,000 00		
Balance appropriation repairing.....	1,000 00		
		\$11,629 76	

Respectfully submitted,
 GEO. E. MACOMBER,
 BIGELOW T. SANBORN,
 MANNING S. CAMPBELL,
Building Committee.

STEWARD AND TREASURER'S REPORT.



To the Trustees of the Maine Insane Hospital:

I herewith present my report of the financial standing of the Maine Insane Hospital for the year ending November 30, 1905:

**Total Receipts and Disbursements of Cash for the Year Ending
November 30, 1905.**

DR.		
Balance of cash on hand December 1, 1904.....	\$3,234 88	
Receipts for year, hospital account.....	175,964 51	
Received from State of Maine, account Coburn Fund, Williams and Gilman legacies.....	2,130 00	
Received from State of Maine, account appropriation for copper aprons and fire-proof stairways.....	10,000 00	
Received from State of Maine, account appropriation for sewer.....	3,500 00	
Received from State of Maine, account appropriation for completing second female wing.....	6,000 00	
Received from State of Maine, account appropriation for balance due on piggery.....	3,000 00	
Received from State of Maine, account appropriation for proposed new road across insane and arsenal property.....	2,000 00	
Received from State of Maine, account appropriation for pump and tank connections with steam mains, including duct and protection for same.....	2,000 00	
Received from State of Maine, account appropriation for renovating arsenal building to be used for male wards.....	30,000 00	
Received from State of Maine, account appropriation for furnishings for wards and day room, kitchen equipment and fittings for care of 125 patients.....	6,000 00	
Received from State of Maine, account appropriation for repairs on barracks and other buildings for protection and use in connection with said buildings.....	1,000 00	
Received of C. E. Field, treasurer, Widows Island appropriation.....	4,000 00	\$248,829 39
CR.		
Disbursements, hospital account.....	\$170,437 23	
Disbursements, account Coburn fund, Williams and Gilman legacies.....	1,806 13	
Disbursements, account appropriation for copper aprons and fire-proof stairways.....	472 39	
Disbursements, account appropriation for sewer.....	3,500 00	
Disbursements, account appropriation for renovating second female wing.....	9,638 14	
Disbursements, account appropriation for balance due on piggery.....	\$3,000 00	
Disbursements, account appropriation for proposed new road across insane and arsenal property.....	2,000 00	
Disbursements, account appropriation for renovating arsenal building.....	25,370 24	
Disbursements, account appropriation for pump and tank connections.....	2,000 00	
Disbursements, account appropriation Widows Island, C. E. Field, treasurer.....	4,000 00	
Balance of cash on hand, November 30, 1905.....	26,605 26	\$248,829 39

COMPARATIVE STATEMENT "A"
Of Resources and Liabilities November 30, 1904.

RESOURCES—SUPPLIES IN STOCK.		
Cash on hand	\$3,234	88
Due from State of Maine for support of patients	16,192	35
Due from towns and individuals for support of patients....	30,711	12
Provisions, groceries, crockery and furniture on hand, per inventory.....	16,231	28
Dry goods, clothing, etc., on hand, per inventory	9,309	23
Coal on hand per inventory.....	9,994	60
Medical supplies on hand per inventory	1,666	23
Horses, cows, hogs and produce on hand, per inventory....	22,752	43
Repairs and improvements, pipe, fittings, lumber and materials on hand, per inventory.....	9,448	18
Expense, stationery, books and office materials on hand, per inventory.....	721	85
Real estate, Norton house, purchased in 1886.....	900	00
Real estate, Hoyt house, purchased in 1890	2,500	00
Real estate, Severance farm, purchased in 1893	2,000	00
Real estate, Thorne farm, purchased in 1893.....	4,500	00
		\$130,162 15
LIABILITIES.		
Due firms and individuals, account supplies.....	\$28,555	56
Due employees, per pay roll.....	4,090	52
Amusement Fund, Orne bequest, (1883).....	1,000	00
Colburn fund, balance interest in treasury	2,981	13
Appropriation for remodeling and renovating the second female wing, balance unexpended	4,140	78
		\$40,767 99
Net resources, as per hospital account "A" in annual statement, November 30, 1904		\$89,394 16

COMPARATIVE STATEMENT "B"
Of Resources—Supplies in Use November 30, 1904.

Dispensary department, medical instruments, furnishings, etc., on hand, per inventory	\$1,804	72
Farm department, agricultural implements, carts, carriages, sleds, sleighs, tools, etc., on hand, per inventory	8,653	33
Greenhouse department, plants, pots, implements, etc., on hand, per inventory	1,864	63
Hospital furnishings department, furniture, bedding, fixtures, household materials, etc., on hand, per inventory ..	59,102	62
Repairs and improvements department, engineer's, blacksmith's, carpenter's, painter's, mason's, and plumber's tools, implements, etc., on hand, per inventory	4,045	07
Amusement fund, principal of Orne bequest (1883)	1,060	00
Net resources, as per hospital account "B" in annual statement, November 30, 1904		\$76,470 37

COMPARATIVE STATEMENT "A"
Of Resources and Liabilities November 30, 1905.

RESOURCES—SUPPLIES IN STOCK.		
Cash on hand	\$26,605 26	
Due from State of Maine for support of patients.....	16,465 65	
Due from towns and individuals for support of patients....	34,618 14	
Provisions, groceries, crockery and furniture on hand, per inventory	17,113 68	
Dry goods, clothing, etc., on hand, per inventory	7,765 96	
Coal on hand, per inventory	12,886 67	
Medical supplies on hand, per inventory.....	1,890 28	
Horses, cows, hogs and produce on hand, per inventory	29,273 69	
Repairs and improvements, pipe, fittings, lumber and materials on hand, per inventory	9,177 74	
Expense, stationery, books and office materials on hand per inventory	580 24	
Real estate, Norton house, purchased in 1886	900 00	
Real estate, Hoyt house, purchased in 1890	2,500 00	
Real estate, Severance farm, purchased in 1893	2,000 00	
Real estate, Thorne farm, purchased in 1893.....	4,500 00	
		\$166,217 31
LIABILITIES.		
Due firms and individuals, account supplies	\$39,067 75	
Due employes per pay roll.....	4,433 14	
Amusement fund, Orne bequest (1883).....	1,000 00	
Coburn fund, balance interest in treasury.....	3,305 00	
Appropriation for remodeling and renovating the second female wing, balance unexpended.....	502 64	
Appropriation repairs on barracks, arsenal buildings, balance unexpended	1,000 00	
Appropriation furnishings for arsenal building balance unexpended	6,000 00	
Appropriation renovation arsenal building, balance unexpended.....	4,629 76	
Appropriation Copper aprons and fire-pfoof stairways, balance unexpended.....	9,527 61	
		69,465 90
Net resources as per hospital account "A" in annual statement November 30, 1905.....		\$96,751 41

COMPARATIVE STATEMENT "B"
Of Resources—Supplies in Use November 30, 1905.

Dispensary department, medical instruments, furnishings, etc., on hand, per inventory.....	\$1,701 41	
Farm department, agricultural implements, carts, carriages, sleds, sleighs, tools, etc., on hand per inventory....	9,110 03	
Greenhouse department, plants, pots, implements, etc., on hand, per inventory	1,998 83	
Hospital furnishings department, furniture, bedding, fixtures, household materials, etc., on hand, per inventory..	58,708 80	
Repairs and improvements department, engineer's, blacksmith's, carpenter's, painter's, mason's and plumber's tools, implements, etc., on hand per inventory	3,736 53	
Amusement fund, principal of Orne bequest (1883).....	1,000 00	
Net resources as per hospital account "B" in annual statement, November 30 1905.....		\$76,250 60

TWENTY-SECOND ANNUAL FINANCIAL STATE-

	Supplies in stock. On hand per inventory avail- able November 30, 1905.	Supplies in use. On hand per in- ventory unavail- able November 30, 1905.	Trial Balance.		Net cost of different departments.
Hospital acc't "A," supplies in stock			\$89,394	16	
Hospital account "B," supplies in use				76,470	37
Cash			\$26,605	26	
Dry goods department	\$7,705	96		6,678	00
Dispensary department	1,890	28	\$1,701	41	6,520
Farm department	24,863	28	9,110	03	31,785
Garden department	2,125	41			339
Greenhouse department			1,998	83	2,955
Grocery department	14,531	63		14,531	63
Expense department	580	24		6,840	20
Heating and lighting department	12,886	67		30,988	36
Hog department	2,285	00		1,611	34
Hospital furnishings department	686	52	58,703	80	67,098
Repairs and improvements	9,177	74	3,736	53	26,286
Real estate	9,900	00		9,828	00
Subsistence	1,895	53			52,126
Amusement fund, "Orne"				1,000	00
Coburn fund, Williams and Gilman legacies					3,305
Bills payable					1,000
Interest and discount					415
Salaries and wages due employes					4,433
State of Maine owes hospital					16,465
Sundry persons and towns owes hospital					34,618
Sundry persons and towns hospital owes					39,067
Extra repairs and improvements					2,501
Appropriation for arsenal road, amount expended in excess of appropriation					1,898
Appropriation for remodeling and renovating second female wing, balance unexpended					502
Appropriation repairs arsenal build- ings, balance unexpended					1,000
Appropriation furnishing arsenal building, balance unexpended					6,000
Appropriation renovation arsenal building, balance unexpended					4,629
Appropriation copper aprons and fireproof stairways					9,527
	\$88,528	26	\$75,250	60	288,212
			288,212	22	288,212
Increase in Hospital Account A					7,357
Decrease in Hospital Account B					
					61,084
Net increase					\$7,137

We hereby certify that we have examined the accounts of the Treasurer for the year ending November 30, 1905, and find them correct.

THOMAS WHITE, }
SIDNEY M. BIRD, } Finance Committee
GEO. E. MACOMBER, } of Trustees.

Very respectfully submitted,

MANNING S. CAMPBELL, *Steward and Treasurer.*

GARDEN PRODUCTS FOR THE YEAR 1905.

367½	Bushels apples	\$204 55
41½	Bushels pears	41 65
¾	Bushels plums	75
72	Bushels beet greens.....	36 00
165	Bunches beets	8 25
26,345	Pounds beets	338 00
176	Bushels string beans.....	183 50
65	Bushels green peas.....	81 25
60	Bushels spinach	30 00
304½	Pounds asparagus	38 07
2,320	Pounds cabbage	34 80
2,150	Pounds carrots	26 87
2,982	Pounds pumpkins	36 65
6,385	Pounds parsnips	79 81
3,330	Pounds rhubarb	45 00
20,235	Pounds squash	284 95
6,190	Pounds tomatoes	123 80
13,157	Pounds turnips	135 81
44,828	Pounds onions	687 98
114	Bunches onions	5 70
1,097	Bunches radish	55 95
19,263	Cucumbers	175 95
26,533	Ears green corn.....	222 73
900	Pounds pop corn.....	36 00
9,633	Heads celery	1,097 30
6,213	Heads lettuce	126 33
2,935	Boxes strawberries	293 50
124	Boxes blackberries	14 88
94	Boxes gooseberries	9 40
694	Boxes currants	69 40
160	Bushels pickles	240 00
6¾	Tons rye (green).....	25 00
10 180-2000	Tons corn fodder.....	40 36

 \$4,830 19

FARM PRODUCTS FOR THE YEAR 1905.

5,764	Pounds beef	\$470 02
2,814	Pounds veal	253 26
184	Pounds liver	7 48
45	Pounds tongue	5 45
412	Pounds tallow	8 54
2	Sets head and feet.....	20
2	Calves	30 00
1,235	Pounds hides	81 76
308	Pounds calf skins.....	33 88
50,765	Gallons milk	9,344 58
200	Bushels potatoes (small).....	50 00
2,116½	Bushels potatoes	1,431 95
890	Bushels oats	356 00
395 575-2000	Tons ensilage	2,964 66
91¼	Tons green feed.....	273 75
54	Tons Hungarian (green).....	324 00
110½	Tons oats and peas (green).....	663 00
454 685-2000	Tons hay	6,360 80
36	Tons straw	252 00
		<hr/>
		\$22,911 33

ARTICLES MADE IN SEWING ROOM. NOV. 30, 1905.

319	Aprons.	3	Duck mittens (pairs).
74	Bureau covers.	136	Nightdresses.
6	Books covered.	1,286	Pillow slips.
8	Bed straps.	3,126	Sheets.
51	Camisoles.	15	Men's shirts.
152	Camisole strings.	256	Skirts.
44	Coffee and prov. bags.	248	Tablecloths.
95	Chemises.	2,810	Towels.
2	Sand bags.	32	Waists.
17	Cooks' caps.	6	Mattress covers.
32	Cooks' coats.	1,005	Rolls bandages.
328	Clothes bags.	297	Yards tennis tape.
20	Curtains.	24	Bibs.
99	Dresses.	364	Napkins hemmed.
212	Pairs drawers.		

ARTICLES REPAIRED IN SEWING ROOM. NOV. 30, 1905.

660	Aprons.	2	Pairs mittens faced.
7	Pairs blankets bound and repaired.	18	Pillow slips.
		54	Sheets.
1	Stable blanket.	8	Spreads.
205	Cooks' coats.	32	Tablecloths.
23	Clothes bags.	33	Tablecloths from old material.
182	Camisoles.	39	Pairs white pants.
3	Frocks.	107	Napkins and towels.
19	Curtains.	134	Rugs bound and repaired.
6	Carriage robes.		
2	Carriage cushions.		

CHAPLAIN'S REPORT.

AUGUSTA, MAINE, November 30, 1905.

To the Trustees of the Maine Insane Hospital:

During the year 1905 religious services have been maintained at the Hospital by chaplains appointed from the different representative religious denominations as has been the custom in recent years.

The idea of selecting different preachers for the chaplaincy is a good one and gives variety and added interest to the service. I am convinced that the service itself is beneficial both mentally and morally to the patients who attend. The attendance is always large and the audience always attentive. A hopeful, earnest message is always appreciated by the auditors. The presence of the superintendent is helpful alike to speaker and hearers. Altogether the religious service Sunday afternoon is one of more than ordinary interest. With a beautiful and roomy chapel, a first-class pipe organ, a splendid quartet choir, and the sympathetic support of Dr. Sanborn and his assistants the chaplain has an opportunity for enforcing religious truth to be coveted by any speaker. Some of the most intelligent and appropriate criticisms that I have ever had passed upon my sermons have been by people who spoke to me after these services and I have concluded that this is a place that calls for the best work of mind and heart and that such work results in good.

Respectfully submitted,

C. G. MOSHER, *Chaplain.*

REPORT OF VISITING COMMITTEE.

To His Excellency the Governor, and the Executive Council of the State of Maine:

Your committee appointed to visit the two State hospitals for the insane have attended to that duty and would report that the provisions of the statutes have been fully complied with. The lady visitor has not failed to visit the two institutions each month throughout the past year including the period covering the obligations of the committee. The two male members have from time to time and at irregular intervals visited the wards of the Hospitals and inquired into the physical and mental condition of the patients.

After inspecting the methods adopted in administering to the immediate wants of the patients, the mild disciplinary rules and the opportunities such procedures offer for proper care and treatment we believe them to be not only wise but judicious. We have at all times found the patients well clothed, the rooms and wards clean and well ventilated and a sufficient amount of clothing and bedding to meet the physical requirements of the patients. Opportunities have been afforded the inmates to make known their requests and we are happy to state that no complaints have been made of a serious nature or that there had been any neglect or refusal on the part of the nurses and the attendants to attend to their reasonable demands.

The dietary is ample and so arranged as to meet the varied requirements of the patients. A large herd of cows particularly at the Augusta Hospital furnishes an abundant supply of fresh milk and the productive gardens of both institutions provide the patients with healthy vegetables.

Much is being accomplished at the two Hospitals in the direction of increased ventilation and one cannot fail to notice the

great improvements which exist in consequence of the recent reconstruction of two of the old wings of the Hospital at Augusta. The largely increased ventilation occasioned by inlets of heated fresh air into the individual sleeping apartments and its corresponding egress of foul air flues cannot fail to extend to the patients added opportunities pointing towards improvement and recovery. The addition of the arsenal property and the reconstruction and fire proof building on its grounds for the accommodation of an increased number of patients will subserve to the demands for further opportunities for treatment, and will strengthen and enlarge the methods which are constantly being devised to further the interests of this unfortunate class.

Your committee have had ample opportunities for thorough inspection of both institutions and have been cordially received by their superintendents and associate officers who are evidently devoting their time and strength in the endeavor to extend through the various methods adopted, proper care, to render the lives of this unfortunate class as comfortable as possible, under the circumstances, and to administer such aid as shall bring about improvement, and recovery if possible.

The constant study of the management who have in charge the treatment of these mentally diseased citizens of the State is to endeavor by proper construction and by the various appliances adopted to render the environments of the two Hospitals as homelike as possible. We can confidently assure the relatives of the patients, and the public as well, that with the existing methods and opportunities for care they can rest content that there are existing in these charitable institutions advantages for improvement far beyond that which can be obtained under home environments.

Respectfully submitted,

N. M. JONES,
GEO. A. MURCHIE,
S. E. PETTENGILL.

December 31, 1905.

APPENDIX.

[FORM OF MITTIMUS.]

AND INSTRUCTIONS RELATING TO COMMITMENT OF PATIENTS TO EITHER HOSPITAL.

STATE OF MAINE.

To the Superintendent of the Maine Insane Hospital:

[FORM OF BOND FOR SUPPORT.]

KNOW ALL MEN BY THESE PRESENTS, That we, —, of —, in the county of —, as principal, and —, of —, in the county of —, as sureties, are jointly and severally held and bound unto —, Steward of the Insane Hospital at Augusta, or to his successor in said office, in the sum of three hundred dollars, to the payment of which sum, well and truly to be made to him, the said —, or to his successors in said office, we bind ourselves, our executors and administrators, firmly by these presents.

*Sealed with our seals, and dated at —, this — day
of —, A. D. 19*

The condition of the above obligation is such, That whereas — of —, in the county of —, is about to be admitted as a boarder and patient to the Institution aforesaid; now, if the said — shall pay to said —, or to his successor in said office, such sum per week for the board, washing, medicine and attendance, according to the trouble and expense incurred for said patient, as may be determined by the Trustees for the time being, not to exceed —, and pay for all such necessary articles of clothing as shall be furnished said — by the said —, or his successor, and remove the said — from said institution, whenever they shall be thereto in writing requested by the Superintendent for the time being,—and shall also pay a further sum, not exceeding fifty dollars, for all damages that may arise from injury to the furniture and other property of said Institution, by said —, and for reasonable charges that may be incurred in case of the elopement of said —, payments to be made quarterly and at the time of removal, with interest on the

amount after it becomes due as aforesaid, then this obligation to be null and void, otherwise to remain in full force and virtue. [L. S.]

Witness:

[L. S.]

QUESTIONS

TO BE ANSWERED BY THE PATIENT'S FAMILY OR PHYSICIAN.

1. Age?
2. Married or single?
3. Occupation?
4. How old at first attack?
5. Date of present attack? What appearances?
6. What changes since?
7. On what subject?
8. Any rational intervals?
9. Any relatives ever insane, and who were they?
10. Ever attempted suicide or homicide, and in what manner?
11. Destructive to clothes or property?
12. Disposed to filthiness of person or habits?
13. Any restraint or confinement been applied? If any, what?
14. If former attacks, how many, and how long did they continue?
15. What natural peculiarities? Power of self-control? temper? disposition? predominant passions? disappointment as to property, affections, wounded pride, loss of friends, family troubles, intemperance in the use of ardent spirits, tobacco, &c.?
16. History of any bodily disease, especially suppression of evacuations, eruptions, sores, &c., injuries, epilepsy, palsy, &c.
17. What cause or causes are supposed to have induced the attack?
18. What curative means have been tried? State if blood-letting has been resorted to; if so, to what extent?

Male patients admitted into the Institution, should come provided with at least three good cotton shirts; coat, vest and pants, of strong woolen cloth; two pairs woolen stockings, one hat or cap, pocket handkerchiefs, brush and comb, and one pair of boots or shoes.

Females should have, at least, a change of under-clothes, shoes and stockings, brush and comb, decent bonnet, and two substantial dresses; the woolens should be of dark color. It is quite desirable, also, that a Bible or Testament should not be forgotten in the outfit.

No person over twenty-one years of age can be received without the certificate required by the act regulating the Hospital, in the Revised Statutes.

INSTRUCTIONS TO MUNICIPAL OFFICERS IN COMMIT-
MENTS TO EITHER INSANE HOSPITAL.

To the Municipal Officers of the Towns in the State of Maine:

GENTLEMEN:—The present Legislature has just made an important amendment of the law, R. S. chap. 143, sections 13 and 34, relating to the commitment of insane persons to the insane hospitals. The amendment has been approved by the Governor and is now the law. The law is now as follows:

“Sect. 13. Insane persons, not thus sent to any hospital, shall be subject to examination as hereinafter provided. The municipal officers of towns shall constitute a board of examiners, and on complaint in writing of any blood-relative, husband or wife of said alleged insane person, or of any justice of the peace, they shall immediately inquire into the condition of any person in said town alleged to be insane; shall appoint a time and place for a hearing by them of the allegations of said complaint, and shall cause to be given in hand to the person so alleged to be insane, at least twenty-four hours prior to the time of said hearing, a true copy of said complaint, together with a notice of the time and place of said hearing and that he has the right and will be given opportunity then and there to be heard in the matter; shall call before them all testimony necessary for a full understanding of the case; and if they think such person insane, and that his comfort and safety, or that of others interested, will thereby be promoted, they shall forthwith send him either to the Maine Insane Hospital or to the Eastern Maine Insane Hospital with a certificate stating the fact of his insanity, and the town in which he resided or was found at the time of examination, and directing the superintendent to receive and detain him until he is restored or discharged by law, or by the superintendent or trustees. They shall keep a record of their doings, and furnish a copy to any interested person requesting and paying for it.”

“Sect. 34. In all cases of preliminary proceedings for the commitment of any person to the hospital, to establish the fact of the insanity of the person to whom insanity is imputed there shall be required the evidence of at least two reputable physicians given by them under oath before the board of examiners, together with a certificate signed by such physicians and filed with said board, that in their opinion such person is insane, such evidence and certificate to be based upon due inquiry and personal examination of the person to whom insanity is imputed; and a certified copy of the physicians' certificate shall accompany the papers of commitment of the insane person to the hospital.”

By careful reading of the law as it now is you will observe that *it is necessary to give to the person alleged to be insane at least twenty-four hours prior notice of hearing* and that he has the right and will be given opportunity to be heard in the matter.

You will also perceive that the amended statute more distinctly sets out the necessity *that the physician shall testify under oath before the Municipal Officers* as to the alleged insanity of the person.

Proper blank forms have been prepared for use hereafter in proceedings for the commitment of insane persons to our hospitals; and a set of such forms is forwarded you herewith and others will be forwarded you on your request therefor.

THE FORMS ARE

1. The complaint to be signed by the person making the complaint; to which is attached the order for the hearing and notice, to be signed by the Municipal Officers. Form 1 is to remain on the town files.

2. Copy of such complaint and order, attested by the Town Clerk; to be delivered in hand to the person alleged to be insane, by the town constable.

3. The commitment paper to be signed by the Municipal Officers and sent forward to the hospital with the patient.

4. Record of the doings of the Municipal Officers to be signed by them and attested by the Town Clerk and filed with the town records.

5. (a) Physicians' certificate to be filed with the Municipal Officers.
(b) Attested copy of such certificate to be sent to the hospital with the commitment paper.

Dated this twenty-third day of January, A. D. 1903.

Trustees of the Maine Insane Hospital
and Eastern Maine Insane Hospital.

By HERBERT T. POWERS, Sec'y.

N. B. Blanks for committal of patients will be forwarded upon application by addressing either Dr. Bigelow T. Sanborn, Supt. Maine Insane Hospital, Augusta, Me., or Dr. P. H. S. Vaughan, Supt. Eastern Maine Insane Hospital, Bangor, Me.

FORM I.

INSANE PERSON. COMPLAINT AND ORDER FOR HEARING
AND NOTICE IN THE CASE OF.

TO BE RETAINED ON THE TOWN FILES.

To the Municipal Officers of the town of _____ in the County of _____ and State of Maine:

(a) _____ of the town of _____ in the County of _____ and State of Maine, who is a _____ relative, to wit: a _____ of (b) _____ of the town of _____ in the County of _____ and State of Maine, hereby makes written complaint and says that said (b) _____ is insane, and that the comfort and safety of said (b) _____ and that of others interested, will be promoted by committing the said (b) _____ to the _____ Maine Insane Hospital.

WHEREFORE you complainant prays that you will immediately inquire into the condition of the said (b) _____ and that such other and further proceedings may be had in the premises as is by the Statutes of said State of Maine in such case made and provided.

Dated at said _____ this _____ day of _____ A. D. 190 .

STATE OF MAINE.

County of _____ ss. Town of _____

The above named complaint being presented to us this day we hereby appoint our office and (c) _____ the _____ day of _____ A. D. 190 , at _____ o'clock in the _____ noon, as the time and place for a hearing by us of the allegations of said complaint. And we hereby give notice to the said (b) _____ the person as above alleged to be insane, of said time and place of said hearing, and that he, the said (b) _____ has a right and will be given opportunity then and there to be heard in the matter.

Given under our hands at said _____ this _____ day of _____ A. D. 190 .

Selectmen of the town of _____

STATE OF MAINE.

(d) _____ County of _____ ss. Town of _____ A. D. 190 .

I hereby certify that I this day at _____ o'clock in the _____ noon delivered in hand to (b) _____ the within named alleged insane per-

son, a true copy of the within complaint and the order of the Municipal Officers thereon, of even tenor with the within.

Attest:

Constable of said town of

- (a) Name of complainant.
- (b) Name of insane person.
- (c) The time must be so as to give at least 24 hours prior notice of the hearing to the person alleged to be insane.
- (d) As soon as the constable has given in hand to (b) the attested copy—form 2—he will fill out and sign the above return of such service.

FORM 2.

INSANE PERSON, COPY OF COMPLAINT AND ORDER FOR HEARING AND NOTICE IN THE CASE OF _____ TO BE SERVED ON HIM.

TO BE GIVEN IN HAND TO THE ALLEGED INSANE PERSON BY THE CONSTABLE.

To the Municipal Officers of the town of _____ in the County of _____ and State of Maine:

(a) _____ of the town of _____ in the County of _____ and State of Maine, who is a _____ relative, to wit, a _____ of (b) _____ of the town of _____ in the County of _____ and State of Maine, hereby makes written complaint and says that said (b) _____ is insane; and that the comfort and safety of said (b) _____ and that of others interested, will be promoted by committing the said (b) _____ to the _____ Maine Insane Hospital.

WHEREFORE your complainant prays that you will immediately inquire into the condition of the said (b) _____ and that such other and further proceedings may be had in the premises as is by the Statutes of said State of Maine in such case made and provided.

Dated at said _____ this _____ day of _____ A. D. 190 _____

.....

STATE OF MAINE.

County of _____ ss. Town of _____

The above named complaint being presented to us this day we hereby appoint our office and (c) _____ the _____ day of _____ A. D. 190 _____, at _____ o'clock in the _____ noon, as the time and place for a hearing by us of the allegations of said complaint. And we hereby

give notice to the said (b) the person as above alleged to be insane, of said time and place of said hearing, and that he, the said (b) has a right and will be given opportunity then and there to be heard in the matter.

Given under our hands at said this day of A. D. 190 .

.....
.....
.....

Selectmen of the Town of

A true copy of the original complaint and the order of the Municipal Officers thereon.

Attest:

.....Clerk of said Town of

FORM 3.

COMMITMENT TO THE _____ MAINE INSANE HOSPITAL OF _____ AN INSANE PERSON.

COMMITMENT OF INSANE PERSON TO THE HOSPITAL.

STATE OF MAINE.

To the Superintendent of the Maine Insane Hospital:
WHEREAS, on the day of A. D. 190 ,
(a) of the town of in the County of
and State of Maine, and who bears the relationship of to
(b) of the town of in the County of
and State of Maine, of us, the Municipal Officers of the town of
in the County of and State of Maine, a complaint
in writing stating that the said (b) is insane, and a proper
subject for commitment to and treatment in said hospital; and thereupon
we appointed our office in said town of and the
day of A. D. 190 , and the hour of o'clock in the
noon as the place and time for a hearing by us of the allegations
of said complaint, and caused to be given in hand to the said
(b) at o'clock in the noon of the
day of A. D. 190 , a true copy of said complaint, together
with a notice of the time and place of said hearing and that the said
(b) had the right and would be given opportunity then and
there to be heard in the matter; and at our office in said town of
at o'clock in the noon of the day

of A. D. 190 , being the place and time appointed therefor, as aforesaid, we made due inquiry into the condition of the said (b) called before us all testimony necessary for a full understanding of the case, and also heard the testimony under oath of, accompanied by a certificate of and two reputable physicians, whose evidence and certificate are based upon due inquiry and personal examination of the said (b) establishing the fact of the insanity of the said (b)

WHEREUPON it was proven to us and we are of the opinion that the said (b) is insane, and that the safety and comfort of the said (b) and that of others interested, will be promoted by the commitment to and detention in said hospital of the said (b) and that the said (b) be sent forthwith to said hospital.

THEREFORE we hereby certify that said (b) is insane and that was residing and found in the town of aforesaid at the time of said examination; and You, the said Superintendent, are hereby ordered and required to receive said (b) into said hospital and detain in your care until shall have become restored and of sound mind, or be discharged by law, or by the Superintendent, or Trustees.

Given under our hands at said this day of

A. D. one thousand nine hundred and

.....

Selectmen of the town of

- Mem. (a) Name of the complainant.
- (b) Name of the insane person.

FORM 4.

RECORD OF COMMITMENT OF _____ TO THE _____
MAINE INSANE HOSPITAL.

(a) Name of the complainant.

(b) Name of the insane person.

Record of doings of Municipal Officers in Commitment of Insane Person to the Hospital, to be signed by Municipal Officers and Town Clerk and filed with town records.

STATE OF MAINE.

To the Superintendent of the _____ Maine Insane Hospital:
WHEREAS, on the _____ day of _____ A. D. 190 ,
(a) _____ of the town of _____ in the County of _____
and State of Maine, and who bears the relationship of _____ to
(b) _____ of the town of _____ in the County of _____
and State of Maine, made to us, the Municipal Officers of the town of _____
in the County of _____ and State of Maine, a complaint
in writing stating that the said (b) _____ is insane, and a proper
subject for commitment to and treatment in said hospital; and thereupon
we appointed our office in said town of _____ and the
day of _____ A. D. 190 , and the hour of _____ o'clock in the
_____ noon as the place and time for a hearing by us of the allegations
of said complaint, and caused to be given in hand to the said
(b) _____ at _____ o'clock in the _____ noon of the
day of _____ A. D. 190 , a true copy of said complaint, together
with a notice of the time and place of said hearing and that the said
(b) _____ had the right and would be given opportunity then and
there to be heard in the matter; and at our office in said town of _____
at _____ o'clock on the _____ noon of the _____ day
of _____ A. D. 190 , being the place and time appointed therefor,
as aforesaid, we made due inquiry into the condition of the said
(b) _____ called before us all testimony necessary for a full under-
standing of the case, and also heard the testimony under oath of, accom-
panied by a certificate of _____ and _____ two reputable phy-
sicians, whose evidence and certificate are based upon due inquiry and
personal examination of the said (b) _____ establishing the fact
of the insanity of the said (b) _____

WHEREUPON, it was proven to us and we are of the opinion that
the said (b) _____ is insane, and that the safety and comfort of the
said (b) _____ and that of others interested, will be promoted by
the commitment to and detention in said hospital of the said
(b) _____ and that the said (b) _____ be sent forthwith to
said hospital.

THEREFORE we hereby certify that said (b) is insane and that was residing and found in the town of aforesaid at the time of said examination; and you, the said Superintendent, are hereby ordered and required to receive said (b) into said hospital and detain in your care until shall have become restored and of sound mind, or be discharged by law, or by the Superintendent, or Trustees.

Given under our hands at said this day of A. D. one thousand nine hundred and

.....

 Selectmen of the town of

A true record,

Attest:

Clerk of said town of

FORM 5.

PHYSICIANS' CERTIFICATE IN THE CASE OF _____
 AN INSANE PERSON.

PHYSICIANS' CERTIFICATE OF INSANITY.

(a)

We, the undersigned, reputable and practicing physicians in the town of County of and State of Maine, hereby certify that, after due inquiry and personal examination of of the said town of in our opinion said is INSANE.

Dated at this day of 190 .
 M. D.
 M. D.

(b)

A true copy of the physicians' certificate to Municipal Officers.

Attest:

Clerk of said town of

(a) The original certificate is to be filed with and retained by the Municipal Officers.

(b) The certified copy of this certificate is to be forwarded with the commitment paper to the Superintendent of the Hospital.

REPORT

OF THE

Trustees, Resident Officers and Visiting Committee

OF THE

EASTERN MAINE INSANE HOSPITAL

December 1, 1905

OFFICERS OF THE HOSPITAL.

TRUSTEES.

FREDERICK ROBIE, President, Gorham.
CHARLES E. FIELD, Secretary, Bangor.
MRS. J. R. SMITH, Litchfield.
SIDNEY M. BIRD, Rockland.
THOMAS WHITE, Bangor.
GEORGE E. MACOMBER, Augusta.
E. E. CHASE, Bluehill.

RESIDENT OFFICERS.

PHILIP H. S. VAUGHAN, M. D., Superintendent.
BURT F. HOWARD, M. D., Assistant Superintendent.
EZRA B. SKOLFIELD, M. D., Assistant Physician.
CHARLES F. PERRY, Steward.
CHARLES S. PEARL, Treasurer.
ADELAIDE C. BROWN, Matron.

CHAPLAINS.

REV. JOHN S. PENMAN,
REV. EDWARD McSWEENEY,
MR. ROBERT A. JORDAN.

SUPERVISORS.

MALE.

FRED R. CARTER.
HERBERT E. HERRIN, Assistant Supervisor.
ERNEST L. MITCHELL, Night Supervisor.

FEMALE.

MARY E. HICKEY.
CLAIRE I. MYERS, Assistant Supervisor.
LUELLE M. McLEAN, Night Supervisor.

WILBUR S. FISKE, Engineer.
LESLIE W. SOMERS, Clerk.
WILLIAM A. PALMER, Storekeeper.
ISABELLE N. HERRIN, Superintendent's Clerk.
GEORGE WARE, Head Farmer.

SUPERINTENDENT'S REPORT.

To the Board of Trustees of the Eastern Maine Insane Hospital:

GENTLEMEN:—I have the honor to submit for your consideration the Superintendent's fifth annual report and appended thereto the report of the Treasurer and the Steward, giving in detail the operations of the institution for the year ending November 30, 1905.

Reference to the tables of medical statistics will show an increase in the daily and monthly average of patients. We have had a larger number of deaths than in previous years, but most of them were patients of advanced age, who were old residents of the hospital or came here suffering from some mental affliction of which senility was the principal basic factor. It is pleasing to state that our recoveries have been as large as in former years, based on the number of admissions. The question of recovery is, of course, in a measure a matter of professional judgment, but I have endeavored to be conservative in placing discharged patients in the recovery list. A large number of recoveries are in some degree due to the number of patients admitted, who were suffering from the excessive use of narcotics, which was the principal exciting cause of their mental derangement.

The excessive use of alcohol has been the main cause of more cases of mental trouble than in previous years and from symptoms observed after admission I have reason to believe that the acute toxemia from which they were suffering at the time of their admission was due to the excessive use of alcoholic spirits, which had been adulterated with more injurious material. We have had fewer cases than usual admitted as results of the use of morphine and cocain, but I think that this is no indication of decrease in the use of narcotic drugs, as many patients are being sent out of the State for treatment for disease incurred as the results of the habitual use of these drugs. The common

sale of morphine, and to some extent cocain, to habitual users by the pharmacies in this State has increased, I believe, to an alarming extent within the past few years, and this has unquestionably been the cause of many cases of moral deterioration resulting finally in mental disease, which has made it necessary to commit them to some institution for treatment. And I believe that some further restriction should be placed upon the sale of narcotic drugs, not only for those who purchase them today, but for the effect that it may have upon future generations, as there is no doubt that the habits thus acquired by the ancestors give a tendency to mental and moral weakness in the progeny, and while they may not inherit directly the ancestor's disease for the use of these drugs or stimulants, yet they do inherit a certain predisposition which renders them liable to fall victims to a baneful habit, from which otherwise they would have been free.

We have had no suicides during the year, and no untoward accidents of any kind, and have been free from any contagious or infectious diseases, with the exception of one case of scarlet fever.

All of the hospital wards have been much congested during the entire year. In order to keep the number of patients in the institution as near as possible within the safety limit, I have discharged as many chronic tractable patients as possible, though in many instances I know that this has been a hardship both to the patients and their friends; but it is evidently necessary to do this in order that we can receive acute cases, many of which are recoverable, and also unmanageable cases, which are in many instances a menace to the community in which they reside.

The training school for nurses has continued to prove a success and the service rendered to our unfortunate sick by the nurses and nurse pupils has been of a high order. Lectures, recitations, and demonstrations have been given before the classes by the resident medical staff, by the medical staff of the Eastern Maine General Hospital, and by the head of the training school, and the results of our work in this direction are easily demonstrated and have in my opinion fully justified any additional expense that may have been incurred thereby.

It should be evident to all who have had experience in the treatment of the nervous and insane that the employment of the trained nurse is indispensable to accomplish the results desired, and that the instruction, the discipline and the régime of the training school has proven itself invaluable in institutional work of this character.

REPAIRS AND IMPROVEMENTS.

In respect to repairs and improvements I would say that we have begun quite extensive repairs in the plumbing of the institution, which will, I think, be completed in the course of a few months. New sinks are also being installed throughout the dining rooms of the hospital wards, which will be a much appreciated convenience.

Double windows have been placed on the dining rooms and bath rooms of both wings, and the results thus far have been very satisfactory in raising the temperature of these more exposed places in our wards. Work in this direction will continue until the appropriation made by the last legislature has been expended for the purpose specified. A painter and carpenter have, as in previous years, been constantly employed to attend to the necessary repairs of these departments.

Improvement of the grounds for the purpose of adornment has been continued during the past year, but our means have been so limited that we have been unable to do all that we wished to accomplish in this direction.

The purchase of the Thornton and Laughton farms, which adjoined the original hospital farm, for which specific appropriation was made by the last legislature, will, I believe, be a distinct advantage, and will eventually increase the income of the hospital. The products of the farm and garden have been unusually large during the past year and fresh vegetables have been provided for all of the wards daily during the entire season. I believe additional lands should be purchased at the earliest opportune time, as we can unquestionably make this branch of the institution profitable.

A hot water heater has been installed within the past year and has proven to be efficient for the purpose for which it was

intended. It has a capacity of 2700 gallons of water, and we are able part of the year to utilize our exhaust steam for bringing this water to the desired temperature, thereby saving fuel in sufficient amount to gradually pay for the expense of its introduction. The temperature regulator in connection with this, by means of which we can keep the temperature within certain limits, has been of practical use thus far, and will, I believe, obviate some of the dangers which are at times made obvious by more or less serious accidents in the way of water running from the faucets in the wards at the boiling temperature.

Under the immediate supervision of the steward, Mr. Perry, we have begun in a small way a piggery, which will, I think, prove a source of income to the hospital. No special appropriation was made for this purpose, and the work of construction has been carried on by our carpenter with the assistance of the farm help and the patients.

A fire alarm box giving us direct connection with the City Fire Department has been installed, so that with our own apparatus we are well fitted to combat any conflagration which might occur in the institution.

ACKNOWLEDGMENTS.

The Hospital is under obligations to the following persons for their thoughtful and generous contributions for the benefit of the patients:

Thomas White, Staples & Griffin, Shaw & Stewart, Mr. Charles Chalmers, W. B. Reed, Gen. A. B. Farnham, Mr. Harry Arnold, Y. M. C. A., Miss Emily Mea, Chas. M. Stewart, Hon. J. B. Foster, Mrs. Elizabeth Rice, Mr. Frank Hight, Mr. Robert Jordan, Tarratine Club, Masonic Club, J. R. Mason, Esq., Mrs. W. D. Stewart, East Side Pharmacy.

CONCLUSION.

In conclusion, I would say that I feel under a renewed obligation to your board for their valued advice and assistance in the executive management and direction of the affairs of the Hospital and for your kind personal considerations.

PHILIP H. S. VAUGHAN, *Superintendent.*

MEDICAL STATISTICS, 1905.

MOVEMENT OF POPULATION.

	Men.	Women.	Total.
Number in hospital November 30, 1904.....	135	119	254
Number admitted during the year.....	51	65	116
Daily average 1901.....	97	85	182
Daily average 1902.....	114	92	206
Daily average 1903.....	127	97	224
Daily average 1904.....	126	106	232
Daily average 1905.....	133 ⁷ / ₁₀	127 ⁷ / ₁₀	261 ⁴ / ₁₀

DISCHARGES AND DEATHS.

	Men.	Women.	Total.
Recovered.....	26	24	50
Improved.....	9	17	26
Unimproved.....	2	0	2
Transferred.....	1	9	10
Died.....	19	13	32
Number in hospital November 30, 1905.....	129	120	249

AGES OF THOSE ADMITTED.

	Men.	Women.	Total.
From 10-20 years.....	2	3	5
" 20-30 ".....	11	11	22
" 30-40 ".....	8	19	27
" 40-50 ".....	6	10	16
" 50-60 ".....	10	15	25
" 60-70 ".....	11	4	15
" 70-80 ".....	3	3	6
	51	65	116

AGES AT TIME OF DEATH.

	Men.	Women.	Total.
From 20-30 years.....	1	0	1
“ 30-40 “.....	1	0	1
“ 40-50 “.....	3	1	4
“ 50-60 “.....	5	4	9
“ 60-70 “.....	6	3	9
“ 70-80 “.....	1	4	5
“ 80-90 “.....	2	1	3
	19	13	32

DURATION OF INSANITY PRIOR TO ADMISSION.

	Men.	Women.	Total.
Not exceeding 1 month.....	21	27	48
“ “ 3 months.....	6	10	16
“ “ 6 “.....	3	2	5
“ “ 9 “.....	1	1	2
“ “ 12 “.....	4	3	7
“ “ 2 years.....	1	4	5
“ “ 3 “.....	1	0	1
“ “ 4 “.....	3	2	5
“ “ 5 “.....	1	0	1
“ “ 6 “.....	0	3	3
“ “ 7 “.....	0	0	0
“ “ 8 “.....	2	1	3
“ “ 10 “.....	0	1	1
“ “ 12 “.....	2	1	3
Congenital.....	1	4	5
Unknown.....	5	6	11
	51	65	116

TIME OF TREATMENT OF PATIENTS DISCHARGED RECOVERED.

	Men.	Women.	Total.
Not exceeding 3 months.....	9	12	21
“ “ 6 “.....	6	5	11
“ “ 9 “.....	5	5	10
Exceeding 12 months.....	6	2	8
	26	24	50

DURATION OF INSANITY PRIOR TO ADMISSION OF THOSE DISCHARGED RECOVERED.

	Men.	Women.	Total.
Not exceeding 1 month.....	12	12	24
“ “ 2 months.....	4	3	7
“ “ 3 “.....	3	1	4
“ “ 6 “.....	2	3	5
“ “ 9 “.....	0	0	0
“ “ 12 “.....	0	0	0
Exceeding 12 “.....	5	5	10
	26	24	50

SUPERINTENDENT'S REPORT.

II

RELATIONS TO HOSPITALS OF PATIENTS ADMITTED.

	Men.	Women.	Total.
Never before in any hospital for insane	49	49	99
Former inmate of this hospital only.....	1	6	7
Former inmate of other hospitals only	8	7	15
Former inmate of this and other hospitals.....	2	3	5
	51	65	116

CAUSES OF DEATH.

	Men.	Women.	Total.
Acute delirious mania.....	1	0	1
Apoplexy	3	0	3
Brain syphilis	0	1	1
Cerebral softening	0	2	2
Cerebral embolism.....	0	1	1
Diabetes.....	1	0	1
Epilepsy	1	0	1
General paralysis	3	0	3
Nephritis	4	1	5
Organic brain disease.....	3	2	5
Organic heart disease.....	0	1	1
Pneumonia.....	2	3	5
Pulmonary tuberculosis	1	1	2
Pyelo nephritis.....	0	1	1
	19	13	32

PROBABLE CAUSE OF INSANITY OF THOSE ADMITTED.

	Men.	Women.	Total.
Alcoholism.....	9	2	11
Congenital	2	1	3
Epilepsy	4	3	7
Heredity	16	19	35
Heredity and typhoid fever.....	0	2	2
La grippe	1	0	1
Morphinism	0	2	2
Not insane	1	1	2
Over work and worry.....	1	3	4
Puerperal	0	2	2
Puerperal and heredity.....	0	1	1
Syphilis	3	2	5
Senility.....	3	6	9
Unknown.....	11	21	32
	51	65	116

NATIVITY OF THOSE ADMITTED.

	Men.	Women.	Total.
British Columbia.....	1	0	1
Canada.....	1	3	4
England.....	1	2	3
Ireland.....	2	1	3
Maryland.....	1	1	2
Massachusetts.....	2	1	3
Maine.....	36	46	82
New Brunswick.....	3	2	5
New Hampshire.....	1	0	1
Prince Edward Island.....	0	2	2
Unknown.....	3	7	10
	51	65	116

OCCUPATION OF THOSE ADMITTED.

	Men.	Women.	Total.
Farmer.....	11	0	11
Stevedore.....	1	0	1
Saloon keeper.....	1	0	1
Carpenter.....	2	0	2
Laborer.....	5	0	5
Shoemaker.....	1	0	1
Butcher.....	1	0	1
Merchant.....	1	0	1
Grocer.....	1	0	1
Sausage maker.....	1	0	1
Blacksmith.....	3	0	3
Engineer.....	3	0	3
Mill hand.....	2	0	2
Baker.....	1	0	1
Salesman.....	1	0	1
Hackman.....	2	0	2
None.....	4	11	15
Peddler.....	1	0	1
Cooper.....	1	0	1
Porter.....	1	0	1
Guide.....	1	0	1
Station agent.....	1	0	1
Dentist.....	1	0	1
Sailor.....	1	0	1
Piano polisher.....	1	0	1
Housewife.....	0	35	35
Unknown.....	1	4	5
Teacher.....	0	3	3
Student.....	0	2	2
Clerk.....	1	1	2
Dressmaker.....	0	5	5
Masseur.....	0	1	1
Cook.....	0	2	2
Nurse.....	0	1	1
	51	65	116

RESIDENCE OF THOSE ADMITTED.

	Men.	Women.	Total.
Addison	0	3	3
Ashland	1	0	1
Bangor	12	16	28
Belfast	2	0	2
Brewer	2	3	5
Bradley	0	1	1
Brooklin	0	1	1
Brooksville	1	1	2
Buxton	0	1	1
Calais	3	5	8
Carmel	0	1	1
Cherryfield	1	0	1
Charleston	1	0	1
Clifton	0	1	1
Corinna	0	1	1
Corinth	1	0	1
Crystal	1	0	1
Dixmont	2	0	2
Eastport	0	2	2
Eden	0	1	1
Ellsworth	3	0	3
Foxcroft	1	0	1
Fort Fairfield	0	1	1
Gouldsboro	0	1	1
Greenville	0	2	2
Guilford	1	1	2
Harrington	1	1	2
Hampden	0	2	2
Heron	1	0	1
Houlton	1	0	1
Island Falls	1	0	1
Kingman	1	0	1
Lee	0	1	1
Lincoln	0	3	3
Limestone	0	1	1
Lubec	0	1	1
Mars Hill	1	0	1
Madawaska	1	0	1
Machais	1	1	2
Milford	0	1	1
Milbridge	1	1	2
Monroe	1	0	1
Millinocket	0	1	1
Newburgh	0	1	1
Norcross	1	0	1
Newport	1	0	1
Orono	1	2	3
Oldtown	1	0	1
Orland	0	1	1
Orrington	0	1	1
Perry	0	1	1
Pembroke	1	1	2
Portage	0	1	1
Presque Isle	1	0	1
Springfield	1	0	1
Southwest Harbor	0	1	1
Vanceboro	1	0	1
Woodland	1	0	1
Weston	0	1	1
	51	65	116

TYPE OF DISEASES OF THOSE ADMITTED.

	Men.	Women.	Total.
Exhaustion psychoses:			
Collapse delirium	3	1	4
Acute confusional insanity	0	5	5
Acquired neurasthenia	3	1	4
Intoxication psychoses:			
Chronic alcoholism and morphinism	4	0	4
Chronic alcoholism	2	2	4
Delirium tremens	1	0	1
Alcoholic delusional insanity	1	0	1
Alcoholism, chronic and acute and bromidism	0	2	2
Morphinism	0	3	3
Dementia praecox	4	9	13
Dementia paralytica	5	5	10
Organic dementia	3	6	9
Involution psychoses:			
Involution melancholia	4	5	9
Presenile delusional insanity	0	1	1
Senile dementia	6	6	12
Manic-depressive insanity	5	9	14
Paranoia	1	4	5
General neuroses:			
Epileptic insanity	4	3	7
Hysterical insanity	0	1	1
Defective mental development:			
Imbecility	3	2	5
Idiocy	1	0	1
Not insane	1	0	1
	51	65	116

TREASURER'S REPORT.

To the Trustees of the Eastern Maine Insane Hospital:

I herewith present my report of the financial standing of the Eastern Maine Insane Hospital for the year ending November 30, 1905.

Total Receipts and Disbursements of Cash for the Year Ending November 30, 1905.

DR.		
Balance of cash on hand December 1, 1904	\$8,518 12	
Receipts for year, hospital account	67,034 03	
Received from State account of appropriation (balance due for 1904)	425 00	
Received from State account appropriation 1905	23,150 00	
		\$99,127 15
CR.		
Disbursements for the year	\$89,327 68	
Balance cash on hand November 30, 1905	9,799 47	
		\$99,127 15

Respectfully submitted,

CHARLES S. PEARL,

Treasurer.

STEWARD'S REPORT.

To the Trustees of the Eastern Maine Insane Hospital:

I herewith present my report of the financial affairs of the Eastern Maine Insane Hospital, showing resources, liabilities, and department expenditures for the year ending November 30, 1905.

COMPARATIVE STATEMENT "A."

Of Resources and Liabilities November 30, 1904.

RESOURCES—SUPPLIES IN STOCK.		
Cash on hand	\$8,518 12	
Due from State of Maine for support of patients.....	4,897 77	
Due from cities, towns, and individuals for support of patients.....	13,383 17	
Provisions and groceries, \$3,546.86; crockery as per inventory, \$17.23	3,564 09	
Dry goods, clothing, etc., as per inventory.....	2,692 07	
Coal, as per inventory.....	2,484 10	
Medical supplies, as per inventory	418 24	
Horses, swine, produce and stable, \$550.00; farm, \$1,821.26; garden, \$1,522.39, as per inventory.....	3,893 65	
Repairs and improvements, lumber, hardware, paint stock, etc., as per inventory.....	628 75	
Engineers pipe, fitting and electrical supplies, per inventory.....	381 81	
Hospital stationery, office fittings, etc., as per inventory.....	198 07	
		\$41,059 84
LIABILITIES.		
Due firms and individuals, account supplies.....	\$20,980 89	
Due employes for pay roll.....	2,067 30	
		\$23,048 19
Net resources as per Hospital account "A" in annual statement November 30, 1904.....		\$18,011 65

COMPARATIVE STATEMENT "B."

Of Resources—Supplies in Use November 30, 1904.

Dispensary, medical instruments.....	\$1,075 19	
Farm—agricultural implements, carts, sleds, tools, etc.....	974 05	
Stable, carriages, sleighs, harnesses, tools, etc	1,291 40	
Engineer's department, tools, etc.....	737 18	
Expense, hospital stationery, books and supplies in offices	358 78	
Hospital furnishings, furniture, bedding, etc.....	23,337 78	
Garden, tools, etc.....	71 94	
Repairs and improvements, carpenter's and painter's tools, etc.....	698 44	
Net resources as per Hospital account "B" in annual statement, November 30, 1904.....		\$30,539 76

COMPARATIVE STATEMENT "A."
Of Resources and Liabilities, November 30, 1905.

RESOURCES—SUPPLIES IN STOCK.		
Cash on hand.....	\$9,799 47	
Due from State of Maine for support of patients.....	5,053 82	
Due from cities, towns, and individuals, for support of patients.....	13,080 05	
Provisions and groceries \$2,921.02; crockery as per inventory, \$235.99.....	3,157 01	
Dry goods, clothing, etc., as per inventory.....	2,180 48	
Coal as per inventory.....	2,655 96	
Medical supplies as per inventory.....	690 14	
Horses, swine, produce, etc.; stable, \$867.50; farm, \$2,652.84; garden, \$1,138.19, per inventory.....	4,658 53	
Repairs and improvements, lumber, hardware, paint stock, etc., per inventory.....	603 40	
Pipes and fittings and electrical supplies, per inventory.....	922 19	
		\$42,801 05
LIABILITIES.		
Due firms and individuals, account supplies.....	\$22,568 35	
Due employees for pay roll.....	2,300 29	
		\$24,868 64
Net resources as per Hospital account "A" in annual statement November 30, 1905.....		\$17,932 41

COMPARATIVE STATEMENT "B."
Of Resources—Supplies in use, November 30, 1905.

Dispensary, medical instruments, etc.....	\$1,028 21	
Farm—agricultural implements, carts, sleds, tools, etc.....	951 11	
Stable—carriages, sleighs, harnesses, tools, etc.....	1,149 44	
Engineer's department, tools, etc.....	711 93	
Expense—stationery, books and supplies in offices.....	374 04	
Hospital furnishings, furniture, bedding, etc.....	25,167 40	
Garden, tools, etc.....	59 35	
Repairs and improvements, carpenters and painters tools, etc.....	802 27	
Net resources as per hospital account "B" in annual statement, November 30, 1905.....		\$30,223 75

FIFTH ANNUAL FINANCIAL STATE

	Supplies in stock per inventory available November 30, 1905.	Supplies in use per inventory available November 30, 1905.	Trial Balance.		Net cost of departments.
Hospital account A, (supplies in stock)			\$18,011	65
Hospital account A, (appropriation from State)			23,575	00
Hospital account B, (supplies in use)			30,539	76
Cash			\$9,799	47
Dry goods department	\$2,180	48	1,757	54
Dispensary	690	14	3,268	48	\$1,550 13
Farm	2,652	84	931	11	630 99
Garden	1,138	19	59	35	14 17
Grocery department	2,921	02	2,921	02
Stable	867	50	1,149	44	2,424 11
Expense			374	04	3,002 30
Light, heat and power (coal)	2,655	96	11,219	51	8,563 55
Repairs and improvements	603	40	802	27	6,444 49
Hospital furnishings	235	99	25,167	40	4,177 64
Subsistence					13,933 09
Interest and discount					157 37
Engineers department	922	19	711	93	5,958 52
Ice			602	44	4,324 40
Water			502	84	602 44
Amusements			389	14	502 84
Hot water heater			1,333	93	389 14
Laughton farm			2,650	80	1,333 93
Thornton farm			1,872	72	2,650 80
Salaries and wages					1,872 72
State of Maine owes hospital					2,800 29
Cities, towns and persons owe hospital			5,053	82
Sundry persons hospital owes			13,080	05
			22,668	35
	\$14,867	71	\$30,223	75
			111,085	51
			111,085	51
Net cost to run or decrease in Hospital Account B
Net cost to run or decrease in Hospital Account A
					\$38,483 65

We hereby certify that we have examined the accounts of the Treasurer and the Steward for the year ending November 30, 1905, and find them correct.

THOMAS WHITE,
GEO. E. MACOMBER, } *Financial Committee*
CHAS. E. FIELD, } *of Trustees.*

Respectfully submitted,

CHAS. F. PERRY, *Steward.*

MENT, NOVEMBER 30, 1905.

Net gain of departments.	Hospital Account A. Available assets.	Hospital Account B. Unavailable assets.	Resources B. Assets unavailable.	Resources A. Assets available.	Liabilities.
	\$18,011 65				
	23,575 00		\$30,539 76		
\$422 94				\$9,799 47	
				2,180 48	
			\$1,028 21	690 14	
			931 11	2,652 84	
			59 35	1,133 19	
				2,921 02	
			1,149 44	867 50	
			374 04		
				2,655 96	
				603 40	
13,933 09			25,167 40	235 99	
157 37					
			711 93	922 19	
					\$2,300 29
				5,053 82	
					13,080 05
					22,568 35
316 01		\$316 01			
23,654 24	\$23,654 24				
\$38,483 65					
Balance Hospital Account A . . .	17,932 41				
Balance Hospital Account B		30,223 75			
	\$41,586 65	\$41,586 65	\$30,539 76	\$30,539 76	
Total resources A				\$42,801 05	
Total resources B			\$30,223 75	30,223 75	
Total resources and liabilities				\$73,024 80	\$24,868 64
Balance Hospital Account A					17,932 41
Balance Hospital Account B					30,223 75
				\$73,024 80	\$73,024 80

GARDEN PRODUCTS.

43	Bushels beans (string).....	\$28 75
312	Quarts beans (shelled).....	31 25
25	Dozen beets (bunches).....	10 20
42	Bushels beet greens	22 75
4,800	Pounds beets	50 60
23	Heads cauliflower	3 45
5	Dozen bunches carrots	2 20
3,635	Pounds carrots	36 80
16,350	Pounds cabbage	238 60
4,000	Pounds cabbage, small for stock.....	15 00
75	Boxes currants	8 25
1,549	Dozen ears green corn.....	143 06
688	Heads celery	73 20
5,756	Cucumbers	104 42
30	Boxes gooseberries	2 70
12	Dozen heads lettuce.....	12 29
5	Dozen bunches onions	1 76
65	Bushels onions	65 25
1,520	Bushels potatoes	864 65
100	Bushels small potatoes	15 00
90	Bushels green peas.....	77 78
658	Pounds pumpkin	6 58
1,407	Pounds parsnips	28 14
29	Boxes raspberries	5 80
28	Dozen radishes	13 89
91	Boxes strawberries	10 96
4,481	Pounds squash	67 27
12,000	Pounds squash, small stock.....	30 00
9	Bushels spinach	4 50
12,425	Pounds turnip	94 45
5,000	Pounds turnip, small, for stock.....	12 50
10,000	Pounds turnip, flat, for stock.....	25 00
11	Bushels green tomatoes	4 40
3,387	Pounds ripe tomatoes	103 85

 \$2,215 30

FARM PRODUCTS.

70	Bushels barley	\$45 50
3	Calves	17 00
2	Cows	50 00
81	Tons hay	888 00
1,260	Gallons milk	210 07
870	Measured bushels oats	365 40
3,182	Pounds pork	218 63
35	Figs	101 50
20	Tons straw	160 00
		\$2,056 10

LIST OF ARTICLES MADE IN SEWING ROOM FROM
NOV. 30, 1904, TO NOV. 30, 1905.

2	Aprons, carpenter's.	174	Nightgowns, long.
83	Aprons, duck.	31	Night shirts, short.
13	Aprons, gingham.	358	Pillow slips.
84	Aprons, nurse's.	3	Pin cushions.
1	Bed sore pad.	2	Restraint sheets.
6	Bibs, duck.	10	Restraint straps.
37	Bureau covers.	9	Rugs.
28	Camisoles.	2	Shirts.
531	Yard camisole string.	1	Shirtwaist.
261	Candy bags.	24	Shirtwaist suits.
1	Combination duck suit.	279	Sheets, bleached.
23	Chemises.	809	Sheets, unbleached.
2	Coffee bags.	1	Sideboard cover.
9	Commode covers.	134	Skirts.
6	Corset covers.	3	Sofa pillows.
54	Pairs nurse's cuffs.	34	Splashes.
3	Curtains for screen.	36	Tablecloths.
32½	Pairs sash curtains.	1	Table cover.
2	Wardrobe curtains.	195	Towels, dish.
2	Doilies.	400	Towels, hand.
6	Doucheroom caps.	125	Towels, roller.
2	Doucheroom suits.	58	Towels, made from old spreads for stable.
57	Pairs drawers.		
18	Strong dresses.	14	Uniforms.
13	Holders.	6	Uniform waists.
3	Ice bags.	14	Pairs window draperies.
162	Napkins.	6	Window shades.
1	Laundry bag.	7	Wash, cloths.
59	Nightgowns, short.	4	Wrappers.

LIST OF ARTICLES REPAIRED IN SEWING ROOM FROM
NOV. 30, 1904, TO NOV. 30, 1905.

195	Aprons.	290	Pairs pants.
14	Blankets.	15	Pillows.
1	Cap.	67	Pillow slips.
69	Camisoles.	1	Restraint mitten.
111	Coats.	1	Restraint sheet.
130	Pairs men's drawers.	25	Rugs.
36	Dresses.	98	Sheets.
9	Grain bags.	497	Shirts.
688	Pairs hose.	3	Skirts.
7	Jackets.	104	Spreads.
2	Laundry bags.	1	Sweater.
1	Mattress.	1	Tablecloth.
4	Pairs mittens.	24	Towels.
14	Night gowns.	80	Vests.
4	Pairs pajamas.	9	Window shades.

LIST OF ARTICLES TAGGED IN SEWING ROOM FROM
NOV. 30, 1904, TO NOV. 30, 1905.

3	Pairs arm elastics.	1	Neck scarf.
1	Bath robe.	19	Overalls.
65	Blankets.	6	Pairs overshoes.
28	Caps.	35	Shirts.
57	Coats.	4	Pairs shoes.
7	Pairs gloves.	1	Smoking jacket.
6	Handkerchiefs.	8	Sweaters.
7	Hats.	95	Ties.
679	Pairs Hose.	2	Vests.
29	Mittens.		

CHAPLAIN'S REPORT.

To the Honorable Trustees of Eastern Maine Insane Hospital:

Religious services were regularly held during the year, Sabbath afternoons, with intermission of months of July and August. The patients who attended seemed to take a deep interest and followed them for the most part attentively and intelligently. Frequently, at the close, they would express their satisfaction and the benefit derived from them. Their friends have spoken of the advantage of meetings for our patients.

In the selection of topics of instruction and the method of presenting it, the preaching had in view the special needs and circumstances of the patients.

Appreciation is due Mr. W. A. Palmer for efficient work in the singing, a valuable assistance in making our meetings interesting.

As heretofore, the superintendent and assistants showed a marked interest in the meetings and encouraged the patients by their presence and uniform courtesy.

Respectfully submitted,

(Signed)

EDWARD McSWEENEY.