

# MAINE STATE LEGISLATURE

The following document is provided by the  
**LAW AND LEGISLATIVE DIGITAL LIBRARY**  
at the Maine State Law and Legislative Reference Library  
<http://legislature.maine.gov/lawlib>



Reproduced from scanned originals with text recognition applied  
(searchable text may contain some errors and/or omissions)

PUBLIC DOCUMENTS OF MAINE:

1905

BEING THE

ANNUAL REPORTS

OF THE VARIOUS

DEPARTMENTS AND INSTITUTIONS

For the Year 1904.

---

VOLUME III.

---

AUGUSTA  
KENNEBEC JOURNAL PRINT  
1905

**REPORTS**

*OF THE*

*Trustees, Resident Officers and  
Visiting Committee*

*OF THE*

***MAINE INSANE HOSPITAL***

*AND*

***Eastern Maine Insane Hospital***

***December 1, 1904.***

---

*AUGUSTA  
Kennebec Journal Print  
1905*



## OFFICERS FOR 1904-1905.

---

### Trustees.

FREDERICK ROBIE, M. D., Gorham, President.  
H. T. POWERS, Fort Fairfield, Secretary.  
Mrs. J. R. SMITH, Litchfield.  
THOMAS WHITE, Bangor.  
SIDNEY M. BIRD, Rockland.  
CHARLES E. FIELD, Bangor.  
GEORGE E. MACOMBER, Augusta.

### Resident Officers.

BIGELOW T. SANBORN, M. D., Superintendent.  
HORACE B. HILL, M. D., Assistant Superintendent.  
H. L. HORSMAN, M. D., Second Assistant.  
GERTRUDE E. HEATH, M. D., Fourth Assistant.  
MANNING S. CAMPBELL, Steward and Treasurer.  
ALICE G. TWITCHELL, Matron.  
G. R. CAMPBELL, M. D., Pathologist and Bacteriologist.

### Chaplains for 1904.

Rev. NORMAN MCKINNON, Augusta.  
Rev. C. G. MOSHER, Augusta.  
Rev. E. G. SPENCER, Augusta.  
Rev. C. W. DOHERTY, Augusta.

### Subordinate Officers.

JOHN A. GETCHELL, Hospital Clerk.  
M. F. MOORE, Assistant Hospital Clerk.  
W. H. MITCHELL, Second Assistant Hospital Clerk.  
GEO. M. FELLOWS, Superintendent's Clerk.  
ALBERT M. PINGREE, Store Clerk.

### Supervisors.

Male.	Female.
VERMONT R. LUCE.	Mrs. ANNIE D. MCLEAN.
GEORGE E. KIMBALL, First Assistant.	Miss MARIA H. MCFEE, Ass't.
CHARLES H. DAVIS, Second Assistant.	

### Women's Pavilion.

Miss ANNIE K. McLAUGHLIN.  
Miss ELIZABETH E. CARTER, Assistant.

### Men's Pavilion.

OLIN B. HUNNEWELL.  
HENRY W. PLACE, Assistant.  
W. L. SAMPSON, Engineer.  
W. H. ALLEN, Superintendent Farm, Garden and Floral Department.

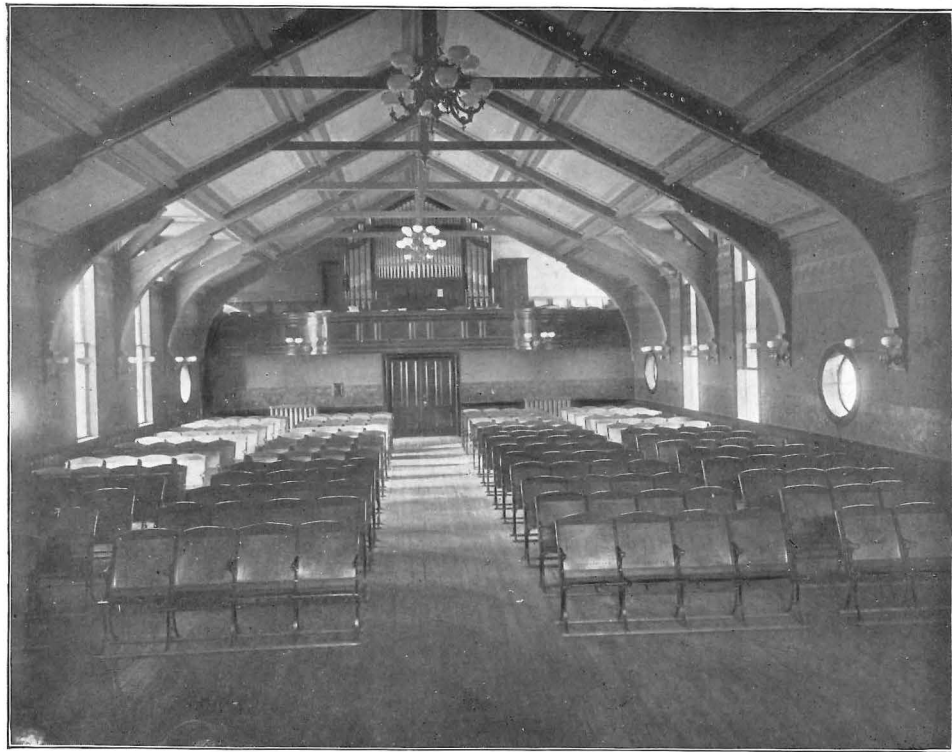
### **Standing Committees for 1904-1905.**

- On Conference with Legislative Committee—Robie, White and Macomber.
  - On Finance—White, Bird and Macomber.
  - On Buildings and Improvements—Bird, Robie and Powers.
  - On Farm Stock and Outside Property—Field, Powers and Robie.
  - On Library—Mrs. Smith, White and Dr. Sanborn.
  - On Recreation and Amusement of Patients—Dr. Sanborn, Field, Mrs. Smith.
- 

### **Visiting Committee for 1905.**

- January—Robie, Mrs. Smith, Bird and White.
- February—Field, Macomber, White and Mrs. Smith.
- March—Full Board.
- April—Robie, Field, Mrs. Smith and Bird.
- May—Bird, White, Field and Macomber.
- June—Full Board.
- July—Robie, Macomber, Powers and Field.
- August—Mrs. Smith, Bird, Powers and Macomber.
- September—Full Board.
- October—Macomber, Powers, White and Field.
- November—Robie, Bird, Mrs. Smith and Powers.
- December—Full Board.





THE COBURN AMUSEMENT HALL, SHOWING ORGAN.



## TRUSTEES' REPORT.

---

*To His Excellency, the Governor, and the Executive Council  
of the State of Maine:*

The board of trustees of the two Insane Hospitals of the State, after the completion of another year of official service, ending November 30, 1904, would respectfully present for your consideration the following annual report.

The trustees have held regular quarterly meetings during the year, and also the members of a visiting committee representing the full board have at monthly intervals visited the two institutions, interviewed the patients, and satisfied themselves that the affairs of the Hospitals were being well administered. These several visits, in which every member of the board has taken part, have furnished a good opportunity for carefully inspecting the daily service and general conditions at both institutions, and have also enabled the visitors to form a just estimate of the nature of the care given to the unfortunate insane by their official attendants. The trustees are most happy to say, as the result of their careful observation, that the two establishments have been managed with a due regard for the happiness and best interests of the patients, and that the various complaints received and investigated by us, from time to time, have all been satisfactorily explained, as arising from the abnormal mental condition of the complainants. Whenever and wherever there were sufficient reasons for inquiry, we have always found a readiness to impart information, and if any wrong was apparent it has always been speedily rectified.

The different apartments and wards of the two Hospitals have always appeared neat and clean, and the tables have been supplied with an abundant variety of wholesome food. We are pleased to report an almost universal endeavor on the part of

the attendants to do their whole duty faithfully; wherever there has been any delinquency, those at fault have been reprimanded, and in a few instances summarily dismissed. To our great gratification, we are able to say that the great majority of the help have proved faithful and efficient.

Those of the patients able to enjoy outdoor exercises and recreation have been given abundant opportunity for the same, nor has the social side of their nature been neglected. The last summer visit of the inmates by steamer to the Isle of Springs by way of river and ocean was an occasion of great pleasure to all. The various social, intellectual and religious gatherings held at suitable intervals have afforded enjoyment and profit to body and mind. The patients have themselves expressed in the strongest terms their appreciation of these many privileges.

The annual reports of the two superintendents, giving the usual tables of statistical details and other important information, will be found extremely interesting, and afford a definite record of the history of the Hospitals for the year ending November 30, 1904. The accompanying reports of the stewards and treasurers show that the financial condition of the institutions is very satisfactory. The other reports required from other parties by the laws of the State are also annexed, and furnish a complete view of the several departments they represent.

The health of the inmates has been carefully safeguarded under the direction of the competent superintendents, and an able corps of medical associates. The report shows a very satisfactory number of recoveries, and the death list contains no greater number than is to be looked for under the most favorable conditions.

A decision of the supreme court of the State of Maine rendered the re-commitment of the insane in the two Hospitals necessary for their legal detention therein. The last legislature passed a law pointing out the solution of this troublesome problem. The trustees are able to report that the conditions of this law have been fully complied with, and that all the patients in the two establishments have been legally re-committed.

The superintendents of both Hospitals have been called as experts to testify in a most important will case, the discussion

of which has interested the entire population of the State. The point in dispute has been the soundness of mind of an individual who, by a codicil added to a previous will, materially changed his earlier intentions. The case has been long, and the evidence somewhat tedious, and the opinions required of the experts have called for the closest examination of a large number of conflicting facts. The evidence given by Superintendents Sanborn and Vaughan showed a thorough and comprehensive understanding of the subjects submitted to them for the exercise of their mature judgment; and, though the opposite side of the case was fortified by the adverse judgment of experts equally distinguished in the science of mental conditions, and though there has been some criticism of the absence of our superintendents from their posts, still the trustees are of the opinion that this absence has been fully made up to the State by the valuable facts and experience which such trials always furnish.

#### HOSPITAL PIGGERY.

The hospital piggery, a building that has attracted considerable public attention during the past few years, and that has been a very important and useful factor in the administration of the subsistence department of the establishment at Augusta, was destroyed by fire on July 22, 1904. The cause of the fire has never been satisfactorily explained. The building had fortunately been insured for \$3,000 by Mr. Campbell, the steward of the institution. The trustees, on consultation with the administrative officers of the Hospital, immediately saw the need of replacing the building, both to insure care and safety to the hundred hogs that had escaped the conflagration, and to afford an opportunity for the continued profit from an increasing herd. A new building has therefore been erected as carefully and economically as possible, the sum of \$3,000 having been appropriated for this purpose from the earnings of the Hospital; this amount should be replaced in its treasury.

#### RECONSTRUCTION.

The sum appropriated by the legislature for reconstructing in fireproof form the stone wings of the Hospital at Augusta occupied by the female patients has been carefully expended under the direction of the trustees. In consequence of unavoidable

able delay in obtaining the material necessary for its full completion, that wing of the building, which called for the expenditure of \$45,000 appropriated by the last legislature, is not quite ready for occupancy. The sum mentioned, together with what has been used from the Hospital earnings, will not meet the expenses of re-construction. There will be need of a further appropriation of \$6,000. The wing will be ready early in January, and will remedy the present crowded condition of the institution. Its improved appearance and the increased facilities it offers for taking care of an additional number of patients fully justify the large outlay. The trustees most cordially invite public examination of the excellent work that has been done, and would particularly call the attention of the executive and legislative departments of the State to the greatly improved sanitary conditions resulting from the change. The same reason which has already influenced the legislature to appropriate money for the reconstruction of these two wings, and the extremely satisfactory improvements that have followed these expenditures, should induce the State to continue its public benevolence, so that the remaining female wing of the building may likewise be renovated, and the good work also be extended to include the three stone wings in the male part of the institution, from which the call for public aid is equally urgent. The trustees would respectfully ask for an appropriation of at least \$40,000.

With the understanding that this sum shall be expended for renovating and repairing the first stone wing occupied by the male patients which, when completed, would accommodate sixty more patients than are now cared for.

According to the Bible the various faculties of man's mental and moral nature reflect in their degree the same characteristics that are found in the Divine Head of the Universe, for it is a common religious belief "that man was created by God after His own image." It is, however, a sad commentary on the above statement that the mental powers of certain individuals are liable to become impaired and often actually dangerous to the community. It therefore becomes imperative that every proper means should be used for restoring these unfortunates to health and happiness. At all times we should rely upon the aid of a

beneficent Providence in our endeavors to alleviate the sufferings incident to insanity.

#### FUTURE REQUIREMENTS.

In his last annual report the superintendent of the Augusta Hospital has called our attention to the destructive and unsanitary forces at work on the Harlow and Sanborn wings of the institution, in consequence of the leakage of water from the roofs of these two wings into the rooms below, occasioning serious damage to property and threatening the health of the inmates. We would therefore recommend that a sum be appropriated sufficient for the construction of suitable copper aprons extending around the entire roof of these two buildings; and for this purpose we ask an appropriation of \$4,000.

#### SECURITY OF LIFE FROM THE DANGER OF FIRE.

The endangering and loss of life by fire has been among the early experiences of this and other institutions of the same sort in our country. There is nothing more lamentable or terrible than the results that may follow the burning of a large institution in which a great number of insane inmates are domiciled. It is fitting that the State, before any such calamity occurs, should provide safe and easy fire-escapes or iron stairways for those unfortunates residing in these buildings under our care and protection. We would therefore call the attention of the executive and legislative departments of the State to the dangerous condition of the inmates of the Sanborn and Harlow brick wings of the Augusta Hospital, and would ask that an appropriation of \$8,000 be made for placing safe fire-escapes in the various wards of these Hospital buildings.

#### THE INCREASE IN THE NUMBER OF PATIENTS IN THE TWO HOSPITALS AND THEIR NEEDS.

The number of insane in the Hospital at Augusta on November 30, 1904, was 407 men and 297 women. Total number of patients, 704.

The records of the Hospital for November 30, 1903, show 377 men and 287 women. Total number, 664; which shows a gain of 40 patients in the Augusta Hospital in one year.

The number of insane in the Hospital at Bangor, November 30, 1904, was 135 men and 119 women. Total number of patients, 254.

The records of the Bangor Hospital on November 30, 1904, show 120 men and 96 women. Total number, 216; which shows a gain of 38 at the Bangor Hospital.

The number of patients in the Hospital at Augusta, November 30, 1904, was 704; the number at Bangor at the same date was 254; making a total in both hospitals at that date of 958. It will be seen that this indicates an increase over last year (1903) of 78 patients; while further investigation shows an increase of 117 patients over the total number in the Hospitals November 30, 1902. This large increase in two years calls for careful public consideration of the means best adapted to provide for these unfortunates in the future. Of the two institutions that at Bangor has had a larger relative increase of patients during the past two years, and its proper capacity is already unduly taxed.

The trustees would respectfully call the attention of the legislature to the urgent needs of the latter establishment, and would ask that the necessary funds be provided for its enlargement, a thing which was contemplated at the time of its construction and which has now become imperative.

We submit plans and specifications for the building and finishing of the two new wings of the Bangor Hospital, and ask that an appropriation of \$125,000 be made to meet the increased requirements of the insane in the eastern part of our State.

THE INSANE DEPARTMENT OF THE STATE PRISON AT  
THOMASTON.

The establishment and administration of the insane department at the Thomaston State Prison have proved very satisfactory to the inmates of the two Insane Hospitals, and have been heartily approved of by the public in general. The trustees, after consulting those directly interested in the condition of the patients detained at the prison, and after learning the wishes of the inmates of the Hospitals, are of the opinion that the insane department at Thomaston should be continued, and that its administration should be strengthened by suitable laws

passed by the legislature, until a proper building can be erected for the detention and cure of our criminal insane.

#### MAINE INSANE HOSPITAL AT AUGUSTA.

With but a single exception the board of attending physicians at this Hospital remains the same as it was last year. The thanks of the trustees are due to the able and popular superintendent and his most capable staff for their efficient and painstaking performance of the duties imposed upon them. Dr. H. K. Stinson, who has acted as third assistant physician, has forwarded his resignation, to take effect December 15, 1904; he intends to enter general practice. The trustees have accepted his resignation, but have not yet filled the vacancy. They have been perfectly satisfied with the diligent work of Dr. Stinson, and are pleased to know that his medical knowledge and experience will continue to be employed within the limits of the State.

A committee of the trustees has made a careful investigation of the cost of installing an electric lighting plant at the Augusta Insane Hospital. The present service, rendered by a private corporation, is expensive and not entirely satisfactory. The installation of a plant of sufficient capacity to supply the needs of the institution would cost about \$15,000. Such a plant would save the Hospital more than two thousand dollars a year, and the trustees recommend that the legislature make an appropriation for that purpose.

#### SEWERAGE.

An extension of the sewerage system of this Hospital at Augusta is absolutely necessary. The present condition of the sewers is unsanitary, and endangers the health of the people who live in the vicinity. The expense of the needed improvements would be \$3,500, and we recommend that the legislature appropriate that amount to be so expended.

#### THE REPORT OF THE STEWARD AND TREASURER OF THE MAINE INSANE HOSPITAL.

With his usual business ability Mr. Campbell, the steward and treasurer of the Hospital at Augusta, has presented a detailed statement of its financial condition. Repeated examinations have made the trustees thoroughly familiar with this officer's

system of book-keeping, and they feel satisfied that the various items contained in his report have been made up carefully and correctly. They are pleased to note that each separate sum of money appropriated by the legislature has been duly entered and accounted for by proper vouchers, and that all the different accounts have been methodically arranged, each in its own place. The following is an abstract of the steward and treasurer's report for the year ending November 30, 1904:

## FINANCE.

An abstract from the steward and treasurer's report of the Insane Hospital at Augusta shows the receipts and disbursements for the year as follows:

TOTAL RECEIPTS AND DISBURSEMENTS OF CASH FOR THE YEAR  
ENDING NOVEMBER 30, 1904.

## DR.

Balance cash on hand December 1, 1903.....	\$8,399 64
Receipts for the year, Hospital account.....	167,306 50
Received from State of Maine, account appropriation for remodeling and renovating second female wing .....	20,000 00
Received through insurance agency of Macomber, Farr & Whitten, insurance on piggery burned July 22, 1904.....	3,000 00
	<hr/>
	\$198,706 14

## CR.

Disbursements, hospital account.....	\$166,097 35
Disbursements, account appropriations for remodeling and renovating second female wing.....	28,583 88
Disbursements, account appropriation for remodeling and renovating first female wing transferred to appropriation for remodeling and renovating second female wing.....	790 03
Balance cash on hand November 30, 1904.....	3,234 88
	<hr/>
	\$198,706 14





RENOVATED WARD FIRST FEMALE WING.



The annual financial statement of the steward and treasurer shows a net gain or profit of \$1,435.63 and there has been expended for general improvements and repairs from the receipts of the hospital the sum of \$10,853.98. In addition thereto the books of the treasurer show that there has also been expended for extraordinary repairs and improvements which include renovating the chapel ward, grading, electric wiring, water piping and steam piping, crushed stone for roads, etc., drains and sewers, a total of \$4,123.28. There has been expended for the new stock barn, additions and alterations, \$5,134.86. Though incomplete at the present time, there has been expended for the re-building of the new piggery a total of \$4,379.71, less the insurance of \$3,000. Total amount taken from the earnings of the hospital for special extraordinary repairs and improvements, not including general repairs and improvements, \$10,637.85. This represents the current surplus earnings of the institution. It will be noticed that there are no interest bearing liabilities and the interest account stands on the right side of the ledger. There are no notes outstanding. The appropriations for additions and remodeling the second female wing, which is now nearly ready for occupancy, is not sufficient to provide for the total cost, and the approximate estimate for an amount necessary to complete the work, which includes plumbing, painting, fitting the baggage-rooms and closets, etc., and the architect's bill will be about \$5,000 and the cost of new furnishings necessary to complete the building, including what we now have on hand, would be \$1,000. Therefore an appropriation of \$6,000 should be provided for this deficiency.

SUMMARY OF APPROPRIATIONS FOR THE TWO INSANE HOSPITALS OF MAINE NEEDED FOR THE YEARS 1905 AND 1906.

*First, for the Maine Insane Hospital at Augusta.*

Amount advanced by the Hospital from its earnings for rebuilding the piggery which should be reimbursed .....	\$3,000 00
Expense of copper aprons and safe iron escapes or fireproof stairways, for Harlow and Sanborn wings of the hospital .....	12,000 00

To construct and build a suitable sewerage.....	3,500 00
For re-construction of the third wing of the stone building occupied by female patients.....	60,000 00
For completion of re-construction of the second female stone wing.....	6,000 00
For installing an electric light plant.....	15,000 0
Total amount .....	<u>\$79,500 00</u>

*For the Eastern Maine Insane Hospital.*

For construction of one additional wing.....	\$125,000 00
For deficiency in running expenses.....	20,000 00
For the purchase of two small farms.....	4,350 00
For heating Hospital building with coal.....	15,000 00
For repairs and improvements.....	5,000 00
Total amount .....	<u>\$169,350 00</u>
For improvements on the building located on "Widow's Island," near Vinalhaven.....	\$6,000 00
Total summary of appropriations asked for.....	\$254,850 00

FARM.

In consequence of unfavorable climatic conditions the Hospital farm at Augusta has not been so productive and profitable as in former years. The farmer, Mr. William H. Allen, has ably carried out the steward's careful plans in this department. The fine looking herd of cows, one hundred in number, together with fifty heifers, are in a healthy condition, and supply the full quota of milk required at the Hospital. The excess in vegetables, etc., consumed by the institution over and above the amount produced by the farm itself should not represent a large sum; and an earnest effort is being made to bring about this result. The value of the hogs lost in the recent burning of the piggery was \$1,500, but the natural increase of the herd is now gradually repairing this loss.

THE EASTERN MAINE INSANE HOSPITAL.

The death of the late superintendent, George W. Foster, M. D., occurring early in January, 1904, caused great public sorrow and regret; for he had filled an honorable position in the

medical profession, and his devotion to the interests of the new hospital had been recognized and appreciated by an increasing number of devoted friends. To fill the vacancy this board immediately selected P. H. S. Vaughan, M. D., as the future superintendent. His long and successful experience of many years in hospital work was a sufficient guaranty to win him the unanimous support of those responsible for making the selection. The Hospital's improved condition and marked progress, and his faithful administration of the several departments under his charge, testify strongly that no mistake has been made. The position of assistant superintendent has been filled during the year by Bert F. Howard, M. D.; he has faithfully discharged the duties of the office. The remaining member of the staff is Dr. E. B. Skolfield, who promises to do his work faithfully.

The trustees are very much pleased with the success that has attended the effort made to increase the fertility of the farm, and thereby produce a larger harvest. The general appearance of the grounds about the Hospital buildings bears pleasing testimony to the thought and labor expended upon them.

#### TREASURER OF THE EASTERN MAINE INSANE HOSPITAL.

The original charter of this Hospital contained the provision that the offices of treasurer and steward should be held by separate persons. The board of trustees consequently elected as treasurer Hon. Charles S. Pearl of Bangor, who has been a very careful and efficient officer. The last legislature, in completing the revision of the Statutes, did not recognize this departure from former precedents, but made it necessary for the offices of both steward and treasurer to be held by one and the same person. The trustees have not yet made a change in compliance with the letter of the law, but have allowed Treasurer Pearl to continue in office, believing that the matter mentioned above was an oversight and that the original provisions of the charter in regard to the office of treasurer would be observed and established by law.

The treasurer, the steward and other officers of the institution have faithfully attended to their duties and made proper reports. The statement of the treasurer and the steward shows the finances of the Hospital to be in the following condition :

## CASH STATEMENT, NOVEMBER 30, 1904.

*Resources.*

Cash on hand .....	\$ 8,518 12	
Due from cities and towns.....	13,323 16	
Due from individuals.....	60 01	
Due from State, support patients....	4,897 77	
Due from State, balance appropriations .....	425 00	
	<hr/>	\$27,224 06

*Liabilities.*

Owe firms .....	\$20,980 89	
Owe salaries and wages.....	2,067 30	
	<hr/>	\$23,048 19
Surplus .....		\$4,175 87

The continued able and efficient service of Mr. C. F. Perry, steward of the Hospital, deserves a favorable notice.

ADDITIONAL APPROPRIATIONS FOR THE EASTERN MAINE  
INSANE HOSPITAL.

The appropriations made by the legislature in 1903 for the Eastern Maine Insane Hospital, amounting to \$60,950, have been expended economically and with due regard for the best interests of the institution.

The appropriation made by the legislature two years ago for the deficiency in the running expenses of the hospital represented \$25,000. In order that future obligations may be promptly met, the legislature should appropriate for this purpose the sum of at least \$20,000.

The need of sufficient acreage of land for hospital uses is one of the subjects that should always receive the earnest attention of those in charge of these institutions throughout our country. There is on record an official statement that has always been considered substantially correct to the effect that a hospital should possess at least one acre of land for every patient carried upon its rolls. At present the inmates of this hospital number over 250 and are fast increasing, while the number of acres now connected with it is only 115. The two farms, containing about 45 acres, which are now leased and cultivated, are absolutely

needed for the use of the Hospital. Their cost would be \$4,350, and we recommend that this amount be appropriated for their purchase.

The buildings and grounds of the Hospital require permanent repairs and improvements, and the board of trustees would recommend the appropriation for this purpose of the same amount that was appropriated in 1903, namely \$5,000.

The board of trustees would further recommend that the legislature appropriate for heating the Eastern Maine Insane Hospital the sum of \$15,000.

We also advise the careful reading of the superintendent's report, which gives substantial reasons for the passage of the above appropriations recommended by us.

#### TRAINING SCHOOL FOR NURSES OF THE EASTERN MAINE INSANE HOSPITAL.

At the second graduation, after two years of experimental work, thorough study and lectures by distinguished medical experts in the Hospital, diplomas were conferred during 1904 upon the following capable and well qualified attendants: Maria Foss, Claire Irene Myers, Luella M. McLain, Rose Churchill, Fred R. Carter, Fred Woodman and H. Eugene Norwood.

#### ADDITIONAL BENEFITS AND QUARTERS FOR THE INSANE.

Among the various matters affecting the condition of the insane in our State institutions we would respectfully call attention to the real estate and buildings on Widow's Island, located near Vinalhaven and about twelve miles from the city of Rockland. These buildings were erected by the United States at an expense of about \$75,000, as a temporary home for the disabled soldiers and sailors of the late war with Spain. The speedy termination of the war made these structures unnecessary, and the national government presented the property to the State of Maine, with the proviso that it be used for some well defined public good. The executive department of the State in November called the attention of the trustees of the two Insane Hospitals to the question of using these buildings as a summer home for the curable inmates of the institutions. Early in December,

1904, the trustees accordingly visited this island, and made a careful examination of the real estate and buildings thereon. It was a beautiful day, and the visit was a satisfactory and pleasant one. While the general feeling of the board was unfavorable to the use of the property as a sanitarium for our insane, still all the trustees present were greatly pleased with the general appearance of the large commodious buildings, as well as with the thorough workmanship and fine material used in their construction; and all were of the opinion that, so far as the buildings themselves were concerned, they fully met the requirements of a proper summer home by the ocean for a judiciously selected company of insane inmates.

It is estimated that the rooms of the building would accommodate seventy-five patients, and that an expenditure of \$6,000 would fully equip it for occupancy. While the trustees were not prepared to advise the immediate use of this property, they considered the question of sufficient importance to bring directly to the attention of the next legislature, in order that the whole subject might be fully investigated, with the idea of occupying this valuable real estate, if the best interests of the insane could thus be promoted. The judgment of one member of the board was against the use of the building for the purposes already stated.

#### CONCLUSIONS.

The board of trustees are reminded that the present month closes the administration of an executive department careful, efficient and benevolent in the performance of its public duties toward the insane of our State. We bid them an earnest God-speed for their noble work and would extend the usual greetings to the new administration, which promises to have a just appreciation of the importance of caring for Maine's mentally unfortunate.

The lamentable condition of man, when reason and judgment are dethroned by insanity, can be correctly measured only by the wisdom of the Almighty. So far as this world is concerned, the only means of relief and cure with the aid of Providence are in human hands. This board of trustees during their frequent visits to these Hospitals have had opportunities possessed by few to understand the amount of suffering and untold misery asso-



ciated with mental disease, and are conscious of the great benefits resulting from public benevolence, as evidenced by the improvement and recovery of numerous inmates of our hospitals under the watchful care and treatment of the medical boards presiding over these institutions.

In grateful recognition of Divine assistance we earnestly solicit the continued bountiful public and private benevolence of the citizens of Maine.

FREDERICK ROBIE,  
MRS. J. E. SMITH,  
THOMAS WHITE,  
HERBERT T. POWERS,  
GEORGE E. MACOMBER,  
CHARLES E. FIELD,  
SIDNEY M. BIRD,

*Trustees.*

## REPORT OF THE COMMITTEE ON RECREATION AND AMUSEMENT OF PATIENTS.

---

*To the Trustees of the Maine Insane Hospital:*

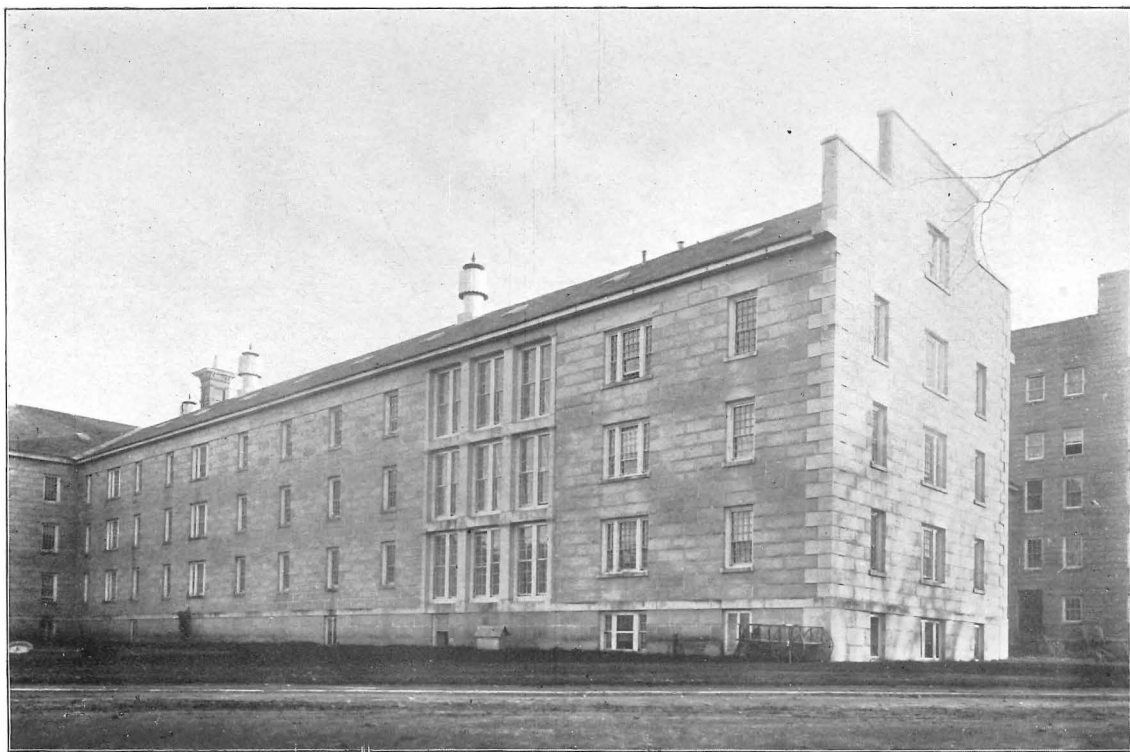
Your committee, appointed for the purpose of instituting methods for the mental and physical recreation of our patients, have constantly been in close touch with such procedures as we have deemed most prudent and practical as in our judgment would afford the most favorable and beneficial results. It is pertinent to all that in directing this branch of treatment, in studying individual cases and determining just what kind of recreation is best adapted to meet the indications of so many individual patients, is not only a tax, but must necessarily pre-occupy the attention in the direction of persistent and constant effort. It is the character of service which requires individualization. If in instituting measures for the moral welfare it could be directed by concrete methods and the course pursued for one would meet the indications for all, it would very materially lessen the incumbent duties. When however it is considered that mental disease is so variable both in its subjective and objective features, and that a certain procedure in the line of mental treatment may be well suited to one and injurious to another, and such observation presents a demonstrable clinical fact, it becomes at once apparent that any attempt to establish a line of treatment "en masse" would be attended with fruitless endeavors and regarded as unscientific and objectionable. Mental obliquities may properly be regarded as the result of disorder of the brain. "Mens sana in corpore sano," carries with it the force of abstract truth and is an axiom which corresponds to clinically demonstrable facts. The definition of insanity in whatever phraseology it may be presented admits of much criticism, yet the fact that it arises as a disorder of brain

tissues may be regarded as a settled conclusion, such deductions having been arrived at after years of careful investigation by indefatigable students in brain anatomy and pathology. Departures from mental health may arise from actual pathological conditions which have occurred in the cellular or vascular tissues of the brain organ, or physiological derangement of its own substance or that of other organs of the body, namely, the heart, or the various organs which constitute the abdominal viscera, may become disturbed and react upon the brain centres, and because of its sympathetic relation there may be observed improper functionation, and under such circumstances we detect abnormal mental manifestations. The definition of derangement of mind of Bucknell and Tuke may be regarded as admitting of as little criticism perhaps as any, when they regard insanity as a disease of the brain (idiopathic or sympathetic) affecting the integrity of the mind whether marked by intellectual or emotional disorder; such affection not being the mere symptom or immediate result of fever or poison. It having been demonstrated then beyond criticism that mental disease arises either from a physiological disturbance or actual lesions of the brain, it is not to be regarded as peculiar when we observe such a variety of mental manifestations, especially when we take into consideration the manifold duties which the brain cortex is called upon to perform, particularly when it is considered that the multitudinous convolutions of its parts are localized areas which determine and carry into effect certain and definite processes in the operations of the mind. It has been scientifically demonstrated that certain areas are endowed with the capabilities of performing definite duties, such as those in the brain centres, which, when placed in operation, give rise to articulate speech or to muscular activity, or afford opportunities for the proper functionation of the special senses as seeing, hearing, feeling and tasting. It is then not to be regarded as marvellous that we observe such varied mental manifestations showing themselves in the outward acts of the mentally deranged, or that disease of the brain presents so many forms or types of derangement which go to make up the nomenclature of mental disease; hence in treating such conditions simple generalization is not sufficient. A certain course pursued in the treatment of a patient afflicted with mental disorder might be of much service,

while such pursued course would become an actual injury to one suffering from another form or type of disease. In the attempt to divert our patients and to extend to them just what may be needed to enable the feeble mental powers to recuperate, it is evident much depends upon the character of the disturbance in the organ of the brain, so that it requires careful discrimination and the necessity of close contact and attentive clinical observation. We have at our disposal in the treatment of mental disease many helpful methods and just how they may be applied to individual cases calls for experience, sound judgment and careful discrimination. In most cases there may be observed a neurasthenic and anæmic condition. The brain cells, because of the withdrawal of proper nutrition, become easily exhausted and hence we sometimes observe derangement of the memory, inability to think or incoördination of mental operations. In such conditions it would be folly to attempt to place before the patient any agency which would call for continuous thinking. Reading, the perusal of literature which may be so helpful to some patients, might be actually injurious to a patient suffering from brain anæmia. From such persons books should be withdrawn and he be allowed the advantage of bringing the perceptive faculties into play. He should have the opportunities offered of open air recreation and his mind exercised by what he sees and hears. Only a minimum number are capable of any prolonged mental draft, hence judiciously planned manual employment under the influence of pleasant open air environments afford the maximum opportunities for curability.

It has been the purpose of your committee to offer such opportunities through excursions upon the water, frequent trolley rides, light and pleasing theatrical and musical entertainments, at the various theatres in the city and home production. We have endeavored to extend to our male patients the beneficial opportunities which manual labor offers in the departments of the farm, garden, greenhouse and the various industrial departments of the institution. Our orchestra and band which has become a settled feature in the treatment of our patients, has performed faithful and efficient service during the year. Our Sunday services, which have been found so valuable an adjunct in offering spiritual comfort to our household, have been prosecuted as in former years and have extended helpfulness to the





EXTERIOR VIEW SECOND FEMALE WING BEFORE RENOVATION.

despondent. We cannot speak in too commendable terms of the aid which the Sabbath choir have supplemented in the exercises of the Sunday services. We are under obligations to A. L. Shepard for the presentation of moving pictures. It afforded a very pleasing and profitable evening's entertainment. A ladies' quartet from the city under the management of Mrs. Susie M. Brickett gave an evening's entertainment which was highly enjoyed by all. A musical recital by George R. Dean of Boston was enjoyed by all because of its great excellence. The Cony High School Minstrels under the direction of the principal, Mr. Cook, presented their annual entertainment in the chapel, much to the delight of a large audience. Our patients look forward with much pleasure to the yearly observance of these exercises by the young ladies and gentlemen of this school.

COBURN FUND DISBURSEMENTS.

FOR THE YEAR ENDING NOVEMBER 30, 1904, AS PER VOUCHERS IN TREASURER'S OFFICE.

GENERAL AMUSEMENTS.		
Paid Choir and organist.....	\$335 85	
Orchestra and band.....	673 16	\$1,008 51
SPECIAL ENTERTAINMENTS, REPAIRS, ETC.		
Paid A. L. Shepard, for one entertainment, moving pictures ....	\$40 00	
Gounod Quartette, for one entertainment.....	15 00	
George Dean, for one entertainment.....	13 00	
Cony High School Minstrels, for one entertainment .....	25 00	
Goodman-Leavitt-Yatter Co., for repairs to combination billiard and pool table.....	25 40	
C. W. & R. M. Bowen Co., for repairs to static electrical machine.....	47 90	
Staples, Smith & Moody, for piano covers.....	27 00	
Eastern Steamship Co. for use of steamer Wiwurna, patients excursion to Isle of Springs.....	100 00	
Augusta, Gardiner & Winthrop Railway Co., for use of special car, trolley rides, patients .....	60 00	
Old Corner Book Store, for books .....	26 00	
F. A. Davis Co., for books .....	12 00	
Music, musical supplies for band, orchestra and choir.....	68 12	
Patients to plays, circus, fair and car rides .....	51 70	
Christmas cards .....	8 25	
Tuning and repairing pianos and organs .....	49 50	
Games and amusements for patients .....	9 25	576 12
		\$1,584 63

BIGELOW T. SANBORN,  
CHARLES E. FIELD,  
MRS. J. R. SMITH,

*Committee on Recreation and Amusement of Patients.*

## REPORT OF THE COMMITTEE ON HOSPITAL LIBRARY.

*To the Trustees of the Maine Insane Hospital.*

Your committee on the library for the year ending Nov. 30,  
1904, having attended to that duty now ask leave to report.

1903.			
December	1....	To deposit in Augusta Savings Bank .....	\$1,221 00
December	1....	20 shares First National Bank stock.....	2,000 00
December	1....	cash on hand .....	40
1904.			
January	1....	dividends on bank stock .....	60 00
July	1....	dividends on bank stock .....	60 00
		Savings bank dividends.....	42 37
			\$3,383 77
1904.		DISBURSEMENTS.	
January	16....	By paid for books, E. B. Treat & Co.....	4 00
February	11....	G. E. Stechert .....	3 00
February	25....	P. F. Collier .....	3 00
March	24....	Funk & Wagnalls .....	5 00
April	22....	P. Blakeston's Son & Co.....	1 75
September	6....	William Wood & Co.....	2 00
October	26....	W. T. Keener & Co.....	2 75
November	28....	Times Newspaper Co.....	4 75
November	30....	Charles E. Lauriat Company .....	10 70
November	30....	Papers and Magazines .....	115 65
November	30....	Express .....	30
		Balance on hand .....	3,230 87
			\$3,383 77
December	1....	Balance in savings bank .....	\$1,221 00
		Twenty shares First National Bank stock.....	2,000 00
		Cash on hand .....	9 87
			\$3,230 87

MRS. J. R. SMITH,  
THOMAS WHITE,  
BIGELOW T. SANBORN,  
*Committee on Library.*



## SUPERINTENDENT'S REPORT.

---

### *To the Trustees of the Maine Insane Hospital:*

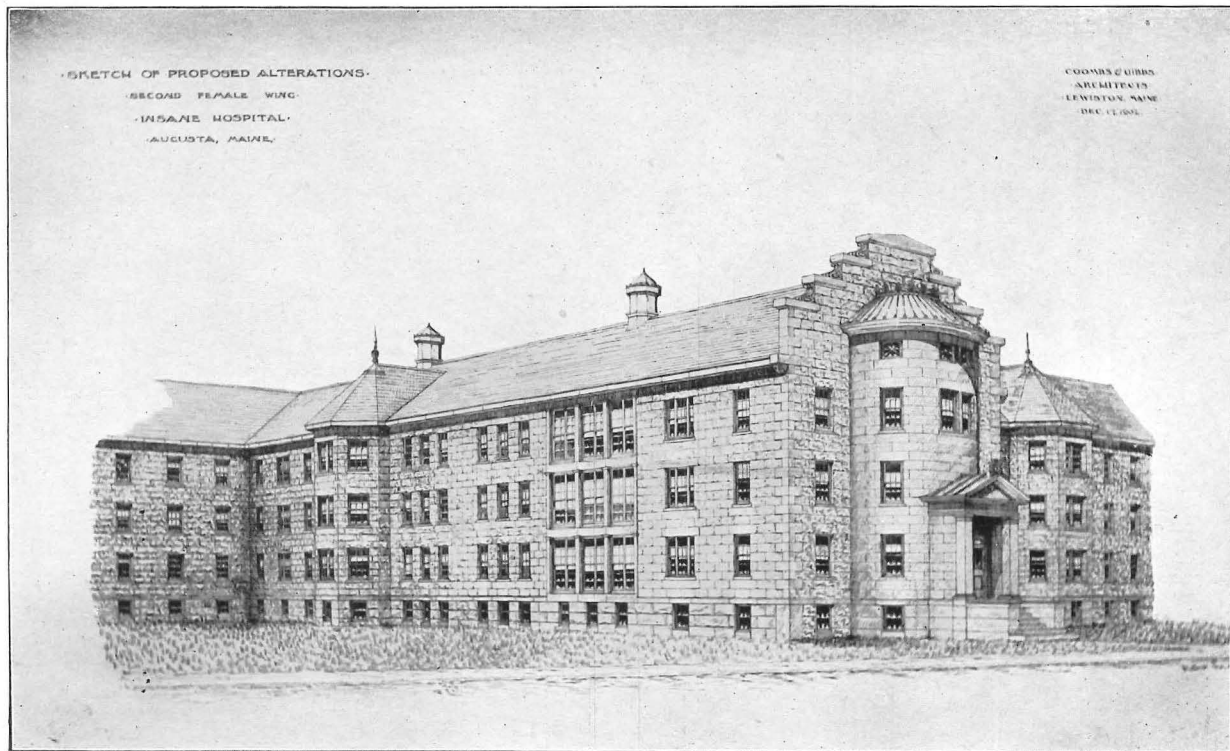
In accordance with statutory enactment I would respectfully submit for your consideration the superintendent's sixty-fourth annual report.

The law contemplates that the character of such a report should be confined to the incidents that have transpired in the management of the institution since the date of the prior communication. As would be expected ordinarily the occurrences which are likely to be observed are more or less similar in character from year to year which make reports of this description more or less monotonous and in some particulars bear the semblance of repetition, yet in taking in such communications in their entirety certain incidents will be found to have transpired unlike those of former years thereby adding new experiences to hospital management. It is a consideration for which we should be devoutly thankful to Him "who watches even the sparrow's fall," that all who have had to do in any way in caring for the interests of this charity have been preserved from accident or disease, and that those who have been placed under our keeping have not been subjected to painful accidents or acute and critical illnesses, but have enjoyed a fair degree of comfort and restfulness. At the commencement of the year there were remaining a total of 664 patients, 377 men and 287 women. There have been admitted since 200, 122 men and 78 women. The number under treatment has been 864, 499 men and 365 women. The discharges and deaths have been as follows: Total recoveries 49, 32 men and 17 women; much improved 14, 9 men and 5 women; improved 9, 4 men and 5 women; unimproved 11, 9 men and 2 women; died 77, 38 men and 39 women; leaving at the close of the hospital year November 30th, 1904, a total of 704 patients, 407 men and 297 women. The daily average num-

ber of patients for the entire year has been 689, the greatest number in the institution under treatment was 710 which the statistics show was on Aug. 12th; the least number in the hospital under treatment was 663 which occurred Dec. 10th, 1903. The recoveries based upon the number admitted have been slightly less than occurred during the period embraced in the preceding report and the death rate is found to be slightly higher. Variations in the above respect necessarily occur chargeable no doubt to many causes, prominent among these may be mentioned differences in atmospheric influences, the admission of patients whose diseases are of a more formidable and degenerative character and the higher percentage of age, all of which conditions may operate unfavorably during the history of a given report.

In calling your attention to the medical statistics referable to the causes of death during the present year and comparing it with the corresponding statistics of the previous one it will be found that organic and pathological conditions operated much more prominently in causing destruction of life than that which existed in the death rate of the former report.

In the treatment of patients there has nothing arisen which would seem to indicate the pursuance of any radical departure from former methods devised in recent years. Some drugs of recent introduction have proved valueless and have been discarded. The use of Veronal where indicated, and which we have prescribed frequently the past year as an hypnotic, has proved of much value. It is quite certain in its therapeutic action, producing quiet and natural sleep, and does not leave in its wake the unfavorable effects that are so frequently observed in many drugs which seem to be indicated for insomnia. I am still of the opinion that static electricity is of much service and have observed frequent favorable results from its use. In the gynæcological treatment of our patients under the immediate service of my assistant, Dr. Gertrude E. Heath, 285 treatments have been given during the year to 45 individual patients, in 14 cases positive results have occurred in the curability of the patient and 18 have become much improved. The treatment of nine cases of the eye and ear have resulted in much improvement. During the past three years in which the doctor has been



RENOVATED AND REMODELLED SECOND FEMALE WING.



engaged in this special service upon the medical staff of the hospital she has treated ten hundred and thirty-three cases.

#### RECONSTRUCTIONS.

All of the matters pertaining to the appropriation and contracts in connection with the rebuilding of the second female wing was fully set forth in my report of last year so that it is unnecessary to enter again into the details of this construction. I regret not to be able to report of its full completion and occupancy which we had anticipated would have occurred before this date. The failure, however, on the part of the contractors for the plumbing and slate material have delayed it, so that before it can be utilized for its intended purposes a portion of the plumbing must be completed and the slate flooring of bathrooms, entry ways and stairways must be constructed. All of the material entering into the renovation of the wing was of good quality and all of its construction has been performed in a workmanlike manner. Its erection is of fireproof material, steel beams and terracotta being substituted instead of the former combustible material. Inasmuch as it is intended to provide for our most formidable and destructive class its inside finish is of yellow birch thus being able to sustain much more resistance than if constructed with less stable lumber. Great care has been given to its reconstruction with a view to modernize all of its various apartments, to economize labor in its supervision, to afford a maximum amount of sunlight and offer added advantages for its occupants. All of its wards will present a pleasing sight to the eye and I believe will fully meet the expectations of its administration and the public as well.

The new barn, which was not completed at the closing of last year's report, and which was constructed with a view to accommodate our farm teams and our young horned stock, was finished and occupied several months ago. Its stable offers most convenient and ample accommodations for our farm horses. It is thoroughly lighted, ventilated and constructed in the most approved plan in order to afford proper sanitation. The department for the accommodation of our young stock meets the indications for which it was intended and provides most excellent accommodations. This building becomes a valu-

able adjunct in the operations of the farm. It also extends an opportunity for a further division of our stock which is so essential in maintaining and caring for so large a herd.

On the evening of the 22d of July a fire was discovered in our piggery which resulted in the entire destruction of the wood-work, the basement being left quite intact. At the time of its occurrence the man in charge had come in to the institution for his evening meal and to aid in milking. We suffered a loss of one hundred and four swine, twenty-nine of which were full grown breeding stock and the remaining seventy-five were small pigs and shoats. There had been no fire in the piggery for several months and no smoking was allowed in the building. A thorough investigation into the causes of the conflagration did not elicit any information as to the origin of the fire. Inasmuch as the basement suffered so little from the effects of the disaster, your building committee, which have had the immediate charge of all construction during the past two years under your direction, thought it advisable to rebuild on the same general plan of the old structure, omitting some features in order to economize. We entered into a contract with Reuel J. Noyes of Augusta for \$5000 to construct and complete the building with the exception of heating, painting and plastering the room occupied by the man in charge. At the closing of this report the contract is nearly completed and in a few weeks the building will be ready for its intended use.

#### REPAIRS AND IMPROVEMENTS.

The size and extent of the buildings comprised in the hospital plant are of such a character that it requires a large force in the various mechanical departments in order that neglect and dilapidation shall not occur. The past year has been an exceptionally busy one inasmuch as necessity has required in many directions unusual outlays in repairs and improvements. Inasmuch as we concluded to construct the new barn under the immediate direction of our own carpenter, quite an increased force has been required in this department. In addition to the above extensive construction, our carpenters have entirely renovated what is known as the old brick wards, arranging many important changes in the rooms, laying new hardwood floors throughout

and making most thorough repairs in its wards and all of its apartments. There has been for many years so much criticism by the public as to its unsightly location, and which must be regarded as a just one, that the policy has been to make as little outlay as possible, expecting from time to time that some action might be made in the direction of its discontinuance as a hospital building or in its removal to some other location less conspicuous, but it was determined by your board that because of the large number of male patients now under our care, the building could not possibly be discarded at the present time. The entire internal structure had become exceedingly dilapidated and unsanitary. In order to continue its occupancy, thorough and extensive repairs and improvements could not be longer delayed, all of which have been accomplished by our own force and the funds furnished out of the hospital earnings. With its new bathrooms, hardwood floors throughout and repainting, it offers very comfortable environments and proper hygiene exists. Our carpenters have made very extensive repairs upon our out-buildings, notably our house occupied by the assistant gardener and the premises located upon the highway near the electric station. The latter premises have been reshingled, reclapboarded, repainted and other extensive repairs were made. This department of labor has also constructed hardwood floors for the private male ward. This renovation has added much to the convenience and appearance of this important department. An unusual amount of labor has been accomplished by the plumbing department. It has supplied the necessary hydrants for the new barn, piped the entire building with water for fire and drinking purposes, constructed a line of sewerage and arranged lines of piping for the saving and utilization of the liquid excrement from the horses and stock. In fact the entire building is furnished with modern plumbing in every particular. The plumbing which had existed in the old brick wards has been replaced by new bathrooms of modern and approved methods in construction. The plumbing is well advanced at this date in the wing for females in process of construction, and the repairs in this department of work throughout the entire institution has been kept well in hand. We have expended an unusual amount of labor in painting which required an increased force. Under the charge of our painter nearly every one of our out-buildings

have received two coats of paint during the season, including the exterior of the old brick ward. The accomplishment of this necessary labor adds very much to the appearance of the entire hospital plant. It was determined by the building committee that the painting of the newly renovated wing should be done by the hospital and this department of labor has at this date nearly completed the requirements. Our mason has completed the necessary repairs in his department and in addition has made many improvements, among which may be mentioned the construction of a new mortuary in the basement of the renovated wing, which was made necessary by a change of location in the reconstruction. He has also remodelled and enlarged the mortuary for males. The engineer has been busily occupied through the entire warm season repairing and arranging the heating plant for the exigencies of winter use. A large amount of labor was expended in lowering quite a section of the steam returns which required the removal of a large area of ledge. We are now experiencing the results of this procedure, in that it affords a more rapid return of the steam and hot water to the boilers and it is found that the heating of the wings in this locality is accomplished much easier and more uniform temperature is obtained in the individual wards.

#### FARM AND GARDEN.

I am unable at this stage to inform you of the yield of these two departments or to make a comparison with former years, and so am obliged to refer you to the report of the steward and treasurer for a detailed account of what has been produced. I apprehend, however, that the products in either department will not be fully up to the average of former years in consequence of the severe drouth which existed in this section of the State throughout the early and latter part of the season. Scarcely any disease has been observed among our swine and herd of cows and in consequence of the large amount of green fodder that we were able to furnish the latter stock during the drouth our supply of milk has been uniformly regular and bountiful. Throughout the larger part of the season we furnished two experienced men whose duty has been to accompany patients out upon the farm and garden for manual labor, instruct them in this



service and attend to their proper supervision. Such opportunities are found to be of much value, not only in keeping up the physical health but aiding in establishing more healthy mental conditions.

#### FLORAL DEPARTMENT.

This department under the immediate care of George P. Campbell has been well looked after. An unusual display of plants and flowers has been presented to the view of the patients as they have looked upon the various lawns of the institution, which tends, it may be unconsciously, to lessen depression, to soften excitement and assuage distressing hallucinations and delusions. The greenhouse has afforded quite an abundant supply of flowers which are distributed weekly and sometimes semi-weekly throughout the wards of the institution. Constant visits are made to that department by many of our patients who inquire into the character and nature of individual plants. Such opportunities are not only educative but afford as well a pleasant pastime, especially for a large number of the female patients.

#### FUTURE NEEDS.

Considering the extent and character of an institution of this magnitude I apprehend there will scarcely ever be a period when there will not exist a judicious and legitimate demand for further aid in the continued equipment and maintenance of some of its parts. Indeed it seems to me one could not expect otherwise. There is constant deterioration, and it would be unwise, contrary to strict business principles and injustice to its occupants to allow any degree of departure from a well equipped condition to exist. The hospital has now in its male wards within twenty of the maximum number before the transfer was made to the institution at Bangor, and these departments are becoming crowded. The same condition I understand also exists at Bangor. It would seem then that some arrangement must be made whereby we may be able to care for a larger number of patients and I know of no more economical method to be pursued than that which occurred by an appropriation for the renovation of our wings for women, whereby the reconstruction will extend the opportunities to accommodate at least sixty or sixty-five more

patients. I trust the policy of the legislature which has already been inaugurated may continue, and would urge upon your consideration the necessity of asking that body for an appropriation to complete the renovation of the female side of the hospital, which requires an outlay for only one more wing and also for the reconstruction of the first wing for males, such renovation to be made with fireproof material. The Harlow and Sanborn wings which were erected some fifteen years ago are performing most valuable service because of their exceptionally fine location and their capacity to provide for large numbers, but notwithstanding this its occupants during severe storms of summer and the icy condition of the roofs in winter are subjected to much inconvenience from dampness upon the outer walls occasioned by water backing up from the roof and making its way down through the inside of the outer walls of the building. This condition is not only an annoyance but is exceedingly unsanitary and subjects the occupants to some danger of illness in consequence of such existing conditions. So much dampness exists that the paint is soon destroyed and so offers to inspection dilapidated and uninviting rooms. Such imperfections can only be remedied by the construction of copper aprons extending around the entire roof and which should be at least three feet and a half in width extending up the roof from the eaves. Such construction placed upon our newly renovated wings have entirely remedied the conditions that I have narrated. These wings, because of their more ample proportions and from the fact that they accommodate our infirmaries for both sexes and our large force of night attendants and watchmen in the attics, are perhaps contributing a larger share of institutional service than any other portion of the institution. The construction is such that each wing is supplied with two ample and well arranged stairways leading from the basements to the attic, at the end of each ward. While they are all surrounded by brick partitions yet the stairways themselves are of wooden material. Taking into consideration the large number of persons that are domiciled in the four stories of these buildings prudence would dictate that these four exits should be constructed of fire-proof material and I would recommend that an appropriation be asked for to place them in such a condition as a likelihood of escape in case of conflagration, may be made much safer.

By direction of your board I have procured the services of G. M. Coombs to make estimates for the above recited requirements and to rearrange the plans of the two wings already constructed and adapt them to the intended uses of the two wings for which you are requested to ask an appropriation. After careful inquiry his estimates to complete these two wings, the repairing of the Harlow and Sanborn roofs and the construction of fire-proof stairways for both wings are \$112,000.00. I desire to make emphatic the necessity of such renovations and would urgently request that you ask the legislature for a sufficient appropriation to remedy these existing defects.

Your attention was called to the necessity of establishing a sewer from our out-buildings to the river early in the season and directions were given me to construct one. The reasons offered were that at times our neighbors made complaints that the occupants living in the vicinity were annoyed by unwholesome odors coming from our sewerage. Additional importance also was attached to the necessity of such construction when we recalled the large number of buildings that have been erected within a few years in that locality and the addition of bathrooms, water-closets and urinals in our stables and the farm-house. We were unable to undertake this during the past season because of the demands, not only upon our time but our finances in carrying into execution and completion important and immediate demands. Mr. Getchell, the city engineer, has arranged the route for the sewer and his estimate for the same including material and its complete construction is at a cost of \$3,500.00. In order to place the hospital plant in a proper sanitary condition and to protect our neighbors such a sewer should be built at the earliest period the coming spring. If the finances of the institution will not allow of the above outlay you may think it advisable to seek aid from the legislature.

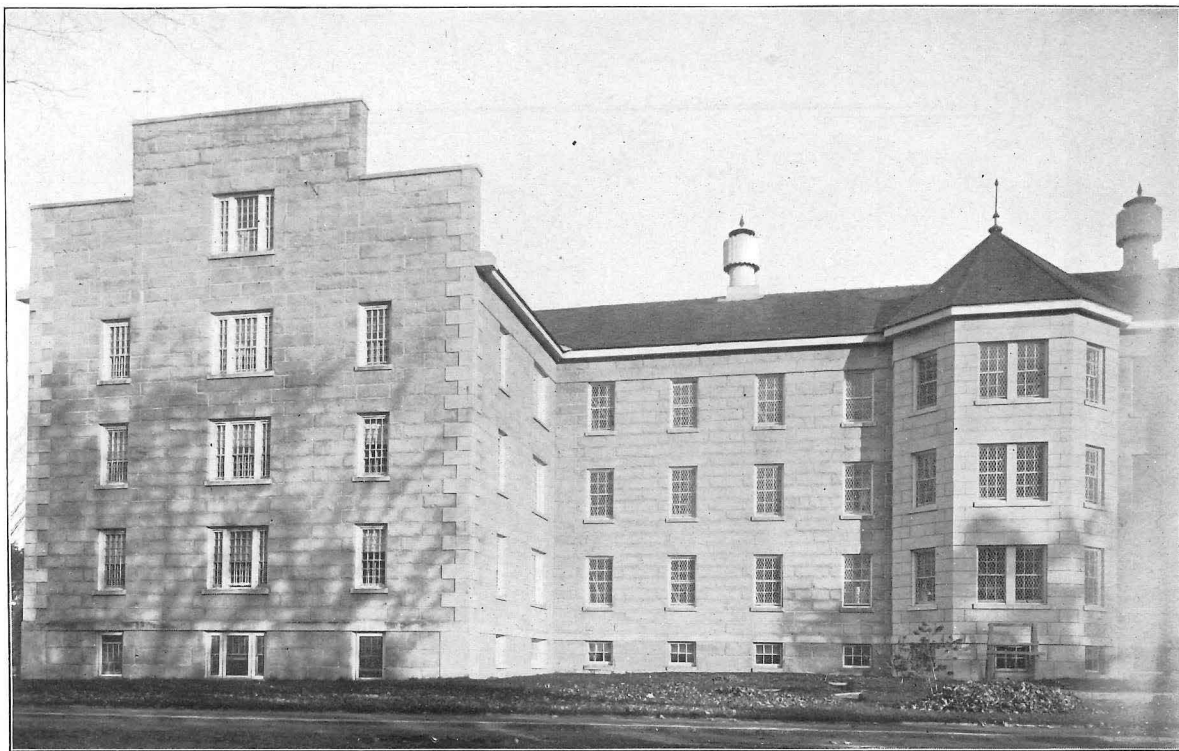
Mr. H. H. Hammond, secretary of the Standard Electric Time Co., of Boston, has submitted a proposition for an electric time and program system for the institution, consisting of a large program regulator and 63 No. 1 secondary 12-inch quartered oak clocks; 8 mantle clocks and a central large 24-inch white marble clock, with switchboard, battery, pilot dials, switches, plugs and relays complete, also 1 large size weather-

proof gong, with necessary storage battery, installed, wired and connected throughout the buildings complete for the sum of \$1,574. Estimate for cable, conduits and mouldings necessary to the installation \$500.00. The Echo Magneto Clock Co., submit a proposition for a watchman's clock equipment, consisting of an 80 station recorder and 68 high grade generators in water-proof boxes for outside service, including the interior wiring properly connected, complete, for the sum of \$704.00. George M. Stevens Co. submit for the fire alarm system complete several propositions. The one most suitable for our purpose is estimated at a cost of \$2,500.00 installed. Additional wiring, covering and protecting wires for out-buildings would cost about \$500.00. The desirability of such a system in an institution of this character must appeal to your judgment, inasmuch as it would offer instantaneous information in case of fire, would extend full protection to the hospital in its arbitrary directions given the night force, and establish a uniformity of time for the entire plant. I will leave the above proposition to your judgment and consideration and to such action as you may deem prudent.

By a decision of the supreme court the law regulating the recommitment of patients, and which had been in operation for more than half a century, was regarded by that body as insufficient and the last legislature at its adjourned session enacted an additional law governing the commitment of patients, placing such a procedure for execution in the care of the judges of the municipal courts of Augusta and Bangor. I am pleased to state that at the closing of this report nearly all of the patients who were being cared for here under the old law have been recommitment under the new process. It will take only a week or ten days at the most to complete such procedure.

#### MEDICAL STAFF.

The medical staff of the Hospital has remained intact up to the close of this report. I regret to say, however, that my third assistant, Dr. H. K. Stinson, resigned his position on the 14th inst., desiring it to take effect at the end of one month in order that he may take up the general practice of medicine. The doctor has been an efficient and painstaking auxiliary to the staff



FRONT VIEW FIRST FEMALE WING, RECENTLY RENOVATED.



of the Hospital and the best wishes of all go with him to his new field of labor. No sickness has afflicted any officer of the Hospital of a sufficient character to prevent being at the post of duty, and I am under obligations to all for their constant and unremitting aid to me in my official duties in administering the affairs of the Hospital.

The substantial aid which has always been extended to me by the visiting committee and the lady visitor has continued in their monthly inspections throughout the entire year. I take this occasion to express my grateful acknowledgment for this material support.

I would not be unmindful of that share of success which is the result in no small degree of the painstaking and watchful care of competent supervisors, nurses and attendants. Such faithful service cannot be overestimated and becomes a constituent element in the successful management of any Hospital. Every department of the institution with few exceptions has performed faithful and valuable service, which I appreciate and desire to extend my hearty commendations and acknowledgments.

I am sensible of the able support and wise council which your board has extended to me in the attempted performance of my duties. Your aim has uniformly been in all of your deliberations, to seize upon such agencies as shall strengthen and continue a wise administrative policy. I trust my conduct and service may be such as will warrant your continued confidence and support.

## MEDICAL STATISTICS, 1904.

TABLE No. 1.  
MOVEMENT OF POPULATION.

	Men.	Women.	Total.
Remaining November 30, 1903 .....	377	287	664
Admitted since .....	122	78	200
Number under treatment .....	499	365	864
<b>DISCHARGES AND DEATHS.</b>			
Recovered .....	32	17	49
Much improved .....	9	5	14
Improved .....	4	5	9
Unimproved .....	9	2	11
Died .....	38	39	77
Remaining November 30, 1904 .....	407	297	704

TABLE No. 2.  
ASSIGNED CAUSE OF INSANITY OF THOSE ADMITTED DURING THE YEAR 1904.

	Men.	Women.	Total.
Alcoholism .....	12	0	12
Critical period .....	0	8	8
Congenital .....	6	1	7
Domestic affliction .....	0	2	2
Drug habit .....	1	1	2
Dissipation .....	1	0	1
Disappointed affection .....	0	1	1
Epilepsy .....	7	3	10
Financial troubles .....	1	0	1
Grief .....	3	0	3
Heredity .....	23	15	38
Ill physical health .....	7	8	15
La Grippe .....	1	3	4
Overstudy .....	2	0	2
Overwork .....	5	4	9
Religious excitement .....	2	1	3
Self abuse .....	5	0	5
Syphilis .....	1	1	2
Senility .....	9	0	9
Sunstroke .....	2	0	2
Traumatism .....	6	2	8
Uterine disease .....	0	2	2
Unknown .....	28	25	53
Worry .....	0	1	1
Total .....	122	78	200



TABLE No. 3.  
AGES OF THOSE ADMITTED.

	Men.	Women.	Total.
From 10 to 20 years of age.....	3	1	4
" 20 " 30 " .....	29	7	36
" 30 " 40 " .....	26	21	47
" 40 " 50 " .....	25	23	48
" 50 " 60 " .....	19	8	27
" 60 " 70 " .....	13	11	24
" 70 " 80 " .....	7	5	12
" 80 " 90 " .....	0	2	2
Total.....	122	78	200

TABLE No. 4.  
SOCIAL CONDITION OF THOSE ADMITTED.

	Men.	Women.	Total.
Married .....	49	32	81
Single.....	60	33	93
Widowed .....	11	10	21
Divorced .....	2	3	5
Total.....	122	78	200

TABLE No. 5.  
DURATION OF INSANITY PRIOR TO ADMISSION.

	Men.	Women.	Total.
Not exceeding 1 week.....	17	5	22
" " 1 month.....	31	16	47
" " 3 months.....	22	9	31
" " 6 " .....	16	11	27
" " 9 " .....	1	6	7
" " 12 " .....	7	7	14
" " 2 years.....	7	5	12
" " 3 " .....	0	4	4
" " 4 " .....	3	0	3
" " 5 " .....	0	2	2
" " 10 " .....	4	6	10
" " 15 " .....	4	4	8
" " 30 " .....	2	2	4
Congenital .....	8	1	9
Total.....	122	78	200

TABLE NO. 6.  
MONTHLY ADMISSION.

	Men.	Women.	Total.
December 1903.....	8	6	14
January 1904.....	14	6	20
February ".....	7	9	16
March ".....	10	8	18
April ".....	2	6	8
May ".....	15	8	23
June ".....	14	7	21
July ".....	9	10	19
August ".....	9	4	13
September ".....	8	6	14
October ".....	16	3	19
November ".....	10	5	15
Total .....	122	78	200

TABLE NO. 7.  
TIME OF TREATMENT OF PATIENTS DISCHARGED RECOVERED.

	Men.	Women.	Total.
Not exceeding 3 months.....	13	3	16
" " 6 ".....	10	7	17
" " 9 ".....	4	2	6
" " 12 ".....	0	1	1
" " 2 years.....	1	2	3
" " 3 ".....	3	1	4
" " 8 ".....	1	1	2
Total.....	32	17	49

TABLE NO. 8.  
CAUSES OF DEATH.

	Men.	Women.	Total.
Apoplexy .....	4	0	4
Apoplexy passive.....	1	0	1
Brain anaemia.....	0	1	1
Carcinoma of uterus .....	0	1	1
Dementia primary .....	2	0	2
Dementia senilis .....	8	1	9
Dementia terminalis.....	5	16	21
Epilepsy .....	1	2	3
Mania acute.....	1	3	4
Mania chronic .....	2	8	10
Mania puerperal .....	0	1	1
Melancholia acute.....	2	0	2
Melancholia chronic .....	0	4	4
Nephritis acute .....	1	0	1
Nephritis chronic .....	2	0	2
Paresis .....	6	0	6
Phthisis pulmonalis .....	3	1	4
Typho-mania .....	0	1	1
Total .....	38	39	77

TABLE No. 9.  
MONTHLY MORTALITY.

	Men.	Women.	Total.
December, 1903.....	3	5	8
January, 1904.....	1	4	5
February, ".....	1	4	5
March, ".....	2	2	4
April, ".....	2	2	4
May, ".....	2	5	7
June, ".....	4	2	6
July, ".....	5	1	6
August, ".....	5	3	8
September, ".....	4	4	8
October, ".....	4	6	10
November, ".....	5	1	6
Total.....	38	39	77

TABLE No. 10.  
AGE AT DEATH.

	Men.	Women.	Total.
From 10 to 20 years.....	1	1	2
" 20 " 30 ".....	2	0	2
" 30 " 40 ".....	10	6	16
" 40 " 50 ".....	6	11	17
" 50 " 60 ".....	6	9	15
" 60 " 70 ".....	3	4	7
" 70 " 80 ".....	9	6	15
" 80 " 90 ".....	1	2	3
Total.....	38	39	77

TABLE No. 11.  
APPROXIMATE DURATION OF INSANITY PRIOR TO DEATH.

	Men.	Women.	Total.
1 month.....	0	4	4
3 months.....	4	1	5
6 ".....	3	1	4
12 ".....	3	6	9
2 years.....	4	1	5
3 ".....	5	1	6
5 ".....	9	6	15
10 ".....	1	5	6
15 ".....	2	5	7
20 ".....	2	2	4
25 ".....	4	2	6
35 ".....	0	2	2
45 ".....	1	1	2
60 ".....	0	1	1
Total.....	38	39	77

TABLE NO. 12.  
OCCUPATION OF THOSE ADMITTED.

	Men.	Women.	Total.
Bell-boy .....	1	0	1
Candy-maker .....	1	0	1
Baker .....	1	0	1
Bartender .....	1	0	1
Book-keeper .....	1	0	1
Blacksmith .....	3	0	3
Box-maker .....	1	0	1
Clerk .....	1	0	1
Carpenter .....	2	0	2
Coachman .....	1	0	1
Express-driver .....	1	0	1
Electrician .....	1	0	1
Farmer .....	24	0	24
Fruit-dealer .....	1	0	1
Housekeeper .....	0	23	23
Hotel man .....	2	0	2
Housewife .....	0	32	32
Hospital attendant .....	1	0	1
Life insurance agent .....	1	0	1
Laborer .....	34	0	34
Merchant .....	2	0	2
Mill operator .....	8	0	8
Newsboy .....	1	0	1
None .....	11	8	19
Nurse .....	0	2	2
Plumber .....	1	0	1
Painter .....	3	0	3
Pattern maker .....	1	0	1
Reporter .....	1	0	1
Railroad man .....	2	0	2
Shoe maker .....	5	2	7
Spinster .....	0	1	1
Saddler .....	1	0	1
Stonecutter .....	3	0	3
Stonemason .....	1	0	1
Seamstress .....	0	3	3
Stenographer .....	1	0	1
Salesman .....	3	0	3
Teacher .....	0	4	4
Total .....	122	78	200

TABLE No. 13.  
RESIDENCE OF THOSE ADMITTED.

	Men.	Women.	Total.
Auburn .....	3	5	8
Athens .....	1	0	1
Andover .....	1	0	1
Augusta .....	3	3	6
Augusta Jail .....	1	0	1
Bangor .....	1	0	1
Brooksville .....	1	0	1
Bethel .....	1	2	3
Bath .....	0	3	3
Bowdoin .....	1	1	2
Brunswick .....	0	1	1
Burham .....	0	1	1
Belfast .....	1	0	1
Biddeford .....	2	1	3
Boothbay Harbor .....	0	2	2
Benton .....	1	0	1
Buxton .....	1	0	1
Bristol .....	1	0	1
Bowdoinham .....	1	0	1
Berwick .....	1	0	1
Cornish .....	0	1	1
Chelsea .....	1	1	2
Cumberland Co. Jail .....	2	0	2
Cumberland .....	1	1	2
Dayton .....	2	0	2
Durham .....	1	0	1
Dresden .....	0	1	1
Eliot .....	0	1	1
Eden .....	3	0	3
East Pittston .....	1	0	1
Foxcroft .....	1	0	1
Fairfield .....	6	1	7
Fryeburg .....	1	0	1
Greenville .....	1	0	1
Gardiner .....	1	0	1
Georgetown .....	0	1	1
Harrison .....	0	1	1
Hallowell .....	1	1	2
Industry .....	1	0	1
Kittery .....	1	0	1
Kennebunkport .....	1	0	1
Knox Co. Jail .....	3	0	3
Lewiston .....	8	6	14
Litchfield .....	0	1	1
Leeds .....	1	0	1
Limerick .....	0	1	1
Lisbon .....	1	0	1
Lebanon .....	1	0	1
Minot .....	0	1	1
Mexico .....	1	0	1
Madison .....	1	0	1
Montville .....	1	1	2
Mechanic Falls .....	0	2	2
Monmouth .....	0	1	1
Nobleboro .....	1	1	2
Newfield .....	2	0	2
North Berwick .....	2	0	2
Norway .....	0	1	1
Oxford .....	0	1	1
Old Orchard .....	2	0	2
Oakland .....	1	1	2
Pittsfield .....	0	1	1
Portland .....	11	6	17
Poland .....	0	1	1
Pittston .....	0	2	2
Peru .....	1	0	1
Parsonsfield .....	0	1	1
Phillips .....	0	1	1
Richmond .....	2	2	4
Rockport .....	0	1	1

TABLE NO. 13—*Concluded.*

	Men.	Women.	Total.
Rockland .....	5	0	5
Randolph .....	0	1	1
Rumford .....	1	0	1
Rangeley .....	1	1	2
Sanford .....	1	1	2
South Berwick .....	2	1	3
Saco .....	1	0	1
Scarboro .....	0	1	1
Stonington .....	1	1	2
South Thomaston .....	0	1	1
Standish .....	0	1	1
Skowhegan .....	1	0	1
Somerset Co. Jail .....	1	0	1
Thorndike .....	1	0	1
Thomaston .....	1	1	2
Turner .....	1	0	1
Temple .....	1	0	1
Troy .....	1	0	1
Union .....	1	0	1
Unity .....	1	1	2
Upton .....	2	0	2
Vassalboro .....	0	1	1
Vinalhaven .....	1	0	1
Waterford .....	1	0	1
Waterville .....	2	1	3
Winterport .....	0	1	1
Westbrook .....	1	0	1
Wells .....	2	0	2
Winthrop .....	1	1	2
Waterboro .....	2	0	2
Woodstock .....	1	0	1
Woolwich .....	0	1	1
Wiscasset .....	1	1	2
Windham .....	0	2	2
Winslow .....	1	0	1
York Co. Jail .....	1	0	1
Total .....	122	78	200

TABLE NO. 14.

NUMBER OF ADMISSIONS OF THOSE ADMITTED.

	Men.	Women.	Total.
Admitted the first time .....	102	63	165
“ second time .....	10	6	16
“ third time .....	4	6	10
“ fourth time .....	3	0	3
“ fifth time .....	2	1	3
“ sixth time .....	0	1	1
“ twelfth time .....	1	0	1
“ nineteenth time .....	0	1	1
Total .....	122	78	200

TABLE NO. 15.  
NUMBER OF ADMISSIONS OF THOSE DISCHARGED RECOVERED.

	Men.	Women.	Total.
Admitted the first time.....	23	12	35
“ “ second time.....	1	3	4
“ “ third time.....	4	1	5
“ “ fourth time.....	1	0	1
“ “ fifth time.....	1	0	1
“ “ eighth time.....	0	1	1
“ “ tenth time.....	1	0	1
“ “ eleventh time.....	1	0	1
<b>Total</b> .....	<b>32</b>	<b>17</b>	<b>49</b>

TABLE NO. 16.  
RELIGION OF THOSE ADMITTED.

	Men.	Women.	Total.
Catholic.....	23	8	31
Jew.....	1	0	1
Protestant.....	97	68	165
Unknown.....	1	2	3
<b>Total</b> .....	<b>122</b>	<b>78</b>	<b>200</b>

TABLE NO. 17.  
NATIVITY OF THOSE ADMITTED.

	Men.	Women.	Total.
Canada.....	8	1	9
Connecticut.....	0	1	1
Denmark.....	0	1	1
England.....	2	1	3
Ireland.....	2	4	6
Maine.....	98	53	151
Massachusetts.....	1	1	2
New York.....	0	1	1
New Brunswick.....	4	1	5
New Hampshire.....	0	1	1
Norway.....	0	1	1
Prince Edwards Island.....	1	0	1
Pennsylvania.....	1	1	2
Quebec.....	0	1	1
Sweden.....	1	0	1
Turkey.....	1	0	1
Unknown.....	3	9	12
Vermont.....	0	1	1
<b>Total</b> .....	<b>122</b>	<b>78</b>	<b>200</b>

TABLE No. 18.  
SHOWING THE OPERATIONS OF THE HOSPITAL FROM ITS COMMENCEMENT TO THE  
PRESENT TIME.

Year.	Admitted.	Discharged.	Whole num- ber under treatment.	Recovered.	Improved.	Unimproved.	Died.	Greatest num- ber in hospital on any day.	Least number in hospital on any day.	Remaining at the end of year.	Daily average number for the year.
1840-1.....	105	79	133	33	20	20	6	70	28	54	48
1841-2.....	87	76	141	36	16	18	6	73	50	65	62
1842-3.....	82	79	147	31	27	17	4	72	58	68	65
1843-4.....	83	75	151	32	18	22	3	79	65	76	70
1844-5.....	99	90	175	38	22	23	7	89	72	85	80
1845-6.....	102	87	187	46	22	14	5	107	79	100	93
1846-7.....	124	100	224	53	17	20	10	125	98	124	108
1847-8.....	128	125	252	60	31	14	20	135	117	127	112
1848-9.....	123	123	250	60	28	17	18	135	118	127	126
1849-50.....	126	109	253	58	20	16	15	148	126	144	137
1850-1.....	90	102	234	51	40	52	39	155	52	52	75
1851-2.....	105	72	157	36	11	16	9	84	52	84	78
1852-3.....	124	89	208	45	14	15	15	119	84	119	109
1853-4.....	110	114	229	49	15	18	32	119	114	115	109
1854-5.....	128	88	243	41	14	14	19	155	114	155	134
1855-6.....	149	114	304	54	22	19	19	194	151	190	167
1856-7.....	144	126	334	69	24	19	14	215	190	208	204
1857-8.....	126	126	334	59	25	18	24	225	205	208	213
1858-9.....	149	120	357	58	22	23	17	240	205	337	222
1859-60.....	136	133	373	63	22	17	31	246	227	240	236
1860-1.....	135	123	375	55	25	16	27	255	239	252	248
1861-2.....	125	119	377	57	24	19	19	263	244	258	254
1862-3.....	118	111	376	52	21	14	24	266	242	265	254
1863-4.....	124	135	389	49	22	11	53	273	247	254	263
1864-5.....	142	119	396	47	25	23	24	282	254	277	272
1865-6.....	135	136	412	61	29	13	33	287	267	276	277
1866-7.....	150	123	426	54	27	11	31	303	276	303	391
1867-8.....	165	129	468	63	23	16	27	341	302	339	219
1868-9.....	150	152	489	68	28	14	42	351	332	337	342
1869-70.....	130	122	467	48	19	18	37	348	330	345	339
1870-1.....	174	151	519	58	28	21	44	376	345	368	363
1871-2.....	202	177	570	79	34	19	45	404	368	393	385
1872-3.....	200	182	593	83	36	20	43	416	388	411	400
1873-4.....	189	207	600	61	33	61	52	420	393	393	406
1874-5.....	188	178	581	68	31	27	52	408	389	403	398
1875-6.....	186	184	589	68	33	31	52	408	384	405	398
1876-7.....	194	183	599	74	35	28	46	423	397	416	411
1877-8.....	188	186	604	56	45	37	48	423	406	418	415
1878-9.....	196	195	614	53	52	60	30	432	399	419	415
1879-80.....	188	171	607	57	33	43	38	439	390	436	412
1880-1.....	215	201	651	56	57	42	46	453	426	450	442
1881-2.....	194	183	644	71	35	34	43	465	433	461	449
1882-3.....	208	205	669	53	42	22	88	467	430	464	450
1883-4.....	203	207	667	59	31	16	101	472	443	460	454
1884-5.....	249	223	709	80	54	12	77	488	459	486	474
1885-6.....	231	189	717	66	56	7	60	543	484	528	506
1886-7.....	226	202	754	82	52	14	54	556	527	552	543
1887-8.....	250	224	802	76	48	19	81	600	552	578	580
1888-9.....	225	223	803	65	60	22	76	599	561	580	579
1889-90.....	253	207	833	65	52	17	73	634	577	626	612
1890-1.....	245	198	871	63	47	18	70	677	626	673	649
1891-2.....	269	257	942	71	72	25	89	697	669	685	685
1892-3.....	287	301	972	75	83	55	88	714	671	671	683
1893-4.....	284	275	955	84	61	36	104	706	665	680	680
1894-5.....	274	248	954	95	54	34	65	712	680	706	688
1895-6.....	240	237	946	58	70	29	80	717	690	709	703
1896-7.....	255	251	964	52	95	33	81	737	710	713	722
1897-8.....	234	214	947	42	76	35	61	740	708	733	727
1898-9.....	249	235	982	48	37	21	103	771	732	747	747
1899-1900.....	273	249	1,020	61	49	32	107	782	748	771	764
1900-1901.....	206	377	977	66	92	117	102	776	600	600	702
1901-1902.....	203	172	803	46	28	16	82	631	596	631	607
1902-1903.....	209	176	840	57	31	17	77	668	629	646	646
1903-1904.....	200	160	864	49	23	11	77	710	663	704	689

Respectfully submitted,

BIGELOW T. SANBORN, *Superintendent.*

Maine Insane Hospital, Augusta, November 30, 1904.



## REPORT OF BUILDING COMMITTEE.

AUGUSTA, MAINE, November 30, 1904.

*To the Trustees of the Maine Insane Hospital:*

GENTLEMEN: In accordance with the resolve approved March 28, 1903, (see chapter 418, laws of 1903, page 729), appropriating forty-five thousand dollars for additions and remodeling the second female wing, we herewith submit the report of cash received on account of the appropriation and disbursements for the year ending November 30, 1904.

DR.	RECEIPTS.		
1903.			
Dec. 1.	To balance cash on hand, unexpended.....	\$11,934	63
1904.			
Feb. 9.	To cash from State treasurer .....	10,000	00
July 5.	To cash from State treasurer .....	5,000	00
Aug. 31.	To cash from State treasurer .....	5,000	00
Nov. 30.	To unexpended balance of appropriation for renovation of first female wing, transferred to appropriation for remodeling and renovation of second female wing .....	790	03
			\$32,724 66
<b>DISBURSEMENTS FOR ADDITIONS AND REMODELING.</b>			
CR.			
Paid	Ruel J. Noyes, contractor for mason and carpenter work .....	\$8,475	00
	John A. Finn, contractor for cut granite work .....	1,993	28
	Fletcher & Crowell Co., contractors for steel construction .....	1,732	00
	F. Korneffel & Son, contractors for copper work, aprons, ventilators and skylights, first and second wings .....	1,546	02
	R. K. Gatley, contractor for plastering .....	2,350	00
	Jewett, Hanson & Chapin, for bill of extras in connection with mason work and pointing .....	557	33
	Jewett, Hanson & Chapin, contractors for setting slate base and floors .....	250	00
	American Slate Co., contractors for slate base, floors, stairs, etc .....	1,000	00
	Burge & Fernald, contractors for fire proofing floors, etc, A. H. Moulton, contractor for steam heating and ventilation .....	2,724	00
	R. J. Reilly, contractor for slating roofs, etc .....	125	00
	Kennebec Light & Heat Co., for material and labor wiring for electricity .....	954	61
	McKenney & Waterbury Co., for electric and gas fixtures .....	308	75
	Iron work, labor of blacksmith and material .....	338	45
	Renovation second female wing, material, labor of teams and men, etc .....	555	88
	Trucking and freight, labor of teams, men, freight, etc. Rough granite, bushing circular bay, pointing back porch, extra basement sills, labor of teams, men, etc. Interior finish, material, labor of men., etc .....	303	39
	Concreting and plastering, material, labor of men, etc. Slate work, labor of men, teams, etc .....	206	43
	Plumbing work, labor of men, teams, material, etc .....	215	97
	Painting work, material, labor of men, etc .....	209	12
		766	92
		329	48
			\$23,583 88
	Balance of appropriation unexpended November 30, 1904 .....		\$4,140 78

REPORT OF BUILDING COMMITTEE—*Continued.*

To be provided for in completion of building:		
American Slate Co., balance of contract .....	\$435 00	
Jewett, Hanson & Chapin, balance of contract .....	330 00	
Ruel J. Noyes, balance of contract .....	2,806 00	
Ruel J. Noyes, bill of extras .....	400 00	
Estimated cost of plumbing, painting, carpenter and mason work and architect's bill .....	5,169 78	
Estimated cost of furnishings .....	1,000 00	\$10,140 78
Less unexpended balance of November 30, 1904 .....		4,140 78
Estimated total amount necessary to complete and furnish building .....		\$6,000 00

Respectfully submitted,

GEO. E. MACOMBER,  
 BIGELOW T. SANBORN,  
 MANNING S. CAMPBELL,  
*Building Committee.*





LAUNDRY, POWER HOUSE AND COAL POCKET.

## STEWARD AND TREASURER'S REPORT.

*To the Trustees of the Maine Insane Hospital:*

I herewith present my report of the financial standing of the Maine Insane Hospital for the year ending November 30, 1904.

### Total Receipts and Disbursements of Cash for the Year Ending November 30, 1904.

DR.		
Balance cash on hand December 1, 1903.....	\$8,399 64	
Receipts for year, hospital account.....	167,306 50	
Received from State of Maine, account appropriation for remodeling and renovating second female wing.....	20,000 00	
Received through insurance agency of Macomber, Farr and Whitten, insurance on piggery burned July 22, 1904.....	3,000 00	
		\$198,706 14
CR.		
Disbursements, hospital account.....	\$166,097 35	
Disbursements, account appropriation for remodeling and renovating second female wing.....	28,583 88	
Disbursements, account appropriation for remodeling and renovating first female wing transferred to appropriation for remodeling and renovating second female wing.....	790 03	
Balance cash on hand November 30, 1904.....	3,234 88	
		\$198,706 14

**COMPARATIVE STATEMENT "A"**  
**Of Resources and Liabilities November 30, 1903.**

RESOURCES—SUPPLIES IN STOCK.		
Cash on hand.....	\$8,399 64	
Due from State of Maine for support of patients.....	15,156 94	
Due from towns and individuals for support of patients....	32,345 12	
Provisions, groceries, crockery and furniture, per inventory	12,117 68	
Dry goods, clothing, etc., per inventory.....	9,420 96	
Coal on hand, per inventory.....	9,593 76	
Medical supplies on hand, per inventory.....	1,764 91	
Horses, cows, hogs, produce, per inventory.....	24,796 69	
Repairs and improvements, pipe, fittings, lumber and materials, per inventory.....	10,569 14	
Expense, stationery, books and office materials, per inventory.....	732 51	
Real estate, Norton house, purchased in 1886.....	900 00	
Real estate, Hoyt house, purchased in 1890.....	2,500 00	
Real estate, Severance farm, purchased in 1893.....	2,000 00	
Real estate, Thorne farm, purchased in 1893.....	4,500 00	
		\$134,797 35
LIABILITIES.		
Due firms and individuals, account supplies.....	\$24,501 13	
Due employes per pay roll.....	3,949 29	
Amusement fund (Orne bequest).....	1,000 00	
Coburn fund, balance interest in treasury.....	2,525 76	
Appropriation for remodeling and renovating the first female wing, balance unexpended.....	790 03	
Appropriation for remodeling and renovating the second female wing, balance unexpended.....	11,934 63	
		\$44,700 84
Net resources as per hospital account "A" in annual statement November 30, 1903.....		\$90,096 51

**COMPARATIVE STATEMENT "B"**  
**Of Resources—Supplies in Use November 30, 1903.**

Dispensary department, medical instruments, furnishings, etc.....	\$1,715 22	
Farm department, agricultural implements, carts, carriages, sleds, sleighs, tools, etc.....	8,651 00	
Greenhouse department, plants, pots, implements, etc.....	1,733 41	
Hospital furnishings department, furniture, bedding, fixtures, household materials, etc.....	57,298 84	
Repairs and improvements department, engineer's, blacksmith's, carpenter's, painter's, mason's and plumber's tools, implements, etc.....	3,933 92	
Amusement fund, principal of Orne bequest.....	1,000 00	
Net resources as per hospital account "B" in annual statement, November 30 1903.....		\$74,332 39

**COMPARATIVE STATEMENT "A"**  
**Of Resources and Liabilities November 30, 1904.**

RESOURCES—SUPPLIES IN STOCK.		
Cash on hand .....	\$3,234 88	
Due from State of Maine for support of patients .....	16,192 85	
Due from towns and individuals for support of patients .....	30,711 12	
Provisions, groceries, crockery and furniture, per inventory .....	16,231 28	
Dry goods, clothing, etc., per inventory .....	9,309 23	
Coal on hand per inventory .....	9,994 60	
Medical supplies on hand per inventory .....	1,666 23	
Horses, cows, hogs, produce, per inventory .....	22,752 43	
Repairs and improvements, pipe, fittings, lumber and materials, per inventory .....	9,448 18	
Expense, stationery, books and office materials, per inventory .....	721 85	
Real estate, Norton house, purchased in 1886 .....	900 00	
Real estate, Hoyt house, purchased in 1890 .....	2,500 00	
Real estate, Severeance farm, purchased in 1893 .....	2,060 00	
Real estate, Thorne farm, purchased in 1893 .....	4,500 00	
		\$130,162 15
LIABILITIES.		
Due firms and individuals, account supplies .....	\$28,555 56	
Due employees, per pay roll .....	4,030 32	
Amusement Fund (Orne bequest) .....	1,000 00	
Coburn fund, balance interest in treasury .....	2,981 13	
Appropriation for remodeling and renovating the second female wing, balance unexpended .....	4,140 78	
		\$40,767 99
Net resources, as per hospital account "A" in annual statement, November 30, 1904 .....		\$89,394 16

**COMPARATIVE STATEMENT "B"**  
**Of Resources—Supplies in Use November 30, 1904.**

Dispensary department, medical instruments, furnishings, etc. ....	\$1,804 72	
Farm department, agricultural implements, carts, carriages, sleds, sleighs, tools, etc. ....	8,653 33	
Greenhouse department, plants, pots, implements, etc. ....	1,864 63	
Hospital furnishings department, furniture, bedding, fixtures, household materials, etc. ....	59,102 62	
Repairs and improvements department, engineer's, blacksmith's, carpenter's, painter's, mason's, and plumber's tools, implements, etc. ....	4,045 07	
Amusement fund, principal of Orne bequest .....	1,060 00	
Net resources, as per hospital account "B" in annual statement, November 30, 1904 .....		\$76,470 37

## TWENTY-FIRST ANNUAL FINANCIAL STATE-

	Supplies in stock. On hand per inventory avail- able November 30, 1904.	Supplies in use. On hand per in- ventory unavail- able November 30, 1904.	Trial Balance.		Net cost of different departments.
Hospital account A, supplies in stock.....			\$90,096	51	
Hospital account B, supplies in use.....			74,332	39	
Cash.....			\$3,234	85	
Dry goods department.....	\$9,309 23		8,239	01	
Dispensary department.....	1,666 23	\$1,804 72	5,772	33	\$2,301 38
Farm department.....	19,995 07	8,653 33	30,163	16	1,514 76
Garden department.....	1,214 36		203	50	
Greenhouse department.....		1,864 63	2,803	70	939 07
Grocery department.....	13,687 02		13,687	02	
Expense department.....	721 85		7,183	74	6,461 89
Heating and lighting department....	9,994 60		29,806	87	19,812 27
Hog department.....	1,543 00		2,397	82	854 82
Hospital furnishing department.....	1,015 09	59,102 62	65,848	45	5,730 74
Repairs and improvements.....	9,448 18	4,045 07	24,347	23	10,853 98
Real estate.....	9,900 00		9,828	00	
Subsistence.....	1,529 17			56,348	90
Amusement fund ("Orne").....			1,000	00	
Coburn fund.....				2,981	13
Bills payable.....				1,000	00
Interest and discount.....				511	24
Salaries and (wages due employes)..				4,090	52
State of Maine (owes hospital).....			16,192	35	
Sundry persons and towns (owe hospital).....			30,711	12	
Sundry persons and towns (hospital owes).....				28,555	56
Extra repairs and improvements....			4,123	28	4,123 28
New stock barn additions.....			5,134	86	5,134 86
New piggery. Amount expended in excess of insurance (\$3,000).....			1,379	71	1,379 71
Appropriation for remodeling and renovating second female wing, balance unexpended.....				4,140	78
	\$80,023 80	\$75,470 37	262,057	03	262,057 03
Decrease in Hospital Account A.....					
Increase in Hospital Account B.....					2,137 98
					61,244 74
Net increase.....					\$1,435 63

We hereby certify that we have examined the accounts of the Treasurer for the year ending November 30, 1904, and find them correct.

THOMAS WHITE, } Finance Committee  
SIDNEY M. BIRD, } of Trustees.  
GEO. E. MACOMBER, }

Very respectfully submitted,

MANNING S. CAMPBELL, *Steward and Treasurer.*



MENT, NOVEMBER 30, 1904.

Net production or gain of different departments.	Hospital Account A. Available assets.	Hospital Account B. Unavailable assets.	Resources B. Assets unavailable.	Resources A. Assets available.	Liabilities.
.....	\$90,096 51				
.....		\$74,332 39		\$3,234 88	
\$1,070 22				9,309 23	
.....			\$1,804 72	1,666 23	
1,010 86			8,653 33	19,995 07	
.....				1,214 36	
.....			1,864 63	13,687 02	
.....				721 85	
.....				9,994 60	
.....				1,543 00	
.....			59,102 62	1,015 09	
72 00			4,045 07	9,448 18	
57,878 07				9,900 00	
.....			1,000 00	1,529 17	
.....					\$2,981 13
.....					1,000 00
511 24					4,090 52
.....				16,192 35	
.....				30,711 12	
.....					28,555 56
.....					4,140 78
702 35	\$702 35		2,137 98		
\$61,244 74					
Balance Hospital account A.....	\$89,394 16				
Balance Hospital account B.....		\$76,470 37			
	\$90,096 51	\$90,096 51	\$76,470 37	\$76,470 37	
Total resources A.....				130,162 15	
Total resources B.....			\$76,470 37	76,470 37	
Total resources and liabilities.....				206,632 52	\$40,767 99
Balance Hospital account A.....					89,394 18
Balance Hospital account B.....					76,470 37
Proof.....				206,632 52	206,632 52

## GARDEN PRODUCTS FOR THE YEAR, 1904.

326		Bushels apples.....	\$ 88 95
105		Bushels apples (crab and cider).....	13 30
350		Pounds asparagus.....	43 76
59		Bushels beet greens.....	29 50
10,100		Pounds beets.....	120 21
4,000		Boxes blackberries.....	4 80
86		Bushels beans (string).....	107 50
9,308		Pounds Cabbage.....	139 70
23,437		Ears corn (green).....	234 37
13	1310-2000	Tons corn fodder.....	54 62
27,511		Cucumbers .....	220 61
368		Boxes currants.....	36 80
1,024		Pounds carrots.....	10 24
9,230		Heads celery.....	1,020 52
38		Heads cauliflour.....	9 50
58		Boxes gooseberries.....	5 80
4,642		Heads lettuce.....	110 20
4,119		Pounds pumpkins.....	41 19
9,910		Pounds parsnips.....	123 88
8		Bushels pears.....	8 00
30		Bushels peas (green).....	60 00
134½		Bushels pickles.....	201 75
251		Bunches radish.....	25 10
2,737		Pounds rhubarb.....	42 32
43		Bushels Spinach.....	21 50
8,523		Pounds squash.....	114 18
70		Boxes strawberries.....	8 75
6,466		Pounds tomatoes.....	137 53
20,891		Pounds turnips.....	216 05
5	1885-2000	Tons winter rye (green).....	30 65
			\$3,281 28

## FARM PRODUCTS FOR THE YEAR, 1904.

9,626	Pounds beef .....	\$ 765 61
270	Pounds calf skins.....	29 19
221	705-2000 Tons ensilage.....	1,660 14
69 $\frac{3}{4}$	Tons green feed.....	418 50
1,309	Pounds hides.....	74 81
341	1044-2000 Tons hay.....	4,781 31
39,221 $\frac{3}{4}$	Gallons milk.....	7,236 02
47 $\frac{1}{2}$	Tons oats and peas (green).....	285 00
1,069	Bushels potatoes.....	647 97
614	Pounds tallow.....	13 76
5	Sets, heads and feet.....	50
83	Pounds tongue.....	9 96
3,584	Pounds veal.....	322 56
329	Pounds liver.....	15 63
6	130-2000 Tons rye (green).....	36 39
53	870-2000 Tons Hungarian (green).....	320 61
Total .....		<u>\$16,617 96</u>

## ARTICLES MADE IN SEWING ROOM, 1904.

331	Aprons.	63	Bureau and Stand Covers.
2	Books covered.	596	Bandages.
19	Coffee and provision bags.	446	Clothes bags.
28	Cooks' coats.	62	Camisoles.
13	Camisole strings.	43	Curtains.
194	Chemise.	171	Dresses.
176	Pairs drawers.	112	Nightdresses.
240	Napkins hemmed.	1,586	Pillow slips.
4,370	Sheets.	290	Skirts.
7	Shirts.	299	Tablecloths.
3,429	Towels.	17	Waists.
6	Dress waists.	11	Bands.
317	Christmas bags.	320	Yards lawn tennis tape.
46	HOLDERS.	8	Knee pads.
4	Jelly bags.		

## ARTICLES REPAIRED IN SEWING ROOM.

693	Aprons.	5	Pair blankets.
284	Coats.	14	Clothes bags.
127	Camisoles.	42	Frocks.
5	Stable robes.	41	Napkins and towels.
33	Curtains.	1	Pair mittens faced.
24	Pillow slips.	70	Sheets.
23	Spreads.	70	Tablecloths.
41	Pairs white pants.	151	Rugs bound and repaired.
211	Napkins, from old material.	75	Tablecloths from old material.
427	Dresses repaired.		

## CHAPLAINS' REPORT.

---

*To the Trustees of the Maine Insane Hospital:*

GENTLEMEN: During the year 1904 religious services have been maintained at the Hospital. The Revs. C. A. Hayden, H. E. Dunnack and B. P. Hope, pastors of Augusta, together with the Rev. Father Doherty of St. Mary's church, have been the officiating clergymen.

The importance of this service cannot be overestimated. A cheerful, encouraging message coming once a week to such of the patients as are able to attend the services, adds much to the happiness of these isolated lives. This fact is recognized by those in charge of the services. Dr. Sanborn is always present when at the Hospital, and his unflinching interest in the audience and the minister is an inspiring feature of the hour. Dr. Hill's careful attention to the music as well as his constant and appreciative attendance on the services, speaks his estimate of the good work thus accomplished. Also the organist and the quartette choir participate in the exercises as those who realize that their mission is to bring good cheer and courage to hearts that are often in need of such ministry.

The patients manifest their appreciation of the services by attending in large numbers. They are cordial in their words to the preachers, and the hour is one to which many of them look forward with glad anticipations.

A feature that cannot but impress the visitor at these services, is the feeling they all have for Dr. Sanborn. They come about him as one whom they know as a kind and indulgent friend. They seem to know that he has their interests at heart, and that any word they may have to say will be understood and appreciated. As far as such a thing is possible, the conditions seem ideal for the comfort and improvement of the patients.

Respectfully submitted for the chaplains,

B. P. HOPE, *Scribe.*

AUGUSTA, ME., November 30, 1904.

## REPORT OF VISITING COMMITTEE.

---

The visiting committee of the Maine Insane Hospitals in compliance with the Statute law of the State, herewith respectfully submit for your consideration a report of their visits to the institutions for the year ending December 31, 1904.

The Hospitals have been visited each month during the year by one or more of the committee. These visits have been made throughout the different departments at irregular intervals, and it is gratifying to be able to state that we have always found the patients clean, well cared for, their wearing apparel of good quality and carefully looked after and the attendants in every instance courteous and closely attending to the wants of the inmates.

Your committee have had deep interest in the improvements and changes in the old wings of the Augusta Hospital and are gratified to be able to report that the patients (occupying the wards already renovated) are sufficiently appreciative to enjoy the added comfort and benefits which result from these changes. We have also given close attention to the kitchens and dining-rooms and have invariably found the food to be well cooked, well served and the dining-rooms neat and cheerful. Your committee believe that the more pleasant and homelike the surroundings of these unfortunates are, the better the results derived from their treatment will be. We have been pleased to notice the efforts made at both institutions to interest and amuse the inmates. Rides and walks, books and music, with indoor amusements, serve to make their life as pleasant as possible as an aid to their recovery.

The affairs of the Hospitals are, in our judgment, in excellent condition and under the management of officials thoroughly qualified to discharge their important duties.

Most respectfully submitted.

NATHANIEL M. JONES,  
EDWARD E. CHASE,  
MRS. WALDO PETTENGILL.

## APPENDIX.

---

[FORM OF MITTIMUS.]

---

### AND INSTRUCTIONS RELATING TO COMMITMENT OF PATIENTS TO EITHER HOSPITAL.

#### STATE OF MAINE.

*To the Superintendent of the Maine Insane Hospital:*

[FORM OF BOND FOR SUPPORT.]

KNOW ALL MEN BY THESE PRESENTS, That we, —, of —, in the county of —, as principal, and —, of —, in the county of —, as sureties, are jointly and severally held and bound unto —, Steward of the Insane Hospital at Augusta, or to his successor in said office, in the sum of three hundred dollars, to the payment of which sum, well and truly to be made to him, the said —, or to his successors in said office, we bind ourselves, our executors and administrators, firmly by these presents.

*Scaled with our seals, and dated at —, this — day  
of —, A. D. 19*

*The condition of the above obligation is such, That whereas — of —, in the county of —, is about to be admitted as a boarder and patient to the Institution aforesaid; now, if the said — shall pay to said —, or to his successor in said office, such sum per week for the board, washing, medicine and attendance, according to the trouble and expense incurred for said patient, as may be determined by the Trustees for the time being, not to exceed —, and pay for all such necessary articles of clothing as shall be furnished said — by the said —, or his successor, and remove the said — from said institution, whenever they shall be thereto in writing requested by the Superintendent for the time being,—and shall also pay a further sum, not exceeding fifty dollars, for all damages that may arise from injury to the furniture and other property of said Institution, by said —, and for reasonable charges that may be incurred in case of the elopement of said —, payments to be made quarterly and at the time of removal, with interest on the*

amount after it becomes due as aforesaid, then this obligation to be null and void, otherwise to remain in full force and virtue. [L. S.]

Witness:

[L. S.]

### QUESTIONS

TO BE ANSWERED BY THE PATIENT'S FAMILY OR PHYSICIAN.

1. Age?
2. Married or single?
3. Occupation?
4. How old at first attack?
5. Date of present attack? What appearances?
6. What changes since?
7. On what subject?
8. Any rational intervals?
9. Any relatives ever insane, and who were they?
10. Ever attempted suicide or homicide, and in what manner?
11. Destructive to clothes or property?
12. Disposed to filthiness of person or habits?
13. Any restraint or confinement been applied? If any, what?
14. If former attacks, how many, and how long did they continue?
15. What natural peculiarities? Power of self-control? temper? disposition? predominant passions? disappointment as to property, affections, wounded pride, loss of friends, family troubles, intemperance in the use of ardent spirits, tobacco, &c.?
16. History of any bodily disease, especially suppression of evacuations, eruptions, sores, &c., injuries, epilepsy, palsy, &c.
17. What cause or causes are supposed to have induced the attack?
18. What curative means have been tried? State if blood-letting has been resorted to; if so, to what extent?

Male patients admitted into the Institution, should come provided with at least three good cotton shirts; coat, vest and pants, of strong woolen cloth; two pairs woolen stockings, one hat or cap, pocket handkerchiefs, brush and comb, and one pair of boots or shoes.

Females should have, at least, a change of under-clothes, shoes and stockings, brush and comb, decent bonnet, and two substantial dresses; the woolens should be of dark color. It is quite desirable, also, that a Bible or Testament should not be forgotten in the outfit.

No person over twenty-one years of age can be received without the certificate required by the act regulating the Hospital, in the Revised Statutes.



INSTRUCTIONS TO MUNICIPAL OFFICERS IN COMMIT-  
MENTS TO EITHER INSANE HOSPITAL.

---

*To the Municipal Officers of the Towns in the State of Maine:*

GENTLEMEN:—The present Legislature has just made an important amendment of the law, R. S. chap. 143, sections 13 and 34, relating to the commitment of insane persons to the insane hospitals. The amendment has been approved by the Governor and is now the law. The law is now as follows:

“Sect. 13. Insane persons, not thus sent to any hospital, shall be subject to examination as hereinafter provided. The municipal officers of towns shall constitute a board of examiners, and on complaint in writing of any blood-relative, husband or wife of said alleged insane person, or of any justice of the peace, they shall immediately inquire into the condition of any person in said town alleged to be insane; shall appoint a time and place for a hearing by them of the allegations of said complaint, and shall cause to be given in hand to the person so alleged to be insane, at least twenty-four hours prior to the time of said hearing, a true copy of said complaint, together with a notice of the time and place of said hearing and that he has the right and will be given opportunity then and there to be heard in the matter; shall call before them all testimony necessary for a full understanding of the case; and if they think such person insane, and that his comfort and safety, or that of others interested, will thereby be promoted, they shall forthwith send him either to the Maine Insane Hospital or to the Eastern Maine Insane Hospital with a certificate stating the fact of his insanity, and the town in which he resided or was found at the time of examination, and directing the superintendent to receive and detain him until he is restored or discharged by law, or by the superintendent or trustees. They shall keep a record of their doings, and furnish a copy to any interested person requesting and paying for it.”

“Sect. 34. In all cases of preliminary proceedings for the commitment of any person to the hospital, to establish the fact of the insanity of the person to whom insanity is imputed there shall be required the evidence of at least two reputable physicians given by them under oath before the board of examiners, together with a certificate signed by such physicians and filed with said board, that in their opinion such person is insane, such evidence and certificate to be based upon due inquiry and personal examination of the person to whom insanity is imputed; and a certified copy of the physicians' certificate shall accompany the papers of commitment of the insane person to the hospital.”

By careful reading of the law as it now is you will observe that *it is necessary to give to the person alleged to be insane at least twenty-four hours prior notice of hearing* and that he has the right and will be given opportunity to be heard in the matter.

You will also perceive that the amended statute more distinctly sets out the necessity *that the physician shall testify under oath before the Municipal Officers* as to the alleged insanity of the person.

Proper blank forms have been prepared for use hereafter in proceedings for the commitment of insane persons to our hospitals; and a set of such forms is forwarded you herewith and others will be forwarded you on your request therefor.

#### THE FORMS ARE

1. The complaint to be signed by the person making the complaint; to which is attached the order for the hearing and notice, to be signed by the Municipal Officers. Form 1 is to remain on the town files.
2. Copy of such complaint and order, attested by the Town Clerk; to be delivered in hand to the person alleged to be insane, by the town constable.
3. The commitment paper to be signed by the Municipal Officers and sent forward to the hospital with the patient.
4. Record of the doings of the Municipal Officers to be signed by them and attested by the Town Clerk and filed with the town records.
5. (a) Physicians' certificate to be filed with the Municipal Officers.  
(b) Attested copy of such certificate to be sent to the hospital with the commitment paper.

Dated this twenty-third day of January, A. D. 1903.

Trustees of the Maine Insane Hospital  
and Eastern Maine Insane Hospital.

By HERBERT T. POWERS, Sec'y.

N. B. Blanks for committal of patients will be forwarded upon application by addressing either Dr. Bigelow T. Sanborn, Supt. Maine Insane Hospital, Augusta, Me., or Dr. P. H. S. Vaughan, Supt. Eastern Maine Insane Hospital, Bangor, Me.

## FORM I.

INSANE PERSON. COMPLAINT AND ORDER FOR HEARING  
AND NOTICE IN THE CASE OF.

---

TO BE RETAINED ON THE TOWN FILES.

To the Municipal Officers of the town of \_\_\_\_\_ in the County of \_\_\_\_\_ and State of Maine:

(a) \_\_\_\_\_ of the town of \_\_\_\_\_ in the County of \_\_\_\_\_ and State of Maine, who is a \_\_\_\_\_ relative, to wit: a \_\_\_\_\_ of \_\_\_\_\_ (b) \_\_\_\_\_ of the town of \_\_\_\_\_ in the County of \_\_\_\_\_ and State of Maine, hereby makes written complaint and says that said (b) \_\_\_\_\_ is insane, and that the comfort and safety of said (b) \_\_\_\_\_ and that of others interested, will be promoted by committing the said (b) \_\_\_\_\_ to the \_\_\_\_\_ Maine Insane Hospital.

WHEREFORE your complainant prays that you will immediately inquire into the condition of the said (b) \_\_\_\_\_ and that such other and further proceedings may be had in the premises as is by the Statutes of said State of Maine in such case made and provided.

Dated at said \_\_\_\_\_ this \_\_\_\_\_ day of \_\_\_\_\_ A. D. 190 .

## STATE OF MAINE.

County of \_\_\_\_\_ ss. Town of \_\_\_\_\_

The above named complaint being presented to us this day we hereby appoint our office and (c) \_\_\_\_\_ the \_\_\_\_\_ day of \_\_\_\_\_ A. D. 190 , at \_\_\_\_\_ o'clock in the \_\_\_\_\_ noon, as the time and place for a hearing by us of the allegations of said complaint. And we hereby give notice to the said (b) \_\_\_\_\_ the person as above alleged to be insane, of said time and place of said hearing, and that he, the said (b) \_\_\_\_\_ has a right and will be given opportunity then and there to be heard in the matter.

Given under our hands at said \_\_\_\_\_ this \_\_\_\_\_ day of \_\_\_\_\_ A. D. 190 .

Selectmen of the town of \_\_\_\_\_

## STATE OF MAINE.

(d) \_\_\_\_\_ County of \_\_\_\_\_ ss. Town of \_\_\_\_\_ A. D. 190 .

I hereby certify that I this day at \_\_\_\_\_ o'clock in the \_\_\_\_\_ noon delivered in hand to (b) \_\_\_\_\_ the within named alleged insane per-

son, a true copy of the within complaint and the order of the Municipal Officers thereon, of even tenor with the within.

Attest:

Constable of said town of

- (a) Name of complainant.
- (b) Name of insane person.
- (c) The time must be so as to give at least 24 hours prior notice of the hearing to the person alleged to be insane.
- (d) As soon as the constable has given in hand to (b) the attested copy—form 2—he will fill out and sign the above return of such service.

FORM 2.

INSANE PERSON, COPY OF COMPLAINT AND ORDER FOR HEARING AND NOTICE IN THE CASE OF \_\_\_\_\_ TO BE SERVED ON HIM.

TO BE GIVEN IN HAND TO THE ALLEGED INSANE PERSON BY THE CONSTABLE.

To the Municipal Officers of the town of \_\_\_\_\_ in the County of \_\_\_\_\_ and State of Maine:

(a) \_\_\_\_\_ of the town of \_\_\_\_\_ in the County of \_\_\_\_\_ and State of Maine, who is a \_\_\_\_\_ relative, to wit, a \_\_\_\_\_ of (b) \_\_\_\_\_ of the town of \_\_\_\_\_ in the County of \_\_\_\_\_ and State of Maine, hereby makes written complaint and says that said (b) \_\_\_\_\_ is insane; and that the comfort and safety of said (b) \_\_\_\_\_ and that of others interested, will be promoted by committing the said (b) \_\_\_\_\_ to the \_\_\_\_\_ Maine Insane Hospital.

WHEREFORE your complainant prays that you will immediately inquire into the condition of the said (b) \_\_\_\_\_ and that such other and further proceedings may be had in the premises as is by the Statutes of said State of Maine in such case made and provided.

Dated at said \_\_\_\_\_ this \_\_\_\_\_ day of \_\_\_\_\_ A. D. 190 \_\_\_\_\_

STATE OF MAINE.

County of \_\_\_\_\_ ss. Town of \_\_\_\_\_

The above named complaint being presented to us this day we hereby appoint our office and (c) \_\_\_\_\_ the \_\_\_\_\_ day of \_\_\_\_\_ A. D. 190 \_\_\_\_\_, at \_\_\_\_\_ o'clock in the \_\_\_\_\_ noon, as the time and place for a hearing by us of the allegations of said complaint. And we hereby

give notice to the said (b) the person as above alleged to be insane, of said time and place of said hearing, and that he, the said (b) has a right and will be given opportunity then and there to be heard in the matter.

Given under our hands at said this day of A. D. 190 .

.....  
.....  
.....

Selectmen of the Town of

A true copy of the original complaint and the order of the Municipal Officers thereon.

Attest:

.....Clerk of said Town of

FORM 3.

COMMITMENT TO THE MAINE INSANE HOSPITAL OF AN INSANE PERSON.

COMMITMENT OF INSANE PERSON TO THE HOSPITAL.

STATE OF MAINE.

To the Superintendent of the Maine Insane Hospital:  
WHEREAS, on the day of A. D. 190 , (a) of the town of in the County of and State of Maine, and who bears the relationship of to (b) of the town of in the County of and State of Maine, made of us, the Municipal Officers of the town of in the County of and State of Maine, a complaint in writing stating that the said (b) is insane, and a proper subject for commitment to and treatment in said hospital; and thereupon we appointed our office in said town of and the day of A. D. 190 , and the hour of o'clock in the noon as the place and time for a hearing by us of the allegations of said complaint, and caused to be given in hand to the said (b) at o'clock in the noon of the day of A. D. 190 , a true copy of said complaint, together with a notice of the time and place of said hearing and that the said (b) had the right and would be given opportunity then and there to be heard in the matter; and at our office in said town of at o'clock in the noon of the day

of A. D. 190 , being the place and time appointed therefor, as aforesaid, we made due inquiry into the condition of the said (b) called before us all testimony necessary for a full understanding of the case, and also heard the testimony under oath of, accompanied by a certificate of and two reputable physicians, whose evidence and certificate are based upon due inquiry and personal examination of the said (b) establishing the fact of the insanity of the said (b)

WHEREUPON it was proven to us and we are of the opinion that the said (b) is insane, and that the safety and comfort of the said (b) and that of others interested, will be promoted by the commitment to and detention in said hospital of the said (b) and that the said (b) be sent forthwith to said hospital.

THEREFORE we hereby certify that said (b) is insane and that was residing and found in the town of aforesaid at the time of said examination; and You, the said Superintendent, are hereby ordered and required to receive said (b) into said hospital and detain in your care until shall have become restored and of sound mind, or be discharged by law, or by the Superintendent, or Trustees.

Given under our hands at said this day of  
 A. D. one thousand nine hundred and

.....  
 .....  
 .....

Selectmen of the town of

- Mem. (a) Name of the complainant.
- (b) Name of the insane person.

## FORM 4.

RECORD OF COMMITMENT OF \_\_\_\_\_ TO THE \_\_\_\_\_  
MAINE INSANE HOSPITAL.

- (a) Name of the complainant.  
 (b) Name of the insane person.

Record of doings of Municipal Officers in Commitment of Insane Person to the Hospital, to be signed by Municipal Officers and Town Clerk and filed with town records.

## STATE OF MAINE.

To the Superintendent of the \_\_\_\_\_ Maine Insane Hospital:  
 WHEREAS, on the \_\_\_\_\_ day of \_\_\_\_\_ A. D. 190 ,  
 (a) \_\_\_\_\_ of the town of \_\_\_\_\_ in the County of \_\_\_\_\_  
 and State of Maine, and who bears the relationship of \_\_\_\_\_ to  
 (b) \_\_\_\_\_ of the town of \_\_\_\_\_ in the County of \_\_\_\_\_  
 and State of Maine, made to us, the Municipal Officers of the town of \_\_\_\_\_  
 in the County of \_\_\_\_\_ and State of Maine, a complaint  
 in writing stating that the said (b) \_\_\_\_\_ is insane, and a proper  
 subject for commitment to and treatment in said hospital; and thereupon  
 we appointed our office in said town of \_\_\_\_\_ and the  
 day of \_\_\_\_\_ A. D. 190 , and the hour of \_\_\_\_\_ o'clock in the  
 noon as the place and time for a hearing by us of the allegations  
 of said complaint, and caused to be given in hand to the said  
 (b) \_\_\_\_\_ at \_\_\_\_\_ o'clock in the \_\_\_\_\_ noon of the  
 day of \_\_\_\_\_ A. D. 190 , a true copy of said complaint, together  
 with a notice of the time and place of said hearing and that the said  
 (b) \_\_\_\_\_ had the right and would be given opportunity then and  
 there to be heard in the matter; and at our office in said town of \_\_\_\_\_  
 at \_\_\_\_\_ o'clock on the \_\_\_\_\_ noon of the \_\_\_\_\_ day  
 of \_\_\_\_\_ A. D. 190 , being the place and time appointed therefor,  
 as aforesaid, we made due inquiry into the condition of the said  
 (b) \_\_\_\_\_ called before us all testimony necessary for a full under-  
 standing of the case, and also heard the testimony under oath of, accom-  
 panied by a certificate of \_\_\_\_\_ and \_\_\_\_\_ two reputable phy-  
 sicians, whose evidence and certificate are based upon due inquiry and  
 personal examination of the said (b) \_\_\_\_\_ establishing the fact  
 of the insanity of the said (b) \_\_\_\_\_

WHEREUPON, it was proven to us and we are of the opinion that  
 the said (b) \_\_\_\_\_ is insane, and that the safety and comfort of the  
 said (b) \_\_\_\_\_ and that of others interested, will be promoted by  
 the commitment to and detention in said hospital of the said  
 (b) \_\_\_\_\_ and that the said (b) \_\_\_\_\_ be sent forthwith to  
 said hospital.

THEREFORE we hereby certify that said (b) is insane and that was residing and found in the town of aforesaid at the time of said examination; and you, the said Superintendent, are hereby ordered and required to receive said (b) into said hospital and detain in your care until shall have become restored and of sound mind, or be discharged by law, or by the Superintendent, or Trustees.

Given under our hands at said this day of  
 A. D. one thousand nine hundred and

.....  
 .....  
 .....  
 Selectmen of the town of

A true record,

Attest:

Clerk of said town of

---

FORM 5.

PHYSICIANS' CERTIFICATE IN THE CASE OF \_\_\_\_\_  
 AN INSANE PERSON.

---

PHYSICIANS' CERTIFICATE OF INSANITY.

(a)

We, the undersigned, reputable and practicing physicians in the town of County of and State of Maine, hereby certify that, after due inquiry and personal examination of of the said town of in our opinion said is INSANE.

Dated at this day of 190 .

M. D.  
 M. D.

(b)

A true copy of the physicians' certificate to Municipal Officers.

Attest:

Clerk of said town of

(a) The original certificate is to be filed with and retained by the Municipal Officers.

(b) The certified copy of this certificate is to be forwarded with the commitment paper to the Superintendent of the Hospital.



REPORT

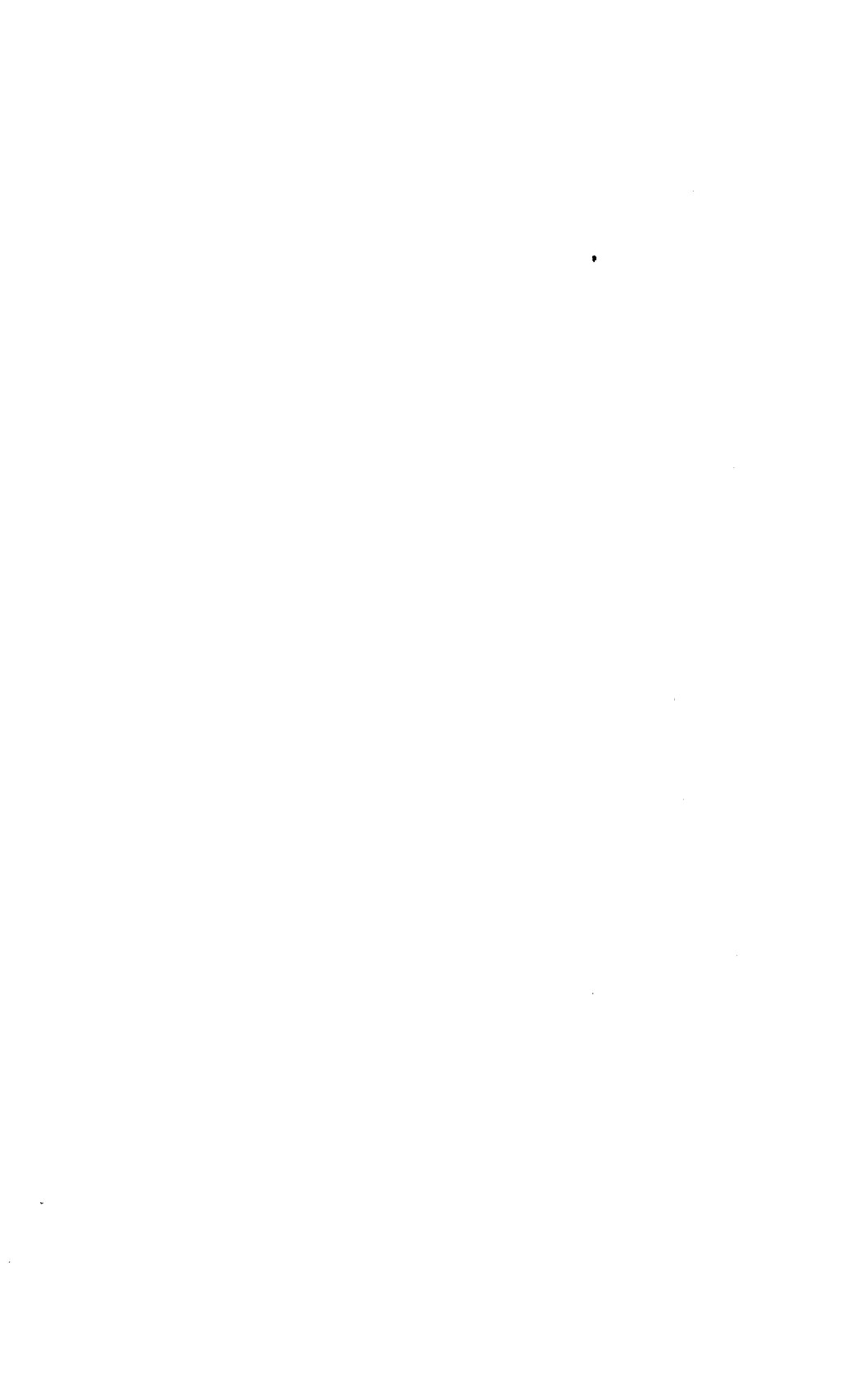
OF THE

Trustees, Resident Officers and Visiting Committee

OF THE

EASTERN MAINE INSANE HOSPITAL

December 1, 1904.



## OFFICERS OF THE HOSPITAL.

---

### TRUSTEES.

FREDERICK ROBIE, President, Gorham.  
H. T. POWERS, Secretary, Fort Fairfield.  
MRS. J. R. SMITH, Litchfield.  
SIDNEY M. BIRD, Rockland.  
THOMAS WHITE, Bangor.  
CHARLES E. FIELD, Bangor.  
GEORGE E. MACOMBER, Augusta.

### RESIDENT OFFICERS.

PHILIP H. S. VAUGHAN, M. D., Superintendent.  
BURT F. HOWARD, M. D., Assistant Superintendent.  
EZRA B. SKOLFIELD, M. D., Assistant Physician.  
CHARLES F. PERRY, Steward.  
CHARLES S. PEARL, Treasurer.  
ADELAIDE C. BROWN, Matron.

### CHAPLAINS.

REV. JOHN S. PENMAN,  
REV. EDWARD McSWEENEY,  
MR. ROBERT A. JORDAN.

### SUPERVISORS.

#### MALE.

FRED R. CARTER.  
HERBERT E. HERRIN, Assistant Supervisor.  
ERNEST L. MITCHELL, Night Supervisor.

#### FEMALE.

FLORENCE MACRAE.  
MARY E. HICKEY, Assistant Supervisor.  
BELLE SAVAGE, Night Supervisor.

WILLIAM KENNEY, Engineer.  
LESLIE W. SOMERS, Clerk.  
WILLIAM A. PALMER, Storekeeper.  
ISABELLE N. HERRIN, Superintendent's Clerk.  
GEORGE WARE, Head Farmer.



## SUPERINTENDENT'S REPORT.

---

*To the Board of Trustees of the Eastern Maine Insane Hospital:*

GENTLEMEN: I herewith submit for your consideration the superintendent's fourth annual report for the year ending November 30, 1904.

The total number of patients under treatment during the year has been 351, and the number admitted during the year has been 135, as against 118 in the previous year. The daily average, from the beginning of the institution in 1901, has increased from 182, up to the present time, to 232 patients. During the past year eighty-two patients have been discharged from the hospital, of which 47 had recovered, 27 discharged improved, 6 unimproved, and 2 transferred to the Maine Insane Hospital at Augusta. There have died during the present year 15 patients. There were remaining in the Hospital November 30, 1904, 254.

The percentage of recoveries has been unusually large, due in part undoubtedly to the fact that the physicians and relatives of patients are coming more and more to believe in the necessity of early hospital treatment for those mentally deranged. We have been very fortunate in having few deaths during the year, only 15 having occurred, which is a little more than 4% of the total number under treatment. The recoveries based on admissions is about 35%. A very large per cent of acute cases have recovered after a variable length of time. In a majority of these cases we have discovered some underlying physical disease, which was apparently the cause of the mental symptoms observed, and when this has been removed or mitigated the mental trouble has been relieved in a corresponding degree.

In mental diseases, as in all other diseases, the first and most important consideration is to ascertain the cause, and for the alienist this is a much more difficult problem than for the general

practitioner, as he is obliged to consider and weigh the extent of various predisposing and exciting causes which may be of value in forming a correct determination of the nature of the case.

As in previous years nephritis has been concomitant, and I believe, a cause in many of the acute cases committed to the Hospital. The work in the department of urinalysis shows that during the past year 301 specimens have been examined, and among these 38 have shown a pathological condition, 18 cases of which have been nephritis. In several cases there has been a partial, or temporarily a total, suppression of the function of the kidneys, and when this condition has been relieved there has invariably been improvement in the mental state. There can be no doubt that nephritis plays a very important part in the causation of mental disease. In ascertaining the extent which this disease plays as a causative factor in mental disease we have found the analysis of a single specimen of urine to be of little value and oftentimes misleading; while the repeated examination of the amount of the secretion from the kidneys in twenty-four hours often shows that their function is deranged and that the amount secreted is abnormally small and that the presence or absence of albumen or casts or both in one examination may be of little significance.

Among the alleged causes of insanity of those admitted, alcoholism is a prominent factor. It is usually associated, however, with other excesses, especially among the higher classes, and is often an exciting cause in neuropathic and mental cases. The importance of a correct knowledge of the pathology of the various psychoses has become more and more apparent, and while in many cases we are necessarily confined to symptomatic treatment, our efforts should consist largely in ascertaining and relieving the underlying cause of the symptoms manifest. It matters little what name you give to any group of symptoms, whether we call it psychosis or neurosis, whether it be one of elation or depression, the all important fact to be determined is the actual condition, or in other words, the physical basis of the disturbance.

In the treatment of our acute cases we have continued to depend largely on various hydrotherapeutic measures, such as the cold douche, following a few minutes' treatment in the hot

cabinet, wet packs at varying temperatures, massage, and to a moderate extent electricity, the static and galvanic current having been employed.

The work in the training school for nurses has been satisfactory, and much has been accomplished by the employment of trained nurses among all classes of patients. The graduating class consisted of seven; four women and three men having successfully passed the examination required. The lectures have been given by the medical staff, and by the head of the training school, on various subjects relative to their work as nurses.

In regard to repairs and improvements I would say that the new boiler, which was purchased last year, has been placed in position and connected, and is now in operation, and a feed pump has also been added to the equipments of this department. A switch board has been placed in position in the assembly hall, and a recording wattmeter has been installed in the engineer's department in order to give us an accurate account of our electrical output. Electric lights have been placed on the driveway of the hospital to the main road at an expense of about \$300.

Concerning the needs of the institution: The first and most important is that of additional accommodations for patients. The hospital has been much overcrowded for the past year, and we cannot without present accommodations properly care for and treat the insane in this section of the State. It will be necessary for us to discharge many chronic cases in order to take care of the acute cases which must have hospital treatment. In many instances it is a great hardship to the patients, as well as to the relatives and friends of the chronic class to care for them at home, and the smaller municipalities have not as a rule proper accommodations for taking care of patients, especially during the winter season. In our over-crowded condition, however, it will be necessary to make some provision for caring for them outside of the hospital, in order that we may take patients that are acutely deranged. In order to accommodate the mentally afflicted in this section of the State, two additional buildings should be constructed at the earliest possible time. The demand, I believe, is imperative and urgent, and should receive your serious consideration.

There is much to be done in the way of permanent repairs and improvements, and sufficient appropriation should be provided for this. There are many repairs to be made in the plumbing of the hospital. The balcony in the assembly hall should be completed. The improvement of the grounds of the institution should be continued, and additional trees and shrubs should be added in order to make them still more attractive and pleasing to our inmates. I believe that we should purchase land adjacent to the hospital farm, so that this department of the institution could be placed on a paying basis. I would recommend the purchase of the Thornton and Laughton farms, so called, which adjoin our land and could be utilized to the profit of the Hospital. I think it would be profitable to the Hospital to produce its own milk, and that if a suitable cow barn could be provided, it would be well for us to have a sufficient number of cows to supply the Hospital with milk.

In regard to the financial condition of the Hospital, I would say that we have endeavored to practice rigid economy in the various departments of the institution, but with the number of patients under treatment, and at the present price of board, we must necessarily have a yearly deficit in our running expenses. If we had accommodations for twice the number of patients we now have, we could undoubtedly pay all running expenses of the hospital and have a small balance to our credit annually. The departments outside of the wards would not have to be materially enlarged, and practically the same number of employees would do the work in their various departments. It will be necessary therefore to ask for an appropriation to make up the deficit in running expenses for the next two years, as we have already used the amount appropriated by the last legislature for this purpose. While our number of patients has gradually increased during the past two years from 209 in 1902, to 254 at the end of the present Hospital year, there has been but a slight increase in the number of employees, and no increase in the amount of salaries and wages paid.

In regard to the farm and garden I would say that the farm has been operated successfully and shows a slight profit, while the latter shows a small deficit. We have been able to afford our patients an ample supply of fresh vegetables of our own raising during the summer. The farm has produced 1600



bushels of potatoes of good quality, which will be several hundred bushels in excess of our needs during the coming year, the surplus of which will be sold at the market price.

Our resources, which includes cash on hand, and the amount due from individuals, municipalities, and the State for the support of patients, is \$27,224.06, and our liabilities, \$23,048.19, leaving a balance of \$4,125.87. In giving a correct estimate of this statement, however, it should be considered that we have used our entire appropriation, made at the last session of the legislature, for deficit in running expenses.

In regard to the general internal conduct of affairs at the Hospital I am pleased to say that there has been harmonious co-operation of officials and employees; which of course tends directly and indirectly to the comfort and proper care of our inmates. The various heads of departments have been faithful and conscientious in the performance of their duties, and the nurses and attendants, upon whom so much depends as to the welfare of our patients, have with few exceptions performed the duties required of them in a satisfactory manner.

The medical staff of the Hospital have given efficient service, and much credit is due to them in the successful results of our treatment of patients. One change has occurred during the year among the medical officers; Dr. H. O. Johnson, the junior assistant, having gone to the Hartford Retreat as assistant physician, and Dr. E. B. Skolfield taking his place on the 15th of August.

Rev. A. B. Lorimer, Rev. Walter Yates, Rev. Edward McSweeney, and Mr. Robert A. Jordan have given faithful service as chaplains for the Hospital during the past year.

In conclusion I would say that I feel under deep obligation to the board of trustees for their kindly advice and support in my administration of the executive affairs of the hospital.

## ACKNOWLEDGMENTS.

We are pleased to acknowledge the receipt of the various articles for the benefit of the patients as follows :

Gifts of money from Jessie J. Glen, Mrs. Nora Lord, Mrs. A. C. Brown, and R. A. Jordan ; candy from Mrs. E. S. Simonton, Mrs. W. H. Rollins, Emily Mea, Thomas White, and Staples & Griffin ; books and magazines from Mrs. W. H. Rollins, Mrs. Chas. Emerson, Mr. J. A. Homer, Mrs. J. W. Taney, Mrs. Chas. Stewart, Mrs. W. D. Stewart, Miss Giddings, Mrs. Lizzie Rice, Hon. J. B. Foster, Mr. Frank Day, and the Tarratine Club.

## MEDICAL STATISTICS, 1904.

### MOVEMENT OF POPULATION.

	Men.	Women.	Total.
Number in hospital Nov. 30, 1903 .....	120	96	216
Number admitted during year .....	67	68	135
Total number under treatment .....	187	164	351
Daily average 1901 .....	97	85	182
Daily average 1902 .....	114	92	206
Daily average 1903 .....	127	97	224
Daily average 1904 .....	126	106	232

### DISCHARGES AND DEATHS.

	Men.	Women.	Total.
Recovered .....	26	21	47
Improved .....	13	14	27
Unimproved .....	3	3	6
Transferred .....	1	1	2
Died .....	9	6	15
Number in hospital November 30, 1904 .....	135	119	254

### AGES OF THOSE ADMITTED.

	Men.	Women.	Total.
10 to 20 years .....	2	3	5
20 " 30 " .....	11	20	31
30 " 40 " .....	12	15	27
40 " 50 " .....	18	16	34
50 " 60 " .....	10	6	16
60 " 70 " .....	10	4	14
70 " 80 " .....	4	4	8
	67	68	135

## AGES AT TIME OF DEATH.

	Men.	Women.	Total.
20 to 30 years.....	0	1	1
30 " 40 ".....	1	0	1
40 " 50 ".....	3	1	4
50 " 60 ".....	2	2	4
60 " 70 ".....	2	0	2
70 " 80 ".....	1	2	3
	9	6	15

## DURATION OF INSANITY PRIOR TO ADMISSION.

	Men.	Women.	Total.
Not exceeding 1 month.....	30	21	51
" " 3 months.....	3	7	10
" " 6 ".....	5	8	13
" " 9 ".....	0	2	2
" " 12 ".....	2	5	7
" " 2 years.....	3	1	4
" " 3 ".....	0	1	1
" " 4 ".....	1	3	4
" " 5 ".....	1	1	2
" " 6 ".....	1	1	2
" " 7 ".....	1	1	2
" " 8 ".....	0	3	3
" " 10 ".....	2	2	4
Congenital.....	4	2	6
Unknown.....	14	10	24
	67	68	135

## TIME OF TREATMENT OF PATIENTS DISCHARGED RECOVERED.

	Men.	Women.	Total.
Not exceeding 3 months.....	8	10	18
" " 6 ".....	6	6	12
" " 9 ".....	6	4	10
Exceeding 12 months.....	6	1	7
	26	21	47

DURATION OF INSANITY PRIOR TO ADMISSION OF THOSE DISCHARGED RECOVERED.

	Men.	Women.	Total.
Not exceeding 1 month.....	11	11	22
“ “ 2 months.....	4	2	6
“ “ 3 “.....	3	2	5
“ “ 6 “.....	0	1	1
“ “ 9 “.....	1	0	1
“ “ 12 “.....	3	1	4
Exceeding 12 months.....	4	4	8
	<hr/> 26	<hr/> 21	<hr/> 47

RELATIONS TO HOSPITALS OF PATIENTS ADMITTED.

	Men.	Women.	Total.
Never before in any hospital for insane.....	15	12	27
Former inmate of this hospital only.....	6	2	8
“ “ “ other hospital only.....	5	5	10
“ “ “ this and other hospitals.....	0	2	2
	<hr/> 26	<hr/> 21	<hr/> 47

CAUSES OF DEATH.

	Men.	Women.	Total.
Pneumonia and organic heart disease.....	0	1	1
Pneumonia and nephritis.....	1	0	1
Pneumonia.....	1	0	1
Paresis.....	2	0	2
Apoplexy.....	1	1	2
Valvular disease of heart.....	1	0	1
Strangulation.....	1	0	1
Exhaustion from melancholia and sepsis.....	1	0	1
Organic brain disease.....	1	0	1
Epilepsy.....	0	1	1
Meningitis.....	0	1	1
Exhaustion following dementia.....	0	1	1
Nephritis.....	0	1	1
	<hr/> 9	<hr/> 6	<hr/> 15

## ALLEGED CAUSE OF NSANITY OF THOSE ADMITTED.

	Men.	Women.	Total.
Accident or injury .....	2	0	2
Alcoholism .....	9	1	10
Congenital .....	4	2	6
Cerebral anaemia .....	1	0	1
Domestic infelicity .....	0	1	1
Excesses .....	3	1	4
Epilepsy .....	5	2	7
Heredity .....	13	27	40
Heredity and overwork .....	0	1	1
Heredity and pneumonia .....	1	0	1
Heredity and alcoholism .....	3	0	3
La Grippe .....	1	0	1
Morphinism .....	1	1	2
Morphinism and cocaine .....	0	1	1
Nephritis .....	1	3	4
Puerperal .....	0	3	3
Puerperal and overwork .....	0	2	2
Senility .....	6	2	8
Senility and organic heart disease .....	0	1	1
Unknown .....	17	20	37
	67	68	135

## NATIVITY OF THOSE ADMITTED.

	Men.	Women.	Total.
Maine .....	48	54	102
New Brunswick .....	3	3	5
Poland .....	0	1	1
Ireland .....	0	3	3
Sweden .....	1	0	1
Germany .....	1	0	1
France .....	1	0	1
Minnesota .....	0	1	1
Pennsylvania .....	1	0	1
Ohio .....	1	0	1
California .....	1	0	1
Nova Scotia .....	0	1	1
Unknown .....	10	5	15
	67	68	135

## OCCUPATION OF THOSE ADMITTED.

	Men.	Women.	Total.
Basket maker .....	0	1	1
Blacksmith .....	1	0	1
Cooper .....	1	0	1
Carpenter .....	3	0	3
Domestic .....	0	16	16
Engineer .....	1	0	1
Farmer .....	17	0	17
Hostler .....	1	0	1
Housewife .....	0	27	27
Laborer .....	16	0	16
Merchant .....	3	0	3
Mill hands .....	2	3	5
Milliner .....	0	1	1
P. O. clerk .....	1	0	1
Sailor .....	5	0	5
Ship carpenter .....	1	0	1
Salesman .....	1	0	1
Seamstress .....	0	2	2
Student .....	2	0	2
Stenographer .....	0	1	1
Tramp .....	0	1	1
Teacher .....	1	1	2
Teamster .....	1	0	1
Woodsmen .....	5	0	5
Unknown .....	2	0	2
None .....	3	15	18
	67	68	135

## RESIDENCE OF THOSE ADMITTED.

	Men.	Women.	Total.
Bangor .....	11	20	31
Bradford .....	1	0	1
Blanchard .....	1	0	1
Brownville .....	1	0	1
Brooklin .....	1	0	1
Bar Harbor .....	1	0	1
Bradley .....	2	0	2
Bucksport .....	3	0	3
Belfast .....	3	2	5
Brewer .....	0	1	1
Cherryfield .....	2	0	2
Carmel .....	1	1	2
Calais .....	1	5	6
Camden .....	1	0	1
Clinton .....	1	0	1
Dexter .....	2	0	2
Danforth .....	0	1	1
Ellsworth .....	3	1	4
Eden .....	2	0	2
East Machias .....	1	1	2
Eastport .....	1	0	1
Edmunds .....	0	2	2
Franklin .....	1	0	1
Fort Kent .....	0	1	1
Fort Fairfield .....	0	1	1
Foxcroft .....	0	1	1
Greenville .....	1	1	2
Gouldsboro .....	0	1	1
Houlton .....	1	0	1
Hampden .....	2	0	2
Harrington .....	2	1	3
Hodgdon .....	0	1	1
Hancock .....	1	1	2
Island Falls .....	0	2	2
Jonesboro .....	1	0	1
Jonesport .....	1	2	3
Kenduskeag .....	1	0	1
Lamoine .....	1	0	1
Limestone .....	0	1	1
Lubec .....	0	2	2
Ludlow .....	0	1	1
Lincoln .....	0	1	1
Monroe .....	1	0	1
Milbridge .....	2	1	3
Monson .....	1	0	1
Millinocket .....	1	0	1
Machias .....	0	1	1
Newport .....	1	0	1
Newburgh .....	0	1	1
Old Town .....	3	1	4
Orrington .....	1	0	1
Orono .....	0	1	1
Orland .....	0	1	1
Penobscot .....	1	0	1
Plymouth .....	0	1	1
Presque Isle .....	0	1	1
Pittsfield .....	0	1	1
Passadumkeag .....	0	1	1
Sargentville .....	2	0	2
Sedgwick .....	0	2	2
Sullivan .....	0	1	1
Tremont .....	1	0	1
Van Buren .....	0	1	1
Verona .....	0	1	1
Winterport .....	1	1	2
Whiting .....	0	1	1
Westou .....	1	0	1
	67	68	135



## TREASURER'S REPORT.

---

*To the Trustees of The Eastern Maine Insane Hospital:*

I herewith present my report of the financial standing of the Eastern Maine Insane Hospital for the year ending November 30, 1904.

### Total Receipts and Disbursements of Cash for the Year Ending November 30, 1904.

DR.		
Balance of cash on hand November 1st, 1903 .....	\$2,262 99	
Receipts for year, hospital account .....	58,010 01	
Received on account of appropriation from state.....	30,000 00	
		\$90,273 00
CR.		
Disbursements for the year .....	\$81,754 88	
Balance cash on hand November 30, 1904.....	8,518 12	
		\$90,273 00

Respectfully submitted,

CHARLES S. PEARL, *Treasurer.*

## STEWARD'S REPORT.

*To the Trustees of The Eastern Maine Insane Hospital:*

I herewith present my report of the financial affairs of the Eastern Maine Insane Hospital, showing resources, liabilities, and department expenditures for the year ending November 30, 1904.

### COMPARATIVE STATEMENT "A." Of Resources and Liabilities, November 30, 1903.

RESOURCES—SUPPLIES IN STOCK.		
Cash on hand .....	\$2,262 99	
Due from State of Maine for support of patients .....	4,476 46	
Due from cities, towns, and individuals, for support of patients .....	11,670 80	
Provisions and groceries, \$2,494.13; crockery as per inventory, \$32.82 .....	2,526 95	
Dry goods, clothing, etc., as per inventory .....	2,230 34	
Coal as per inventory .....	3,382 06	
Medical supplies as per inventory .....	599 52	
Horses, swine, produce and stable, \$1,110.00; farm, \$2,439.38; garden, \$1,706.05, per inventory .....	5,255 43	
Repairs and improvements, lumber, hardware, paint stock, etc., per inventory .....	462 18	
Engineers pipe, fittings, and electrical supplies, per inventory .....	182 77	
		\$33,049 50
LIABILITIES.		
Due firms and individuals, account supplies .....	\$22,104 87	
Due employes for pay roll .....	2,298 68	
		\$24,403 55
Net resources as per Hospital account "A" in annual statement November 30, 1903 .....		\$8,645 95

### COMPARATIVE STATEMENT "B." Of Resources—Supplies in use, November 30, 1903.

Dispensary, medical instruments .....	\$1,108 87	
Farm agricultural implements, carts, sleds, tools, etc .....	860 26	
Stable, carriages, sleighs, harnesses, tools, etc .....	2,114 98	
Engineer's department, tools, etc .....	652 74	
Expense, hospital stationery, books and supplies in offices ..	446 26	
Hospital furnishings, furniture, bedding, etc .....	25,715 17	
Garden, tools, etc .....	79 44	
Repairs and improvements, carpenters and painters tools, etc .....	596 64	
Net resources as per hospital account "B" in annual statement, November 30, 1903 .....		\$31,569 36

**COMPARATIVE STATEMENT "A."**  
**Of Resources and Liabilities November 30, 1904.**

RESOURCES—SUPPLIES IN STOCK.		
Cash on hand	\$8,518 12	
Due from State of Maine for support of patients	4,897 77	
Due from cities, towns, and individuals for support of patients	13,383 17	
Provisions and groceries, \$3,546.86; crockery as per inventory, \$17.23	3,564 09	
Dry goods, clothing, etc., as per inventory	2,692 07	
Coal, as per inventory	2,484 10	
Medical supplies, as per inventory	418 24	
Horses, swine, produce and stable, \$550.00; farm, \$1,821.26; garden, \$1,522.39, as per inventory	3,893 65	
Repairs and improvements, lumber, hardware, paint stock, etc., as per inventory	628 75	
Engineers pipe, fitting and electrical supplies, per inventory	381 81	
Hospital stationery, office fittings, etc., as per inventory	198 07	
		\$41,059 84
LIABILITIES.		
Due firms and individuals, account supplies	\$20,980 89	
Due employes for pay roll	2,067 30	
		\$23,048 19
Net resources as per Hospital account "A" in annual statement November 30, 1904		\$18,611 65

**COMPARATIVE STATEMENT "B."**  
**Of Resources—Supplies in Use November 30, 1904.**

Dispensary, medical instruments	\$1,075 19	
Farm—agricultural implements, carts, sleds, tools, etc	974 05	
Stable, carriages, sleighs, harnesses, tools, etc	1,291 40	
Engineer's department, tools, etc	737 18	
Expense, hospital stationery, books and supplies in offices	358 78	
Hospital furnishings, furniture, bedding, etc	25,337 78	
Garden, tools, etc	71 94	
Repairs and improvements, carpenter's and painter's tools, etc	698 44	
Net resources as per Hospital account "B" in annual statement, November 30, 1904		\$30,539 76

## FOURTH ANNUAL FINANCIAL STATE

	Supplies in stock per inventory available November 30, 1904.	Supplies in use per inventory unavailable November 30, 1904.	Trial Balance.		Net cost of departments.
Hospital account A, (supplies in stock) .....			\$8,645	95	
Hospital account A, (appropriation from State) .....			30,000	00	
Hospital account B, (supplies in use) .....			31,569	36	
Cash .....			\$8,518	12	
Dry goods department .....	\$2,692	07	2,319	54	
Dispensary .....	418	24	\$1,075	19	\$1,475
Farm .....	1,821	26	974	05	
Garden .....	1,522	39	71	94	
Grocery department .....	3,546	86	3,546	86	575
Stable .....	550	00	1,291	40	3,422
Expense .....	198	07	358	78	2,812
Light, heat and power (coal) .....	2,484	10	11,245	09	8,760
Repairs and improvements .....	628	75	693	44	5,725
Hospital furnishings .....	17	23	25,337	78	3,723
Subsistence .....				10,186	25
Interest and discount .....				252	53
Engineers department .....	381	81	737	18	4,646
Assembly hall .....				100	41
Ice .....				531	88
Water .....				482	11
Amusements .....				289	62
Salaries and wages due employees .....				2,067	30
State of Maine owes hospital .....				4,897	77
Cities, towns and persons owe hospital .....				13,383	17
Sundry persons hospital owes .....				20,980	89
	\$14,260	78	\$30,539	76	
			103,702	28	
			103,702	28	
Net cost to run or decrease in Hospital Account A .....					
Net cost to run or decrease in Hospital Account B .....					
					\$32,545
					74

We hereby certify that we have examined the accounts of the Treasurer and the Steward for the year ending November 30, 1904, and find them correct.

THOMAS WHITE, }  
 SIDNEY M. BIRD, } *Financial Committee*  
 GEO. E. MACOMBER, } *of Trustees.*

Respectfully submitted,

CHAS. F. PERRY, *Steward.*

MENT, NOVEMBER 30, 1904.

Net gain of departments.	Hospital Account A. Available assets.		Hospital Account B. Unavailable assets.		Resources B. Assets unavailable.	Resources A. Assets available.	Liabilities.
		\$8,645 95					
		30,000 00					
				\$31,569 36		\$8,518 12	
\$372 53					\$1,075 19	2,692 07	
70 53					974 05	418 24	
					71 94	1,521 26	
						1,522 39	
						3,546 86	
					1,291 40	550 00	
					358 78	198 07	
						2,484 10	
					693 44	628 75	
10,186 25					25,337 78	17 23	
252 53							
					737 18	381 81	
							\$2,067 30
						4,897 77	
						13,383 17	
							20,980 89
20,634 30	\$20,634 30						
1,029 60			\$1,029 60				
\$32,545 74							
Balance Hospital Account A. . . .	18,011 65						
Balance Hospital Account B. . . .			30,539 76				
	\$38,645 95	\$38,645 95	\$31,569 36	\$31,569 36			
Total resources A						\$41,059 84	
Total resources B					\$30,539 76	30,539 76	
Total resources and liabilities						\$71,599 60	\$23,048 19
Balance Hospital Account A. . . .							18,011 65
Balance Hospital Account B. . . .							30,539 76
						\$71,599 60	\$71,599 60

## GARDEN PRODUCTS.

9	Bushels apples.....	\$4 00
16¼	Bushels string beans.....	12 21
584	Quarts shelled beans.....	57 20
6	Bunches beets.....	30
6	Bushels beet greens.....	4 50
53½	Bushels beets.....	36 19
71½	Bushels carrots.....	35 70
22,405	Pounds cabbage.....	285 39
42	Boxes currants.....	6 30
636	Dozen corn.....	75 12
1,082	Heads celery.....	128 30
2,853	Cucumbers.....	57 06
16	Boxes gooseberries.....	2 40
403	Dozen heads lettuce.....	33 46
1,615	Bushels potatoes.....	951 05
115	bushels potatoes, small.....	17 25
84½	Bushels peas, early green.....	100 00
1,791	Pounds pumpkin.....	17 91
8	Boxes raspberries.....	1 28
336	Bunches radishes.....	26 88
47	Boxes strawberries.....	7 23
10,461	Pounds squash.....	139 69
341	Bushels turnips.....	200 80
115	Bushels tomatoes, green.....	40 40
700	Pounds tomatoes, ripe.....	17 54
		<hr/>
		\$2,258 16

## FARM.

62½	Bushels barley.....	\$40 63
1	Calf sold.....	2 50
79	Tons hay.....	1,062 00
2,497	Gals. milk.....	381 89
338	Bushels oats.....	152 10
6	Pigs.....	15 00
1,209½	Pounds pork.....	84 67
13	Tons straw.....	104 00
		<hr/>
		\$1,842 79

## LIST OF ARTICLES MADE IN SEWING ROOM FROM NOVEMBER 30, 1903, TO NOVEMBER 30, 1904.

2	Aprons, barber.		
3	Aprons, douch room.	430	Pillow slips.
58	Aprons, duck.	29	Pillow ticks.
151	Aprons, nurses.	4	Pin cushions.
6	Aprons, print.	4	Restraint collars.
36	Bibs, duck.	4	Pairs restraint mittens and belt.
3	Bureau covers.	6	Restraint straps.
44	Camisoles.	6	Shirts.
389	Yards camisoles string.	3	Shirt waists.
18	Douch room caps.	8	Shirt waist suits.
6	Chemises.	298	Sheets, bleached.
2	Commode covers.	607	Sheets unbleached.
2	Corset covers.	3	Sheets, rubber.
14	Couch ticks.	114	Skirts.
93	Pairs cuffs, nurses.	3	Splashes.
1	Curtain, dark.	44	Tablecloths.
37	Curtain sash.	364	Towels, dish.
4	Doilies.	315	Towels, hand.
6	Drawers.	24	Towels, pack.
6	Dresses, strong.	42	Towels, roller.
9	HOLDERS.	33	Towels for stable, made from old spreads.
75	Feet lawn tennis strips.	60	Traycloths.
1	Lung protector.	14	Uniforms.
12	Mattress ticks.	9	Uniform waists.
222	Napkins.	4	Window Draperies.
283	Night gowns, long.	31	Window shades.
15	Night gowns, short.	20	Wrappers.
12	Night shirts.		
7	Pillows.		

LIST OF ARTICLES REPAIRED IN SEWING ROOM FROM  
NOVEMBER 30, 1903 TO NOVEMBER 30, 1904.

183	Blankets.	1	Restraint collar.
117	Camisoles.	2	Pairs restraint mittens.
142	Coats.	4	Restraint sheets.
27	Drawers, ladies.	41	Rugs.
145	Drawers, men.	456	Sheets.
106	Dresses.	596	Shirts.
305	Pairs hose.	38	Skirts.
1	Laundry bag.	101	Spreads.
1	Mattress.	14	Tablecloths.
56	Nightgowns.	33	Towels.
1	Pair pajamas.	8	Undervests.
165	Pants.	75	Vests.
10	Pillows.	14	Window shades.
75	Pillow slips.		

LIST OF ARTICLES TAGGED IN SEWING ROOM FROM  
NOVEMBER 30, 1903, TO NOVEMBER 30, 1904.

3	Pair arm-elastics.	7	Neckscarfs.
4	Bathrobes.	25	Pairs overalls.
478	Blankets.	18	Pairs overshoes.
33	Caps.	3	Pairs pants.
83	Coats.	68	Shirts.
4	Pairs drawers.	7	Pairs slippers.
18	Pairs gloves.	3	Smoking jackets.
4	Handkerchiefs.	10	Sweaters.
5	Hats.	151	Ties.
766	Pairs hose.	2	Vests.
24	Pairs mittens.	2	Pairs wristers.



## CHAPLAINS' REPORT.

---

*To the Honorable Trustees of the Eastern Maine Insane Hospital:*

It gives pleasure to report that religious services were held Sabbath afternoons in the large audience hall of the institution during the year.

The superintendent and his assistants effectively co-operated in the work, and evinced a deep interest in everything that was accomplished by these services beneficial to the patients. I reflect the sentiments of all who had the privilege of conducting the services, in expressing appreciation of the uniform courtesy and kindness of the superintendent and other officials toward us, making it a pleasure to have a part in the work.

A pleasing feature of the exercises meriting praise and encouragement was appropriate singing, contributing, as it did, very much to the interest of the patients in the service.

Unquestionably the patients derive much benefit from these meetings, as one may notice by the attention and interest with which they follow the service and the satisfaction oftentimes expressed.

The trustees and the institution are to be congratulated in having for this and other purposes so spacious a hall of admirable acoustic qualities. All that is done here is well done.

Respectfully submitted,

EDWARD McSWEENEY.