

MAINE STATE LEGISLATURE

The following document is provided by the
LAW AND LEGISLATIVE DIGITAL LIBRARY
at the Maine State Law and Legislative Reference Library
<http://legislature.maine.gov/lawlib>



Reproduced from scanned originals with text recognition applied
(searchable text may contain some errors and/or omissions)

ANNUAL COMPLIANCE REPORT

STATE OF MAINE WORKERS' COMPENSATION BOARD



LAW & LEGISLATIVE
REFERENCE LIBRARY
43 STATE HOUSE STATION
AUGUSTA, ME 04333

JUL 20 2000

1999 Compliance Report

January 1, 1999 - December 31, 1999

Monitoring, Audit & Enforcement Division

Paul R. Dionne
Executive Director

Steven P. Minkowsky
Deputy Director of Benefits Administration

KF
3615
.Z99
M227
1999

27 State House Station
Augusta, Maine 04333-0027
(207) 287-3751

On April 18, 2000, the Workers' Compensation Board unanimously accepted the Annual Compliance Report from January 1, 1999 through December 31, 1999. This report represents the efforts of the staff from Computer Services, the Coverage Division, the Claims Management Division, the Monitoring, Audit and Enforcement (MAE) Division, and the workers' compensation community.

CAVEATS

- The 1999 Quarterly Compliance Reports represent static results based upon data received by the deadline for each quarter.
- The 1999 Annual Compliance Report represents the dynamic results based upon data received by March 30, 2000.
- The Board's current benchmarks are as follows:
 - (1) Payment of Initial Indemnity Benefits made within 0-14 days is 80%.
 - (2) Memoranda of Payment received within 0-17 days is 75%.
- The Reconciliation Report process identified internal and external errors and problems. Ongoing testing and analysis of the Reconciliation and Compliance Reports will improve the quality of the data.
- Employer delays in reporting dates of injury and/or dates of incapacity lower insurance company and third party administrator compliance. Future programs could provide greater insight into this problem.
- Confusion with some members of the workers' compensation community in completing the new forms may have impacted on the compliance percentages. Statewide workshops held throughout the state during 1999 have been addressing this problem.
- Question marks listed on this report indicate that the insurance company, the third-party administrator, or the self-administered employer did not provide the required data; therefore, the time line calculation could not be determined.

Compliance information on individual insurance carriers, third-party administrators and self-administered employers for the four quarters of 1999 is listed on the Board's web-site: janus.state.me.us/wcb

Annual Compliance Report

1/1/99 – 12/31/99

1999 Quarterly Compliance Reports¹

	First Quarter		Second Quarter		Third Quarter		Fourth Quarter	
	<u>7 Days</u>	<u>10 Days</u>	<u>7 Days</u>	<u>10 Days</u>	<u>7 Days</u>	<u>10 Days</u>	<u>7 Days</u>	<u>10 Days</u>
First Report Of Injury Received within:	71.96%	81.88%	72.60%	81.28%	68.29%	77.13%	71.28%	79.31%
Initial Indemnity Payment Made Within 14 Days	81.24%		78.49%		79.54%		79.18%	
Memoranda of Payment Received Within 17 Days	77.27%		73.97%		75.45%		74.58%	

Compliance Comparison

	Pilot Project 1997	Annual Compliance ² 1999	Percent of Change
First Report Of Injury Received within 7 Days	36.74%	69.20%	88.35%
Initial Indemnity Payment Made Within 14 Days	59.39%	79.35%	33.61%
Memoranda of Payment Received Within 17 Days	56.78%	75.14%	32.34%

¹ Static results based upon data received by the deadline for each quarter.

² Dynamic results based upon data received by March 30, 2000.

1. The first part of the document is a list of the names of the persons who have been appointed to the various positions of the Board of Directors of the Corporation.

2. The second part of the document is a list of the names of the persons who have been appointed to the various positions of the Board of Directors of the Corporation.

3. The third part of the document is a list of the names of the persons who have been appointed to the various positions of the Board of Directors of the Corporation.

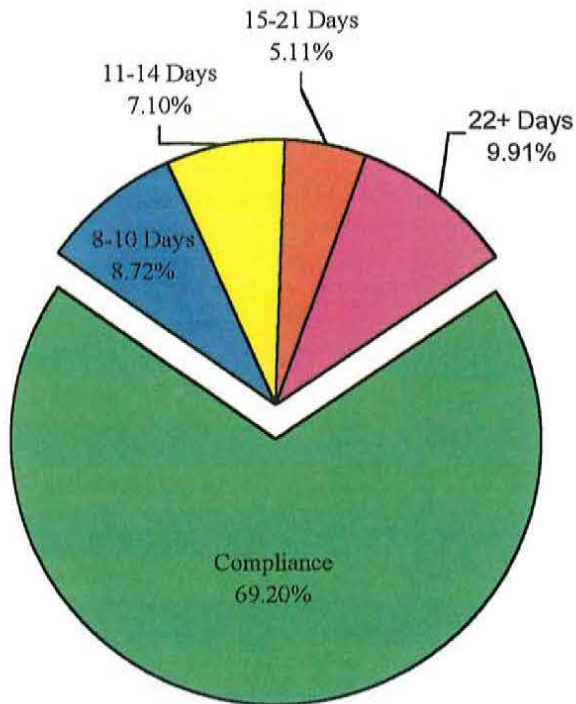
4. The fourth part of the document is a list of the names of the persons who have been appointed to the various positions of the Board of Directors of the Corporation.

5. The fifth part of the document is a list of the names of the persons who have been appointed to the various positions of the Board of Directors of the Corporation.

Annual Compliance Report

1/1/99 – 12/31/99

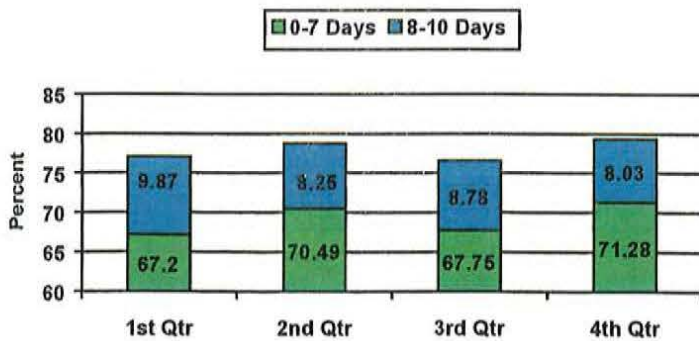
FIRST REPORTS OF OCCUPATIONAL INJURY OR DISEASE



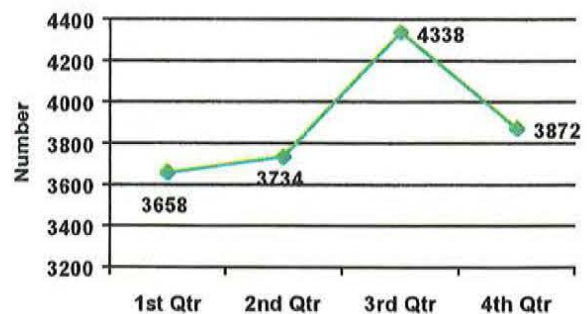
First Reports Received Within:

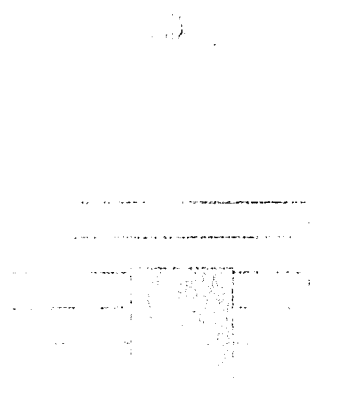
0 – 7	Days	10,797	69.20 %
8 – 10	Days	1,362	8.72 %
11 – 14	Days	1,109	7.10 %
15 – 21	Days	799	5.11 %
22+	Days	1,547	9.91 %
Total		15,602	100 %

Annual Compliance



First Reports

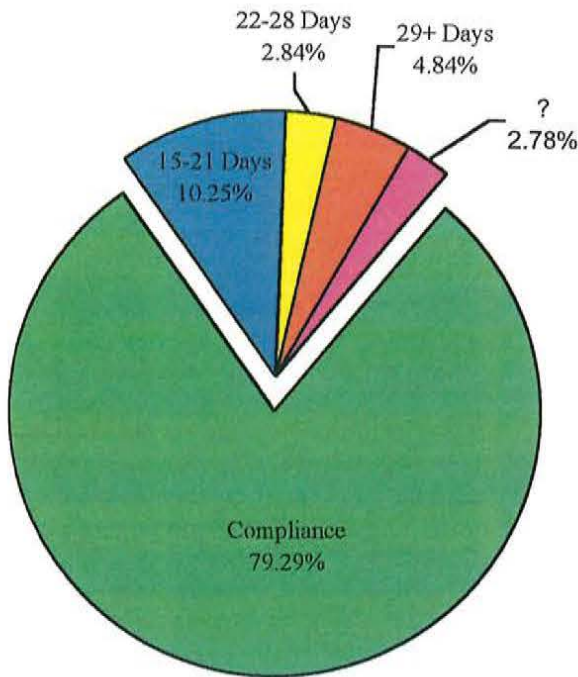




Annual Compliance Report

1/1/99 – 12/31/99

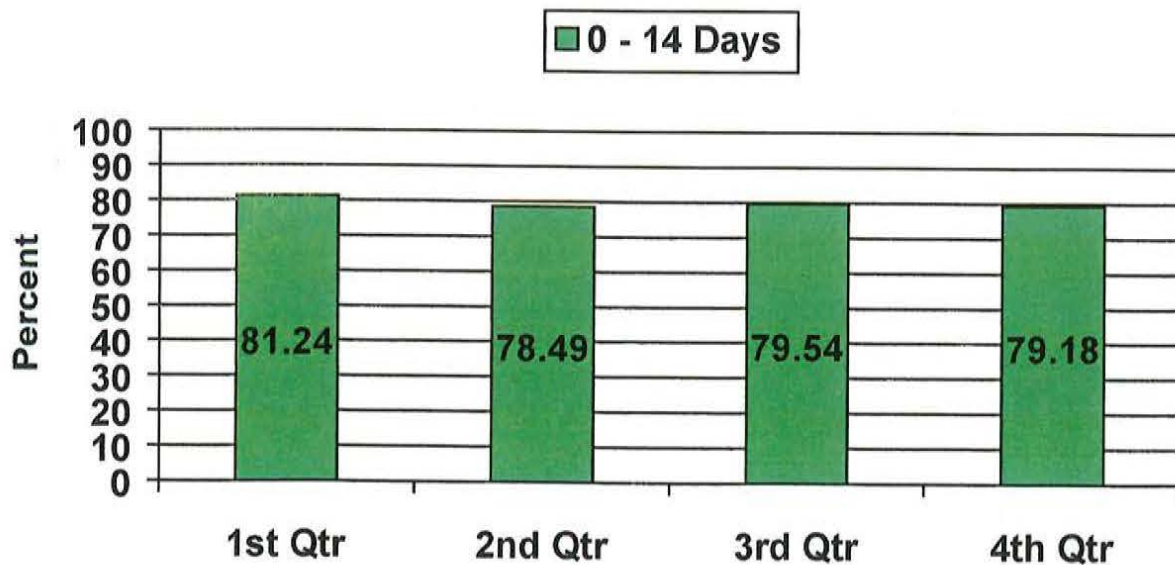
PAYMENT OF INITIAL INDEMNITY BENEFIT



Initial Payment Made Within:

0 – 14	Days	3,851	79.29 %
15 – 21	Days	498	10.25 %
22 – 28	Days	138	2.84 %
29 +	Days	235	4.84 %
?	Days	135	2.78 %
Total		4,857	100 %

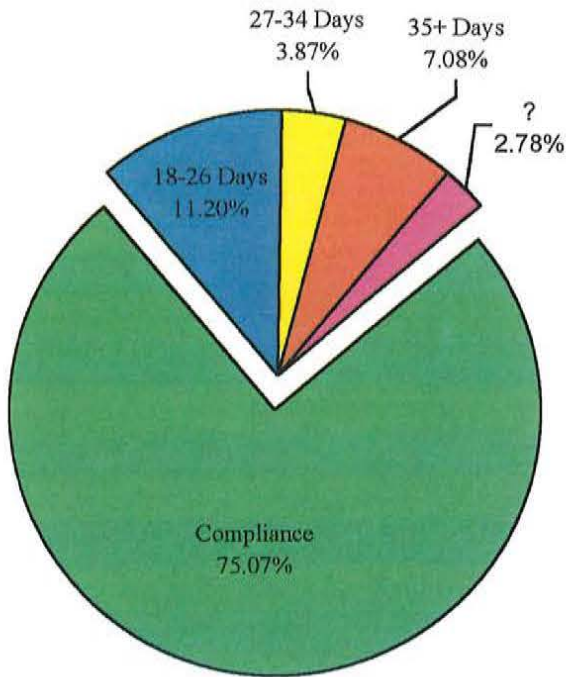
Quarterly Compliance Comparison



Annual Compliance Report

1/1/99 – 12/31/99

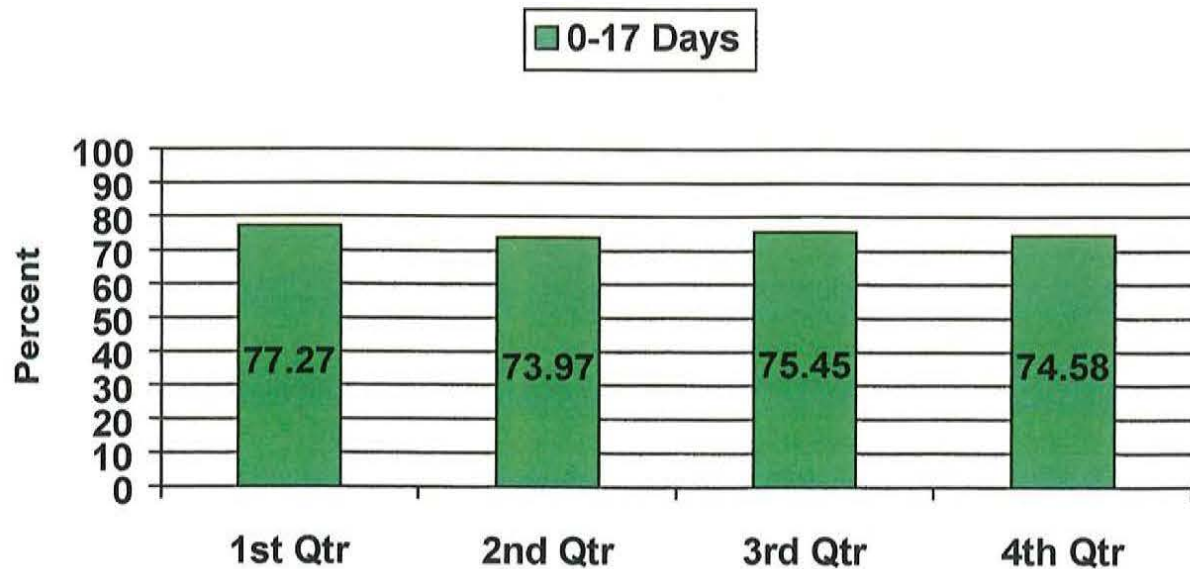
MEMORANDUM OF PAYMENT



Memorandum of Payment Received Within:

0 – 17	Days	3,646	75.07 %
18 – 26	Days	544	11.20 %
27 – 34	Days	188	3.87 %
35 +	Days	344	7.08 %
?	Days	135	2.78 %
Total		4,857	100%

Quarterly Compliance Comparison



Compliance Report

01/01/1999 - 12/31/1999

ACADIA INSURANCE CO
Ncci - 33391

Indemnity Payment

0-14 Days	33	76.74%
15-21 Days	4	9.30%
22-28 Days	2	4.65%
29+ Days	4	9.30%
? Days	0	0.00%

Memorandum of Payment Received

0-17 Days	36	83.72%
18-26 Days	2	4.65%
27-34 Days	2	4.65%
35+ Days	3	6.98%
? Days	0	0.00%

Total	43	100%	43	100%
-------	----	------	----	------

ACADIA INSURANCE CO.
Ncci - TPA12

Indemnity Payment

0-14 Days	0	0.00%
15-21 Days	0	0.00%
22-28 Days	0	0.00%
29+ Days	0	0.00%
? Days	0	0.00%

Memorandum of Payment Received

0-17 Days	0	0.00%
18-26 Days	0	0.00%
27-34 Days	0	0.00%
35+ Days	0	0.00%
? Days	0	0.00%

Total	0	100%	0	100%
-------	---	------	---	------

ACADIA INSURANCE COMPANY
Ncci - 30260

Indemnity Payment

0-14 Days	232	83.15%
15-21 Days	30	10.75%
22-28 Days	8	2.87%
29+ Days	9	3.23%
? Days	0	0.00%

Memorandum of Payment Received

0-17 Days	244	87.46%
18-26 Days	21	7.53%
27-34 Days	5	1.79%
35+ Days	9	3.23%
? Days	0	0.00%

Total	279	100%	279	100%
-------	-----	------	-----	------

Compliance Report

01/01/1999 - 12/31/1999

ACE AMERICAN INSURANCE COMPANY
Ncci - 23035

Indemnity Payment

0-14 Days	1	50.00%
15-21 Days	0	0.00%
22-28 Days	0	0.00%
29+ Days	1	50.00%
? Days	0	0.00%

Total	2	100%
-------	---	------

Memorandum of Payment Received

0-17 Days	1	50.00%
18-26 Days	0	0.00%
27-34 Days	0	0.00%
35+ Days	1	50.00%
? Days	0	0.00%

2	100%
---	------

ACE FIRE UNDERWRITERS INSURANC
Ncci - 15431

Indemnity Payment

0-14 Days	0	0.00%
15-21 Days	1	100.00%
22-28 Days	0	0.00%
29+ Days	0	0.00%
? Days	0	0.00%

Total	1	100%
-------	---	------

Memorandum of Payment Received

0-17 Days	0	0.00%
18-26 Days	1	100.00%
27-34 Days	0	0.00%
35+ Days	0	0.00%
? Days	0	0.00%

1	100%
---	------

AMERICAN & FOREIGN INS CO
Ncci - 14699

Indemnity Payment

0-14 Days	1	100.00%
15-21 Days	0	0.00%
22-28 Days	0	0.00%
29+ Days	0	0.00%
? Days	0	0.00%

Total	1	100%
-------	---	------

Memorandum of Payment Received

0-17 Days	0	0.00%
18-26 Days	0	0.00%
27-34 Days	0	0.00%
35+ Days	1	100.00%
? Days	0	0.00%

1	100%
---	------

Compliance Report

01/01/1999 - 12/31/1999

AMERICAN AUTOMOBILE INS CO
Ncci - 29760

Indemnity Payment

0-14 Days	1	100.00%
15-21 Days	0	0.00%
22-28 Days	0	0.00%
29+ Days	0	0.00%
? Days	0	0.00%

Total	1	100%
-------	---	------

Memorandum of Payment Received

0-17 Days	1	100.00%
18-26 Days	0	0.00%
27-34 Days	0	0.00%
35+ Days	0	0.00%
? Days	0	0.00%

Total	1	100%
-------	---	------

AMERICAN EMPLOYERS INS. CO.
Ncci - 10049

Indemnity Payment

0-14 Days	18	75.00%
15-21 Days	5	20.83%
22-28 Days	1	4.17%
29+ Days	0	0.00%
? Days	0	0.00%

Total	24	100%
-------	----	------

Memorandum of Payment Received

0-17 Days	18	75.00%
18-26 Days	4	16.67%
27-34 Days	0	0.00%
35+ Days	2	8.33%
? Days	0	0.00%

Total	24	100%
-------	----	------

AMERICAN INS CO
Ncci - 12289

Indemnity Payment

0-14 Days	0	0.00%
15-21 Days	0	0.00%
22-28 Days	0	0.00%
29+ Days	1	100.00%
? Days	0	0.00%

Total	1	100%
-------	---	------

Memorandum of Payment Received

0-17 Days	0	0.00%
18-26 Days	0	0.00%
27-34 Days	0	0.00%
35+ Days	1	100.00%
? Days	0	0.00%

Total	1	100%
-------	---	------

Compliance Report

01/01/1999 - 12/31/1999

AMERICAN INTERSTATE INS. CO.
Ncci - 24759

Indemnity Payment

0-14 Days	18	78.26%
15-21 Days	3	13.04%
22-28 Days	2	8.70%
29+ Days	0	0.00%
? Days	0	0.00%

Memorandum of Payment Received

0-17 Days	17	73.91%
18-26 Days	6	26.09%
27-34 Days	0	0.00%
35+ Days	0	0.00%
? Days	0	0.00%

Total	23	100%	23	100%
-------	----	------	----	------

AMERICAN MANUFACTURERS MUT INS
Ncci - 17116

Indemnity Payment

0-14 Days	13	76.47%
15-21 Days	2	11.76%
22-28 Days	0	0.00%
29+ Days	0	0.00%
? Days	2	11.76%

Memorandum of Payment Received

0-17 Days	3	17.65%
18-26 Days	6	35.29%
27-34 Days	3	17.65%
35+ Days	3	17.65%
? Days	2	11.76%

Total	17	100%	17	100%
-------	----	------	----	------

AMERICAN MOTORISTS INS CO
Ncci - 10065

Indemnity Payment

0-14 Days	4	80.00%
15-21 Days	1	20.00%
22-28 Days	0	0.00%
29+ Days	0	0.00%
? Days	0	0.00%

Memorandum of Payment Received

0-17 Days	1	20.00%
18-26 Days	0	0.00%
27-34 Days	2	40.00%
35+ Days	2	40.00%
? Days	0	0.00%

Total	5	100%	5	100%
-------	---	------	---	------

Compliance Report

01/01/1999 - 12/31/1999

AMERICAN PROTECTION INS. CO..
Ncci - 19186

Indemnity Payment

0-14 Days	10	76.92%
15-21 Days	2	15.38%
22-28 Days	0	0.00%
29+ Days	1	7.69%
? Days	0	0.00%

Memorandum of Payment Received

0-17 Days	5	38.46%
18-26 Days	2	15.38%
27-34 Days	2	15.38%
35+ Days	4	30.77%
? Days	0	0.00%

Total	13	100%	13	100%
-------	----	------	----	------

AMGUARD INSURANCE COMPANY
Ncci - 21873

Indemnity Payment

0-14 Days	7	53.85%
15-21 Days	4	30.77%
22-28 Days	1	7.69%
29+ Days	1	7.69%
? Days	0	0.00%

Memorandum of Payment Received

0-17 Days	5	38.46%
18-26 Days	5	38.46%
27-34 Days	3	23.08%
35+ Days	0	0.00%
? Days	0	0.00%

Total	13	100%	13	100%
-------	----	------	----	------

ARGONAUT INS CO
Ncci - 14095

Indemnity Payment

0-14 Days	0	0.00%
15-21 Days	0	0.00%
22-28 Days	0	0.00%
29+ Days	0	0.00%
? Days	0	0.00%

Memorandum of Payment Received

0-17 Days	0	0.00%
18-26 Days	0	0.00%
27-34 Days	0	0.00%
35+ Days	0	0.00%
? Days	0	0.00%

Total	0	100%	0	100%
-------	---	------	---	------

Compliance Report

01/01/1999 - 12/31/1999

ARROW HART
Ncci - S356

Indemnity Payment

0-14 Days	3	100.00%
15-21 Days	0	0.00%
22-28 Days	0	0.00%
29+ Days	0	0.00%
? Days	0	0.00%

Total	3	100%
-------	---	------

Memorandum of Payment Received

0-17 Days	2	66.67%
18-26 Days	0	0.00%
27-34 Days	0	0.00%
35+ Days	1	33.33%
? Days	0	0.00%

3	100%
---	------

ARROW MUTUAL INS CO
Ncci - 16640

Indemnity Payment

0-14 Days	0	0.00%
15-21 Days	0	0.00%
22-28 Days	0	0.00%
29+ Days	0	0.00%
? Days	0	0.00%

Total	0	100%
-------	---	------

Memorandum of Payment Received

0-17 Days	0	0.00%
18-26 Days	0	0.00%
27-34 Days	0	0.00%
35+ Days	0	0.00%
? Days	0	0.00%

0	100%
---	------

ASSOCIATED INDEMNITY CORPORATI
Ncci - 10103

Indemnity Payment

0-14 Days	0	0.00%
15-21 Days	0	0.00%
22-28 Days	0	0.00%
29+ Days	0	0.00%
? Days	0	0.00%

Total	0	100%
-------	---	------

Memorandum of Payment Received

0-17 Days	0	0.00%
18-26 Days	0	0.00%
27-34 Days	0	0.00%
35+ Days	0	0.00%
? Days	0	0.00%

0	100%
---	------

Compliance Report

01/01/1999 - 12/31/1999

ASSURANCE CO OF AMERICA
Ncci - 12173

Indemnity Payment

0-14 Days	1	100.00%
15-21 Days	0	0.00%
22-28 Days	0	0.00%
29+ Days	0	0.00%
? Days	0	0.00%

Memorandum of Payment Received

0-17 Days	1	100.00%
18-26 Days	0	0.00%
27-34 Days	0	0.00%
35+ Days	0	0.00%
? Days	0	0.00%

Total	1	100%
-------	---	------

1	100%
---	------

ATLANTIC MUTUAL INS CO
Ncci - 16470

Indemnity Payment

0-14 Days	3	50.00%
15-21 Days	3	50.00%
22-28 Days	0	0.00%
29+ Days	0	0.00%
? Days	0	0.00%

Memorandum of Payment Received

0-17 Days	1	16.67%
18-26 Days	1	16.67%
27-34 Days	1	16.67%
35+ Days	3	50.00%
? Days	0	0.00%

Total	6	100%
-------	---	------

6	100%
---	------

BANGOR, CITY OF
Ncci - S705

Indemnity Payment

0-14 Days	13	86.67%
15-21 Days	2	13.33%
22-28 Days	0	0.00%
29+ Days	0	0.00%
? Days	0	0.00%

Memorandum of Payment Received

0-17 Days	14	93.33%
18-26 Days	1	6.67%
27-34 Days	0	0.00%
35+ Days	0	0.00%
? Days	0	0.00%

Total	15	100%
-------	----	------

15	100%
----	------

Compliance Report

01/01/1999 - 12/31/1999

BATH IRON WORKS

Ncci - S347

Indemnity Payment

0-14 Days	51	92.73%
15-21 Days	2	3.64%
22-28 Days	0	0.00%
29+ Days	2	3.64%
? Days	0	0.00%

Total	55	100%
-------	----	------

Memorandum of Payment Received

0-17 Days	51	92.73%
18-26 Days	1	1.82%
27-34 Days	2	3.64%
35+ Days	1	1.82%
? Days	0	0.00%

55	100%
----	------

BILL JOHNSON AGENCY

Ncci - S362

Indemnity Payment

0-14 Days	1	100.00%
15-21 Days	0	0.00%
22-28 Days	0	0.00%
29+ Days	0	0.00%
? Days	0	0.00%

Total	1	100%
-------	---	------

Memorandum of Payment Received

0-17 Days	1	100.00%
18-26 Days	0	0.00%
27-34 Days	0	0.00%
35+ Days	0	0.00%
? Days	0	0.00%

1	100%
---	------

BUCKLER IRVIN & GRAF

Ncci - S334

Indemnity Payment

0-14 Days	0	0.00%
15-21 Days	0	0.00%
22-28 Days	0	0.00%
29+ Days	1	100.00%
? Days	0	0.00%

Total	1	100%
-------	---	------

Memorandum of Payment Received

0-17 Days	0	0.00%
18-26 Days	0	0.00%
27-34 Days	0	0.00%
35+ Days	1	100.00%
? Days	0	0.00%

1	100%
---	------

Compliance Report

01/01/1999 - 12/31/1999

C/O M A D ASSOC. WKRS' COMP.. T
Ncci - S391

Indemnity Payment

0-14 Days	0	0.00%
15-21 Days	0	0.00%
22-28 Days	0	0.00%
29+ Days	0	0.00%
? Days	0	0.00%

Memorandum of Payment Received

0-17 Days	0	0.00%
18-26 Days	0	0.00%
27-34 Days	0	0.00%
35+ Days	0	0.00%
? Days	0	0.00%

Total	0	100%
-------	---	------

0	100%
---	------

CADILLAC MOUNTAIN INSURANCE CO
Ncci - 30252

Indemnity Payment

0-14 Days	17	100.00%
15-21 Days	0	0.00%
22-28 Days	0	0.00%
29+ Days	0	0.00%
? Days	0	0.00%

Memorandum of Payment Received

0-17 Days	17	100.00%
18-26 Days	0	0.00%
27-34 Days	0	0.00%
35+ Days	0	0.00%
? Days	0	0.00%

Total	17	100%
-------	----	------

17	100%
----	------

CENTENNIAL INS CO
Ncci - 12149

Indemnity Payment

0-14 Days	0	0.00%
15-21 Days	0	0.00%
22-28 Days	0	0.00%
29+ Days	0	0.00%
? Days	0	0.00%

Memorandum of Payment Received

0-17 Days	0	0.00%
18-26 Days	0	0.00%
27-34 Days	0	0.00%
35+ Days	0	0.00%
? Days	0	0.00%

Total	0	100%
-------	---	------

0	100%
---	------

Compliance Report

01/01/1999 - 12/31/1999

CENTRAL MAINE POWER CO
Ncci - S708

Indemnity Payment

0-14 Days	5	100.00%
15-21 Days	0	0.00%
22-28 Days	0	0.00%
29+ Days	0	0.00%
? Days	0	0.00%

Memorandum of Payment Received

0-17 Days	5	100.00%
18-26 Days	0	0.00%
27-34 Days	0	0.00%
35+ Days	0	0.00%
? Days	0	0.00%

Total	5	100%
-------	---	------

5	100%
---	------

CHARTER OAK FIRE INS
Ncci - 15318

Indemnity Payment

0-14 Days	5	62.50%
15-21 Days	3	37.50%
22-28 Days	0	0.00%
29+ Days	0	0.00%
? Days	0	0.00%

Memorandum of Payment Received

0-17 Days	4	50.00%
18-26 Days	3	37.50%
27-34 Days	0	0.00%
35+ Days	1	12.50%
? Days	0	0.00%

Total	8	100%
-------	---	------

8	100%
---	------

CHUBB INSURANCE CO
Ncci - 21512

Indemnity Payment

0-14 Days	1	50.00%
15-21 Days	1	50.00%
22-28 Days	0	0.00%
29+ Days	0	0.00%
? Days	0	0.00%

Memorandum of Payment Received

0-17 Days	0	0.00%
18-26 Days	0	0.00%
27-34 Days	0	0.00%
35+ Days	2	100.00%
? Days	0	0.00%

Total	2	100%
-------	---	------

2	100%
---	------

Compliance Report

01/01/1999 - 12/31/1999

CIANBRO CORP
Ncci - S344

Indemnity Payment

0-14 Days	0	0.00%
15-21 Days	0	0.00%
22-28 Days	0	0.00%
29+ Days	0	0.00%
? Days	0	0.00%

Memorandum of Payment Received

0-17 Days	0	0.00%
18-26 Days	0	0.00%
27-34 Days	0	0.00%
35+ Days	0	0.00%
? Days	0	0.00%

Total	0	100%	0	100%
-------	---	------	---	------

CITIZENS INSURANCE CO OF AMERI
Ncci - 11002

Indemnity Payment

0-14 Days	61	72.62%
15-21 Days	15	17.86%
22-28 Days	4	4.76%
29+ Days	3	3.57%
? Days	1	1.19%

Memorandum of Payment Received

0-17 Days	62	73.81%
18-26 Days	14	16.67%
27-34 Days	3	3.57%
35+ Days	4	4.76%
? Days	1	1.19%

Total	84	100%	84	100%
-------	----	------	----	------

CLAIMS MANAGEMENT INC.
Ncci - TPA10

Indemnity Payment

0-14 Days	11	42.31%
15-21 Days	6	23.08%
22-28 Days	2	7.69%
29+ Days	0	0.00%
? Days	7	26.92%

Memorandum of Payment Received

0-17 Days	8	30.77%
18-26 Days	4	15.38%
27-34 Days	4	15.38%
35+ Days	3	11.54%
? Days	7	26.92%

Total	26	100%	26	100%
-------	----	------	----	------

Compliance Report

01/01/1999 - 12/31/1999

CLARENDON NATIONAL INSURANCE C
Ncci - 25461

Indemnity Payment

0-14 Days	0	0.00%
15-21 Days	0	0.00%
22-28 Days	0	0.00%
29+ Days	2	100.00%
? Days	0	0.00%

Memorandum of Payment Received

0-17 Days	0	0.00%
18-26 Days	0	0.00%
27-34 Days	0	0.00%
35+ Days	2	100.00%
? Days	0	0.00%

Total	2	100%	2	100%
-------	---	------	---	------

CNA
Ncci - S392

Indemnity Payment

0-14 Days	5	100.00%
15-21 Days	0	0.00%
22-28 Days	0	0.00%
29+ Days	0	0.00%
? Days	0	0.00%

Memorandum of Payment Received

0-17 Days	3	60.00%
18-26 Days	1	20.00%
27-34 Days	0	0.00%
35+ Days	1	20.00%
? Days	0	0.00%

Total	5	100%	5	100%
-------	---	------	---	------

COMMERCIAL UNION YORK INS. CO.
Ncci - 14540

Indemnity Payment

0-14 Days	100	75.76%
15-21 Days	15	11.36%
22-28 Days	3	2.27%
29+ Days	5	3.79%
? Days	9	6.82%

Memorandum of Payment Received

0-17 Days	100	75.76%
18-26 Days	17	12.88%
27-34 Days	3	2.27%
35+ Days	3	2.27%
? Days	9	6.82%

Total	132	100%	132	100%
-------	-----	------	-----	------

Compliance Report

01/01/1999 - 12/31/1999

CONNECTICUT INDEMNITY CO, THE
Ncci - 11762

Indemnity Payment			Memorandum of Payment Received		
0-14 Days	37	48.05%	0-17 Days	30	38.96%
15-21 Days	10	12.99%	18-26 Days	11	14.29%
22-28 Days	3	3.90%	27-34 Days	6	7.79%
29+ Days	23	29.87%	35+ Days	26	33.77%
? Days	4	5.19%	? Days	4	5.19%
Total	77	100%		77	100%

CONSTITUTION STATE SERVICE
Ncci - S327

Indemnity Payment			Memorandum of Payment Received		
0-14 Days	11	73.33%	0-17 Days	11	73.33%
15-21 Days	4	26.67%	18-26 Days	2	13.33%
22-28 Days	0	0.00%	27-34 Days	0	0.00%
29+ Days	0	0.00%	35+ Days	2	13.33%
? Days	0	0.00%	? Days	0	0.00%
Total	15	100%		15	100%

CONSTITUTION STATE SERVICES
Ncci - TPA11

Indemnity Payment			Memorandum of Payment Received		
0-14 Days	0	0.00%	0-17 Days	0	0.00%
15-21 Days	0	0.00%	18-26 Days	0	0.00%
22-28 Days	0	0.00%	27-34 Days	0	0.00%
29+ Days	0	0.00%	35+ Days	0	0.00%
? Days	0	0.00%	? Days	0	0.00%
Total	0	100%		0	100%

Compliance Report

01/01/1999 - 12/31/1999

CONTINENTAL CASUALTY CO

Ncci - 10243

Indemnity Payment

0-14 Days	12	54.55%
15-21 Days	5	22.73%
22-28 Days	1	4.55%
29+ Days	0	0.00%
? Days	4	18.18%

Total	22	100%
-------	----	------

Memorandum of Payment Received

0-17 Days	10	45.45%
18-26 Days	4	18.18%
27-34 Days	2	9.09%
35+ Days	2	9.09%
? Days	4	18.18%

22	100%
----	------

CONTINENTAL INS COS

Ncci - 15113

Indemnity Payment

0-14 Days	1	100.00%
15-21 Days	0	0.00%
22-28 Days	0	0.00%
29+ Days	0	0.00%
? Days	0	0.00%

Total	1	100%
-------	---	------

Memorandum of Payment Received

0-17 Days	0	0.00%
18-26 Days	0	0.00%
27-34 Days	0	0.00%
35+ Days	1	100.00%
? Days	0	0.00%

1	100%
---	------

CRAWFORD & CO

Ncci - S305

Indemnity Payment

0-14 Days	1	50.00%
15-21 Days	0	0.00%
22-28 Days	1	50.00%
29+ Days	0	0.00%
? Days	0	0.00%

Total	2	100%
-------	---	------

Memorandum of Payment Received

0-17 Days	1	50.00%
18-26 Days	0	0.00%
27-34 Days	1	50.00%
35+ Days	0	0.00%
? Days	0	0.00%

2	100%
---	------

Compliance Report

01/01/1999 - 12/31/1999

CRUM & FORSTER
Ncci - 22322

Indemnity Payment

0-14 Days	1	100.00%
15-21 Days	0	0.00%
22-28 Days	0	0.00%
29+ Days	0	0.00%
? Days	0	0.00%

Memorandum of Payment Received

0-17 Days	0	0.00%
18-26 Days	0	0.00%
27-34 Days	0	0.00%
35+ Days	1	100.00%
? Days	0	0.00%

Total	1	100%	1	100%
-------	---	------	---	------

CUNNINGHAM & LINDSEY
Ncci - S396

Indemnity Payment

0-14 Days	3	50.00%
15-21 Days	0	0.00%
22-28 Days	1	16.67%
29+ Days	0	0.00%
? Days	2	33.33%

Memorandum of Payment Received

0-17 Days	1	16.67%
18-26 Days	2	33.33%
27-34 Days	0	0.00%
35+ Days	1	16.67%
? Days	2	33.33%

Total	6	100%	6	100%
-------	---	------	---	------

DUNLAP CLAIMS MANAGEMENT
Ncci - S357

Indemnity Payment

0-14 Days	143	82.18%
15-21 Days	22	12.64%
22-28 Days	2	1.15%
29+ Days	5	2.87%
? Days	2	1.15%

Memorandum of Payment Received

0-17 Days	135	77.59%
18-26 Days	25	14.37%
27-34 Days	1	0.57%
35+ Days	11	6.32%
? Days	2	1.15%

Total	174	100%	174	100%
-------	-----	------	-----	------

Compliance Report

01/01/1999 - 12/31/1999

EASTGUARD INSURANCE COMPANY
Ncci - 33936

Indemnity Payment

0-14 Days	19	67.86%
15-21 Days	5	17.86%
22-28 Days	2	7.14%
29+ Days	2	7.14%
? Days	0	0.00%

Memorandum of Payment Received

0-17 Days	15	53.57%
18-26 Days	6	21.43%
27-34 Days	4	14.29%
35+ Days	3	10.71%
? Days	0	0.00%

Total	28	100%
-------	----	------

28	100%
----	------

ELECTRIC INSURANCE COMPANY
Ncci - 12629

Indemnity Payment

0-14 Days	2	66.67%
15-21 Days	0	0.00%
22-28 Days	0	0.00%
29+ Days	0	0.00%
? Days	1	33.33%

Memorandum of Payment Received

0-17 Days	2	66.67%
18-26 Days	0	0.00%
27-34 Days	0	0.00%
35+ Days	0	0.00%
? Days	1	33.33%

Total	3	100%
-------	---	------

3	100%
---	------

EMPLOYERS FIRE INS CO
Ncci - 12300

Indemnity Payment

0-14 Days	10	76.92%
15-21 Days	0	0.00%
22-28 Days	1	7.69%
29+ Days	1	7.69%
? Days	1	7.69%

Memorandum of Payment Received

0-17 Days	8	61.54%
18-26 Days	1	7.69%
27-34 Days	2	15.38%
35+ Days	1	7.69%
? Days	1	7.69%

Total	13	100%
-------	----	------

13	100%
----	------

Compliance Report

01/01/1999 - 12/31/1999

EMPLOYERS INS OF WAUSAU

Ncci - 15555

Indemnity Payment

0-14 Days	16	47.06%
15-21 Days	8	23.53%
22-28 Days	1	2.94%
29+ Days	3	8.82%
? Days	6	17.65%

Memorandum of Payment Received

0-17 Days	13	38.24%
18-26 Days	9	26.47%
27-34 Days	2	5.88%
35+ Days	4	11.76%
? Days	6	17.65%

Total	34	100%	34	100%
-------	----	------	----	------

ESIS INC

Ncci - S370

Indemnity Payment

0-14 Days	3	37.50%
15-21 Days	5	62.50%
22-28 Days	0	0.00%
29+ Days	0	0.00%
? Days	0	0.00%

Memorandum of Payment Received

0-17 Days	4	50.00%
18-26 Days	4	50.00%
27-34 Days	0	0.00%
35+ Days	0	0.00%
? Days	0	0.00%

Total	8	100%	8	100%
-------	---	------	---	------

Excelsior Insurance Company

Ncci - 10650

Indemnity Payment

0-14 Days	28	90.32%
15-21 Days	1	3.23%
22-28 Days	1	3.23%
29+ Days	1	3.23%
? Days	0	0.00%

Memorandum of Payment Received

0-17 Days	28	90.32%
18-26 Days	2	6.45%
27-34 Days	0	0.00%
35+ Days	1	3.23%
? Days	0	0.00%

Total	31	100%	31	100%
-------	----	------	----	------

Compliance Report

01/01/1999 - 12/31/1999

FAIRFIELD INSURANCE COMPANY
Ncci - 32530

Indemnity Payment

0-14 Days	0	0.00%
15-21 Days	0	0.00%
22-28 Days	0	0.00%
29+ Days	0	0.00%
? Days	0	0.00%

Memorandum of Payment Received

0-17 Days	0	0.00%
18-26 Days	0	0.00%
27-34 Days	0	0.00%
35+ Days	0	0.00%
? Days	0	0.00%

Total	0	100%
-------	---	------

0	100%
---	------

FILENES

Ncci - S338

Indemnity Payment

0-14 Days	1	100.00%
15-21 Days	0	0.00%
22-28 Days	0	0.00%
29+ Days	0	0.00%
? Days	0	0.00%

Memorandum of Payment Received

0-17 Days	1	100.00%
18-26 Days	0	0.00%
27-34 Days	0	0.00%
35+ Days	0	0.00%
? Days	0	0.00%

Total	1	100%
-------	---	------

1	100%
---	------

FIRE & CASUALTY INSURANCE CO O
Ncci - 10731

Indemnity Payment

0-14 Days	1	8.33%
15-21 Days	4	33.33%
22-28 Days	1	8.33%
29+ Days	3	25.00%
? Days	3	25.00%

Memorandum of Payment Received

0-17 Days	2	16.67%
18-26 Days	3	25.00%
27-34 Days	2	16.67%
35+ Days	2	16.67%
? Days	3	25.00%

Total	12	100%
-------	----	------

12	100%
----	------

Compliance Report

01/01/1999 - 12/31/1999

FIREMANS FUND AMERICAN INS CO
Ncci - 12416

Indemnity Payment			Memorandum of Payment Received		
0-14 Days	41	80.39%	0-17 Days	28	54.90%
15-21 Days	6	11.76%	18-26 Days	15	29.41%
22-28 Days	2	3.92%	27-34 Days	5	9.80%
29+ Days	1	1.96%	35+ Days	2	3.92%
? Days	1	1.96%	? Days	1	1.96%
<hr/>			<hr/>		
Total	51	100%		51	100%

FRONTIER INSURANCE
Ncci - 21237

Indemnity Payment			Memorandum of Payment Received		
0-14 Days	1	100.00%	0-17 Days	0	0.00%
15-21 Days	0	0.00%	18-26 Days	1	100.00%
22-28 Days	0	0.00%	27-34 Days	0	0.00%
29+ Days	0	0.00%	35+ Days	0	0.00%
? Days	0	0.00%	? Days	0	0.00%
<hr/>			<hr/>		
Total	1	100%		1	100%

GAB ROBBINS
Ncci - TPA2

Indemnity Payment			Memorandum of Payment Received		
0-14 Days	0	0.00%	0-17 Days	0	0.00%
15-21 Days	0	0.00%	18-26 Days	0	0.00%
22-28 Days	0	0.00%	27-34 Days	0	0.00%
29+ Days	0	0.00%	35+ Days	0	0.00%
? Days	0	0.00%	? Days	0	0.00%
<hr/>			<hr/>		
Total	0	100%		0	100%

Compliance Report

01/01/1999 - 12/31/1999

GALLAGHER BASSETT INSURANCE SE
Ncci - TPA6

Indemnity Payment

0-14 Days	5	62.50%
15-21 Days	1	12.50%
22-28 Days	1	12.50%
29+ Days	1	12.50%
? Days	0	0.00%

Total	8	100%
-------	---	------

Memorandum of Payment Received

0-17 Days	4	50.00%
18-26 Days	1	12.50%
27-34 Days	1	12.50%
35+ Days	2	25.00%
? Days	0	0.00%

8	100%
---	------

GALLAGHER-BASSETT INS SERVICES
Ncci - S304

Indemnity Payment

0-14 Days	4	66.67%
15-21 Days	2	33.33%
22-28 Days	0	0.00%
29+ Days	0	0.00%
? Days	0	0.00%

Total	6	100%
-------	---	------

Memorandum of Payment Received

0-17 Days	3	50.00%
18-26 Days	2	33.33%
27-34 Days	1	16.67%
35+ Days	0	0.00%
? Days	0	0.00%

6	100%
---	------

GATES MACDONALD
Ncci - S743

Indemnity Payment

0-14 Days	3	27.27%
15-21 Days	1	9.09%
22-28 Days	3	27.27%
29+ Days	1	9.09%
? Days	3	27.27%

Total	11	100%
-------	----	------

Memorandum of Payment Received

0-17 Days	2	18.18%
18-26 Days	2	18.18%
27-34 Days	1	9.09%
35+ Days	3	27.27%
? Days	3	27.27%

11	100%
----	------

Compliance Report

01/01/1999 - 12/31/1999

GENERAL ACCIDENT INS CO
Ncci - 10359

Indemnity Payment

0-14 Days	0	0.00%
15-21 Days	0	0.00%
22-28 Days	0	0.00%
29+ Days	1	100.00%
? Days	0	0.00%

Memorandum of Payment Received

0-17 Days	0	0.00%
18-26 Days	0	0.00%
27-34 Days	0	0.00%
35+ Days	1	100.00%
? Days	0	0.00%

Total	1	100%
-------	---	------

1	100%
---	------

GENERAL ADJUSTMENT BUREAU
Ncci - S355

Indemnity Payment

0-14 Days	6	37.50%
15-21 Days	4	25.00%
22-28 Days	3	18.75%
29+ Days	2	12.50%
? Days	1	6.25%

Memorandum of Payment Received

0-17 Days	5	31.25%
18-26 Days	3	18.75%
27-34 Days	2	12.50%
35+ Days	5	31.25%
? Days	1	6.25%

Total	16	100%
-------	----	------

16	100%
----	------

GEORGIA-PACIFIC CORPORATION
Ncci - S714

Indemnity Payment

0-14 Days	4	100.00%
15-21 Days	0	0.00%
22-28 Days	0	0.00%
29+ Days	0	0.00%
? Days	0	0.00%

Memorandum of Payment Received

0-17 Days	2	50.00%
18-26 Days	1	25.00%
27-34 Days	1	25.00%
35+ Days	0	0.00%
? Days	0	0.00%

Total	4	100%
-------	---	------

4	100%
---	------

Compliance Report

01/01/1999 - 12/31/1999

Granite State Ins Co
Ncci - 13102

Indemnity Payment

Memorandum of Payment Received

0-14 Days	0	0.00%	0-17 Days	0	0.00%
15-21 Days	0	0.00%	18-26 Days	0	0.00%
22-28 Days	0	0.00%	27-34 Days	0	0.00%
29+ Days	0	0.00%	35+ Days	0	0.00%
? Days	0	0.00%	? Days	0	0.00%
<hr/>			<hr/>		
Total	0	100%		0	100%

GREAT AMERICAN INS CO
Ncci - 14176

Indemnity Payment

Memorandum of Payment Received

0-14 Days	0	0.00%	0-17 Days	0	0.00%
15-21 Days	0	0.00%	18-26 Days	0	0.00%
22-28 Days	0	0.00%	27-34 Days	0	0.00%
29+ Days	0	0.00%	35+ Days	0	0.00%
? Days	0	0.00%	? Days	0	0.00%
<hr/>			<hr/>		
Total	0	100%		0	100%

HANNAFORD BROTHERS
Ncci - S381

Indemnity Payment

Memorandum of Payment Received

0-14 Days	30	58.82%	0-17 Days	26	50.98%
15-21 Days	14	27.45%	18-26 Days	10	19.61%
22-28 Days	4	7.84%	27-34 Days	8	15.69%
29+ Days	2	3.92%	35+ Days	6	11.76%
? Days	1	1.96%	? Days	1	1.96%
<hr/>			<hr/>		
Total	51	100%		51	100%

Compliance Report

01/01/1999 - 12/31/1999

HANOVER INSURANCE CO

Ncci - 13633

Indemnity Payment

0-14 Days	74	71.15%
15-21 Days	13	12.50%
22-28 Days	4	3.85%
29+ Days	11	10.58%
? Days	2	1.92%

Memorandum of Payment Received

0-17 Days	68	65.38%
18-26 Days	17	16.35%
27-34 Days	3	2.88%
35+ Days	14	13.46%
? Days	2	1.92%

Total	104	100%
-------	-----	------

104	100%
-----	------

HELMSMAN MANAGEMENT SERVICE

Ncci - S321

Indemnity Payment

0-14 Days	25	73.53%
15-21 Days	2	5.88%
22-28 Days	2	5.88%
29+ Days	5	14.71%
? Days	0	0.00%

Memorandum of Payment Received

0-17 Days	25	73.53%
18-26 Days	2	5.88%
27-34 Days	3	8.82%
35+ Days	4	11.76%
? Days	0	0.00%

Total	34	100%
-------	----	------

34	100%
----	------

INS CO OF THE STATE OF PENN

Ncci - 13889

Indemnity Payment

0-14 Days	0	0.00%
15-21 Days	0	0.00%
22-28 Days	0	0.00%
29+ Days	0	0.00%
? Days	0	0.00%

Memorandum of Payment Received

0-17 Days	0	0.00%
18-26 Days	0	0.00%
27-34 Days	0	0.00%
35+ Days	0	0.00%
? Days	0	0.00%

Total	0	100%
-------	---	------

0	100%
---	------

Compliance Report

01/01/1999 - 12/31/1999

John Deere Ins Co
Ncci - 13668

Indemnity Payment

Memorandum of Payment Received

0-14 Days	0	0.00%	0-17 Days	0	0.00%
15-21 Days	0	0.00%	18-26 Days	0	0.00%
22-28 Days	0	0.00%	27-34 Days	0	0.00%
29+ Days	0	0.00%	35+ Days	0	0.00%
? Days	0	0.00%	? Days	0	0.00%
Total	0	100%		0	100%

LAPSE IN COVERAGE
Ncci - LAPSE

Indemnity Payment

Memorandum of Payment Received

0-14 Days	0	0.00%	0-17 Days	0	0.00%
15-21 Days	0	0.00%	18-26 Days	0	0.00%
22-28 Days	0	0.00%	27-34 Days	0	0.00%
29+ Days	0	0.00%	35+ Days	0	0.00%
? Days	0	0.00%	? Days	0	0.00%
Total	0	100%		0	100%

LEGION INSURANCE CO
Ncci - 24422

Indemnity Payment

Memorandum of Payment Received

0-14 Days	1	100.00%	0-17 Days	0	0.00%
15-21 Days	0	0.00%	18-26 Days	1	100.00%
22-28 Days	0	0.00%	27-34 Days	0	0.00%
29+ Days	0	0.00%	35+ Days	0	0.00%
? Days	0	0.00%	? Days	0	0.00%
Total	1	100%		1	100%

Compliance Report

01/01/1999 - 12/31/1999

LIBERTY MUTUAL INSURANCE CORP
Ncci - 27243

Indemnity Payment

0-14 Days	15	78.95%
15-21 Days	3	15.79%
22-28 Days	0	0.00%
29+ Days	0	0.00%
? Days	1	5.26%

Memorandum of Payment Received

0-17 Days	15	78.95%
18-26 Days	3	15.79%
27-34 Days	0	0.00%
35+ Days	0	0.00%
? Days	1	5.26%

Total	19	100%
-------	----	------

19	100%
----	------

LIBERTY INSURANCE CORP.
Ncci - 21814

Indemnity Payment

0-14 Days	63	95.45%
15-21 Days	2	3.03%
22-28 Days	0	0.00%
29+ Days	0	0.00%
? Days	1	1.52%

Memorandum of Payment Received

0-17 Days	63	95.45%
18-26 Days	2	3.03%
27-34 Days	0	0.00%
35+ Days	0	0.00%
? Days	1	1.52%

Total	66	100%
-------	----	------

66	100%
----	------

LIBERTY MUTUAL FIRE INSURANCE
Ncci - 16586

Indemnity Payment

0-14 Days	81	89.01%
15-21 Days	5	5.49%
22-28 Days	4	4.40%
29+ Days	1	1.10%
? Days	0	0.00%

Memorandum of Payment Received

0-17 Days	76	83.52%
18-26 Days	9	9.89%
27-34 Days	4	4.40%
35+ Days	2	2.20%
? Days	0	0.00%

Total	91	100%
-------	----	------

91	100%
----	------

Compliance Report

01/01/1999 - 12/31/1999

LIBERTY MUTUAL INS CO

Ncci - 15628

Indemnity Payment

0-14 Days	46	85.19%
15-21 Days	6	11.11%
22-28 Days	1	1.85%
29+ Days	1	1.85%
? Days	0	0.00%

Memorandum of Payment Received

0-17 Days	46	85.19%
18-26 Days	7	12.96%
27-34 Days	1	1.85%
35+ Days	0	0.00%
? Days	0	0.00%

Total	54	100%
-------	----	------

54	100%
----	------

LUMBER MUTUAL INS CO

Ncci - 16543

Indemnity Payment

0-14 Days	6	50.00%
15-21 Days	1	8.33%
22-28 Days	1	8.33%
29+ Days	2	16.67%
? Days	2	16.67%

Memorandum of Payment Received

0-17 Days	6	50.00%
18-26 Days	2	16.67%
27-34 Days	1	8.33%
35+ Days	1	8.33%
? Days	2	16.67%

Total	12	100%
-------	----	------

12	100%
----	------

LUMBER MUTUAL/SEACO INSURANCE

Ncci - 24597

Indemnity Payment

0-14 Days	2	20.00%
15-21 Days	3	30.00%
22-28 Days	1	10.00%
29+ Days	4	40.00%
? Days	0	0.00%

Memorandum of Payment Received

0-17 Days	2	20.00%
18-26 Days	3	30.00%
27-34 Days	0	0.00%
35+ Days	5	50.00%
? Days	0	0.00%

Total	10	100%
-------	----	------

10	100%
----	------

Compliance Report

01/01/1999 - 12/31/1999

LUMBERMEN'S UNDERWRITING ALLIA
Ncci - 18376

Indemnity Payment

0-14 Days	2	100.00%
15-21 Days	0	0.00%
22-28 Days	0	0.00%
29+ Days	0	0.00%
? Days	0	0.00%

Total	2	100%
-------	---	------

Memorandum of Payment Received

0-17 Days	1	50.00%
18-26 Days	1	50.00%
27-34 Days	0	0.00%
35+ Days	0	0.00%
? Days	0	0.00%

Total	2	100%
-------	---	------

LUMBERMENS MUTUAL CASUALTY CO
Ncci - 15644

Indemnity Payment

0-14 Days	9	52.94%
15-21 Days	6	35.29%
22-28 Days	1	5.88%
29+ Days	1	5.88%
? Days	0	0.00%

Total	17	100%
-------	----	------

Memorandum of Payment Received

0-17 Days	5	29.41%
18-26 Days	6	35.29%
27-34 Days	2	11.76%
35+ Days	4	23.53%
? Days	0	0.00%

Total	17	100%
-------	----	------

MAINE ADJUSTMENT SERVICE
Ncci - TPA9

Indemnity Payment

0-14 Days	0	0.00%
15-21 Days	1	100.00%
22-28 Days	0	0.00%
29+ Days	0	0.00%
? Days	0	0.00%

Total	1	100%
-------	---	------

Memorandum of Payment Received

0-17 Days	0	0.00%
18-26 Days	1	100.00%
27-34 Days	0	0.00%
35+ Days	0	0.00%
? Days	0	0.00%

Total	1	100%
-------	---	------

Compliance Report

01/01/1999 - 12/31/1999

MAINE AUTOMOBILE DEALERS

Ncci - S803

Indemnity Payment

0-14 Days	45	90.00%
15-21 Days	4	8.00%
22-28 Days	0	0.00%
29+ Days	1	2.00%
? Days	0	0.00%

Memorandum of Payment Received

0-17 Days	47	94.00%
18-26 Days	2	4.00%
27-34 Days	0	0.00%
35+ Days	1	2.00%
? Days	0	0.00%

Total	50	100%	50	100%
-------	----	------	----	------

MAINE BONDING & CASUALTY CO

Ncci - 12963

Indemnity Payment

0-14 Days	17	62.96%
15-21 Days	5	18.52%
22-28 Days	1	3.70%
29+ Days	2	7.41%
? Days	2	7.41%

Memorandum of Payment Received

0-17 Days	14	51.85%
18-26 Days	5	18.52%
27-34 Days	1	3.70%
35+ Days	5	18.52%
? Days	2	7.41%

Total	27	100%	27	100%
-------	----	------	----	------

MAINE EMPLOYERS MUTUAL INSURAN

Ncci - 30449

Indemnity Payment

0-14 Days	1,054	87.76%
15-21 Days	68	5.66%
22-28 Days	27	2.25%
29+ Days	52	4.33%
? Days	0	0.00%

Memorandum of Payment Received

0-17 Days	1,014	84.43%
18-26 Days	88	7.33%
27-34 Days	35	2.91%
35+ Days	64	5.33%
? Days	0	0.00%

Total	1,201	100%	1,201	100%
-------	-------	------	-------	------

Compliance Report

01/01/1999 - 12/31/1999

MAINE HEALTH CARE ASSOCIATION
Ncci - S387

Indemnity Payment

0-14 Days	53	94.64%
15-21 Days	2	3.57%
22-28 Days	0	0.00%
29+ Days	0	0.00%
? Days	1	1.79%

Memorandum of Payment Received

0-17 Days	52	92.86%
18-26 Days	1	1.79%
27-34 Days	1	1.79%
35+ Days	1	1.79%
? Days	1	1.79%

Total	56	100%
-------	----	------

56	100%
----	------

MAINE MOTOR TRANSPORT W.C. TRU
Ncci - S385

Indemnity Payment

0-14 Days	54	93.10%
15-21 Days	2	3.45%
22-28 Days	0	0.00%
29+ Days	1	1.72%
? Days	1	1.72%

Memorandum of Payment Received

0-17 Days	53	91.38%
18-26 Days	2	3.45%
27-34 Days	1	1.72%
35+ Days	1	1.72%
? Days	1	1.72%

Total	58	100%
-------	----	------

58	100%
----	------

MAINE MUNICIPAL ASSOCIATION
Ncci - S801

Indemnity Payment

0-14 Days	167	87.43%
15-21 Days	8	4.19%
22-28 Days	4	2.09%
29+ Days	12	6.28%
? Days	0	0.00%

Memorandum of Payment Received

0-17 Days	166	86.91%
18-26 Days	8	4.19%
27-34 Days	5	2.62%
35+ Days	12	6.28%
? Days	0	0.00%

Total	191	100%
-------	-----	------

191	100%
-----	------

Compliance Report

01/01/1999 - 12/31/1999

MAINE SCHOOL MGNT ASSOC
Ncci - S374

Indemnity Payment

0-14 Days	69	92.00%
15-21 Days	2	2.67%
22-28 Days	1	1.33%
29+ Days	3	4.00%
? Days	0	0.00%

Memorandum of Payment Received

0-17 Days	69	92.00%
18-26 Days	2	2.67%
27-34 Days	1	1.33%
35+ Days	3	4.00%
? Days	0	0.00%

Total	75	100%
-------	----	------

75	100%
----	------

MARYLAND CASUALTY CO
Ncci - 10545

Indemnity Payment

0-14 Days	2	22.22%
15-21 Days	1	11.11%
22-28 Days	2	22.22%
29+ Days	2	22.22%
? Days	2	22.22%

Memorandum of Payment Received

0-17 Days	1	11.11%
18-26 Days	1	11.11%
27-34 Days	0	0.00%
35+ Days	5	55.56%
? Days	2	22.22%

Total	9	100%
-------	---	------

9	100%
---	------

MASSACHUSETTS BAY INS CO
Ncci - 10006

Indemnity Payment

0-14 Days	110	78.57%
15-21 Days	18	12.86%
22-28 Days	4	2.86%
29+ Days	6	4.29%
? Days	2	1.43%

Memorandum of Payment Received

0-17 Days	101	72.14%
18-26 Days	25	17.86%
27-34 Days	5	3.57%
35+ Days	7	5.00%
? Days	2	1.43%

Total	140	100%
-------	-----	------

140	100%
-----	------

Compliance Report

01/01/1999 - 12/31/1999

Mead Oxford Corporation
Ncci - S394

Indemnity Payment

0-14 Days	9	90.00%
15-21 Days	1	10.00%
22-28 Days	0	0.00%
29+ Days	0	0.00%
? Days	0	0.00%

Memorandum of Payment Received

0-17 Days	10	100.00%
18-26 Days	0	0.00%
27-34 Days	0	0.00%
35+ Days	0	0.00%
? Days	0	0.00%

Total	10	100%	10	100%
-------	----	------	----	------

MEAD PUBLISHING PAPER DIV
Ncci - S765

Indemnity Payment

0-14 Days	3	100.00%
15-21 Days	0	0.00%
22-28 Days	0	0.00%
29+ Days	0	0.00%
? Days	0	0.00%

Memorandum of Payment Received

0-17 Days	3	100.00%
18-26 Days	0	0.00%
27-34 Days	0	0.00%
35+ Days	0	0.00%
? Days	0	0.00%

Total	3	100%	3	100%
-------	---	------	---	------

MORSE, PAYSON & NOYES
Ncci - S388

Indemnity Payment

0-14 Days	47	82.46%
15-21 Days	4	7.02%
22-28 Days	1	1.75%
29+ Days	4	7.02%
? Days	1	1.75%

Memorandum of Payment Received

0-17 Days	42	73.68%
18-26 Days	9	15.79%
27-34 Days	2	3.51%
35+ Days	3	5.26%
? Days	1	1.75%

Total	57	100%	57	100%
-------	----	------	----	------

Compliance Report

01/01/1999 - 12/31/1999

NATIONAL GRANGE MUT INS CO
Ncci - 16322

Indemnity Payment

0-14 Days	1	100.00%
15-21 Days	0	0.00%
22-28 Days	0	0.00%
29+ Days	0	0.00%
? Days	0	0.00%

Total	1	100%
-------	---	------

Memorandum of Payment Received

0-17 Days	1	100.00%
18-26 Days	0	0.00%
27-34 Days	0	0.00%
35+ Days	0	0.00%
? Days	0	0.00%

1	100%
---	------

NETHERLANDS INSURANCE COMPANY,
Ncci - 14184

Indemnity Payment

0-14 Days	27	93.10%
15-21 Days	2	6.90%
22-28 Days	0	0.00%
29+ Days	0	0.00%
? Days	0	0.00%

Total	29	100%
-------	----	------

Memorandum of Payment Received

0-17 Days	28	96.55%
18-26 Days	1	3.45%
27-34 Days	0	0.00%
35+ Days	0	0.00%
? Days	0	0.00%

29	100%
----	------

NEW ENGLAND TEL & TEL CO
Ncci - S729

Indemnity Payment

0-14 Days	17	89.47%
15-21 Days	1	5.26%
22-28 Days	1	5.26%
29+ Days	0	0.00%
? Days	0	0.00%

Total	19	100%
-------	----	------

Memorandum of Payment Received

0-17 Days	15	78.95%
18-26 Days	0	0.00%
27-34 Days	1	5.26%
35+ Days	3	15.79%
? Days	0	0.00%

19	100%
----	------

Compliance Report

01/01/1999 - 12/31/1999

NEW YORK UNDERWRITERS INS CO.
Ncci - 10456

Indemnity Payment

0-14 Days	0	0.00%
15-21 Days	0	0.00%
22-28 Days	0	0.00%
29+ Days	0	0.00%
? Days	1	100.00%

Total	1	100%
-------	---	------

Memorandum of Payment Received

0-17 Days	0	0.00%
18-26 Days	0	0.00%
27-34 Days	0	0.00%
35+ Days	0	0.00%
? Days	1	100.00%

Total	1	100%
-------	---	------

NO RECORDED COVERAGE

Ncci - NONE

Indemnity Payment

0-14 Days	4	44.44%
15-21 Days	2	22.22%
22-28 Days	1	11.11%
29+ Days	1	11.11%
? Days	1	11.11%

Total	9	100%
-------	---	------

Memorandum of Payment Received

0-17 Days	4	44.44%
18-26 Days	1	11.11%
27-34 Days	1	11.11%
35+ Days	2	22.22%
? Days	1	11.11%

Total	9	100%
-------	---	------

NORGUARD INSURANCE COMPANY

Ncci - 25844

Indemnity Payment

0-14 Days	5	41.67%
15-21 Days	1	8.33%
22-28 Days	2	16.67%
29+ Days	4	33.33%
? Days	0	0.00%

Total	12	100%
-------	----	------

Memorandum of Payment Received

0-17 Days	5	41.67%
18-26 Days	0	0.00%
27-34 Days	5	41.67%
35+ Days	2	16.67%
? Days	0	0.00%

Total	12	100%
-------	----	------

Compliance Report

01/01/1999 - 12/31/1999

NORTH AMERICAN SPECIALTY INS C
Ncci - 24147

Indemnity Payment

Memorandum of Payment Received

0-14 Days	0	0.00%	0-17 Days	0	0.00%
15-21 Days	0	0.00%	18-26 Days	0	0.00%
22-28 Days	0	0.00%	27-34 Days	0	0.00%
29+ Days	0	0.00%	35+ Days	0	0.00%
? Days	0	0.00%	? Days	0	0.00%
Total	0	100%		0	100%

NORTH RIVER INS
Ncci - 14508

Indemnity Payment

Memorandum of Payment Received

0-14 Days	1	100.00%	0-17 Days	1	100.00%
15-21 Days	0	0.00%	18-26 Days	0	0.00%
22-28 Days	0	0.00%	27-34 Days	0	0.00%
29+ Days	0	0.00%	35+ Days	0	0.00%
? Days	0	0.00%	? Days	0	0.00%
Total	1	100%		1	100%

Northern Assurance Co of Ameri
Ncci - 13773

Indemnity Payment

Memorandum of Payment Received

0-14 Days	1	100.00%	0-17 Days	1	100.00%
15-21 Days	0	0.00%	18-26 Days	0	0.00%
22-28 Days	0	0.00%	27-34 Days	0	0.00%
29+ Days	0	0.00%	35+ Days	0	0.00%
? Days	0	0.00%	? Days	0	0.00%
Total	1	100%		1	100%

Compliance Report

01/01/1999 - 12/31/1999

NORTHERN GENERAL SERVICES

Ncci - S323

Indemnity Payment

0-14 Days	113	75.33%
15-21 Days	23	15.33%
22-28 Days	3	2.00%
29+ Days	8	5.33%
? Days	3	2.00%

Memorandum of Payment Received

0-17 Days	118	78.67%
18-26 Days	17	11.33%
27-34 Days	6	4.00%
35+ Days	6	4.00%
? Days	3	2.00%

Total	150	100%
-------	-----	------

150	100%
-----	------

Northern Insurance Co of N Y

Ncci - 13765

Indemnity Payment

0-14 Days	9	75.00%
15-21 Days	1	8.33%
22-28 Days	0	0.00%
29+ Days	1	8.33%
? Days	1	8.33%

Memorandum of Payment Received

0-17 Days	3	25.00%
18-26 Days	4	33.33%
27-34 Days	1	8.33%
35+ Days	3	25.00%
? Days	1	8.33%

Total	12	100%
-------	----	------

12	100%
----	------

NYNEX CORPORATION

Ncci - S772

Indemnity Payment

0-14 Days	1	100.00%
15-21 Days	0	0.00%
22-28 Days	0	0.00%
29+ Days	0	0.00%
? Days	0	0.00%

Memorandum of Payment Received

0-17 Days	1	100.00%
18-26 Days	0	0.00%
27-34 Days	0	0.00%
35+ Days	0	0.00%
? Days	0	0.00%

Total	1	100%
-------	---	------

1	100%
---	------

Compliance Report

01/01/1999 - 12/31/1999

OLD REPUBLIC INS CO
Ncci - 11509

Indemnity Payment

Memorandum of Payment Received

0-14 Days	0	0.00%	0-17 Days	0	0.00%
15-21 Days	0	0.00%	18-26 Days	0	0.00%
22-28 Days	0	0.00%	27-34 Days	0	0.00%
29+ Days	0	0.00%	35+ Days	0	0.00%
? Days	0	0.00%	? Days	0	0.00%
Total	0	100%		0	100%

OTIS SPECIALTY PAPERS
Ncci - S386

Indemnity Payment

Memorandum of Payment Received

0-14 Days	0	0.00%	0-17 Days	0	0.00%
15-21 Days	0	0.00%	18-26 Days	0	0.00%
22-28 Days	0	0.00%	27-34 Days	0	0.00%
29+ Days	0	0.00%	35+ Days	0	0.00%
? Days	0	0.00%	? Days	0	0.00%
Total	0	100%		0	100%

PACIFIC EMPLOYERS INS CO
Ncci - 10677

Indemnity Payment

Memorandum of Payment Received

0-14 Days	30	90.91%	0-17 Days	26	78.79%
15-21 Days	1	3.03%	18-26 Days	4	12.12%
22-28 Days	0	0.00%	27-34 Days	1	3.03%
29+ Days	2	6.06%	35+ Days	2	6.06%
? Days	0	0.00%	? Days	0	0.00%
Total	33	100%		33	100%

Compliance Report

01/01/1999 - 12/31/1999

PEERLESS INS CO
Ncci - 11355

Indemnity Payment

0-14 Days	33	86.84%
15-21 Days	2	5.26%
22-28 Days	1	2.63%
29+ Days	2	5.26%
? Days	0	0.00%

Memorandum of Payment Received

0-17 Days	33	86.84%
18-26 Days	1	2.63%
27-34 Days	1	2.63%
35+ Days	3	7.89%
? Days	0	0.00%

Total	38	100%	38	100%
-------	----	------	----	------

PRATT & WHITNEY
Ncci - S333

Indemnity Payment

0-14 Days	2	100.00%
15-21 Days	0	0.00%
22-28 Days	0	0.00%
29+ Days	0	0.00%
? Days	0	0.00%

Memorandum of Payment Received

0-17 Days	2	100.00%
18-26 Days	0	0.00%
27-34 Days	0	0.00%
35+ Days	0	0.00%
? Days	0	0.00%

Total	2	100%	2	100%
-------	---	------	---	------

Providence Washington Ins Co
Ncci - 12939

Indemnity Payment

0-14 Days	0	0.00%
15-21 Days	0	0.00%
22-28 Days	0	0.00%
29+ Days	0	0.00%
? Days	0	0.00%

Memorandum of Payment Received

0-17 Days	0	0.00%
18-26 Days	0	0.00%
27-34 Days	0	0.00%
35+ Days	0	0.00%
? Days	0	0.00%

Total	0	100%	0	100%
-------	---	------	---	------

Compliance Report

01/01/1999 - 12/31/1999

PUBLIC SERVICE MUTUAL INS CO
Ncci - 16152

Indemnity Payment

0-14 Days	0	0.00%
15-21 Days	0	0.00%
22-28 Days	0	0.00%
29+ Days	0	0.00%
? Days	0	0.00%

Memorandum of Payment Received

0-17 Days	0	0.00%
18-26 Days	0	0.00%
27-34 Days	0	0.00%
35+ Days	0	0.00%
? Days	0	0.00%

Total	0	100%	0	100%
-------	---	------	---	------

REDLAND INSURANCE COMPANY
Ncci - 25453

Indemnity Payment

0-14 Days	5	100.00%
15-21 Days	0	0.00%
22-28 Days	0	0.00%
29+ Days	0	0.00%
? Days	0	0.00%

Memorandum of Payment Received

0-17 Days	5	100.00%
18-26 Days	0	0.00%
27-34 Days	0	0.00%
35+ Days	0	0.00%
? Days	0	0.00%

Total	5	100%	5	100%
-------	---	------	---	------

RELIANCE INSURANCE COMPANY
Ncci - 12521

Indemnity Payment

0-14 Days	6	42.86%
15-21 Days	1	7.14%
22-28 Days	1	7.14%
29+ Days	1	7.14%
? Days	5	35.71%

Memorandum of Payment Received

0-17 Days	2	14.29%
18-26 Days	2	14.29%
27-34 Days	3	21.43%
35+ Days	2	14.29%
? Days	5	35.71%

Total	14	100%	14	100%
-------	----	------	----	------

Compliance Report

01/01/1999 - 12/31/1999

RELIANCE NAT'L INDEMNITY INS. C
Ncci - 14478

Indemnity Payment			Memorandum of Payment Received		
0-14 Days	7	70.00%	0-17 Days	4	40.00%
15-21 Days	1	10.00%	18-26 Days	1	10.00%
22-28 Days	0	0.00%	27-34 Days	1	10.00%
29+ Days	0	0.00%	35+ Days	2	20.00%
? Days	2	20.00%	? Days	2	20.00%
Total	10	100%		10	100%

RELIANCE NATIONAL INS. CO
Ncci - 26379

Indemnity Payment			Memorandum of Payment Received		
0-14 Days	6	46.15%	0-17 Days	3	23.08%
15-21 Days	2	15.38%	18-26 Days	4	30.77%
22-28 Days	1	7.69%	27-34 Days	0	0.00%
29+ Days	1	7.69%	35+ Days	3	23.08%
? Days	3	23.08%	? Days	3	23.08%
Total	13	100%		13	100%

ROYAL & SUNALLIANCE
Ncci - 13684

Indemnity Payment			Memorandum of Payment Received		
0-14 Days	34	62.96%	0-17 Days	24	44.44%
15-21 Days	10	18.52%	18-26 Days	12	22.22%
22-28 Days	2	3.70%	27-34 Days	7	12.96%
29+ Days	3	5.56%	35+ Days	6	11.11%
? Days	5	9.26%	? Days	5	9.26%
Total	54	100%		54	100%

Compliance Report

01/01/1999 - 12/31/1999

RSKCO/ALEXSIS RISK MGT SERVICE
Ncci - S382

Indemnity Payment

0-14 Days	2	40.00%
15-21 Days	1	20.00%
22-28 Days	2	40.00%
29+ Days	0	0.00%
? Days	0	0.00%

Total	5	100%
-------	---	------

Memorandum of Payment Received

0-17 Days	2	40.00%
18-26 Days	1	20.00%
27-34 Days	1	20.00%
35+ Days	1	20.00%
? Days	0	0.00%

5	100%
---	------

RYDER CLAIMS SERVICE CORP
Ncci - S350

Indemnity Payment

0-14 Days	0	0.00%
15-21 Days	0	0.00%
22-28 Days	0	0.00%
29+ Days	0	0.00%
? Days	1	100.00%

Total	1	100%
-------	---	------

Memorandum of Payment Received

0-17 Days	0	0.00%
18-26 Days	0	0.00%
27-34 Days	0	0.00%
35+ Days	0	0.00%
? Days	1	100.00%

1	100%
---	------

SAFEGUARD INSURANCE COMPANY
Ncci - 13986

Indemnity Payment

0-14 Days	0	0.00%
15-21 Days	0	0.00%
22-28 Days	0	0.00%
29+ Days	0	0.00%
? Days	0	0.00%

Total	0	100%
-------	---	------

Memorandum of Payment Received

0-17 Days	0	0.00%
18-26 Days	0	0.00%
27-34 Days	0	0.00%
35+ Days	0	0.00%
? Days	0	0.00%

0	100%
---	------

Compliance Report

01/01/1999 - 12/31/1999

SAVERS PROPERTY & CASUALTY INS
Ncci - 31771

Indemnity Payment

0-14 Days	1	50.00%
15-21 Days	0	0.00%
22-28 Days	0	0.00%
29+ Days	0	0.00%
? Days	1	50.00%

Memorandum of Payment Received

0-17 Days	1	50.00%
18-26 Days	0	0.00%
27-34 Days	0	0.00%
35+ Days	0	0.00%
? Days	1	50.00%

Total	2	100%
-------	---	------

2	100%
---	------

SECURITY INSURANCE OF HARTFORD
Ncci - 12572

Indemnity Payment

0-14 Days	12	70.59%
15-21 Days	2	11.76%
22-28 Days	0	0.00%
29+ Days	3	17.65%
? Days	0	0.00%

Memorandum of Payment Received

0-17 Days	11	64.71%
18-26 Days	2	11.76%
27-34 Days	1	5.88%
35+ Days	3	17.65%
? Days	0	0.00%

Total	17	100%
-------	----	------

17	100%
----	------

SEDGEWICK OF MAINE INC
Ncci - S301

Indemnity Payment

0-14 Days	223	78.80%
15-21 Days	42	14.84%
22-28 Days	8	2.83%
29+ Days	4	1.41%
? Days	6	2.12%

Memorandum of Payment Received

0-17 Days	228	80.57%
18-26 Days	37	13.07%
27-34 Days	7	2.47%
35+ Days	5	1.77%
? Days	6	2.12%

Total	283	100%
-------	-----	------

283	100%
-----	------

Compliance Report

01/01/1999 - 12/31/1999

SEDGWICK JAMES OF NORTHERN NEW
Ncci - S383

Indemnity Payment

0-14 Days	68	86.08%
15-21 Days	7	8.86%
22-28 Days	2	2.53%
29+ Days	2	2.53%
? Days	0	0.00%

Memorandum of Payment Received

0-17 Days	69	87.34%
18-26 Days	8	10.13%
27-34 Days	0	0.00%
35+ Days	2	2.53%
? Days	0	0.00%

Total	79	100%
-------	----	------

79	100%
----	------

SEDGWICK OF NEW ENGLAND
Ncci - S399

Indemnity Payment

0-14 Days	7	77.78%
15-21 Days	0	0.00%
22-28 Days	1	11.11%
29+ Days	0	0.00%
? Days	1	11.11%

Memorandum of Payment Received

0-17 Days	5	55.56%
18-26 Days	1	11.11%
27-34 Days	0	0.00%
35+ Days	2	22.22%
? Days	1	11.11%

Total	9	100%
-------	---	------

9	100%
---	------

SENTRY INS
Ncci - 15571

Indemnity Payment

0-14 Days	1	50.00%
15-21 Days	0	0.00%
22-28 Days	0	0.00%
29+ Days	0	0.00%
? Days	1	50.00%

Memorandum of Payment Received

0-17 Days	1	50.00%
18-26 Days	0	0.00%
27-34 Days	0	0.00%
35+ Days	0	0.00%
? Days	1	50.00%

Total	2	100%
-------	---	------

2	100%
---	------

Compliance Report

01/01/1999 - 12/31/1999

SEVEN HILLS INSURANCE COMPANY
Ncci - 24287

Indemnity Payment

0-14 Days	0	0.00%
15-21 Days	0	0.00%
22-28 Days	0	0.00%
29+ Days	0	0.00%
? Days	0	0.00%

Total	0	100%
-------	---	------

Memorandum of Payment Received

0-17 Days	0	0.00%
18-26 Days	0	0.00%
27-34 Days	0	0.00%
35+ Days	0	0.00%
? Days	0	0.00%

0	100%
---	------

SPECIALTY RISK SERVICES INC
Ncci - TPA5

Indemnity Payment

0-14 Days	0	0.00%
15-21 Days	0	0.00%
22-28 Days	0	0.00%
29+ Days	0	0.00%
? Days	1	100.00%

Total	1	100%
-------	---	------

Memorandum of Payment Received

0-17 Days	0	0.00%
18-26 Days	0	0.00%
27-34 Days	0	0.00%
35+ Days	0	0.00%
? Days	1	100.00%

1	100%
---	------

St Paul Fire & Marine Ins Co
Ncci - 13706

Indemnity Payment

0-14 Days	7	41.18%
15-21 Days	2	11.76%
22-28 Days	1	5.88%
29+ Days	1	5.88%
? Days	6	35.29%

Total	17	100%
-------	----	------

Memorandum of Payment Received

0-17 Days	7	41.18%
18-26 Days	3	17.65%
27-34 Days	0	0.00%
35+ Days	1	5.88%
? Days	6	35.29%

17	100%
----	------

Compliance Report
/

01/01/1999 - 12/31/1999

ST PAUL GUARDIAN INS CO
Ncci - 14230

Indemnity Payment

0-14 Days	6	75.00%
15-21 Days	1	12.50%
22-28 Days	0	0.00%
29+ Days	0	0.00%
? Days	1	12.50%

Total	8	100%
-------	---	------

Memorandum of Payment Received

0-17 Days	6	75.00%
18-26 Days	1	12.50%
27-34 Days	0	0.00%
35+ Days	0	0.00%
? Days	1	12.50%

8	100%
---	------

STATE OF MAINE WORKERS COMP DI
Ncci - S369

Indemnity Payment

0-14 Days	94	93.07%
15-21 Days	6	5.94%
22-28 Days	0	0.00%
29+ Days	1	0.99%
? Days	0	0.00%

Total	101	100%
-------	-----	------

Memorandum of Payment Received

0-17 Days	94	93.07%
18-26 Days	5	4.95%
27-34 Days	1	0.99%
35+ Days	1	0.99%
? Days	0	0.00%

101	100%
-----	------

STERLING RISK MANAGEMENT SERVI
Ncci - S371

Indemnity Payment

0-14 Days	1	33.33%
15-21 Days	1	33.33%
22-28 Days	1	33.33%
29+ Days	0	0.00%
? Days	0	0.00%

Total	3	100%
-------	---	------

Memorandum of Payment Received

0-17 Days	0	0.00%
18-26 Days	2	66.67%
27-34 Days	0	0.00%
35+ Days	1	33.33%
? Days	0	0.00%

3	100%
---	------

Compliance Report

01/01/1999 - 12/31/1999

SYNERNET

Ncci - S395

Indemnity Payment

0-14 Days	20	58.82%
15-21 Days	4	11.76%
22-28 Days	1	2.94%
29+ Days	0	0.00%
? Days	9	26.47%

Memorandum of Payment Received

0-17 Days	21	61.76%
18-26 Days	3	8.82%
27-34 Days	0	0.00%
35+ Days	1	2.94%
? Days	9	26.47%

Total	34	100%	34	100%
-------	----	------	----	------

SYNERNET

Ncci - TPA8

Indemnity Payment

0-14 Days	4	44.44%
15-21 Days	3	33.33%
22-28 Days	0	0.00%
29+ Days	0	0.00%
? Days	2	22.22%

Memorandum of Payment Received

0-17 Days	5	55.56%
18-26 Days	2	22.22%
27-34 Days	0	0.00%
35+ Days	0	0.00%
? Days	2	22.22%

Total	9	100%	9	100%
-------	---	------	---	------

THE HARTFORD

Ncci - 10448

Indemnity Payment

0-14 Days	32	71.11%
15-21 Days	4	8.89%
22-28 Days	0	0.00%
29+ Days	5	11.11%
? Days	4	8.89%

Memorandum of Payment Received

0-17 Days	16	35.56%
18-26 Days	9	20.00%
27-34 Days	1	2.22%
35+ Days	15	33.33%
? Days	4	8.89%

Total	45	100%	45	100%
-------	----	------	----	------

Compliance Report

01/01/1999 - 12/31/1999

Transcontinental Ins Co
Ncci - 12688

Indemnity Payment

0-14 Days	24	80.00%
15-21 Days	3	10.00%
22-28 Days	0	0.00%
29+ Days	1	3.33%
? Days	2	6.67%

Total	30	100%
-------	----	------

Memorandum of Payment Received

0-17 Days	18	60.00%
18-26 Days	6	20.00%
27-34 Days	1	3.33%
35+ Days	3	10.00%
? Days	2	6.67%

30	100%
----	------

TRANSCONTINENTAL TECHNICAL SER
Ncci - S393

Indemnity Payment

0-14 Days	4	100.00%
15-21 Days	0	0.00%
22-28 Days	0	0.00%
29+ Days	0	0.00%
? Days	0	0.00%

Total	4	100%
-------	---	------

Memorandum of Payment Received

0-17 Days	1	25.00%
18-26 Days	0	0.00%
27-34 Days	1	25.00%
35+ Days	2	50.00%
? Days	0	0.00%

4	100%
---	------

Transportation Ins Co
Ncci - 12408

Indemnity Payment

0-14 Days	1	25.00%
15-21 Days	2	50.00%
22-28 Days	0	0.00%
29+ Days	1	25.00%
? Days	0	0.00%

Total	4	100%
-------	---	------

Memorandum of Payment Received

0-17 Days	1	25.00%
18-26 Days	1	25.00%
27-34 Days	1	25.00%
35+ Days	1	25.00%
? Days	0	0.00%

4	100%
---	------

Compliance Report

01/01/1999 - 12/31/1999

TRAVELERS INDEMNITY CO OF ILL
Ncci - 13579

Indemnity Payment

0-14 Days	19	73.08%
15-21 Days	5	19.23%
22-28 Days	1	3.85%
29+ Days	1	3.85%
? Days	0	0.00%

Memorandum of Payment Received

0-17 Days	16	61.54%
18-26 Days	5	19.23%
27-34 Days	2	7.69%
35+ Days	3	11.54%
? Days	0	0.00%

Total	26	100%
-------	----	------

26	100%
----	------

TRAVELERS INDEMNITY COMPANY OF
Ncci - 13439

Indemnity Payment

0-14 Days	5	62.50%
15-21 Days	1	12.50%
22-28 Days	0	0.00%
29+ Days	1	12.50%
? Days	1	12.50%

Memorandum of Payment Received

0-17 Days	5	62.50%
18-26 Days	1	12.50%
27-34 Days	1	12.50%
35+ Days	0	0.00%
? Days	1	12.50%

Total	8	100%
-------	---	------

8	100%
---	------

TRAVELERS INS CO
Ncci - 10804

Indemnity Payment

0-14 Days	45	72.58%
15-21 Days	11	17.74%
22-28 Days	1	1.61%
29+ Days	4	6.45%
? Days	1	1.61%

Memorandum of Payment Received

0-17 Days	40	64.52%
18-26 Days	11	17.74%
27-34 Days	3	4.84%
35+ Days	7	11.29%
? Days	1	1.61%

Total	62	100%
-------	----	------

62	100%
----	------

Compliance Report

01/01/1999 - 12/31/1999

TRAVELERS/AETNA C & S CO
Ncci - 11223

Indemnity Payment

Memorandum of Payment Received

0-14 Days	0	0.00%
15-21 Days	0	0.00%
22-28 Days	0	0.00%
29+ Days	0	0.00%
? Days	0	0.00%

0-17 Days	0	0.00%
18-26 Days	0	0.00%
27-34 Days	0	0.00%
35+ Days	0	0.00%
? Days	0	0.00%

Total	0	100%
-------	---	------

0	100%
---	------

TRUCK INSURANCE EXCHANGE
Ncci - 18244

Indemnity Payment

Memorandum of Payment Received

0-14 Days	0	0.00%
15-21 Days	0	0.00%
22-28 Days	0	0.00%
29+ Days	0	0.00%
? Days	0	0.00%

0-17 Days	0	0.00%
18-26 Days	0	0.00%
27-34 Days	0	0.00%
35+ Days	0	0.00%
? Days	0	0.00%

Total	0	100%
-------	---	------

0	100%
---	------

TWIN CITY FIRE INS CO
Ncci - 14974

Indemnity Payment

Memorandum of Payment Received

0-14 Days	1	50.00%
15-21 Days	0	0.00%
22-28 Days	0	0.00%
29+ Days	0	0.00%
? Days	1	50.00%

0-17 Days	1	50.00%
18-26 Days	0	0.00%
27-34 Days	0	0.00%
35+ Days	0	0.00%
? Days	1	50.00%

Total	2	100%
-------	---	------

2	100%
---	------

Compliance Report

01/01/1999 - 12/31/1999

UNITED PACIFIC INSURANCE CO
Ncci - 11312

Indemnity Payment

0-14 Days	6	66.67%
15-21 Days	2	22.22%
22-28 Days	0	0.00%
29+ Days	0	0.00%
? Days	1	11.11%

Memorandum of Payment Received

0-17 Days	4	44.44%
18-26 Days	3	33.33%
27-34 Days	1	11.11%
35+ Days	0	0.00%
? Days	1	11.11%

Total	9	100%
-------	---	------

9	100%
---	------

VALIANT INSURANCE CO
Ncci - 13048

Indemnity Payment

0-14 Days	0	0.00%
15-21 Days	0	0.00%
22-28 Days	0	0.00%
29+ Days	0	0.00%
? Days	1	100.00%

Memorandum of Payment Received

0-17 Days	0	0.00%
18-26 Days	0	0.00%
27-34 Days	0	0.00%
35+ Days	0	0.00%
? Days	1	100.00%

Total	1	100%
-------	---	------

1	100%
---	------

WAUSAU UNDERWRITERS INS CO
Ncci - 18996

Indemnity Payment

0-14 Days	6	50.00%
15-21 Days	2	16.67%
22-28 Days	2	16.67%
29+ Days	1	8.33%
? Days	1	8.33%

Memorandum of Payment Received

0-17 Days	4	33.33%
18-26 Days	3	25.00%
27-34 Days	2	16.67%
35+ Days	2	16.67%
? Days	1	8.33%

Total	12	100%
-------	----	------

12	100%
----	------

Compliance Report

01/01/1999 - 12/31/1999

White Mountains Insurance Co
Ncci - 33790

Indemnity Payment

0-14 Days	1	100.00%
15-21 Days	0	0.00%
22-28 Days	0	0.00%
29+ Days	0	0.00%
? Days	0	0.00%

Total	1	100%
-------	---	------

Memorandum of Payment Received

0-17 Days	1	100.00%
18-26 Days	0	0.00%
27-34 Days	0	0.00%
35+ Days	0	0.00%
? Days	0	0.00%

1	100%
---	------

Worcester Insurance Company
Ncci - 21644

Indemnity Payment

0-14 Days	1	25.00%
15-21 Days	2	50.00%
22-28 Days	0	0.00%
29+ Days	1	25.00%
? Days	0	0.00%

Total	4	100%
-------	---	------

Memorandum of Payment Received

0-17 Days	1	25.00%
18-26 Days	1	25.00%
27-34 Days	1	25.00%
35+ Days	1	25.00%
? Days	0	0.00%

4	100%
---	------

YASUDA FIRE & MARINE INSURANCE
Ncci - 19321

Indemnity Payment

0-14 Days	0	0.00%
15-21 Days	1	100.00%
22-28 Days	0	0.00%
29+ Days	0	0.00%
? Days	0	0.00%

Total	1	100%
-------	---	------

Memorandum of Payment Received

0-17 Days	0	0.00%
18-26 Days	1	100.00%
27-34 Days	0	0.00%
35+ Days	0	0.00%
? Days	0	0.00%

1	100%
---	------

Compliance Report

01/01/1999 - 12/31/1999

Yellow Freight System Inc
Ncci - S746

Indemnity Payment

Memorandum of Payment Received

0-14 Days	1	50.00%	0-17 Days	0	0.00%
15-21 Days	0	0.00%	18-26 Days	0	0.00%
22-28 Days	1	50.00%	27-34 Days	1	50.00%
29+ Days	0	0.00%	35+ Days	1	50.00%
? Days	0	0.00%	? Days	0	0.00%
Total	2	100%	Total	2	100%

ZURICH U.S.
Ncci - 10863

Indemnity Payment

Memorandum of Payment Received

0-14 Days	7	38.89%	0-17 Days	5	27.78%
15-21 Days	2	11.11%	18-26 Days	1	5.56%
22-28 Days	1	5.56%	27-34 Days	2	11.11%
29+ Days	2	11.11%	35+ Days	4	22.22%
? Days	6	33.33%	? Days	6	33.33%
Total	18	100%	Total	18	100%

? --> Indicates the Insurer, TPA, Self-insured Employer did not provide required data, and calculation could not be determined.



Summary Compliance Report 01/01/1999 - 12/31/1999

Indemnity Payment

0-14	Days	3853	79.35%
15-21	Days	499	10.28%
22-28	Days	138	2.84%
29+	Days	235	4.84%
?	Days	131	2.70%

Total		4856	100%
-------	--	------	------

Memorandum of Payment Received

0-17	Days	3649	75.14%
18-26	Days	544	11.20%
27-34	Days	188	3.87%
35+	Days	344	7.08%
?	Days	131	2.70%

		4856	100%
--	--	------	------