

MAINE STATE LEGISLATURE

The following document is provided by the
LAW AND LEGISLATIVE DIGITAL LIBRARY
at the Maine State Law and Legislative Reference Library
<http://legislature.maine.gov/lawlib>



Reproduced from electronic originals
(may include minor formatting differences from printed original)

2013 ANNUAL REPORT



Featured Courthouse – Kennebec County Superior Court – Augusta Maine

BOARD OF OVERSEERS OF THE BAR

CREATED BY THE MAINE SUPREME JUDICIAL COURT
IN 1978 TO GOVERN THE CONDUCT OF LAWYERS
AS OFFICERS OF THE COURT

2013 ANNUAL REPORT OF THE MAINE BOARD OF OVERSEERS OF THE BAR

Table of Contents

Introduction	1
Mission Statement	2
Board Leadership and Staff.....	2
Commissions	3
Overview of the Attorney Disciplinary Process.....	3
Grievance Complaints	3
Fee Arbitration Commission.....	4
Professional Ethics Commission.....	4
Education and Outreach Programs	5
Professional Update for Lawyers and Judges	6
Study of Maine Bar Rules with Respect to the Bar and the Public	6
Registration.....	6
Funding	6
Recognizing Volunteers.....	8
Statistics	10

COVER PHOTO CREDIT

Title: Kennebec County Courthouse, Augusta, Maine
Author: Jimmy Emerson
Source: flickr
License: Some rights reserved.



Board of Overseers of the Bar

2013 Annual Report

INTRODUCTION

The Board of Overseers of the Bar was created by the Maine Supreme Judicial Court in 1978 as an independent administrative body to govern the conduct of lawyers as officers of the Court. The Board regulates attorney conduct by enforcing the Maine Bar Rules and the Maine Rules of Professional Conduct (Rules) adopted by the Court. The purpose of those Rules is to provide appropriate standards for attorneys with respect to their practice of the profession of law, including, but not limited to, their relationship with their clients, the general public, other members of the legal profession, the courts, and other agencies of this state.

MISSION STATEMENT

The Board's mission is to encourage and promote competent and ethical practice by members of the Maine Bar, and to make these standards known to members of the public so that they have confidence in the legal profession in Maine.

The Board accomplishes its mission by:

- registering and regulating attorneys licensed to practice in Maine;
- approving and providing continuing legal education programs;
- requiring that all attorneys licensed to practice in Maine have met the Maine Supreme Judicial Court's continuing legal education standards;
- providing guidance to attorneys on ethical issues through written advisory opinions issued by the Professional Ethics Commission, as well as an ethics helpline;
- informing members of the public of their rights concerning proper attorney behavior and the availability of fee arbitration;
- enforcing Maine's code of ethics for attorneys; and
- endeavoring to achieve the best possible legal representation of clients through all of these measures.

BOARD LEADERSHIP AND STAFF

The Maine Supreme Judicial Court appoints Board members to oversee the operations of the organization. The Board is composed of six lawyers and three members of the public. Public members are appointed by the Court on the recommendation of the Governor. Board members may serve two consecutive three-year terms.

Board Members

Gregory T. Caswell (Chair) – Falmouth

Cathy A. DeMerchant – Augusta

Barbara H. Furey, Esq. – Portland

Charles E. Gilbert III, Esq. (Vice Chair) – Bangor

The Honorable Warren M. Silver – Bangor (Court Liaison)

Daniel A. Pileggi, Esq. – Ellsworth

Dawn M. Pelletier, Esq. – Bangor

Victoria Powers, Esq. – Portland

Stephen J. Schwartz, Esq. – Portland

Board Staff

Susan E. Adams, CLE/Registration Coordinator

Jody A. Breton, Registration Clerk

J. Scott Davis, Bar Counsel

Aria Eee, Assistant Bar Counsel

Heather S. Hinton, Assistant to the Executive Director

Alan P. Kelley, Assistant Bar Counsel

Karen Mondor, Assistant to Bar Counsel

Angela Morse, Board Clerk

Jacqueline M. Rogers, Executive Director

Donna L. Spillman, Assistant to Bar Counsel

COMMISSIONS

The Board appoints volunteer members to three Commissions established by the Maine Bar Rules: the Grievance Commission, the Fee Arbitration Commission, and the Professional Ethics Commission. Three-member panels of the Fee Arbitration Commission and the Grievance Commission conduct their duties and responsibilities as defined in the Maine Bar Rules. Each panel is comprised of two attorneys and one public member. The Professional Ethics Commission, consisting of eight attorneys, renders formal written advisory opinions to the Court, Board, Grievance Commission, Bar Counsel and members of the Maine bar. Those opinions involve the interpretation and application of the Maine Rules of Professional Conduct related to specific questions of lawyer conduct.

Information concerning the responsibilities and functions of the Board and each of its Commissions may be found on the Board's website.

OVERVIEW OF THE ATTORNEY DISCIPLINARY PROCESS

The purpose of the disciplinary system is to monitor the legal profession's compliance with the Court's promulgated rules of ethics and to discipline or otherwise sanction lawyers whose conduct violates those standards.

Complaints filed with the Board are taken very seriously. Each written complaint is reviewed by the office of Bar Counsel and investigated if it involves alleged misconduct that, if proven true, would be a violation of the Rules. Complaints that do not actually allege conduct in violation of the Rules are not subject to the disciplinary system.

The Board does not provide complainants with legal assistance or advice and the complaint process is not a substitute for a civil action. The disciplinary system is not designed to compensate a complaining party for monetary loss or emotional distress incurred as a result of attorney misconduct.

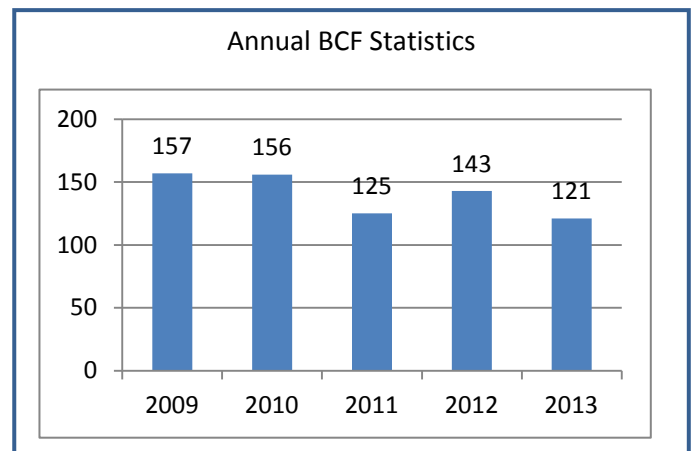
The forms of sanction or discipline that may be imposed upon a lawyer for unethical conduct are: dismissal with a warning, public reprimand, suspension, and disbarment. All orders and reports issued after disciplinary hearings are published on the Board's website.

GRIEVANCE COMPLAINTS

Upon receipt of a written signed grievance complaint, Bar Counsel determines whether the grievance, on its face, alleges professional misconduct. If the complaint does not allege professional misconduct, Bar Counsel will docket the matter as a Bar Counsel File (BCF). Bar Counsel will then dismiss the complaint, with or without investigation, pursuant to Maine Bar Rule 7.1(c). If the complaint does allege professional misconduct, the complaint will be docketed as a Grievance Commission File (GCF) and will be sent to the lawyer who is alleged to have committed the professional misconduct for a written response.

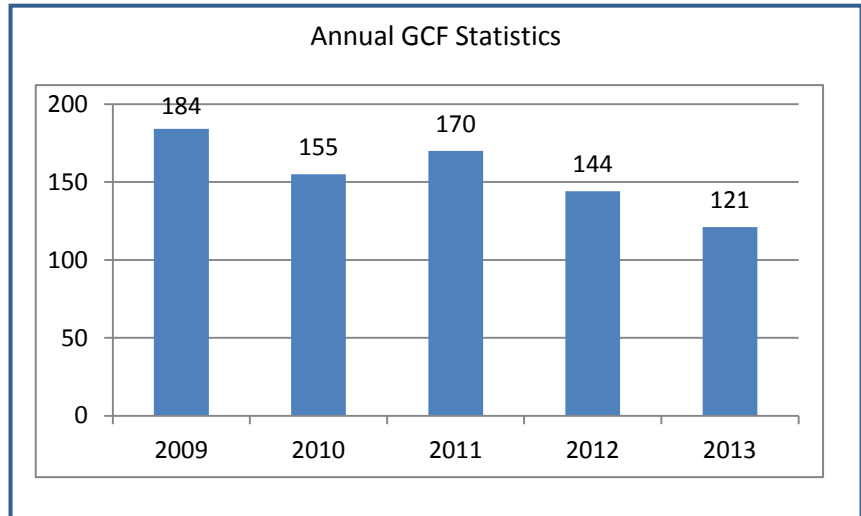
In 2013, Bar Counsel received, screened and docketed 121 BCF complaints. Upon written notice of a dismissal, the complainant is provided with an explanation as to the reason

for the dismissal. The complainant is also notified of the right to file a written request within fourteen days for the dismissal to be reviewed. If a review is sought, a public member of the Board or the Grievance Commission may approve, disapprove or modify the terms of the dismissal. In all dismissed BCF matters, the involved attorney is provided with copies of the complaint filing, the dismissal letter, and notice of any resulting request for review. The parties are



subsequently notified of the reviewer’s decision. Bar Counsel dismissed 121 BCF matters involving 117 attorneys. Upon receipt of the complainant’s request for review, 45 of those dismissals were reviewed by public members who affirmed 44 dismissals and disapproved one. At the close of 2013, there were eleven pending BCF matters, three of which were under public member review.

In 2013, Bar Counsel received, screened and docketed 121 new grievance complaints as GCF complaints. After investigation, three-member panels of the Grievance Commission met to conduct preliminary case reviews involving 140 GCF complaints pursuant to Maine Bar Rule 7.1(d). Such reviews are not hearings, and neither the respective complainant nor the respondent attorney is present or involved at the review. Although there is no confidentiality restriction requirement applicable to complainant and respondent attorney, Bar Counsel’s investigation and the Grievance Commission Panels’ preliminary review process are required to be kept confidential by the Board, the Commission and the Board’s staff under Maine Bar Rule 7.1(d)(2) and 7.3(k)(1).



The Grievance Commission issued 37 hearing decisions pursuant to Maine Bar Rule 7.1(e). All disciplinary hearings are open to the public and the resulting decisions are published on the Board’s website. At the close of 2013, there were 55 pending GCF matters.

Bar Counsel also investigated seventeen matters that were filed and considered by a Single Justice of the Maine Supreme Judicial Court. At the close of 2013, there were thirteen pending Court matters.

Preliminary Case Review Dispositions

Dismissal.....	85	Probable Cause for Hearing.....	38
Dismissal with Warning.....	16	Consent to Proceed to Court.....	1

Hearing Dispositions

Dismissal.....	1	Public Reprimand	18
Dismissal with Warning.....	9	Information Authorized.....	5
Stipulated Disposition Rejected by Panel.....	4		

Single Justice and Law Court Dispositions

Dismissal.....	0	Reinstatement - Administrative	2
Dismissal with Warning.....	0	Reinstatement - Discipline	0
Reciprocal Disbarment	0	Public Reprimand	2
Reciprocal Suspension	1	Resignation.....	2
Temporary Suspension	2	Suspension.....	5
Disability Suspension.....	2	Receiver Appointment	4
Suspended Suspension	2		

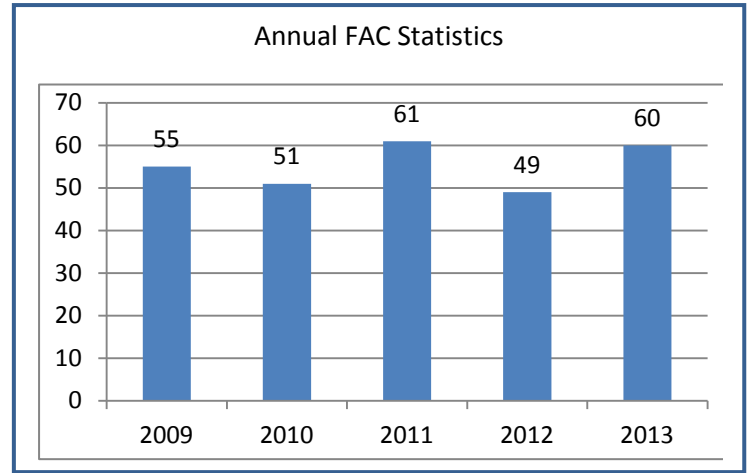
FEE ARBITRATION COMMISSION

The Board docketed 60 fee arbitration petitions in 2013.

Over the course of the year, 26 dispute matters were dismissed, settled or withdrawn prior to a hearing. Fee Arbitration Commission Panels heard and rendered Awards in 35 matters. Of those, the Commission decided in favor of the petitioner in 13 cases and in favor of the respondent attorney in 22 cases. At year-end, 17 fee arbitration matters remained pending.

On June 28, 2013, an experienced group of fee arbitrators discussed the Fee Arbitration process during a

presentation for the Maine State Bar Association Summer Meeting in Bar Harbor, Maine. This session entitled “Fees: How to Get Paid and Stay Paid,” addressed common billing mistakes and ways to avoid them, covered the importance of the written fee agreement, discussed highlights of the proposed amendments to Maine Bar Rule 9, and walked participants through the process of fee arbitration from notice to the client of the right to arbitrate to the fee arbitration award and confidential addendum.



Fee Arbitration Hearing Dispositions

Award to Petitioner	13
Award to Respondent.....	22

Dismissal 26

PROFESSIONAL ETHICS COMMISSION

The Professional Ethics Commission issues advisory opinions to the Court, Board, Bar Counsel, and to the Grievance Commission on matters involving the interpretation and application of the Maine Rules of Professional Conduct. The Commission also issues advisory opinions on ethical questions posed by members of the bar.

On January 8, 2013, the Professional Ethics Commission issued Opinion #207 – *The Ethics of Cloud Computing and Storage*. In its Opinion, the Commission advised that Maine attorneys may use cloud computing and storage for client matters as long as safeguards are in place to ensure that the attorney’s use of this technology does not result in the violation of any of the attorney’s obligations under the various Maine Rules of Professional Conduct. Recognizing that technology is perpetually renewing and reinventing itself, the Commission advised that cloud computing triggers the same ethical obligations that lawyers have always owed to their clients. With the expansion of remote data storage and processing services comes the need to observe the same previously established ethical obligations attorneys have followed in caring for client information. Opinion #207 is available on the Board’s website.

The Commission also assisted Bar Counsel in processing informal confidential opinions in letter format in response to several inquiries from Maine attorneys. The complete list of the Commission’s formal opinions is published on the Board’s website.

EDUCATION AND OUTREACH PROGRAMS

MCLE Seminars Approved by the Board - In conjunction with the annual registration period, the Board administers attorney compliance with Maine Bar Rule 12 - Continuing Legal Education. Active attorneys are required to annually complete eleven hours of approved continuing legal education programming, including one hour of ethics or professionalism. In 2013, The Board approved 2,734 courses that were submitted by 498 providers.

CLE Presentations - The Board is committed to educating lawyers about the ethical considerations surrounding their law practice and ways to avoid common disciplinary problems. As part of this ongoing initiative, the Board co-sponsored a free seminar with the Maine State Bar Association and the Maine Bar Foundation on December 12th entitled "Lawyer Trust Accounts – Management Principals & Recordkeeping Resources." The seminar focused on the need for attorneys and their staff to have a good grasp of client trust accounting. Speakers emphasized the fact that attorneys are ultimately responsible for their client funds. Presenters also discussed best practices regarding a clearly defined system that shows what clients have paid, where their money is going, and how much of their money in the trust account belongs to each client. In addition to providing guidance on financial reporting requirements, attendees were also provided with practical steps to ethically manage trust accounts. Approximately 200 lawyers and support staff attended the seminar.

Speaking Engagements - Also on the education front, Bar Counsel spoke at 30 state and national continuing legal education seminars. Through these educational opportunities, Bar Counsel offered guidance on practice management, how to avoid ethical problems, updates on disciplinary decisions and trends in the realm of ethics and professionalism. Bar Counsel welcomes the opportunity to provide CLE presentations to Maine lawyers and members of their staff on issues concerning ethics and professional responsibility.

Ethics Helpline - The office of Bar Counsel, through the Ethics Helpline, provides informal ethics and professional responsibility advice to Maine attorneys. Members of the bar are encouraged to call and speak with Bar Counsel to discuss ethical dilemmas. Bar Counsel will only discuss the conduct of the inquiring attorney or another member of that attorney's law firm. Board Regulation No. 28 prohibits Bar Counsel from advising an inquiring attorney about another attorney's actual or hypothetical conduct. *See also* Advisory Opinions #67 and #171. In 2013, Bar Counsel fielded 729 helpline calls; by comparison, 666 calls were received in 2012. The top ten subjects of inquiry for 2013 were:

1. Conflicts of Interest
2. Practice Management
3. Client Confidentiality
4. Termination/Withdrawal from Representation
5. Contact with Opposing Counsel
6. Attorney Fees
7. Reporting Professional Misconduct
8. Questions about Grievance Complaints and the Discipline Process
9. Client Communication
10. Clients with Diminished Capacity

Publications – The Board publishes a *Handbook for a Receiver of the Law Practice of a Disabled or Missing or Deceased ("DMD") Maine Attorney* and a *Practice Closing Guide*. Both publications are available in PDF format on the Board's website. The Board also publishes and distributes hundreds of brochures to the public regarding how to file a grievance complaint and/or a fee arbitration petition.

BOARD ONLINE PUBLICATIONS

- Bar Counsel Informal Advisory Ethics Notes
- Handbook for a Receiver of the Law Practice of a Disabled or Missing or Deceased ("DMD") Maine Attorney (PDF)
- Practice Closing Guide

To download these publications, visit www.mebaroverseers.org, go to "Attorney Services" and select "Legal Resources."

THE ETHICS HELPLINE NUMBER IS
207-623-1122

PROFESSIONAL UPDATE FOR MAINE LAWYERS AND JUDGES

As part of the Board's ongoing educational outreach to members of the bar, the Board publishes a bi-monthly electronic newsletter entitled *Professional Update for Maine Lawyers and Judges*. In addition to administrative updates, statistical data, notice of rule amendments and Court news, Bar Counsel publishes a regular feature entitled *Bar Counsel Informal Advisory Ethics Notes* wherein Bar Counsel provides ethical guidance to members of the bar. The newsletter also highlights an "Enduring Ethics Opinion" concerning earlier advisory opinions issued by the Professional Ethics Commission that remain in place under the Maine Rules of Professional Conduct.

STUDY OF MAINE BAR RULES WITH RESPECT TO THE BAR AND THE PUBLIC

The Board is charged with the continuous study of the Bar in its relation to the public and the courts for the purpose of making recommendations to the Court with respect to changes, additions or deletions to the Maine Bar Rules or for such other action by the Court as it may deem advisable in its supervision of the Bar. In response to that charge, the Board's *Committee to Review Maine Bar Disciplinary Enforcement Rules* continued its review of the Maine Bar Rules in 2013. After two years of work, the committee will be submitting a final report next year proposing new rules that integrate many of the current Maine Bar Rules and Board Regulations, as well as several aspects of the ABA Model Rules for Lawyer Disciplinary Enforcement.

A *Task Force to Study Maine's Bar Demographics* was established in 2013 to analyze attorney demographics including, but not limited to, registration status, age, admission year, gender, practice type, practice size, and geographic location. The Task Force will also examine how Maine's aging bar will impact the bar and access to justice for Maine citizens.

REGISTRATION

The Board maintains a Register of attorneys who are active members of the bar in the State of Maine, as well as records of inactive, resigned, suspended, and disbarred attorneys. At the end of 2013, the active registration roll total was 5,286 representing an increase of 61 attorneys over the prior year.

Administrative Suspensions

Maine Bar Rule 6 requires attorneys to annually renew their license with the Board. In 2013, forty-five attorneys were administratively suspended for failing to complete the registration process.

Demographics

Registration demographic statistics show that 69% of Maine's resident attorney population is concentrated in three counties: Cumberland, Kennebec, and Penobscot. Gender statistics show that women make up 35% of the bar and men represent 65% of the bar. Age demographics at year's end show that 21% of the bar is younger than 40, 50% are between the ages of 40 and 59, and that 29% are 60 years or older.

FUNDING

Although the Board is subject to the supervision of the Maine Supreme Judicial Court, the Board receives no public taxpayer monies to subsidize its operations. The Board's fiscal year is July 1 through June 30. Each year the Board prepares a budget for the Court's review and approval. The Board's audited financial statements for the 2012-2013 fiscal year show revenue of \$1,049,535 and expenses of \$970,187. The fund balance as of June 30, 2013 totaled \$670,074.

Registration Statistics

<i>Resident</i>	
Active	3807
Emeritus	3
Federal Judiciary	10
Maine Judicial	68
Law Clerk	25
<i>Non-Resident</i>	
Active	1366
Law Clerk	7
Total:	5286

In addition to the collection of licensing fees, the Board also collects the Court's annual assessment fee on behalf of the Lawyers' Fund for Client Protection (LFCP) and the Maine Assistance Program for Lawyers and Judges (MAP).

The purpose of the LFCP is to promote public confidence in the administration of justice and the integrity of the legal profession by reimbursing clients who suffer losses caused by an attorney's dishonest conduct. Generally, such conduct involves the misuse of funds in the care of the attorney or the misappropriation of funds for the attorney's personal benefit.

MAP has three purposes: to protect the interests of clients and the general public from harm caused by impaired lawyers or judges; to confidentially assist impaired members of the profession to begin and continue recovery; and to educate the bench, the bar, and the public as to the causes of and remedies for impairments affecting members of the legal profession.

RECOGNIZING VOLUNTEERS

The Board fulfills its mission with the assistance of volunteer attorneys and members of the public. Collectively, they devote hundreds of hours each year to protect the public. The work of the Board could not be accomplished without the donation of their time, talent, and expertise. Thank you.



RECEIVER RECOGNITION

The following attorneys were specially appointed by the Court pursuant to Maine Bar Rule 7.3(f) to wind down the practices of attorneys that were determined to be disabled, missing, deceased or unable to practice as a result of a disciplinary matter. As a service to the public and the bar, receivers donate countless hours to ensure that clients are protected. Thank you.

Thomas G. Ainsworth, Esq. – South Portland
Andrew T. Dawson, Esq. – Augusta
Nathaniel R. Fenton, Esq. – Bangor

Sarah Beth Neault, Esq. – York
David R. Weiss, Esq. – Bath



GRIEVANCE COMMISSION

William E. Baghdoyan, Esq., Chair – Augusta
John R. Bass II, Esq., Vice Chair – Portland
David S. Abramson, Esq. – Portland
Carletta M. Bassano, Esq. – Ellsworth
Frank H. Bishop, Esq. – Presque Isle
M. Ray Bradford Jr., Esq. – Bangor
Peter Clifford, Esq. – Kennebunk
Sallie M. Crittendon – Norway
Richard P. Dana – Cape Elizabeth
Mary A. Denison, Esq. – Winthrop
Steven E. Diaz, MD, FACEP – Waterville
Martica S. Douglas, Esq. – Portland
Emilie Van Eeghan – Canaan
Peter C. Fessenden, Esq. – Brunswick
David J. Fletcher, Esq. – Calais
Robert S. Frank, Esq. – Portland
John P. Gause, Esq. – Bangor
Martha C. Gaythwaite, Esq. – Portland
Franklin D. Gooding – Saco
Clarke C. Hambley, Jr., Esq. – Portland
Joe Hardy – York

Robert S. Hark, Esq. – Portland
Catherine L. Haynes, Esq. – Ellsworth
John C. Hunt, Esq. – Kennebunk
John R. Hutchins – Brunswick
Thomas H. Kelley, Esq. – Portland
Michael K. Knowles – Kennebunk
Justin D. LeBlanc, Esq. – Portland
Maurice A. Libner, Esq. – Brunswick
James A. McKenna III, Esq. – Hallowell
Sarah McPartland-Good, Esq. – Orono
Marjorie M. Medd – Norway
Cynthia M. Mehnert, Esq. – Bangor
Margaret J. Palmer, Ph.D. – New Gloucester
Victoria Powers, Esq. – Portland
Kenneth L. Roberts – Scarborough
Norman A. Ross – Hampden
William R. Stokes, Esq. – Augusta
Nolan Thompson – Portland
Vendean V. Vafiades, Esq. – Portland
Milton R. Wright – Readfield
Jud Knox – York

FEE ARBITRATION COMMISSION

Daniel J. Stevens, Esq., Chair – Augusta
Michael H. Ayotte, Esq. – Saco
Edmond J. Bearor, Esq. – Bangor
Paul F. Bolin – Bangor
Rufus E. Brown, Esq. – Portland
Rebecca A. Cayford, Esq. – Skowhegan
Steven E. Cope, Esq. – Portland
Rick Dacri – Kennebunk
Darren Defoe, Esq. – Biddeford
Cathy A. DeMerchant – Augusta
Gregory P. Dorr, Esq. – Bangor
Susan E. Driscoll, Esq. – Kennebunk
Arthur H. Dumas, Esq. – Sanford
Thomas P. Elias, Esq. – York
Angela M. Farrell, Esq. – Bangor
David M. Glasser, Esq. – Camden
Peter G. Hastings, Esq. – Fryeburg

Naomi H. Honeth, Esq. – Portland
Dennis L. Jones, Esq. – Farmingdale
Heidi J. Kinney – Orrington
Michael J. Levey, Esq. – Winthrop
Christopher L. Mann, Esq. – Augusta
Daniel J. Mitchell, Esq. – Portland
Steven J. Mogul, Esq. – Bangor
Jon S. Oxman, Esq. – Auburn
Lori M. Pelletier – Kennebunk
Paul T. Pierson, Esq. – Holden
Michael R. Poulin, Esq. – Auburn
Edward Rabasco Jr., Esq. – Lewiston
Michael B. Reynolds – Raymond
Timothy Smith – Corea
Edward M. Snook – Auburn
Michael E. Stern, Esq. – Wiscasset
Stephen W. Veazey – Norway

PROFESSIONAL ETHICS COMMISSION

Robert J. Stolt, Esq., Chair – Augusta
Ellen S. Best, Esq. – Blue Hill
James M. Bowie, Esq. – Portland
C. Donald Briggs III, Esq. – Rockport

Rebecca A. Cayford, Esq. – Skowhegan
Rita M. Farry, Esq. - Yarmouth
David L. Herzer, Jr., Esq. – Portland
Anne-Marie L. Storey, Esq. – Bangor

SPECIAL RECOGNITION

The following commission members' service ended in 2013:

Fee Arbitration Commission

Daniel J. Stevens, Esq. – Augusta
Gregory P. Dorr, Esq. – Bangor
Angela M. Farrell, Esq. – Bangor
Steven J. Mogul, Esq. – Bangor
Paul T. Pierson, Esq. – Holden
Edward Rabasco, Jr., Esq. – Lewiston
Michael E. Stern, Esq. – Wiscasset

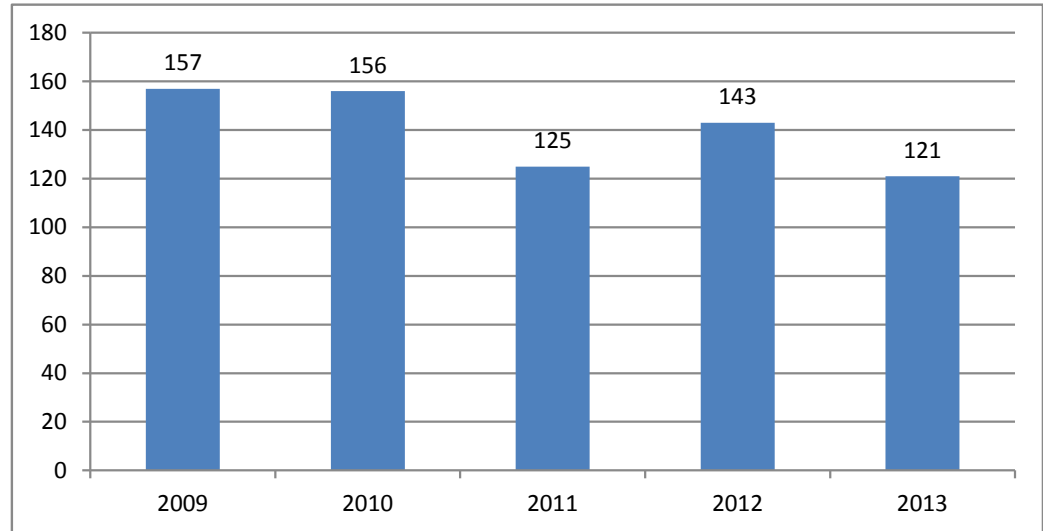
Professional Ethics Commission

Rebecca A. Cayford, Esq. – Skowhegan
Grievance Commission
William E. Baghdoyan, Esq. – Augusta
John R. Bass II, Esq. – Portland
Carletta M. Bassano, Esq. – Ellsworth
Martha C. Gaythwaite, Esq. – Portland
Joe Hardy – York
Victoria Powers, Esq. – Portland

Bar Counsel Files

Annual Statistics

Year	Total	Variance
2003	150	
2004	159	6.00%
2005	160	0.63%
2006	148	-7.50%
2007	117	-20.95%
2008	167	42.74%
2009	157	-5.99%
2010	156	-0.64%
2011	125	-19.87%
2012	143	14.40%
2013	121	-15.38%



Respondents by County

County	2009		2010		2011		2012		2013	
Androscoggin	9	5.73%	15	9.62%	9	7.20%	7	4.90%	14	11.57%
Aroostook	6	3.82%	5	3.21%	10	8.00%	6	4.20%	4	3.31%
Cumberland	40	25.48%	45	28.85%	29	23.20%	41	28.67%	35	28.93%
Franklin	2	1.27%	15	9.62%	1	0.80%	2	1.40%	0	0.00%
Hancock	3	1.91%	4	2.56%	3	2.40%	7	4.90%	3	2.48%
Kennebec	31	19.75%	15	9.62%	23	18.40%	18	12.59%	17	14.05%
Knox	4	2.55%	7	4.49%	2	1.60%	4	2.80%	2	1.65%
Lincoln	9	5.73%	3	1.92%	2	1.60%	4	2.80%	3	2.48%
Oxford	3	1.91%	11	7.05%	3	2.40%	6	4.20%	2	1.65%
Penobscot	21	13.38%	15	9.62%	17	13.60%	13	9.09%	16	13.22%
Piscataquis	0	0.00%	0	0.00%	1	0.80%	0	0.00%	0	0.00%
Sagadahoc	2	1.27%	3	1.92%	0	0.00%	1	0.70%	1	0.83%
Somerset	3	1.91%	0	0.00%	1	0.80%	7	4.90%	2	1.65%
Waldo	1	0.64%	2	1.28%	2	1.60%	6	4.20%	5	4.13%
Washington	1	0.64%	3	1.92%	8	6.40%	5	3.50%	5	4.13%
York	10	6.37%	10	6.41%	10	8.00%	12	8.39%	9	7.44%
Out of State	12	7.64%	3	1.92%	4	3.20%	4	2.80%	3	2.48%
Total:	157		156		125		143		121	

Bar Counsel Files

Area of Law

	2009		2010		2011		2012		2013	
Administrative/Municipal Law	11	7.01%	3	1.92%	0	0.00%	7	4.90%	7	5.79%
ADR/Mediation/Arbitration	0	0.00%	3	1.92%	1	0.80%	1	0.70%	0	0.00%
Bankruptcy Law	4	2.55%	3	1.92%	3	2.40%	1	0.70%	2	1.65%
Child Protection Law	2	1.27%	2	1.28%	2	1.60%	1	0.70%	0	0.00%
Civil Rights/Discrimination Law	2	1.27%	0	0.00%	0	0.00%	1	0.70%	1	0.83%
Collections Law	4	2.55%	2	1.28%	3	2.40%	3	2.10%	9	7.44%
Commercial/Business Law	2	1.27%	6	3.85%	1	0.80%	7	4.90%	2	1.65%
Contracts/Consumer Law	1	0.64%	0	0.00%	1	0.80%	2	1.40%	0	0.00%
Corporate Law	1	0.64%	1	0.64%	0	0.00%	0	0.00%	0	0.00%
Criminal Conviction	0	0.00%	0	0.00%	1	0.80%	0	0.00%	0	0.00%
Criminal Law	37	23.57%	36	23.08%	24	19.20%	30	20.98%	18	14.88%
Education Law	2	1.27%	0	0.00%	0	0.00%	0	0.00%	0	0.00%
Elder Law	2	1.27%	2	1.28%	1	0.80%	1	0.70%	1	0.83%
Employment Law	4	2.55%	3	1.92%	0	0.00%	0	0.00%	4	3.31%
Environmental Law	0	0.00%	0	0.00%	0	0.00%	0	0.00%	1	0.83%
Family Law	42	26.75%	32	20.51%	33	26.40%	29	20.28%	25	20.66%
Foreclosure Law	2	1.27%	1	0.64%	2	1.60%	3	2.10%	0	0.00%
General Practice	0	0.00%	0	0.00%	1	0.80%	0	0.00%	1	0.83%
Health Law	0	0.00%	0	0.00%	3	2.40%	0	0.00%	1	0.83%
Immigration & Naturalization Law	0	0.00%	0	0.00%	0	0.00%	0	0.00%	1	0.83%
Insurance Law	0	0.00%	0	0.00%	1	0.80%	0	0.00%	0	0.00%
Juvenile Law	1	0.64%	0	0.00%	0	0.00%	0	0.00%	0	0.00%
Landlord/Tenant Law	3	1.91%	3	1.92%	1	0.80%	3	2.10%	6	4.96%
Law-Related Services	1	0.64%	1	0.64%	0	0.00%	1	0.70%	0	0.00%
Other/Unknown	10	6.37%	5	3.21%	6	4.80%	3	2.10%	1	0.83%
PFA/Harassment	1	0.64%	0	0.00%	2	1.60%	4	2.80%	2	1.65%
Real Estate Law	10	6.37%	25	16.03%	14	11.20%	25	17.48%	18	14.88%
Social Security Law	0	0.00%	3	1.92%	0	0.00%	1	0.70%	0	0.00%
Torts	5	3.18%	4	2.56%	11	8.80%	3	2.10%	8	6.61%
Wills/Estates/Probate	9	5.73%	19	12.18%	11	8.80%	17	11.89%	11	9.09%
Workers' Compensation	1	0.64%	2	1.28%	3	2.40%	0	0.00%	2	1.65%
Total:	157		156		125		143		121	

Complaint Source

	2009		2010		2011		2012		2013	
Attorney	1	0.64%	4	2.56%	4	3.20%	10	6.99%	2	1.65%
Beneficiary	0	0.00%	0	0.00%	2	1.60%	0	0.00%	0	0.00%
Client	39	24.84%	39	25.00%	44	35.20%	26	18.18%	30	24.79%
Judge	1	0.64%	0	0.00%	0	0.00%	0	0.00%	0	0.00%
Law Enforcement	0	0.00%	0	0.00%	1	0.80%	0	0.00%	0	0.00%
Opposing Counsel	0	0.00%	2	1.28%	1	0.80%	0	0.00%	1	0.83%
Opposing Party	37	23.57%	54	34.62%	49	39.20%	57	39.86%	50	41.32%
Other	79	50.32%	57	36.54%	23	18.40%	50	34.97%	38	31.40%
Vendor	0	0.00%	0	0.00%	1	0.80%	0	0.00%	0	0.00%
Total:	157		156		125		143		121	

Statistics are based on year in which case was opened.

Bar Counsel Files

Final Disposition

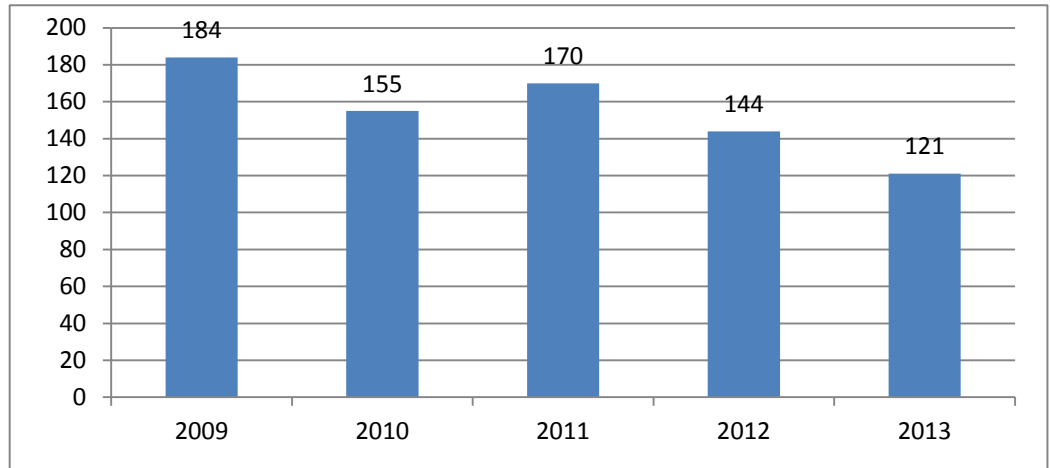
Open Year	Individual Cases by Open Year					Distinct Respondents by Open Year				
	2009	2010	2011	2012	2013	2009	2010	2011	2012	2013
BCF Bump up to Grievance	0	0	0	0	1	114	67	0	0	1
BCF Dismissal	132	85	0	0	0	114	67	0	0	0
BCF Dismissal with Investigation	0	25	78	66	48	0	25	73	58	47
BCF Dismissal without Investigation	0	17	15	28	22	0	17	15	25	22
BCF Lay Review Dismissal Approved	25	29	32	44	38	25	29	32	40	36
BCF Lay Review Dismissal Disapproved	0	0	0	4	1	0	0	0	2	1
Total:	157	156	125	142	110	139	138	120	125	107

Close Year	Individual Cases by Close Year					Distinct Respondents by Close Year				
	2009	2010	2011	2012	2013	2009	2010	2011	2012	2013
BCF Bump up to Grievance	0	0	0	0	1	67	0	0	1	1
BCF Dismissal	139	93	0	0	0	121	74	0	0	0
BCF Dismissal with Investigation	0	19	79	65	53	0	19	75	59	52
BCF Dismissal without Investigation	0	17	14	27	22	0	17	14	26	22
BCF Lay Review Dismissal Approved	31	28	33	43	42	30	28	33	43	39
BCF Lay Review Dismissal Disapproved	0	0	0	2	3	0	0	0	2	3
Total:	170	157	126	137	121	151	138	122	130	117

Grievance Commission Files

Annual Statistics

Year	Total	Variance
2003	152	
2004	164	7.89%
2005	158	-3.66%
2006	158	0.00%
2007	196	24.05%
2008	207	5.61%
2009	184	-11.11%
2010	155	-15.76%
2011	170	9.68%
2012	144	-7.10%
2013	121	-28.82%



Respondent County

County	2009		2010		2011		2012		2013	
Androscoggin	10	5.43%	12	7.74%	6	3.53%	9	6.25%	7	5.79%
Aroostook	10	5.43%	7	4.52%	14	8.24%	4	2.78%	10	8.26%
Cumberland	55	29.89%	42	27.10%	54	31.76%	64	44.44%	27	22.31%
Franklin	0	0.00%	1	0.65%	0	0.00%	2	1.39%	4	3.31%
Hancock	8	4.35%	8	5.16%	14	8.24%	3	2.08%	4	3.31%
Kennebec	23	12.50%	10	6.45%	7	4.12%	7	4.86%	6	4.96%
Knox	4	2.17%	10	6.45%	4	2.35%	3	2.08%	6	4.96%
Lincoln	5	2.72%	6	3.87%	2	1.18%	3	2.08%	4	3.31%
Oxford	6	3.26%	3	1.94%	2	1.18%	2	1.39%	0	0.00%
Penobscot	26	14.13%	19	12.26%	12	7.06%	20	13.89%	18	14.88%
Piscataquis	0	0.00%	0	0.00%	1	0.59%	0	0.00%	2	1.65%
Sagadahoc	7	3.80%	3	1.94%	7	4.12%	1	0.69%	3	2.48%
Somerset	1	0.54%	1	0.65%	2	1.18%	2	1.39%	1	0.83%
Waldo	1	0.54%	7	4.52%	2	1.18%	2	1.39%	0	0.00%
Washington	2	1.09%	3	1.94%	6	3.53%	0	0.00%	2	1.65%
York	16	8.70%	15	9.68%	16	9.41%	11	7.64%	15	12.40%
Out-of-State	10	5.43%	8	5.16%	21	12.35%	11	7.64%	12	9.92%
Total:	184		155		170		144		121	

Grievance Commission Files

Area of Law

	2009		2010		2011		2012		2013	
Administrative/Municipal Law	1	0.54%	3	1.94%	4	2.35%	1	0.69%	3	2.48%
ADR/Mediation/Arbitration	0	0.00%	0	0.00%	2	1.18%	0	0.00%	0	0.00%
Antitrust Law	0	0.00%	0	0.00%	1	0.59%	0	0.00%	0	0.00%
Appellate	0	0.00%	0	0.00%	0	0.00%	1	0.69%	0	0.00%
Bankruptcy Law	7	3.80%	6	3.87%	5	2.94%	5	3.47%	4	3.31%
Child Protection	1	0.54%	0	0.00%	1	0.59%	1	0.69%	2	1.65%
Civil Rights/Discrimination Law	0	0.00%	1	0.65%	0	0.00%	0	0.00%	1	0.83%
Collections Law	5	2.72%	2	1.29%	7	4.12%	4	2.78%	3	2.48%
Commercial/Business	12	6.52%	9	5.81%	10	5.88%	11	7.64%	2	1.65%
Contracts/Consumer	3	1.63%	2	1.29%	3	1.76%	1	0.69%	1	0.83%
Corporate Law	0	0.00%	0	0.00%	0	0.00%	1	0.69%	1	0.83%
Criminal Conviction	0	0.00%	0	0.00%	0	0.00%	0	0.00%	1	0.83%
Criminal Law	28	15.22%	23	14.84%	24	14.12%	19	13.19%	13	10.74%
Elder Law	4	2.17%	0	0.00%	0	0.00%	0	0.00%	0	0.00%
Election Law	1	0.54%	0	0.00%	0	0.00%	0	0.00%	1	0.83%
Employment Law	9	4.89%	2	1.29%	0	0.00%	3	2.08%	0	0.00%
Environmental Law	0	0.00%	0	0.00%	0	0.00%	0	0.00%	0	0.00%
Family Law	49	26.63%	39	25.16%	44	25.88%	38	26.39%	29	23.97%
Foreclosure Law	0	0.00%	1	0.65%	5	2.94%	3	2.08%	1	0.83%
General Practice	2	1.09%	1	0.65%	2	1.18%	5	3.47%	6	4.96%
Health Law	0	0.00%	1	0.65%	0	0.00%	0	0.00%	1	0.83%
Immigration and Naturalization Law	0	0.00%	0	0.00%	0	0.00%	0	0.00%	1	0.83%
Indian Law	1	0.54%	0	0.00%	0	0.00%	0	0.00%	0	0.00%
Insurance Law	0	0.00%	1	0.65%	4	2.35%	0	0.00%	2	1.65%
Intellectual Property	0	0.00%	0	0.00%	0	0.00%	0	0.00%	0	0.00%
Labor Law	1	0.54%	1	0.65%	0	0.00%	0	0.00%	0	0.00%
Landlord/Tenant	1	0.54%	2	1.29%	1	0.59%	1	0.69%	16	13.22%
Law Practice Management	17	9.24%	19	12.26%	17	10.00%	13	9.03%	0	0.00%
Law-Related Services	0	0.00%	0	0.00%	0	0.00%	0	0.00%	0	0.00%
PFA/Harassment	3	1.63%	1	0.65%	3	1.76%	3	2.08%	0	0.00%
Real Estate	7	3.80%	12	7.74%	8	4.71%	15	10.42%	14	11.57%
Reinstatement	2	1.09%	2	1.29%	0	0.00%	0	0.00%	0	0.00%
Social Security Law	2	1.09%	1	0.65%	1	0.59%	1	0.69%	0	0.00%
Taxation	0	0.00%	2	1.29%	0	0.00%	0	0.00%	0	0.00%
Torts	14	7.61%	5	3.23%	8	4.71%	6	4.17%	6	4.96%
Wills/Estates/Probate	13	7.07%	16	10.32%	12	7.06%	6	4.17%	11	9.09%
Workers' Compensation	1	0.54%	0	0.00%	2	1.18%	3	2.08%	1	0.83%
Other/Unknown	0	0.00%	3	1.94%	6	3.53%	3	2.08%	1	0.83%
Total:	184		155		170		144		121	

Statistics are based on year in which case was opened.

Grievance Commission Files

Respondent Firm Size

Firm Size	2009		2010		2011		2012		2013	
1	86	46.74%	70	45.16%	93	54.71%	64	44.44%	63	52.07%
2 - 5	51	27.72%	50	32.26%	48	28.24%	42	29.17%	42	34.71%
6 - 9	15	8.15%	9	5.81%	9	5.29%	10	6.94%	9	7.44%
10 - 19	7	3.80%	1	0.65%	7	4.12%	7	4.86%	1	0.83%
20 - 49	8	4.35%	9	5.81%	3	1.76%	7	4.86%	3	2.48%
50 - 99	2	1.09%	1	0.65%	1	0.59%	0	0.00%	0	0.00%
100+	0	0.00%	0	0.00%	3	1.76%	6	4.17%	0	0.00%
Unknown	15	8.15%	15	9.68%	6	3.53%	8	5.56%	3	2.48%
Total:	184		155		170		144		121	

Respondent Age

Age	2009		2010		2011		2012		2013	
29 or less	3	1.63%	0	0.00%	3	1.76%	1	0.69%	0	0.00%
30 - 34	17	9.24%	9	5.81%	8	4.71%	2	1.39%	8	6.61%
35 - 39	20	10.87%	12	7.74%	16	9.41%	14	9.72%	7	5.79%
40 - 44	15	8.15%	18	11.61%	25	14.71%	19	13.19%	19	15.70%
45 - 49	34	18.48%	23	14.84%	18	10.59%	19	13.19%	11	9.09%
50 - 54	35	19.02%	29	18.71%	23	13.53%	25	17.36%	17	14.05%
55 - 59	23	12.50%	24	15.48%	35	20.59%	17	11.81%	18	14.88%
60 - 64	19	10.33%	28	18.06%	26	15.29%	15	10.42%	19	15.70%
65 - 69	11	5.98%	9	5.81%	11	6.47%	22	15.28%	16	13.22%
70+	7	3.80%	3	1.94%	5	2.94%	8	5.56%	6	4.96%
Unknown	0	0.00%	0	0.00%	0	0.00%	2	1.39%	0	0.00%
Total:	184		155		170		144		121	

Complaint Source

	2009		2010		2011		2012		2013	
Attorney	17	9.24%	3	1.94%	16	9.41%	11	7.64%	15	12.40%
Beneficiary	0	0.00%	2	1.29%	2	1.18%	0	0.00%	0	0.00%
Client	86	46.74%	83	53.55%	85	50.00%	73	50.69%	61	50.41%
Court Order	0	0.00%	0	0.00%	1	0.59%	0	0.00%	0	0.00%
Judge	0	0.00%	1	0.65%	2	1.18%	0	0.00%	3	2.48%
Law Enforcement	0	0.00%	0	0.00%	1	0.59%	0	0.00%	0	0.00%
Opposing Counsel	1	0.54%	3	1.94%	1	0.59%	0	0.00%	2	1.65%
Opposing Party	16	8.70%	21	13.55%	30	17.65%	29	20.14%	16	13.22%
Sua Sponte	25	13.59%	22	14.19%	21	12.35%	13	9.03%	20	16.53%
Vendor	0	0.00%	0	0.00%	1	0.59%	1	0.69%	0	0.00%
Other	39	21.20%	20	12.90%	10	5.88%	17	11.81%	4	3.31%
Total:	184		155		170		144		121	

Statistics are based on year in which case was opened.

Grievance Commission Files

Sanctioned Cases by Area of Law - Open Year

	2009		2010		2011		2012		2013	
Administrative/Municipal Law	0	0.00%	1	1.96%	0	0.00%	0	0.00%	0	0.00%
Appellate Law	0	0.00%	0	0.00%	0	0.00%	1	2.56%	0	0.00%
Bankruptcy Law	2	4.17%	1	1.96%	3	5.66%	2	5.13%	1	5.56%
Child Protection Law	1	2.08%	0	0.00%	0	0.00%	0	0.00%	1	5.56%
Collections Law	1	2.08%	0	0.00%	5	9.43%	0	0.00%	0	0.00%
Commercial/Business Law	3	6.25%	4	7.84%	2	3.77%	1	2.56%	1	5.56%
Contracts/Consumer Law	2	4.17%	2	3.92%	0	0.00%	0	0.00%	1	5.56%
Corporate Law	0	0.00%	0	0.00%	5	9.43%	1	2.56%	0	0.00%
Criminal Law	6	12.50%	5	9.80%	0	0.00%	4	10.26%	0	0.00%
Elder Law	1	2.08%	0	0.00%	0	0.00%	0	0.00%	0	0.00%
Employment Law	2	4.17%	1	1.96%	0	0.00%	0	0.00%	0	0.00%
Family Law	6	12.50%	8	15.69%	9	16.98%	14	35.90%	0	0.00%
Foreclosure Law	0	0.00%	0	0.00%	0	0.00%	0	0.00%	1	5.56%
General Practice	2	4.17%	1	1.96%	0	0.00%	1	2.56%	2	11.11%
Health Law	0	0.00%	1	1.96%	0	0.00%	0	0.00%	0	0.00%
Insurance Law	0	0.00%	1	1.96%	2	3.77%	0	0.00%	0	0.00%
Law Practice Management	12	25.00%	13	25.49%	12	22.64%	7	17.95%	9	50.00%
PFA/Harassment	2	4.17%	0	0.00%	0	0.00%	0	0.00%	0	0.00%
Real Estate Law	3	6.25%	3	5.88%	4	7.55%	4	10.26%	0	0.00%
Torts	1	2.08%	1	1.96%	2	3.77%	1	2.56%	1	5.56%
Wills/Estates/Probate	4	8.33%	8	15.69%	5	9.43%	1	2.56%	1	5.56%
Workers' Compensation Law	0	0.00%	0	0.00%	0	0.00%	2	5.13%	0	0.00%
Other	0	0.00%	1	1.96%	4	7.55%	0	0.00%	0	0.00%
Total:	48		51		53		39		18	

Sanctioned Cases by Area of Law - Closed Year

	2009		2010		2011		2012		2013	
Administrative/Municipal Law	1	1.45%	1	2.00%	0	0.00%	0	0.00%	0	0.00%
Appellate	0	0.00%	0	0.00%	0	0.00%	0	0.00%	1	50.00%
Bankruptcy Law	0	0.00%	2	4.00%	3	7.50%	1	1.96%	4	7.14%
Child Protection Law	2	2.90%	1	2.00%	0	0.00%	0	0.00%	1	1.79%
Collections Law	0	0.00%	1	2.00%	0	0.00%	3	5.88%	2	3.57%
Commercial/Business Law	2	2.90%	2	4.00%	3	7.50%	4	7.84%	2	3.57%
Contracts/Consumer Law	2	2.90%	2	4.00%	1	2.50%	0	0.00%	1	1.79%
Corporate Law	2	2.90%	0	0.00%	0	0.00%	0	0.00%	1	1.79%
Criminal Law	6	8.70%	7	14.00%	5	12.50%	4	7.84%	3	5.36%
Elder Law	0	0.00%	0	0.00%	1	2.50%	0	0.00%	0	0.00%
Employment Law	1	1.45%	0	0.00%	1	2.50%	1	1.96%	0	0.00%
Family Law	18	26.09%	8	16.00%	4	10.00%	11	21.57%	14	25.00%
Foreclosure Law	0	0.00%	0	0.00%	0	0.00%	0	0.00%	1	#DIV/0!
General Practice	1	1.45%	2	4.00%	0	0.00%	0	0.00%	3	5.36%
Health Law	0	0.00%	1	2.00%	0	0.00%	0	0.00%	0	0.00%
Insurance Law	0	0.00%	0	0.00%	0	0.00%	3	5.88%	0	0.00%
Law Practice Management	7	10.14%	13	26.00%	7	17.50%	13	25.49%	13	23.21%
PFA/Harassment	0	0.00%	2	4.00%	0	0.00%	0	0.00%	0	0.00%
Real Estate Law	9	13.04%	3	6.00%	3	7.50%	5	9.80%	3	5.36%
Torts	5	7.25%	1	2.00%	2	5.00%	2	3.92%	1	1.79%
Wills/Estates/Probate	10	14.49%	4	8.00%	9	22.50%	2	3.92%	4	7.14%
Other	3	4.35%	0	0.00%	1	2.50%	2	3.92%	2	3.57%
Total:	69		50		40		51		56	

Sanction Types: Hearing Dismissal with Warning; Hearing Reprimand; Court Reprimand; Court Suspension; Court Disbarment

Grievance Commission Files

Discipline Cases by Area of Law - Open Year

	2009		2010		2011		2012		2013	
Administrative/Municipal Law	0	0.00%	0	0.00%	0	0.00%	0	0.00%	0	0.00%
Bankruptcy Law	1	6.25%	1	3.57%	2	6.90%	2	12.50%	1	10.00%
Child Protection Law	0	0.00%	0	0.00%	0	0.00%	0	0.00%	1	10.00%
Collections Law	0	0.00%	0	0.00%	1	3.45%	0	0.00%	0	0.00%
Commercial/Business Law	3	18.75%	2	7.14%	1	3.45%	0	0.00%	0	0.00%
Contracts/Consumer Law	1	6.25%	1	3.57%	0	0.00%	0	0.00%	0	0.00%
Corporate Law	0	0.00%	0	0.00%	0	0.00%	0	0.00%	0	0.00%
Criminal Law	1	6.25%	1	3.57%	2	6.90%	0	0.00%	0	0.00%
Elder Law	0	0.00%	0	0.00%	0	0.00%	0	0.00%	0	0.00%
Employment Law	1	6.25%	1	3.57%	0	0.00%	0	0.00%	0	0.00%
Family Law	1	6.25%	4	14.29%	5	17.24%	9	56.25%	1	10.00%
General Practice	0	0.00%	1	3.57%	0	0.00%	1	6.25%	0	0.00%
Insurance Law	0	0.00%	1	3.57%	1	3.45%	0	0.00%	0	0.00%
Law Practice Management	2	12.50%	5	17.86%	8	27.59%	1	6.25%	7	70.00%
PFA/Harassment	1	6.25%	0	0.00%	0	0.00%	0	0.00%	0	0.00%
Real Estate Law	1	6.25%	1	3.57%	4	13.79%	1	6.25%	0	0.00%
Taxation Law	0	0.00%	0	0.00%	0	0.00%	0	0.00%	0	0.00%
Torts	1	6.25%	1	3.57%	1	3.45%	0	0.00%	0	0.00%
Wills/Estates/Probate	3	18.75%	8	28.57%	2	6.90%	0	0.00%	0	0.00%
Workers' Compensation Law	0	0.00%	0	0.00%	0	0.00%	2	12.50%	0	0.00%
Other	0	0.00%	1	3.57%	2	6.90%	0	0.00%	0	0.00%
Total:	16		28		29		16		10	

Discipline Cases by Area of Law - Close Year

	2009		2010		2011		2012		2013	
Administrative/Municipal Law	1	3.13%	0	0.00%	0	0.00%	0	0.00%	0	0.00%
Bankruptcy Law	0	0.00%	1	5.56%	2	8.33%	1	3.70%	4	11.76%
Child Protection Law	2	6.25%	0	0.00%	0	0.00%	0	0.00%	1	2.94%
Commercial/Business Law	2	6.25%	2	11.11%	1	4.17%	3	11.11%	1	2.94%
Contracts/Consumer Law	0	0.00%	1	5.56%	1	4.17%	0	0.00%	0	0.00%
Corporate Law	1	3.13%	0	0.00%	0	0.00%	0	0.00%	0	0.00%
Criminal Law	2	6.25%	1	5.56%	2	8.33%	1	3.70%	1	2.94%
Elder Law	0	0.00%	0	0.00%	0	0.00%	0	0.00%	0	0.00%
Employment Law	0	0.00%	0	0.00%	1	4.17%	1	3.70%	0	0.00%
Family Law	8	25.00%	3	16.67%	2	8.33%	4	14.81%	12	35.29%
General Practice	0	0.00%	1	5.56%	0	0.00%	0	0.00%	2	5.88%
Insurance Law	0	0.00%	0	0.00%	0	0.00%	2	7.41%	0	0.00%
Law Practice Management	0	0.00%	3	16.67%	4	16.67%	8	29.63%	8	23.53%
PFA/Harassment	0	0.00%	1	5.56%	0	0.00%	0	0.00%	0	0.00%
Real Estate Law	6	18.75%	0	0.00%	1	4.17%	4	14.81%	1	2.94%
Torts	2	6.25%	1	5.56%	1	4.17%	1	3.70%	0	0.00%
Wills/Estates/Probate	5	15.63%	4	22.22%	8	33.33%	1	3.70%	1	2.94%
Workers' Compensation Law	0	0.00%	0	0.00%	0	0.00%	0	0.00%	2	5.88%
Other	3	9.38%	0	0.00%	1	4.17%	1	3.70%	1	2.94%
Total:	32		18		24		27		34	

Sanction Types: Hearing Reprimand; Court Reprimand; Court Suspension; Court Disbarment

Grievance Commission Files and Court Matters

Final Disposition

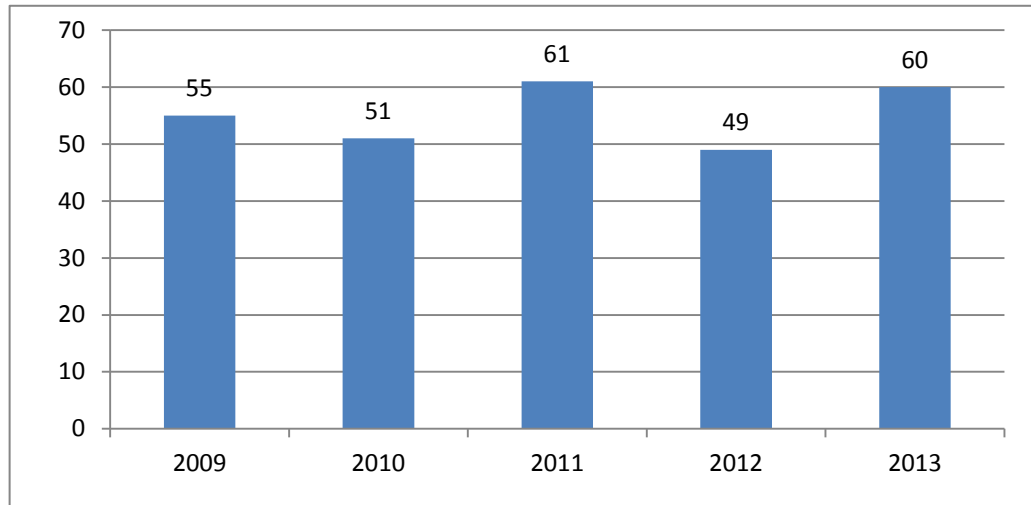
	Individual Cases by Case Opened Year					Distinct Respondents by Case Opened Year				
	2009	2010	2011	2012	2013	2009	2010	2011	2012	2013
Board Dismissal	0	0	1	0	0	0	0	1	0	0
Case Review Dismissal	124	99	103	99	47	113	87	86	87	43
Case Review Dismissal With Warning	27	20	16	19	6	26	20	15	18	6
Hearing Dismissal	1	1	4	1	0	1	1	4	1	0
Hearing Dismissal With Warning	5	3	8	4	2	5	3	8	4	2
Hearing Reprimand	10	17	18	6	7	9	14	17	6	7
Court Disbarment	0	1	0	0	0	0	1	0	0	0
Court Dismissal	3	3	5	1	0	1	1	2	1	0
Court Dismissal with Warning	0	0	0	0	0	0	0	0	0	0
Court Reciprocal Disbarment	0	0	2	1	0	0	0	2	1	0
Court Reciprocal Suspension	0	1	0	1	1	0	1	0	1	1
Court Reinstatement Approved	0	0	1	5	0	0	0	1	5	0
Administrative Discipline	2	0	2	1	1	2	0	2	1	1
Court Reinstatement Denied	1	2	0	0	0	1	2	0	0	0
Court Reprimand	0	1	4	3	2	0	1	3	2	1
Court Resignation	0	2	1	4	2	0	2	1	2	2
Court Suspended Suspension	5	1	0	1	0	1	1	0	1	0
Court Suspension	7	10	13	7	1	5	4	7	3	1
Court Temporary Suspension	0	0	0	0	1	0	0	0	0	1
Total:	185	161	178	153	70	164	138	149	133	65

	Individual Cases by Case Closed Year					Distinct Respondents by Case Closed Year				
	2009	2010	2011	2012	2013	2009	2010	2011	2012	2013
Board Dismissal	0	0	1	0	0	0	0	1	0	0
Case Review Dismissal	161	111	95	107	82	138	96	88	90	68
Case Review Dismissal with Warning	34	28	12	19	14	34	25	12	19	14
Hearing Dismissal	3	6	2	3	2	3	6	2	3	2
Hearing Dismissal with Warning	3	4	4	5	10	3	4	4	5	10
Hearing Reprimand	20	11	16	15	18	15	10	11	14	17
Court Disbarment	3	1	0	0	0	1	1	0	0	0
Court Dismissal	0	3	1	4	4	0	1	1	1	1
Court Dismissal with Warning	0	0	0	6	0	0	0	0	6	0
Court Reciprocal Disbarment	0	0	2	1	0	0	0	2	1	0
Court Reciprocal Suspension	0	0	1	1	1	0	0	1	1	1
Court Reinstatement Approved	0	0	0	6	0	0	0	0	6	0
Administrative Discipline	2	1	2	0	2	2	1	2	0	2
Court Reinstatement Denied	1	0	1	0	0	0	2	1	0	0
Court Reprimand	1	0	1	4	5	1	0	1	3	2
Court Resignation	2	0	2	1	6	2	0	2	1	2
Court Suspended Suspension	0	10	0	0	1	0	1	0	0	1
Court Suspension	6	9	7	10	14	3	6	1	3	7
Court Temporary Suspension	0	2	0	0	0	0	2	0	0	0
Total:	235	188	147	182	159	202	155	129	153	127

Fee Arbitration Petitions

Annual Statistics

Year	Total	Variance
2003	80	
2004	67	-16.25%
2005	63	-5.97%
2006	60	-4.76%
2007	58	-3.33%
2008	57	-1.72%
2009	55	-3.51%
2010	51	-7.27%
2011	61	19.61%
2012	49	
2013	49	-19.67%



Respondent County

County	2009		2010		2011		2012		2013	
Androscoggin	5	9.09%	4	7.84%	8	13.11%	4	8.16%	8	13.33%
Aroostook	1	1.82%	4	7.84%	2	3.28%	3	6.12%	2	3.33%
Cumberland	21	38.18%	18	35.29%	24	39.34%	14	28.57%	16	26.67%
Franklin	0	0.00%	0	0.00%	0	0.00%	3	6.12%	1	1.67%
Hancock	0	0.00%	0	0.00%	1	1.64%	1	2.04%	1	1.67%
Kennebec	8	14.55%	3	5.88%	1	1.64%	6	12.24%	4	6.67%
Knox	2	3.64%	4	7.84%	1	1.64%	0	0.00%	3	5.00%
Lincoln	1	1.82%	2	3.92%	1	1.64%	1	2.04%	2	3.33%
Oxford	4	7.27%	1	1.96%	3	4.92%	0	0.00%	1	1.67%
Penobscot	7	12.73%	5	9.80%	10	16.39%	7	14.29%	10	16.67%
Piscataquis	0	0.00%	0	0.00%	2	3.28%	0	0.00%	0	0.00%
Sagadahoc	1	1.82%	0	0.00%	3	4.92%	3	6.12%	2	3.33%
Somerset	0	0.00%	2	3.92%	1	1.64%	1	2.04%	1	1.67%
Waldo	1	1.82%	2	3.92%	0	0.00%	0	0.00%	0	0.00%
Washington	0	0.00%	0	0.00%	0	0.00%	1	2.04%	0	0.00%
York	3	5.45%	4	7.84%	3	4.92%	2	4.08%	8	13.33%
Out-of-State	1	1.82%	2	3.92%	1	1.64%	3	6.12%	1	1.67%
Total:	55		51		61		49		60	

Fee Arbitration Petitions

Respondent Firm Size

Firm Size	2009		2010		2011		2012		2013	
1	19	34.55%	22	43.14%	29	47.54%	24	48.98%	24	40.00%
2 - 5	24	43.64%	22	43.14%	26	42.62%	15	30.61%	21	35.00%
6 - 9	2	3.64%	1	1.96%	3	4.92%	0	0.00%	4	6.67%
10 - 19	3	5.45%	2	3.92%	3	4.92%	7	14.29%	7	11.67%
20 - 49	4	7.27%	3	5.88%	0	0.00%	0	0.00%	3	5.00%
50 - 99	0	0.00%	0	0.00%	0	0.00%	1	2.04%	0	0.00%
100+	1	1.82%	0	0.00%	0	0.00%	1	2.04%	0	0.00%
Unknown	2	3.64%	1	1.96%	0	0.00%	1	2.04%	1	1.67%
Total:	55		51		61		49		60	

Respondent Age

Age	2009		2010		2011		2012		2013	
29 or less	1	1.82%	1	1.96%	1	1.64%	0	0.00%	2	3.33%
30 - 34	5	9.09%	2	3.92%	2	3.28%	1	2.04%	5	8.33%
35 - 39	5	9.09%	2	3.92%	4	6.56%	3	6.12%	4	6.67%
40 - 44	4	7.27%	3	5.88%	7	11.48%	8	16.33%	12	20.00%
45 - 49	10	18.18%	9	17.65%	1	1.64%	3	6.12%	7	11.67%
50 - 54	4	7.27%	9	17.65%	7	11.48%	4	8.16%	4	6.67%
55 - 59	10	18.18%	9	17.65%	10	16.39%	9	18.37%	6	10.00%
60 - 64	9	16.36%	9	17.65%	14	22.95%	4	8.16%	8	13.33%
65-69	2	3.64%	3	5.88%	8	13.11%	12	24.49%	5	8.33%
70+	5	9.09%	4	7.84%	7	11.48%	4	8.16%	6	10.00%
Unknown	0	0.00%	0	0.00%	0	0.00%	1	2.04%	1	1.67%
Total:	55		51		61		49		60	

Complaint Source

	2009		2010		2011		2012		2013	
Attorney	0	0.00%	3	5.88%	2	3.28%	2	4.08%	1	1.67%
Client	47	85.45%	44	86.27%	57	93.44%	41	83.67%	53	88.33%
Opposing Party	1	1.82%	0	0.00%	0	0.00%	1	2.04%	1	1.67%
Other	7	12.73%	4	7.84%	0	0.00%	5	10.20%	5	8.33%
Vendor	0	0.00%	0	0.00%	2	3.28%	0	0.00%	0	0.00%
Total:	55		51		61		49		60	

Statistics are based on year in which case was opened.

Fee Arbitration Petitions

Area of Law by Open Year

	2009		2010		2011		2012		2013	
Administrative/Municipal Law	0	0.00%	0	0.00%	1	1.64%	1	2.04%	1	1.67%
ADR/Mediation/Arbitration	2	3.64%	0	0.00%	0	0.00%	0	0.00%	0	0.00%
Banking Law	0	0.00%	1	1.96%	0	0.00%	0	0.00%	0	0.00%
Bankruptcy Law	0	0.00%	2	3.92%	3	4.92%	3	6.12%	0	0.00%
Civil Rights/Discrimination Law	0	0.00%	0	0.00%	0	0.00%	0	0.00%	1	1.67%
Collections Law	0	0.00%	0	0.00%	3	4.92%	0	0.00%	0	0.00%
Commercial/Business	3	5.45%	5	9.80%	2	3.28%	3	6.12%	2	3.33%
Contracts/Consumer	3	5.45%	0	0.00%	1	1.64%	2	4.08%	0	0.00%
Corporate Law	0	0.00%	0	0.00%	0	0.00%	1	2.04%	1	1.67%
Criminal Law	6	10.91%	3	5.88%	8	13.11%	7	14.29%	5	8.33%
Education Law	0	0.00%	0	0.00%	0	0.00%	0	0.00%	1	1.67%
Employment Law	2	3.64%	0	0.00%	2	3.28%	0	0.00%	4	6.67%
Environmental Law	0	0.00%	0	0.00%	0	0.00%	0	0.00%	0	0.00%
Family Law	22	40.00%	23	45.10%	21	34.43%	14	28.57%	24	40.00%
Insurance Law	0	0.00%	0	0.00%	1	1.64%	1	2.04%	2	3.33%
Intellectual Property	0	0.00%	0	0.00%	0	0.00%	0	0.00%	0	0.00%
Labor Law	4	7.27%	0	0.00%	0	0.00%	0	0.00%	0	0.00%
Landlord/Tenant	0	0.00%	3	5.88%	0	0.00%	1	2.04%	0	0.00%
Law Practice Management	0	0.00%	0	0.00%	0	0.00%	0	0.00%	0	0.00%
Law-Related Services	0	0.00%	0	0.00%	0	0.00%	0	0.00%	0	0.00%
PFA/Harassment	1	1.82%	0	0.00%	1	1.64%	1	2.04%	0	0.00%
Real Estate	3	5.45%	6	11.76%	1	1.64%	10	20.41%	8	13.33%
Social Security Law	0	0.00%	0	0.00%	0	0.00%	1	2.04%	1	1.67%
Taxation	0	0.00%	0	0.00%	0	0.00%	1	2.04%	1	1.67%
Torts	3	5.45%	1	1.96%	1	1.64%	0	0.00%	2	3.33%
Wills/Estates/Probate	5	9.09%	6	11.76%	4	6.56%	0	0.00%	5	8.33%
Workers' Compensation	1	1.82%	0	0.00%	1	1.64%	1	2.04%	1	1.67%
Other/Unknown	0	0.00%	1	1.96%	11	18.03%	2	4.08%	1	1.67%
Total:	55		51		61		49		60	

Disposition by Open Year

	2008	2009	2010	2011	2012
Award to Petitioner	5	7	6	10	4
Award to Respondent	21	15	18	21	10
Dismissal	31	33	27	28	17
Total:	57	55	51	59	31

Disposition by Close Year

	2008	2009	2010	2011	2012
Award to Petitioner	4	4	8	8	9
Award to Respondent	20	24	14	21	18
Dismissal	30	35	30	30	21
Total:	54	63	52	59	48

Fee Arbitration Commission

Disposition by Open Year

	2009	2010	2011	2012	2013
Award to Petitioner	7	6	10	11	6
Award to Respondent	15	18	21	15	17
Dismissal	33	27	28	23	20
Total:	55	51	59	49	43

Disposition by Close Year

	2009	2010	2011	2012	2013
Award to Petitioner	4	8	8	9	13
Award to Respondent	24	14	21	18	22
Dismissal	35	30	30	21	26
Total:	63	52	59	48	61

Registration Statistics

	2009		2010		2011		2012		2013	
Resident										
Active	3665	72.76%	3721	72.55%	3742	72.58%	3754	71.85%	3807	72.02%
Emeritus	5	0.10%	5	0.10%	4	0.08%	2	0.04%	3	0.06%
Federal Judiciary									10	
Judicial	75	1.49%	78	1.52%	82	1.59%	82	1.57%	68	1.29%
Law Clerk	27	0.54%	26	0.51%	25	0.48%	26	0.50%	25	0.47%
		74.89%		74.67%		74.73%		73.95%		73.84%
Non-Resident										
Active	1264	25.09%	1297	25.29%	1298	25.17%	1360	26.03%	1366	25.84%
Law Clerk	1	0.02%	2	0.04%	5	0.10%	1	0.02%	7	0.13%
		25.11%		25.33%		25.27%		26.05%		25.97%
Total:	5037		5129		5156		5225		5286	
Increase over prior year.			92	1.83%	27	0.53%	69	1.34%	61	1.17%

Admission by Year

	2009		2010		2011		2012		2013	
1/1/1935 - 12/31/1939	2	0.04%	2	0.04%	2	0.04%	2	0.04%	2	0.04%
1/1/1940 - 12/31/1944	0	0.00%	0	0.00%	0	0.00%	0	0.00%	0	0.00%
1/1/1945 - 12/31/1949	2	0.04%	0	0.00%	1	0.02%	1	0.02%	0	0.00%
1/1/1950 - 12/31/1954	25	0.50%	21	0.41%	20	0.39%	19	0.36%	17	0.32%
1/1/1955 - 12/31/1959	21	0.42%	20	0.39%	18	0.35%	17	0.33%	13	0.25%
1/1/1960 - 12/31/1964	43	0.85%	42	0.82%	37	0.72%	32	0.61%	29	0.55%
1/1/1965 - 12/31/1969	110	2.18%	106	2.07%	102	1.98%	98	1.88%	96	1.82%
1/1/1970 - 12/31/1974	326	6.47%	321	6.26%	311	6.03%	308	5.89%	295	5.58%
1/1/1975 - 12/31/1979	495	9.83%	489	9.53%	473	9.17%	463	8.86%	441	8.34%
1/1/1980 - 12/31/1984	555	11.02%	544	10.61%	531	10.30%	518	9.91%	508	9.61%
1/1/1985 - 12/31/1989	758	15.05%	749	14.60%	735	14.26%	730	13.97%	720	13.62%
1/1/1990 - 12/31/1994	682	13.54%	672	13.10%	659	12.78%	646	12.36%	634	11.99%
1/1/1995 - 12/31/1999	655	13.00%	653	12.73%	635	12.32%	627	12.00%	622	11.77%
1/1/2000 - 12/31/2004	606	12.03%	601	11.72%	584	11.33%	574	10.99%	572	10.82%
1/1/2005 - 12/31/2009	757	15.03%	747	14.56%	740	14.35%	720	13.78%	701	13.26%
1/1/2010 - 12/31/2013	0	0.00%	162	3.16%	308	5.97%	470	9.00%	636	12.03%
Total:	5037		5129		5156		5225		5286	

County Demographics

County	2009		2010		2011		2012		2013	
Androscoggin	209	4.15%	220	4.29%	219	4.25%	202	3.87%	208	3.93%
Aroostook	78	1.55%	79	1.54%	78	1.51%	75	1.44%	74	1.40%
Cumberland	1851	36.75%	1873	36.52%	1898	36.81%	1916	36.67%	1948	36.85%
Franklin	32	0.64%	30	0.58%	33	0.64%	36	0.69%	33	0.62%
Hancock	98	1.95%	102	1.99%	100	1.94%	101	1.93%	109	2.06%
Kennebec	469	9.31%	475	9.26%	471	9.13%	472	9.03%	489	9.25%
Knox	98	1.95%	95	1.85%	101	1.96%	105	2.01%	107	2.02%
Lincoln	72	1.43%	81	1.58%	79	1.53%	79	1.51%	75	1.42%
Oxford	44	0.87%	45	0.88%	42	0.81%	41	0.78%	41	0.78%
Penobscot	342	6.79%	342	6.67%	340	6.59%	347	6.64%	344	6.51%
Piscataquis	7	0.14%	8	0.16%	9	0.17%	9	0.17%	9	0.17%
Sagadahoc	76	1.51%	83	1.62%	86	1.67%	92	1.76%	89	1.68%
Somerset	41	0.81%	40	0.78%	41	0.80%	41	0.78%	41	0.78%
Waldo	37	0.73%	37	0.72%	37	0.72%	38	0.73%	38	0.72%
Washington	29	0.58%	30	0.58%	33	0.64%	30	0.57%	34	0.64%
York	289	5.74%	286	5.58%	290	5.62%	298	5.70%	306	5.79%
Out-of-State	1265	25.11%	1303	25.40%	1299	25.19%	1343	25.70%	1341	25.37%
Total:	5037		5129		5156		5225		5286	

Variance over Prior Year

County	2009		2010		2011		2012		2013	
Androscoggin	209	#REF!	220	5.26%	219	-0.45%	202	-7.76%	208	2.97%
Aroostook	78	#REF!	79	1.28%	78	-1.27%	75	-3.85%	74	-1.33%
Cumberland	1851	#REF!	1873	1.19%	1898	1.33%	1916	0.95%	1948	1.67%
Franklin	32	#REF!	30	-6.25%	33	10.00%	36	9.09%	33	-8.33%
Hancock	98	#REF!	102	4.08%	100	-1.96%	101	1.00%	109	7.92%
Kennebec	469	#REF!	475	1.28%	471	-0.84%	472	0.21%	489	3.60%
Knox	98	#REF!	95	-3.06%	101	6.32%	105	3.96%	107	1.90%
Lincoln	72	#REF!	81	12.50%	79	-2.47%	79	0.00%	75	-5.06%
Oxford	44	#REF!	45	2.27%	42	-6.67%	41	-2.38%	41	0.00%
Penobscot	342	#REF!	342	0.00%	340	-0.58%	347	2.06%	344	-0.86%
Piscataquis	7	#REF!	8	14.29%	9	12.50%	9	0.00%	9	0.00%
Sagadahoc	76	#REF!	83	9.21%	86	3.61%	92	6.98%	89	-3.26%
Somerset	41	#REF!	40	-2.44%	41	2.50%	41	0.00%	41	0.00%
Waldo	37	#REF!	37	0.00%	37	0.00%	38	2.70%	38	0.00%
Washington	29	#REF!	30	3.45%	33	10.00%	30	-9.09%	34	13.33%
York	289	#REF!	286	-1.04%	290	1.40%	298	2.76%	306	2.68%
Out-of-State	1265	#REF!	1303	3.00%	1299	-0.31%	1343	3.39%	1341	-0.15%
Total:	5037		5129		5156		5225		5286	

Firm Size

	2009		2010		2011		2012		2013	
Solo	1413	28.05%	1415	27.59%	1429	27.72%	1382	26.45%	1419	26.84%
2 - 5	1200	23.82%	1197	23.34%	1194	23.16%	1167	22.33%	1226	23.19%
6 - 9	407	8.08%	421	8.21%	403	7.82%	416	7.96%	419	7.93%
10 - 19	428	8.50%	420	8.19%	418	8.11%	413	7.90%	446	8.44%
20 - 49	408	8.10%	406	7.92%	426	8.26%	397	7.60%	404	7.64%
50 - 99	310	6.15%	301	5.87%	201	3.90%	239	4.57%	247	4.67%
100+	387	7.68%	376	7.33%	454	8.81%	467	8.94%	479	9.06%
N/A	484	9.61%	593	11.56%	631	12.24%	744	14.24%	646	12.22%
Total:	5037		5129		5156		5225		5286	

County/Age Demographics

County	29 or Less	30-34	35-39	40-44	45-49	50-54	55-59	60-64	65-69	70+	Total
Androscoggin	9	23	18	29	22	15	28	31	22	11	208
Aroostook	3	3	10	6	6	6	8	9	9	14	74
Cumberland	85	185	202	185	217	255	275	252	180	112	1948
Franklin	0	2	1	4	1	5	6	5	5	4	33
Hancock	4	4	5	7	12	15	15	18	16	13	109
Kennebec	18	30	23	42	52	72	88	90	46	28	489
Knox	4	8	11	10	8	9	15	15	20	7	107
Lincoln	1	2	3	5	6	5	10	10	22	11	75
Oxford	0	3	4	2	2	10	6	3	7	4	41
Penobscot	19	29	21	29	36	54	51	55	31	19	344
Piscataquis	0	0	0	2	1	0	1	1	3	1	9
Sagadahoc	5	9	6	9	10	9	9	8	16	8	89
Somerset	3	3	0	3	2	5	7	9	5	4	41
Waldo	1	5	4	0	4	4	4	6	5	5	38
Washington	2	4	1	5	1	2	3	3	9	4	34
York	9	23	22	25	28	44	49	53	27	26	298
Out-of-State	46	112	132	171	176	204	214	142	110	34	1343
Total:	209	445	463	534	584	714	789	710	533	305	5286

Practice Type

	2009		2010		2011		2012		2013	
Government	528	10.48%	532	10.37%	523	10.14%	522	9.99%	547	10.35%
In-House/Corporate Counsel	325	6.45%	317	6.18%	328	6.36%	334	6.39%	334	6.32%
Judiciary	88	1.75%	90	1.75%	95	1.84%	73	1.40%	70	1.32%
Law Clerk	28	0.56%	21	0.41%	17	0.33%	25	0.48%	33	0.62%
Law School	31	0.62%	32	0.62%	32	0.62%	32	0.61%	33	0.62%
Legal Service	105	2.08%	101	1.97%	95	1.84%	92	1.76%	100	1.89%
Military	21	0.42%	22	0.43%	14	0.27%	13	0.25%	9	0.17%
Private Practice	3421	67.92%	3381	65.92%	3383	65.61%	3333	63.79%	3452	65.30%
Retired	46	0.91%	49	0.96%	65	1.26%	69	1.32%	84	1.59%
Other	444	8.81%	584	11.39%	604	11.71%	732	14.01%	624	11.80%

Age Demographics

	2009		2010		2011		2012		2013	
29 or Less	128	2.54%	142	2.77%	147	2.85%	215	4.11%	209	3.95%
30 - 34	364	7.23%	378	7.37%	393	7.62%	435	8.33%	445	8.42%
35 - 39	466	9.25%	449	8.75%	440	8.53%	447	8.56%	463	8.76%
40 - 44	592	11.75%	604	11.78%	573	11.11%	574	10.99%	534	10.10%
45 - 49	641	12.73%	599	11.68%	572	11.09%	573	10.97%	584	11.05%
50 - 54	790	15.68%	784	15.29%	760	14.74%	758	14.51%	714	13.51%
55 - 59	809	16.06%	803	15.66%	787	15.26%	786	15.04%	789	14.93%
60 - 64	697	13.84%	721	14.06%	727	14.10%	708	13.55%	710	13.43%
65+	550	10.92%	649	12.65%	757	14.68%				
65-69							469	8.98%	533	10.08%
70+							260	4.98%	305	5.77%
Total:	5037		5129		5156		5225		5286	

Gender Demographics

	2009		2010		2011		2012		2013	
Female	1639	32.54%	1726	33.65%	1769	34.31%	1810	34.64%	1844	34.88%
Male	3398	67.46%	3403	66.35%	3387	65.69%	3415	65.36%	3442	65.12%
Total:	5037		5129		5156		5225		5286	

Female	2009		2010		2011		2012		2013	
29 or Less	70	1.39%	78	1.52%	87	1.69%	124	2.37%	117	2.21%
30 - 34	202	4.01%	213	4.15%	214	4.15%	230	4.40%	229	4.33%
35 - 39	192	3.81%	196	3.82%	209	4.05%	210	4.02%	229	4.33%
40 - 44	216	4.29%	230	4.48%	216	4.19%	214	4.10%	207	3.92%
45 - 49	241	4.78%	229	4.46%	226	4.38%	228	4.36%	220	4.16%
50 - 54	274	5.44%	278	5.42%	267	5.18%	268	5.13%	266	5.03%
55 - 59	236	4.69%	260	5.07%	271	5.26%	271	5.19%	279	5.28%
60 - 64	150	2.98%	167	3.26%	182	3.53%	177	3.39%	170	3.22%
65+	58	1.15%	75	1.46%	97	1.88%				
65-69							73	1.40%	106	2.01%
70+							15	0.29%	21	0.40%

Male	2009		2010		2011		2012		2013	
29 or Less	58	1.15%	64	1.25%	60	1.16%	91	1.74%	92	1.74%
30 - 34	162	3.22%	165	3.22%	179	3.47%	205	3.92%	216	4.09%
35 - 39	274	5.44%	253	4.93%	231	4.48%	237	4.54%	234	4.43%
40 - 44	376	7.46%	374	7.29%	357	6.92%	360	6.89%	327	6.19%
45 - 49	400	7.94%	370	7.21%	346	6.71%	345	6.60%	364	6.89%
50 - 54	516	10.24%	506	9.87%	493	9.56%	490	9.38%	448	8.48%
55 - 59	573	11.38%	543	10.59%	516	10.01%	515	9.86%	510	9.65%
60 - 64	547	10.86%	554	10.80%	545	10.57%	531	10.16%	540	10.22%
65+	492	9.77%	574	11.19%	660	12.80%				
65-69							396	7.58%	427	8.08%
70+							245	4.69%	284	5.37%
Total:	5037		5129		5156		5225		5286	

County/Age Demographics

County	29 or Less	30 - 34	35-39	40-44	45-49	50-54	55-59	60-64	65-69	70+	Total:
Androscoggin	9	23	18	29	22	15	28	31	22	11	208
Aroostook	3	3	10	6	6	6	8	9	9	14	74
Cumberland	85	185	202	185	217	255	275	252	180	112	1948
Franklin	0	2	1	4	1	5	6	5	5	4	33
Hancock	4	4	5	7	12	15	15	18	16	13	109
Kennebec	18	30	23	42	52	72	88	90	46	28	489
Knox	4	8	11	10	8	9	15	15	20	7	107
Lincoln	1	2	3	5	6	5	10	10	22	11	75
Oxford	0	3	4	2	2	10	6	3	7	4	41
Penobscot	19	29	21	29	36	54	51	55	31	19	344
Piscataquis	0	0	0	2	1	0	1	1	3	1	9
Sagadahoc	5	9	6	9	10	9	9	8	16	8	89
Somerset	3	3	0	3	2	5	7	9	5	4	41
Waldo	1	5	4	0	4	4	4	6	5	5	38
Washington	2	4	1	5	1	2	3	3	9	4	34
York	9	23	22	25	28	44	49	53	27	26	298
Out-of-State	46	112	132	171	176	204	214	142	110	34	1343
Total:	209	445	463	534	584	714	789	710	533	305	5286

County designation is based on preferred mailing address of attorney.

County/Practice Demographics

County	Private Practice	Government	Judiciary	Legal Service	In-House/Corporate	Law School	Law Clerk	Other	Sub-Total:	Androscoggin	Aroostook	Cumberland	Franklin	Hancock	Kennebec	Knox	Lincoln	Oxford	Penobscot	Piscataquis	Sagadahoc	Somerset	Waldo	Washington	York	Out-of-State	Total:	
Age: 29 or Less																												
	6	1	0	0	0	0	0	2	9	3	2	46	0	2	4	1	0	0	10	0	1	2	2	1	6	29	111	
	1	3	1	6	3	0	5	21	85	3	1	3	0	0	4	0	0	0	1	2	2	0	0	1	0	6	19	
	0	0	0	0	0	0	0	0	0	0	0	0	0	0	0	0	0	0	0	0	0	0	0	0	0	0	1	8
	0	0	0	0	0	0	0	0	0	0	0	0	0	0	0	0	0	0	1	0	1	0	0	0	0	1	6	
	0	0	0	0	0	0	0	0	0	0	0	0	0	0	4	0	0	0	2	0	1	0	0	0	0	0	1	15
	2	0	0	0	0	0	0	0	0	0	0	0	2	6	3	3	1	0	4	0	0	1	0	2	2	6	48	
	9	3	0	0	0	0	0	0	0	0	0	0	0	4	18	4	1	0	19	0	5	3	1	2	9	46	209	
Age: 30 - 34																												
	18	2	2	0	0	0	0	0	18	2	2	134	1	3	14	6	2	2	20	0	4	2	2	4	20	68	302	
	2	9	5	9	2	3	23	0	0	0	0	9	0	1	5	1	0	0	0	0	0	1	0	0	0	14	35	
	2	0	0	0	0	0	0	0	0	0	0	0	0	0	1	0	0	0	4	0	1	0	0	0	0	3	16	
	0	0	0	0	0	0	0	0	0	0	0	0	1	0	1	0	0	0	0	0	2	0	1	1	0	9	24	
	0	0	0	0	0	0	0	0	0	0	0	2	0	0	0	0	0	0	0	0	0	0	0	0	0	0	2	
	0	0	0	0	0	0	0	0	0	0	0	3	0	0	0	0	0	0	3	0	0	0	0	0	0	3	9	
	1	0	0	0	0	0	0	0	0	0	0	23	0	0	9	1	0	1	2	0	2	0	0	1	2	15	57	
	23	3	0	0	0	0	0	0	0	0	0	185	2	4	30	8	2	3	29	0	9	3	5	4	23	112	445	
Age: 35 - 39																												
	13	2	0	0	0	0	0	0	13	8	8	132	1	5	10	7	3	3	12	0	4	0	0	4	17	87	307	
	2	14	4	15	1	3	32	0	0	1	1	14	0	0	9	2	0	0	4	0	0	0	0	0	3	11	46	
	0	0	0	0	0	0	0	0	0	0	0	4	0	0	2	0	0	0	1	0	0	0	0	0	0	1	8	
	0	0	0	0	0	0	0	0	0	0	0	15	0	0	0	1	0	1	1	0	2	0	0	1	14	36		
	0	0	0	0	0	0	0	0	0	0	0	1	0	0	0	0	0	0	0	0	0	0	0	0	0	2	3	
	0	0	0	0	0	0	0	0	0	0	0	3	0	0	1	0	0	0	0	0	0	0	0	0	0	0	4	
	0	0	0	0	0	0	0	0	0	0	0	1	0	0	0	0	0	0	0	0	0	0	0	0	0	0	1	
	3	0	0	0	0	0	0	0	0	0	0	32	0	0	1	1	0	0	3	0	0	0	0	0	1	17	58	
	18	10	0	0	0	0	0	0	0	0	0	202	1	5	23	11	3	4	21	0	6	0	4	1	22	132	463	

County	Private Practice	Government	Judiciary	Legal Service	In-House/Corporate	Law Clerk	Law School	Military	Other	Sub-Total:	York	Washington	Waldo	Somerset	Sagadahoc	Piscataquis	Penobscot	Oxford	Lincoln	Knox	Kennebec	Hancock	Franklin	Cumberland	Aroostook	Androscoggin	Total:
Age: 40 - 44	24	1	1	0	1	0	3	0	2	29	18	4	0	2	7	2	18	2	3	8	14	6	2	119	3	24	343
	Government	14	0	0	0	2	0	0	0	14	4	0	0	1	1	0	3	0	1	1	19	1	1	14	3	1	67
	Judiciary	2	0	0	0	0	0	0	0	2	0	0	0	0	0	0	0	0	0	0	0	0	0	2	0	1	5
	Legal Service	16	0	0	0	0	0	0	0	16	0	1	0	0	0	0	3	0	0	0	4	0	0	0	0	0	9
	In-House/Corporate	2	0	0	0	0	0	0	0	2	0	0	0	0	1	0	2	0	0	0	2	0	0	16	0	1	48
	Law Clerk	3	0	0	0	3	0	0	0	3	0	0	0	0	0	0	1	0	0	0	0	0	0	2	0	0	4
	Law School	0	0	0	0	0	0	0	0	0	0	0	0	0	0	0	0	0	0	0	0	0	0	0	0	0	5
	Military	0	0	0	0	0	0	0	0	0	0	0	0	0	0	0	0	0	0	0	0	0	0	0	0	0	2
	Other	29	0	0	0	29	0	0	0	29	2	0	0	0	0	0	2	0	0	1	1	0	0	0	0	0	51
	Sub-Total:	29	4	7	42	10	5	2	29	2	25	5	0	3	9	2	29	2	5	10	42	7	4	185	6	29	534
Age: 45 - 49	16	2	0	1	1	0	2	0	2	21	18	0	3	1	7	1	24	1	5	7	20	11	1	131	5	16	349
	Government	14	0	0	0	14	0	0	0	14	4	0	1	1	1	0	3	0	0	0	26	1	0	14	0	2	76
	Judiciary	2	0	0	0	2	0	0	0	2	0	0	0	0	0	0	1	0	0	0	0	0	0	0	0	0	2
	Legal Service	28	0	0	0	28	0	0	0	28	4	0	0	0	1	0	1	0	0	0	4	0	0	0	0	0	13
	In-House/Corporate	2	0	0	0	2	0	0	0	2	4	0	0	0	1	0	2	0	0	0	1	0	0	0	0	0	74
	Law School	1	0	0	0	1	0	0	0	1	0	0	0	0	0	0	0	0	0	0	0	0	0	0	0	0	2
	Military	39	0	0	0	39	0	0	0	39	0	0	0	0	1	0	5	0	0	1	1	0	0	0	0	0	4
	Other	22	1	12	52	8	6	2	36	1	28	1	4	2	10	1	36	1	2	6	8	52	12	1	217	6	64
	Sub-Total:	22	1	12	52	8	6	2	36	1	28	1	4	2	10	1	36	1	2	6	8	52	12	1	217	6	584
Age: 50 - 54	13	1	1	0	0	0	0	0	0	13	31	1	2	3	7	0	39	0	3	4	14	10	3	174	4	13	444
	Government	22	3	0	0	22	0	0	0	22	4	0	0	1	1	0	7	0	1	1	44	2	2	22	1	1	107
	Judiciary	3	0	0	0	3	0	0	0	3	1	0	0	0	0	0	4	0	0	0	2	0	0	3	0	0	16
	Legal Service	23	1	0	0	23	0	0	0	23	1	0	0	0	0	0	0	0	0	0	3	0	0	0	0	0	11
	In-House/Corporate	2	0	0	0	2	0	0	0	2	0	0	0	0	0	0	0	0	0	0	0	0	0	0	0	0	60
	Law School	0	0	0	0	0	0	0	0	0	0	0	0	0	0	0	0	0	0	0	0	0	0	0	0	0	7
	Law Clerk	0	0	0	0	0	0	0	0	0	0	0	0	0	0	0	1	0	0	0	0	0	0	0	0	0	1
	Military	0	0	0	0	0	0	0	0	0	0	0	0	0	0	0	0	0	0	0	0	0	0	0	0	0	1
	Retired	0	0	0	0	0	0	0	0	0	0	0	0	1	0	0	0	0	0	0	0	0	0	0	0	0	1
	Other	29	0	3	5	3	1	0	3	0	4	0	2	0	1	0	3	0	0	1	3	5	3	29	0	0	66
	Sub-Total:	15	5	15	72	9	5	10	54	0	44	2	4	5	9	0	54	0	10	5	72	15	5	255	6	15	714

County	Private Practice	Government	Judiciary	Legal Service	In-House/Corporate	Law School	Law Clerk	Military	Retired	Other	Sub-Total:	Androscoggin	Aroostook	Cumberland	Franklin	Hancock	Kennebec	Knox	Lincoln	Oxford	Penobscot	Piscataquis	Sagadahoc	Somerset	Waldo	Washington	York	Out-of-State	Total:
Age: 55 - 59	22	2	3	0	0	0	0	0	0	1	28	28	8	275	6	15	88	15	10	6	39	1	4	7	2	3	40	156	556
	2	8	4	13	1	0	0	0	3	19											5	0	0	0	0	0	0	20	86
	3	1	0	4	0	0	0	0	2	0											3	0	0	0	0	0	1	1	27
	1	8	0	0	0	0	0	0	0	0											0	0	0	0	0	0	0	0	8
	1	4	0	0	0	0	0	0	0	0											0	0	0	0	0	0	0	0	38
	0	13	0	0	0	0	0	0	0	0											1	1	0	0	0	0	0	15	2
	0	1	0	0	0	0	0	0	0	0											0	0	0	0	0	0	0	1	1
	0	0	0	0	0	0	0	0	1	0											0	0	0	0	0	0	0	0	1
	0	3	1	0	0	0	0	0	0	0											0	0	0	0	0	0	0	1	1
	1	19	1	0	0	0	0	0	5	3											2	2	0	0	1	0	4	19	62
	28	275	6	15	88	15	10	6	51	7											51	1	9	7	4	3	49	214	789
Age: 60 - 64	25	3	1	0	0	0	0	0	0	0	31	25	7	182	5	14	33	13	7	3	39	0	8	8	4	3	43	82	476
	3	14	0	0	0	0	0	0	2	0											5	0	0	0	0	0	3	18	86
	1	7	0	0	0	0	0	0	0	0											3	1	0	0	0	0	3	1	21
	0	2	0	0	0	0	0	0	6	0											3	0	0	0	0	0	0	8	20
	1	15	0	0	0	0	0	0	4	0											3	0	0	0	0	0	1	12	38
	0	2	0	0	0	0	0	0	0	0											0	0	0	0	0	0	0	1	3
	0	7	0	0	0	0	0	0	1	0											0	0	0	0	0	0	1	4	16
	1	23	0	0	0	0	0	0	5	0											2	0	0	0	0	0	2	16	50
	31	252	5	18	90	15	10	3	55	2											2	1	8	9	6	3	53	142	710
Age: 65 - 69	18	2	0	0	0	0	0	0	0	0	18	18	7	134	4	15	29	17	19	5	20	1	10	5	4	8	23	80	399
	2	9	0	0	0	0	0	0	1	0											2	2	2	0	0	0	0	6	28
	0	3	0	0	0	0	0	0	0	0											4	1	1	0	0	0	0	1	18
	0	6	0	0	0	0	0	0	1	0											0	0	0	0	1	0	0	1	7
	1	3	0	0	0	0	0	0	0	0											0	0	0	0	0	0	1	3	11
	0	9	1	0	0	0	0	0	2	1											0	0	0	0	0	0	1	2	7
	1	14	0	0	0	0	0	0	1	0											1	1	2	0	0	1	1	9	31
	22	180	5	16	46	20	7	31	4	4											4	3	16	5	5	9	27	110	533
Age: 70+	9	86	3	9	23	5	10	3	15	1											15	1	5	4	4	4	24	26	244
	0	1	0	0	1	0	0	0	0	0											0	0	0	0	0	0	0	1	4
	1	3	0	0	0	0	0	0	0	0											0	0	0	0	0	0	0	1	5
	0	2	0	0	0	0	0	0	0	0											0	0	0	0	0	0	0	0	2
	0	1	0	0	0	0	0	0	0	0											0	0	0	0	0	0	0	0	1
	0	10	1	2	2	2	1	4	0	0											4	0	3	0	0	0	2	2	30
	1	9	0	0	2	2	0	0	0	0											0	0	0	0	0	0	0	4	19
	11	112	4	13	28	7	11	4	19	0											19	1	8	4	5	4	26	34	305
	208	1948	33	109	489	107	75	41	344	9											34	38	89	41	38	34	306	1341	5286
	3.93%	36.85%	0.62%	2.06%	9.25%	2.02%	1.42%	0.78%	6.51%	0.17%											6.51%	0.17%	1.68%	0.78%	0.72%	0.64%	5.79%	25.37%	



Board of Overseers of the Bar
P O Box 527
Augusta, ME 04332-0527
T. 207-623-1121
F. 207-623-4175
www.mebaroverseers.org