

MAINE STATE LEGISLATURE

The following document is provided by the
LAW AND LEGISLATIVE DIGITAL LIBRARY
at the Maine State Law and Legislative Reference Library
<http://legislature.maine.gov/lawlib>



Reproduced from electronic originals
(may include minor formatting differences from printed original)



Feasibility Study and Concept Design for the Maine Correctional Center

Maine Department of Corrections
Windham, Maine



Prepared by:
SMRT Architects and Engineers
in association with
Pulitzer/Bogard & Associates





Legislative Mandate:

“prepare an independent feasibility study of the need for correctional facility construction projects in the Town of Windham. The feasibility study must consider and provide financial analysis with respect to a number of components including but not limited to the costs of the existing correctional system and the population growth and costs of a new correctional facility in the Town of Windham.”



Key Conclusions:

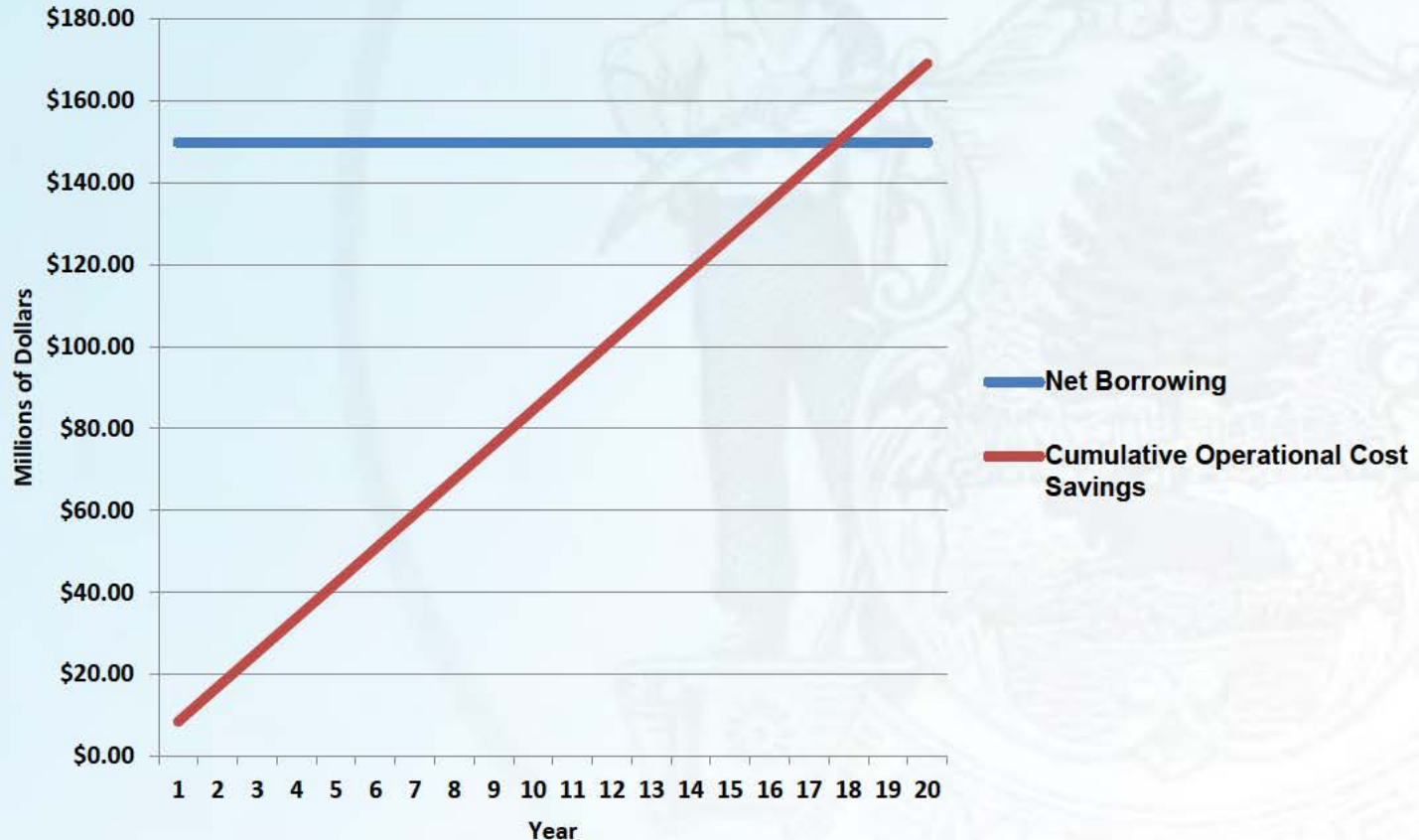
- 1. There is a positive economic benefit to the State of Maine and the project is self-funded***
- 2. This project will enable MDOC to do “more with less”***
- 3. The alternative to this plan of action will be more costly***
- 4. This project positively realigns the system capacity***



- 1. There is a positive economic benefit to the State of Maine and the project is self-funded***
 - **Will be closing the DCF and SMWRC and downsize CCF**
 - **Will be avoiding necessary capital improvements to inefficient facilities**
 - **Will put in place a design for MCC that permits more efficient operations and lowers costs**
 - **The cumulative savings will fund the new construction**



1. There is a positive COST benefit to the State of Maine and the project is self-funded





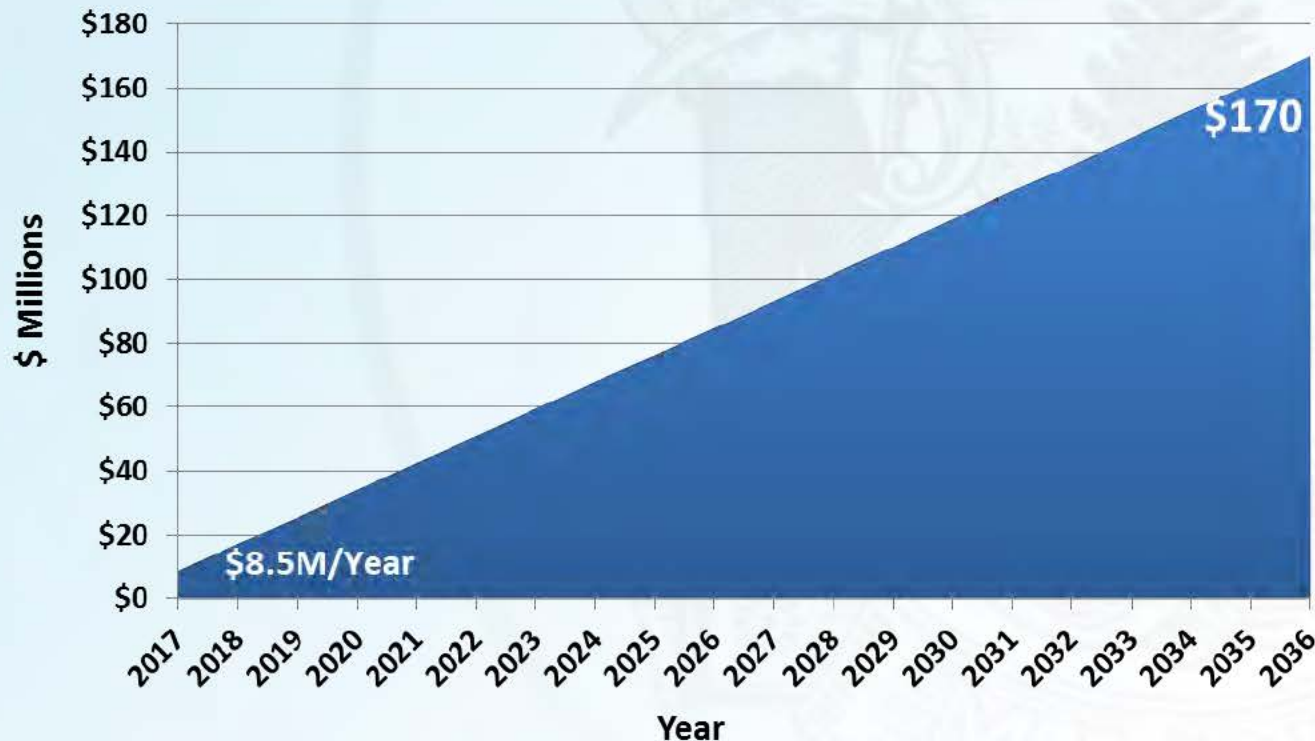
2. This project will enable MDOC to do “more with less”

- **Maine has 9th highest per diem cost in the country, this plan will reduce that cost by 14.3%**
- **The plan will fill unmet treatment needs including those who are or have:**
 - **Physical illnesses**
 - **Mental illnesses**
 - **Substance abusers**
 - **Sex offenders**
 - **Assisted Living and Geriatric needs**
- **The plan will meet the needs of the growing female population**
- **Increase safety and security for public, staff and inmates**
- **Significantly enhances the re-entry system**



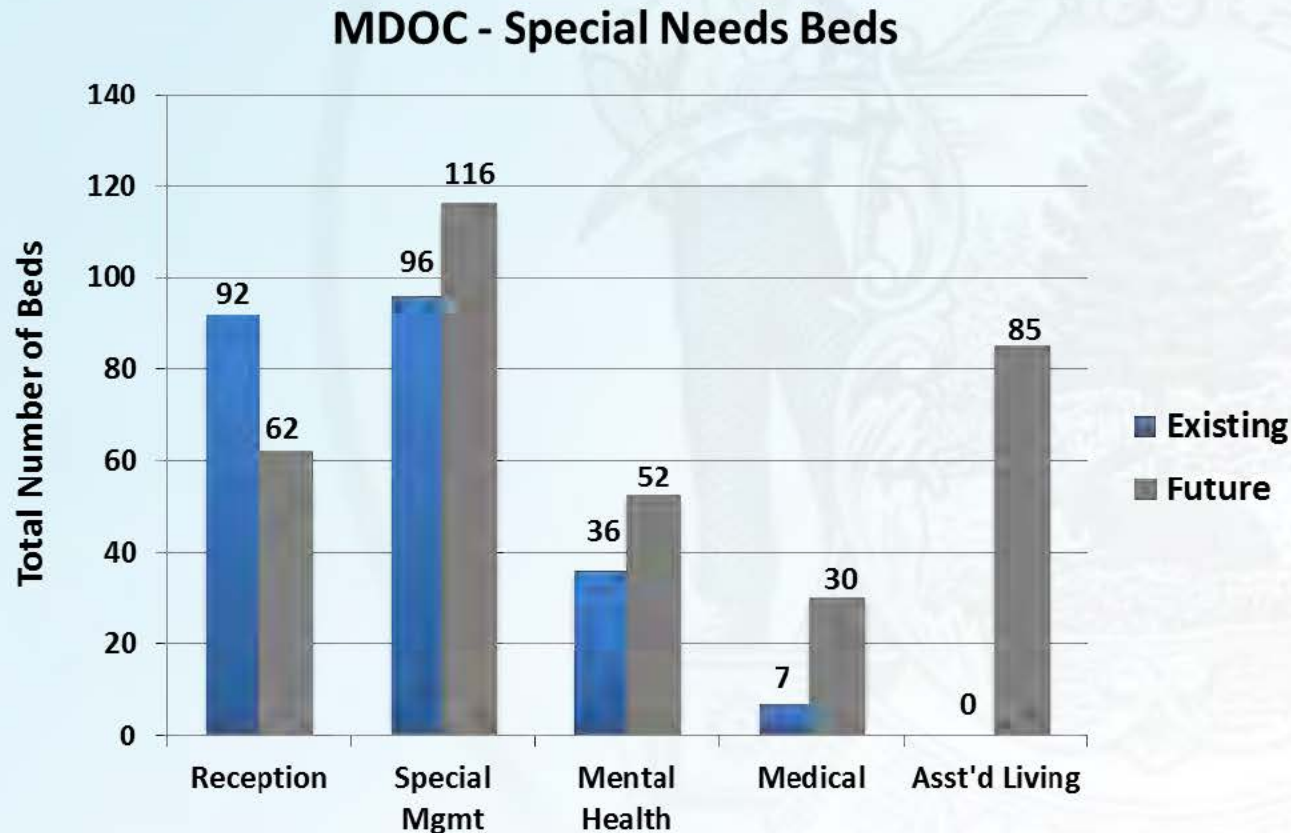
2. *This project will enable MDOC to do “more with less”*

20 Year Cumulative Savings, 2017 – 2036
(In 2014 dollars)





2. *This project will enable MDOC to do “more with less”*



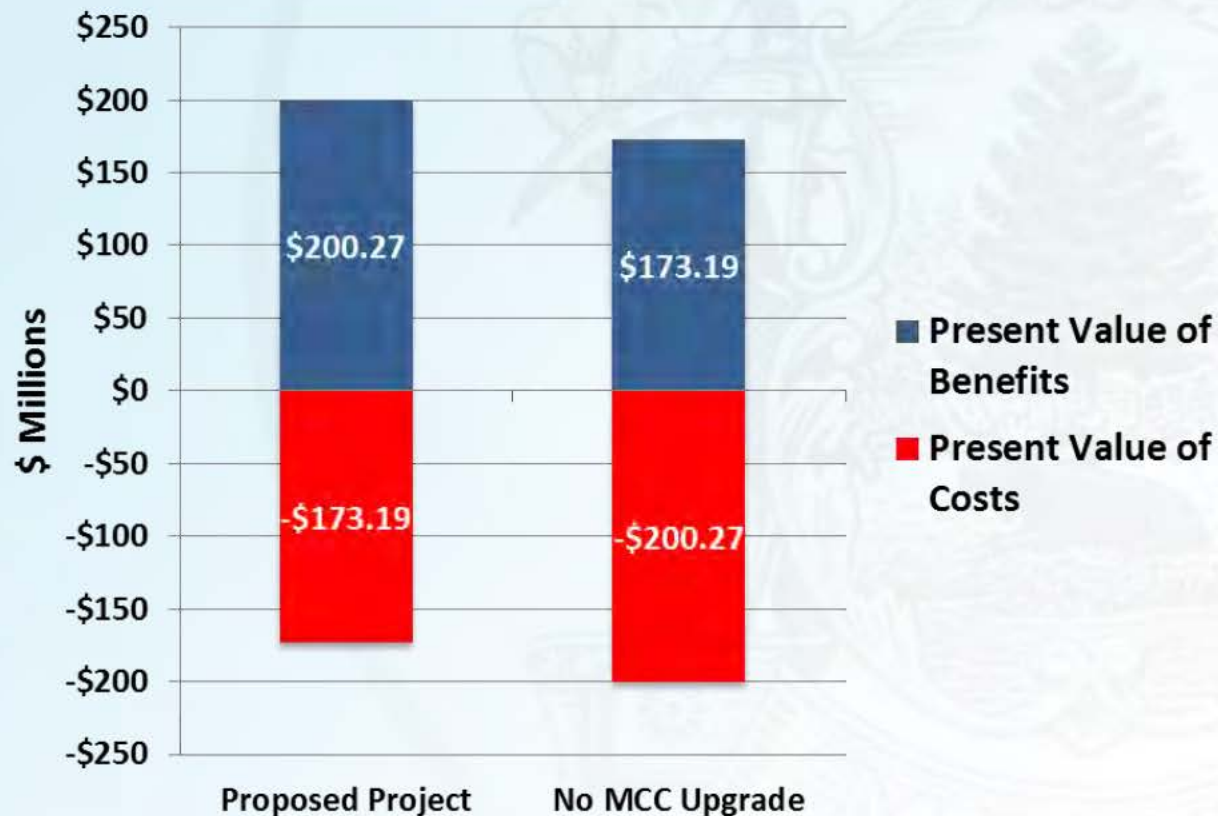


3. The alternative to this plan of action will be more costly

- **The state will need to spend at least \$71.4 million on repairs/renovations to allow existing inefficient facilities to remain operational**
- **This considerable expenditure will still yield little in terms of efficiencies or reducing operating costs**
- **Nor will it meet the needs for special populations or the re-entry system without significant increases in operating expenditures**



3. *The alternative to this plan of action will be more costly*



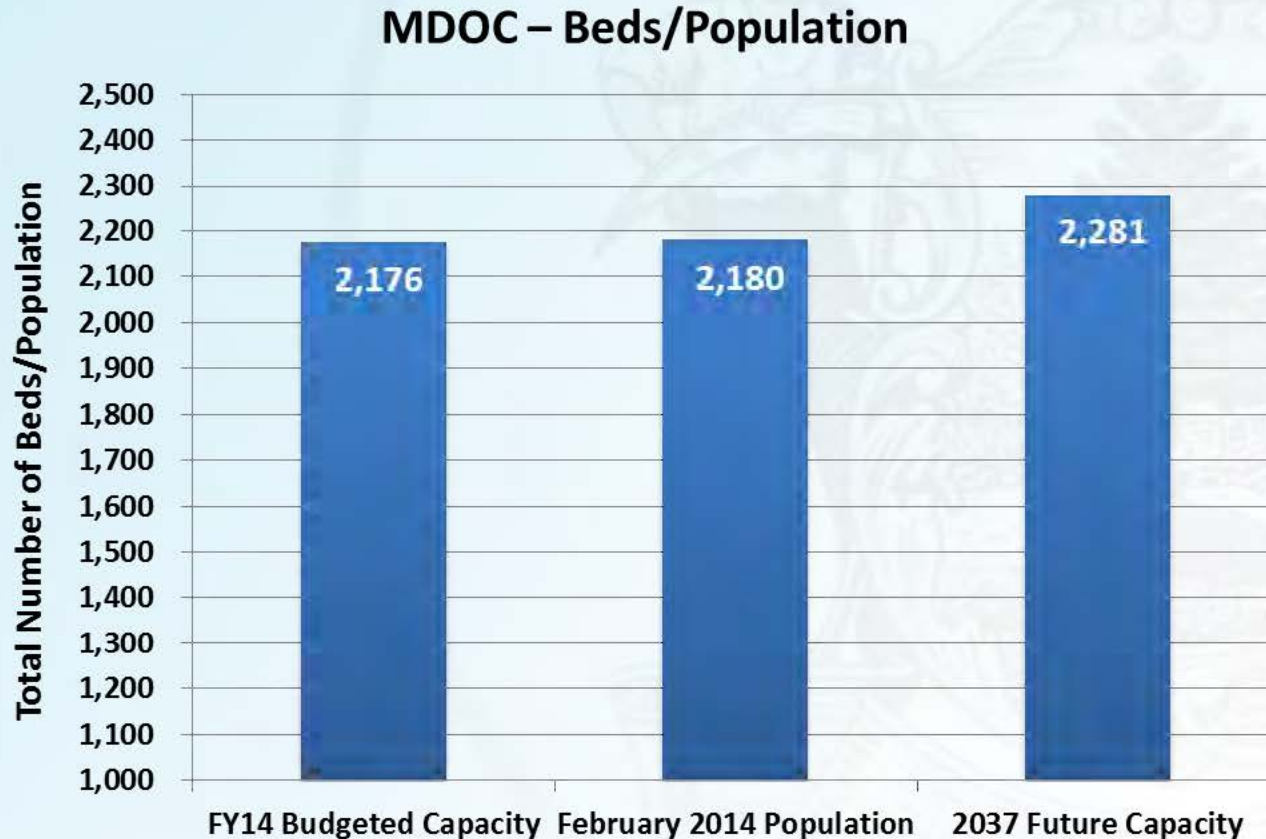


4. This project positively realigns the system capacity

- **Marginally increases general population bed capacity while providing needed bed space for special populations**
- **Will provide capacity to assist counties with difficult and expensive to manage inmates**
- **Realignment of future capacity will provide the flexibility to house different classifications and allow for peaking needs**



4. *This project positively realigns the system capacity*





FEASIBILITY STUDY FOR THE MAINE CORRECTIONAL CENTER Windham, ME



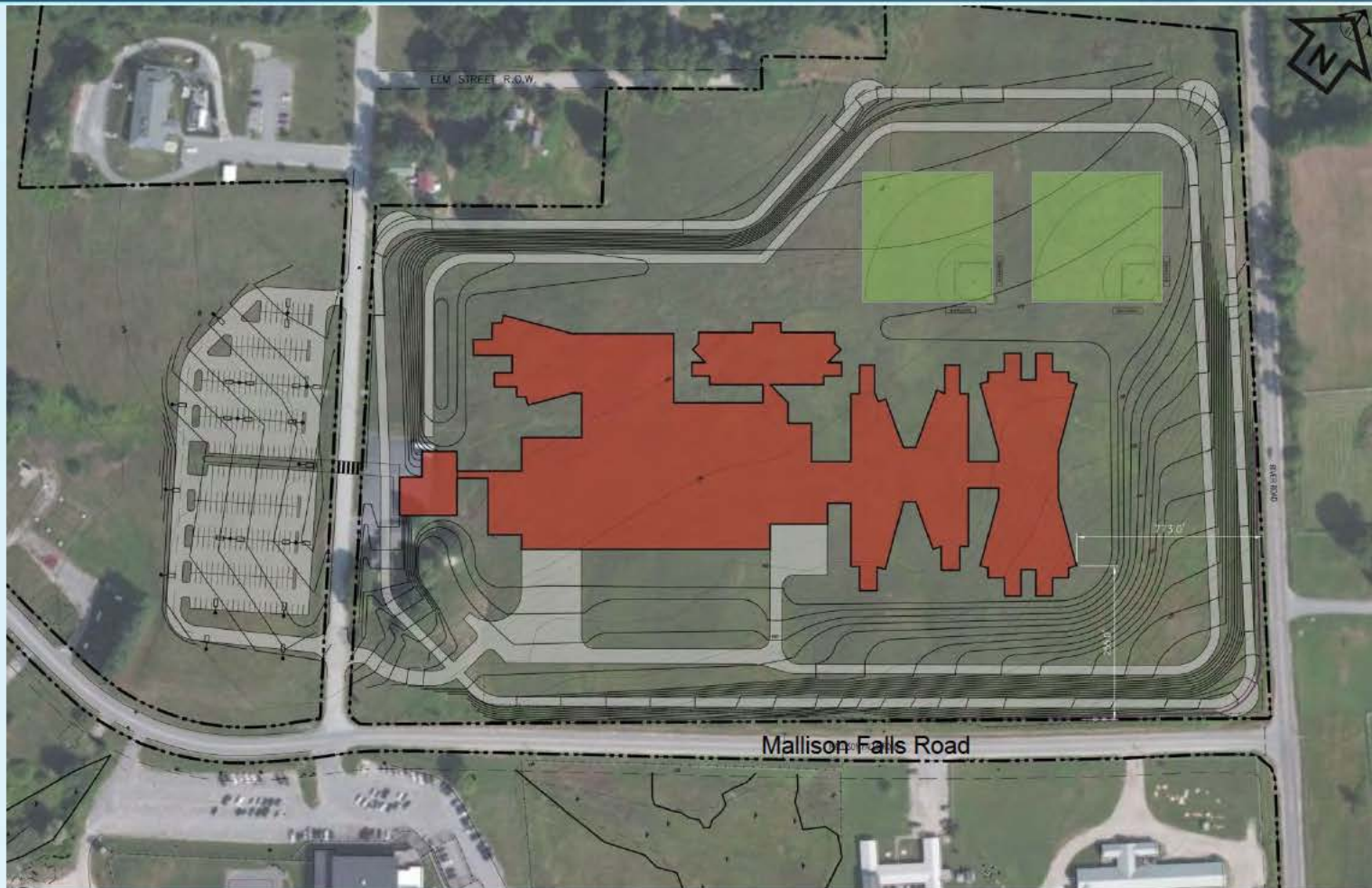


FEASIBILITY STUDY FOR THE MAINE CORRECTIONAL CENTER Windham, ME





FEASIBILITY STUDY FOR THE MAINE CORRECTIONAL CENTER Windham, ME





FEASIBILITY STUDY FOR THE MAINE CORRECTIONAL CENTER Windham, ME

