

MAINE STATE LEGISLATURE

The following document is provided by the
LAW AND LEGISLATIVE DIGITAL LIBRARY
at the Maine State Law and Legislative Reference Library
<http://legislature.maine.gov/lawlib>



Reproduced from electronic originals
(may include minor formatting differences from printed original)

MAINE DEPARTMENT OF HEALTH AND HUMAN SERVICES

Office of Child and Family Services

**Child Protective Services
Annual Report**

2017



Paul R. LePage, Governor

Ricker Hamilton, Commissioner

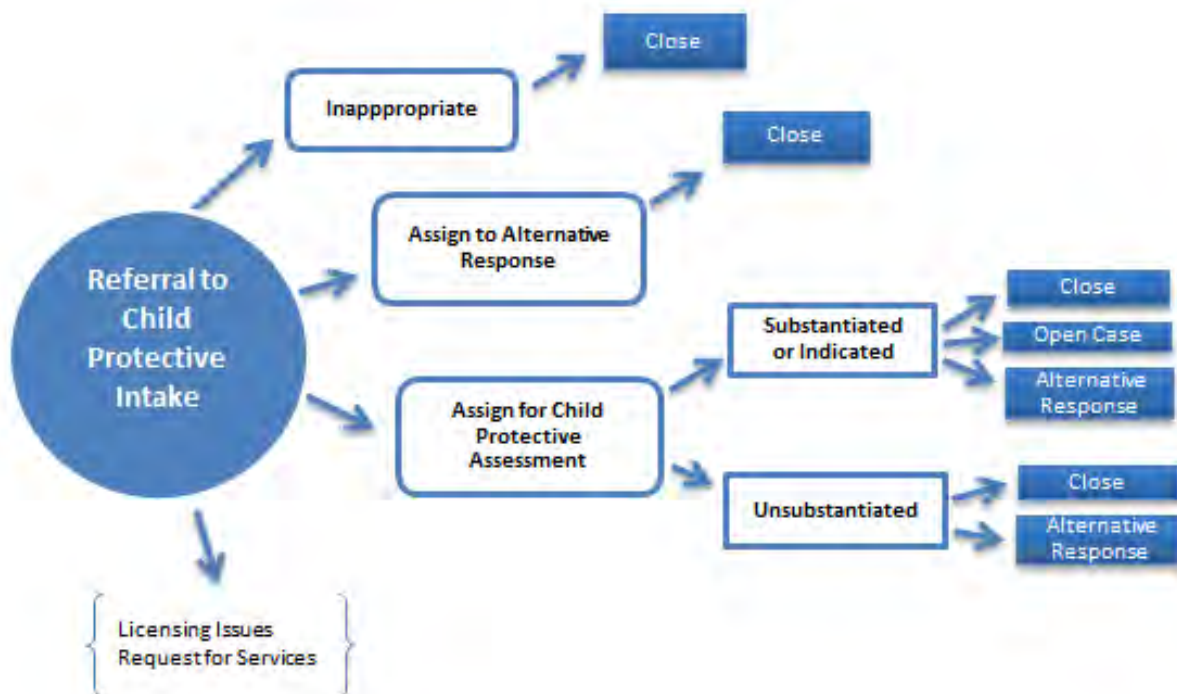
Child Protective Services Annual Report

The following report provides a summary of the number of referrals to Child Protective Services, the number of unassigned referrals, and a series of detailed reports on the characteristics of the referrals that were assigned to caseworkers for assessment.

A referral is any written or verbal request for Child Protective Services intervention, in a family situation on behalf of a child, in order to assess or resolve problems being presented.

All county level data represents the county where the primary caregiver was residing at the time of the Intake referral.

• • •
Title 22 MRSA, Chapter 1071, Subsection 4002 defines abuse or neglect as "a threat to a child's health or welfare by physical, mental, or emotional injury or impairment, sexual abuse or exploitation, deprivation of essential needs or lack of protection from these by a person responsible for the child."
• • •



REFERRALS FOR CHILD PROTECTIVE SERVICES

During calendar year 2017, the Department of Health and Human Services received **19,567** referrals for Child Protective Services intervention in a family situation. Most referrals are received through Child Protective Intake, though a small amount of reports are received within one of the eight District Offices. When reports are received, a decision is made regarding whether or not the report contains allegations of abuse or neglect per Title 22. If the report does not contain allegations of abuse or neglect per Maine state law, the report is not assigned (“inappropriate”) for intervention. When reports contain allegations of abuse or neglect and are “appropriate” for intervention, the report may be assigned for a child protective assessment, or assigned to an Alternative Response Program (ARP).

The following chart shows the number of reports received by county over the past three years. This includes inappropriate reports, reports assigned for alternative response, and those assigned for a child protective assessment.

NUMBER OF REFERRALS BY COUNTY AND CALENDAR YEAR			
COUNTY	2015	2016	2017
Androscoggin	2147	2024	2199
Aroostook	1198	1212	1237
Cumberland	2532	2495	2612
Franklin	462	458	463
Hancock	578	617	596
Kennebec	2079	2104	2114
Knox	544	576	587
Lincoln	418	418	480
Oxford	950	954	1006
Penobscot	2486	2479	2638
Piscataquis	240	256	238
Sagadahoc	366	399	427
Somerset	972	988	1045
Waldo	579	670	654
Washington	424	458	474
York	2514	2406	2559
Unknown	38	19	79
Out of State	88	97	159
TOTAL	18615	18630	19567

**Excludes reports referred to Licensing, Out of Home Investigation Unit, Service Requests, and reports received where a case was already open and the information was not a new incident.*

**County represents the county where the primary caregiver was residing at the time of the Intake referral.*

INAPPROPRIATE REFERRALS

During calendar year 2017, **8,768** reports were deemed “inappropriate” (screened out) as they did not contain allegations of child abuse or neglect. Some examples of reports that would be deemed inappropriate include:

- **Parent/child conflict:** Children and parents in conflict over family, school, friends, or behaviors, with no allegations of abuse or neglect. Includes adolescents who are runaways or who are exhibiting acting out behaviors that parents have been unable to control.
- **Non-specific allegations** or allegations of marginal physical or emotional care, which may be poor parenting practice, but is not considered abuse or neglect under Maine Law.
- **Conflicts over custody** and or visitation of children which may include allegations of marginal/poor care.
- **Families in crisis** due to financial, physical, mental health, or interpersonal problems, but there are no allegations of abuse or neglect.

The following is the breakdown of inappropriate reports received by county over the past three years.

NUMBER OF INAPPROPRIATE REPORTS BY COUNTY			
COUNTY	2015	2016	2017
Androscoggin	858	772	786
Aroostook	524	508	539
Cumberland	1109	1099	1212
Franklin	156	180	223
Hancock	246	252	288
Kennebec	716	787	972
Knox	227	214	262
Lincoln	175	161	195
Oxford	396	353	443
Penobscot	988	928	1143
Piscataquis	103	95	106
Sagadahoc	143	180	209
Somerset	357	376	468
Waldo	244	267	312
Washington	154	167	222
York	1014	1008	1151
Unknown	38	19	79
Out of State	87	97	158
TOTAL	7535	7463	8768

ALTERNATIVE RESPONSE

The Department of Health and Human Services has contracts with private agencies to provide an alternative response to reports of child abuse and neglect when the allegations are considered to be of low to moderate severity.

In 2017, there were **2,185** reports which were assigned to a Contract Agency for alternative response at the time of initial report. Referrals are also made to Alternative Response Programs at the conclusion of a child protective assessment or case with a family, when ongoing services and support are deemed necessary. The following chart shows the number of reports assigned for alternative response at the time of the Intake report.

REPORTS ASSIGNED FOR ALTERNATIVE RESPONSE BY COUNTY			
COUNTY	2015	2016	2017
Androscoggin	329	299	312
Aroostook	151	145	203
Cumberland	183	195	244
Franklin	86	78	79
Hancock	60	76	57
Kennebec	338	217	171
Knox	60	69	77
Lincoln	50	70	67
Oxford	151	197	163
Penobscot	246	237	199
Piscataquis	25	34	22
Sagadahoc	66	70	72
Somerset	66	79	115
Waldo	91	92	104
Washington	28	29	37
York	247	240	263
TOTAL	2177	2127	2185

**County represents the county where the primary caregiver was residing at the time of the Intake referral.*

REFERRALS FOR CHILD PROTECTIVE SERVICES

There were **7,288** reports involving **10,119** children assigned to a caseworker for a child protective assessment during calendar year 2017.

The following is the breakdown by county of reports assigned for a child protective assessment over the past 3 years.

REPORTS ASSIGNED FOR CHILD PROTECTIVE ASSESSMENT BY COUNTY			
COUNTY	2015	2016	2017
Androscoggin	884	821	810
Aroostook	477	501	418
Cumberland	1199	1144	1028
Franklin	216	195	150
Hancock	256	270	217
Kennebec	1000	1035	884
Knox	241	264	220
Lincoln	180	174	200
Oxford	383	387	333
Penobscot	1164	1134	1017
Piscataquis	107	118	92
Sagadahoc	148	142	133
Somerset	529	494	406
Waldo	223	273	199
Washington	205	222	160
York	1234	1105	1021
TOTAL	8446	8279	7288

** County represents the county where the primary caregiver was residing at the time of the Intake referral. For families that were out of state residents, the county above is that where the incident occurred while they were in Maine.*

REFERRALS FOR CHILD PROTECTIVE SERVICES

The following is the breakdown by county and age group of the alleged victims associated with the reports assigned for a child protective assessment over the past three years.

NUMBER OF ALLEGED VICTIMS ASSOCIATED WITH REPORTS ASSIGNED FOR CHILD PROTECTIVE ASSESSMENTS												
COUNTY	2015				2016				2017			
	Age Group				Age Group				Age Group			
	0-4	5-9	10-14	15-17	0-4	5-9	10-14	15-17	0-4	5-9	10-14	15-17
Androscoggin	660	517	290	86	593	415	273	78	532	450	288	100
Aroostook	347	235	166	46	369	267	148	55	288	199	154	49
Cumberland	756	667	380	161	680	607	363	137	589	513	366	123
Franklin	156	126	63	28	127	124	72	26	101	98	50	19
Hancock	176	135	76	21	177	116	74	32	165	93	69	25
Kennebec	637	555	338	113	724	524	349	123	544	470	357	124
Knox	169	128	59	21	180	127	82	25	137	107	72	28
Lincoln	124	74	78	13	94	92	68	24	146	82	84	21
Oxford	282	215	139	50	263	225	144	40	214	167	121	42
Penobscot	829	551	351	98	822	523	336	99	665	503	334	100
Piscataquis	79	43	47	14	63	54	52	20	61	36	34	18
Sagadahoc	80	78	49	18	77	76	53	13	70	61	57	19
Somerset	348	285	213	60	317	256	203	49	243	222	194	50
Waldo	140	127	67	31	196	172	77	38	124	127	77	20
Washington	146	111	84	22	138	128	78	31	103	75	64	20
York	710	639	450	176	651	546	421	142	563	507	407	126
TOTAL	5639	4486	2850	958	5471	4252	2793	932	4545	3710	2728	890

*County represents the county where the primary caregiver was residing at the time of the Intake referral.

*Children may be counted multiple times if more than one report was received in the year. There were 10,119 unique children in calendar year 2017.

REFERRAL SOURCE OF ALL REPORTS RECEIVED

The following is a breakdown of the report source, (i.e. “Referent”) for reports received in calendar year 2017. Mandated reporters are required by law to provide their name and information about their professional relationship with the family, though can ask that their name be kept confidential from the family. Non-mandated reporters can ask that their name be kept “anonymous” and not disclose their name/identity for the report.

REFERRAL SOURCE – ALL REPORTS			
REFERRAL SOURCE	2015	2016	2017
Anonymous	9%	8%	8%
Child Care Personnel	1%	1%	1%
Law Enforcement Personnel	14%	15%	15%
Medical Personnel	15%	15%	15%
Mental Health Personnel	13%	12%	11%
Neighbor/Friend	4%	4%	4%
Other	1%	1%	0%
Relative	5%	5%	5%
School Personnel	19%	20%	21%
Self/Family	11%	11%	10%
Social Services Personnel	8%	9%	9%

REFERRAL SOURCE OF REPORTS ASSIGNED FOR CHILD PROTECTIVE ASSESSMENT

REFERRAL SOURCE – REPORTS ASSIGNED FOR CHILD PROTECTIVE ASSESSMENT			
REFERRAL SOURCE	2015	2016	2017
Anonymous	8%	8%	7%
Child Care Personnel	1%	1%	1%
Law Enforcement Personnel	19%	21%	22%
Medical Personnel	16%	16%	15%
Mental Health Personnel	11%	11%	10%
Neighbor/Friend	4%	4%	4%
Other	1%	1%	0%
Relative	6%	6%	5%
School Personnel	18%	17%	18%
Self/Family	7%	7%	7%
Social Services Personnel	9%	10%	10%

**Excludes reports referred to Licensing, Out of Home Investigations, Service Requests, and reports received where a case was already open and the information was not a new incident.*

***HOUSEHOLD TYPE/LIVING ARRANGEMENT OF FAMILIES
ASSIGNED FOR CHILD PROTECTIVE ASSESSMENT***

When receiving reports of suspected abuse/neglect, Maine OCFS documents information regarding the living arrangement of each family/household. For example, a two parent, unmarried family may include a biological parent and his/her live-in partner who is also a caretaker to the child (ren). A one parent female/male family would be a household with a single parent caring for the children. A “relative” household type would be chosen when grandparents, aunt/uncle, etc. are the caregivers of children. A non-relative household type would be selected when children are being cared for by a person not related to them.

The following chart shows the living arrangement at the time of the receipt of the Intake report for those reports that were assigned for a child protective assessment.

LIVING ARRANGEMENT OF FAMILIES FOR REPORTS ASSIGNED FOR CHILD PROTECTIVE ASSESSMENT			
Household Type/Living Arrangement	2015	2016	2017
Two Parent Married	19%	19%	19%
Two Parent Unmarried	35%	36%	35%
One Parent Female	35%	34%	33%
One Parent Male	7%	7%	9%
Adoptive Home	1%	1%	1%
Relative	3%	3%	3%
Non Relative	0%	0%	0%
Other	1%	1%	0%

FAMILY RISK FACTORS IDENTIFIED DURING ASSESSMENT

The following shows the percentage of assessments where one of the following risk factors were found during the assessment. Each assessment may have several risk factors.

RISK FACTOR	2015	2016	2017
Prior History with CPS	74%	76%	76%
Mental Health Problems	44%	43%	41%
Involved with Court	22%	23%	23%
Spouse Abuse / Family Violence	21%	21%	21%
Drug Misuse by Parent	18%	20%	17%
Pregnancy / New Child	18%	18%	16%
Heavy Child Care Responsibility	13%	11%	12%
Parent / Child Conflict	11%	11%	11%
School Related Problems	11%	11%	11%
ADD / ADHD	11%	12%	11%
Alcohol Misuse by Parent	11%	11%	11%
Unstable Living Conditions	11%	10%	11%
Former Foster Child	10%	10%	10%
Physical Health Problems	9%	9%	9%
Learning Disability	8%	7%	7%
Severe Acting Out Behavior by Child	8%	8%	7%
Divorce Conflict	8%	7%	6%
Emotionally Disturbed Child	7%	6%	5%
Inadequate Housing	5%	4%	4%
Social Isolation	3%	3%	3%
Drug Misuse by Child	2%	1%	2%
Physical Disability	2%	2%	2%
Premature Birth	1%	1%	1%
Runaway	1%	1%	<1%
Alcohol Misuse by Child	1%	<1%	<1%
Abuse to Animals	<1%	<1%	<1%
Visual / Hearing Impairment	<1%	<1%	<1%
Previous Child Death	<1%	<1%	<1%
Failure to Thrive Child	<1%	<1%	<1%
Fire Setting	<1%	<1%	<1%
Fetal Alcohol Syndrome	<1%	<1%	<1%

*Totals will exceed 100% due to each assessment having multiple risk factors identified during the assessment.

COMPLETED ASSESSMENTS

Below are outcomes for assessments completed in calendar year 2016 and 2017, showing the number of completed assessments by county which resulted in a finding of abuse or neglect (substantiated or indicated), or no findings of abuse/neglect (unsubstantiated). Substantiated findings are high severity, whereas indicated findings are of low/moderate severity.

CHILD PROTECTIVE ASSESSMENT FINDINGS						
COUNTY	2016			2017		
	# Assigned	# Substantiated/ Indicated	#Unsubstantiated	# Assigned	# Substantiated/ Indicated	#Unsubstantiated
Androscoggin	821	221	600	810	229	581
Aroostook	501	114	387	417	132	285
Cumberland	1144	261	883	1028	244	784
Franklin	195	51	144	150	38	112
Hancock	269	77	192	217	82	135
Kennebec	1035	349	686	883	310	573
Knox	264	67	197	219	44	175
Lincoln	174	50	124	199	66	133
Oxford	387	88	299	333	85	248
Penobscot	1134	320	814	1017	278	739
Piscataquis	118	26	92	92	26	66
Sagadahoc	142	36	106	133	33	100
Somerset	494	167	327	406	149	257
Waldo	272	61	211	199	40	159
Washington	222	73	149	160	67	93
York	1105	307	798	1021	337	684
State	8277	2268	6009	7284	2160	5124

*County represents the county where the primary caregiver was residing at the time of the Intake referral.

ASSESSMENT FINDINGS RATE

The following shows the percentage of assessments completed where findings of abuse or neglect were substantiated or indicated by county.

ASSESSMENT FINDINGS RATE			
COUNTY	2015	2016	2017
Androscoggin	23%	27%	28%
Aroostook	18%	23%	32%
Cumberland	21%	23%	24%
Franklin	19%	26%	25%
Hancock	36%	27%	38%
Kennebec	27%	34%	35%
Knox	21%	25%	20%
Lincoln	30%	29%	33%
Oxford	18%	23%	26%
Penobscot	25%	28%	27%
Piscataquis	19%	22%	28%
Sagadahoc	19%	25%	25%
Somerset	35%	34%	37%
Waldo	23%	22%	20%
Washington	29%	33%	42%
York	32%	28%	33%
TOTAL	25%	27%	30%

**County represents the county where the primary caregiver was residing at the time of the Intake referral.*

CHILD ABUSE AND NEGLECT VICTIMS BY ABUSE TYPE

The following report shows the victims by age group and type(s) of abuse found during the child protective assessment for the past three years. Children may be counted multiple times if they were the victim of more than one abuse type in a given assessment, or the victim of abuse in separate assessments over the course of the calendar year.

2015				
AGE	Sexual Abuse	Physical Abuse	Neglect	Emotional Abuse
0-4	64	491	1044	228
5-9	73	282	654	407
10-14	73	180	388	338
15-17	25	60	110	114
Total	235	1013	2196	1087

2016				
AGE	Sexual Abuse	Physical Abuse	Neglect	Emotional Abuse
0-4	67	466	1132	269
5-9	86	312	673	458
10-14	89	193	372	347
15-17	38	71	97	118
Total	280	1042	2274	1192

2017				
AGE	Sexual Abuse	Physical Abuse	Neglect	Emotional Abuse
0-4	62	456	1037	271
5-9	97	306	646	407
10-14	104	210	412	385
15-17	35	51	102	104
Total	298	1023	2197	1167