

MAINE STATE LEGISLATURE

The following document is provided by the
LAW AND LEGISLATIVE DIGITAL LIBRARY
at the Maine State Law and Legislative Reference Library
<http://legislature.maine.gov/lawlib>



Reproduced from electronic originals
(may include minor formatting differences from printed original)

MAINE DEPARTMENT OF HEALTH AND HUMAN SERVICES

Office of Child and Family Services

**Child Protective Services
Annual Report**

2016



Paul R. LePage, Governor

Mary C. Mayhew, Commissioner

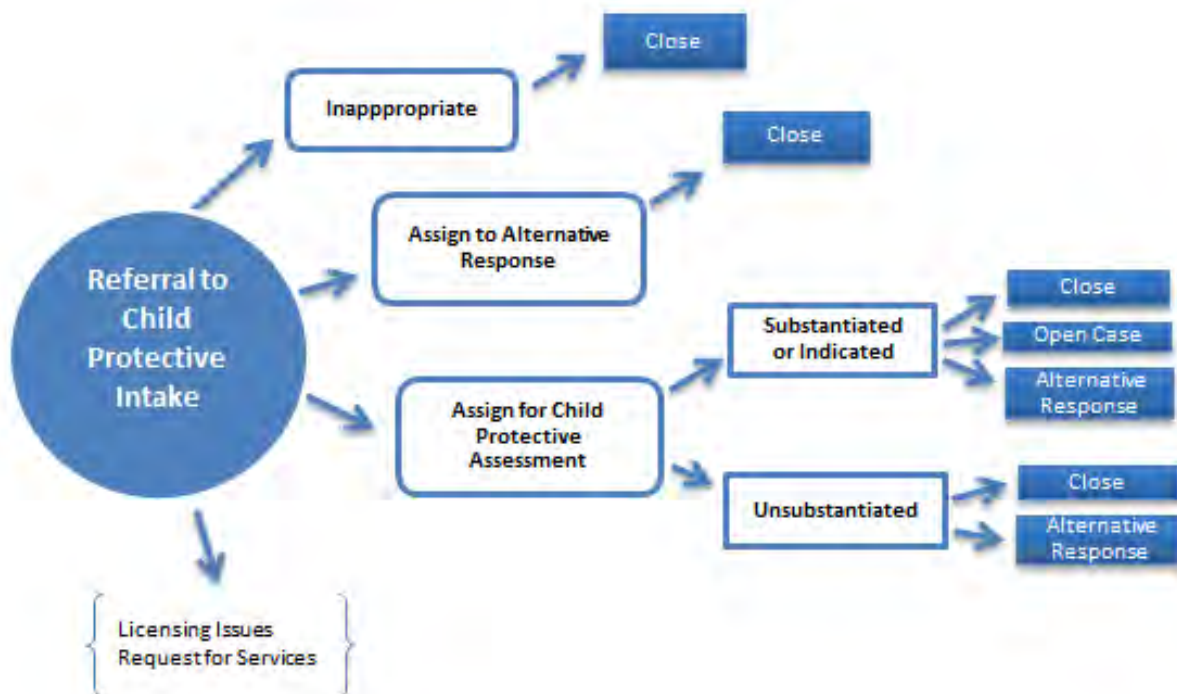
Child Protective Services Annual Report

The following report provides a summary of the number of referrals to Child Protective Services, the number of unassigned referrals, and a series of detailed reports on the characteristics of the referrals that were assigned to caseworkers for assessment.

A referral is any written or verbal request for Child Protective Services intervention, in a family situation on behalf of a child, in order to assess or resolve problems being presented.

All county level data represents the county where the primary caregiver was residing at the time of the Intake referral.

...
Title 22 MRSA, Chapter 1071, Subsection 4002 defines abuse or neglect as "a threat to a child's health or welfare by physical, mental, or emotional injury or impairment, sexual abuse or exploitation, deprivation of essential needs or lack of protection from these by a person responsible for the child."
...



REFERRALS FOR CHILD PROTECTIVE SERVICES

During calendar year 2016, the Department of Health and Human Services received **18,630** referrals for Child Protective Services intervention in a family situation. Most referrals are received through Child Protective Intake, though a small amount of reports are received within one of the eight District Offices. When reports are received, a decision is made regarding whether or not the report contains allegations of abuse or neglect per Title 22. If the report does not contain allegations of abuse or neglect per Maine state law, the report is not assigned (“inappropriate”) for intervention. When reports contain allegations of abuse or neglect and are “appropriate” for intervention, the report may be assigned for a child protective assessment, or assigned to an Alternative Response Program (ARP).

The following chart shows the number of reports received by county over the past three years. This includes inappropriate reports, reports assigned for alternative response, and those assigned for a child protective assessment.

NUMBER OF REFERRALS BY COUNTY AND CALENDAR YEAR			
COUNTY	2014	2015	2016
Androscoggin	2158	2147	2024
Aroostook	1220	1198	1212
Cumberland	2650	2532	2495
Franklin	471	462	458
Hancock	658	578	617
Kennebec	2252	2079	2104
Knox	573	544	576
Lincoln	441	418	418
Oxford	946	950	954
Penobscot	2529	2486	2479
Piscataquis	275	240	256
Sagadahoc	392	366	399
Somerset	959	972	988
Waldo	627	579	670
Washington	480	424	458
York	2584	2514	2406
Unknown	11	38	19
Out of State	13	88	97
TOTAL	19239	18615	18630

**Excludes reports referred to Licensing, Out of Home Investigation Unit, Service Requests, and reports received where a case was already open and the information was not a new incident.*

**County represents the county where the primary caregiver was residing at the time of the Intake referral.*

INAPPROPRIATE REFERRALS

During calendar year 2016, **7,463** reports were deemed “inappropriate” (screened out) as they did not contain allegations of child abuse or neglect. Some examples of reports that would be deemed inappropriate include:

- **Parent/child conflict:** Children and parents in conflict over family, school, friends, or behaviors, with no allegations of abuse or neglect. Includes adolescents who are runaways or who are exhibiting acting out behaviors that parents have been unable to control.
- **Non-specific allegations** or allegations of marginal physical or emotional care, which may be poor parenting practice, but is not considered abuse or neglect under Maine Law.
- **Conflicts over custody** and or visitation of children which may include allegations of marginal/poor care.
- **Families in crisis** due to financial, physical, mental health, or interpersonal problems, but there are no allegations of abuse or neglect.

The following is the breakdown of inappropriate reports received by county over the past three years.

NUMBER OF INAPPROPRIATE REPORTS BY COUNTY			
COUNTY	2014	2015	2016
Androscoggin	908	858	772
Aroostook	499	524	508
Cumberland	1184	1109	1099
Franklin	194	156	180
Hancock	252	246	252
Kennebec	889	716	787
Knox	241	227	214
Lincoln	181	175	161
Oxford	371	396	353
Penobscot	1060	988	928
Piscataquis	118	103	95
Sagadahoc	166	143	180
Somerset	375	357	376
Waldo	291	244	267
Washington	152	154	167
York	1092	1014	1008
Unknown	11	38	19
Out of State	13	87	97
TOTAL	7997	7535	7463

ALTERNATIVE RESPONSE

The Department of Health and Human Services has contracts with private agencies to provide an alternative response to reports of child abuse and neglect when the allegations are considered to be of low to moderate severity.

In 2016, there were **2,127** reports which were assigned to a Contract Agency for alternative response at the time of initial report. Referrals are also made to Alternative Response Programs at the conclusion of a child protective assessment or case with a family, when ongoing services and support are deemed necessary. The following chart shows the number of reports assigned for alternative response at the time of the Intake report.

REPORTS ASSIGNED FOR ALTERNATIVE RESPONSE BY COUNTY			
COUNTY	2014	2015	2016
Androscoggin	262	329	299
Aroostook	176	151	145
Cumberland	160	183	195
Franklin	60	86	78
Hancock	76	60	76
Kennebec	228	338	217
Knox	56	60	69
Lincoln	59	50	70
Oxford	132	151	197
Penobscot	221	246	237
Piscataquis	33	25	34
Sagadahoc	57	66	70
Somerset	43	66	79
Waldo	100	91	92
Washington	60	28	29
York	185	247	240
TOTAL	1908	2177	2127

**County represents the county where the primary caregiver was residing at the time of the Intake referral.*

REFERRALS FOR CHILD PROTECTIVE SERVICES

There were **8,279** reports involving **11,546** children assigned to a caseworker for a child protective assessment during calendar year 2016.

The following is the breakdown by county of reports assigned for a child protective assessment over the past 3 years.

REPORTS ASSIGNED FOR CHILD PROTECTIVE ASSESSMENT BY COUNTY			
COUNTY	2014	2015	2016
Androscoggin	940	884	821
Aroostook	509	477	501
Cumberland	1251	1199	1144
Franklin	215	216	195
Hancock	313	256	270
Kennebec	1114	1000	1035
Knox	268	241	264
Lincoln	186	180	174
Oxford	424	383	387
Penobscot	1160	1164	1134
Piscataquis	118	107	118
Sagadahoc	165	148	142
Somerset	535	529	494
Waldo	219	223	273
Washington	241	205	222
York	1287	1234	1105
TOTAL	8945	8446	8279

** County represents the county where the primary caregiver was residing at the time of the Intake referral. For families that were out of state residents, the county above is that where the incident occurred while they were in Maine.*

REFERRALS FOR CHILD PROTECTIVE SERVICES

The following is the breakdown by county and age group of the alleged victims associated with the reports assigned for a child protective assessment over the past three years.

NUMBER OF ALLEGED VICTIMS ASSOCIATED WITH REPORTS ASSIGNED FOR CHILD PROTECTIVE ASSESSMENTS												
COUNTY	2014				2015				2016			
	Age Group				Age Group				Age Group			
	0-4	5-9	10-14	15-17	0-4	5-9	10-14	15-17	0-4	5-9	10-14	15-17
Androscoggin	679	552	329	90	660	517	290	86	593	415	273	78
Aroostook	369	287	161	70	347	235	166	46	369	267	148	55
Cumberland	802	679	461	184	756	667	380	161	680	607	363	137
Franklin	132	124	98	32	156	126	63	28	127	124	72	26
Hancock	219	147	109	29	176	135	76	21	177	116	74	32
Kennebec	758	570	346	134	637	555	338	113	724	524	349	123
Knox	201	141	86	22	169	128	59	21	180	127	82	25
Lincoln	117	104	71	25	124	74	78	13	94	92	68	24
Oxford	296	271	164	44	282	215	139	50	263	225	144	40
Penobscot	823	579	378	122	829	551	351	98	822	523	336	99
Piscataquis	79	58	41	14	79	43	47	14	63	54	52	20
Sagadahoc	106	95	55	24	80	78	49	18	77	76	53	13
Somerset	379	284	233	77	348	285	213	60	317	256	203	49
Waldo	176	143	73	16	140	127	67	31	196	172	77	38
Washington	174	138	75	25	146	111	84	22	138	128	78	31
York	781	699	484	181	710	639	450	176	651	546	421	142
TOTAL	6091	4871	3164	1089	5639	4486	2850	958	5471	4252	2793	932

*County represents the county where the primary caregiver was residing at the time of the Intake referral.

*Children may be counted multiple times if more than one report was received in the year. There were 11,546 unique children in calendar year 2016.

REFERRAL SOURCE OF ALL REPORTS RECEIVED

The following is a breakdown of the report source, (i.e. “Referent”) for reports received in calendar year 2016. Mandated reporters are required by law to provide their name and information about their professional relationship with the family, though can ask that their name be kept confidential from the family. Non-mandated reporters can ask that their name be kept “anonymous” and not disclose their name/identity for the report.

REFERRAL SOURCE – ALL REPORTS			
REFERRAL SOURCE	2014	2015	2016
Anonymous	9%	9%	8%
Child Care Personnel	1%	1%	1%
Law Enforcement Personnel	13%	14%	15%
Medical Personnel	14%	15%	15%
Mental Health Personnel	12%	13%	12%
Neighbor/Friend	4%	4%	4%
Other	1%	1%	1%
Relative	6%	5%	5%
School Personnel	20%	19%	20%
Self/Family	11%	11%	11%
Social Services Personnel	9%	8%	9%

REFERRAL SOURCE OF REPORTS ASSIGNED FOR CHILD PROTECTIVE ASSESSMENT

REFERRAL SOURCE – REPORTS ASSIGNED FOR CHILD PROTECTIVE ASSESSMENT			
REFERRAL SOURCE	2014	2015	2016
Anonymous	9%	8%	8%
Child Care Personnel	1%	1%	1%
Law Enforcement Personnel	18%	19%	21%
Medical Personnel	15%	16%	16%
Mental Health Personnel	10%	11%	11%
Neighbor/Friend	5%	4%	4%
Other	1%	1%	1%
Relative	6%	6%	6%
School Personnel	18%	18%	17%
Self/Family	8%	7%	7%
Social Services Personnel	9%	9%	10%

**Excludes reports referred to Licensing, Out of Home Investigations, Service Requests, and reports received where a case was already open and the information was not a new incident.*

**HOUSEHOLD TYPE/LIVING ARRANGEMENT OF FAMILIES
ASSIGNED FOR CHILD PROTECTIVE ASSESSMENT**

When receiving reports of suspected abuse/neglect, Maine OCFS documents information regarding the living arrangement of each family/household. For example, a two parent, unmarried family may include a biological parent and his/her live-in partner who is also a caretaker to the child (ren). A one parent female/male family would be a household with a single parent caring for the children. A “relative” household type would be chosen when grandparents, aunt/uncle, etc. are the caregivers of children. A non-relative household type would be selected when children are being cared for by a person not related to them.

The following chart shows the living arrangement at the time of the receipt of the Intake report for those reports that were assigned for a child protective assessment.

LIVING ARRANGEMENT OF FAMILIES FOR REPORTS ASSIGNED FOR CHILD PROTECTIVE ASSESSMENT			
Household Type/Living Arrangement	2014	2015	2016
Two Parent Married	19%	19%	19%
Two Parent Unmarried	32%	35%	36%
One Parent Female	36%	35%	34%
One Parent Male	7%	7%	7%
Adoptive Home	1%	1%	1%
Relative	3%	3%	3%
Non Relative	0%	0%	0%
Other	1%	1%	1%

FAMILY RISK FACTORS IDENTIFIED DURING ASSESSMENT

The following shows the percentage of assessments where one of the following risk factors were found during the assessment. Each assessment may have several risk factors.

RISK FACTOR	2014	2015	2016
Prior History with CPS	75%	74%	76%
Mental Health Problems	45%	44%	43%
Involved with Court	23%	22%	23%
Spouse Abuse / Family Violence	20%	21%	21%
Drug Misuse by Parent	19%	18%	20%
Pregnancy / New Child	18%	18%	18%
ADD / ADHD	11%	11%	12%
Heavy Child Care Responsibility	13%	13%	11%
School Related Problems	12%	11%	11%
Parent / Child Conflict	12%	11%	11%
Alcohol Misuse by Parent	10%	11%	11%
Unstable Living Conditions	13%	11%	10%
Former Foster Child	9%	10%	10%
Physical Health Problems	10%	9%	9%
Severe Acting Out Behavior by Child	10%	8%	8%
Divorce Conflict	9%	8%	7%
Learning Disability	8%	8%	7%
Emotionally Disturbed Child	9%	7%	6%
Inadequate Housing	5%	5%	4%
Social Isolation	3%	3%	3%
Physical Disability	2%	2%	2%
Drug Misuse by Child	2%	2%	1%
Premature Birth	1%	1%	1%
Runaway	1%	1%	1%
Alcohol Misuse by Child	1%	1%	<1%
Abuse to Animals	<1%	<1%	<1%
Visual / Hearing Impairment	1%	<1%	<1%
Previous Child Death	<1%	<1%	<1%
Failure to Thrive Child	<1%	<1%	<1%
Fire Setting	<1%	<1%	<1%
Fetal Alcohol Syndrome	<1%	<1%	<1%

*Totals will exceed 100% due to each assessment having multiple risk factors identified during the assessment.

COMPLETED ASSESSMENTS

Below are outcomes for assessments completed in calendar year 2015 and 2016, showing the number of completed assessments by county which resulted in a finding of abuse or neglect (substantiated or indicated), or no findings of abuse/neglect (unsubstantiated). Substantiated findings are high severity, whereas indicated findings are of low/moderate severity.

CHILD PROTECTIVE ASSESSMENT FINDINGS						
COUNTY	2015			2016		
	# Assigned	# Substantiated/ Indicated	#Unsubstantiated	# Assigned	# Substantiated/ Indicated	#Unsubstantiated
Androscoggin	878	200	678	821	221	600
Aroostook	476	85	391	501	114	387
Cumberland	1199	257	942	1144	261	883
Franklin	216	40	176	195	51	144
Hancock	256	93	164	269	77	192
Kennebec	1000	269	730	1035	349	686
Knox	241	50	190	264	67	197
Lincoln	180	53	126	174	50	124
Oxford	383	70	313	387	88	299
Penobscot	1164	286	878	1134	320	814
Piscataquis	107	21	87	118	26	92
Sagadahoc	148	28	119	142	36	106
Somerset	529	186	343	494	167	327
Waldo	223	52	171	272	61	211
Washington	205	59	146	222	73	149
York	1234	399	834	1105	307	798
State	8446	2148	6288	8277	2268	6009

*County represents the county where the primary caregiver was residing at the time of the Intake referral.

ASSESSMENT FINDINGS RATE

The following shows the percentage of assessments completed where findings of abuse or neglect were substantiated or indicated by county.

ASSESSMENT FINDINGS RATE			
COUNTY	2014	2015	2016
Androscoggin	25%	23%	27%
Aroostook	25%	18%	23%
Cumberland	25%	21%	23%
Franklin	24%	19%	26%
Hancock	40%	36%	27%
Kennebec	23%	27%	34%
Knox	21%	21%	25%
Lincoln	20%	30%	29%
Oxford	24%	18%	23%
Penobscot	25%	25%	28%
Piscataquis	32%	19%	22%
Sagadahoc	18%	19%	25%
Somerset	33%	35%	34%
Waldo	26%	23%	22%
Washington	29%	29%	33%
York	33%	32%	28%
TOTAL	27%	25%	27%

**County represents the county where the primary caregiver was residing at the time of the Intake referral.*

CHILD ABUSE AND NEGLECT VICTIMS BY ABUSE TYPE

The following report shows the victims by age group and type(s) of abuse found during the child protective assessment for the past three years. Children may be counted multiple times if they were the victim of more than one abuse type in a given assessment, or the victim of abuse in separate assessments over the course of the calendar year.

2014				
AGE	Sexual Abuse	Physical Abuse	Neglect	Emotional Abuse
0-4	69	436	1237	235
5-9	86	305	729	506
10-14	82	159	427	387
15-17	28	49	126	128
Total	265	949	2519	1256

2015				
AGE	Sexual Abuse	Physical Abuse	Neglect	Emotional Abuse
0-4	64	491	1044	228
5-9	73	282	654	407
10-14	73	180	388	338
15-17	25	60	110	114
Total	235	1013	2196	1087

2016				
AGE	Sexual Abuse	Physical Abuse	Neglect	Emotional Abuse
0-4	67	466	1132	269
5-9	86	312	673	458
10-14	89	193	372	347
15-17	38	71	97	118
Total	280	1042	2274	1192