

MAINE STATE LEGISLATURE

The following document is provided by the
LAW AND LEGISLATIVE DIGITAL LIBRARY
at the Maine State Law and Legislative Reference Library
<http://legislature.maine.gov/lawlib>



Reproduced from scanned originals with text recognition applied
(searchable text may contain some errors and/or omissions)

Public Documents of Maine :

BEING THE

ANNUAL REPORTS

OF THE VARIOUS

Public Officers Institutions

FOR THE YEAR

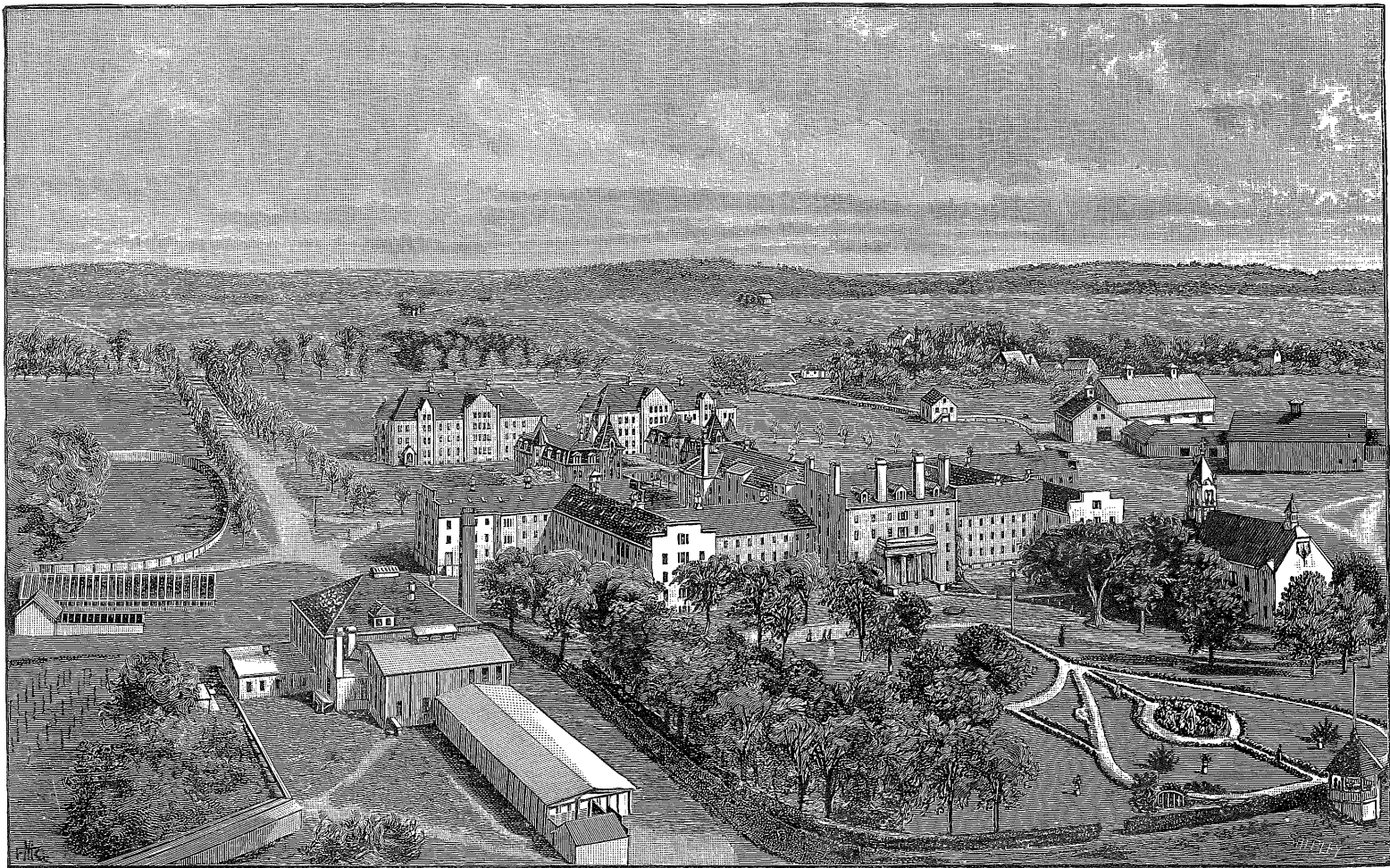
1895

VOLUME I.

AUGUSTA :

BURLEIGH & FLYNT, PRINTERS TO THE STATE.

1895.



REPORTS
OF THE
TRUSTEES, RESIDENT OFFICERS
AND THE
VISITING COMMITTEE
OF THE
Maine Insane Hospital

DECEMBER 1, 1893

AUGUSTA
BURLEIGH & FLYNT, PRINTERS TO THE STATE
1894

OFFICERS FOR 1893-94.

Trustees.

FREDERICK ROBIE, M. D., GORHAM, *President*.
LYNDON OAK, GARLAND, *Secretary*.
JUDSON S. CLARK, MILLTOWN.
MRS. J. R. SMITH, LITCHFIELD.
WM. H. HUNT, LIBERTY.
R. B. SHEPHERD, SKOWHEGAN.

Resident Officers.

BIGELOW T. SANBORN, M. D., *Superintendent*.
HORACE B. HILL, M. D., *Assistant Superintendent*.
P. H. S. VAUGHAN, M. D., *Second Assistant*.
D. B. CREDIFORD, M. D., *Third Assistant*.
EMMER VIRGINIA BAKER, M. D., *Fourth Assistant*.
MANNING S. CAMPBELL, *Steward and Treasurer*.
ALICE G. TWITCHELL, *Matron*.

REV. J. M. WYMAN, AUGUSTA, *Chaplain*.

Subordinate Officers.

CHARLES F. PERRY, *Hospital Clerk*.
THERON D. REED, *Assistant Hospital Clerk*.
FRANK BILLINGS, *Second Assistant Hospital Clerk*.
GERTRUDE HARRINGTON, *Superintendent's Clerk*.
ELWIN M. GRANT, *Store Clerk*.

Supervisors.

MALE.	FEMALE.
VERMONT R. LUCE.	MRS. ANNIE D. MCLEAN.
GEORGE S. KIMBALL, <i>First Assistant</i> .	MISS MARIA H. MCFEE, <i>Assistant</i>
CHARLES H. DAVIS, <i>Second Assistant</i> .	

Women's Pavilion.

MRS. LIZZIE F. GRANT,
MISS LIZZIE F. JOHNSON.

Men's Pavilion.

ANSEL L. BRANN.

W. L. SAMPSON, *Engineer*. W. H. ALLEN, *Florist and Gardener*.
HORACE B. CONY, *Farm Superintendent*.

Standing Committees for 1893-94.

On Conference with Legislative Committee—Oak, Robie and Hunt.

On Finance—Oak, Hunt and Clark.

On Buildings and Improvements—Shepherd, Robie and Mrs. Smith.

On Farm Stock and Outside Property—Shepherd, Robie and Hunt.

On Library—Mrs. J. R. Smith and Dr. B. T. Sanborn.

On Recreation of Patients—Sanborn, Shepherd and Clark.

Visiting Committee for the Year.

January—Oak and Clark.

February—Mrs. Smith and Hunt.

March—Full Board.

April—Oak and Shepherd.

May—Robie and Mrs. Smith.

June—Full Board.

July—Mrs. Smith and Oak.

August—Hunt and Robie.

September—Full Board.

October—Clark and Hunt.

November—Robie and Shepherd.

December—Full Board.

TRUSTEES' REPORT.

*To his Excellency, the Governor, and the Executive Council
of the State of Maine :*

The Trustees of the Maine Insane Hospital during the past year have endeavored to faithfully discharge the several duties set forth by the laws of the State establishing a Board of Trustees for the management of this Institution.

Their manifold duties have brought them into close contact with every department of the Hospital; and the results of the monthly meetings, either by a full board, or by its representative committee, have been entered upon official records prepared for that purpose. A summary of our examination and investigation discloses the fact that the general condition and personnel of the patients of the Hospital are not materially changed from the satisfactory reports of previous years. An abundance of good and well cooked food, suitable clothing, neat and well ventilated sleeping apartments, and other desirable comforts are the fruits of a well conducted institution; and in our own Hospital in these particulars everything is highly commendable. There have been no well founded complaints from the patients in regard to an insufficient allowance of good food or illiberal table supplies. We have always found a competent and faithful attendant service, and a careful and well directed medical treatment. The examination of the Trustees into the general management of the Institution discloses the fact that there is complete harmony among the constituent factors of this well regulated Institution, and that its distinguished Superintendent, and all those

acting under him have faithfully during the past year worked for the welfare of the Hospital, and for the physical and moral interests of its unfortunate inmates. The Trustees would respectfully call the attention of the Governor and Council to the official reports of the several officers of the Institution for an extended statement of its several departments.

EXPENDITURES.

The Trustees, with due regard to the financial condition of the treasury, have from time to time authorized the expenditure of moneys which have accumulated from the receipts of board and other sources over and above the necessary expenditures for carrying on the Hospital, and applied this apparent surplus for repairs on the buildings and several important permanent improvements. The expenditure for repairs is absolutely necessary to meet the exigencies and depreciation which continuous periods of time are constantly working upon the buildings of the Hospital; and for these repairs the Legislature makes no adequate appropriation. It requires diligent attention and large sums of money to save many of the buildings connected with the Hospital from becoming dilapidated, worn and dangerous. The expenditures for necessary repairs and improvements of this character for the past year have been \$17,115.80.

INFIRMARY.

The Trustees after the adjournment of the Legislature were confronted with the fact that diphtheria was still in existence in the Hospital by the occasional appearance of this treacherous malady. After due deliberation, the Trustees, by the concurrent advice of the Superintendent, Dr. Sanborn, considered that the safety of the inmates of the Hospital and all others connected with it could only be subserved by the immediate construction of a suitable infirmary for the care of epidemic diseases. They have caused to be built and furnished a building for the exclusive care of this class of diseases, at an expense of \$5,616.32.

It admirably answers the purpose of its construction, and we believe that its inception was in the right direction, for it was in accordance with the motto on the seal of the Institution, "*Salus populi suprema est lex.*"

THE HOSPITAL FARM.

The necessity of enlarging the acreage of the Hospital farm has increased in consequence of the additional number of inmates being continually added to its population. In the best Insane Hospitals in the country it is found that one acre to each inmate is the intelligent rule of experience, which has been considered requisite for the physical wants of the population of these institutions. We have in our Hospital farm to-day five hundred and sixty acres, which is nearly up to the accurate standard of requirement in acreage for our patients. The large increase of our herd of cattle, which to-day numbers sixty-eight cows, being largely of the Holstein grade, has made it imperative for the financial and economic interests of the Hospital to purchase more acres of land for pasturage and production of hay. At a meeting of the Trustees, held March 30, 1893, it was voted, "to purchase the Severance lot so called," containing eighty acres, more or less, for the sum of two thousand dollars; one thousand dollars borrowed from the amusement and recreation fund, donated by the late Ex-Gov. Coburn, on delivery of deed; one thousand dollars borrowed from the same fund January 1, 1894, drawing five per cent interest. These purchases were considered wise and economic, for they give the patients of the Hospital excellent opportunities for recreation and walks on our own premises, away from the annoyance of public travel on the streets of Augusta. The additional pasturage and hay which these additional acres of land supply were also absolutely needed, and the credit from these sources added largely to the increased profit of the farm during the season of 1893. At a meeting of the Trustees, held May 4, 1893, it was voted, "to purchase the farm known as the Fred S. Thorne place," containing

eighty acres of land, abutting the Hospital farm on the east, the amount to be paid therefor being \$4,500, payment being made as follows: \$1,000, on receipt of the deed, one note of \$500, payable January 1, 1894; one note of \$1,000, payable June 1, 1894; one note of \$1,000, payable January 1, 1895; and a note of \$1,000, payable June 1, 1895. The interest on each of said notes to be five per cent per annum.

The net profit from the farm during the past year as appears from the report of the Steward and Treasurer is as follows:

The farm department shows a net profit of.....	\$2,646 73
The garden department shows a net profit of....	3,806 95
The hay department shows a net profit of.....	1,541 40
	<hr/>
	\$7,995 08

This large financial income and the hygienic benefit to the patients from the consumption of fresh farm products, especially the large quantities of rich milk from the farm which is used in the Hospital, cannot fail to give sufficient reasons to justify the purchase of additional acreage. The profit of the farm alone this year has paid for the one hundred and sixty acres which have been added to the original farm.

FINANCE.

The financial condition of the Hospital as set forth by the report of the Treasurer shows that the business of the Institution is in a healthy condition, and the affairs conducted upon a good business basis.

DR.

Receipts for the year, Hospital account.....	\$175,324 15
Received appropriations from the State.....	15,130 00
Balance of cash on hand, December 1, 1892..	4,084 18
	<hr/>
	\$194,538 33

CR.

Disbursements, Hospital account.....	\$180,643	16
Disbursements on account of appropriations....	9,555	10
Balance of cash on hand.....	4,340	07
	<hr/>	
	\$194,538	33

The available assets of the Hospital, which are largely represented by supplies on hand, have increased for the last three years from \$41,307.47 to \$63,517.41. The low price of nearly every article of food that enters into the general subsistence department has given opportunity for the purchase and use of more of the luxuries of living, and ability to secure a larger and better class of attendants. Cheaper purchases have also increased the cash balance of the Hospital over and above former exhibits, and thus given the Treasurer a larger ready cash capital to meet his bills promptly and thereby secure large discounts. It is a wise economy to have considerable surplus in the treasury, for the bills receivable for board are paid only once in three months, and oftentimes there is not the promptness in payment there should be.

HOSPITAL BUILDINGS.

The physical condition of the Hospital is excellent, and the outlay of expenditures for the present year has improved the laundry, the cooking department, the Hospital buildings, the barns and the grounds adjacent to the buildings, &c., so that we now have an institution of which the State may well be proud. The appropriation for repairing the front of the stone building, under the direction of the Trustees and the Superintendent, has been expended by contract, and the work and new appearance speak their own commendation. The renovation and changes of the diphtheritic ward of the Hospital are completed, and will add much to the usefulness of the Institution. In order to avoid the great danger from fire, the Trustees have introduced the lighting of the barns and

such of the wards as were exposed to danger from fire, by electricity; and as fast as the finances of the Institution will admit it should be introduced into all wards of the Hospital.

RECREATION AND AMUSEMENT.

The Trustees have noticed with great satisfaction the pleasure and benefit which the inmates of the Hospital have derived from recreation and amusement exercises, the expense of which are met by the judicious expenditure of revenue derived from the "Coburn Fund," and feel assured that these means are among the potent forces, which cannot be over-estimated, in restoring a disordered mind to reason. The purchase of a very fine organ from this fund has added much to the attraction of divine service on the Sabbath.

POPULATION OF THE HOSPITAL.

The crowded condition of the Hospital still continues. The question of a new Hospital is also agitated, and is one of the questions which must be met by future legislation. Every practical effort has been made to free the Hospital of patients who can be otherwise cared for without personal or public detriment. Early in the season a systematic and careful effort was made by the Trustees and Superintendent to eliminate from the Hospital all those patients that the laws of the State contemplated might be removed. We have sent to the insane department of the State Prison fifteen of the inmates of the Hospital. We also found that twenty-nine of the male and fifteen of the female patients were proper candidates for removal to other localities. This effort was effectual in nearly every instance, and the population of the Hospital has accordingly been reduced by this procedure of actually fifty-five of its former inmates, but owing to the incoming of new patients there has been only a net decrease of about fifteen patients. This decrease is liable to be cancelled at any time by the natural result of an increase of the insane popula-

tion of our State and other well known causes. The Governor and Council and the Trustees of the Institution have appointed a committee who during the present year will carefully examine into the number and condition of the insane of the State, so as to provide adequate facts in a report for public consideration, in order to meet what the necessities of the State demand for its unfortunate insane. It is expected that the Legislature will meet this question at its next session in an intelligent manner and with satisfactory conclusions.

GEORGE E. WEEKS.

The death of Hon. George E. Weeks, one of the Trustees of this Institution, occurred February 22, 1893, and the following expression relating to his death was adopted and ordered to be placed upon the records of the Trustees: "The Hon. George E. Weeks having been removed from the Board of Trustees of the Maine Insane Hospital by death, we deem it eminently proper to leave on record an expression of high esteem in which he was held by his associates. He came into the Board more than five years ago bringing with him a broad, varied and valuable experience in business affairs which he was ready at all times to devote to the welfare of the Institution. He was uniformly considerate and courteous in his intercourse with his associates, cautious and safe in counsel, and conscientious in the discharge of his official duties. His bearing towards the unfortunate inmates of the Hospital was inspired by the best instincts of humanity. We part with him in sadness; our association with him as a member of the Board of Trustees will always be a pleasant remembrance.

Voted, That a copy of the above expression be sent to the relatives.

OFFICERS OF THE HOSPITAL.

The Trustees again desire to express their appreciation of the valuable services of Dr. Sanborn, the Superintendent of the Hospital. He has been assisted by a valuable corps of

attendant physicians and has been efficiently aided by the various heads and employes of the other departments of the Hospital, but still, with such surroundings, his hand is everywhere recognized in his ever pains-taking and skilful administration of the affairs of the Institution.

CONCLUSION.

The experiences of the past clearly indicate that in the future there must be large outlays of money to keep the Hospital buildings in complete order and meet the demands of those new improvements which advance in mental and sanitary treatment is constantly developing. There are many resources at hand, which Providence and Art have given us, to restore the body to health and the mind to reason. Whatever is reasonable should not be denied by any false economy, but a broad liberality should be exercised for the unfortunate insane, so that all those who are curable should not be allowed to grope in darkness. If the price of board is to be lessened, it will require of the Legislature annual appropriations to meet the expenses of all necessary repairs.

The highest type of civilization is measured and reached by a public policy of the State which cares best for unfortunate humanity.

FREDERIC ROBIE,	}	Trustees of the Maine Insane Hospital.
R. B. SHEPHERD,		
LYNDON OAK,		
W. H. HUNT,		
MRS. J. R. SMITH,		
J. S. CLARK,		

AUGUSTA, November 30, 1893.

Report of the Committee on Recreation and Amusement of Patients.

To the Trustees of the Maine Insane Hospital:

Your committee appointed for the purpose of carrying into execution your wishes relative to the employment of suitable agencies for the moral treatment and social well-being of our patients are able to report satisfactory results.

A portion of the interest of the Coburn fund has been wisely and judiciously expended for the amusement and diversion of the inmates.

Inspired by the success which has heretofore attended our efforts in furnishing steamboat excursions for our patients, it was thought best to repeat them and two trips were made during the months of June and August with most gratifying results. No accident occurred during either excursion. They afforded much enjoyment to all and material physical and mental benefit accrued.

The same agencies have been employed as heretofore with a view to divert the minds of our patients from morbid channels; such as judiciously appointed manual labor, pedestrian exercises in the open air, paroles for patients who are exercising sufficient self-control to warrant them and in furnishing rides with our teams for such, who from various causes are unable to walk, or to whom the latter means seem preferable. The regular secular exercises have been kept up at our chapel two evenings each week, with the exception of a few months during the summer, which have been made interesting by our Hospital orchestra.

Your committee desire to emphasize the importance of this instituted exercise as a curative measure in the treatment of our patients. Our orchestra deserves much praise for the excellence of its music and for the good it accomplishes. The means expended in this direction we believe is rewarded by a rich harvest in the amelioration of disordered minds. During the year the usual efforts have been made in introducing various games into the wards for occupation and diversion.

Your committee to whom was entrusted the purchasing of a pipe organ for the chapel, after visiting the various manufactories, concluded to place its order with Cole & Woodbury of Boston, at a price not to exceed \$2,000. It was placed in the gallery of our chapel during the vacation season, and after being thoroughly tested by Prof. Hyde of this city, was found to be an organ of excellent quality of tone and workmanship. It was thought best to introduce a water-motor for the use of the organ, which increased the price, as will be seen by the appended statement, to \$2,153.

In the early part of October a most instructive and pleasant entertainment was afforded the patients, officers of the Institution and invited guests in the dedicatory services of the organ by Prof. Kotzschmar accompanied by the Hayden Quartette of Portland. Hannibal A Williams' Shakespearian recital during two evenings were enjoyed by all and afforded a most excellent entertainment for our patients and the entire Institution. Prof. Pray's usual yearly visit with his exhibition of legerdemain was enjoyed by all. Other exercises during the year, gratuitous and otherwise, have afforded our patients profitable evening entertainments.

We are indebted to Mr. Frank Beale of this city for a generous supply of Christmas cards for the annual Christmas trees at our chapel. We are also under obligations to the publishers of *Puck* for fifty copies of their publications for distribution in the various wards.

Your committee append the following financial exhibit of the fund expended in this department of work :

COBURN FUND DISBURSEMENT,
 FOR YEAR ENDING NOVEMBER 30, 1893, AS PER VOUCHERS ON FILE IN
 TREASURER'S OFFICE.

AMUSEMENTS.		
Paid for patients to circus	\$ 12 00	
excursions to Isle of Springs (2).....	120 00	
readings from Shakespeare by Hannibal Williams	75 00	
legerdemain exhibition by Prof. Pray	10 00	
Atlas of the World, Rand & McNally.	35 00	
games, etc	41 32	
music and musical supplies	46 72	
tuning and repairing	30 50	
expense Dr. Sanborn to Boston account organ purchase	37 60	
expense Dr. Hill and Rev. Mr. Wyman to Skowhegan		
inspecting organ.....	8 20	
organ examination, Prof. Hyde	20 00	
organ recital, Prof. Kotzschmar and Hayden Quartette	47 50	
orchestra and band rehearsals and concerts.....	590 66	
choir services	176 50	
		\$1,251 00
MUSICAL INSTRUMENTS.		
one bass viol, bow and rubber covering.....	\$75 00	
one cornet and case	20 00	
one church organ with motor for same.....	2,153 00	
one polyphone and twelve tunes.....	62 00	
		2,310 00
		\$3,561 00

BIGELOW T. SANBORN, } *Committee on Recrea-*
 R. B. SHEPHERD, } *tion and Amuse-*
 W. H. HUNT, } *ment of Patients.*

Report of the Committee on the Hospital Library.

To the Trustees of the Maine Insane Hospital :

Your Committee on the Library for the year ending
November 30, 1893, having attended to its duty, now ask
leave to report :

	ASSETS AND RECEIPTS.	
1892.		
December 1...	To deposit in Augusta Savings Bank	\$1,250 41
December 1...	railroad bonds.....	2,000 00
December 1...	cash on hand	94 85
1893.		
April 1.....	cash for coupons	60 00
October 1.....	cash for coupons	60 00
November 30..	bank dividends.....	50 50
		\$3,515 76
1892.	DISBURSEMENTS.	
December 20..	By paid for Vols. 1 and 2, Magazine of Poetry.....	\$6 00
December 27..	New England Magazine and The Greatest Thing of the World.....	5 75
December 27..	Psychopathia Sexualis	3 00
December 27..	Art Interchange.....	4 00
December 28..	books (J. F. Pierce).....	3 00
1893.		
January 11....	Leader	1 00
January 11....	Sloane Electricity Simplified	81
January 24....	Rhyme and Measure	1 00
January 31....	Vol. 10, Medico Legal Journal.....	3 00
February 3....	Back Country Poems	1 00
March 9.....	17 volumes Simms (Estes & Lauriat).....	9 50
March 13....	3 volumes A System of Therapeutics.....	15 00
March 22....	1 volume Stearns' Mental Diseases.....	2 60
April 5.....	Life and Works of James G. Blaine	3 50
June 15....	Vols. 1 and 2, Current History.....	4 50
July 26....	Phillips Brooks' Life, Vol. 1.....	2 75
August 1....	Hospital Annual.....	1 00
October 10. .	Reference Handbook Medical Science	6 00
October 10. .	express on books.....	35
November 30..	papers and magazines.....	135 70
November 30..	By balance on hand.....	3,306 30
		\$3,515 76
	Balance: Savings Bank.....	\$1,225 91
	Bonds	2,000 00
	Cash on hand	80 39
		\$3,306 30

Mrs. J. R. SMITH, } *Committee on*
BIGELOW T. SANBORN, } *Library.*

SUPERINTENDENT'S REPORT.

To the Board of Trustees of the Maine Insane Hospital :

GENTLEMEN :—I would respectfully submit for your consideration, as required by statute, a brief review of what has transpired in the operations of this Institution during the past twelve months, which embraces the Superintendent's Fifty-third Annual Report.

In casting a retrospective glance through all of the multitudinous duties which devolve upon the officers and employes of an Institution of this character and size, and through all the occurrences which must necessarily obtain, it affords me much gratification to be able to report that the efforts made have been abundantly blessed ; and, taking into consideration all of its varied interests, it has been a year of prosperity.

No accidents of especial importance have occurred, and, with the exception of some unusual sickness, occurring principally in the earlier part of the season, and which will be mentioned farther on in this report, unusual health has prevailed.

For the success which has attended the efforts of the officers and employes, we humbly acknowledge Divine assistance.

ADMISSIONS AND DISCHARGES.

At the beginning of the year, December 1, 1892, there were resident in the Hospital 685 patients ; 357 men, 328 women. Two hundred and eighty-seven have been admitted since ; 170 men, 117 women ; making the whole number under treatment 972 ; 527 men, 445 women. Of these there have been discharged

301 ; 178 men and 123 women ; leaving at the close of the year 671 ; 350 men and 321 women.

The per cent of recoveries for the past year, based upon the number under treatment, has not materially changed, being 7.71 against 7.43 the preceding year. The per cent of recoveries based upon the number of admissions has been 26.13 against 26.02 the preceding year.

SUPPORT OF PATIENTS.

The patients have been supported in the following manner : Fifty-nine by their own means, 84 entirely by the State and 528 have received State aid of \$1.50 per week, towns and individuals paying the balance.

MORTUARY RECORD.

During the winter and early spring months some of the patients and employes of the Institution became afflicted with inflammatory conditions of the throat, characterized by follicular tonsillitis. At the same time there was observed in others a membranous condition of the tonsils and throat which resulted in diphtheria. During the entire period of this malady, which recurred several times, there were some twelve cases in which the disease was evidently specific, and from which two employes and two patients succumbed to the infection.

Mr. John Sanford, our faithful and efficient supervisor, I regret to chronicle, was one of the number who yielded to the septic poison. He had by his integrity of character and faithfulness to duty won the respect and confidence of the officers of the Institution, and commanded the love and esteem of the patients. We deeply regret his loss.

Mr. Clark, who was another victim to the disease, was a faithful, efficient employe and had won the confidence of all with whom he came in contact. He was a great loss to the Institution and his relatives.

Notwithstanding the occurrence of this malady it will be observed by the statistics of this report that the per cent of deaths in proportion to number under treatment has been somewhat less than that of the preceding year.

Aside from the above affliction, general health has prevailed, and the patients have enjoyed a large share of comfort throughout the year.

REMOVAL OF PATIENTS.

It will be observed by consultation of Table No. 1 of the medical statistics of the Institution that the number of patients remaining November 30, 1892, were fourteen in excess of the number at the close of the present fiscal year. This reduction in the number of our patients was occasioned partly by the act of the last legislature, making provision for a certain class of the patients at the insane department of State prison, and also by action of your board, in inducing towns and individuals to remove such patients, who, in the judgment of the Superintendent had apparently become harmless and imbecile.

This elimination instituted by act of the legislature whereby arrangements were made at the State prison to receive those who had been sent here from that institution for treatment, and the discharge by your board of more than two score, greatly relieved the Institution of its superabundance of patients, thereby affording better opportunities for treating the acutely insane, enhancing recovery and furnishing better opportunities for the protection and comfort of all.

REPAIRS.

It must be borne in mind that quite a portion of the Institution has been in long use, covering a period of nearly sixty years. This necessitates continual renovation, and during the past year an unusual amount of repairs have been made by the various mechanics of the Institution.

The usual renovation of the heating apparatus has been made by Mr. Sampson, our efficient engineer, and two addi-

tional heaters for furnishing the Institution with hot water have been constructed and placed in position by his direction. Also an additional vacuum pump to the Williames system has been introduced into the engine room to give more efficiency, and aid the present pump in relieving the various radiators and steam-coils of the heating apparatus.

The usual repairs in the woodwork of the Institution have been made by Mr. Hallowell, our skilful carpenter, with his corps of workmen.

The disinfection of clothing by steam has been regarded of such value that it was thought best to make further provisions in this direction, and in the early part of the season an additional steam disinfector was constructed. This method of cleansing soiled clothing proves to be practical and effectual, and we believe aids much in sanitation.

IMPROVEMENTS.

The resolve of the last legislature appropriating \$15,130 for the purpose of making repairs and improvements in the center building and for the renovation of a portion of the second wing for men, has, up to the date of this report, been but partially expended, and the renovation and reconstruction, with the exception of the erection of the porte-cochere and the repair of the portico, is still in process.

The contract to furnish material for the porte-cochere was made with the New Hampshire Granite Company for \$4,725. The contract for its construction and the renovation of the portico was awarded Alonzo A. Young of this city, for \$1,446.76. This part of the work was finished in October under the direction of G. M. Coombs, architect. The material furnished and the construction was satisfactory, and the presence of the porte-cochere adds much to the convenience and architecture of the Institution.

The necessary repairs and renovation of the wing was awarded Nathaniel Noyes of this city for \$2,400, and is now in process of construction.

Mr. Noyes' contract with the Institution would have been completed before this date, but for the fact that the building had heretofore been occupied for purposes of isolation of contagious diseases when occurring, and it was not judicious to vacate until some suitable provisions could be made for this emergency. To this end and agreeable to the vote of your Board last March, plans were secured for the erection of an infirmary to be located north of the Hospital greenhouse, and within easy reach of the Institution. The construction was made by our own mechanics under the direction of our carpenter, Mr. Hallowell, but it was not completed sufficiently early to afford necessary time for the completion of the wing for men at this date.

The infirmary is conveniently located. The rooms are well lighted and ventilated, and the entire building is heated from our boiler house. It comprises a kitchen, dining room, thirteen sleeping rooms and a large dormitory. A bath room has been constructed and water introduced from the supply system for the Institution. The entire building is lighted by electricity.

The infirmary will be a valuable adjunct, not only for the protection of the Institution in the event contagious diseases should occur, but in its absence may afford excellent accommodations for twenty or more mild patients.

Your contract entered into with the Kennebec Light and Heat Company to install electric lights for a portion of the Institution, not to exceed five hundred lights, is now being carried into execution, which, when completed, will greatly lessen fire risks and add much to the light and comfort of the wards.

FARM AND GARDEN.

For the details of this valuable adjunct I would respectfully refer you to the concise and practical report of the Steward and Treasurer. It will be seen that both the farm and the garden have been a source of material profit to the Institution during the past year, and have exceeded in productiveness that of any former period.

The purchase, by vote of your Board, of the Cony property consisting of eighty acres, and that of the Thorne estate, comprising eighty-seven acres, have added much to the profit of the farm during the past year, and will continue to be of much value to the Institution as the productiveness of the soil is developed.

The yield of hay from this source and the other portion of the farm has increased more than 100 per cent over that of last year. This has afforded the opportunity of increasing our herd of cows so that the supply of milk has been increased more than twenty-five per cent over that of former years. The efforts made not only to increase the number of our herd but to afford a better quality of cows in the introduction of more Holsteins, has been successful and added much to the profits from this department.

I desire to emphasize the importance of supplying our stock with better accommodations. The present barns are dilapidated and inadequate to meet the demands. As soon as means can be provided a suitable barn of modern structure and proper size should be erected at a greater distance from the wards of the Institution for the proper protection and accommodation of our herd of cows.

OFFICIAL CHANGES.

Dr. George D. Rowe, the second assistant, severed his connection with the Institution at the commencement of the year, to go into general practice. Dr. Rowe was a young man of much promise and we were sorry to lose his valued service. Our best wishes go with him in his new field of labor.

We were fortunate in securing the services of Dr. D. B. Crediford, who came highly recommended from the department of the Maine Medical School where he graduated. Dr. Crediford has entered into the work with a determination which can but result in success.

No other changes have occurred in my associates, and I congratulate the Institution on being able to retain the services of long tried and valuable officers.

CONCLUSION.

It would seem appropriate before closing this report to make mention of the death of the late Dr. Henry M. Harlow which occurred on the fifth day of last April. The doctor had been identified with the Institution for a period of thirty-eight years, and nearly all of the time as its chief head. Dr. Harlow possessed the requisite qualities for success in this speciality. Notwithstanding his removal from the active service of the Institution some ten years ago, he still retained much interest in its welfare, and I feel under deep obligation for friendly and judicious counsel. During his long superintendency he labored indefatigably for this great charity and for the best good of the unfortunates of our State.

Much assistance has been rendered me by the advice and kindly offices of the committee of the board of visitors. They have been prompt in visiting the Institution and are interested in its welfare. My associates in office have rendered me valuable aid at all times. They have been deeply interested in the labors of the Institution and have carried into execution my directions with much zeal and fidelity. I am under continued obligations to your Board for the confidence you have reposed in me and trust I may continue to warrant your support.

Medical Statistics—1892-93.

TABLE No. 1.
MOVEMENT OF POPULATION.

	Men.	Women.	Total.
Remaining November 30, 1892	357	328	685
Admitted since	170	117	287
Number under treatment	527	445	972
DISCHARGES AND DEATHS.			
Recovered	43	32	75
Much improved	19	12	31
Improved	31	21	52
Unimproved	30	25	55
Died	55	33	88
Remaining November 30, 1893	350	321	671

TABLE No. 2.
ASSIGNED CAUSES OF INSANITY IN THOSE ADMITTED DURING THE YEAR.

	Men.	Women.	Total.
Alcoholism	2	0	2
Apoplexy	1	1	2
Business trouble	7	1	8
Childbirth	0	5	5
Cocaine habit	1	0	1
Consumption	1	0	1
Disappointed affection	3	2	5
Domestic affliction	5	12	17
Epilepsy	6	2	8
Gestation	0	1	1
Dissolute habits	1	0	1
Heredity	8	5	13
Ill health	4	3	7
Injury	2	0	2
Injury to head	2	1	3
Injury to eyes	1	0	1
Intemperance	16	3	19
Jealousy	0	1	1
La grippe	5	6	11
Masturbation	10	0	10
Morphine habit	1	0	1
Overwork	8	2	10
Over-study	0	4	4
Paralysis	0	3	3

TABLE No. 2—*Concluded.*

	Men.	Women.	Total.
Puberty	1	1	2
Menopause.....	0	10	10
Religious excitement.....	5	1	6
Sexual indulgence	1	0	1
Struma	1	0	1
Senility.....	6	1	7
Sunstroke.....	3	0	3
Traumatism.....	2	0	2
Unknown ..	66	51	117
Uterine disease.....	0	1	1
Worriment.....	1	0	1
Total	170	117	287

TABLE No. 3.

AGES OF THOSE ADMITTED.

	Men.	Women.	Total.
From 10 to 20 years of age.....	6	8	14
“ 20 “ 30 “ “	34	13	47
“ 30 “ 40 “ “	41	26	67
“ 40 “ 50 “ “	17	25	42
“ 50 “ 60 “ “	37	19	56
“ 60 “ 70 “ “	14	11	25
“ 70 “ 80 “ “	10	9	19
“ 80 “ 90 “ “	2	0	2
Unknown.....	9	6	15
Total.....	170	117	287

TABLE No. 4.

SOCIAL CONDITION OF THOSE ADMITTED.

	Men.	Women.	Total.
Married	74	52	126
Widowed.....	9	19	28
Divorced.....	3	6	9
Single.....	65	35	100
Unknown.....	19	5	24
Total.....	170	117	287

TABLE No. 5.
DURATION OF INSANITY PRIOR TO ADMISSION.

	Men.	Women.	Total.
Not exceeding 1 month	44	24	68
" " 3 months	26	14	40
" " 6 "	19	9	28
" " 9 "	4	1	5
" " 12 "	16	3	19
" " 18 "	1	2	3
" " 2 years	9	9	18
" " 3 "	6	3	9
" " 4 "	2	2	4
" " 5 "	5	3	8
" " 6 "	1	3	4
" " 7 "	0	1	1
" " 8 "	1	3	4
" " 10 "	3	0	3
" " 11 "	0	1	1
" " 12 "	2	0	2
" " 15 "	0	1	1
" " 20 "	0	1	1
" " 30 "	2	1	3
Unknown.....	29	36	65
Total.....	170	117	287

TABLE No. 6.
MONTHLY ADMISSIONS.

	Men.	Women.	Total.
1892, December.....	18	8	26
1893, January	11	10	21
" February.....	8	3	11
" March.....	6	9	15
" April.....	19	8	27
" May.....	26	15	41
" June.....	10	13	23
" July.....	18	14	32
" August.....	15	12	27
" September.....	9	7	16
" October.....	18	10	28
" November.....	12	8	20
Total.....	170	117	287

TABLE No. 7.
TIME OF TREATMENT OF PATIENTS DISCHARGED RECOVERED.

	Men.	Women.	Total.
Not exceeding 3 months	13	8	21
“ “ 6 “	14	7	21
“ “ 9 “	4	2	6
“ “ 12 “	3	5	8
“ “ 18 “	4	4	8
“ “ 2 years	2	1	3
“ “ 3 “	3	2	5
“ “ 4 “	0	2	2
“ “ 5 “	1	0	1
Total	44	31	75

TABLE No. 8.
CAUSES OF DEATH.

	Men.	Women.	Total.
Anaemia	1	0	1
Anasarca	3	1	4
Apoplexy	3	0	3
Acute mania	2	5	7
Acute melancholia	3	5	8
Chronic mania	2	4	6
Chronic melancholia	5	1	6
Diphtheria	2	0	2
Diarrhea	2	0	2
Epilepsy	8	1	9
General paralysis	6	0	6
Hydropericardium	2	0	2
Hepatitis	0	1	1
Intestinal perforation	1	0	1
Marasmus	1	1	2
Meningitis	1	0	1
Paralytic insanity	1	4	5
Phthisis pulmonalis	3	2	5
Senile dementia	3	0	3
Strangulation	0	1	1
Terminal dementia	4	4	8
Typhomania	1	0	1
Valvular disease of the heart	1	4	5
Total	55	33	88

TABLE No. 9.
MONTHLY MORTALITY.

	Men.	Women.	Total.
1892, December	7	3	10
1893, January	4	2	6
“ February	2	5	7
“ March	5	1	6
“ April	5	6	11
“ May	7	3	10
“ June	7	6	13
“ July	2	1	3
“ August	6	5	11
“ September	2	1	3
“ October	5	0	5
“ November	3	0	3
Total	55	33	88

TABLE No. 10.
AGE AT DEATH.

	Men.	Women.	Total.
From 10 to 20 years of age	2	1	3
“ 20 “ 30 “ “	7	3	10
“ 30 “ 40 “ “	6	3	9
“ 40 “ 50 “ “	6	12	18
“ 50 “ 60 “ “	13	7	20
“ 60 “ 70 “ “	11	1	12
“ 70 “ 80 “ “	6	4	10
“ 80 “ 90 “ “	3	1	4
Unknown	1	1	2
Total	55	33	88

TABLE No. 11.
APPROXIMATE DURATION OF INSANITY PRIOR TO DEATH.

	Men.	Women.	Total.
1 month ..	1	1	2
2 months ..	4	5	9
6 “ ..	2	4	6
9 “ ..	4	1	5
12 “ ..	3	2	5
18 “ ..	4	2	6
2 years.....	9	2	11
3 “ ..	6	6	12
4 “ ..	2	2	4
5 “ ..	3	1	4
6 “ ..	6	0	6
7 “ ..	1	1	2
8 “ ..	0	1	1
9 “ ..	0	1	1
10 “ ..	3	1	4
12 “ ..	1	0	1
15 “ ..	3	0	3
20 “ ..	2	0	2
25 “ ..	0	1	1
26 “ ..	1	1	2
37 “ ..	0	1	1
60 “ ..	1	0	1
Total	55	33	88

TABLE No. 12.
OCCUPATION OF THOSE ADMITTED.

	Men.	Women.	Total.
Agent.....	2	0	2
Barber.....	1	0	1
Bookkeeper.....	1	1	2
Bell-boy.....	1	0	1
Blacksmith.....	1	0	1
Butcher.....	2	0	2
Carriage trimmer.....	1	0	1
Carriage maker.....	1	0	1
Carpenter.....	6	0	6
Clerk.....	4	1	5
Compositor.....	0	1	1
Contractor.....	1	0	1
Cooper.....	2	0	2
Domestic.....	0	6	6
Engineer.....	3	0	3
Farmer.....	40	0	40
Fireman.....	1	0	1
Fisherman.....	1	0	1
Horse dealer.....	2	0	2
Hotel keeper.....	1	0	1
Housekeeper.....	0	12	12
Housewife.....	0	62	62
Jobber.....	1	0	1
Laborer.....	30	0	30
Lumberman.....	1	0	1
Merchant.....	1	0	1
Miller.....	1	0	1
Mill operative.....	6	2	8
Musician.....	0	1	1
None.....	30	21	51
Painter.....	2	0	2
Pauper.....	0	3	3
Photographer.....	1	0	1
Physician.....	1	0	1
Pilot.....	1	0	1
Plasterer.....	1	0	1
Sailor.....	5	0	5
Salesman.....	1	0	1
School boy.....	1	0	1
School girl.....	0	4	4
School teacher.....	0	1	1
Ship carpenter.....	1	0	1
Ship caulker.....	1	0	0
Shoemaker.....	4	0	4
Shoe operative.....	1	0	1
Stone cutter.....	3	0	3
Stone mason.....	1	0	1
Strawshop operative.....	0	1	1
Surveyor.....	1	0	1
Tailor.....	1	0	1
Teamster.....	1	0	1
Trunk maker.....	1	0	1
Weaver.....	1	0	1
Total.....	170	117	287

TABLE No. 13.
RESIDENCE PRIOR TO ADMISSION.

	Men.	Women.	Total.
Albion	1	1	2
Alfred jail	1	0	1
Arrowsic	1	0	1
Auburn	2	3	5
Augusta.....	9	7	16
Bangor.....	9	7	16
Bath	3	2	5
Belfast.....	5	2	7
Benedicta.....	1	0	1
Berwick.....	0	1	1
Biddeford.....	2	0	2
Boothbay	1	0	1
Boothbay Harbor.....	1	0	1
Bowdoinham.....	0	1	1
Bethel.....	2	1	3
Brunswick	3	0	3
Brewer	1	1	2
Bristol	1	0	1
Bridgton.....	1	0	1
Bradford	0	1	1
Bucksport.....	1	0	1
Calais.....	0	3	3
Camden.....	0	1	1
Caribou.....	0	1	1
Cape Elizabeth	2	1	3
Charleston	1	0	1
Chelsea	0	2	2
Cherryfield	1	0	1
Cornish	1	0	1
Concord	0	1	1
Cornville.....	1	0	1
Cumberland	0	3	3
Corinth.....	1	0	1
Cushing.....	0	1	1
Deering	1	1	2
Damariscotta	1	1	2
Deer Isle	1	0	1
Denmark	0	1	1
Dresden	0	2	2
Dover.....	0	1	1
Eastport	1	1	2
Ellsworth	2	1	3
Elliot	1	0	1
Edlington	3	0	3
Etna	0	1	1
Embden.....	1	0	1
Farmington	5	0	5
Fort Kent.....	1	0	1
Freeport	1	1	2
Friendship	1	0	1
Foxcroft.....	0	1	1
Frankfort	0	1	1
Gorham.....	1	2	3
Gardiner	2	2	4
Garland.....	1	0	1
Guilford	1	0	1
Harrington	1	0	1
Hallowell.....	2	0	2
Hodgdon	1	1	2
Hartland	0	1	1
Hampden.....	1	0	1
Industry	2	0	2
Jonesport.....	0	1	1
Kennebunk.....	2	0	2
Kennebec jail	1	0	1
Lewiston	8	4	12
Lagrange	0	1	1
Ludlow	1	0	1
Lisbon.....	0	2	2
Limerick	1	0	1
Lowell	1	0	1
Leeds	1	0	1

TABLE No. 13—*Concluded.*

	Men.	Women.	Total.
Monroe	1	0	1
Medway	1	1	2
Madison	1	0	1
Montville.....	1	0	1
Maxfield.....	0	2	2
Monmouth.....	0	1	1
Mechanic Falls.....	1	0	1
Newport.....	0	1	1
Norridgewock.....	2	1	3
Norway.....	2	0	2
Northport.....	0	1	1
North Haven.....	0	1	1
Old Orchard.....	1	0	1
Old Town.....	2	0	2
Orrington.....	0	1	1
Orono.....	0	1	1
Poland.....	1	1	2
Presque Isle.....	0	2	2
Portland.....	8	7	15
Palermo.....	0	1	1
Phippsburg.....	0	1	1
Penobscot.....	1	0	1
Phillips.....	1	0	1
Pembroke.....	1	0	1
Rangeley.....	3	0	3
Rumford.....	1	0	1
Richmond.....	1	0	1
Rockport.....	0	1	1
Readfield.....	0	1	1
Randolph.....	0	1	1
Rockland.....	4	3	7
Saco.....	4	1	4
State Prison.....	4	0	4
Surry.....	1	0	1
St. Albans.....	1	0	1
Sidney.....	1	1	2
Skowhegan.....	2	2	4
Sullivan.....	1	0	1
South Berwick.....	1	1	2
Stoneham.....	1	0	1
Searsport.....	1	0	1
Sherman.....	1	0	1
Strong.....	0	0	1
Trenton.....	0	1	1
Unity.....	2	0	2
Vinalhaven.....	2	1	3
Vanceboro.....	0	1	1
Vassalboro.....	0	1	1
Van Buren.....	1	0	1
Winslow.....	1	0	1
Winthrop.....	2	1	3
Weid.....	1	0	1
Westbrook.....	2	1	3
Woolwich.....	0	1	1
Webster.....	0	1	1
Waterford.....	1	0	1
Waterborough.....	0	1	1
Waterville.....	5	3	8
Wilton.....	1	0	1
West Gardiner.....	0	1	1
Winterport.....	0	1	1
Yarmouth.....	1	2	3
York.....	2	0	2
Dexter.....	1	1	2
Total	170	117	287

TABLE No. 14.
NUMBER OF ADMISSIONS OF THOSE ADMITTED.

	Men.	Women.	Total.
Admitted the first time.....	116	71	187
“ “ second time.....	33	32	65
“ “ third time.....	14	9	23
“ “ fourth time.....	5	1	6
“ “ fifth time.....	1	1	2
“ “ sixth time.....	1	2	3
“ “ fourteenth time.....	0	1	1
Total.....	170	117	287

TABLE No. 15.
NUMBER OF ADMISSIONS OF THOSE DISCHARGED RECOVERED.

	Men.	Women.	Total.
Admitted the first time.....	31	18	49
“ “ second time.....	5	7	12
“ “ third time.....	3	2	5
“ “ fourth time.....	2	2	4
“ “ fifth time.....	1	0	1
“ “ sixth time.....	1	0	1
“ “ seventh time.....	1	1	2
“ “ fourteenth time.....	0	1	1
Total.....	44	31	75

TABLE No. 16.
RELIGION OF THOSE ADMITTED.

	Men.	Women.	Total.
Protestants.....	130	88	218
Catholics.....	21	17	38
Jew.....	0	1	1
Unknown.....	19	11	30
Total.....	170	117	287

TABLE No. 17.
 NATIVITY OF THOSE ADMITTED.

	Men.	Women.	Total.
British America.....	1	0	1
Canada.....	2	3	5
Denmark.....	1	0	1
England.....	1	0	1
Germany.....	0	1	1
Ireland.....	4	4	8
Italy.....	2	0	2
Maine.....	134	86	220
Massachusetts.....	1	3	4
New Brunswick.....	7	3	10
New Hampshire.....	0	1	1
New York.....	1	1	2
Nova Scotia.....	4	0	4
Prince Edward's Island.....	1	0	1
Sweden.....	1	0	1
Unknown.....	9	15	24
District of Columbia.....	1	0	1
Total.....	170	117	287

TABLE No. 18.

SHOWING THE OPERATIONS OF THE HOSPITAL FROM ITS COMMENCEMENT TO THE PRESENT TIME.

Year.	Admitted.	Discharged.	Whole number under treatment.	Recovered.	Improved.	Unimproved.	Died.	Greatest number in hospital on any day.	Least number in hospital on any day.	Remaining at the end of year.	Daily average number for the year.
1840-1.....	120	80	129	30	14	24	5	70	1	52	48
1841-2.....	89	72	141	32	16	19	5	73	50	65	59
1842-3.....	86	84	151	32	16	31	5	72	58	62	65
1843-4.....	83	75	151	30	16	23	3	79	55	75	70
1844-5.....	99	90	175	39	21	26	2	89	71	85	80
1845-6.....	102	87	187	41	22	14	5	107	80	101	93
1846-7.....	124	100	125	53	17	20	10	125	98	124	108
1847-8.....	128	125	152	60	31	14	20	135	117	127	112
1848-9.....	123	110	150	65	22	19	14	139	121	139	126
1849-50.....	110	120	149	66	35	21	14	165	123	124	137
1850-1.....	75	122	199	22	28	40	32	125	30	76	75
1851-2.....	48	42	124	23	4	8	8	76	34	84	79
1852-3.....	126	89	210	45	14	15	15	120	84	119	108
1853-4.....	109	114	228	49	15	18	32	140	114	115	127
1854-5.....	123	88	243	41	14	14	10	155	114	155	134
1855-6.....	149	114	304	54	22	19	19	194	151	190	167
1856-7.....	144	126	334	69	24	29	14	215	190	208	204
1857-8.....	126	126	334	59	25	18	24	225	102	208	213
1858-9.....	149	120	357	58	22	23	17	240	102	237	222
1859-60.....	136	133	373	63	22	17	31	246	227	240	236
1860-1.....	135	123	375	55	25	16	27	255	239	252	248
1861-2.....	126	119	377	57	24	19	19	267	244	258	254
1862-3.....	118	111	376	52	21	14	24	266	242	265	254
1863-4.....	124	135	389	49	22	11	53	273	247	254	253
1864-5.....	142	110	396	47	25	23	24	282	254	277	272
1865-6.....	135	133	412	61	29	13	33	287	267	276	277
1866-7.....	150	123	426	54	27	11	21	303	276	303	391
1867-8.....	165	129	468	63	23	16	27	341	302	339	319
1868-9.....	150	153	489	68	28	14	42	351	332	337	342
1869-70.....	130	122	467	48	19	18	37	348	330	345	339
1870-1.....	174	151	519	58	28	21	44	376	345	368	363
1871-2.....	202	177	510	79	34	19	45	404	368	393	384
1872-3.....	200	282	593	85	36	20	53	416	388	411	400
1873-4.....	189	207	600	61	33	61	52	420	393	393	400
1874-5.....	188	178	581	66	31	27	52	408	389	403	398
1875-6.....	186	184	589	68	33	31	52	408	384	405	398
1876-7.....	194	183	599	72	35	28	46	423	397	416	411
1877-8.....	188	186	604	56	45	37	48	423	406	418	415
1878-9.....	196	195	614	53	52	60	30	432	399	419	415
1879-80.....	188	171	607	57	32	43	38	439	390	436	412
1880-1.....	215	201	651	56	57	42	46	453	426	450	442
1881-2.....	194	183	644	71	35	34	43	465	433	461	449
1882-3.....	208	205	669	53	42	22	88	467	430	464	450
1883-4.....	203	207	667	59	31	16	101	472	443	460	454
1884-5.....	249	223	709	80	54	12	77	488	459	486	474
1885-6.....	231	189	717	66	56	7	60	543	484	528	506
1886-7.....	226	202	754	82	52	14	54	556	527	552	543
1887-8.....	250	224	802	76	48	19	81	600	552	578	580
1888-9.....	225	223	803	65	60	22	76	599	561	580	579
1889-90.....	253	207	833	65	18	17	73	634	577	626	612
1890-1.....	245	198	871	63	47	18	70	677	626	673	649
1891-2.....	269	257	942	71	72	25	89	697	669	685	685
1892-3.....	287	301	972	75	83	55	88	714	671	671	693

Respectfully submitted,

BIGELOW T. SANBORN, *Superintendent.*

MAINE INSANE HOSPITAL, Augusta, Nov. 30, 1893.

CHAPLAIN'S REPORT.

To the Trustees of the Maine Insane Hospital:

Once more I take pleasure in presenting my report as Chaplain. The work of the year has been unusually pleasant. We may not speak of the profit. Yet it has suffered interruption. Owing to the illness of your Chaplain and the work of placing the new organ in the chapel, he was unable to conduct services for a few weeks; though when accommodations would allow a substitute was provided. No service has been interrupted by a response or the occasional fancy of a disordered mind, and rather more than the usual number have chosen to attend; which means that the general health of the patients has been unusually good. For one or two Sundays attendance from one of the wards was prohibited as a cautionary measure. But such careful, thorough, and continuous oversight has been given to the patients that no general epidemic, not even of la grippe, so common abroad, has prevailed.

The music is constantly growing better. The sweet tones of the new organ add not a little to the richness of the melody. The inmates manifest peculiar appreciation when its notes are sounded. No doubt many attend chapel services for the sake of hearing it. This was certainly one of the many happy thoughts of the Superintendent for the comfort of the patients.

The other duties of the Chaplain has been performed as occasion has required, and every aid to be desired has been promptly and courteously extended.

Respectfully submitted.

J. M. WYMAN, *Chaplain.*

AUGUSTA, Me., November 30, 1893.

Steward and Treasurer's Report.

To the Trustees of the Maine Insane Hospital:

I herewith present my report of the financial standing of the Maine Insane Hospital for the year ending November 30, 1893.

Total Receipts and Disbursements of Cash for the Year Ending November 30, 1893.

DR.		
Balance cash on hand December 1, 1892.....	\$ 4,084 18	
Receipts for year, Hospital account	175,324 15	
Received appropriation from State of Maine for repairing entrance to central building and renovating old diphtheria wards	15,130 00	
		\$194,538 33
CR.		
Disbursements, Hospital account.....	\$180,643 16	
Disbursements, account Appropriation..	9,555 10	
Balance, cash on hand November 30, 1893.....	4,340 07	
		\$194,538 33

COMPARATIVE STATEMENT A.
Of Resources and Liabilities November 30, 1892.

RESOURCES—SUPPLIES IN STOCK.		
Cash on hand	\$ 4,084 18	
Due from State of Maine for support of patients	15,933 81	
Due from towns and individuals for support of patients.. .	30,187 21	
Provisions, groceries, crockery, furniture, per inventory...	9,852 29	
Dry goods, clothing, etc., per inventory.....	6,730 30	
Coal on hand, per inventory	11,405 38	
Medical supplies on hand, per inventory	800 39	
Horses, cows, oxen, hogs, produce, per inventory	14,071 02	
Repairs and improvements, pipes and fittings, lumber and materials, per inventory.....	3,274 08	
Expense, stationery, books and office materials, per inventory . . .	233 13	
Real estate, Norton house, purchased in 1886.....	900 00	
Real estate, Hoyt house, purchased in 1890.....	2,500 00	
		\$99,971 79
LIABILITIES.		
Due firms and individuals on account supplies.....	\$17,625 23	
Due employes per pay roll.....	3,336 85	
Amusement fund	1,000 00	
Bills payable.....	10,000 00	
Coburn fund, balance interest in treasury	3,997 22	
Farm stock improvements, balance appropriation unexpended ...	483 02	
		36,502 32
Net resources as per hospital account A in annual statement November 30, 1892		\$63,469 47

COMPARATIVE STATEMENT B,
Of Resources—Supplies in Use November 30, 1892.

Dispensary department, medical instruments, furnishings, etc.....	\$ 527 19	
Farm department, agricultural implements, carts, carriages, sleds, sleighs, tools, etc.....	6,150 15	
Greenhouse department, plants, pots, implements, etc.....	1,991 97	
Hospital furnishings department, furniture, bedding, fixtures and household materials, etc	55,570 28	
Repairs and improvements department, engineer's, blacksmith's, carpenter's, painter's and mason's tools, implements, etc	1,477 30	
Amusement fund, principal of Orne bequest	1,000 00	
Net resources as per hospital account B in annual statement November 30, 1892		\$66,716 89

**COMPARATIVE STATEMENT A,
Of Resources and Liabilities November 30, 1893.**

RESOURCES—SUPPLIES IN STOCK.		
Cash on hand	\$ 4,340 07	
Due from State of Maine for support of patients.....	15,797 58	
Due from towns and individuals for support of patients....	29,760 84	
Provisions, groceries, crockery, furniture, per inventory ...	11,505 46	
Dry goods, clothing, etc., per inventory	7,470 28	
Coal on hand, per inventory	12,522 28	
Medical supplies on hand, per inventory	1,061 71	
Horses, cows, oxen, hogs, produce, per inventory.....	17,608 45	
Repairs and improvements, pipes and fittings, lumber and materials, per inventory	3,356 24	
Expense, stationery, books and office materials, per inventory	375 83	
Real estate, Norton house, purchased in 1886	900 00	
Real estate, Hoyt house, purchased in 1890	2,500 00	
Real estate, Thorne farm, purchased in 1893.....	4,500 00	
Real estate, Severance farm, purchased in 1893.....	2,000 00	
		\$113,698 74
LIABILITIES.		
Due firms and individuals on account supplies.....	\$22,173 01	
Due employees per pay roll.....	4,292 43	
Amusement fund.....	1,000 00	
Bills payable.....	14,500 00	
Coburn fund, balance interest in treasury.....	2,436 22	
Farm stock improvements, balance appropriation unexpended	204 77	
Appropriation for repairing entrance to Central building and renovating old diphtheria ward, balance	5,574 90	
		50,181 33
Net resources as per hospital account A in annual statement November 30, 1893.....		\$63,517 41

**COMPARATIVE STATEMENT B,
Of Resources--Supplies in Use November 30, 1893.**

Dispensary department, medical instruments, furnishings, etc.....	\$544 81	
Farm department, agricultural implements, carts, carriages, sleds, sleighs, tools, etc.....	6,585 79	
Greenhouse department, plants, pots, implements, etc.....	2,013 49	
Hospital furnishings department, furniture, bedding, fixtures and household materials, etc.	59,148 81	
Repairs and improvements department, engineer's, blacksmith's, carpenter's, painter's and mason's tools, implements, etc.....	1,478 73	
Amusement fund, principal of Orne bequest	1,000 00	
Net resources as per hospital account B in annual statement, November 30, 1893.....		\$70,771 13

TENTH ANNUAL FINANCIAL STATE

	On hand per Inventory A, supplies in stock November 30, 1893.	On hand per Inventory B, supplies in stock November 30, 1893.	Trial Balance.		Net cost of different departments.	
Hospital account A, supplies in stock, etc.....			\$63,469	47	
Hospital account B, supplies in use, etc.....			66,716	89	
Cash.....			\$4,340	07	
Dry goods department.....	\$7,470	28	6,069	13	
Dispensary department.....	1,061	71	\$ 544	81	\$2,250 85	
Farm department.....	11,594	82	6,585	79	
Garden department.....	2,113	63	15,533	88	
Greenhouses department.....			1,693	32	
Grocery department.....		2,013	49	3,034	06	1,020 57
Expense department.....	9,896	77	9,896	77	
Heating and lighting department...	375	83	7,293	43	6,917 60	
Hog department.....	12,522	28	33,490	97	20,968 69	
Hospital furnishings department...	3,900	00	2,358	60	
Repairs and improvements.....	656	37	59,148	31	2,708 52	
Real estate.....	3,356	24	1,478	73	17,115 80	
Subsistence.....	9,900	00	9,719	00	
Amusement fund.....	952	32		50,159	11
Coburn fund.....			1,000	00	
Bills payable.....				2,436	22
Interest and discount.....				15,500	00
Salaries and wages (due employes)...				13	77
State of Maine (owes hospital).....				4,292	43
Persons and towns (owe hospital)...				15,797	58
Sundry persons (hospital owes).....				29,760	84
Farm stock improvements, balance of unexpended appropriation.....				22,173	01
Infirmary.....				204	77
Appropriation for repairing entrance for central building and renovat- ing old diphtheria wards (balance unexpended).....				5,618	22	5,618 22
				5,574	90
	\$63,800	25	\$69,771	13	232,233 89	232,233 89
Increase in Hospital Account B.....					4,054	24
Increase in Hospital Account A.....					47	94
					60,702	43
Net increase.....					\$4,102	18

We hereby certify that we have carefully examined the accounts of the Treasurer for the year ending November 30, 1893, and find them correct.

W. H. HUNT, } Finance Committee
LYNDON OAK, } of Trustees.

MENT, NOVEMBER 30, 1893.

Net production or gain of different departments.	Hospital Account A.		Hospital Account B.		Resources B.	Resources A.	Liabilities.
		\$63,469 47					
				\$66,716 89			
\$1,401 15						\$4,340 07	
2,646 73					\$ 544 81	7,470 28	
3,806 95					6,585 79	1,061 71	
						11,594 82	
					2,013 49	2,113 63	
						9,896 77	
						375 83	
						12,522 28	
1,541 40						3,900 00	
					59,148 31	656 37	
181 00					1,478 73	3,356 24	
51,111 43						9,900 00	
					1,000 00	952 32	
							2,436 22
13 77							15,500 00
							4,292 43
							15,797 58
							29,760 84
							22,173 01
							204 77
							5,574 90
				4,054 24			
		47 94					
\$60,702 43							
Balance Hospital account A.....	\$63,517 41						
Balance Hospital account B.....			\$70,771 13				
	\$63,517 41	\$63,517 41	\$70,771 13	\$70,771 13			
Total resources A						113,698 74	
Total resources B					\$70,771 13	70,771 13	
Total resources and liabilities..						184,469 87	50,181 33
Balance Hospital account A.....							63,517 41
Balance Hospital account B.....							70,771 13
Proof.....						184,469 87	184,469 87

Very respectfully submitted,

MANNING S. CAMPBELL, *Steward and Treasurer.*

GARDEN PRODUCTS FOR YEAR 1893.

181.....bushels	Apples	\$56 10
455.....pounds	Asparagus	68 25
81.....bushels	Beets (greens)	60 75
32,438.....pounds	Beets (table)	391 29
15.....bunches	Beets	45
156.....bushels	Beans (string)	234 00
8.....bushels	Beans (yellow eyes)	17 32
133.....pounds	Blackberries	15 96
31,301.....ears	Corn (green)	313 01
2 1-2.....acres	Corn (fodder)	25 00
49,439.....pounds	Cabbage	770 75
7,036.....	Cucumbers	70 36
750.....pounds	Currants	75 00
152.....heads	Cauliflower	30 40
17,615.....pounds	Carrots	109 35
10,111.....heads	Celery	1,268 49
3,187.....heads	Lettuce	159 75
13,624.....pounds	Onions	272 48
7,190.....pounds	Pumpkins	57 70
10,613.....pounds	Parsnips	106 13
223.....bunches	Parsley	14 20
173.....bushels	Peas (green)	190 00
3.....bushels	Pears	4 50
1,275.....bunches	Radish	19 13
960.....pounds	Rhubarb	14 40
20,612.....pounds	Squash	291 17
3,443.....pounds	Strawberries	430 38
2,200.....plants	Strawberry	16 50
12,869.....pounds	Tomatoes	276 04
47,835.....pounds	Turnips	504 48
		\$5,863 34

FARM PRODUCTS FOR YEAR 1893.

1,014.....pounds.....	Beef (fresh)	\$76 05
20 17-62 ..bushels	Beans (yellow eyes)	45 62
43	Calf skins	27 00
3	Calves (sold)	35 00
13	Cows (sold)	429 00
164.....tons	Ensilage	1,148 00
360.....pounds.....	Hides	9 44
340.....tons	Hay.....	4,760 00
29,408 1-2gallons	Milk	5,162 98
832 1-4bushels	Oats	374 51
21,867.....pounds.....	Potatoes	407 73
50 5-6bushels	Potatoes (small)	12 92
20.....tons	Straw	140 00
2,855.....pounds.....	Turnips	28 55
4,533.....pounds.....	Veal.....	480 81
		\$13,137 61

ARTICLES MADE IN SEWING ROOM FOR THE YEAR 1893.

1,557.....	Sheets.
1,379.....	Pillow slips.
1,894.....	Towels.
228.....	Tablecloths.
358.....	Aprons.
53.....	Pillow ticks.
15.....	Bed sacks.
22.....	Curtains.
25.....	Cooks' caps.
40.....	Frocks.
55.....	Camisoles.
399.....	Dresses.
276.....	Skirts.
287.....	Chemise.
270.....	Pairs drawers.
38.....	Waists.
5.....	Dress waists.
94.....	Night dresses.
89.....	Shirts.
2.....	Undershirts.
145.....	Spice bags.
2.....	Sand bags.
122.....	Clothes bags.
741.....	Rolls bandages.
8.....	Books covered.

ARTICLES REPAIRED IN SEWING ROOM FOR THE YEAR 1893.

34.....	Sheets.
19.....	Pillow slips.
217.....	Camisoles.
346.....	Aprons.
35.....	Tablecoths.
4.....	Cooks' coats.
13.....	Towels.
5.....	Curtains.
3.....	Clothes bags.
2.....	Spreads.
87.....	Frocks.
206.....	Dresses.
35.....	Skirts.
3.....	Waists.
2.....	Cushions.
69.....	Spreads hemmed.
192.....	Napkins hemmed.
7.....	Rugs bound.
5.....	Blankets bound.

APPENDIX.

[FORM OF PHYSICIAN'S CERTIFICATE.]

STATE OF MAINE.

— — —, 18—.

I, ———, of ———, county of ———, hereby certify that I have this day made a medical examination of ———, of ———, and find ——— insane, and a fit subject for treatment at the Maine Insane Hospital at Augusta.

— — —, M. D.

— — —, M. D.

[FORM OF CERTIFICATE AND ORDER FOR ADMISSION.]

STATE OF MAINE.

To the Superintendent of the Maine Insane Hospital :

WHEREAS, the undersigned, Selectmen (or Mayor and Aldermen) of ———, in the county of ———, this day, on complaint made to us in writing, of ———, of ———, in said county ———, of ———, of said ——— who therein says that said ——— is insane, and is a proper subject for said Hospital, made due inquiry into the condition of said ———, and called before us such testimony as was necessary to a full understanding of the case; whereupon, it appeared to us that said ——— was insane, and we were of opinion that the safety and comfort of said ——— and others interested, would be prompted by a residence in said Hospital, and accordingly determined that said ——— be sent forthwith to said Institution.

We, therefore, certify that said ——— is insane and that ——— was residing commorant, and found in the town of ———, aforesaid; and you, the said Superintendent, are hereby ordered and required to receive said ——— into said Hospital, and detain ——— in your care, until ——— shall become of sound mind, or be otherwise discharged by order of law, or by the Superintendent or Trustees.

———— [L. S.]

———— [L. S.]

———— [L. S.]

[FORM OF BOND FOR SUPPORT.]

KNOW ALL MEN BY THESE PRESENTS, That we ——— of ——— in the county of ———, as surety, are held and bound unto ———, Steward of the Insane Hospital at Augusta, or to his successor in office, in the sum of two hundred dollars, to the payment of which sum, well and truly to be made, we bind ourselves, our heirs, executors and administrators, firmly by these presents.

Sealed with our Seals, and dated at ———, this ——— day of ———,
A. D. 189—.

The conditions of this obligation are such, That whereas ——— of ——— in the county of ———, is about to be admitted as a boarder and patient at the Institution aforesaid; now, if the said ———, shall pay to said ——— or his successor, and remove the said ———, and for reasonable charges that may be incurred in case of the elopement of said ———, payment to be made quarterly and at the time of removal, with interest on the amount after it becomes due, as aforesaid, then this obligation to be null and void; otherwise to remain in full force and virtue.

Witness:

[L. S.]

[L. S.]

QUESTIONS.

TO BE ANSWERED BY THE PATIENT'S FAMILY OR PHYSICIAN.

1. Age?
2. Married or single?
3. Occupation?
4. How old at first attack?
5. Date of present attack? What appearances?
6. What changes since?
7. On what subjects?
8. Any rational intervals?
9. Any relations ever insane, and who were they?
10. Ever attempted suicide or homicide, and in what manner?
11. Destructive to clothes or property?
12. Disposed to filthiness of person or habits?
13. Any restraint or confinement been applied? If any, what?
14. If former attacks, how many, and how long did they continue?
15. What natural peculiarities? power of self control? temper? disposition? predominant passion? disappointment as to property? affections, loss of friends, wounded pride, family troubles, intemperance in the use of ardent spirits, tobacco, etc.?
16. History of any bodily disease, especially suppressions of evacuations, eruptions, sores, etc., injuries, epilepsy, palsy, etc.?
17. What cause or causes are supposed to have induced the attacks?
18. What curative means have been tried? State if blood-letting has been resorted to? If so, to what extent?

Male patients admitted into the Institution, should come provided with at least three good cotton shirts, coat, vest and pants, of strong woolen cloth, two pairs woolen stockings, one hat or cap, pocket handkerchief, brush and comb, and one pair of boots or shoes.

Females should have at least, a change of under-clothes, shoes and stockings, brush and comb, decent bonnet and two substantial dresses, the woolens should be of dark color. It is quite desirable also, that a Bible or Testament should not be forgotten in the outfit.

No person over twenty-one years of age, can be received without the certificate required by the act regulating the Hospital, in the revised statutes.