

# MAINE STATE LEGISLATURE

The following document is provided by the  
**LAW AND LEGISLATIVE DIGITAL LIBRARY**  
at the Maine State Law and Legislative Reference Library  
<http://legislature.maine.gov/lawlib>



Reproduced from scanned originals with text recognition applied  
(searchable text may contain some errors and/or omissions)

# Public Documents of Maine:

BEING THE

## ANNUAL REPORTS

OF THE VARIOUS

# Public Officers and Institutions

FOR THE YEAR

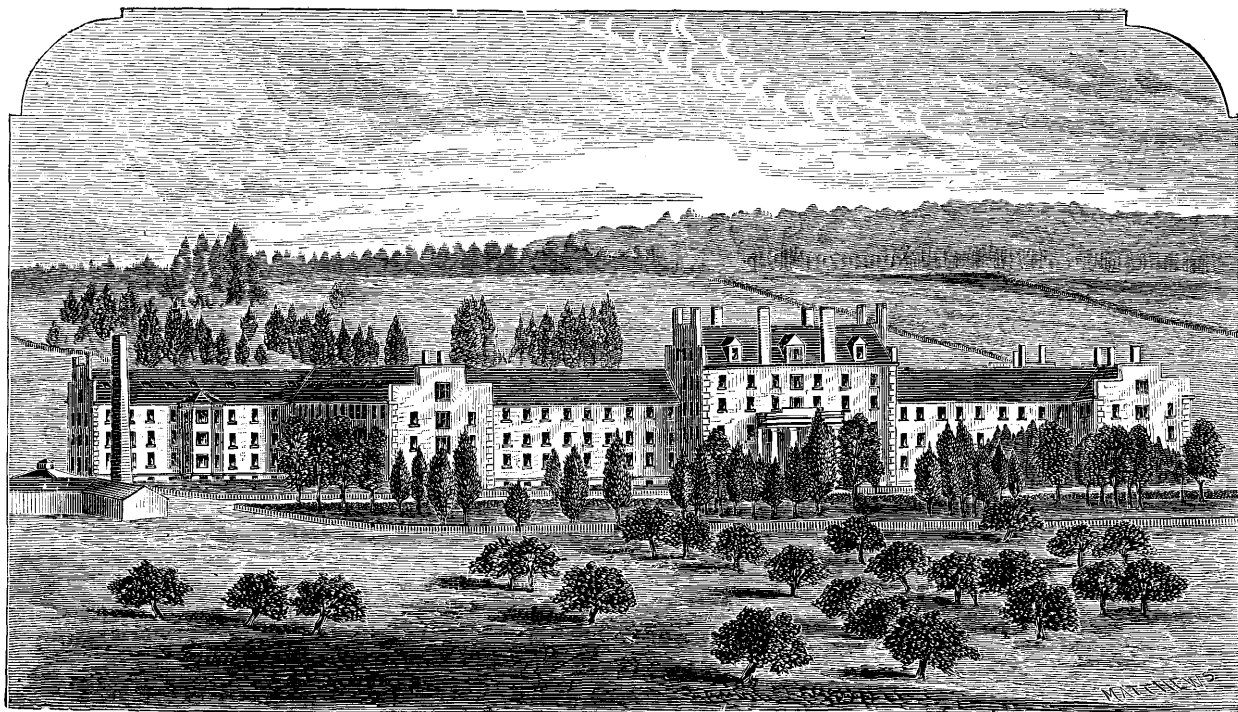
— 1885 —

---

VOLUME I.

---

AUGUSTA:  
SPRAGUE & SON, PRINTERS TO THE STATE.  
1885.



MAINE INSANE HOSPITAL.

REPORTS

OF THE

TRUSTEES, RESIDENT OFFICERS

AND THE

VISITING COMMITTEE

OF THE

Maine Insane Hospital.

DECEMBER 1, 1884.

---

AUGUSTA :

SPRAGUE & SON, PRINTERS TO THE STATE.

1885.

## OFFICERS FOR 1885.

---

JAMES WEYMOUTH, OLDTOWN, *President*.  
D. O. BOWEN, MORRILL, *Secretary*.  
SYLVESTER OAKES, M. D., AUBURN.  
J. H. MANLEY, AUGUSTA.  
J. T. HINCKLEY, BLUEHILL.  
MRS. E. J. TORSEY, KENT'S HILL.

---

### RESIDENT OFFICERS.

DR. B. T. SANBORN, *Superintendent*.  
DR. H. B. HILL, *Assistant Superintendent*.  
DR. O. C. S. DAVIES, *Second Assistant Superintendent*.  
C. N. LOWELL, *Superintendent's Clerk*.  
JOHN W. CHASE, *Steward and Treasurer*.  
MANNING S. CAMPBELL, *Clerk*.  
REV. C. F. PENNEY, *Chaplain*.  
MISS ALICE G. TWITCHELL, *Matron*.  
V. R. LUCE, *Supervisor of Male Wards*.  
MISS EMMA C. GLIDDEN, *Supervisor of Female Wards*.  
MISS ALICE PERKINS, *Head Nurse*.

---

### Standing Committees for 1885.

*On Finance*—Manley, Hinckley, Oakes.  
*On Improvements*—Bowen, Torsey, Weymouth.  
*On Conference with Legislative Committee*—Manley, Bowen,  
Weymouth.  
*On Library*—Torsey, Sanborn.

---

### Visiting Committees for the Year.

<i>January</i> —Bowen, Weymouth.	<i>July</i> —Torsey, Manley.
<i>February</i> —Hinckley, Torsey.	<i>August</i> —Oakes, Hinckley.
<i>March</i> —Full Board.	<i>September</i> —Full Board.
<i>April</i> —Oakes, Torsey.	<i>October</i> —Bowen, Weymouth.
<i>May</i> —Bowen, Weymouth.	<i>November</i> —Torsey, Hinckley.
<i>June</i> —Full Board.	<i>December</i> —Full Board.

## TRUSTEES' REPORT.

---

*To the Honorable the Governor and Executive Council of the State of Maine:*

In accordance with law, the Trustees of the Maine Insane Hospital respectfully submit their annual report for the year ending November 30, 1884.

The close of the forty-fourth year of the existence of the Maine Insane Hospital, finds it, as we believe, on a higher plane of usefulness than at any previous period of its history.

The greatly increased facilities for classification, resulting from the erection of the new pavilions, the much improved ventilation in many of the wards of the old buildings, enable the Superintendent to afford the inmates better accommodations, more comforts and better prospects for recovery, than at any former time.

Committees of the Trustees have visited the Hospital every month and carefully inspected each ward, have seen each and every patient, inquired into their condition, and made such suggestions to the Superintendent, from time to time, as was deemed proper.

Quarterly meetings were held in March and September, the semi-annual meeting in June, and this, the annual meeting, in December.

At the close of each quarter the books, accounts and vouchers, have been carefully examined, compared and found correct.

A year's trial of the *modified* form of double entry, in the style of keeping our books, has proved eminently satisfactory in the hands of Mr. Manning S. Campbell, the accurate and faithful Clerk of the Institution.

For a detailed statement of the internal operations of the Hospital, we respectfully refer you to the very able report of the Superintendent, which is herewith submitted.

Dr. Sanborn has now been in charge of the Institution, as its Superintendent and chief executive officer, for the past eighteen months.

He has been unwearied in his efforts to discharge the responsible duties of his position.

By his courtesy, steady and firm discipline, he has merited and secured the respect and cordial co-operation of his subordinates; and we would not fail to express our appreciation of his earnest and untiring labor, uniform kindness and sympathy, bestowed upon the unfortunates placed under his charge. He has conducted the affairs of the Hospital in an able and skillful manner, highly satisfactory to the Board.

He has been faithfully aided and supported by Drs. Hill and Davies, First and Second Assistant Superintendents; Dr. Hill having had the immediate charge of the female wards, and Dr. Davies that of the male wards.

Mr. V. R. Luce still continues to fill the office, and discharge the duties, of Supervisor of the male wards acceptably.

During the summer, Miss H. W. Ham, after a long period of faithful and acceptable service as Supervisor of the female wards, resigned, and the Superintendent appointed Miss Emma C. Glidden to act as Supervisor, and Miss Perkins as Nurse, until the next meeting of the Board.

At the September meeting, Miss Glidden was unanimously elected Supervisor of the female wards, and Miss Perkins was also elected Nurse, to fill the place made vacant by the promotion of Miss Glidden. They have performed the duties of their respective offices with fidelity, and to the satisfaction of the Superintendent.

The Matron, Miss Alice G. Twitchell, has been thoroughly devoted to the interests of the Institution, and has manifested great skill and executive ability in the affairs connected with her department.

The Visiting Committee from the Council have made frequent visits and careful inspections of all the wards of the Hospital, and have rendered material aid to the Trustees by their advice and counsel.

The Lady Visitor, Mrs. C. R. Whidden, has spent much time in the wards during the past year, and has manifested her usual kindness and sympathy towards the patients, striving earnestly for their comfort and well-being.

At the semi-annual meeting, in June, Mr. J. H. Manley tendered his resignation as Secretary of the Board, which was accepted, and Mr. J. T. Hinckley was unanimously elected to fill the vacancy.

The green-houses, under the care of William H. Allen, have furnished a large supply of flowers for the comfort and happiness of the patients in the halls during the winter months, and an abundance of flowering and foliage plants for beautifying and ornamenting the grounds during the summer months. They also furnished all the early plants for the garden, and have contributed to the funds of the Hospital the sum of three hundred thirty-eight dollars and thirty-eight cents (\$338.38) during the year.

Inasmuch as the products of the garden enter largely into the table supplies of the Hospital, and should therefore be regarded more as a specialty, at the quarterly meeting, in September, it was voted to separate the operations connected with the garden from those of the farm, and place the same under the care and direction of Mr. Allen, our efficient and competent florist, who is also an experienced gardener.

Early in the summer disease made its appearance among the swine, and continued with great severity for several months. It was very rapid in its course and destructive in its results.

A large proportion of the cases proved fatal, many of them in thirty-six hours after the attack. Doubtless this disease is what is generally known as Hog Cholera.

It progressed with varying severity throughout the hot season, destroying 209 hogs, shoats and pigs, causing a loss



to the Institution of three thousand four hundred and forty-five dollars (\$3,445). Every precaution was taken to prevent the spread of the disease; such as separating the well from the sick, and placing them in the open air, so far removed as practicable from their usual quarters, free use of disinfectants, change of diet, mixing charcoal with food, etc. Nothing appeared to arrest or materially modify the disease until the frost came in September.

At the quarterly meeting in September, after careful deliberation, it was voted to raise the price of board twenty-five cents per week, in the public wards of the old buildings, and fifty cents per week in the public wards of the new pavilions.

The Legislature, in the year 1883, appropriated forty thousand dollars (\$40,000) for the purpose of completing, furnishing and fitting for occupancy the pavilion for females, already erected from accumulated funds of the Hospital, and to erect a similar building for males; but no appropriation was made for corridors or tramways.

In our last report we stated that the pavilion for females was completed, furnished and occupied; and it now gives us much pleasure to state that the pavilion for males is *also* completed, furnished and occupied.

For a detailed statement of our expenditures we respectfully refer you to the report of the Building Committee which is herewith submitted.

By reference to this report, it will appear that we have expended much more than the sum appropriated. The pressing need for more room, to relieve the crowded condition of the male wings, which often rendered it necessary for the Superintendent to refuse applications for Hospital privileges, induced the Trustees, after seeking advice from the Governor and Council, to take measures to have the second pavilion completed and fitted for occupancy, as soon as practicable.

Every precaution has been taken by the Trustees and the Building Committee, to secure good materials and good work in the construction of the pavilions. Nearly all the work has

been done by contract, and the contracts have been faithfully carried out to the acceptance of the Building Committee.

Steam and water piping have been done under the direction and personal supervision of Mr. Winthrop C. Sampson, the very able and trusty Engineer of the Institution, and is, in every way, satisfactory.

In consequence of the large volume of surface water coming down from the high land east of the buildings, during the heavy rains of spring and fall, it became necessary for the safety of the property, to do a large amount of grading *this season*, amounting, in the aggregate, to some ten thousand yards. This earth has been moved about one thousand feet, a large portion of it being utilized in the construction of a street across the ravine north of the buildings, rendering the field next to the Arsenal grounds, much more accessible. A portion of the earth was moved by contract, and the remainder by the day, under the care and supervision of a landscape gardener, Thomas Allen, of Bangor.

A circular street, in connection with the grading, has been built at sufficient distance from the buildings to prevent strangers, visiting the Hospital grounds, from holding conversation with the inmates. An open drain has been constructed above the street, of sufficient size and depth to carry all the surface water. All the space below the street, extending to the old buildings, and surrounding the new buildings, has been brought to a suitable grade, and now forms a continuous lawn, interrupted only by one small terrace and a street leading from the rear of the center buildings to the stables.

Superficial drains have been constructed and connected with deeper drains, through which all surface water is conducted to the main sewer; the cost of which, as will appear by vouchers submitted to you by the Building Committee, amounts to the sum of three thousand five hundred and twenty-two dollars and sixty-two cents (\$3,522.62).

During the year, we have coated more than three thousand feet of our steam and hot-water pipes, by the application first, of a fire-proof covering of asbestos; second, by a coat of heavy

felting; third, by a coat of heavy duck, the coating being well secured with copper wire, and painted with two coats of paint throughout. This also has been done under the direction and supervision of our Engineer, at a cost of nine hundred and seventy-five dollars (\$975.00). The Trustees deemed it more economical to cover these pipes, thereby saving and utilizing heat already generated, than to purchase and set a new boiler, which would require the consumption of three hundred tons of coal annually, at a cost of not less than fifteen hundred dollars (\$1,500.00).

The expenditures for the completion, furnishing, etc., for the first pavilion, have been twelve thousand seven hundred and twenty-two dollars and thirteen cents (\$12,722.13); and for the erection, heating, plumbing, finishing and furnishing of the second pavilion, together with the grading, concreting, building of corridors and tramways, etc., amount to forty thousand seven hundred and twenty-one dollars and thirty-one cents (\$40,721.31), which exceeds the amount appropriated by the Legislature by the sum of thirteen thousand four hundred and forty-three dollars and forty-four cents (\$13,443.44). By reference to the report of the Building Committee it will be seen that the estimated amount required to pay balance of contracts, putting in elevator, etc., is nine thousand dollars (\$9,000); this added to the above sum of \$13,443.44 amounts to twenty-two thousand four hundred and forty-three dollars and fourty-four cents (\$22,443.44). It will be seen by reference to the Report of 1883, that the Hospital expended for new boiler and setting the same, and re-setting one old boiler, for enlarging the engine house, and enlargement and extension of mains, three thousand six hundred and four dollars (\$3,604). This sum should be charged into the expense of the new buildings. It will also be seen that the Hospital expended the sum of two thousand two hundred and twenty-nine dollars (\$2,229) for the pumping station at the river. These sums should, in our opinion, be reimbursed to the Hospital by the State; and we would respectfully recommend that the State appropriate the

sum of thirty thousand dollars (\$30,000) to meet the immediate wants of the Institution.

For a detailed statement of the financial operations of the Hospital, we refer you to the Report of the Steward and Treasurer, which accompanies this Report. Mr. R. W. Soule has performed the duties of this office with great promptness and fidelity, and with much honor to himself.

With the completion of the male pavilion, we believe the Maine Insane Hospital to be in a condition to compare favorably with any other State Institution in New England. Some few important changes yet remain to be accomplished.

The bath rooms, in the old buildings, should, in our judgment, be remodeled at once, and new and modern elevators substituted for those now in use, which are unsafe and insufficient.

The chapel building, so called, which stands in a conspicuous place in front of the main buildings, has long been regarded as having outlived its usefulness in its present location, and we trust, that as soon as the financial condition of the Hospital will admit, it will be removed to a site near the engine house, and a basement placed under it, suitable for a carpenter's shop which is one of the great needs of the Institution at the present time.

The Hospital has now a capacity for five hundred patients, which, with the ordinary rate of increase of members, will afford all necessary accommodations for the insane of the State, for the next eight or ten years.

It is hoped that the new buildings, with their modern conveniences, cheerful and well ventilated rooms, will materially improve the condition of convalescent patients, and increase the percentage of recoveries.

During the last few years, many improvements have been made in the Hospital, designed to ameliorate the condition and minister to the comforts of its inmates, among which may be mentioned, wire spring beds, that have been placed in nearly every room; they have proved a great luxury. Painting and stenciling the walls, hanging of pictures, many of which

have been donated by friends of the Institution, the greatly improved ventilation, and carpeting of many of the alcoves, have all contributed to the happiness and well-being of the patients, and have proved important adjuncts in the treatment of the diseased mind. The erection of our extensive green-houses, and the consequent abundance of beautiful flowers, at all seasons of the year, and the arrangement of ornamental grounds, under the supervision of a competent landscape gardener, in our judgment, are highly beneficial in the same direction.

Many more patients, in and about the Hospital, are employed now than formerly, and we cordially endorse and approve the efforts of the Superintendent to introduce employment, as a curative measure, in the treatment of the insane.

SYLVESTER OAKES, M. D., Auburn, *Pres.*

D. O. BOWEN, Morrill, *Sec'y pro tem.*

J. H. MANLEY, Augusta.

JOS. T. HINCKLEY, Bluehill.

JAMES WEYMOUTH, Oldtown.

EMMA J. TORSEY, Kent's Hill.

MAINE INSANE HOSPITAL, }  
AUGUSTA, Nov. 30, 1884. }

## Report of Building Committee.

---

AUGUSTA, MAINE, November 29, 1884.

*To the Trustees of the Maine Insane Hospital:*

GENTLEMEN: By a Resolve of the Legislature, approved March 10th, 1883, the sum of ten thousand dollars was appropriated for furnishing the new female pavilion, including the furnishing of heating apparatus, plumbing, elevators and grading of the grounds. The money has been expended, and the bills for the expenditures audited and approved by the Governor and Council. In every instance, where it was possible to do so, materials were furnished and work performed under contracts.

Paid for plumbing, as per contract . . . . .	\$1,243.44
“ concreting and grading . . . . .	684.98
“ plumbing . . . . .	30.92
“ steam heating apparatus and ventilators, as per contract . . . . .	3,714.12
“ gas fixtures . . . . .	122.95
“ labor and materials for drains, cementing cellar, and stone work . . . . .	1,912.25
“ gas piping . . . . .	60.86
“ mattresses . . . . .	474.85
“ napkins and table linen . . . . .	131.38
“ sheetings . . . . .	28.53
“ furniture, as per contract . . . . .	682.18
“ painting, as per contract . . . . .	807.63
“ carpetings . . . . .	624.33
“ quilts . . . . .	93.00
“ crockery . . . . .	152.32

Paid for spring mattresses.....	\$149.85
“ wire guards for windows.....	562.01
“ elevator .....	484.79
“ chairs .....	139.40
“ toweling .....	101.73
“ work on boiler.....	285.31
“ linen hose.....	193.80
“ stone work.....	41.50
	\$12,722.13

It will be seen that a sum greater than the appropriation was expended, but it was rendered absolutely necessary in order to make the building inhabitable.

COUNCIL CHAMBER,  
AUGUSTA, MAINE, December 1st, 1884. }

I hereby certify that I have carefully examined and audited the account of expenditures of \$12,722.13, made for completing and furnishing the new female pavilion, by the Trustees of the Maine Insane Hospital, and find them correctly stated and properly avouched.

S. C. HATCH,

*For Committee on Accounts.*

---

By a resolve of the Legislature, approved March 10th, 1883, the Trustees of the Maine Insane Hospital were authorized to take in charge the erection and construction of a new pavilion, or building, similar in design to the new pavilion recently erected, for the relief of the male wings of the Hospital buildings, including the furnishing of heating apparatus, plumbing, elevators, and everything necessary to complete the said building ready for occupancy by patients; and the

sum of thirty thousand dollars was appropriated for the purpose. It was also provided that the bills for the expenditures of said money, were to be approved by the Governor and Council, and that plans and specifications of said building and fittings should be made by the Trustees, and the erection and completion of said building and putting in fittings, including the furnishing of materials, should be done by contract, or contracts, and the Trustees should superintend the work as it progressed.

Under this resolve the Trustees have erected, by contract, a new pavilion for males, and erected, by contract, a corridor and tramway, connecting the two pavilions with each other, and with the main buildings. All work that could be done by contract, has been so performed, and all bills paid have been audited and approved by the Governor and Council.

Cash paid for advertising proposals for new male		
	pavilion . . . . .	\$66 49
“	“ postage and check books . . . . .	6 69
“	“ contractors for new male pavilion . .	24,450 00
“	“ legal services . . . . .	25 00
“	“ extra work on building . . . . .	438 90
“	“ piping for steam, gas and water . . .	2,114 55
“	“ wire cornice . . . . .	22 48
“	“ gas fixtures . . . . .	79 12
“	“ plumbing and ventilators, per contract . . . . .	1,700 00
“	“ cutlery . . . . .	64 20
“	“ mattresses . . . . .	141 37
“	“ excavating and grading . . . . .	3,522 62
“	“ concreting . . . . .	631 00
“	“ contractors for building corridors and tramways . . . . .	6,420 06
“	“ interest . . . . .	412 83
“	“ cementing cellar . . . . .	500 00
“	“ furniture . . . . .	126 00
		<hr/>
		\$40,721 31



COUNCIL CHAMBER, }  
 AUGUSTA, MAINE, December 1, 1884. }

I hereby certify that I have carefully examined and audited the expenditures of \$40,721.31 made for the new male pavilion, corridor, and tramway, and excavating and grading, by the Trustees of the Maine Insane Hospital, and find them correctly stated and properly avouched.

S. C. HATCH,

*For Committee on Accounts.*

Total amount received from State.....	\$40,000 00
“ “ expended .....	53,443 44

It will require, to properly furnish and provide this building with an elevator, and complete the grading, some \$9,000 more. Contracts have been made for the furniture, elevator, guards, grading, etc. It will be seen that the Legislature is thus called upon for an appropriation of \$22,000, to complete this building, and to pay for expenditures already made and paid for by money borrowed.

These expenditures were not incurred by the Trustees without fully consulting the Governor and Council, and all agreed that they must be made.

No provision was made by the Legislature for the erection and building of a tramway and corridor connecting the two pavilions, and uniting them with the main buildings. Yet, not to have built the tramway and corridors would have rendered the buildings useless.

The State has now all the buildings it will need for the care of its insane for the next eight or ten years, unless the rate of insanity shall increase more than a hundred fold.

J. H. MANLEY, } *Building Committee*  
 SYLVESTER OAKES, } *of Maine Insane*  
 JOS. T. HINCKLEY, } *Hospital.*

At the annual meeting of the Trustees, this report was read and accepted.

D. O. BOWEN, *Secretary.*

## Report of Committee on the Hospital Library.

*To the Trustees of the Maine Insane Hospital:*

Your Committee on the Library for the year ending Nov. 30, 1884, having attended to their duty, now ask leave to report.

	ASSETS AND RECEIPTS.	DR.
1883.		
December 1.....	To deposit in Augusta Savings Bank.....	\$1,224 00
"    1.....	" railroad bonds on hand.....	2,000 00
"    1.....	" cash on hand.....	21 80
1884.		
April 1.....	" cash for coupons.....	60 00
August 1.....	" bank dividends.....	55 68
October 1.....	" cash for coupons.....	60 00
"    15.....	" " sale of books to Dr. H. B. Hill.....	3 33
November 30.....	" " from box.....	65
		\$3,425 46
	DISBURSEMENTS.	CR.
1883.		
December 6.....	By paid for book.....	\$2 50
"    6.....	" " ".....	2 75
1884.		
January 2.....	" " ".....	1 34
"    4.....	" American Express Company.....	50
"    6.....	" for one copy Guiteau Trial.....	15 00
March 5.....	" " three books.....	6 70
April 26.....	" " Quain's Medical Dictionary.....	7 75
July 31.....	" " binding books and magazines.....	36 00
September 22.....	" American Express Company.....	1 15
"    29.....	" " ".....	55
October 15.....	" for books.....	82 48
November 27.....	" " papers and magazines.....	39 80
"    29.....	" " books.....	3 00
"    30.....	By balance.....	3,225 94
		\$3,425 46
	Balance, { Savings Bank..... \$1,200 00	
	{ Bonds..... 2,000 00	
	{ Cash..... 25 94	\$3,225 94

MRS. E. J. TORSEY, }  
B. T. SANBORN, } *Committee on Library.*



## SUPERINTENDENT'S REPORT.

---

*To the Board of Trustees of the Maine Insane Hospital:*

GENTLEMEN:—In compliance with the provisions of law, the Superintendent would respectfully submit to you the Forty-Fourth Annual Report of the Maine Insane Hospital, which includes a statement of what has occurred in its affairs during the year ending November 30, 1884.

The period involved in this report has been one of unusual activity in the operations of the Hospital. Not only has a large amount of labor been performed for the immediate care and comfort of the inmates, but much has been accomplished by earnest efforts in other directions.

The pavilion for males, commenced last year, has been completed and occupied. During the past summer and autumn a large area of earth has been removed from around this structure, including the excavations from the cellar, giving place to lawns. A large amount of work has been done in the basements of the old wings, in the renovation of the hot and cold air chambers.

The steam mains have all been thoroughly covered with felting, by the most approved methods. Our efforts in behalf of the immediate welfare of those committed to our charge, have been crowned with a measurable degree of success. While the death rate has exceeded that of any previous year, the number of recoveries has been larger than during the period included in our last report.

There have been no homicides, and if we except the unfortunate occurrence of two cases of suicide, the patients have been signally preserved from painful casualties.

### ADMISSIONS AND DISCHARGES.

At the beginning of the year, December 1, 1883, there were resident in the Hospital 464 patients—246 men and 218 women. Two hundred and three have been admitted since—112 men and 91 women; making the whole number under treatment 667—358 men and 309 women. Of these there have been discharged 207—126 men and 81 women, leaving at the close of the year, 460—232 men and 228 women. The monthly admissions have been as follows: 10 men and 7 women were admitted in December; 6 men and 10 women in January; 7 men and 3 women in February; 8 men and 9 women in March; 14 men and 9 women in April; 6 men and 10 women in May; 11 men and 5 women in June; 12 men and 12 women in July; 4 men and 3 women in August; 10 men and 8 women in September; 15 men and 9 women in October; 9 men and 6 women in November.

One hundred and fifty-eight of those admitted during the year were on their first admission, 27 on their second, 7 on their third, 6 on their fourth, 3 on their fifth, 1 on the ninth and 1 on the twelfth. One has been admitted twice in the year.

We find the following to be the condition of those discharged: Recovered, 59—27 men and 32 women; improved, 31—20 men and 11 women; unimproved, 16—9 men and 7 women; died, 101—70 men and 31 women. Of the 59 discharged recovered, 44—21 men and 23 women were on their first admission; 6—3 men and 3 women were on their second; 2 women on the third; 1 woman on the fourth; 2—1 man and 1 woman on their fifth; 1 woman on the sixth; 2—1 man and 1 woman on their ninth, and 1 man on the twelfth.

### THE MORTUARY RECORD,

as will be observed, has been unusually large, being thirteen in excess of that of last year. The same obscure epidemic

influences that operated so intensely upon the lives of our inmates during the winter and spring of 1883, have prevailed a portion of the past year, especially during the first six months.

It is worthy of note that as the temperature grew milder from the approach of summer, the disease abated, and we have had no new cases of dropsy that could be attributed to this specific cause since. The disease attacked very generally those patients who had passed the meridian of life, whose physical powers were waning, not only as the result of age, but in consequence of long continued mental maladies. Their average age was fifty-one years, being five in excess of last year.

#### THE CAUSES OF DEATH

appeared to be as follows : Acute melancholia, 1 man ; ascites, 1 woman ; anasarca, 1 man ; apoplexy, 1 woman ; acute mania, 4—3 men and 1 woman ; chronic insanity, 7—1 man and 6 women ; chronic mania, 2 men ; chronic dementia, 5—3 men and 2 women ; chronic melancholia, 8—6 men and 2 women ; chronic insanity and dropsy, 1 man ; cardiac dropsy, 1 man ; dropsy, 1 man ; exhaustive mania, 1 man ; exhaustion from insanity, 1 woman ; epilepsy, 10—9 men and 1 woman ; general dropsy, 19—15 men and 4 women ; general paralysis, 11 men ; hydro-pericardium, 1 man ; latent phthisis, 2 men ; melancholia, 1 man ; paralysis of the heart, 1 woman ; phthisis pulmonalis, 2 women ; paralysis, 1 woman ; suicide, 1 man ; septaemia, 1 woman ; strangulation, 1 man ; senile dementia, 4—3 men and 1 woman ; terminal dementia, 10—5 men and 5 women ; typho mania, 1 woman.

#### THE ASSIGNED CAUSES OF INSANITY

in those admitted during the year are as follows : Abortion, 1 woman ; apoplexy, 2—1 man and 1 woman ; critical period of life, 11 women ; disappointed ambition, 1 woman ; dissolute life, 1 woman ; domestic affliction, 8—1 man and 7 women ; disappointed affections, 3—2 men and 1 woman ; erysipelas,

1 woman; epilepsy, 15—11 men and 4 women; fright, 1 woman; general paralysis, 3 men; ill health, 24—7 men and 17 women; intemperance, 19—18 men and 1 woman; injury of head, 6 men; injury of spine, 2—1 man and 1 woman; loss of property, 4—3 men and 1 woman; loss of relatives, 4—2 men and 2 women; lactation, 2 women; masturbation, 8 men; measles, 2 women; over-exertion, 2—1 man and 1 woman; opium habit, 2 men; puberty, 3—2 men and 1 woman; puerperal, 4 women; paralysis, 6—2 men and 4 women; sun-stroke, 4 men; syphilis, 1 man; spiritualism, 1 man; senility, 11—7 men and 4 women; seduction, 1 woman; typhoid fever, 1 man; uterine disease, 1 woman; unknown, 46—27 men and 19 women; violent cold, 1 man.

#### THE SOCIAL CONDITION

of those admitted we find to be as follows: Ninety-three were married—47 men and 46 women; 85 were unmarried—51 men and 34 women; 11 were widows and 12 were widowers, and that of 2 men was unknown.

#### THE RESIDENCE OF THOSE COMMITTED

during the year, we find to be as follows: Seven—2 men and 5 women from Augusta; 2 women from Auburn; 1 woman from Alton; 1 woman from Anson; 1 woman from Ashland; 1 man from Appleton; 5—2 men and 3 women from Bangor; 7—6 men and 1 woman from Bath; 3 men from Biddeford; 2 men from Buckfield; 2 women from Brunswick; 2 men from Brooks; 1 woman from Berwick; 1 man from Brownfield; 1 man from Buxton; 1 woman from Bowdoinham; 4—2 men and 2 women from Calais; 3—2 men and 1 woman from Camden; 2 women from Corinna; 2 men from Caribou; 1 man from Cornish; 1 woman from Crystal Plantation; 1 woman from Cape Elizabeth; 1 man from China; 1 man from Cumberland; 1 man from Clinton; 1 man from Charleston; 2—1 man and 1 woman from Deering; 2 men from Deer Isle; 3—2 men and 1 woman from East Livermore;

2 women from Ellsworth; 2 men from Eliot; 2 men from Farmington; 2 men from Freeport; 1 woman from Fayette; 1 man from Freedom; 3—1 man and 2 women from Gorham; 2—1 man and 1 woman from Gardiner; 1 man from Greenville; 1 woman from Greene; 1 man from Garland; 1 woman from Glenburn; 1 woman from Gray; 2 men from Hallowell; 1 woman from Hartland; 1 woman from Jonesport; 1 woman from Kennebunk; 1 man from Kennebunkport; 3—2 men and 1 woman from Knox; 8—1 man and 7 women from Lewiston; 2—1 man and 1 woman from Lovell; 1 man from Lebanon; 2 women from Lisbon; 1 woman from Lincolnville; 3—1 man and 2 women from Monmouth; 1 woman from Montville; 1 man from Machias; 1 woman from Mt. Desert; 1 man from Monroe; 1 man from Milo; 1 woman from Monticello; 1 man from North Haven; 1 man from Nobleboro'; 1 man from Norridgewock; 1 man from Norway; 1 woman from New Vineyard; 4—1 man and 3 women from Oakland; 2—1 man and 1 woman from Oxford; 2 women from Orono; 1 man from Orland; 13—6 men and 7 women from Portland; 4 women from Pittston; 1 man from Parsonsfield; 2—1 man and 1 woman from Plymouth; 1 woman from Parkman; 1 man from Presque Isle; 1 man from Patten; 1 man from Pittsfield; 5—2 men and 3 women from Rockland; 1 woman from Readfield; 1 man from Robbinston; 1 woman from Roxbury; 3 men from State Prison; 2 men from Saco; 1 man from Silver Ridge Plantation; 1 woman from Strong; 1 woman from Searsmont; 1 woman from South Berwick; 1 man from St. Albans; 1 man from Surry; 13 men from Togus; 2—1 man and 1 woman from Thomaston; 1 man from Trenton; 1 man from Temple; 1 man from Thorndike; 1 woman from Topsham; 1 woman from Tremont; 4—2 men and 2 women from Waterville; 1 man from Winterport; 1 woman from Wellington; 1 man from Westbrook; 1 woman from West Gardiner; 1 man from Westport; 1 man from Wells; and 1 man from Wiscasset.



## THE HOSPITAL

has now been in operation 44 years, during which time 6,364 patients have been admitted, and 5,904 have been discharged. Of the latter, 1,162 improved, 1,015 did not improve and 1,343 died. The actual number of individual patients admitted has been 4,811.

## DAILY AVERAGE NUMBER AND SUPPORT OF PATIENTS.

The daily average number of patients for the year has been 454. They have been supported in the following manner: Forty-three by their own means or relatives; 62 entirely by the State, and 355 have received State aid of \$1.50 per week, towns or individuals paying the balance.

## TREATMENT OF PATIENTS.

The medical treatment of the patients has varied but little from that of preceding years. In prescribing for the insane, as well as in other departments of medicine, new remedies are being constantly presented for investigation, and in the use of which much therapeutic value claimed. It has been our aim to bring to bear in our medical treatment, not only the experience of the past in the use of old remedies, but to test the value of new medicinal agents, not discarding all because many are useless. In this endeavor we believe our efforts have not been without benefit, and in the use of a few drugs of recent discovery, our expectations have been realized.

In habitual constipation, from which so large a percentage of our patients suffer, when a laxative is indicated, Cascara Sagrada has been found an excellent remedy, and has in many cases met the requirements. Especially in the treatment of an atonic condition of the digestive system, its physiological action is that of a tonic, inducing a healthier peristaltic action, thereby aiding digestion and preparing those organs to assume their normal functions. To allay nervous restlessness and wakefulness, we rely more upon the Bromides, than upon the

various preparations of Opium. The latter remedies, while they may meet the indications at first, if long continued, often aggravate rather than benefit. We desire to emphasize what was expressed in our last report, upon the importance of the moral treatment of the insane. I believe that much more value is attached to this element than formerly, and it can not be undervalued in the successful practice of this speciality.

The mind preoccupied by perverted thoughts and harassing delusions or hallucinations, will surely degenerate unless diverted from its morbid channel. In our endeavors to aid in correcting vitiated thoughts, misguided feelings and impulses, we have striven to bring to bear all of the moral agencies that we believe to be judicious, and that were at our command. The element of music, social amusements, diversion in the open air, carefully arranged manual employment, have all been used to the extent of former years.

#### SANITARY IMPROVEMENTS.

In all hospitals for the insane, it is considered indispensable to the comfort and well being of the inmates, that there should be judicious and well directed medicinal and moral treatment. While we admit that these adjuncts should always be called into requisition, and indeed cannot be lost sight of with impunity; yet where there are any considerable number of insane congregated, there are other important factors entering into the best devised treatment.

I refer especially to the absolute necessity of placing such institutions under the best possible sanitary conditions. No one who has had the care of the insane for any considerable length of time, can fail to observe the tendency to estranged and degenerative habits of cleanliness in many patients. The once scrupulously tidy, often becomes from deterioration of mental vigor, extremely careless in person and habits. In view of this characteristic feature or inclination, which prevails to such an extent among so large a percentage of the inmates of asylums, neglect of the proper sanitary provisions,

to say the least, is hazardous to the best interests of those confined. The essential pre-requisites to this end are an ample supply of pure water, liberal ingress of sunlight, and proper ventilation. The first is absolutely necessary, not only for cleansing and lavatory requirements, but also for the very important purpose of thorough and constant flushing of vaults, urinals and sewers.

That sunlight is as essential to invigorate and sustain the drooping and prostrated nervous powers, as is food to strengthen and give tone to the muscles, no one will doubt who has witnessed its beneficial effects upon those of our patients who are brought constantly under its influence, from inclination or by direction.

The vitiated and impaired functions, eliminating obnoxious excretions from all the emunctories, demand a constant supply and renewal of fresh air. With these necessities in view, we have endeavored to direct our attention—especially during the past six months—to the ventilation and drainage of the basements on both sides of the house, but more particularly those beneath the male wards. Prior to the much needed grading and draining that has been accomplished during the fall, in the rear of the Hospital, the natural contour of the plat of land lying between the east side of the buildings and the highway, was such that the basements have had to receive much of the surface drainage from a large area, since the foundation of the Institution.

To obviate this a few drains were laid several years ago, but in heavy rains were unable to accomplish the object for which they were intended, so that from year to year objectionable debris has been accumulating at the bottom of the cellars. During the past year all of this has been removed and a perfect system of drainage introduced, all of which is trapped into sewers leading from the water-closets.

The basements of the two extreme wings were constructed without a sufficient number of windows to give light and ventilation; indeed a portion of each cellar was perfectly dark, and having no exit for the accumulation of water, were

damp much of the time. We have broken in through the granite walls and placed in additional windows, not only for the better ventilation of the basements but to furnish an extra supply of fresh air to the hot air chambers.

With these additional apertures there is observed to be much more rapid circulation and change of air in all the wards where this work has been accomplished. A new cold air chamber has been constructed for the extreme wing for males, and sufficiently supplied with windows.

The floor of not only this, but all of the hot and cold air chambers on this side of the house, has been thoroughly cemented, and when some additional work of this character is completed, every portion of these basements can be cleansed with a hose whenever necessary, free exit being provided for by underlying drains.

The same renovation is being carried forward in the basements of the various wings for females, and when completed, with some additional drainage immediately outside of the walls that can be done another spring, we believe it will aid very materially in the ventilation of the various wards and place the Hospital in a more perfect sanitary condition.

#### THE PAVILIONS.

In the completion and occupation of these buildings, very material advantages are being derived in affording increased facilities for more perfect classification. Various improvements have been made in these structures, in the internal arrangements, that are not found in the older buildings, thereby giving better accommodations and essentially adding to the comfort and convenience of the occupants. The system for heating and ventilating is a practical one, and thus far has given most excellent results, not only in the degree of temperature maintained, but also in furnishing a rapid circulation of air.

The introduction of new methods of elevating the food to the various dining rooms, by the use of the Chandler Water Motor, has been found of great utility and to possess many

advantages over those in use in other parts of the Institution. They are noiseless in motion and require but one person to operate them, whereas by the old methods in vogue the services of three men are needed to elevate the food, and the confusion and noise occasioned by the movement of the ropes and windlasses are distracting to the sensitive ear of the sick and nervous.

The basements of these structures have been thoroughly drained and cemented. The sewers are well constructed and have an abundant supply of water to flush them. We believe that in the construction, due regard has been paid to every appointment that would have a tendency to place the buildings, not only in the best possible sanitary condition, but to afford the largest share of comfort and convenience to its occupants. The extensive grading just completed, has done much to adorn the surroundings, and located as they are, remote from those wings occupied by the more turbulent patients, the quiet and convalescent will here be placed under the most favorable circumstances for improvement or recovery.

#### THE FARM.

I desire to emphasize what was expressed in the last annual report, in relation to the farm as a valuable adjunct of the Institution, in the direction of its opportunities for affording suitable and beneficial employment for our patients.

The same efforts as last year have been put forth to give employment upon the premises to as large a number of the inmates as possible, and the marked improvement observed in many cases has fully justified the propriety of this endeavor, demonstrating beyond controversy the beneficial results that may be derived in mental infirmities, from judicious manual employment.

The products of the farm have perhaps been up to the average of former years. While the yield of hay has been less, the grain crops were unusually large and harvested in good order. For a detailed exhibit of the various products

of the farm and garden, you are respectfully referred to the report of the Steward and Treasurer. The serious epidemic that prevailed in this vicinity among the swine last year, attacked our hogs in June, and continued for several months with much severity. The disease seized not only the pigs, but the full grown hogs, and two hundred and nine in all, died from the contagion. This loss seriously affected the farm account.

The decision of your Board in September last, to separate the garden and orchard from the department of the farm, I believe to be a judicious movement. Mr. Allen, in whose hands has been placed the immediate charge, has entered upon the work of the garden with much zeal; and with the improvements already made, I have reason to believe that with a favorable season, the products from this department will be much more valuable another year than ever before.

#### FELTING.

In the last annual report your attention was called to the importance of taking some initiatory steps towards felting the steam mains, and I am able to state that during the past summer this work has been accomplished, under the direction of our engineer. All of the mains and branches have been covered with a layer of asbestos, felting and duck, each of the first two materials being wound in copper wire, and the last thoroughly sewed, over which two coats of paint have been added. To complete this, it was necessary to cover three thousand and fourteen lineal feet of piping, ranging from one to six inches in diameter. The covering has been done in a very thorough and workmanlike manner, and in accordance with the best devised methods. We believe this has been a judicious expenditure, and will very materially lessen the consumption of coal.

## ORDINARY REPAIRS AND IMPROVEMENTS.

The past year has been an unusually busy one in this department of work. Each successive season calls for a considerable outlay in repairing the steam and water pipes that have been in constant use, but aside from that which usually demands repairs, a large amount of new piping has been done. New inch and a quarter and inch pipes have been carried into every ward in the Institution, except the new pavilions, for the object of distributing spring water for drinking purposes, and the wards of the latter will undoubtedly be piped in the same manner before the commencement of another year. In the completion of the repairs and the furnishing of new lines, it has required—of all sizes—four thousand and eighty-eight feet of pipe.

Besides the new drains that have been laid in the basements, the ordinary repairs have been made upon the old drains and sewers, so that they are now in good condition for the approaching cold season. Two mortuaries, one for each side of the Institution, have been built in the basements, of easy access from the sick rooms. They are well furnished, and made in every way convenient for the purposes intended, by being supplied with gas, warm and cold water, and ice chests. The wards formerly occupied by our female private patients, the lower one of which is now used for the sick, have undergone quite extensive repairs in the laying of hard wood floors, the introduction of indirect radiation, and by being thoroughly painted throughout.

The gas works and steam boilers have been put in good order for the extra work required for the winter months. Matched ceilings have been constructed for the engine and boiler rooms, and with the walls, have recently been painted. The pump house at the river, that was left in an unfinished condition last fall, has been completed, and now admirably meets the purpose for which it was intended. The boiler for this building has been covered with asbestos, and we find from

actual weight, that there is a material lessening in the quantity of coal consumed, necessary for the pumping of the water.

The store room for heavy groceries has been completed and occupied, in the basement of the kitchen building, and all articles from the old store, located beneath the extreme female wing, that caused an objectionable odor in the wards above, have been removed to this for storage. A stairway connects this to the kitchen and bake-room above, making it very convenient for furnishing supplies to those departments.

Much credit is due Mr. Sampson, the efficient engineer, for his indefatigable efforts in supervising and carrying forward to completion the work of felting and piping.

#### FUTURE WANTS.

The attention of your Board was called last year to the importance of carrying forward the work that was commenced several years ago, in reconstructing the old bath-rooms and water-closets. I am aware that a large expenditure upon work that evidently demanded more immediate attention has been made during the past season, but I trust that as soon as the financial interests of the Hospital will allow, this necessary change will be prosecuted.

The necessity that I called your attention to in our last report, of repairing the duct leading to the engine house, and of its extension to the laundry, has now become very apparent, from the fact that you desire at an early date to occupy the old passage to the latter building by a lawn.

I would suggest, that as soon as is practicable, the new road located at the east of the pavilions be extended in the same circle and meet the present approach to the Institution in the vicinity of the engine house. This change would remove the objectionable feature of the driveway being in so near proximity to the wings, and would afford opportunity of enlarging the lawns in that locality.

A portion of the farm buildings are becoming somewhat dilapidated and need repairing and painting.



## AMUSEMENTS.

There has been no material change in this department of labor from that of last year. The methods devised for the entertainment and diversion of our patients have become an important factor in the operations of the Institution, and require much time and patience in preparation.

Whatever extra efforts are put forth to divert our people observation teaches us are fully repaid in the marked beneficial results so frequently noticed. The season for entertainments and amusements continues from October until the middle of May, and two evenings of each week are invariably occupied for this purpose, the charge of which is placed under the direction of Dr. Hill, the Assistant Superintendent, who enters upon this labor with commendable zeal, and to whom much credit is due for the success attained.

The band, under the leadership of Prof. E. K. Harlow, has performed very efficient and valuable service, not only in aiding in the entertainments during the winter months, but has afforded much pleasure and comfort to our household, in the open air concerts given twice a week during the summer.

## THE LIBRARIES.

The Black and McLellan libraries are affording profitable reading for all connected with the Institution, the latter of which has been replenished with over one hundred volumes, during the year. This library, which is much the larger of the two, has been carefully arranged during the year, according to the subjects, and catalogued. This arrangement has required time and patience, but which will be repaid, inasmuch as it will greatly facilitate the work of the library in the future. A reading-room has been established, which is accessible to the patients, where they can have the pleasure of perusing the leading magazines and illustrated periodicals. For a full statement of the condition of the funds of the library, you are respectfully referred to the report of the library committee.

## OFFICIAL CHANGES.

With the exception of the change of supervisoress and nurse, the officers of the Hospital remain the same as they were a year ago. In July last, Miss Hannah W. Ham, who had performed the duties of supervisor of the female wards for more than ten years, with much efficiency and fidelity, left the service, and Miss Emma C. Glidden was appointed temporarily to fill the vacancy until the meeting of your Board in September, when she was elected to the position. Miss Glidden brings to this service long experience in the care of the insane, not only as nurse in this Institution, but had been engaged in similar work at other hospitals. Thus far she has performed her duties to my entire satisfaction.

Miss Alice L. Perkins, who had been employed for some time as an attendant, was appointed for the time to fill the position of nurse, made vacant by the promotion of Miss Glidden, when at a subsequent meeting of your Board she was elected. Miss Perkins has entered upon this important labor with that zeal which will insure success. She applies herself closely to her work and is attentive to the wants of the sick.

Miss Ham retired from her duties much to my regret, and she carries with her the best wishes of all, in her new sphere in life.

## ACKNOWLEDGMENTS.

To the many friends of the Hospital, who so frequently have rendered valuable aid, we desire in behalf of all of our patients to express our sincere gratitude.

To George M. Allen & Co. we are under obligations for a generous donation of confectionery for a Christmas treat for the patients; to Alice Harlow, for two valuable brackets; to E. C. Allen, for magazines and for a generous discount on books; to Mrs. C. A. Quinby, for periodicals; to a party from the Augusta High School, under the direction of Mrs. E. C. Burleigh, for a fine dramatic entertainment; to the Bible

Society of Maine, through the politeness of S. W. Larrabee, of Portland, for a very generous gift of Bibles, Testaments and Psalms for the use of the patients ; to Miss Nellie Fogler, of Augusta, for assisting at the piano at musical entertainments ; to the National Home Orchestra, B. W. Thieme conductor, through the kindness of Gen. Luther Stephenson, for a fine May Day concert ; to a male quartette from Augusta, under the leadership of Mr. Andrew D. Ward, assisted by Mrs. Welch and Miss Copp, for an entertaining vocal concert ; to Mr. McNear, of Kent's Hill, and Mr. Jordan, of Massachusetts, for their valuable assistance in a musical entertainment ; to Miss Sanborn, of Hallowell, for dramatic recitations ; to friends of the Institution outside of the State, through the efforts of R. W. Soule, for a generous donation, sufficient to purchase our band instruments ; to the Young People's Missionary Association of the Universalist Parish, of Augusta, for a very pleasing dramatic entertainment ; to J. B. Lippincott & Co., to free subscription to their "Monthly Magazine ;" to papers and magazines, for discount on subscription ; to friends of the Institution, for a valuable crayon likeness of the late Superintendent, Dr. Harlow ; to Mr. Luce, and all who compose the orchestra, for their frequent and valuable services at all of the entertainments ; to Prof. E. K. Harlow, every member of this household is under especial obligations for the very efficient aid rendered so constantly in vocal and instrumental music.

#### THE BOARD OF VISITORS.

This committee have manifested the same deep interest in the welfare of all that pertains to the Hospital and the patients as has characterized their acts since assuming the functions of their office. Two or more members of the Board have made regular monthly inspections of the wards during the year, and have had opportunities of seeing and observing the wants and condition of each patient.

To each individual of the committee I am under personal obligations for counsel given and courtesies received.

I desire in conclusion to express my highest appreciation for that large share of self-sacrificing and willing service that has been rendered to the afflicted by so many attendants. I am under renewed obligations to my medical assistants for the alacrity with which they have at all times seconded my efforts, and for that marked devotion to the interests of the Institution, which characterizes their labors. To Mr. R. W. Soule, the Steward and Treasurer, I am much indebted for his uniform urbanity and kindness to me, and for his promptness in discharging the important duties devolving upon him. To Miss Alice G. Twitchell, the Matron, who has sustained herself with so much credit for many years in the arduous labors of her position, I am under many obligations for that continuance of efficiency and manifest interest. Mr. Manning S. Campbell has been untiring in the duties of his clerkship, and meets with my entire approval. To Mr. C. N. Lowell, who performs the clerical work of my office, I am indebted for valuable service. The supervisors have at all times been prompt in carrying out the instructions given them, and continue to render efficient aid. Permit me to return my sincere thanks to each member of your Board for the confidence you have seen fit to repose in me in my official relations, and for the wise counsel I have received from you on many occasions.

Committing this great charity, with all its interests, to the wisdom of Him who "doeth all things well," and to the fostering care of a generous people, we enter with confidence upon the duties of another year.

# STATISTICAL TABLES,

For the Year Ending November 30, 1884.

TABLE No. 1.

YEARLY STATEMENT FROM DECEMBER 1, 1883, TO NOVEMBER 30, 1884.

	Males.	Females.	Total.
Remaining December 1, 1883.....	246	218	464
Admitted during the year.....	112	91	203
Number under treatment during the year.....	358	309	667
DISCHARGES AND DEATHS.			
Discharged recovered.....	27	32	59
Discharged improved.....	20	11	31
Discharged unimproved.....	9	7	16
Died.....	70	31	101
Remaining November 30, 1884.....	232	228	460

TABLE No. 2.

TABLE OF ASSIGNED CAUSES OF INSANITY OF PATIENTS ADMITTED DURING THE YEAR.

	Males.	Females.	Total.
Abortion.....	-	1	1
Apoplexy.....	1	1	2
Critical period of life.....	-	11	11
Disappointed ambition.....	-	1	1
Domestic afflictions.....	1	7	8
Disappointed affection.....	2	1	3
Dissolute life.....	-	1	1
Erysipelas.....	-	1	1
Epilepsy.....	11	4	15
Fright.....	-	1	1
General paralysis.....	3	-	3
Ill health.....	7	17	24
Intemperance.....	18	1	19
Injury of head.....	6	-	6
Injury of spine.....	1	1	2
Loss of property.....	3	1	4
Loss of relatives.....	2	2	4
Lactation.....	-	2	2
Masturbation.....	8	-	8
Measles.....	-	2	2

TABLE No. 2—*Concluded.*

	Males.	Females.	Total.
Over-exertion.....	1	1	2
Opium habit.....	2	-	2
Puberty.....	2	1	3
Puerperal.....	-	4	4
Paralysis.....	2	4	6
Sunstroke.....	4	-	4
Syphilis.....	1	-	1
Spiritualism.....	1	-	1
Senility.....	7	4	11
Seduction.....	-	1	1
Typhoid fever.....	1	-	1
Uterine disease.....	-	1	1
Unknown.....	27	19	46
Violent cold.....	1	-	1
Total.....	112	91	203

TABLE No. 3.

RELATING TO THOSE ADMITTED.

	Males.	Females.	Total.
From 15 to 20 years of age.....	6	4	10
“ 20 “ 25 “.....	11	6	17
“ 25 “ 30 “.....	11	14	25
“ 30 “ 35 “.....	7	8	15
“ 35 “ 40 “.....	16	9	25
“ 40 “ 45 “.....	12	12	24
“ 45 “ 50 “.....	12	9	21
“ 50 “ 55 “.....	9	8	17
“ 55 “ 60 “.....	6	2	8
“ 60 “ 65 “.....	9	9	18
“ 65 “ 70 “.....	4	2	6
“ 70 “ 75 “.....	9	6	15
“ 75 “ 80 “.....	-	2	2
Total.....	112	91	203

TABLE No. 4.  
ADMISSIONS RELATIVE TO THE SOCIAL CONDITION.

	Males.	Females.	Total.
Married.....	47	46	93
Unmarried.....	51	34	85
Widows.....	-	11	11
Widowers.....	12	-	12
Unknown.....	2	-	2
Total.....	112	91	203

TABLE No. 5.  
DURATION OF DISEASE PRIOR TO ADMISSION.

	Males.	Females.	Total.
Not exceeding 1 month.....	20	16	36
“ 3 “.....	12	10	22
“ 6 “.....	12	14	26
“ 9 “.....	4	2	6
“ 12 “.....	12	7	19
“ 18 “.....	2	5	7
“ 2 years.....	6	10	16
“ 3 “.....	9	8	17
“ 4 “.....	5	-	5
“ 5 “.....	6	6	12
“ 6 “.....	4	2	6
“ 7 “.....	1	2	3
“ 8 “.....	1	1	2
“ 9 “.....	1	1	2
“ 10 “.....	3	1	4
“ 12 “.....	1	2	3
“ 13 “.....	-	1	1
“ 15 “.....	1	1	2
“ 18 “.....	2	-	2
“ 19 “.....	2	-	2
“ 20 “.....	3	-	3
“ 26 “.....	-	1	1
“ 27 “.....	-	1	1
“ 32 “.....	1	-	1
Unknown.....	4	-	4
Total.....	112	91	203

TABLE No. 6.  
MONTHLY ADMISSIONS DURING THE YEAR.

	Males.	Females.	Total.
1883, December.....	10	7	17
1884, January.....	6	10	16
“ February.....	7	3	10
“ March.....	8	9	17
“ April.....	14	9	23
“ May.....	6	10	16
“ June.....	11	5	16
“ July.....	12	12	24
“ August.....	4	3	7
“ September.....	10	8	18
“ October.....	15	9	24
“ November.....	9	6	15
Total.....	112	91	203

TABLE No. 7.

TIME OF TREATMENT OF THE FIFTY-NINE PATIENTS DISCHARGED  
CURED.

	Males.	Females.	Total.
Not exceeding 3 months.....	15	5	20
“ 6 “.....	6	7	13
“ 9 “.....	1	10	11
“ 12 “.....	1	4	5
“ 2 years.....	3	3	6
“ 3 “.....	—	2	2
“ 5 “.....	1	1	2
Total.....	27	32	59



TABLE No. 8.  
CAUSES OF DEATH OF THOSE WHO DIED DURING THE YEAR, AND  
THE AVERAGE AGE AT DEATH.

	Males.	Females.	Total.
Acute melancholia .....	1	-	1
Ascites.....	-	1	1
Anasarca.....	1	-	1
Apoplexy.....	-	1	1
Acute mania .....	3	1	4
Chronic insanity .....	1	6	7
" mania .....	2	-	2
" dementia .....	3	2	5
" melancholia .....	6	2	8
" insanity and dropsy .....	1	-	1
Cardiac dropsy .....	1	-	1
Dropsy.....	1	-	1
Exhaustive mania .....	1	-	1
Exhaustion from insanity .....	-	1	1
Epilepsy.....	9	1	10
General dropsy .....	15	4	19
General paralysis .....	11	-	11
Hydro-pericardium .....	1	-	1
Latent phthisis .....	2	-	2
Melancholia .....	1	-	1
Paralysis of the heart .....	-	1	1
Phthisis pulmonalis .....	-	2	2
Paralysis.....	-	1	1
Suicide .....	1	-	1
Septaemia .....	-	1	1
Strangulation .....	1	-	1
Senile dementia .....	3	1	4
Terminal dementia.....	5	5	10
Typho mania .....	-	1	1
Total.....	70	31	101

The average age at death was 51 years.

TABLE No. 9.

MORTALITY FROM DECEMBER 1, 1883, TO NOVEMBER 30, 1884.

	Males.	Females.	Total.
1883, December.....	6	2	8
1884, January.....	9	5	14
“ February.....	11	3	14
“ March.....	13	1	14
“ April.....	8	4	12
“ May.....	2	2	4
“ June.....	6	3	9
“ July.....	5	1	6
“ August.....	1	2	3
“ September.....	3	3	6
“ October.....	2	5	7
“ November.....	4	-	4
Total.....	70	31	101

TABLE No. 10.

## OCCUPATION OF PERSONS COMMITTED DURING THE YEAR.

	Males.	Females.	Total.
Boot maker .....	1	-	1
Book-keeper.....	1	-	1
Butcher.....	1	-	1
Clerk.....	3	-	3
Carpenter.....	1	-	1
Cooper.....	1	-	1
Clergyman.....	1	-	1
Dress maker.....	-	1	1
Domestic.....	-	20	20
Farmer.....	26	-	26
Grocer.....	1	-	1
House keeper.....	-	11	11
House wife.....	-	39	39
Hotel waiter.....	1	-	1
Jeweler.....	1	-	1
Laborer.....	23	-	23
Mill operative.....	1	1	2
Mechanic.....	1	-	1
Merchant.....	2	-	2
Moulder.....	1	-	1
News agent.....	1	-	1
Nurse.....	-	1	1
No occupation.....	12	7	19
Printer.....	2	1	3
Peddler.....	2	-	2
Sea captain.....	1	-	1
Salesman.....	2	-	2
Spinster.....	-	2	2
Ship caulker.....	1	-	1
Seaman.....	6	-	6
School girl.....	-	3	3
School boy.....	2	-	2
School teacher.....	-	3	3
Stage driver.....	2	-	2
Ship carpenter.....	3	-	3
Soldier.....	9	-	9
Sail maker.....	2	-	2
Tailoress.....	-	2	2
Trader.....	1	-	1
Total.....	112	91	203

TABLE No. 11.

RESIDENCE OF THOSE COMMITTED DURING THE YEAR.

	Males.	Females.	Total.
Augusta .....	2	5	7
Auburn .....	-	2	2
Alton .....	-	1	1
Anson .....	-	1	1
Ashland .....	-	1	1
Appleton .....	1	-	1
Bangor .....	2	3	5
Bath .....	6	1	7
Biddeford .....	3	-	3
Buckfield .....	2	-	2
Brunswick .....	-	2	2
Brooks .....	2	-	2
Berwick .....	-	1	1
Brownfield .....	1	-	1
Buxton .....	1	-	1
Bowdoinham .....	-	1	1
Calais .....	2	2	4
Camden .....	2	1	3
Corinna .....	-	2	2
Caribou .....	2	-	2
Cornish .....	1	-	1
Crystal Plantation .....	-	1	1
Cape Elizabeth .....	-	1	1
China .....	1	-	1
Cumberland .....	1	-	1
Clinton .....	1	-	1
Charleston .....	1	-	1
Deering .....	1	1	2
Deer Isle .....	2	-	2
East Livermore .....	2	1	3
Ellsworth .....	-	2	2
Eliot .....	2	-	2
Farmington .....	2	-	2
Freeport .....	2	-	2
Fayette .....	-	1	1
Freedom .....	1	-	1
Gorham .....	1	2	3
Gardiner .....	1	1	2
Greenville .....	1	-	1
Greene .....	-	1	1
Garland .....	1	-	1
Glenburn .....	-	1	1
Gray .....	-	1	1
Hallowell .....	2	-	2
Hartland .....	-	1	1
Jonesport .....	-	1	1
Kennebunk .....	-	1	1
Kennebunkport .....	1	-	1
Knox .....	2	1	3
Lewiston .....	1	7	8
Lovell .....	1	1	2
Lebanon .....	1	-	1
Lisbon .....	-	2	2
Lincolnville .....	-	1	1
Monmouth .....	1	2	3
Montville .....	-	1	1
Machias .....	1	-	1
Mt. Desert .....	-	1	1
Monroe .....	1	-	1

TABLE No. 11—*Concluded.*

	Males.	Females.	Total.
Milo.....	1	-	1
Monticello.....	-	1	1
North Haven.....	1	-	1
Nobleboro.....	1	-	1
Norridgewock.....	1	-	1
Norway.....	1	-	1
New Vineyard.....	-	1	1
Oakland.....	1	3	4
Oxford.....	1	1	2
Orono.....	-	2	2
Orland.....	1	-	1
Portland.....	6	7	13
Pittston.....	-	4	4
Parsonsfield.....	1	-	1
Plymouth.....	1	1	2
Parkman.....	-	1	1
Presque Isle.....	1	-	1
Patten.....	1	-	1
Pittsfield.....	1	-	1
Rockland.....	2	3	5
Readfield.....	-	1	1
Robbinston.....	1	-	1
Roxbury.....	-	1	1
State Prison.....	3	-	3
Saco.....	2	-	2
Silver Ridge Plantation.....	1	-	1
Strong.....	-	1	1
Searsmont.....	-	1	1
South Berwick.....	-	1	1
St. Albans.....	1	-	1
Surry.....	1	-	1
Togus.....	13	-	13
Thomaston.....	1	1	2
Trenton.....	1	-	1
Temple.....	1	-	1
Thorndike.....	1	-	1
Topsham.....	-	1	1
Tremont.....	-	1	1
Waterville.....	2	2	4
Winterport.....	1	-	1
Wellington.....	-	1	1
Westbrook.....	1	-	1
West Gardiner.....	-	1	1
Westport.....	1	-	1
Wells.....	1	-	1
Wiscasset.....	1	-	1
Total.....	112	91	203

TABLE No. 12.

SHOWING THE OPERATIONS OF THE HOSPITAL FROM ITS COMMENCEMENT TO THE PRESENT TIME.

YEAR.	Admitted.	Discharged.	Whole No. under treatment.	Recovered.	Improved.	Unimproved.	Died.	Gr'tst No. in Hospital on any day.	Least No. in Hospital on any day.	Remaining at the end of year.	Daily average No. for the year.
1840-1.....	120	80	129	30	14	24	5	70	1	52	48
1841 2.....	89	72	141	32	16	19	5	73	50	65	59
1842-3.....	86	84	151	32	16	31	5	72	58	68	65
1843-4.....	83	75	151	30	16	23	3	79	55	75	70
1844-5.....	99	90	175	39	21	26	2	89	71	85	80
1845-6.....	102	87	187	41	22	14	5	107	80	101	93
1846-7.....	124	100	125	53	17	20	10	125	98	124	108
1847-8.....	128	125	152	60	31	14	20	135	117	127	112
1848-9.....	123	110	150	65	22	19	14	139	121	139	126
1849-50.....	110	120	149	66	35	21	14	165	123	124	137
1850-1.....	75	122	199	22	28	40	32	125	30	76	75
1851-2.....	48	42	124	23	4	8	8	76	34	84	79
1852-3.....	126	89	210	45	14	15	15	120	84	119	108
1853-4.....	109	114	228	49	15	18	32	140	114	115	127
1854 5.....	123	88	243	41	14	14	10	155	114	155	134
1855-6.....	149	114	304	54	22	19	19	194	151	190	167
1856-7.....	144	126	334	69	24	29	14	215	190	208	204
1857-8.....	126	126	334	59	25	18	24	225	102	208	213
1858-9.....	149	120	357	58	22	23	17	240	102	237	222
1859 60.....	136	133	373	63	22	17	31	246	227	240	236
1860-1.....	135	123	375	55	25	16	27	255	239	252	248
1861-2.....	126	119	377	57	24	19	19	267	244	258	254
1862-3.....	118	111	376	52	21	14	24	266	242	265	254
1863-4.....	124	135	389	49	22	11	53	273	247	254	253
1864-5.....	142	110	396	47	25	23	24	282	254	277	272
1865-6.....	135	133	412	61	29	13	33	287	267	276	277
1866-7.....	150	123	426	54	27	11	21	303	276	303	391
1867-8.....	165	129	468	63	23	16	27	341	302	339	319
1868-9.....	150	153	489	68	28	14	42	351	332	337	342
1869-70.....	130	122	467	48	19	18	37	348	330	345	339
1870-1.....	174	151	519	58	28	21	44	376	345	368	363
1871-2.....	202	177	570	79	34	19	45	404	368	393	384
1872 3.....	200	282	593	85	36	20	53	416	388	411	400
1873-4.....	189	207	600	61	33	61	52	420	393	393	400
1874-5.....	188	178	581	66	31	27	52	408	389	403	398
1875-6.....	186	184	589	68	33	31	52	408	384	405	398
1876-7.....	194	183	599	72	35	28	46	423	397	416	411
1877-8.....	188	186	604	56	45	37	48	423	406	418	415
1878-9.....	196	195	614	53	52	60	30	432	399	419	415
1879-80.....	188	171	607	57	32	43	38	439	390	436	412
1880-1.....	215	201	651	56	57	42	46	453	426	450	442
1881-2.....	194	183	644	71	35	34	43	465	433	461	449
1882 3.....	208	205	669	53	42	22	88	467	430	464	450
1883 4.....	203	207	667	59	31	16	101	472	443	460	454

Respectfully submitted,

BIGELOW T. SANBORN, *Superintendent.*

MAINE INSANE HOSPITAL,  
 AUGUSTA, November 30, 1884. }

## CHAPLAIN'S REPORT.

---

*To the Trustees of the Maine Insane Hospital:*

GENTLEMEN :— With the close of the year comes the duty of making a brief statement, which is included in the trust with which I am charged, by your appointment.

Early in the year, sudden prostration through illness rendered it impossible for me to conduct the Sabbath services of my own church, or even to leave my home. Services of my own pulpit and of the Hospital were conducted by regular supplies. Finding that many weeks must elapse before I should be able to resume my work, I consulted the Superintendent, Dr. Sanborn, concerning this method of providing for the chapel services, and was assured that it was entirely satisfactory; and so for a large fraction of the year, till within a few weeks, the religious services at the Hospital have been conducted by clergymen from this city, or persons who have supplied my own pulpit. No Sabbath has passed without a religious service, and none have been buried from the Hospital without appropriate funeral services in the chapel.

The attendance, wholly voluntary, has been larger than usual during the year. This has been true, so far as I have had opportunity of judging, and from the testimony of those who have conducted the chapel service from time to time. The quiet, orderly deportment of those in attendance, the respectful attention given to the preacher, have been both a surprise and gratification to those who for the first time have officiated at such a service. Of the value of religious services for that class of patients who can and are desirous of attending upon them, there can be no doubt. There is a wonderful

adaptation in the consolations of the Gospel of Christ to the afflicted and sorrowful; and His Word is not in vain. God himself declares, "it shall accomplish that which I please, and shall prosper *in the thing* whereto I send it."

I am happy to testify to the kind and respectful consideration I have met with during the past year from the Superintendent and all associated with him in the government of the Hospital. The kind attention I have received has made the weakness and suffering of the past months less hard to bear.

Respectfully submitted,

C. F. PENNEY, *Chaplain.*

AUGUSTA, Nov. 30, 1884.



## STEWARD AND TREASURER'S REPORT.

---

*To the Trustees of the Maine Insane Hospital:*

I herewith present my report of the financial standing of the Maine Insane Hospital for the year ending November 30, 1884. In our comparative statement we have added stock on hand for repairs and improvements, blank-books, stationery, &c., as per inventories, as the same appears (in the balance of Hospital account) in the statement under our new system of book-keeping.

### THE FARM.

We have had under cultivation about the usual number of acres, and the crops, with two exceptions, have been up to the average. The hay fell off fully one-third from the previous year, and the potatoes, as a result of early rust and rot, proved very light. For the products of the farm I refer you to page — of this report.

Our pasturage is inadequate for the amount of stock we are keeping, and I would recommend that a portion of the back field be used for grazing and that the pasture nearer the buildings be cultivated. We have already taken in from our pasture and connected with our garden several acres which will prove very productive.

### THE HOGS.

Early in the summer, when we had but fairly commenced the sale of pigs and shoates, the hog cholera made its appearance and continued through the hot weather, destroying two hundred and nine hogs and pigs, many of them being our

best breeding stock. As this disease has appeared in other parts of the State in the past two years, the question as to what course should be pursued in the future with regard to our hogs, is one worthy of your consideration.

I desire to renew my expressions of gratitude to your Honorable Board for the many kindnesses received; and again to thank the resident officers, clerks and employees for their assistance in discharging the duties of this office.

*Statement of Resources and Liabilities, November 30, 1883.*

RESOURCES.		
Cash on hand.....	\$2,945 96	
Due from State for support of patients.....	5,932 09	
Due from towns and individuals for support of patients ....	13,115 53	
Provisions and groceries on hand, per inventory.....	5,028 26	
Dry goods and clothing on hand, per inventory.....	2,771 46	
Medical supplies on hand, per inventory.....	524 53	
Coal and gas oil on hand, per inventory.....	7,540 00	
Horses, oxen, cows and hogs on hand, per inventory .....	7,062 00	
		\$44,919 83
LIABILITIES.		
Due for groceries and provisions.....	2,146 32	
corn and meal .....	297 68	
medical supplies.....	186 94	
dry goods and clothing.....	819 41	
repairs and improvements.....	3,091 68	
crockery and hardware .....	96 83	
laundry supplies.....	141 10	
furniture.....	223 35	
coal and oil .....	3,455 93	
employees, per pay-roll .....	5,353 96	
borrowed money.....	10,000 00	
amusement fund .....	1,000 00	
		26,813 20
		18,106 63
		\$44,919 83

*Comparative Statement of Resources and Liabilities, November 30, 1884.*

RESOURCES.		
Cash on hand .....	\$2,967 51	
Due from State for support of patients.....	5,015 91	
Due from towns and individuals for support of patients ....	15,642 11	
Provisions, groceries, and crockery, etc., on hand per inventory .....	3,852 08	
Dry goods and clothing on hand, per inventory.....	2,859 35	
Medical supplies on hand, per inventory .....	540 08	
Coal and gas oil on hand, per inventory.....	8,395 20	
Horses, cows, oxen, hogs and produce on hand, per inventory,	9,477 98	
Due from building committee loan, account treasurer's note,	17,000 00	
Due from building committee loan, account new pavilions..	2,623 79	
		\$68,374 01
LIABILITIES.		
Due firms and individuals on account for supplies.....	13,875 47	
Due employees, per pay-roll.....	5,700 48	
Bills payable as per loan to building committee.....	17,000 00	
Borrowed money .....	10,000 00	
Amusement fund .....	1,000 00	
		47,575 95
		\$20,798 06
Repairs and improvements, pipe fittings, lumber and materials on hand, per inventory .....		1,770 30
Expense, stationery, blank books and office materials, per inventory.....		240 45
Net available resources as per hospital account, annual statement.....		\$22,808 81

Articles Made in Sewing-Room for the Year Ending  
November 30, 1884.

1532	.....	Sheets,
802	.....	Pillow slips,
112	.....	Straw ticks,
273	.....	Bed spreads (hemmed),
1374	.....	Towels,
109	.....	Curtains,
108	.....	Napkins,
69	.....	Table cloths,
23	.....	Clothes bags,
82	.....	Pillow ticks,
740	.....	Dresses,
380	.....	Chemises,
197	.....	Pairs drawers,
250	.....	Skirts,
20	.....	Waists,
64	.....	Night dresses,
549	.....	Shirts,
2	.....	Pairs pants,
140	.....	Aprons,
20	.....	Pairs mittens,
17	.....	Camisoles,
1	.....	Chair-cover,
14	.....	Rugs (hemmed).

## FARM PRODUCTS.

200	..... tons	..... Hay,
613	..... bushels	..... Potatoes,
152	..... “	..... Onions,
91	..... “	..... Beans,
887	..... “	..... Oats,
143	..... “	..... Peas and Beans (green),
376	..... “	..... Beets (table),
500	..... “	..... “ (mangle),
300	..... “	..... Turnips,
105	..... “	..... Parsnips,
380	..... “	..... Tomatoes,
7200	..... pounds	..... Squash (Hubbard),
1020	..... “	..... “ (summer),
11,220	..... ears	..... Corn (sweet),
6690	.....	..... Cucumbers (green),
15	..... barrels	..... Pickles (cucumber),
229	..... “	..... Apples,
1600	..... pounds	..... Cabbage (purple),
16,956	..... “	..... “ (drum-head),
6916	..... heads	..... Lettuce,
1300	..... “	..... Celery,
237	..... quarts	..... Strawberries,
130	..... “	..... Blackberries,
400	..... “	..... Raspberries,
20	..... pounds	..... Onion seed,
74,278	..... quarts	..... Milk,
377	..... pounds	..... Asparagus,

## 1st ANNUAL FINANCIAL

	On Hand Per Inventory, November 30, 1884. Available.		On hand Per Inventory, November 30, 1884. Unavailable.		Trial Balance.		Net Cost of Different Departments.
	\$	\$	\$	\$	\$	\$	
Hospital account or available....	-	-	-	-	20,882 95	-	-
Unavailable assets.....	-	-	-	-	41,288 92	-	-
Cash.....	-	-	2,967 51	-	-	-	-
Farm account.....	7,876 98	3,014 68	9,920 18	-	-	-	-
Hog account.....	1,601 00	-	1,340 54	-	-	-	-
Green-houses.....	-	1,356 60	1,679 61	-	-	323 01	-
Dispensary.....	540 08	312 86	1,700 40	-	-	847 46	-
Dry goods department.....	2,859 35	-	2,144 27	-	-	-	-
Coal and gas oil.....	8,395 20	-	23,690 29	-	-	15,295 09	-
Hospital furnishings.....	302 48	31,301 53	33,939 25	-	-	2,335 24	-
Repairs and improvements.....	1,770 30	689 15	9,406 13	-	-	6,946 68	-
Subsistence.....	3,549 60	-	-	-	25,267 18	-	-
General expense account.....	240 45	-	3,303 94	-	-	3,063 49	-
Amusement fund.....	-	-	999 24	-	-	-	-
Library fund.....	-	-	3,225 94	-	-	-	-
Bills payable.....	-	-	-	-	28,000 00	-	-
State of Maine (owes Hospital account support of patients)..	-	-	5,015 91	-	-	-	-
Interest and discount.....	-	-	415 89	-	-	415 89	-
Building Committee (loaned them on Treasurer's note).....	-	-	17,000 00	-	-	-	-
Building Committee (acct. new pavilions).....	-	-	2,623 79	-	-	-	-
Salaries and wages (due empl'y's)	-	-	-	-	5,700 48	-	-
Sundry persons and towns (owe Hospital)...	-	-	15,642 11	-	-	-	-
Sundry persons (Hospital owes),	-	-	-	-	13,875 47	-	-
Totals.....	27,135 44	36,674 82	135,015 00	135,015 00	-	-	-
					Decrease in unavailable assets,	-	-
					Increase in available assets,	1,925 86	-
						31,152 72	-
					Net Increase.....	1,536 94	-

\* There was an unusual loss of \$3,445.00 worth of Hogs, by cholera, so that while the Hospital shows a net improvement of \$1,536.94, that improvement would have been \$4,981.94 but for this unusual loss.

Very respectfully submitted.

R. W. SOULE, *Steward and Treasurer.*

MAINE INSANE HOSPITAL, }  
Augusta, Nov. 30, 1884. }

STATEMENT. NOV. 30, 1884.

Net Production or Gain of Different Departments.	Hospital Account.		Unavailable Assets.		Assets Unavailable.	Assets Available.	Liabilities.
	\$	\$	\$	\$	\$	\$	
-	-	20,882 95	-	41,288 92	-	2,967 51	
-	-	-	-	-	-	7,876 98	
971 48	-	-	-	-	3,014 68	1,601 00	
*260 46	-	-	-	-	-	-	
-	-	-	-	-	1,356 60	540 08	
715 08	-	-	-	-	312 86	2,859 35	
-	-	-	-	-	-	8,395 20	
-	-	-	-	-	31,301 53	302 48	
-	-	-	-	-	689 15	1,770 30	
28,816 78	-	-	-	-	-	3,549 60	
-	-	-	-	-	-	240 45	
-	-	-	-	-	999 24	-	28,000 00
-	-	-	-	-	3,225 94	-	
-	-	-	-	-	-	5,015 91	
-	-	-	-	-	-	17,000 00	
-	-	-	-	-	-	2,623 79	
-	-	-	-	-	-	-	5,700 48
-	-	-	-	-	-	15,642 11	
-	-	-	-	-	-	-	13,875 47
388 92	-	-	388 92	-	-	-	
-	-	1,925 86	-	-	-	-	
<u>31,152 72</u>							
Bal. Hos.acct	22,808 81	-	40,900 00	-	-	-	
" unav. as'ts	-	-	-	41,288 92	-	-	
	<u>22,808 81</u>	<u>22,808 81</u>	<u>41,288 92</u>	<u>41,288 92</u>			
					Total available assets . . . . .	70,384 76	
					" Unavailable assets . . . . .	40,900 00	
					" Assets and liabilities . . . . .	111,284 76	47,575 95
					Balance Hospital account . . . . .	-	22,808 81
					" Unavailable assets . . . . .	-	40,900 00
					Proof . . . . .	111,284 76	111,284 76





## VISITING COMMITTEE'S REPORT.

---

*To the Honorable Governor and the Executive Council of the State of Maine:*

The State Visiting Committee to the Insane Hospital herewith submit their eleventh annual report of the condition of that Institution for the year ending December 1, 1884.

In conformity with the statute regulating their appointment, your committee have individually and in company visited the hospital frequently and at irregular intervals during the year, and have closely inspected each department. The visits of the year have been unusually gratifying, as marked progress in all that tends to the comfort and recovery of the patients has been noted.

The reports of the Trustees and other officers are so full in the details of management and improvements that it is not necessary for this Committee to review the points of advancement which have been made during the year.

The buildings have at all times exhibited neatness and order. The improvements in and around the Hospital, completed and in progress of completion, are characterized by excellent taste and are necessary to meet the demands of the present time. Every change effected appears to be conducive to the health and comfort of the inmates.

The pavilions recently erected by the generosity of the State, and now occupied, could scarcely have been improved in the plan of construction. Removed as they are from the other buildings, they approximate in some degree the cottage system, and the home-like appearance of all the surroundings must obviously add to the happiness of the patients, and tend to hasten their recovery.

In our unrestrained intercourse with the patients, unaccompanied by officers or attendants, we have been gratified by many proofs that they receive, as a rule, unremitting care and attention.

In the past year we have found very little well-grounded cause for complaint. In the absence of undue restraint, and in the efforts to preserve quiet in the wards, on the part of the attendants; in attention to the personal appearance of the patients, and in the increase of their out-door exercise, there has been evident advancement over previous years.

From personal observation we are convinced that the present corps of attendants, directed by the physicians of either department, are humane and efficient. After faithful service by day they are relieved by a reliable night-watch, and thus any attention or aid required by the patients is constantly at hand.

The Superintendent has proved himself an excellent officer. In season and out he has been indefatigable in his efforts to promote the welfare of those committed to his care. He merits the confidence and gratitude of all who have friends at the Hospital.

While similar institutions in other States are wealthier, better endowed, and receive larger private benefactions, we are convinced that in ability of management, solicitude for the comfort and happiness of the inmates, and earnest, able efforts to promote recovery, there are few superior to our own. We would again earnestly bespeak for it a continuance of the intelligent regard of the people of the State.

We have urged in former reports the therapeutic value of employment. We are glad to know that during the past year, more patients than usual of the stronger and healthier class have been given occupation out of doors, and have by labor lightened grief. It is to be regretted, however, that there is no established system of employment, which would interest and benefit many more within the wards.

We again earnestly advise the removal of the criminal insane patients to a ward or building where they may not be associated with the inmates whose tastes and habits are entirely

distinct. While we admit that from humane considerations they should receive the kind ministrations of those who understand mental diseases, yet we insist that they should be entirely separated from the patients whose instincts are pure and good.

The appropriation of the last Legislature proved insufficient to effectually carry out the designed improvements, and to completely finish and equip the new pavilions.

The Trustees have taken the liberty to expend about thirteen thousand dollars in excess of the appropriations, and we regard their action, in so doing, as both wise and proper, for in no other way could the buildings erected have been made habitable. We feel confident that the coming Legislature will not hesitate to make good this deficiency, and to promptly respond to the call for further funds to complete the improvements so well inaugurated.

We have at all times been received at the Hospital with courtesy, and our suggestions have been patiently listened to by both the Trustees and the resident officers. For their kind attention we desire, through your honorable body, to express our gratitude.

C. C. CORNISH,  
A. F. CROCKETT,  
MRS. C. R. WHIDDEN.



# APPENDIX.

[FORM OF *MITTIMUS*.]

## STATE OF MAINE.

*To the Superintendent of the Maine Insane Hospital:*

WHEREAS, the undersigned, Selectmen of the town of——, in the county of——, this day, on complaint to us made in writing, by (\*) —— of the town of——, in said county, who bears the relationship of—— to (†) ——, of said town of——, who therein says that said (†) —— is insane, and is a proper subject for said Hospital, made due inquiry into the condition of said (†) ——, and called before us such testimony as was necessary to a full understanding of the case; whereupon, it appeared to us that said (†) —— was insane, and we were of opinion that the safety and comfort of said (†) —— and others interested, would be promoted by a residence in said Hospital, and accordingly determined that said (†) —— be sent forthwith to said Institution.

We, therefore, certify that said (†) —— is insane, and that —— was residing commorant, and found in the town of—— aforesaid at the time of arrest and examination aforesaid; and you, the said Superintendent, are hereby ordered and required to receive said (†) —— into said Hospital, and detain —— in your care until —— shall become of sound mind, or be otherwise discharged by order of law, or by the Superintendent or Trustees.

Given under our hands, at said ——, this —— day of ——, in the year of our Lord one thousand eight hundred and ——

} *Selectmen.*

---

\* Complainant's name.

† Name of person to be committed.

## [PHYSICIAN'S CERTIFICATE OF INSANITY.]

We, the undersigned, practicing physicians of the town of \_\_\_\_\_ and State of Maine, have examined into the state of health and mental condition of \_\_\_\_\_ of said \_\_\_\_\_, and we hereby certify that in our opinion \_\_\_\_\_ is insane.

\_\_\_\_\_ M. D.

\_\_\_\_\_ M. D.

Dated at said \_\_\_\_\_ this \_\_\_\_\_ day of \_\_\_\_\_, 18

## [FORM OF BOND FOR SUPPORT.]

KNOW ALL MEN BY THESE PRESENTS, That we, \_\_\_\_\_, of \_\_\_\_\_, in the county of \_\_\_\_\_, as principal, and \_\_\_\_\_, of \_\_\_\_\_, in the county of \_\_\_\_\_, as sureties, are jointly and severally held and bound unto \_\_\_\_\_, Steward of the Insane Hospital at Augusta, or to his successor in said office, in the sum of two hundred dollars, to the payment of which sum, well and truly to be made to him, the said \_\_\_\_\_, or to his successors in said office, we bind ourselves, our executors and administrators, firmly by these presents.

*Sealed with our seals, and dated at \_\_\_\_\_, this \_\_\_\_\_ day of \_\_\_\_\_, A. D. 18*

*The condition of the above obligation is such, That, whereas \_\_\_\_\_ of \_\_\_\_\_, in the county of \_\_\_\_\_, is about to be admitted as a boarder and patient to the Institution aforesaid; now, if the said \_\_\_\_\_ shall pay to said \_\_\_\_\_, or to his successor in said office, such sum per week for the board, washing, medicine and attendance, according to the trouble and expense incurred for said patient, as may be determined by the Trustees for the time being, not to exceed \_\_\_\_\_, and pay for all such necessary articles of clothing as shall be furnished said \_\_\_\_\_ by the said \_\_\_\_\_, or his successor, and remove the said \_\_\_\_\_ from said Institution, whenever they shall be thereto in writing requested by the Superintendent for the time being,—and shall also pay a further sum, not exceeding fifty dollars, for all damages that may arise from injury to the furniture and other property of said Institution, by said \_\_\_\_\_, and for reasonable charges that may be*

incurred in case of the elopement of said —, payments to be made quarterly and at the time of removal, with interest on the amount after it becomes due as aforesaid, then this obligation to be null and void, otherwise to remain in full force and virtue. [L. S.]

Witness :

[L. S.]

---

### QUESTIONS

TO BE ANSWERED BY THE PATIENT'S FAMILY OR PHYSICIAN.

1. Age?
2. Married or single?
3. Occupation?
4. How old at first attack?
5. Date of present attack? What appearances?
6. What changes since?
7. On what subject?
8. Any rational intervals?
9. Any relatives ever insane, and who were they?
10. Ever attempted suicide or homicide, and in what manner?
11. Destructive to clothes or property?
12. Disposed to filthiness of person or habits?
13. Any restraint or confinement been applied? If any, what?
14. If former attacks, how many, and how long did they continue?
15. What natural peculiarities? power of self-control? temper? disposition? predominant passions? disappointment as to property, affections, wounded pride, loss of friends, family troubles, intemperance in the use of ardent spirits, tobacco, &c.?
16. History of any bodily disease, especially suppression of evacuations, eruptions, sores, &c., injuries, epilepsy, palsy, &c.
17. What cause or causes are supposed to have induced the attack?
18. What curative means have been tried? State if blood-letting has been resorted to, if so, to what extent?



Male patients admitted into the Institution, should come provided with at least three good cotton shirts, coat, vest and pants, of strong woolen cloth, two pairs woolen stockings, one hat or cap, pocket handkerchiefs, brush and comb, and one pair of boots or shoes.

Females should have, at least, a change of under-clothes, shoes and stockings, brush and comb, decent bonnet, and two substantial dresses; the woolens should be of dark color. It is quite desirable, also, that a Bible or Testament should not be forgotten in the outfit.

No person over twenty-one years of age can be received without the certificate required by the act regulating the Hospital, in the Revised Statutes.



STATE OF MAINE.

---

IN COUNCIL, December 30, 1884.

Read, and 2500 copies ordered to be printed for the use of the several departments.

ATTEST:                   JOSEPH O. SMITH, *Secretary of State.*