

MAINE STATE LEGISLATURE

The following document is provided by the
LAW AND LEGISLATIVE DIGITAL LIBRARY
at the Maine State Law and Legislative Reference Library
<http://legislature.maine.gov/lawlib>



Reproduced from scanned originals with text recognition applied
(searchable text may contain some errors and/or omissions)

DOCUMENTS

PRINTED BY ORDER OF

THE LEGISLATURE,

OF THE

STATE OF MAINE,

DURING ITS SESSION

A. D. 1835.

AUGUSTA:
WILLIAM J. CONDON,.....PRINTER.

1835.

ABSTRACT

OF THE

RETURNS

MADE TO THE OFFICE OF THE

SECRETARY OF STATE,

IN PURSUANCE OF A

RESOLVE OF THE LEGISLATURE

ENTITLED

“Resolve for ascertaining the number and expense of supporting the
poor throughout the State,”

PASSED MARCH 12, 1834.

AUGUSTA:

W. J. CONDON, PRINTER TO THE STATE.

1835.



STATE OF MAINE.

SECRETARY OF STATE'S OFFICE, {
AUGUSTA, JAN. 10, 1835. }

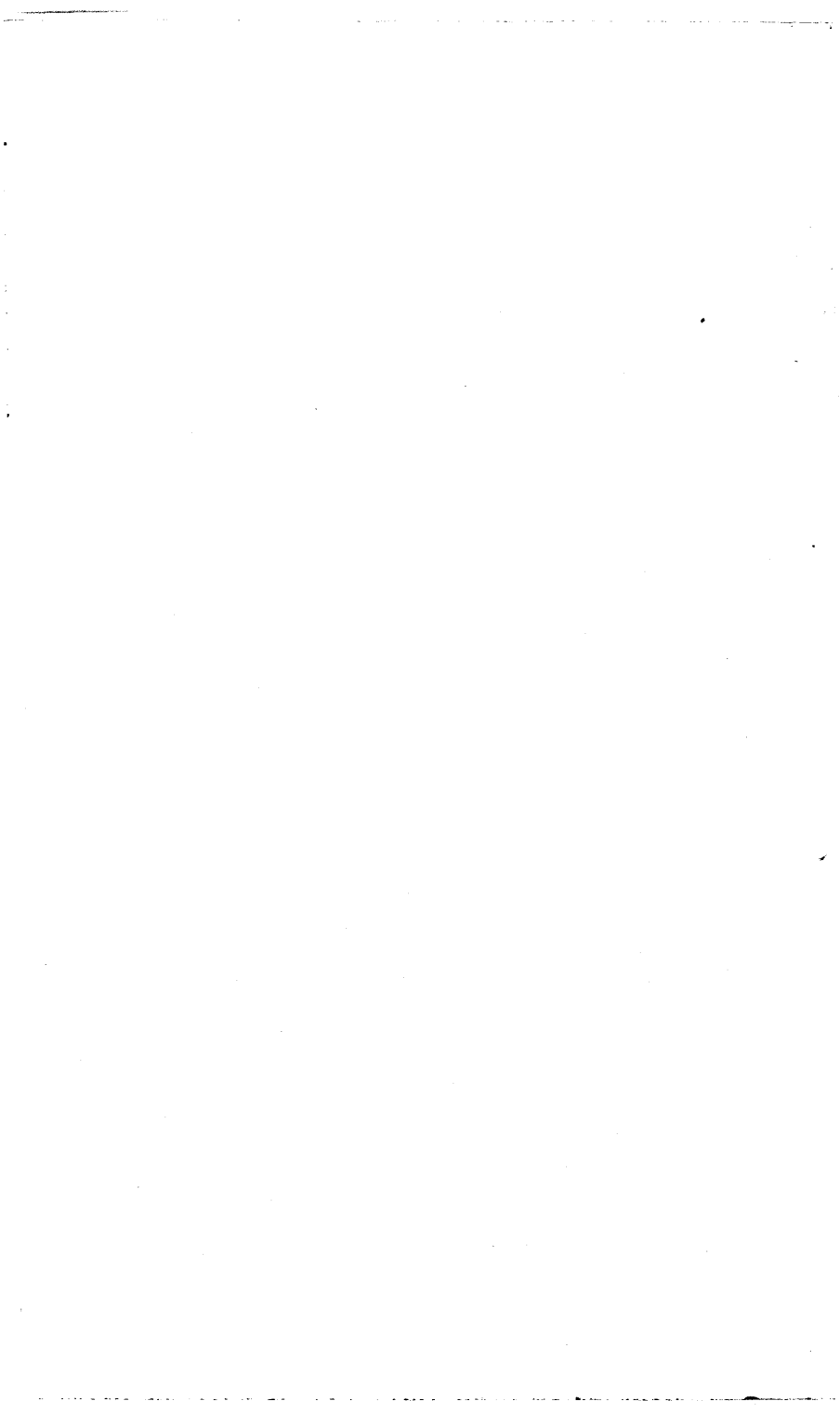
To the Senate and House of Representatives:

In compliance with the requirements of a Resolve, entitled a "Resolve for ascertaining the number and expense of supporting the poor throughout the State," passed March 10th, 1834, I have the honor to lay before the Legislature, a list of the returns made to this Office, according to the provisions of said Resolve, (specifying, by Counties, in separate columns, against the respective names of the several towns and plantations therein named and the cities of Portland and Bangor, the number, age and sex of the paupers in each, and the cost of supporting them wholly or in part) for the use of the Legislature.

It is believed that the classification here presented comports with the requirements of the Resolve. But the returns from which the facts given, are taken, contain much information which cannot be given in a tabular form. Towns adopt various modes of supporting their poor; some contract for the support of particular families; others, for the support of their poor, for a single year, or for a number of years, whether the support required, be "in whole" or "in part." And in a few cases towns have contracted for the support of particular individuals for life.

The officers who have made the returns, do not seem, in all cases, to have given the same construction to the meaning of the Resolve. For these and other causes, the information presented by the returns, cannot be fully appreciated without a recurrence to the originals.

ROSCOE G. GREENE, *Secretary of State.*



**Exhibit of the number and expense of Paupers supported wholly or in part
by the Cities, Towns and Plantations in the State.**

COUNTY OF YORK.

TOWNS.	SUPPORTED WHOLLY.								SUPPORTED IN PART.			Whole Number of Persons.	Whole Expense.	
	Males over 20 yrs. of age, with the average of their annual expense.		Females over 20 yrs. of age, with the average of their annual expense.		Males under 20 yrs. of age, with the average of their annual expense.		Females under 20 years of age, with the average of their annual expense.		Number of Males.	Number of Females.	Aggregate of their expense during the year.		Dols.	Cts.
	Number.	Average Expense.	Number.	Average Expense.	Number.	Average Expense.	Number.	Average Expense.						
		Dols.		Cts.		Dols.		Cts.	Dols.	Cts.	Dols.		Cts.	
Acton, - - -	1	38 75							8	11	207 60	20	246 35	
Alfred, - - -	3		4								16 00	14	228 00	

COUNTY OF YORK—[Continued.]

Berwick, - - -	1	30 00	2	38 84					101 32	14	209 00
Biddeford, - - -	3		14							29	530 00
Buxton, - - -	8	40 12	7	31 52		1	22 00		396 67	49	960 33
Cornish, - - -	1	12 50	3	21 08	1	9 50			18 67	7	103 92
Eliot, - - -	1	33 06	13	33 06			1 33 06	1 4	35 65	20	531 12
Hollis, - - -										26	395 00
Kennebunk, - - -	7		7		1					15	530 00
Kennebunk-Port,											
Kittery, - - -	1	35 30	5	35 30	1	35 30		12 7	203 13	26	450 23
Lebanon, - - -	1	50 00	12	28 60			1 19 75		164 00	30	577 00
Limerick, - - -										24	378 00
Limington, - - -	3		9		2			2 5 6		27	477 00
Lyman, - - -			3	29 32			3 14 19				242 02
Newfield, - - -					1	13 00	2 15 00		1 10 00	4	53 00
North Berwick, -											
Parsonsfield, -	5		6							20	672 32
Saco, - - -									100 00		700 00
Sanford, - - -	4	36 92	3	47 96	2	6 50				9	304 56
Shapleigh, - - -			3	26 50				6 3	123 50	12	203 00
South Berwick, -	2		10		1		1		62 40	20	478 30
Waterborough, -	2	25 87	3	15 75	1	104 00	2 10 38	1 1	10 00	10	233 75
Wells, - - -	5	49 80	3	36 67	3	30 67		9 18	449 00	38	808 00
York, - - -	9		22		8					47	1085 48

COUNTY OF CUMBERLAND.

Baldwin, - - -	1	50 00	4	33 75	9	14 44	10	13 70	6	11	155 00	41	607 00
Bridgton, - - -													
Brunswick, - - -	4		2		2		1		7	11	309 52	27	671 13
Cape Elizabeth, - - -	7	49 62	13	37 67	1	37 67				2	7 00	23	881 81
Cumberland, - - -	4	36 40	8	36 40								12	436 80
Danville, - - -	2	18 58	2	48 75						4	18 50	8	153 16
Durham, - - -	11		2		1							14	570 00
Falmouth, - - -	5		10				2		1	2	27 00	20	677 00
Freeport, - - -	8		1		1				4	3		17	375 00
Gorham, - - -	6	26 31	8	26 31	1	26 31	4	26 31		2	40 00		540 00
Gray, - - -	3		2		1		3		1	1	87 00	11	377 00
Harpswell, - - -	4	26 37	6	41 25							44 00		397 00
Harrison, - - -	1	51 00	1	51 00					1	3	50 00	6	152 00
Minot, - - -			4	51 84	1	40 00					319 80	23	597 16
Naples, - - -												none	
New Gloucester, - - -	3	24 95	5	34 18			1	16 64		2	40 00	11	302 36
North Yarmouth, - - -	4		14									18	190 00
Otisfield, - - -	2	67 50	2	50 00							42 00		322 00
Poland, - - -	2	34 95	8	28 90	2	23 40	2	10 40	2		25 00	16	393 72
Portland, - - -													
Pownal, - - -	2	45 16	3	55 56			1	14 00		1	5 00	7	276 00
Raymond, - - -	1	26 00	1	52 00			1	26 00	3	9	178 60	15	282 60
Scarborough, - - -	6	50 35	10	37 78					13	12	145 00	41	824 92
Sebago, - - -	2	50 00							1	3	15 00	6	115 00
Standish, - - -	1	80 00	1	65 00	1	30 00			2	5	145 80	10	346 60

COUNTY OF CUMBERLAND—[Continued]

Westbrook, - -	8		7	1					16	350 28		
Windham, - -	8	30 51	7	24 40	2	33 00		4	5	83 22	26	599 23

COUNTY OF LINCOLN.

Alna, - - -	3	53 93	2	45 50			2	19 50	1		20 00	8	311 80
Bath, - - -													
Boothbay, - -	2	39 00	4	42 25					1	26 00		7	273 00
Bowdoin, - - -	2	37 50	7	39 29					2	5	121 00	16	471 00
Bowdoinham, - -	1	60 00	4	52 50					1	1	50 00	7	320 00
Bremen, - - -	1	13 00	2	32 50								3	78 00
Bristol, - - -	4		7		2		2					15	501 46
Cushing, - - -													
Dresden, - - -			5								34 44		255 22
Edgecomb, - - -			1	40 00					2	3	127 68	6	167 68
Friendship, - -	1	52 00	2	65 00					2	2	25 00	5	207 00
Georgetown, - -	4		5		1				2	3	50 00	16	316 00
Jefferson, - - -	1	100 00	2	51 00			2	50 00	4	2	148 00	11	450 00
Lewiston, - - -													
Lisbon, - - -	5		10		4		7					26	688 42
Litchfield, - -	4		6									22	247 40
New Castle, - -	4		4		2							10	225 00
Nobleborough, - -									2	1	95 00	3	95 00
Phippsburg, - -			4	41 25			1	10 00	5	4	91 00	14	266 00
Richmond, - - -									1	2	85 00	3	85 00

COUNTY OF LINCOLN—[Continued.]

St. George, - -														455 34
Thomaston, - -														662 00
Topsham, - - -	2	46 50	3	32 00					11	12	154 25	28		343 25
Union, - - -	1	65 00	1	52 00					1	3	70 00	6		187 00
Waldoborough, - -	2	24 00	5	43 82	2	16 50			2	4	289 20	15		572 79
Wales, - - -	1	65 00							5	3	27 68	9		92 68
Warren, - - -	4		7		1		1		1	1	96 00	15		531 00
Washington, - - -			2	71 00	2	19 00	1	21 84	1		2 50	6		204 34
Westport, - - -			2	62 94					2		14 27	4		140 15
Whitefield, - - -	4	46 75	8	32 50					4	6	119 00	22		566 00
Wiscasset, - - -											435 89			771 45
Woolwich, - - -	3	56 00	4	43 00						1	21 00	7		361 00
Patricktown Plantation,														

COUNTY OF HANCOCK.

Amherst, - - -														none
Aurora, - - -														none
Bluehill, - - -			2				1			2	26 00	5		160 00
Brooksville, - - -	5	61 00	1	45 00					1	4	111 00	11		461 00
Bucksport, - - -														
Castine, - - -	2	52 00	3	52 00			1	17 16		3	86 84	9		364 00
Cranberry Isles, - -										4	4	52 75	8	52 75
Deer Isle, - - -	2	43 92	2	35 00	1	25 00				1	35 00	6		217 84
Eden, - - -					1	10 00	1	31 20	2	2	78 00	6		119 20

COUNTY OF WASHINGTON—[Continued.]

Calais, - - -	1	234 00	1	65 00					3	5	156 00	12	980 00
Cherryfield, - - -	4	58 25							1	1	17 50	6	268 00
Charlotte, - - -													
Columbia, - - -	1	50 00								1	52 00	2	102 00
Cooper, - - -													
Crawford, - - -												none	
Cutler, - - -													
Dennysville, - - -									2	1	62 00	3	62 00
Eastport, - - -	10	87 47	8	60 67	9	46 70	12	42 25	21	15			1407 95
East Machias, - - -												20	220 00
Edmunds, - - -													
Harrington, - - -	1	7 75	1	26 00	1	30 00	1	11 10				4	74 85
Hodgdon, - - -													
Houlton, - - -										1	3 00	1	3 00
Jonesborough, - - -									1		45 00	1	45 00
Jonesport, - - -													
Lubec, - - -	1	74 88	4	47 64									352 73
Machias, - - -													
Machias Port, - - -			1	65 00					2		115 00		180 00
Marion, - - -													
Pembroke, - - -													
Perry, - - -			1	70 00	1	40 00	1	35 00		1	25 00	4	170 00
Princeton, - - -												none	
Robbinston, - - -	1	49 92	2	44 46							257 50		396 34
Steuben, - - -	1	50 00					1	30 00	1		20 00	3	100 00

COUNTY OF WASHINGTON—[Continued.]

Trescott, - - -											
Wesley, - - -											
Whiting, - - -											
New Limerick Plantation,											none
Greenfield " "											
Williams College Grant,											none
No. 23, - - -											

COUNTY OF KENNEBEC.

Albion, - - -										40	1400 00
Augusta, - - -	5		11		1		4				
Belgrade, - - -											
China, - - -	1	40 00	6	42 67	1	20 00			202 00		518 00
Chesterville, - - -	1	47 50	1	47 50	1	16 00				3	111 00
Clinton, - - -	6		9		1					16	850 00
Dearborn, - - -											
Farmington, - - -	5		8		1		1			15	550 00
Fayette, - - -	2	23 28	2	34 80	1	5 28			35 57	14	157 01
Gardiner, - - -	4	58 50	4	58 50	2	45 50			5 15 461 34	30	1020 34
Greene, - - -	1	44 75	5	33 66	1	12 25	1	14 50	139 00	20	371 48
Hallowell, - - -											
Leeds, - - -										16	455 00
Monmouth, - - -	3	49 29	2	41 00	1	52 00			255 92	37	527 78
Mount Vernon, - - -	4	40 69	1	48 00					3 27 00	8	237 76

COUNTY OF KENNEBEC—[Continued.]

New Sharon, - - -										29	322 00
Pittston, - - -	1	100 00	5							12	487 20
Readfield, - - -	2		4							6	437 00
Rome, - - -	1	50 00	3	54 00				1	5	10	260 00
Sidney, - - -	2		4		3		6				332 84
Temple, - - -			1	30 00				1		2	40 00
Vassalborough, - - -	3	75 00	5	76 00						28	781 75
Vienna, - - -			1	22 00				1	3	5	52 00
Waterville, - - -	1		3		5		4			13	385 00
Wayne, - - -			3	52 67			1	129 00	5	4	168 00
Wilton, - - -			2	62 00			4	17 25		28	315 00
Windsor, - - -	1	25 00	4	31 34					4	7	162 84
Winslow, - - -											
Winthrop, - - -	1	111 55	6	40 19						21	543 58

COUNTY OF OXFORD.

Andover, - - -			3	39 01						3	117 04
Albany, - - -											
Berlin, - - -								3	6	9	62 86
Bethel, - - -	1	51 47	1	45 68	1	15 00		9	6	18	263 32
Brownfield, - - -			2	52 00				2	3	7	189 00
Buckfield, - - -	2	47 50	1	60 00						20	494 26
Byron, - - -										none	
Cauton, - - -								2	3		

COUNTY OF OXFORD—[Continued.]

Carthage, - - -								15	13	214 00	28	214 00
Denmark, - - -	3	31 25	3	31 25								
Dixfield, - - -			1	54 00				3	4	43 59	8	97 59
Fryeburg, - - -												
Gilead, - - -	1	15 00	1	15 00							2	30 00
Greenwood, - - -												100 00
Hartford - - -			3	46 39				6	5	59 76	14	198 92
Hebron, - - -			2	49 50	2	23 00		2	2	43 00	8	188 00
Hiram, - - -												
Jay, - - -	1	70 00	3	47 67				2	2	79 99	8	292 99
Lovell, - - -					2		3					5 110 24
Livermore, - - -	4		11									18 645 00
Mexico, - - -	1	30 00						2	3	12 00	6	42 00
Norway, - - -	1		3		2	31 75		1	7	107 00	14	322 50
Newry, - - -												none
Oxford, - - -	2	26 00	6	35 00	1	26 00	1	26 00	1	4	25 00	15 339 00
Paris, - - -	1	53 00			1	12 00			8	12	241 25	22 306 25
Porter, - - -			1	52 00								10 109 16
Peru, - - -								8	8	95 00	16	95 00
Rumford, - - -												
Stow, - - -			1	55 00								1 55 00
Stoneham, - - -												
Sumner, - - -	1	31 20	2	36 40	1	104 00						4 208 00
Sweden, - - -												none
Turner, - - -	4		9						1	12 00	21	477 80

COUNTY OF OXFORD—[Continued.]

Waterford, - - -									11	270 00	
Weld, - - -							4	6	10	140 00	
Woodstock, - - -		1	50 00					1	25 00	2	75 00
Howard's Gore, - - -											
Hamlin's Grant, - - -											
No. 1, 1st Range, - - -										none	
Homes & Andover W. sur.											

COUNTY OF SOMERSET.

Abbot, - - -								3	20 00	3	20 00		
Anson, - - -				4		2		3					
Athens, - - -	1	50 00						6	8	146 68	24	413 44	
Avon, - - -			1	32 32			1	26 00	4	5	157 00	10	207 00
Bingham - - -								8	7	55 00	17	113 32	
Brighton, - - -												137 00	
Bloomfield, - - -													
Blanchard, - - -			1	16 00							1	16 00	
Canaan, - - -													
Cambridge, - - -									1	1	26 00	2	26 00
Concord, - - -													
Cornville, - - -			1	60 00					2	5	100 00	8	160 00
Chandlerville, - - -												none	
Embden, - - -			1	25 00					1		15 00	2	40 00
Fairfield, - - -	1	86 00	3	35 33			1	26 00	11	14	206 97	30	425 79

COUNTY OF SOMERSET—[Continued.]

Freeman, - - -			2	75 00							2	150 00	
Harmony, - - -													
Hartland, - - -													
Industry, - - -													
Kingfield, - - -			1	36 00	1	25 00	1	25 00	2	1	39 50	6	125 50
Lexington, - - -													
Madison, - - -									1	1	46 62	2	46 62
Mercer, - - -												21	82 41
Milburn, - - -									4	3	27 67	9	140 70
Moscow, - - -	1	90 03	1	23 00								3	67 00
Monson, - - -	1	39 00	1	25 00						1	3 00		201 00
New Portland, - - -			2	25 50							150 00		62 00
New Vineyard, - - -			2	31 00								2	62 00
Norridgewock, - - -	1	50 00	2	50 00					7	5	141 60	15	291 60
Salem, - - -													
Palmyra, - - -	1	100 00							2	1	58 00		158 00
Parkman, - - -			2	52 00	4	29 90	3	23 05				9	396 76
Phillips, - - -	1	20 00					1	12 00	10	4	110 00	16	142 00
Pittsfield, - - -			2		1		1		1	1	50 00	6	154 00
Ripley, - - -												none	
Solon, - - -	1	24 04	3	41 03			2	21 83	2		172 22	8	363 01
St. Albans, - - -							1	45 00	1		12 00	2	57 00
Starks, - - -			1	52 00	1	17 33	1	17 33	3	6	205 14	12	291 80
Strong, - - -			2	35 00			2	12 17	3	3	54 00	10	148 34
Wellington, - - -	1	50 00							9	9	135 00		185 00

COUNTY OF PENOBSCOT—[Continued]

Williamsburg, - -											none
Argyle, - - -											none
No. 4, East Penob. River,											
Burlington, - -											
Greenbush, - -											none
Springfield, - -											
Bowerbank, - -											
Unorganized plantations— classed with Lincoln,											

COUNTY OF WALDO.

Appleton, - - -	1		1								2	88 20	
Belfast, - - -													
Belmont, - - -			1	52 00				6	3	105 00	10	157 00	
Brooks, - - -													
Burnham, - - -			1	29 95							1	29 95	
Camden, - - -											36	763 08	
Frankfort, - - -	5		4				1				10	333 00	
Freedom, - - -			1	78 00				2	1	85 36	4	163 36	
Hope, - - -	1	65 00	1	54 00	3	25 92	5	33 74	3	3	124 00	16	489 45
Islesborough, - - -													
Jackson, - - -								3	4	45 00	7	45 00	
Knox, - - -	1	17 34									1	17 34	
Lincolnton, - - -	3	41 33	6	38 83	2	27 50	2	27 50			13	467 00	

COUNTY OF WALDO—[Continued.]

Liberty, - - -	1	30 00	1	25 00			3	15 00				5	100 00
Montville, - - -	2		3							229 50		20	298 50
Monroe, - - -	1		3			3	2		9	6	169 43	24	434 18
Northport, - - -	3		3			1						7	258 00
Prospect, - - -	2	60 50	5	40 00			1	100 00	2	1	37 00	11	*458 00
Palermo, - - -			2	30 94	1	39 00			2	1	90 41	6	191 29
Searsmont, - - -	1	94 00			1	25 00			1	2	43 00	5	162 00
Swanville, - - -			4	44 75			1	25 00				5	204 60
Thorndike, - - -												none	
Troy, - - -	2		2									4	149 00
Unity, - - -	1		2									28	264 00
Waldo Plantation, -												none	

*\$25 more for doctor's bills.