

MAINE STATE LEGISLATURE

The following document is provided by the
LAW AND LEGISLATIVE DIGITAL LIBRARY
at the Maine State Law and Legislative Reference Library
<http://legislature.maine.gov/lawlib>



Reproduced from scanned originals with text recognition applied
(searchable text may contain some errors and/or omissions)

Griffin, Teen

From: Boulter, David
Sent: Thursday, September 01, 2011 8:21 AM
To: Caverly, Robert; Gardiner, Phyllis; Griffin, Teen
Cc: Small, Mary; Vanderwood, Sara
Subject: RE: Reapportionment Commission - Documents
Importance: High

The Law Librarian is the designated custodian of public records for the legislature so I suggest that the master files be delivered to the Law and Legislative Reference Library, preferably indexed.

From: Caverly, Robert
Sent: Wednesday, August 31, 2011 5:03 PM
To: Boulter, David; Gardiner, Phyllis; Griffin, Teen
Cc: Small, Mary; Vanderwood, Sara
Subject: Reapportionment Commission - Documents
Importance: High

David/Teen/Phyllis,

I served as the Republican appointed staff member to the Reapportionment Commission. Currently I am in possession of many of the Commission's documents. I am interested in knowing what we need to keep and where we are keeping it. I have been asking around and no one seems to know what to do with this stuff.

I am assuming we want to keep it for legislative record and possible court challenges, but again I have not found where I should submit these materials.

I have submitted the Republican Report to the Clerk and Secretary's office. However the Commission reports do not include the minutes, all the written testimony, and recordings of the meetings. I have talked to the Law Library and they suggested I bring down some materials and they would "look at them" to see what they want for the files. Is that as far as we need to go?

Thank you,
-Robert

Robert Caverly

Senior Policy Advisor
Maine State Senate
Office of the President
(207) 287-1558 Office
(207) 287-1500 Main Office
robert.caverly@legislature.maine.gov

9/6/2011

Commission to Reapportion Maine's Congressional Districts

Monday, August 15, 2011

9:00 am, Legislative Council Chamber (Room 334, State House)

Agenda

- I. Old Business
 - A. Approval of minutes of meeting of July 20, 2011
 - B. Review of budget

- II. New Business
 - A. Presentation of Democratic proposal with discussion
 - B. Presentation of Republican proposal with discussion

- III. Schedule next meeting (s)

- IV. Other matters

- V. Adjourn

Commission to Reapportion Maine's Congressional Districts

Tuesday, August 23, 2011

9:00 am, Appropriations Hearing Room (Room 228, State House)

Agenda

- I. Old Business
 - A. Approval of minutes of meeting of August 15, 2011
- II. Summary presentation of Republican plan or plans
- III. Summary presentation of Democratic plan or plans
- IV. Public comment
- V. Schedule final meeting
- VI. Other matters
- VII. Adjourn

Commission to Reapportion Maine's Congressional Districts

Tuesday, August 30, 2011

9:00 am, Legislative Council Chamber (Room 334, State House)

Agenda

- I. Old Business
 - A. Approval of minutes of meeting of August 23, 2011
- II. Summary presentation of final Democratic plan (Vassalboro-Gardiner)
- III. Summary presentation of final Republican plan (Lincoln-Cumberland)
- IV. Brief comment by each Commission member and expression of preference
- V. Vote on Commission recommendation
- VI. Establish procedure to submit report to Legislature
- VII. Adjourn

Commission to Reapportion Maine's Congressional Districts

Minutes of Organizational Meeting of July 20, 2011

The meeting was called to order by Speaker of the House, Robert W. Nutting at 9 am. Speaker Nutting asked all members of the Commission to identify themselves. Speaker Nutting then provided the Commission with the Legislature's charge to the Commission and had Joint Order HP 1186 distributed. Speaker Nutting then asked for nominations of a Permanent Chair. Michael Friedman was nominated and his nomination was seconded. He was then elected Chair by a unanimous vote of the Commission.

The Chair then introduced himself to the Commission members. Thereafter a motion was made and seconded to require a quorum of 8 members present in order to take action and, further, to use Robert's Rules of Order for Commission business.

A discussion was held on the Commission's budget of \$60,000. A motion was made and seconded to allocate \$25,000 to each caucus to spend to purchase goods and services with the remaining \$10,000 would be allocated as reimbursement for mileage and per diems to the Commission as provided by law. All purchases must be in furtherance of Commission business. The Chair will sign off on the expense requests and all expenses made will be made available to the public. The motion was approved by a unanimous vote of the Commission.

A discussion was held on whether it would be necessary to hire staff to assist the Commission in its work. Rather than hire new staff, each caucus suggested and then agreed to provide the Commission with one legislative aide, without charge, to assist the Commission and the Chair. It was agreed that the legislative aides would be under the direction of the Chair when working on Commission activities. It was also decided that each caucus would have a separate room to conduct its work in drafting proposals for consideration by the Commission. The Chair will have access to both rooms.

The next meeting of the Commission will occur on August 15, 2011 at 9:00 am in Room 334 of the State House.

No other matters were discussed and the meeting was adjourned.

Reapportionment of Congressional Districts
010-30A-1110-01

SUMMARY OF EXPENDITURES
August 12, 2011

BUDGET	PERSONAL SERVICES	ALL OTHER	TOTAL
	\$ 4,000.00	\$ 56,000.00	\$60,000.00
EXPENDITURES			
Member Expenses			
scheduled meeting	200.00	789.45	989.45
7/20/2011		195.96	195.96
7/27/2011		445.12	445.12
7/29/2011		64.10	64.10
8/3/2011		72.76	72.76
8/10/2011		<u>72.76</u>	<u>72.76</u>
	<u>\$ 200.00</u>	<u>\$ 1,567.39</u>	<u>\$ 1,767.39</u>
Equipment			
7/27/2011		12,015.00	12,015.00
8/10/2011		1,472.96	1,472.96
8/10/2011		978.00	978.00
8/10/2011		305.48	305.48
		<u>\$ 14,771.44</u>	<u>\$ 14,771.44</u>
Total Expenditures	<u>\$ 200.00</u>	<u>\$ 16,338.83</u>	<u>\$ 16,538.83</u>
<hr/>			
Balance as of 8/12/2011	<u>\$ 3,800.00</u>	<u>\$ 39,661.17</u>	<u>\$ 43,461.17</u>
Pending Expenditures			
PO #: LEG072511767		5,900.00	5,900.00
Item has been ordered but not yet received nor invoiced.		<u>\$ 5,900.00</u>	<u>\$ 5,900.00</u>
Total with Pending Expenditures	<u>\$ 3,800.00</u>	<u>\$ 33,761.17</u>	<u>\$ 37,561.17</u>

Commission to Reapportion Maine's Congressional Districts

Minutes of Organizational Meeting of August 15, 2011

The meeting was called to order by the Commission Chair, Michael Friedman, at 9:06 am. The Chair distributed copies of the agenda to commission members and those in attendance.

Old Business

The Chair asked for a motion on the approval of the minutes from the July 20, 2011 meeting. The motion was made and the vote was unanimous.

The Chair called attention to the copy of the budget that was provided in the agenda. The Chair was pleased that both caucuses were frugal with their expenditures.

New Business

The Chair announced the procedures for the presentations of reapportionment plans. The Democrats would present first, followed by the Republicans. Questions from the caucuses would be held until both sides finished their presentations.

Senator Seth Goodall presented the Democrat caucus plan.

Josh Tardy presented the Republican caucus plan.

Questions and discussion followed the presentations.

The Chair announced despite the drastically different proposals he believed both caucuses were willing to work toward a compromise. He was impressed with the seriousness and hard work both caucuses were putting into their proposals and he believed both sides were operating in good faith.

The next meeting was set for Tuesday August 23, 2011 at 9 am. The meeting was set to be held in Room 228 of the State House. The next meeting will also allow public comments from the general public. Both caucuses and the Chairman agreed to have any new proposals or compromises submitted to the Chair by noon on Friday August 19, 2011. The deadline was created to help the general public craft their statements for the commission.

No other matters were discussed and the meeting was adjourned.

Commission to Reapportion Maine's Congressional Districts

Minutes of Organizational Meeting of August 23, 2011

The meeting was called to order by the Commission Chair, Michael Friedman, at 9:15 am. The Chair invited everyone to the public hearing and informed them of the overflow room available on the 1st floor. The overflow room was set up with audio for those who wanted to listen to the proceedings. The Chair then asked that cell phones be turned off.

I. Old Business

The Chair asked for a motion on the approval of the minutes from the August 15, 2011 meeting. The motion was made and the vote was unanimous.

II. Summary presentations of Republican plan or plans

Presenting for the Republican Caucus was Senator Debra Plowman and Representative Leslie Fossel.

III. Summary presentation of Democratic plan or plans

Presenting for the Democratic Caucus was Senator Seth Goodall.

Following the presentations by both caucuses the Chair thanked the presenters for being brief, on point, and educationally driven.

IV. Public Comment

The Chair explained the rules for those members of the public wishing to testify before the Commission. Those wishing to speak need to sign up at the table outside of the commission room, state their name and hometown and any organization they might be representing, direct comments to the commission as a whole not to individuals, act civilly and courtesy while testifying. Each speaker will have 3 minutes to complete their remarks; the Chair will signal the speaker when there is 1 minute remaining in their time to help them come to a conclusion.

48 individuals testified before the commission.

Following all testimony the Chair closed the public comment portion of the commission hearing. The Chair thanked all those who attended and participated.

V. Schedule Final Meeting

The Chair recommended to both caucuses prior the hearing that the final meeting should be on Monday, August 29, 2011 at 9 am in the Legislative Council Chambers. The Chair's recommendation was adopted by the Commission by acclamation.

The Chair also recognized that there might be some commission members who can not attend. Those who can not attend will be allowed to proxy their vote at the final meeting.

VI. Other Matters

There was a concern that the commission members receive the testimony that was submitted electronically for those who could not attend the public hearing. The Chair, Senator Goodall and Senator Plowman agreed that testimony submitted electronically would be provided to the commission members.

VII. Adjourn

The Chair entertained a motion to adjourn.

No other matters were discussed and the meeting was adjourned.

Commission to Reapportion Maine's Congressional Districts

Minutes of Meeting of August 30, 2011

The meeting was called to order by the Commission Chair, Michael Friedman, at 9:15 am. The Chair invited everyone to the public and reviewed the proposed agenda.

I. Old Business

The Chair asked for a motion on the approval of the minutes from the August 23, 2011 meeting. The motion was made and the vote was unanimous.

II. Summary presentations of final Democratic Plan

Presenting for the Democrat Caucus was Senator Seth Goodall.

III. Summary presentation of final Republican Plan

Presenting for the Republican Caucus was Senator Debra Plowman.

Following the presentations by both caucuses the Chair thanked the presenters for their efforts. The Chair also recognized David Emery and Alex Pringle for their expertise in helping draft proposals and maps for each caucus.

IV. Comments by Commission members and expression of preference

The Chair explained how the Commissioner's Comments would be conducted. Each Commission member will be allowed 3-5 minutes to speak about their thoughts. Following the conclusion of each member's comments they are to express their preference on which plan the Commission should adopt. Public Members are to go first, followed by Party Designees, Representatives, Senators, then the Chair will express his desire.

Republican Public Member Josh Tardy prefers the Republican Western Maine Plan. Mr. Tardy noted that if there was support outside of the Republican Caucus for the Republican Lincoln-Cumberland Plan then he would be happy to cast his vote in favor of that proposal.

Democrat Public Member Catherine Newell prefers the Democrat Vassalboro-Gardiner Plan.

Maine Republican Party Designee Dan Billings prefers the Republican Western Maine Plan. Mr. Billings noted that if there was support outside of the Republican Caucus for the Republican Lincoln-Cumberland Plan then he would be happy to cast his vote in favor of that proposal.

Maine Democratic Party Designee Richard Grandmaison said personally he preferred the Democrat Vassalboro Plan. Mr. Grandmaison will vote in support of the Democrat Vassalboro-Gardiner Plan.

Representative Leslie Fossel stated his preference for the Republican Lincoln-Cumberland Plan.

Representative Henry Beck has a preference for the Democrat Vassalboro-Gardiner Plan. Rep. Beck was not in attendance his comments and stated preference was presented by Senator Seth Goodall.

Representative Richard Cebra prefers the Republican Western Maine Plan. Representative Cebra noted that if there was support outside of the Republican Caucus for the Republican Lincoln-Cumberland Plan then he would be happy to cast his vote in favor of that proposal.

Representative Joan Welsh has a preference for the Democrat Vassalboro-Gardiner Plan. Rep. Welsh was not in attendance her comments and stated preference was presented by Senator Seth Goodall.

Representative Kenneth Fredette stated his preference for the Republican Lincoln-Cumberland Plan.

Representative John Martin personally prefers the Democrat Vassalboro Plan. Rep. Martin stated for the vote today he would be voting in favor of the Democrat Vassalboro-Gardiner Plan. Rep. Martin was not in attendance, however was able to phone in and participate in the Commissions proceedings.

Senator Rodney Whitemore stated his preference for the Republican Western Maine Plan.

Senator Philip Bartlett stated his preference for the Democrat Vassalboro-Gardiner Plan.

Senator Debra Plowman prefers the Republican Western Maine Plan. Senator Plowman noted that if there was support outside of the Republican Caucus for the Republican Lincoln-Cumberland Plan then she would be happy to cast her vote in favor of that proposal.

Senator Seth Goodall stated his preference for the Democrat Vassalboro-Gardiner Plan.

The Chair Michael Friedman stated his preference for the Democrat Vassalboro-Gardiner Plan.

V. Vote on Commission recommendation

Senator Seth Goodall moved that the Democrat Vassalboro-Gardiner Plan be the plan the recommended to the Legislature by the Commission. The motion was seconded and the vote was taken.

Mr. Tardy – No

Ms. Newell – Yes

Mr. Billings – No

Mr. Grandmaison – Yes

Rep. Fossel – No

Rep. Beck – Yes (proxy vote submitted by Sen. Goodall)

Rep. Cebra – No

Rep. Welsh – Yes (proxy vote submitted by Sen. Goodall)

Rep. Fredette – No

Rep. Martin – Yes

Sen. Whittemore – No

Sen. Bartlett – Yes

Sen. Plowman – No

Sen. Goodall – Yes

Chairman Friedman – Yes

Vote: 8-7 Motion Prevails

Senator Plowman stated the Minority report as the Republican Western Maine Plan.

VI. Adjourn

The Chair thanked everyone for their participation.

There was a motion to adjourn. The vote was unanimous.

The meeting was adjourn and no other matters were taken up.

Commission to Reapportion Maine's Congressional Districts

Minutes of Final Meeting of August 30, 2011

The meeting was called to order by the Commission Chair, Michael Friedman, at 9:15 am. All members were present except Representative John Martin, Representative Joan Welsh and Representative Henry Beck. Previously, it had been agreed upon that absent members could participate by telephone and vote by proxy through their caucus leaders.

The Chair asked for a motion on the approval of the minutes from the August 23, 2011 public meeting. The motion was made, seconded and approved unanimously.

Senator Seth Goddall then presented a summary of the plan offered by the Democrats, identified as the Vassalboro Gardiner Plan

Senator Debra Plowman then presented a summary of the 2 plans offered by the Republicans, identified as the Western Maine and Lincoln Cumberland Plans.

Thereafter, each Commission Member spoke and expressed their preference as to a plan.

A motion was then made by Senator Seth Goddall, and seconded by a Commission member, to accept the Democratic Vassalboro Gardiner Plan as the majority plan of the Commission and to send this recommendation to the Legislature. All members were polled individually and the motion passed 8-7 with all members of the Democratic caucus and the Chair voting in favor and all members of the Republican caucus voting against.

The Republican caucus then confirmed that their minority plan to the Legislature would be the Western Maine Plan.

Each caucus was instructed by the Chair to prepare their reports to the Legislature on a timely basis.

A motion to adjourn was made, seconded and approved unanimously. No additional matters were discussed and the meeting was adjourned.



HOUSE OF REPRESENTATIVES

2 STATE HOUSE STATION
AUGUSTA, MAINE 04333-0002

(207) 287-1400

TTY: (207) 287-4469

Edward J. Mazurek

65 Beech Street
Rockland, ME 04841
Residence: (207) 594-5647

Testimony on Redistricting Proposal Presented by Representative Mazurek August 23, 2011

Good morning Chair Friedman and members of the Redistricting Commission, I am Ed Mazurek and I am here before you today as the Representative of Rockland and part of Owl's Head.

I have been contact by numerous constituents about the proposed Republican and Democratic redistricting proposals. Many people were not able to be here this morning but I am here to represent them and share with you their thoughts and opinions.

Every constituent who has contact me is opposed to the Republican plan which would move Knox County from the first Congressional District into the second Congressional District. There are many reasons why this proposal is a bad idea and not in the best interest of the people of Knox County.

Rockland and Knox County have strong economic, political and cultural ties to district one communities. Many people who live in Knox County work in places like Bath or Portland. Many local businesses have strong ties to district one businesses; they are either affiliated through ownership or strong economic ties.

Our local railroad line, Maine Eastern runs into Bath, linking us both physically and economically to towns in the first district.

Culturally, when people think of themselves in Knox County, they align themselves and identify with district one.

We also have strong ties with the coastal communities south of Knox County because of our fisherman. The type of problems that we have in Knox County are similar to those in district one and we have little in common with the challenges of Aroostook, Washington, Penobscot and Hancock counties. Those counties have their own set of problems that we do not share.

I do not understand and cannot find any logic in the Republican proposal which would cause major disruptions to our current congressional districts.

CITY OF ROCKLAND, MAINE

RESOLVE #67
AUGUST 22, 2011

IN CITY COUNCIL

BE IT HEREBY RESOLVED BY THE CITY COUNCIL AS FOLLOWS:

THAT: Whereas Rockland and Knox County share strong economic, cultural and tourism ties with communities to the south currently located in Maine Congressional District #1;

AND: Whereas Rockland and Knox County residents depend upon those ties for continued Congressional representation of our unique marine related issues in the more heavily populated communities of the southern and mid coast of Maine;

IT IS HEREBY RESOLVED BY THE CITY COUNCIL AS FOLLOWS: That the Rockland City Council opposes any redistricting proposal for Maine's Congressional Districts that would move Rockland and the remainder of Knox County from Congressional District #1 to Congressional District #2 as being contrary to the best interests of the people of Rockland and Knox County and their proper representation in the United States House of Representatives.

Sponsors: Mayor Harden and Councilor Dickerson
Originators: Councilor Dickerson and Mayor Harden

August 23, 2011

Chair Michael Friedman &
Redistricting Committee Members,

My name is Penny Plourde. I am a
resident of Vassalboro, Maine in
Kennebec County.

This is my first trip back to The Great
Chambers since I retired in January
as Director of the Division of Vocational
Rehabilitation. As such, I address
you today as citizen Plourde here
regarding the Redistricting Plan you
must put forth on our behalf
as required by the Court.

While my ideal plan would be to leave
the 1969 map as it "has been for it
has worked for Maine people and
our elected legislative bodies both
Democratic and Republican alike.

So first if its not broke why change;
however, the Maine Supreme Court
has instructed the change. Outside
this beltway many people go about their
daily life without great regard for
more "radical impact" We in Vassalboro
are closely linked to Waterville, within

The 2nd District, Our community
shares much with WTVL. Even our
Adult Ed programs come out of
WTVL and we are contiguous to/
with this Kernbee county community.

Can't tell you first hand that as
Mainers, we are consumed by
holding onto our job (if we have one)
keeping our roof over our head,
feeding and clothing our families
and we want you to do your
job, to settle this matter. - Now!

We want the fairest, most easiest
and least disruptive plan
implemented. To not do so and to
continue the redistricting disruptions
will only serve to antagonize,
frustrate and drive away
Mainers from our 2 party systems

Urge this Redistricting Committee to be
bold, honorable and above all else
put Maine Voters first. Implement
the Democratic recommendation

Thank you,
Penny P. Black

**TESTIMONY BEFORE THE REDISTRICTING COMMISSION
STATE HOUSE—AUGUSTA ---- AUGUST 23rd, 2011**

My name is JIM MATLACK. I live at 2 Spring Mountain Drive in Rockport. I offer this testimony as a private citizen deeply opposed to the radical redistricting plan put forward by the Republicans.

I urge you to be guided by the injunction laid upon doctors: “DO NO HARM”—or in this case: “DO THE LEAST HARM.” By that I mean, make the least change and disruption in order to accomplish the goal of equalizing the voting population in Maine’s two Congressional districts.

If a shift of one or two towns results in the required balance, why displace some 350,000 voters and over a hundred towns as well as whole counties?

Under the Republican plan some 25% of Maine voters would be transferred to a new Congressional district. Representatives Pingree and Michaud would both be put in the redrawn Second District.

Neither law nor custom nor common decency can justify such a massive disruption. Indeed the only rationale for the radical Republican plan is a blatant attempt to seek partisan advantage.

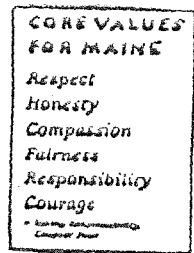
I urge you not to endorse such transparent manipulation of Maine’s citizens and established political processes. Please bring forward a plan that does the least damage to the existing district lines rather than one that steals legitimacy from the outcome of your deliberations.

JAMES MATLACK, 2 SPRING MOUNTAIN DRIVE, ROCKPORT, ME 04856

jmatlack@roadrunner.com

(207) 236-0903

Concerned Citizens: Joseph & Michele Greenier of Stockton Springs
Redistricting Committee - August 23, 2011 at 9:00am - Rm 228
In favor of moving one town only.



As Concerned Citizens, we respectfully request this Redistricting Committee to "make it simple". We recommend the simplest way to resolve this issue is to move one town that borders District #2. It takes significantly more time, energy and money to cover a bigger geographical area for District #2, which covers about 3/4 of the state. To be fair and reasonable, it makes more sense to move one town vs. moving 139 municipalities and seven counties, which is too many changes.

The people of Maine want this commission to "make it simple and stop wasting time, money and energy. We all need to do what's best for this state and work together to solve problems, not create more problems. This state needs job creation, not politicking.

Southern Maine always receives more representation, more money, more jobs and more services, at the expense of the rest of Maine. We understand that one plan wants to remodel the whole southern part of Maine and the other plan is the least amount of disruption to Maine people, for redistricting. This commission should be choosing the plan that presents the least amount of disruption to Maine people. We question has there been a cost analysis to these two plans? We contend that there is going to be a huge costs for these changes to 139 municipalities and seven counties, especially for town maps, town reports, etc.

The people of Maine want this commission to "make it simple", not complicated, in this process of redistricting. Thank you.

335 Main St. Apt.5
Vassalboro, Me. 04989
August 23, 2011

Maine Congressional Reapportionment Commission
Hearing: Augusta Maine
August 23, 2011

To the Reapportionment Commission:

I want to speak about this purely from a resident's perspective -- from the perspective of the PERSON represented. This seems to be overlooked as the political parties pick up towns and areas of the state and move them around like puzzle pieces.

A Maine resident has the opportunity to develop a relationship with his or her congressional representative. You know who he or she is, and he or she may eventually get to know you, if you are an active involved resident. He or she knows your town, and the concerns of your town and it's residents. Those of you that have served in the Legislature know what I mean. You know "your" towns, and a lot of your individual people. You know "your" town managers, community leaders and activists. You know businesses, large and small, in "your" district. You know the unique concerns and "issues" of your regions and towns and the very current concerns they are dealing with, as well as their historical background. And they know YOU. You know them better than someone from another region of the state.

This relationship between residents and their representatives is a GOOD thing. It means I can call or write my legislator or congress person for help knowing that they understand where I am from, what my town and the area around it is like, and what our concerns are. They know what the issues are, who is on which side, whether my perspective is at all reasonable, whether what I say reflects a commonly held view, and probably where the town officials stand on the issue! Please move as few towns as possible into a different district where the congressional representative has not represented them in the past and doesn't have this kind of background on the town.

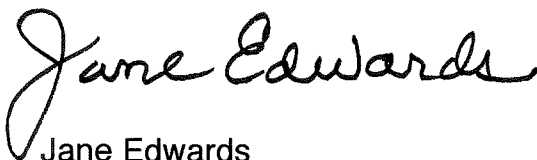
And please try to keep towns which share many common interests in the same district. I refer to towns like Lewiston/Auburn, Bangor/Brewer, Waterville/Winslow, etc. There also are many smaller towns that share major employers, or major issues. It won't always be possible to keep towns with common interests in the same district, but please make it a consideration.

As a resident of Vassalboro, a town which may be affected, it makes more sense to me to make a change for just ONE community and move just Vassalboro to a different district as in the Democrats' first plan, than it does to move four or five communities to different districts, as in the Democrats' second plan. Vassalboro shares many common concerns with the rest of that district. The Republicans' first plan looks like a nightmare of changes for people all over the state. I can imagine how officials, business people, residents, interest groups and community activists of those communities must be reacting! I have not seen their second plan so I can't comment on that.

I am not really comfortable framing my above comments in the context of political parties..... but maps submitted by political parties seem to be all that were available for discussion in advance of the hearing today. I wish there were some maps proposed by Independents, the Green Party, or for that matter maps proposed by towns or counties. I have read the statutory and constitutional requirements regarding reapportionment and I don't see anything that says that the maps to be considered by the commission have to come from political parties, or only from political parties. Did I miss something? The statutes DO say that if reapportionment is done by the courts they have to consider "plans and briefs filed by the public." I hope there will be some other maps presented to the Commission today or in the future before a final plan is submitted to the Legislature.

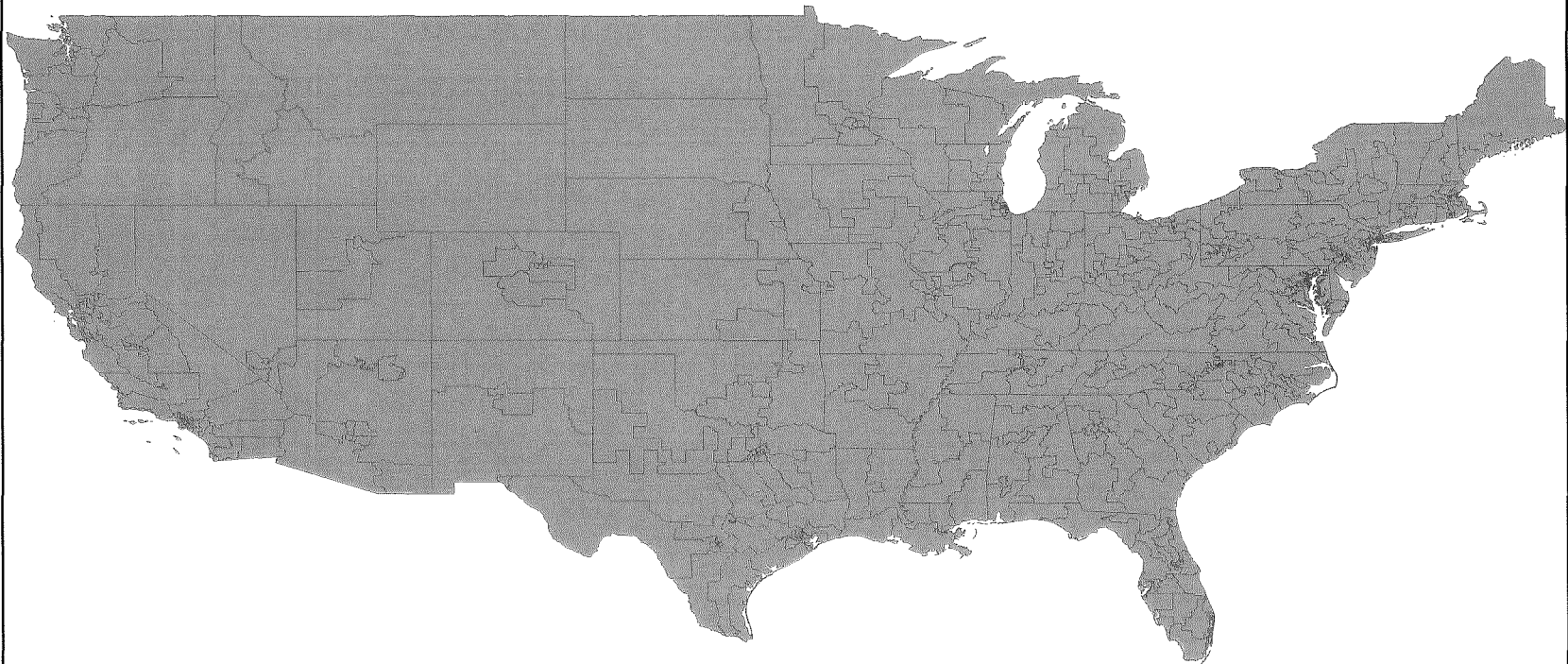
Reapportionment should not be done in a way to keep the 2 major political parties happy, or to keep the congressional representatives happy. It should be done in a way to best serve the citizens and communities of Maine.

Thank you,

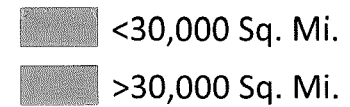
A handwritten signature in cursive script that reads "Jane Edwards". The signature is written in black ink and is positioned above the typed name.

Jane Edwards
Vassalboro

United States Congressional Districts 110th Congress



Congressional District Land Area

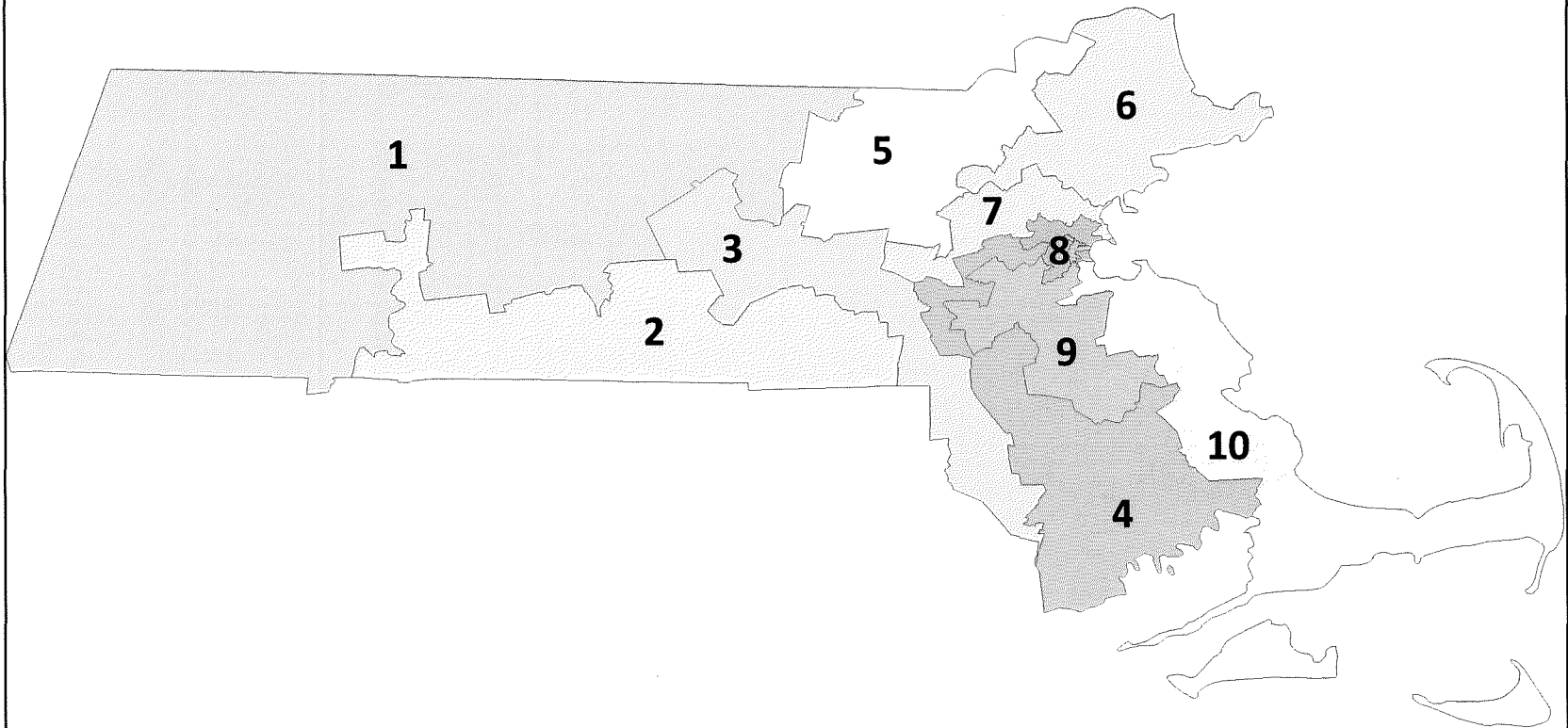


Source: http://www.census.gov/geo/www/cd110th/natl_code/land_cd110_natl.txt

Retrieved: 08/22/2011

Author: Michael Coleman

Massachusetts Congressional Districts 110th Congress



Source: <http://www.census.gov/geo/www/cob/cd110.html>

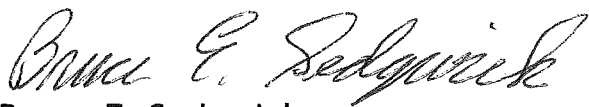
Retrieved: 08/22/2011

Author: Michael Coleman

Bruce Sedgwick
57 Provost Road
Jefferson

I support the Republican redistricting plan. By using county lines as boundaries for each district, a fair and equitable process is in place for voters to elect one representative to effectively represent their county and local interests. The plan also conforms with national guidelines to eliminate, as much as possible, the gerrymandering process used previously to establish district boundaries. Most important, the voters spoke clearly in the election last fall that they were looking for Republican leadership. It is that leadership that is reflected in the Republican redistricting plan.

Respectfully submitted,

A handwritten signature in cursive script that reads "Bruce E. Sedgwick". The signature is written in black ink and is positioned above the typed name and address.

Bruce E. Sedgwick
57 Provost Road
Jefferson, ME 04348
August 23, 2011

Tyler J. Washburn
683 Maine St.
Bowdoin, ME

Good morning/afternoon, distinguished members of the Maine Redistricting Commission, my name is Tyler Washburn. I am a resident of Bowdoin, Maine, a registered voter since March 12th, and as of this coming Friday, I will be a Student at the University of Maine.

The proposed Republican Plan is the only plan currently being considered that has the deviation of one resident, creating the closest count of equality available. The Democratic plans have continually differed from that one resident count.

Secondly, the proposed Republican Plan is the only plan that challenges the divide between the two "Maine's." By creating East / West districts, both coastal in areas, non coastal in others, densely populated in locations, and rural in others, the entire Maine Congressional Delegation would be more apt to work towards Statewide Policy initiatives, rather than those benefitting just their individual districts.

Statewide, Maine has 8.6% of its families below the poverty level (12.6% of the total population.) The current Congressional District One has 6.6% of its families beneath that line. Current Congressional District Two has 10.5% of its families beneath that line. Statewide, the per capita income (in 2009 inflation-adjusted dollars) is \$24,980. Current Congressional District One sits at \$28,061. Current Congressional District Two sits at \$21,798. Statewide, for our population 25 and over, 89.4% are High School Graduates or higher. Congressional District One sits at 91.3%, whereas Congressional District Two sits at 87.3%. Fixing these economic and educational variances has never been a campaign promise for Maine's First Congressional District. It's a daily problem for the people of Upper Oxford, Aroostook, and even Androscoggin Counties. By changing boundary lines, and bringing these areas into the fold, the division between the "haves" and the "have not's" will begin to close.

The following quote by a member of this Commission appeared in the Portland Press Herald, on August 20: *"The notion that the Democrats are playing politics is false, and the Republicans are clearly drawing the lines to seek an electoral advantage in future elections, ...The amount of time that many of us have put in, working with different ideas, and directly with the Republicans, makes those comments laughable," he said.* I don't find this laughable. Maine Democrats are looking to continue the status quo for personal political gain, as many Mainers will have to be able debate between heat and food on the table. They offer the lame excuses that Congressmen are being placed into the same districts, and one district is being made for the Republicans. They decry "Gerrymandering" on Twitter, Facebook, the News and the Presses. Last time I checked, these lines are nearly compact, and vary by 1 vote, instead of the allowable 10% under federal law. What's more, a Congressman doesn't have to live in his or her district.

A good Representative, Democrat or Republican, should be able to get reelected whoever their constituents are, as long as they Represent those very constituents, and listen to their needs and concerns.

In closing, I would like to say, I embrace this plan. Whatever the commission decides, will go to the House and Senate, and maybe on to the courts. Whatever plan is passed will result in the districts for the next ten years, starting with the first Congressional Elections that I'll be able to vote in. I hope that this group can look past political points, and do what's best for Maine's most vulnerable, including some of my relatives. And as a good voter, I look forward to researching the records of my prospective candidates, and the issues. I also look forward to have the *option* of voting for my favorite current Maine Congressman, Mike Michaud.

Testimony before the Congressional Redistricting Commission
August 23, 2011
by
Elaine Makas, Ph.D.
10 Sheffield Ave.
Lewiston, ME 04240

Mr. Friedman and other distinguished members of the Congressional Redistricting Commission:

Thank you for giving me this opportunity to speak briefly to you in support of the Democratic plans for adjusting the boundaries of Maine's two Congressional Districts.

My name is Elaine Makas, and I am from Lewiston. I served for six years, from 2002-2008, as one of Lewiston's Representatives to the State Legislature. Since then, I have represented Lewiston on our County Commission. It is in this capacity, as a resident of Lewiston and as an Androscoggin County Commissioner, that I speak today.

First and foremost, I want to stress the strong, long-standing social, economic, and political bonds between Androscoggin, Franklin, and Oxford Counties. In addition to the similarities of culture and heritage, our three counties share common economic interests, such as papermaking and other timber-based industries. These economic similarities are evident in our shared membership on the Central Western Maine Workforce Investment Board (on which I serve as our County's representative). The three counties also comprise a single prosecutorial district; our District Attorney represents the State of Maine in the Superior and District Courts of Androscoggin, Franklin, and Oxford Counties. Most recently, a further connection has been forged as a result of jail consolidation; Oxford County inmates are transferred to Androscoggin County for any stay exceeding 48 hours.

These formal connections reflect the long-standing similarities of interests shared by Androscoggin, Franklin, and Oxford Counties -- a bond that should not be jeopardized by splitting off any part of these three counties into a separate Congressional District.

The natural and reinforced connections among these three counties contrast sharply with the differences between these counties and our neighbors to the south. Cumberland and York Counties, for example, are justifiably proud of their cosmopolitan nature and their appeal as destinations for tourists interested in our beautiful Maine seacoast. Androscoggin County and our two central and western neighbors are equally proud of our natural resources and scenic tourist sites, but we have needs that are very different than those of Cumberland and York Counties. Combining these areas into one Congressional District might diminish the unique assets of Central/Western Maine and Southern Maine, almost certainly to the detriment of the less-populated Androscoggin, Franklin, and Oxford Counties. Our three counties are much more appropriately situated, as they are now, in the same Congressional District as our neighboring counties to the north.

I thank you for your time and attention, and I encourage you to preserve the existing bonds between Androscoggin, Oxford, and all of Franklin County -- and to respect the valuable distinctions between Central/Western Maine and Southern Maine -- by supporting one of the Democratic plans for re-districting.

I will be happy to answer any questions you may have.

Executive Department

Laurent F. Gilbert, Sr.

Mayor



Good morning Chairman Friedman and members of the Legislative Commission on Reapportionment, my name is Larry Gilbert and I have the great honor to serve as mayor of the City of Lewiston. Thank you for having me here today to share my thoughts on the redistricting proposals that have recently been presented to the public.

The All-America City of Lewiston is a unique and enjoyable place in which to live, work, play, operate a business, and raise a family. Lewiston is positioned in the heart of Maine's second-largest metropolitan area and serves as a regional economic and service center for central and western Maine. As mayor, my job is to advocate for the interests of Lewiston and its citizens. For those that have followed my political history, I have supported candidates from both parties based on what I considered best for Lewiston.

For over a generation, Lewiston has been the dominant player in Maine's Second Congressional District. As the largest city in the district, our infrastructure, health care, education, social service and cultural needs have been a priority for our Member of Congress. Over that time we've been represented by Democratic and Republican members of Congress. As the largest city in one of the state's largest metro areas, our needs have not been taken for granted by our Congressional Representatives. Under the proposal advanced by the Republican Party, I fear that Lewiston would take a back seat to the interests, needs, and wants of the wealthier and more densely populated communities to our south and on the coast. I firmly believe that this will be a loss for our city.

Lewiston has been dealt many tough blows when it comes to needed economic development. Eleven years ago, Lewiston lost the opportunity for the US Postal Service to build a mail handling facility in our area. This would have created hundreds of needed jobs in our community, but our more populous, wealthier neighbors to the south exerted their influence to get the facility. More recently, Amtrak service was expanded from Portland to Brunswick instead of to Lewiston. Yet again, the political clout of the coast won out. Just this past legislative session, a proposal for a Lewiston Casino received less legislative support than other proposed gaming facilities. I can go on about examples where Lewiston has gotten the short end of the deal, but I think you get the point.

I'm not naïve enough to think that we can right all of these wrongs by how we apportion our congressional districts, but I am certain that a plan to move

Lewiston to the first district will make it worse.

Lewiston has always had a close working relationship with our Representative to Congress. In recent years, we have seen significant federal investments in our airport, veterans' health facilities, local cultural institutions, and hospitals. I believe these efforts would be diminished should Lewiston find itself in a subservient position to our larger and wealthier neighbors to the south.

Lewiston also retains close economic and cultural ties with communities across the northern reaches of Maine. Like Bangor, Waterville, Presque Isle, and Skowhegan, Lewiston is an interior service center. We share common concerns and interests with these communities. Just like these cities, we are adjusting to the decline of our manufacturing base and coping with the economic development and environmental challenges that brings. We are all fighting to keep our hospitals and schools funded and to provide a broad range of services to our residents and the rural communities that surround us. When Lewiston recently hired a new city manager, the most qualified person was Bangor's former manager, Ed Barrett. Ed was an obvious choice because he'd been dealing with many of the same issues in Bangor that we deal with in Lewiston. Things are happening in Lewiston/Auburn as well as other communities across Maine's inland in large part because we work together. As a matter of state policy, we should ensure that the interior service centers continue to have a strong voice on federal policy. It seems the Republican proposal would only dilute that voice.

There are significant cultural reasons for Lewiston to remain in the second district. As a Franco American, our heritage belongs with the inland north where our ancestors settled many generations ago. In some respects, I think a recent editorial in the Lewiston Sun Journal summed up this issue perfectly:

"Since statehood, the tri-county region of Franklin, Oxford and Androscoggin have shared cultural and economic bonds. Little has changed. We are also far more connected culturally to the Franco-centric communities of northern Maine than we are to our cosmopolitan cousins in Cumberland and York counties."

This isn't about dividing Maine, but it is about recognizing that there are differences between our coastal and our interior communities. Drawing different lines on a map will not erase these differences. Diluting the interests of the interior will not bring us better services or greater attention to our issues -- it will only serve to put them on the back burner.

In closing, I urge the members of the commission to reject the radical proposal to remake our congressional districts. According to the Census, there is an 8,669 person difference between the existing districts. I encourage the commission to find a solution that is proportional to the problem. Thank You.

Testimony in opposition to the Republican Redistricting Plan
Before the Statehouse Committee considering redistricting
Maine August 23, 2011
From: Bill Williamson; Jefferson

The Committee has already heard that the proposed plan submitted by the Republican Party is expensive, unnecessarily complex and disruptive in that it would change the representation for 300,000 people.

It was not too long ago that politics was more of a rivalry between two opposing teams such as the Red Sox and Yankees rather than the blood feud between the Hatfields and McCoys that it has all too often the case today. One side should be watching to catch and point out the inevitable miscues that occur in any human interaction. The citizens through their letters, testimony and ultimately their vote pick the best ideas and candidates.

Good government results from this and bad government results when one side unilaterally takes control and uses their power for political gain, ignoring the input of the opposition.

The proposed plan will have the effect of creating two opposing districts, one Republican and one Democratic; one red and the other blue. Voters in the Republican district will hear mostly comments favorable to the Republican cause and the voters in the Democratic District will likewise hear mostly comments favorable to the Democratic cause. Those who feel differently in each district risk having their voices drowned out and their thoughts ignored. Those who may not have yet made up their mind on an issue will be deprived of equal information from different points of view.

The result will be even more balkanization and divisiveness. Even more gridlock will result as each side becomes less able or willing to communicate and even more entrenched in their respective positions. Good government and the best decisions will not be the result of this.

The world does get smaller every day, economic competition is world wide. If we are to remain first class as a nation and keep up with those who envy our standard of living, we need to have the very best ideas rise to the top and the very best structure in place for uncovering and allowing them to move forward.

The Republican redistricting plan is a step away from this goal.

Thank you for the opportunity to testify.

My name is John Smith. I am a resident of Brunswick and I am here today to ask you to support the most logical, fair and consistent redistricting plan put forward – the Vassalboro Plan.

As you know, you are tasked with assuring that all Mainers are represented as equally as practicable in the U.S. House of Representatives. Achieving this objective is critical to our Democracy. It is also important that voters not perceive the path taken to achieving this goal as a sweeping political power play.

None of the proposals put forward represent the status quo.

They each achieve the objective of balancing the first and second congressional districts to achieve the ^{principle} objective of 1 person, 1 vote.

The initial democratic proposal, the Vassalboro plan, takes the least disruptive approach to achieving this end. And the compromise democratic plan, the Vassalboro-China plan, also effectively achieves the goal without making far-reaching changes.

The Republican proposal's path to achieving this balance is one that radically alters the existing districts, casting aside traditional district divisions ~~and~~ not only endorsed but actually drawn by the courts. The sweeping approach disrupts traditional and logical regional alliances and deprives hundreds of thousands of voters the opportunity to vote for their current democratically elected congressperson. It is true that no approach should seek to protect the political strongholds of incumbents. It is equally true that no approach should go out of its way to move two democratically elected congresspeople into the same district. Regrettably, the Republican plan does just that.

I will also add, as someone who has worked in elections administration for ten years, most recently as a Deputy Secretary of State, that in the area of elections, radical change, unless absolutely necessary, should be avoided as it often leads to unintended and undesirable consequences. In this case there is no need for a radical change.

I urge you to avoid undermining the confidence Maine voters have in their elections by making ^{far-reaching} ~~radical~~ and politically motivated changes, when it is clear that modest adjustments from our existing court-approved district lines will achieve the goal of equal representation. **THANK YOU**

To: The Maine State Redistricting Commission
From: Becky Bartovics of Knox County
Re: The Redistricting Plans
Date: August 23, 2100

Dear Members of the Commission,

The maps that indicate the proposed changes in the two Parties Redistricting Plans could not be farther apart. While one, manages to complete the change with minimal impact, moving only 4340 voters, the second plan with a draconian stroke of the pen, completely changes the districts composition and displaces 1/4 of the voters to the other district. To say that the second plan, the Republican one, is not solely based on political lines does not pass the straight-faced test. In fact, one could surmise that it also is not one developed by Mainers, but by that group of legislative interlopers who are messing about all over the countryside, in every small state in the nation, called ALEC, American Legislative Exchange Council. We, Mainers, are an independent sort. Perhaps those folks should leave us to decide our representation by ourselves.

I am a voter in Knox County, and it is fair to say that I am politically active, so I contact my legislators frequently. If I and the rest of my county were to be moved to the 2nd District, for two more years we would be represented by a perfectly good congressman, but not the one we voted for.

Living in Maine, while it has its down side, offers a unique opportunity for its citizenry to be on a first name basis with many local, state and congressional leaders. By changing our representative midstream, the Republican plan effectively denies the rights of a large number (360,000) of Maine voters. I would suggest that this legislature (fondly deemed the Whoopie Pie Legislature) ought to handle its constituents with care.

Process in this Administration has been often derailed, and it is suggested that the Republicans in the legislature might try to circumvent the 2/3 majority rule on redistricting. It is unethical to changes the rules of any game midstream. This is true in backyard baseball, in town government, in business. We expect you to do your work within the confines of existing law. The Democratic proposal that moves Vassalboro into the 2nd District effectively balances the two Districts with minimal disruption. Keeping it Simple, seems prudent, appropriate and ethical. With all due respect, the other proposal is the opposite.

Thank you for taking the time to hear my argument

Becky Bartovics
273 North Shore Rd.
North Haven, ME
04853

TO: Members of the Re-Districting Committee

**Testimony From Susan Cook Regarding the Proposed Re-districting
of Congressional Districts 1 and 2**

Date: August 23, 2011

Respectfully submitted by:

Susan Cook *Susan Cook*

418 Washington St.

Bath, Maine 04530

207-991-8042

This proposal to shift 350,000 citizens from one Congressional District to another represents a disregard for Constituents' right to participate in this Democracy and indeed disregard for Democracy itself. This is more of the disturbing trend we have seen of inflated partisanship at the cost of fairness and balance, more disregard for the voice of citizens.

Other examples are the recent passage of a bill to eliminate same-day voter registration making it far more difficult for citizens to vote, a concern I have heard throughout the collection of signatures to give the participants in our democracy a chance be to heard on their desire for same-day voter registration.

The most disturbing example is the fact that the now President of the Maine Senate records constituents' phone calls- without their consent and indeed without even announcing as Insurance companies do- that the call will be recorded. The consequence? Intimidation of constituents so they dare not call.

This re-districting proposal is yet another effort to intimidate voters, to say, we don't like how you vote so we are going to force you to vote for someone else?

Sound familiar? Sound like Democracy disregarded? You bet. Like Ukraine, like any other country where Democracy is not respected- where the consequence of voting is the imposition of all possible obstacles- like the elimination of Congressional Districts to suit the party in power.

Do I have to say it? Shame on you for trying to move 350,000 voters because you don't like the way they voted. Shame on lawmakers who record constituents' phone calls to intimidate them and make them fearful of voicing their views. Democracy deserves our best not manipulation. The people here who speak against moving 350,000 citizens to accommodate your manufactured district deserve far far better.



HOUSE OF REPRESENTATIVES

2 STATE HOUSE STATION
AUGUSTA, MAINE 04333-0002

(207) 287-1400

TTY: (207) 287-4469

Paul E. Gilbert

P. O. Box 186

Jay, ME 04239

Residence: (207) 897-5143

State House E-Mail:

RepPaul.Gilbert@legislature.maine.gov

Testimony of Rep. Paul Gilbert Redistricting Proposal

August 23, 2011

Good morning Chair Friedman and members of the Redistricting Commission my name is Paul Gilbert and I represent Chesterville, Jay, Mercer, New Sharon and Starks in House District 87. Unfortunately, I am not able to be here in person today due to an important meeting in my district.

I am submitting this testimony which reflects my views as well as the many constituents who have contacted me regarding the proposed Republican redistricting plan.

Every single person I have heard from is against the Republican proposal which would split Franklin County between the first and second Congressional Districts. Franklin County has always traditionally been a part of the second Congressional District and our economy, culture, and interests are in no way compatible with southern, coastal Maine.

Franklin County needs a Representative who knows us and who has expertise in our interests. We are focused along with Oxford and Androscoggin Counties on the paper mills and forestry issues and have little in common with the coastal, urban communities in southern Maine.

We do not want to have to compete for resources with Portland and under the Republican proposal we would also have to compete with Lewiston and Auburn. The Republican proposal would split Franklin County for purely political reasons and would not in any way serve the best interest of the people of Franklin County.

-----Original Message-----

From: victorb <victorb@uninets.net>

To: DebraPlowman <DebraPlowman@cs.com>

Sent: Fri, Aug 19, 2011 4:28 am

Subject: Congressional redistricting

8/19/2011

TO: Senator Debra Plowman

I have learned that you are part of the committee charged with producing new Maine congressional districts.

Recently I saw a plan which equalizes the populations by placing the Lewiston-Auburn area into the 1st District. I wish to congratulate you and support it whole-heartedly. It is fair-minded and actually places communities with a common sphere-of-interest together because residents of Androscoggin County share more common identity with the Portland-area than do Bangor and residents of the Maine coast who make their living from the sea and outdoor recreation have more in common with folks in central and northern Maine who make their living from the land and outdoor recreation.

Victor Berardelli
435 Mudgett Road
Newburgh, ME 04444-4963

Good morning, Chairman Friedman and Members of the Committee:

I came today with no prepared remarks, but after listening to the many before me, I have gathered some thoughts and hope to offer a slightly different perspective.

I am cognizant of the fact that the abbreviation for Maine is ME.... but hearing the arguments of those who have spoken in opposition to the Constitutional Republican plan for redistricting, all I can hear is “me, me, me” between the lines.

For decades, the votes from the previously politically “radically districted” Congressional districts were slanted blatantly in favor of the southern end of the state... what some would call. Northern Massachusetts.” Northern Maine unfairly bared the brunt of decisions that have hurt us in many ways.

Yet we live in an era when many will bend over backwards to help the people of Haiti or the people of Japan, polar bears, endangered plants and a myriad of other causes. Perhaps it is time for southern Maine to become part of ALL of Maine, and make an attempt to identify with the problems we face.

Our Congressional representatives can meet new people and learn about new communities. Coastal and urban citizens can discover, through education and interest, what rural Mainers experience. And may I remind you that nobody is being displaced... nobody has to move. Even Chellie Pingree can live in whichever house she chooses.

We all simply have to think about what’s best of ALL of Maine and then do it fairly, respectfully and CONSTITUTIONALLY. Thank you.

Dena Worster
Palmyra, Maine
Somerset County

207-938-4477

-----Original Message-----

From: Doug Damon <dougdamon@live.com>

To: debraplowman <debraplowman@cs.com>

Sent: Fri, Aug 19, 2011 8:40 am

Subject: Redistricting

Sen Plowman, I support yours and the GOP's plan for redistricting in Maine. This initiative is fair and equitable for the people.

Rep Douglas Damon

Dist 16. Bangor

Sent from my U.S. Cellular BlackBerry® smartphone

State of Maine Congressional Redistricting - 2011

The Republican Plans

Criteria Considered

- Deviation
- Contiguity
- Compactness
- Adherence to boundaries of political subdivisions

Deviation

- U.S. Supreme Court: Wesberry v. Sanders
376 U.S. 1

–Achieving a minimum population deviation between Congressional Districts is, by far, the most important criterion, far surpassing all other in relative importance.

Deviation

- 2010 U.S. Census - Maine population:
1,328,361
 - Therefore the minimum population difference between the two congressional districts is one.
 - **664,181** and **664,180**

Deviation

- The courts may allow some variances from the minimum deviation, however only to achieve a “legitimate state objective”.
- Examples of accepted deviation variances:
 - The creation of districts having a majority population of racial minority:
 - This is not relevant to Maine as racial minorities make up only 6% of Maine’s population.

Deviation

– Make Districts more compact:

- Republicans have demonstrated in several draft plans that greater compactness does not require a deviation greater than one.

– Avoiding contests between incumbents:

- The Republican position is that reapportionment is not intended to protect incumbents. Our goal has been draw districts that comply with the U.S. and State Constitutions.
- U.S. Constitution does not require a Member of Congress reside from the district they represent.
- However, a deviation greater than one is not necessary to place the Maine incumbents in separate districts.

Deviation

– Preserving the cores of existing districts:

- Iowa, among other states, have established a reapportionment approach that intentionally mixes constituencies. Moving new territory into an incumbent's district is an effective way to encourage political debate, healthy dialog, and meaningful election contests.
- The Republican preferred plan maintains 72% of the current constituencies in their districts.
- A deviation greater than one is not necessary to easily maintain the cores of the current congressional districts.

Deviation

– Maintaining districts that have historical significance:

- An example of a district with historical significance would be Virginia's "Fighting Ninth" which has existed since 1870.
- Maine's two congressional districts got their shape following the loss of Maine's Third Congressional District in the 1960's.
- As recent as 1993, Justice Clifford of the Maine Supreme Court argued Androscoggin County should be a part of the First District.
- Contrast Maine's congressional districts with the "Fighting Ninth" and there is no historical rationale other than the passage of time.

Deviation

– Accommodating unique geography:

- An example of a unique geographic consideration would be Michigan's Upper Peninsula.
- Maine does not have such a qualifying geographic consideration to protect. Thus a deviation greater than one is not necessary.

Deviation

- “Legitimate State Objective”
 - Is established by the government of a state by declaring the existence of a “legitimate state objective” and then justifying its declaration.
 - The Governor and the Legislature (past and present) have not declared such a “legitimate state objective” exists.

Deviation Conclusion

- Maine does not fit any of the accepted deviation variances and a “legitimate state objective” has not been declared
- Republicans believe a deviation of one is a necessary element of the 2011 reapportionment plan

Contiguity

- The easiest of the reapportionment requirements. Simply means that no portion of a district can be separated from the rest by territory that belongs to another district.
 - All Republican plans are contiguous.

Compactness

- Compactness is measured mathematically using several standardized tests.
 - The Republican plans are measured and compared to the current districts by six standard tests, each well-known and recognized by mainstream political scientists.
 - Tests used: Polsby-Popper Circularity Ratio, Circumference to Perimeter Ratio, Schwartzberg Convex Hull Test, Roeck Test, Ehrenberg Test, and Radii Ratio

Adherence to Boundaries of Political Subdivisions

- The Maine Constitution requires that districts must cross county and municipal boundaries only when necessary to create a constitutional plan.
 - Republicans have demonstrated that it is possible to create new districts with a minimum deviation and only splitting one county.

The Republican Plans

- Maine Republicans have produced redistricting plans designed to strictly meet both U.S. and Maine Constitutional standards.
- Today Republicans will be providing a description of two of our draft plans.

The Republican Plans

- The first plan is the preferred Republican plan which was presented at both August 15 and August 23 meetings of the Reapportionment Commission.
 - Referred to as the C3 plan, this plan re-orientes Maine's Congressional Districts and has a deviation of one.

C3 Plan: GOP Preferred Plan

First District

Androscoggin

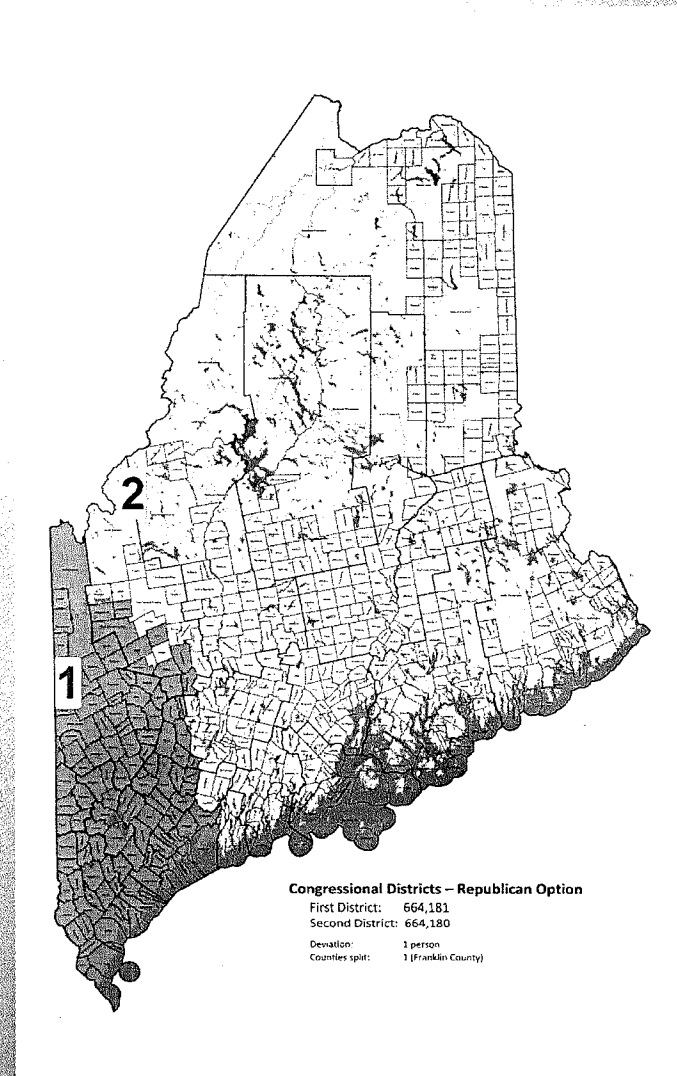
Cumberland

Oxford

York

Franklin (part)

Avon, Carthage, Chesterville, Farmington, Jay,
Rangeley Plt, Sandy River Plt, West Central
Franklin (UT), Weld, Wilton

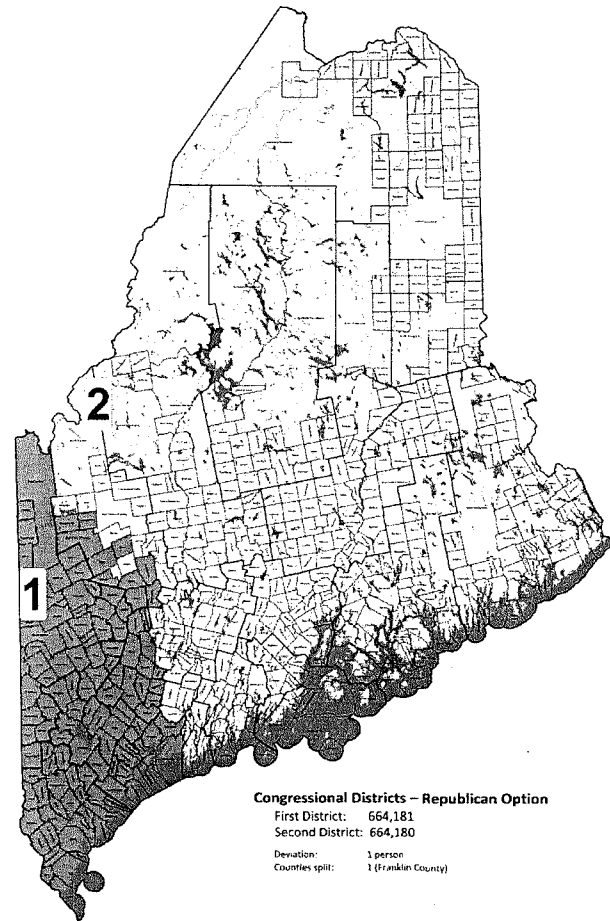


C3 Plan: GOP Preferred Plan

Second District

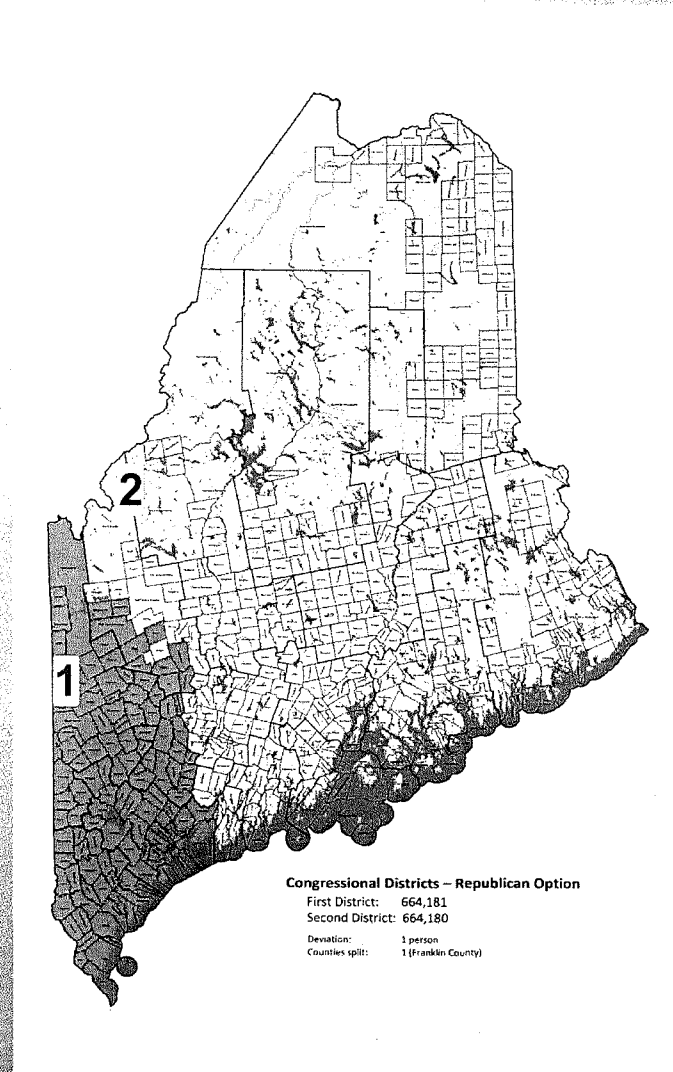
Aroostook
Hancock
Kennebec
Knox
Lincoln
Penobscot
Piscataquis
Sagadahoc
Somerset
Waldo
Washington
Franklin (part)

Carrabasset Valley, Coplin Plt., Dallas Plt., Eustis, Industry, Kingfield, New Sharon, New Vineyard, Phillips, Rangeley, Strong, Temple, East Central Franklin (UT), North Franklin (UT), South Franklin (UT), Wyman Twp.

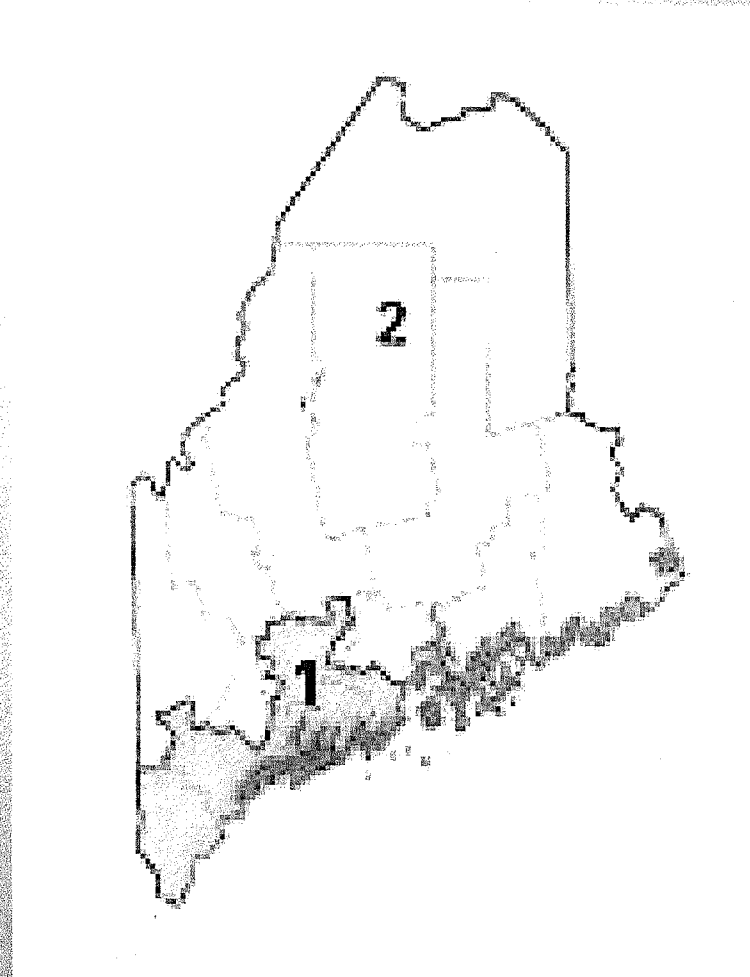
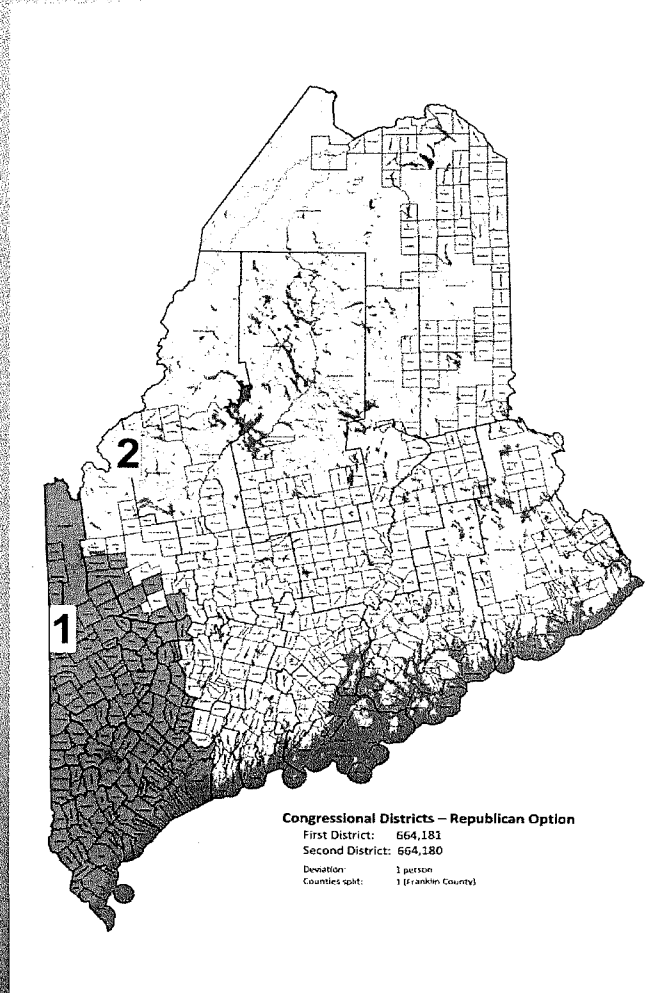


C3 Plan: GOP Preferred Plan

- Creates a East/West division
- Mitigate the “Two Maine’s” phenomenon
- Creates a more regular configuration compared to the current districts
- Addresses the growing land disparity
- Maintain healthy political dialog



C3 Plan vs. Current Districts



C3 Plan vs. Current Districts

Land Area

C3 Plan

- 1st District **4,809** Sq. Miles
- 2nd District **25,768** Sq. Miles

Current Districts

- 1st District 3,471 Sq. Miles
- 2nd District 27,106 Sq. Miles

Compactness Tests

-Polsby-Popper

1st **25.0%** 2nd **34.4%**

1st 16.4% 2nd 27.1%

-Circumference to perimeter

1st **50.9%** 2nd **60.1%**

1st 41.6% 2nd 53.3%

-Schwartzberg

1st **82.3%** 2nd **86.6%**

1st 64.0% 2nd 83.2%

C3 Plan: GOP Preferred Plan

- Gerrymander?
 - To divide into voting districts so as to give unfair advantage to one party in elections.
 - The C3 plan does not give unfair advantage to any political party in Maine.
 - It simply is a more compact and reasonable way to draw Maine's congressional districts. Eliminating North vs. South, Haves vs. Have Not's.
 - Forcing our Representatives to represent all of Maine's interests.

What we heard from our counterparts

- Our Democratic colleagues first rejected 3 elements of the C3 Plan.
 - Androscoggin County in First District
 - Moving Knox County to Second District (Congresswoman Pingree's hometown)
 - Shifting 376,000 persons from one congressional district to the other

Republican Attempt at Consensus

- Republicans addressed all 3 concerns with a possible consensus plan. *(Offered through negotiations prior to the Aug. 23rd public hearing)*
 - Democrats responded with a 4th objection:
Moving Waterville back into the 1st District
- Republicans have made several attempts to address the concerns of our colleagues.
- The latest attempt is the Republican B6 Plan.

B6 Plan: Possible Consensus Plan

First District

Androscoggin

Knox

Sagadahoc

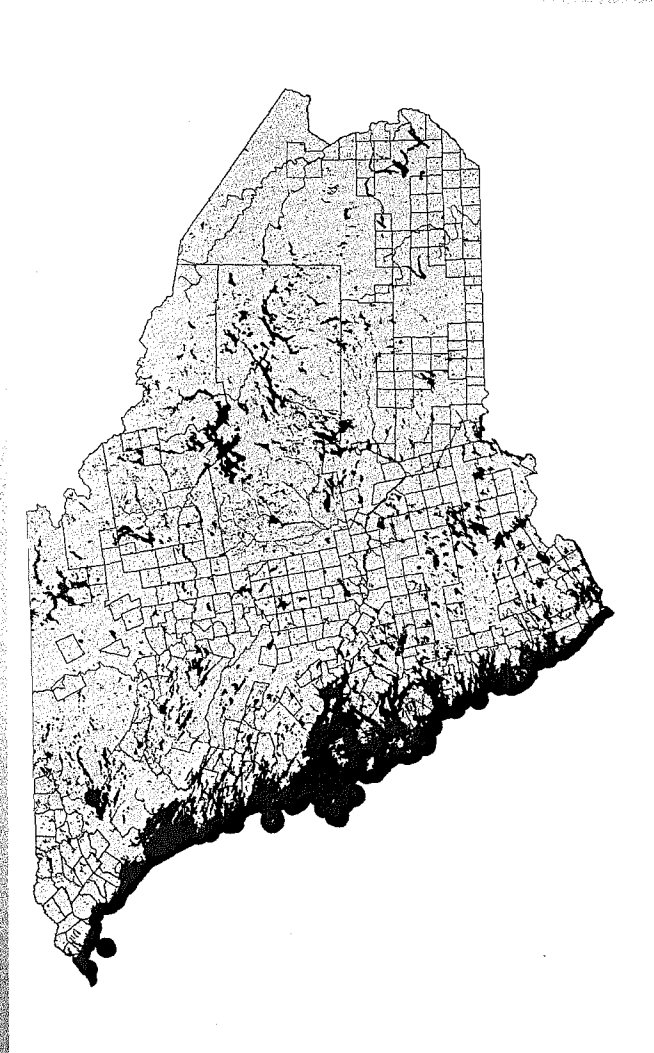
York

Cumberland (part)

Baldwin, Brunswick, Cape Elizabeth, Chebeague Island, Cumberland, Falmouth, Frye Island, Gorham, Gray, Harpswell, Long Island, New Gloucester, North Yarmouth, Portland, Pownal, Raymond, Scarborough, South Portland, Standish, Westbrook, Windham, Yarmouth

Lincoln (part)

Alna, Boothbay, Boothbay Harbor, Bremen, Bristol, Edgecomb, Hibberts Gore, Monhegan Island, Newcastle, South Bristol, Southport, Louds Island, Waldoboro, Westport



B6 Plan: Possible Consensus Plan

Second District

Aroostook

Franklin

Hancock

Kennebec

Knox

Oxford

Penobscot

Piscataquis

Somerset

Waldo

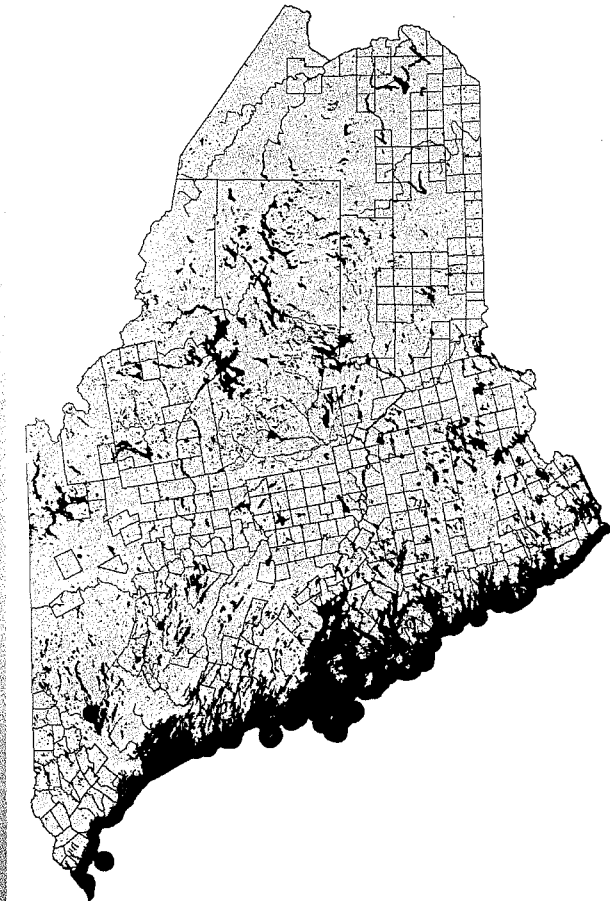
Washington

Cumberland (part)

Bridgton, Casco, Harrison, Naples, Sebago

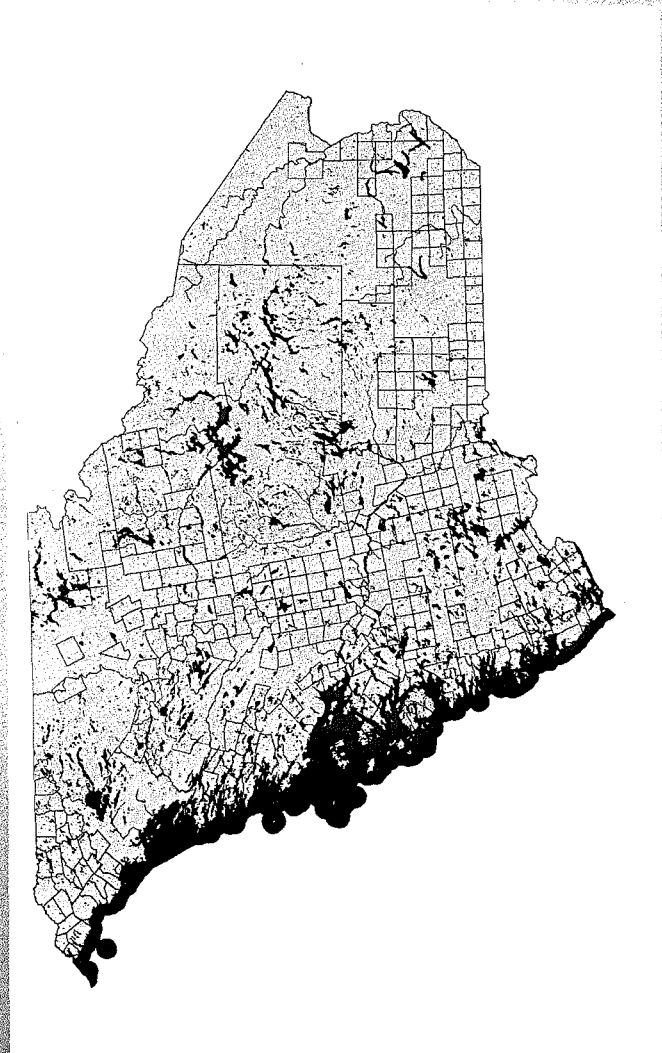
Lincoln (part)

Dresden, Damariscotta, Jefferson, Nobleboro, Somerville,
Whitefield, Wiscasset

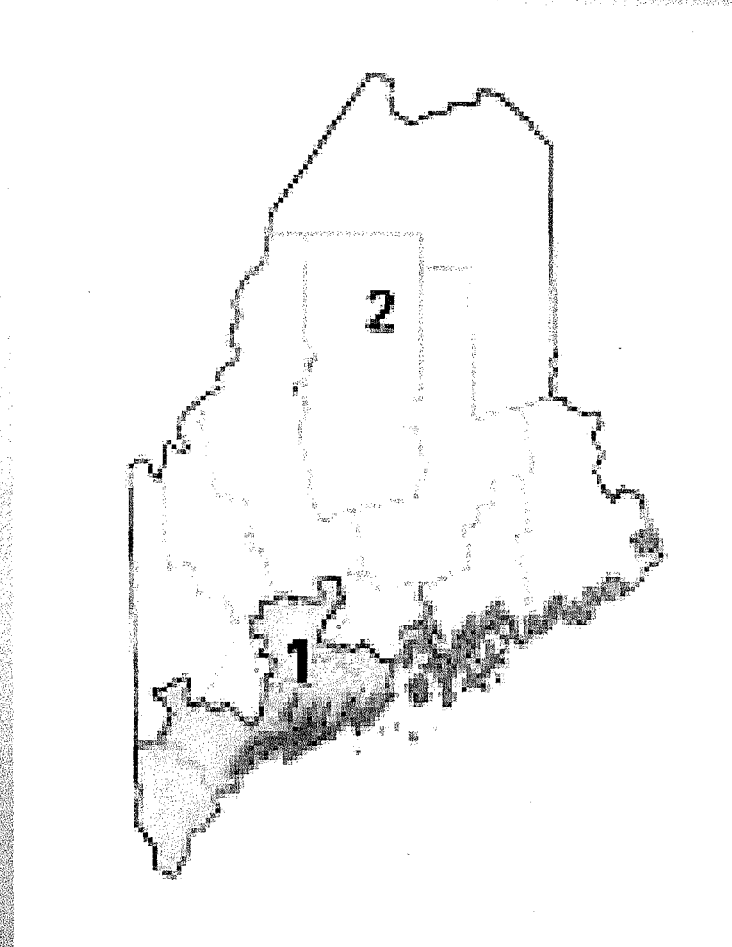
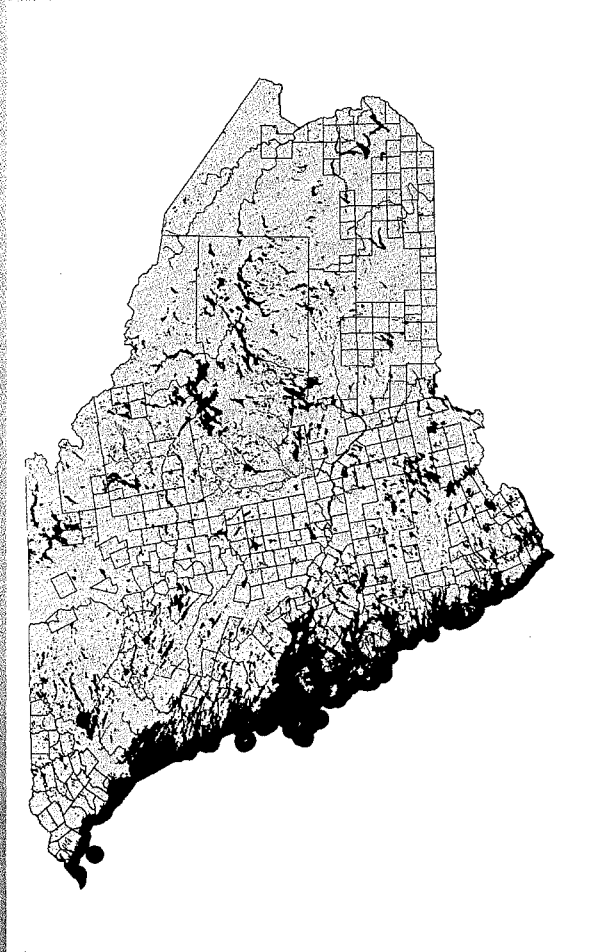


B6 Plan: Possible Consensus Plan

- B6 Plan relents to the Democrats 3 of the 4 stated concerns
 - Keeps all of Knox County in 1st District (Congresswoman Pingree's hometown)
 - Moves fewer persons than the C3 Plan
 - Waterville remains in the 2nd District
- Obtains one Republican request
 - Androscoggin County moves to 1st District



B6 Plan vs. Current Districts



B6 Plan vs. Current Districts

Core of District Retained

- B6 Plan**
 - 1st District 83.2%
 - 2nd District 83.6%

Current Districts

Compactness Tests

-Polsby-Popper	1 st 17.1%	2 nd 30.4%	1 st 16.4%	2 nd 27.1%
-Circumference to perimeter	1 st 42.6%	2 nd 56.5%	1 st 41.6%	2 nd 53.3%
-Schwartzberg	1 st 60.1%	2 nd 85.0%	1 st 64.0%	2 nd 83.2%

Conclusion